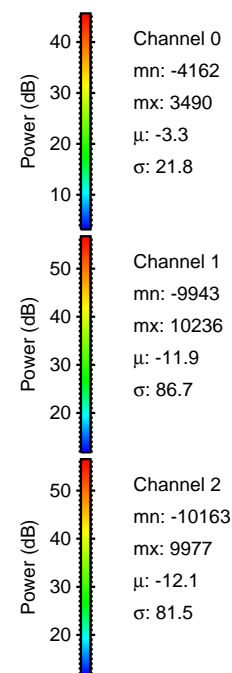
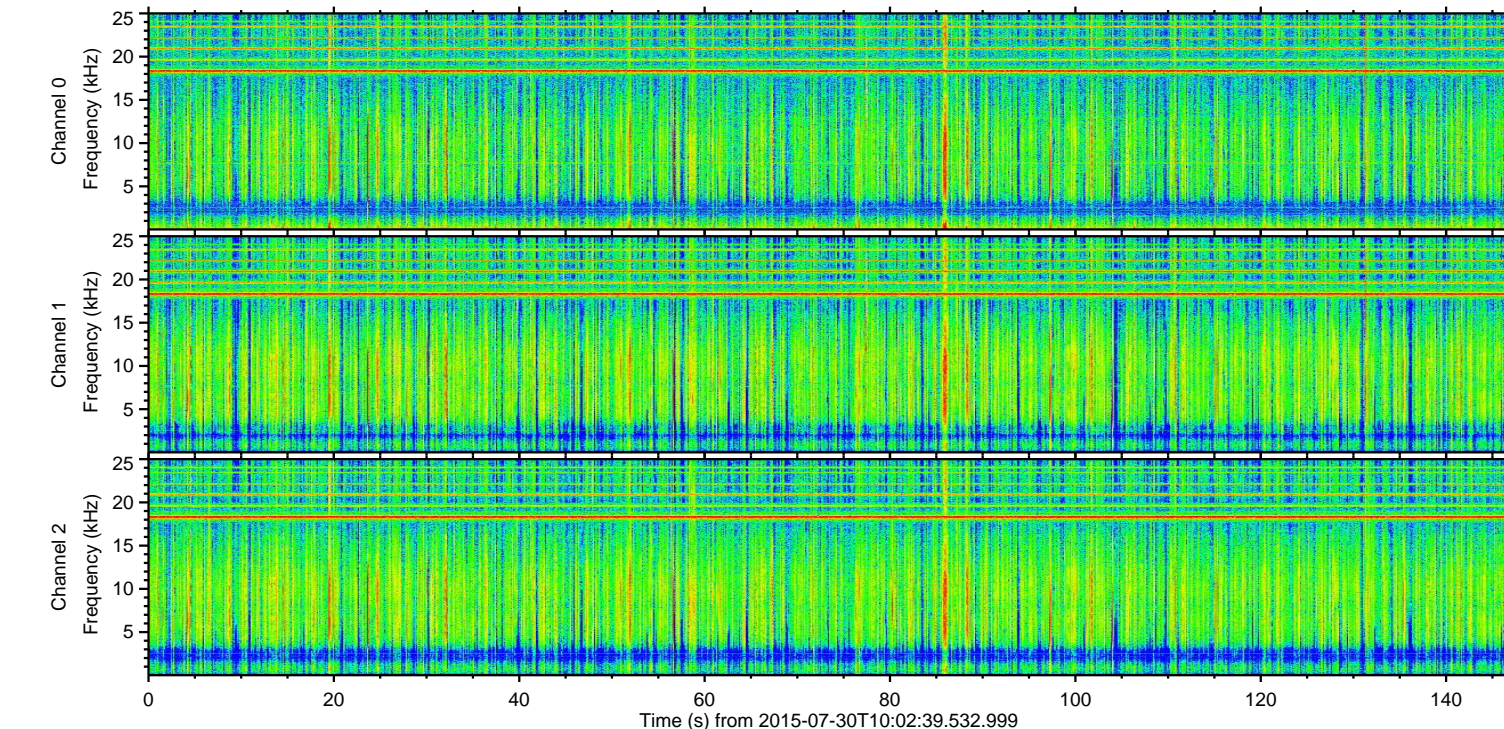
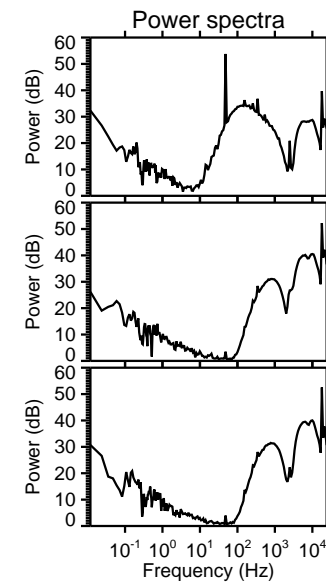
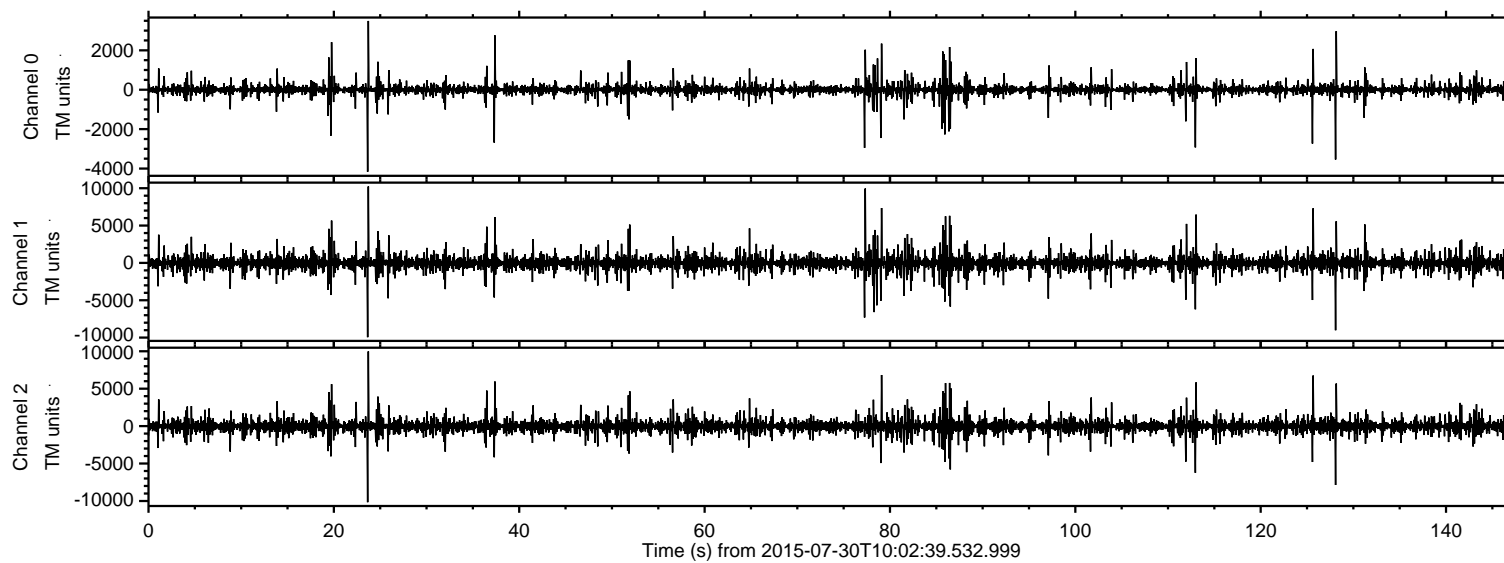


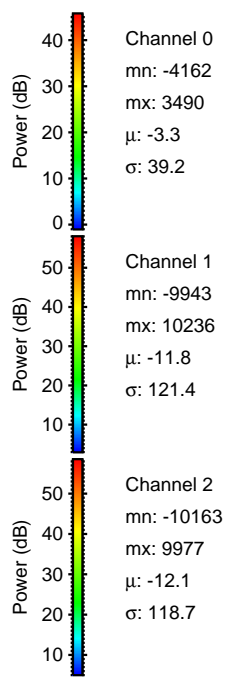
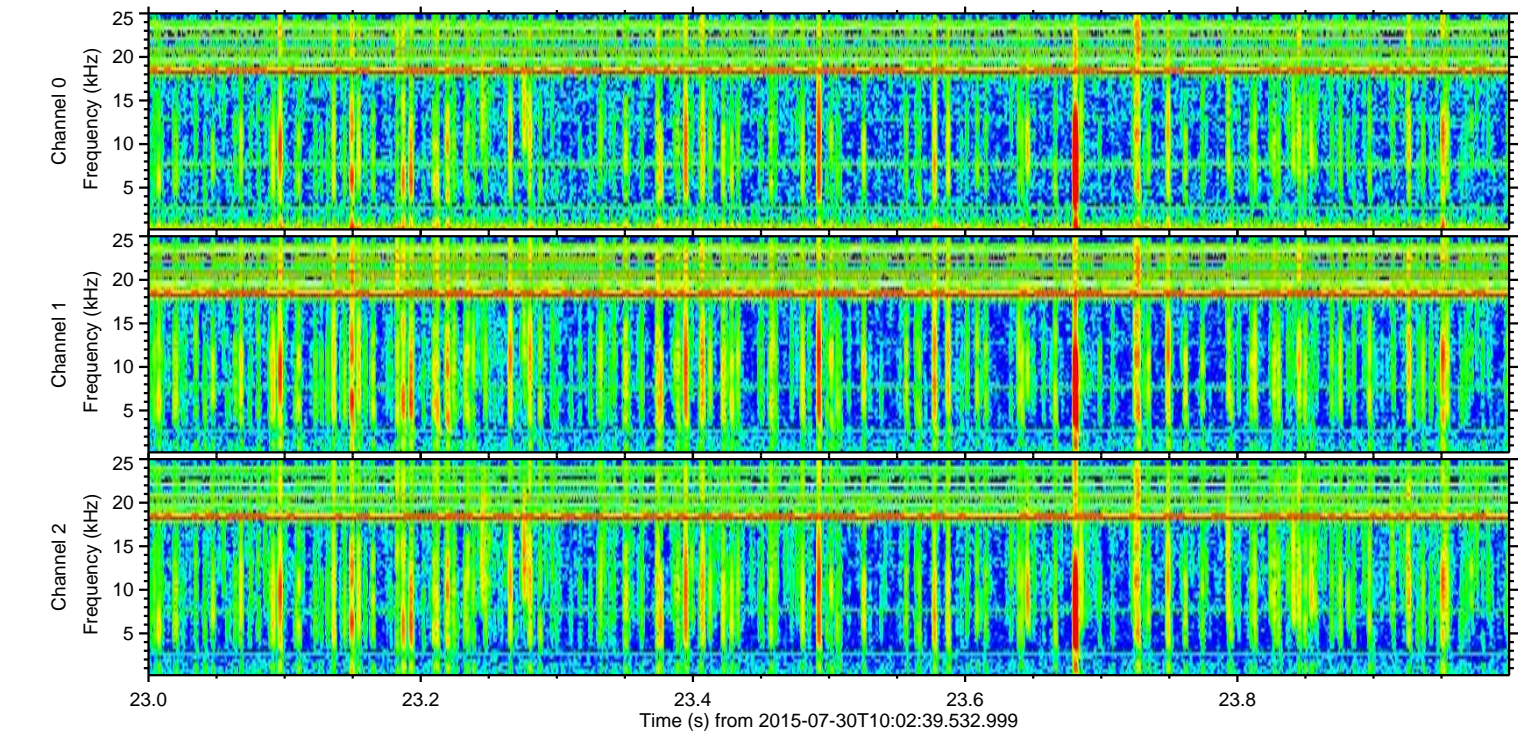
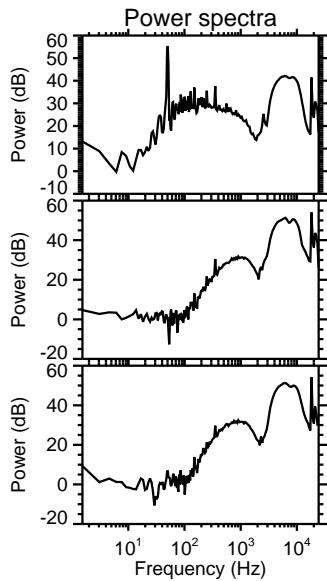
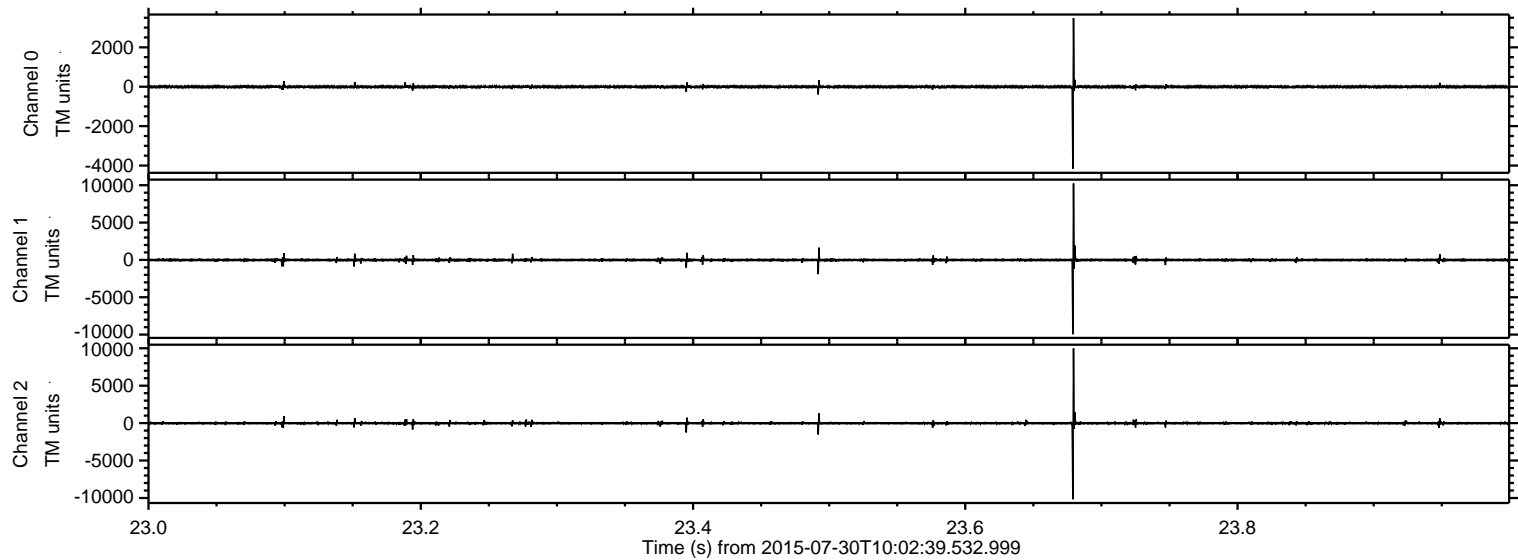
ELMAVAN 3D WAVEFORMS (Measured data sampled at 50 kHz) 51000 packets of 144 samples from 2015-07-30T10:02:39.532.999.

Processed Thu Jul 30 12:09:10 2015 by ELM ver.2012-10-06 from 001\_\_elm20150730\_100238\_\_dat00.bin





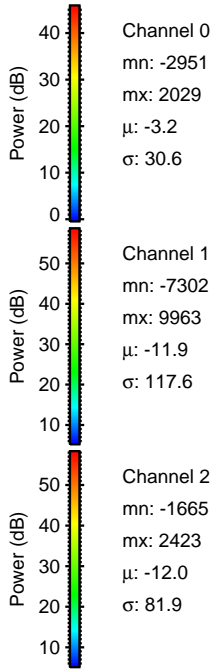
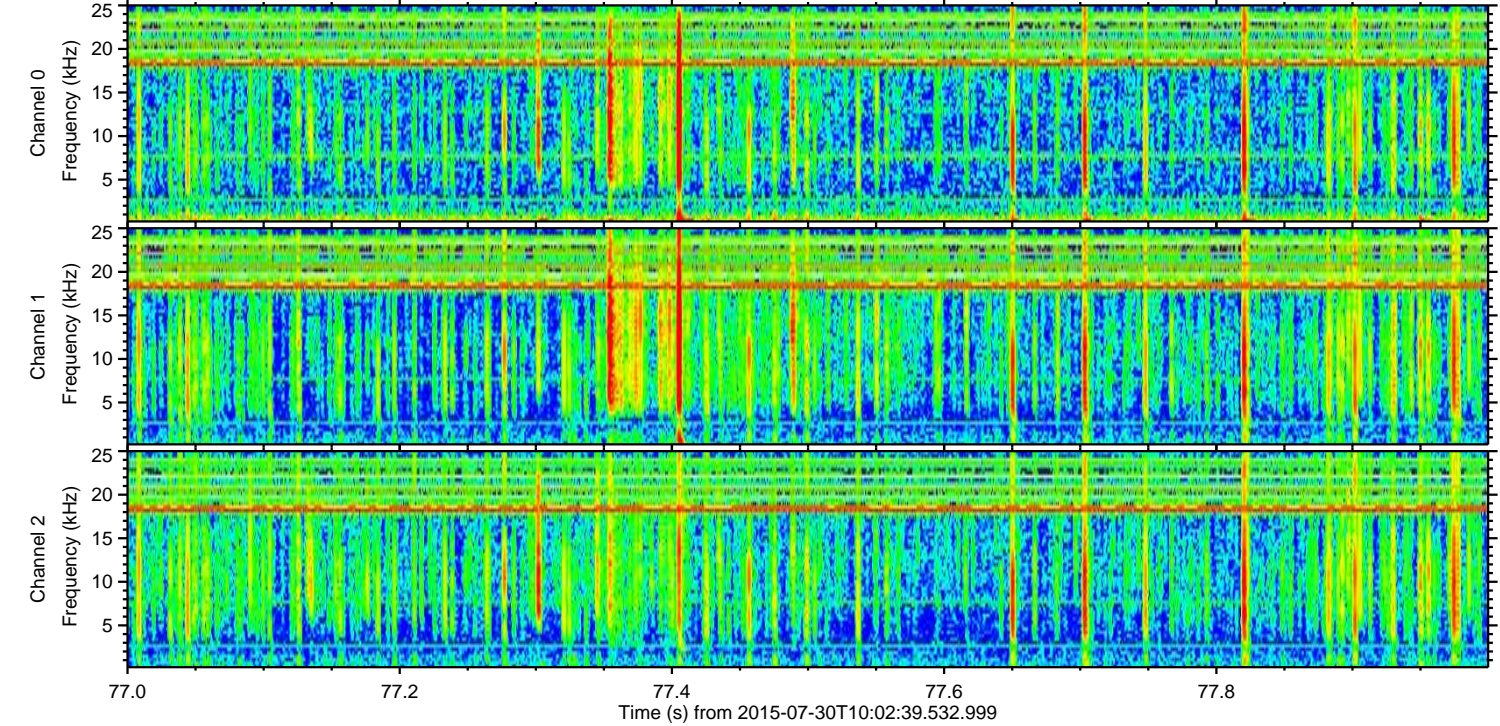
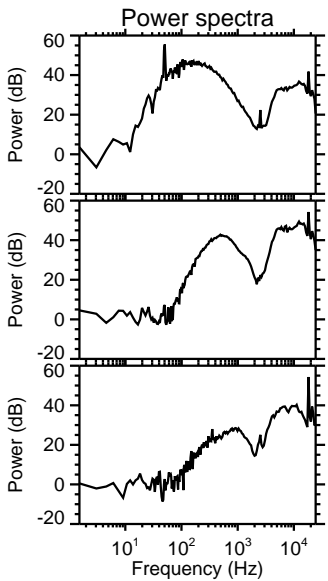
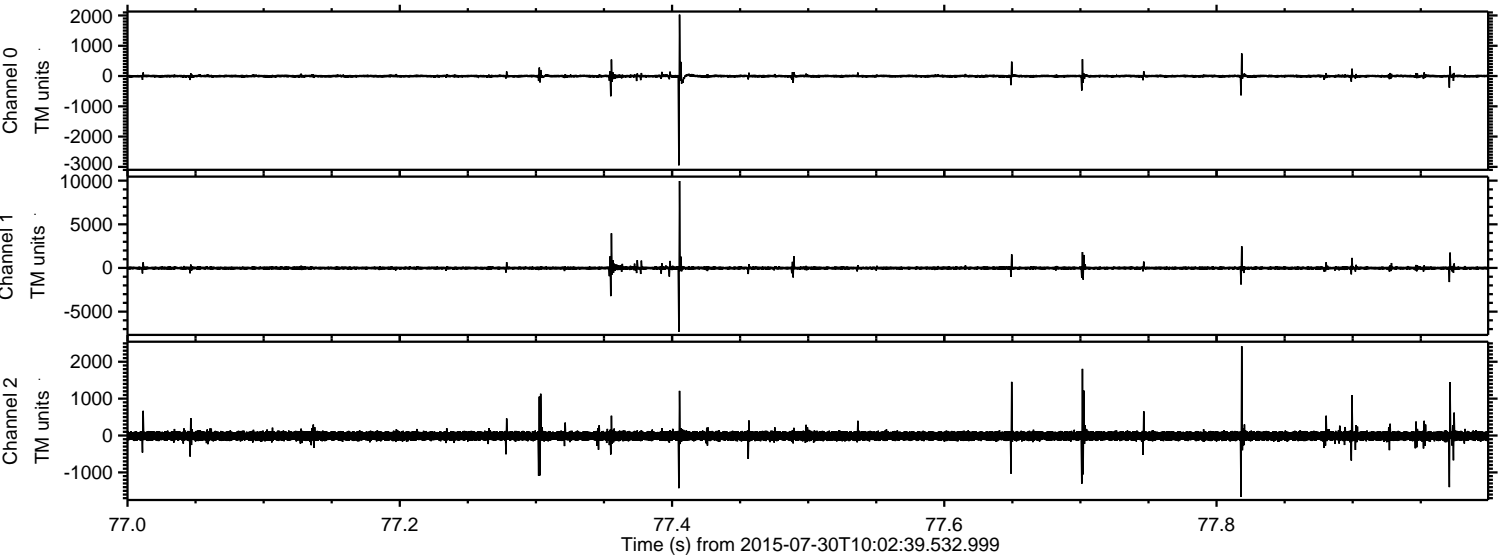
Processed Thu Jul 30 12:09:22 2015 by ELM ver.2012-10-06 from 001\_\_elm20150730\_100238\_\_dat00.bin





ELMAVAN 3D WAVEFORMS (Measured data sampled at 50 kHz) 51000 packets of 144 samples from 2015-07-30T10:02:39.532.999. Part 78/147

Processed Thu Jul 30 12:09:23 2015 by ELM ver.2012-10-06 from 001\_\_elm20150730\_100238\_\_dat00.bin



Channel 0  
mn: -2951  
mx: 2029  
 $\mu$ : -3.2  
 $\sigma$ : 30.6

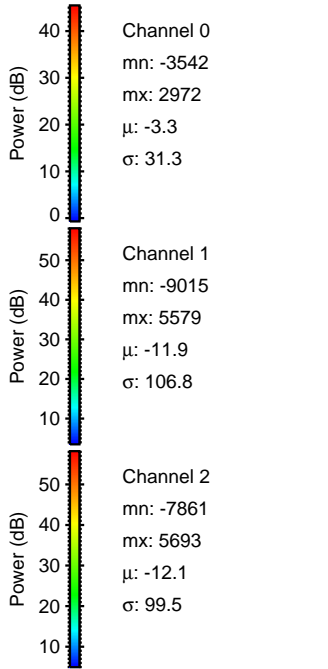
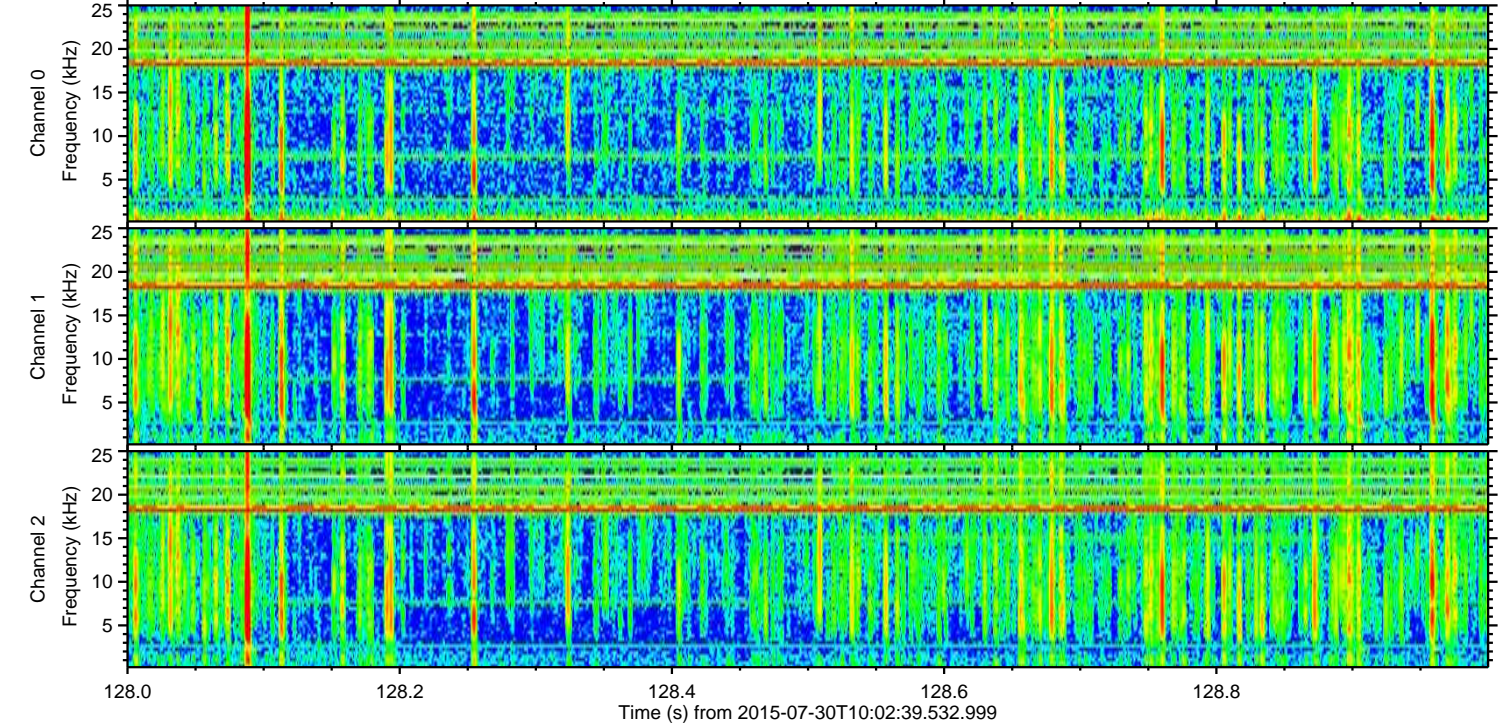
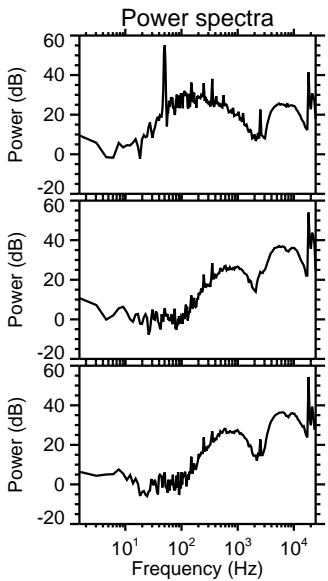
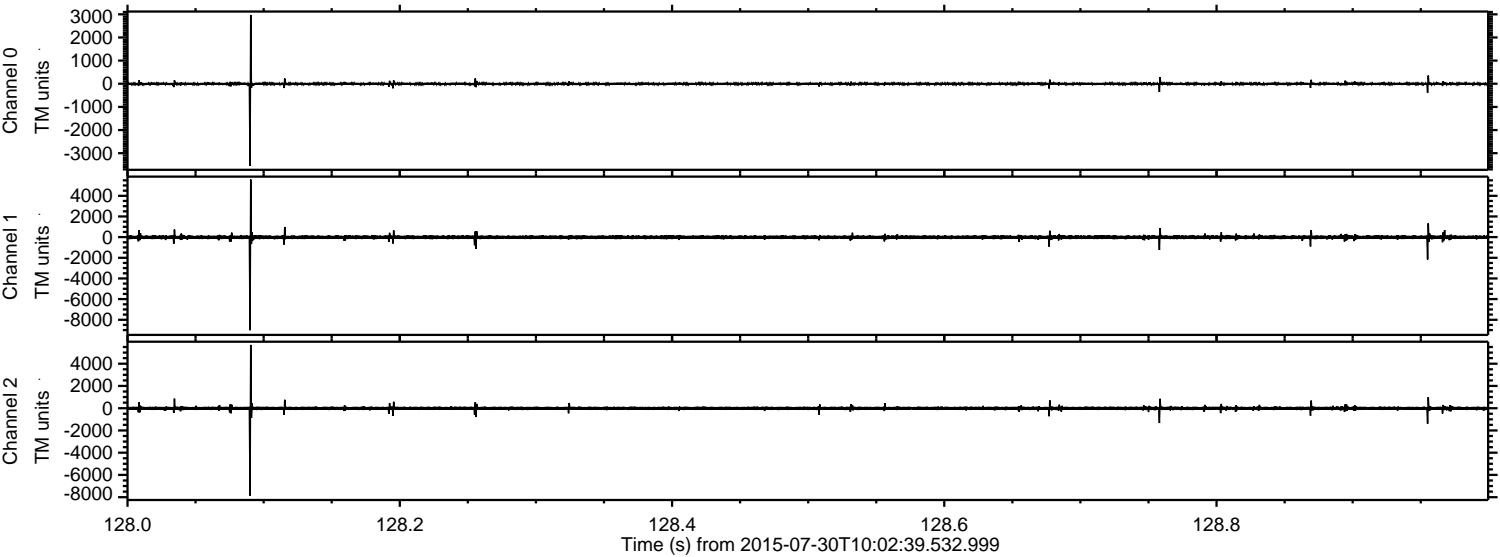
Channel 1  
mn: -7302  
mx: 9963  
 $\mu$ : -11.9  
 $\sigma$ : 117.6

Channel 2  
mn: -1665  
mx: 2423  
 $\mu$ : -12.0  
 $\sigma$ : 81.9



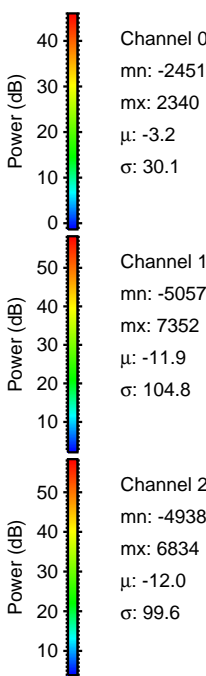
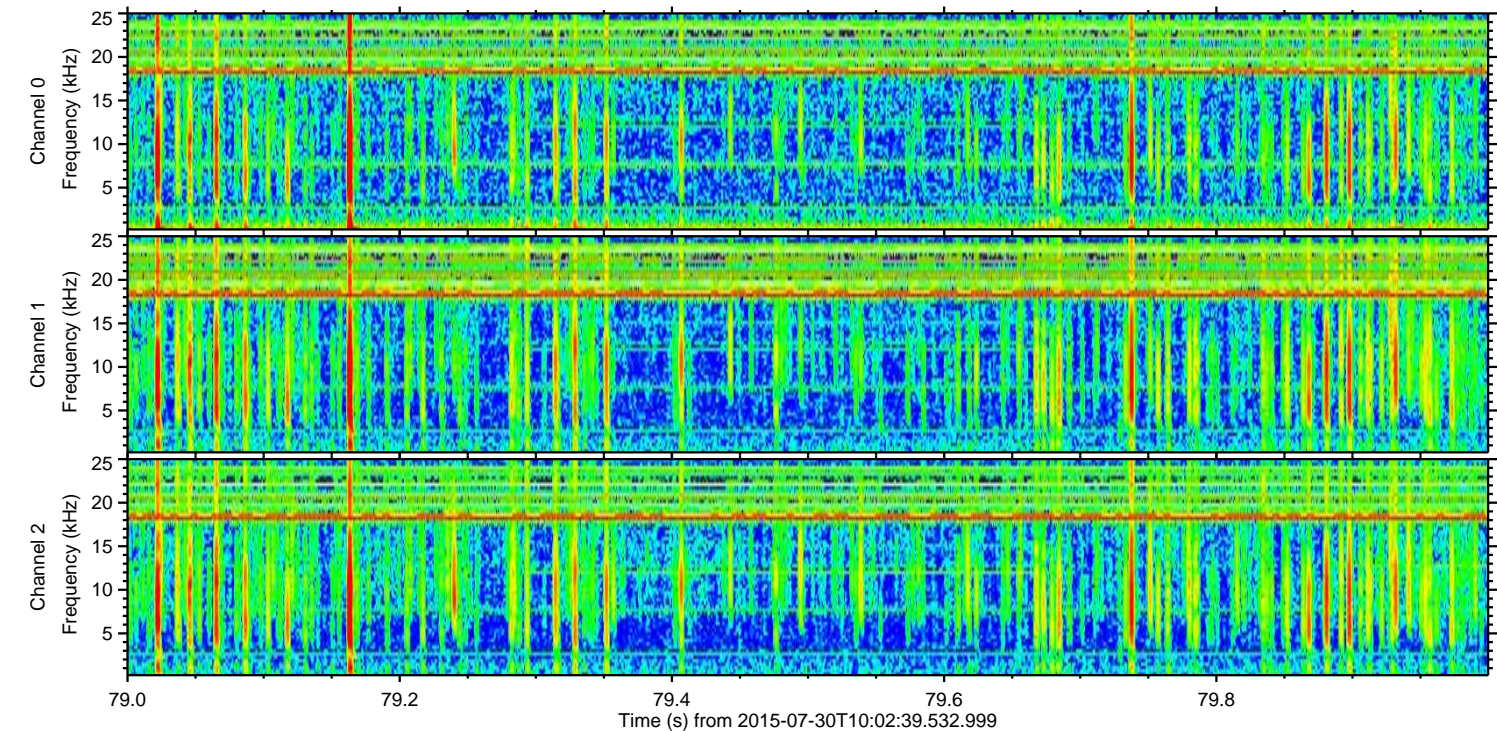
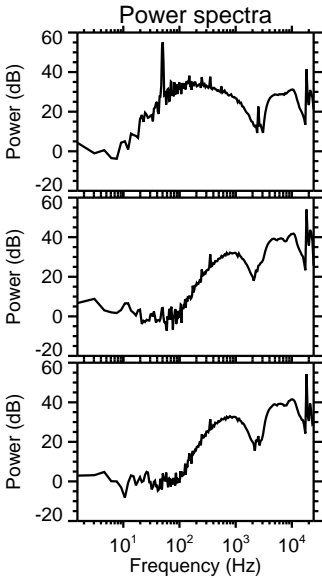
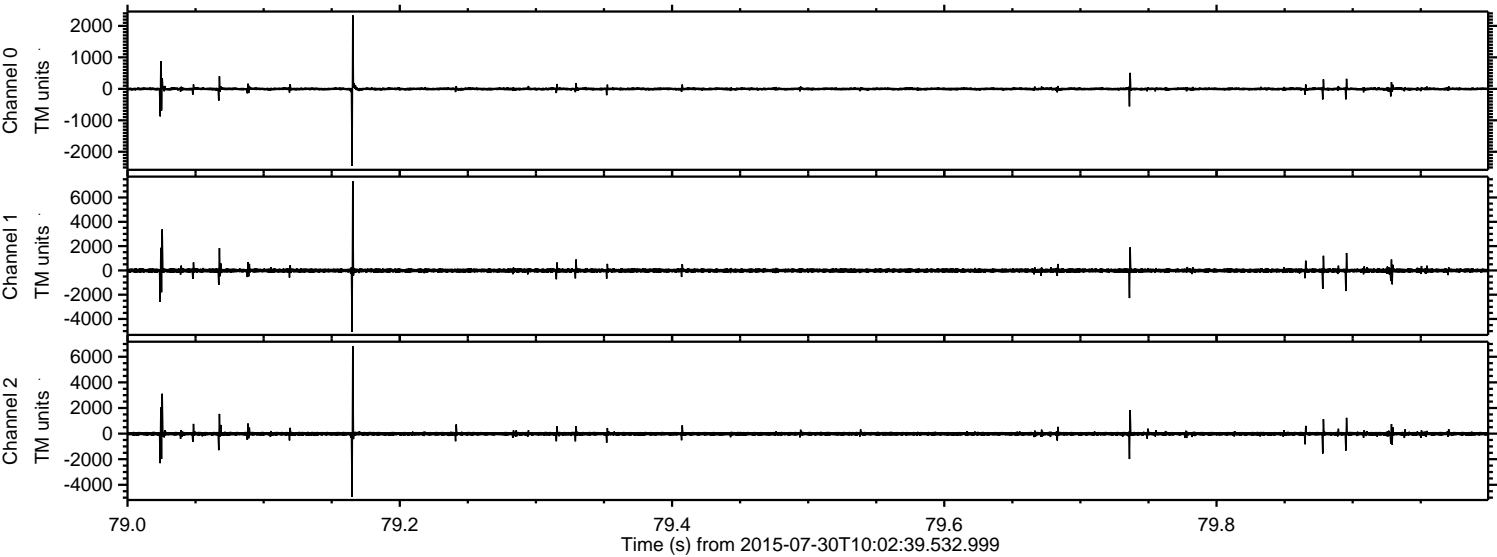
ELMAVAN 3D WAVEFORMS (Measured data sampled at 50 kHz) 51000 packets of 144 samples from 2015-07-30T10:02:39.532.999. Part 129/147

Processed Thu Jul 30 12:09:24 2015 by ELM ver.2012-10-06 from 001\_\_elm20150730\_100238\_\_dat00.bin





Processed Thu Jul 30 12:09:24 2015 by ELM ver.2012-10-06 from 001\_\_elm20150730\_100238\_\_dat00.bin



Channel 0  
mn: -2451  
mx: 2340  
 $\mu$ : -3.2  
 $\sigma$ : 30.1

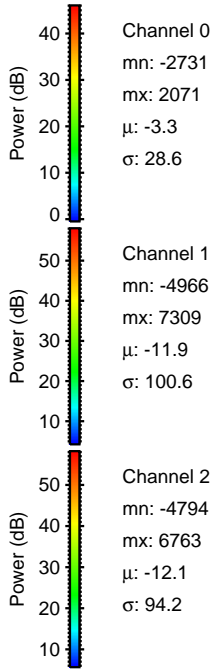
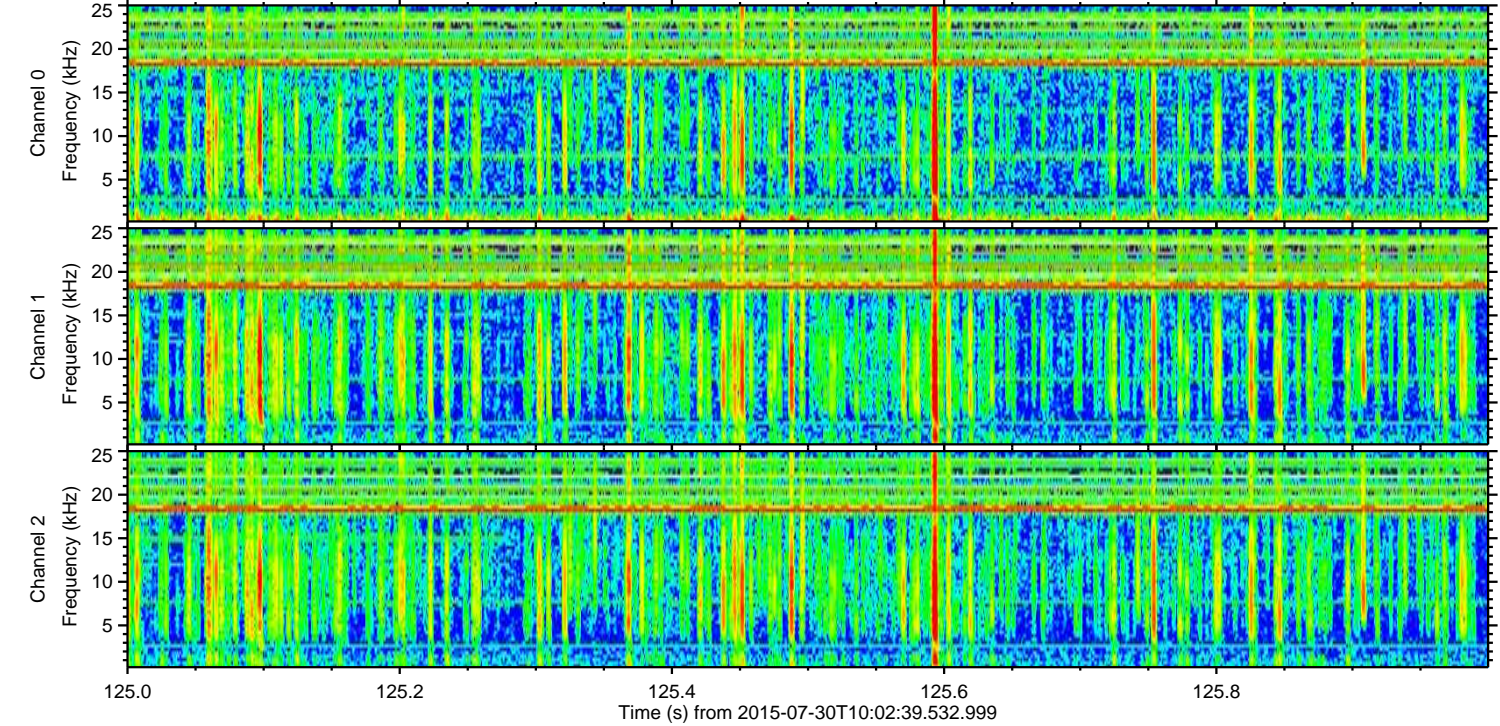
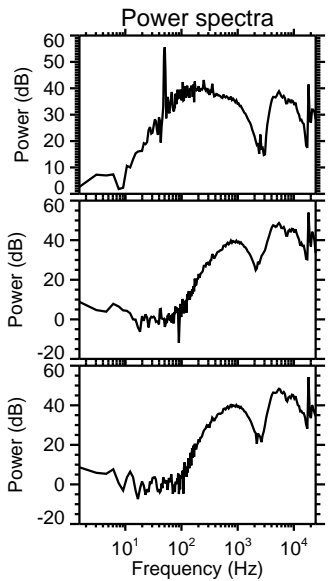
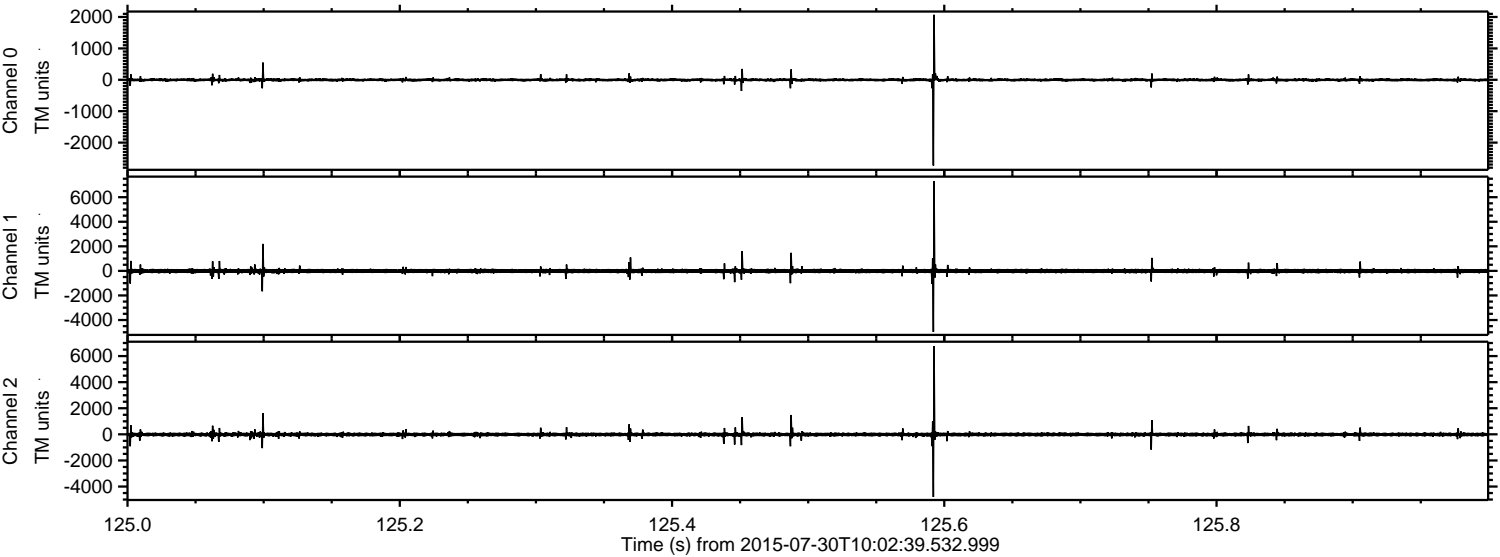
Channel 1  
mn: -5057  
mx: 7352  
 $\mu$ : -11.9  
 $\sigma$ : 104.8

Channel 2  
mn: -4938  
mx: 6834  
 $\mu$ : -12.0  
 $\sigma$ : 99.6



ELMAVAN 3D WAVEFORMS (Measured data sampled at 50 kHz) 51000 packets of 144 samples from 2015-07-30T10:02:39.532.999. Part 126/147

Processed Thu Jul 30 12:09:25 2015 by ELM ver.2012-10-06 from 001\_\_elm20150730\_100238\_\_dat00.bin



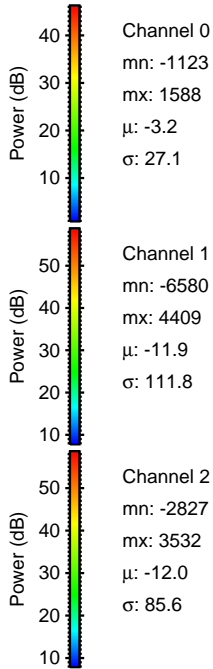
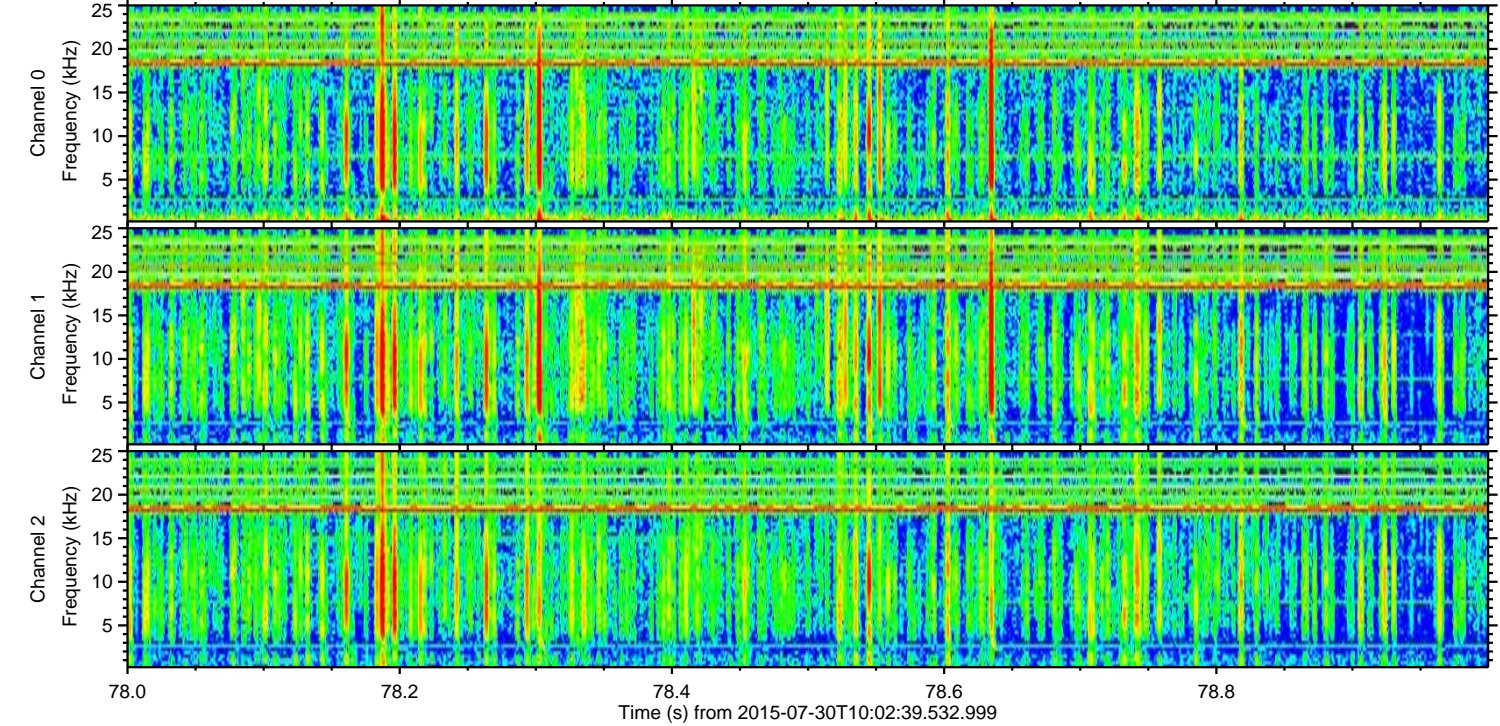
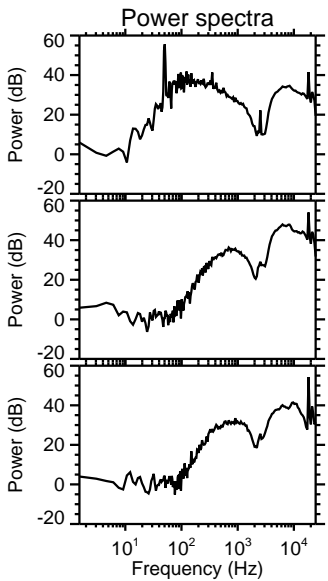
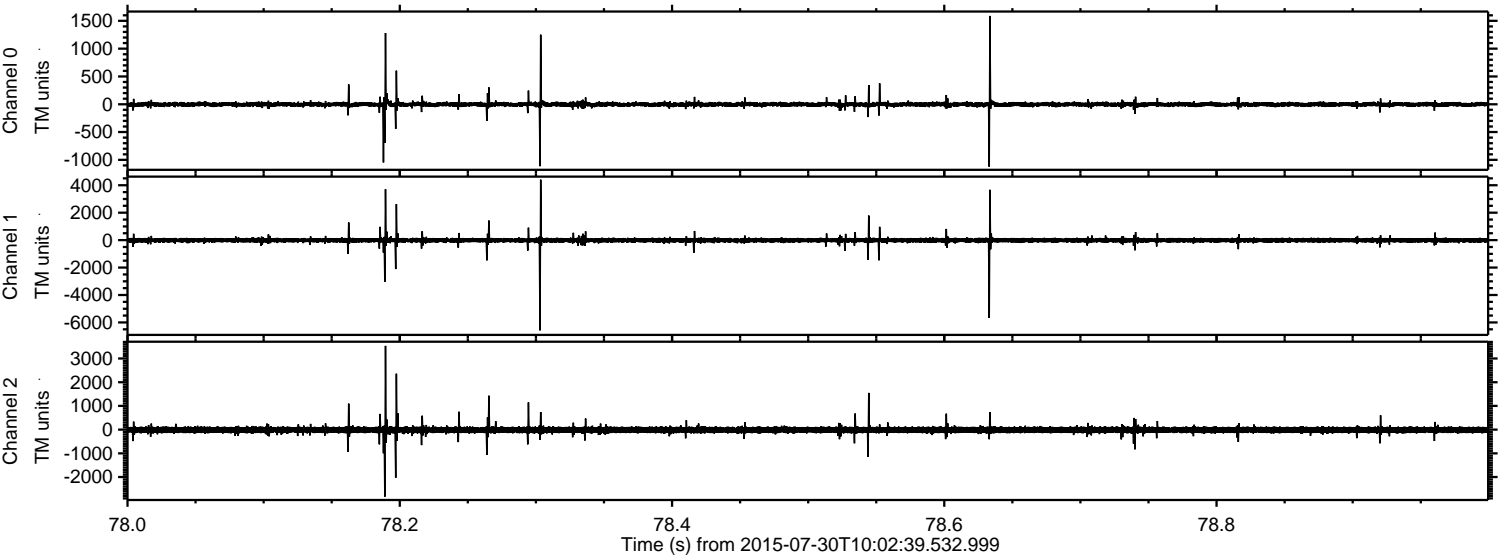
Channel 0  
mn: -2731  
mx: 2071  
 $\mu$ : -3.3  
 $\sigma$ : 28.6

Channel 1  
mn: -4966  
mx: 7309  
 $\mu$ : -11.9  
 $\sigma$ : 100.6

Channel 2  
mn: -4794  
mx: 6763  
 $\mu$ : -12.1  
 $\sigma$ : 94.2



Processed Thu Jul 30 12:09:26 2015 by ELM ver.2012-10-06 from 001\_\_elm20150730\_100238\_\_dat00.bin



Channel 0  
mn: -1123  
mx: 1588  
 $\mu$ : -3.2  
 $\sigma$ : 27.1

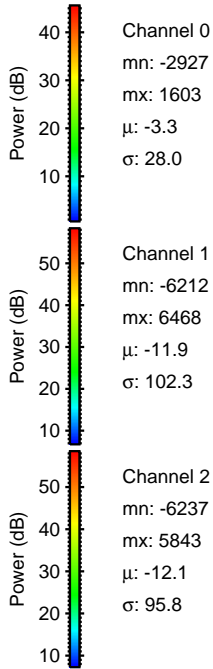
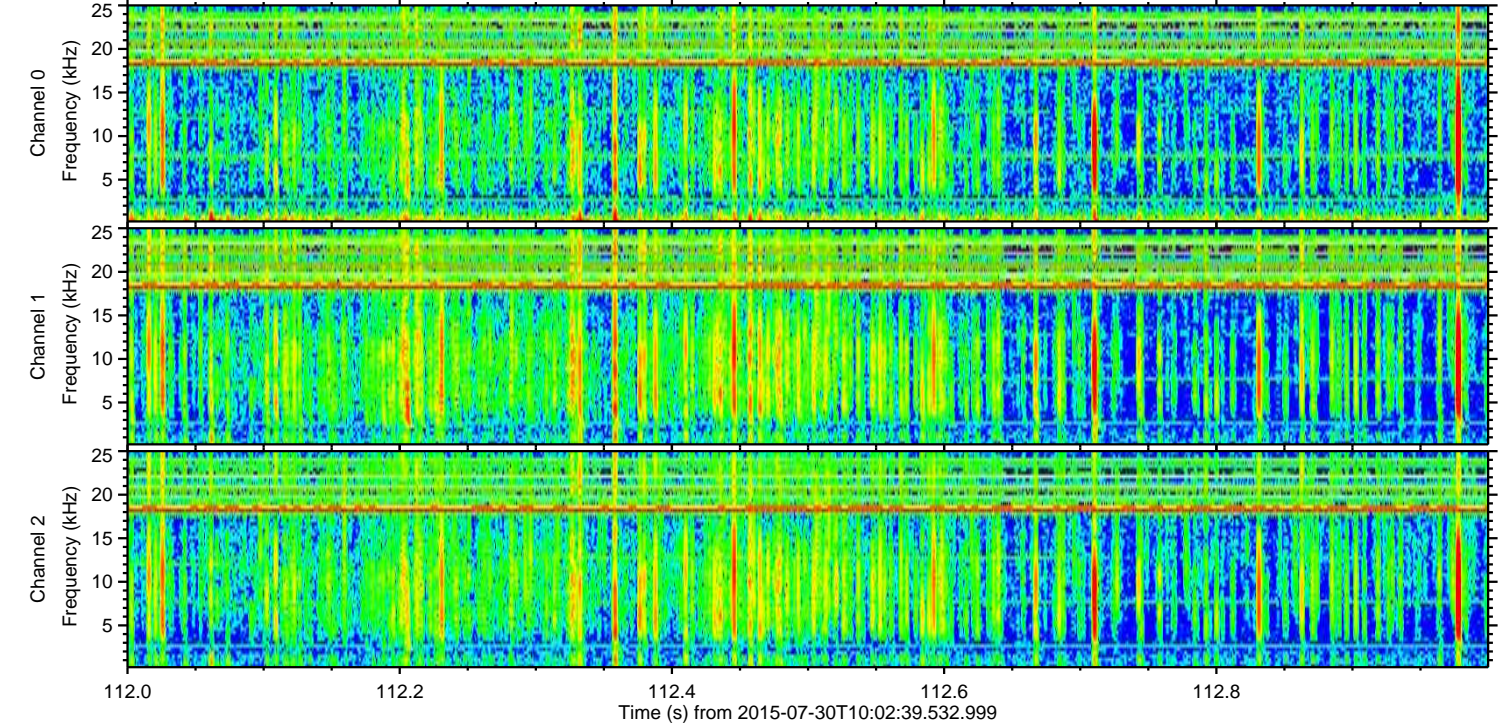
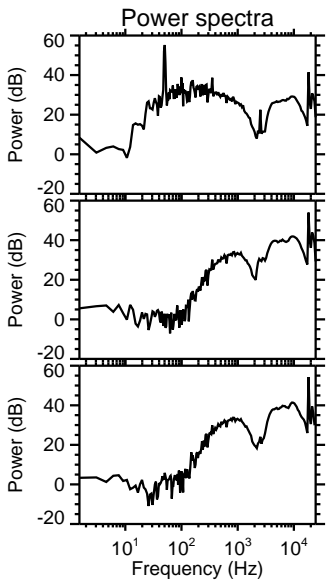
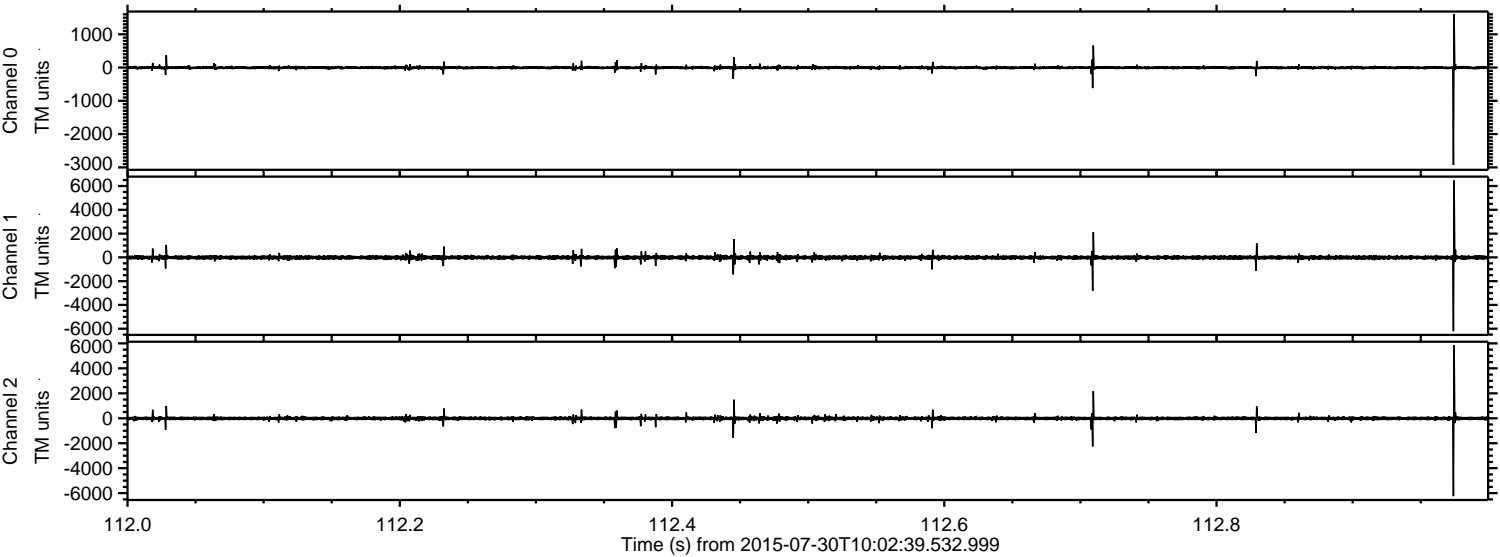
Channel 1  
mn: -6580  
mx: 4409  
 $\mu$ : -11.9  
 $\sigma$ : 111.8

Channel 2  
mn: -2827  
mx: 3532  
 $\mu$ : -12.0  
 $\sigma$ : 85.6



ELMAVAN 3D WAVEFORMS (Measured data sampled at 50 kHz) 51000 packets of 144 samples from 2015-07-30T10:02:39.532.999. Part 113/147

Processed Thu Jul 30 12:09:27 2015 by ELM ver.2012-10-06 from 001\_\_elm20150730\_100238\_\_dat00.bin



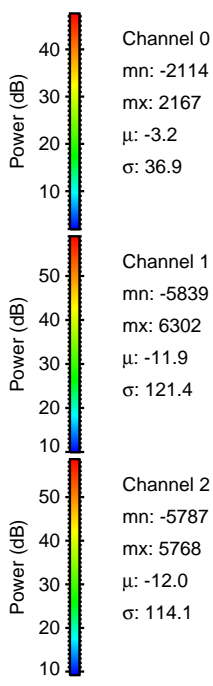
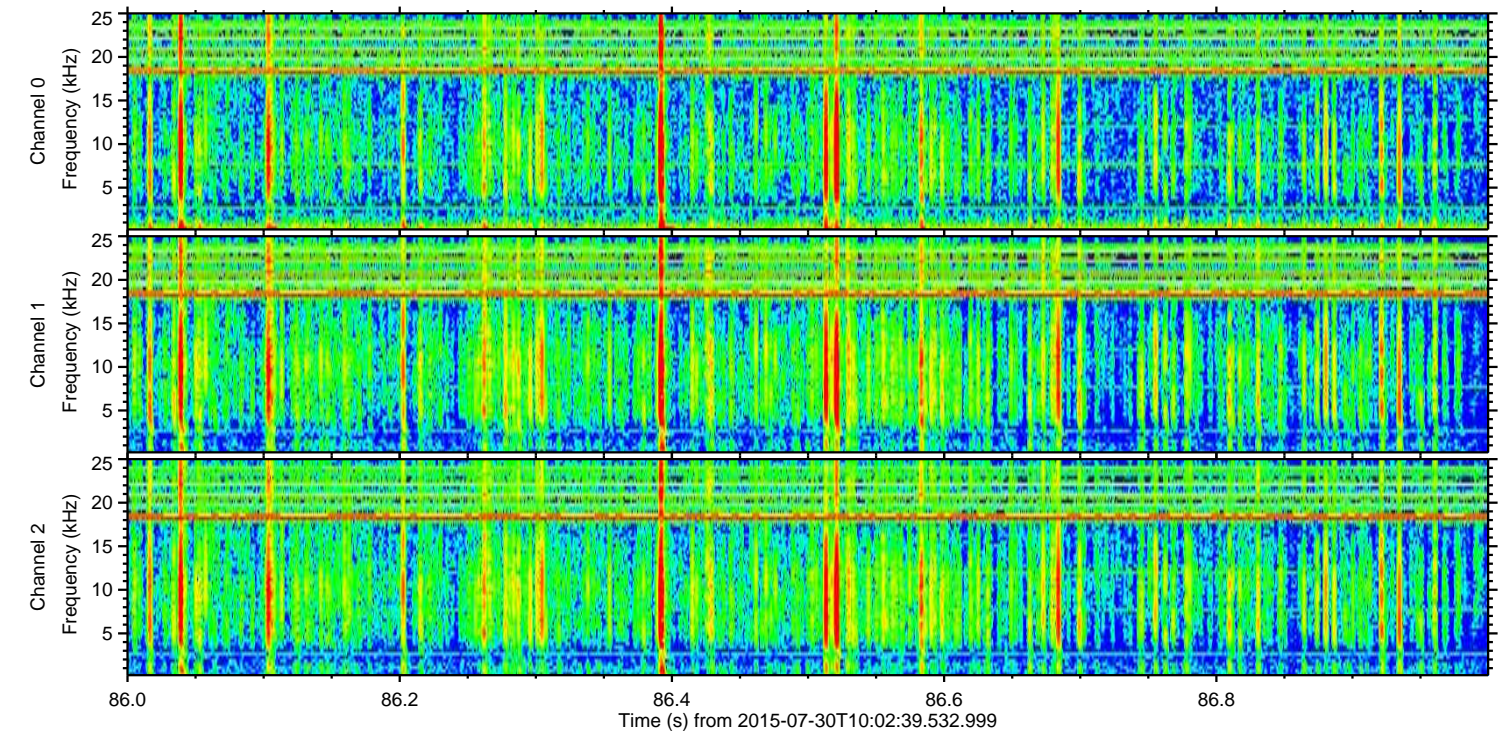
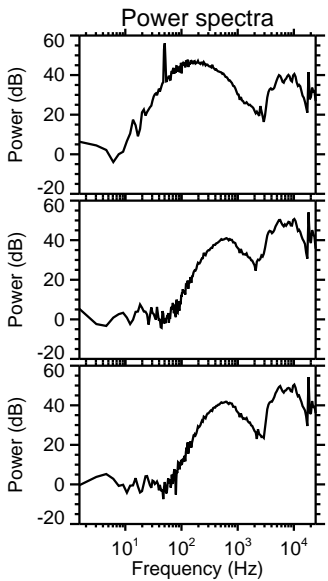
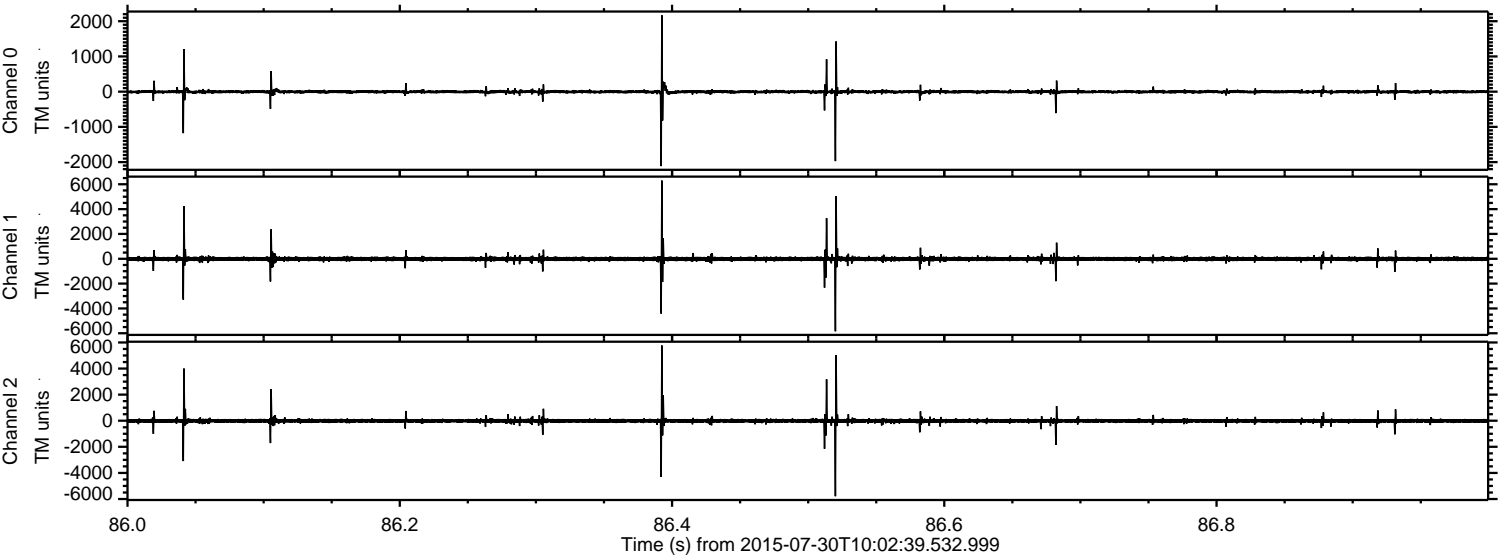
Channel 0  
mn: -2927  
mx: 1603  
 $\mu$ : -3.3  
 $\sigma$ : 28.0

Channel 1  
mn: -6212  
mx: 6468  
 $\mu$ : -11.9  
 $\sigma$ : 102.3

Channel 2  
mn: -6237  
mx: 5843  
 $\mu$ : -12.1  
 $\sigma$ : 95.8



Processed Thu Jul 30 12:09:28 2015 by ELM ver.2012-10-06 from 001\_\_elm20150730\_100238\_\_dat00.bin



Channel 0  
mn: -2114  
mx: 2167  
 $\mu$ : -3.2  
 $\sigma$ : 36.9

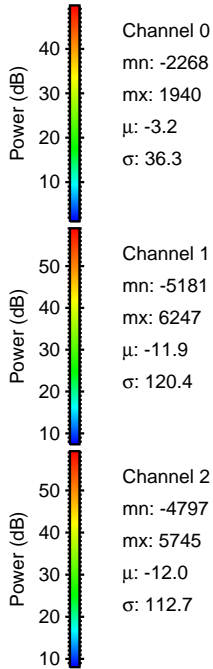
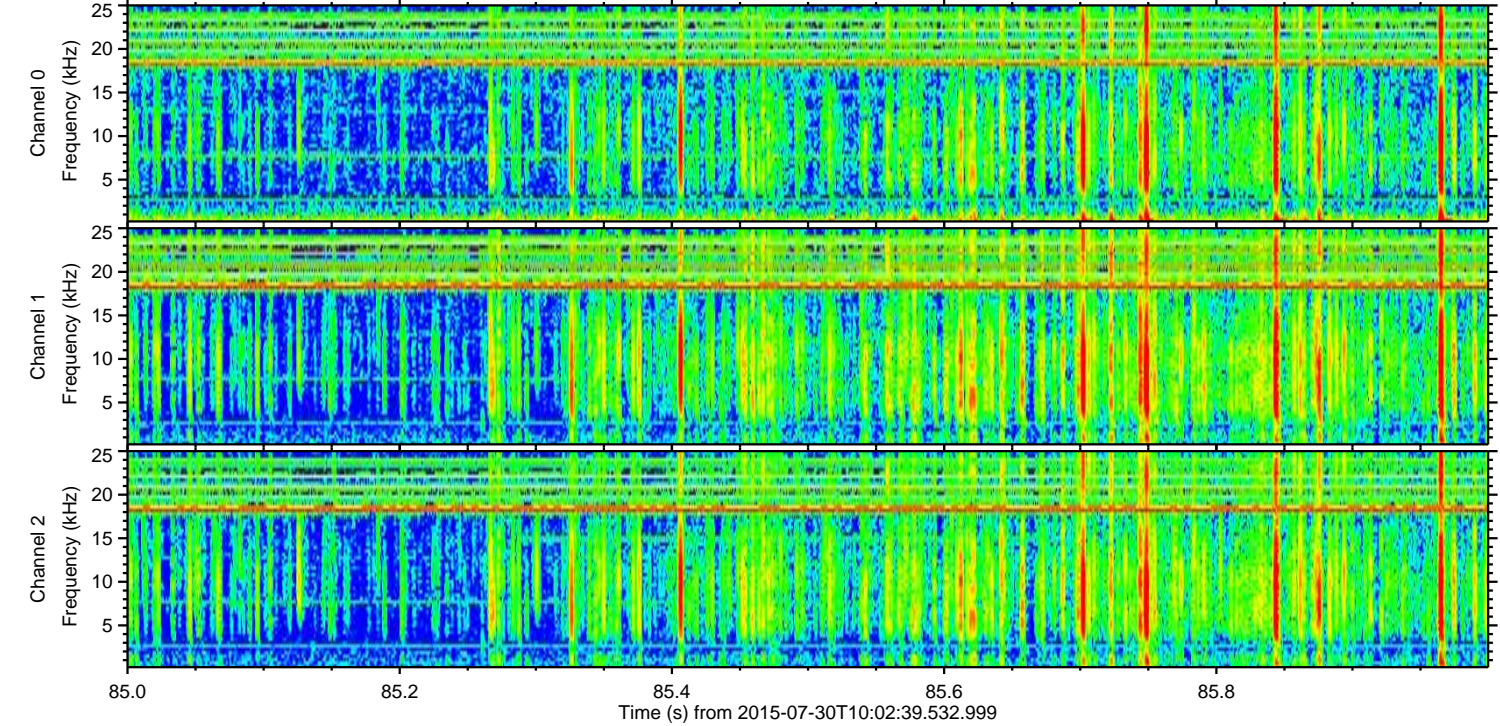
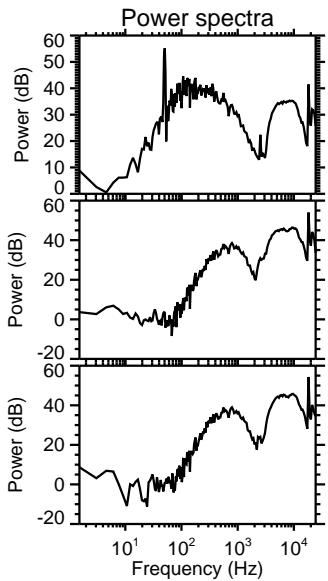
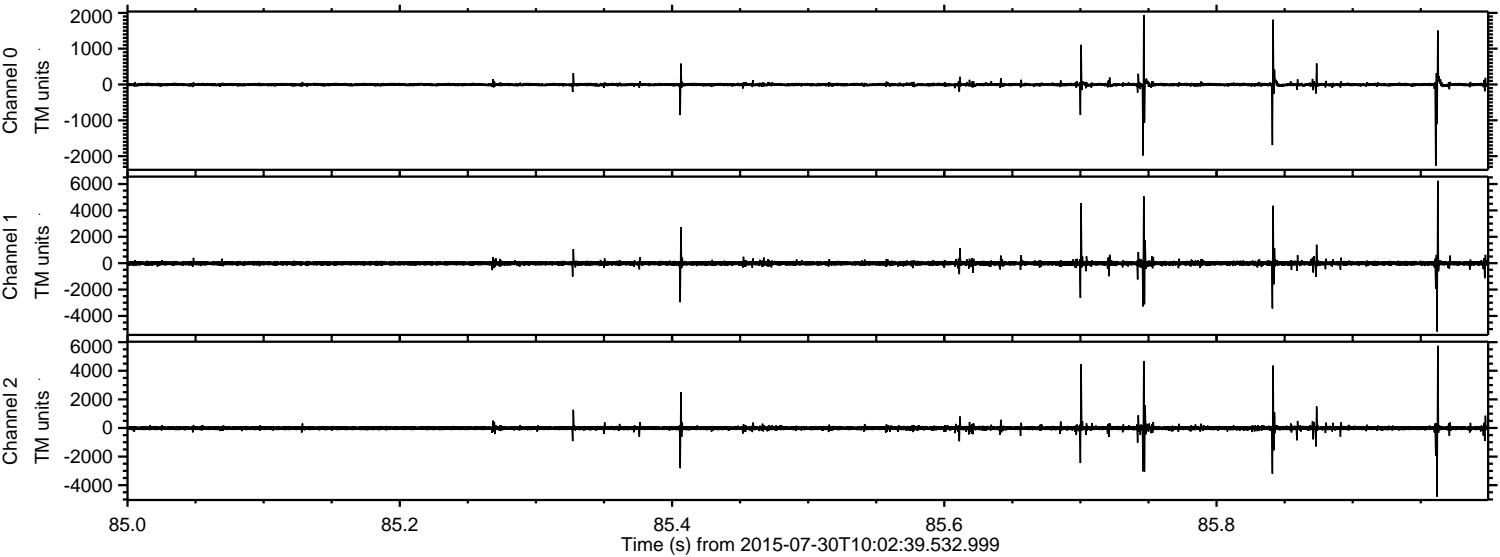
Channel 1  
mn: -5839  
mx: 6302  
 $\mu$ : -11.9  
 $\sigma$ : 121.4

Channel 2  
mn: -5787  
mx: 5768  
 $\mu$ : -12.0  
 $\sigma$ : 114.1



ELMAVAN 3D WAVEFORMS (Measured data sampled at 50 kHz) 51000 packets of 144 samples from 2015-07-30T10:02:39.532.999. Part 86/147

Processed Thu Jul 30 12:09:29 2015 by ELM ver.2012-10-06 from 001\_\_elm20150730\_100238\_\_dat00.bin





ELMAVAN 3D WAVEFORMS (Measured data sampled at 50 kHz) 51000 packets of 144 samples from 2015-07-30T10:02:39.532.999. Part 110/147

