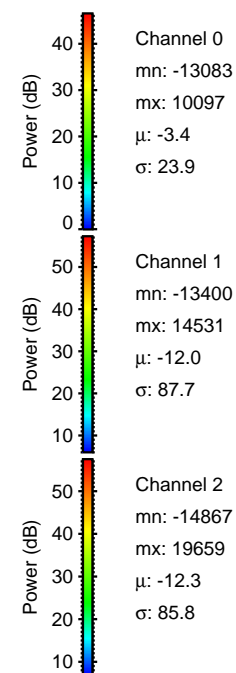
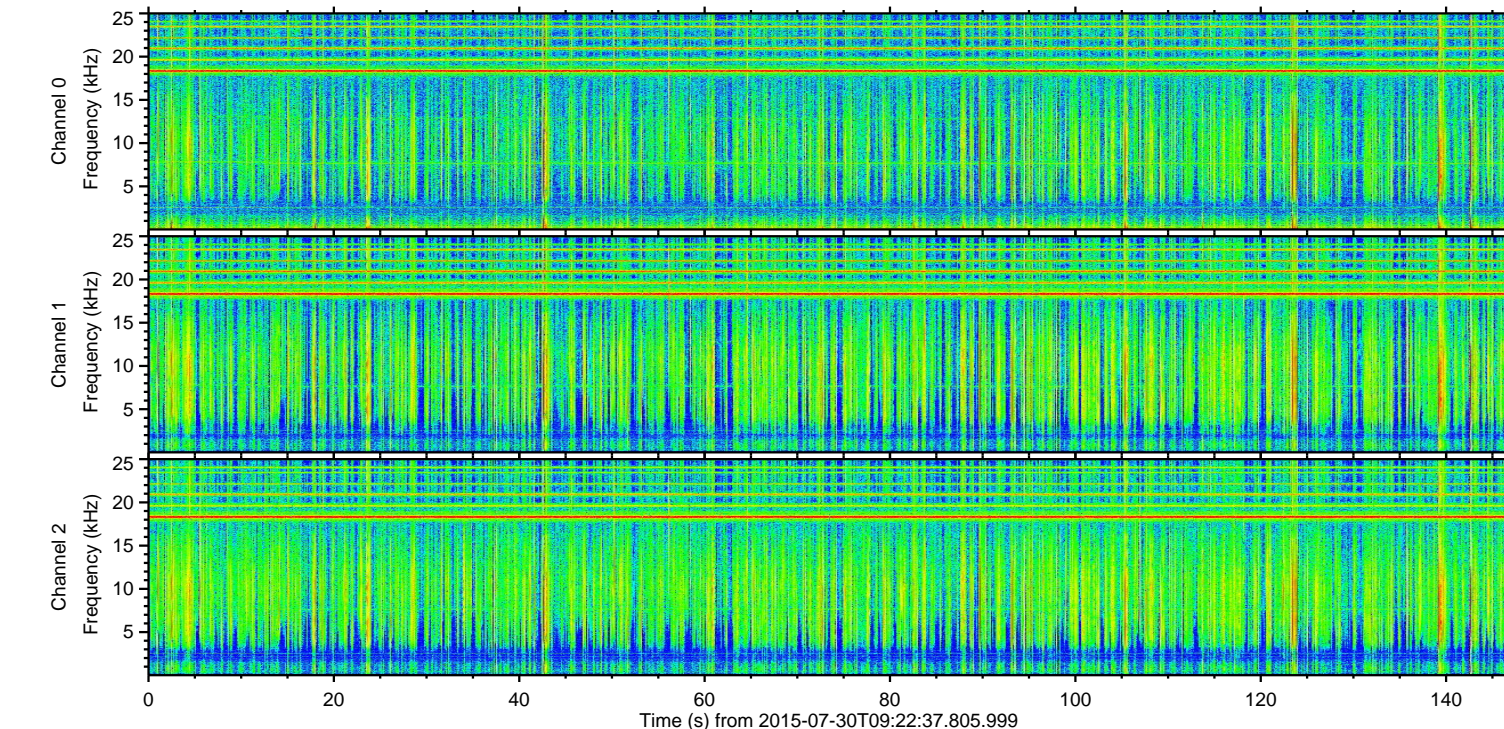
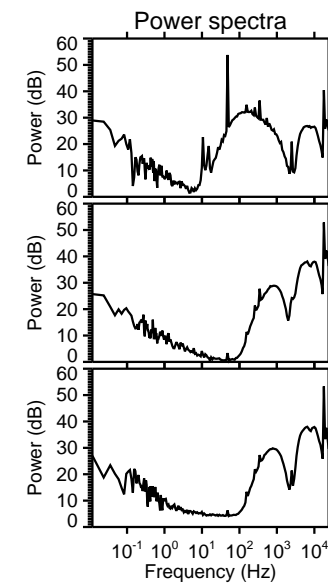
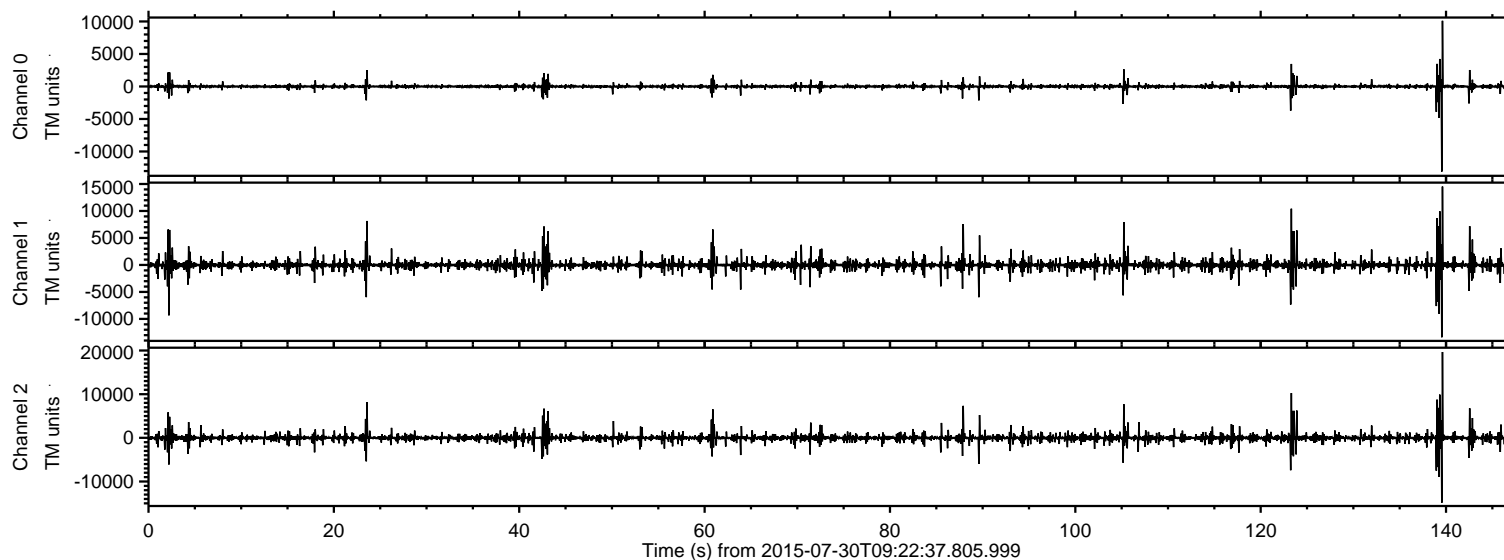


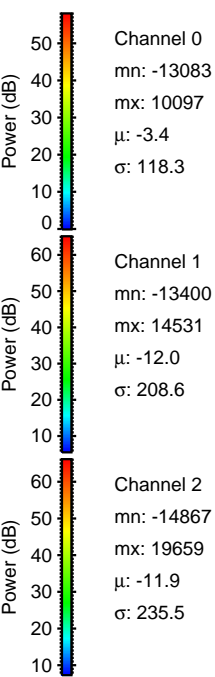
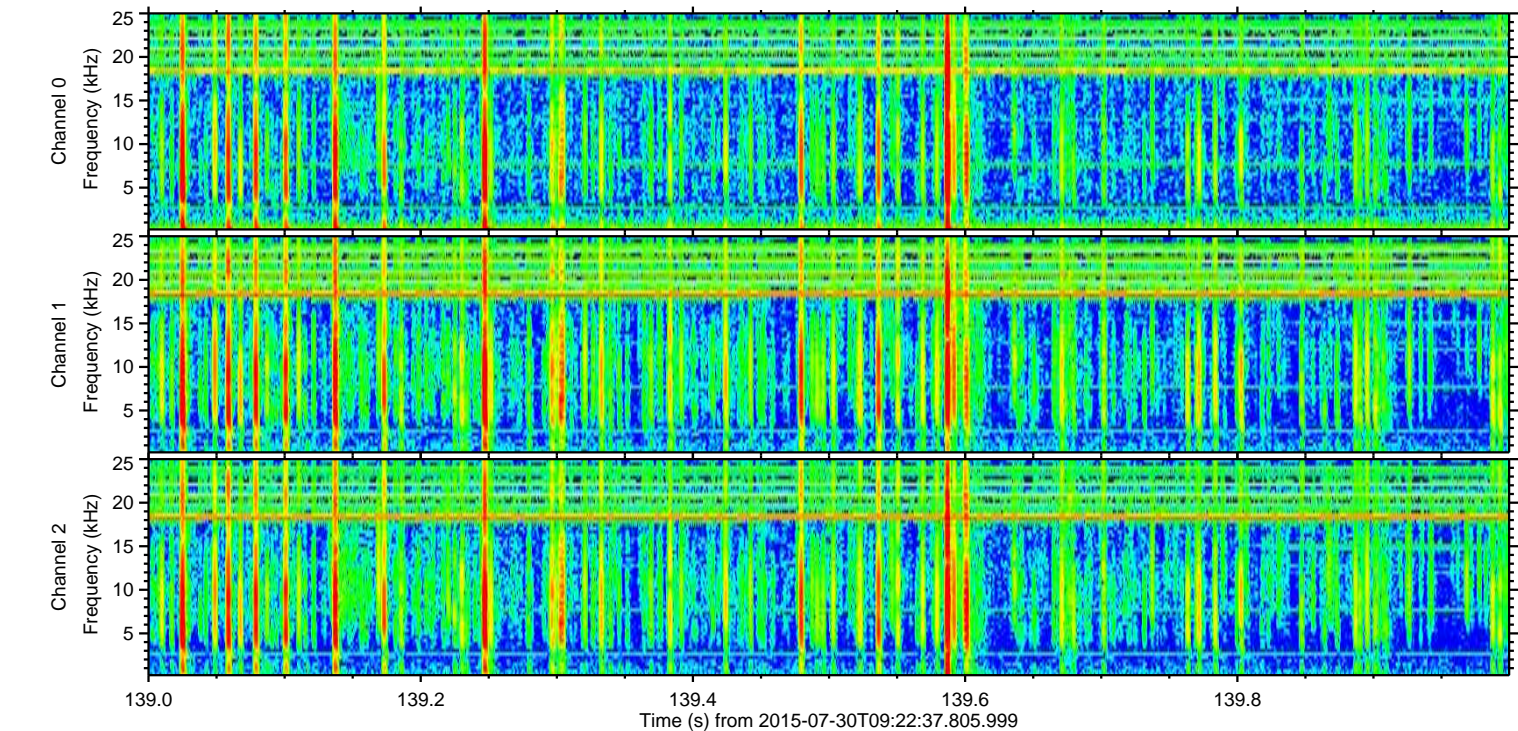
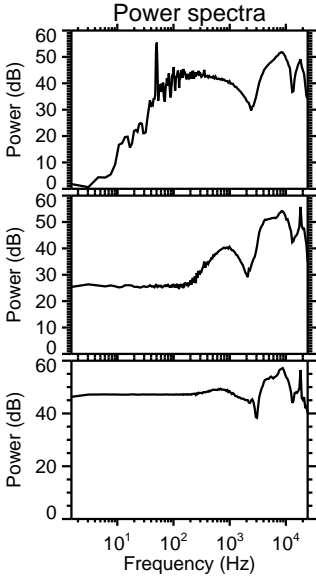
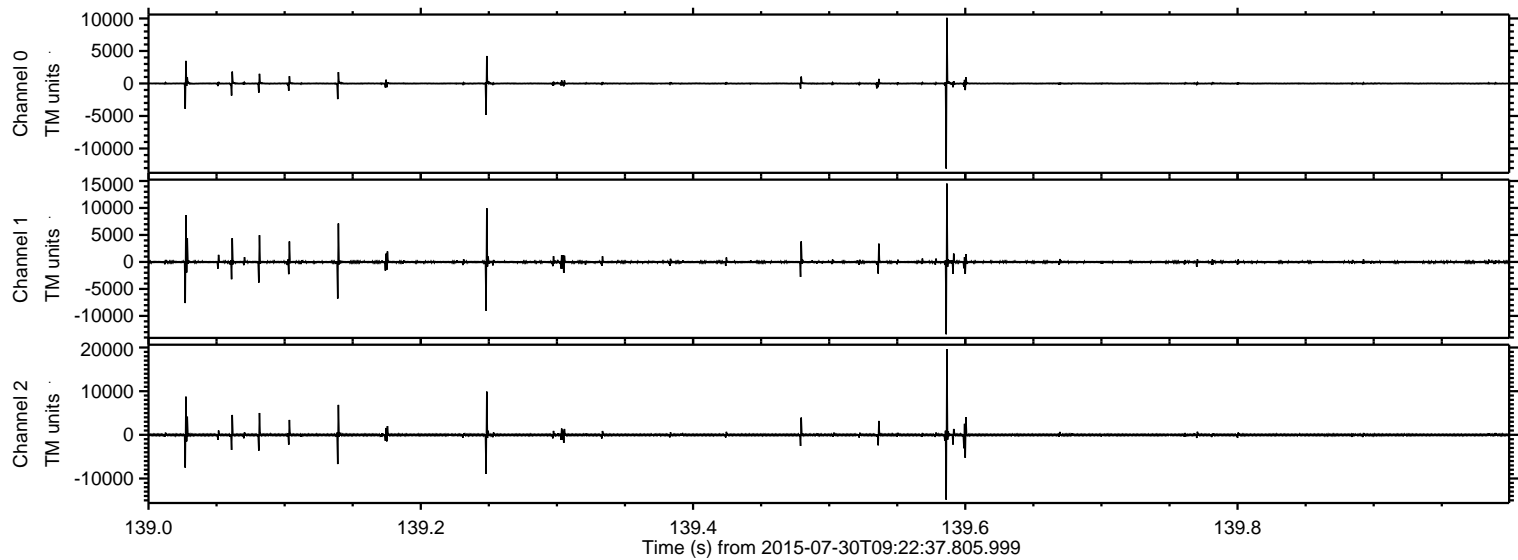
ELMAVAN 3D WAVEFORMS (Measured data sampled at 50 kHz) 51000 packets of 144 samples from 2015-07-30T09:22:37.805.999.

Processed Thu Jul 30 11:28:44 2015 by ELM ver.2012-10-06 from 001__elm20150730_092236__dat00.bin



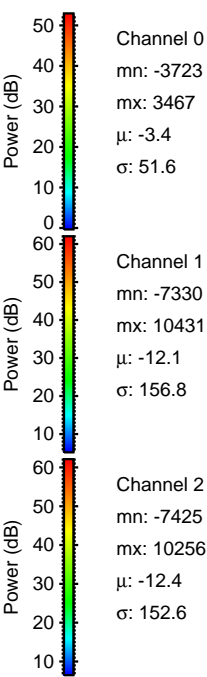
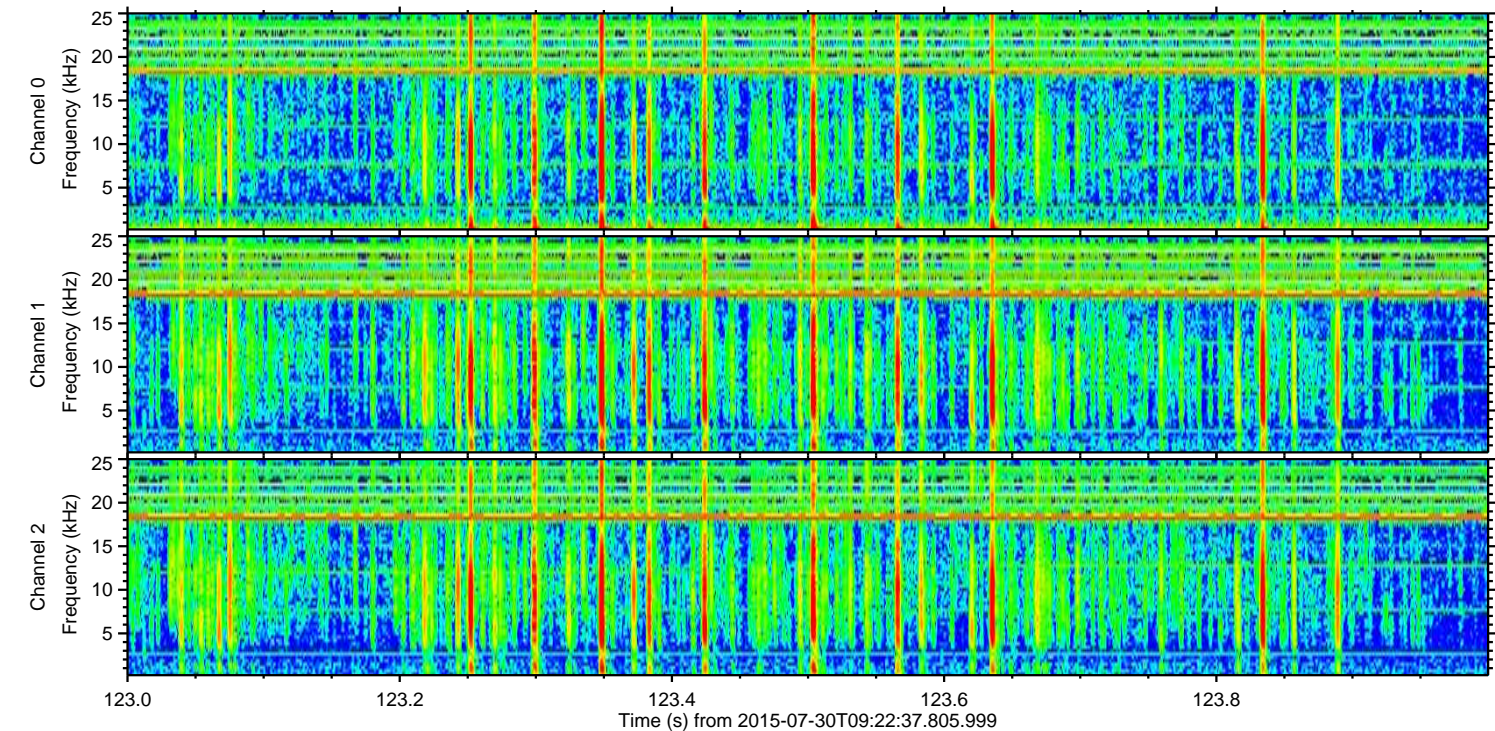
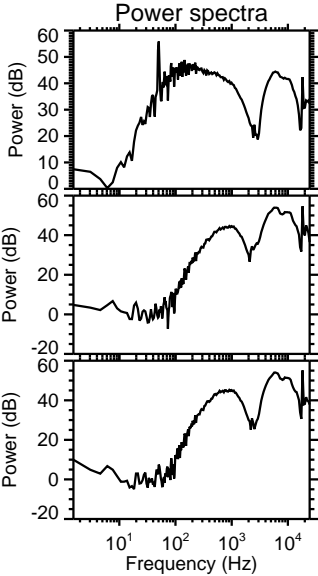
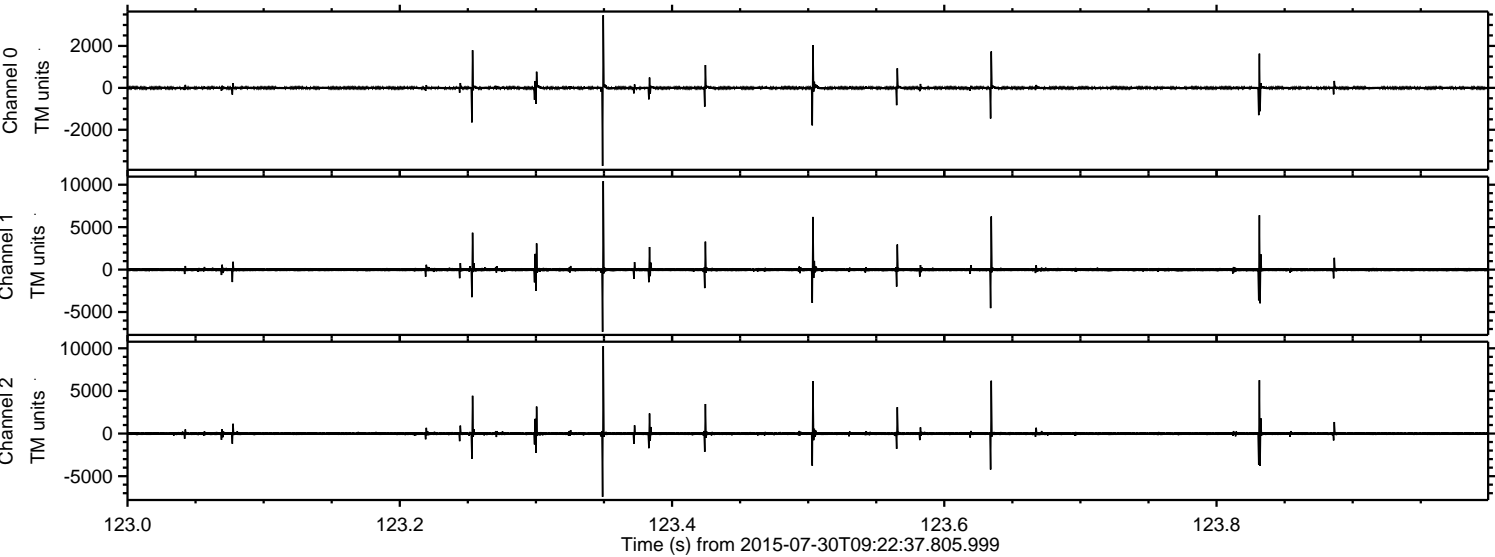
ELMAVAN 3D WAVEFORMS (Measured data sampled at 50 kHz) 51000 packets of 144 samples from 2015-07-30T09:22:37.805.999. Part 140/147

Processed Thu Jul 30 11:28:56 2015 by ELM ver.2012-10-06 from 001__elm20150730_092236__dat00.bin



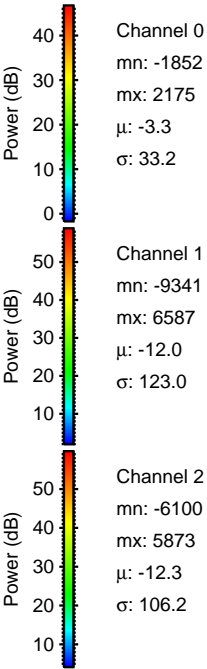
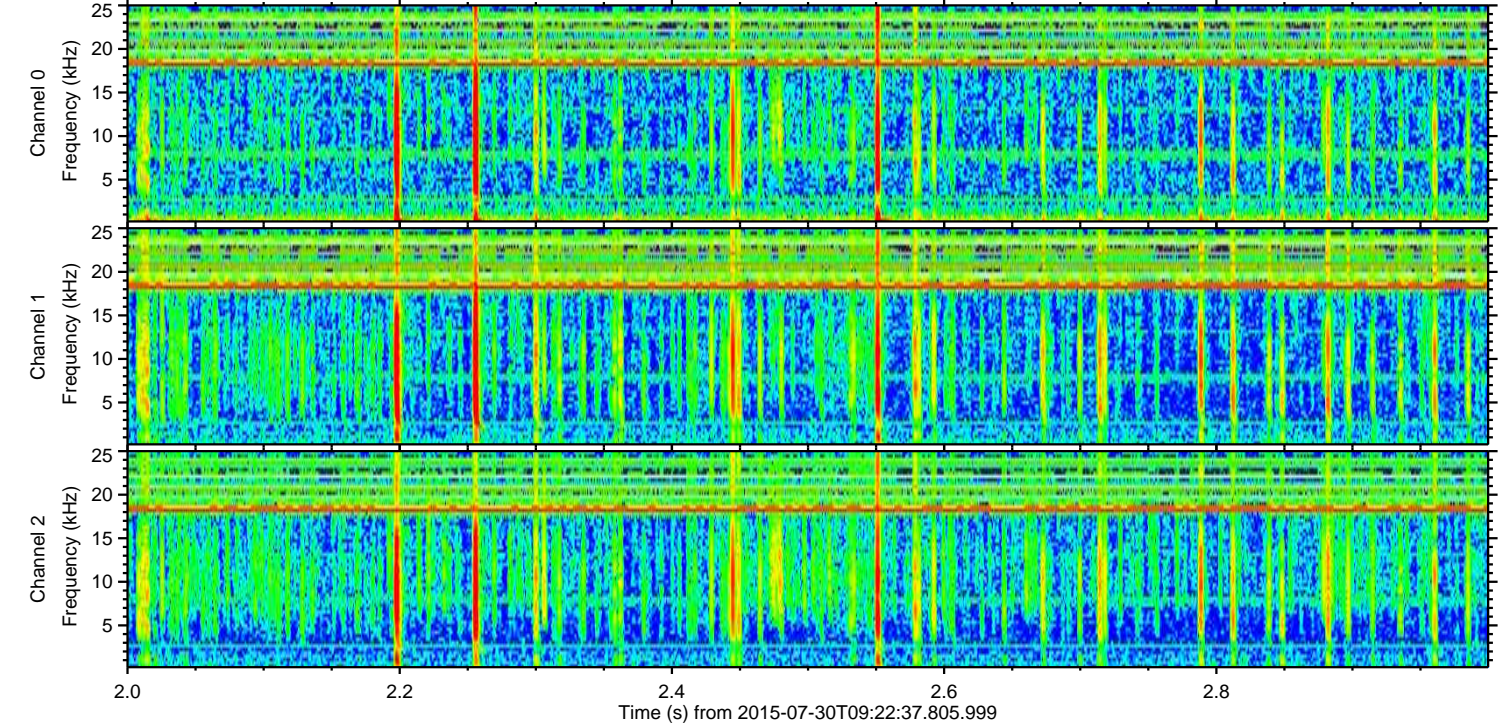
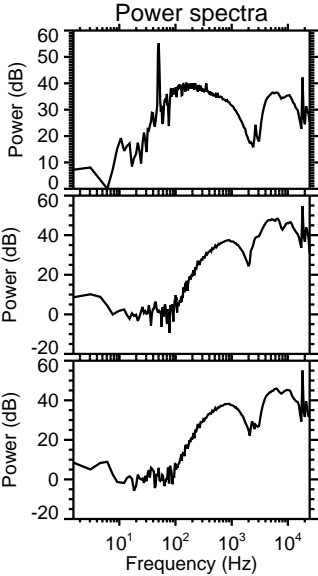
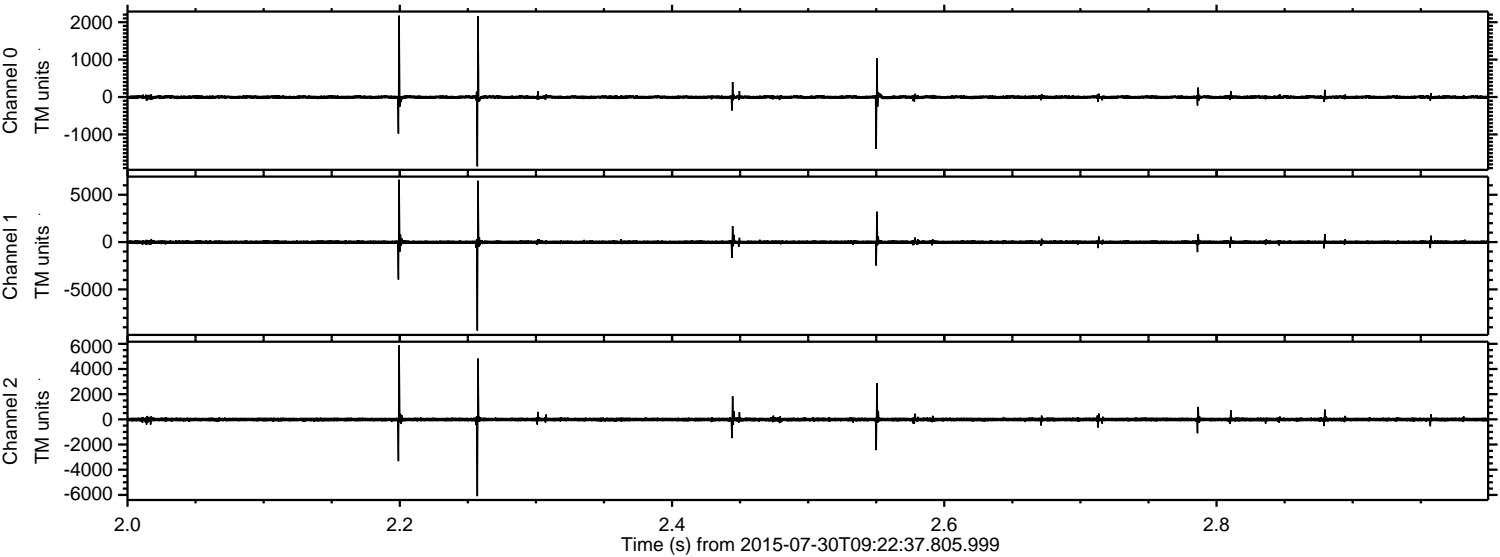
ELMAVAN 3D WAVEFORMS (Measured data sampled at 50 kHz) 51000 packets of 144 samples from 2015-07-30T09:22:37.805.999. Part 124/147

Processed Thu Jul 30 11:28:57 2015 by ELM ver.2012-10-06 from 001__elm20150730_092236__dat00.bin



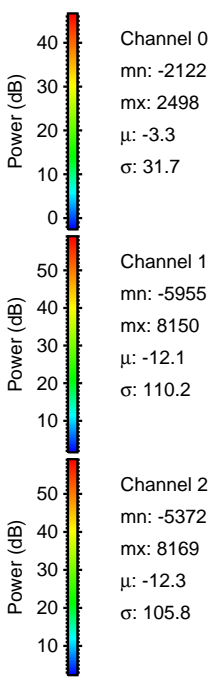
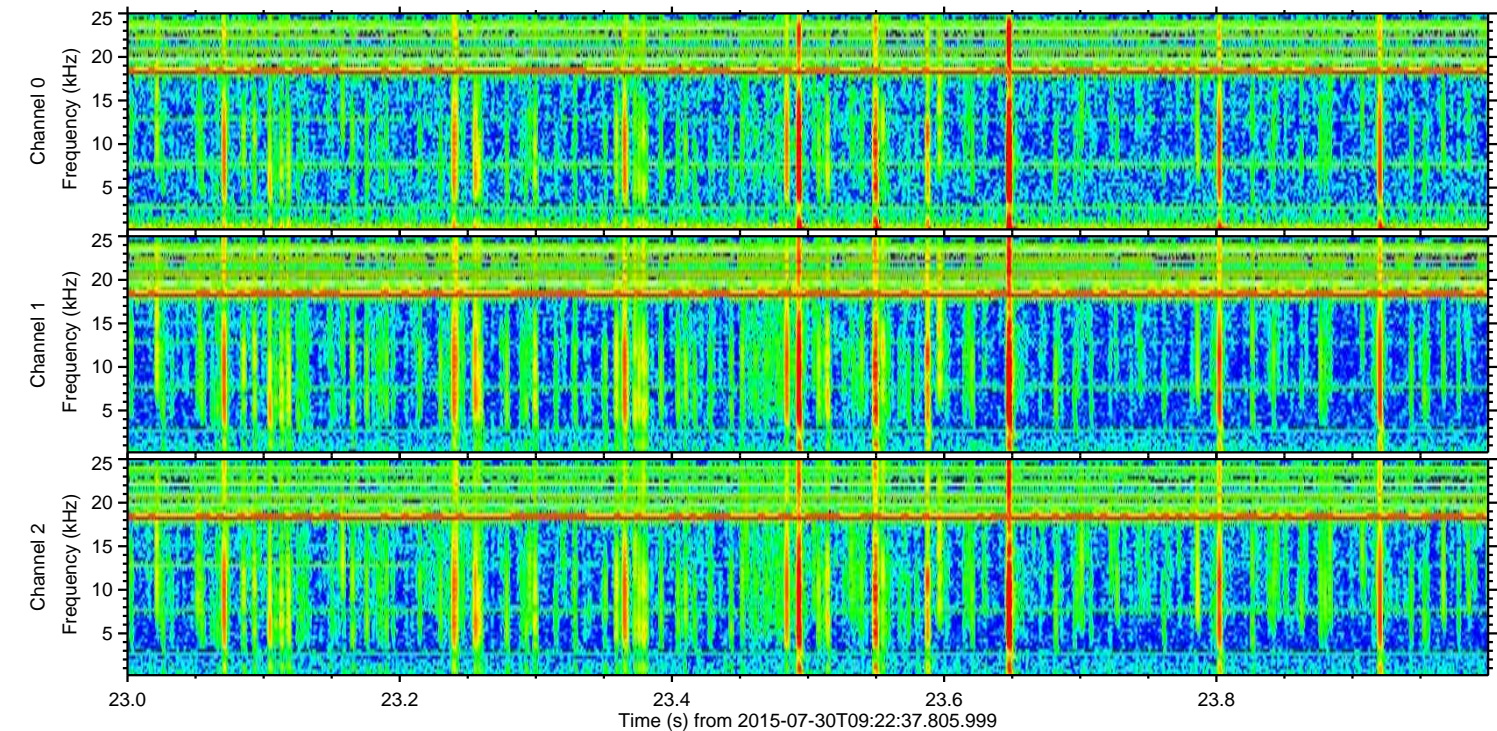
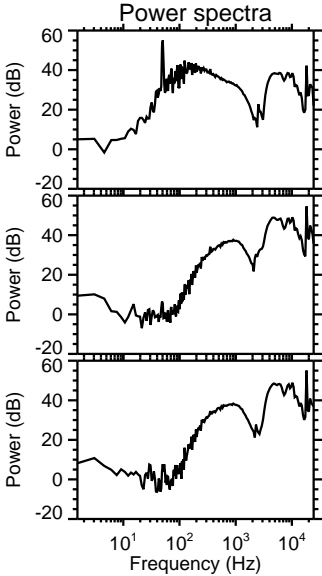
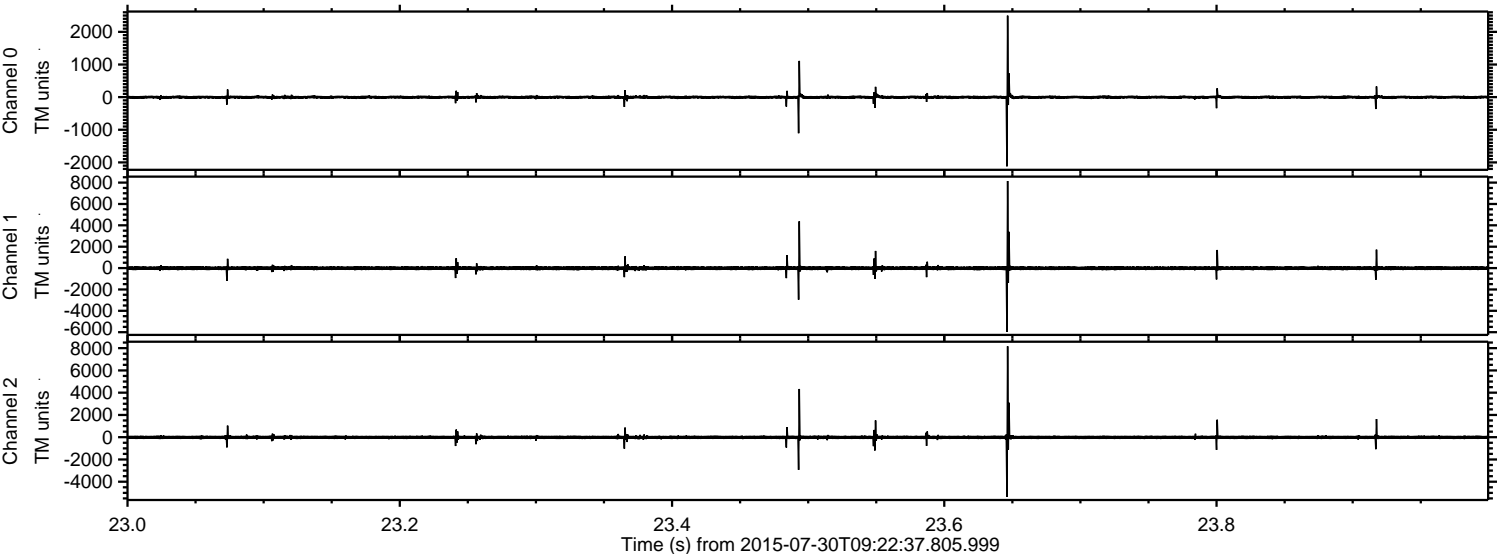
ELMAVAN 3D WAVEFORMS (Measured data sampled at 50 kHz) 51000 packets of 144 samples from 2015-07-30T09:22:37.805.999. Part 3/147

Processed Thu Jul 30 11:28:58 2015 by ELM ver.2012-10-06 from 001__elm20150730_092236__dat00.bin



ELMAVAN 3D WAVEFORMS (Measured data sampled at 50 kHz) 51000 packets of 144 samples from 2015-07-30T09:22:37.805.999. Part 24/147

Processed Thu Jul 30 11:28:59 2015 by ELM ver.2012-10-06 from 001__elm20150730_092236__dat00.bin



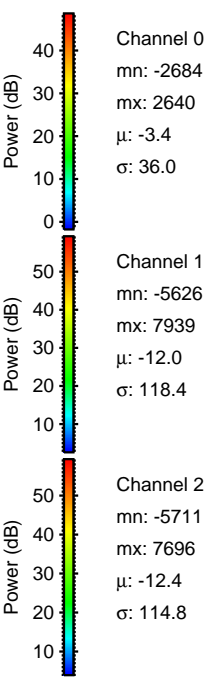
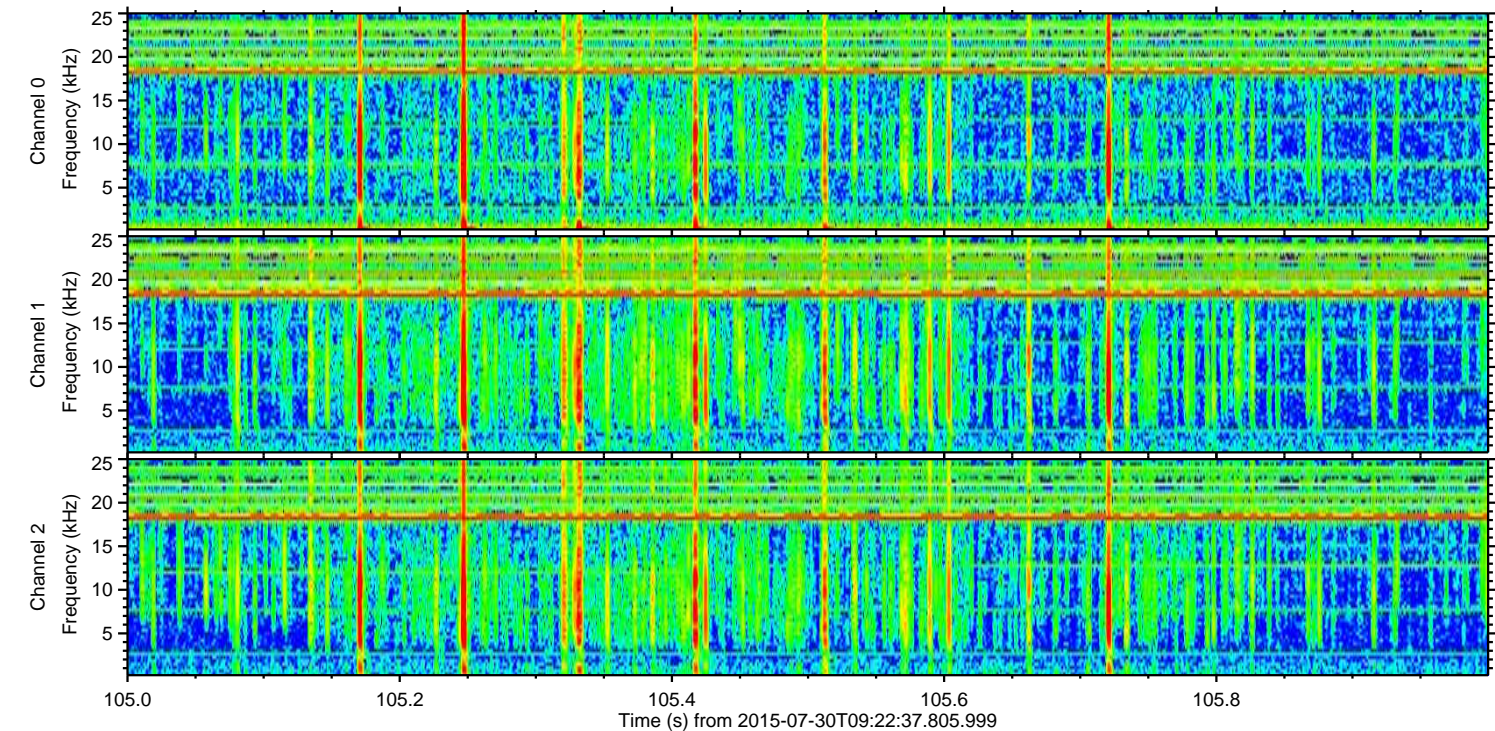
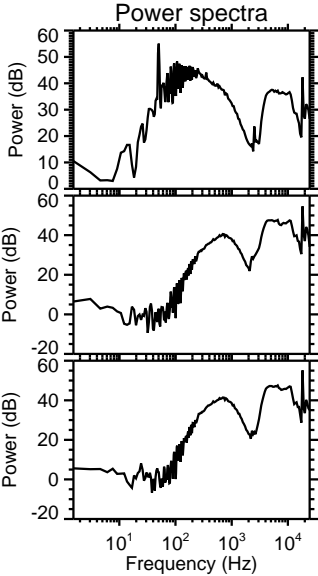
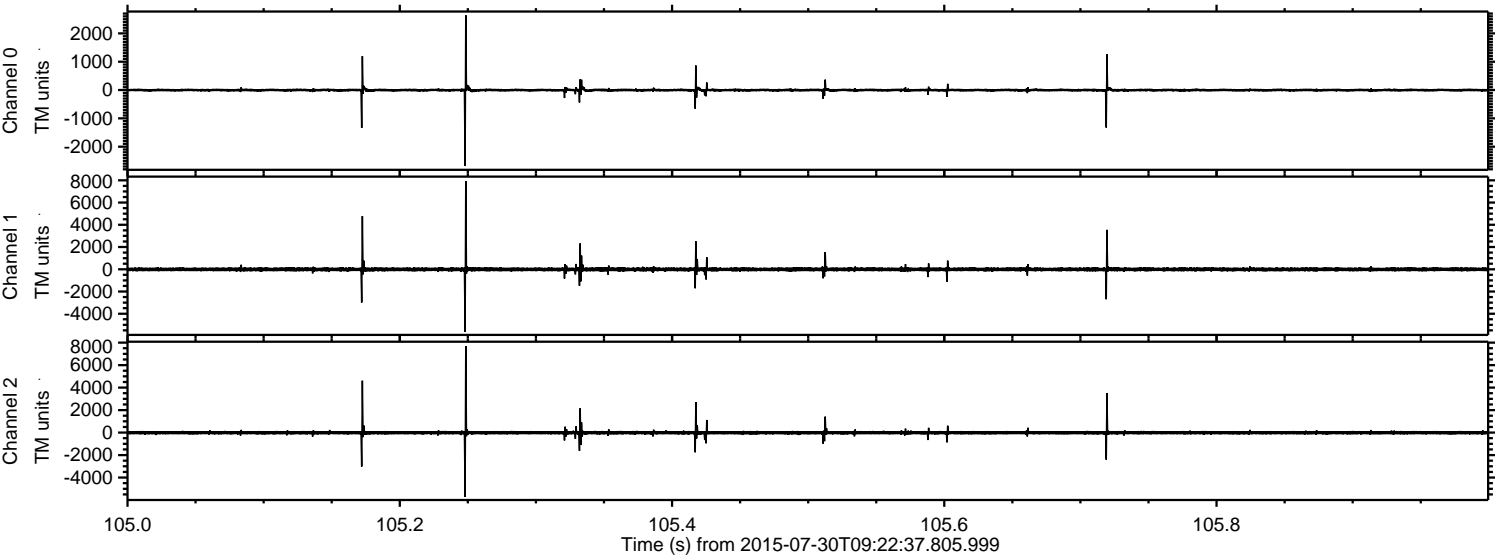
Channel 0
mn: -2122
mx: 2498
 μ : -3.3
 σ : 31.7

Channel 1
mn: -5955
mx: 8150
 μ : -12.1
 σ : 110.2

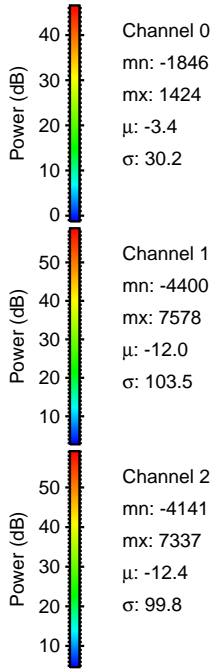
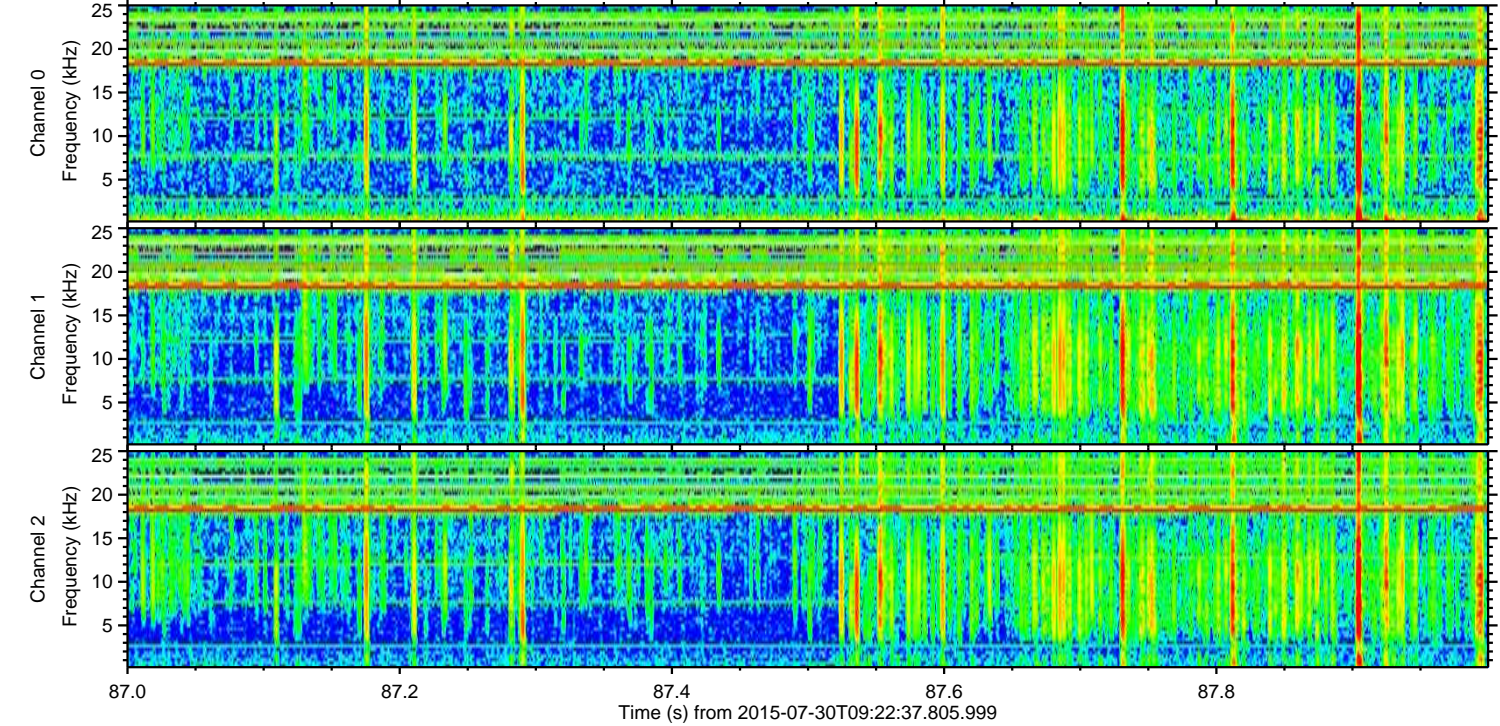
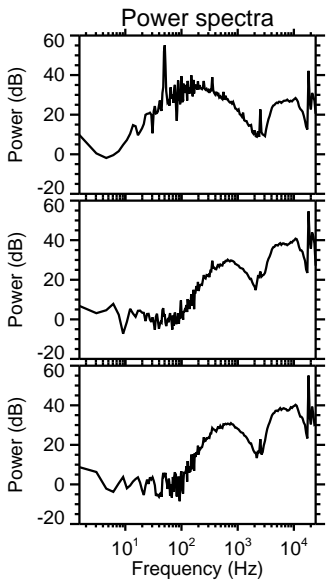
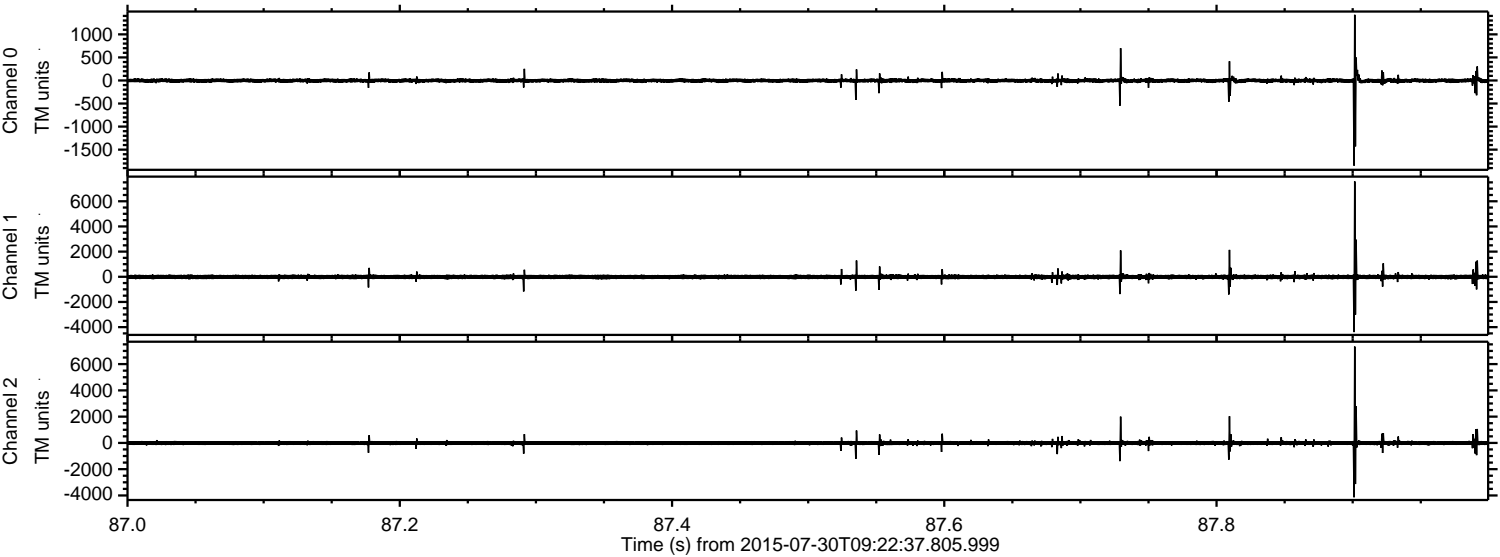
Channel 2
mn: -5372
mx: 8169
 μ : -12.3
 σ : 105.8

ELMAVAN 3D WAVEFORMS (Measured data sampled at 50 kHz) 51000 packets of 144 samples from 2015-07-30T09:22:37.805.999. Part 106/147

Processed Thu Jul 30 11:29:00 2015 by ELM ver.2012-10-06 from 001__elm20150730_092236__dat00.bin



Processed Thu Jul 30 11:29:01 2015 by ELM ver.2012-10-06 from 001__elm20150730_092236__dat00.bin



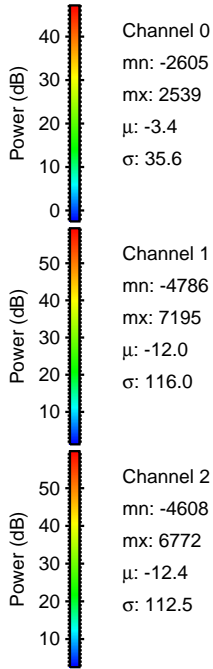
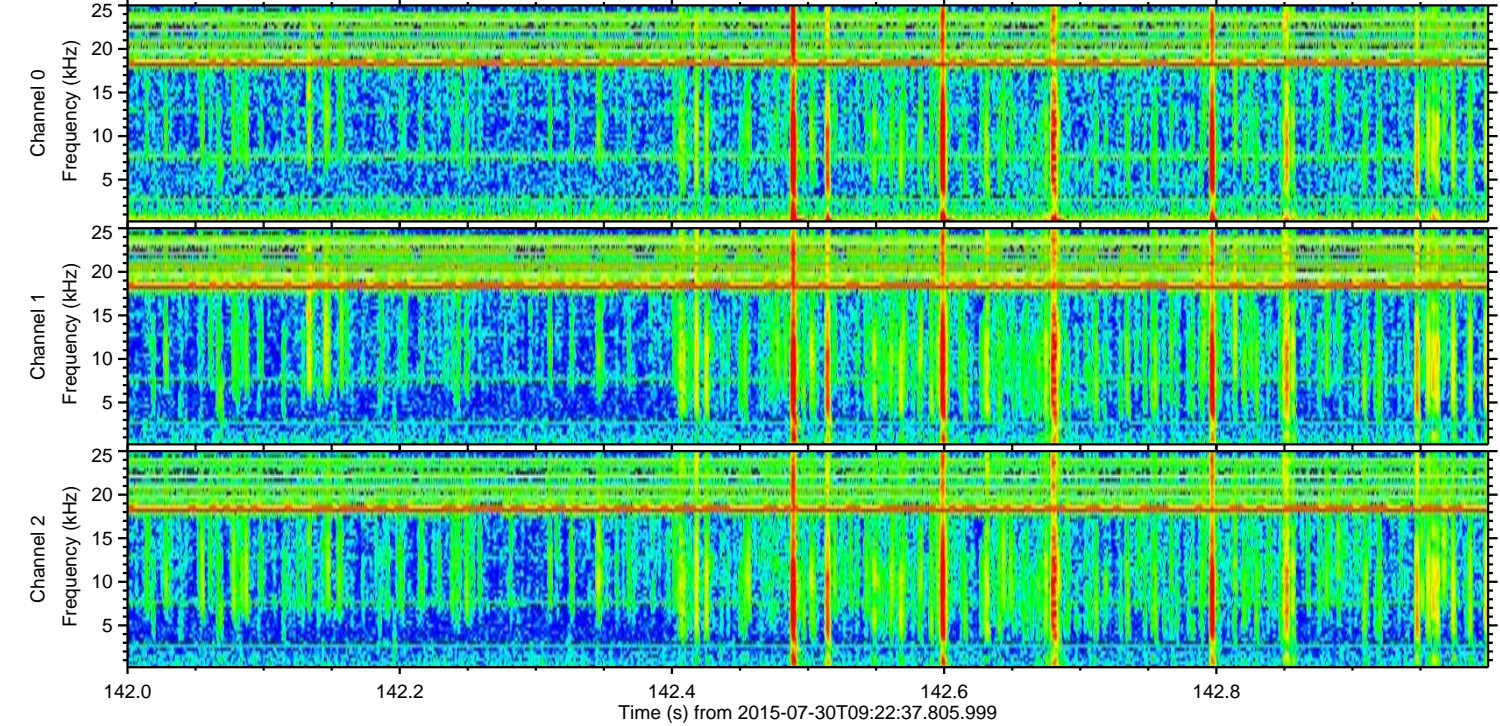
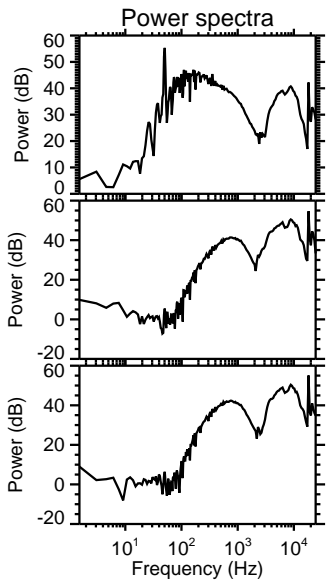
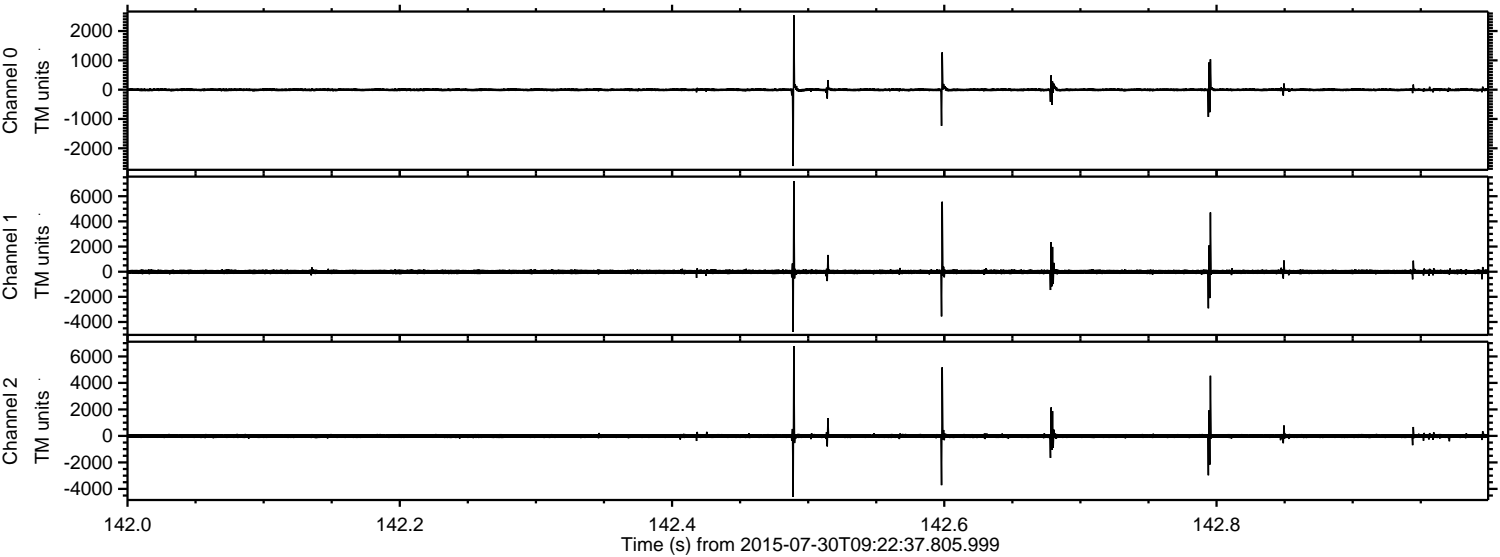
Channel 0
mn: -1846
mx: 1424
 μ : -3.4
 σ : 30.2

Channel 1
mn: -4400
mx: 7578
 μ : -12.0
 σ : 103.5

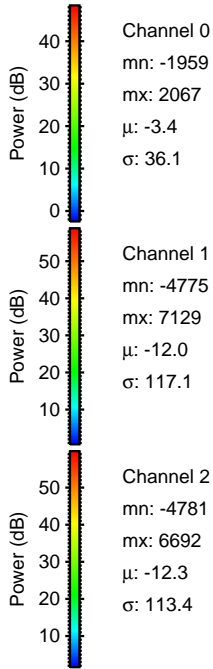
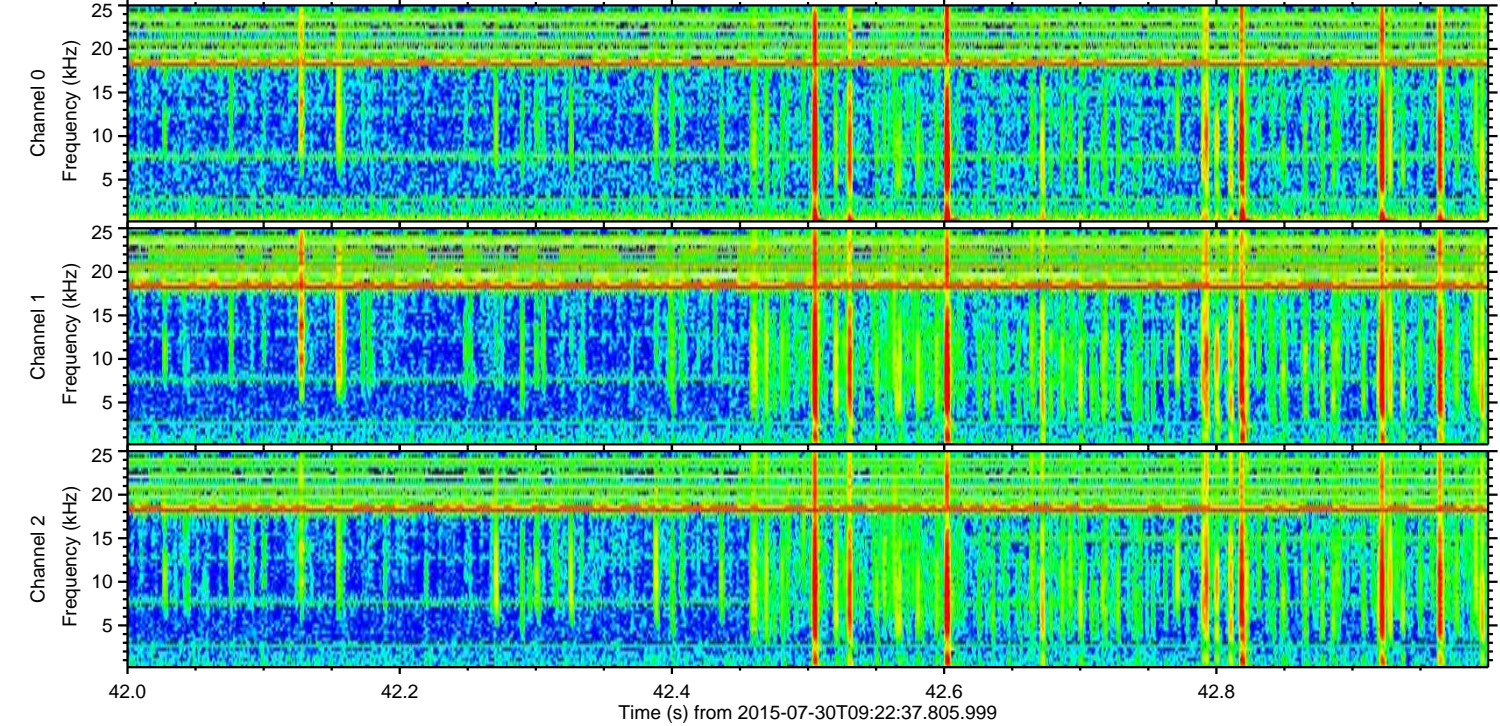
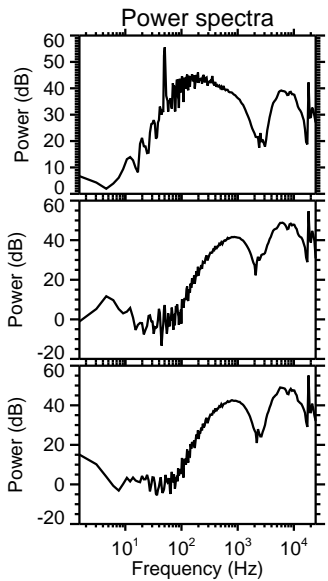
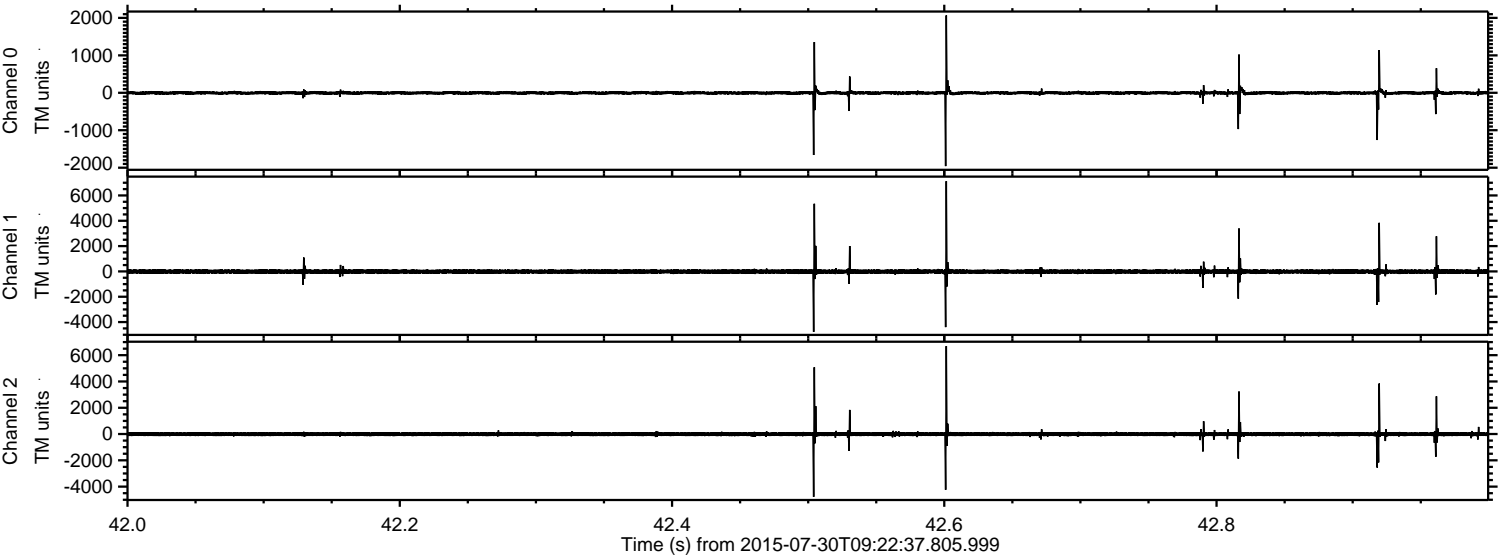
Channel 2
mn: -4141
mx: 7337
 μ : -12.4
 σ : 99.8

ELMAVAN 3D WAVEFORMS (Measured data sampled at 50 kHz) 51000 packets of 144 samples from 2015-07-30T09:22:37.805.999. Part 143/147

Processed Thu Jul 30 11:29:02 2015 by ELM ver.2012-10-06 from 001__elm20150730_092236__dat00.bin

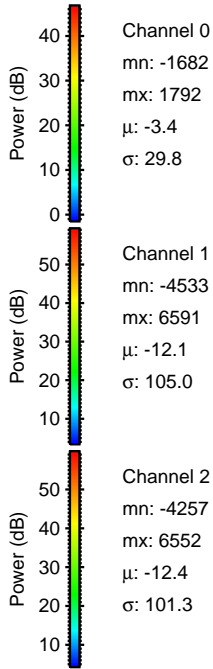
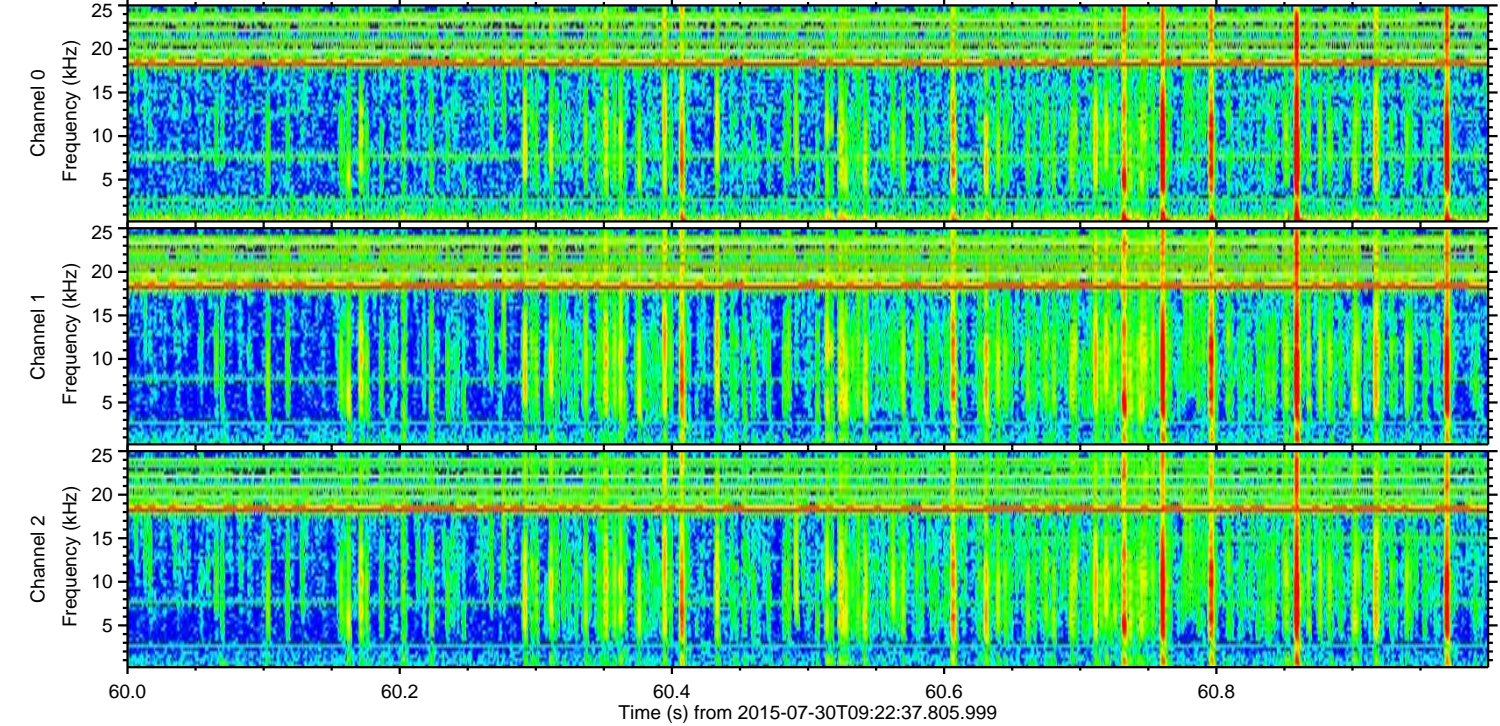
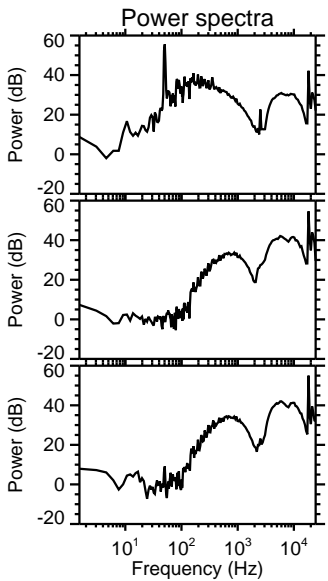
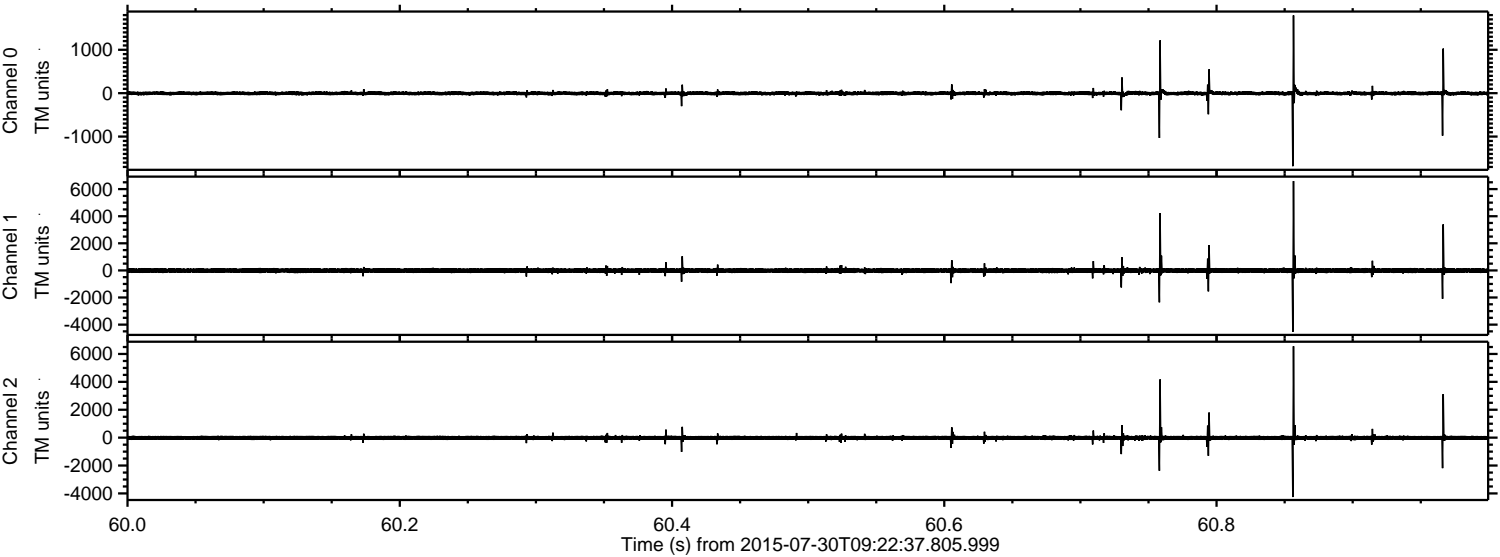


Processed Thu Jul 30 11:29:03 2015 by ELM ver.2012-10-06 from 001__elm20150730_092236__dat00.bin



ELMAVAN 3D WAVEFORMS (Measured data sampled at 50 kHz) 51000 packets of 144 samples from 2015-07-30T09:22:37.805.999. Part 61/147

Processed Thu Jul 30 11:29:03 2015 by ELM ver.2012-10-06 from 001__elm20150730_092236__dat00.bin



Channel 0
mn: -1682
mx: 1792
 μ : -3.4
 σ : 29.8

Channel 1
mn: -4533
mx: 6591
 μ : -12.1
 σ : 105.0

Channel 2
mn: -4257
mx: 6552
 μ : -12.4
 σ : 101.3

Processed Thu Jul 30 11:29:04 2015 by ELM ver.2012-10-06 from 001__elm20150730_092236__dat00.bin

