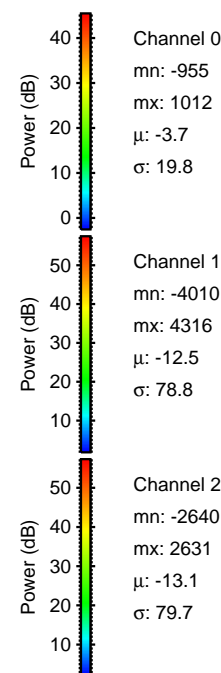
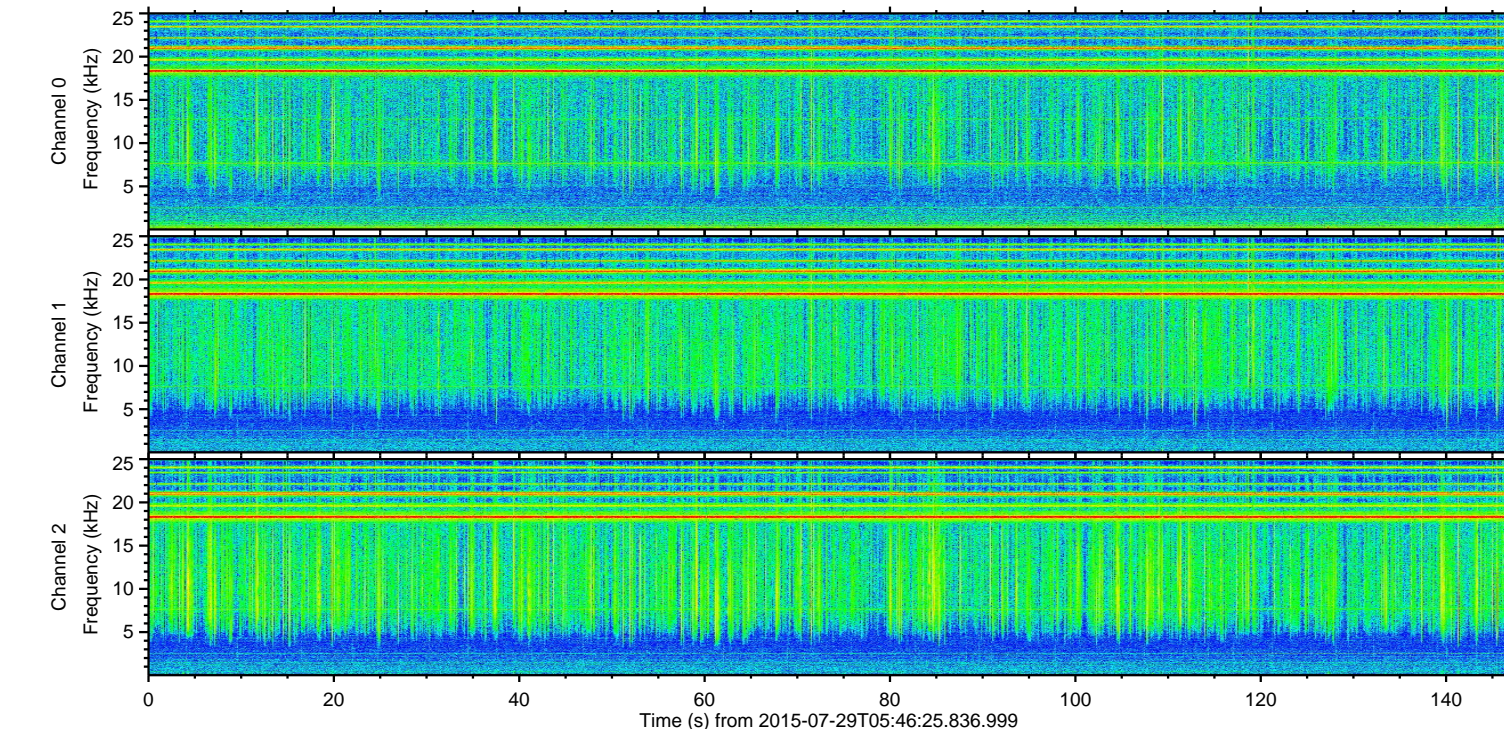
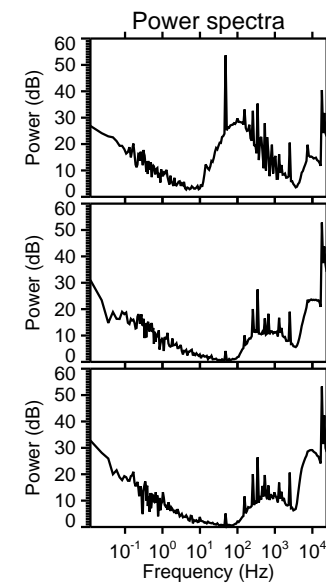
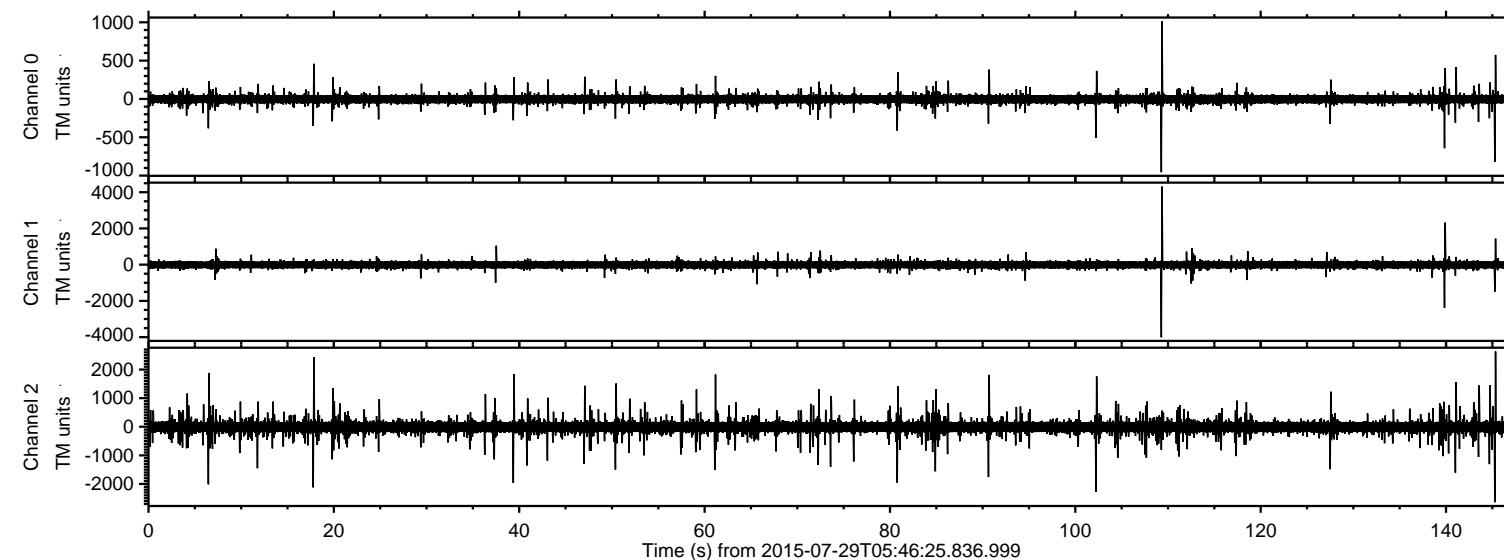


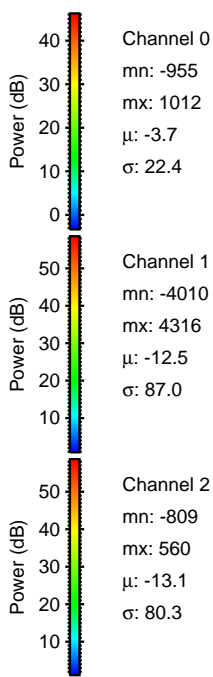
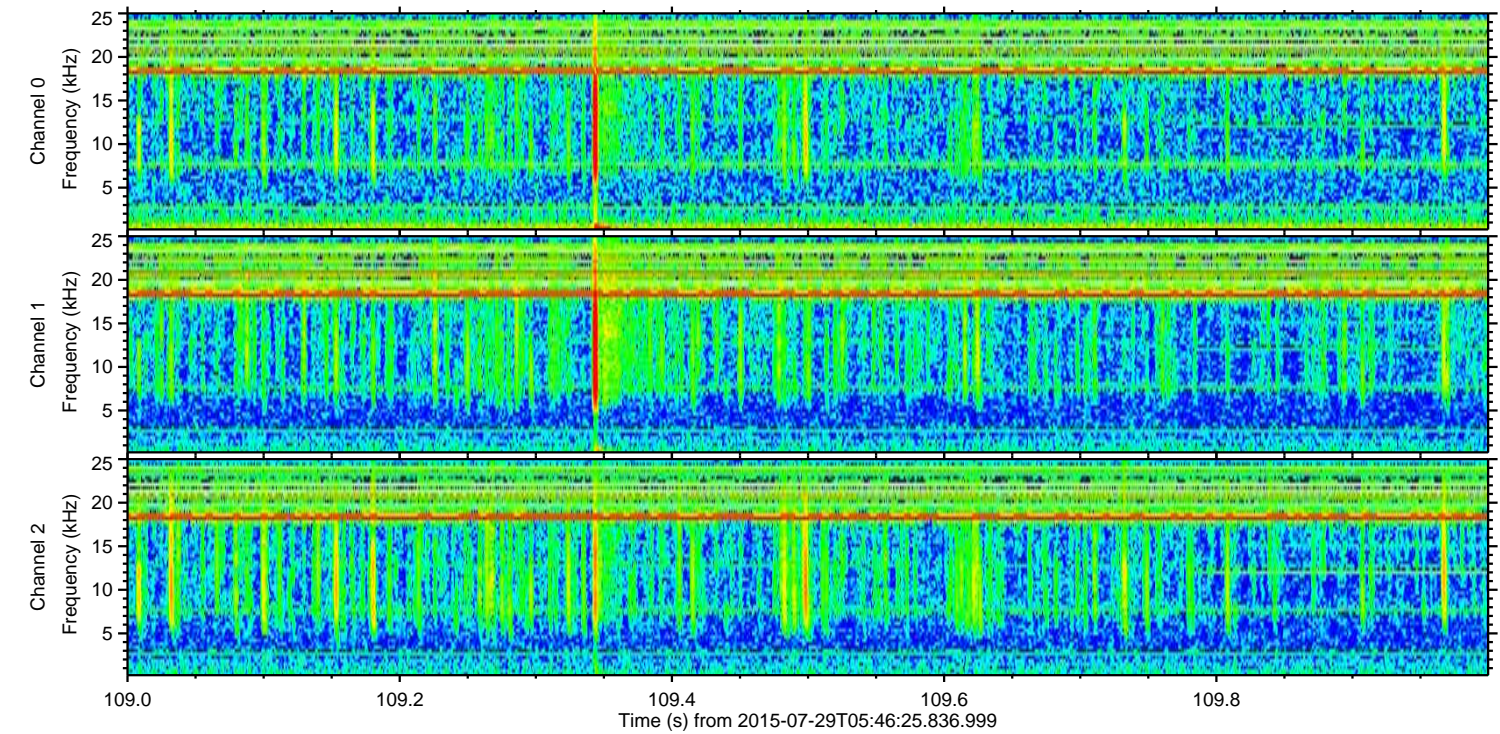
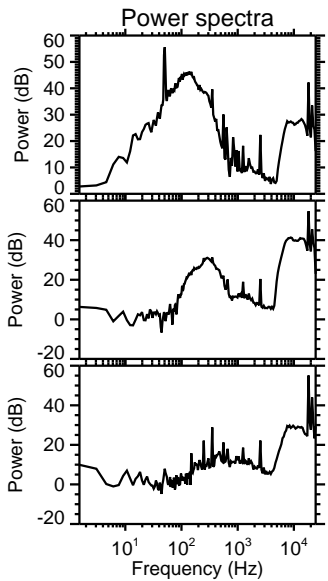
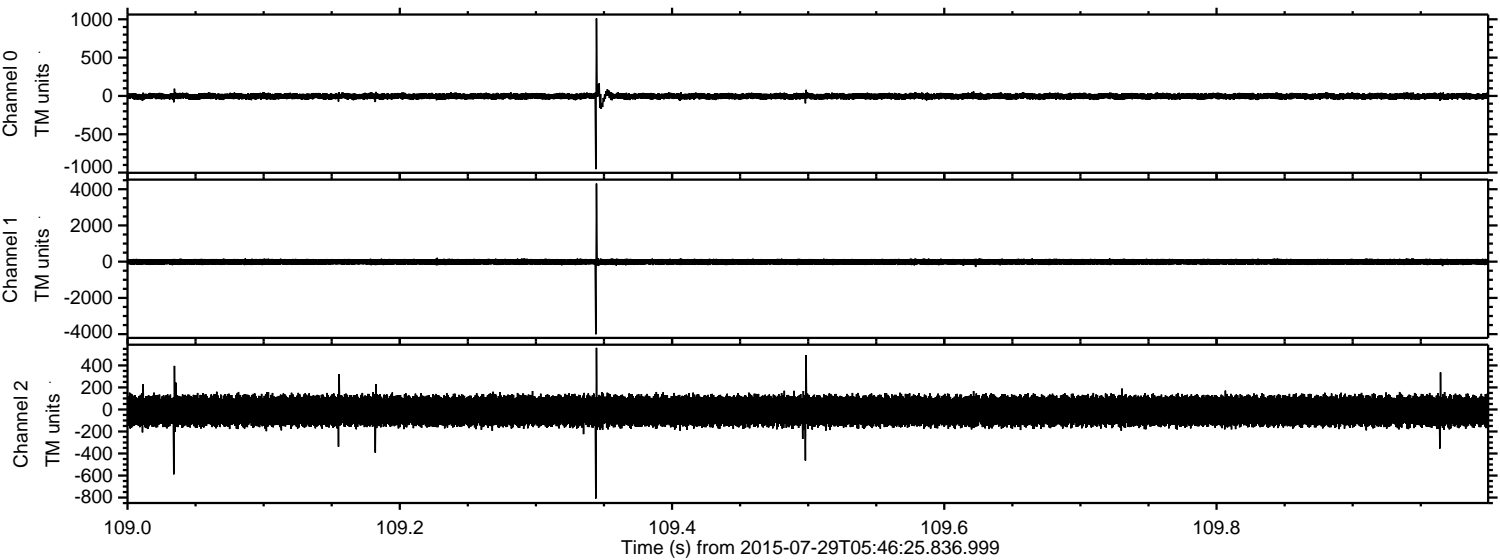
ELMAVAN 3D WAVEFORMS (Measured data sampled at 50 kHz) 51000 packets of 144 samples from 2015-07-29T05:46:25.836.999.

Processed Wed Jul 29 07:52:44 2015 by ELM ver.2012-10-06 from 001__elm20150729_054624__dat00.bin



ELMAVAN 3D WAVEFORMS (Measured data sampled at 50 kHz) 51000 packets of 144 samples from 2015-07-29T05:46:25.836.999. Part 110/147

Processed Wed Jul 29 07:53:00 2015 by ELM ver.2012-10-06 from 001__elm20150729_054624__dat00.bin



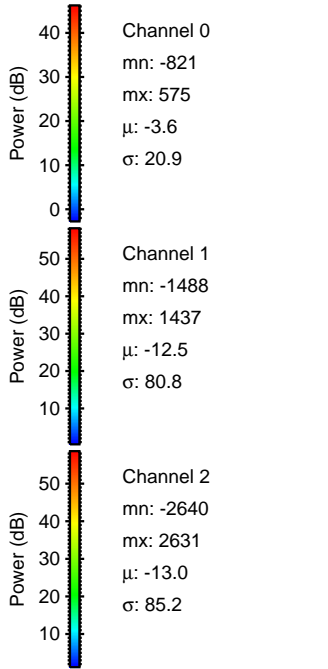
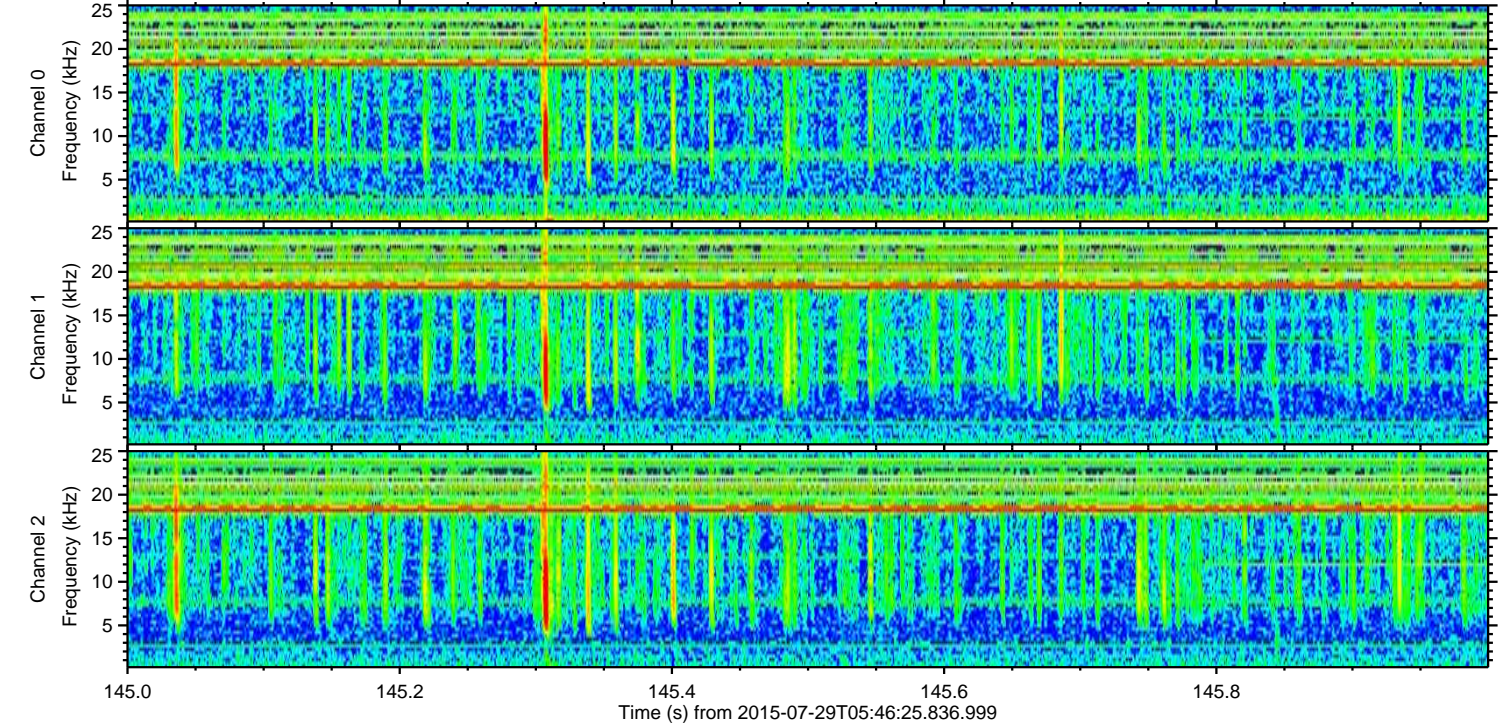
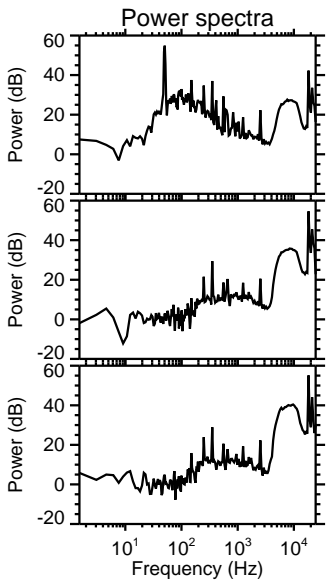
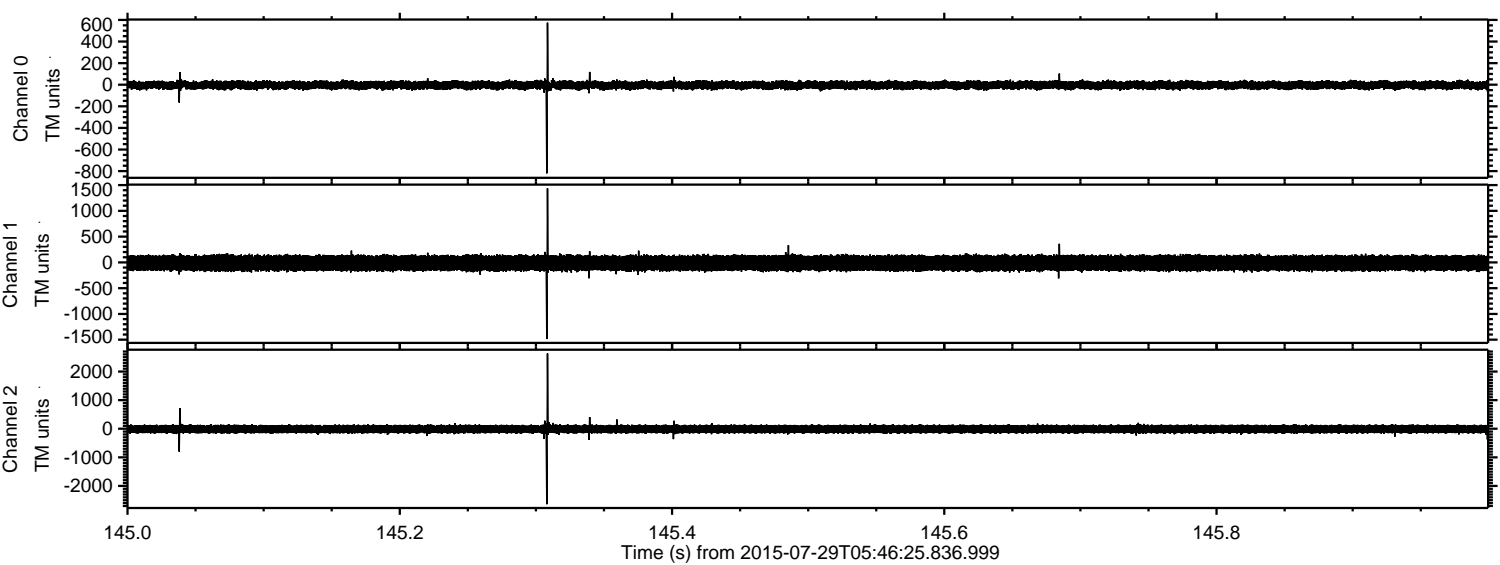
Channel 0
mn: -955
mx: 1012
 μ : -3.7
 σ : 22.4

Channel 1
mn: -4010
mx: 4316
 μ : -12.5
 σ : 87.0

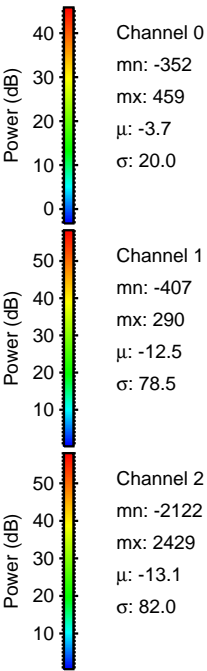
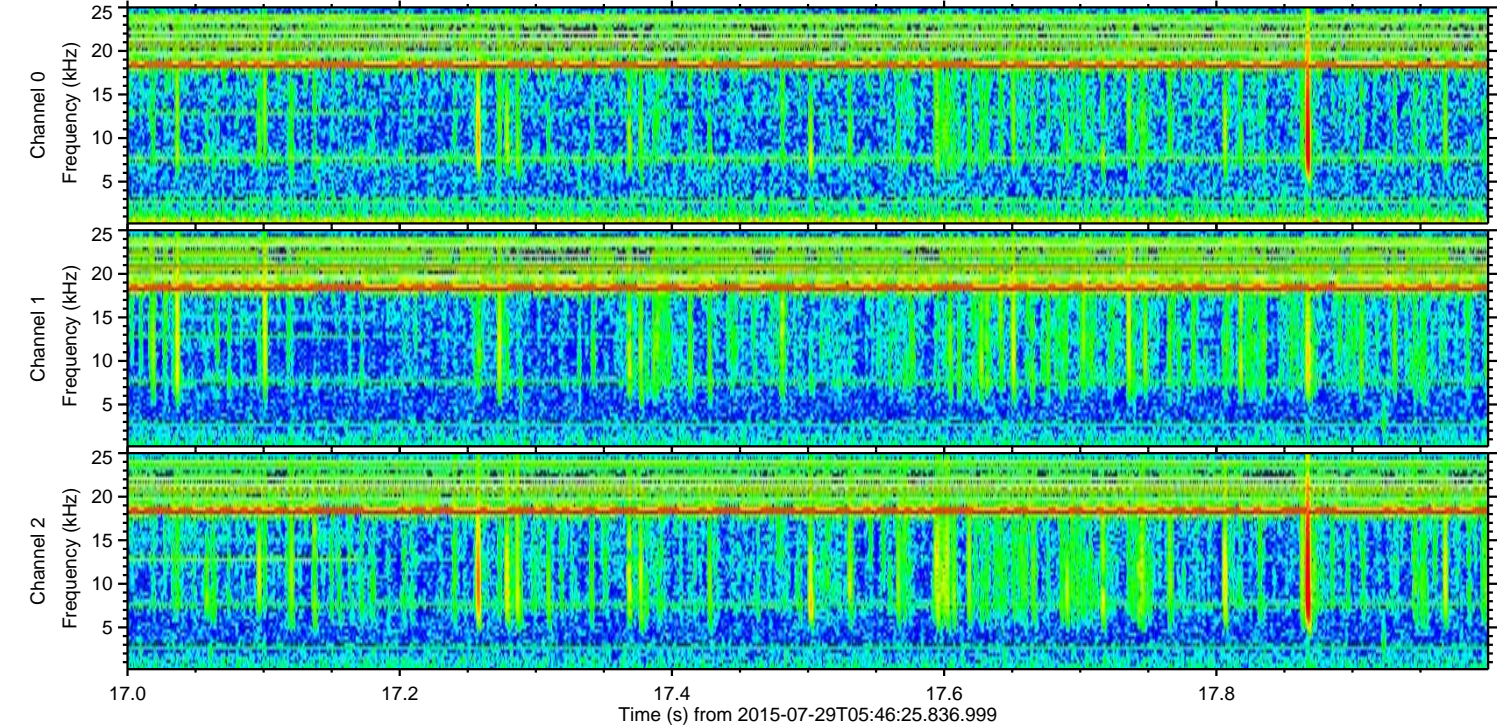
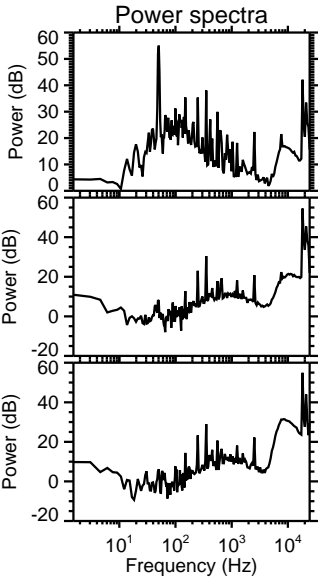
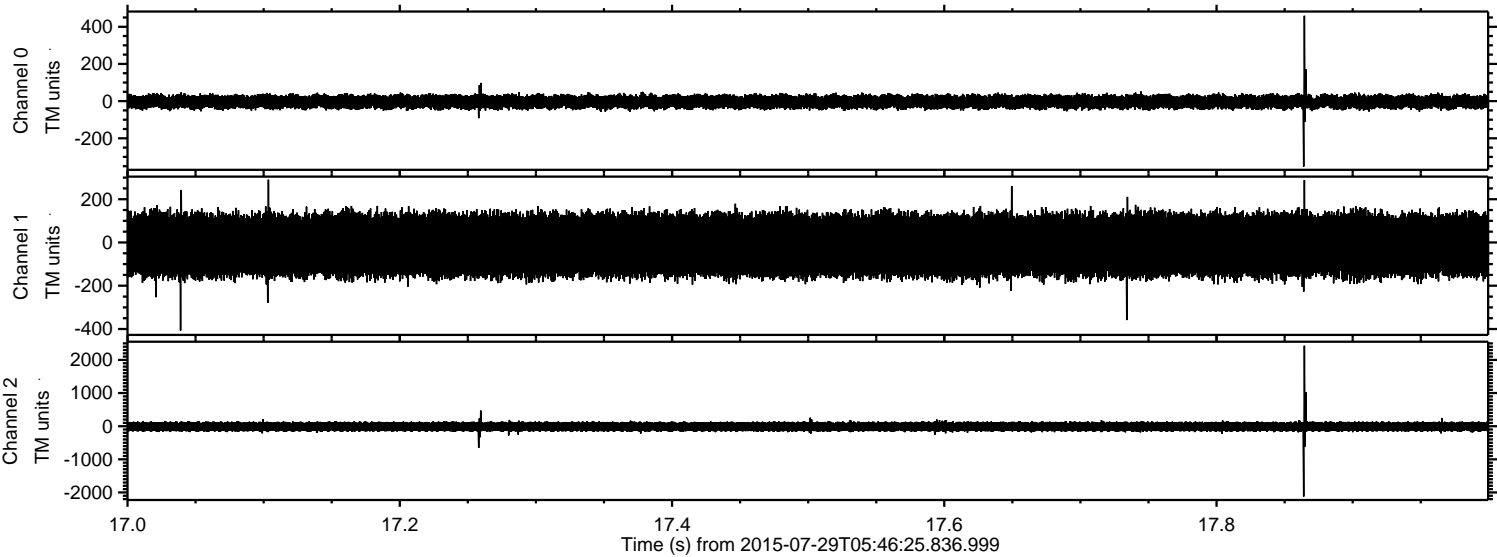
Channel 2
mn: -809
mx: 560
 μ : -13.1
 σ : 80.3

ELMAVAN 3D WAVEFORMS (Measured data sampled at 50 kHz) 51000 packets of 144 samples from 2015-07-29T05:46:25.836.999. Part 146/147

Processed Wed Jul 29 07:53:01 2015 by ELM ver.2012-10-06 from 001__elm20150729_054624__dat00.bin

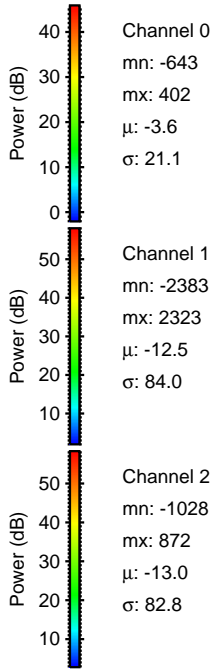
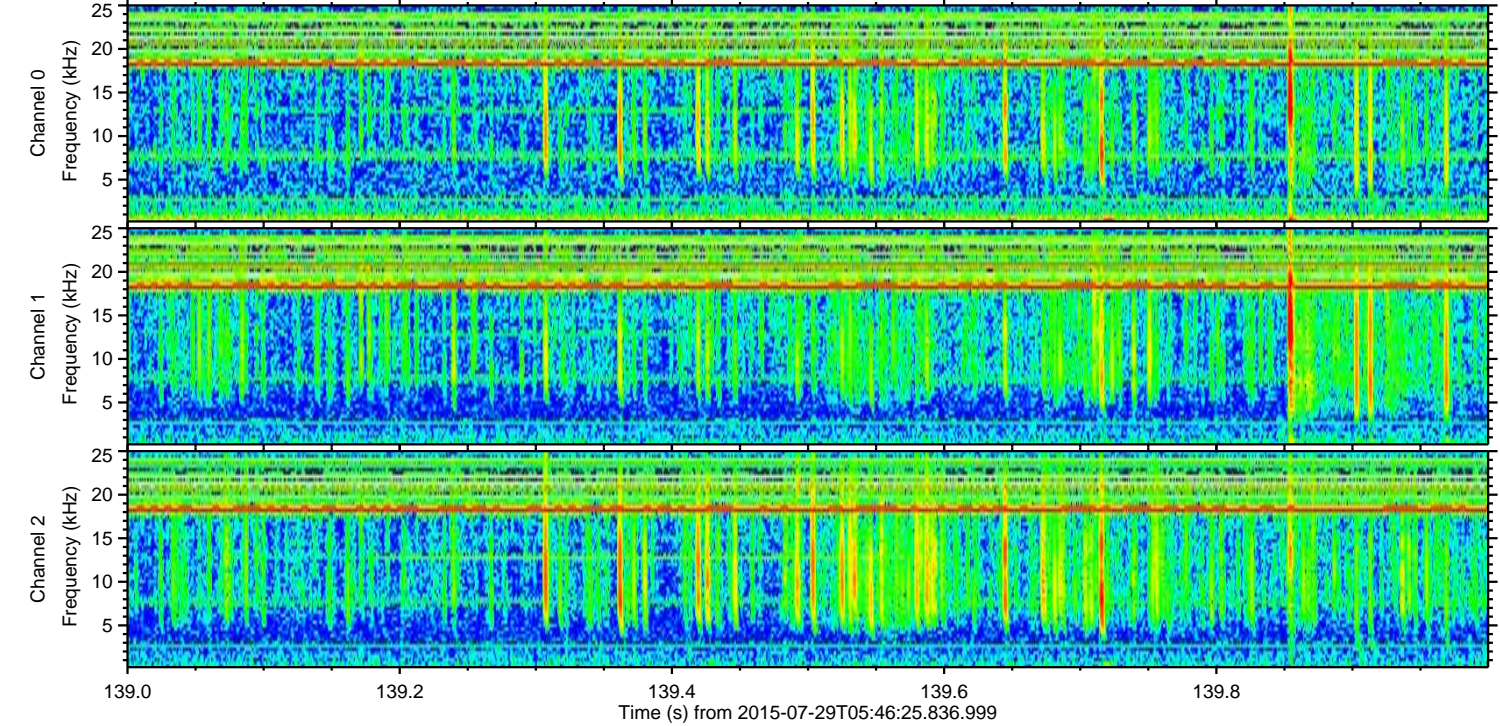
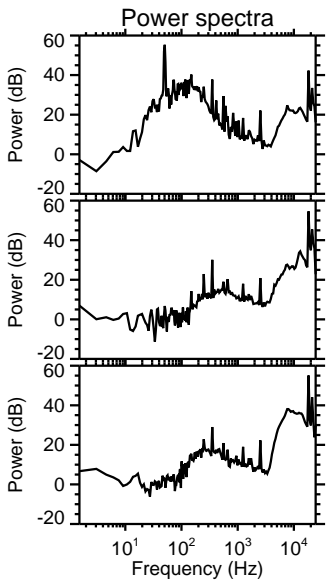
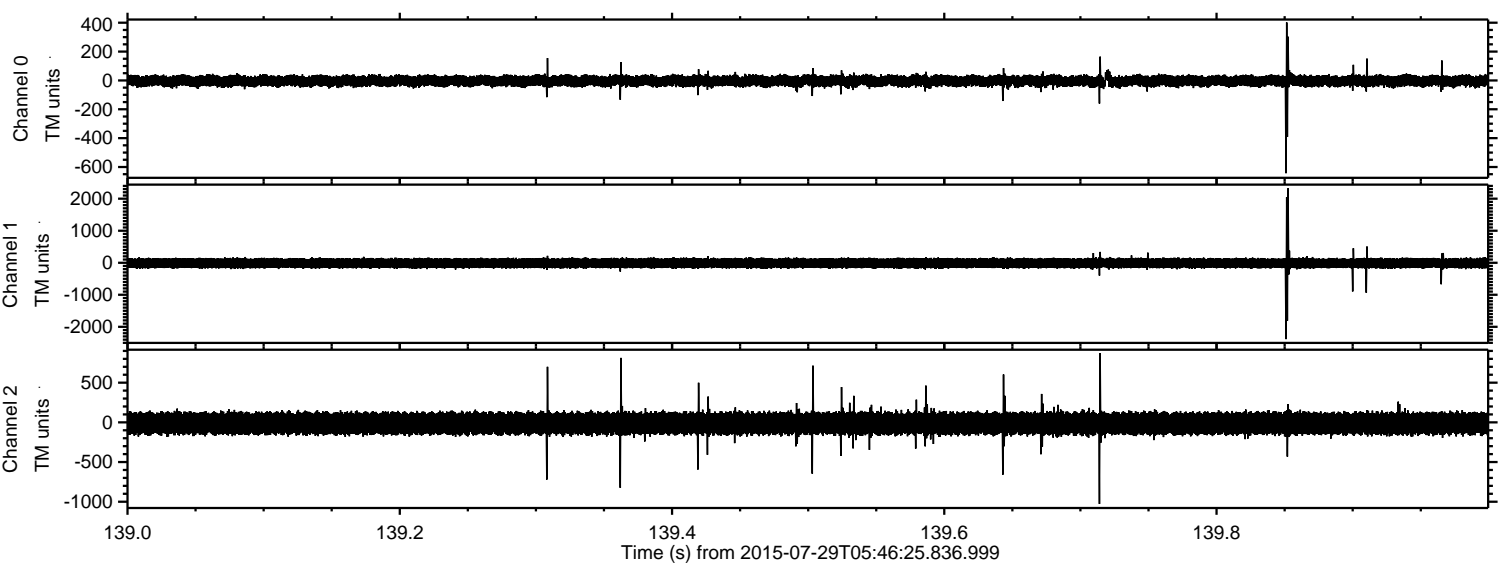


Processed Wed Jul 29 07:53:02 2015 by ELM ver.2012-10-06 from 001__elm20150729_054624__dat00.bin



ELMAVAN 3D WAVEFORMS (Measured data sampled at 50 kHz) 51000 packets of 144 samples from 2015-07-29T05:46:25.836.999. Part 140/147

Processed Wed Jul 29 07:53:03 2015 by ELM ver.2012-10-06 from 001__elm20150729_054624__dat00.bin



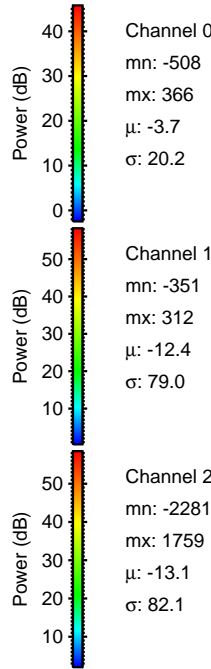
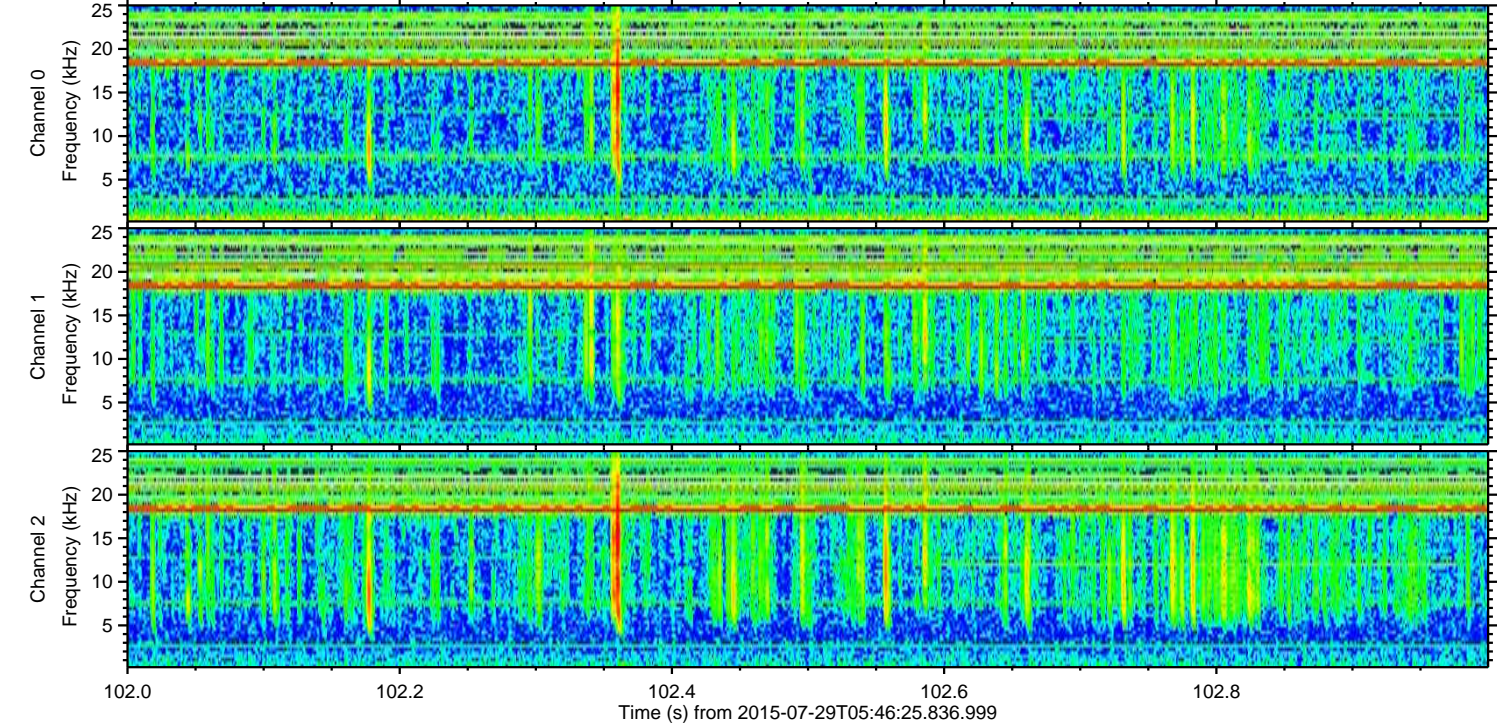
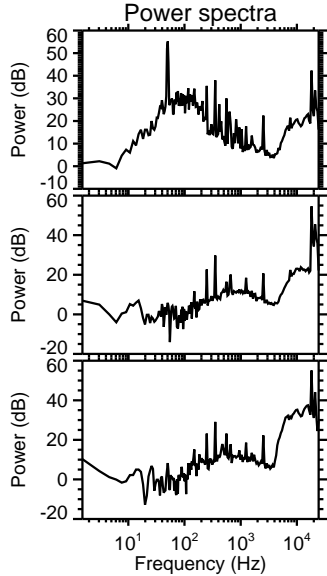
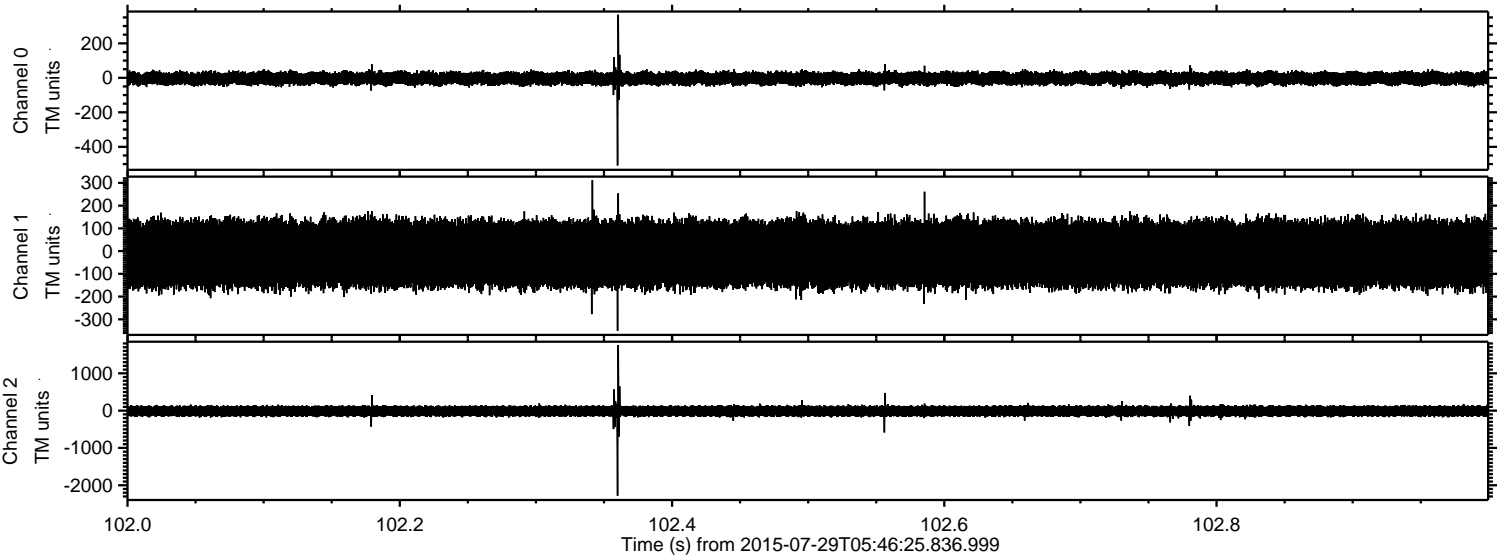
Channel 0
mn: -643
mx: 402
 μ : -3.6
 σ : 21.1

Channel 1
mn: -2383
mx: 2323
 μ : -12.5
 σ : 84.0

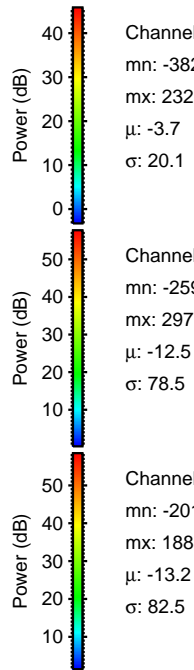
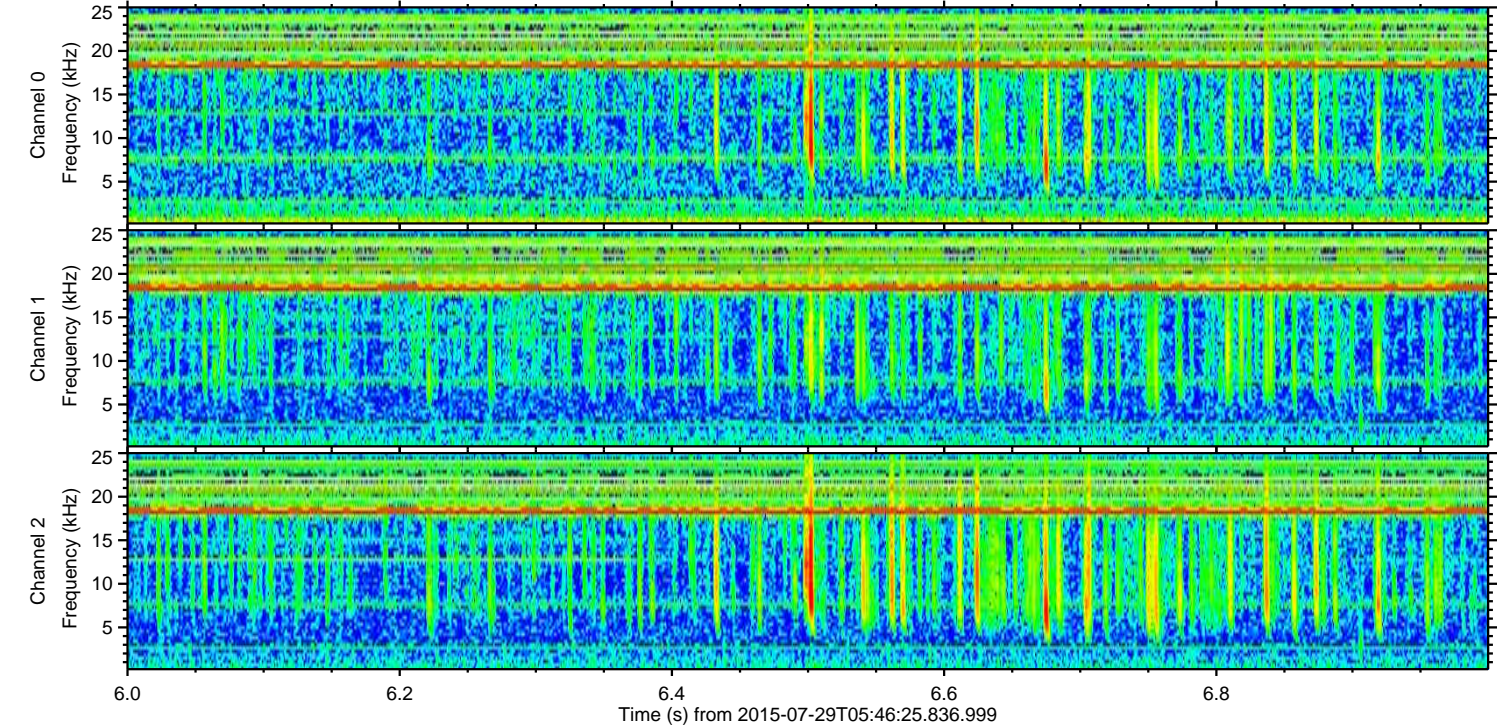
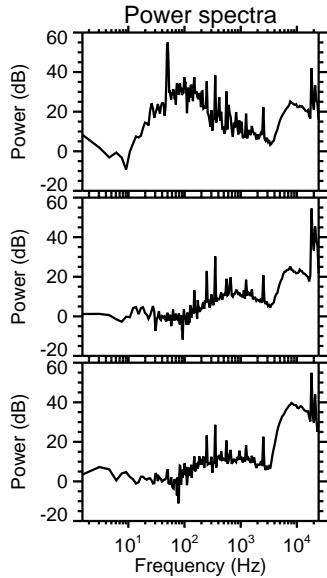
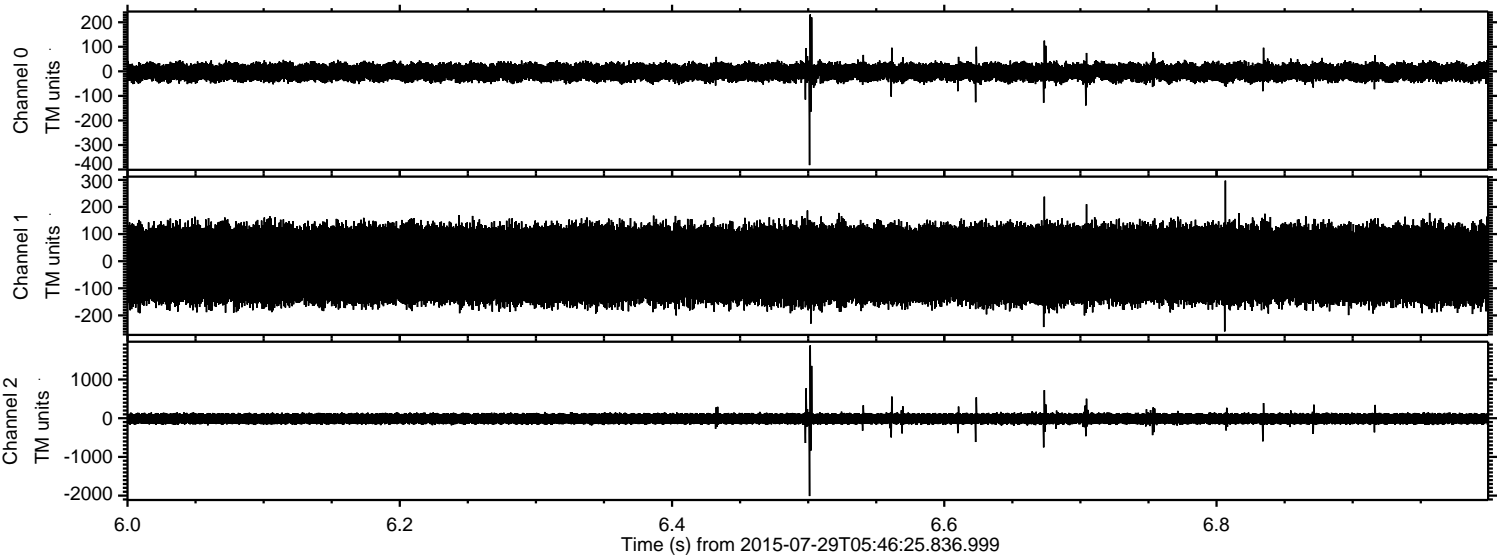
Channel 2
mn: -1028
mx: 872
 μ : -13.0
 σ : 82.8

ELMAVAN 3D WAVEFORMS (Measured data sampled at 50 kHz) 51000 packets of 144 samples from 2015-07-29T05:46:25.836.999. Part 103/147

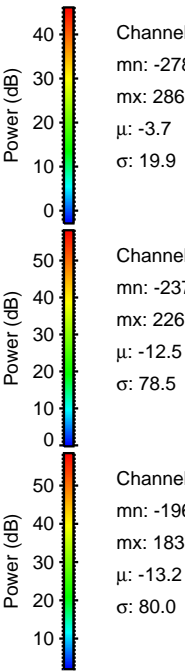
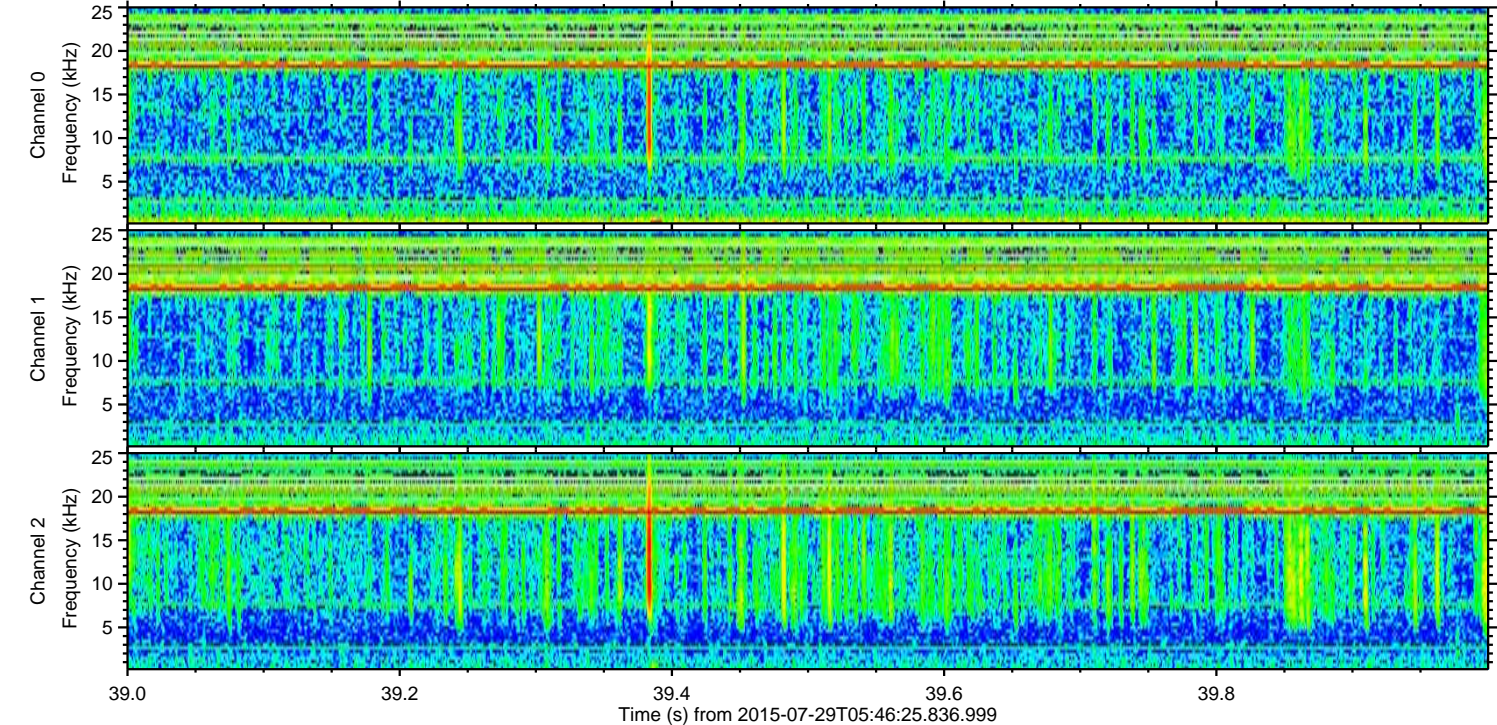
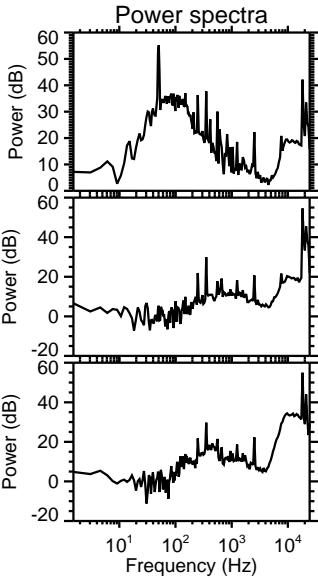
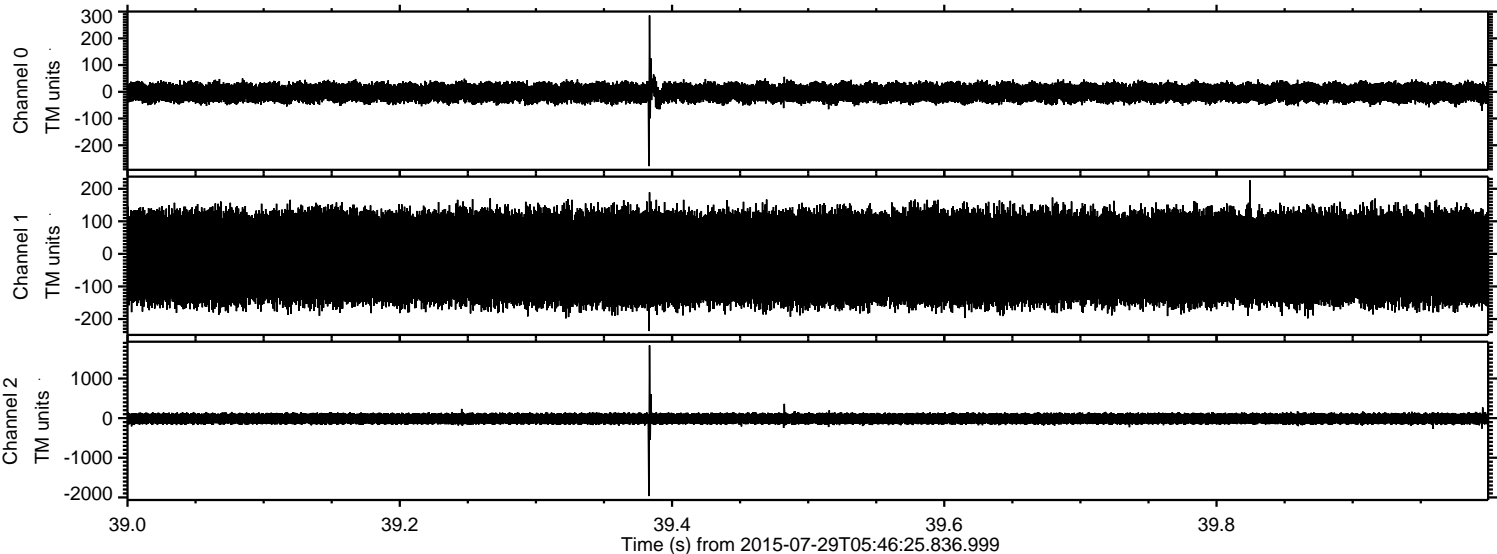
Processed Wed Jul 29 07:53:04 2015 by ELM ver.2012-10-06 from 001__elm20150729_054624__dat00.bin



Processed Wed Jul 29 07:53:05 2015 by ELM ver.2012-10-06 from 001__elm20150729_054624__dat00.bin



Processed Wed Jul 29 07:53:06 2015 by ELM ver.2012-10-06 from 001__elm20150729_054624__dat00.bin

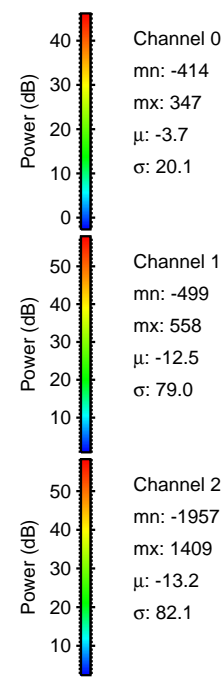
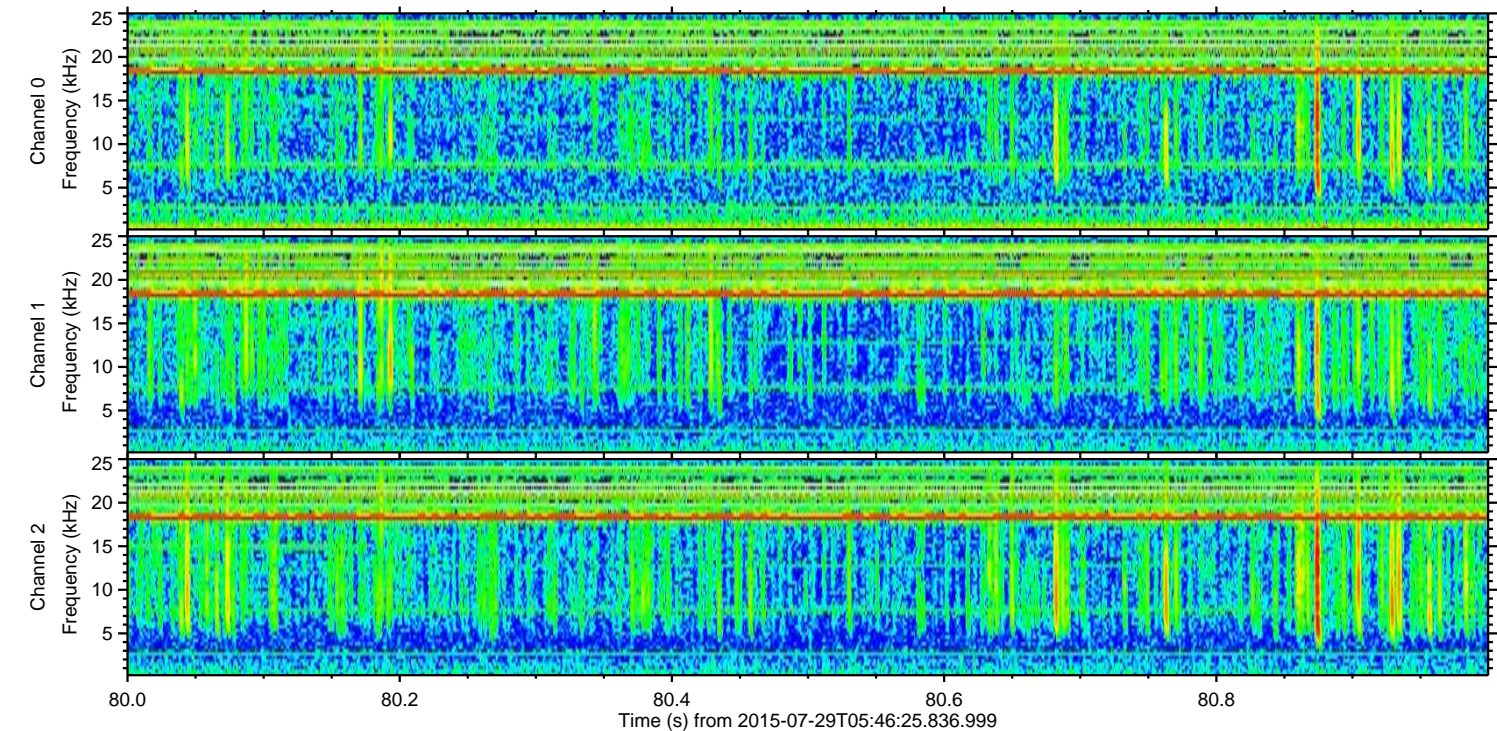
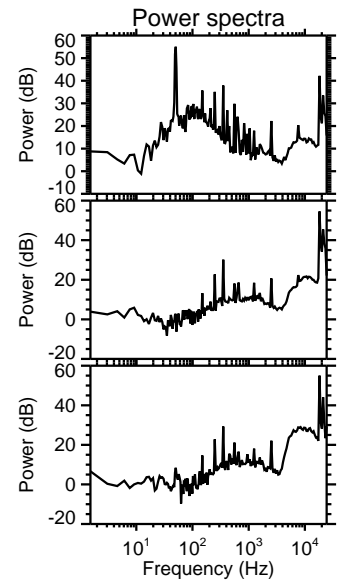
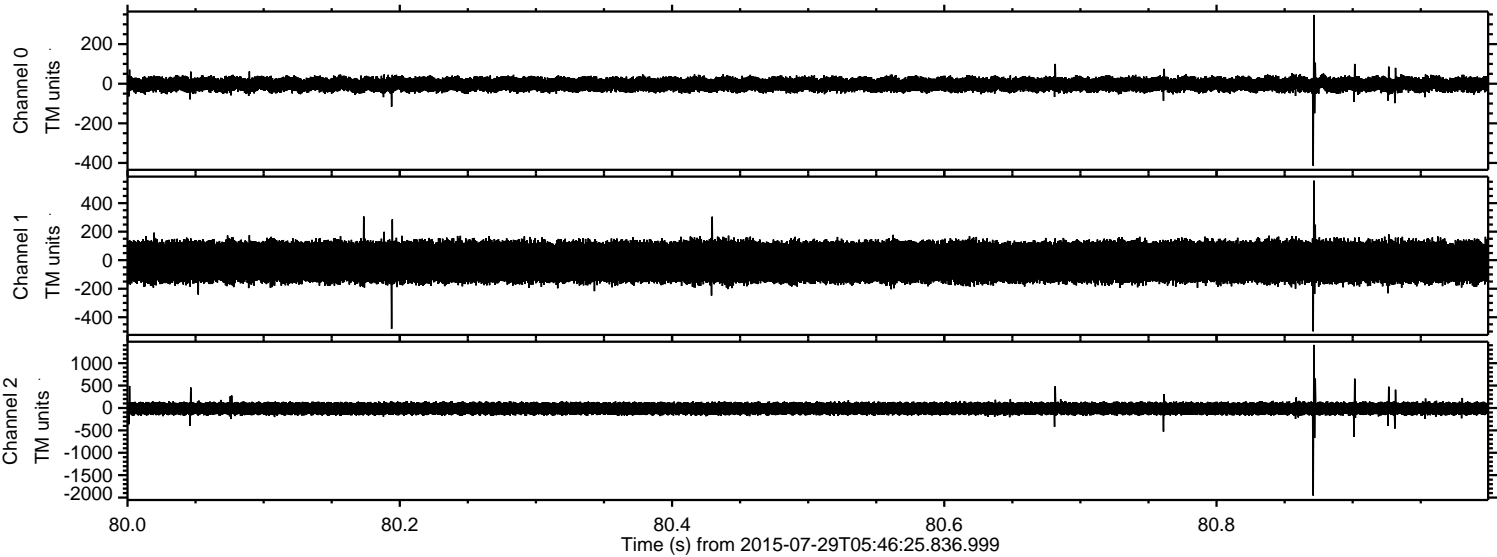


Channel 0
mn: -278
mx: 286
 μ : -3.7
 σ : 19.9

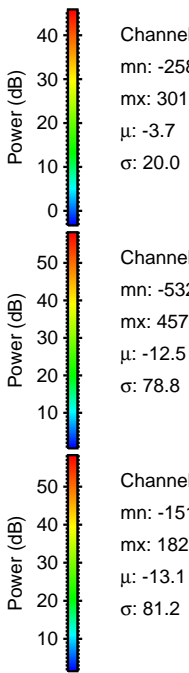
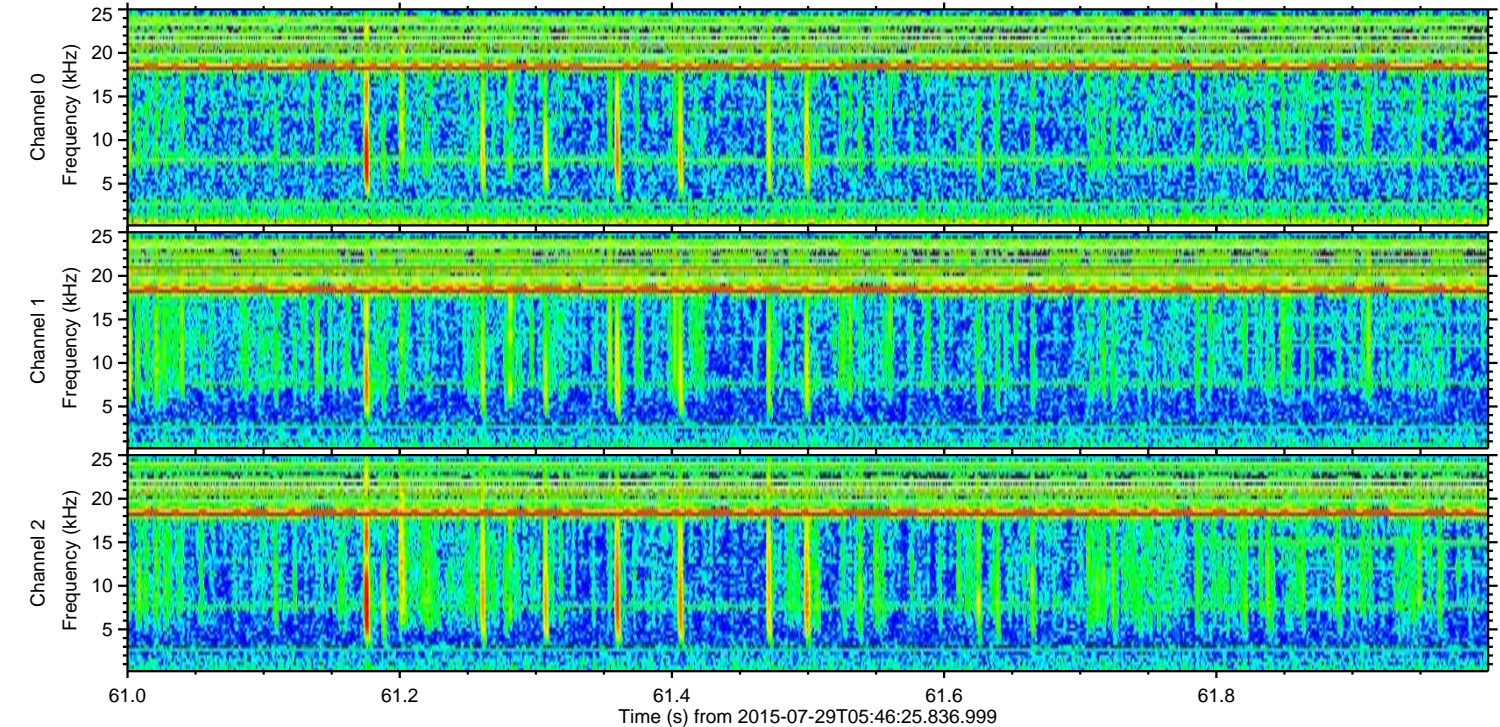
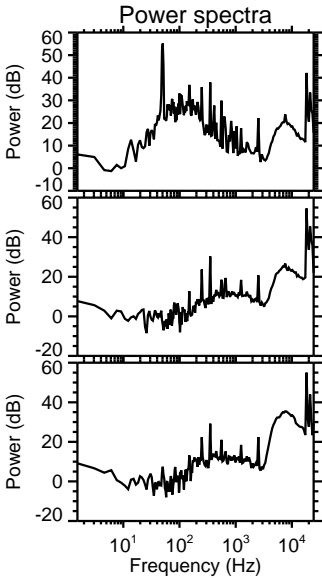
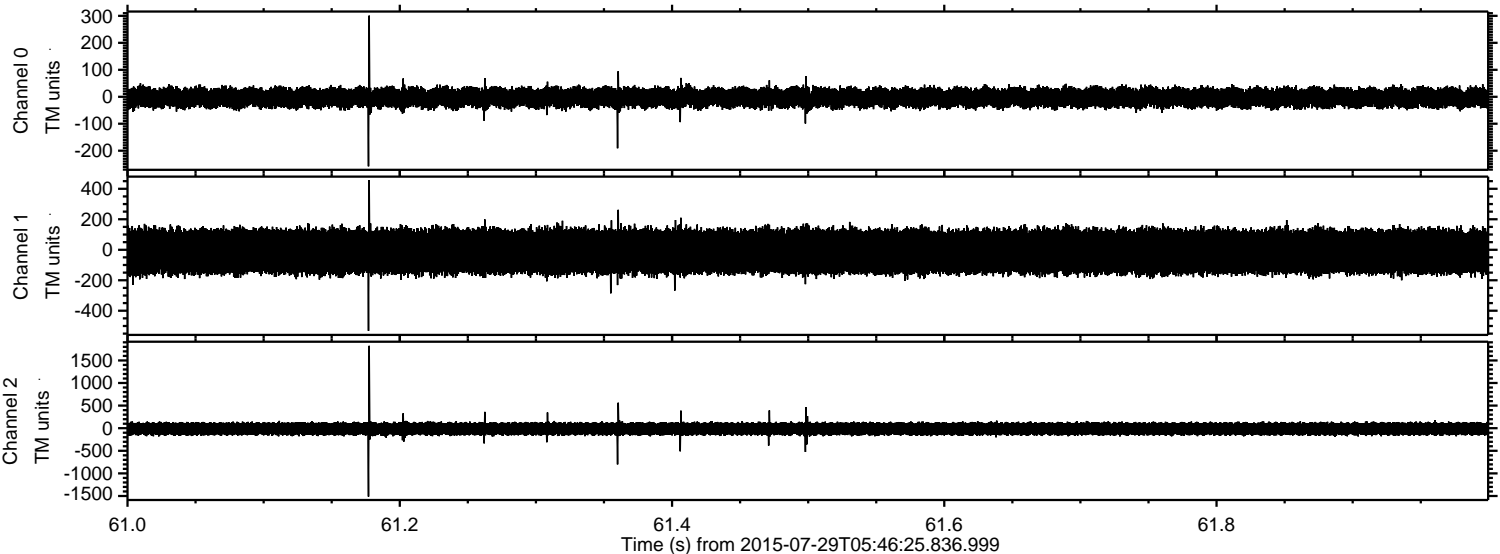
Channel 1
mn: -237
mx: 226
 μ : -12.5
 σ : 78.5

Channel 2
mn: -1967
mx: 1837
 μ : -13.2
 σ : 80.0

Processed Wed Jul 29 07:53:07 2015 by ELM ver.2012-10-06 from 001__elm20150729_054624__dat00.bin



Processed Wed Jul 29 07:53:09 2015 by ELM ver.2012-10-06 from 001__elm20150729_054624__dat00.bin



Channel 0
mn: -258
mx: 301
 μ : -3.7
 σ : 20.0

Channel 1
mn: -532
mx: 457
 μ : -12.5
 σ : 78.8

Channel 2
mn: -1513
mx: 1823
 μ : -13.1
 σ : 81.2

Processed Wed Jul 29 07:53:10 2015 by ELM ver.2012-10-06 from 001__elm20150729_054624__dat00.bin

