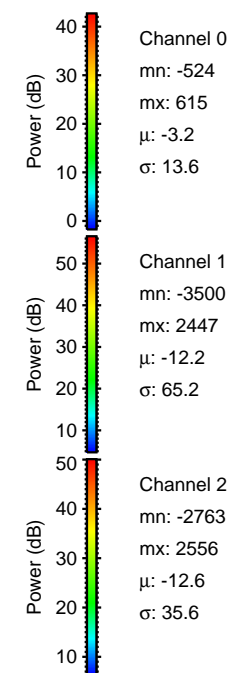
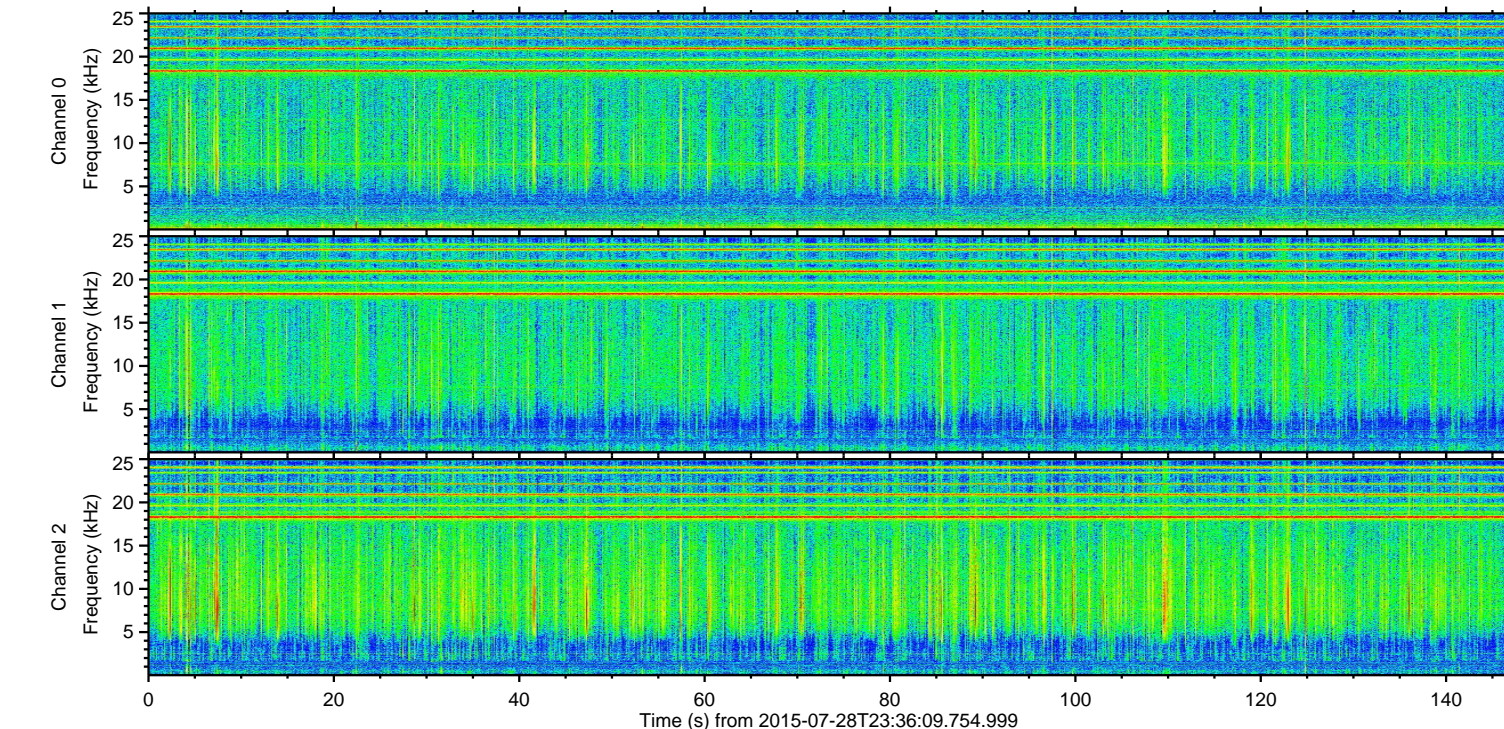
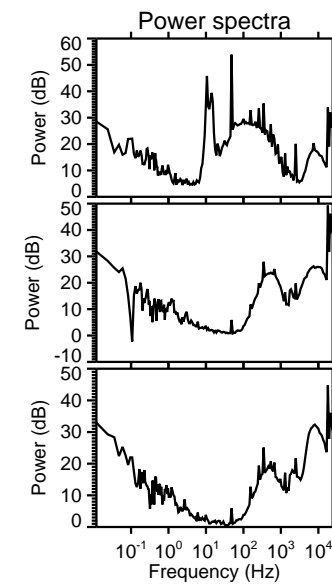
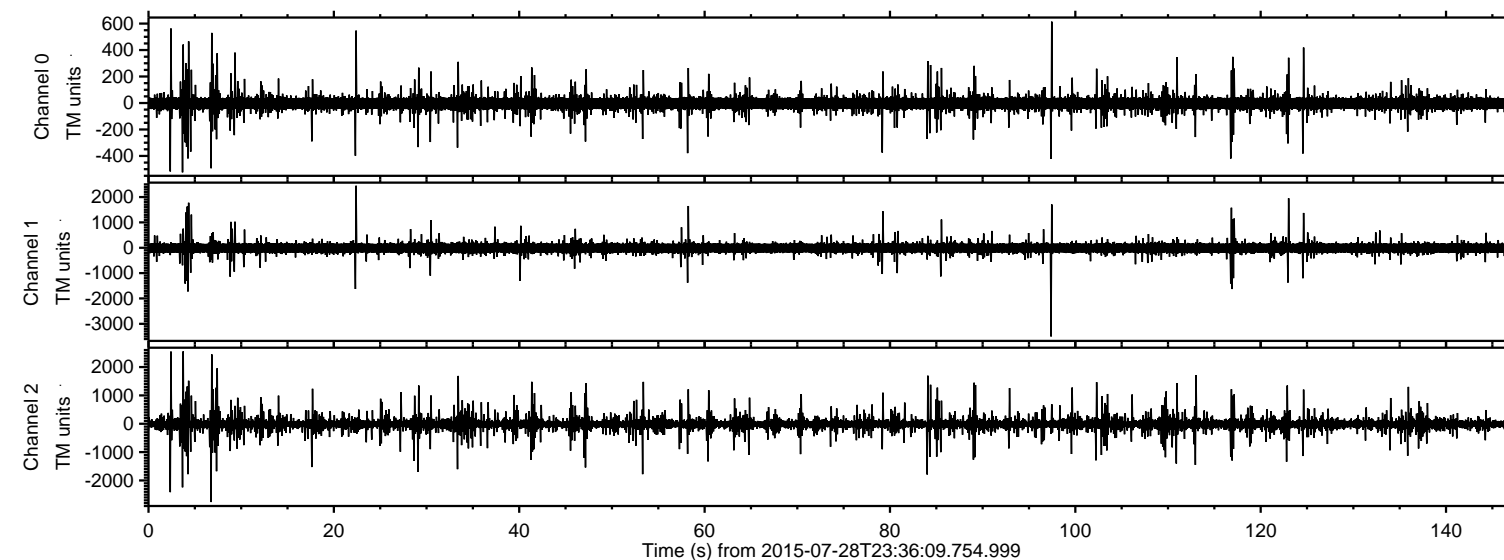


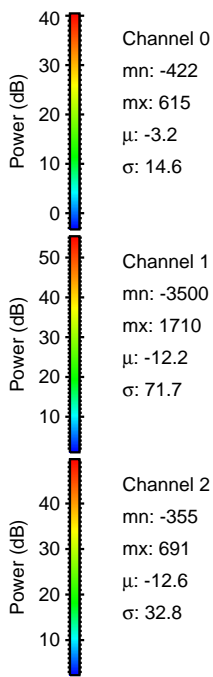
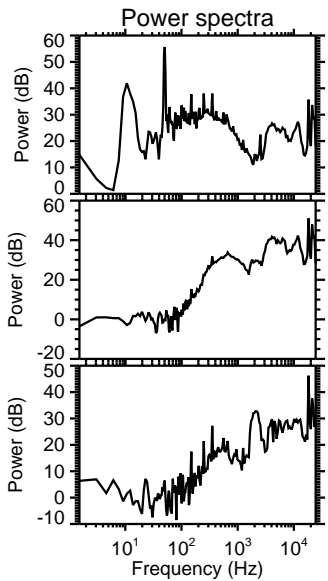
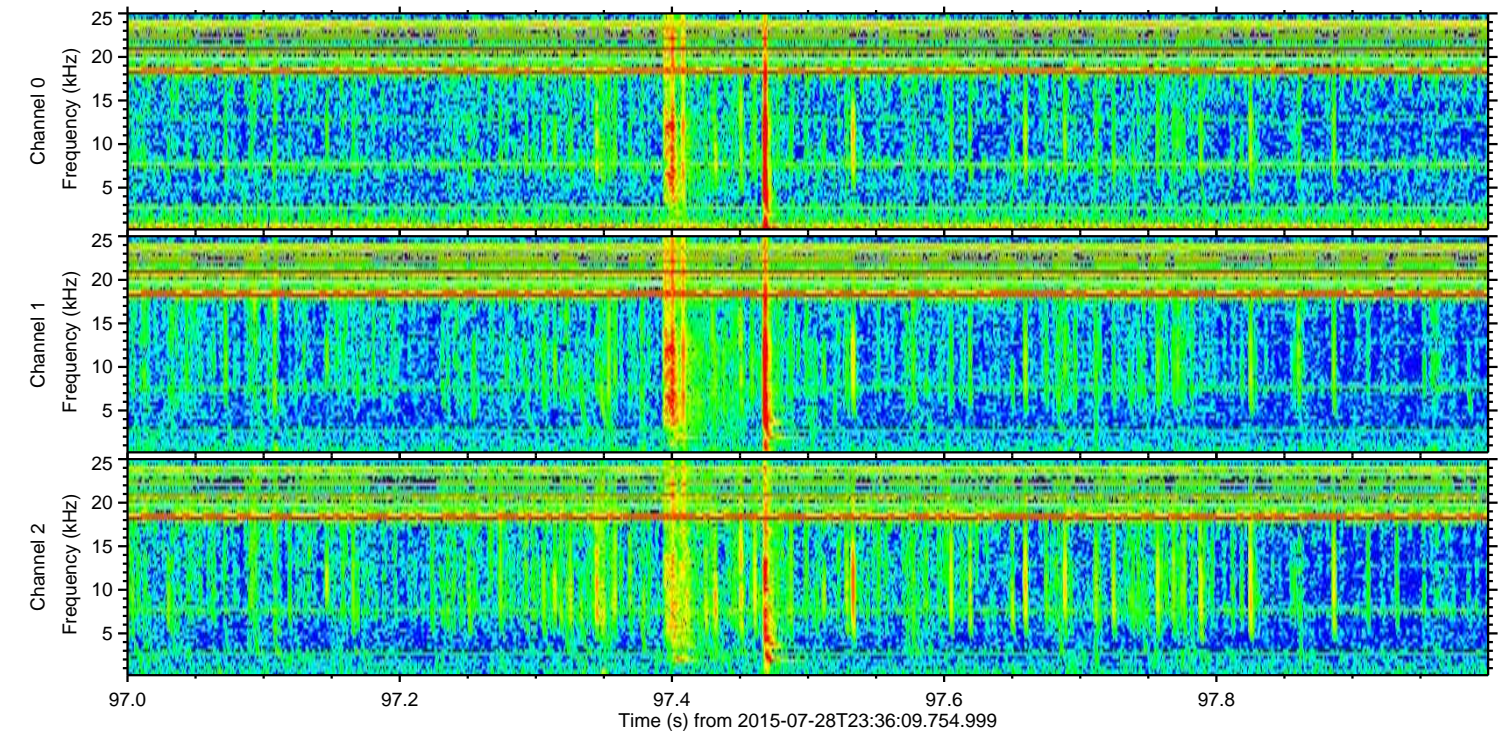
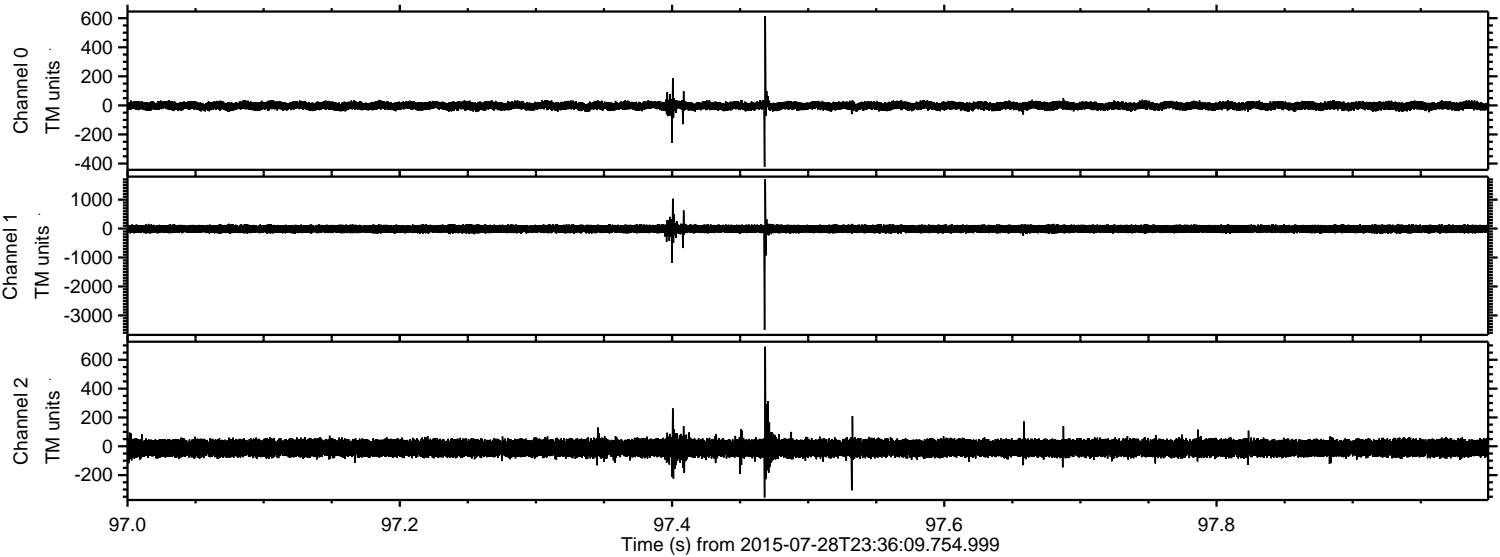
# ELMAVAN 3D WAVEFORMS (Measured data sampled at 50 kHz) 51000 packets of 144 samples from 2015-07-28T23:36:09.754.999.

Processed Wed Jul 29 01:42:37 2015 by ELM ver.2012-10-06 from 001\_\_elm20150728\_233608\_\_dat00.bin





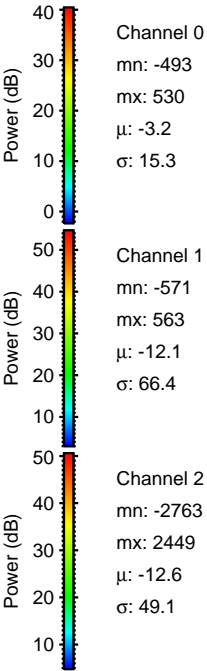
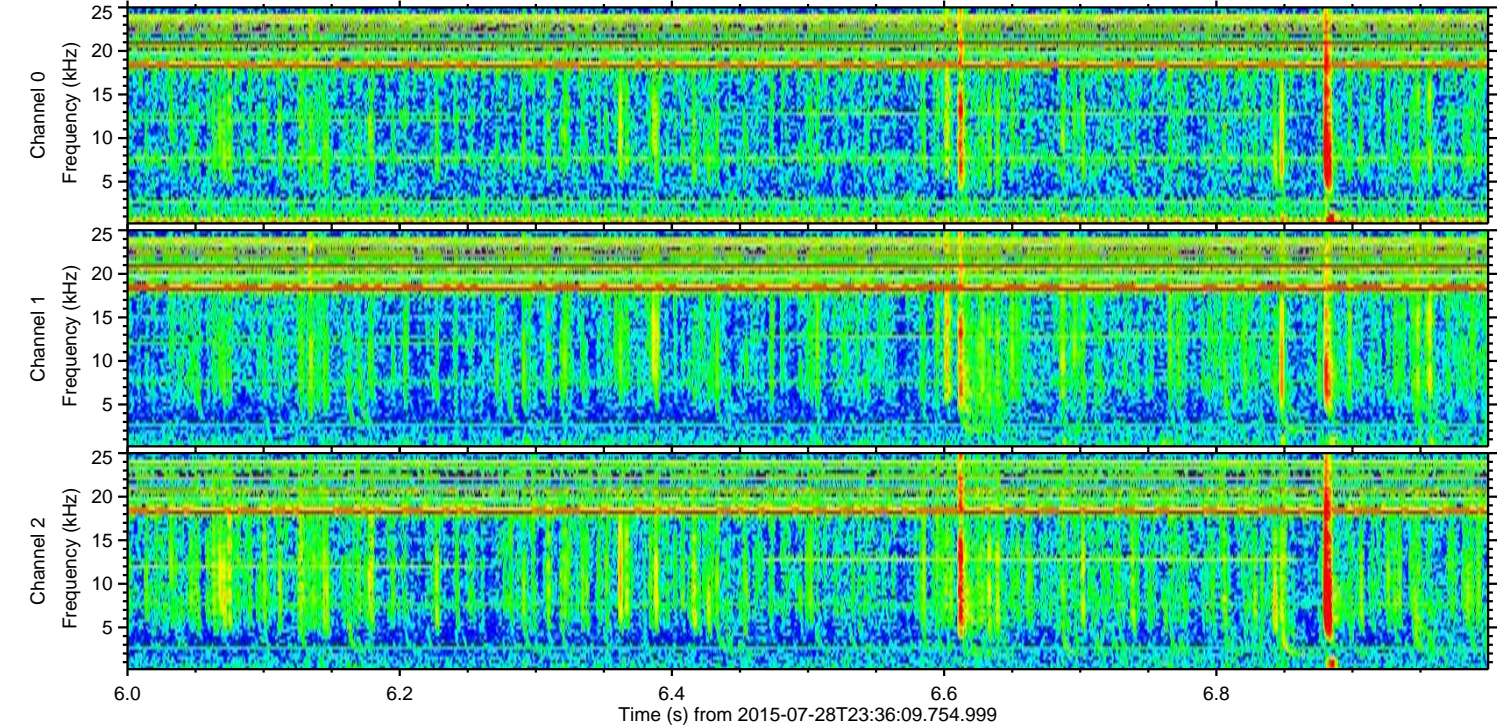
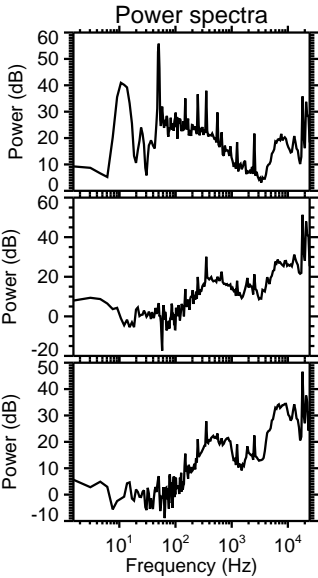
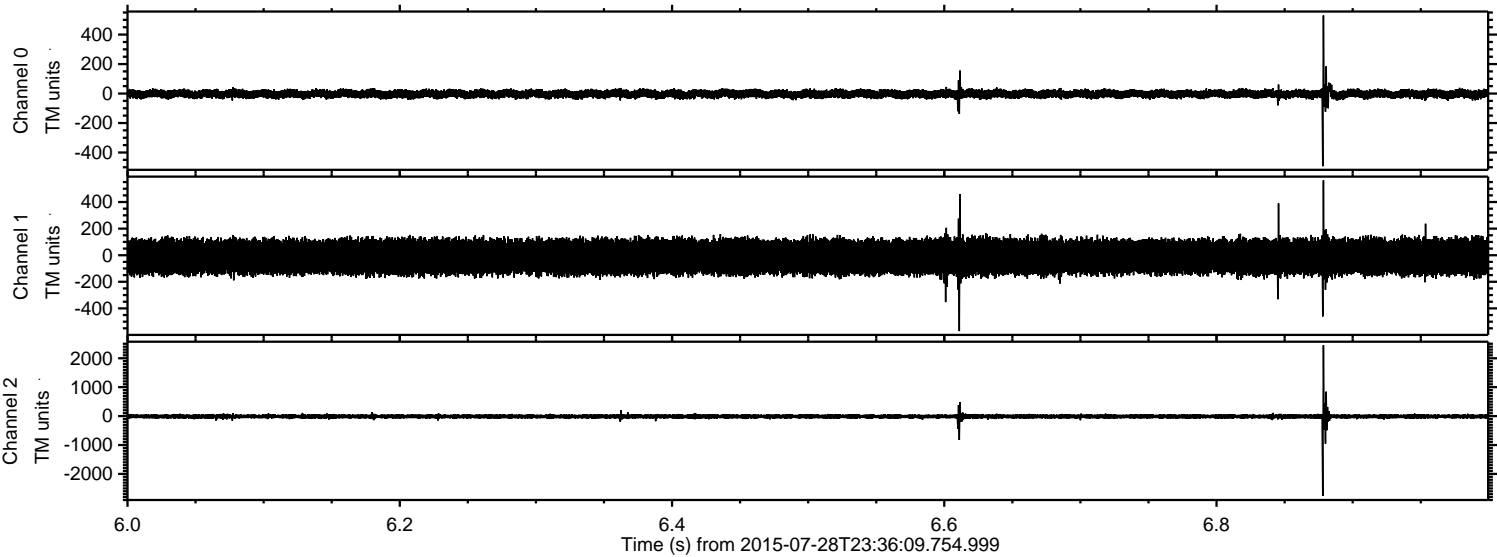
Processed Wed Jul 29 01:42:52 2015 by ELM ver.2012-10-06 from 001\_\_elm20150728\_233608\_\_dat00.bin





ELMAVAN 3D WAVEFORMS (Measured data sampled at 50 kHz) 51000 packets of 144 samples from 2015-07-28T23:36:09.754.999. Part 7/147

Processed Wed Jul 29 01:42:53 2015 by ELM ver.2012-10-06 from 001\_\_elm20150728\_233608\_\_dat00.bin



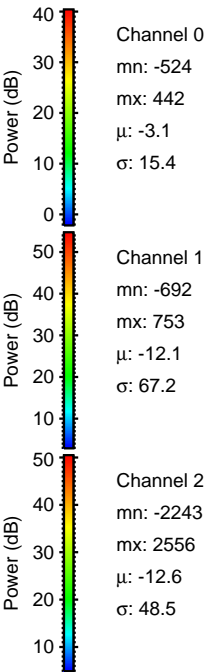
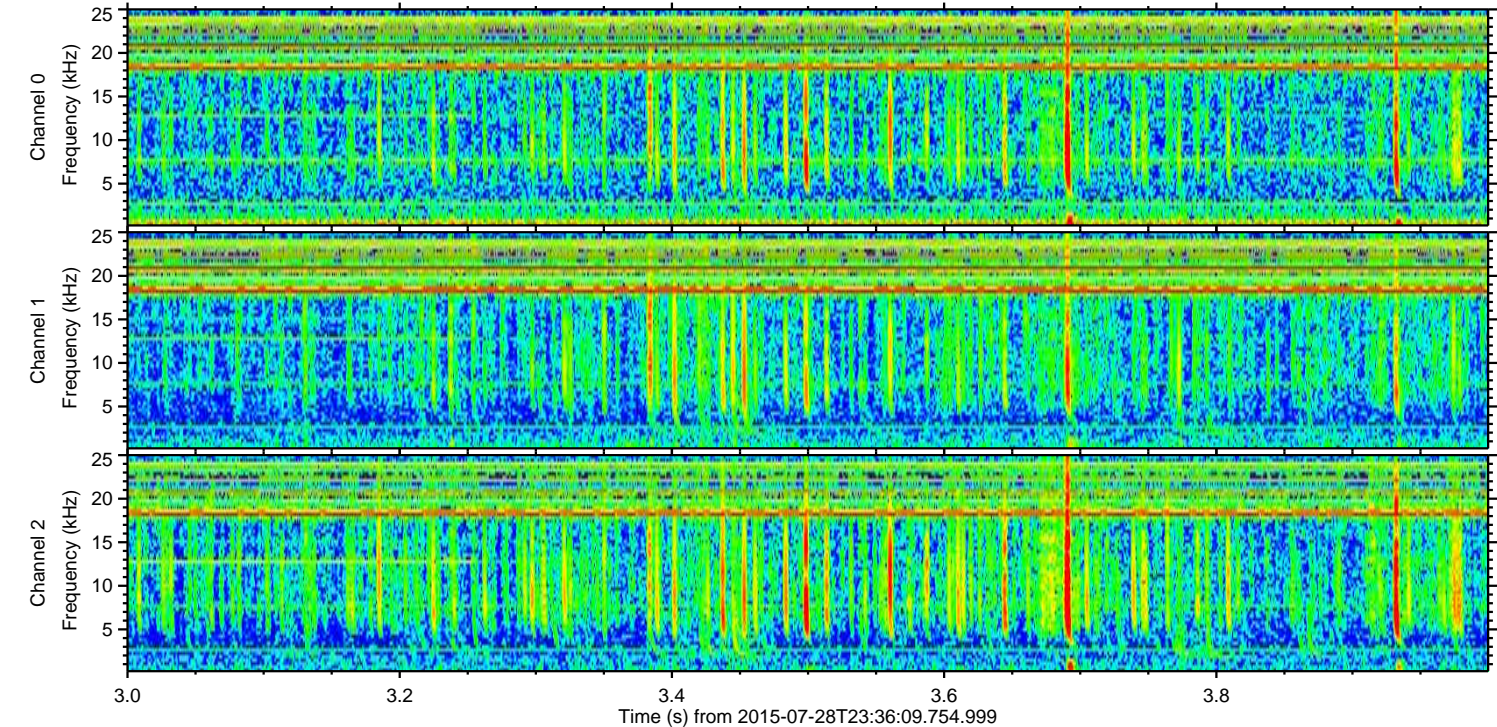
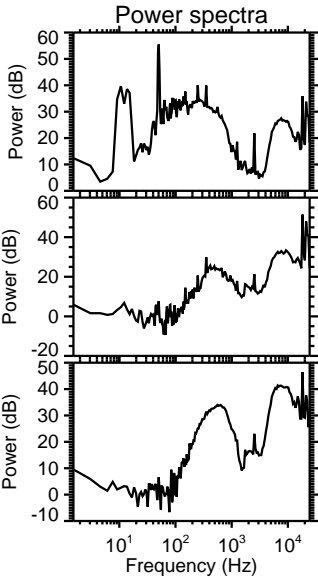
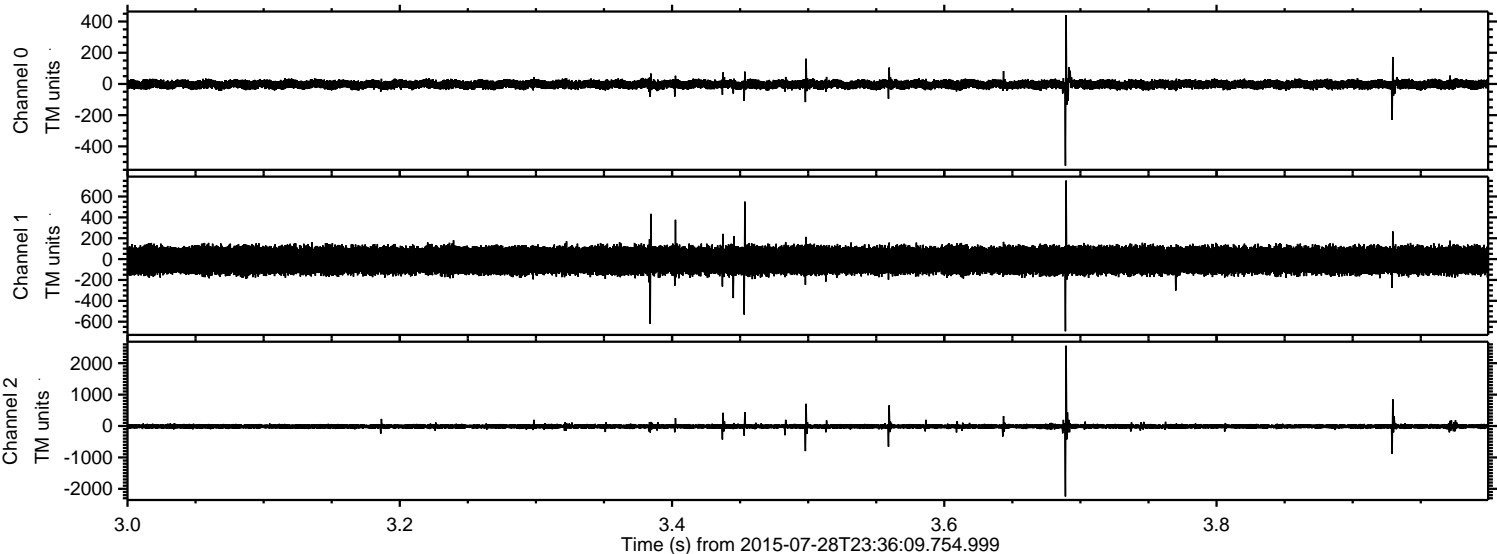
Channel 0  
mn: -493  
mx: 530  
 $\mu$ : -3.2  
 $\sigma$ : 15.3

Channel 1  
mn: -571  
mx: 563  
 $\mu$ : -12.1  
 $\sigma$ : 66.4

Channel 2  
mn: -2763  
mx: 2449  
 $\mu$ : -12.6  
 $\sigma$ : 49.1

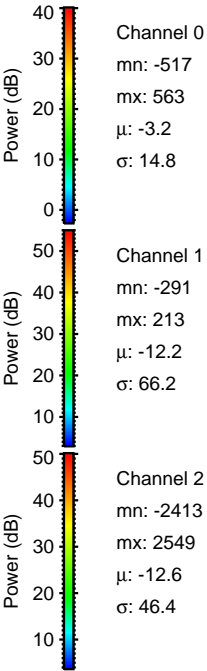
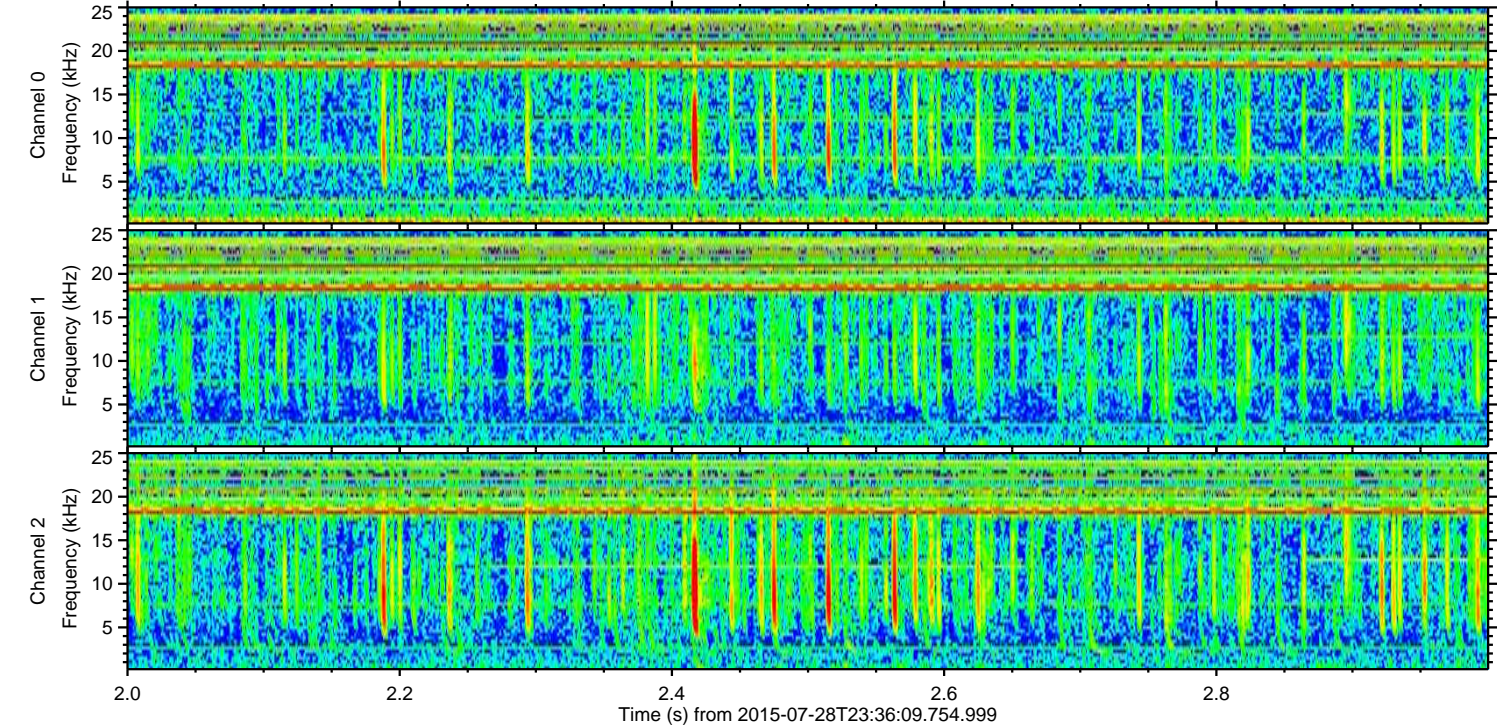
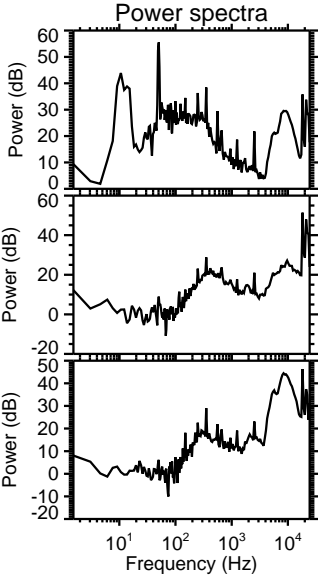
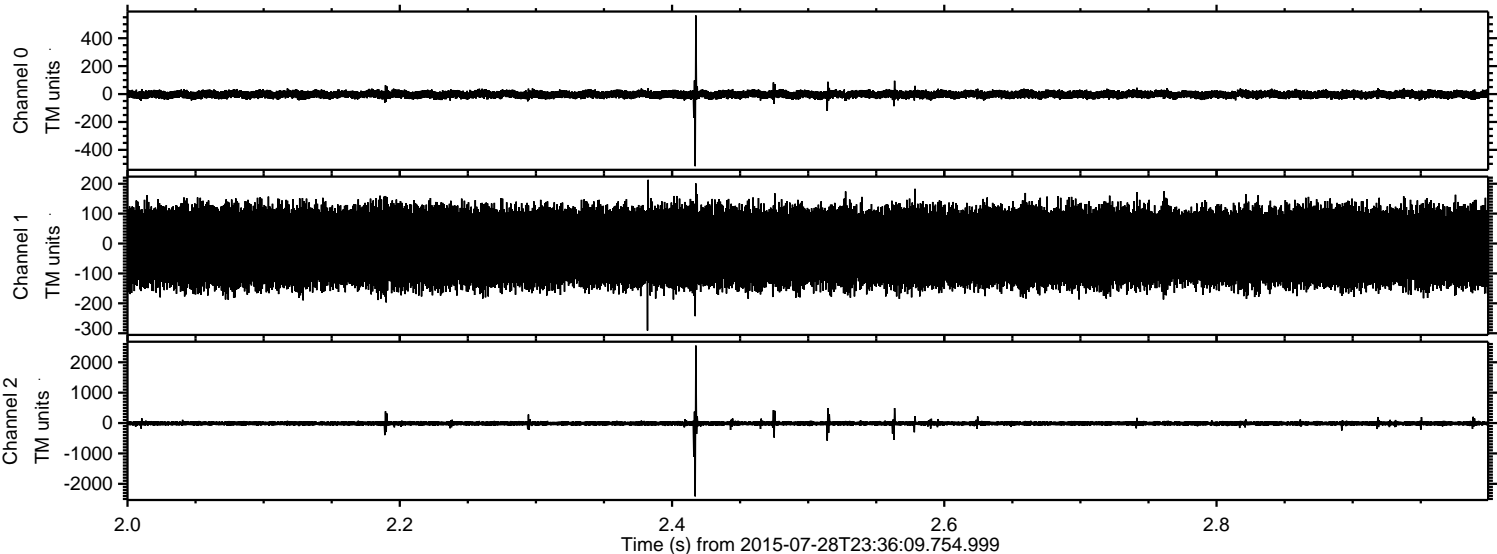


Processed Wed Jul 29 01:42:54 2015 by ELM ver.2012-10-06 from 001\_\_elm20150728\_233608\_\_dat00.bin



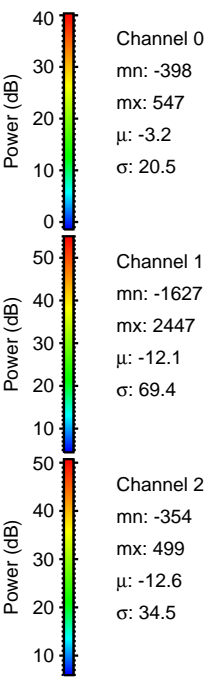
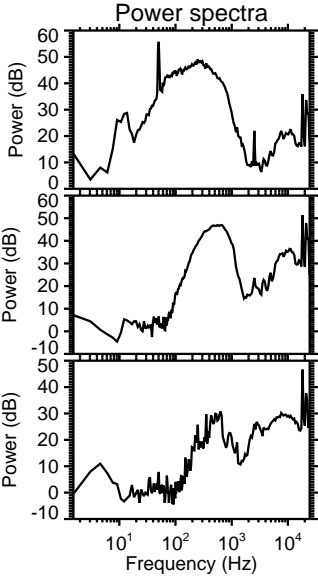
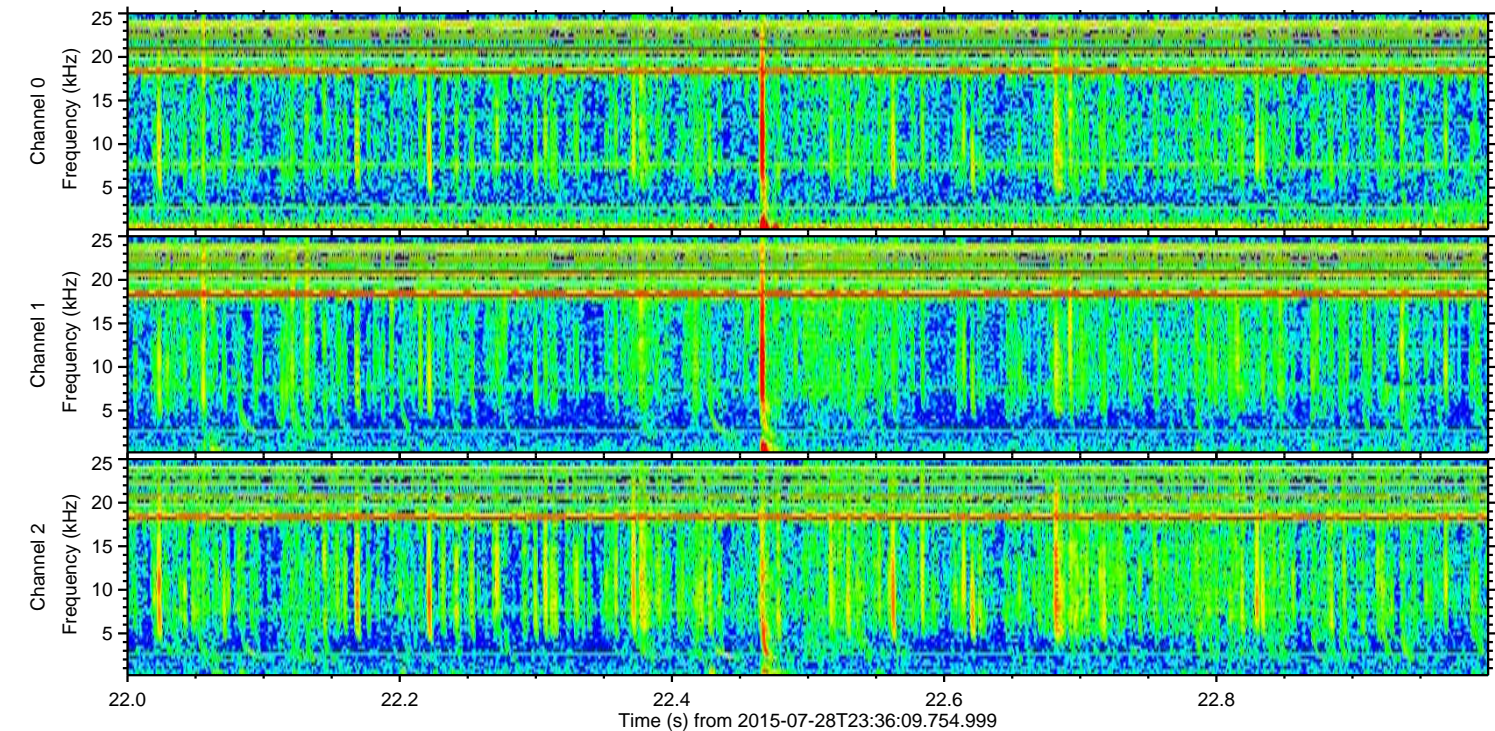
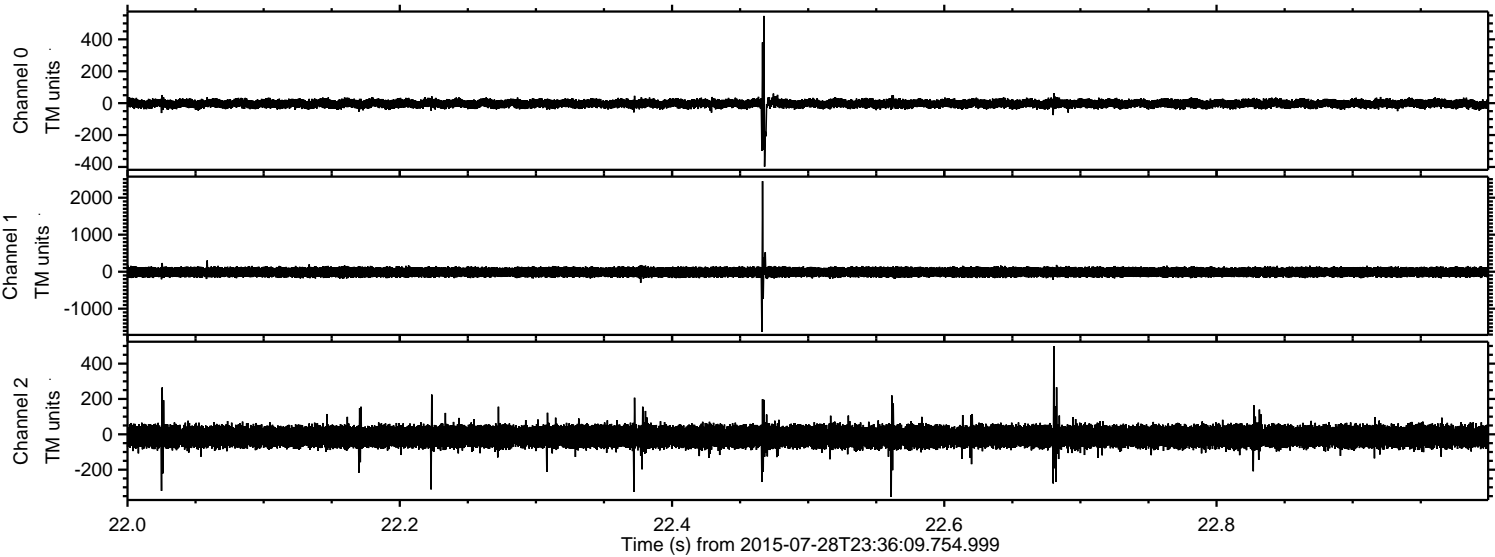


Processed Wed Jul 29 01:42:55 2015 by ELM ver.2012-10-06 from 001\_\_elm20150728\_233608\_\_dat00.bin



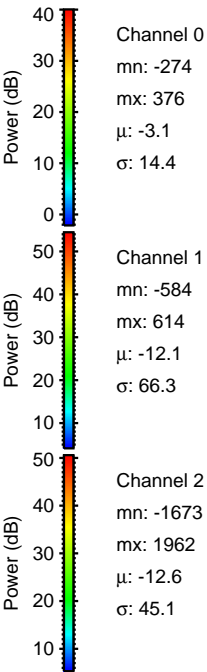
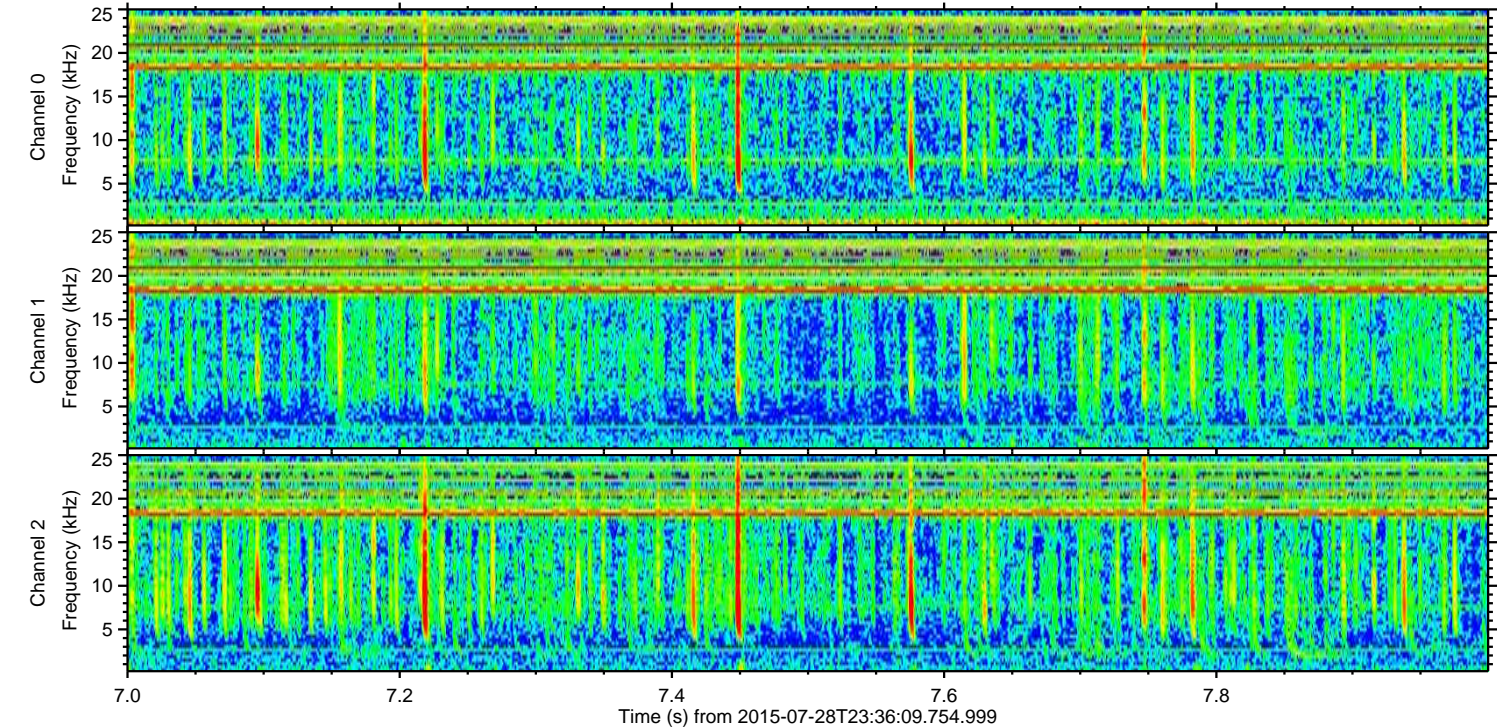
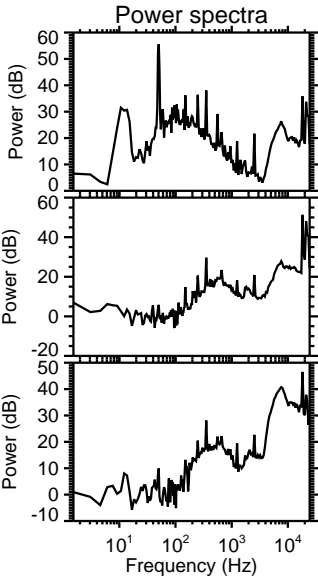
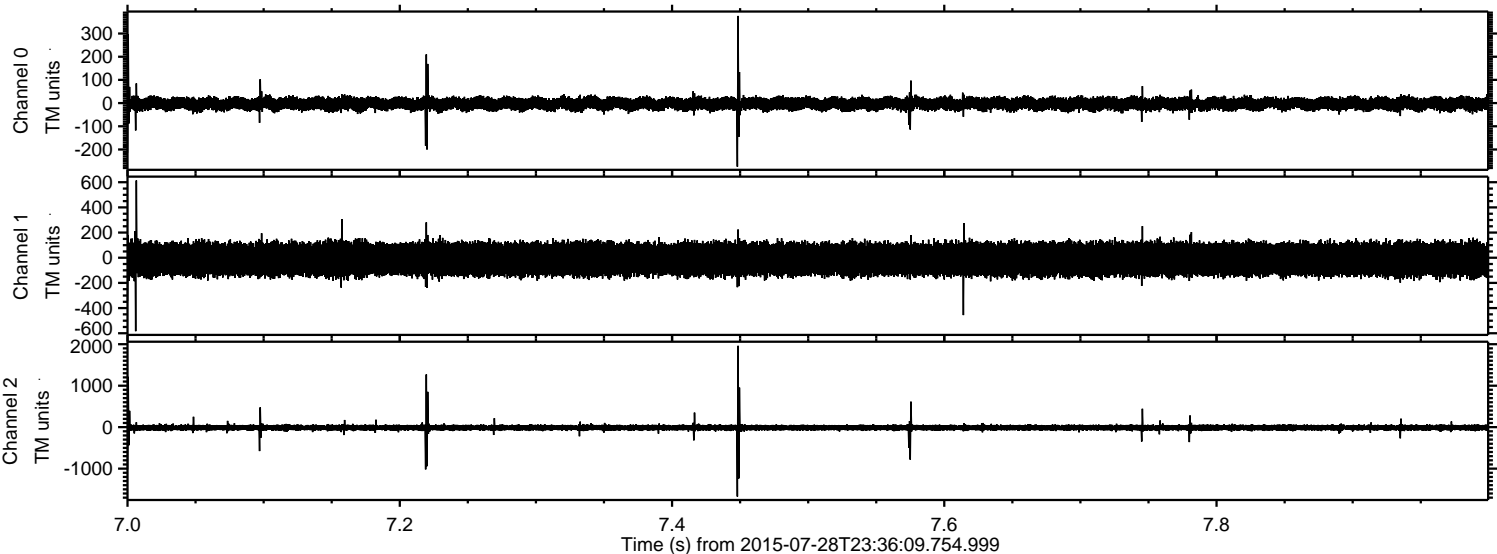


Processed Wed Jul 29 01:42:56 2015 by ELM ver.2012-10-06 from 001\_\_elm20150728\_233608\_\_dat00.bin





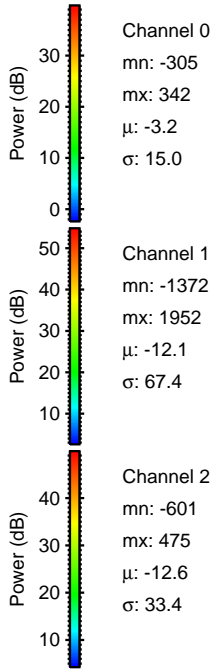
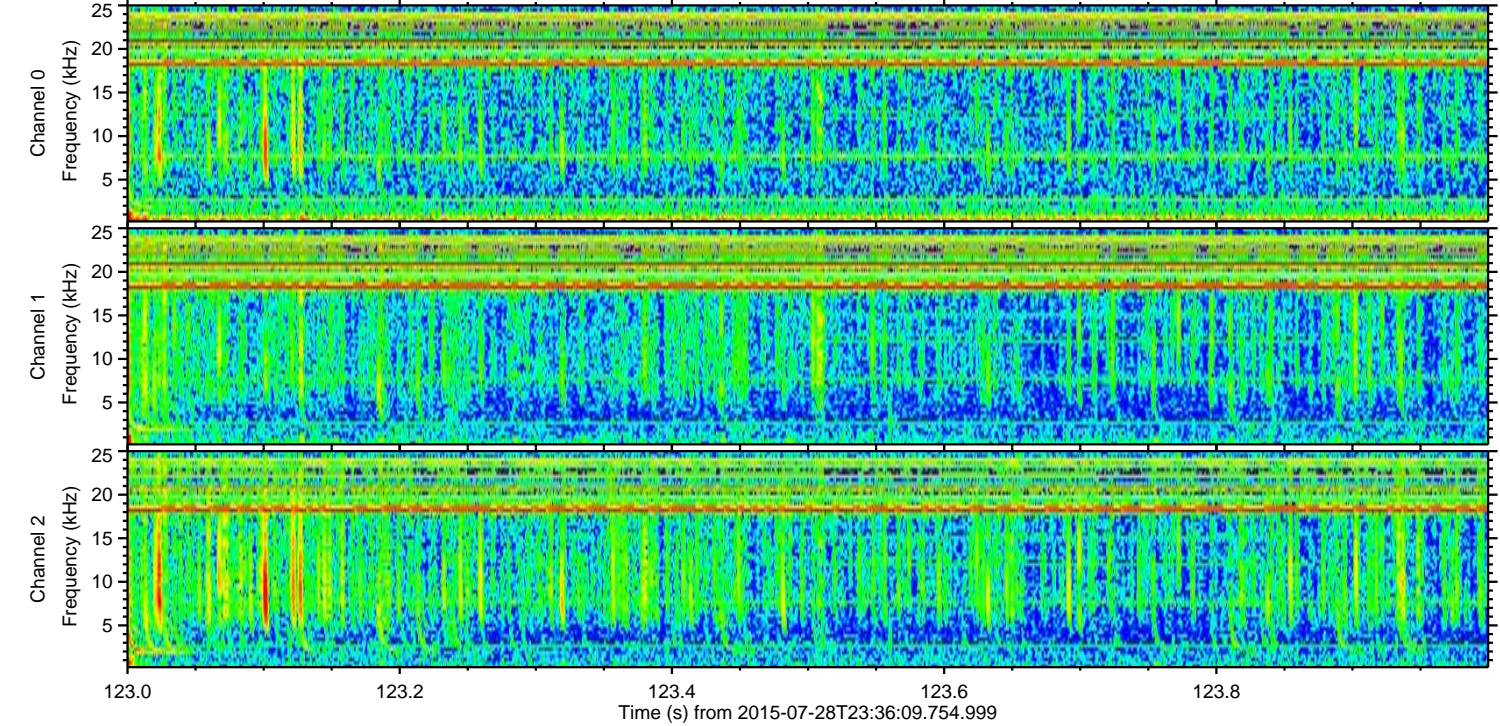
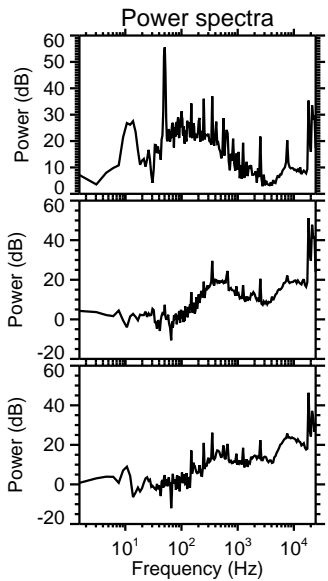
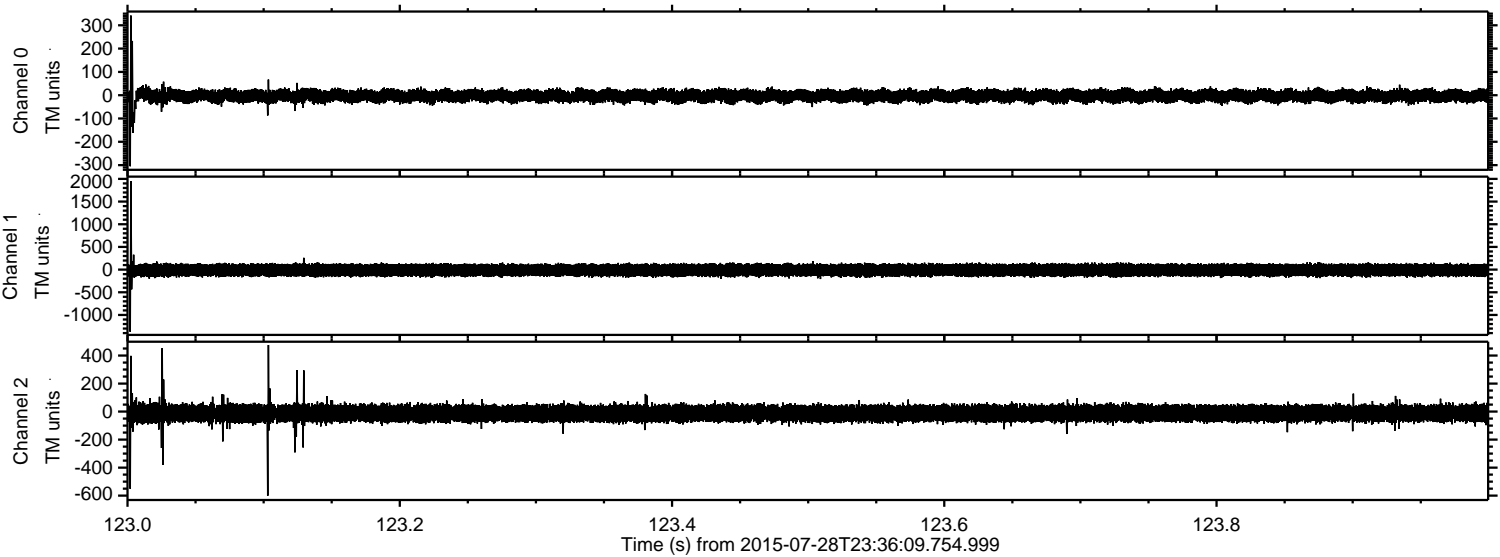
Processed Wed Jul 29 01:42:57 2015 by ELM ver.2012-10-06 from 001\_\_elm20150728\_233608\_\_dat00.bin





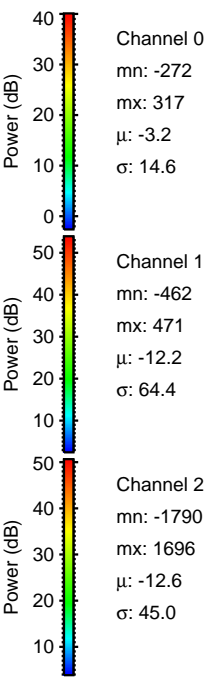
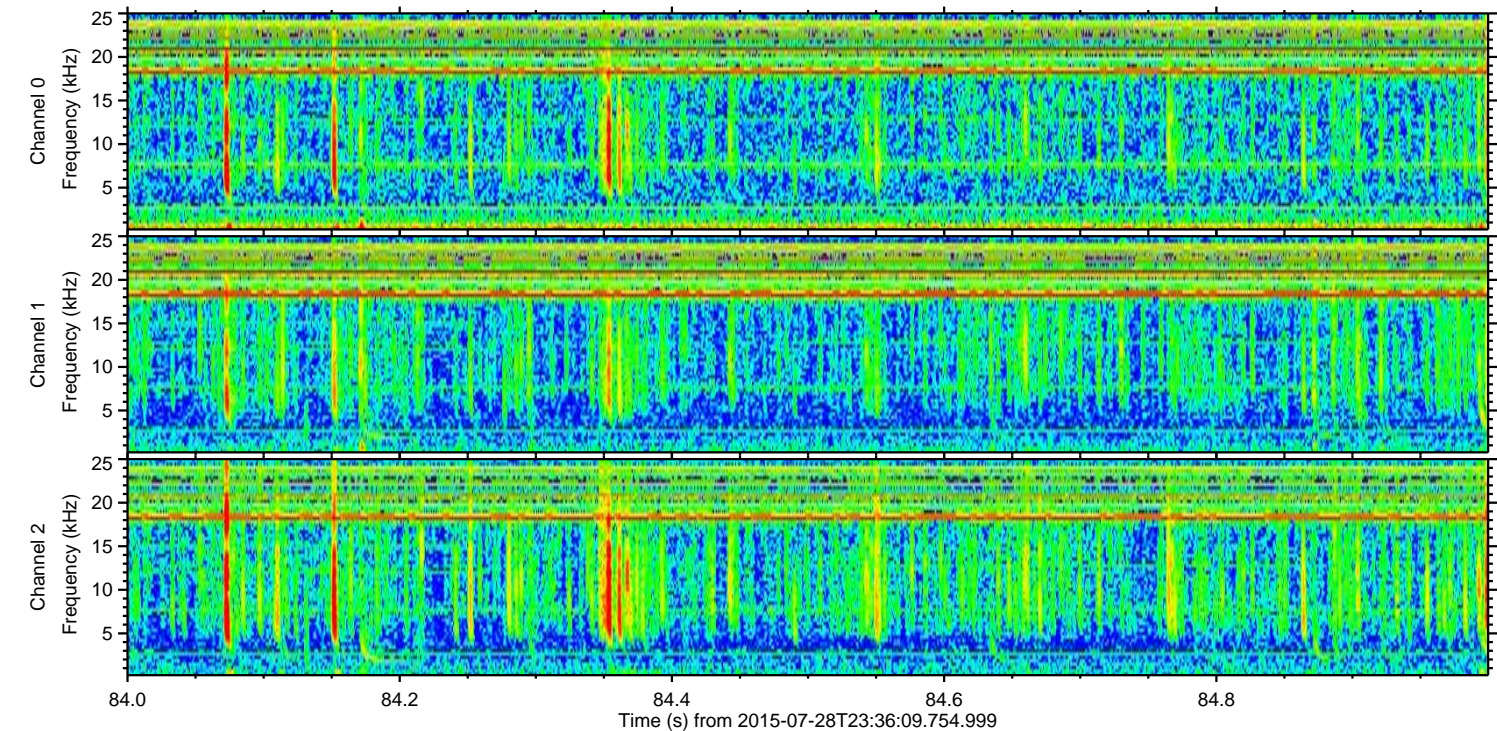
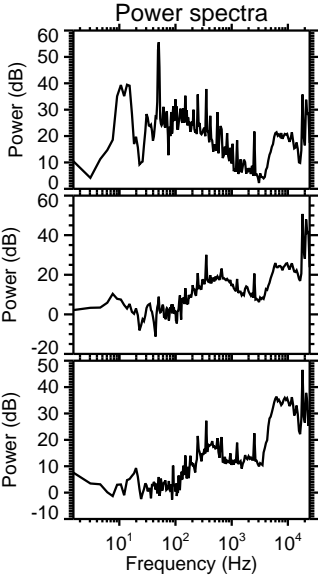
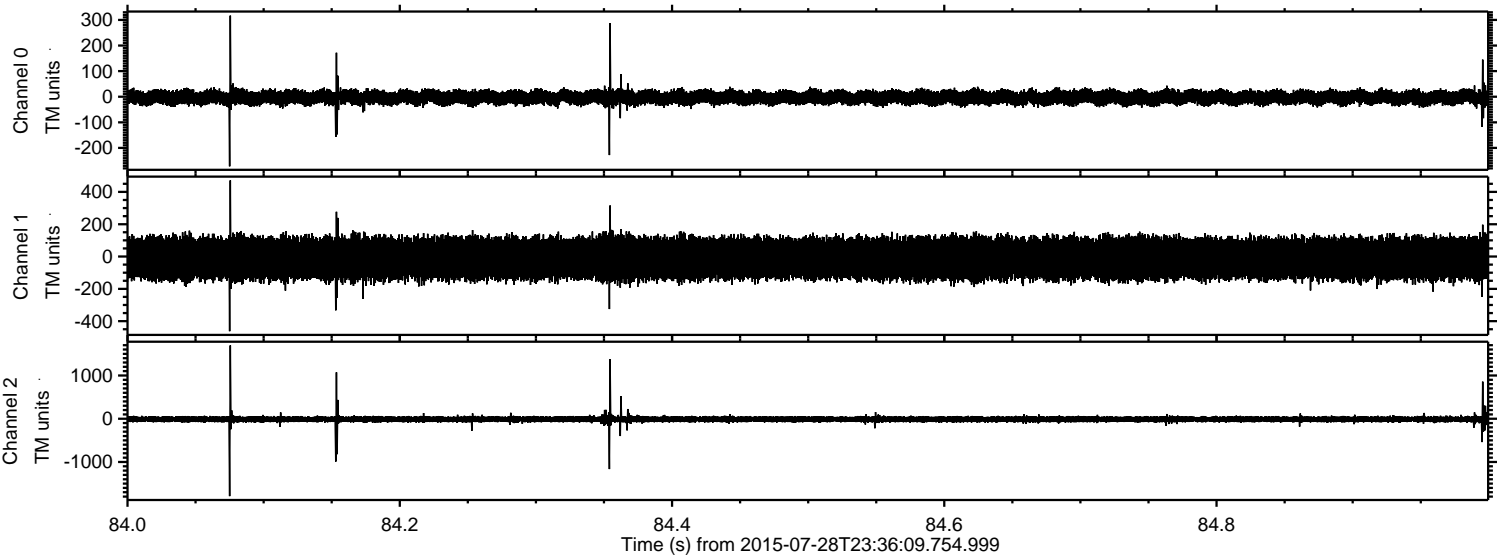
ELMAVAN 3D WAVEFORMS (Measured data sampled at 50 kHz) 51000 packets of 144 samples from 2015-07-28T23:36:09.754.999. Part 124/147

Processed Wed Jul 29 01:42:58 2015 by ELM ver.2012-10-06 from 001\_\_elm20150728\_233608\_\_dat00.bin



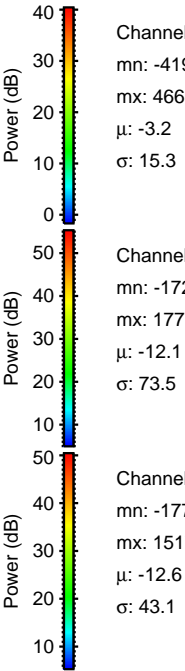
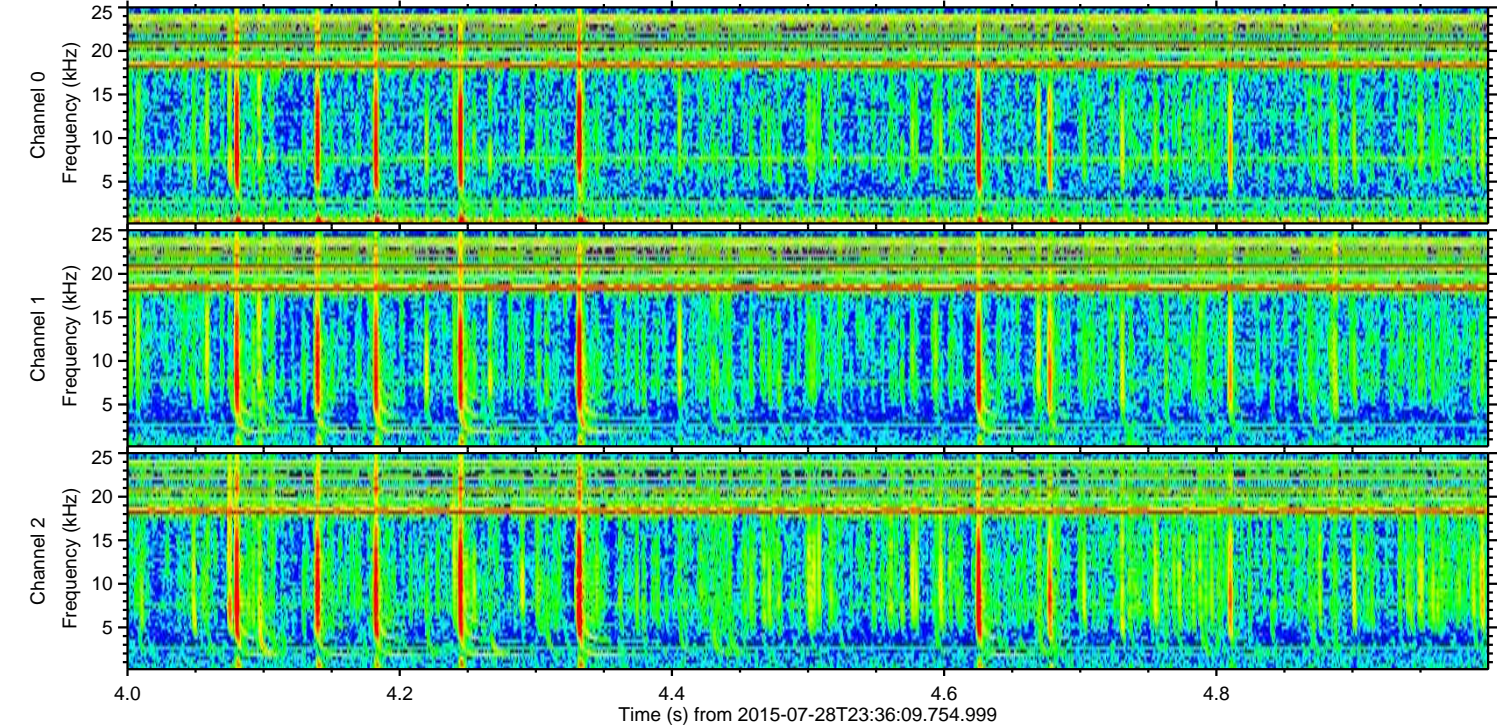
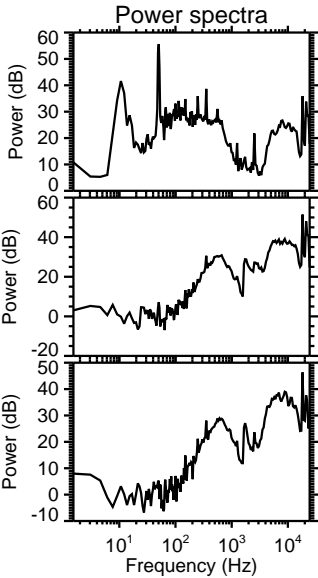
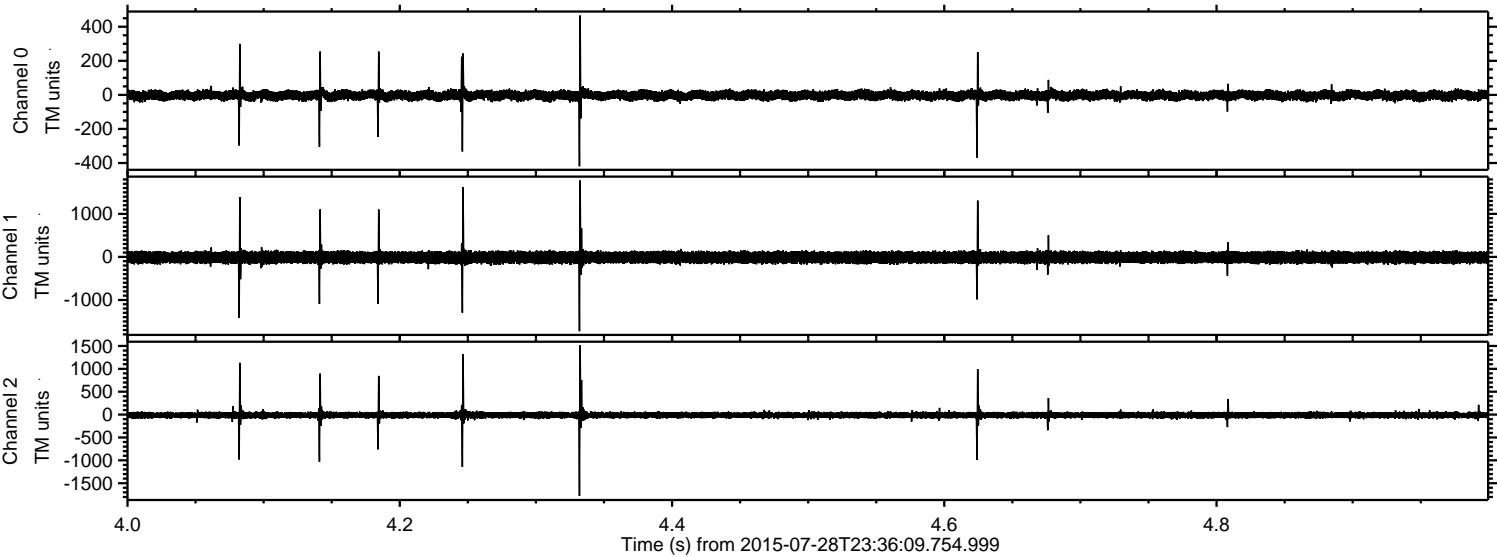


Processed Wed Jul 29 01:42:59 2015 by ELM ver.2012-10-06 from 001\_\_elm20150728\_233608\_\_dat00.bin





Processed Wed Jul 29 01:43:00 2015 by ELM ver.2012-10-06 from 001\_\_elm20150728\_233608\_\_dat00.bin





Processed Wed Jul 29 01:43:01 2015 by ELM ver.2012-10-06 from 001\_\_elm20150728\_233608\_\_dat00.bin

