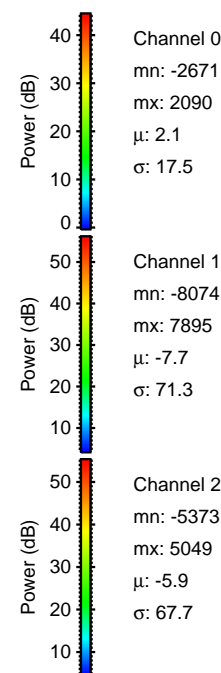
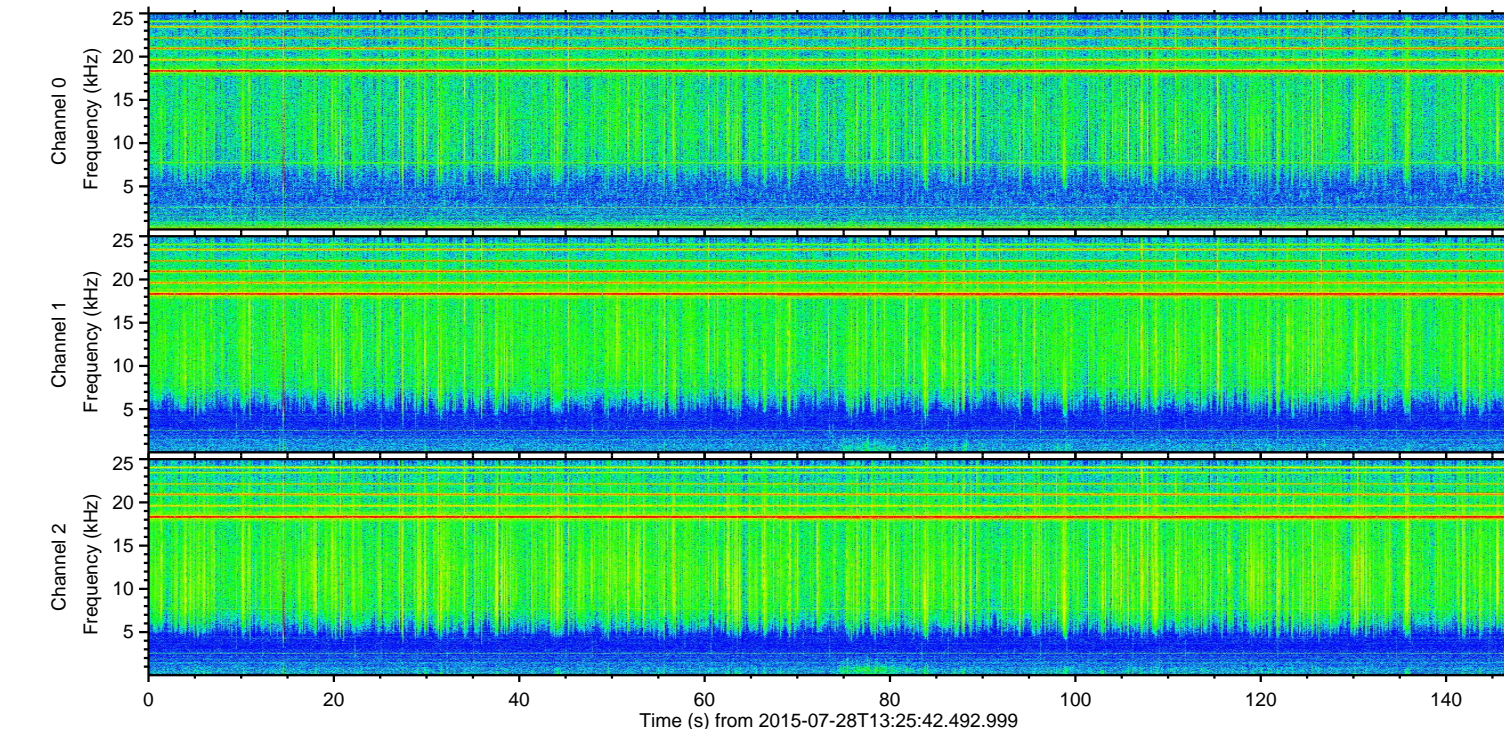
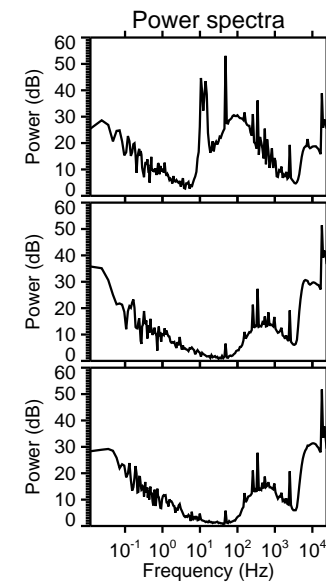
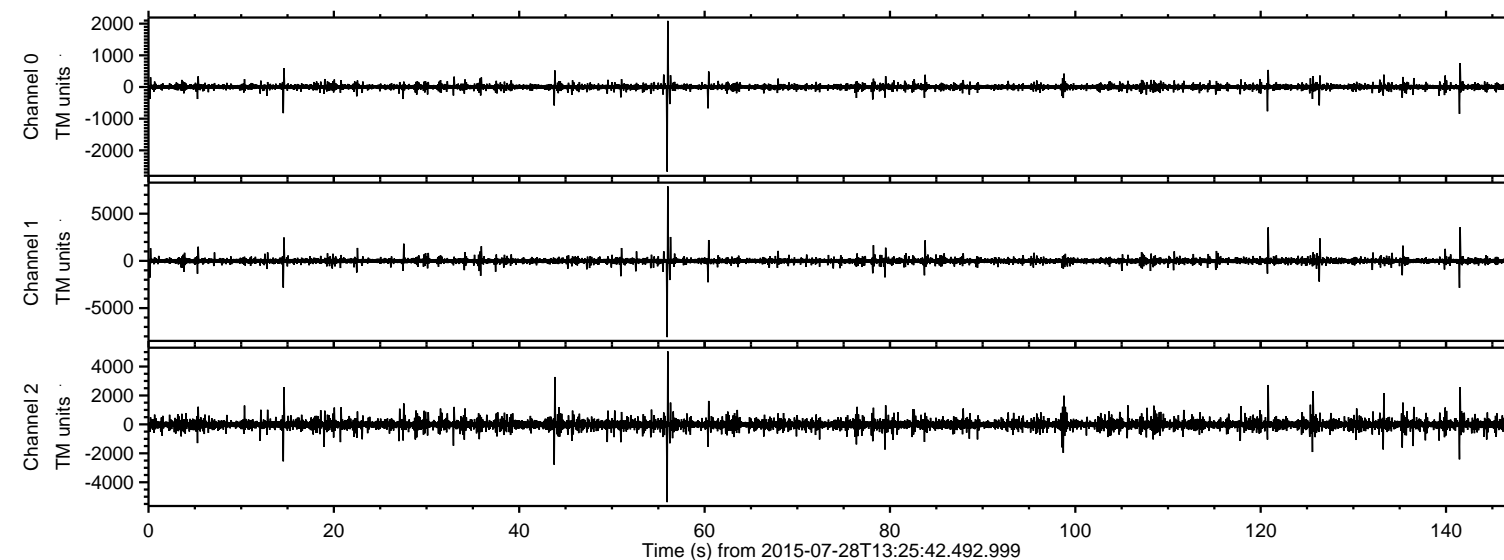
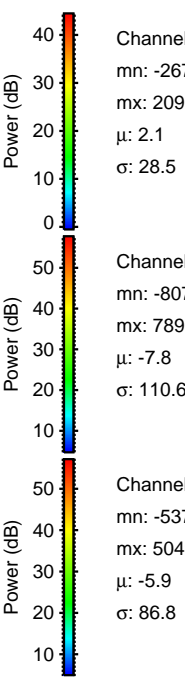
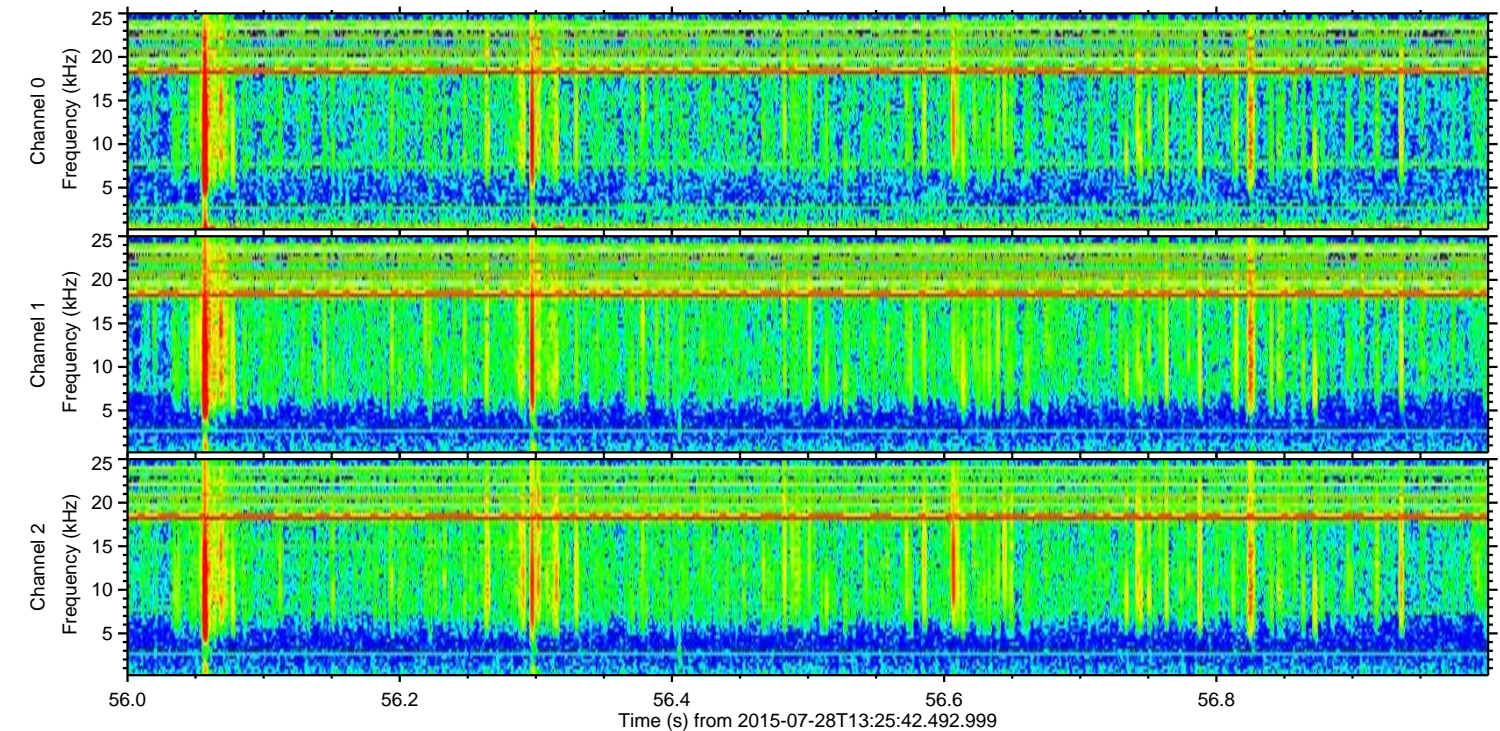
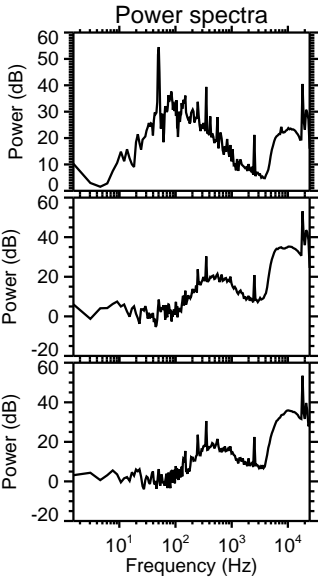
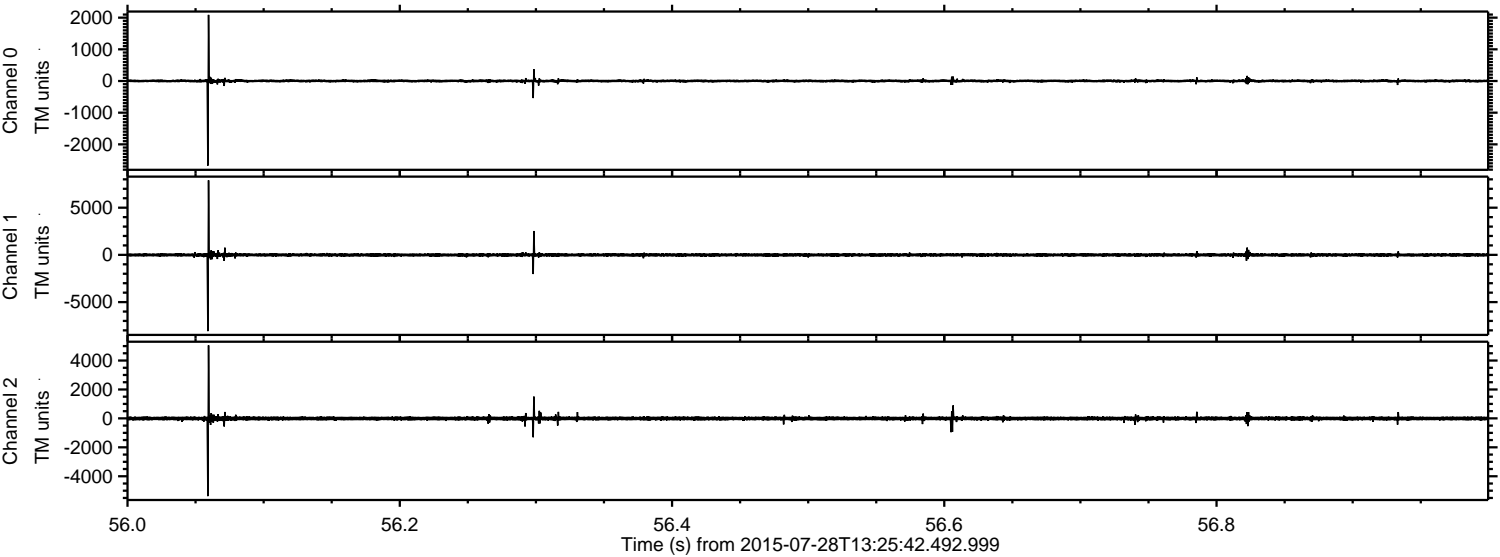


ELMAVAN 3D WAVEFORMS (Measured data sampled at 50 kHz) 51000 packets of 144 samples from 2015-07-28T13:25:42.492.999.

Processed Tue Jul 28 15:32:55 2015 by ELM ver.2012-10-06 from 001__elm20150728_132541__dat00.bin

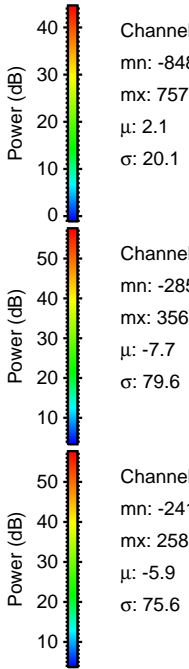
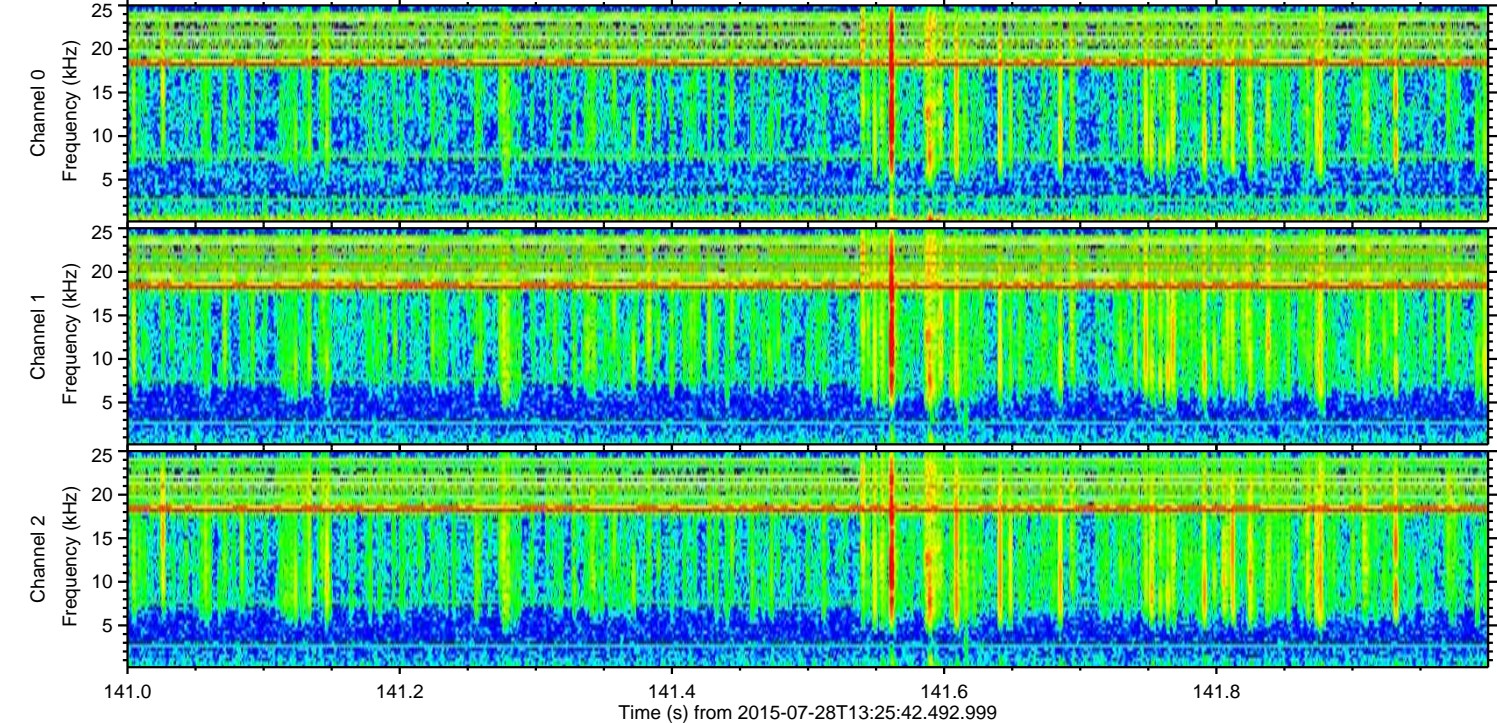
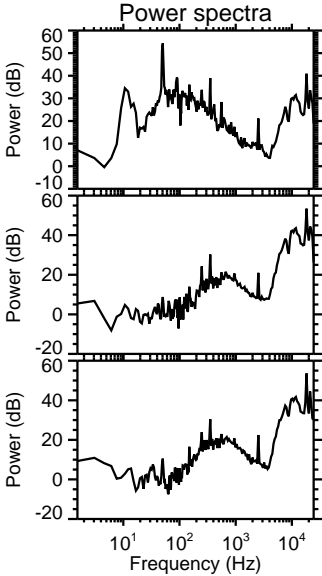
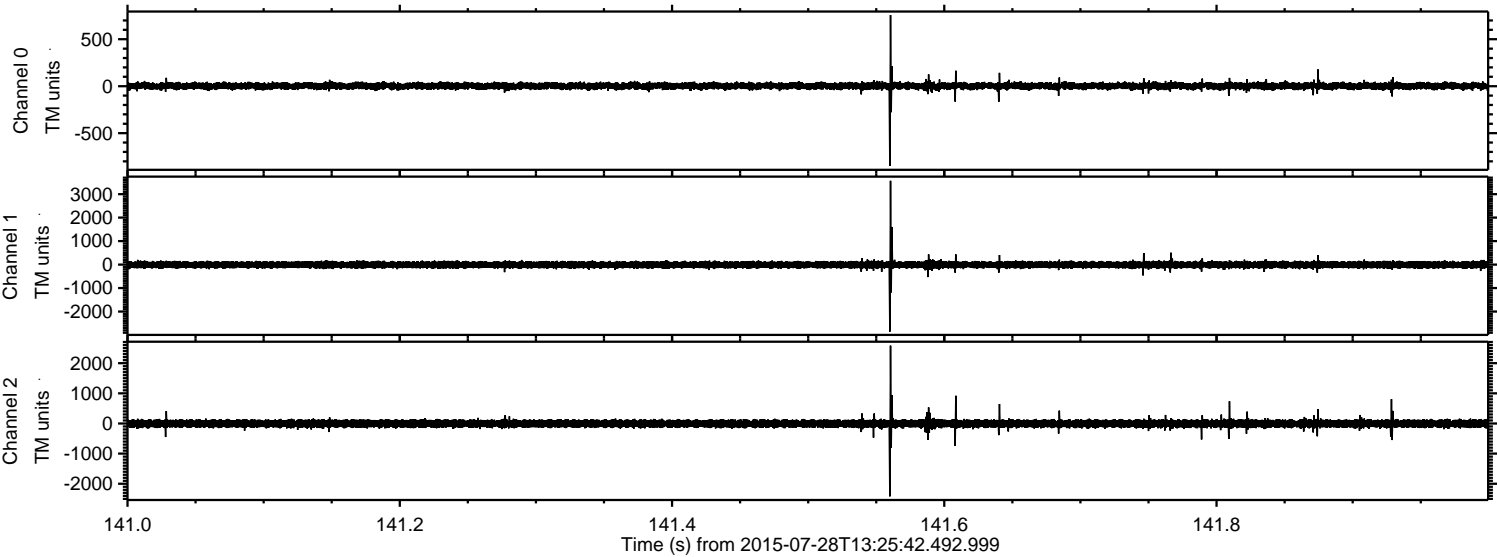


Processed Tue Jul 28 15:33:10 2015 by ELM ver.2012-10-06 from 001__elm20150728_132541__dat00.bin



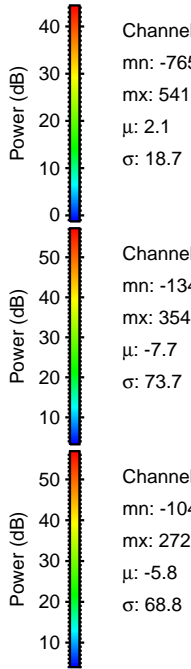
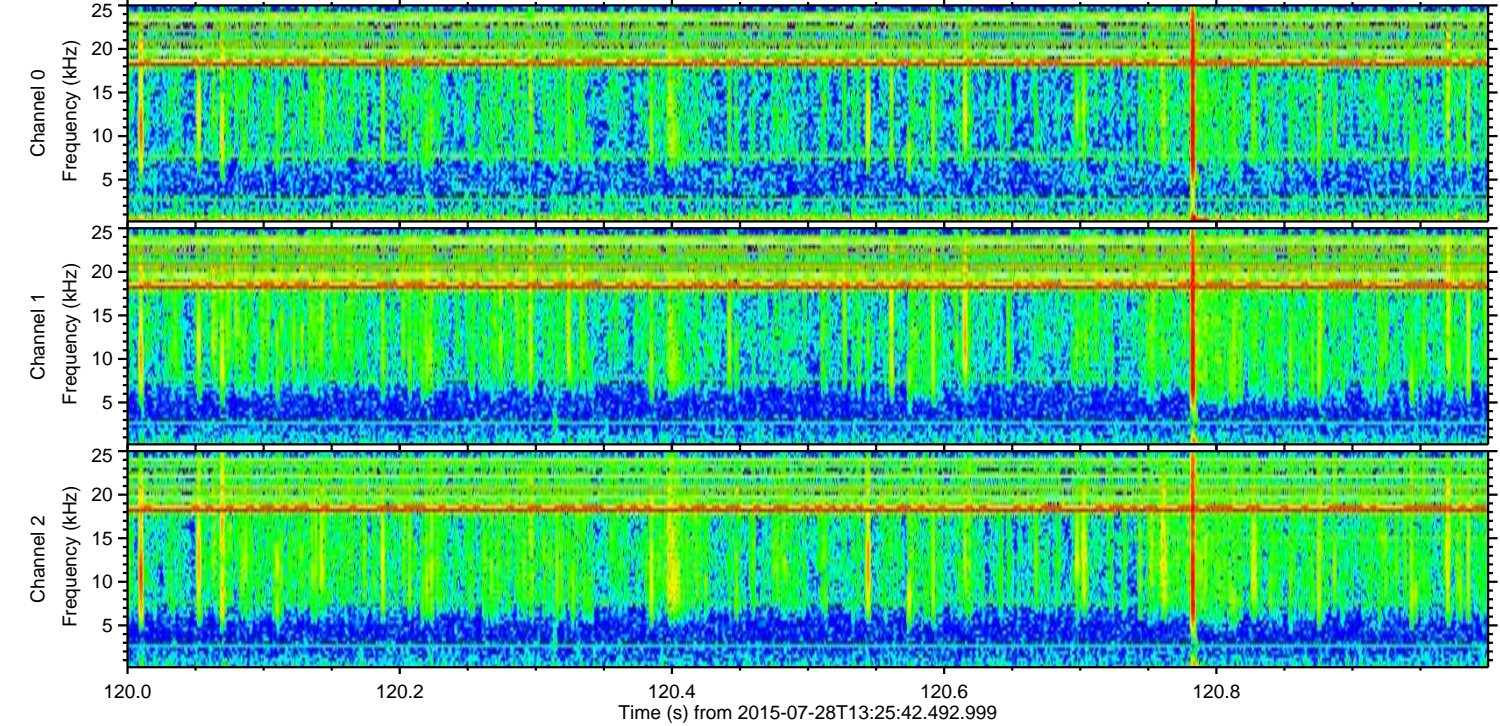
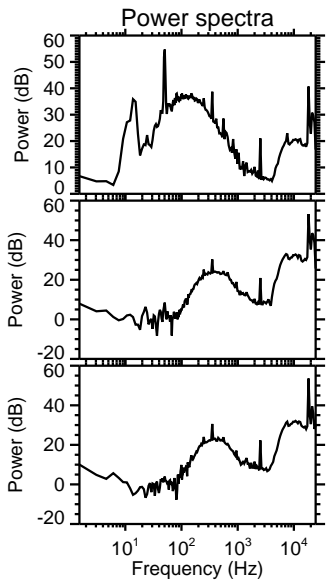
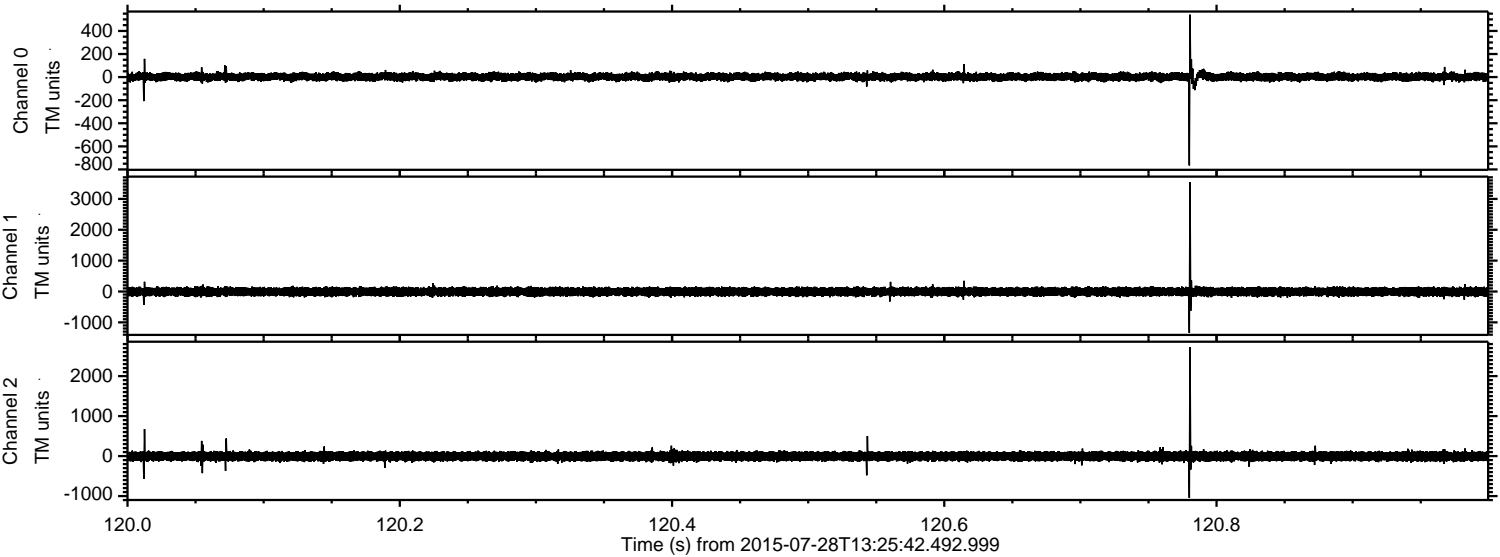
ELMAVAN 3D WAVEFORMS (Measured data sampled at 50 kHz) 51000 packets of 144 samples from 2015-07-28T13:25:42.492.999. Part 142/147

Processed Tue Jul 28 15:33:11 2015 by ELM ver.2012-10-06 from 001__elm20150728_132541__dat00.bin

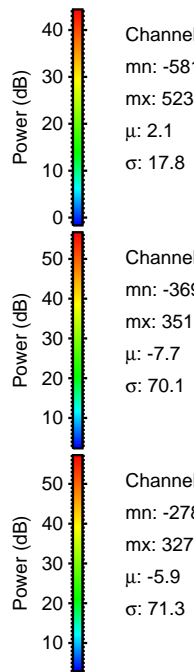
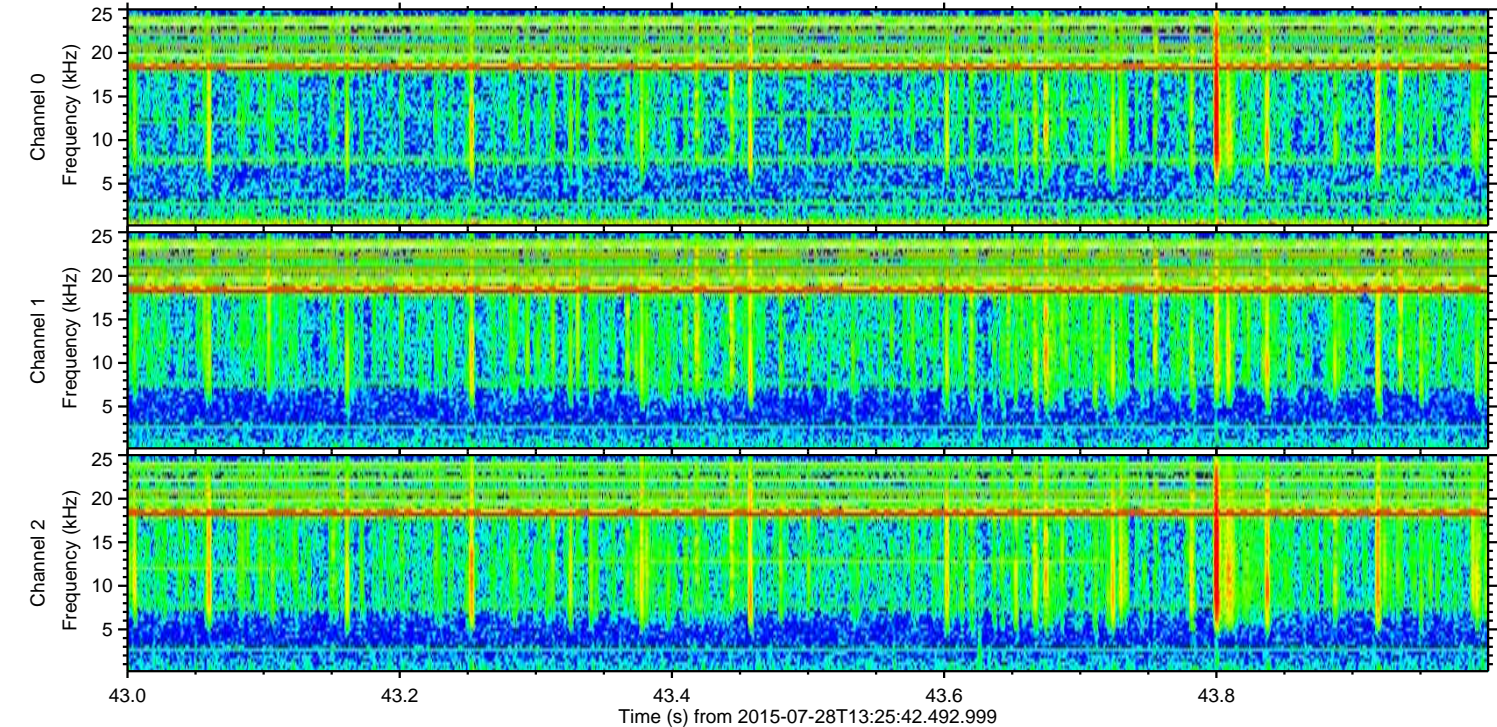
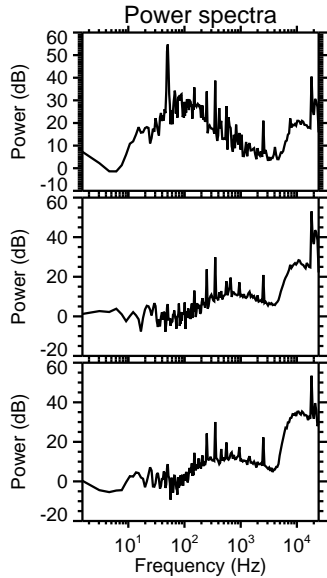
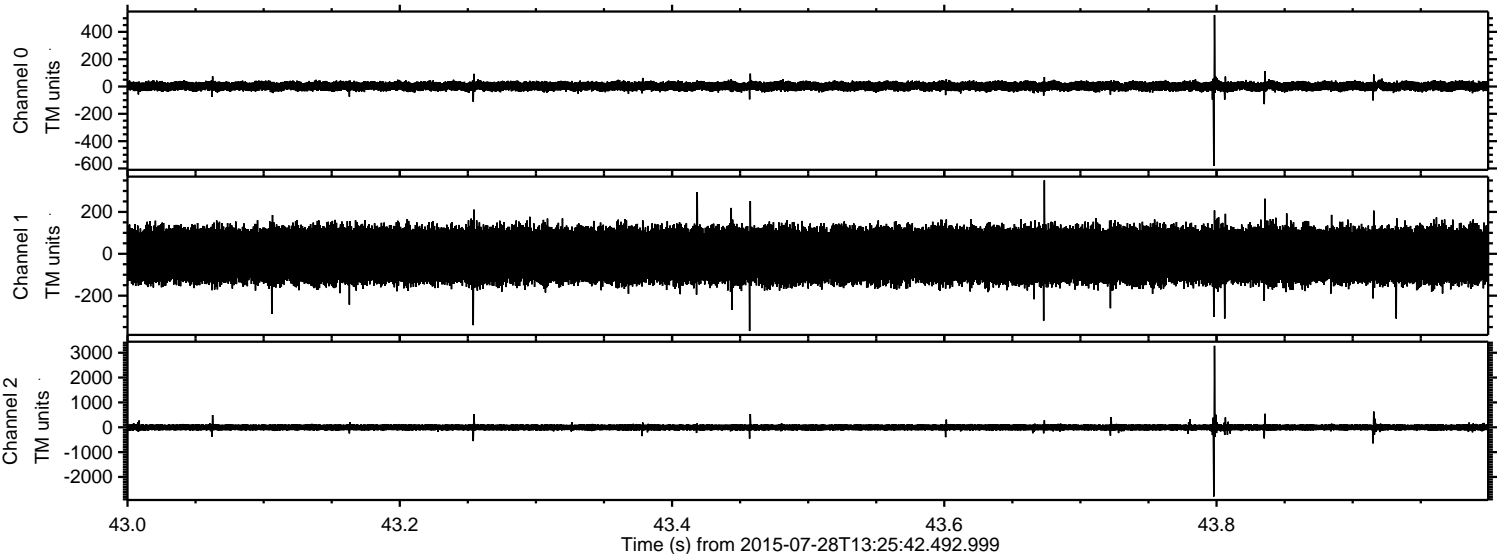


ELMAVAN 3D WAVEFORMS (Measured data sampled at 50 kHz) 51000 packets of 144 samples from 2015-07-28T13:25:42.492.999. Part 121/147

Processed Tue Jul 28 15:33:12 2015 by ELM ver.2012-10-06 from 001__elm20150728_132541__dat00.bin

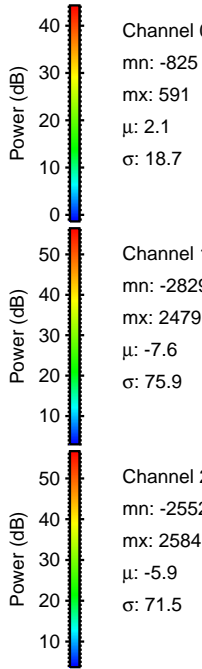
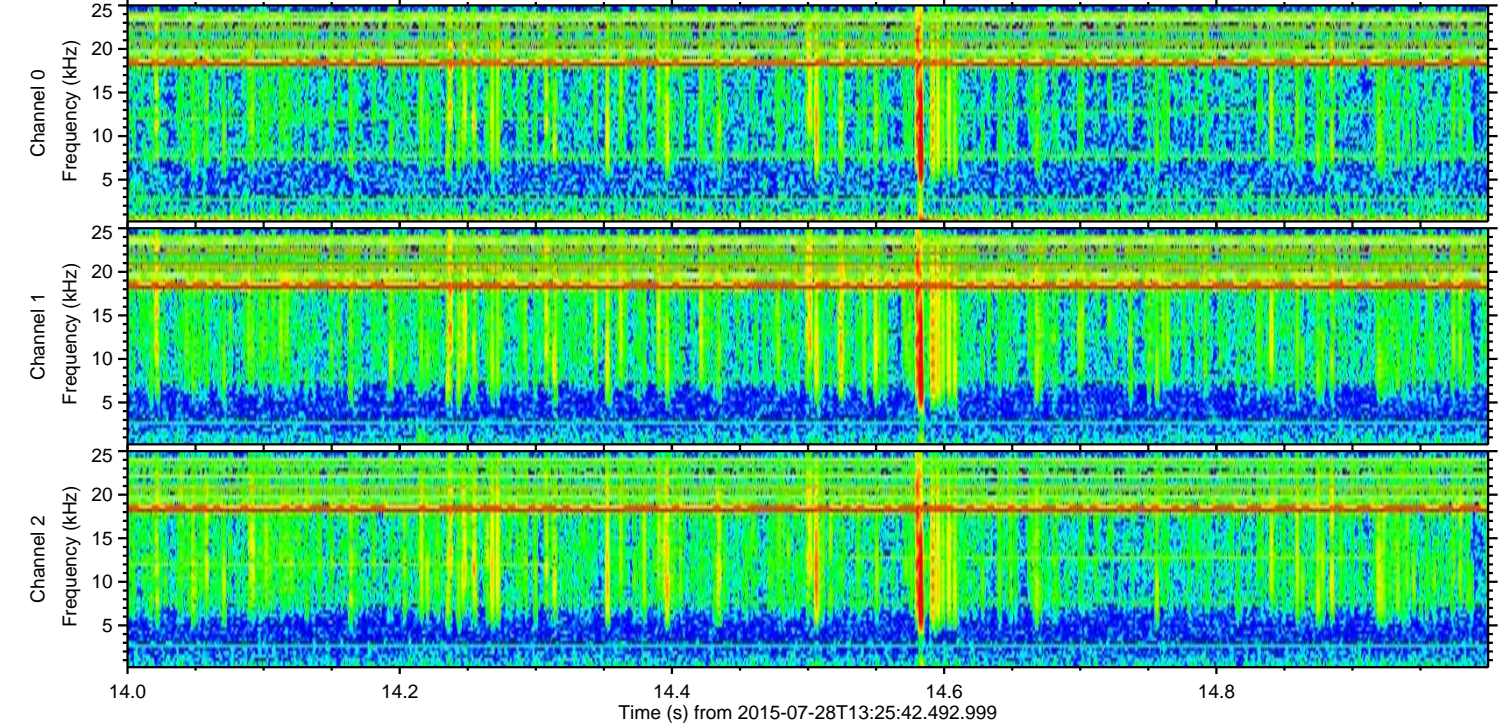
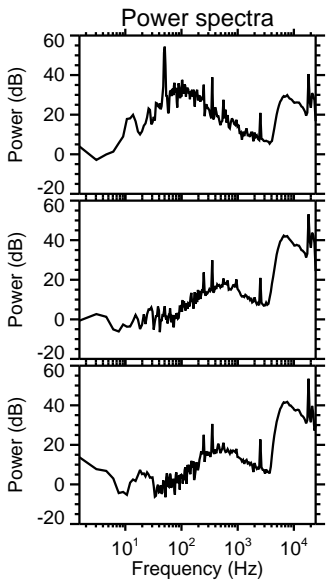
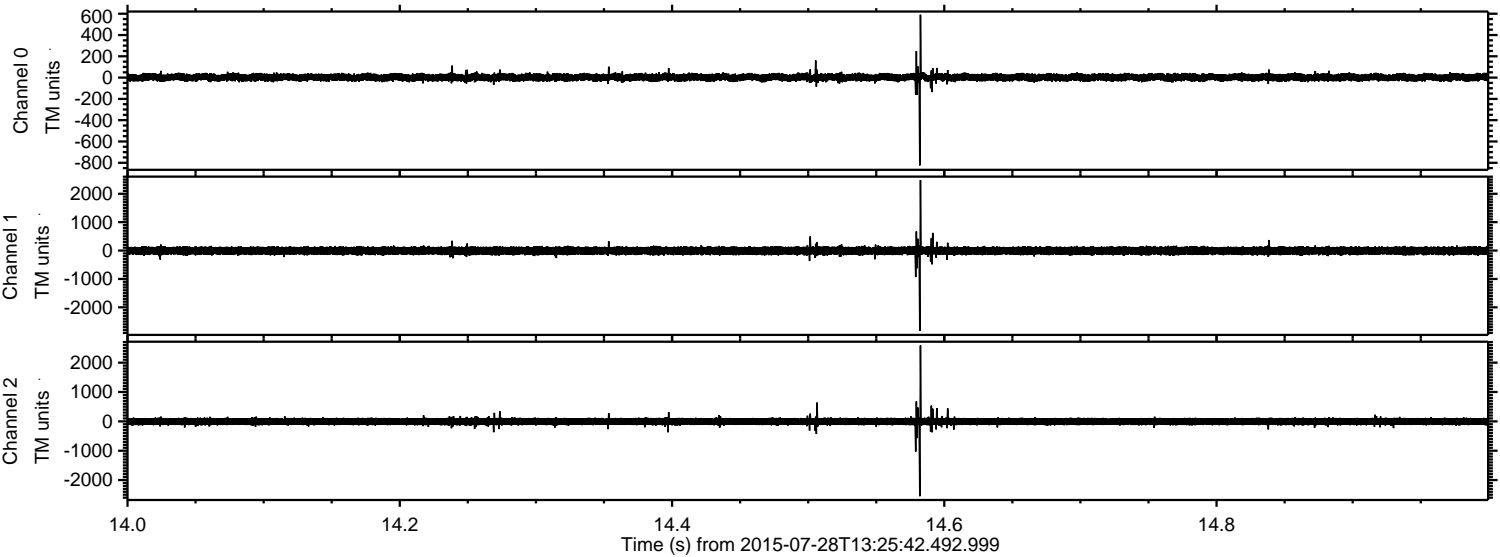


Processed Tue Jul 28 15:33:13 2015 by ELM ver.2012-10-06 from 001__elm20150728_132541__dat00.bin



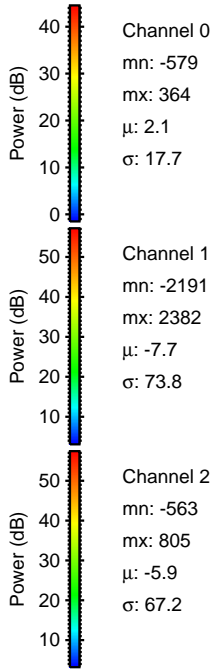
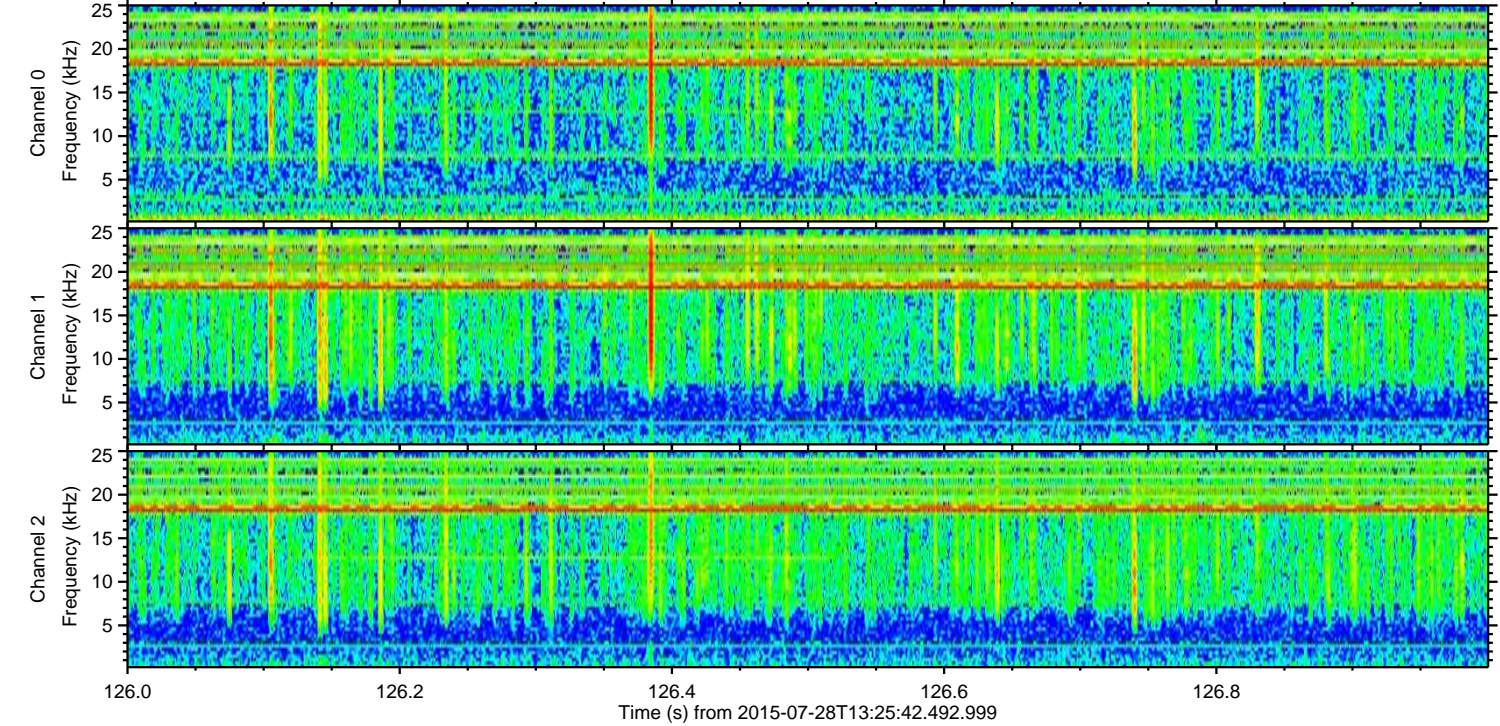
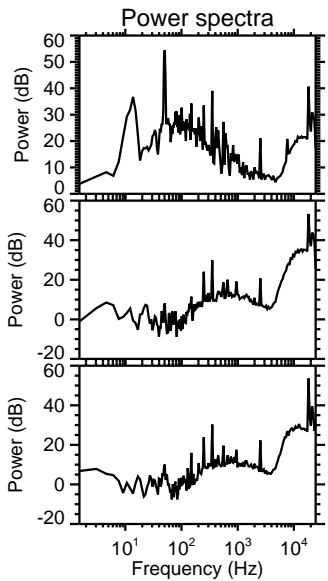
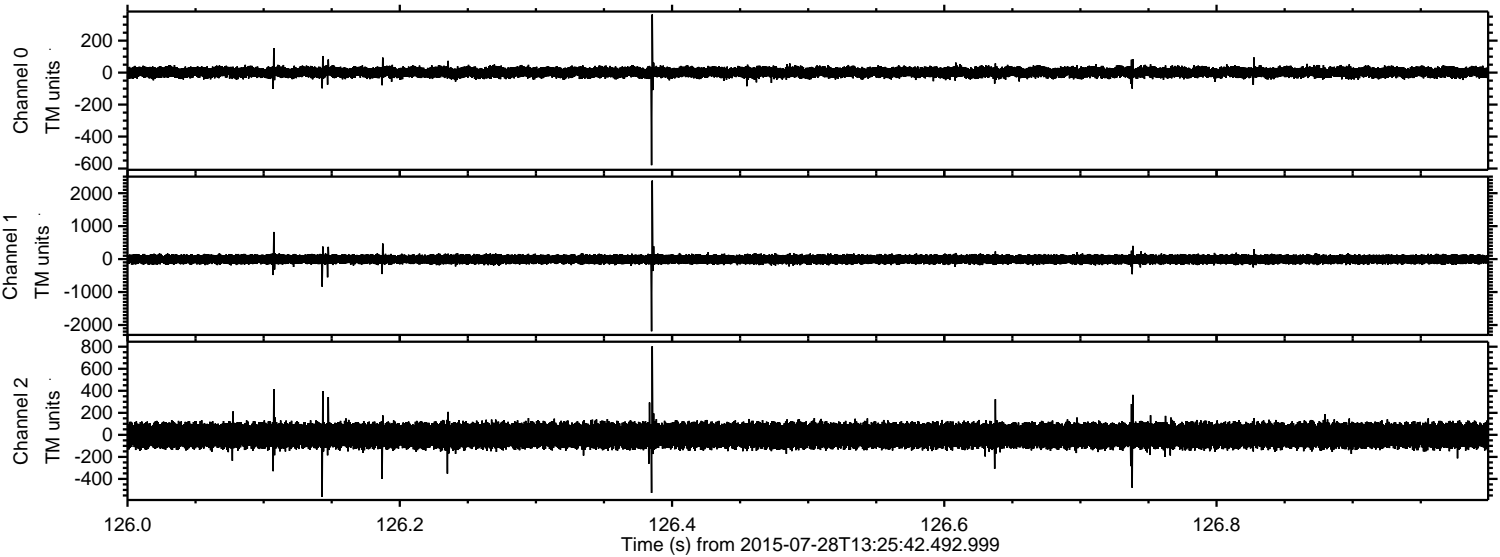
ELMAVAN 3D WAVEFORMS (Measured data sampled at 50 kHz) 51000 packets of 144 samples from 2015-07-28T13:25:42.492.999. Part 15/147

Processed Tue Jul 28 15:33:14 2015 by ELM ver.2012-10-06 from 001__elm20150728_132541__dat00.bin



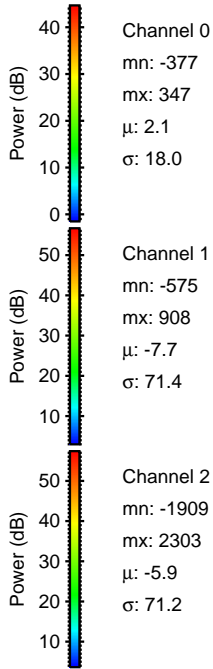
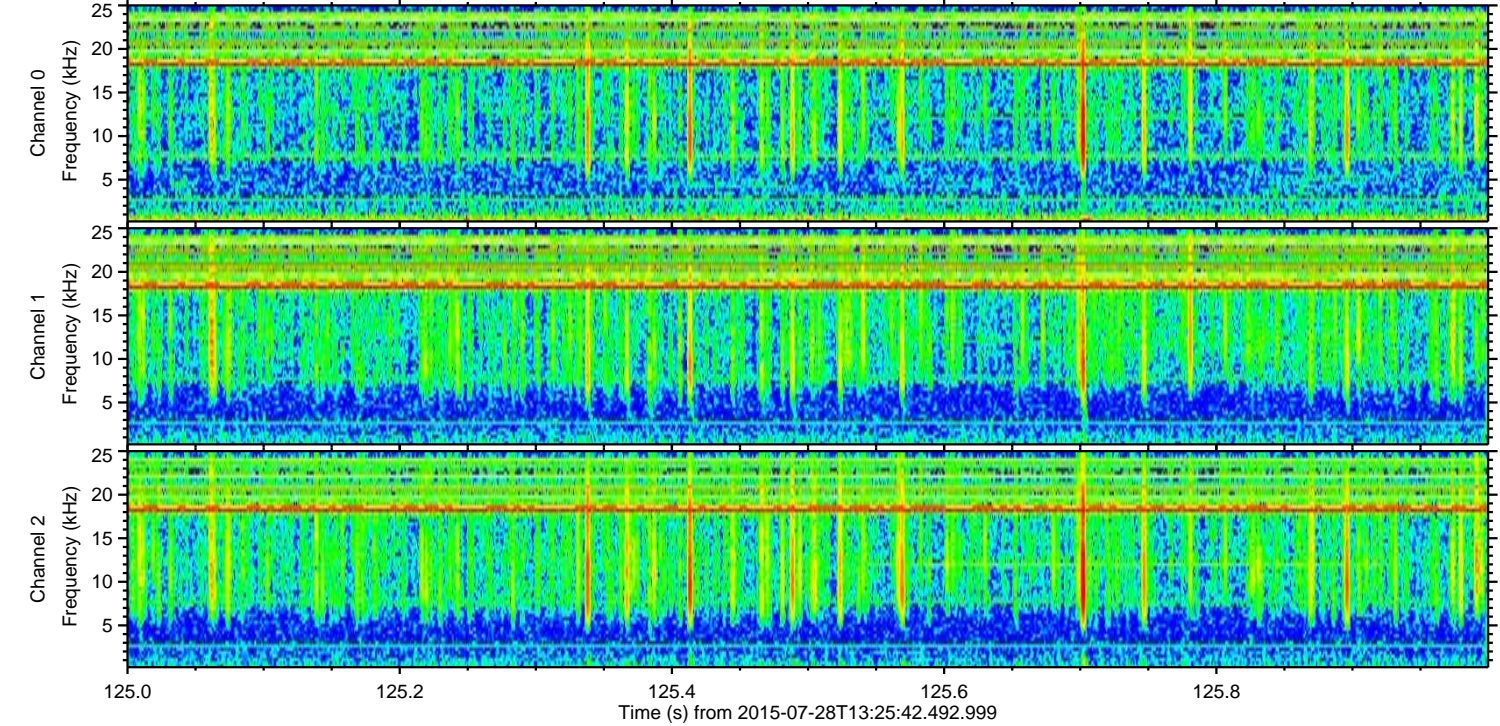
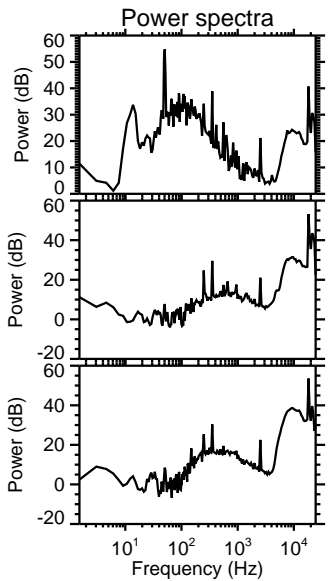
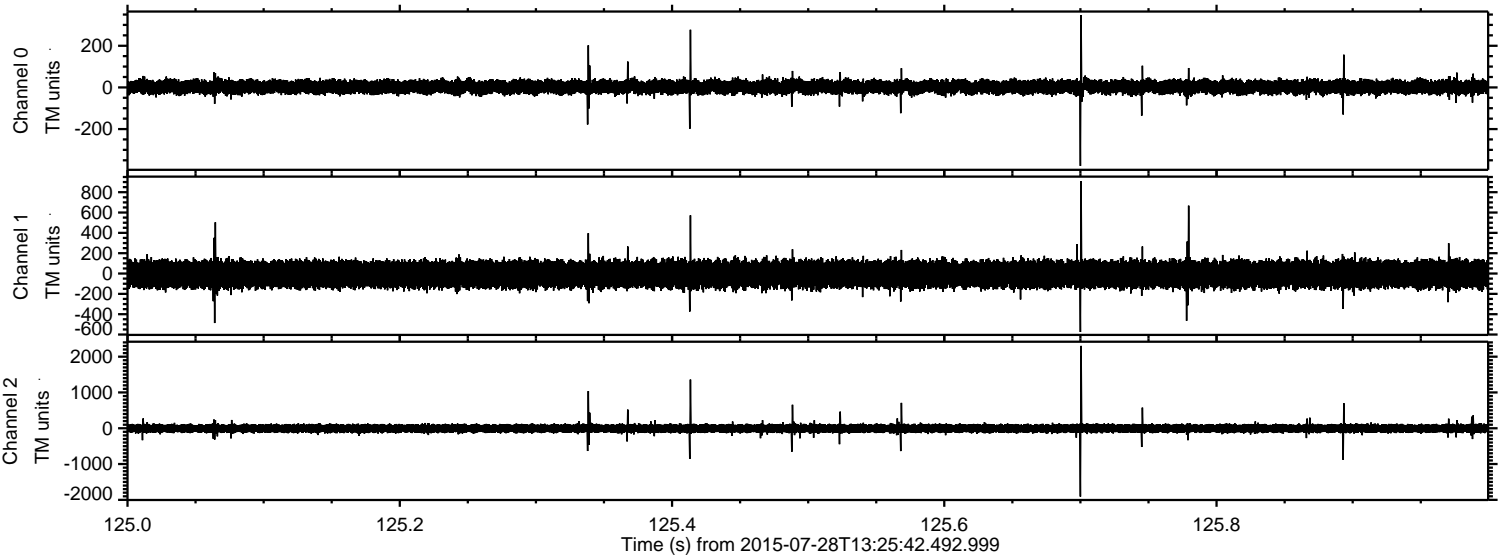
ELMAVAN 3D WAVEFORMS (Measured data sampled at 50 kHz) 51000 packets of 144 samples from 2015-07-28T13:25:42.492.999. Part 127/147

Processed Tue Jul 28 15:33:15 2015 by ELM ver.2012-10-06 from 001__elm20150728_132541__dat00.bin

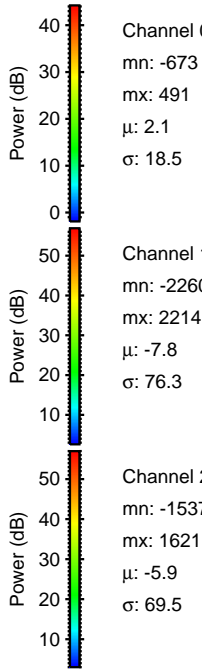
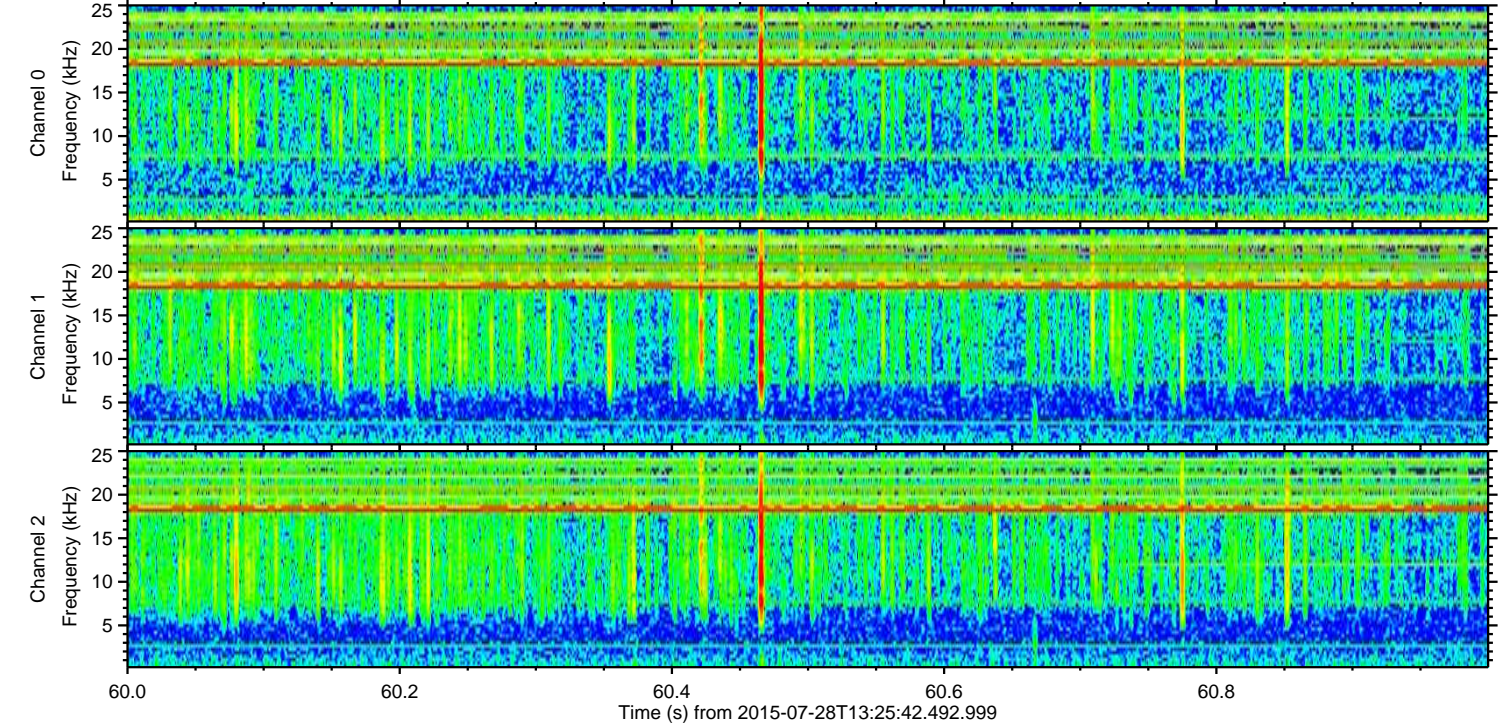
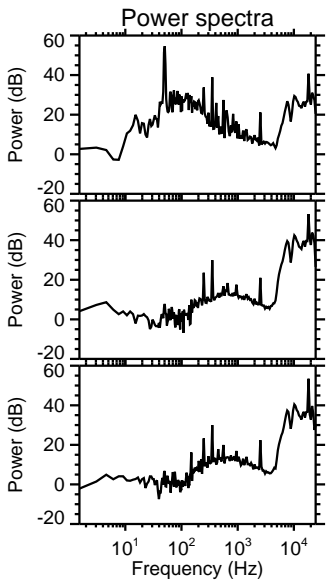
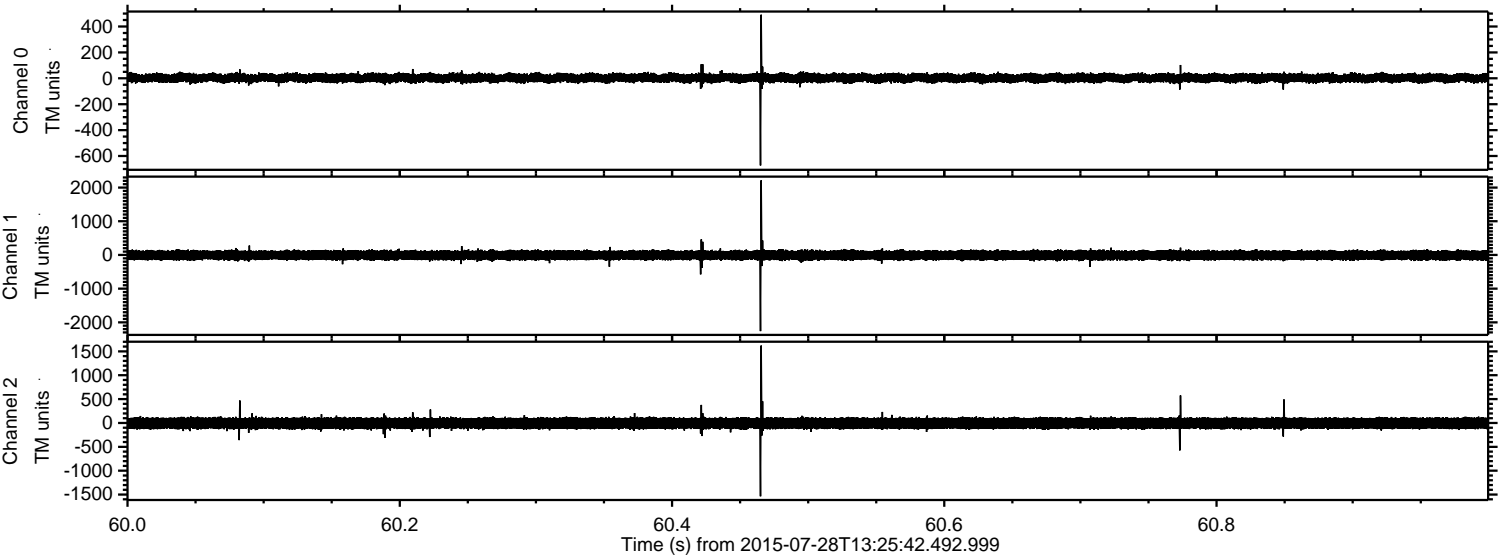


ELMAVAN 3D WAVEFORMS (Measured data sampled at 50 kHz) 51000 packets of 144 samples from 2015-07-28T13:25:42.492.999. Part 126/147

Processed Tue Jul 28 15:33:16 2015 by ELM ver.2012-10-06 from 001__elm20150728_132541__dat00.bin



Processed Tue Jul 28 15:33:18 2015 by ELM ver.2012-10-06 from 001__elm20150728_132541__dat00.bin

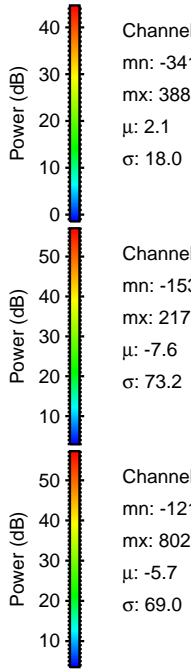
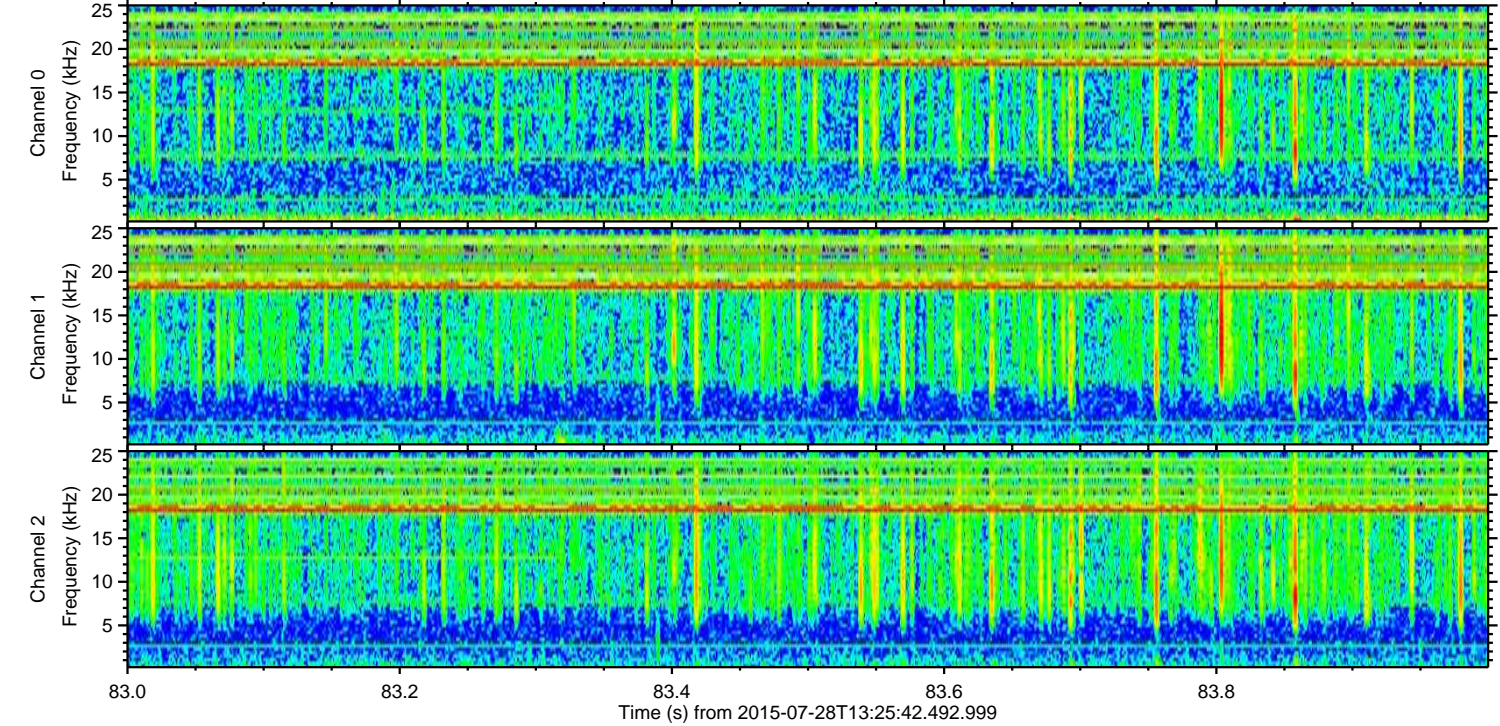
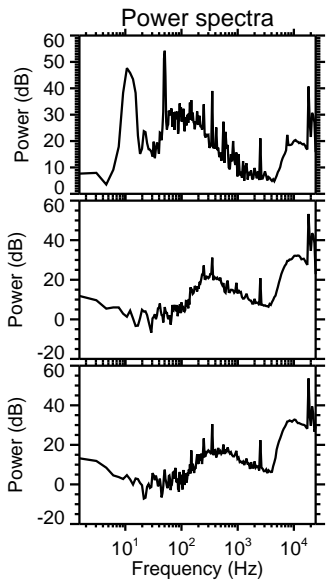
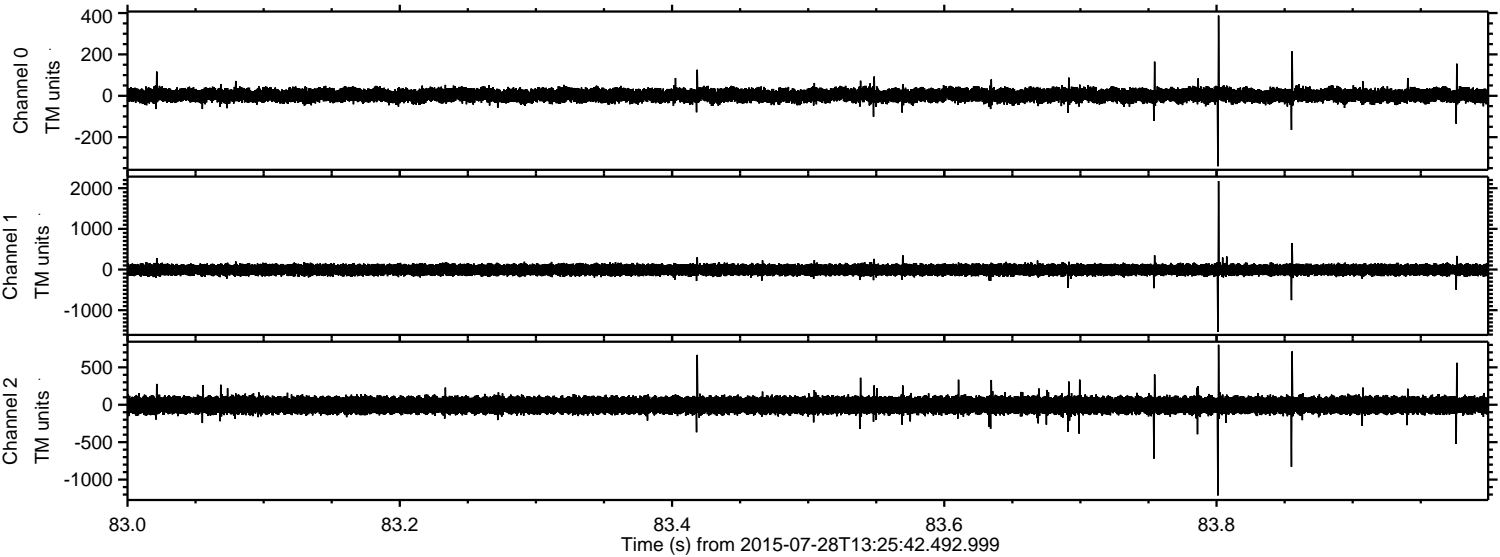


Channel 0
mn: -673
mx: 491
 μ : 2.1
 σ : 18.5

Channel 1
mn: -2260
mx: 2214
 μ : -7.8
 σ : 76.3

Channel 2
mn: -1537
mx: 1621
 μ : -5.9
 σ : 69.5

Processed Tue Jul 28 15:33:19 2015 by ELM ver.2012-10-06 from 001__elm20150728_132541__dat00.bin



Channel 0
mn: -341
mx: 388
 μ : 2.1
 σ : 18.0

Channel 1
mn: -1531
mx: 2175
 μ : -7.6
 σ : 73.2

Channel 2
mn: -1212
mx: 802
 μ : -5.7
 σ : 69.0

Processed Tue Jul 28 15:33:20 2015 by ELM ver.2012-10-06 from 001__elm20150728_132541__dat00.bin

