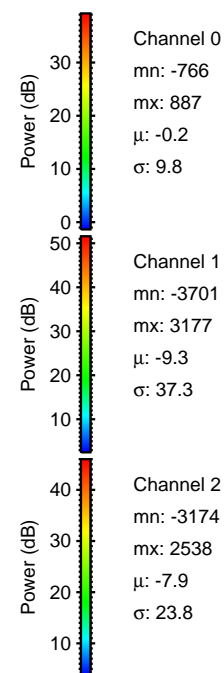
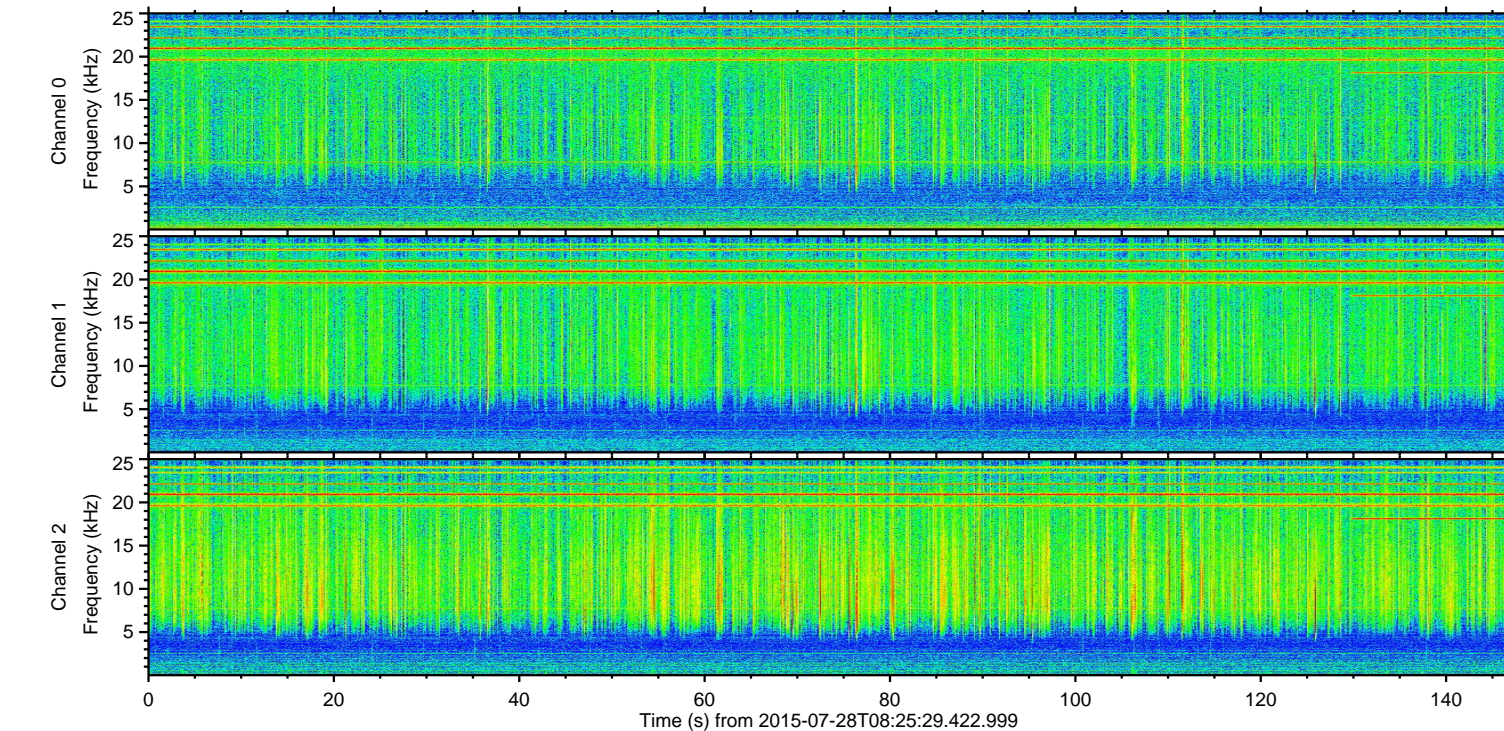
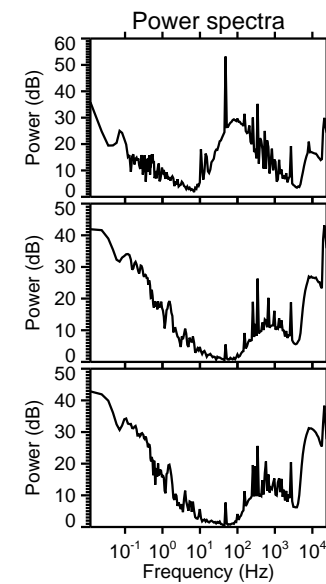
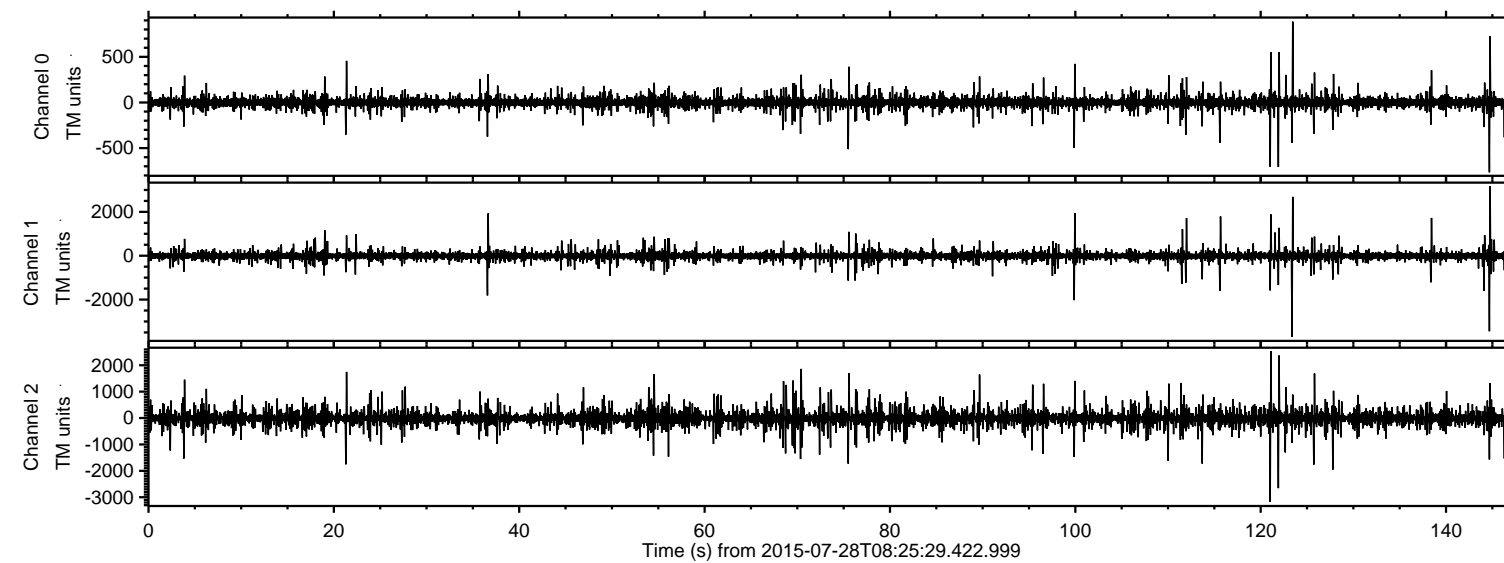


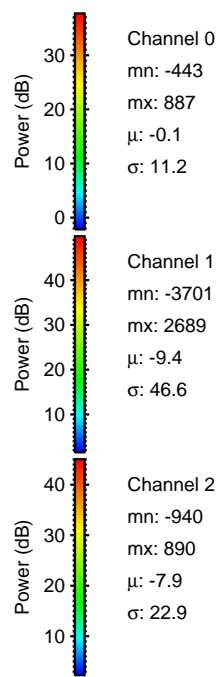
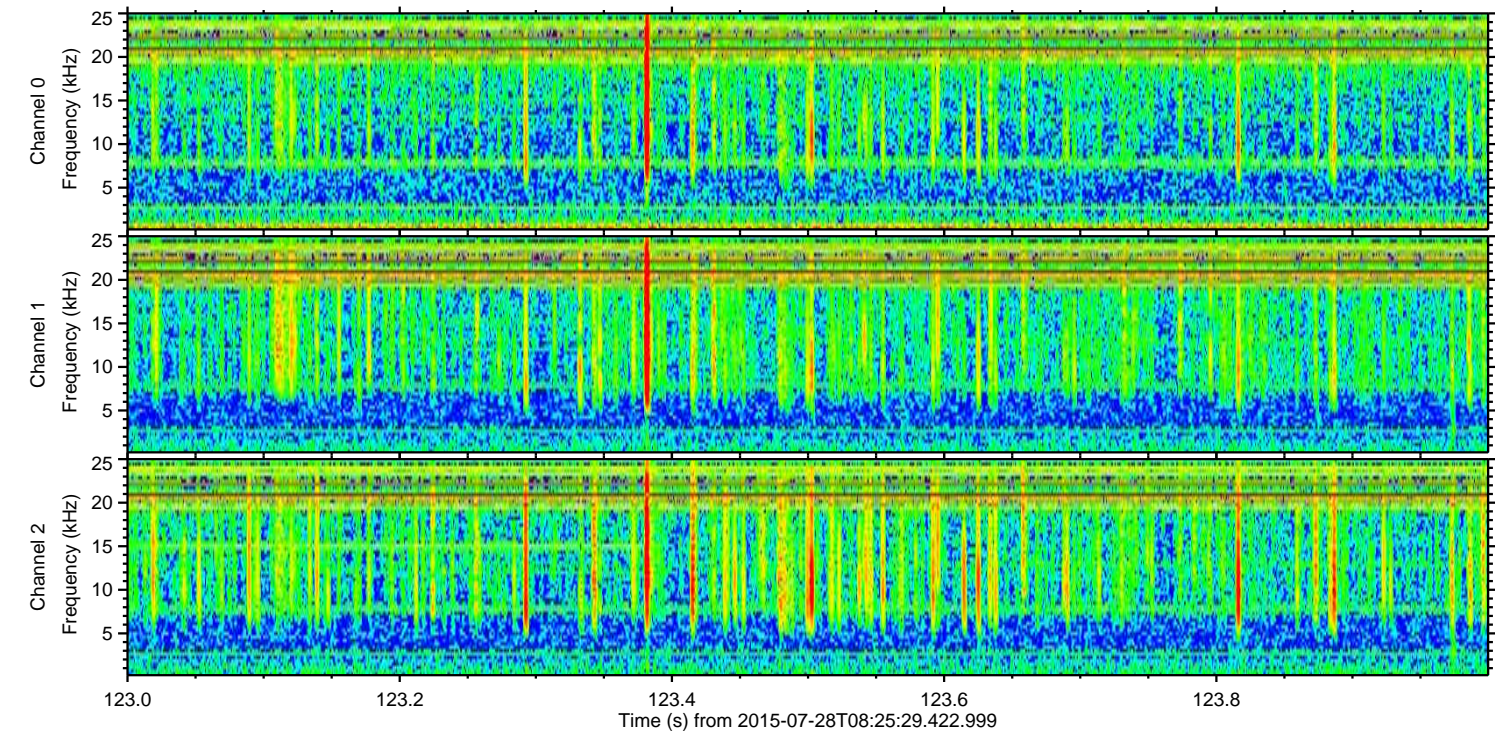
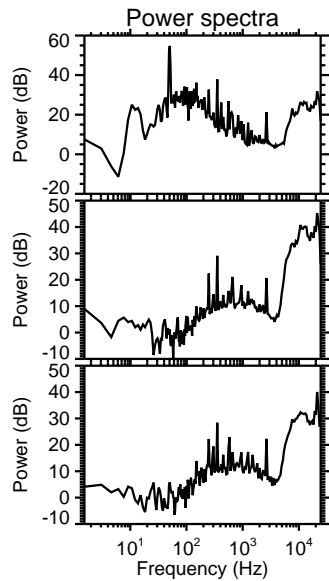
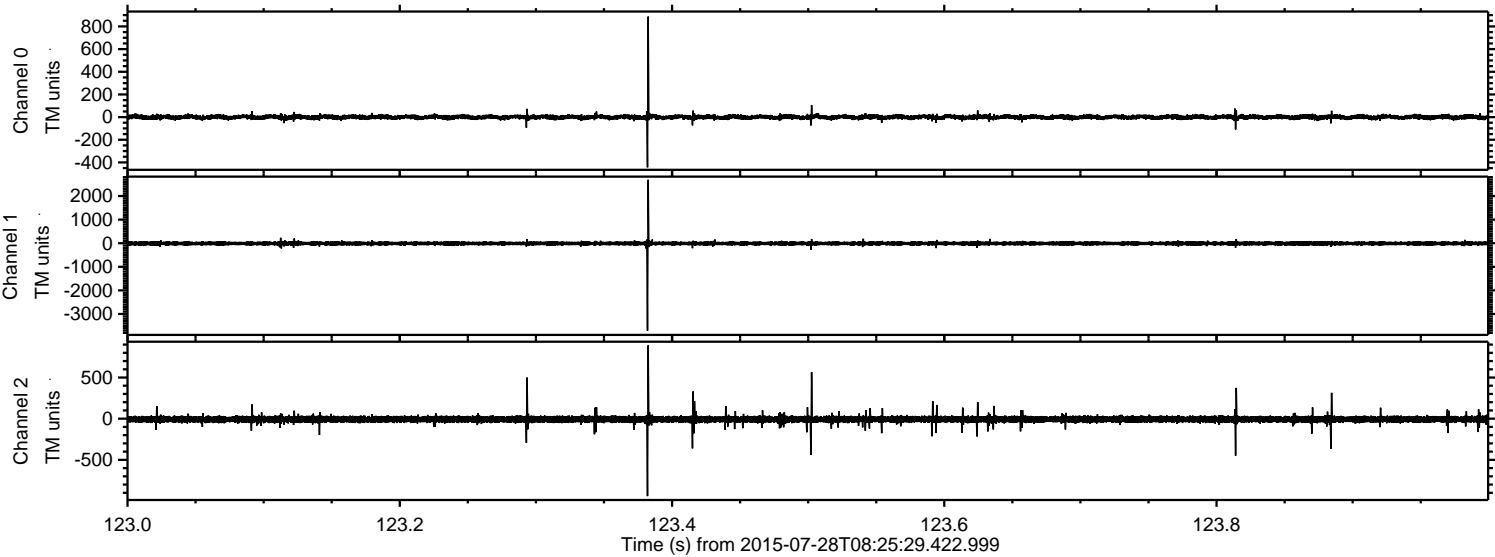
ELMAVAN 3D WAVEFORMS (Measured data sampled at 50 kHz) 51000 packets of 144 samples from 2015-07-28T08:25:29.422.999.

Processed Tue Jul 28 10:32:02 2015 by ELM ver.2012-10-06 from 001__elm20150728_082528__dat00.bin



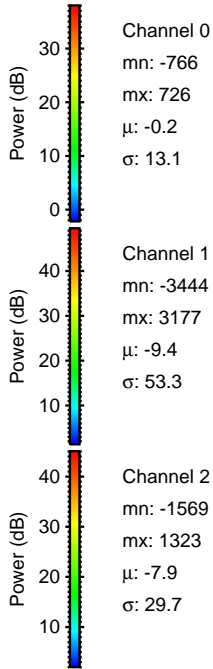
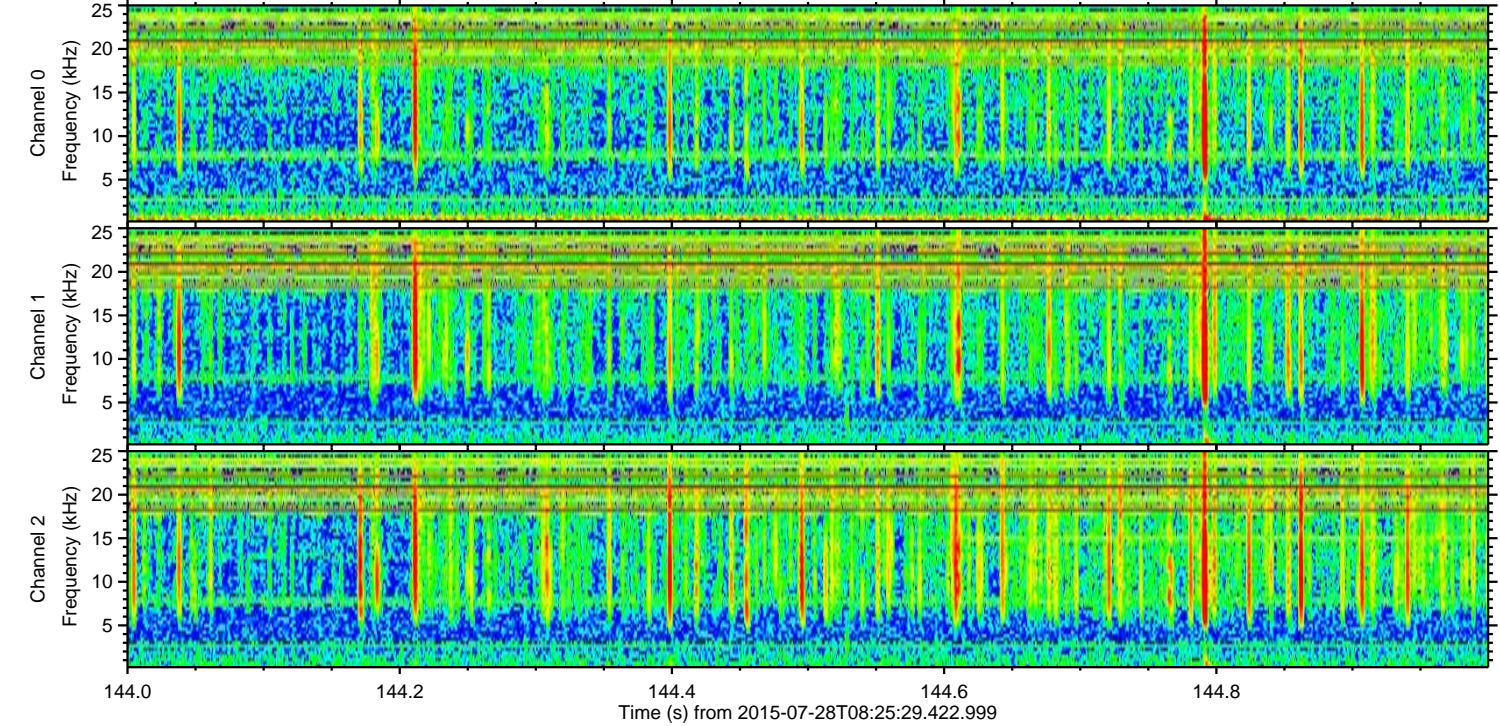
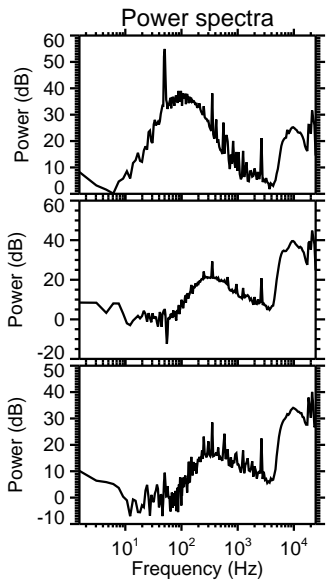
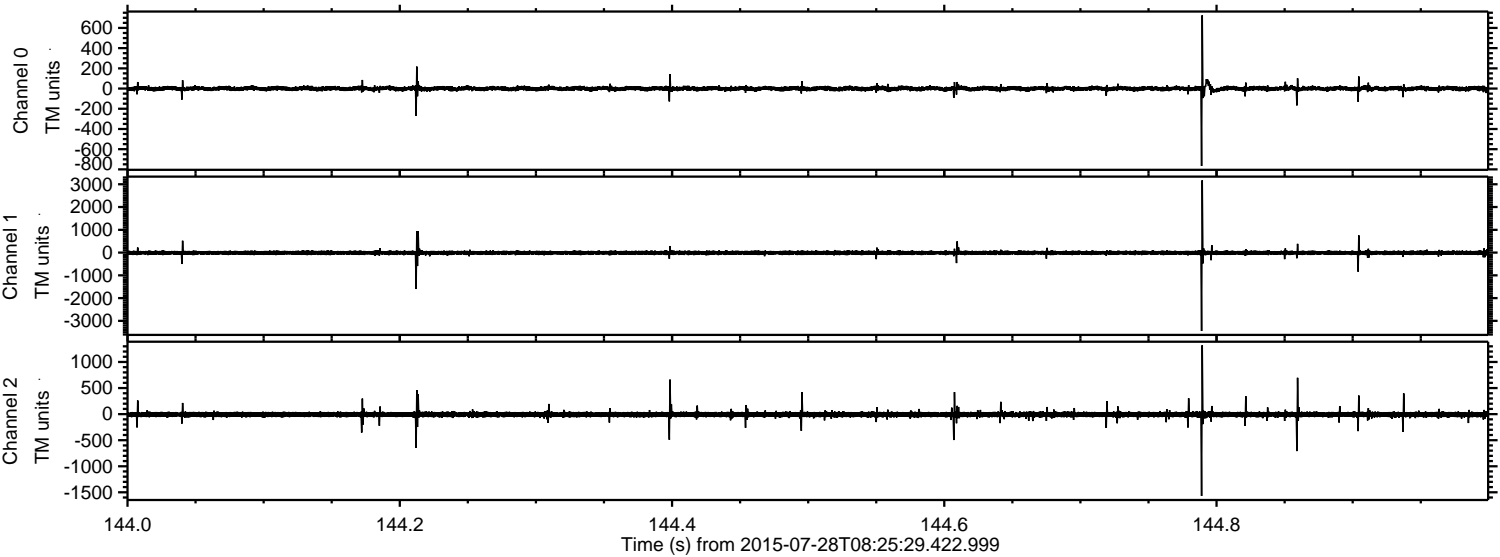
ELMAVAN 3D WAVEFORMS (Measured data sampled at 50 kHz) 51000 packets of 144 samples from 2015-07-28T08:25:29.422.999. Part 124/147

Processed Tue Jul 28 10:32:18 2015 by ELM ver.2012-10-06 from 001__elm20150728_082528__dat00.bin



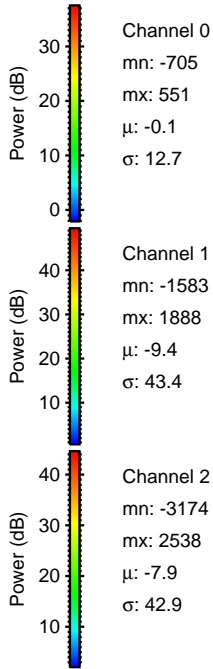
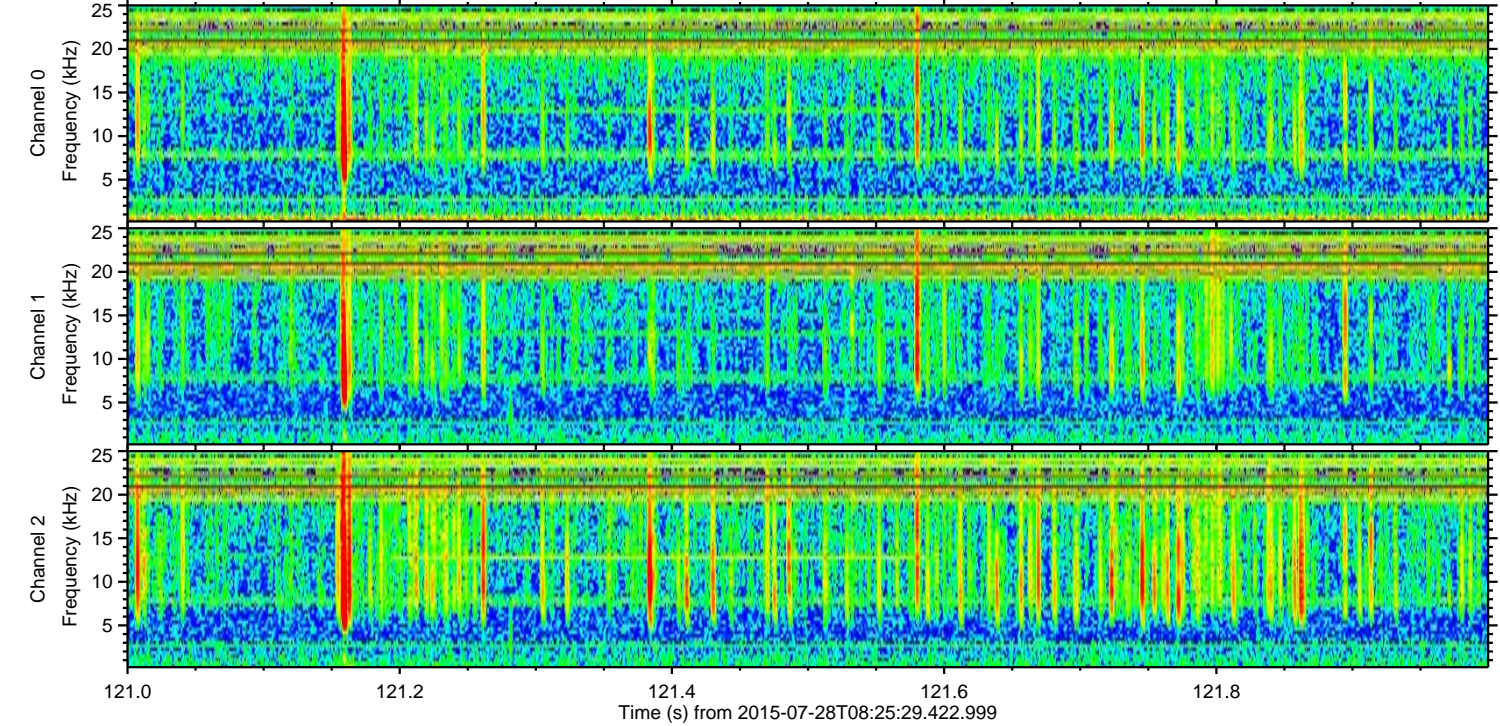
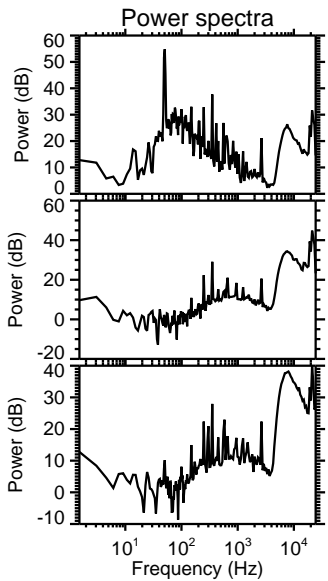
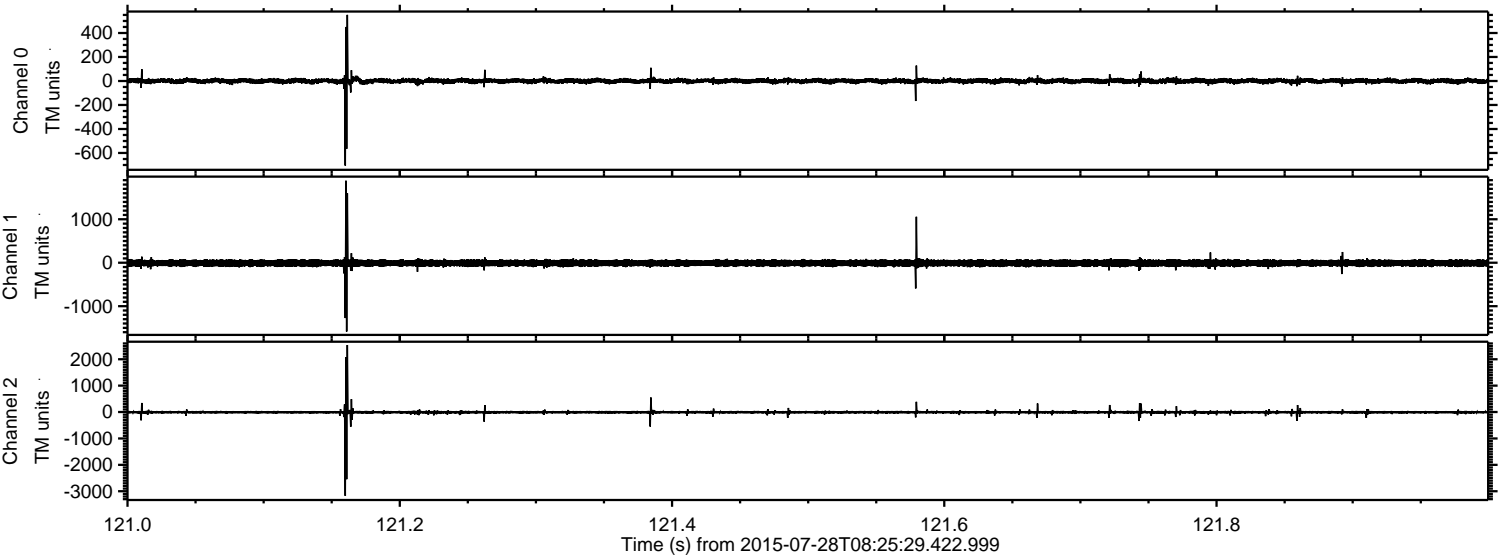
ELMAVAN 3D WAVEFORMS (Measured data sampled at 50 kHz) 51000 packets of 144 samples from 2015-07-28T08:25:29.422.999. Part 145/147

Processed Tue Jul 28 10:32:19 2015 by ELM ver.2012-10-06 from 001__elm20150728_082528__dat00.bin



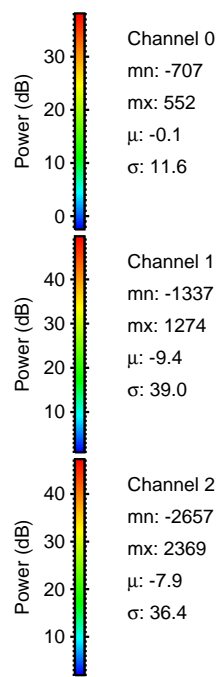
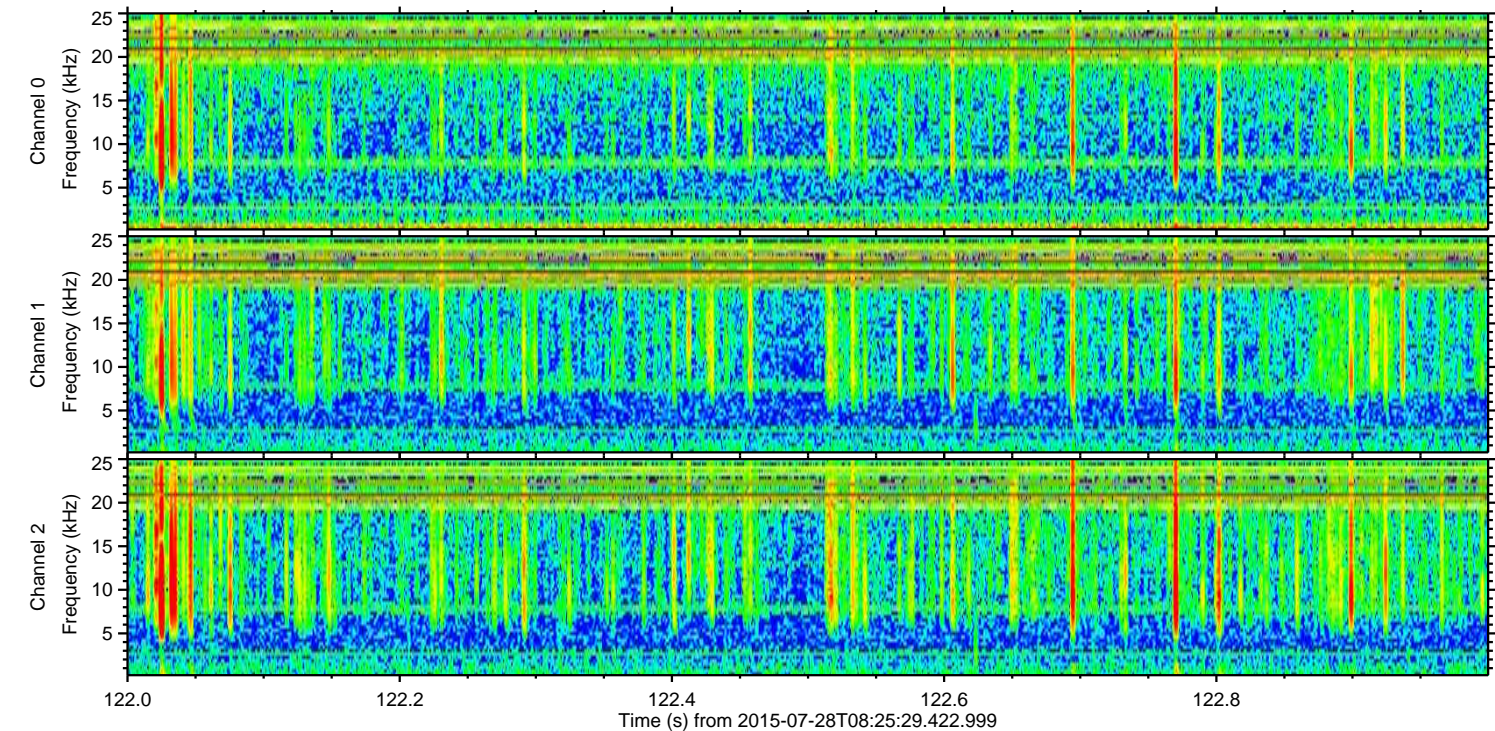
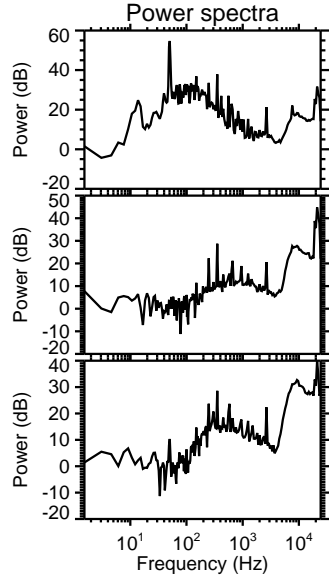
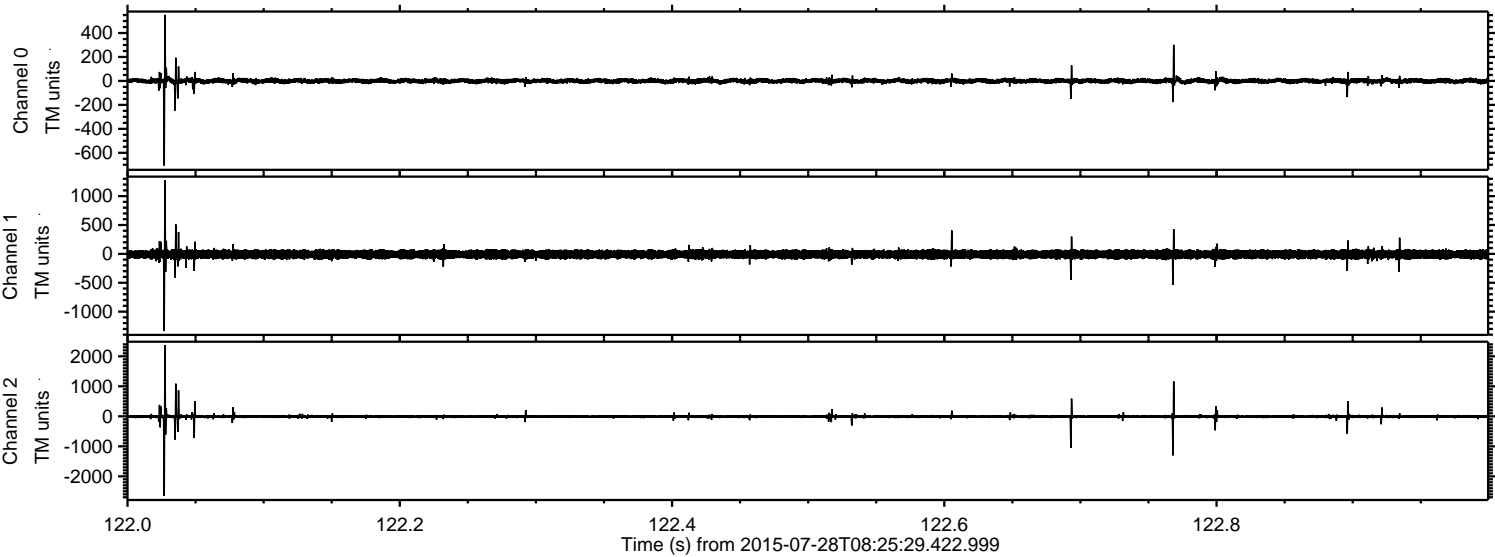
ELMAVAN 3D WAVEFORMS (Measured data sampled at 50 kHz) 51000 packets of 144 samples from 2015-07-28T08:25:29.422.999. Part 122/147

Processed Tue Jul 28 10:32:20 2015 by ELM ver.2012-10-06 from 001__elm20150728_082528__dat00.bin



ELMAVAN 3D WAVEFORMS (Measured data sampled at 50 kHz) 51000 packets of 144 samples from 2015-07-28T08:25:29.422.999. Part 123/147

Processed Tue Jul 28 10:32:21 2015 by ELM ver.2012-10-06 from 001__elm20150728_082528__dat00.bin



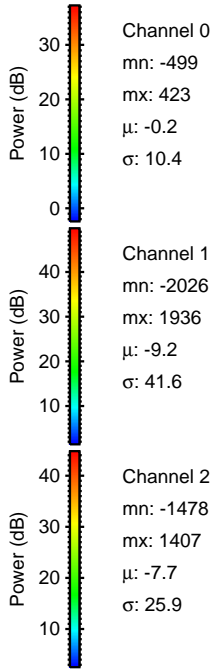
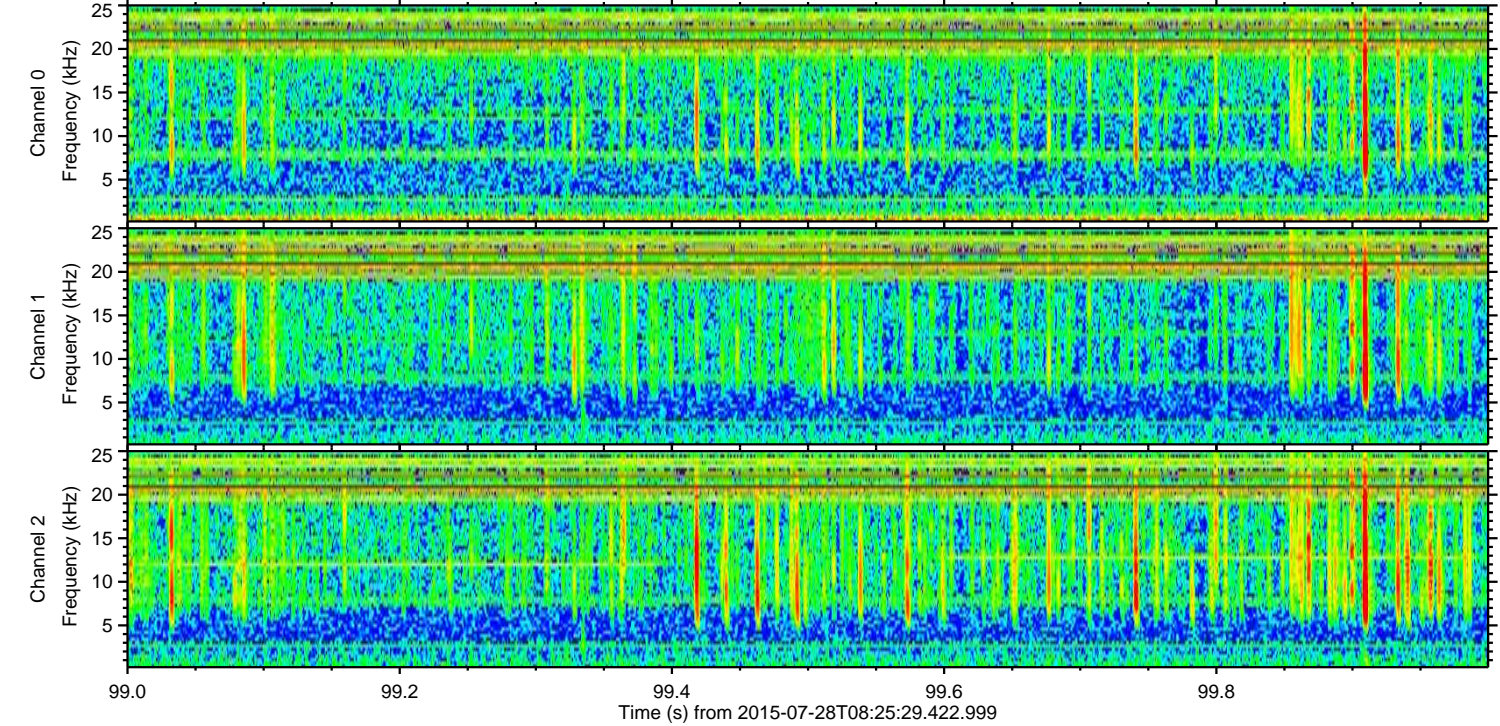
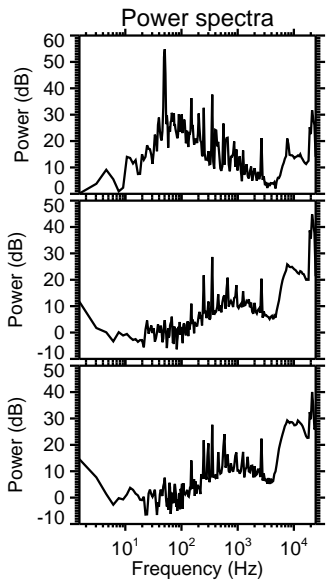
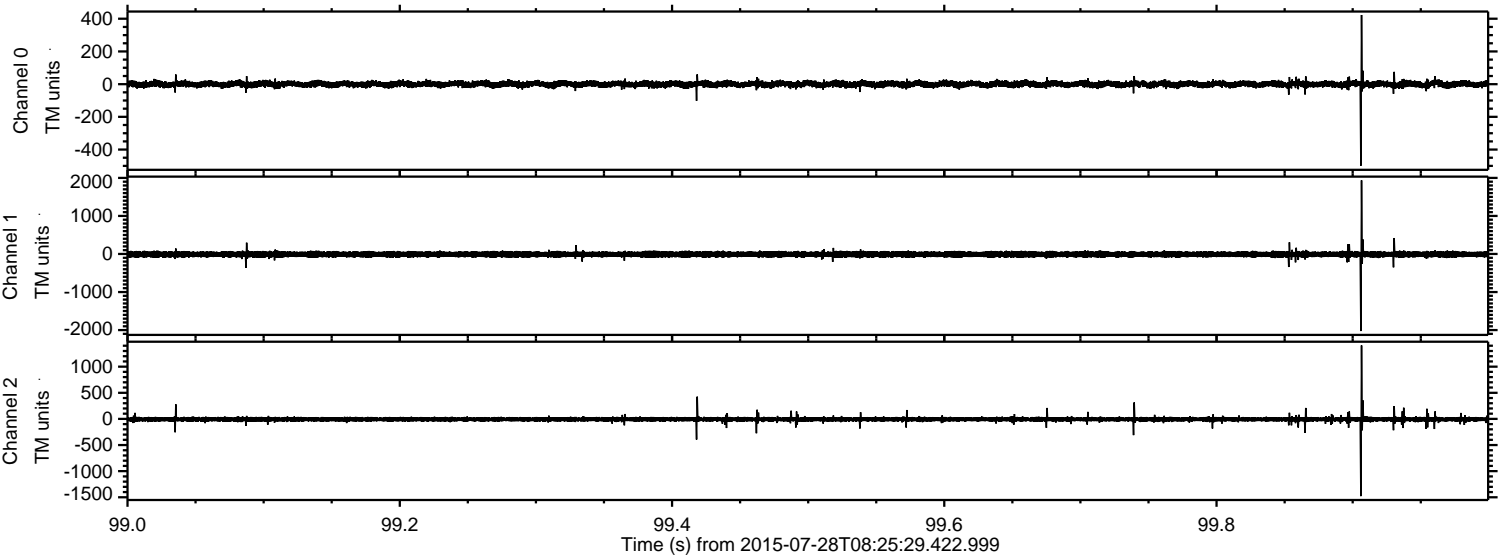
Channel 0
mn: -707
mx: 552
 μ : -0.1
 σ : 11.6

Channel 1
mn: -1337
mx: 1274
 μ : -9.4
 σ : 39.0

Channel 2
mn: -2657
mx: 2369
 μ : -7.9
 σ : 36.4

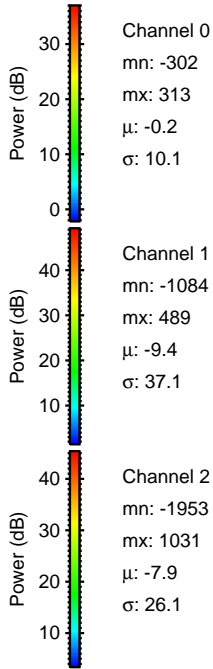
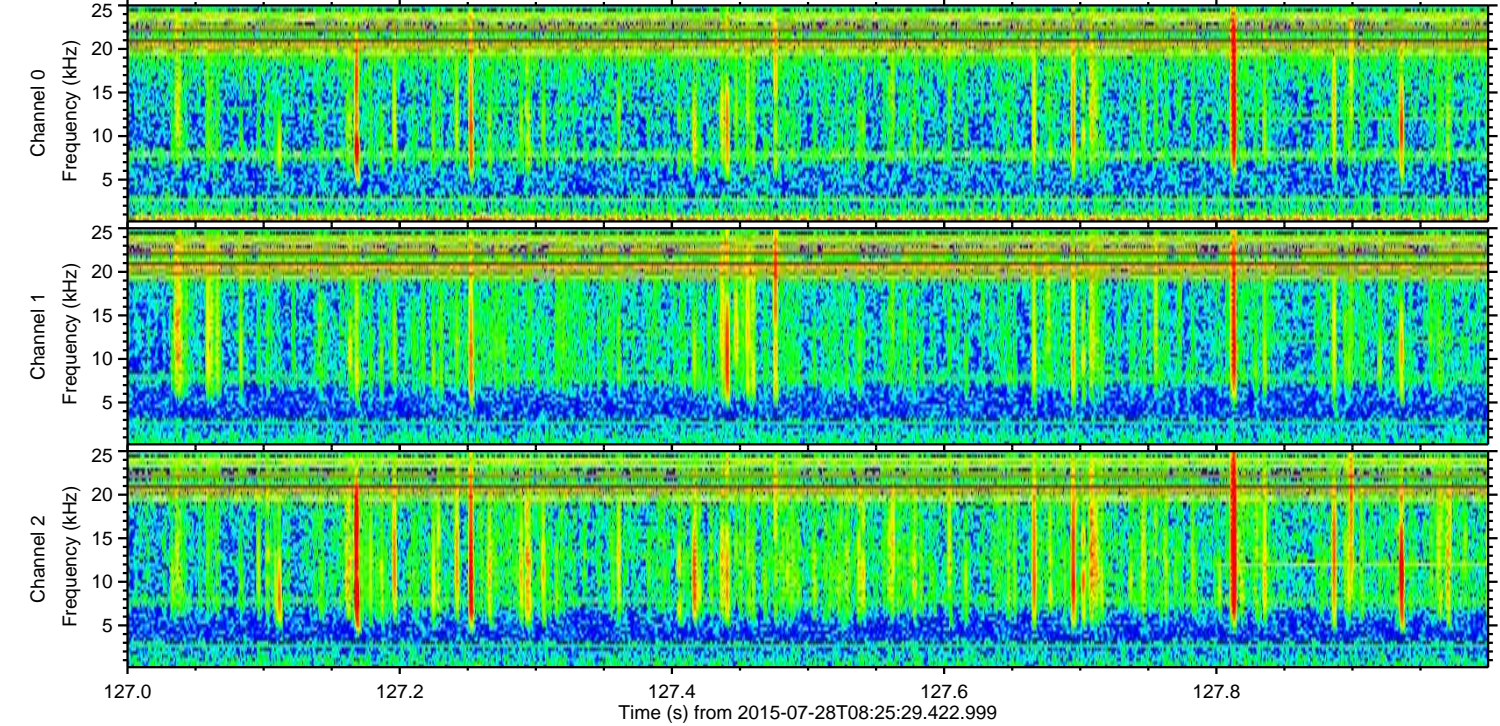
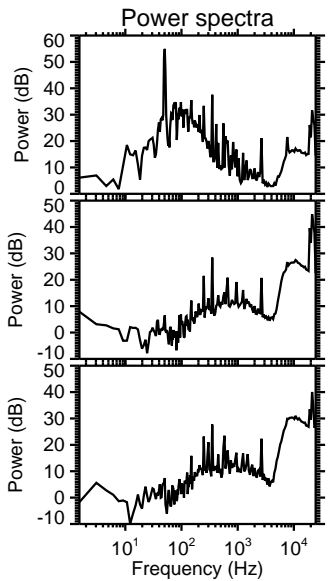
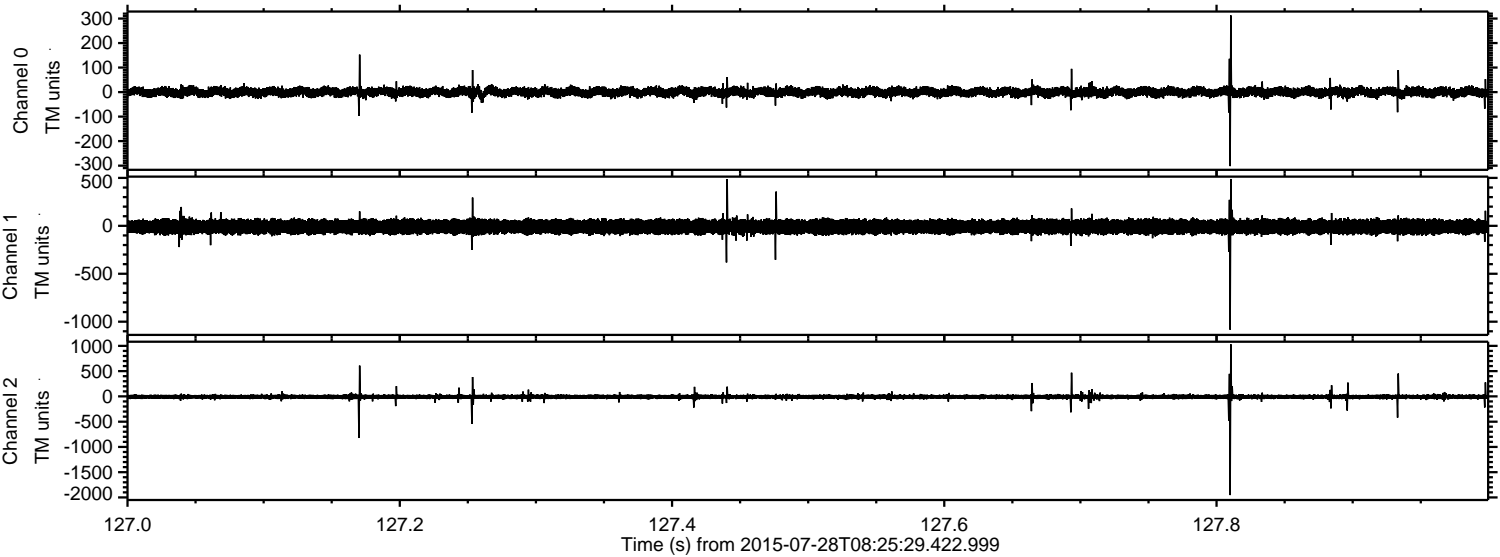
ELMAVAN 3D WAVEFORMS (Measured data sampled at 50 kHz) 51000 packets of 144 samples from 2015-07-28T08:25:29.422.999. Part 100/147

Processed Tue Jul 28 10:32:22 2015 by ELM ver.2012-10-06 from 001__elm20150728_082528__dat00.bin



ELMAVAN 3D WAVEFORMS (Measured data sampled at 50 kHz) 51000 packets of 144 samples from 2015-07-28T08:25:29.422.999. Part 128/147

Processed Tue Jul 28 10:32:23 2015 by ELM ver.2012-10-06 from 001__elm20150728_082528__dat00.bin



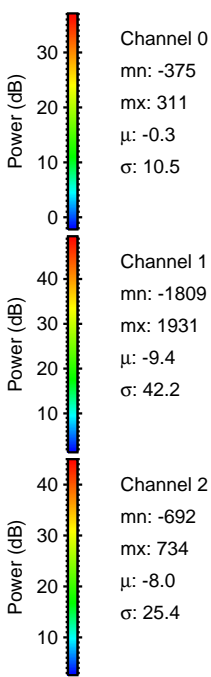
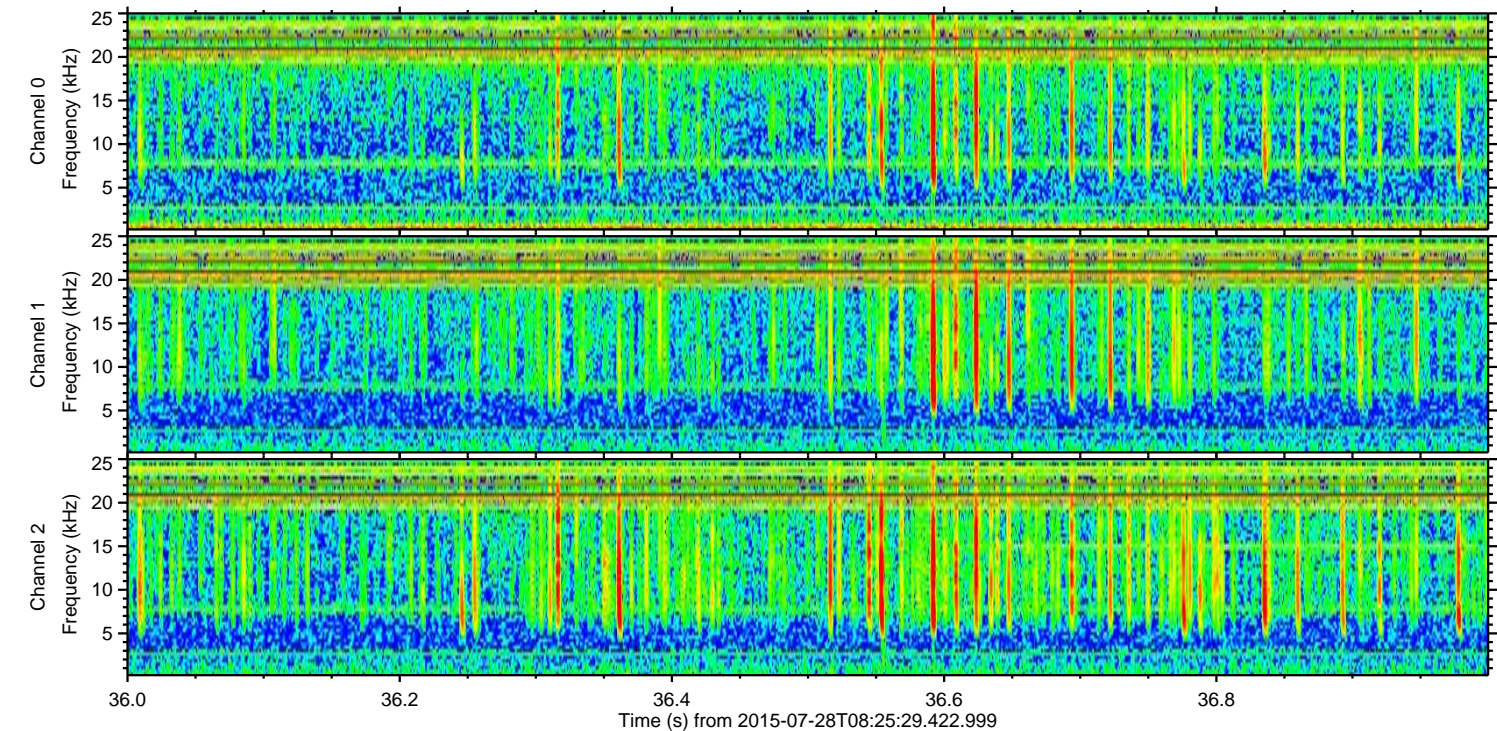
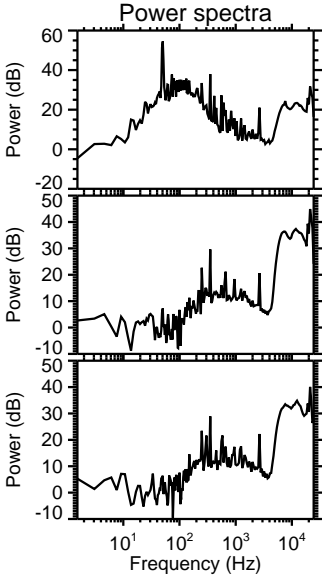
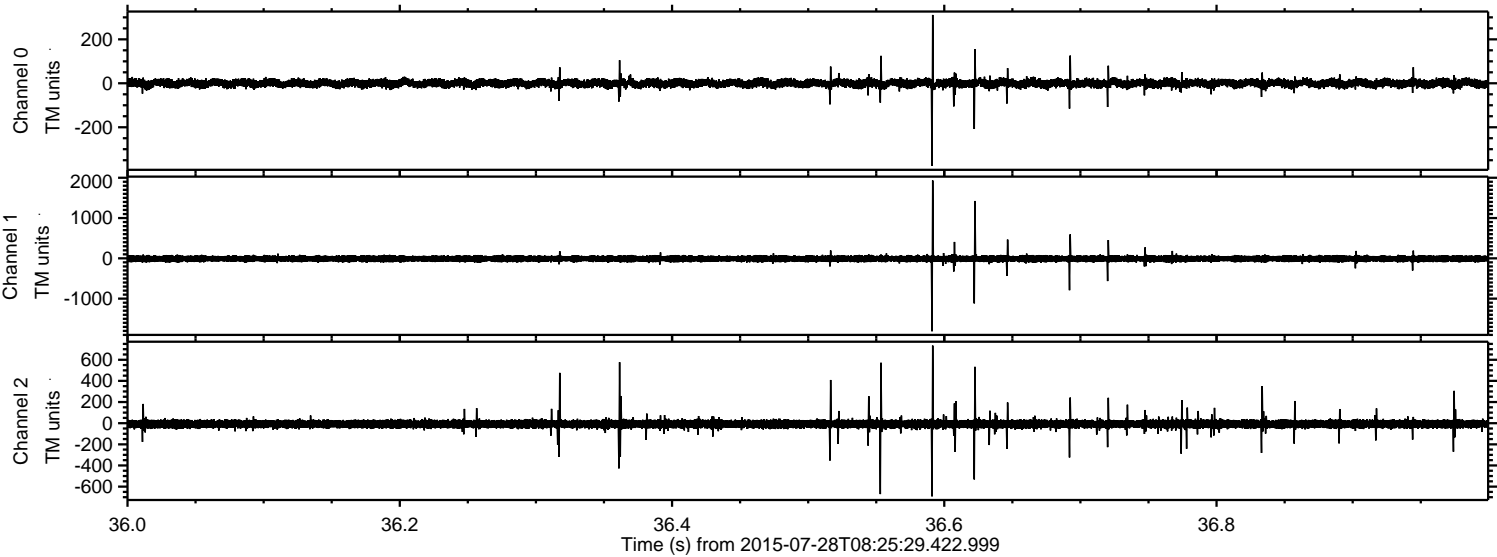
Channel 0
mn: -302
mx: 313
 μ : -0.2
 σ : 10.1

Channel 1
mn: -1084
mx: 489
 μ : -9.4
 σ : 37.1

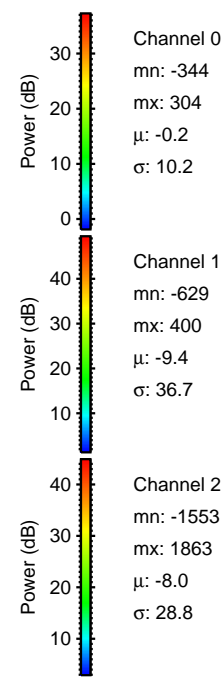
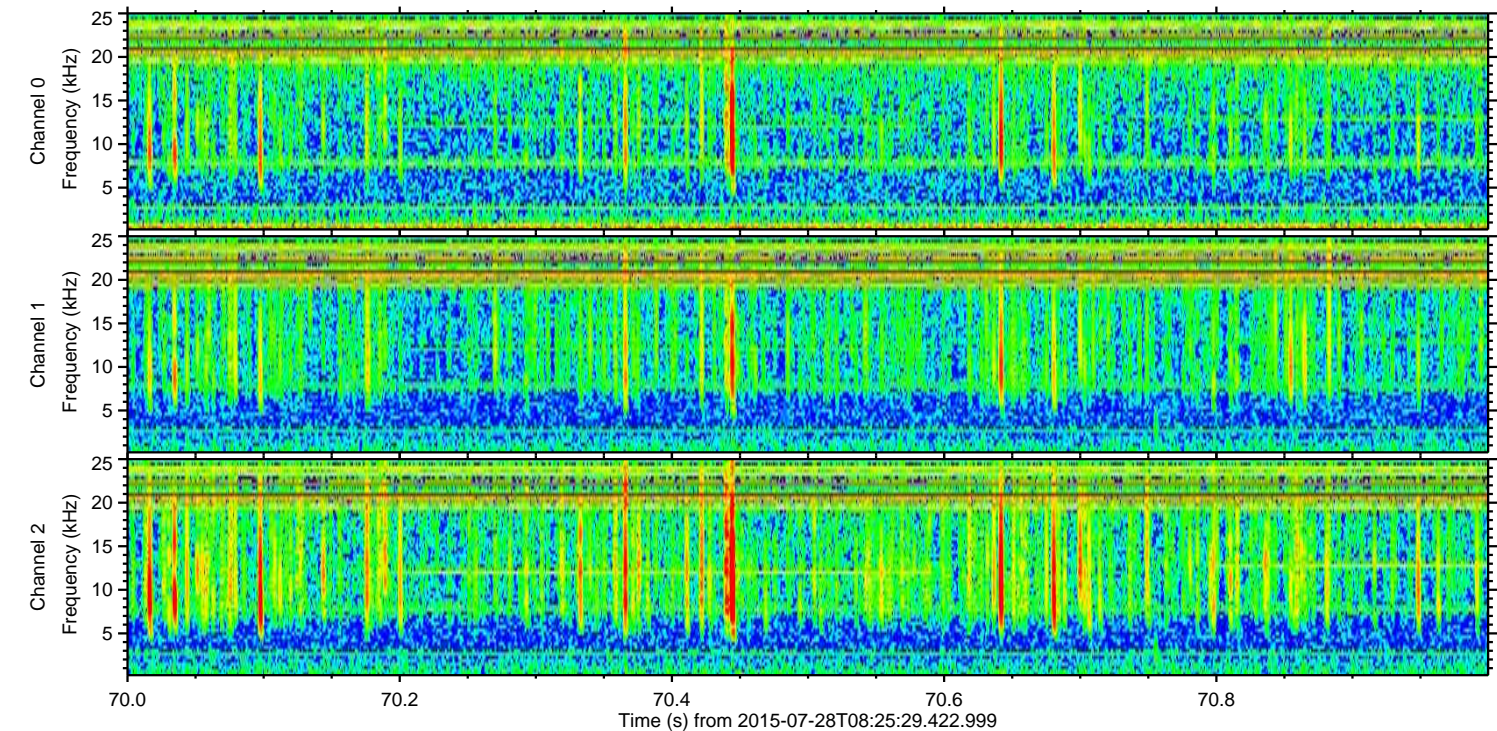
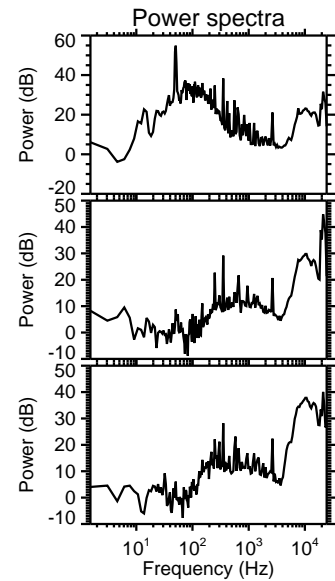
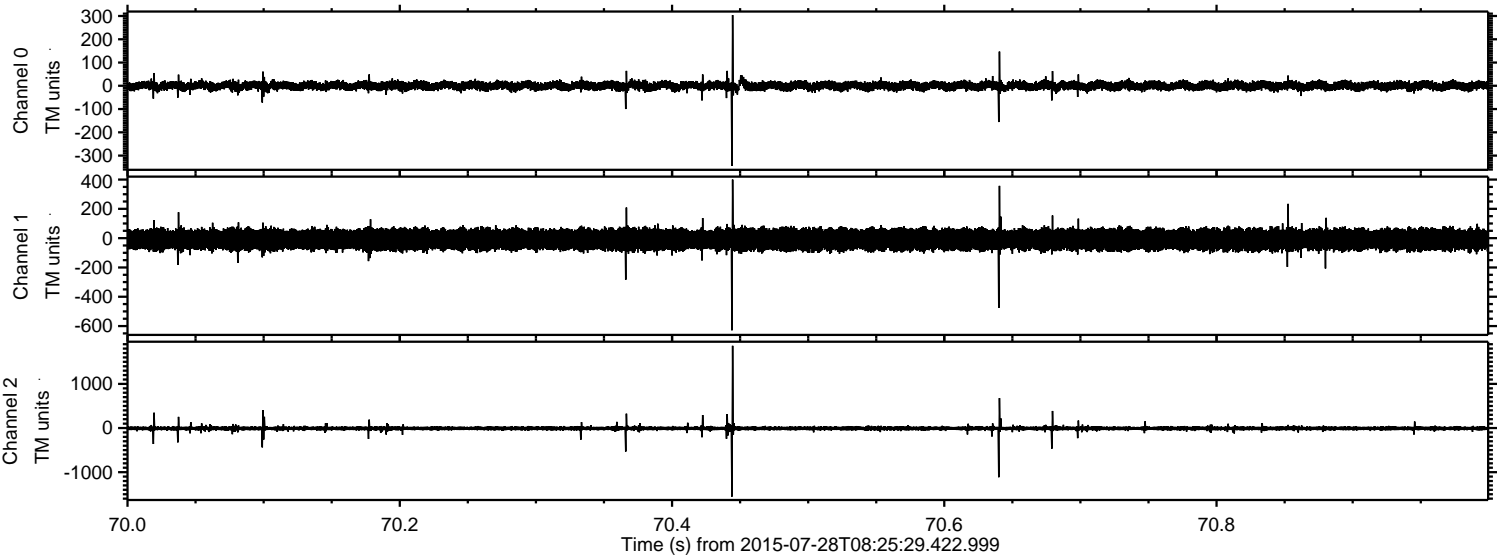
Channel 2
mn: -1953
mx: 1031
 μ : -7.9
 σ : 26.1

ELMAVAN 3D WAVEFORMS (Measured data sampled at 50 kHz) 51000 packets of 144 samples from 2015-07-28T08:25:29.422.999. Part 37/147

Processed Tue Jul 28 10:32:24 2015 by ELM ver.2012-10-06 from 001__elm20150728_082528__dat00.bin

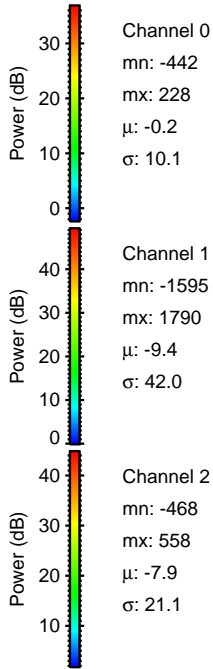
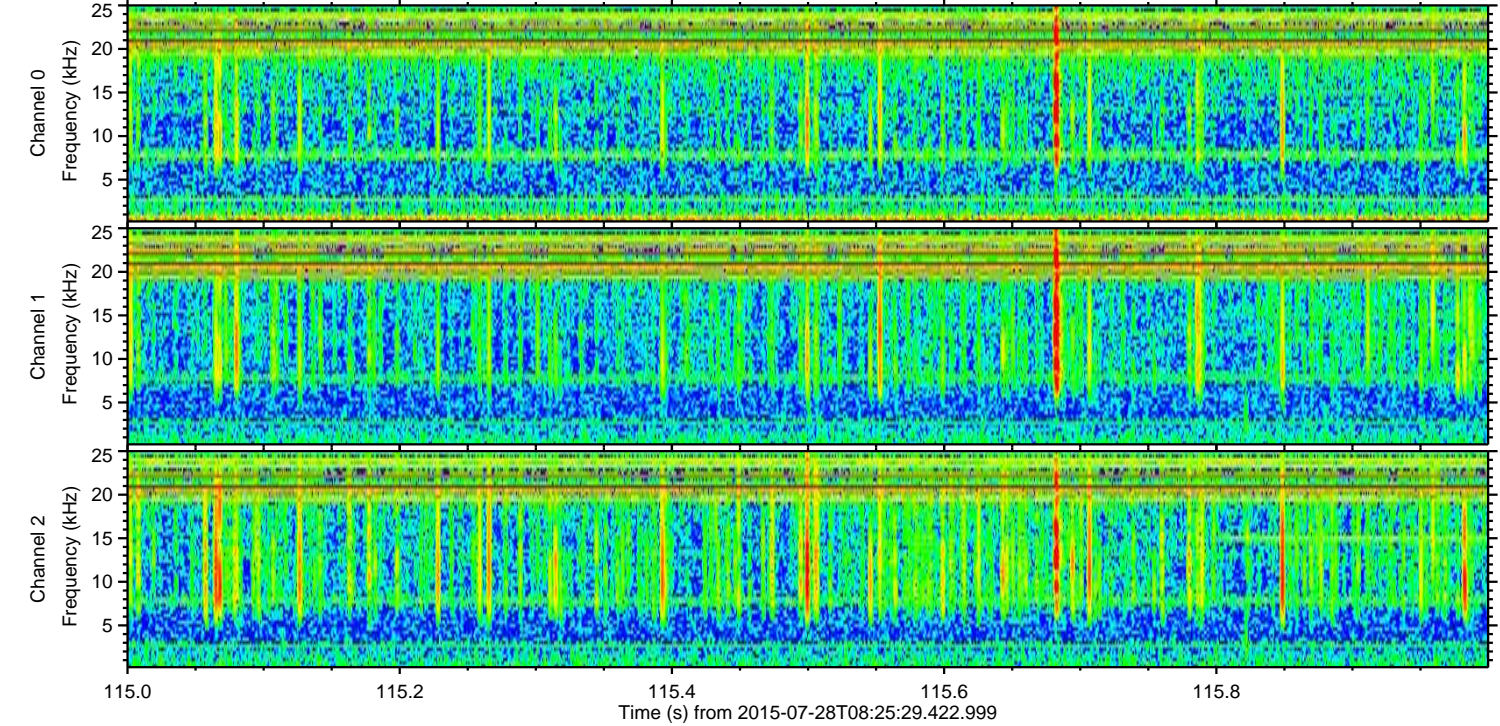
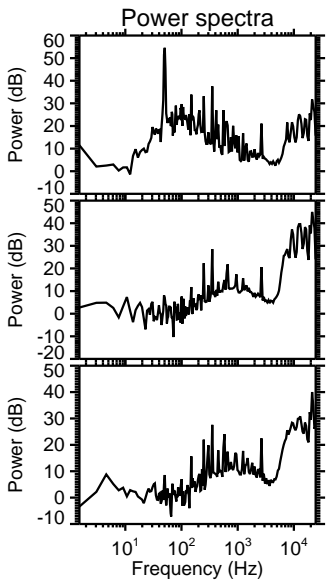
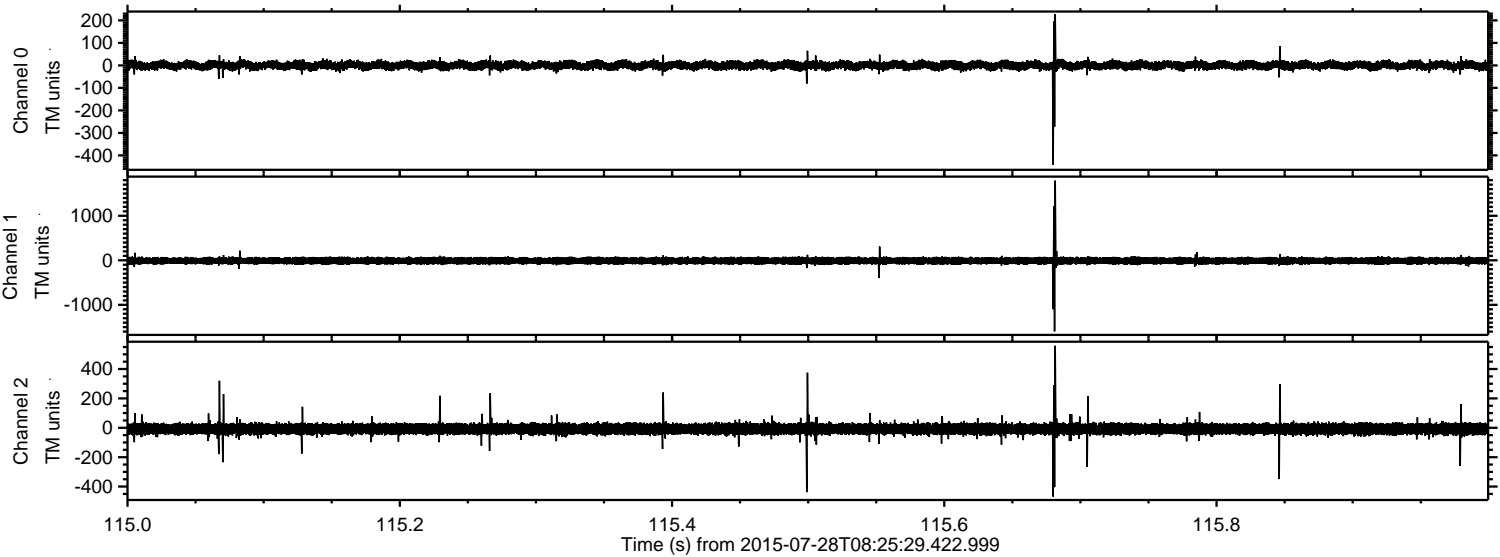


Processed Tue Jul 28 10:32:25 2015 by ELM ver.2012-10-06 from 001__elm20150728_082528__dat00.bin



ELMAVAN 3D WAVEFORMS (Measured data sampled at 50 kHz) 51000 packets of 144 samples from 2015-07-28T08:25:29.422.999. Part 116/147

Processed Tue Jul 28 10:32:26 2015 by ELM ver.2012-10-06 from 001__elm20150728_082528__dat00.bin



ELMAVAN 3D WAVEFORMS (Measured data sampled at 50 kHz) 51000 packets of 144 samples from 2015-07-28T08:25:29.422.999. Part 130/147

