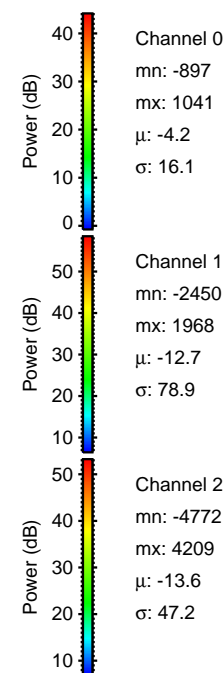
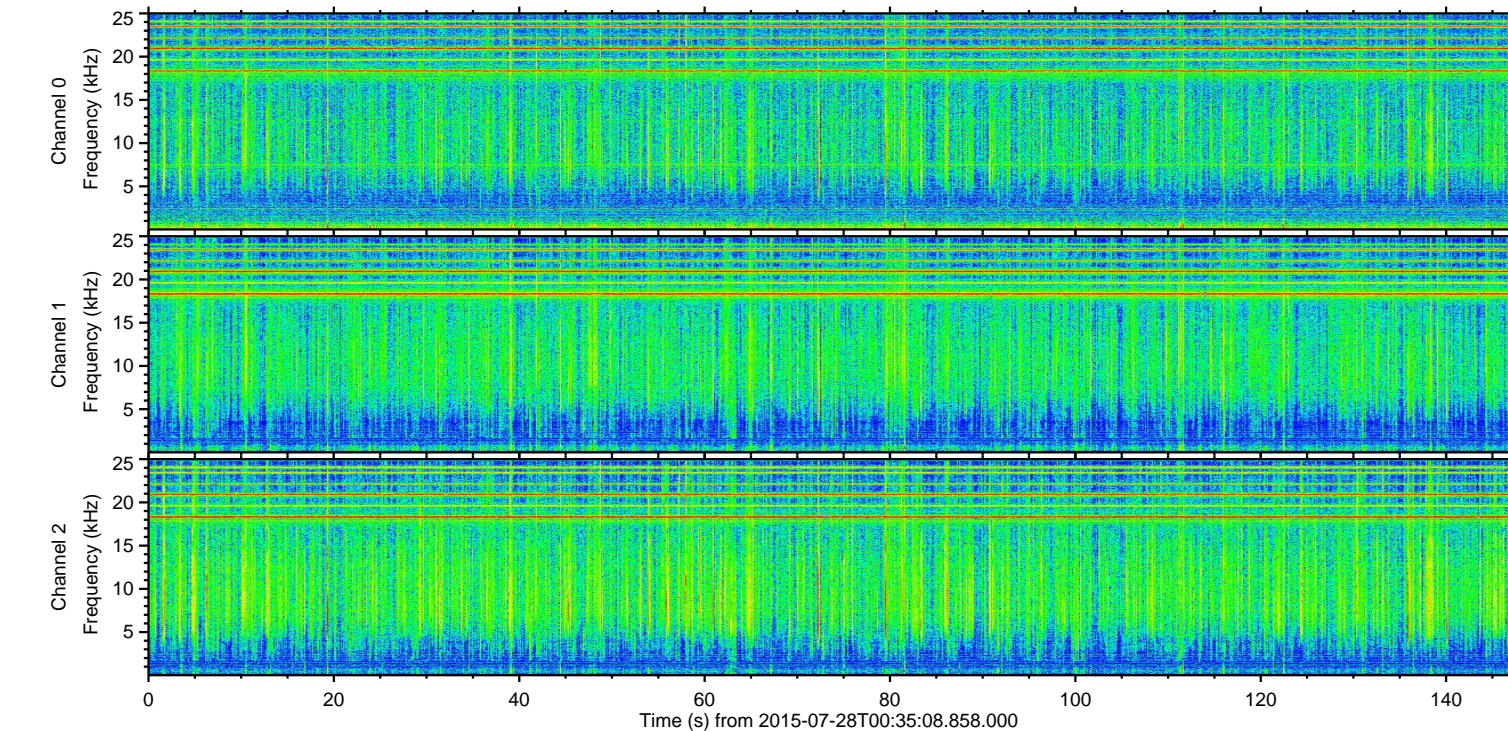
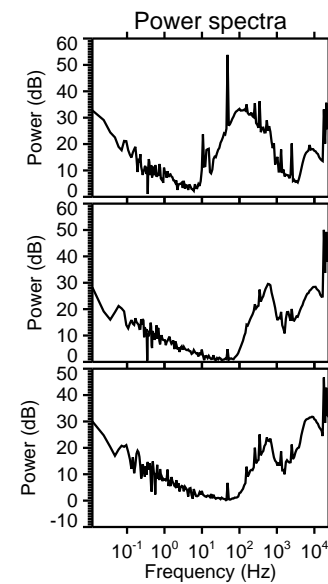
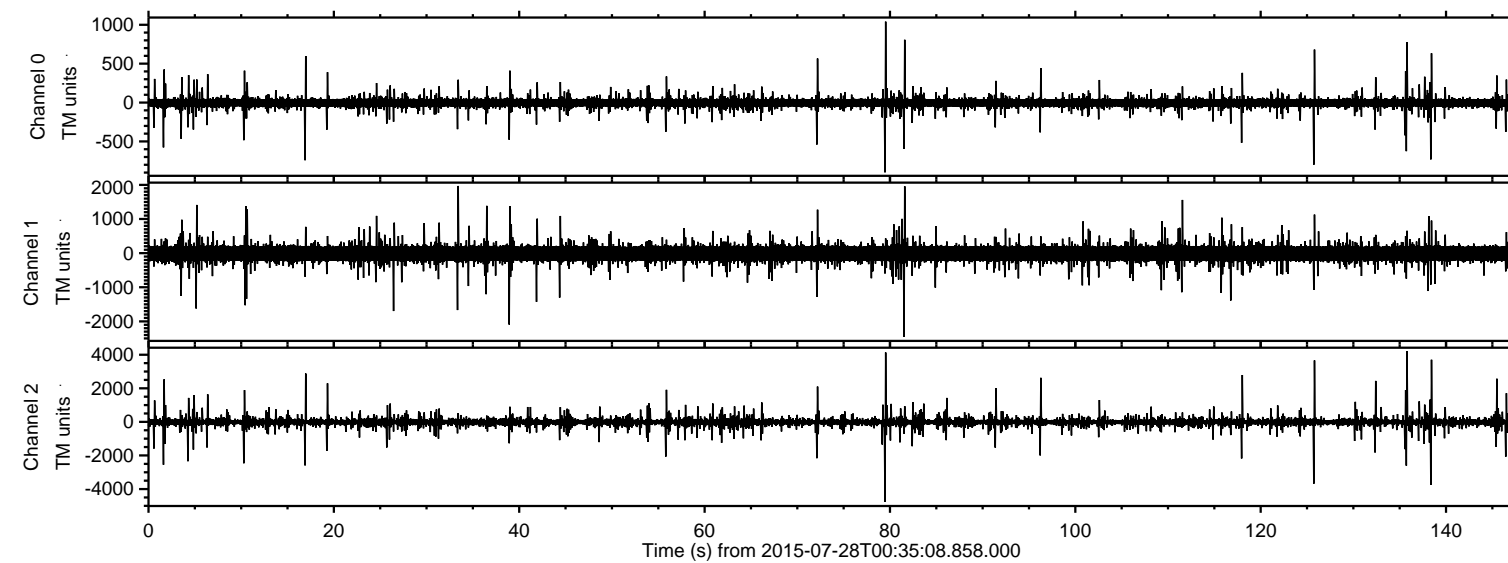


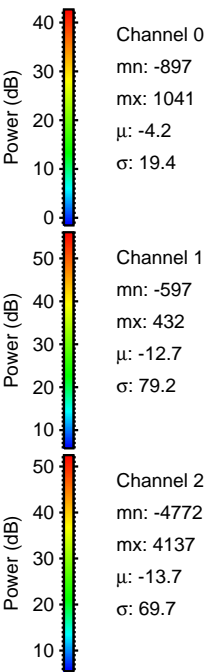
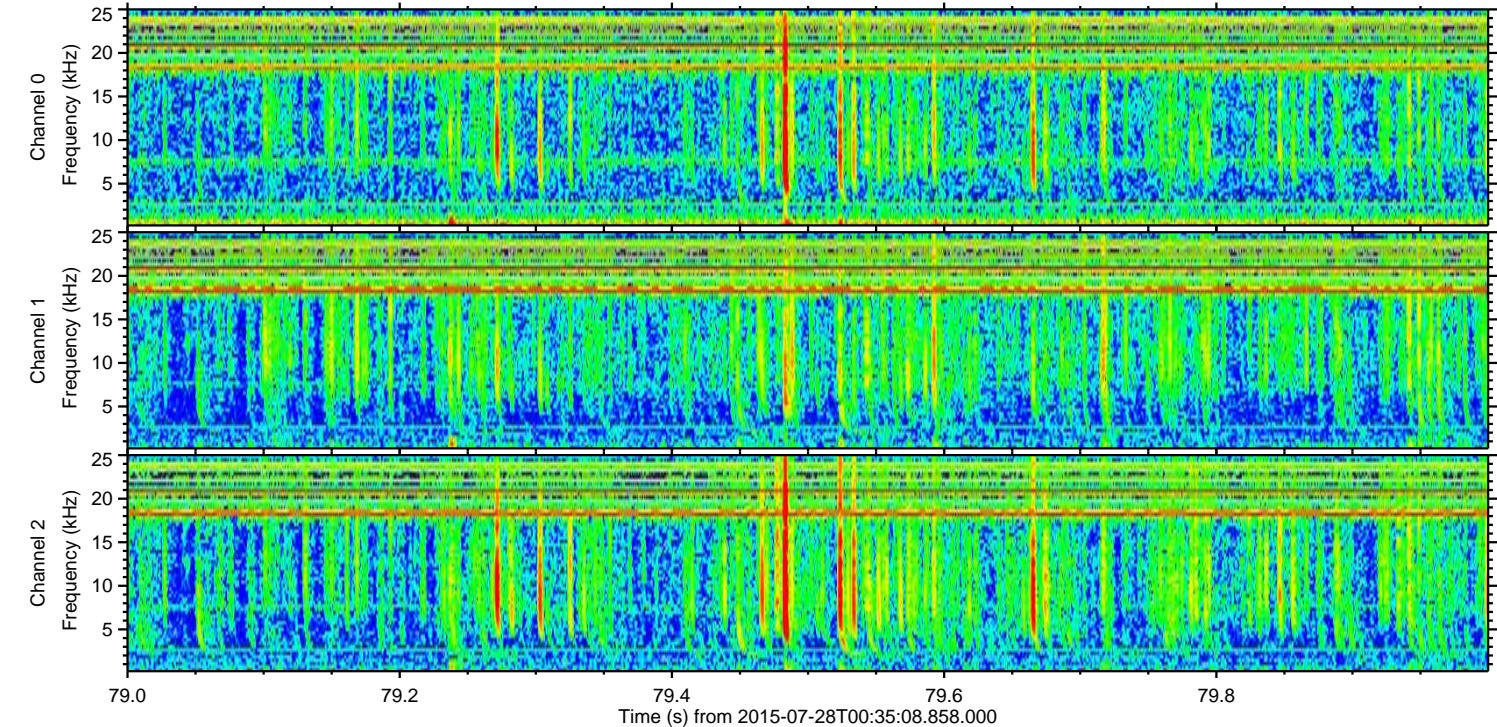
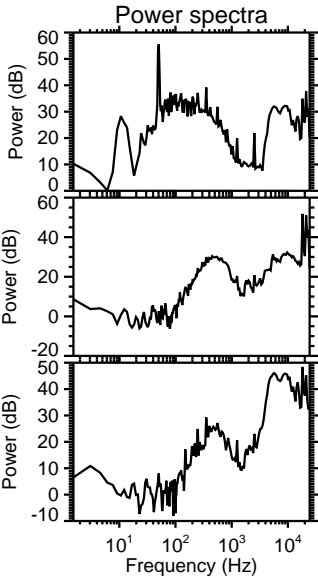
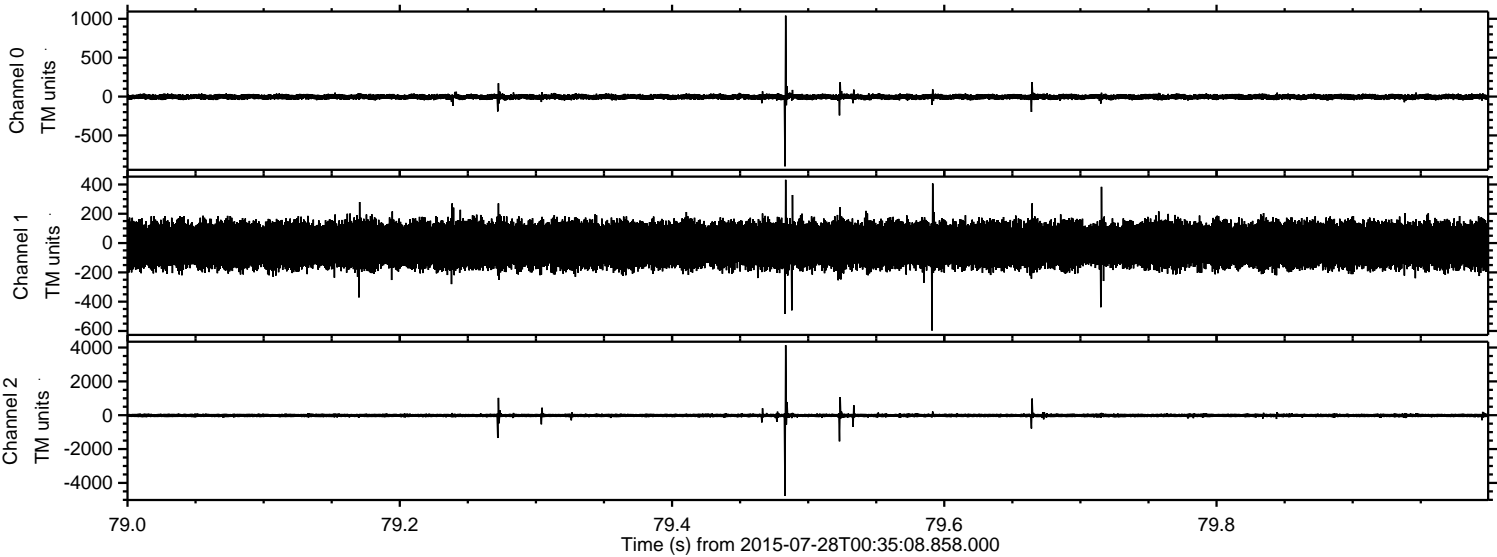
ELMAVAN 3D WAVEFORMS (Measured data sampled at 50 kHz) 51000 packets of 144 samples from 2015-07-28T00:35:08.858.000.

Processed Tue Jul 28 02:41:05 2015 by ELM ver.2012-10-06 from 001__elm20150728_003507__dat00.bin



ELMAVAN 3D WAVEFORMS (Measured data sampled at 50 kHz) 51000 packets of 144 samples from 2015-07-28T00:35:08.858.000. Part 80/147

Processed Tue Jul 28 02:41:21 2015 by ELM ver.2012-10-06 from 001__elm20150728_003507__dat00.bin



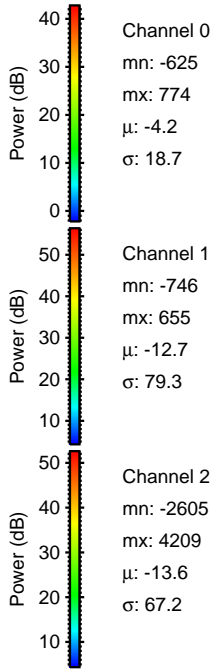
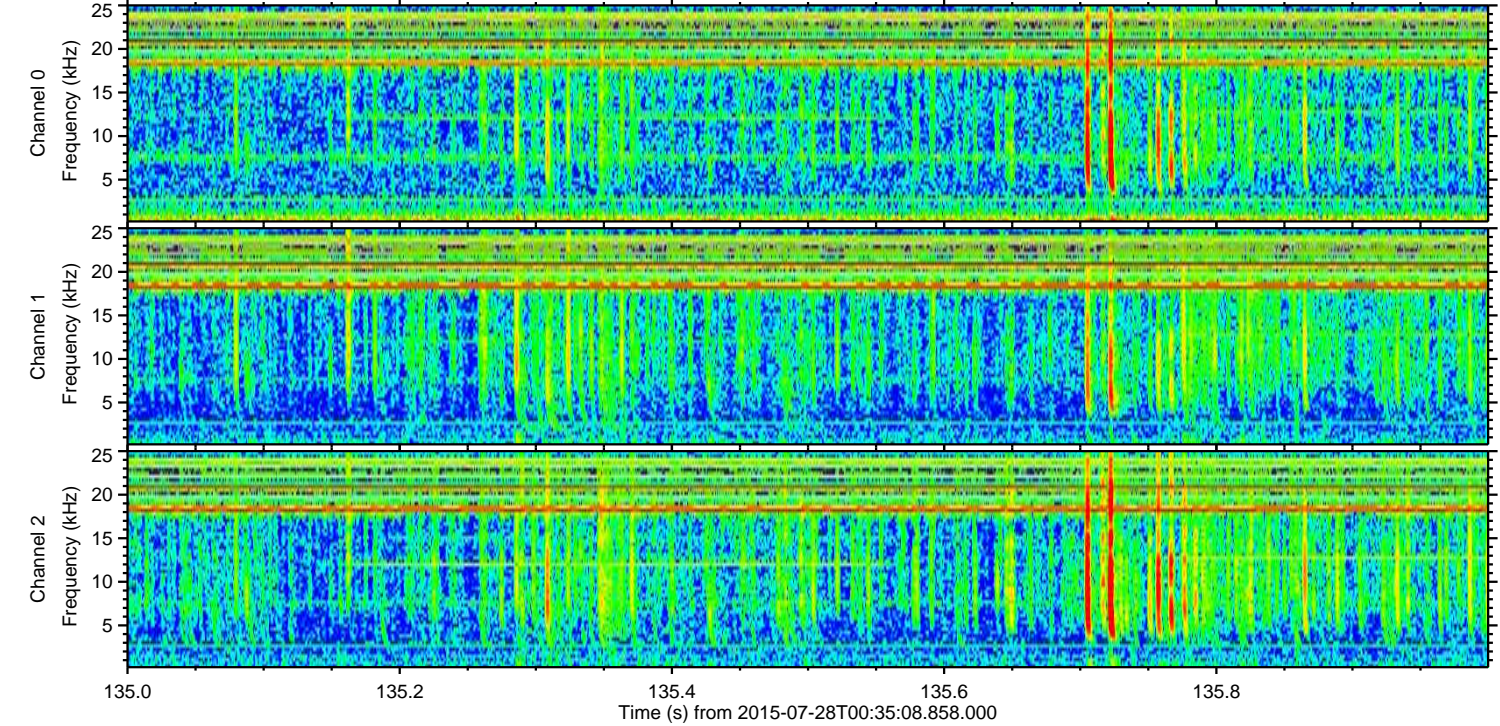
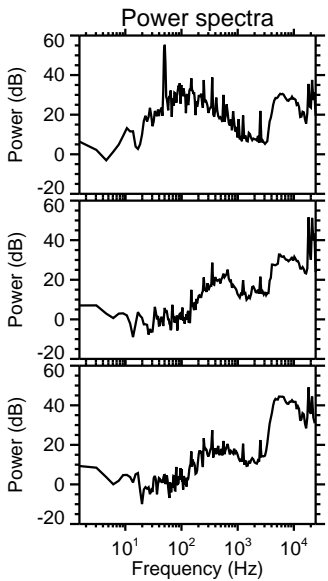
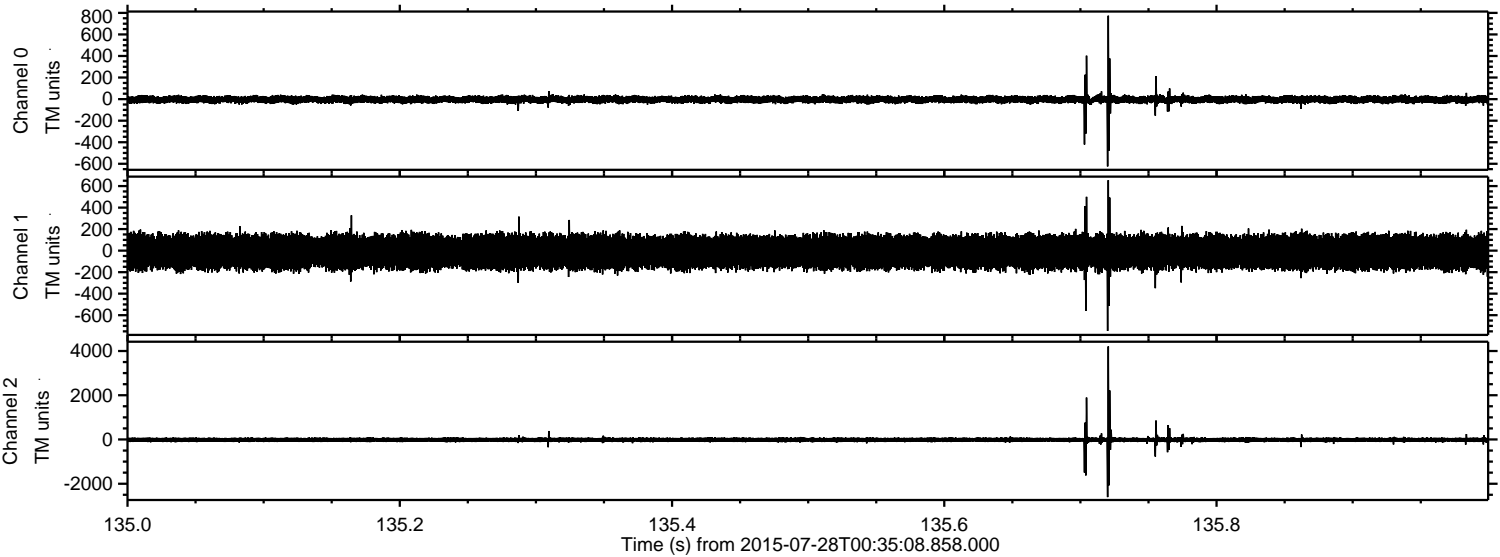
Channel 0
mn: -897
mx: 1041
 μ : -4.2
 σ : 19.4

Channel 1
mn: -597
mx: 432
 μ : -12.7
 σ : 79.2

Channel 2
mn: -4772
mx: 4137
 μ : -13.7
 σ : 69.7

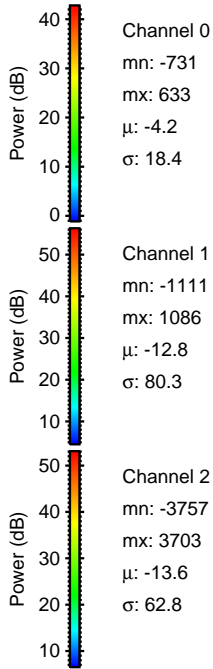
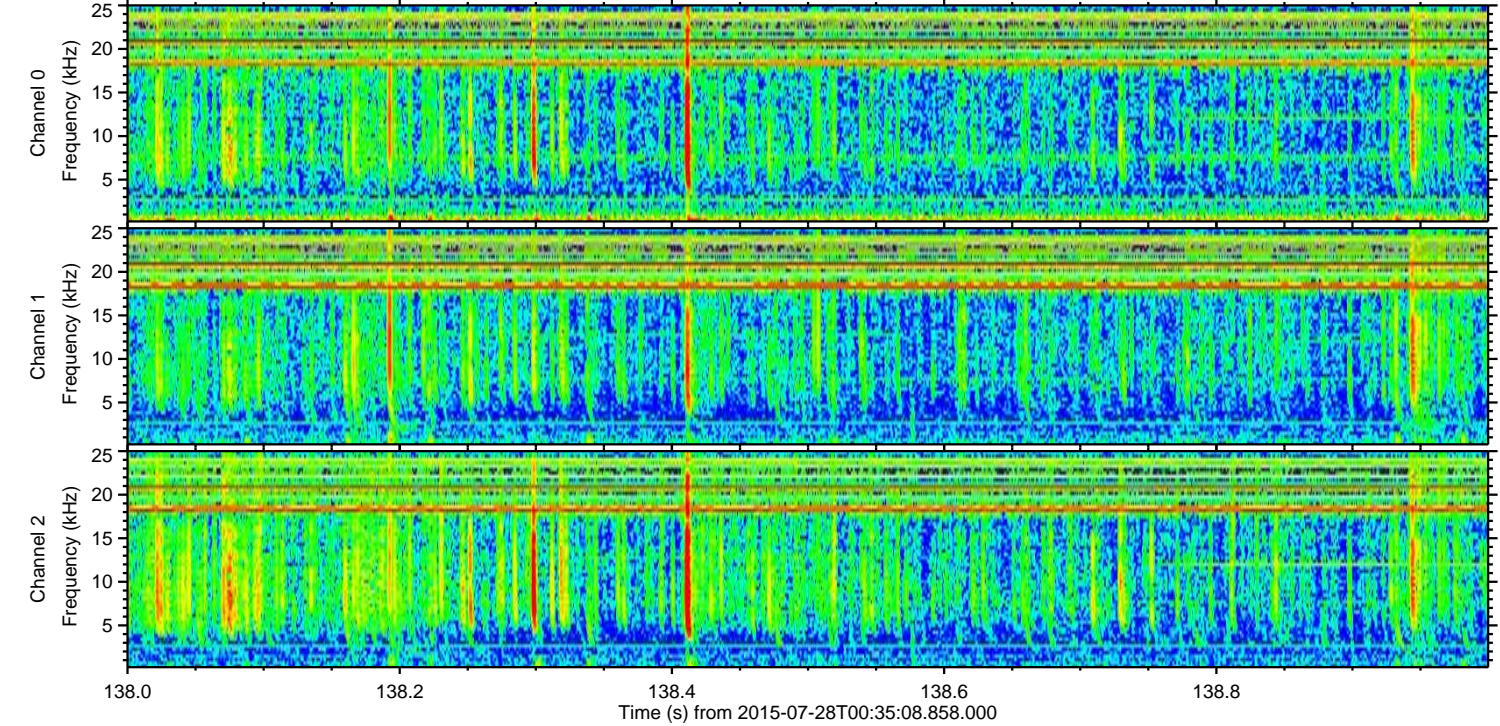
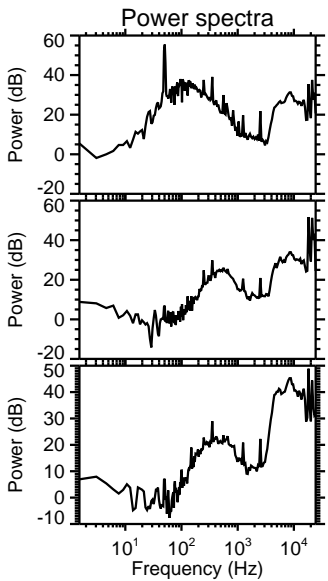
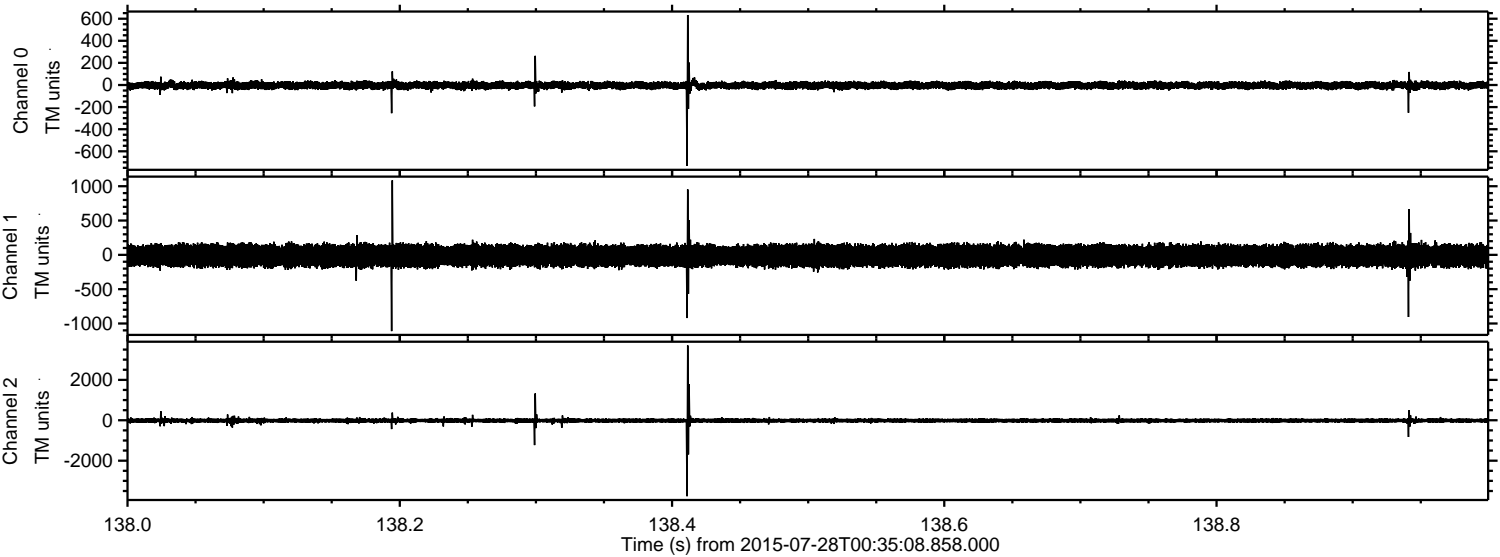
ELMAVAN 3D WAVEFORMS (Measured data sampled at 50 kHz) 51000 packets of 144 samples from 2015-07-28T00:35:08.858.000. Part 136/147

Processed Tue Jul 28 02:41:22 2015 by ELM ver.2012-10-06 from 001__elm20150728_003507__dat00.bin



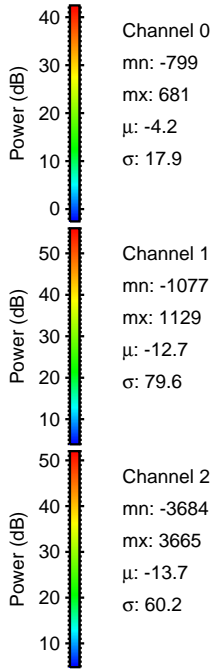
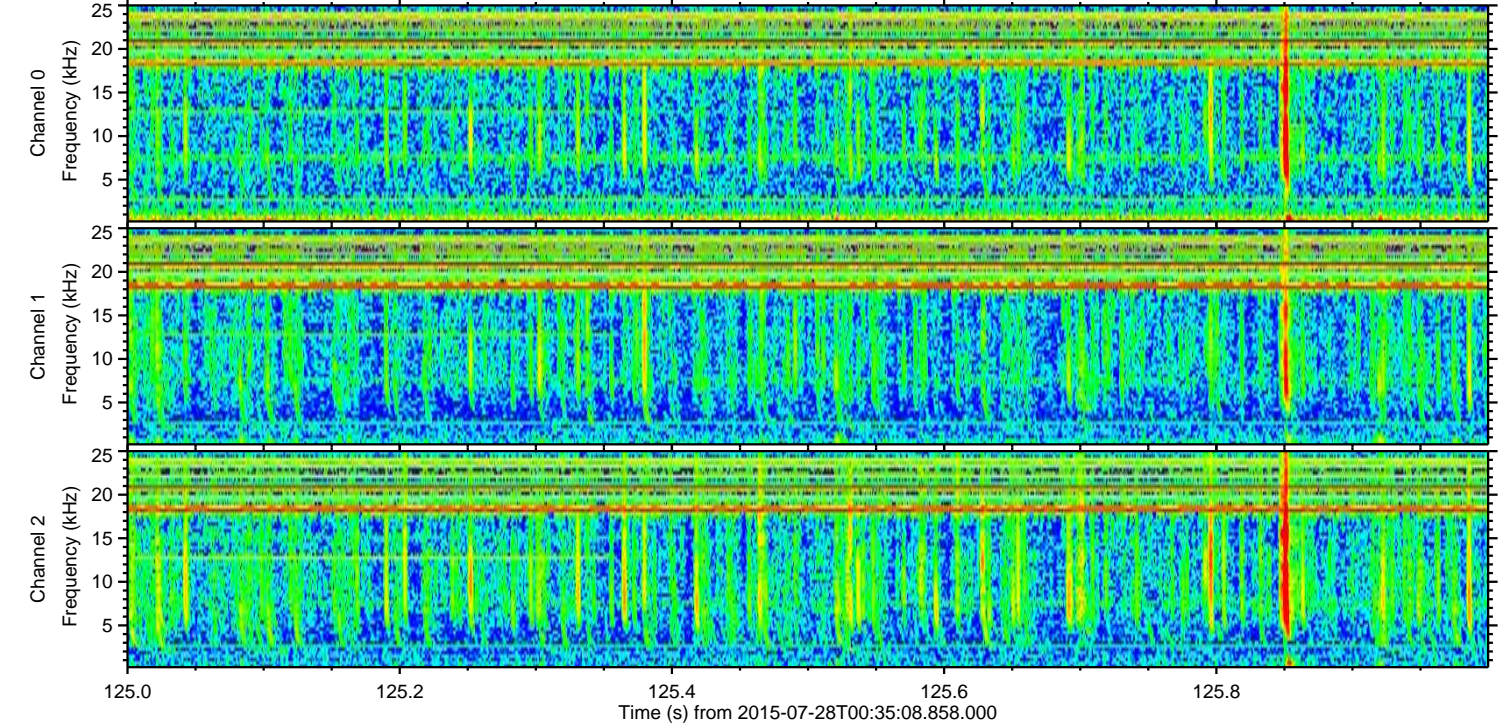
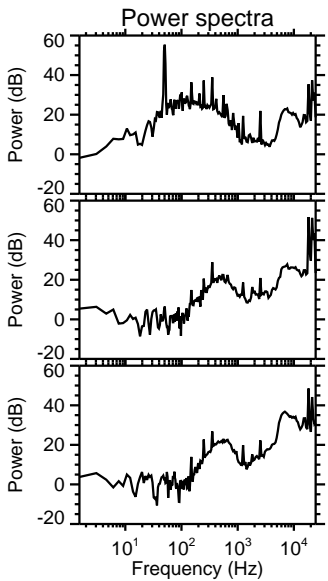
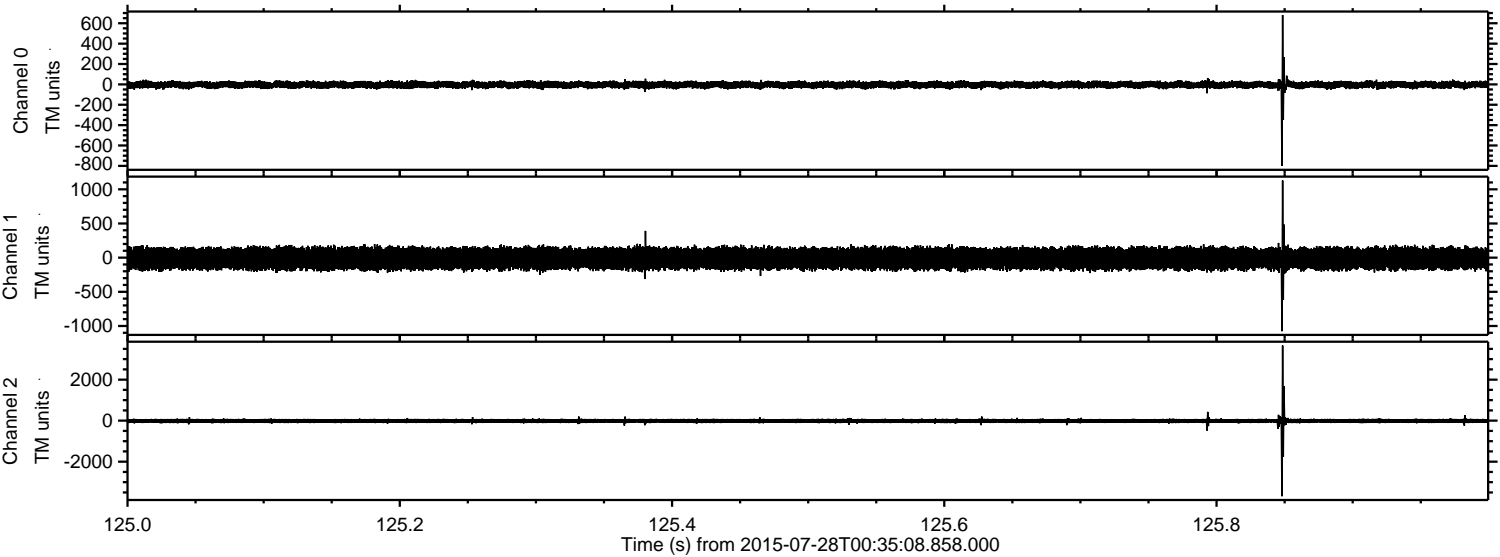
ELMAVAN 3D WAVEFORMS (Measured data sampled at 50 kHz) 51000 packets of 144 samples from 2015-07-28T00:35:08.858.000. Part 139/147

Processed Tue Jul 28 02:41:24 2015 by ELM ver.2012-10-06 from 001__elm20150728_003507__dat00.bin



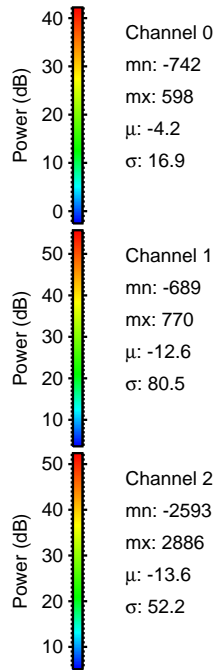
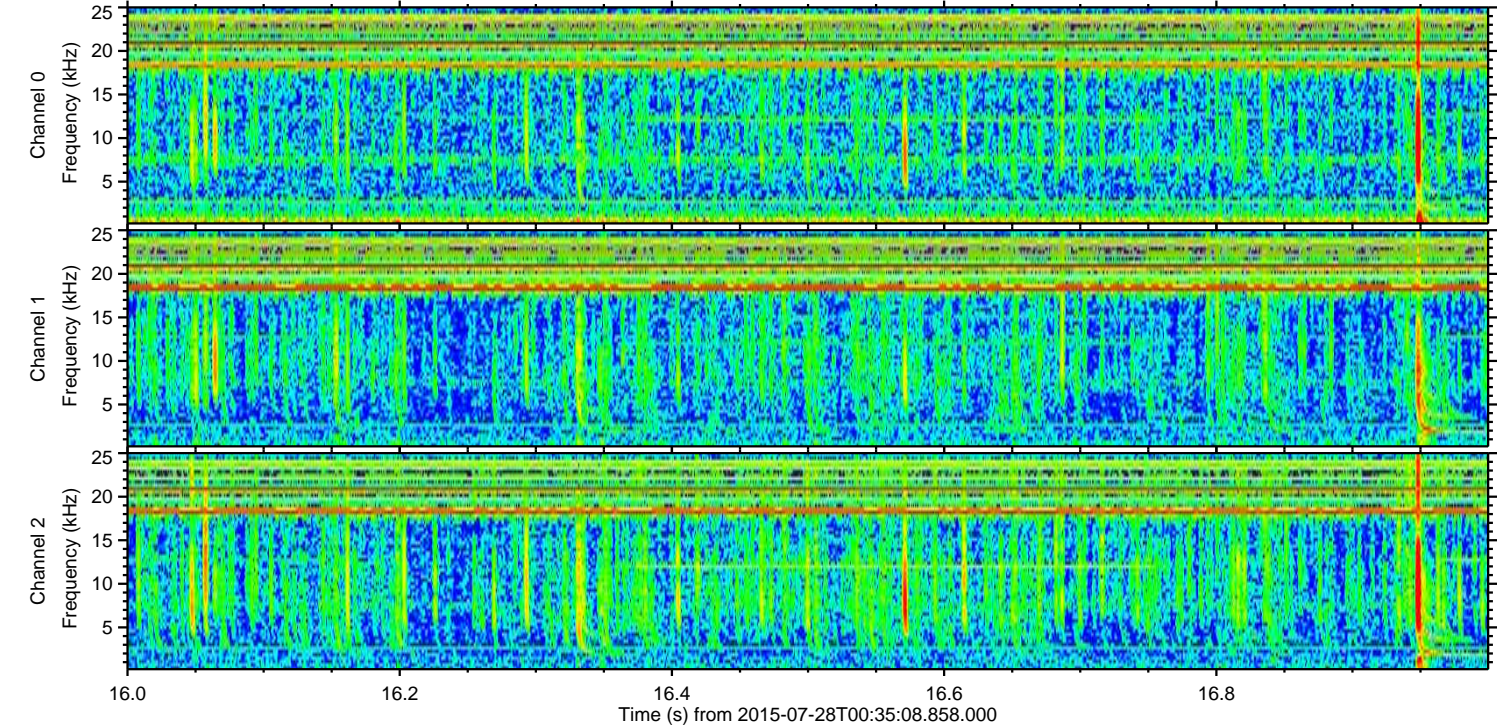
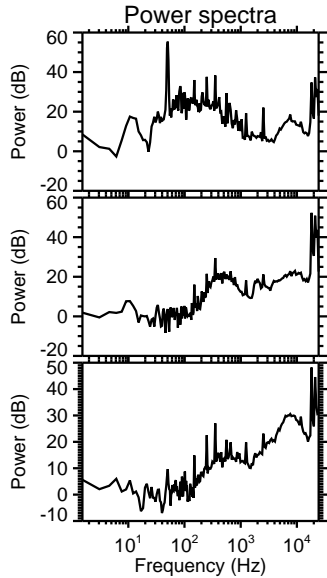
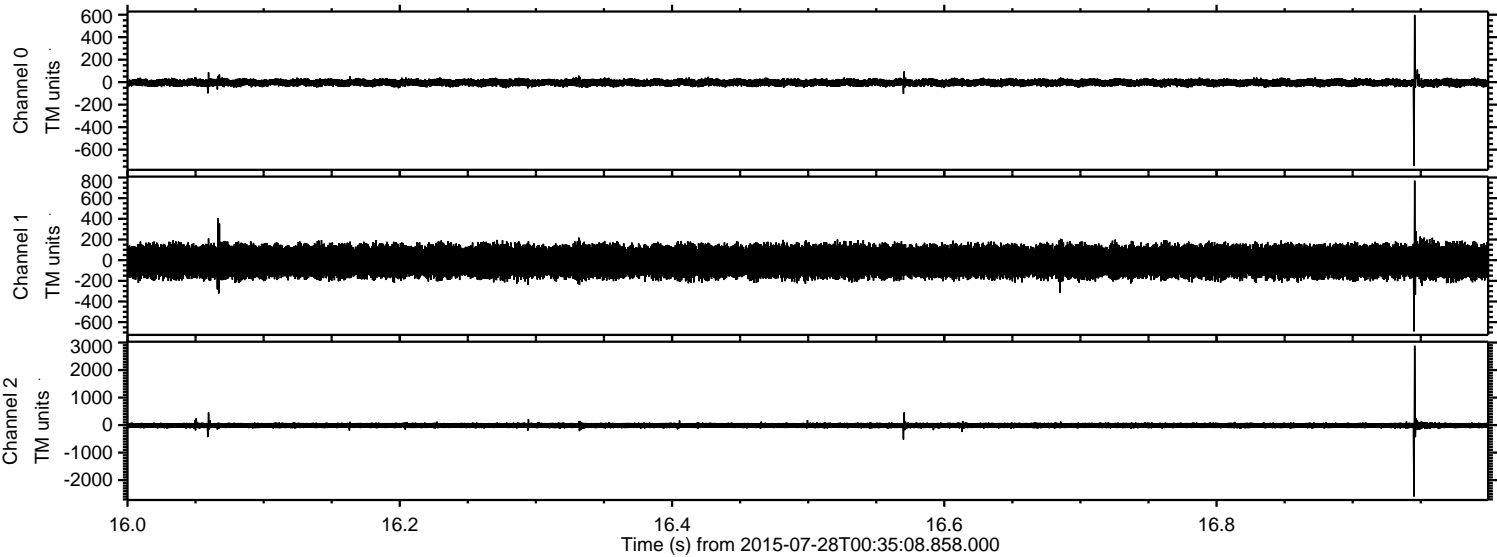
ELMAVAN 3D WAVEFORMS (Measured data sampled at 50 kHz) 51000 packets of 144 samples from 2015-07-28T00:35:08.858.000. Part 126/147

Processed Tue Jul 28 02:41:25 2015 by ELM ver.2012-10-06 from 001__elm20150728_003507__dat00.bin



ELMAVAN 3D WAVEFORMS (Measured data sampled at 50 kHz) 51000 packets of 144 samples from 2015-07-28T00:35:08.858.000. Part 17/147

Processed Tue Jul 28 02:41:26 2015 by ELM ver.2012-10-06 from 001__elm20150728_003507__dat00.bin



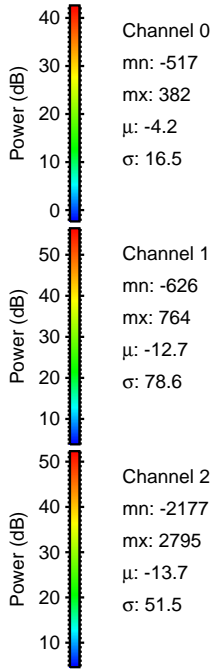
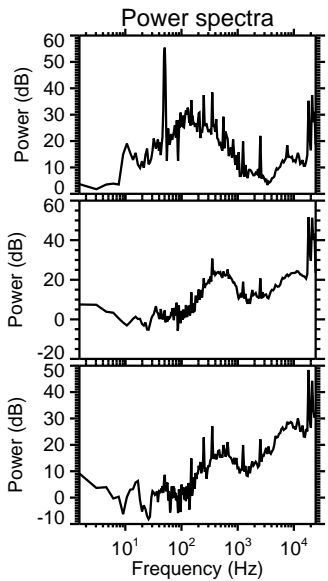
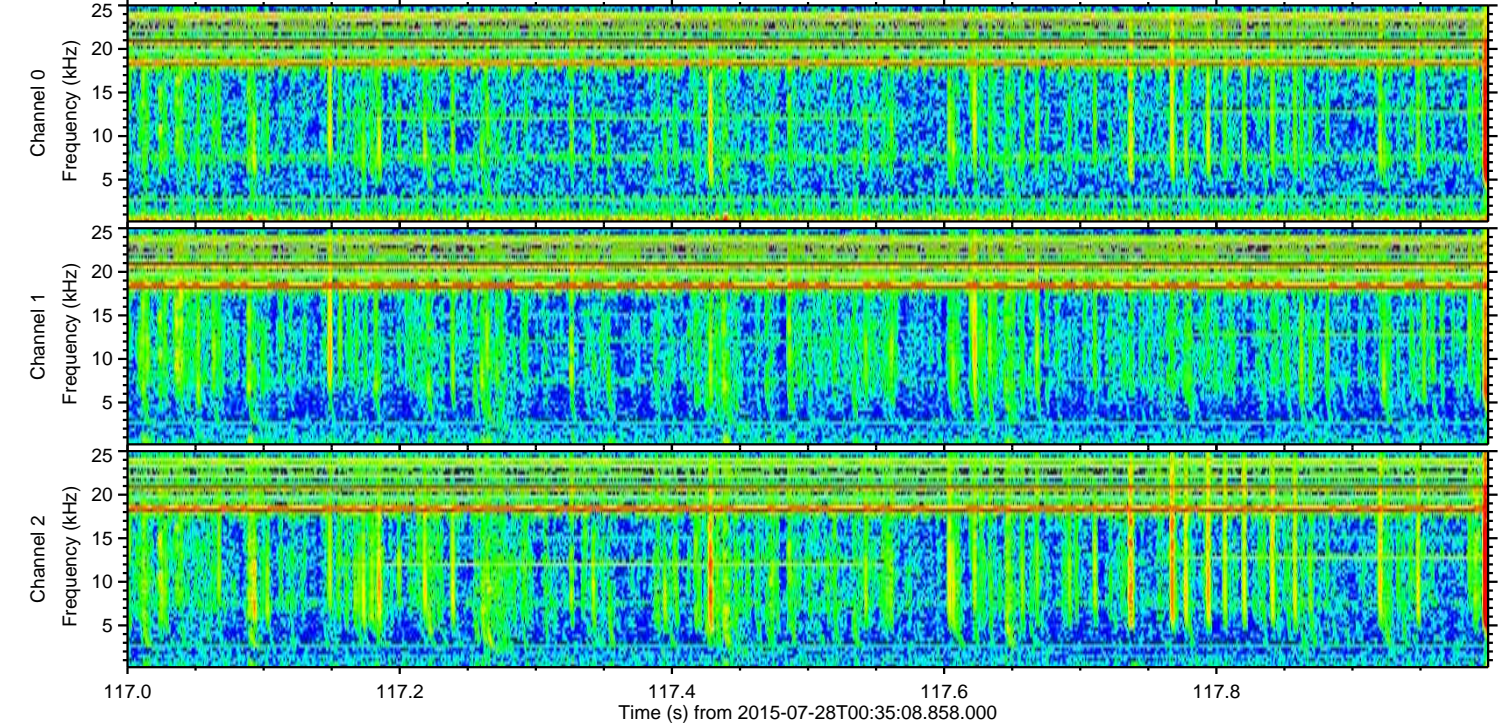
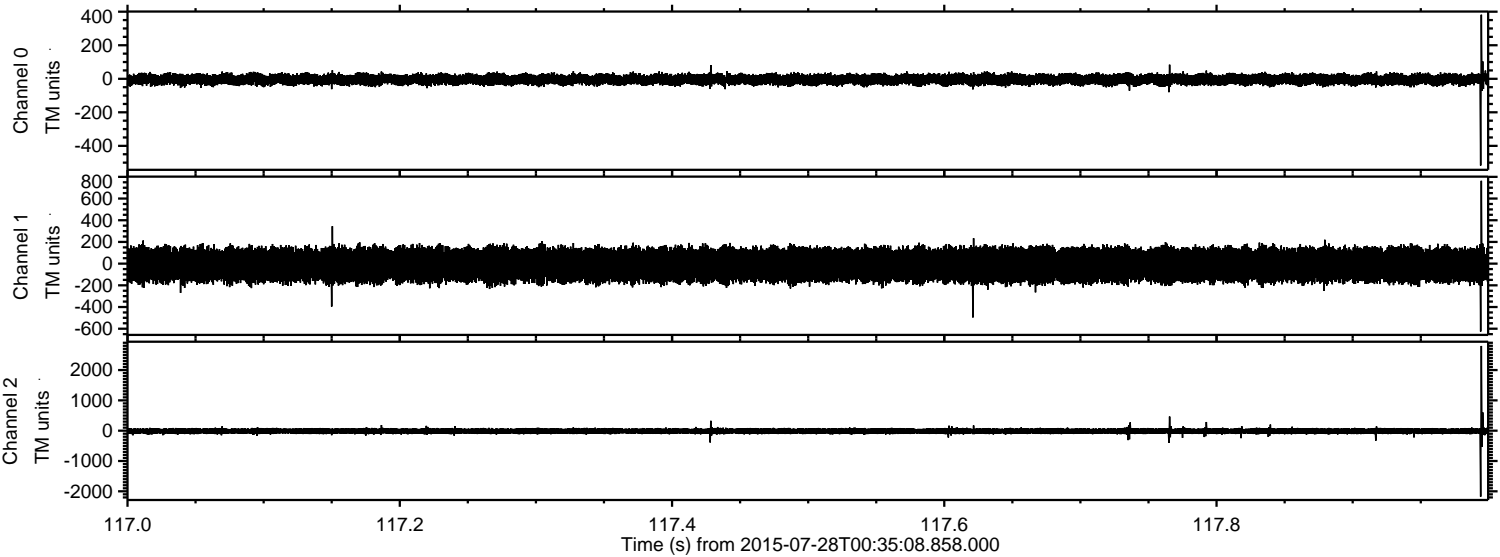
Channel 0
mn: -742
mx: 598
 μ : -4.2
 σ : 16.9

Channel 1
mn: -689
mx: 770
 μ : -12.6
 σ : 80.5

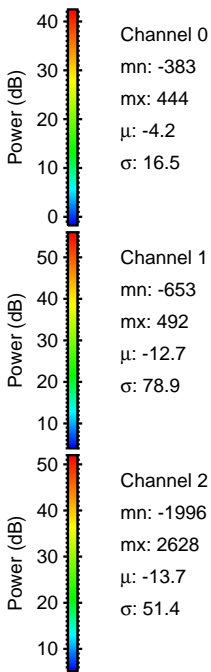
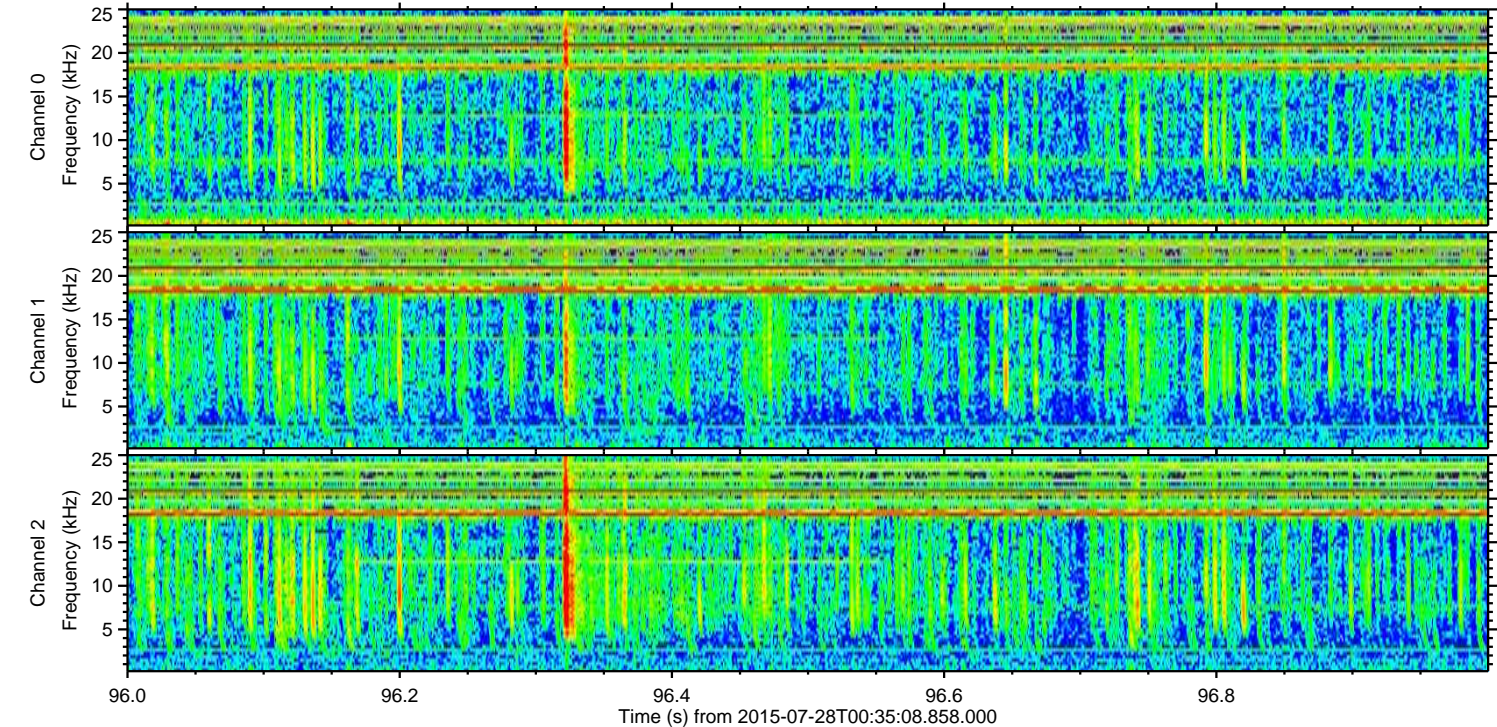
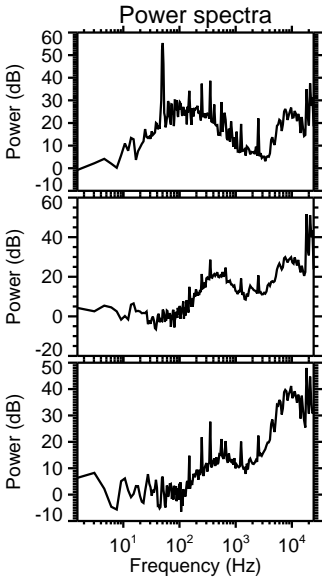
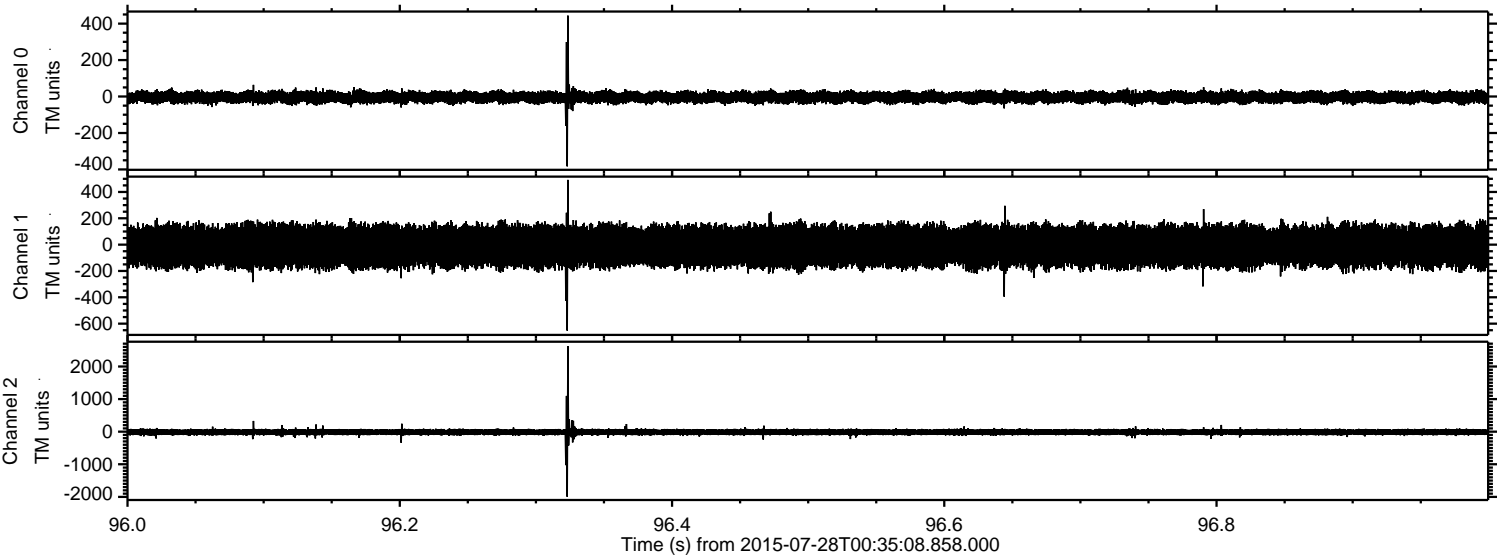
Channel 2
mn: -2593
mx: 2886
 μ : -13.6
 σ : 52.2

ELMAVAN 3D WAVEFORMS (Measured data sampled at 50 kHz) 51000 packets of 144 samples from 2015-07-28T00:35:08.858.000. Part 118/147

Processed Tue Jul 28 02:41:27 2015 by ELM ver.2012-10-06 from 001__elm20150728_003507__dat00.bin

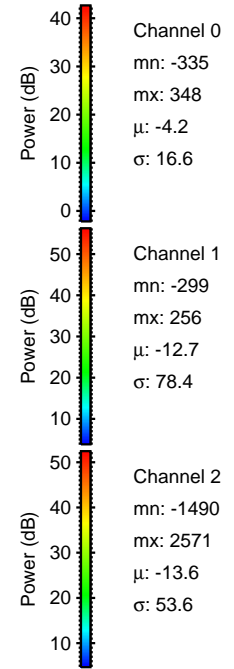
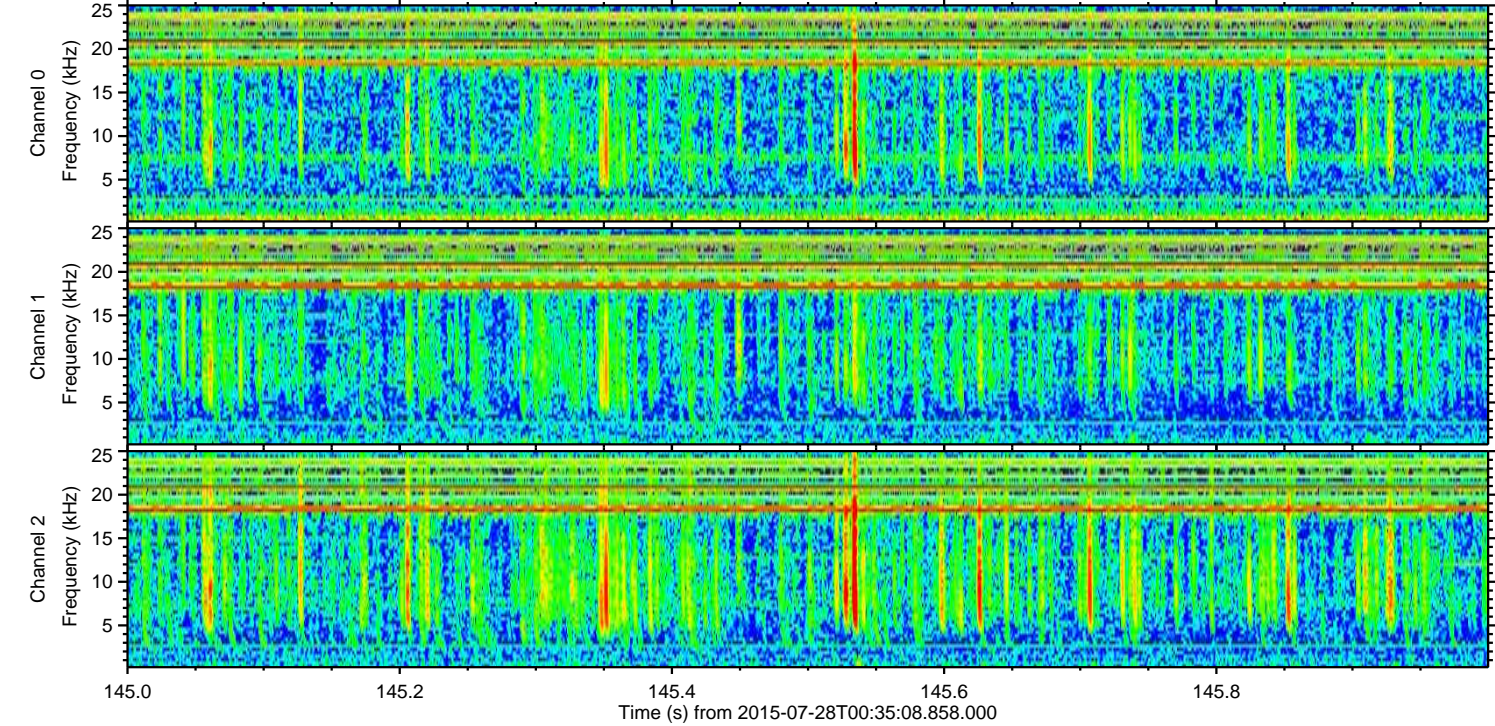
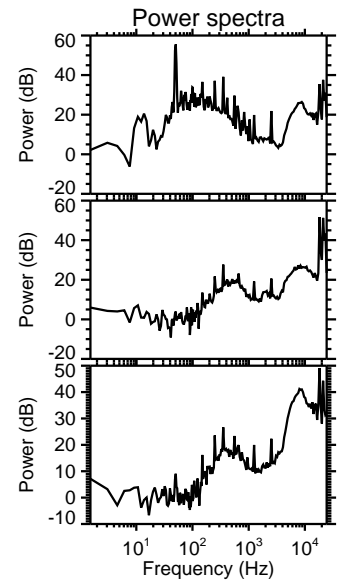
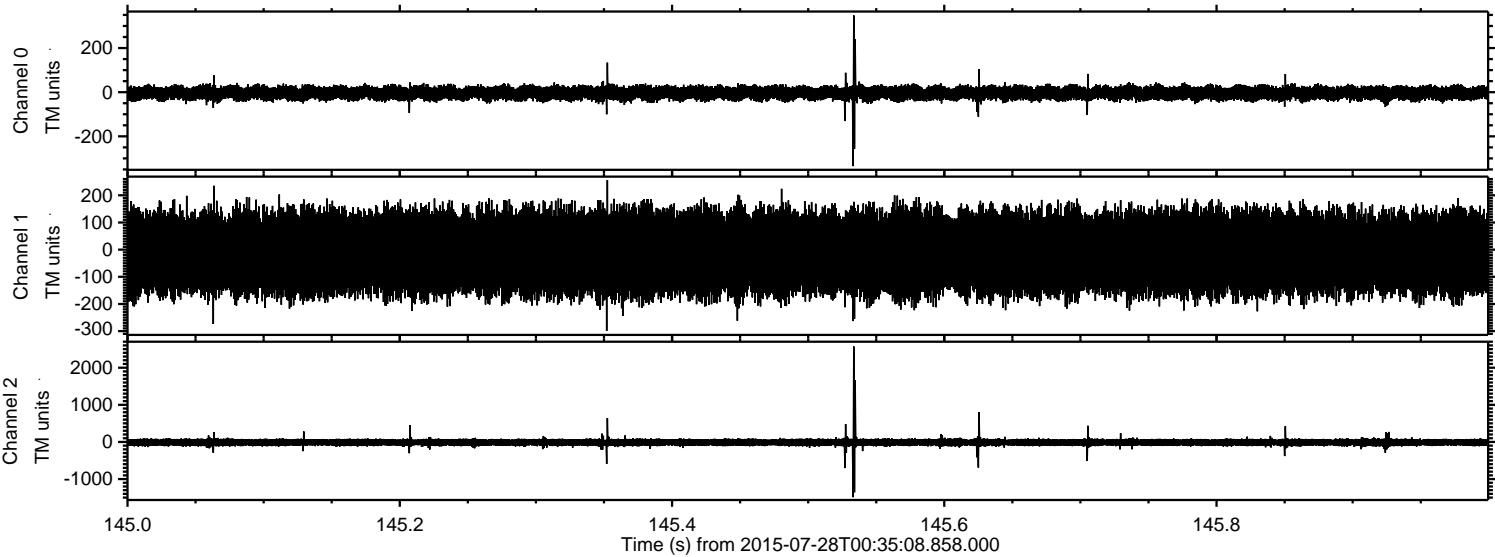


Processed Tue Jul 28 02:41:28 2015 by ELM ver.2012-10-06 from 001__elm20150728_003507__dat00.bin



ELMAVAN 3D WAVEFORMS (Measured data sampled at 50 kHz) 51000 packets of 144 samples from 2015-07-28T00:35:08.858.000. Part 146/147

Processed Tue Jul 28 02:41:29 2015 by ELM ver.2012-10-06 from 001__elm20150728_003507__dat00.bin



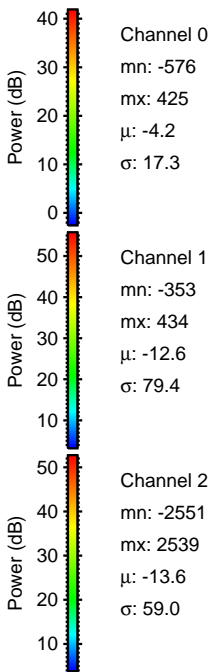
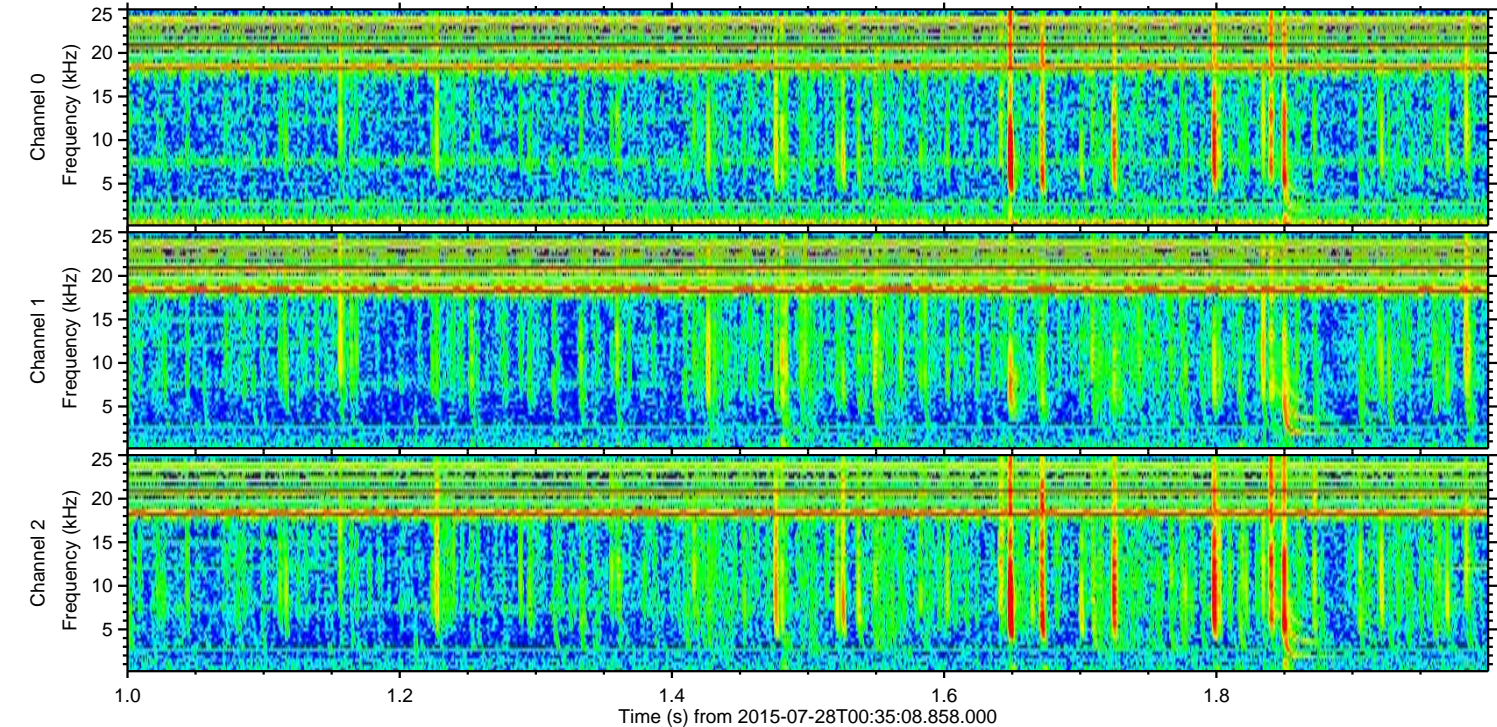
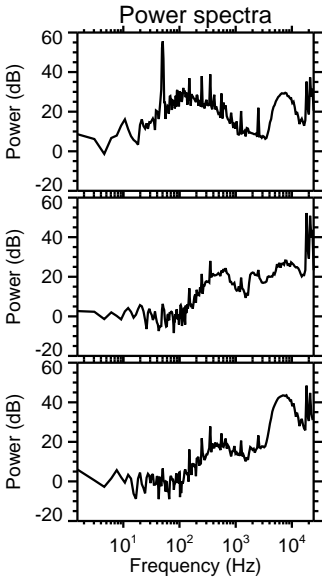
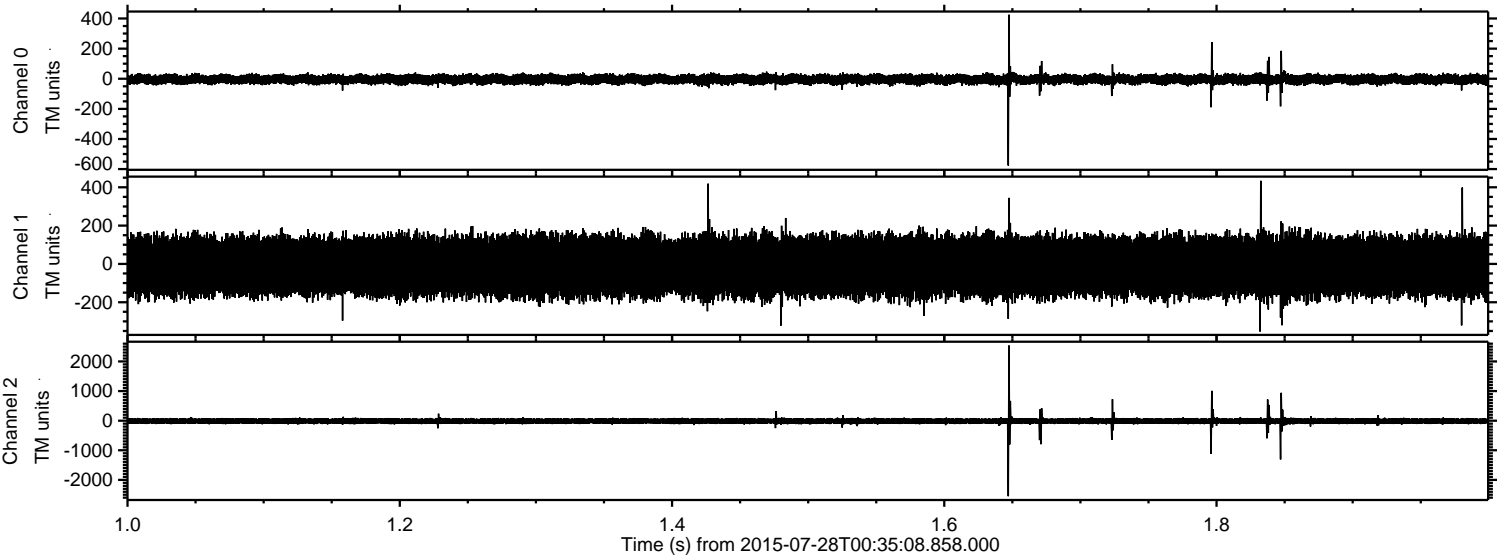
Channel 0
mn: -335
mx: 348
 μ : -4.2
 σ : 16.6

Channel 1
mn: -299
mx: 256
 μ : -12.7
 σ : 78.4

Channel 2
mn: -1490
mx: 2571
 μ : -13.6
 σ : 53.6

ELMAVAN 3D WAVEFORMS (Measured data sampled at 50 kHz) 51000 packets of 144 samples from 2015-07-28T00:35:08.858.000. Part 2/147

Processed Tue Jul 28 02:41:30 2015 by ELM ver.2012-10-06 from 001__elm20150728_003507__dat00.bin



Channel 0
mn: -576
mx: 425
 μ : -4.2
 σ : 17.3

Channel 1
mn: -353
mx: 434
 μ : -12.6
 σ : 79.4

Channel 2
mn: -2551
mx: 2539
 μ : -13.6
 σ : 59.0

ELMAVAN 3D WAVEFORMS (Measured data sampled at 50 kHz) 51000 packets of 144 samples from 2015-07-28T00:35:08.858.000. Part 105/147

