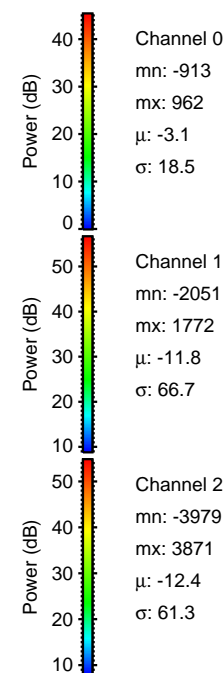
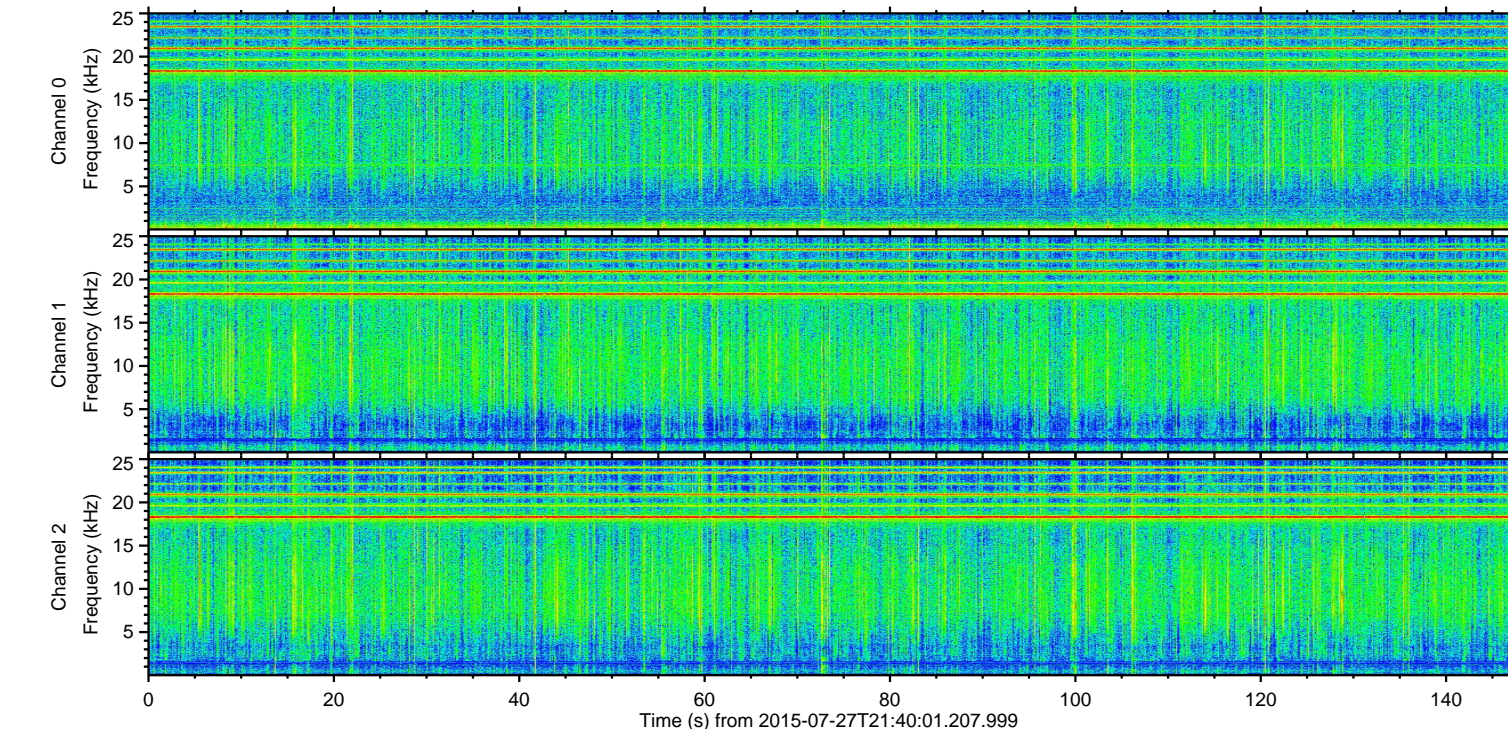
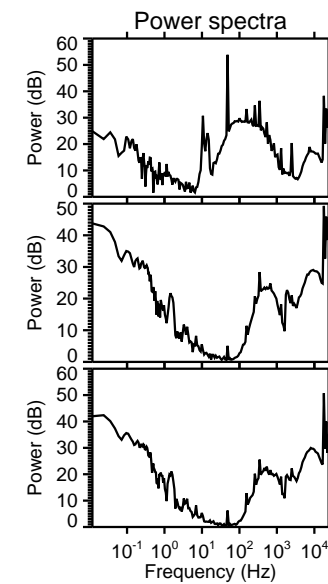
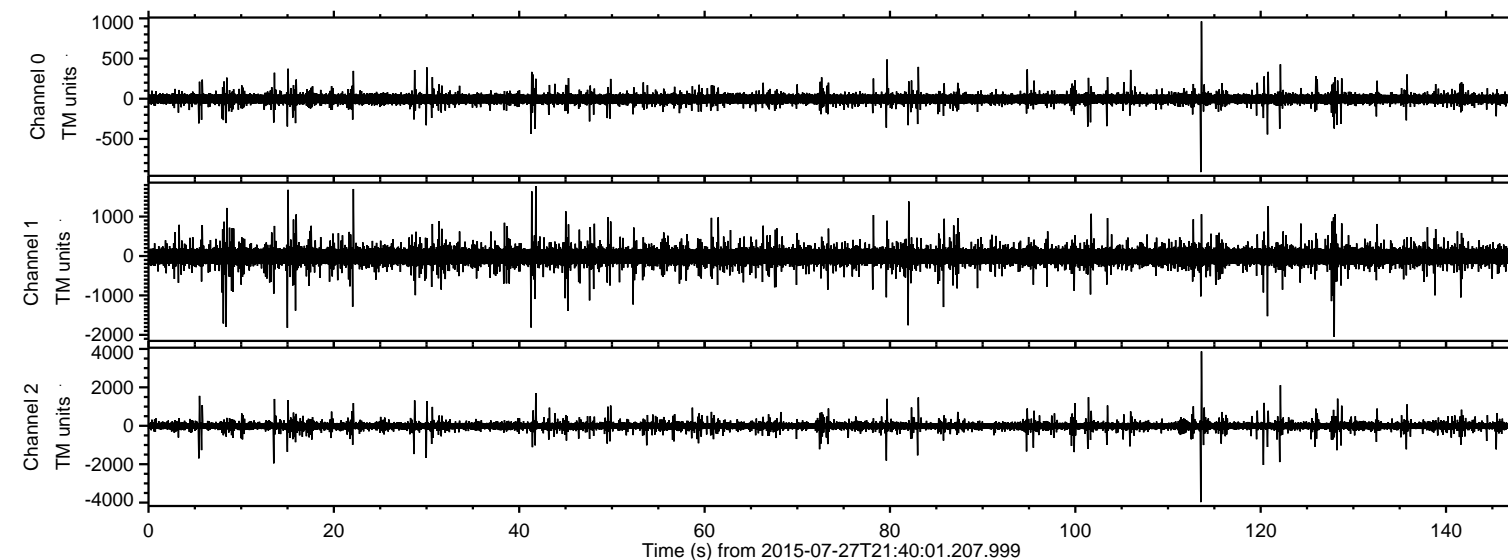


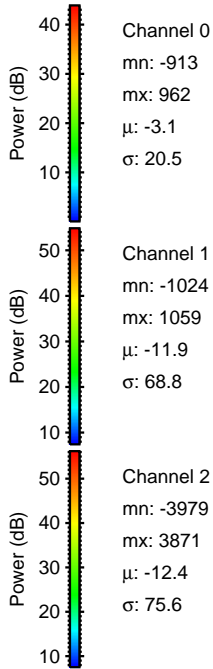
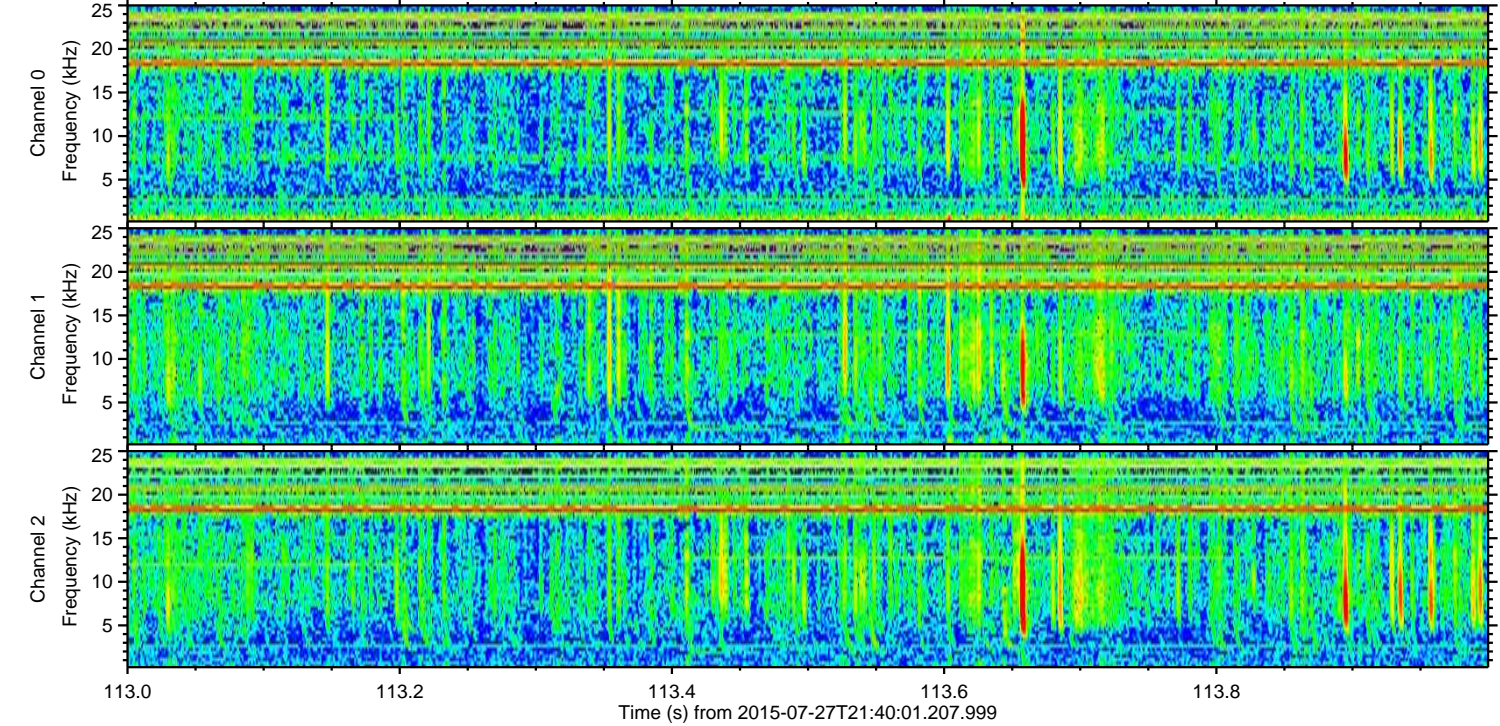
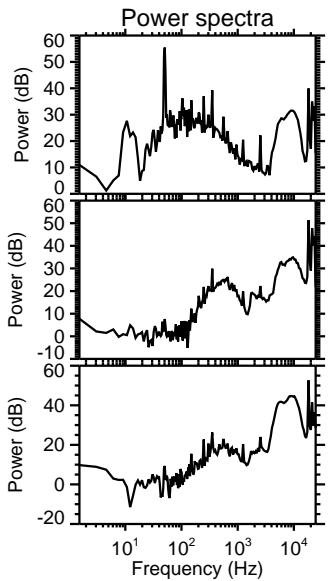
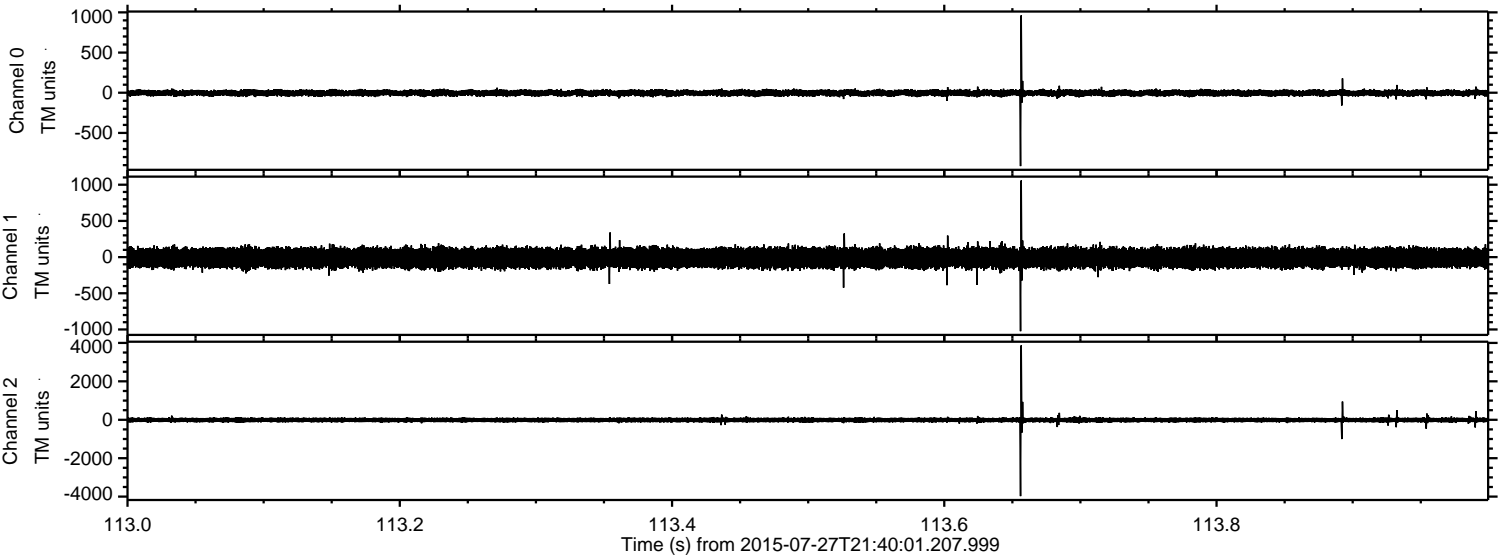
ELMAVAN 3D WAVEFORMS (Measured data sampled at 50 kHz) 51000 packets of 144 samples from 2015-07-27T21:40:01.207.999.

Processed Mon Jul 27 23:46:36 2015 by ELM ver.2012-10-06 from 001__elm20150727_214000__dat00.bin



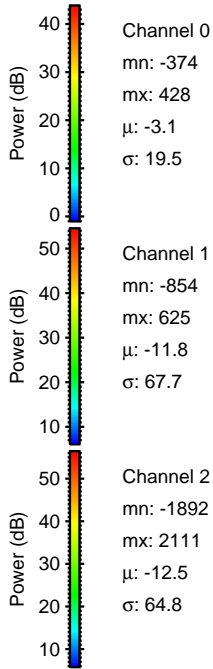
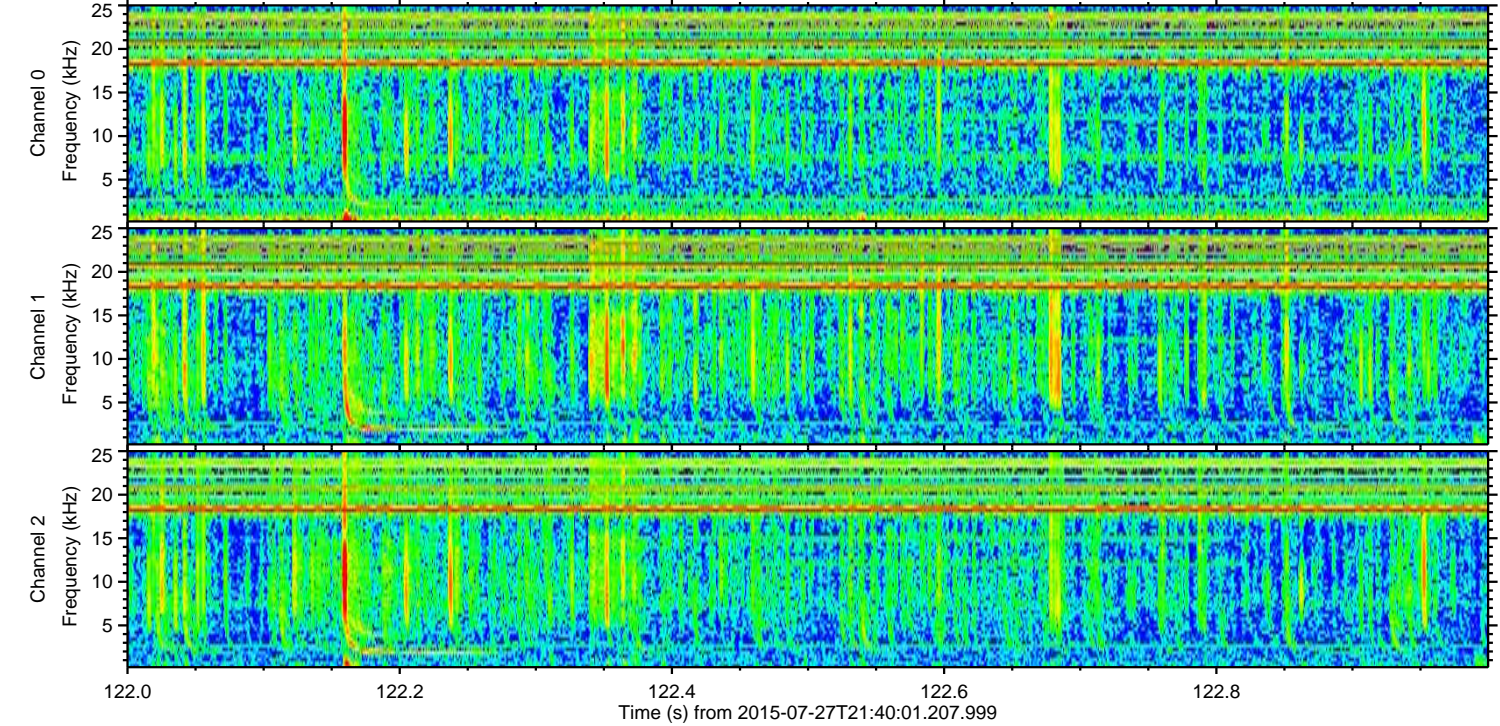
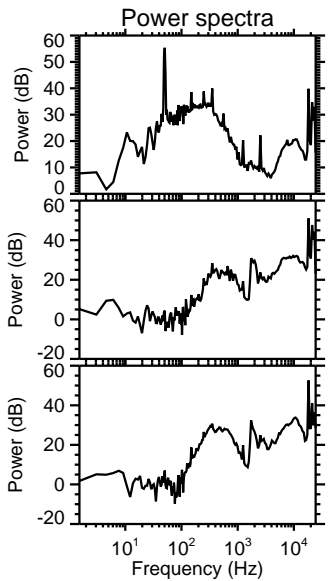
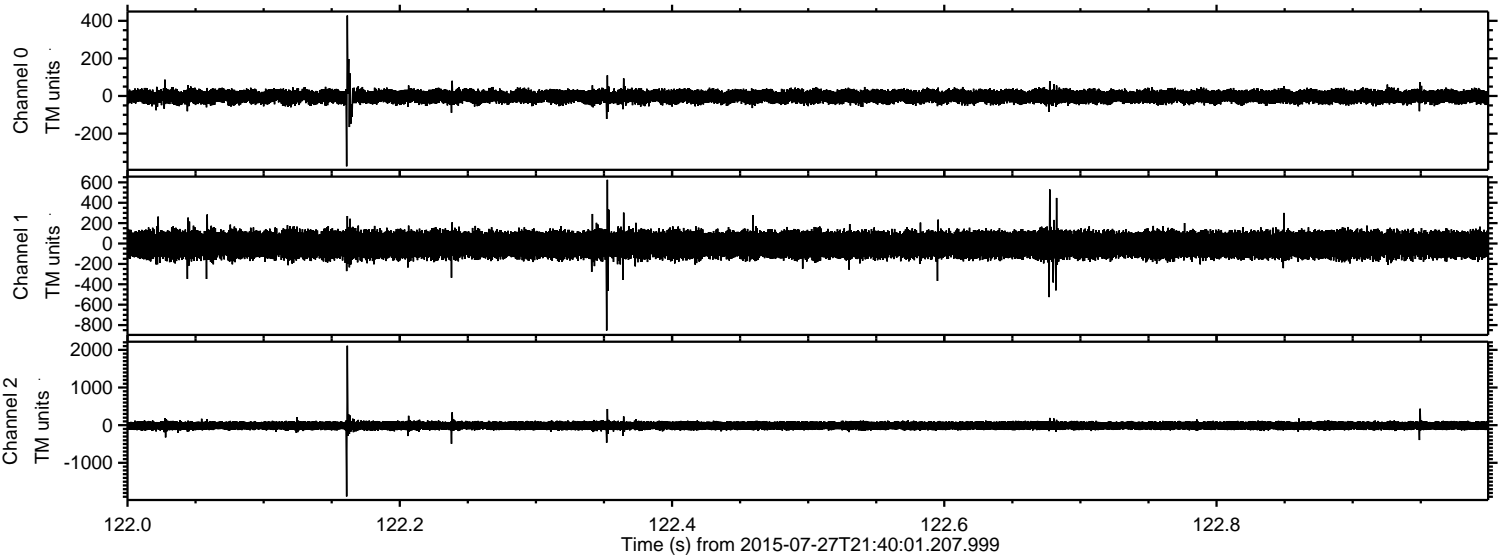
ELMAVAN 3D WAVEFORMS (Measured data sampled at 50 kHz) 51000 packets of 144 samples from 2015-07-27T21:40:01.207.999. Part 114/147

Processed Mon Jul 27 23:46:52 2015 by ELM ver.2012-10-06 from 001__elm20150727_214000__dat00.bin



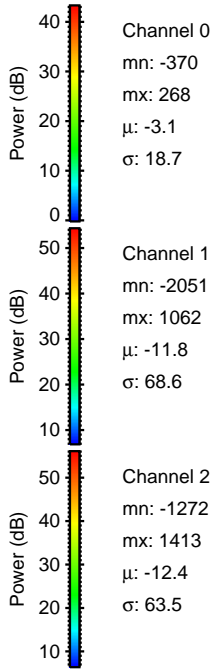
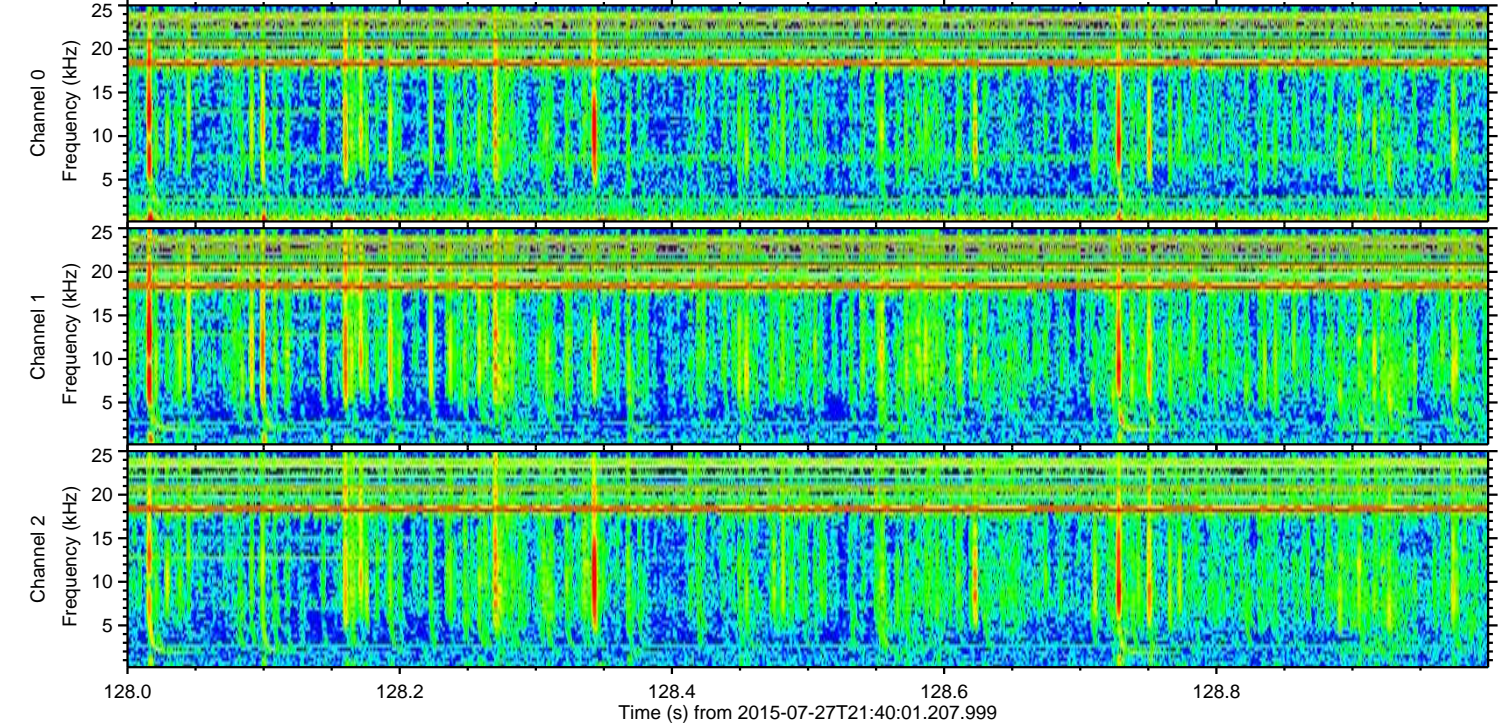
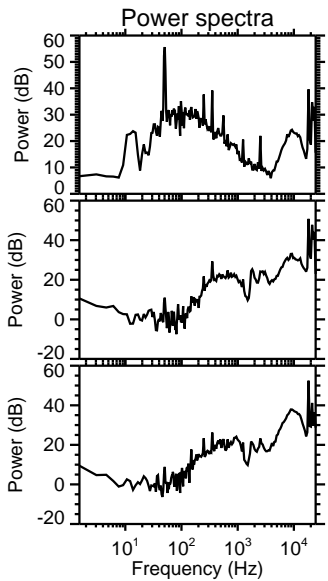
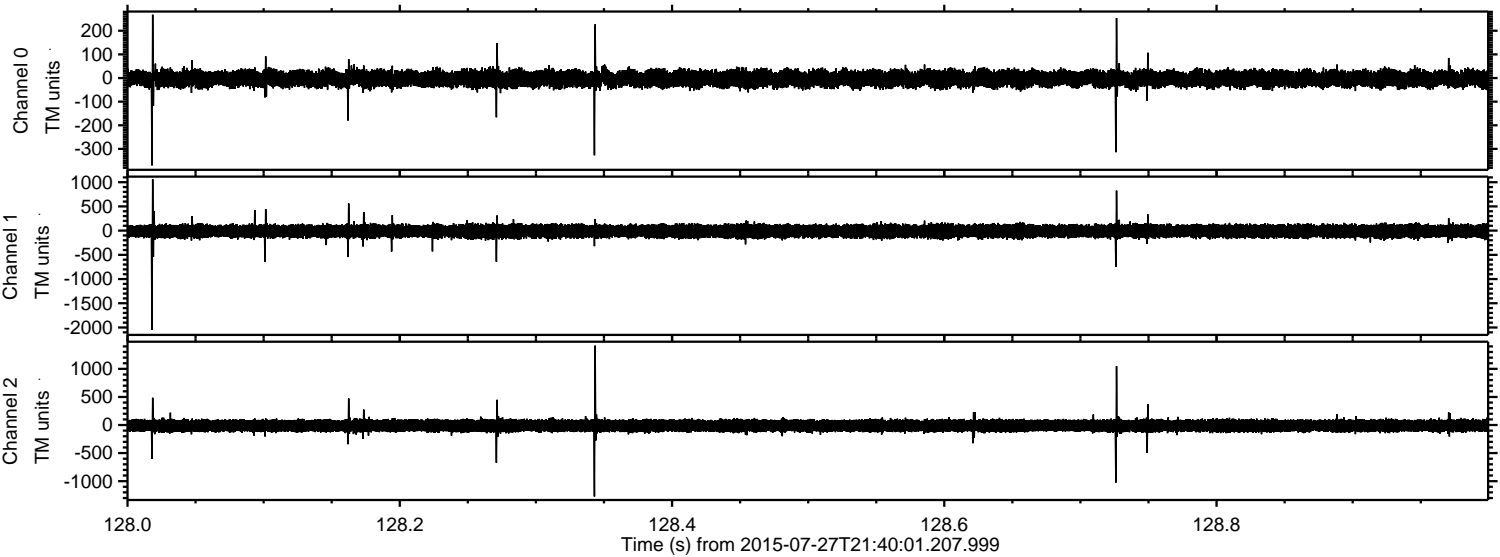
ELMAVAN 3D WAVEFORMS (Measured data sampled at 50 kHz) 51000 packets of 144 samples from 2015-07-27T21:40:01.207.999. Part 123/147

Processed Mon Jul 27 23:46:53 2015 by ELM ver.2012-10-06 from 001__elm20150727_214000__dat00.bin



ELMAVAN 3D WAVEFORMS (Measured data sampled at 50 kHz) 51000 packets of 144 samples from 2015-07-27T21:40:01.207.999. Part 129/147

Processed Mon Jul 27 23:46:54 2015 by ELM ver.2012-10-06 from 001__elm20150727_214000__dat00.bin



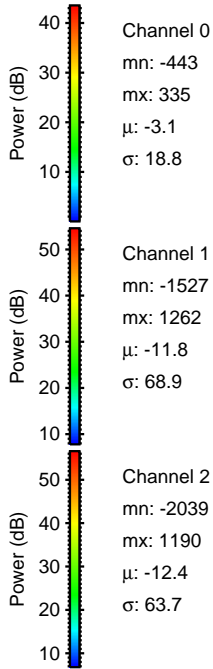
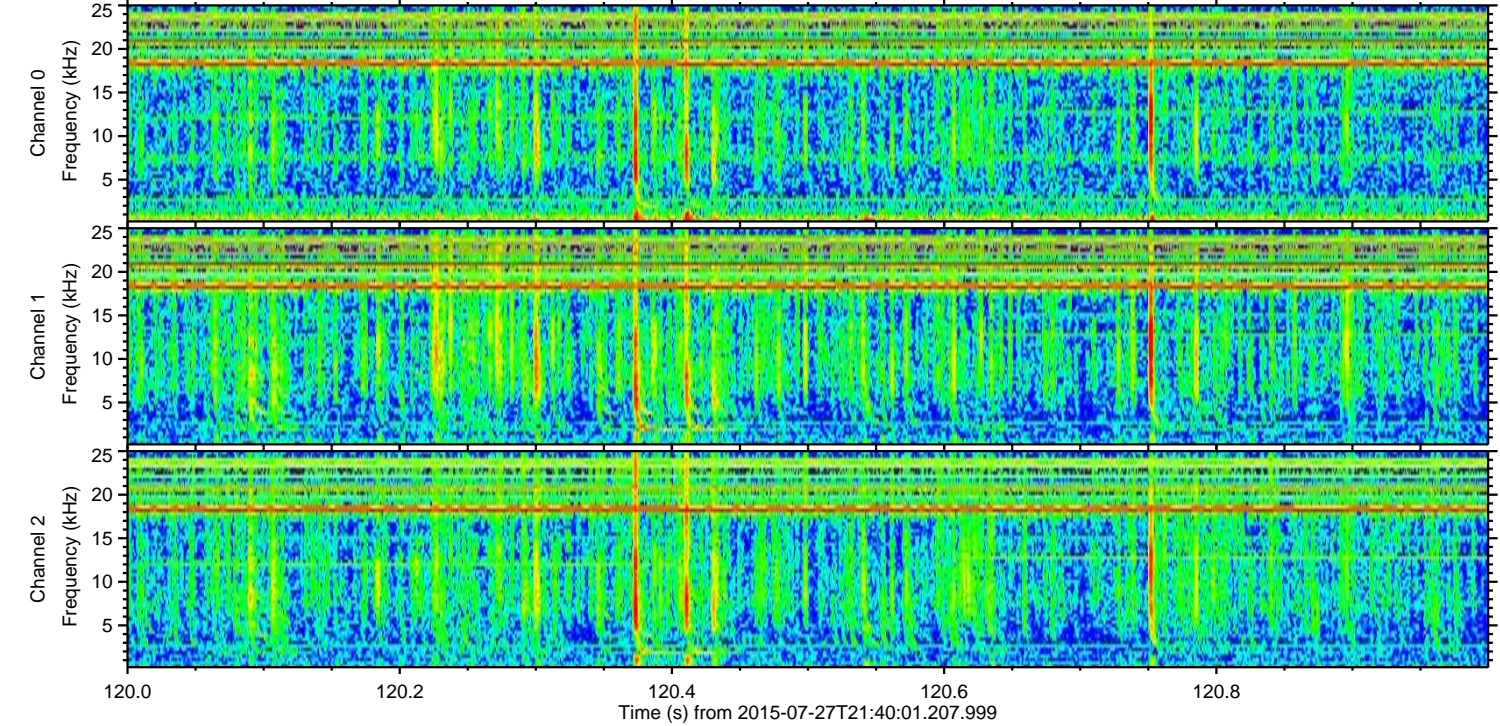
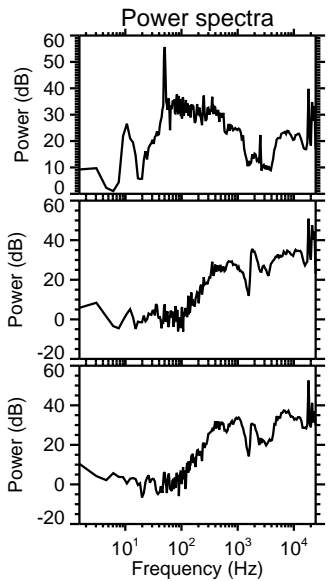
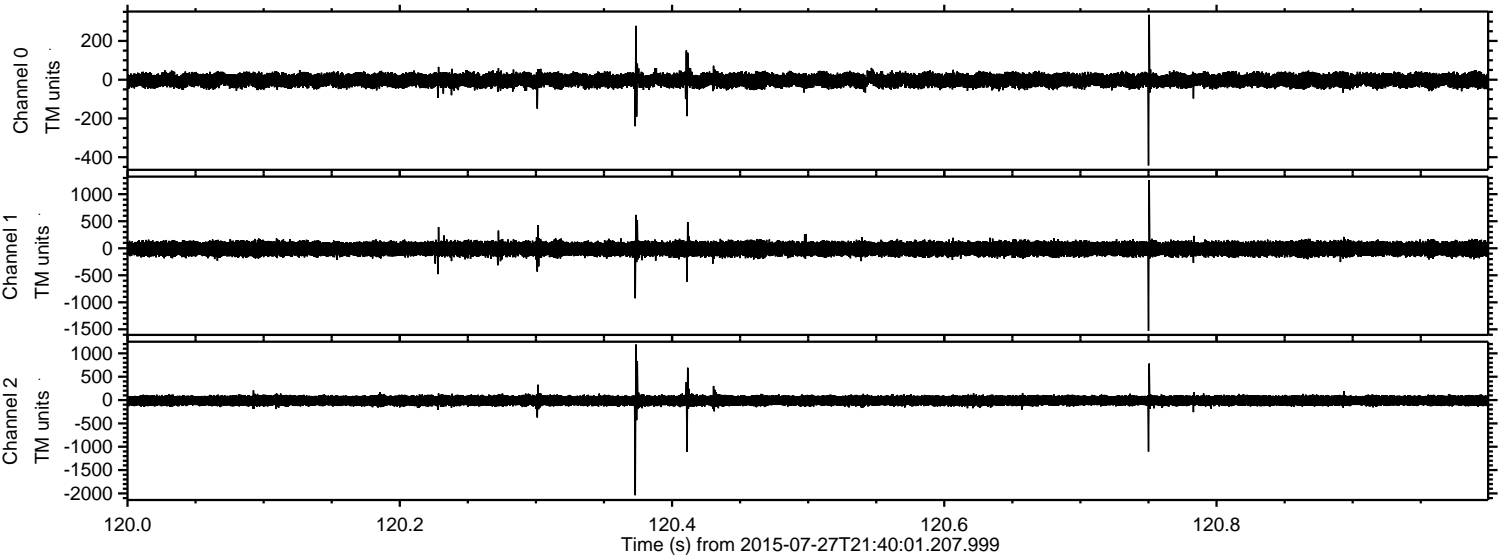
Channel 0
mn: -370
mx: 268
 μ : -3.1
 σ : 18.7

Channel 1
mn: -2051
mx: 1062
 μ : -11.8
 σ : 68.6

Channel 2
mn: -1272
mx: 1413
 μ : -12.4
 σ : 63.5

ELMAVAN 3D WAVEFORMS (Measured data sampled at 50 kHz) 51000 packets of 144 samples from 2015-07-27T21:40:01.207.999. Part 121/147

Processed Mon Jul 27 23:46:55 2015 by ELM ver.2012-10-06 from 001__elm20150727_214000__dat00.bin

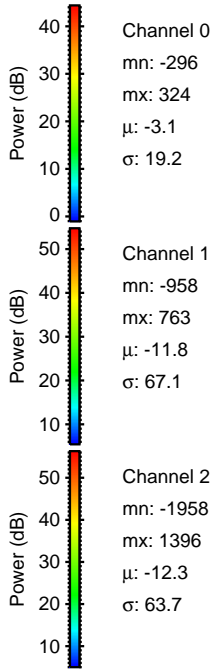
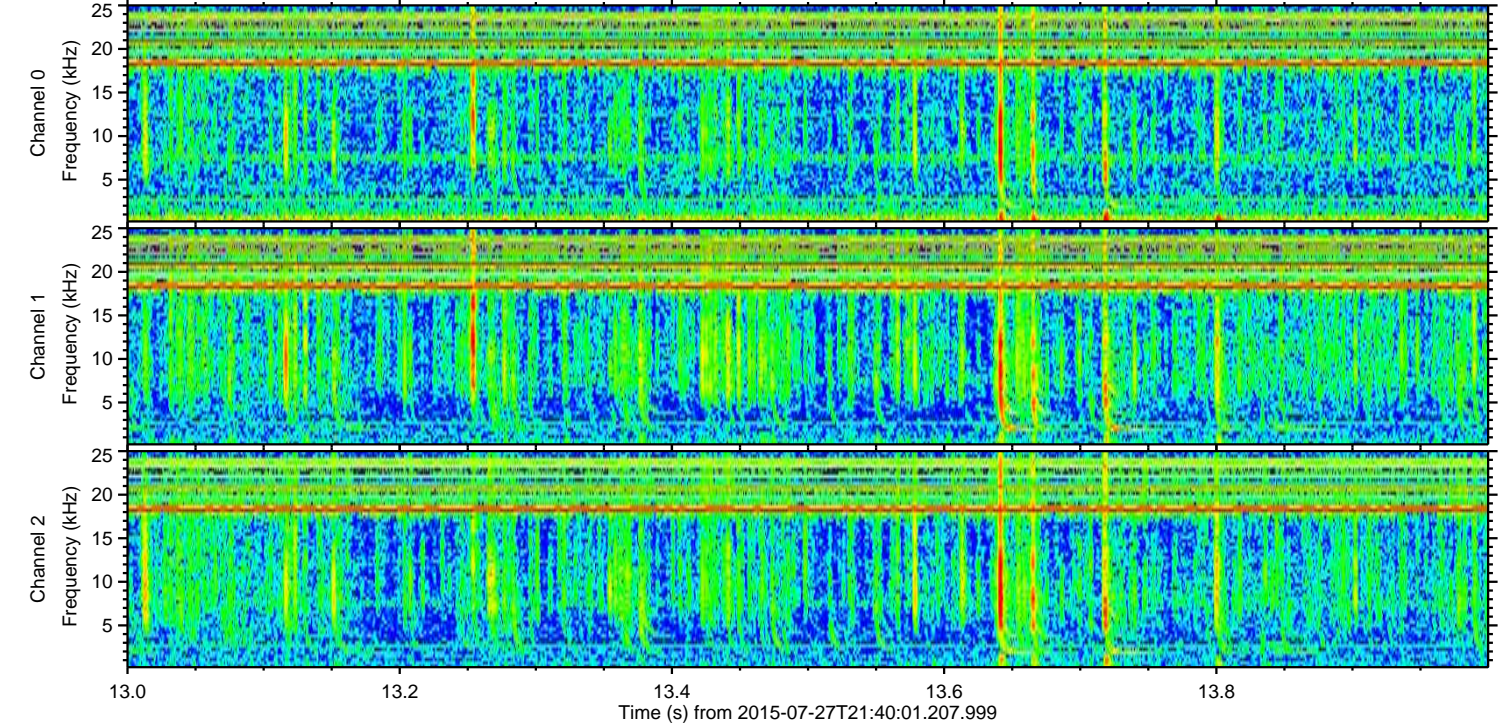
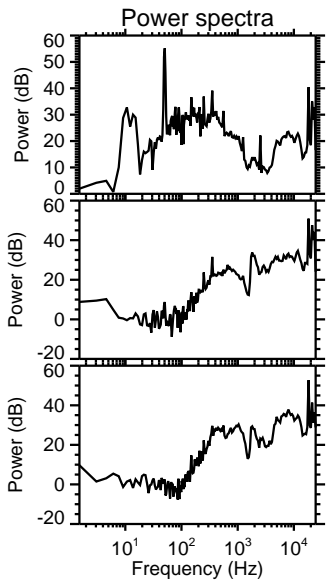
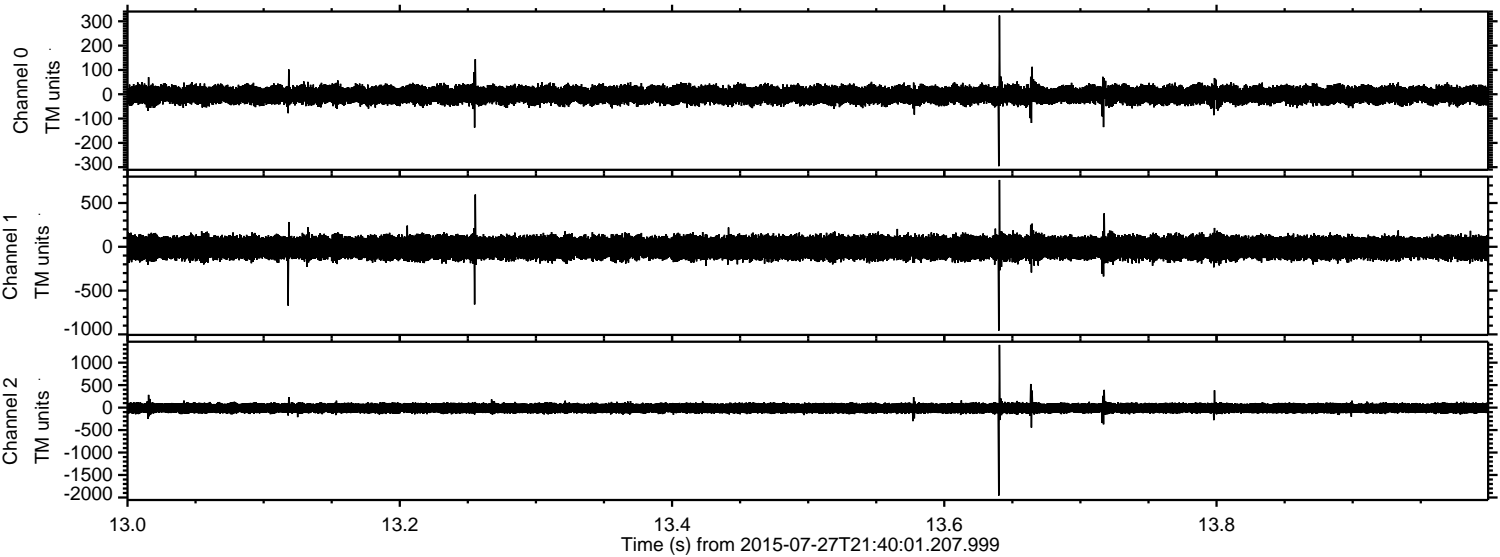


Channel 0
mn: -443
mx: 335
 μ : -3.1
 σ : 18.8

Channel 1
mn: -1527
mx: 1262
 μ : -11.8
 σ : 68.9

Channel 2
mn: -2039
mx: 1190
 μ : -12.4
 σ : 63.7

Processed Mon Jul 27 23:46:56 2015 by ELM ver.2012-10-06 from 001__elm20150727_214000__dat00.bin



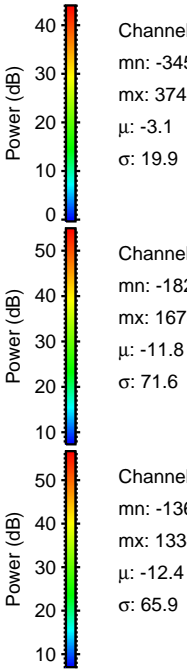
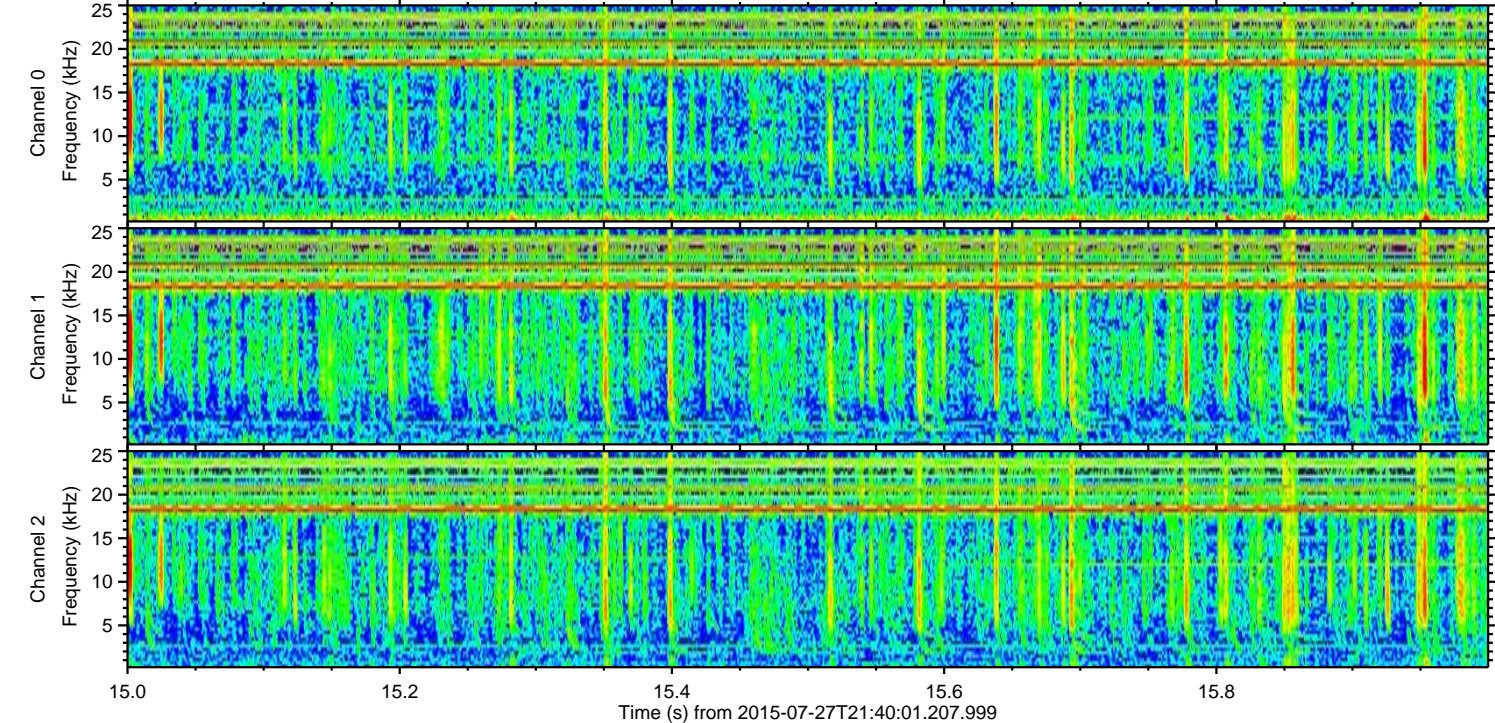
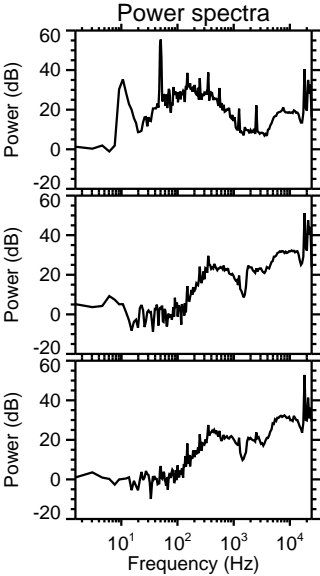
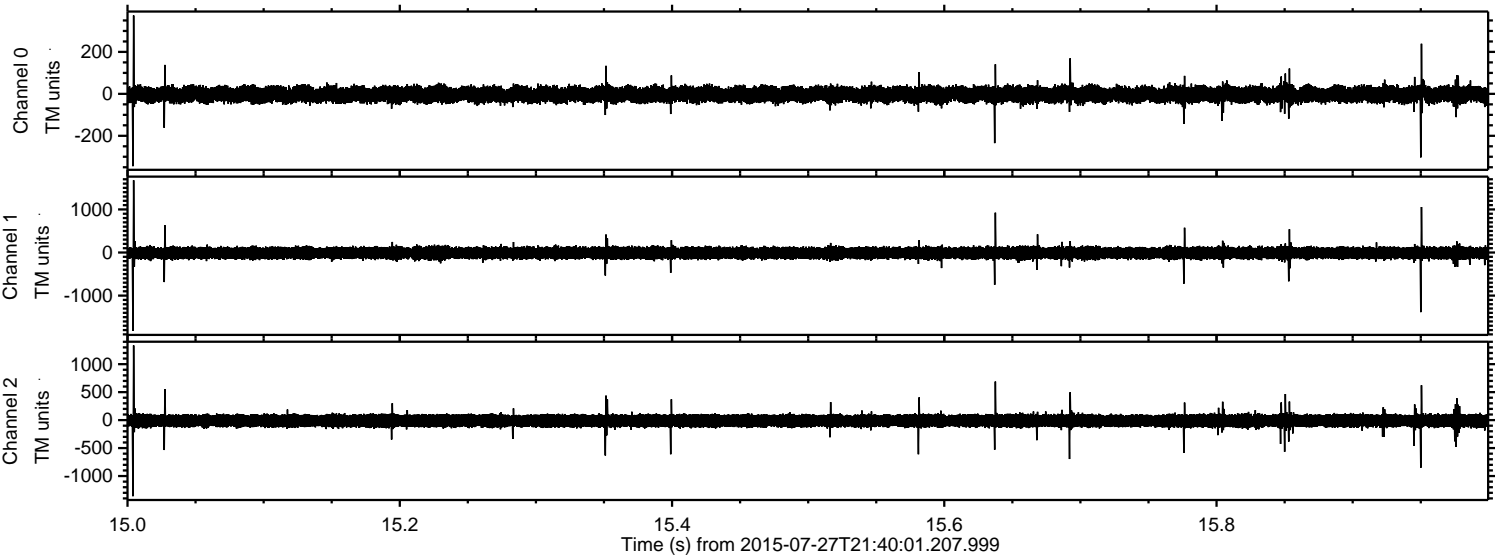
Channel 0
mn: -296
mx: 324
 μ : -3.1
 σ : 19.2

Channel 1
mn: -958
mx: 763
 μ : -11.8
 σ : 67.1

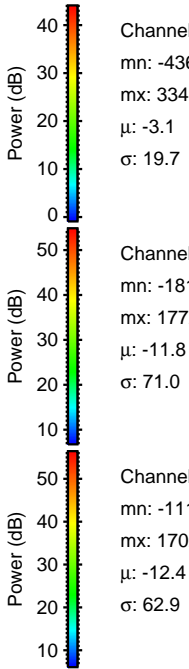
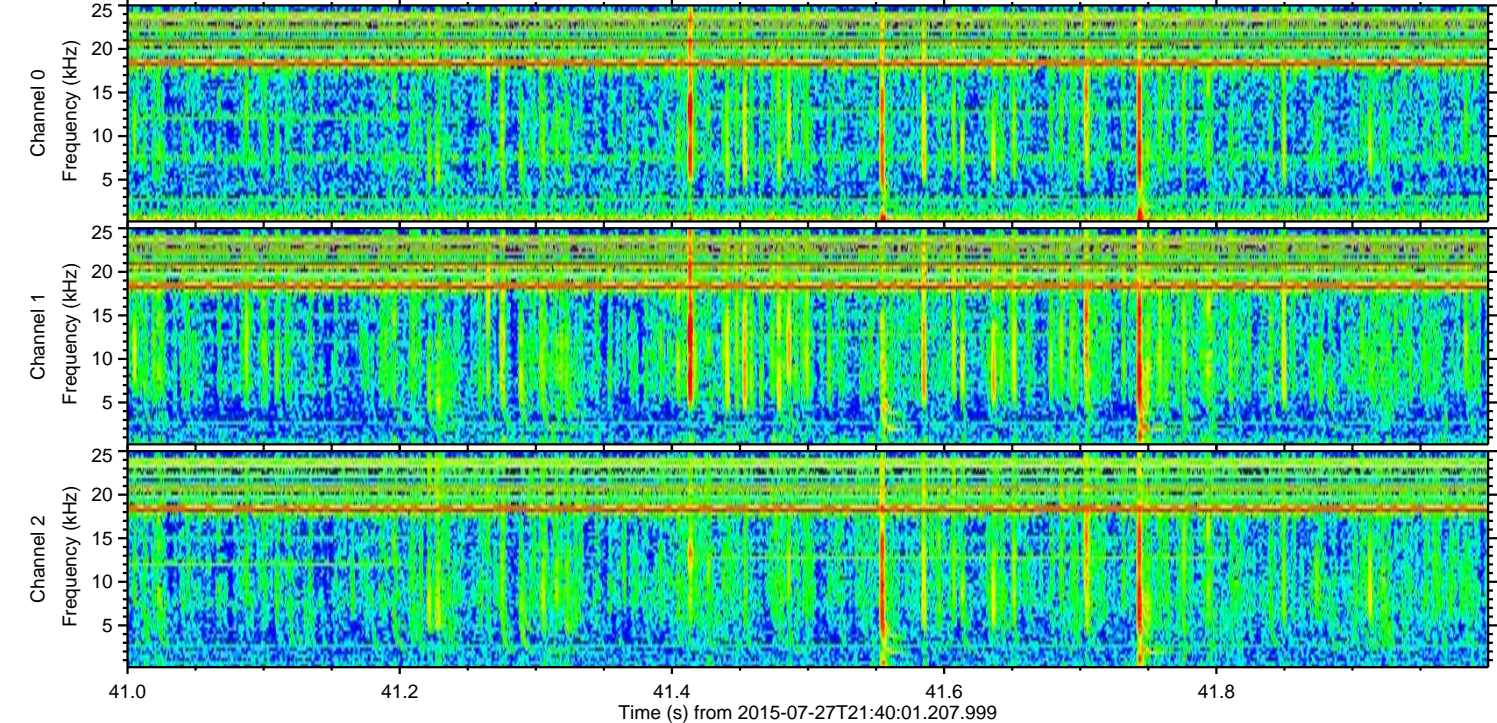
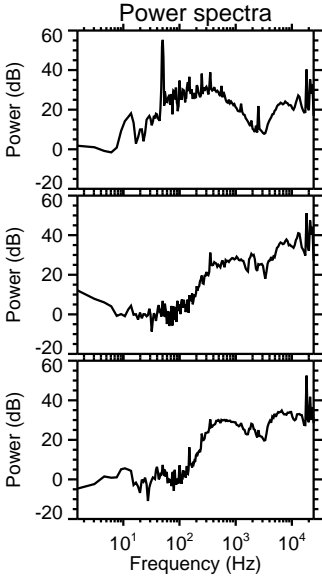
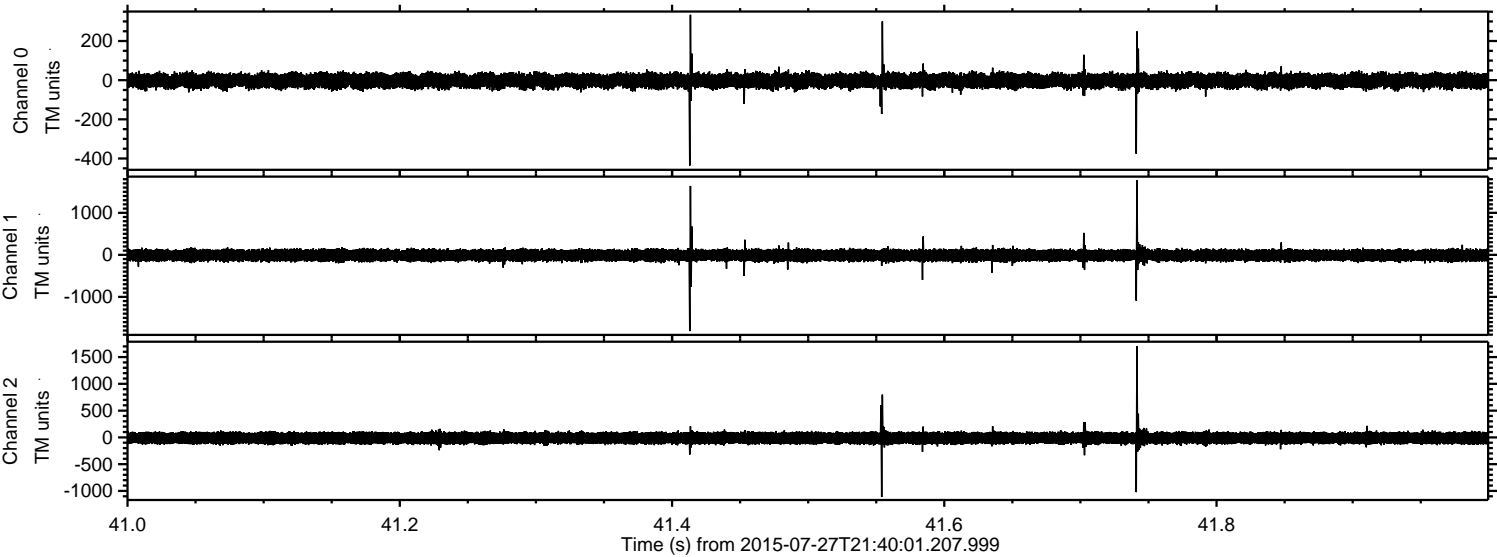
Channel 2
mn: -1958
mx: 1396
 μ : -12.3
 σ : 63.7

ELMAVAN 3D WAVEFORMS (Measured data sampled at 50 kHz) 51000 packets of 144 samples from 2015-07-27T21:40:01.207.999. Part 16/147

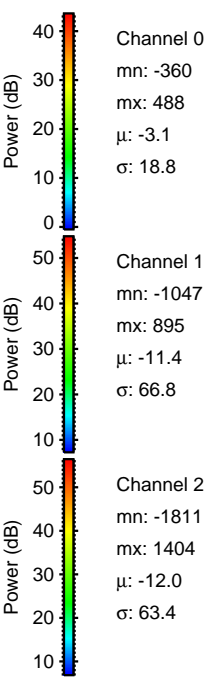
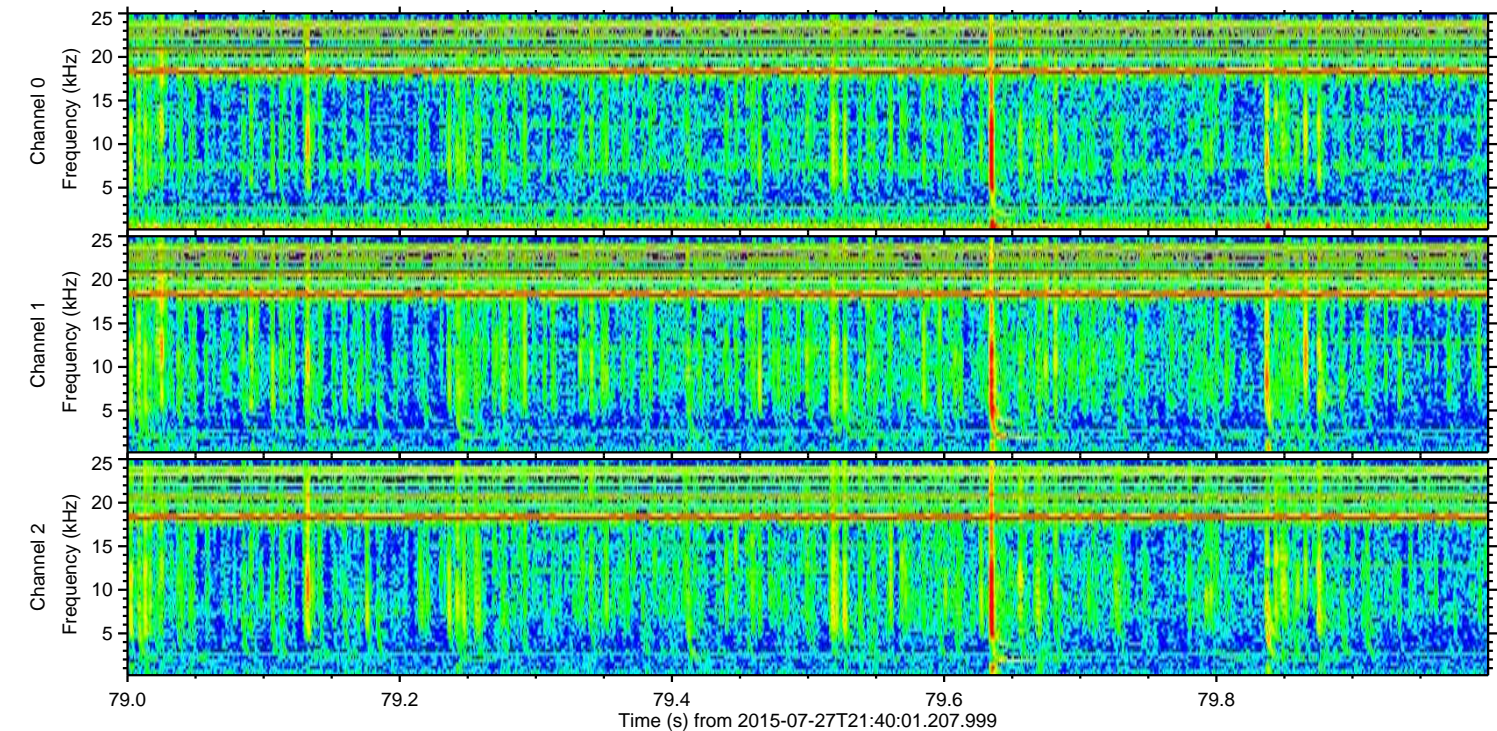
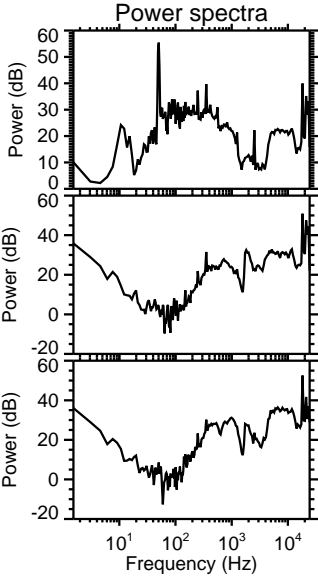
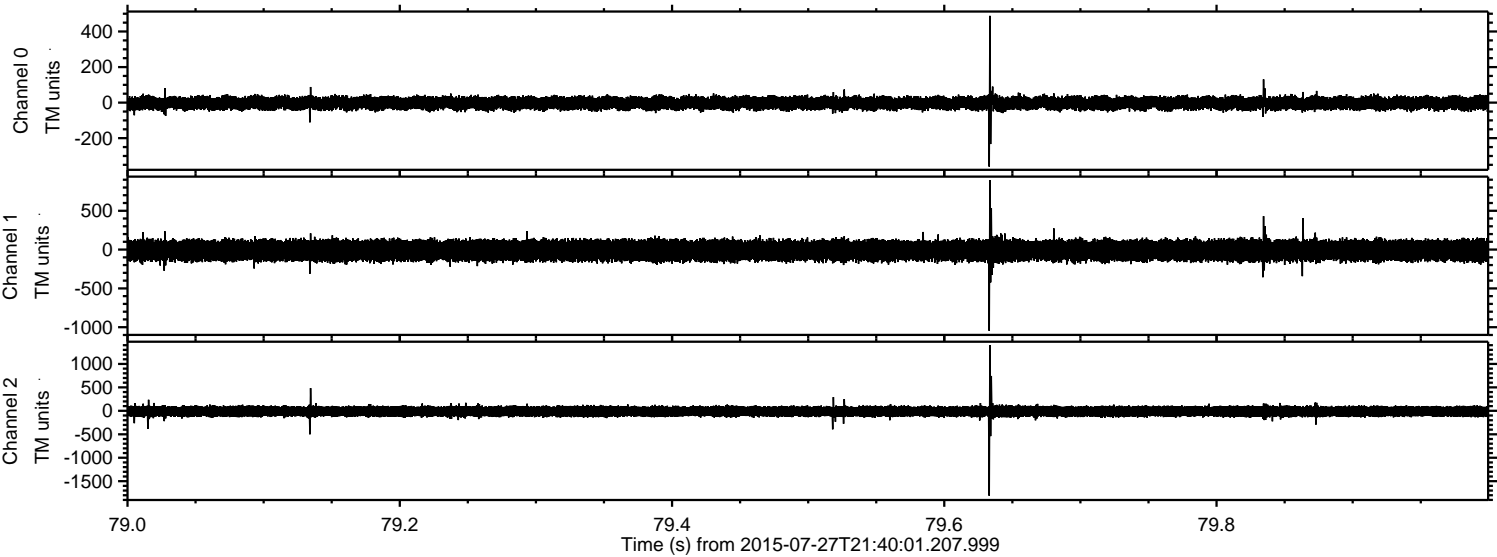
Processed Mon Jul 27 23:46:57 2015 by ELM ver.2012-10-06 from 001__elm20150727_214000__dat00.bin



Processed Mon Jul 27 23:46:58 2015 by ELM ver.2012-10-06 from 001__elm20150727_214000__dat00.bin



Processed Mon Jul 27 23:46:59 2015 by ELM ver.2012-10-06 from 001__elm20150727_214000__dat00.bin



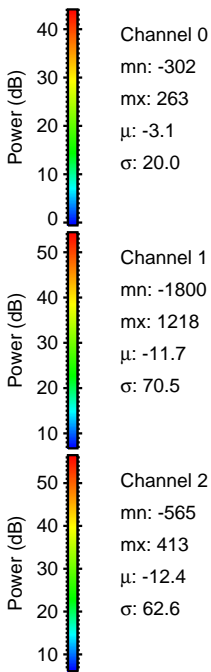
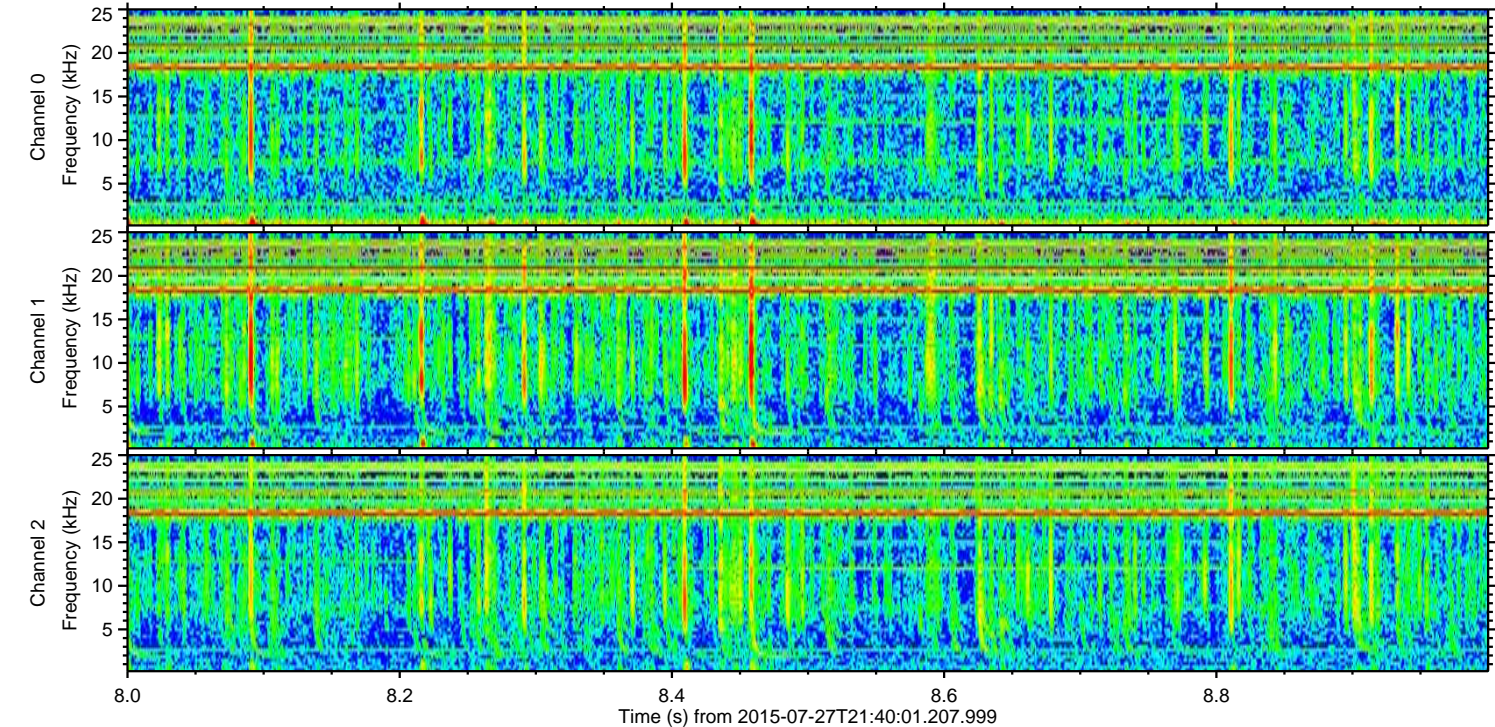
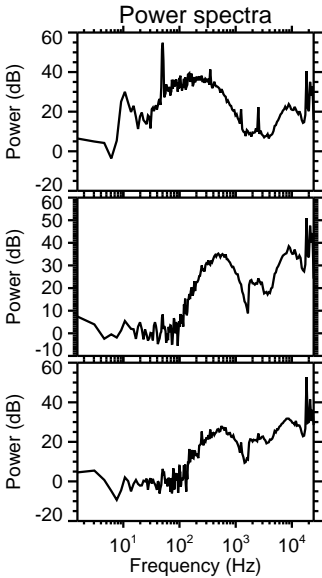
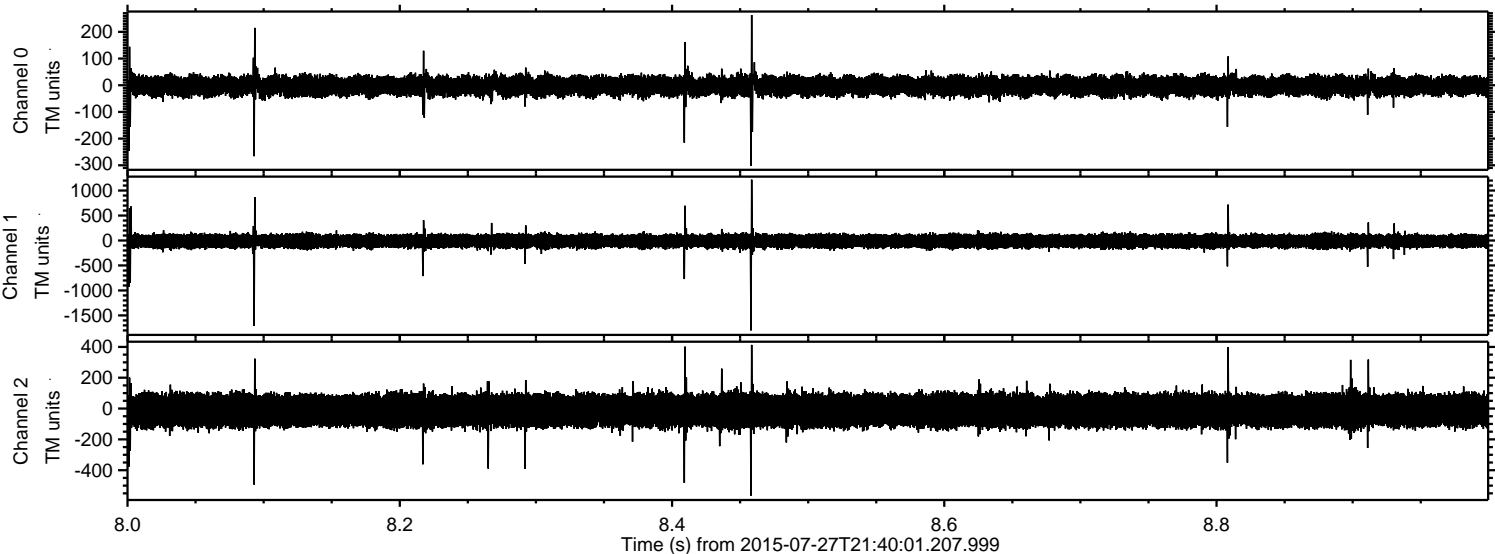
Channel 0
mn: -360
mx: 488
 μ : -3.1
 σ : 18.8

Channel 1
mn: -1047
mx: 895
 μ : -11.4
 σ : 66.8

Channel 2
mn: -1811
mx: 1404
 μ : -12.0
 σ : 63.4

ELMAVAN 3D WAVEFORMS (Measured data sampled at 50 kHz) 51000 packets of 144 samples from 2015-07-27T21:40:01.207.999. Part 9/147

Processed Mon Jul 27 23:47:00 2015 by ELM ver.2012-10-06 from 001__elm20150727_214000__dat00.bin



ELMAVAN 3D WAVEFORMS (Measured data sampled at 50 kHz) 51000 packets of 144 samples from 2015-07-27T21:40:01.207.999. Part 118/147

Processed Mon Jul 27 23:47:02 2015 by ELM ver.2012-10-06 from 001__elm20150727_214000__dat00.bin

