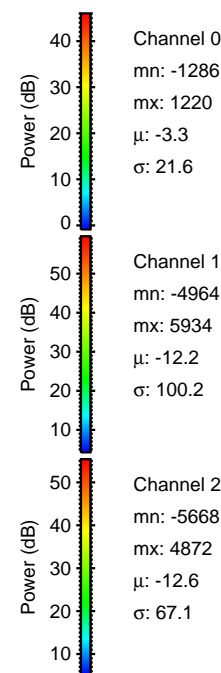
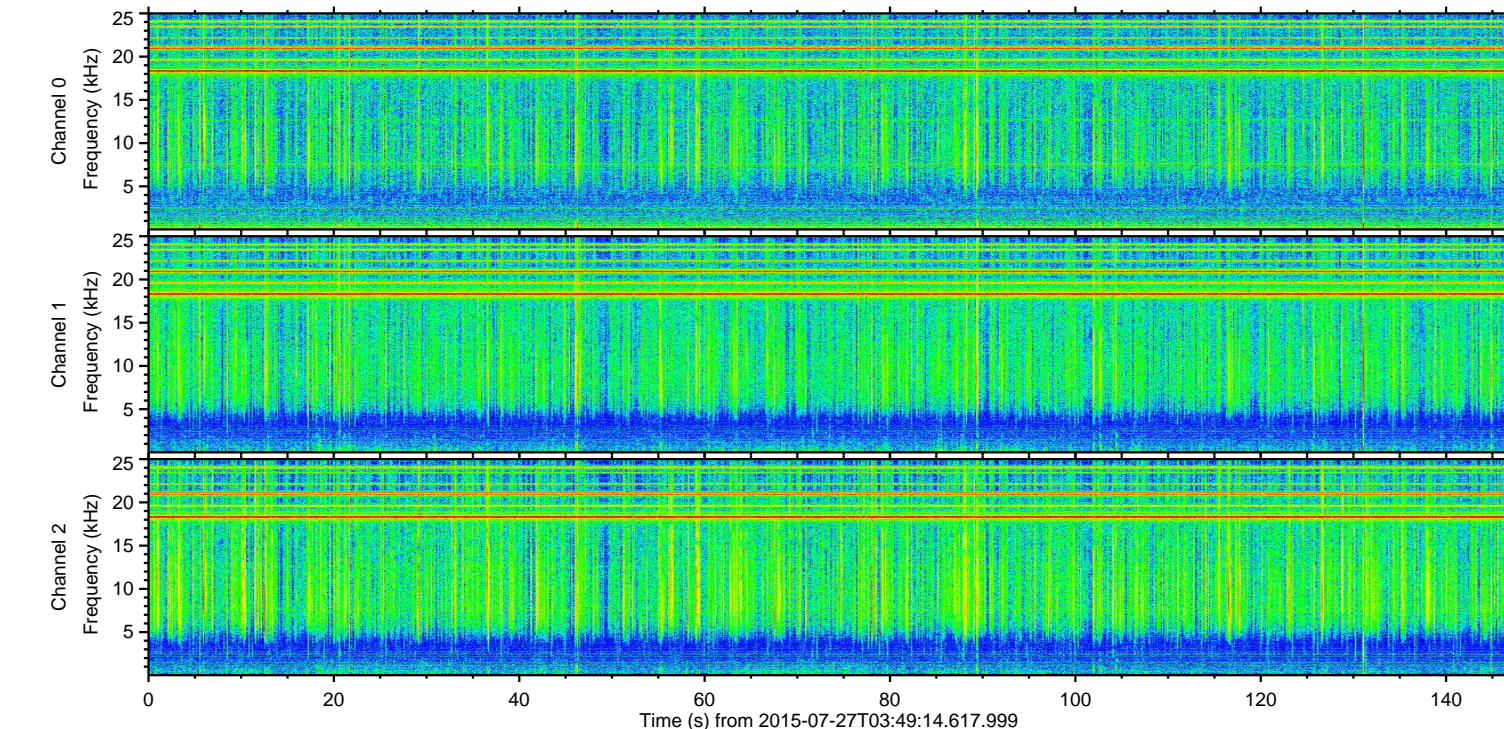
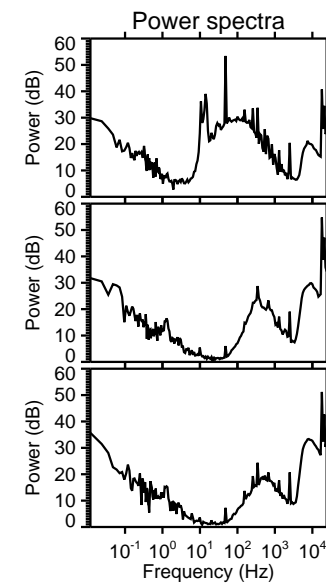
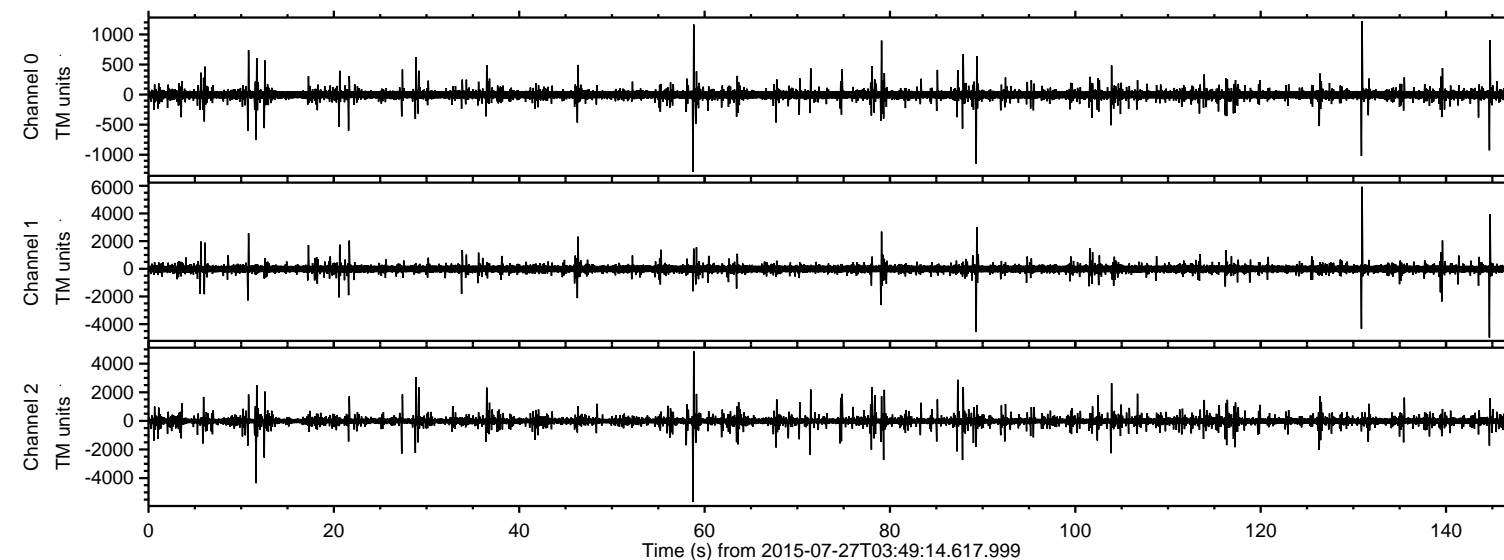


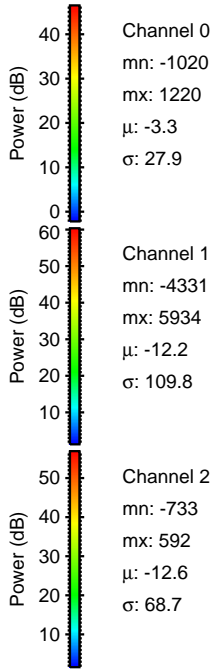
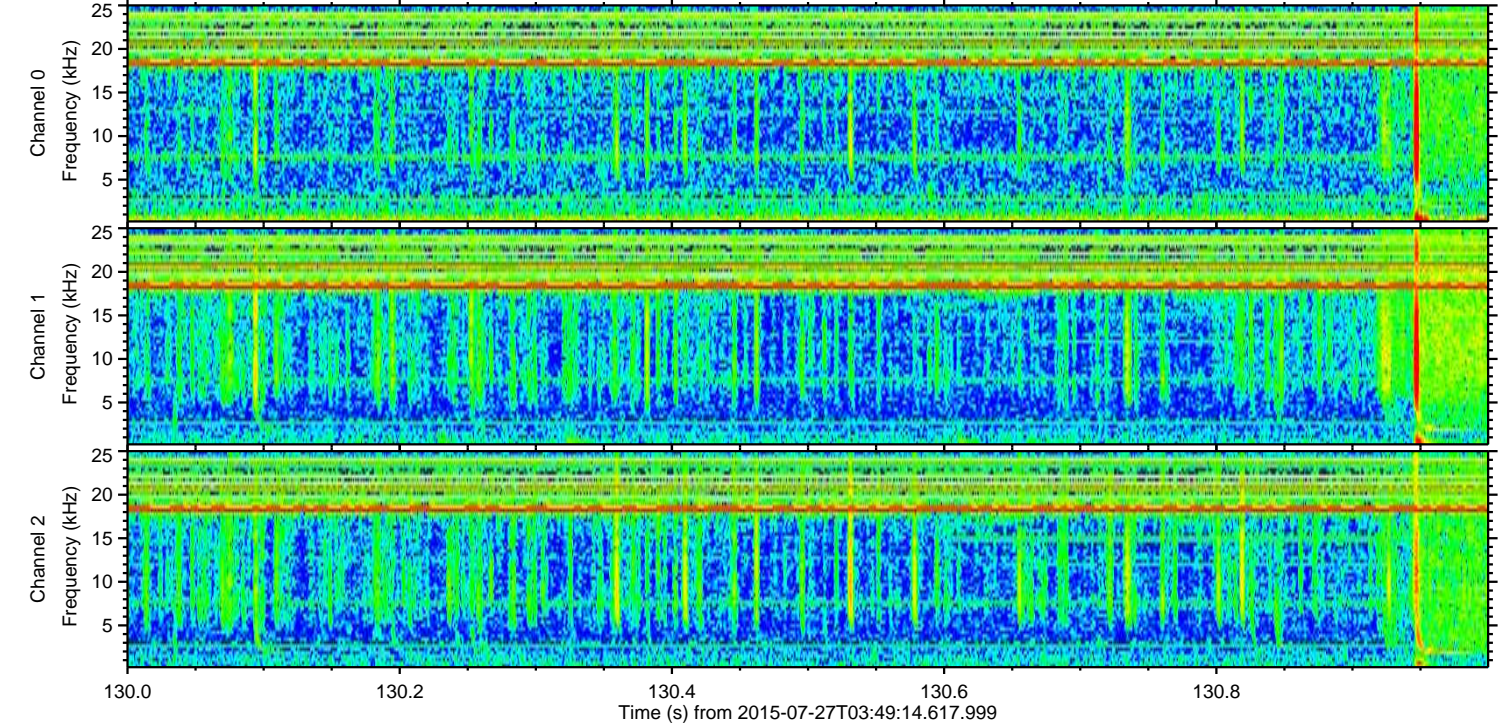
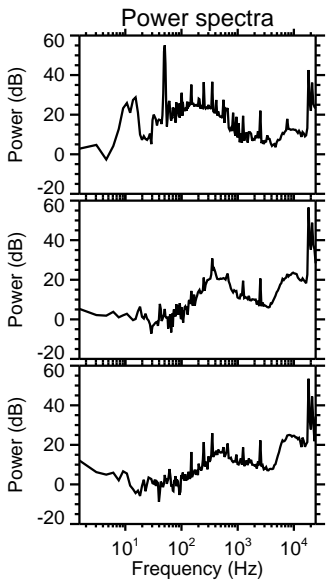
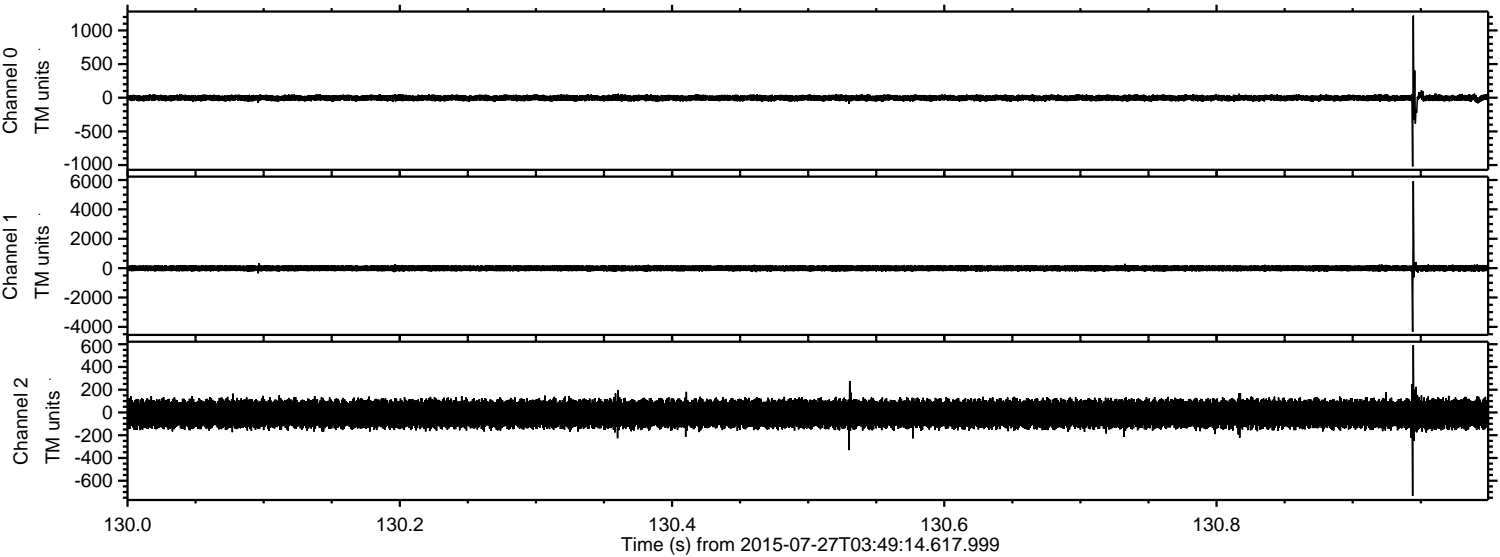
ELMAVAN 3D WAVEFORMS (Measured data sampled at 50 kHz) 51000 packets of 144 samples from 2015-07-27T03:49:14.617.999.

Processed Mon Jul 27 05:55:53 2015 by ELM ver.2012-10-06 from 001__elm20150727_034913__dat00.bin



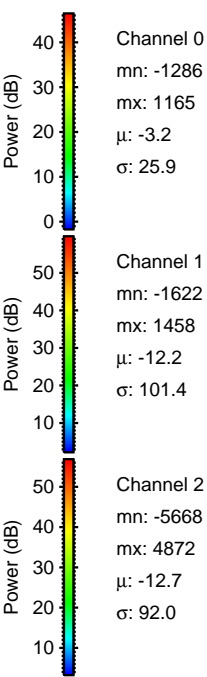
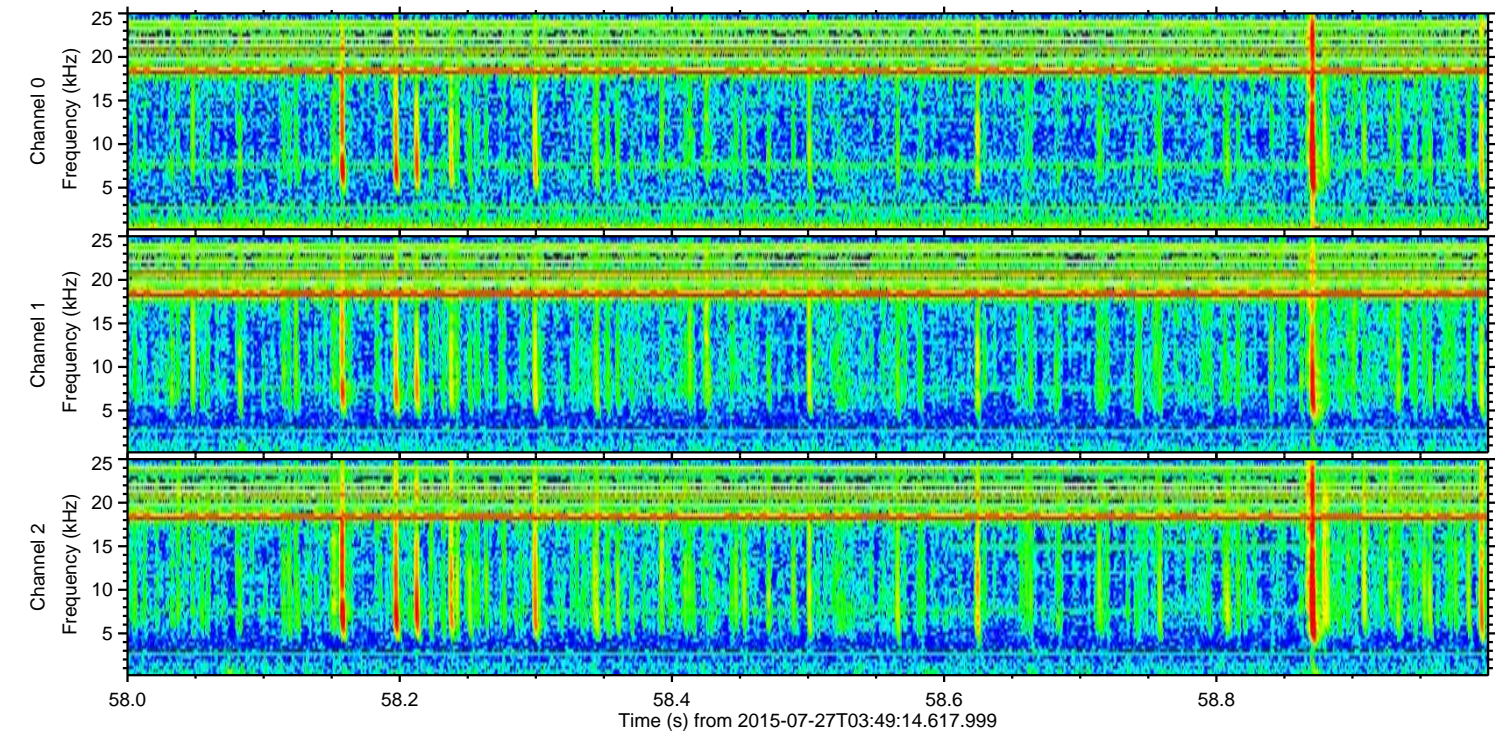
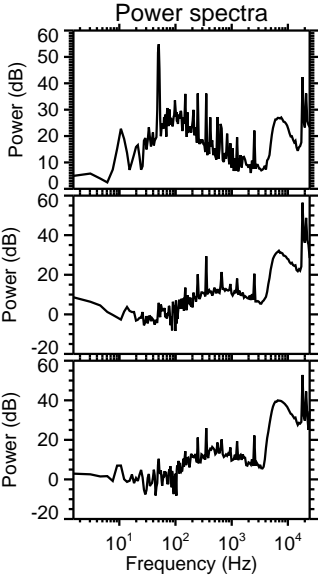
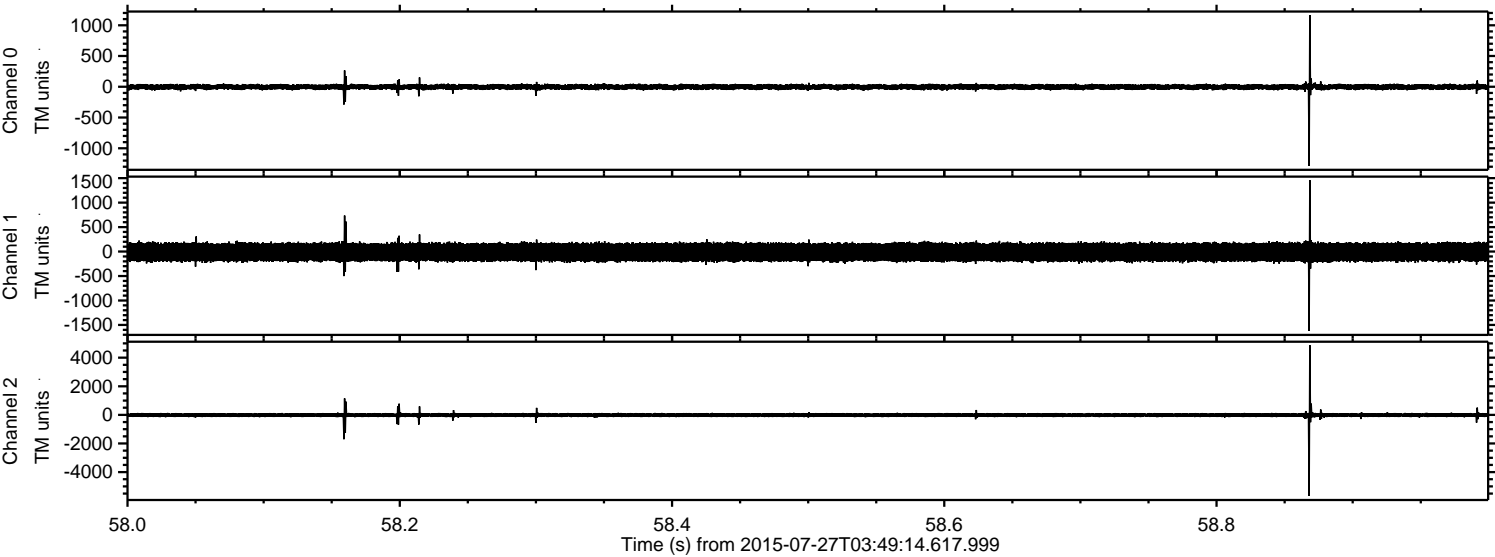
ELMAVAN 3D WAVEFORMS (Measured data sampled at 50 kHz) 51000 packets of 144 samples from 2015-07-27T03:49:14.617.999. Part 131/147

Processed Mon Jul 27 05:56:08 2015 by ELM ver.2012-10-06 from 001__elm20150727_034913__dat00.bin



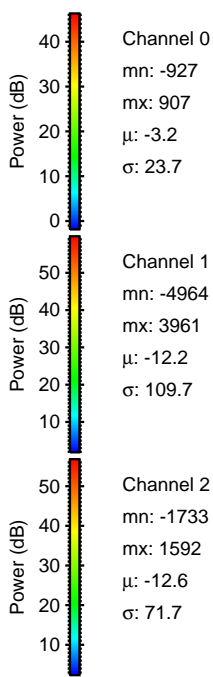
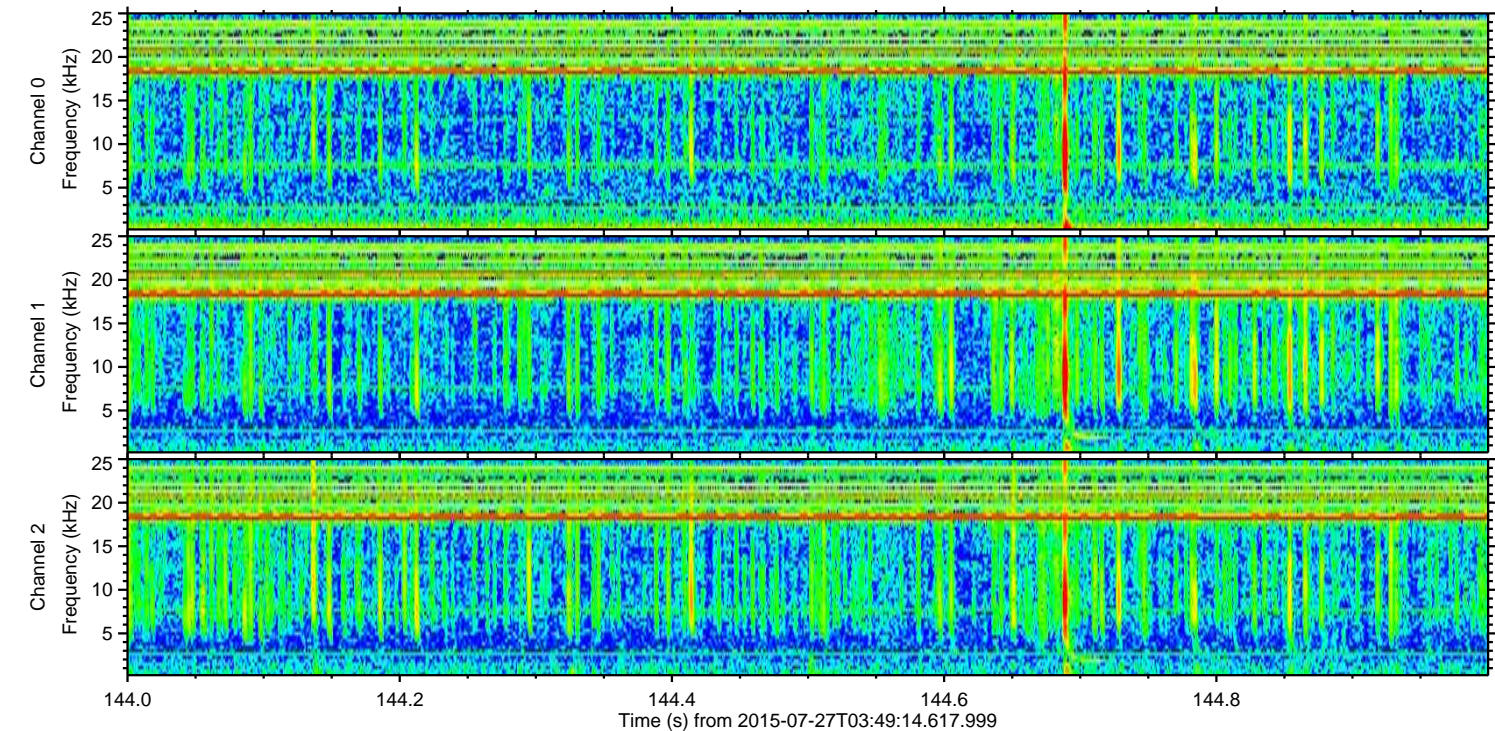
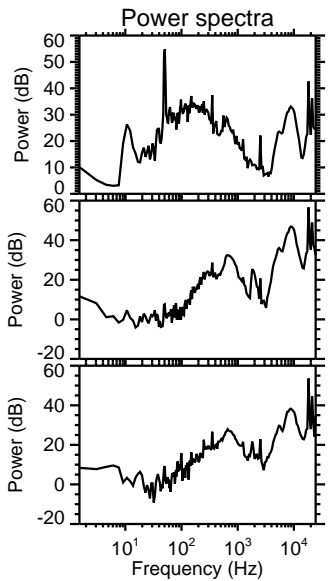
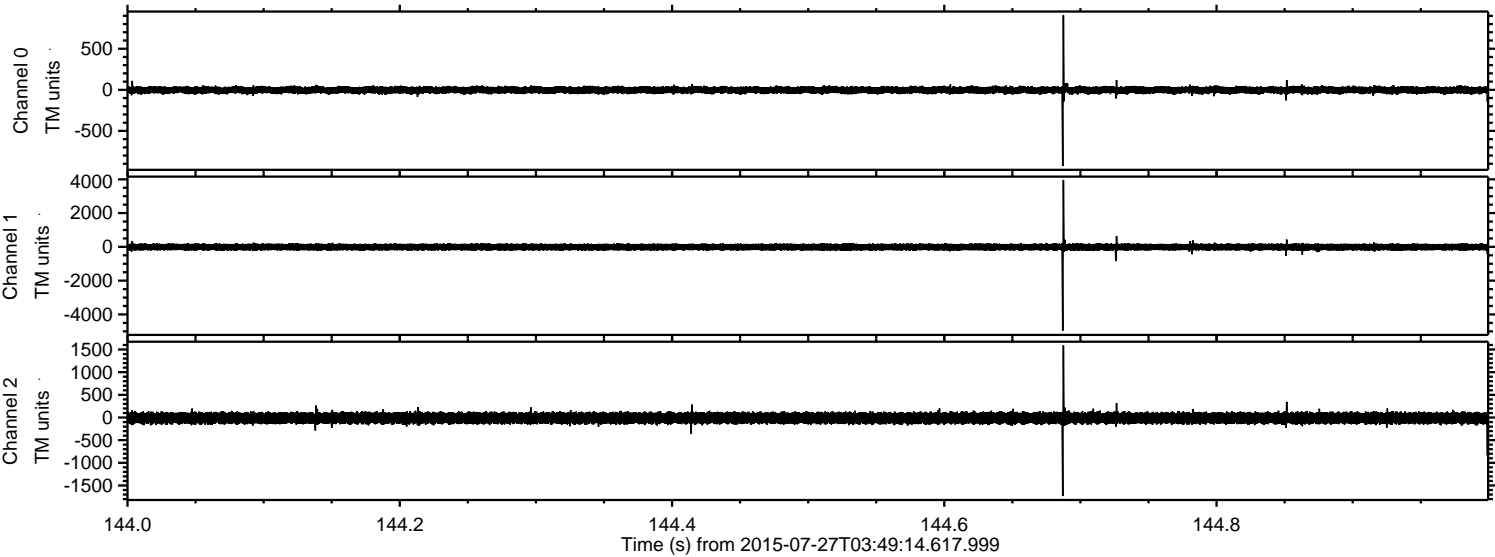
ELMAVAN 3D WAVEFORMS (Measured data sampled at 50 kHz) 51000 packets of 144 samples from 2015-07-27T03:49:14.617.999. Part 59/147

Processed Mon Jul 27 05:56:09 2015 by ELM ver.2012-10-06 from 001__elm20150727_034913__dat00.bin



ELMAVAN 3D WAVEFORMS (Measured data sampled at 50 kHz) 51000 packets of 144 samples from 2015-07-27T03:49:14.617.999. Part 145/147

Processed Mon Jul 27 05:56:10 2015 by ELM ver.2012-10-06 from 001__elm20150727_034913__dat00.bin

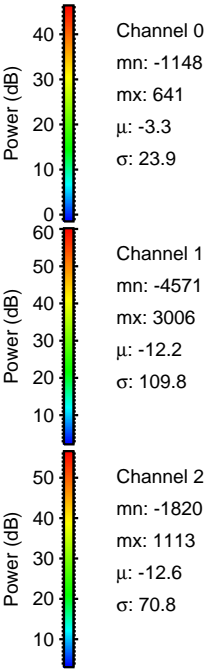
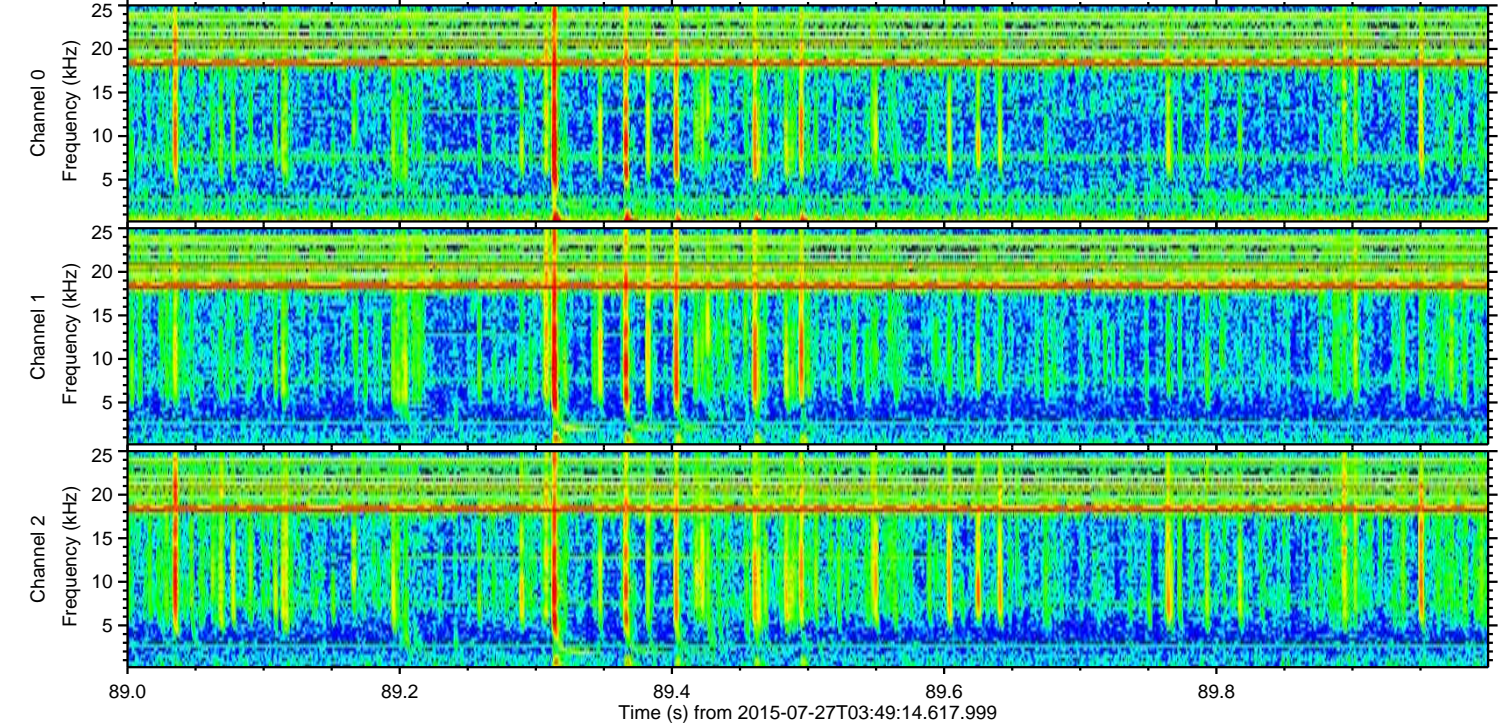
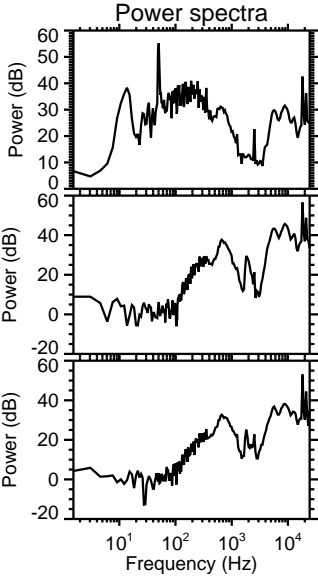
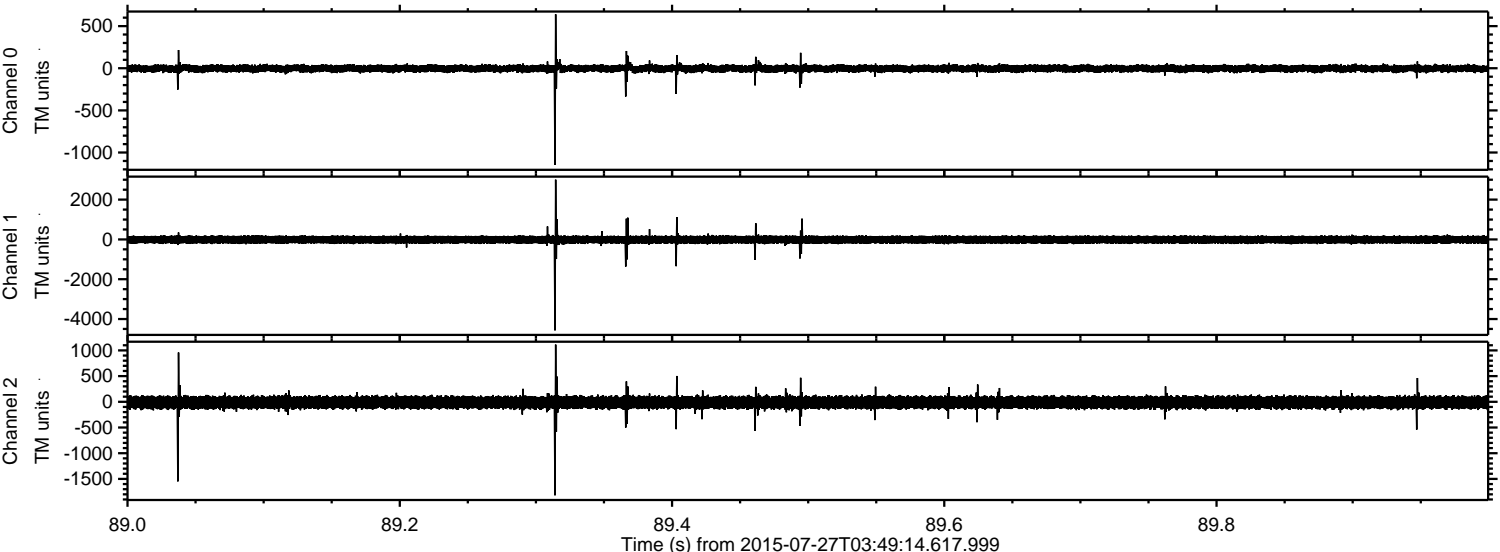


Channel 0
mn: -927
mx: 907
μ: -3.2
σ: 23.7

Channel 1
mn: -4964
mx: 3961
μ: -12.2
σ: 109.7

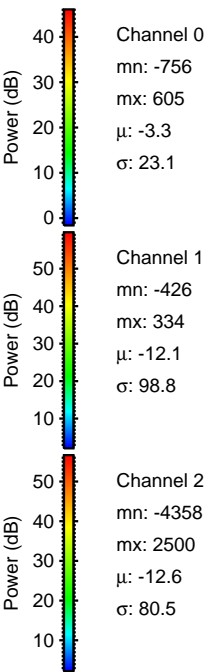
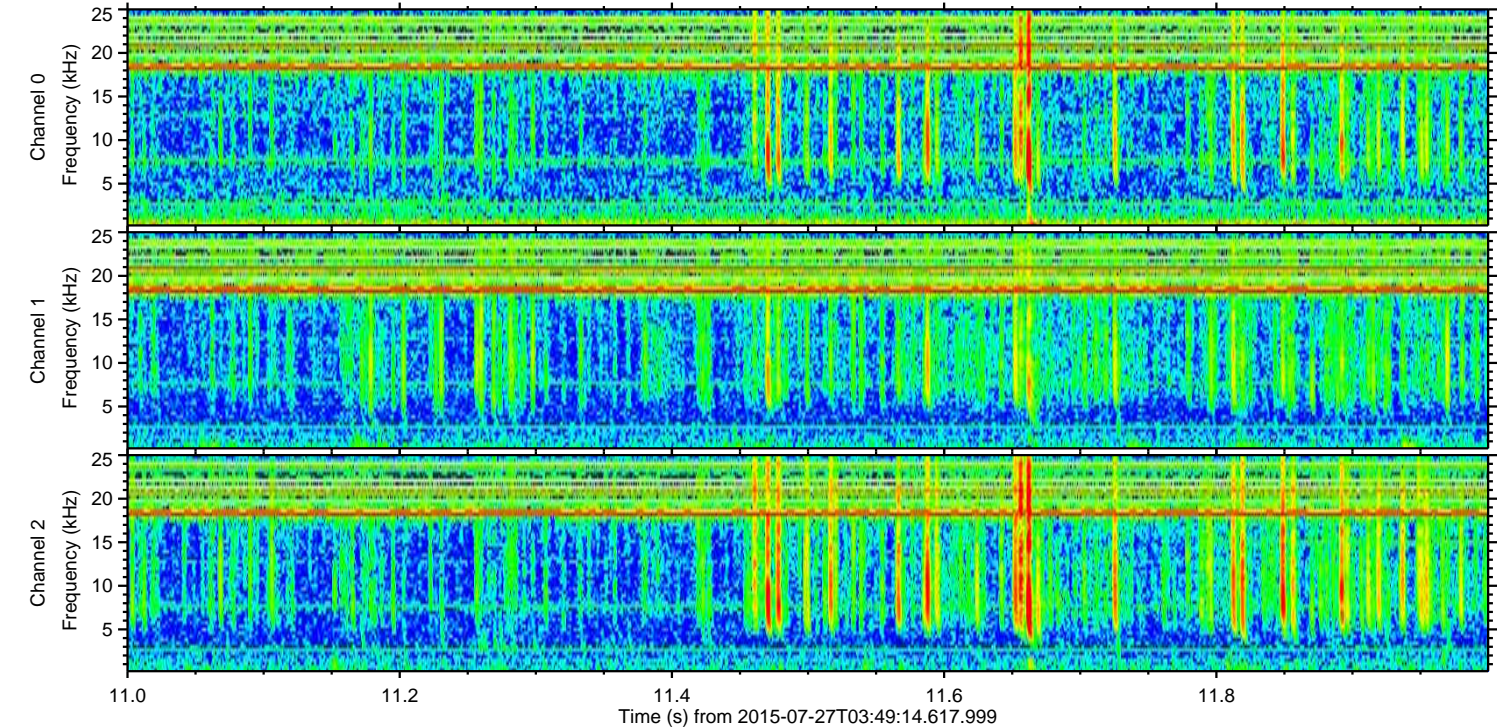
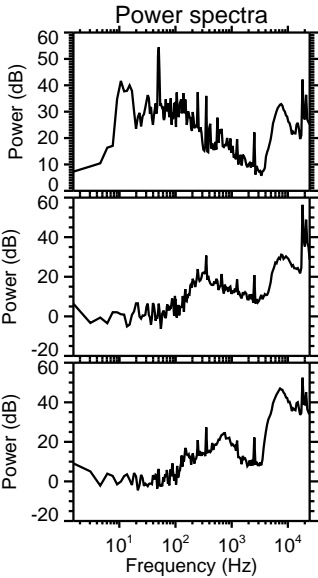
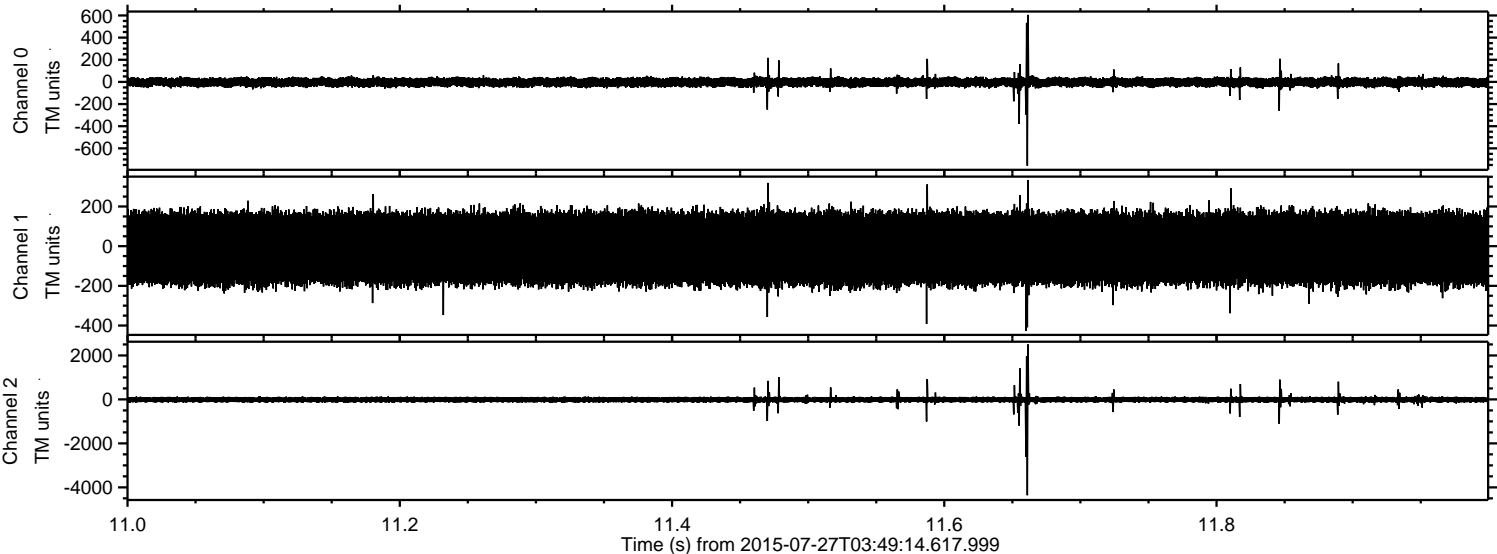
Channel 2
mn: -1733
mx: 1592
μ: -12.6
σ: 71.7

Processed Mon Jul 27 05:56:11 2015 by ELM ver.2012-10-06 from 001__elm20150727_034913__dat00.bin

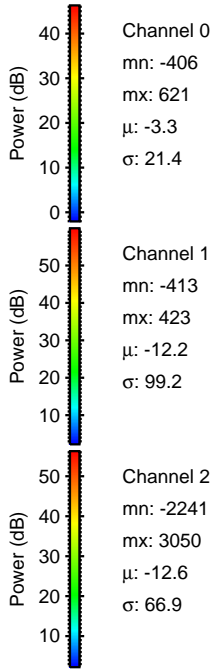
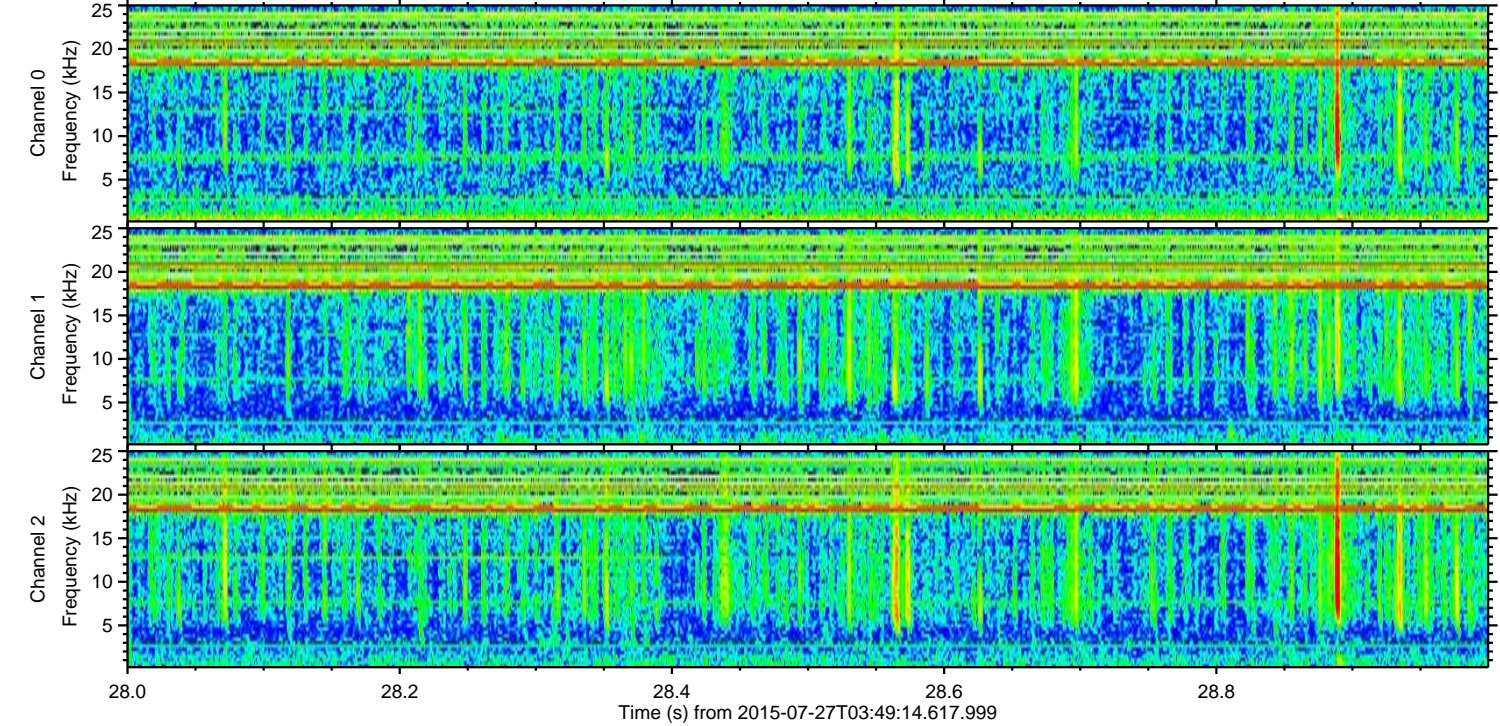
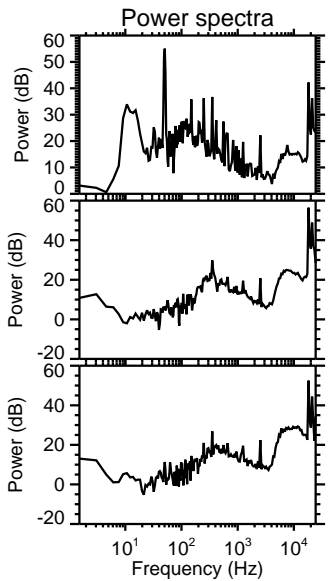
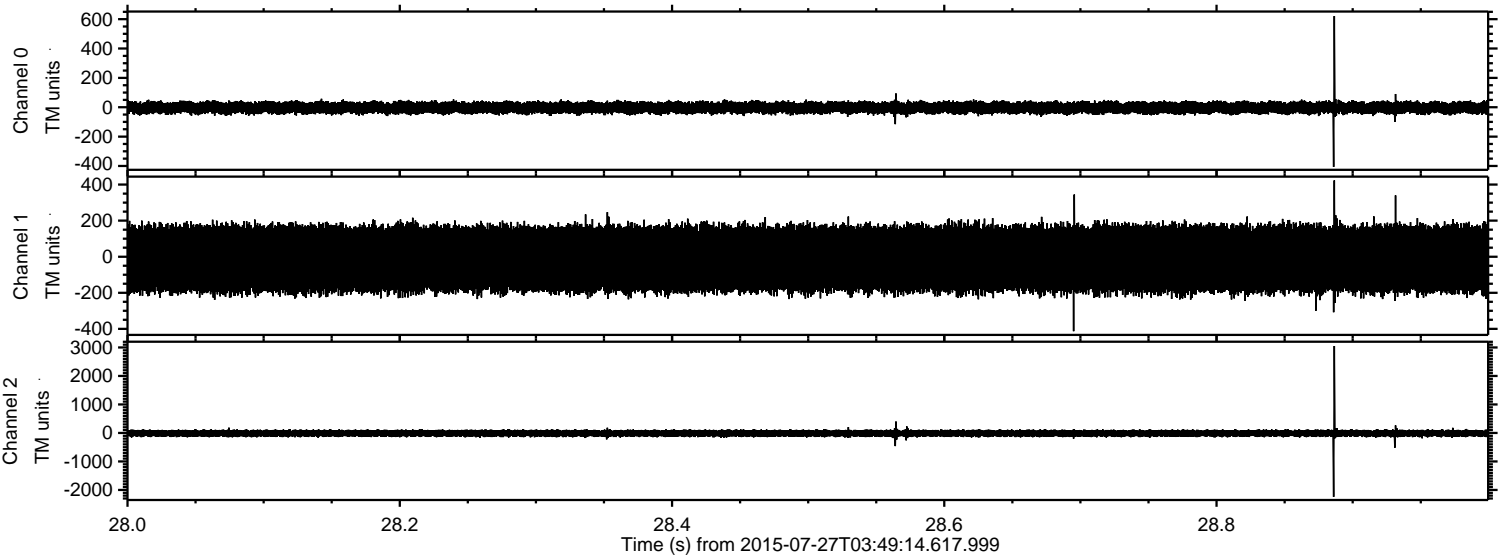


ELMAVAN 3D WAVEFORMS (Measured data sampled at 50 kHz) 51000 packets of 144 samples from 2015-07-27T03:49:14.617.999. Part 12/147

Processed Mon Jul 27 05:56:12 2015 by ELM ver.2012-10-06 from 001__elm20150727_034913__dat00.bin



Processed Mon Jul 27 05:56:13 2015 by ELM ver.2012-10-06 from 001__elm20150727_034913__dat00.bin

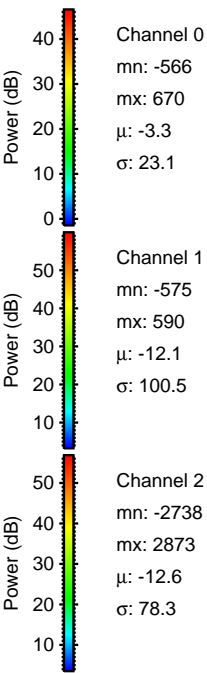
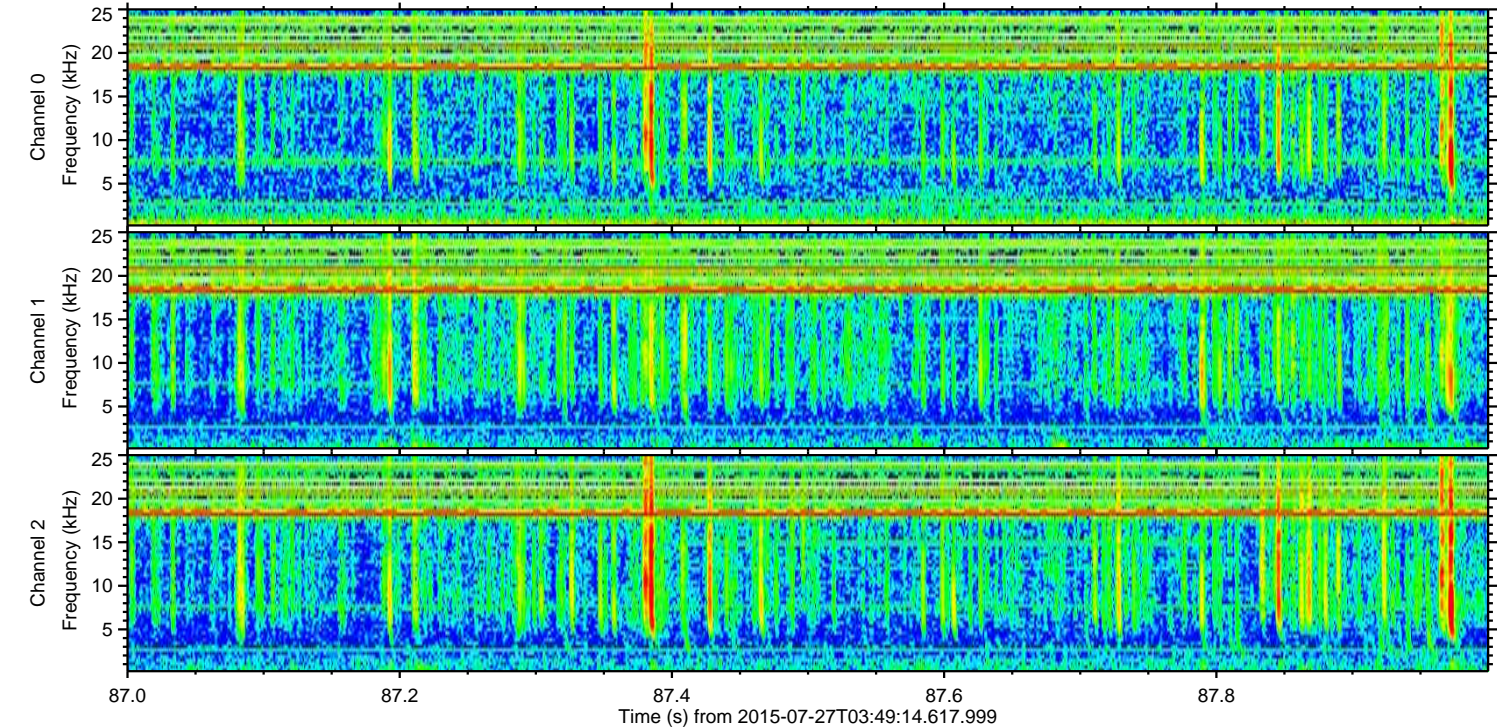
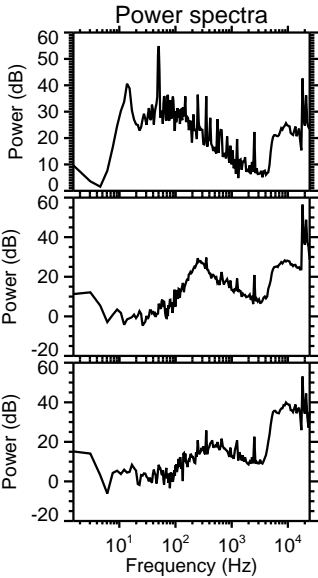
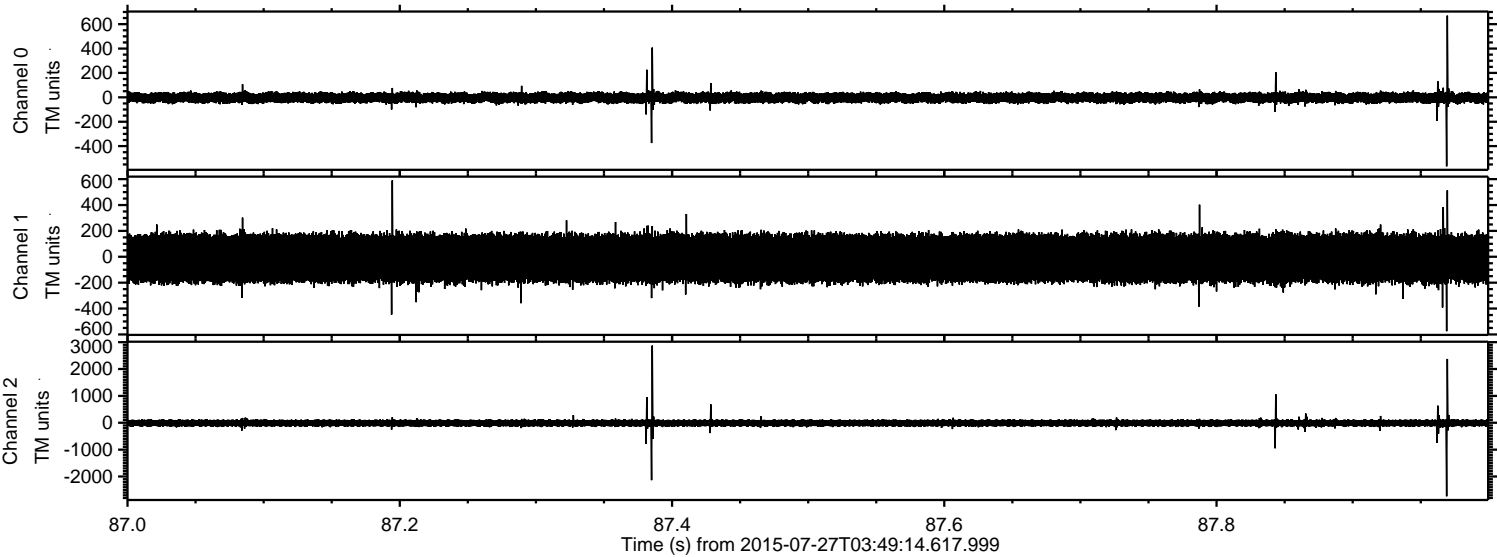


Channel 0
mn: -406
mx: 621
 μ : -3.3
 σ : 21.4

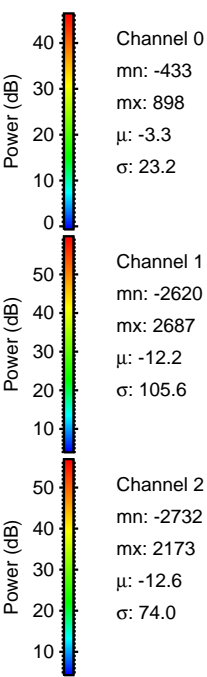
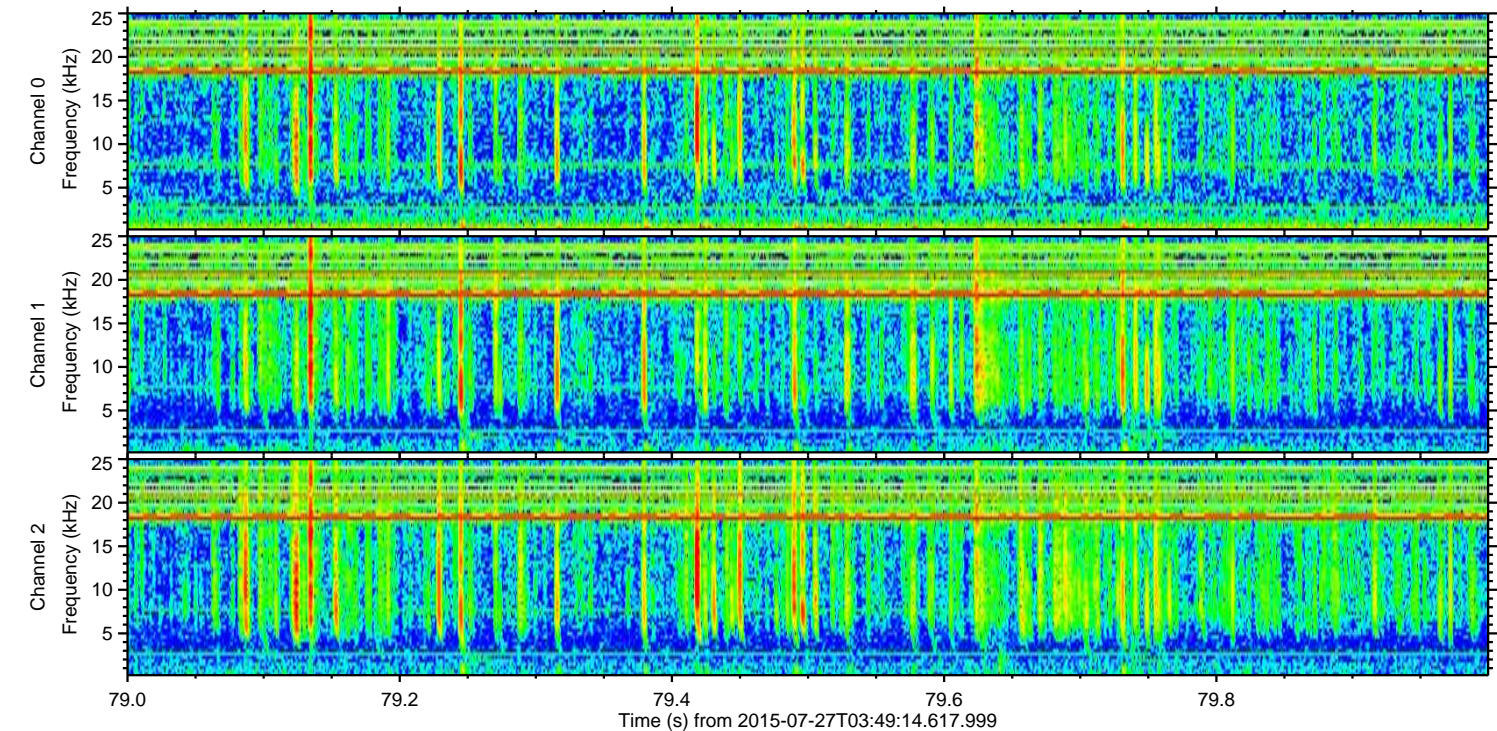
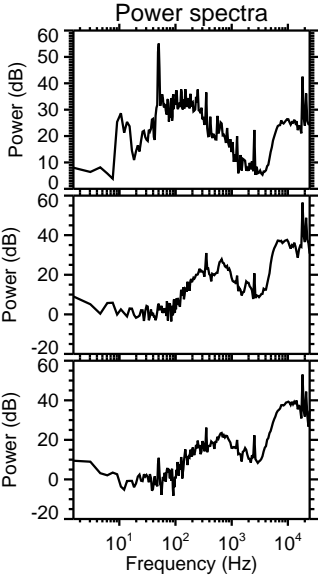
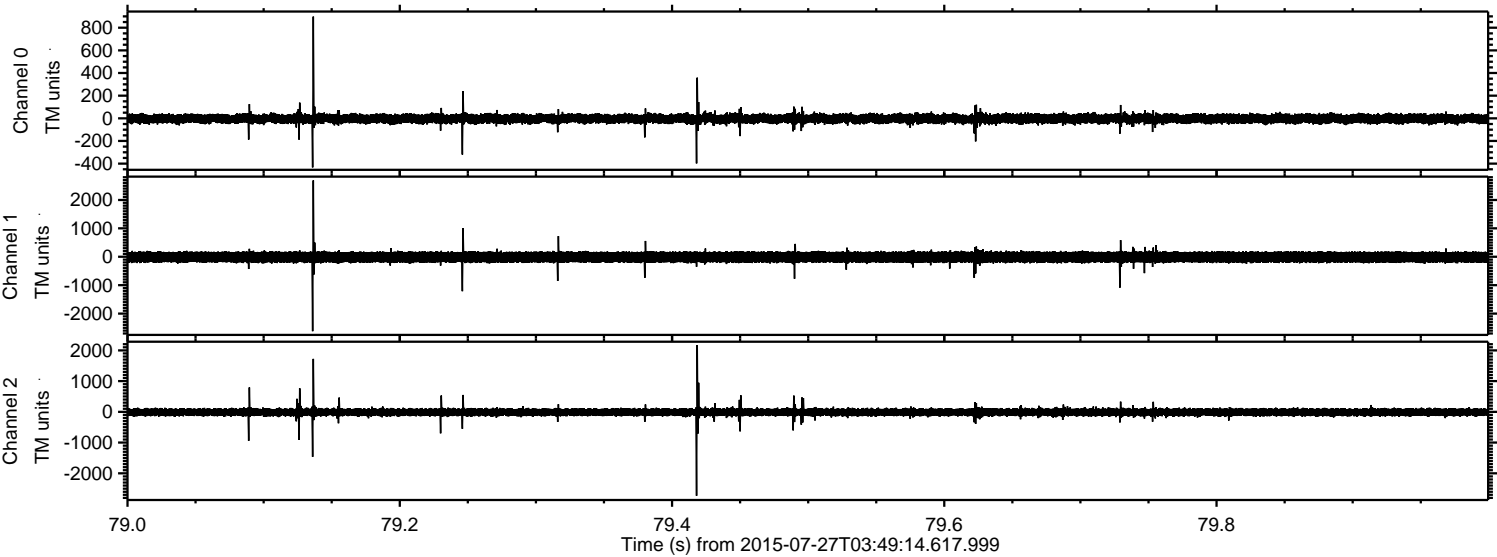
Channel 1
mn: -413
mx: 423
 μ : -12.2
 σ : 99.2

Channel 2
mn: -2241
mx: 3050
 μ : -12.6
 σ : 66.9

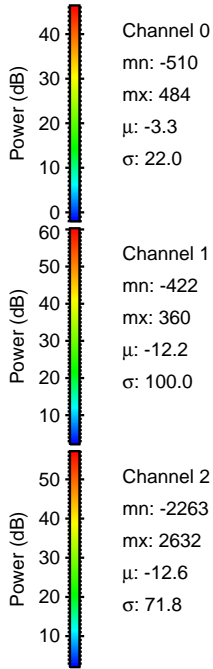
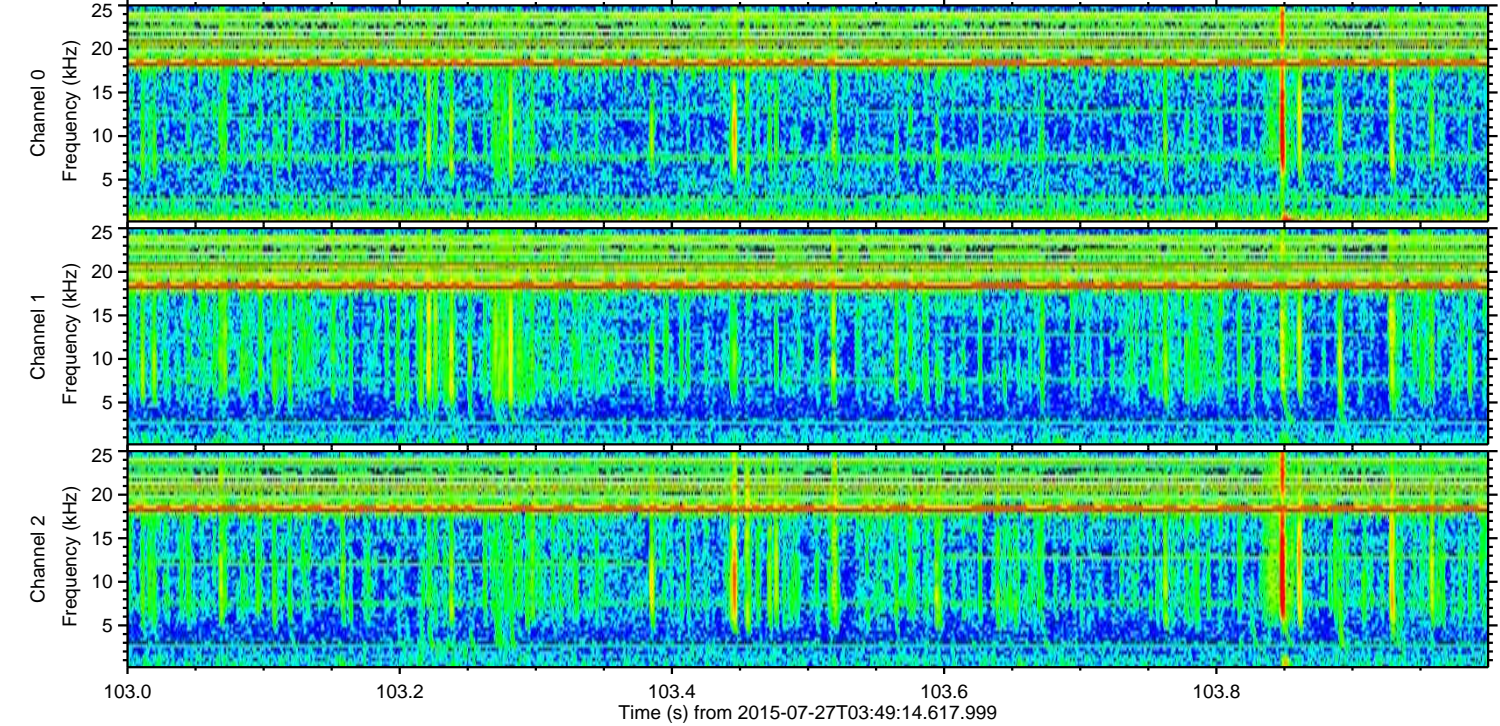
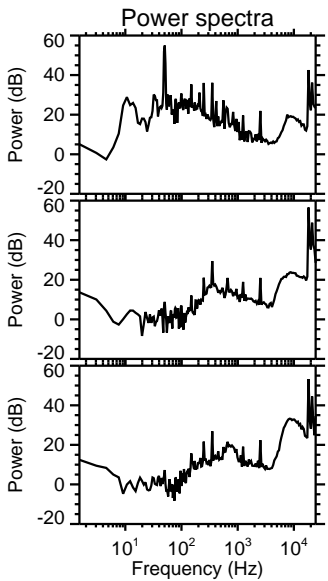
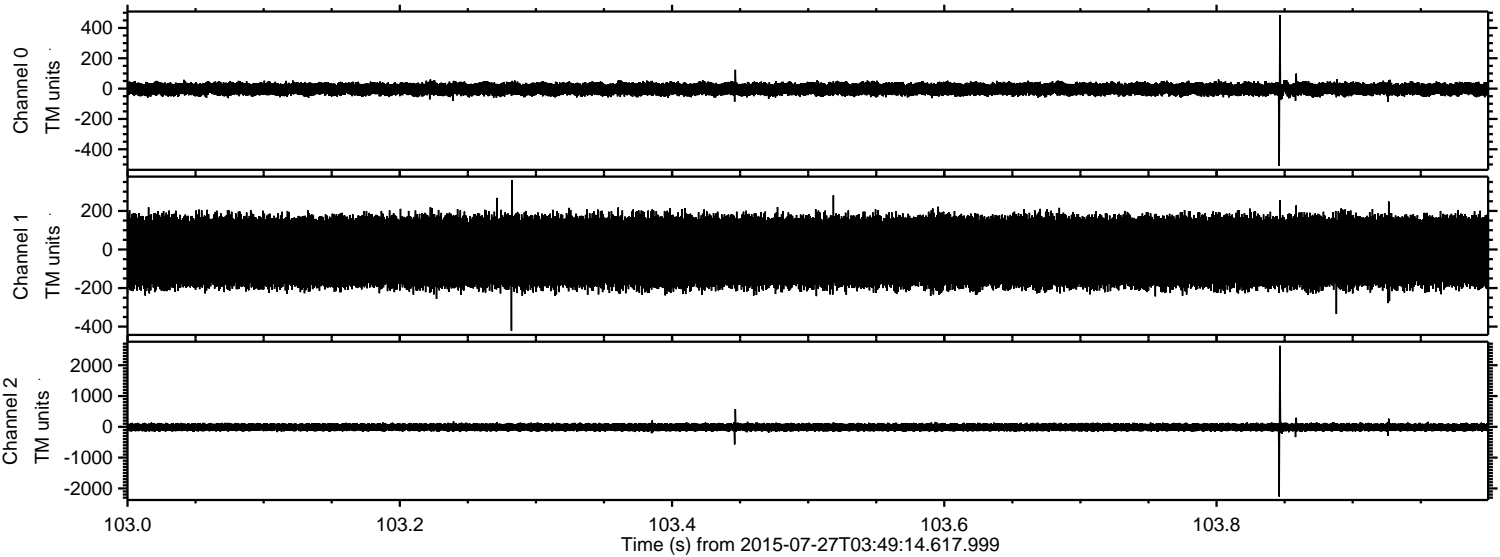
Processed Mon Jul 27 05:56:14 2015 by ELM ver.2012-10-06 from 001__elm20150727_034913__dat00.bin



Processed Mon Jul 27 05:56:15 2015 by ELM ver.2012-10-06 from 001__elm20150727_034913__dat00.bin



Processed Mon Jul 27 05:56:16 2015 by ELM ver.2012-10-06 from 001__elm20150727_034913__dat00.bin



Channel 0
mn: -510
mx: 484
 μ : -3.3
 σ : 22.0

Channel 1
mn: -422
mx: 360
 μ : -12.2
 σ : 100.0

Channel 2
mn: -2263
mx: 2632
 μ : -12.6
 σ : 71.8

Processed Mon Jul 27 05:56:17 2015 by ELM ver.2012-10-06 from 001__elm20150727_034913__dat00.bin

