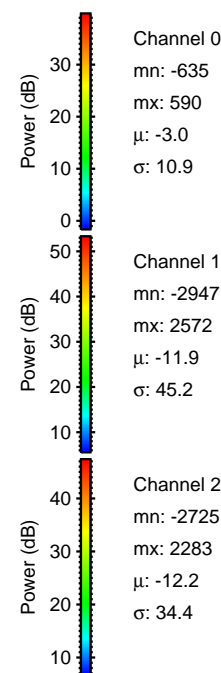
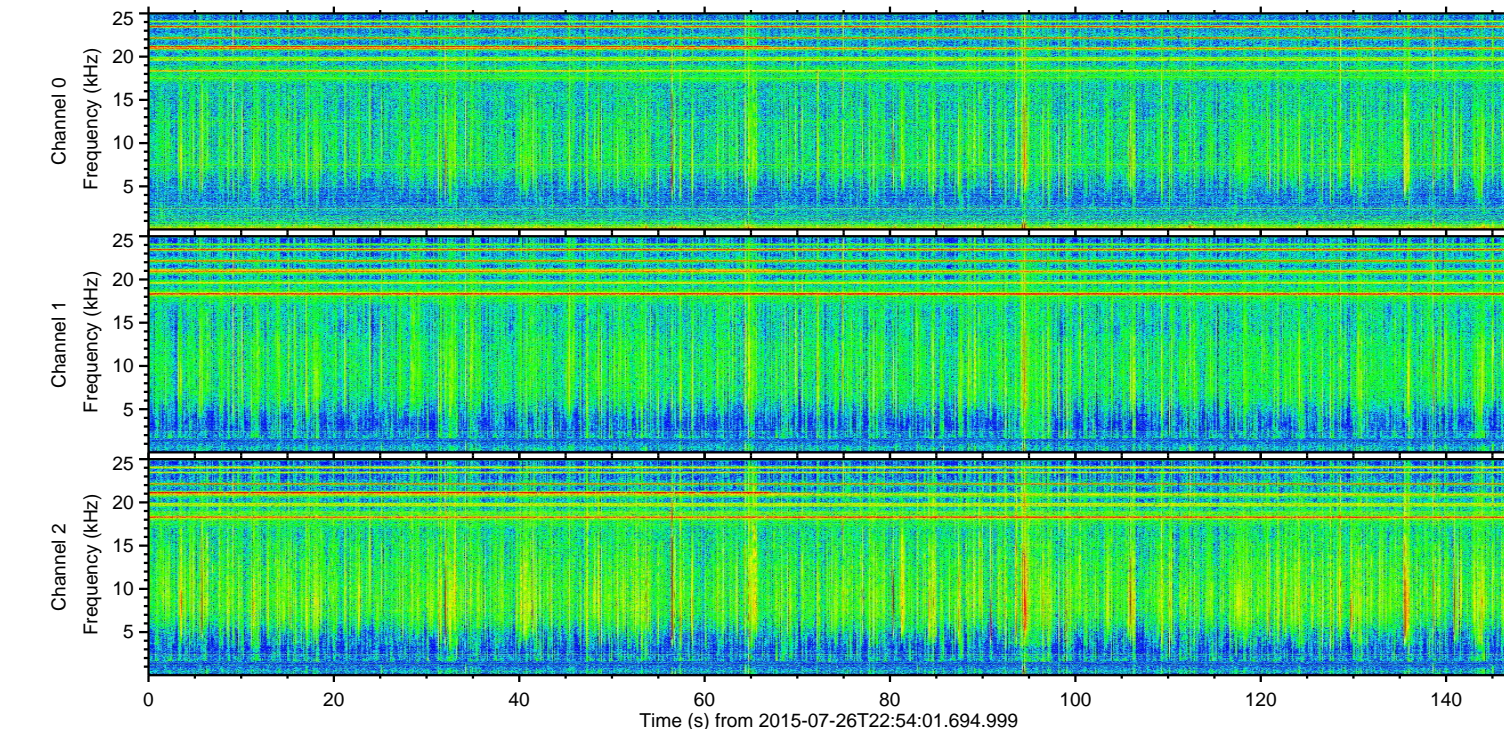
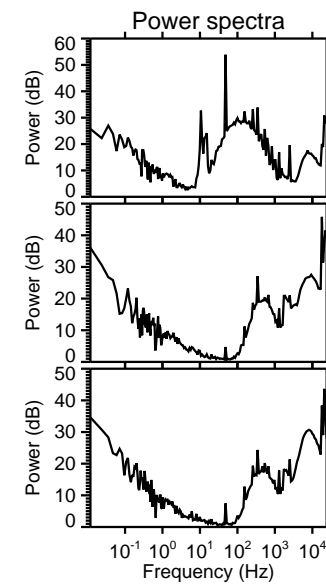
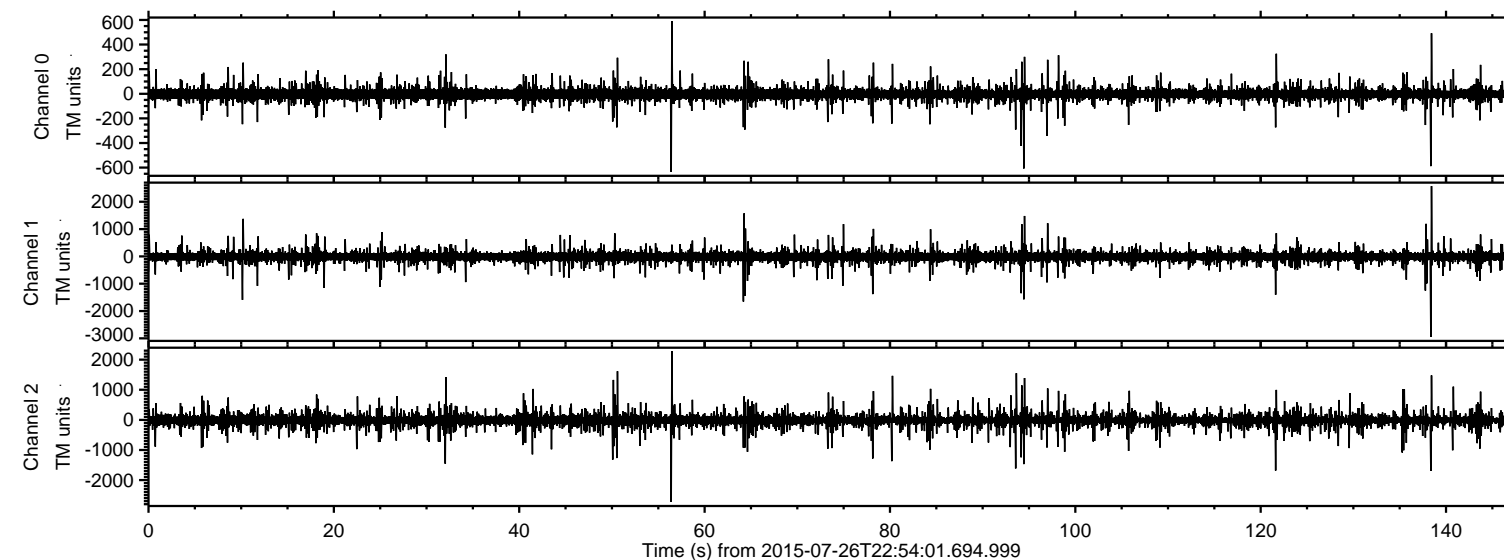


# ELMAVAN 3D WAVEFORMS (Measured data sampled at 50 kHz) 51000 packets of 144 samples from 2015-07-26T22:54:01.694.999.

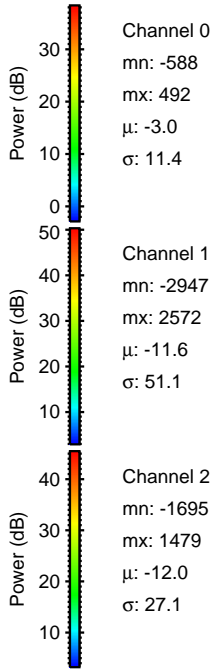
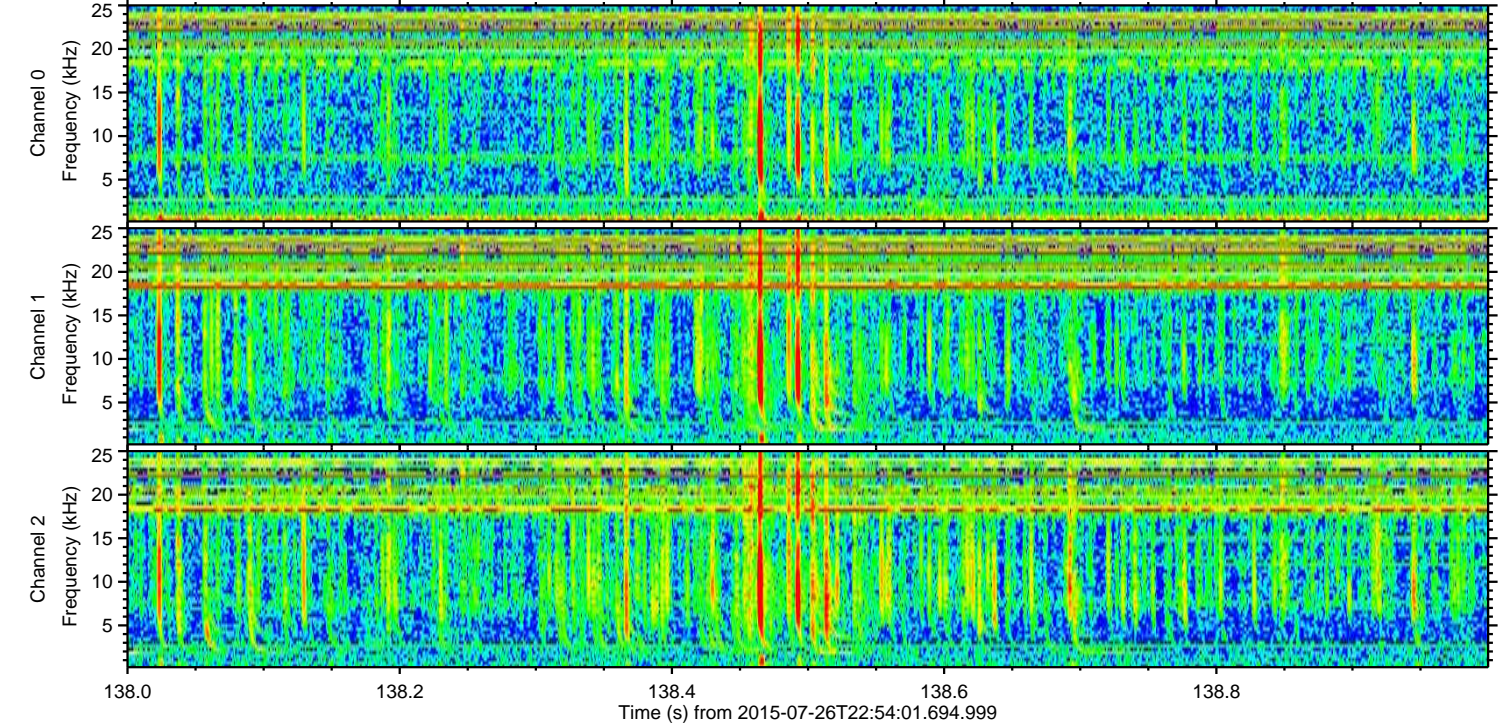
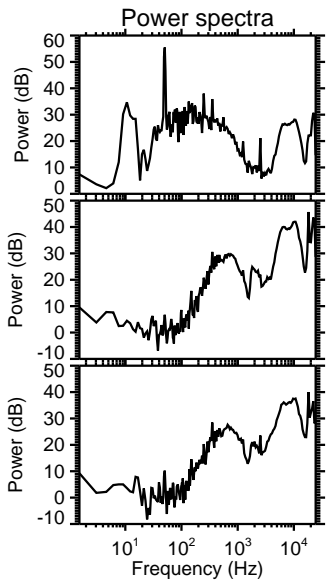
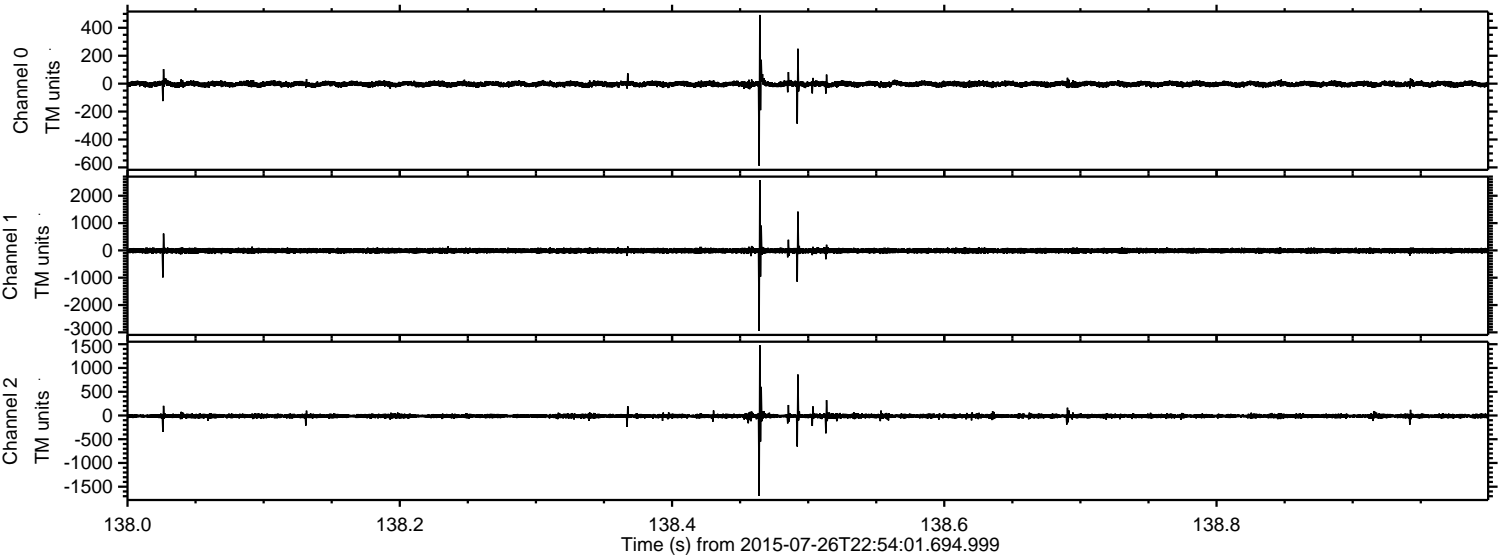
Processed Mon Jul 27 01:00:25 2015 by ELM ver.2012-10-06 from 001\_\_elm20150726\_225400\_\_dat00.bin





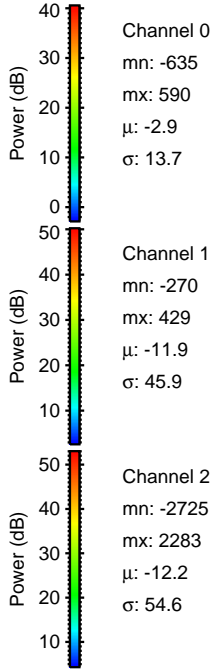
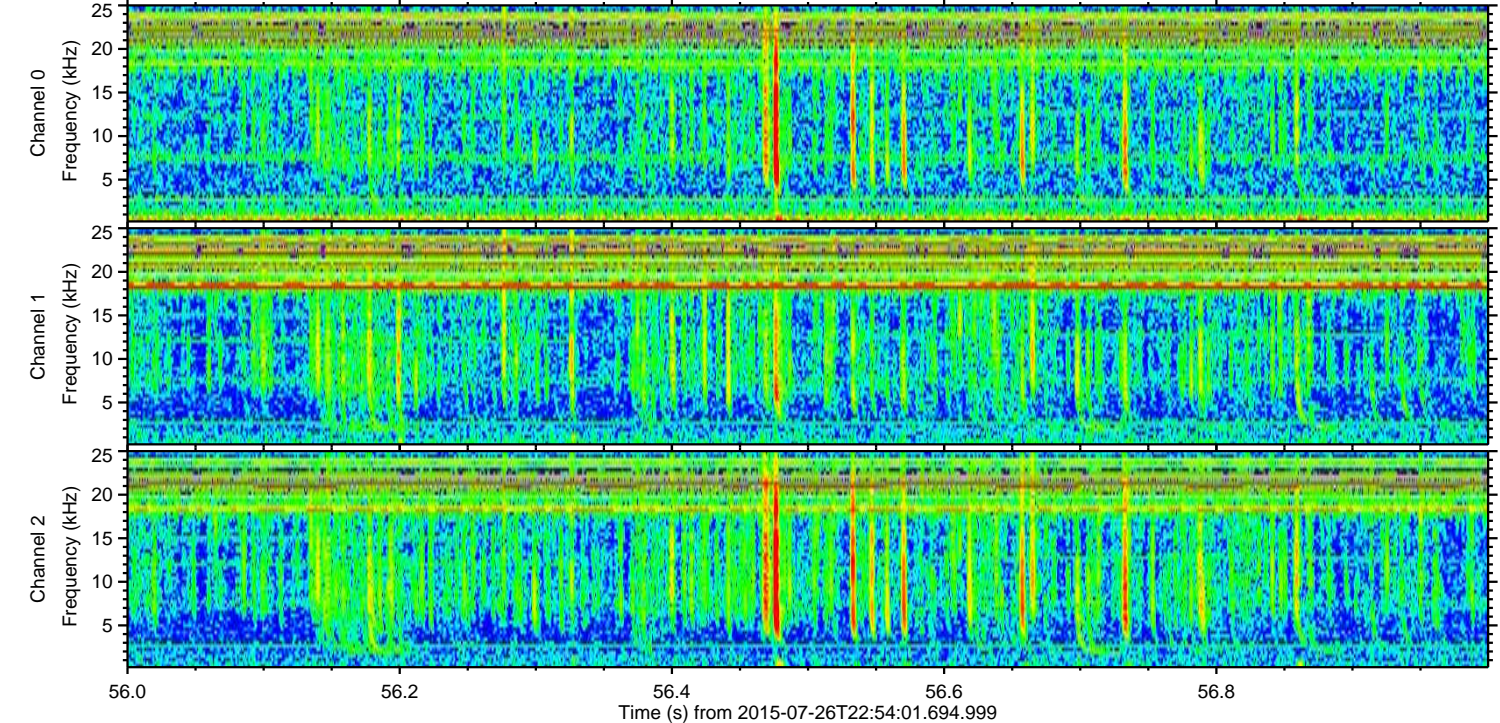
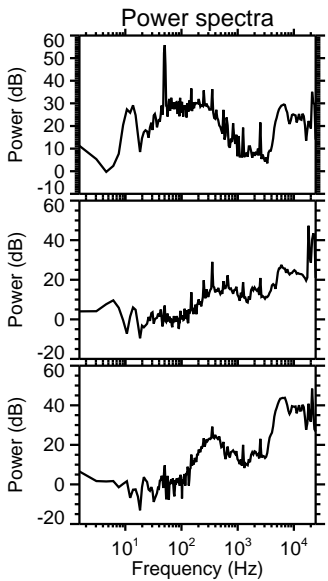
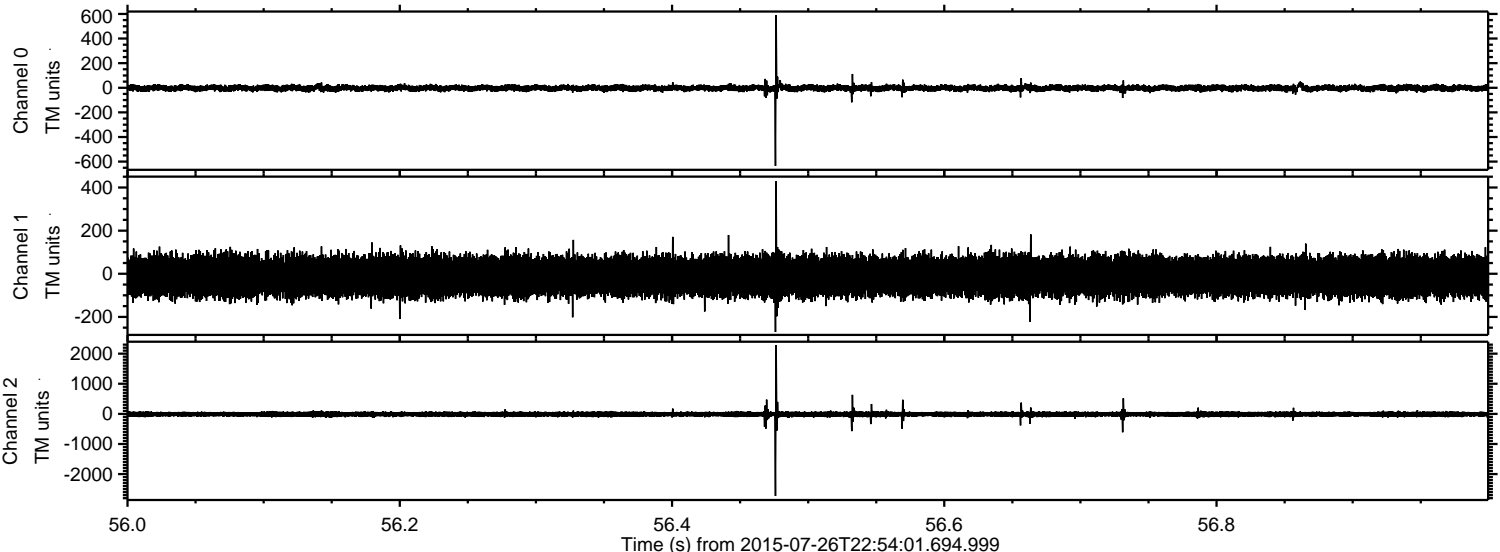
ELMAVAN 3D WAVEFORMS (Measured data sampled at 50 kHz) 51000 packets of 144 samples from 2015-07-26T22:54:01.694.999. Part 139/147

Processed Mon Jul 27 01:00:41 2015 by ELM ver.2012-10-06 from 001\_\_elm20150726\_225400\_\_dat00.bin





Processed Mon Jul 27 01:00:42 2015 by ELM ver.2012-10-06 from 001\_\_elm20150726\_225400\_\_dat00.bin



Channel 0  
mn: -635  
mx: 590  
 $\mu$ : -2.9  
 $\sigma$ : 13.7

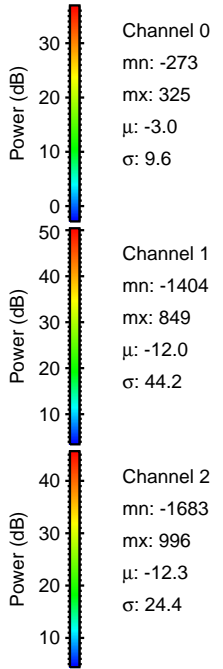
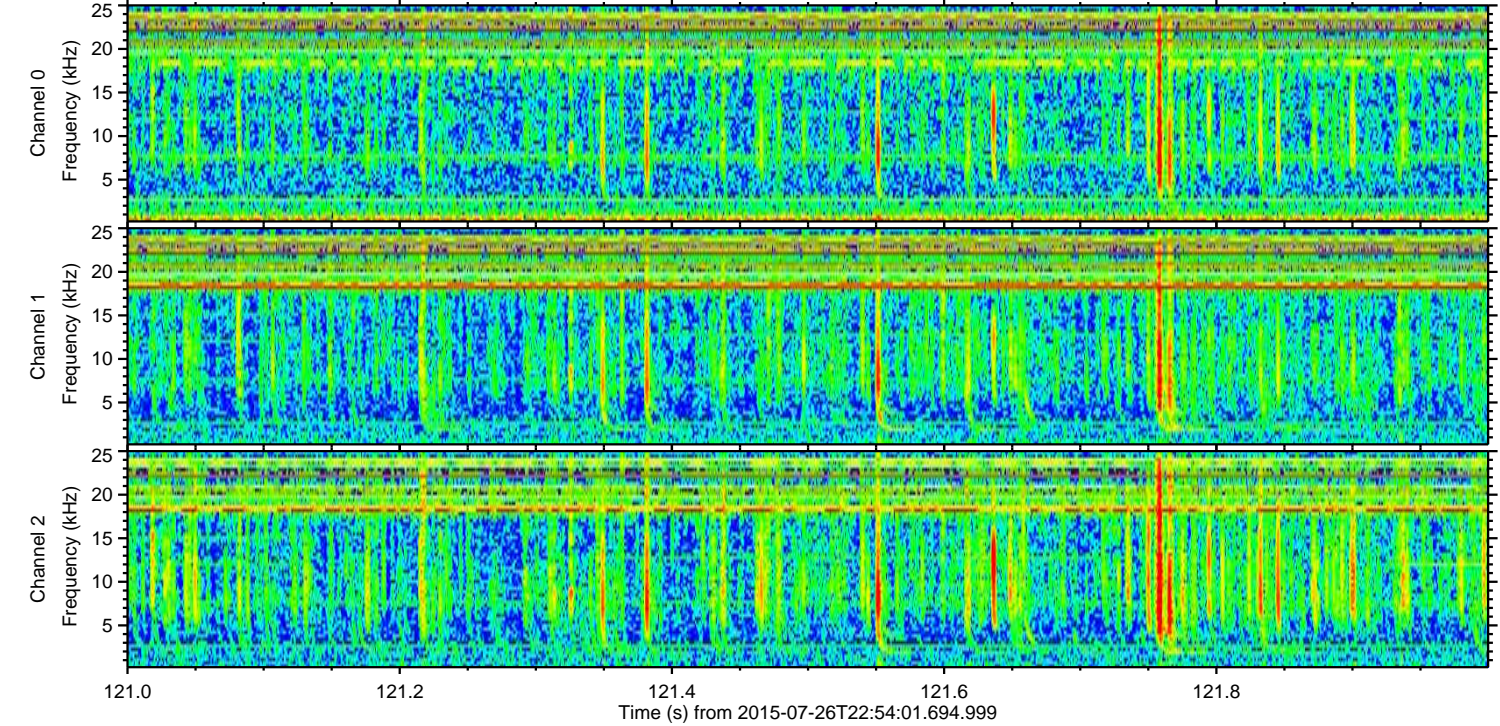
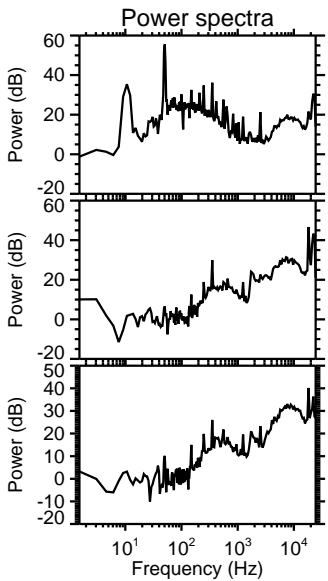
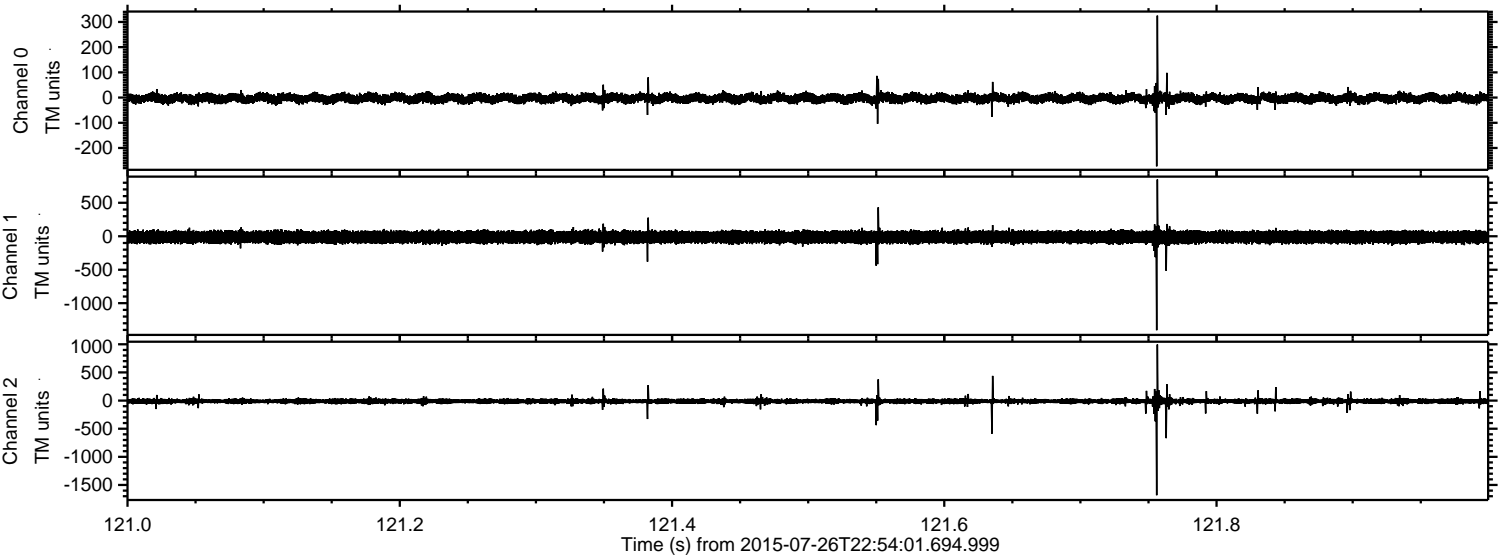
Channel 1  
mn: -270  
mx: 429  
 $\mu$ : -11.9  
 $\sigma$ : 45.9

Channel 2  
mn: -2725  
mx: 2283  
 $\mu$ : -12.2  
 $\sigma$ : 54.6



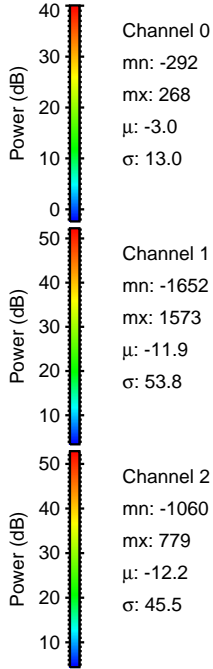
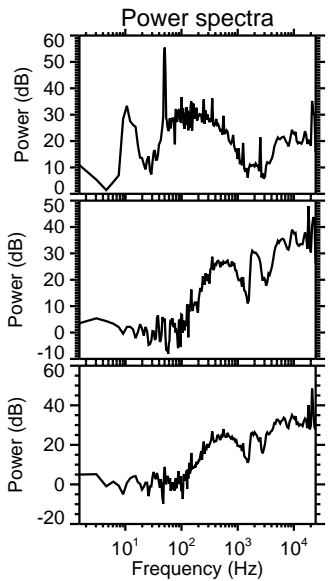
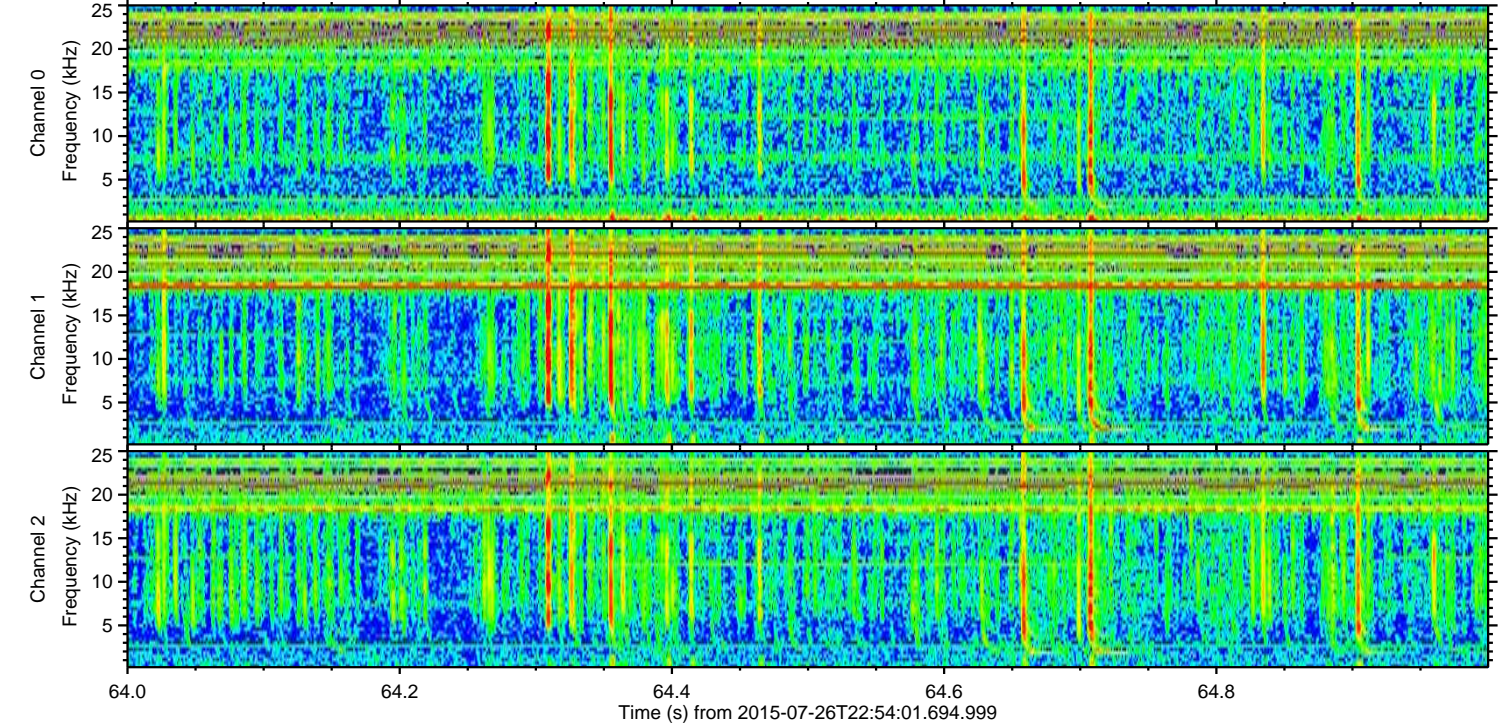
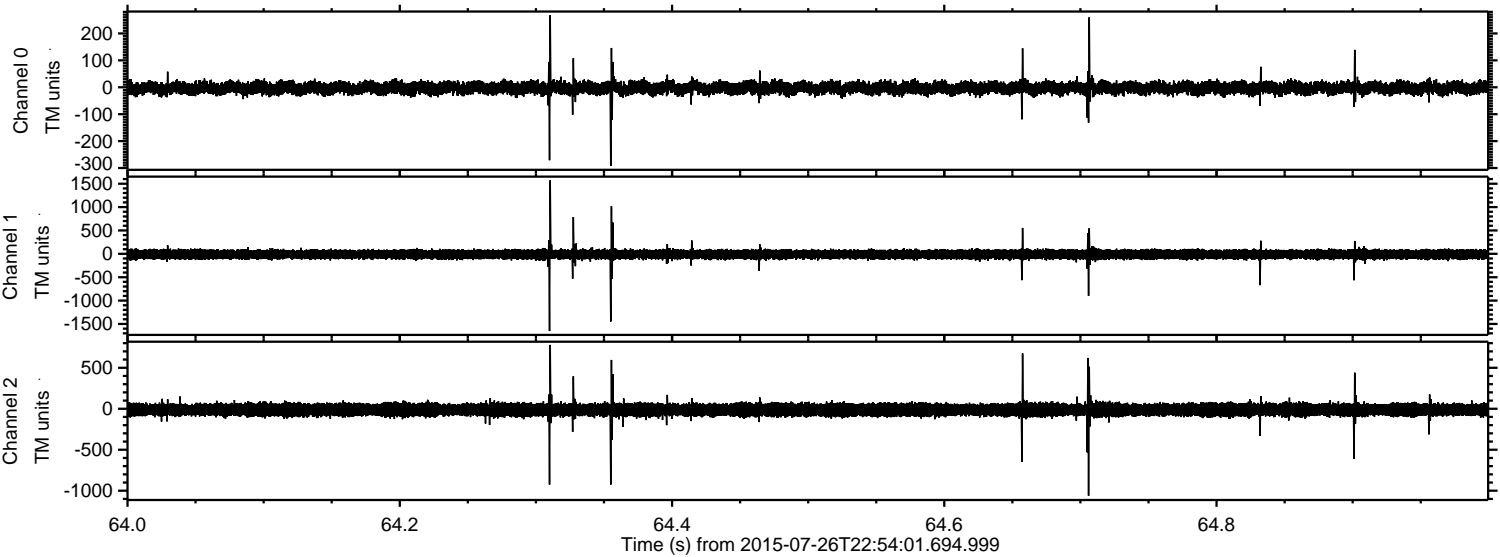
ELMAVAN 3D WAVEFORMS (Measured data sampled at 50 kHz) 51000 packets of 144 samples from 2015-07-26T22:54:01.694.999. Part 122/147

Processed Mon Jul 27 01:00:43 2015 by ELM ver.2012-10-06 from 001\_\_elm20150726\_225400\_\_dat00.bin



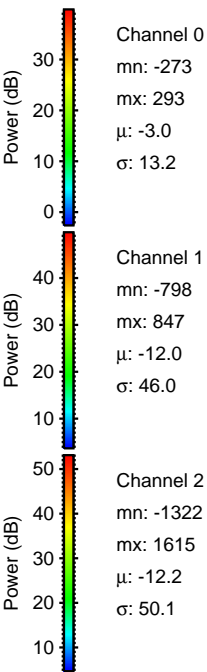
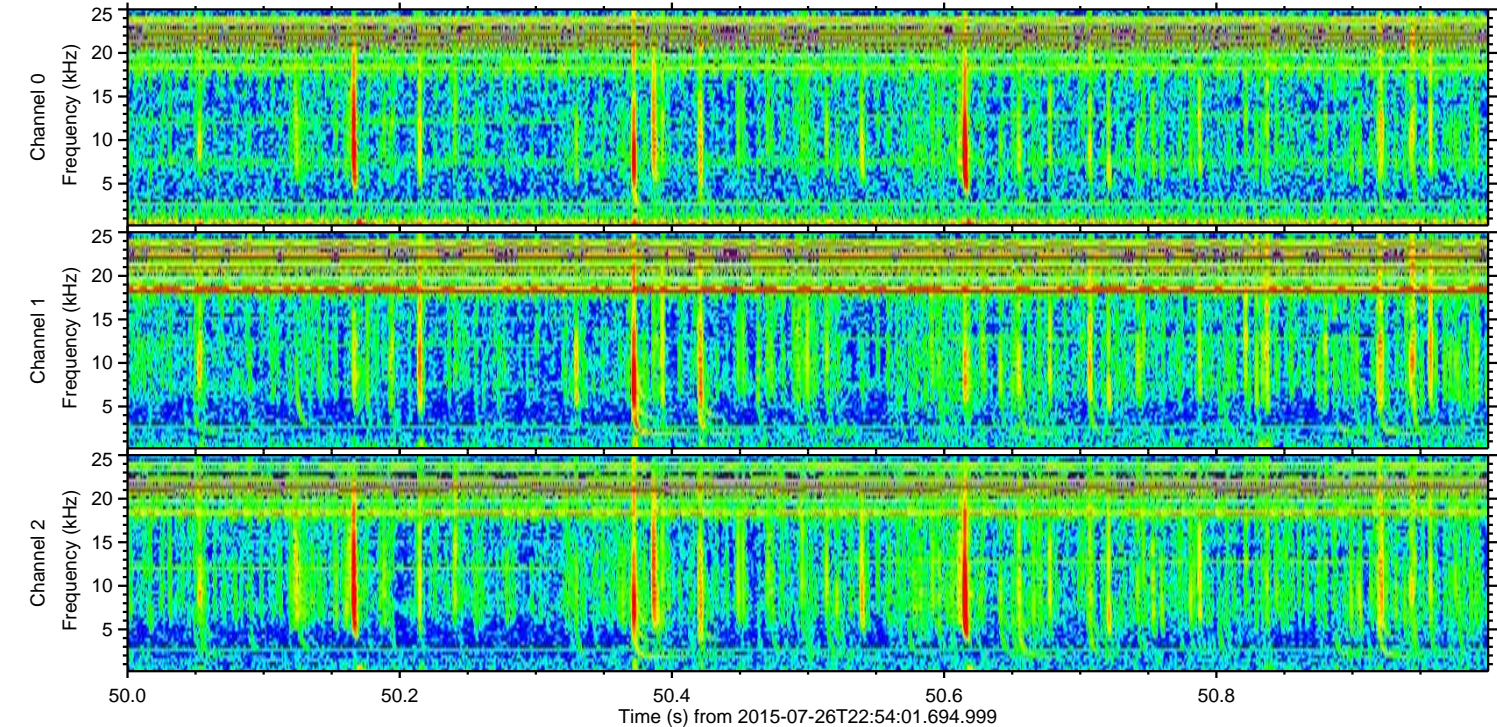
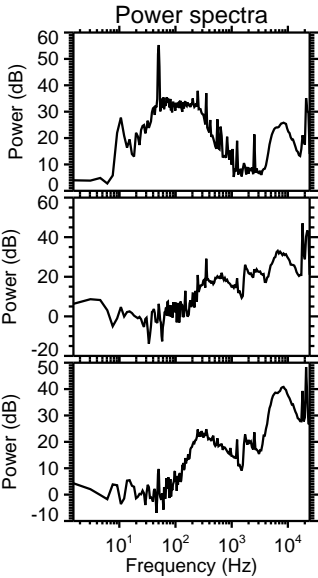
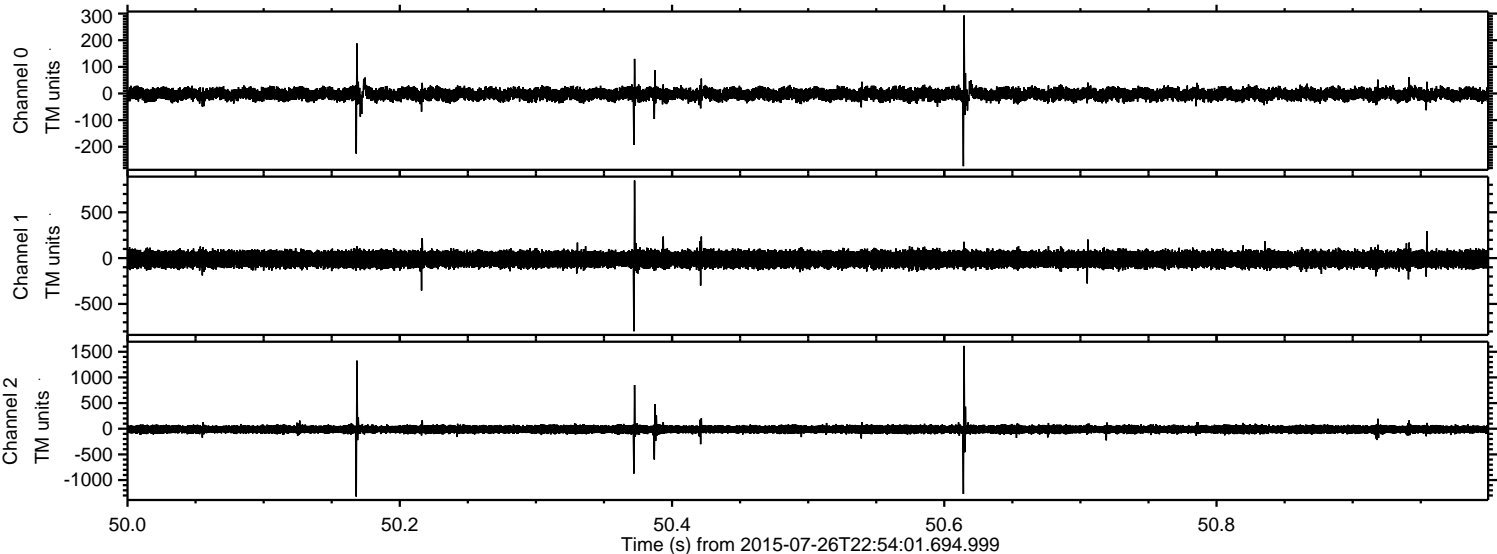


Processed Mon Jul 27 01:00:44 2015 by ELM ver.2012-10-06 from 001\_\_elm20150726\_225400\_\_dat00.bin



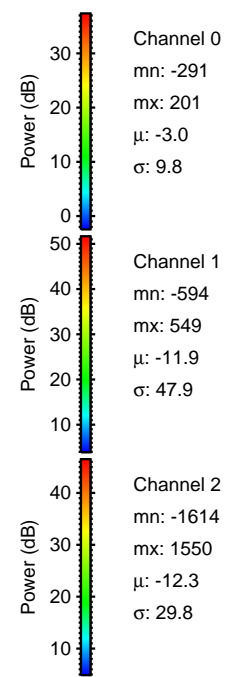
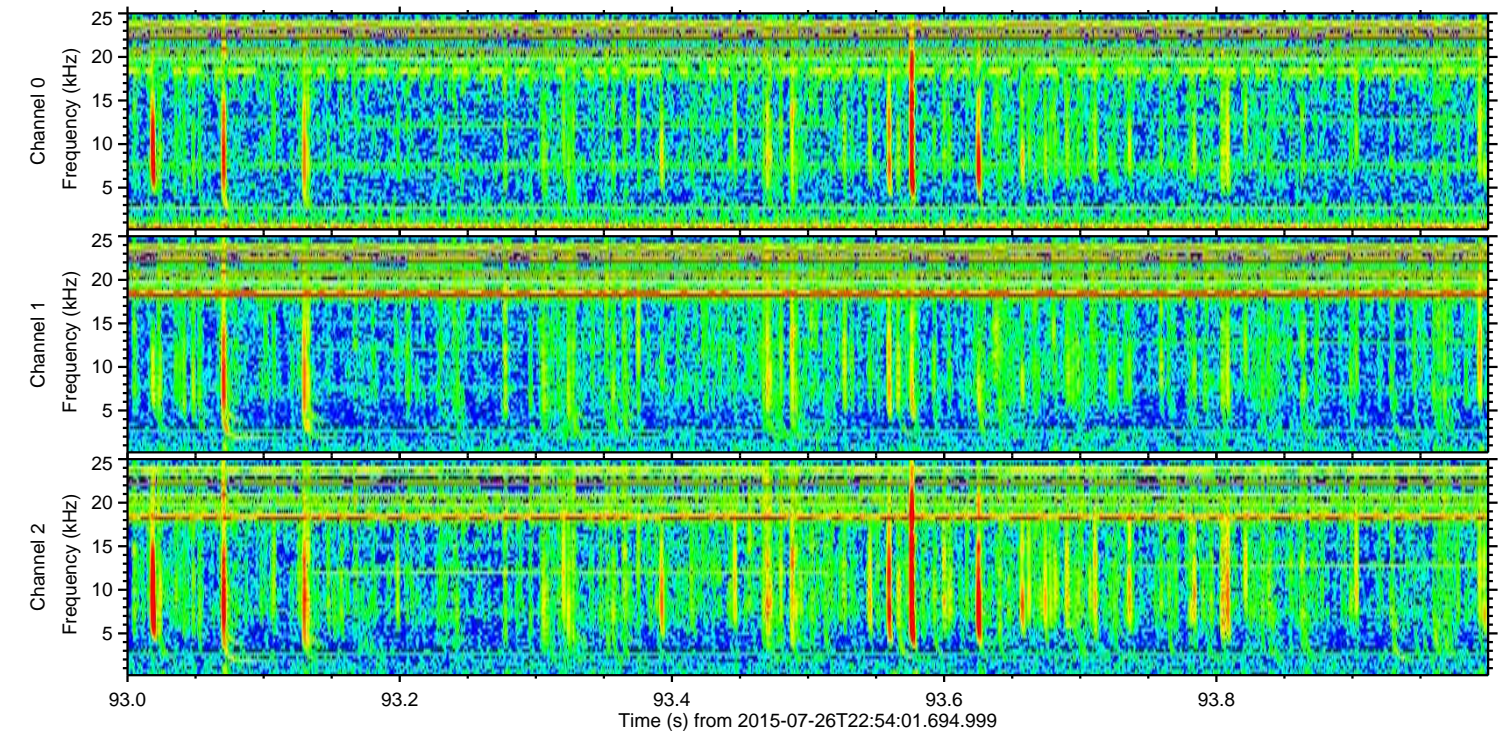
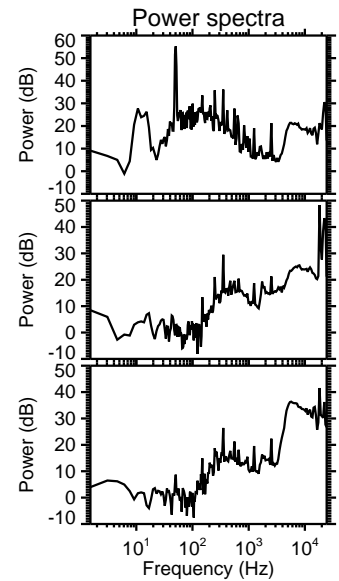
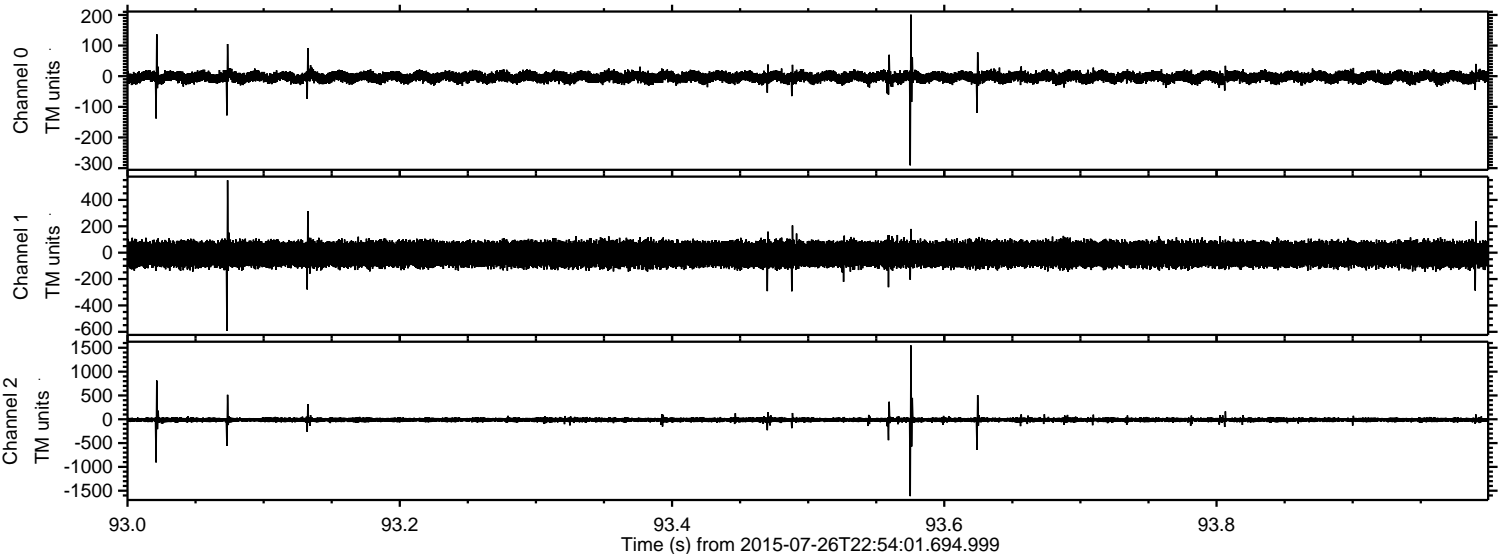


Processed Mon Jul 27 01:00:45 2015 by ELM ver.2012-10-06 from 001\_\_elm20150726\_225400\_\_dat00.bin



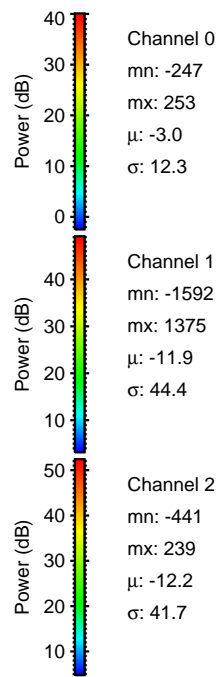
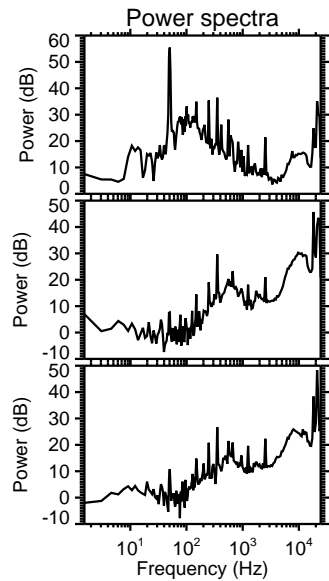
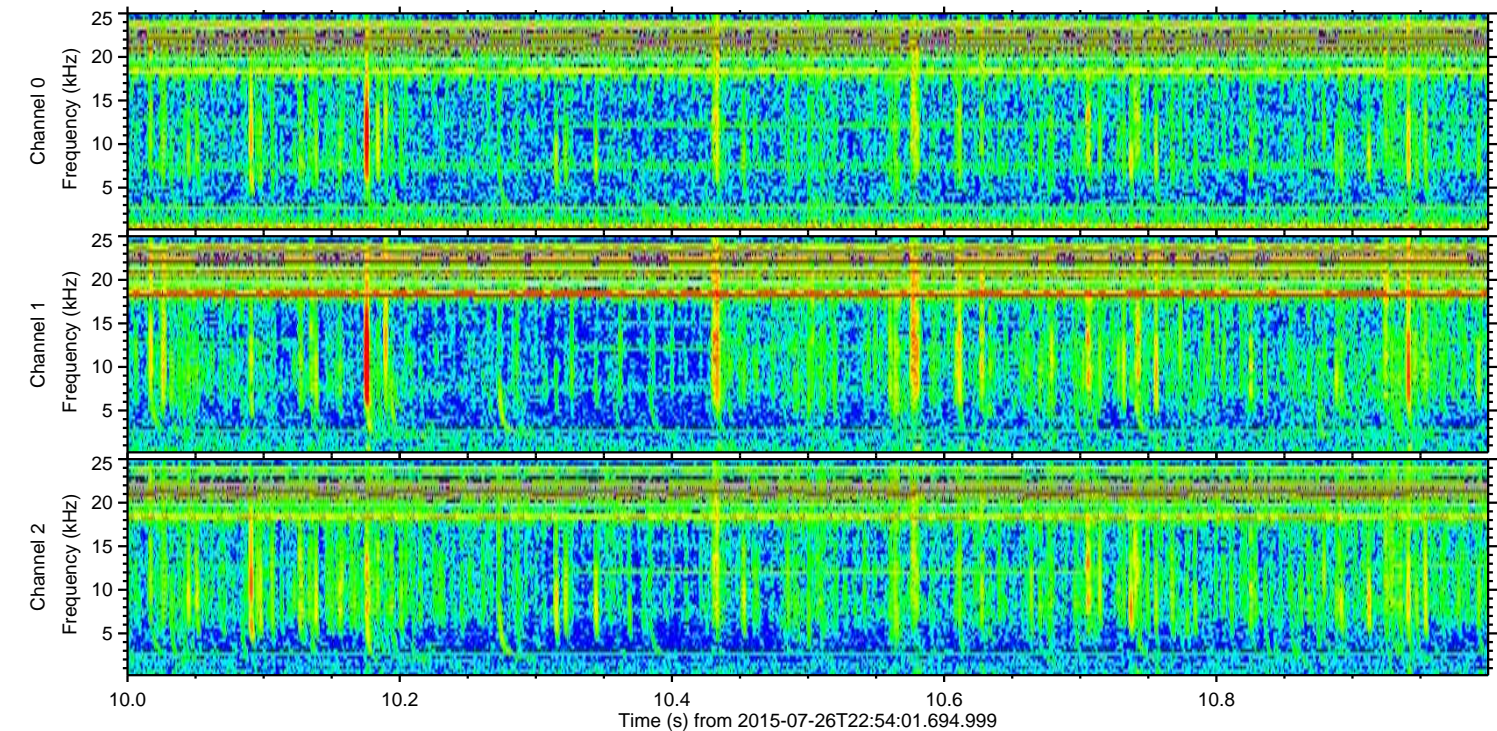
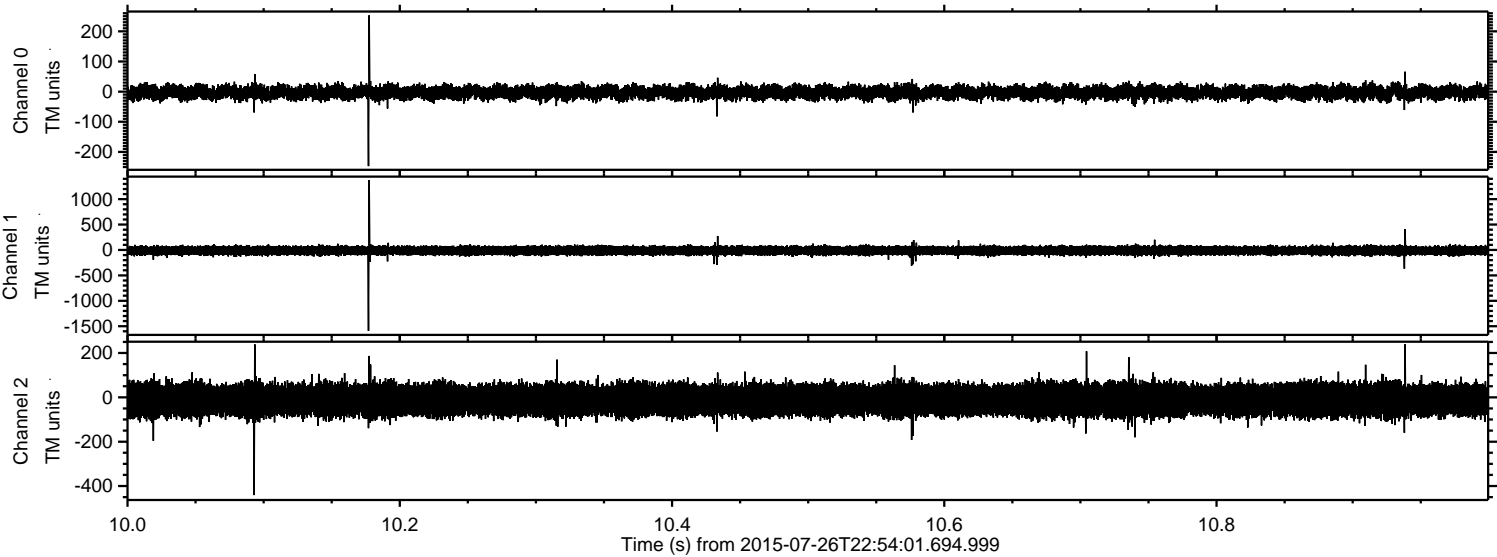


Processed Mon Jul 27 01:00:46 2015 by ELM ver.2012-10-06 from 001\_\_elm20150726\_225400\_\_dat00.bin



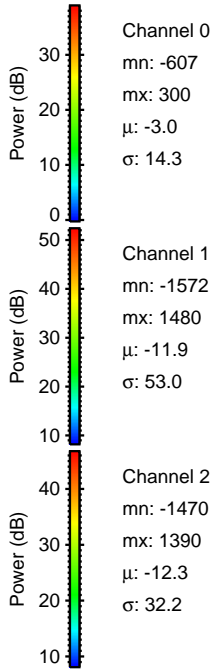
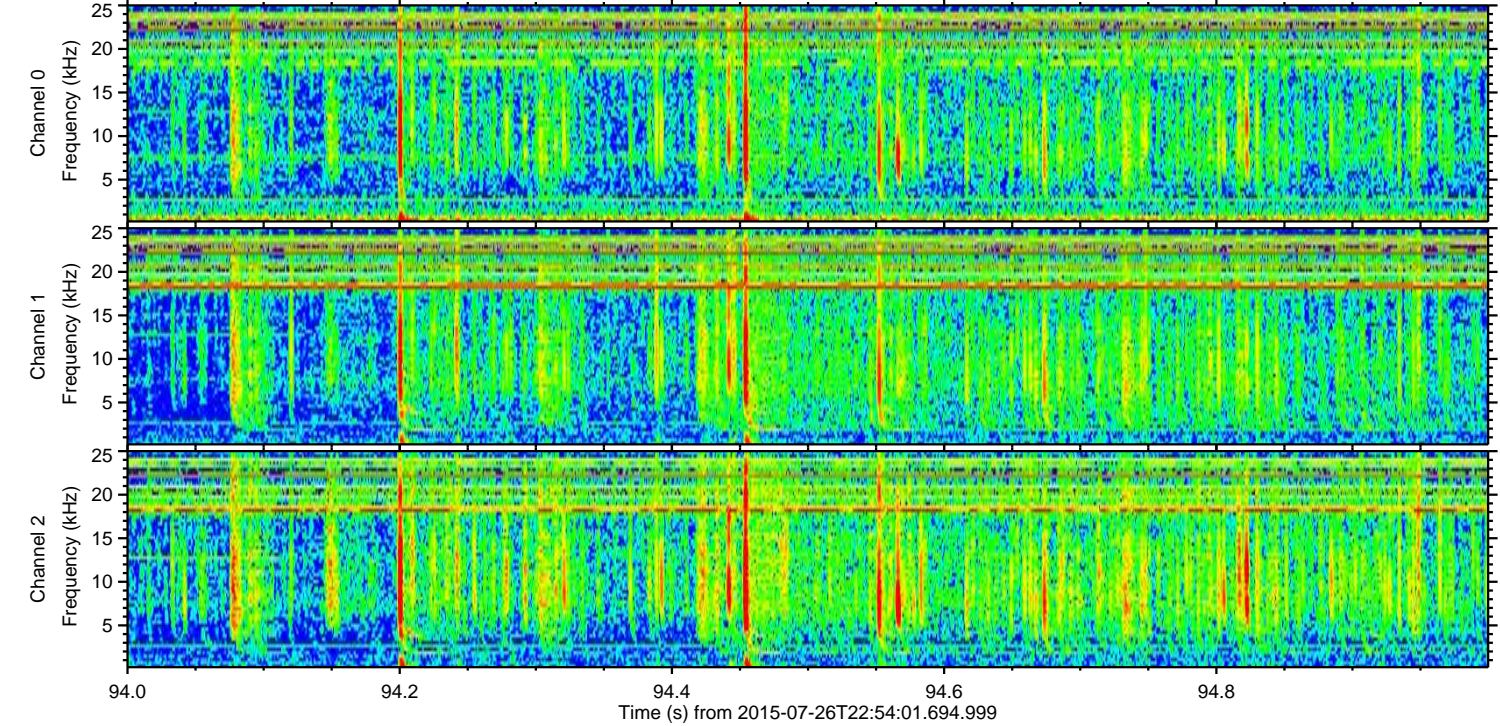
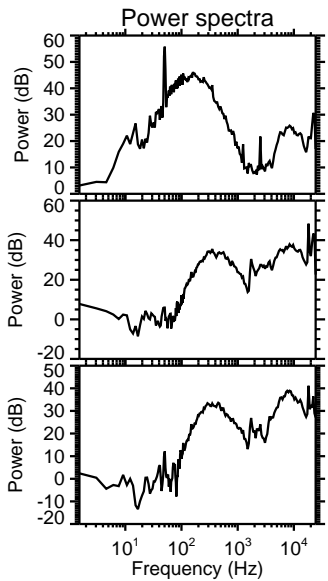
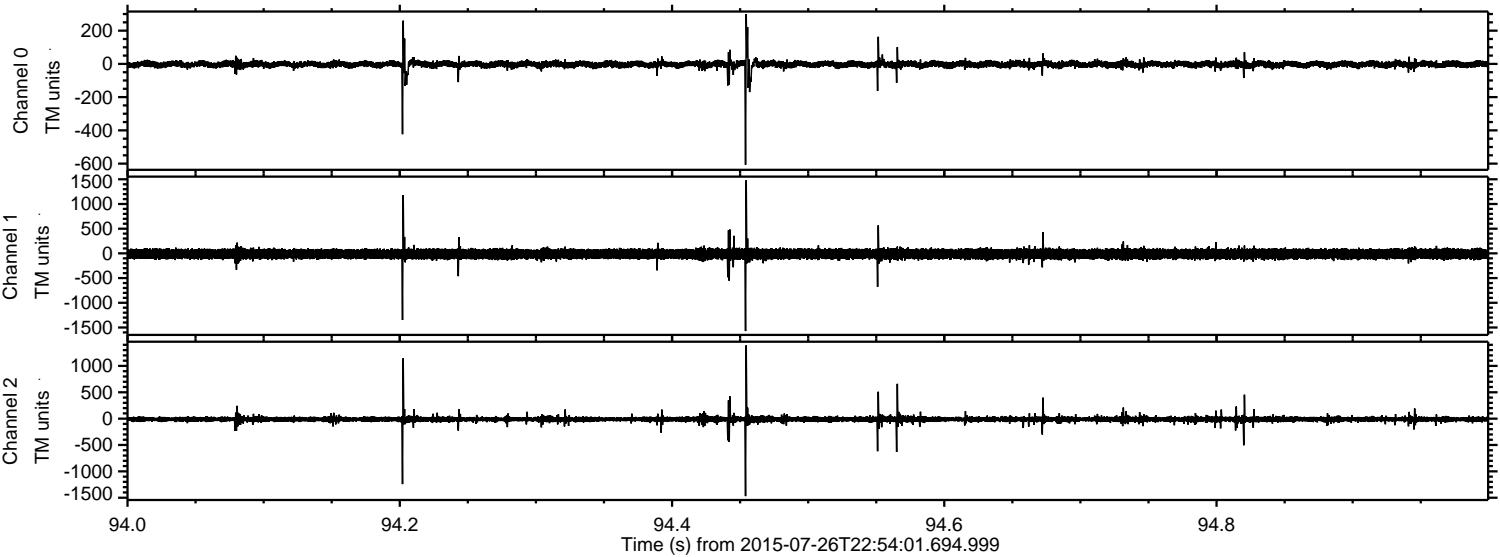


Processed Mon Jul 27 01:00:47 2015 by ELM ver.2012-10-06 from 001\_\_elm20150726\_225400\_\_dat00.bin



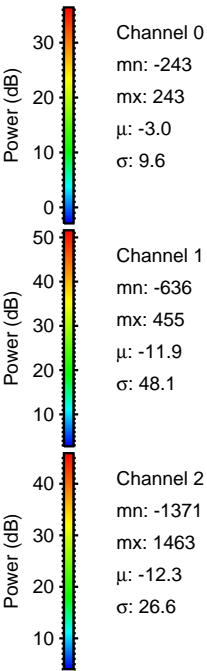
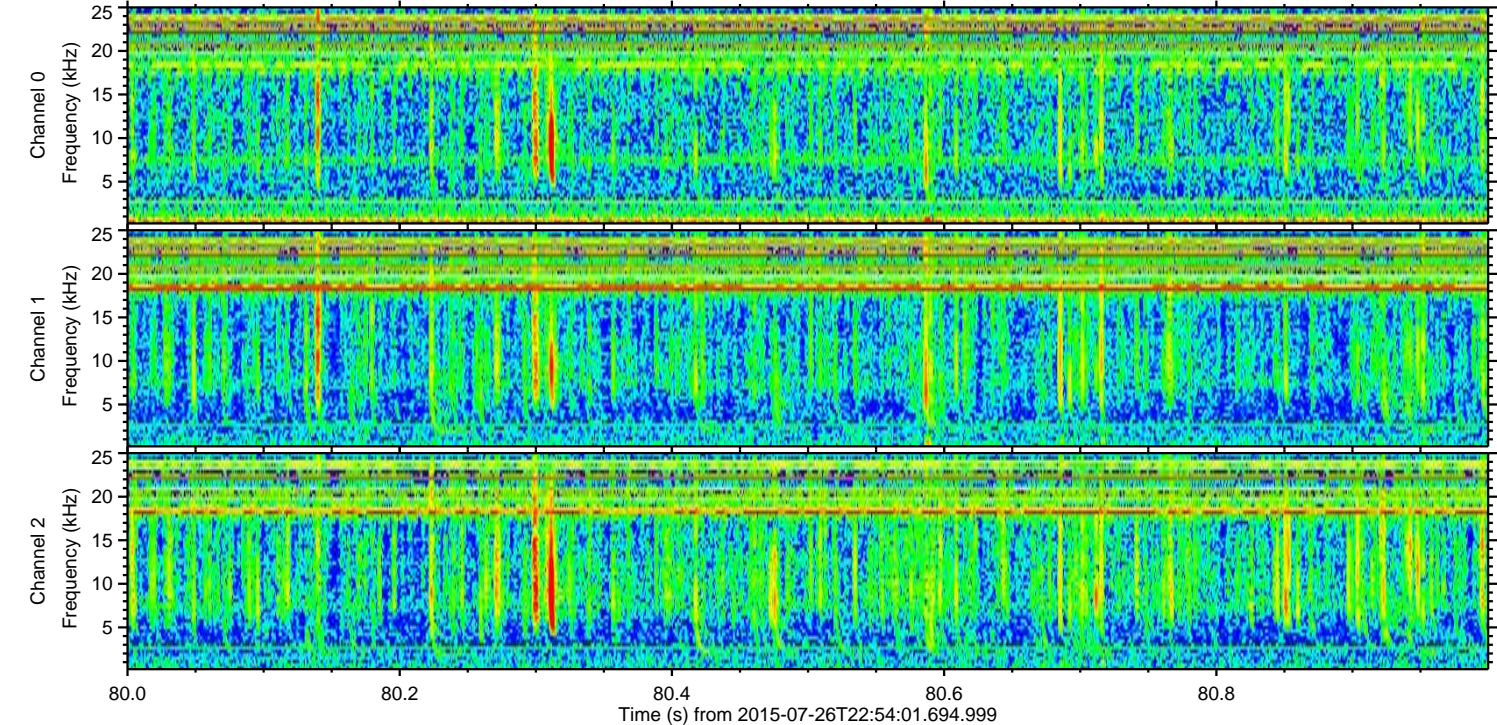
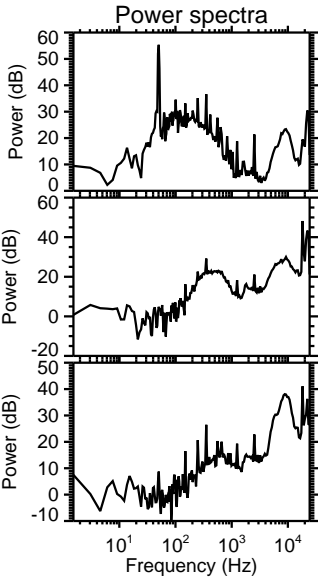
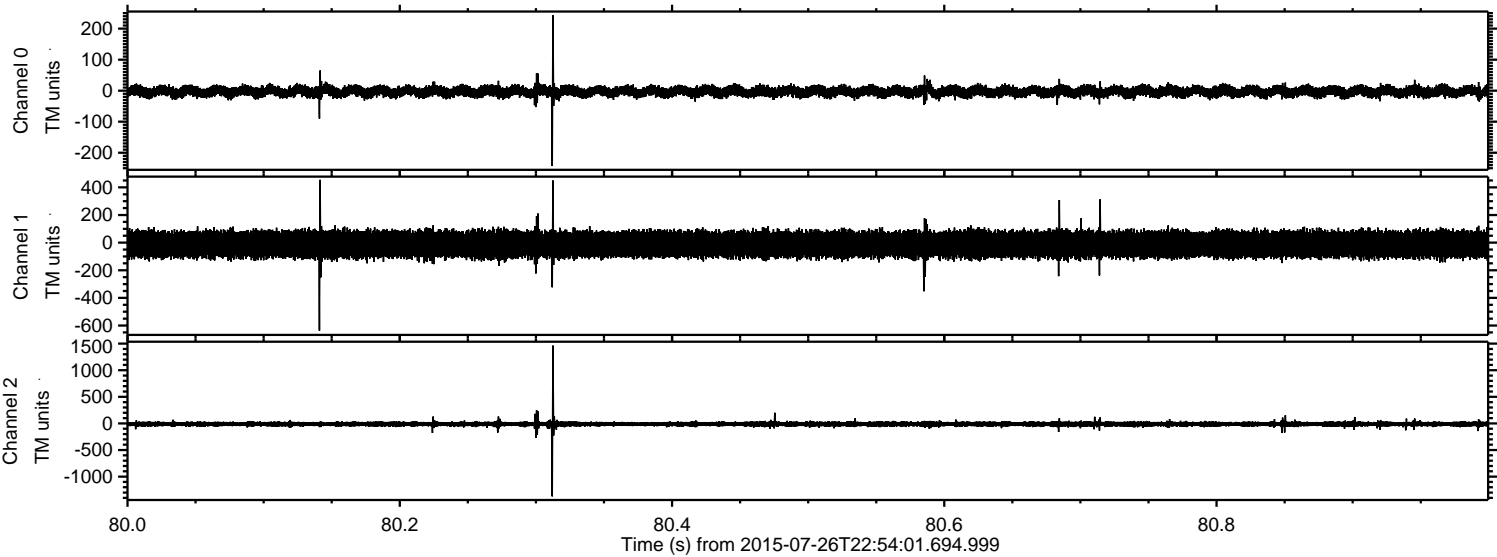


Processed Mon Jul 27 01:00:48 2015 by ELM ver.2012-10-06 from 001\_\_elm20150726\_225400\_\_dat00.bin





Processed Mon Jul 27 01:00:49 2015 by ELM ver.2012-10-06 from 001\_\_elm20150726\_225400\_\_dat00.bin





Processed Mon Jul 27 01:00:50 2015 by ELM ver.2012-10-06 from 001\_\_elm20150726\_225400\_\_dat00.bin

