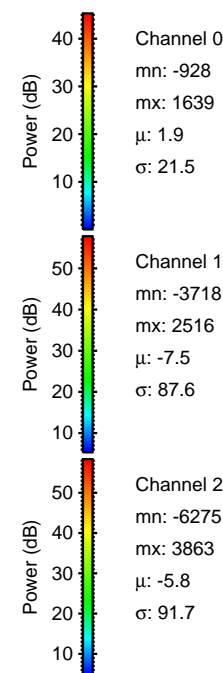
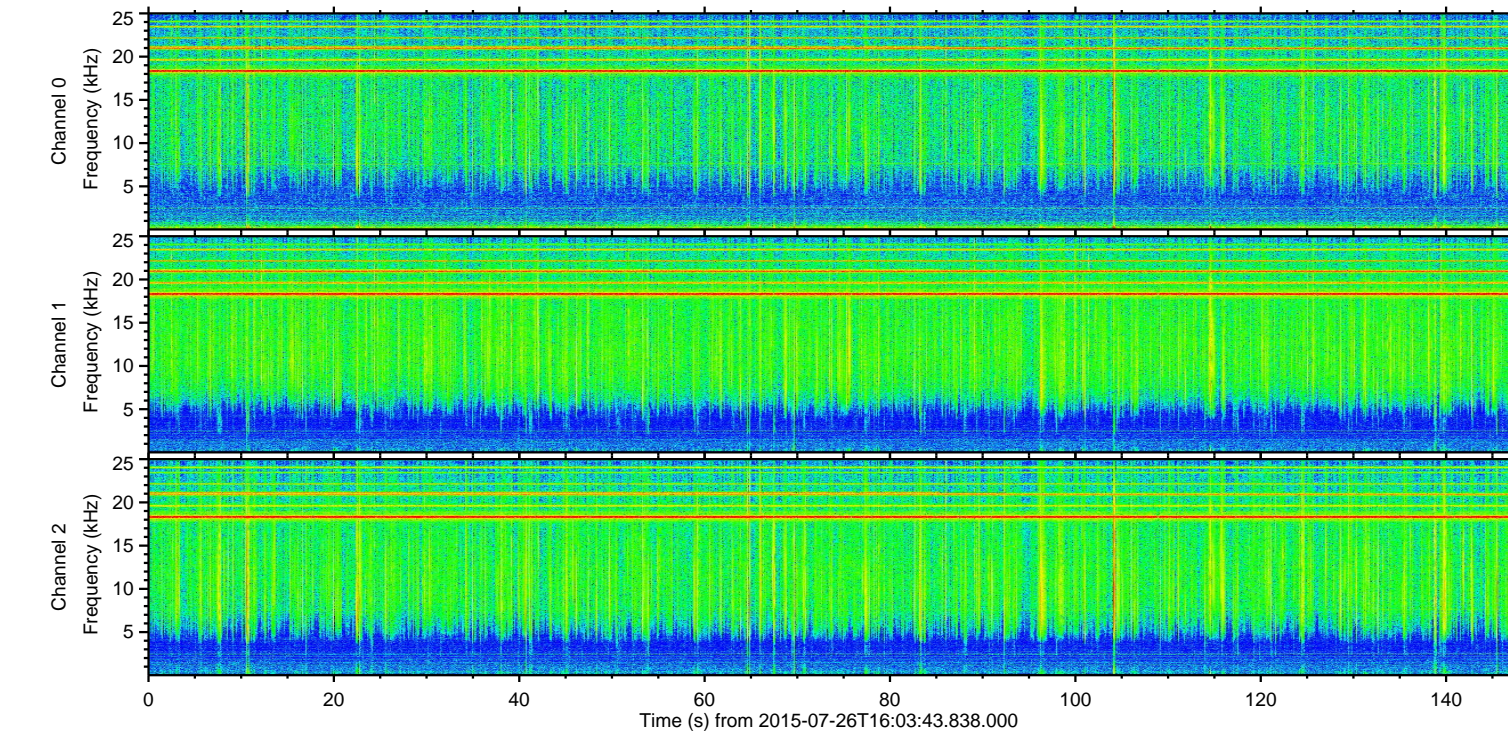
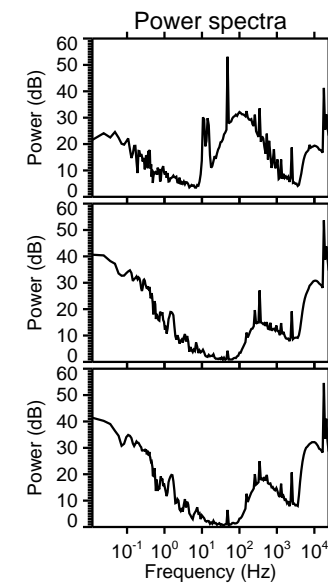
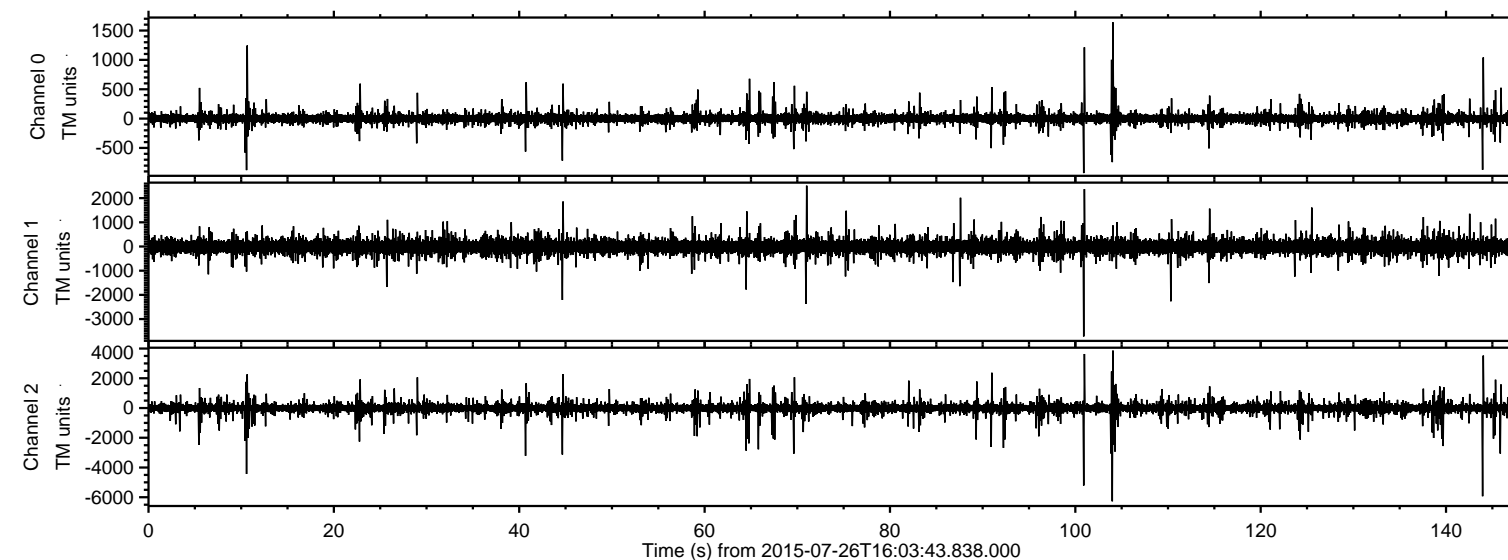


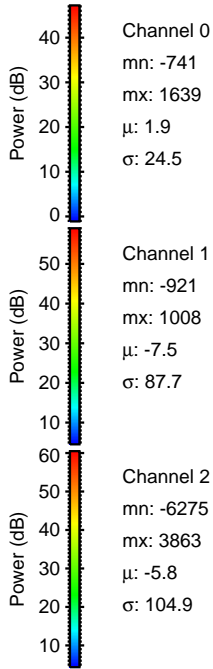
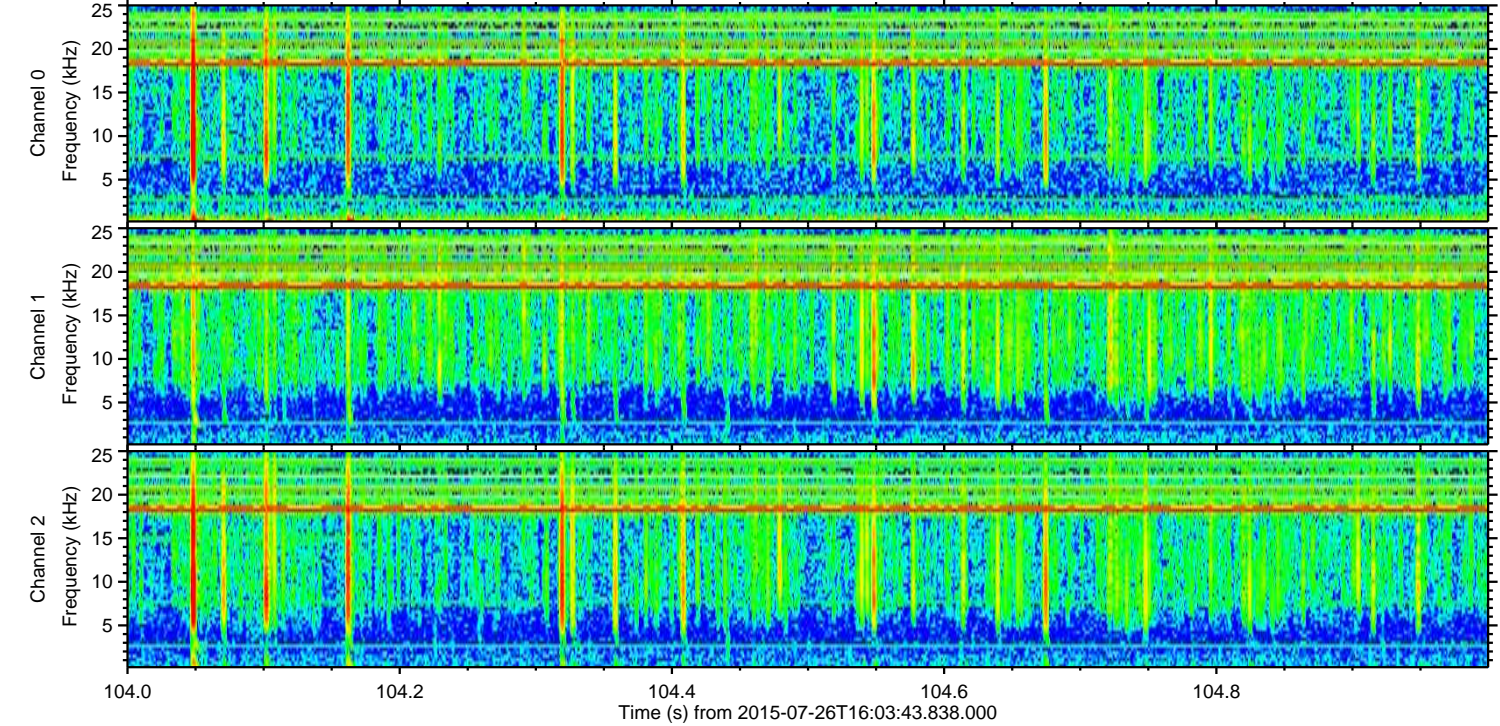
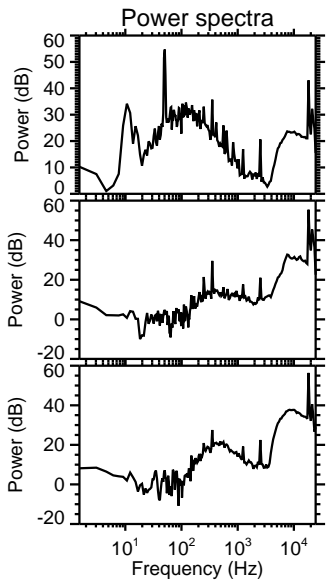
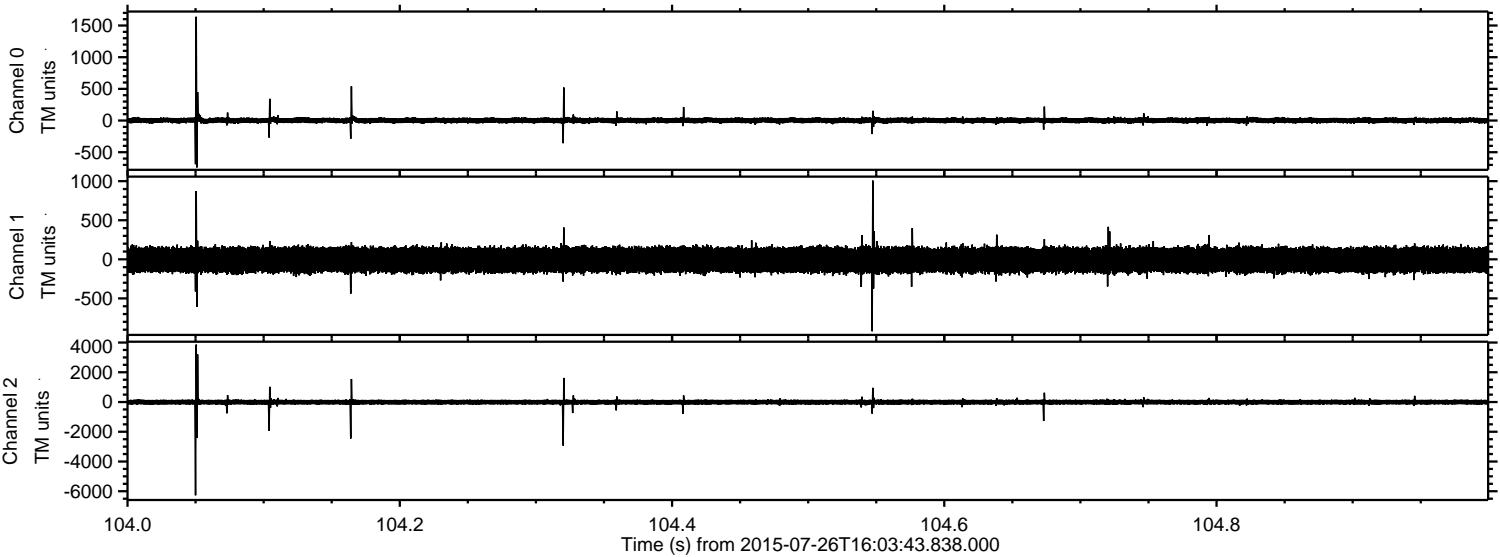
ELMAVAN 3D WAVEFORMS (Measured data sampled at 50 kHz) 51000 packets of 144 samples from 2015-07-26T16:03:43.838.000.

Processed Sun Jul 26 18:09:40 2015 by ELM ver.2012-10-06 from 001__elm20150726_160342__dat00.bin



ELMAVAN 3D WAVEFORMS (Measured data sampled at 50 kHz) 51000 packets of 144 samples from 2015-07-26T16:03:43.838.000. Part 105/147

Processed Sun Jul 26 18:09:55 2015 by ELM ver.2012-10-06 from 001__elm20150726_160342__dat00.bin



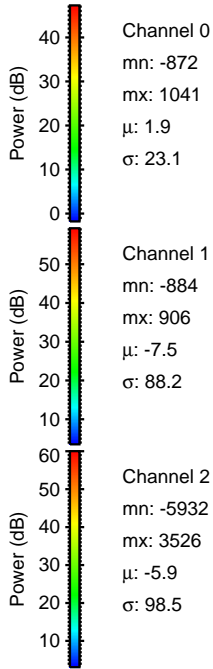
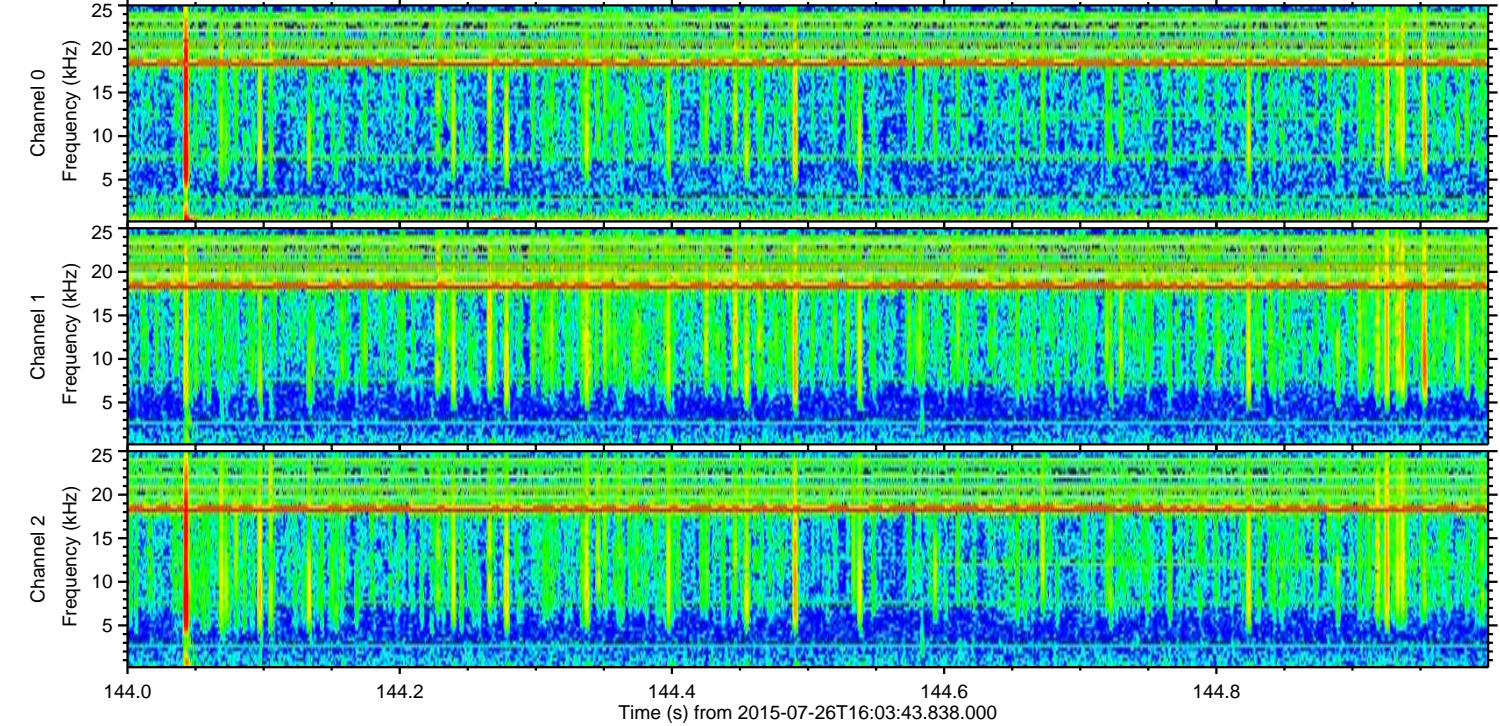
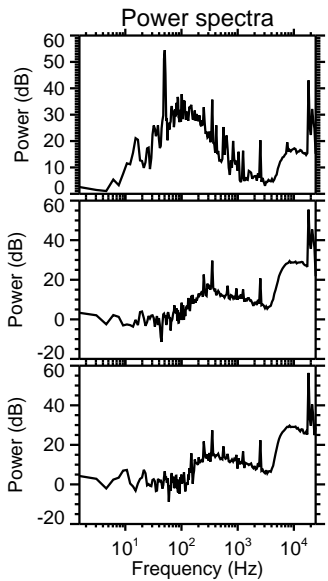
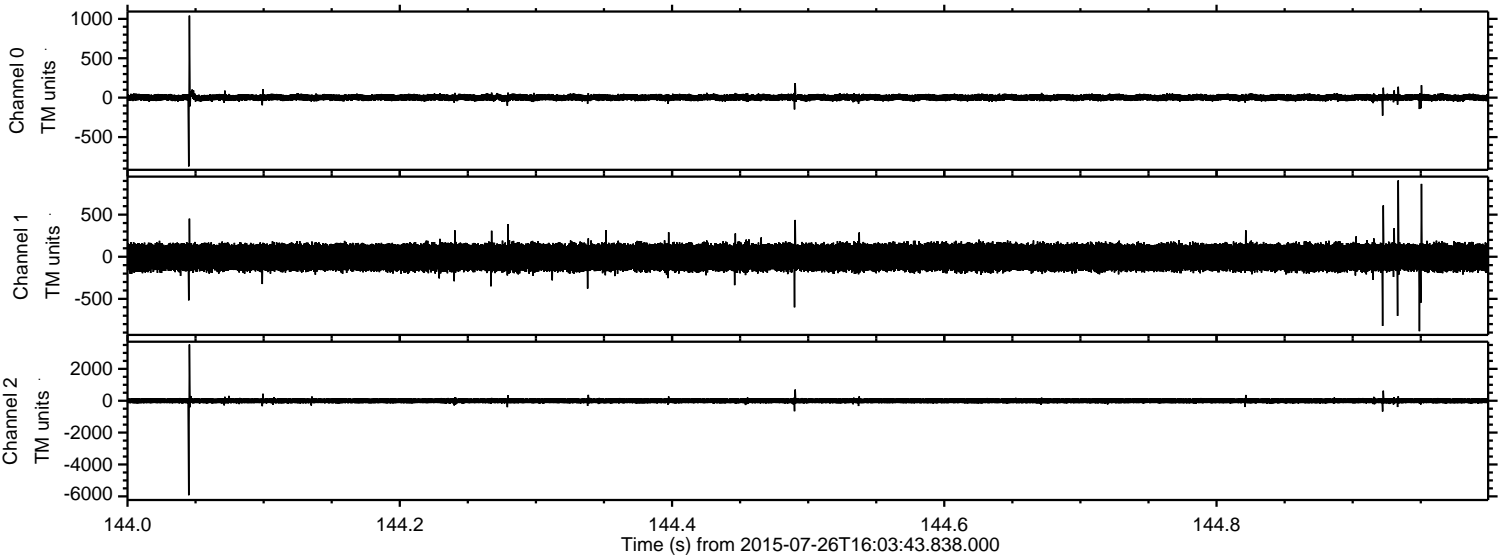
Channel 0
mn: -741
mx: 1639
 μ : 1.9
 σ : 24.5

Channel 1
mn: -921
mx: 1008
 μ : -7.5
 σ : 87.7

Channel 2
mn: -6275
mx: 3863
 μ : -5.8
 σ : 104.9

ELMAVAN 3D WAVEFORMS (Measured data sampled at 50 kHz) 51000 packets of 144 samples from 2015-07-26T16:03:43.838.000. Part 145/147

Processed Sun Jul 26 18:09:56 2015 by ELM ver.2012-10-06 from 001__elm20150726_160342__dat00.bin



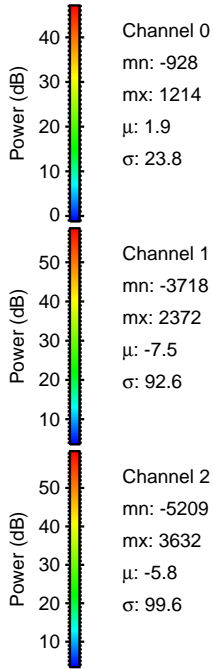
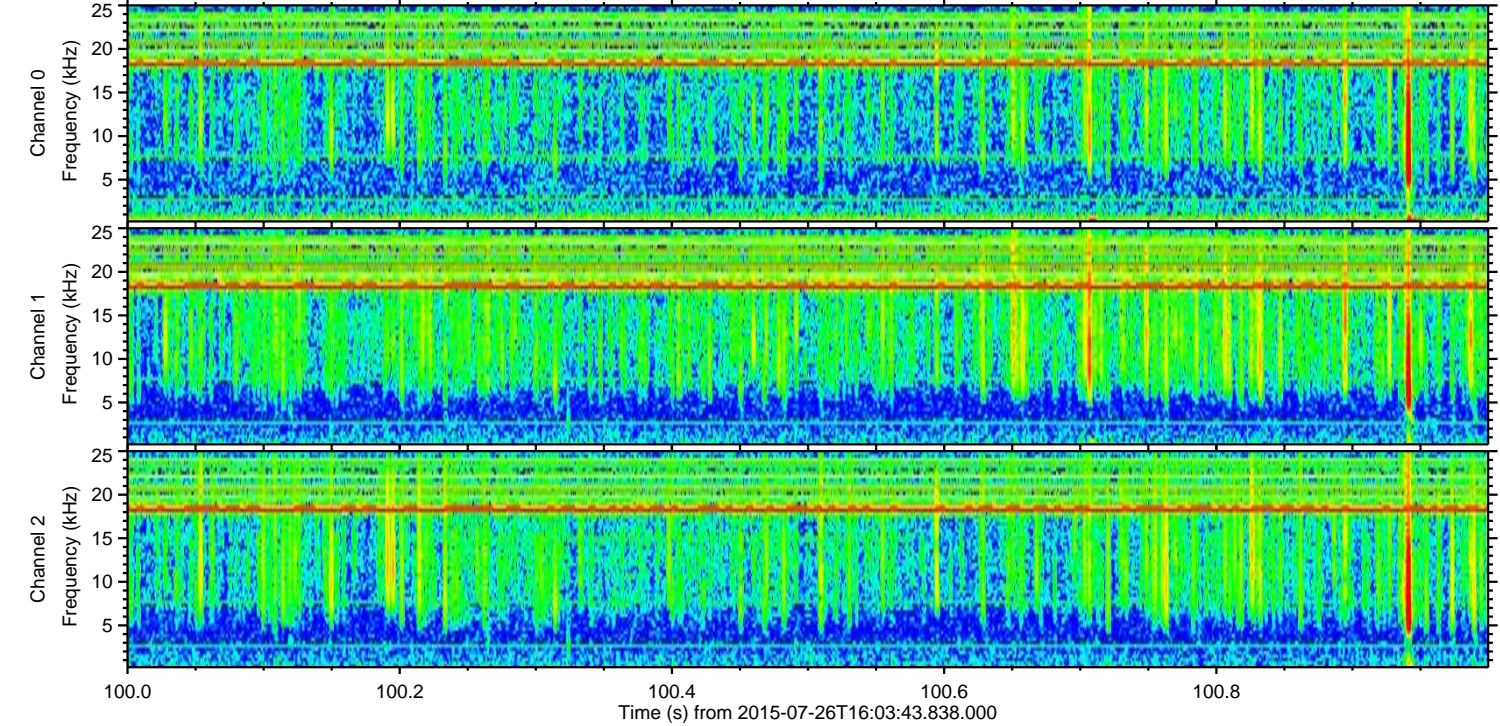
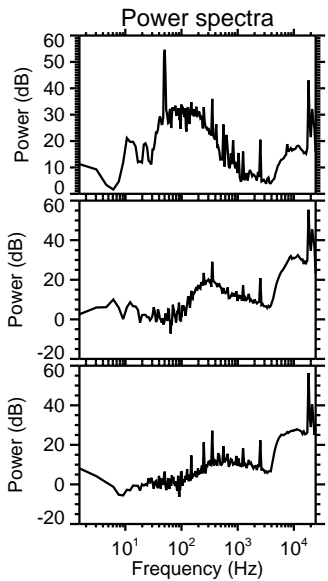
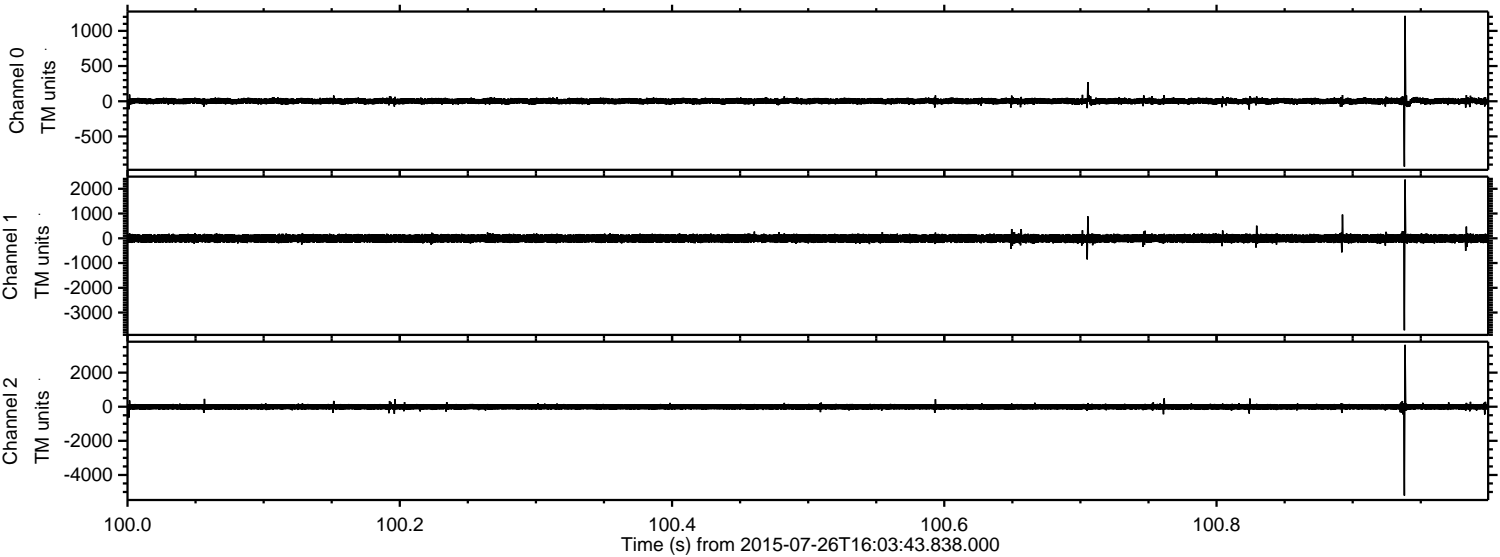
Channel 0
mn: -872
mx: 1041
 μ : 1.9
 σ : 23.1

Channel 1
mn: -884
mx: 906
 μ : -7.5
 σ : 88.2

Channel 2
mn: -5932
mx: 3526
 μ : -5.9
 σ : 98.5

ELMAVAN 3D WAVEFORMS (Measured data sampled at 50 kHz) 51000 packets of 144 samples from 2015-07-26T16:03:43.838.000. Part 101/147

Processed Sun Jul 26 18:09:58 2015 by ELM ver.2012-10-06 from 001__elm20150726_160342__dat00.bin

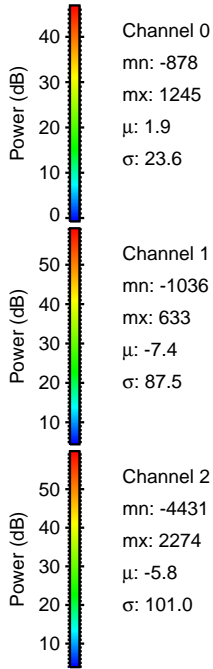
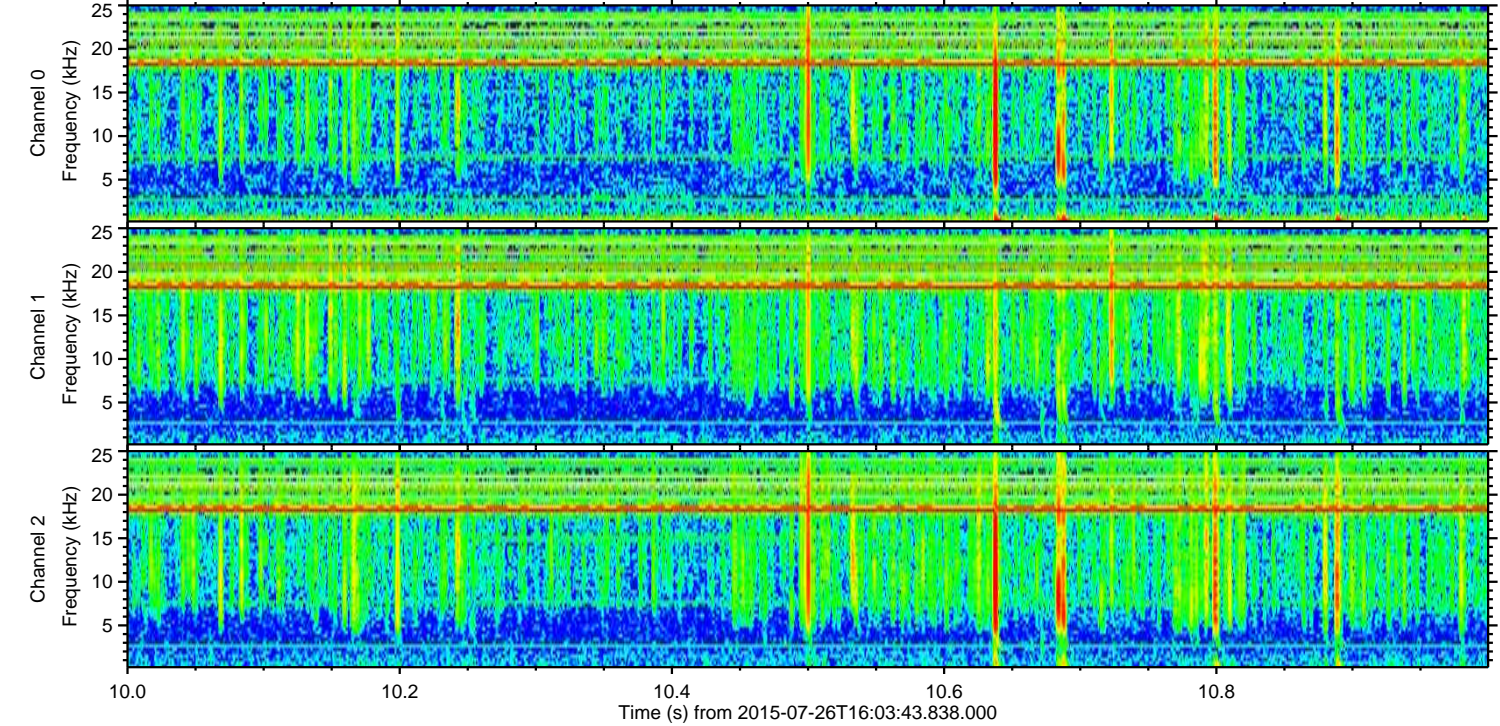
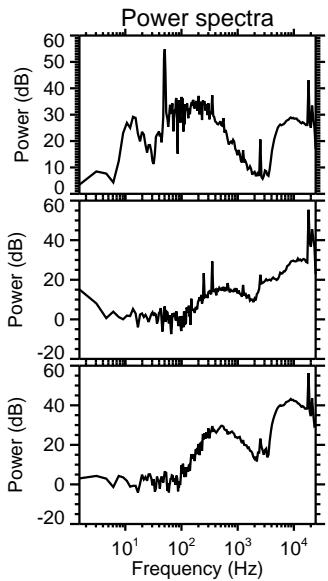
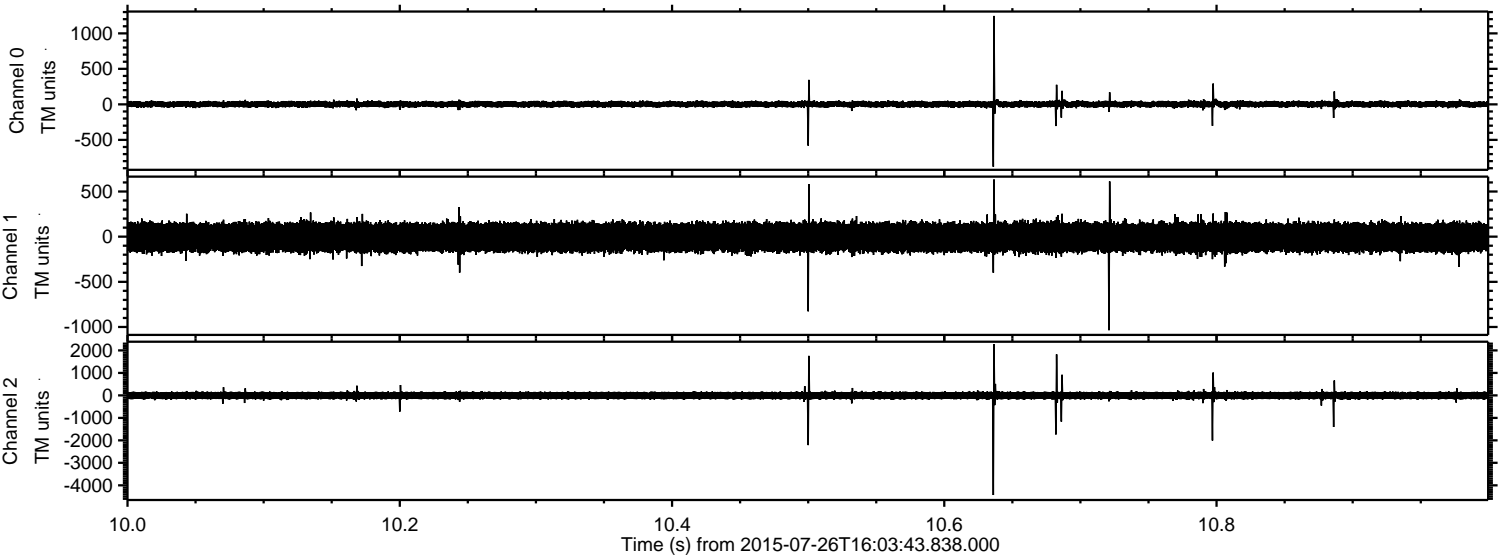


Channel 0
mn: -928
mx: 1214
 μ : 1.9
 σ : 23.8

Channel 1
mn: -3718
mx: 2372
 μ : -7.5
 σ : 92.6

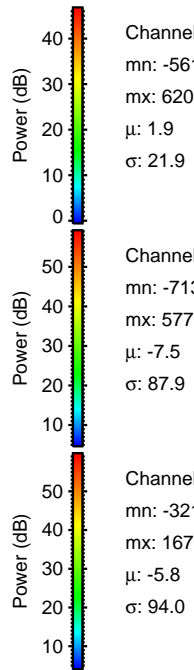
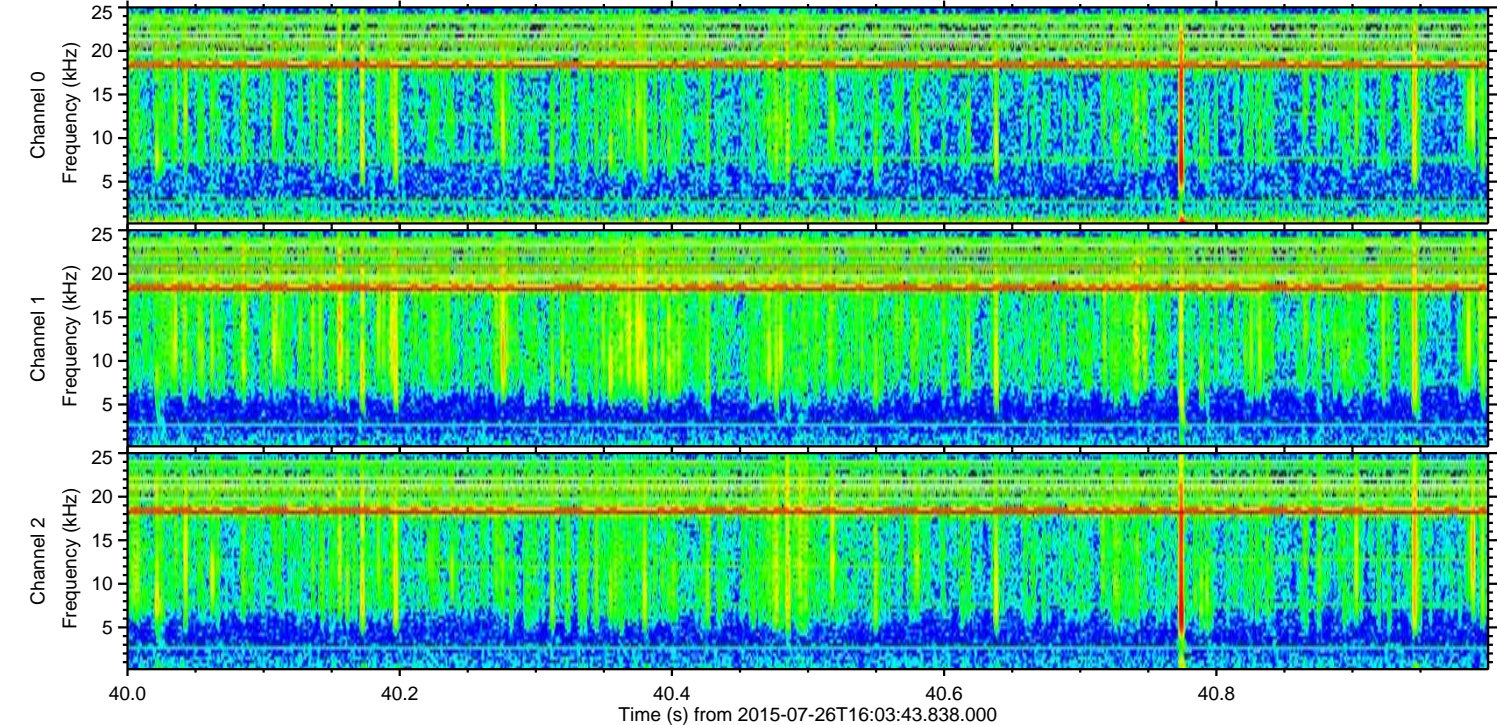
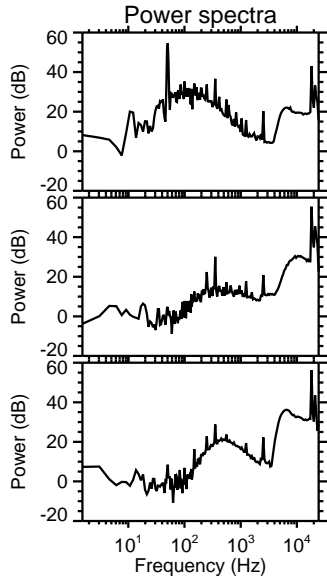
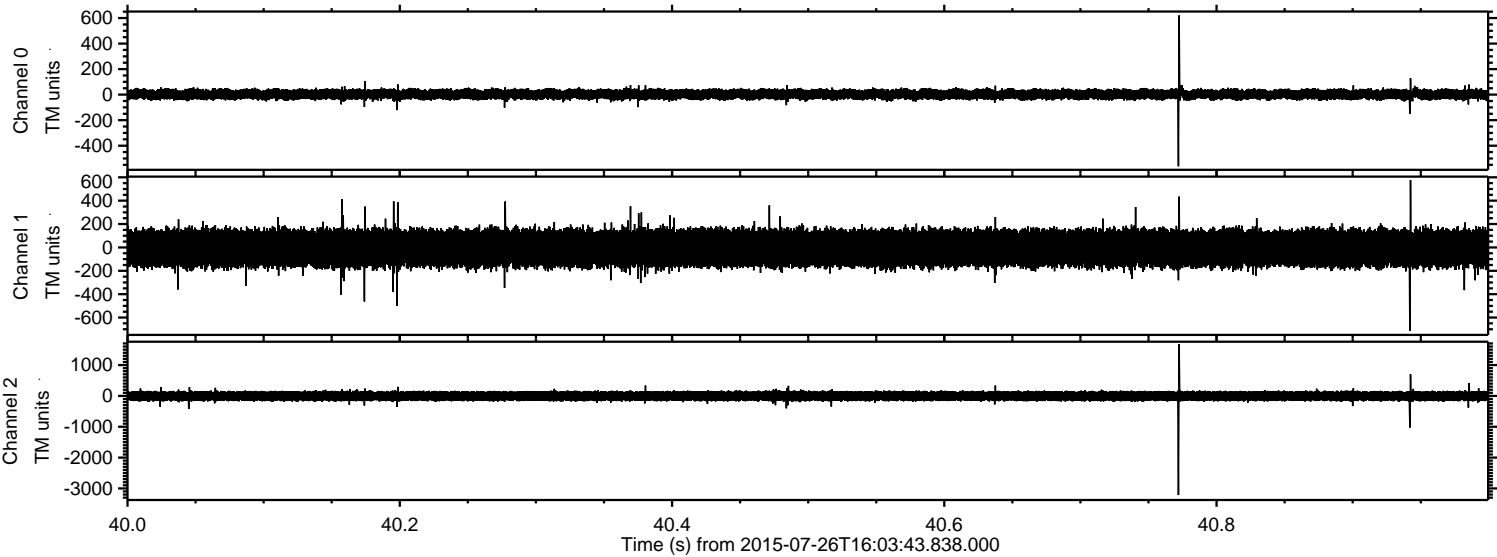
Channel 2
mn: -5209
mx: 3632
 μ : -5.8
 σ : 99.6

Processed Sun Jul 26 18:09:59 2015 by ELM ver.2012-10-06 from 001__elm20150726_160342__dat00.bin



ELMAVAN 3D WAVEFORMS (Measured data sampled at 50 kHz) 51000 packets of 144 samples from 2015-07-26T16:03:43.838.000. Part 41/147

Processed Sun Jul 26 18:10:00 2015 by ELM ver.2012-10-06 from 001__elm20150726_160342__dat00.bin

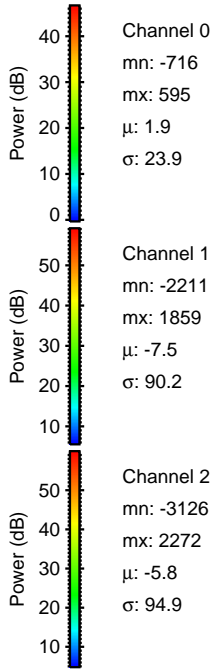
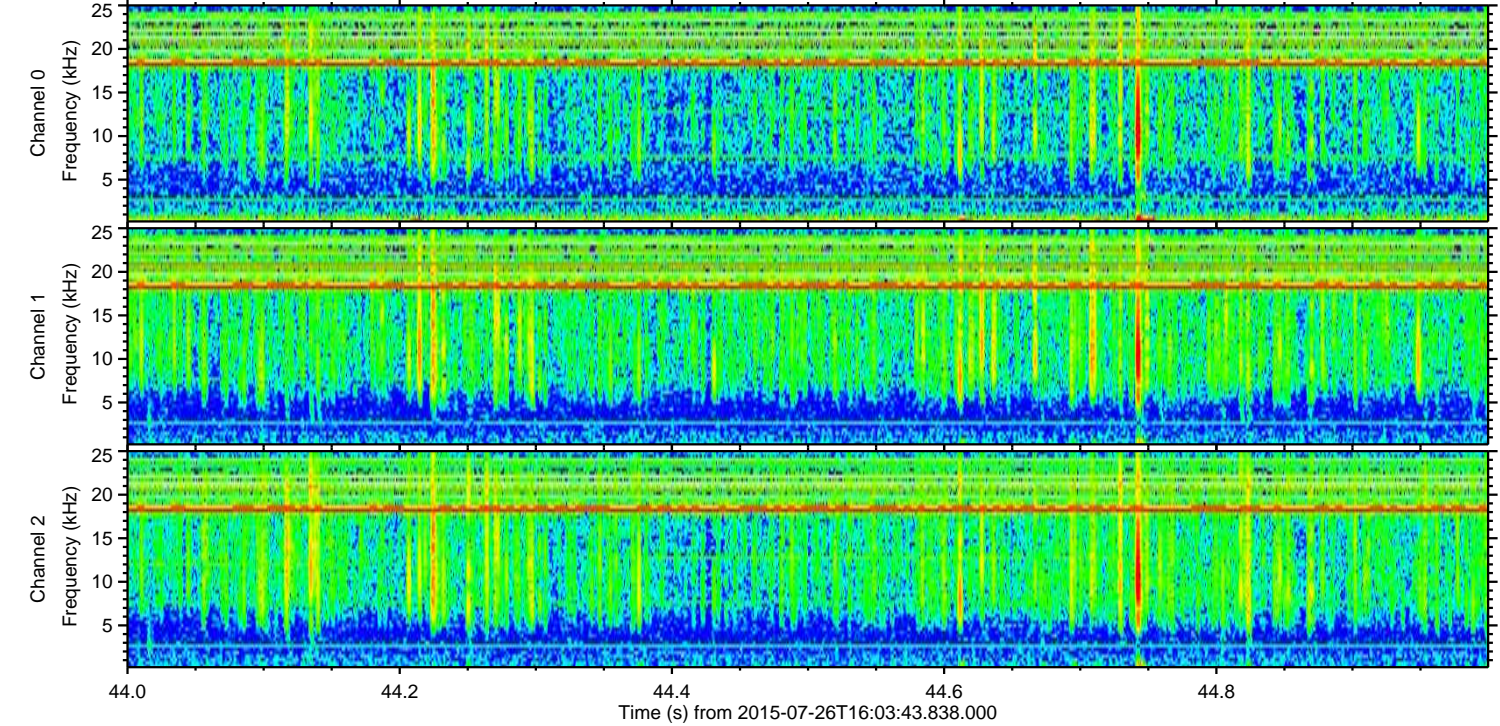
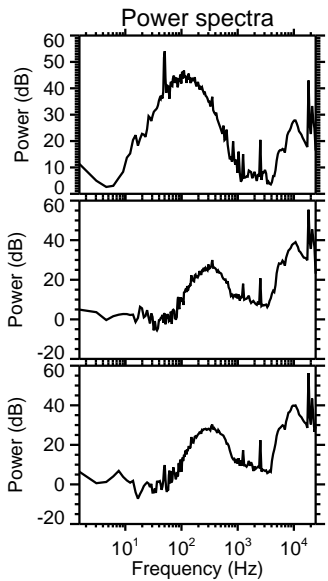
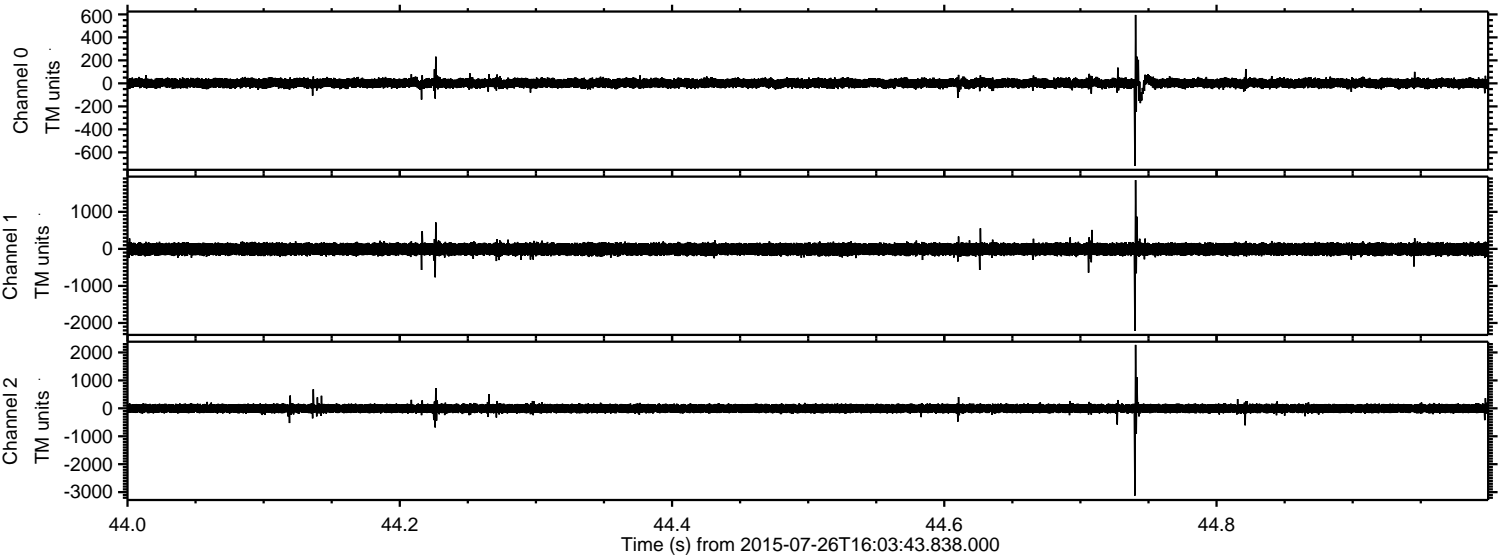


Channel 0
mn: -561
mx: 620
 μ : 1.9
 σ : 21.9

Channel 1
mn: -713
mx: 577
 μ : -7.5
 σ : 87.9

Channel 2
mn: -3215
mx: 1673
 μ : -5.8
 σ : 94.0

Processed Sun Jul 26 18:10:01 2015 by ELM ver.2012-10-06 from 001__elm20150726_160342__dat00.bin

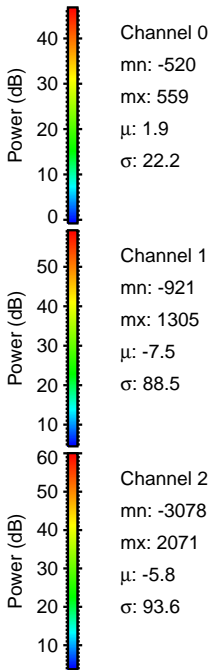
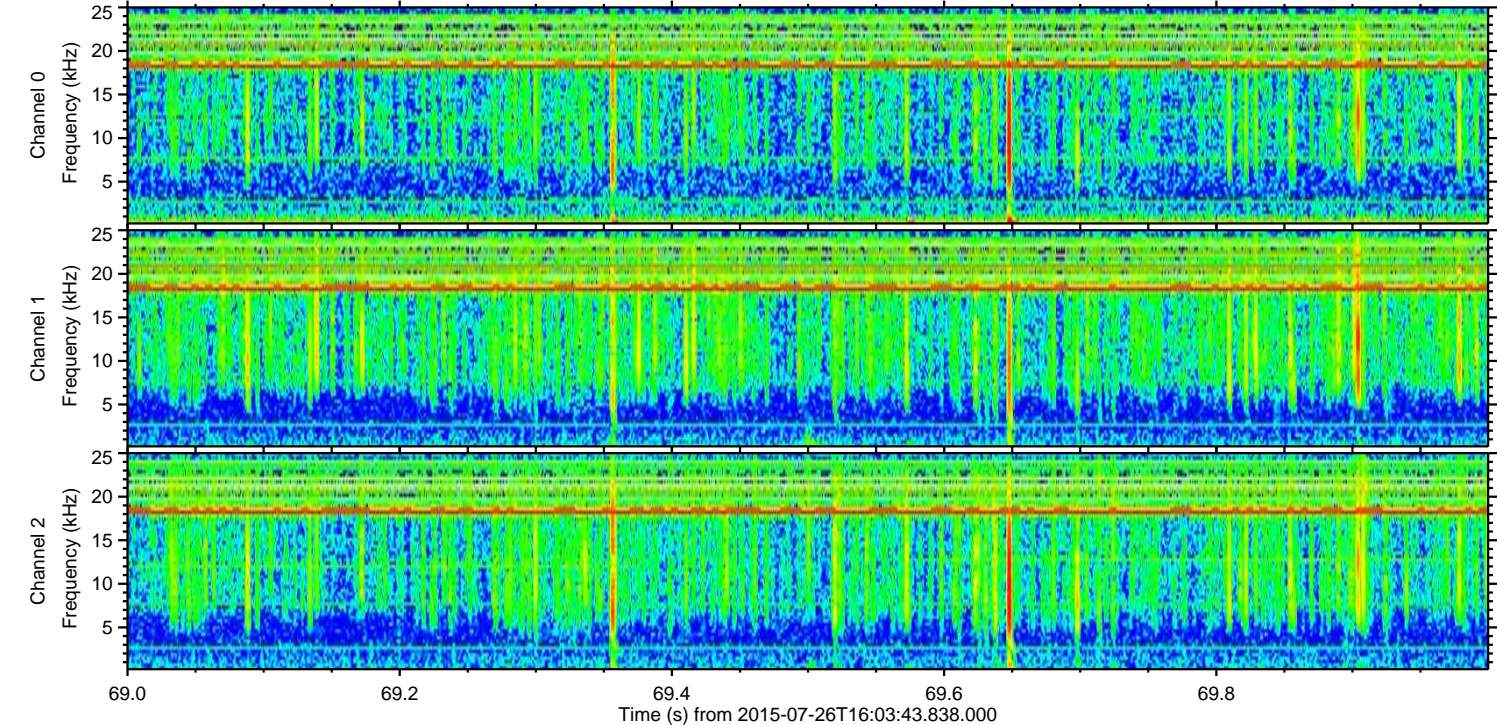
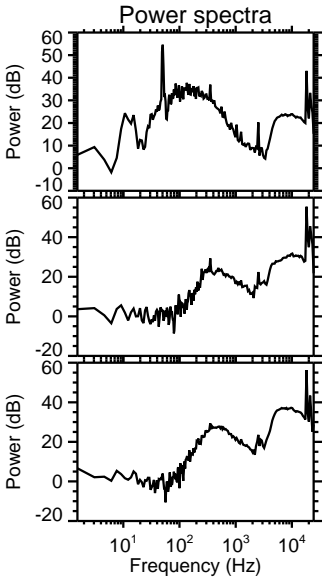
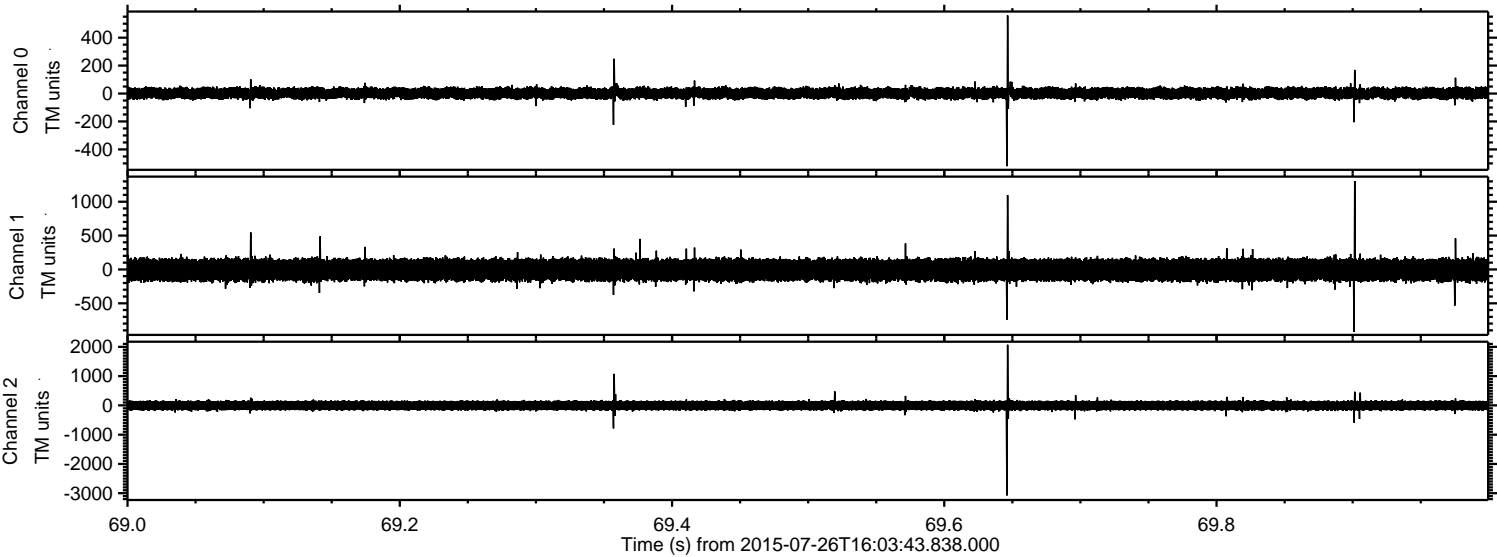


Channel 0
mn: -716
mx: 595
 μ : 1.9
 σ : 23.9

Channel 1
mn: -2211
mx: 1859
 μ : -7.5
 σ : 90.2

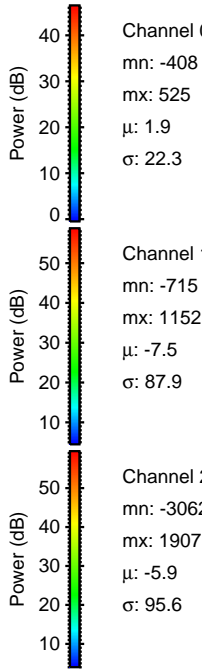
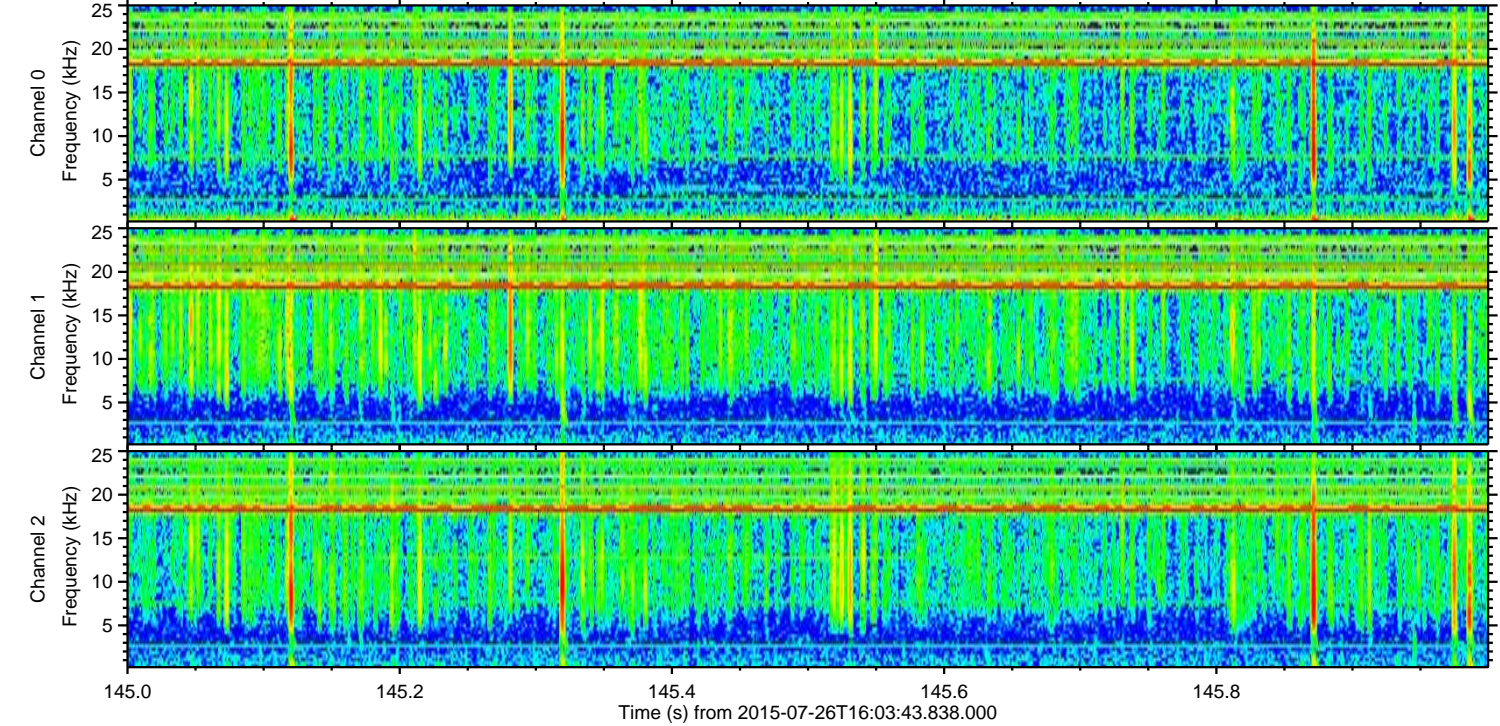
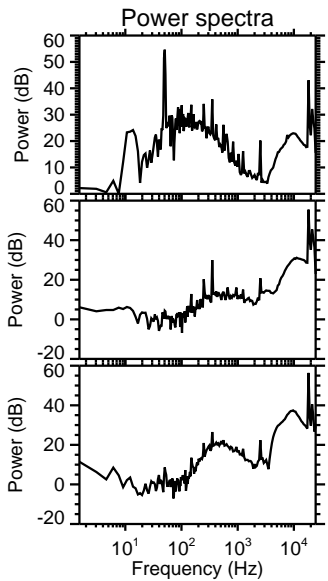
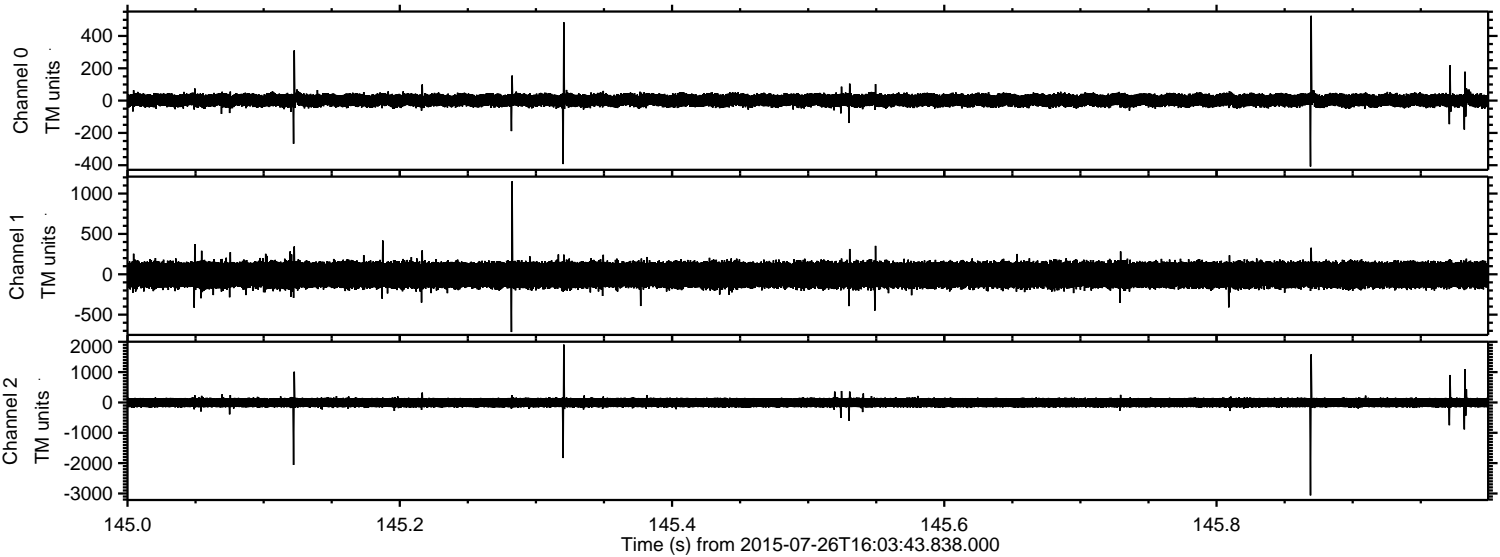
Channel 2
mn: -3126
mx: 2272
 μ : -5.8
 σ : 94.9

Processed Sun Jul 26 18:10:02 2015 by ELM ver.2012-10-06 from 001__elm20150726_160342__dat00.bin



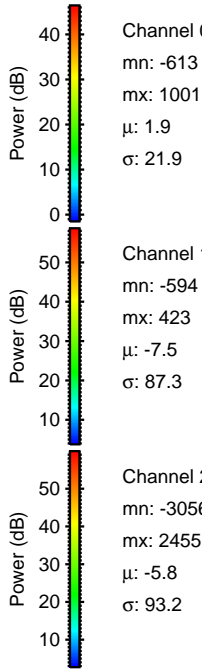
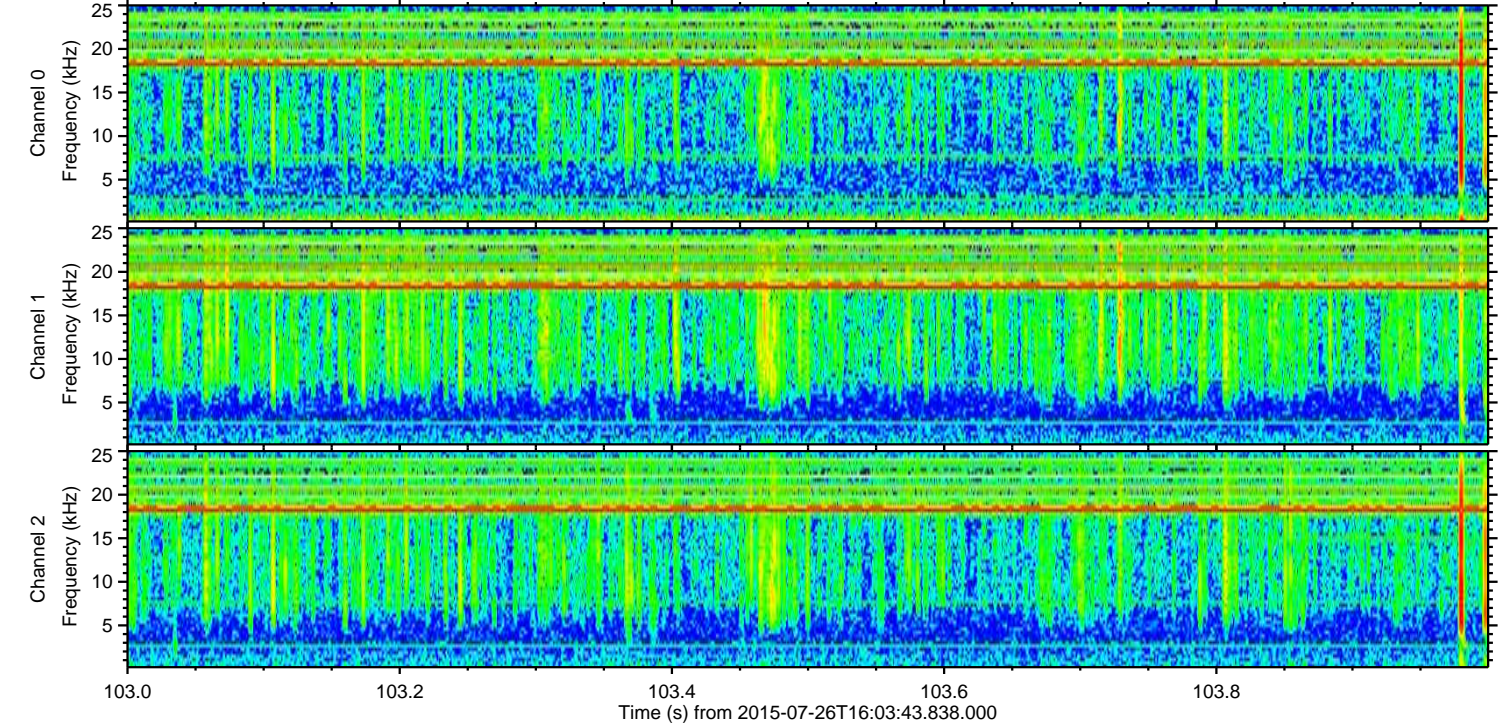
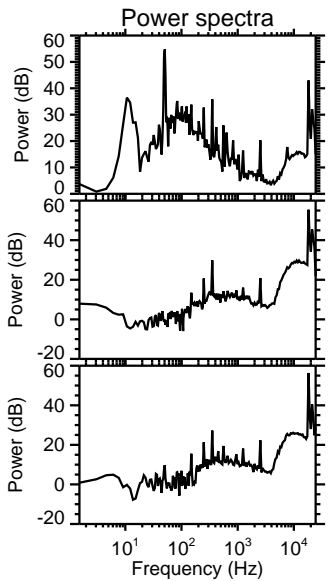
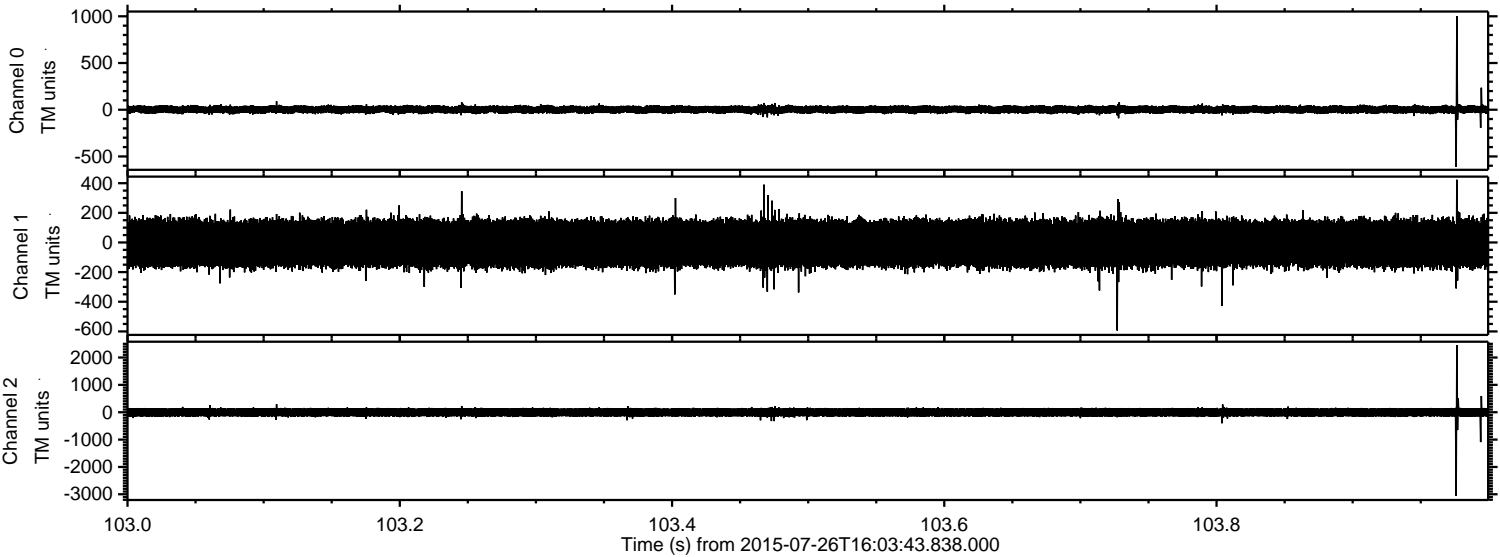
ELMAVAN 3D WAVEFORMS (Measured data sampled at 50 kHz) 51000 packets of 144 samples from 2015-07-26T16:03:43.838.000. Part 146/147

Processed Sun Jul 26 18:10:03 2015 by ELM ver.2012-10-06 from 001__elm20150726_160342__dat00.bin



ELMAVAN 3D WAVEFORMS (Measured data sampled at 50 kHz) 51000 packets of 144 samples from 2015-07-26T16:03:43.838.000. Part 104/147

Processed Sun Jul 26 18:10:04 2015 by ELM ver.2012-10-06 from 001__elm20150726_160342__dat00.bin



Channel 0
mn: -613
mx: 1001
 μ : 1.9
 σ : 21.9

Channel 1
mn: -594
mx: 423
 μ : -7.5
 σ : 87.3

Channel 2
mn: -3056
mx: 2455
 μ : -5.8
 σ : 93.2

Processed Sun Jul 26 18:10:05 2015 by ELM ver.2012-10-06 from 001__elm20150726_160342__dat00.bin

