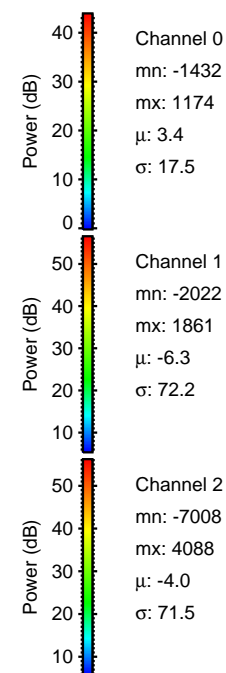
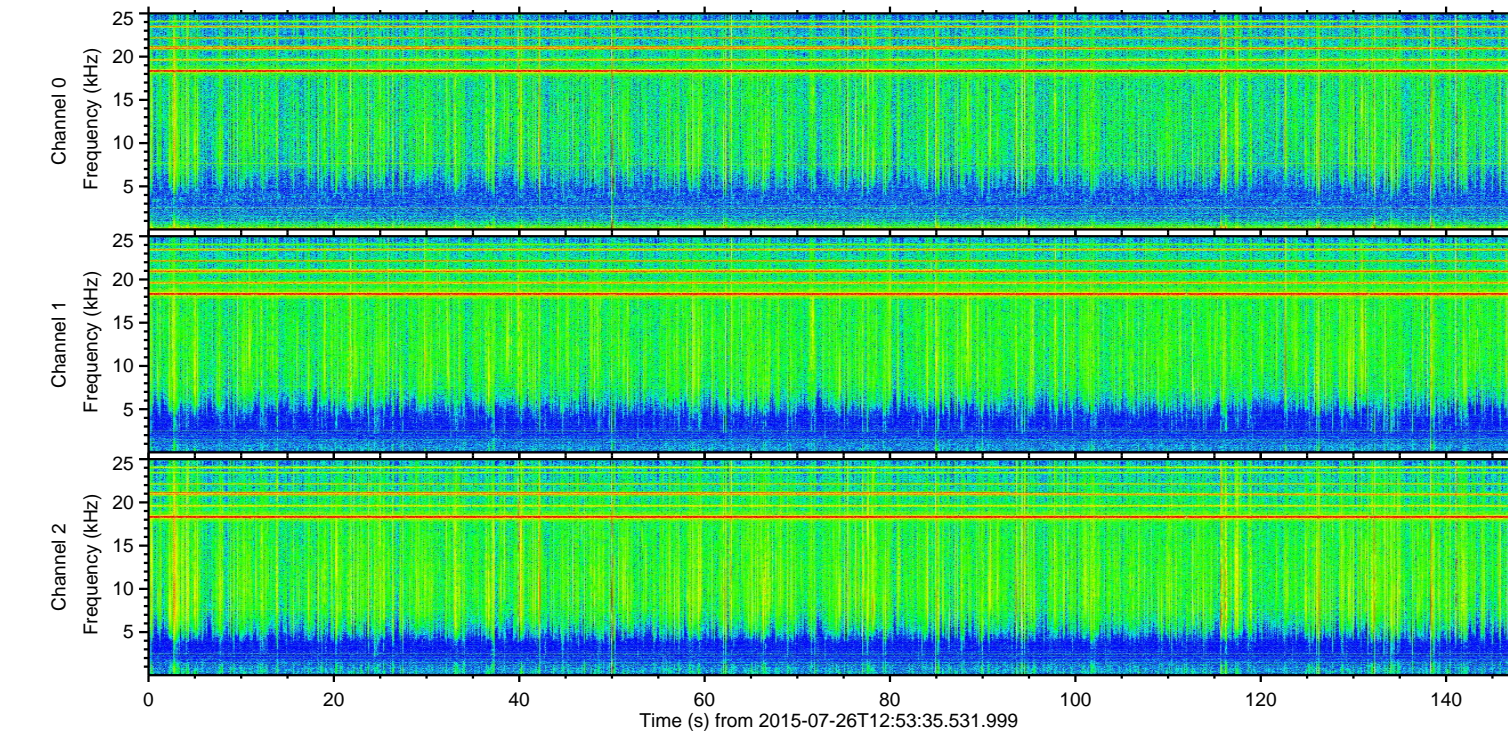
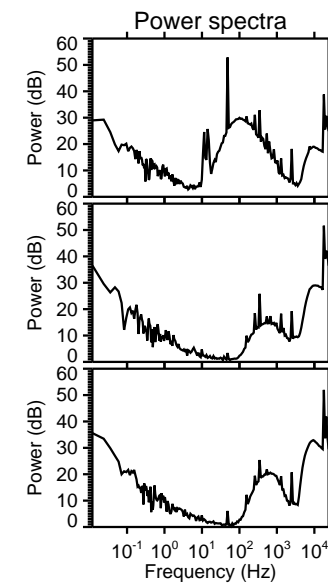
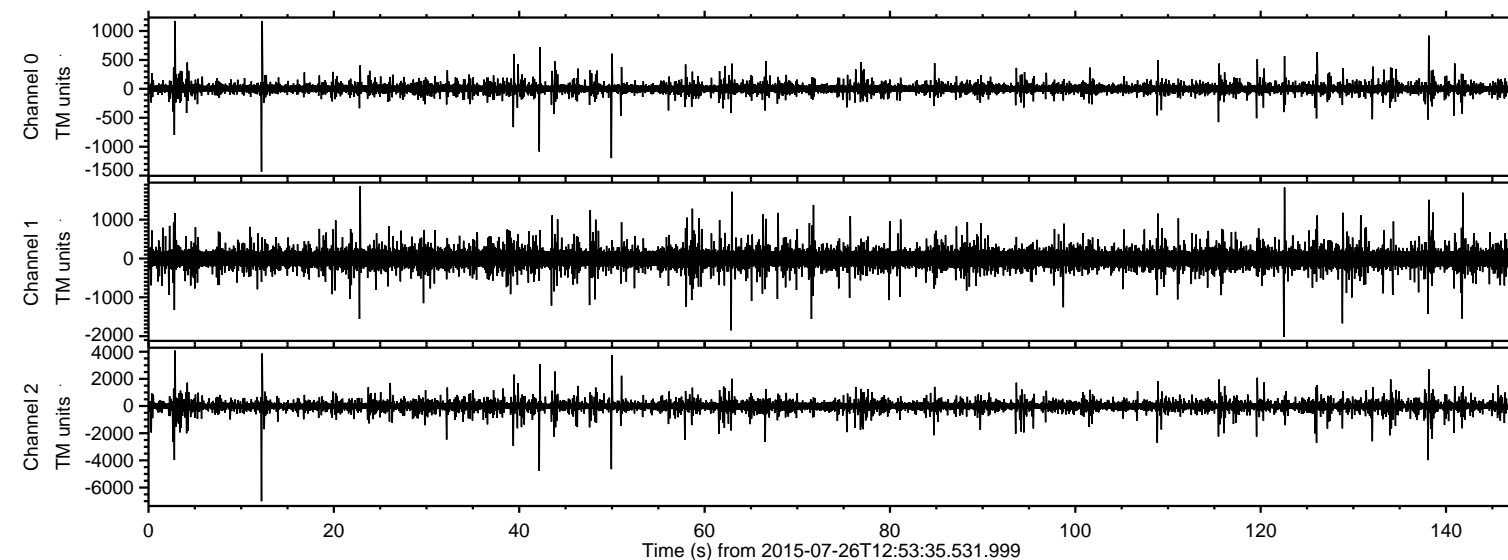


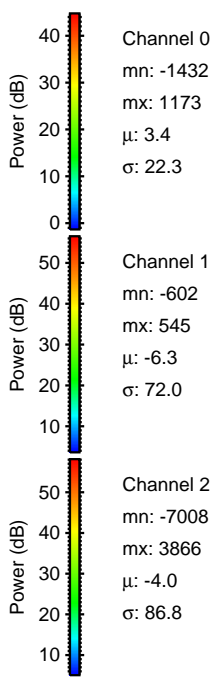
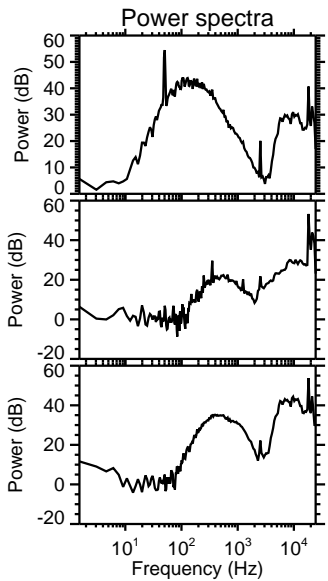
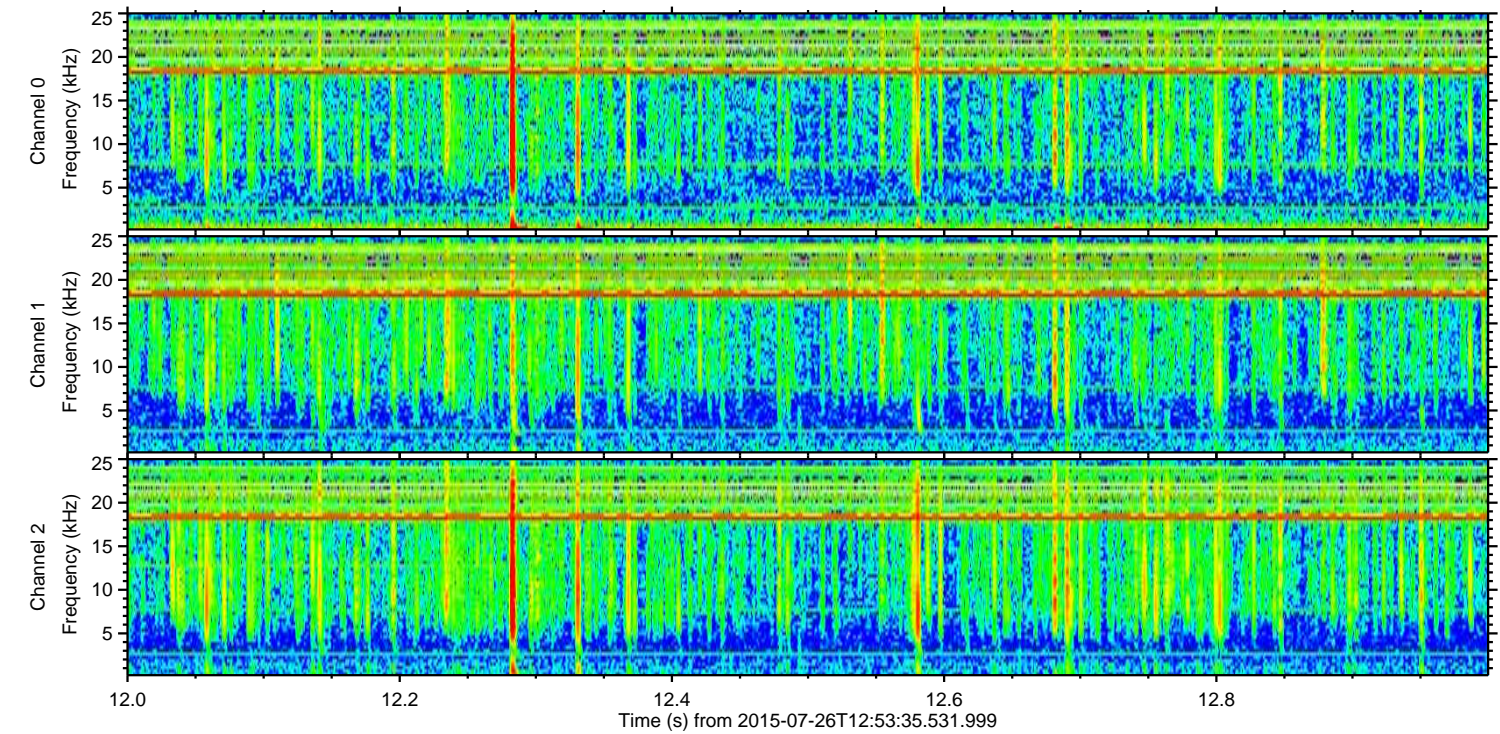
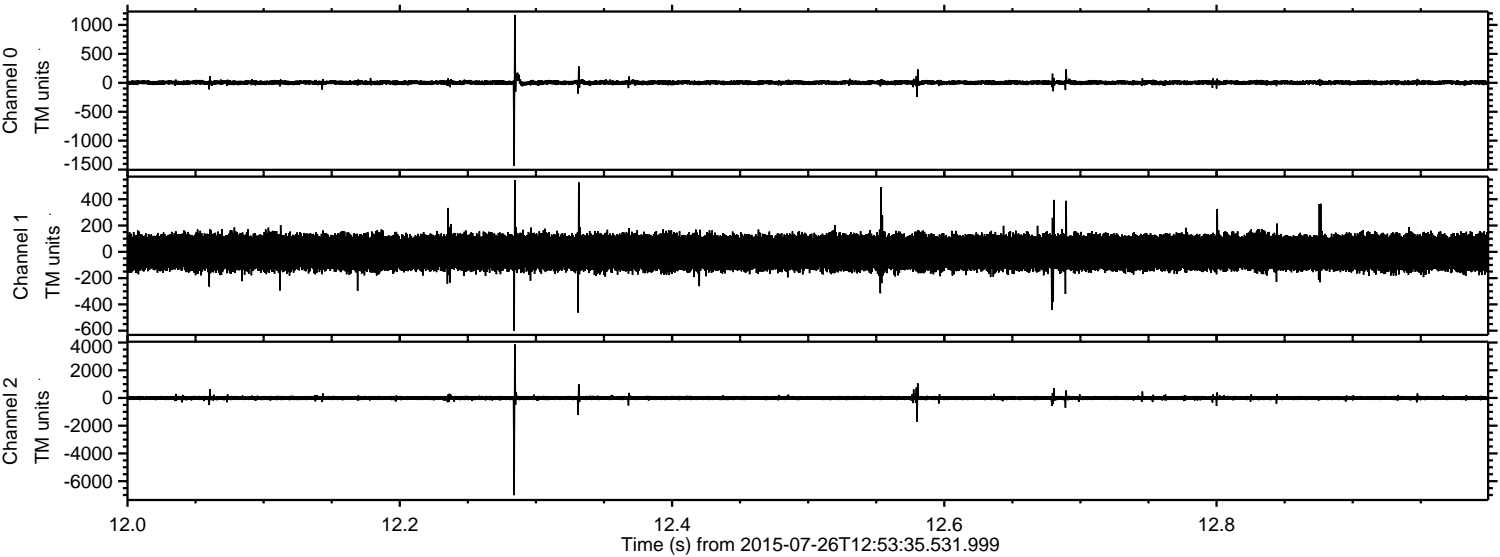
# ELMAVAN 3D WAVEFORMS (Measured data sampled at 50 kHz) 51000 packets of 144 samples from 2015-07-26T12:53:35.531.999.

Processed Sun Jul 26 14:59:32 2015 by ELM ver.2012-10-06 from 001\_\_elm20150726\_125334\_\_dat00.bin



ELMAVAN 3D WAVEFORMS (Measured data sampled at 50 kHz) 51000 packets of 144 samples from 2015-07-26T12:53:35.531.999. Part 13/147

Processed Sun Jul 26 14:59:47 2015 by ELM ver.2012-10-06 from 001\_\_elm20150726\_125334\_\_dat00.bin

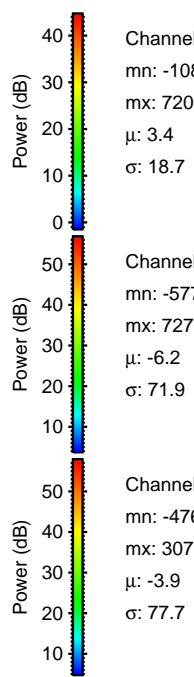
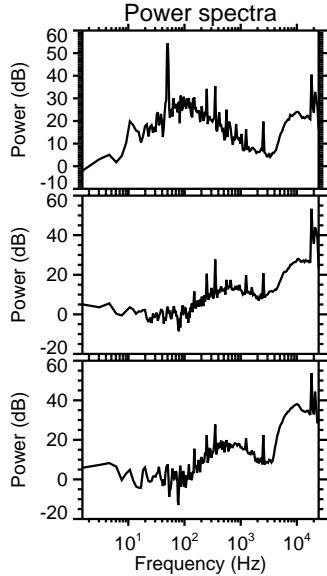
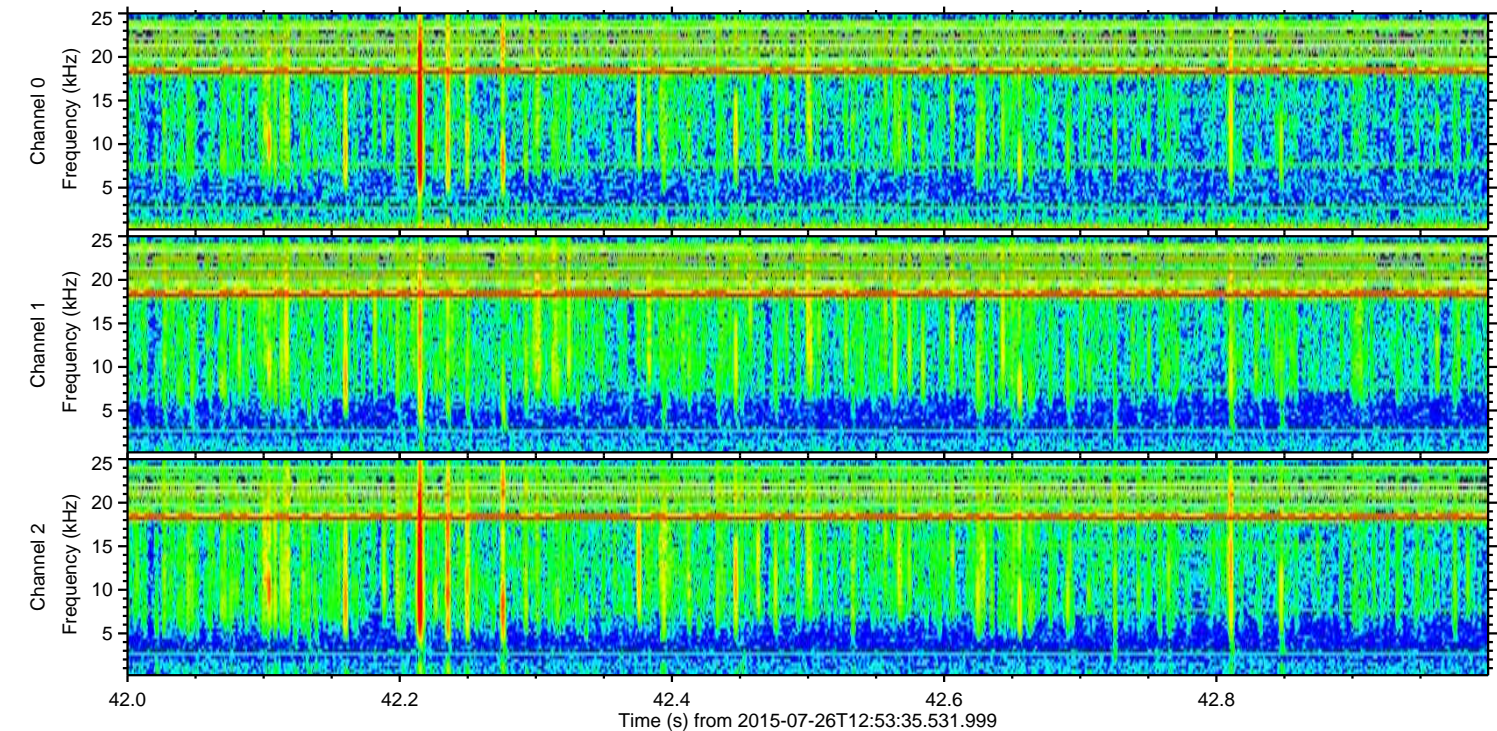
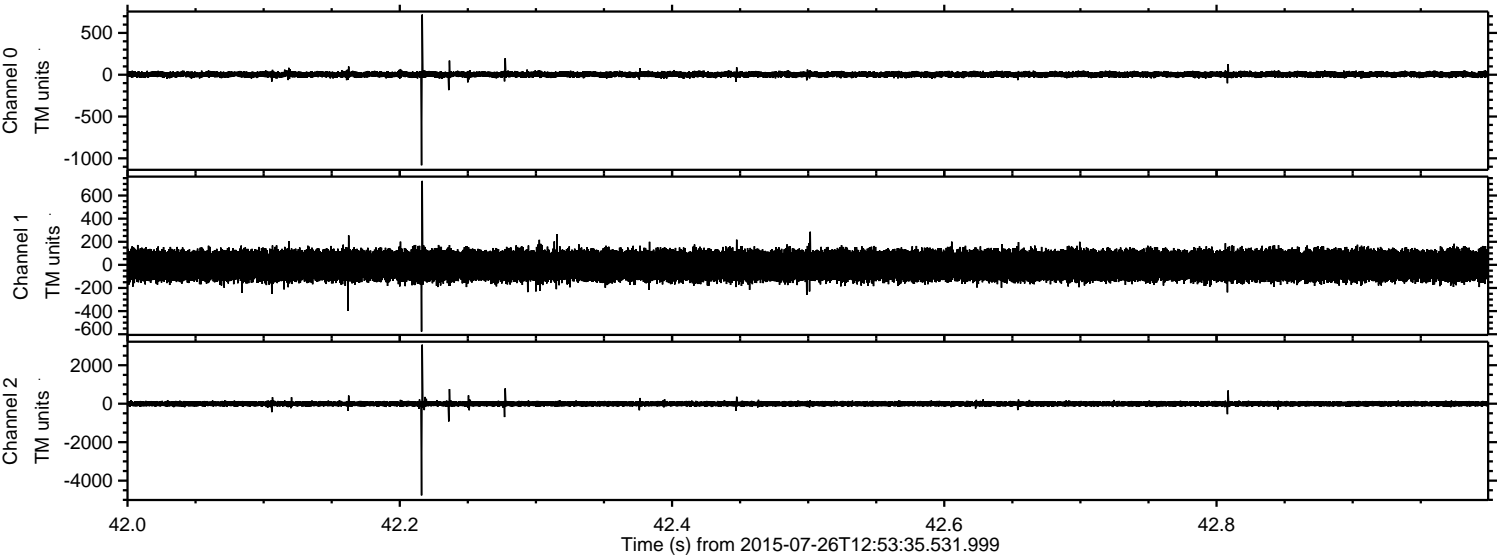


Channel 0  
mn: -1432  
mx: 1173  
 $\mu$ : 3.4  
 $\sigma$ : 22.3

Channel 1  
mn: -602  
mx: 545  
 $\mu$ : -6.3  
 $\sigma$ : 72.0

Channel 2  
mn: -7008  
mx: 3866  
 $\mu$ : -4.0  
 $\sigma$ : 86.8

Processed Sun Jul 26 14:59:48 2015 by ELM ver.2012-10-06 from 001\_\_elm20150726\_125334\_\_dat00.bin



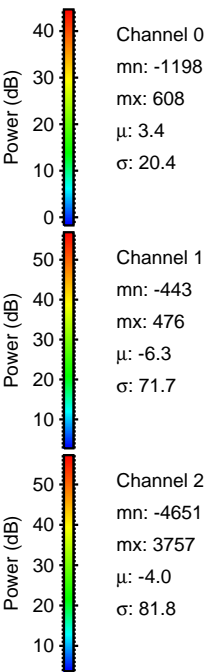
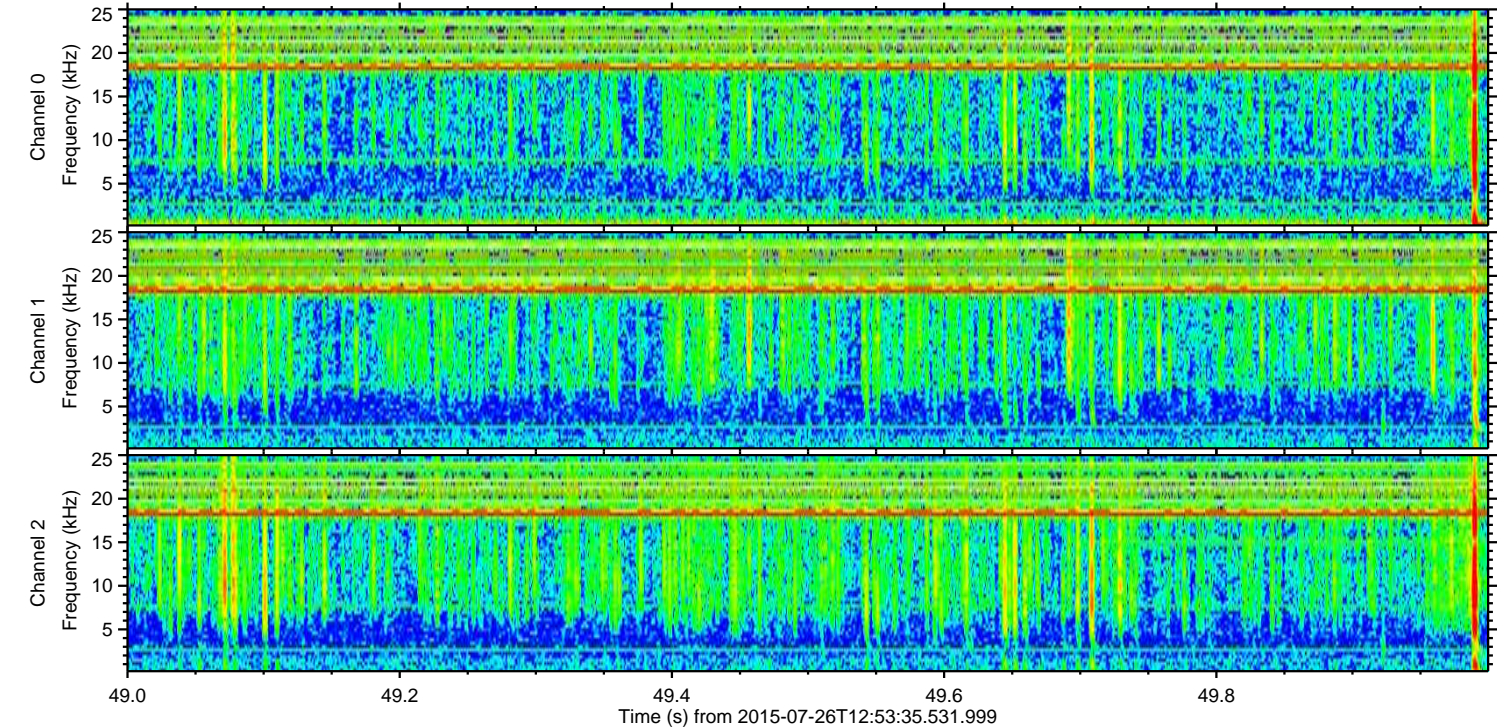
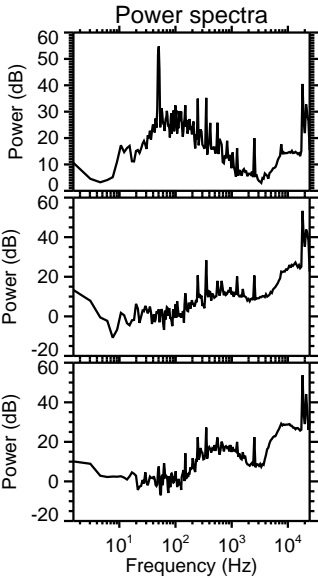
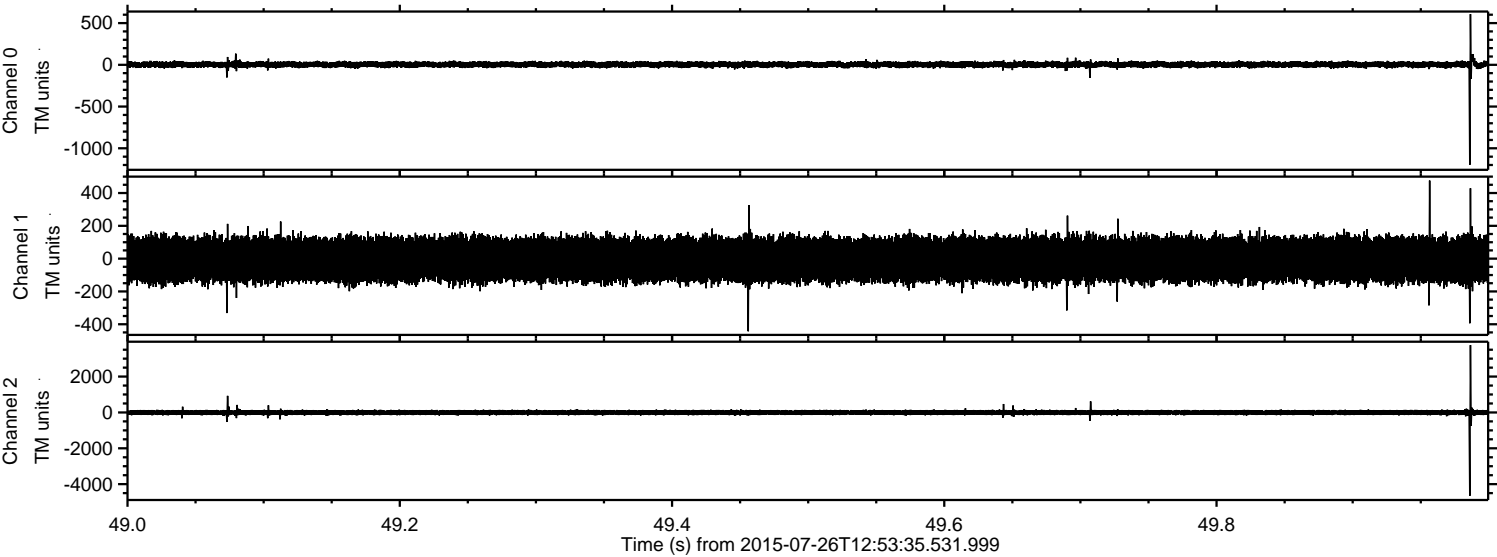
Power spectra

Channel 0  
mn: -1083  
mx: 720  
 $\mu$ : 3.4  
 $\sigma$ : 18.7

Channel 1  
mn: -577  
mx: 727  
 $\mu$ : -6.2  
 $\sigma$ : 71.9

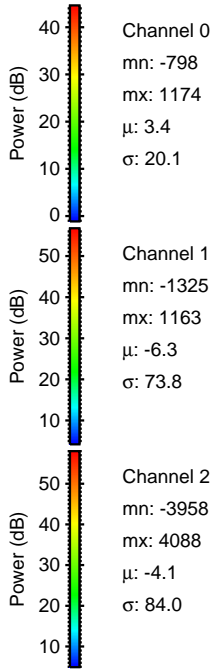
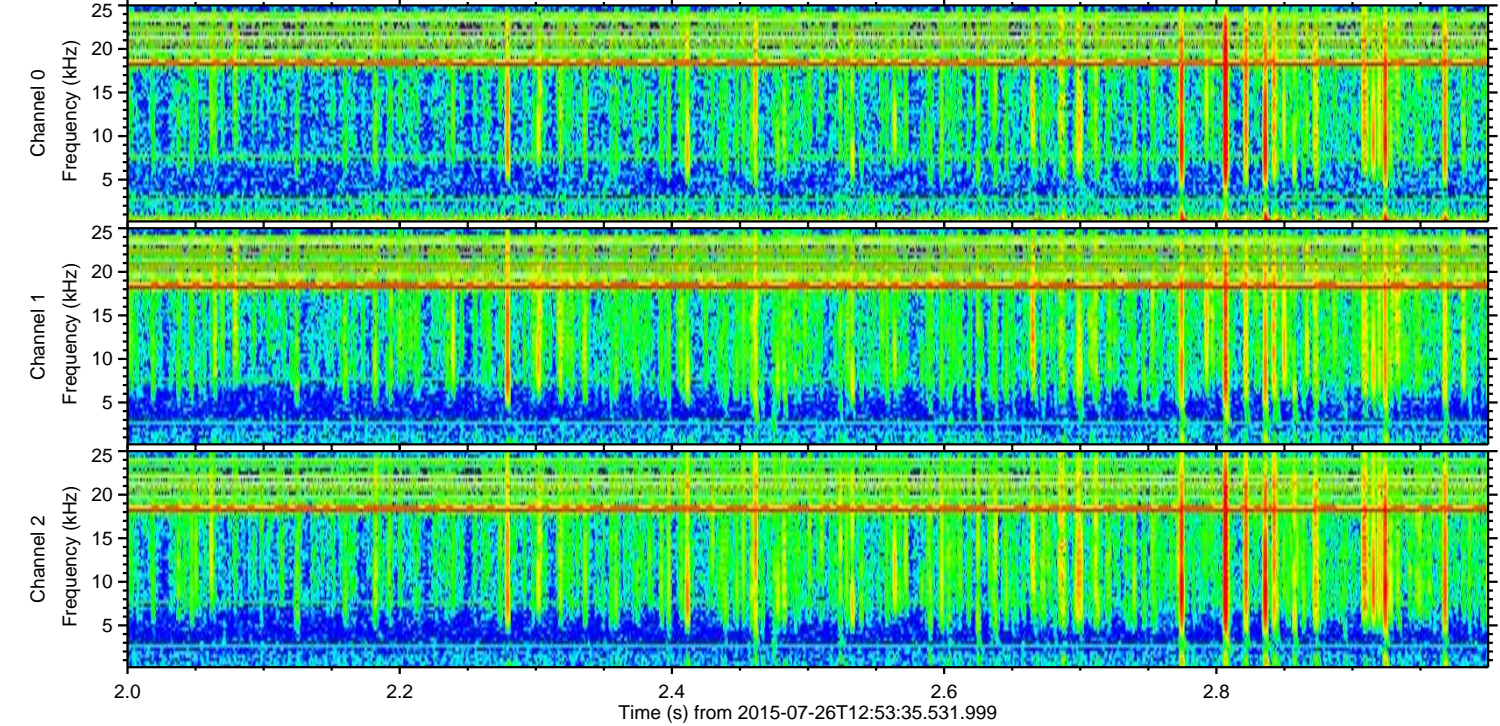
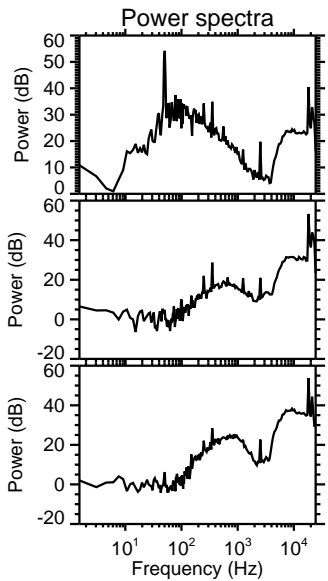
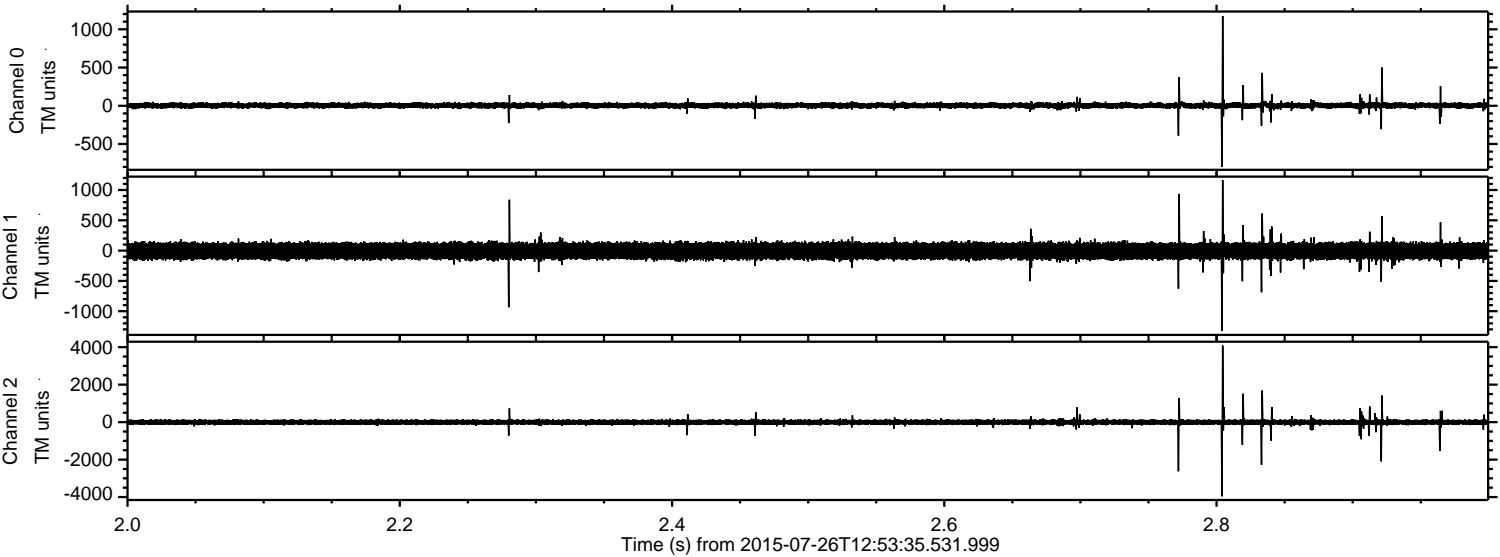
Channel 2  
mn: -4769  
mx: 3071  
 $\mu$ : -3.9  
 $\sigma$ : 77.7

Processed Sun Jul 26 14:59:49 2015 by ELM ver.2012-10-06 from 001\_\_elm20150726\_125334\_\_dat00.bin



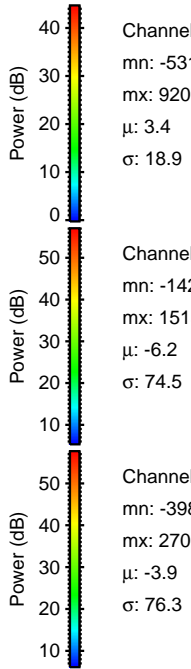
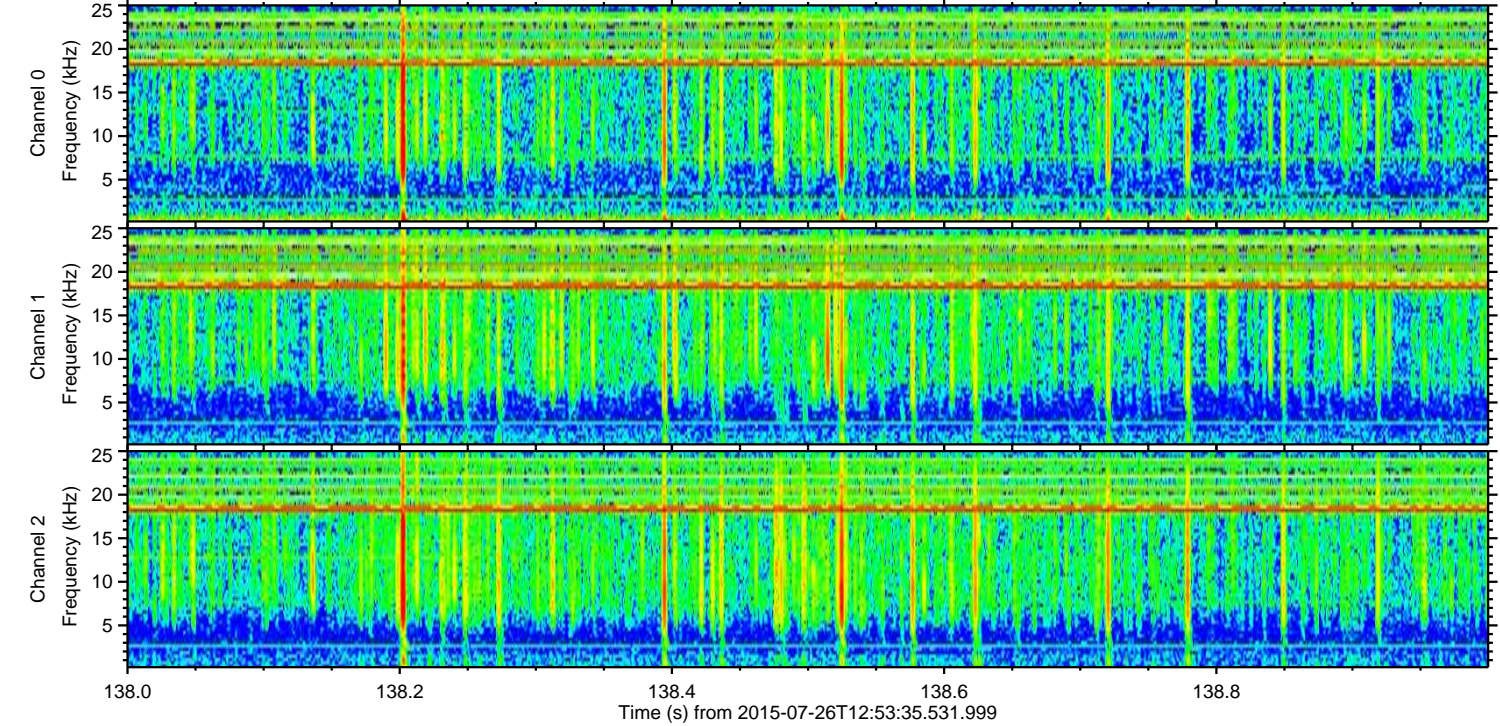
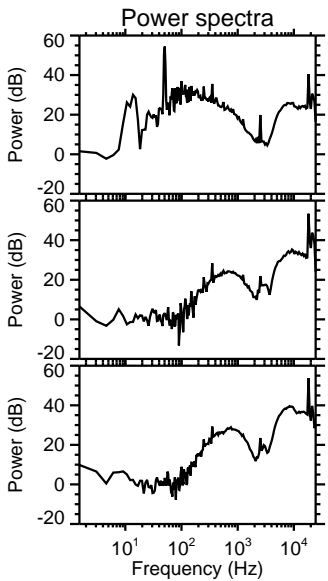
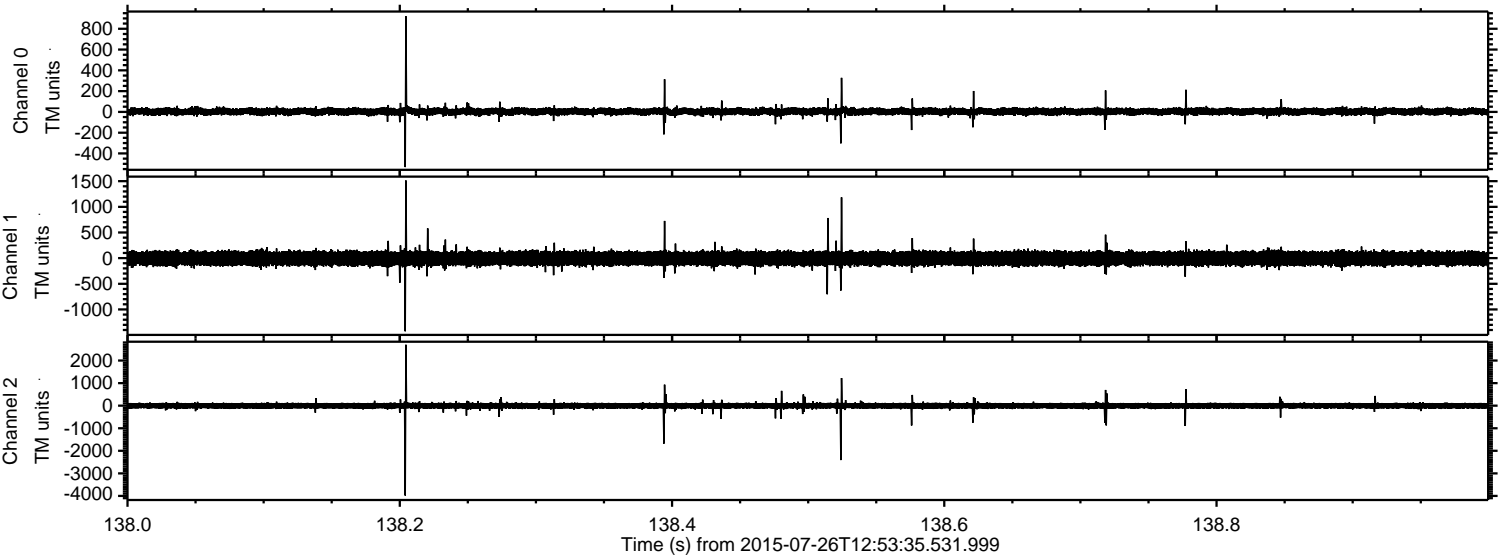
ELMAVAN 3D WAVEFORMS (Measured data sampled at 50 kHz) 51000 packets of 144 samples from 2015-07-26T12:53:35.531.999. Part 3/147

Processed Sun Jul 26 14:59:50 2015 by ELM ver.2012-10-06 from 001\_\_elm20150726\_125334\_\_dat00.bin

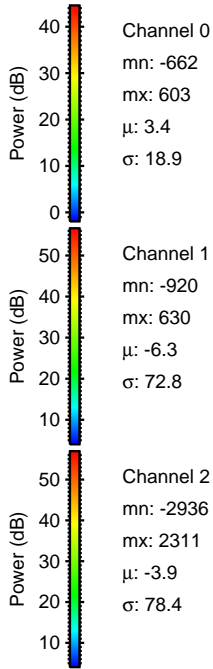
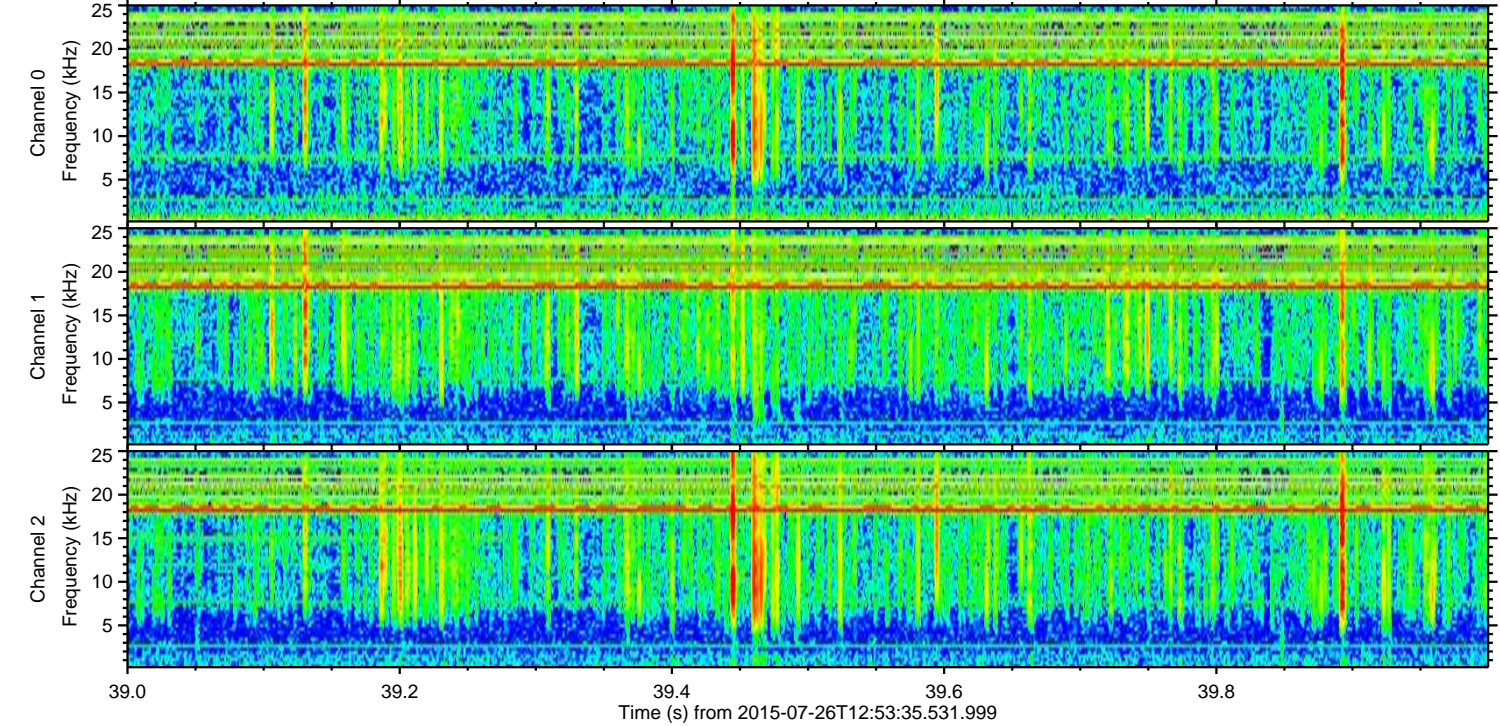
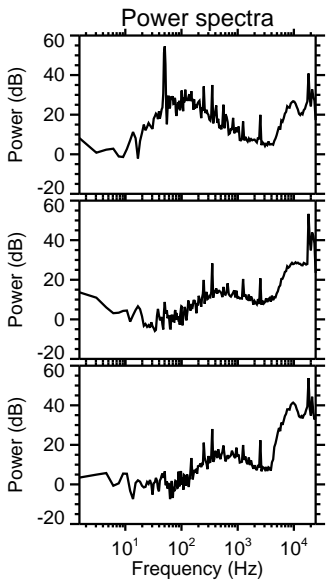
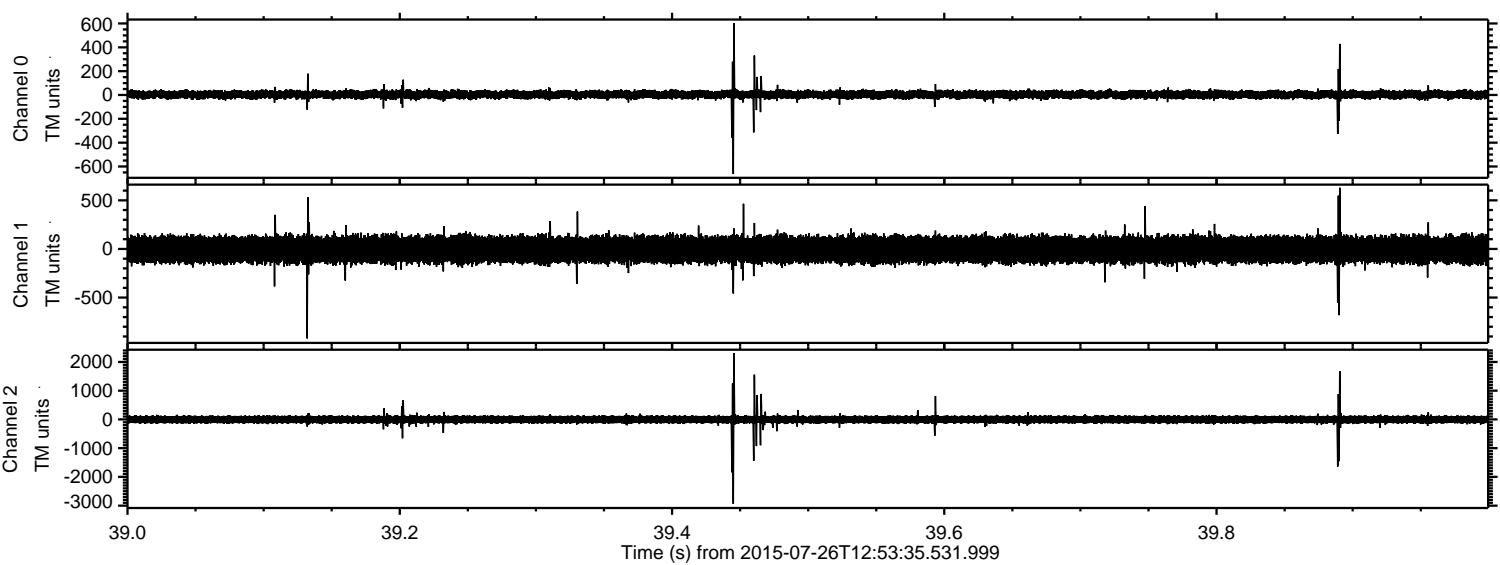


ELMAVAN 3D WAVEFORMS (Measured data sampled at 50 kHz) 51000 packets of 144 samples from 2015-07-26T12:53:35.531.999. Part 139/147

Processed Sun Jul 26 14:59:51 2015 by ELM ver.2012-10-06 from 001\_\_elm20150726\_125334\_\_dat00.bin

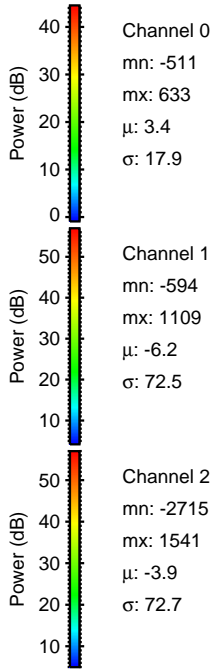
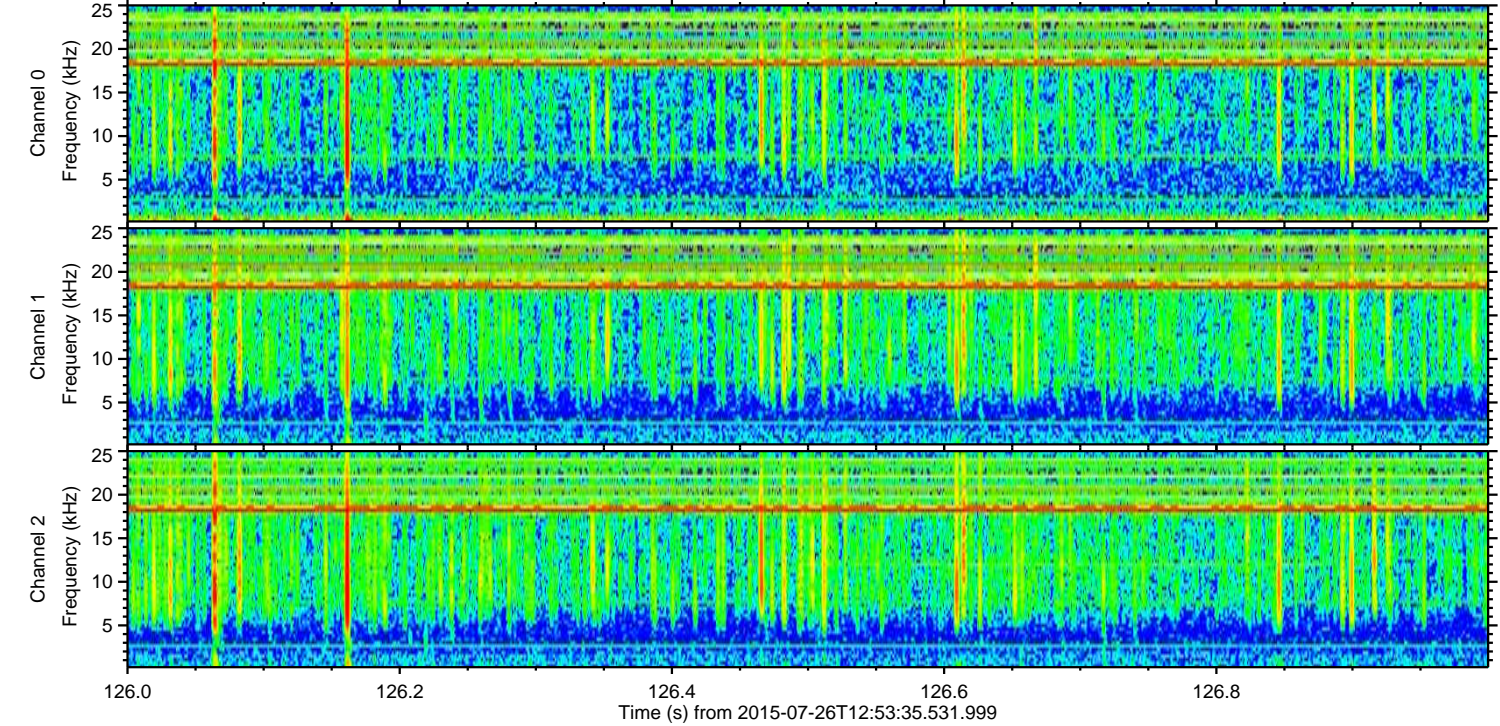
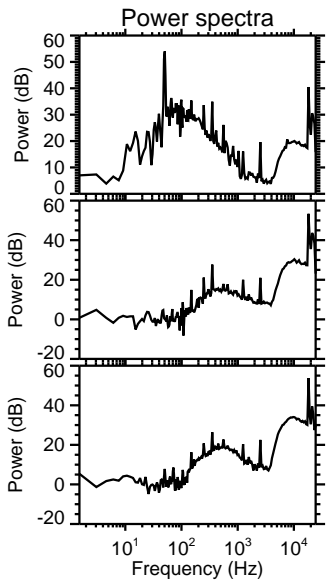
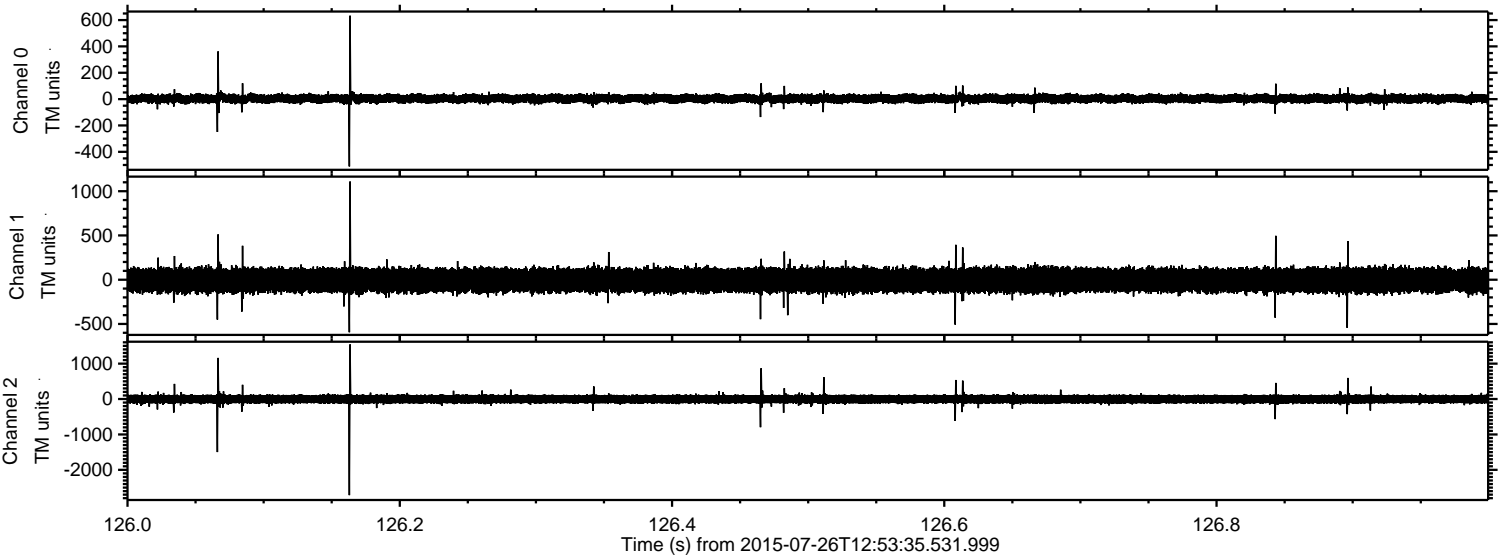


Processed Sun Jul 26 14:59:52 2015 by ELM ver.2012-10-06 from 001\_\_elm20150726\_125334\_\_dat00.bin



ELMAVAN 3D WAVEFORMS (Measured data sampled at 50 kHz) 51000 packets of 144 samples from 2015-07-26T12:53:35.531.999. Part 127/147

Processed Sun Jul 26 14:59:54 2015 by ELM ver.2012-10-06 from 001\_\_elm20150726\_125334\_\_dat00.bin



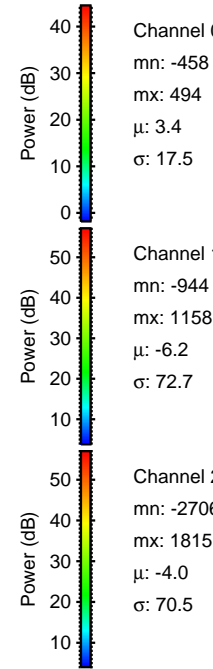
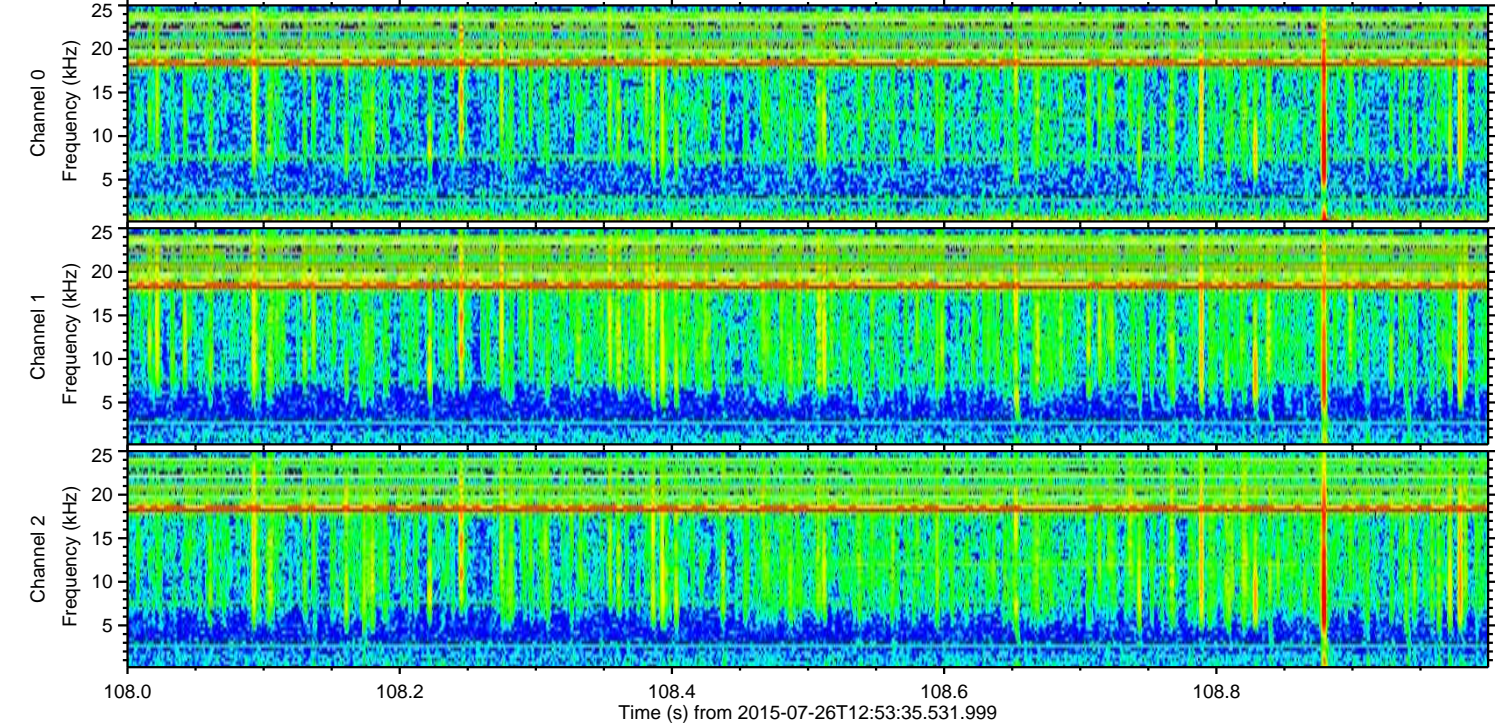
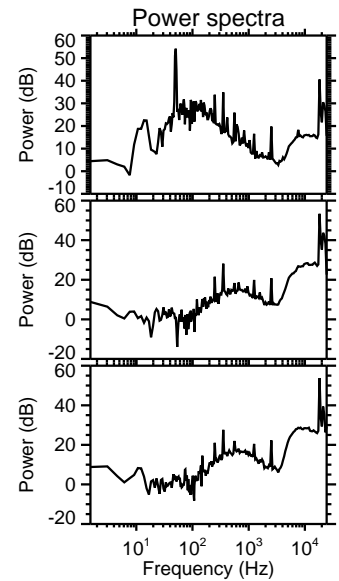
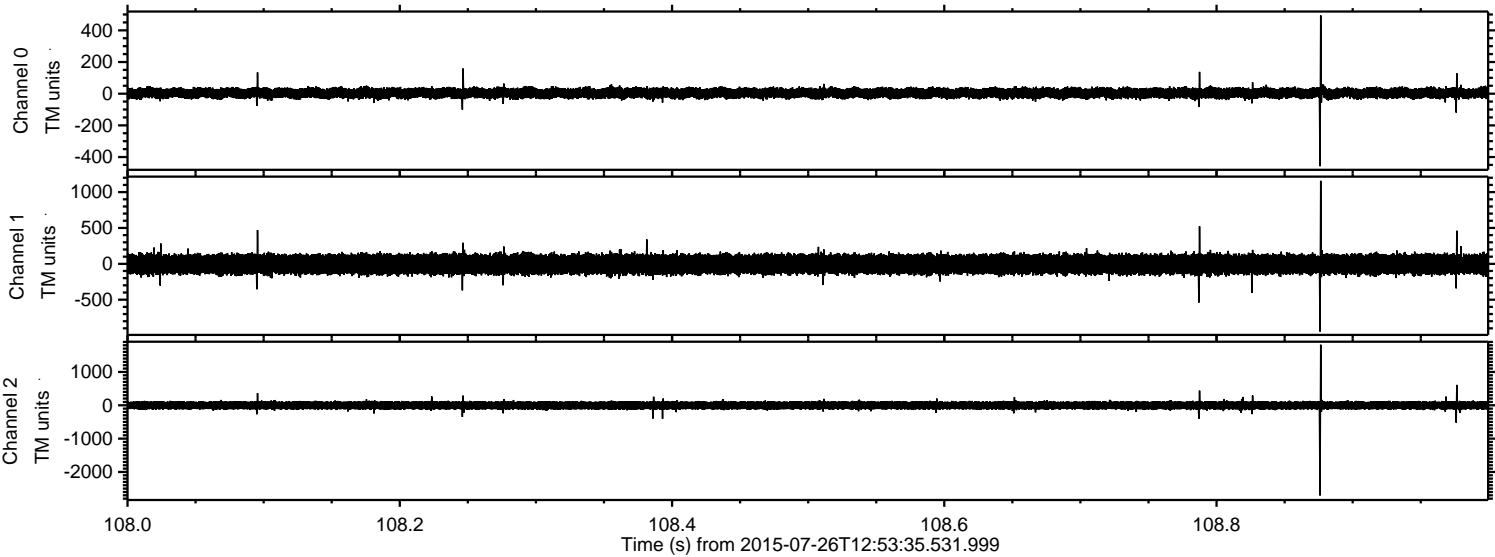
Channel 0  
mn: -511  
mx: 633  
 $\mu$ : 3.4  
 $\sigma$ : 17.9

Channel 1  
mn: -594  
mx: 1109  
 $\mu$ : -6.2  
 $\sigma$ : 72.5

Channel 2  
mn: -2715  
mx: 1541  
 $\mu$ : -3.9  
 $\sigma$ : 72.7

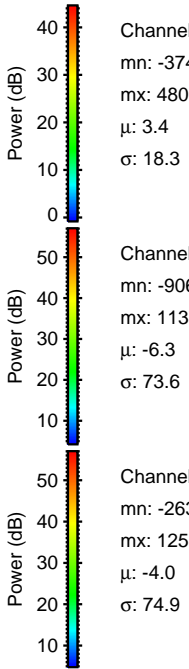
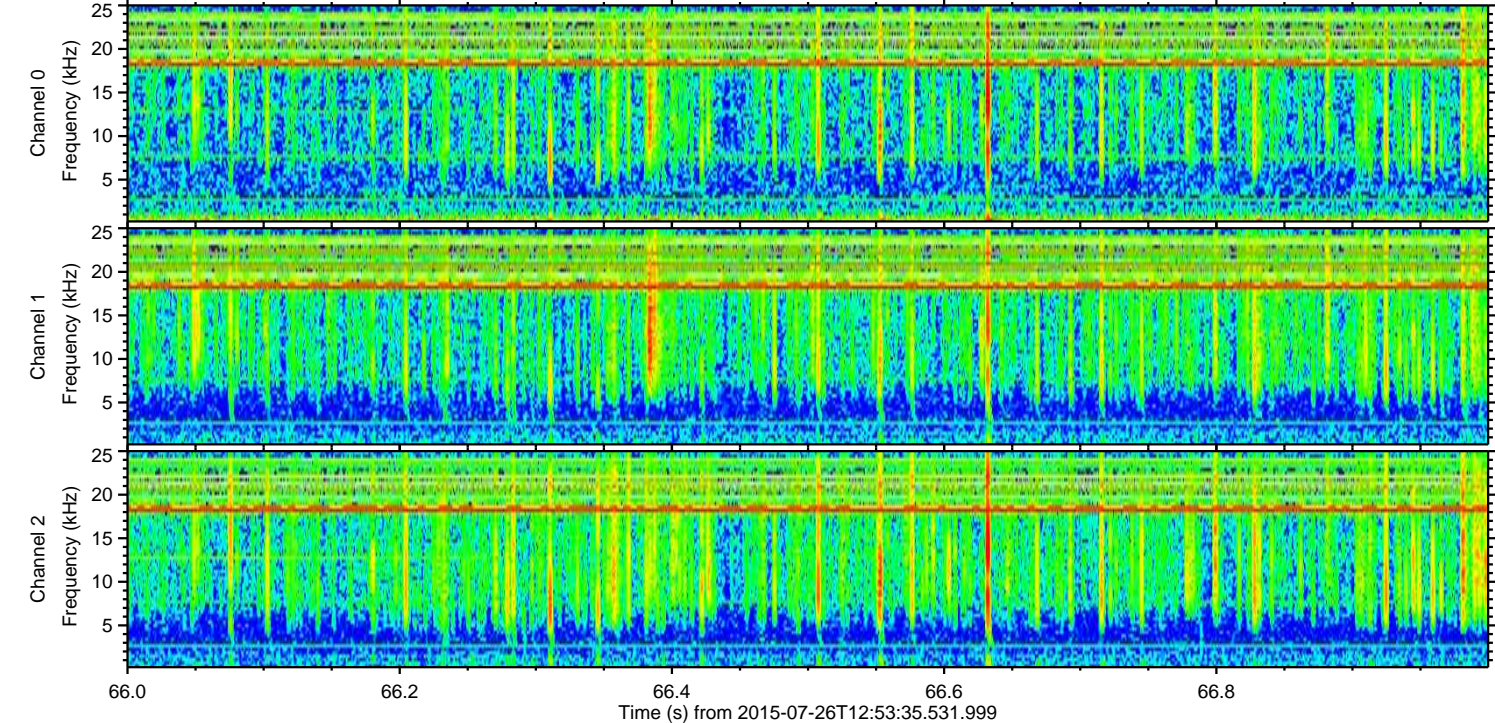
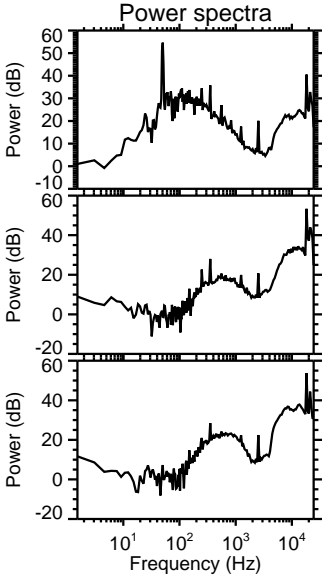
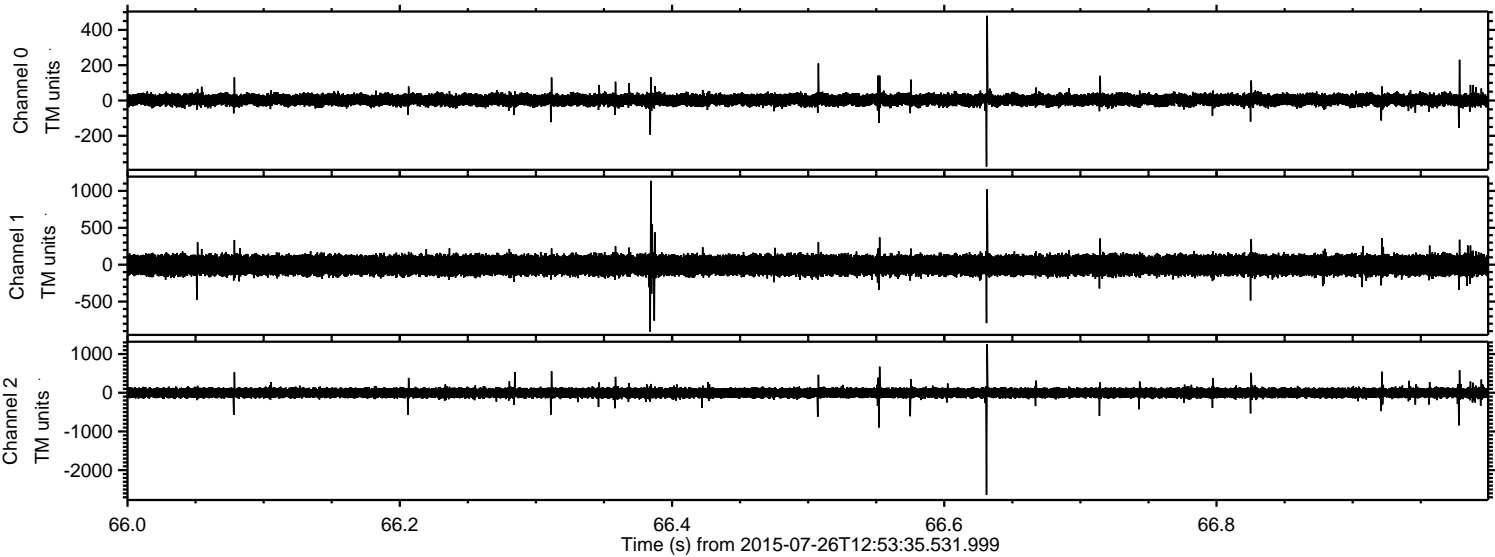
ELMAVAN 3D WAVEFORMS (Measured data sampled at 50 kHz) 51000 packets of 144 samples from 2015-07-26T12:53:35.531.999. Part 109/147

Processed Sun Jul 26 14:59:55 2015 by ELM ver.2012-10-06 from 001\_\_elm20150726\_125334\_\_dat00.bin



ELMAVAN 3D WAVEFORMS (Measured data sampled at 50 kHz) 51000 packets of 144 samples from 2015-07-26T12:53:35.531.999. Part 67/147

Processed Sun Jul 26 14:59:56 2015 by ELM ver.2012-10-06 from 001\_\_elm20150726\_125334\_\_dat00.bin



ELMAVAN 3D WAVEFORMS (Measured data sampled at 50 kHz) 51000 packets of 144 samples from 2015-07-26T12:53:35.531.999. Part 105/147

Processed Sun Jul 26 14:59:57 2015 by ELM ver.2012-10-06 from 001\_\_elm20150726\_125334\_\_dat00.bin

