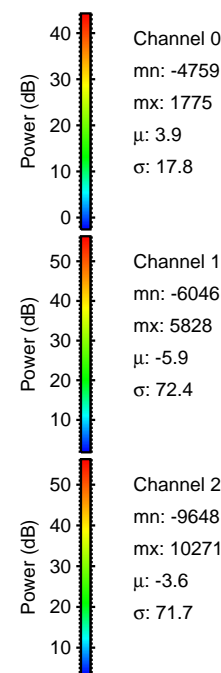
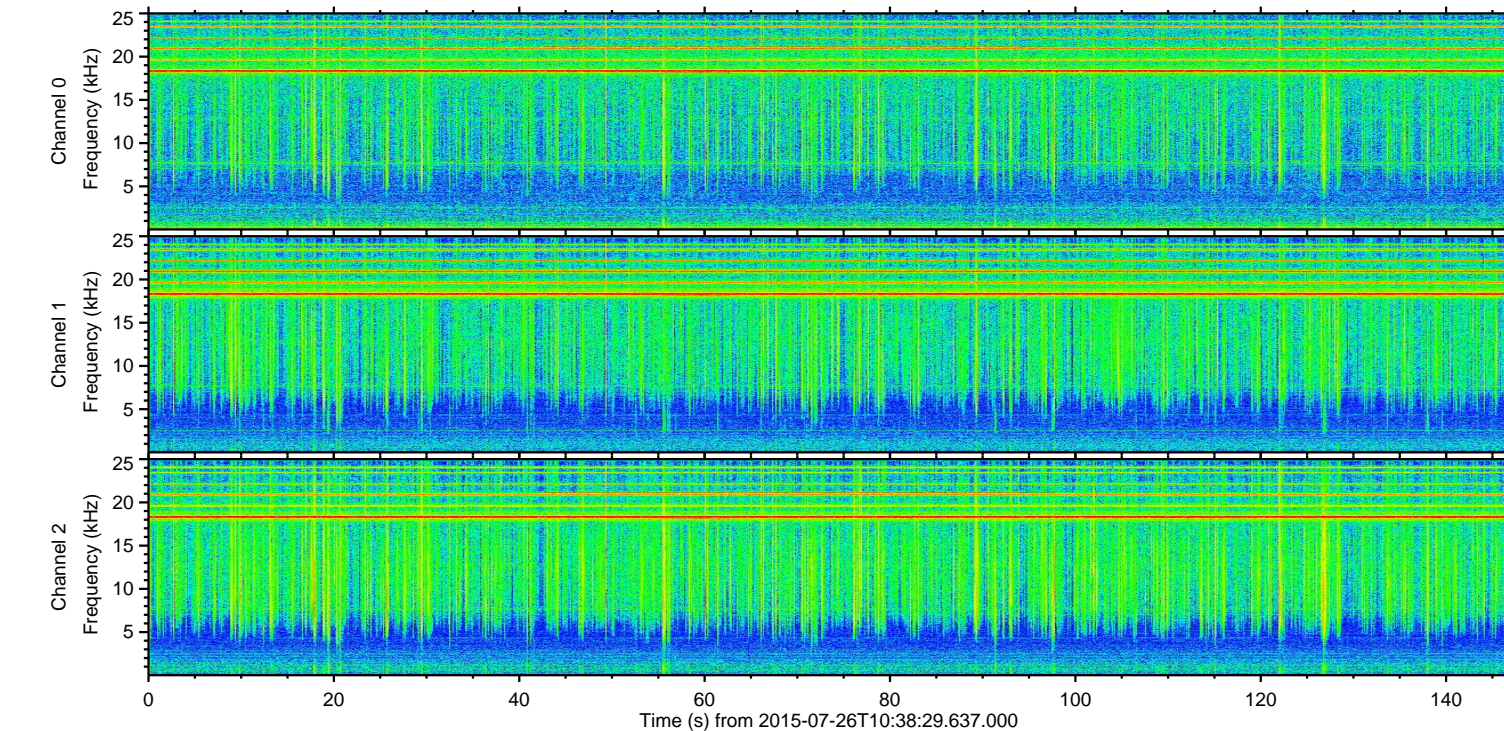
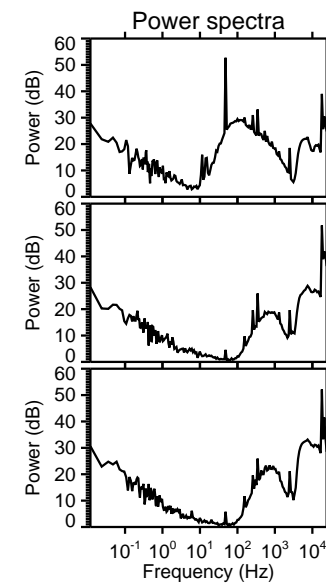
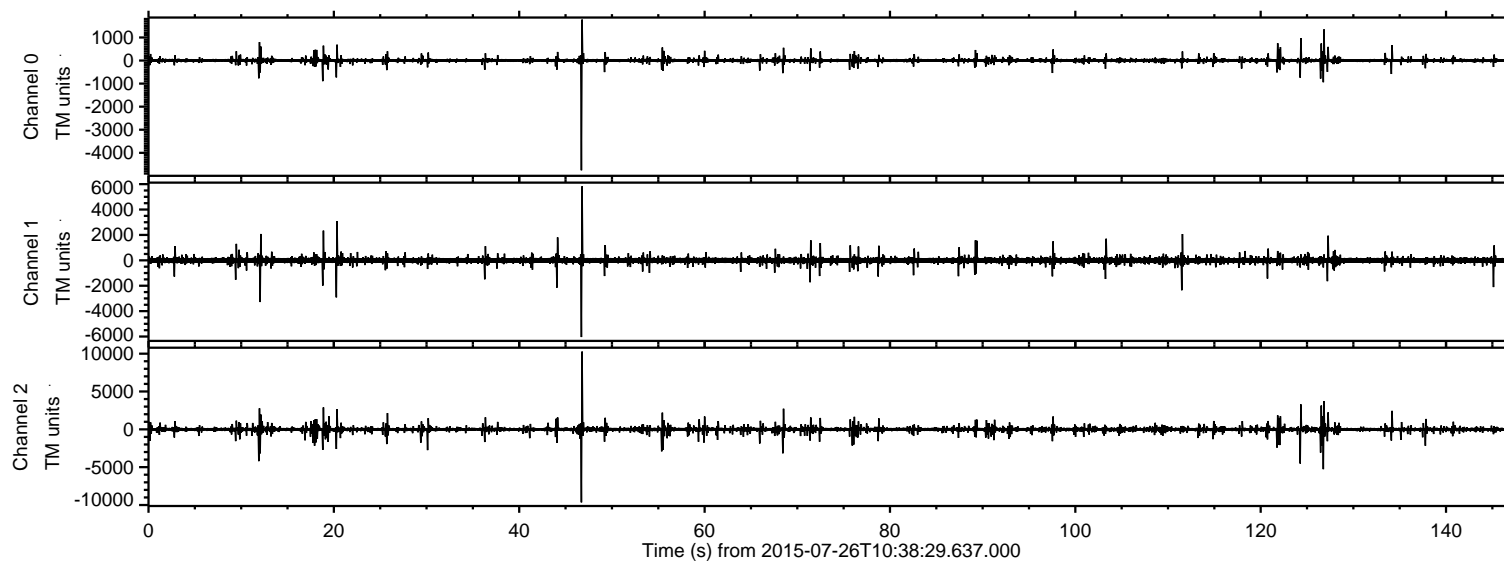


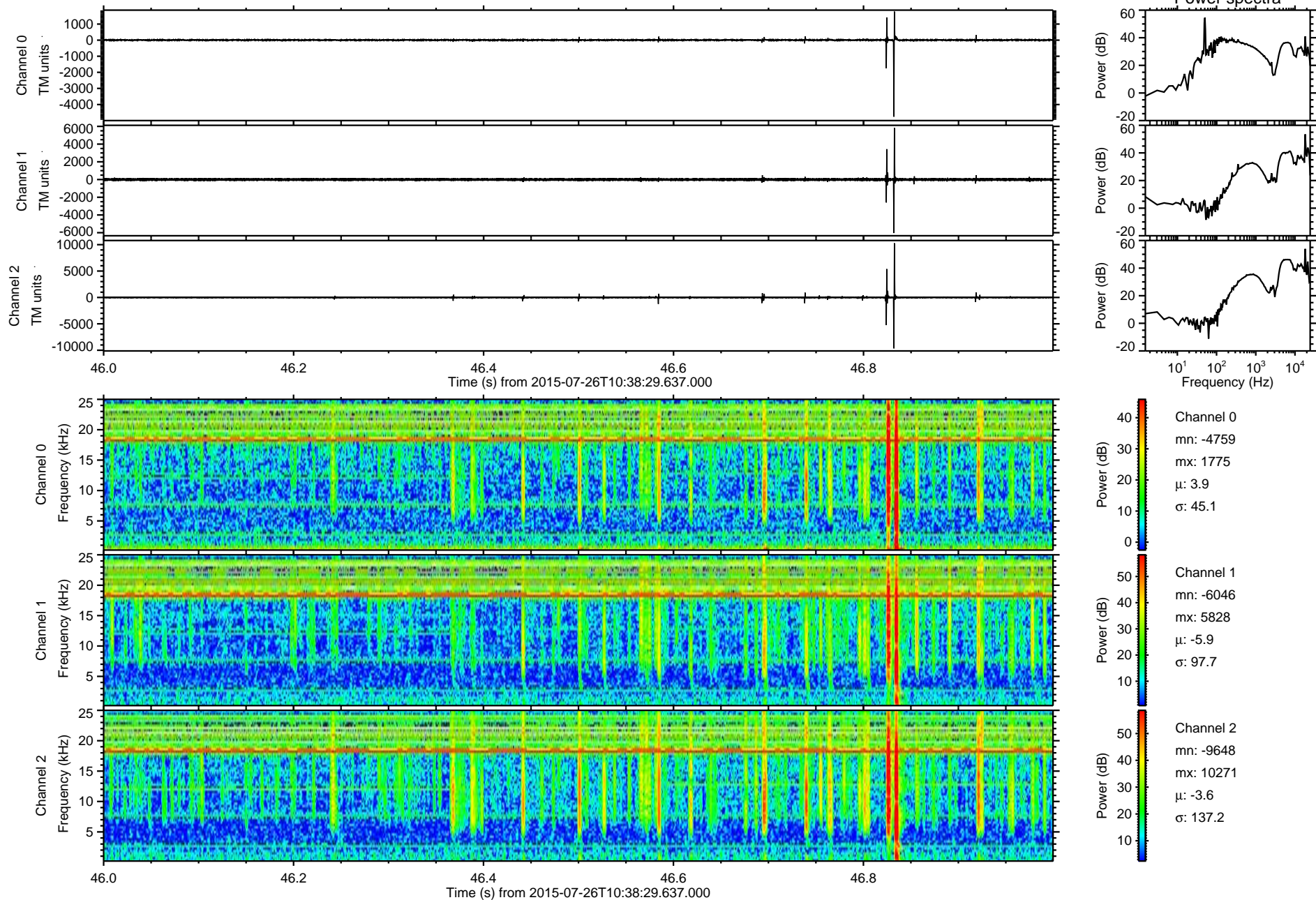
ELMAVAN 3D WAVEFORMS (Measured data sampled at 50 kHz) 51000 packets of 144 samples from 2015-07-26T10:38:29.637.000.

Processed Sun Jul 26 12:45:04 2015 by ELM ver.2012-10-06 from 001__elm20150726_103828__dat00.bin



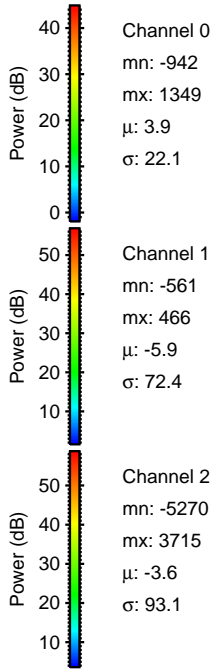
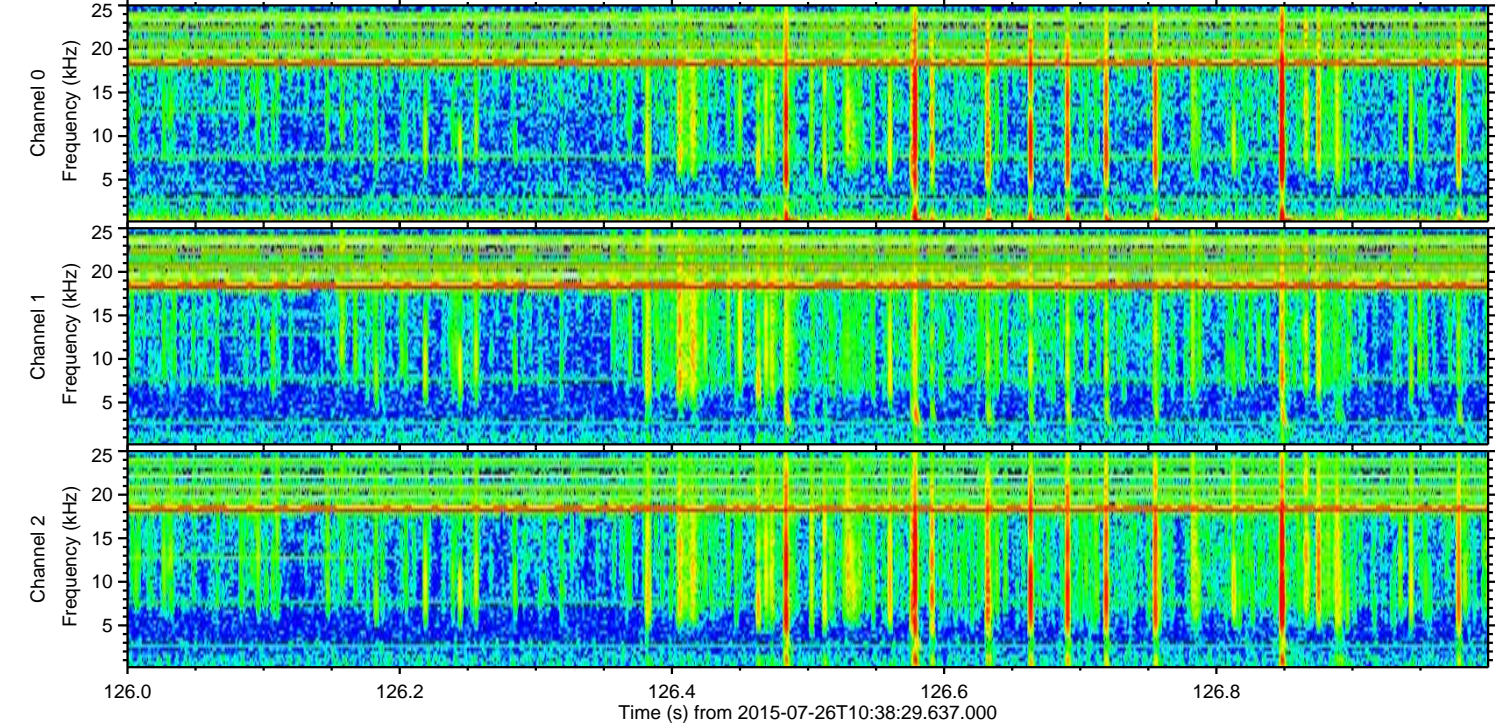
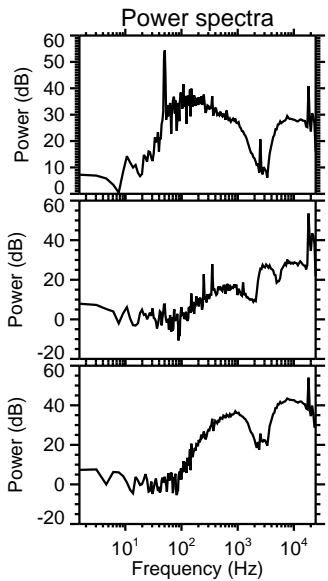
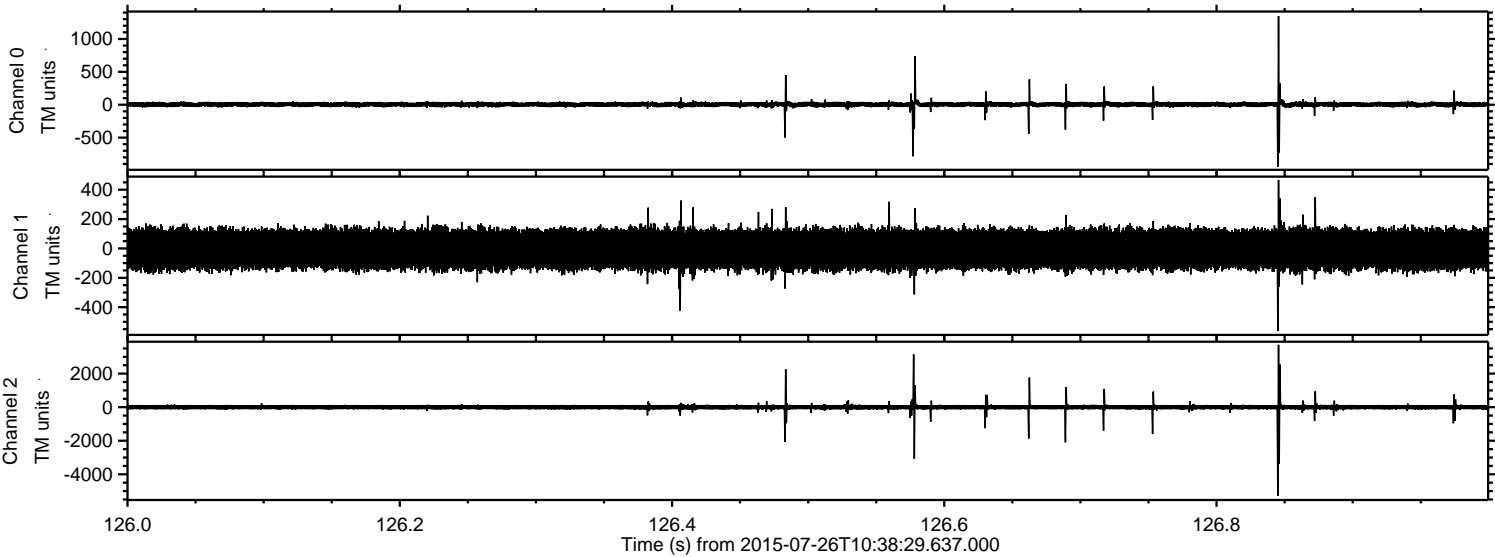
ELMAVAN 3D WAVEFORMS (Measured data sampled at 50 kHz) 51000 packets of 144 samples from 2015-07-26T10:38:29.637.000. Part 47/147

Processed Sun Jul 26 12:45:20 2015 by ELM ver.2012-10-06 from 001__elm20150726_103828__dat00.bin



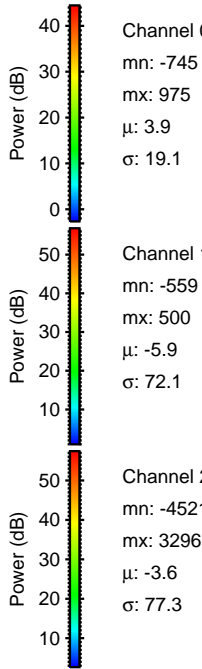
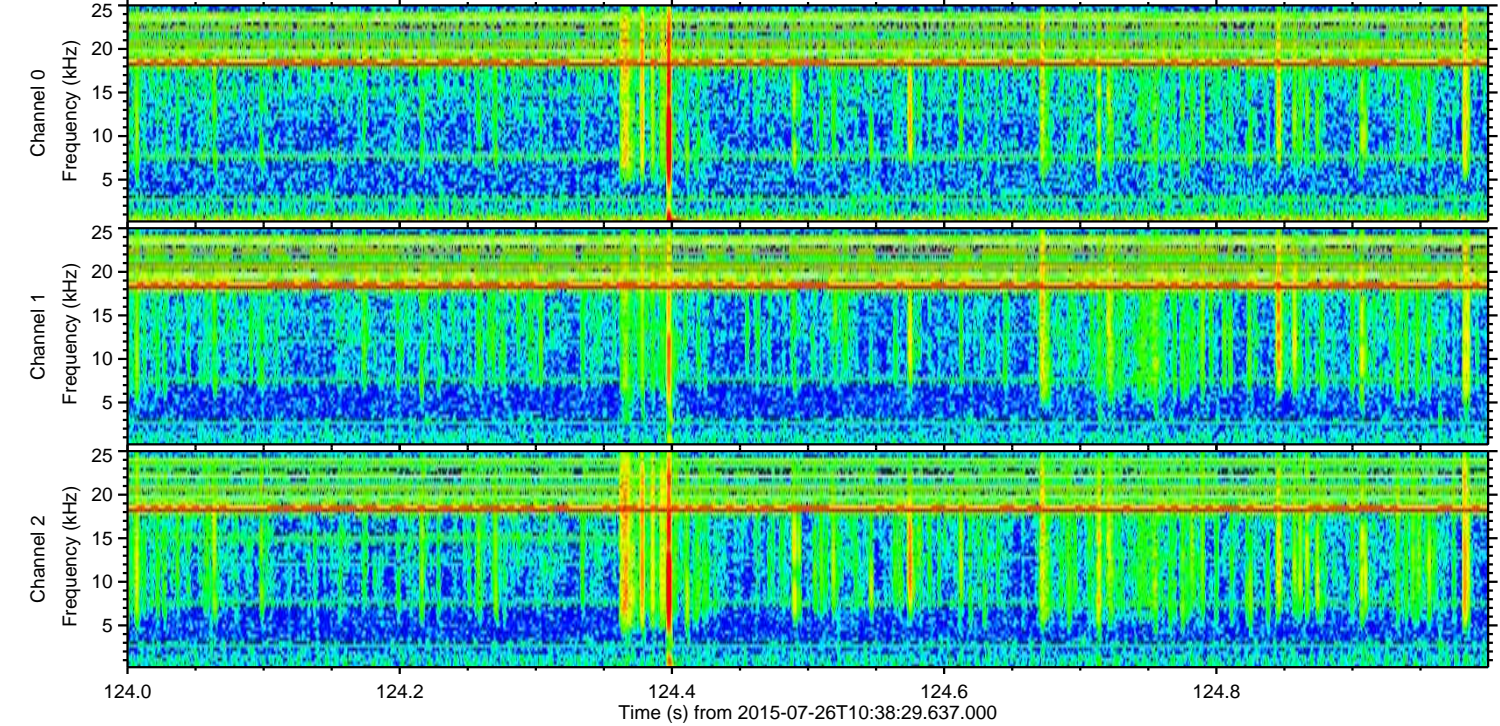
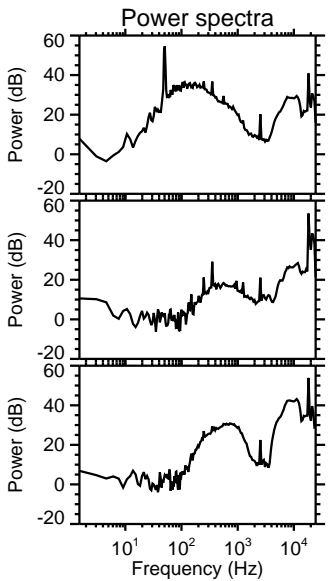
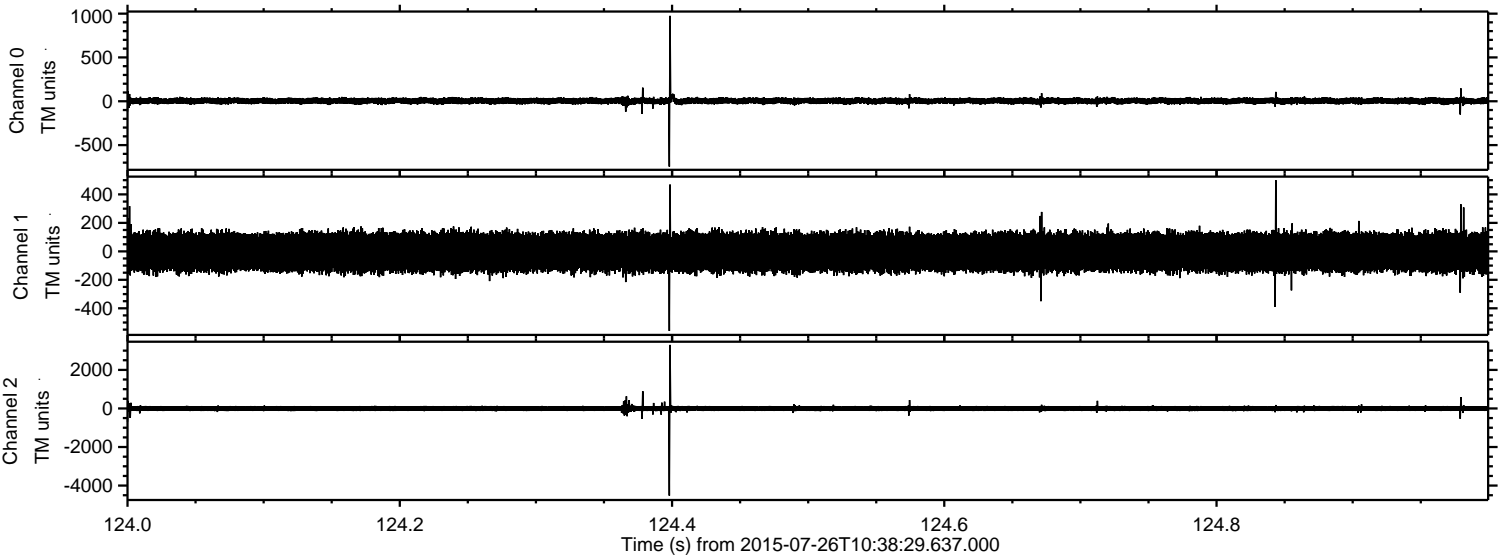
ELMAVAN 3D WAVEFORMS (Measured data sampled at 50 kHz) 51000 packets of 144 samples from 2015-07-26T10:38:29.637.000. Part 127/147

Processed Sun Jul 26 12:45:21 2015 by ELM ver.2012-10-06 from 001__elm20150726_103828__dat00.bin

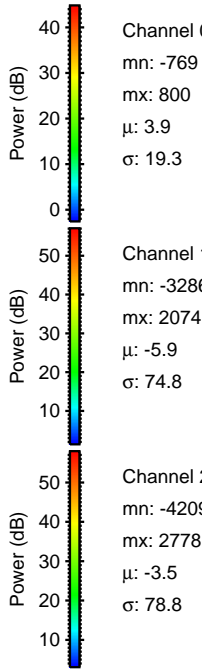
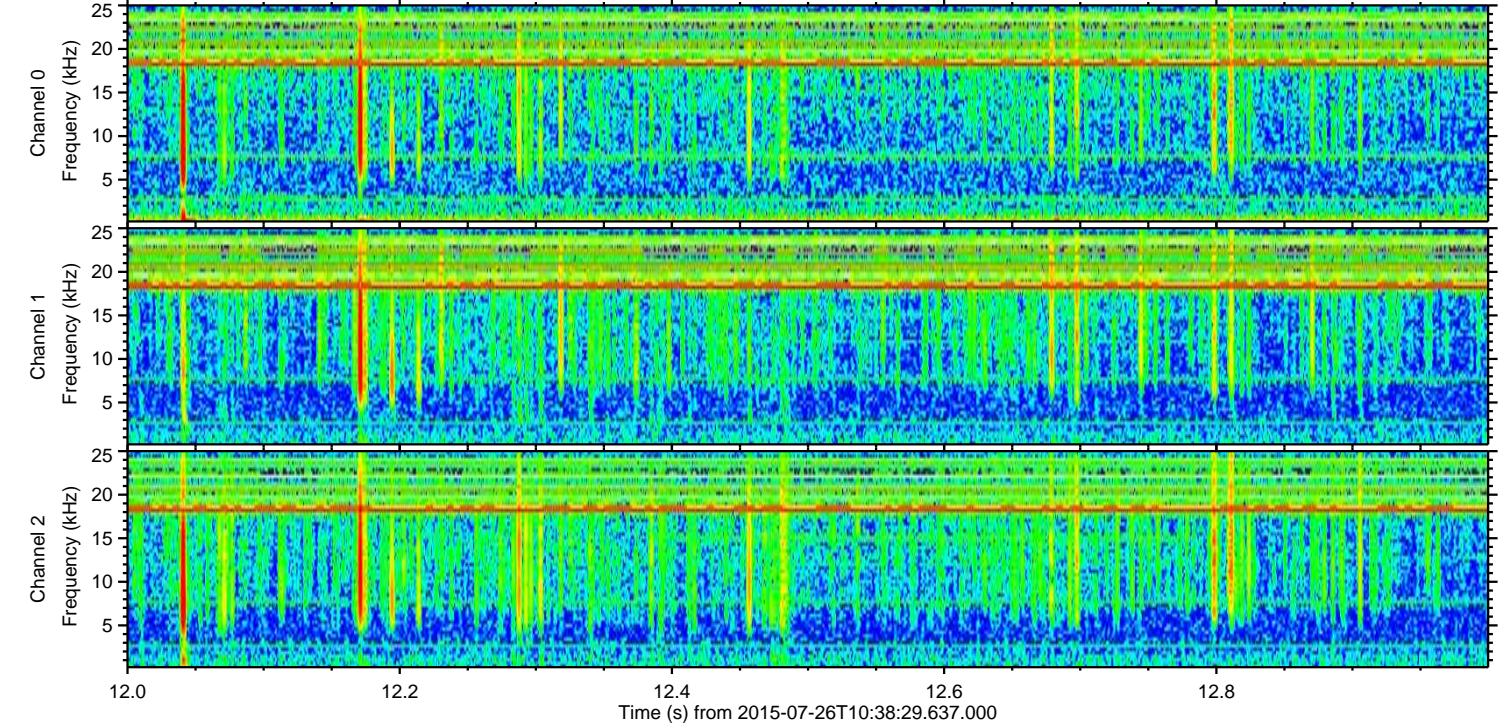
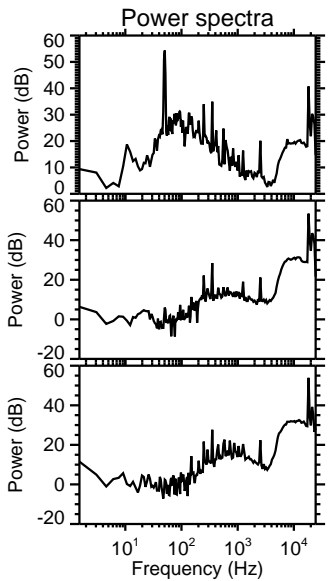
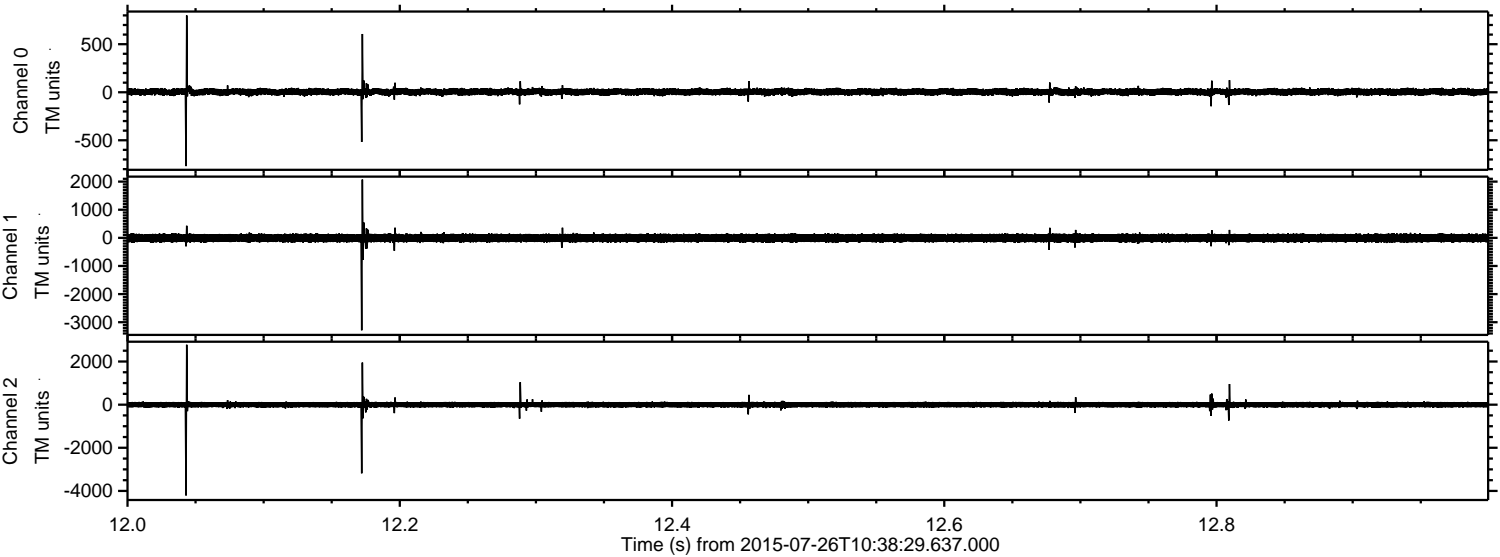


ELMAVAN 3D WAVEFORMS (Measured data sampled at 50 kHz) 51000 packets of 144 samples from 2015-07-26T10:38:29.637.000. Part 125/147

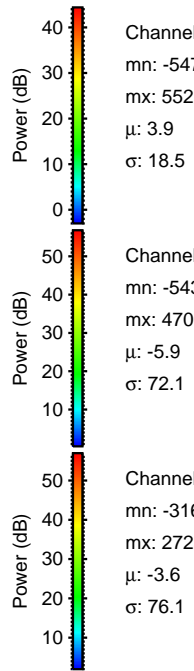
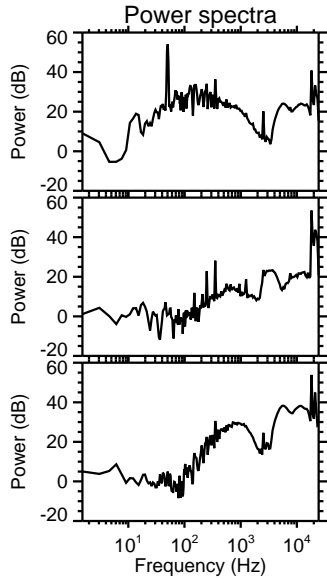
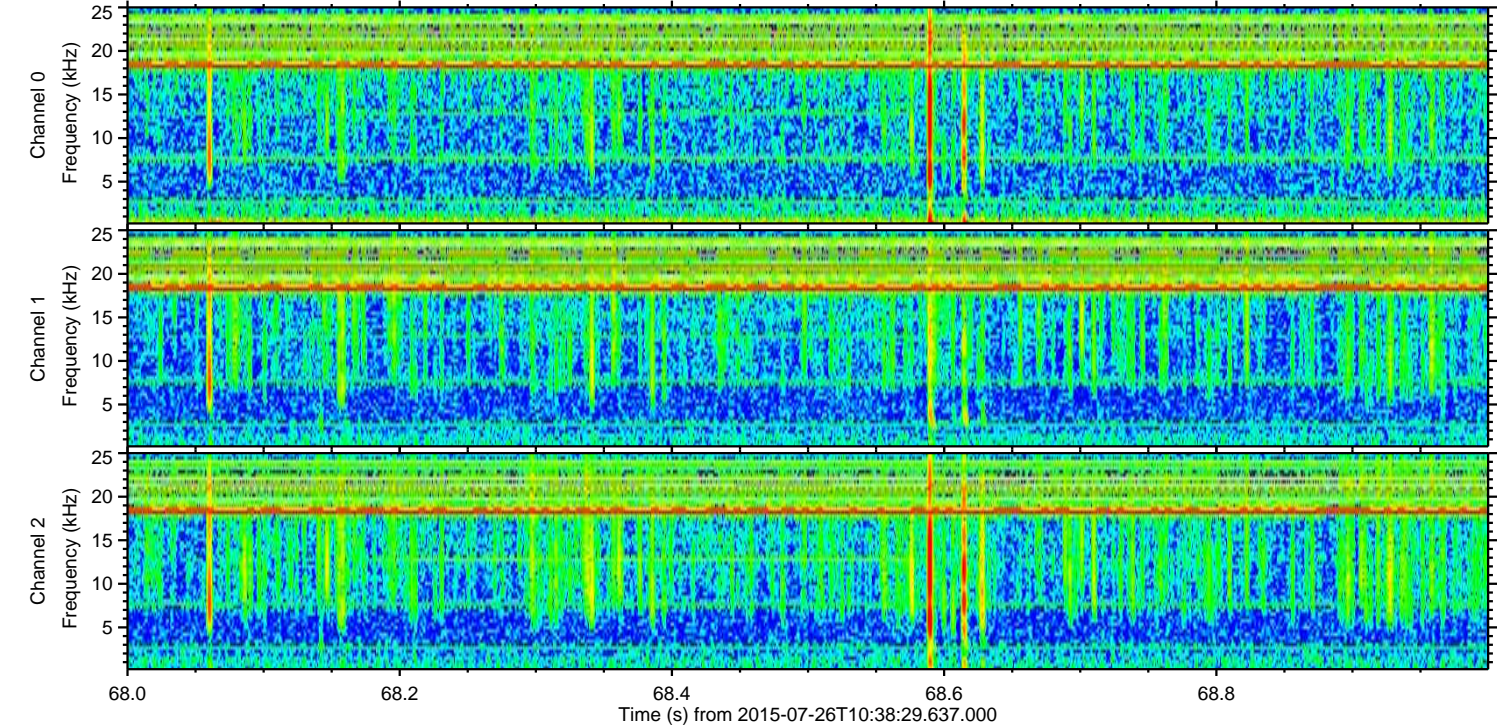
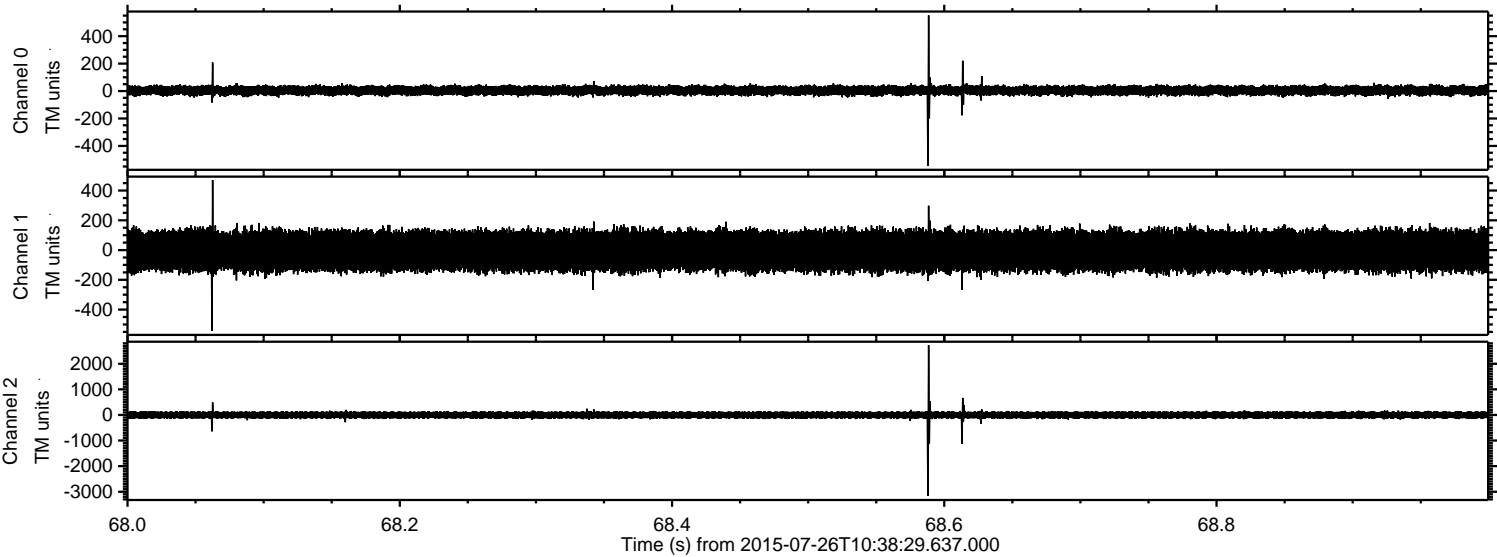
Processed Sun Jul 26 12:45:22 2015 by ELM ver.2012-10-06 from 001__elm20150726_103828__dat00.bin



Processed Sun Jul 26 12:45:23 2015 by ELM ver.2012-10-06 from 001__elm20150726_103828__dat00.bin



Processed Sun Jul 26 12:45:24 2015 by ELM ver.2012-10-06 from 001__elm20150726_103828__dat00.bin



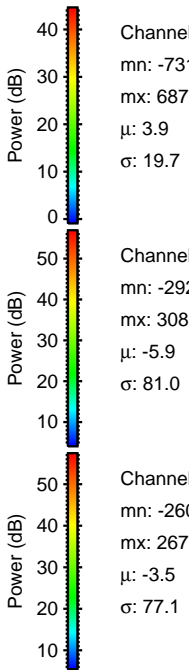
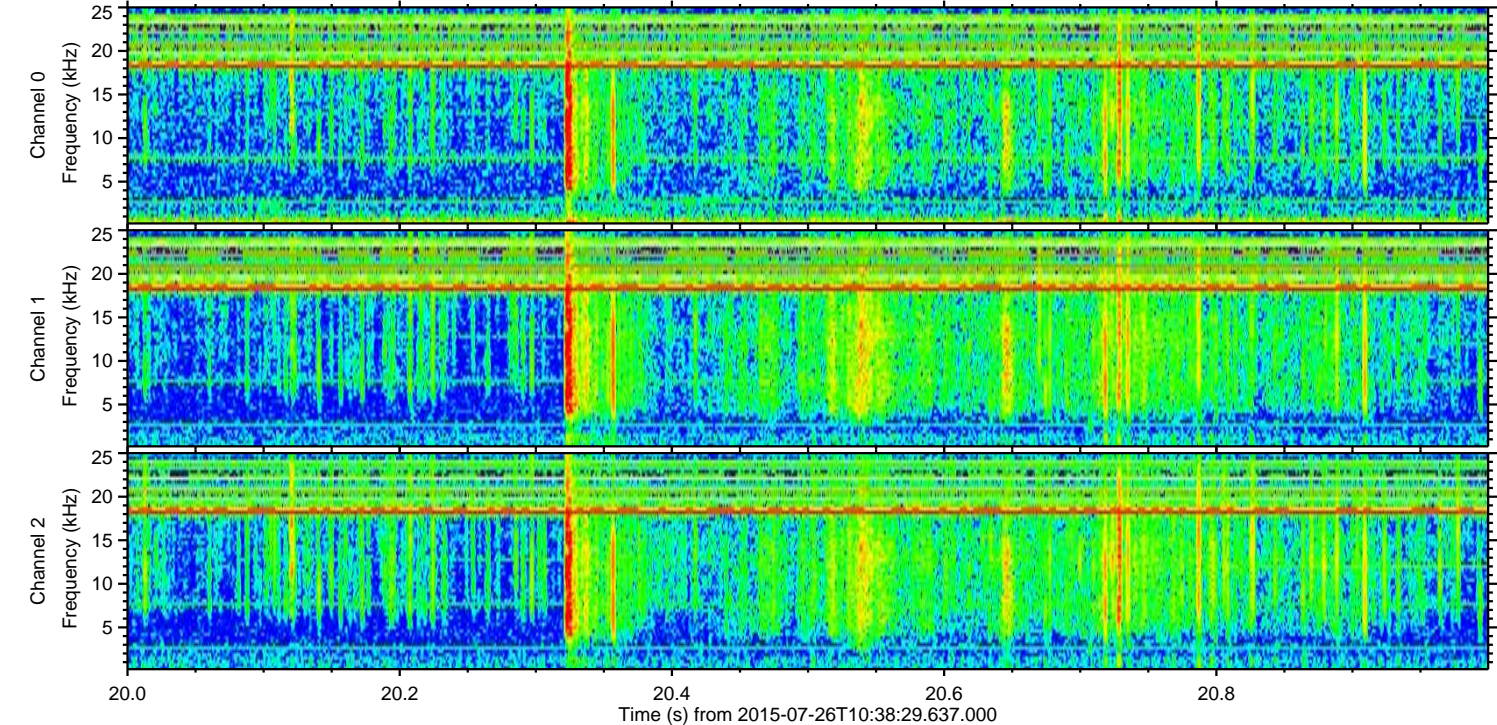
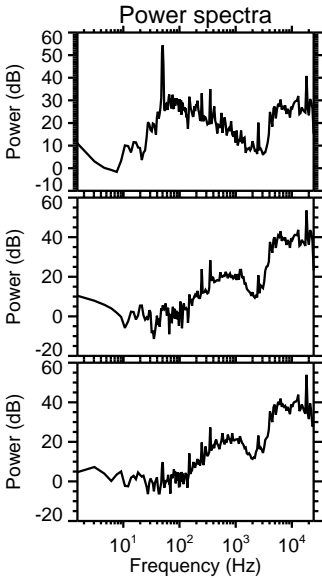
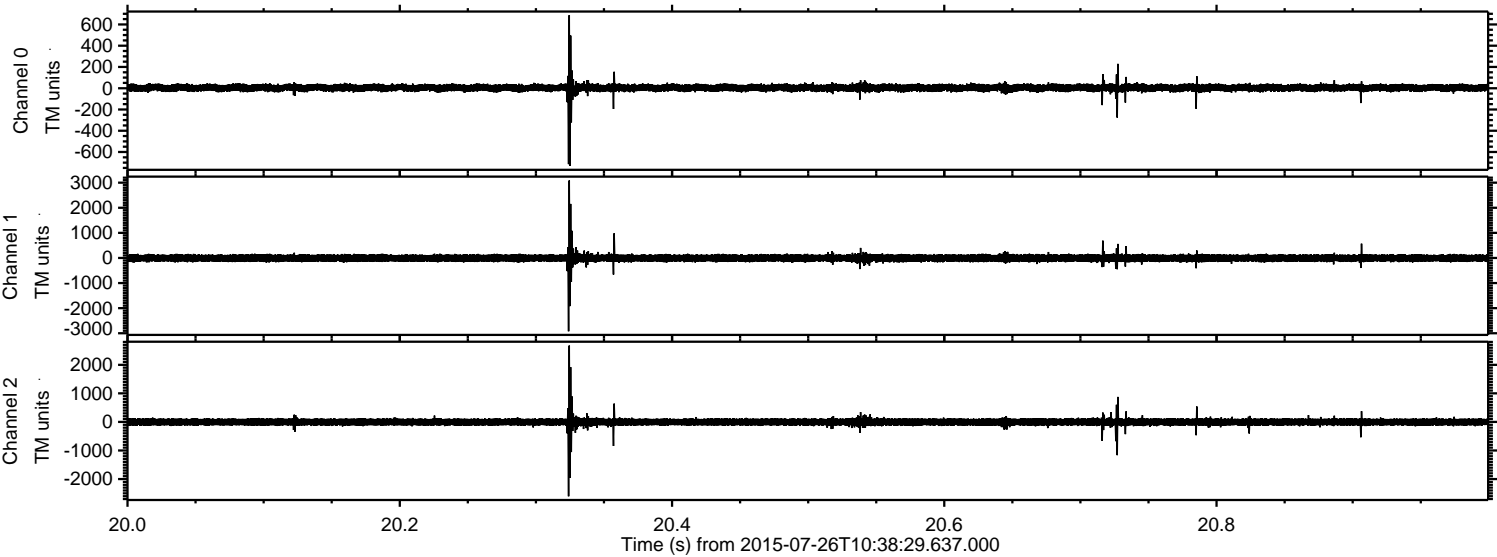
Channel 0
mn: -547
mx: 552
 μ : 3.9
 σ : 18.5

Channel 1
mn: -543
mx: 470
 μ : -5.9
 σ : 72.1

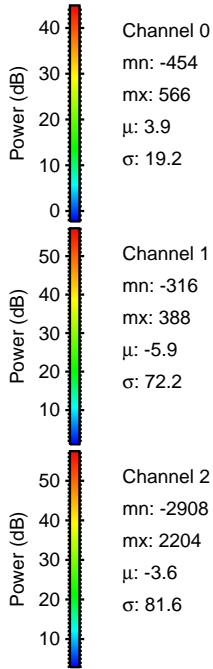
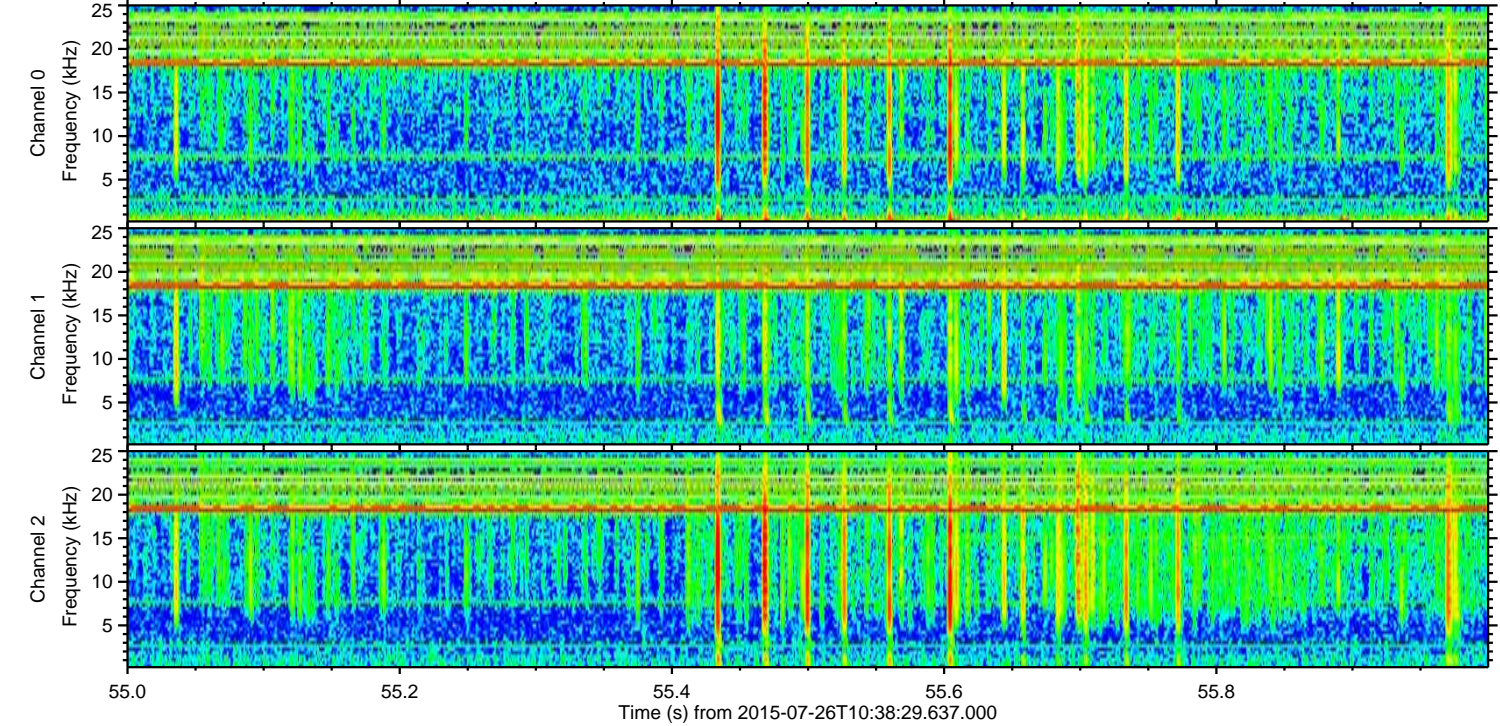
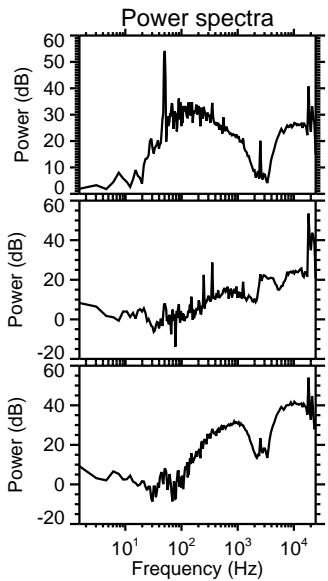
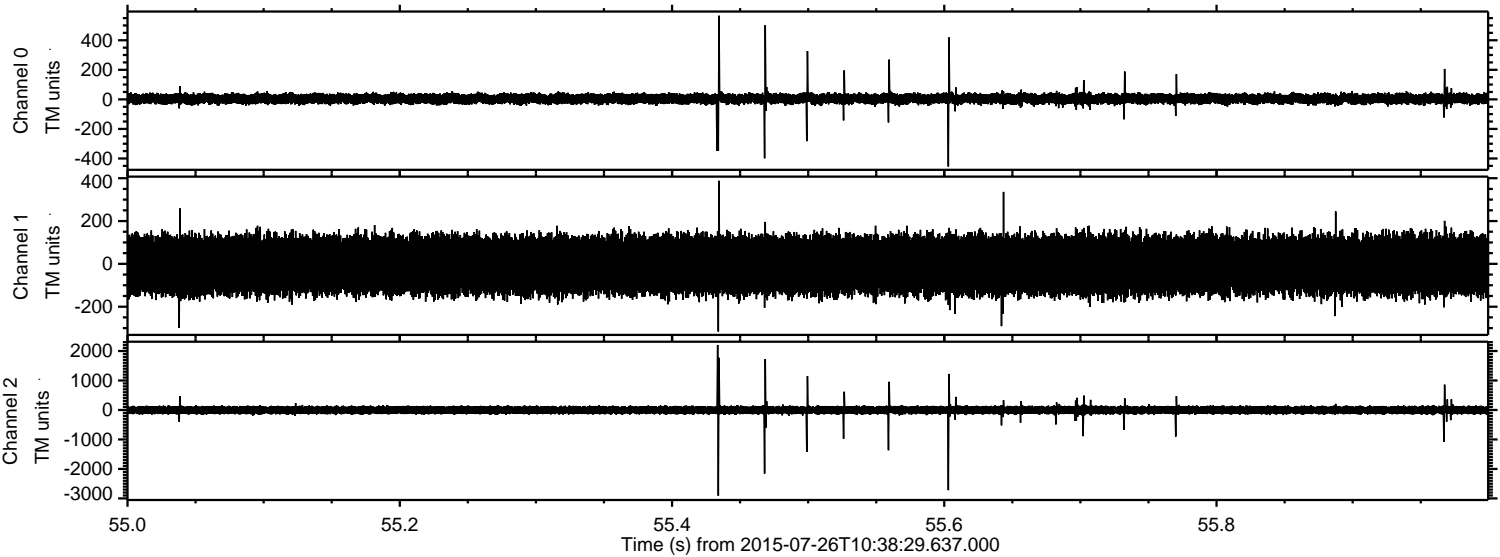
Channel 2
mn: -3165
mx: 2725
 μ : -3.6
 σ : 76.1

ELMAVAN 3D WAVEFORMS (Measured data sampled at 50 kHz) 51000 packets of 144 samples from 2015-07-26T10:38:29.637.000. Part 21/147

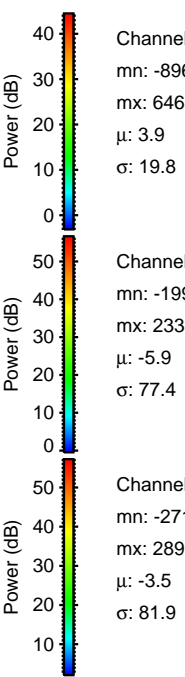
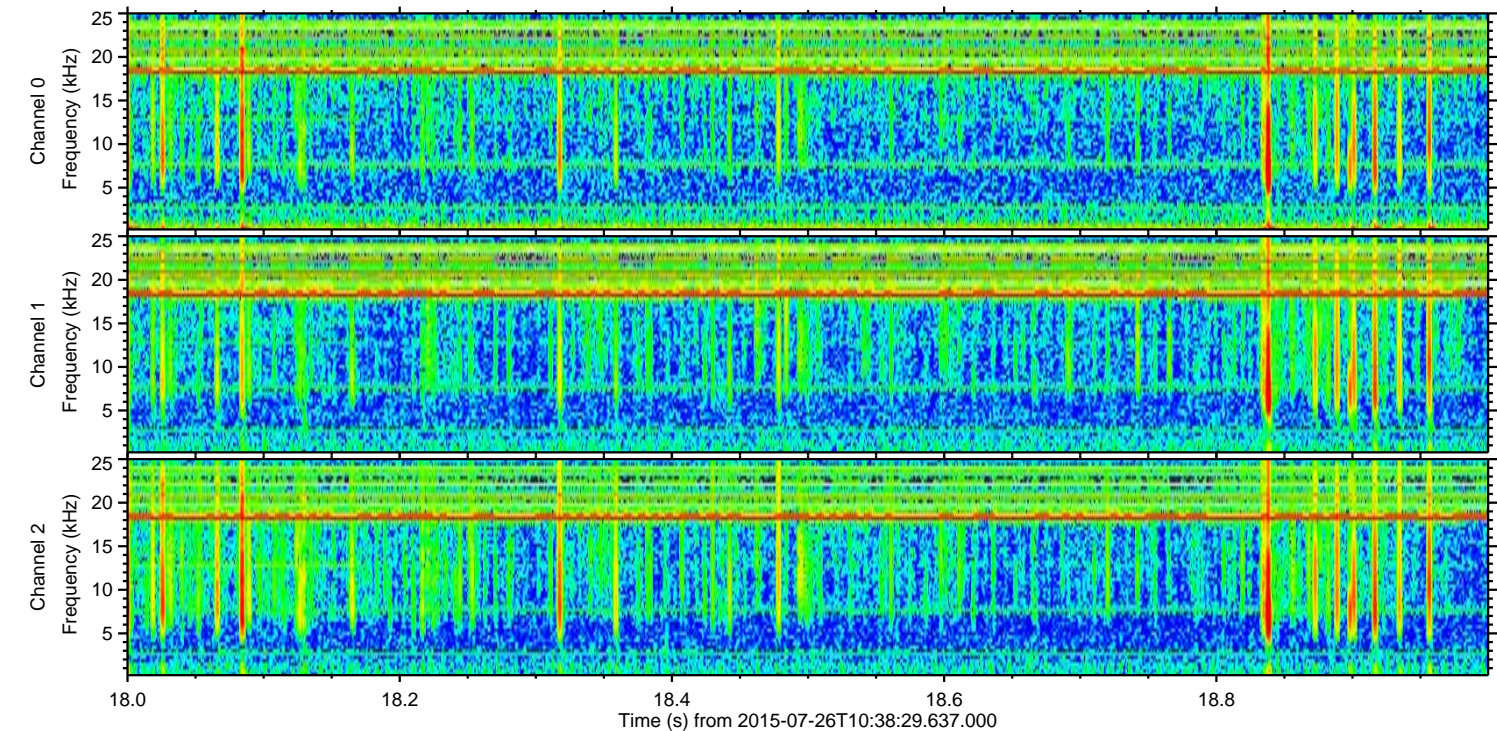
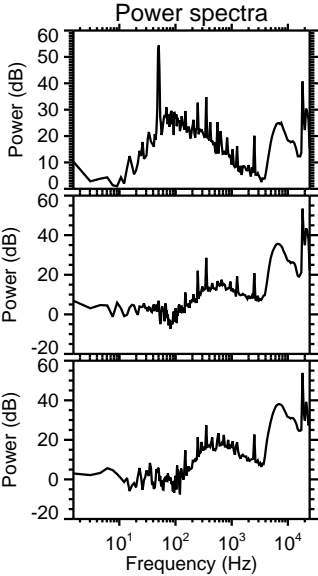
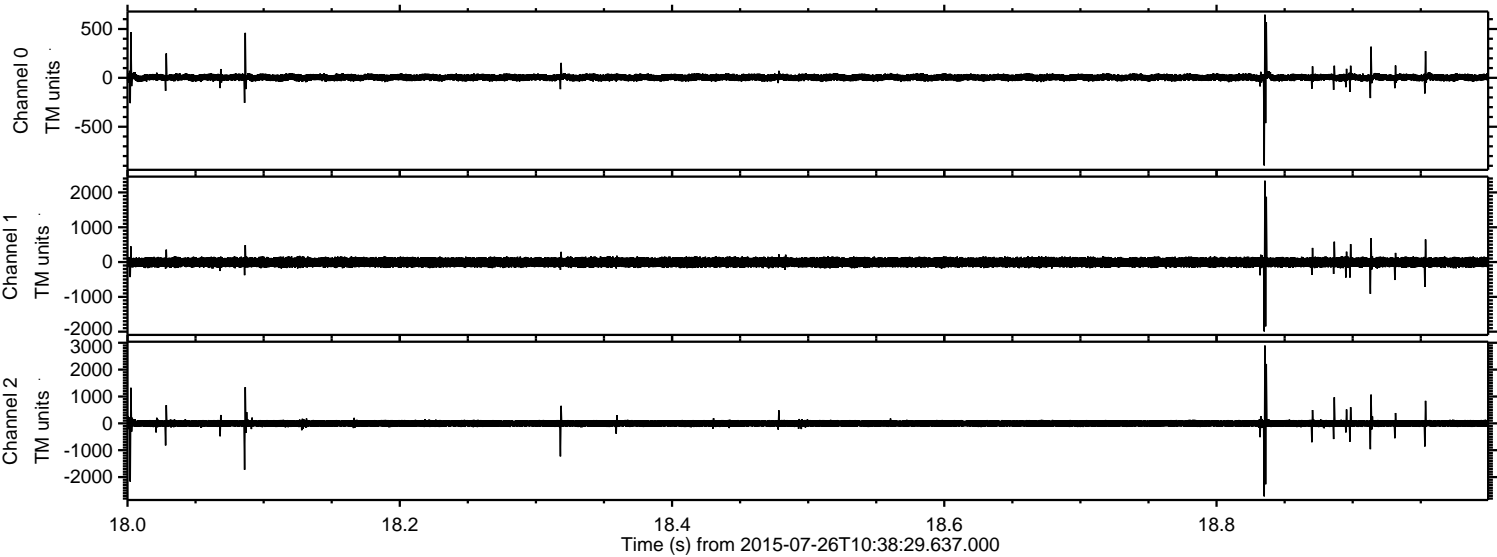
Processed Sun Jul 26 12:45:25 2015 by ELM ver.2012-10-06 from 001__elm20150726_103828__dat00.bin



Processed Sun Jul 26 12:45:26 2015 by ELM ver.2012-10-06 from 001__elm20150726_103828__dat00.bin



Processed Sun Jul 26 12:45:27 2015 by ELM ver.2012-10-06 from 001__elm20150726_103828__dat00.bin

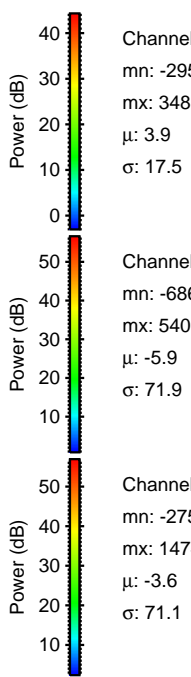
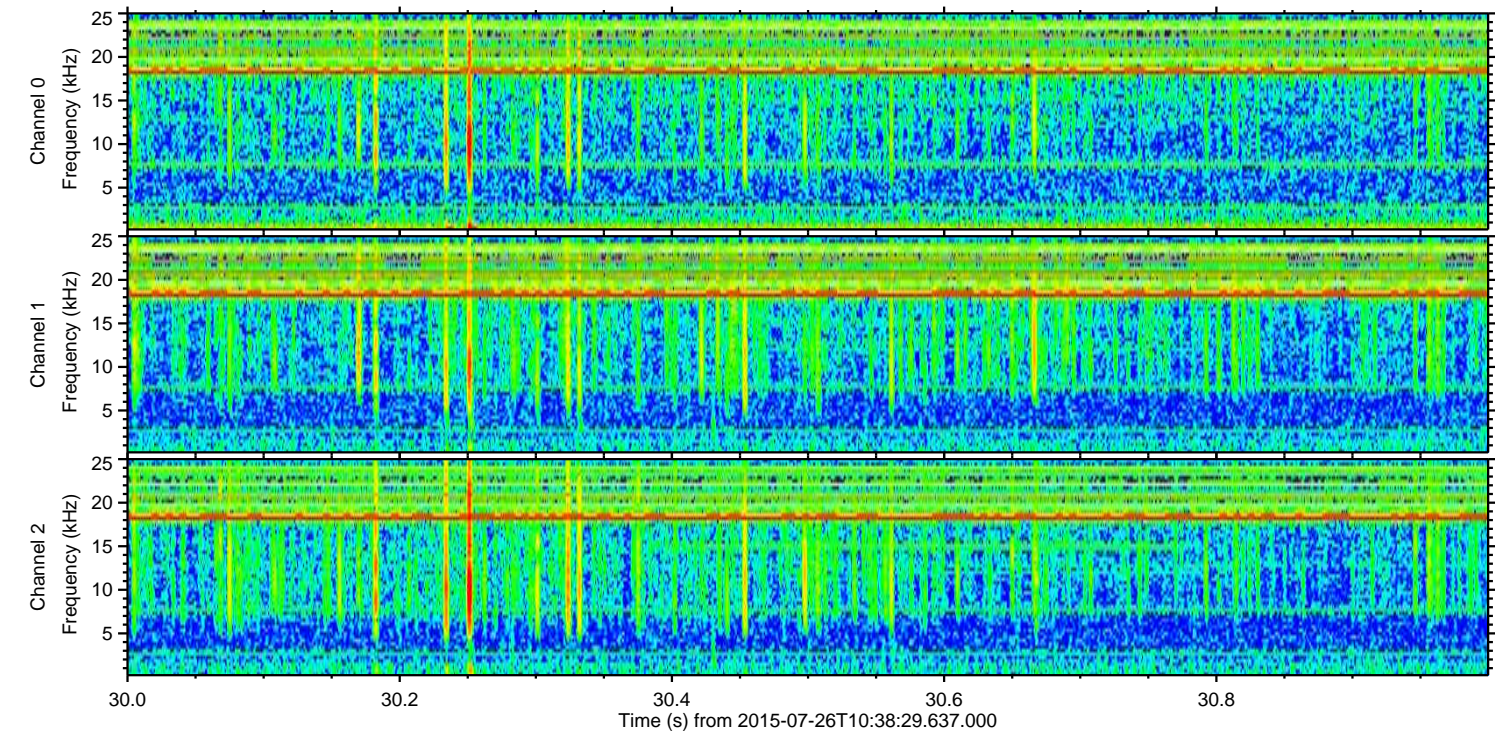
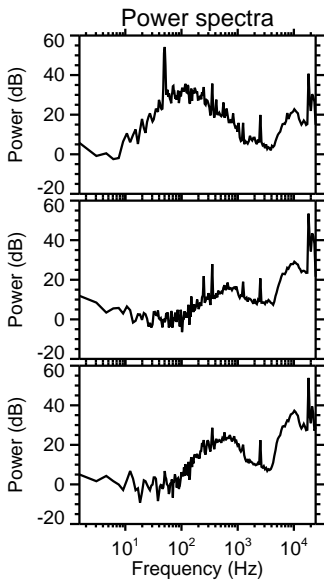
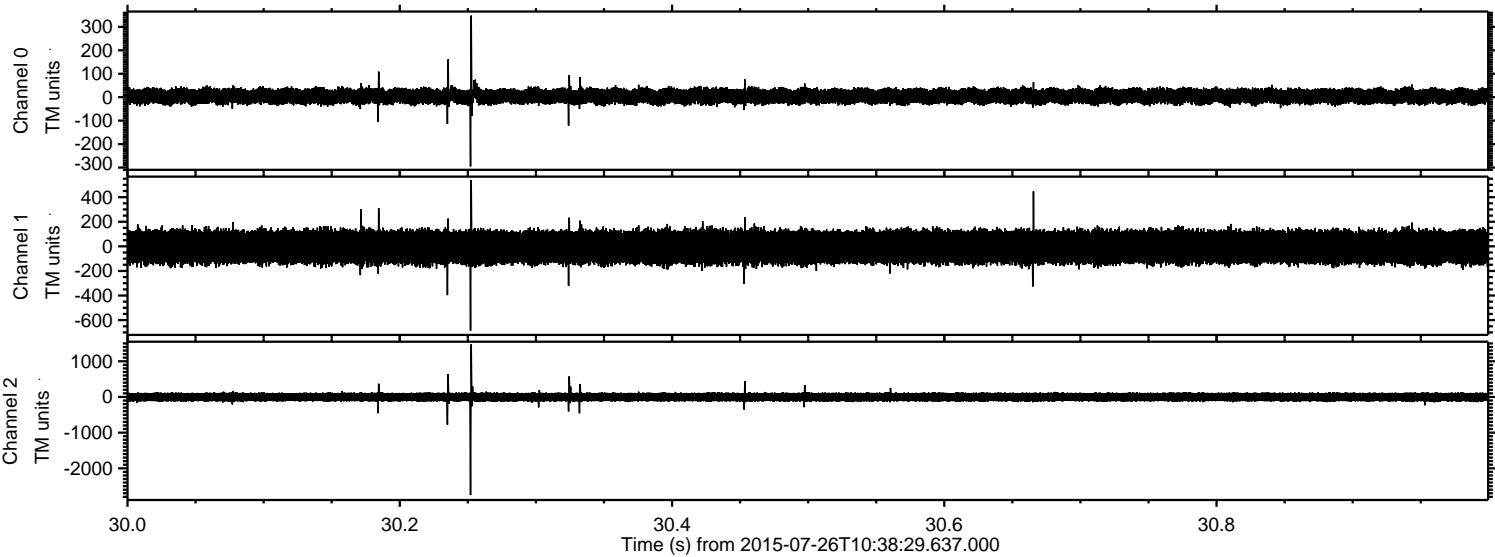


Channel 0
mn: -896
mx: 646
 μ : 3.9
 σ : 19.8

Channel 1
mn: -1993
mx: 2338
 μ : -5.9
 σ : 77.4

Channel 2
mn: -2718
mx: 2895
 μ : -3.5
 σ : 81.9

Processed Sun Jul 26 12:45:28 2015 by ELM ver.2012-10-06 from 001__elm20150726_103828__dat00.bin



Processed Sun Jul 26 12:45:29 2015 by ELM ver.2012-10-06 from 001__elm20150726_103828__dat00.bin

