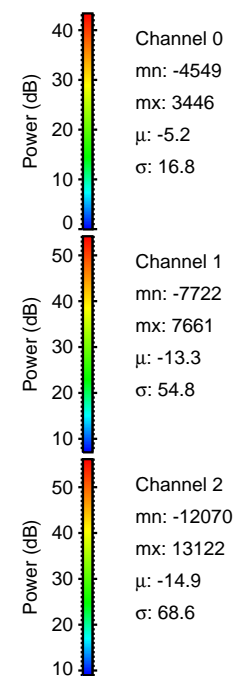
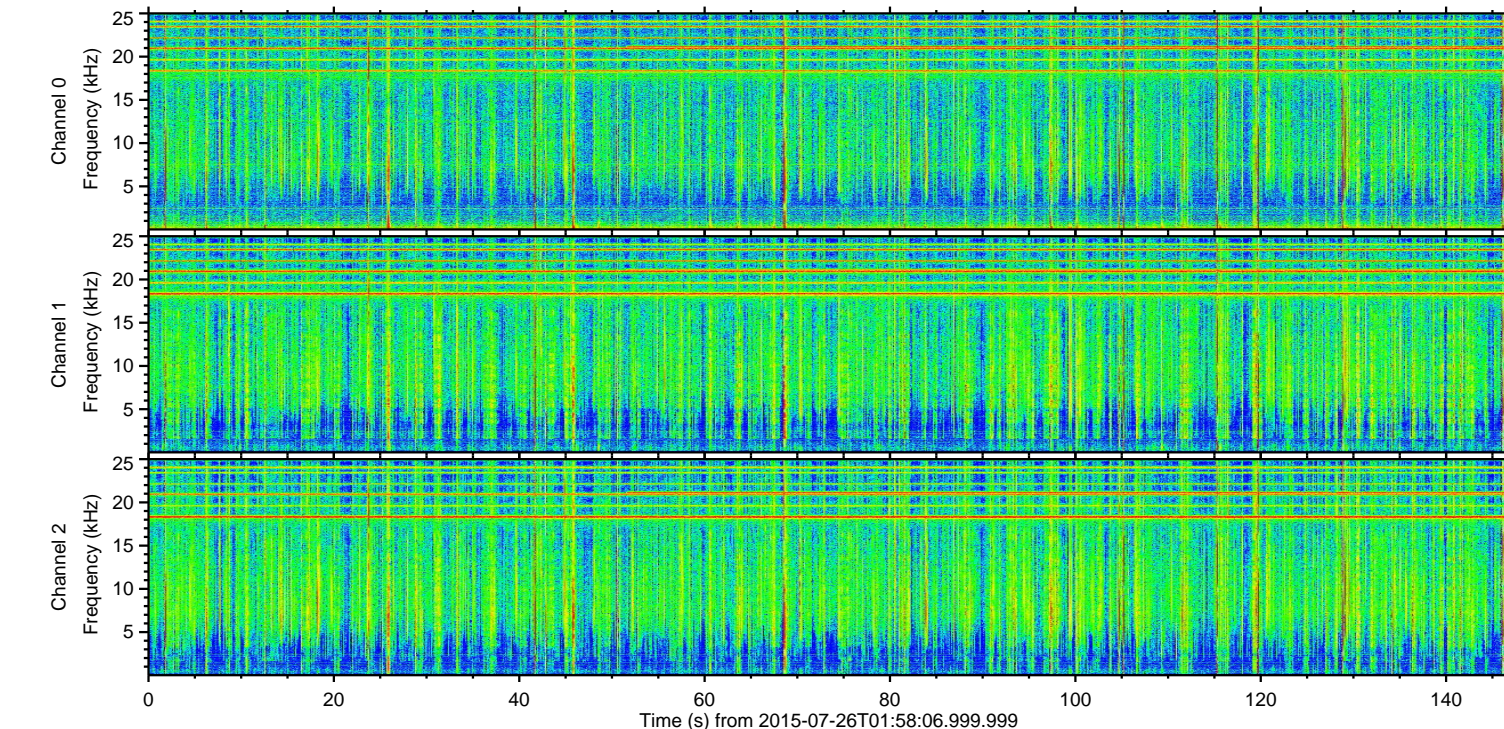
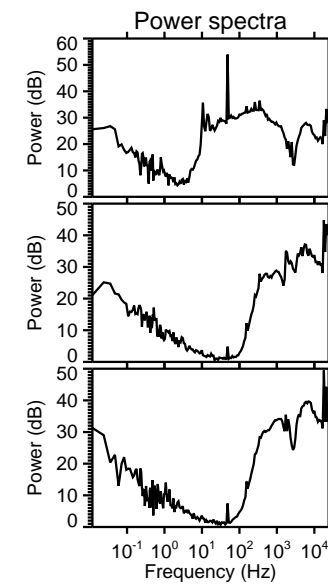
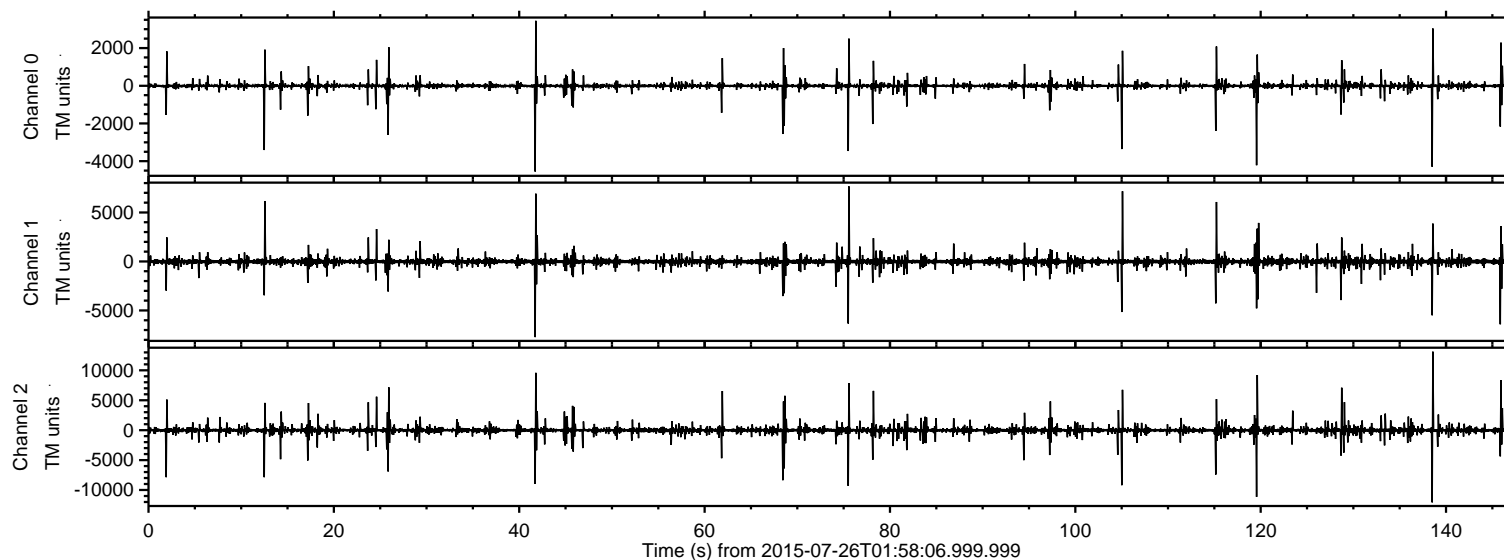


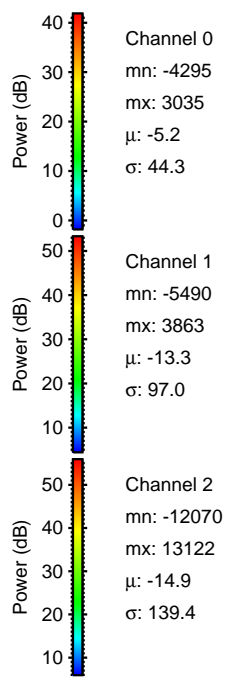
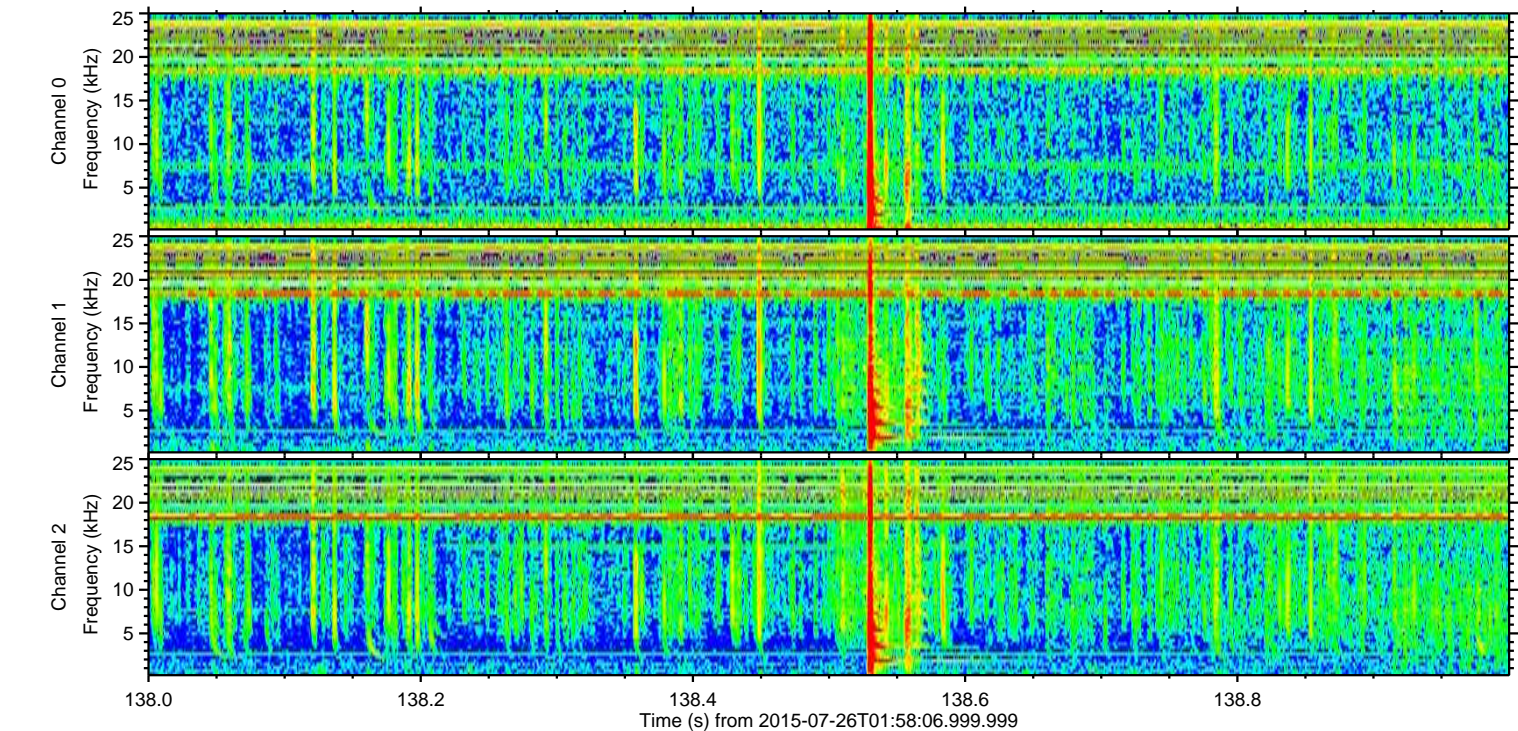
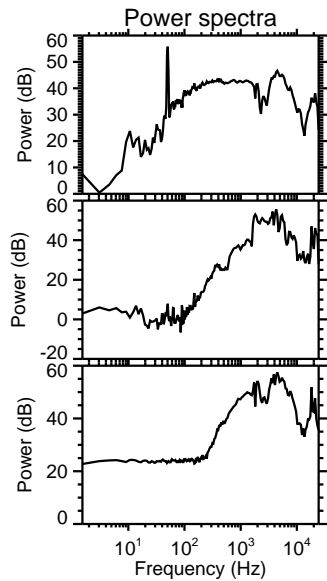
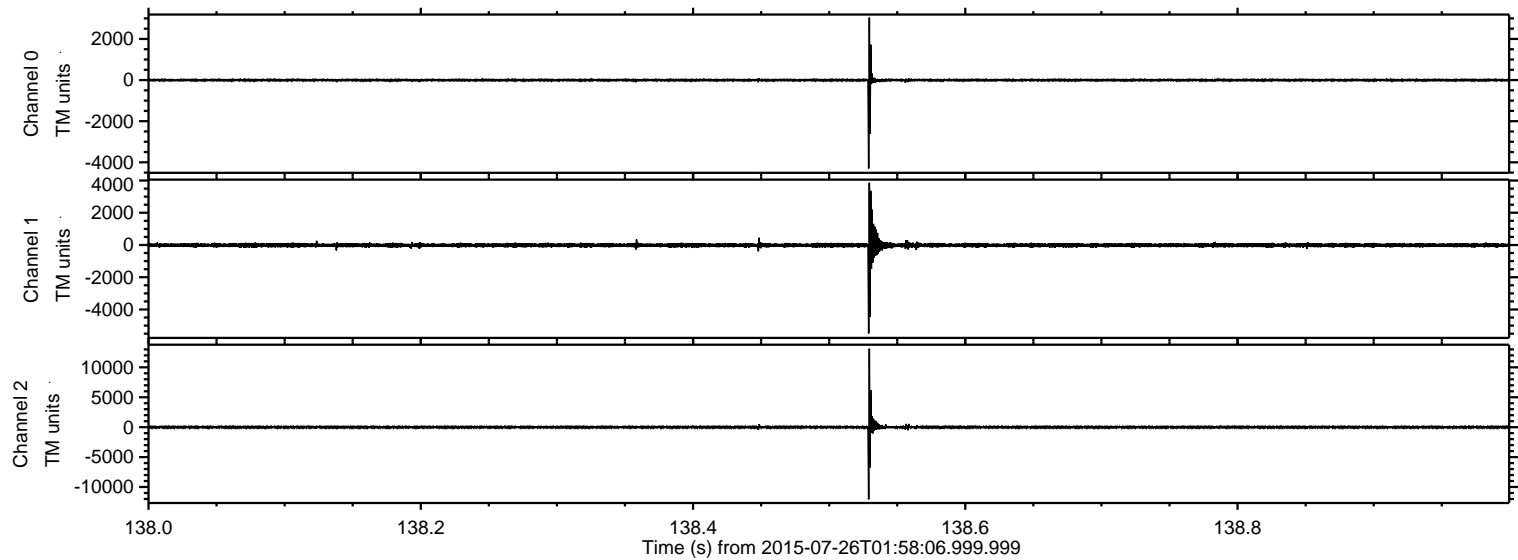
ELMAVAN 3D WAVEFORMS (Measured data sampled at 50 kHz) 51000 packets of 144 samples from 2015-07-26T01:58:06.999.999.

Processed Sun Jul 26 04:04:20 2015 by ELM ver.2012-10-06 from 001__elm20150726_015805__dat00.bin



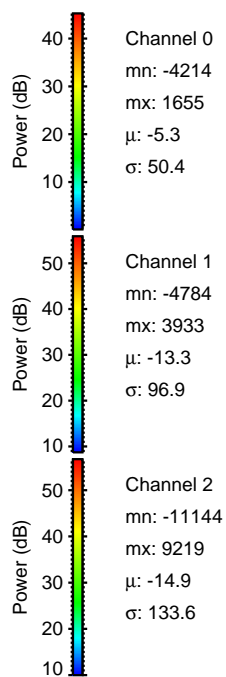
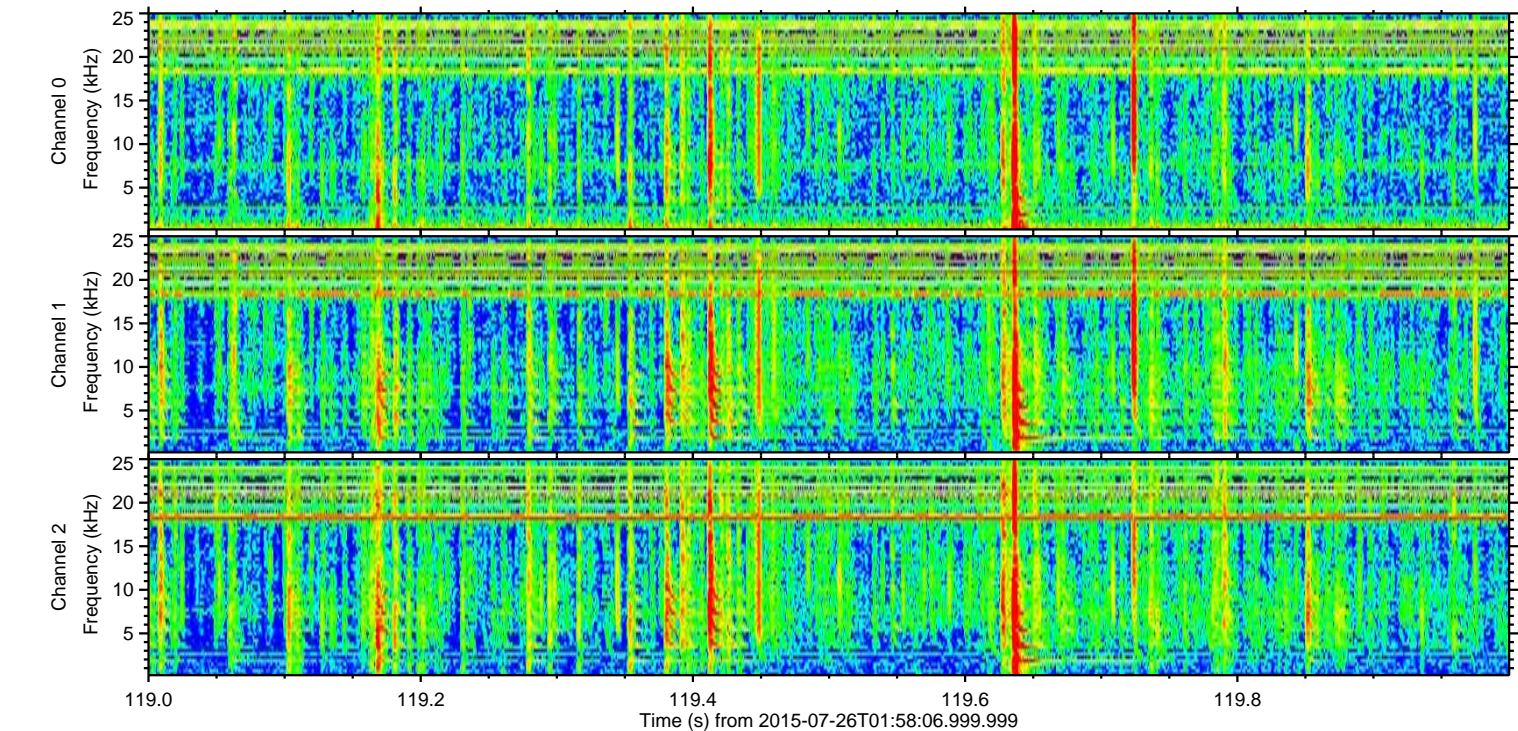
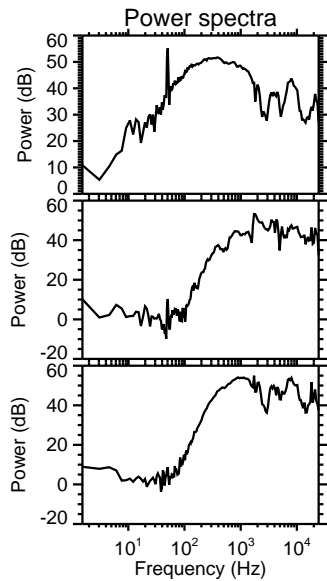
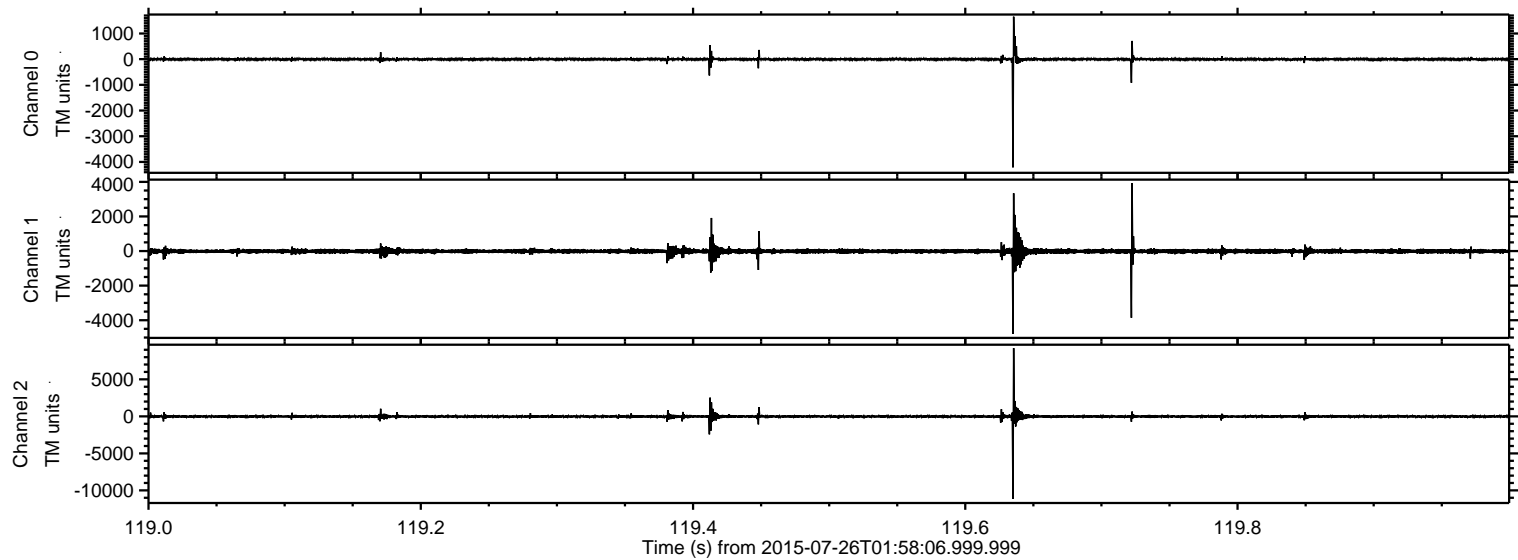
ELMAVAN 3D WAVEFORMS (Measured data sampled at 50 kHz) 51000 packets of 144 samples from 2015-07-26T01:58:06.999.999. Part 139/147

Processed Sun Jul 26 04:04:31 2015 by ELM ver.2012-10-06 from 001__elm20150726_015805__dat00.bin



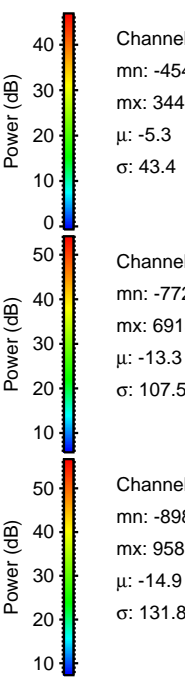
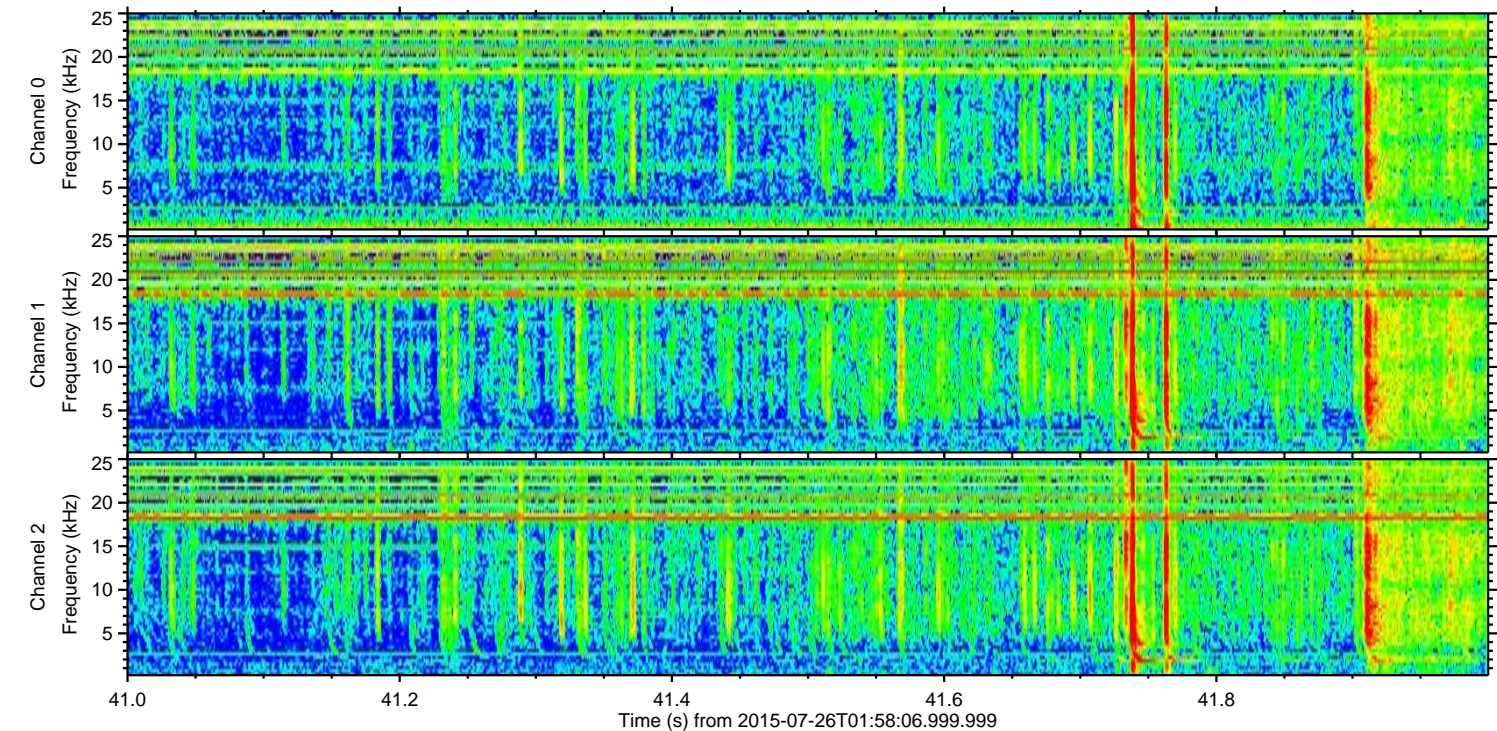
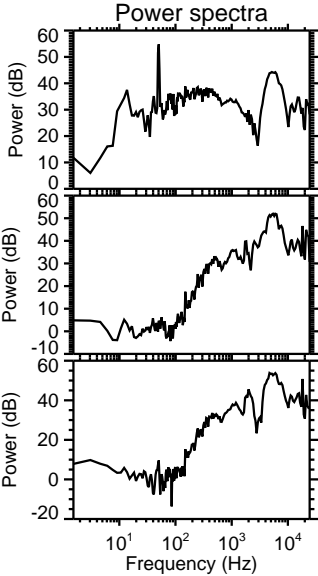
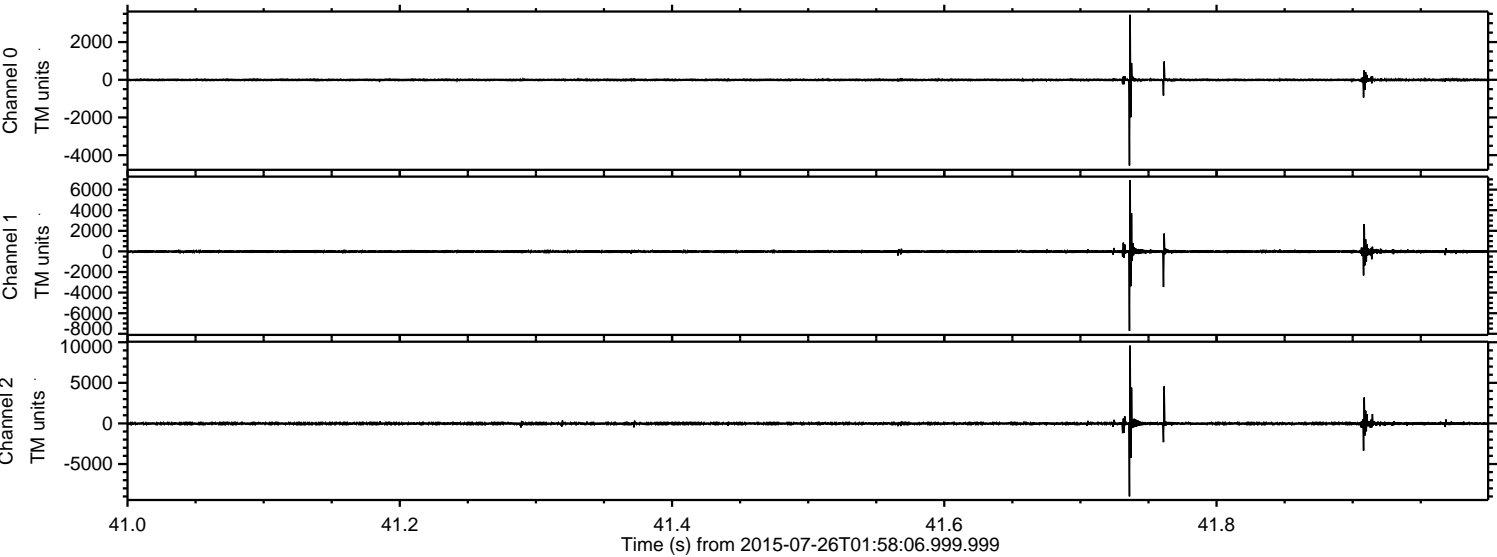
ELMAVAN 3D WAVEFORMS (Measured data sampled at 50 kHz) 51000 packets of 144 samples from 2015-07-26T01:58:06.999.999. Part 120/147

Processed Sun Jul 26 04:04:32 2015 by ELM ver.2012-10-06 from 001__elm20150726_015805__dat00.bin



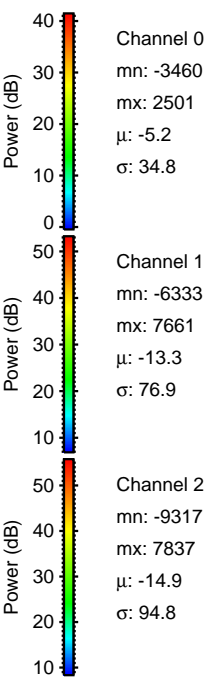
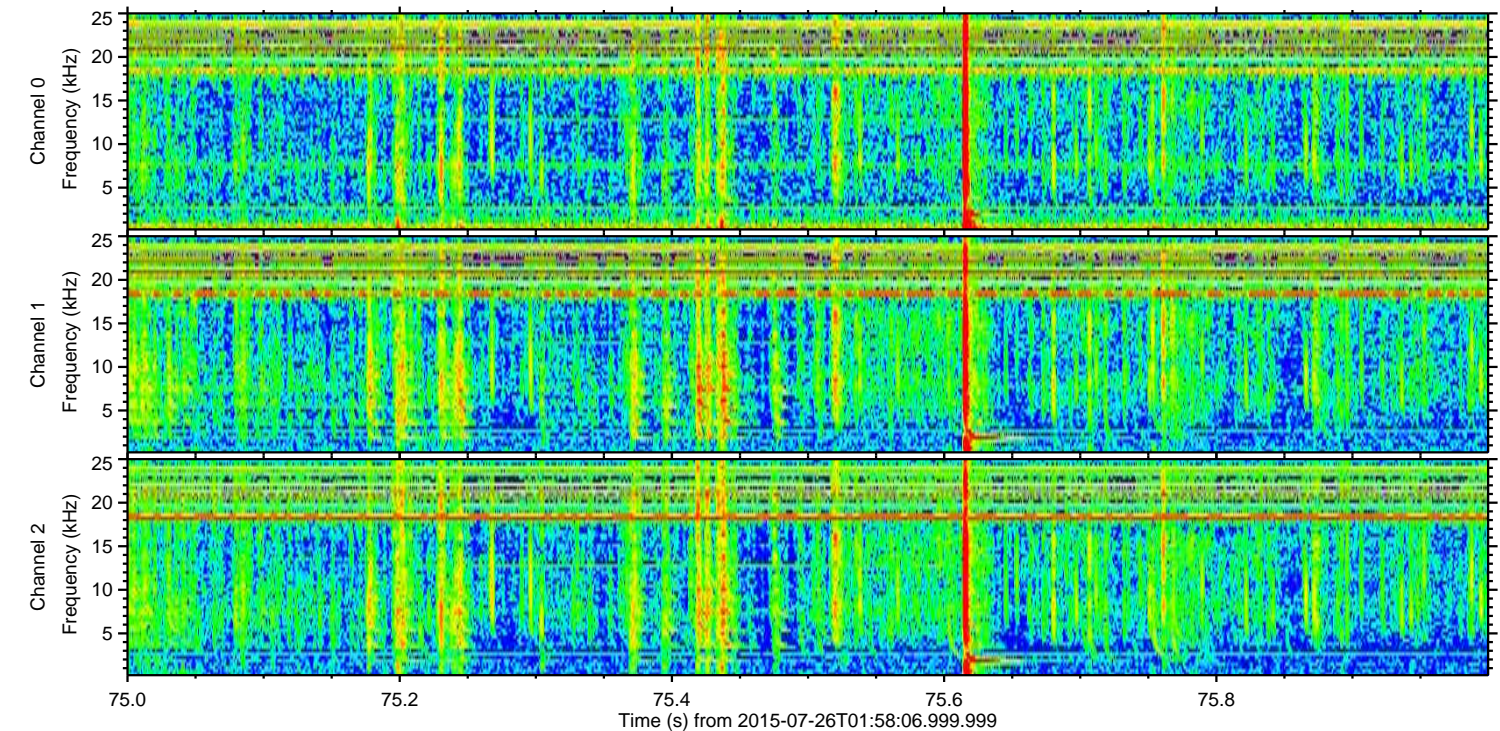
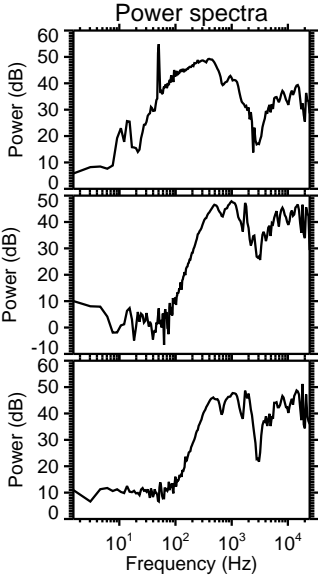
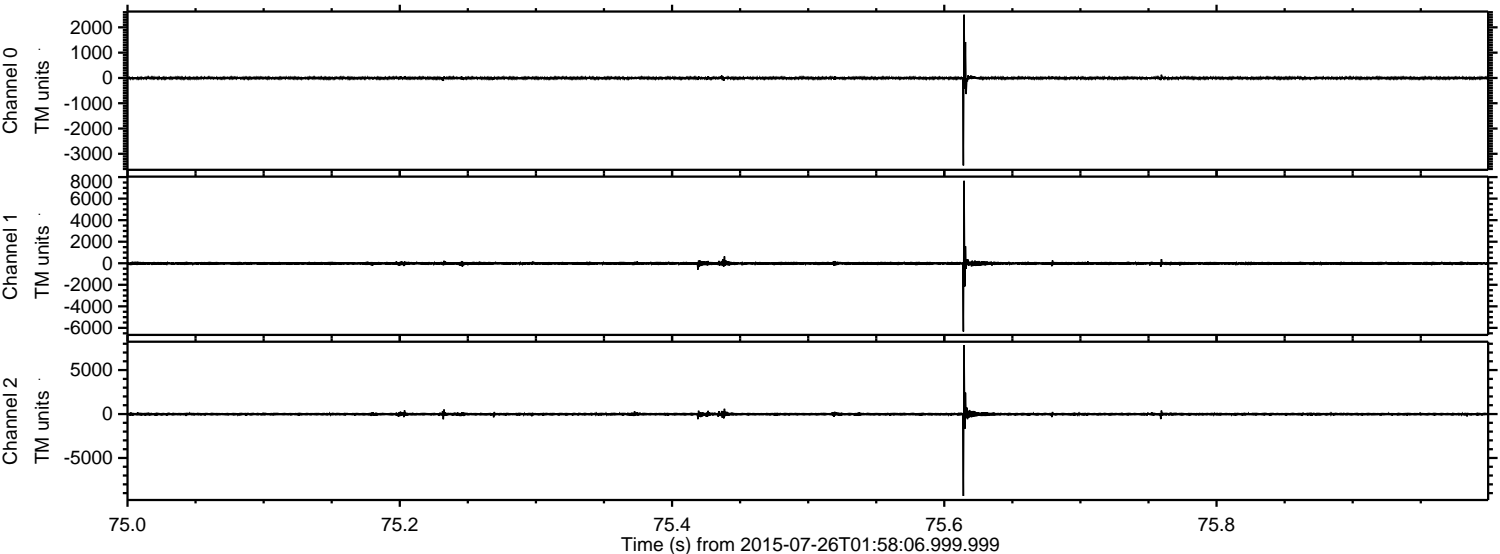
ELMAVAN 3D WAVEFORMS (Measured data sampled at 50 kHz) 51000 packets of 144 samples from 2015-07-26T01:58:06.999.999. Part 42/147

Processed Sun Jul 26 04:04:33 2015 by ELM ver.2012-10-06 from 001__elm20150726_015805__dat00.bin



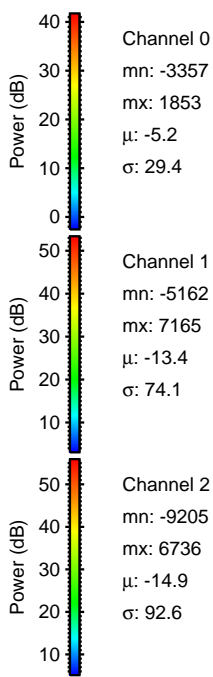
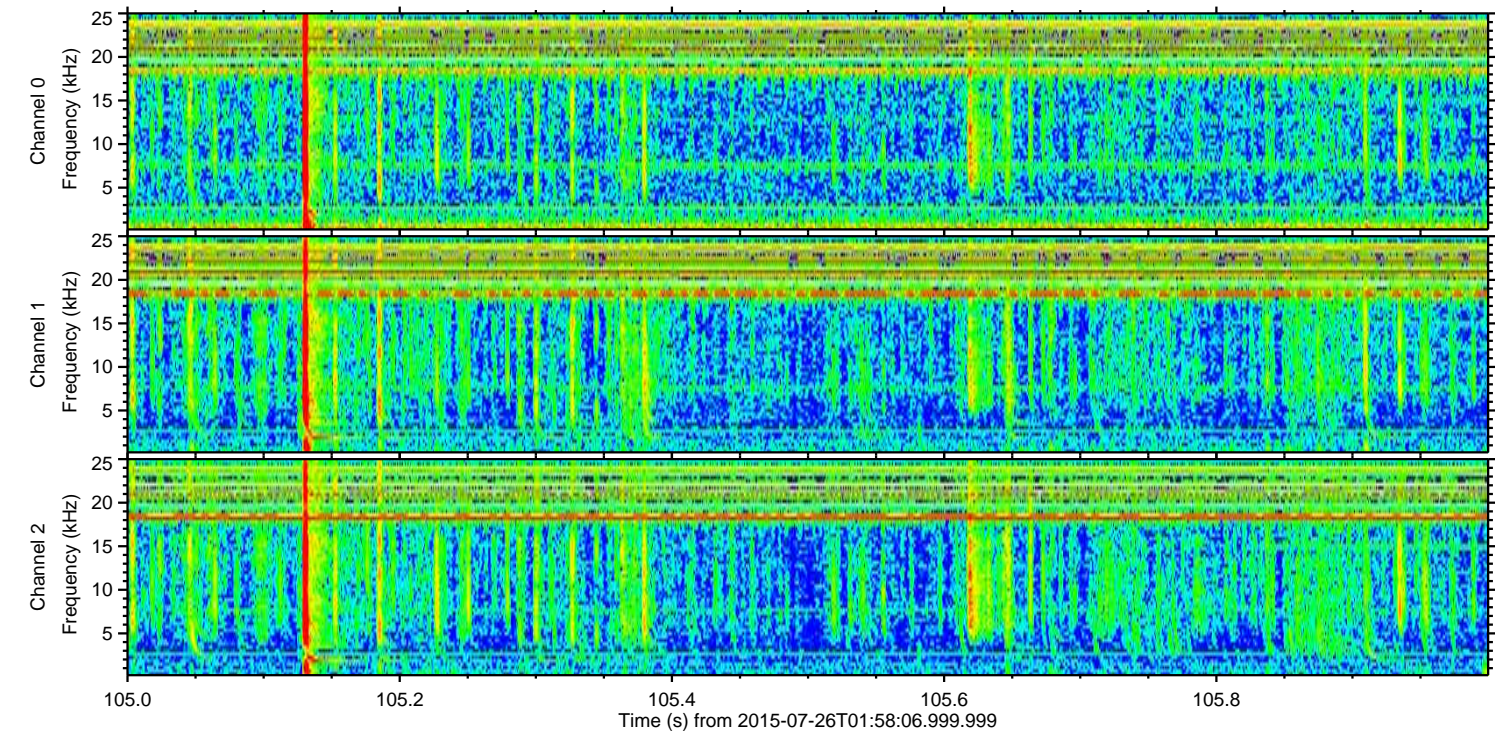
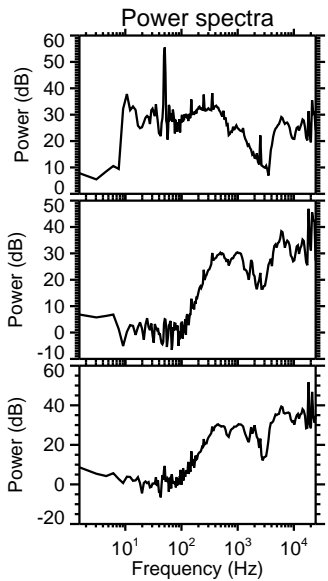
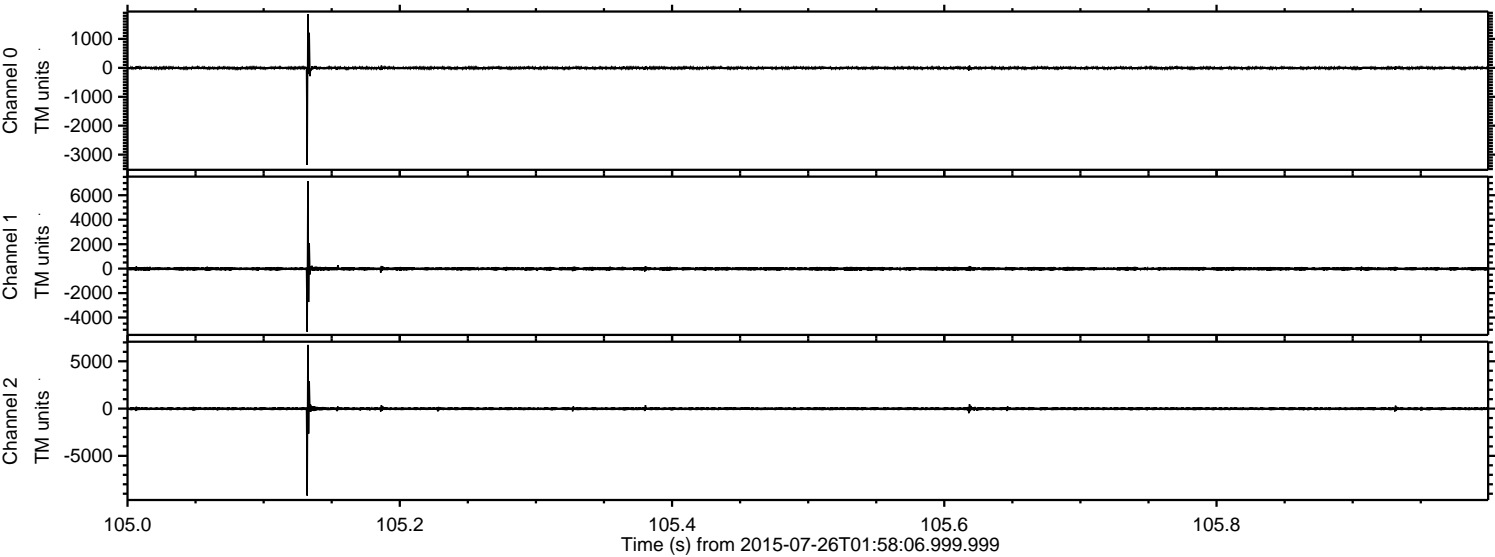
ELMAVAN 3D WAVEFORMS (Measured data sampled at 50 kHz) 51000 packets of 144 samples from 2015-07-26T01:58:06.999.999. Part 76/147

Processed Sun Jul 26 04:04:34 2015 by ELM ver.2012-10-06 from 001__elm20150726_015805__dat00.bin



ELMAVAN 3D WAVEFORMS (Measured data sampled at 50 kHz) 51000 packets of 144 samples from 2015-07-26T01:58:06.999.999. Part 106/147

Processed Sun Jul 26 04:04:35 2015 by ELM ver.2012-10-06 from 001__elm20150726_015805__dat00.bin



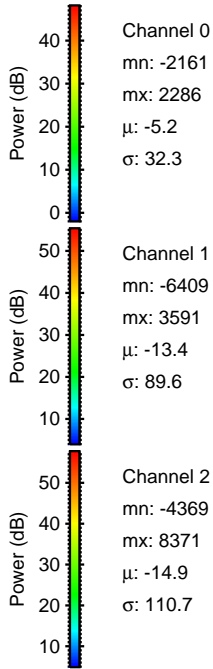
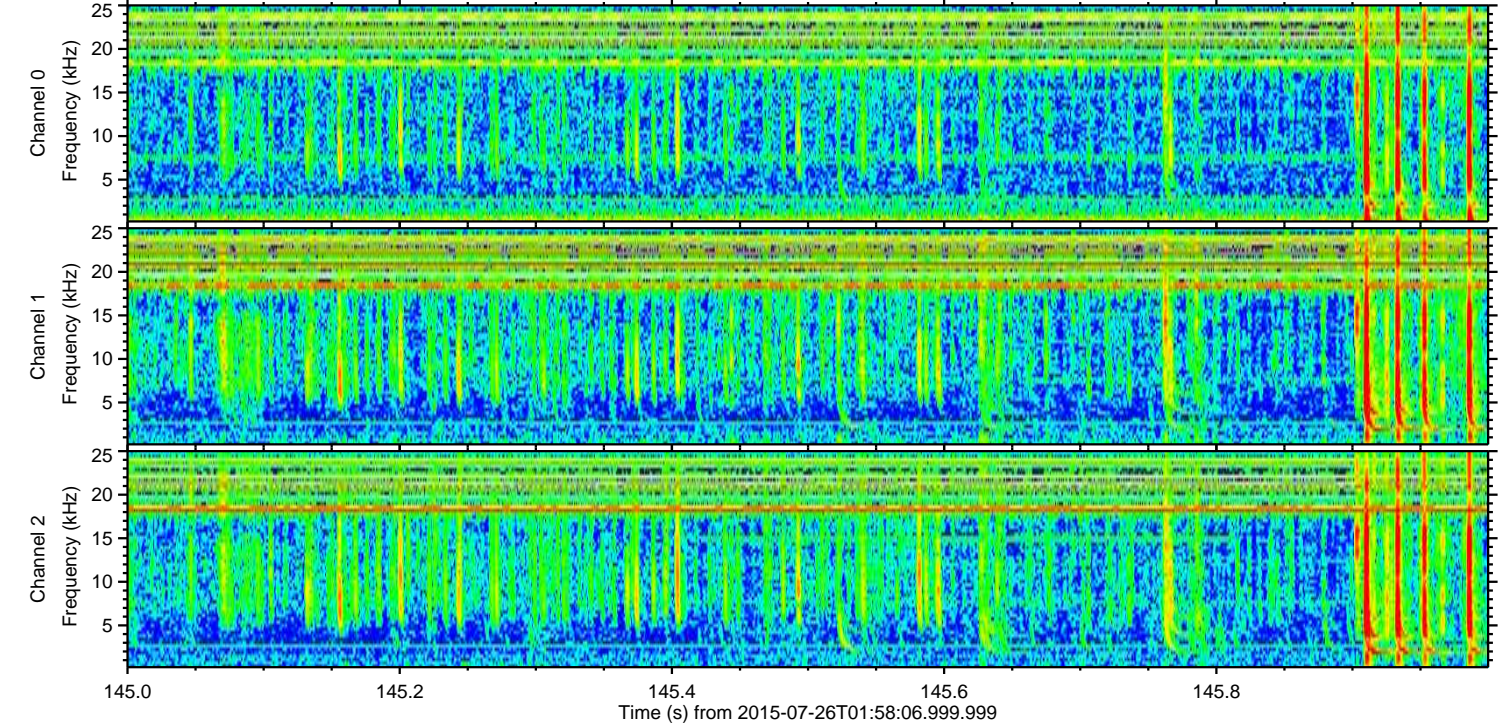
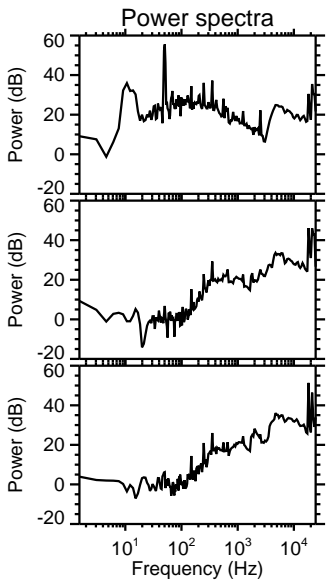
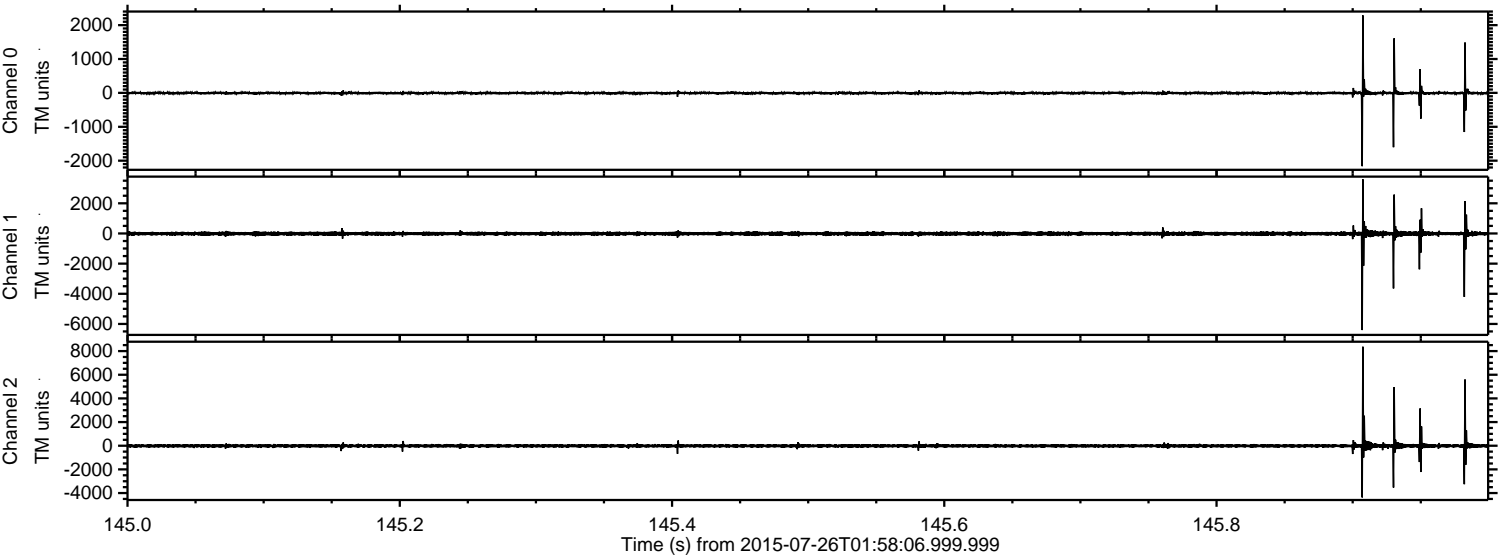
Channel 0
mn: -3357
mx: 1853
 μ : -5.2
 σ : 29.4

Channel 1
mn: -5162
mx: 7165
 μ : -13.4
 σ : 74.1

Channel 2
mn: -9205
mx: 6736
 μ : -14.9
 σ : 92.6

ELMAVAN 3D WAVEFORMS (Measured data sampled at 50 kHz) 51000 packets of 144 samples from 2015-07-26T01:58:06.999.999. Part 146/147

Processed Sun Jul 26 04:04:36 2015 by ELM ver.2012-10-06 from 001__elm20150726_015805__dat00.bin

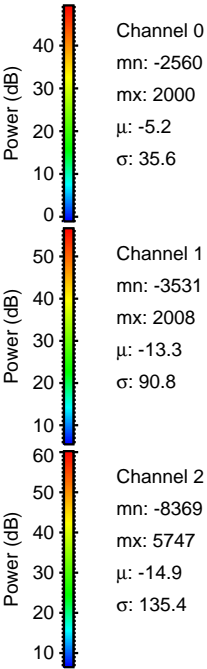
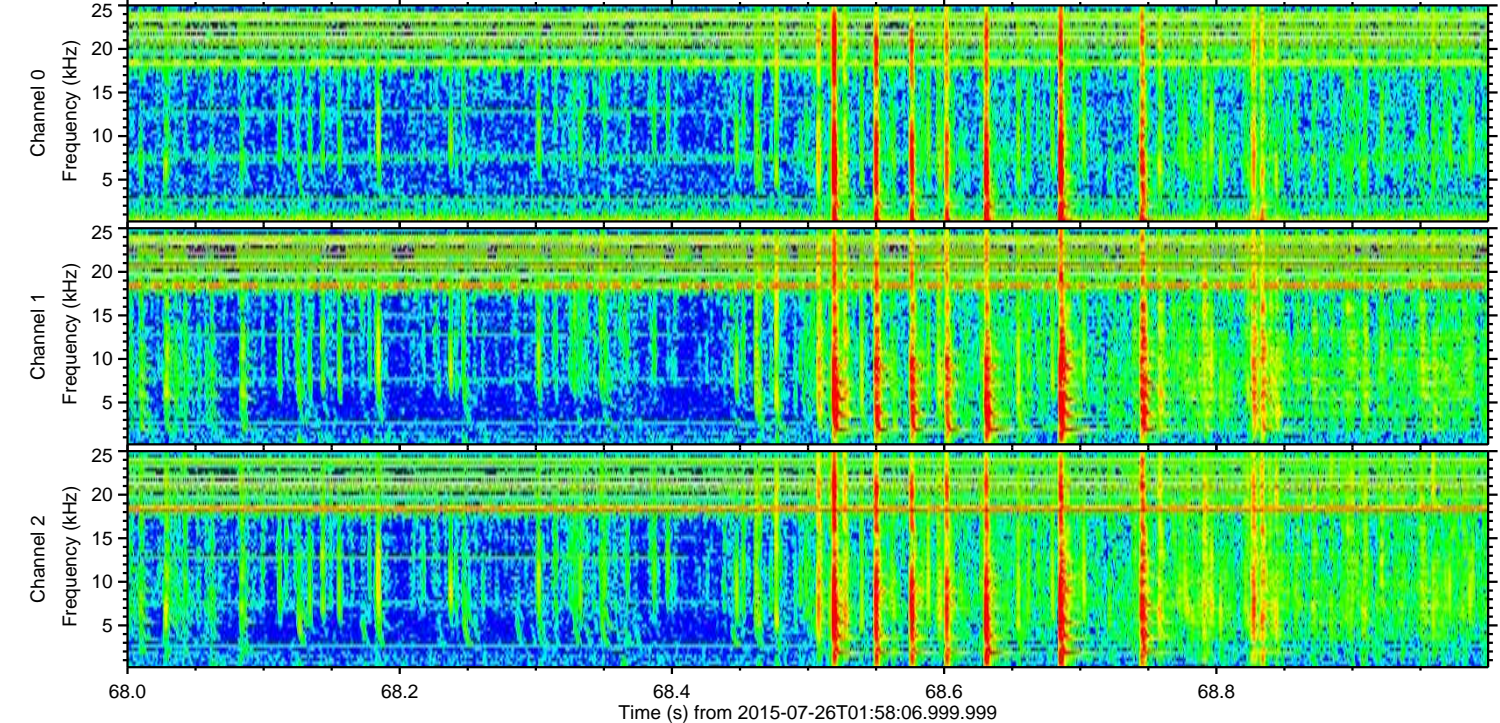
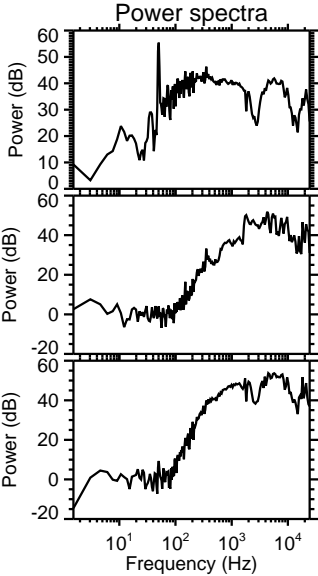
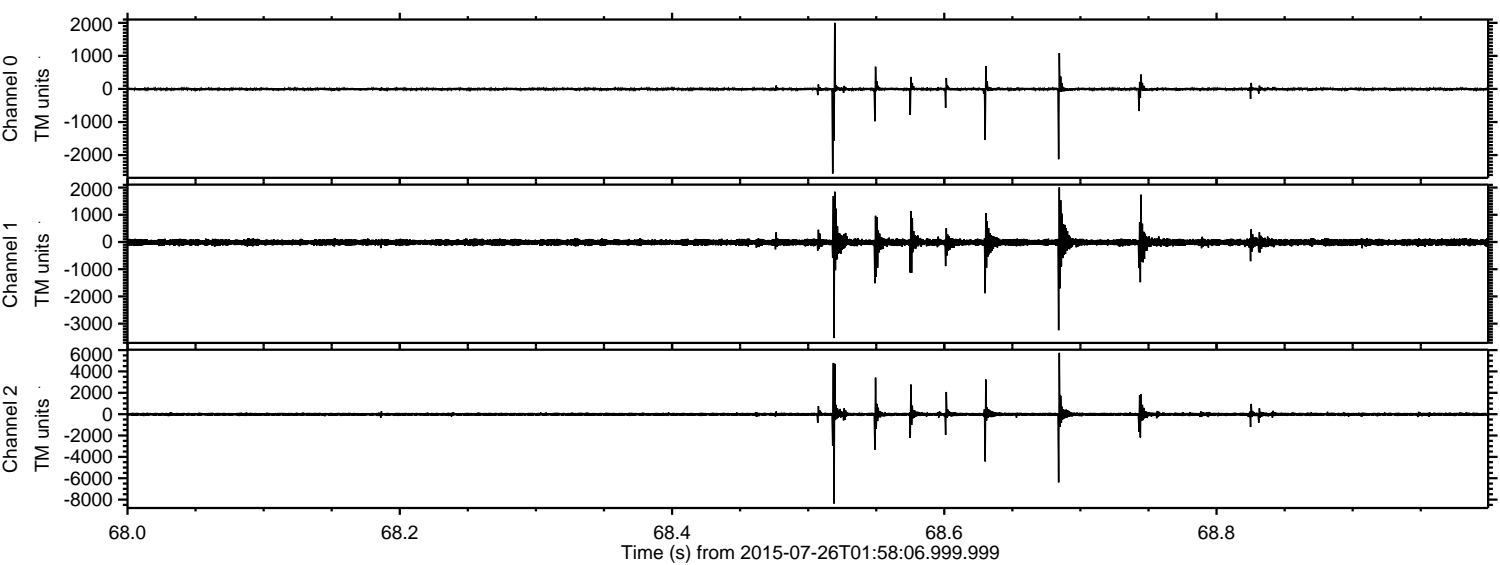


Channel 0
mn: -2161
mx: 2286
 μ : -5.2
 σ : 32.3

Channel 1
mn: -6409
mx: 3591
 μ : -13.4
 σ : 89.6

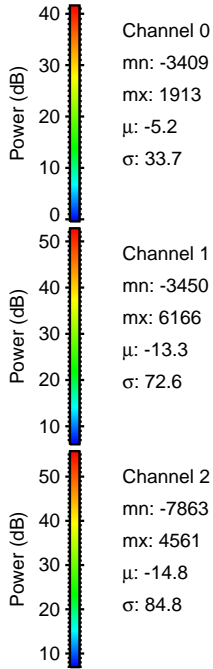
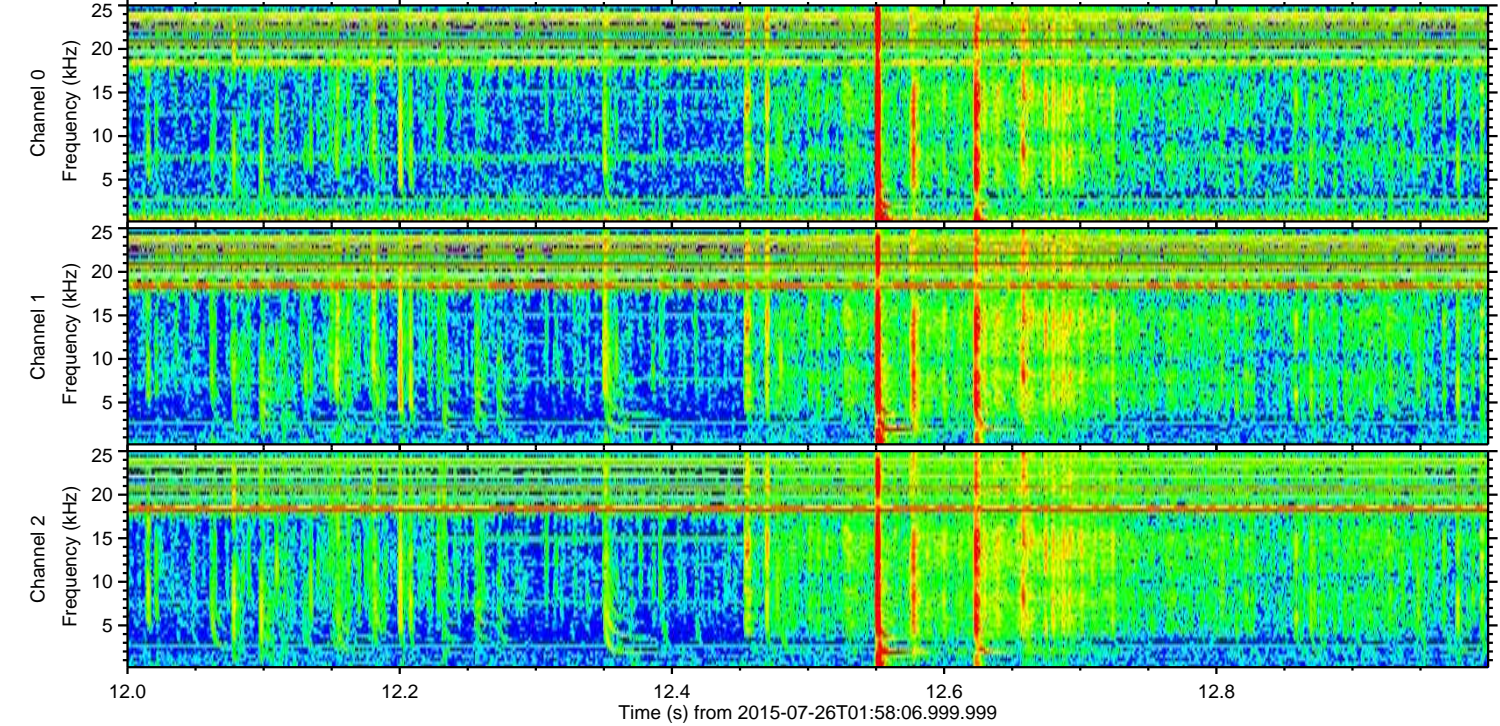
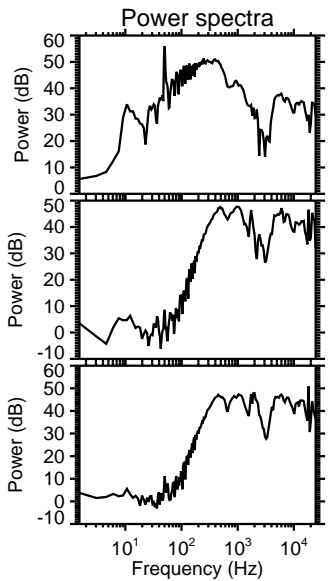
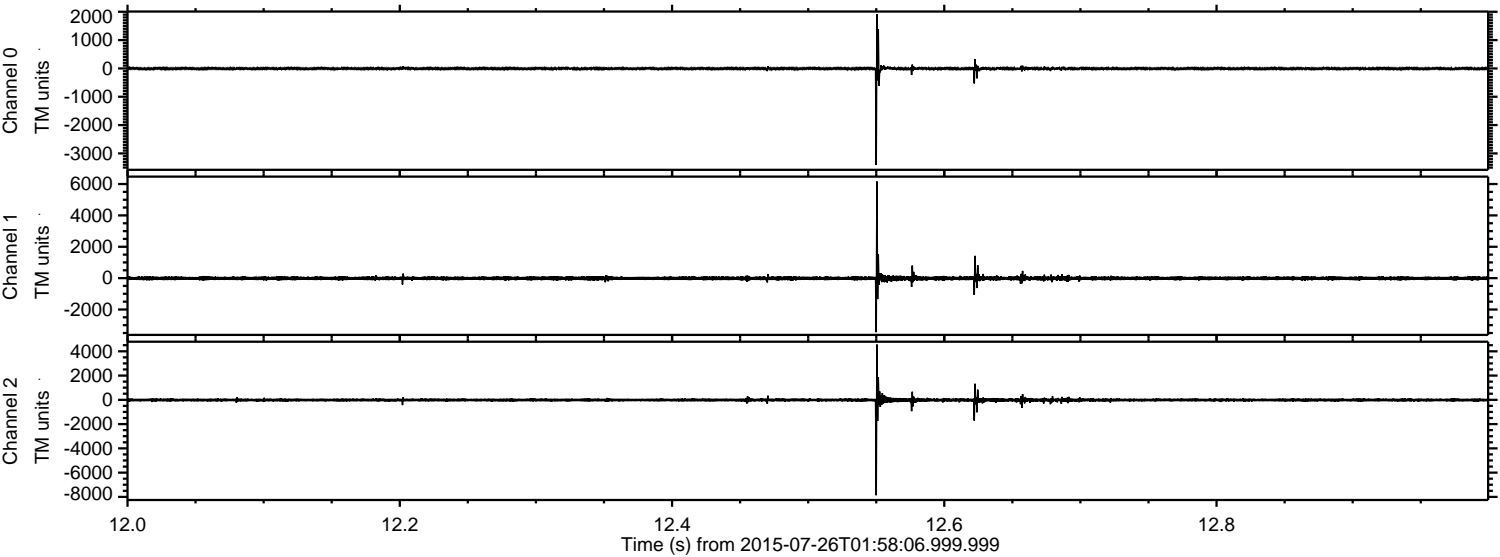
Channel 2
mn: -4369
mx: 8371
 μ : -14.9
 σ : 110.7

Processed Sun Jul 26 04:04:37 2015 by ELM ver.2012-10-06 from 001__elm20150726_015805__dat00.bin



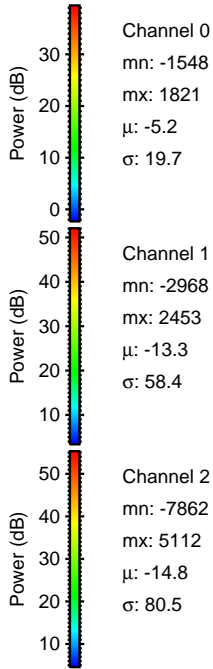
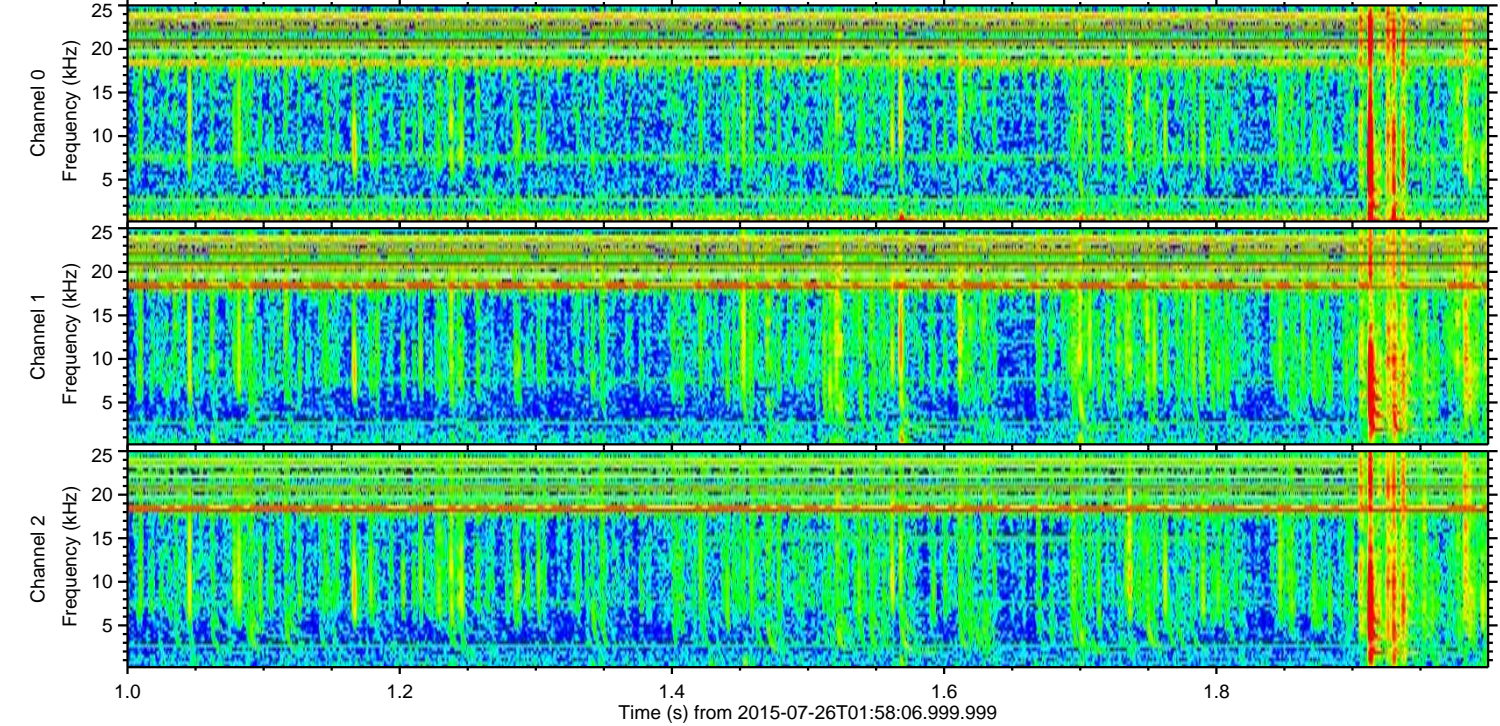
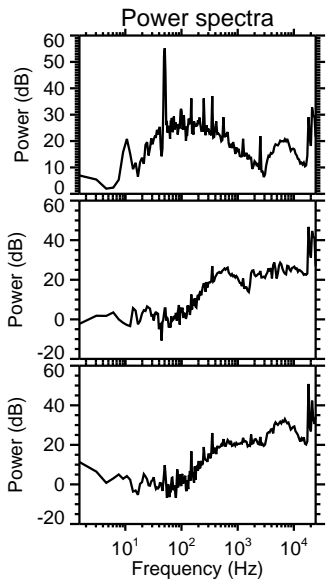
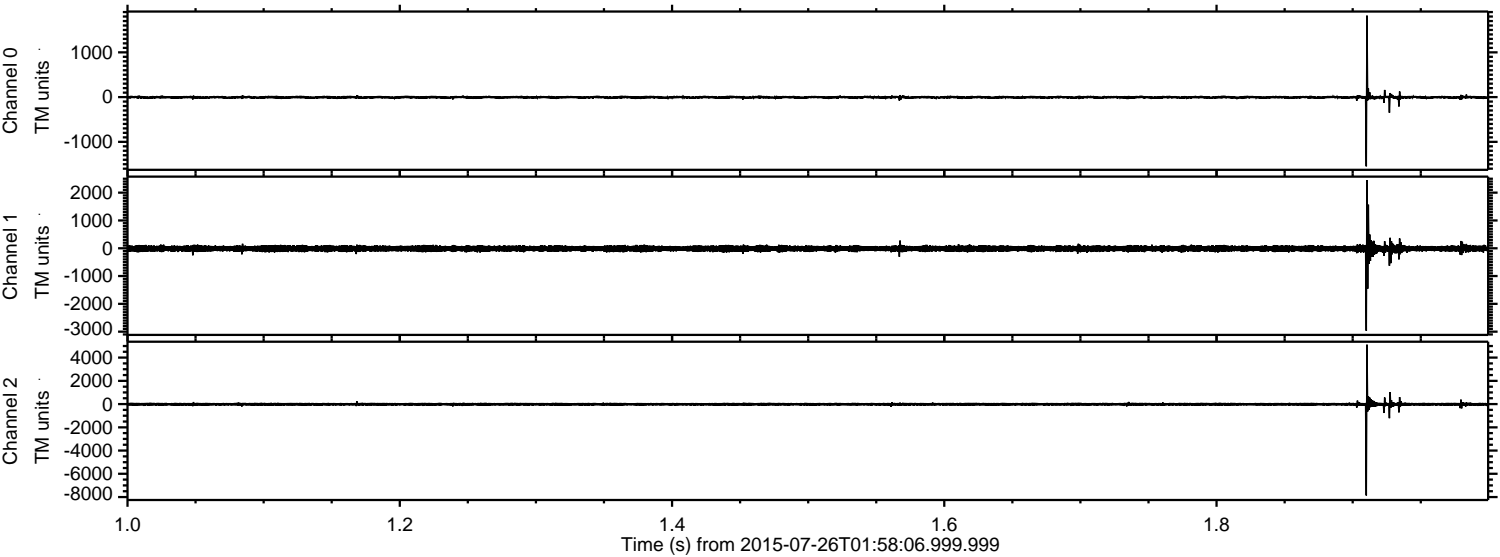
ELMAVAN 3D WAVEFORMS (Measured data sampled at 50 kHz) 51000 packets of 144 samples from 2015-07-26T01:58:06.999.999. Part 13/147

Processed Sun Jul 26 04:04:38 2015 by ELM ver.2012-10-06 from 001__elm20150726_015805__dat00.bin



ELMAVAN 3D WAVEFORMS (Measured data sampled at 50 kHz) 51000 packets of 144 samples from 2015-07-26T01:58:06.999.999. Part 2/147

Processed Sun Jul 26 04:04:39 2015 by ELM ver.2012-10-06 from 001__elm20150726_015805__dat00.bin



Channel 0
mn: -1548
mx: 1821
 μ : -5.2
 σ : 19.7

Channel 1
mn: -2968
mx: 2453
 μ : -13.3
 σ : 58.4

Channel 2
mn: -7862
mx: 5112
 μ : -14.8
 σ : 80.5

Processed Sun Jul 26 04:04:40 2015 by ELM ver.2012-10-06 from 001__elm20150726_015805__dat00.bin

