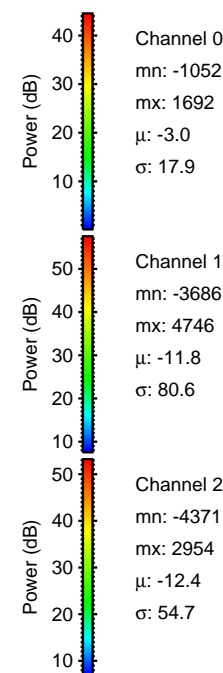
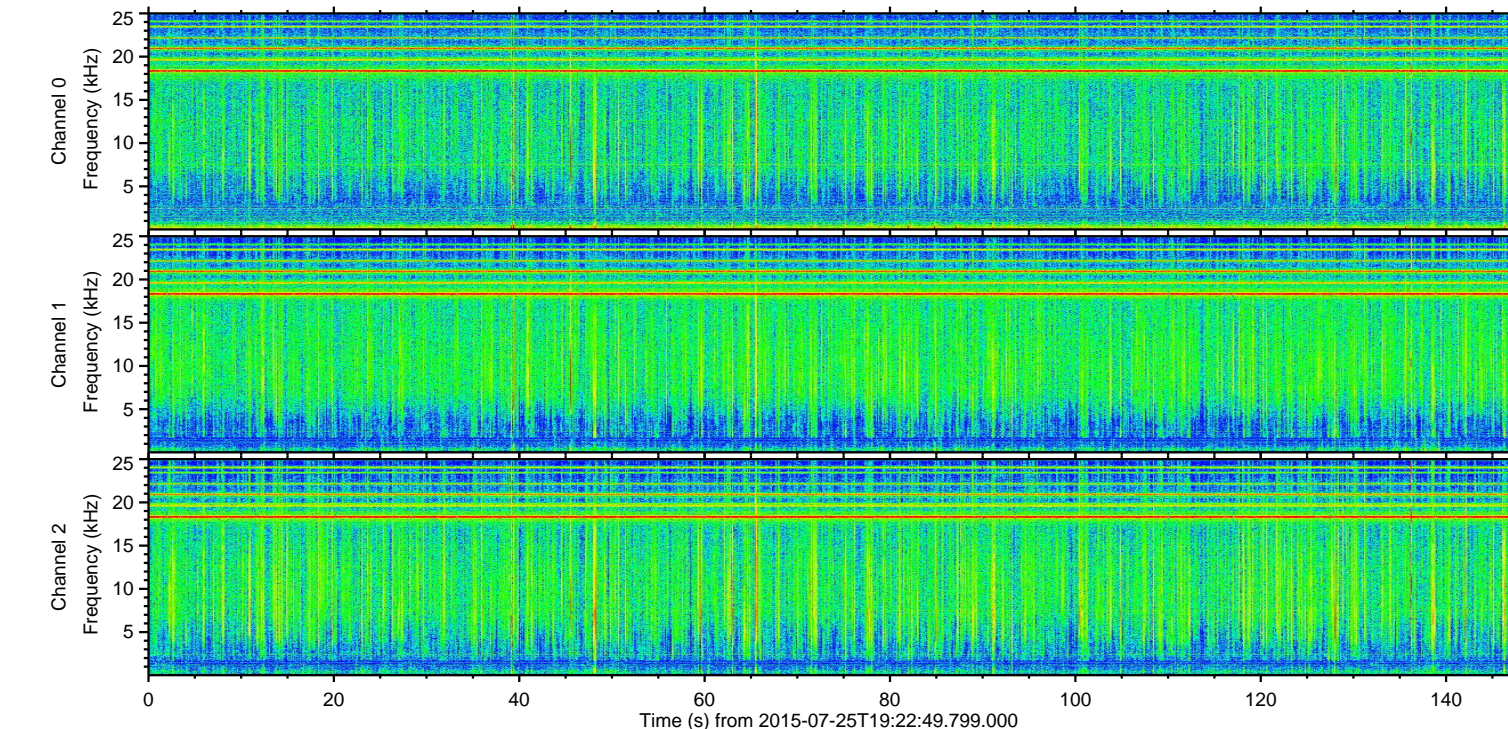
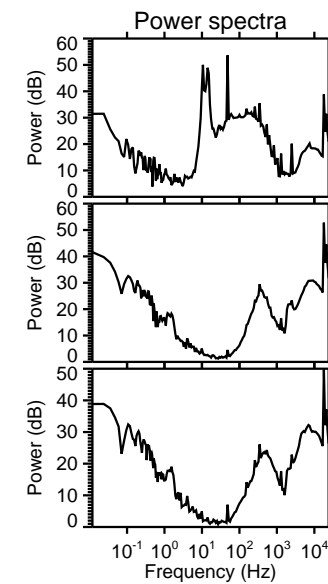
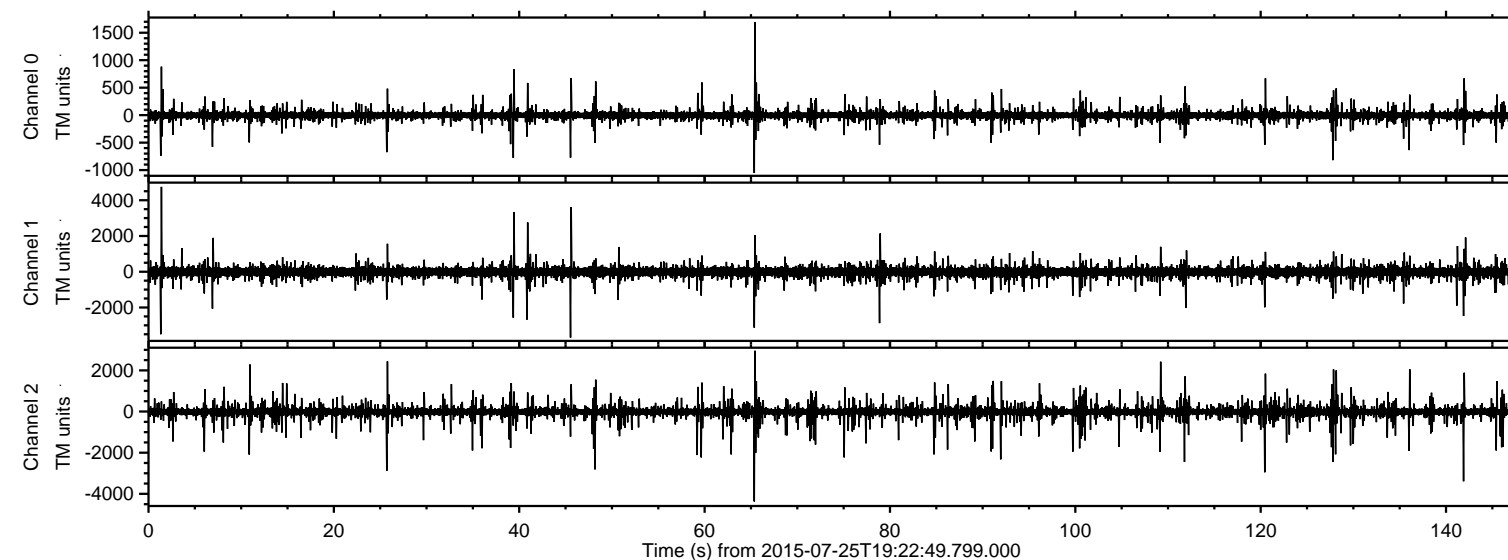
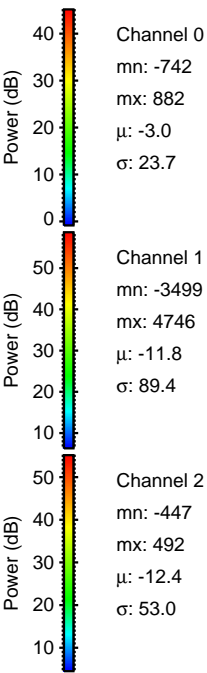
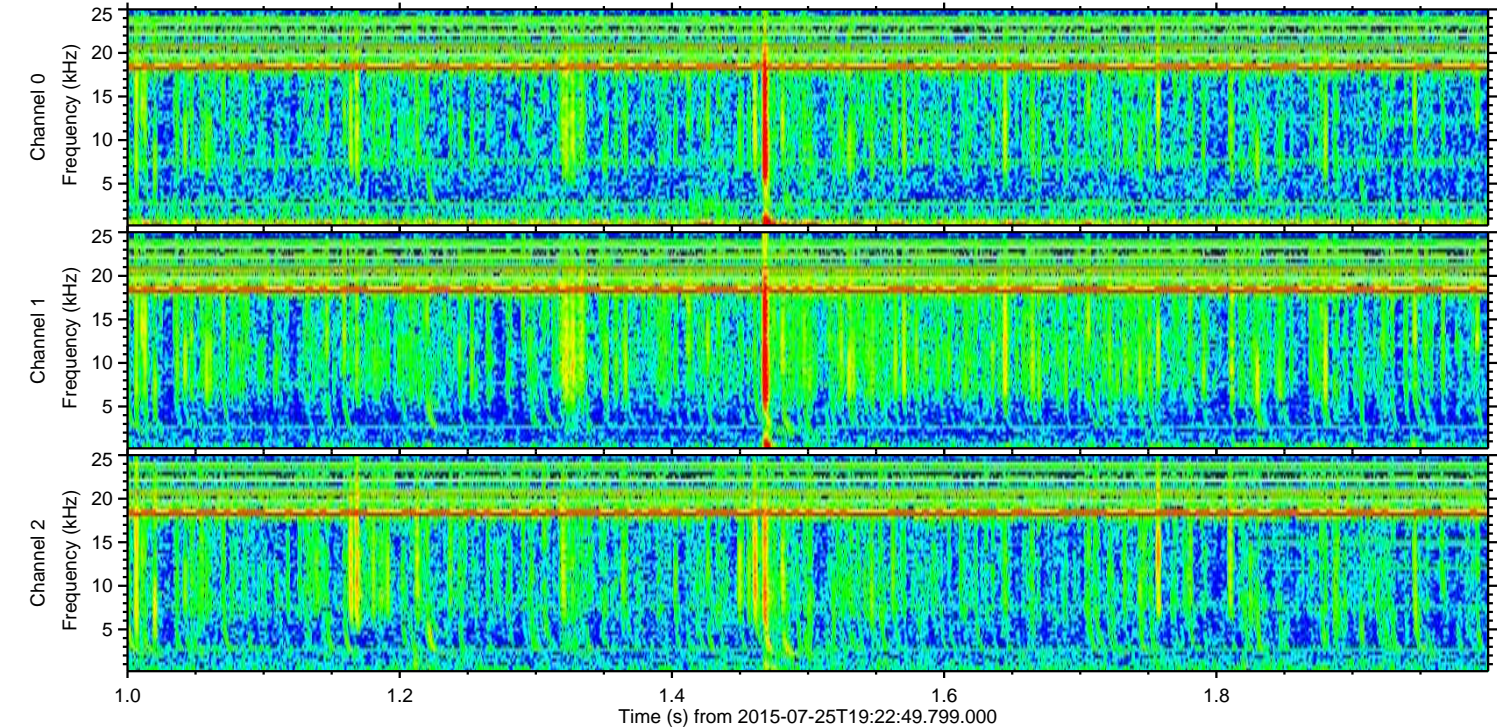
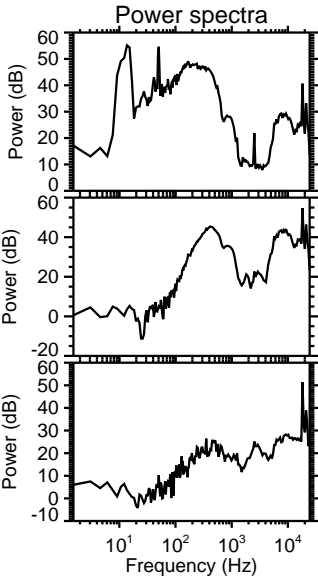
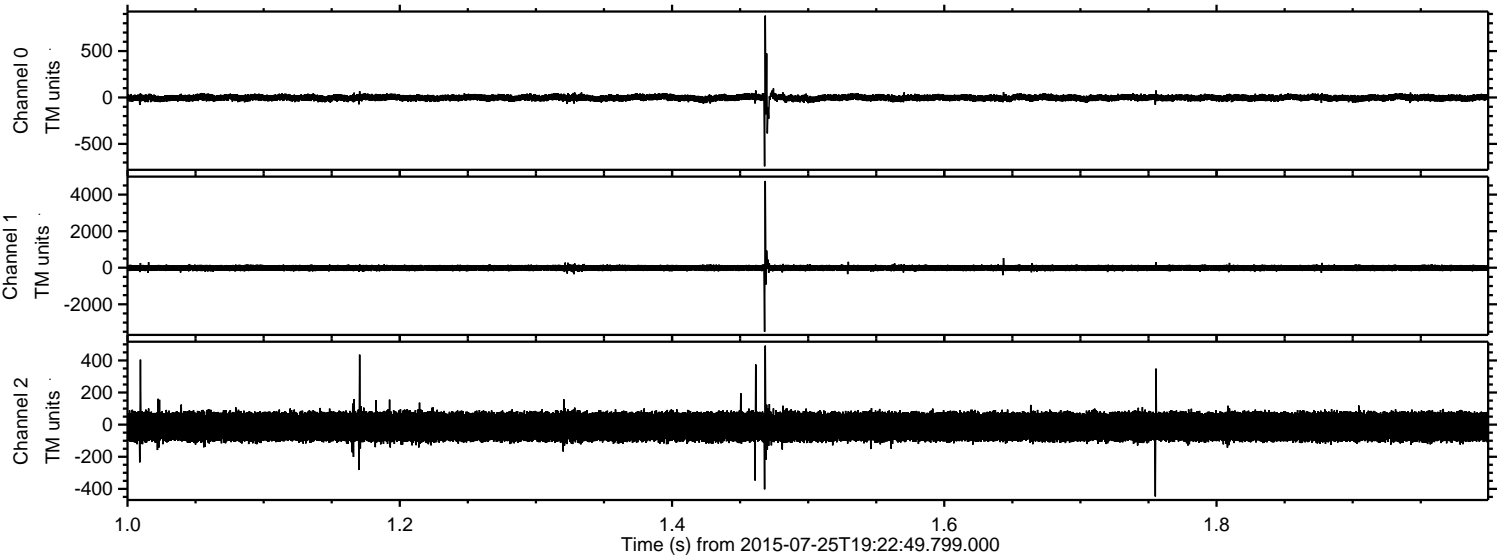


ELMAVAN 3D WAVEFORMS (Measured data sampled at 50 kHz) 51000 packets of 144 samples from 2015-07-25T19:22:49.799.000.

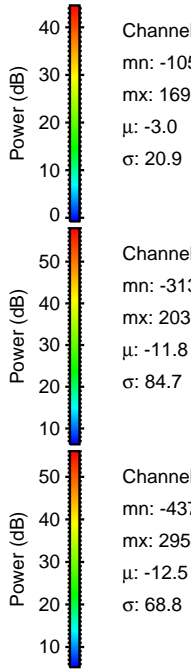
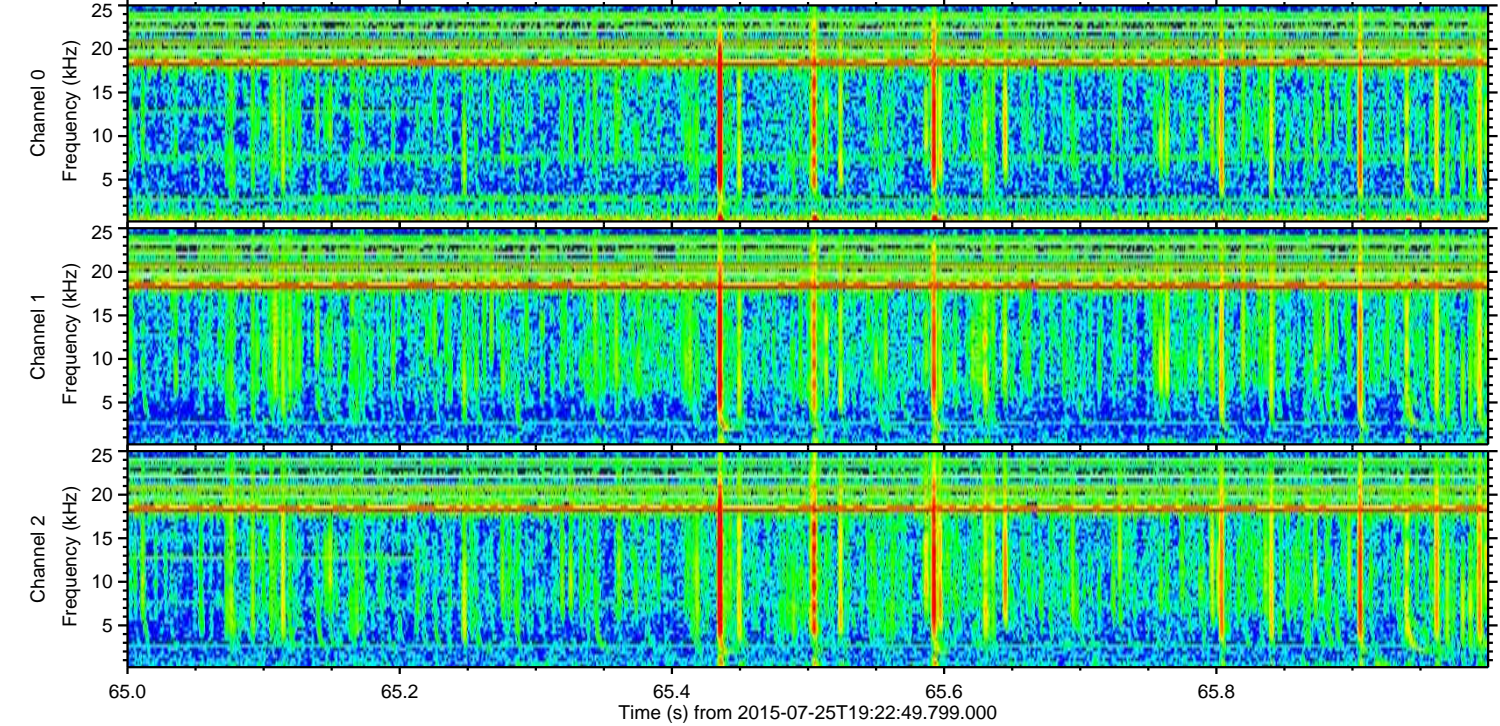
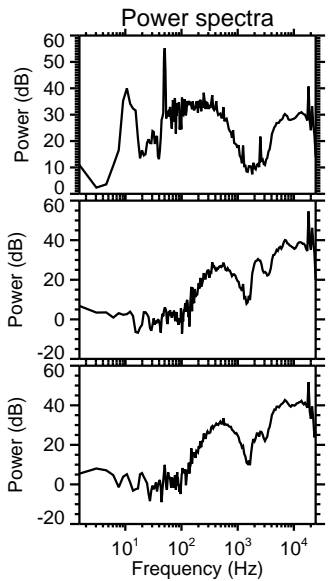
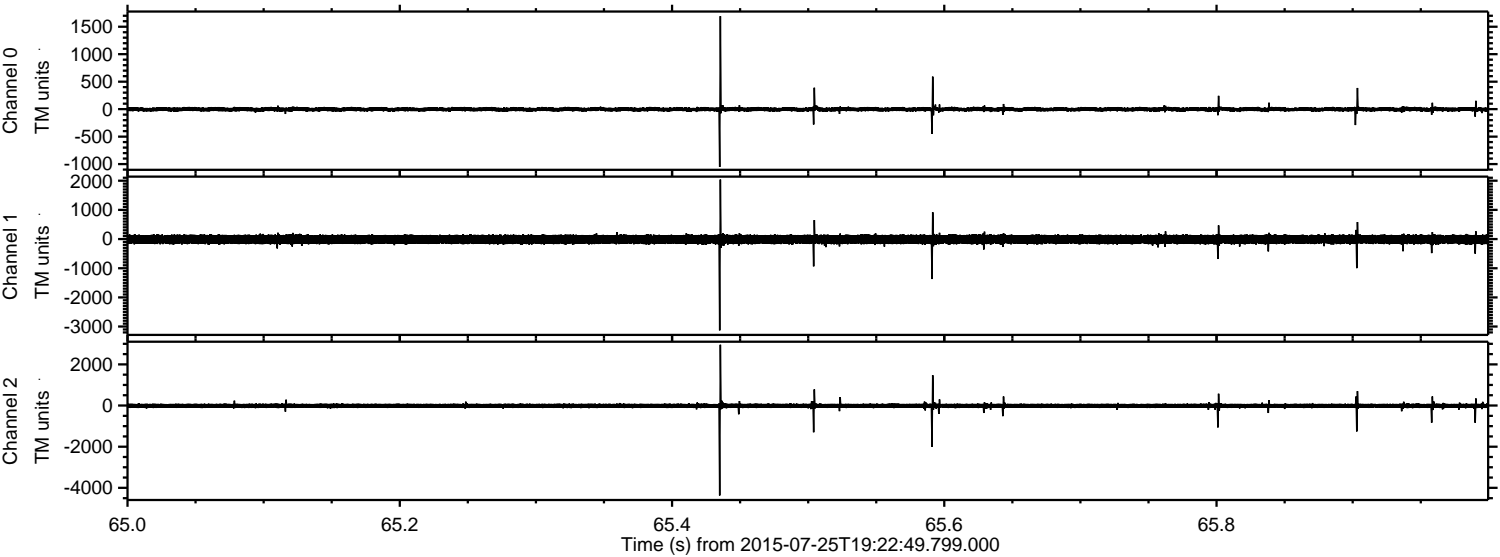
Processed Sat Jul 25 21:29:37 2015 by ELM ver.2012-10-06 from 001__elm20150725_192248__dat00.bin



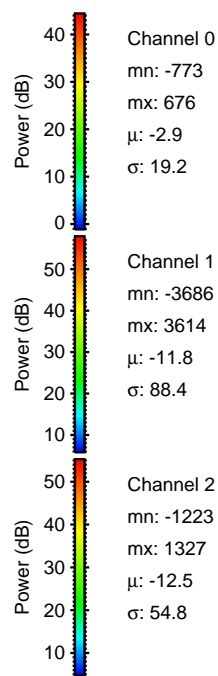
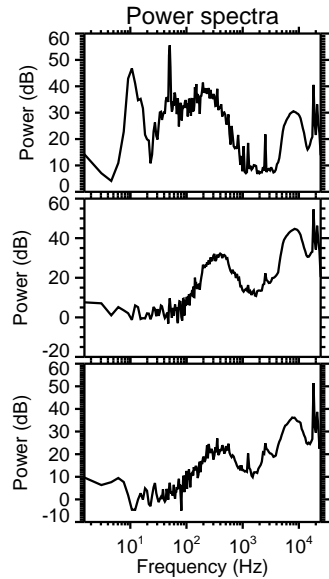
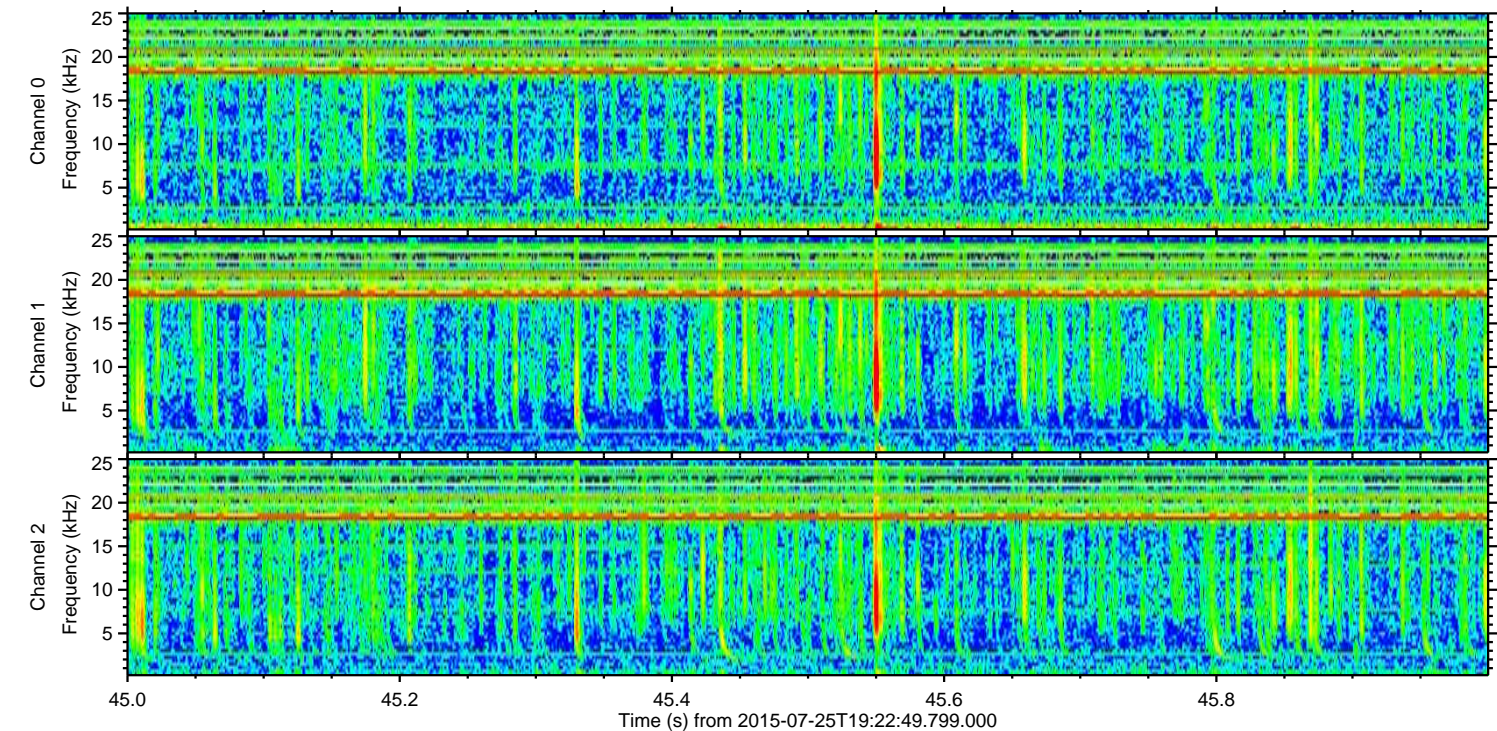
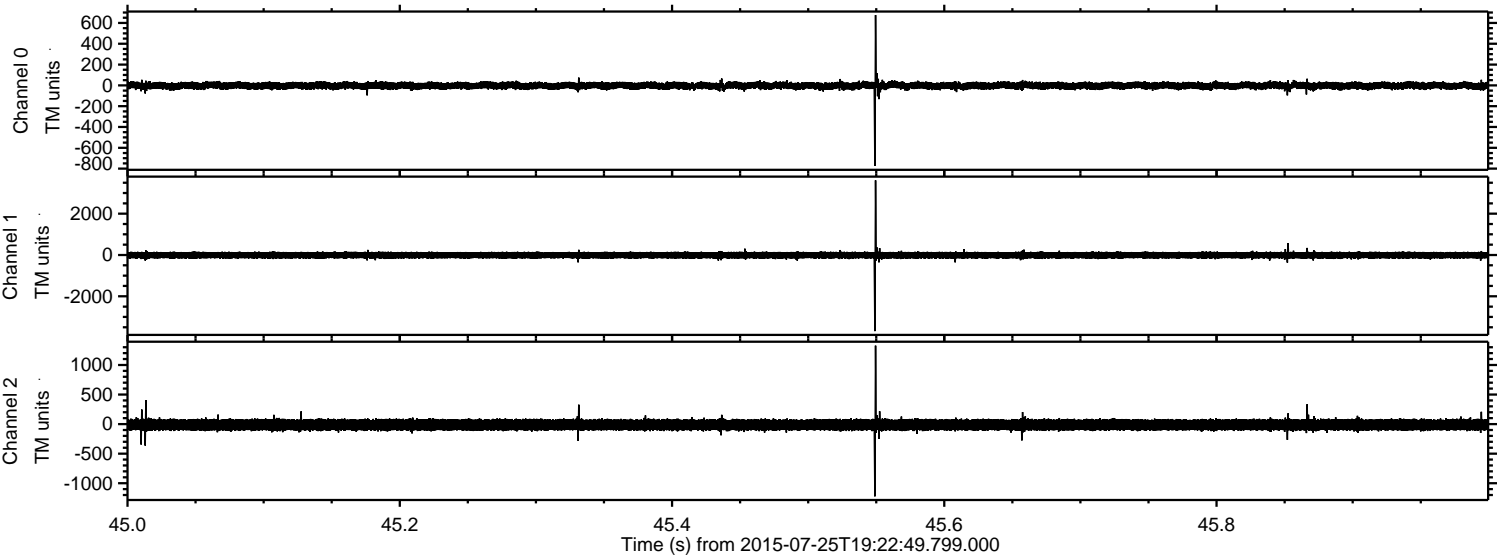
Processed Sat Jul 25 21:29:51 2015 by ELM ver.2012-10-06 from 001__elm20150725_192248__dat00.bin



Processed Sat Jul 25 21:29:52 2015 by ELM ver.2012-10-06 from 001__elm20150725_192248__dat00.bin

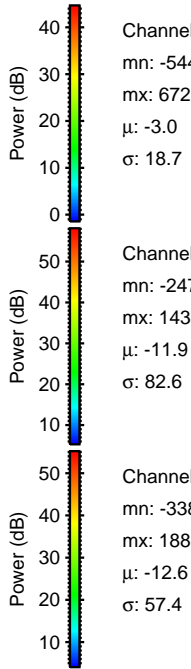
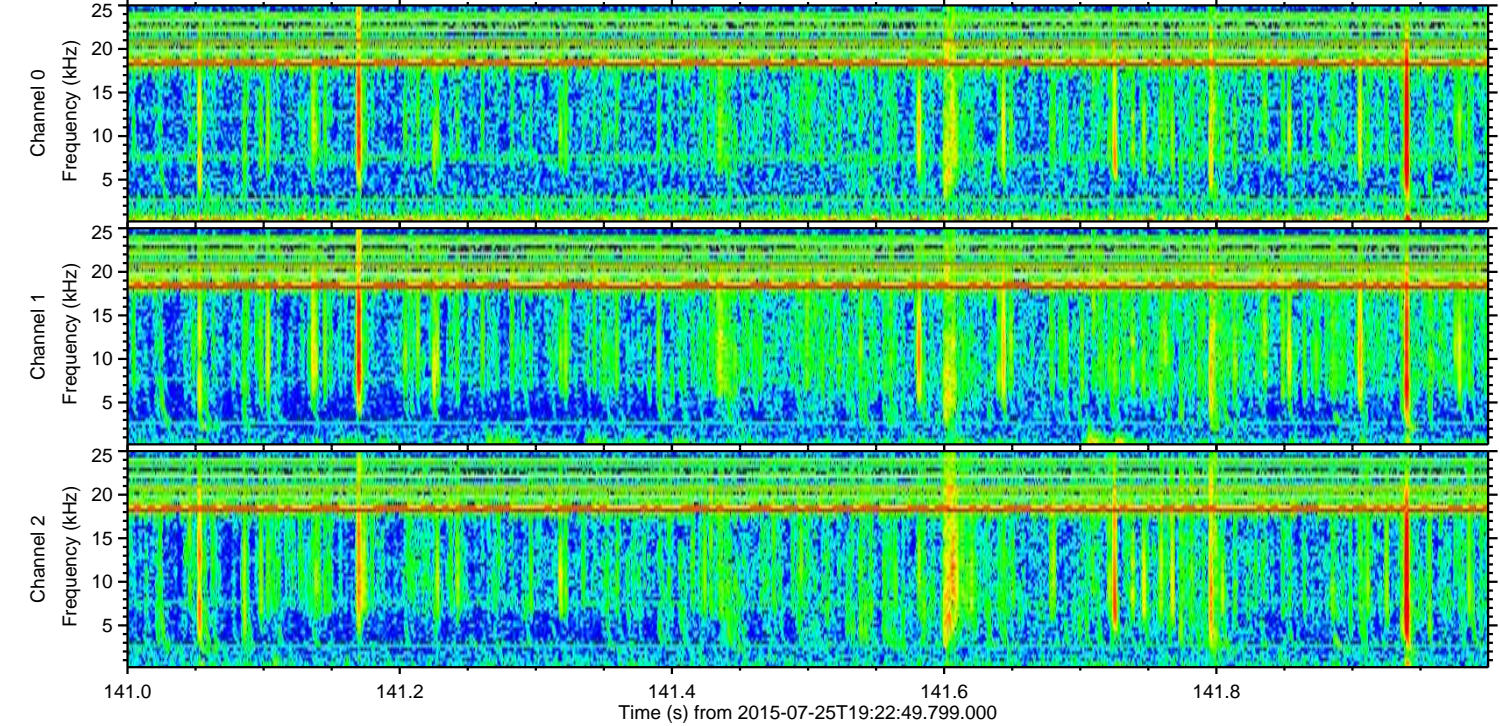
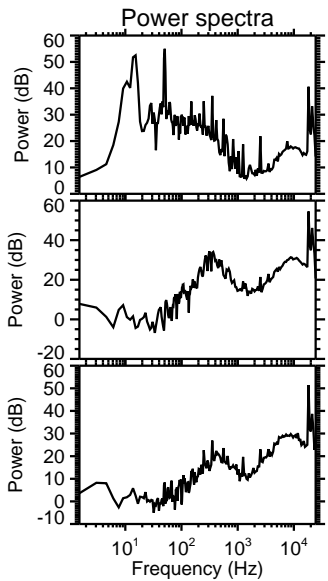
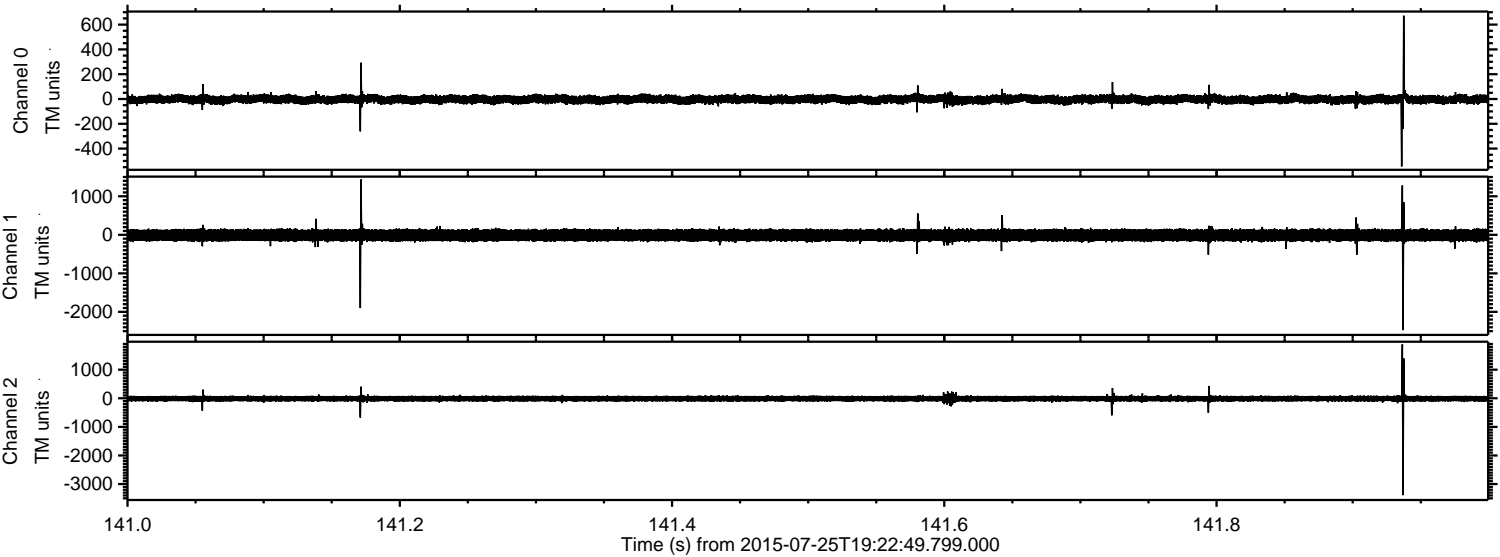


Processed Sat Jul 25 21:29:53 2015 by ELM ver.2012-10-06 from 001__elm20150725_192248__dat00.bin



ELMAVAN 3D WAVEFORMS (Measured data sampled at 50 kHz) 51000 packets of 144 samples from 2015-07-25T19:22:49.799.000. Part 142/147

Processed Sat Jul 25 21:29:54 2015 by ELM ver.2012-10-06 from 001__elm20150725_192248__dat00.bin

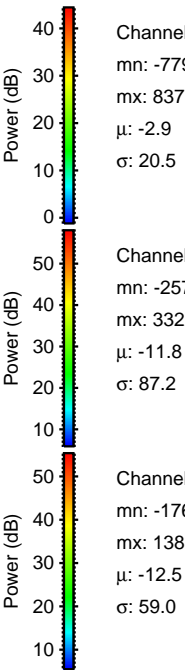
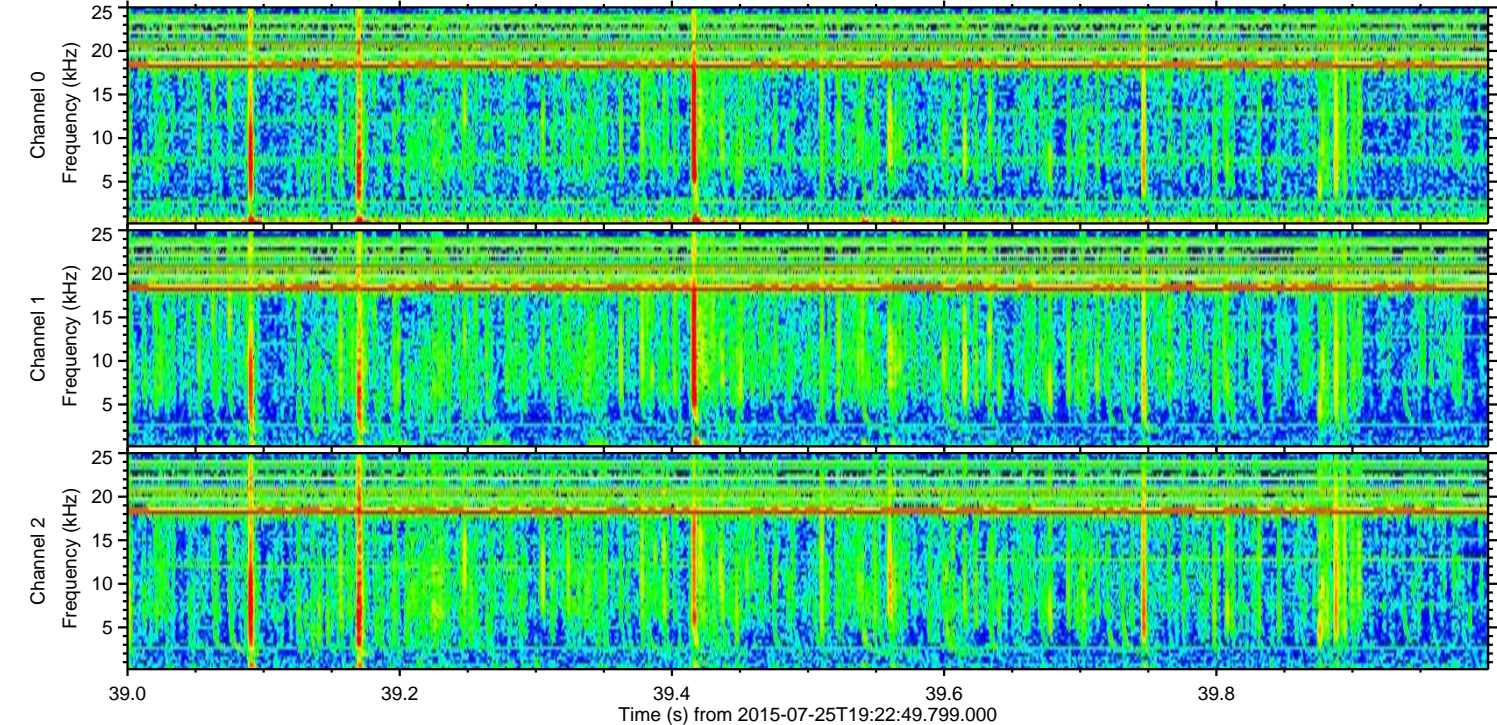
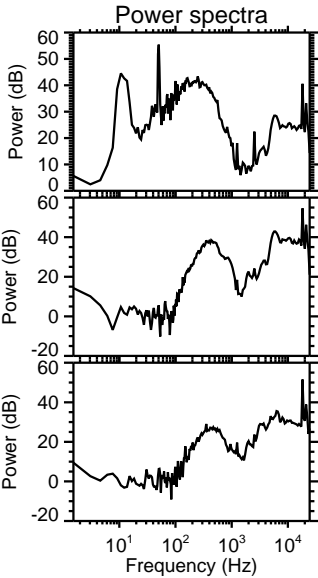
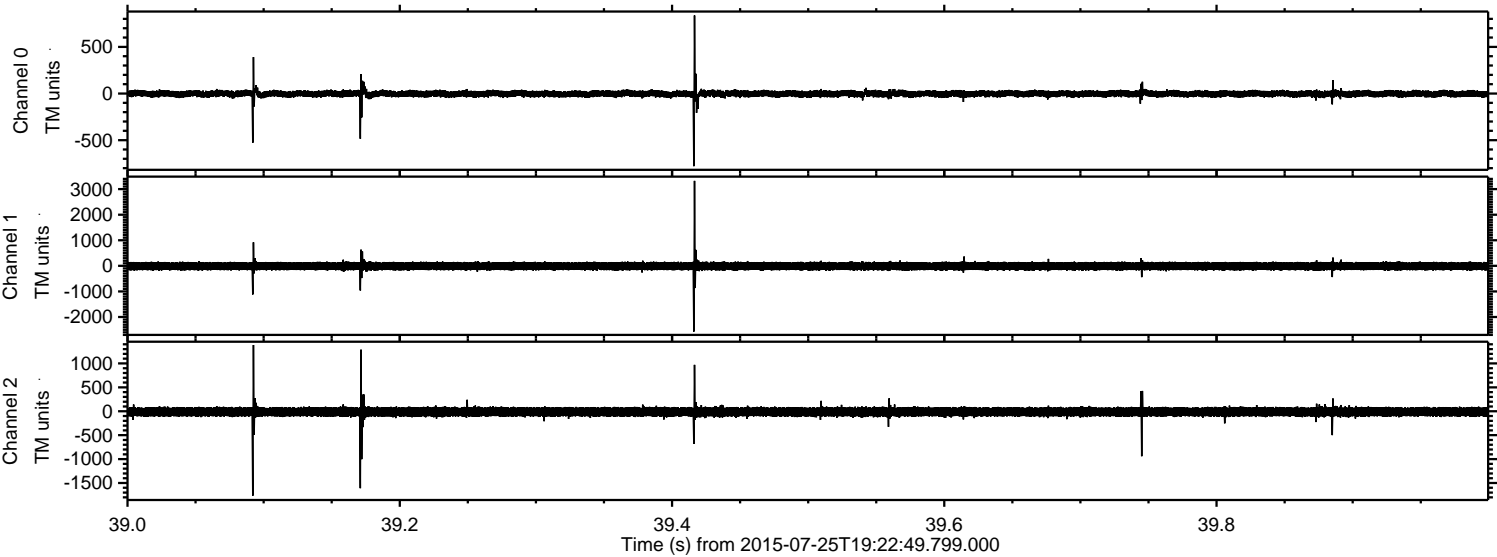


Channel 0
mn: -544
mx: 672
 μ : -3.0
 σ : 18.7

Channel 1
mn: -2474
mx: 1438
 μ : -11.9
 σ : 82.6

Channel 2
mn: -3389
mx: 1885
 μ : -12.6
 σ : 57.4

Processed Sat Jul 25 21:29:56 2015 by ELM ver.2012-10-06 from 001__elm20150725_192248__dat00.bin



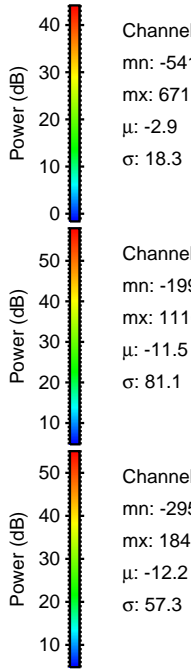
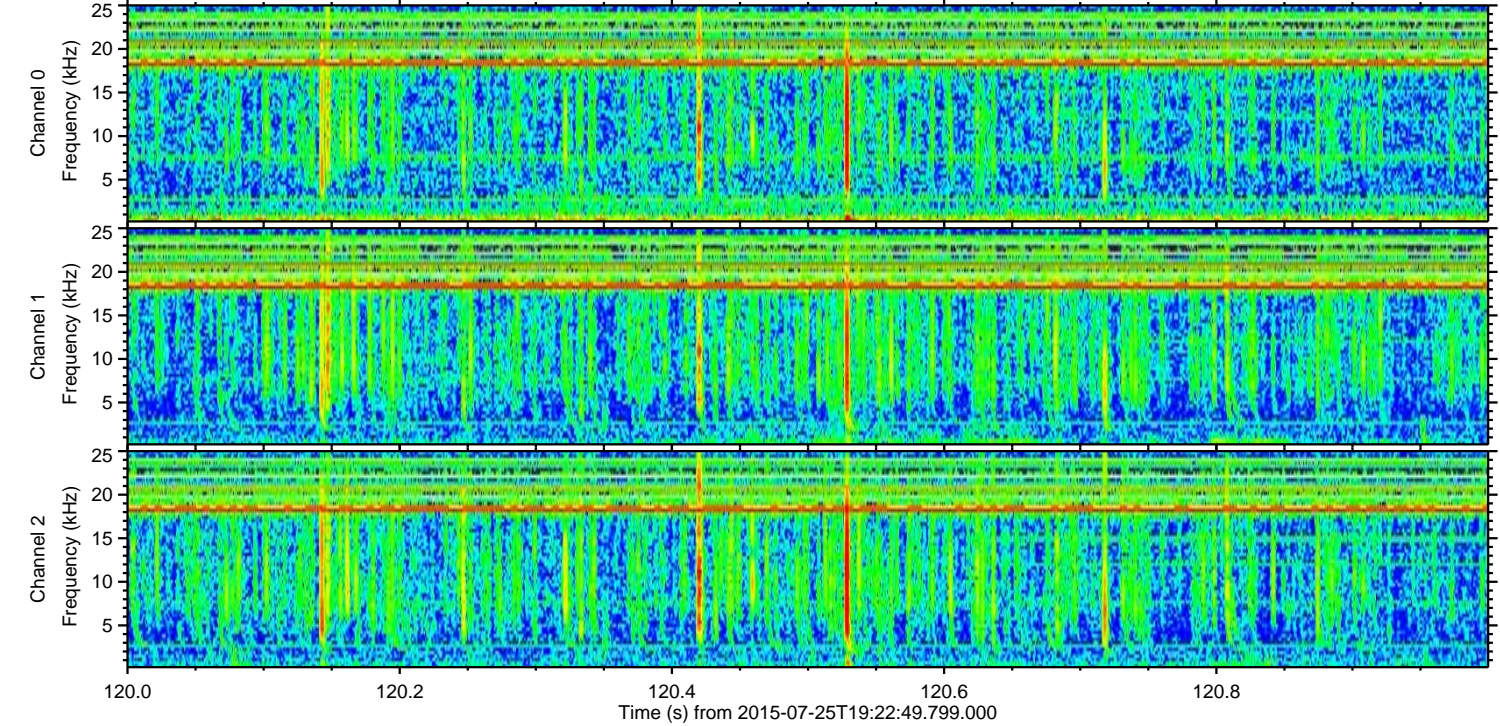
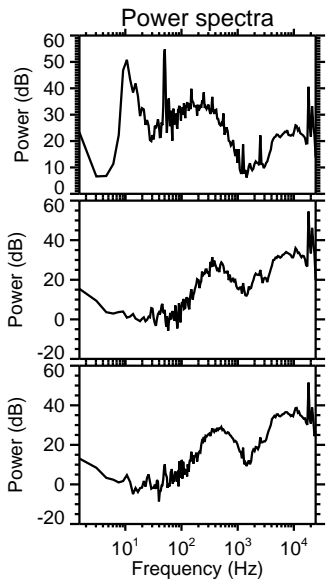
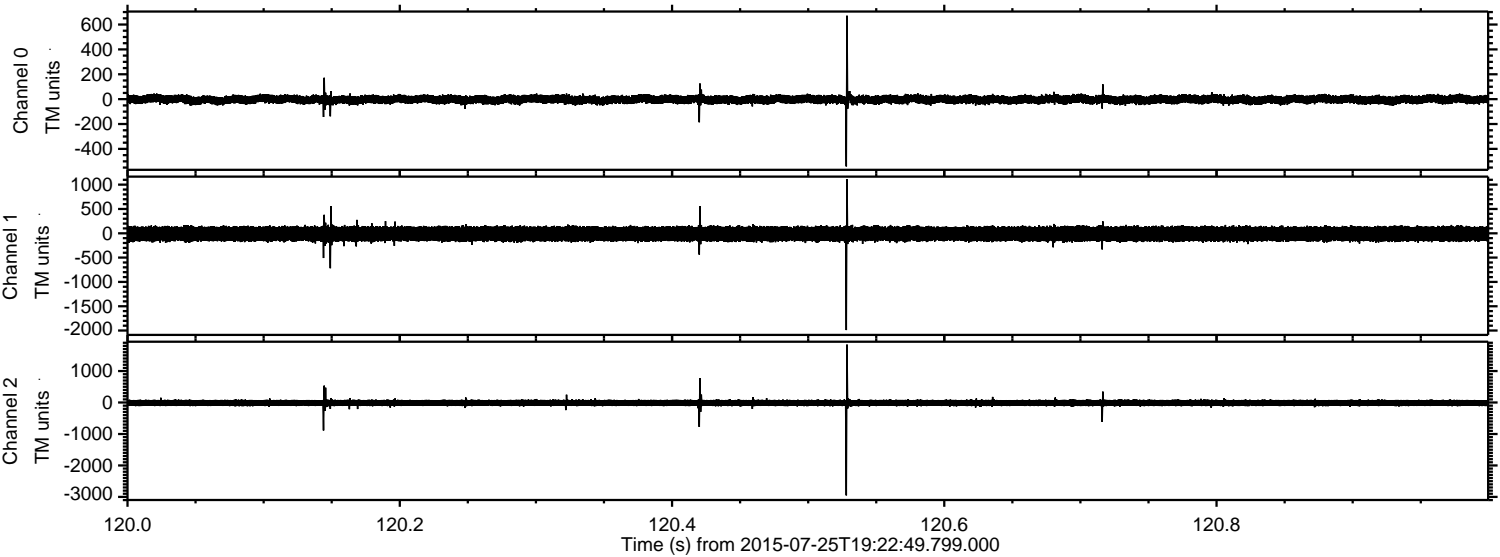
Channel 0
mn: -779
mx: 837
 μ : -2.9
 σ : 20.5

Channel 1
mn: -2571
mx: 3322
 μ : -11.8
 σ : 87.2

Channel 2
mn: -1767
mx: 1385
 μ : -12.5
 σ : 59.0

ELMAVAN 3D WAVEFORMS (Measured data sampled at 50 kHz) 51000 packets of 144 samples from 2015-07-25T19:22:49.799.000. Part 121/147

Processed Sat Jul 25 21:29:57 2015 by ELM ver.2012-10-06 from 001__elm20150725_192248__dat00.bin

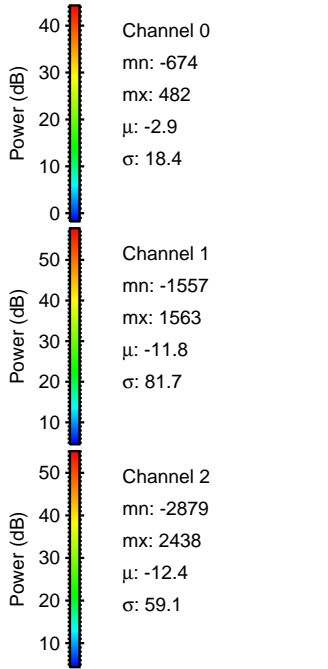
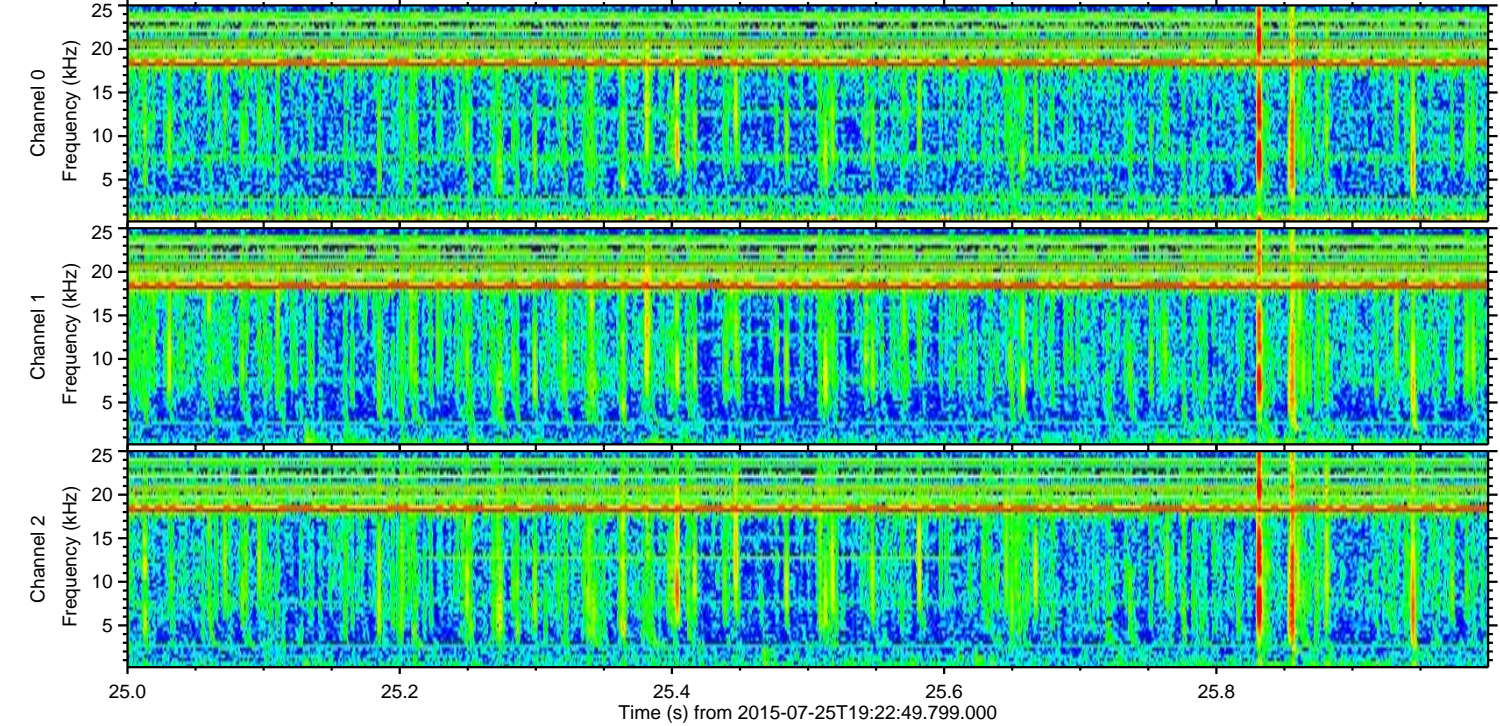
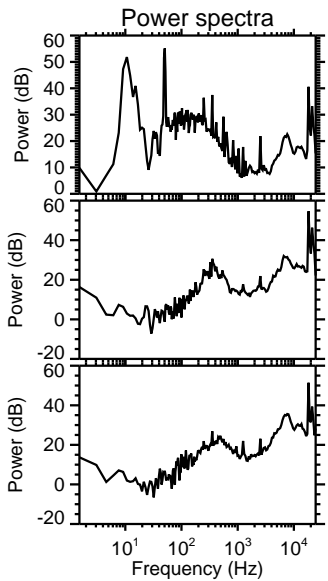
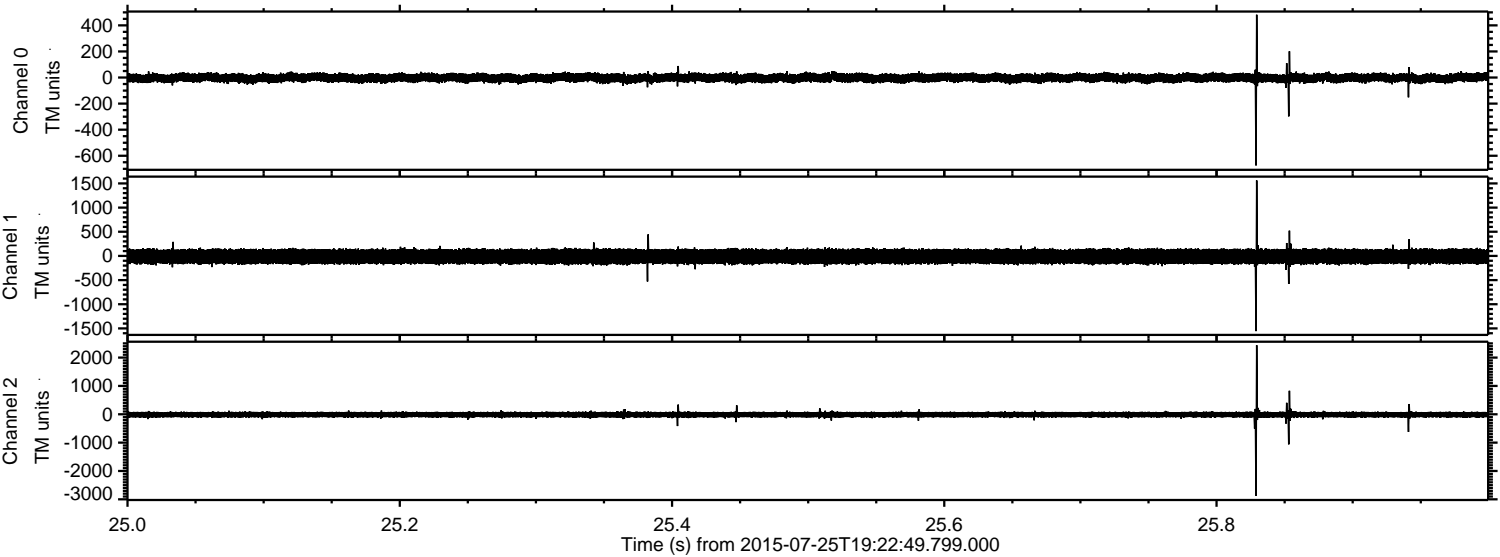


Channel 0
mn: -541
mx: 671
 μ : -2.9
 σ : 18.3

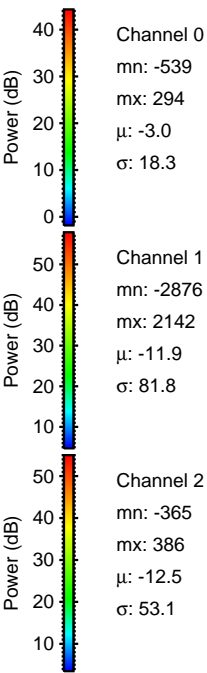
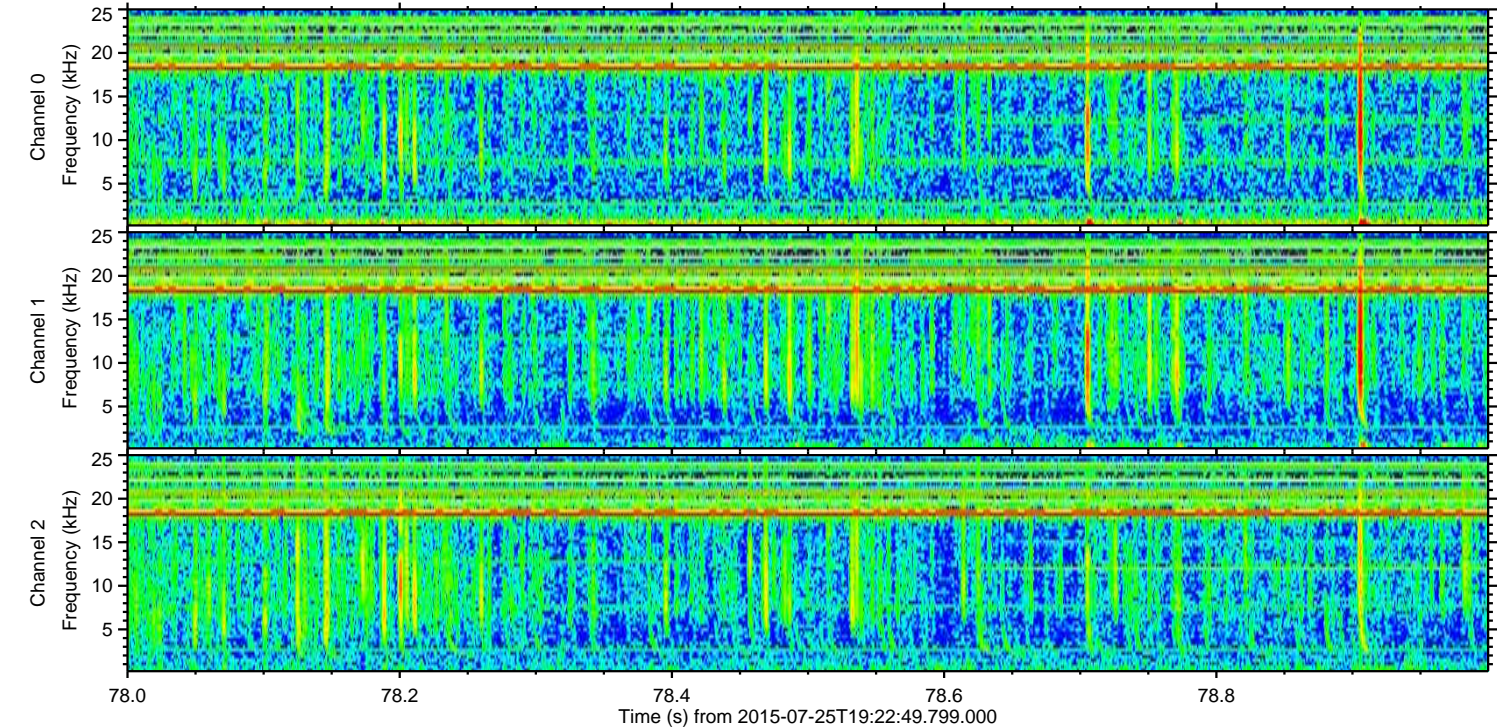
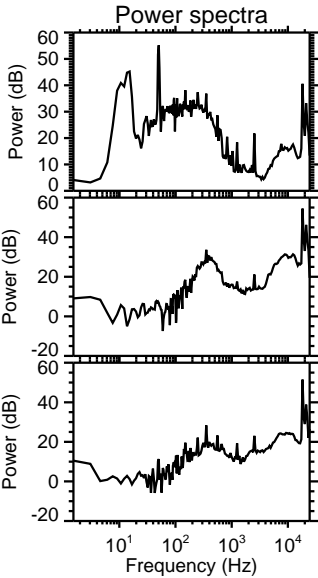
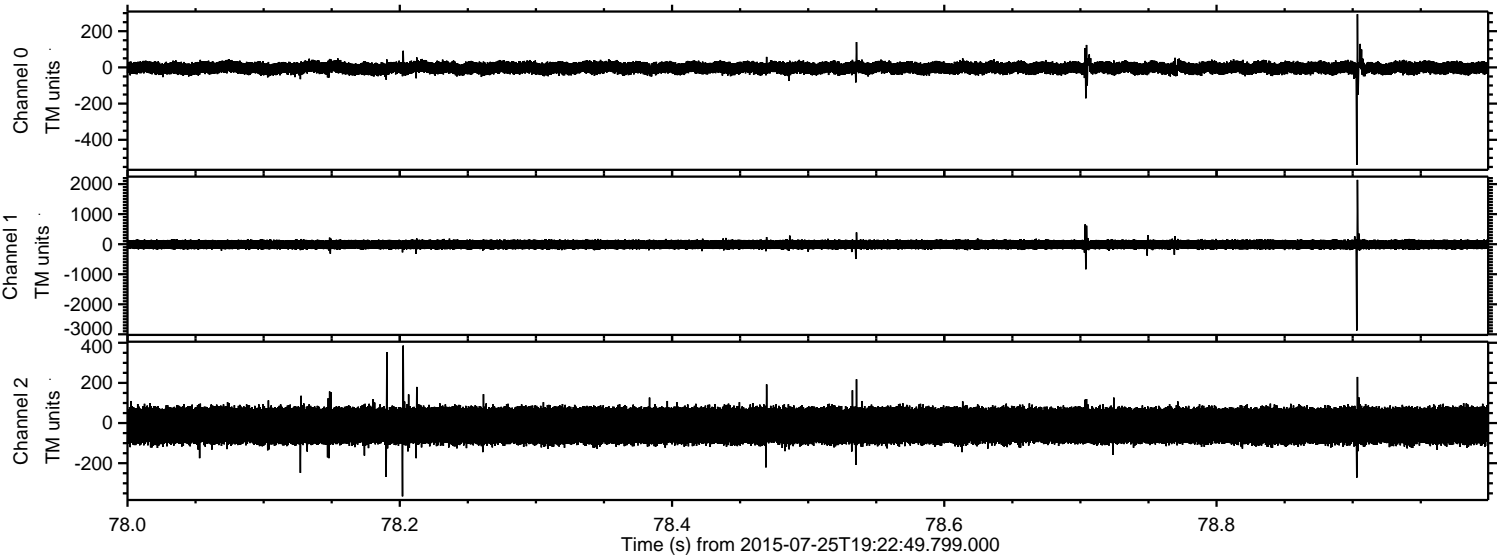
Channel 1
mn: -1990
mx: 1110
 μ : -11.5
 σ : 81.1

Channel 2
mn: -2951
mx: 1841
 μ : -12.2
 σ : 57.3

Processed Sat Jul 25 21:29:58 2015 by ELM ver.2012-10-06 from 001__elm20150725_192248__dat00.bin



Processed Sat Jul 25 21:29:59 2015 by ELM ver.2012-10-06 from 001__elm20150725_192248__dat00.bin



Processed Sat Jul 25 21:30:00 2015 by ELM ver.2012-10-06 from 001__elm20150725_192248__dat00.bin

