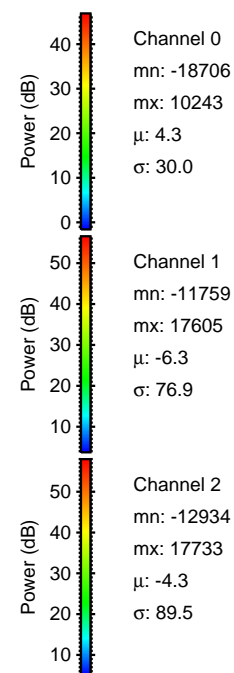
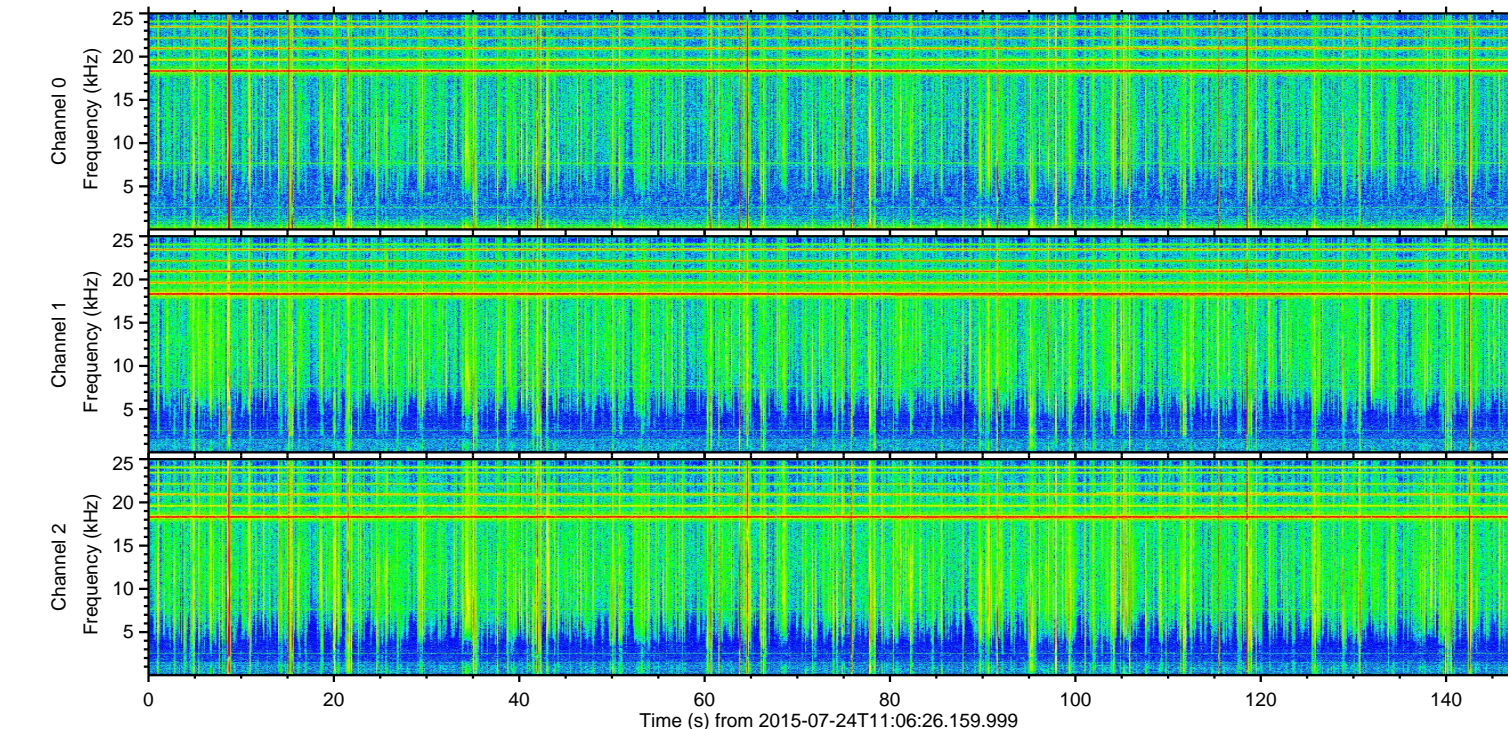
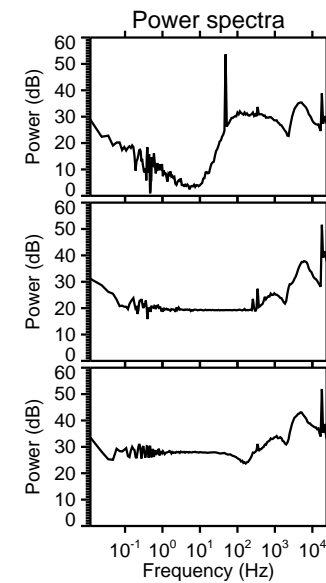
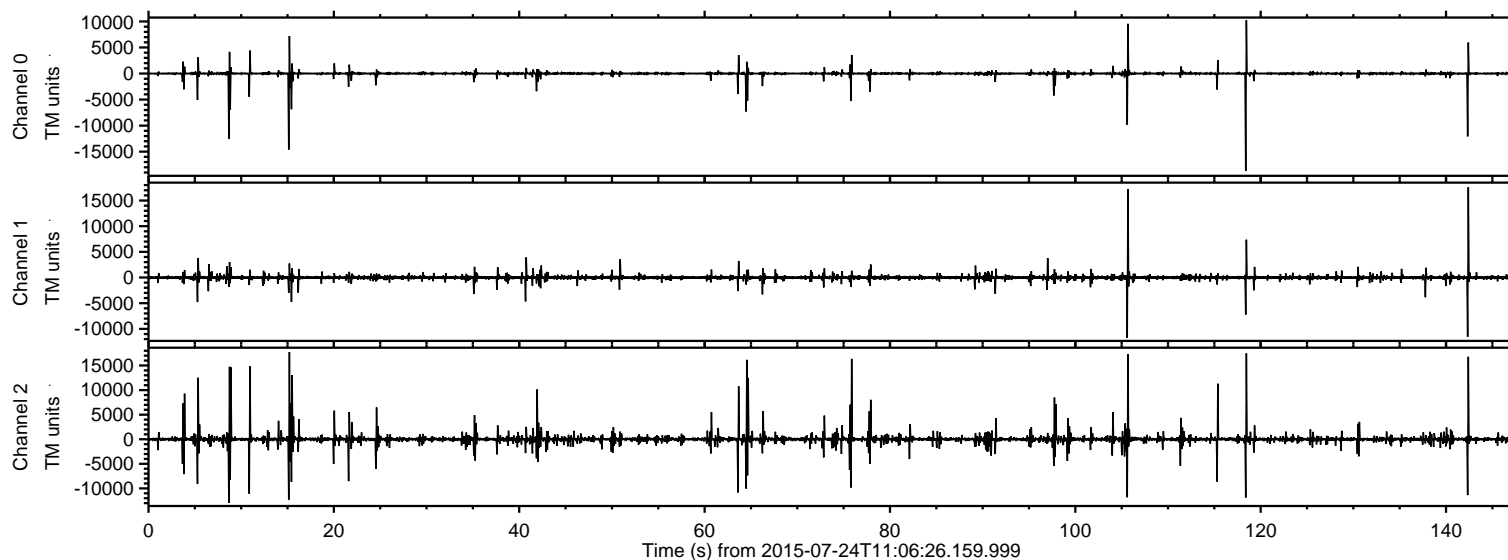


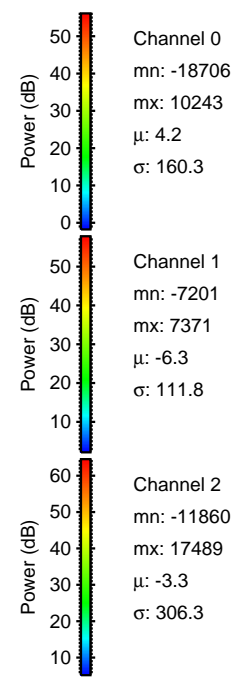
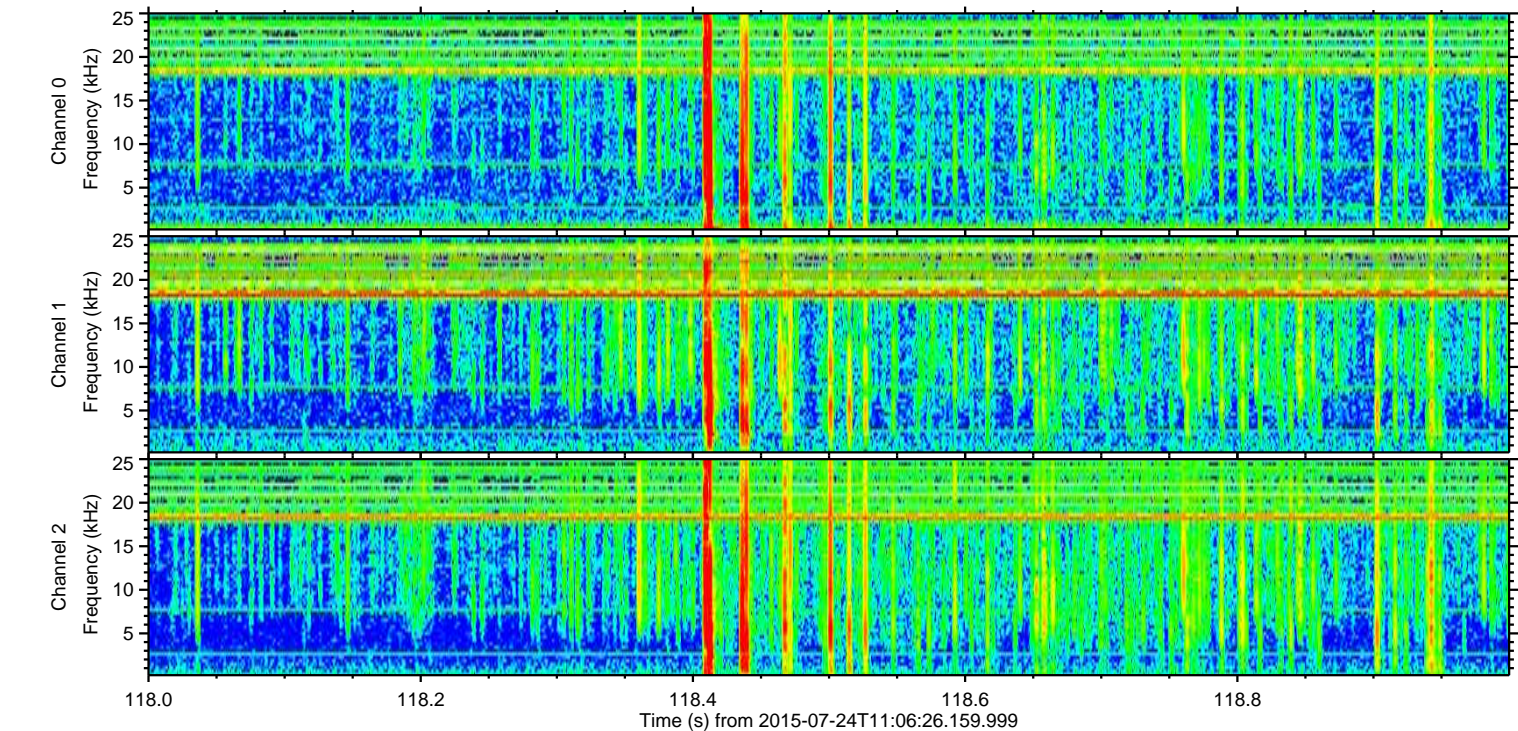
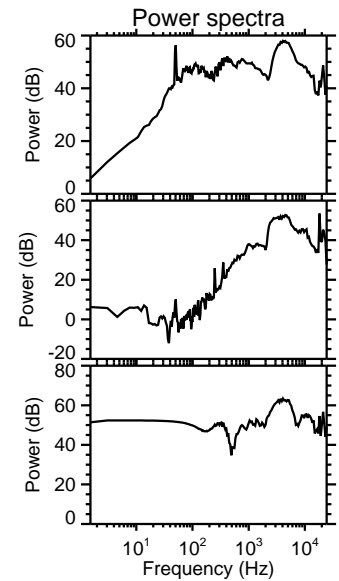
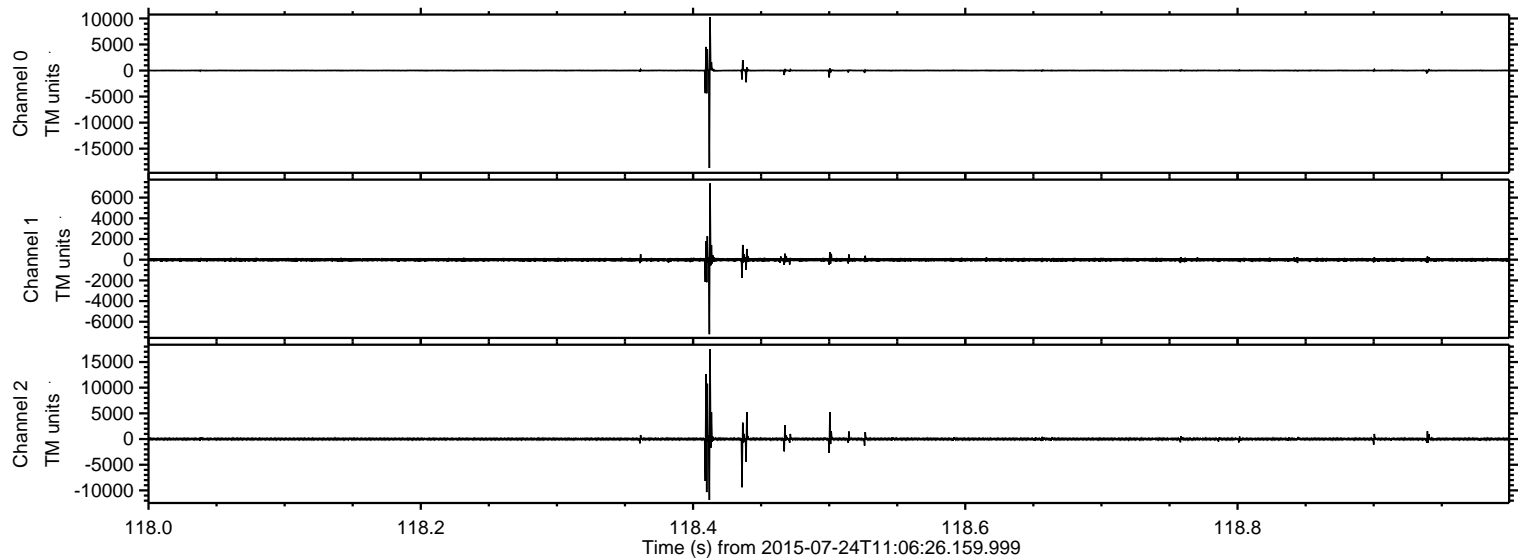
ELMAVAN 3D WAVEFORMS (Measured data sampled at 50 kHz) 51000 packets of 144 samples from 2015-07-24T11:06:26.159.999.

Processed Fri Jul 24 13:13:07 2015 by ELM ver.2012-10-06 from 001__elm20150724_110625__dat00.bin



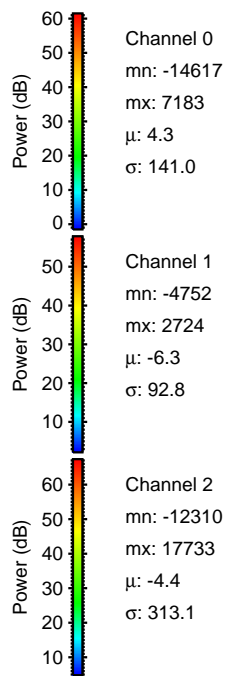
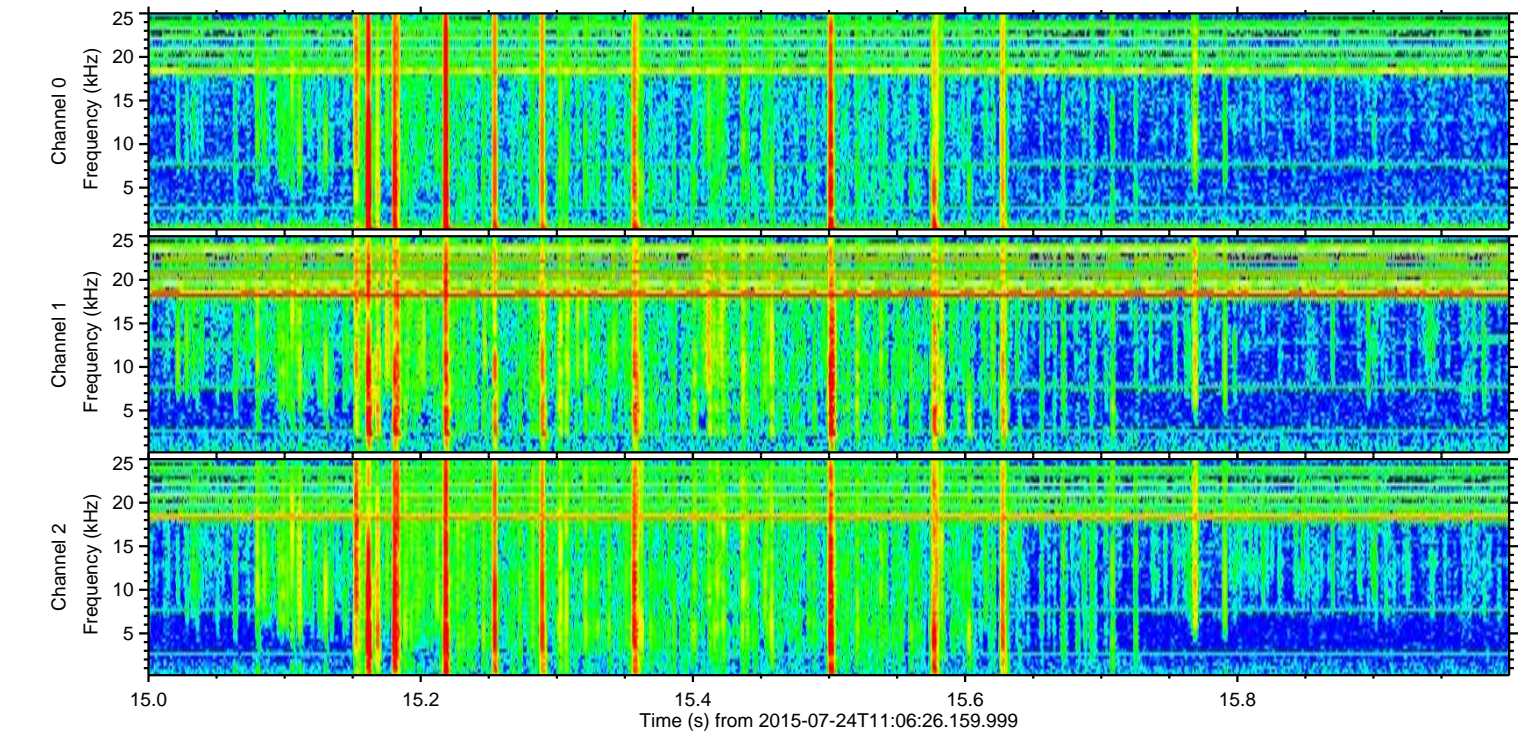
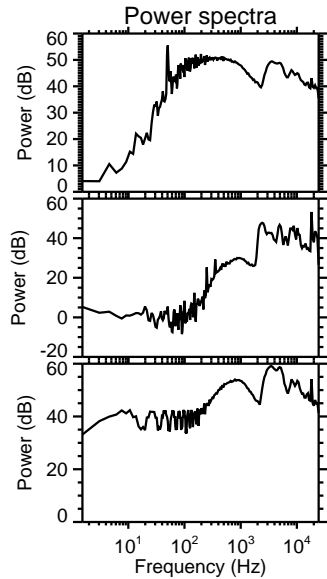
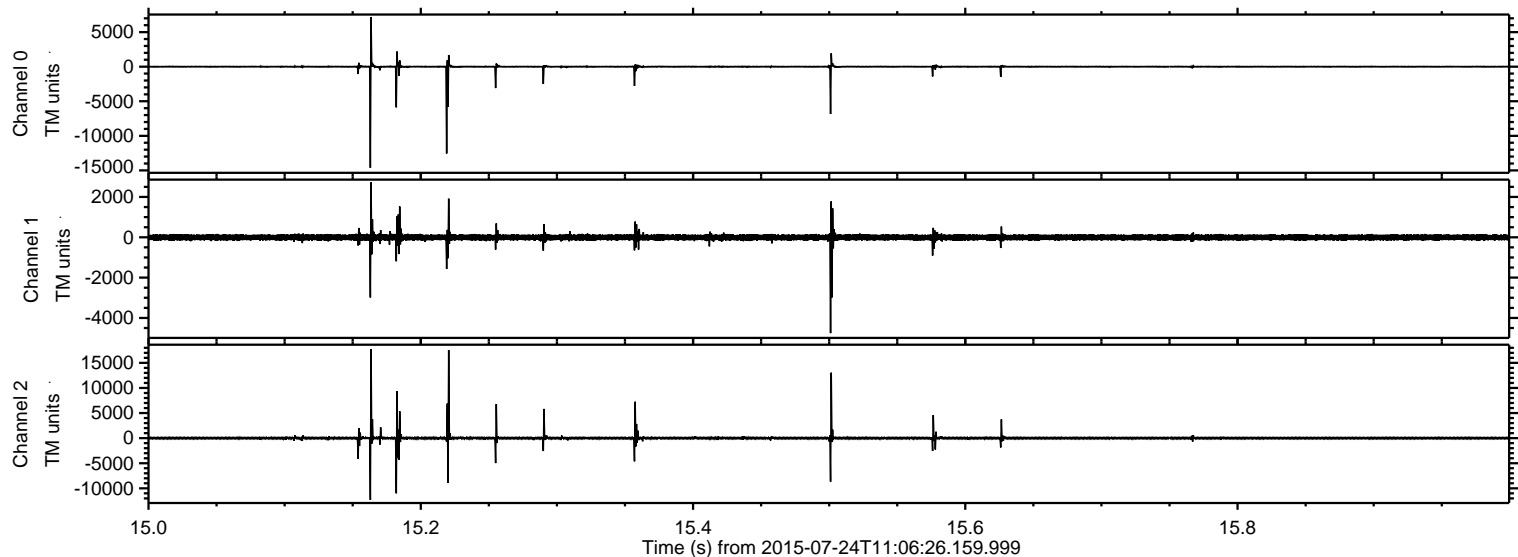
ELMAVAN 3D WAVEFORMS (Measured data sampled at 50 kHz) 51000 packets of 144 samples from 2015-07-24T11:06:26.159.999. Part 119/147

Processed Fri Jul 24 13:13:18 2015 by ELM ver.2012-10-06 from 001__elm20150724_110625__dat00.bin



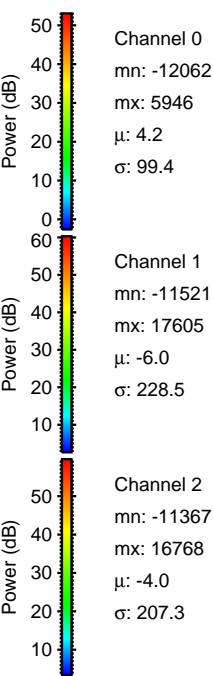
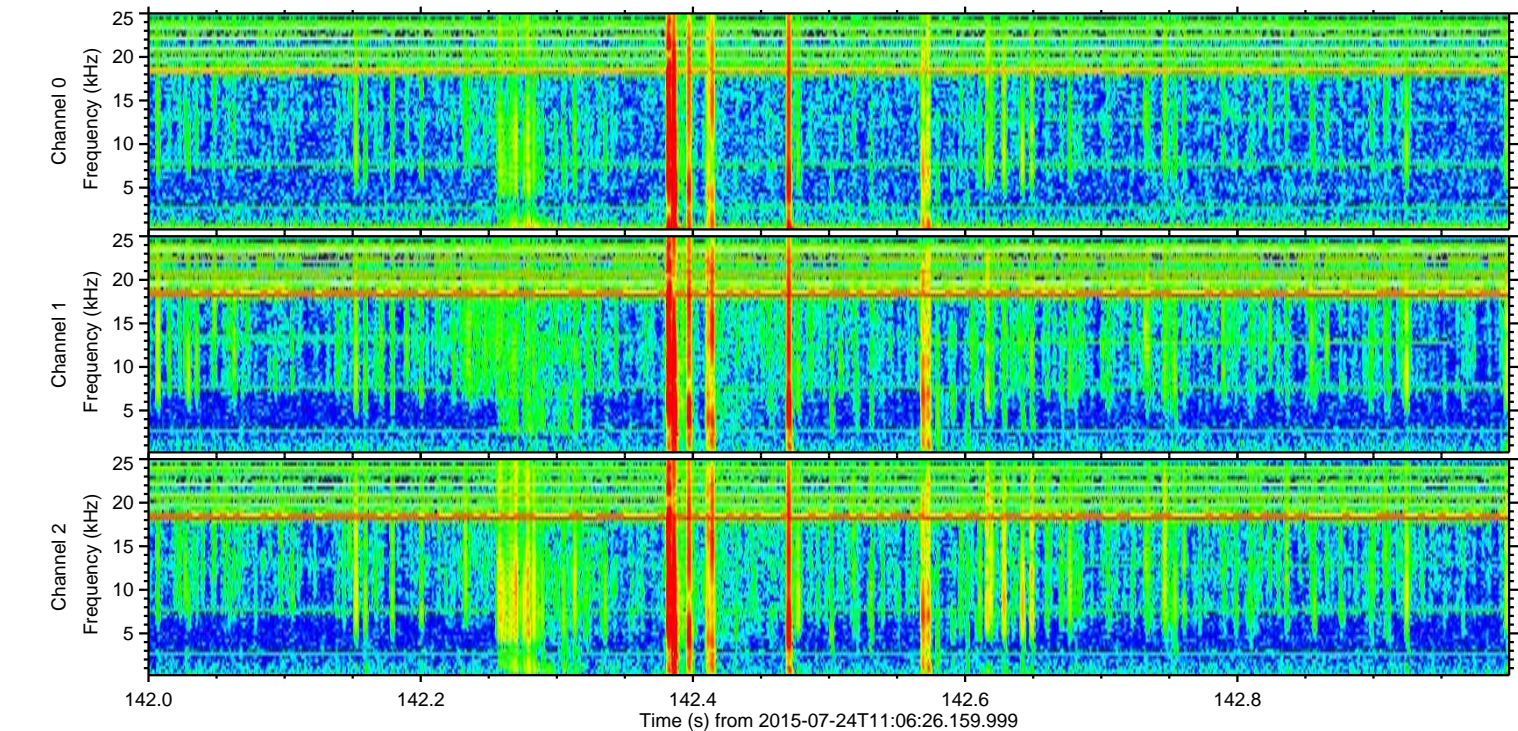
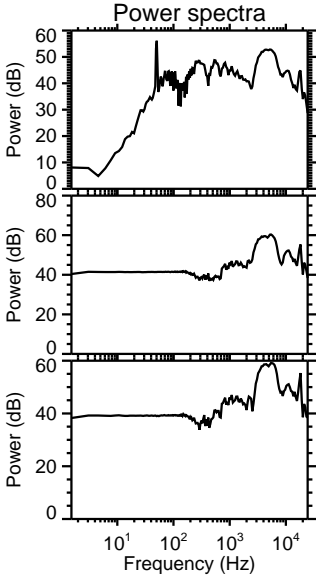
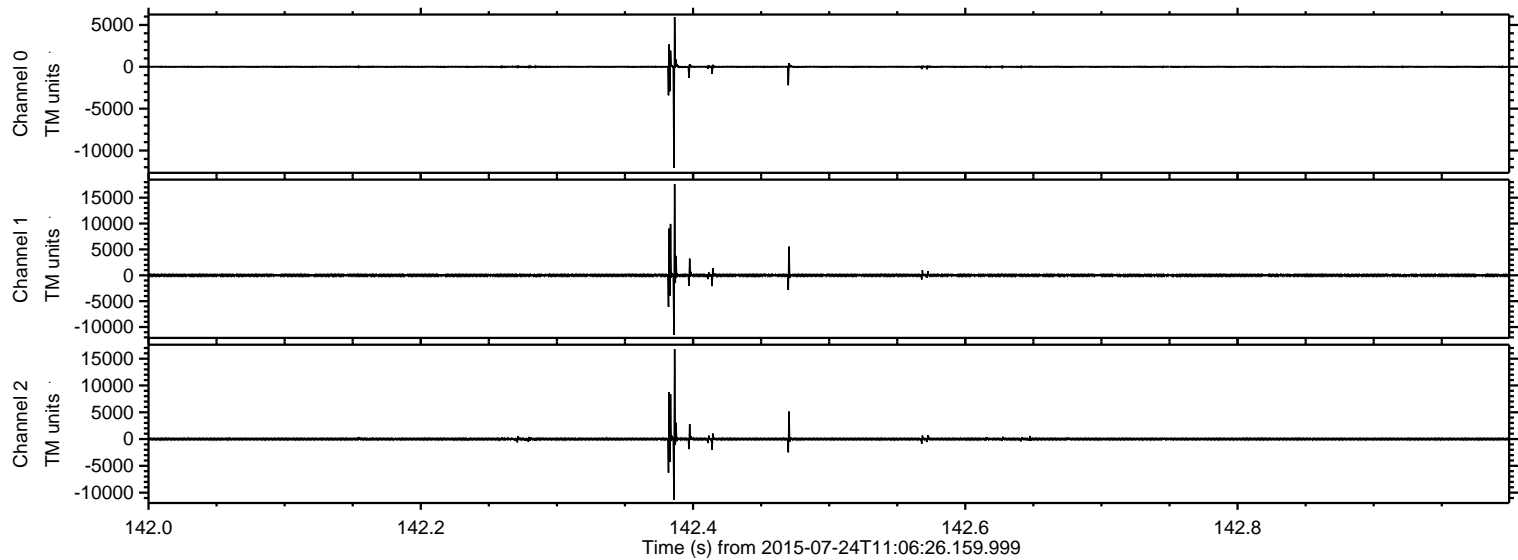
ELMAVAN 3D WAVEFORMS (Measured data sampled at 50 kHz) 51000 packets of 144 samples from 2015-07-24T11:06:26.159.999. Part 16/147

Processed Fri Jul 24 13:13:19 2015 by ELM ver.2012-10-06 from 001__elm20150724_110625__dat00.bin



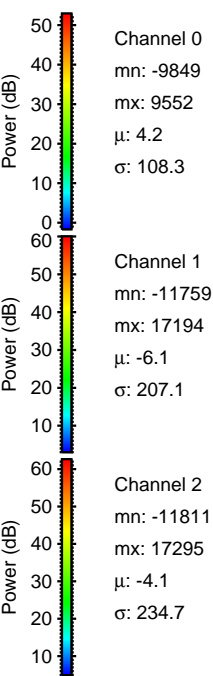
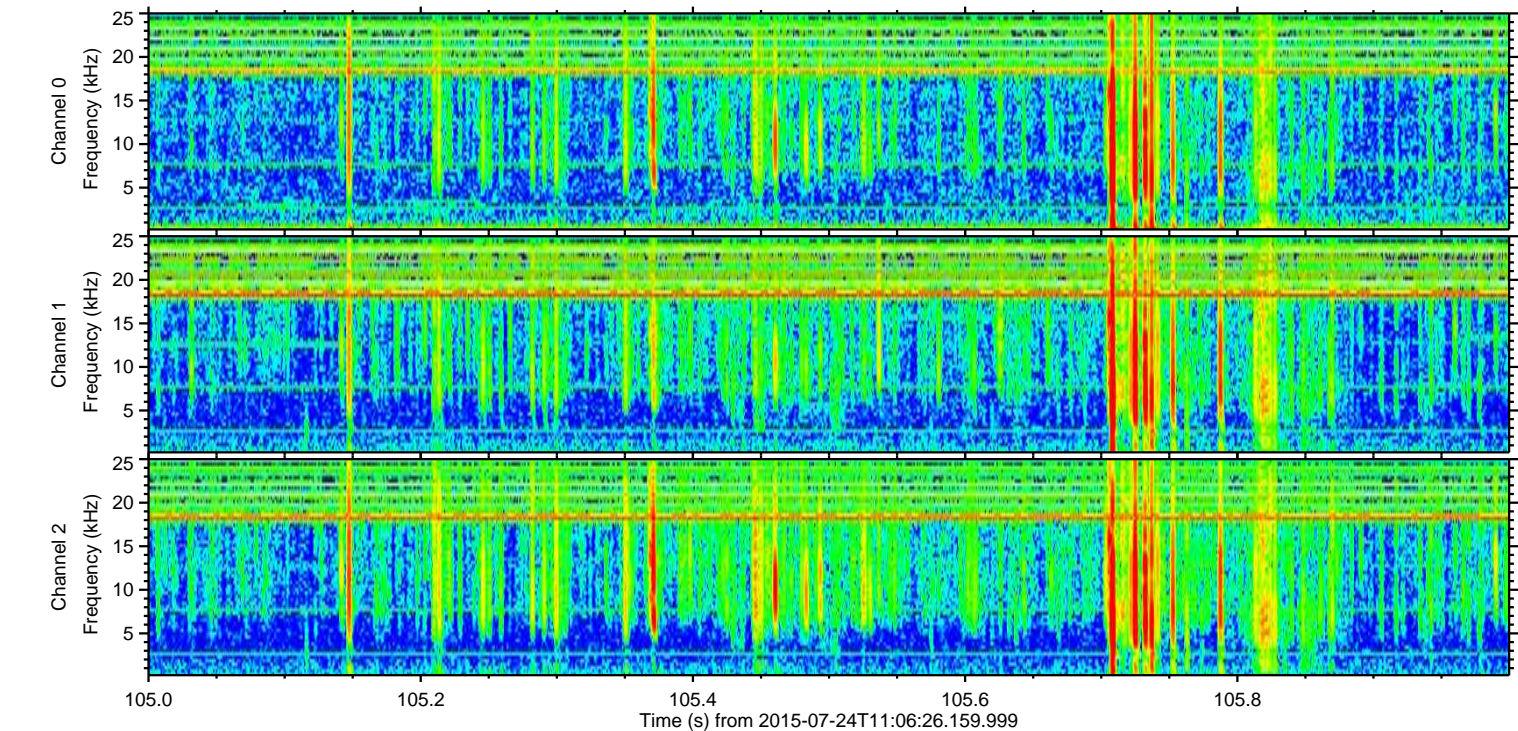
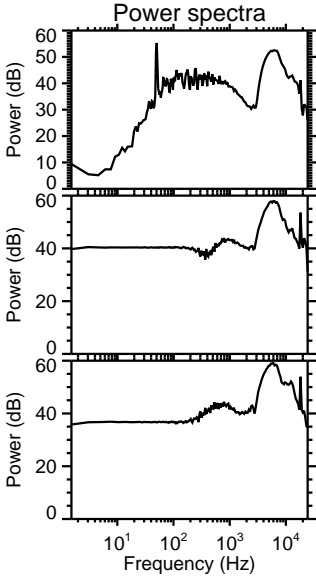
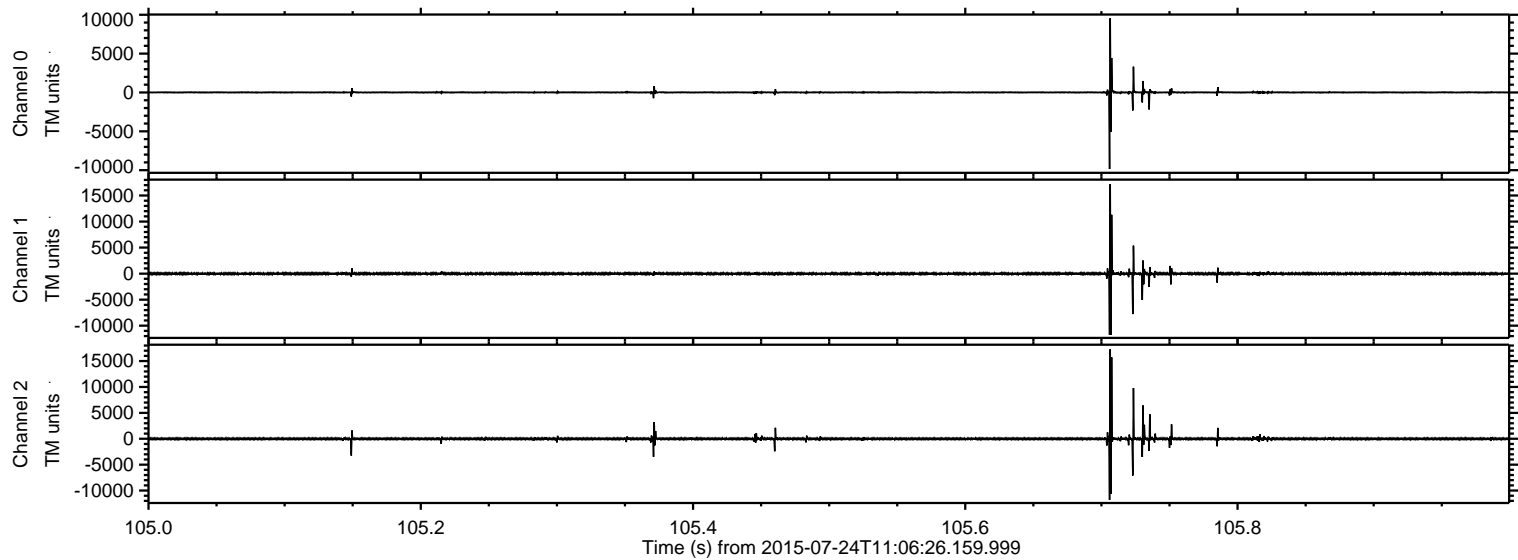
ELMAVAN 3D WAVEFORMS (Measured data sampled at 50 kHz) 51000 packets of 144 samples from 2015-07-24T11:06:26.159.999. Part 143/147

Processed Fri Jul 24 13:13:20 2015 by ELM ver.2012-10-06 from 001__elm20150724_110625__dat00.bin

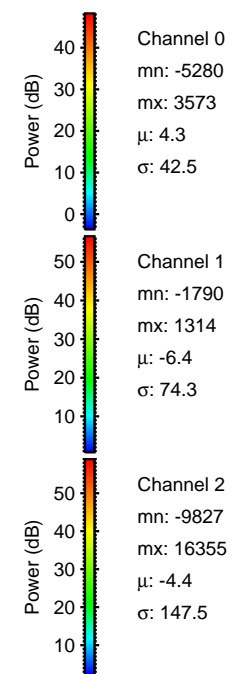
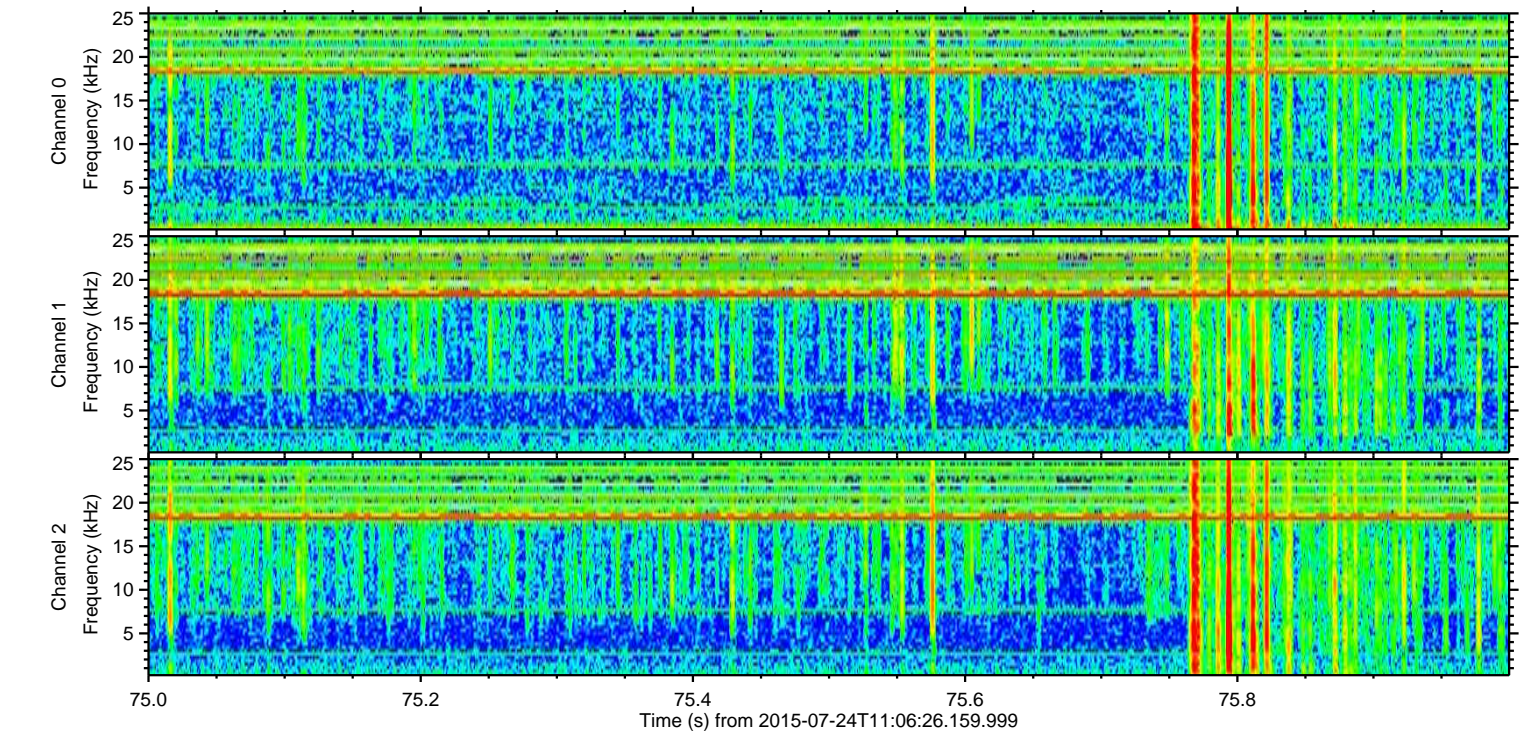
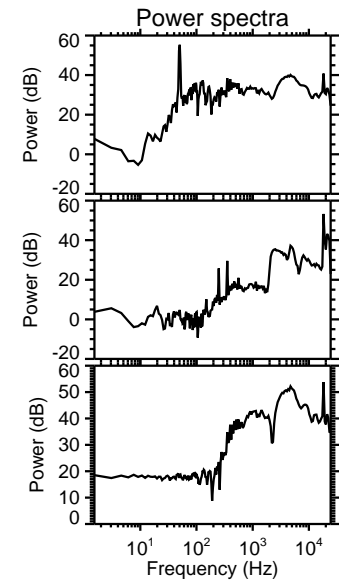
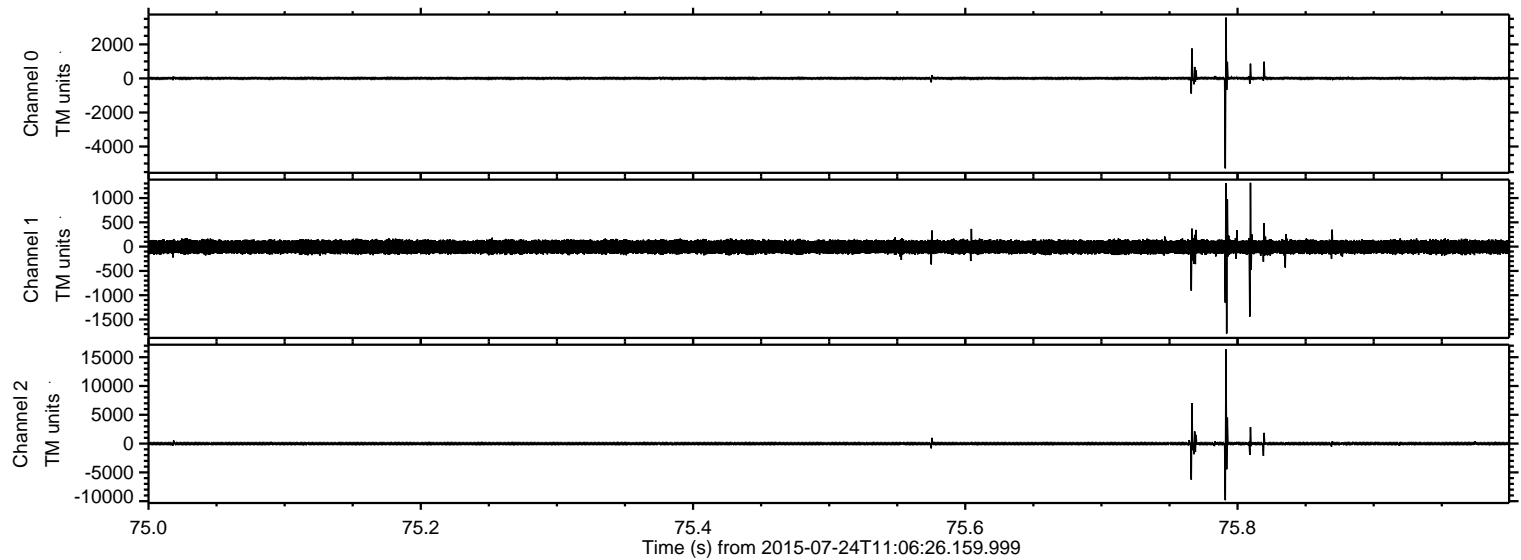


ELMAVAN 3D WAVEFORMS (Measured data sampled at 50 kHz) 51000 packets of 144 samples from 2015-07-24T11:06:26.159.999. Part 106/147

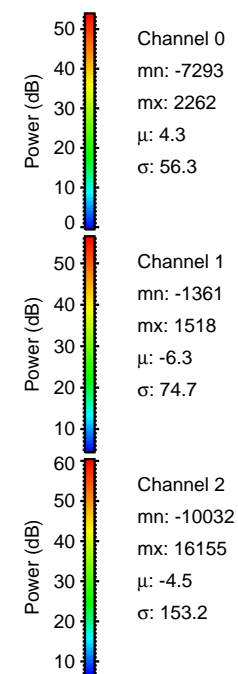
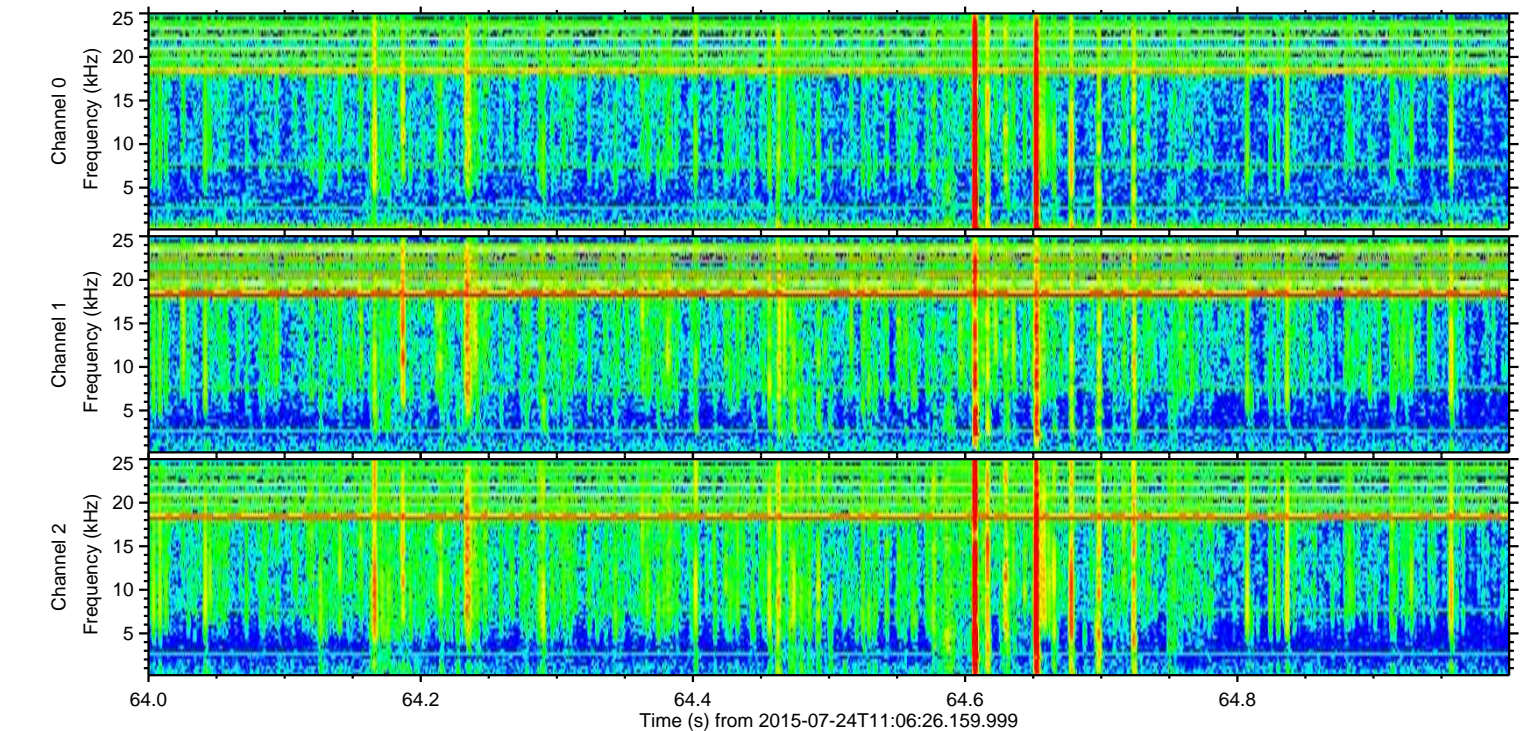
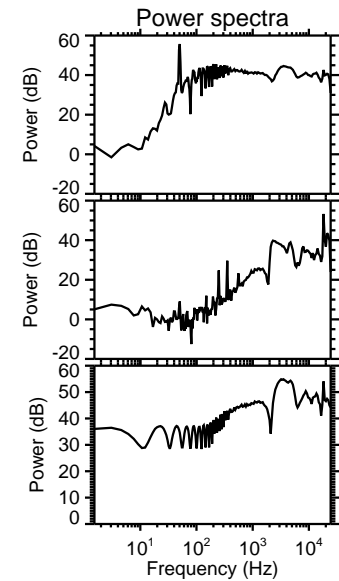
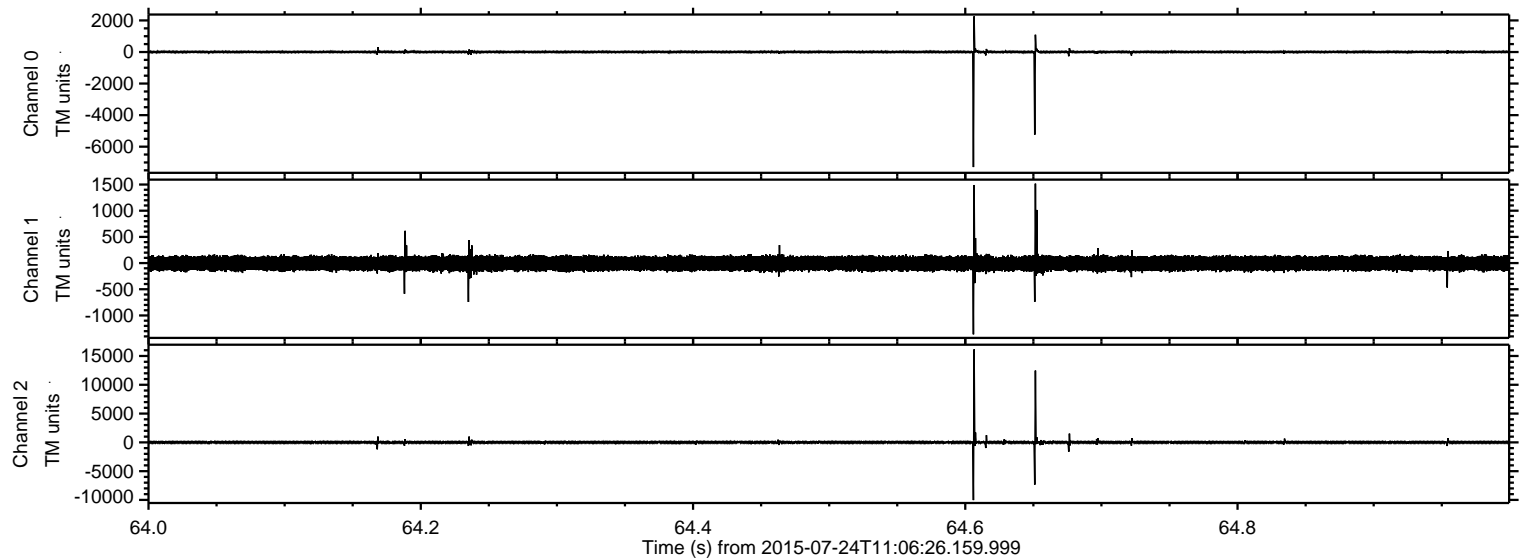
Processed Fri Jul 24 13:13:21 2015 by ELM ver.2012-10-06 from 001__elm20150724_110625__dat00.bin



Processed Fri Jul 24 13:13:22 2015 by ELM ver.2012-10-06 from 001__elm20150724_110625__dat00.bin

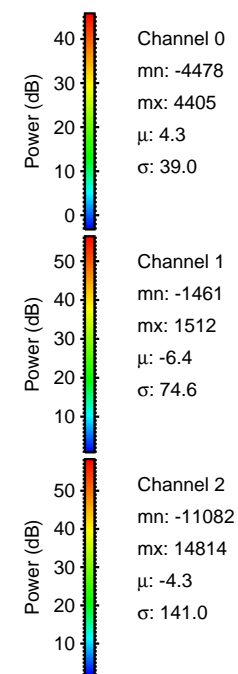
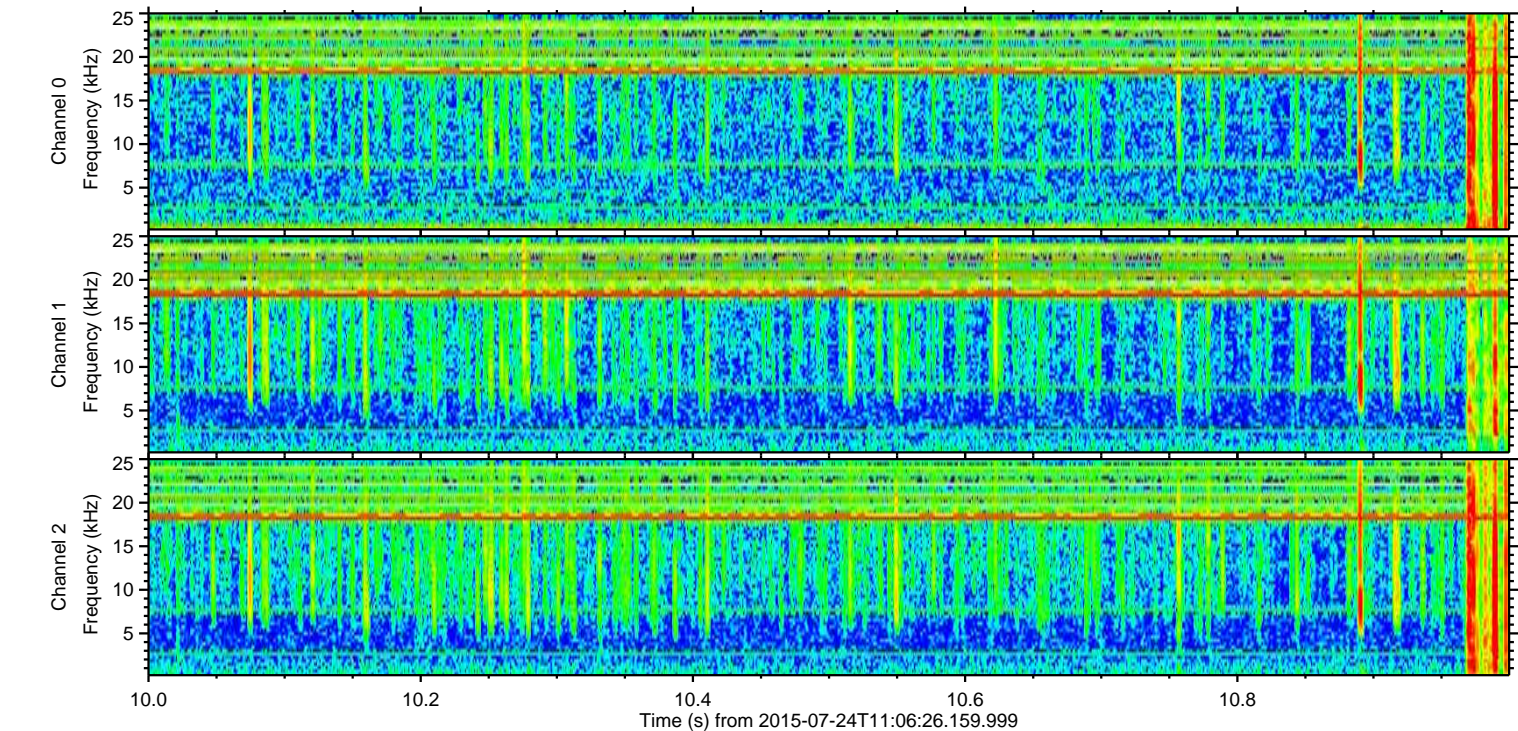
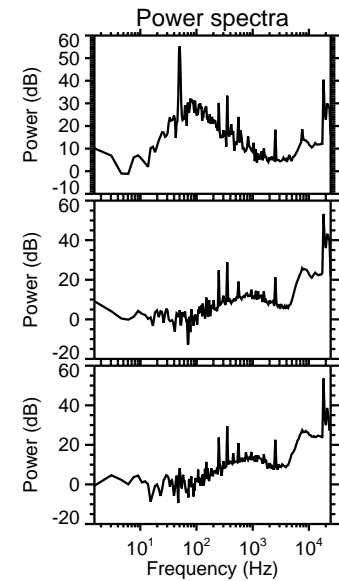
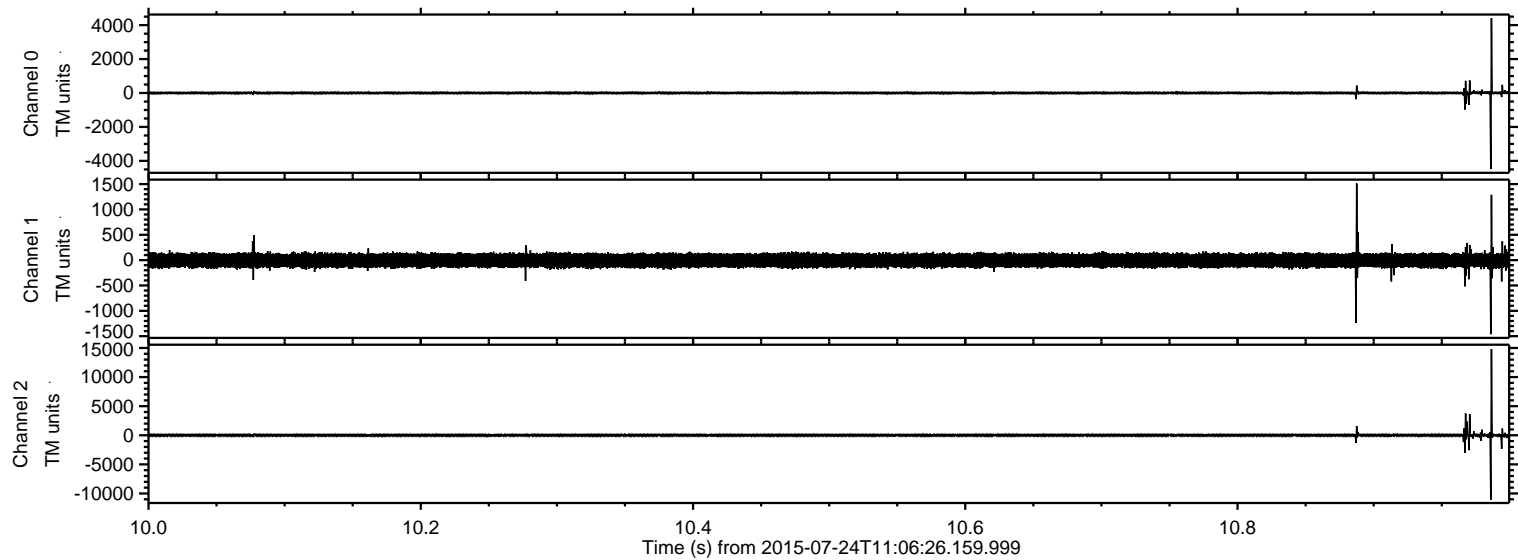


Processed Fri Jul 24 13:13:23 2015 by ELM ver.2012-10-06 from 001__elm20150724_110625__dat00.bin

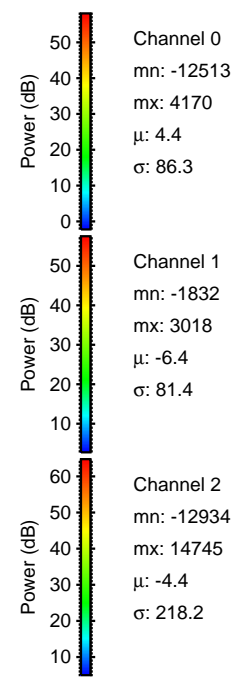
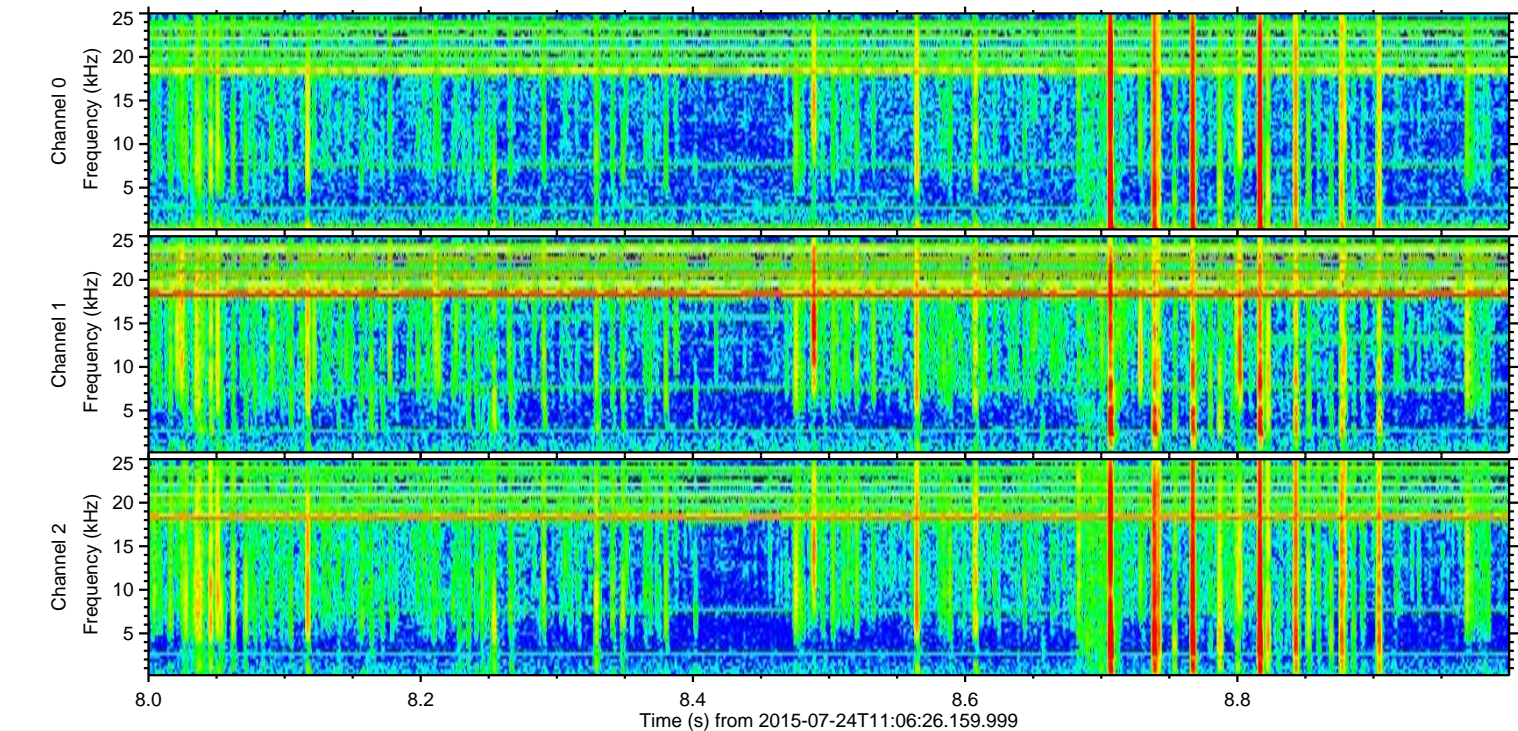
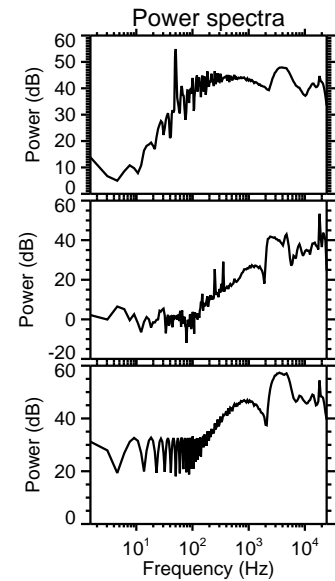
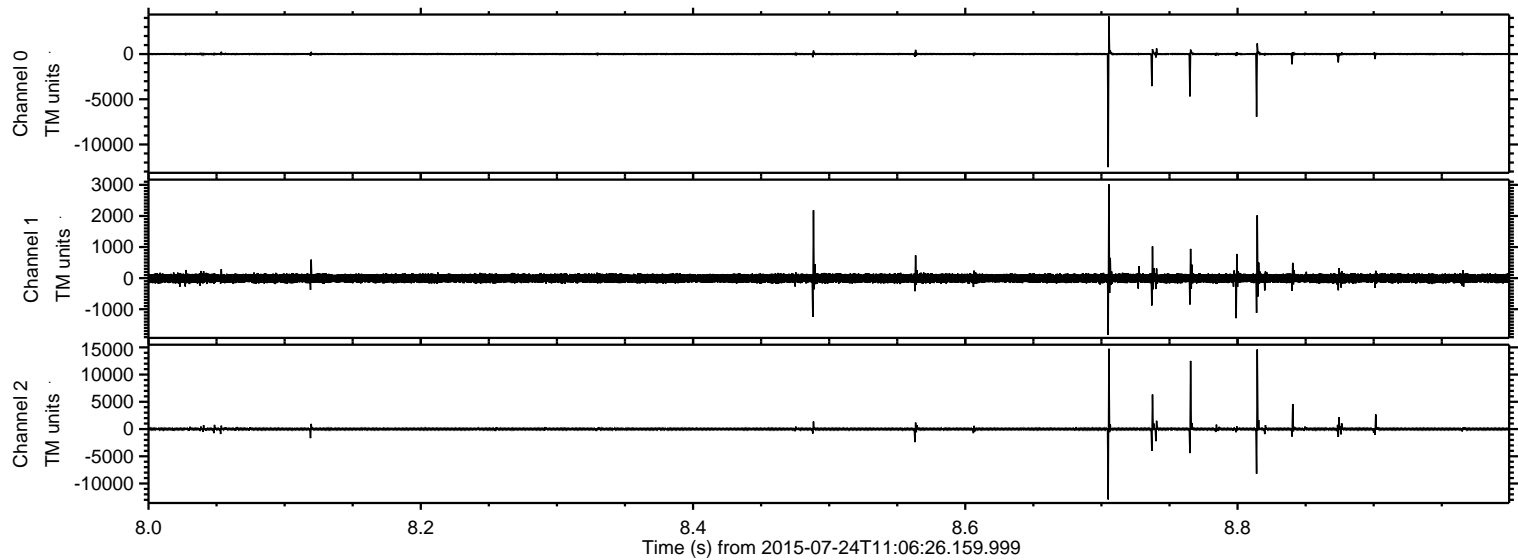


ELMAVAN 3D WAVEFORMS (Measured data sampled at 50 kHz) 51000 packets of 144 samples from 2015-07-24T11:06:26.159.999. Part 11/147

Processed Fri Jul 24 13:13:24 2015 by ELM ver.2012-10-06 from 001__elm20150724_110625__dat00.bin



Processed Fri Jul 24 13:13:25 2015 by ELM ver.2012-10-06 from 001__elm20150724_110625__dat00.bin

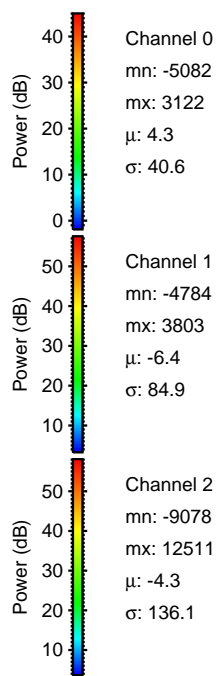
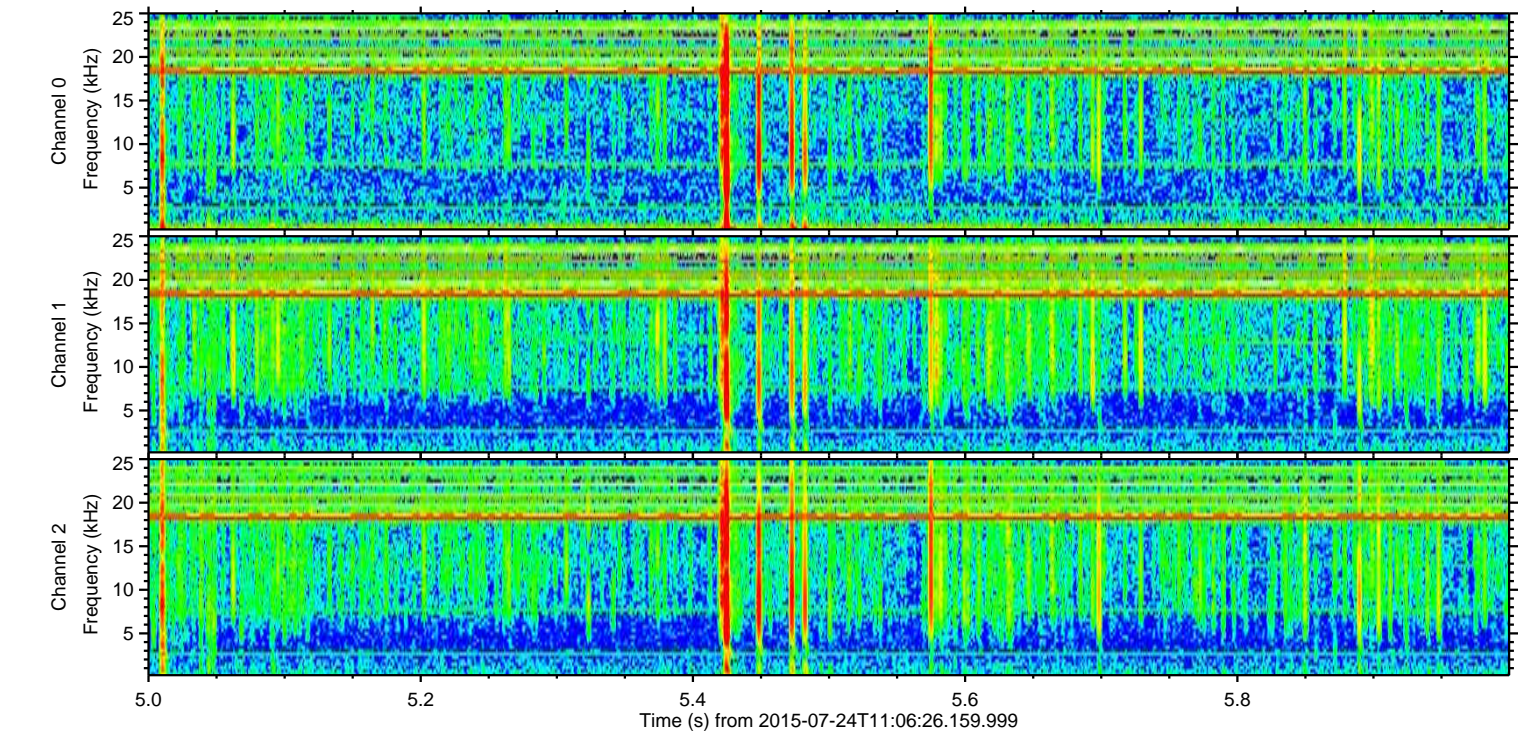
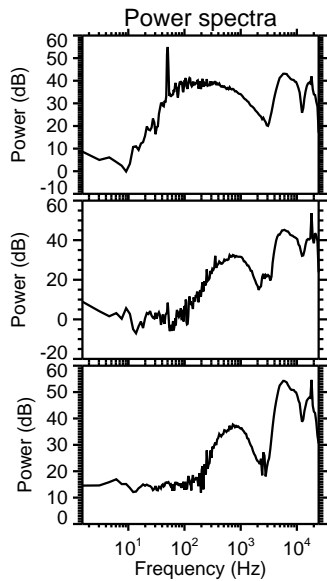
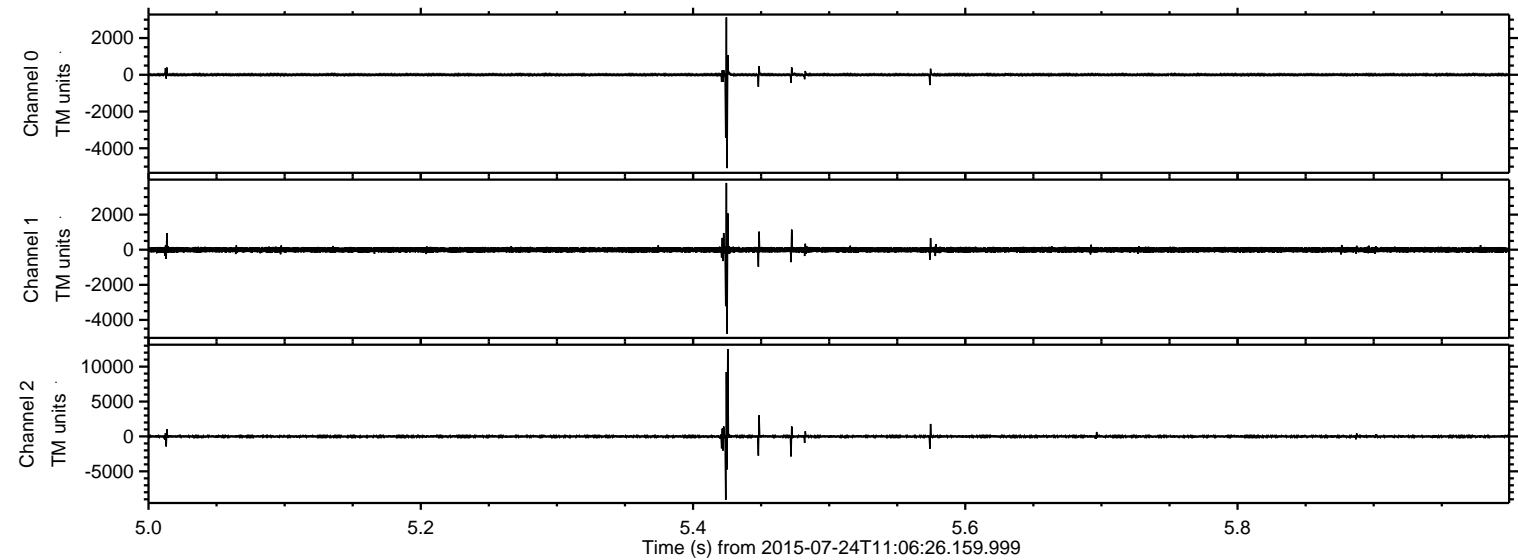


Channel 0
mn: -12513
mx: 4170
 μ : 4.4
 σ : 86.3

Channel 1
mn: -1832
mx: 3018
 μ : -6.4
 σ : 81.4

Channel 2
mn: -12934
mx: 14745
 μ : -4.4
 σ : 218.2

Processed Fri Jul 24 13:13:26 2015 by ELM ver.2012-10-06 from 001__elm20150724_110625__dat00.bin



Processed Fri Jul 24 13:13:27 2015 by ELM ver.2012-10-06 from 001__elm20150724_110625__dat00.bin

