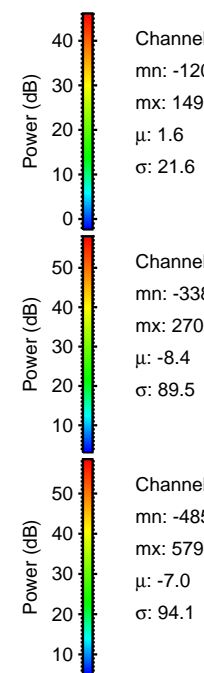
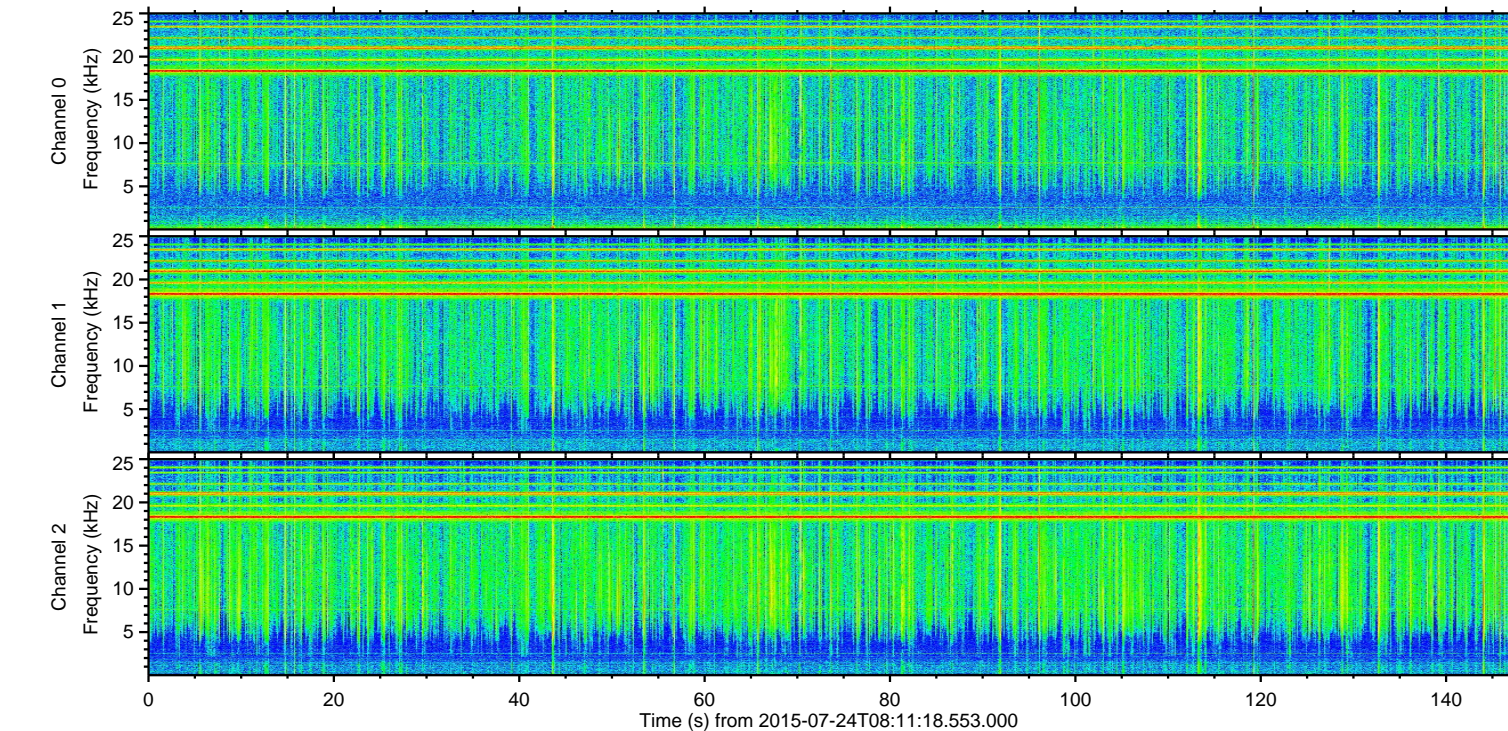
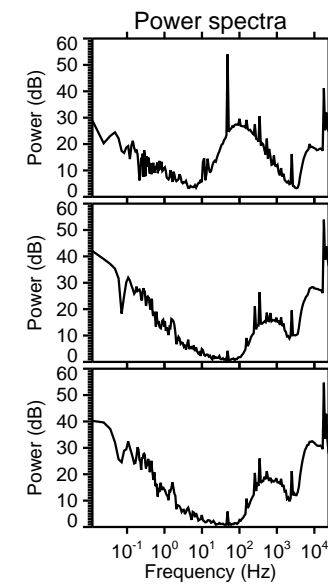
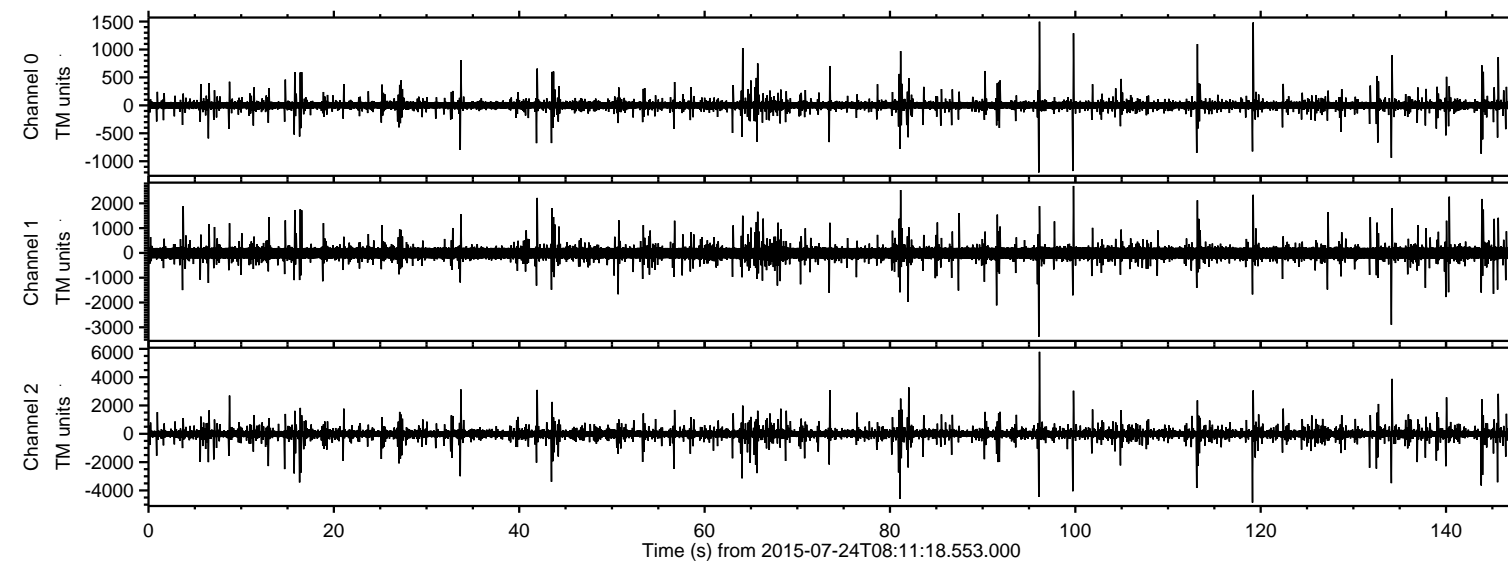


ELMAVAN 3D WAVEFORMS (Measured data sampled at 50 kHz) 51000 packets of 144 samples from 2015-07-24T08:11:18.553.000.

Processed Fri Jul 24 10:17:59 2015 by ELM ver.2012-10-06 from 001__elm20150724_081117__dat00.bin

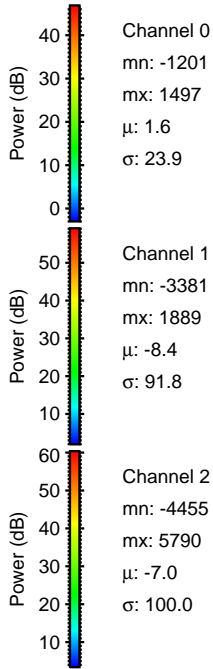
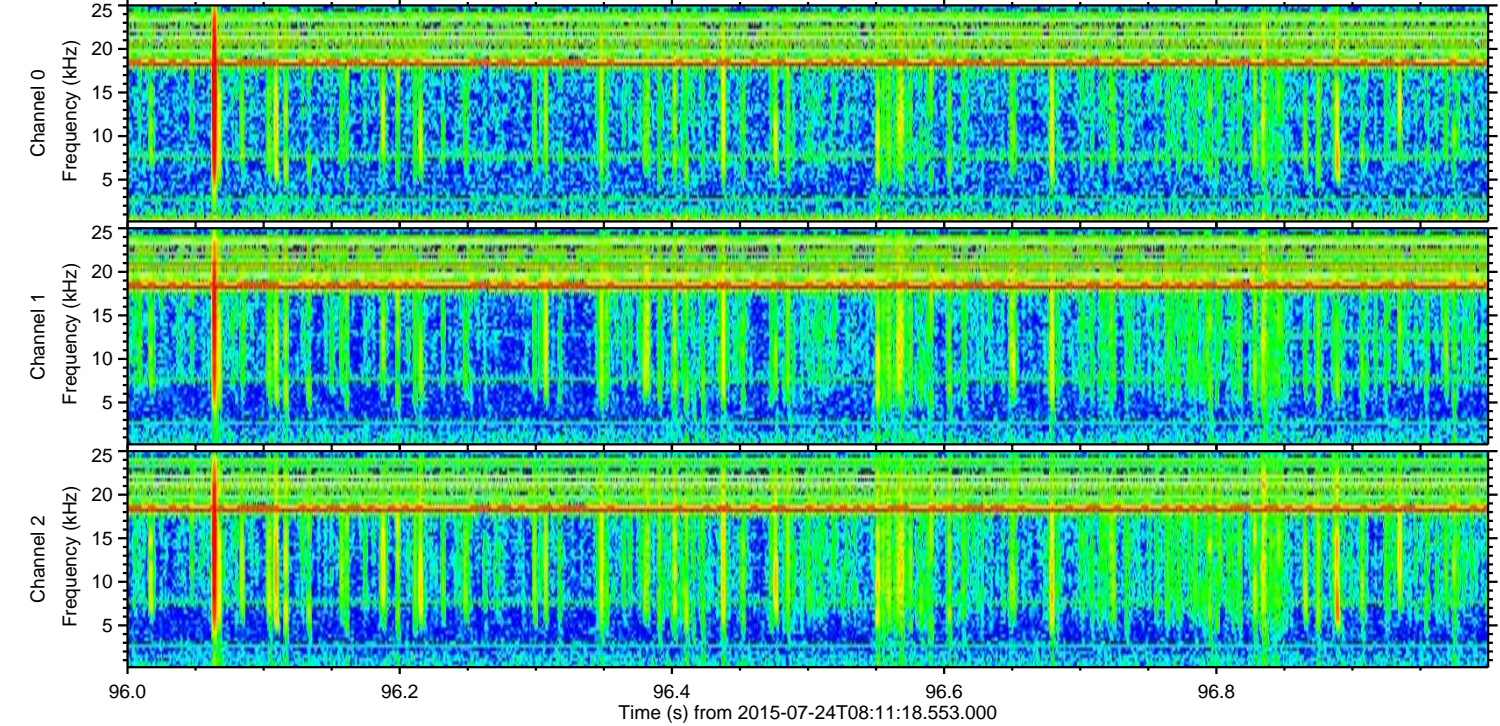
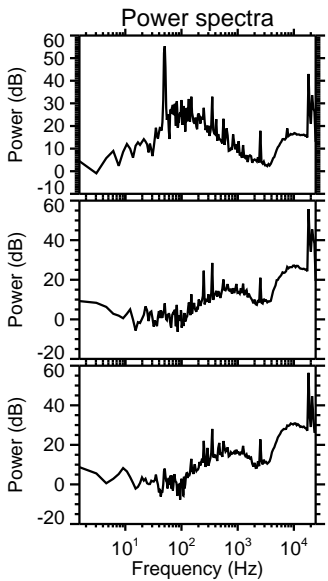
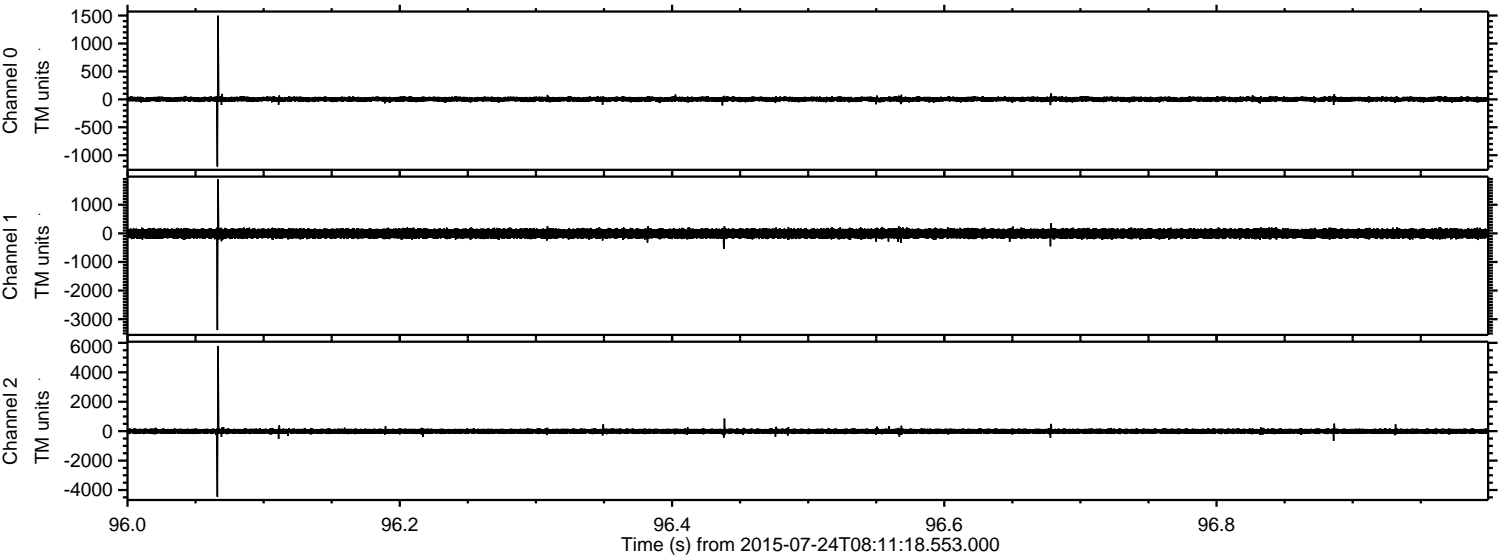


Channel 0
mn: -1201
mx: 1497
 μ : 1.6
 σ : 21.6

Channel 1
mn: -3381
mx: 2702
 μ : -8.4
 σ : 89.5

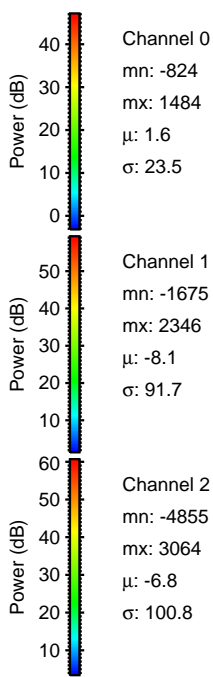
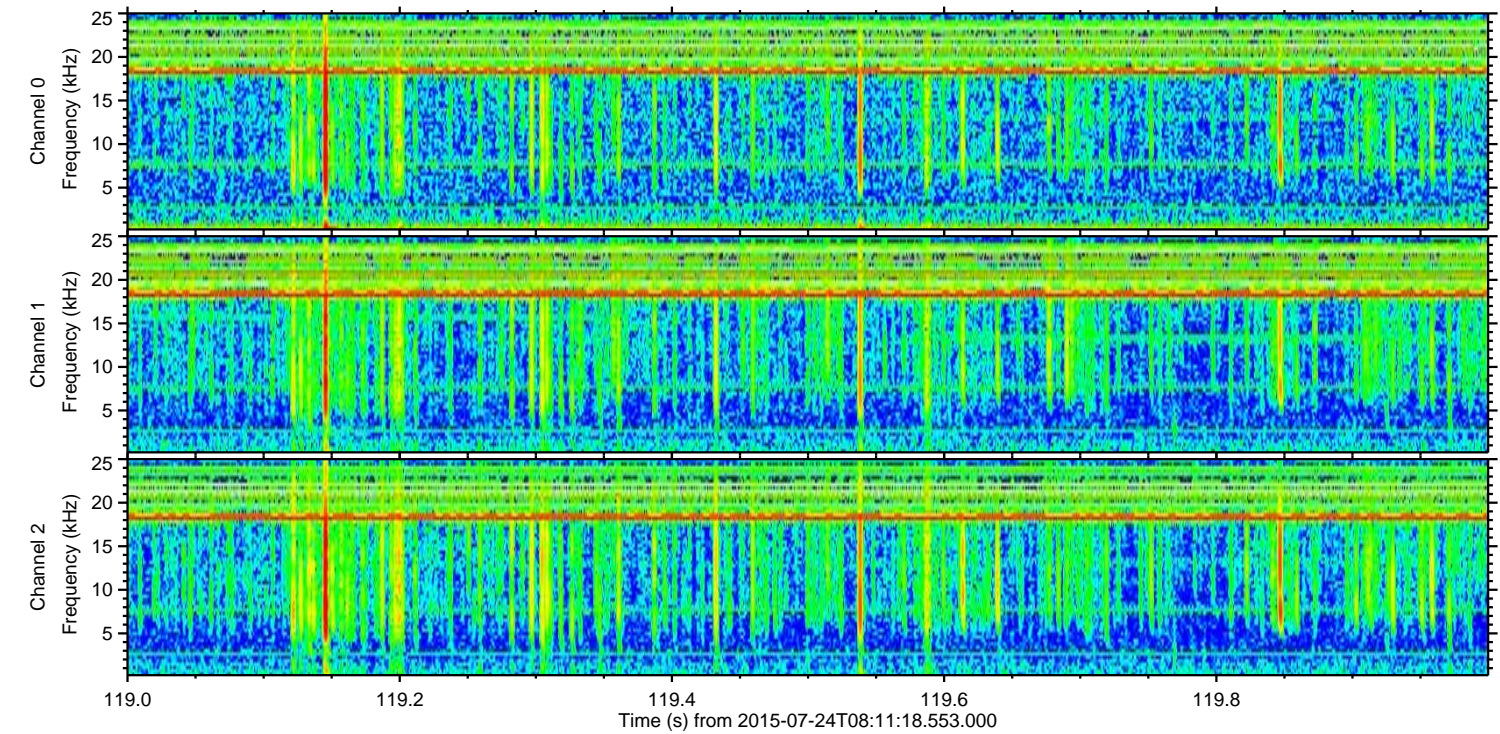
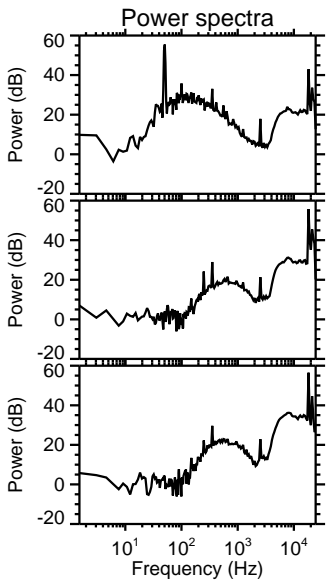
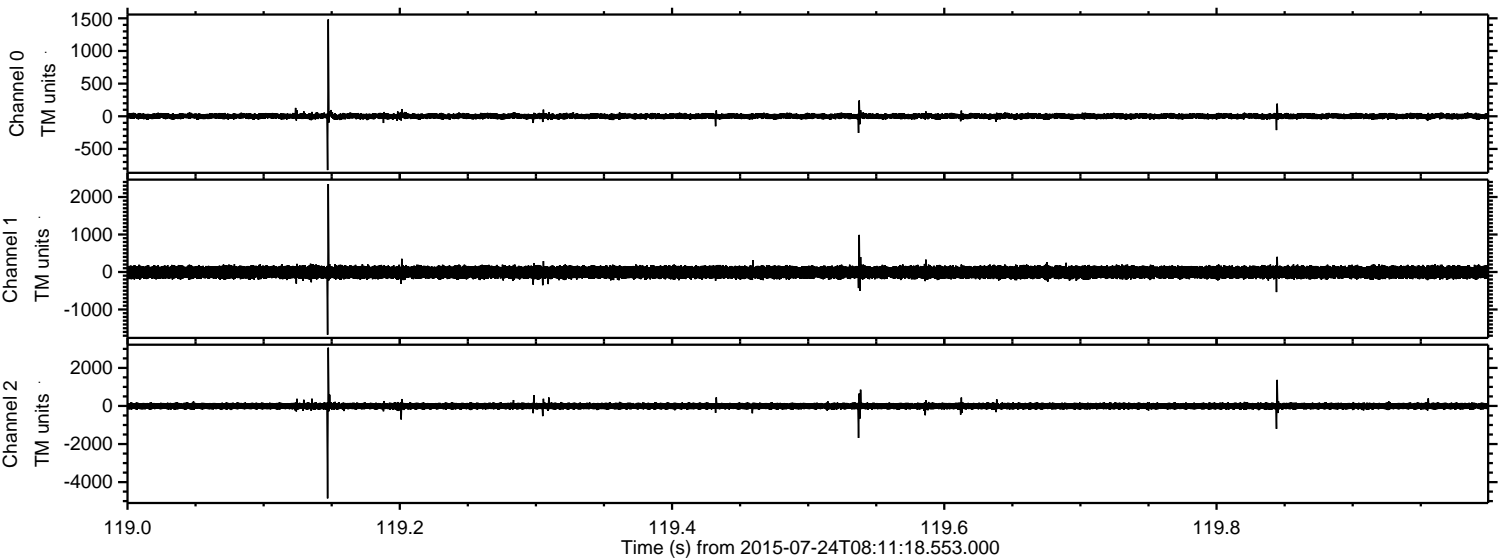
Channel 2
mn: -4855
mx: 5790
 μ : -7.0
 σ : 94.1

Processed Fri Jul 24 10:18:14 2015 by ELM ver.2012-10-06 from 001__elm20150724_081117__dat00.bin



ELMAVAN 3D WAVEFORMS (Measured data sampled at 50 kHz) 51000 packets of 144 samples from 2015-07-24T08:11:18.553.000. Part 120/147

Processed Fri Jul 24 10:18:15 2015 by ELM ver.2012-10-06 from 001__elm20150724_081117__dat00.bin

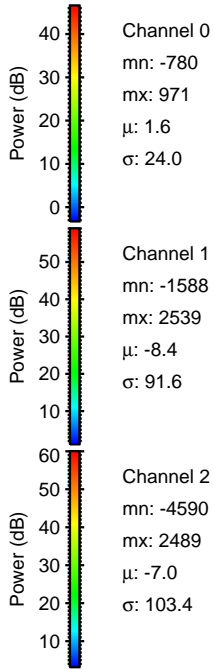
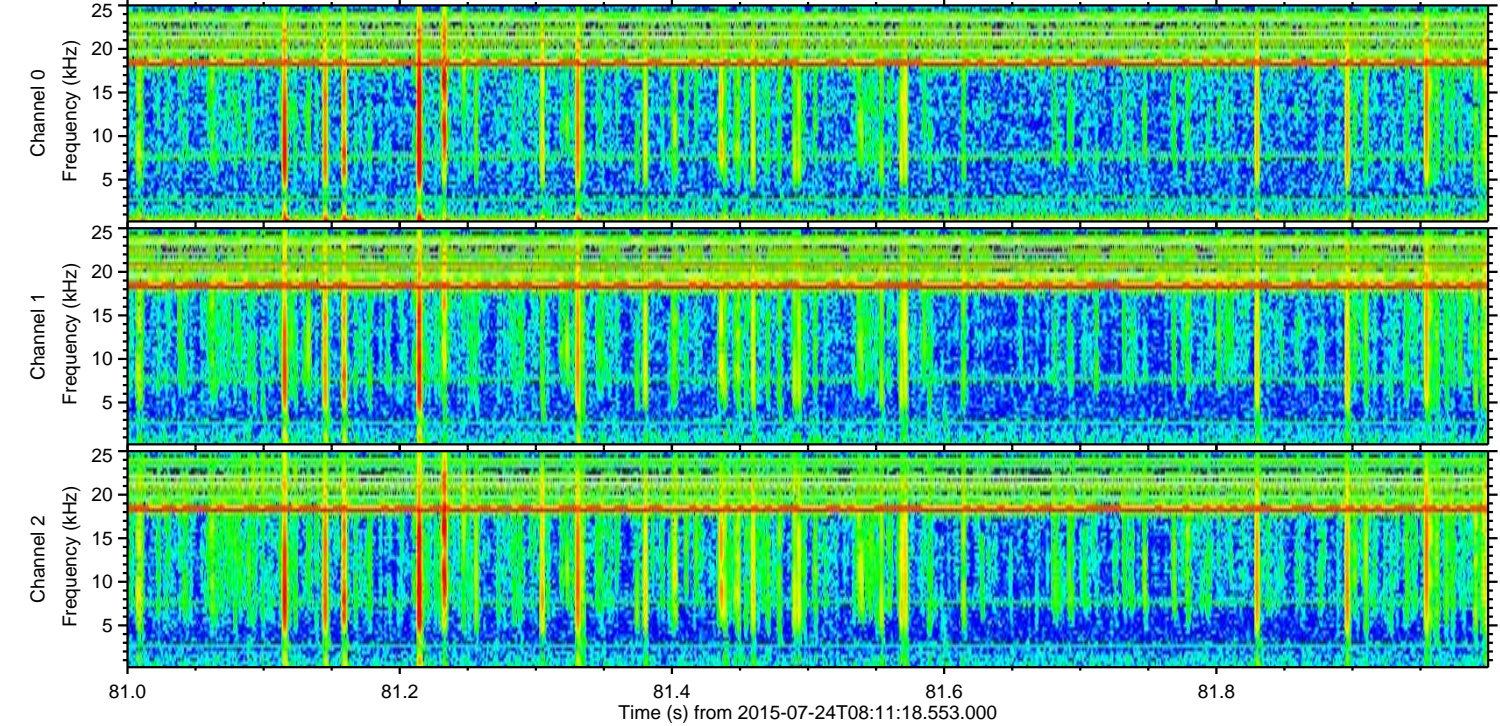
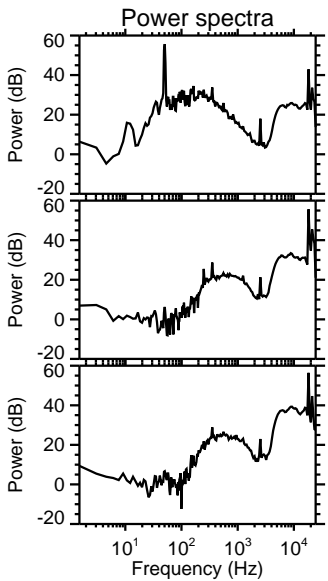
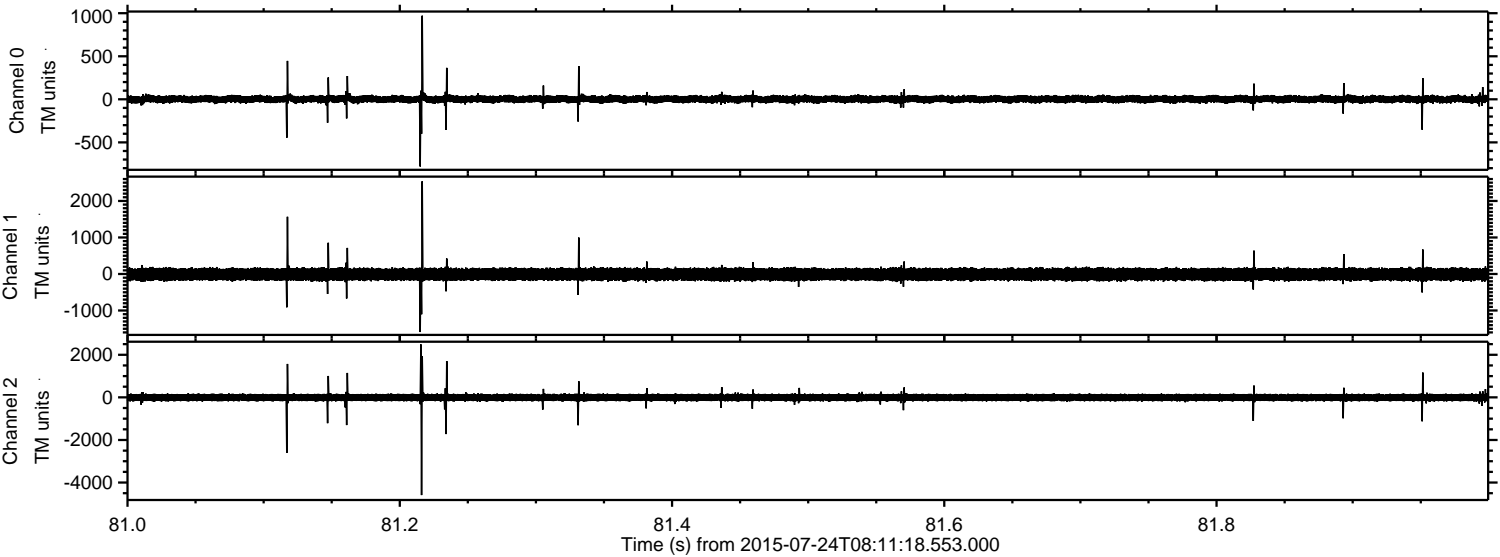


Channel 0
mn: -824
mx: 1484
 μ : 1.6
 σ : 23.5

Channel 1
mn: -1675
mx: 2346
 μ : -8.1
 σ : 91.7

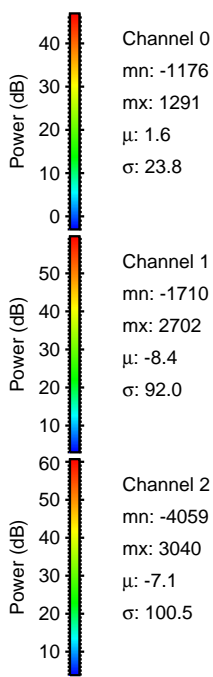
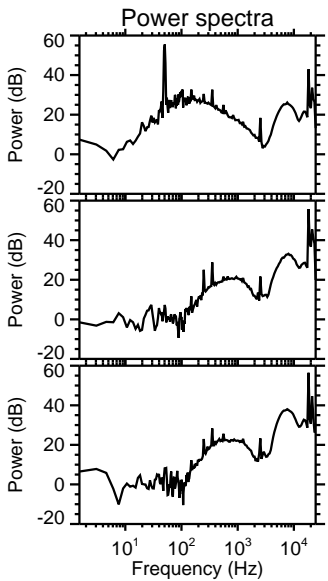
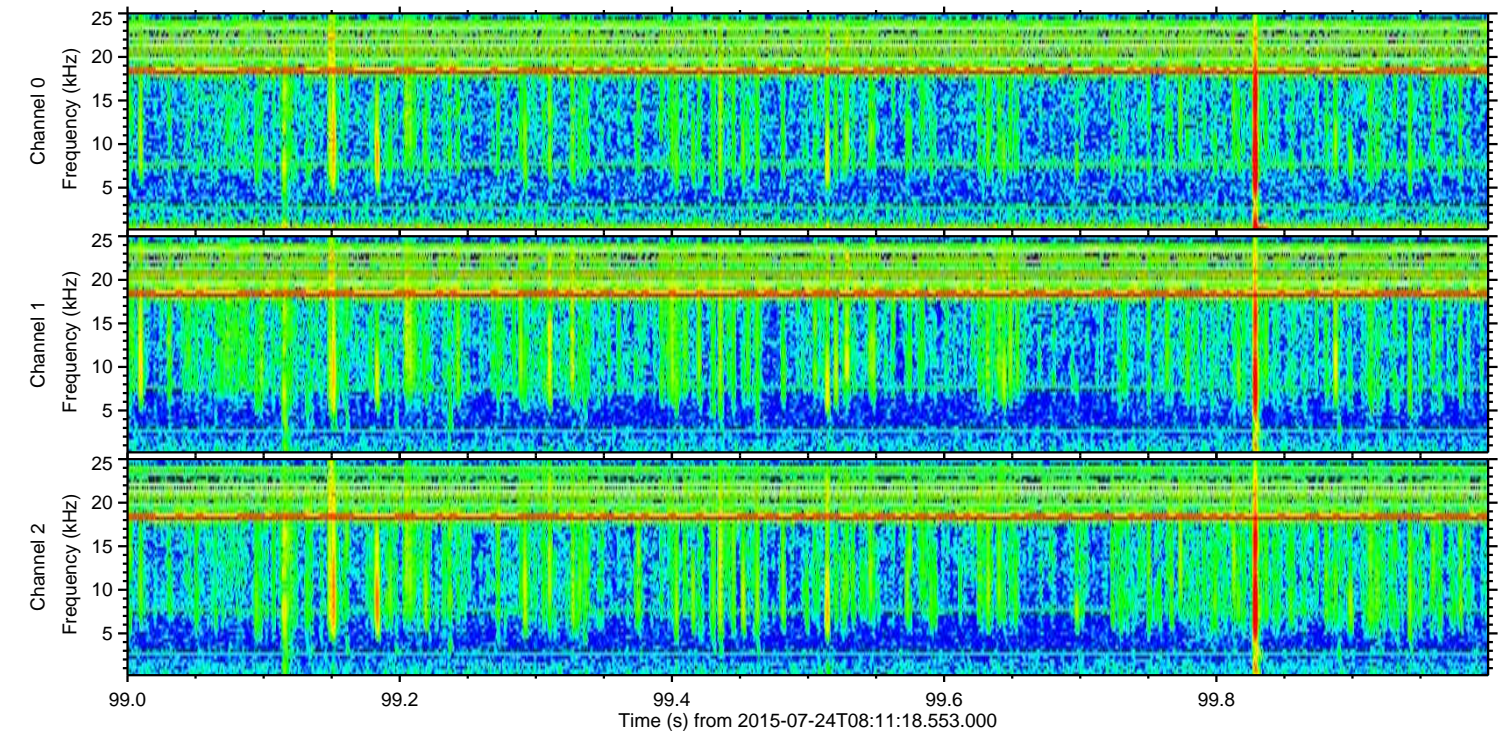
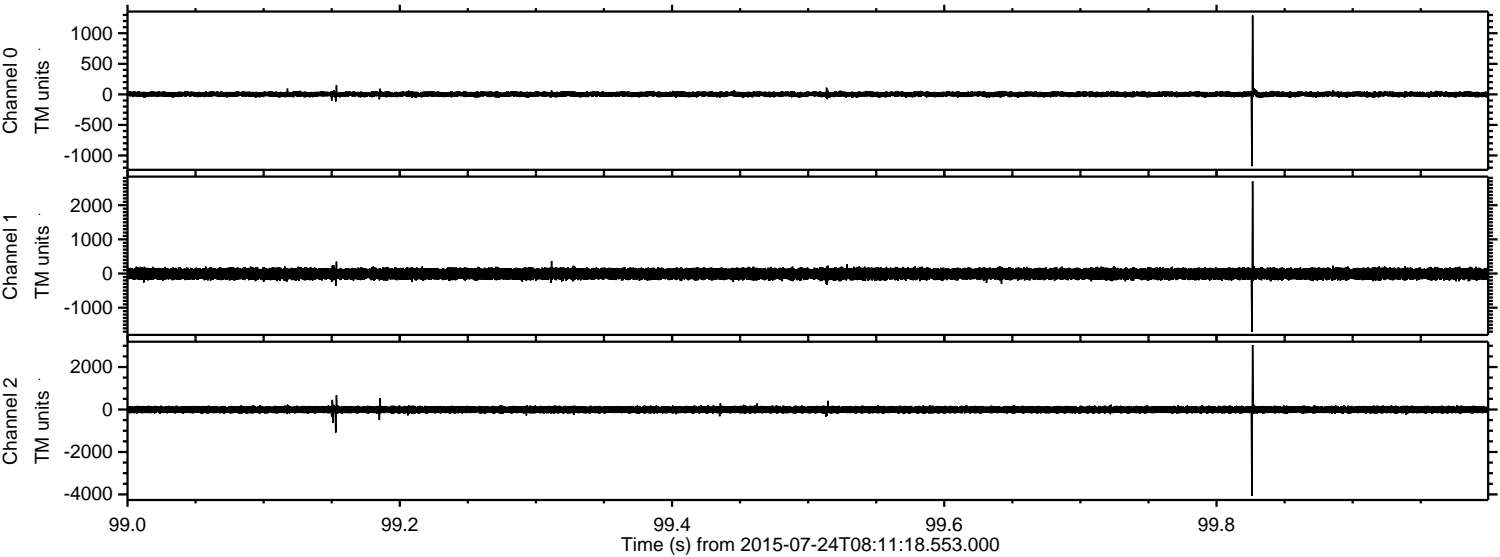
Channel 2
mn: -4855
mx: 3064
 μ : -6.8
 σ : 100.8

Processed Fri Jul 24 10:18:16 2015 by ELM ver.2012-10-06 from 001__elm20150724_081117__dat00.bin

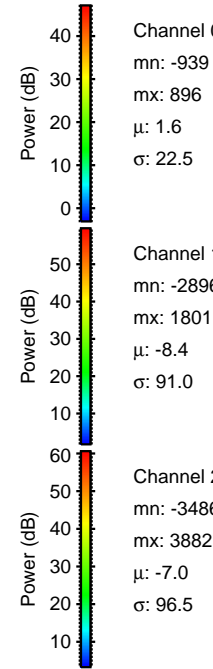
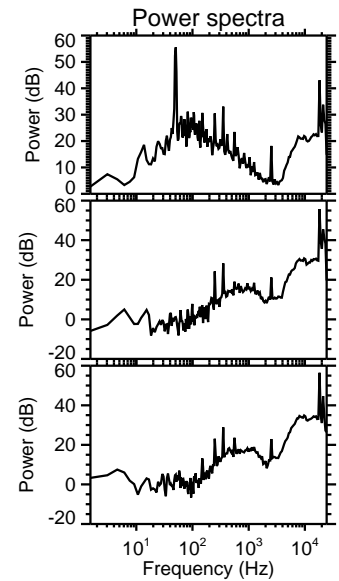
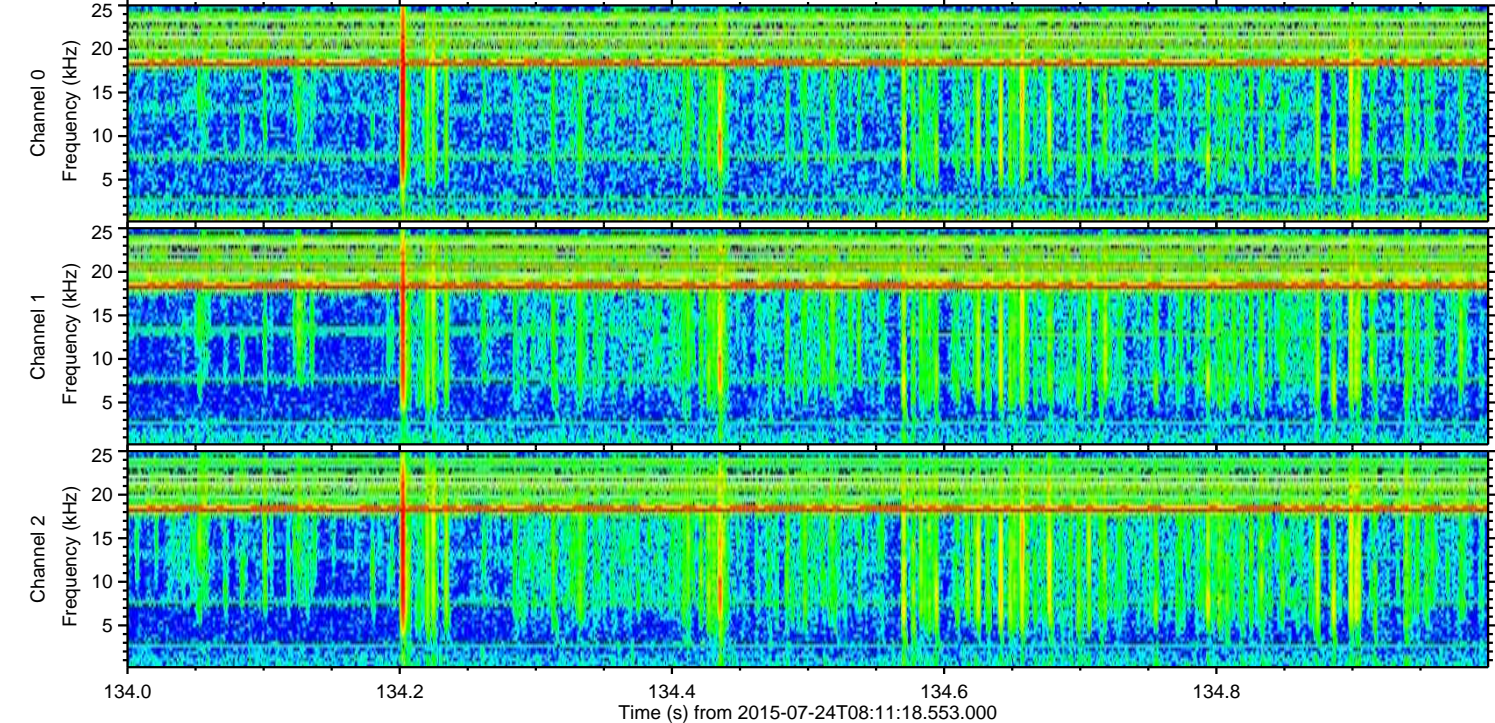
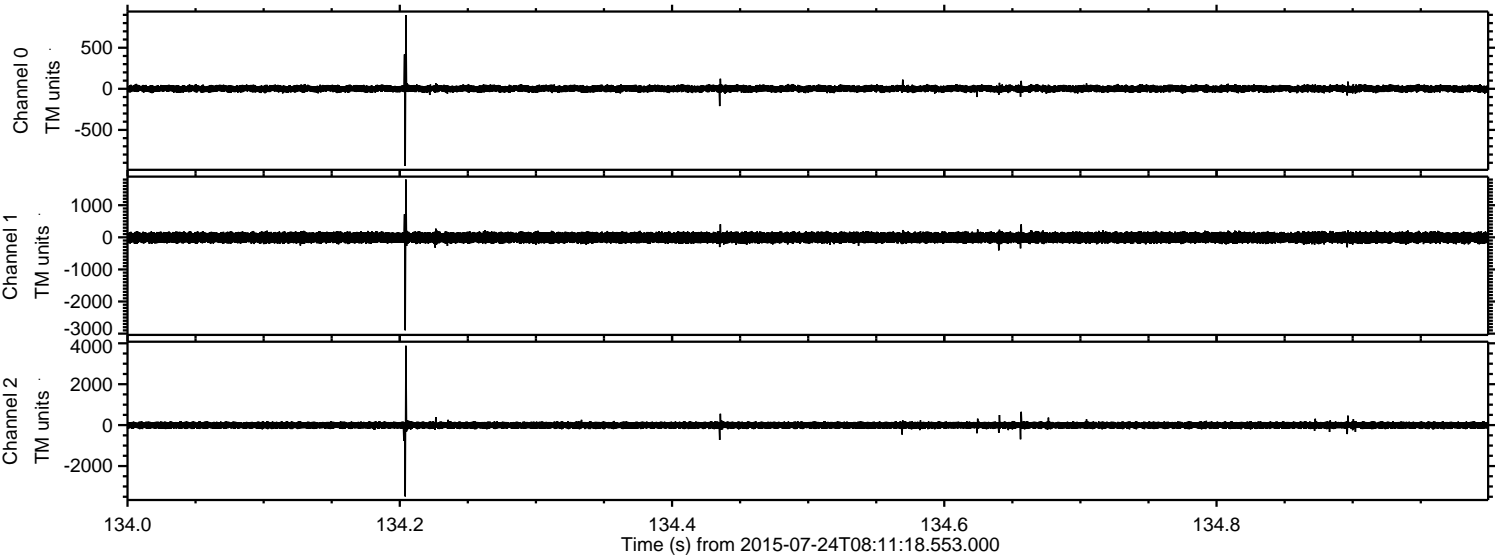


ELMAVAN 3D WAVEFORMS (Measured data sampled at 50 kHz) 51000 packets of 144 samples from 2015-07-24T08:11:18.553.000. Part 100/147

Processed Fri Jul 24 10:18:17 2015 by ELM ver.2012-10-06 from 001__elm20150724_081117__dat00.bin



Processed Fri Jul 24 10:18:18 2015 by ELM ver.2012-10-06 from 001__elm20150724_081117__dat00.bin



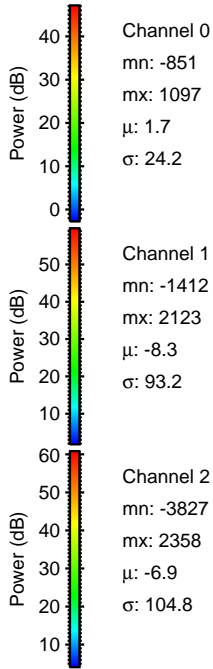
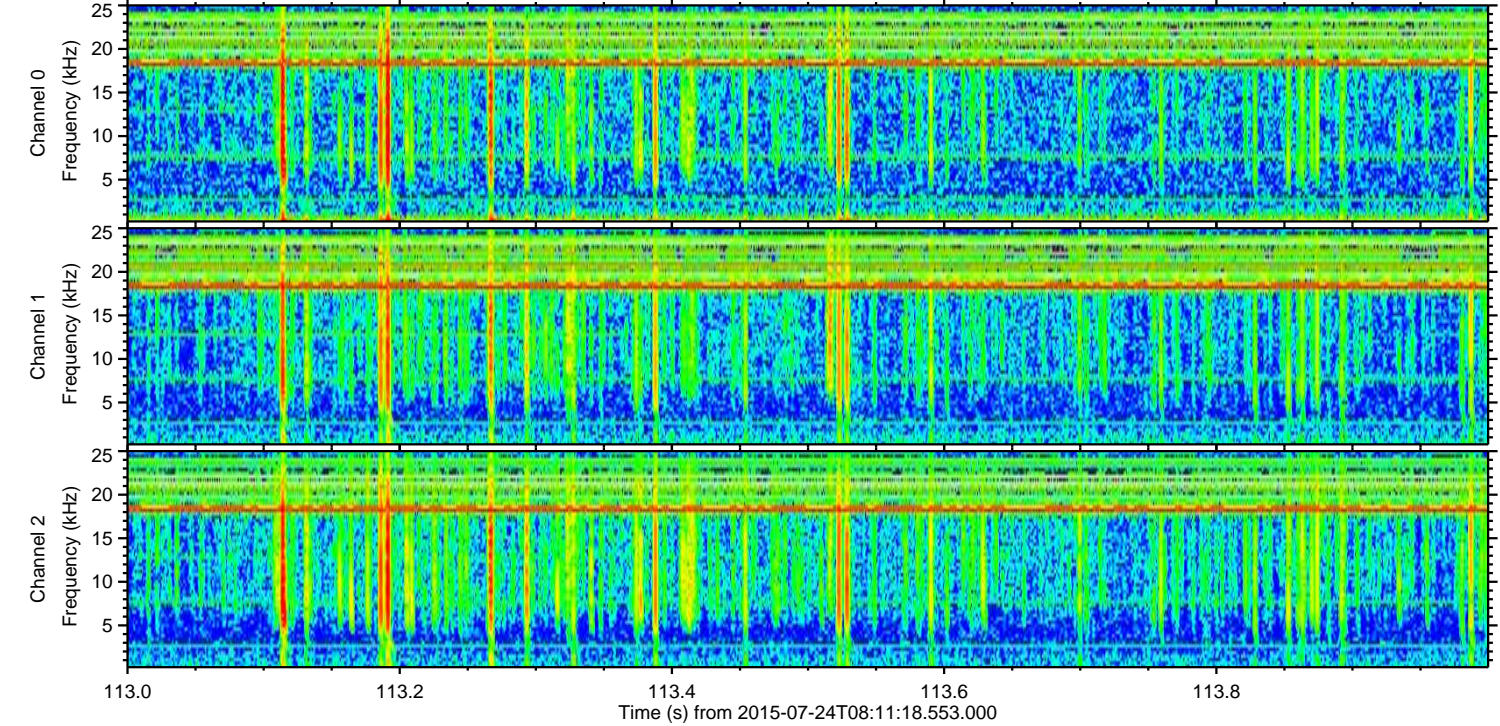
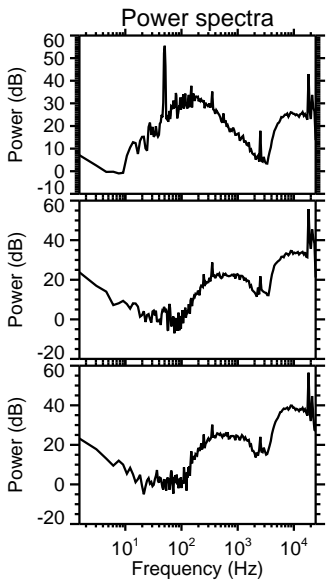
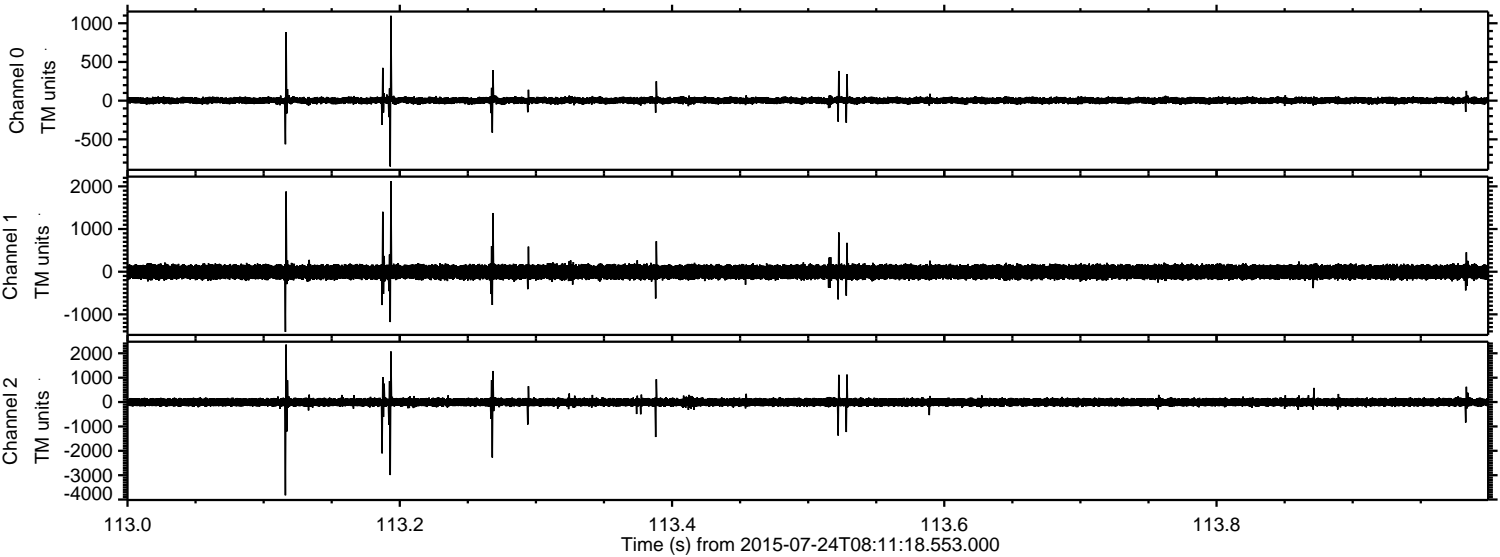
Channel 0
mn: -939
mx: 896
 μ : 1.6
 σ : 22.5

Channel 1
mn: -2896
mx: 1801
 μ : -8.4
 σ : 91.0

Channel 2
mn: -3486
mx: 3882
 μ : -7.0
 σ : 96.5

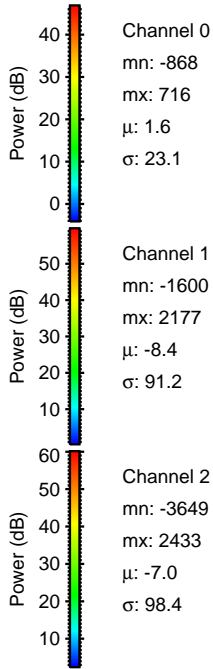
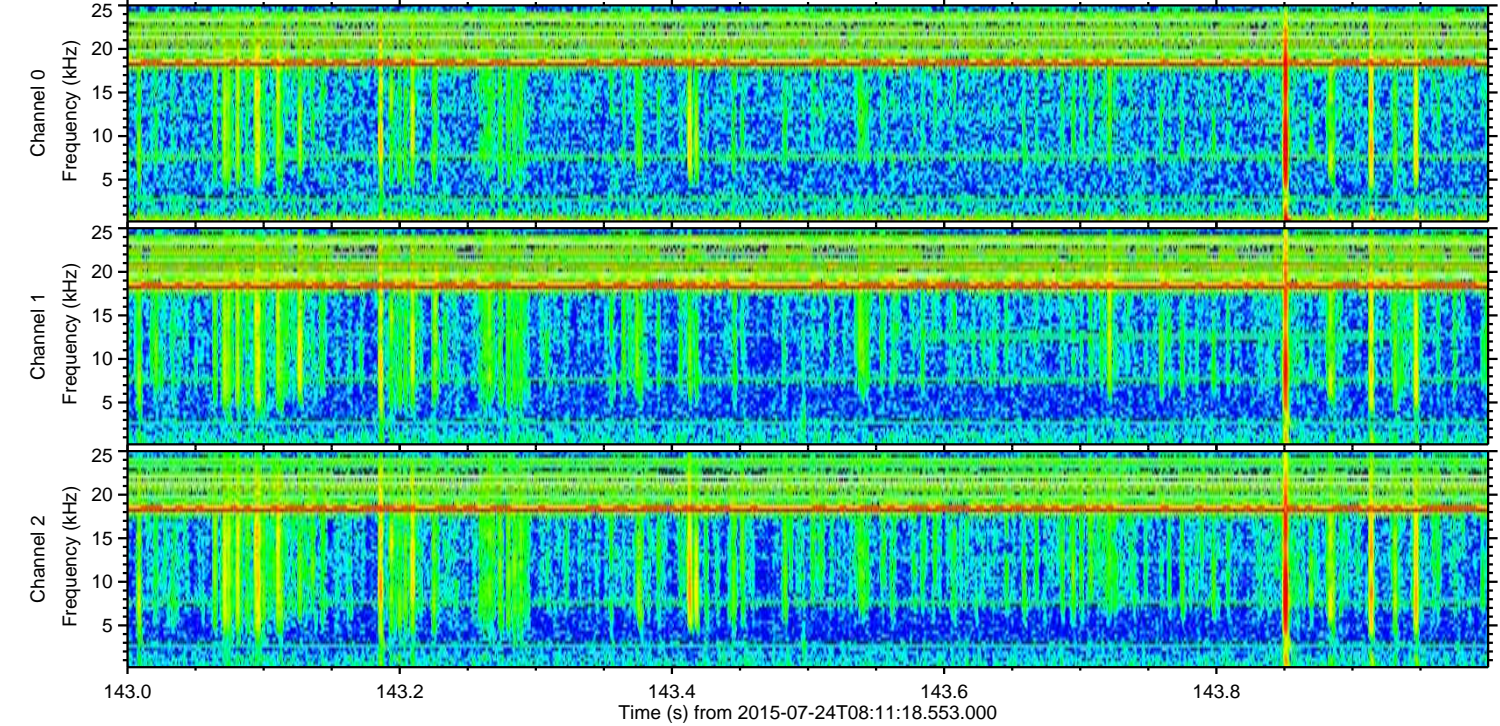
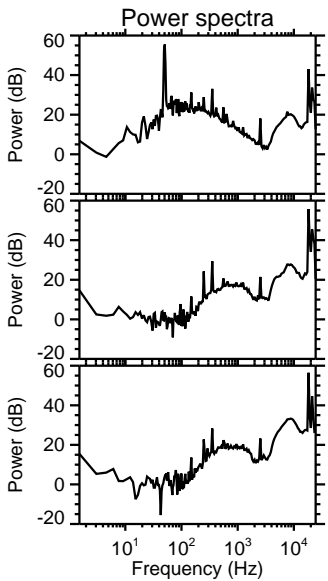
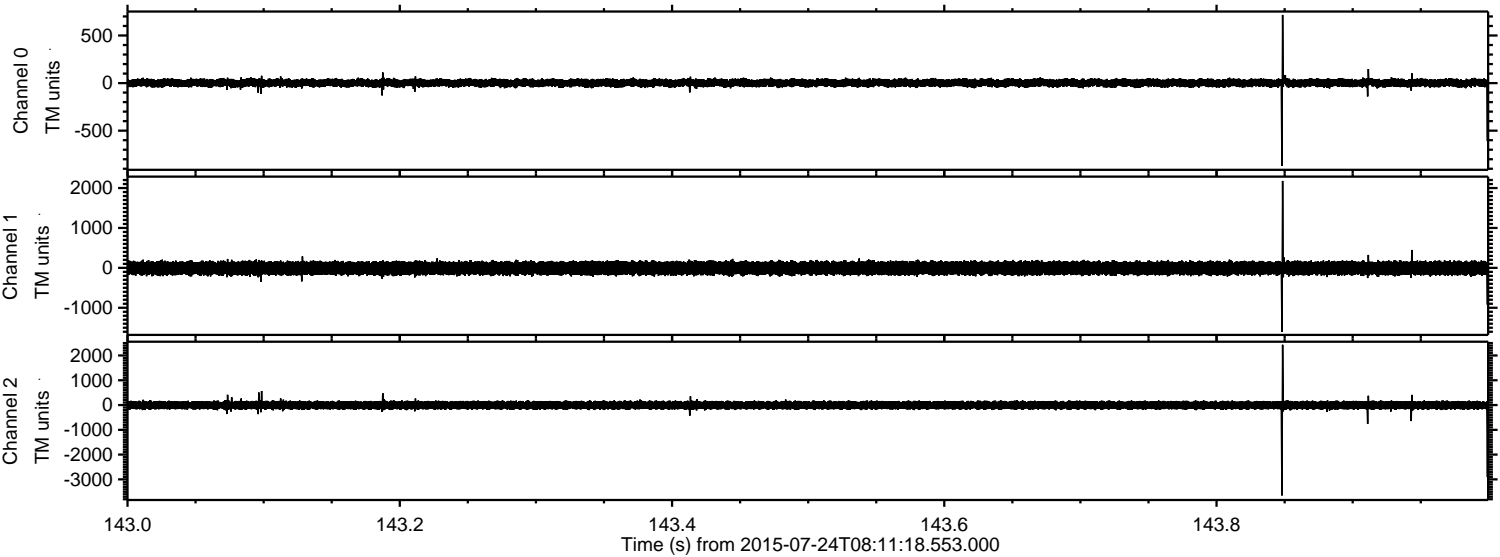
ELMAVAN 3D WAVEFORMS (Measured data sampled at 50 kHz) 51000 packets of 144 samples from 2015-07-24T08:11:18.553.000. Part 114/147

Processed Fri Jul 24 10:18:19 2015 by ELM ver.2012-10-06 from 001__elm20150724_081117__dat00.bin



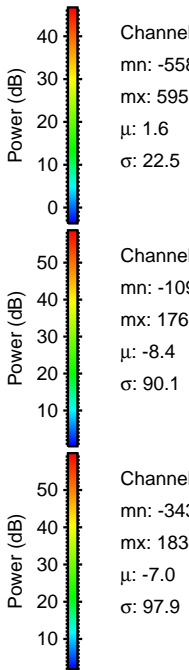
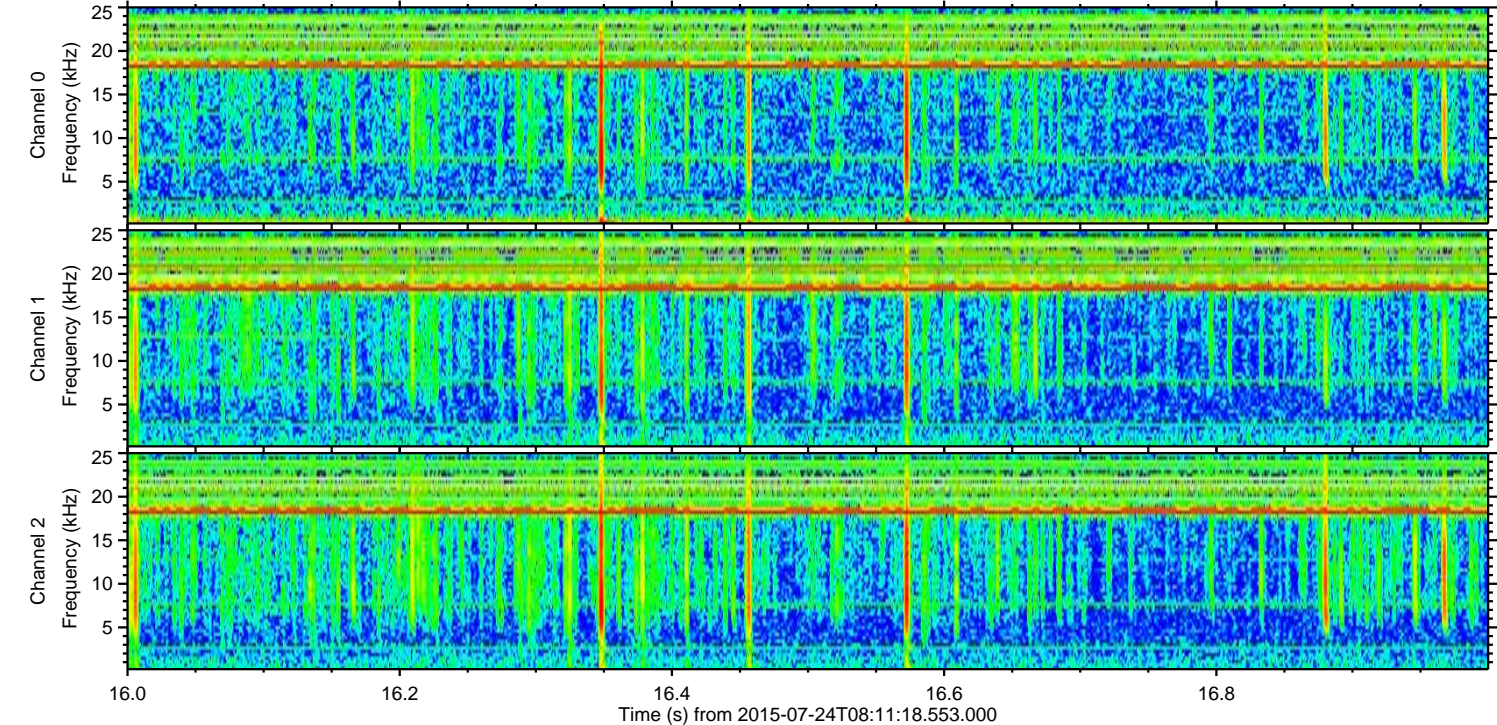
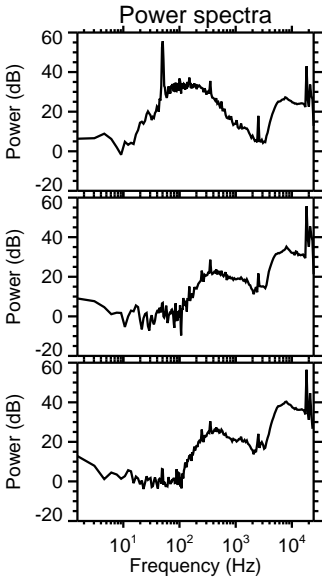
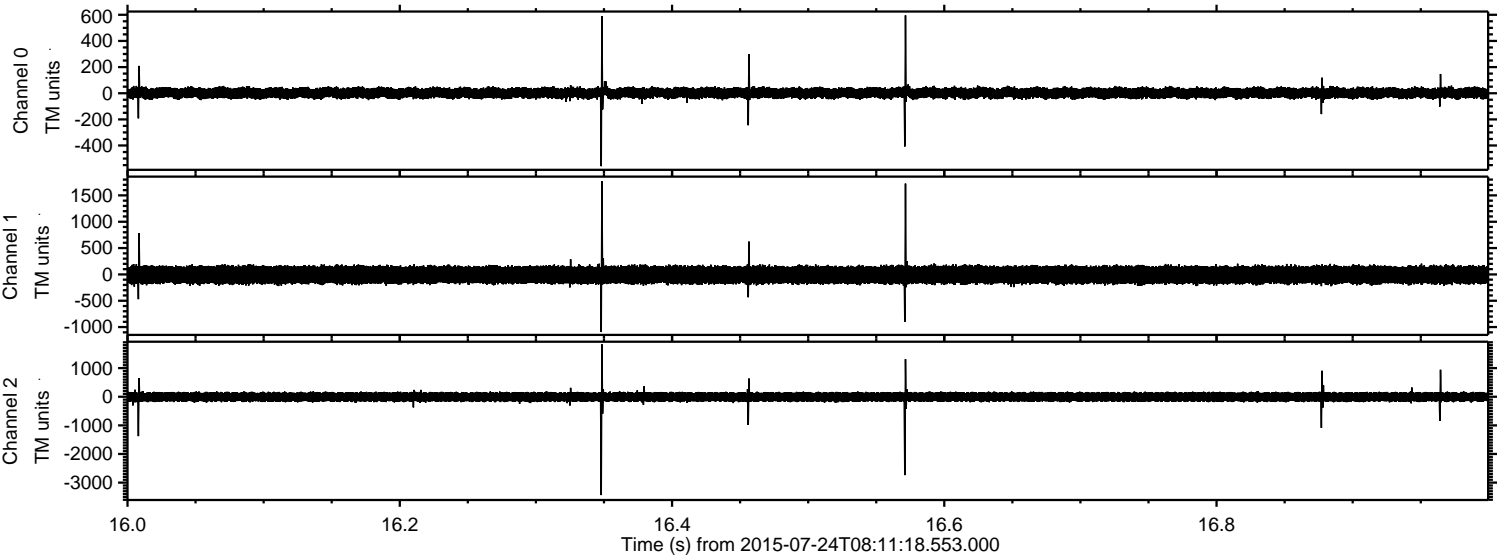
ELMAVAN 3D WAVEFORMS (Measured data sampled at 50 kHz) 51000 packets of 144 samples from 2015-07-24T08:11:18.553.000. Part 144/147

Processed Fri Jul 24 10:18:20 2015 by ELM ver.2012-10-06 from 001__elm20150724_081117__dat00.bin



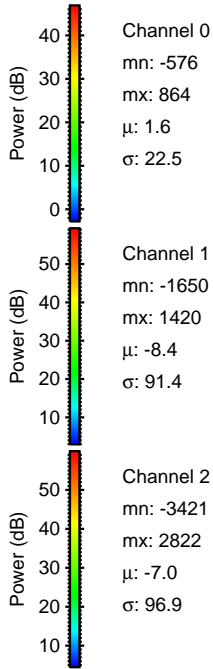
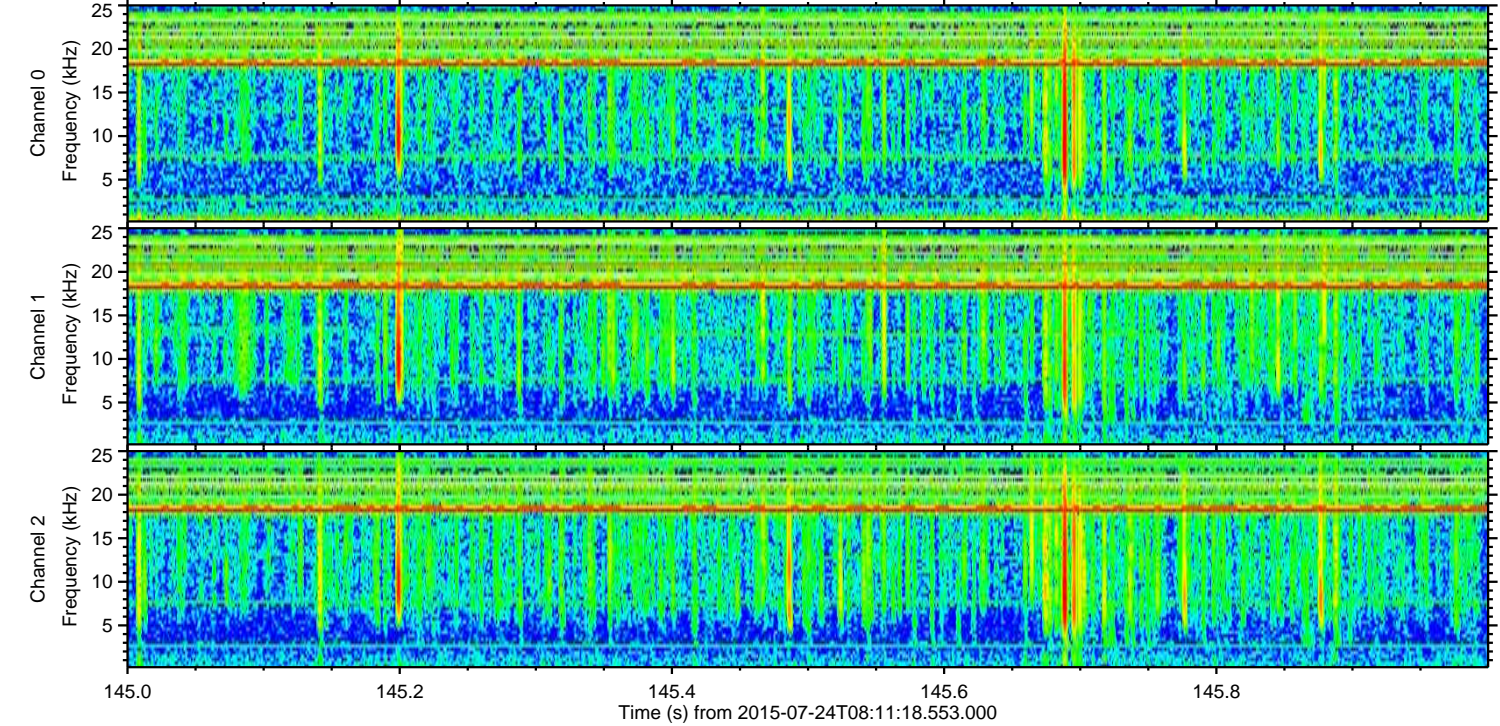
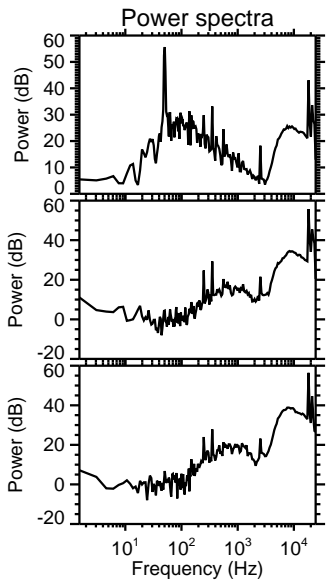
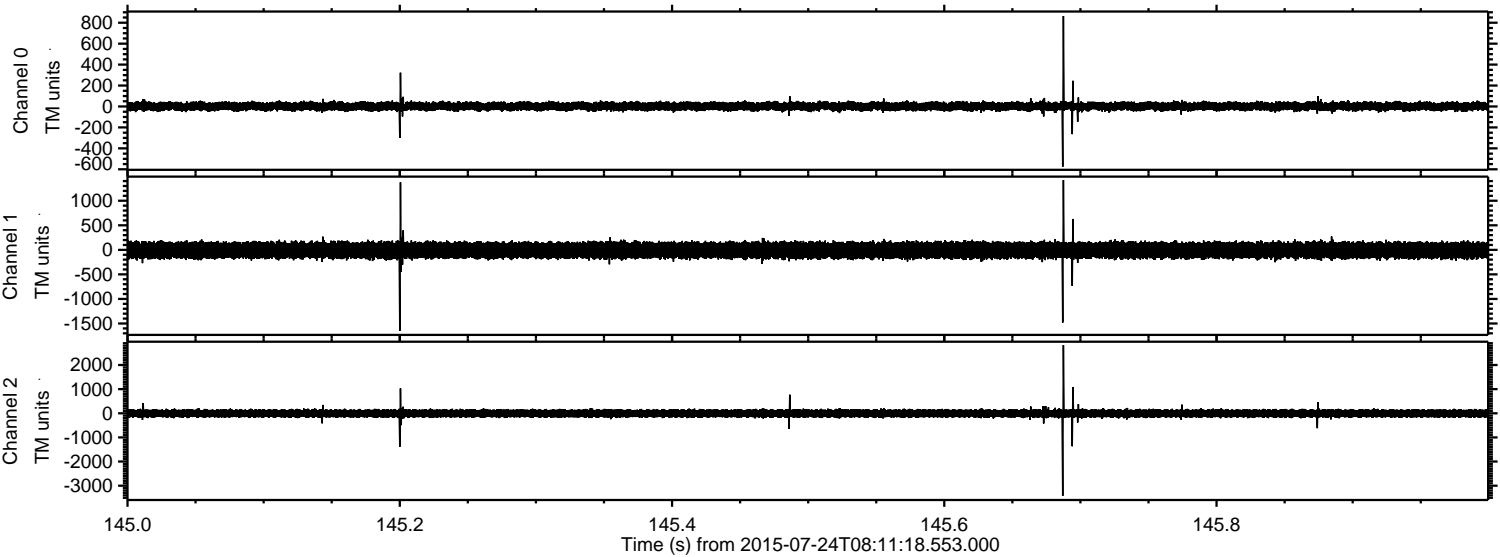
ELMAVAN 3D WAVEFORMS (Measured data sampled at 50 kHz) 51000 packets of 144 samples from 2015-07-24T08:11:18.553.000. Part 17/147

Processed Fri Jul 24 10:18:21 2015 by ELM ver.2012-10-06 from 001__elm20150724_081117__dat00.bin

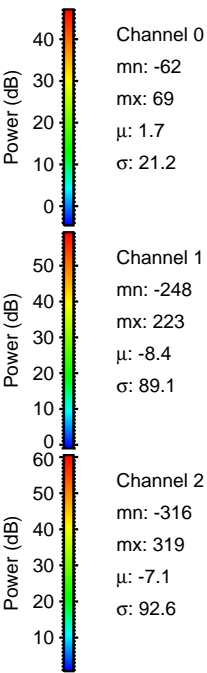
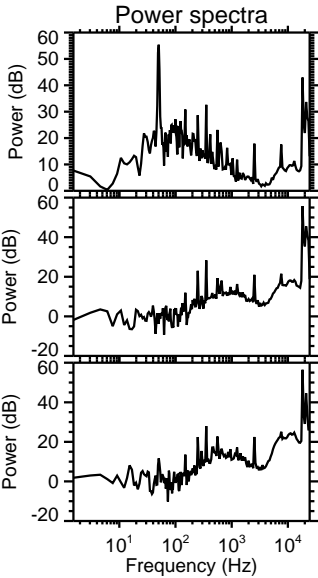
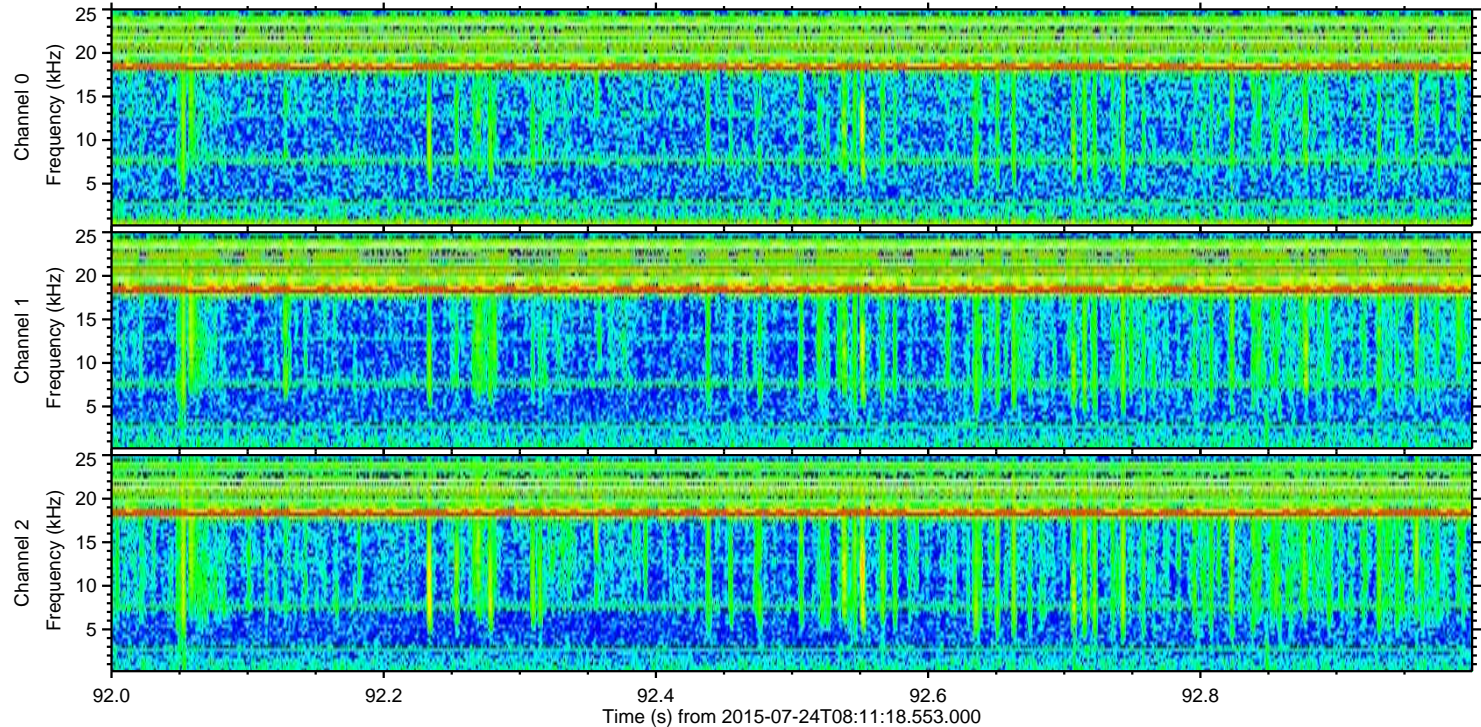
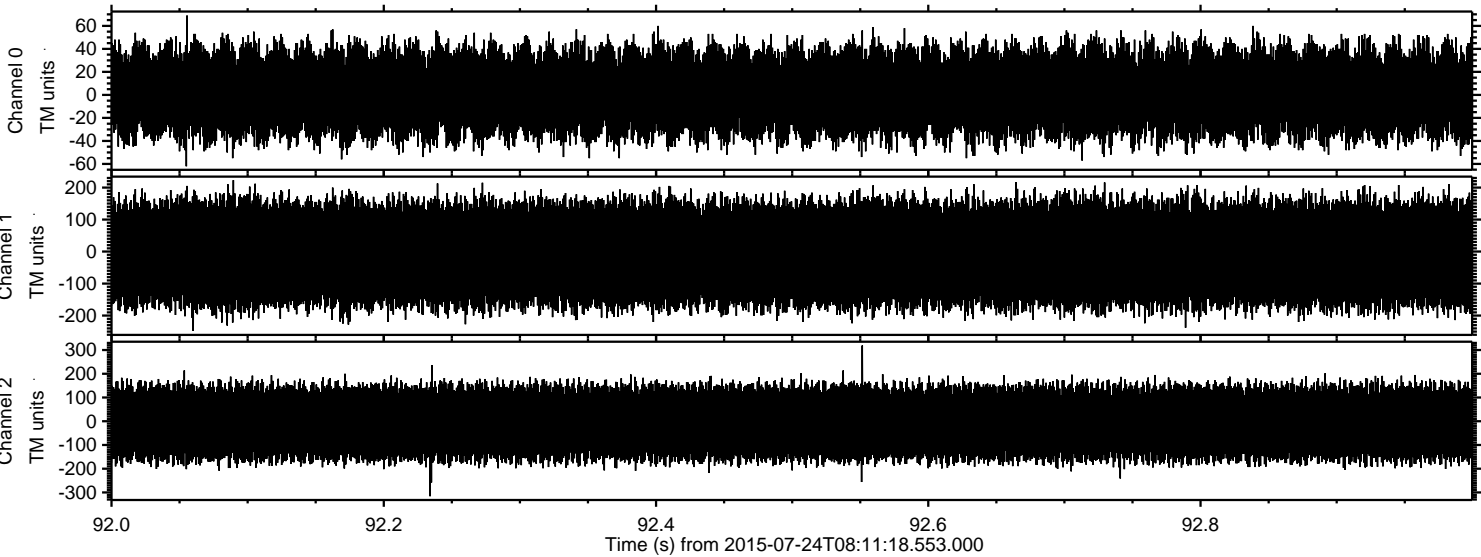


ELMAVAN 3D WAVEFORMS (Measured data sampled at 50 kHz) 51000 packets of 144 samples from 2015-07-24T08:11:18.553.000. Part 146/147

Processed Fri Jul 24 10:18:22 2015 by ELM ver.2012-10-06 from 001__elm20150724_081117__dat00.bin



Processed Fri Jul 24 10:18:23 2015 by ELM ver.2012-10-06 from 001__elm20150724_081117__dat00.bin



Power spectra

Channel 0
mn: -62
mx: 69
 μ : 1.7
 σ : 21.2

Channel 1
mn: -248
mx: 223
 μ : -8.4
 σ : 89.1

Channel 2
mn: -316
mx: 319
 μ : -7.1
 σ : 92.6