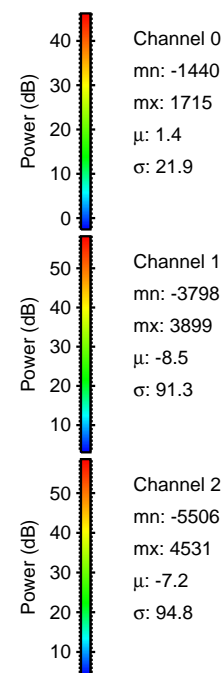
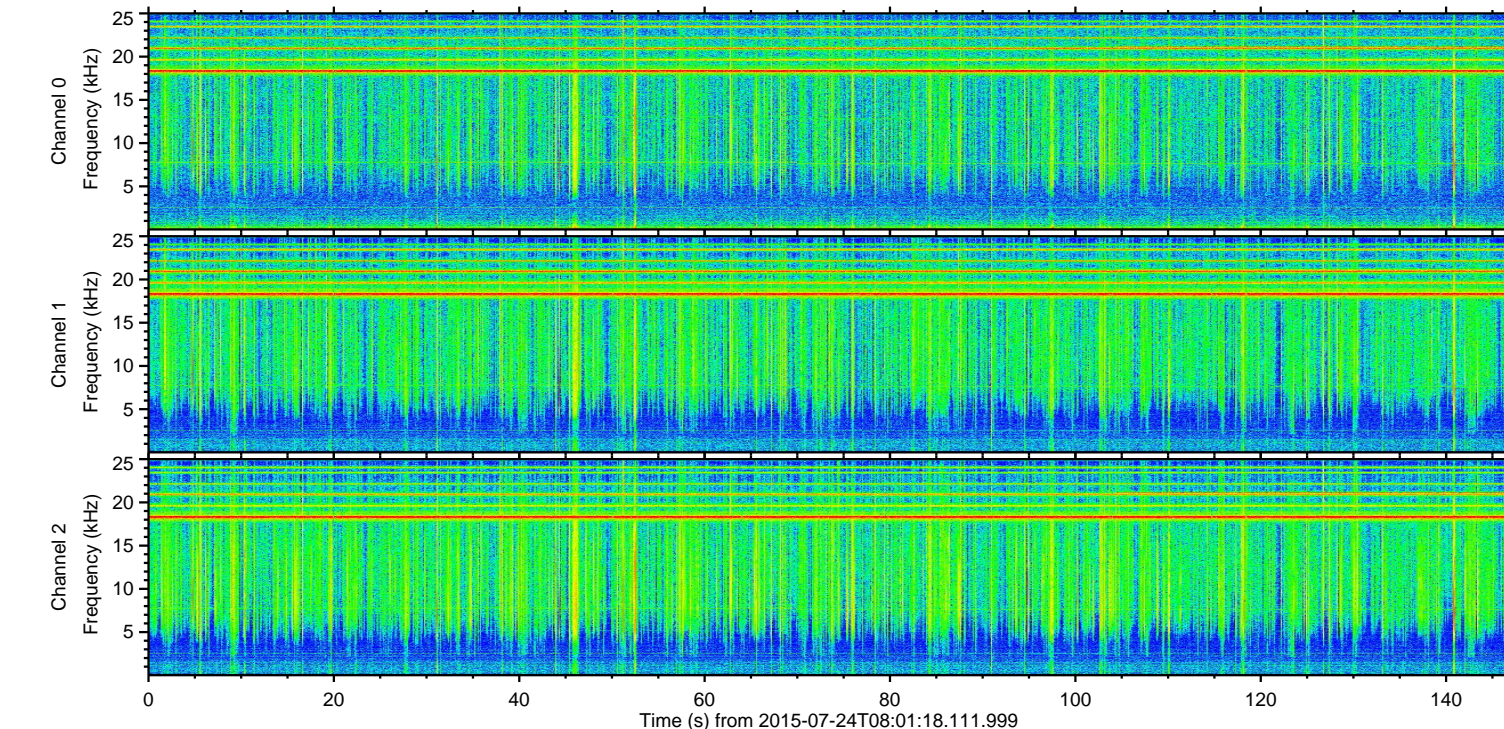
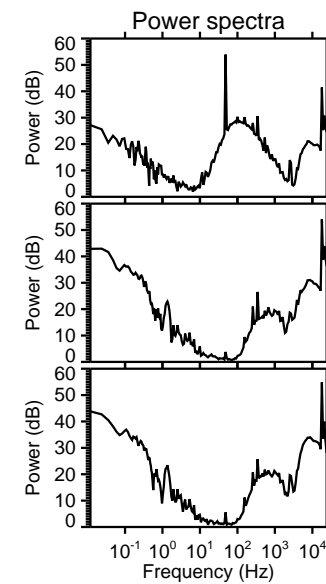
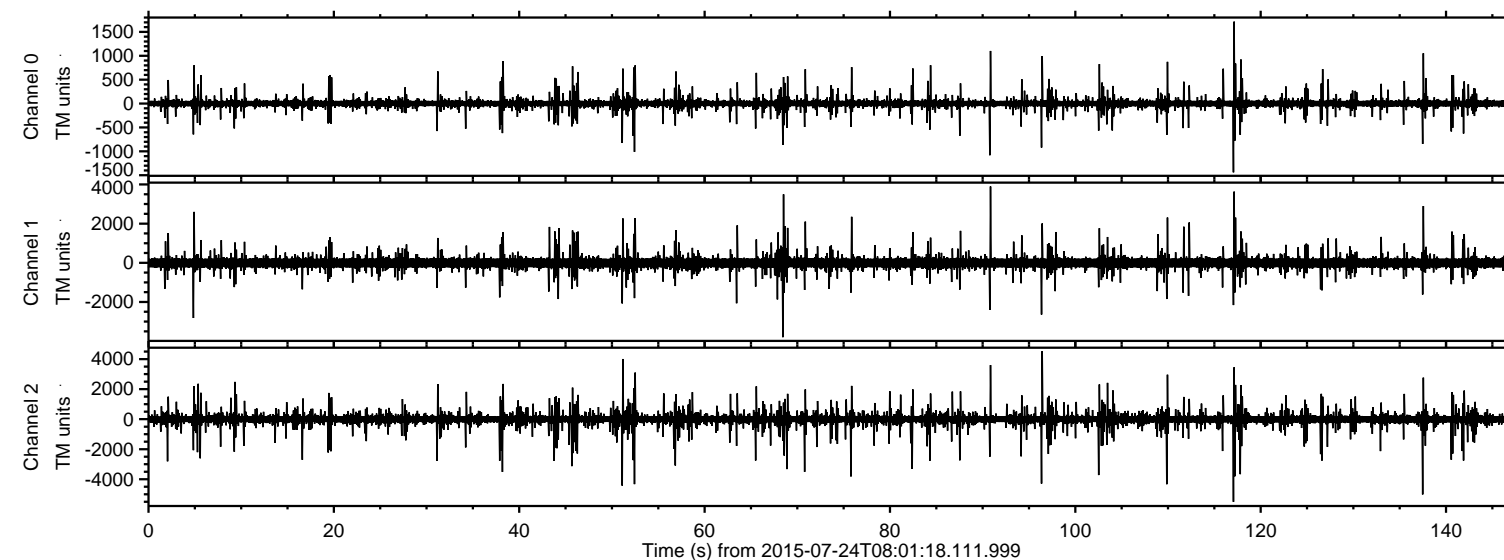


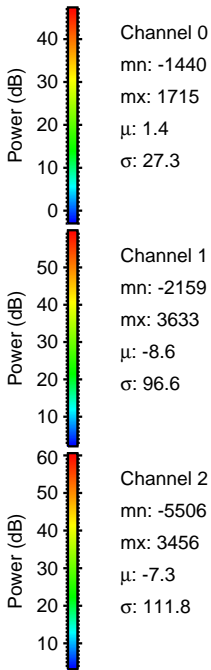
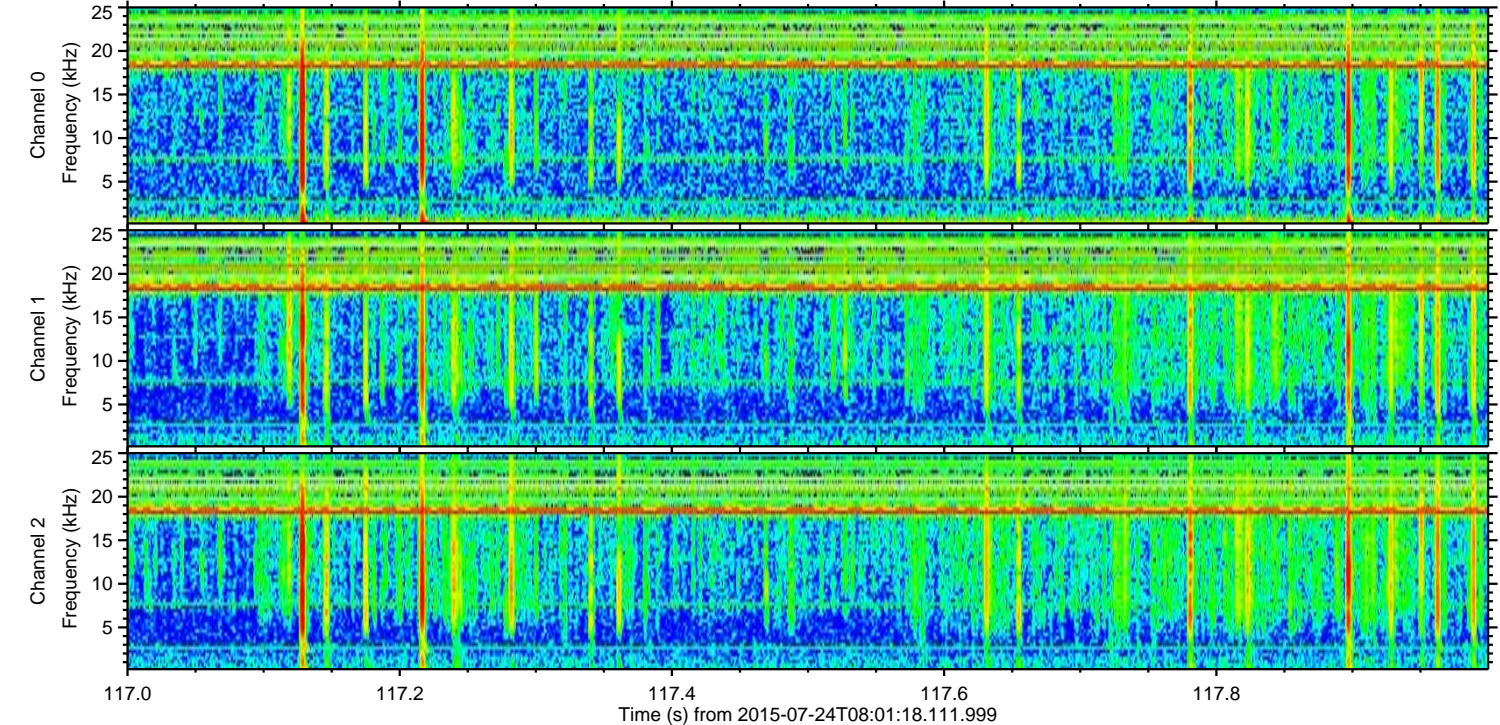
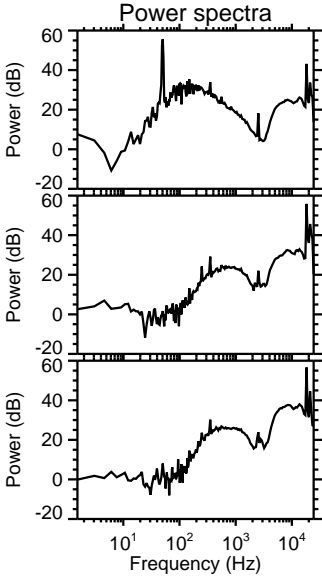
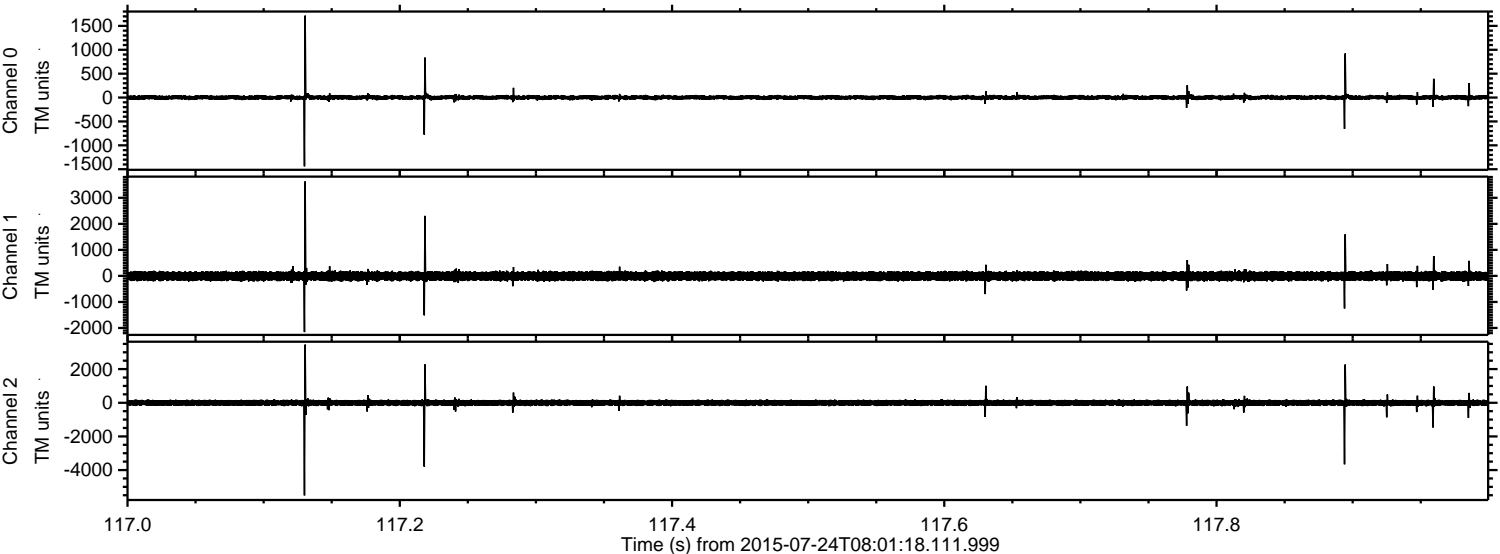
ELMAVAN 3D WAVEFORMS (Measured data sampled at 50 kHz) 51000 packets of 144 samples from 2015-07-24T08:01:18.111.999.

Processed Fri Jul 24 10:07:29 2015 by ELM ver.2012-10-06 from 001__elm20150724_080117__dat00.bin



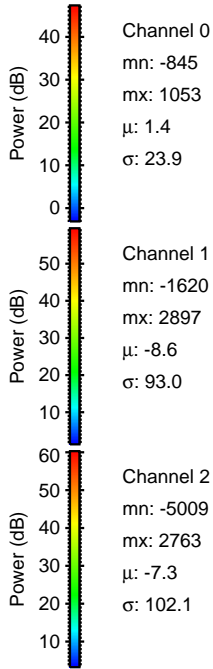
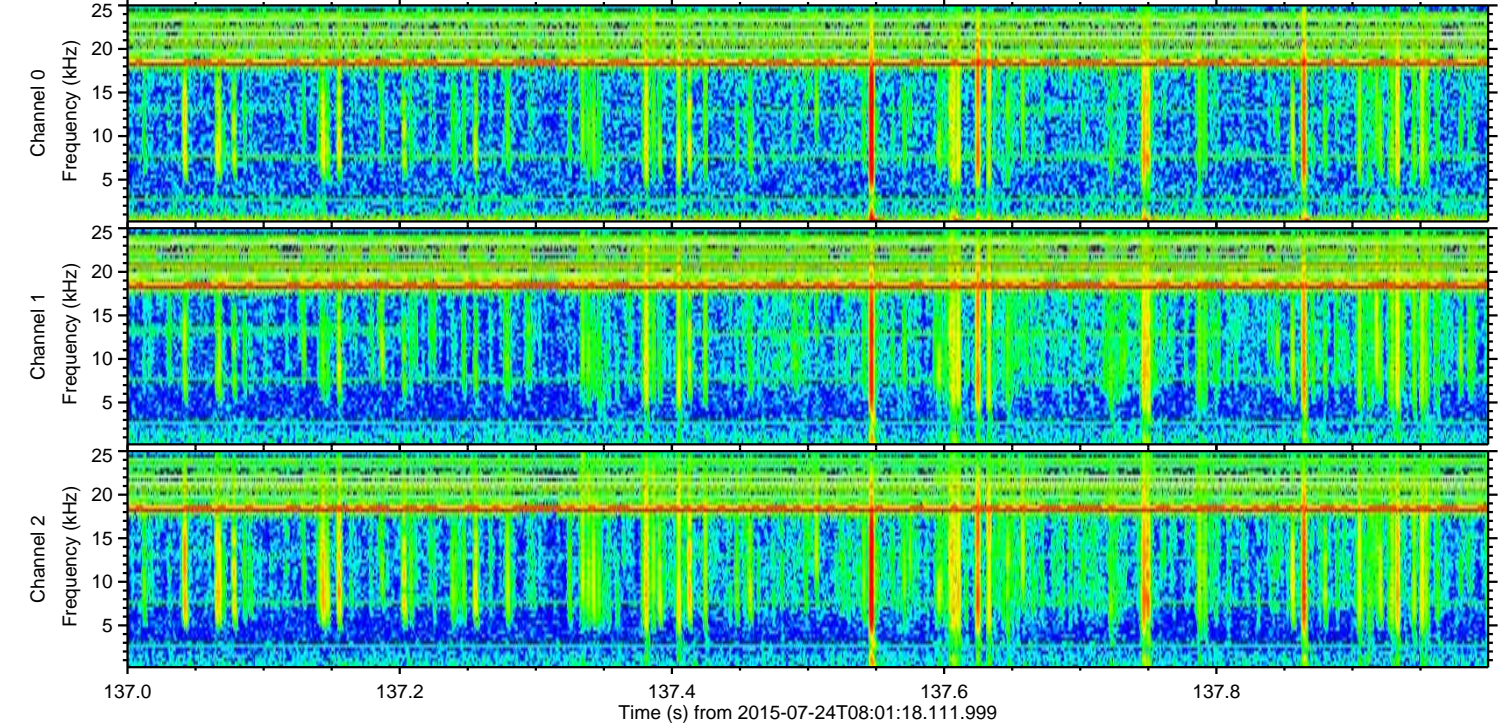
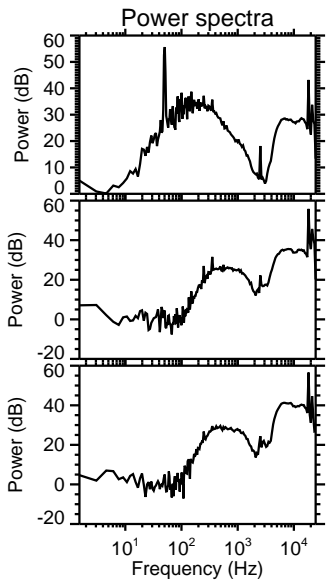
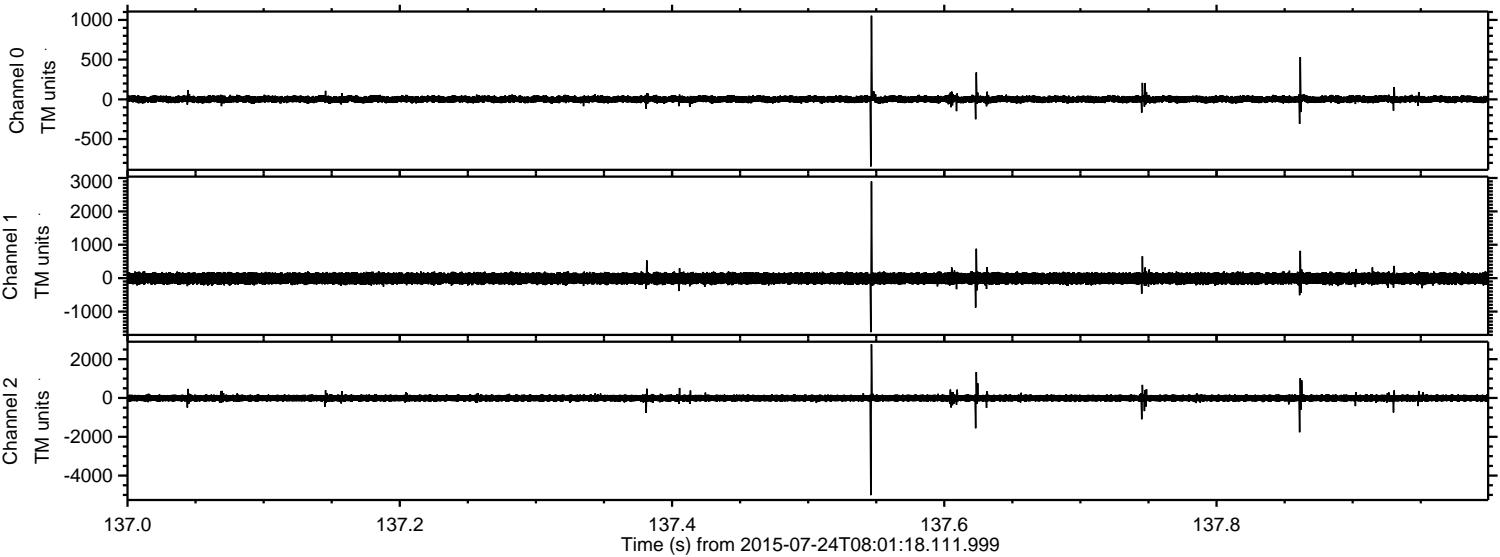
ELMAVAN 3D WAVEFORMS (Measured data sampled at 50 kHz) 51000 packets of 144 samples from 2015-07-24T08:01:18.111.999. Part 118/147

Processed Fri Jul 24 10:07:44 2015 by ELM ver.2012-10-06 from 001__elm20150724_080117__dat00.bin



ELMAVAN 3D WAVEFORMS (Measured data sampled at 50 kHz) 51000 packets of 144 samples from 2015-07-24T08:01:18.111.999. Part 138/147

Processed Fri Jul 24 10:07:45 2015 by ELM ver.2012-10-06 from 001__elm20150724_080117__dat00.bin

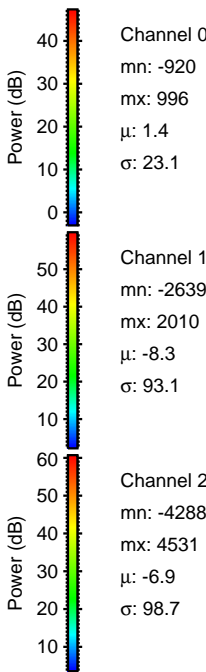
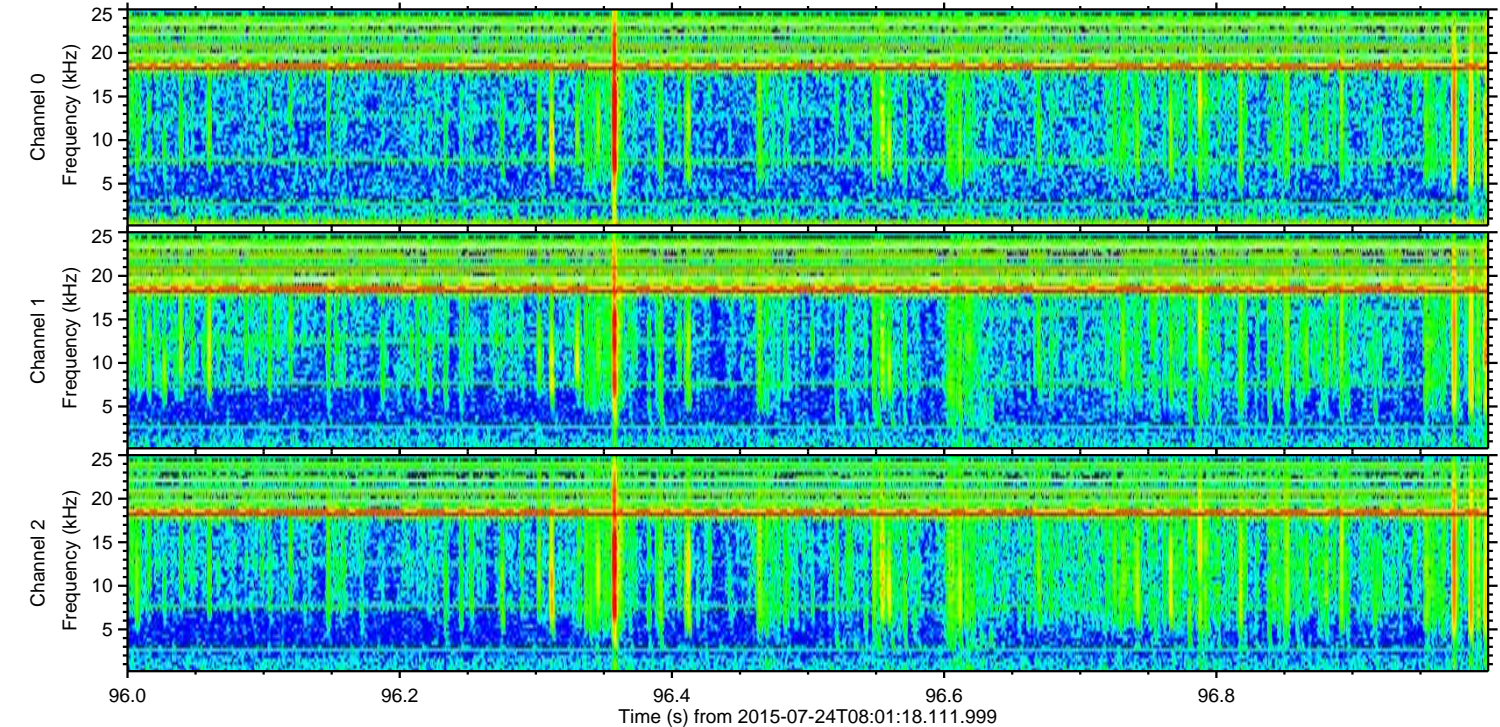
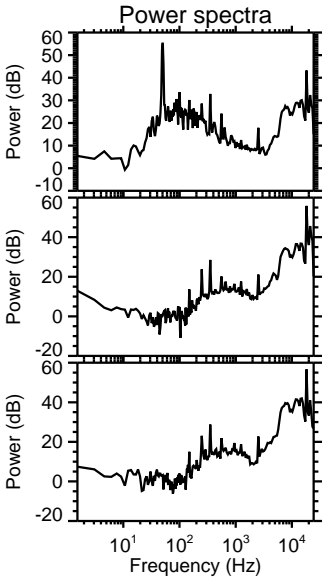
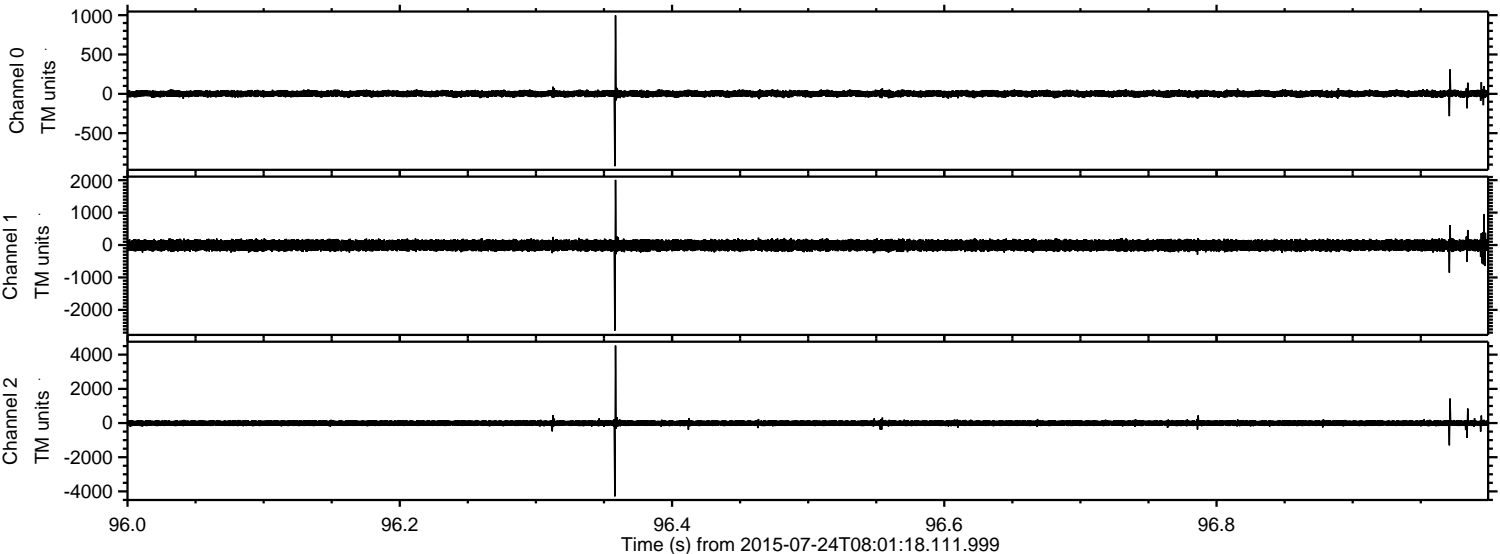


Channel 0
mn: -845
mx: 1053
 μ : 1.4
 σ : 23.9

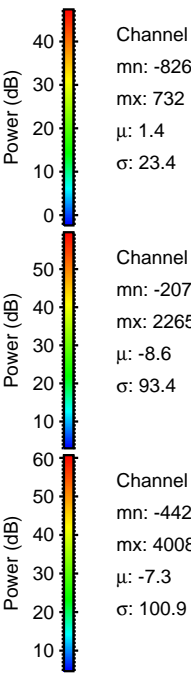
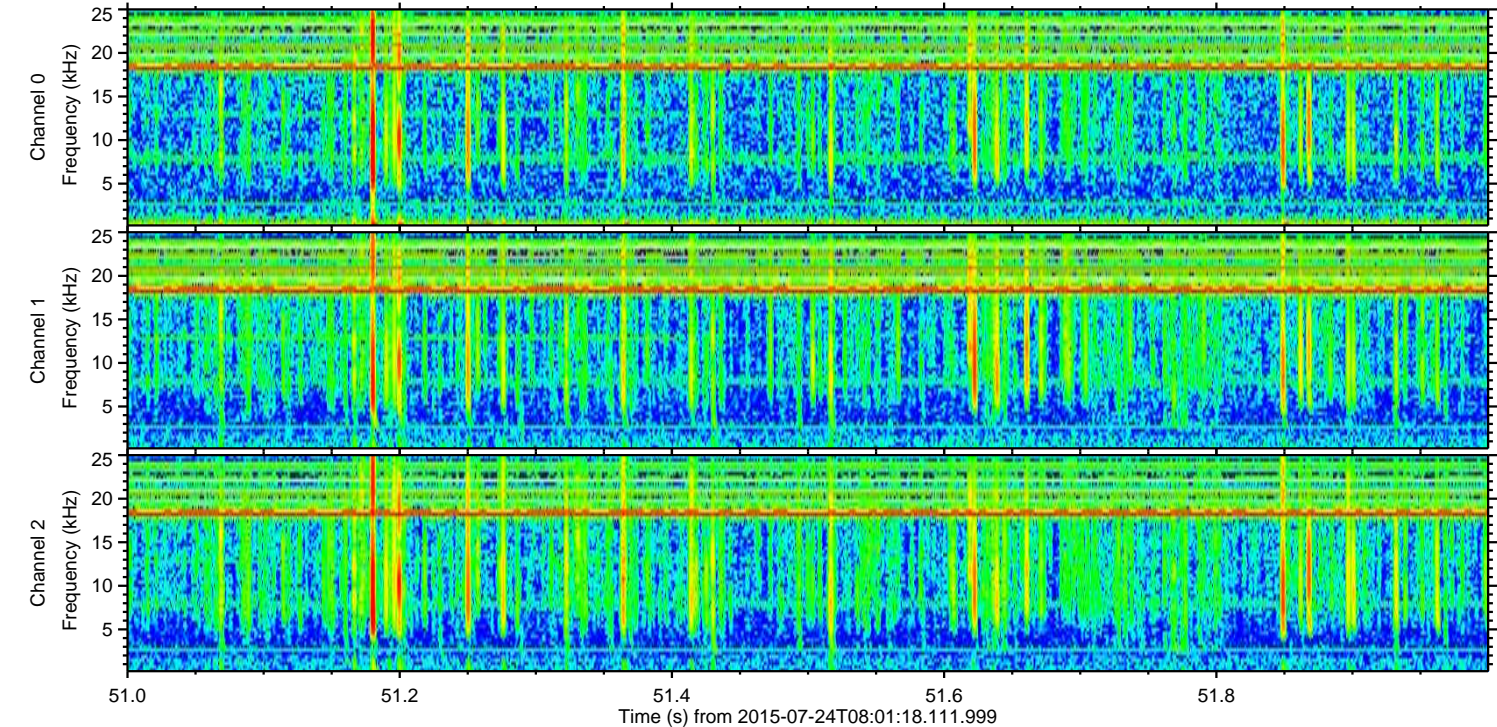
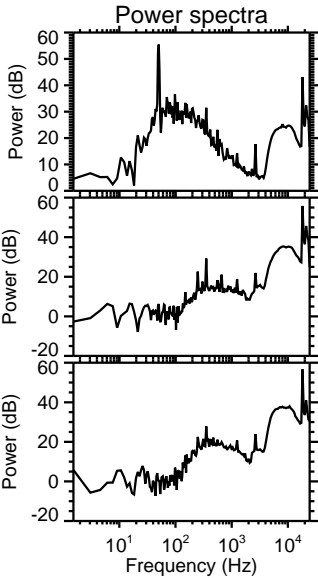
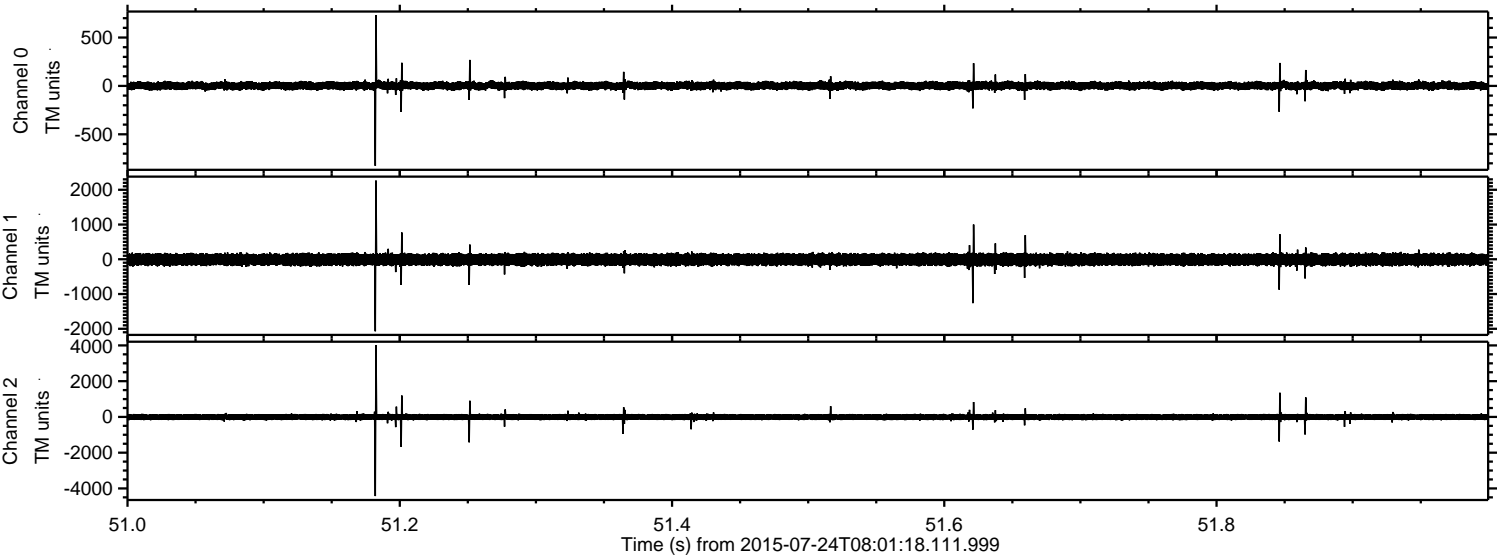
Channel 1
mn: -1620
mx: 2897
 μ : -8.6
 σ : 93.0

Channel 2
mn: -5009
mx: 2763
 μ : -7.3
 σ : 102.1

Processed Fri Jul 24 10:07:46 2015 by ELM ver.2012-10-06 from 001_elm20150724_080117__dat00.bin

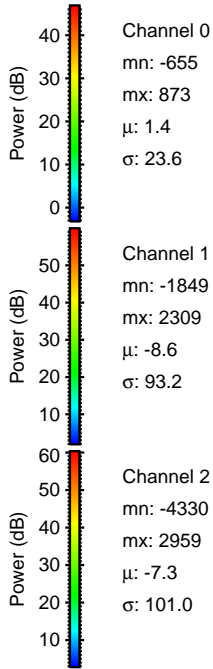
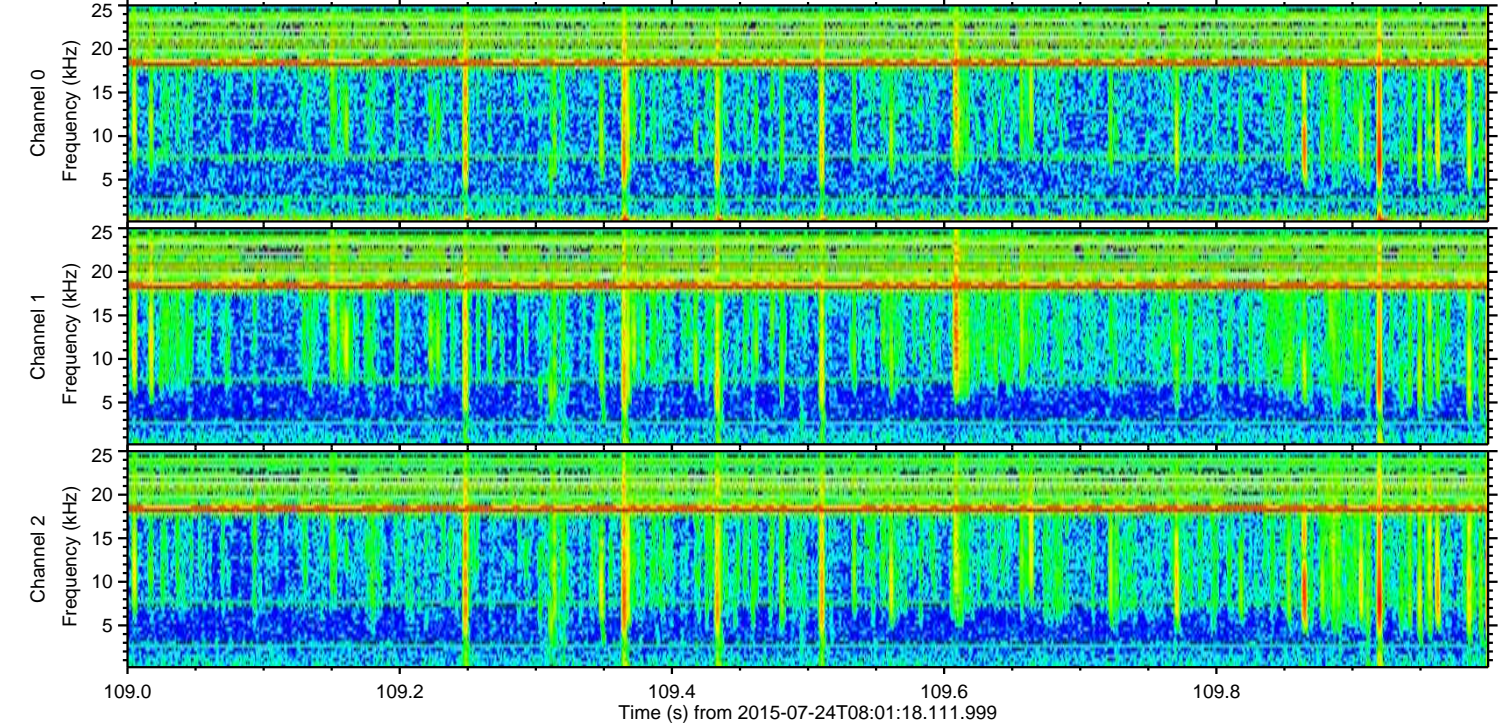
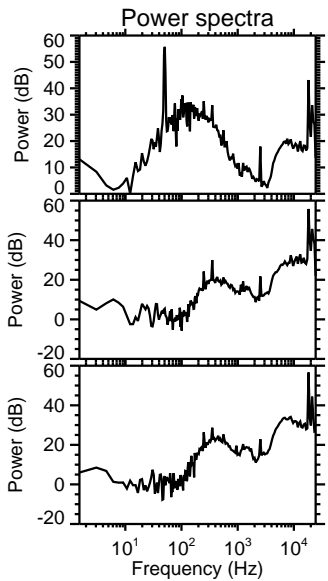
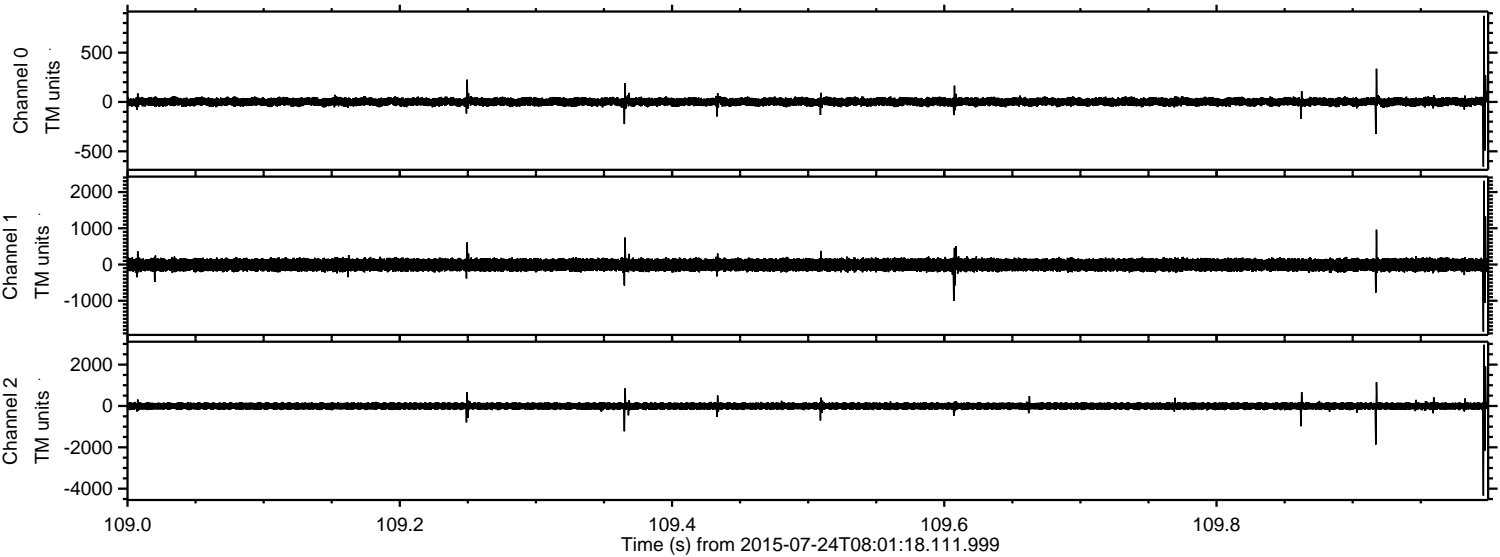


Processed Fri Jul 24 10:07:47 2015 by ELM ver.2012-10-06 from 001__elm20150724_080117__dat00.bin



ELMAVAN 3D WAVEFORMS (Measured data sampled at 50 kHz) 51000 packets of 144 samples from 2015-07-24T08:01:18.111.999. Part 110/147

Processed Fri Jul 24 10:07:48 2015 by ELM ver.2012-10-06 from 001__elm20150724_080117__dat00.bin

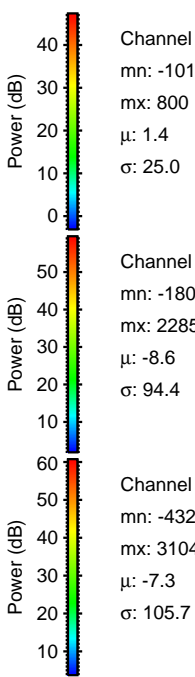
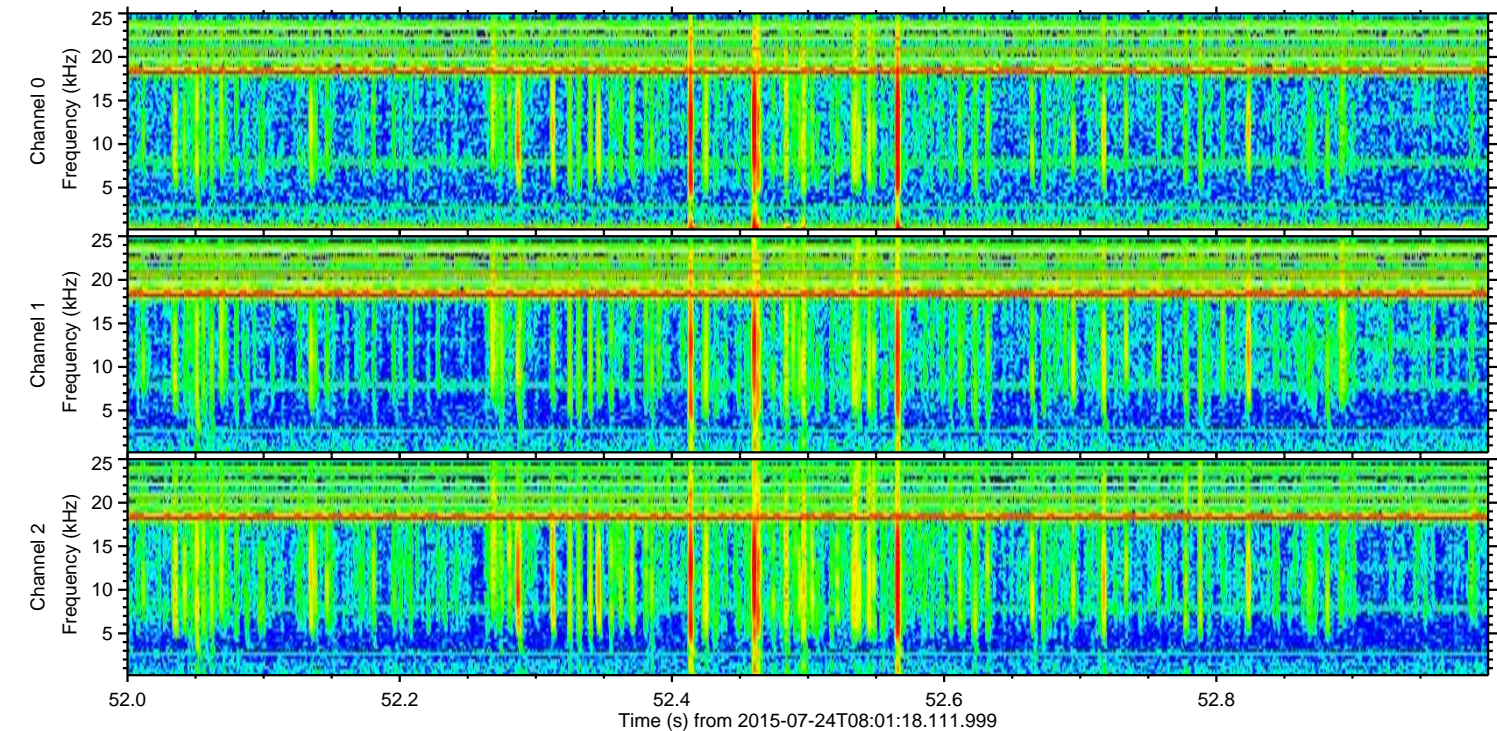
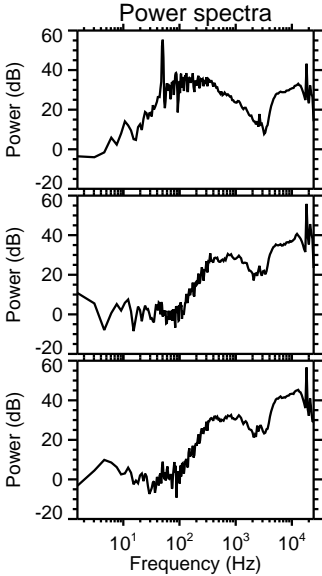
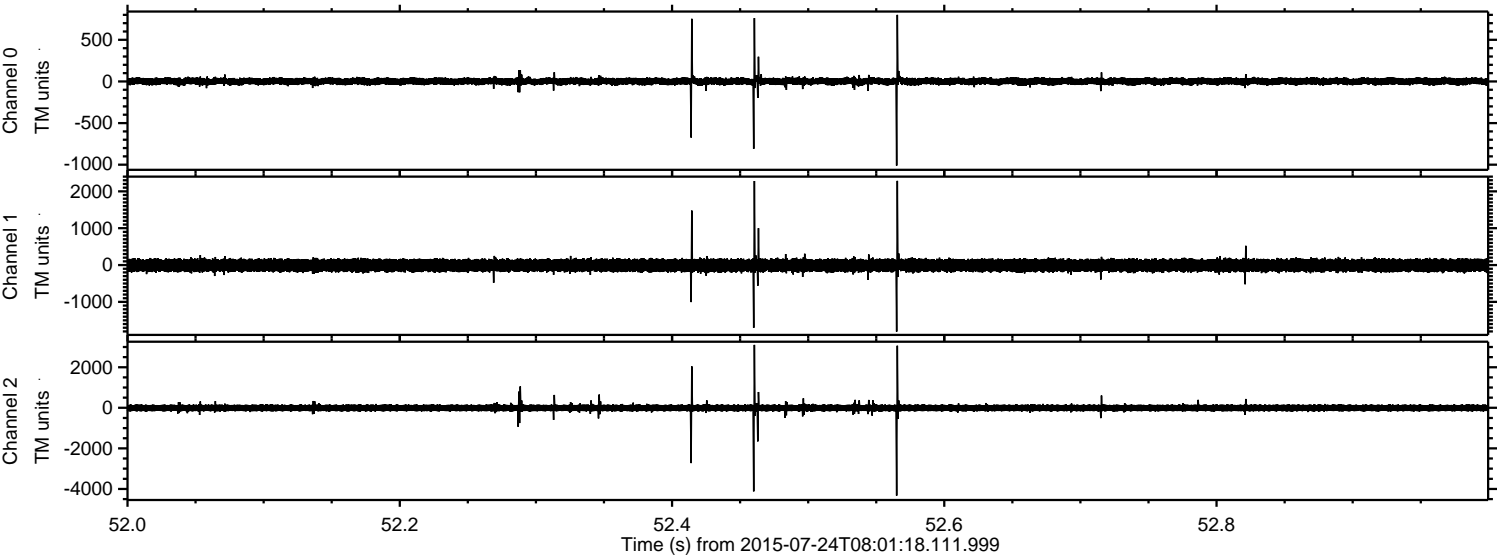


Channel 0
mn: -655
mx: 873
 μ : 1.4
 σ : 23.6

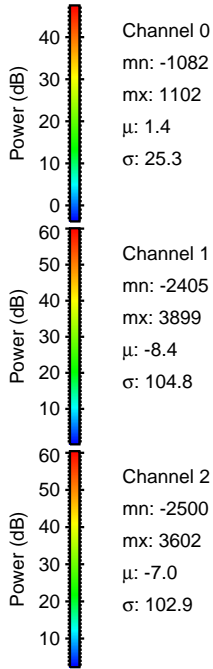
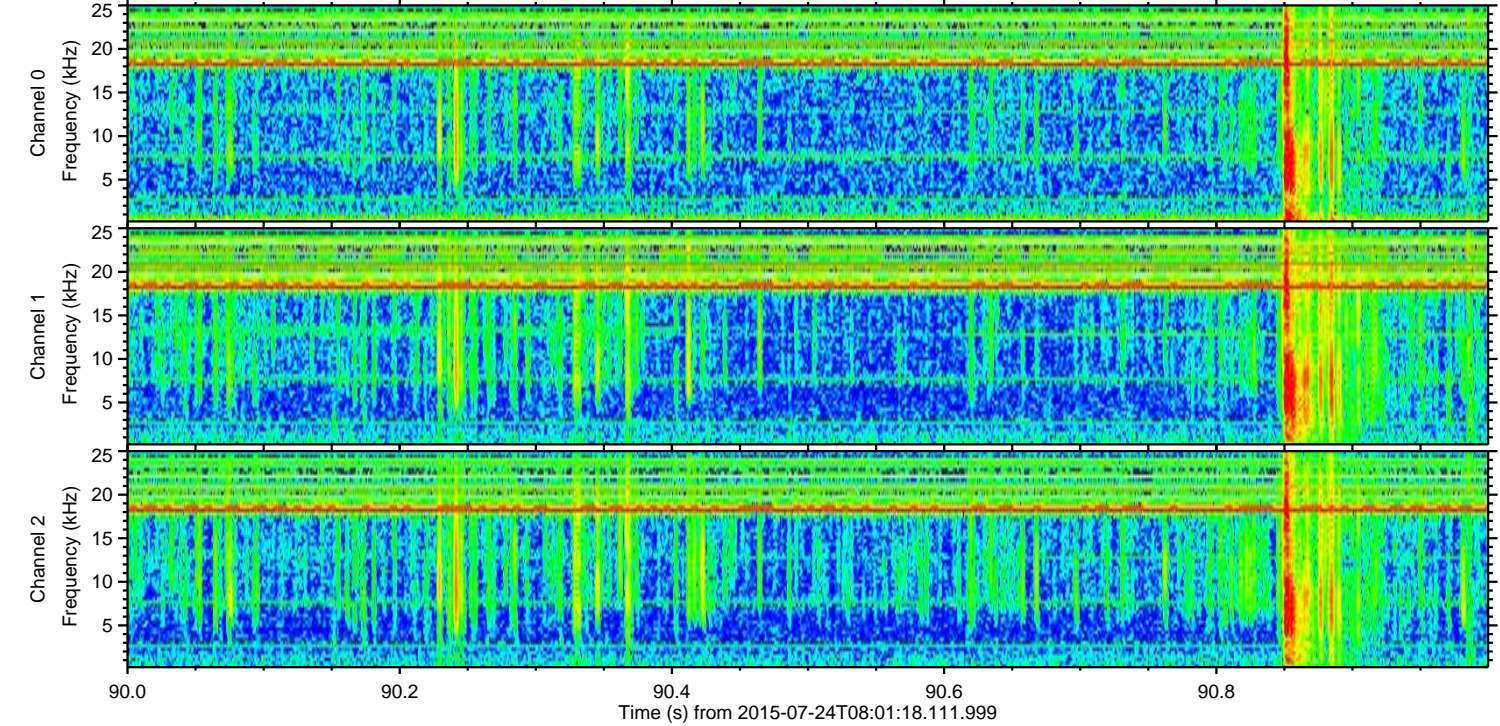
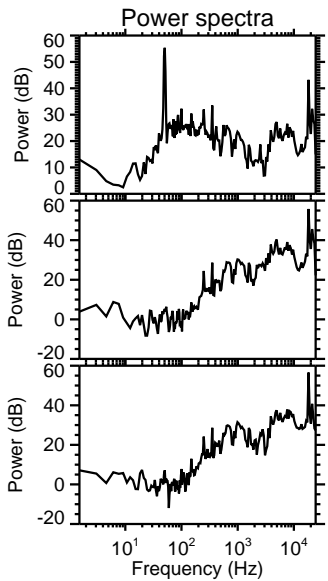
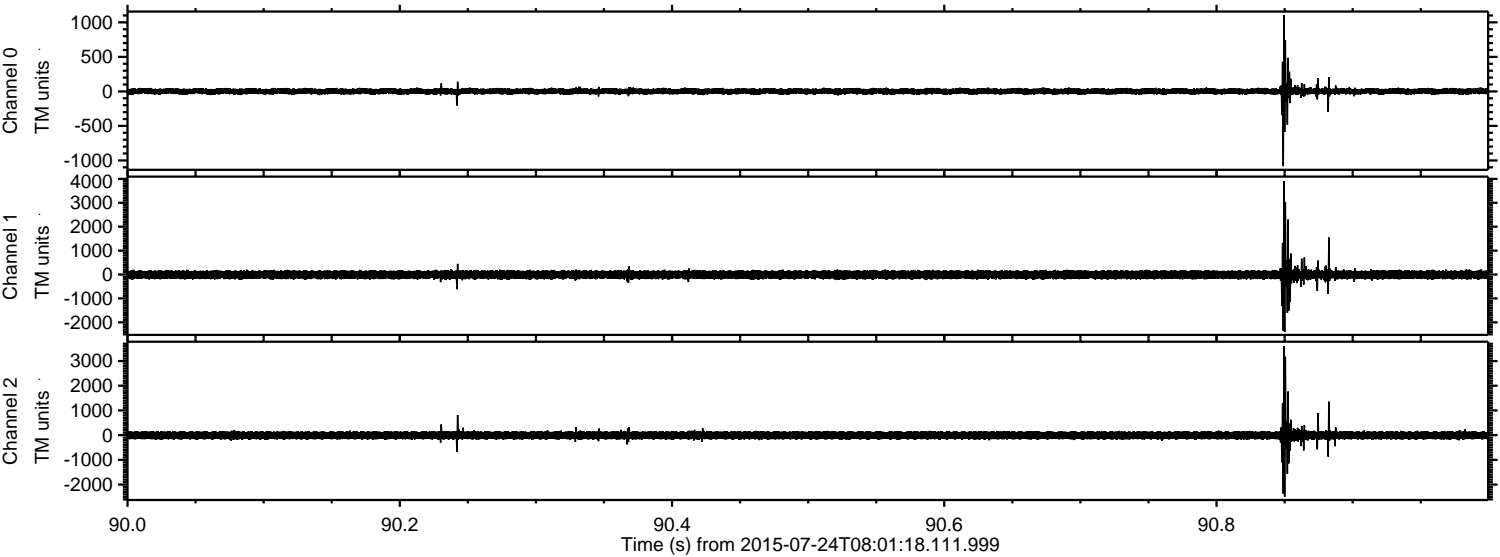
Channel 1
mn: -1849
mx: 2309
 μ : -8.6
 σ : 93.2

Channel 2
mn: -4330
mx: 2959
 μ : -7.3
 σ : 101.0

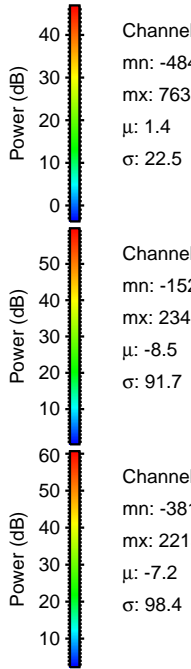
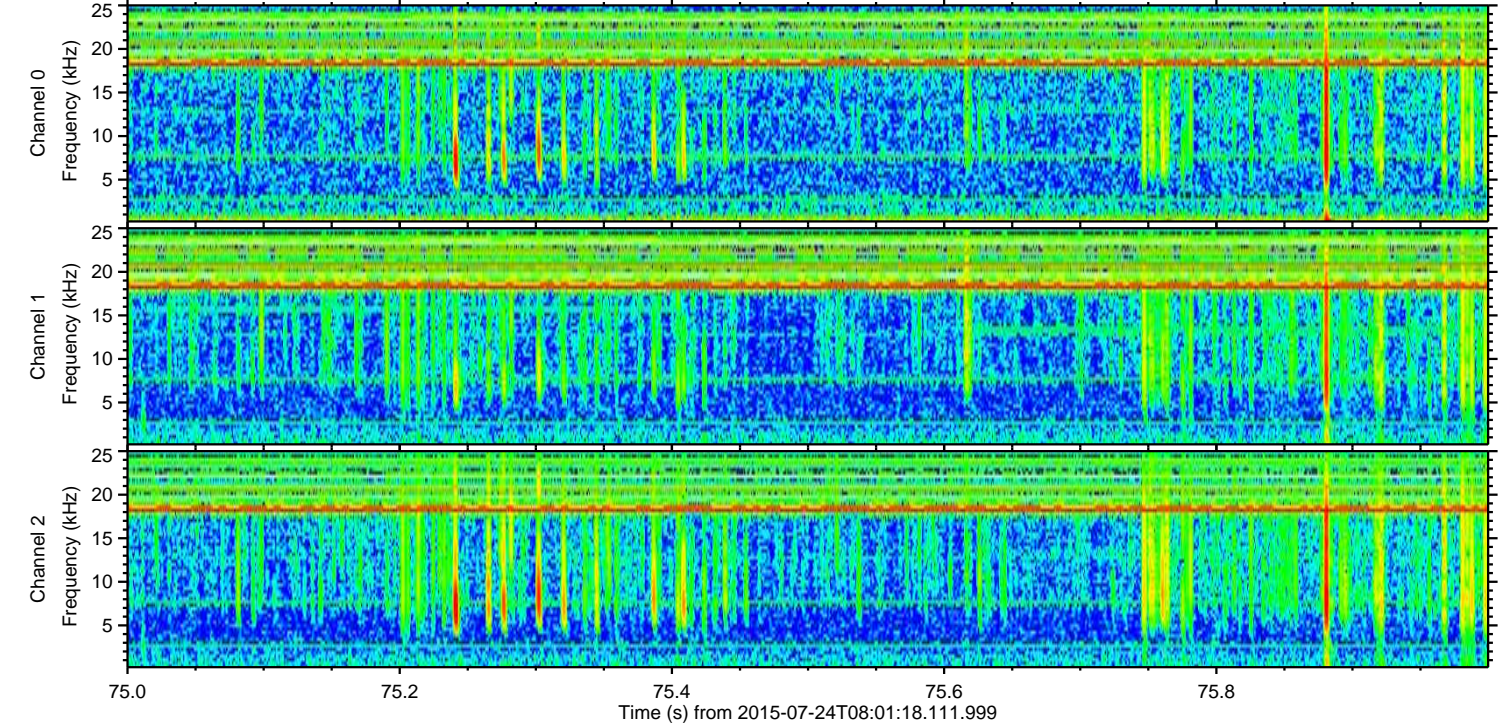
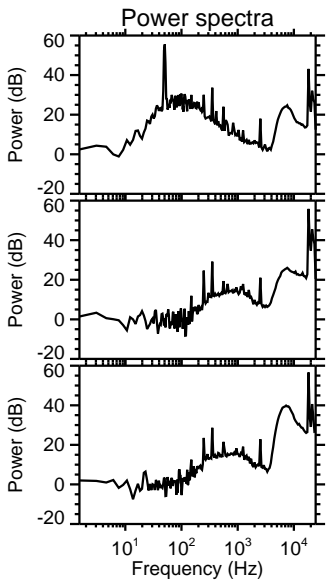
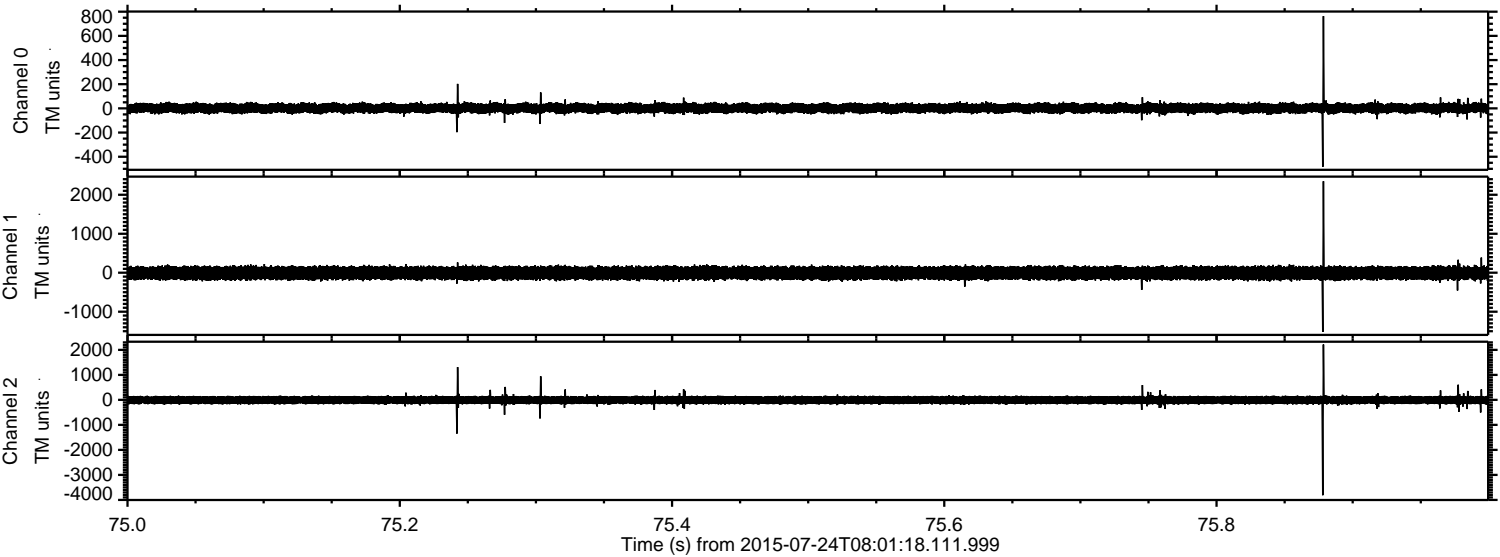
Processed Fri Jul 24 10:07:50 2015 by ELM ver.2012-10-06 from 001__elm20150724_080117__dat00.bin



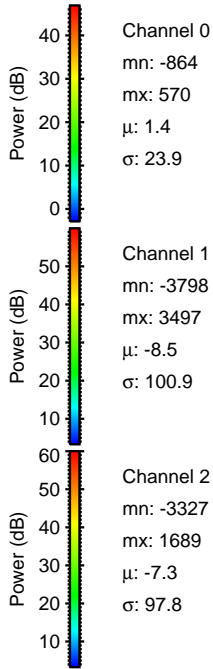
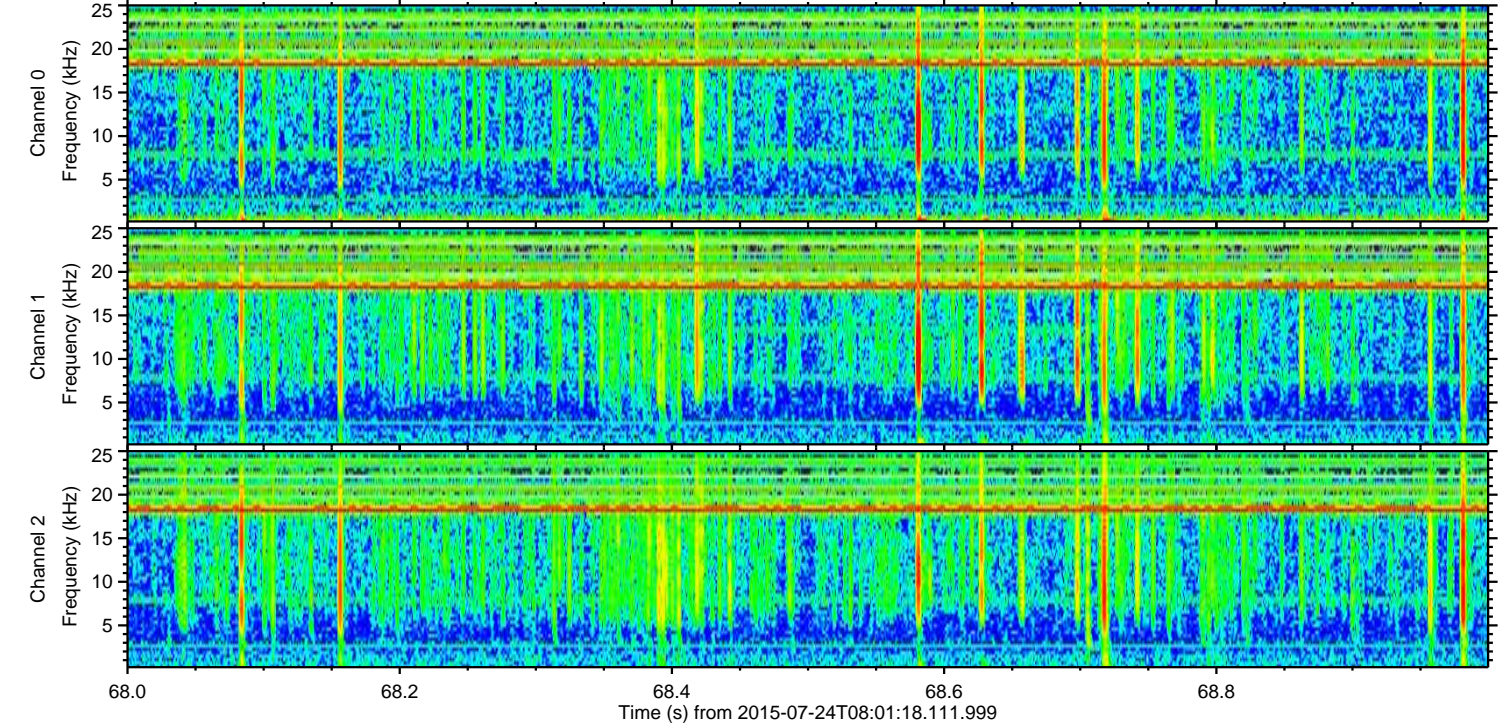
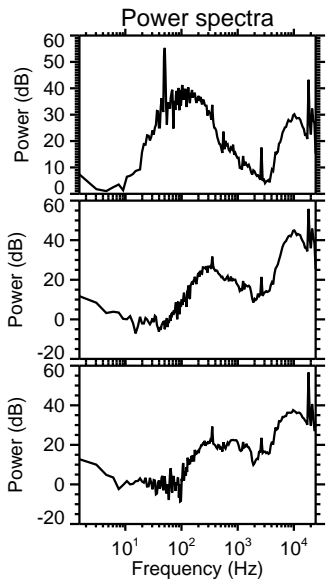
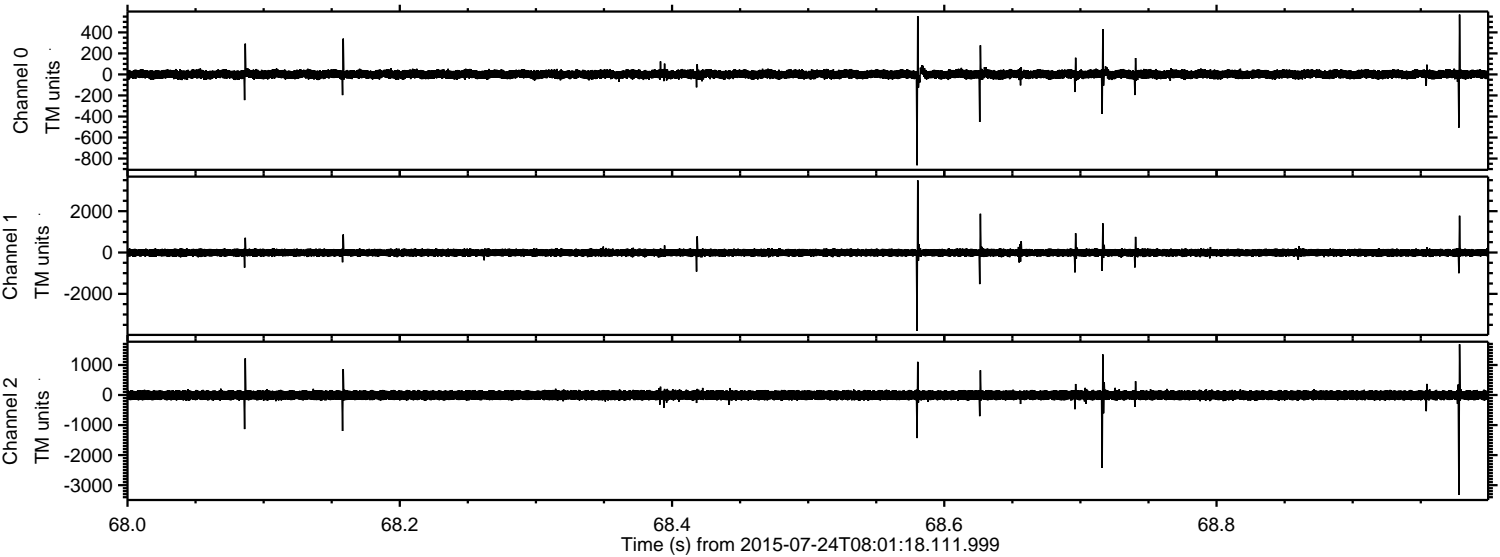
Processed Fri Jul 24 10:07:51 2015 by ELM ver.2012-10-06 from 001__elm20150724_080117__dat00.bin



Processed Fri Jul 24 10:07:52 2015 by ELM ver.2012-10-06 from 001__elm20150724_080117__dat00.bin



Processed Fri Jul 24 10:07:53 2015 by ELM ver.2012-10-06 from 001__elm20150724_080117__dat00.bin



Channel 0

mn: -864
mx: 570
 μ : 1.4
 σ : 23.9

Channel 1

mn: -3798
mx: 3497
 μ : -8.5
 σ : 100.9

Channel 2

mn: -3327
mx: 1689
 μ : -7.3
 σ : 97.8

Processed Fri Jul 24 10:07:54 2015 by ELM ver.2012-10-06 from 001__elm20150724_080117__dat00.bin

