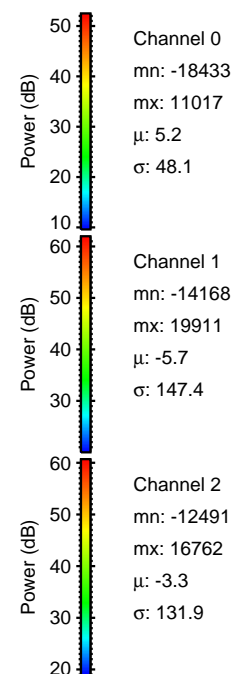
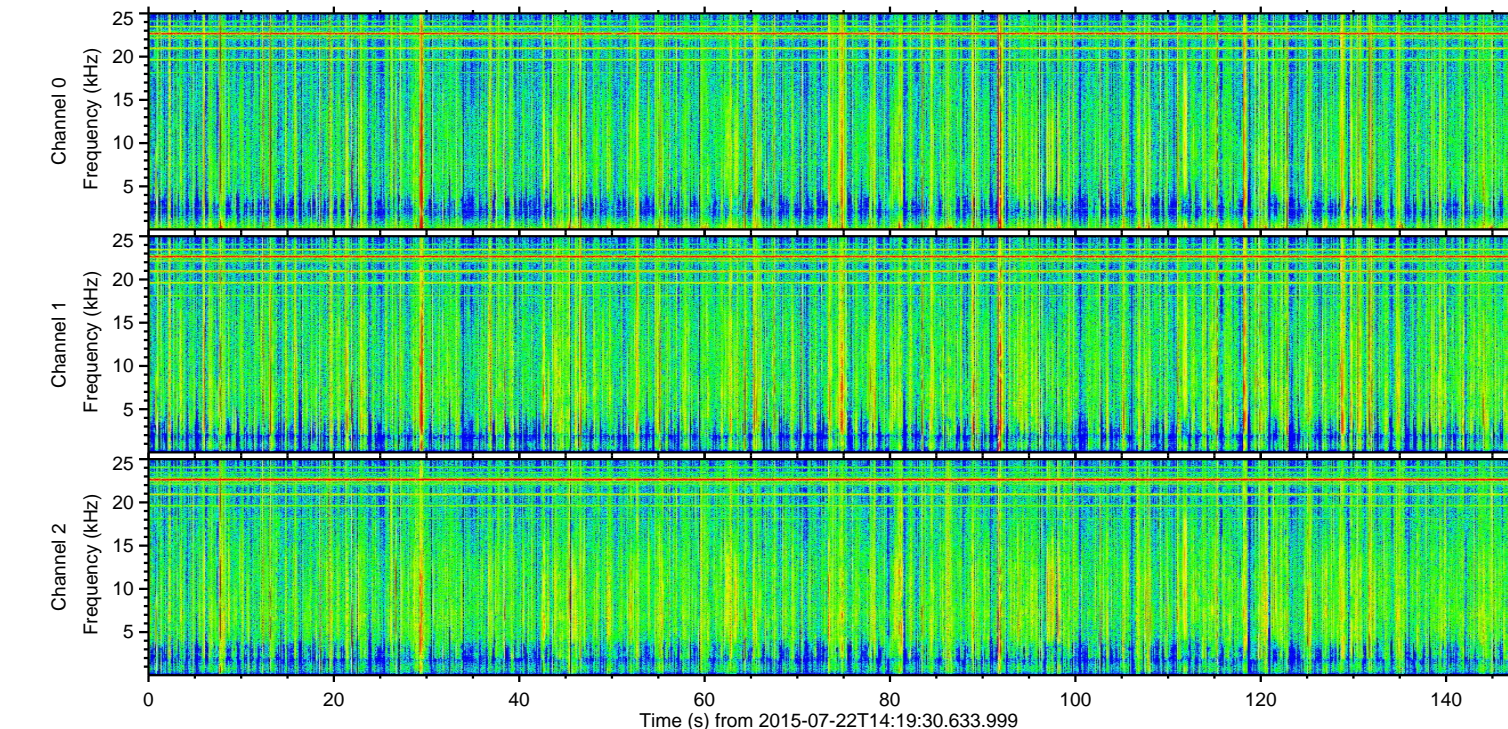
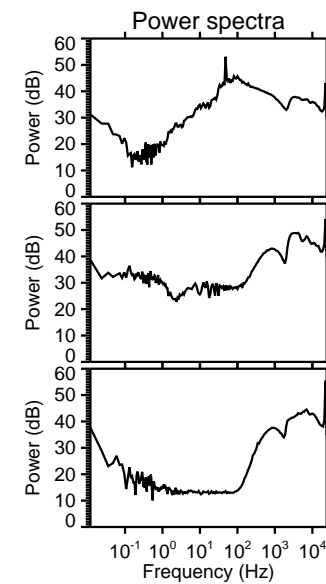
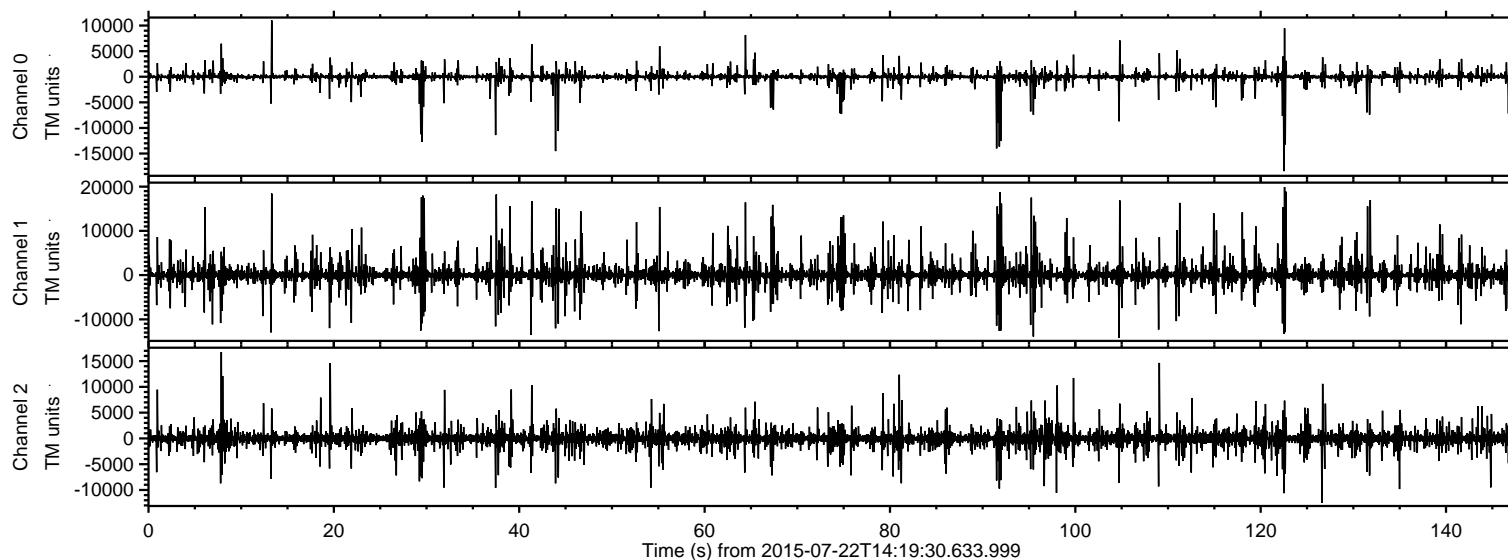


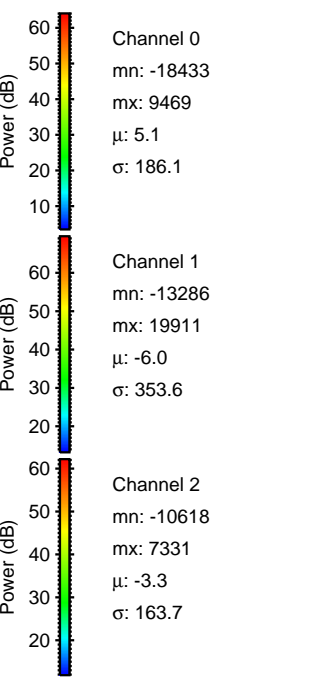
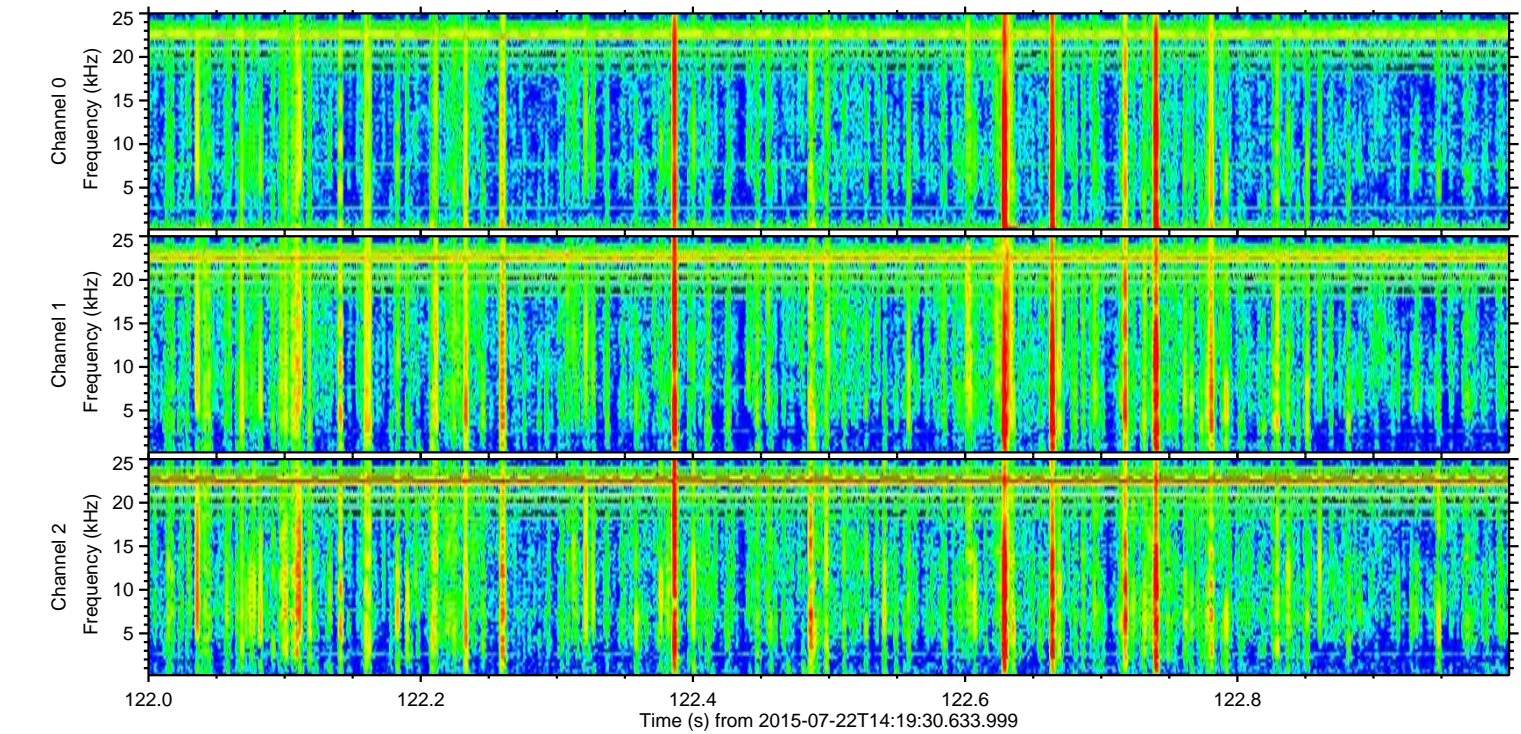
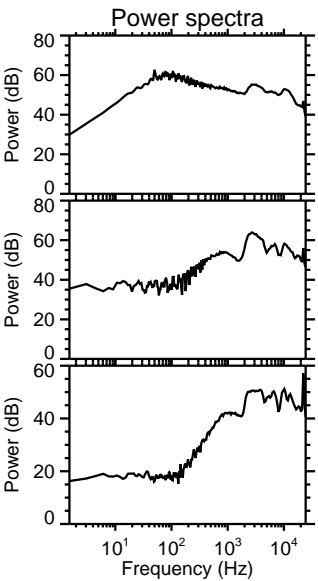
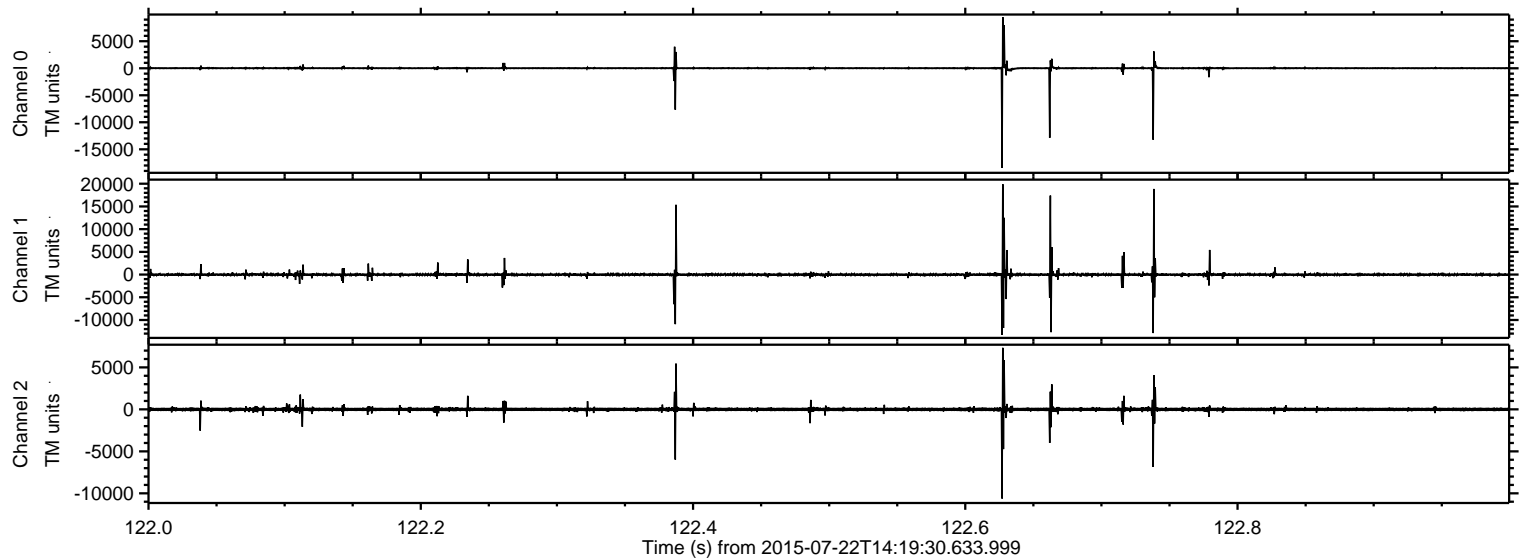
ELMAVAN 3D WAVEFORMS (Measured data sampled at 50 kHz) 51000 packets of 144 samples from 2015-07-22T14:19:30.633.999.

Processed Wed Jul 22 16:27:26 2015 by ELM ver.2012-10-06 from 001__elm20150722_141929__dat00.bin

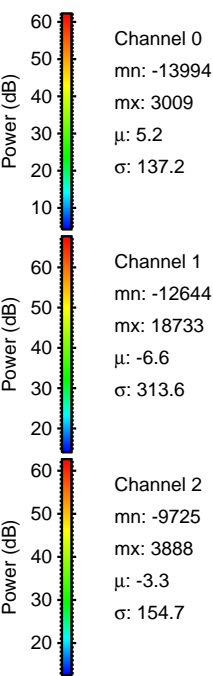
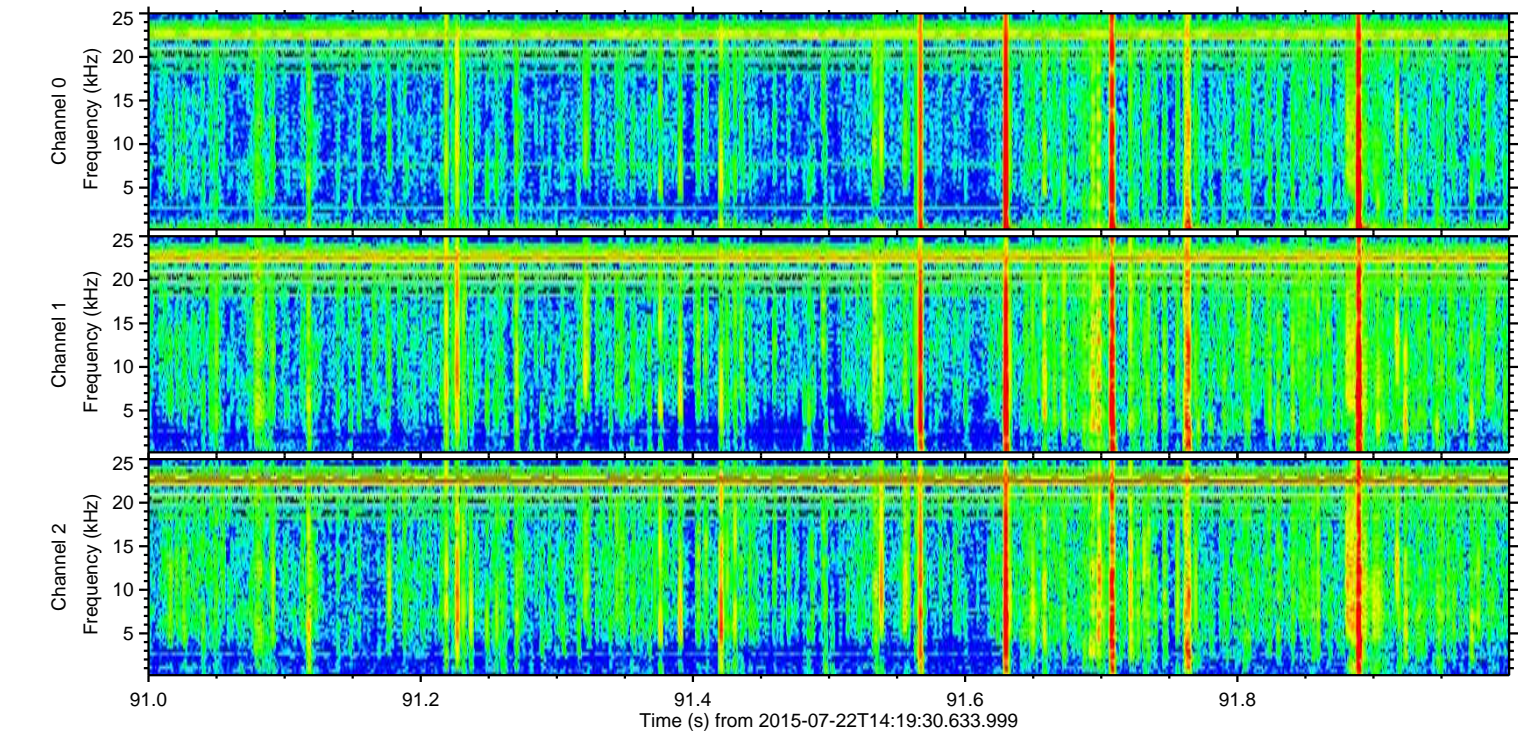
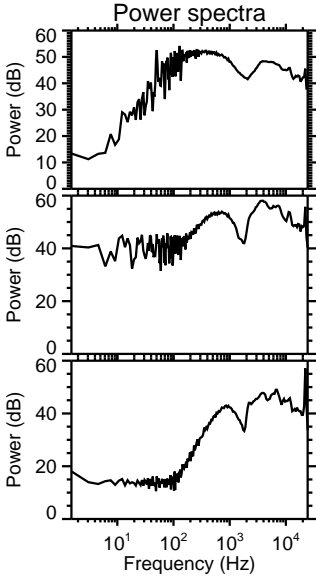
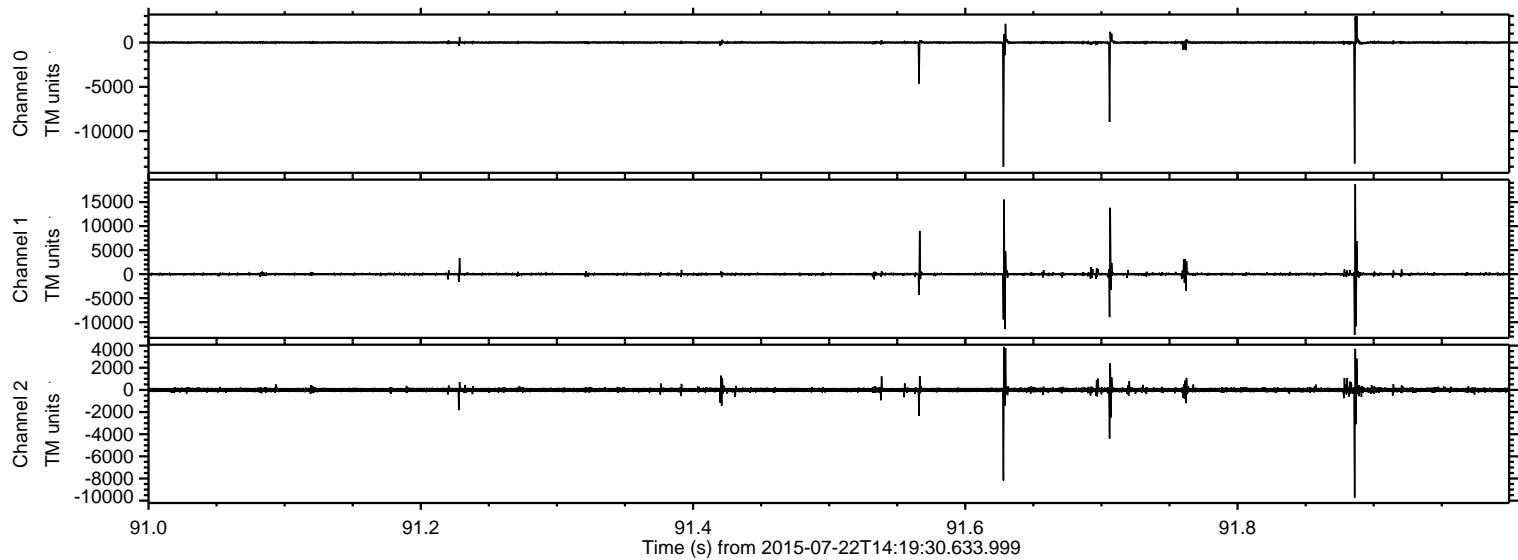


ELMAVAN 3D WAVEFORMS (Measured data sampled at 50 kHz) 51000 packets of 144 samples from 2015-07-22T14:19:30.633.999. Part 123/147

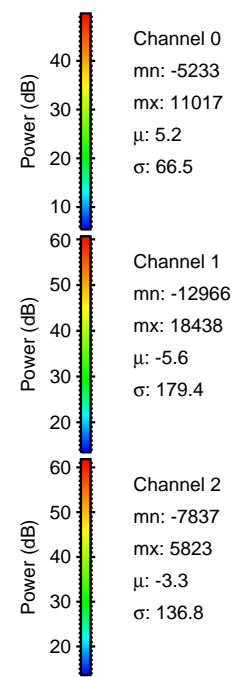
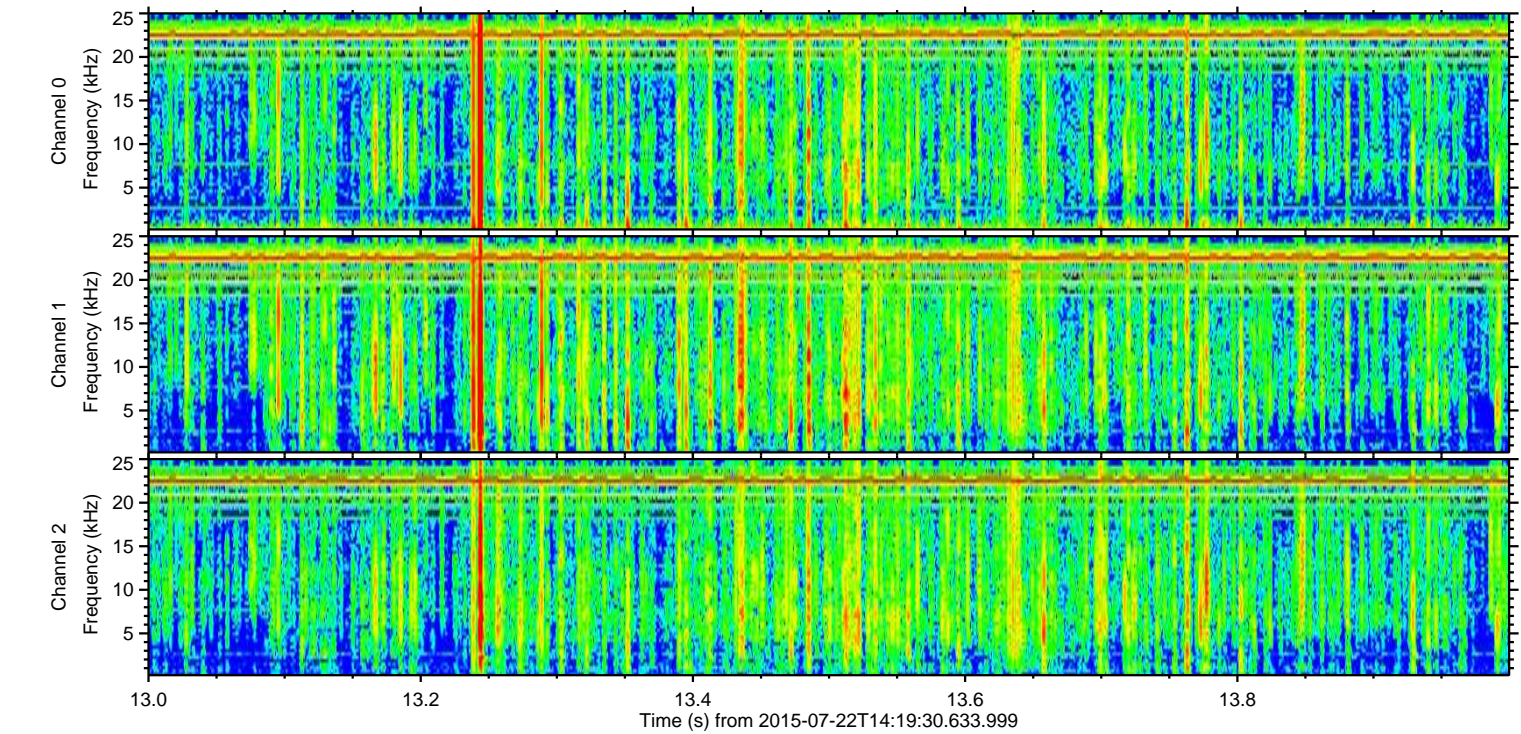
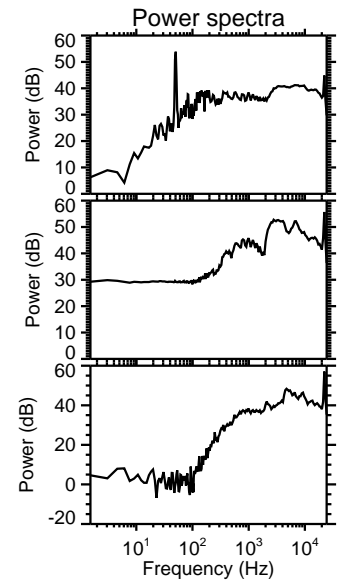
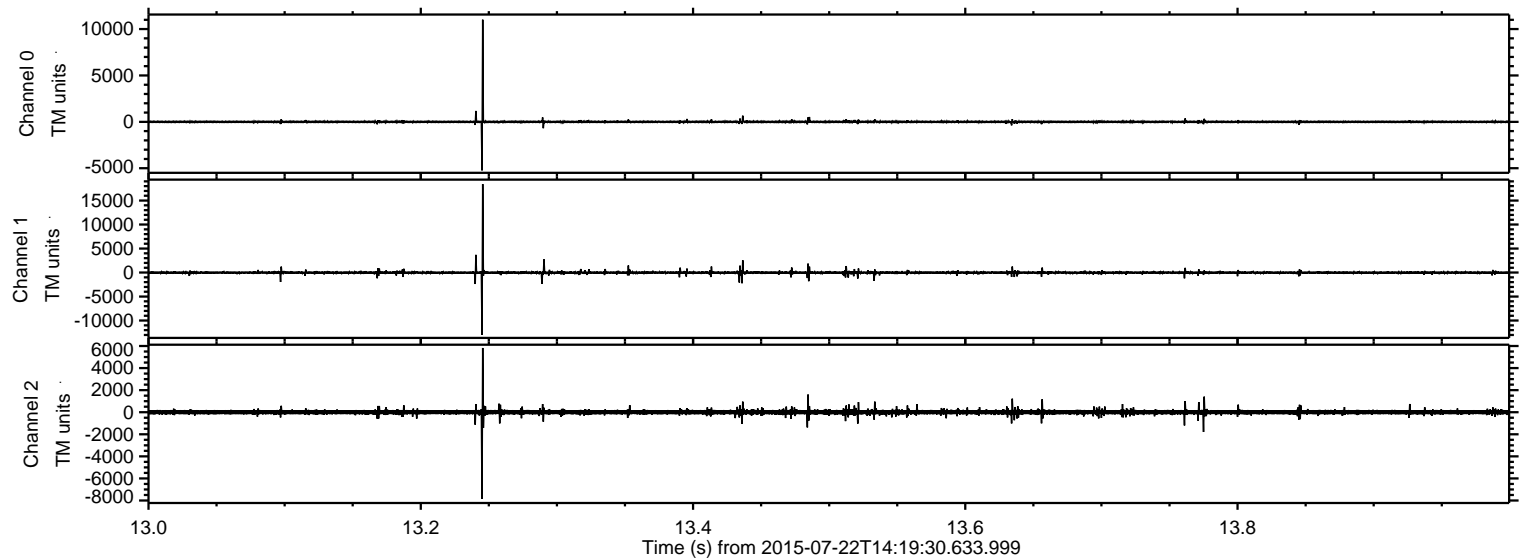
Processed Wed Jul 22 16:27:40 2015 by ELM ver.2012-10-06 from 001__elm20150722_141929__dat00.bin



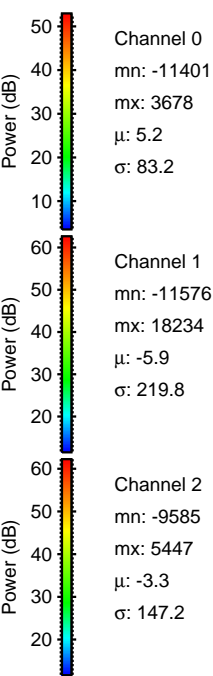
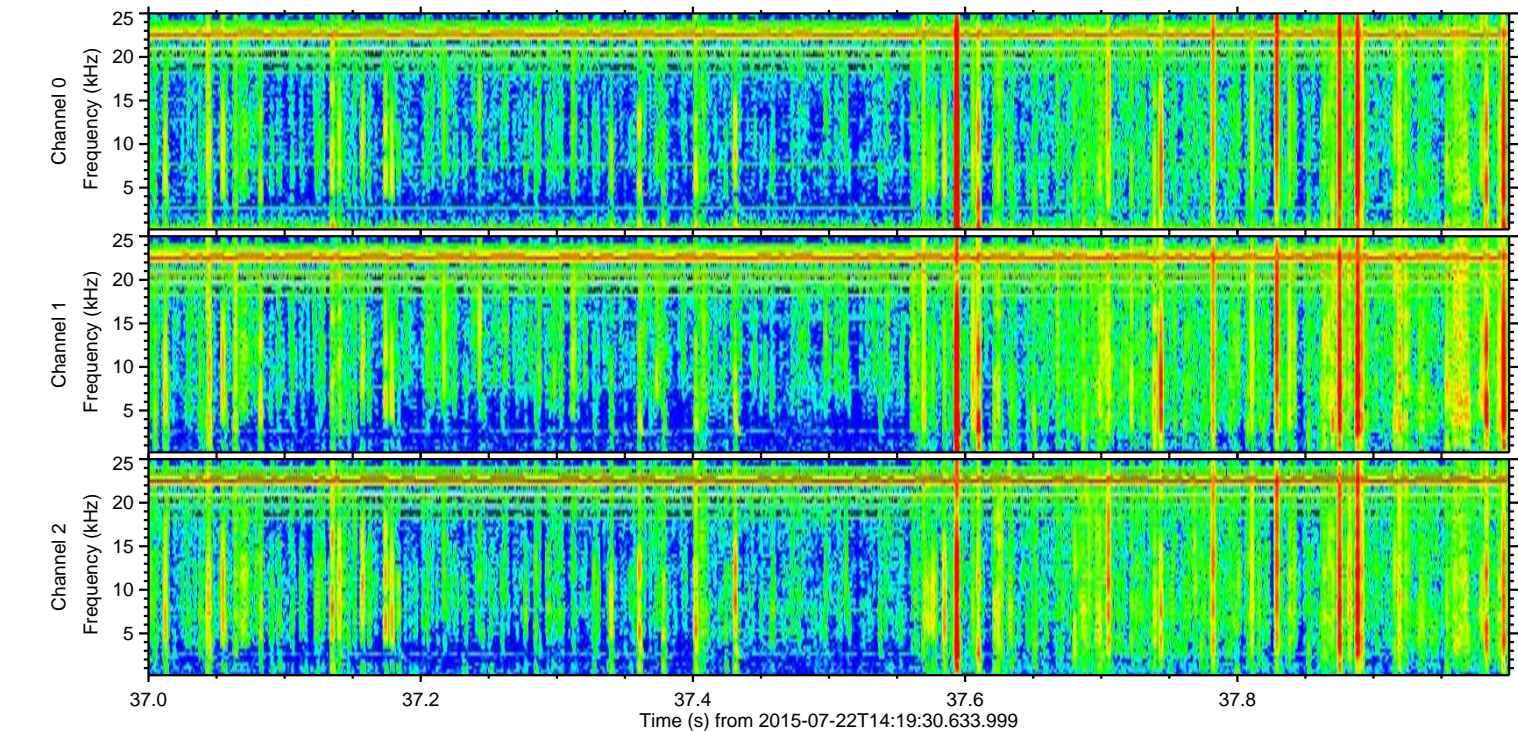
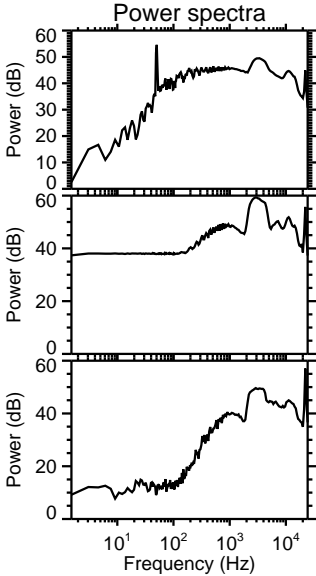
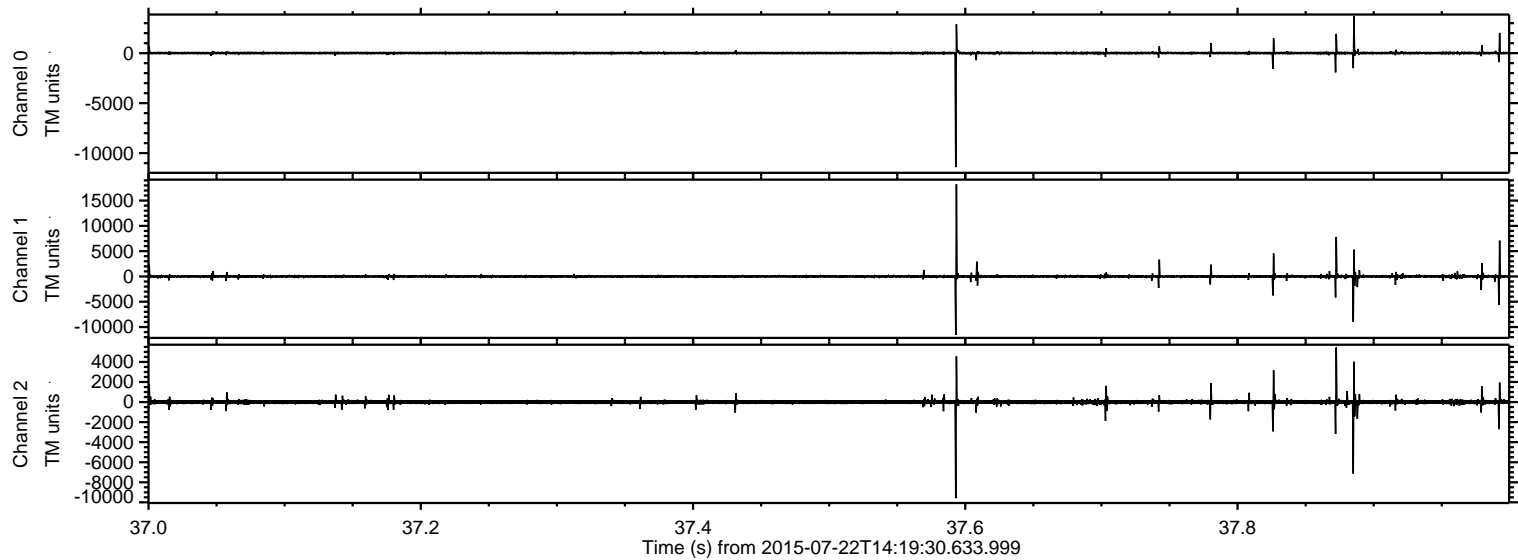
Processed Wed Jul 22 16:27:40 2015 by ELM ver.2012-10-06 from 001__elm20150722_141929__dat00.bin



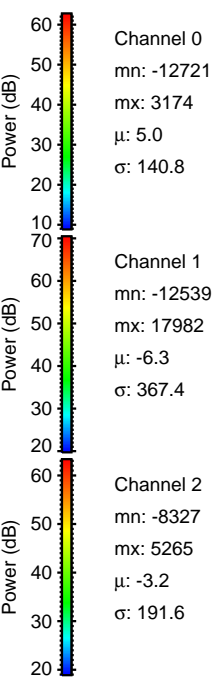
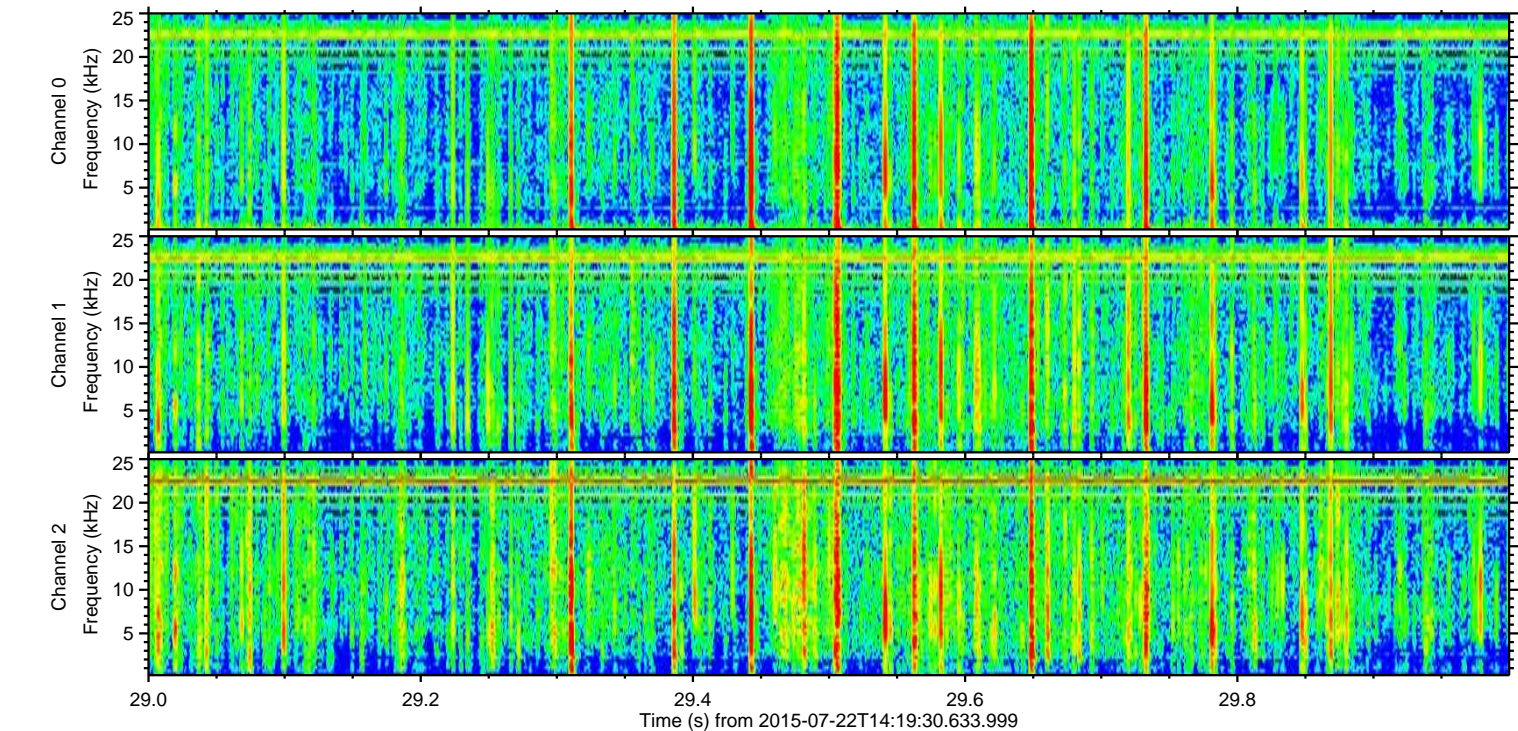
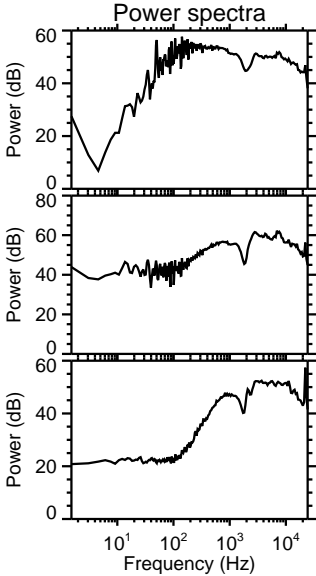
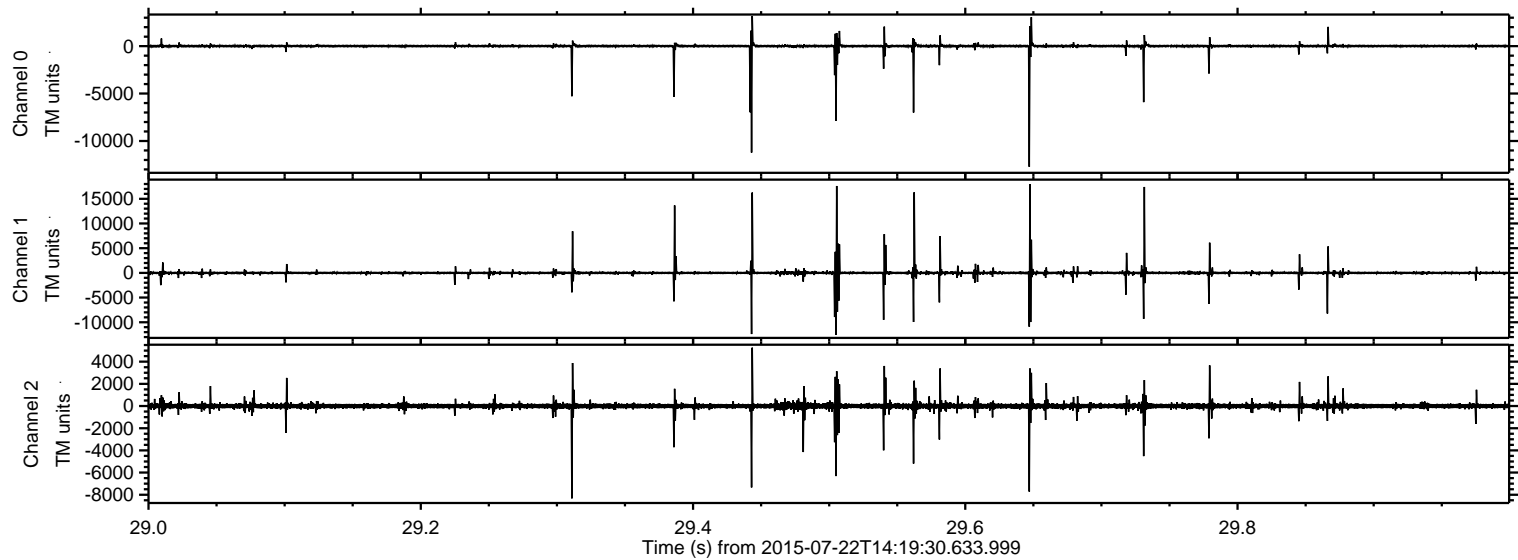
Processed Wed Jul 22 16:27:41 2015 by ELM ver.2012-10-06 from 001__elm20150722_141929__dat00.bin



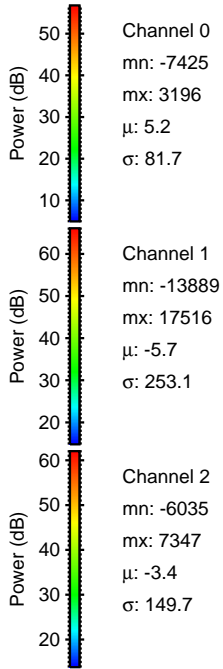
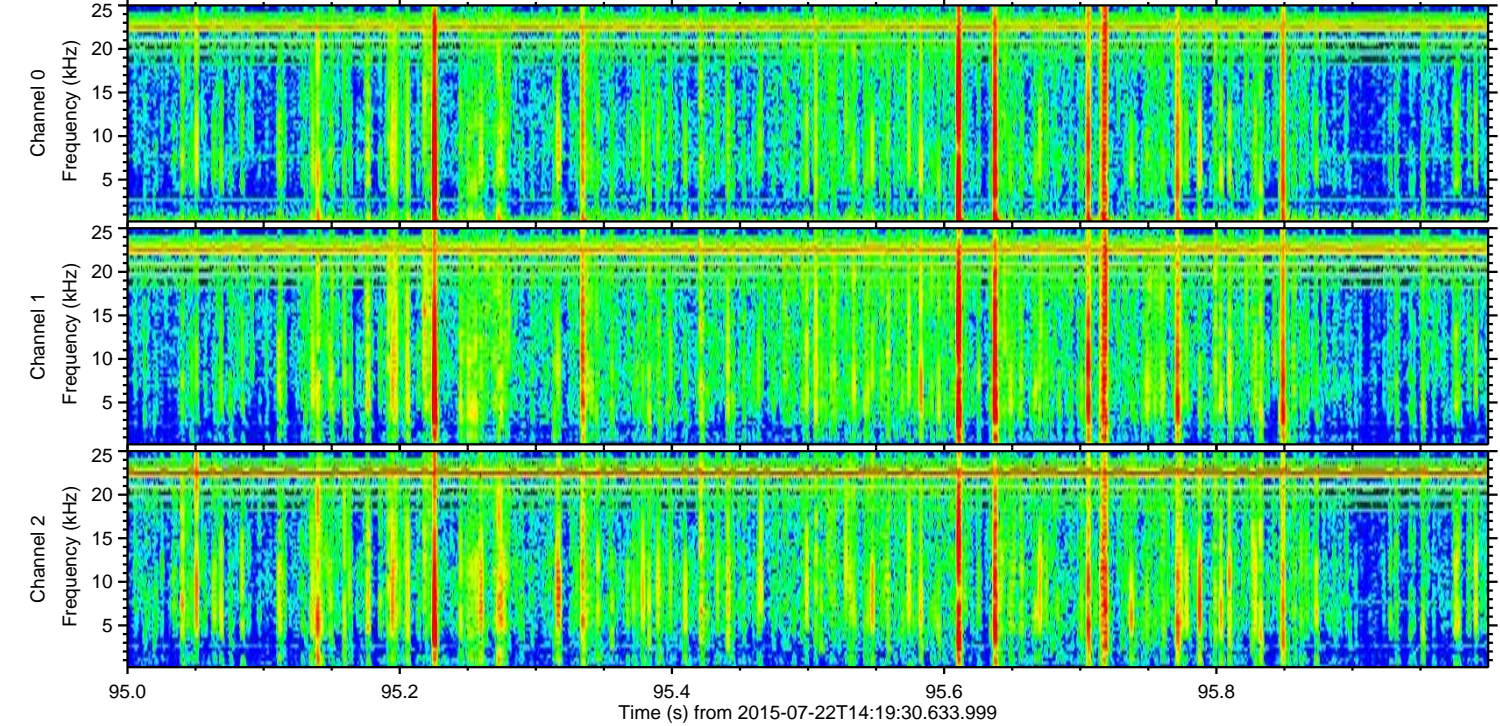
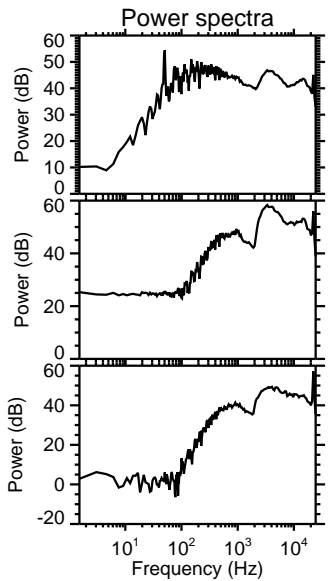
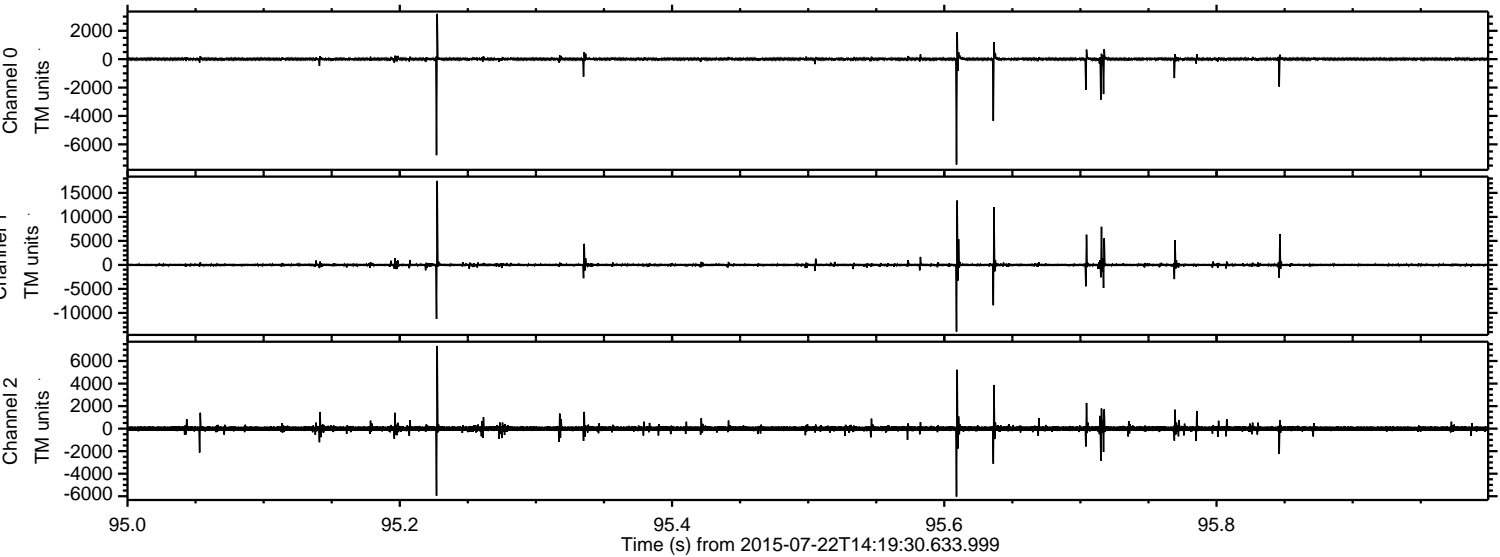
Processed Wed Jul 22 16:27:42 2015 by ELM ver.2012-10-06 from 001__elm20150722_141929__dat00.bin



Processed Wed Jul 22 16:27:43 2015 by ELM ver.2012-10-06 from 001__elm20150722_141929__dat00.bin

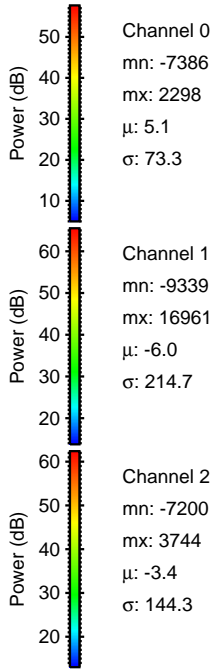
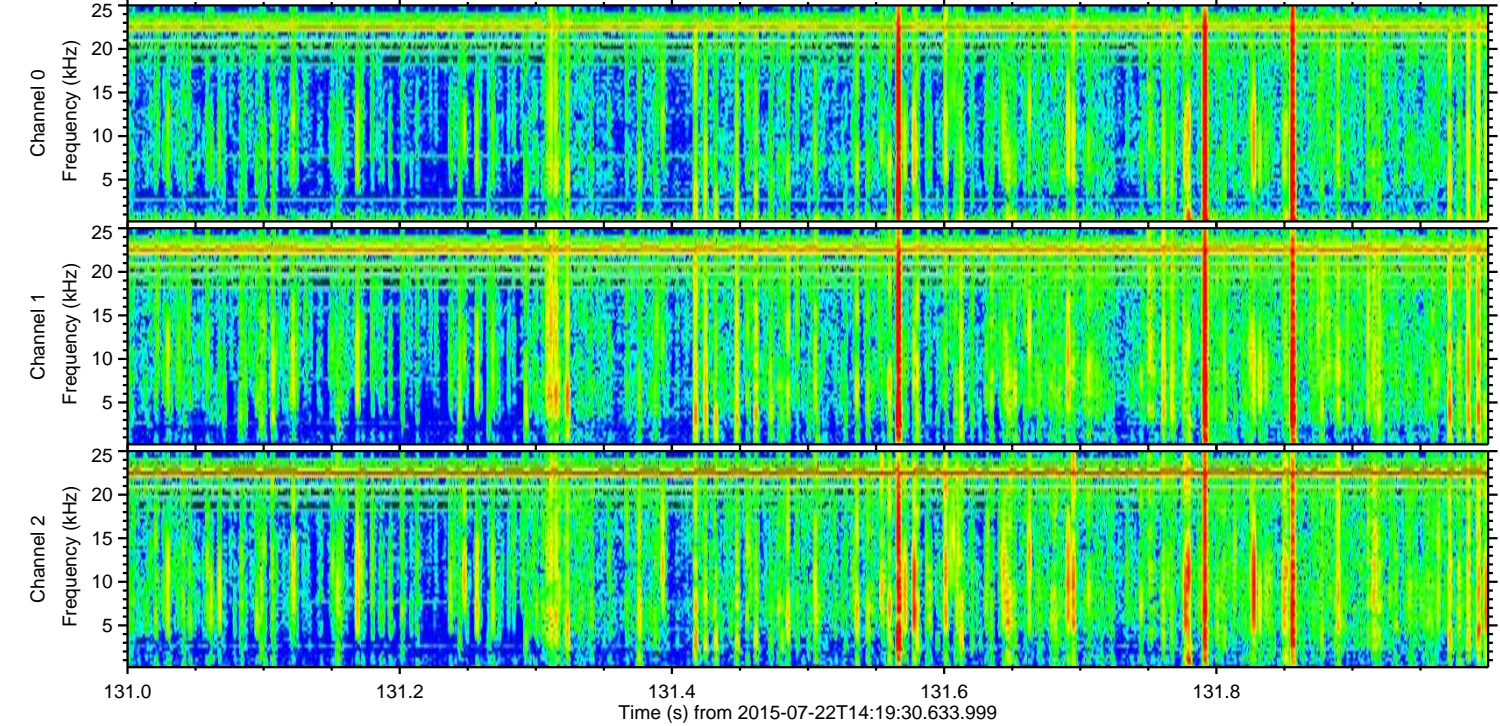
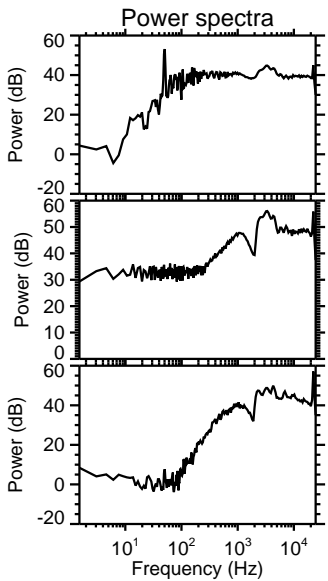
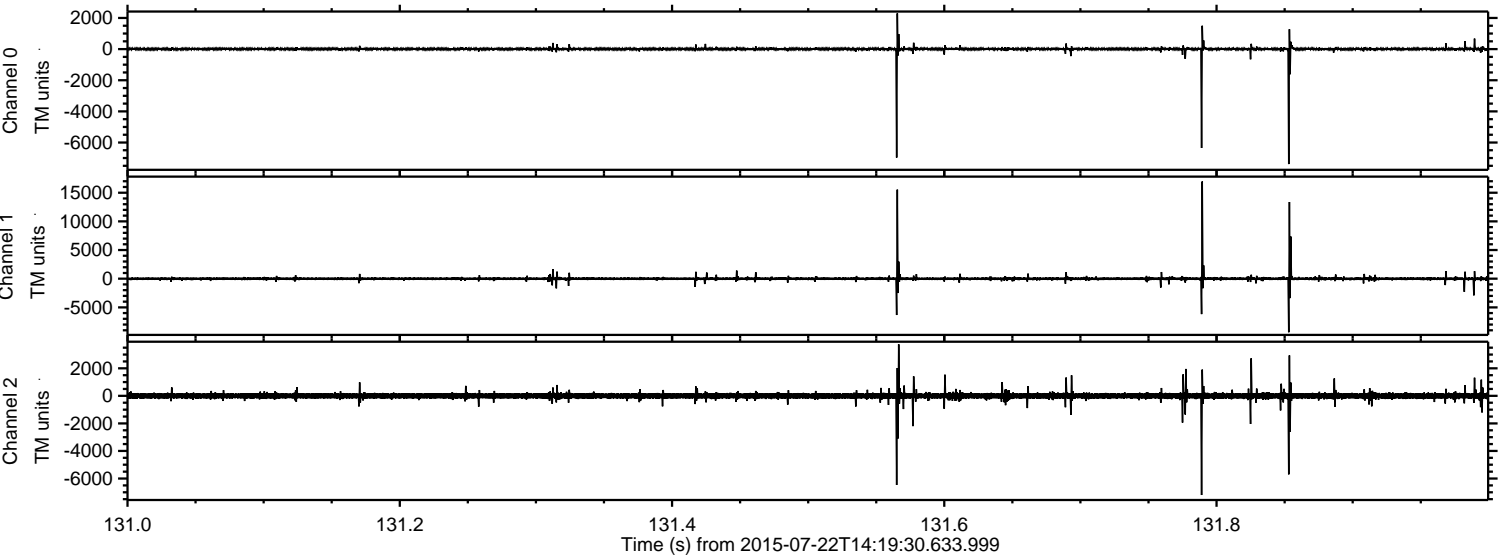


Processed Wed Jul 22 16:27:44 2015 by ELM ver.2012-10-06 from 001__elm20150722_141929__dat00.bin



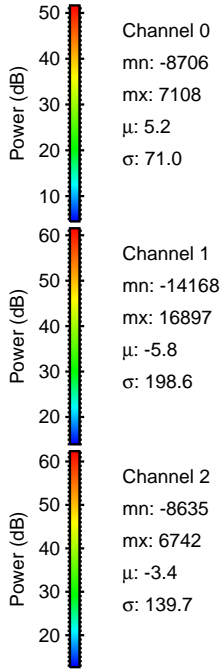
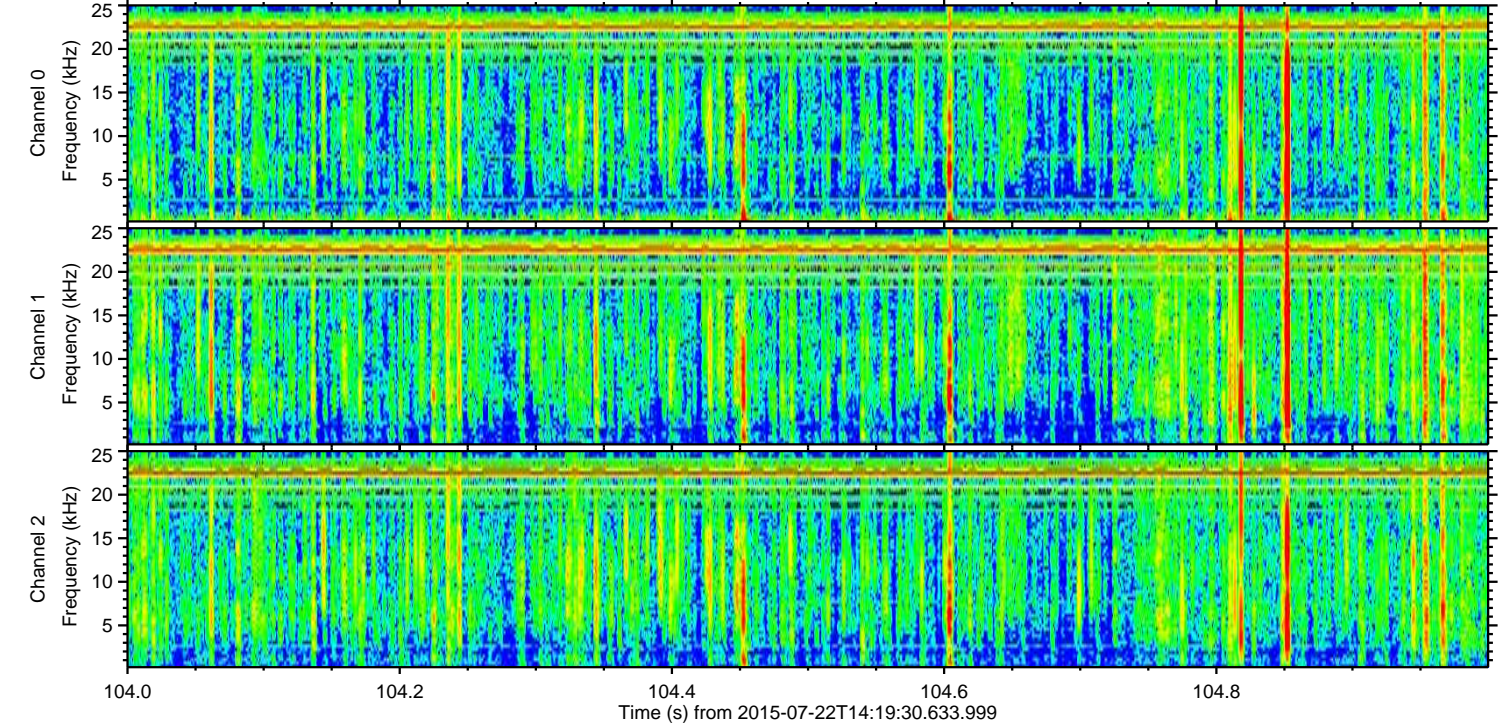
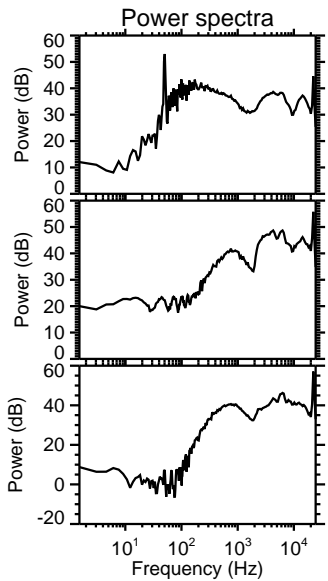
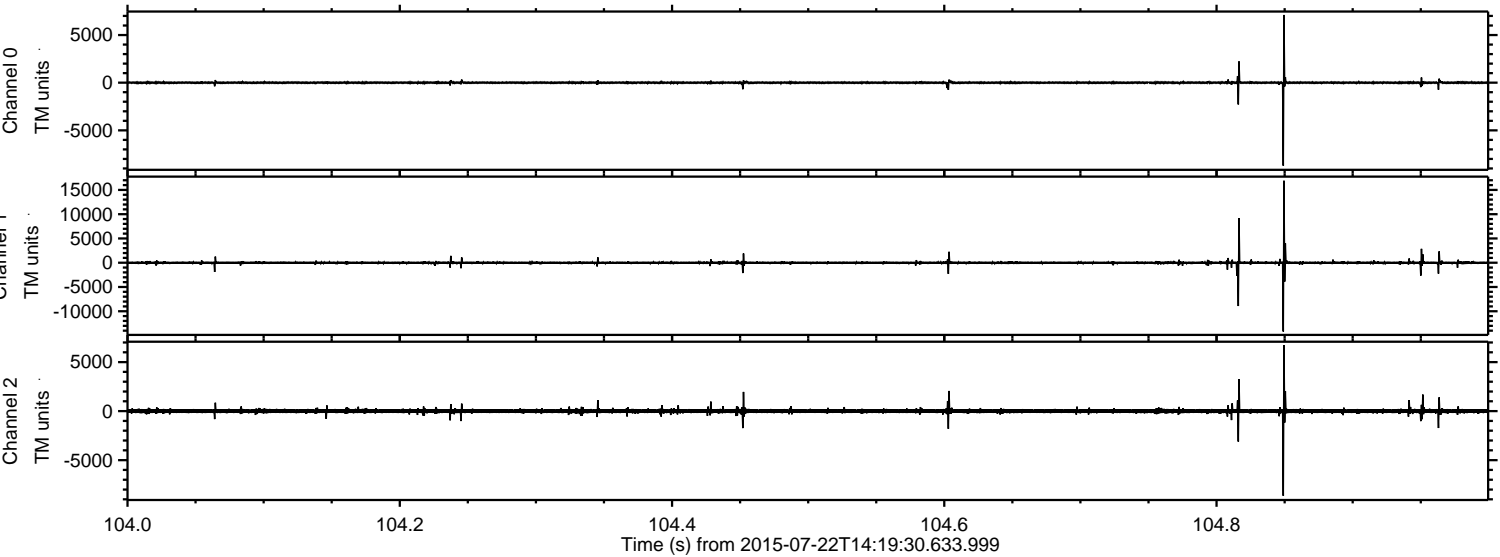
ELMAVAN 3D WAVEFORMS (Measured data sampled at 50 kHz) 51000 packets of 144 samples from 2015-07-22T14:19:30.633.999. Part 132/147

Processed Wed Jul 22 16:27:45 2015 by ELM ver.2012-10-06 from 001__elm20150722_141929__dat00.bin



ELMAVAN 3D WAVEFORMS (Measured data sampled at 50 kHz) 51000 packets of 144 samples from 2015-07-22T14:19:30.633.999. Part 105/147

Processed Wed Jul 22 16:27:46 2015 by ELM ver.2012-10-06 from 001__elm20150722_141929__dat00.bin

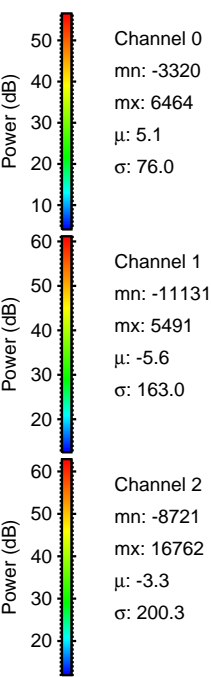
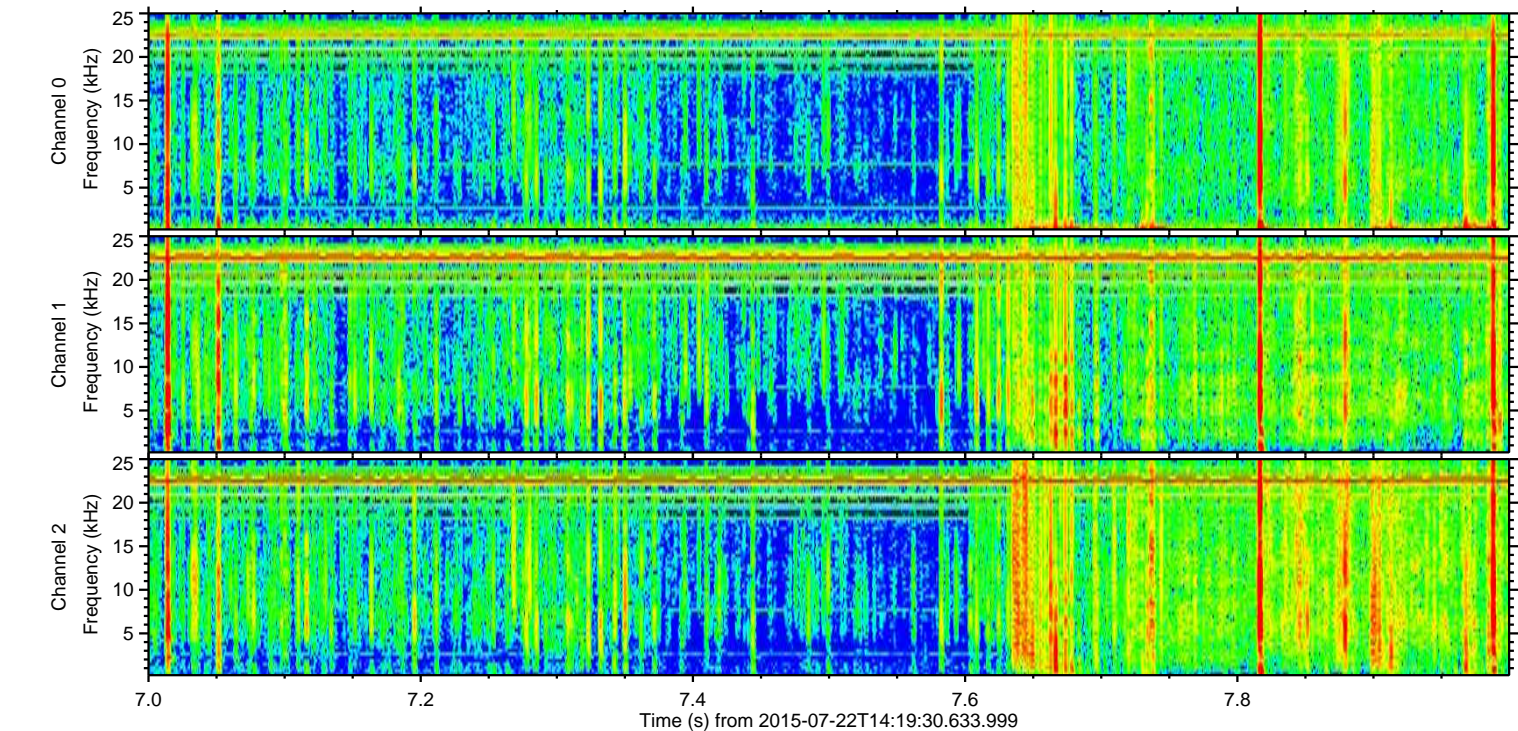
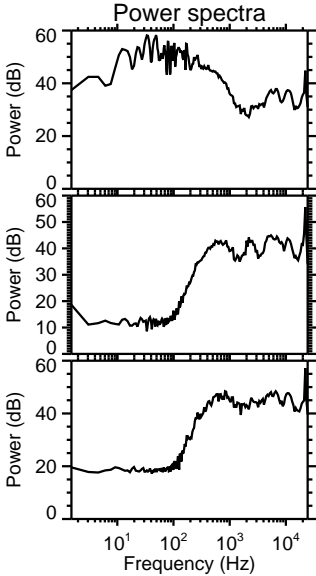
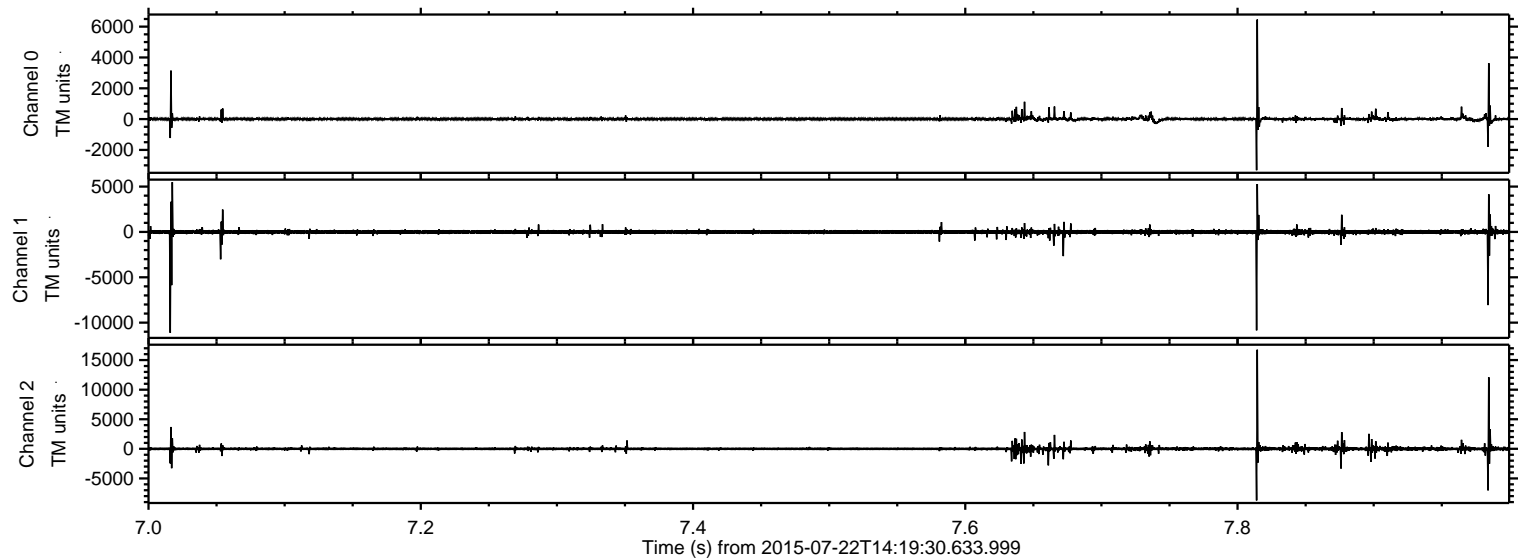


Channel 0
mn: -8706
mx: 7108
 μ : 5.2
 σ : 71.0

Channel 1
mn: -14168
mx: 16897
 μ : -5.8
 σ : 198.6

Channel 2
mn: -8635
mx: 6742
 μ : -3.4
 σ : 139.7

Processed Wed Jul 22 16:27:47 2015 by ELM ver.2012-10-06 from 001__elm20150722_141929__dat00.bin



Processed Wed Jul 22 16:27:48 2015 by ELM ver.2012-10-06 from 001__elm20150722_141929__dat00.bin

