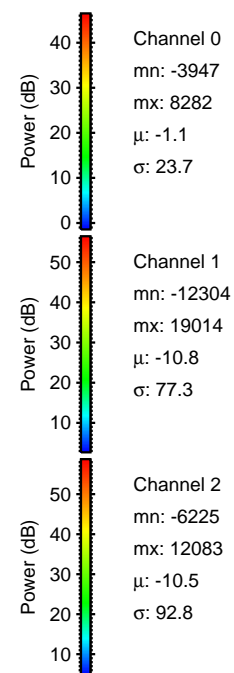
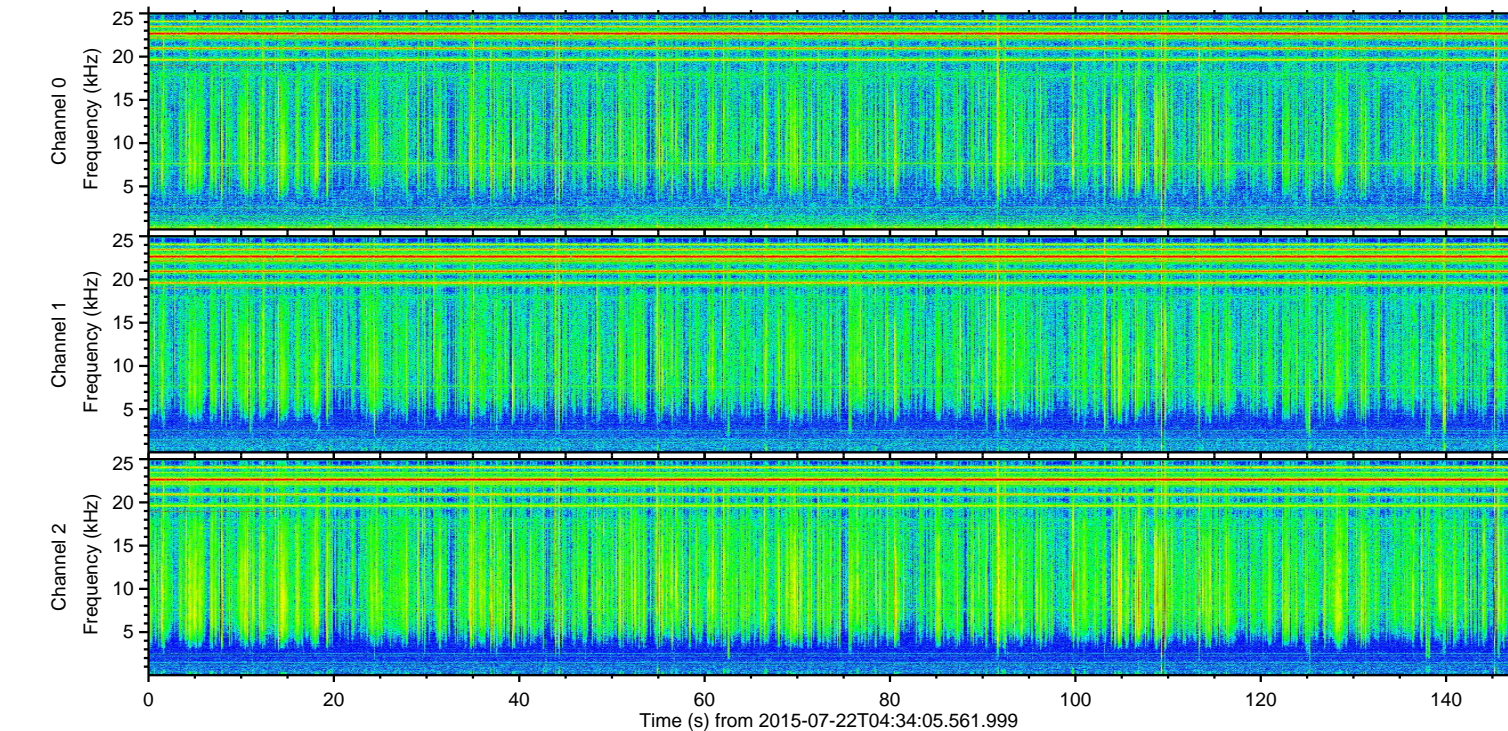
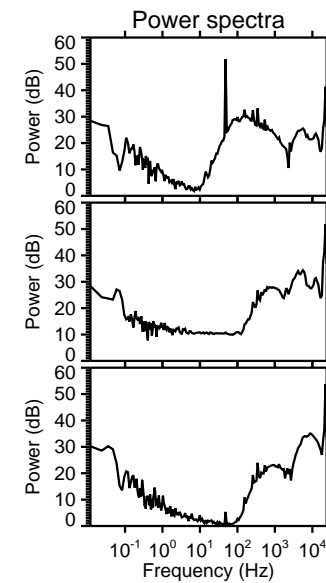
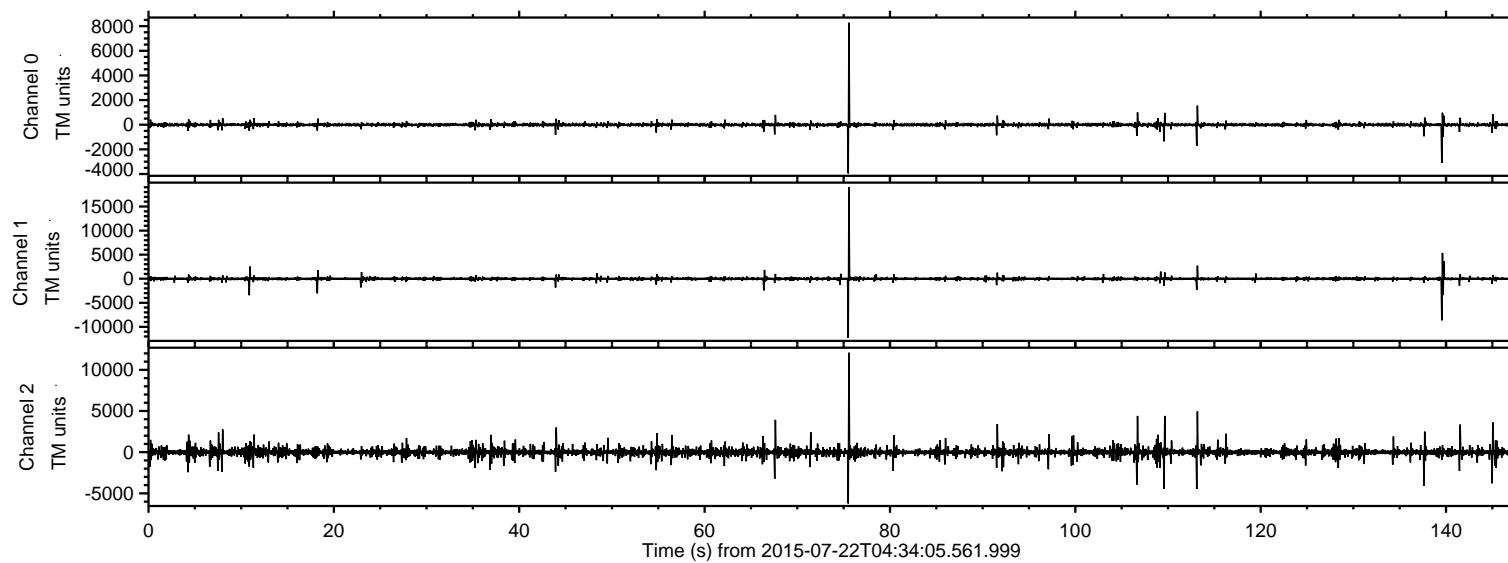


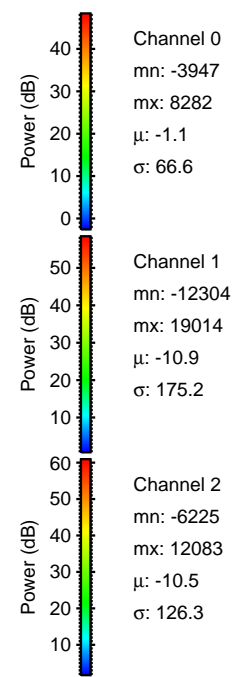
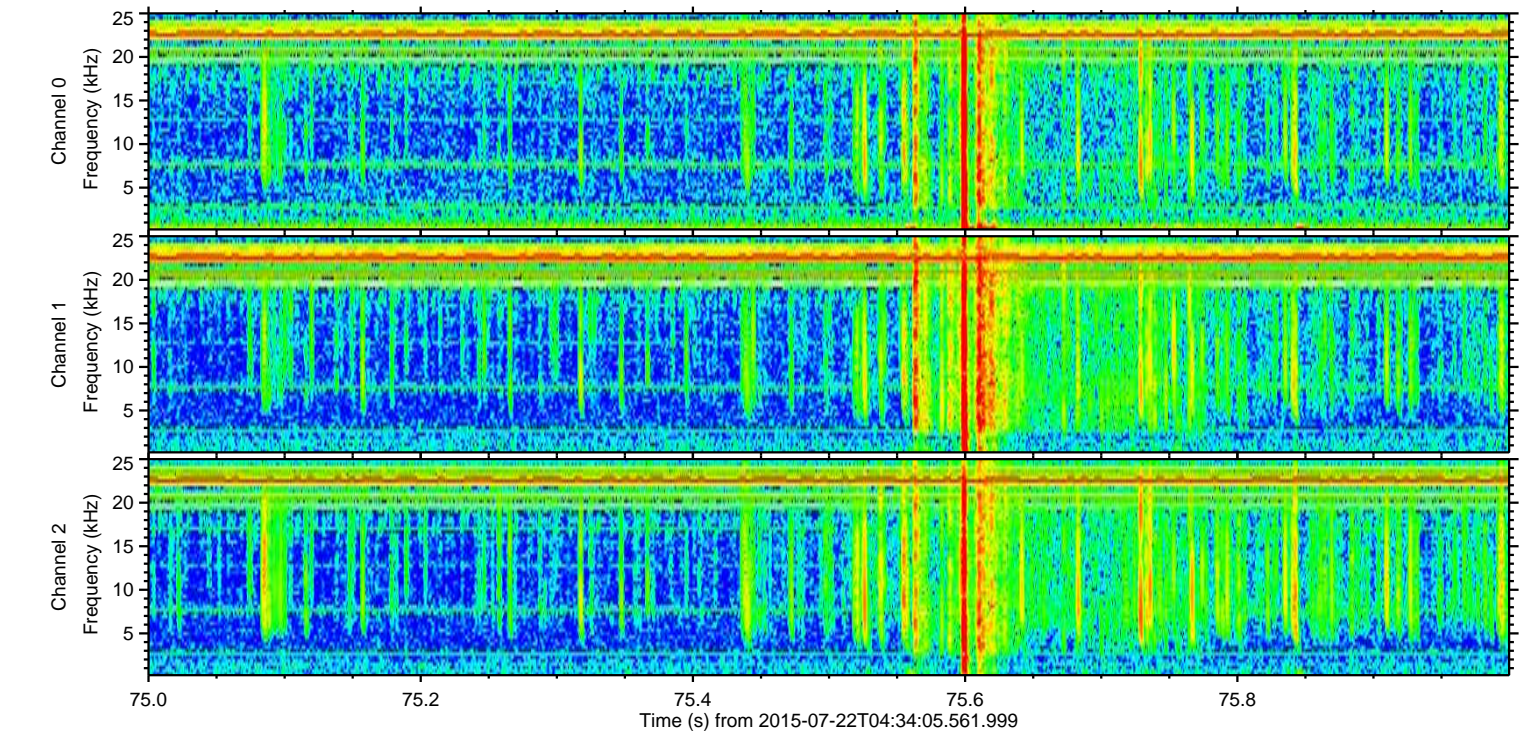
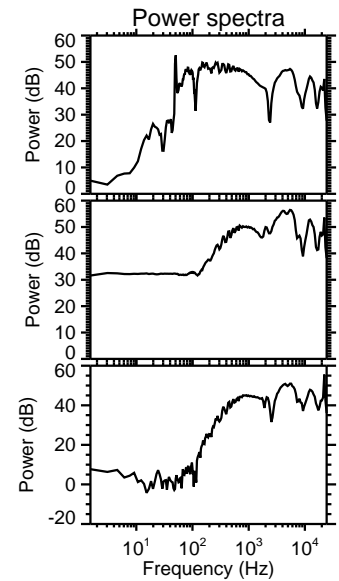
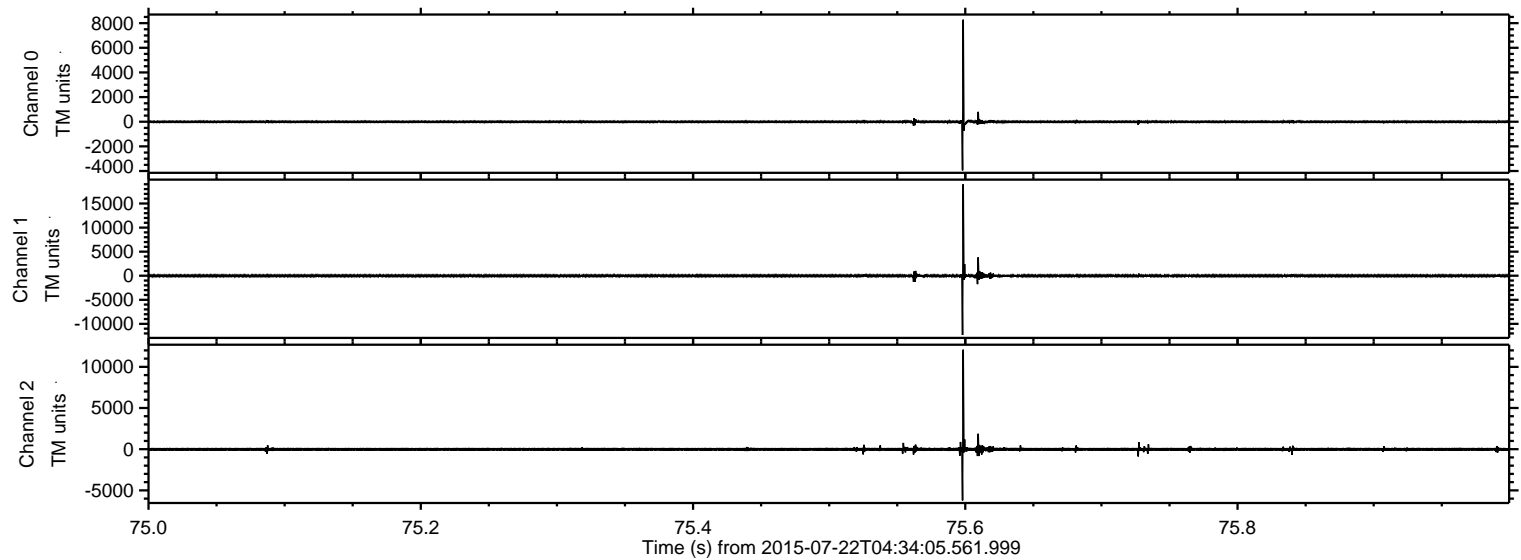
# ELMAVAN 3D WAVEFORMS (Measured data sampled at 50 kHz) 51000 packets of 144 samples from 2015-07-22T04:34:05.561.999.

Processed Wed Jul 22 06:40:52 2015 by ELM ver.2012-10-06 from 001\_\_elm20150722\_043404\_\_dat00.bin





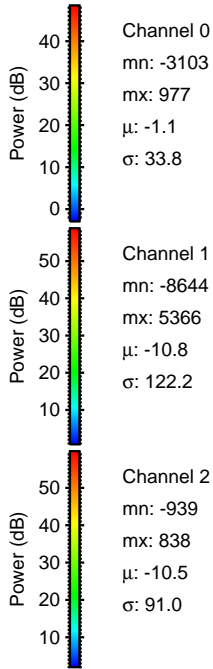
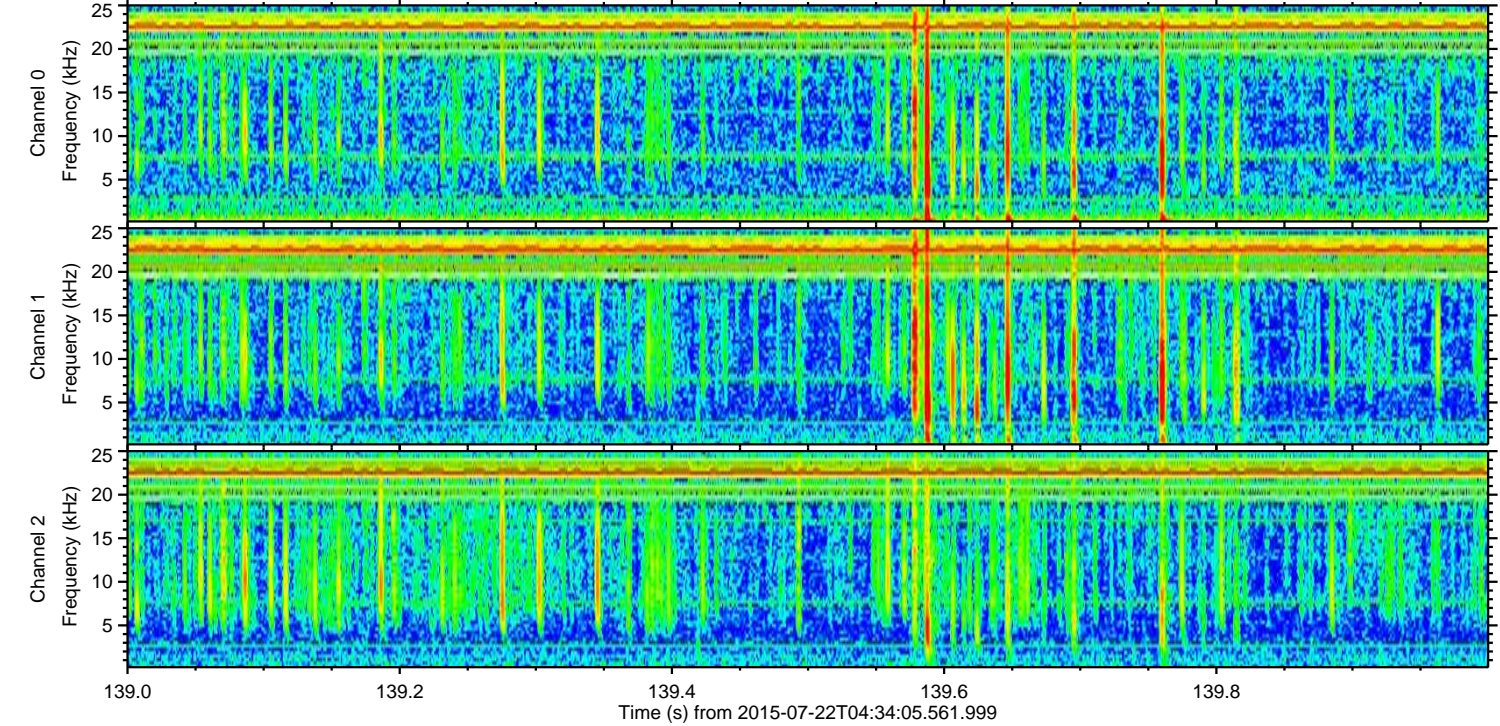
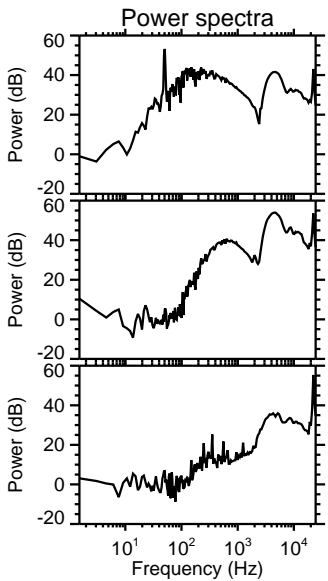
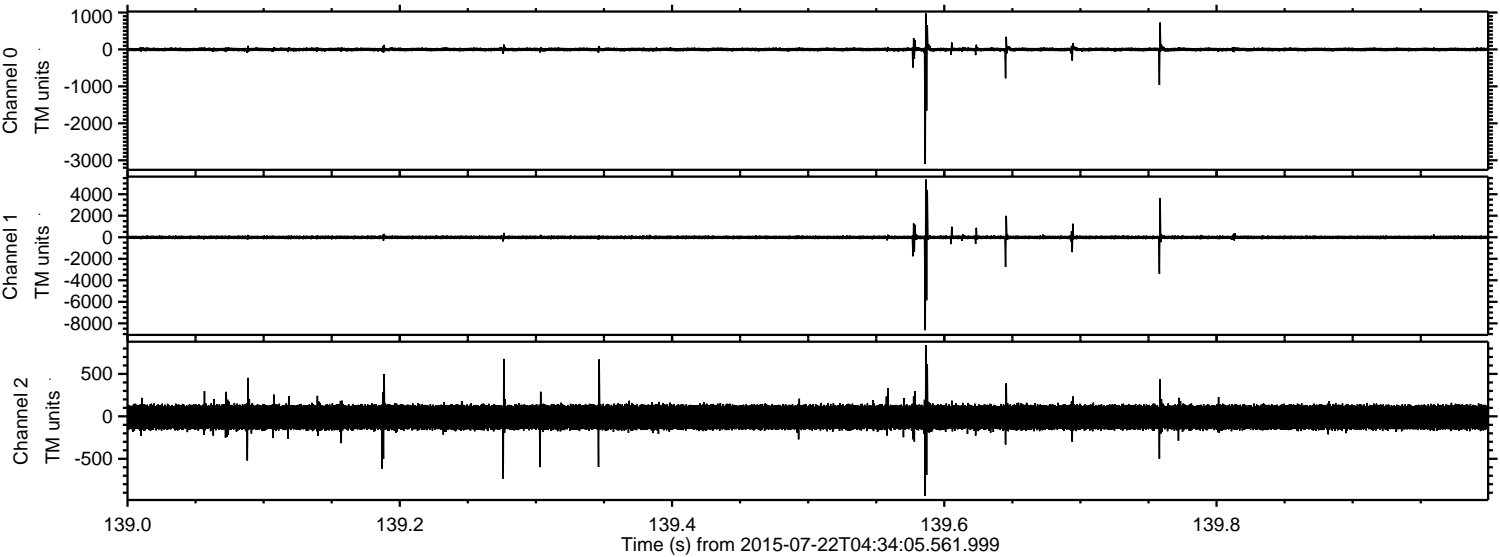
Processed Wed Jul 22 06:41:05 2015 by ELM ver.2012-10-06 from 001\_\_elm20150722\_043404\_\_dat00.bin





ELMAVAN 3D WAVEFORMS (Measured data sampled at 50 kHz) 51000 packets of 144 samples from 2015-07-22T04:34:05.561.999. Part 140/147

Processed Wed Jul 22 06:41:06 2015 by ELM ver.2012-10-06 from 001\_\_elm20150722\_043404\_\_dat00.bin



Channel 0  
mn: -3103  
mx: 977  
 $\mu$ : -1.1  
 $\sigma$ : 33.8

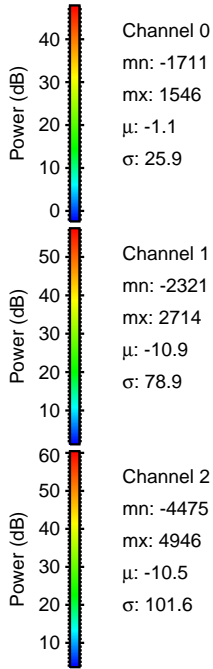
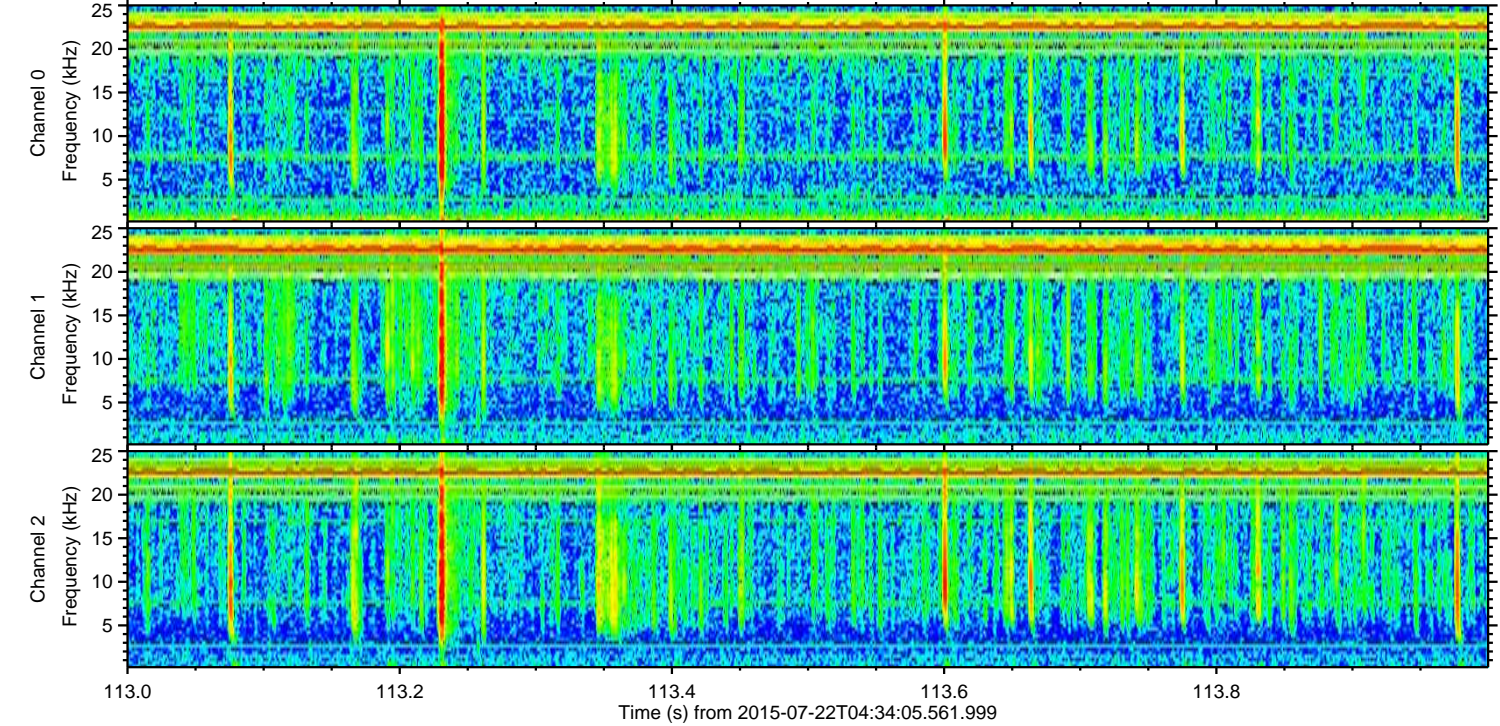
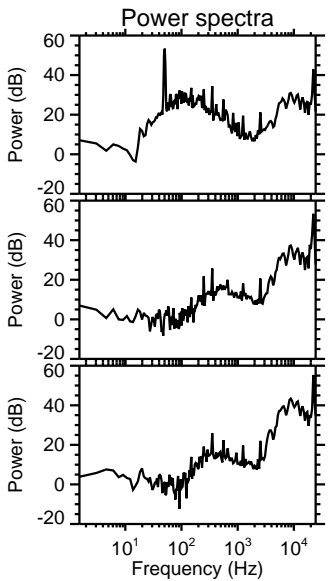
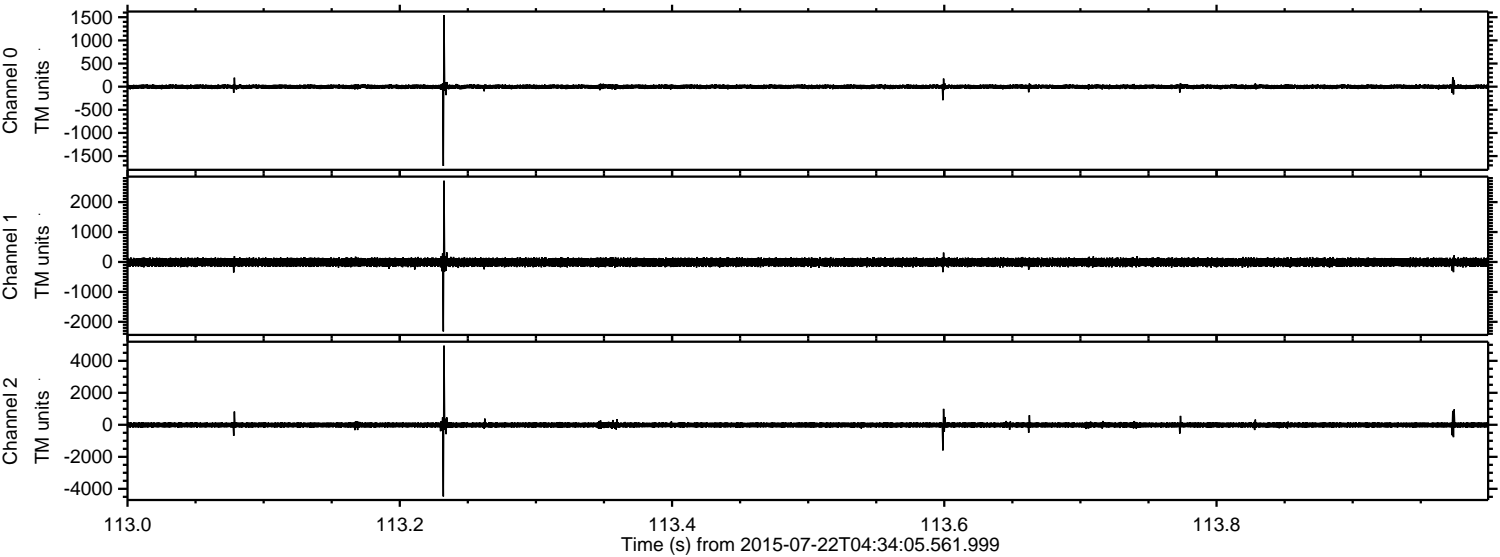
Channel 1  
mn: -8644  
mx: 5366  
 $\mu$ : -10.8  
 $\sigma$ : 122.2

Channel 2  
mn: -939  
mx: 838  
 $\mu$ : -10.5  
 $\sigma$ : 91.0



ELMAVAN 3D WAVEFORMS (Measured data sampled at 50 kHz) 51000 packets of 144 samples from 2015-07-22T04:34:05.561.999. Part 114/147

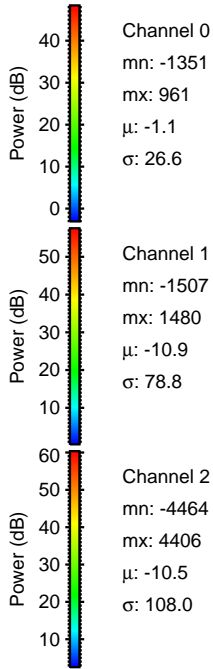
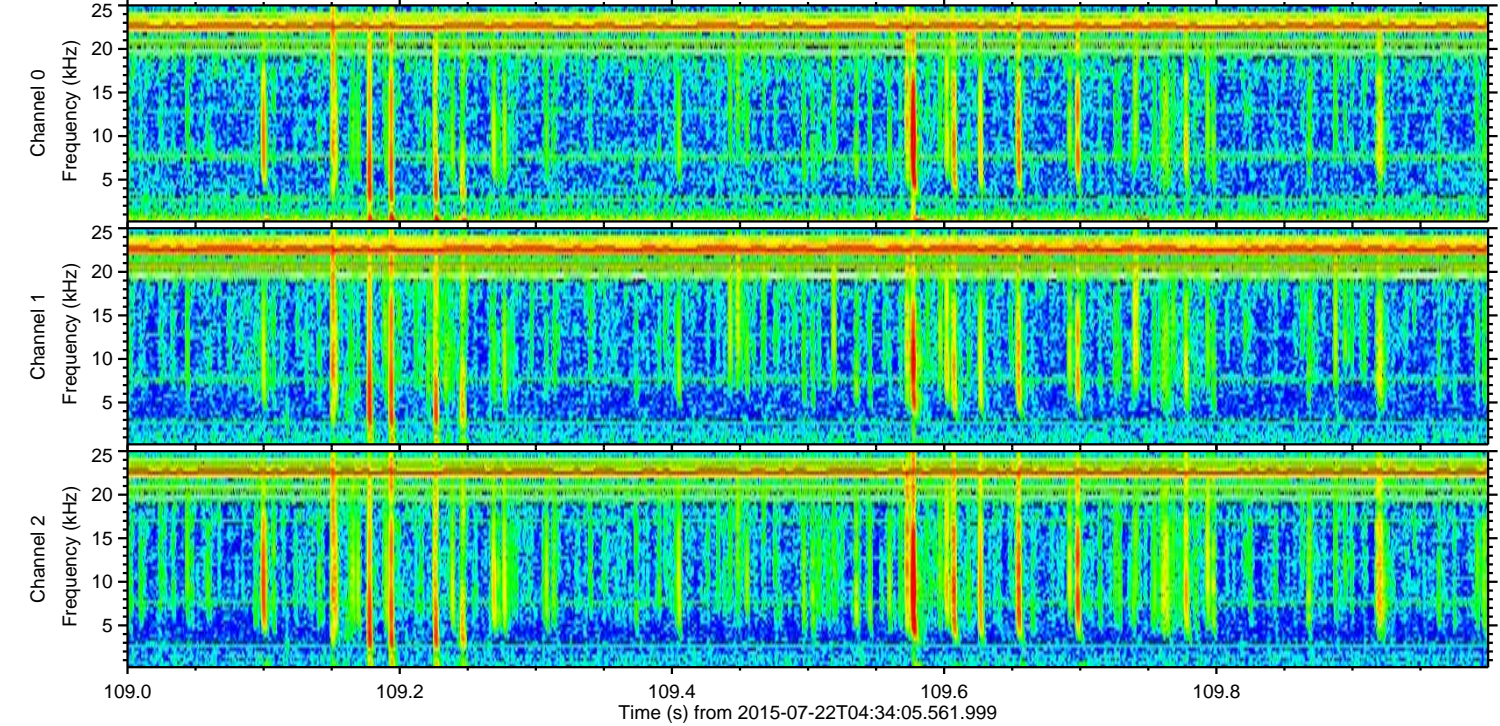
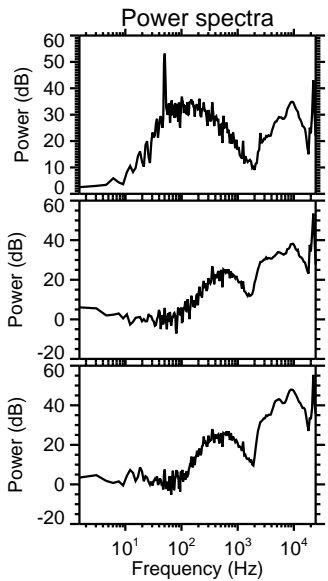
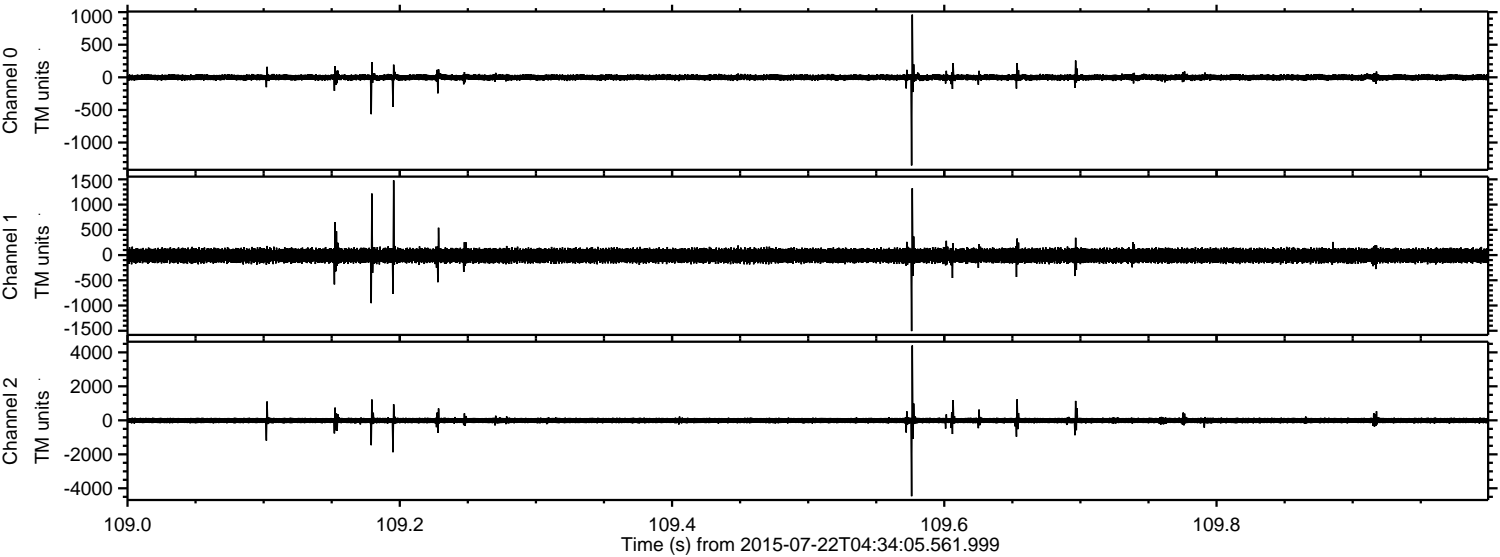
Processed Wed Jul 22 06:41:07 2015 by ELM ver.2012-10-06 from 001\_\_elm20150722\_043404\_\_dat00.bin





ELMAVAN 3D WAVEFORMS (Measured data sampled at 50 kHz) 51000 packets of 144 samples from 2015-07-22T04:34:05.561.999. Part 110/147

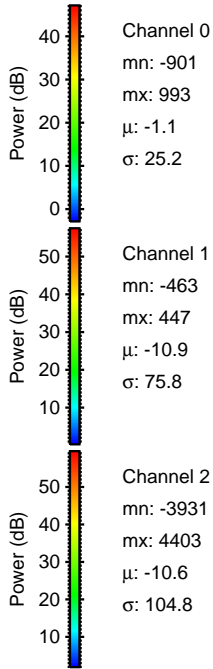
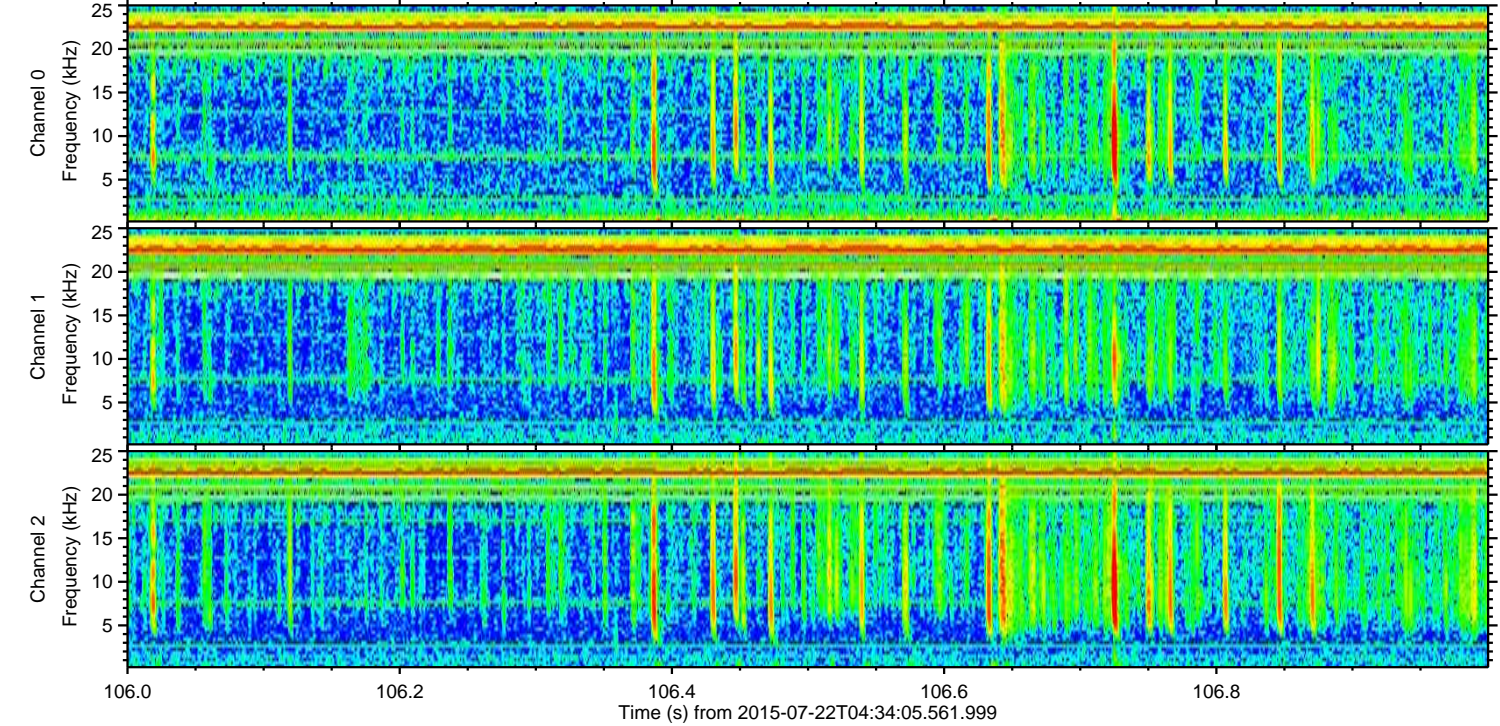
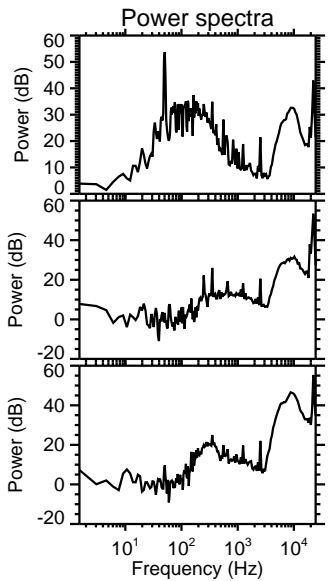
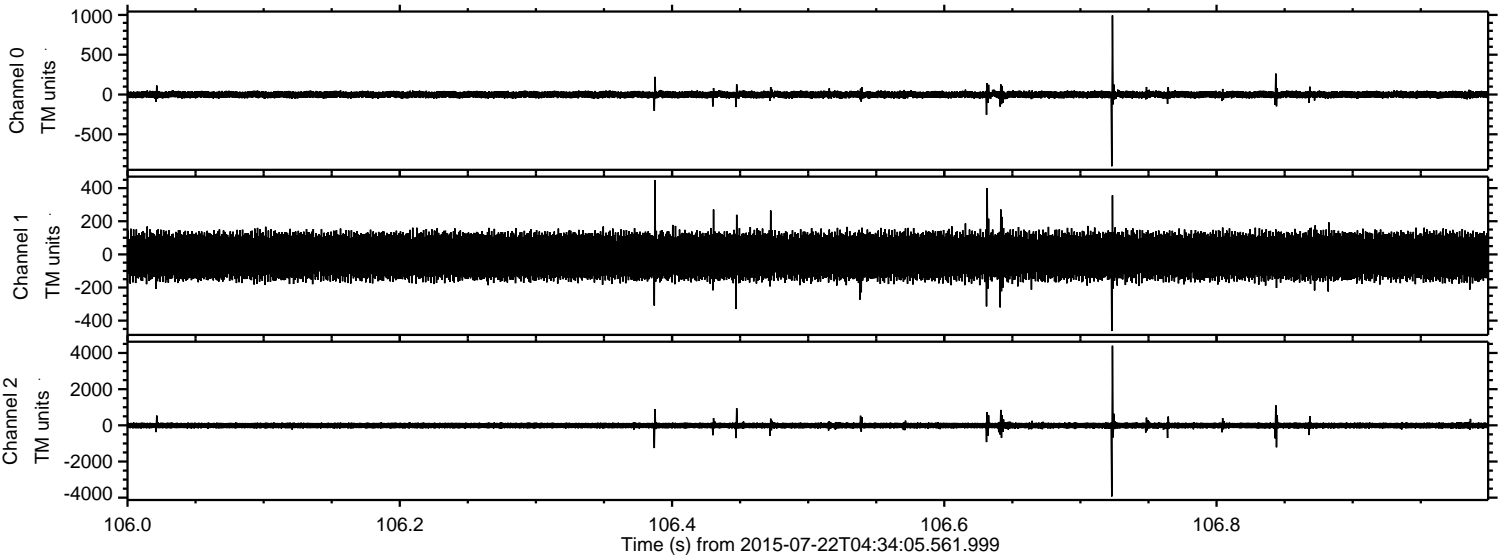
Processed Wed Jul 22 06:41:08 2015 by ELM ver.2012-10-06 from 001\_\_elm20150722\_043404\_\_dat00.bin





ELMAVAN 3D WAVEFORMS (Measured data sampled at 50 kHz) 51000 packets of 144 samples from 2015-07-22T04:34:05.561.999. Part 107/147

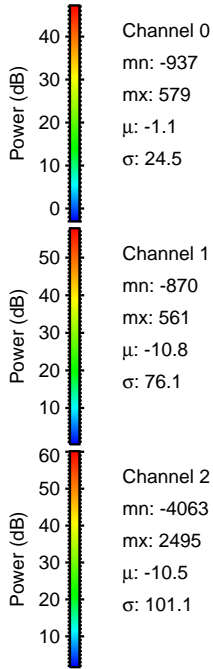
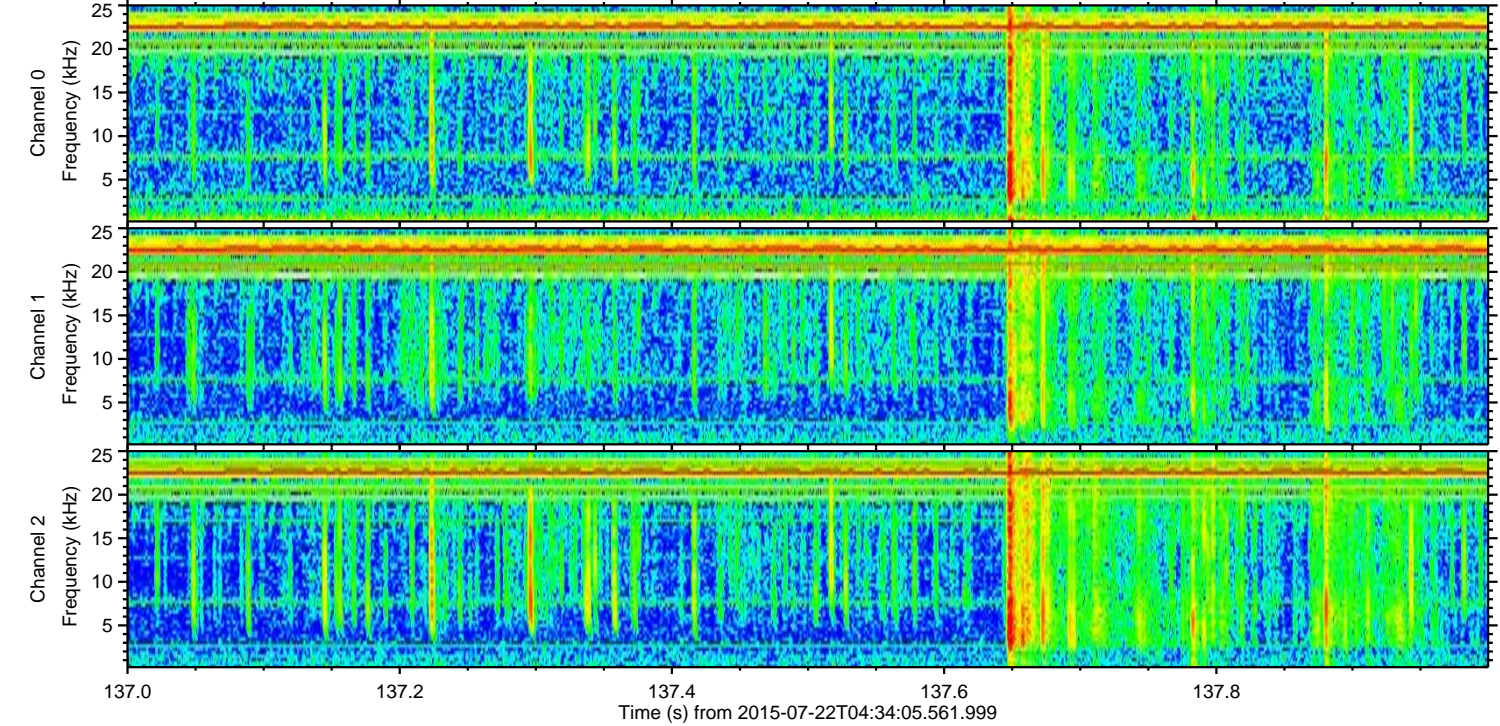
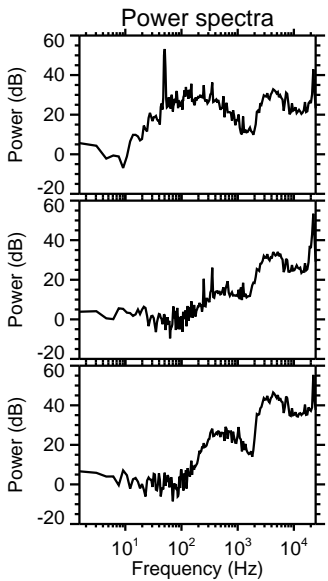
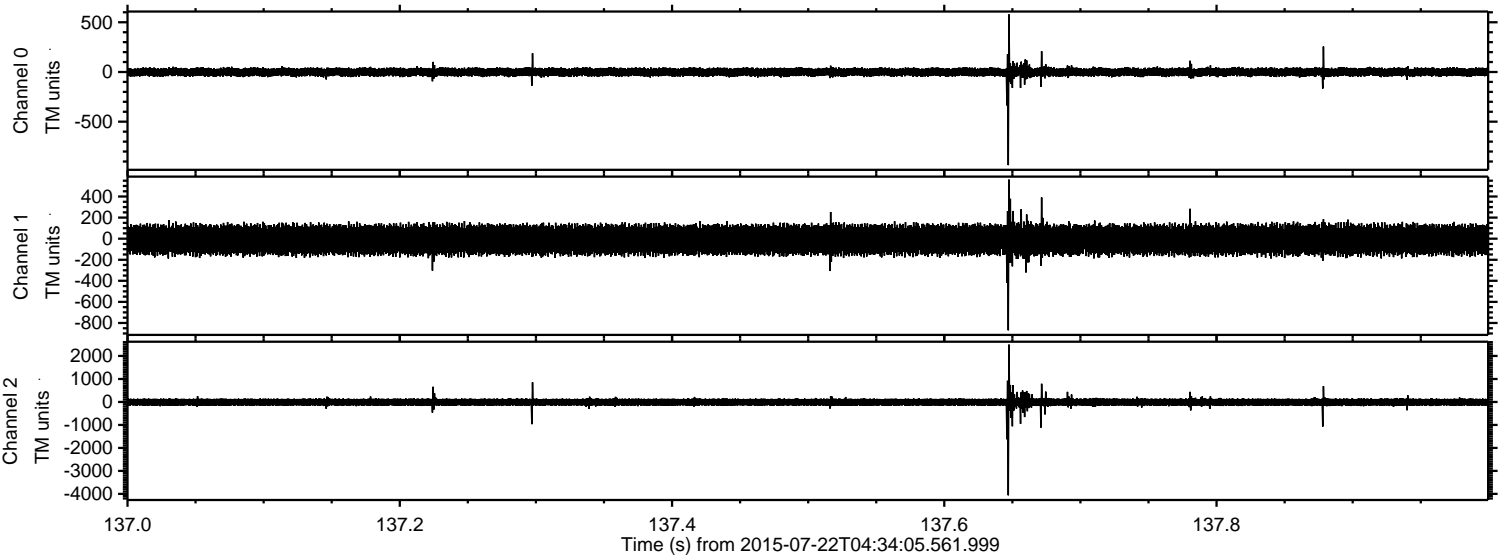
Processed Wed Jul 22 06:41:09 2015 by ELM ver.2012-10-06 from 001\_\_elm20150722\_043404\_\_dat00.bin





ELMAVAN 3D WAVEFORMS (Measured data sampled at 50 kHz) 51000 packets of 144 samples from 2015-07-22T04:34:05.561.999. Part 138/147

Processed Wed Jul 22 06:41:10 2015 by ELM ver.2012-10-06 from 001\_\_elm20150722\_043404\_\_dat00.bin



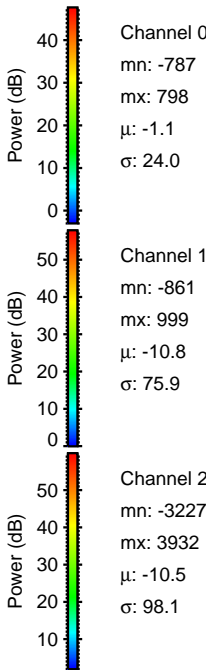
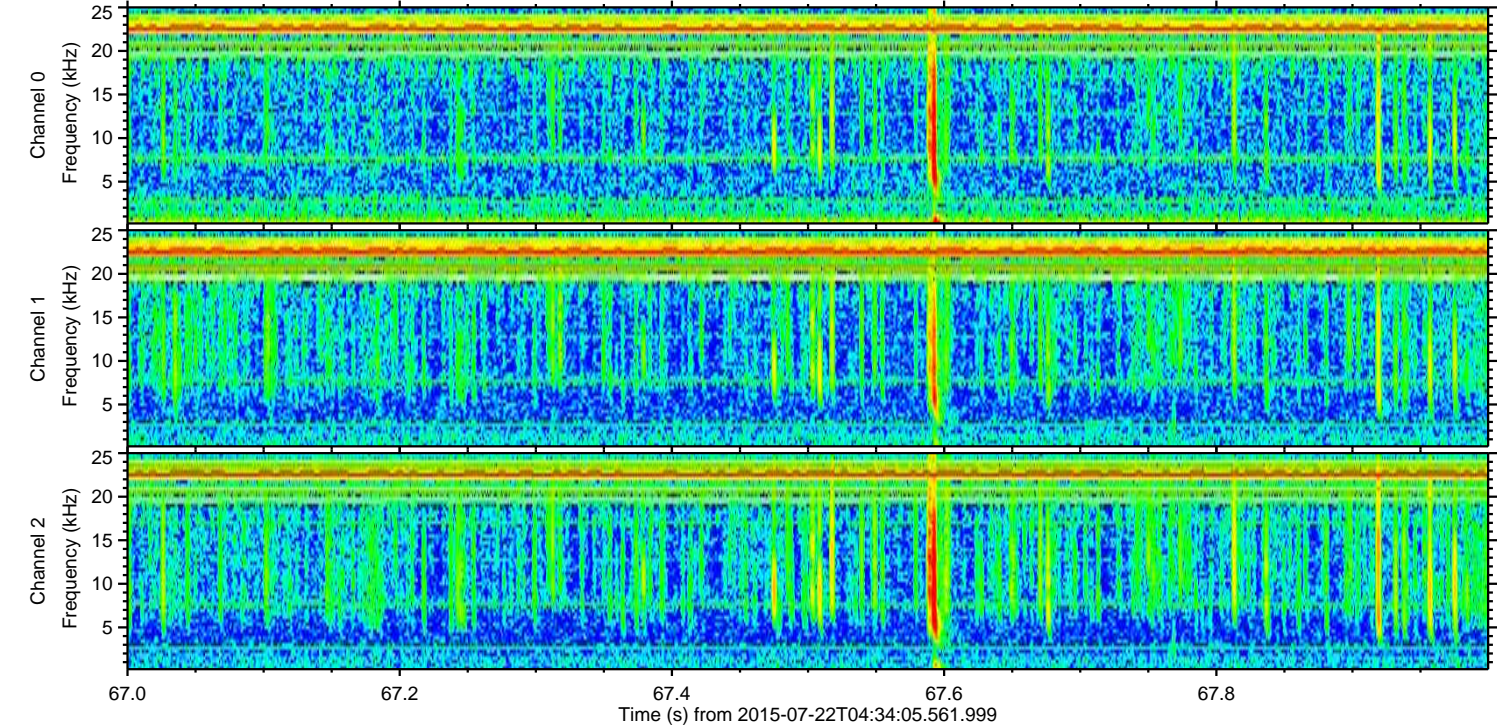
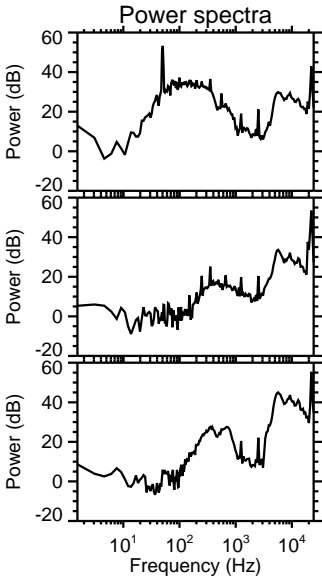
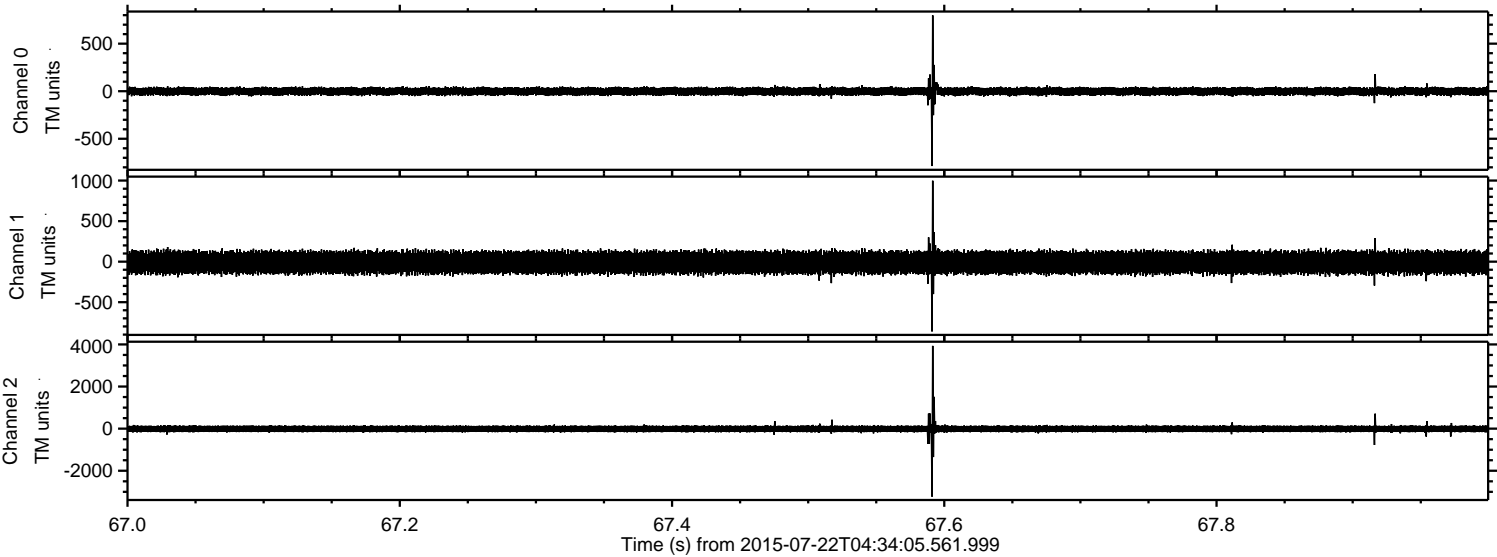
Channel 0  
mn: -937  
mx: 579  
 $\mu$ : -1.1  
 $\sigma$ : 24.5

Channel 1  
mn: -870  
mx: 561  
 $\mu$ : -10.8  
 $\sigma$ : 76.1

Channel 2  
mn: -4063  
mx: 2495  
 $\mu$ : -10.5  
 $\sigma$ : 101.1



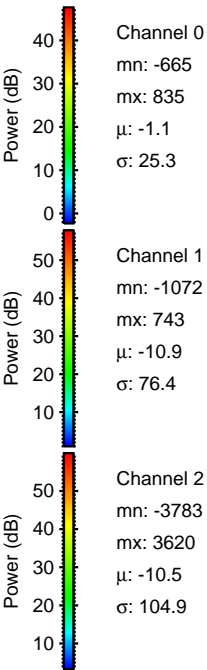
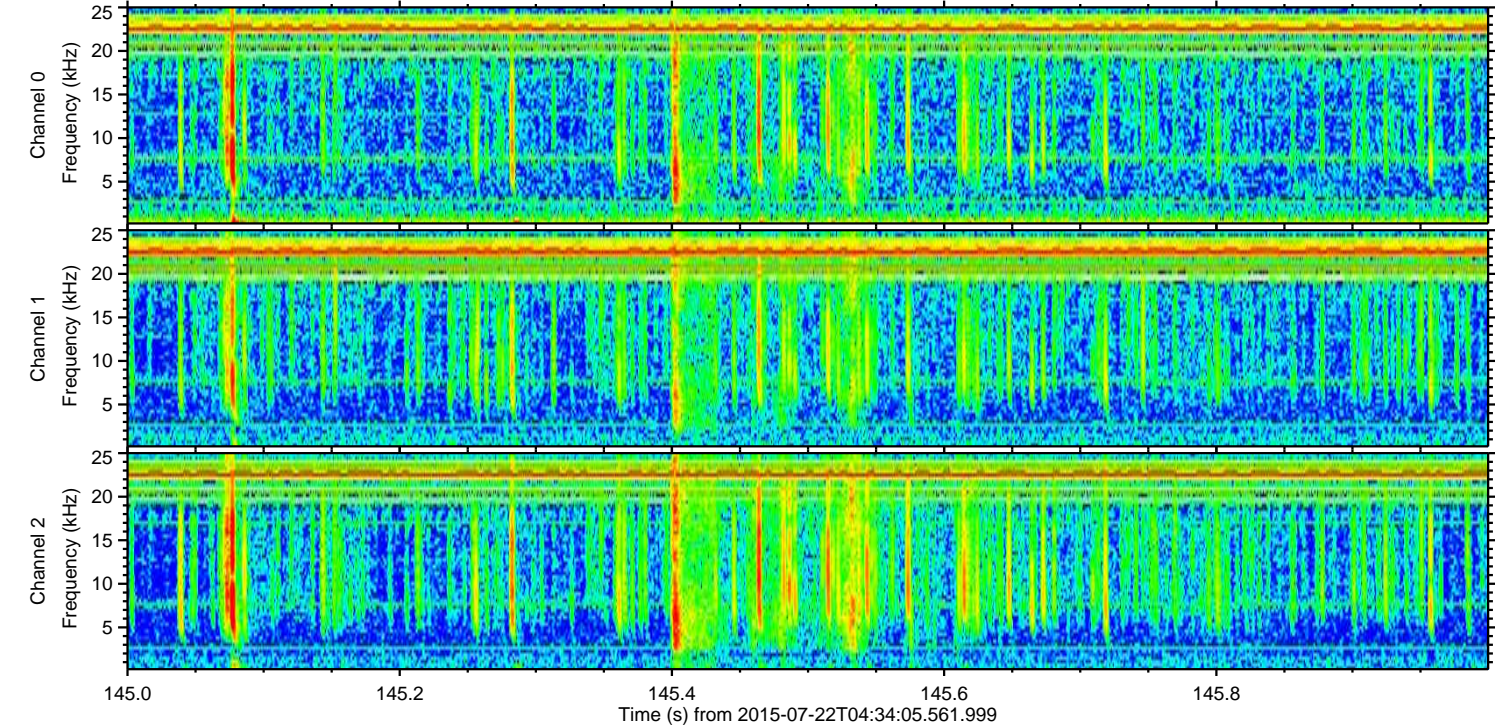
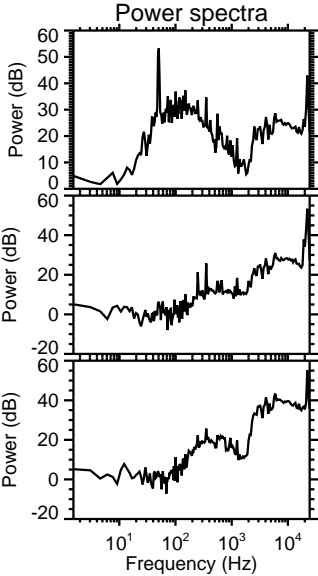
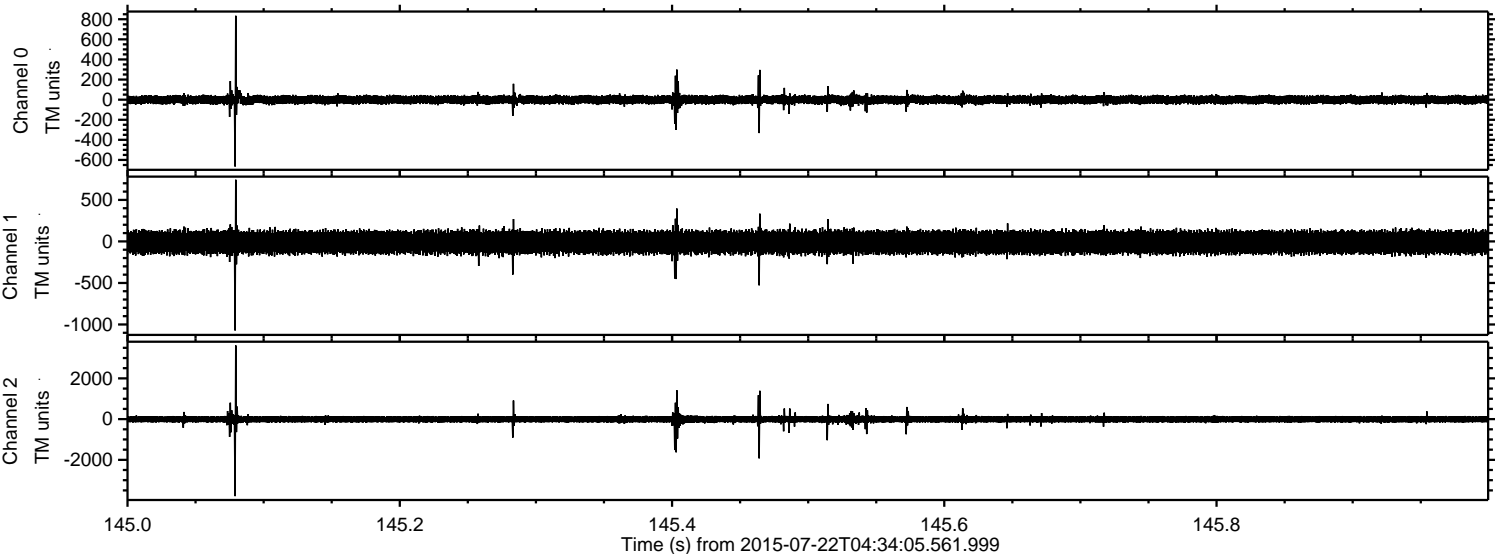
Processed Wed Jul 22 06:41:11 2015 by ELM ver.2012-10-06 from 001\_\_elm20150722\_043404\_\_dat00.bin





ELMAVAN 3D WAVEFORMS (Measured data sampled at 50 kHz) 51000 packets of 144 samples from 2015-07-22T04:34:05.561.999. Part 146/147

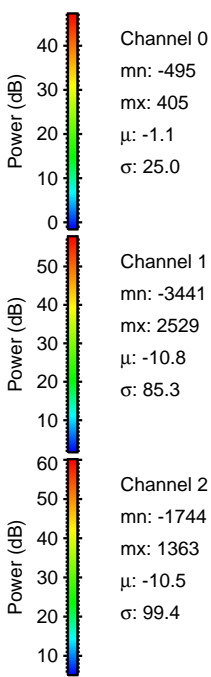
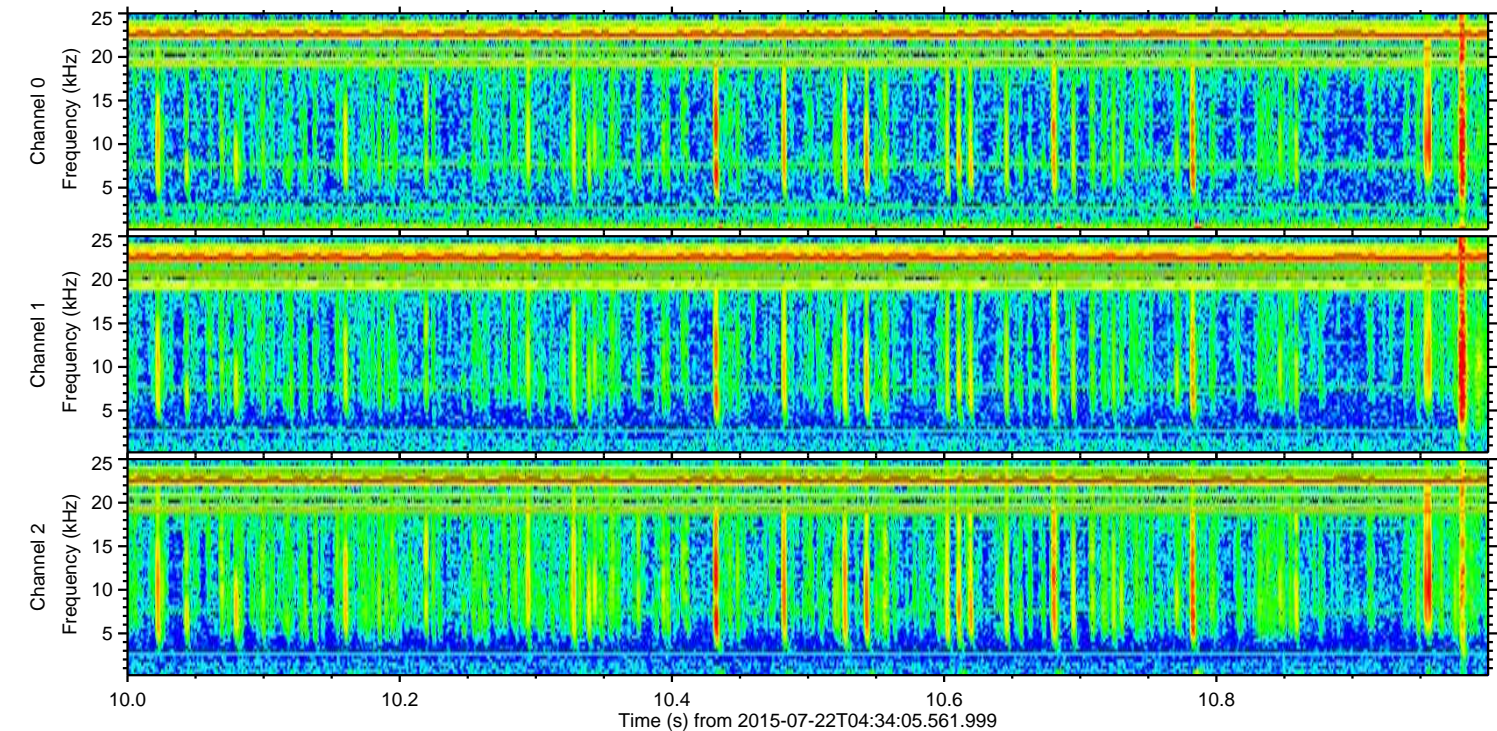
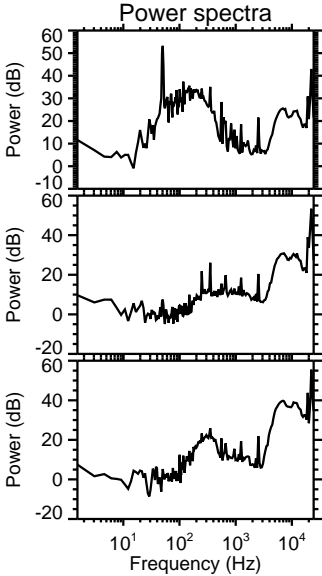
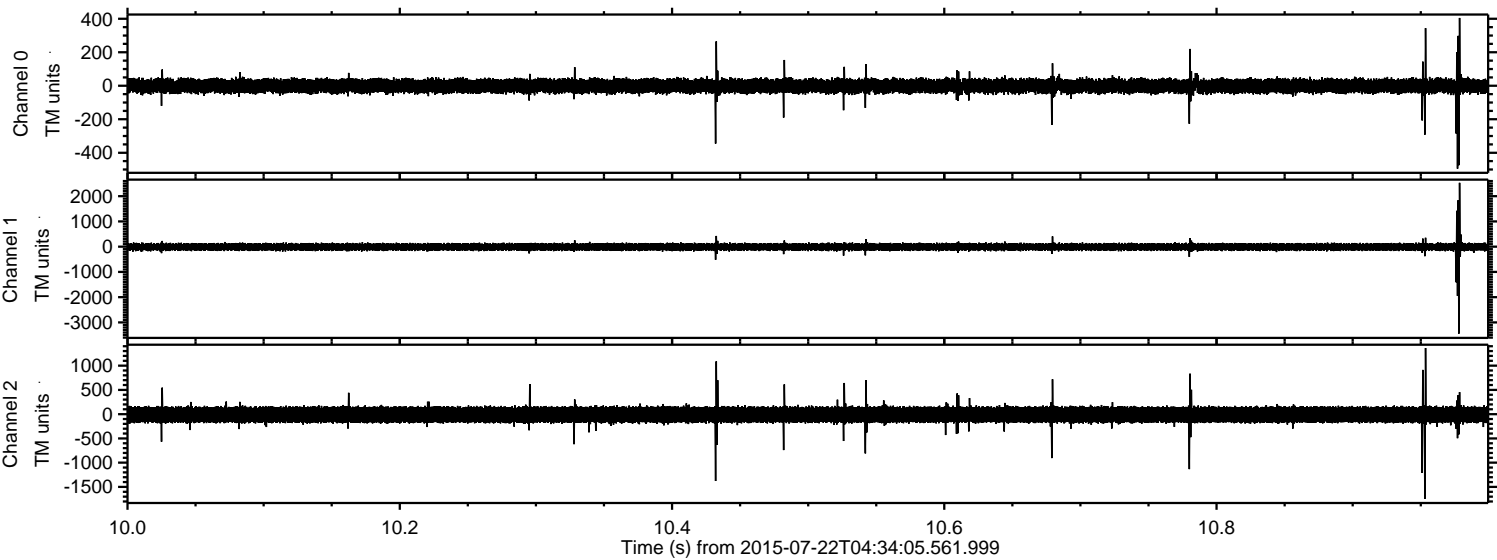
Processed Wed Jul 22 06:41:12 2015 by ELM ver.2012-10-06 from 001\_\_elm20150722\_043404\_\_dat00.bin





ELMAVAN 3D WAVEFORMS (Measured data sampled at 50 kHz) 51000 packets of 144 samples from 2015-07-22T04:34:05.561.999. Part 11/147

Processed Wed Jul 22 06:41:13 2015 by ELM ver.2012-10-06 from 001\_\_elm20150722\_043404\_\_dat00.bin





ELMAVAN 3D WAVEFORMS (Measured data sampled at 50 kHz) 51000 packets of 144 samples from 2015-07-22T04:34:05.561.999. Part 102/147

