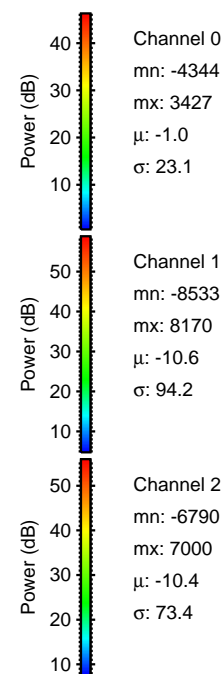
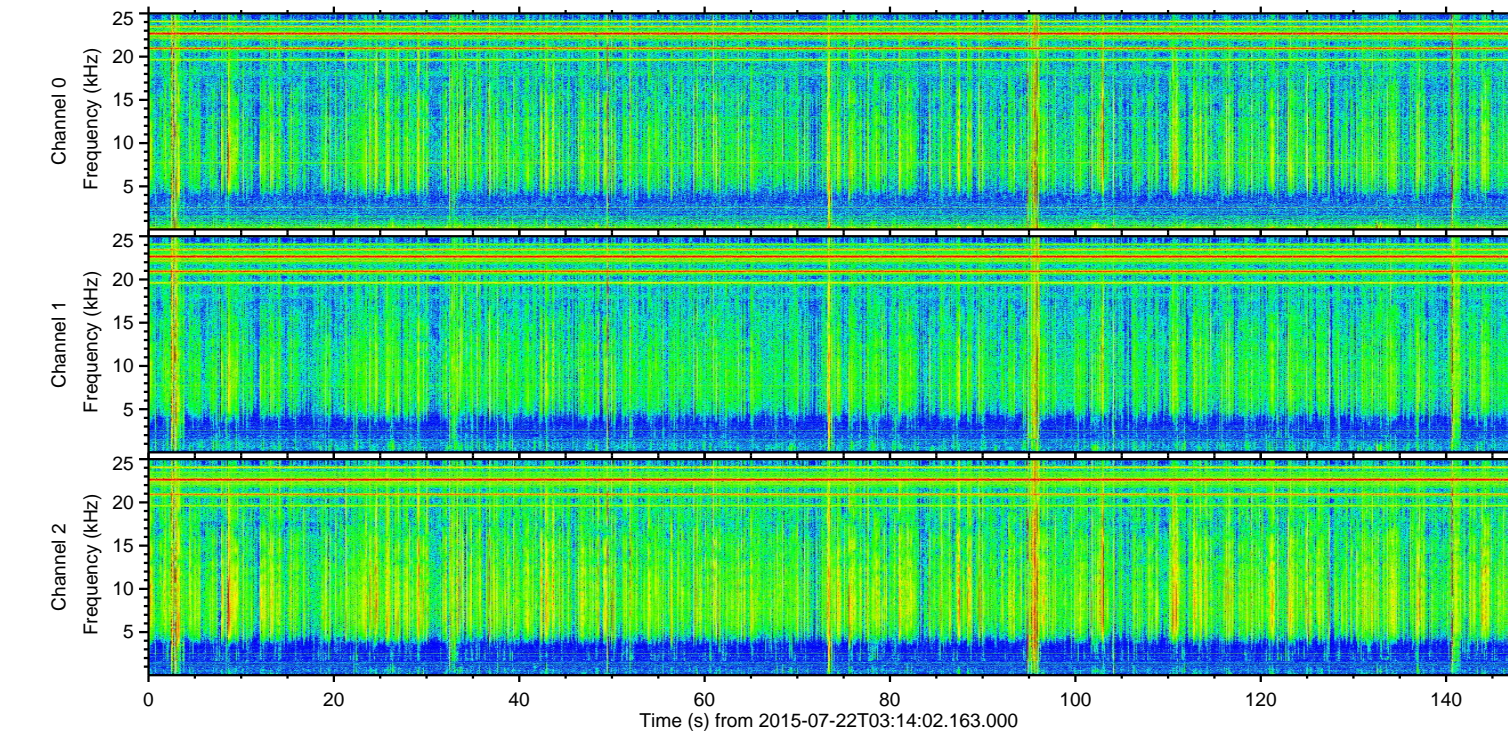
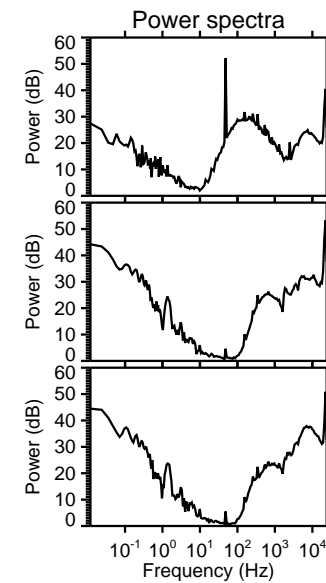
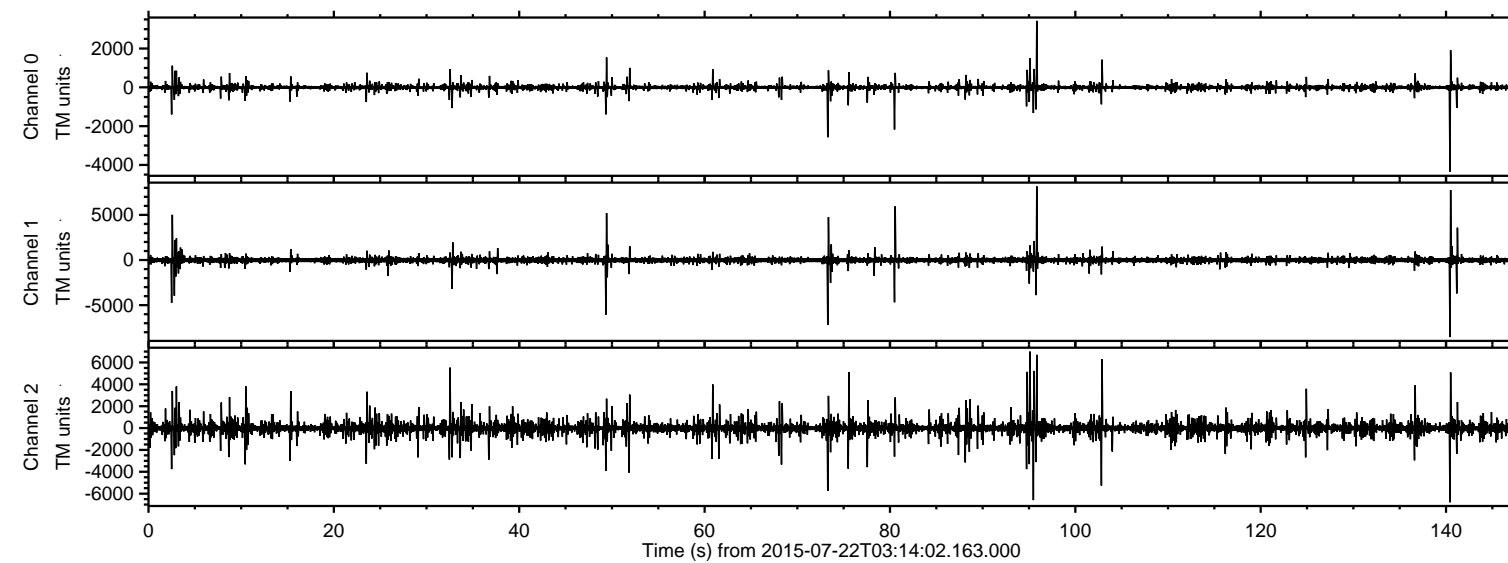


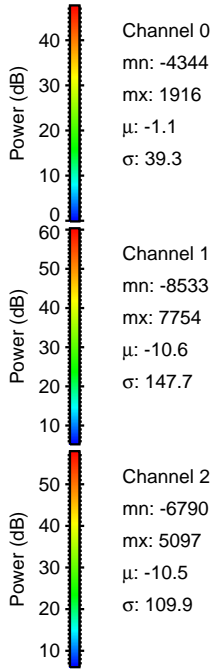
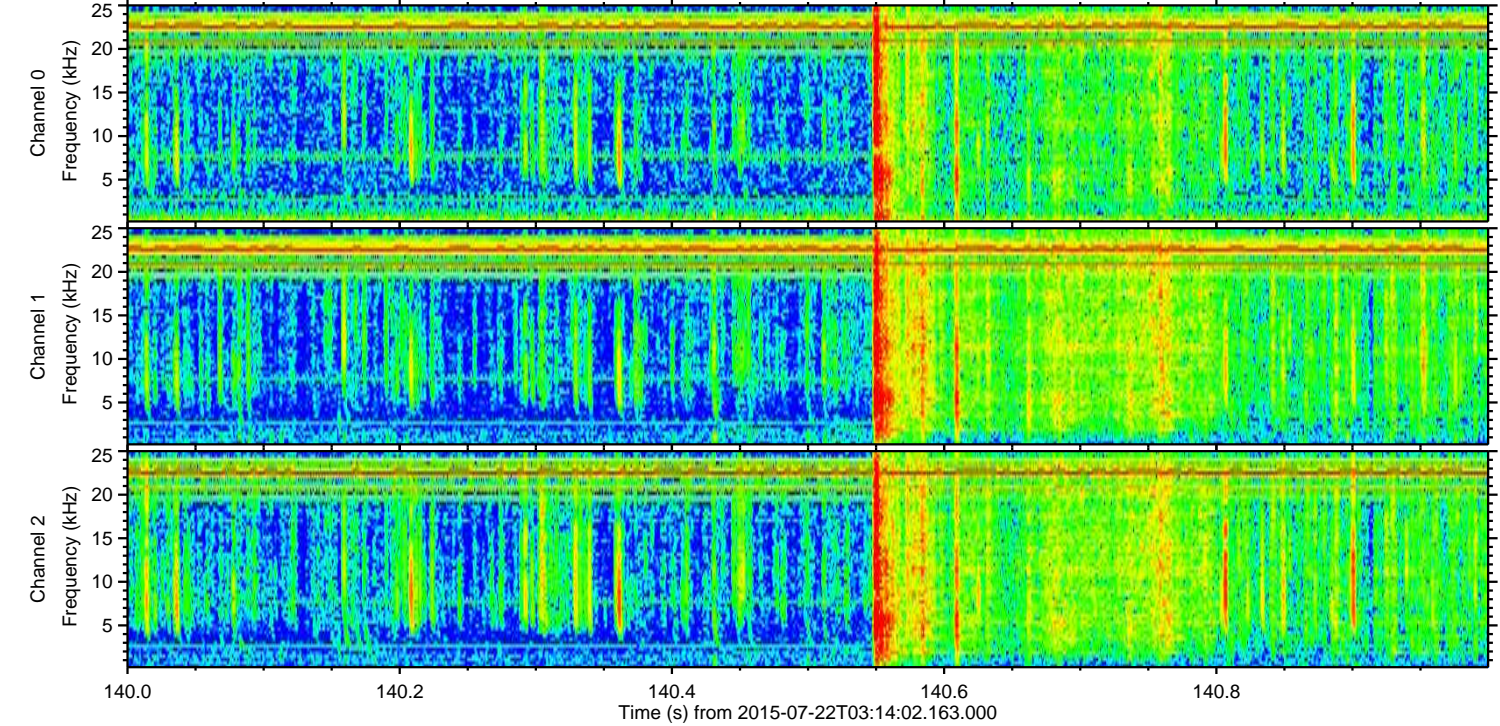
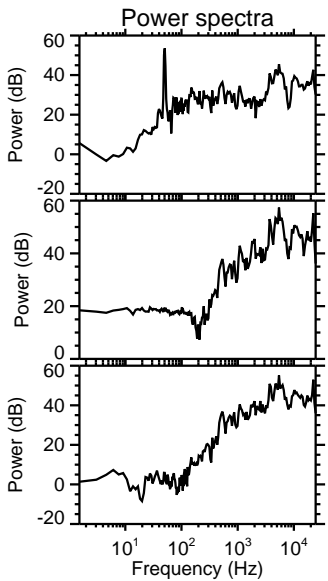
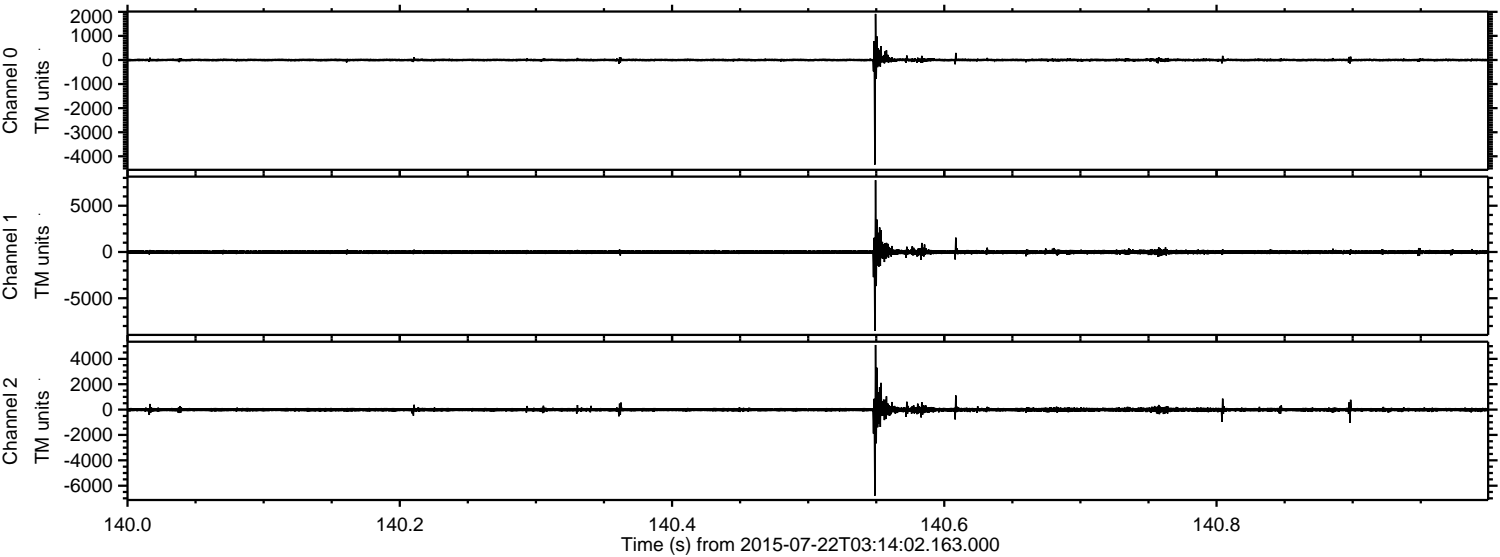
ELMAVAN 3D WAVEFORMS (Measured data sampled at 50 kHz) 51000 packets of 144 samples from 2015-07-22T03:14:02.163.000.

Processed Wed Jul 22 05:47:48 2015 by ELM ver.2012-10-06 from 001__elm20150722_031401__dat00.bin



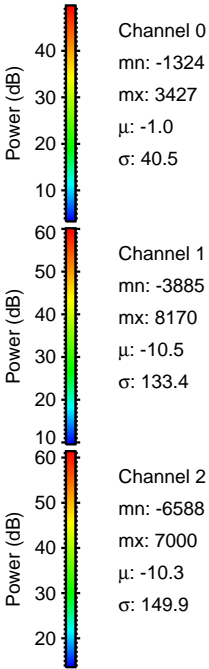
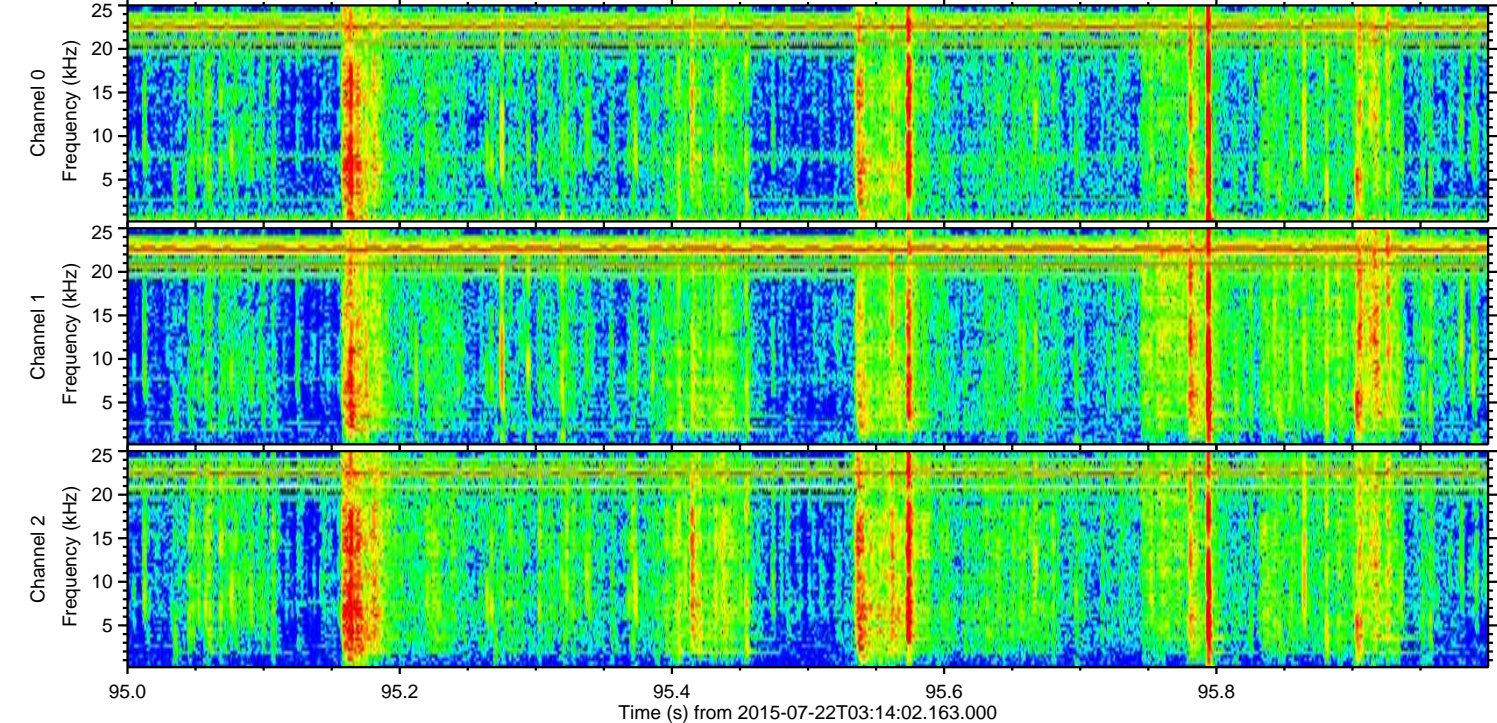
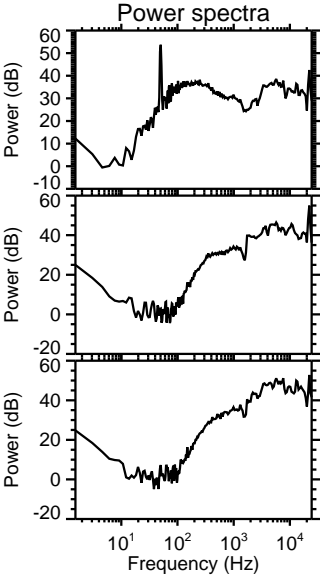
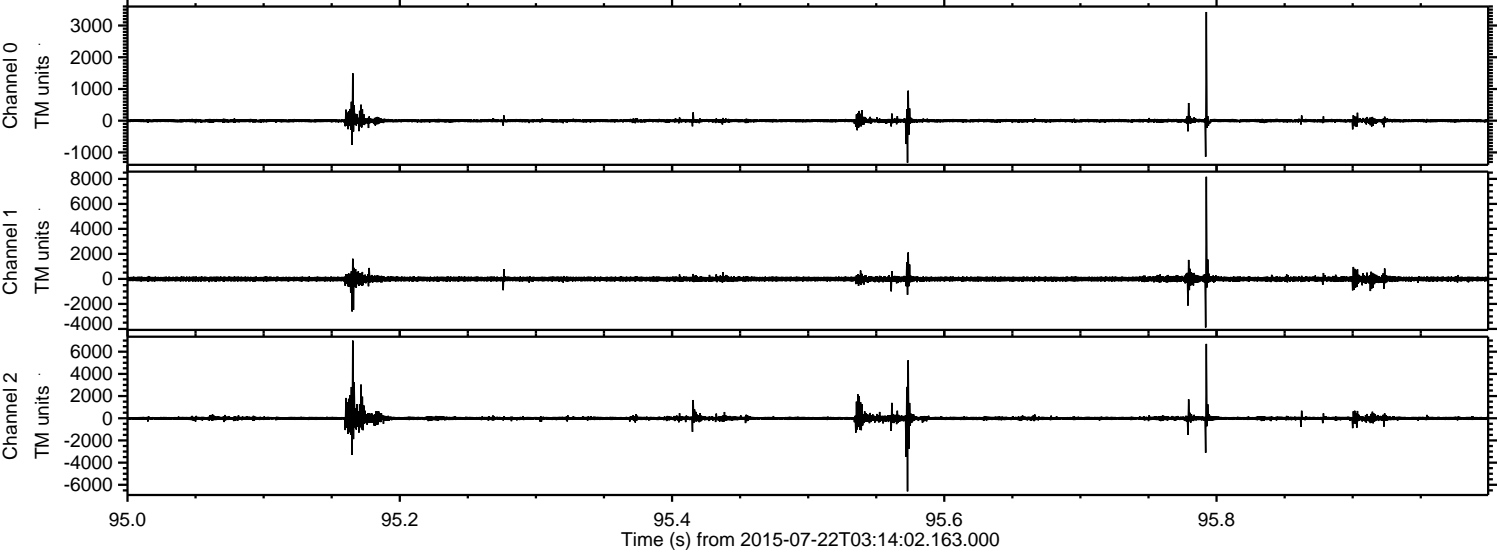
ELMAVAN 3D WAVEFORMS (Measured data sampled at 50 kHz) 51000 packets of 144 samples from 2015-07-22T03:14:02.163.000. Part 141/147

Processed Wed Jul 22 05:48:01 2015 by ELM ver.2012-10-06 from 001__elm20150722_031401__dat00.bin

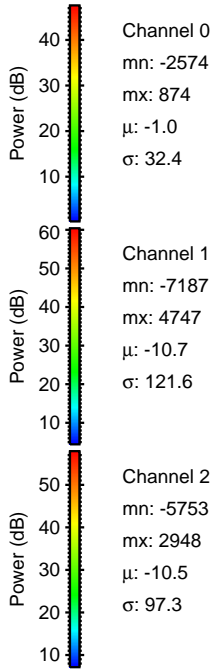
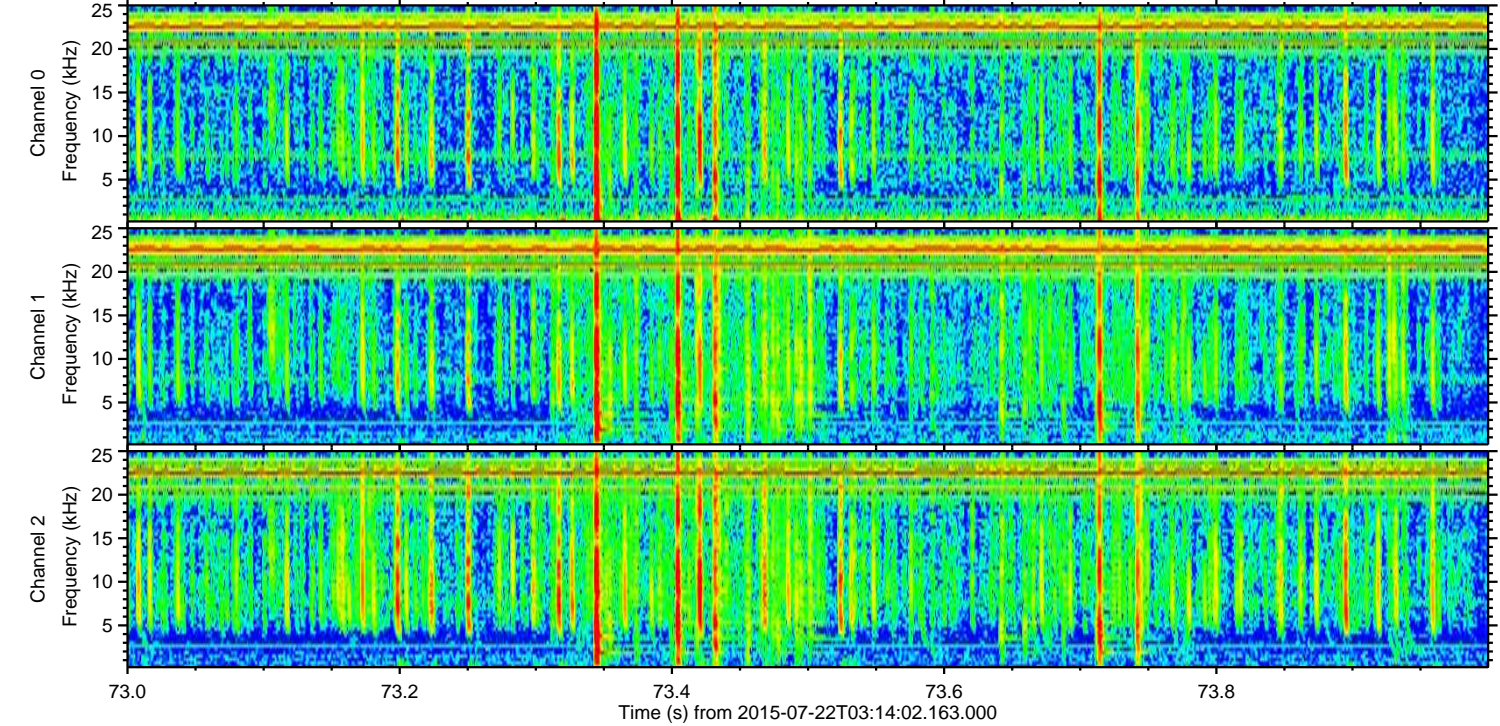
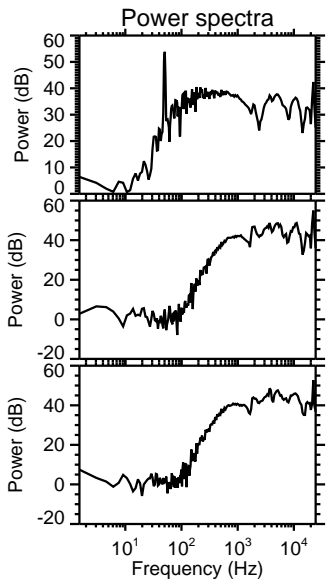
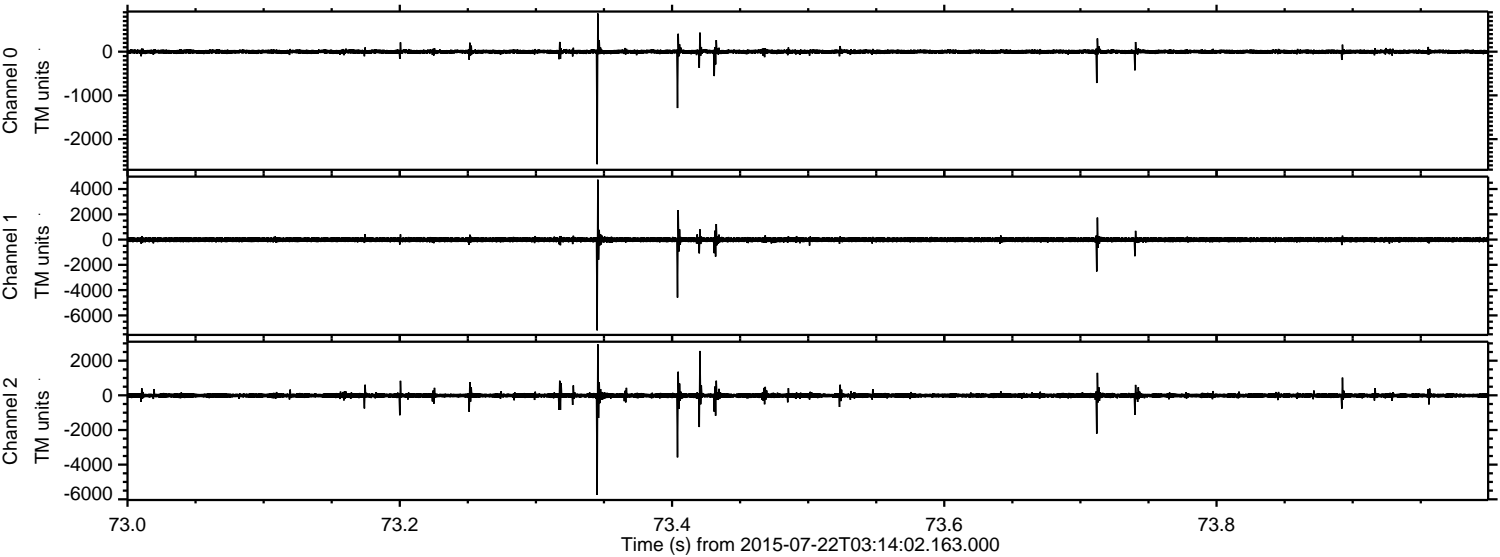


ELMAVAN 3D WAVEFORMS (Measured data sampled at 50 kHz) 51000 packets of 144 samples from 2015-07-22T03:14:02.163.000. Part 96/147

Processed Wed Jul 22 05:48:02 2015 by ELM ver.2012-10-06 from 001__elm20150722_031401__dat00.bin

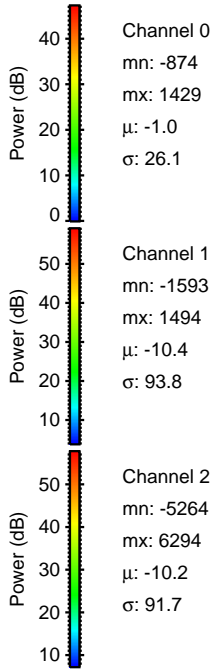
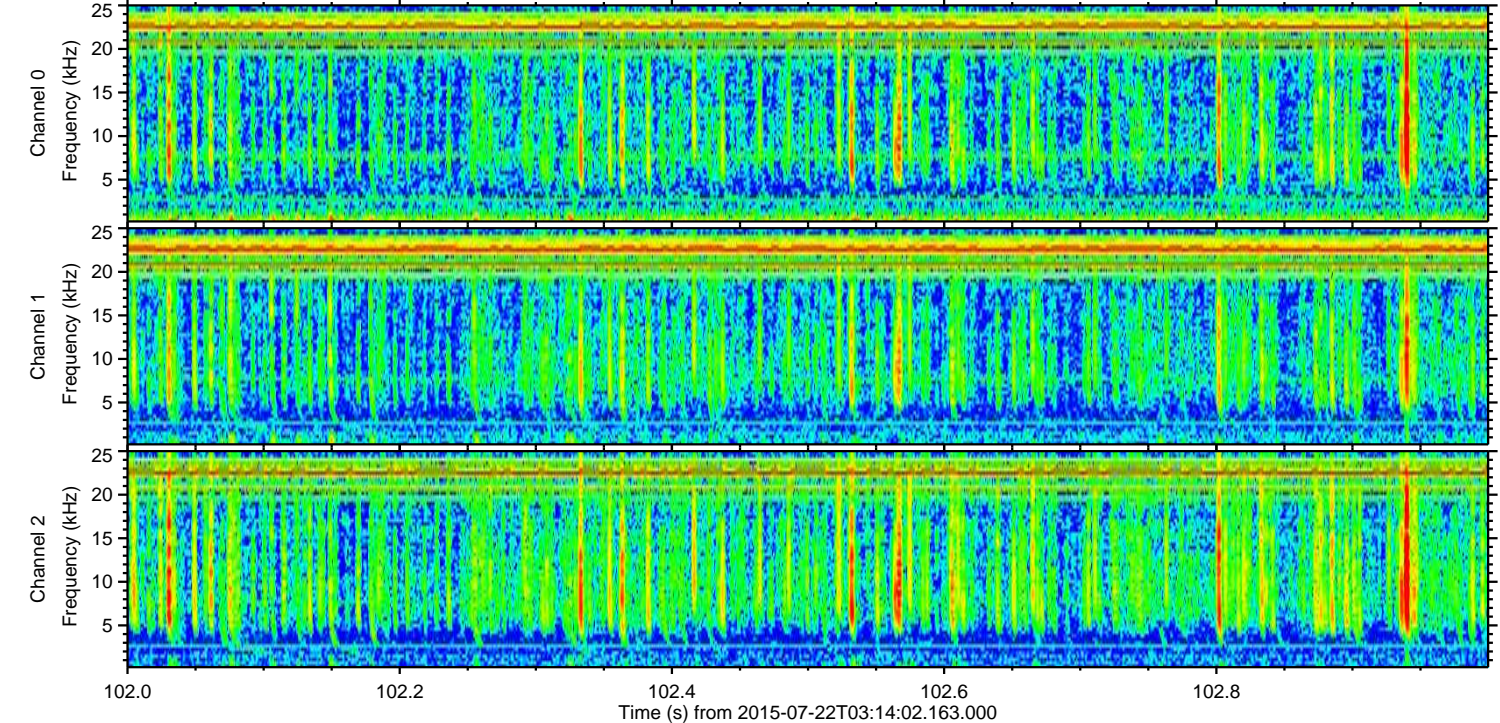
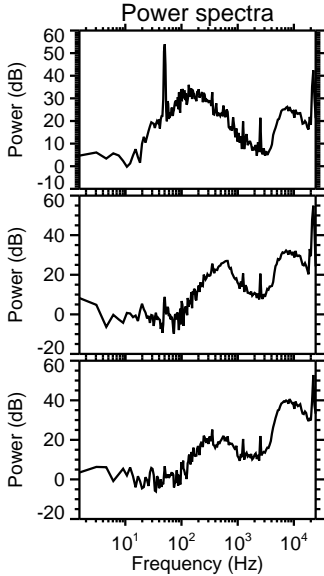
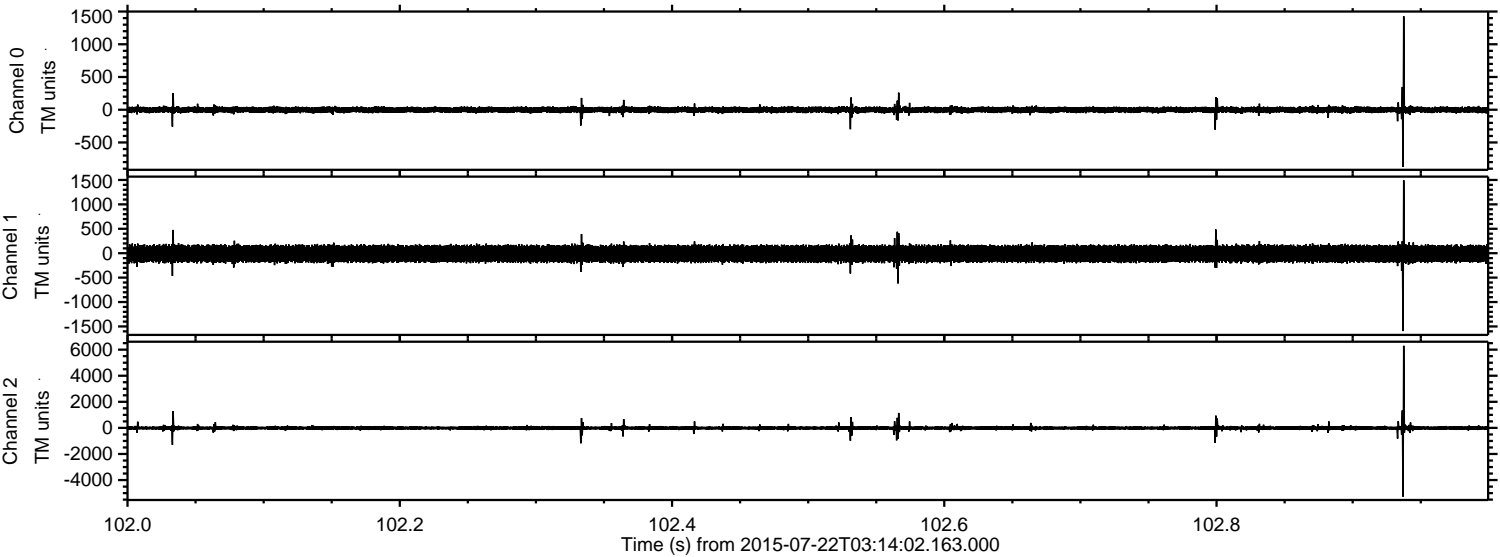


Processed Wed Jul 22 05:48:03 2015 by ELM ver.2012-10-06 from 001__elm20150722_031401__dat00.bin

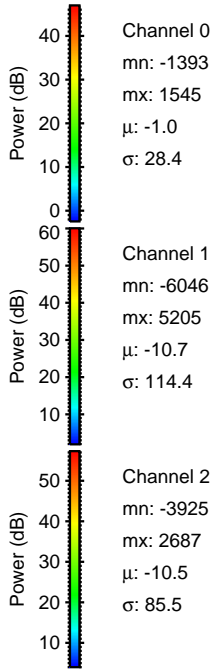
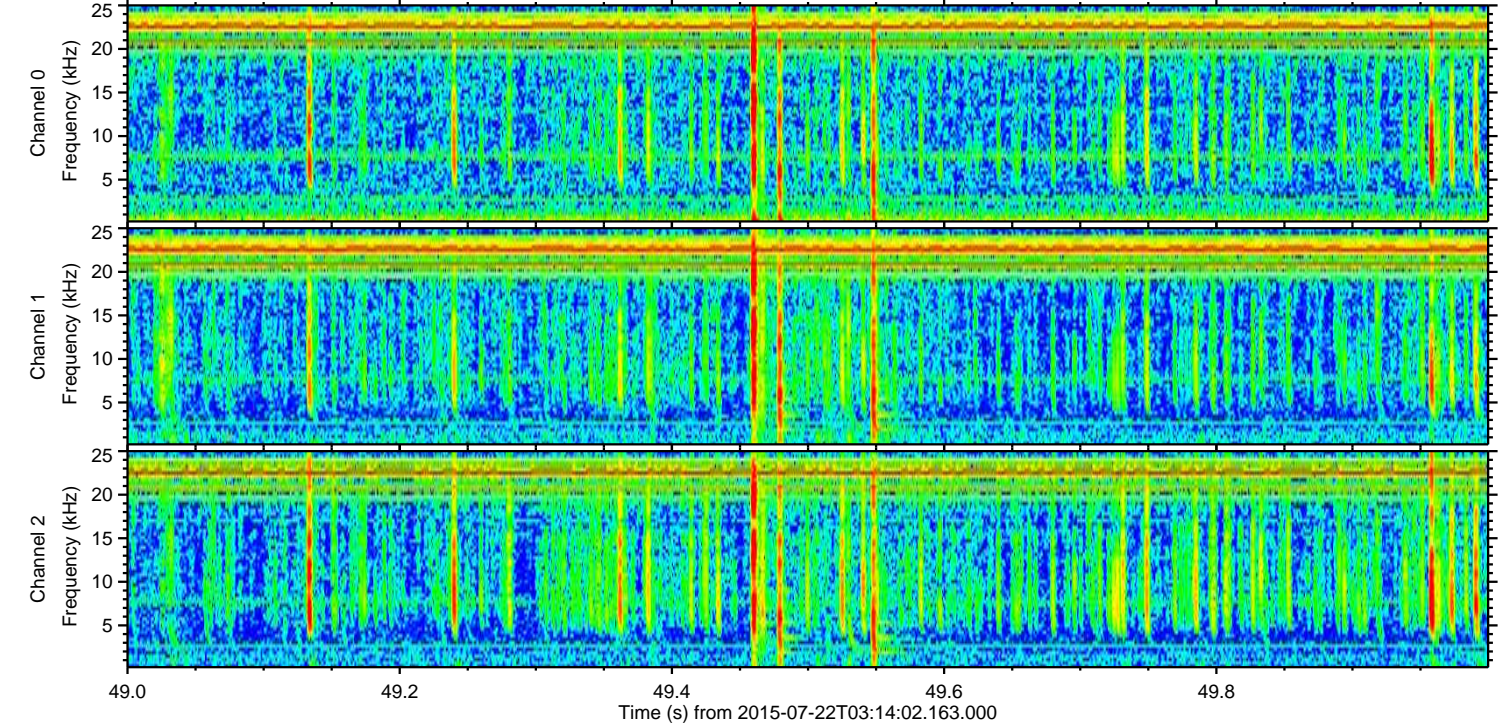
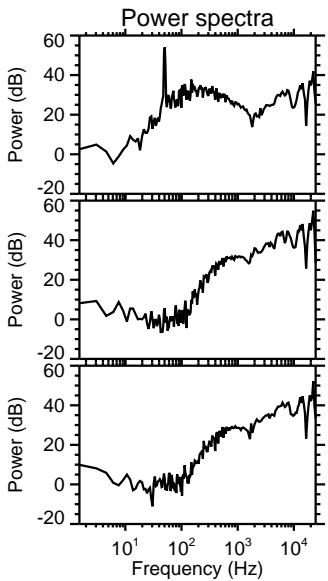
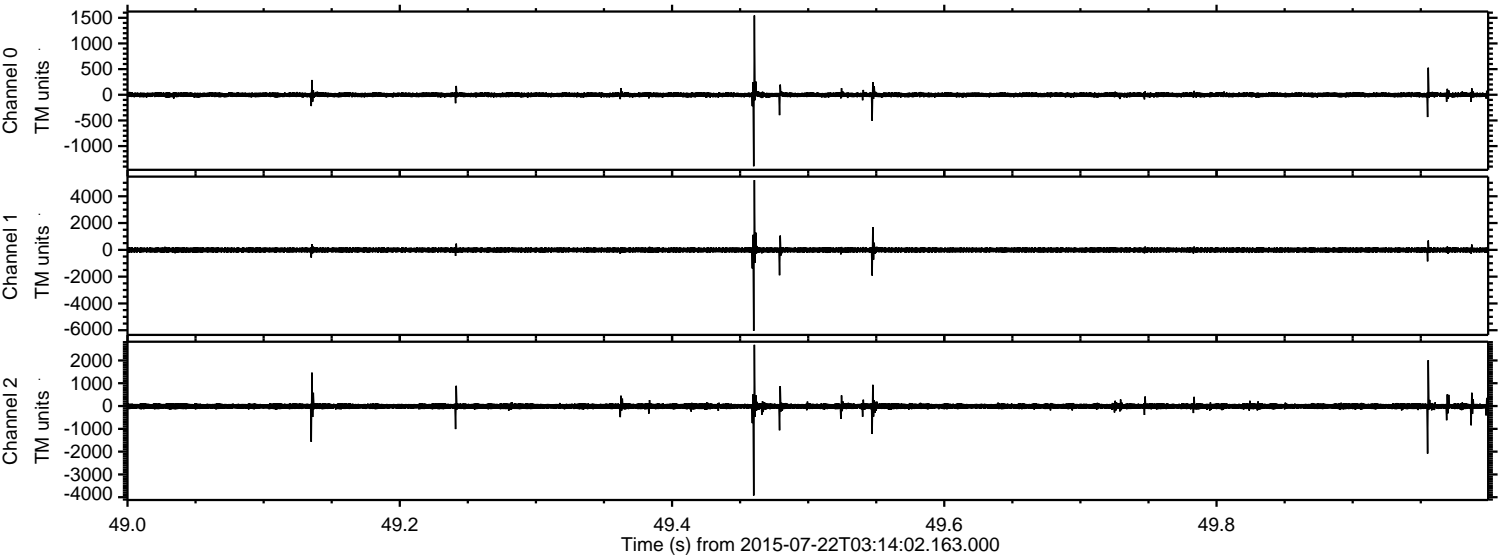


ELMAVAN 3D WAVEFORMS (Measured data sampled at 50 kHz) 51000 packets of 144 samples from 2015-07-22T03:14:02.163.000. Part 103/147

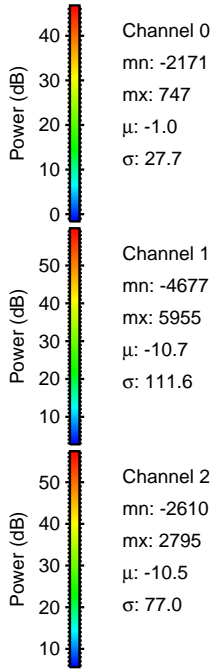
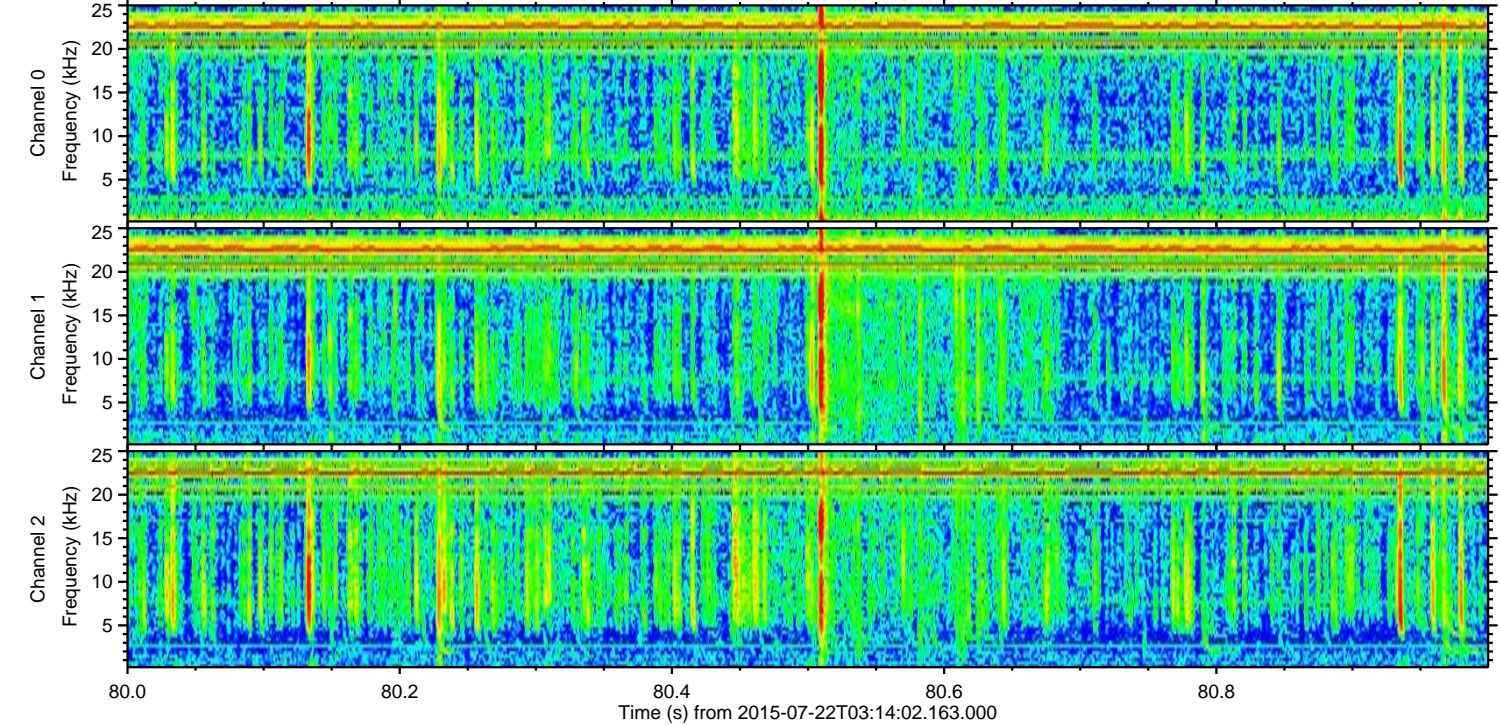
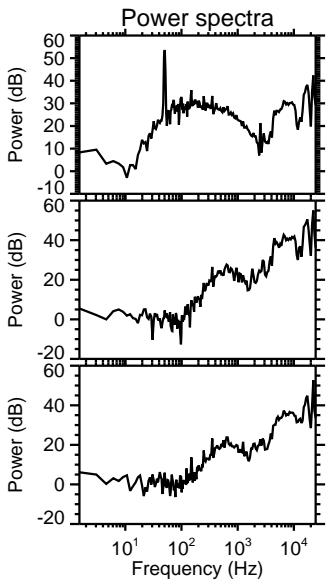
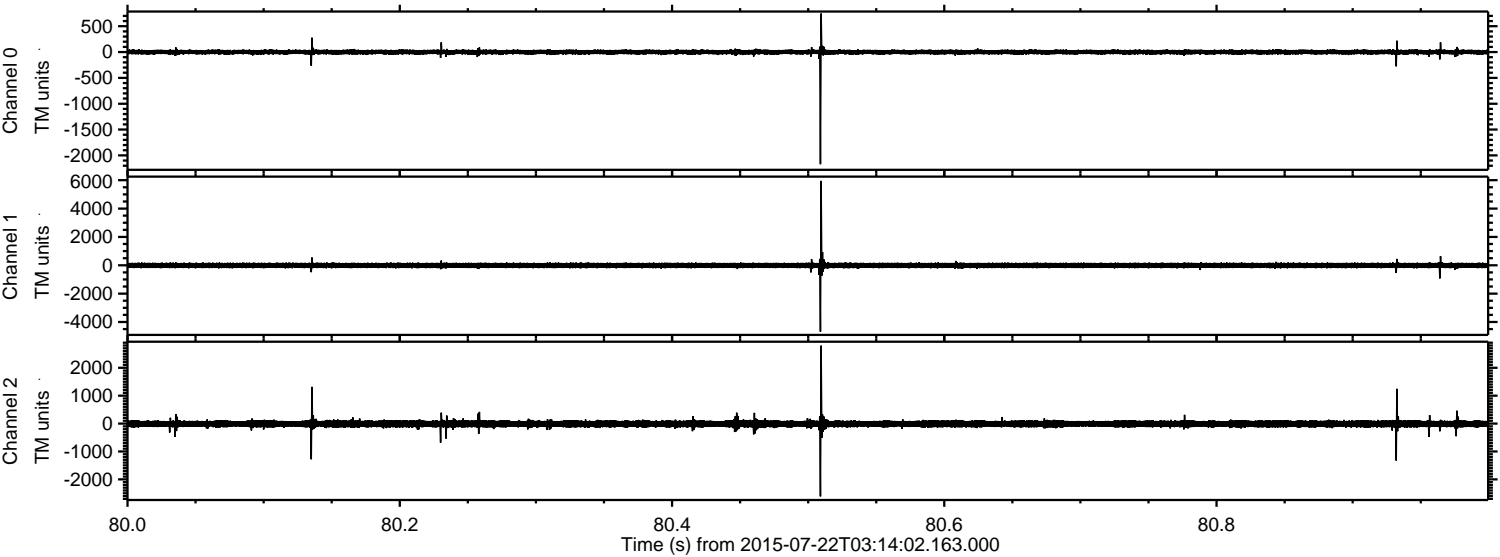
Processed Wed Jul 22 05:48:04 2015 by ELM ver.2012-10-06 from 001__elm20150722_031401__dat00.bin



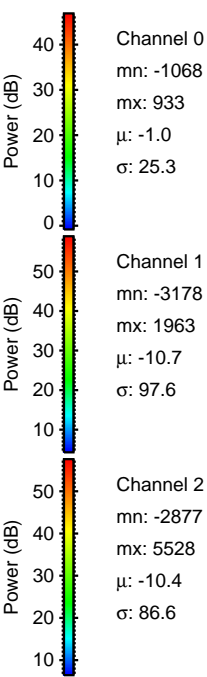
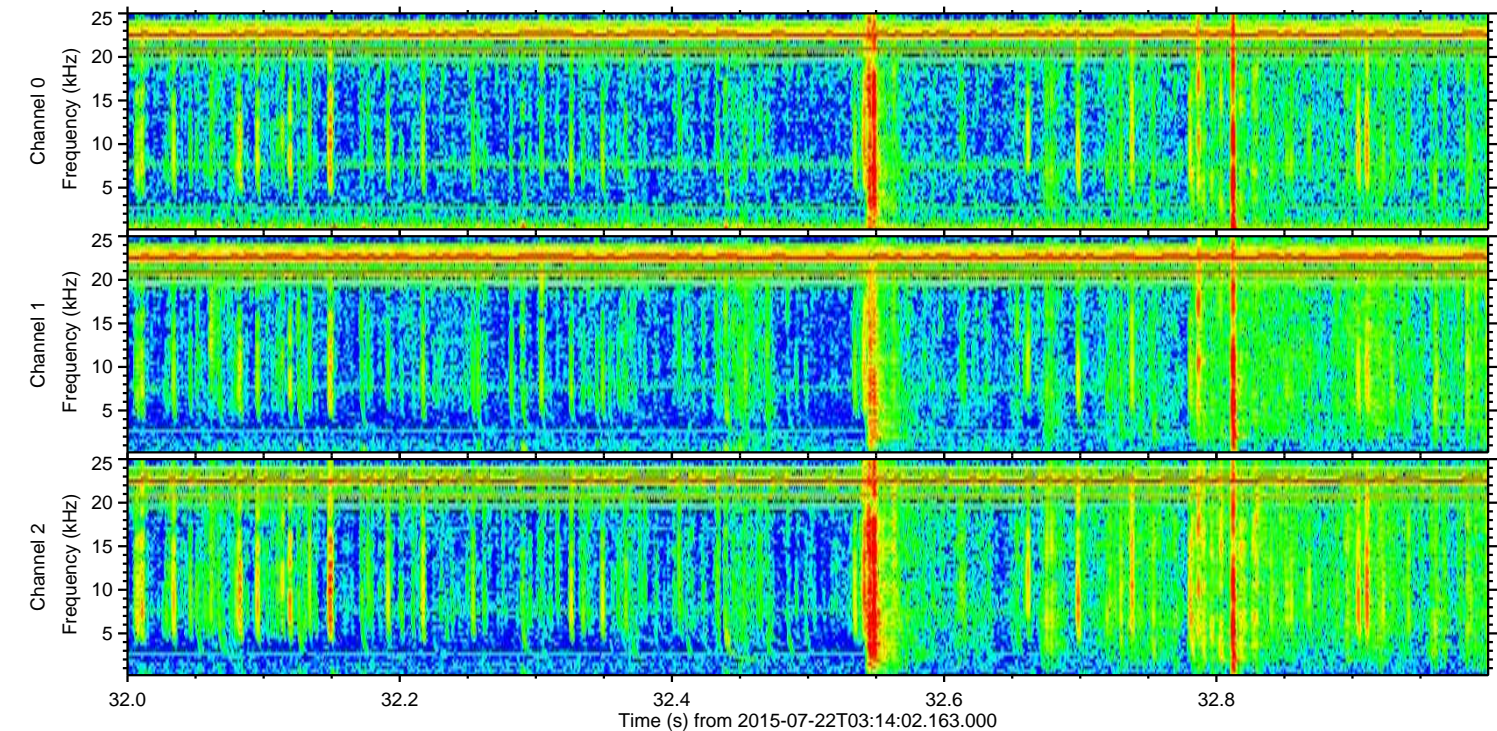
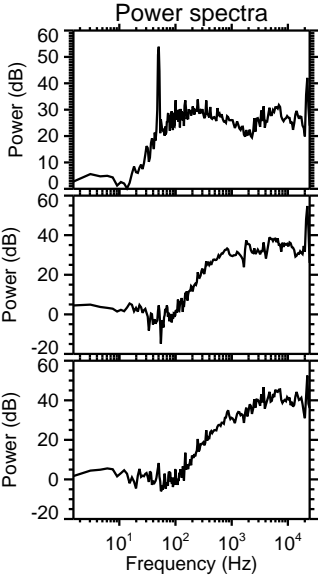
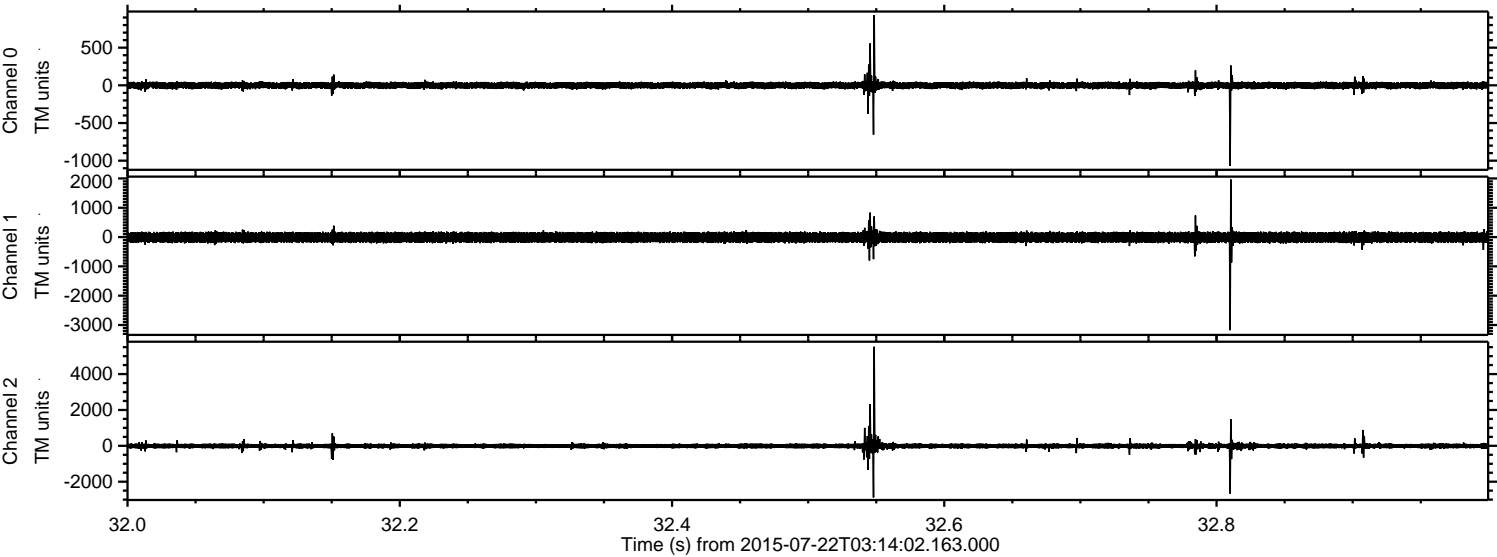
Processed Wed Jul 22 05:48:05 2015 by ELM ver.2012-10-06 from 001__elm20150722_031401__dat00.bin



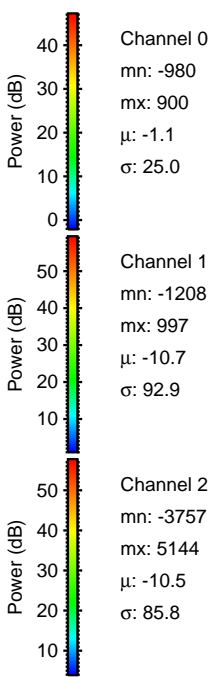
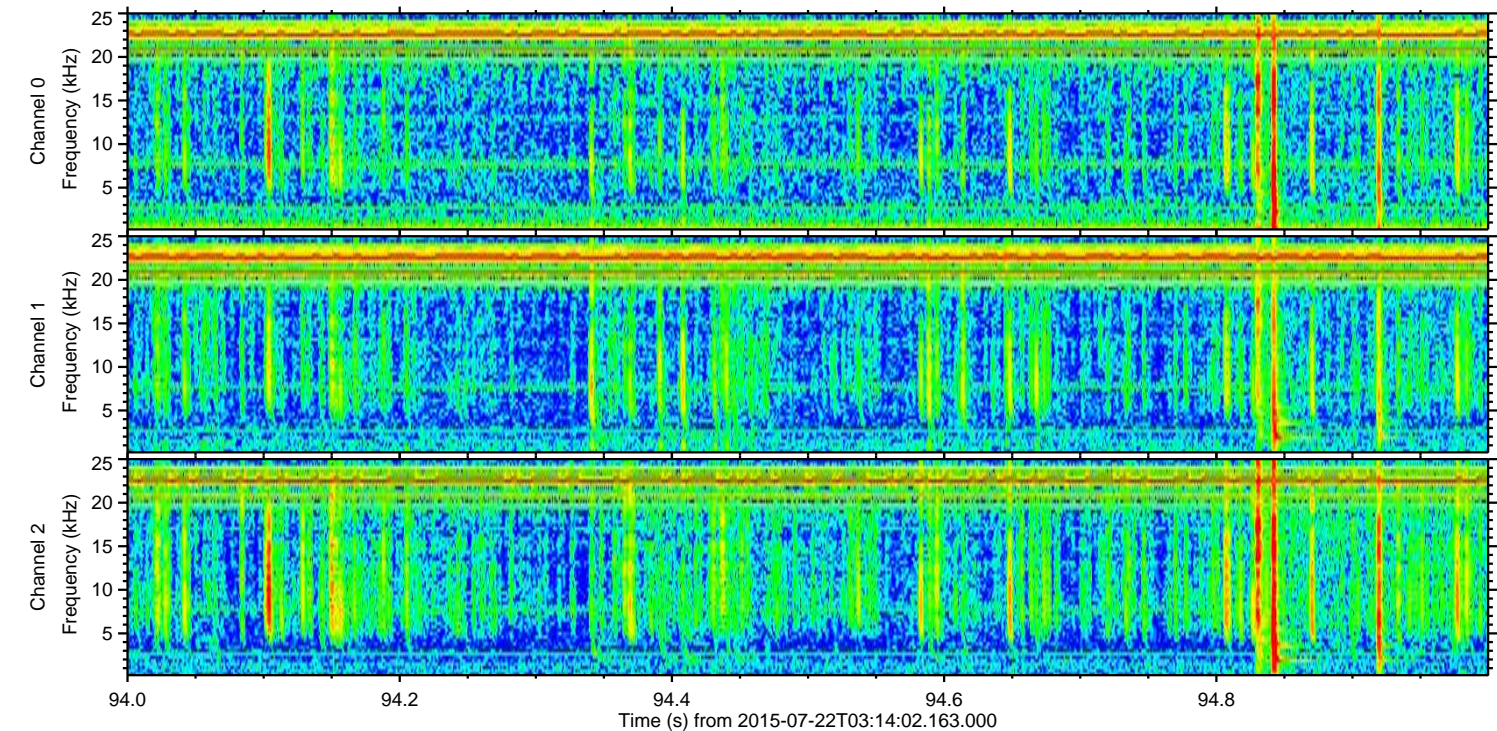
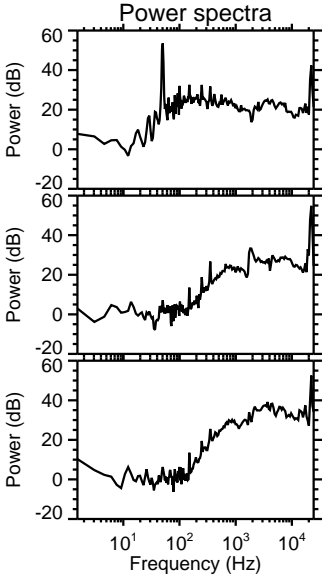
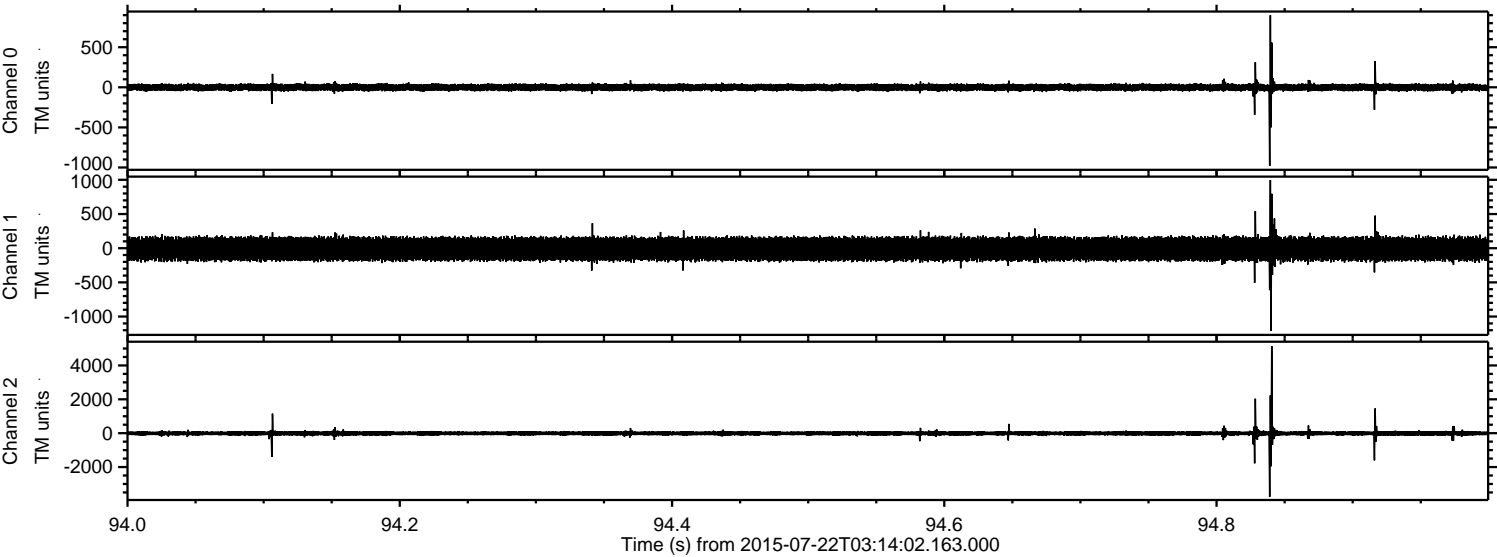
Processed Wed Jul 22 05:48:06 2015 by ELM ver.2012-10-06 from 001__elm20150722_031401__dat00.bin



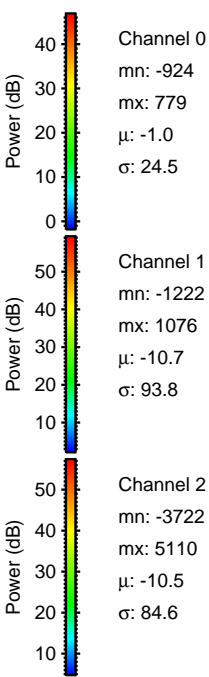
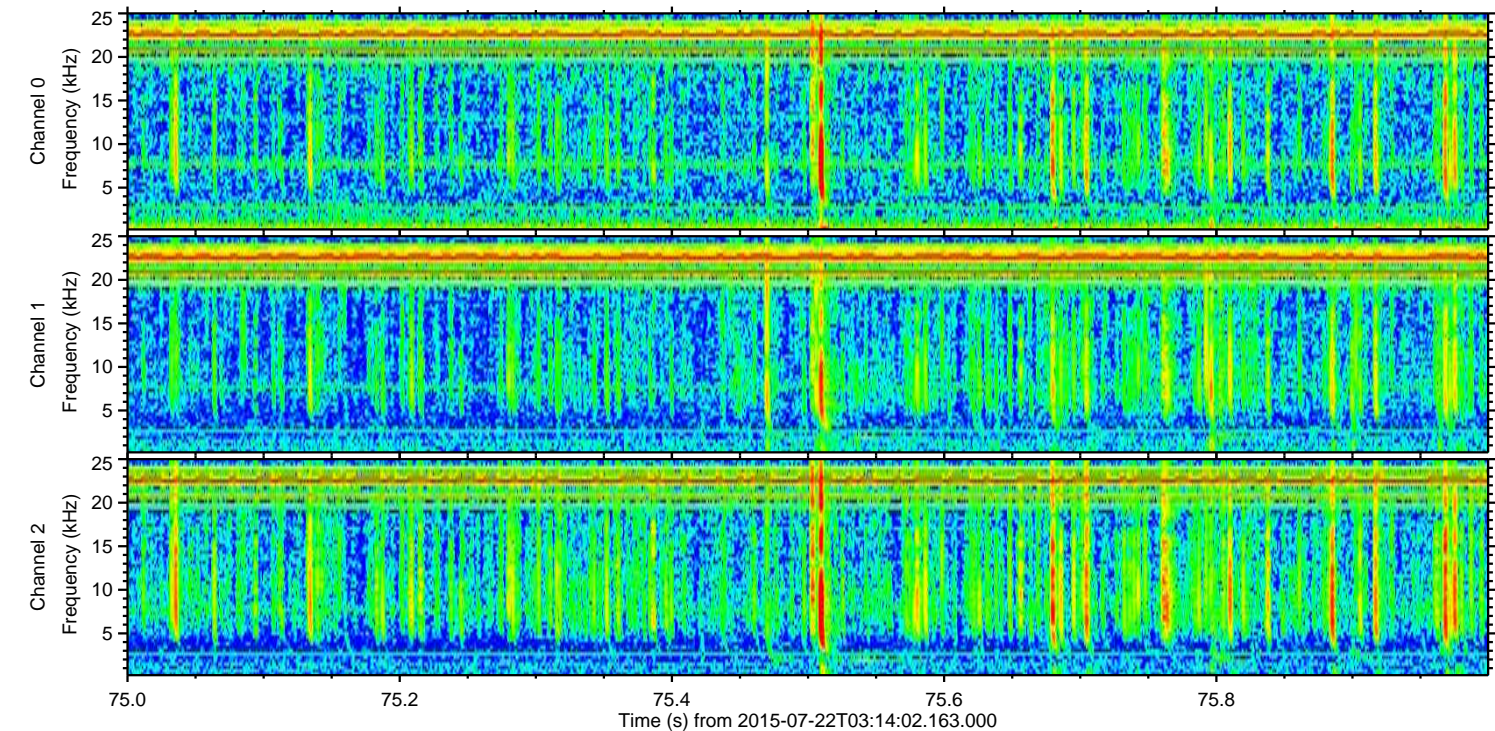
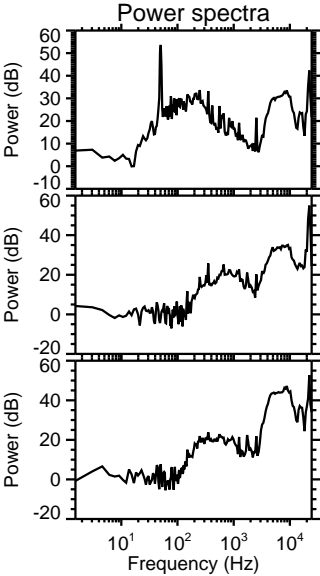
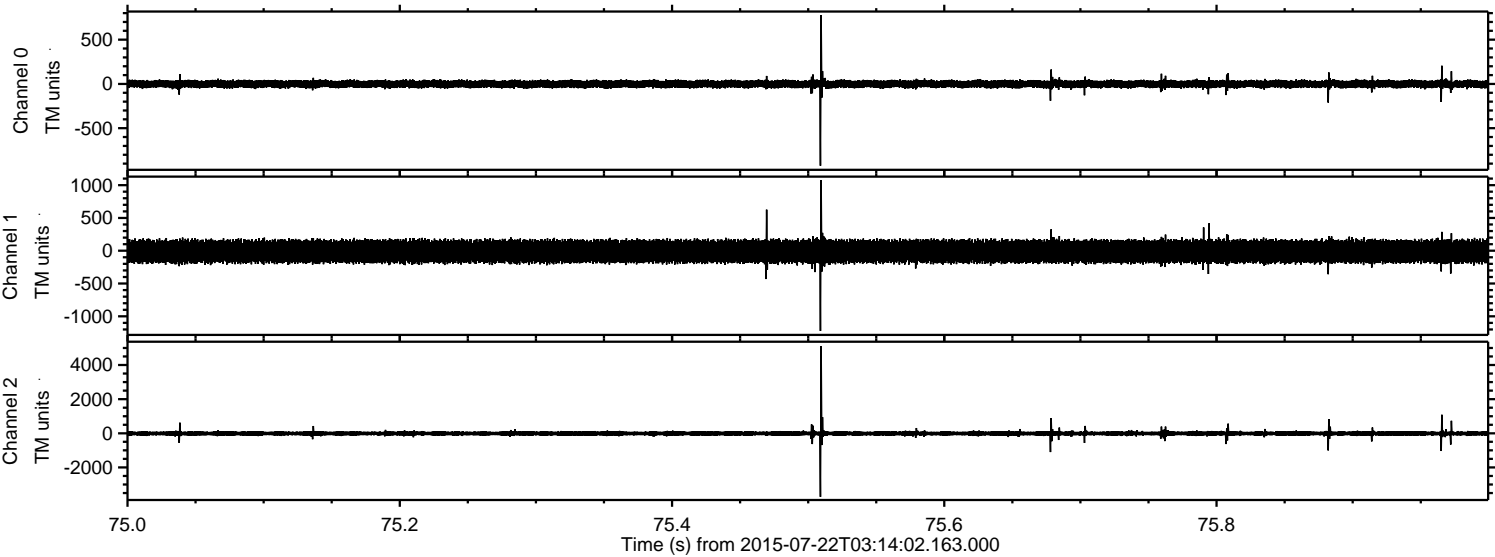
Processed Wed Jul 22 05:48:07 2015 by ELM ver.2012-10-06 from 001__elm20150722_031401__dat00.bin



Processed Wed Jul 22 05:48:08 2015 by ELM ver.2012-10-06 from 001__elm20150722_031401__dat00.bin



Processed Wed Jul 22 05:48:09 2015 by ELM ver.2012-10-06 from 001__elm20150722_031401__dat00.bin



Channel 0
mn: -924
mx: 779
 μ : -1.0
 σ : 24.5

Channel 1
mn: -1222
mx: 1076
 μ : -10.7
 σ : 93.8

Channel 2
mn: -3722
mx: 5110
 μ : -10.5
 σ : 84.6

Processed Wed Jul 22 05:48:10 2015 by ELM ver.2012-10-06 from 001__elm20150722_031401__dat00.bin

