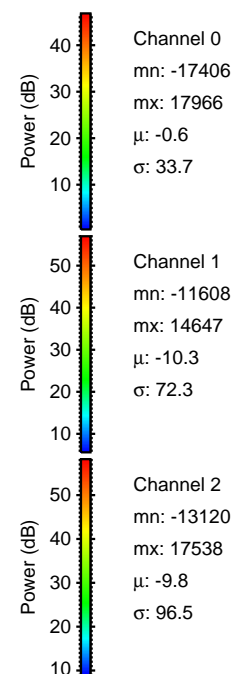
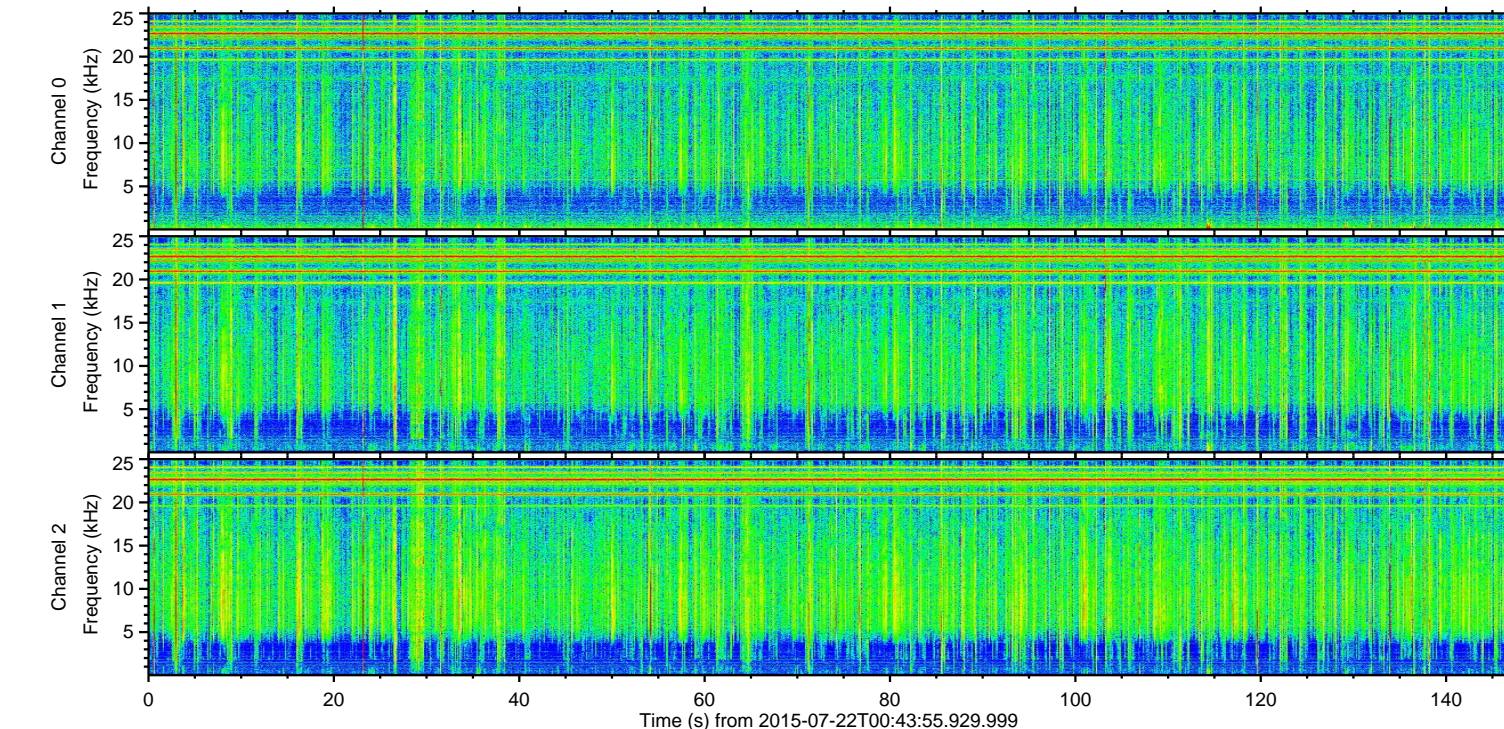
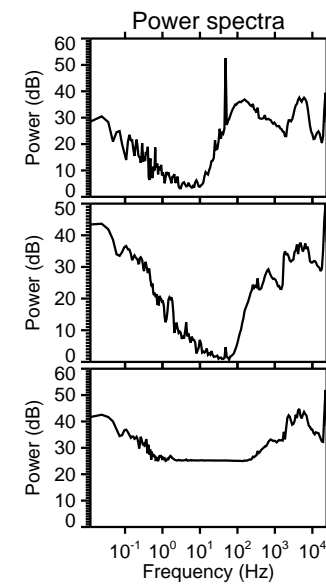
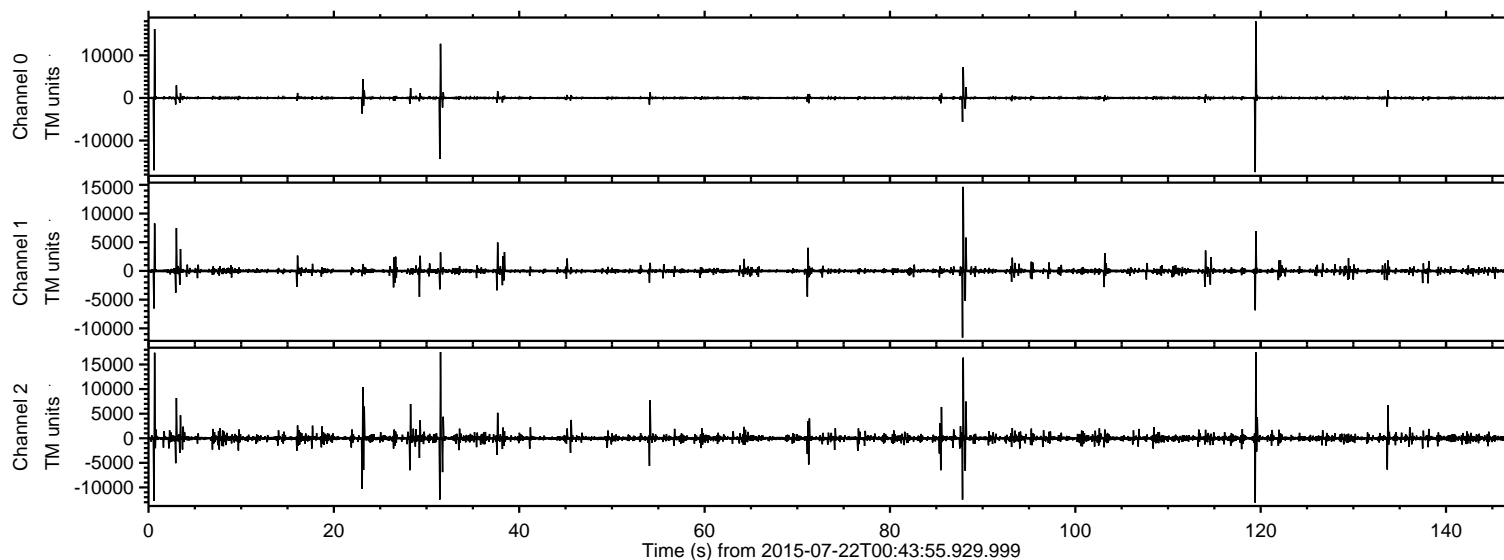


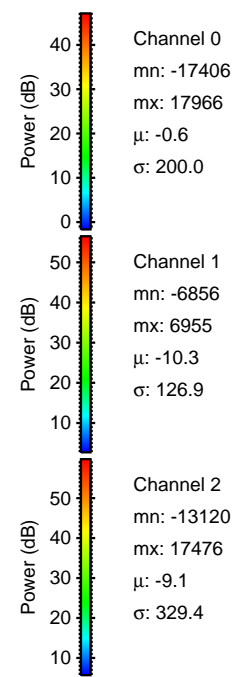
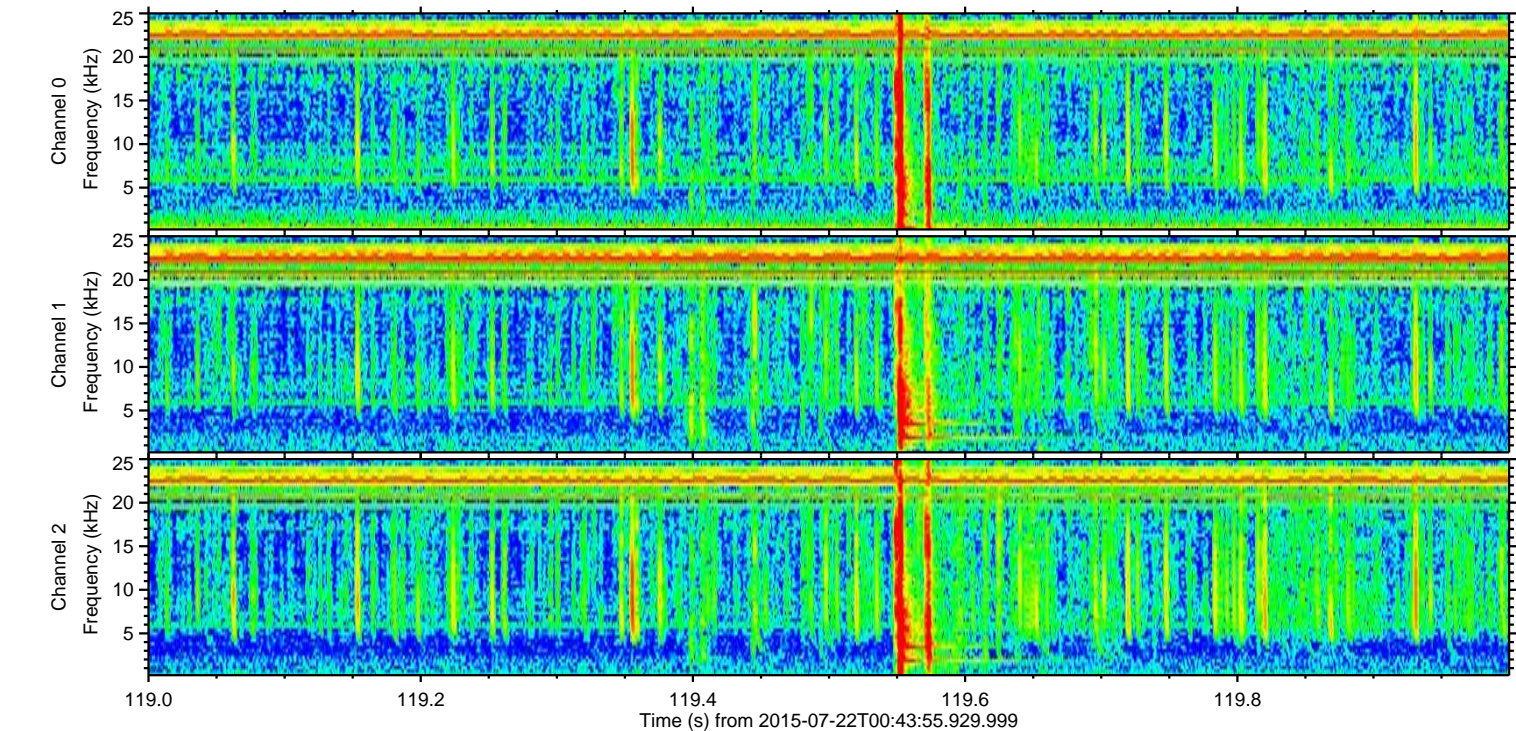
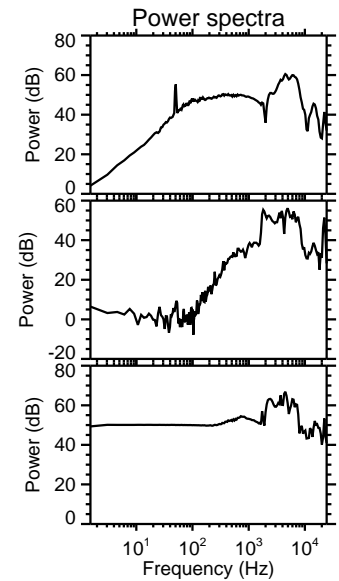
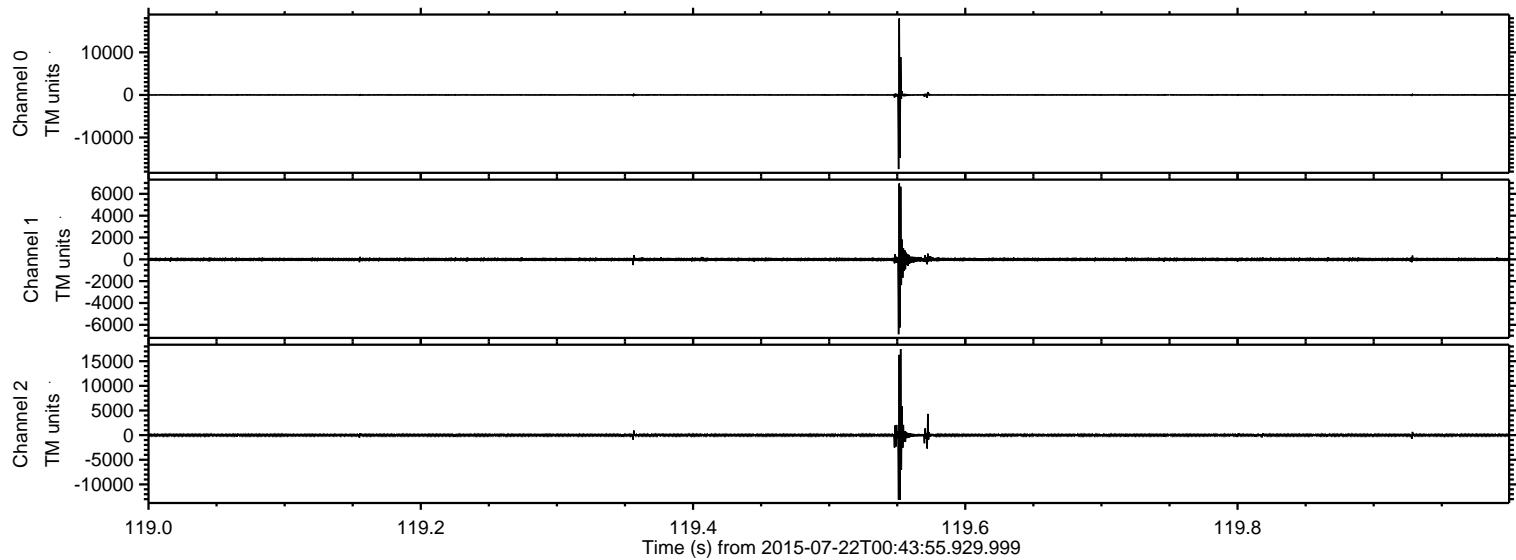
ELMAVAN 3D WAVEFORMS (Measured data sampled at 50 kHz) 51000 packets of 144 samples from 2015-07-22T00:43:55.929.999.

Processed Wed Jul 22 02:54:34 2015 by ELM ver.2012-10-06 from 001__elm20150722_004354__dat00.bin



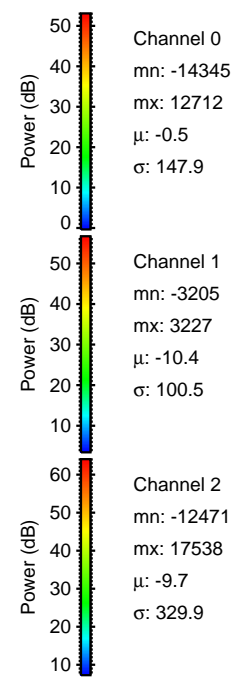
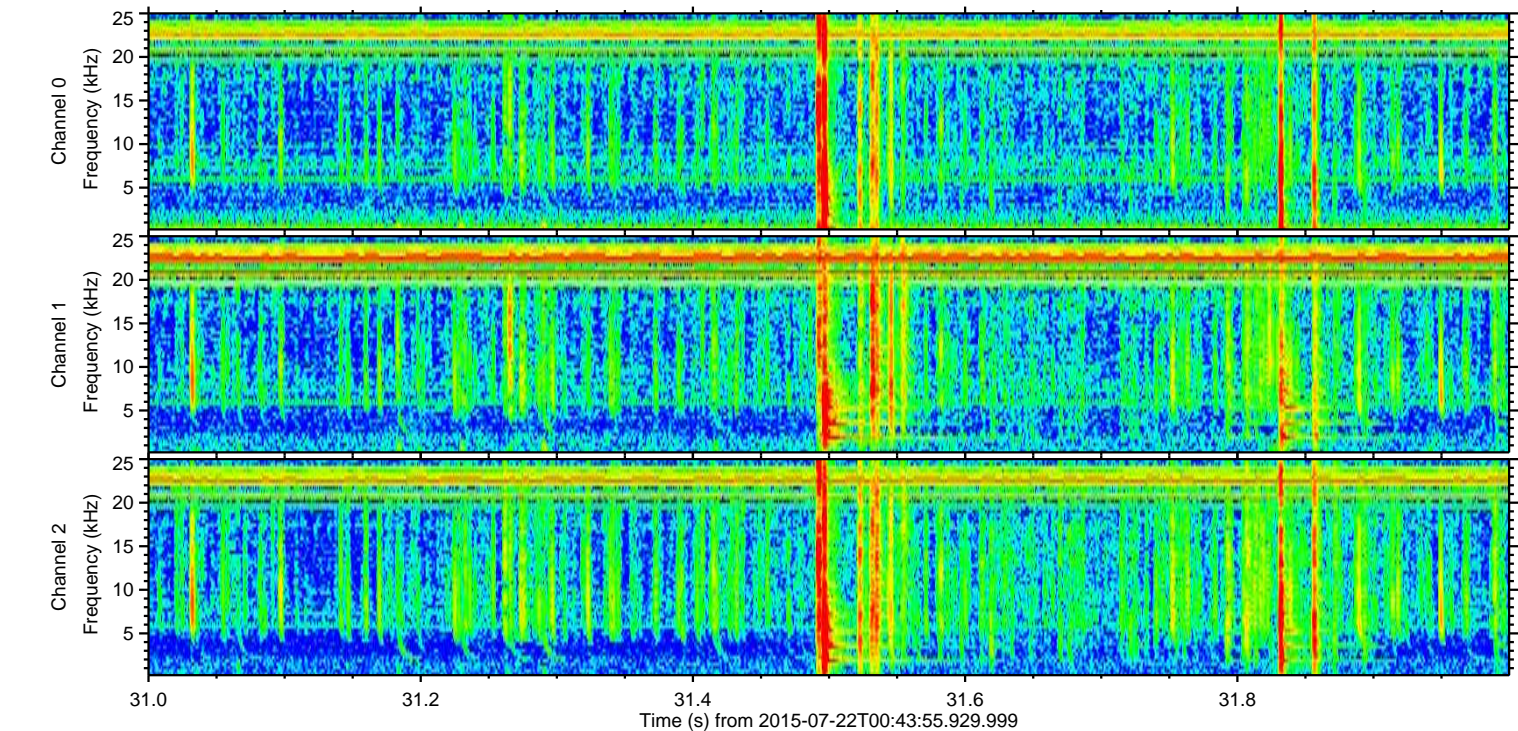
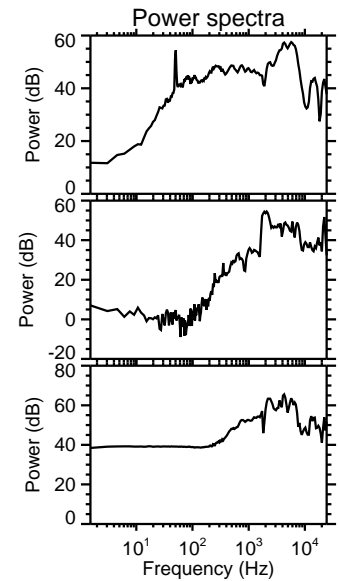
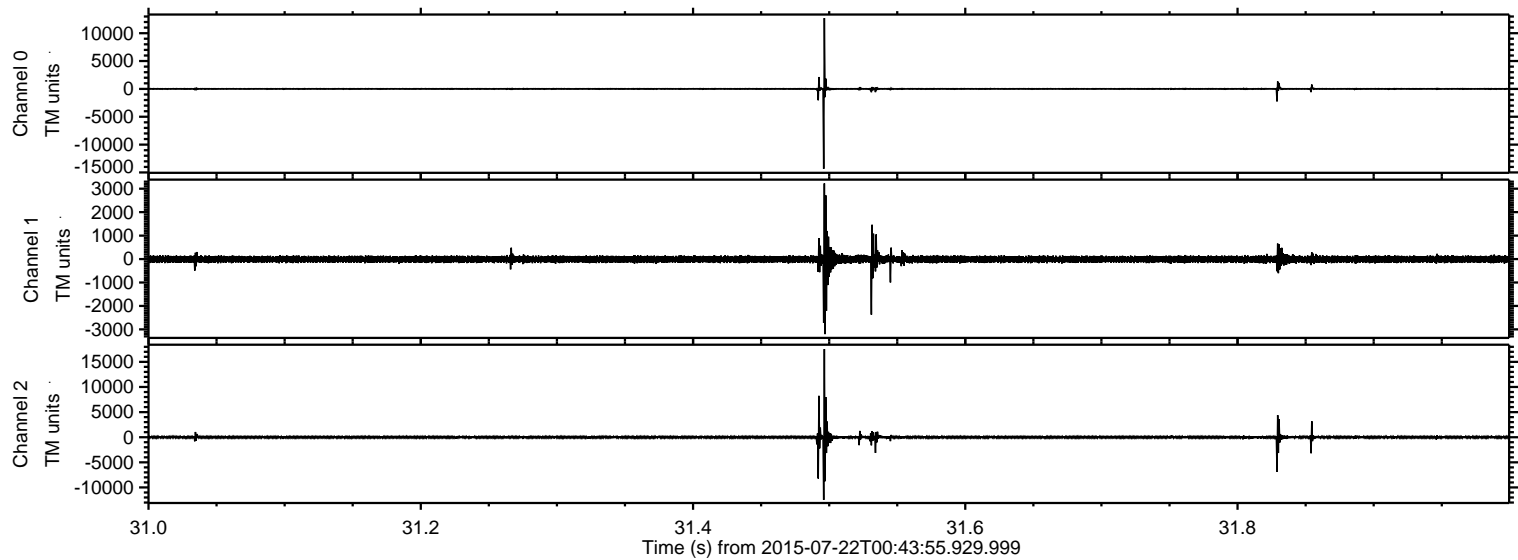
ELMAVAN 3D WAVEFORMS (Measured data sampled at 50 kHz) 51000 packets of 144 samples from 2015-07-22T00:43:55.929.999. Part 120/147

Processed Wed Jul 22 02:54:48 2015 by ELM ver.2012-10-06 from 001__elm20150722_004354__dat00.bin



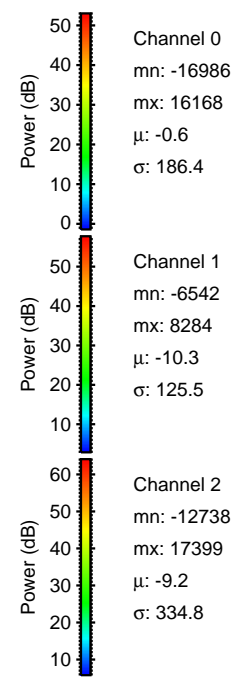
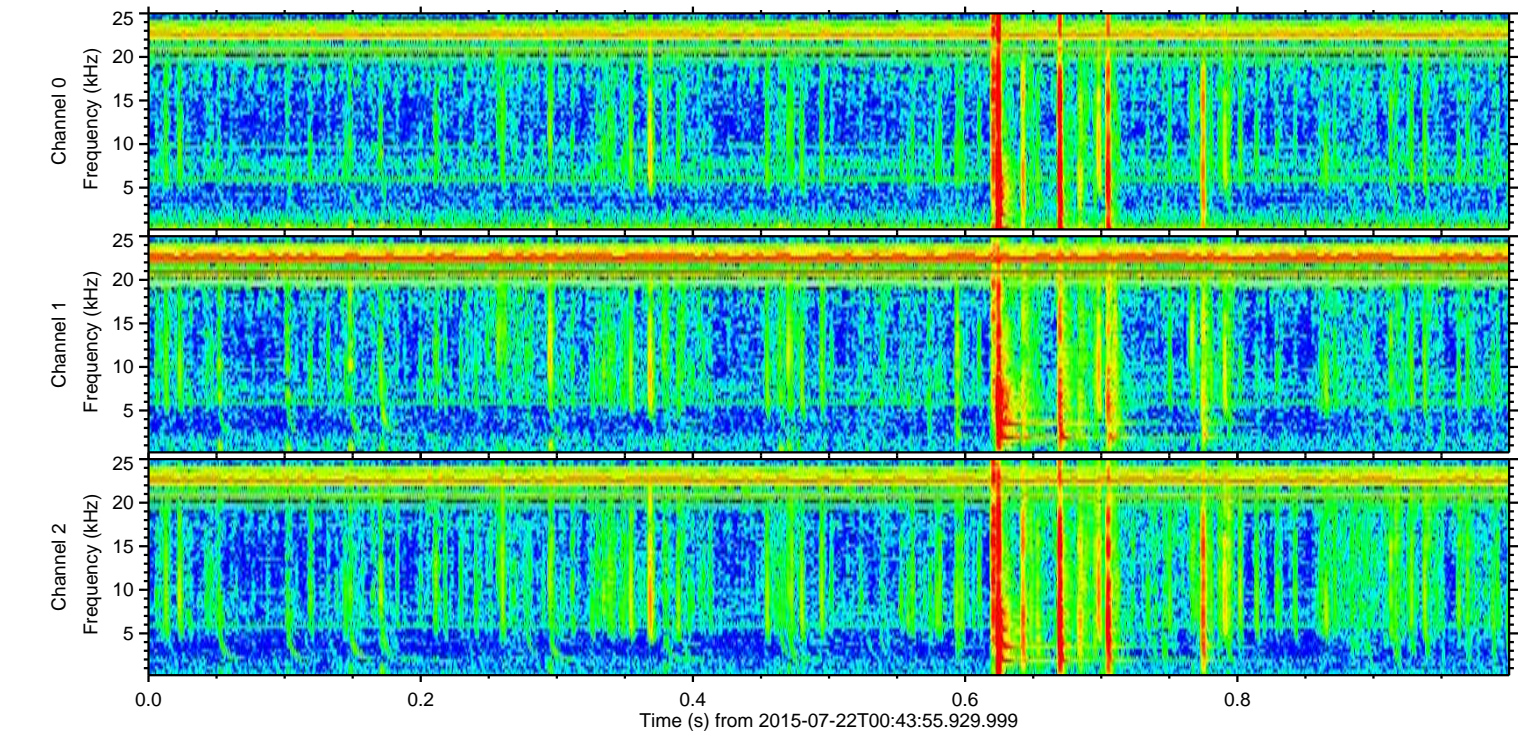
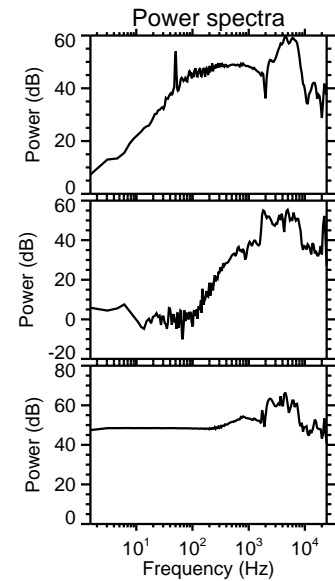
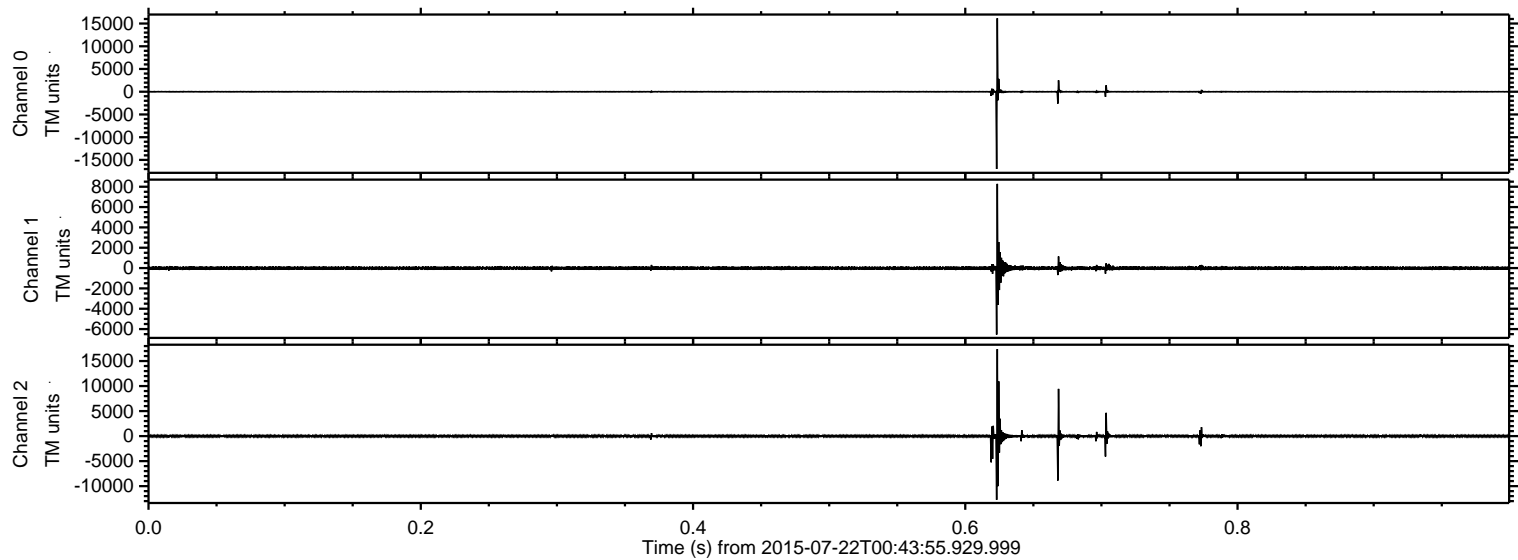
ELMAVAN 3D WAVEFORMS (Measured data sampled at 50 kHz) 51000 packets of 144 samples from 2015-07-22T00:43:55.929.999. Part 32/147

Processed Wed Jul 22 02:54:49 2015 by ELM ver.2012-10-06 from 001__elm20150722_004354__dat00.bin

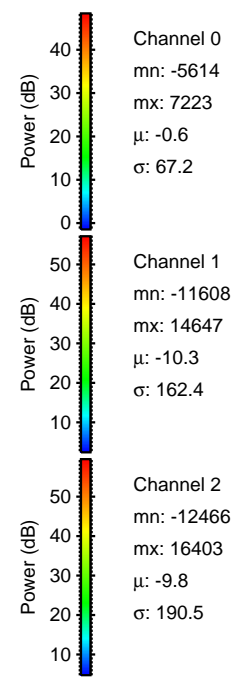
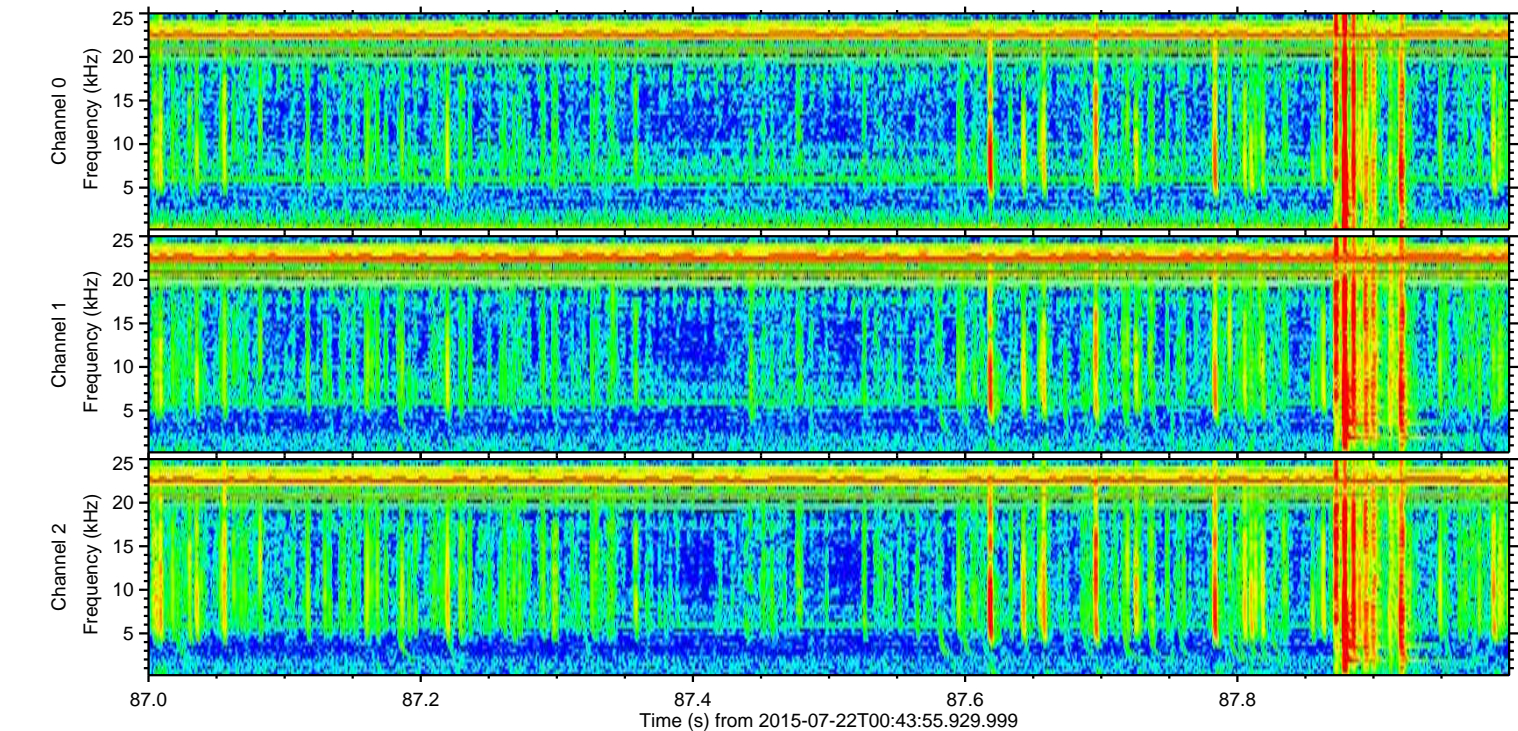
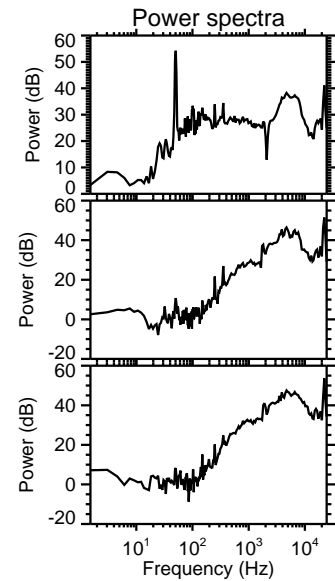
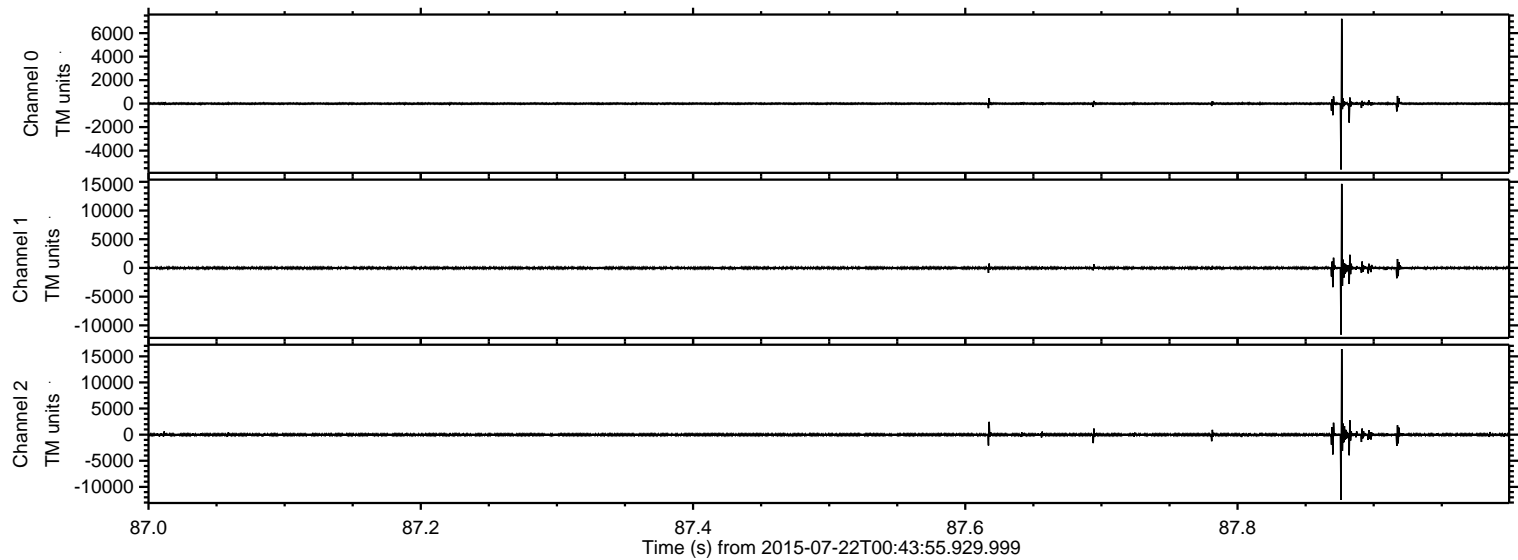


ELMAVAN 3D WAVEFORMS (Measured data sampled at 50 kHz) 51000 packets of 144 samples from 2015-07-22T00:43:55.929.999. Part 1/147

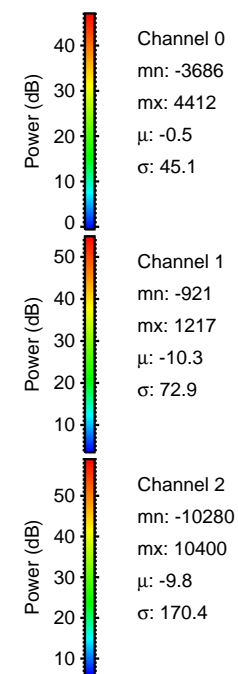
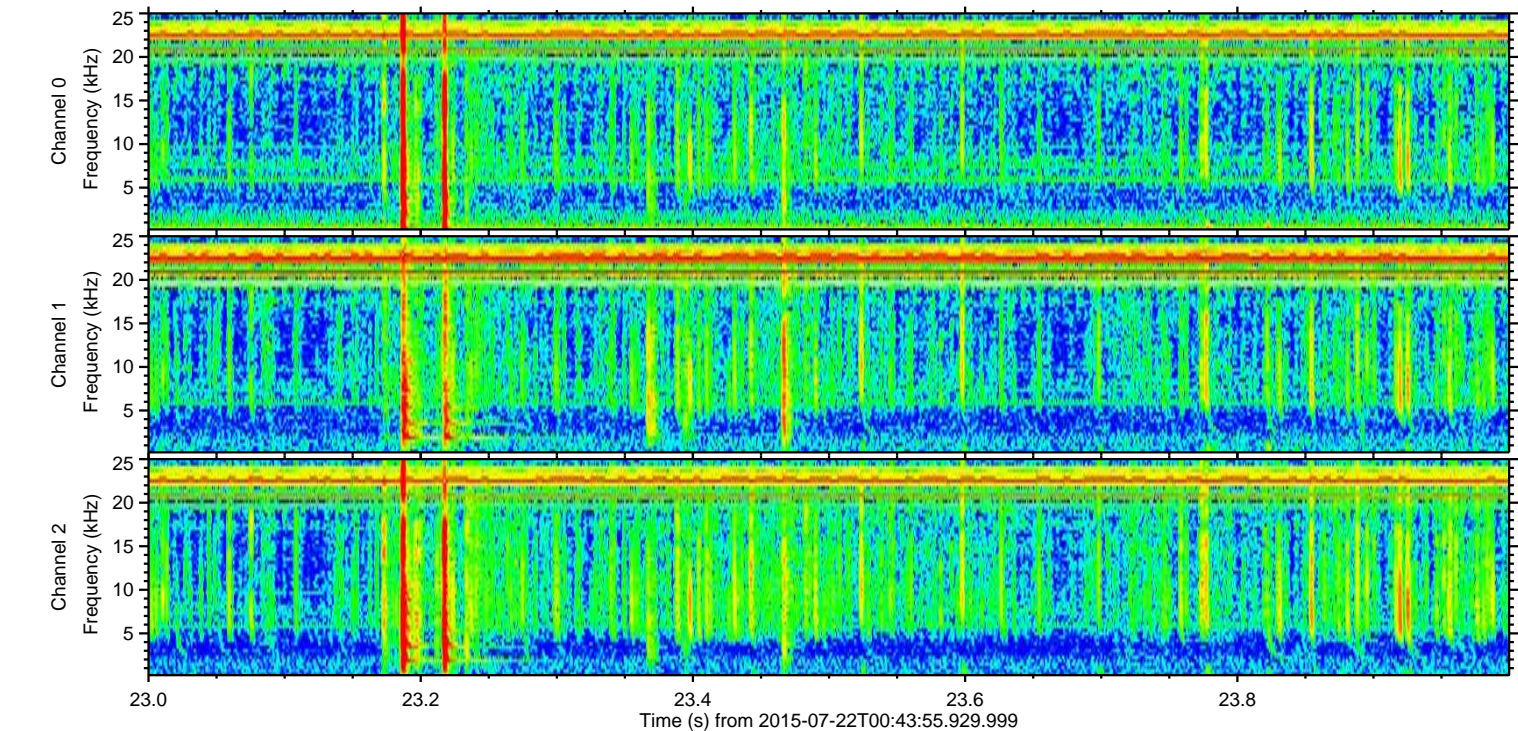
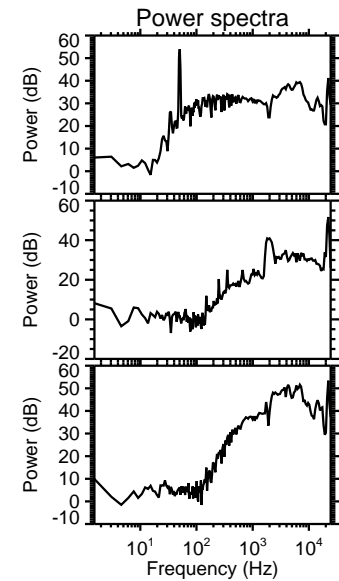
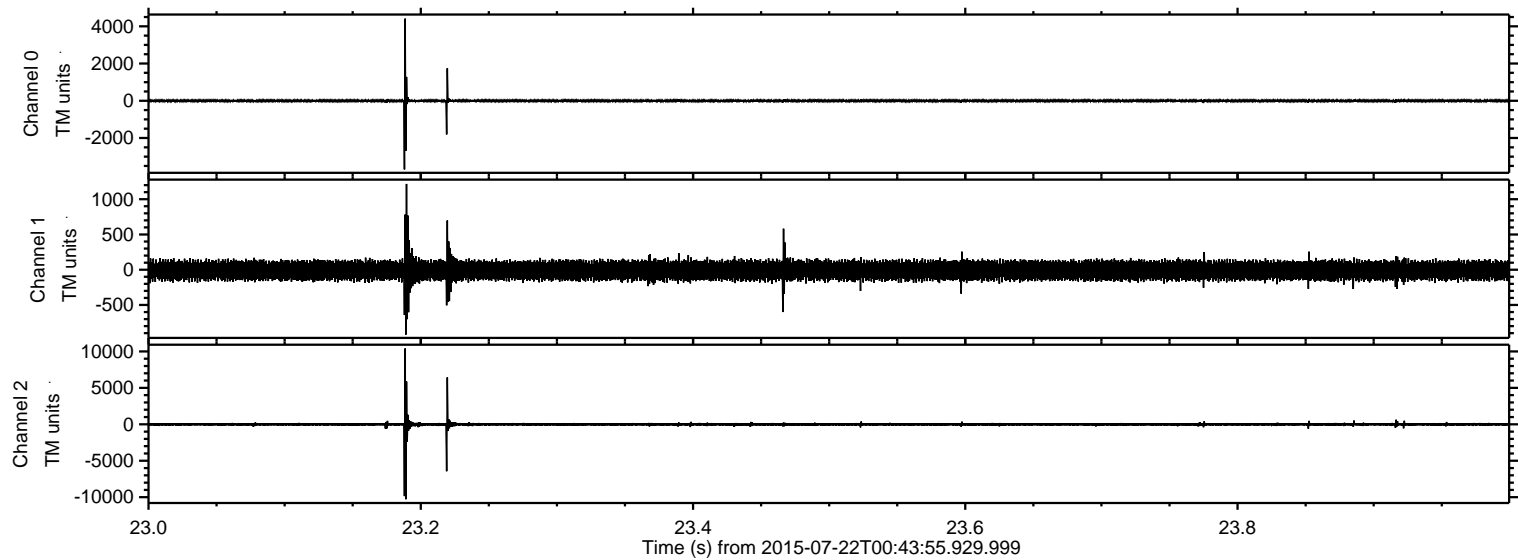
Processed Wed Jul 22 02:54:50 2015 by ELM ver.2012-10-06 from 001__elm20150722_004354__dat00.bin



Processed Wed Jul 22 02:54:51 2015 by ELM ver.2012-10-06 from 001__elm20150722_004354__dat00.bin

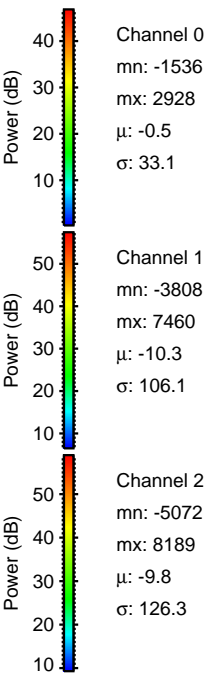
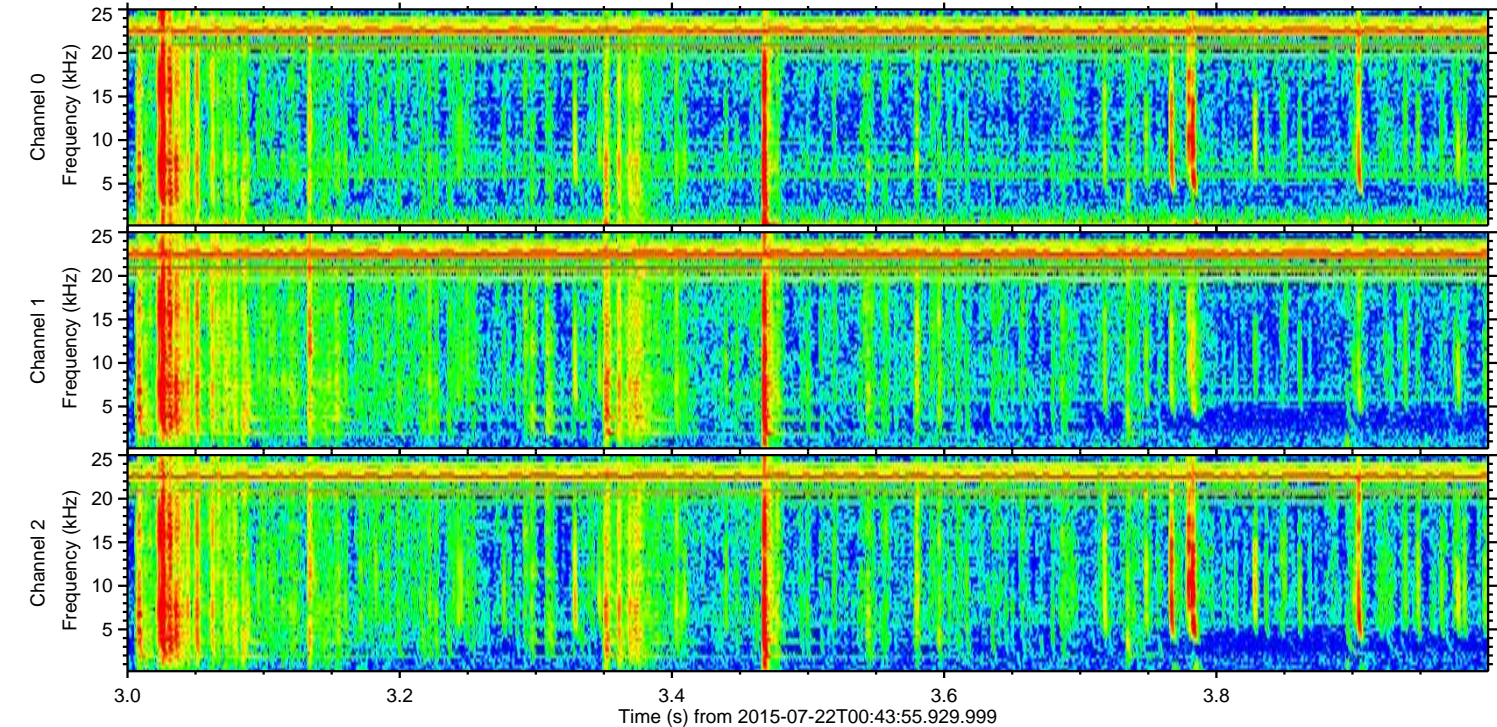
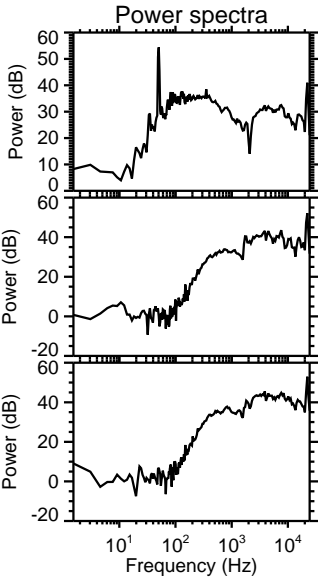
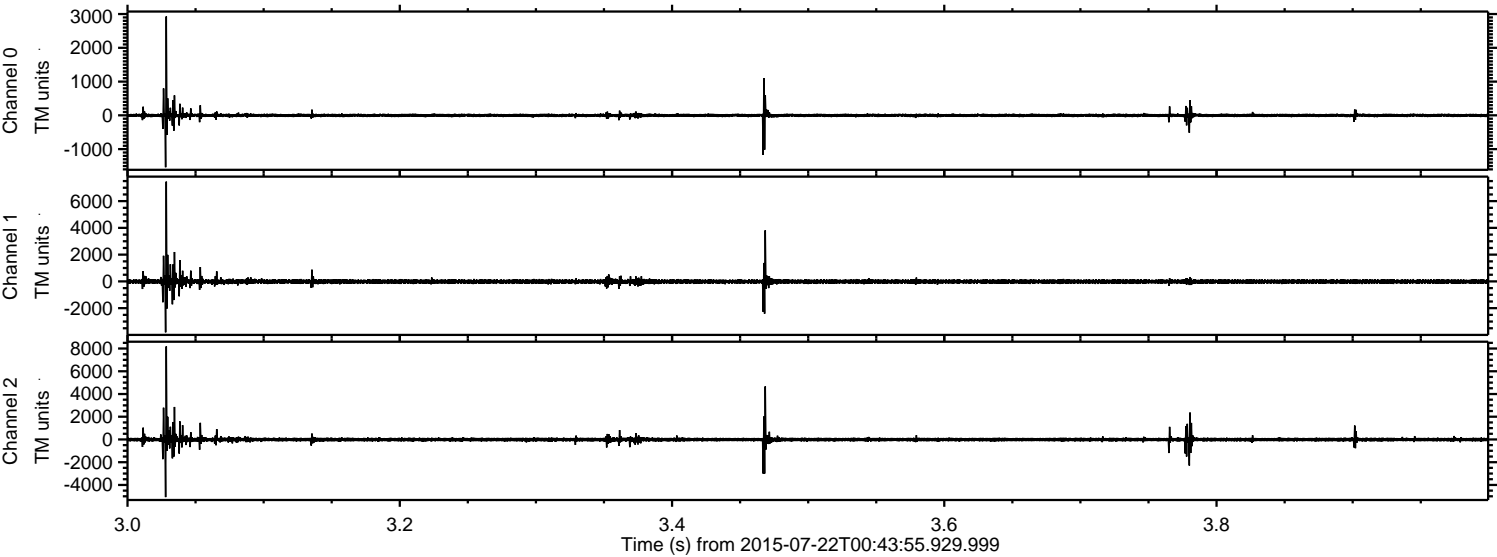


Processed Wed Jul 22 02:54:53 2015 by ELM ver.2012-10-06 from 001__elm20150722_004354__dat00.bin

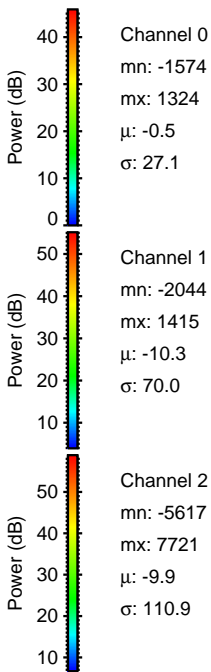
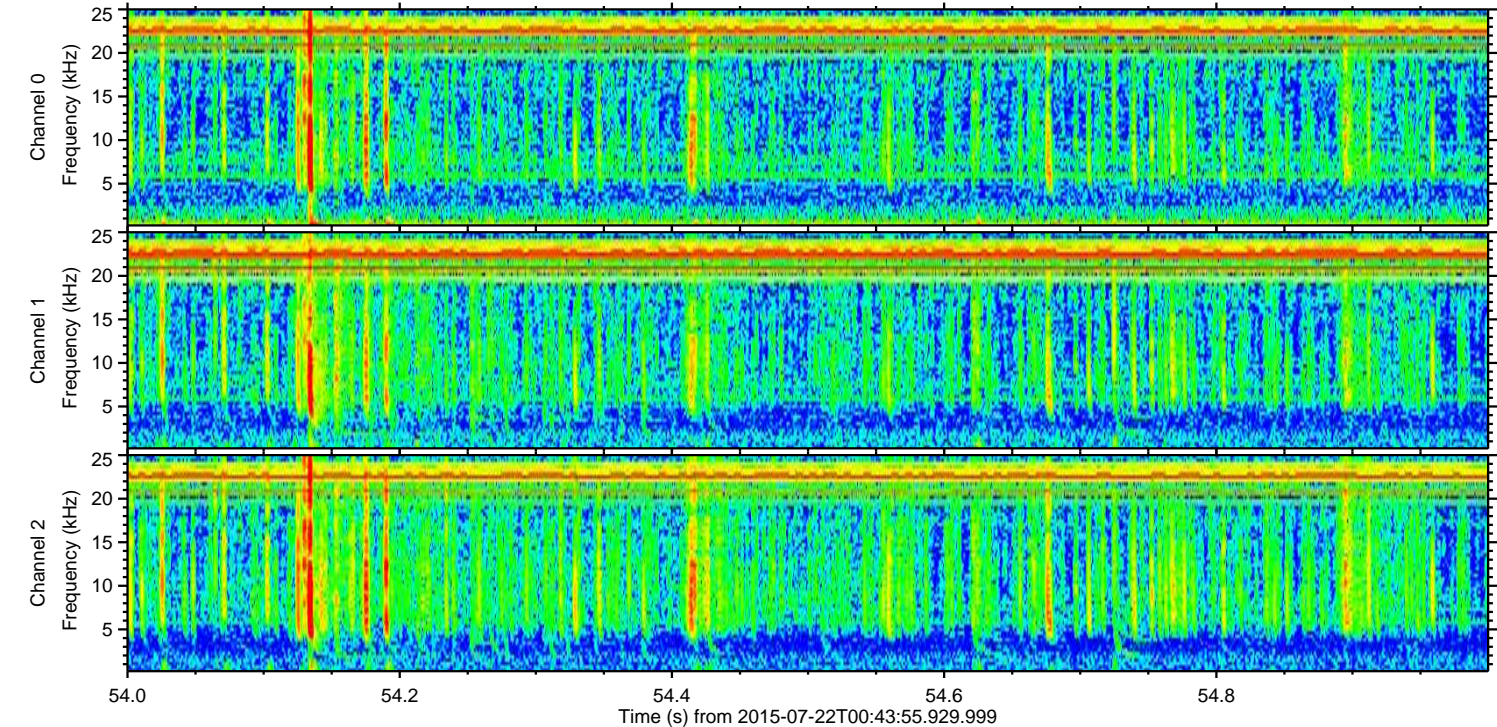
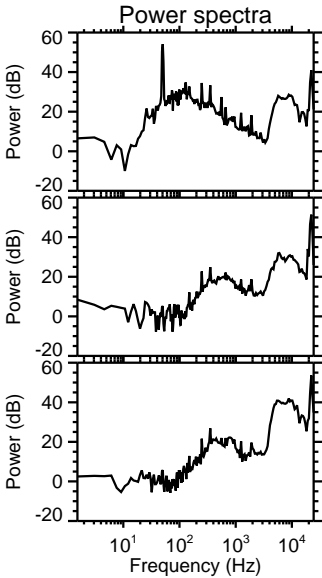
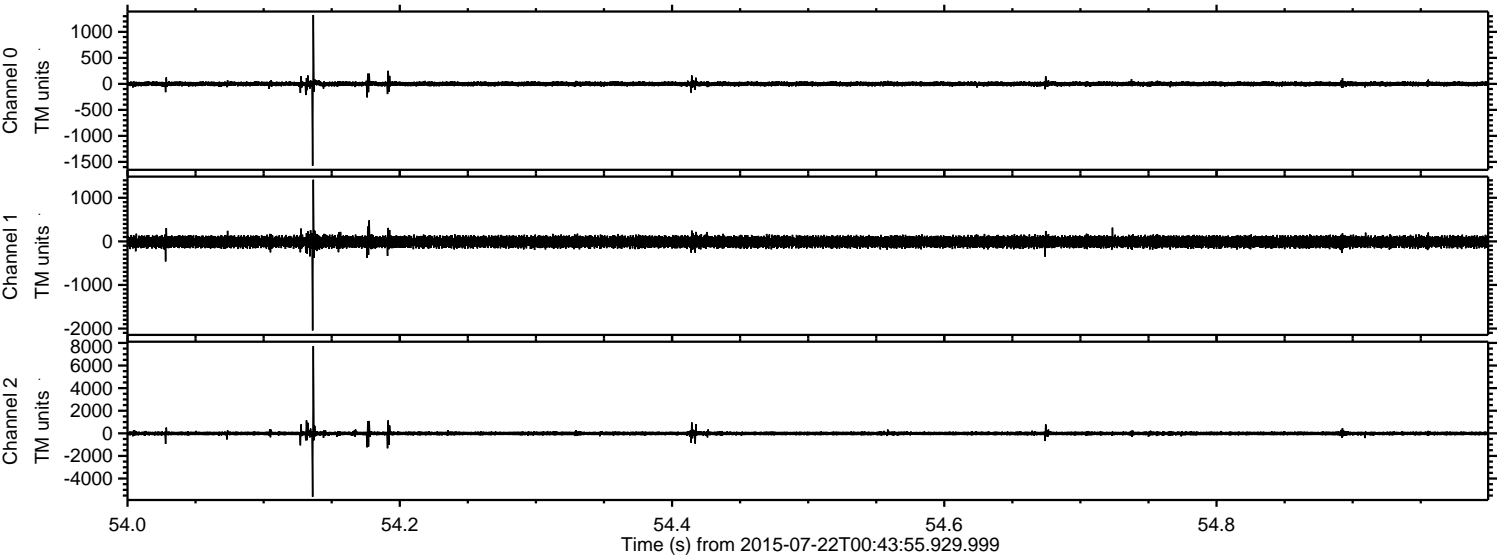


ELMAVAN 3D WAVEFORMS (Measured data sampled at 50 kHz) 51000 packets of 144 samples from 2015-07-22T00:43:55.929.999. Part 4/147

Processed Wed Jul 22 02:54:54 2015 by ELM ver.2012-10-06 from 001__elm20150722_004354__dat00.bin



Processed Wed Jul 22 02:54:55 2015 by ELM ver.2012-10-06 from 001__elm20150722_004354__dat00.bin

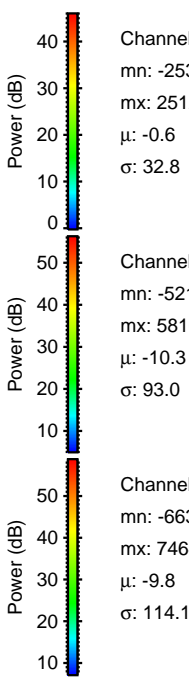
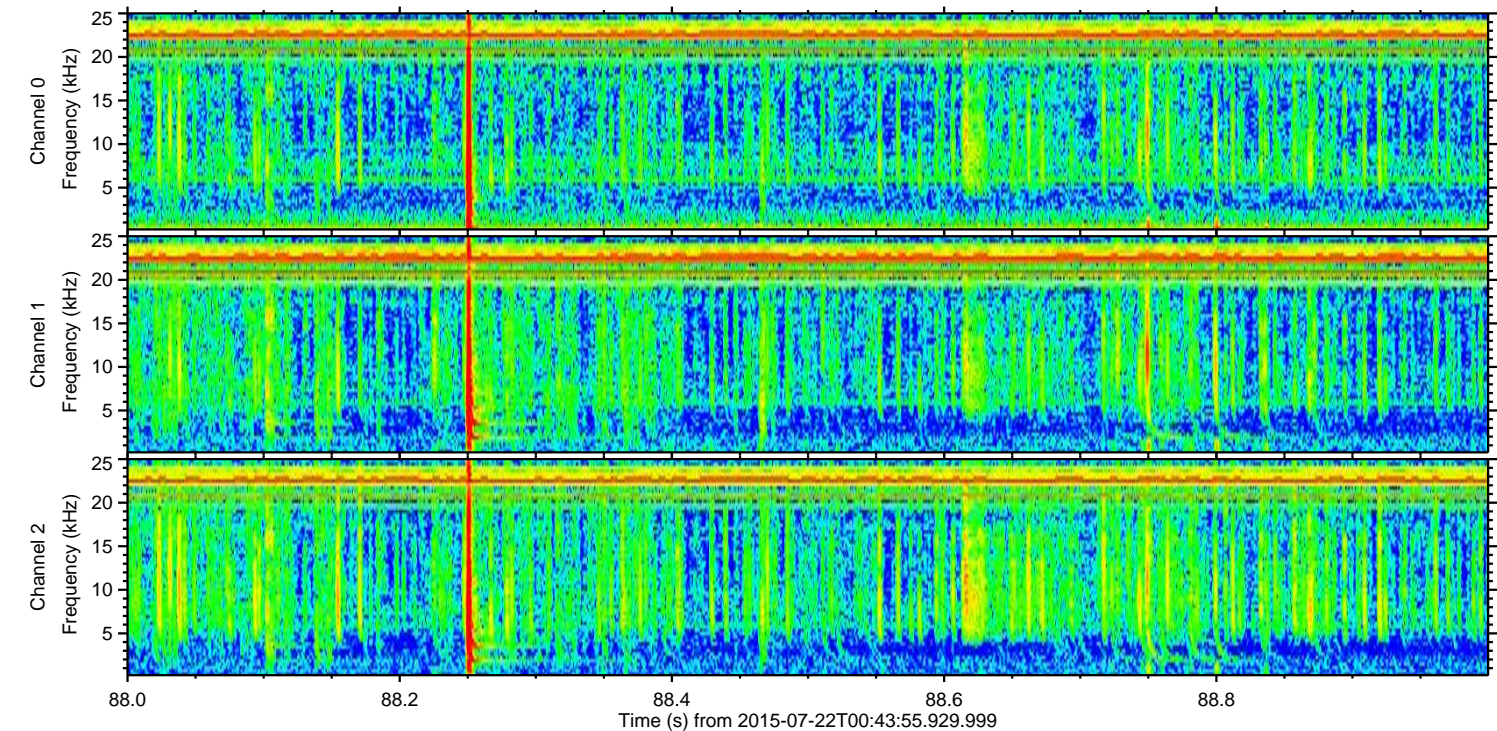
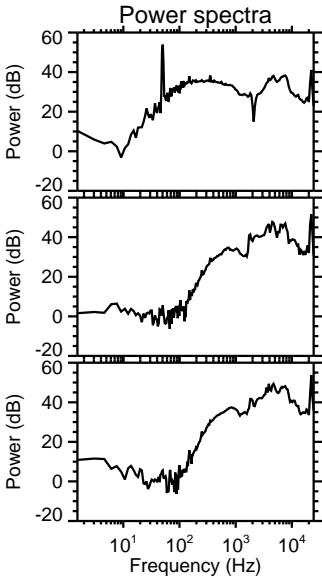
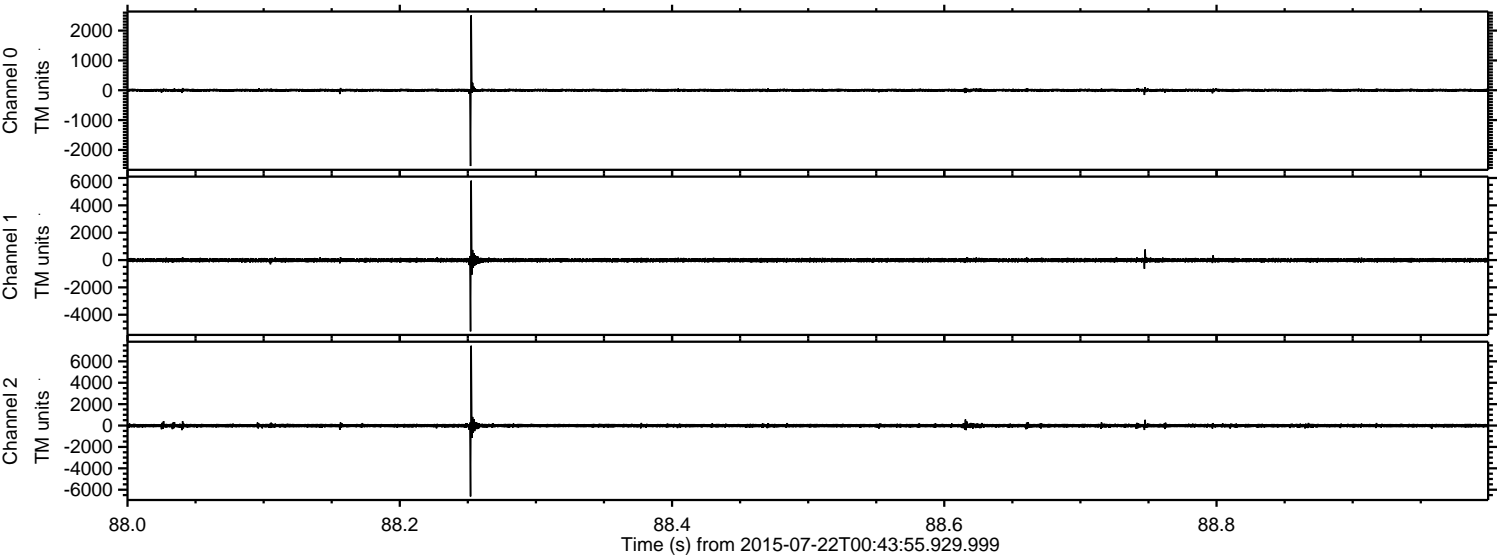


Channel 0
mn: -1574
mx: 1324
 μ : -0.5
 σ : 27.1

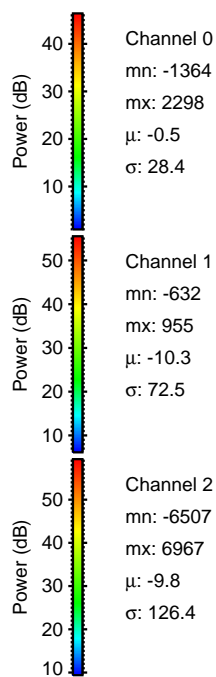
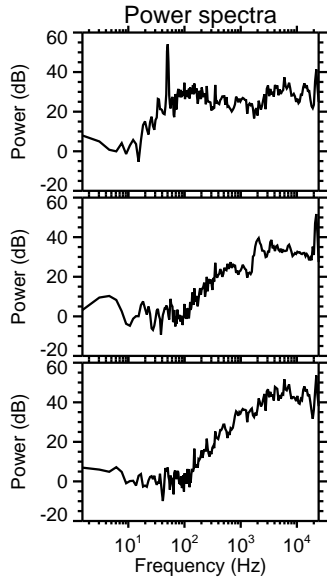
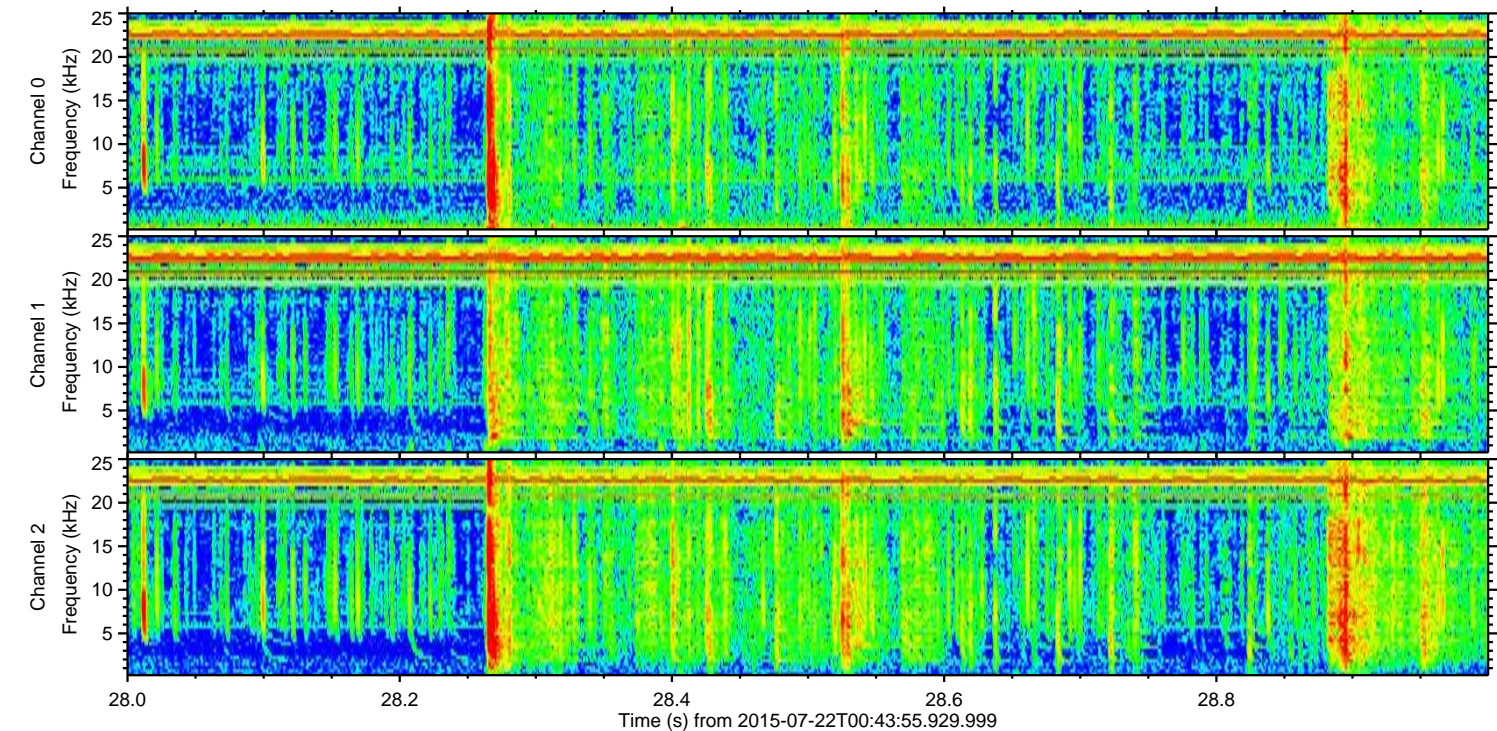
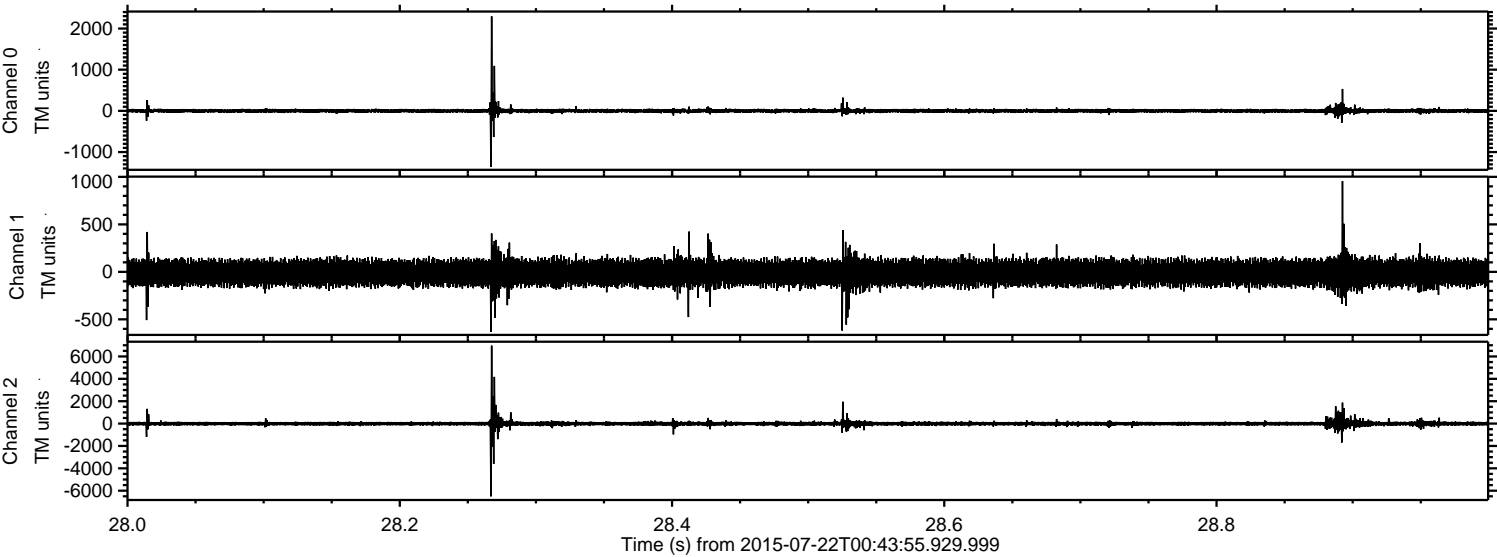
Channel 1
mn: -2044
mx: 1415
 μ : -10.3
 σ : 70.0

Channel 2
mn: -5617
mx: 7721
 μ : -9.9
 σ : 110.9

Processed Wed Jul 22 02:54:56 2015 by ELM ver.2012-10-06 from 001__elm20150722_004354__dat00.bin



Processed Wed Jul 22 02:54:57 2015 by ELM ver.2012-10-06 from 001__elm20150722_004354__dat00.bin



Processed Wed Jul 22 02:54:58 2015 by ELM ver.2012-10-06 from 001__elm20150722_004354__dat00.bin

