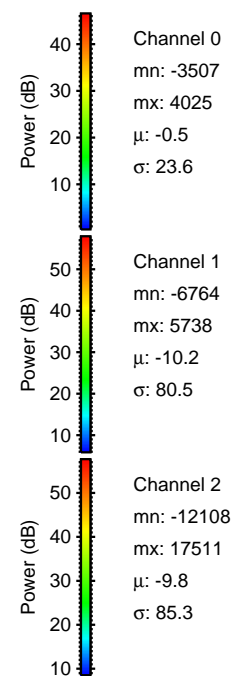
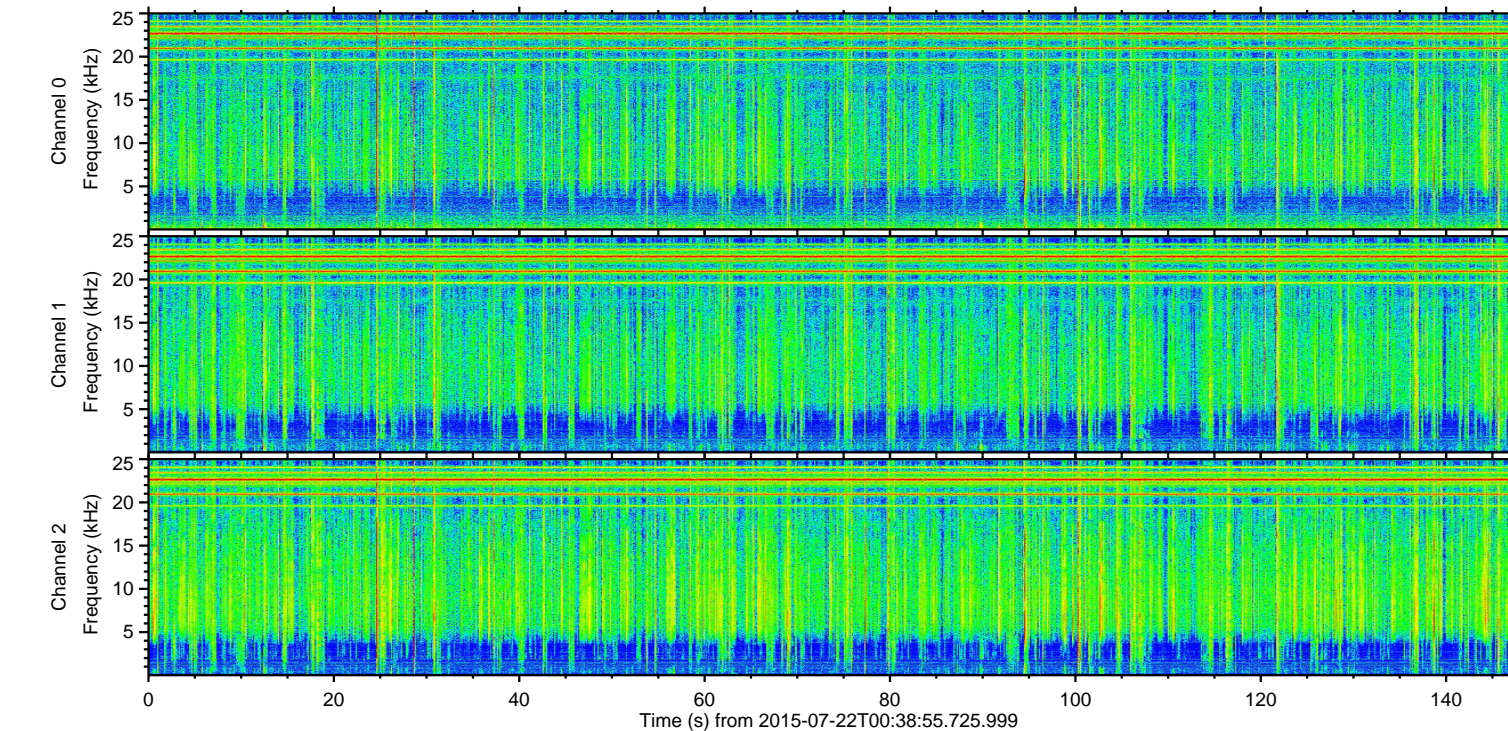
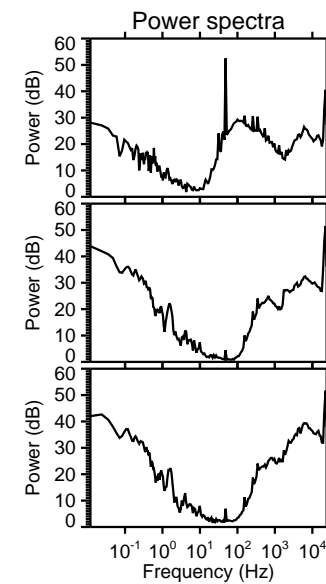
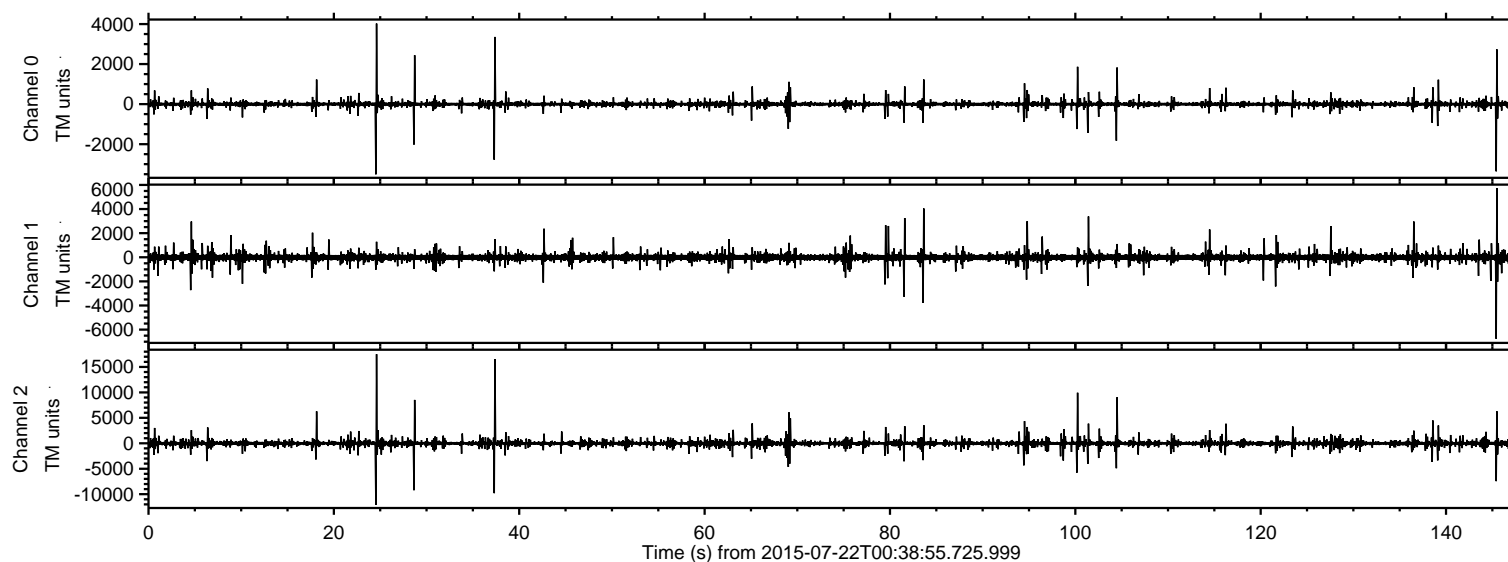


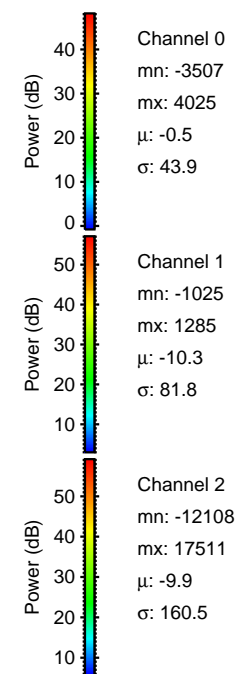
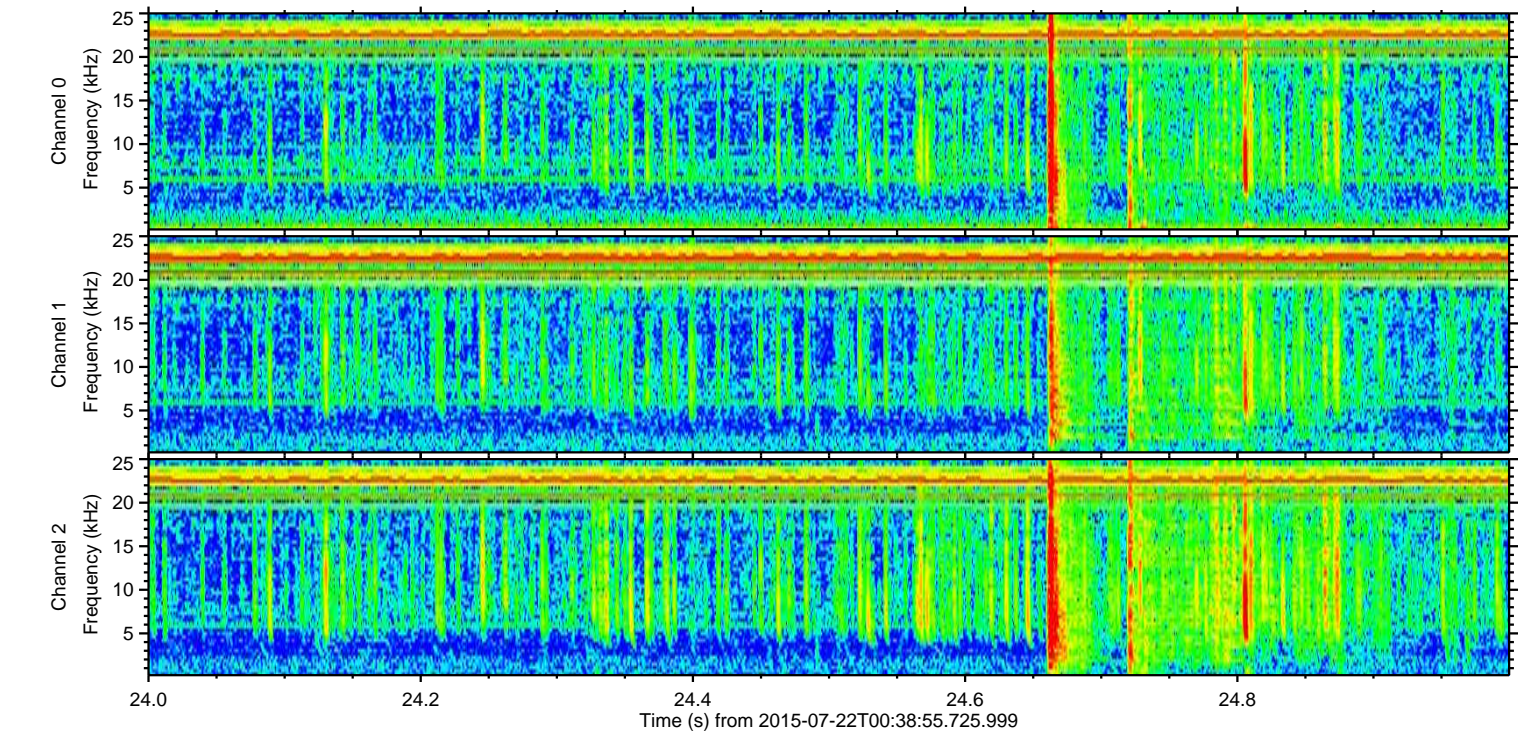
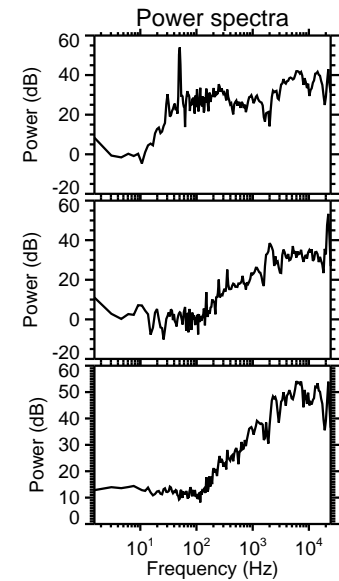
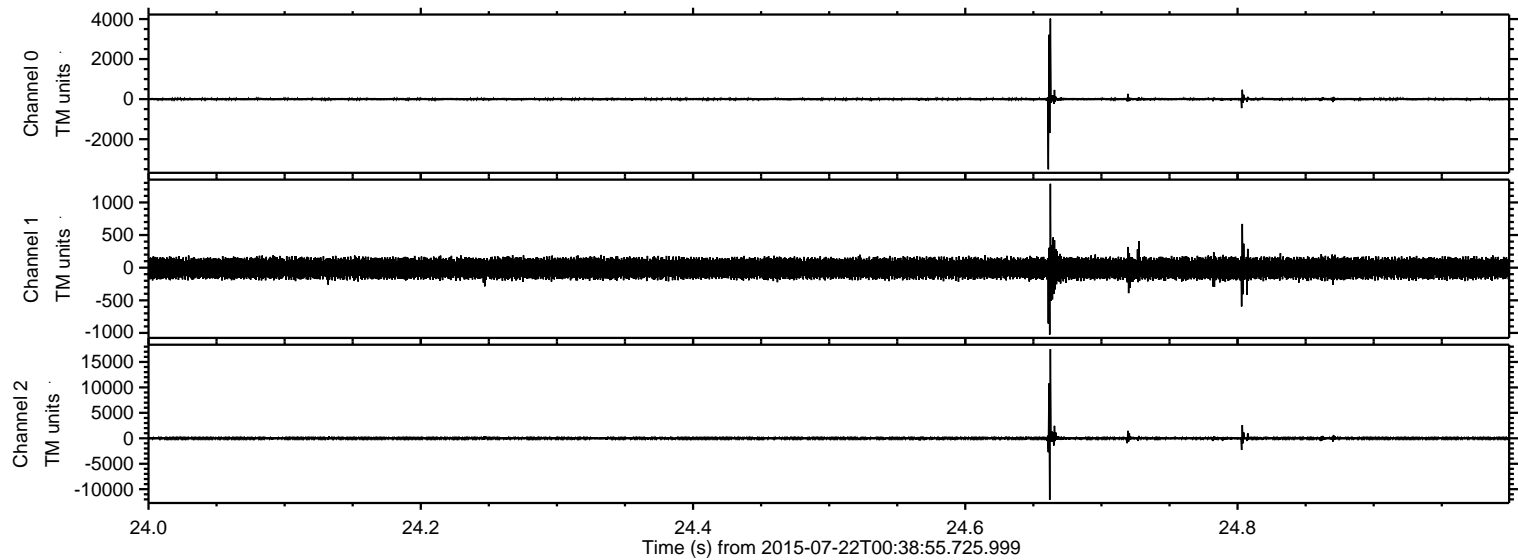
ELMAVAN 3D WAVEFORMS (Measured data sampled at 50 kHz) 51000 packets of 144 samples from 2015-07-22T00:38:55.725.999.

Processed Wed Jul 22 02:49:06 2015 by ELM ver.2012-10-06 from 001__elm20150722_003854__dat00.bin

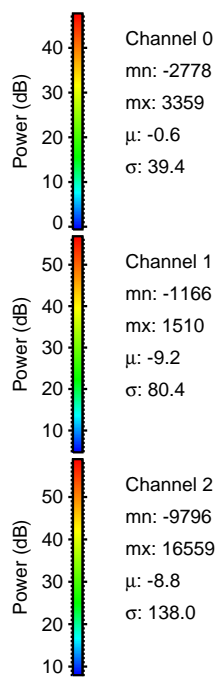
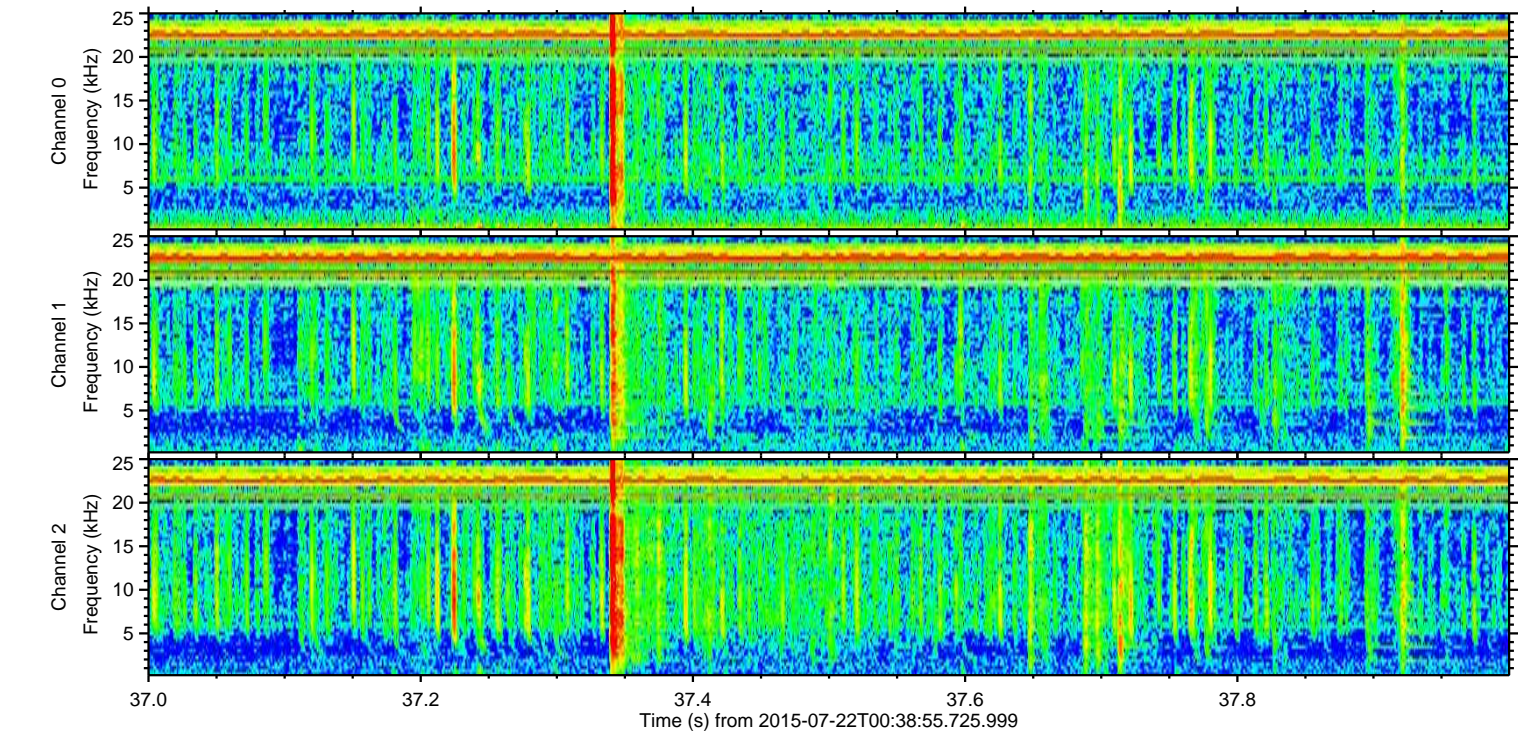
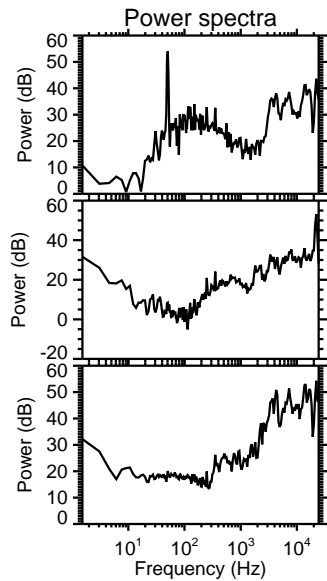
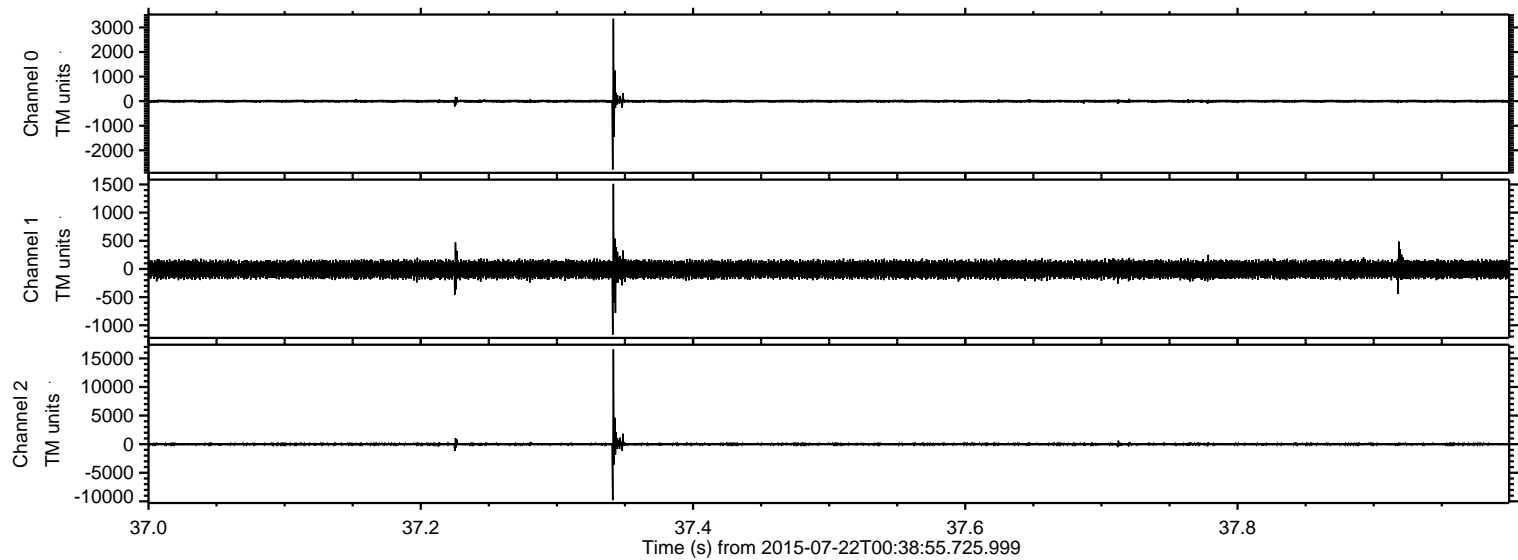


ELMAVAN 3D WAVEFORMS (Measured data sampled at 50 kHz) 51000 packets of 144 samples from 2015-07-22T00:38:55.725.999. Part 25/147

Processed Wed Jul 22 02:49:20 2015 by ELM ver.2012-10-06 from 001__elm20150722_003854__dat00.bin

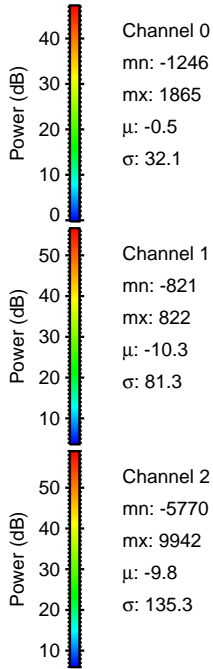
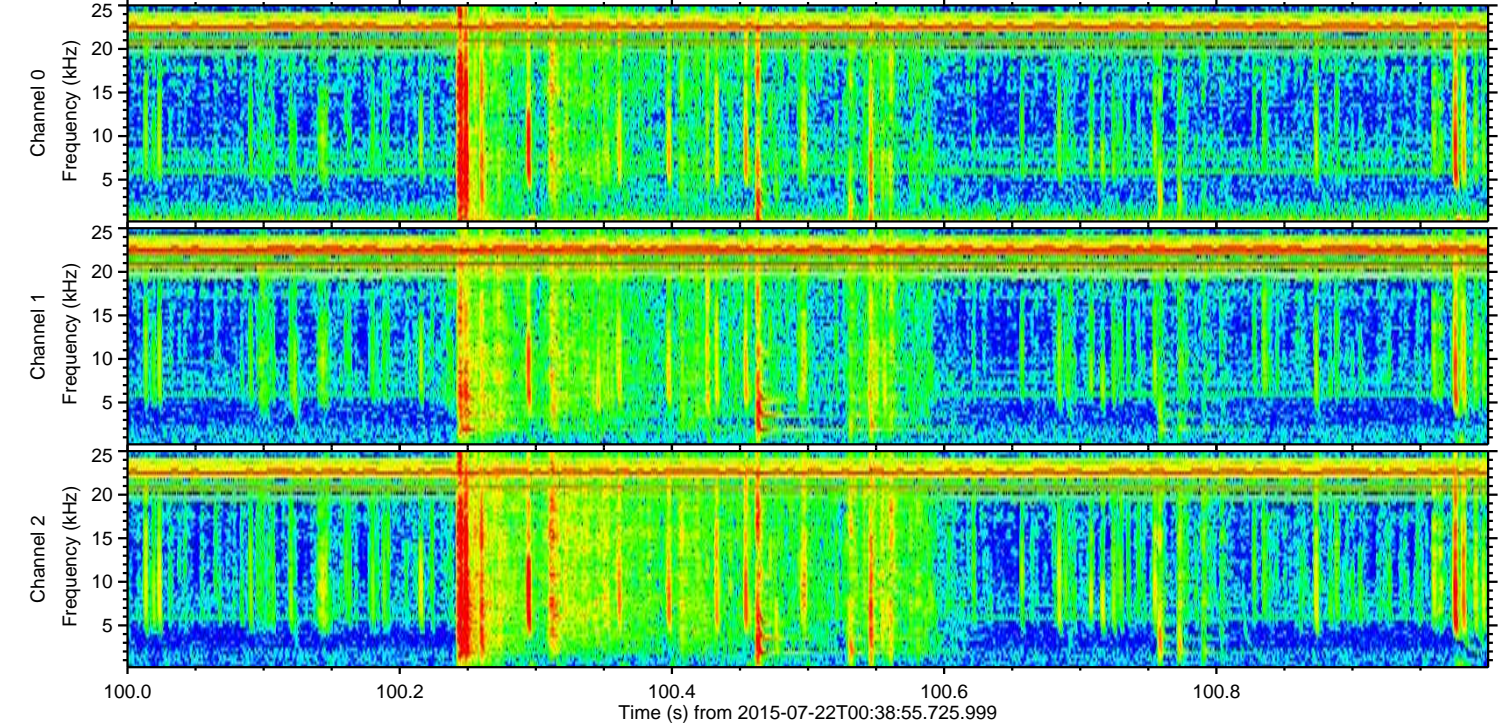
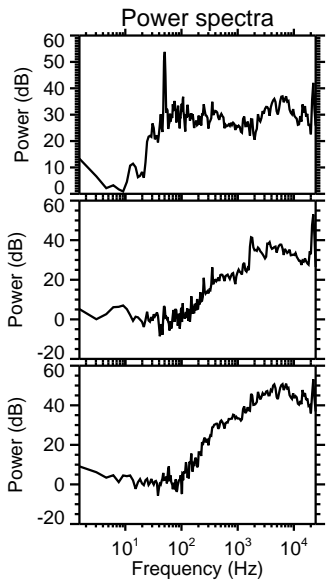
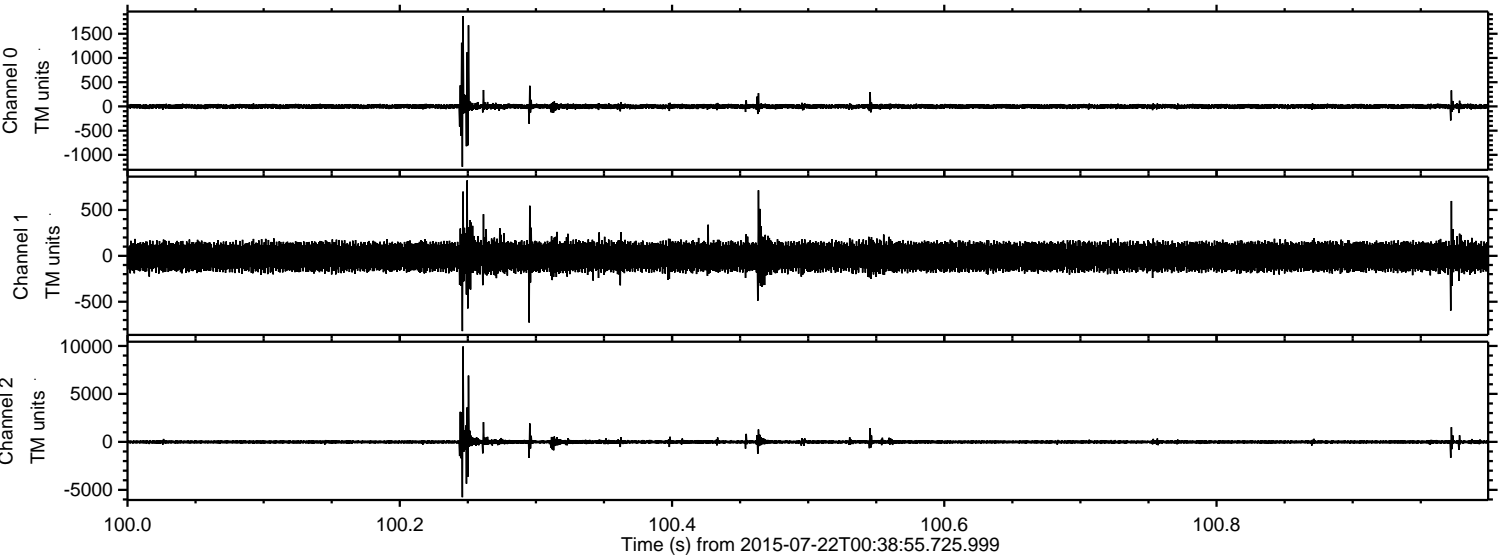


Processed Wed Jul 22 02:49:21 2015 by ELM ver.2012-10-06 from 001__elm20150722_003854__dat00.bin

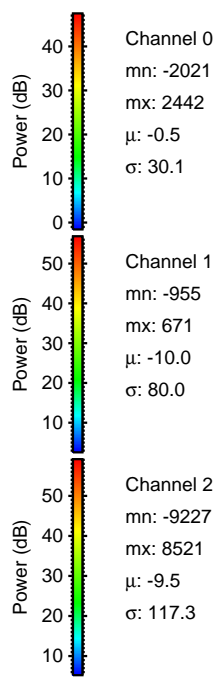
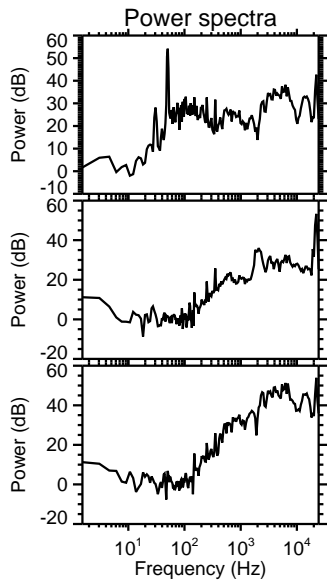
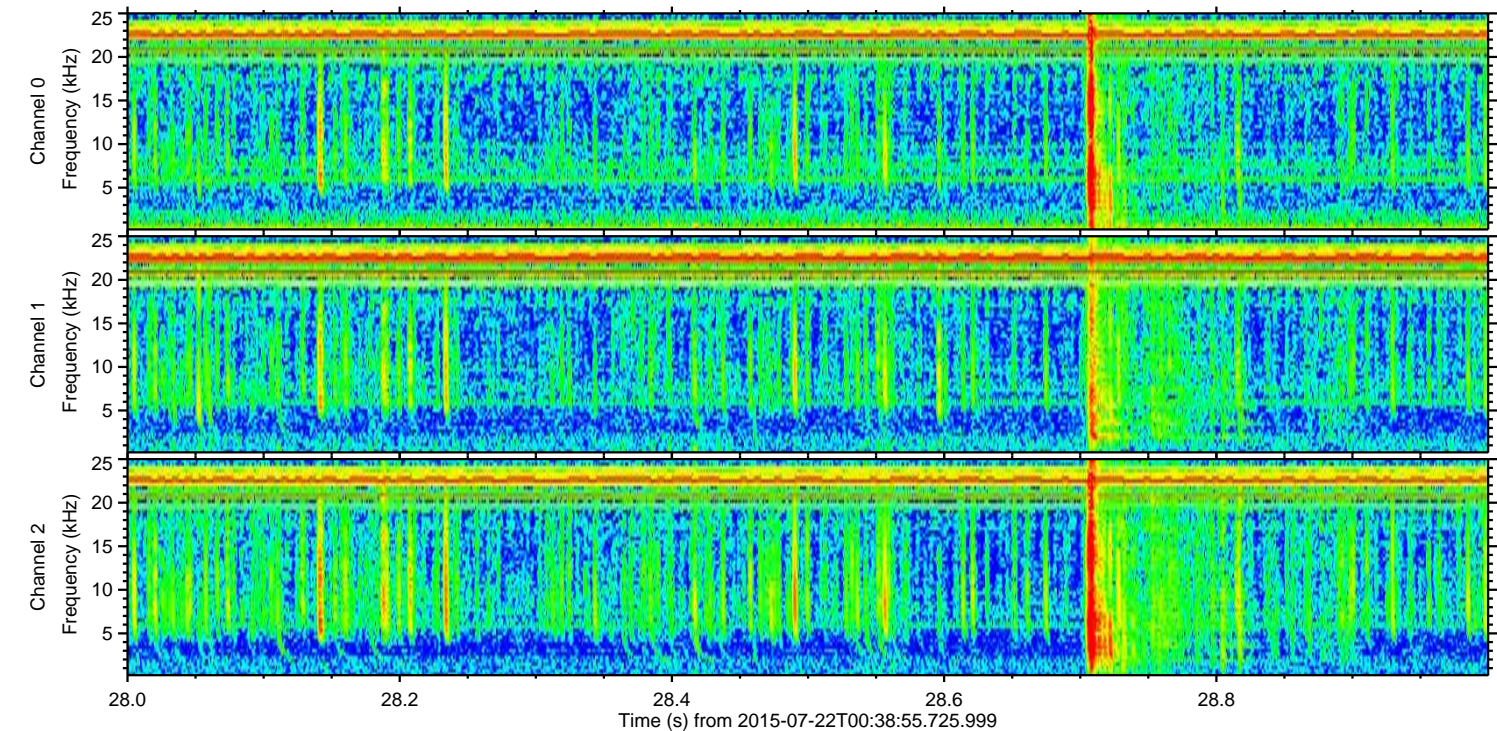
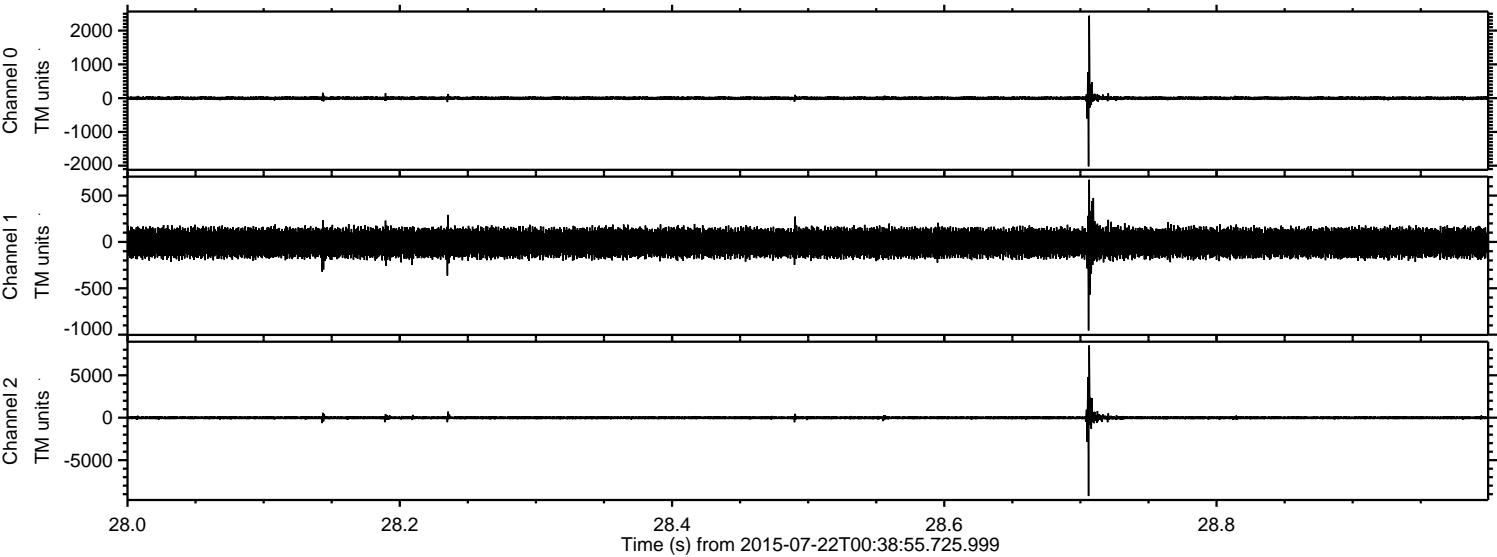


ELMAVAN 3D WAVEFORMS (Measured data sampled at 50 kHz) 51000 packets of 144 samples from 2015-07-22T00:38:55.725.999. Part 101/147

Processed Wed Jul 22 02:49:22 2015 by ELM ver.2012-10-06 from 001__elm20150722_003854__dat00.bin



Processed Wed Jul 22 02:49:23 2015 by ELM ver.2012-10-06 from 001__elm20150722_003854__dat00.bin



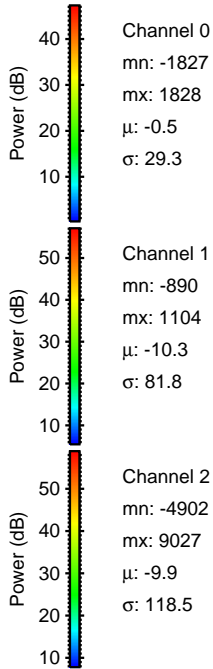
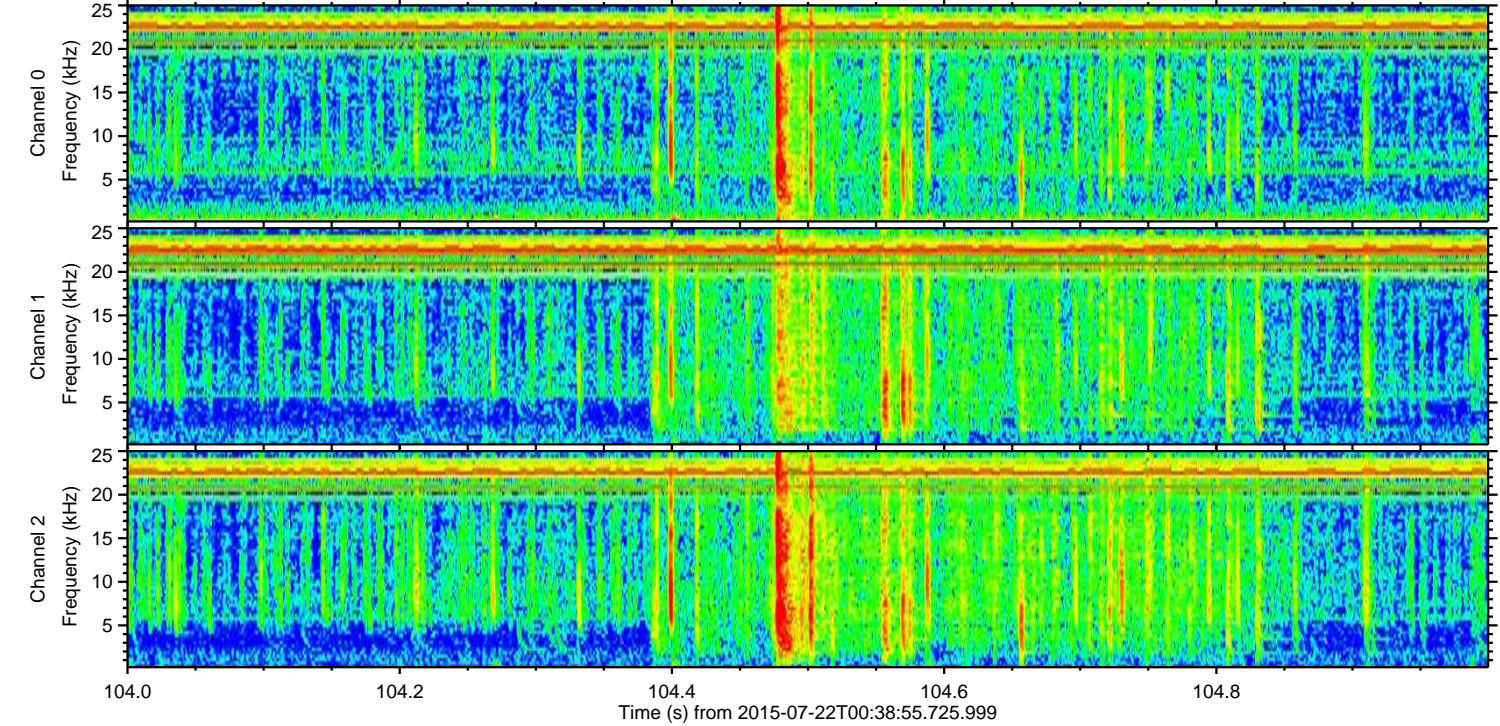
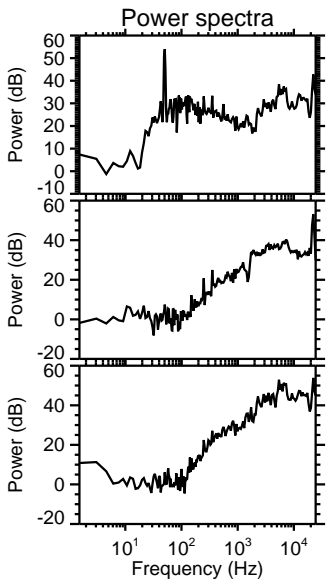
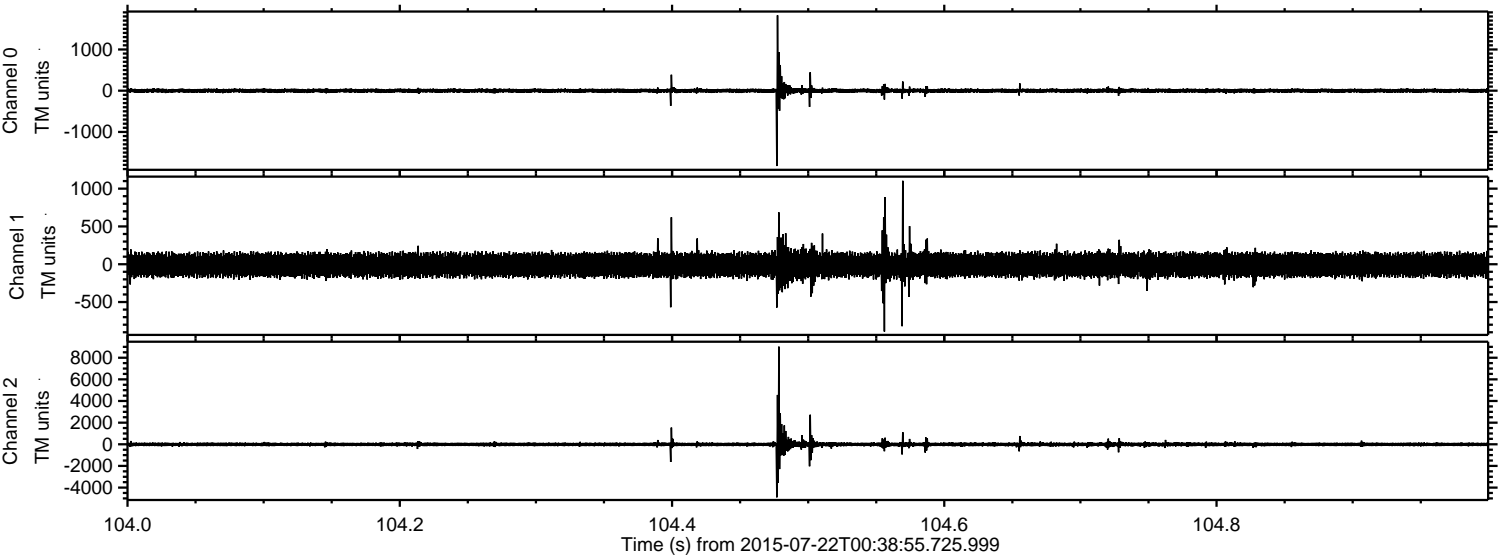
Channel 0
mn: -2021
mx: 2442
 μ : -0.5
 σ : 30.1

Channel 1
mn: -955
mx: 671
 μ : -10.0
 σ : 80.0

Channel 2
mn: -9227
mx: 8521
 μ : -9.5
 σ : 117.3

ELMAVAN 3D WAVEFORMS (Measured data sampled at 50 kHz) 51000 packets of 144 samples from 2015-07-22T00:38:55.725.999. Part 105/147

Processed Wed Jul 22 02:49:24 2015 by ELM ver.2012-10-06 from 001__elm20150722_003854__dat00.bin



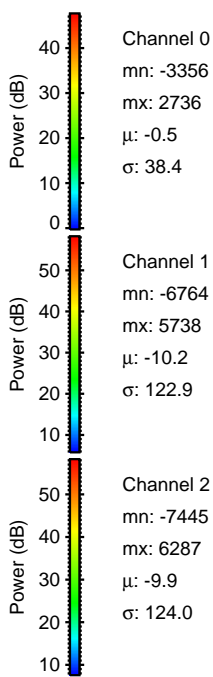
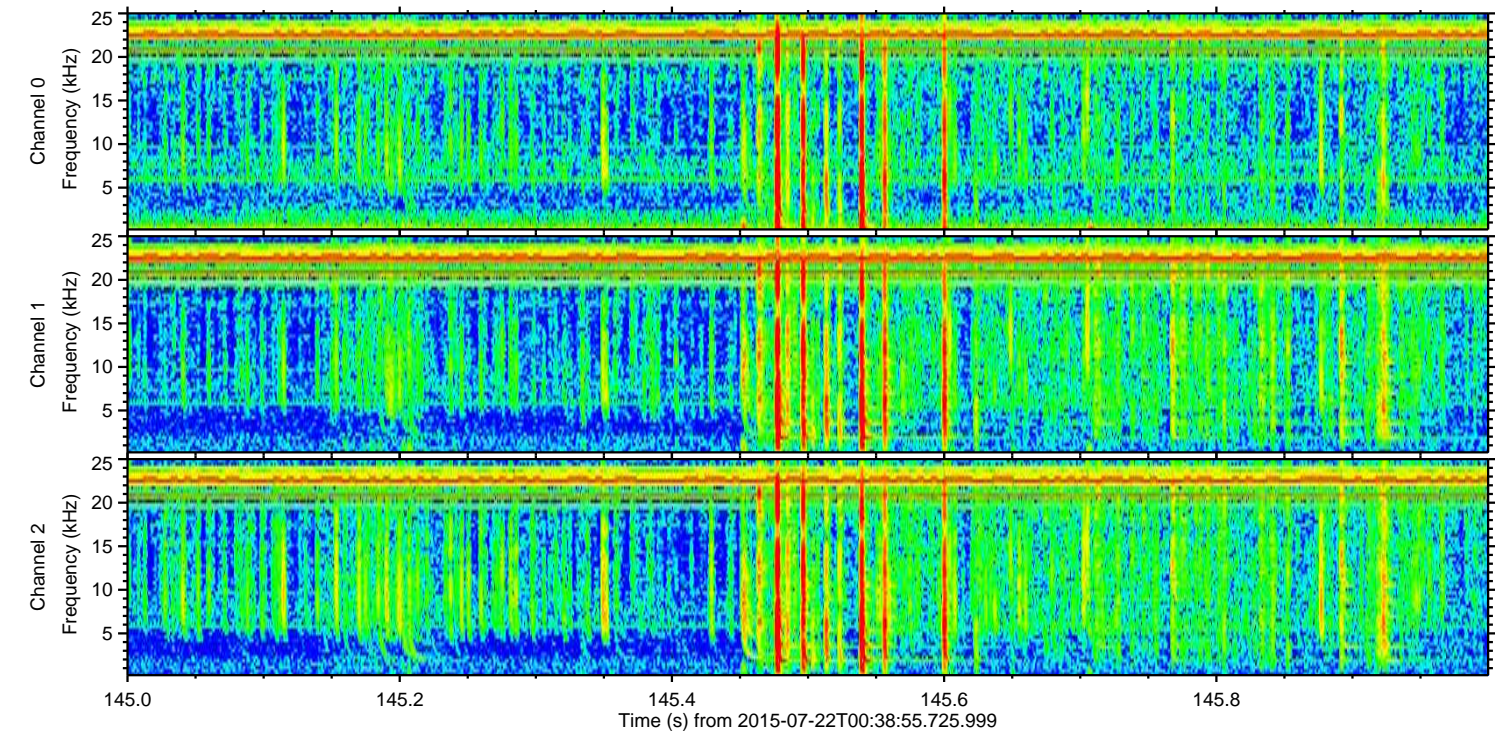
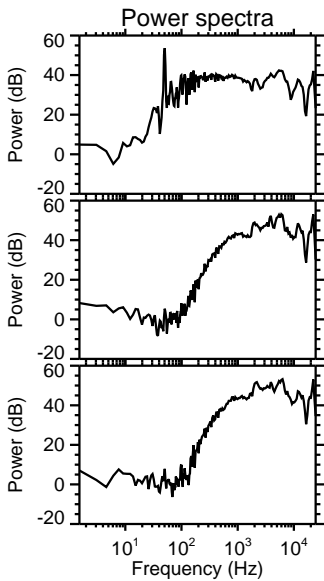
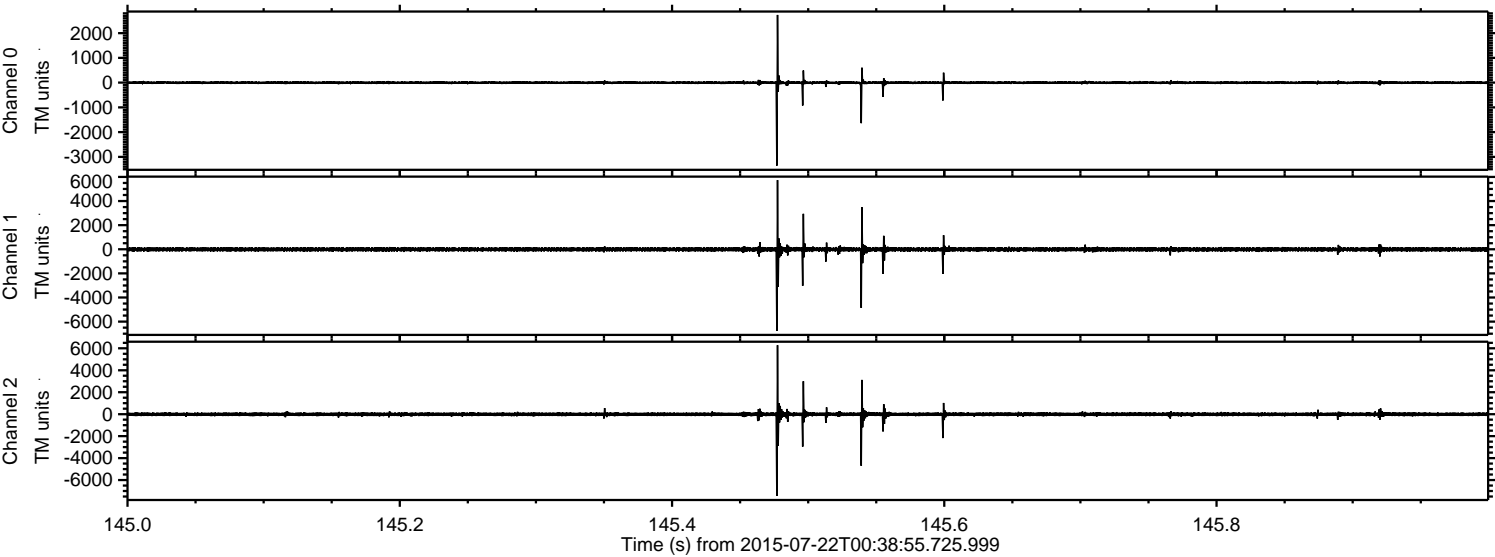
Channel 0
mn: -1827
mx: 1828
 μ : -0.5
 σ : 29.3

Channel 1
mn: -890
mx: 1104
 μ : -10.3
 σ : 81.8

Channel 2
mn: -4902
mx: 9027
 μ : -9.9
 σ : 118.5

ELMAVAN 3D WAVEFORMS (Measured data sampled at 50 kHz) 51000 packets of 144 samples from 2015-07-22T00:38:55.725.999. Part 146/147

Processed Wed Jul 22 02:49:25 2015 by ELM ver.2012-10-06 from 001__elm20150722_003854__dat00.bin



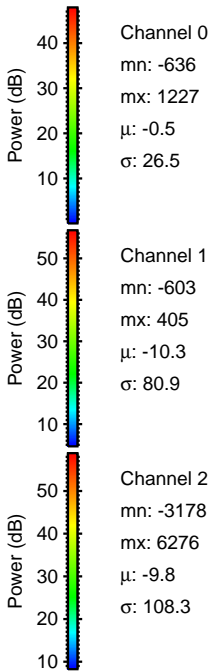
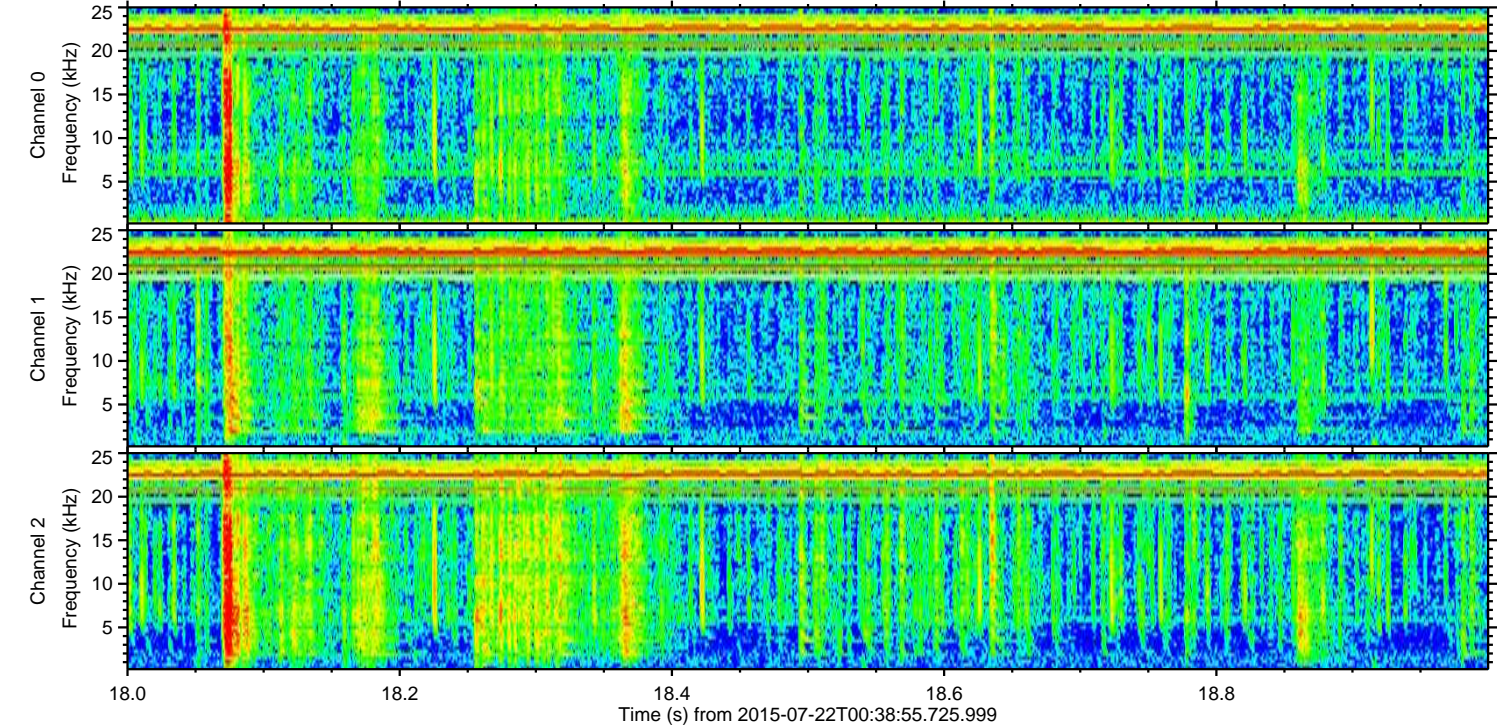
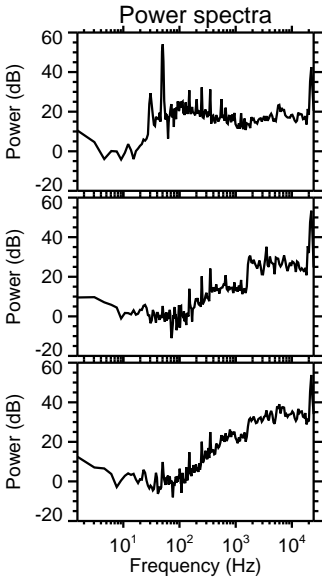
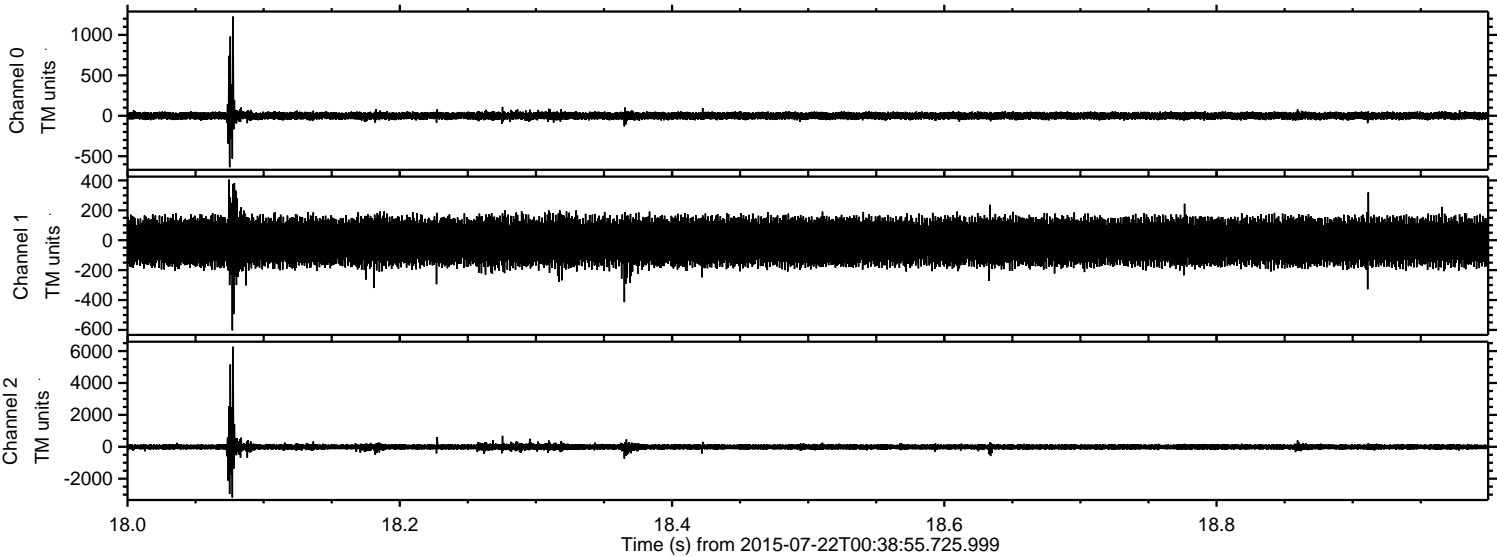
Channel 0
mn: -3356
mx: 2736
 μ : -0.5
 σ : 38.4

Channel 1
mn: -6764
mx: 5738
 μ : -10.2
 σ : 122.9

Channel 2
mn: -7445
mx: 6287
 μ : -9.9
 σ : 124.0

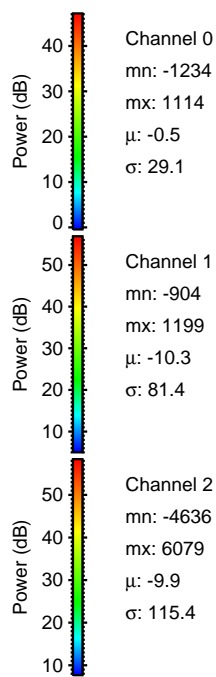
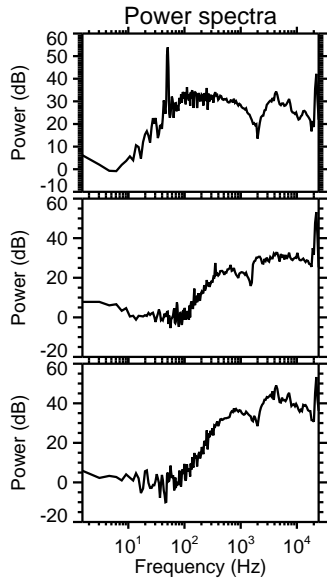
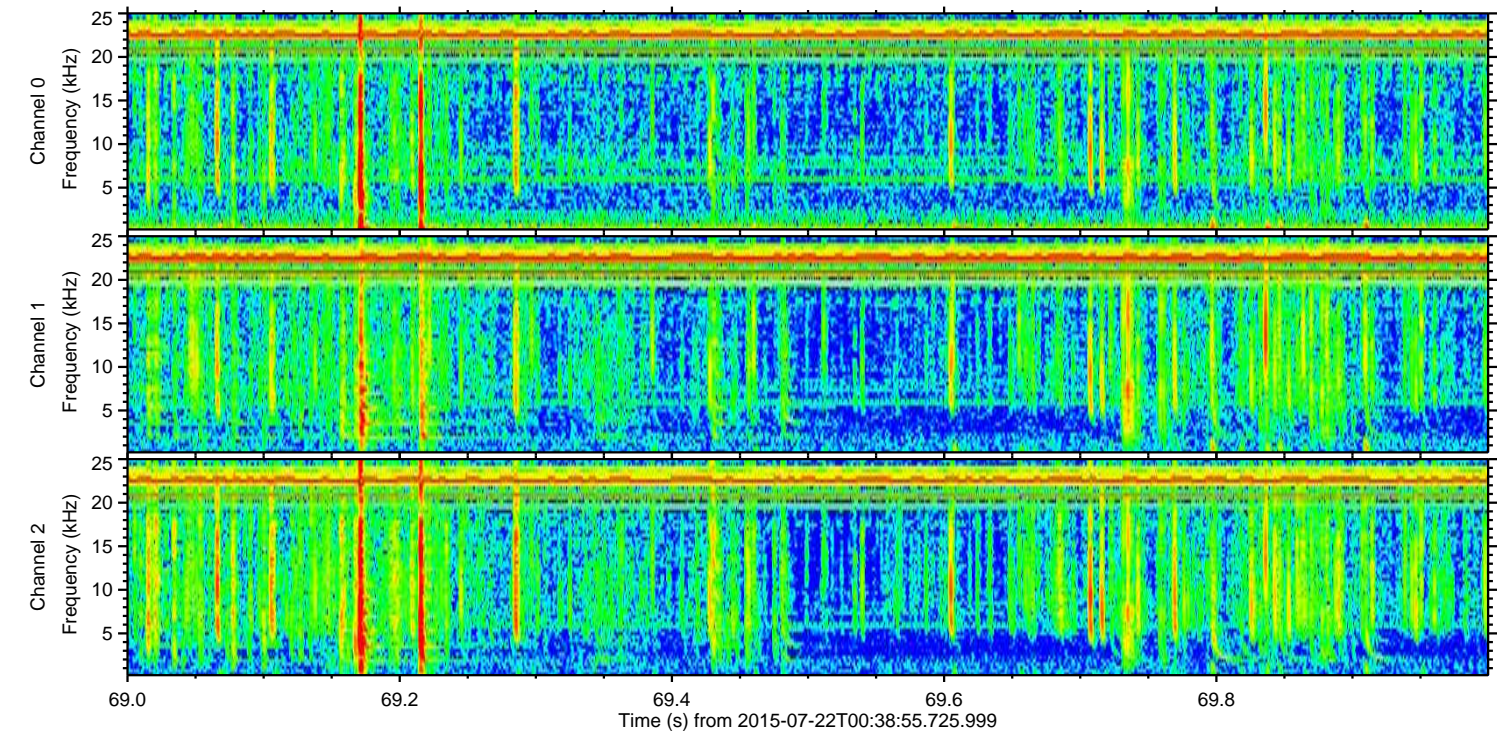
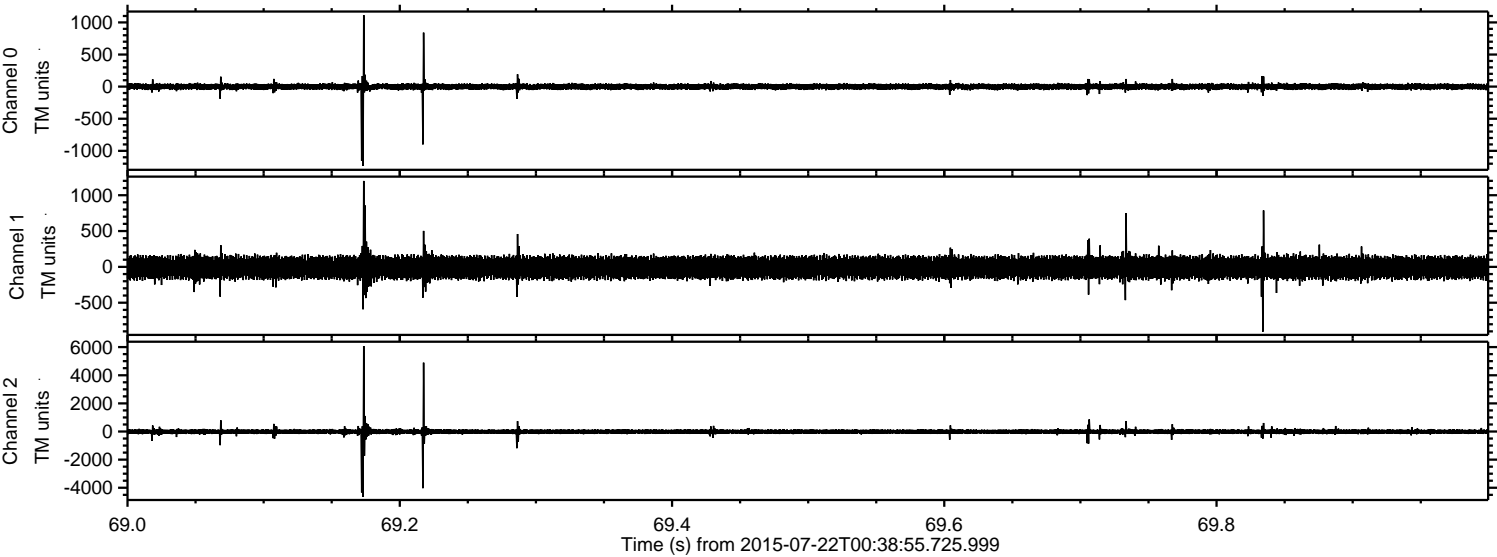
ELMAVAN 3D WAVEFORMS (Measured data sampled at 50 kHz) 51000 packets of 144 samples from 2015-07-22T00:38:55.725.999. Part 19/147

Processed Wed Jul 22 02:49:26 2015 by ELM ver.2012-10-06 from 001__elm20150722_003854__dat00.bin



ELMAVAN 3D WAVEFORMS (Measured data sampled at 50 kHz) 51000 packets of 144 samples from 2015-07-22T00:38:55.725.999. Part 70/147

Processed Wed Jul 22 02:49:27 2015 by ELM ver.2012-10-06 from 001__elm20150722_003854__dat00.bin



Power spectra

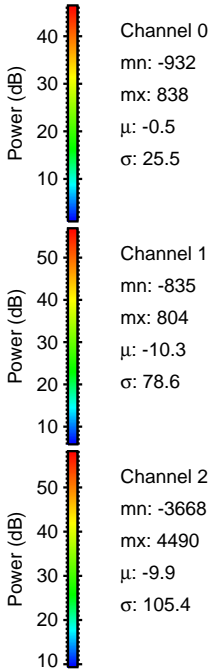
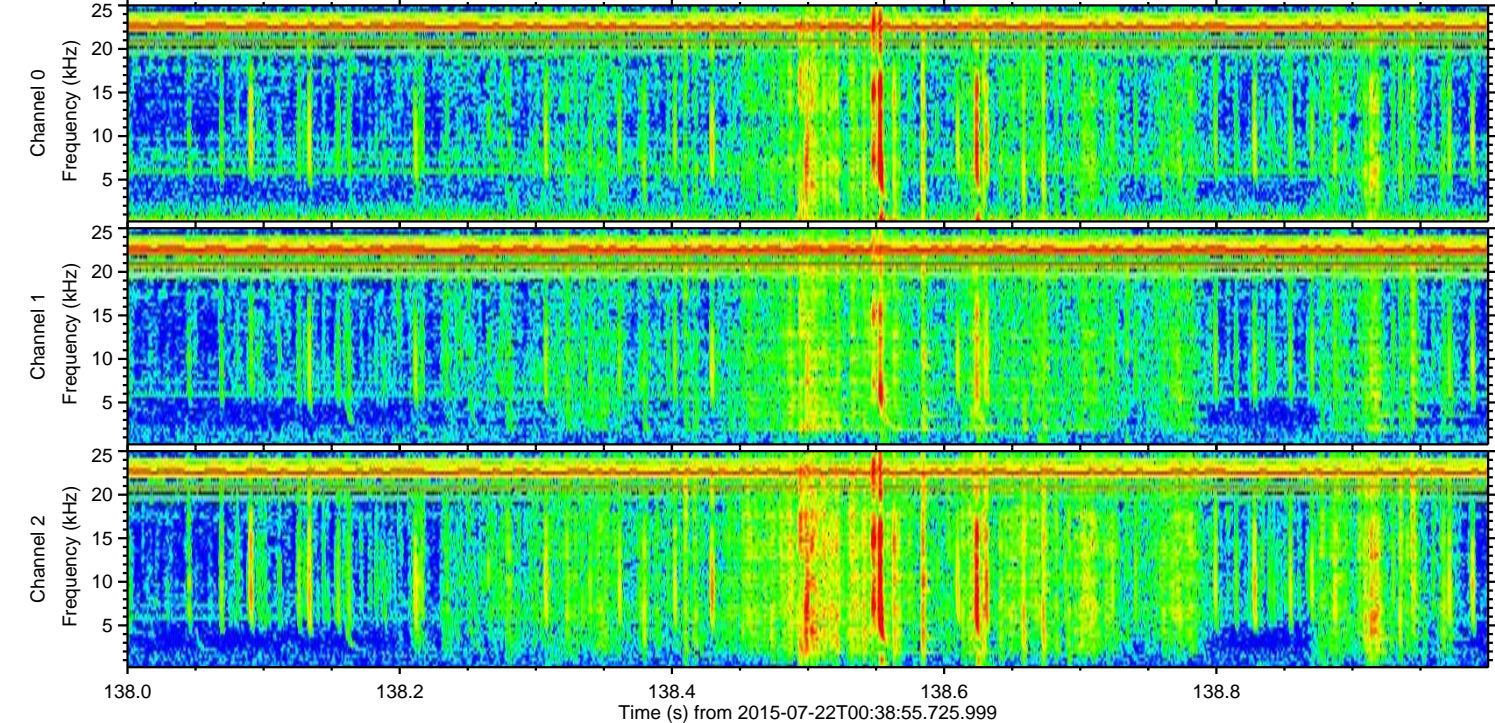
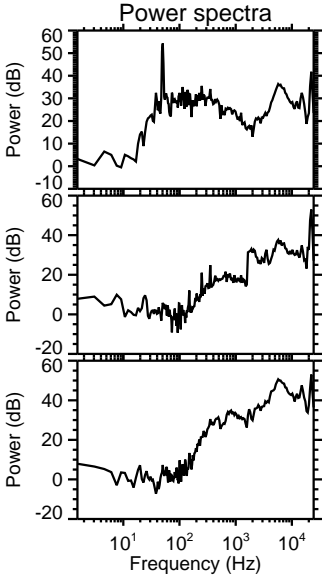
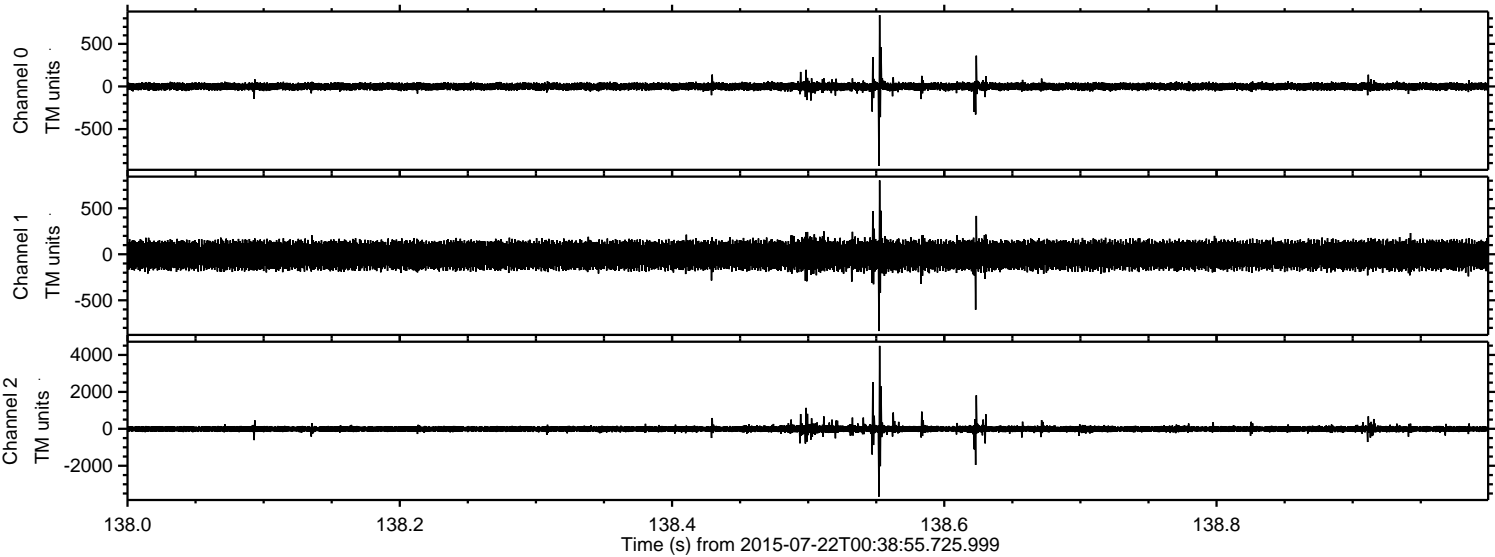
Channel 0
mn: -1234
mx: 1114
 μ : -0.5
 σ : 29.1

Channel 1
mn: -904
mx: 1199
 μ : -10.3
 σ : 81.4

Channel 2
mn: -4636
mx: 6079
 μ : -9.9
 σ : 115.4

ELMAVAN 3D WAVEFORMS (Measured data sampled at 50 kHz) 51000 packets of 144 samples from 2015-07-22T00:38:55.725.999. Part 139/147

Processed Wed Jul 22 02:49:28 2015 by ELM ver.2012-10-06 from 001__elm20150722_003854__dat00.bin



Processed Wed Jul 22 02:49:29 2015 by ELM ver.2012-10-06 from 001__elm20150722_003854__dat00.bin

