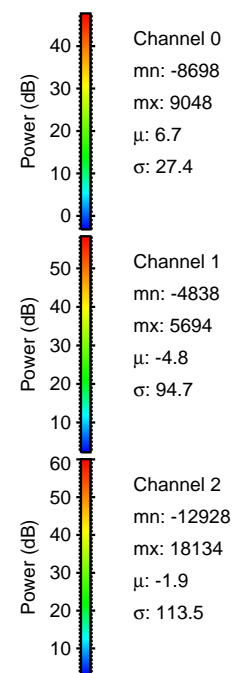
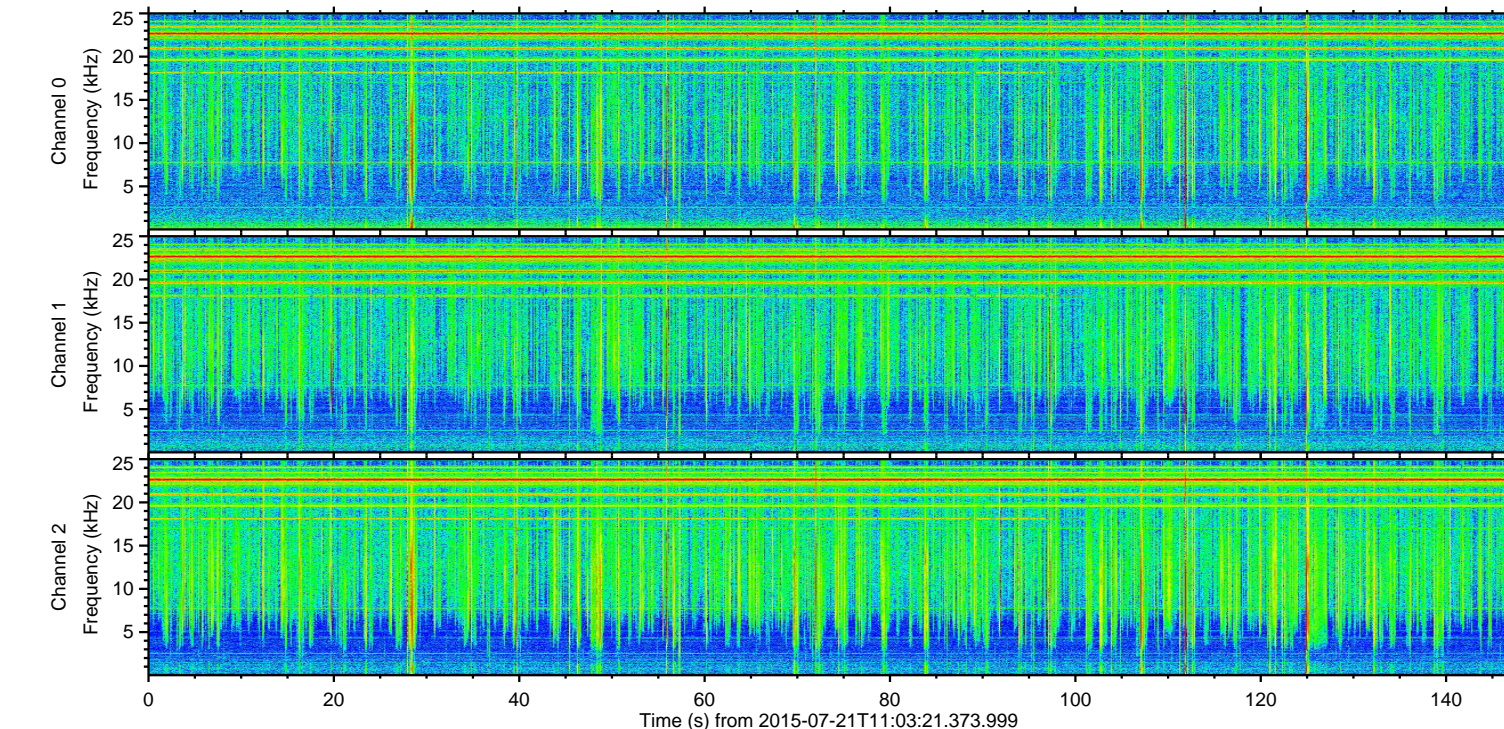
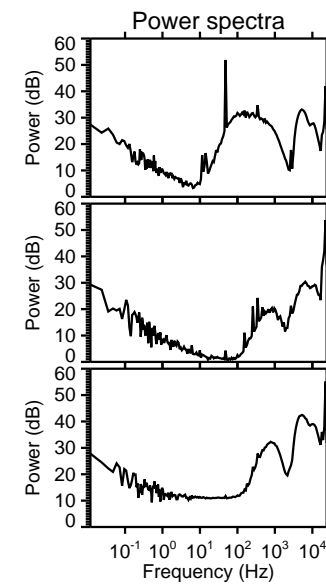
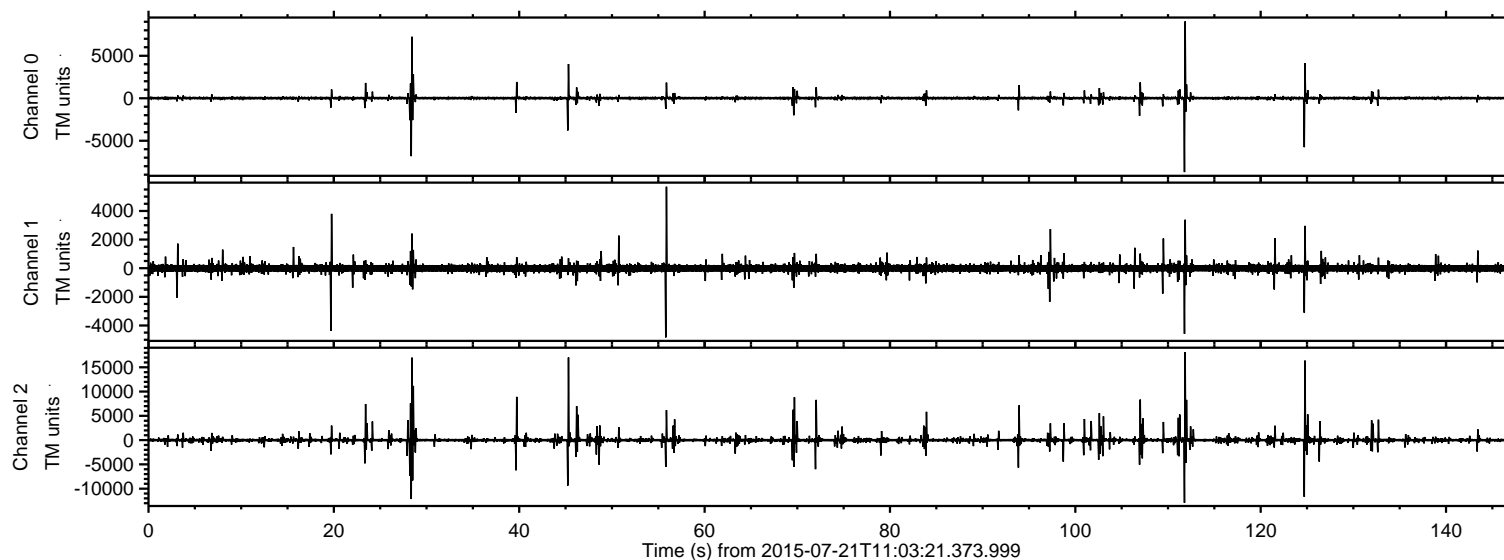


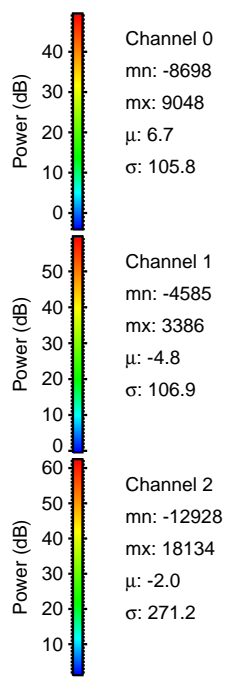
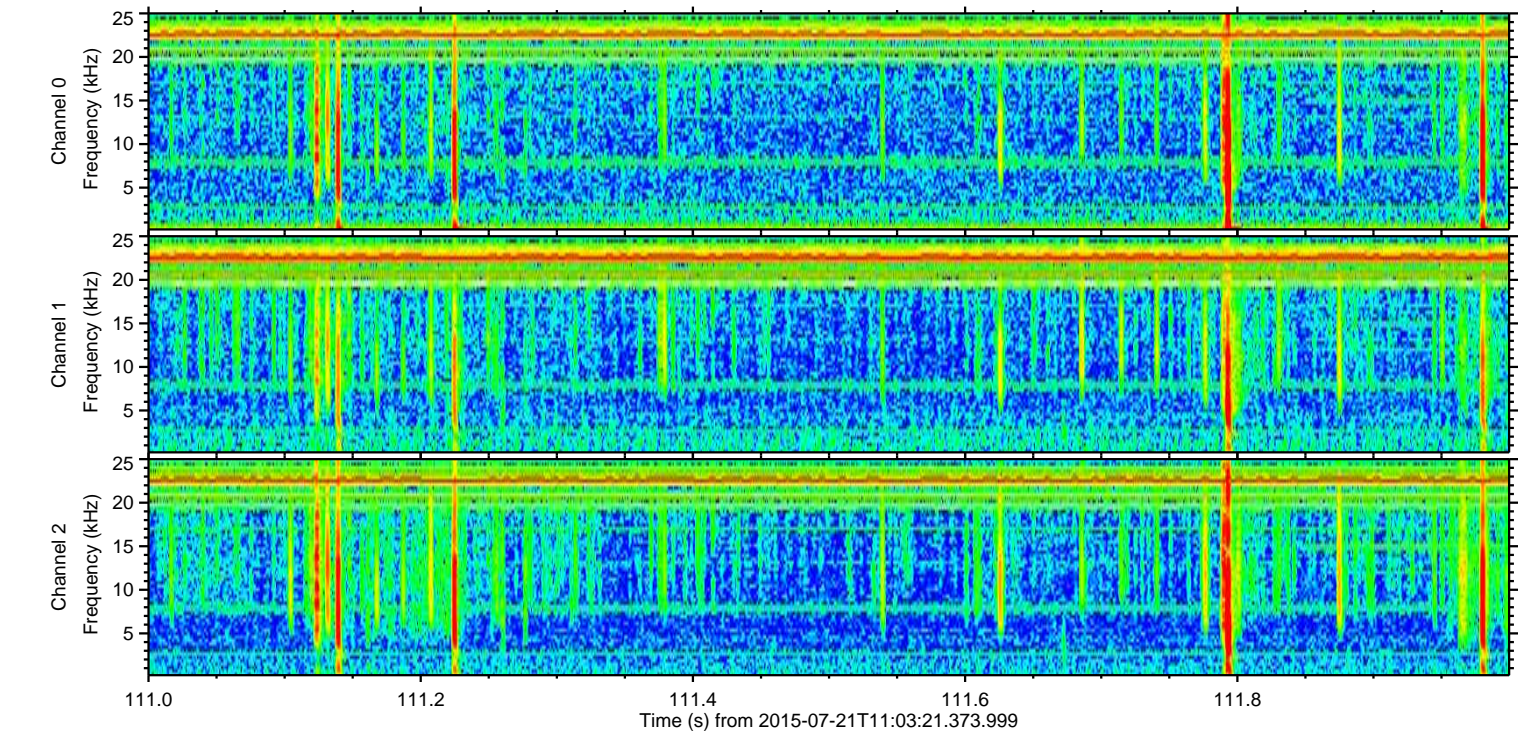
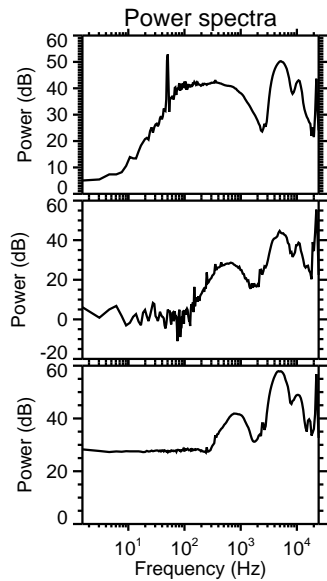
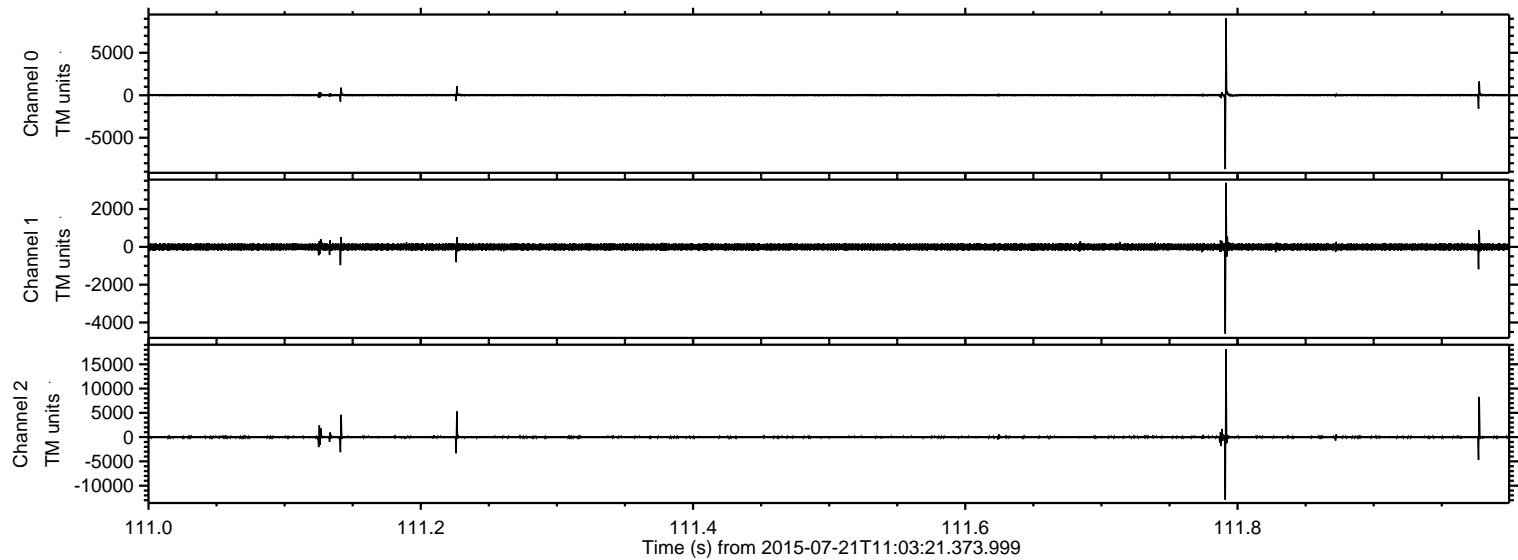
ELMAVAN 3D WAVEFORMS (Measured data sampled at 50 kHz) 51000 packets of 144 samples from 2015-07-21T11:03:21.373.999.

Processed Tue Jul 21 13:09:46 2015 by ELM ver.2012-10-06 from 001__elm20150721_110320__dat00.bin



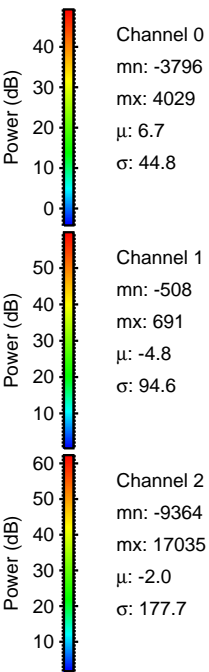
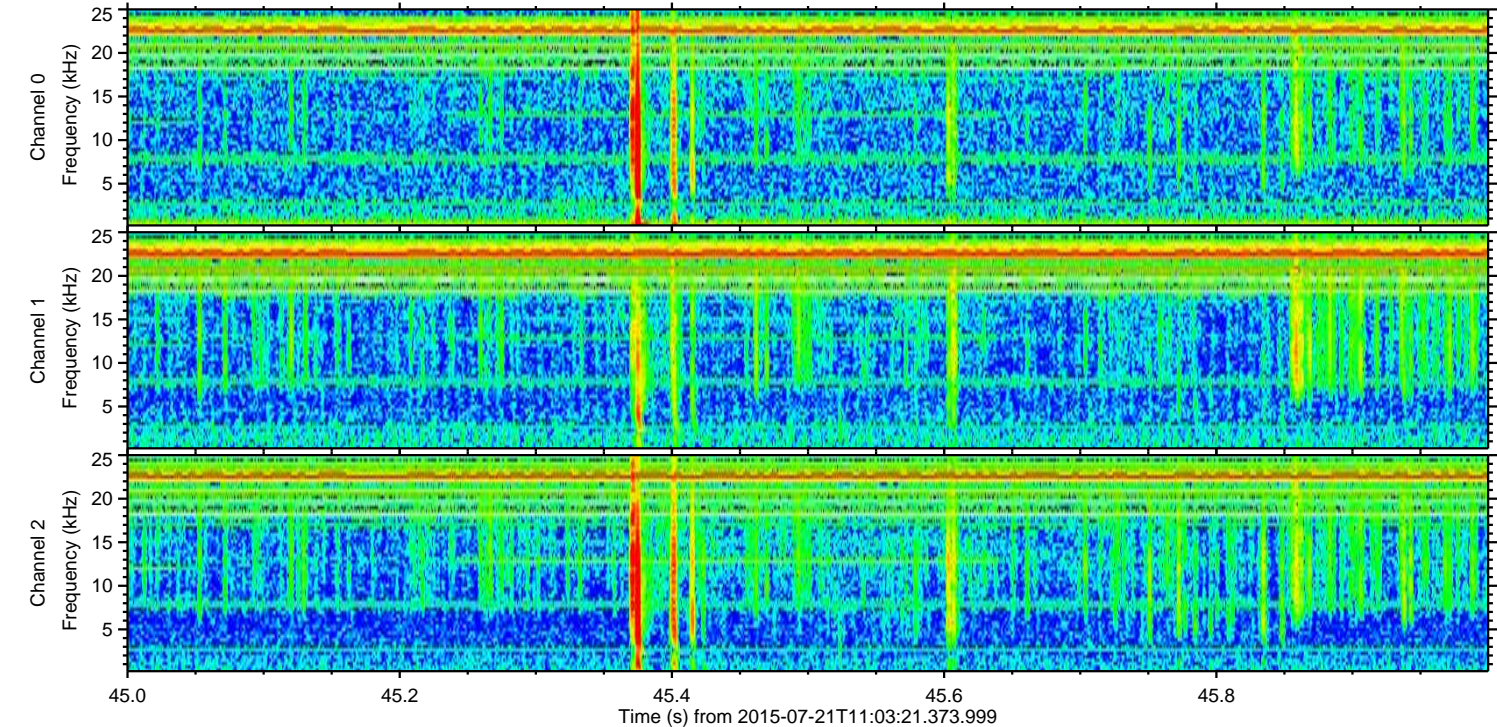
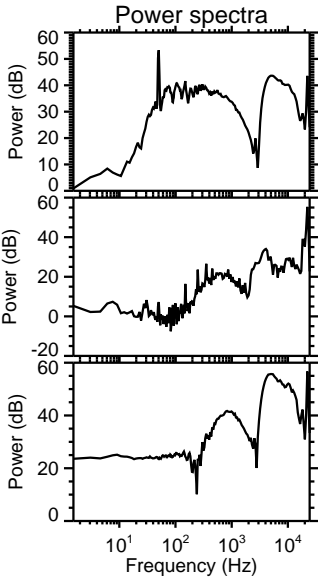
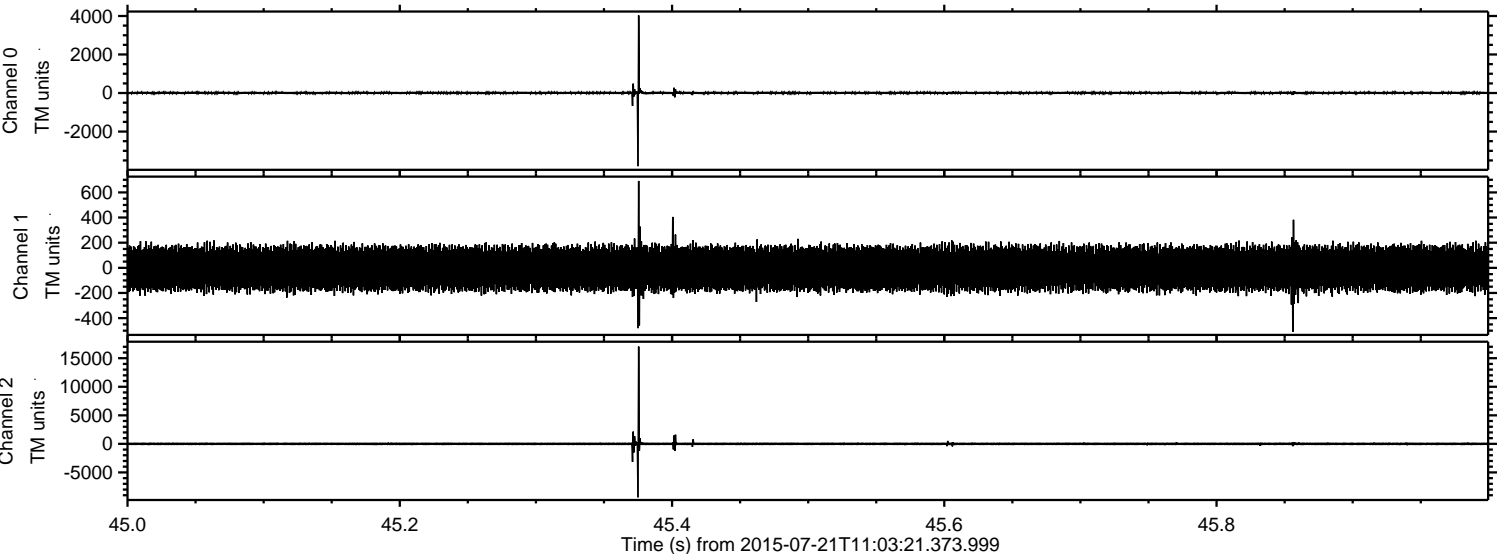
ELMAVAN 3D WAVEFORMS (Measured data sampled at 50 kHz) 51000 packets of 144 samples from 2015-07-21T11:03:21.373.999. Part 112/147

Processed Tue Jul 21 13:09:58 2015 by ELM ver.2012-10-06 from 001__elm20150721_110320__dat00.bin



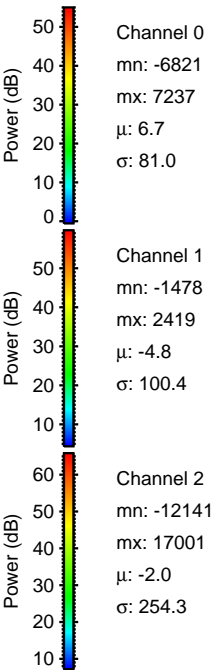
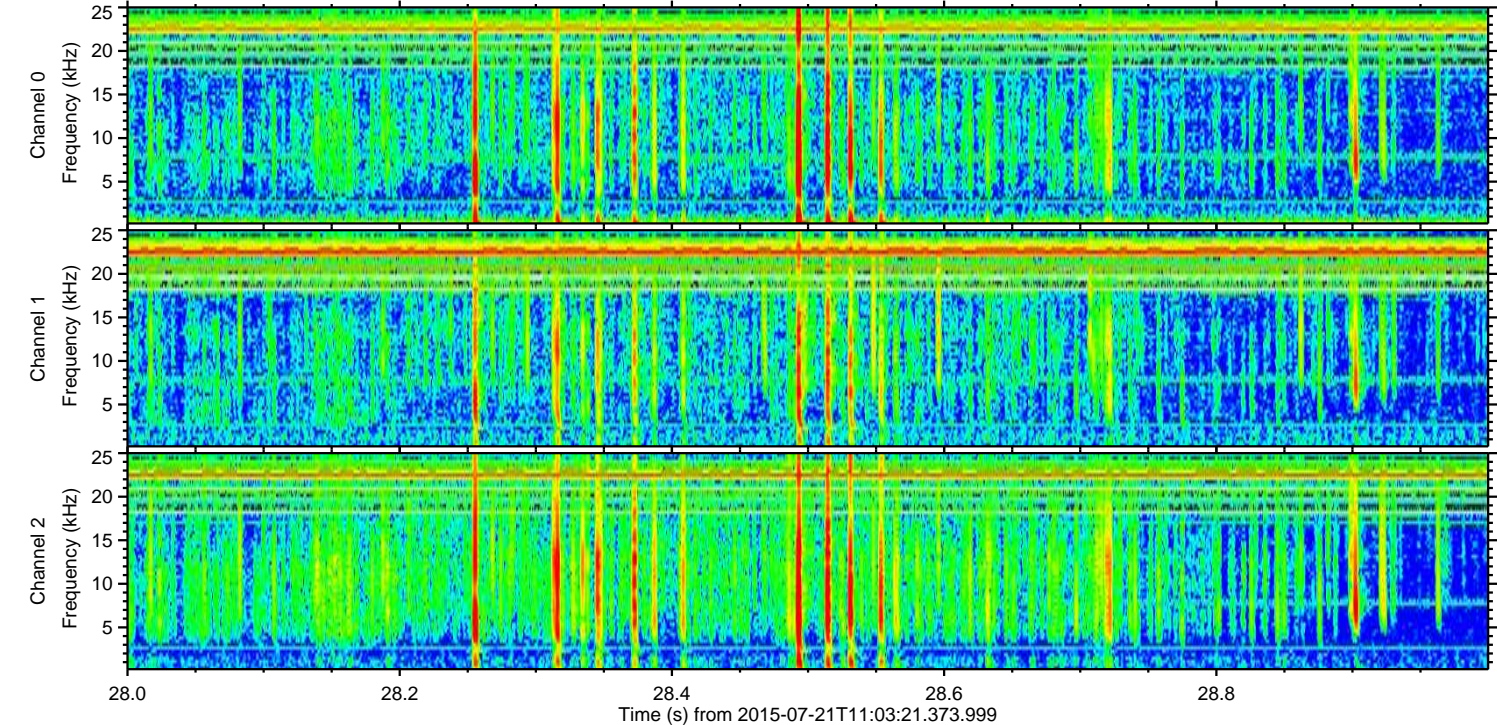
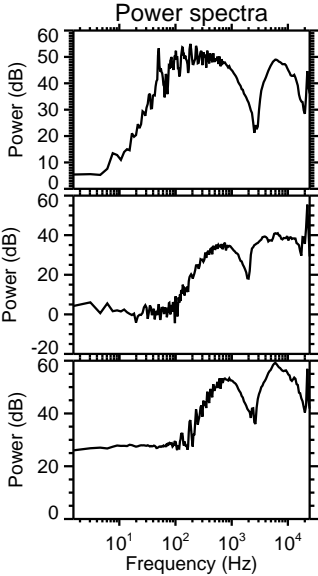
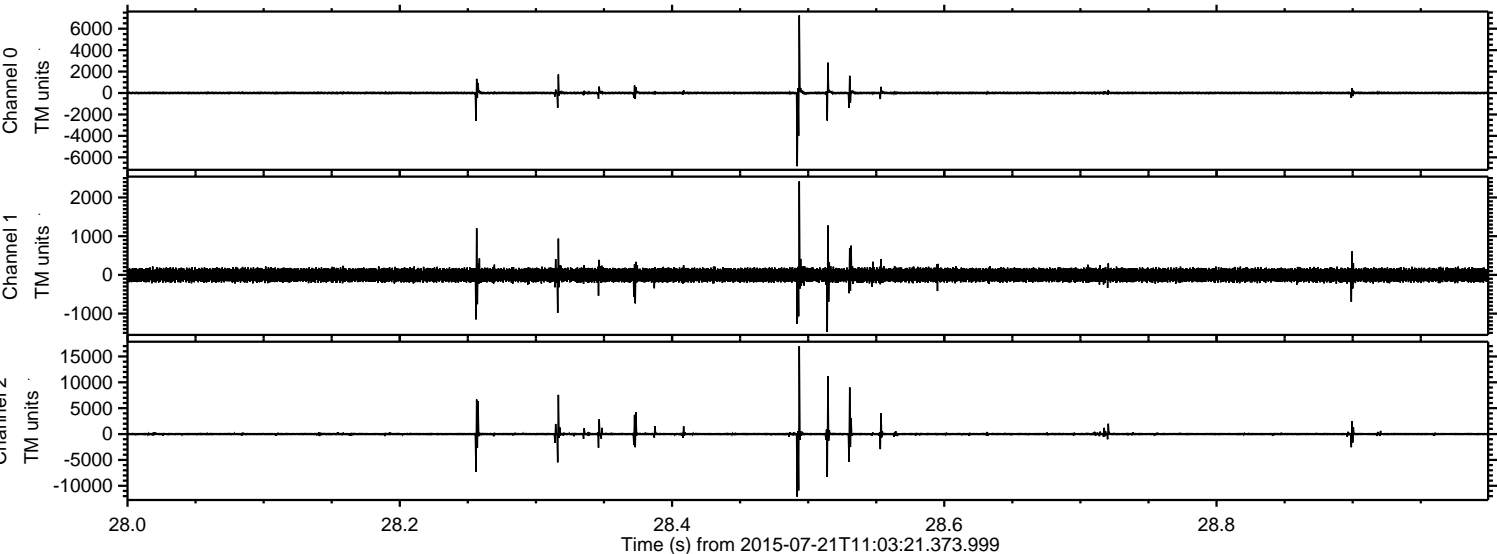
ELMAVAN 3D WAVEFORMS (Measured data sampled at 50 kHz) 51000 packets of 144 samples from 2015-07-21T11:03:21.373.999. Part 46/147

Processed Tue Jul 21 13:09:59 2015 by ELM ver.2012-10-06 from 001__elm20150721_110320__dat00.bin



ELMAVAN 3D WAVEFORMS (Measured data sampled at 50 kHz) 51000 packets of 144 samples from 2015-07-21T11:03:21.373.999. Part 29/147

Processed Tue Jul 21 13:10:00 2015 by ELM ver.2012-10-06 from 001__elm20150721_110320__dat00.bin



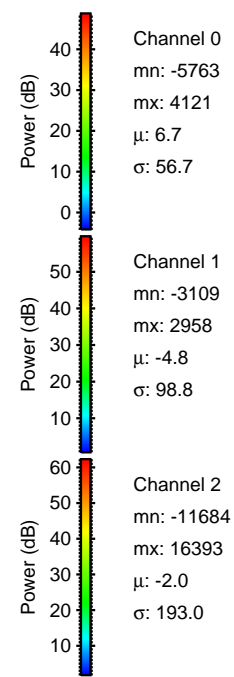
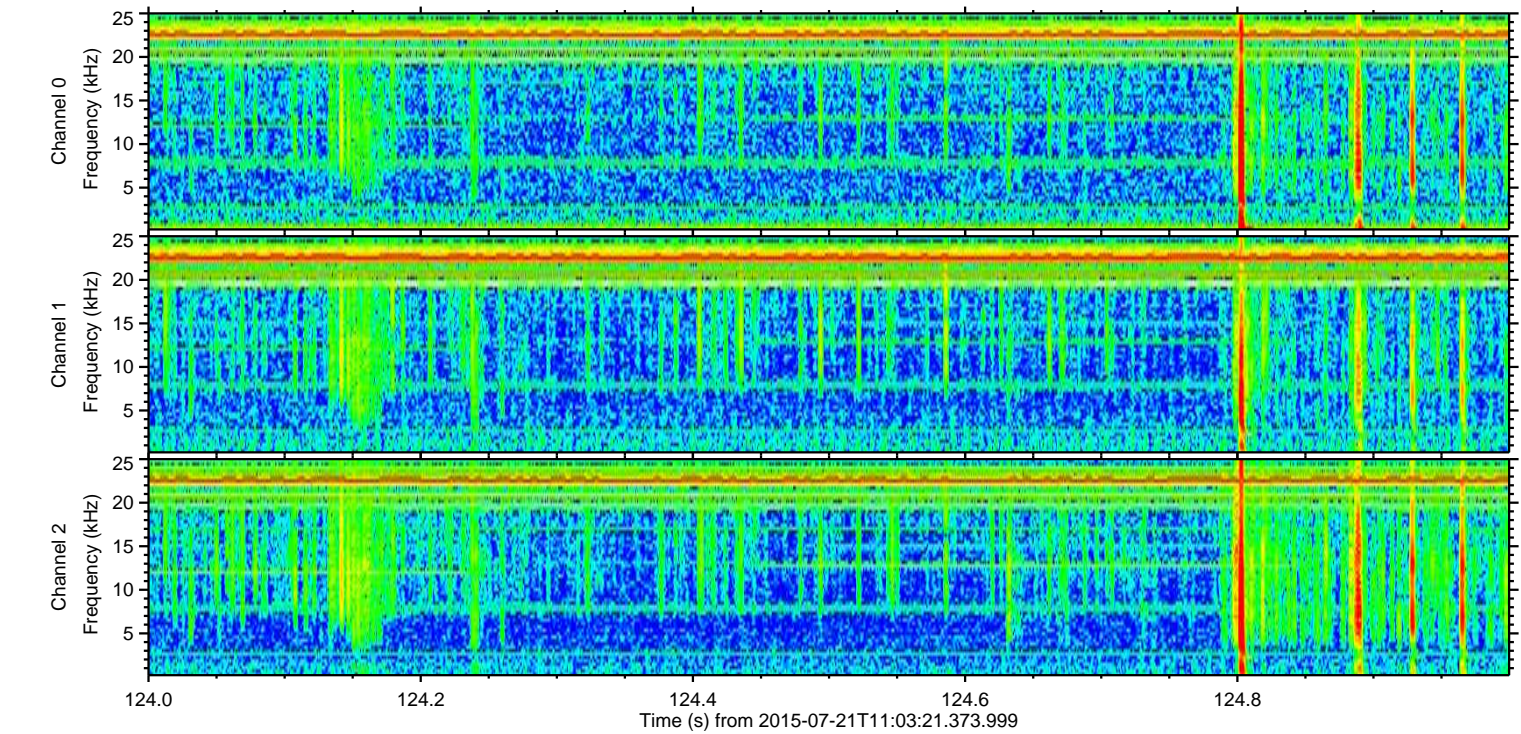
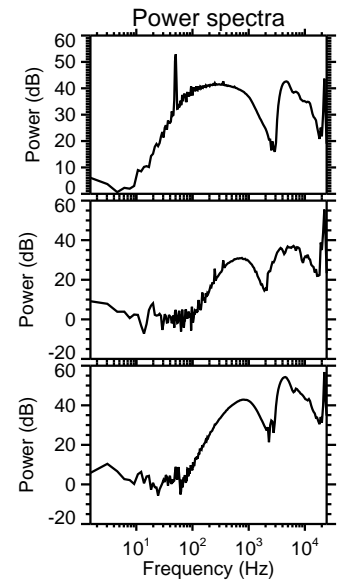
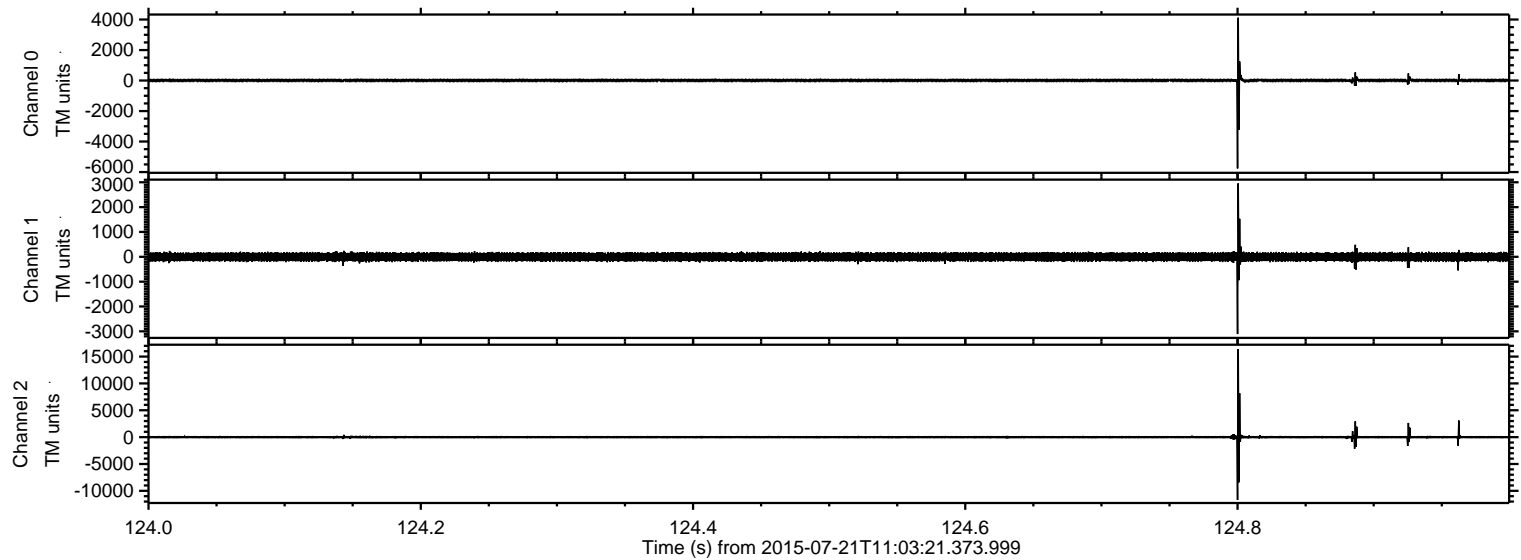
Channel 0
mn: -6821
mx: 7237
 μ : 6.7
 σ : 81.0

Channel 1
mn: -1478
mx: 2419
 μ : -4.8
 σ : 100.4

Channel 2
mn: -12141
mx: 17001
 μ : -2.0
 σ : 254.3

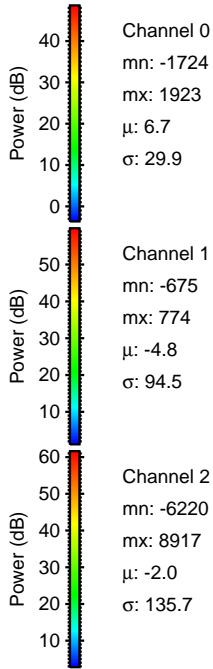
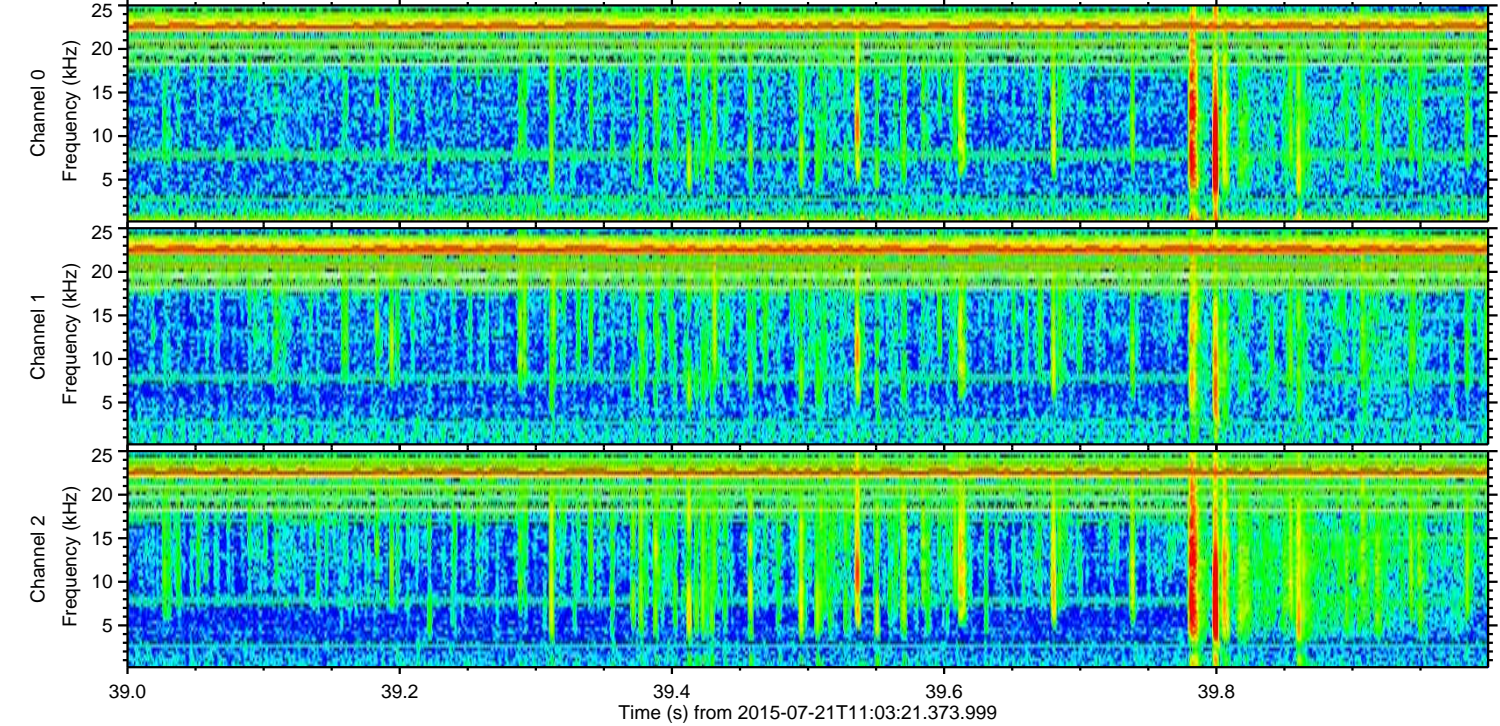
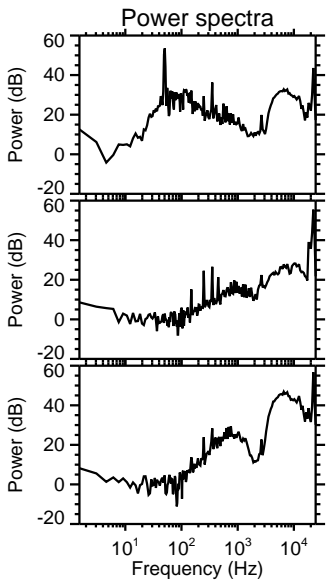
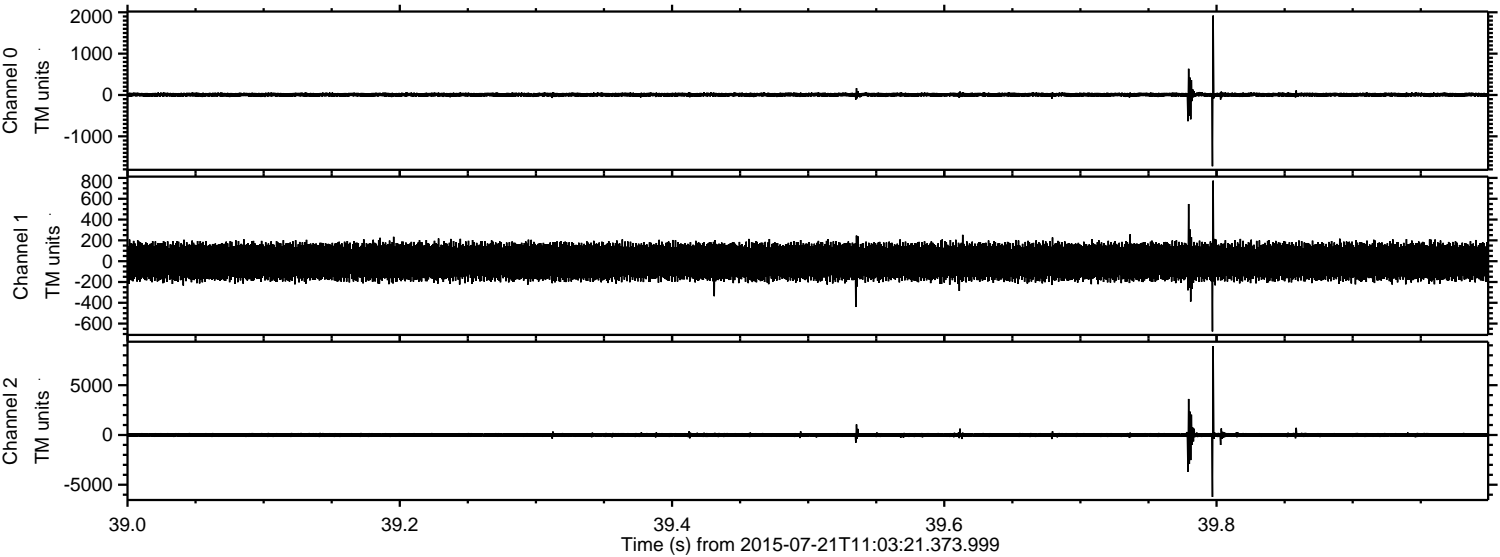
ELMAVAN 3D WAVEFORMS (Measured data sampled at 50 kHz) 51000 packets of 144 samples from 2015-07-21T11:03:21.373.999. Part 125/147

Processed Tue Jul 21 13:10:01 2015 by ELM ver.2012-10-06 from 001__elm20150721_110320__dat00.bin



ELMAVAN 3D WAVEFORMS (Measured data sampled at 50 kHz) 51000 packets of 144 samples from 2015-07-21T11:03:21.373.999. Part 40/147

Processed Tue Jul 21 13:10:02 2015 by ELM ver.2012-10-06 from 001__elm20150721_110320__dat00.bin

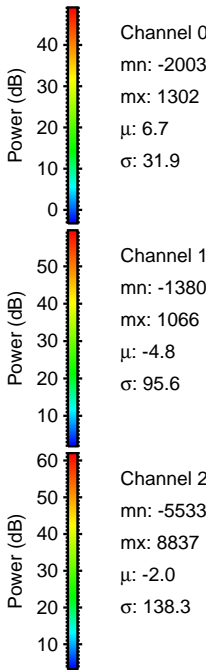
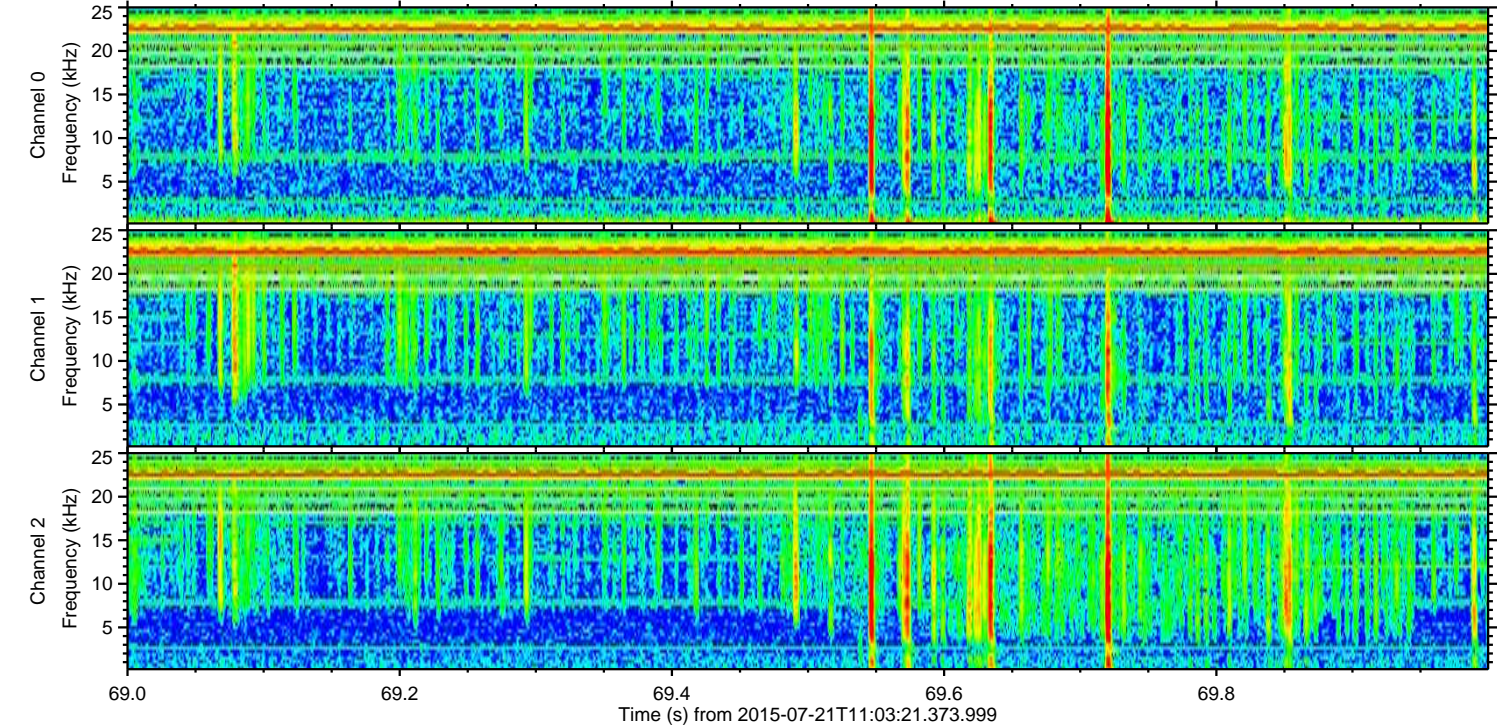
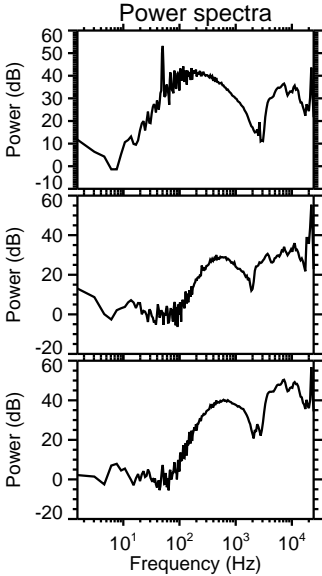
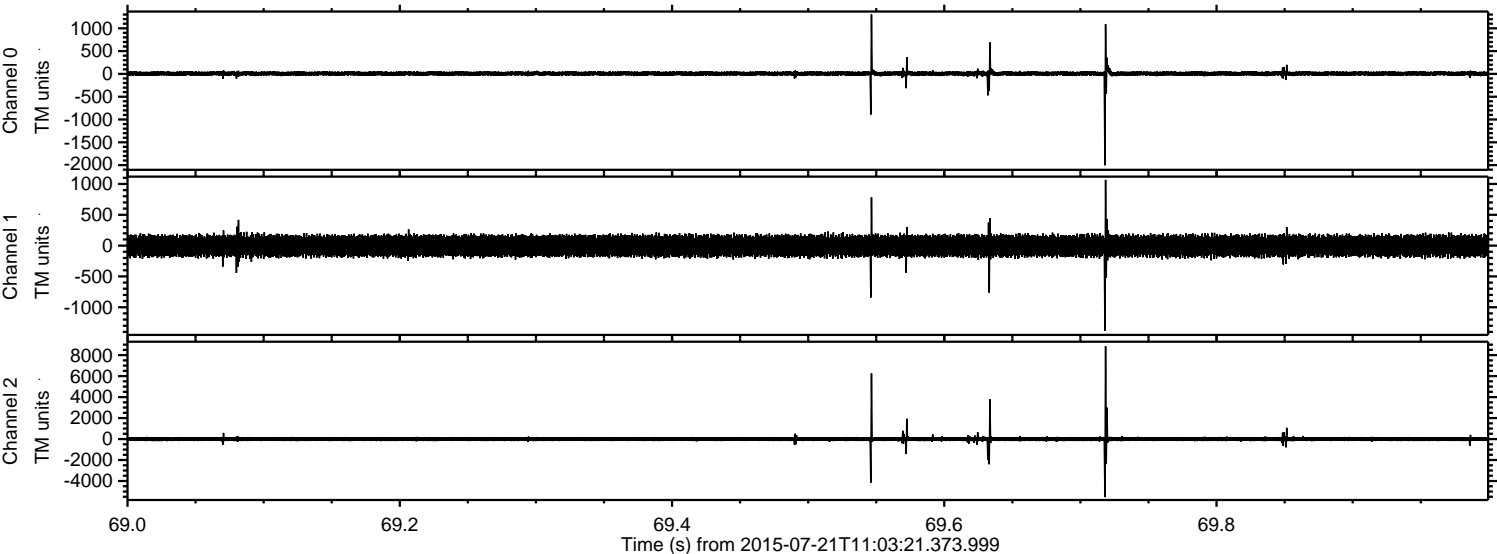


Channel 0
mn: -1724
mx: 1923
 μ : 6.7
 σ : 29.9

Channel 1
mn: -675
mx: 774
 μ : -4.8
 σ : 94.5

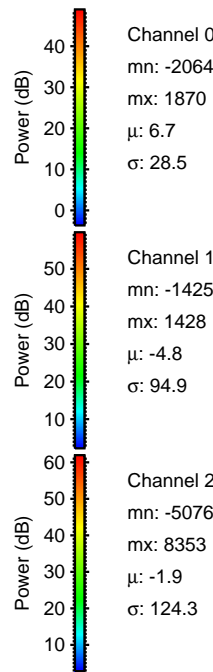
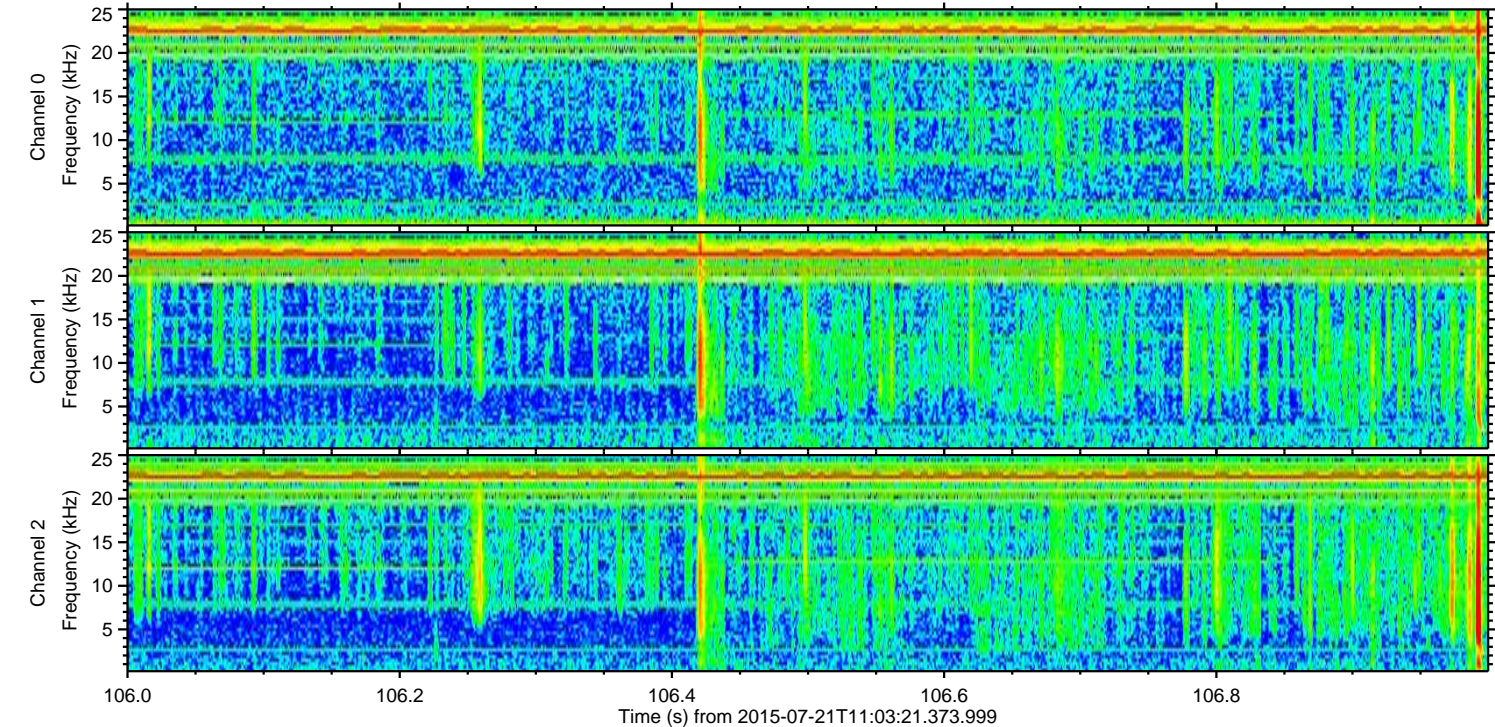
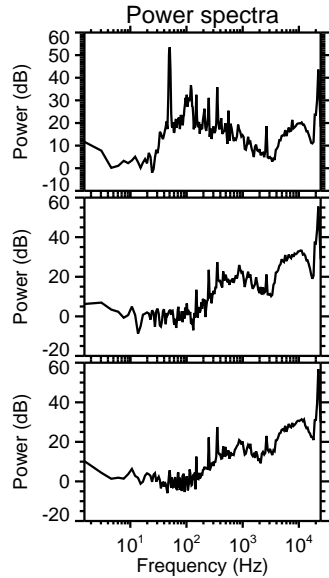
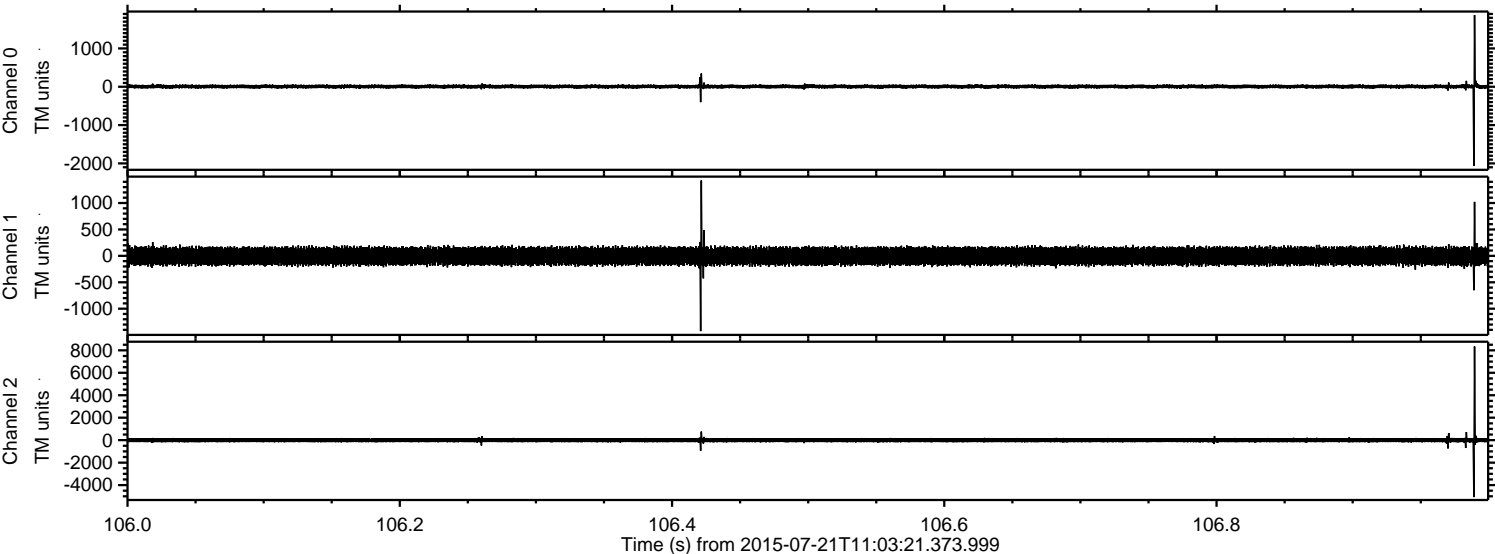
Channel 2
mn: -6220
mx: 8917
 μ : -2.0
 σ : 135.7

Processed Tue Jul 21 13:10:03 2015 by ELM ver.2012-10-06 from 001__elm20150721_110320__dat00.bin



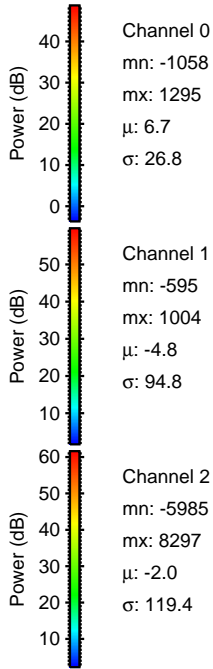
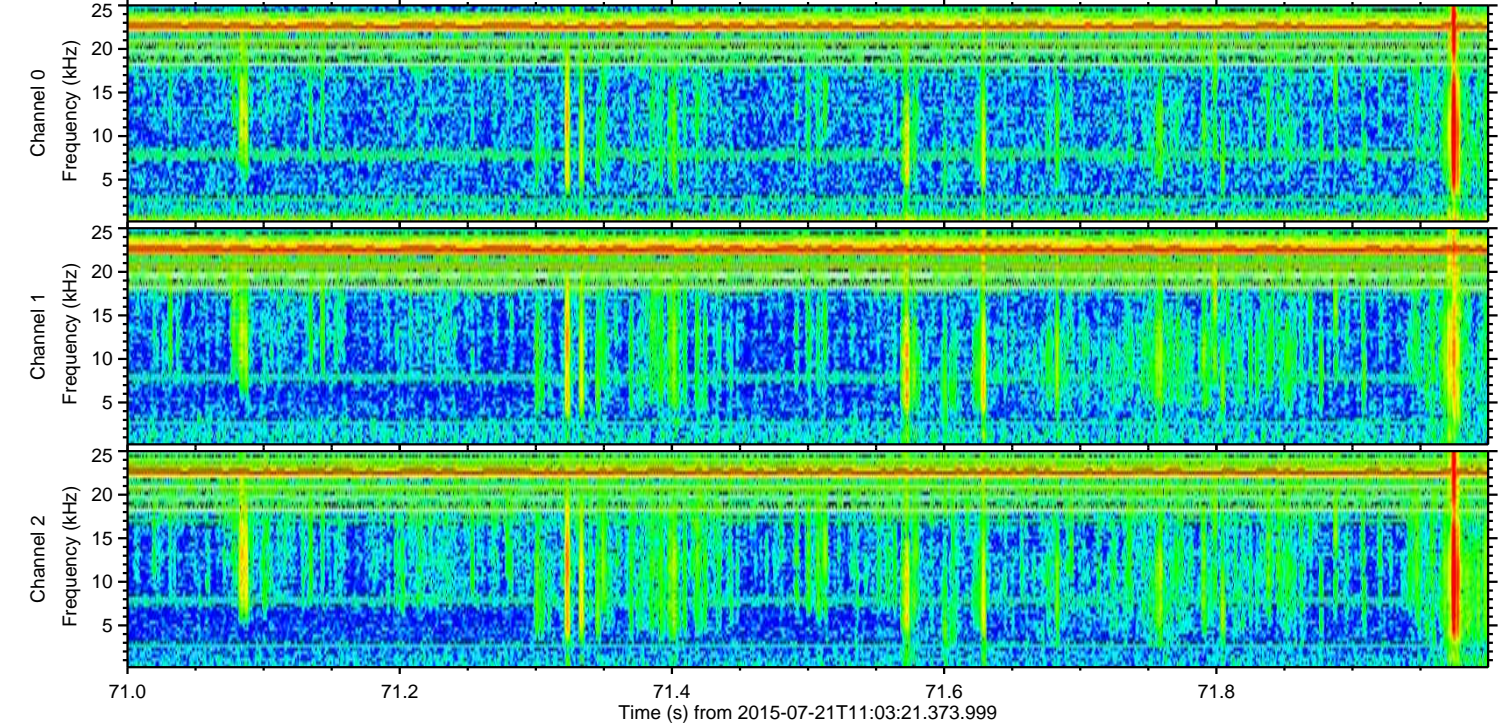
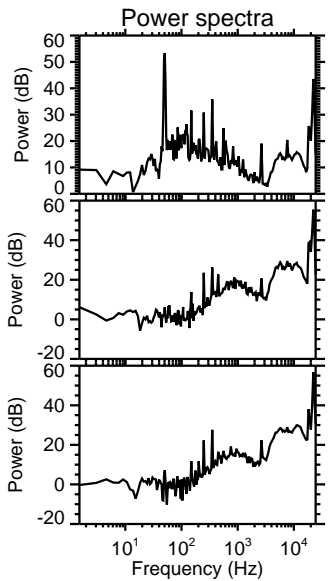
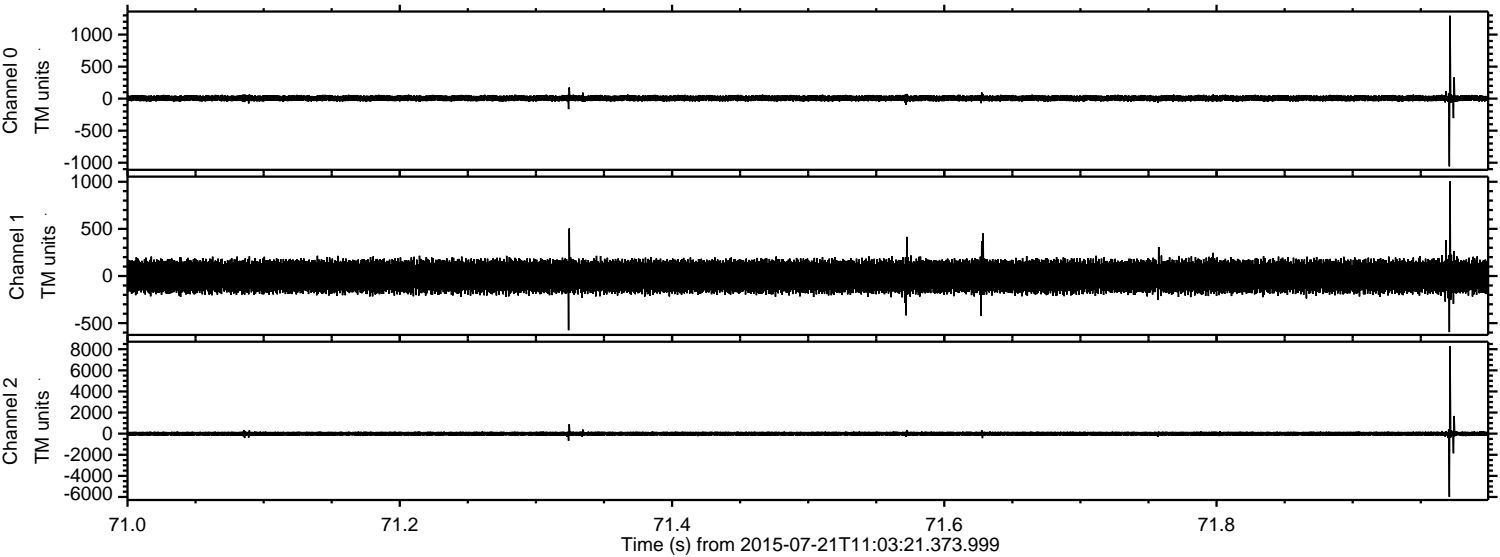
ELMAVAN 3D WAVEFORMS (Measured data sampled at 50 kHz) 51000 packets of 144 samples from 2015-07-21T11:03:21.373.999. Part 107/147

Processed Tue Jul 21 13:10:04 2015 by ELM ver.2012-10-06 from 001__elm20150721_110320__dat00.bin



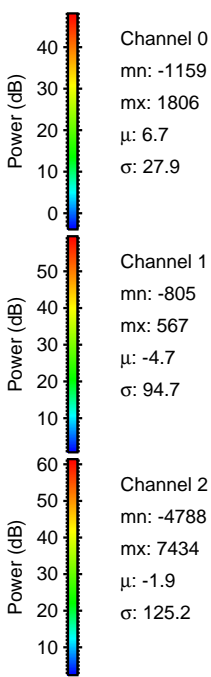
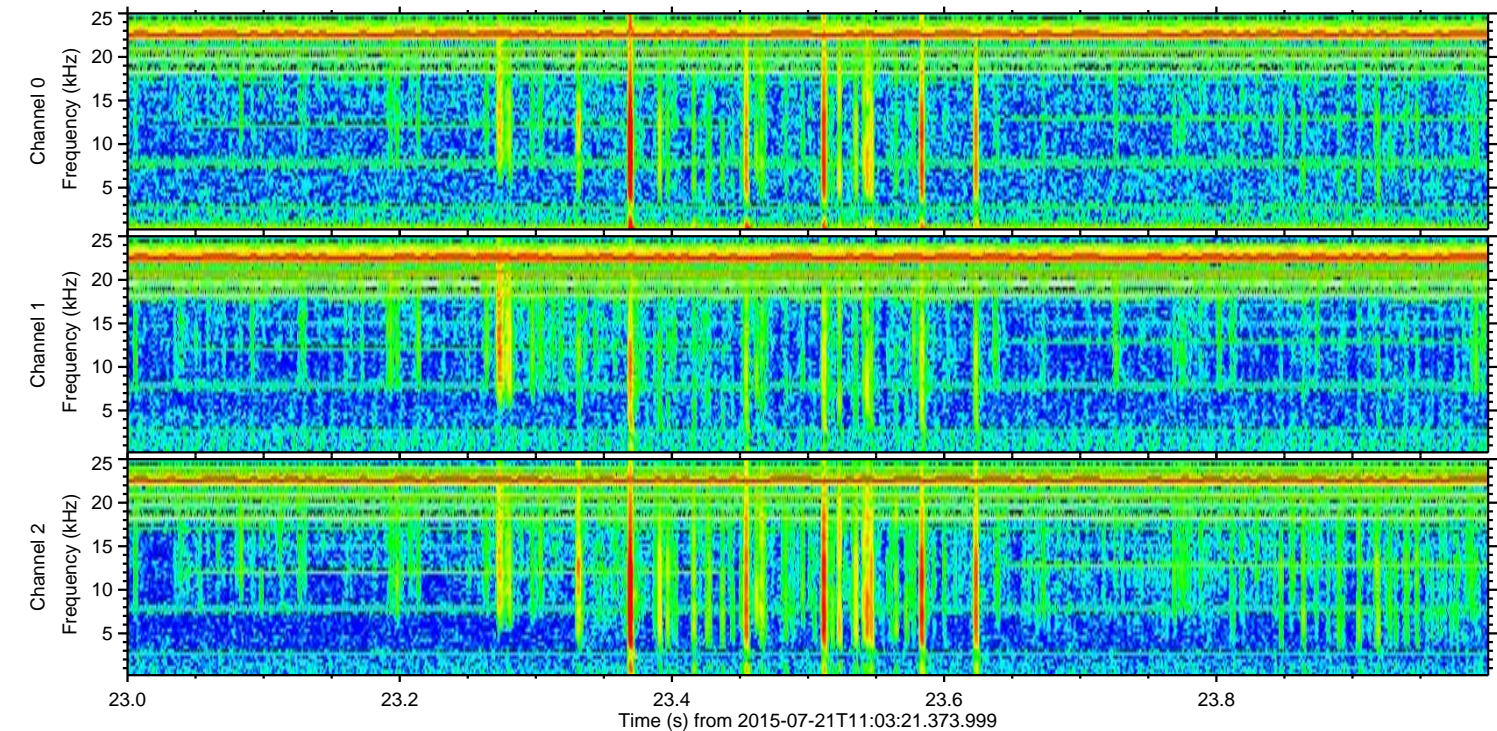
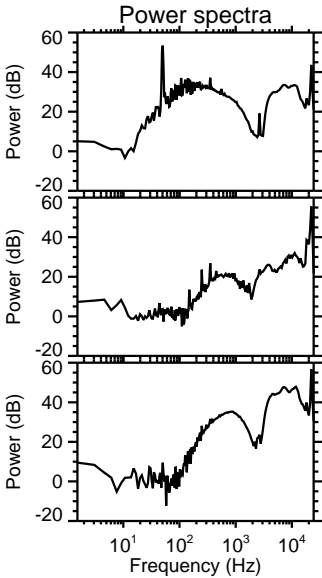
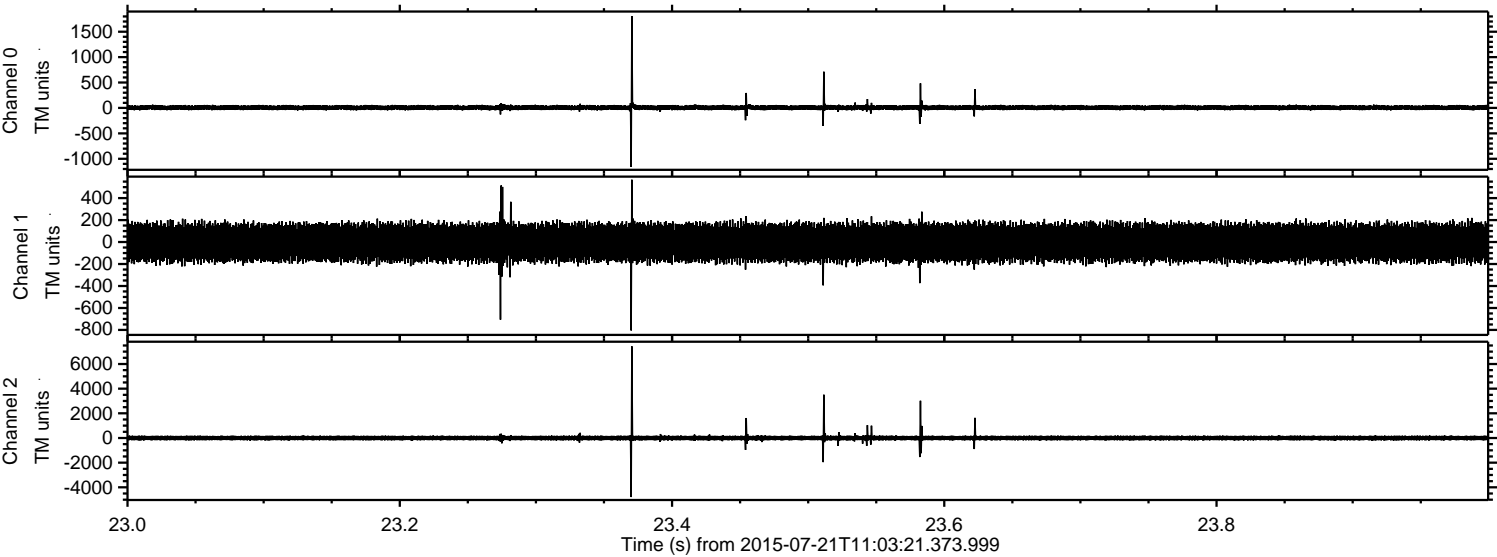
ELMAVAN 3D WAVEFORMS (Measured data sampled at 50 kHz) 51000 packets of 144 samples from 2015-07-21T11:03:21.373.999. Part 72/147

Processed Tue Jul 21 13:10:05 2015 by ELM ver.2012-10-06 from 001__elm20150721_110320__dat00.bin



ELMAVAN 3D WAVEFORMS (Measured data sampled at 50 kHz) 51000 packets of 144 samples from 2015-07-21T11:03:21.373.999. Part 24/147

Processed Tue Jul 21 13:10:06 2015 by ELM ver.2012-10-06 from 001__elm20150721_110320__dat00.bin



Channel 0
mn: -1159
mx: 1806
 μ : 6.7
 σ : 27.9

Channel 1
mn: -805
mx: 567
 μ : -4.7
 σ : 94.7

Channel 2
mn: -4788
mx: 7434
 μ : -1.9
 σ : 125.2

Processed Tue Jul 21 13:10:07 2015 by ELM ver.2012-10-06 from 001__elm20150721_110320__dat00.bin

