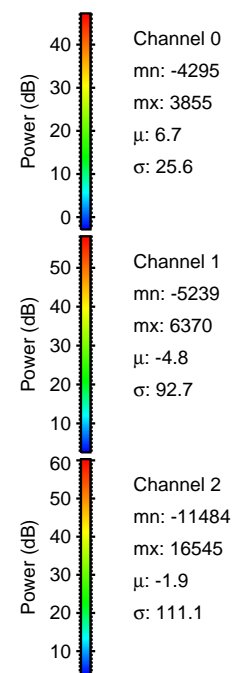
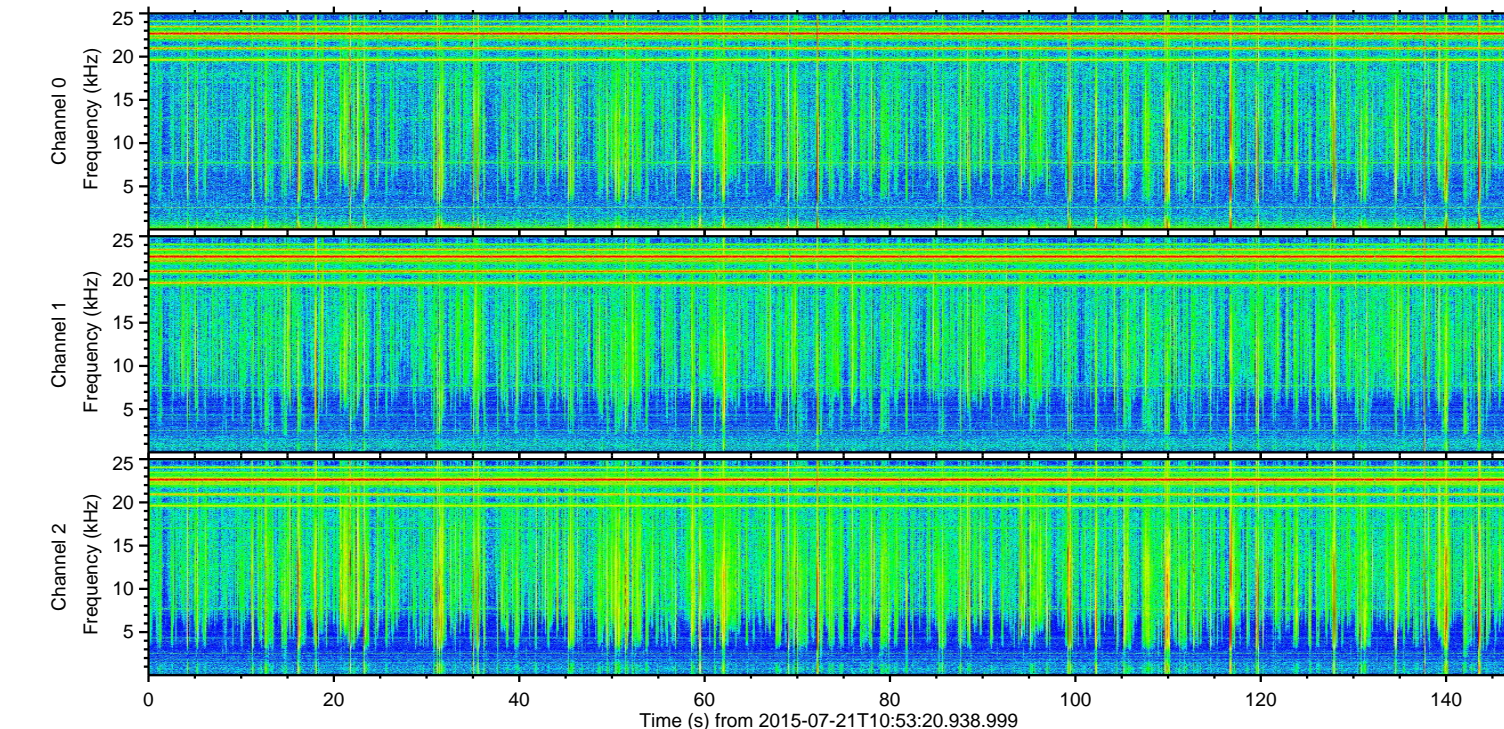
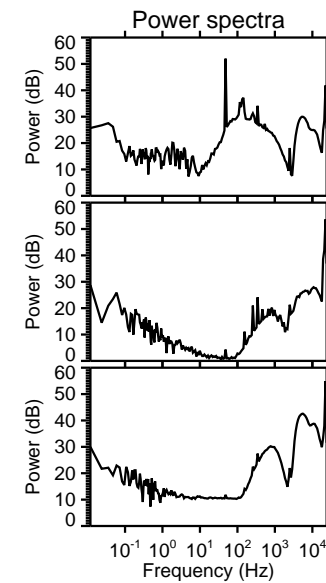
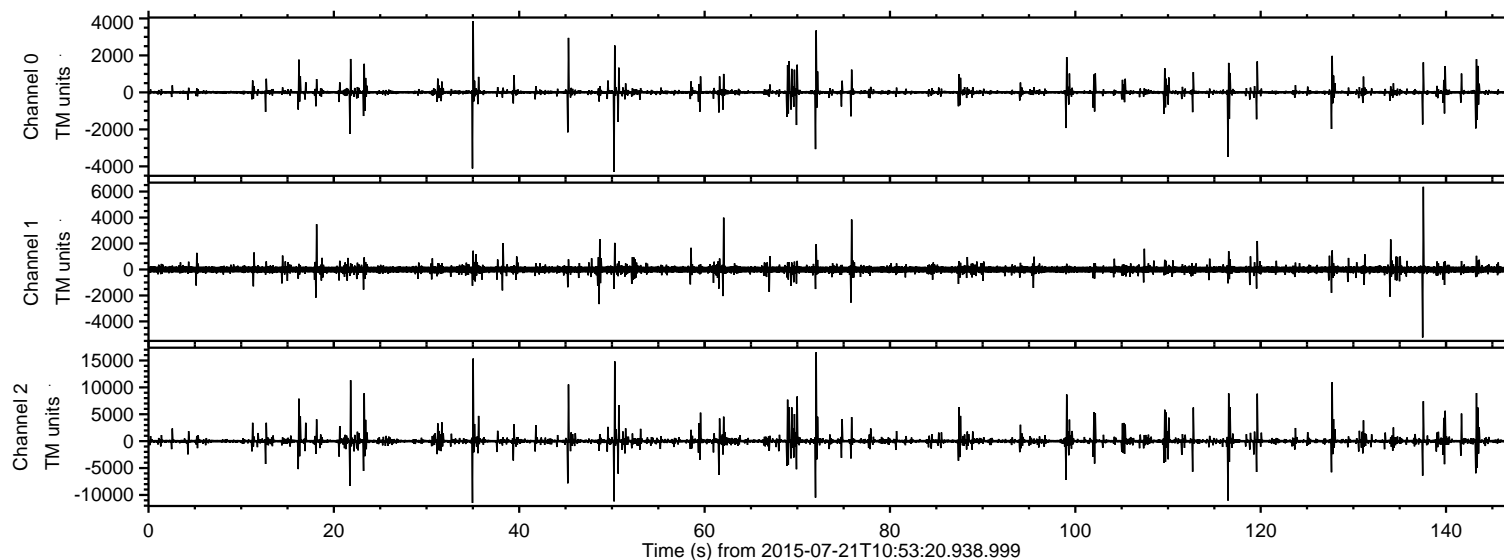


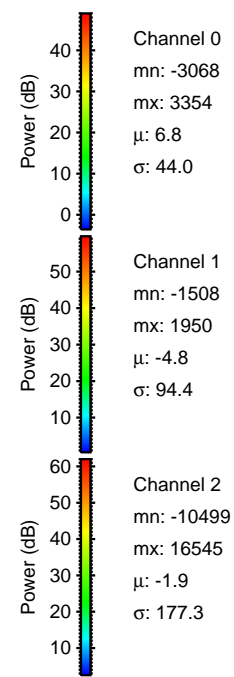
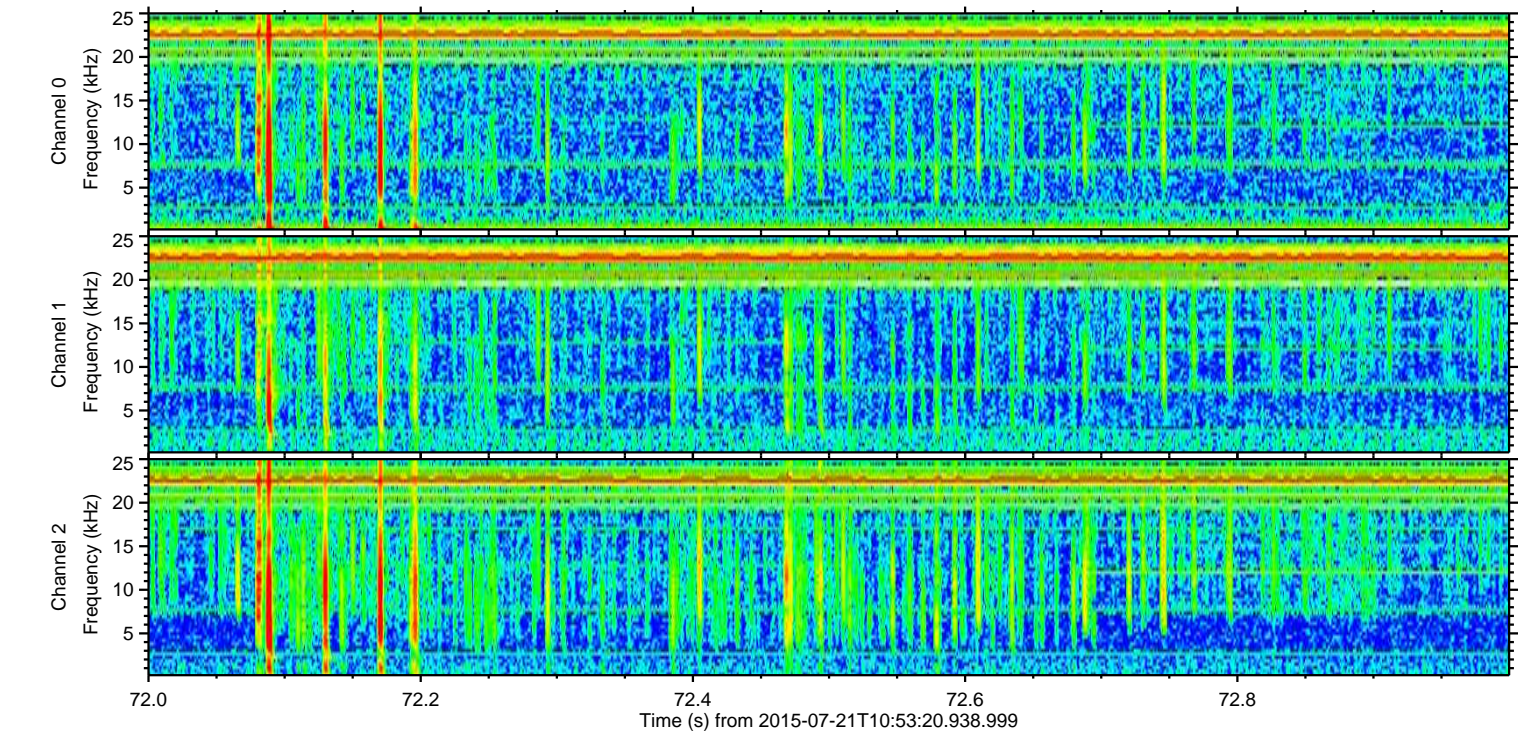
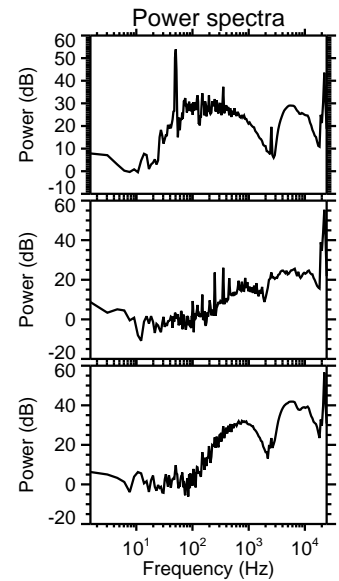
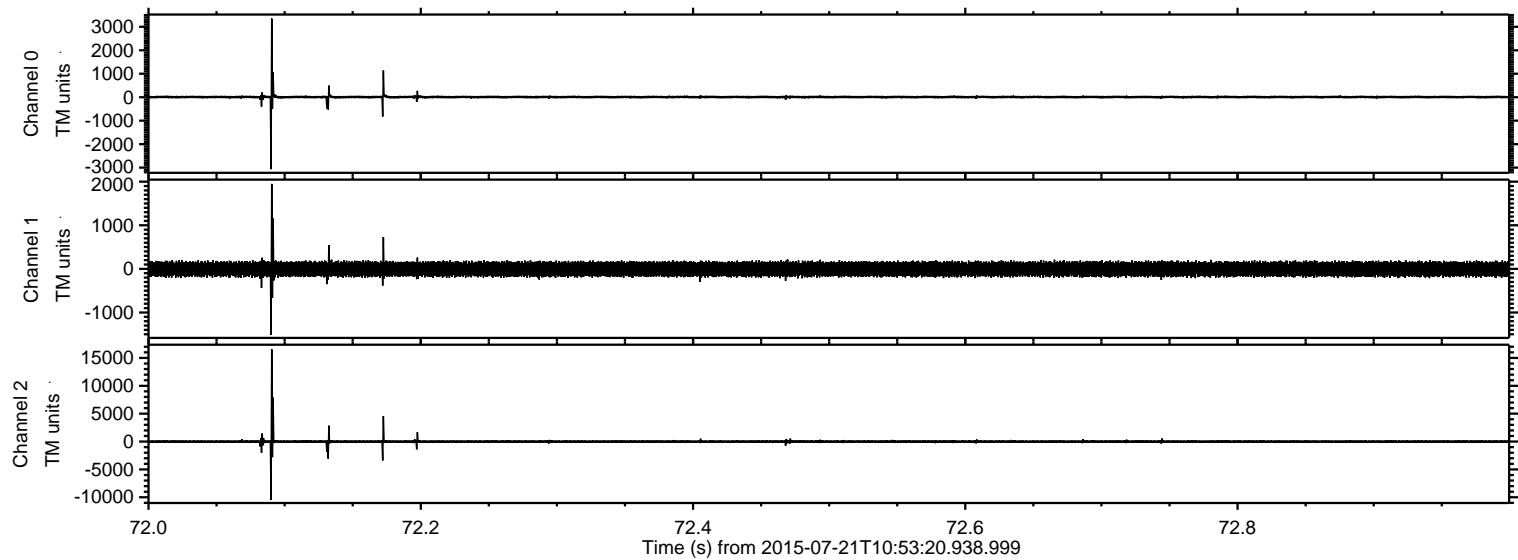
# ELMAVAN 3D WAVEFORMS (Measured data sampled at 50 kHz) 51000 packets of 144 samples from 2015-07-21T10:53:20.938.999.

Processed Tue Jul 21 12:59:24 2015 by ELM ver.2012-10-06 from 001\_\_elm20150721\_105319\_\_dat00.bin





Processed Tue Jul 21 12:59:35 2015 by ELM ver.2012-10-06 from 001\_\_elm20150721\_105319\_\_dat00.bin



Channel 0  
mn: -3068  
mx: 3354  
 $\mu$ : 6.8  
 $\sigma$ : 44.0

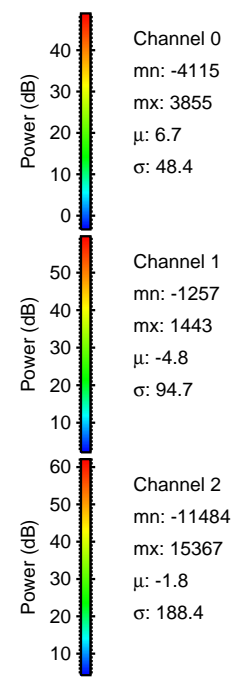
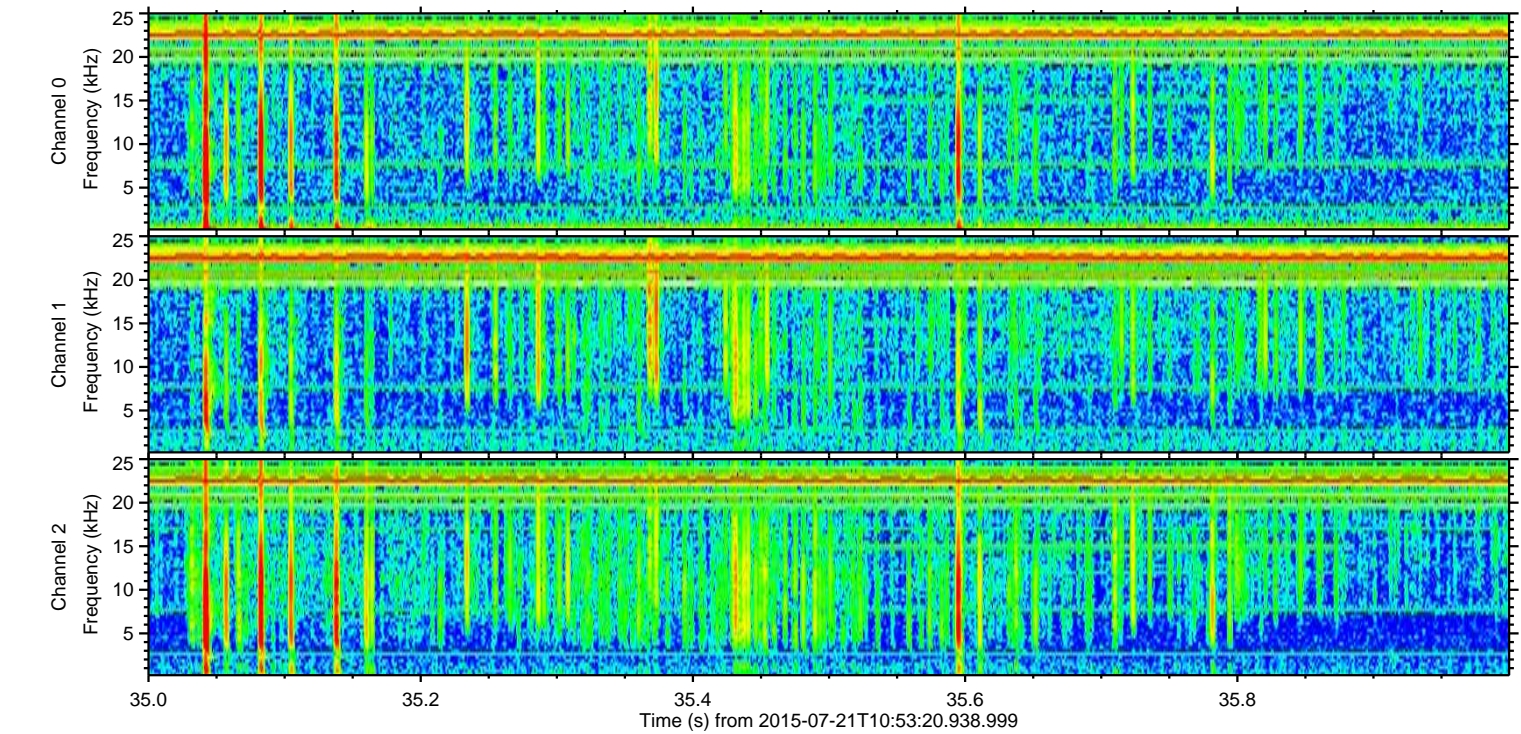
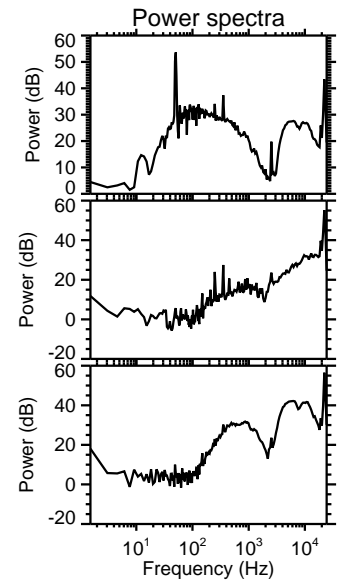
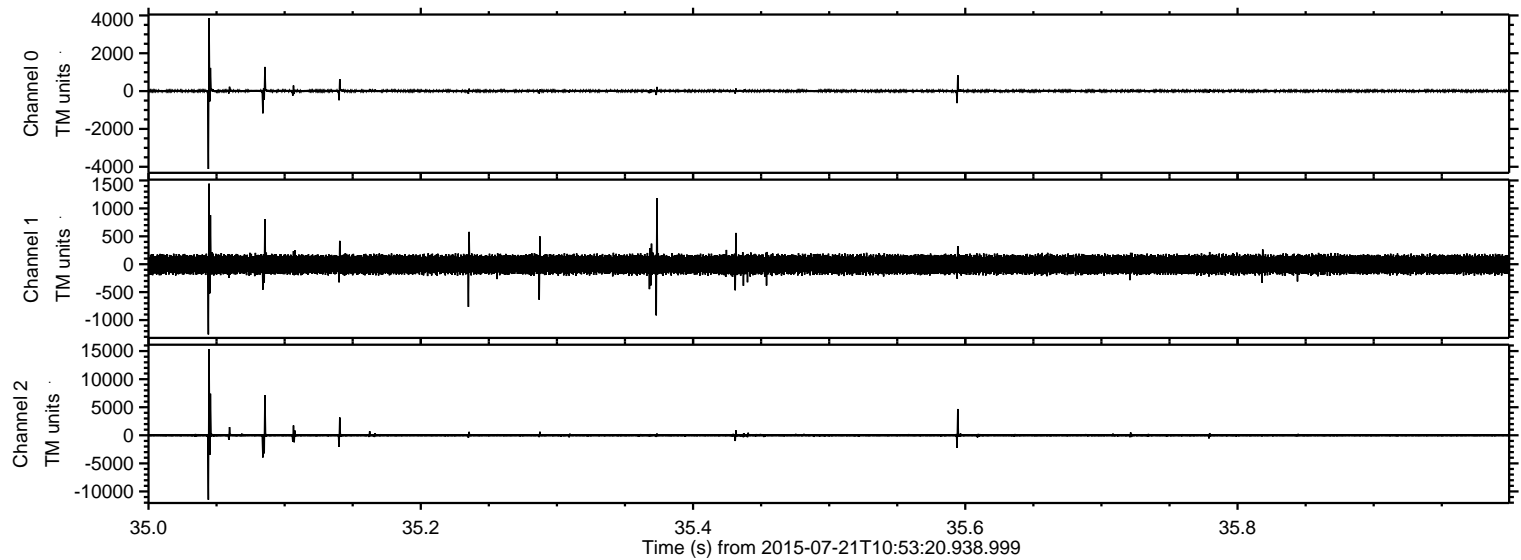
Channel 1  
mn: -1508  
mx: 1950  
 $\mu$ : -4.8  
 $\sigma$ : 94.4

Channel 2  
mn: -10499  
mx: 16545  
 $\mu$ : -1.9  
 $\sigma$ : 177.3



ELMAVAN 3D WAVEFORMS (Measured data sampled at 50 kHz) 51000 packets of 144 samples from 2015-07-21T10:53:20.938.999. Part 36/147

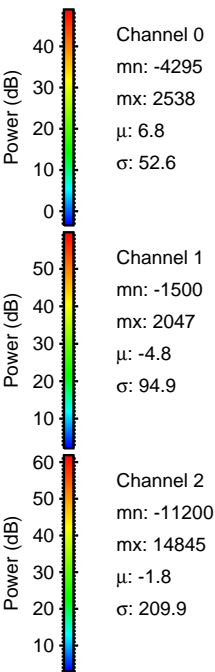
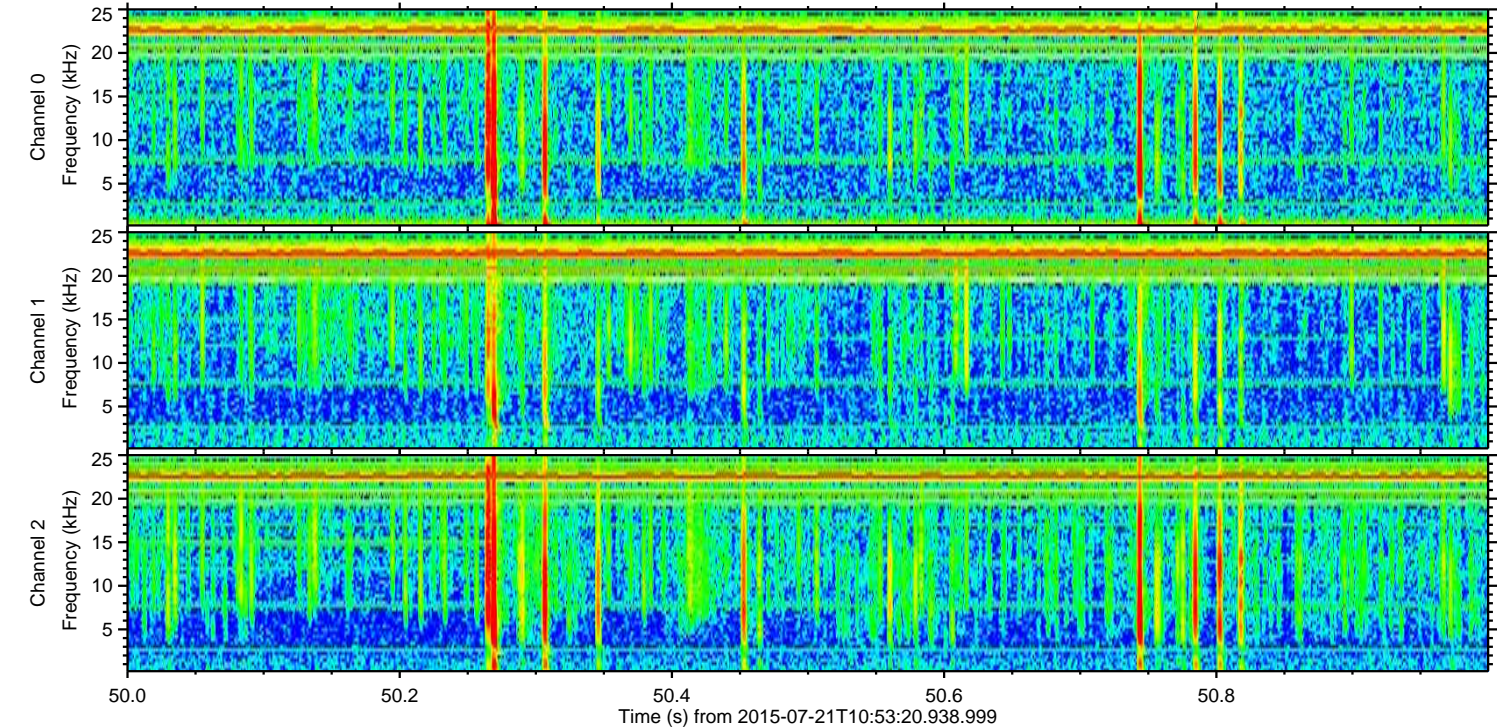
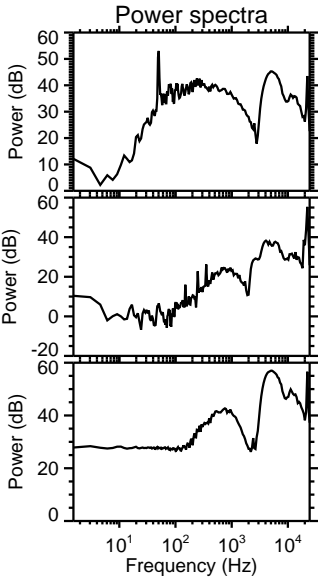
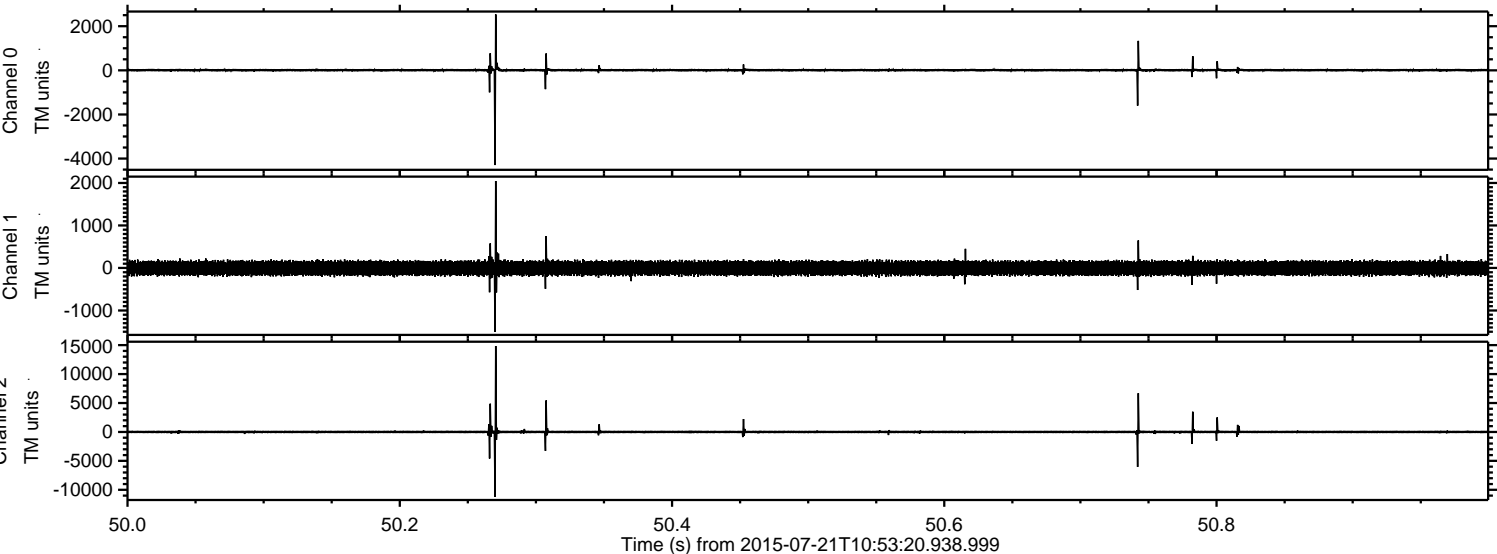
Processed Tue Jul 21 12:59:36 2015 by ELM ver.2012-10-06 from 001\_\_elm20150721\_105319\_\_dat00.bin





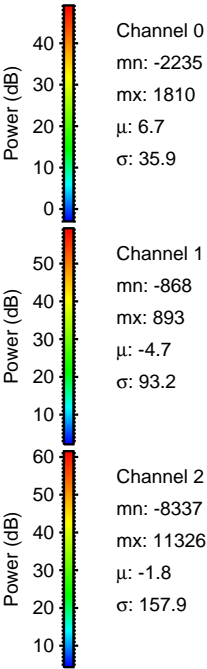
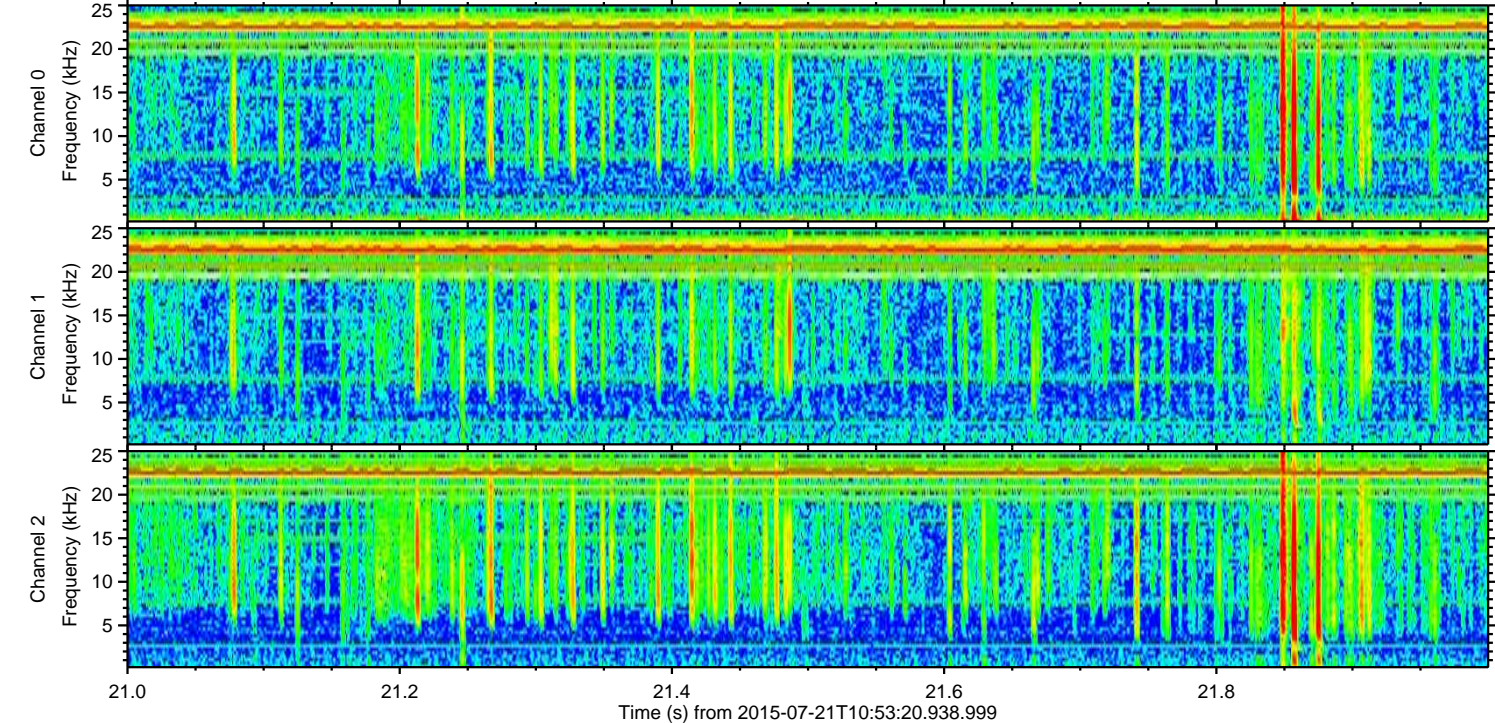
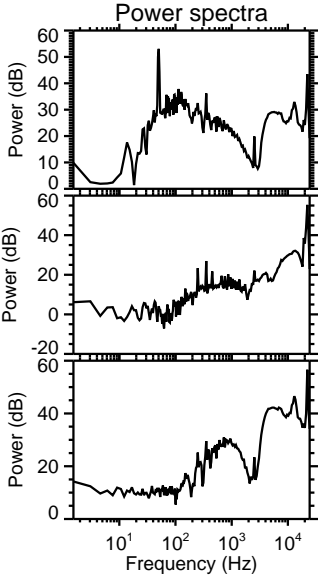
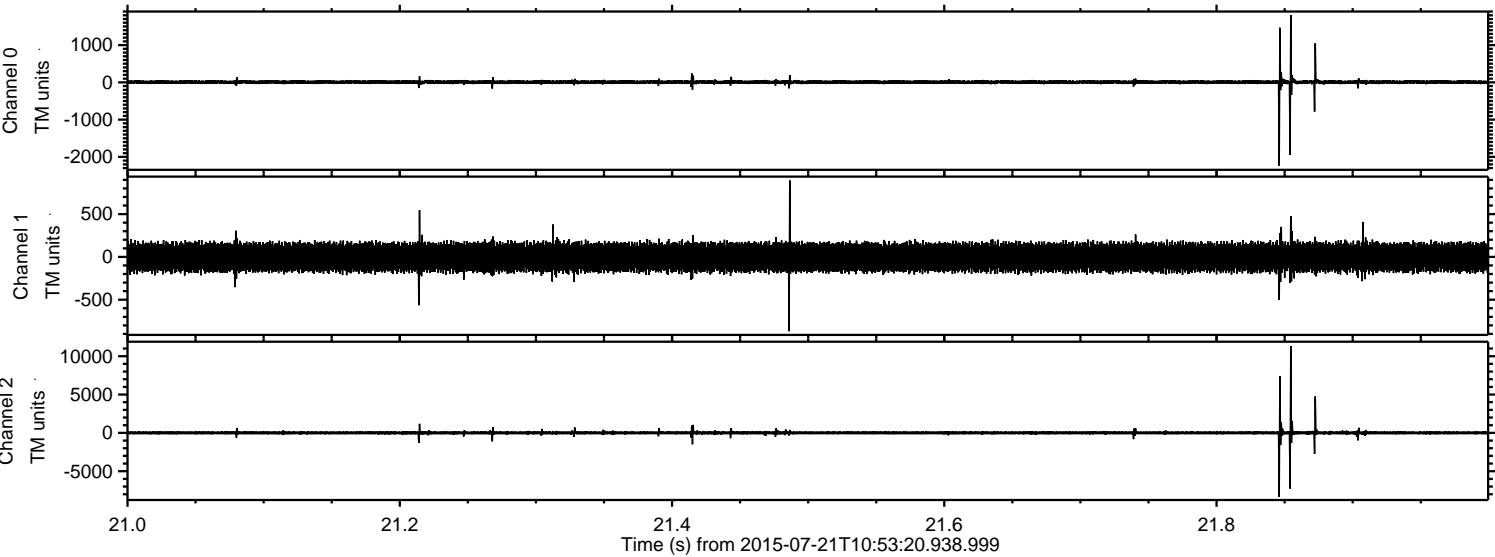
ELMAVAN 3D WAVEFORMS (Measured data sampled at 50 kHz) 51000 packets of 144 samples from 2015-07-21T10:53:20.938.999. Part 51/147

Processed Tue Jul 21 12:59:37 2015 by ELM ver.2012-10-06 from 001\_\_elm20150721\_105319\_\_dat00.bin



ELMAVAN 3D WAVEFORMS (Measured data sampled at 50 kHz) 51000 packets of 144 samples from 2015-07-21T10:53:20.938.999. Part 22/147

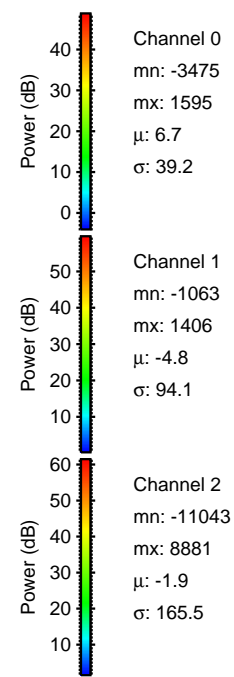
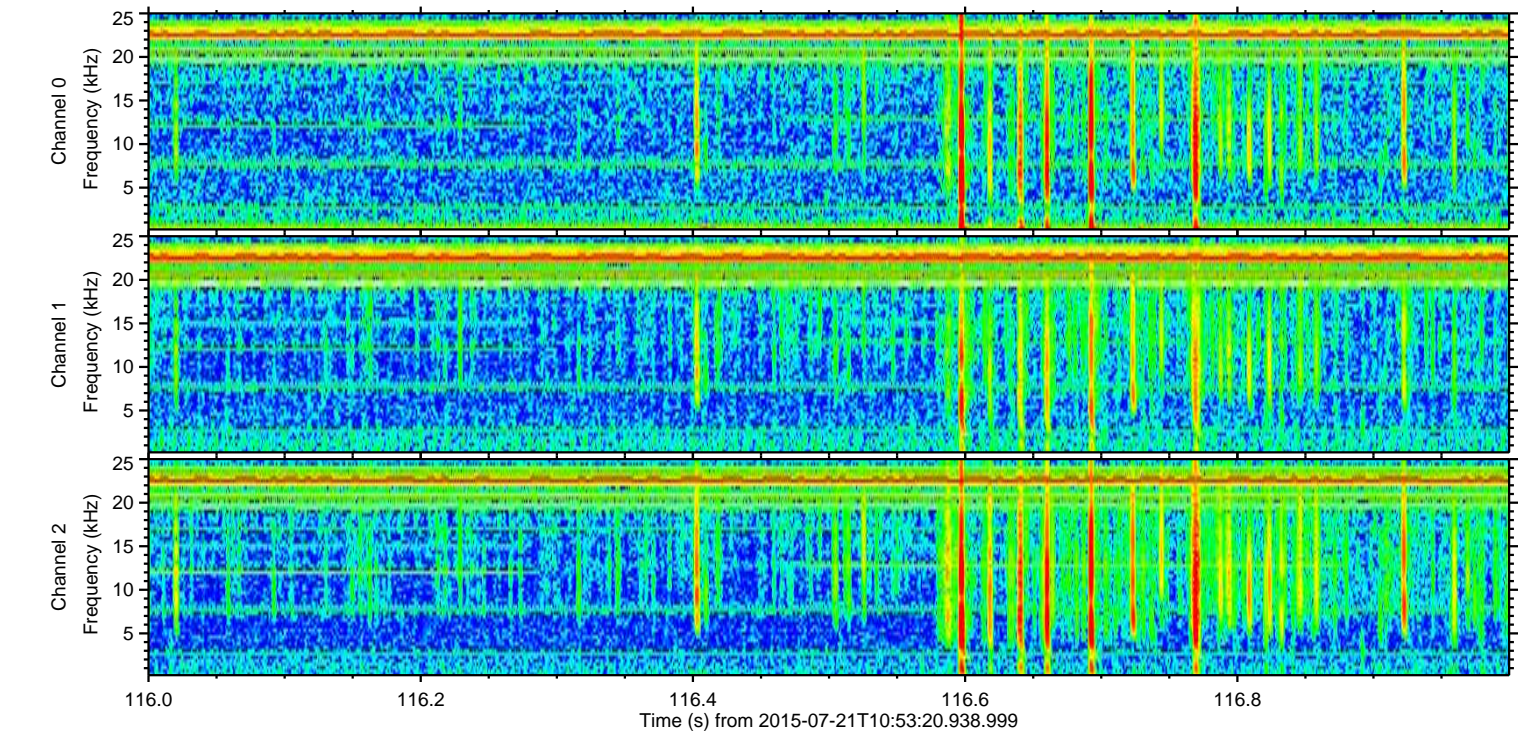
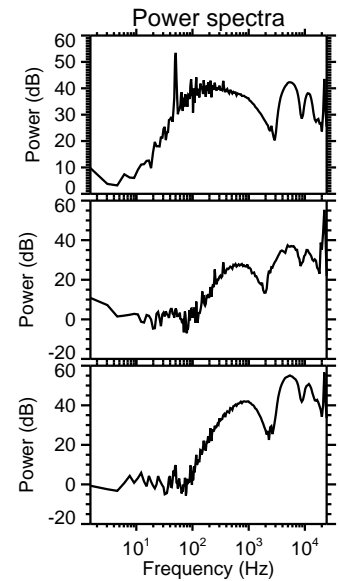
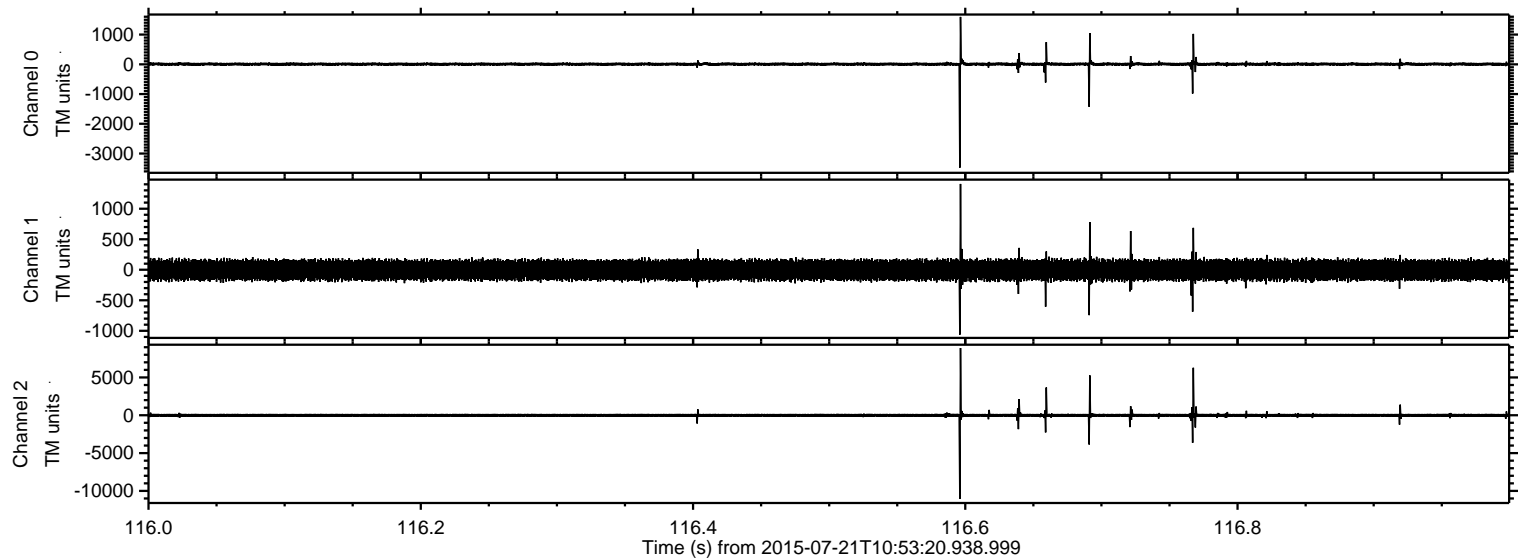
Processed Tue Jul 21 12:59:38 2015 by ELM ver.2012-10-06 from 001\_\_elm20150721\_105319\_\_dat00.bin





ELMAVAN 3D WAVEFORMS (Measured data sampled at 50 kHz) 51000 packets of 144 samples from 2015-07-21T10:53:20.938.999. Part 117/147

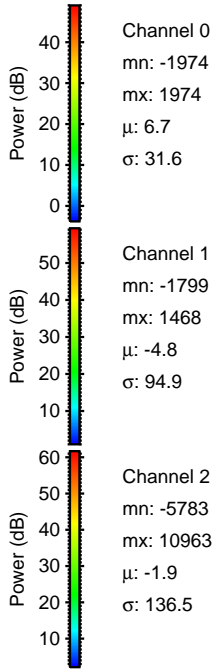
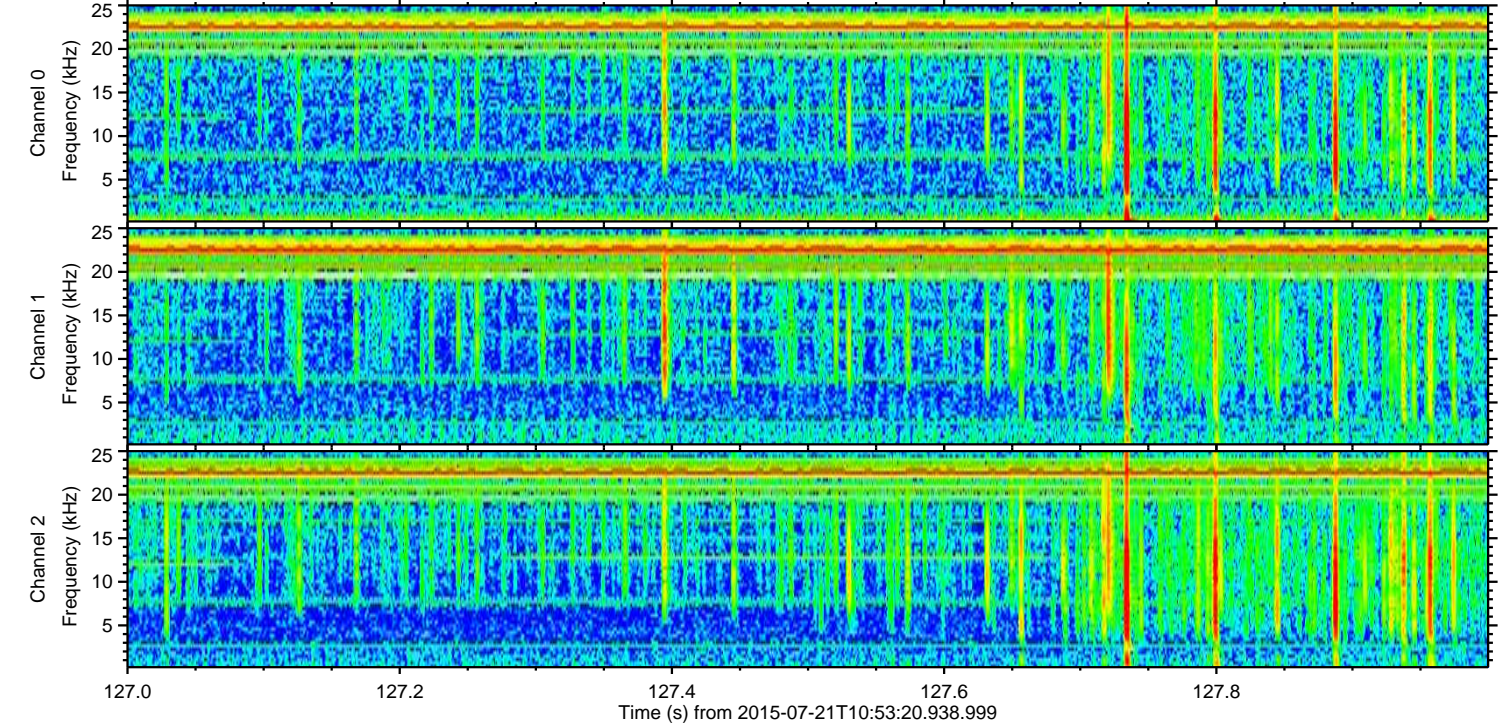
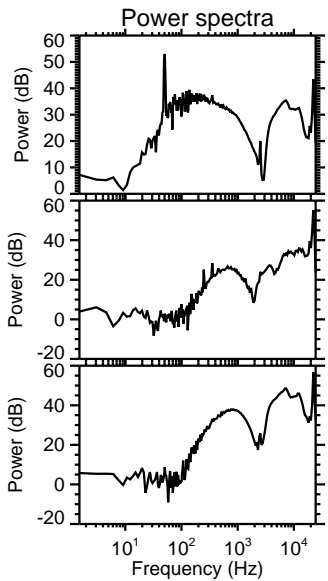
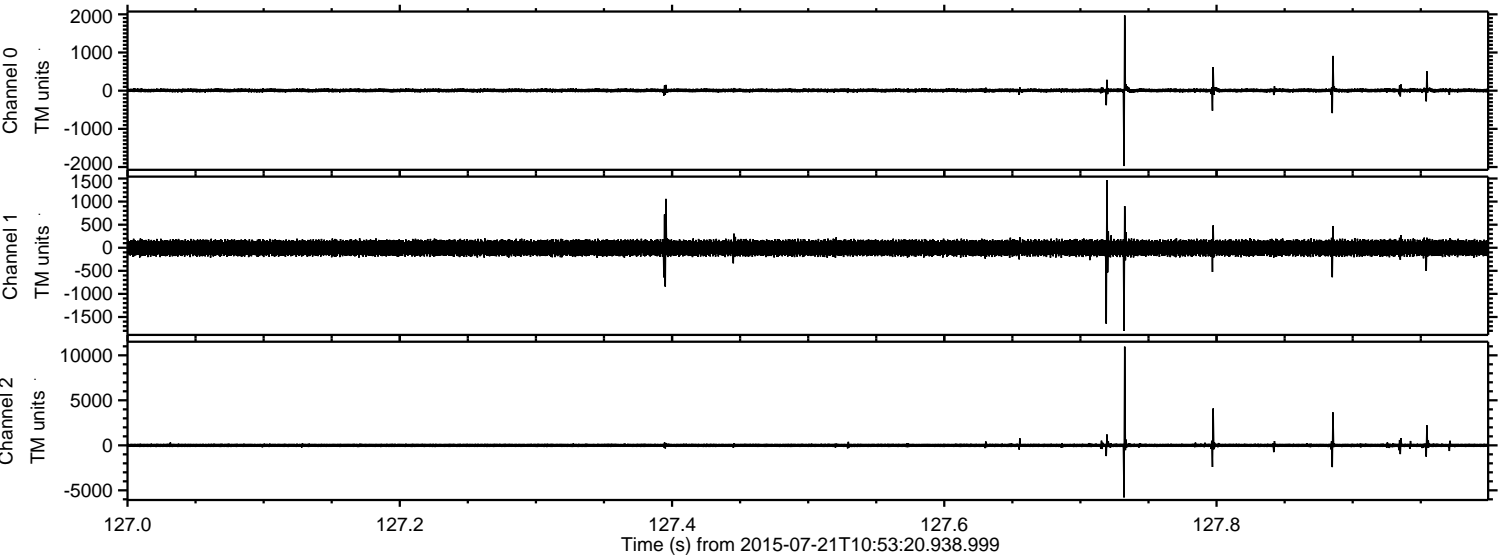
Processed Tue Jul 21 12:59:39 2015 by ELM ver.2012-10-06 from 001\_\_elm20150721\_105319\_\_dat00.bin





ELMAVAN 3D WAVEFORMS (Measured data sampled at 50 kHz) 51000 packets of 144 samples from 2015-07-21T10:53:20.938.999. Part 128/147

Processed Tue Jul 21 12:59:40 2015 by ELM ver.2012-10-06 from 001\_\_elm20150721\_105319\_\_dat00.bin



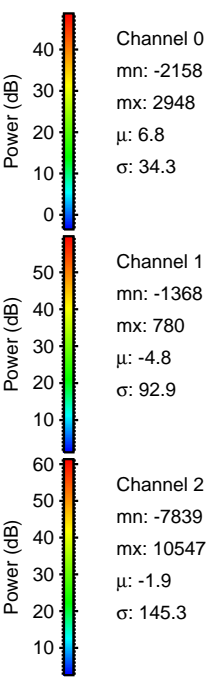
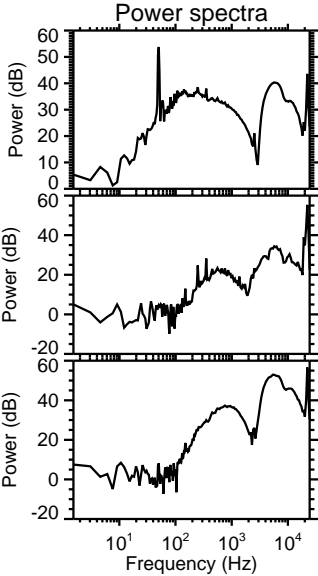
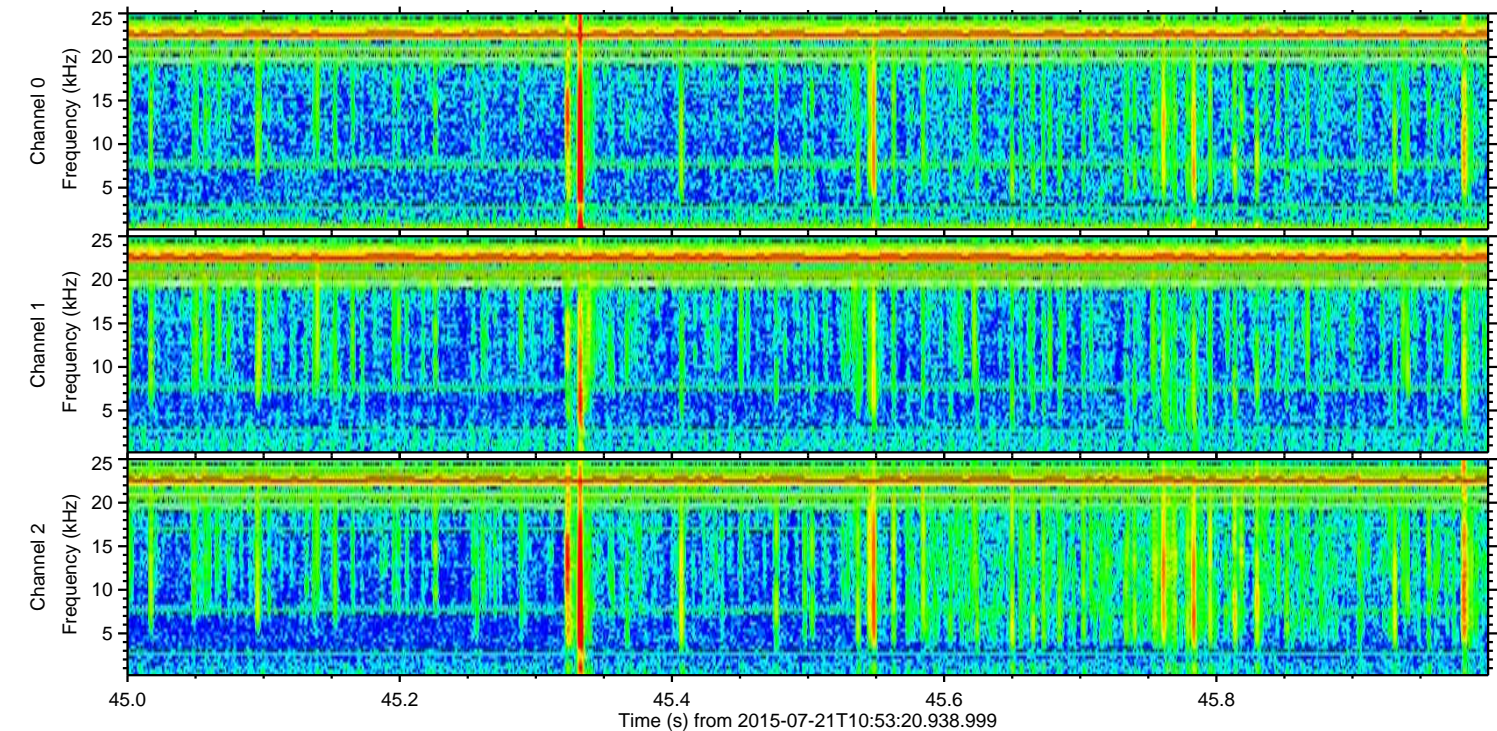
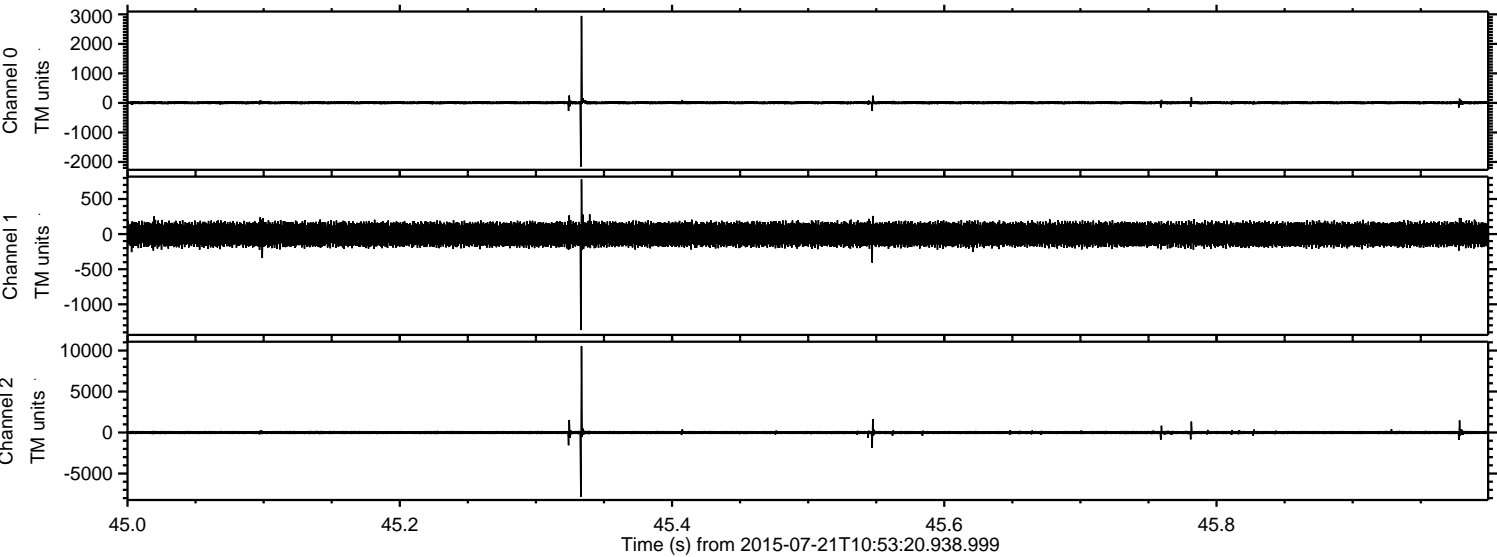
Channel 0  
mn: -1974  
mx: 1974  
 $\mu$ : 6.7  
 $\sigma$ : 31.6

Channel 1  
mn: -1799  
mx: 1468  
 $\mu$ : -4.8  
 $\sigma$ : 94.9

Channel 2  
mn: -5783  
mx: 10963  
 $\mu$ : -1.9  
 $\sigma$ : 136.5



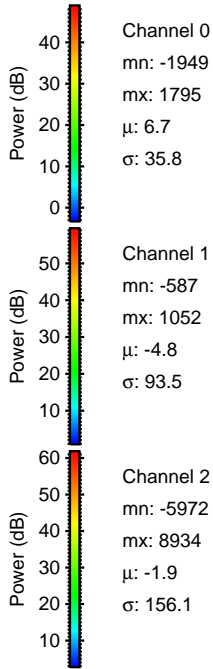
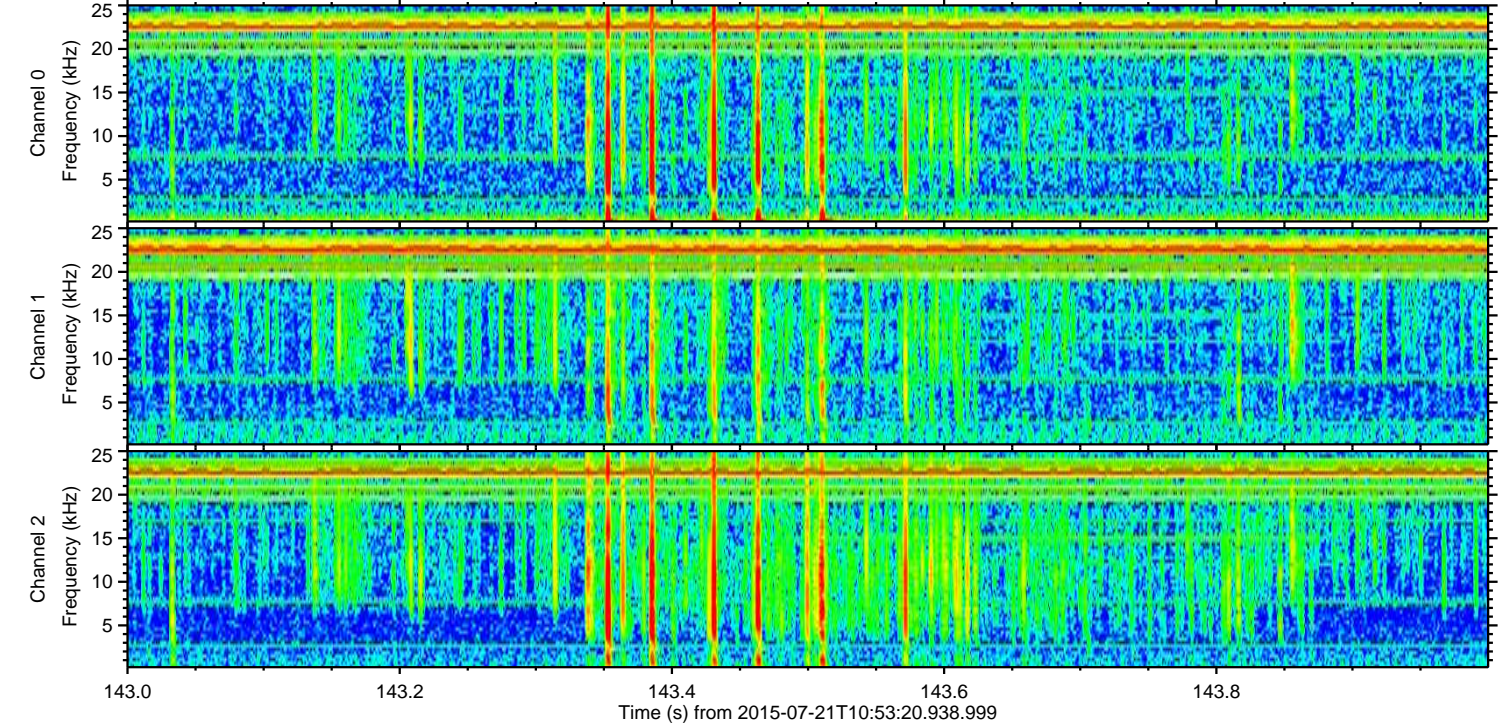
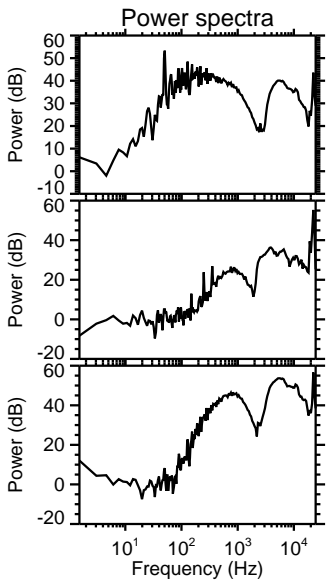
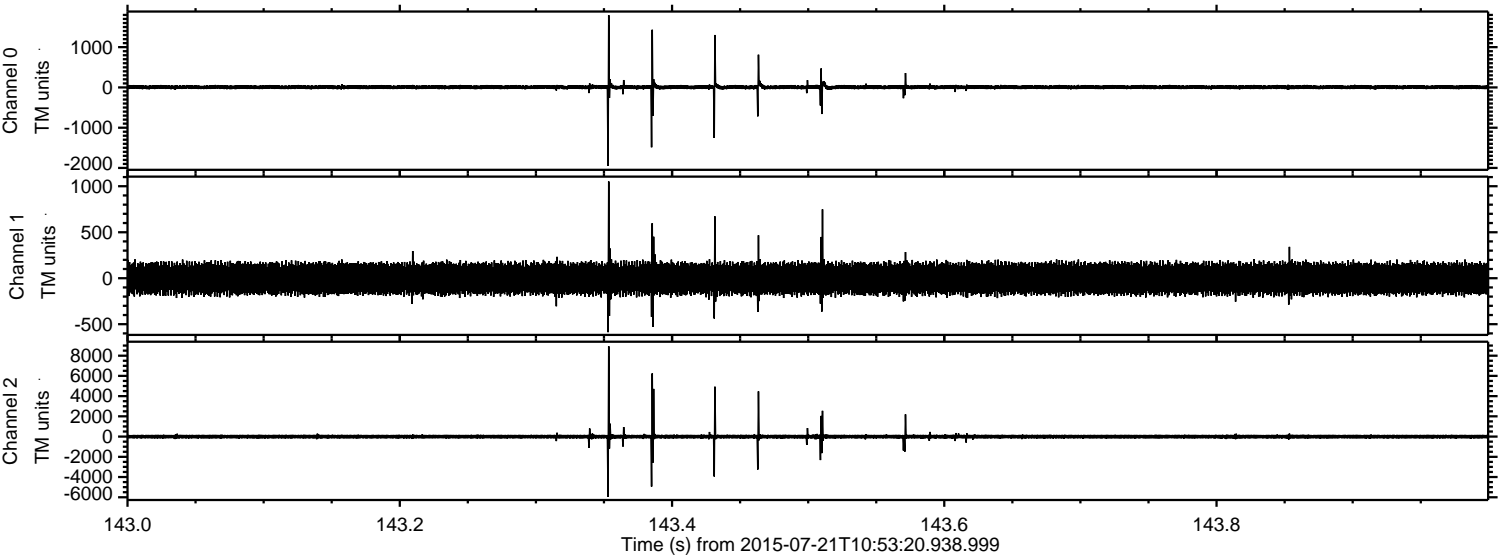
Processed Tue Jul 21 12:59:41 2015 by ELM ver.2012-10-06 from 001\_\_elm20150721\_105319\_\_dat00.bin





ELMAVAN 3D WAVEFORMS (Measured data sampled at 50 kHz) 51000 packets of 144 samples from 2015-07-21T10:53:20.938.999. Part 144/147

Processed Tue Jul 21 12:59:42 2015 by ELM ver.2012-10-06 from 001\_\_elm20150721\_105319\_\_dat00.bin



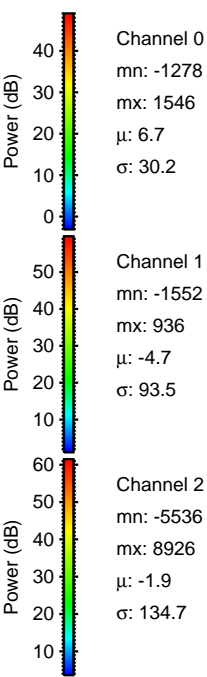
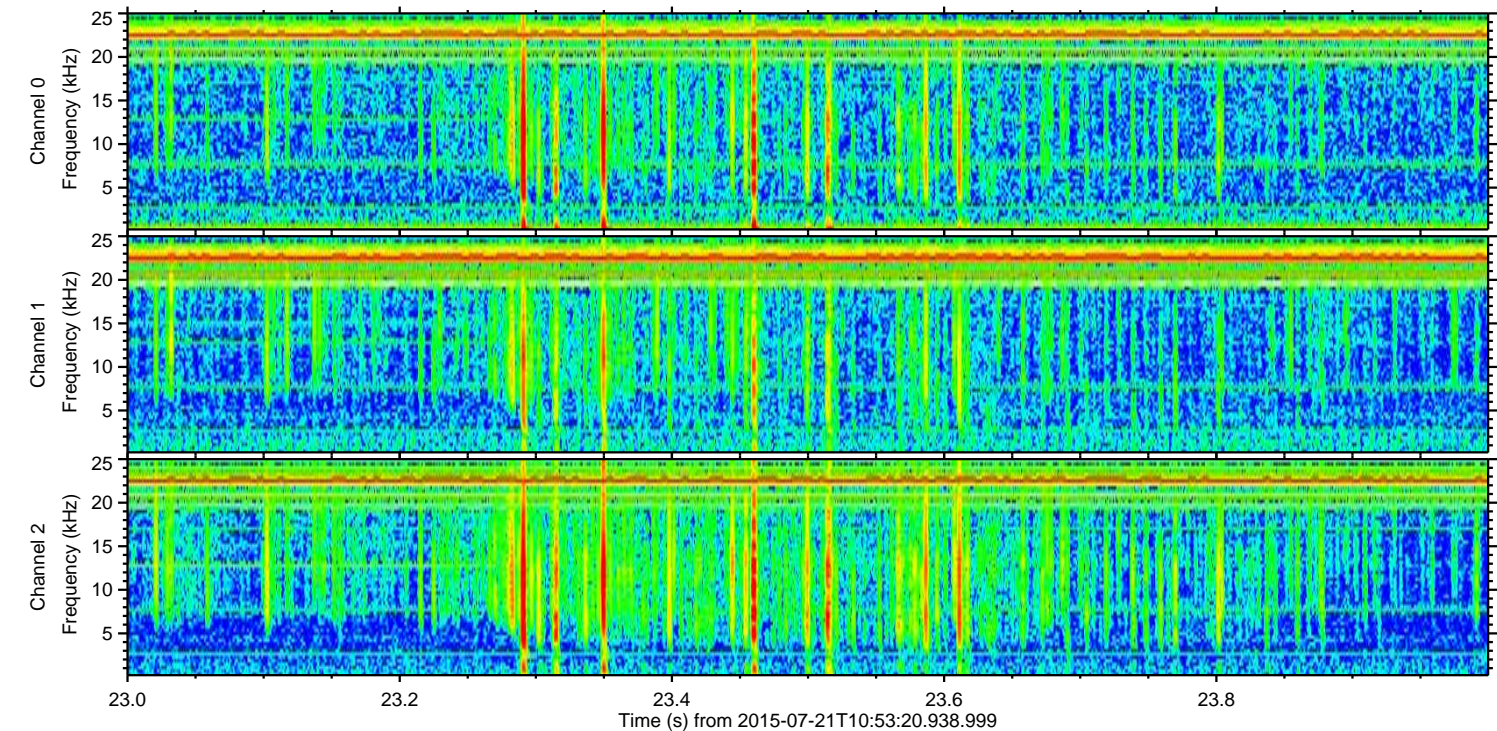
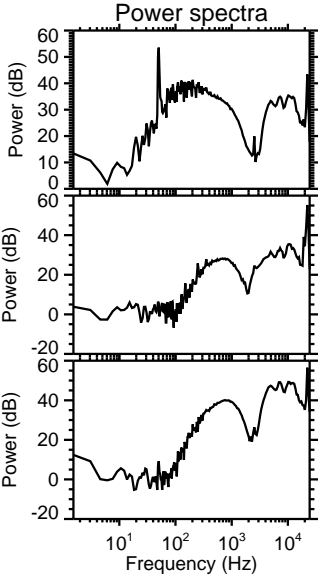
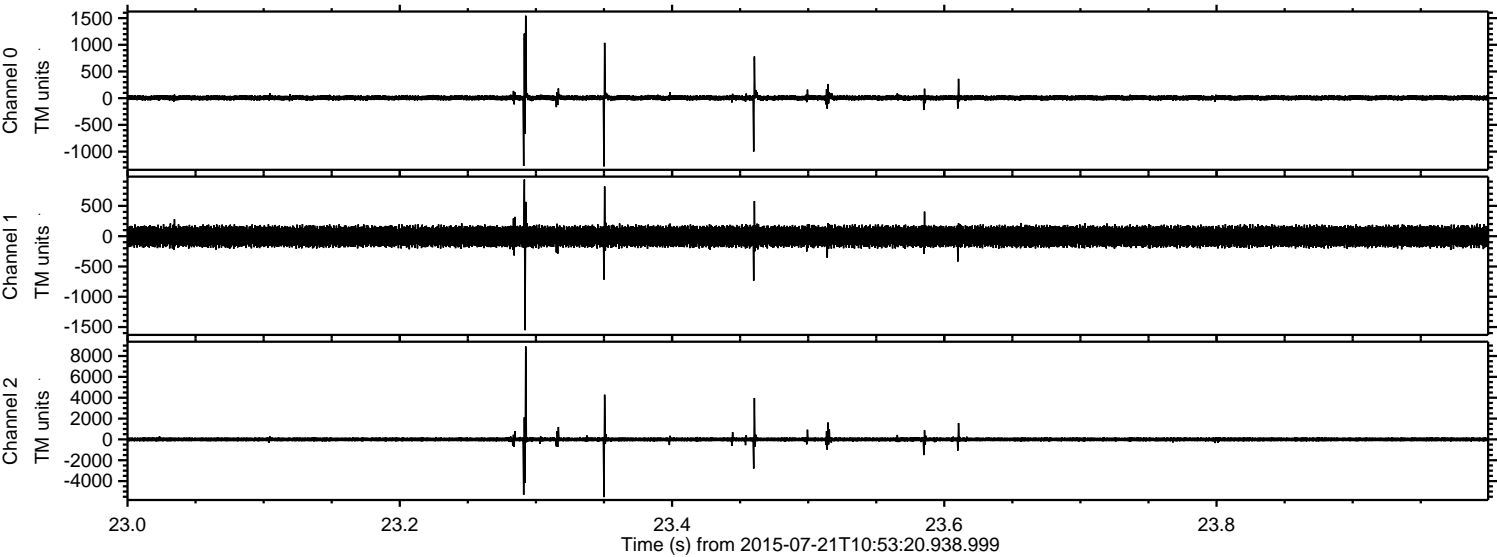
Channel 0  
mn: -1949  
mx: 1795  
 $\mu$ : 6.7  
 $\sigma$ : 35.8

Channel 1  
mn: -587  
mx: 1052  
 $\mu$ : -4.8  
 $\sigma$ : 93.5

Channel 2  
mn: -5972  
mx: 8934  
 $\mu$ : -1.9  
 $\sigma$ : 156.1



Processed Tue Jul 21 12:59:43 2015 by ELM ver.2012-10-06 from 001\_\_elm20150721\_105319\_\_dat00.bin





Processed Tue Jul 21 12:59:44 2015 by ELM ver.2012-10-06 from 001\_\_elm20150721\_105319\_\_dat00.bin

