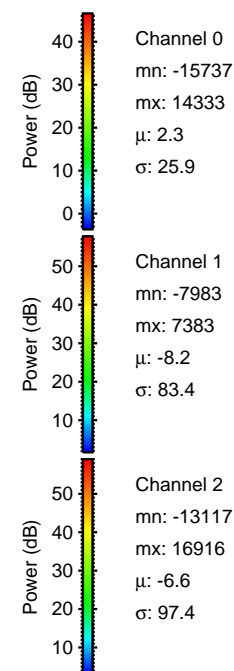
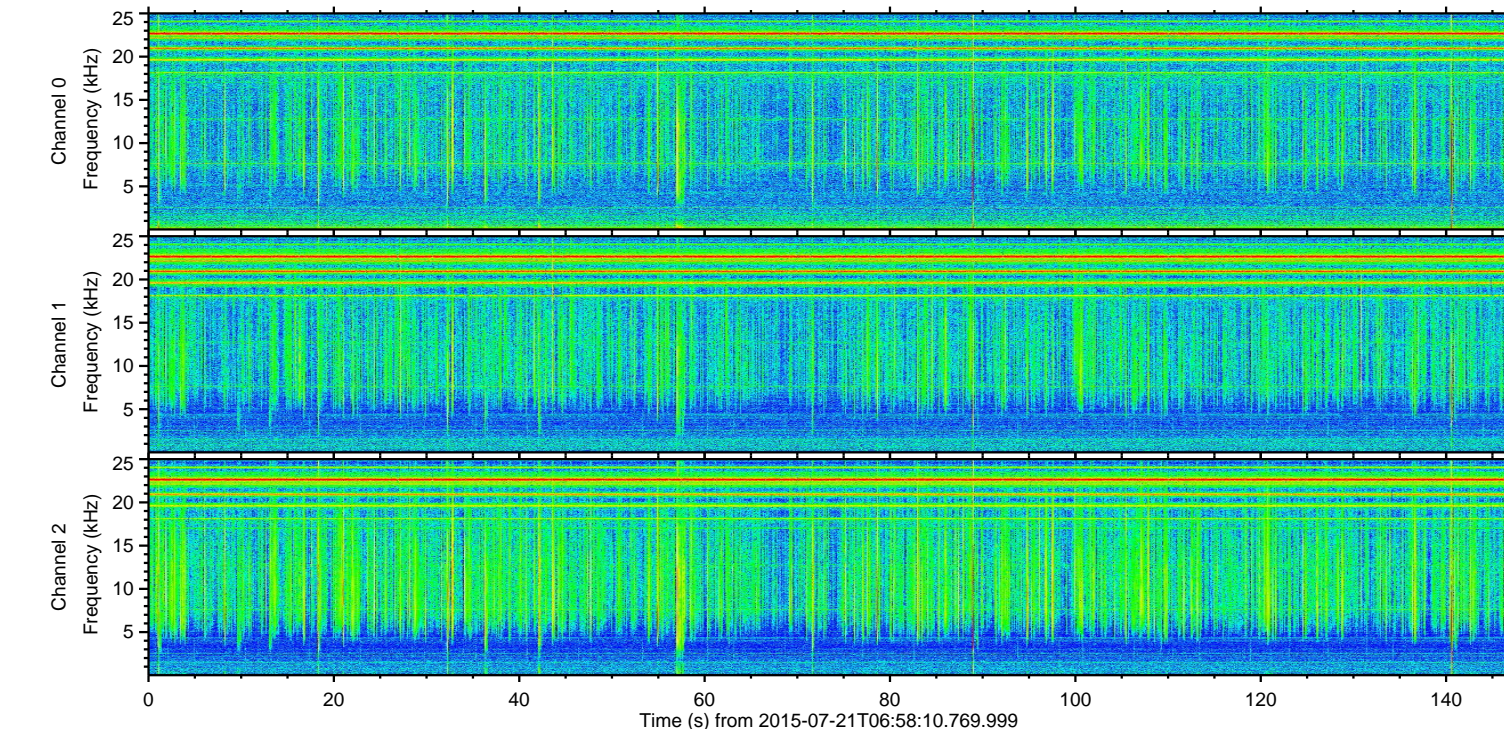
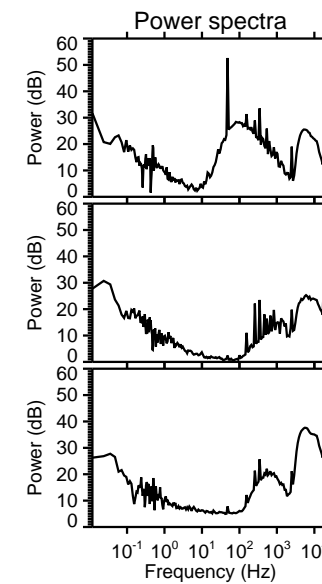
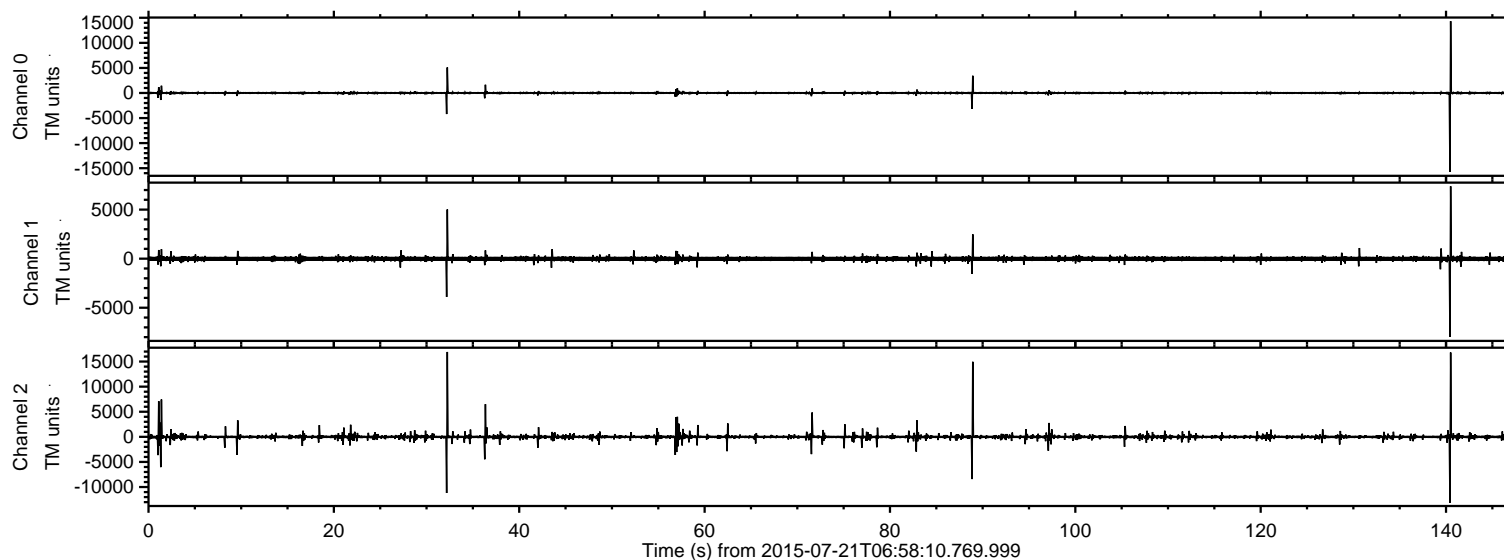


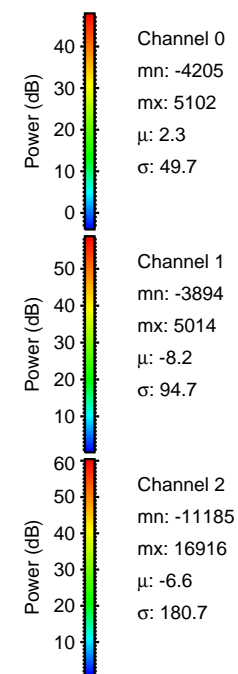
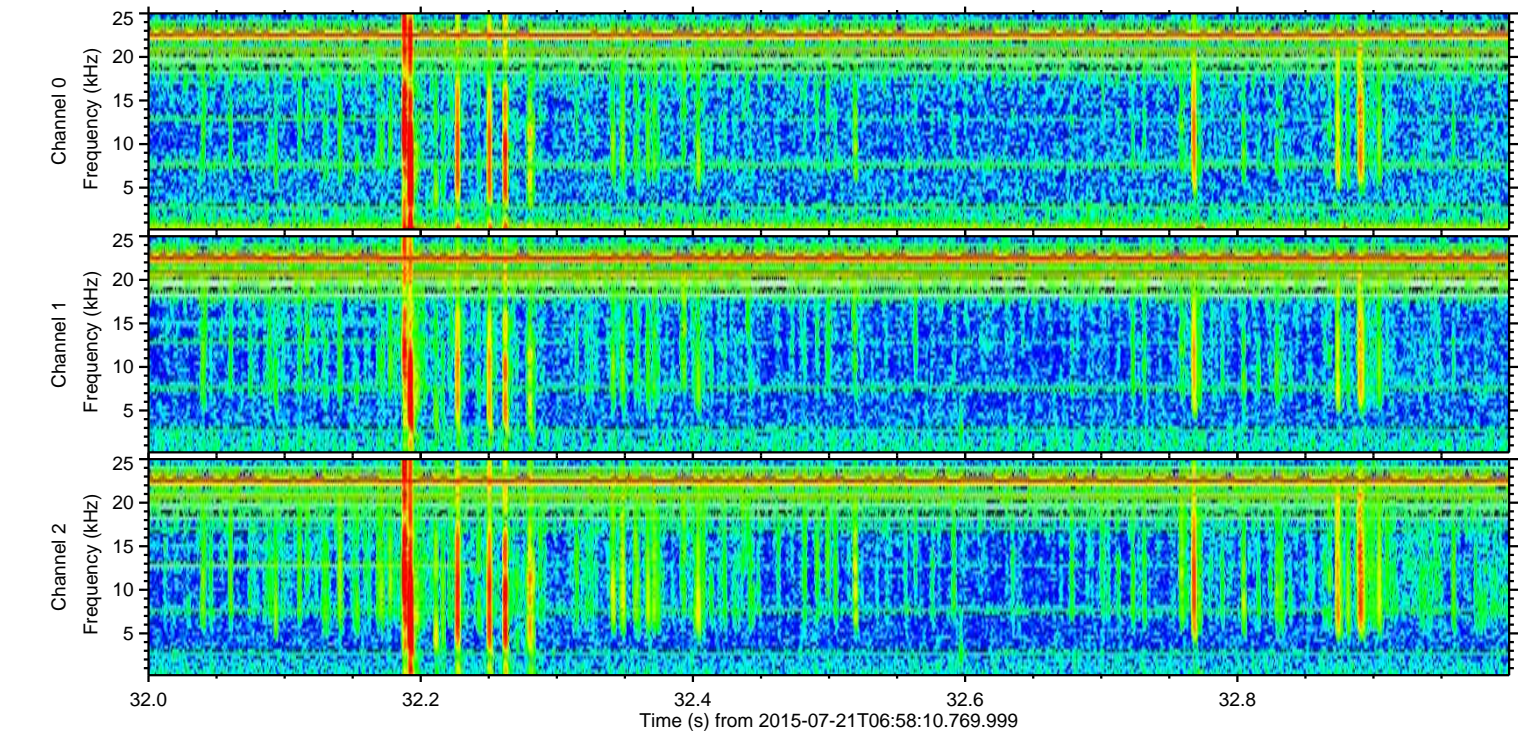
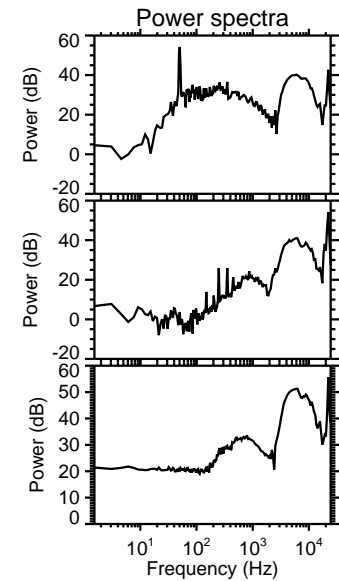
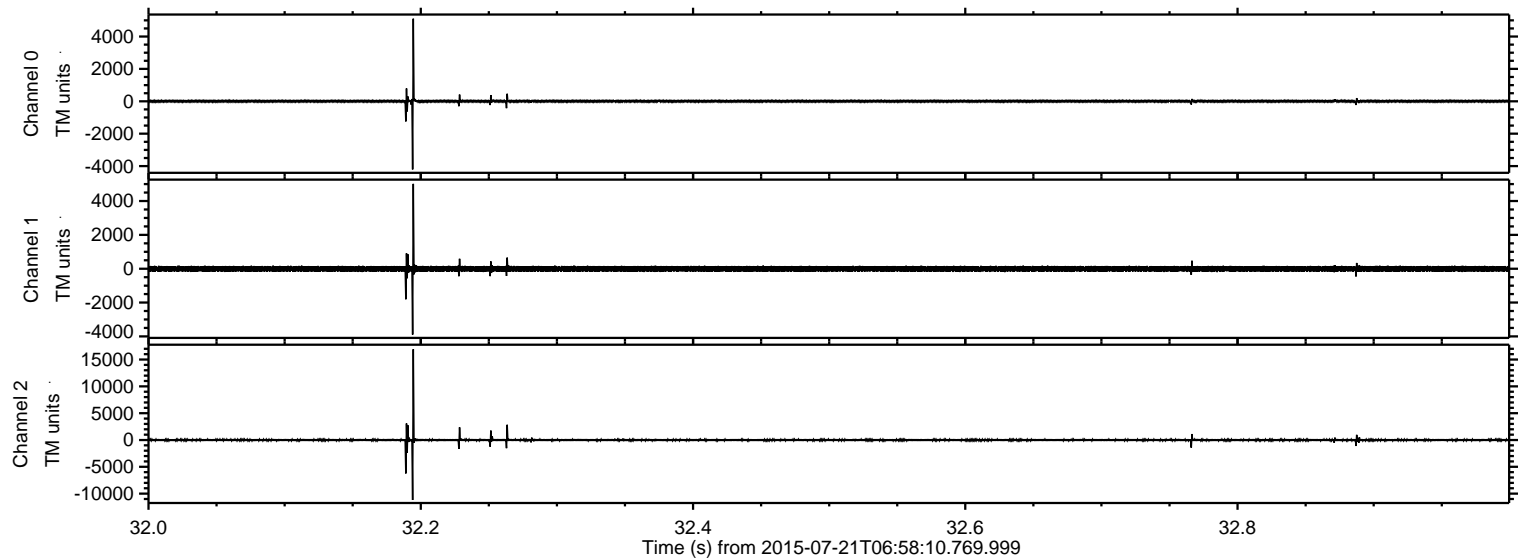
# ELMAVAN 3D WAVEFORMS (Measured data sampled at 50 kHz) 51000 packets of 144 samples from 2015-07-21T06:58:10.769.999.

Processed Tue Jul 21 09:03:56 2015 by ELM ver.2012-10-06 from 001\_\_elm20150721\_065809\_\_dat00.bin



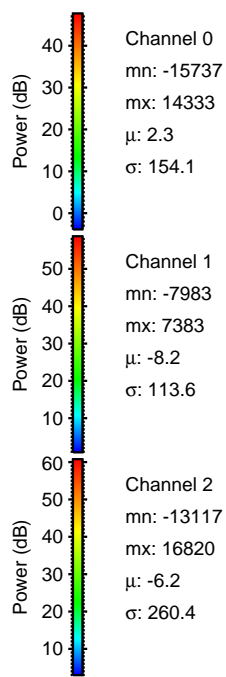
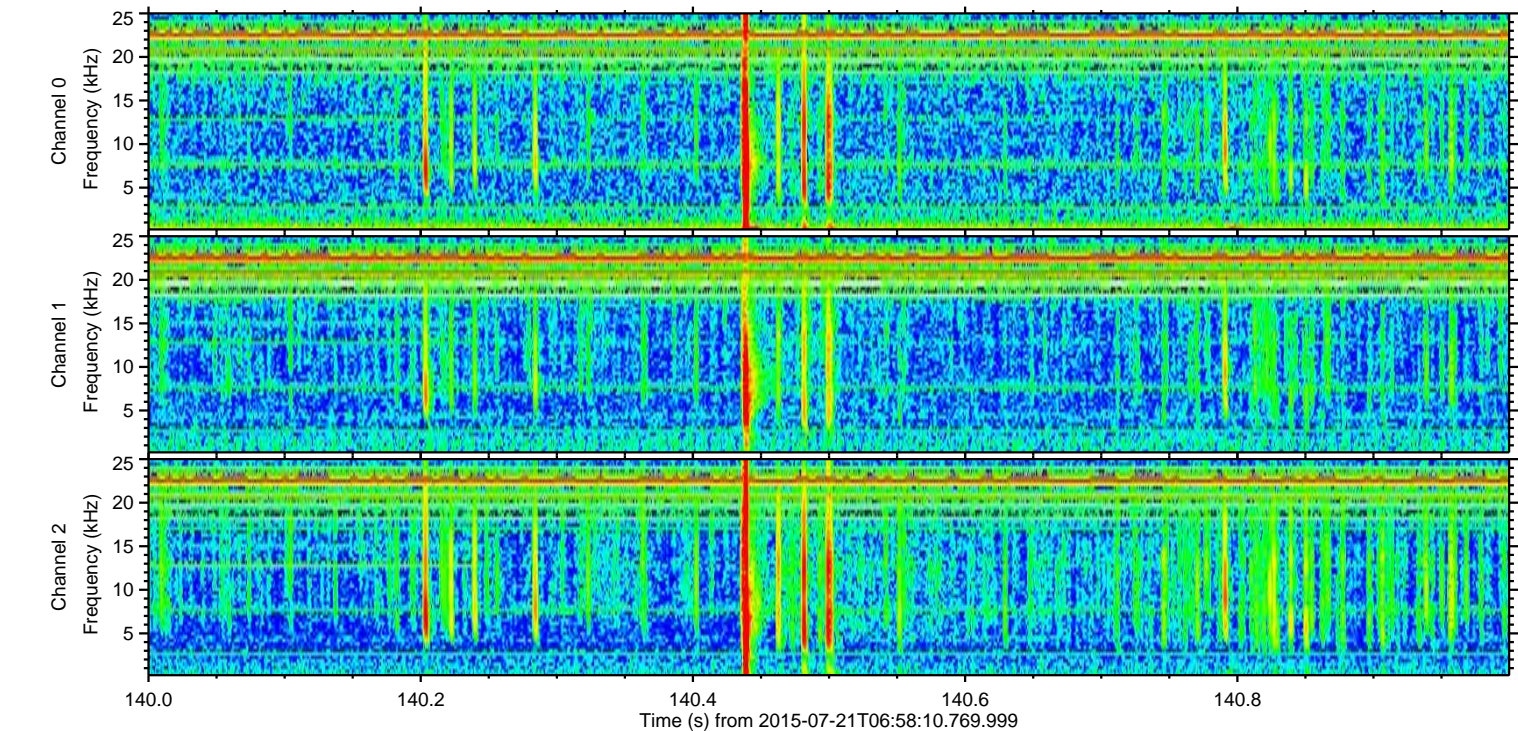
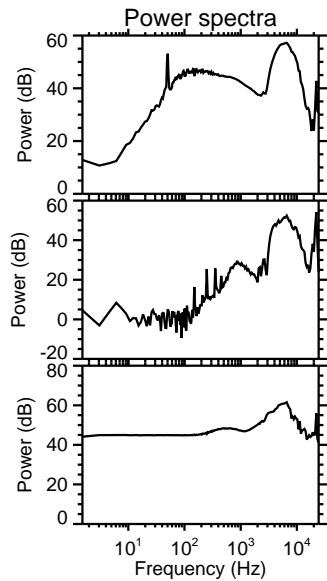
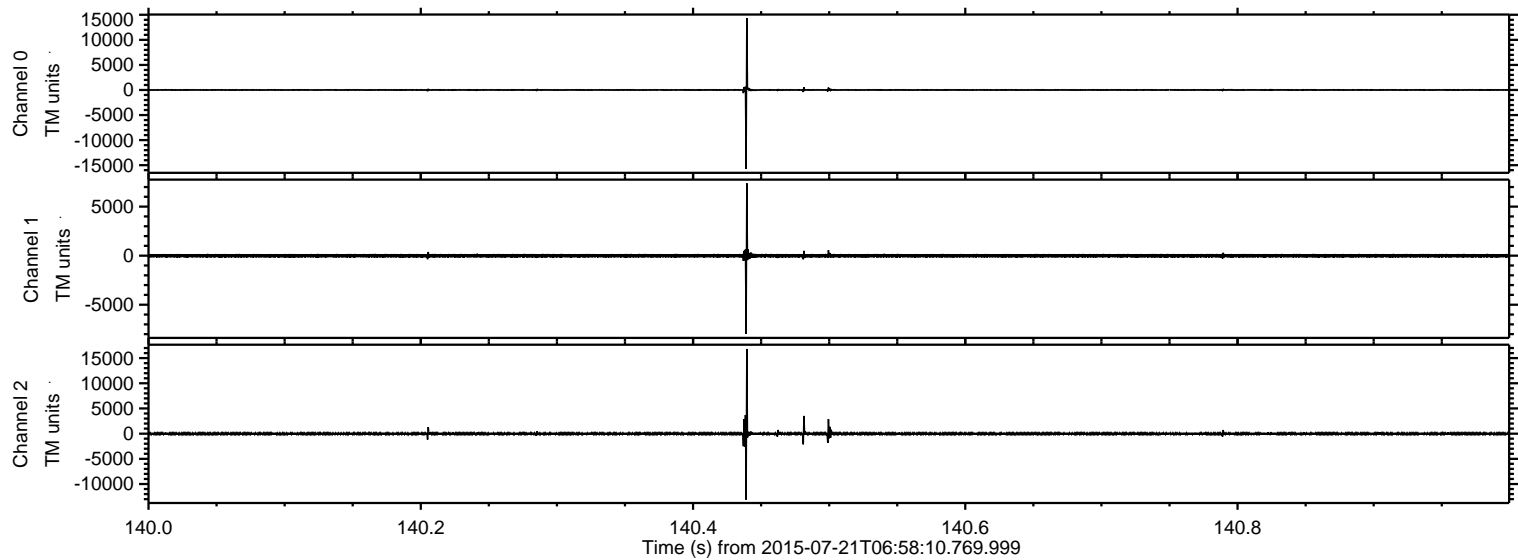
ELMAVAN 3D WAVEFORMS (Measured data sampled at 50 kHz) 51000 packets of 144 samples from 2015-07-21T06:58:10.769.999. Part 33/147

Processed Tue Jul 21 09:04:08 2015 by ELM ver.2012-10-06 from 001\_\_elm20150721\_065809\_\_dat00.bin



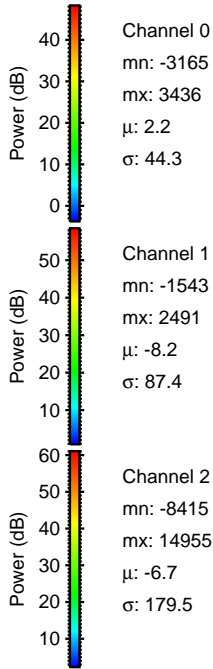
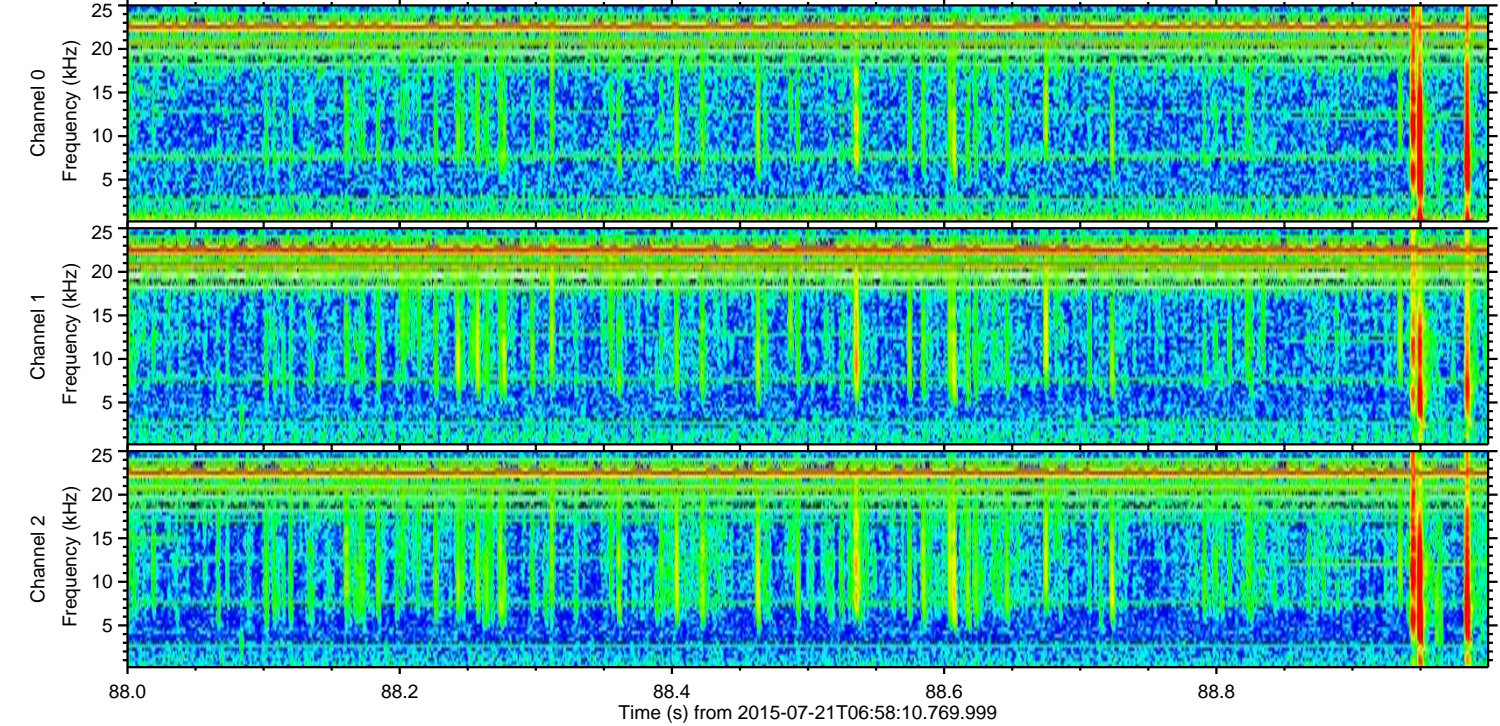
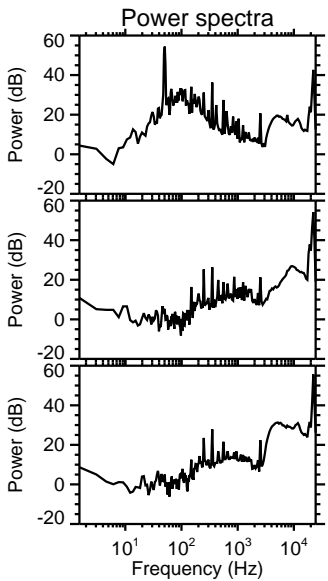
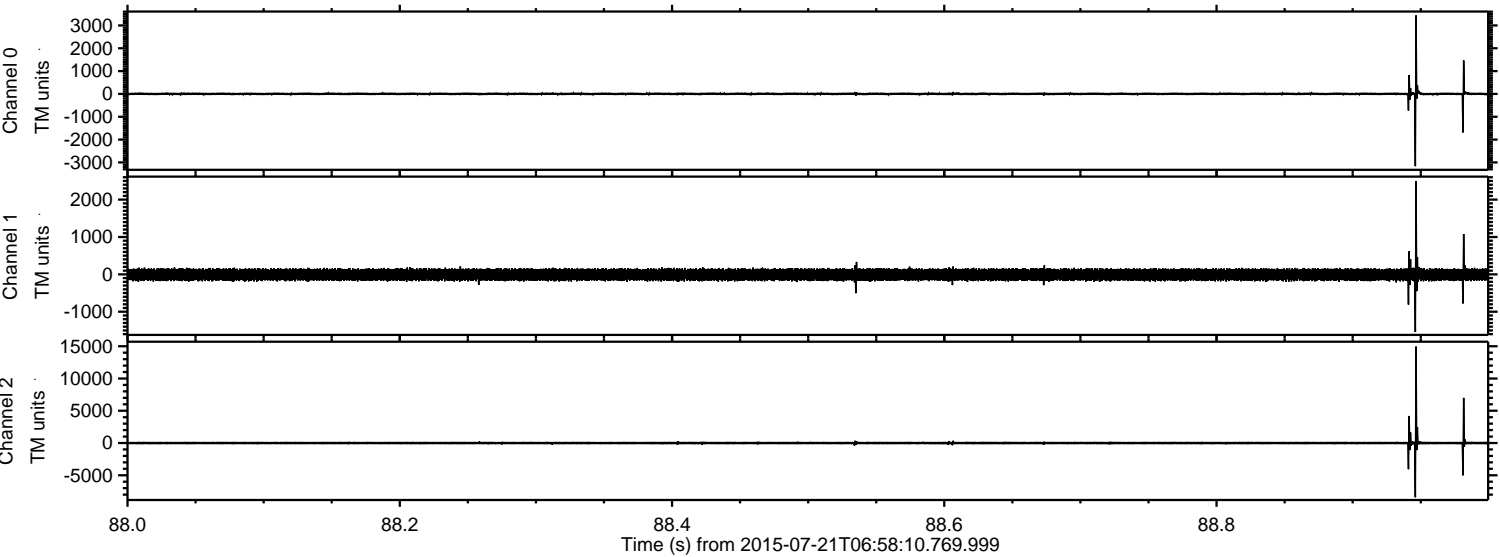
ELMAVAN 3D WAVEFORMS (Measured data sampled at 50 kHz) 51000 packets of 144 samples from 2015-07-21T06:58:10.769.999. Part 141/147

Processed Tue Jul 21 09:04:09 2015 by ELM ver.2012-10-06 from 001\_\_elm20150721\_065809\_\_dat00.bin

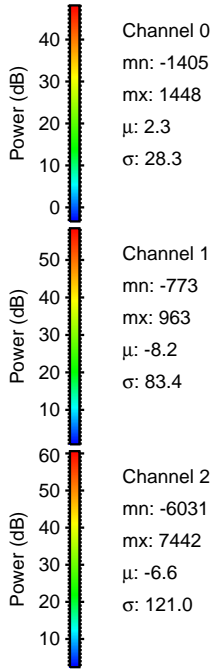
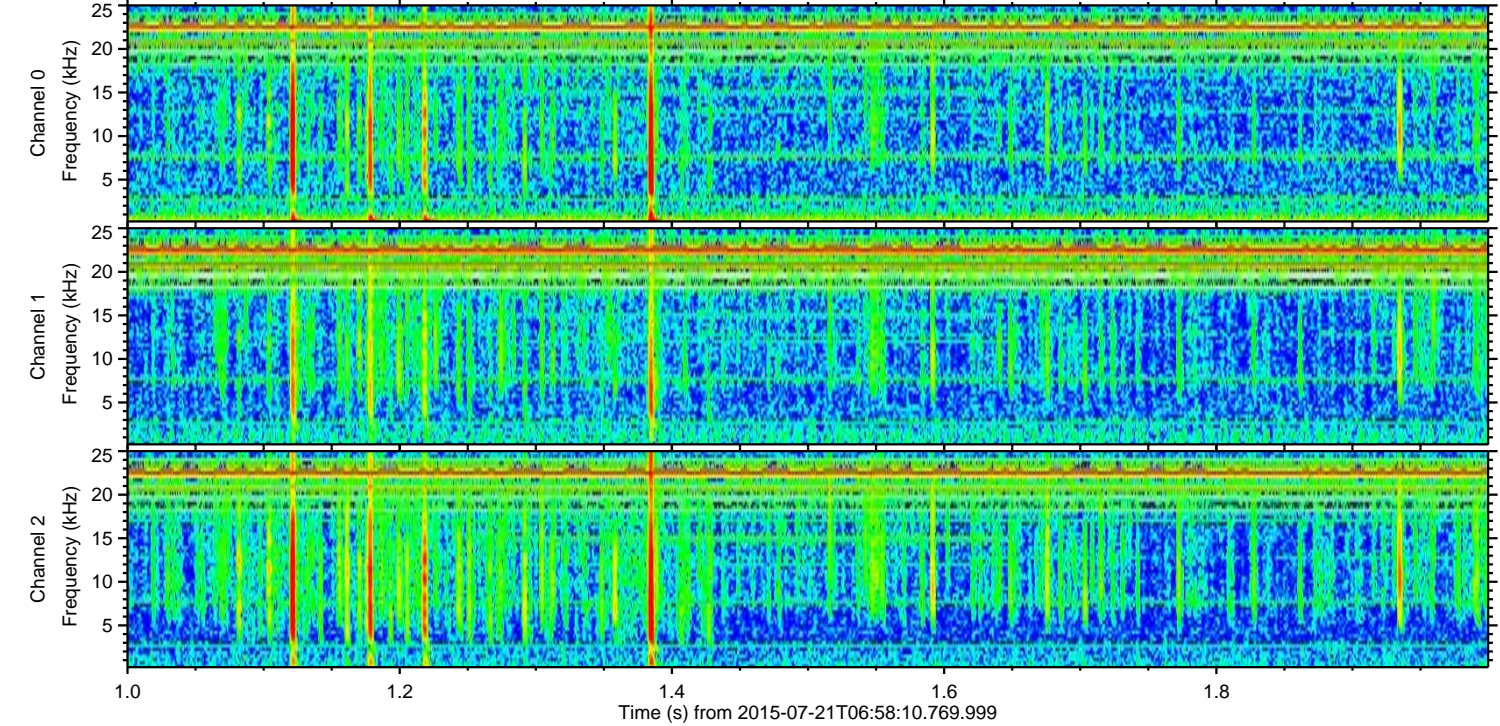
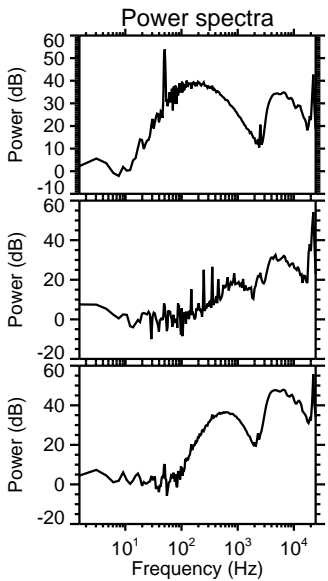
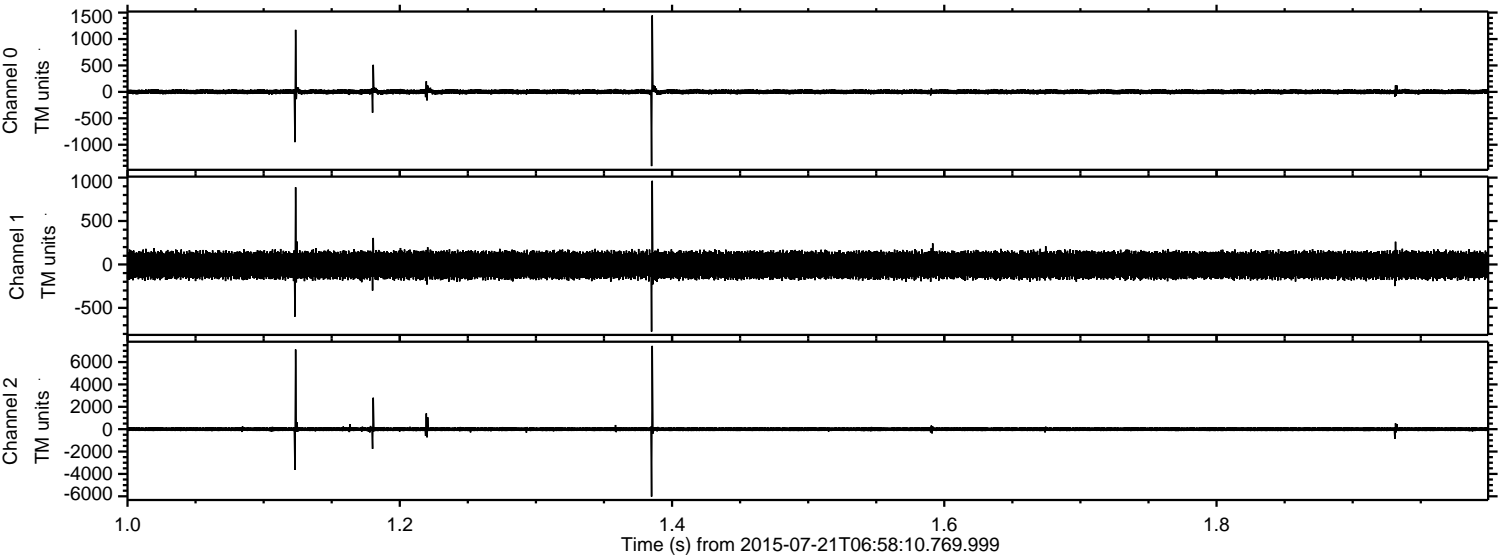


ELMAVAN 3D WAVEFORMS (Measured data sampled at 50 kHz) 51000 packets of 144 samples from 2015-07-21T06:58:10.769.999. Part 89/147

Processed Tue Jul 21 09:04:10 2015 by ELM ver.2012-10-06 from 001\_\_elm20150721\_065809\_\_dat00.bin

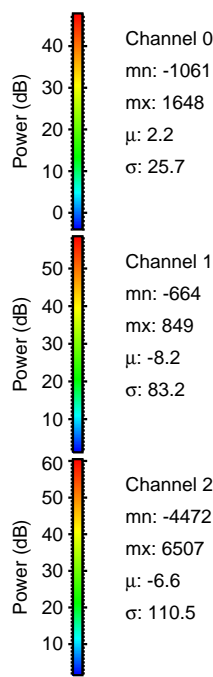
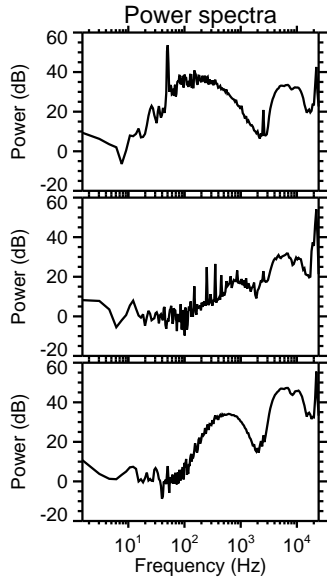
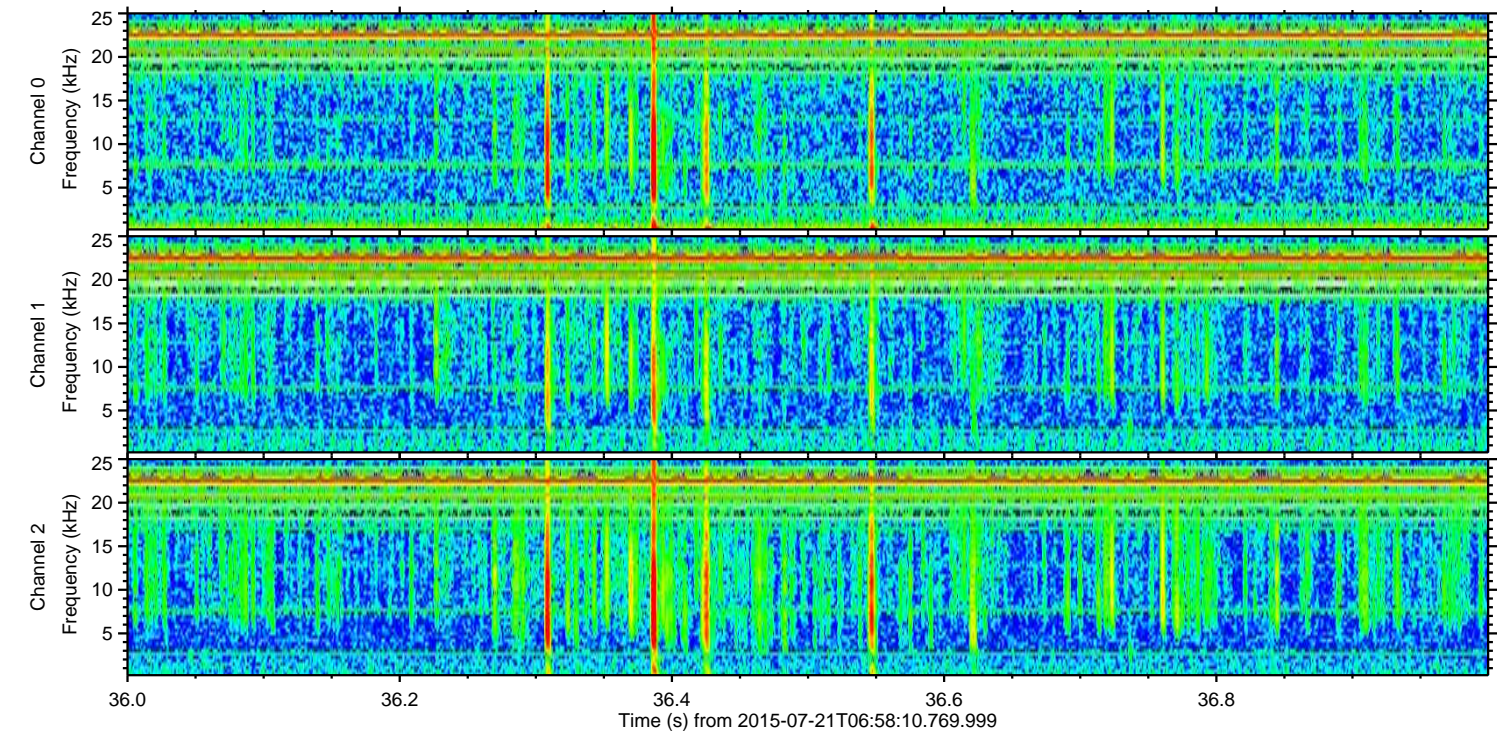
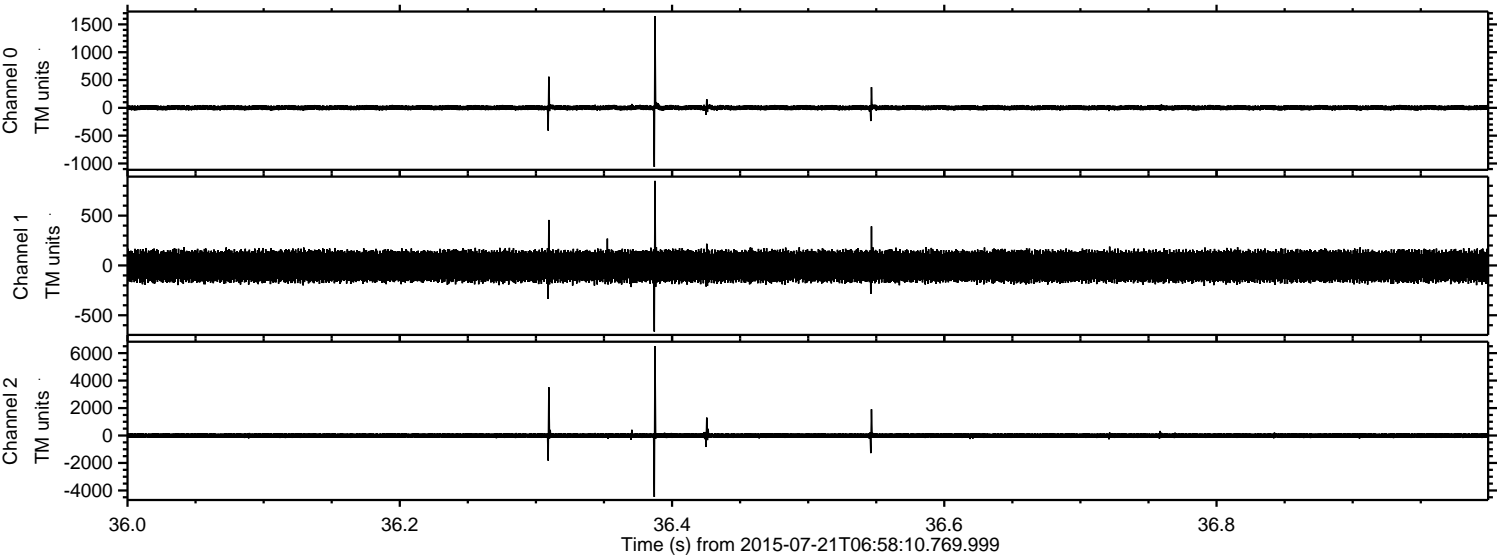


Processed Tue Jul 21 09:04:11 2015 by ELM ver.2012-10-06 from 001\_\_elm20150721\_065809\_\_dat00.bin



ELMAVAN 3D WAVEFORMS (Measured data sampled at 50 kHz) 51000 packets of 144 samples from 2015-07-21T06:58:10.769.999. Part 37/147

Processed Tue Jul 21 09:04:12 2015 by ELM ver.2012-10-06 from 001\_\_elm20150721\_065809\_\_dat00.bin

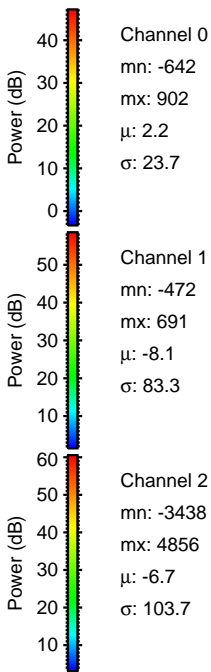
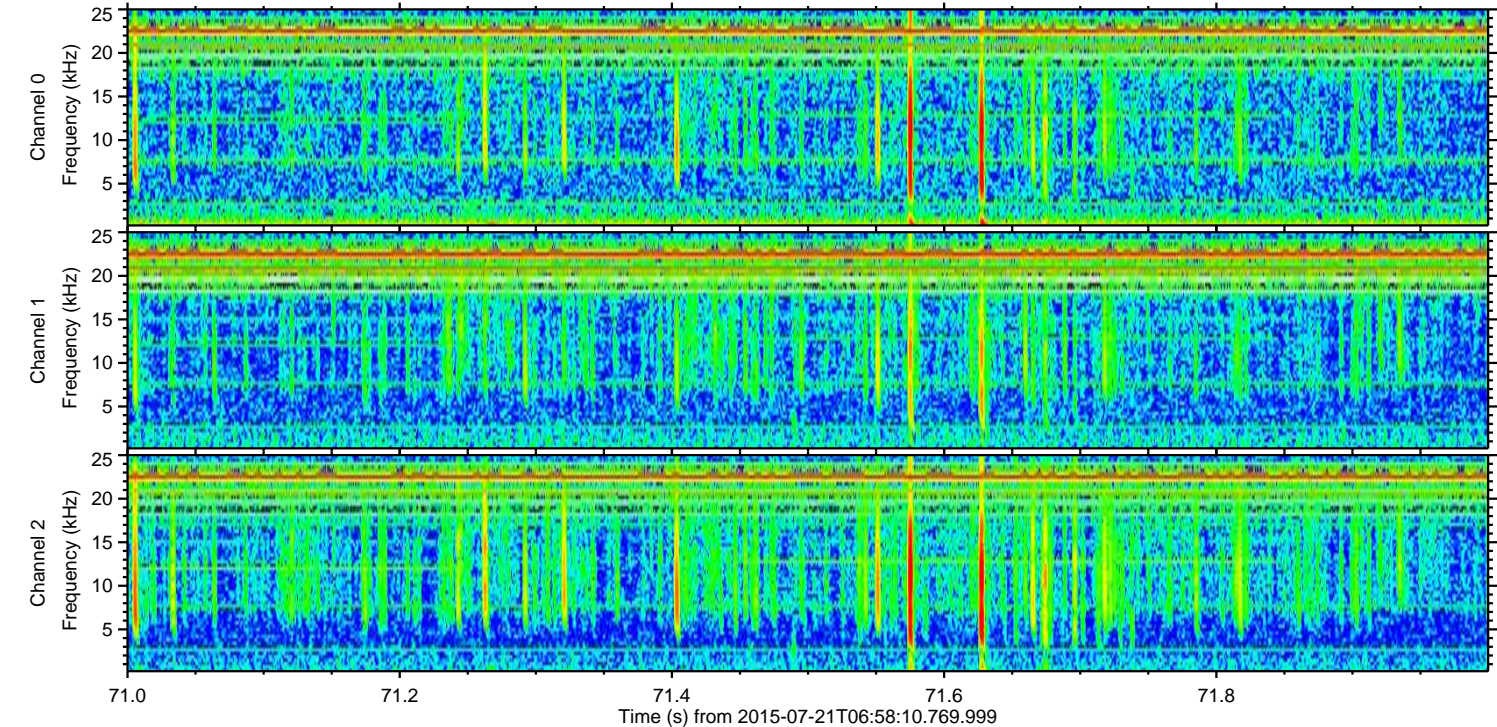
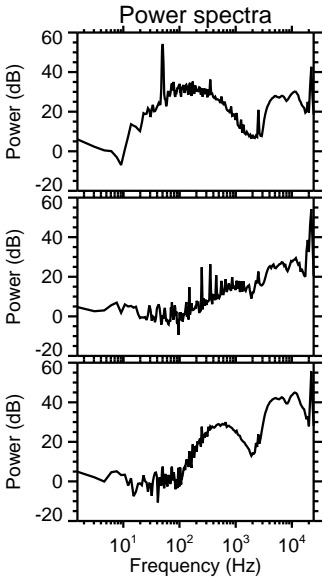
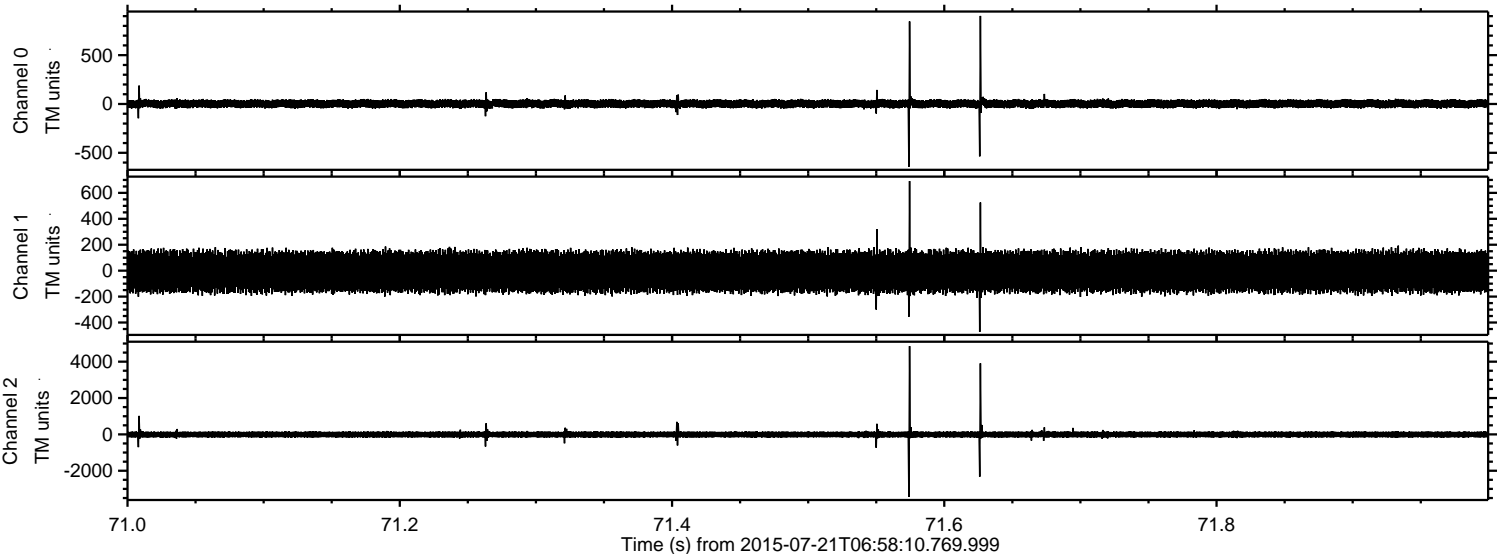


Channel 0  
mn: -1061  
mx: 1648  
 $\mu$ : 2.2  
 $\sigma$ : 25.7

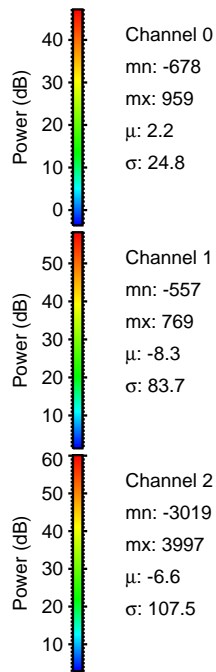
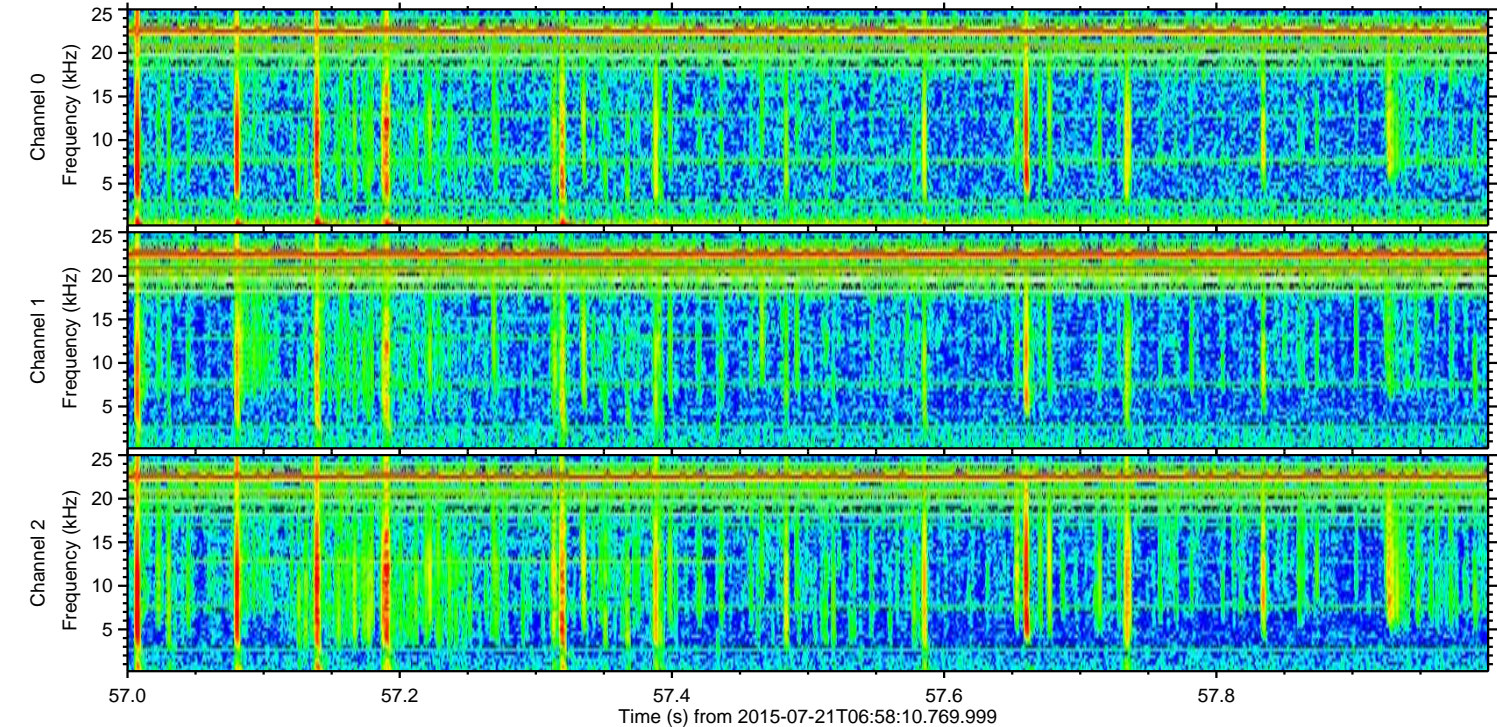
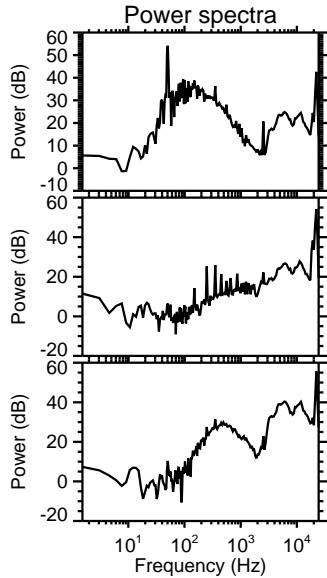
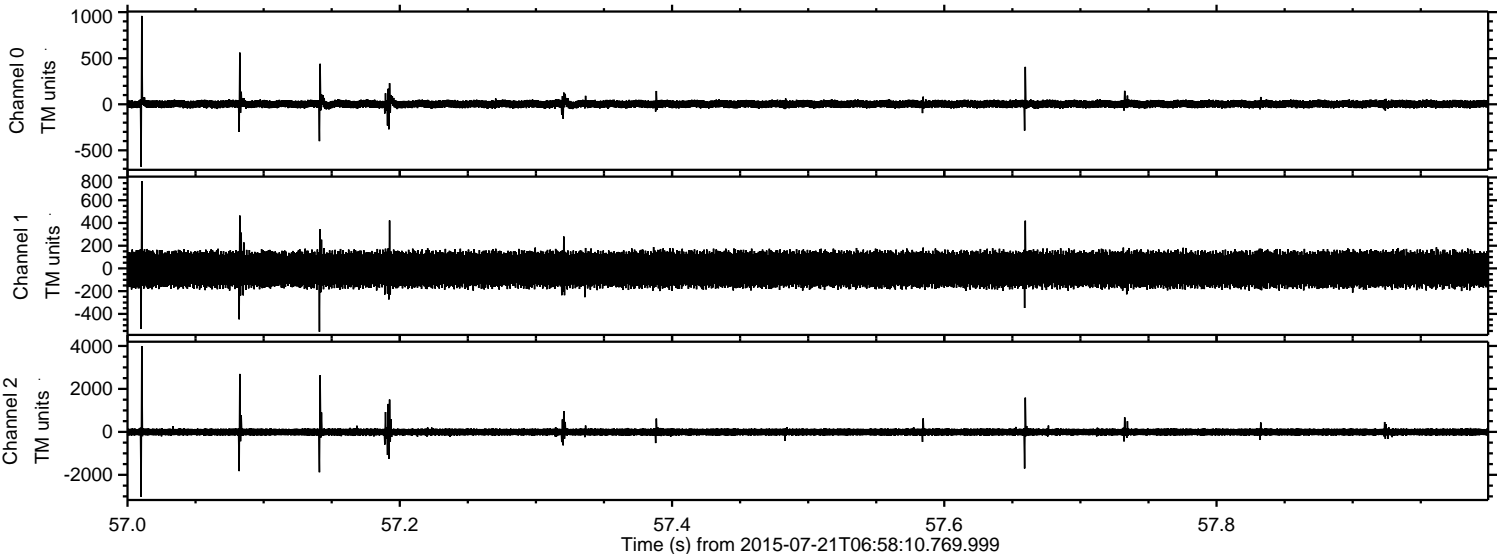
Channel 1  
mn: -664  
mx: 849  
 $\mu$ : -8.2  
 $\sigma$ : 83.2

Channel 2  
mn: -4472  
mx: 6507  
 $\mu$ : -6.6  
 $\sigma$ : 110.5

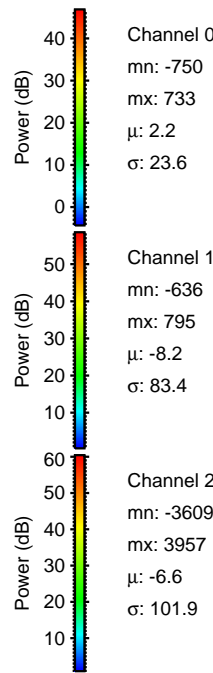
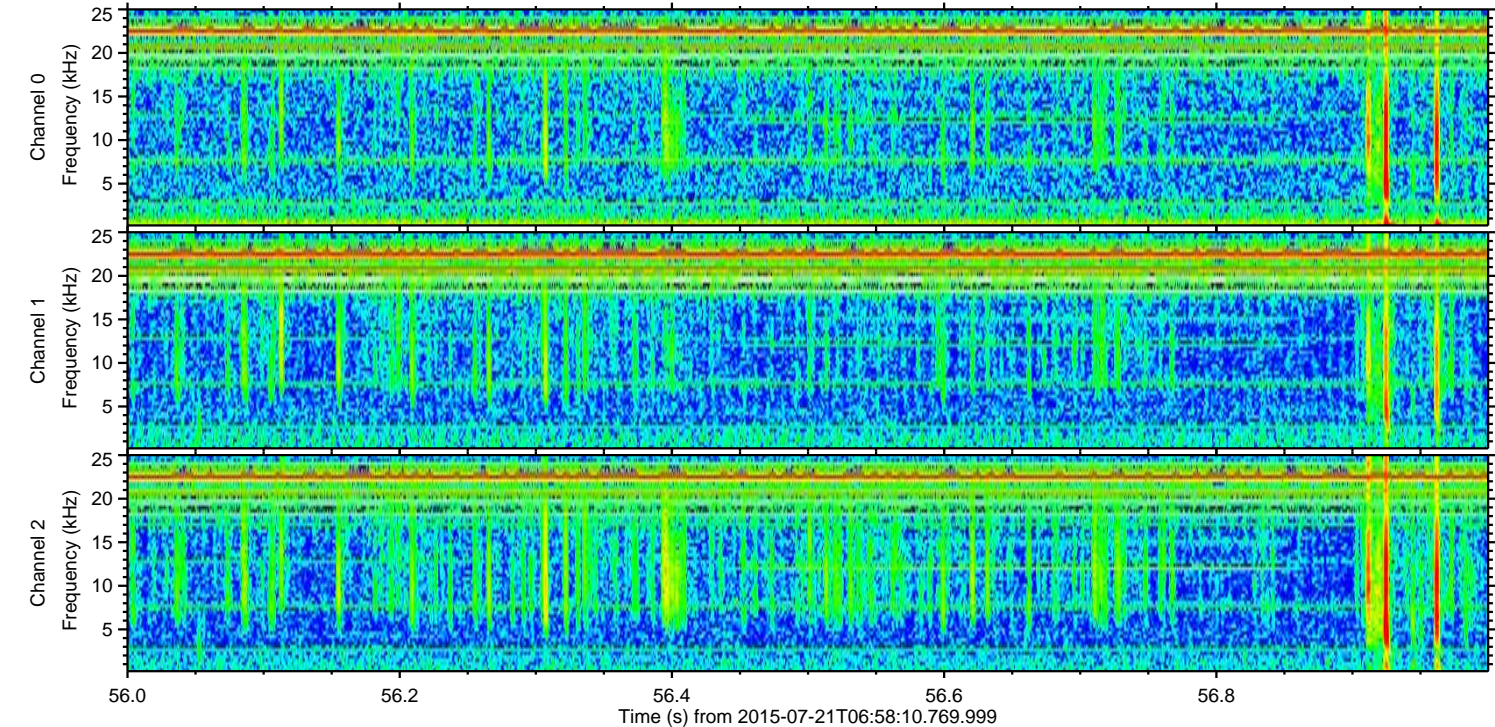
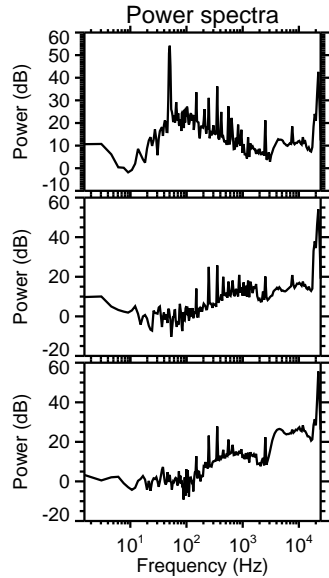
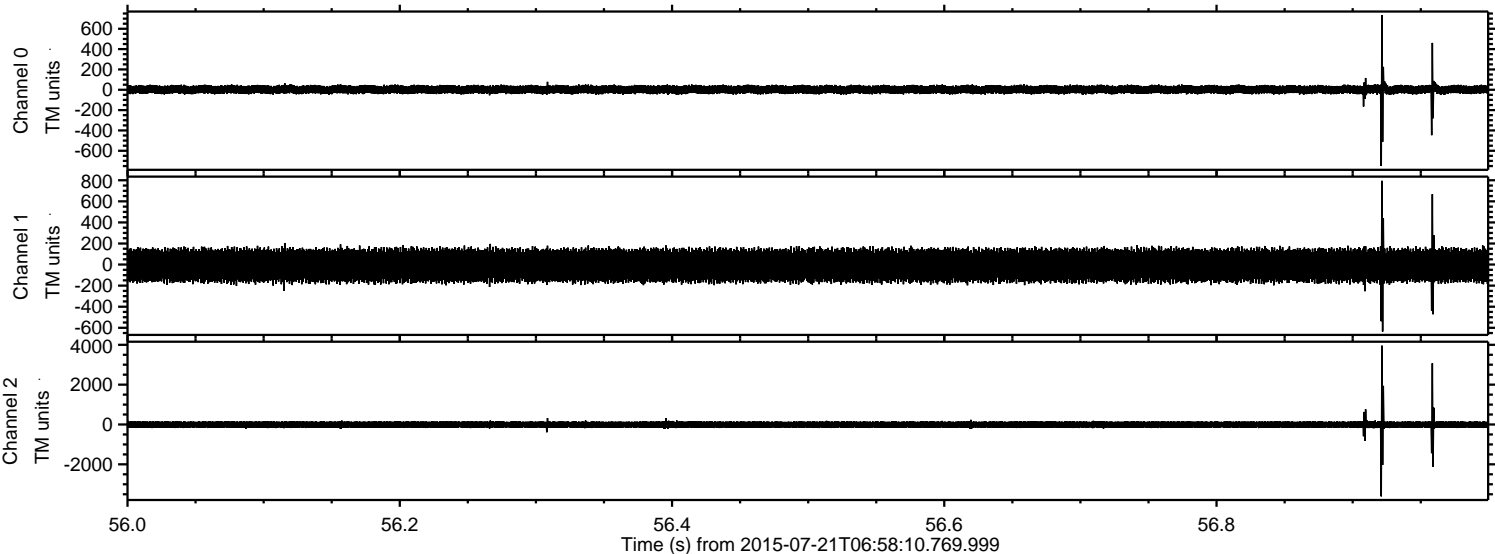
Processed Tue Jul 21 09:04:12 2015 by ELM ver.2012-10-06 from 001\_\_elm20150721\_065809\_\_dat00.bin



Processed Tue Jul 21 09:04:13 2015 by ELM ver.2012-10-06 from 001\_\_elm20150721\_065809\_\_dat00.bin



Processed Tue Jul 21 09:04:14 2015 by ELM ver.2012-10-06 from 001\_\_elm20150721\_065809\_\_dat00.bin



Processed Tue Jul 21 09:04:15 2015 by ELM ver.2012-10-06 from 001\_\_elm20150721\_065809\_\_dat00.bin

