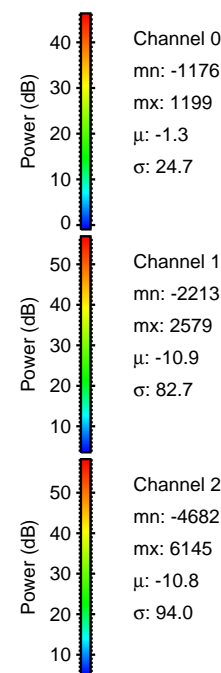
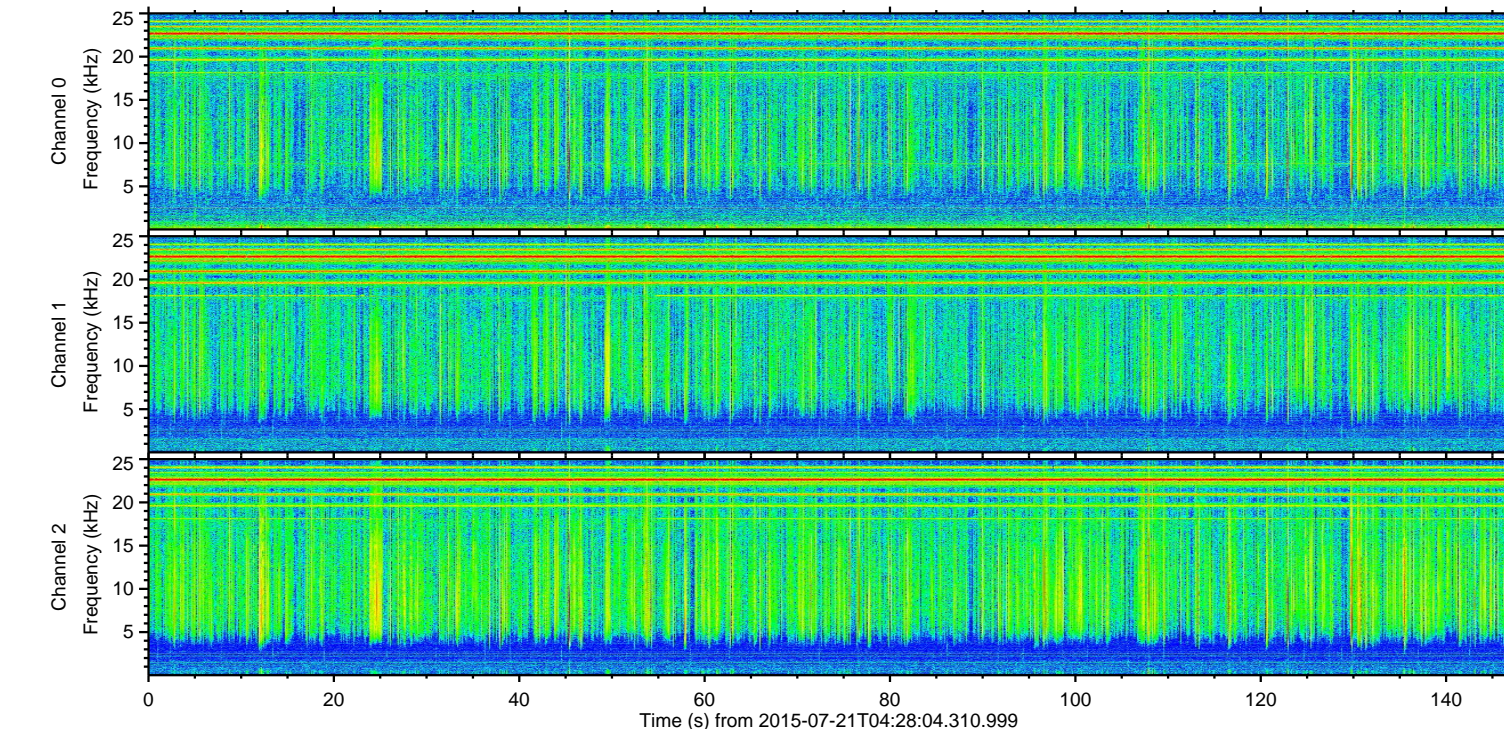
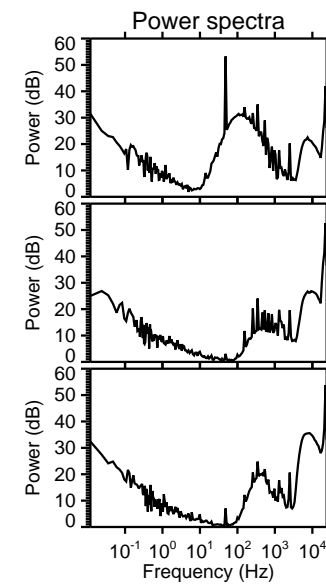
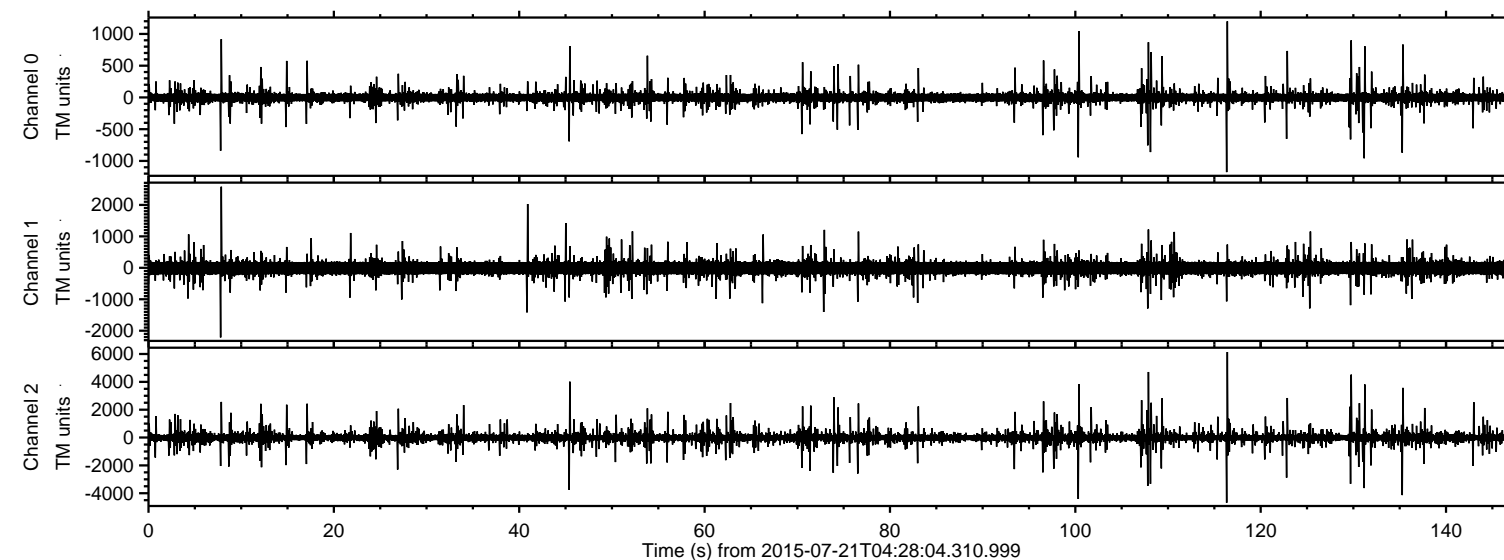


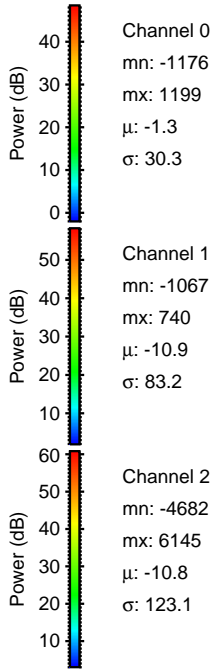
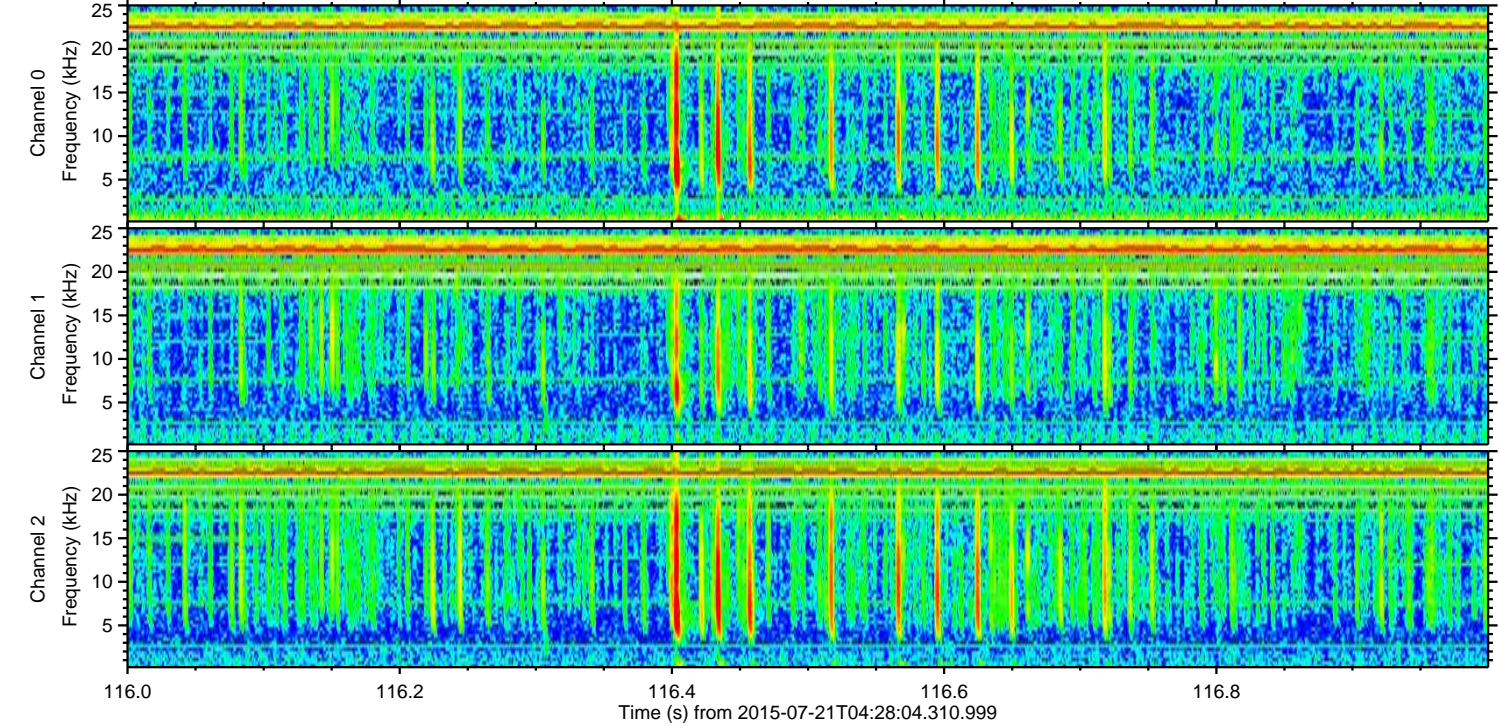
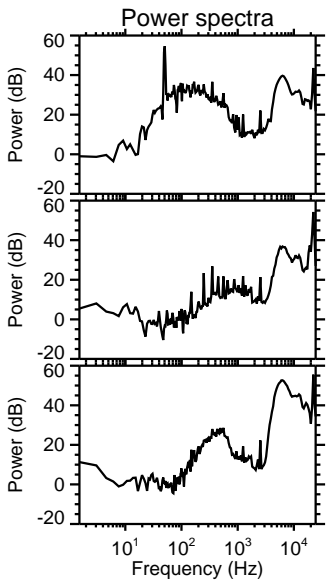
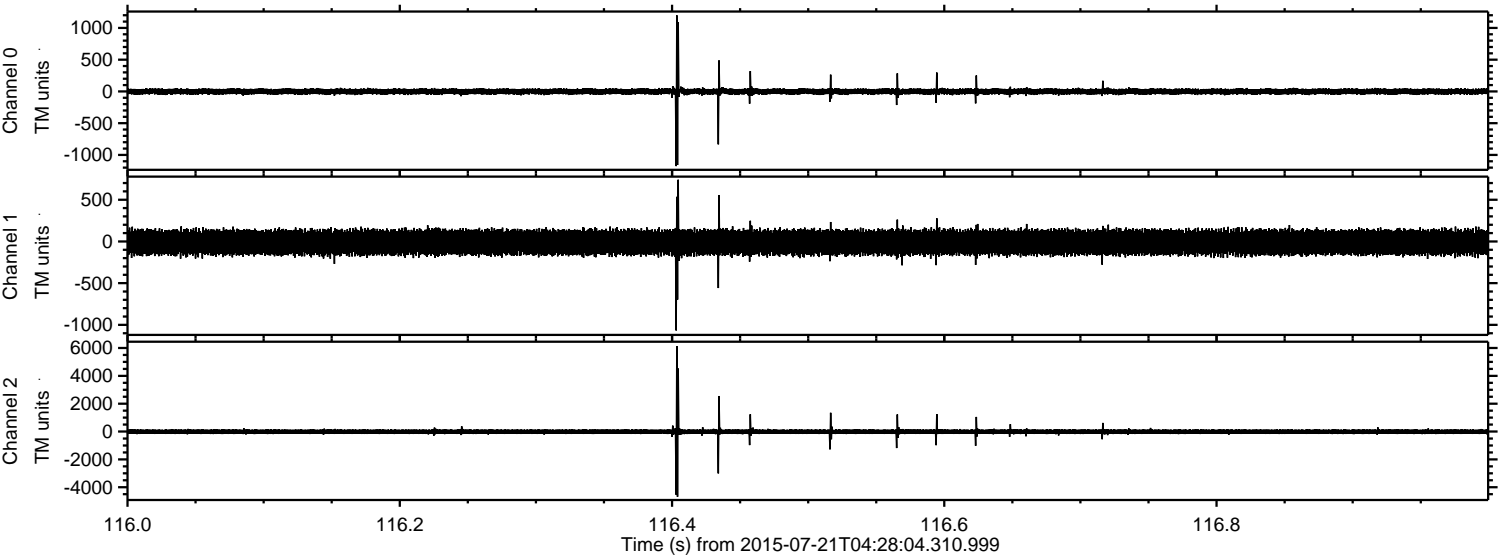
ELMAVAN 3D WAVEFORMS (Measured data sampled at 50 kHz) 51000 packets of 144 samples from 2015-07-21T04:28:04.310.999.

Processed Tue Jul 21 06:34:38 2015 by ELM ver.2012-10-06 from 001__elm20150721_042803__dat00.bin



ELMAVAN 3D WAVEFORMS (Measured data sampled at 50 kHz) 51000 packets of 144 samples from 2015-07-21T04:28:04.310.999. Part 117/147

Processed Tue Jul 21 06:34:49 2015 by ELM ver.2012-10-06 from 001__elm20150721_042803__dat00.bin



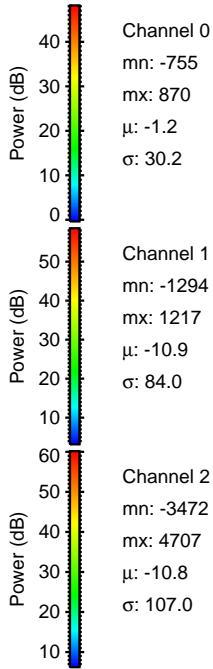
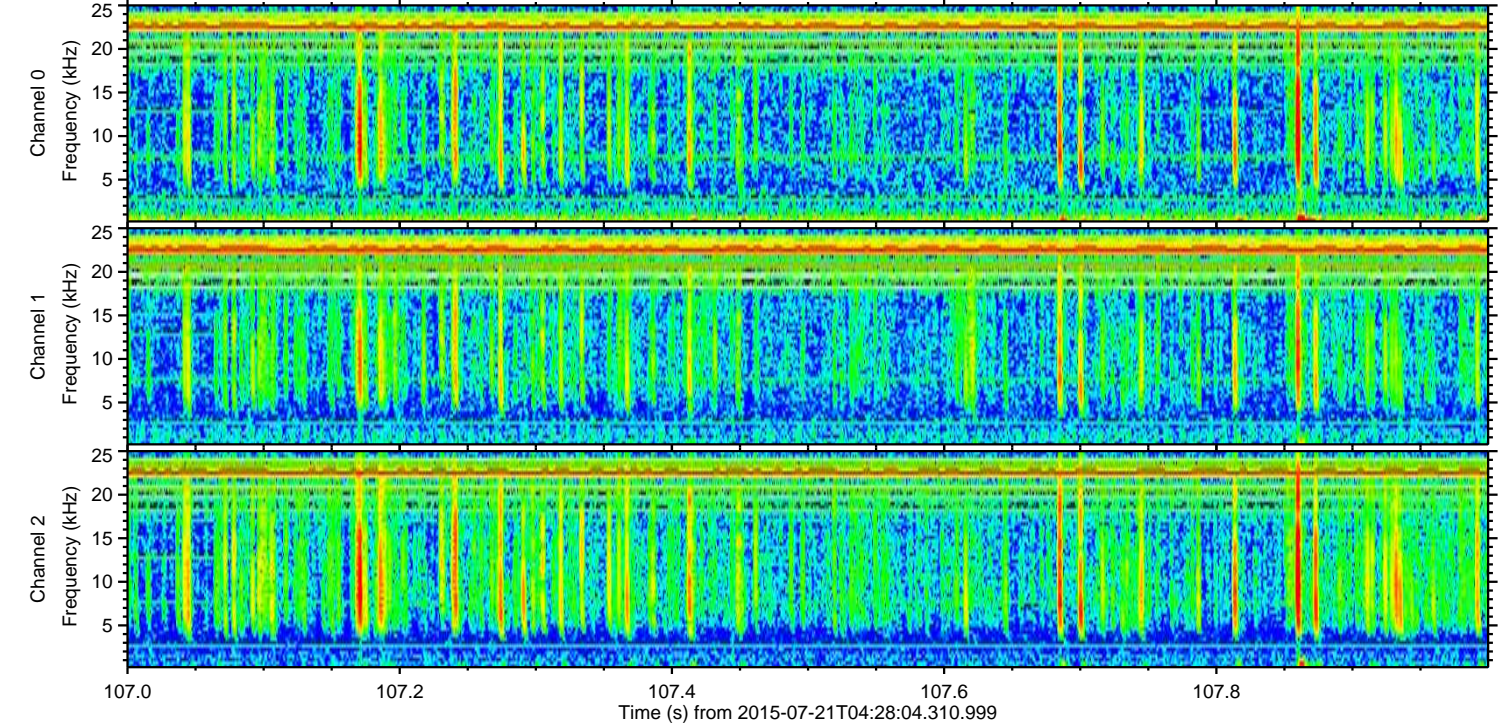
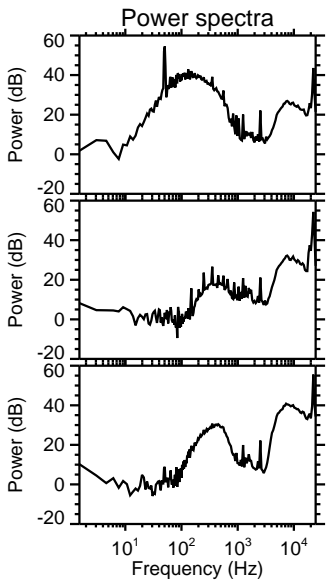
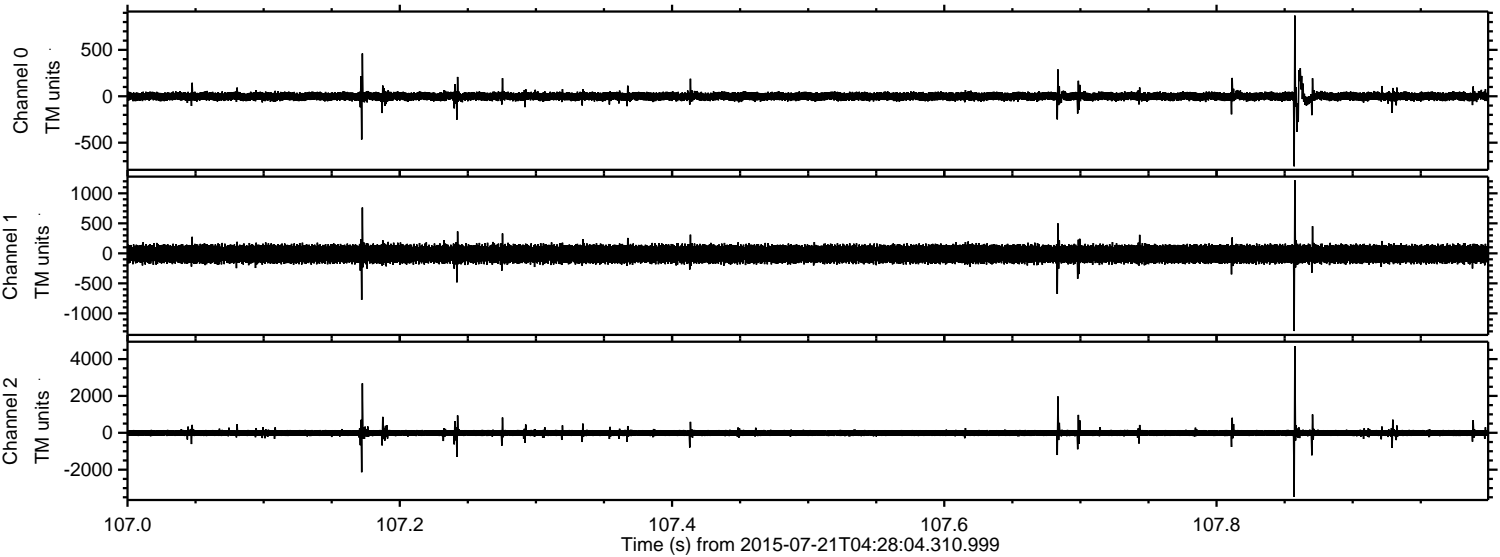
Channel 0
mn: -1176
mx: 1199
 μ : -1.3
 σ : 30.3

Channel 1
mn: -1067
mx: 740
 μ : -10.9
 σ : 83.2

Channel 2
mn: -4682
mx: 6145
 μ : -10.8
 σ : 123.1

ELMAVAN 3D WAVEFORMS (Measured data sampled at 50 kHz) 51000 packets of 144 samples from 2015-07-21T04:28:04.310.999. Part 108/147

Processed Tue Jul 21 06:34:50 2015 by ELM ver.2012-10-06 from 001__elm20150721_042803__dat00.bin

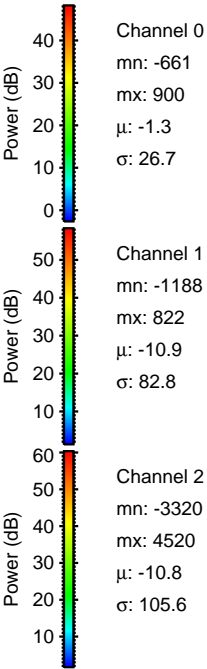
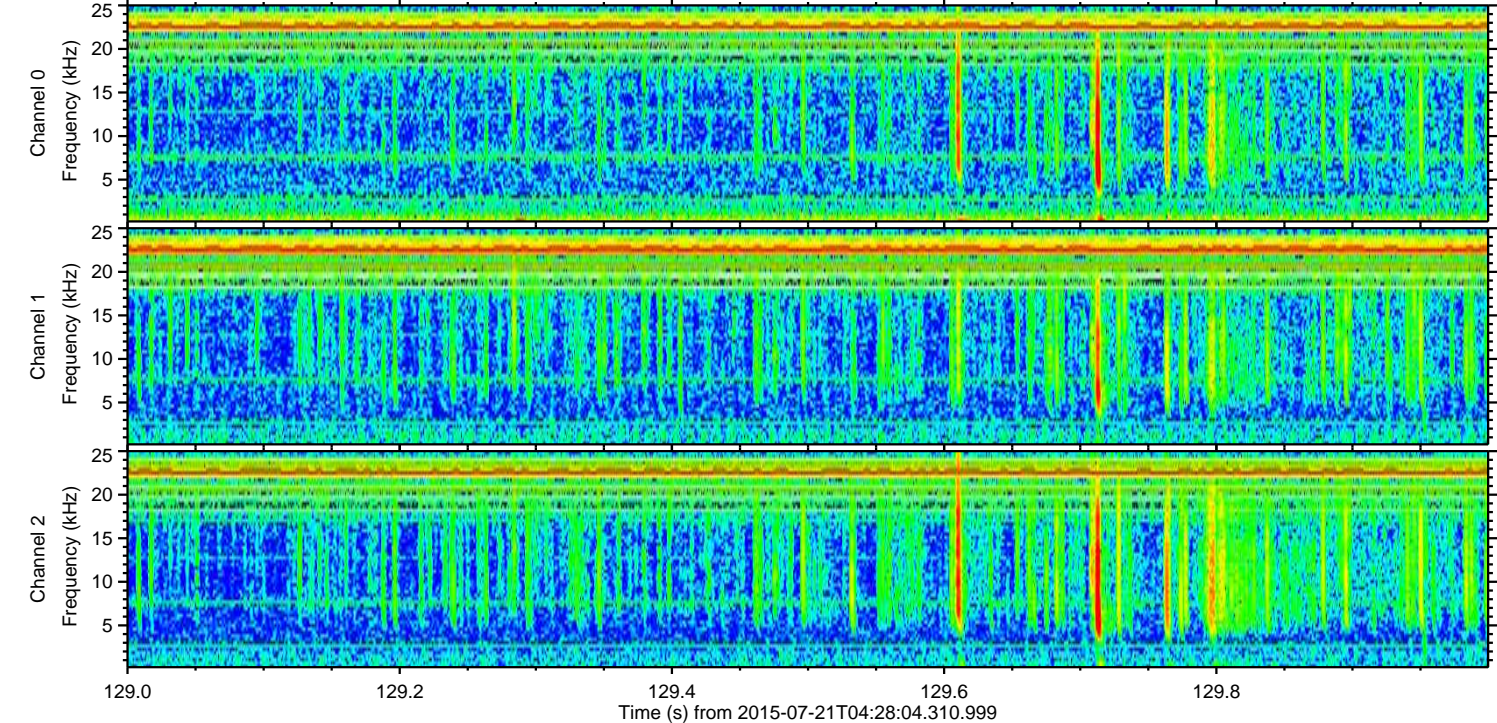
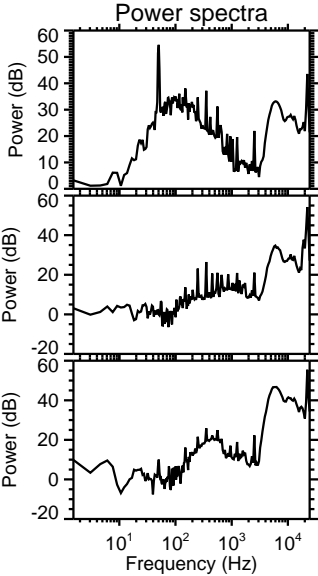
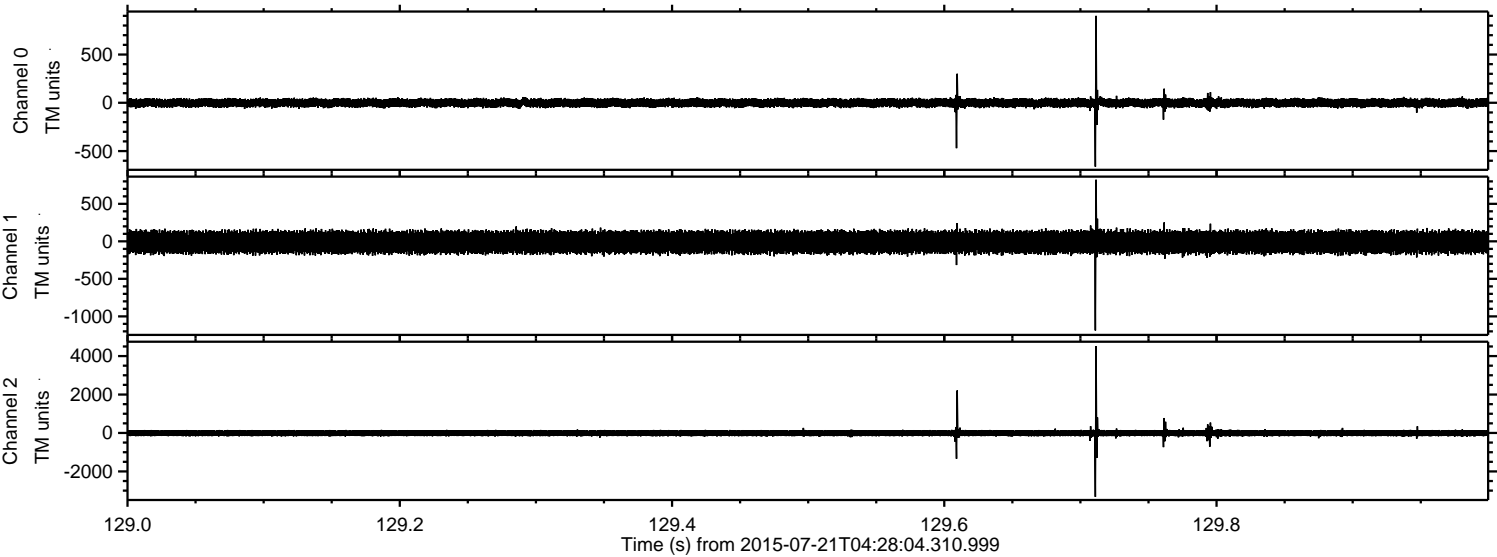


Channel 0
mn: -755
mx: 870
 μ : -1.2
 σ : 30.2

Channel 1
mn: -1294
mx: 1217
 μ : -10.9
 σ : 84.0

Channel 2
mn: -3472
mx: 4707
 μ : -10.8
 σ : 107.0

Processed Tue Jul 21 06:34:51 2015 by ELM ver.2012-10-06 from 001__elm20150721_042803__dat00.bin



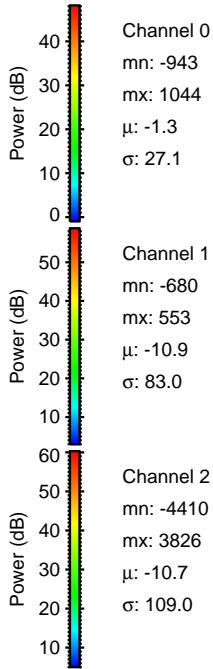
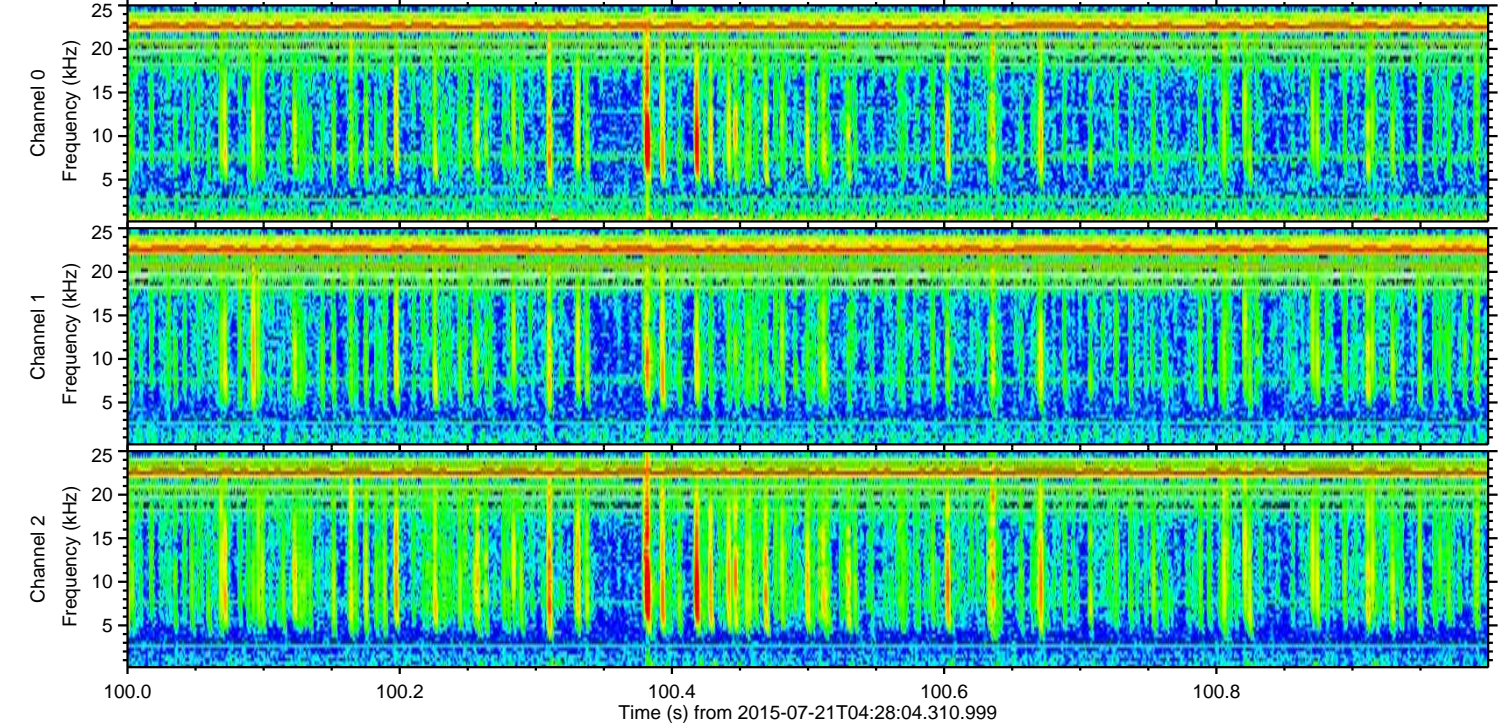
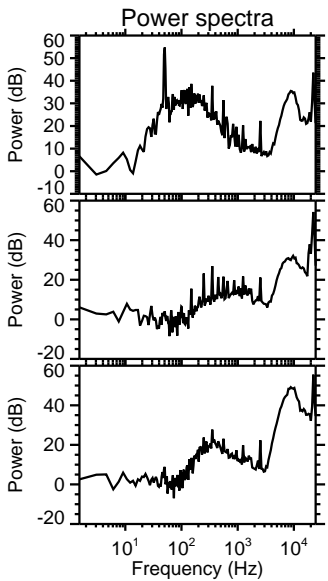
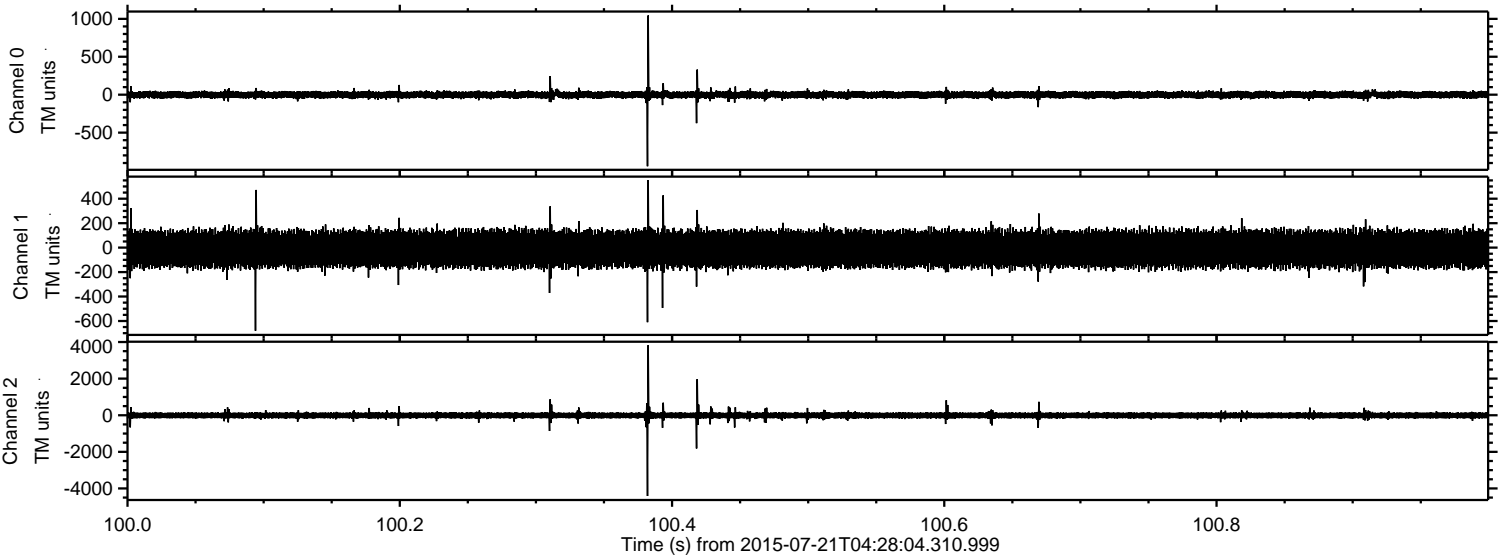
Channel 0
mn: -661
mx: 900
 μ : -1.3
 σ : 26.7

Channel 1
mn: -1188
mx: 822
 μ : -10.9
 σ : 82.8

Channel 2
mn: -3320
mx: 4520
 μ : -10.8
 σ : 105.6

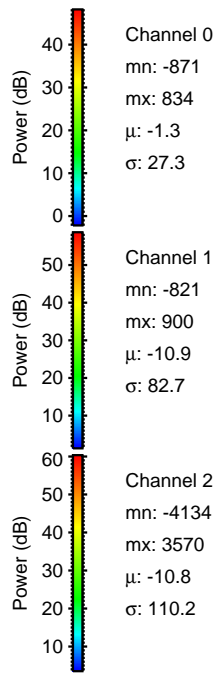
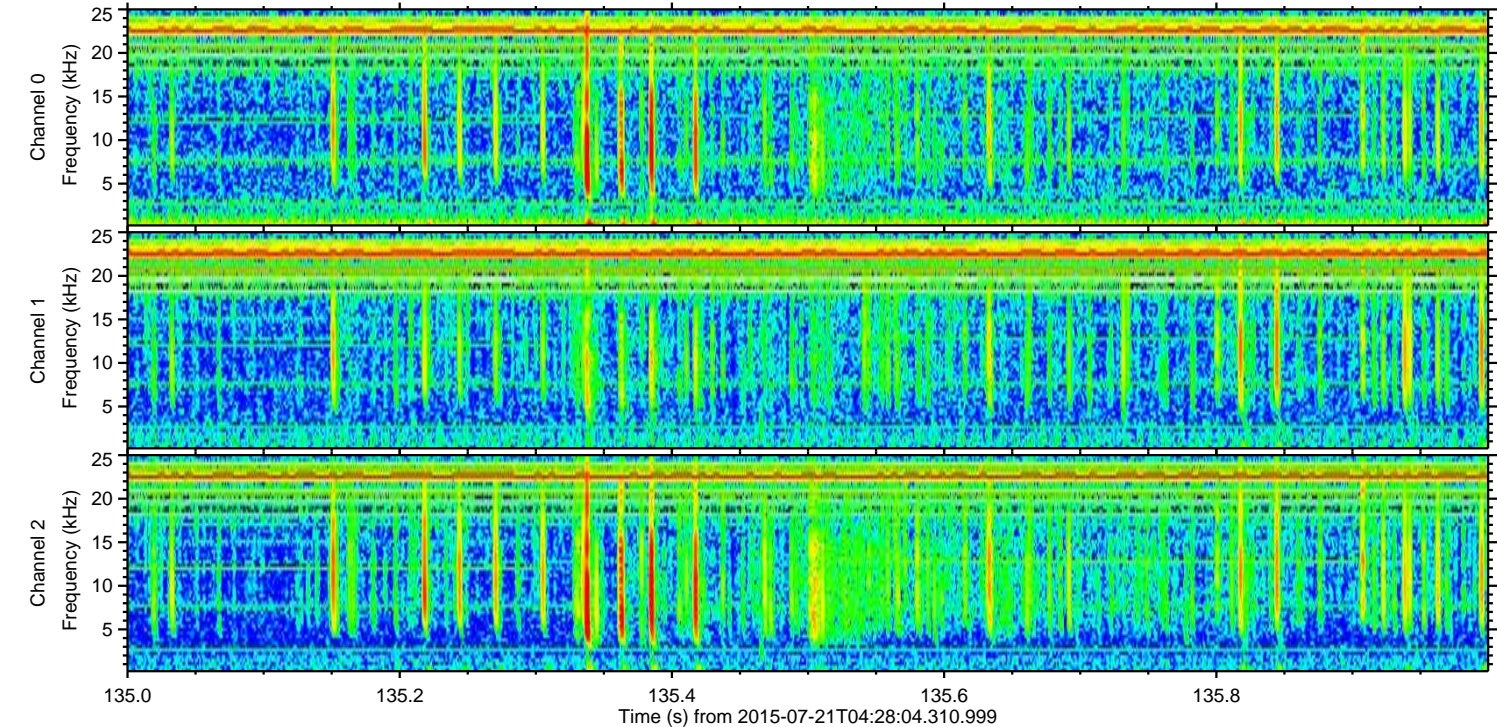
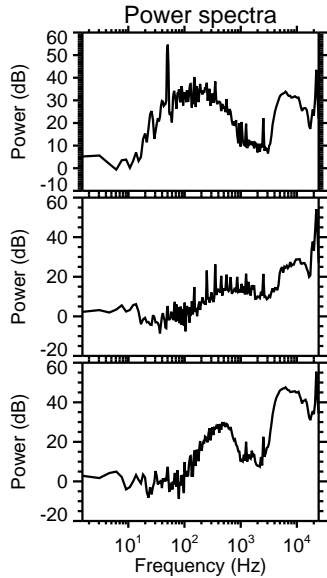
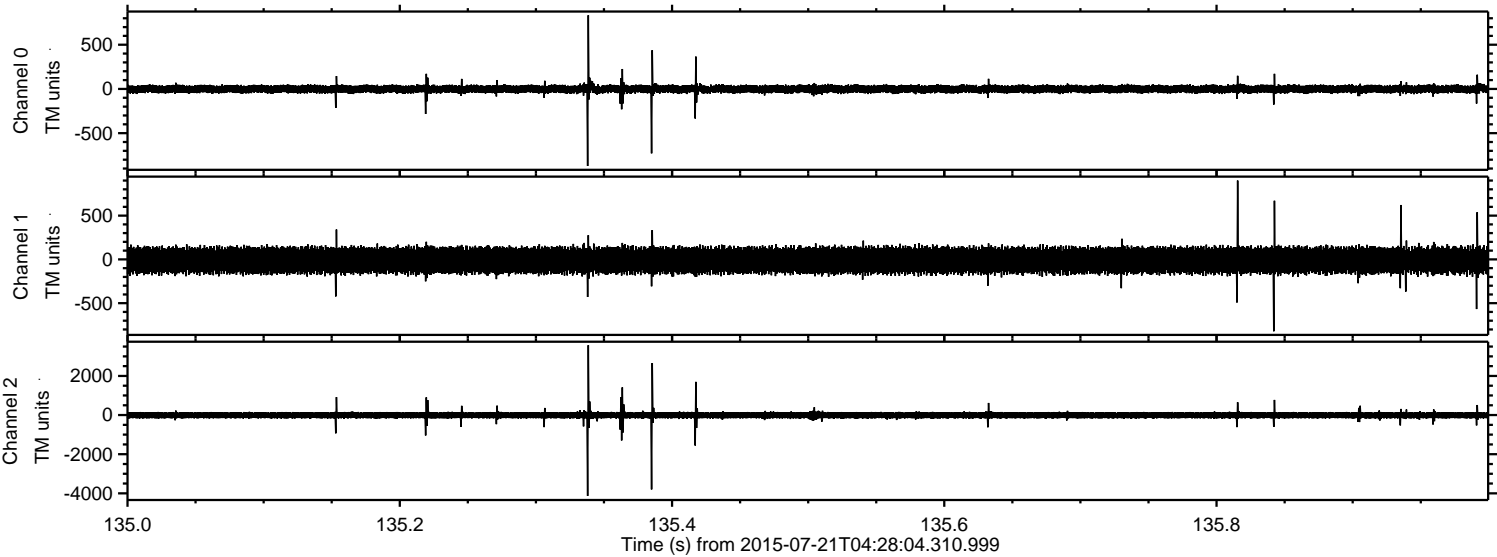
ELMAVAN 3D WAVEFORMS (Measured data sampled at 50 kHz) 51000 packets of 144 samples from 2015-07-21T04:28:04.310.999. Part 101/147

Processed Tue Jul 21 06:34:52 2015 by ELM ver.2012-10-06 from 001__elm20150721_042803__dat00.bin



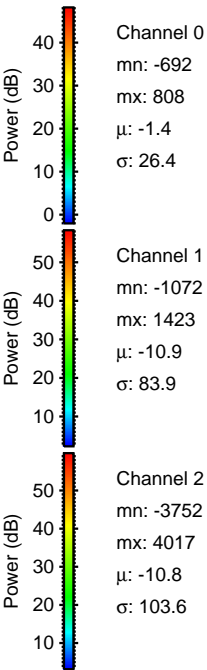
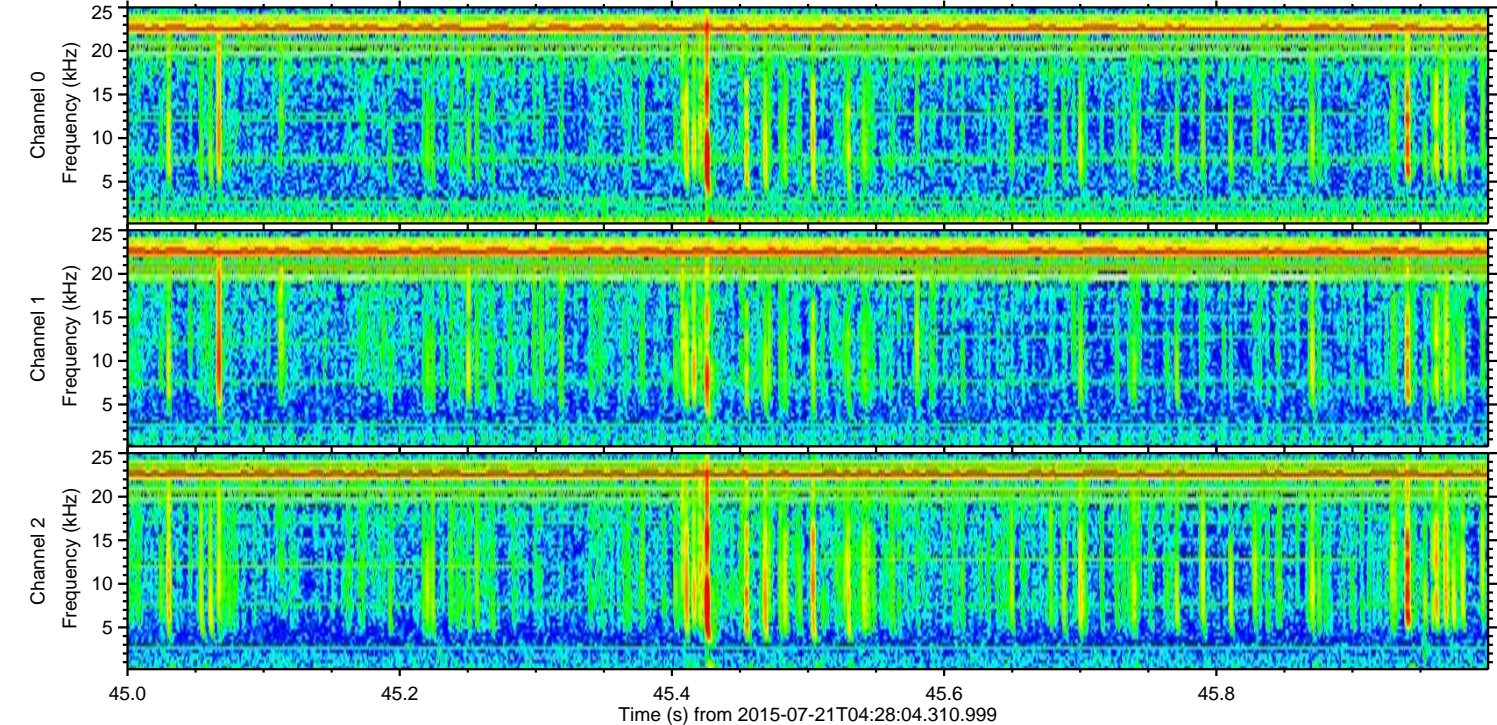
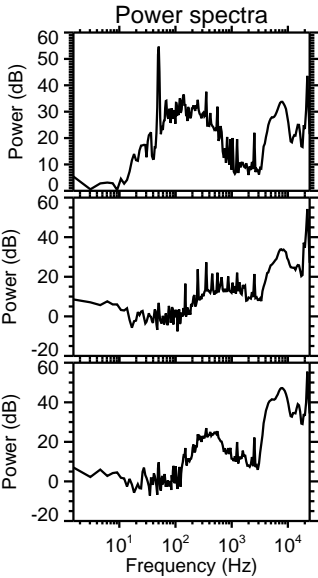
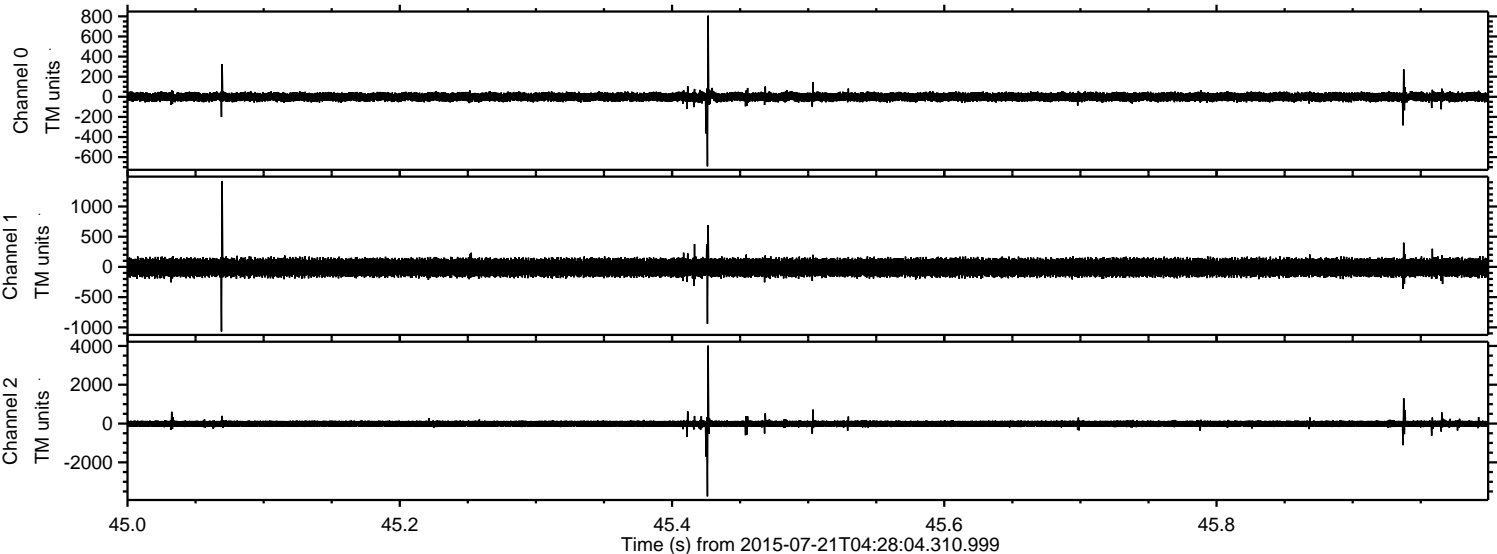
ELMAVAN 3D WAVEFORMS (Measured data sampled at 50 kHz) 51000 packets of 144 samples from 2015-07-21T04:28:04.310.999. Part 136/147

Processed Tue Jul 21 06:34:53 2015 by ELM ver.2012-10-06 from 001__elm20150721_042803__dat00.bin



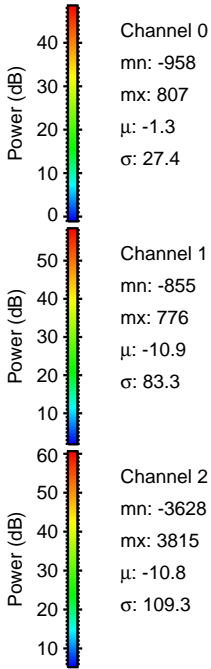
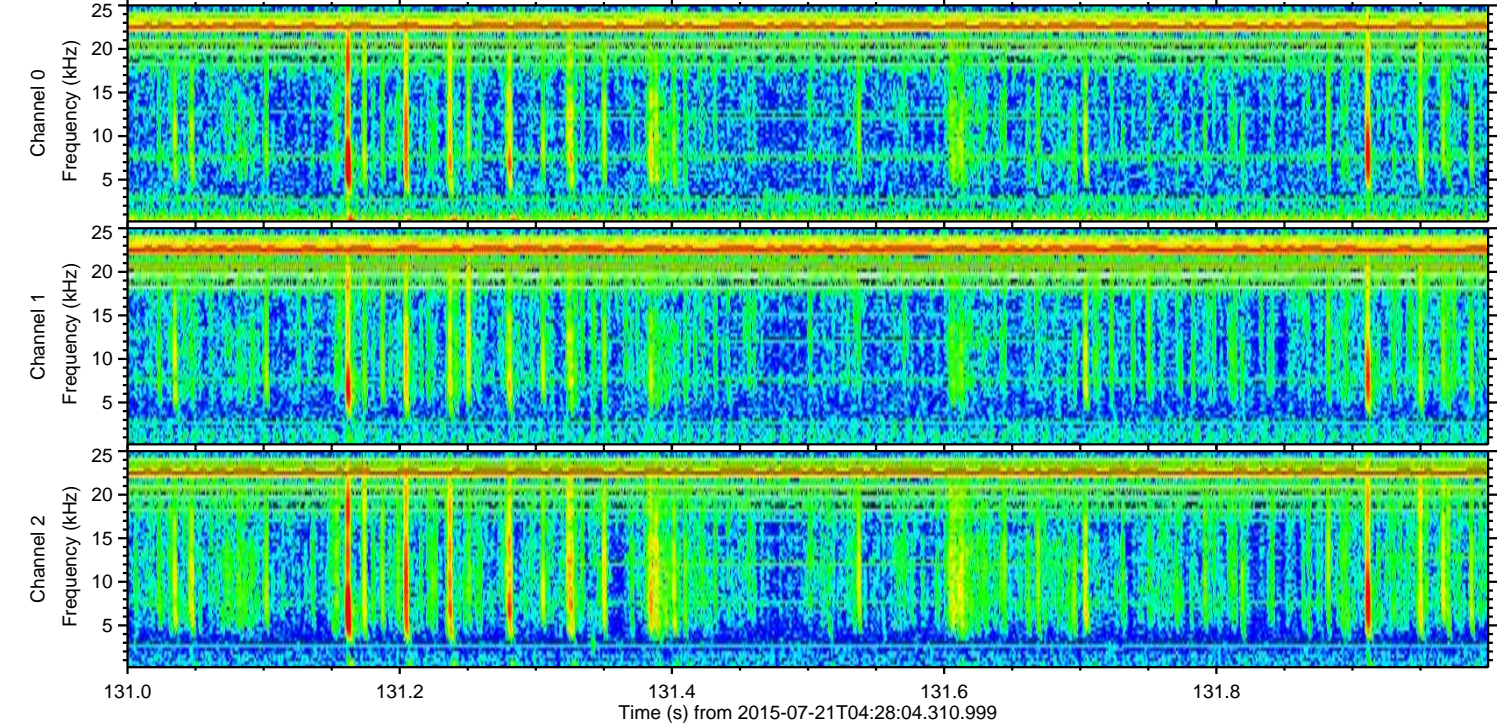
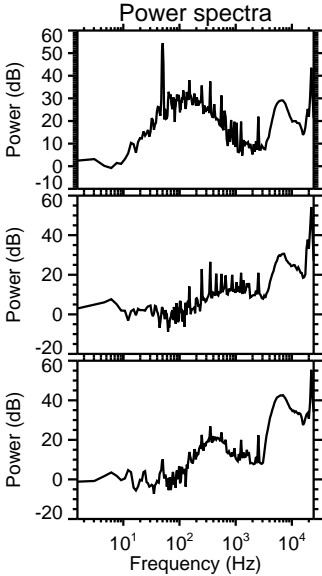
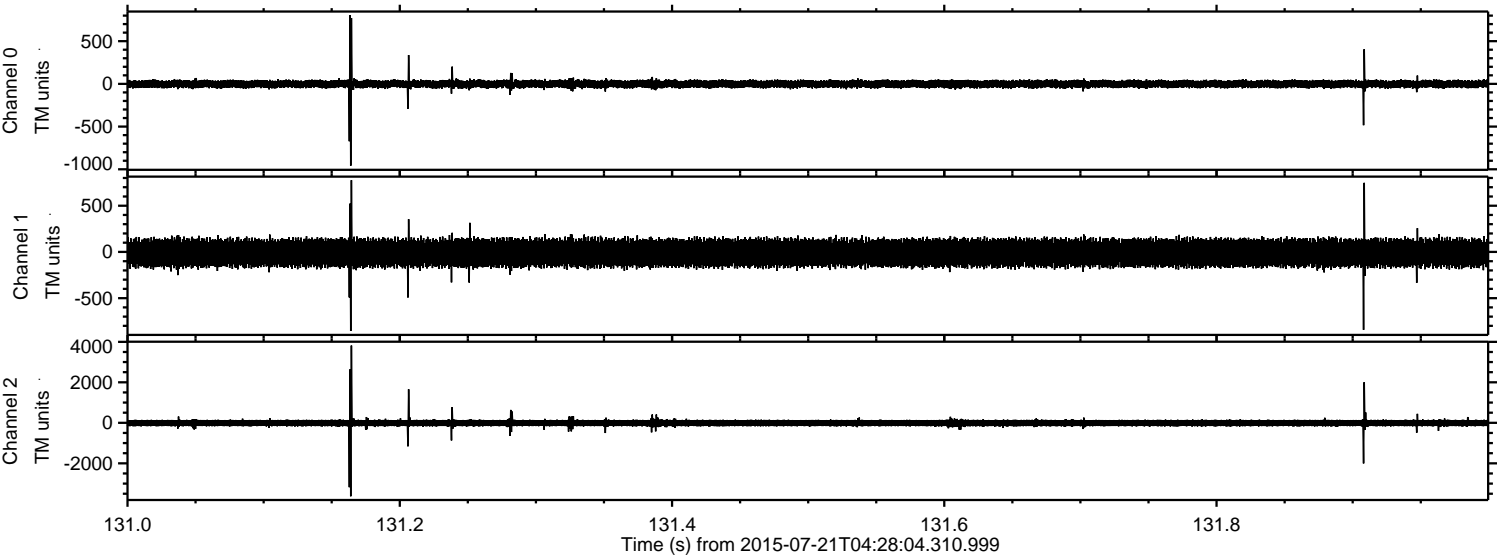
ELMAVAN 3D WAVEFORMS (Measured data sampled at 50 kHz) 51000 packets of 144 samples from 2015-07-21T04:28:04.310.999. Part 46/147

Processed Tue Jul 21 06:34:54 2015 by ELM ver.2012-10-06 from 001__elm20150721_042803__dat00.bin



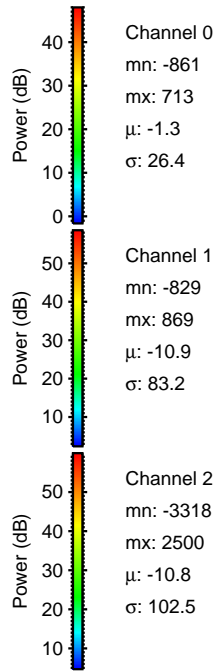
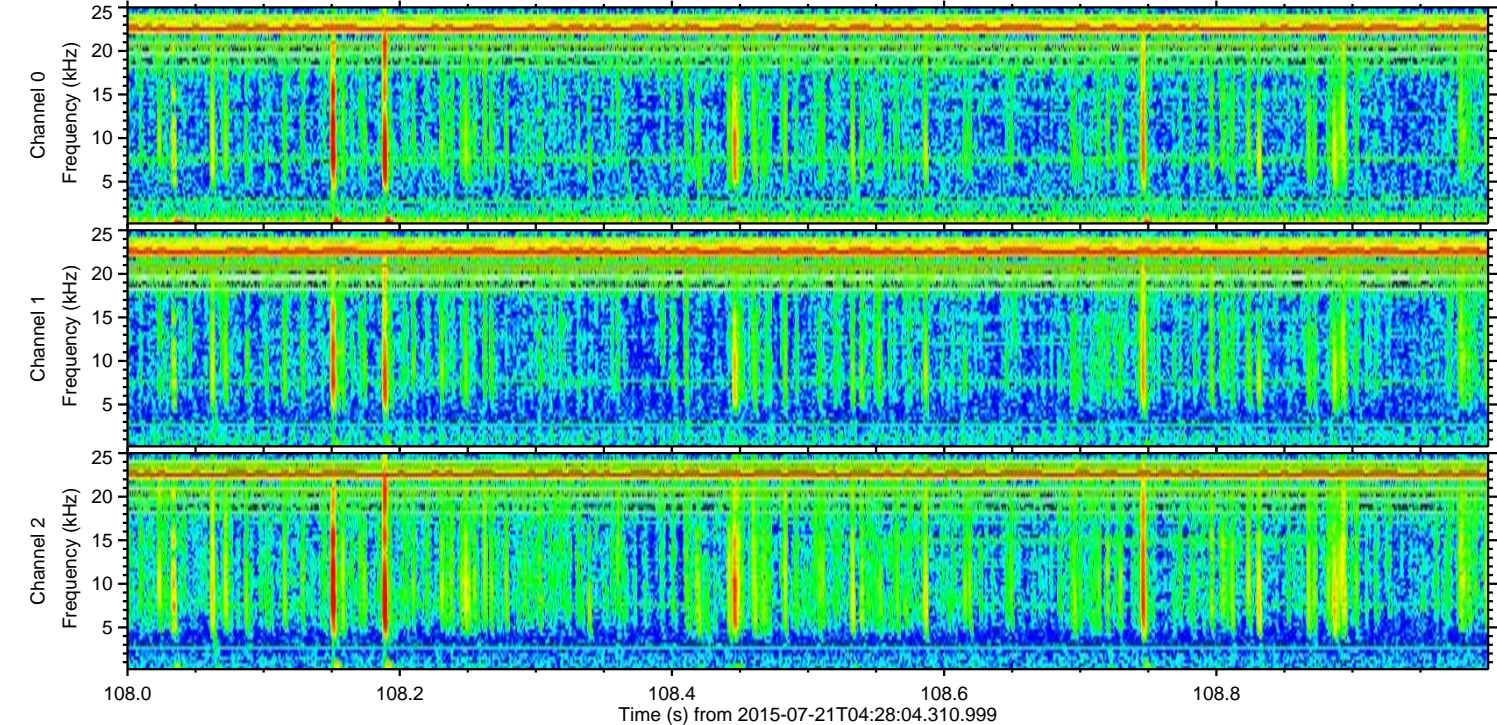
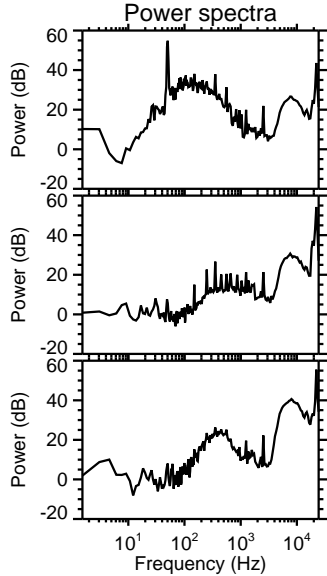
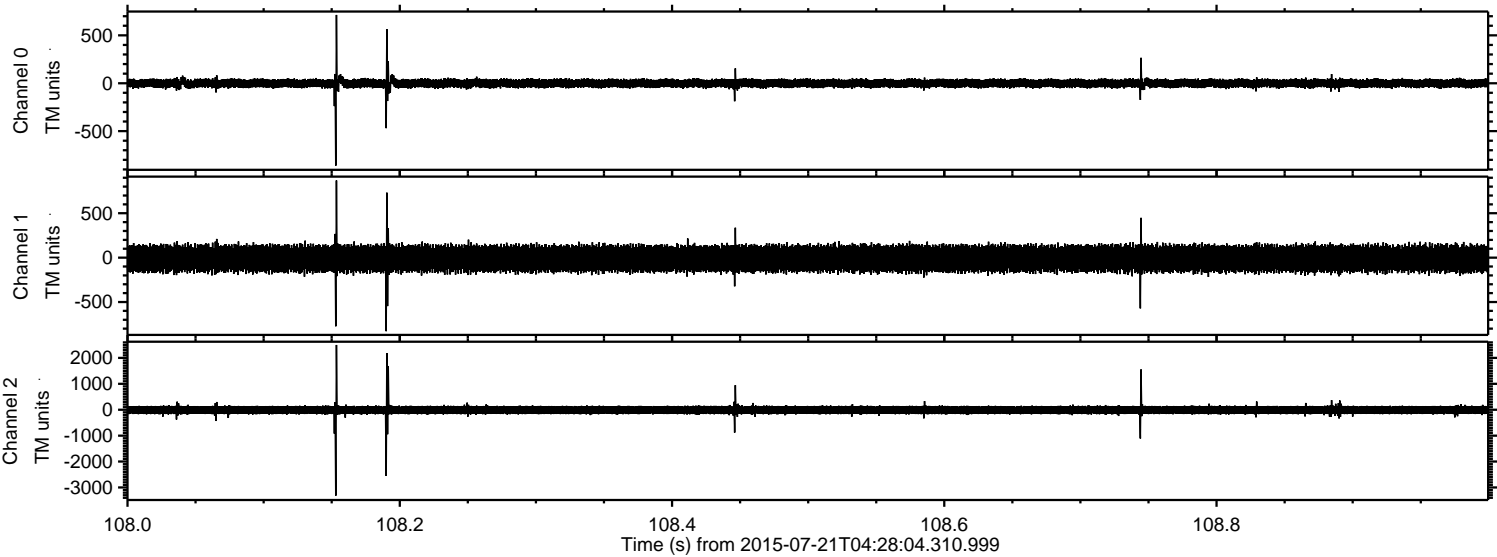
ELMAVAN 3D WAVEFORMS (Measured data sampled at 50 kHz) 51000 packets of 144 samples from 2015-07-21T04:28:04.310.999. Part 132/147

Processed Tue Jul 21 06:34:55 2015 by ELM ver.2012-10-06 from 001__elm20150721_042803__dat00.bin

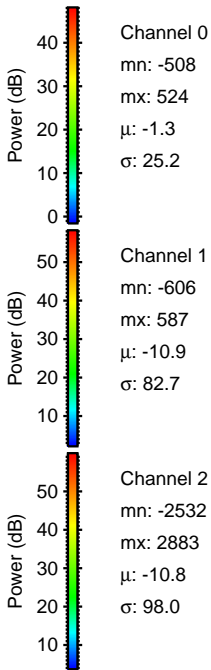
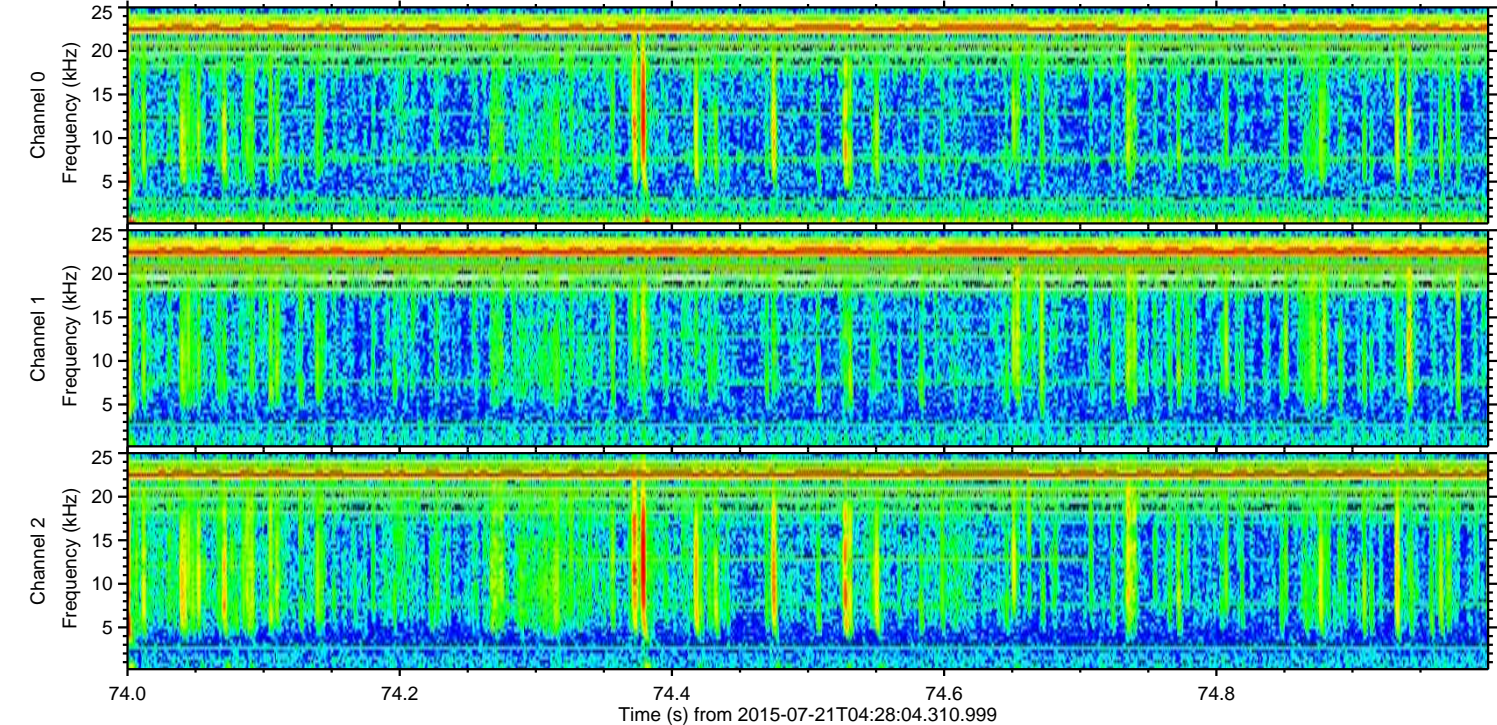
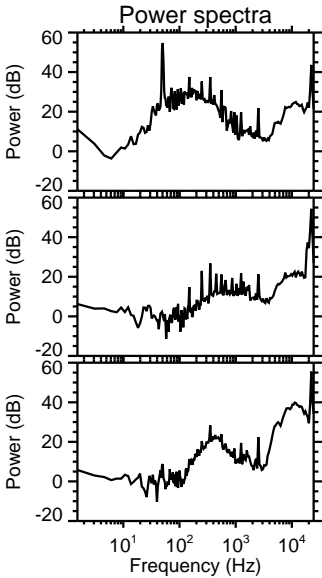
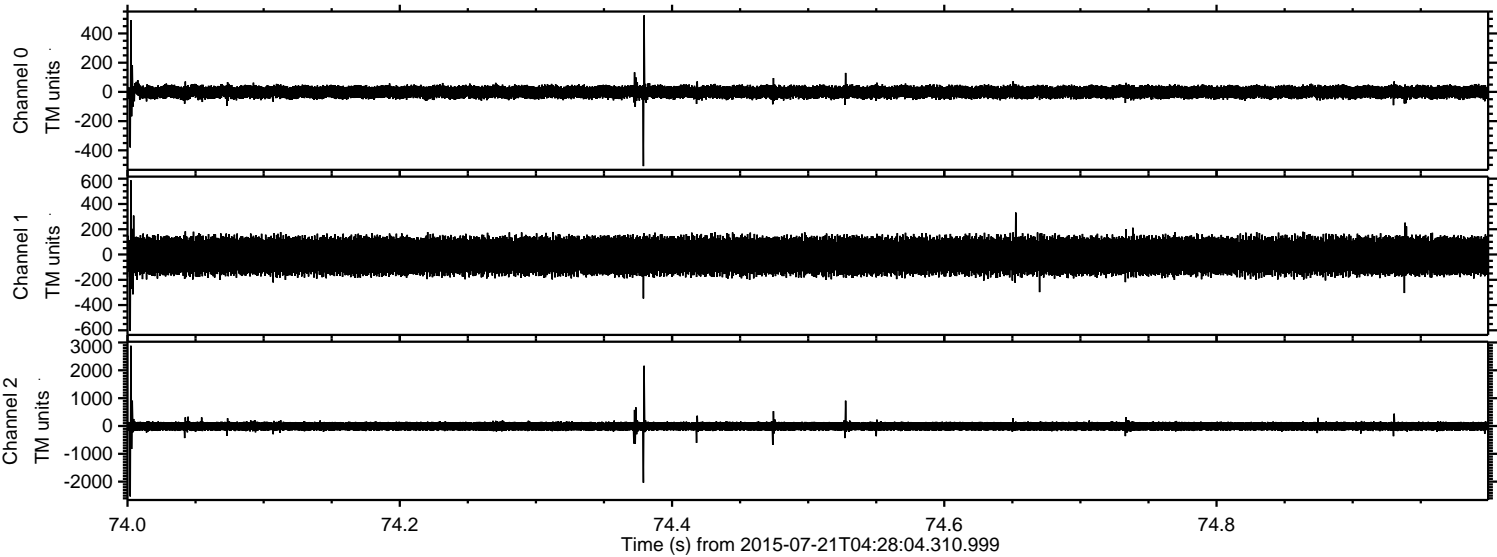


ELMAVAN 3D WAVEFORMS (Measured data sampled at 50 kHz) 51000 packets of 144 samples from 2015-07-21T04:28:04.310.999. Part 109/147

Processed Tue Jul 21 06:34:56 2015 by ELM ver.2012-10-06 from 001__elm20150721_042803__dat00.bin



Processed Tue Jul 21 06:34:57 2015 by ELM ver.2012-10-06 from 001__elm20150721_042803__dat00.bin



ELMAVAN 3D WAVEFORMS (Measured data sampled at 50 kHz) 51000 packets of 144 samples from 2015-07-21T04:28:04.310.999. Part 17/147

Processed Tue Jul 21 06:34:58 2015 by ELM ver.2012-10-06 from 001__elm20150721_042803__dat00.bin

