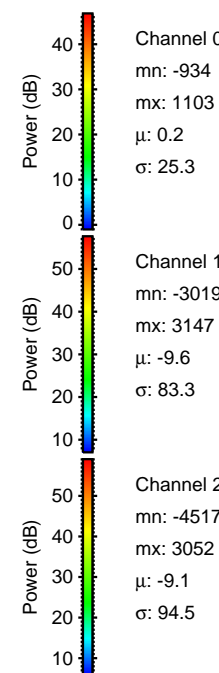
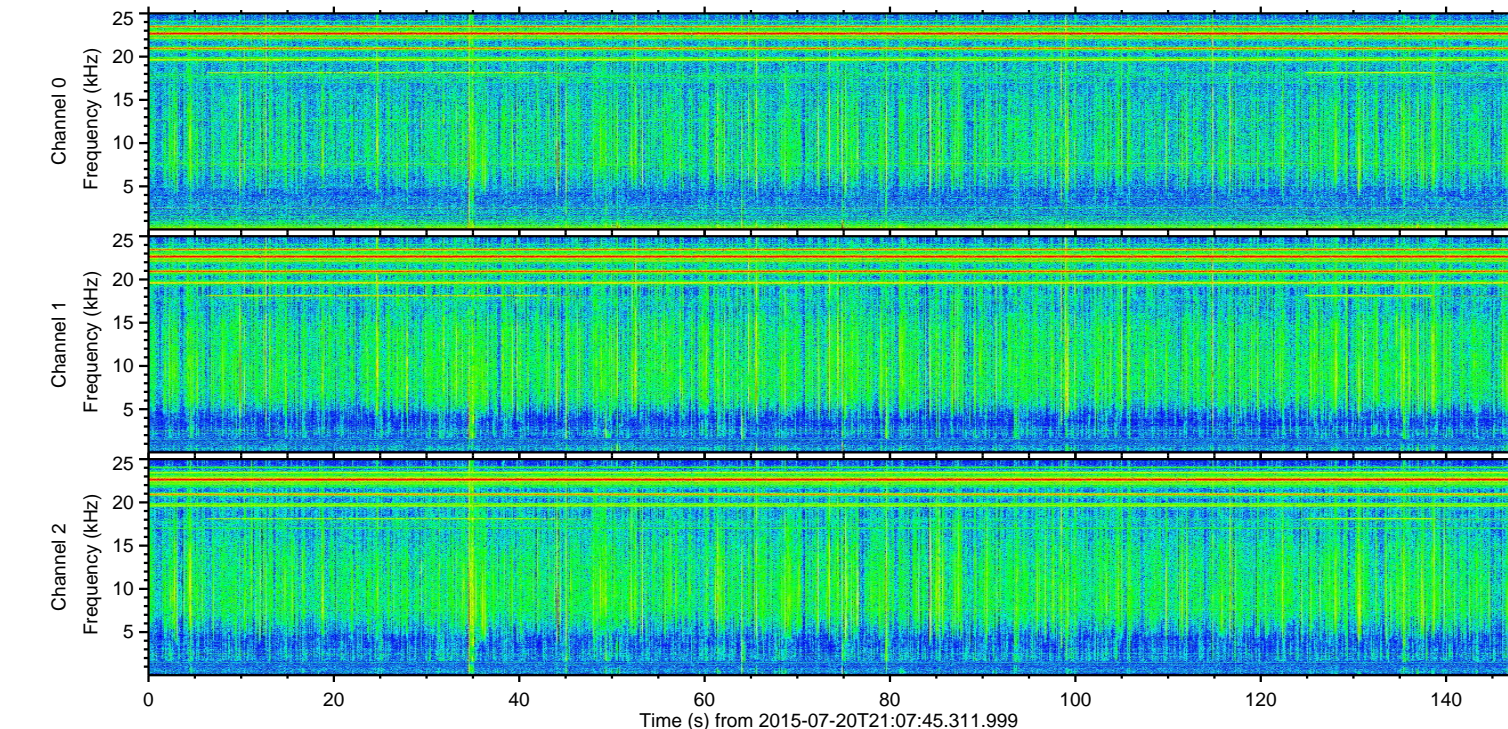
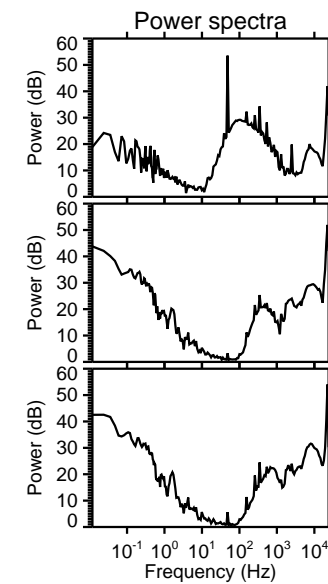
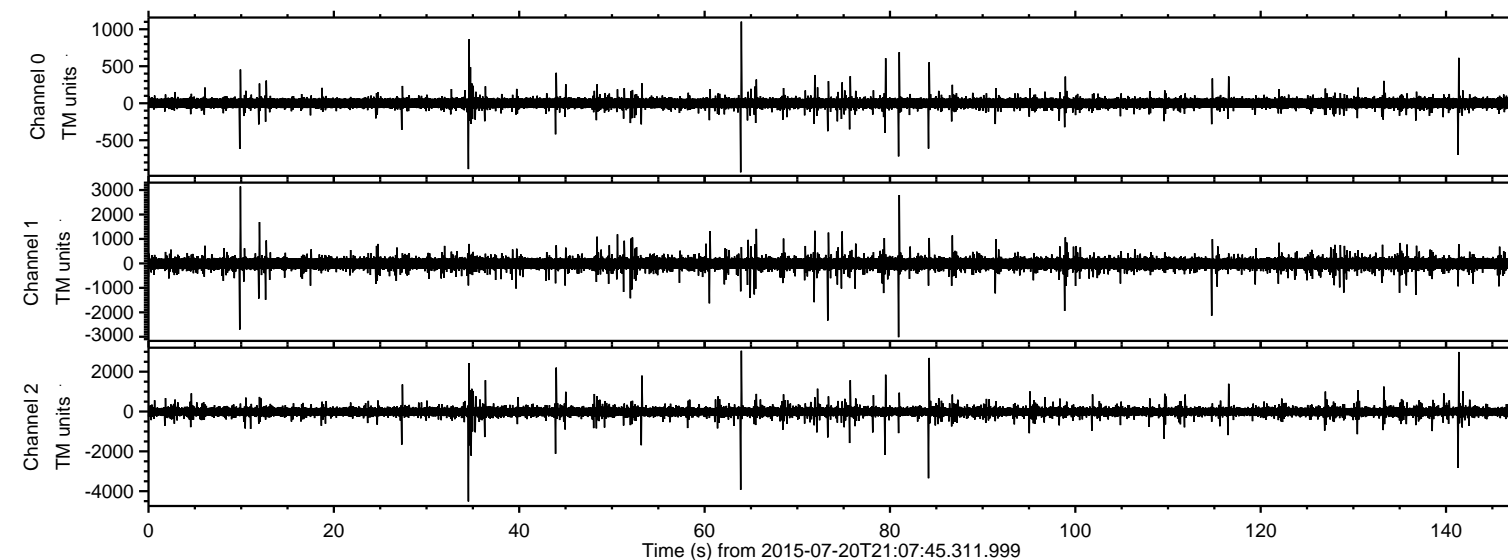
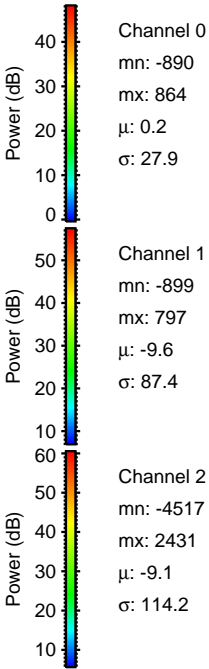
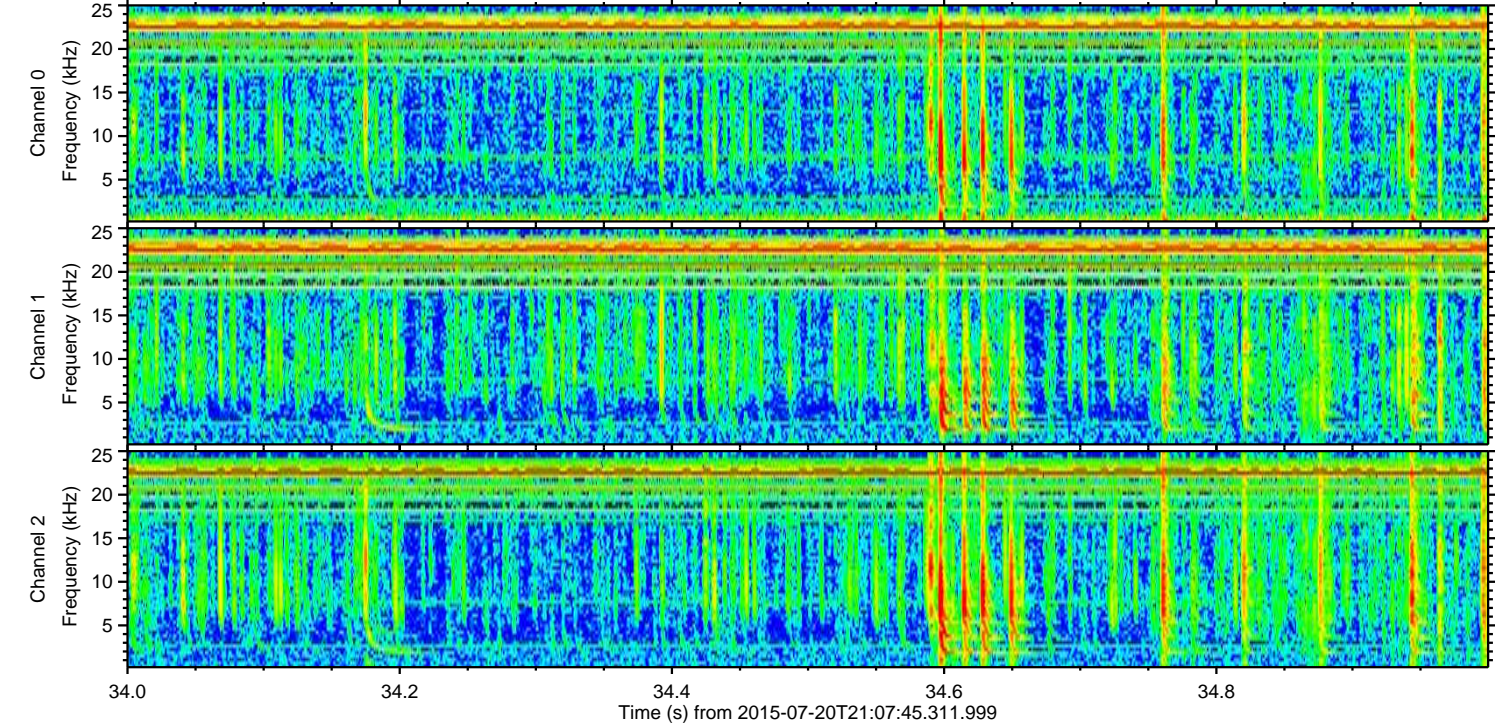
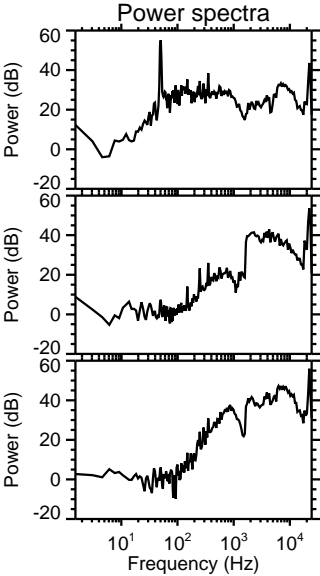
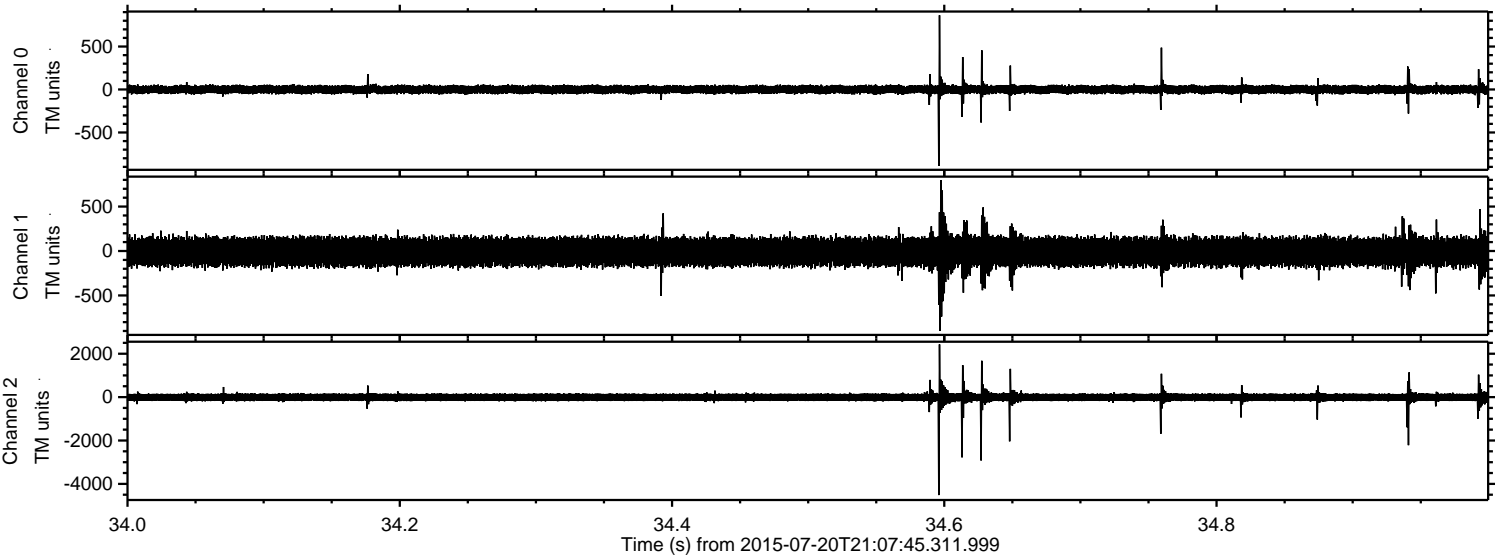


ELMAVAN 3D WAVEFORMS (Measured data sampled at 50 kHz) 51000 packets of 144 samples from 2015-07-20T21:07:45.311.999.

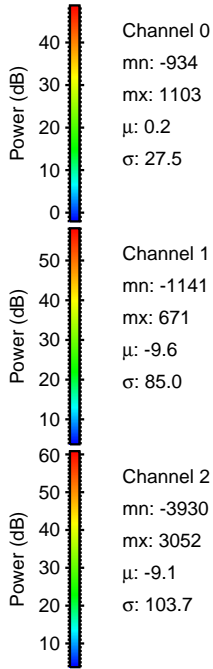
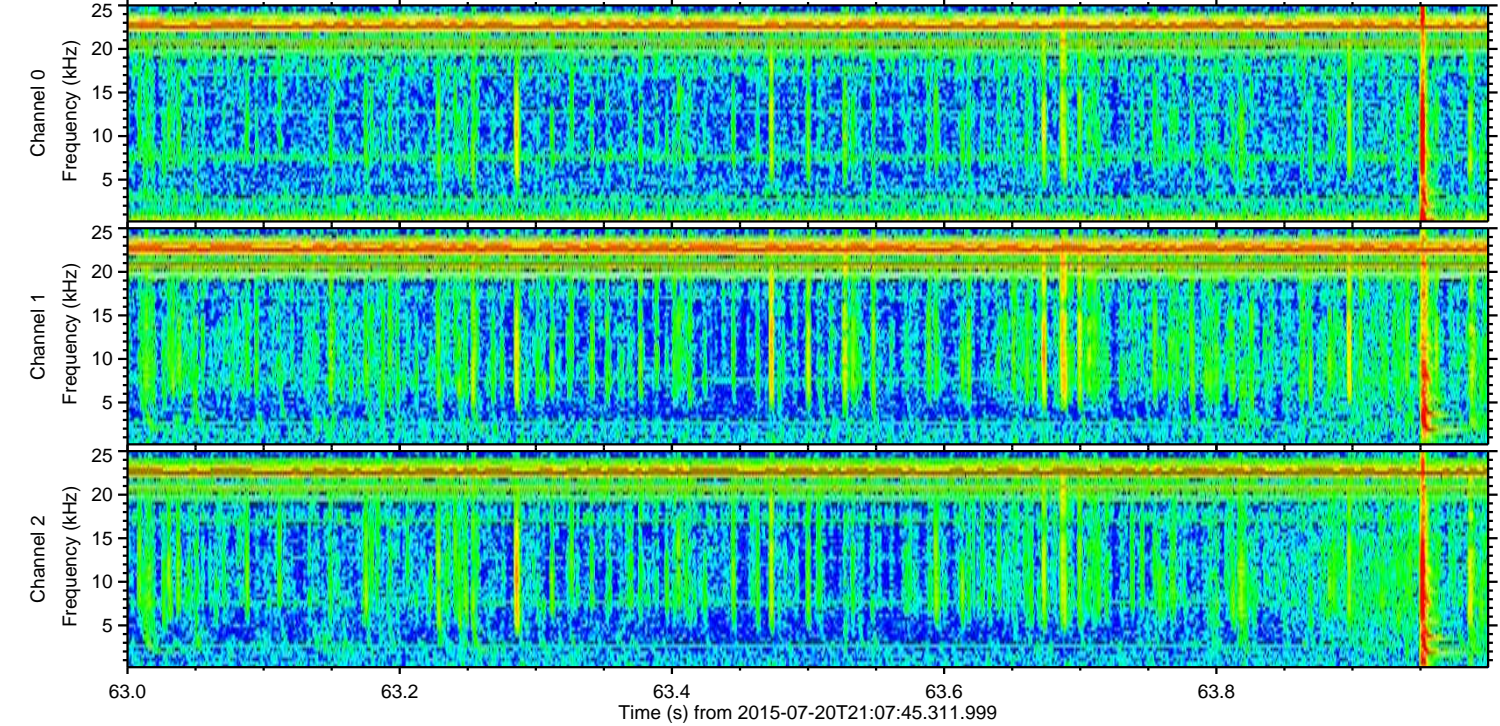
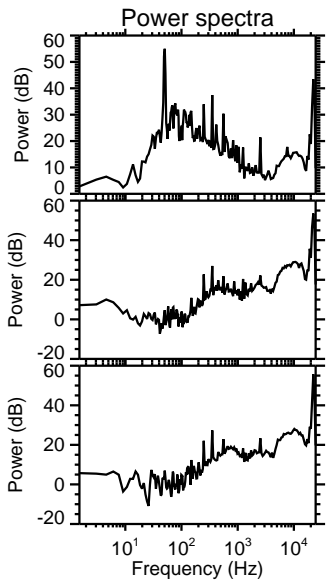
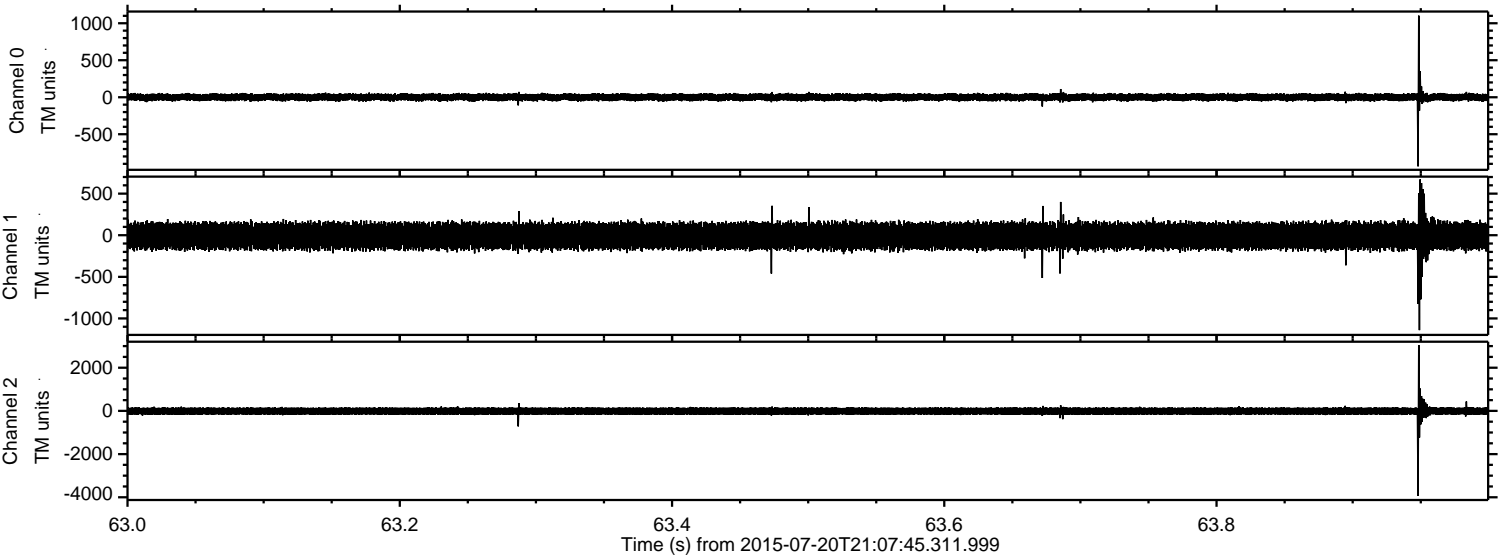
Processed Mon Jul 20 23:13:49 2015 by ELM ver.2012-10-06 from 001__elm20150720_210744__dat00.bin



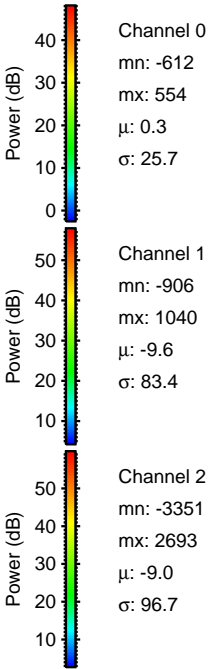
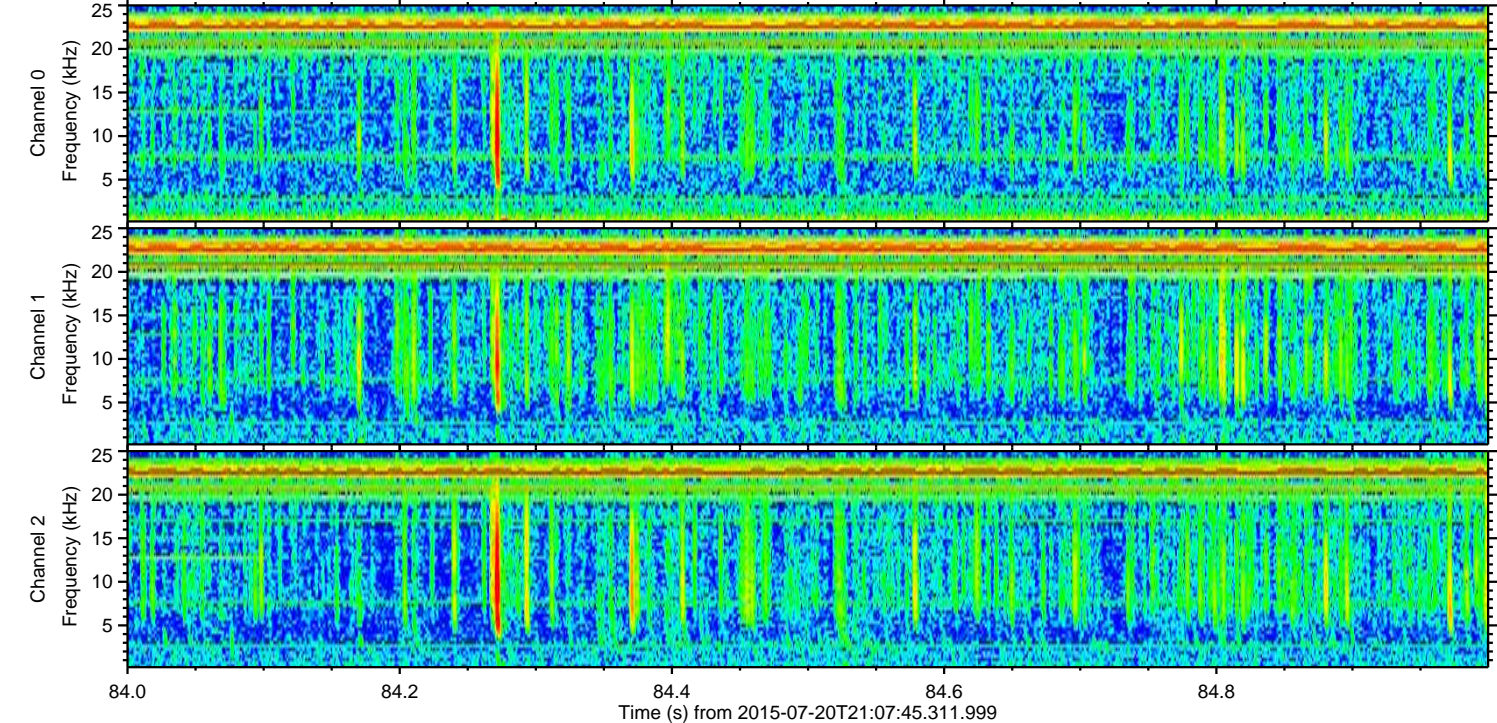
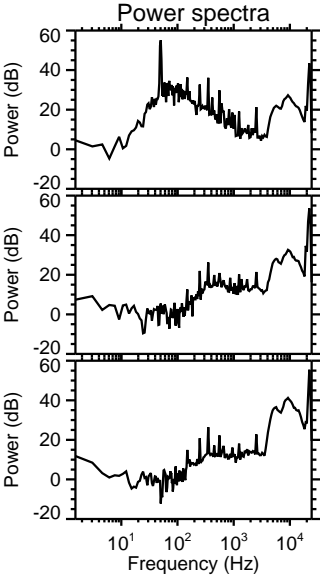
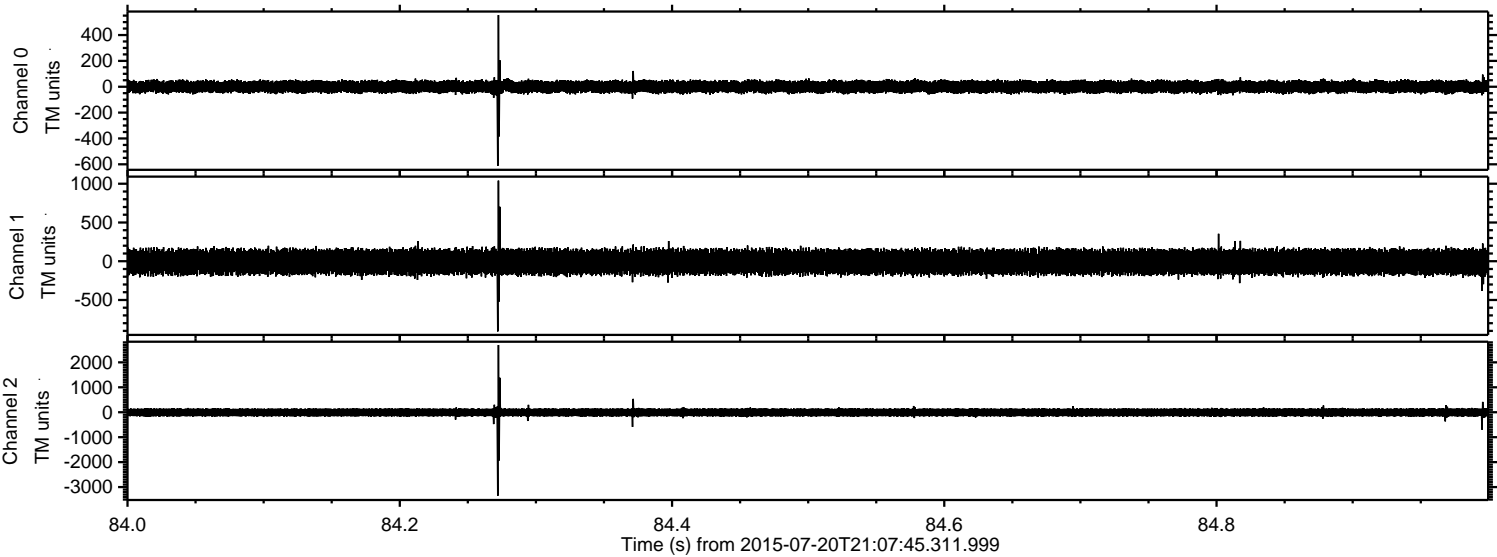
Processed Mon Jul 20 23:14:02 2015 by ELM ver.2012-10-06 from 001__elm20150720_210744__dat00.bin



Processed Mon Jul 20 23:14:03 2015 by ELM ver.2012-10-06 from 001__elm20150720_210744__dat00.bin

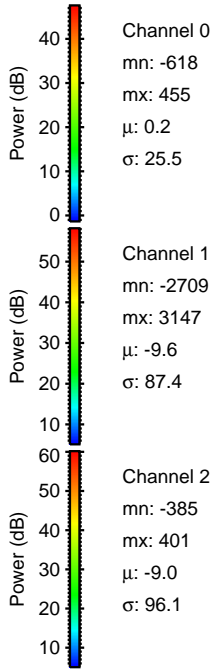
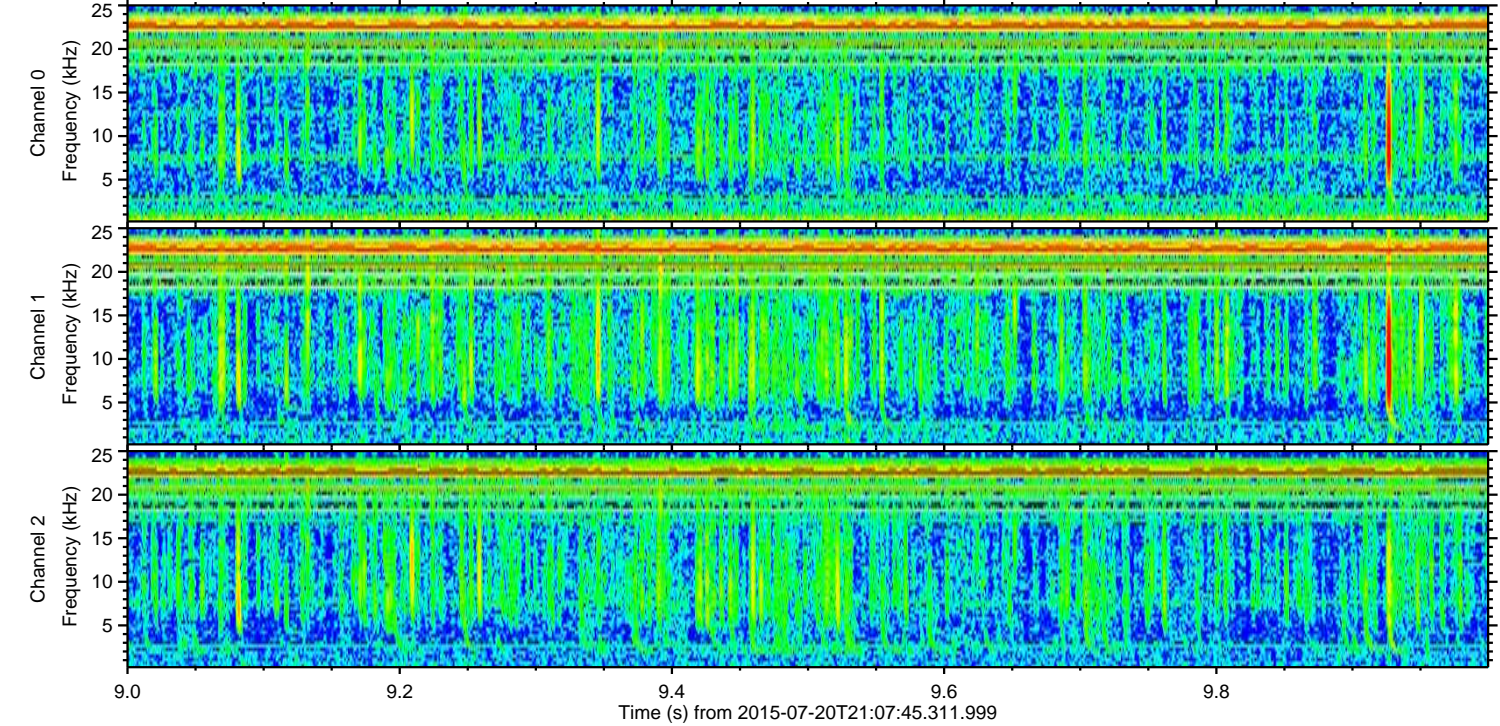
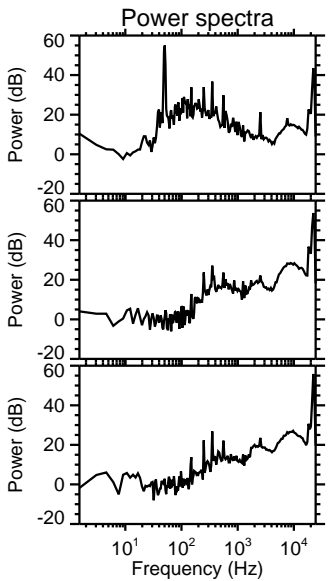
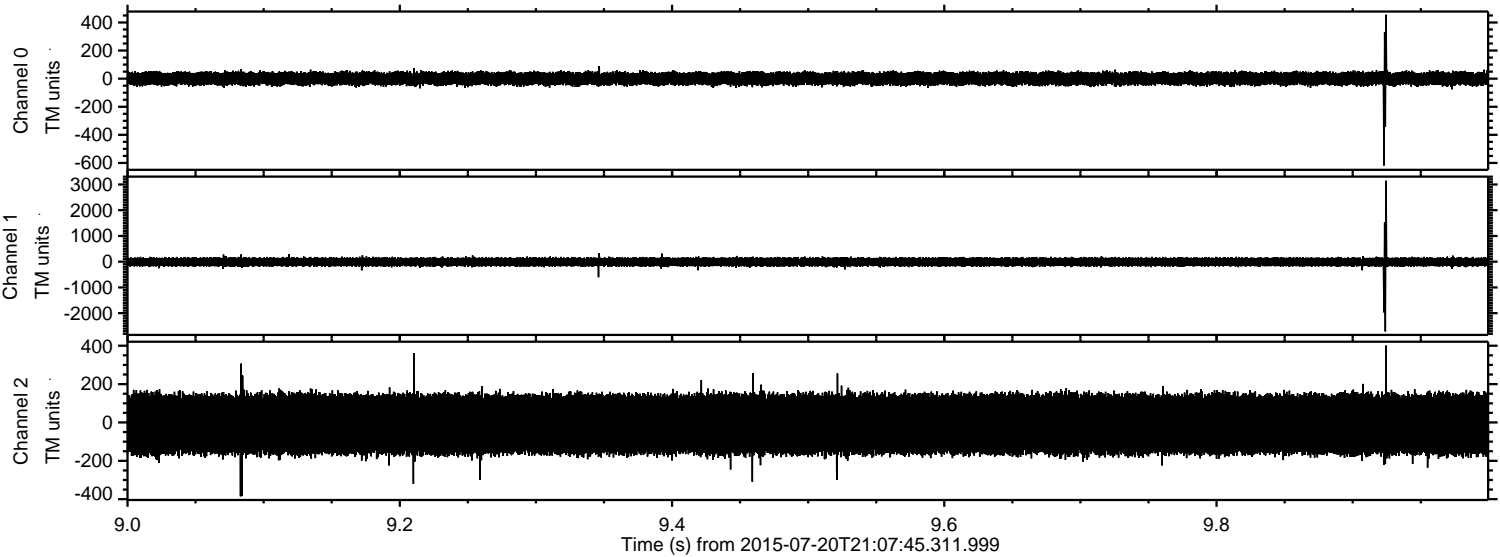


Processed Mon Jul 20 23:14:05 2015 by ELM ver.2012-10-06 from 001__elm20150720_210744__dat00.bin



ELMAVAN 3D WAVEFORMS (Measured data sampled at 50 kHz) 51000 packets of 144 samples from 2015-07-20T21:07:45.311.999. Part 10/147

Processed Mon Jul 20 23:14:06 2015 by ELM ver.2012-10-06 from 001__elm20150720_210744__dat00.bin

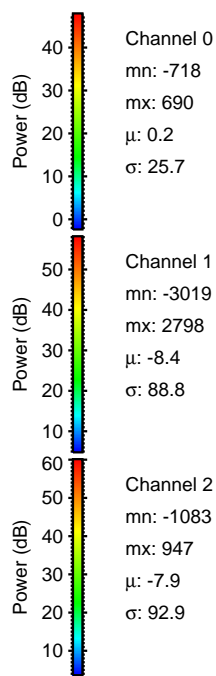
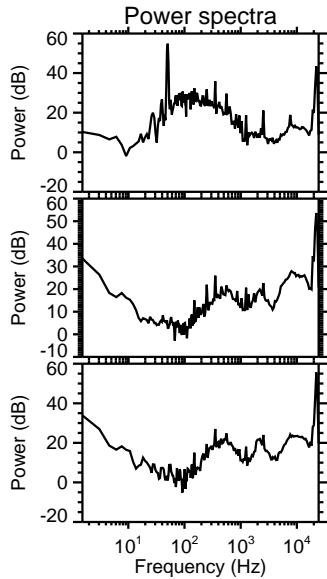
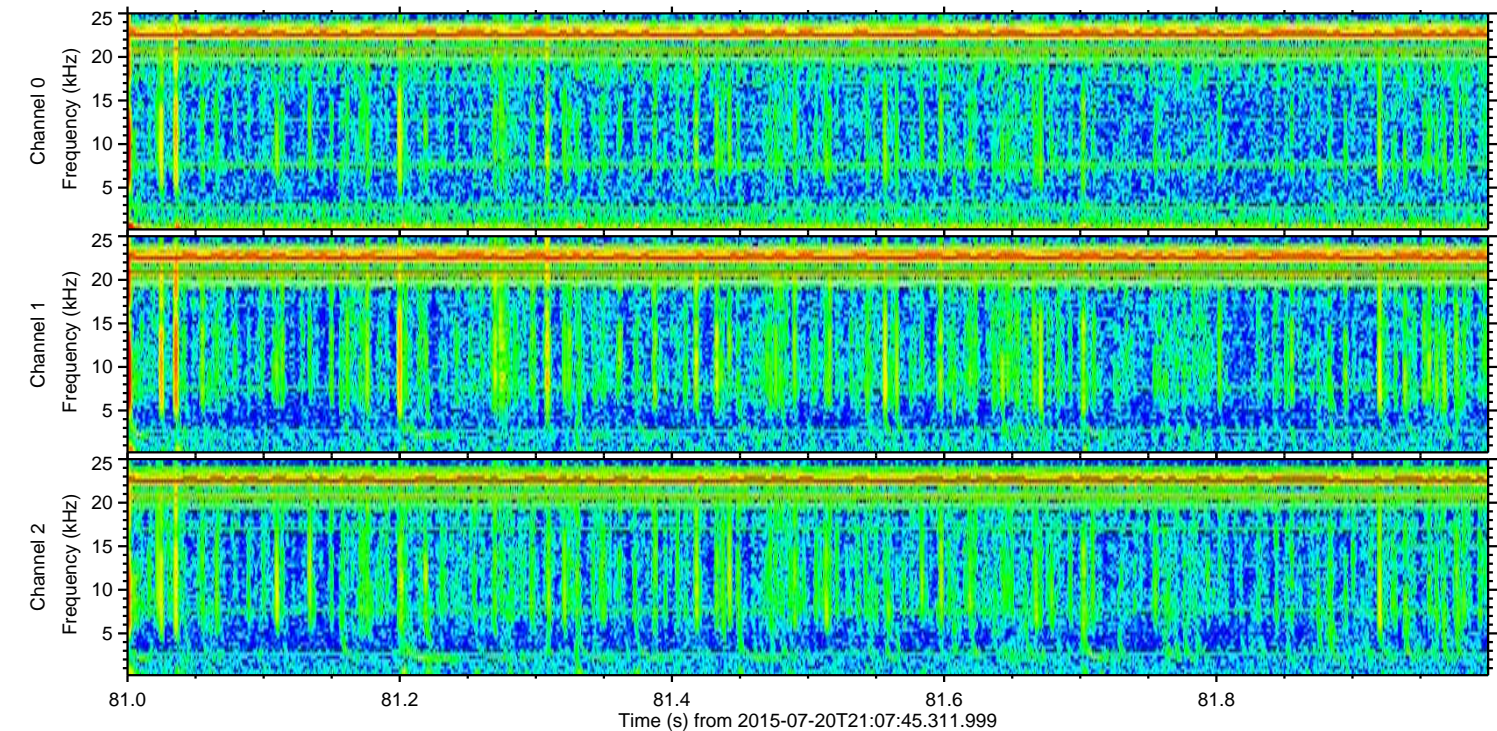
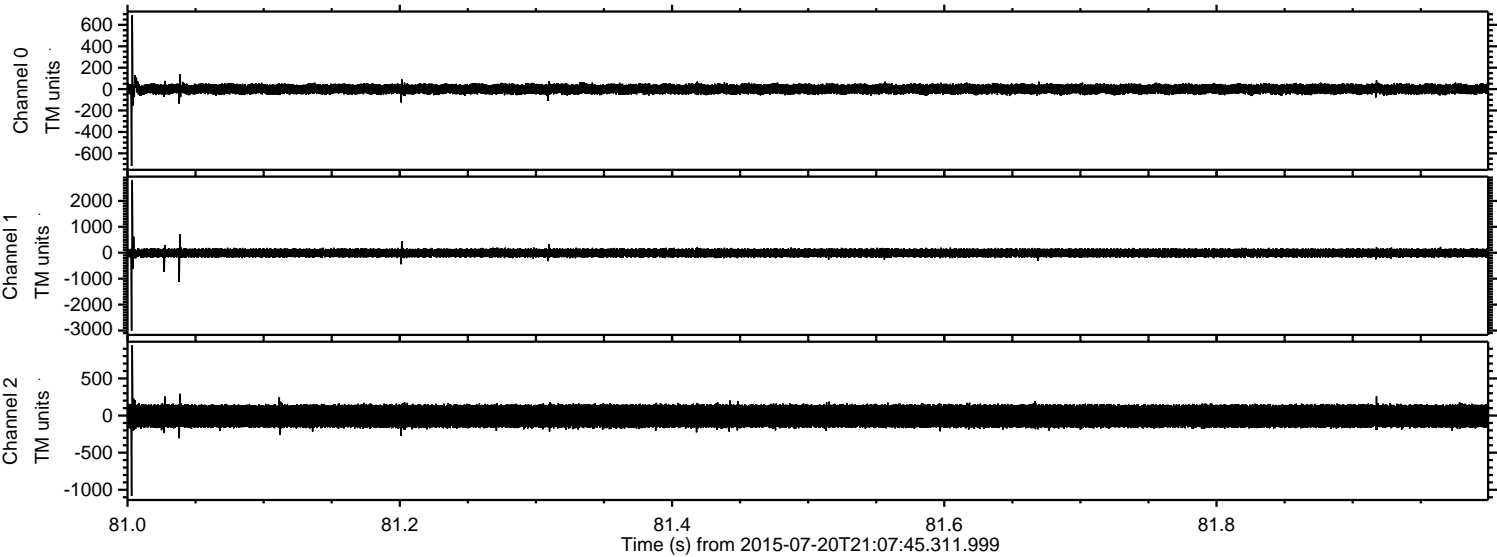


Channel 0
mn: -618
mx: 455
 μ : 0.2
 σ : 25.5

Channel 1
mn: -2709
mx: 3147
 μ : -9.6
 σ : 87.4

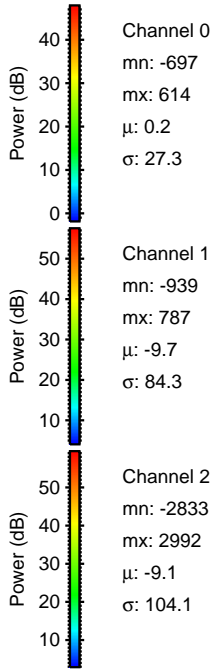
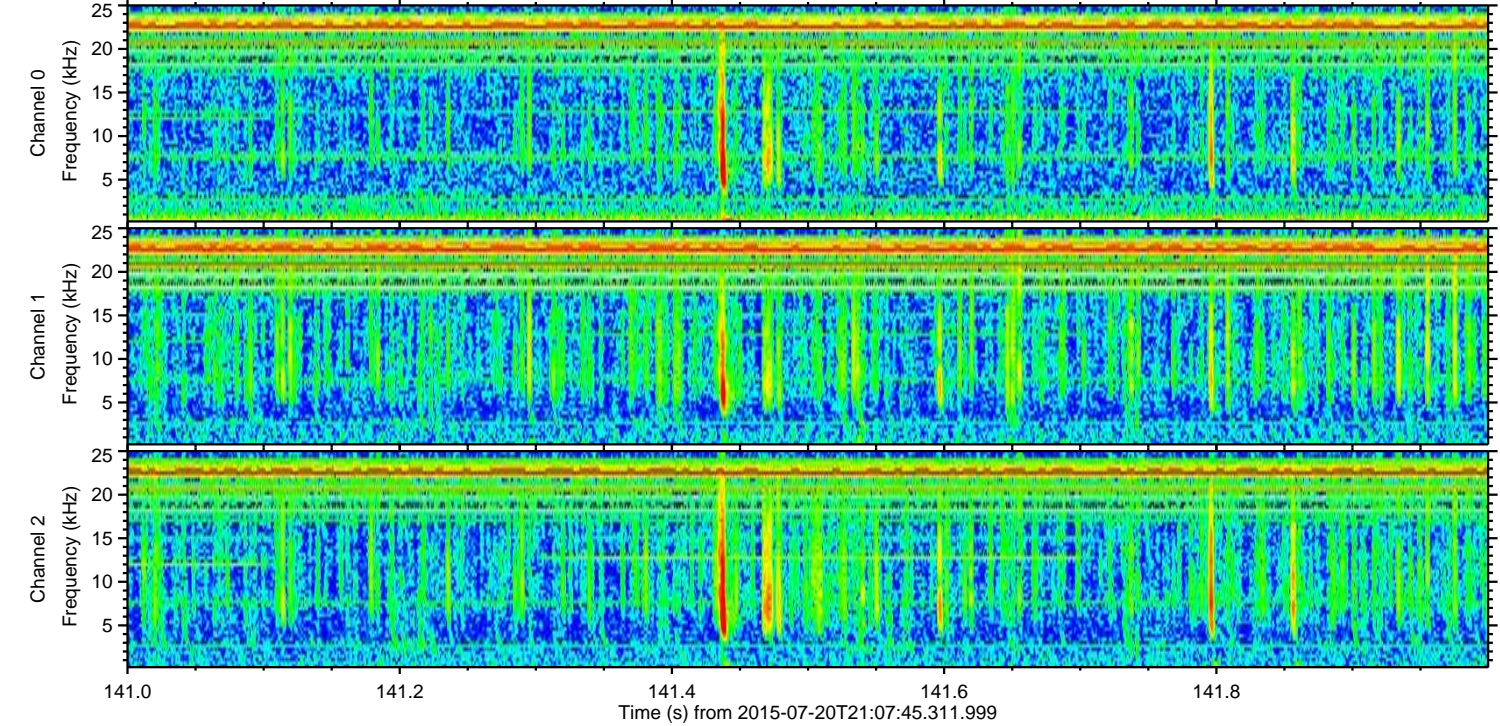
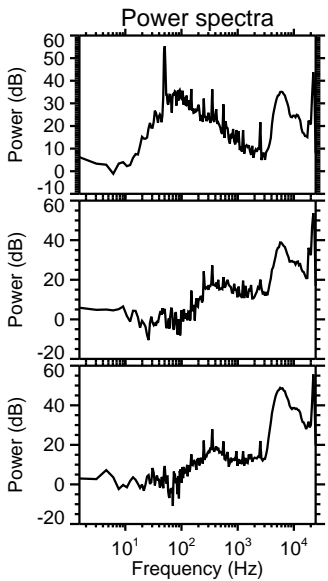
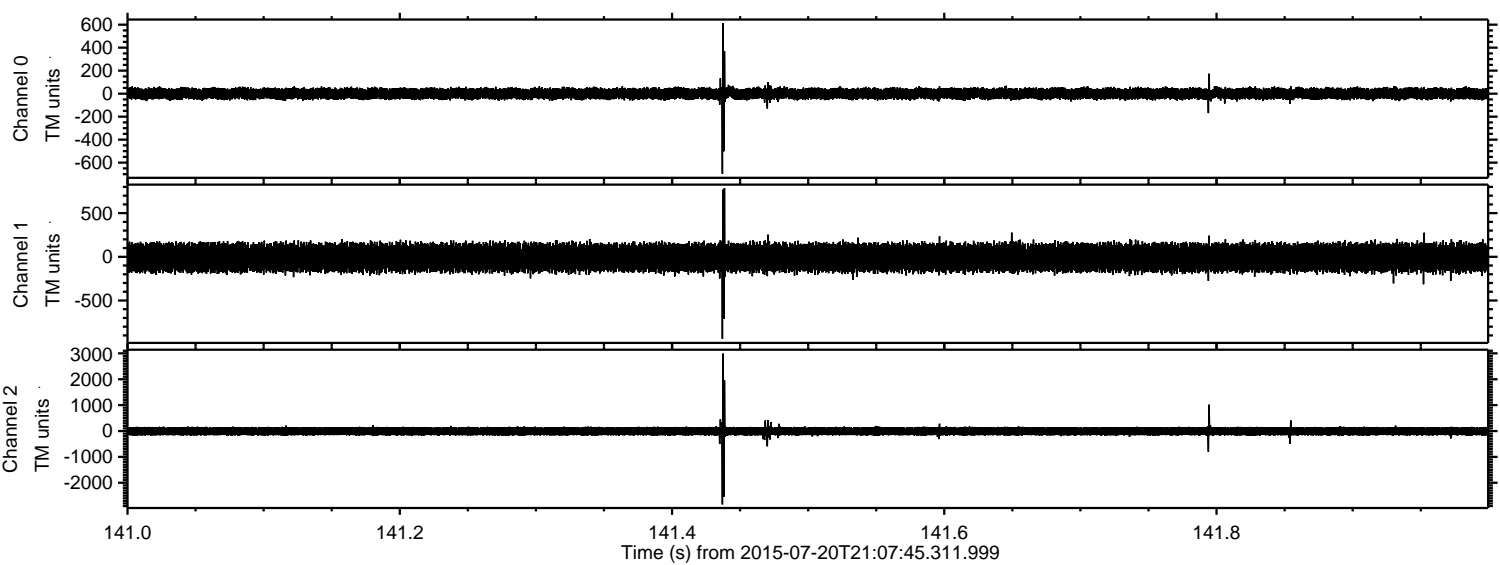
Channel 2
mn: -385
mx: 401
 μ : -9.0
 σ : 96.1

Processed Mon Jul 20 23:14:07 2015 by ELM ver.2012-10-06 from 001__elm20150720_210744__dat00.bin

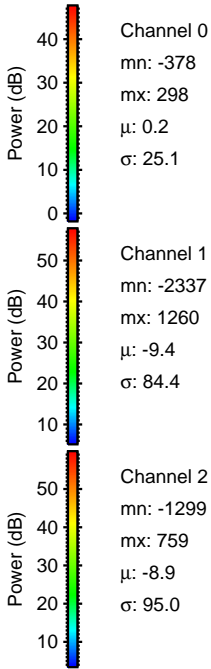
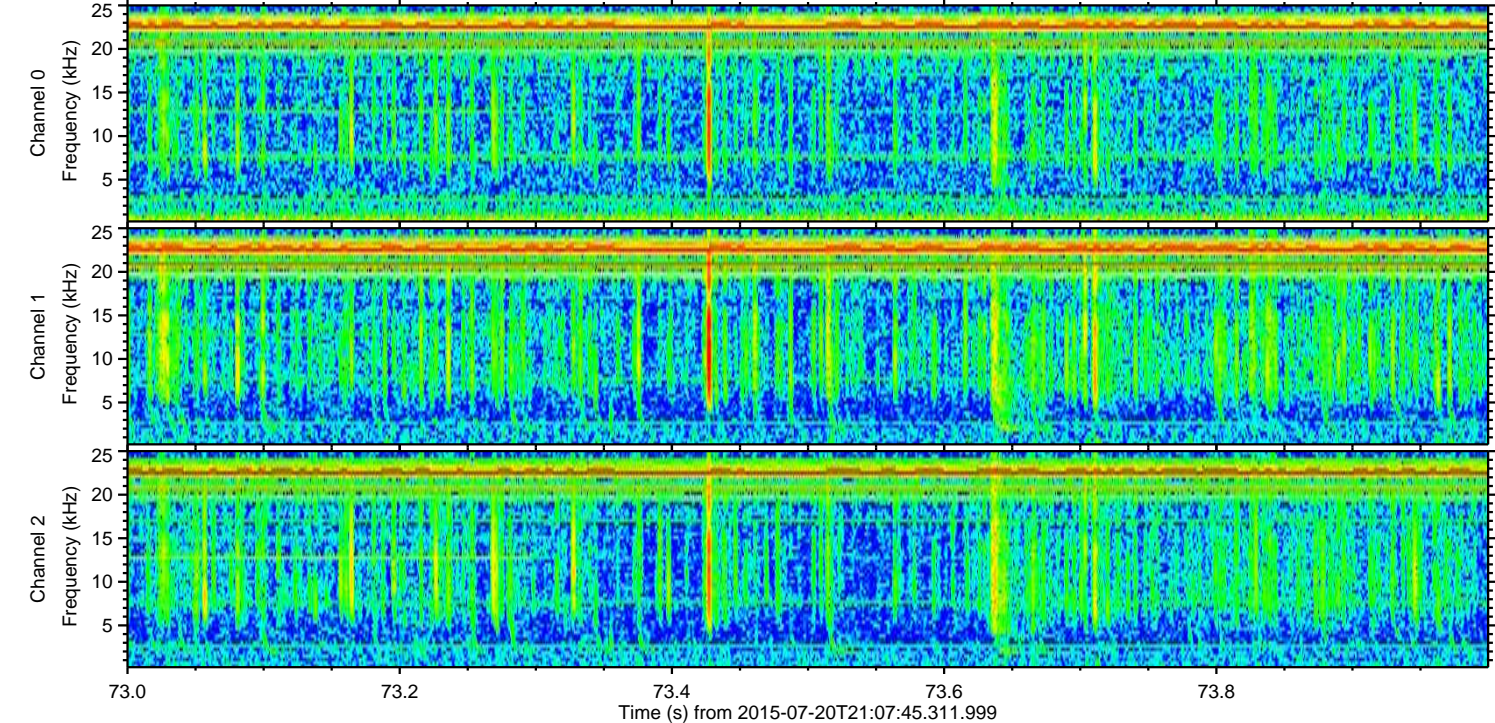
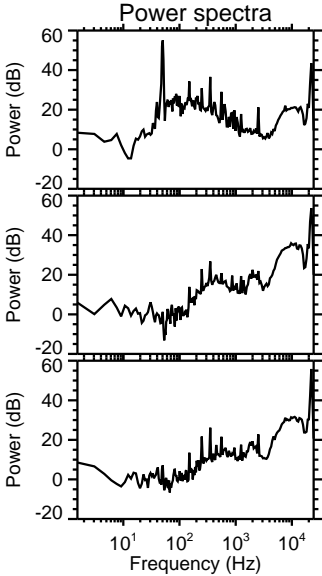
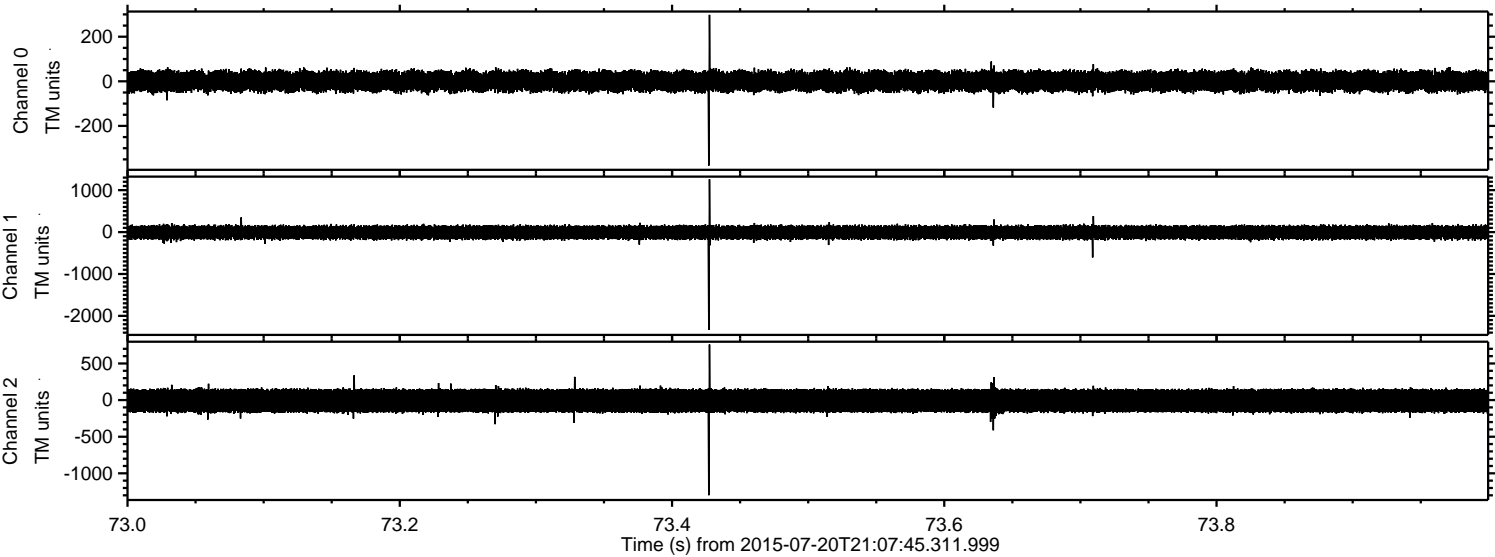


ELMAVAN 3D WAVEFORMS (Measured data sampled at 50 kHz) 51000 packets of 144 samples from 2015-07-20T21:07:45.311.999. Part 142/147

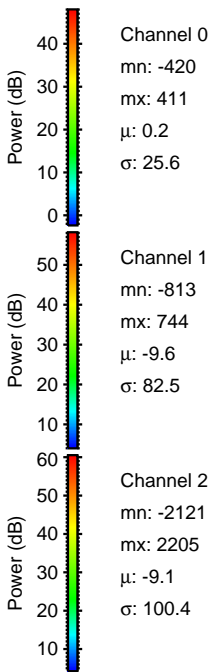
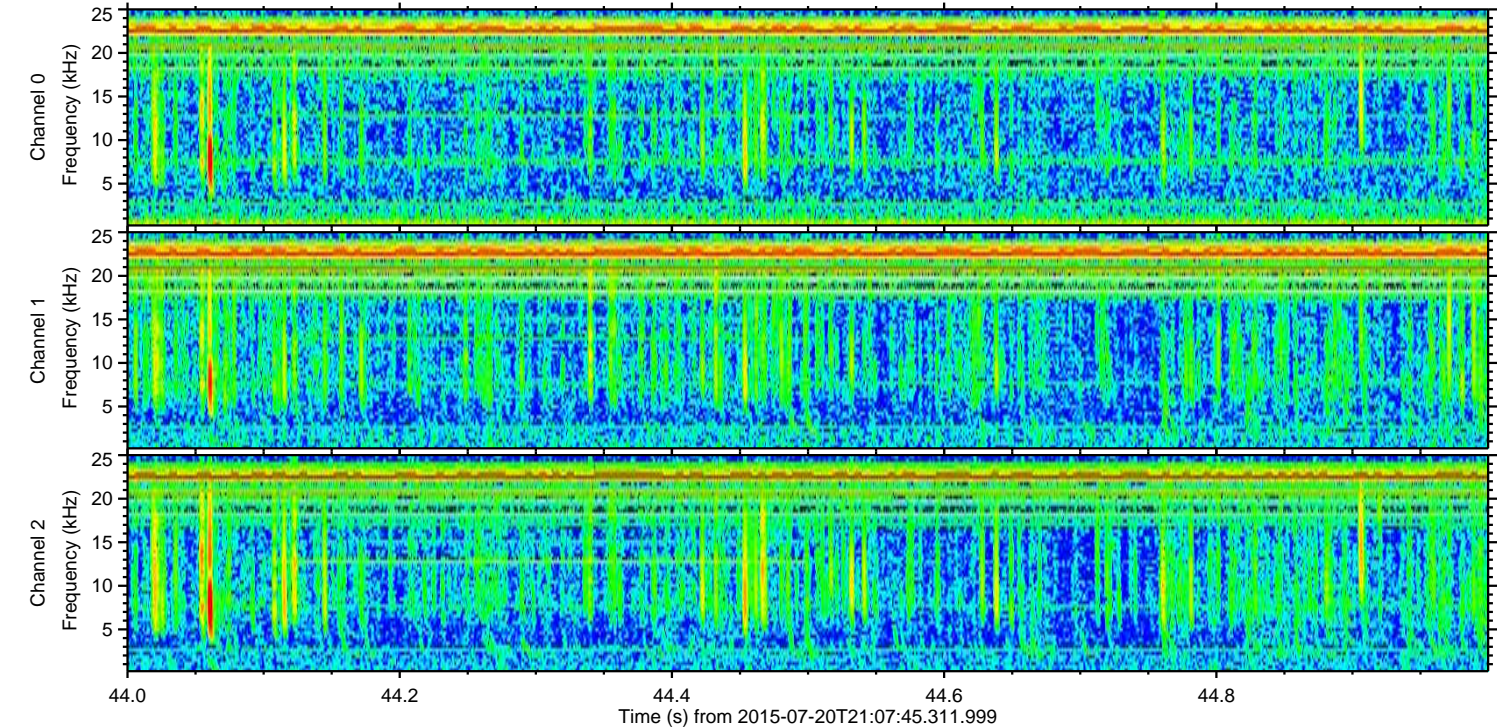
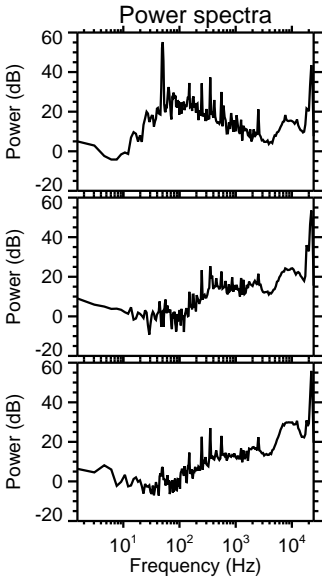
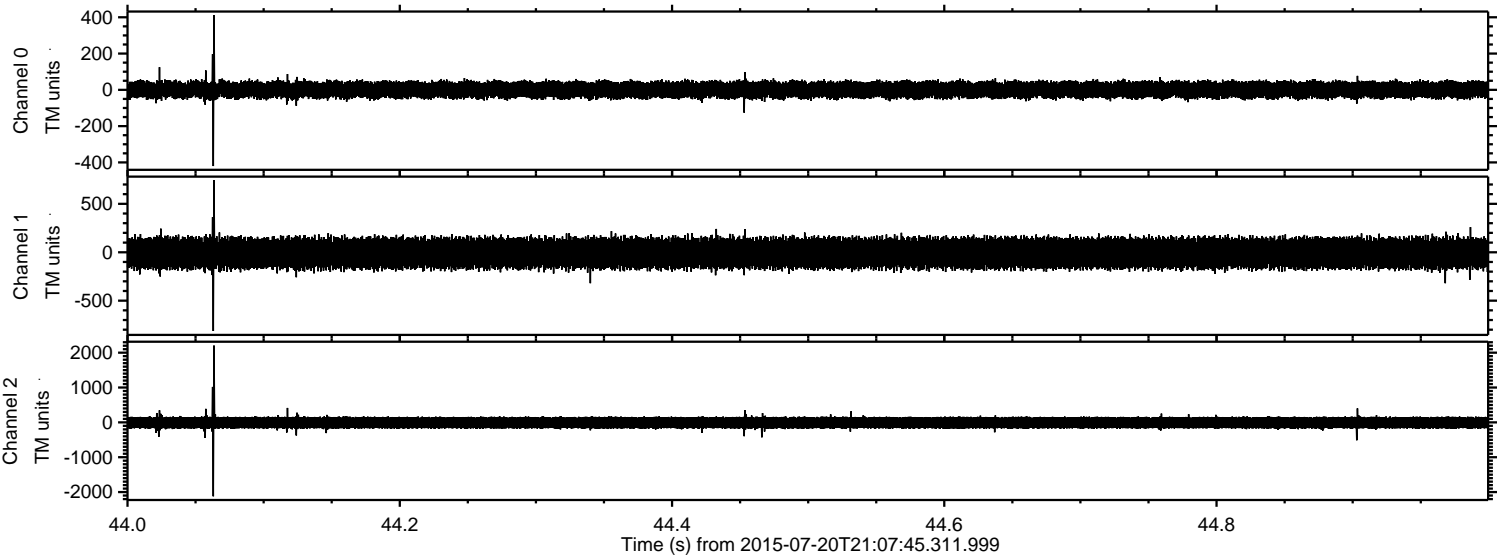
Processed Mon Jul 20 23:14:08 2015 by ELM ver.2012-10-06 from 001__elm20150720_210744__dat00.bin



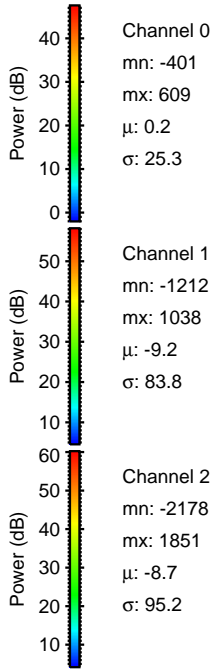
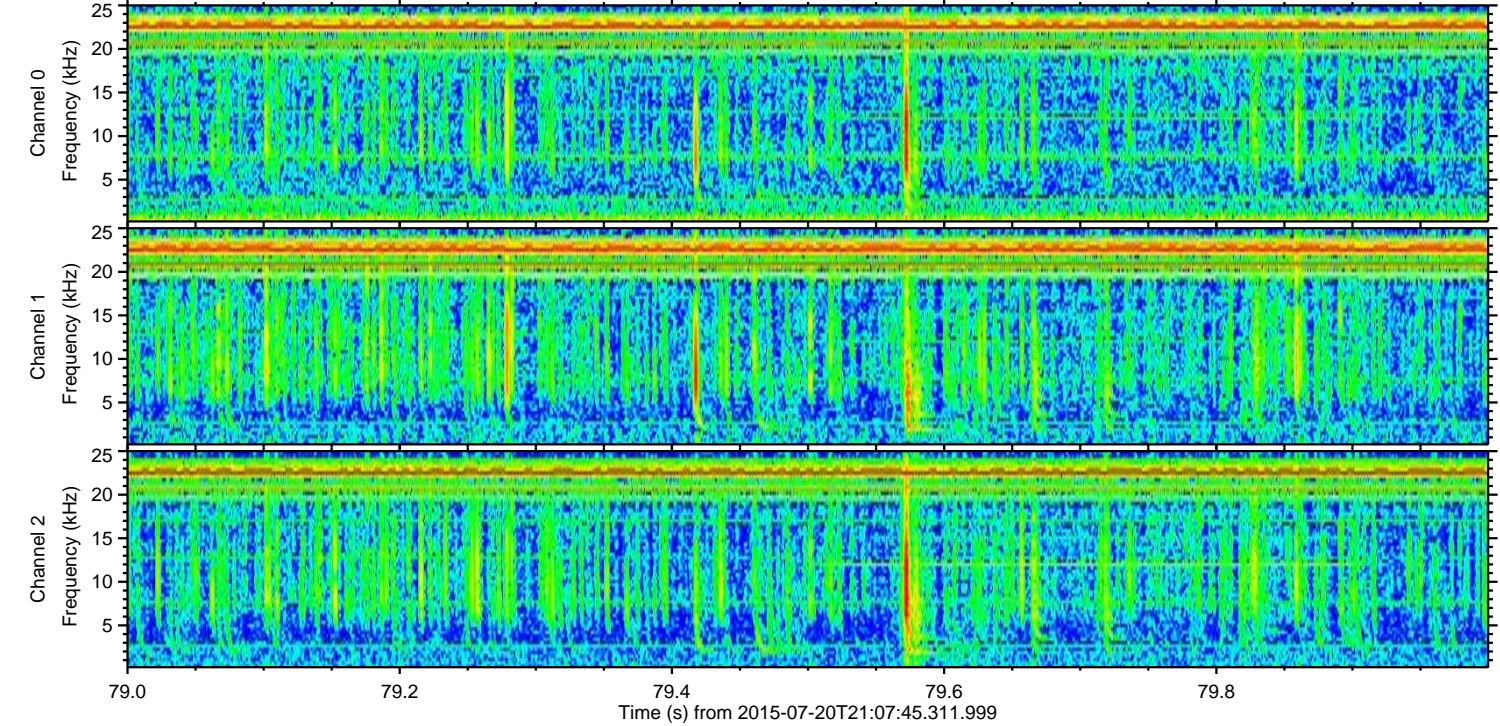
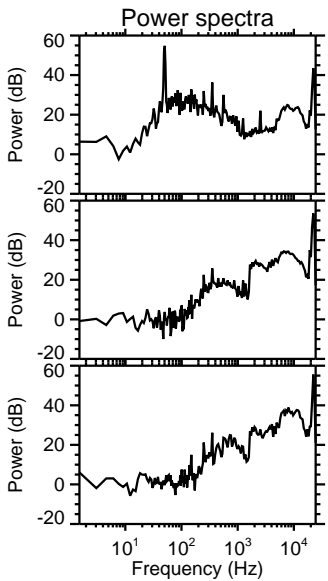
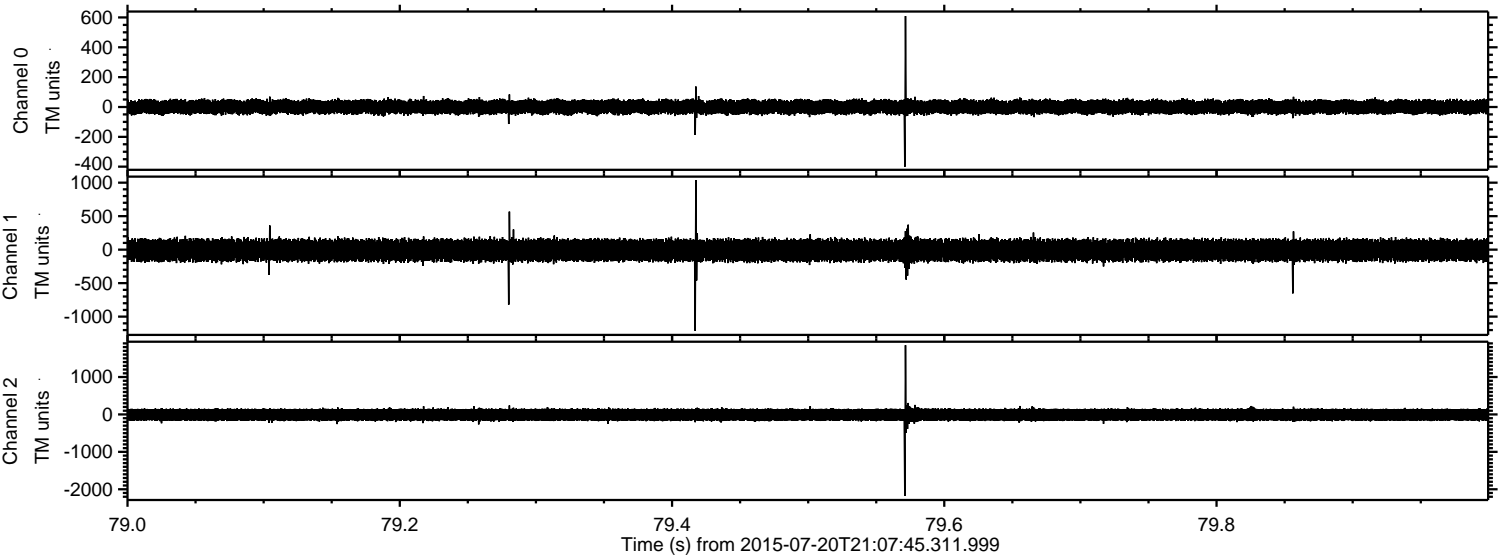
Processed Mon Jul 20 23:14:09 2015 by ELM ver.2012-10-06 from 001__elm20150720_210744__dat00.bin



Processed Mon Jul 20 23:14:10 2015 by ELM ver.2012-10-06 from 001__elm20150720_210744__dat00.bin



Processed Mon Jul 20 23:14:11 2015 by ELM ver.2012-10-06 from 001__elm20150720_210744__dat00.bin



Channel 0
mn: -401
mx: 609
 μ : 0.2
 σ : 25.3

Channel 1
mn: -1212
mx: 1038
 μ : -9.2
 σ : 83.8

Channel 2
mn: -2178
mx: 1851
 μ : -8.7
 σ : 95.2

Processed Mon Jul 20 23:14:12 2015 by ELM ver.2012-10-06 from 001__elm20150720_210744__dat00.bin

