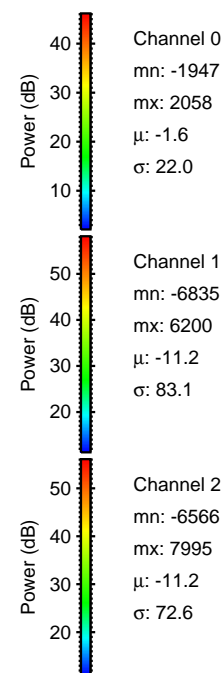
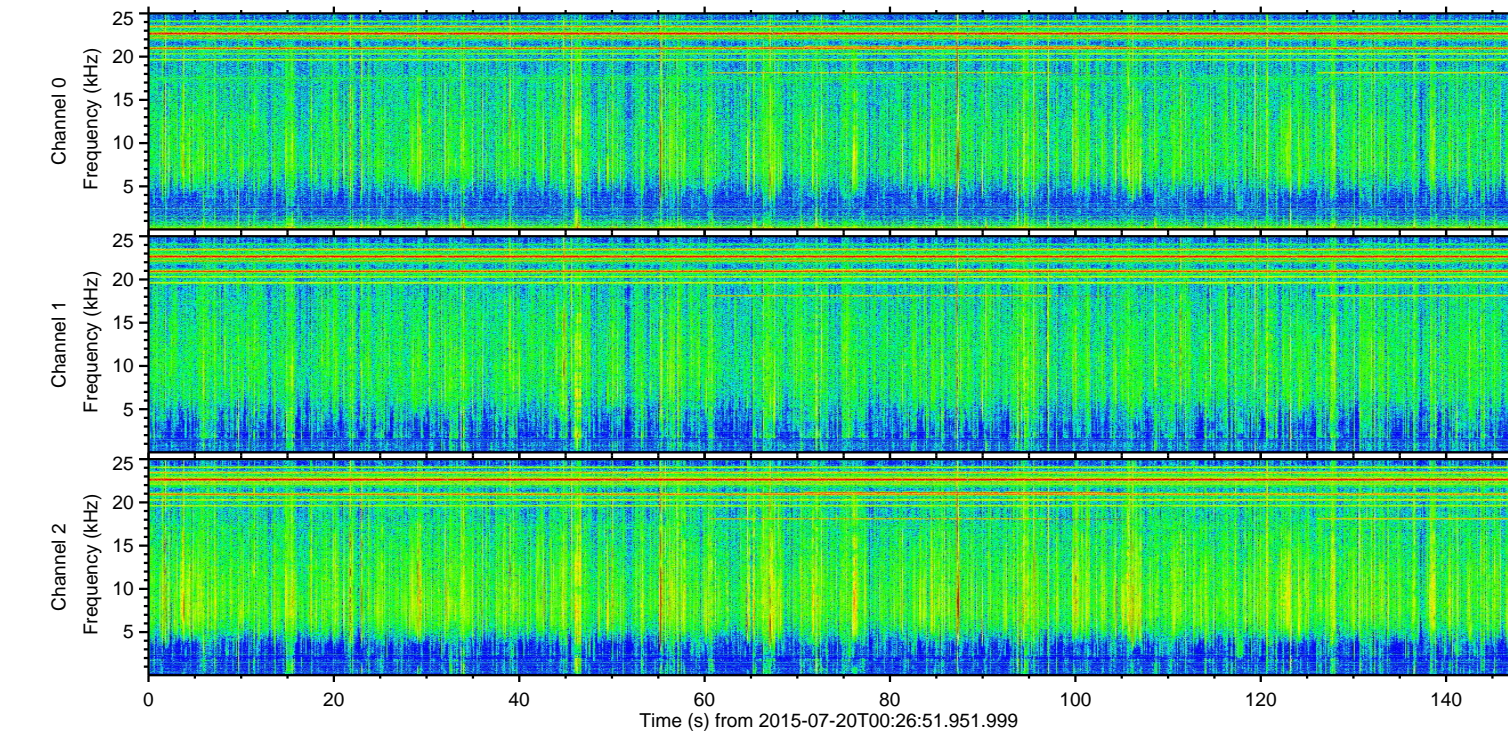
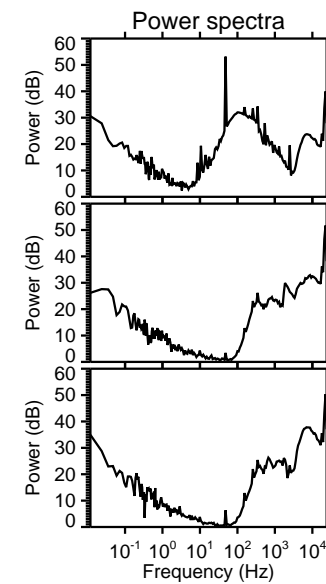
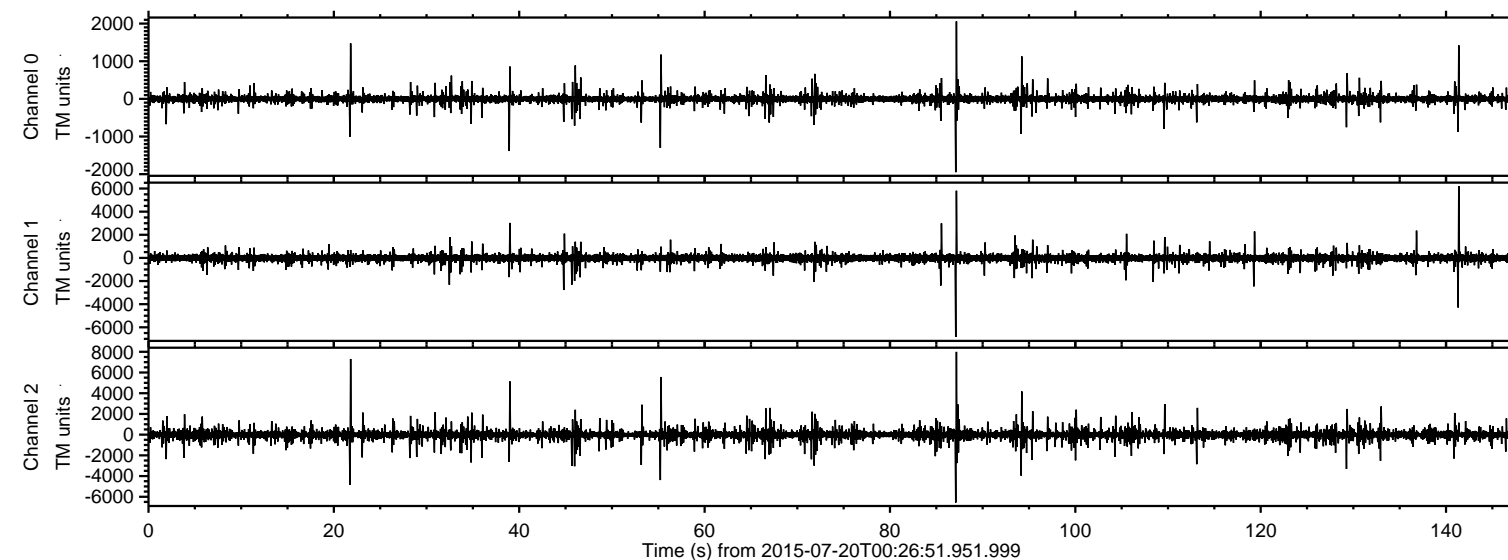
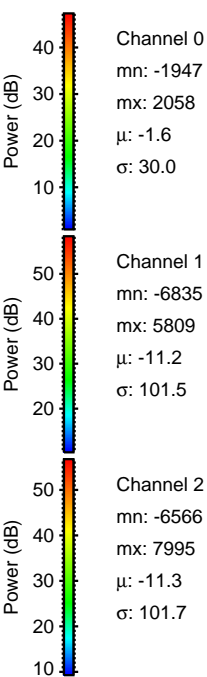
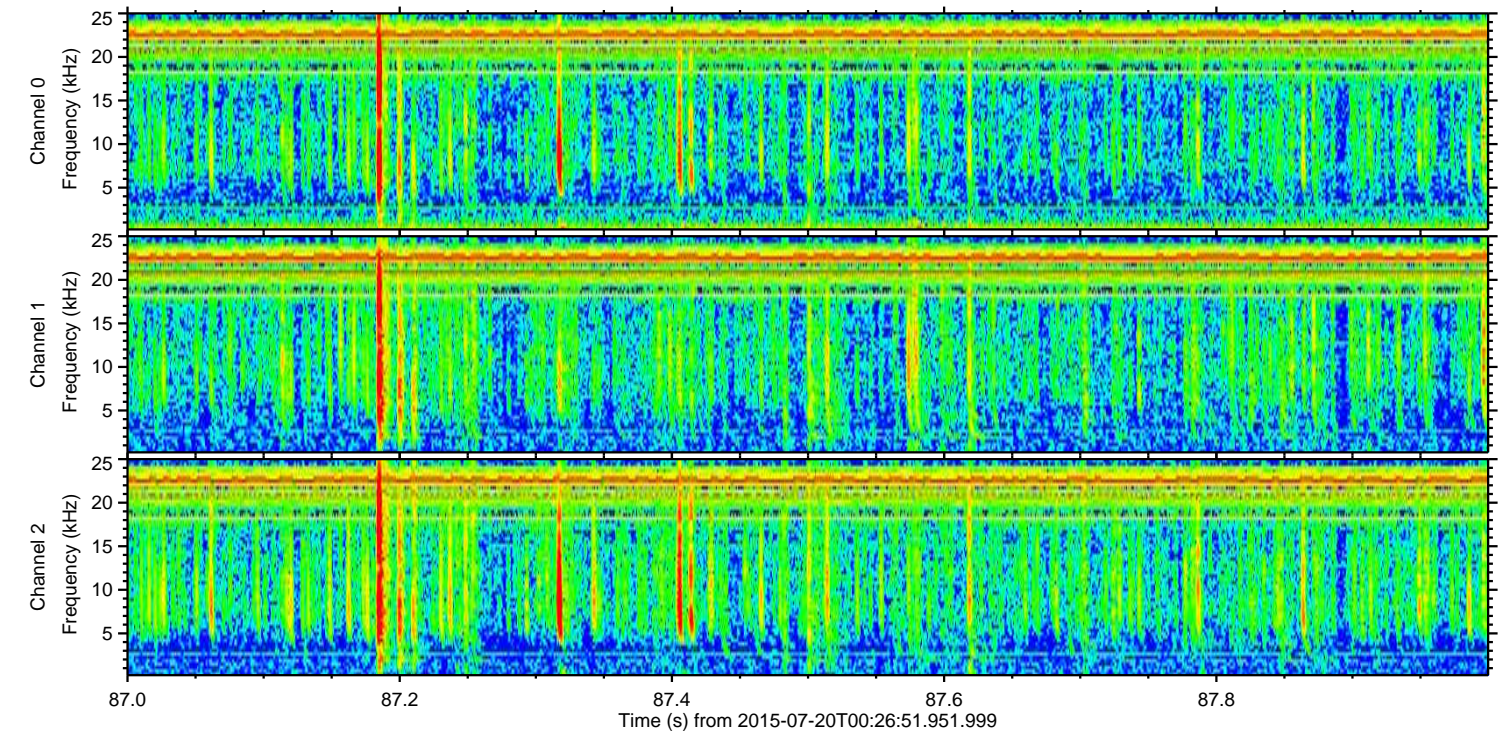
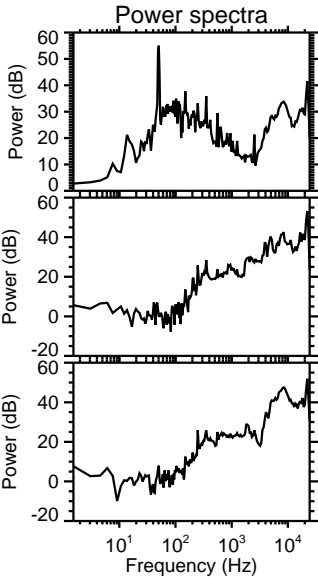
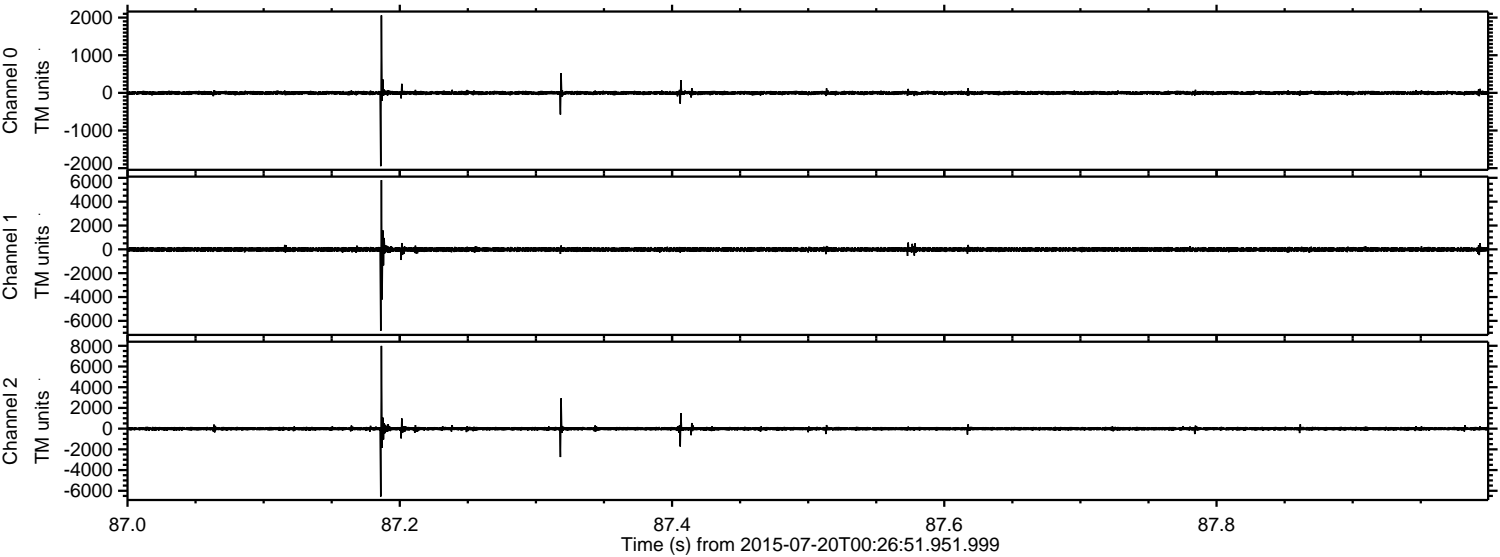


ELMAVAN 3D WAVEFORMS (Measured data sampled at 50 kHz) 51000 packets of 144 samples from 2015-07-20T00:26:51.951.999.

Processed Mon Jul 20 02:33:03 2015 by ELM ver.2012-10-06 from 001__elm20150720_002650__dat00.bin

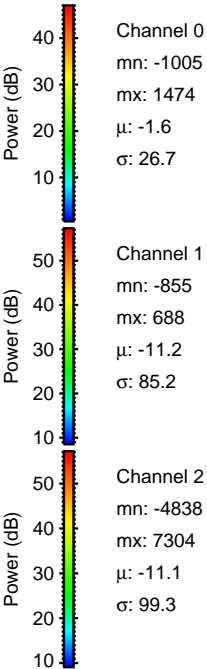
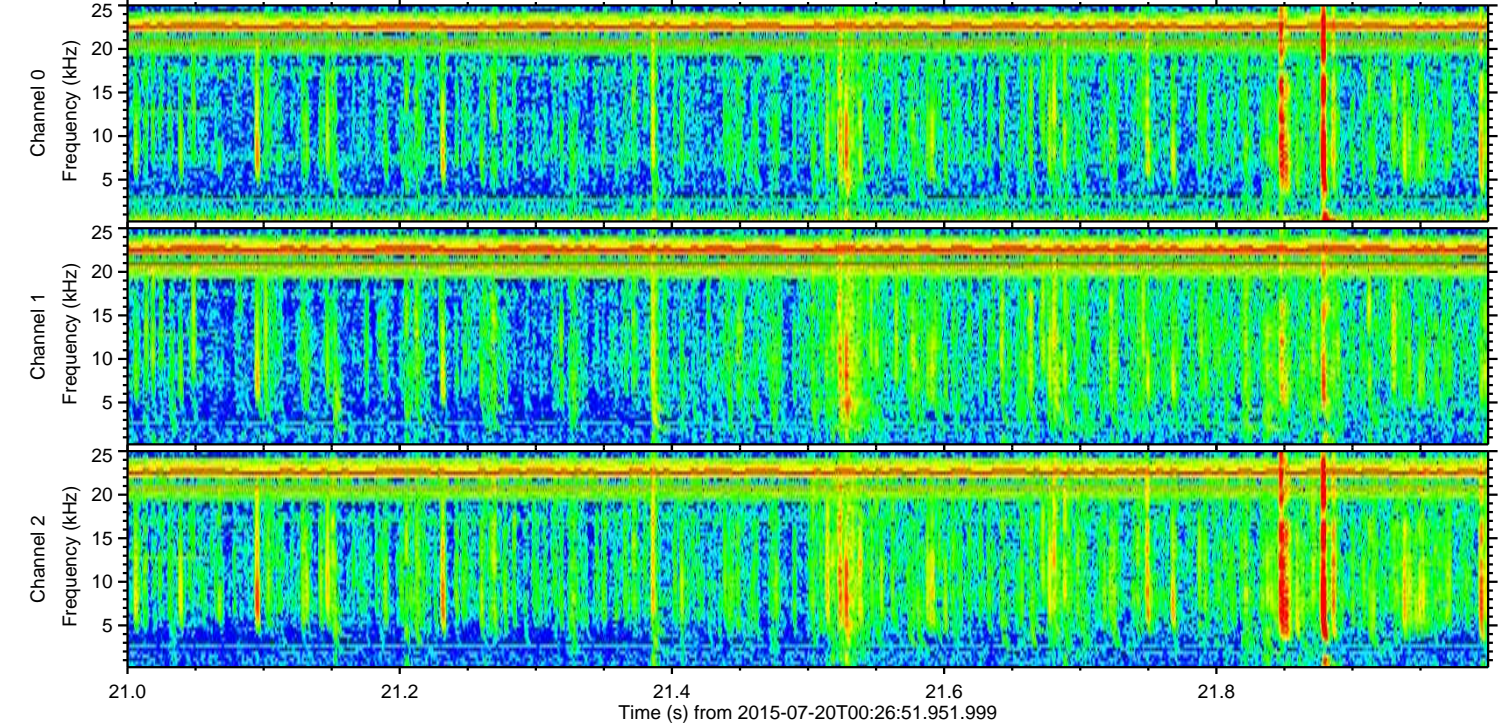
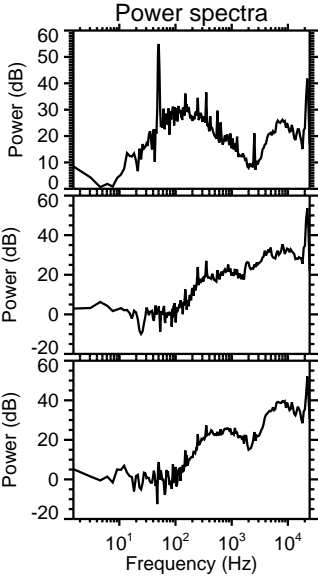
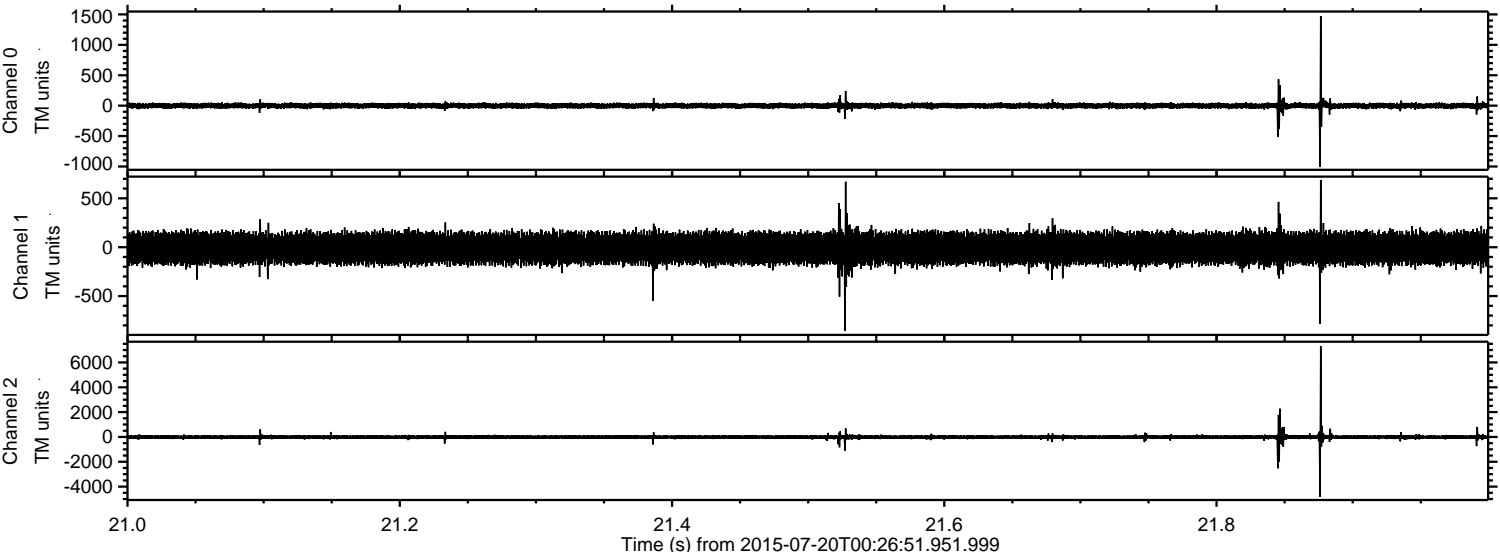


Processed Mon Jul 20 02:33:14 2015 by ELM ver.2012-10-06 from 001__elm20150720_002650__dat00.bin



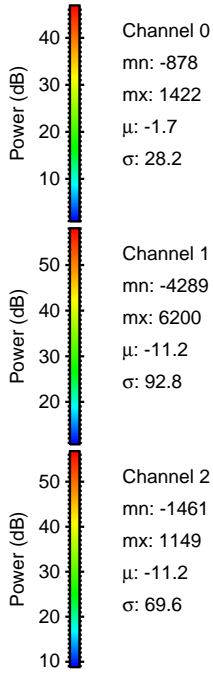
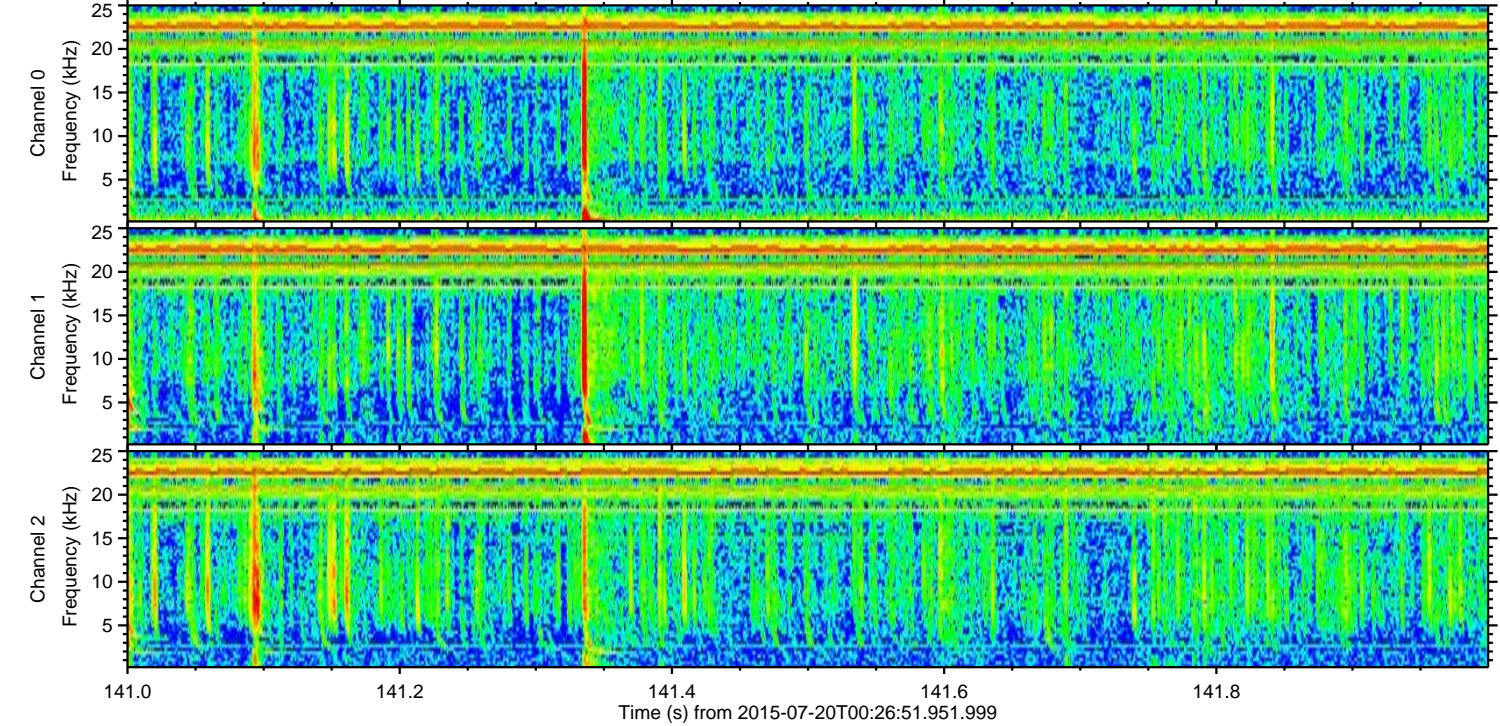
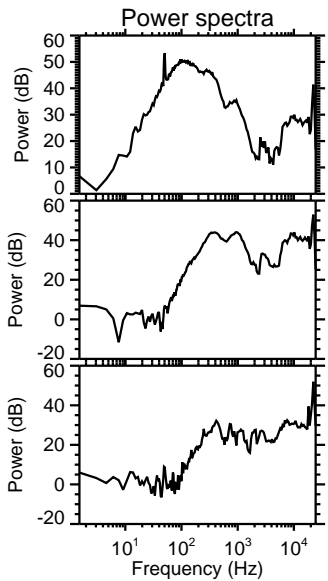
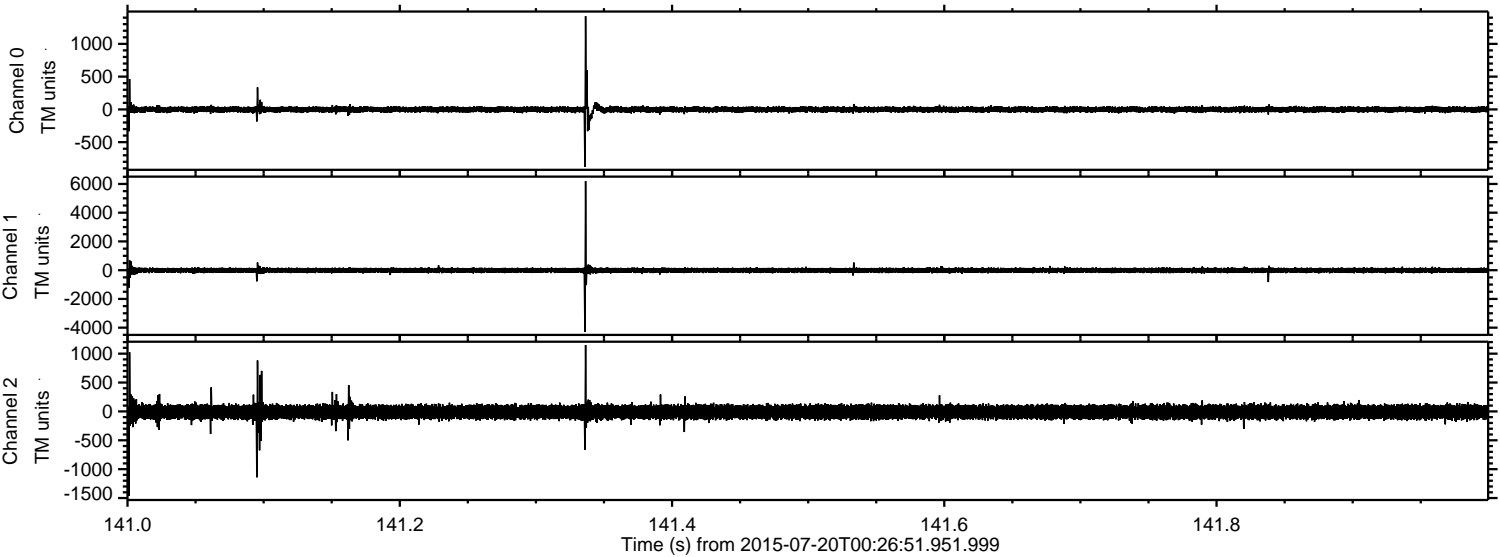
ELMAVAN 3D WAVEFORMS (Measured data sampled at 50 kHz) 51000 packets of 144 samples from 2015-07-20T00:26:51.951.999. Part 22/147

Processed Mon Jul 20 02:33:15 2015 by ELM ver.2012-10-06 from 001__elm20150720_002650__dat00.bin

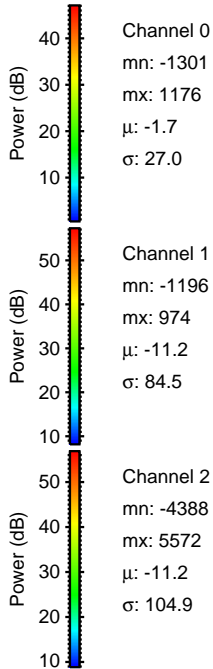
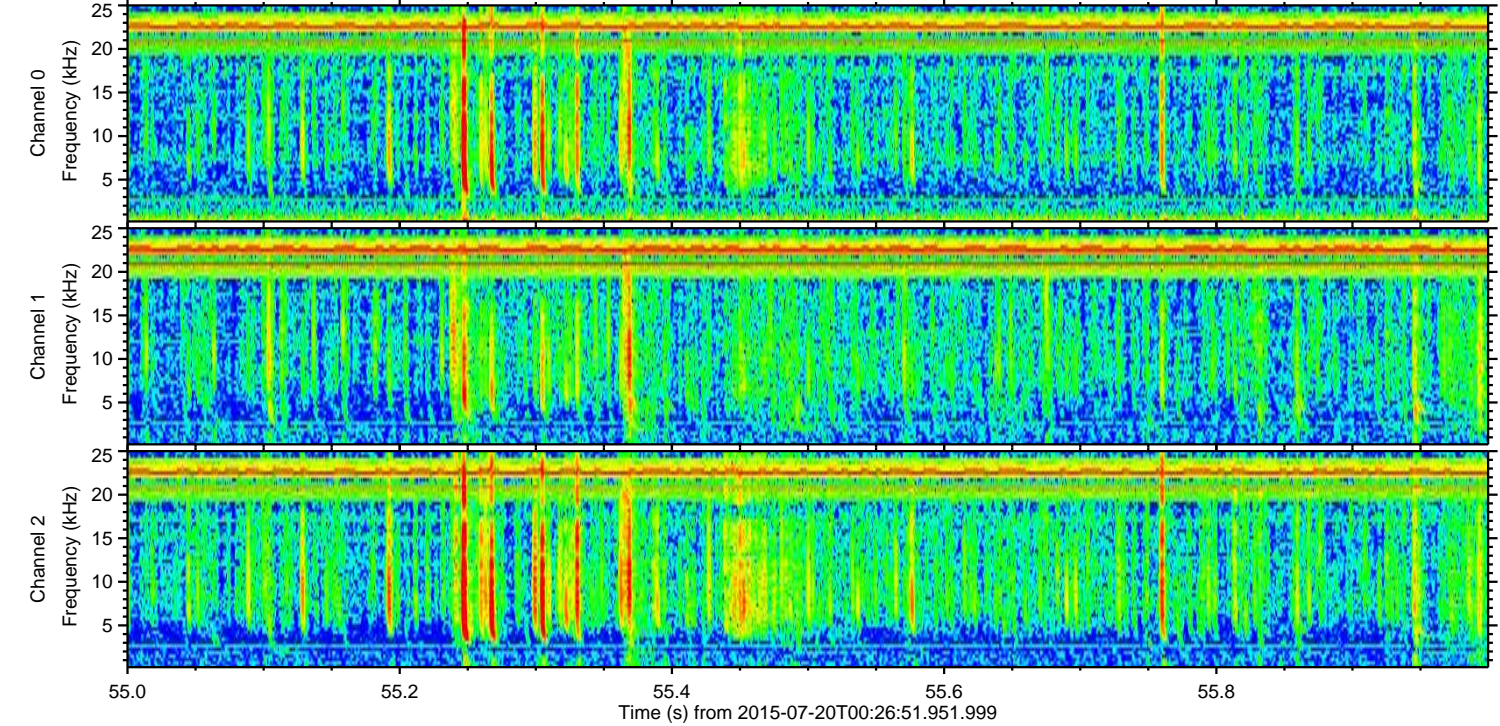
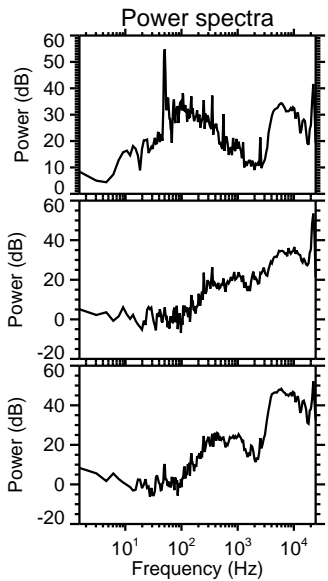
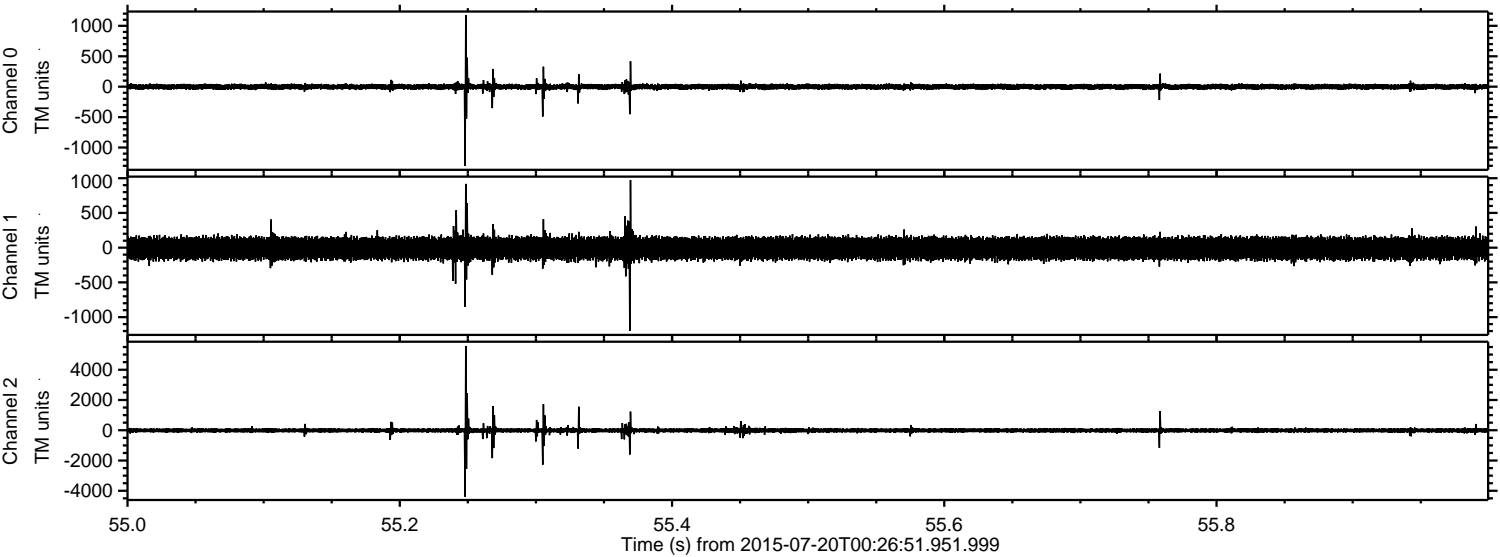


ELMAVAN 3D WAVEFORMS (Measured data sampled at 50 kHz) 51000 packets of 144 samples from 2015-07-20T00:26:51.951.999. Part 142/147

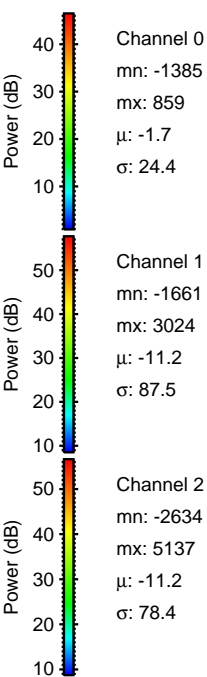
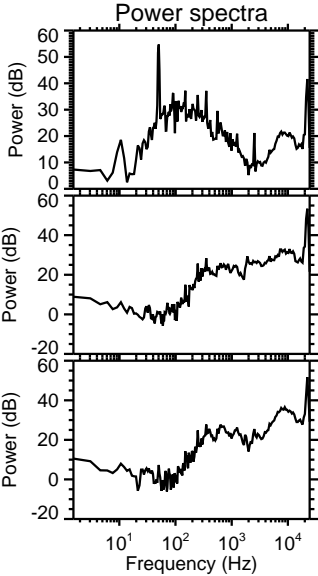
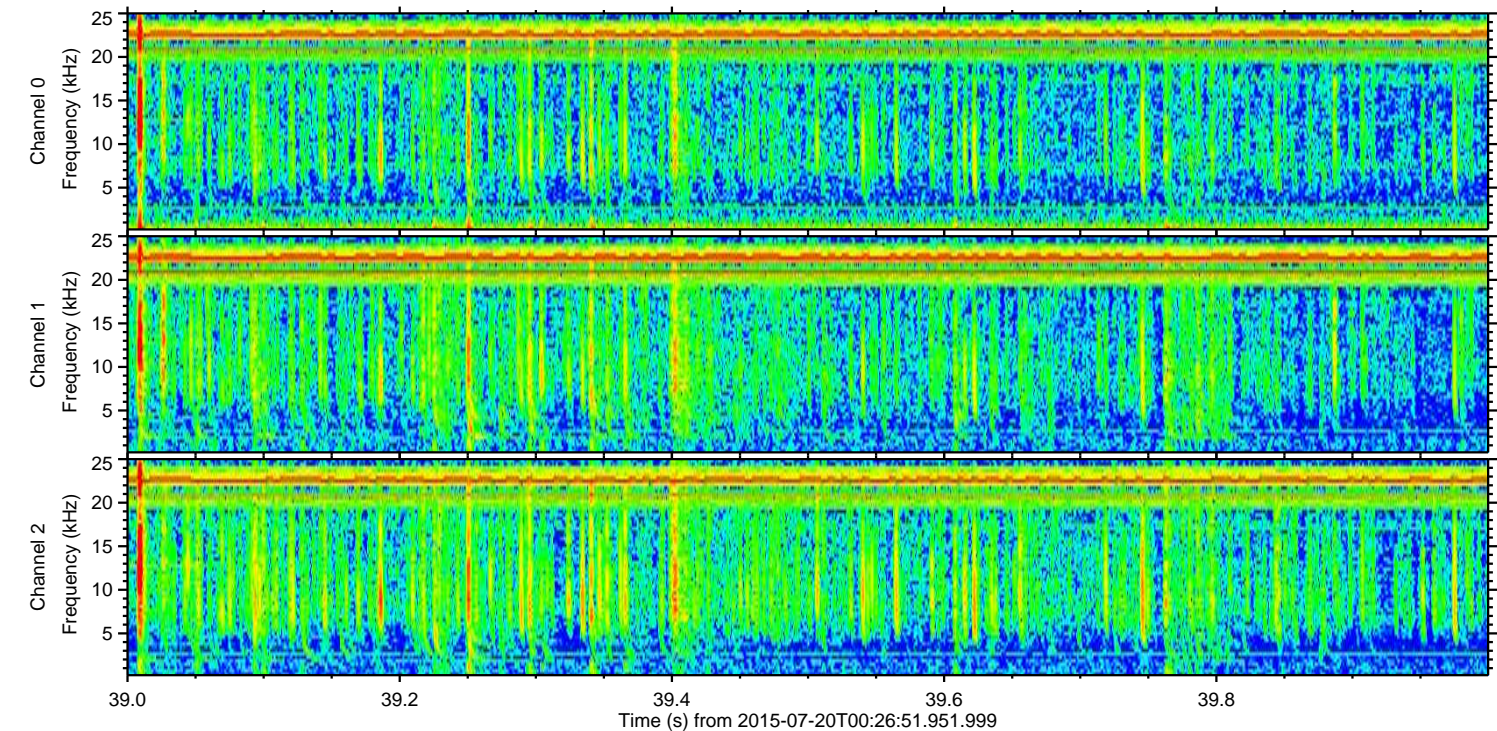
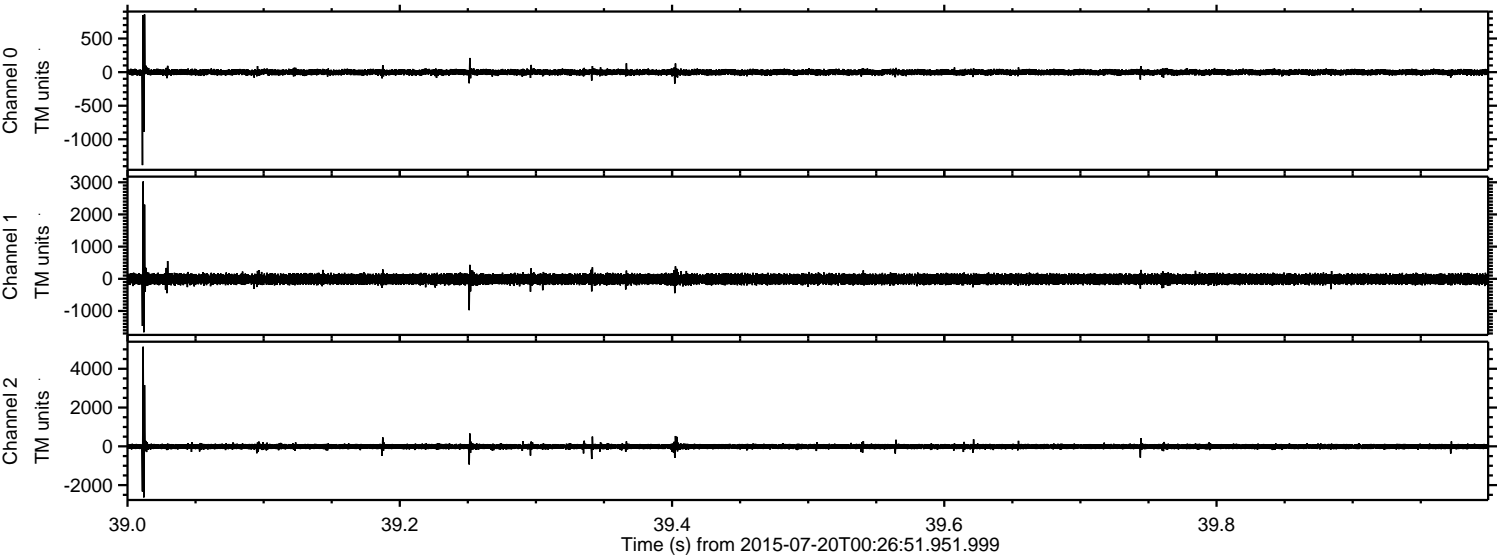
Processed Mon Jul 20 02:33:16 2015 by ELM ver.2012-10-06 from 001__elm20150720_002650__dat00.bin



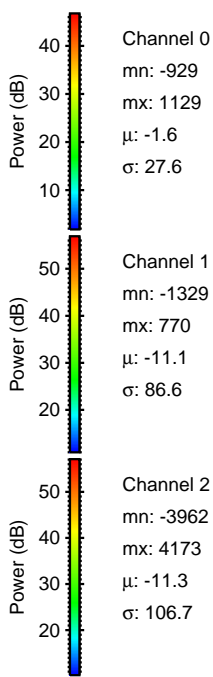
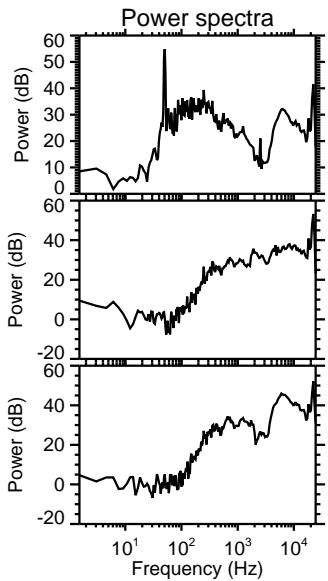
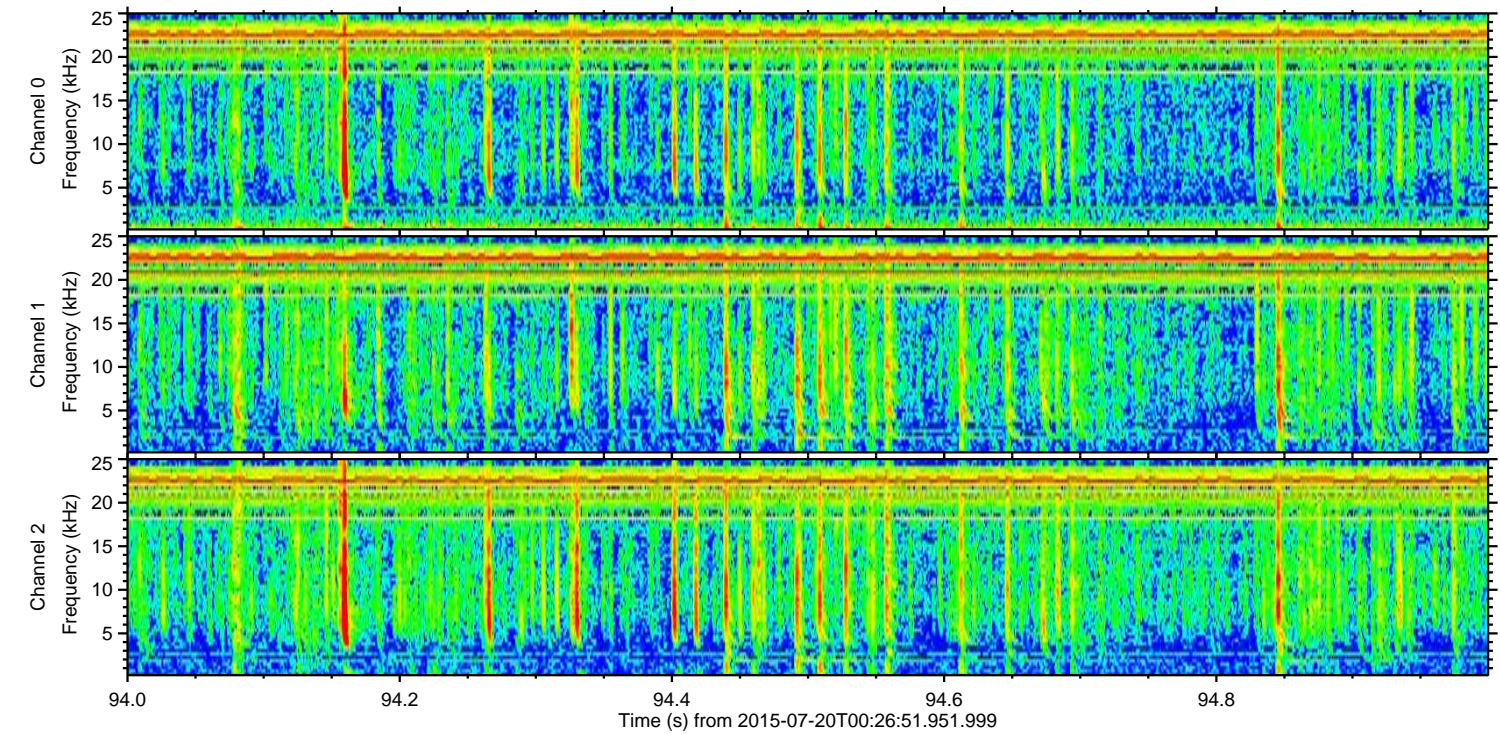
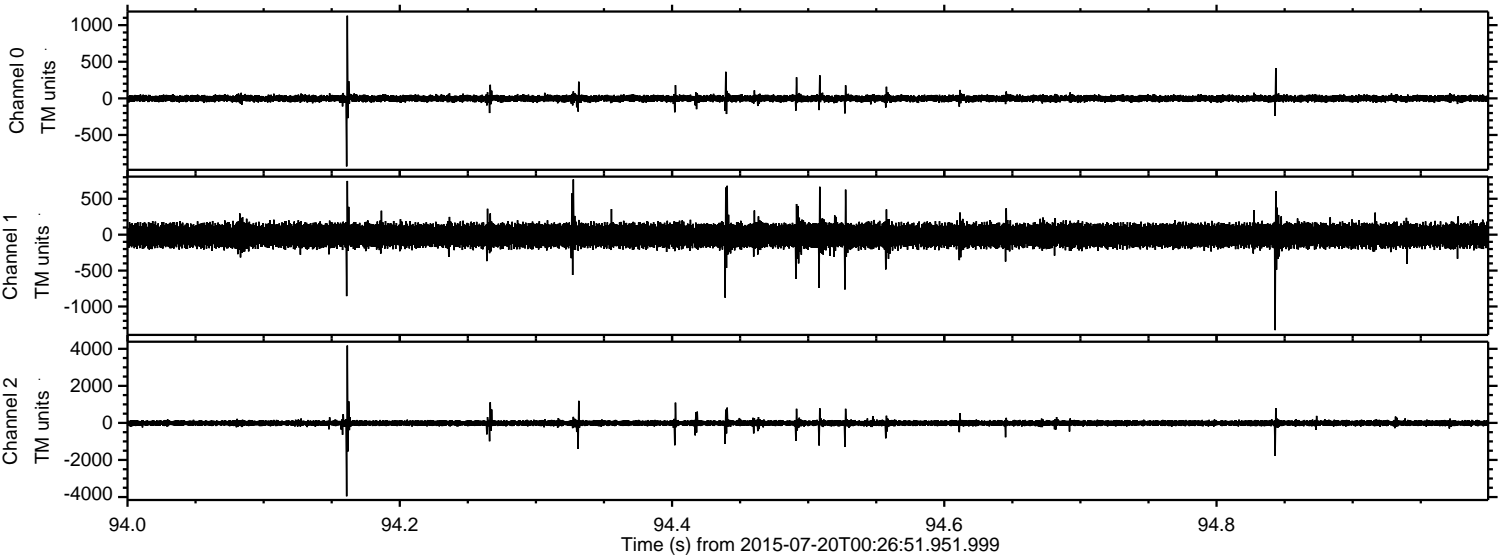
Processed Mon Jul 20 02:33:17 2015 by ELM ver.2012-10-06 from 001__elm20150720_002650__dat00.bin



Processed Mon Jul 20 02:33:18 2015 by ELM ver.2012-10-06 from 001__elm20150720_002650__dat00.bin

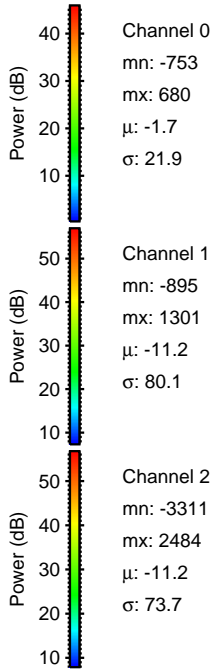
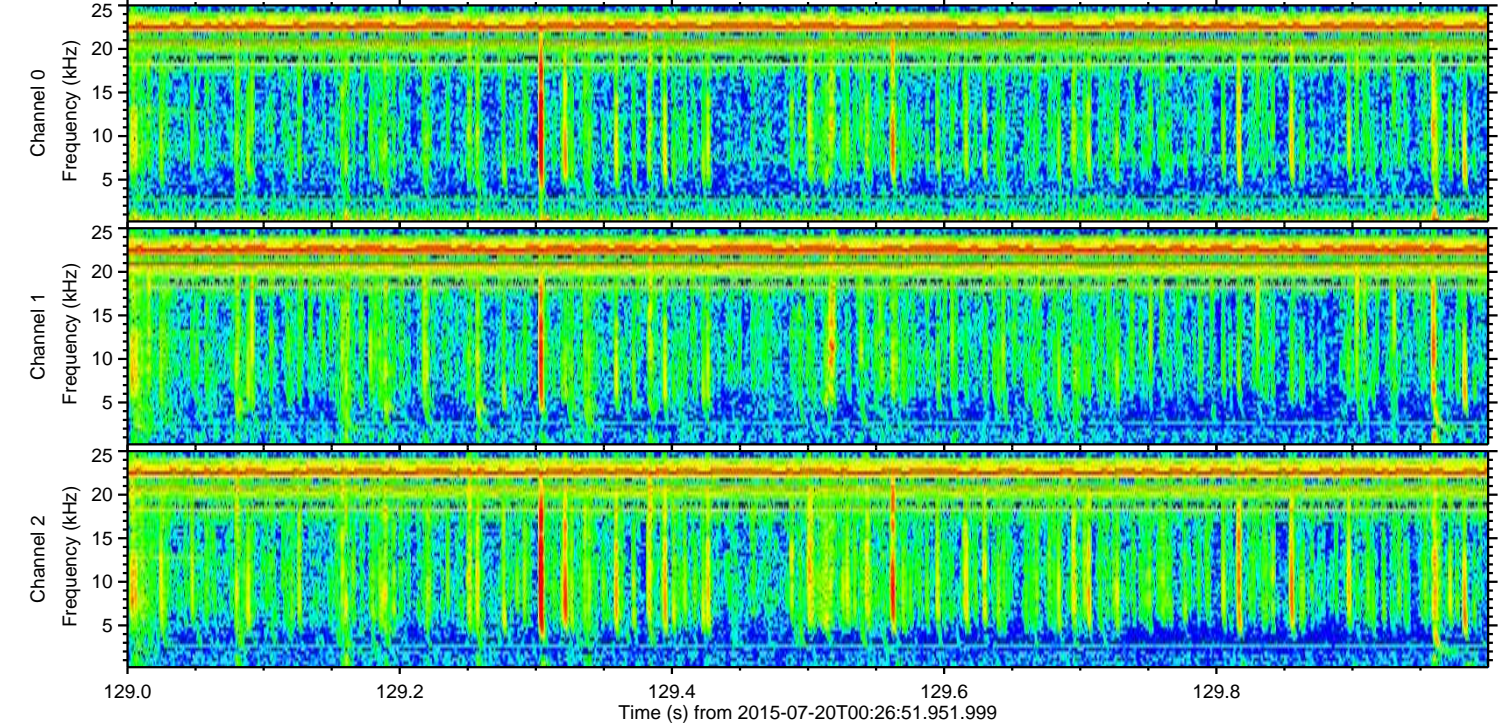
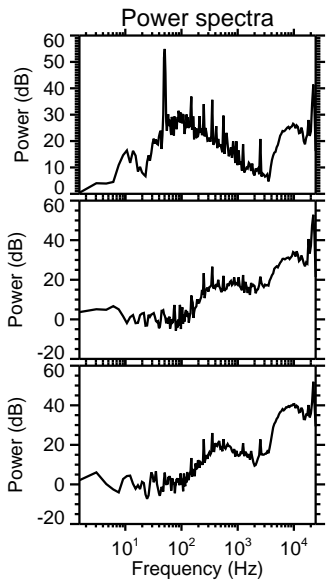
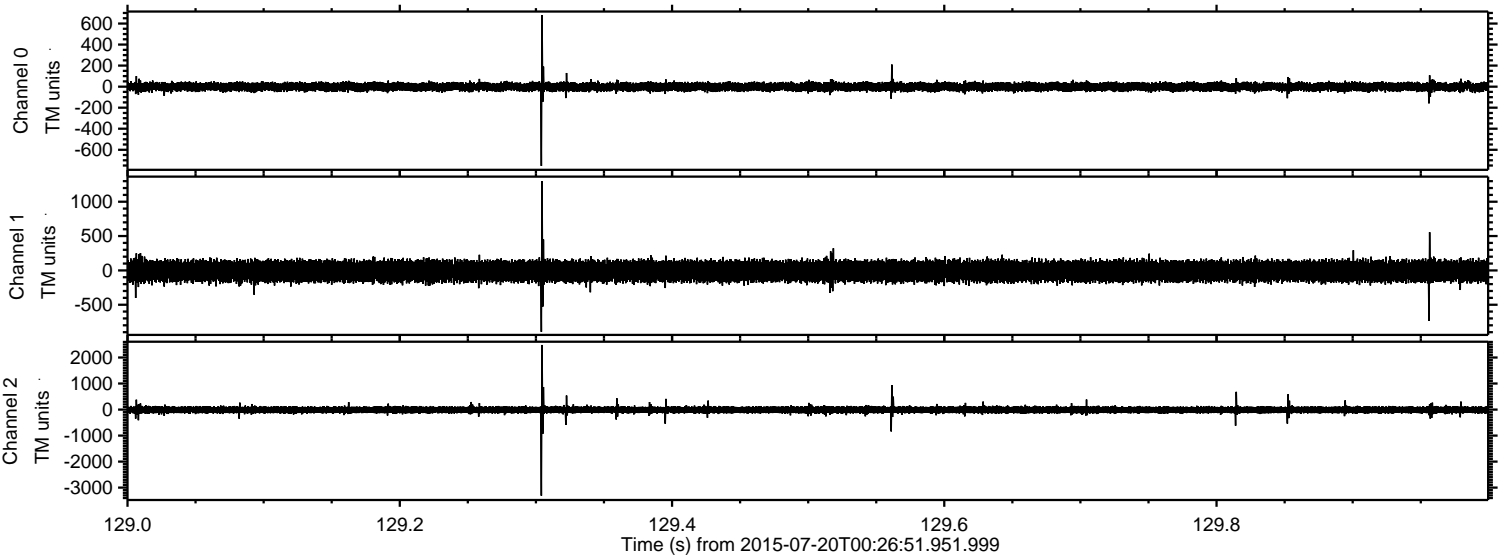


Processed Mon Jul 20 02:33:19 2015 by ELM ver.2012-10-06 from 001__elm20150720_002650__dat00.bin

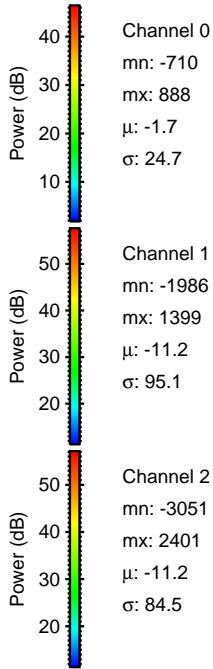
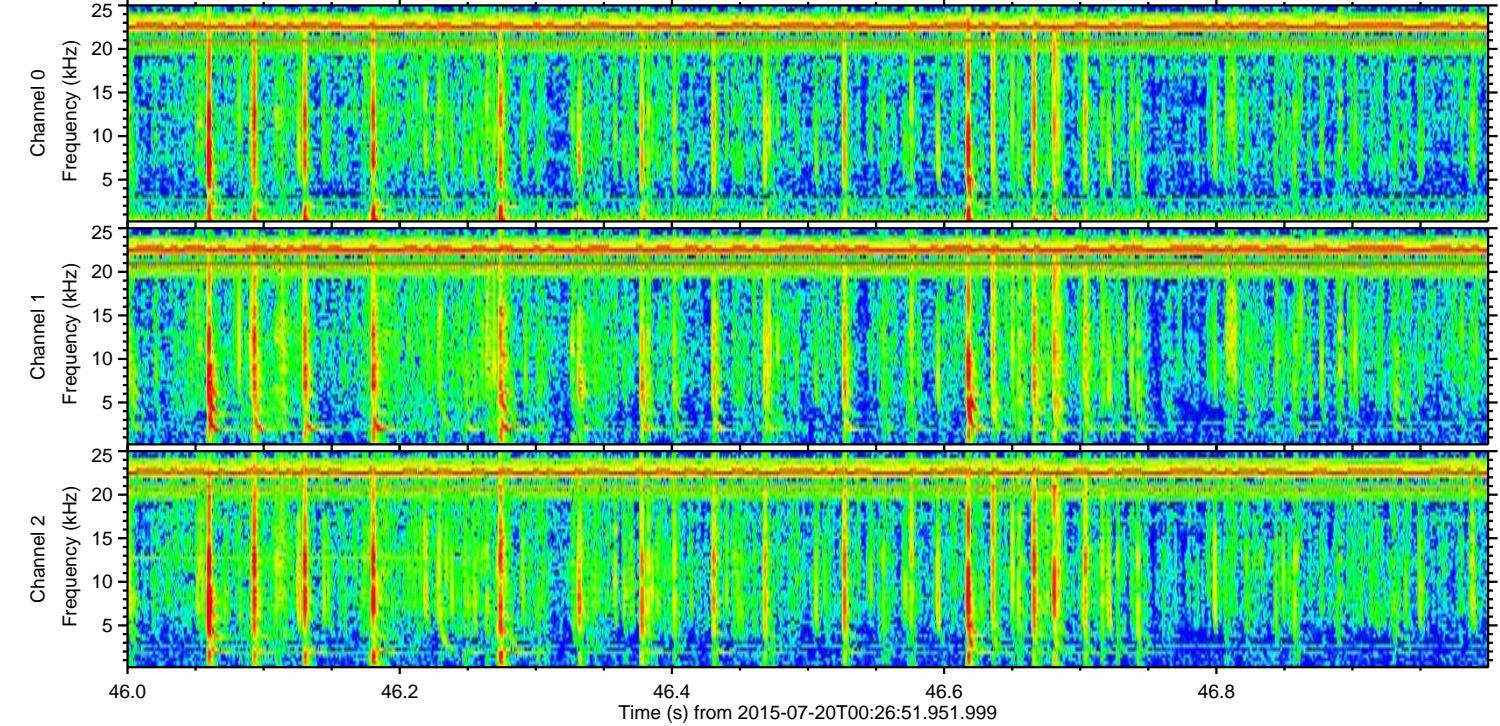
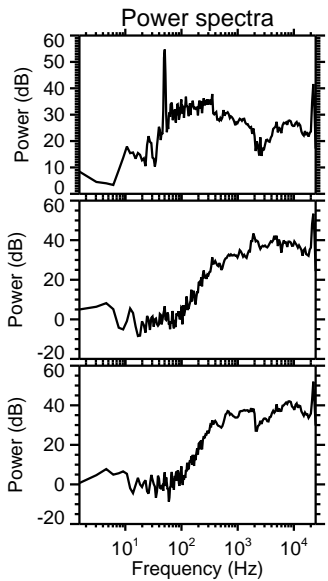
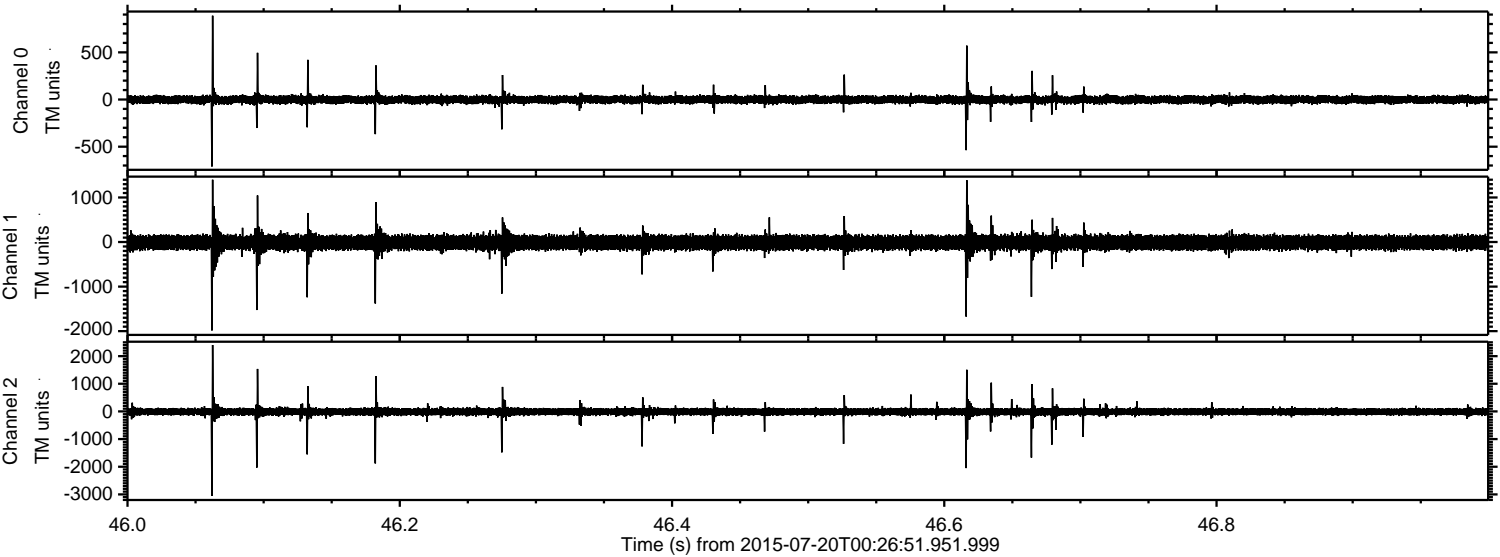


ELMAVAN 3D WAVEFORMS (Measured data sampled at 50 kHz) 51000 packets of 144 samples from 2015-07-20T00:26:51.951.999. Part 130/147

Processed Mon Jul 20 02:33:20 2015 by ELM ver.2012-10-06 from 001__elm20150720_002650__dat00.bin



Processed Mon Jul 20 02:33:21 2015 by ELM ver.2012-10-06 from 001__elm20150720_002650__dat00.bin

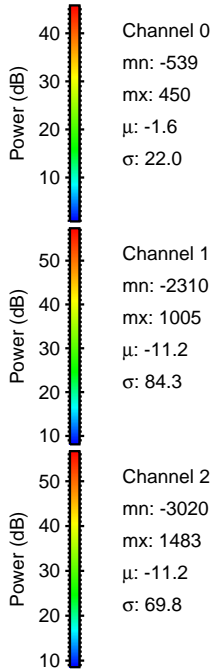
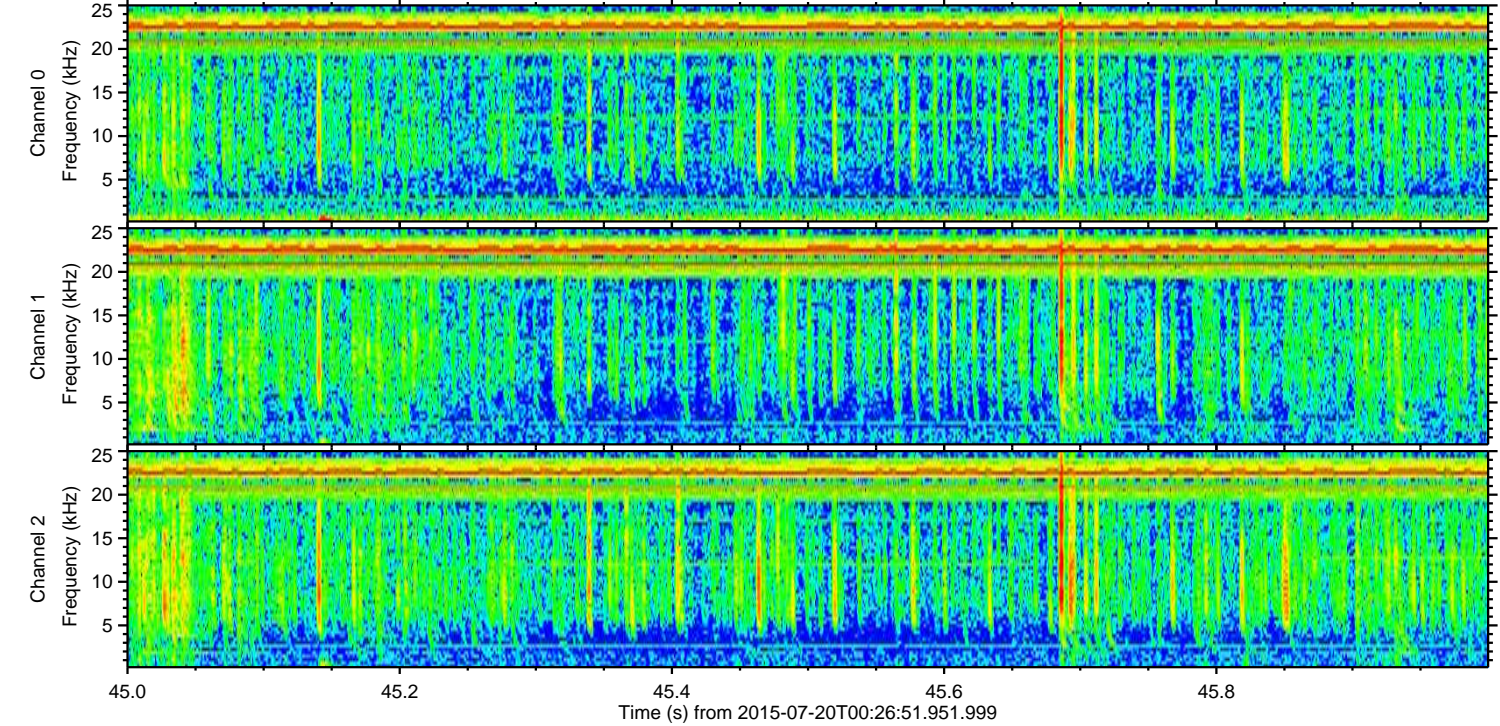
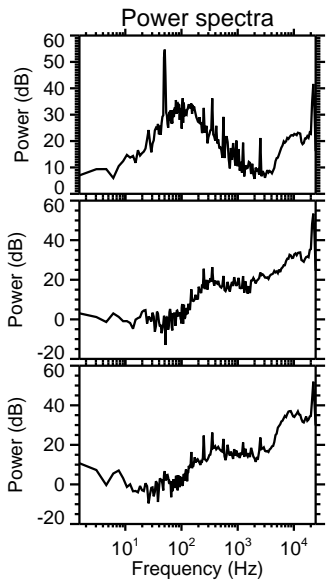
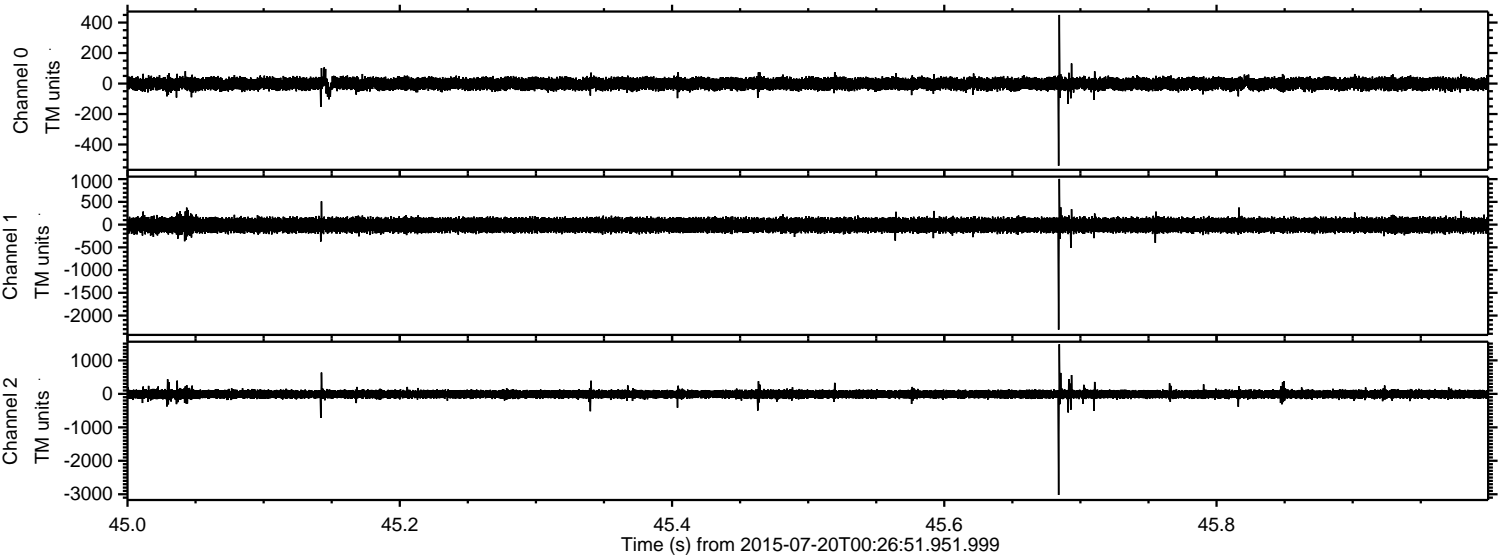


Channel 0
mn: -710
mx: 888
 μ : -1.7
 σ : 24.7

Channel 1
mn: -1986
mx: 1399
 μ : -11.2
 σ : 95.1

Channel 2
mn: -3051
mx: 2401
 μ : -11.2
 σ : 84.5

Processed Mon Jul 20 02:33:22 2015 by ELM ver.2012-10-06 from 001__elm20150720_002650__dat00.bin



Processed Mon Jul 20 02:33:23 2015 by ELM ver.2012-10-06 from 001__elm20150720_002650__dat00.bin

