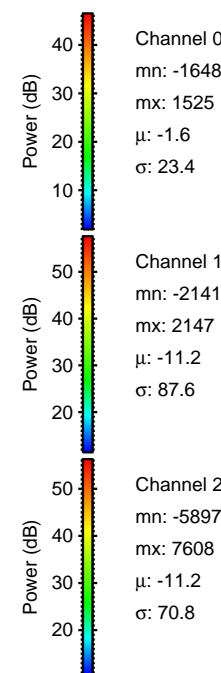
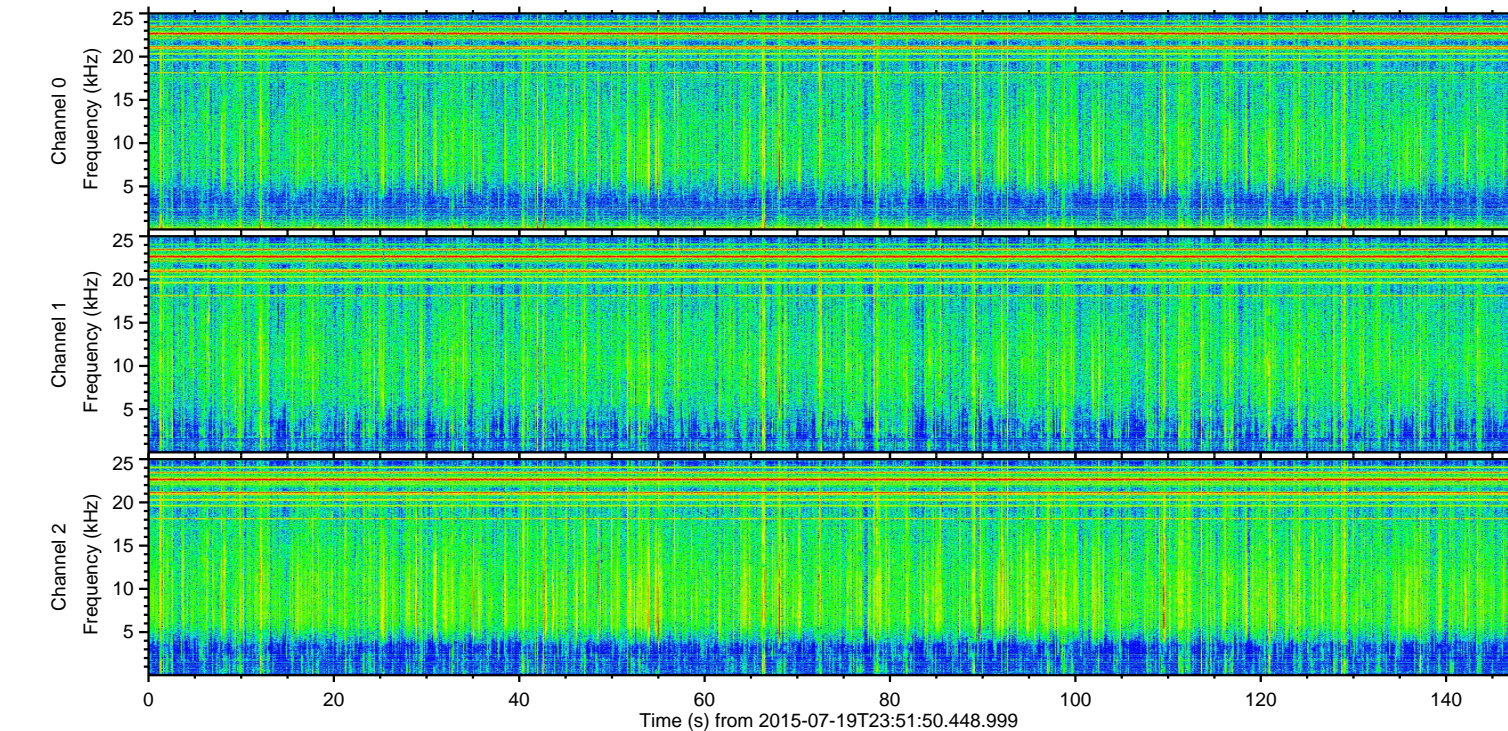
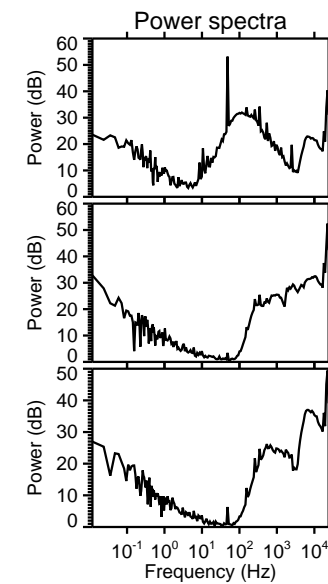
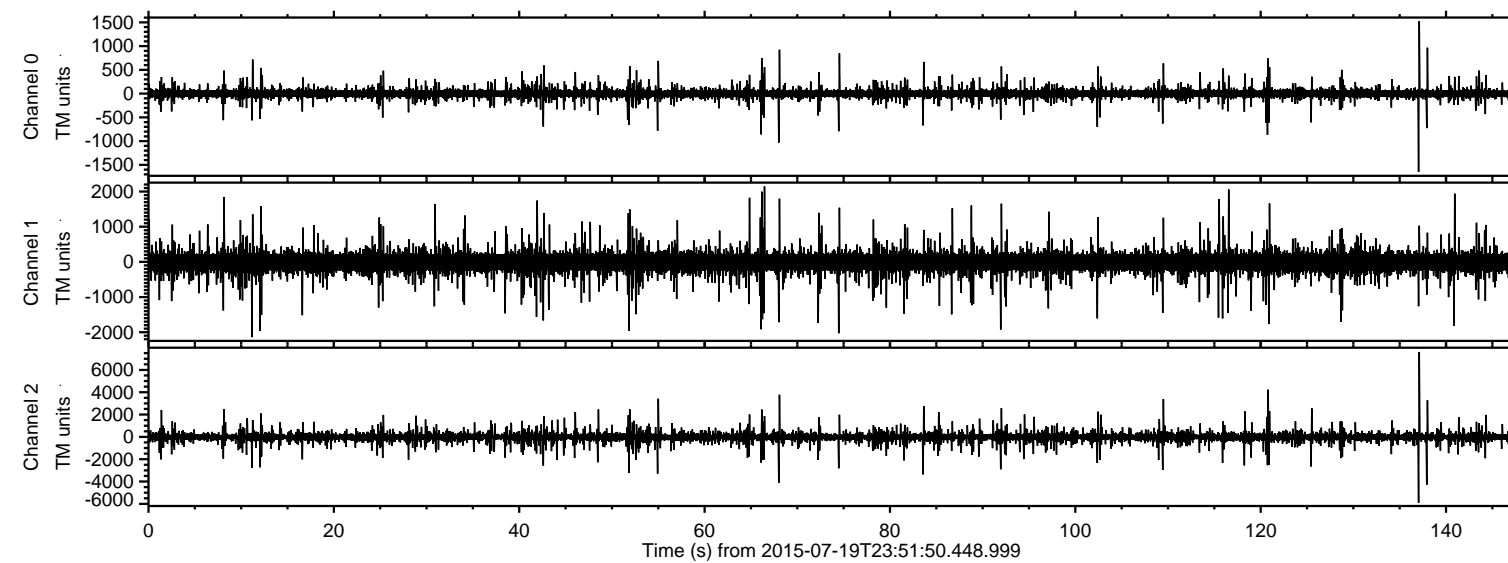


# ELMAVAN 3D WAVEFORMS (Measured data sampled at 50 kHz) 51000 packets of 144 samples from 2015-07-19T23:51:50.448.999.

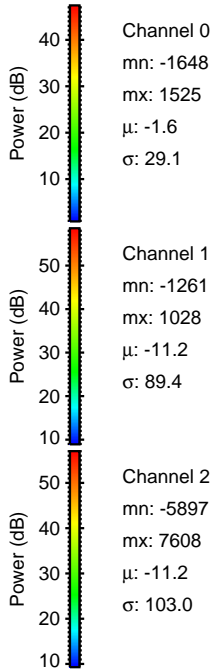
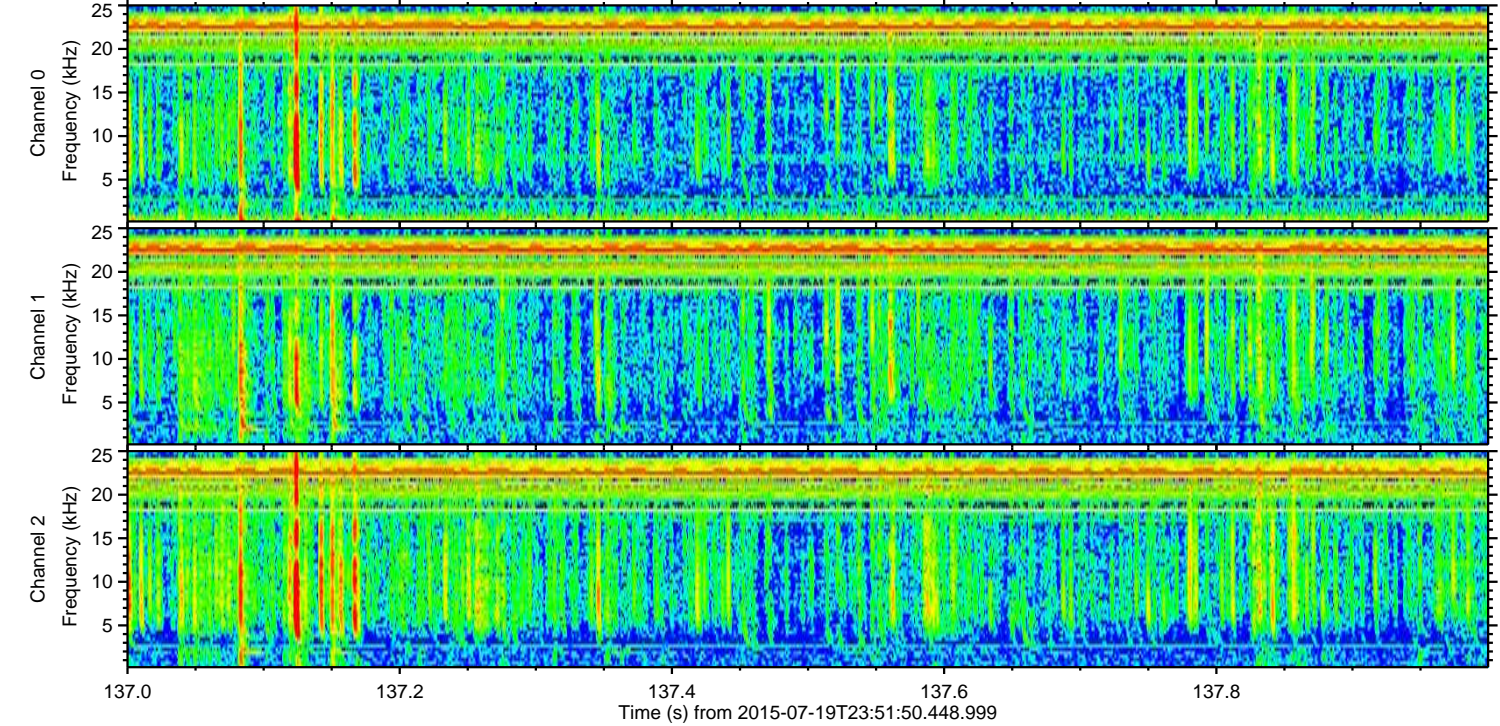
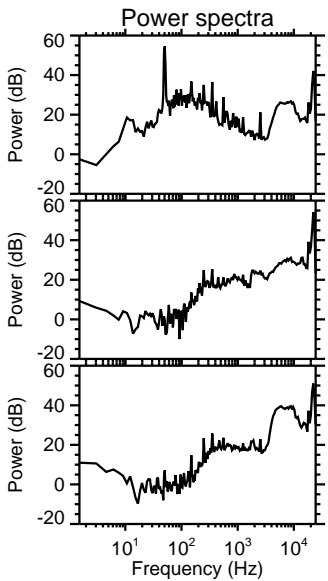
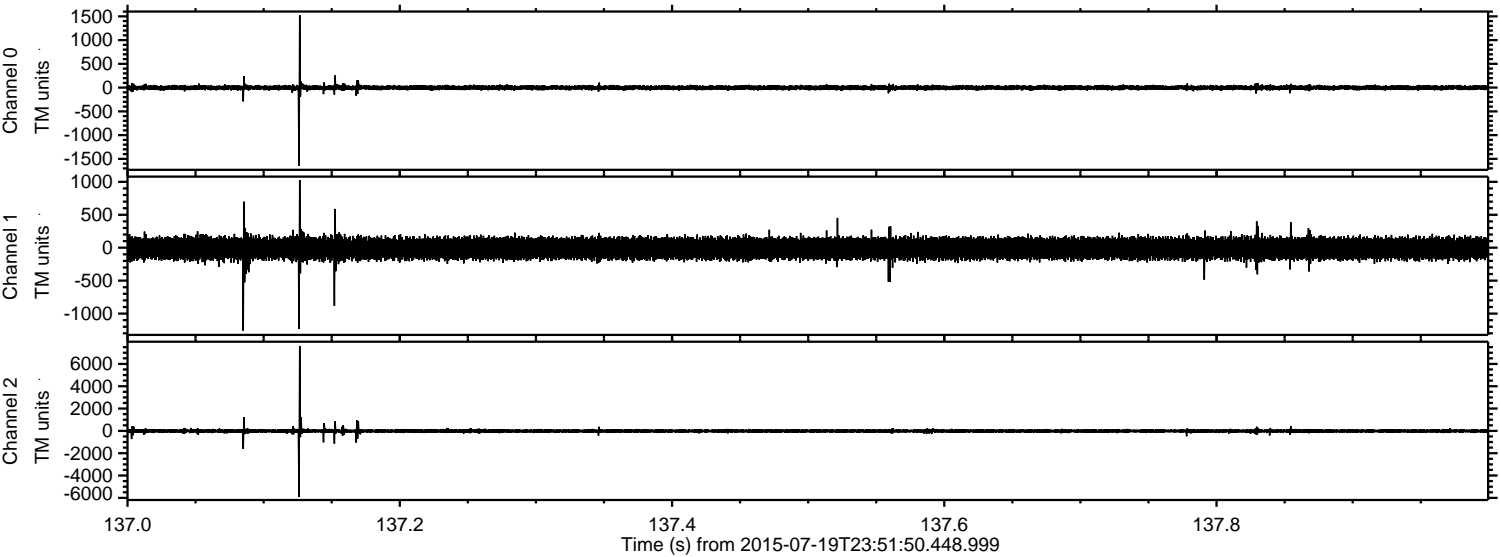
Processed Mon Jul 20 01:57:47 2015 by ELM ver.2012-10-06 from 001\_\_elm20150719\_235149\_\_dat00.bin





ELMAVAN 3D WAVEFORMS (Measured data sampled at 50 kHz) 51000 packets of 144 samples from 2015-07-19T23:51:50.448.999. Part 138/147

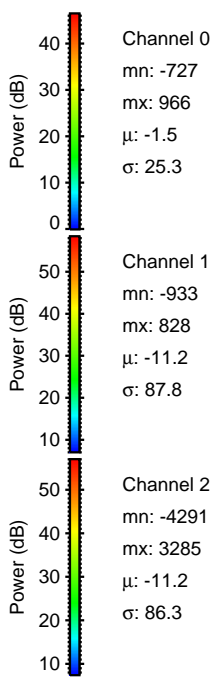
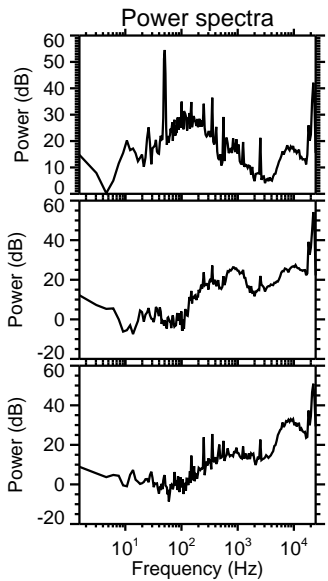
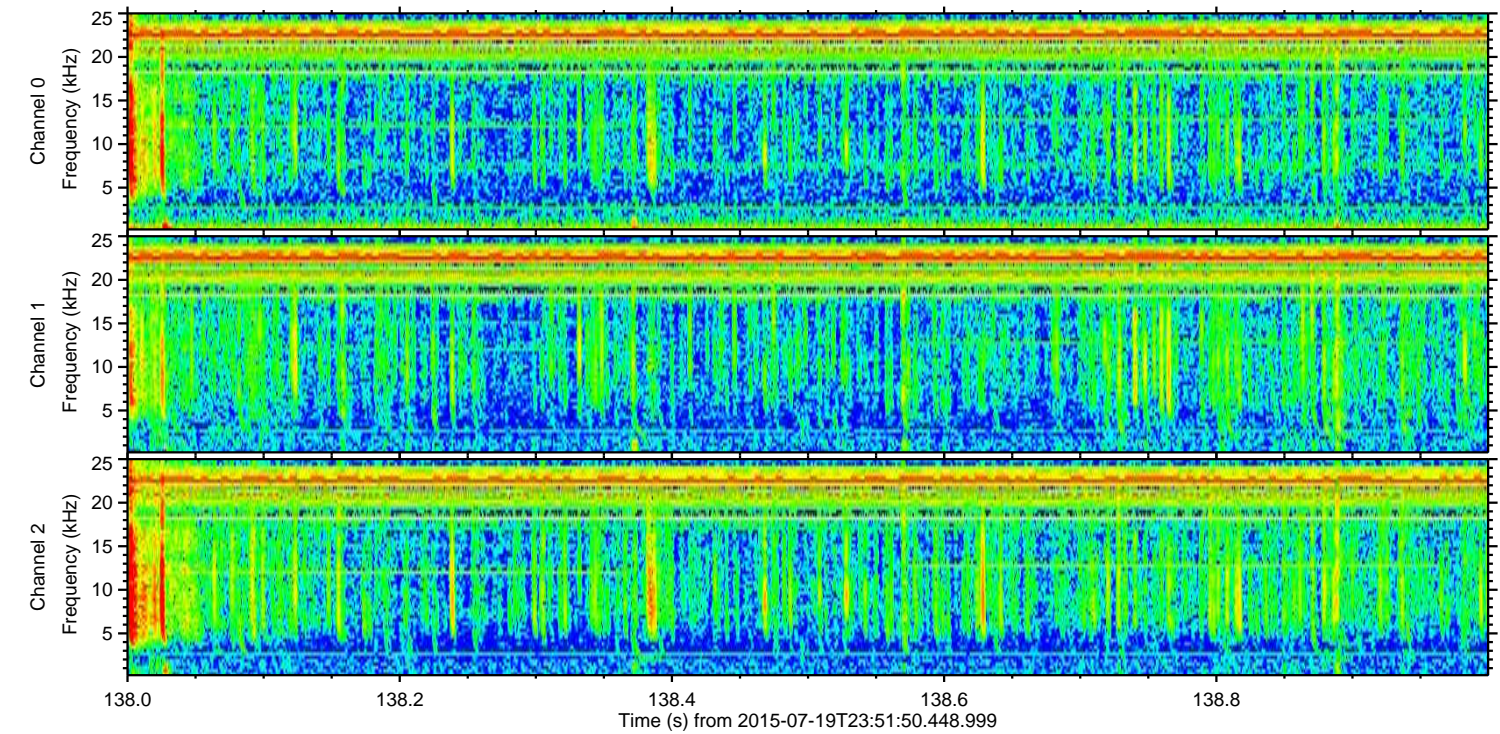
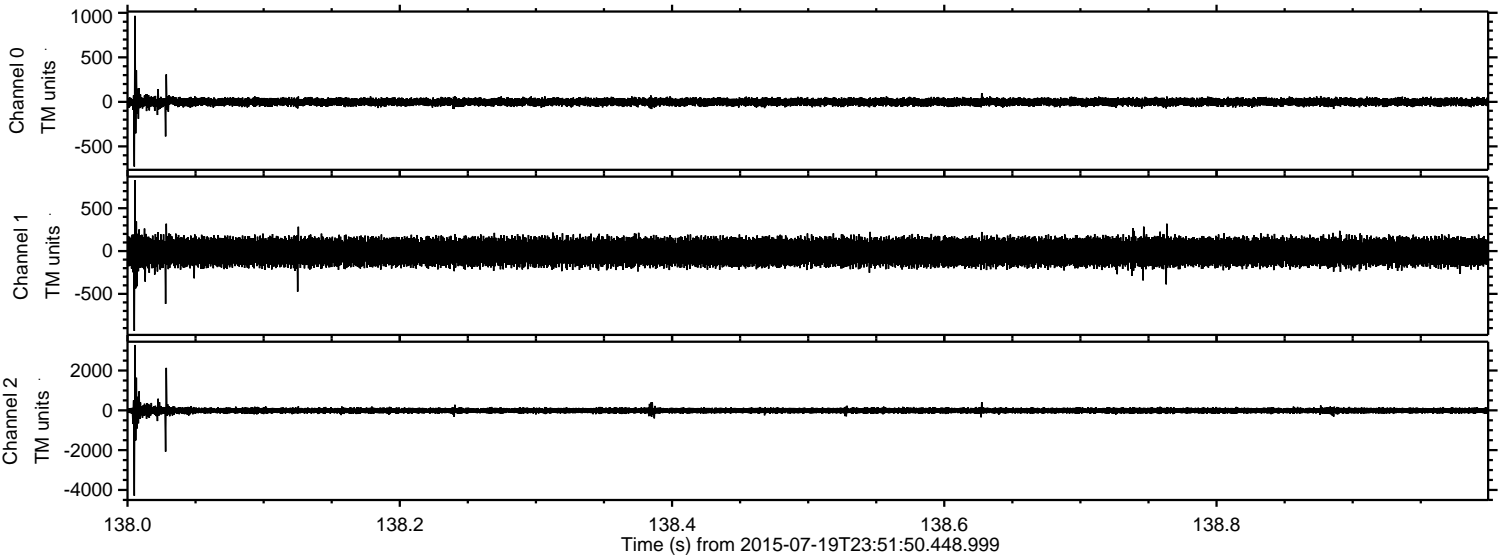
Processed Mon Jul 20 01:57:59 2015 by ELM ver.2012-10-06 from 001\_\_elm20150719\_235149\_\_dat00.bin





ELMAVAN 3D WAVEFORMS (Measured data sampled at 50 kHz) 51000 packets of 144 samples from 2015-07-19T23:51:50.448.999. Part 139/147

Processed Mon Jul 20 01:58:00 2015 by ELM ver.2012-10-06 from 001\_\_elm20150719\_235149\_\_dat00.bin



Channel 0  
mn: -727  
mx: 966  
μ: -1.5  
σ: 25.3

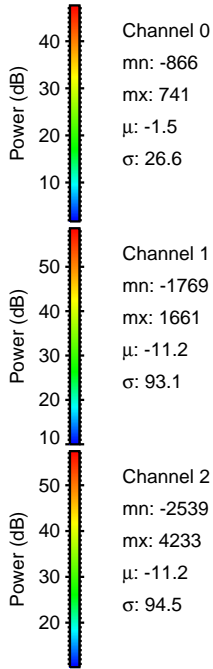
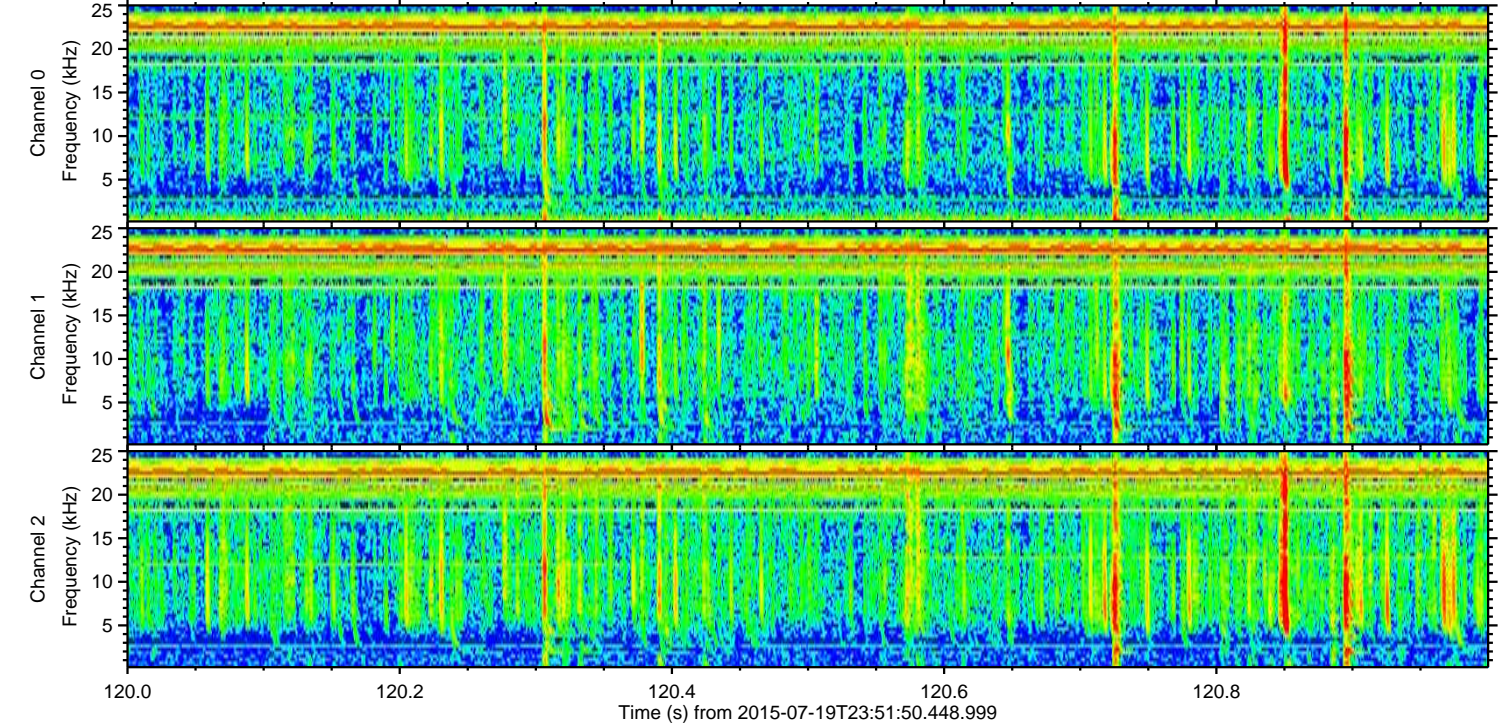
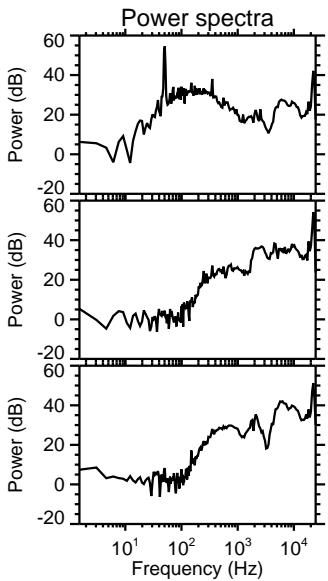
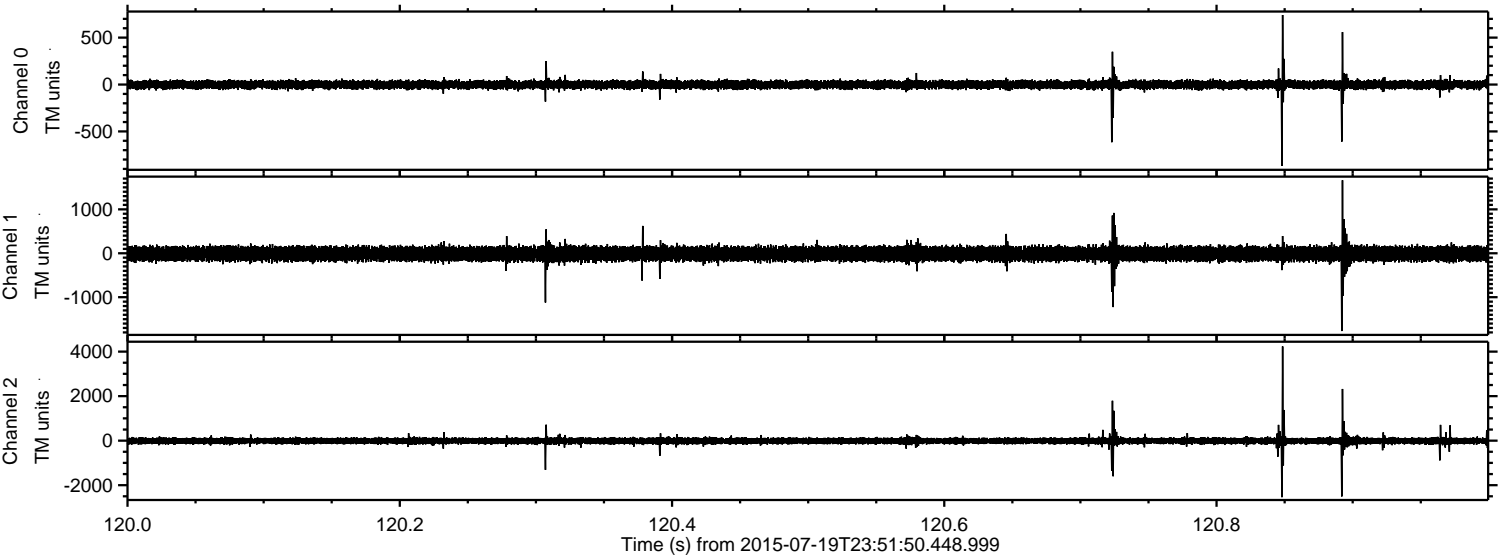
Channel 1  
mn: -933  
mx: 828  
μ: -11.2  
σ: 87.8

Channel 2  
mn: -4291  
mx: 3285  
μ: -11.2  
σ: 86.3



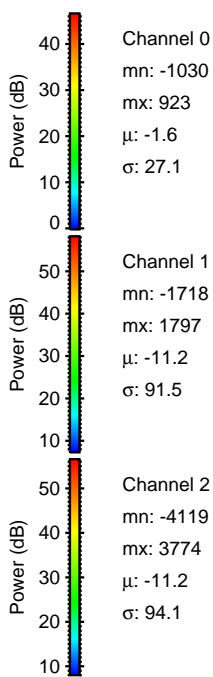
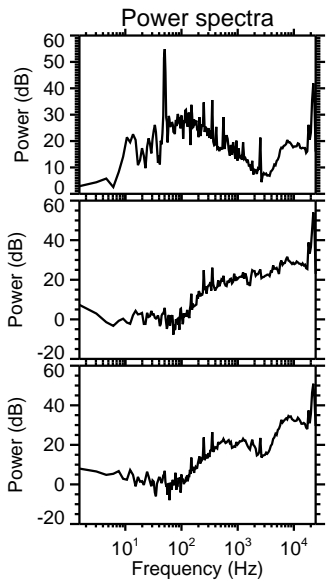
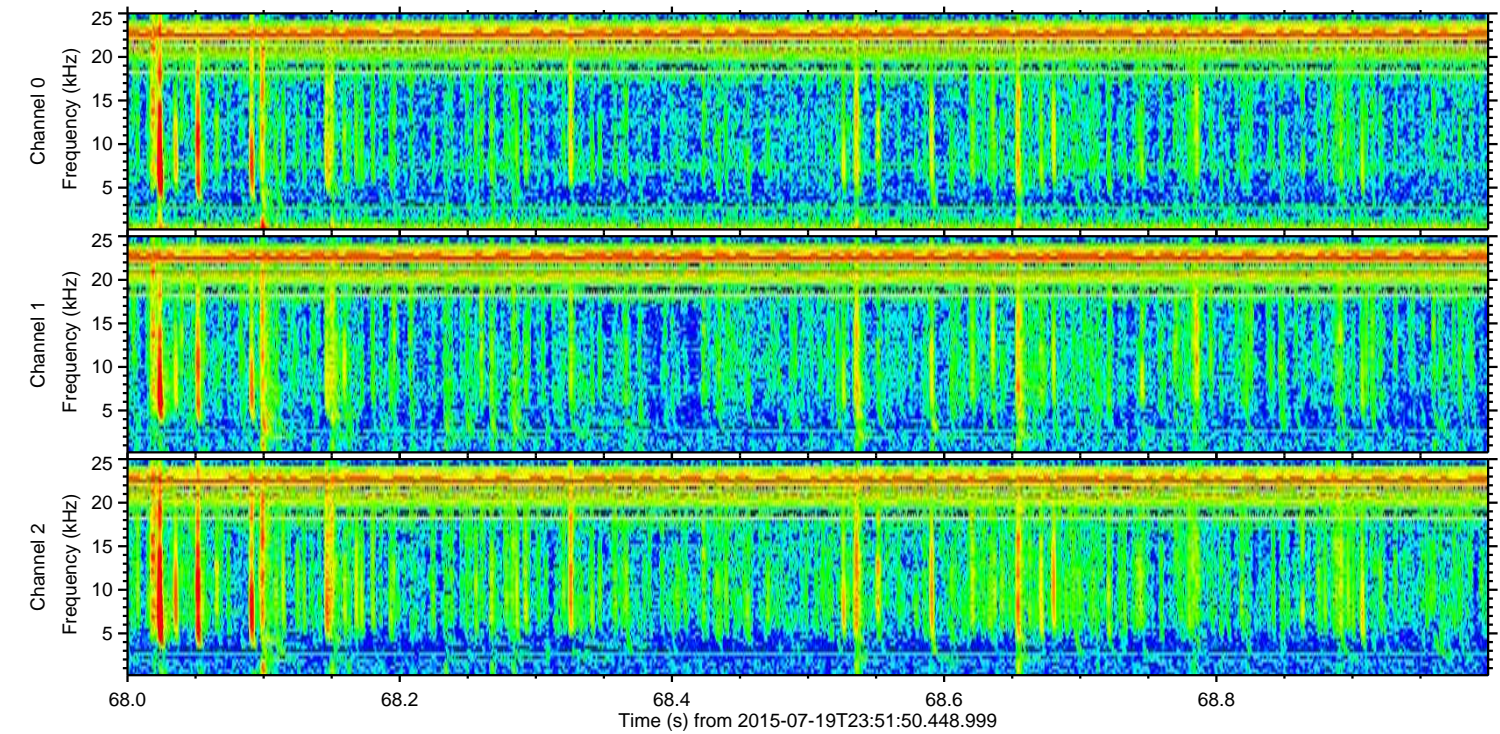
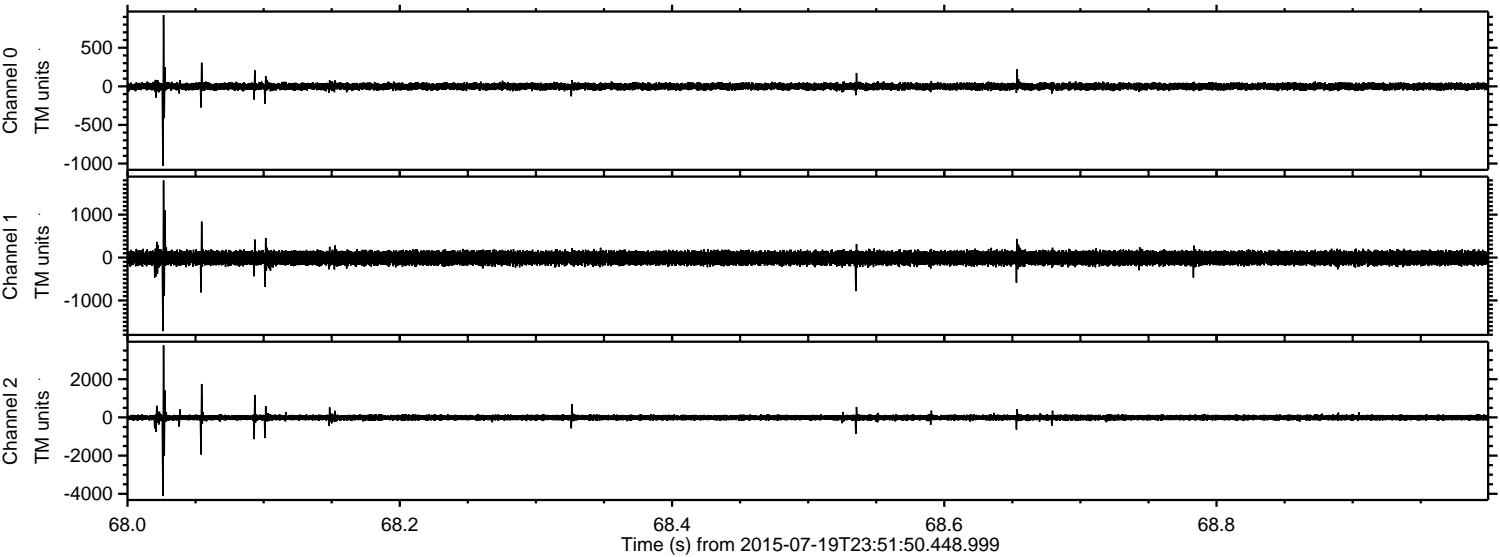
ELMAVAN 3D WAVEFORMS (Measured data sampled at 50 kHz) 51000 packets of 144 samples from 2015-07-19T23:51:50.448.999. Part 121/147

Processed Mon Jul 20 01:58:01 2015 by ELM ver.2012-10-06 from 001\_\_elm20150719\_235149\_\_dat00.bin



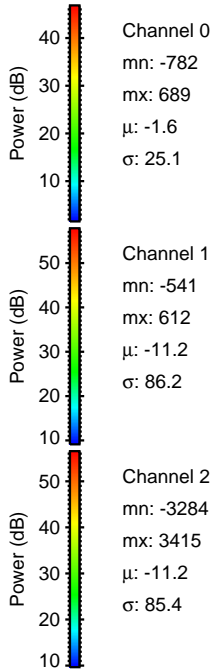
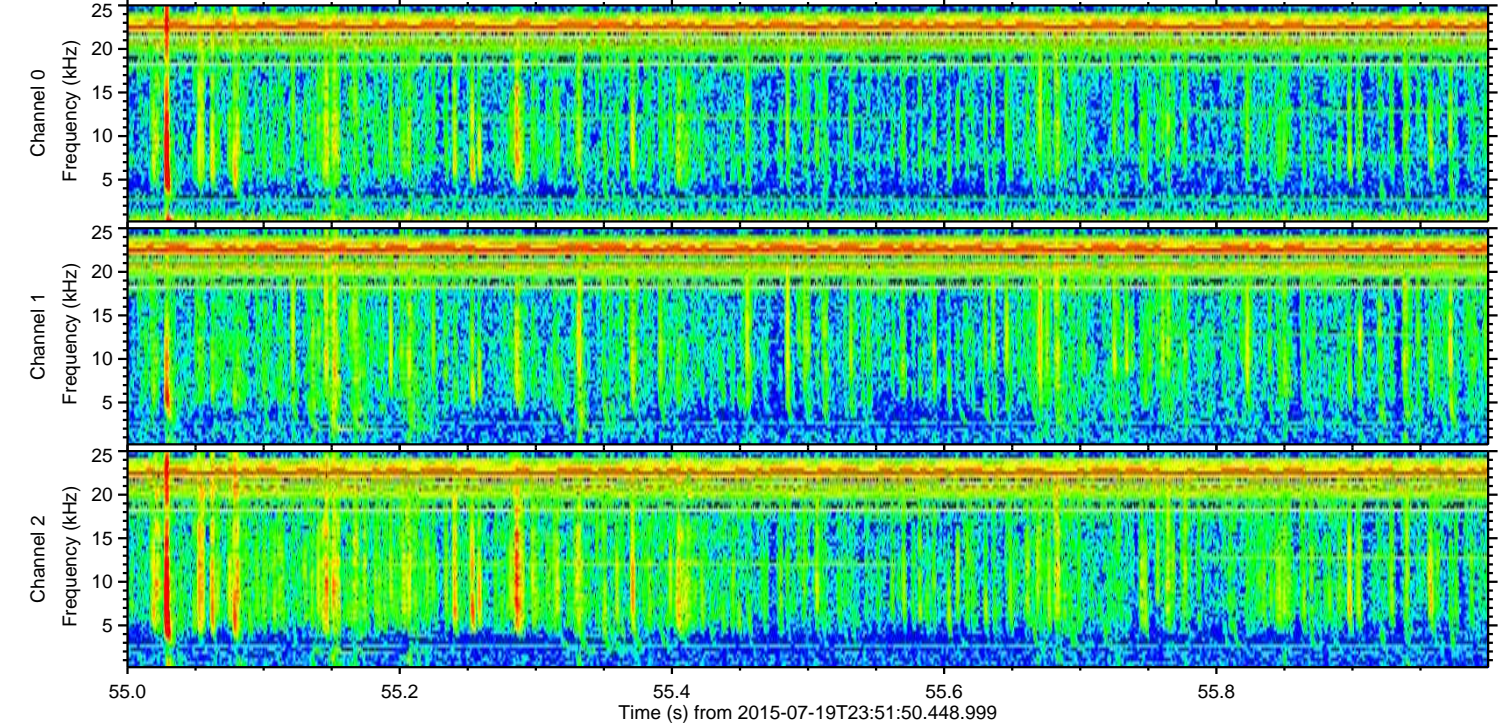
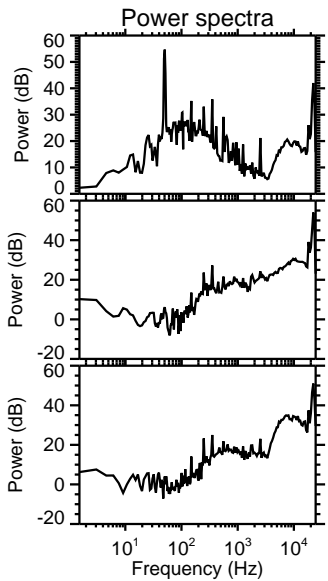
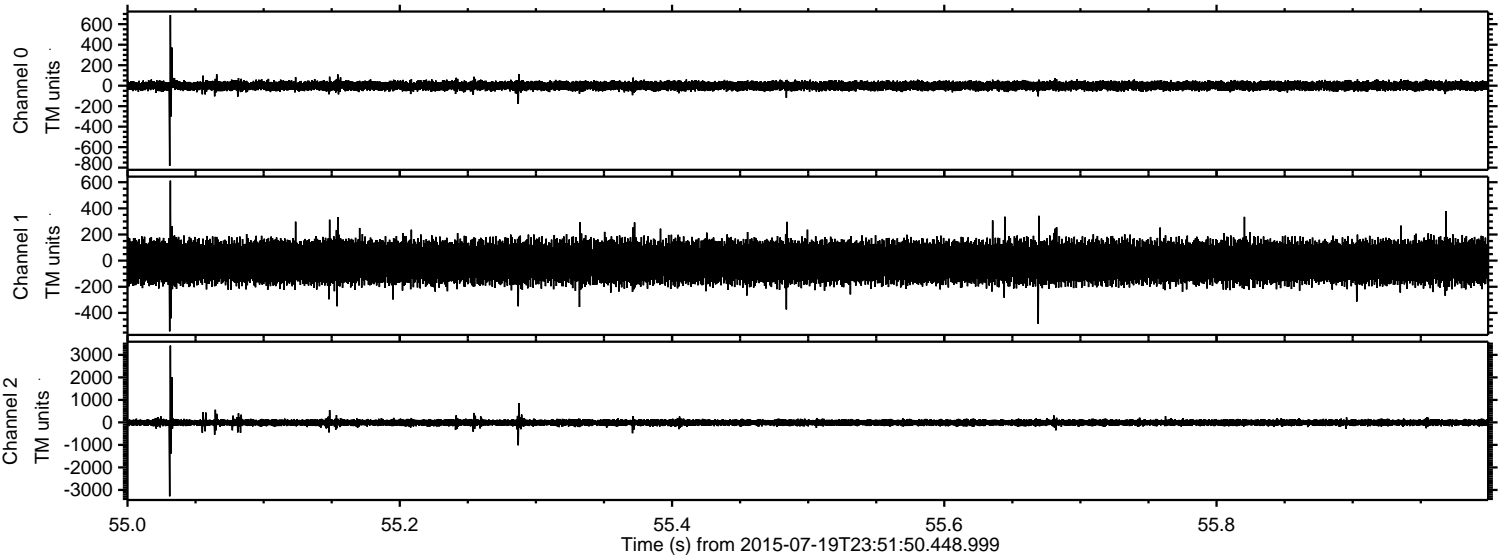


Processed Mon Jul 20 01:58:02 2015 by ELM ver.2012-10-06 from 001\_\_elm20150719\_235149\_\_dat00.bin





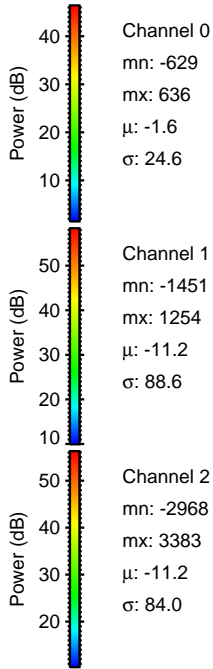
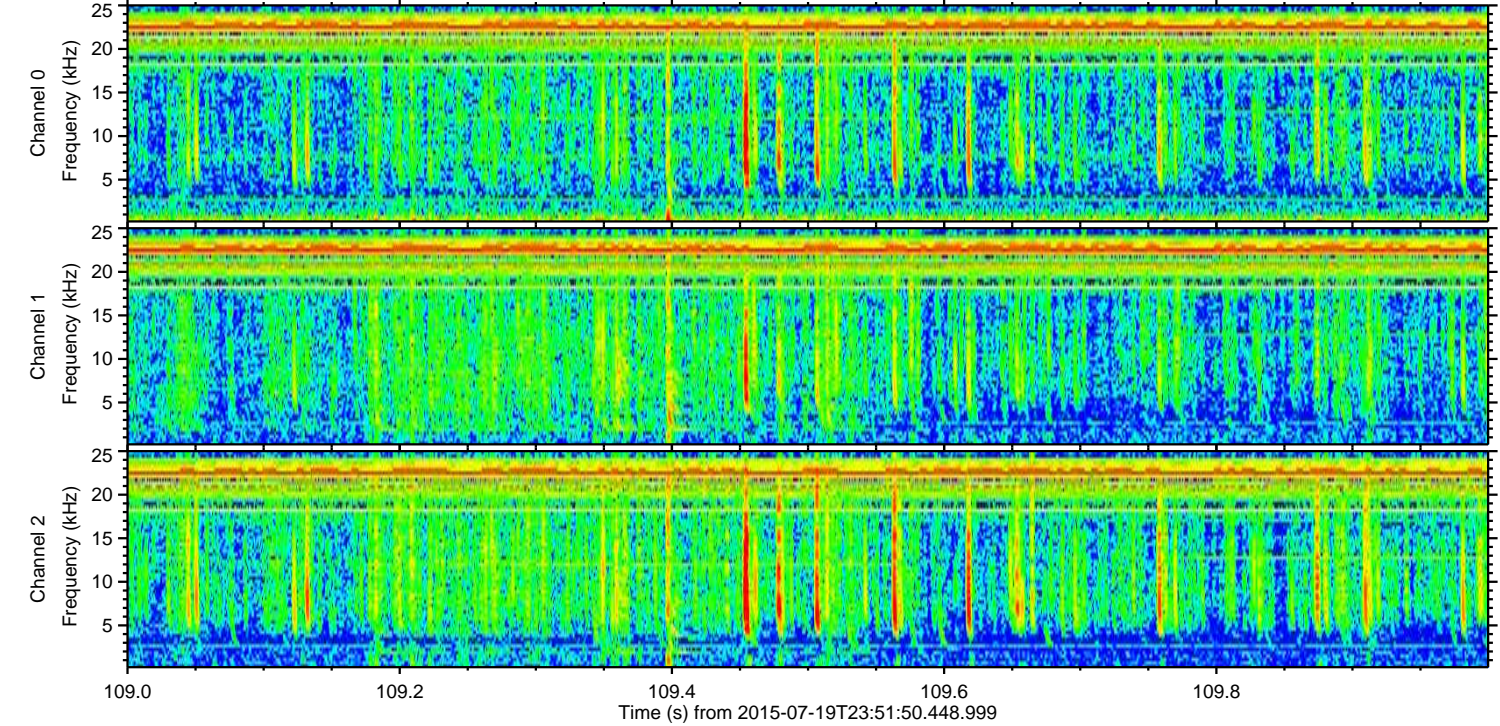
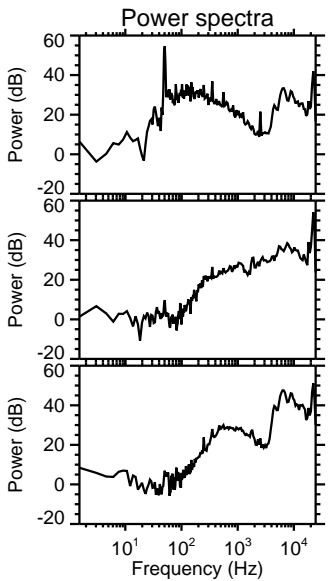
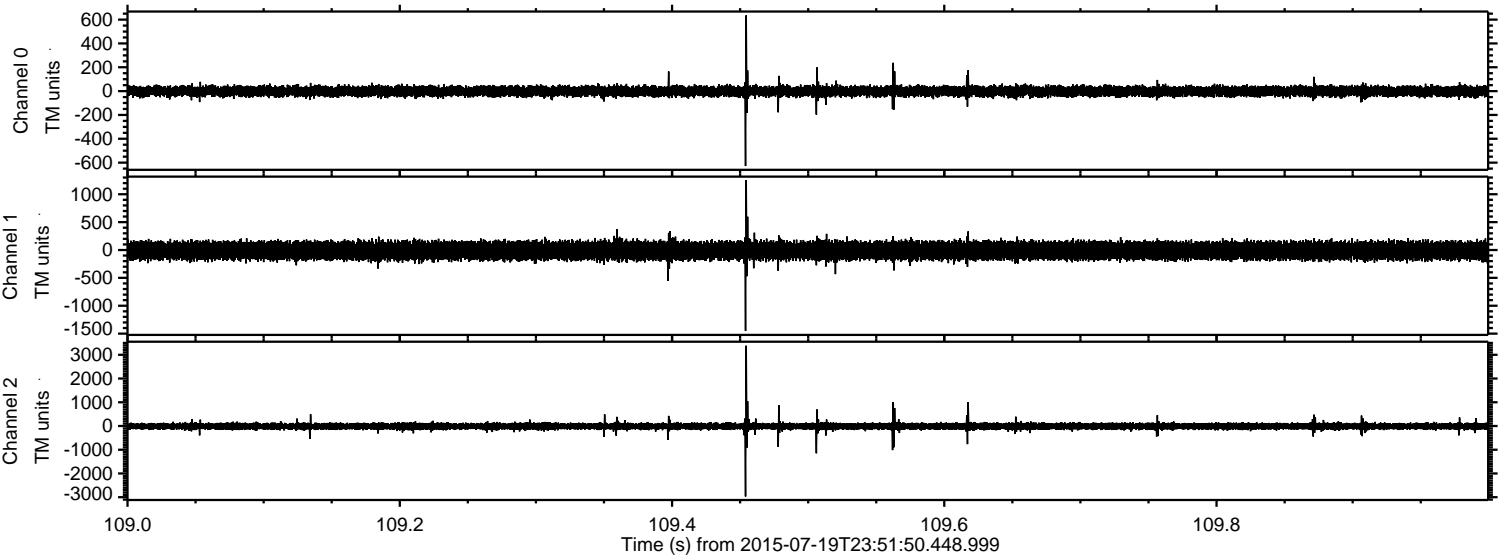
Processed Mon Jul 20 01:58:03 2015 by ELM ver.2012-10-06 from 001\_\_elm20150719\_235149\_\_dat00.bin





ELMAVAN 3D WAVEFORMS (Measured data sampled at 50 kHz) 51000 packets of 144 samples from 2015-07-19T23:51:50.448.999. Part 110/147

Processed Mon Jul 20 01:58:04 2015 by ELM ver.2012-10-06 from 001\_\_elm20150719\_235149\_\_dat00.bin



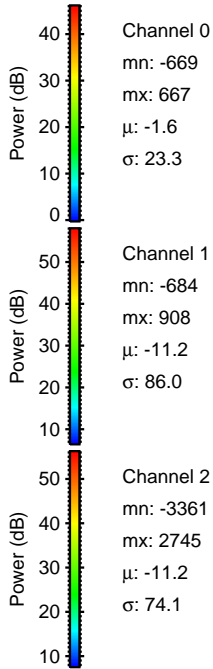
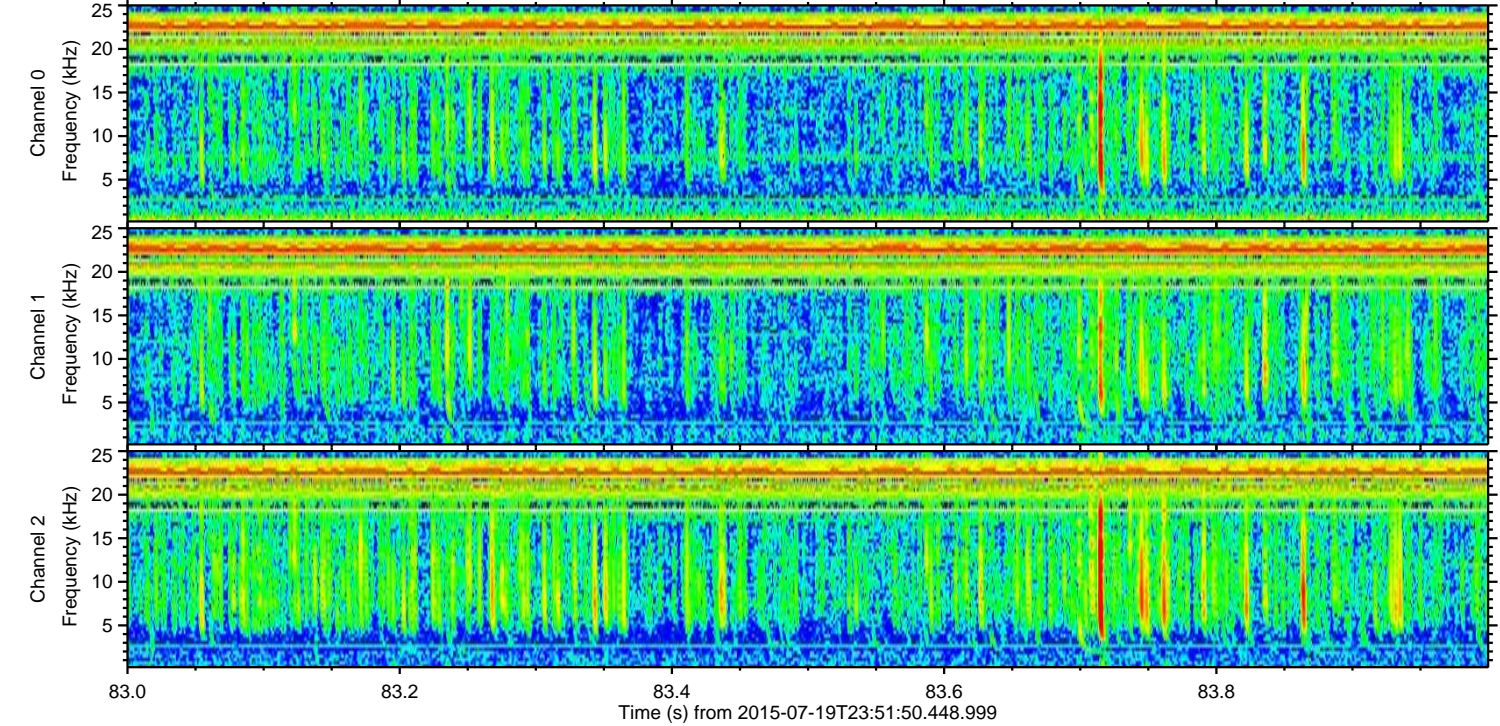
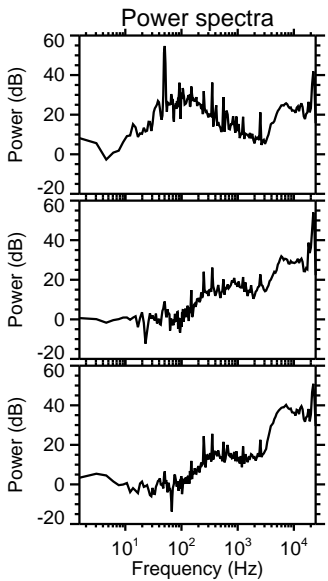
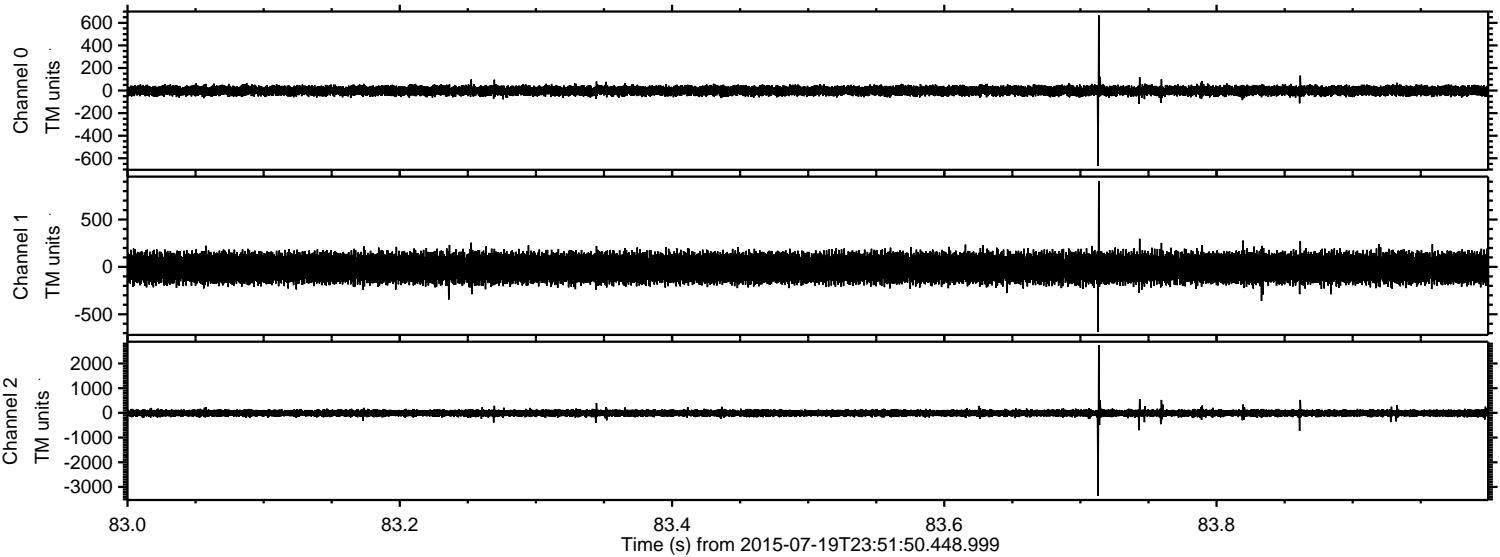
Channel 0  
mn: -629  
mx: 636  
 $\mu$ : -1.6  
 $\sigma$ : 24.6

Channel 1  
mn: -1451  
mx: 1254  
 $\mu$ : -11.2  
 $\sigma$ : 88.6

Channel 2  
mn: -2968  
mx: 3383  
 $\mu$ : -11.2  
 $\sigma$ : 84.0

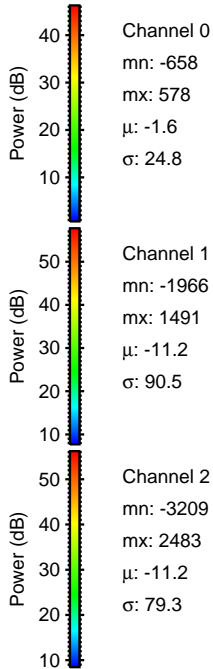
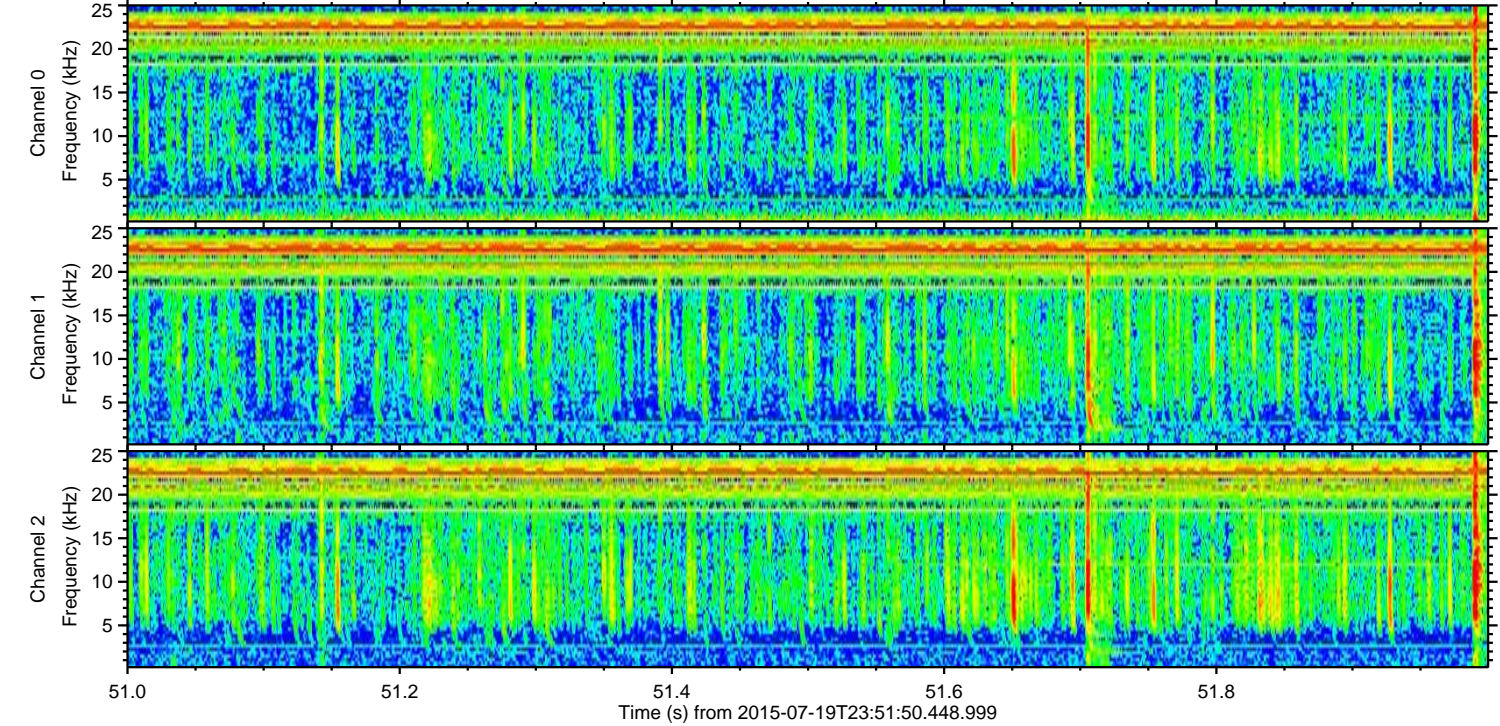
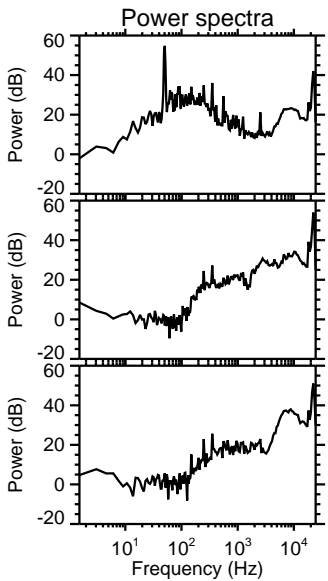
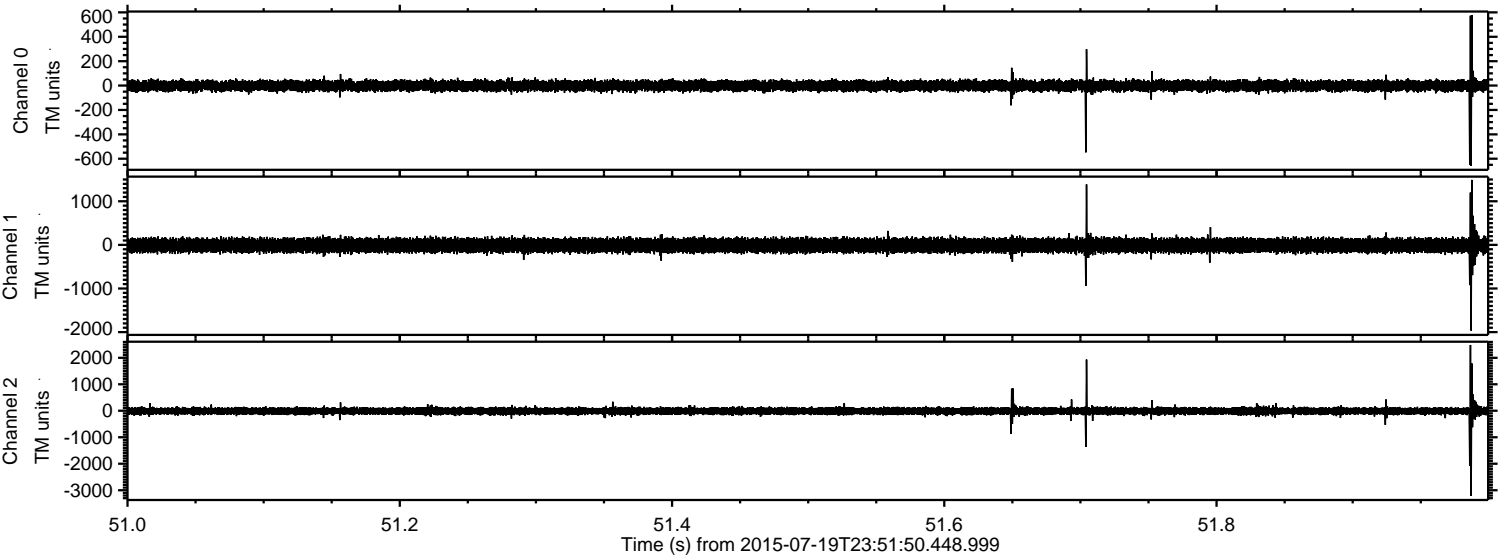


Processed Mon Jul 20 01:58:05 2015 by ELM ver.2012-10-06 from 001\_\_elm20150719\_235149\_\_dat00.bin



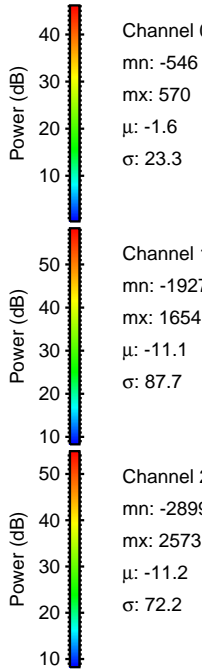
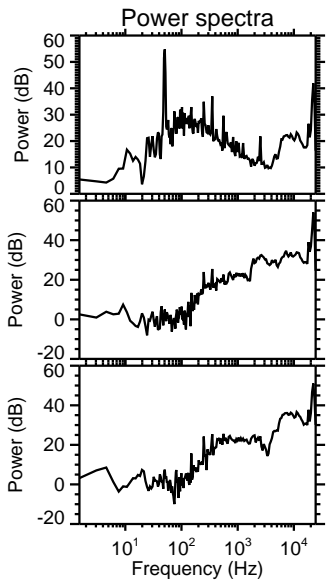
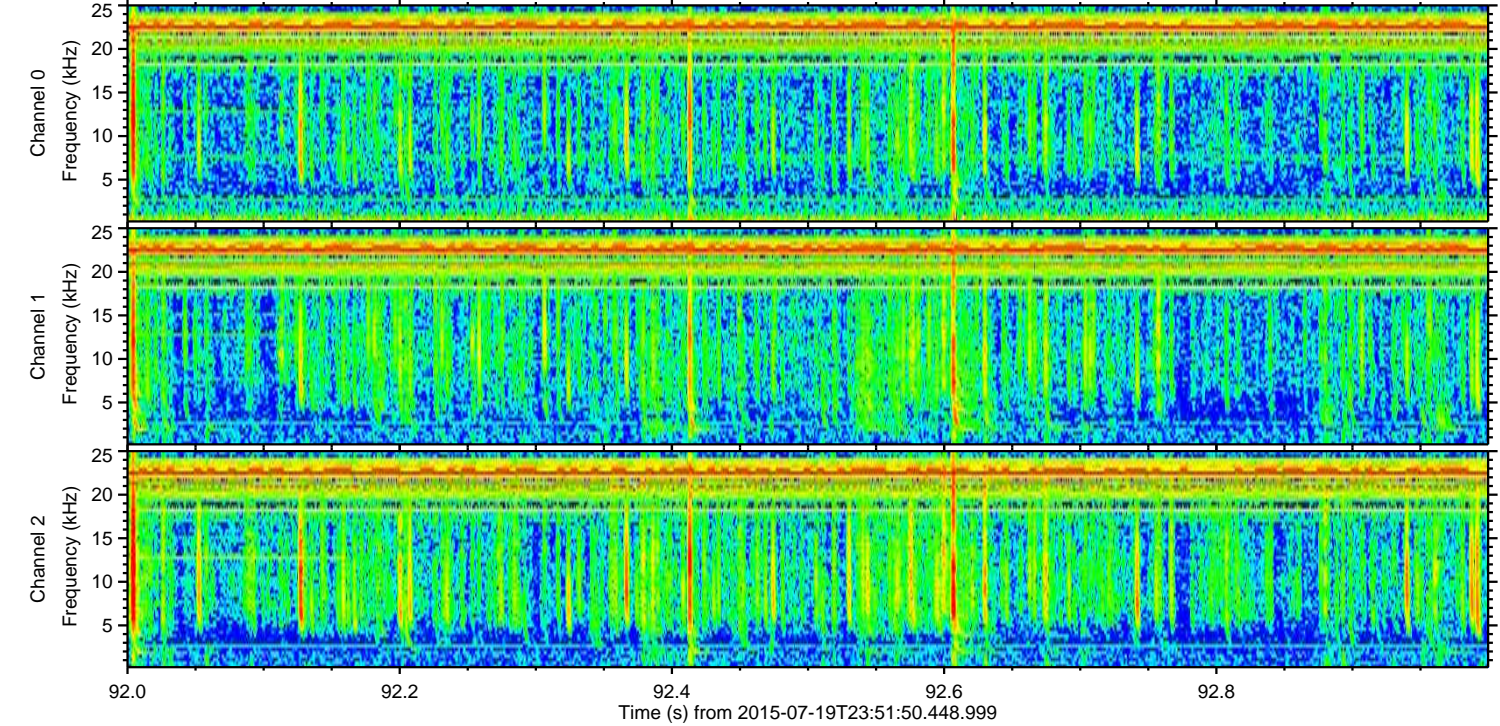
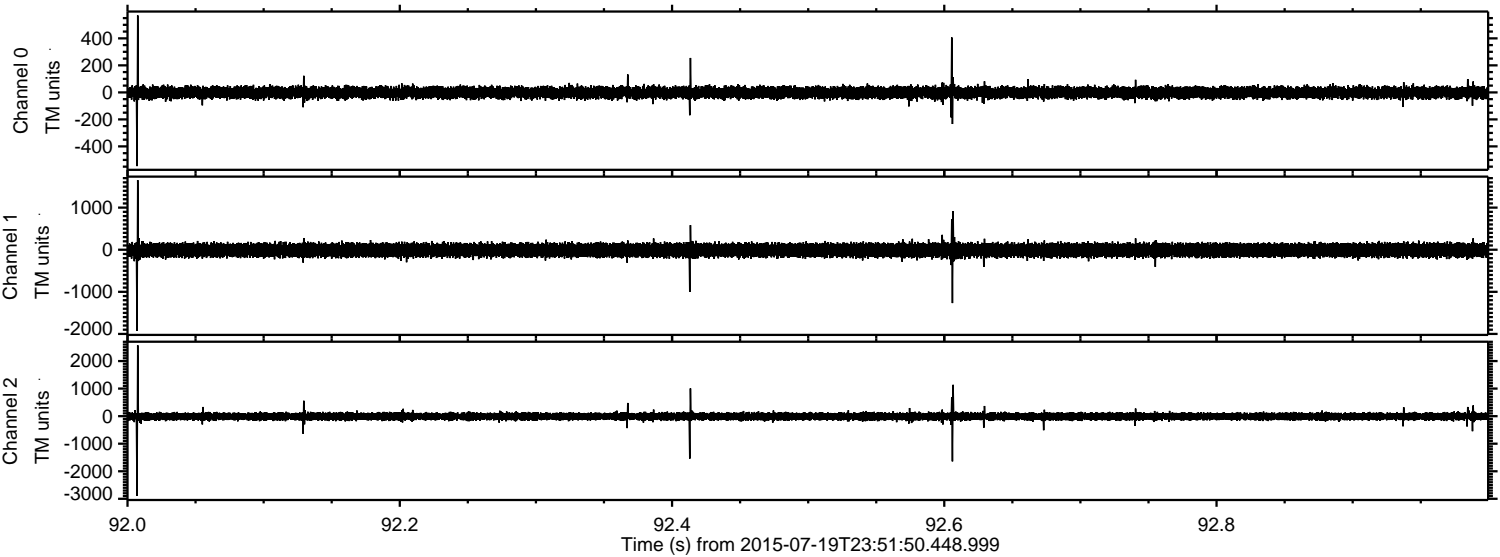


Processed Mon Jul 20 01:58:06 2015 by ELM ver.2012-10-06 from 001\_\_elm20150719\_235149\_\_dat00.bin





Processed Mon Jul 20 01:58:07 2015 by ELM ver.2012-10-06 from 001\_\_elm20150719\_235149\_\_dat00.bin





Processed Mon Jul 20 01:58:07 2015 by ELM ver.2012-10-06 from 001\_\_elm20150719\_235149\_\_dat00.bin

