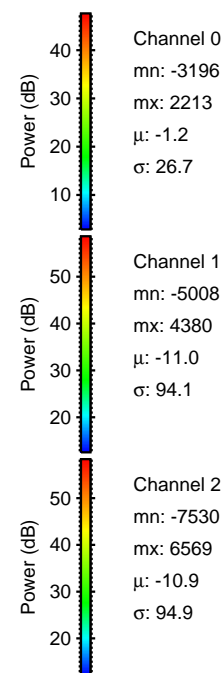
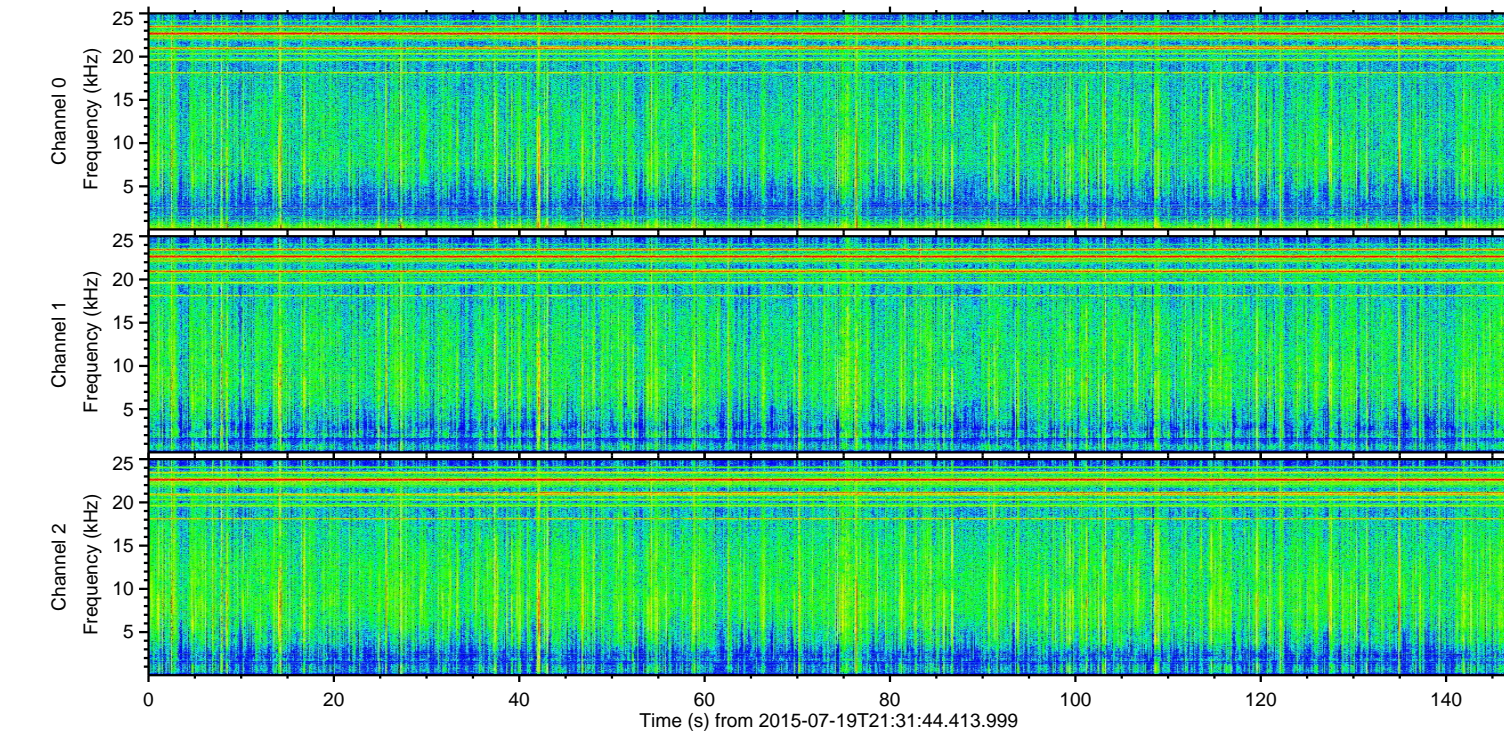
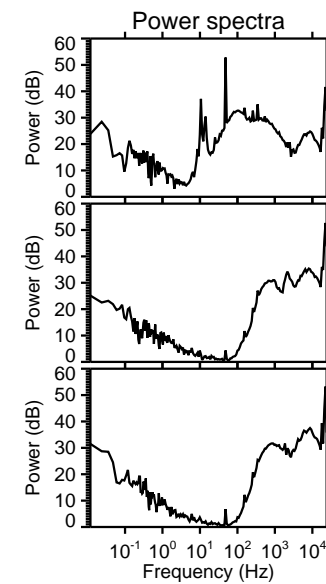
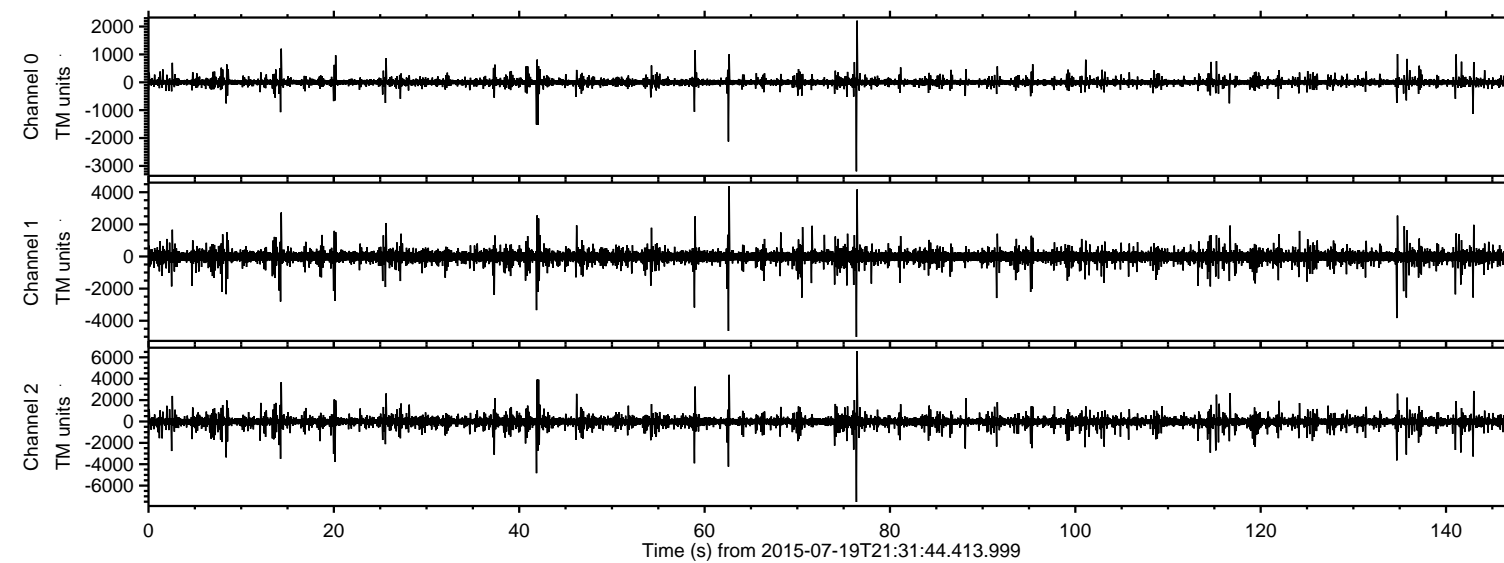


# ELMAVAN 3D WAVEFORMS (Measured data sampled at 50 kHz) 51000 packets of 144 samples from 2015-07-19T21:31:44.413.999.

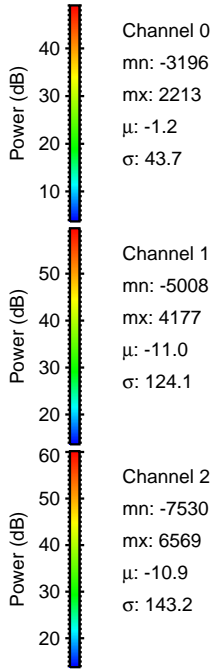
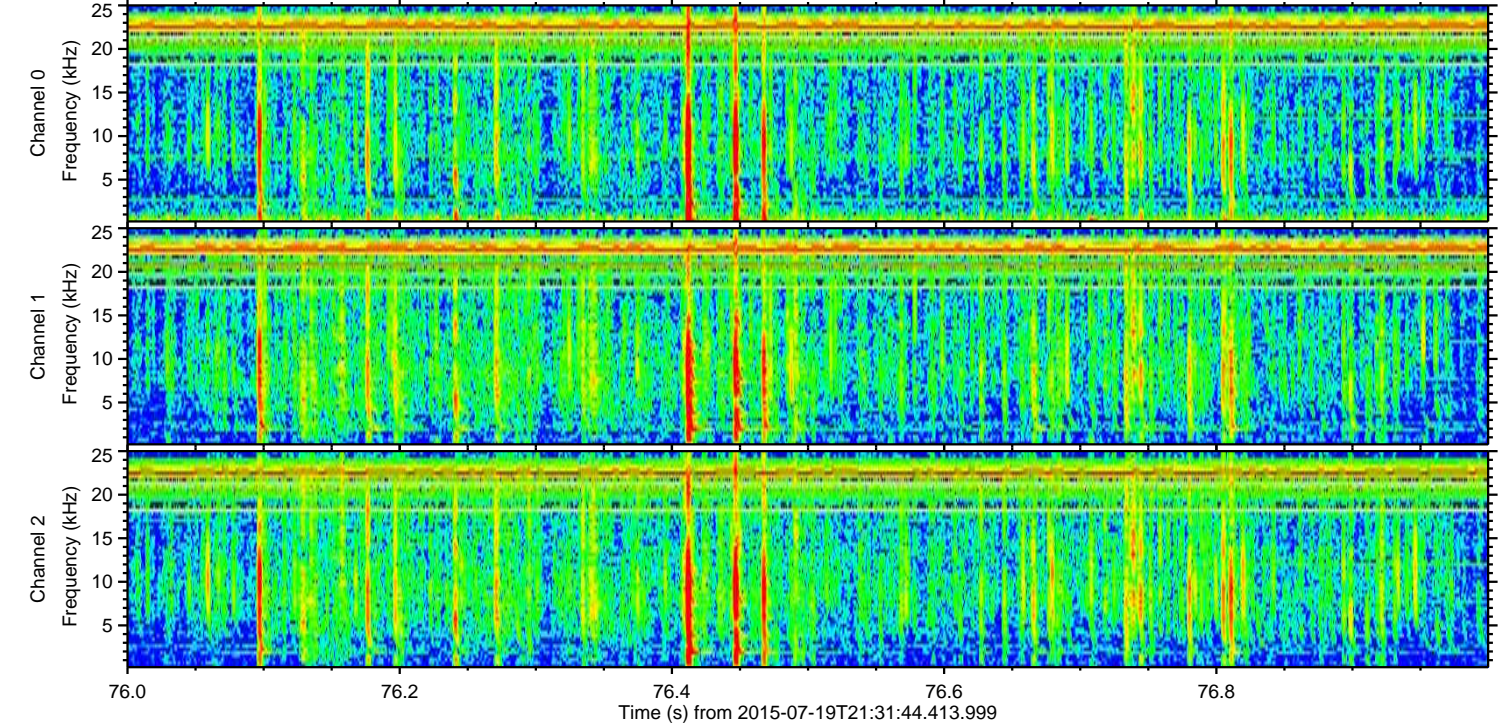
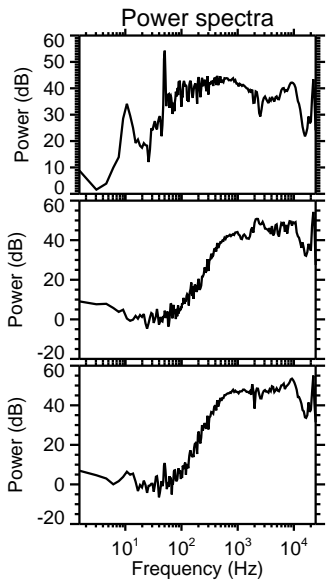
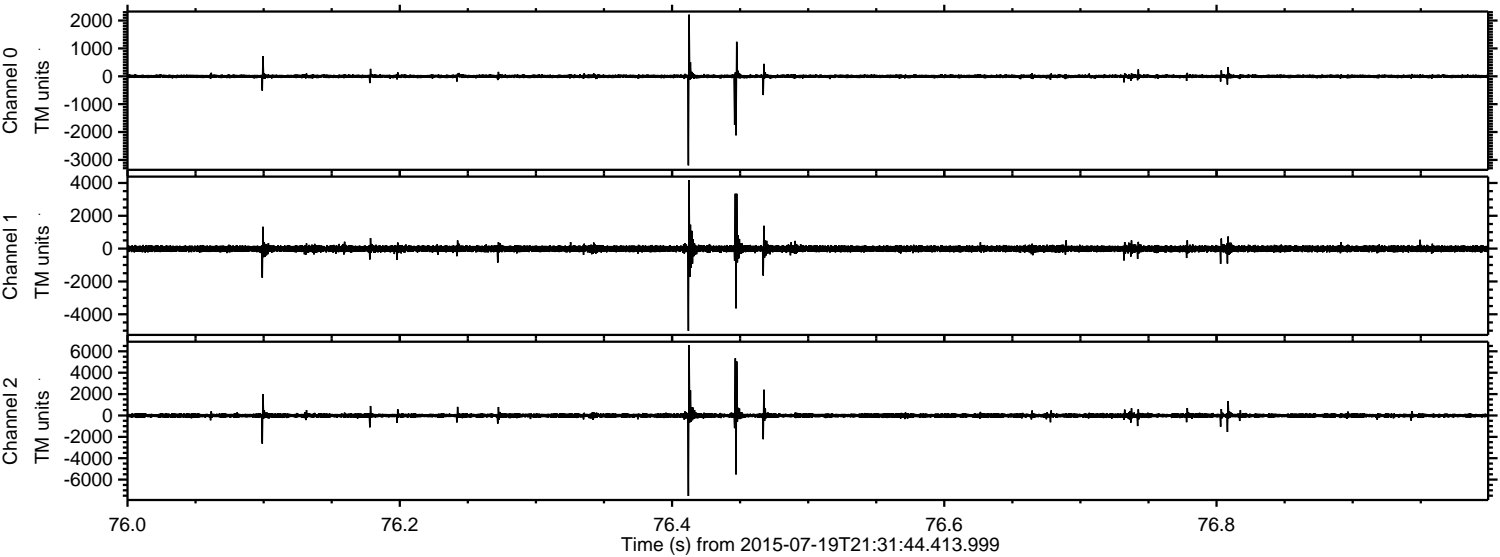
Processed Sun Jul 19 23:38:17 2015 by ELM ver.2012-10-06 from 001\_\_elm20150719\_213143\_\_dat00.bin





ELMAVAN 3D WAVEFORMS (Measured data sampled at 50 kHz) 51000 packets of 144 samples from 2015-07-19T21:31:44.413.999. Part 77/147

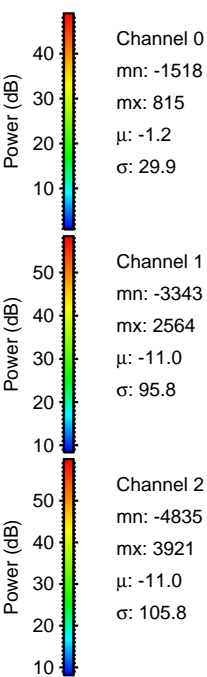
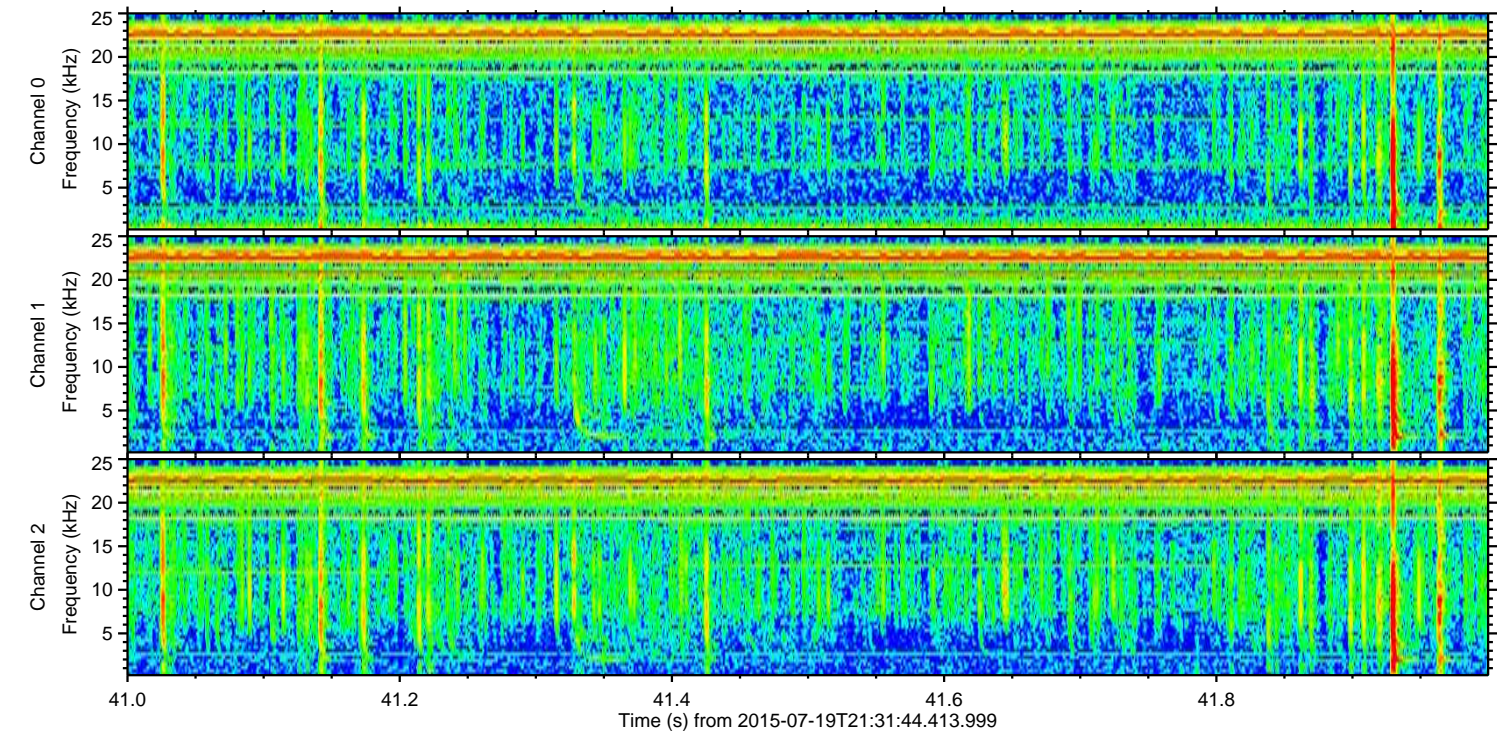
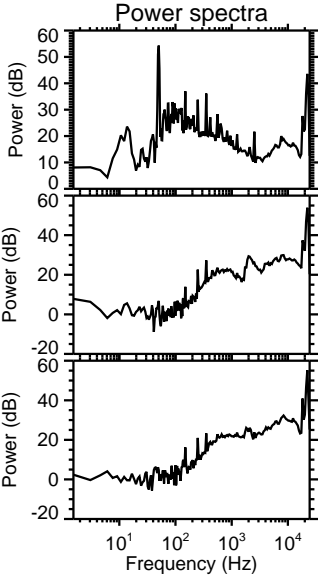
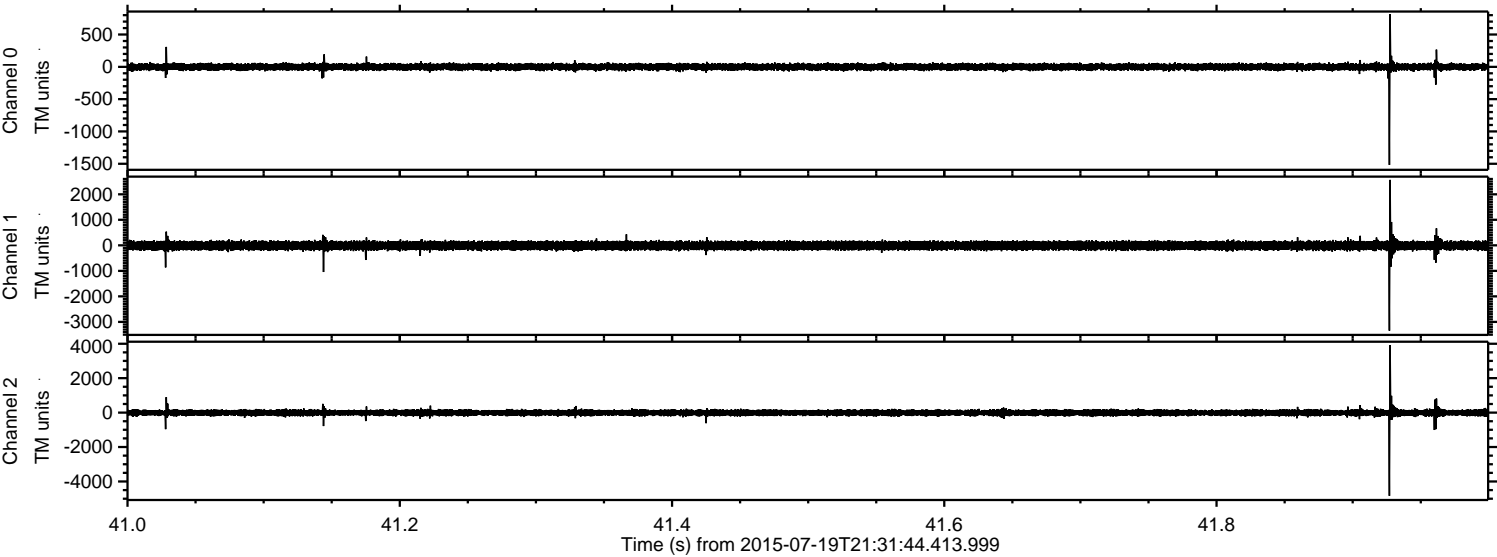
Processed Sun Jul 19 23:38:33 2015 by ELM ver.2012-10-06 from 001\_\_elm20150719\_213143\_\_dat00.bin





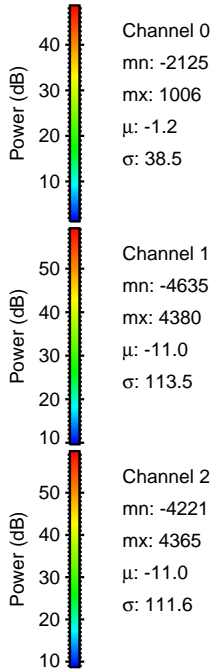
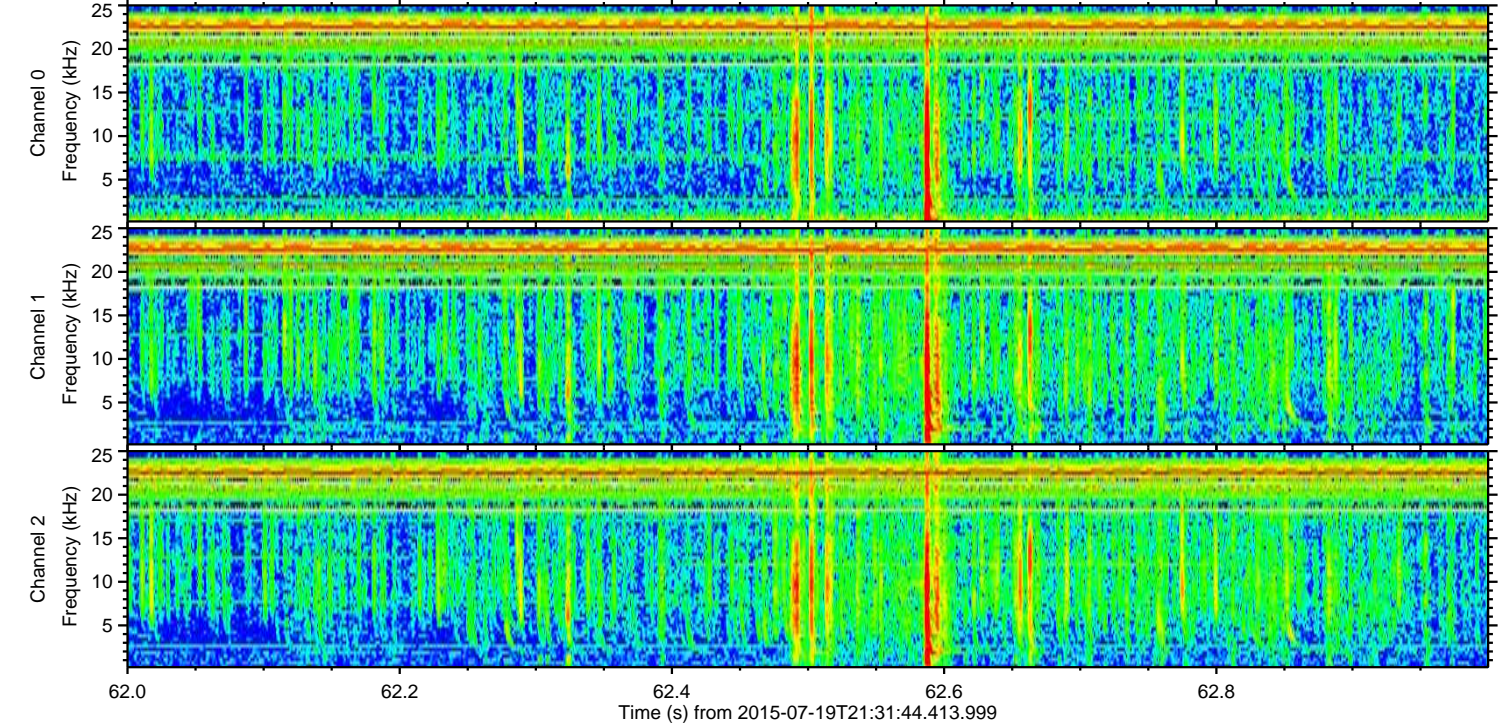
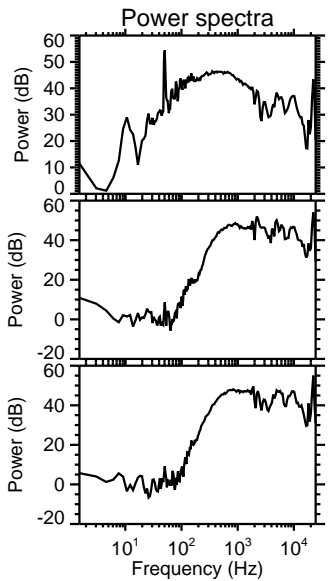
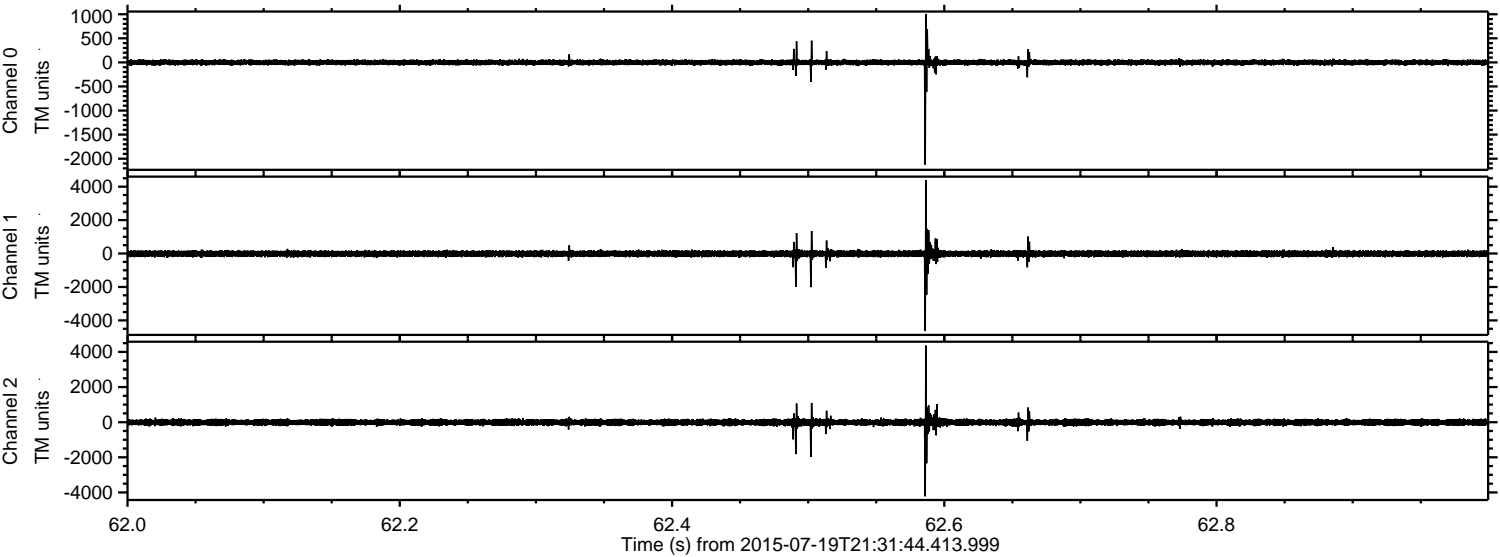
ELMAVAN 3D WAVEFORMS (Measured data sampled at 50 kHz) 51000 packets of 144 samples from 2015-07-19T21:31:44.413.999. Part 42/147

Processed Sun Jul 19 23:38:34 2015 by ELM ver.2012-10-06 from 001\_\_elm20150719\_213143\_\_dat00.bin



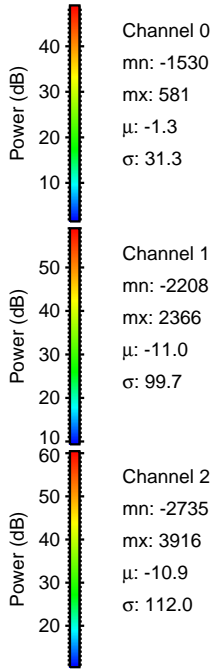
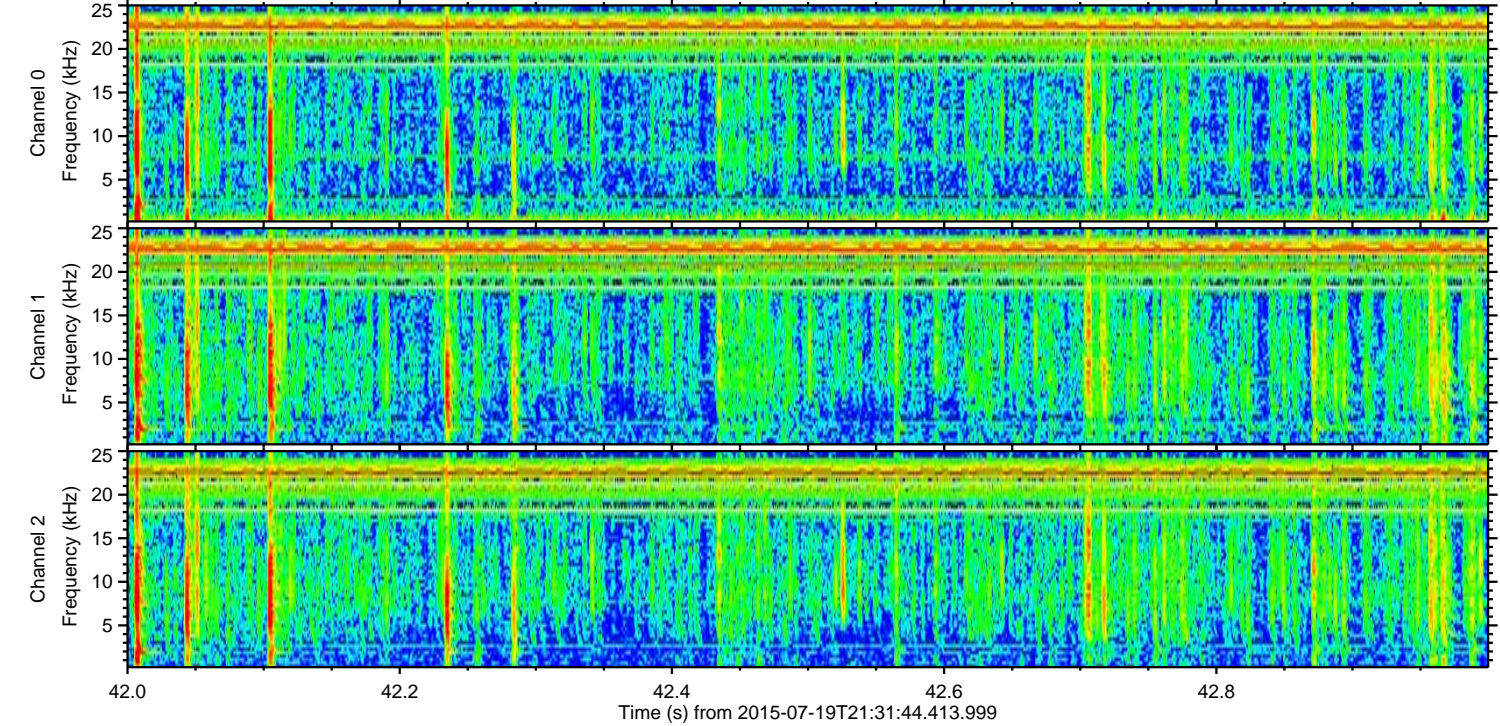
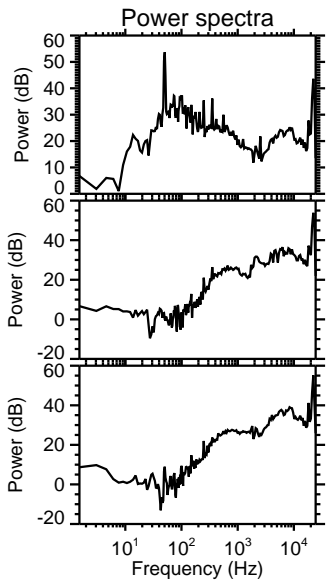
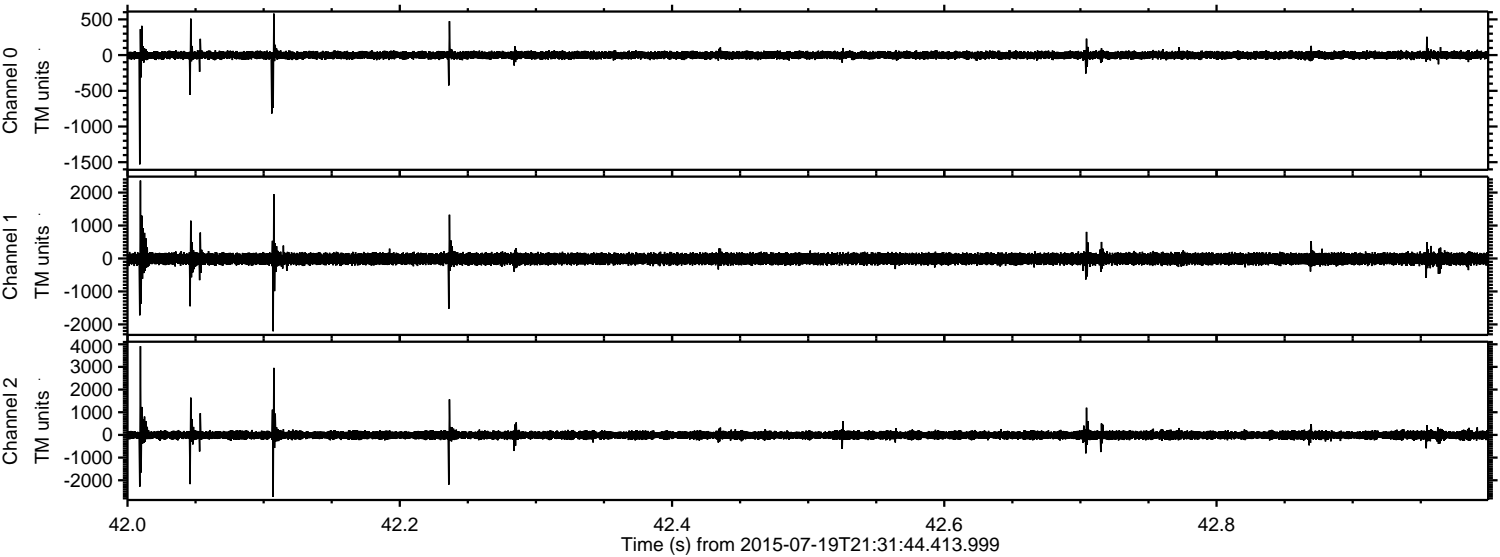


Processed Sun Jul 19 23:38:35 2015 by ELM ver.2012-10-06 from 001\_\_elm20150719\_213143\_\_dat00.bin



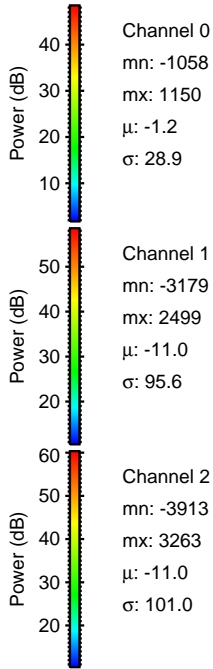
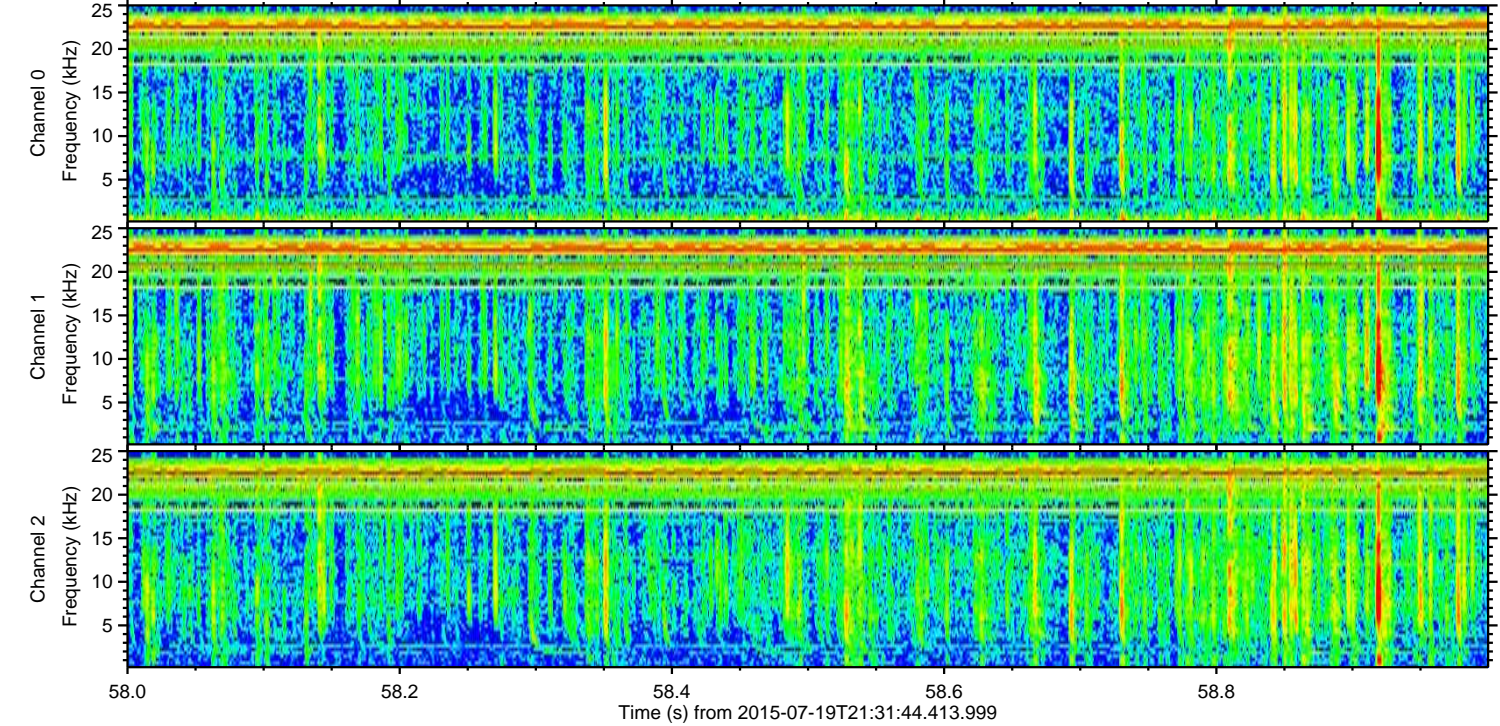
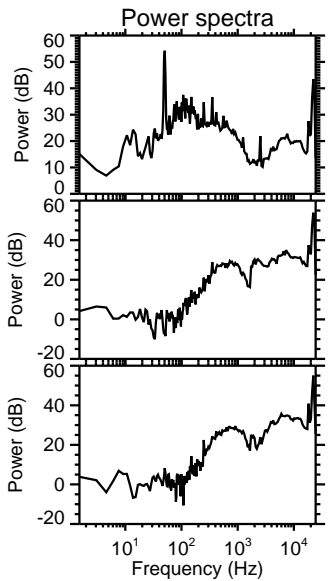
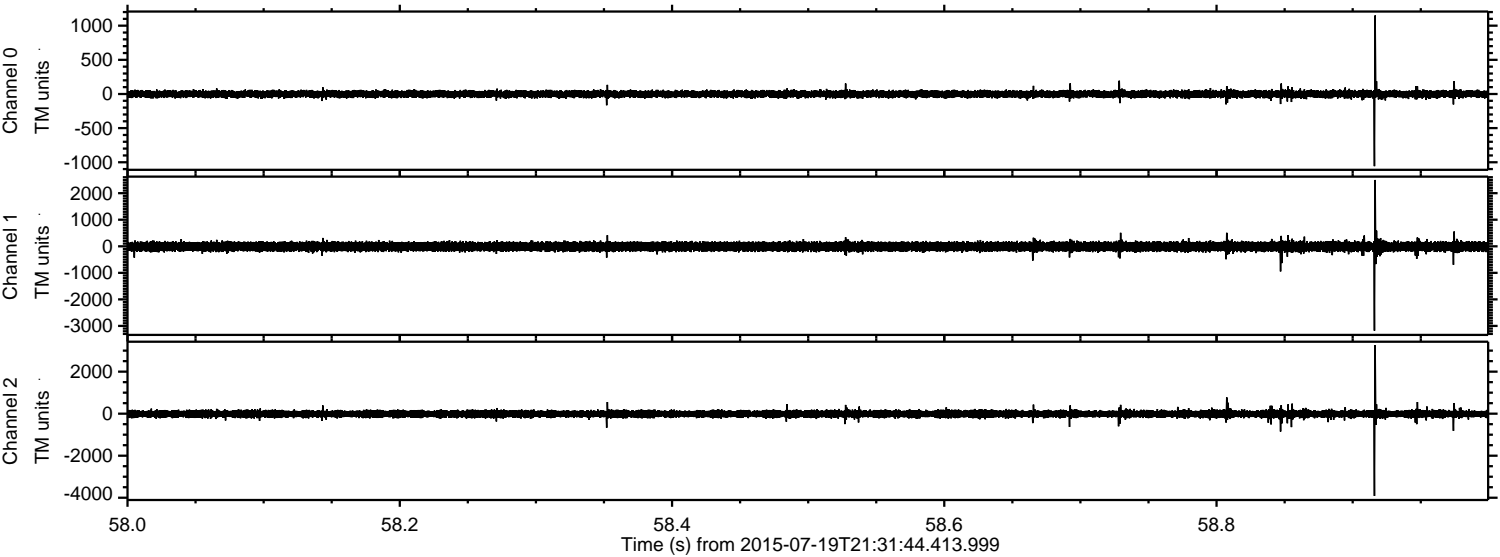


Processed Sun Jul 19 23:38:36 2015 by ELM ver.2012-10-06 from 001\_\_elm20150719\_213143\_\_dat00.bin





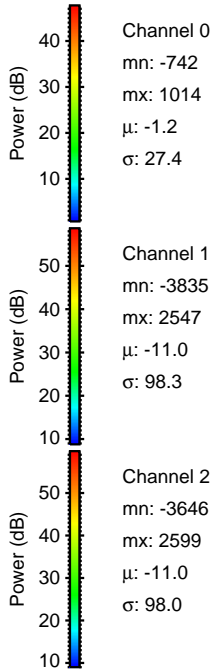
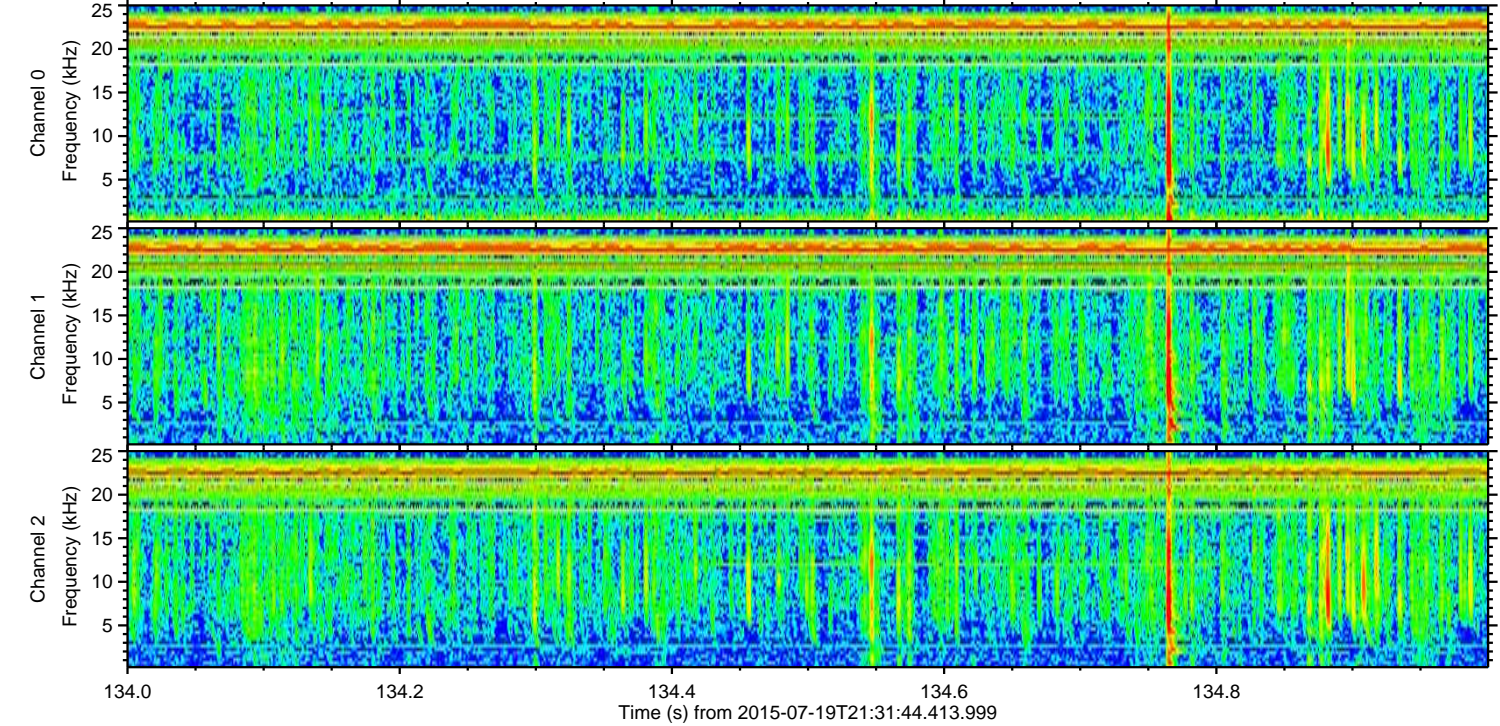
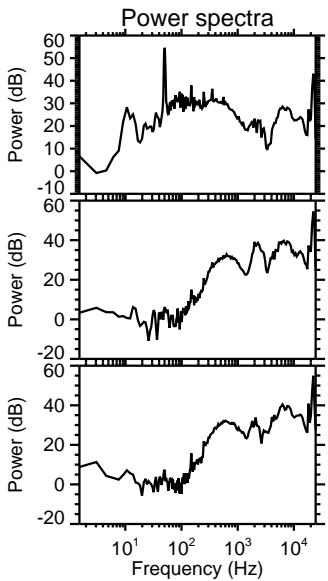
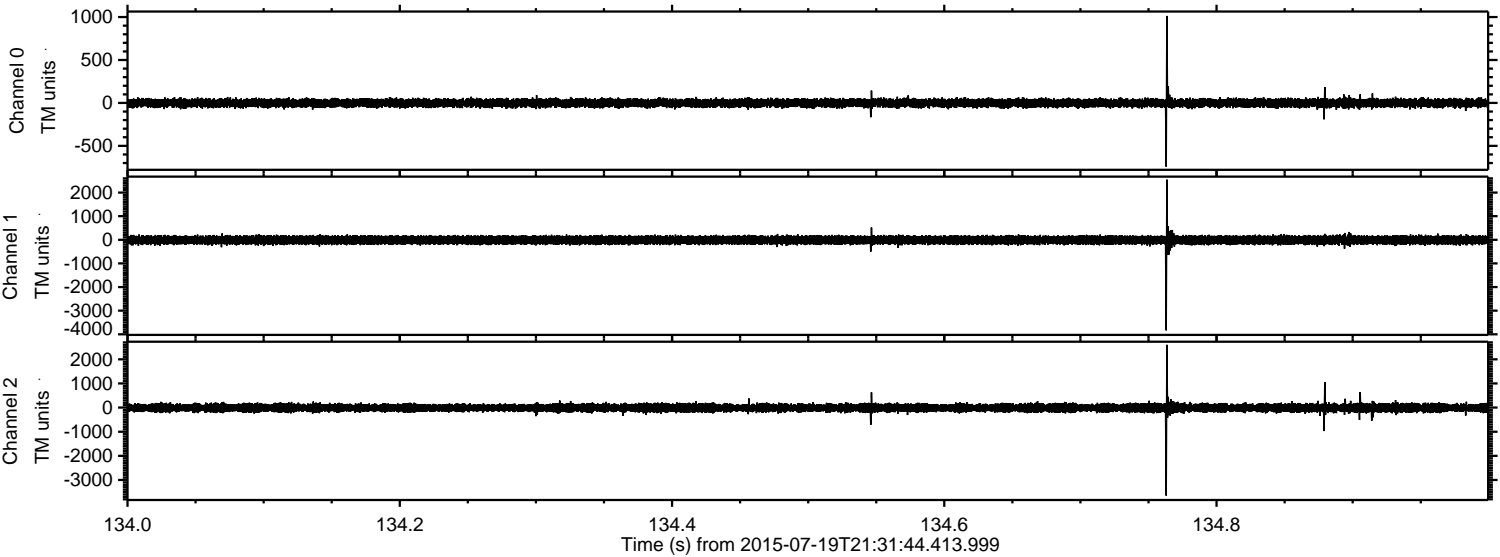
Processed Sun Jul 19 23:38:37 2015 by ELM ver.2012-10-06 from 001\_\_elm20150719\_213143\_\_dat00.bin





ELMAVAN 3D WAVEFORMS (Measured data sampled at 50 kHz) 51000 packets of 144 samples from 2015-07-19T21:31:44.413.999. Part 135/147

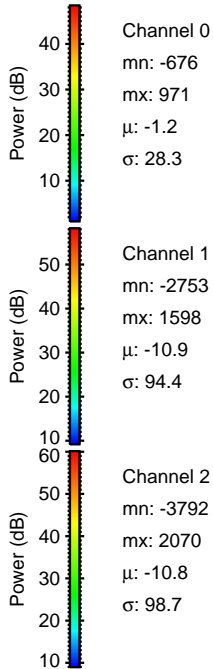
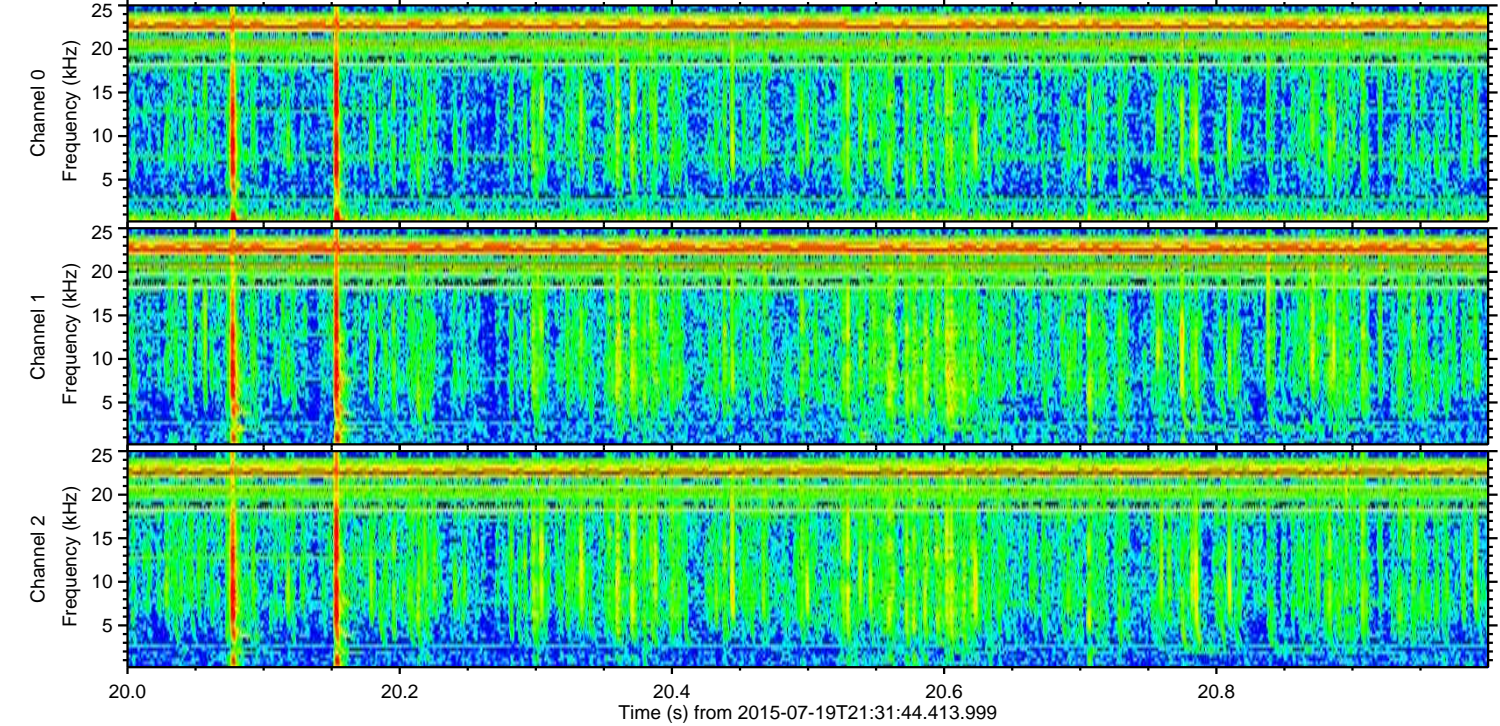
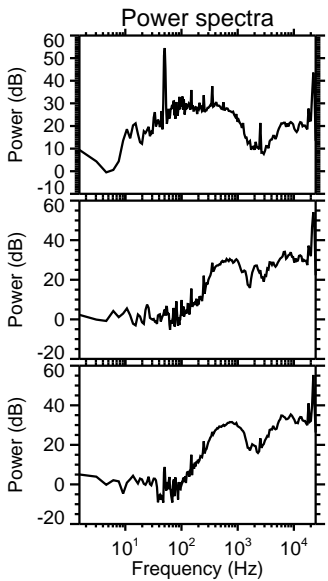
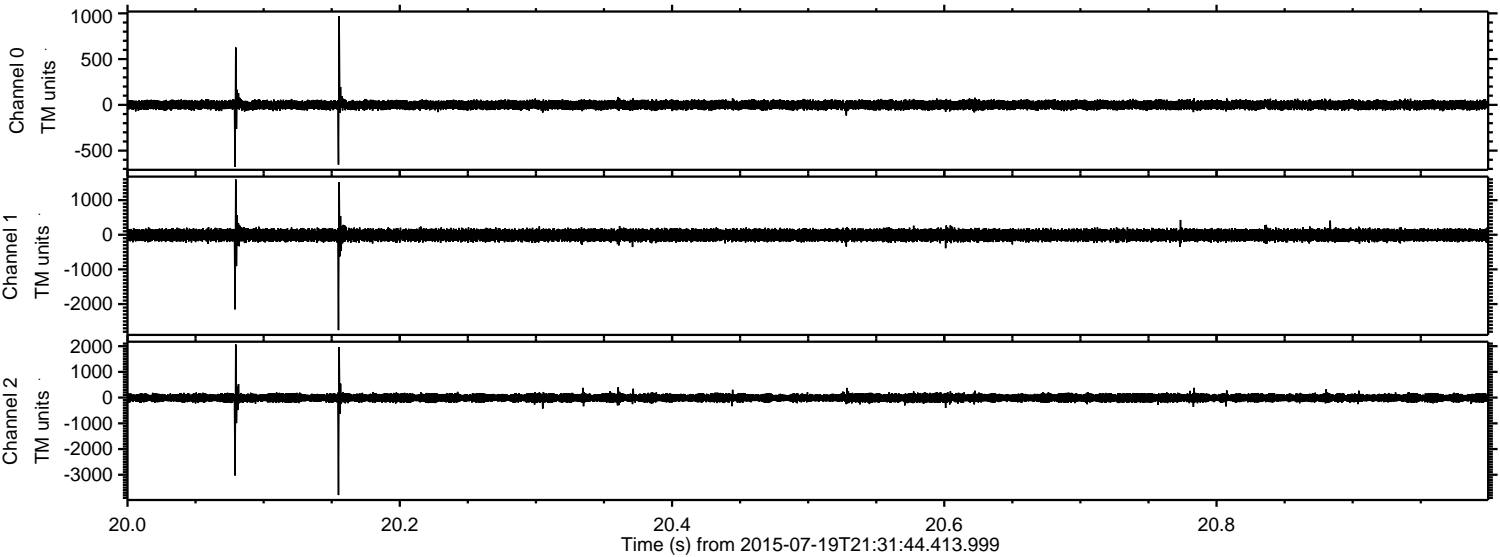
Processed Sun Jul 19 23:38:38 2015 by ELM ver.2012-10-06 from 001\_\_elm20150719\_213143\_\_dat00.bin





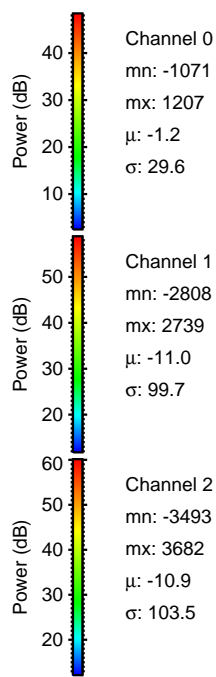
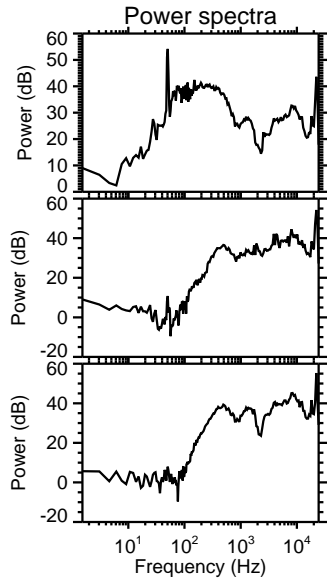
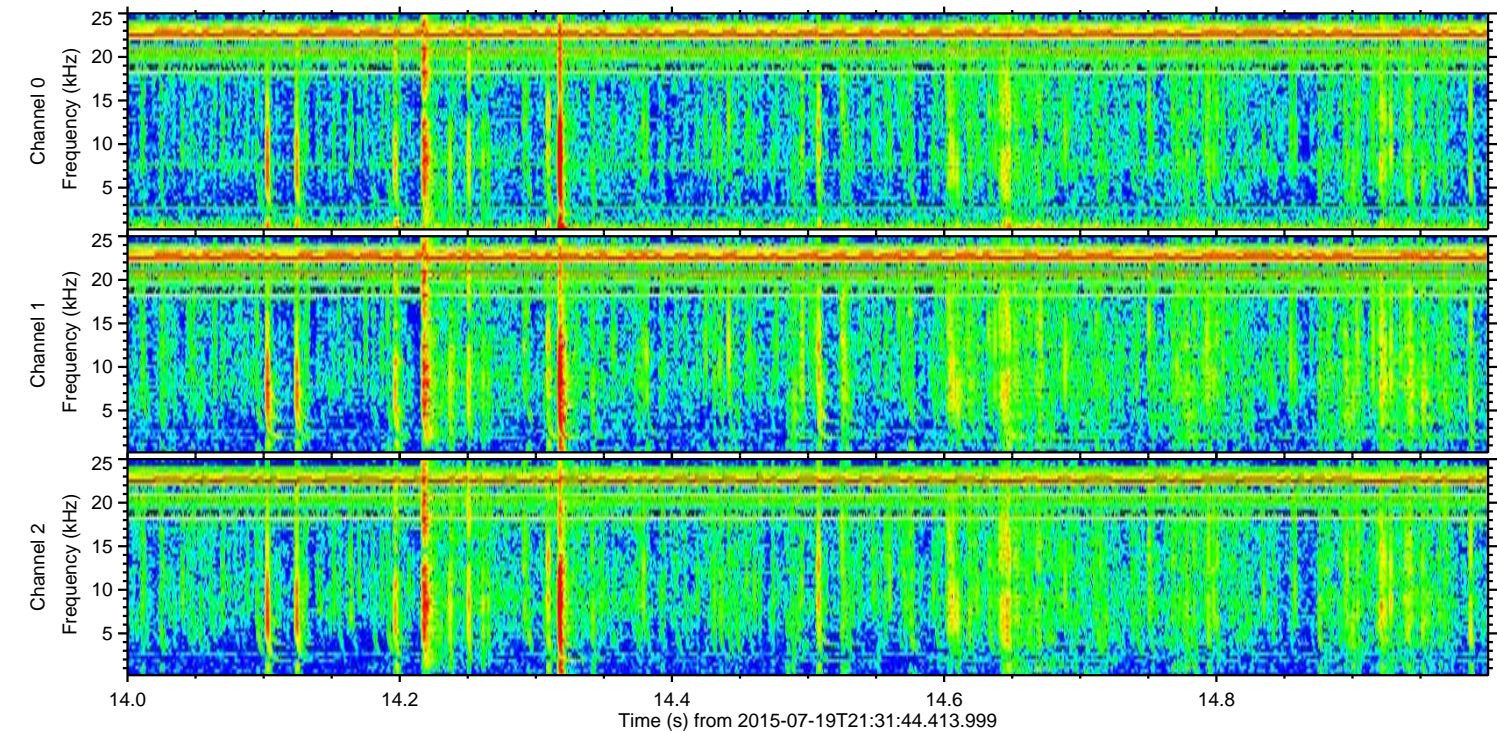
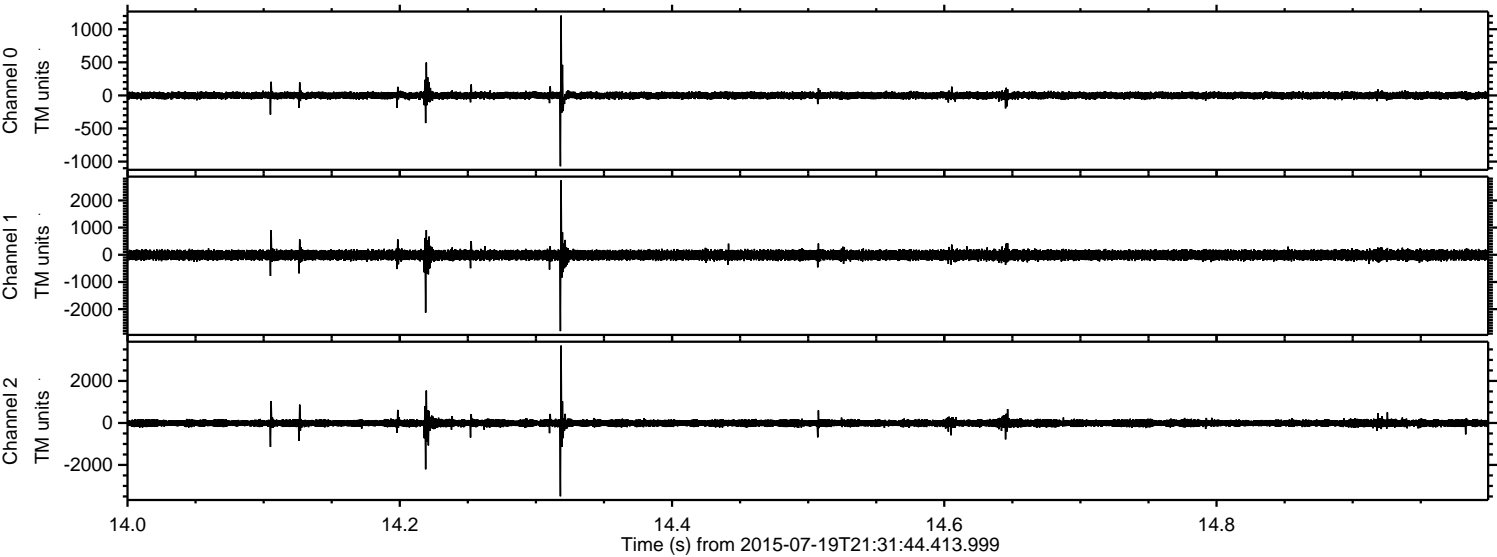
ELMAVAN 3D WAVEFORMS (Measured data sampled at 50 kHz) 51000 packets of 144 samples from 2015-07-19T21:31:44.413.999. Part 21/147

Processed Sun Jul 19 23:38:39 2015 by ELM ver.2012-10-06 from 001\_\_elm20150719\_213143\_\_dat00.bin





Processed Sun Jul 19 23:38:40 2015 by ELM ver.2012-10-06 from 001\_\_elm20150719\_213143\_\_dat00.bin



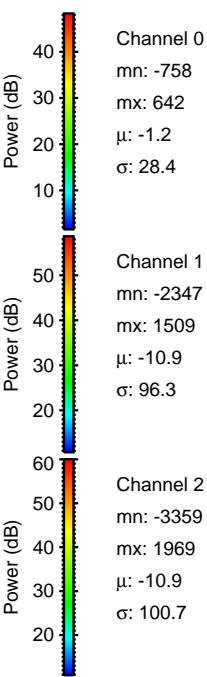
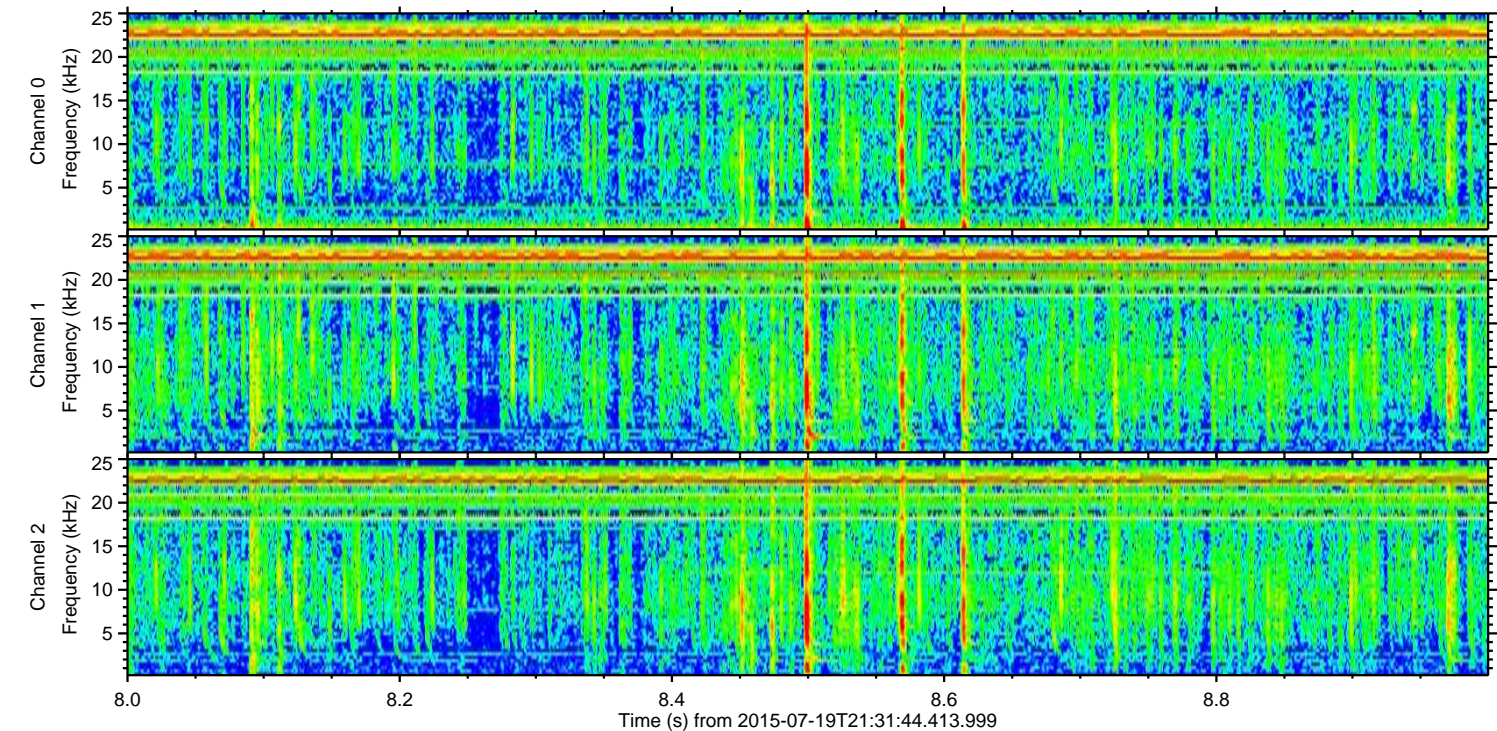
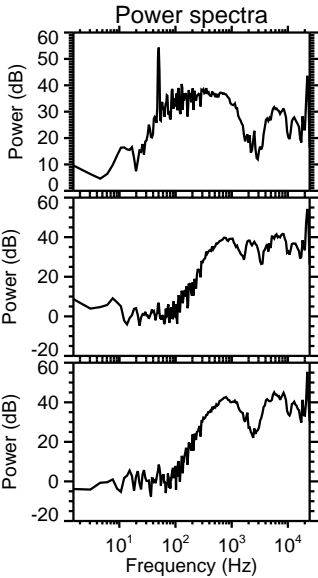
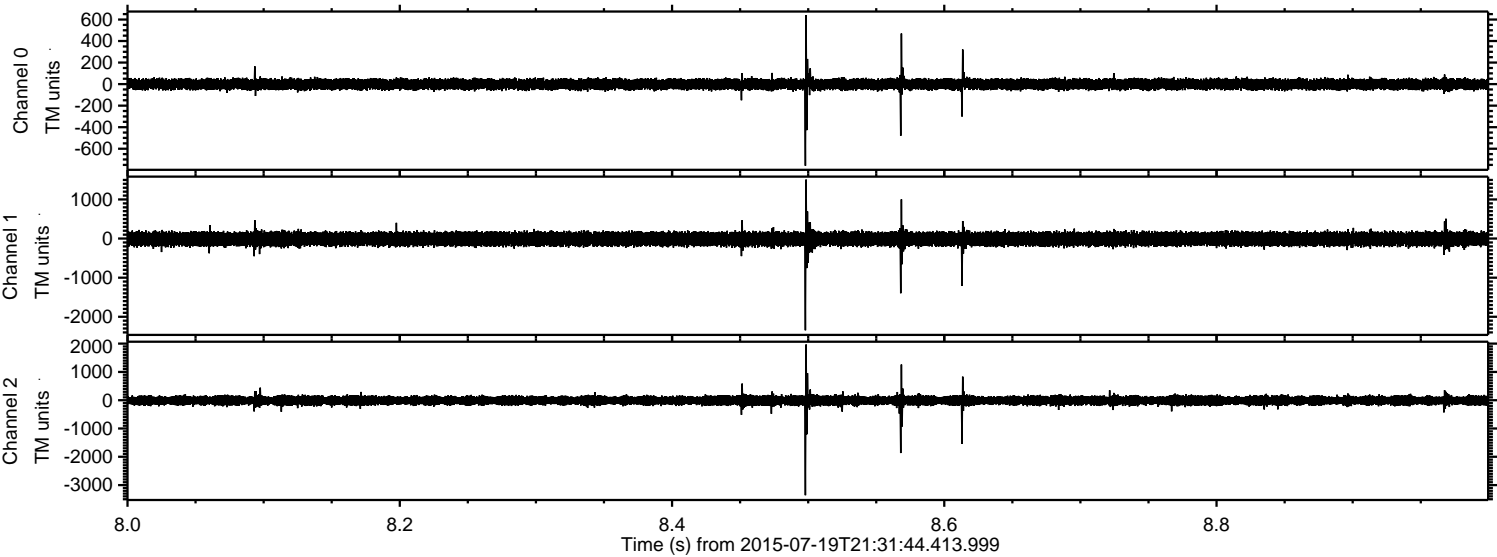
Channel 0  
mn: -1071  
mx: 1207  
 $\mu$ : -1.2  
 $\sigma$ : 29.6

Channel 1  
mn: -2808  
mx: 2739  
 $\mu$ : -11.0  
 $\sigma$ : 99.7

Channel 2  
mn: -3493  
mx: 3682  
 $\mu$ : -10.9  
 $\sigma$ : 103.5



Processed Sun Jul 19 23:38:42 2015 by ELM ver.2012-10-06 from 001\_\_elm20150719\_213143\_\_dat00.bin





Processed Sun Jul 19 23:38:43 2015 by ELM ver.2012-10-06 from 001\_\_elm20150719\_213143\_\_dat00.bin

