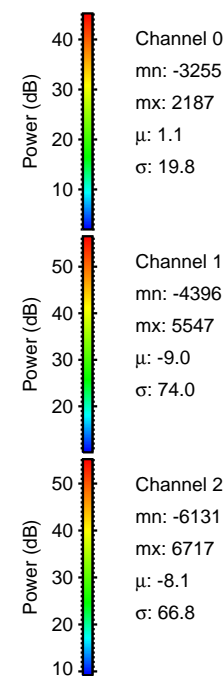
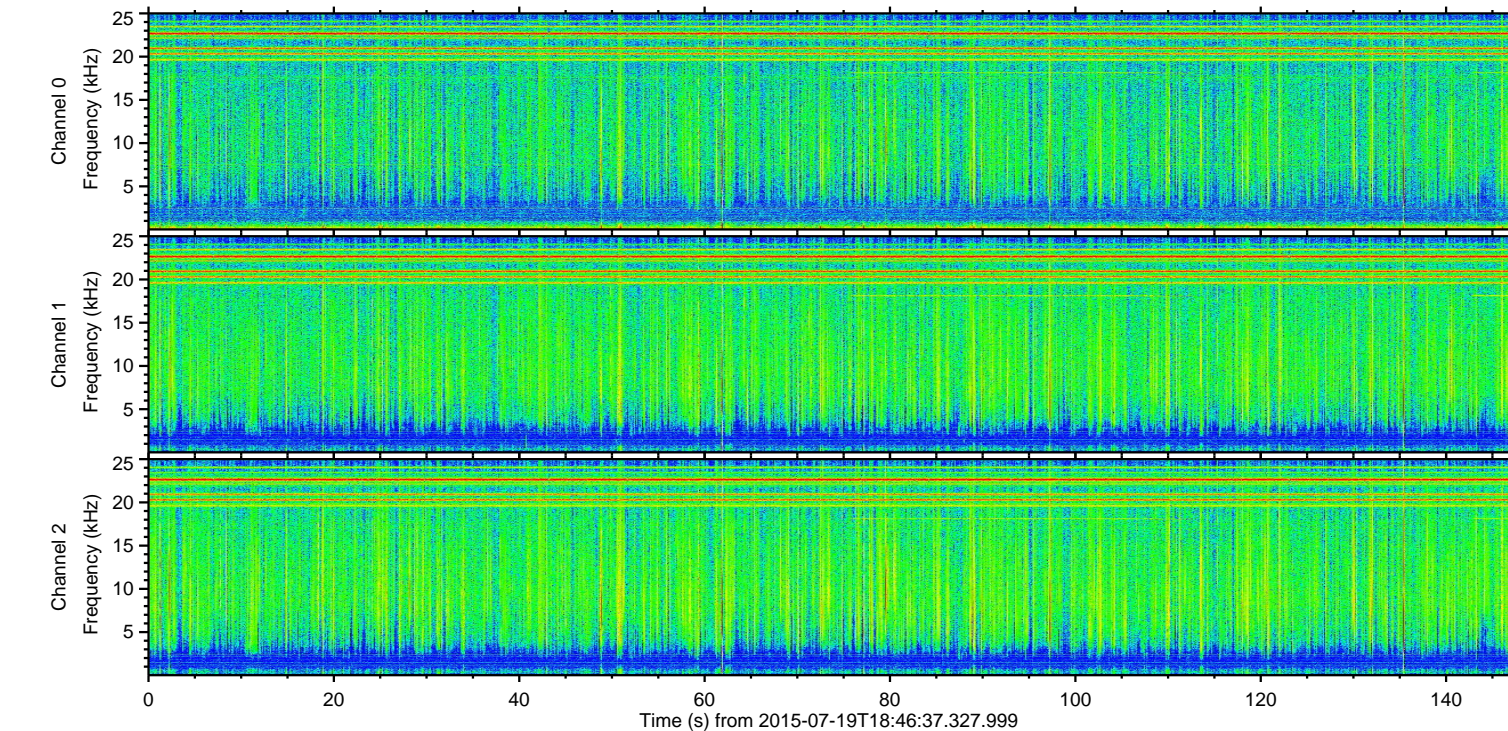
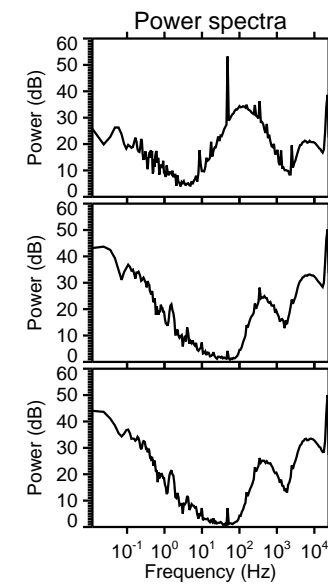
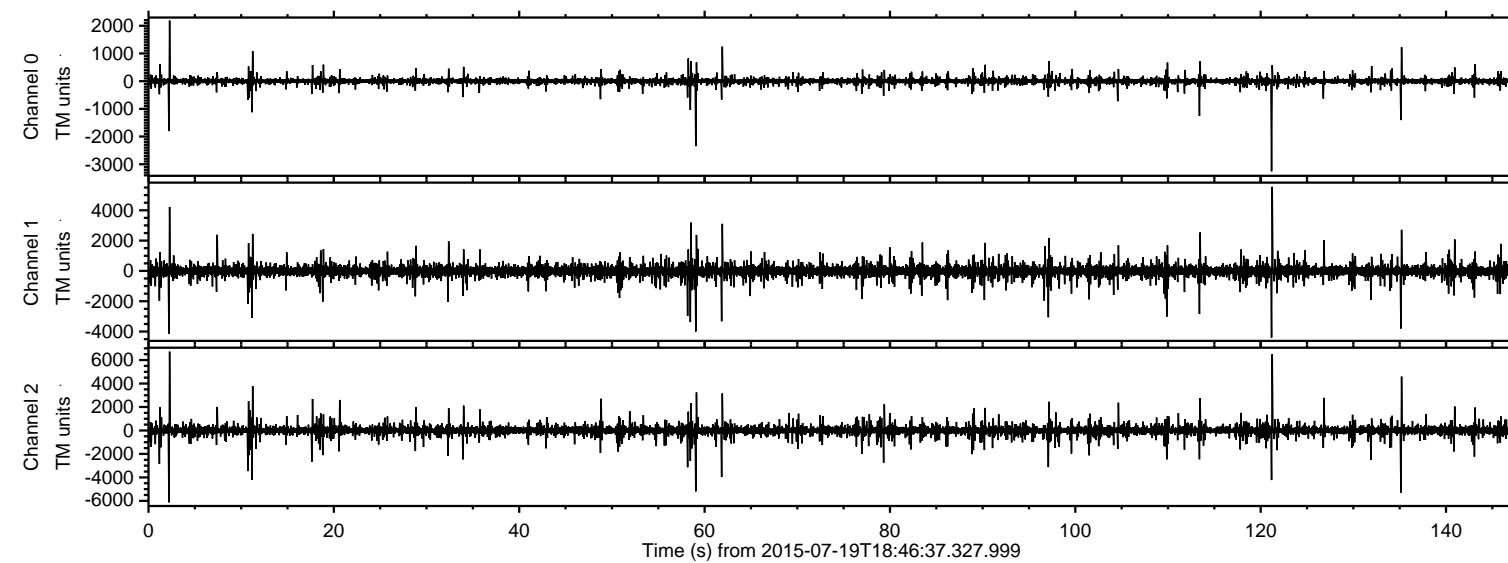


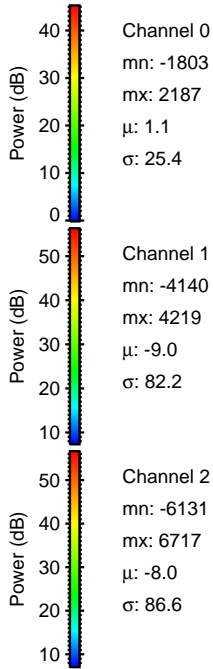
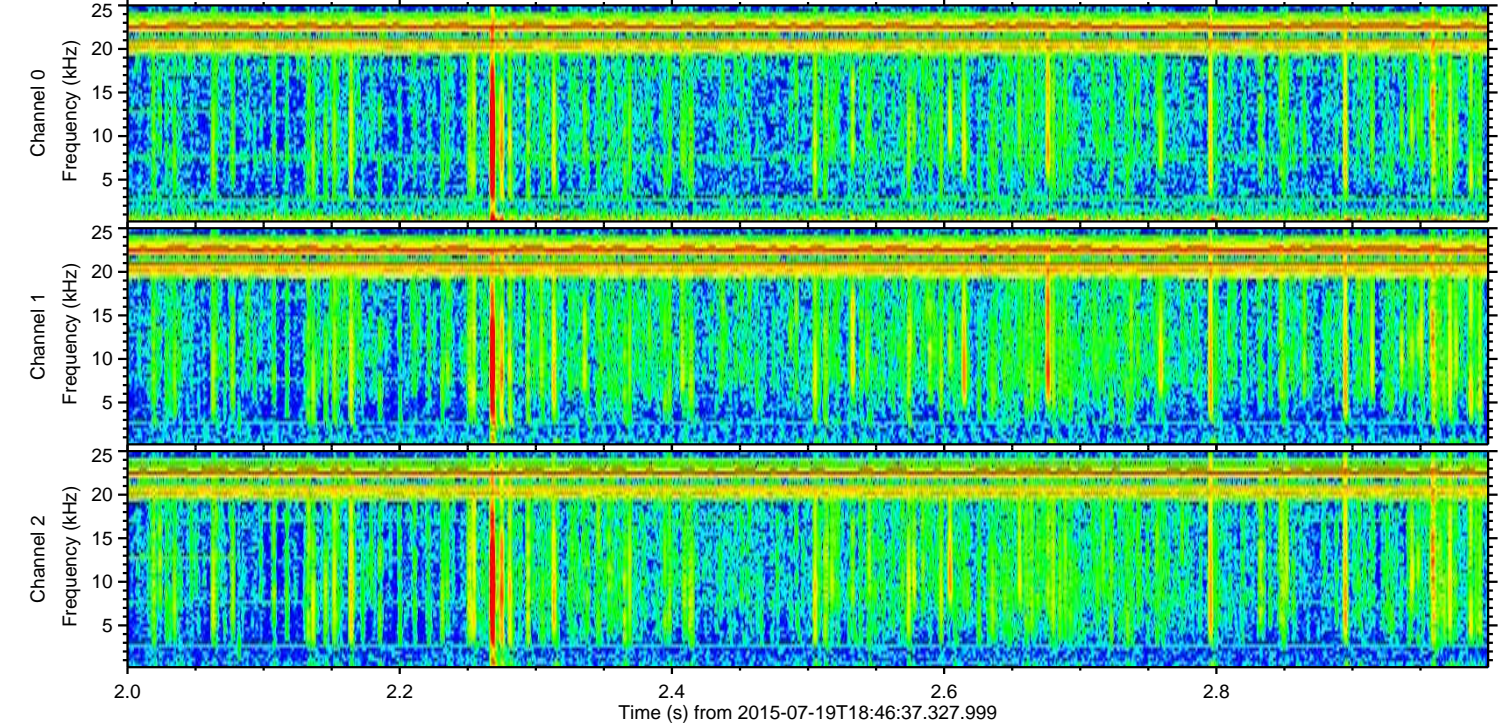
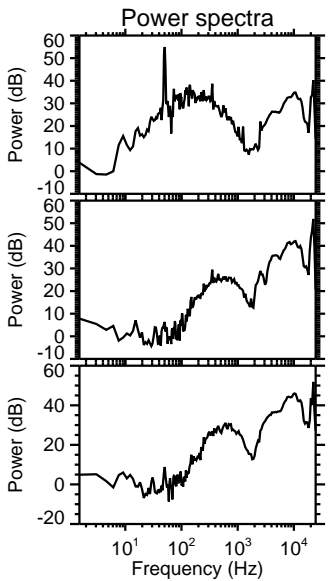
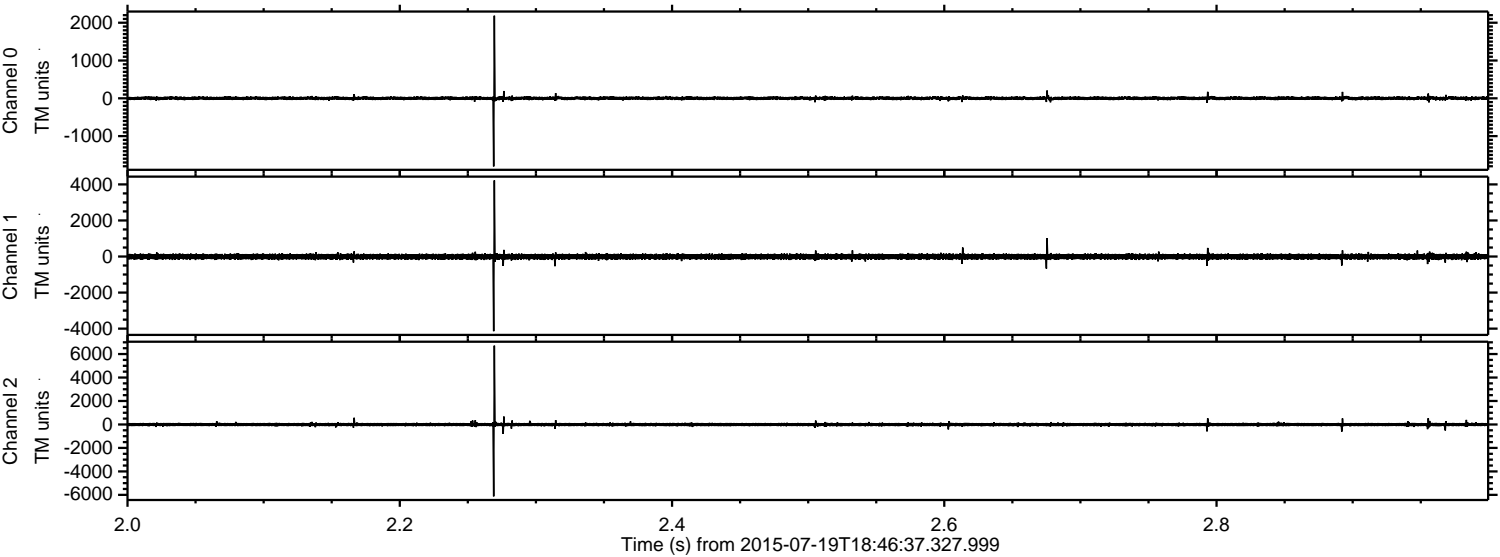
ELMAVAN 3D WAVEFORMS (Measured data sampled at 50 kHz) 51000 packets of 144 samples from 2015-07-19T18:46:37.327.999.

Processed Sun Jul 19 20:52:32 2015 by ELM ver.2012-10-06 from 001__elm20150719_184636__dat00.bin



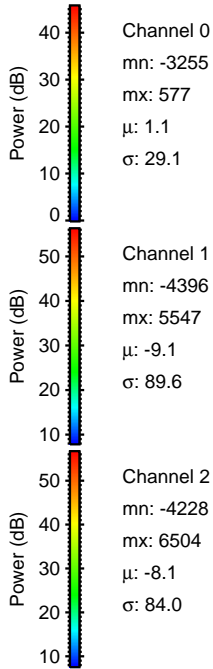
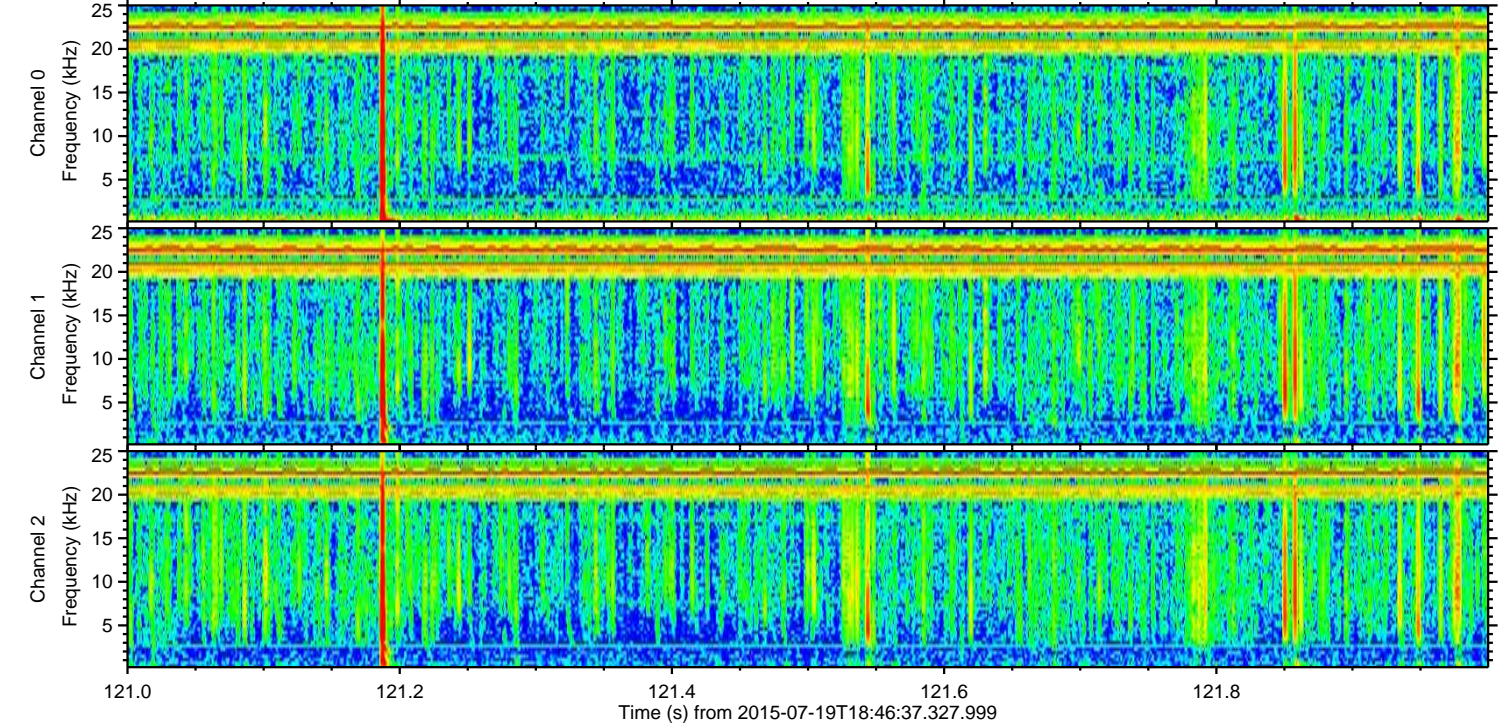
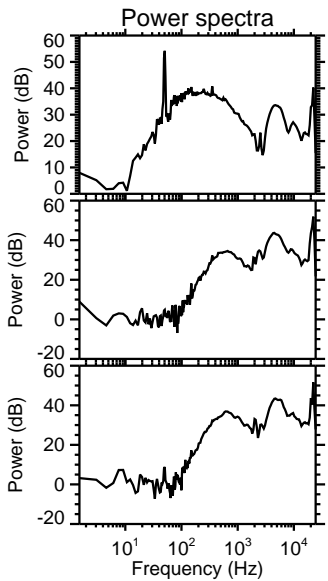
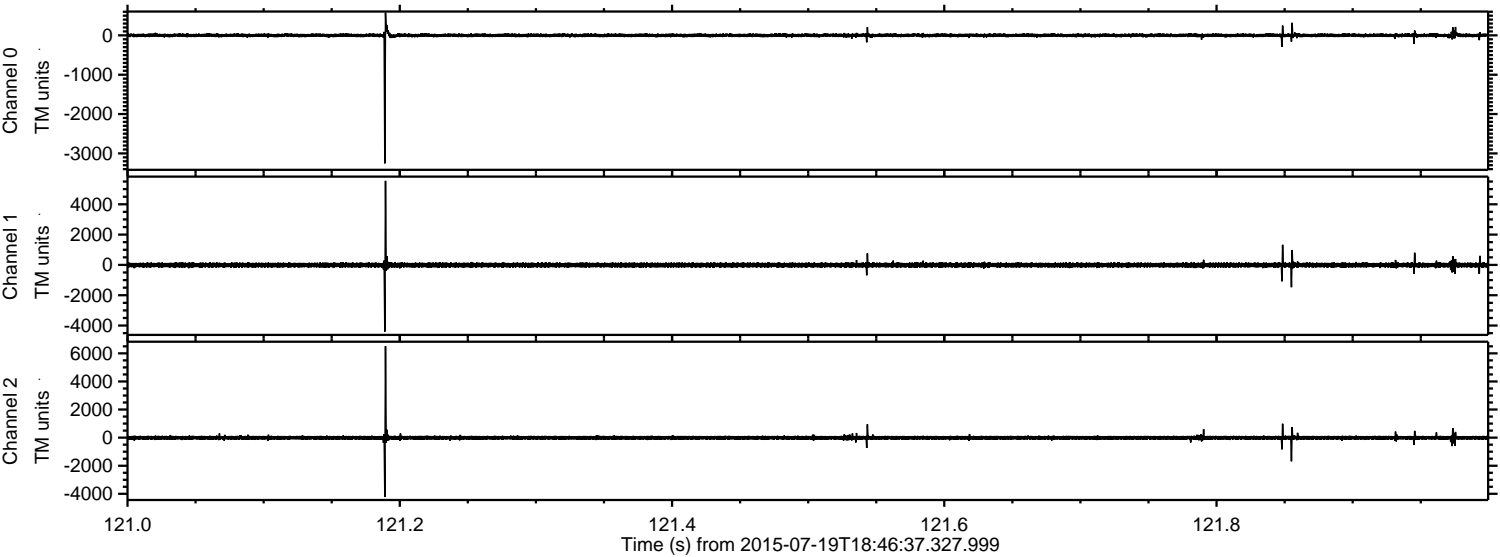
ELMAVAN 3D WAVEFORMS (Measured data sampled at 50 kHz) 51000 packets of 144 samples from 2015-07-19T18:46:37.327.999. Part 3/147

Processed Sun Jul 19 20:52:44 2015 by ELM ver.2012-10-06 from 001__elm20150719_184636__dat00.bin



ELMAVAN 3D WAVEFORMS (Measured data sampled at 50 kHz) 51000 packets of 144 samples from 2015-07-19T18:46:37.327.999. Part 122/147

Processed Sun Jul 19 20:52:45 2015 by ELM ver.2012-10-06 from 001__elm20150719_184636__dat00.bin



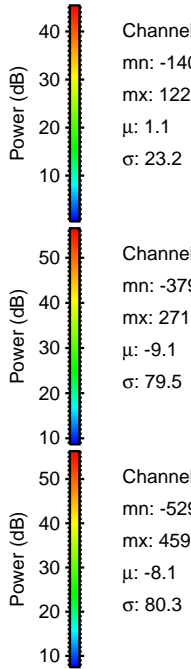
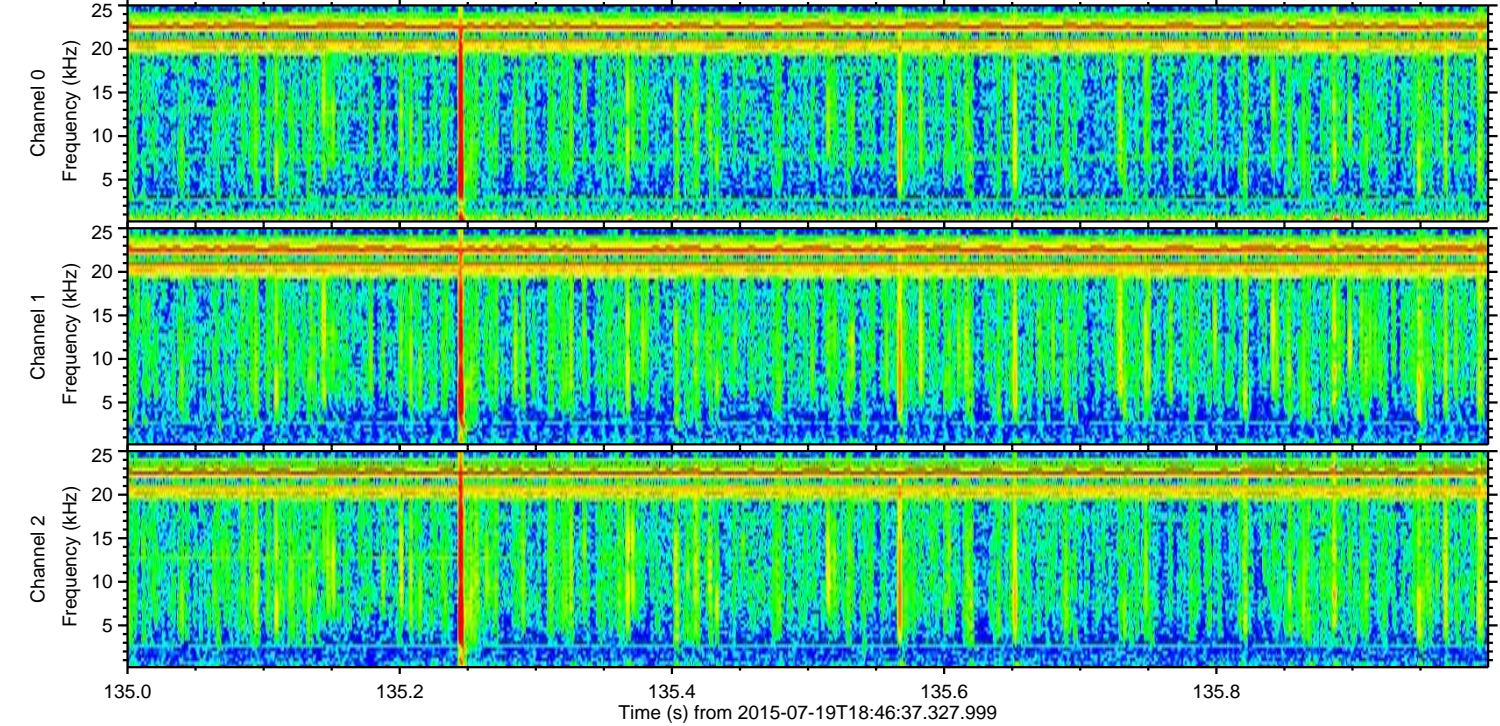
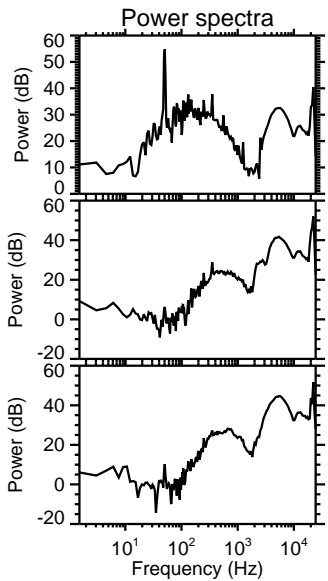
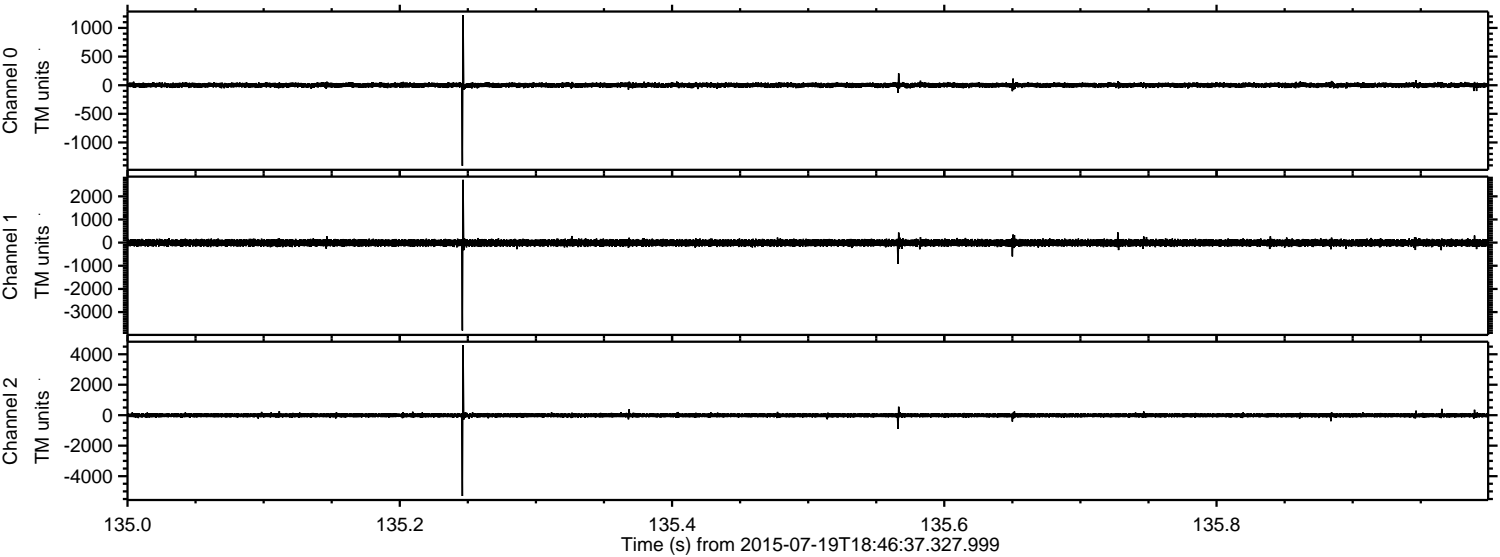
Channel 0
mn: -3255
mx: 577
 μ : 1.1
 σ : 29.1

Channel 1
mn: -4396
mx: 5547
 μ : -9.1
 σ : 89.6

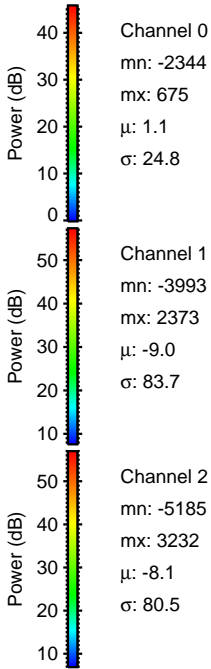
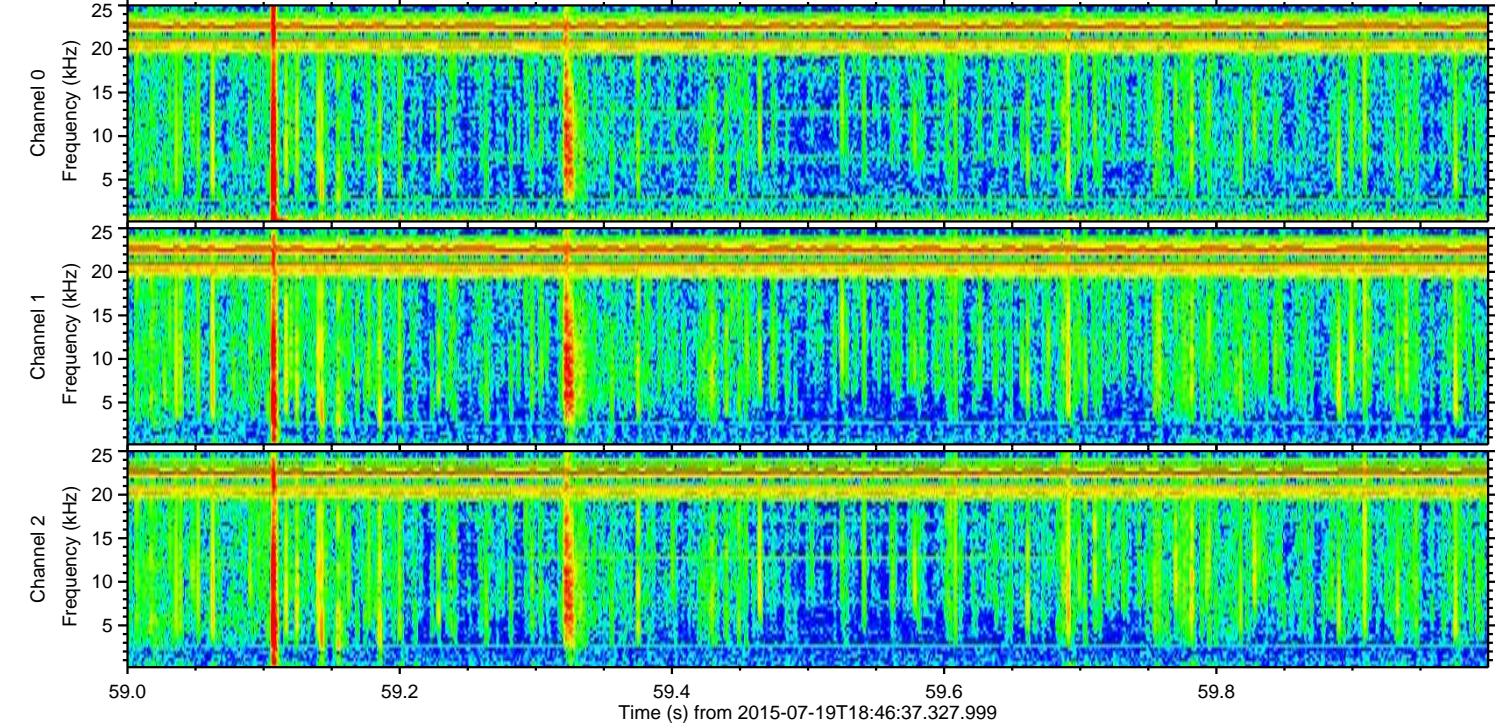
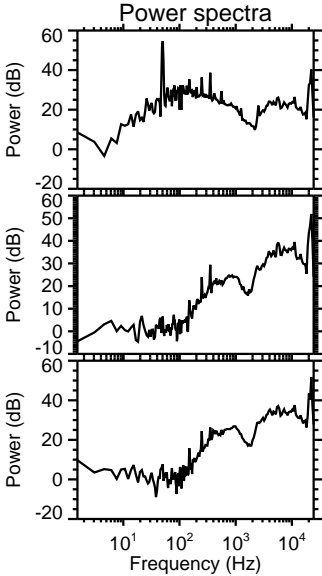
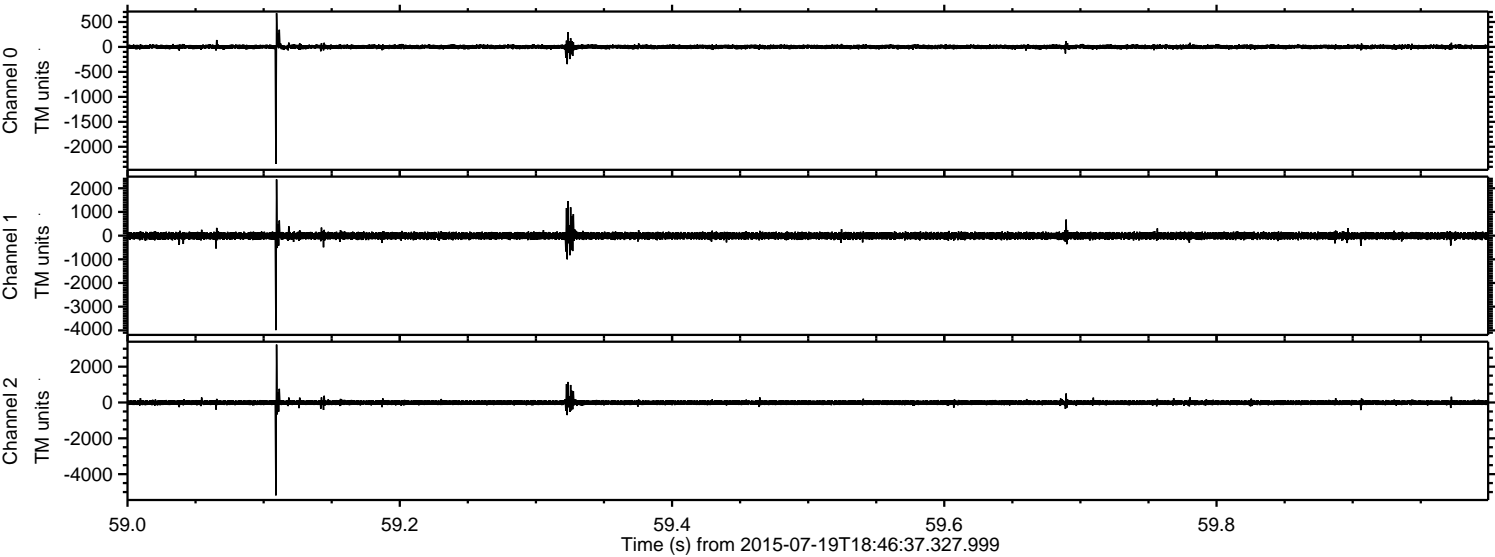
Channel 2
mn: -4228
mx: 6504
 μ : -8.1
 σ : 84.0

ELMAVAN 3D WAVEFORMS (Measured data sampled at 50 kHz) 51000 packets of 144 samples from 2015-07-19T18:46:37.327.999. Part 136/147

Processed Sun Jul 19 20:52:46 2015 by ELM ver.2012-10-06 from 001__elm20150719_184636__dat00.bin

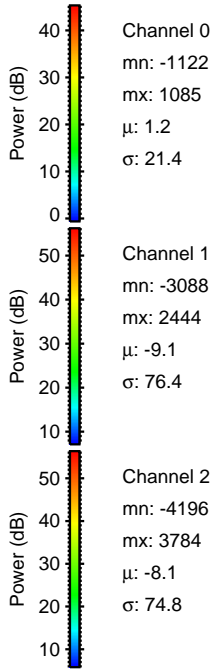
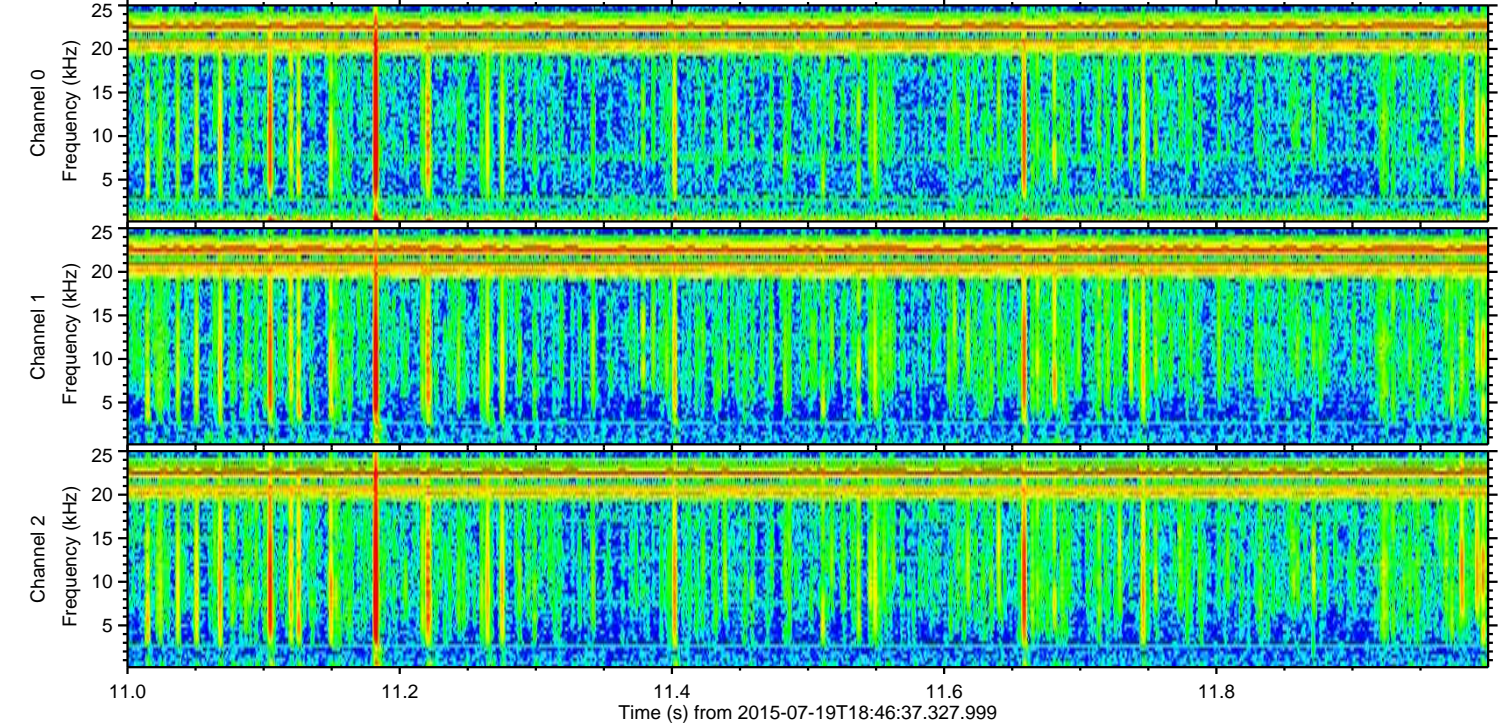
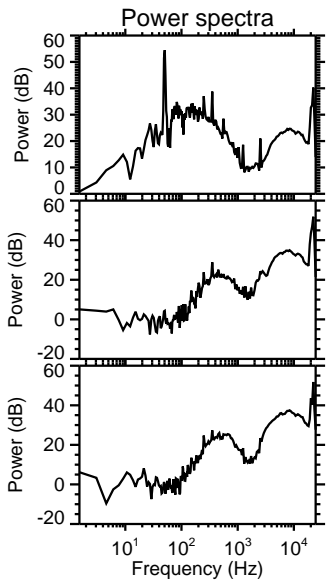
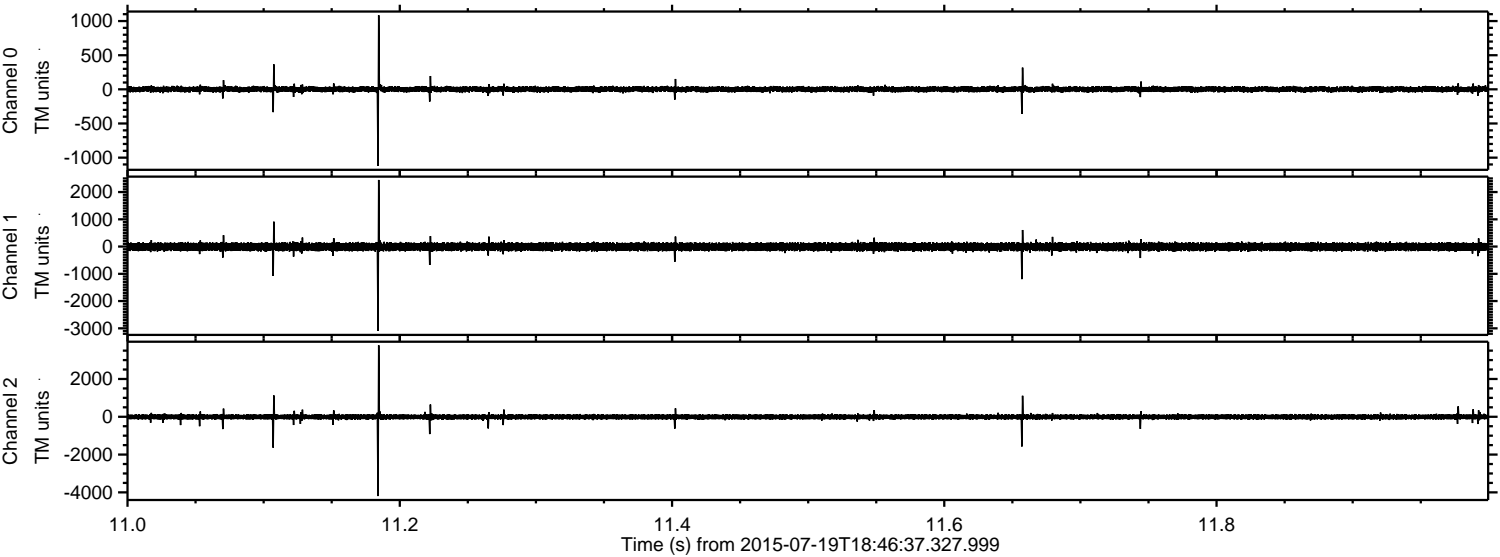


Processed Sun Jul 19 20:52:47 2015 by ELM ver.2012-10-06 from 001__elm20150719_184636__dat00.bin



ELMAVAN 3D WAVEFORMS (Measured data sampled at 50 kHz) 51000 packets of 144 samples from 2015-07-19T18:46:37.327.999. Part 12/147

Processed Sun Jul 19 20:52:48 2015 by ELM ver.2012-10-06 from 001__elm20150719_184636__dat00.bin

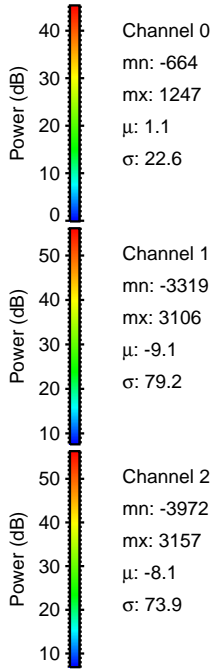
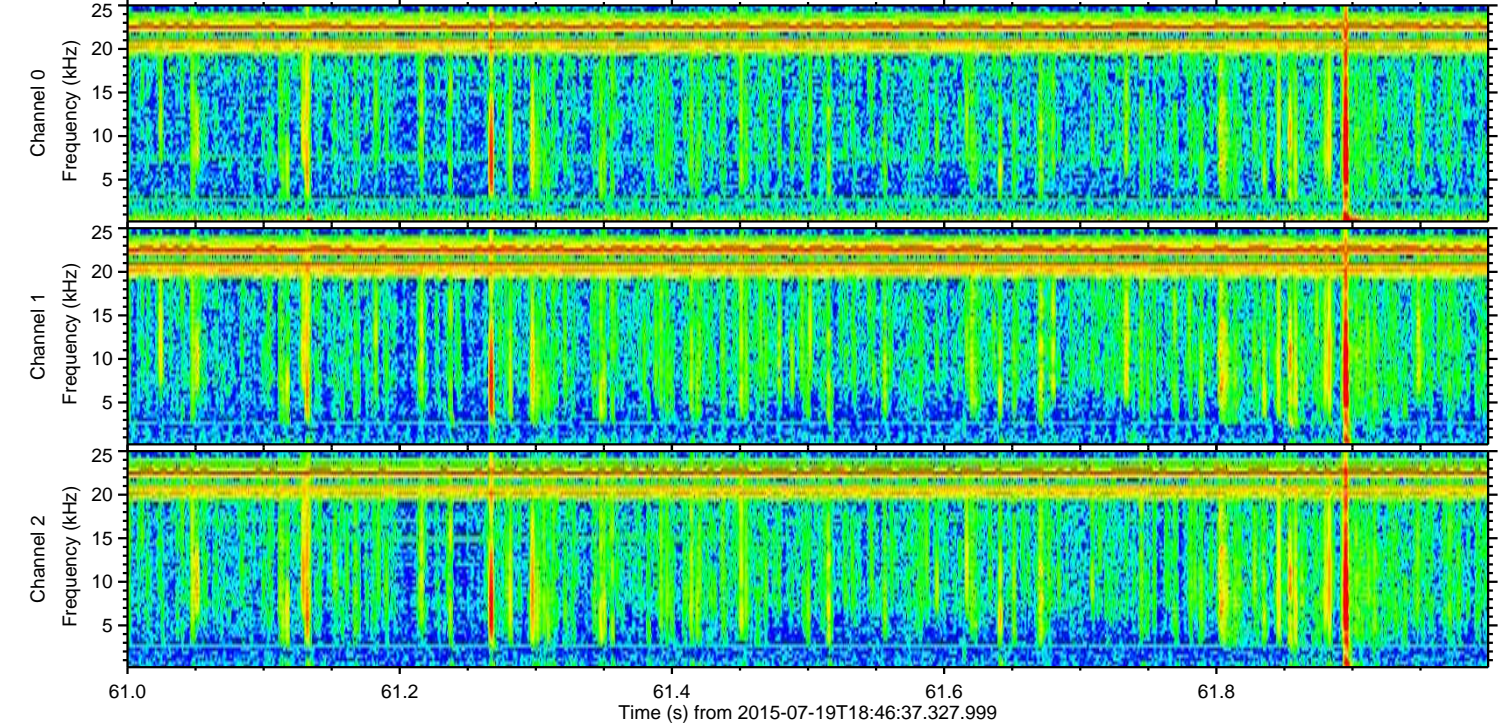
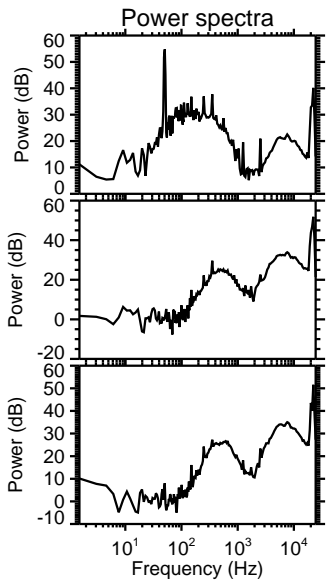
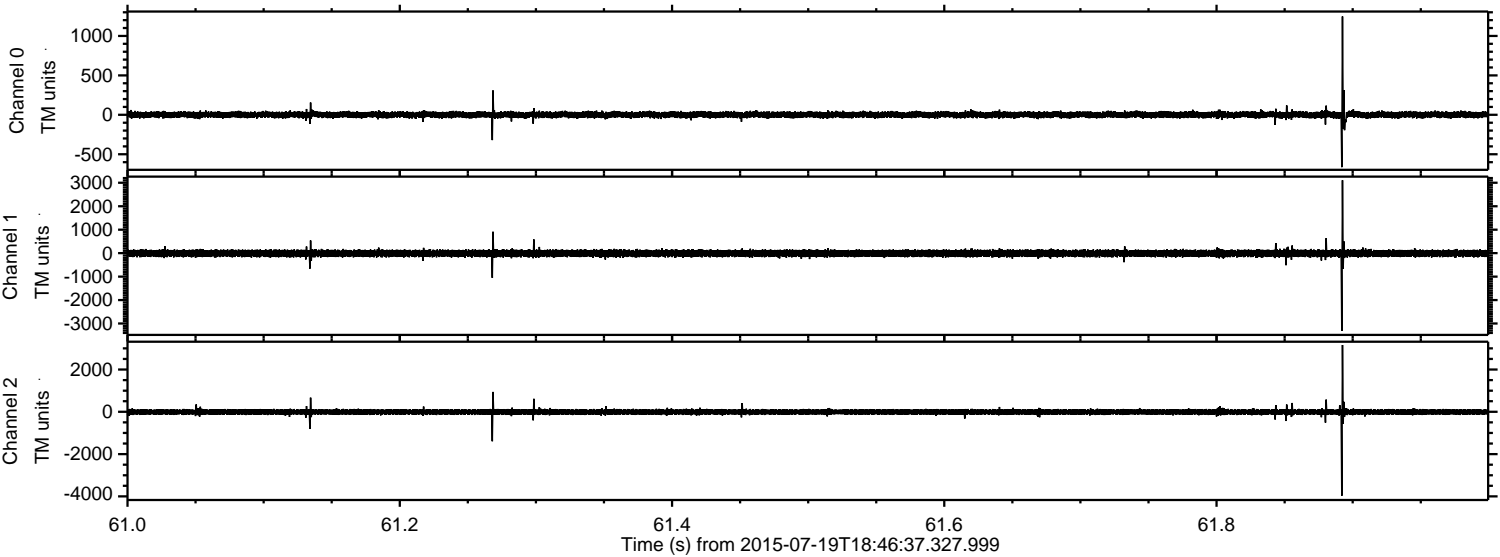


Channel 0
mn: -1122
mx: 1085
 μ : 1.2
 σ : 21.4

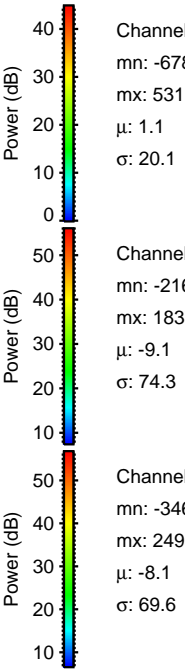
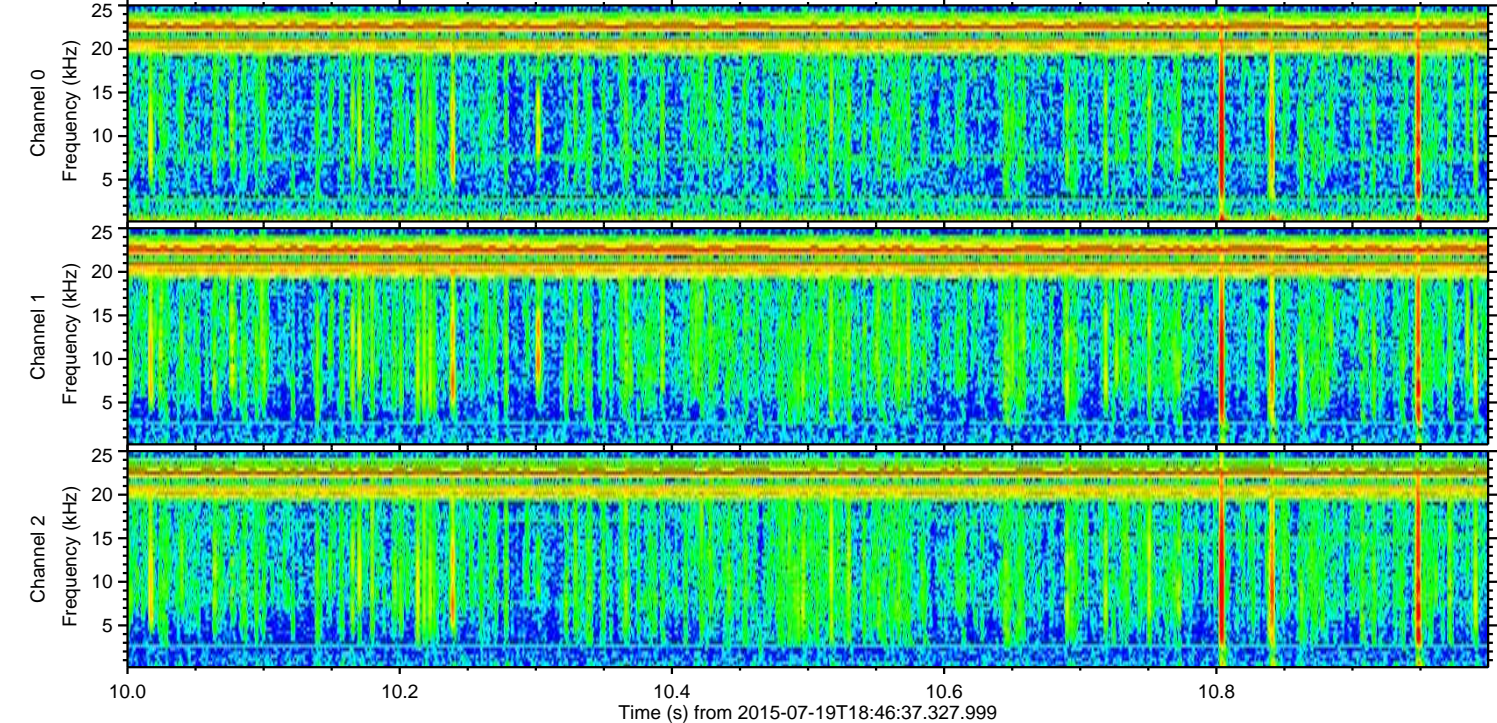
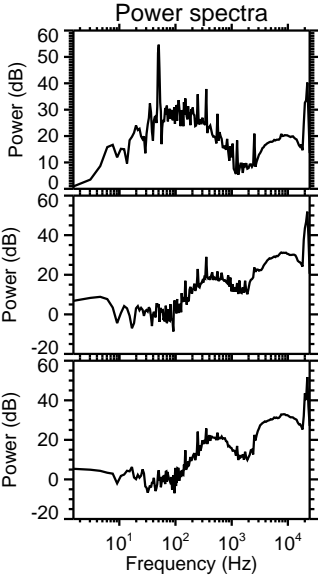
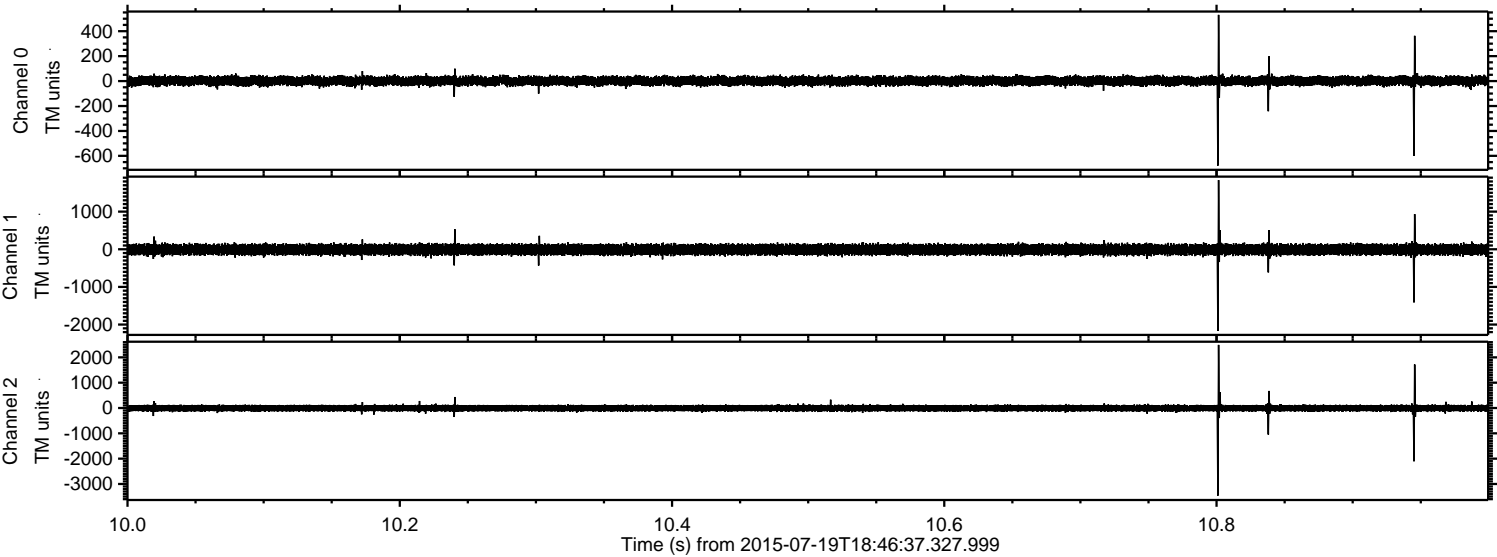
Channel 1
mn: -3088
mx: 2444
 μ : -9.1
 σ : 76.4

Channel 2
mn: -4196
mx: 3784
 μ : -8.1
 σ : 74.8

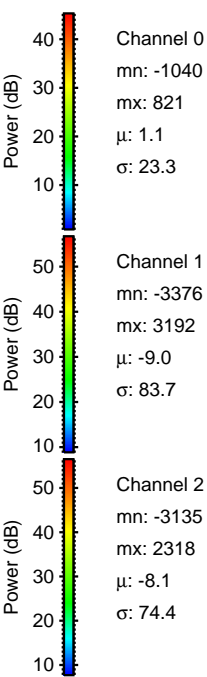
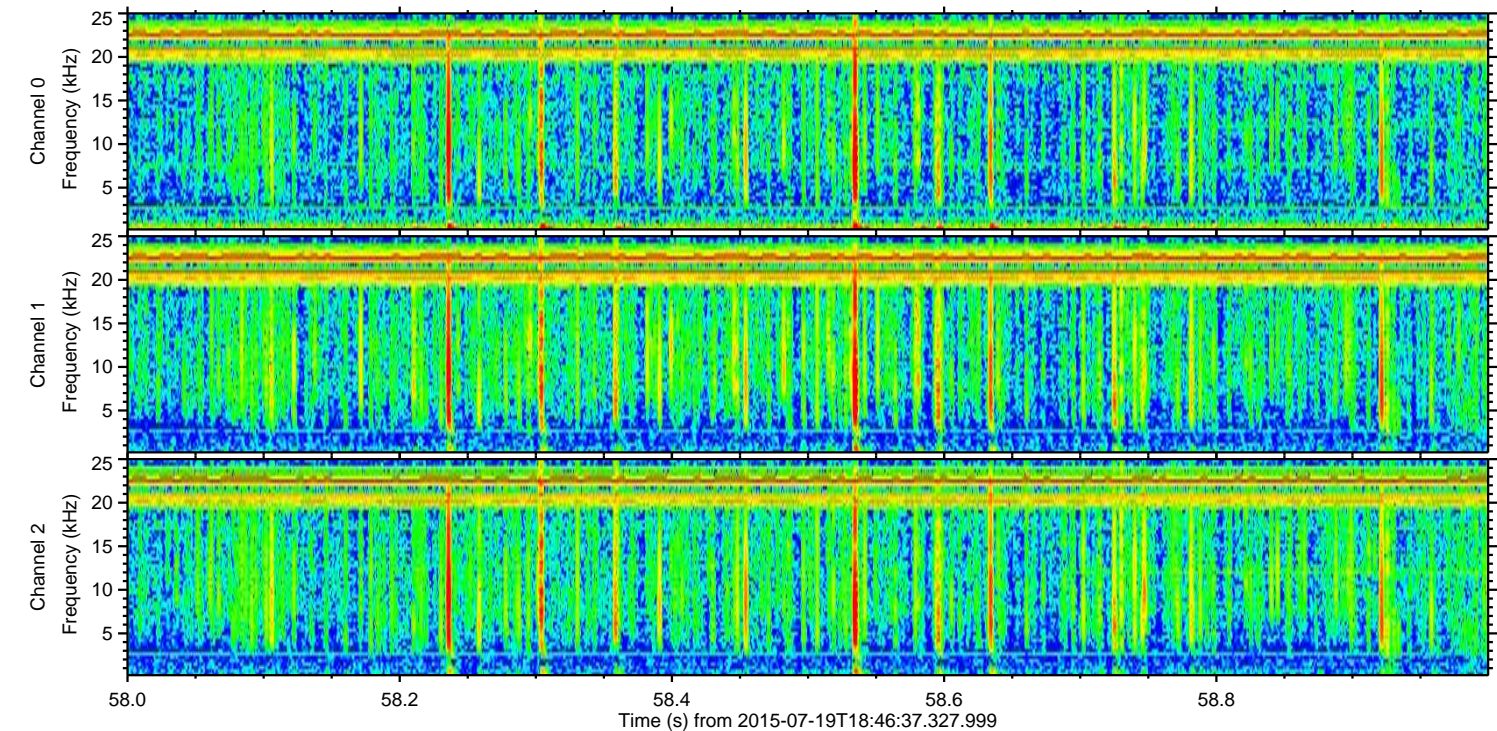
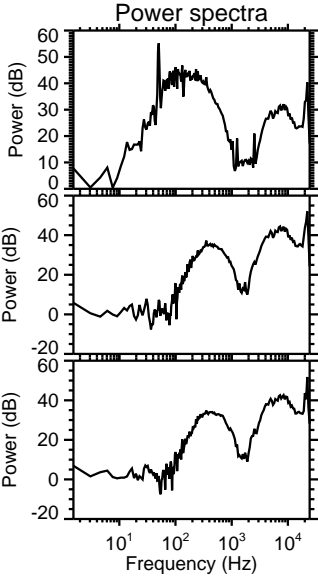
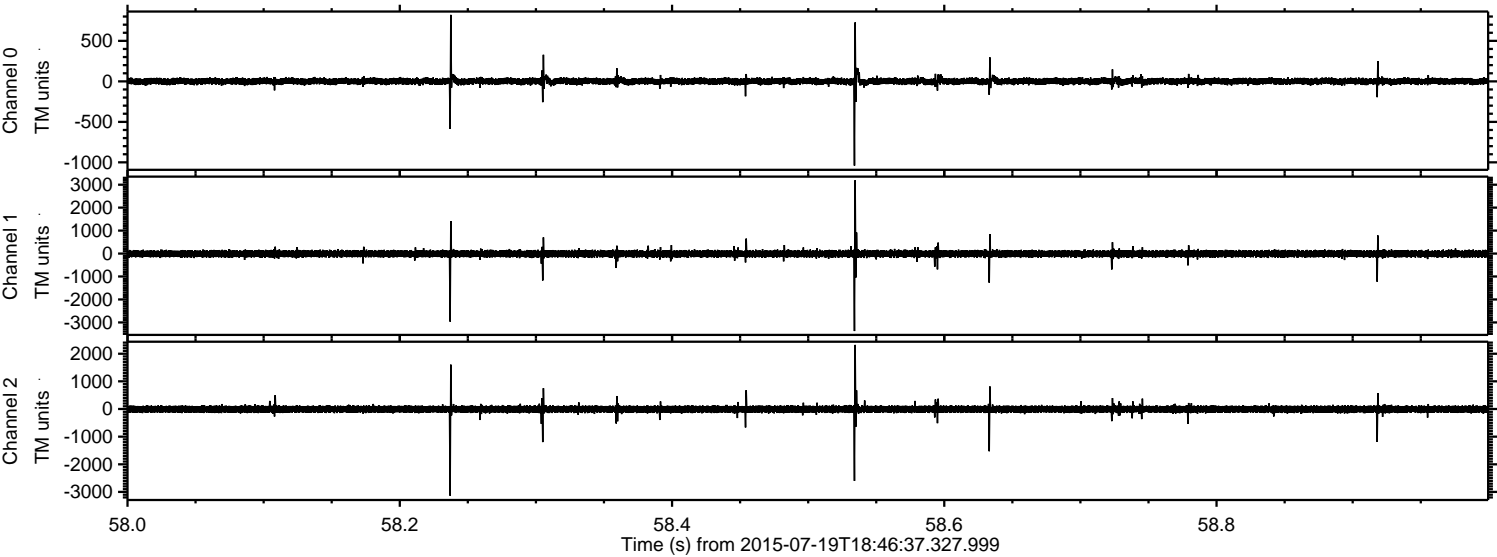
Processed Sun Jul 19 20:52:49 2015 by ELM ver.2012-10-06 from 001__elm20150719_184636__dat00.bin



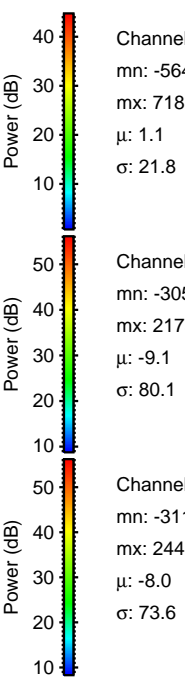
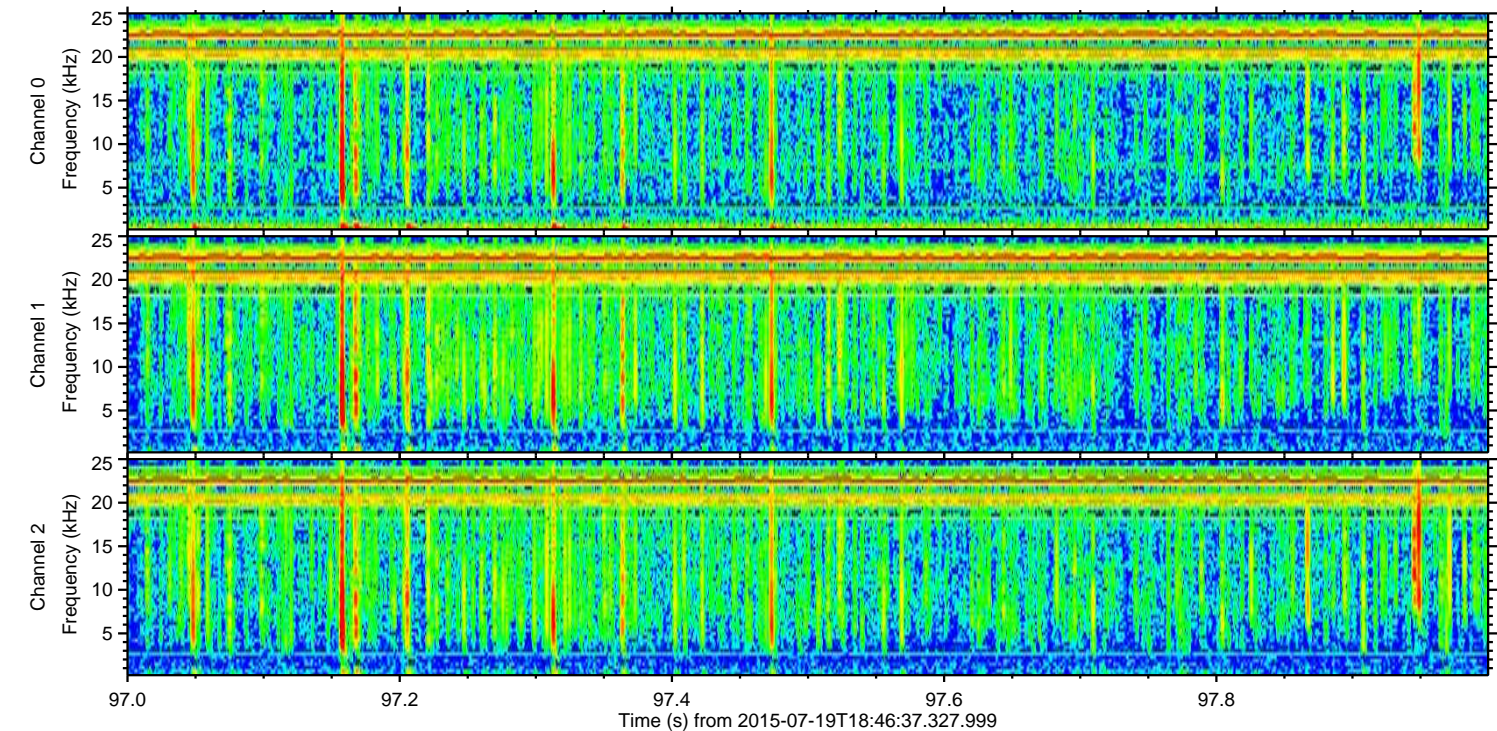
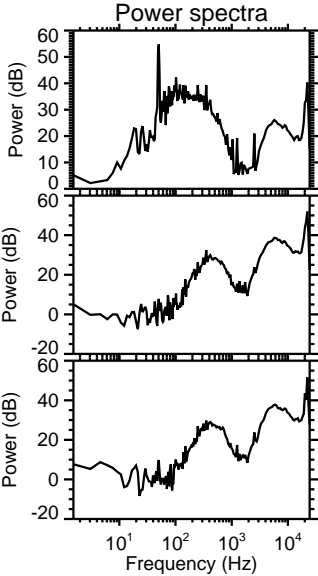
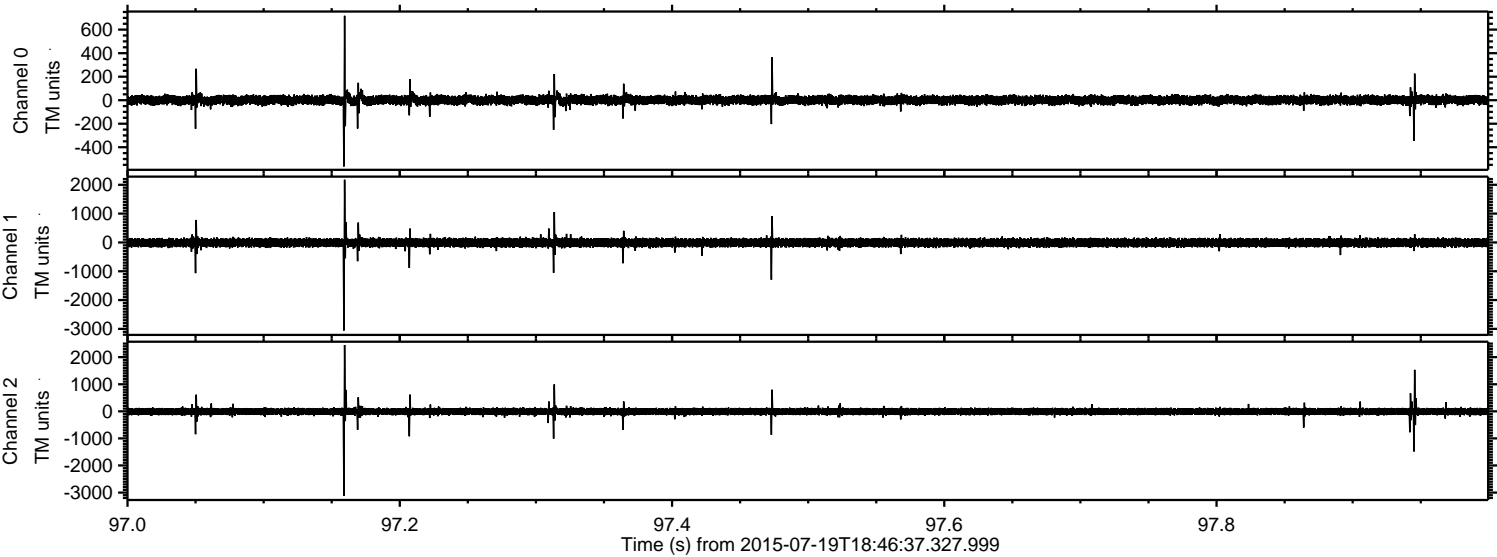
Processed Sun Jul 19 20:52:50 2015 by ELM ver.2012-10-06 from 001__elm20150719_184636__dat00.bin



Processed Sun Jul 19 20:52:51 2015 by ELM ver.2012-10-06 from 001__elm20150719_184636__dat00.bin



Processed Sun Jul 19 20:52:52 2015 by ELM ver.2012-10-06 from 001__elm20150719_184636__dat00.bin



Channel 0
mn: -564
mx: 718
 μ : 1.1
 σ : 21.8

Channel 1
mn: -3056
mx: 2175
 μ : -9.1
 σ : 80.1

Channel 2
mn: -3119
mx: 2448
 μ : -8.0
 σ : 73.6

Processed Sun Jul 19 20:52:53 2015 by ELM ver.2012-10-06 from 001__elm20150719_184636__dat00.bin

