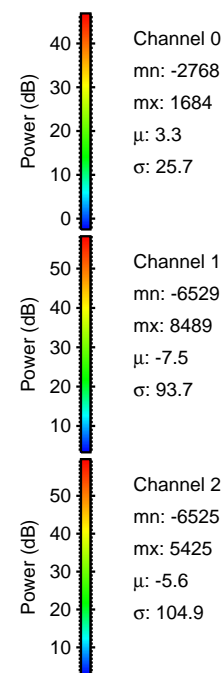
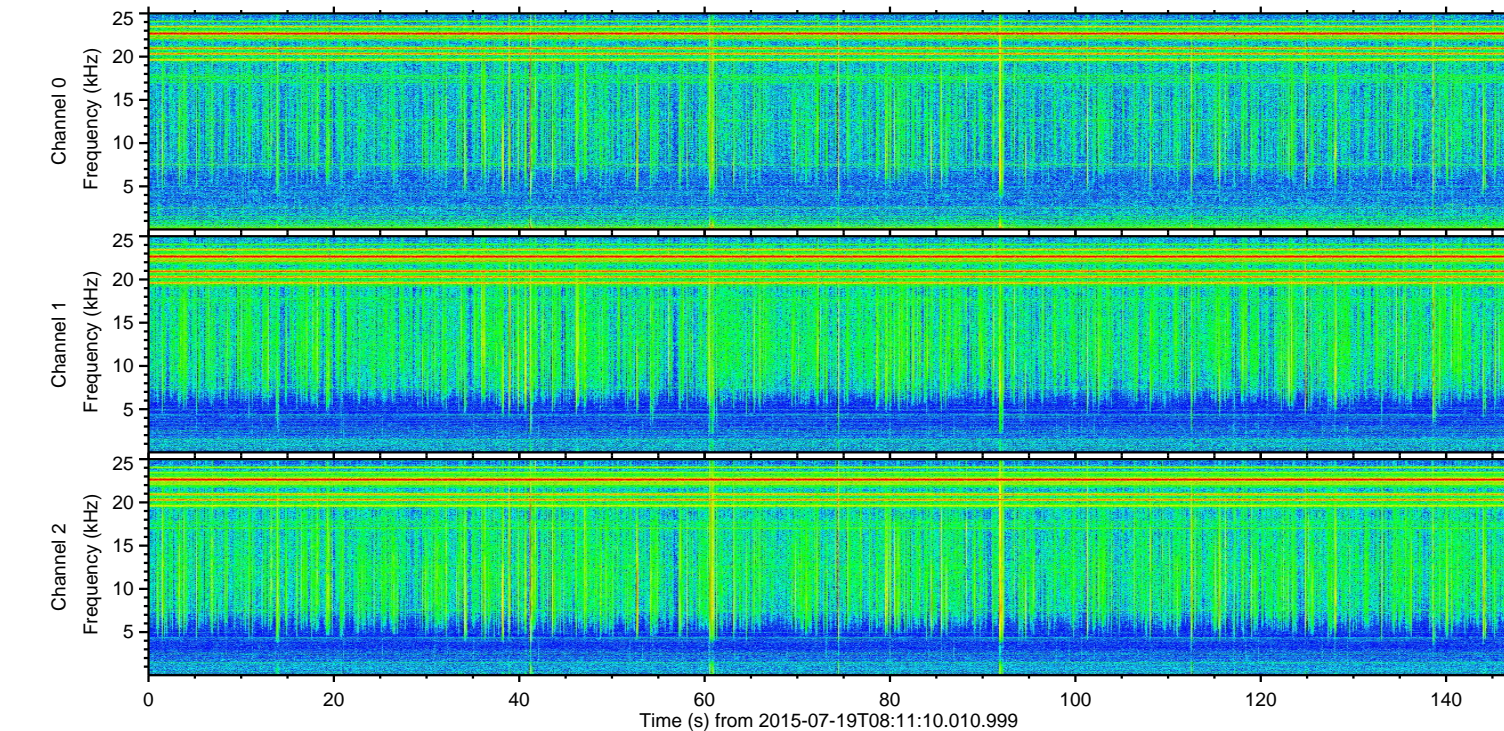
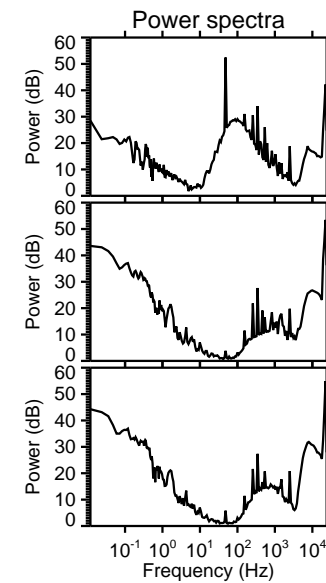
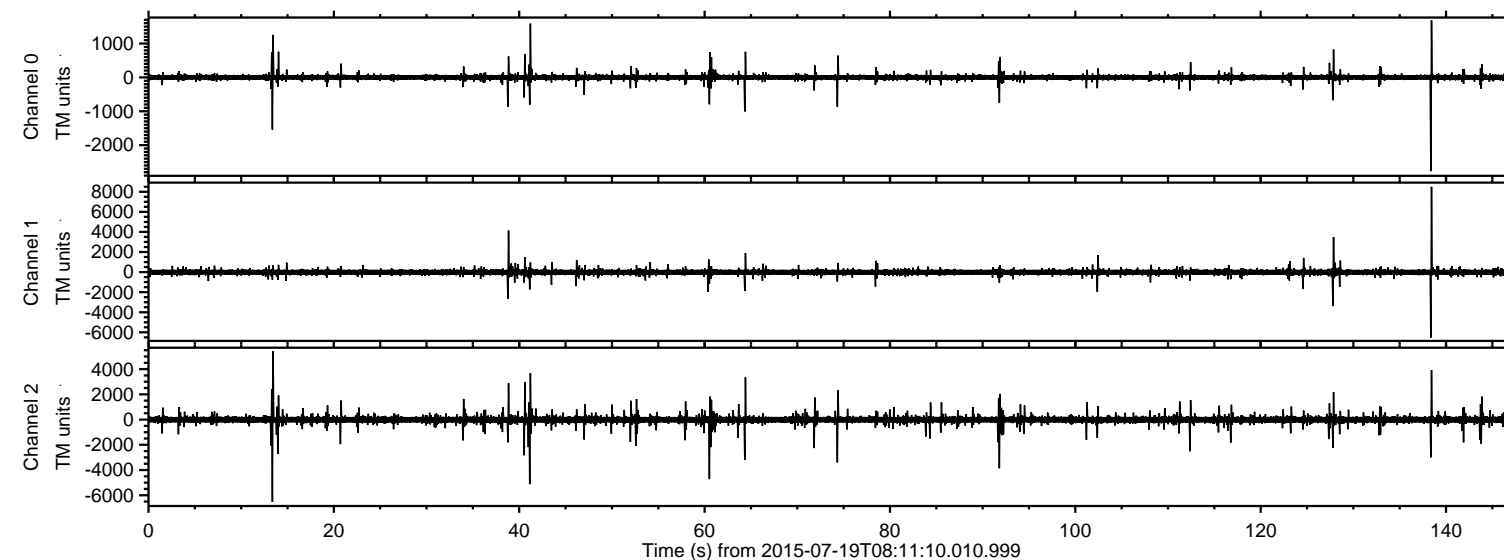


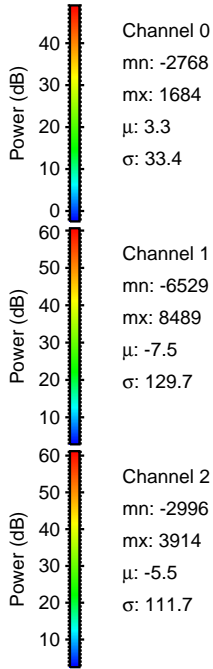
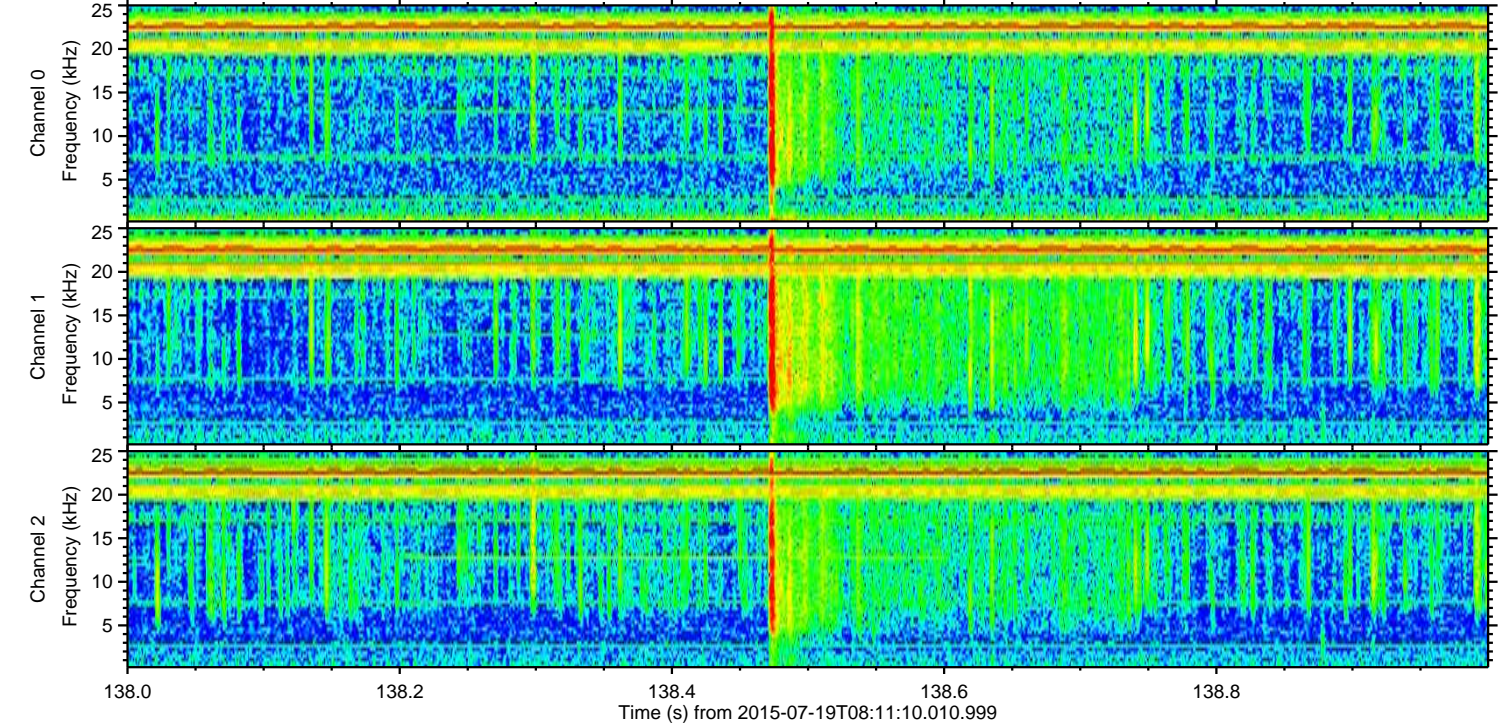
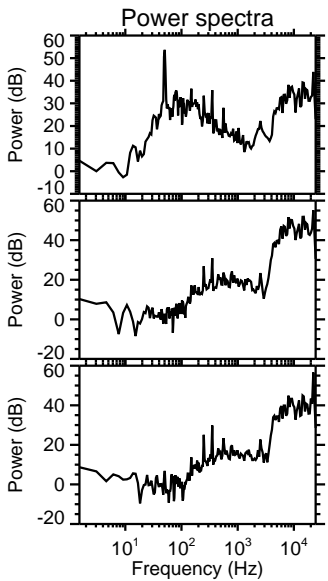
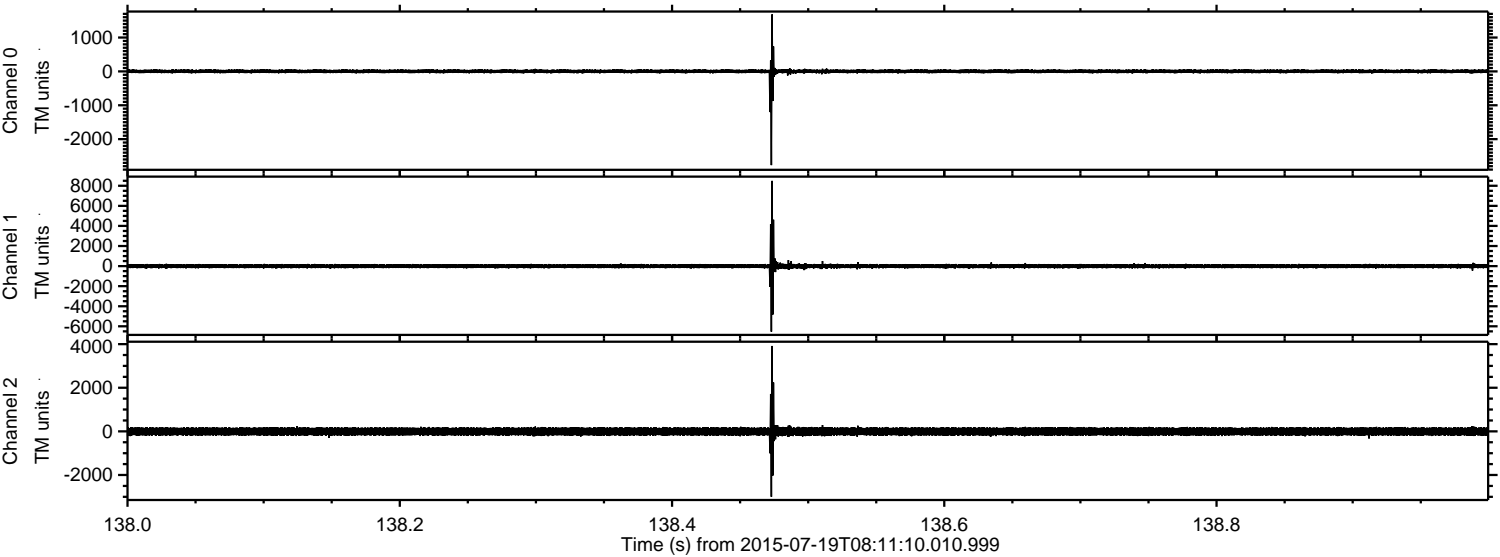
ELMAVAN 3D WAVEFORMS (Measured data sampled at 50 kHz) 51000 packets of 144 samples from 2015-07-19T08:11:10.010.999.

Processed Sun Jul 19 10:17:17 2015 by ELM ver.2012-10-06 from 001\_\_elm20150719\_081109\_\_dat00.bin



ELMAVAN 3D WAVEFORMS (Measured data sampled at 50 kHz) 51000 packets of 144 samples from 2015-07-19T08:11:10.010.999. Part 139/147

Processed Sun Jul 19 10:17:29 2015 by ELM ver.2012-10-06 from 001\_\_elm20150719\_081109\_\_dat00.bin



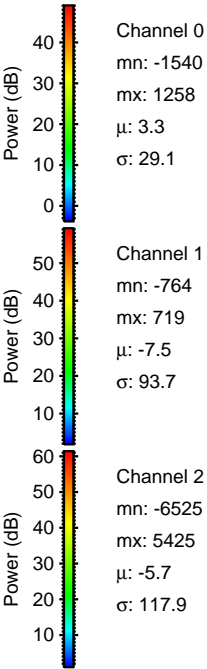
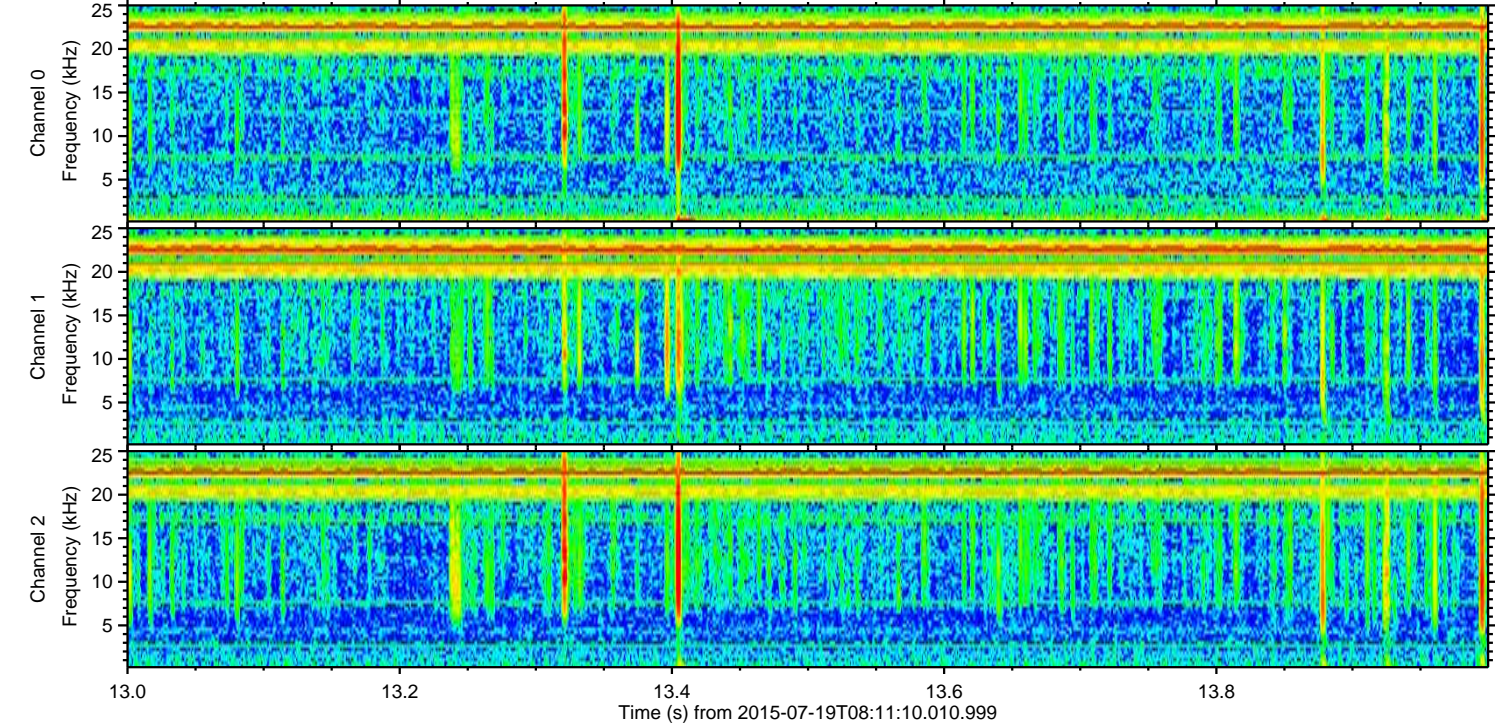
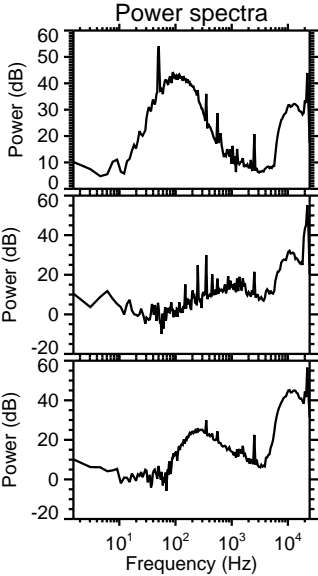
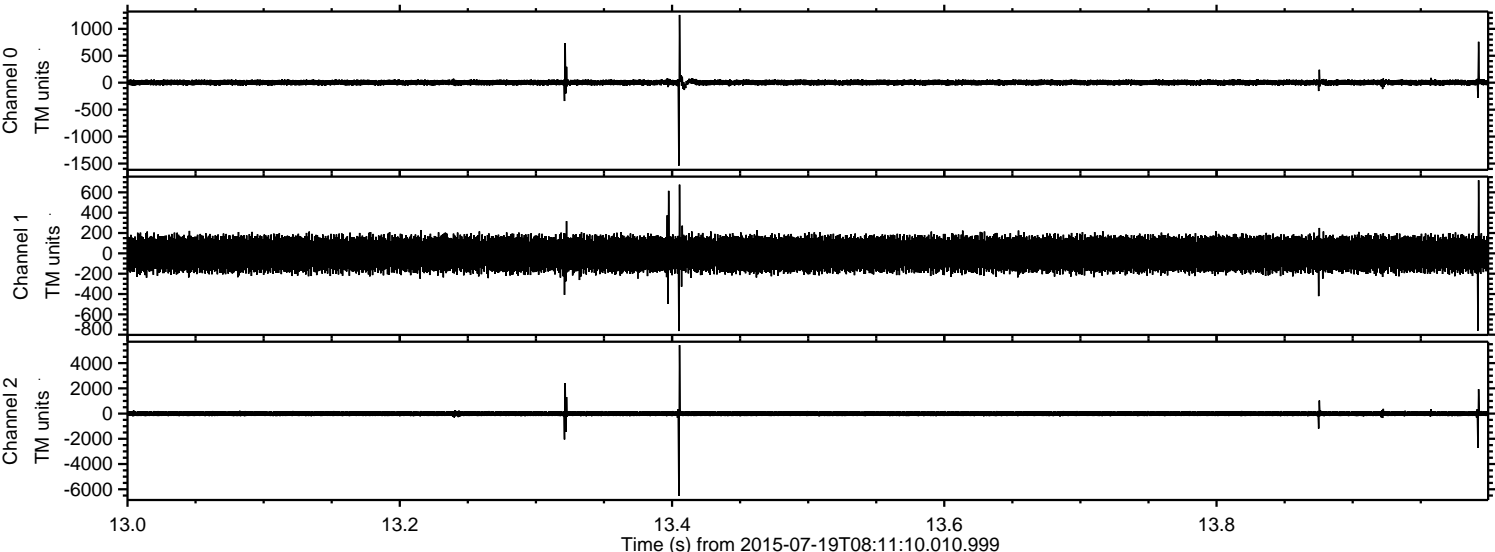
Channel 0  
mn: -2768  
mx: 1684  
 $\mu$ : 3.3  
 $\sigma$ : 33.4

Channel 1  
mn: -6529  
mx: 8489  
 $\mu$ : -7.5  
 $\sigma$ : 129.7

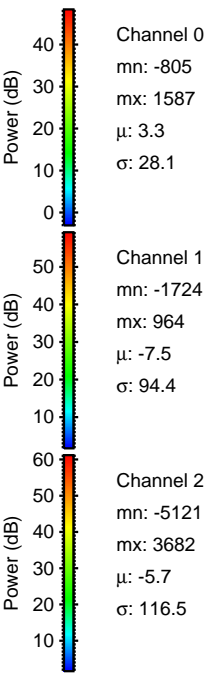
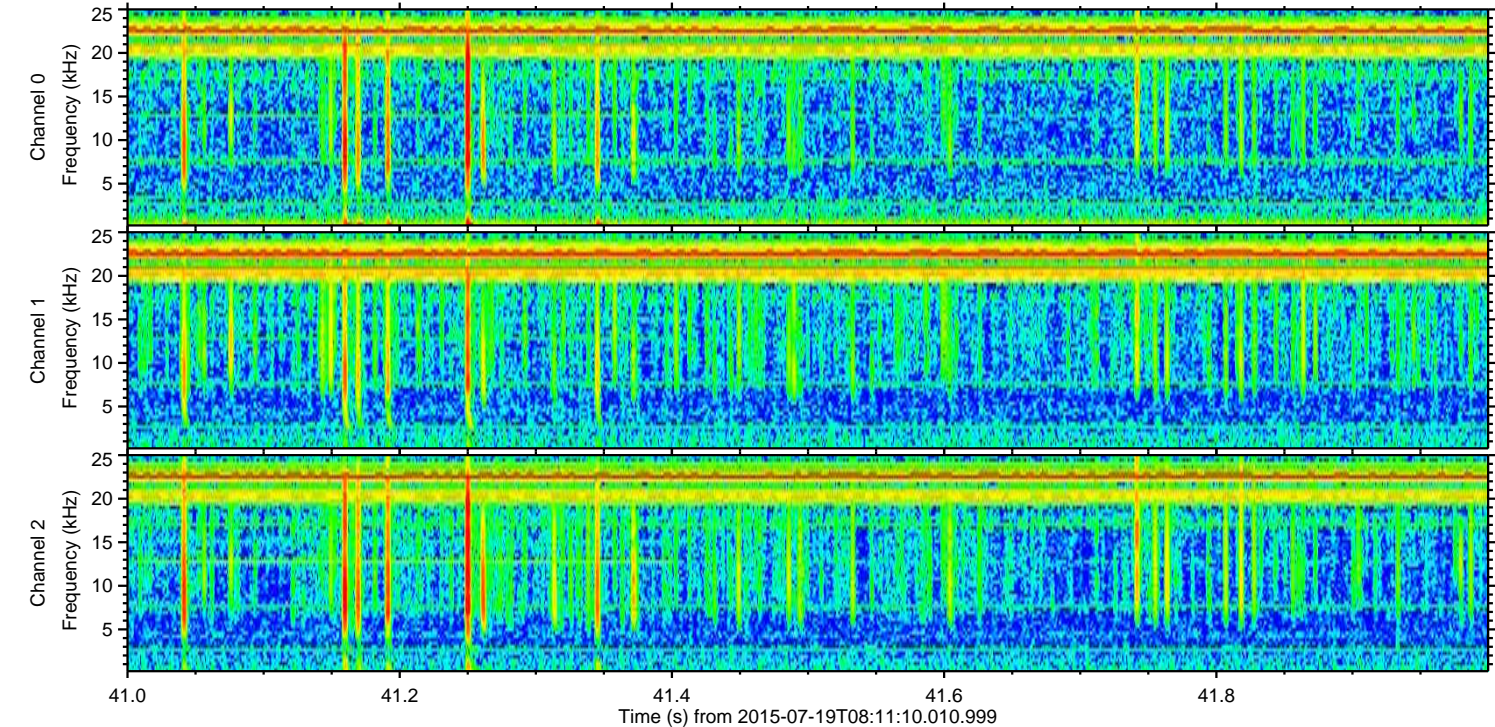
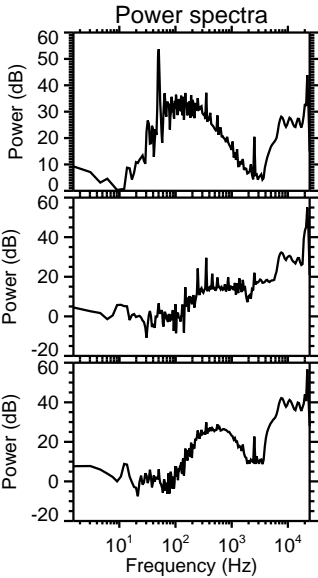
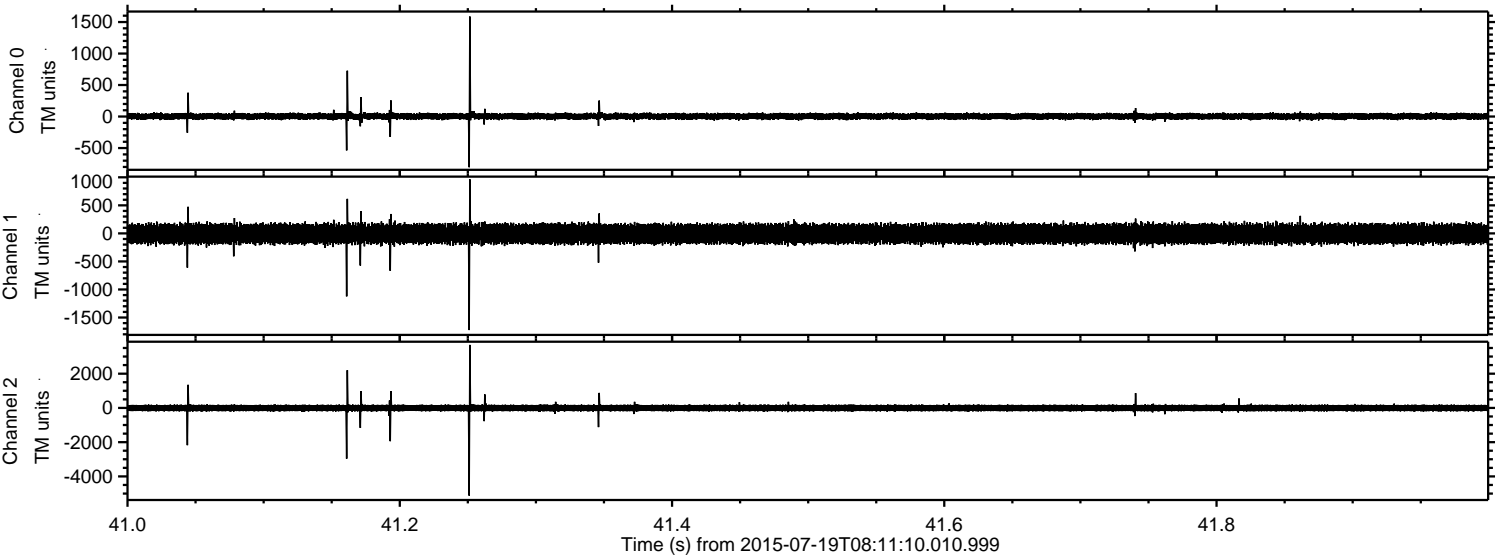
Channel 2  
mn: -2996  
mx: 3914  
 $\mu$ : -5.5  
 $\sigma$ : 111.7

ELMAVAN 3D WAVEFORMS (Measured data sampled at 50 kHz) 51000 packets of 144 samples from 2015-07-19T08:11:10.010.999. Part 14/147

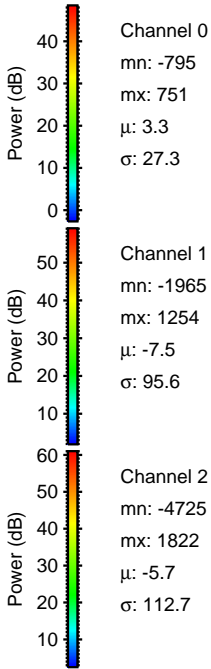
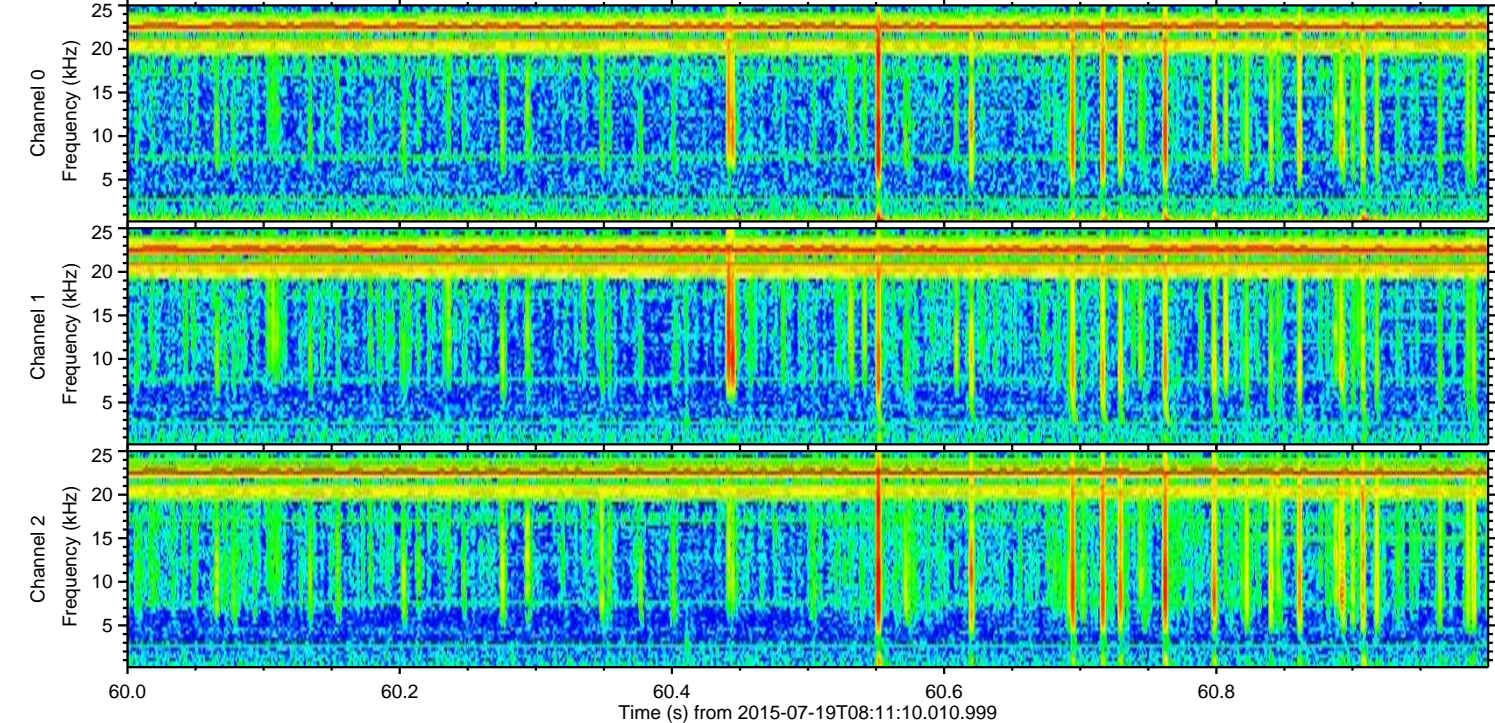
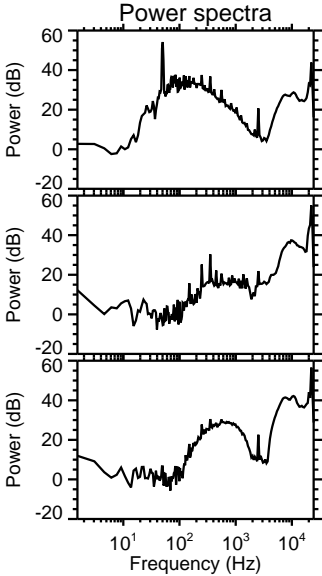
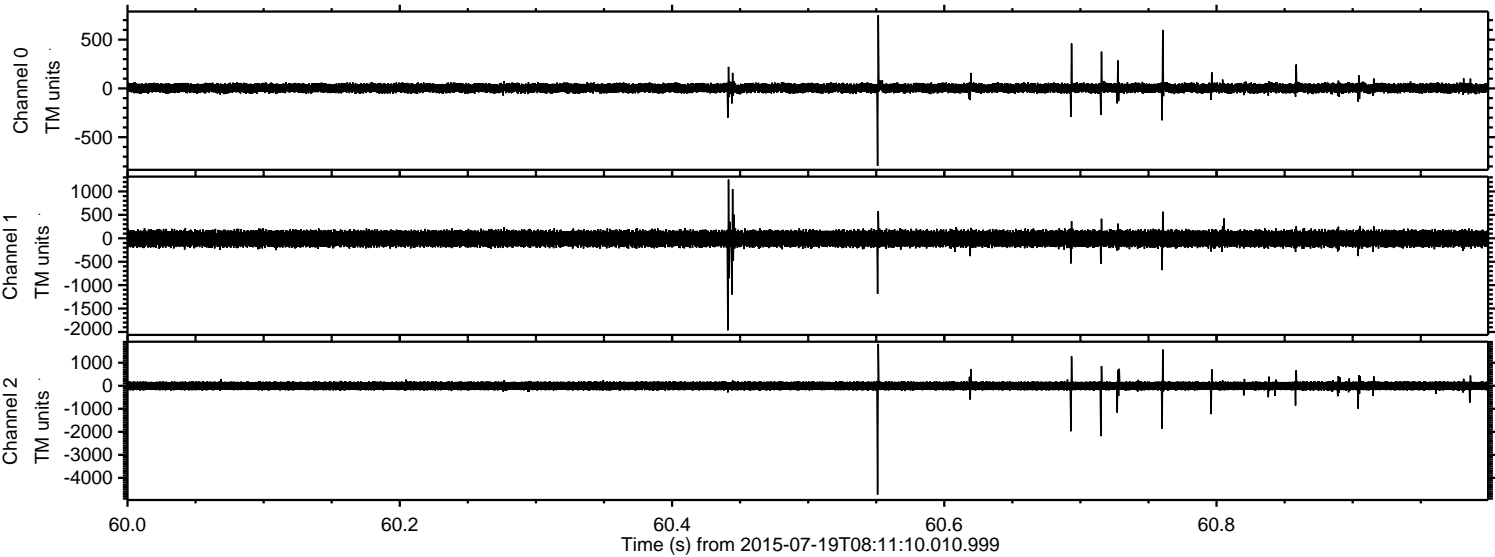
Processed Sun Jul 19 10:17:30 2015 by ELM ver.2012-10-06 from 001\_\_elm20150719\_081109\_\_dat00.bin



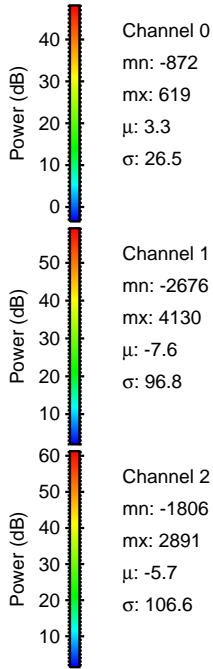
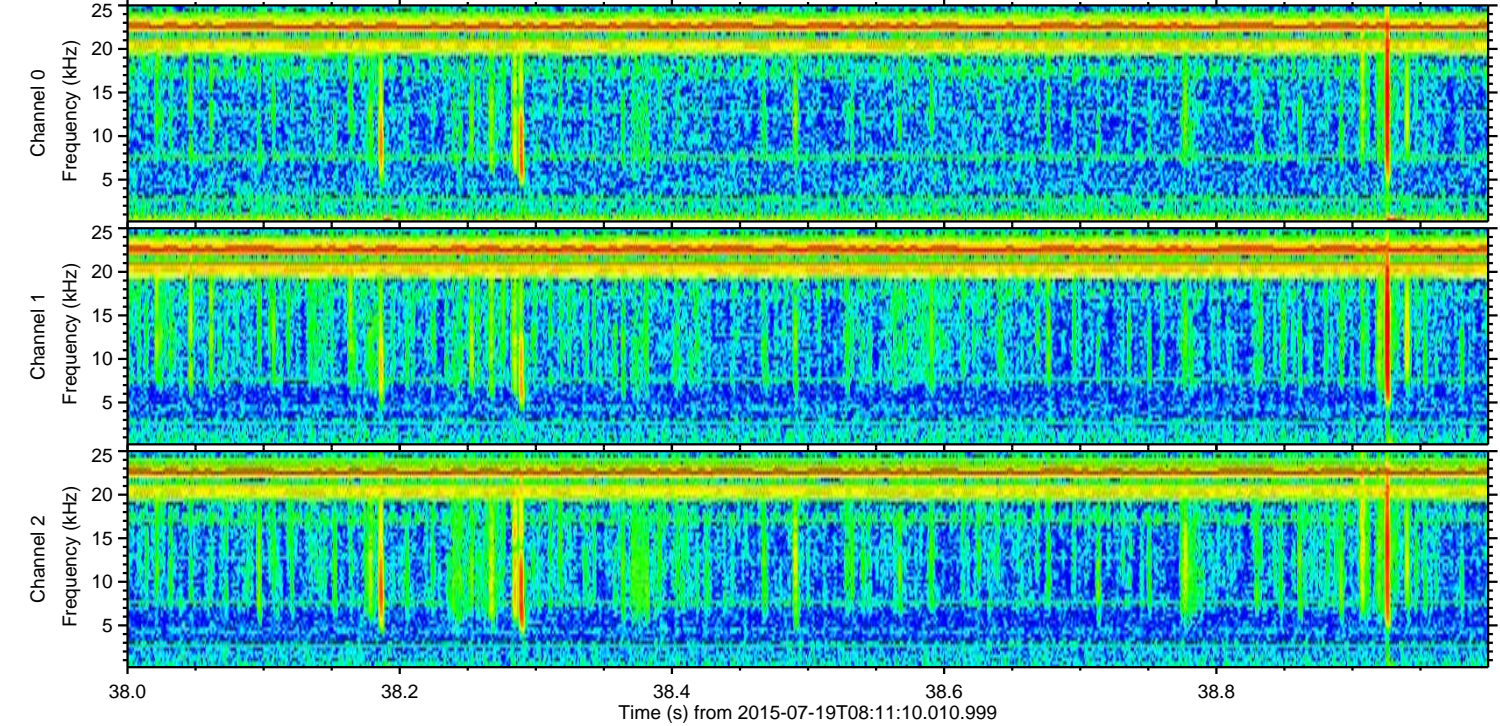
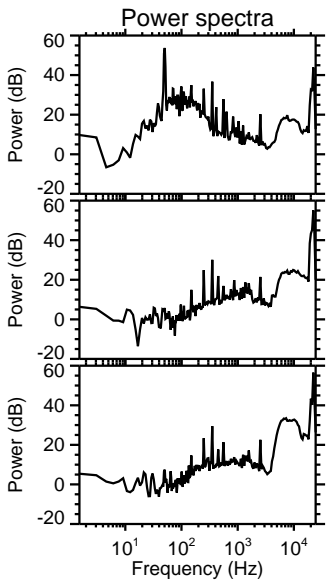
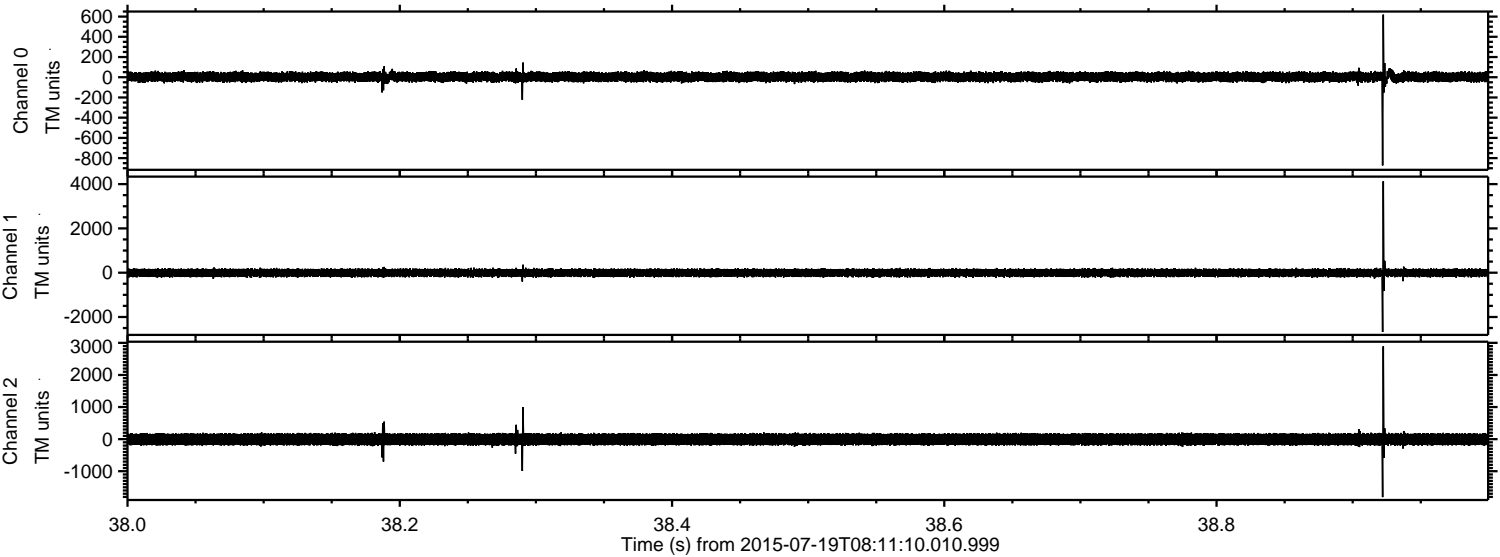
Processed Sun Jul 19 10:17:31 2015 by ELM ver.2012-10-06 from 001\_\_elm20150719\_081109\_\_dat00.bin



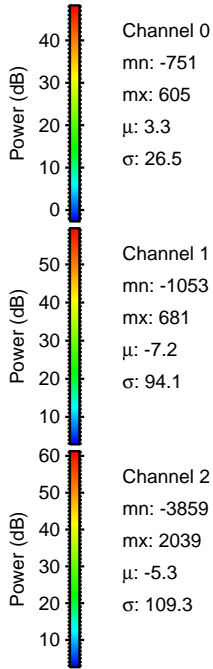
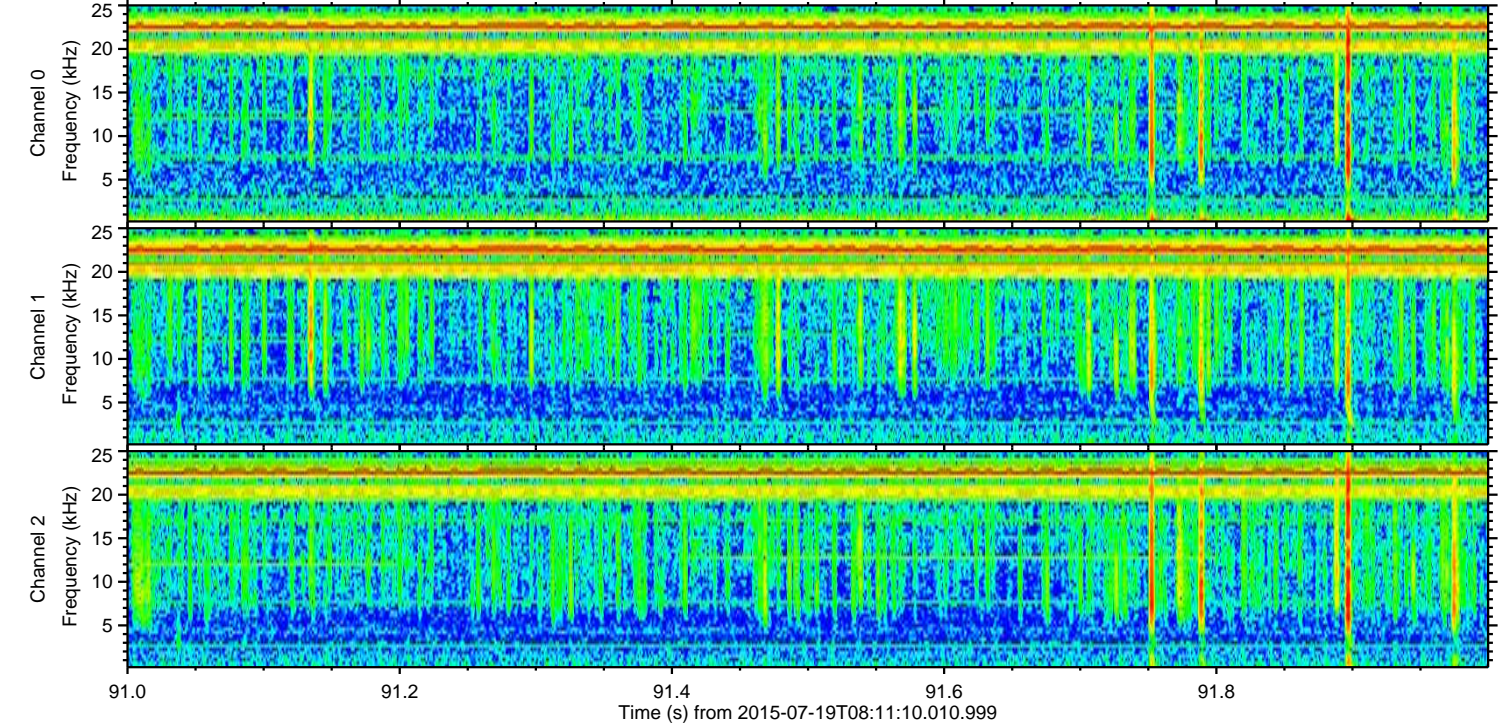
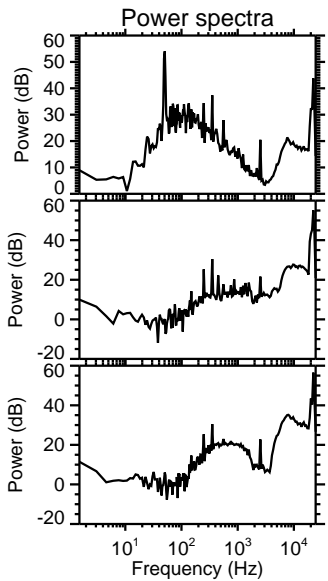
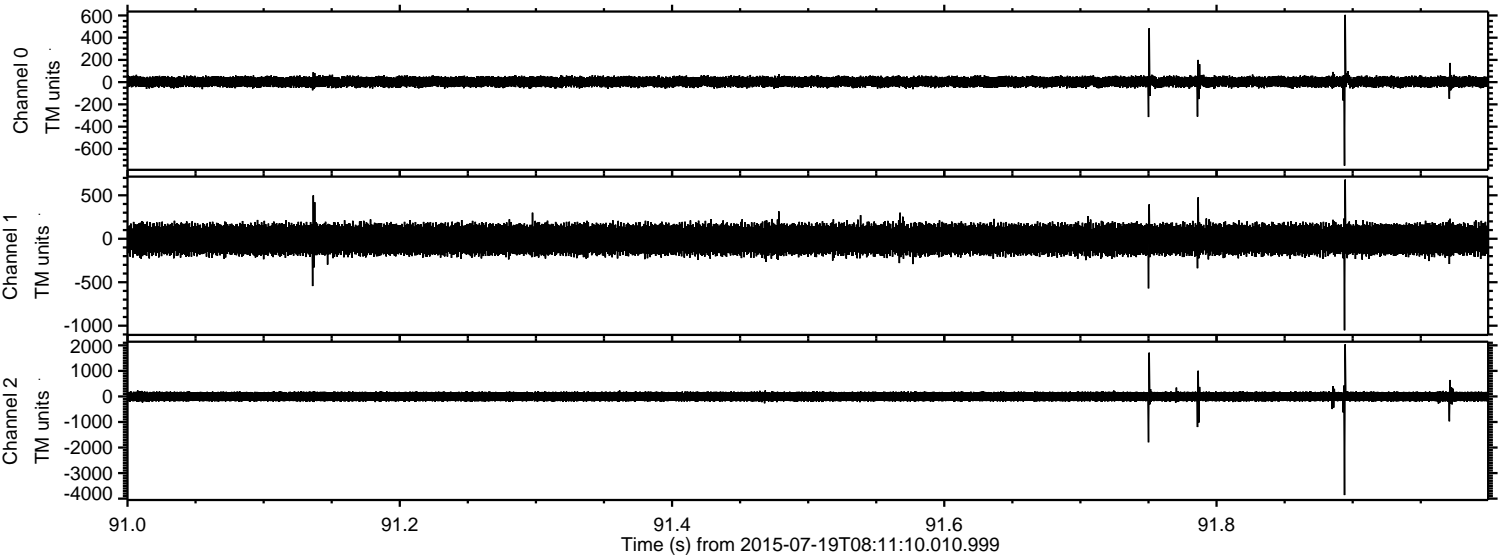
Processed Sun Jul 19 10:17:32 2015 by ELM ver.2012-10-06 from 001\_\_elm20150719\_081109\_\_dat00.bin



Processed Sun Jul 19 10:17:33 2015 by ELM ver.2012-10-06 from 001\_\_elm20150719\_081109\_\_dat00.bin

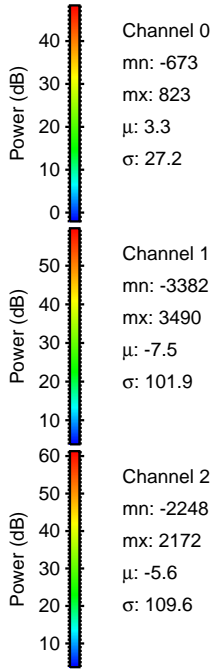
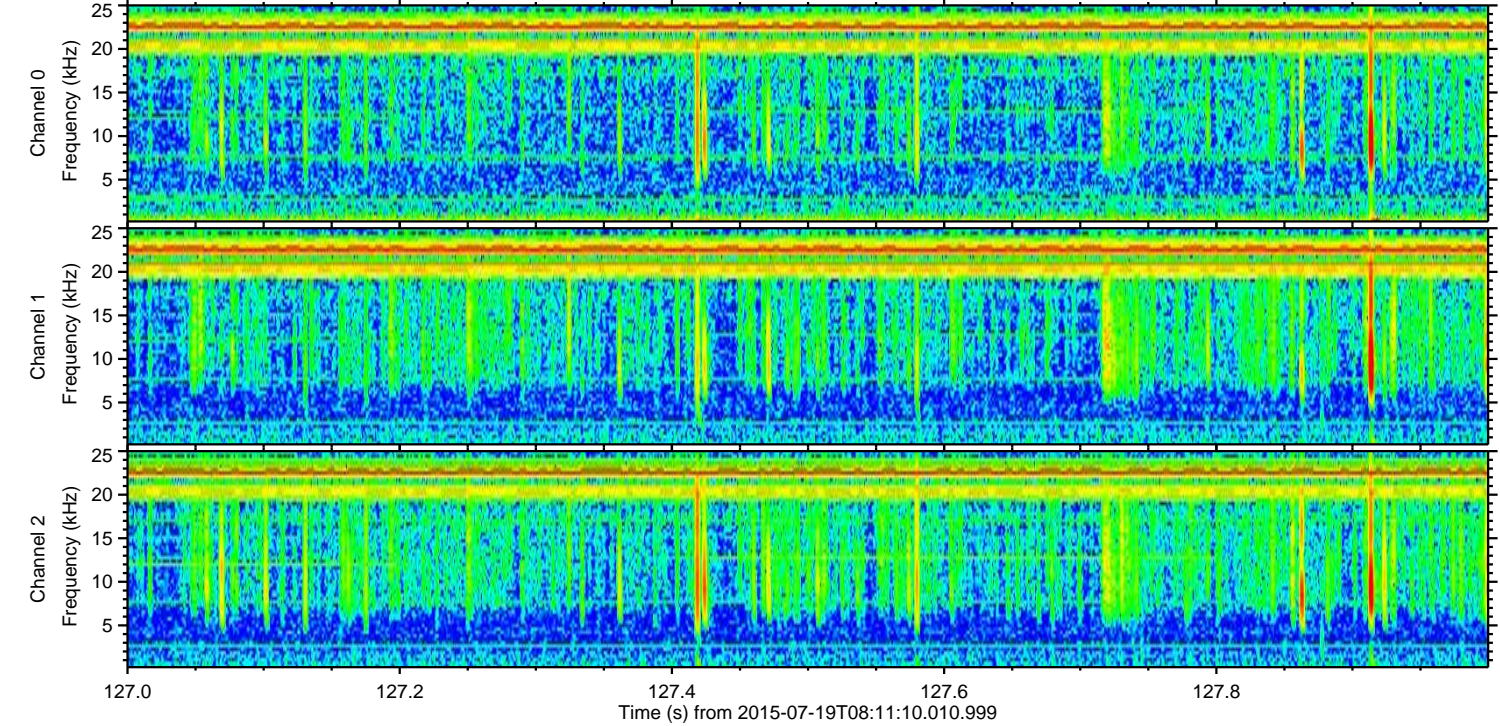
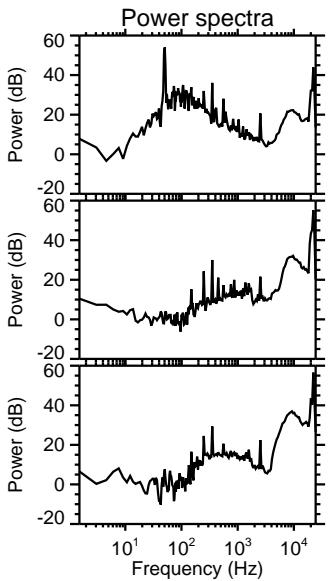
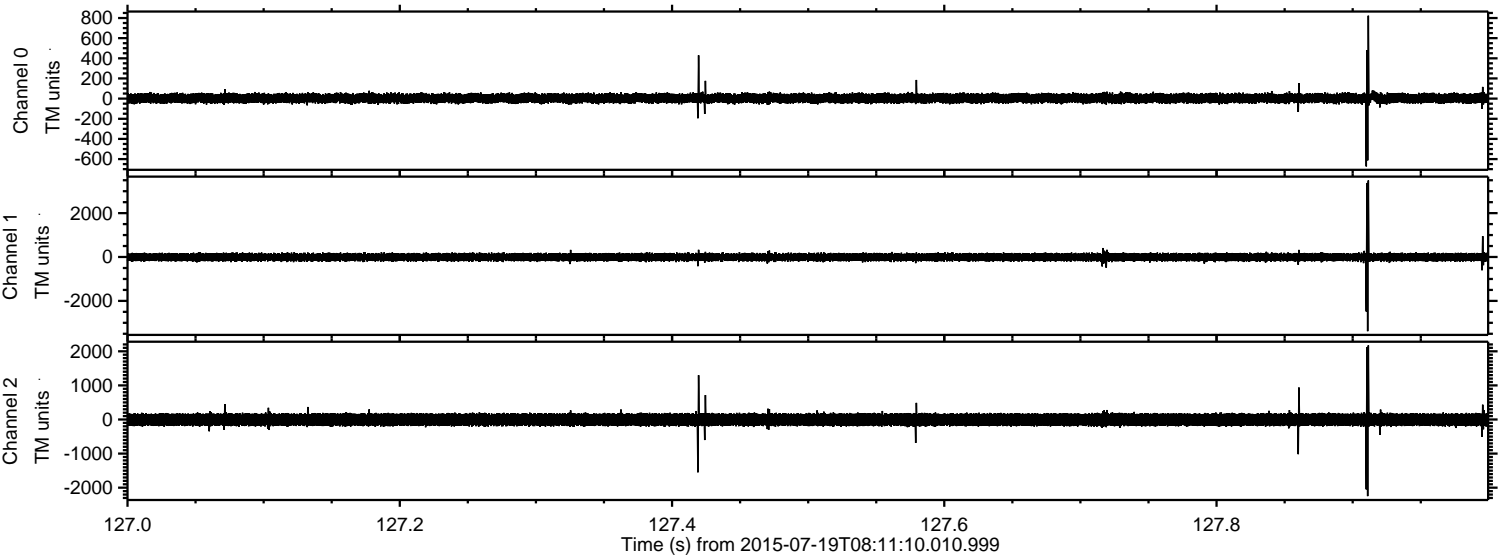


Processed Sun Jul 19 10:17:34 2015 by ELM ver.2012-10-06 from 001\_\_elm20150719\_081109\_\_dat00.bin

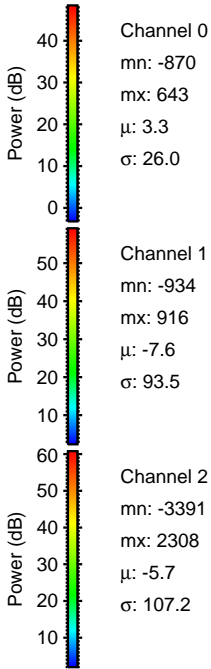
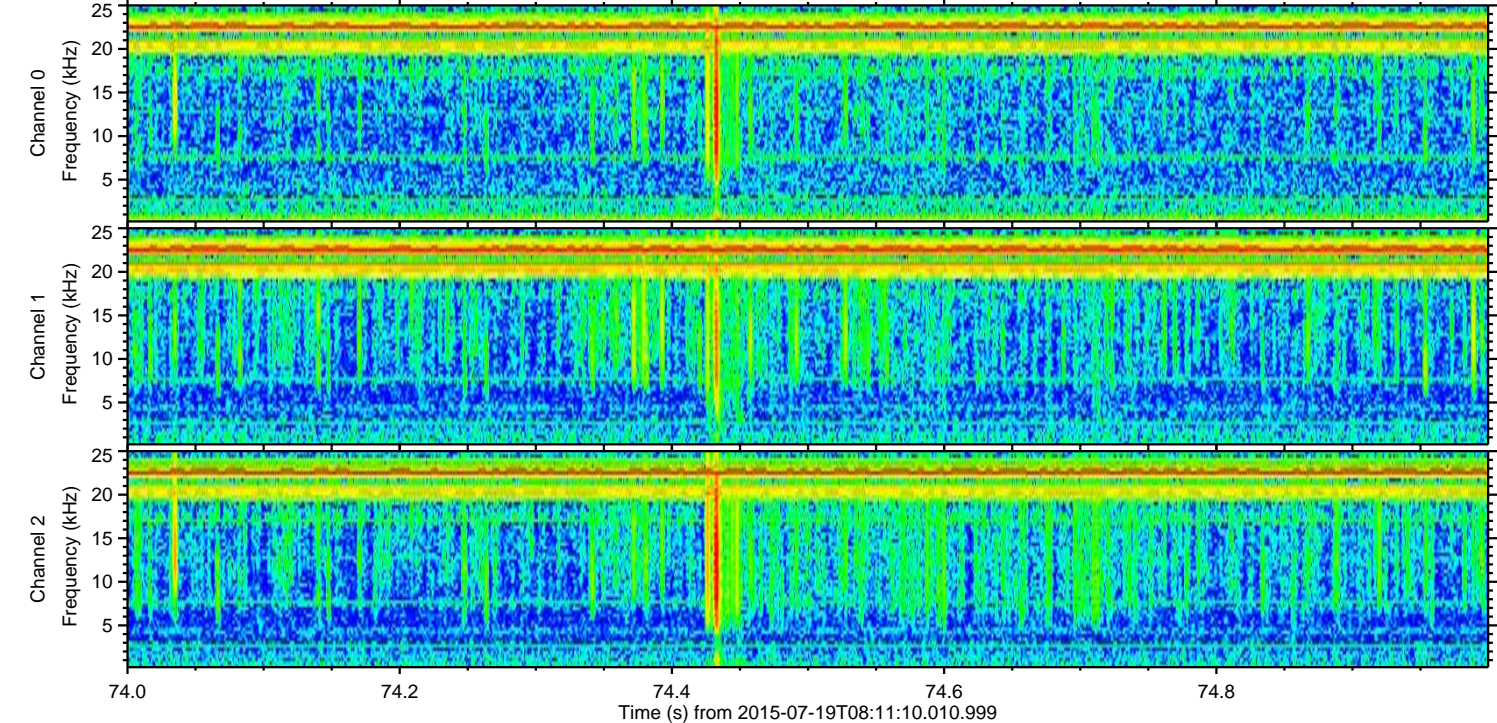
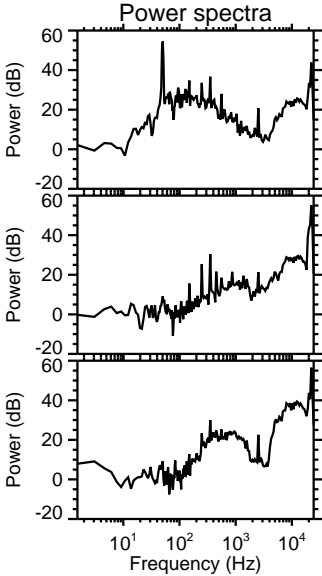
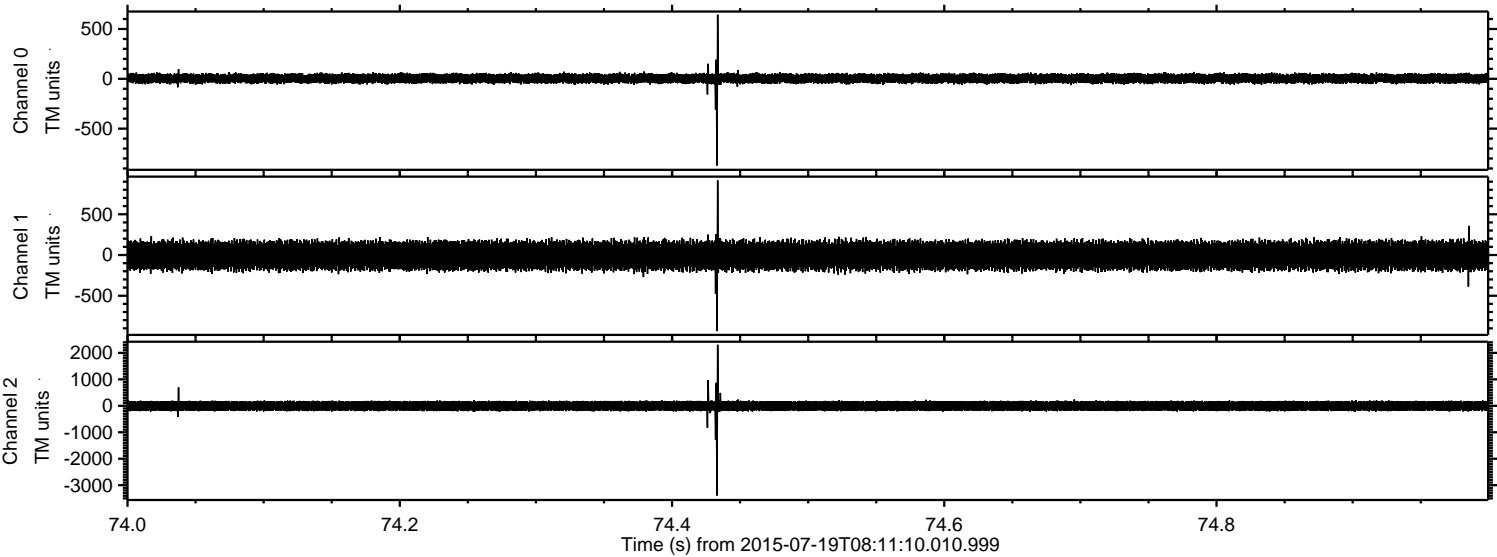


ELMAVAN 3D WAVEFORMS (Measured data sampled at 50 kHz) 51000 packets of 144 samples from 2015-07-19T08:11:10.010.999. Part 128/147

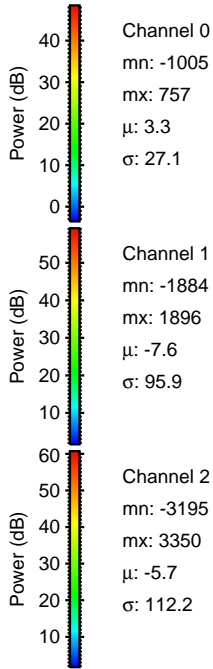
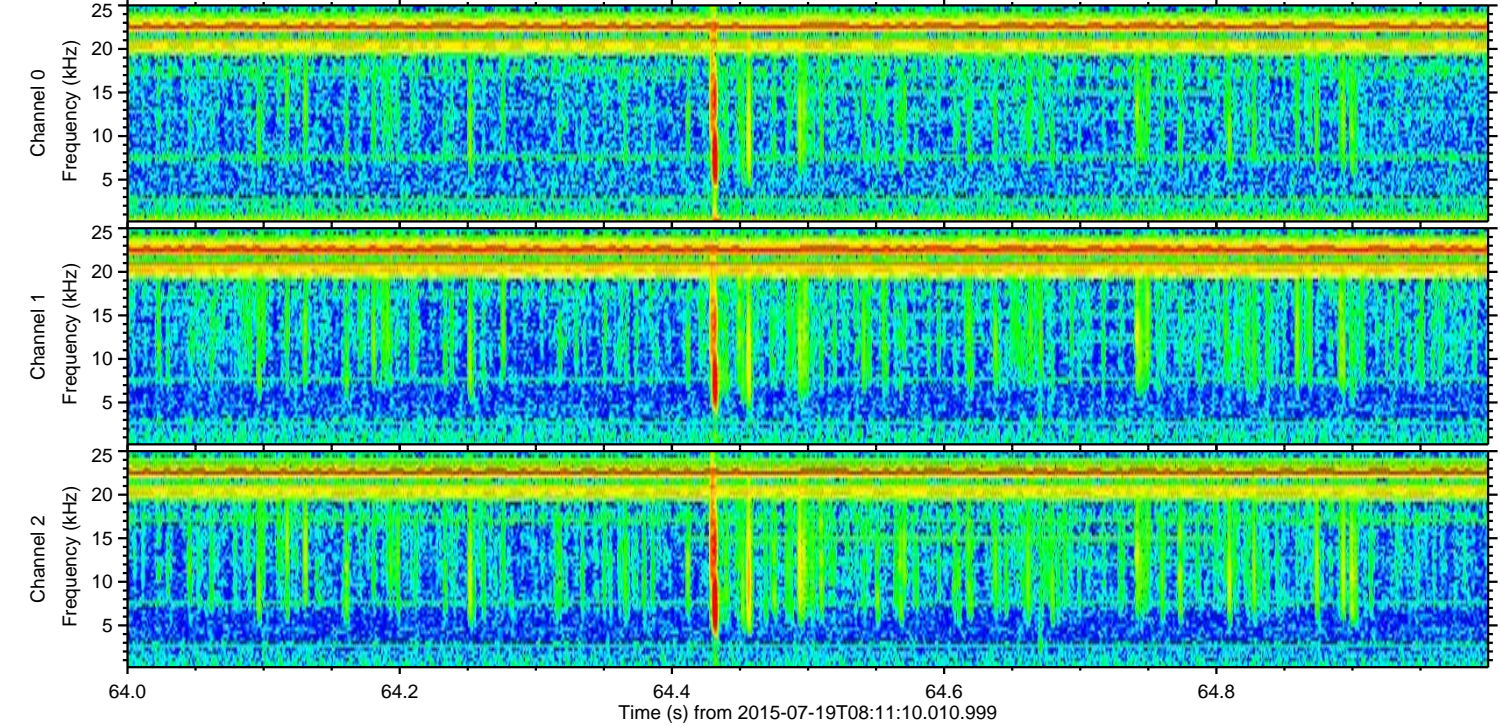
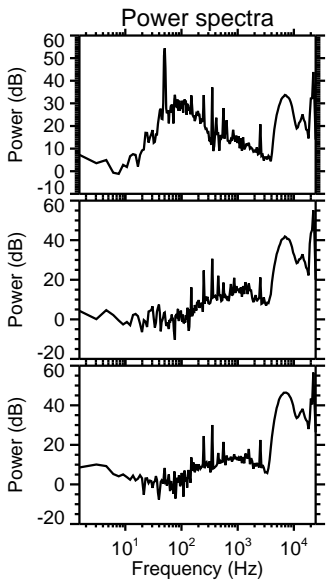
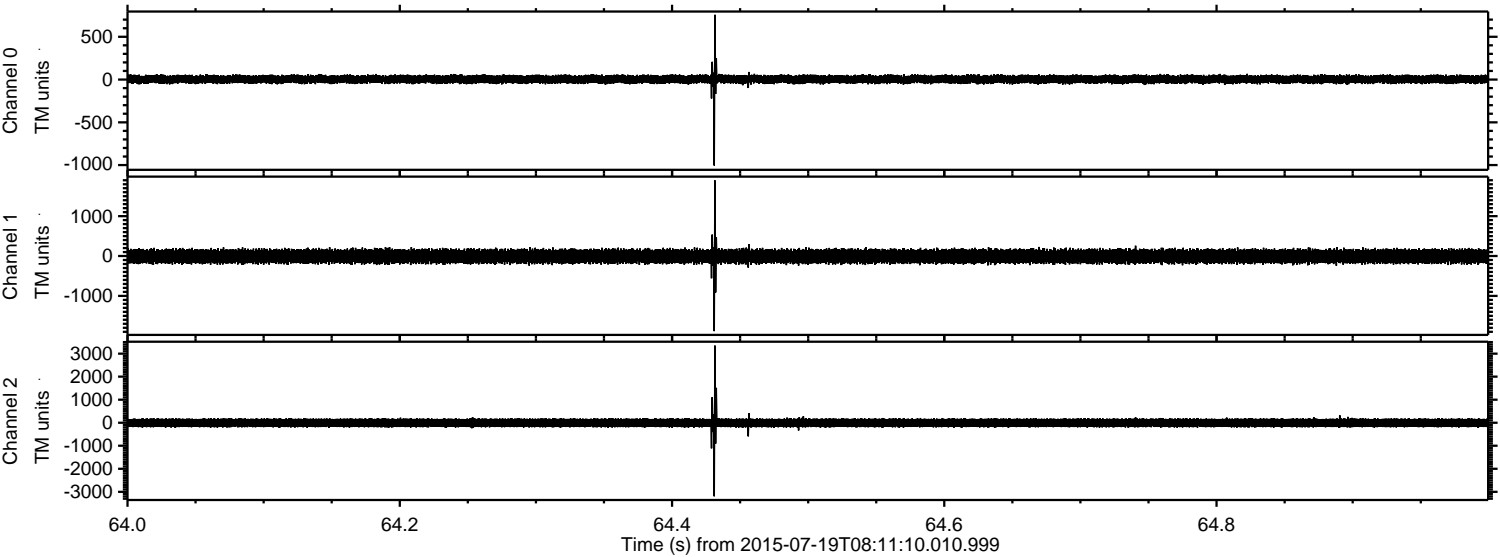
Processed Sun Jul 19 10:17:35 2015 by ELM ver.2012-10-06 from 001\_\_elm20150719\_081109\_\_dat00.bin



Processed Sun Jul 19 10:17:36 2015 by ELM ver.2012-10-06 from 001\_\_elm20150719\_081109\_\_dat00.bin



Processed Sun Jul 19 10:17:37 2015 by ELM ver.2012-10-06 from 001\_\_elm20150719\_081109\_\_dat00.bin



Channel 0  
mn: -1005  
mx: 757  
 $\mu$ : 3.3  
 $\sigma$ : 27.1

Channel 1  
mn: -1884  
mx: 1896  
 $\mu$ : -7.6  
 $\sigma$ : 95.9

Channel 2  
mn: -3195  
mx: 3350  
 $\mu$ : -5.7  
 $\sigma$ : 112.2

Processed Sun Jul 19 10:17:38 2015 by ELM ver.2012-10-06 from 001\_\_elm20150719\_081109\_\_dat00.bin

