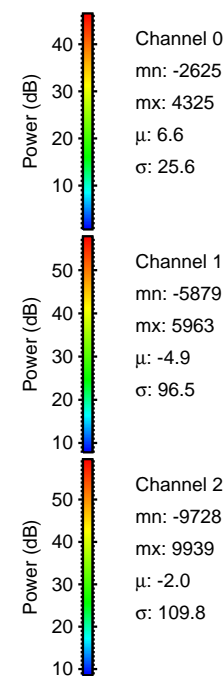
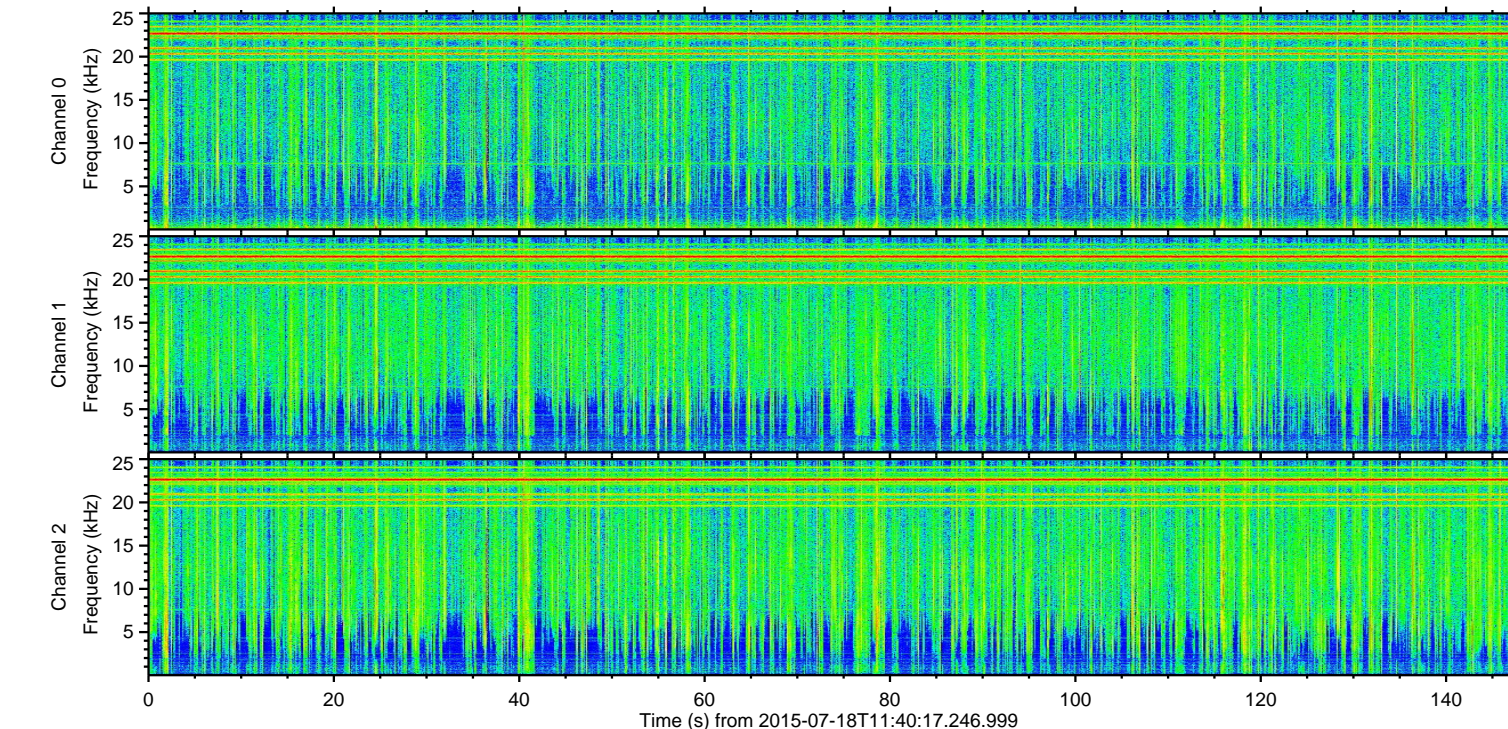
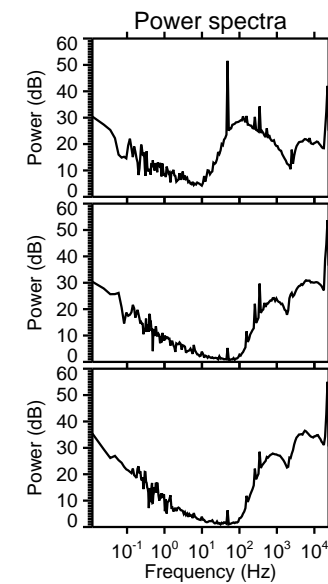
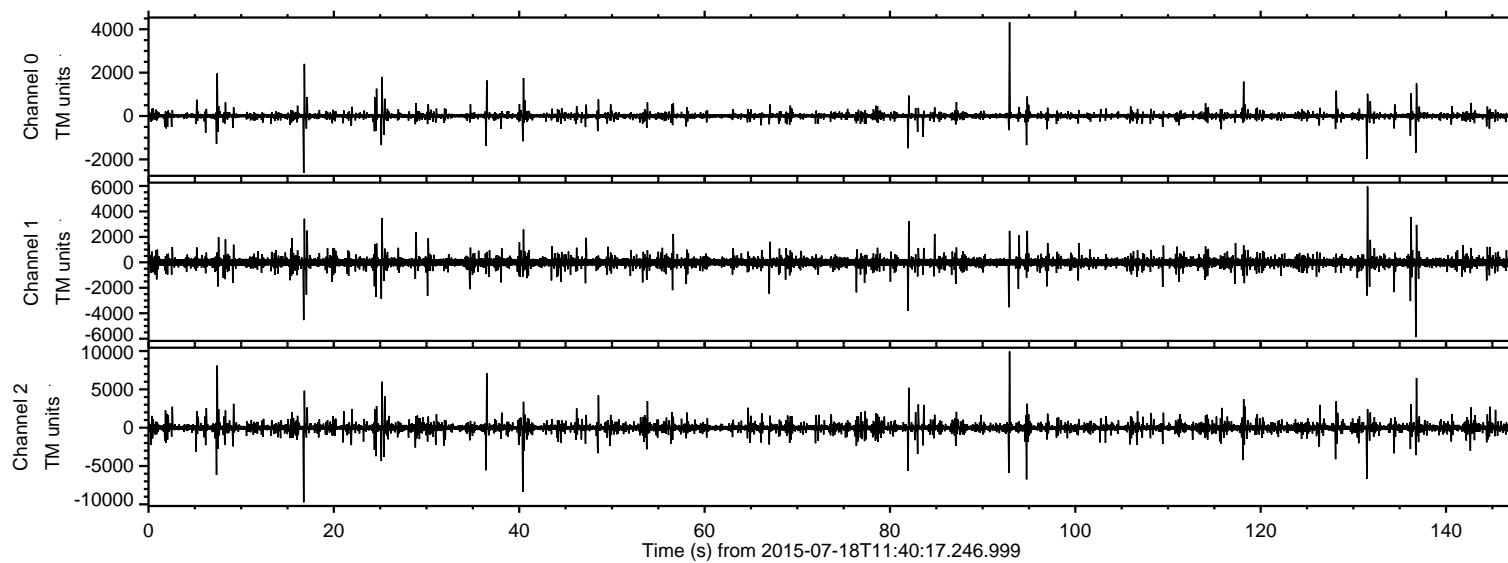
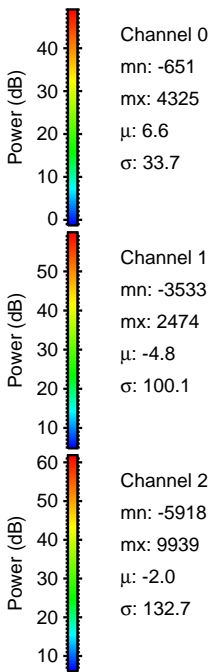
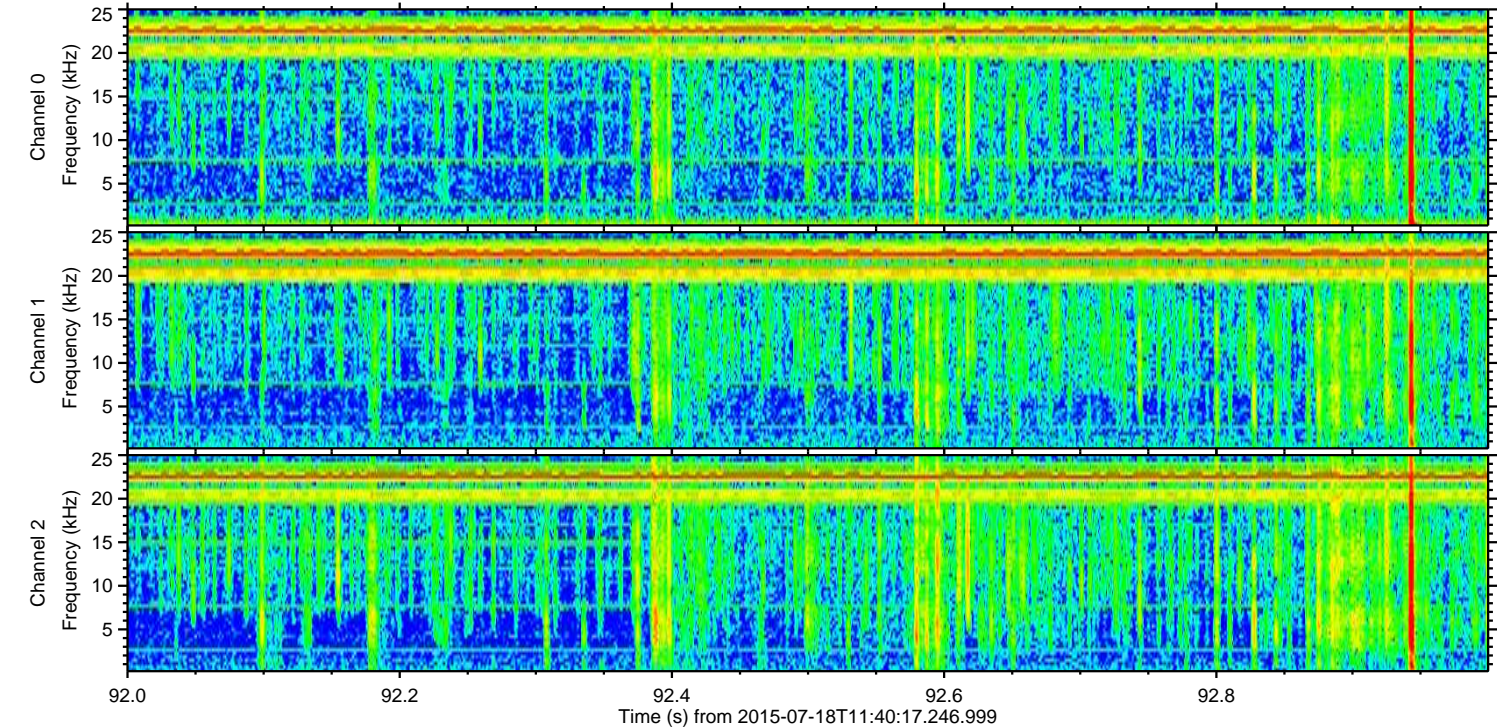
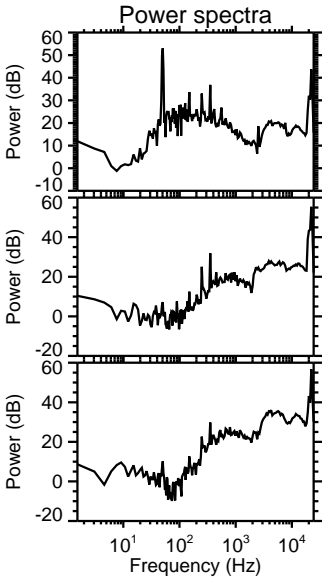
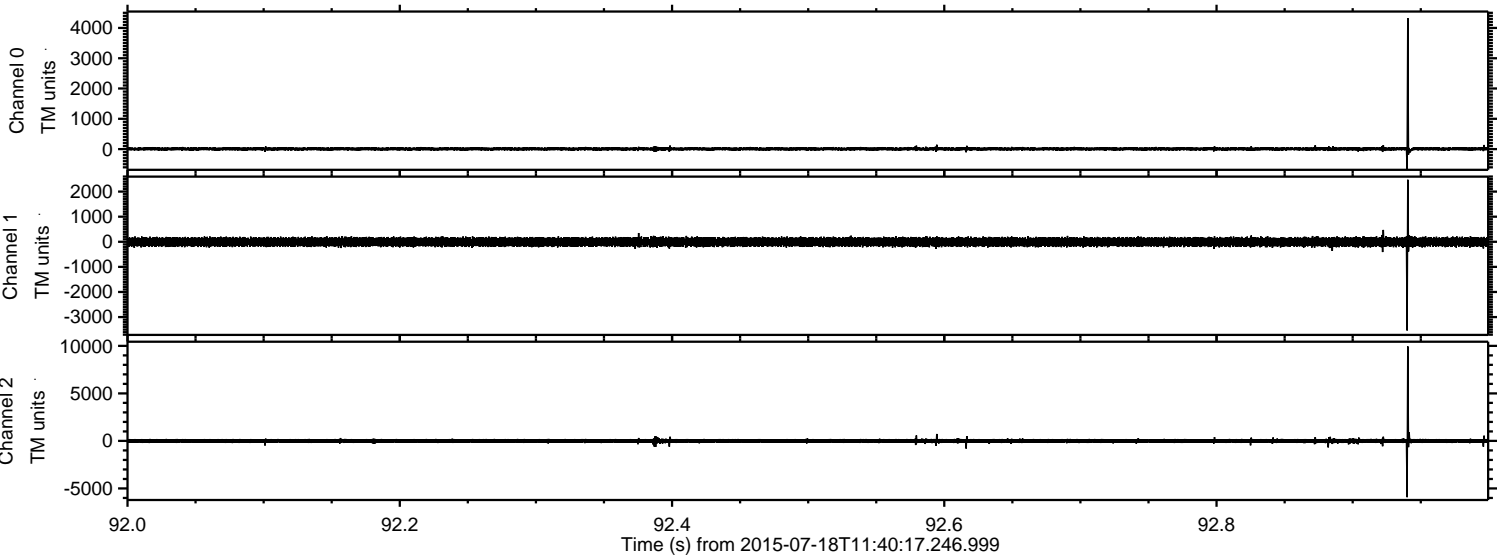


ELMAVAN 3D WAVEFORMS (Measured data sampled at 50 kHz) 51000 packets of 144 samples from 2015-07-18T11:40:17.246.999.

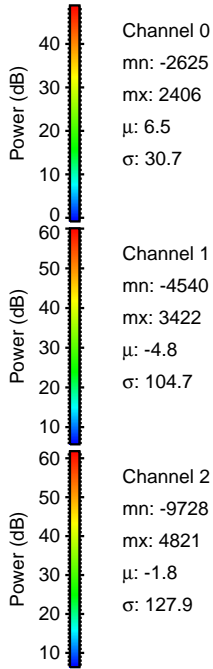
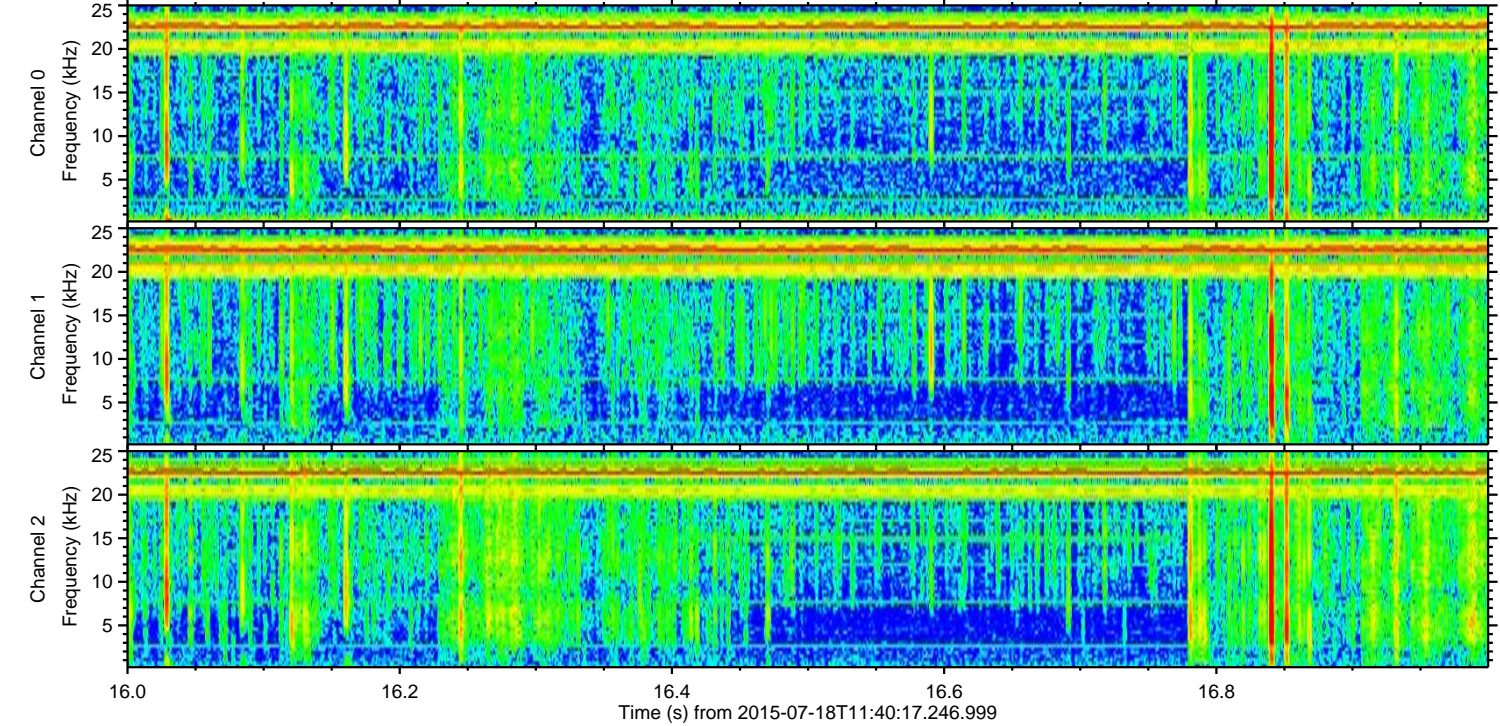
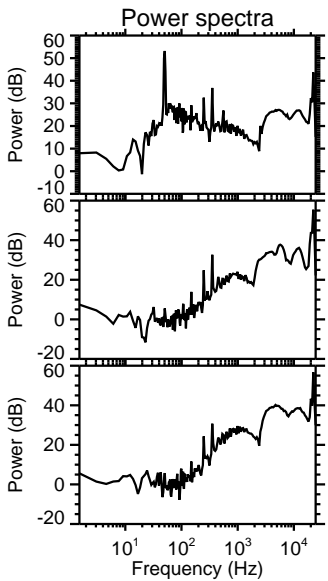
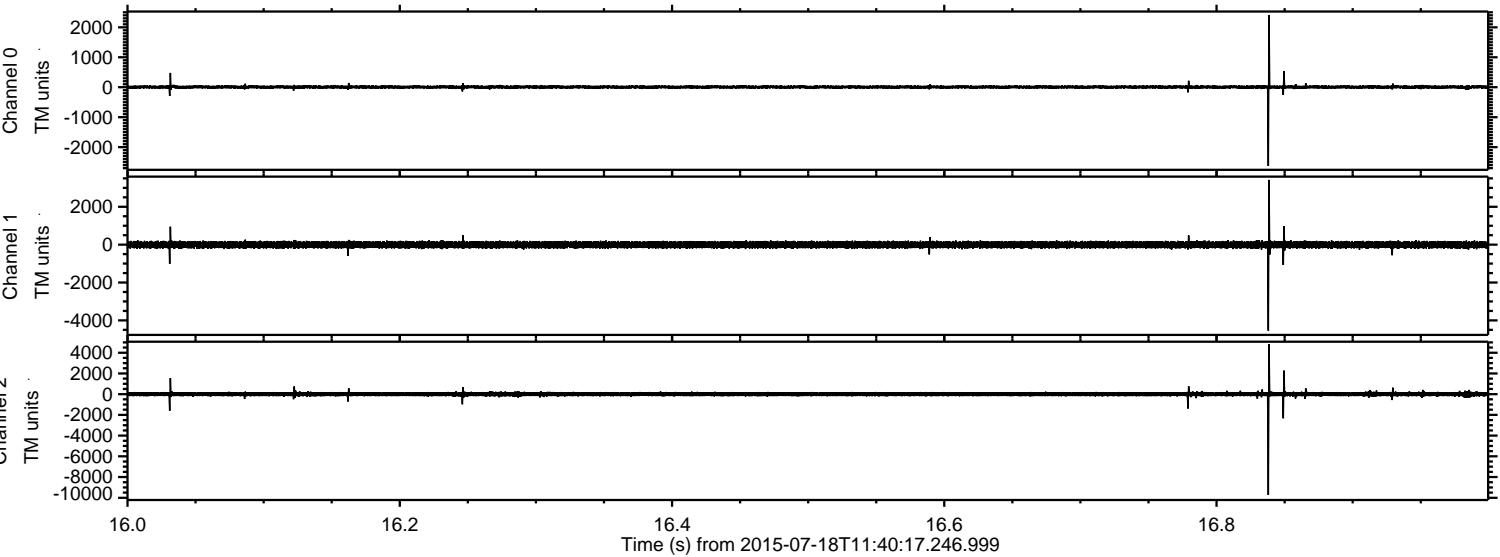
Processed Sat Jul 18 13:46:09 2015 by ELM ver.2012-10-06 from 001\_\_elm20150718\_114016\_\_dat00.bin



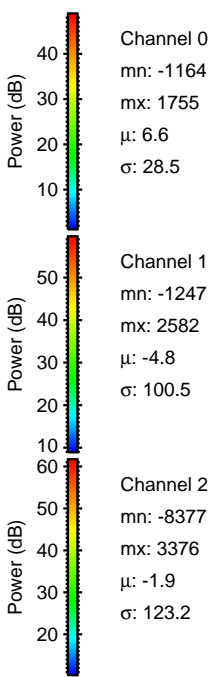
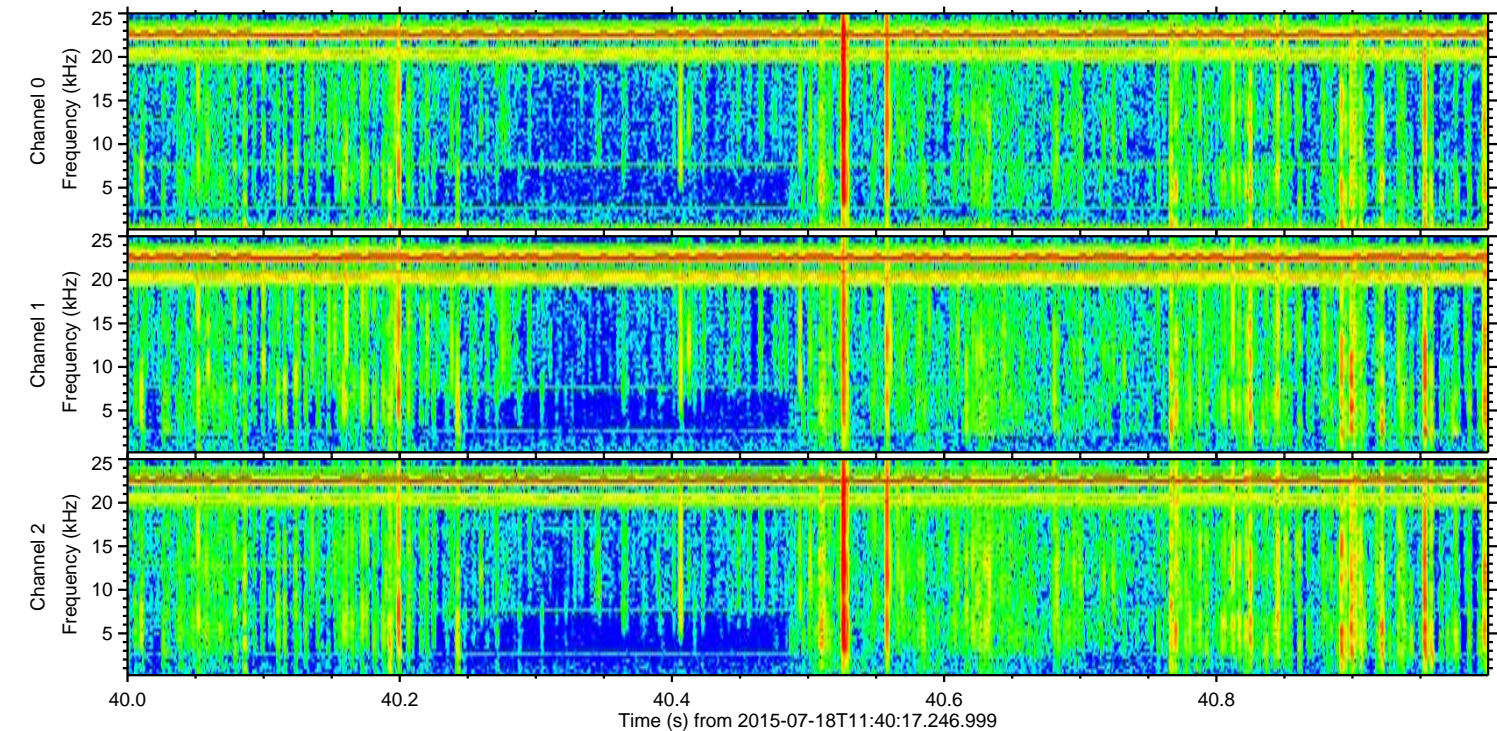
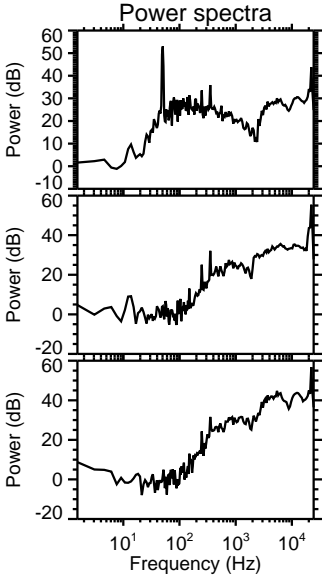
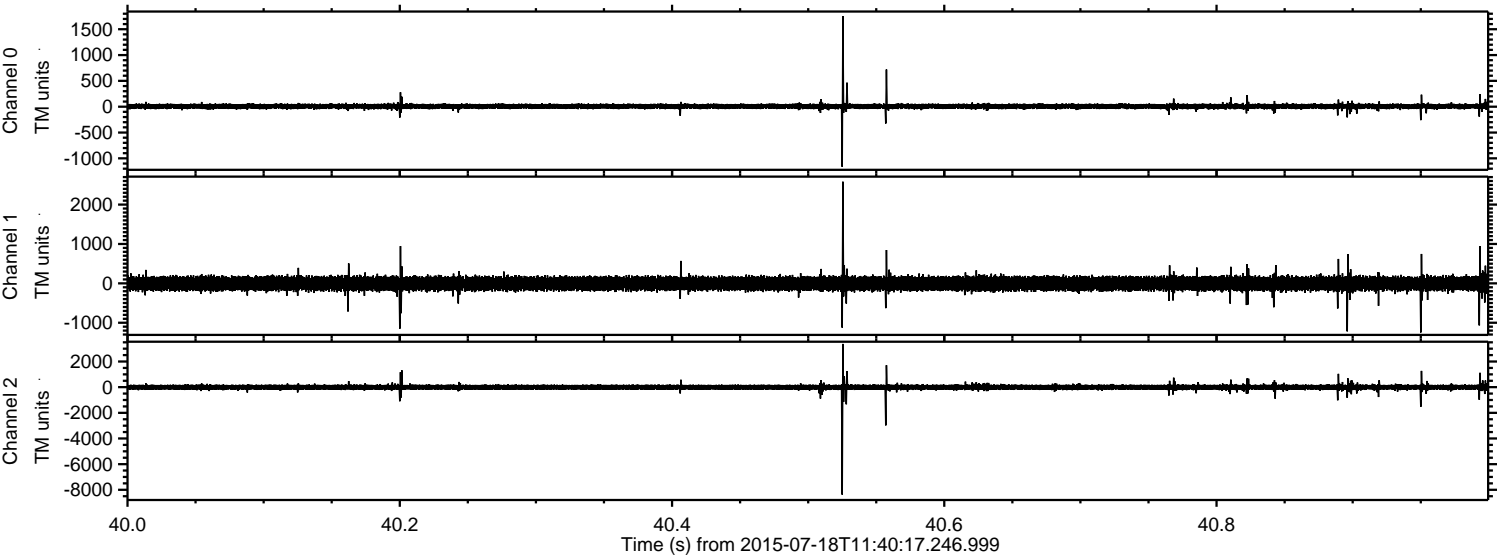
Processed Sat Jul 18 13:46:20 2015 by ELM ver.2012-10-06 from 001\_\_elm20150718\_114016\_\_dat00.bin



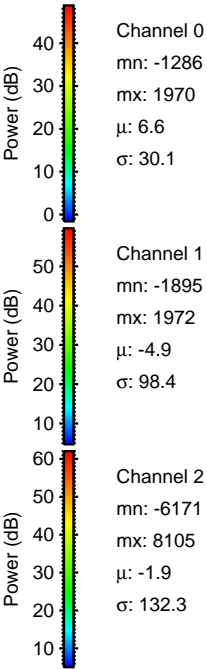
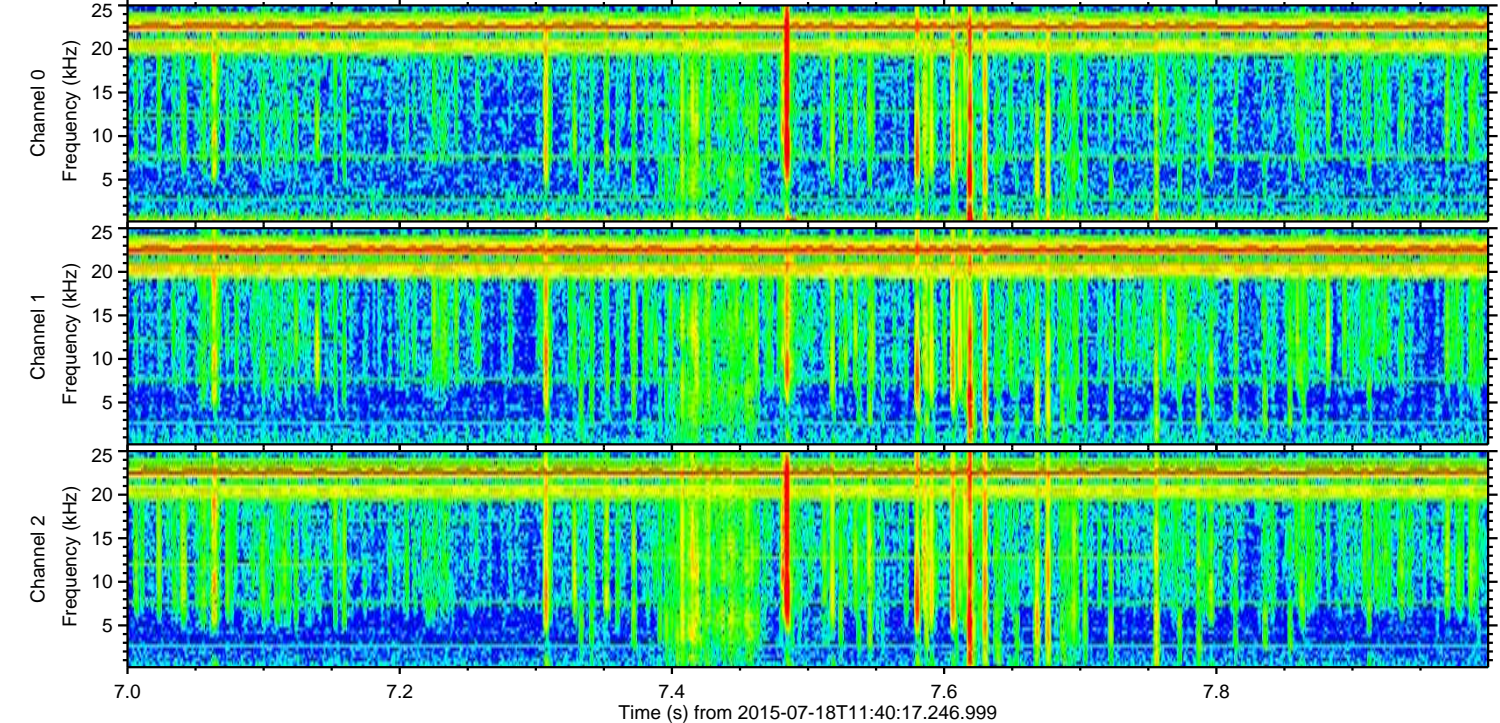
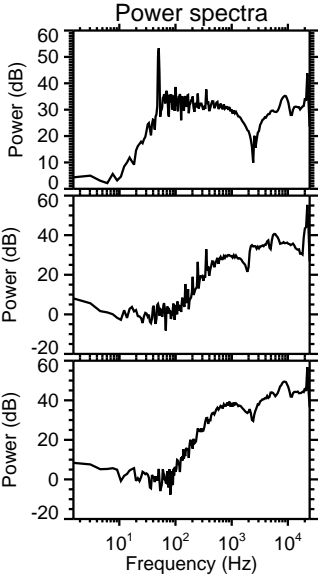
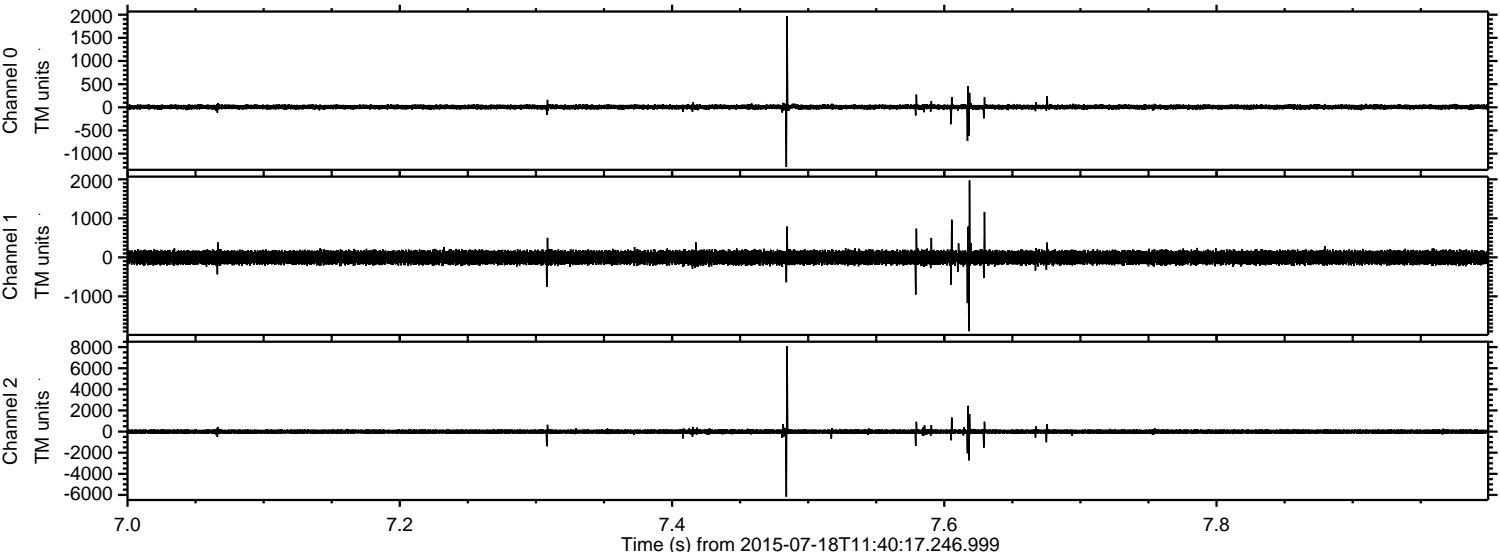
Processed Sat Jul 18 13:46:21 2015 by ELM ver.2012-10-06 from 001\_\_elm20150718\_114016\_\_dat00.bin



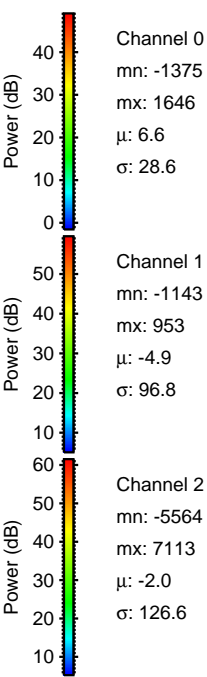
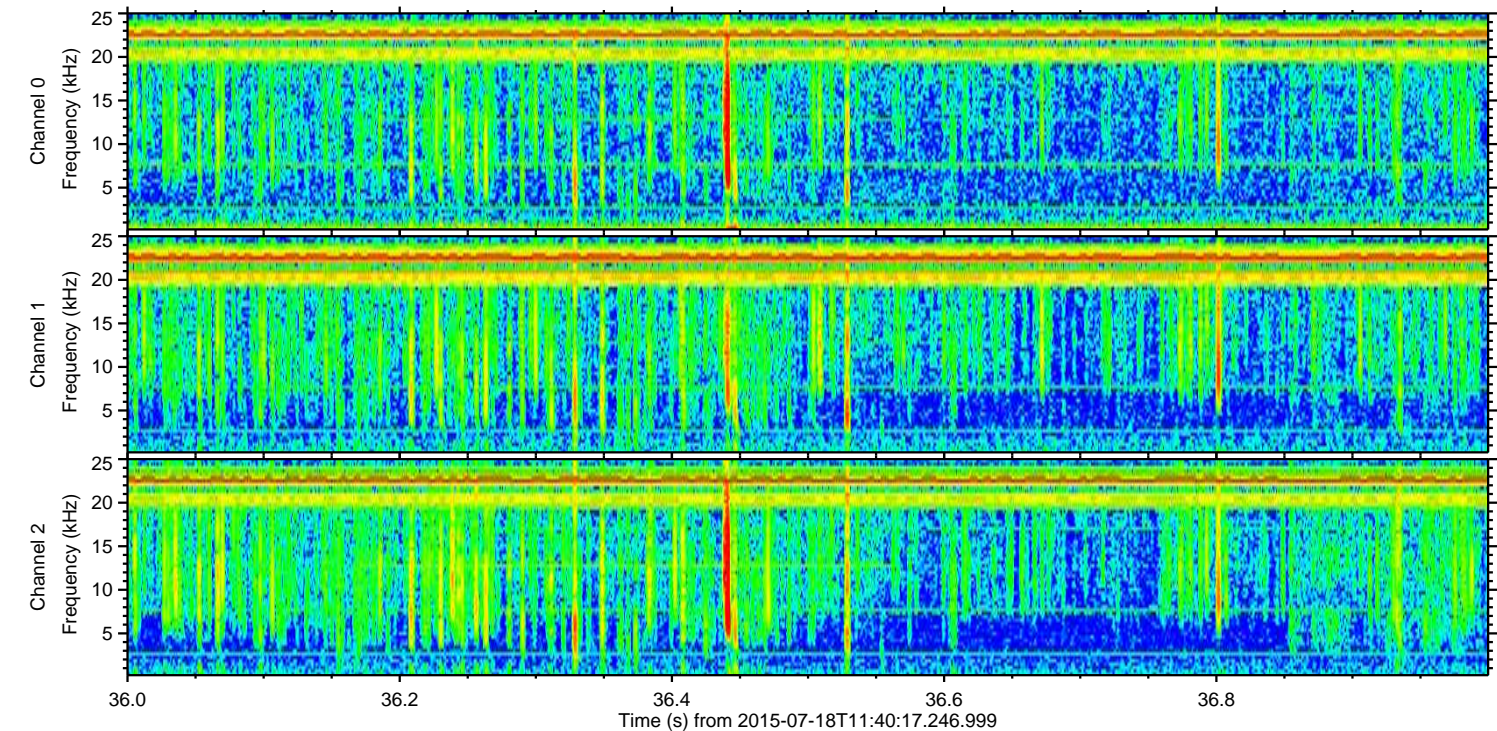
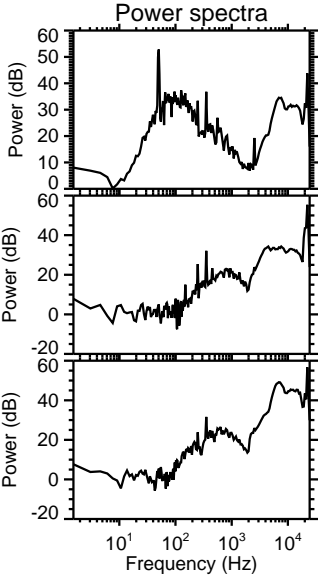
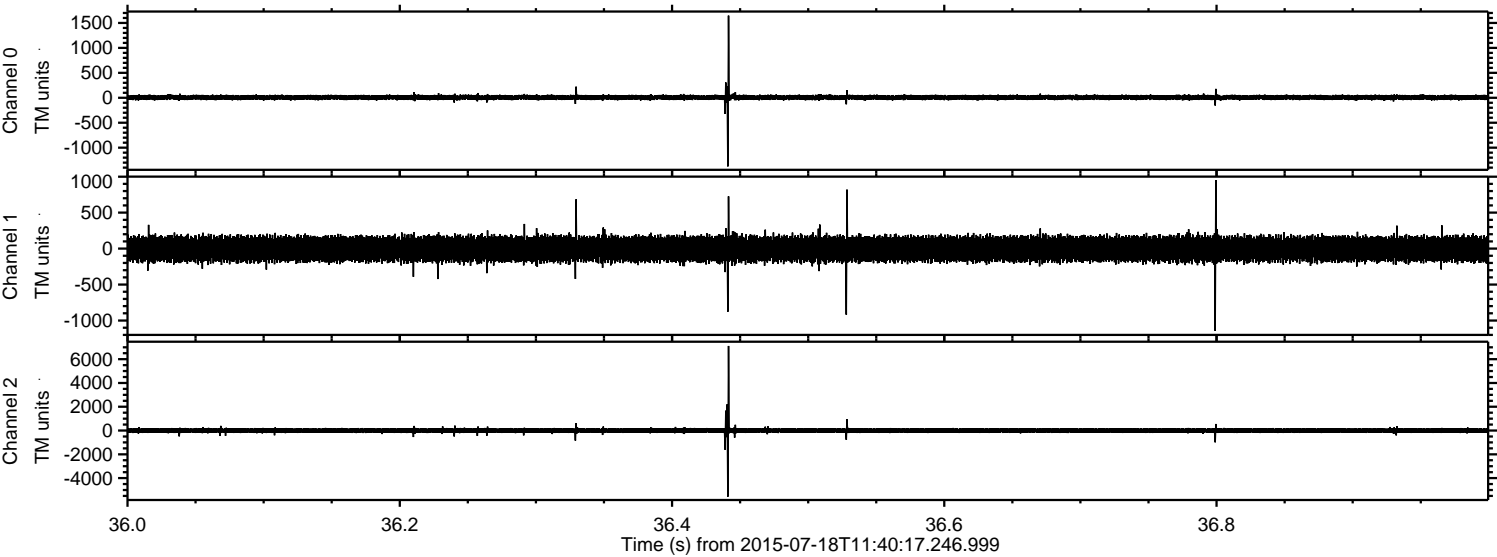
Processed Sat Jul 18 13:46:22 2015 by ELM ver.2012-10-06 from 001\_\_elm20150718\_114016\_\_dat00.bin



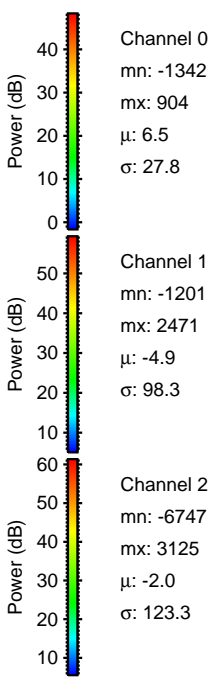
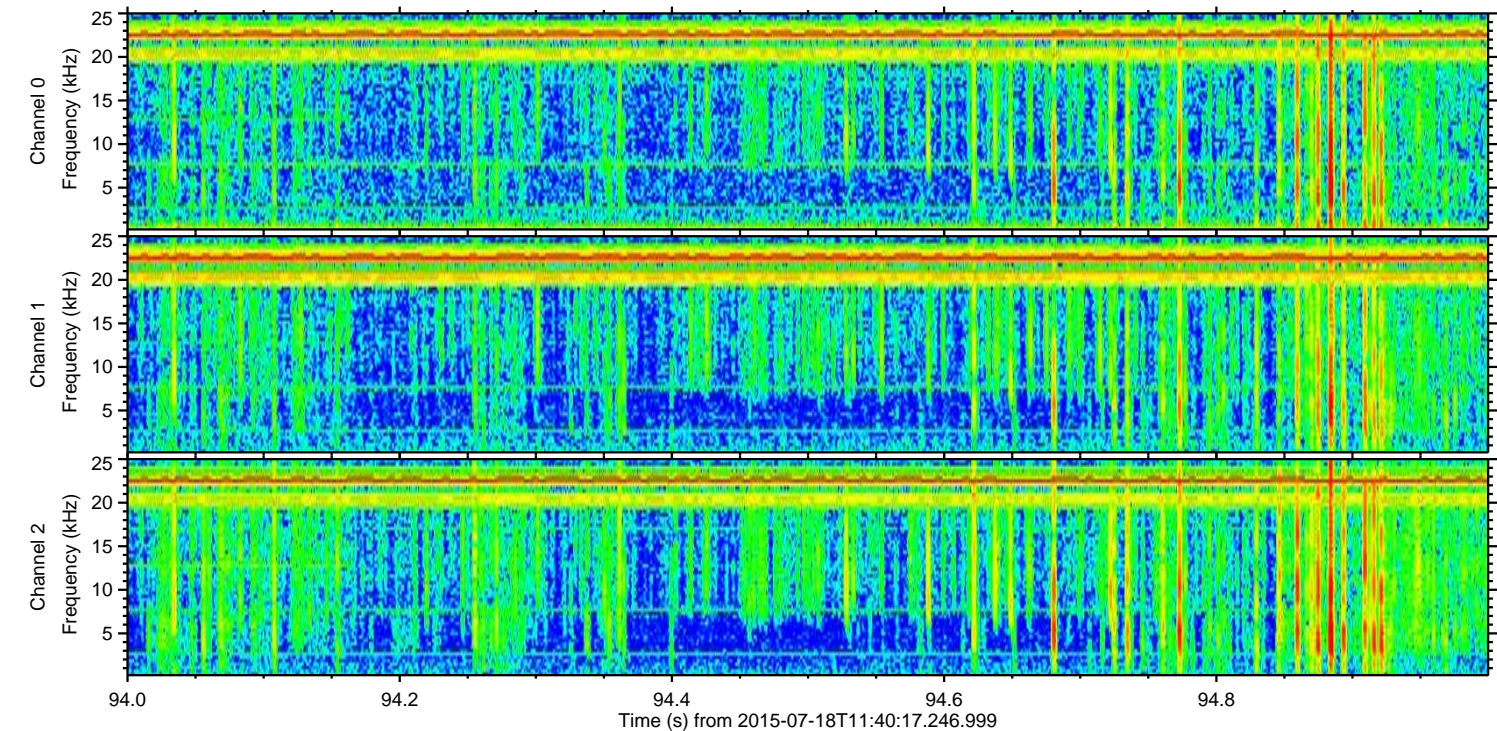
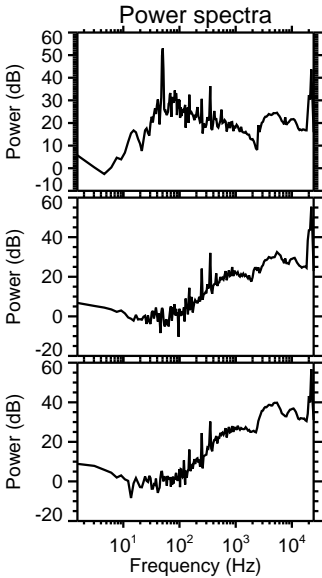
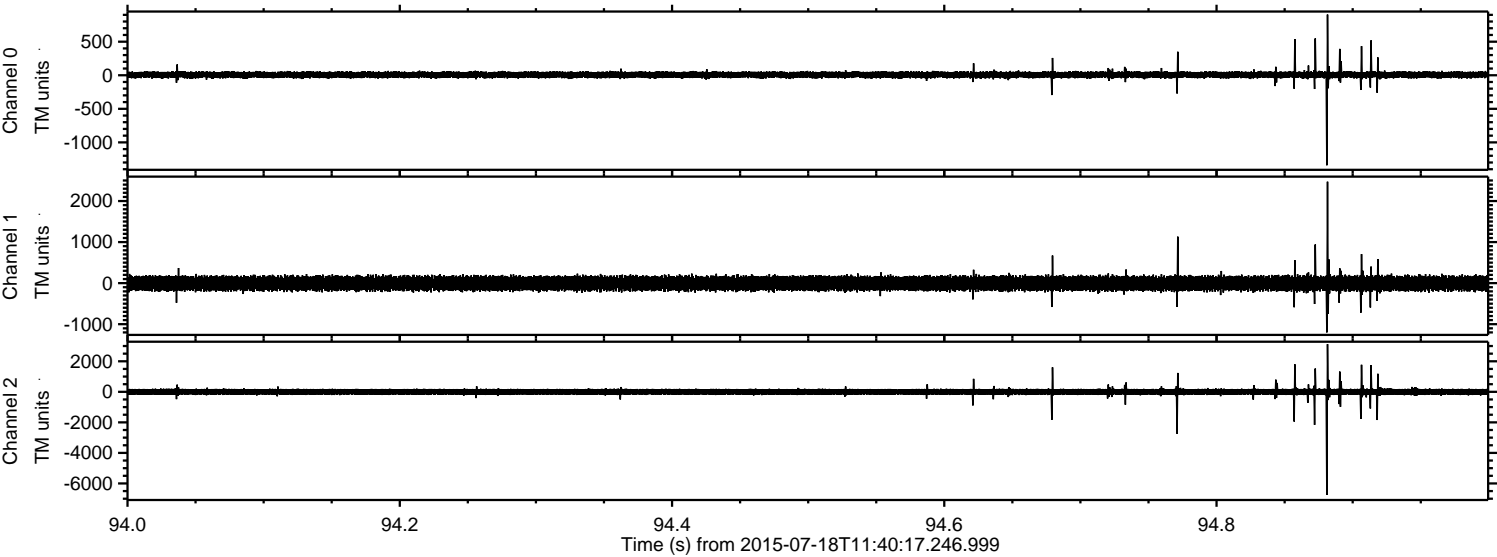
Processed Sat Jul 18 13:46:23 2015 by ELM ver.2012-10-06 from 001\_\_elm20150718\_114016\_\_dat00.bin



Processed Sat Jul 18 13:46:24 2015 by ELM ver.2012-10-06 from 001\_\_elm20150718\_114016\_\_dat00.bin

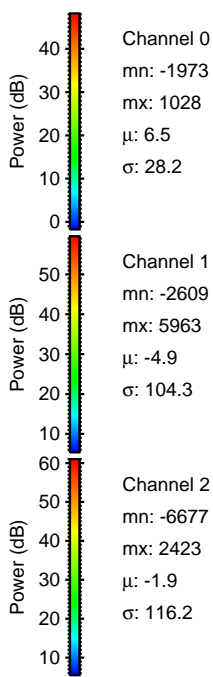
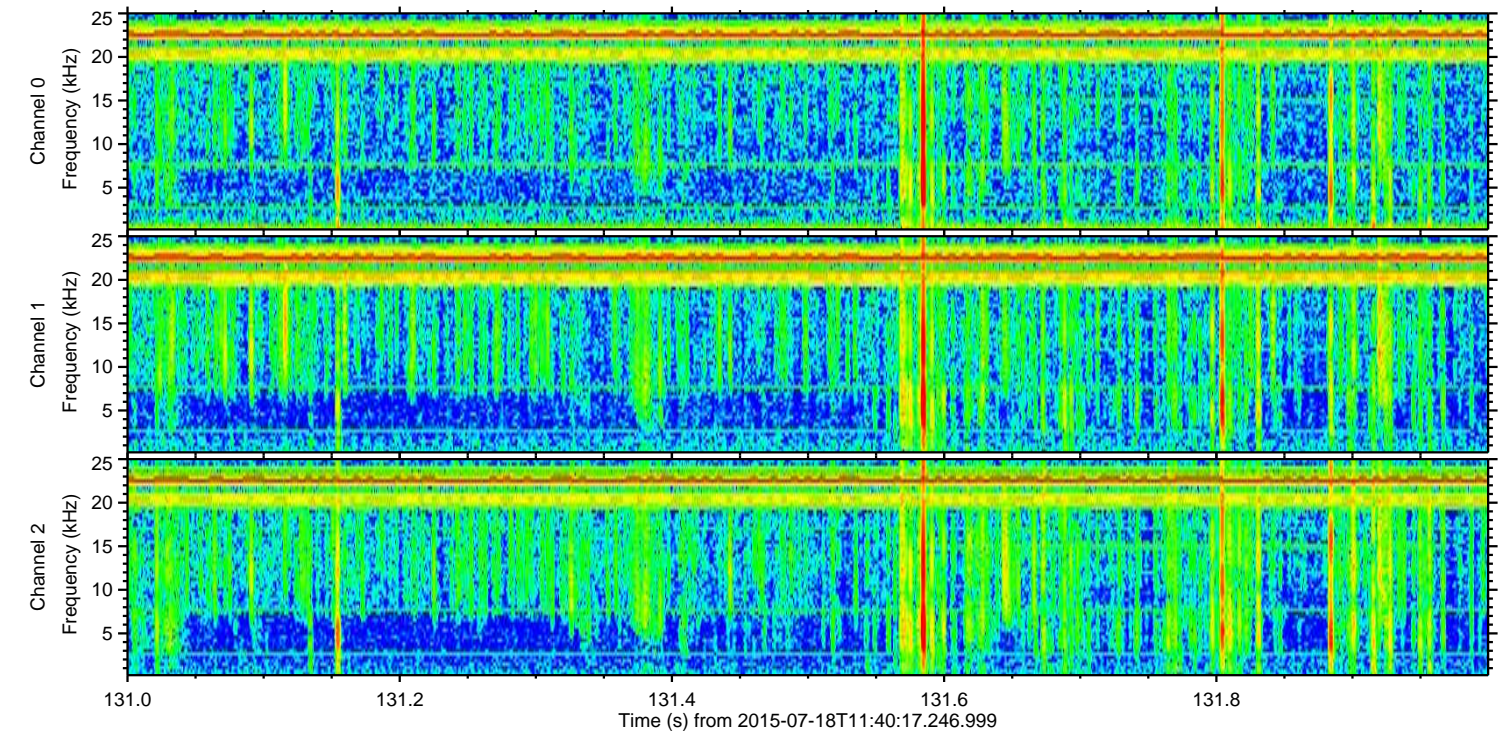
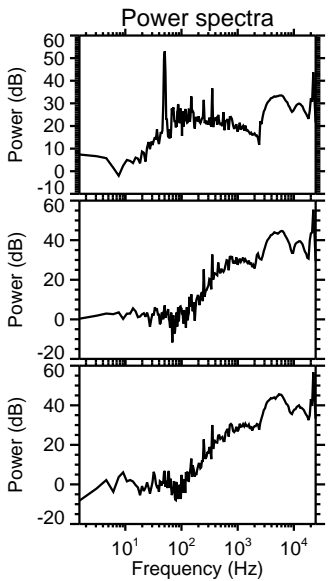
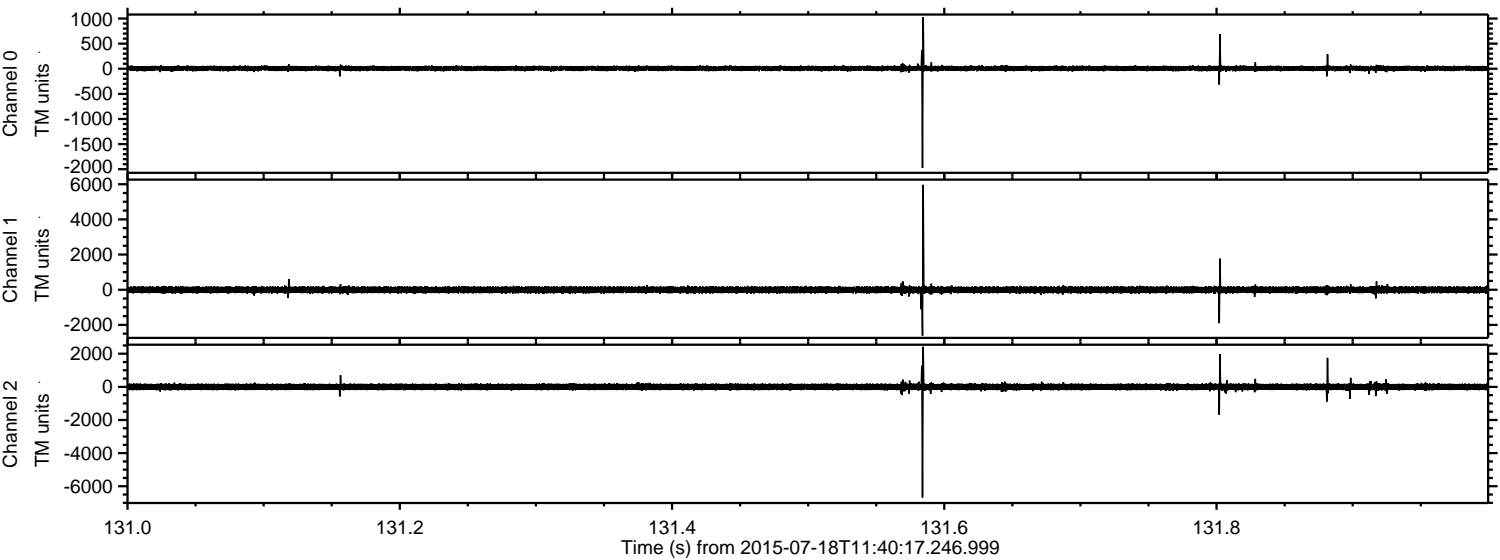


Processed Sat Jul 18 13:46:25 2015 by ELM ver.2012-10-06 from 001\_\_elm20150718\_114016\_\_dat00.bin



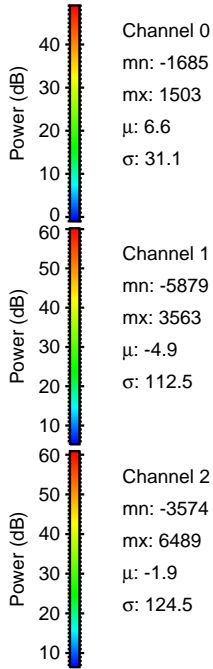
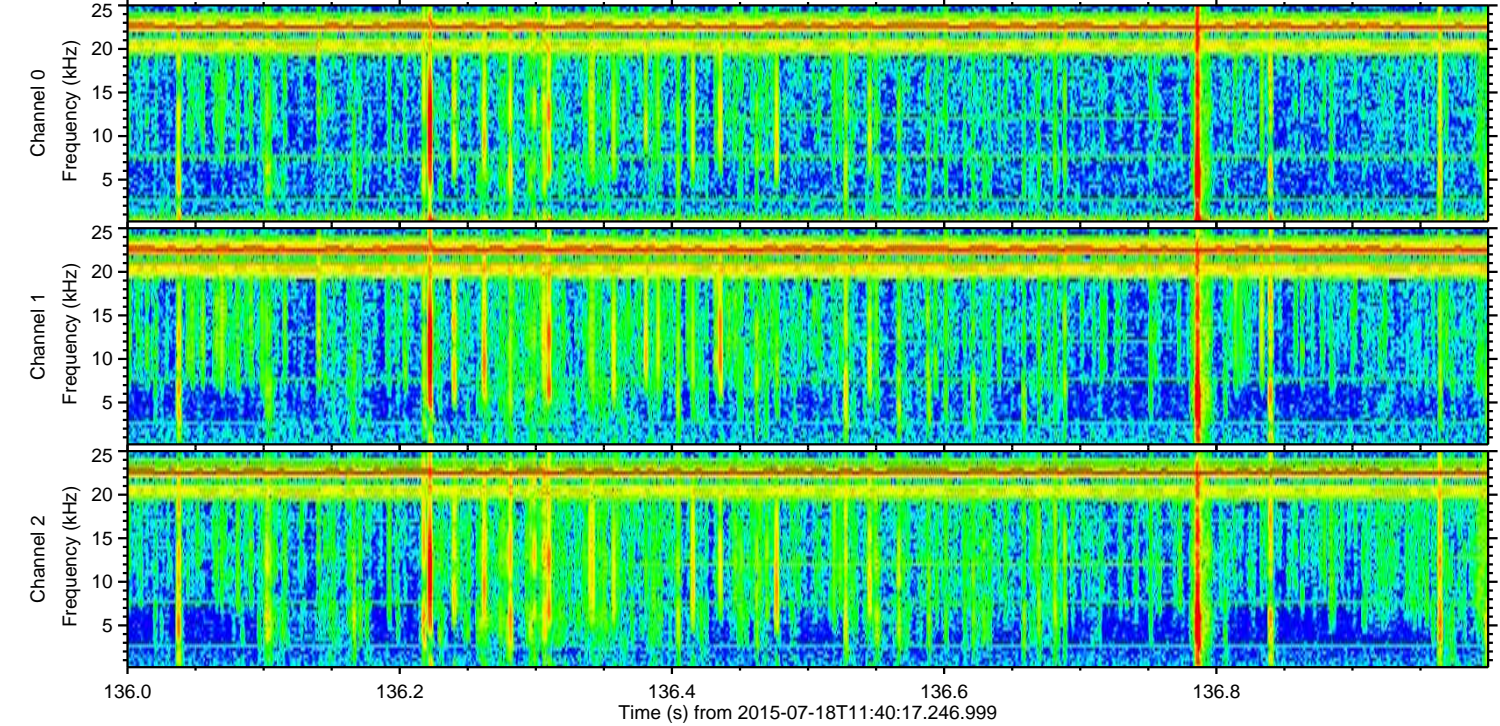
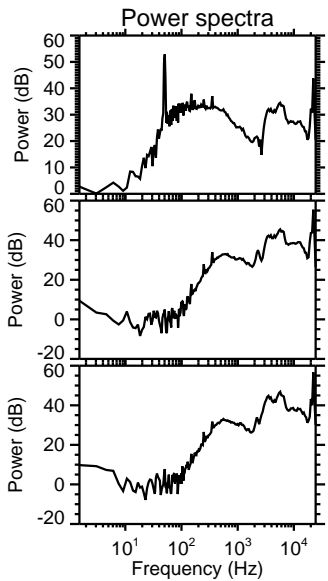
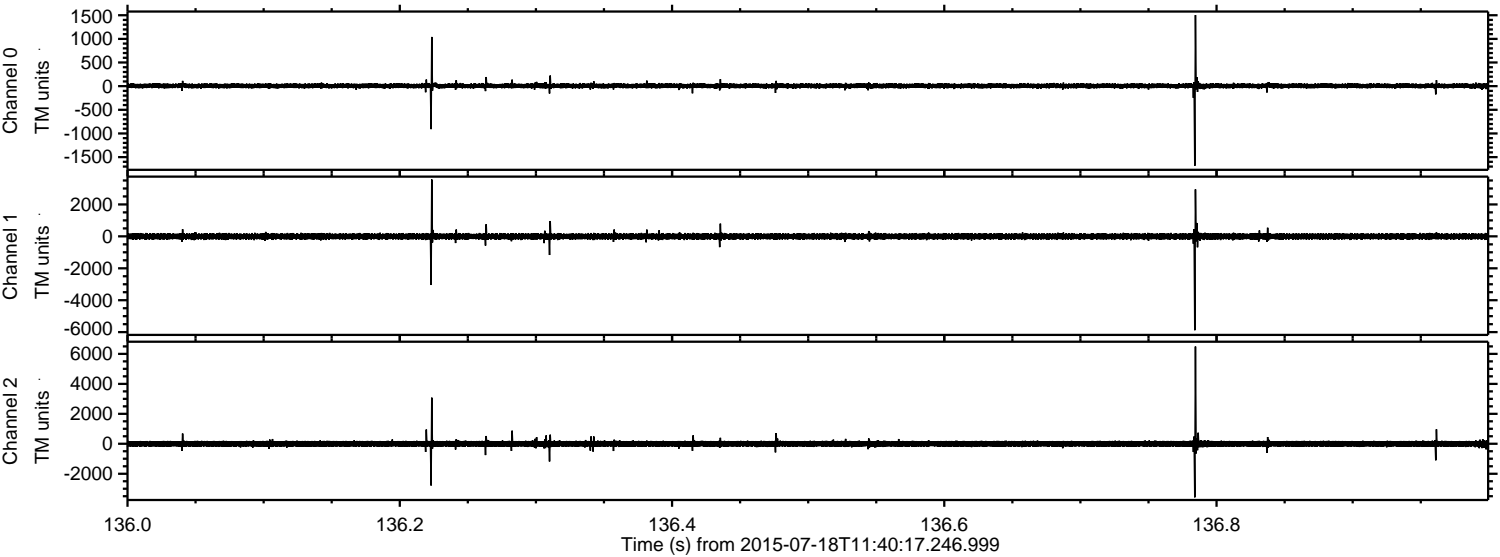
ELMAVAN 3D WAVEFORMS (Measured data sampled at 50 kHz) 51000 packets of 144 samples from 2015-07-18T11:40:17.246.999. Part 132/147

Processed Sat Jul 18 13:46:26 2015 by ELM ver.2012-10-06 from 001\_\_elm20150718\_114016\_\_dat00.bin



ELMAVAN 3D WAVEFORMS (Measured data sampled at 50 kHz) 51000 packets of 144 samples from 2015-07-18T11:40:17.246.999. Part 137/147

Processed Sat Jul 18 13:46:27 2015 by ELM ver.2012-10-06 from 001\_\_elm20150718\_114016\_\_dat00.bin

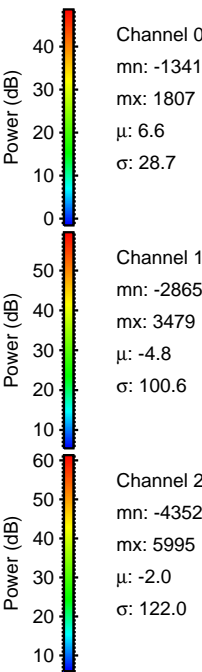
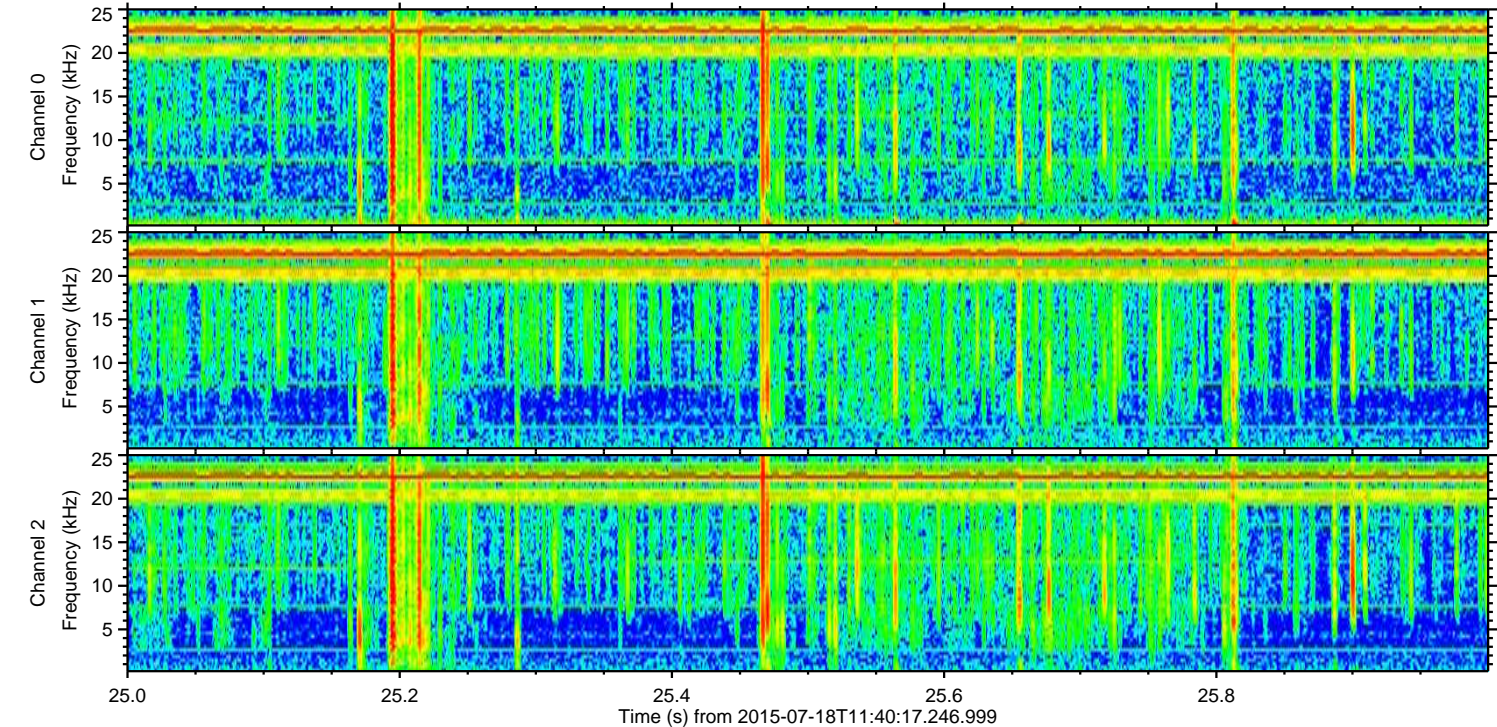
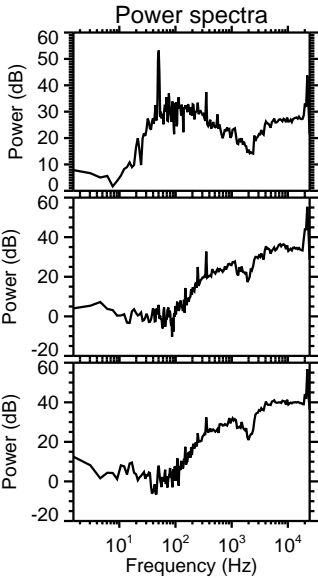
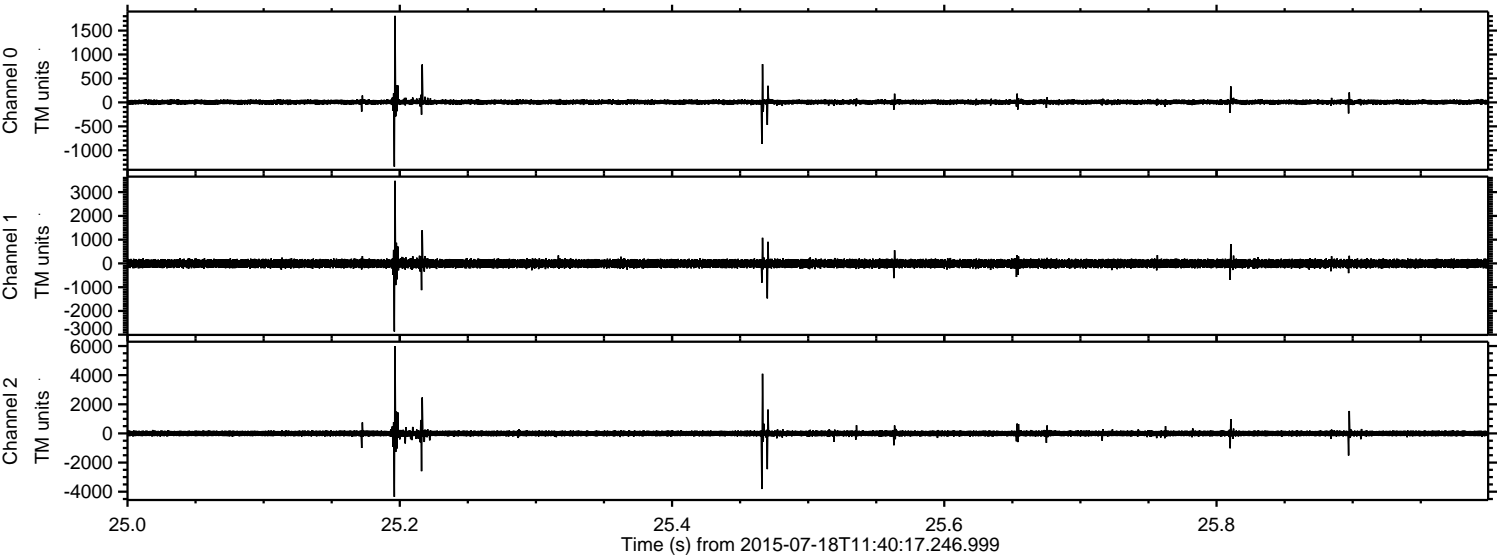


Channel 0  
mn: -1685  
mx: 1503  
 $\mu$ : 6.6  
 $\sigma$ : 31.1

Channel 1  
mn: -5879  
mx: 3563  
 $\mu$ : -4.9  
 $\sigma$ : 112.5

Channel 2  
mn: -3574  
mx: 6489  
 $\mu$ : -1.9  
 $\sigma$ : 124.5

Processed Sat Jul 18 13:46:28 2015 by ELM ver.2012-10-06 from 001\_\_elm20150718\_114016\_\_dat00.bin



Processed Sat Jul 18 13:46:29 2015 by ELM ver.2012-10-06 from 001\_\_elm20150718\_114016\_\_dat00.bin

