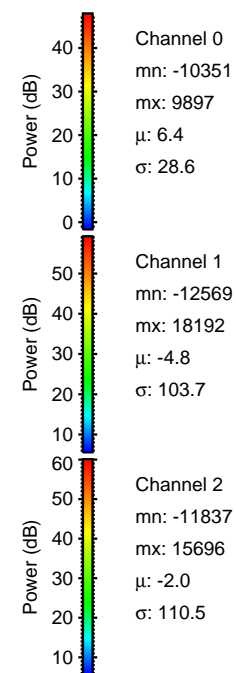
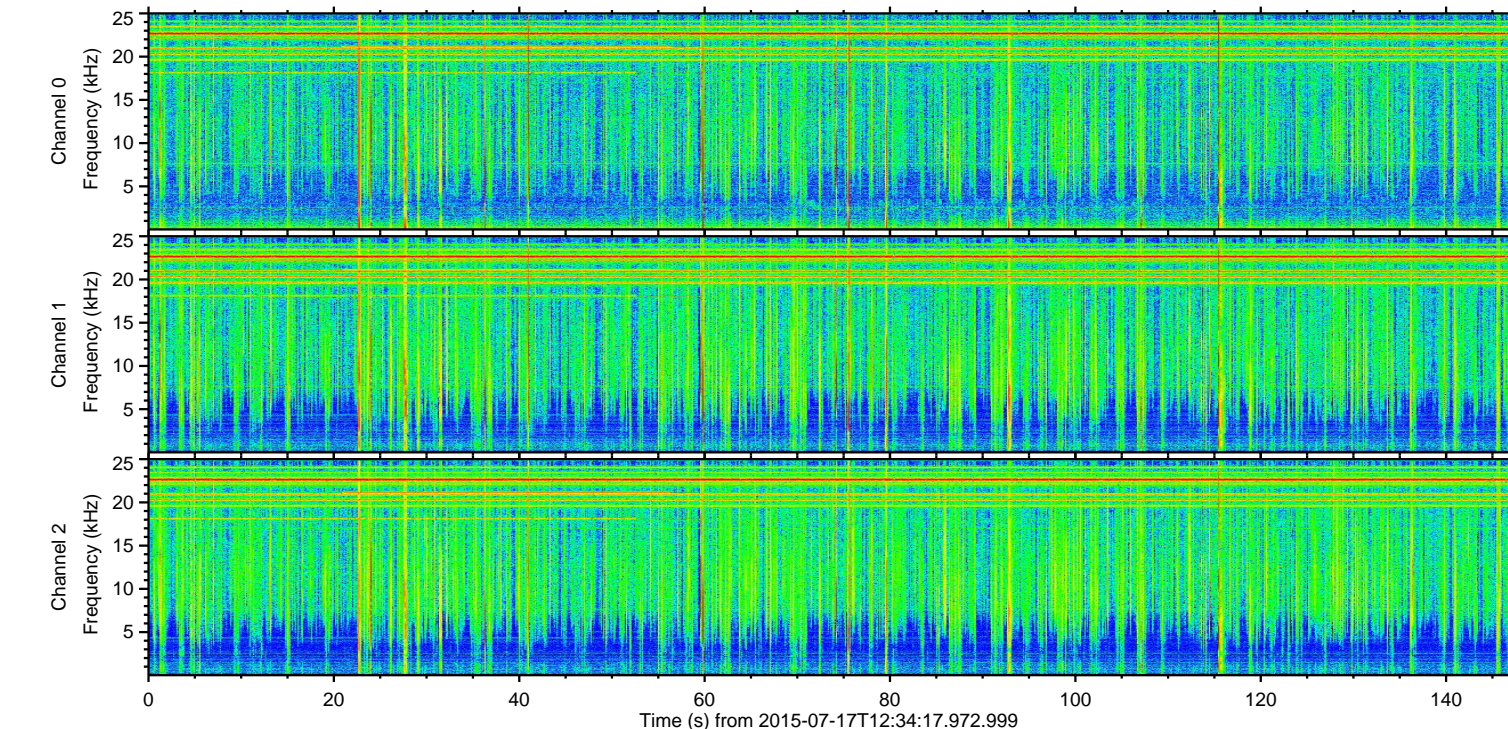
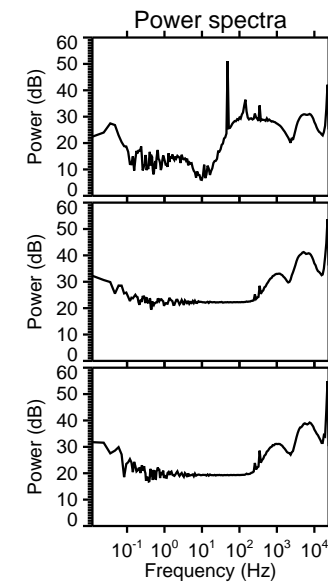
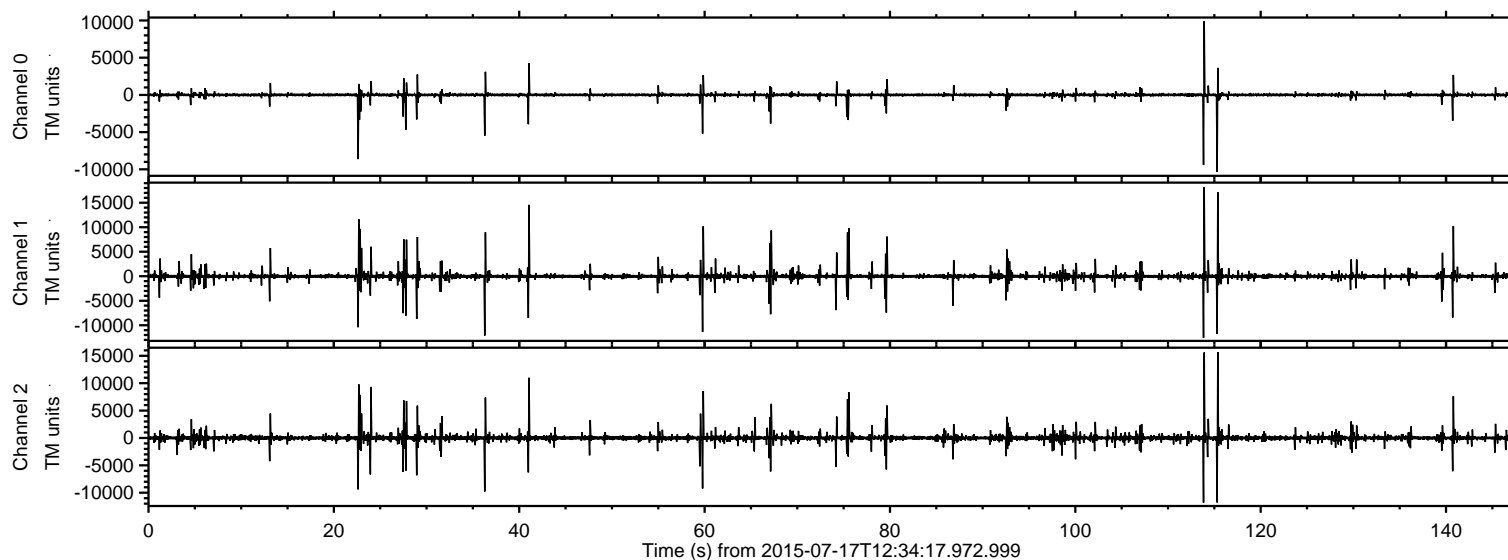


# ELMAVAN 3D WAVEFORMS (Measured data sampled at 50 kHz) 51000 packets of 144 samples from 2015-07-17T12:34:17.972.999.

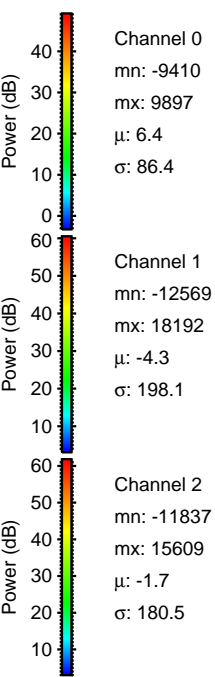
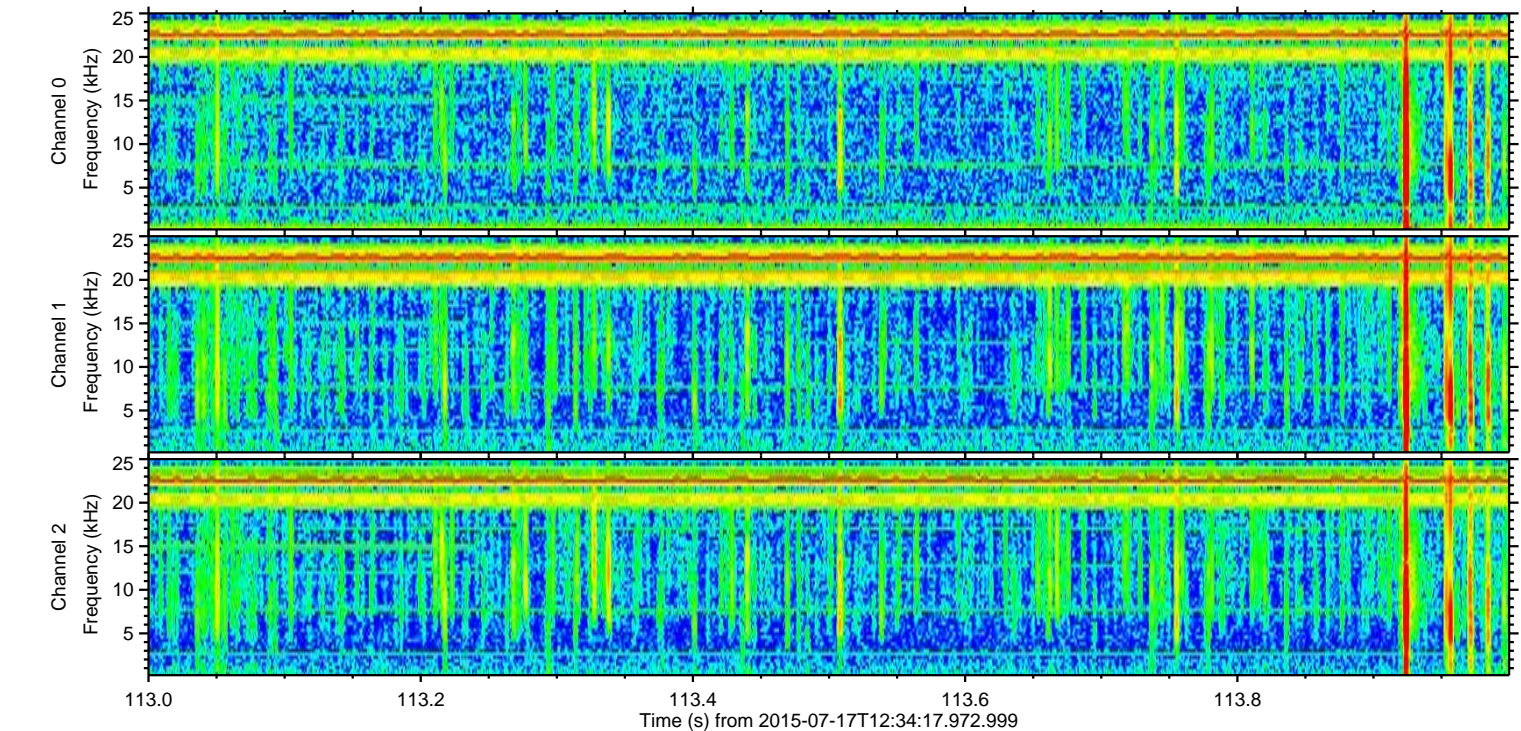
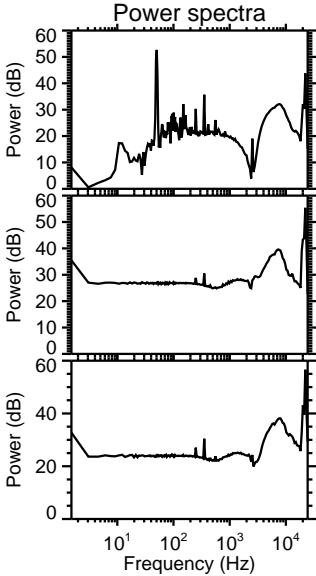
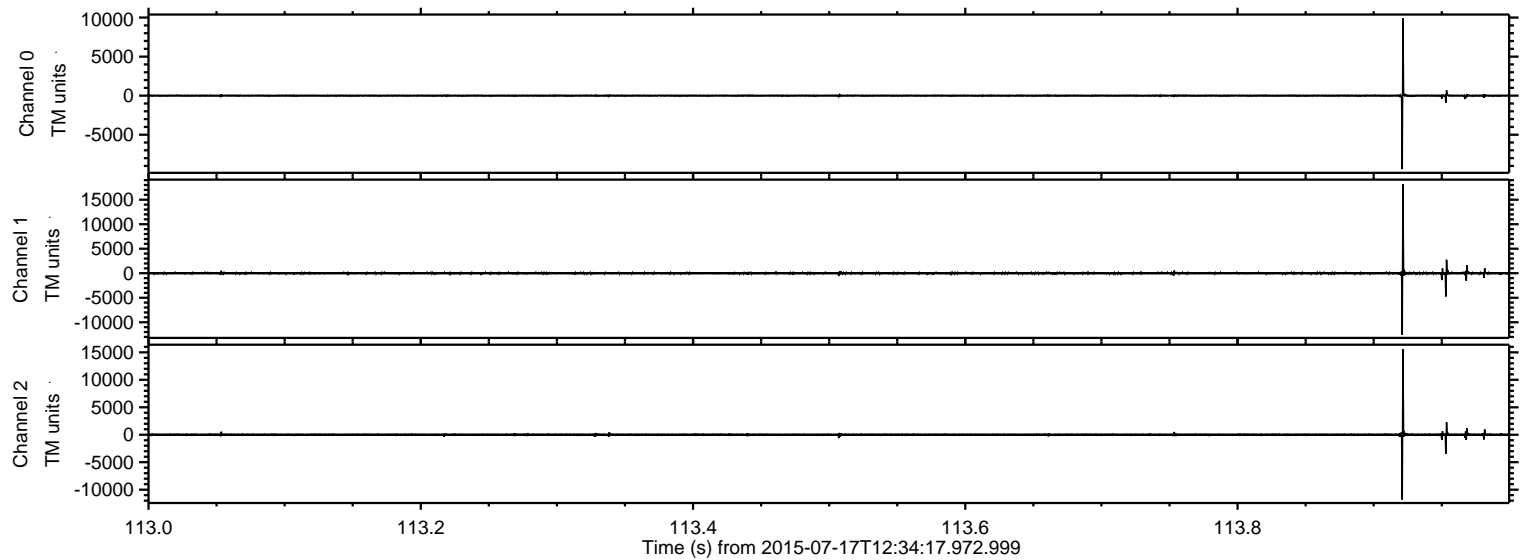
Processed Fri Jul 17 14:40:25 2015 by ELM ver.2012-10-06 from 001\_\_elm20150717\_123416\_\_dat00.bin





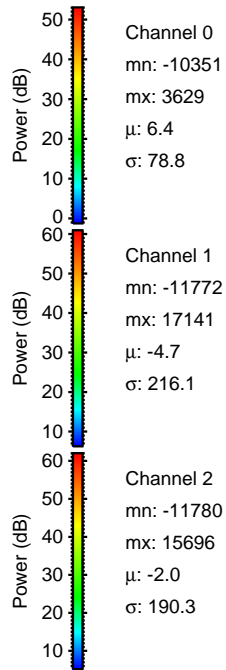
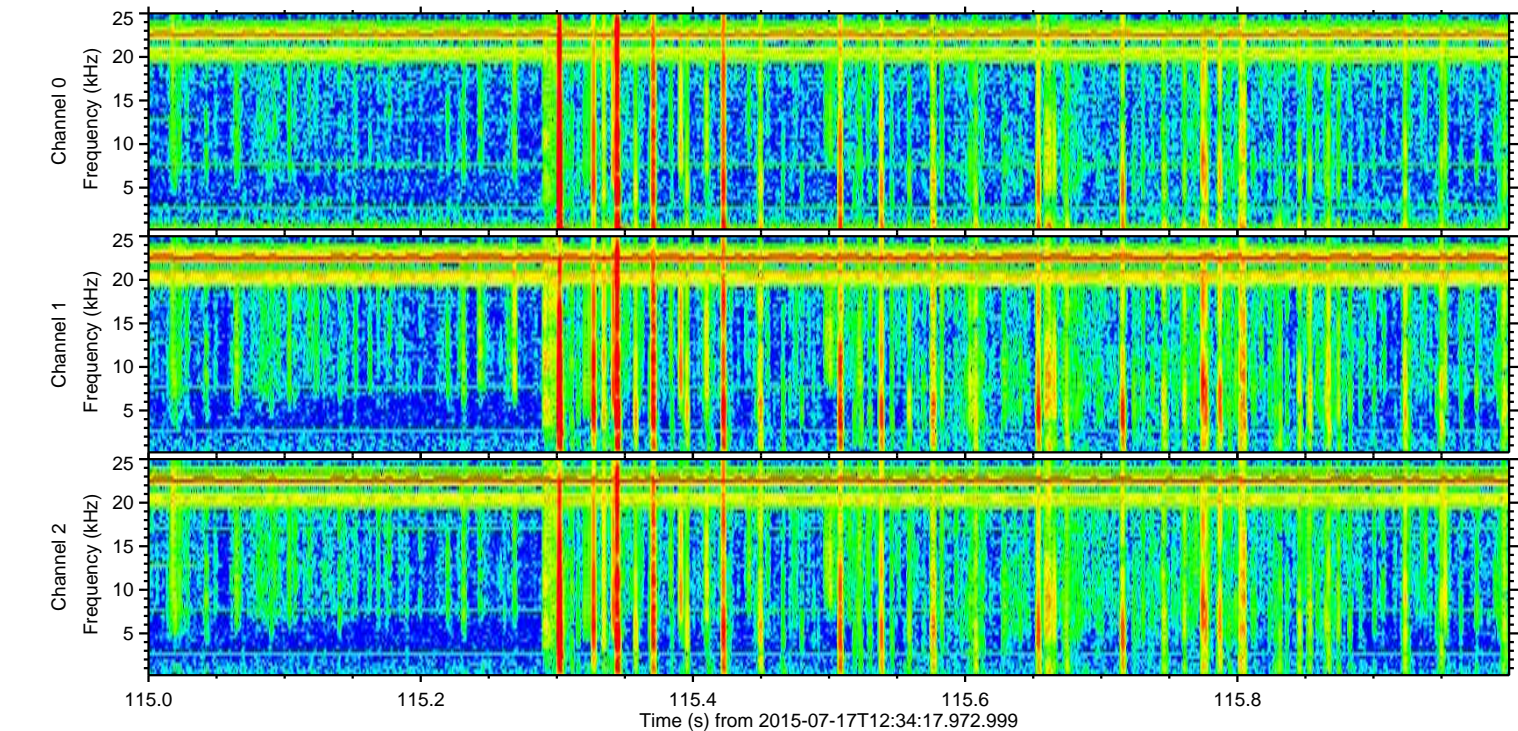
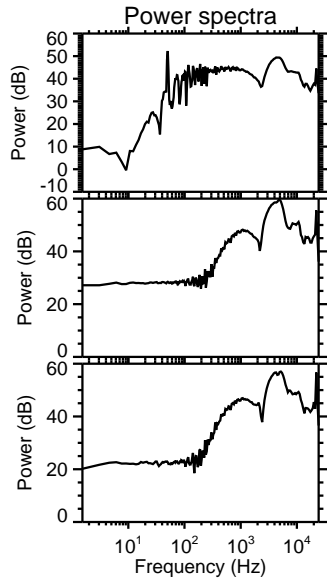
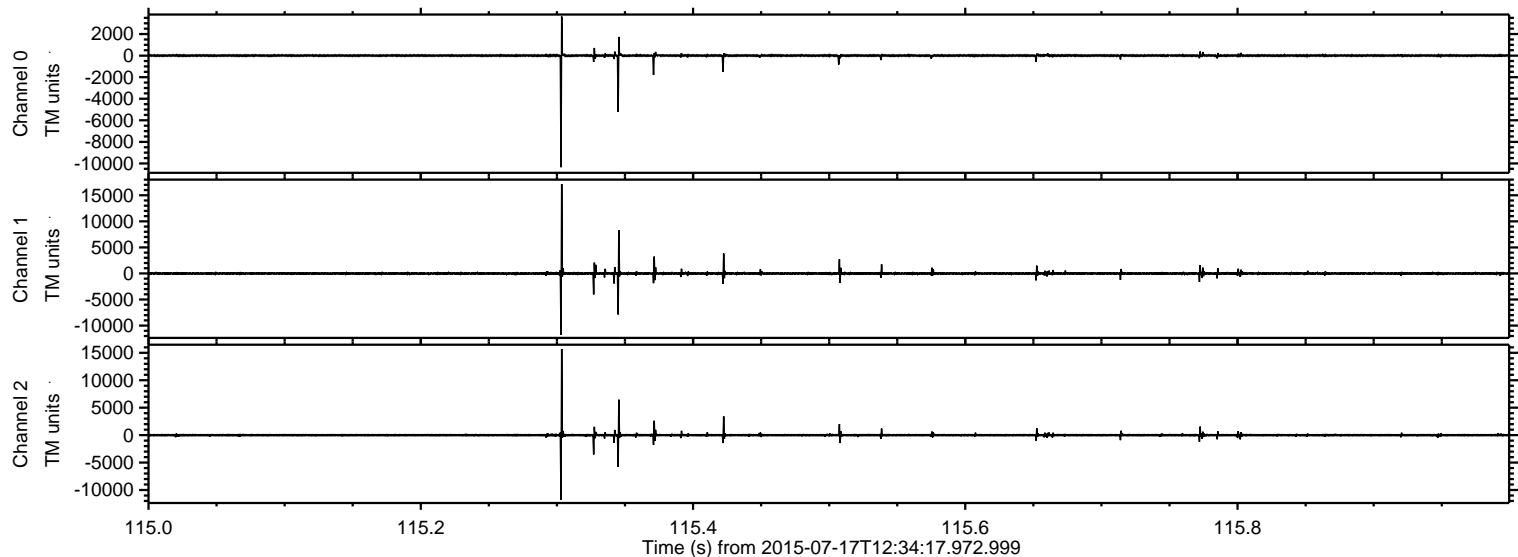
ELMAVAN 3D WAVEFORMS (Measured data sampled at 50 kHz) 51000 packets of 144 samples from 2015-07-17T12:34:17.972.999. Part 114/147

Processed Fri Jul 17 14:40:41 2015 by ELM ver.2012-10-06 from 001\_\_elm20150717\_123416\_\_dat00.bin



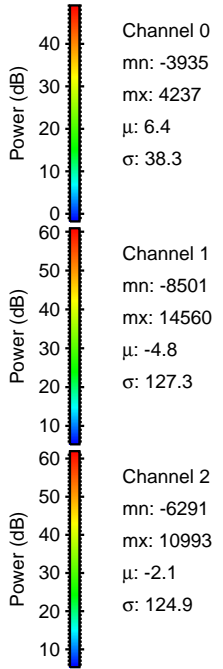
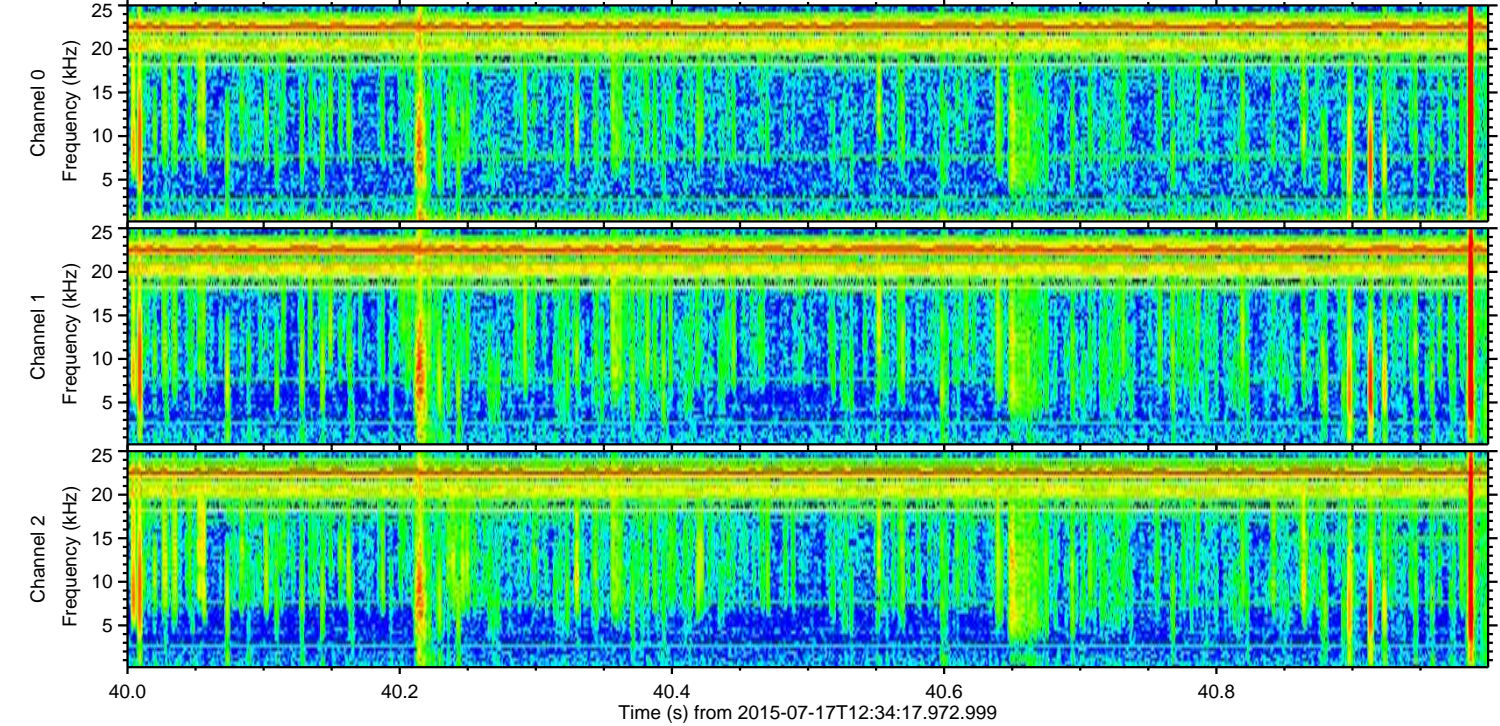
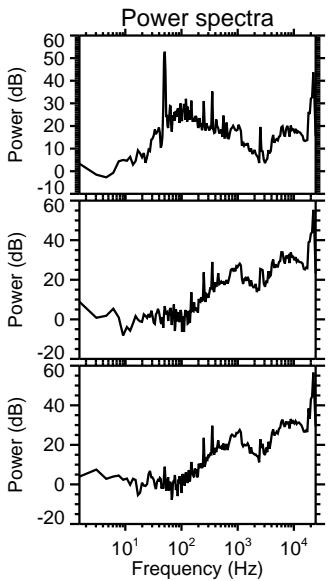
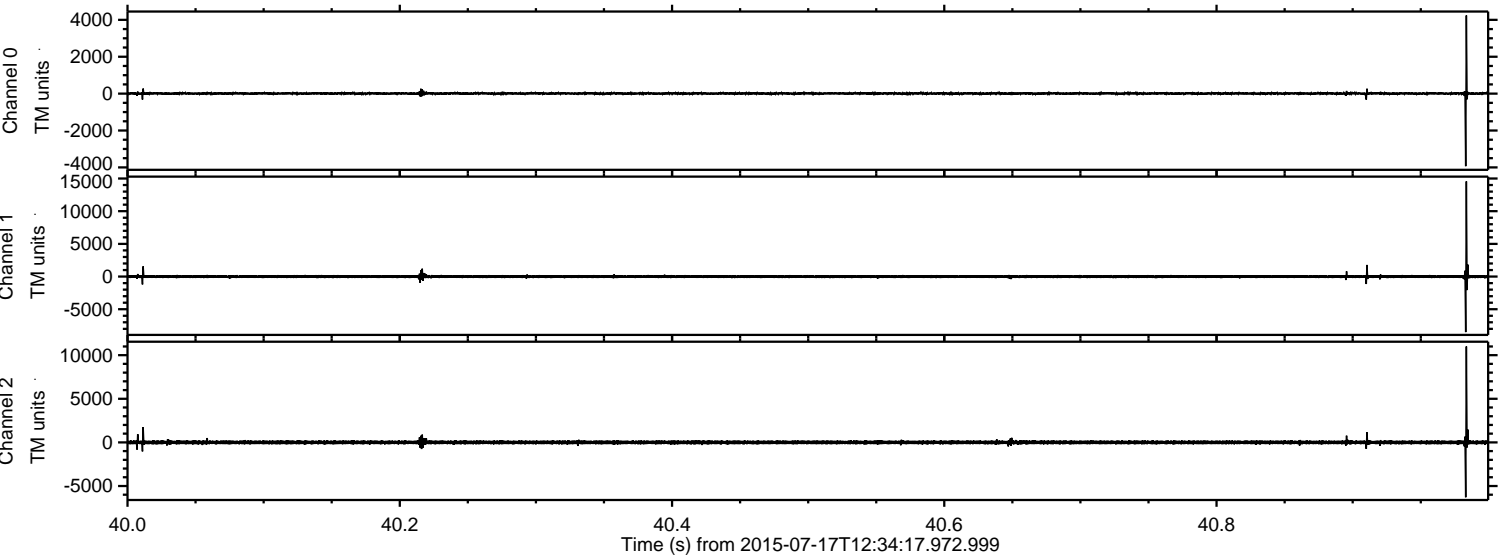
ELMAVAN 3D WAVEFORMS (Measured data sampled at 50 kHz) 51000 packets of 144 samples from 2015-07-17T12:34:17.972.999. Part 116/147

Processed Fri Jul 17 14:40:42 2015 by ELM ver.2012-10-06 from 001\_\_elm20150717\_123416\_\_dat00.bin

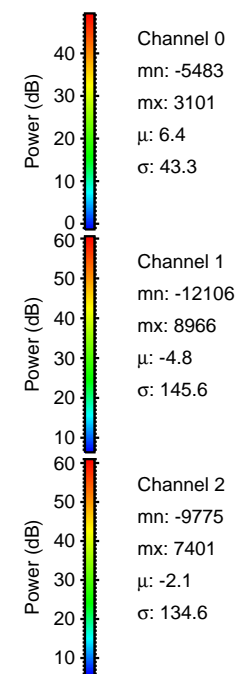
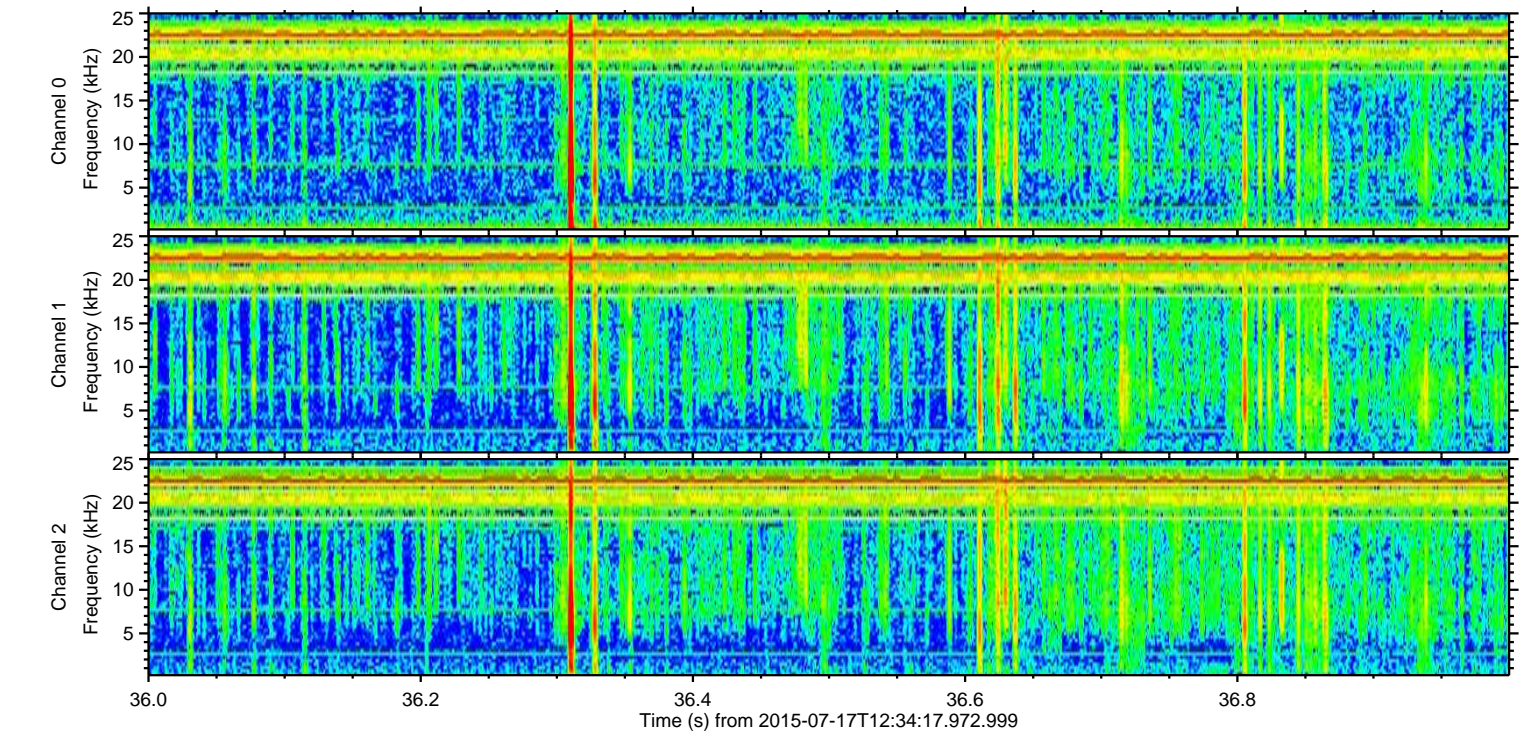
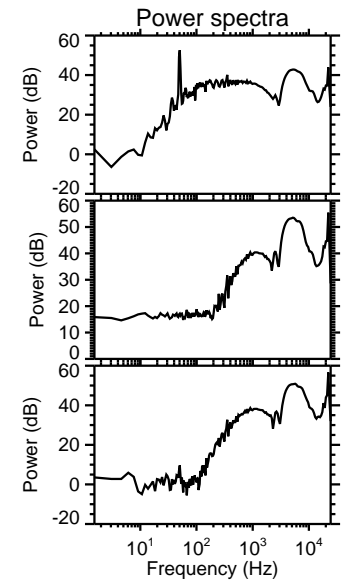
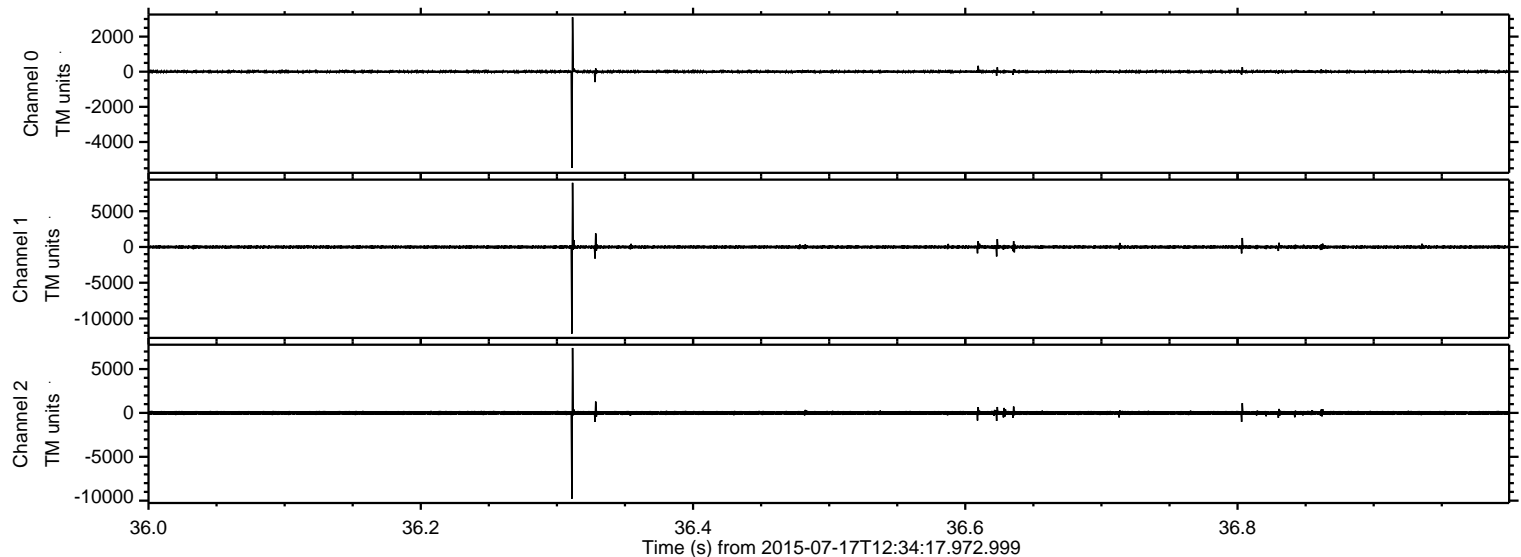




Processed Fri Jul 17 14:40:43 2015 by ELM ver.2012-10-06 from 001\_\_elm20150717\_123416\_\_dat00.bin



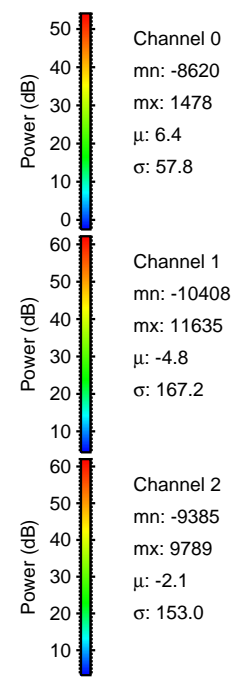
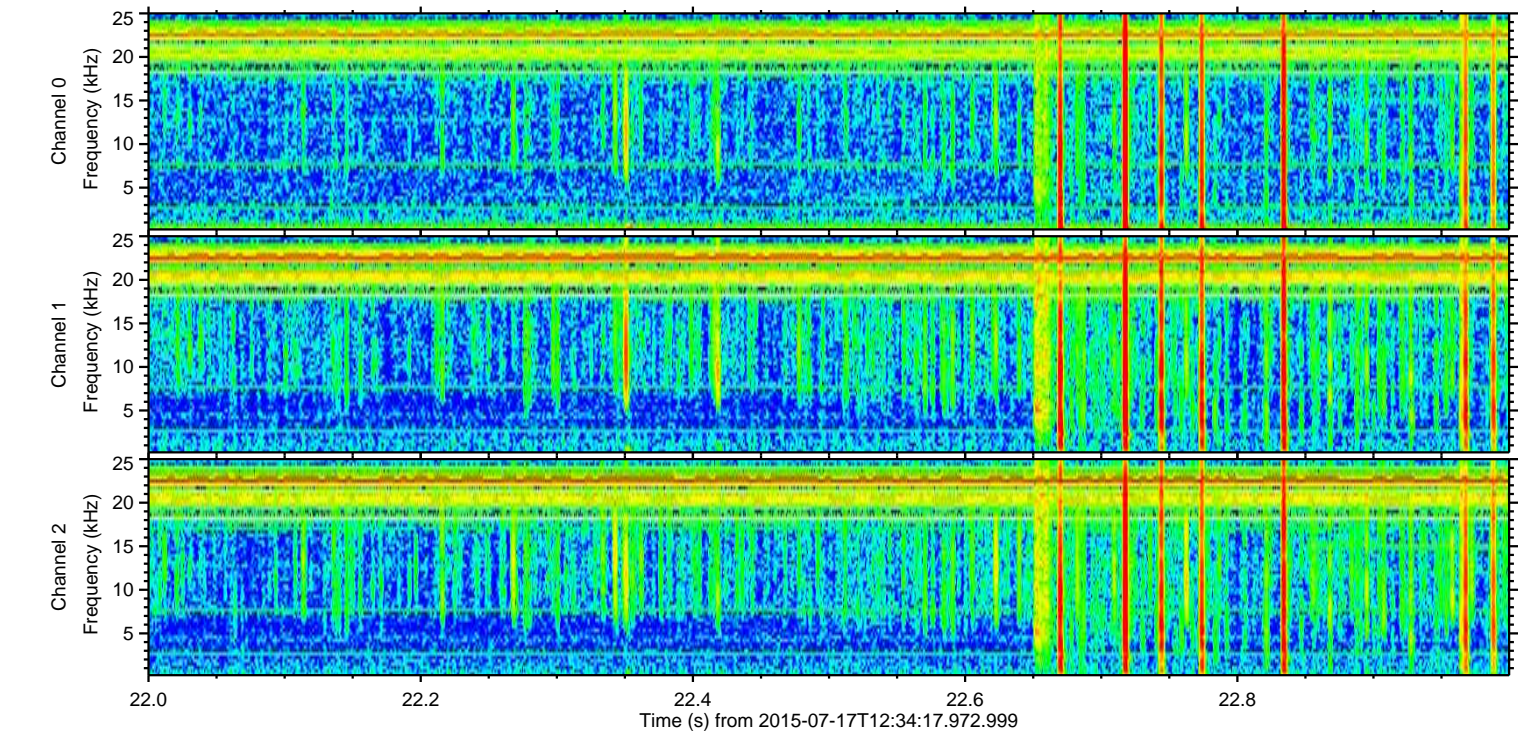
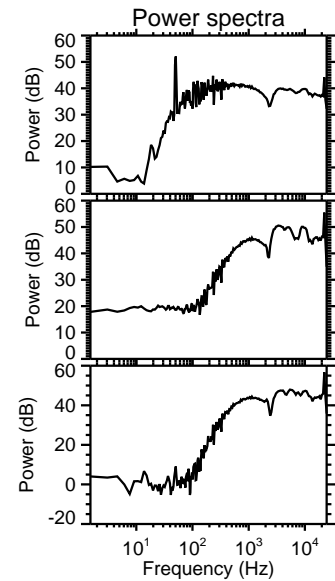
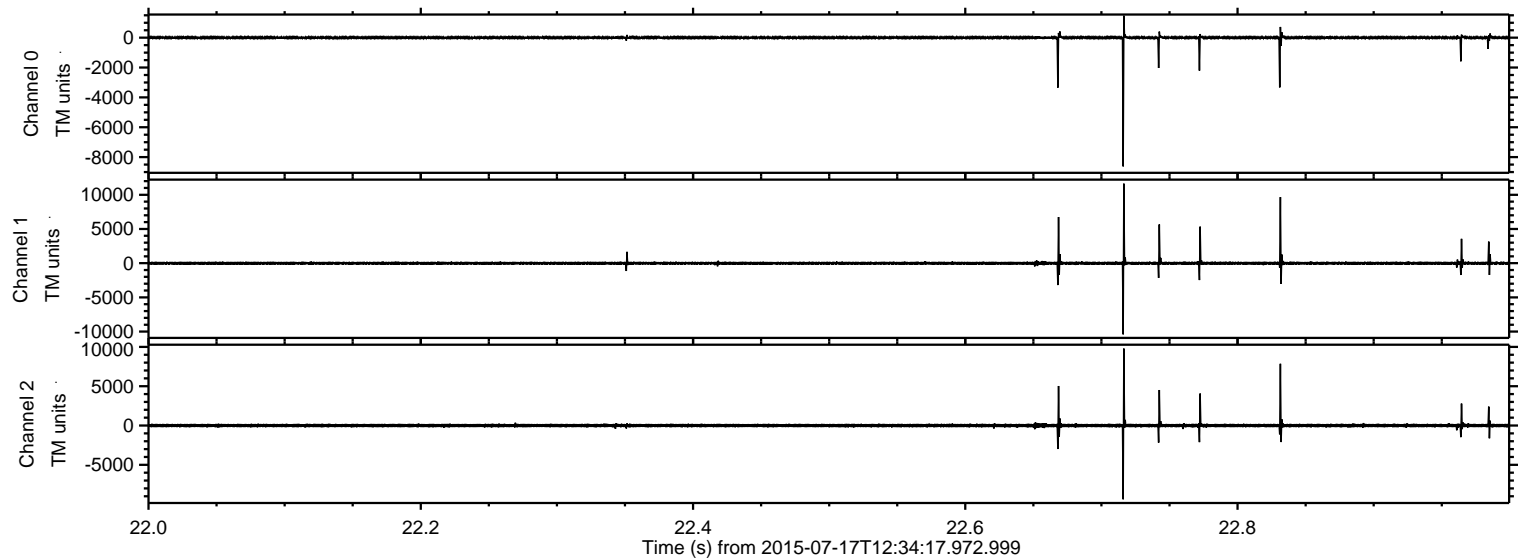
Processed Fri Jul 17 14:40:44 2015 by ELM ver.2012-10-06 from 001\_\_elm20150717\_123416\_\_dat00.bin





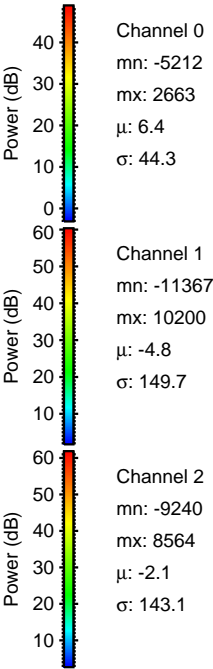
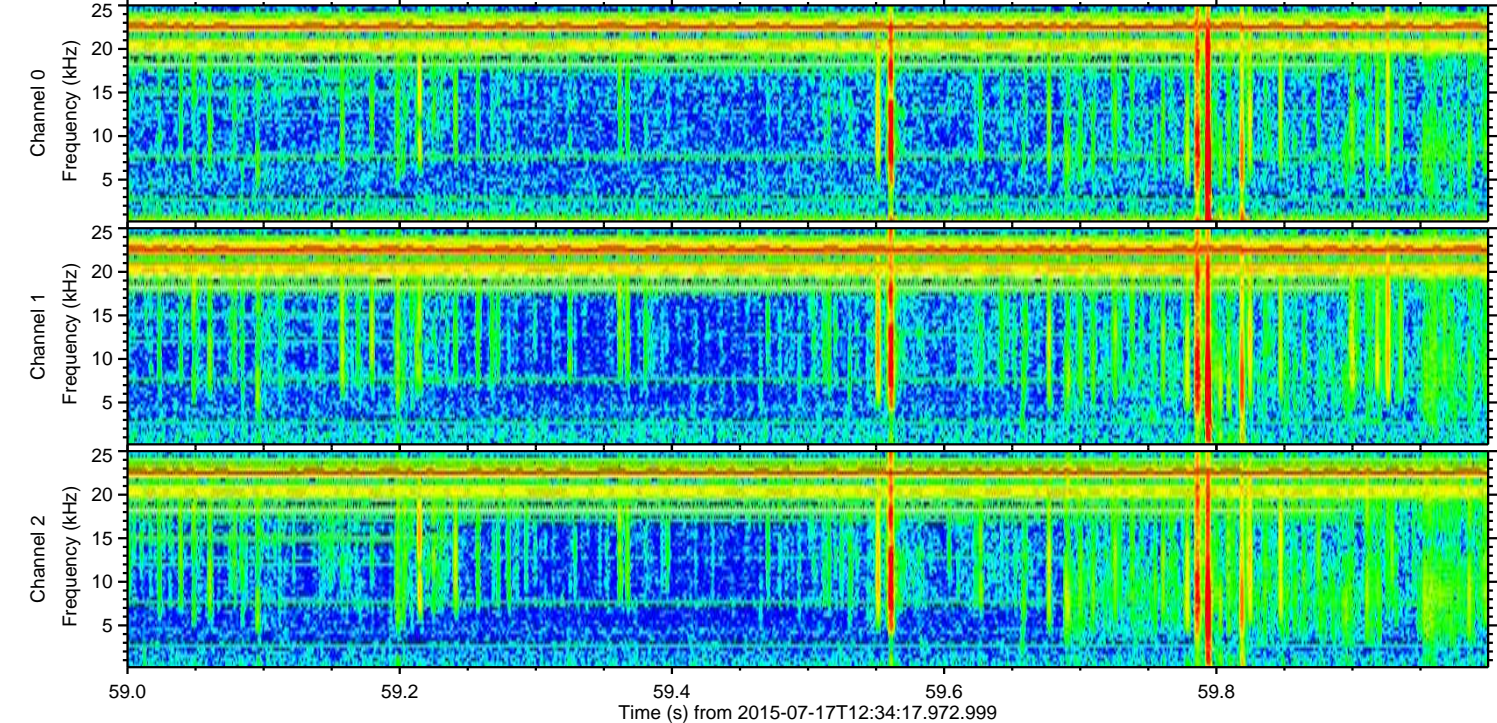
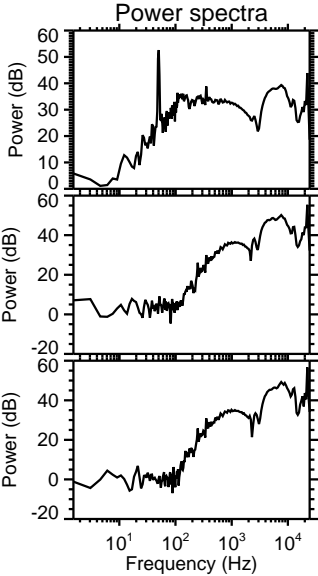
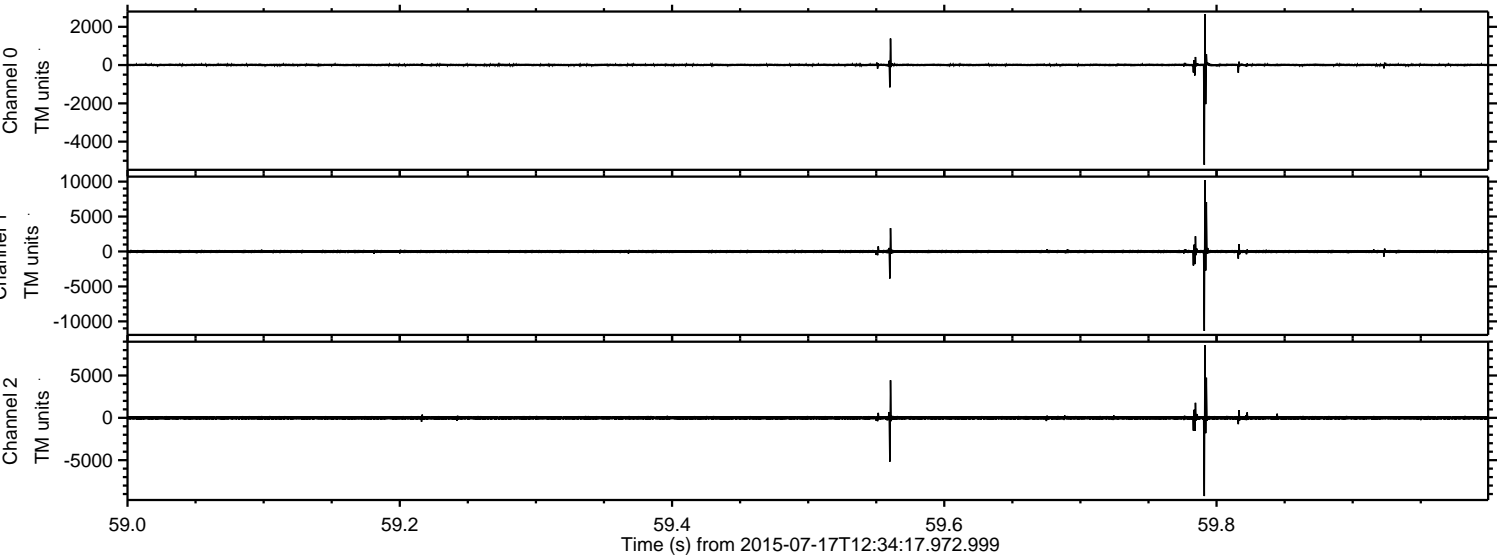
ELMAVAN 3D WAVEFORMS (Measured data sampled at 50 kHz) 51000 packets of 144 samples from 2015-07-17T12:34:17.972.999. Part 23/147

Processed Fri Jul 17 14:40:45 2015 by ELM ver.2012-10-06 from 001\_\_elm20150717\_123416\_\_dat00.bin



ELMAVAN 3D WAVEFORMS (Measured data sampled at 50 kHz) 51000 packets of 144 samples from 2015-07-17T12:34:17.972.999. Part 60/147

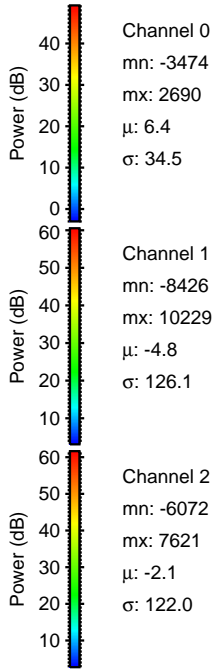
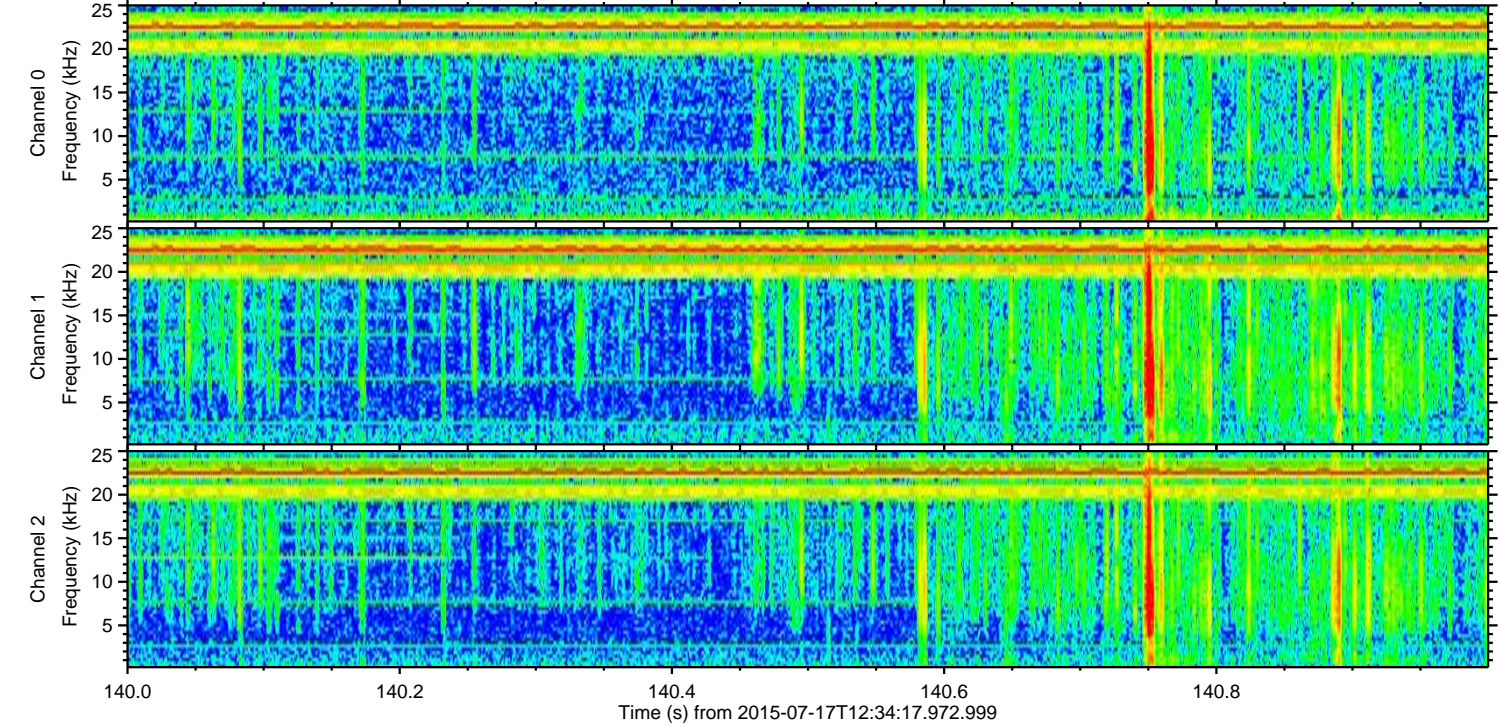
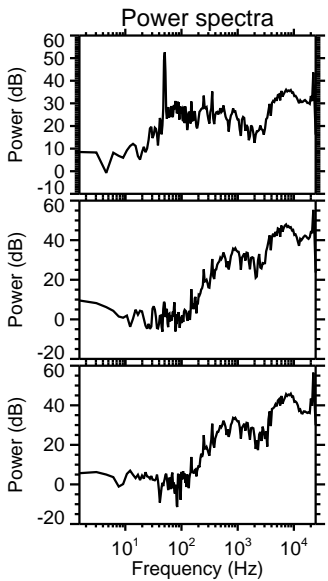
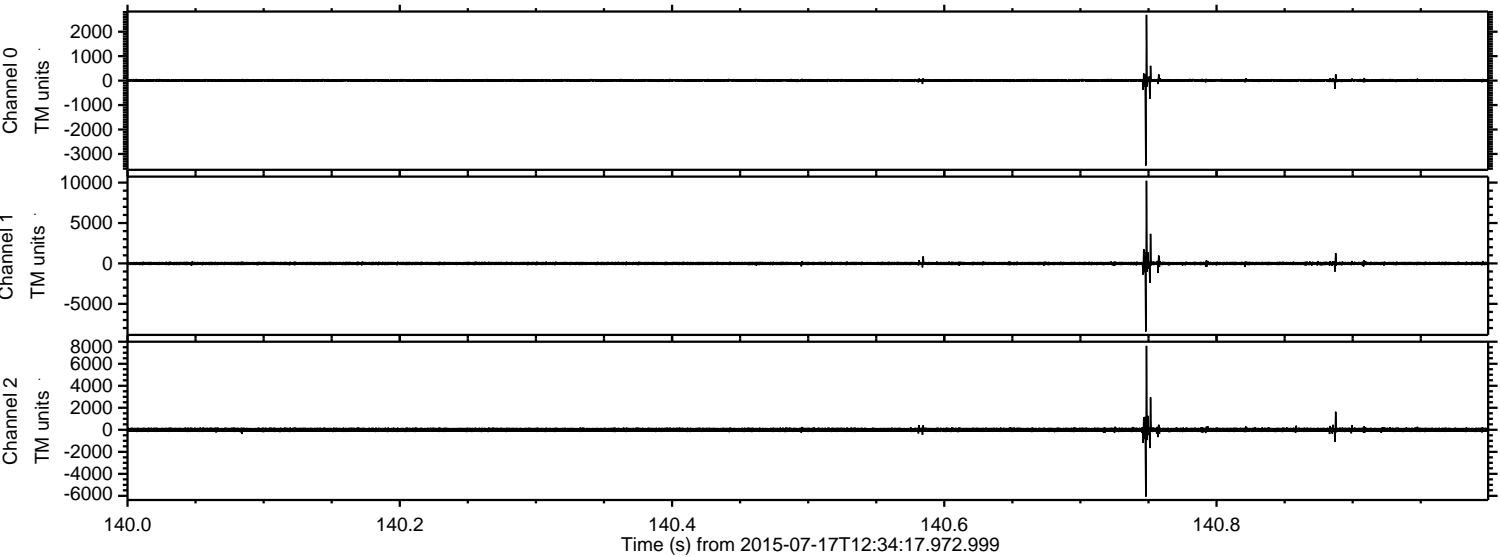
Processed Fri Jul 17 14:40:46 2015 by ELM ver.2012-10-06 from 001\_\_elm20150717\_123416\_\_dat00.bin





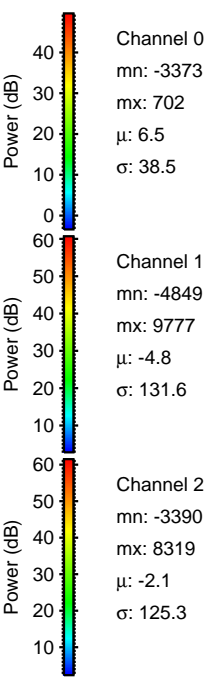
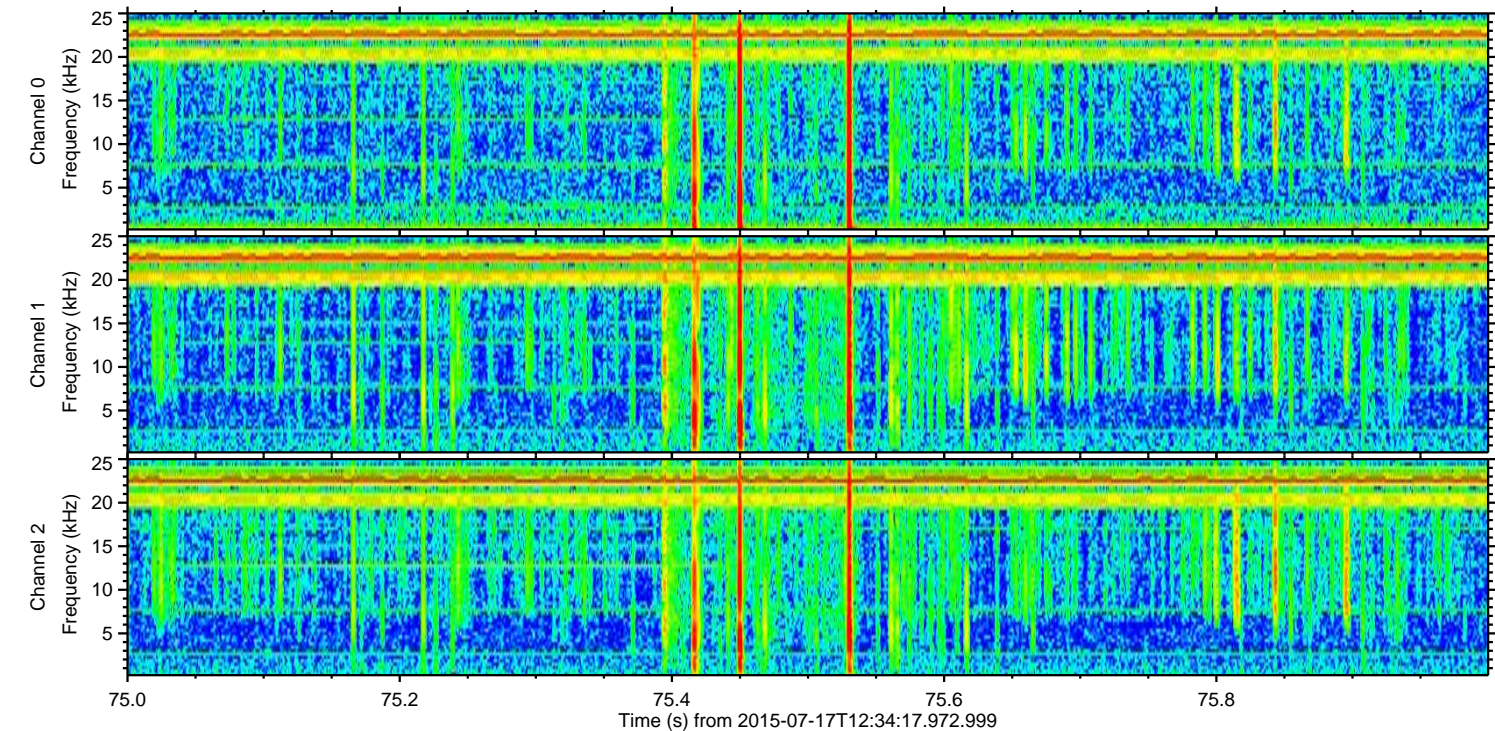
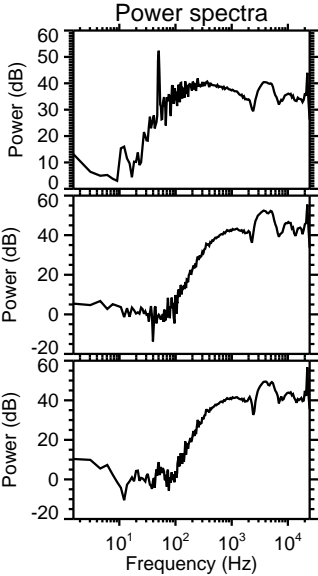
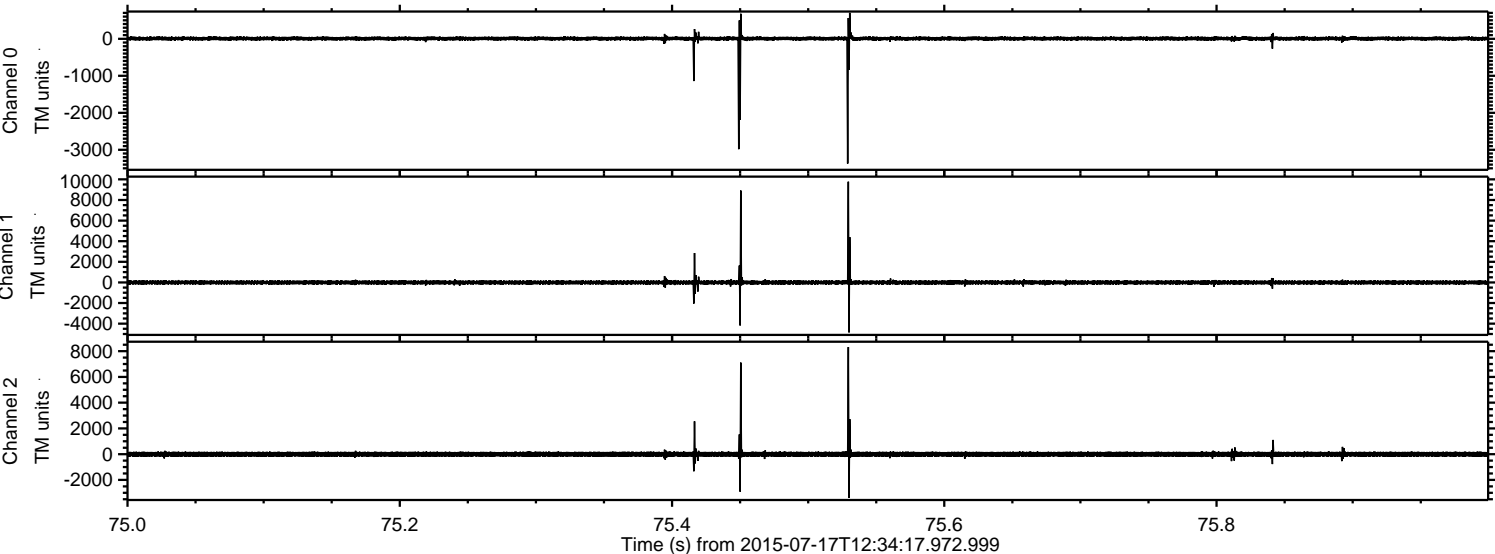
ELMAVAN 3D WAVEFORMS (Measured data sampled at 50 kHz) 51000 packets of 144 samples from 2015-07-17T12:34:17.972.999. Part 141/147

Processed Fri Jul 17 14:40:47 2015 by ELM ver.2012-10-06 from 001\_\_elm20150717\_123416\_\_dat00.bin



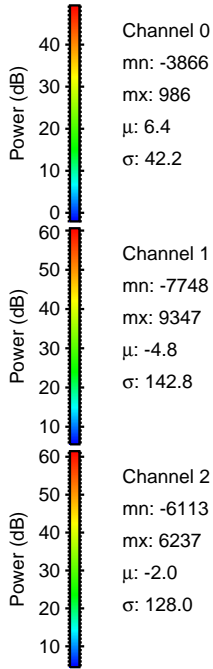
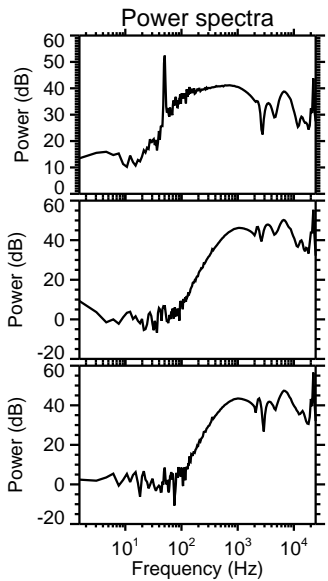
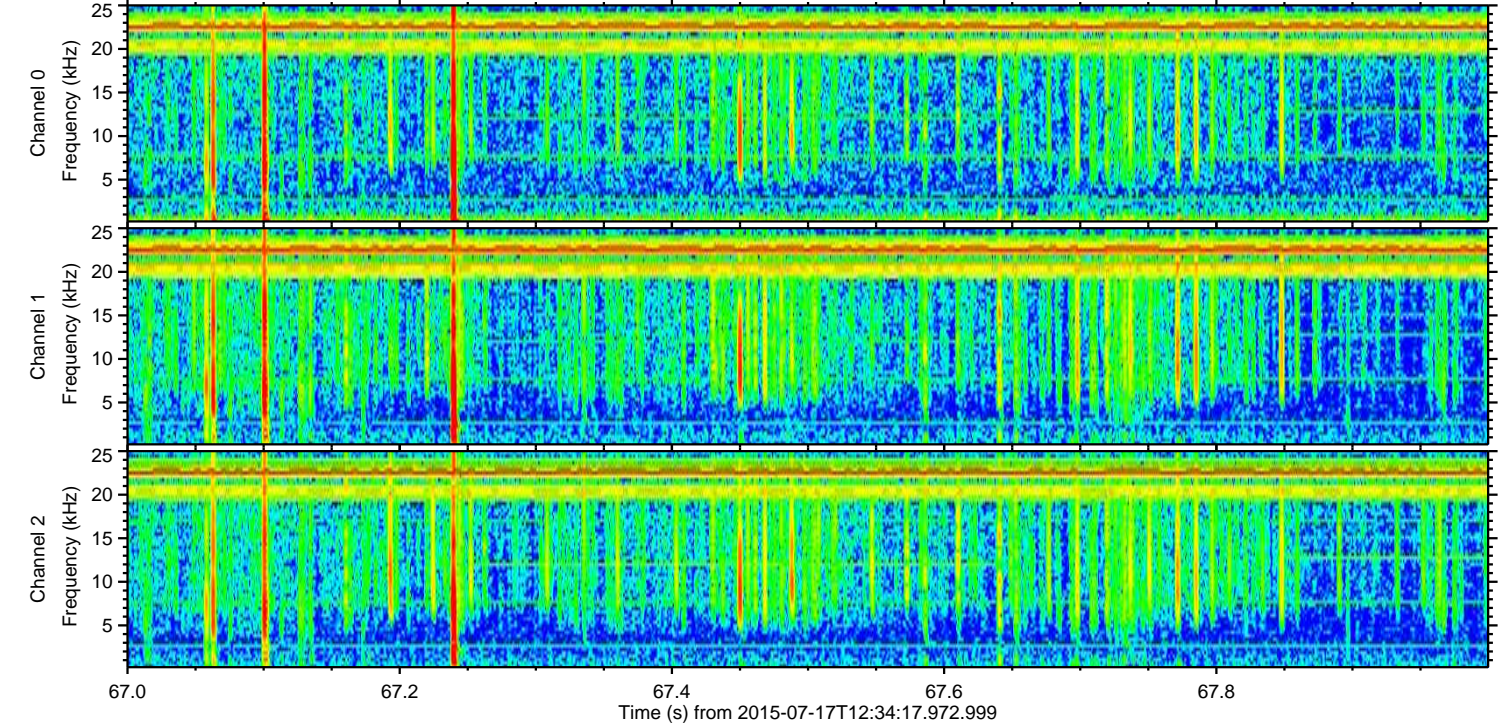
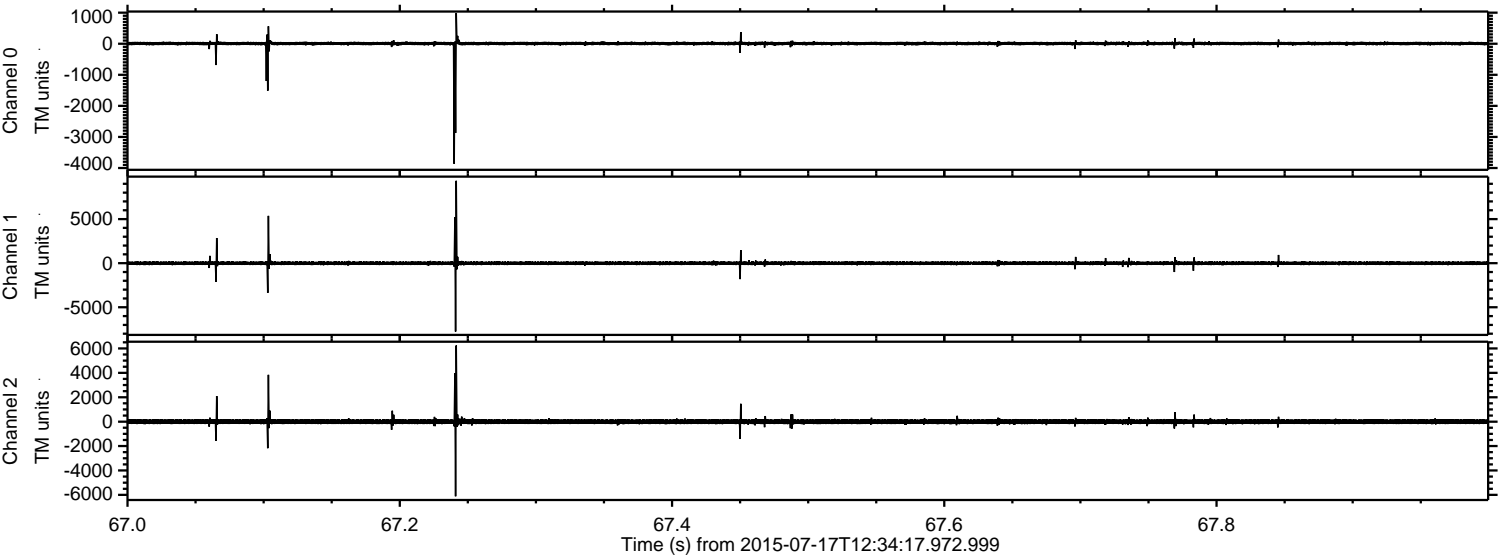


Processed Fri Jul 17 14:40:48 2015 by ELM ver.2012-10-06 from 001\_\_elm20150717\_123416\_\_dat00.bin





Processed Fri Jul 17 14:40:49 2015 by ELM ver.2012-10-06 from 001\_\_elm20150717\_123416\_\_dat00.bin



Channel 0  
mn: -3866  
mx: 986  
 $\mu$ : 6.4  
 $\sigma$ : 42.2

Channel 1  
mn: -7748  
mx: 9347  
 $\mu$ : -4.8  
 $\sigma$ : 142.8

Channel 2  
mn: -6113  
mx: 6237  
 $\mu$ : -2.0  
 $\sigma$ : 128.0



