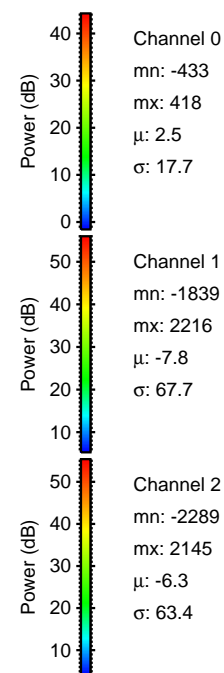
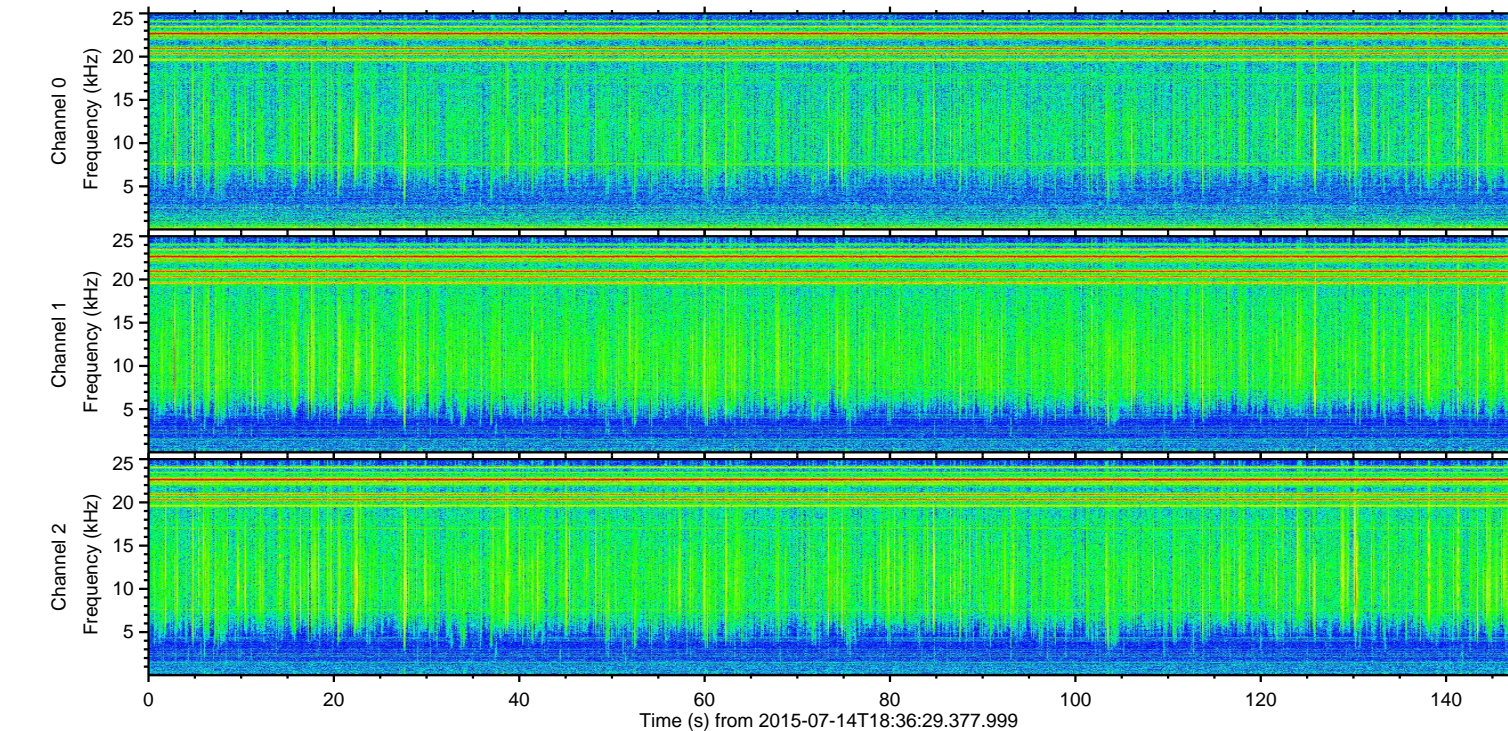
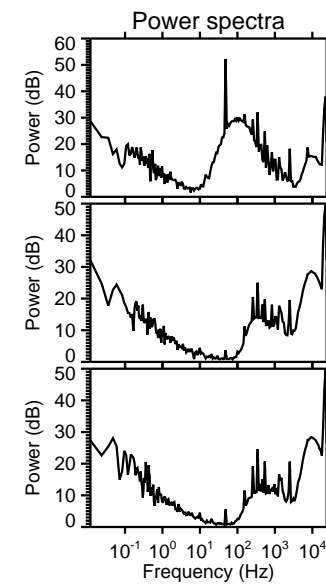
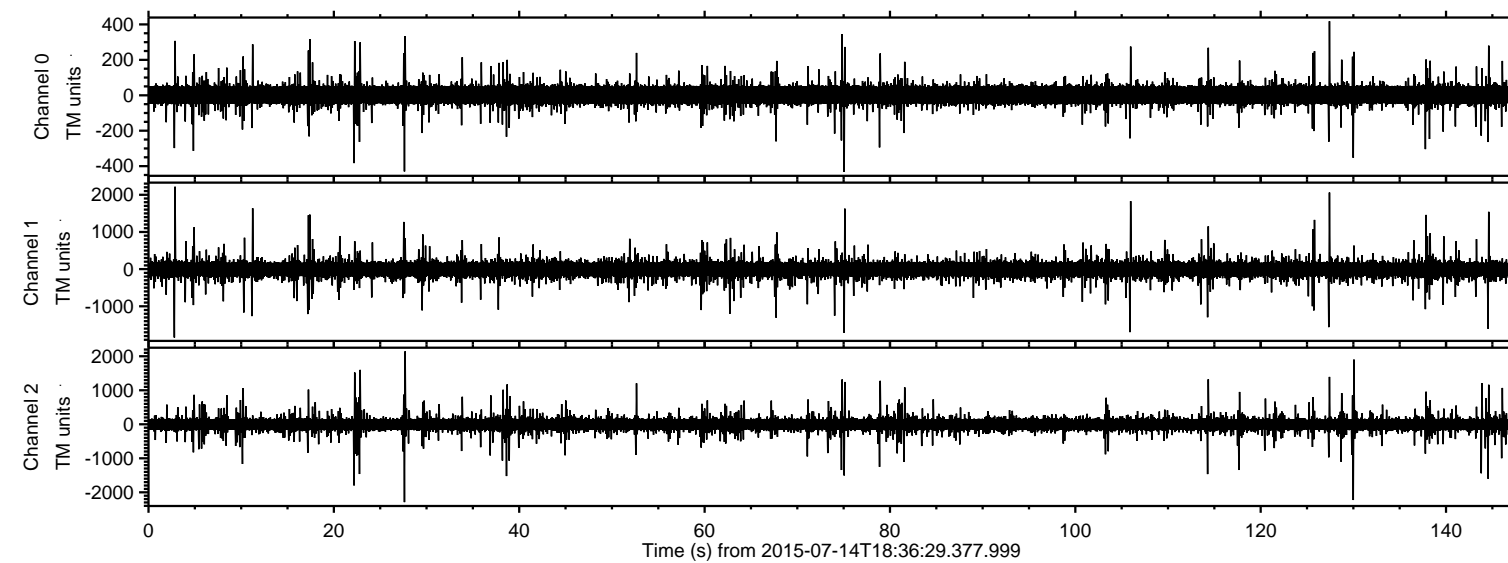
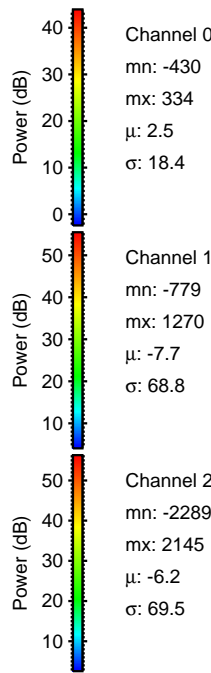
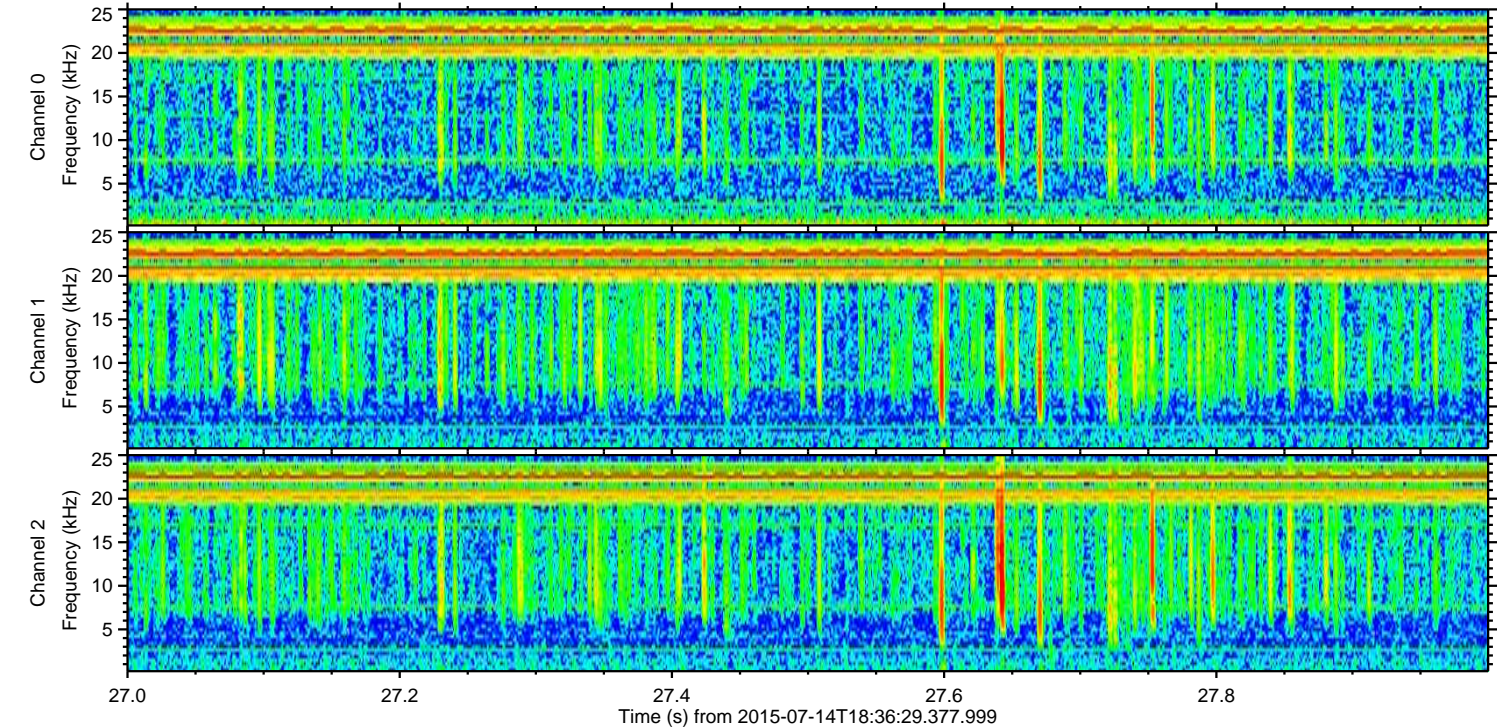
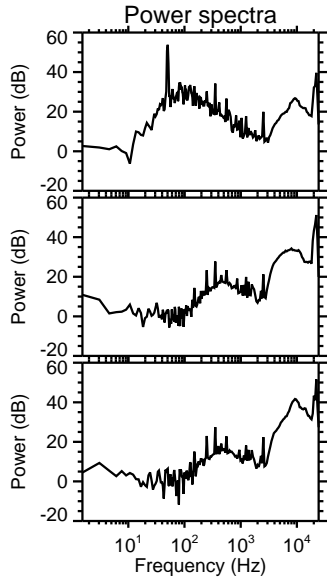
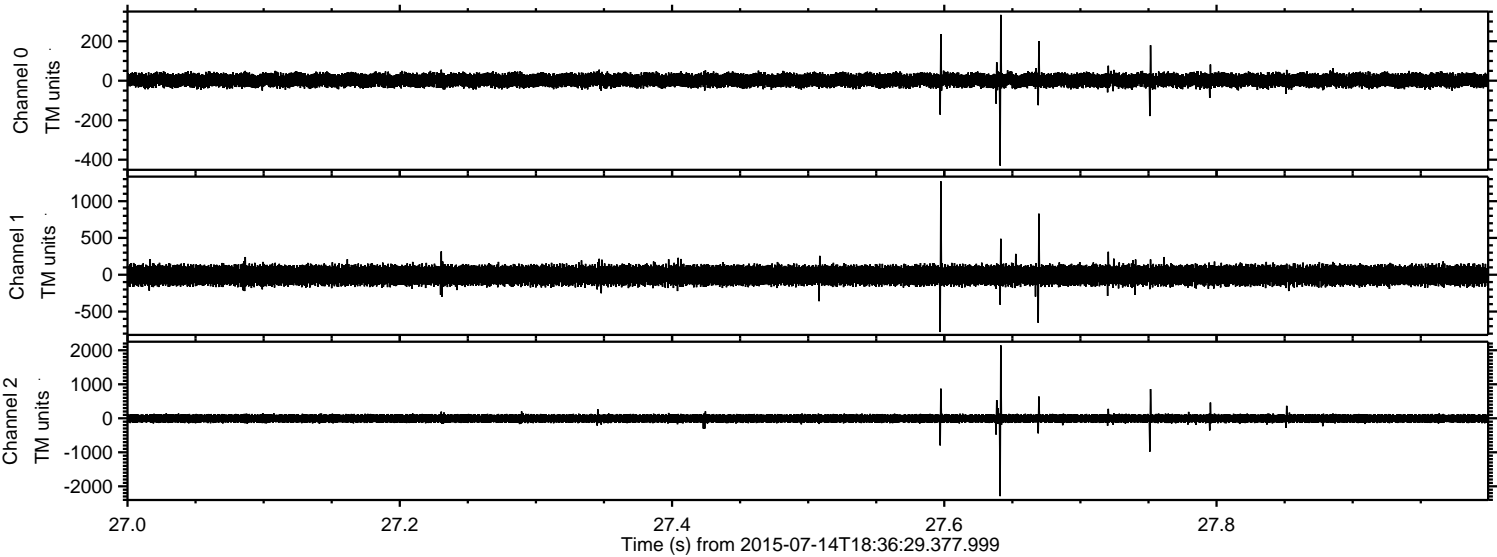


ELMAVAN 3D WAVEFORMS (Measured data sampled at 50 kHz) 51000 packets of 144 samples from 2015-07-14T18:36:29.377.999.

Processed Tue Jul 14 20:43:09 2015 by ELM ver.2012-10-06 from 001__elm20150714_183628__dat00.bin

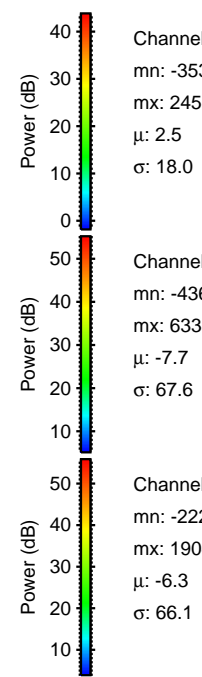
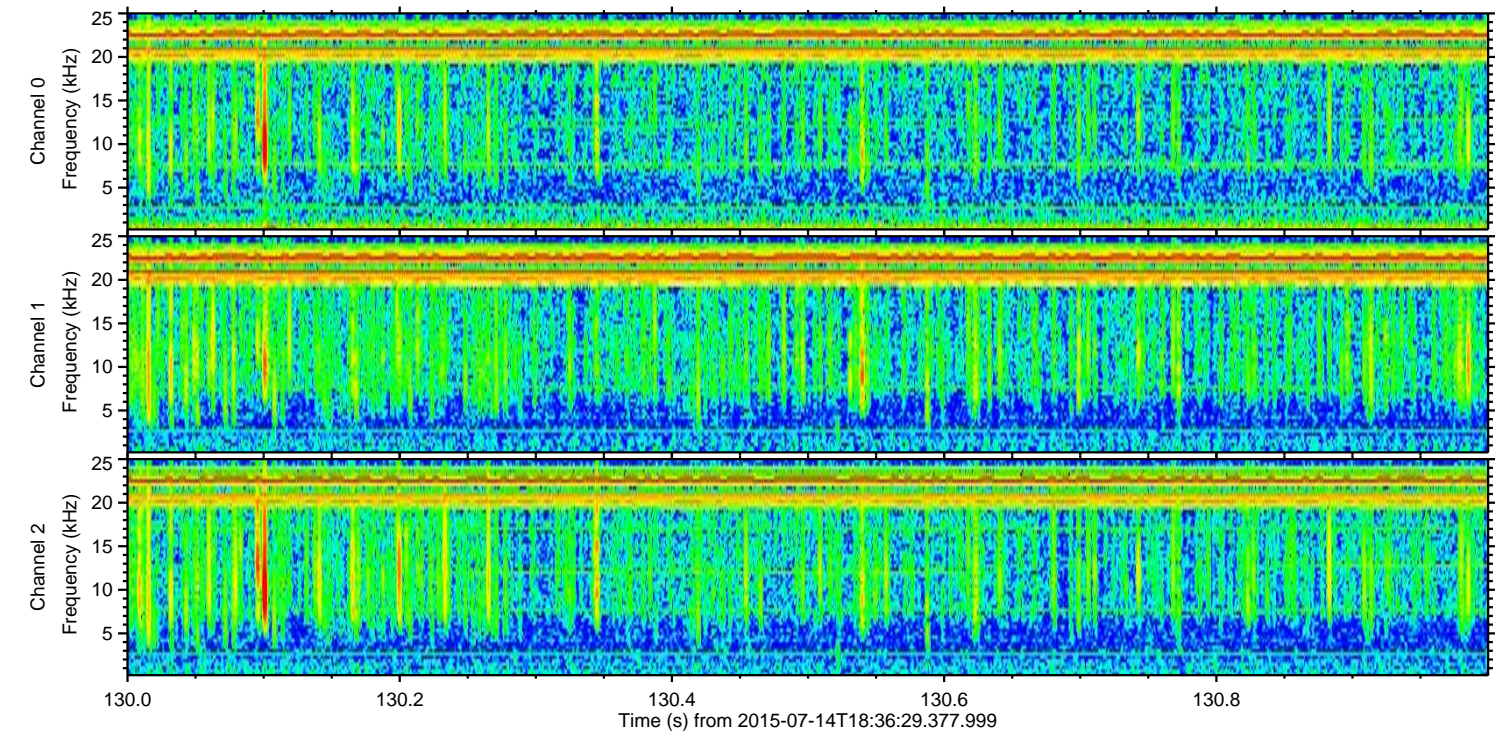
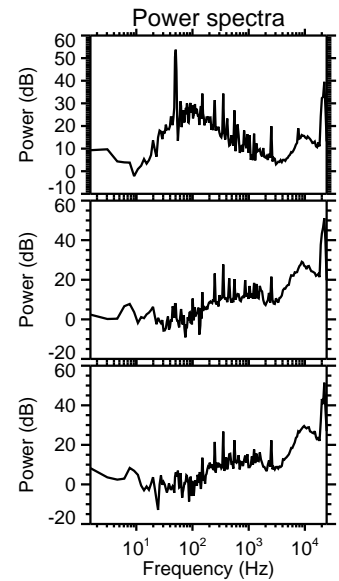
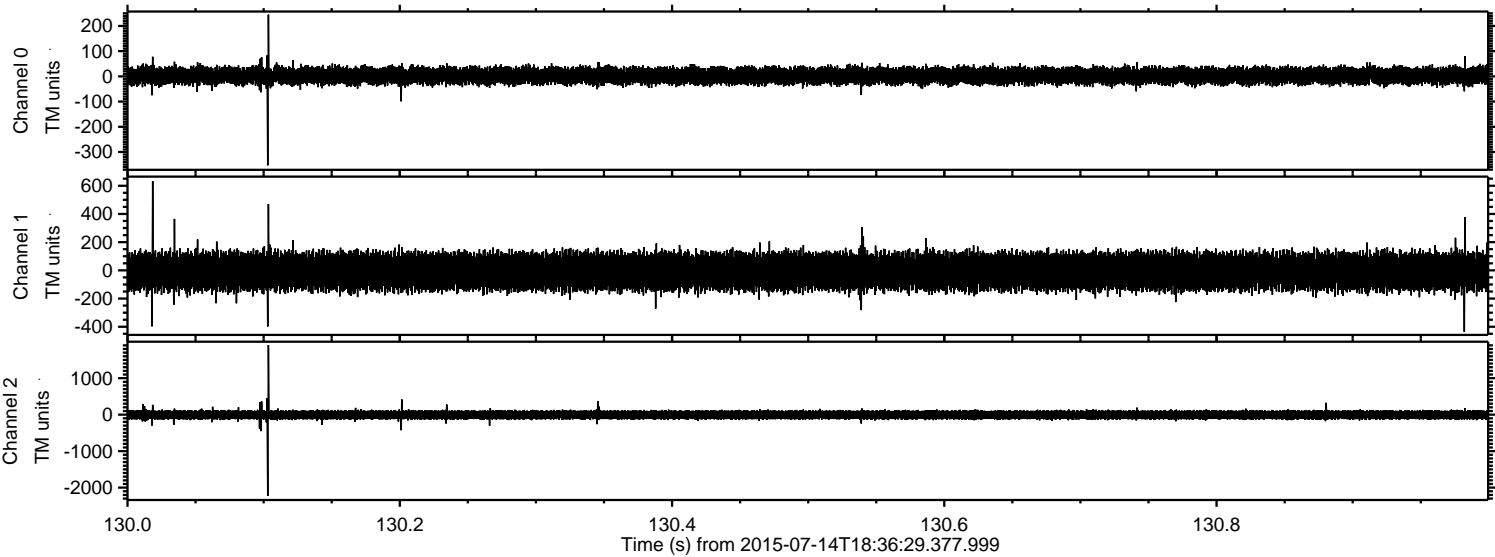


Processed Tue Jul 14 20:43:24 2015 by ELM ver.2012-10-06 from 001__elm20150714_183628__dat00.bin



ELMAVAN 3D WAVEFORMS (Measured data sampled at 50 kHz) 51000 packets of 144 samples from 2015-07-14T18:36:29.377.999. Part 131/147

Processed Tue Jul 14 20:43:25 2015 by ELM ver.2012-10-06 from 001__elm20150714_183628__dat00.bin



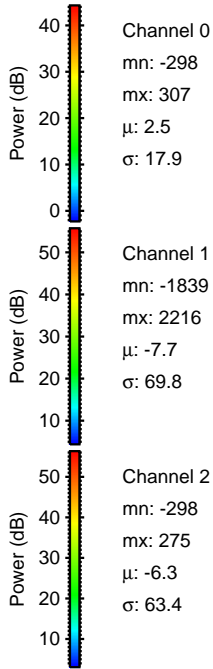
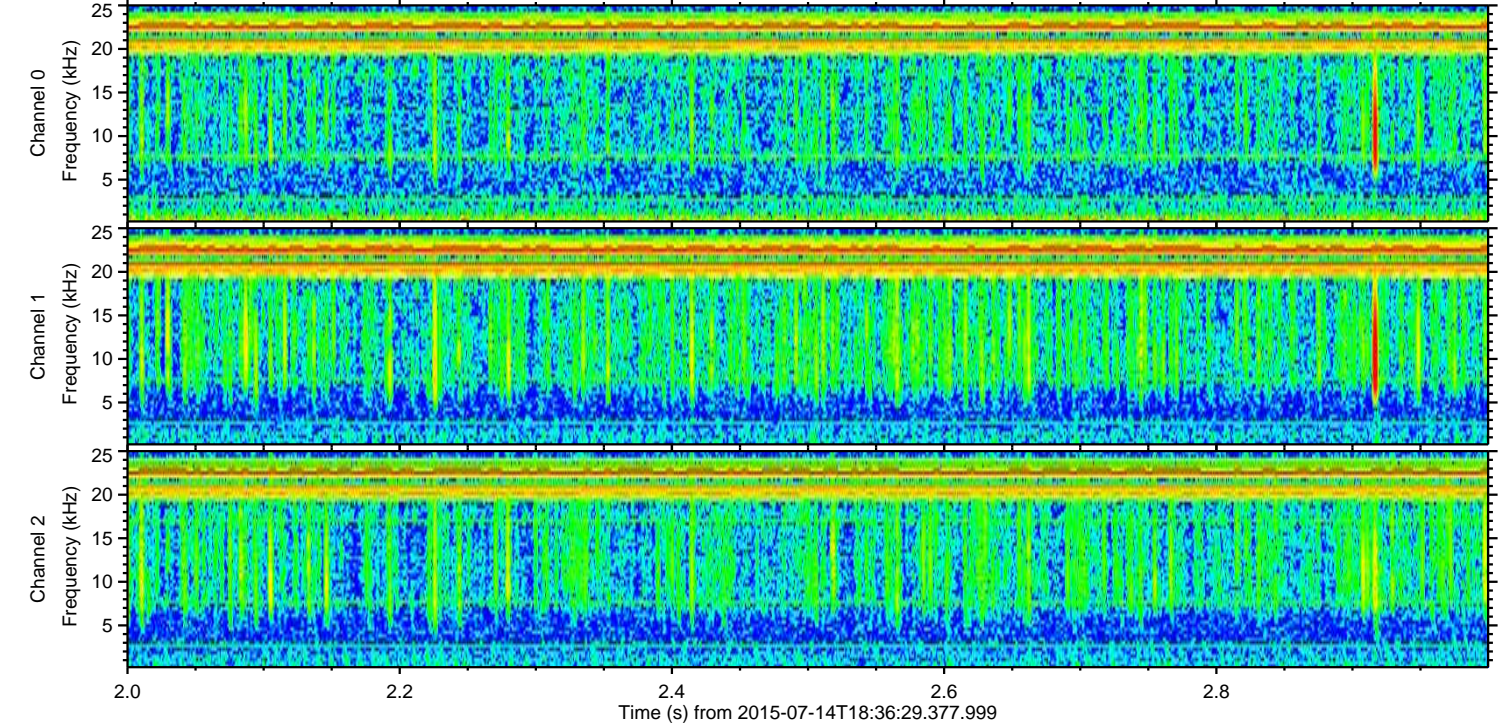
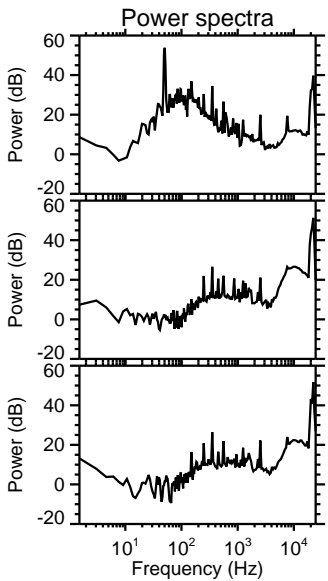
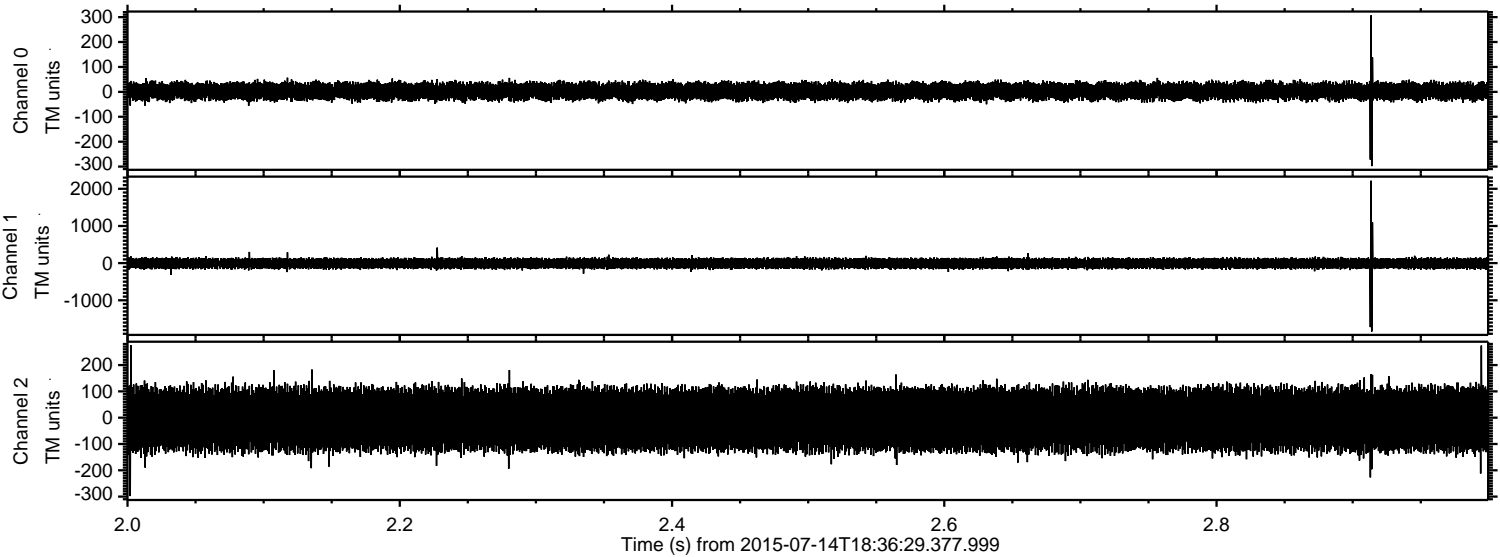
Channel 0
mn: -353
mx: 245
 μ : 2.5
 σ : 18.0

Channel 1
mn: -436
mx: 633
 μ : -7.7
 σ : 67.6

Channel 2
mn: -2228
mx: 1904
 μ : -6.3
 σ : 66.1

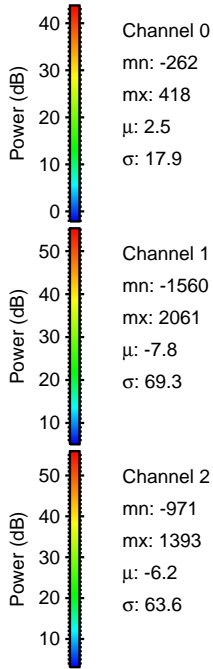
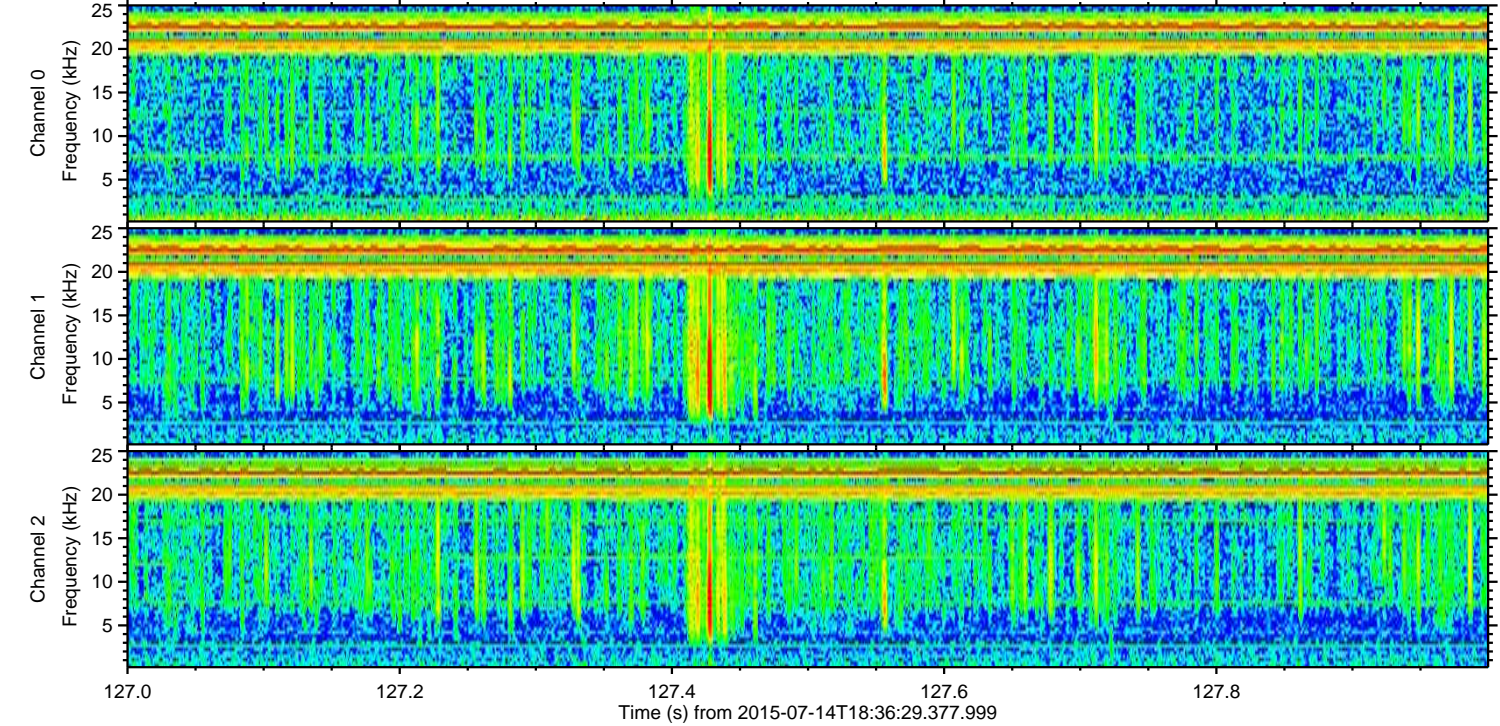
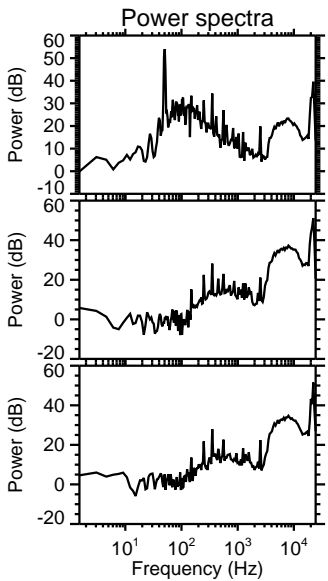
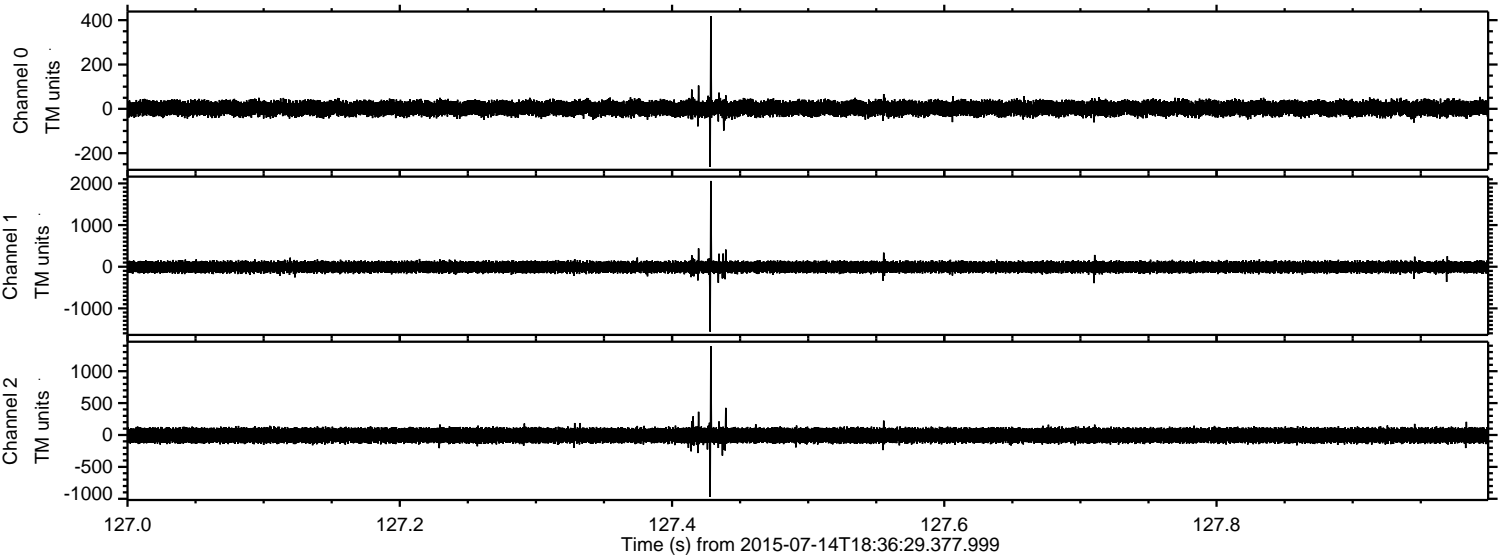
ELMAVAN 3D WAVEFORMS (Measured data sampled at 50 kHz) 51000 packets of 144 samples from 2015-07-14T18:36:29.377.999. Part 3/147

Processed Tue Jul 14 20:43:26 2015 by ELM ver.2012-10-06 from 001__elm20150714_183628__dat00.bin



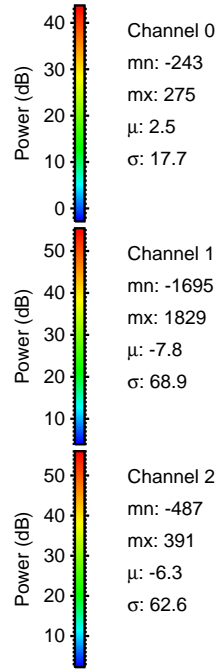
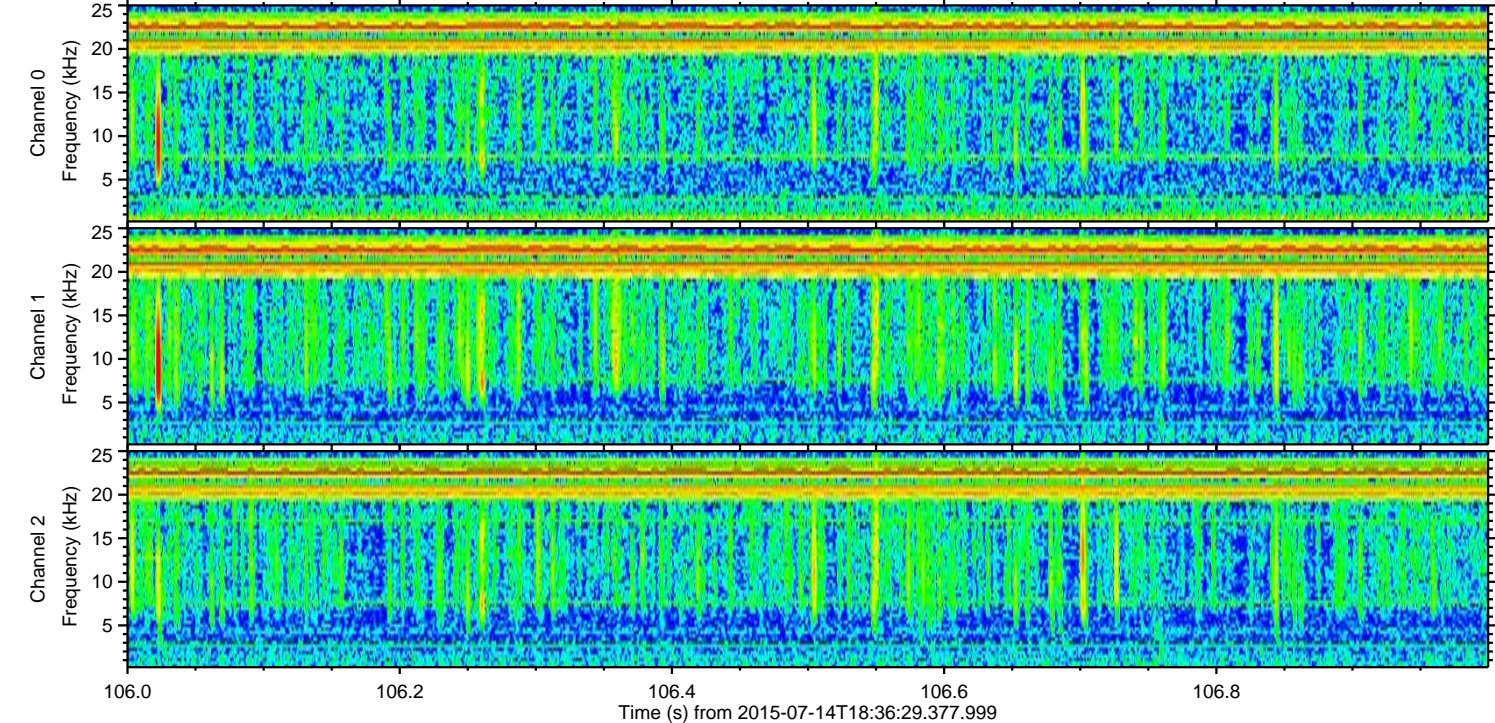
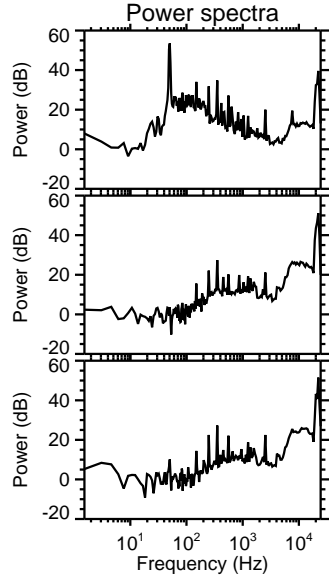
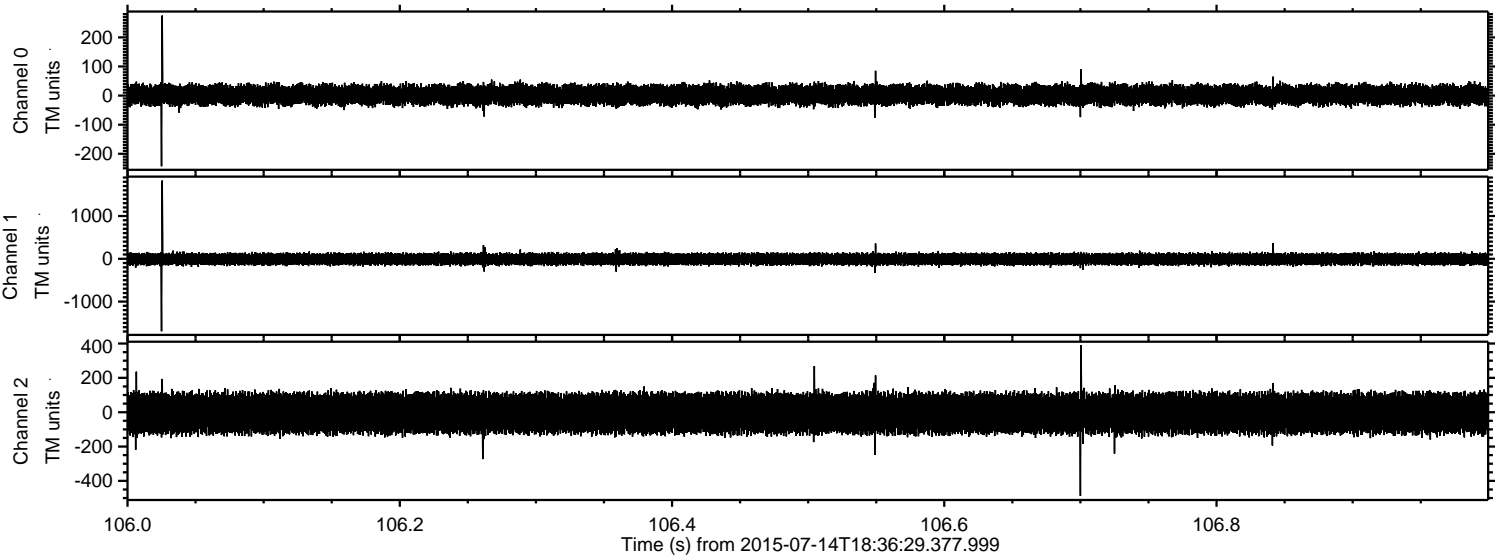
ELMAVAN 3D WAVEFORMS (Measured data sampled at 50 kHz) 51000 packets of 144 samples from 2015-07-14T18:36:29.377.999. Part 128/147

Processed Tue Jul 14 20:43:27 2015 by ELM ver.2012-10-06 from 001__elm20150714_183628__dat00.bin



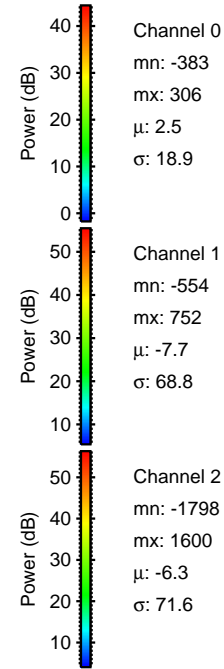
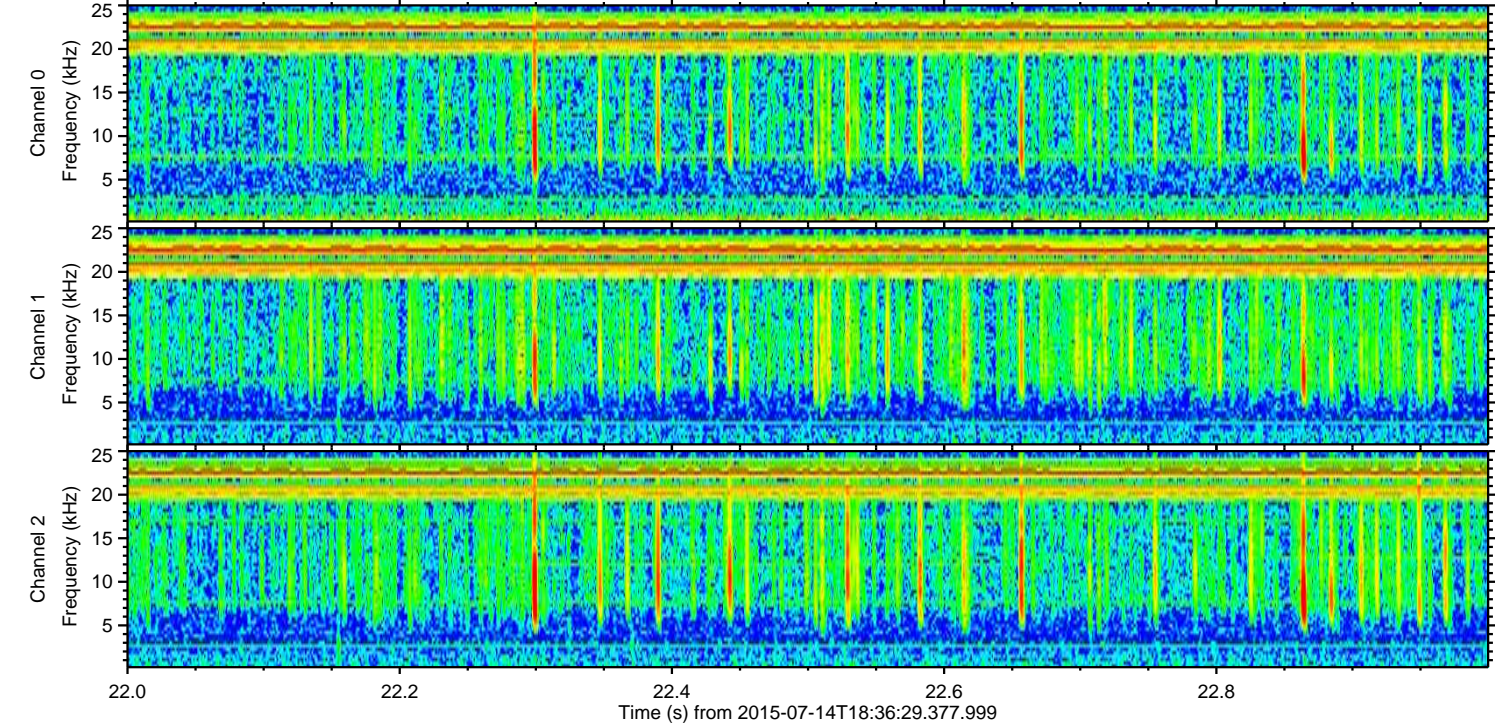
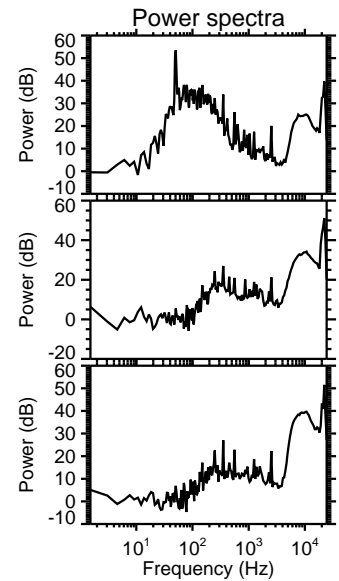
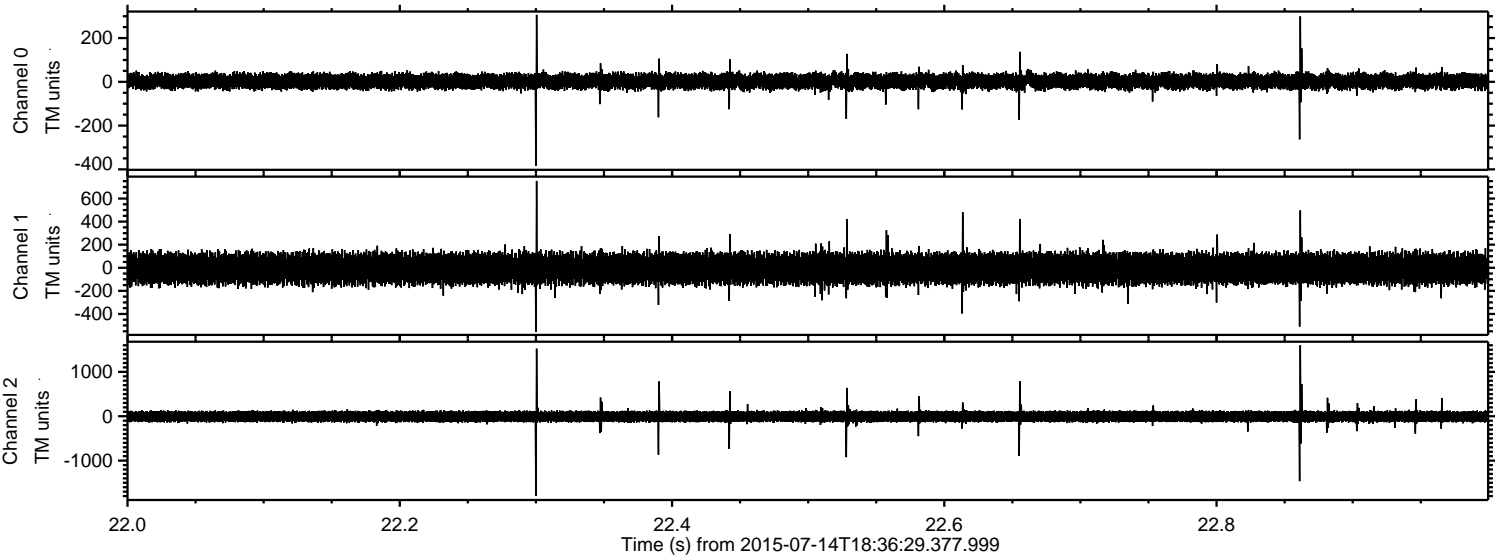
ELMAVAN 3D WAVEFORMS (Measured data sampled at 50 kHz) 51000 packets of 144 samples from 2015-07-14T18:36:29.377.999. Part 107/147

Processed Tue Jul 14 20:43:29 2015 by ELM ver.2012-10-06 from 001__elm20150714_183628__dat00.bin

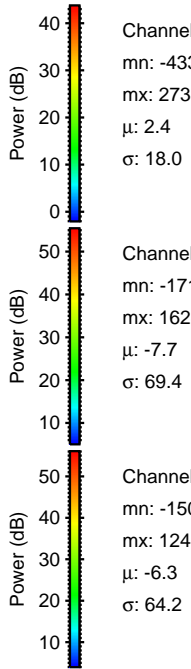
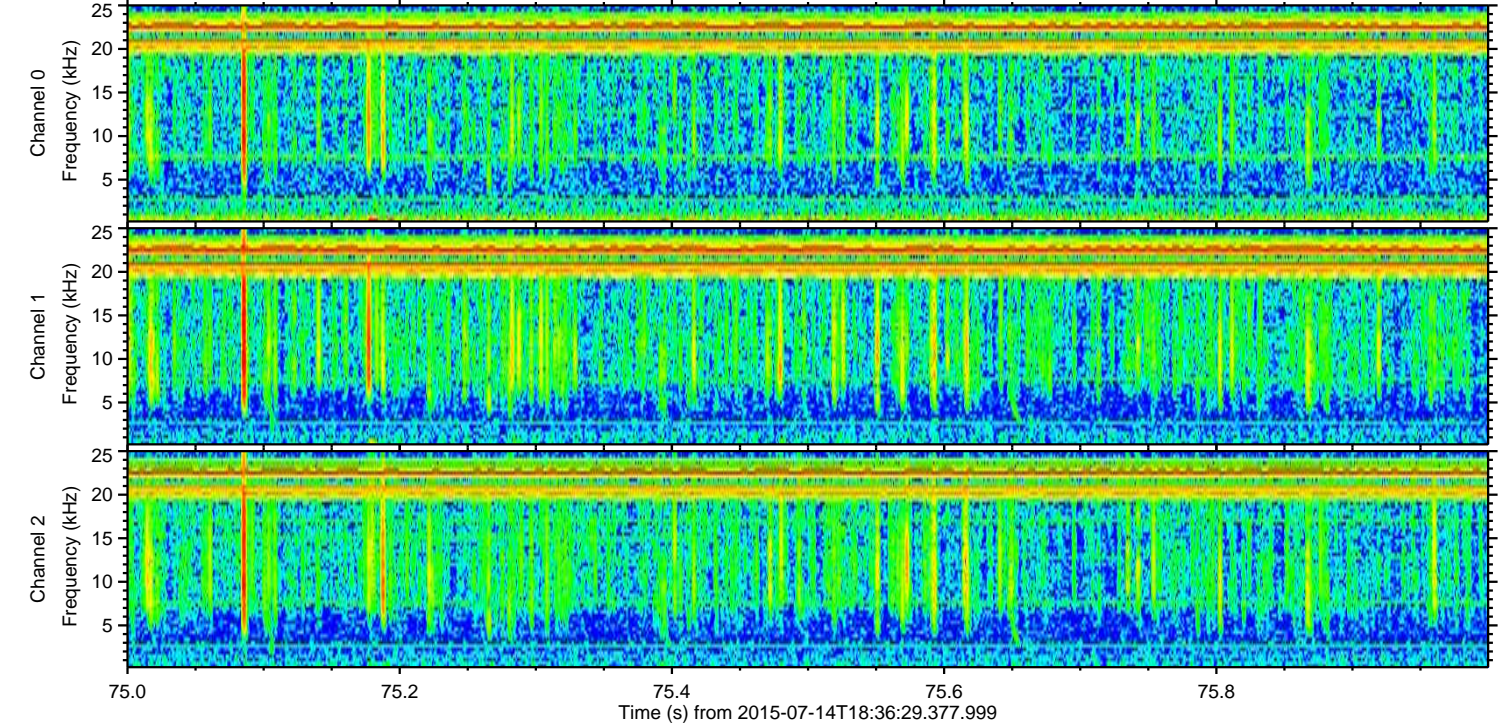
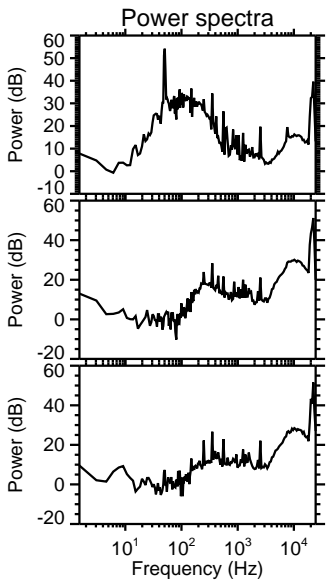
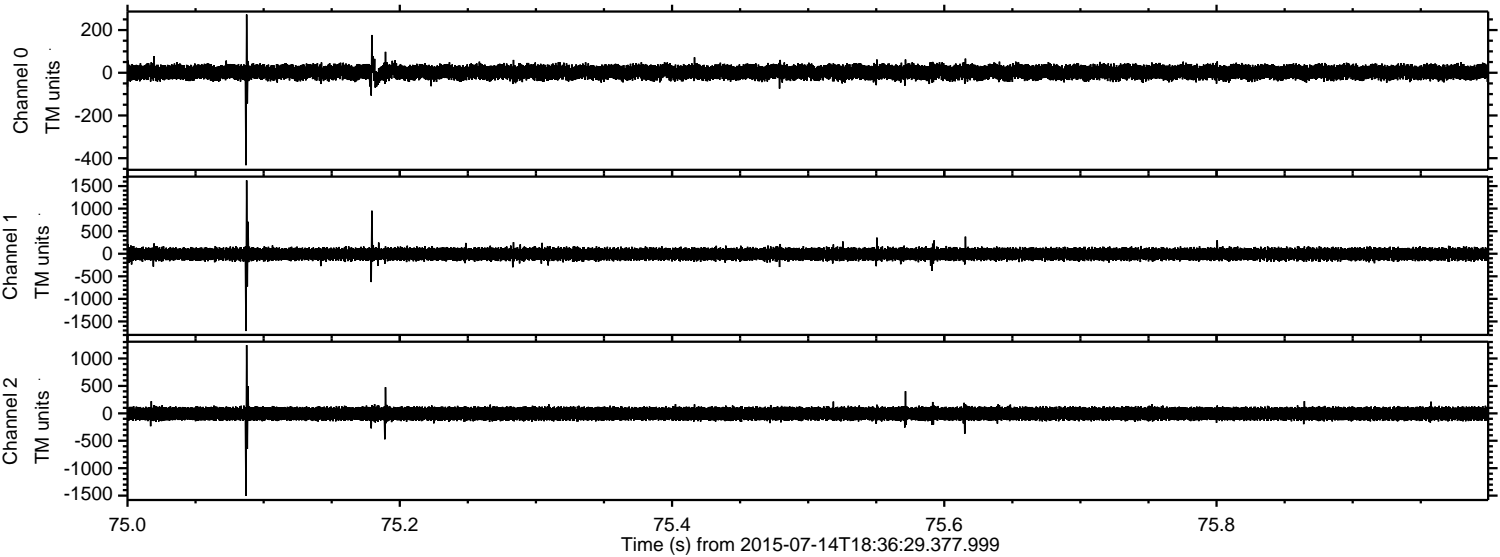


ELMAVAN 3D WAVEFORMS (Measured data sampled at 50 kHz) 51000 packets of 144 samples from 2015-07-14T18:36:29.377.999. Part 23/147

Processed Tue Jul 14 20:43:30 2015 by ELM ver.2012-10-06 from 001__elm20150714_183628__dat00.bin



Processed Tue Jul 14 20:43:31 2015 by ELM ver.2012-10-06 from 001__elm20150714_183628__dat00.bin



Channel 0

Channel 1

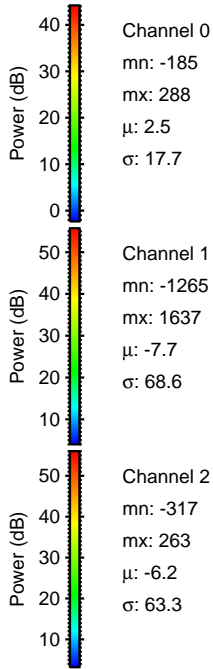
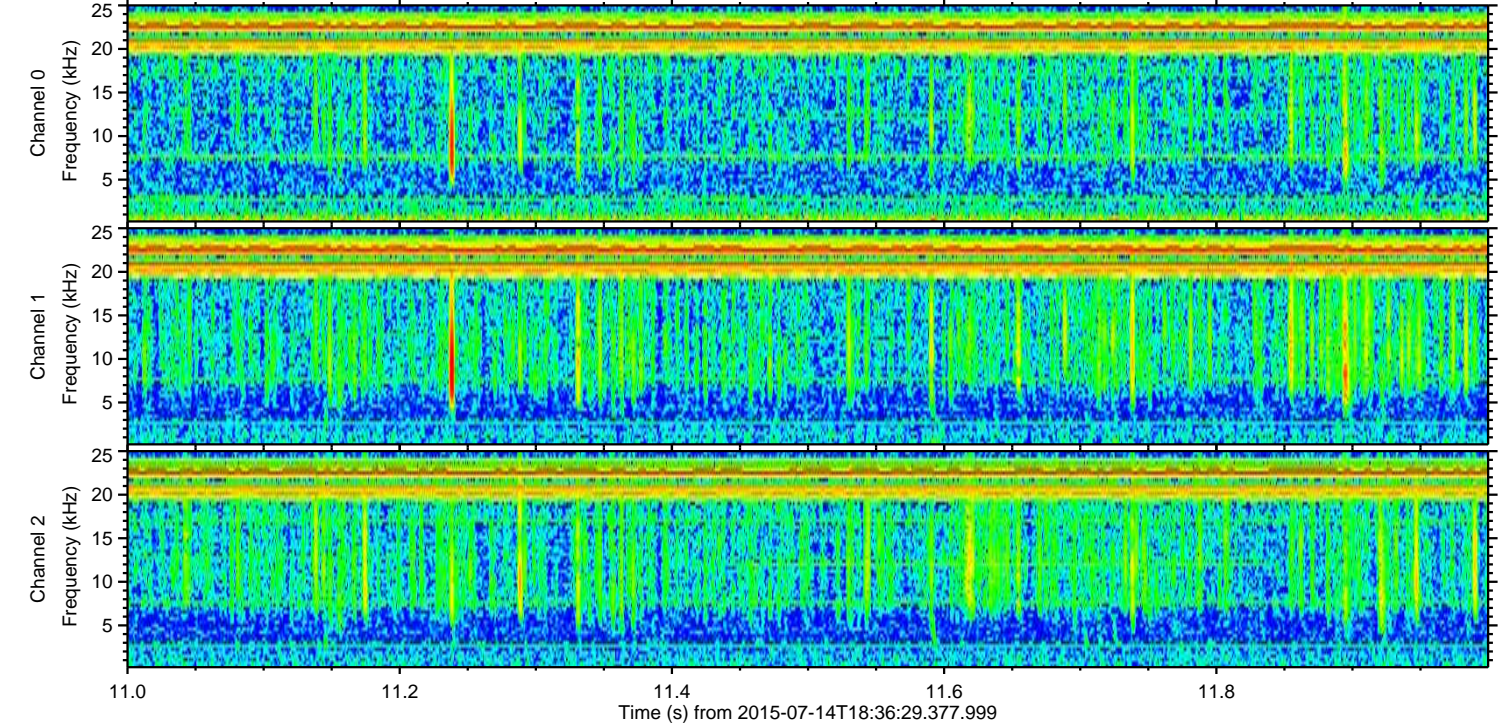
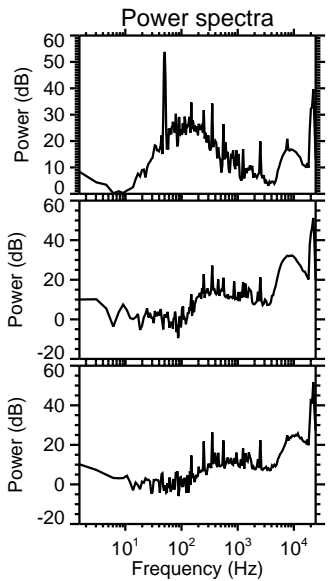
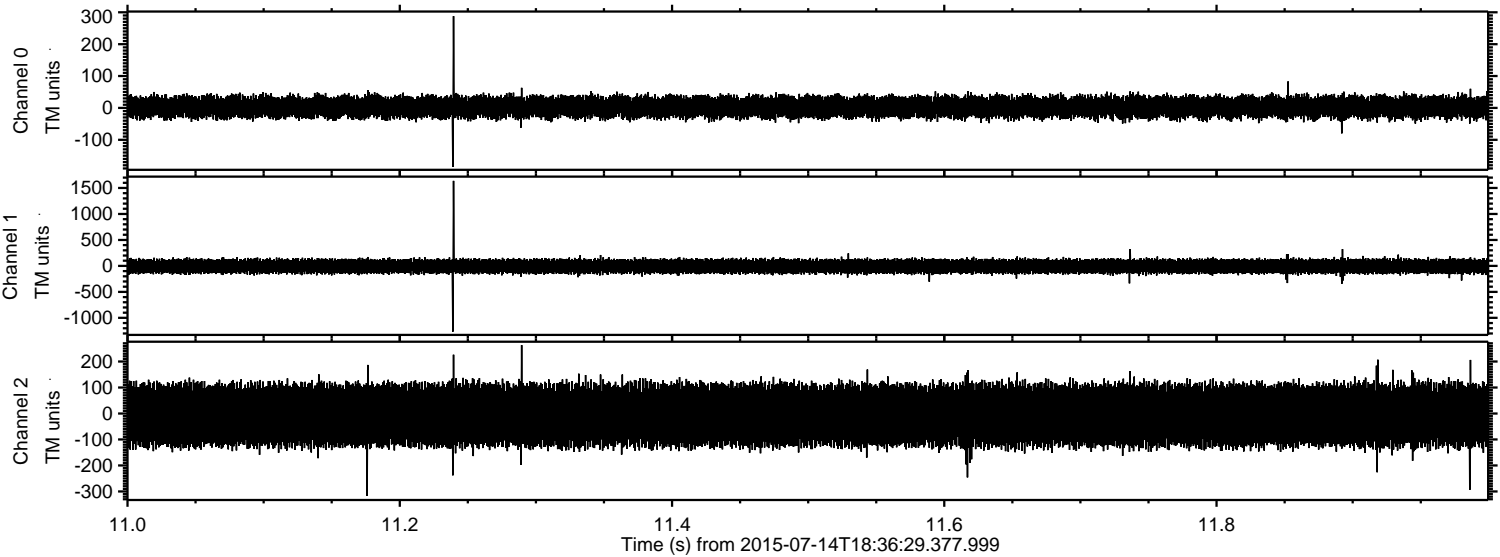
Channel 2

mn: -433
mx: 273
 μ : 2.4
 σ : 18.0

mn: -1713
mx: 1628
 μ : -7.7
 σ : 69.4

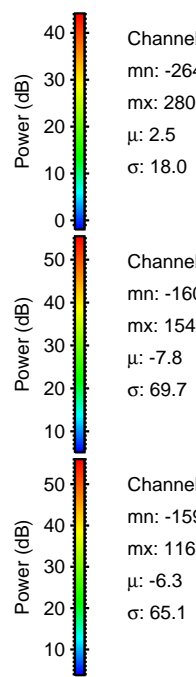
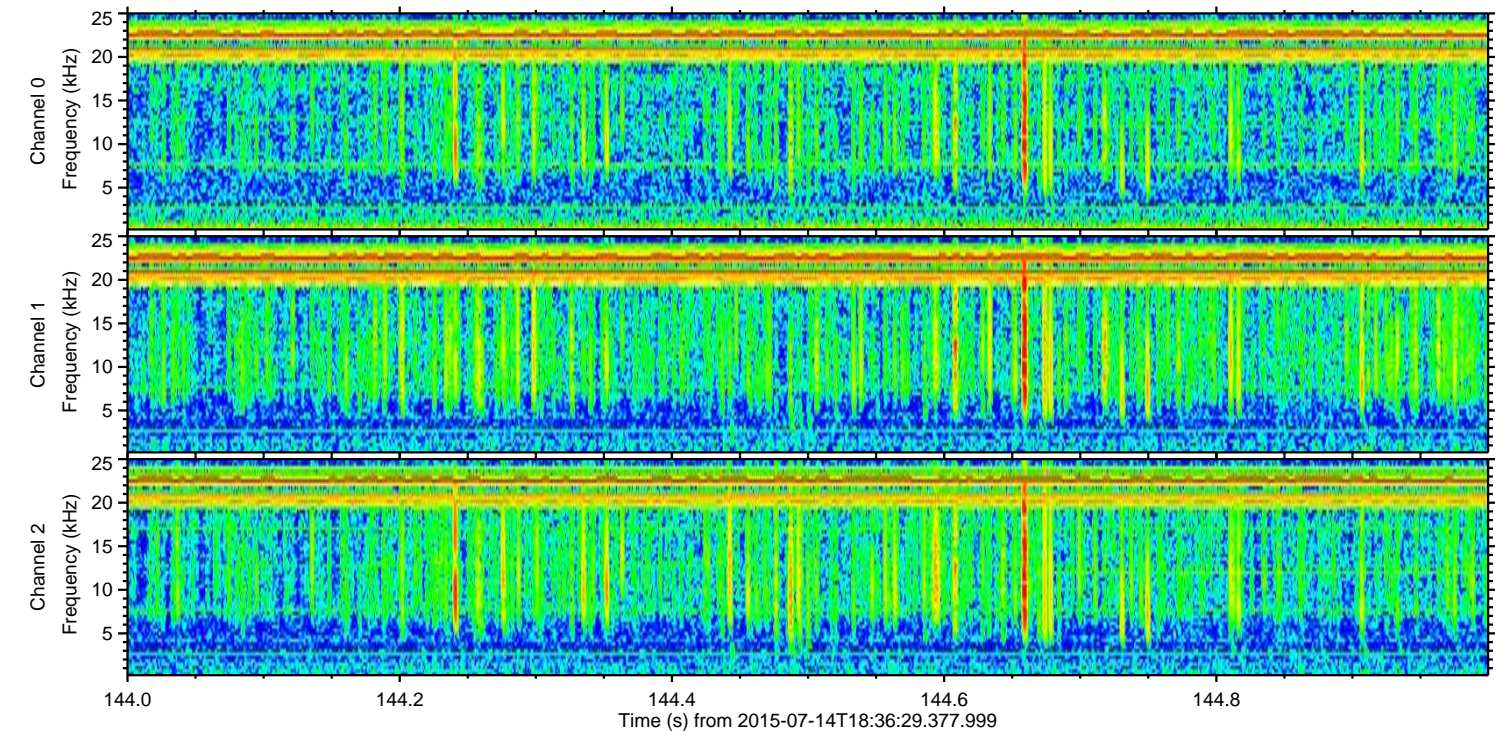
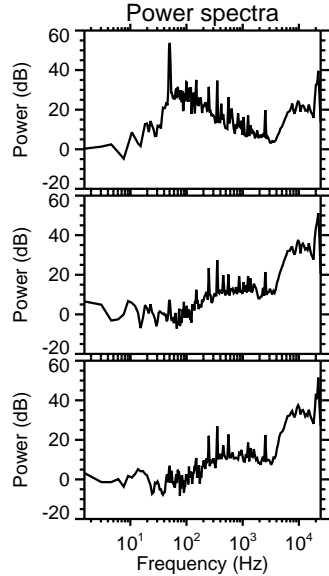
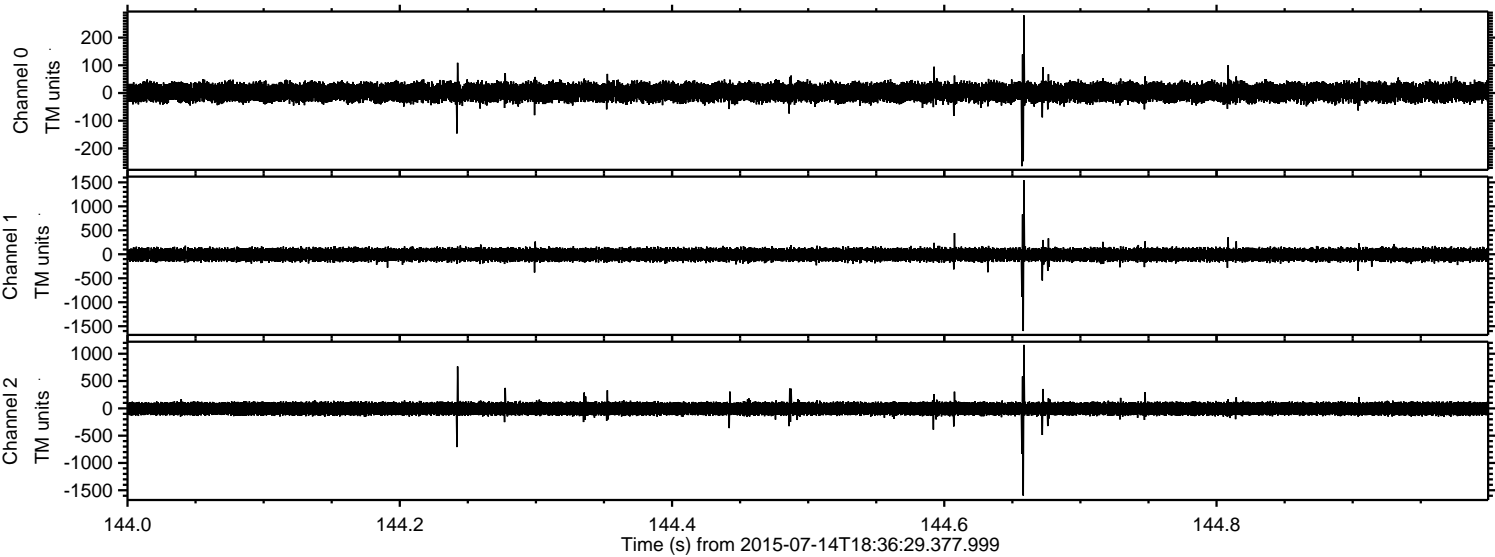
mn: -1505
mx: 1244
 μ : -6.3
 σ : 64.2

Processed Tue Jul 14 20:43:32 2015 by ELM ver.2012-10-06 from 001__elm20150714_183628__dat00.bin



ELMAVAN 3D WAVEFORMS (Measured data sampled at 50 kHz) 51000 packets of 144 samples from 2015-07-14T18:36:29.377.999. Part 145/147

Processed Tue Jul 14 20:43:33 2015 by ELM ver.2012-10-06 from 001__elm20150714_183628__dat00.bin



Channel 0
mn: -264
mx: 280
 μ : 2.5
 σ : 18.0

Channel 1
mn: -1601
mx: 1542
 μ : -7.8
 σ : 69.7

Channel 2
mn: -1598
mx: 1162
 μ : -6.3
 σ : 65.1

