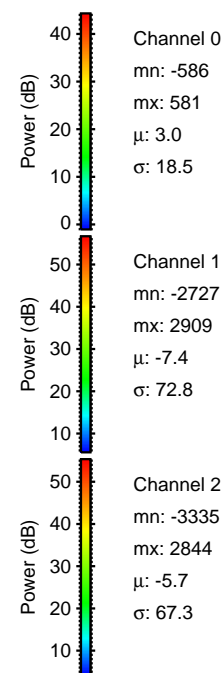
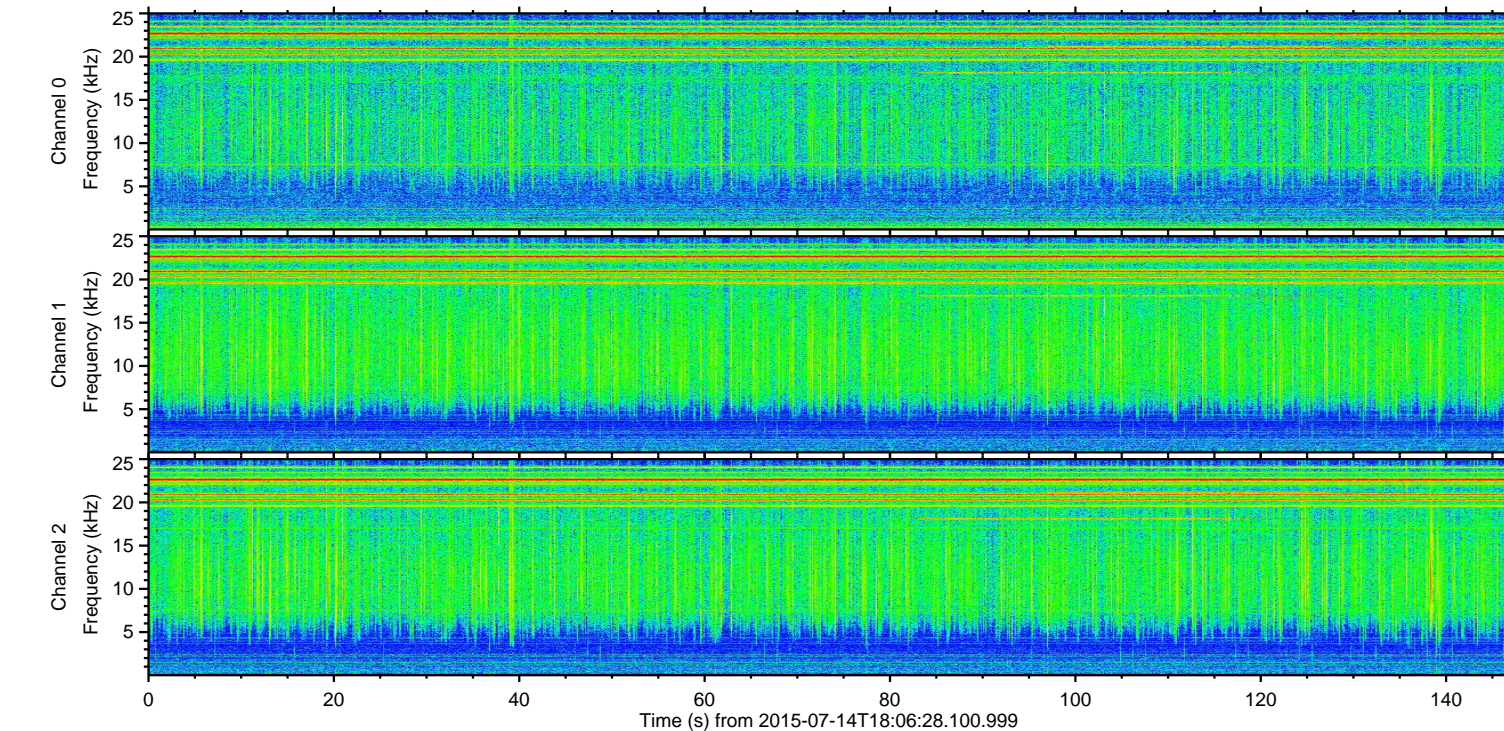
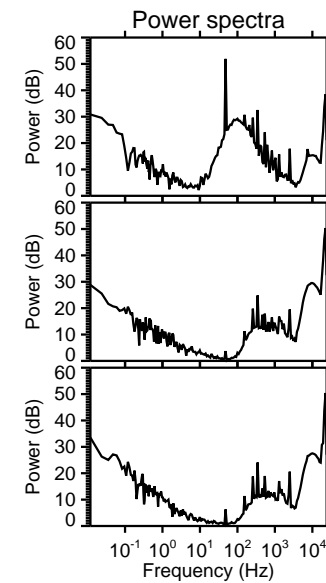
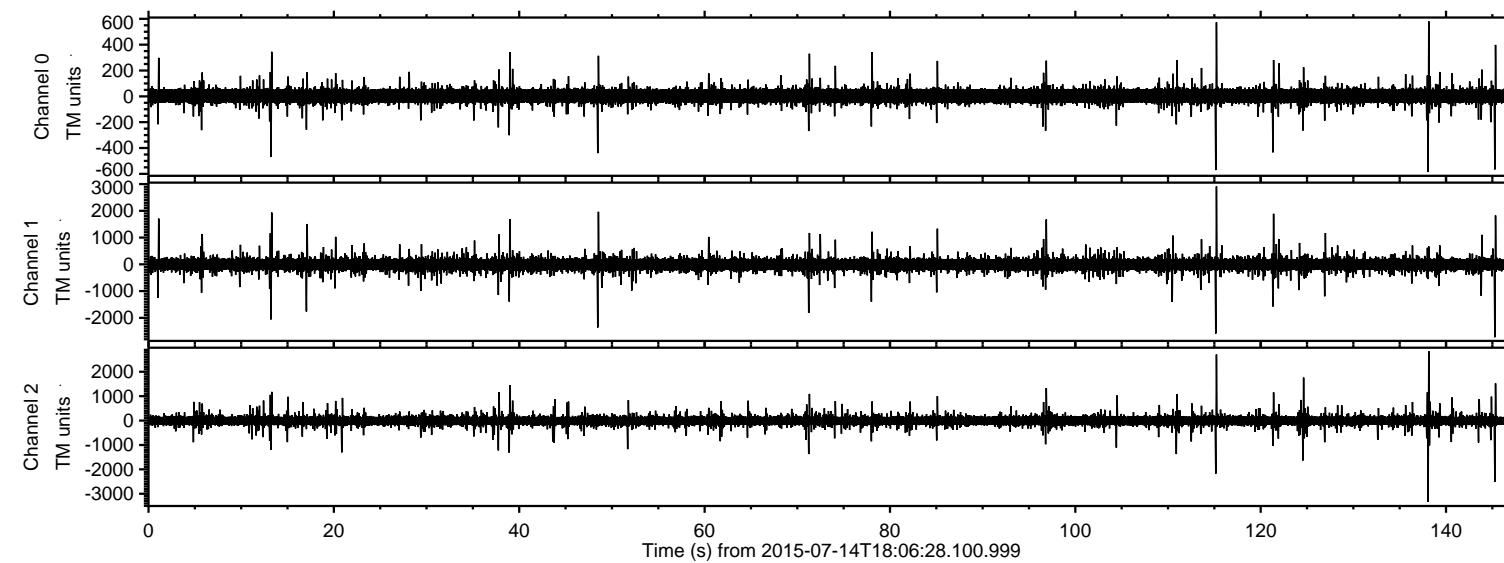


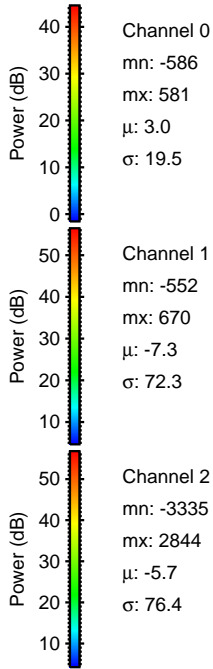
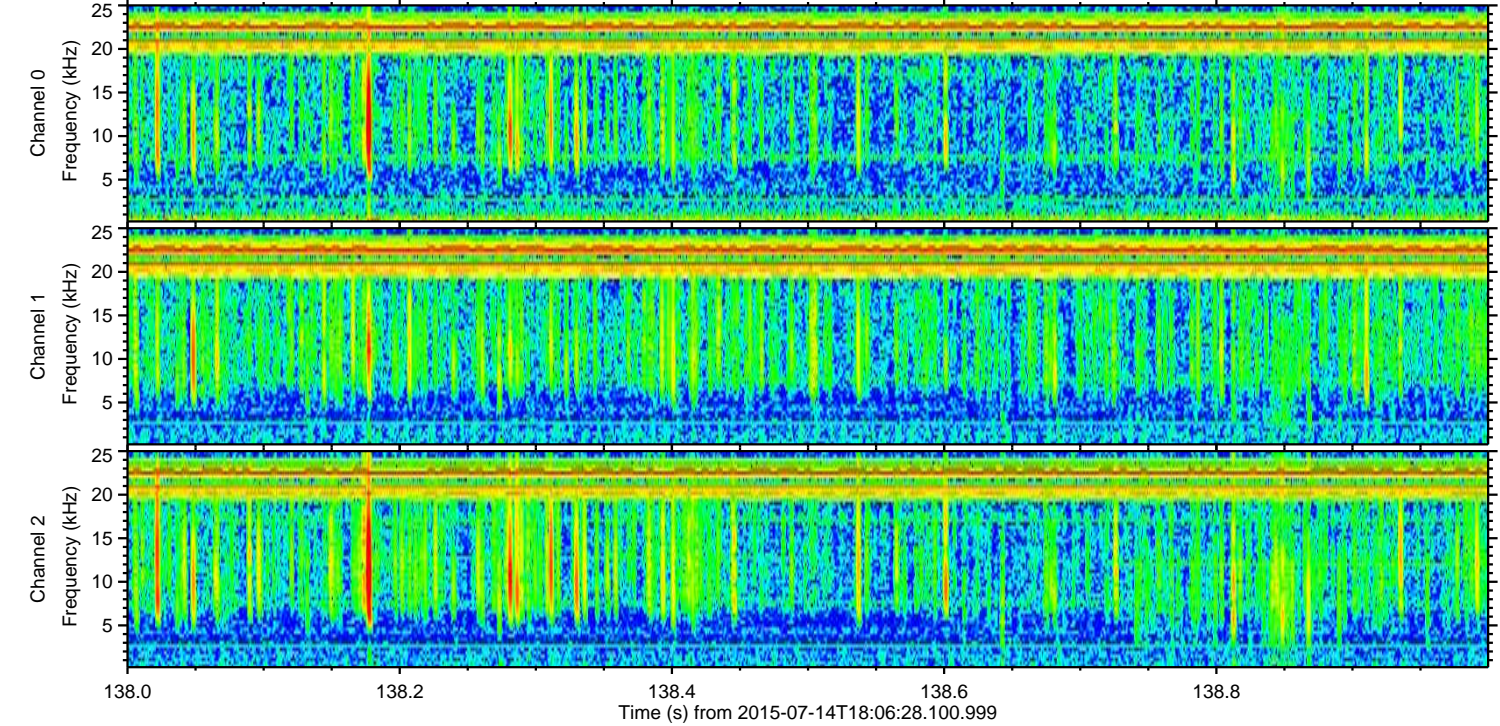
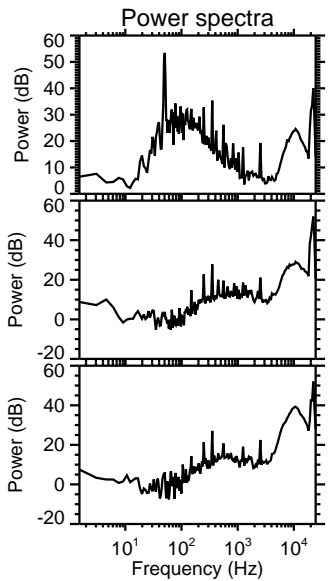
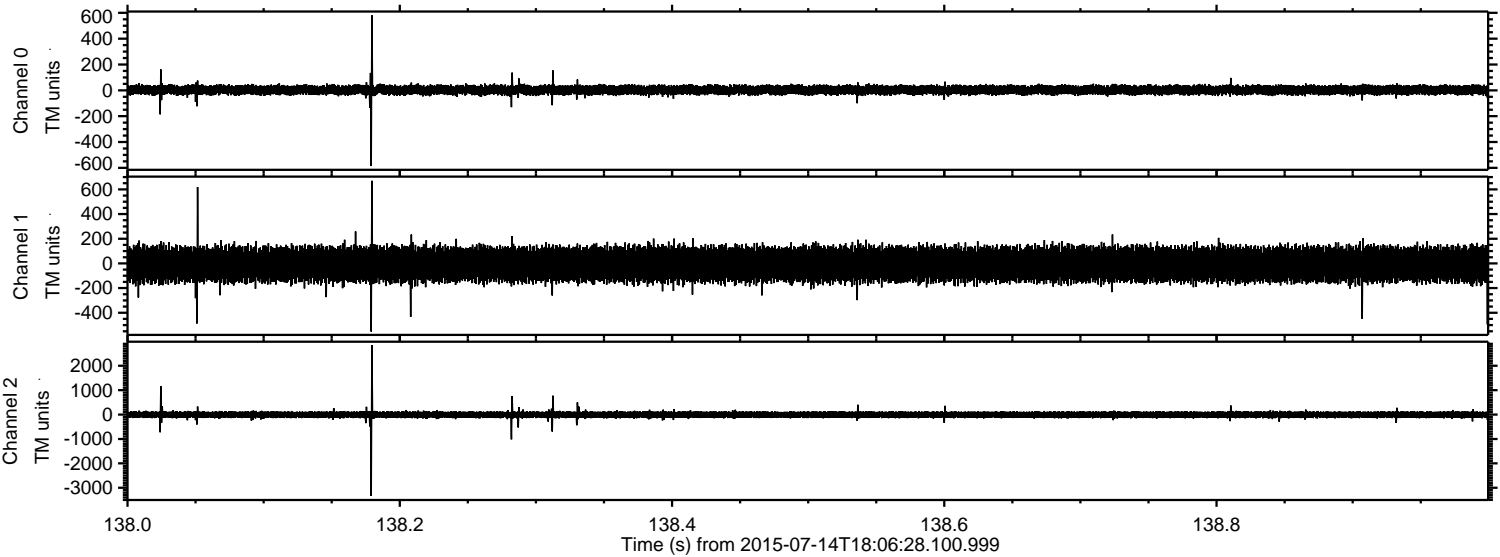
ELMAVAN 3D WAVEFORMS (Measured data sampled at 50 kHz) 51000 packets of 144 samples from 2015-07-14T18:06:28.100.999.

Processed Tue Jul 14 20:12:58 2015 by ELM ver.2012-10-06 from 001__elm20150714_180627__dat00.bin



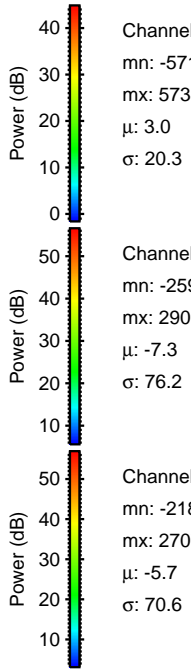
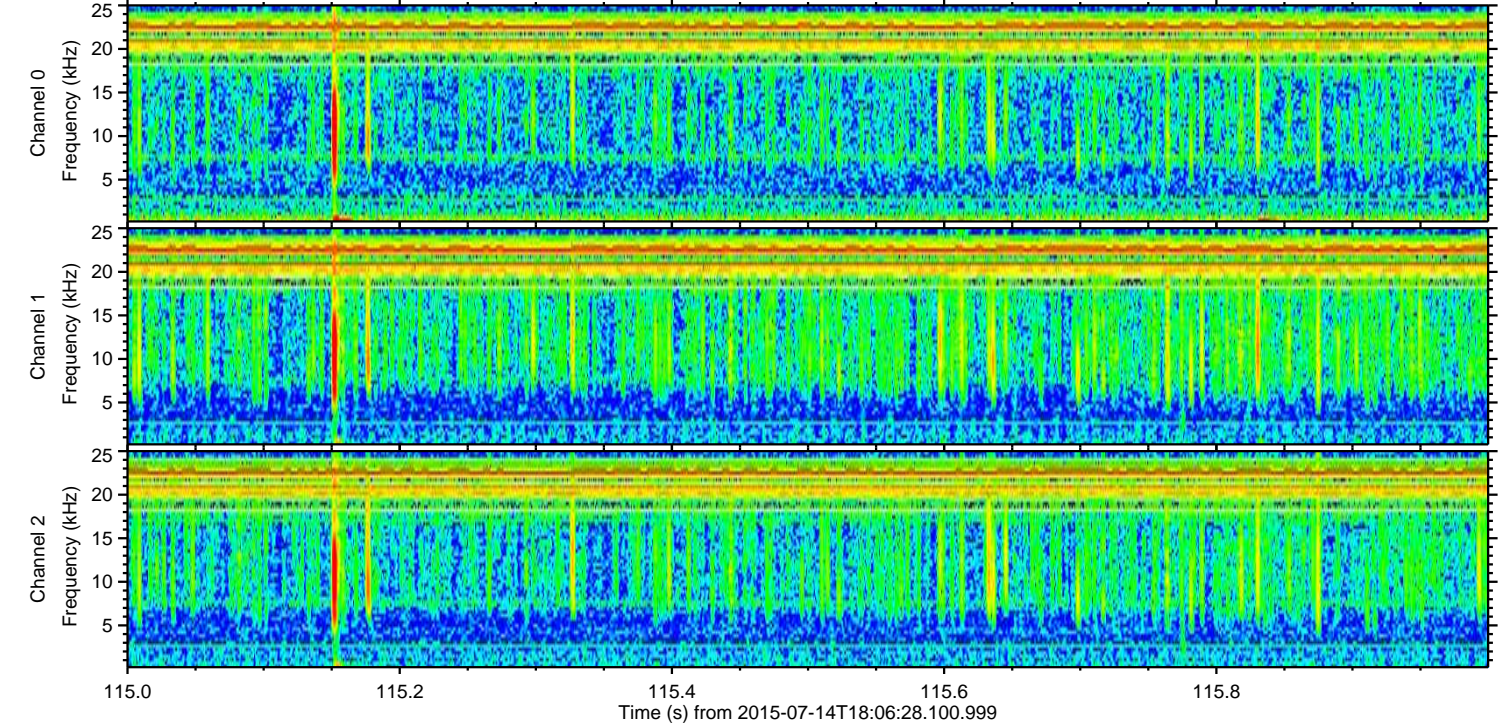
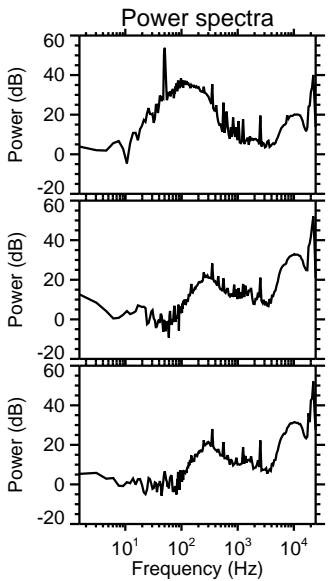
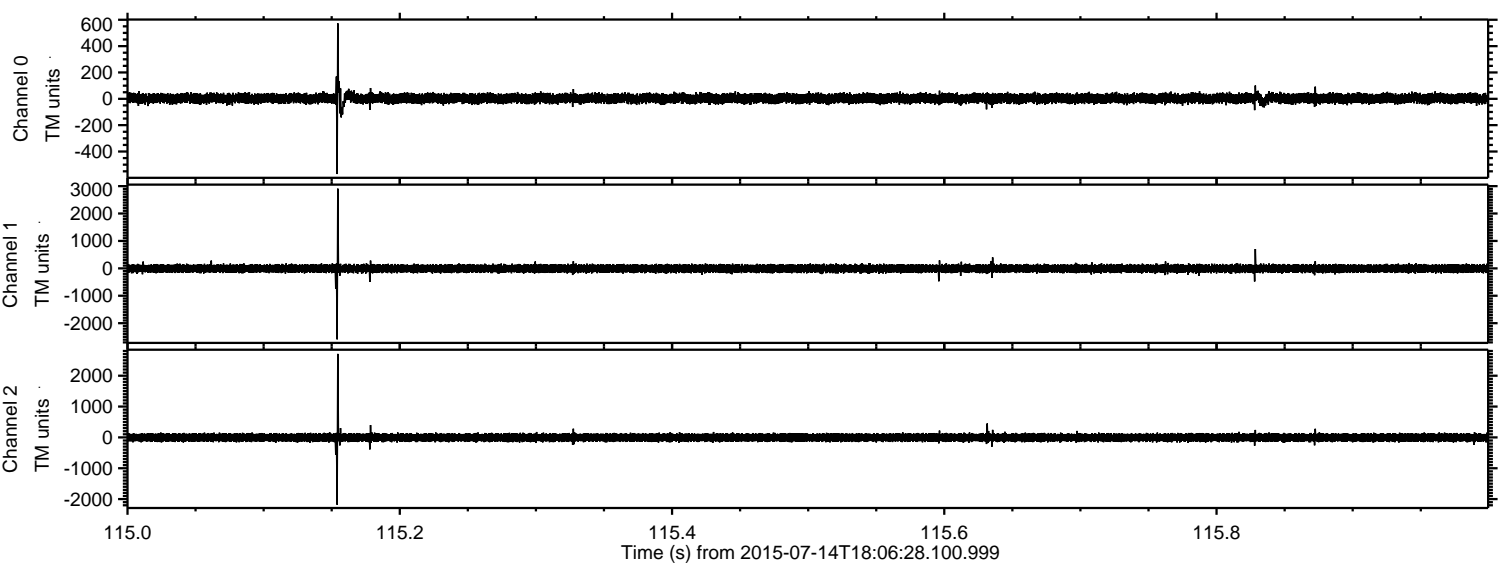
ELMAVAN 3D WAVEFORMS (Measured data sampled at 50 kHz) 51000 packets of 144 samples from 2015-07-14T18:06:28.100.999. Part 139/147

Processed Tue Jul 14 20:13:14 2015 by ELM ver.2012-10-06 from 001__elm20150714_180627__dat00.bin



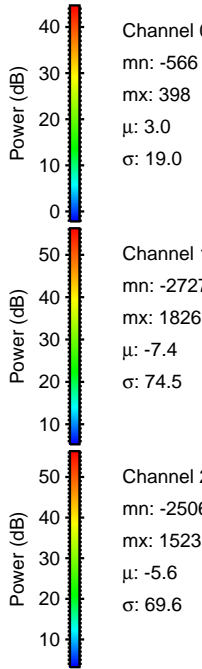
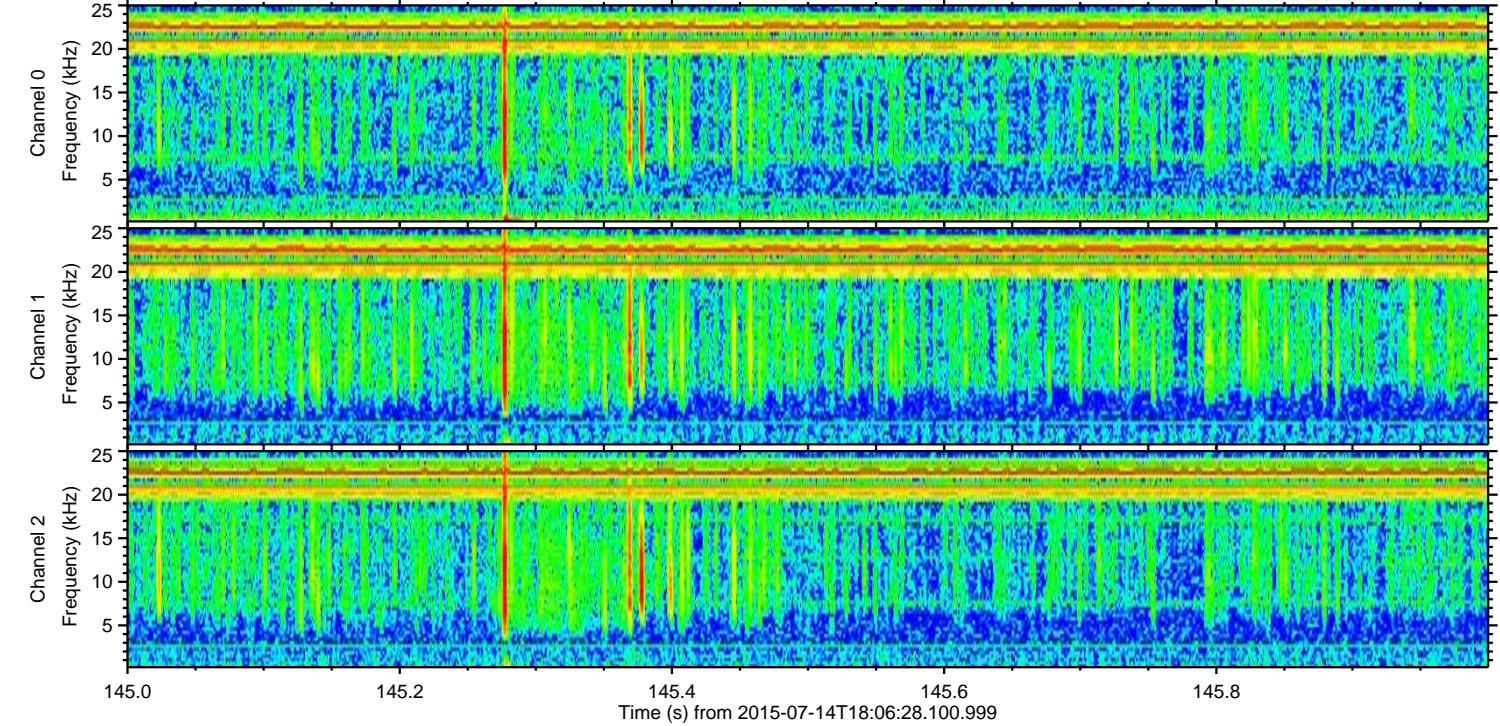
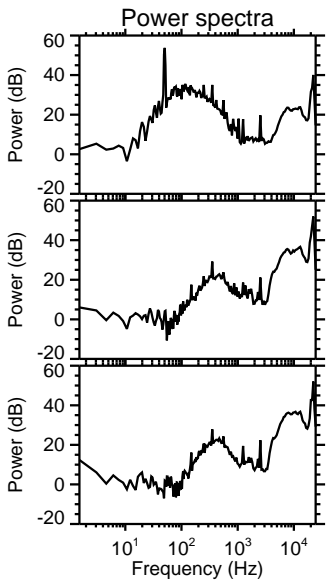
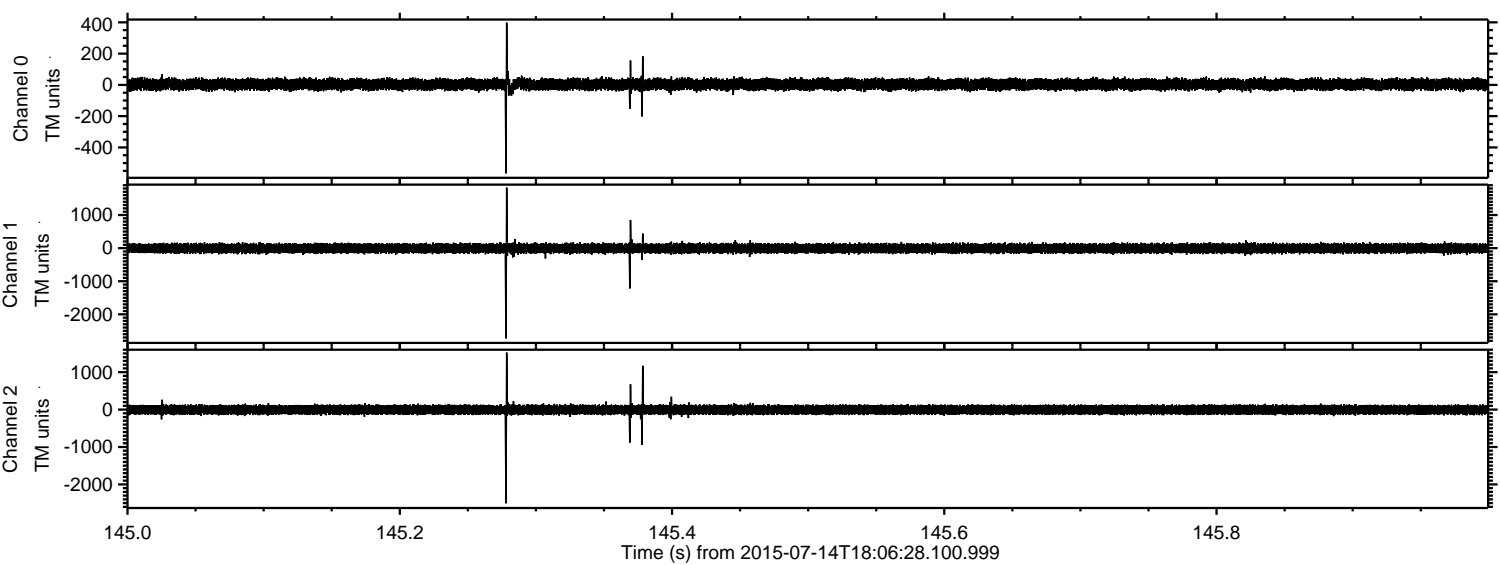
ELMAVAN 3D WAVEFORMS (Measured data sampled at 50 kHz) 51000 packets of 144 samples from 2015-07-14T18:06:28.100.999. Part 116/147

Processed Tue Jul 14 20:13:15 2015 by ELM ver.2012-10-06 from 001__elm20150714_180627__dat00.bin



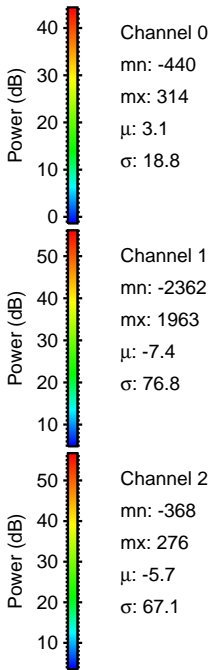
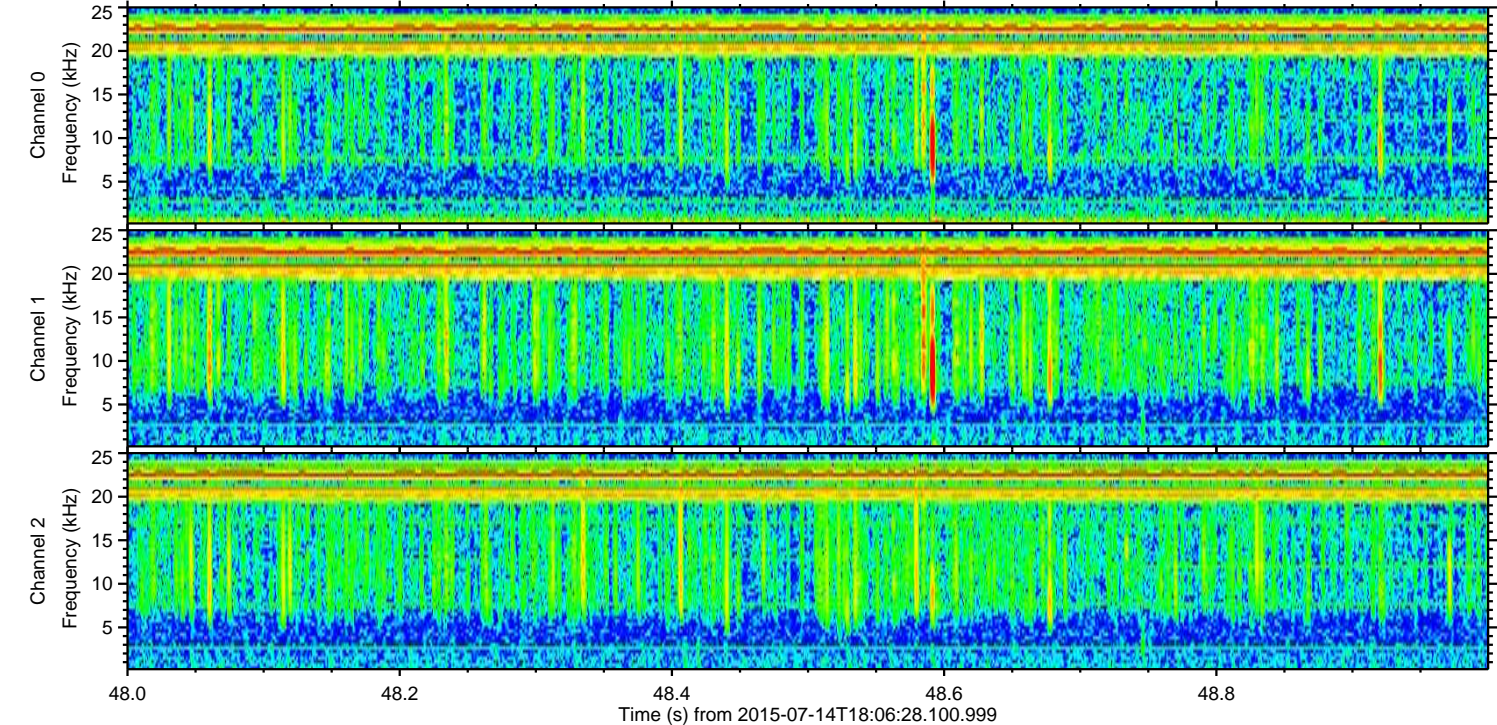
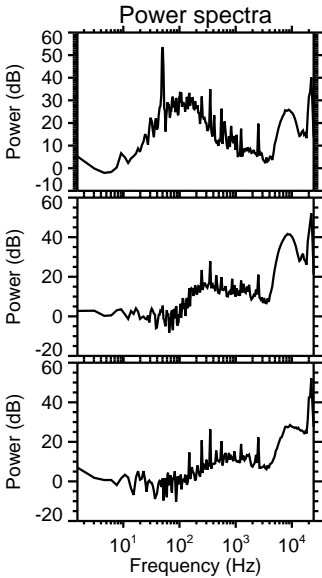
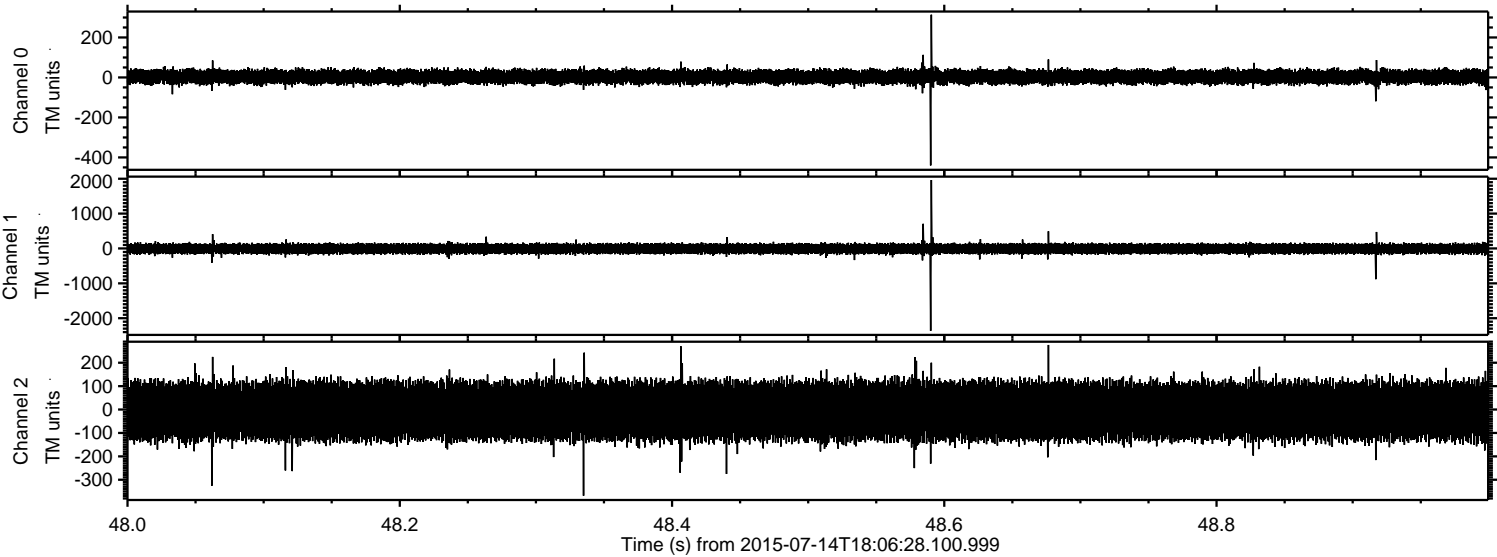
ELMAVAN 3D WAVEFORMS (Measured data sampled at 50 kHz) 51000 packets of 144 samples from 2015-07-14T18:06:28.100.999. Part 146/147

Processed Tue Jul 14 20:13:17 2015 by ELM ver.2012-10-06 from 001__elm20150714_180627__dat00.bin



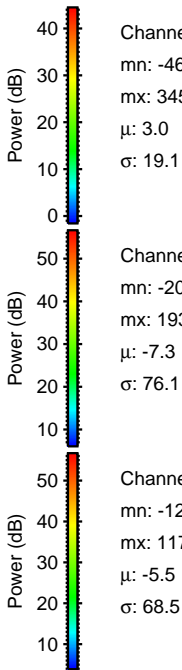
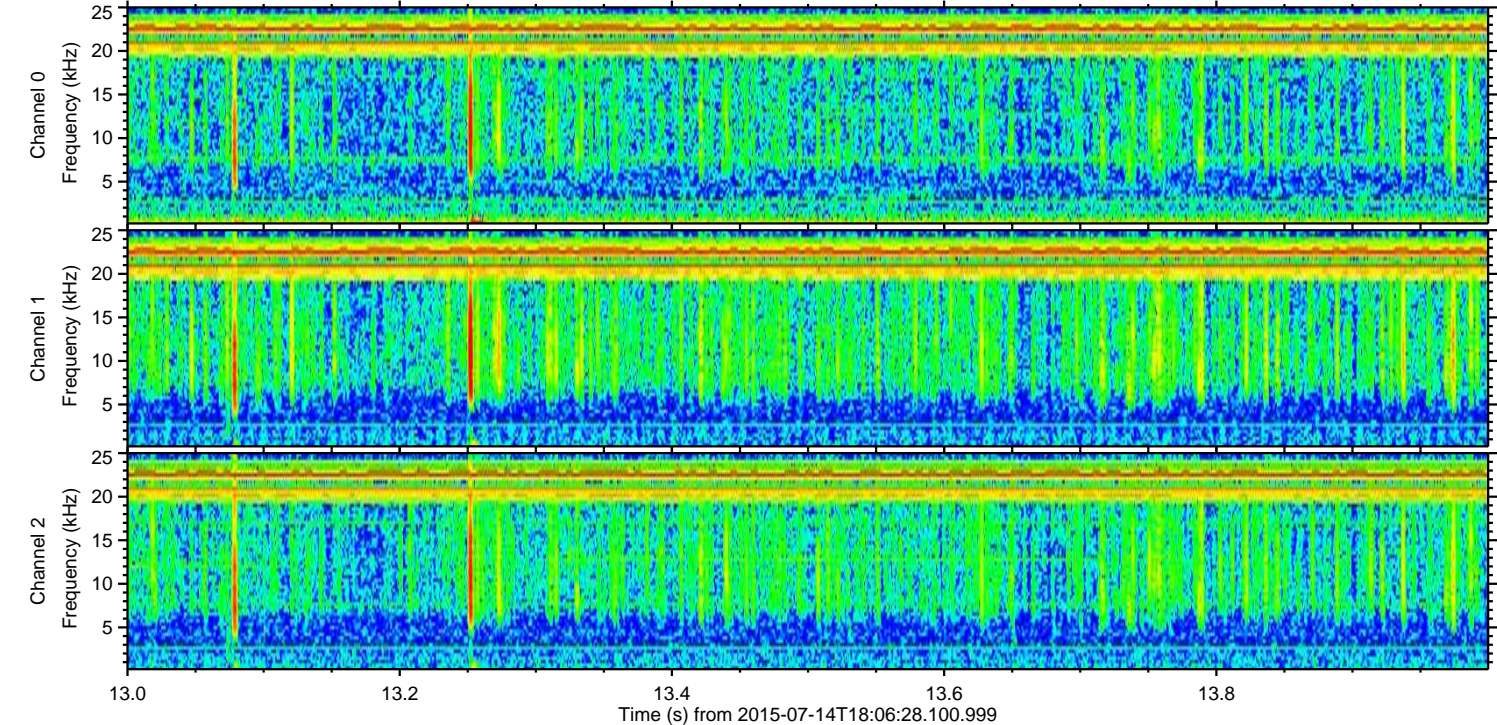
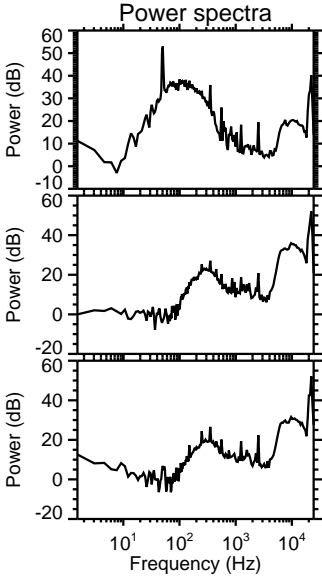
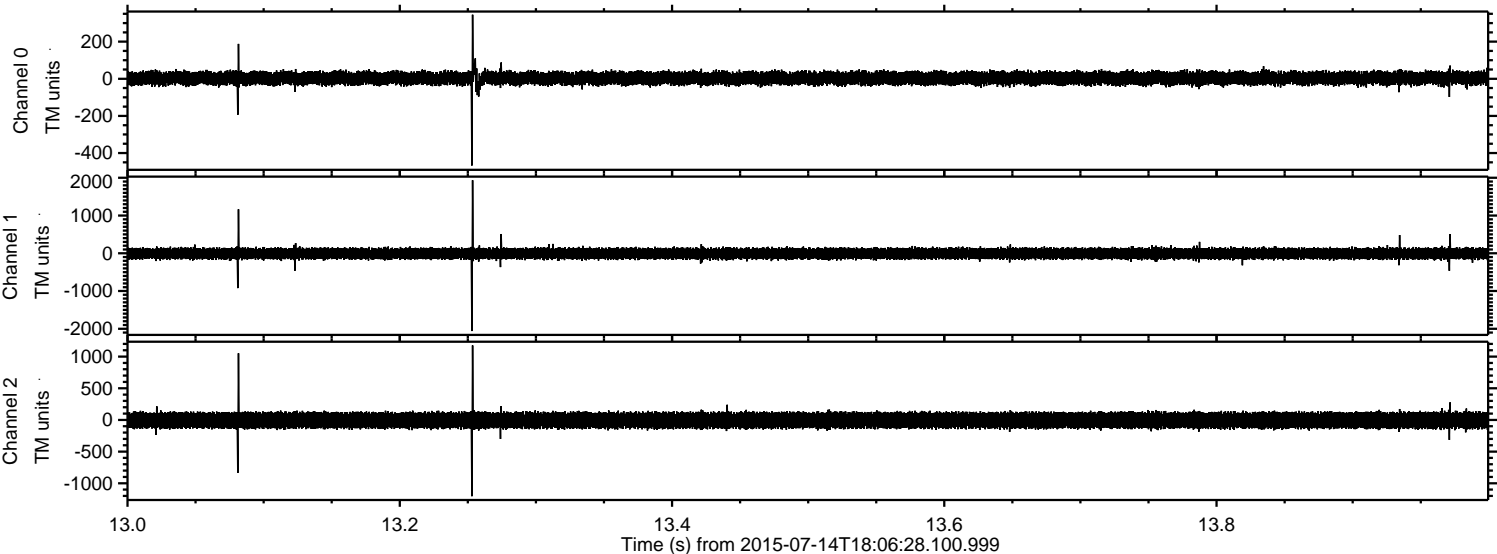
ELMAVAN 3D WAVEFORMS (Measured data sampled at 50 kHz) 51000 packets of 144 samples from 2015-07-14T18:06:28.100.999. Part 49/147

Processed Tue Jul 14 20:13:18 2015 by ELM ver.2012-10-06 from 001__elm20150714_180627__dat00.bin



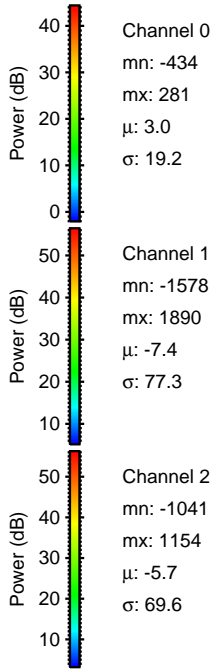
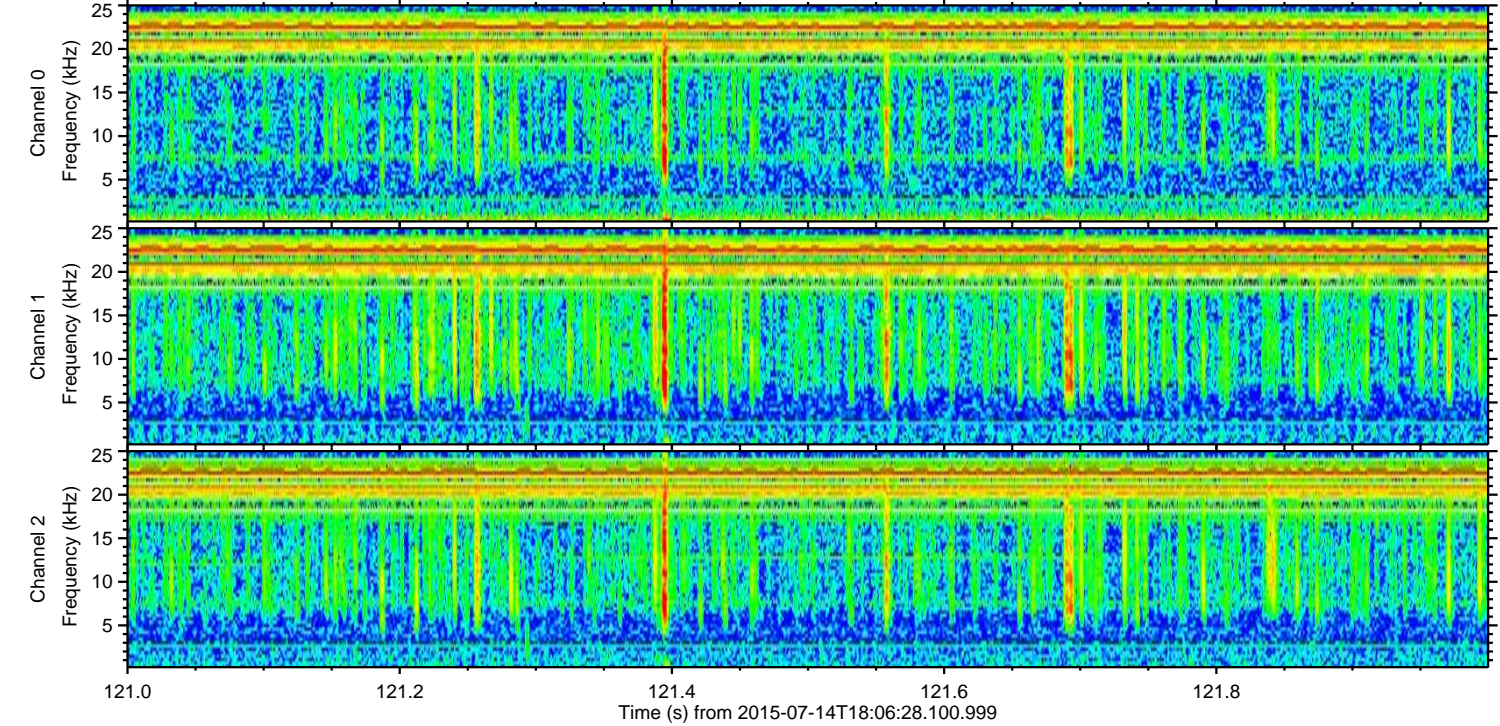
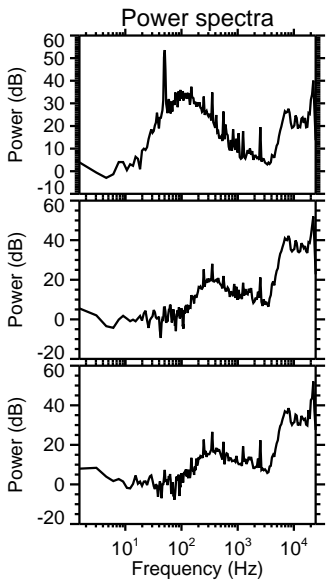
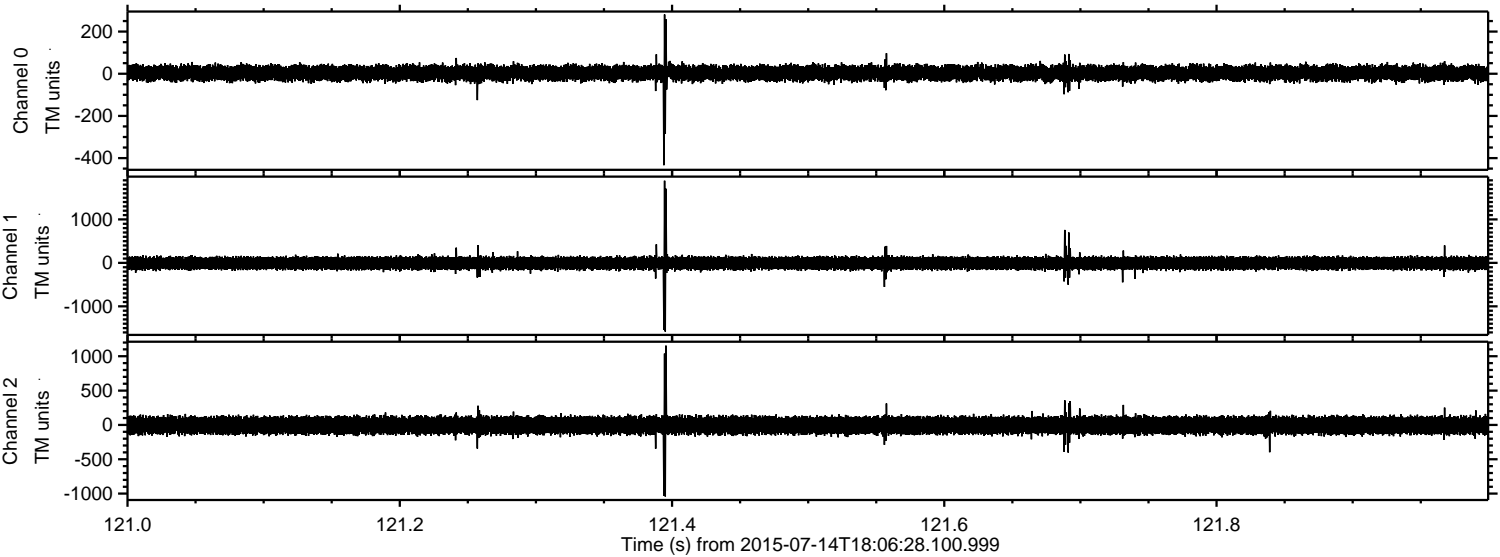
ELMAVAN 3D WAVEFORMS (Measured data sampled at 50 kHz) 51000 packets of 144 samples from 2015-07-14T18:06:28.100.999. Part 14/147

Processed Tue Jul 14 20:13:19 2015 by ELM ver.2012-10-06 from 001__elm20150714_180627__dat00.bin

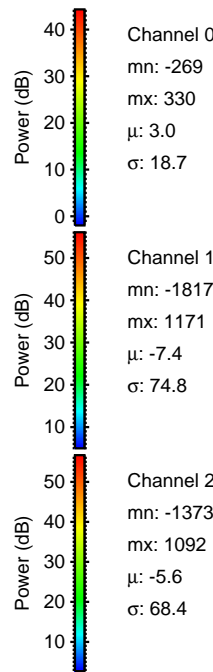
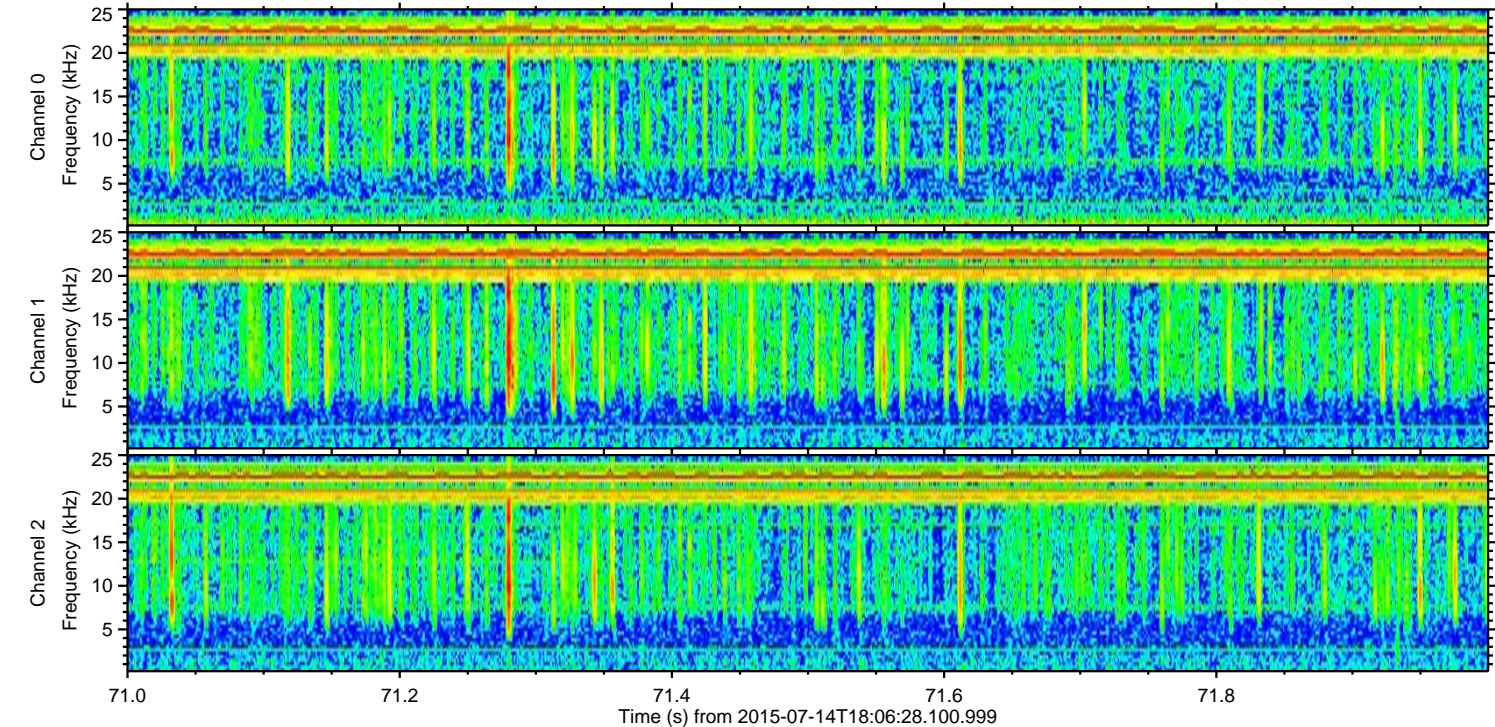
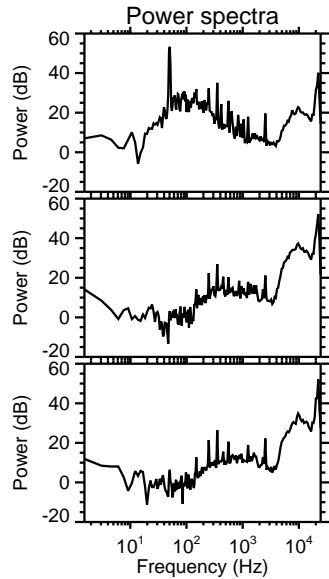
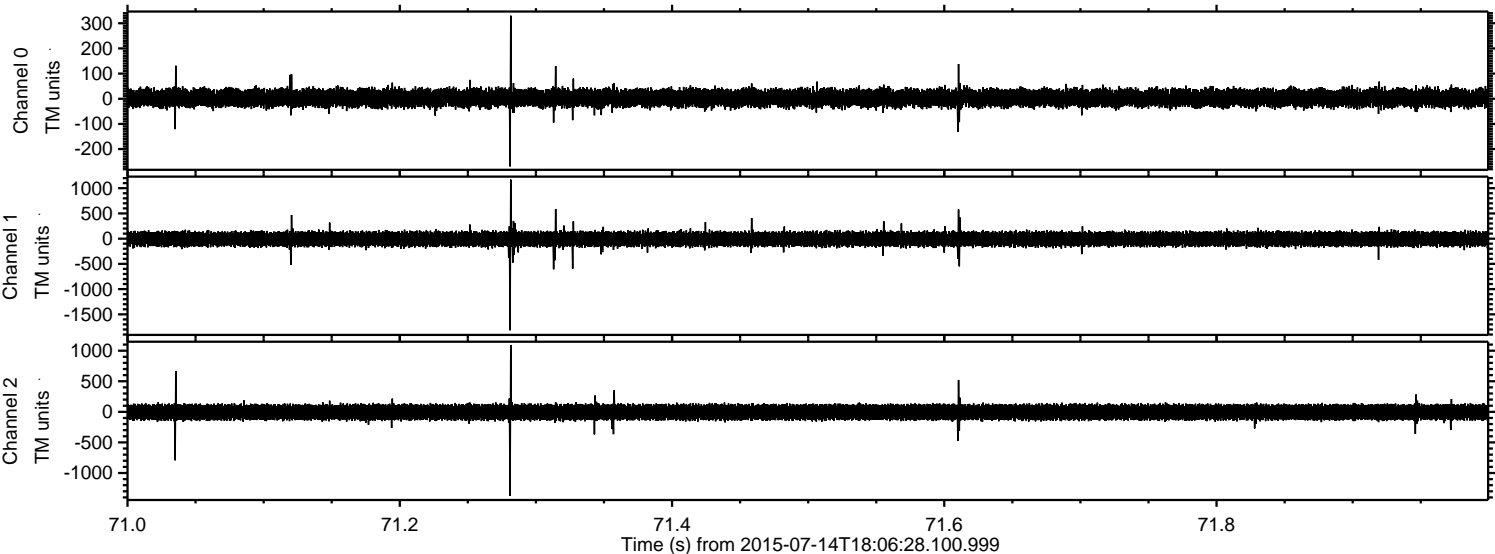


ELMAVAN 3D WAVEFORMS (Measured data sampled at 50 kHz) 51000 packets of 144 samples from 2015-07-14T18:06:28.100.999. Part 122/147

Processed Tue Jul 14 20:13:20 2015 by ELM ver.2012-10-06 from 001__elm20150714_180627__dat00.bin



Processed Tue Jul 14 20:13:21 2015 by ELM ver.2012-10-06 from 001__elm20150714_180627__dat00.bin



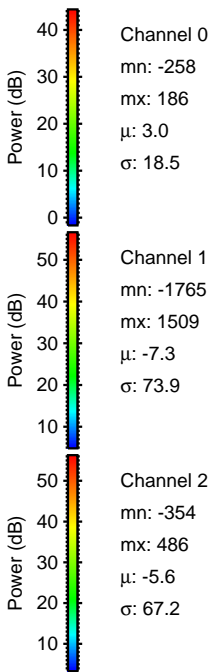
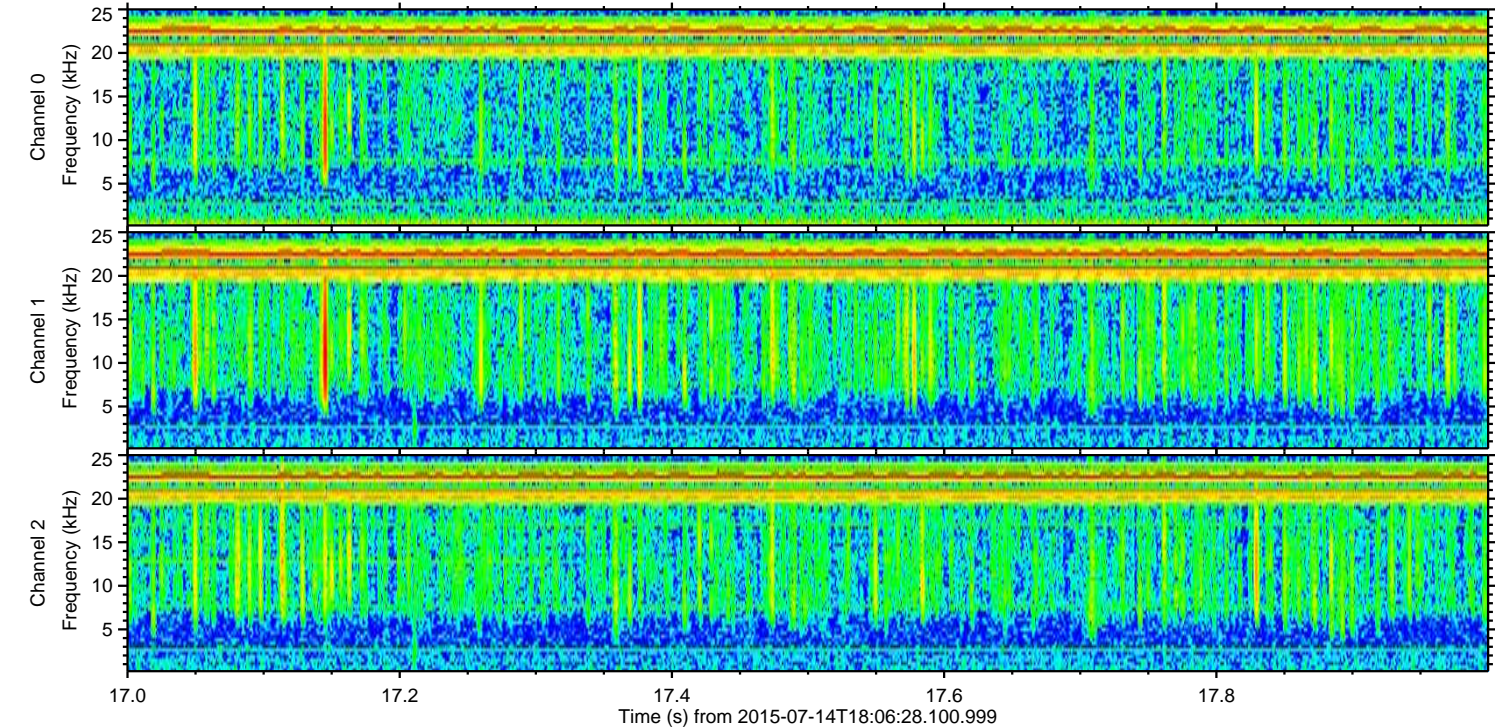
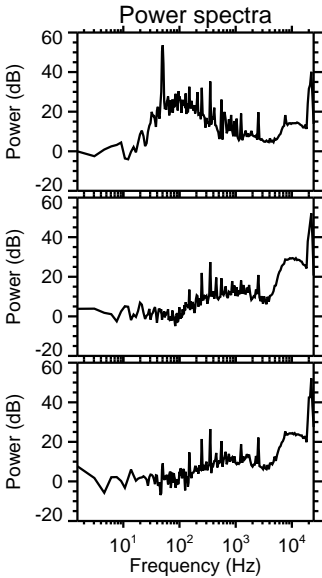
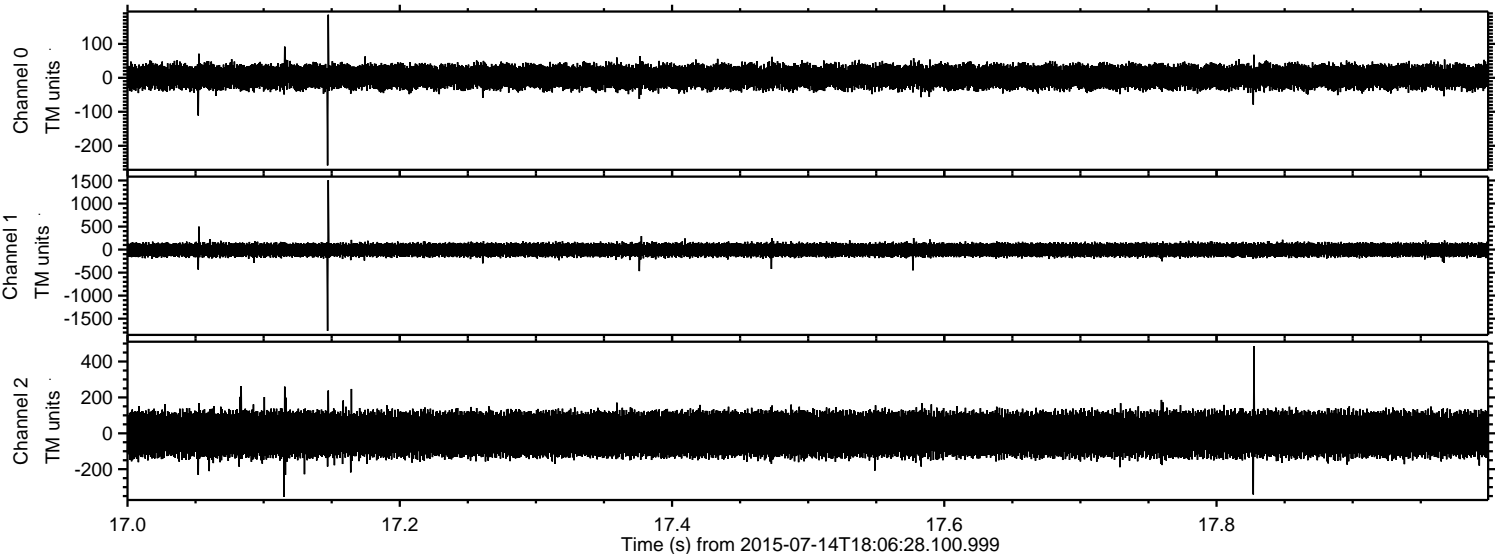
Channel 0
mn: -269
mx: 330
 μ : 3.0
 σ : 18.7

Channel 1
mn: -1817
mx: 1171
 μ : -7.4
 σ : 74.8

Channel 2
mn: -1373
mx: 1092
 μ : -5.6
 σ : 68.4

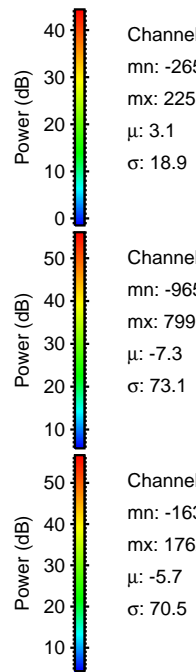
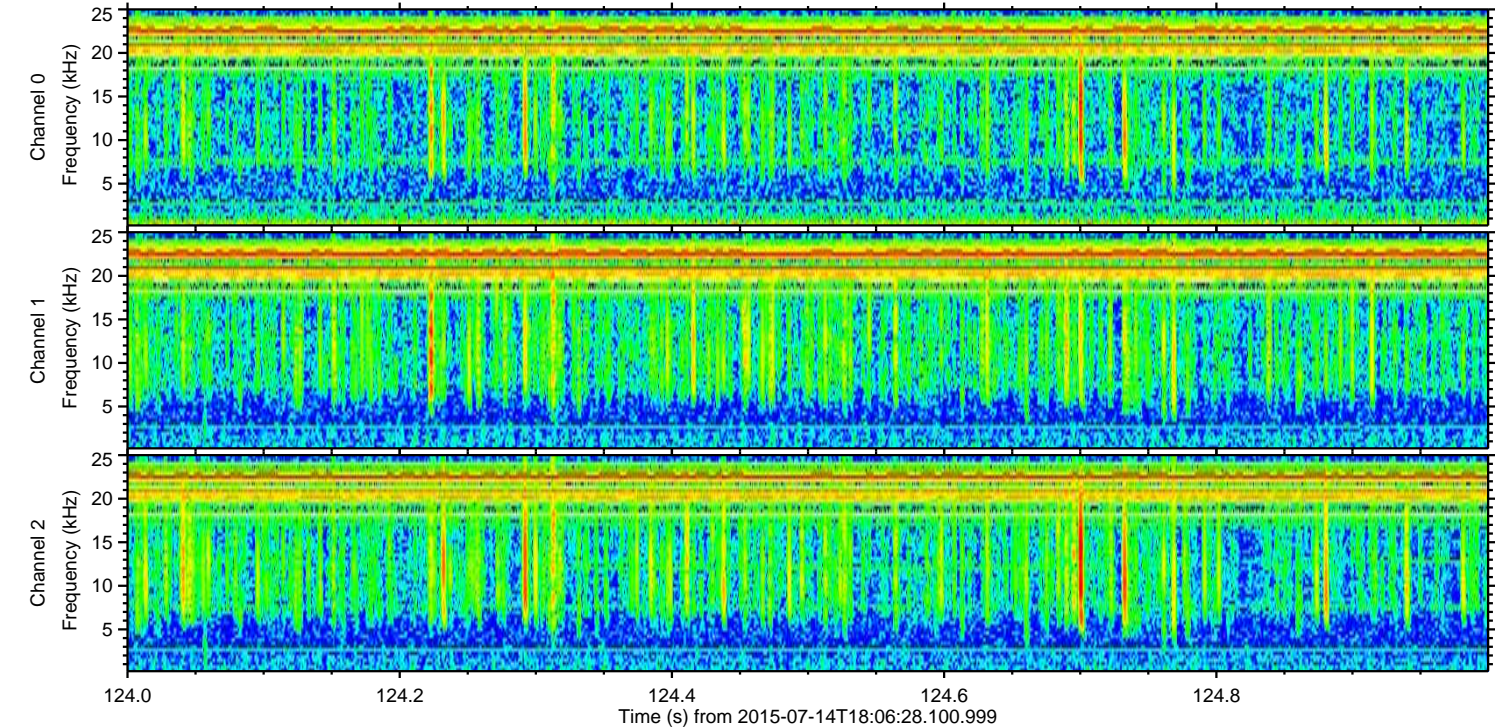
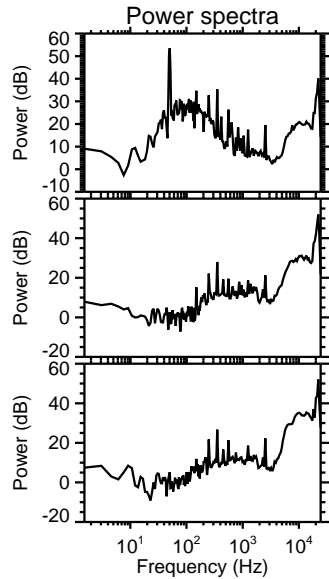
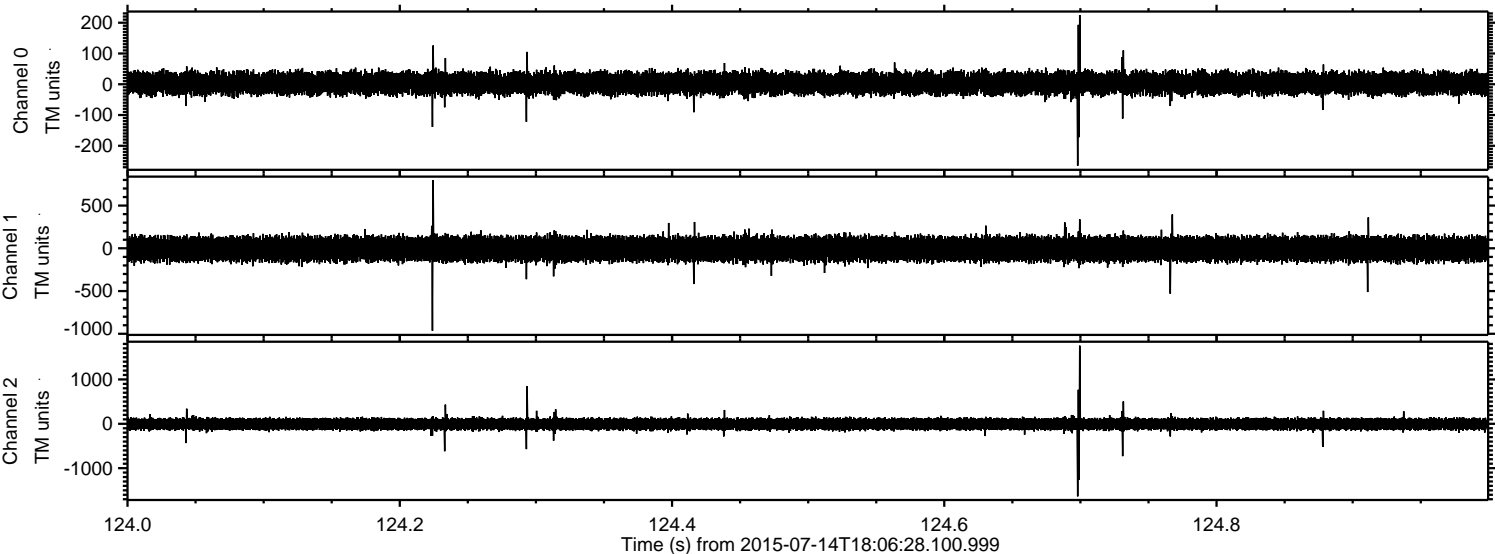
ELMAVAN 3D WAVEFORMS (Measured data sampled at 50 kHz) 51000 packets of 144 samples from 2015-07-14T18:06:28.100.999. Part 18/147

Processed Tue Jul 14 20:13:22 2015 by ELM ver.2012-10-06 from 001__elm20150714_180627__dat00.bin



ELMAVAN 3D WAVEFORMS (Measured data sampled at 50 kHz) 51000 packets of 144 samples from 2015-07-14T18:06:28.100.999. Part 125/147

Processed Tue Jul 14 20:13:23 2015 by ELM ver.2012-10-06 from 001__elm20150714_180627__dat00.bin



ELMAVAN 3D WAVEFORMS (Measured data sampled at 50 kHz) 51000 packets of 144 samples from 2015-07-14T18:06:28.100.999. Part 100/147

