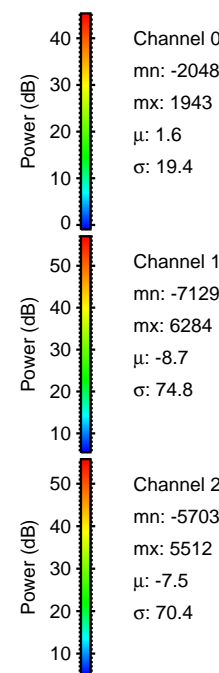
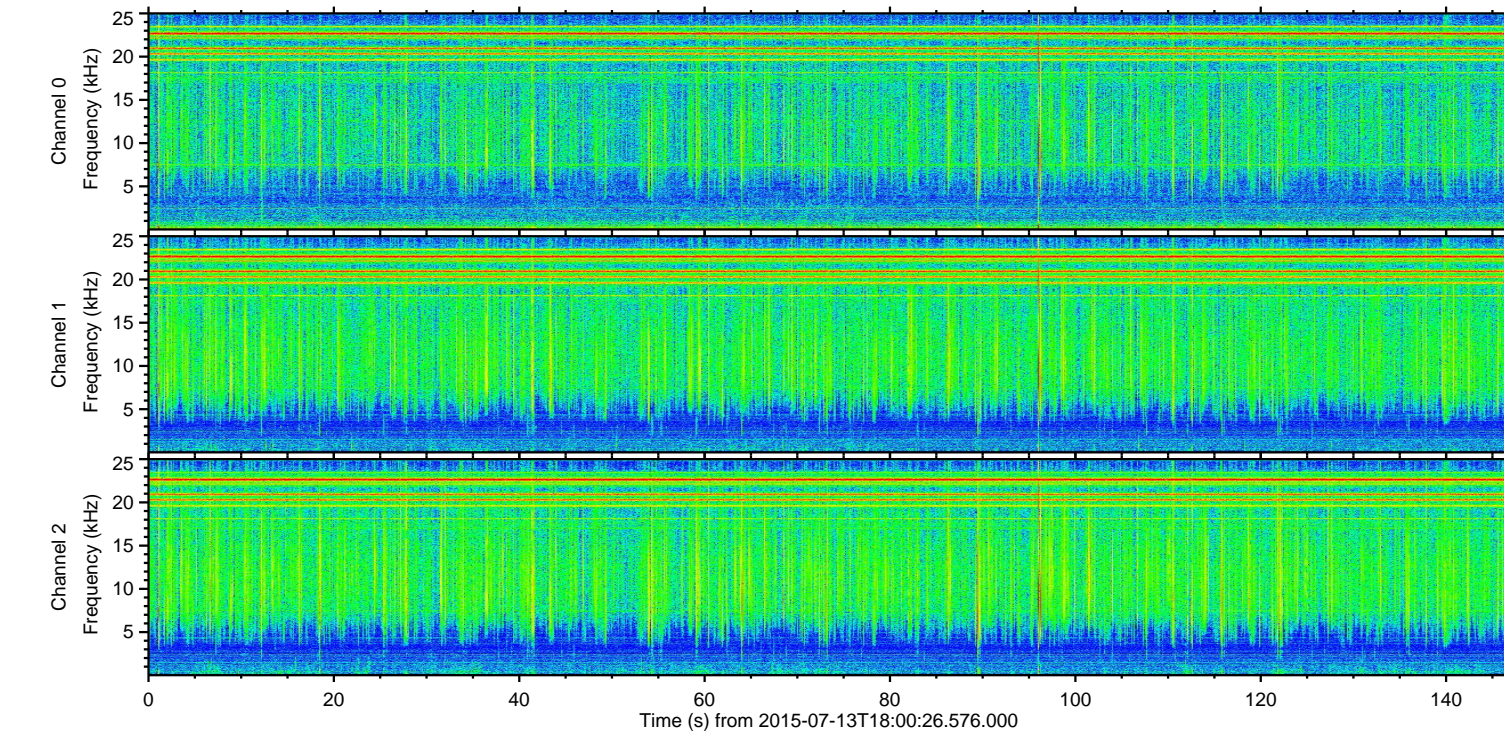
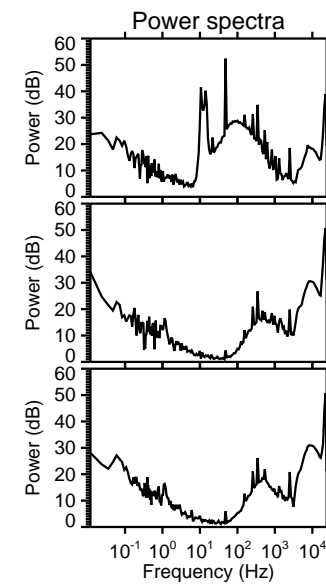
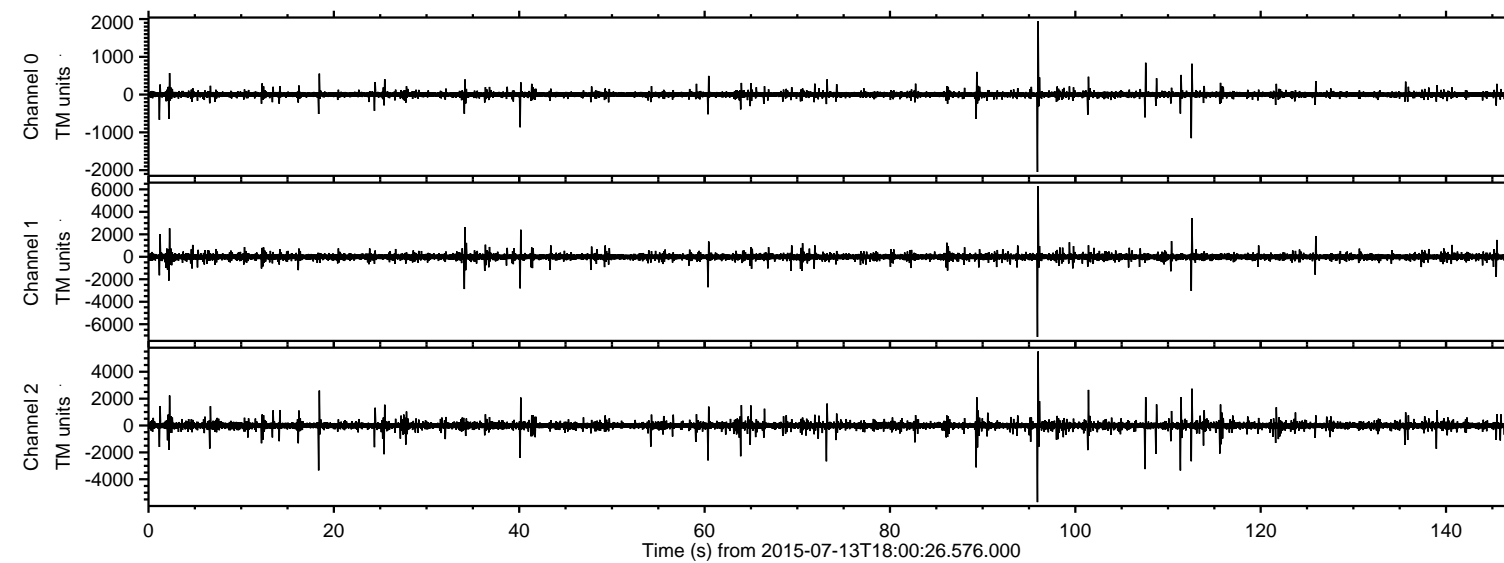
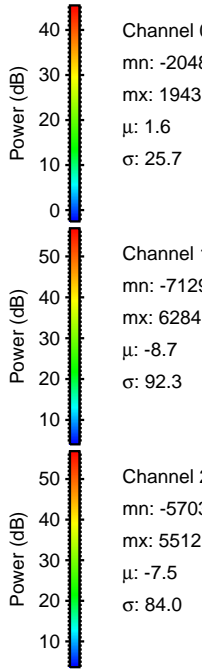
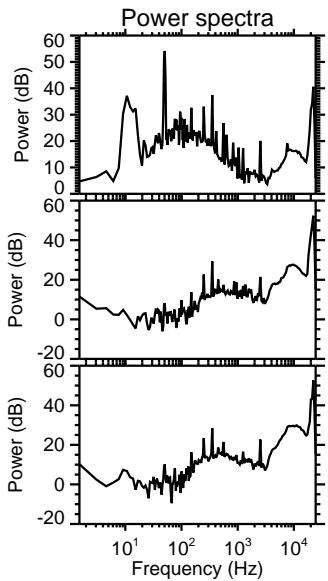
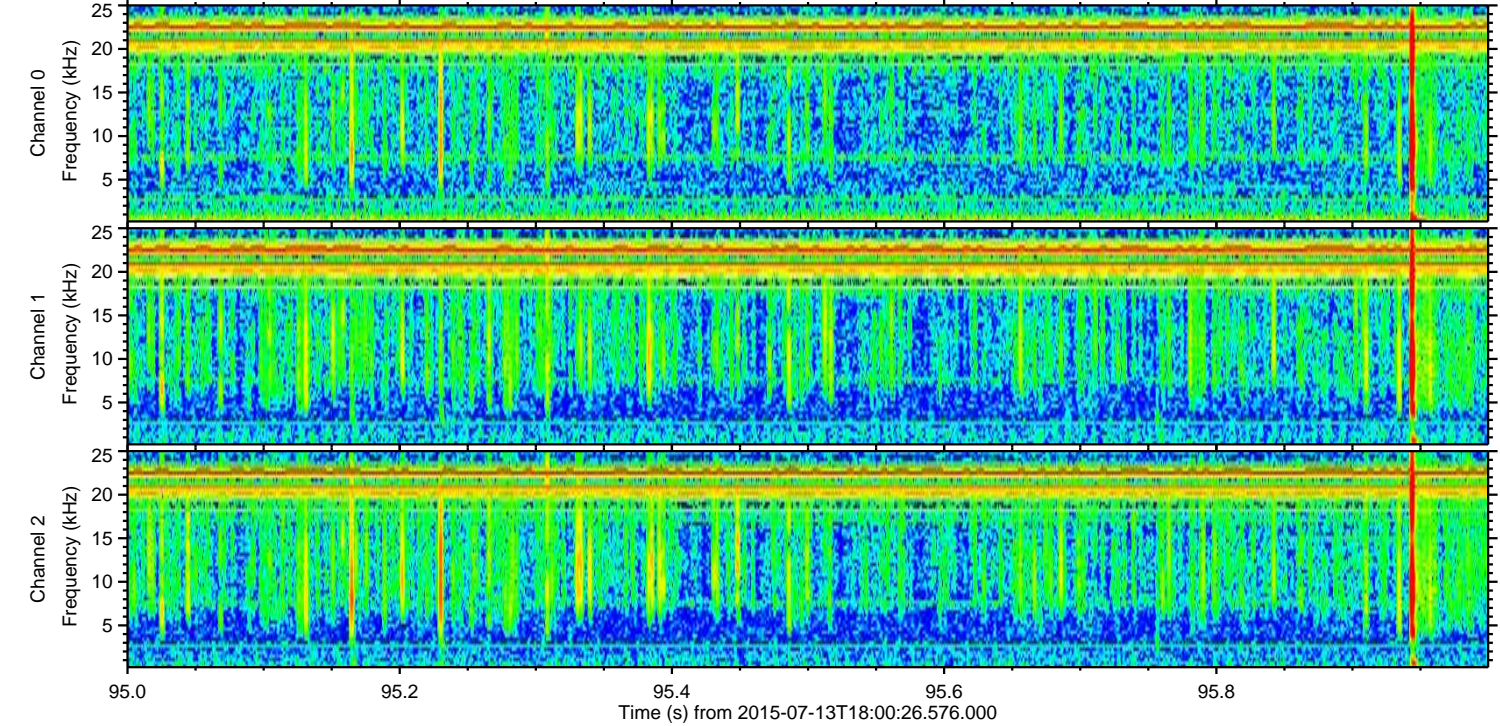
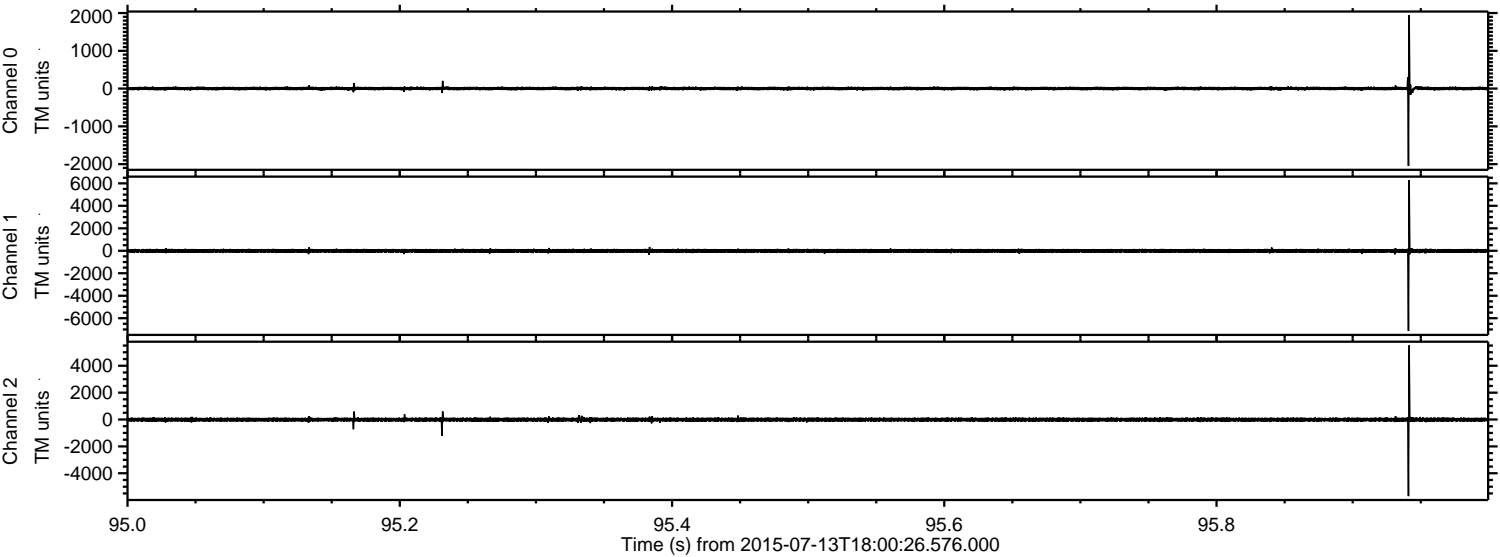


# ELMAVAN 3D WAVEFORMS (Measured data sampled at 50 kHz) 51000 packets of 144 samples from 2015-07-13T18:00:26.576.000.

Processed Mon Jul 13 20:06:57 2015 by ELM ver.2012-10-06 from 001\_\_elm20150713\_180025\_\_dat00.bin

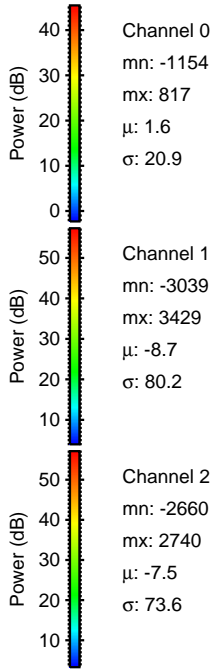
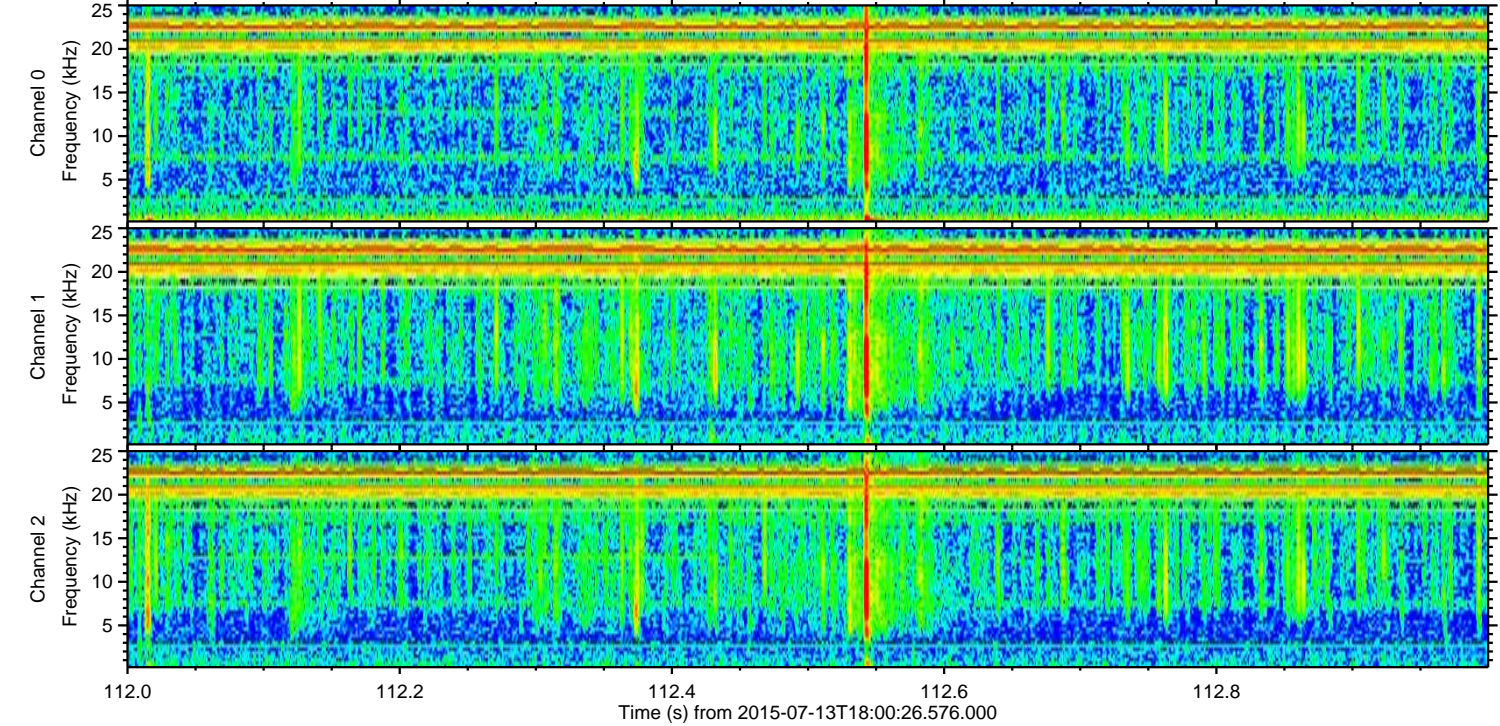
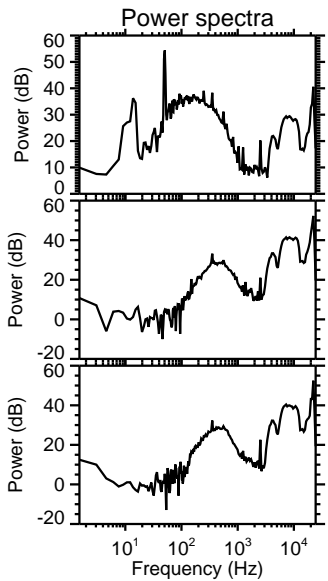
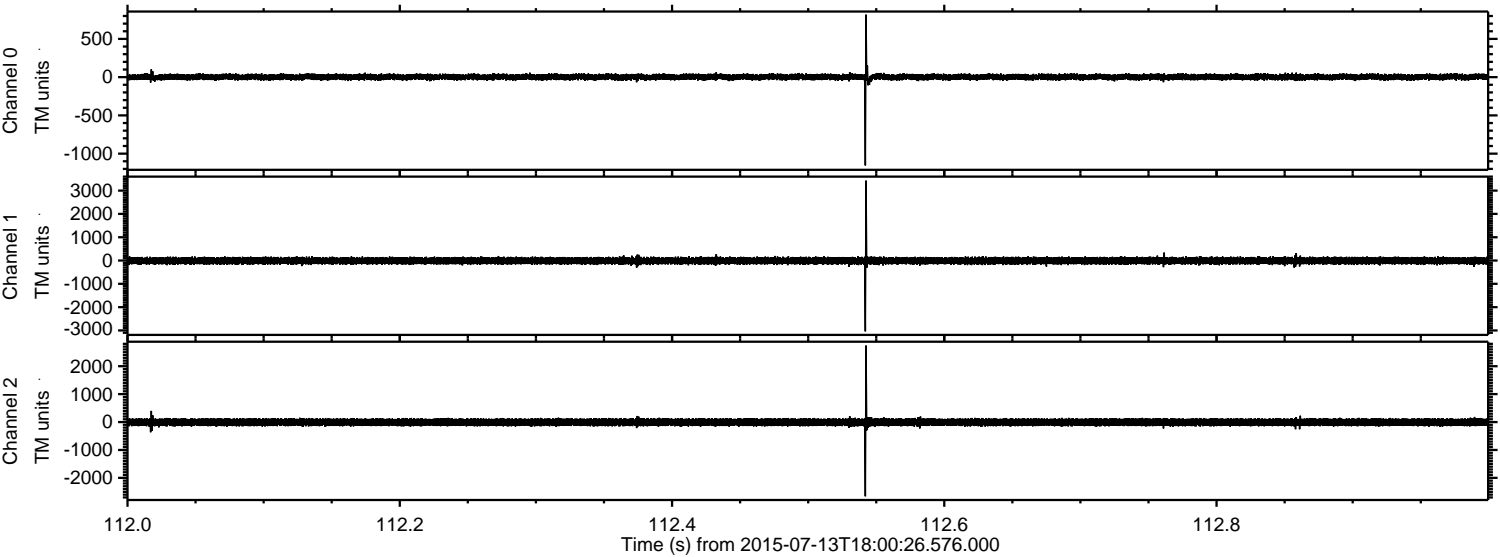


Processed Mon Jul 13 20:07:12 2015 by ELM ver.2012-10-06 from 001\_\_elm20150713\_180025\_\_dat00.bin



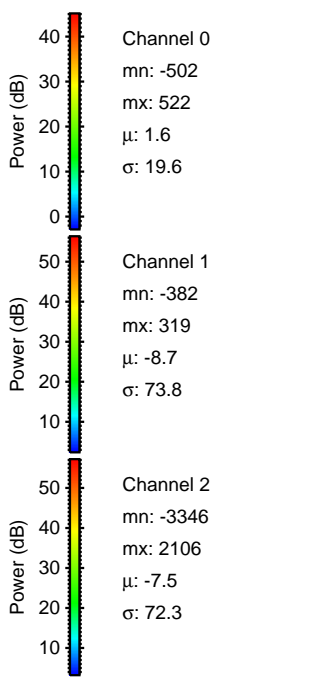
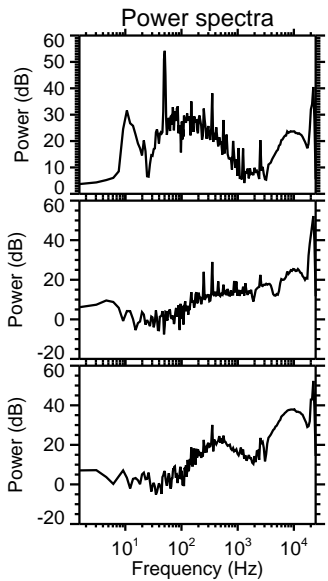
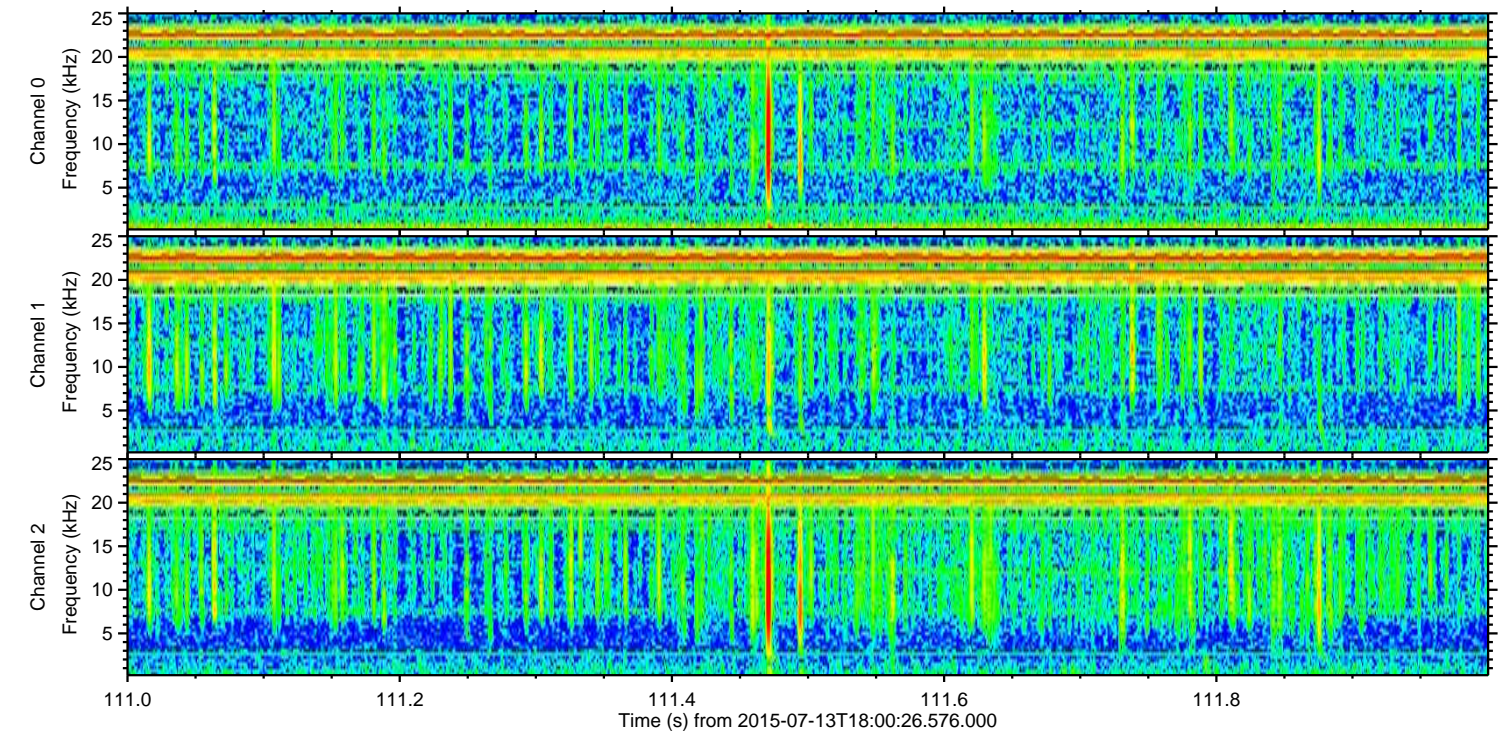
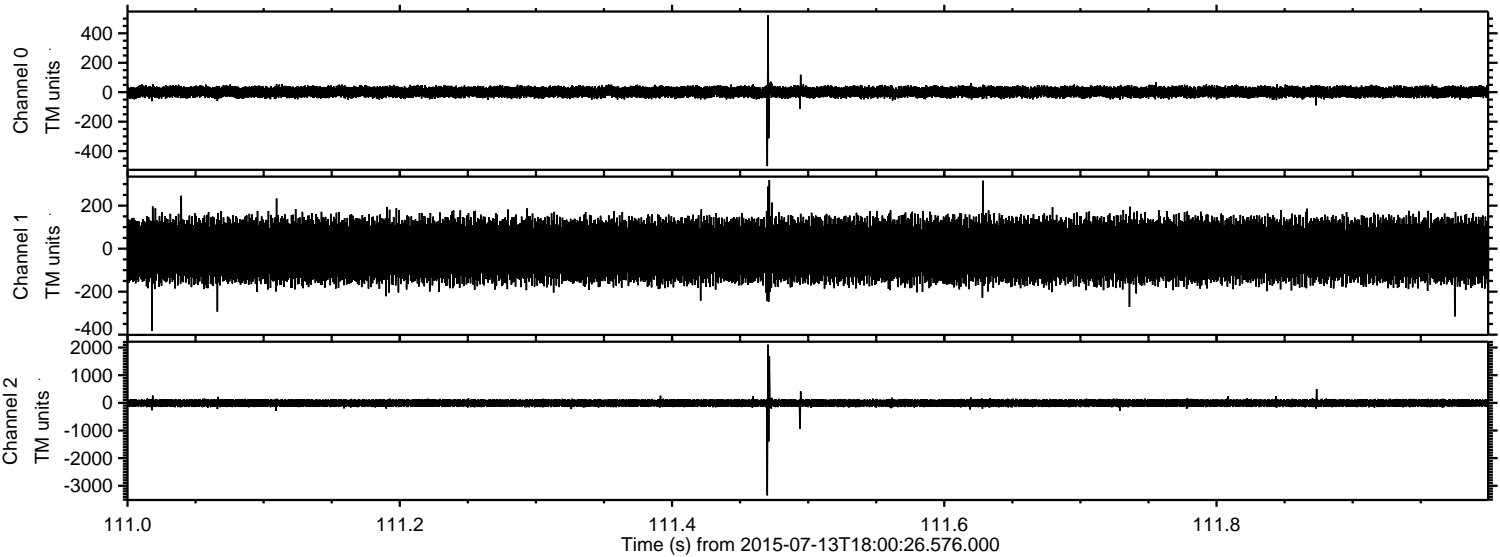
ELMAVAN 3D WAVEFORMS (Measured data sampled at 50 kHz) 51000 packets of 144 samples from 2015-07-13T18:00:26.576.000. Part 113/147

Processed Mon Jul 13 20:07:13 2015 by ELM ver.2012-10-06 from 001\_\_elm20150713\_180025\_\_dat00.bin

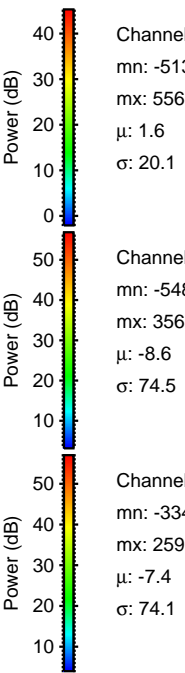
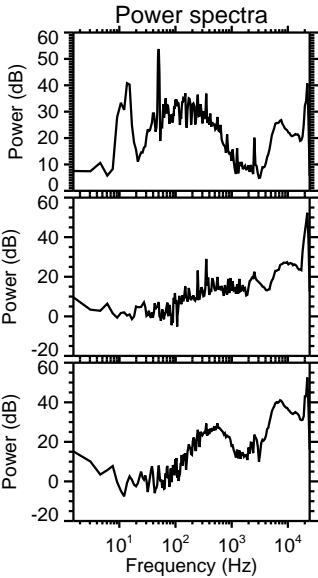
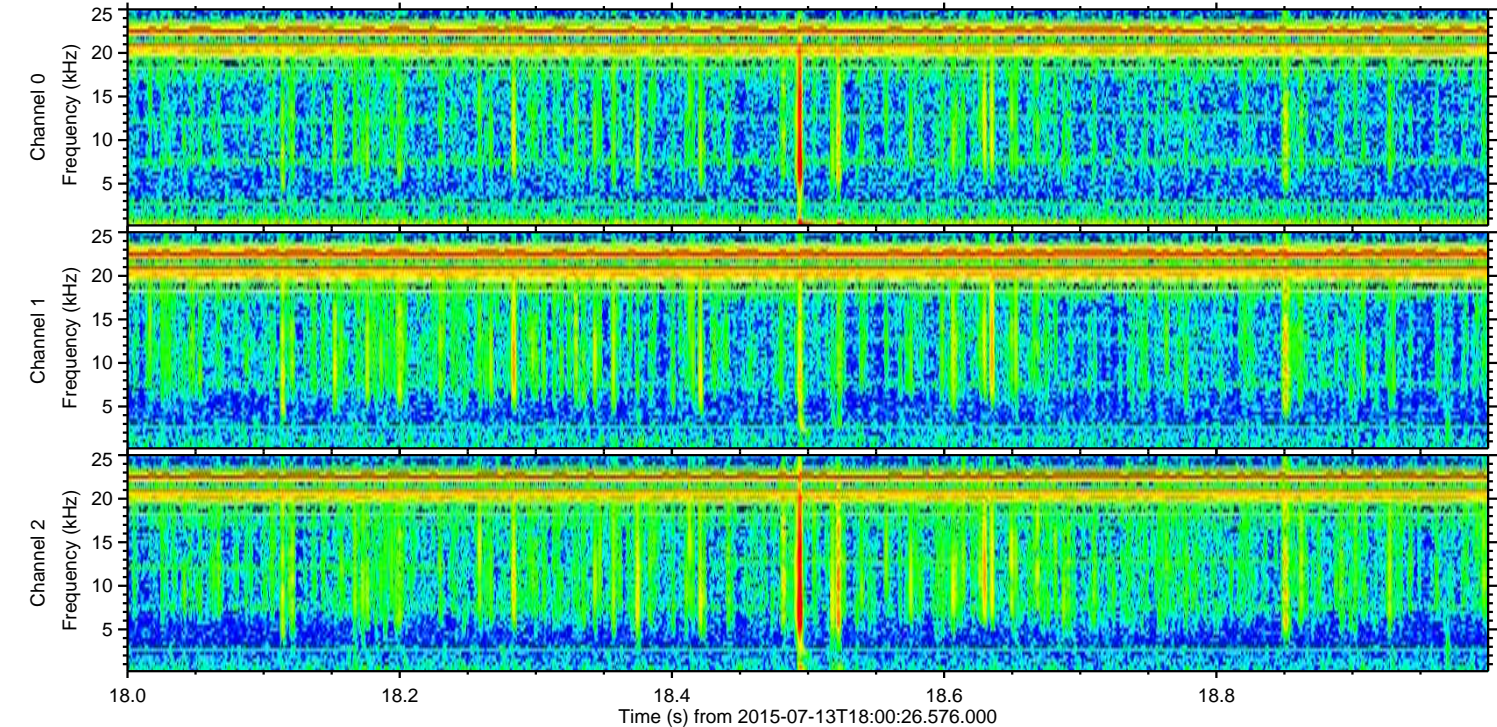
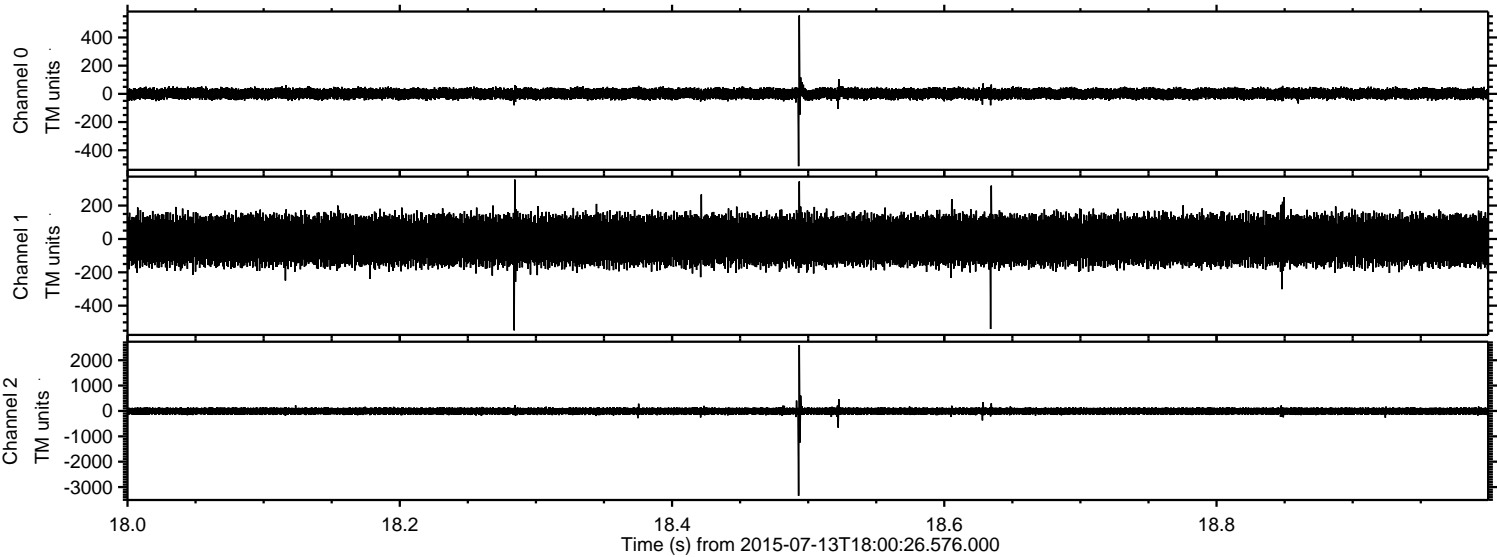


ELMAVAN 3D WAVEFORMS (Measured data sampled at 50 kHz) 51000 packets of 144 samples from 2015-07-13T18:00:26.576.000. Part 112/147

Processed Mon Jul 13 20:07:14 2015 by ELM ver.2012-10-06 from 001\_\_elm20150713\_180025\_\_dat00.bin



Processed Mon Jul 13 20:07:15 2015 by ELM ver.2012-10-06 from 001\_\_elm20150713\_180025\_\_dat00.bin



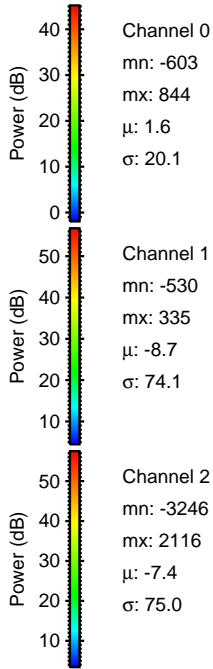
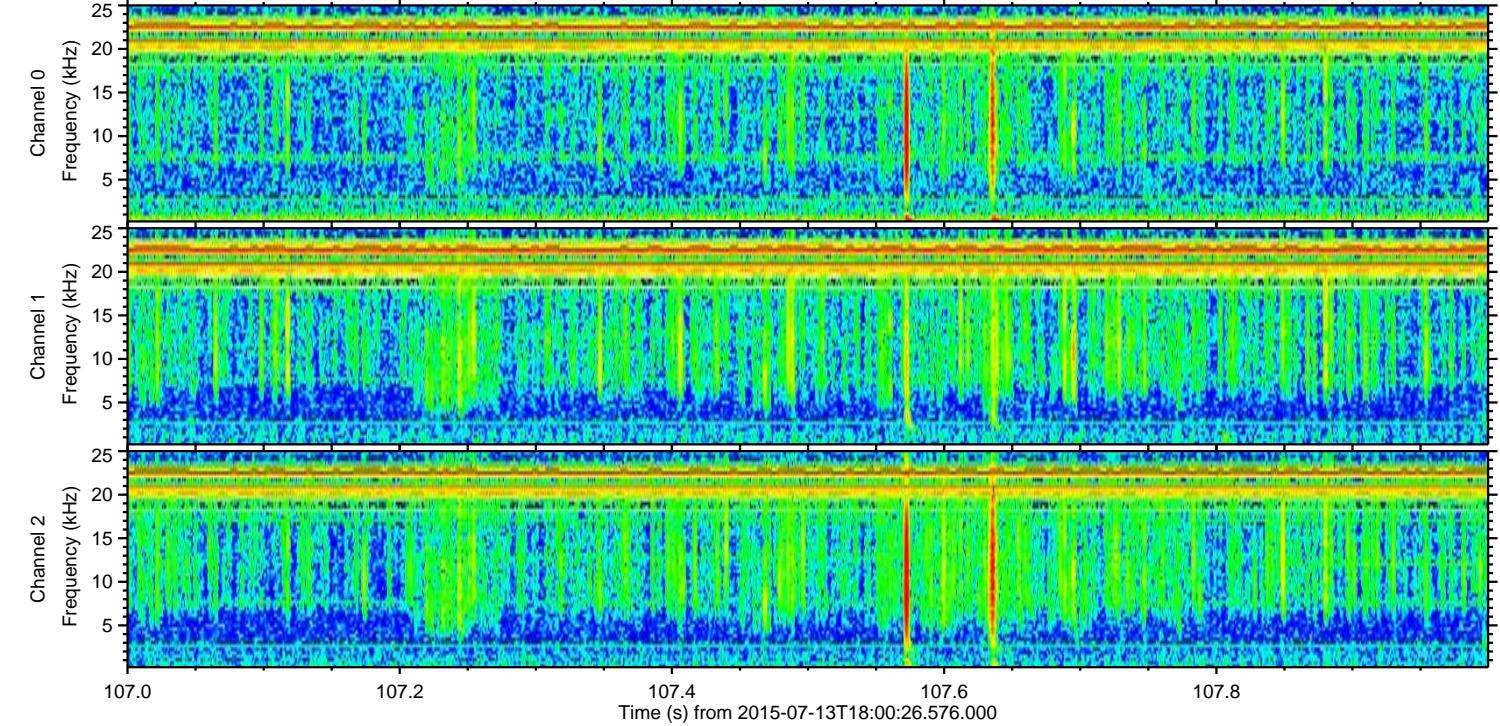
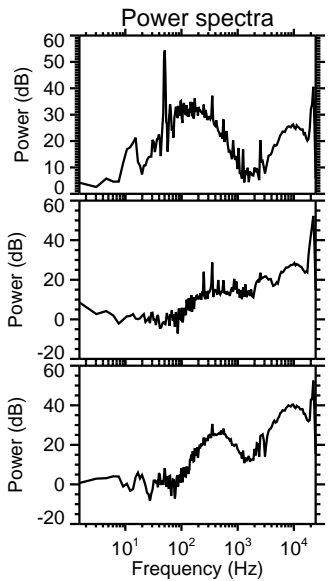
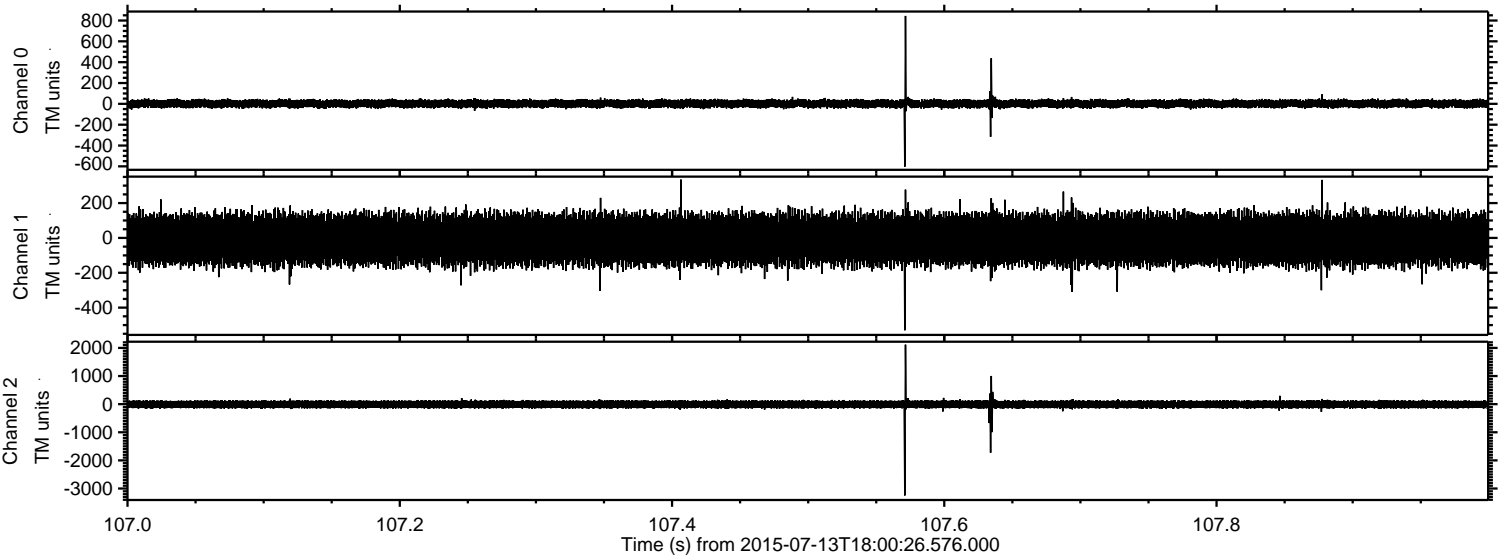
Channel 0  
mn: -513  
mx: 556  
 $\mu$ : 1.6  
 $\sigma$ : 20.1

Channel 1  
mn: -548  
mx: 356  
 $\mu$ : -8.6  
 $\sigma$ : 74.5

Channel 2  
mn: -3342  
mx: 2599  
 $\mu$ : -7.4  
 $\sigma$ : 74.1

ELMAVAN 3D WAVEFORMS (Measured data sampled at 50 kHz) 51000 packets of 144 samples from 2015-07-13T18:00:26.576.000. Part 108/147

Processed Mon Jul 13 20:07:16 2015 by ELM ver.2012-10-06 from 001\_\_elm20150713\_180025\_\_dat00.bin

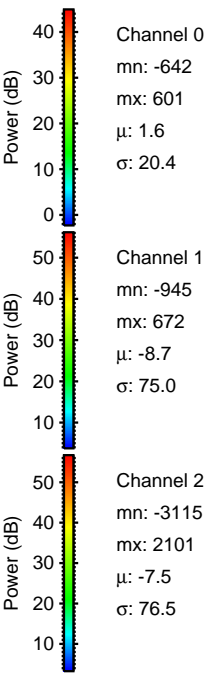
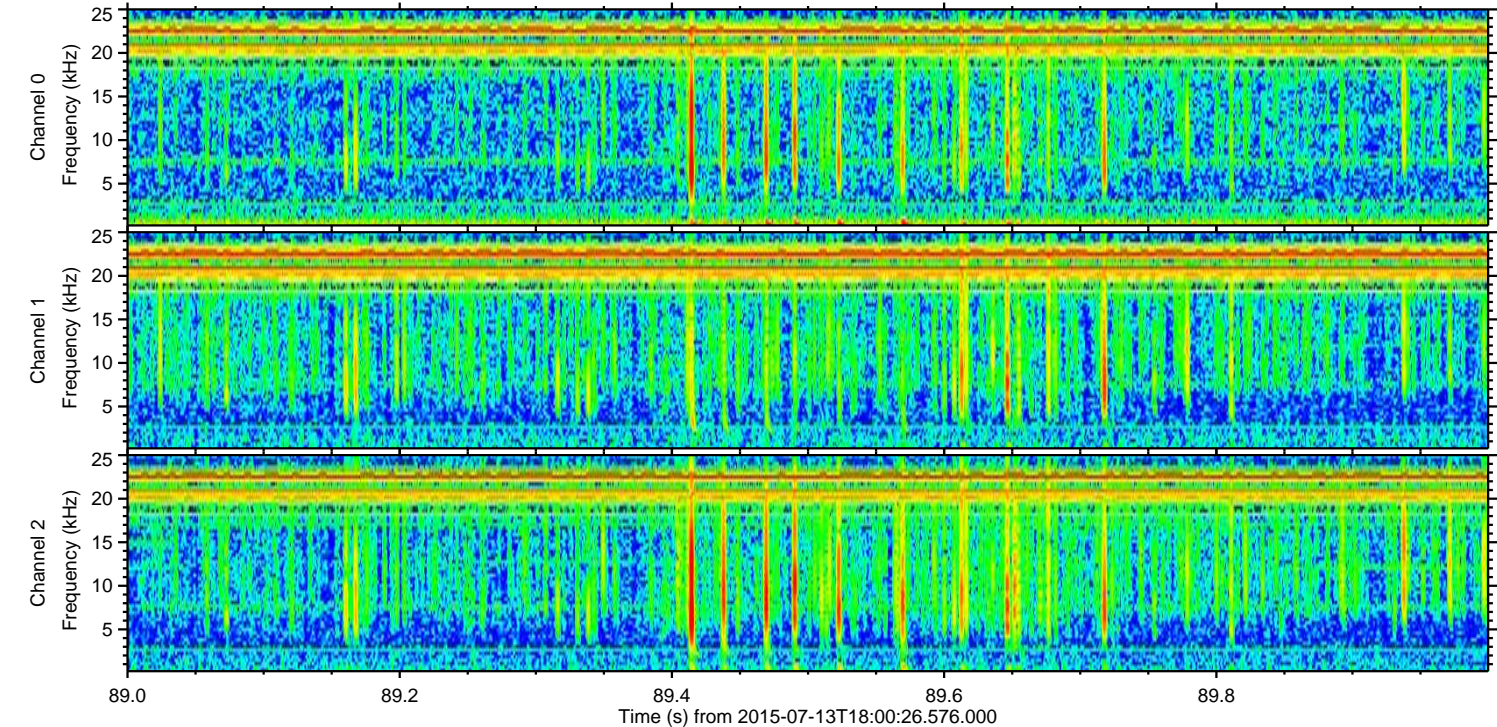
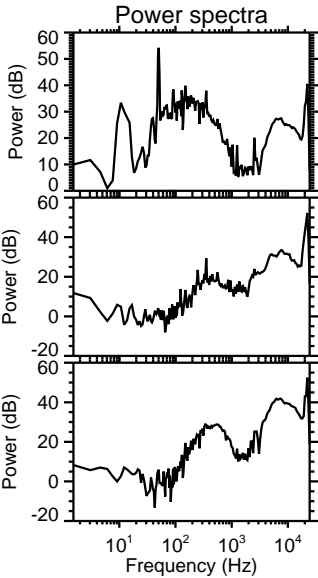
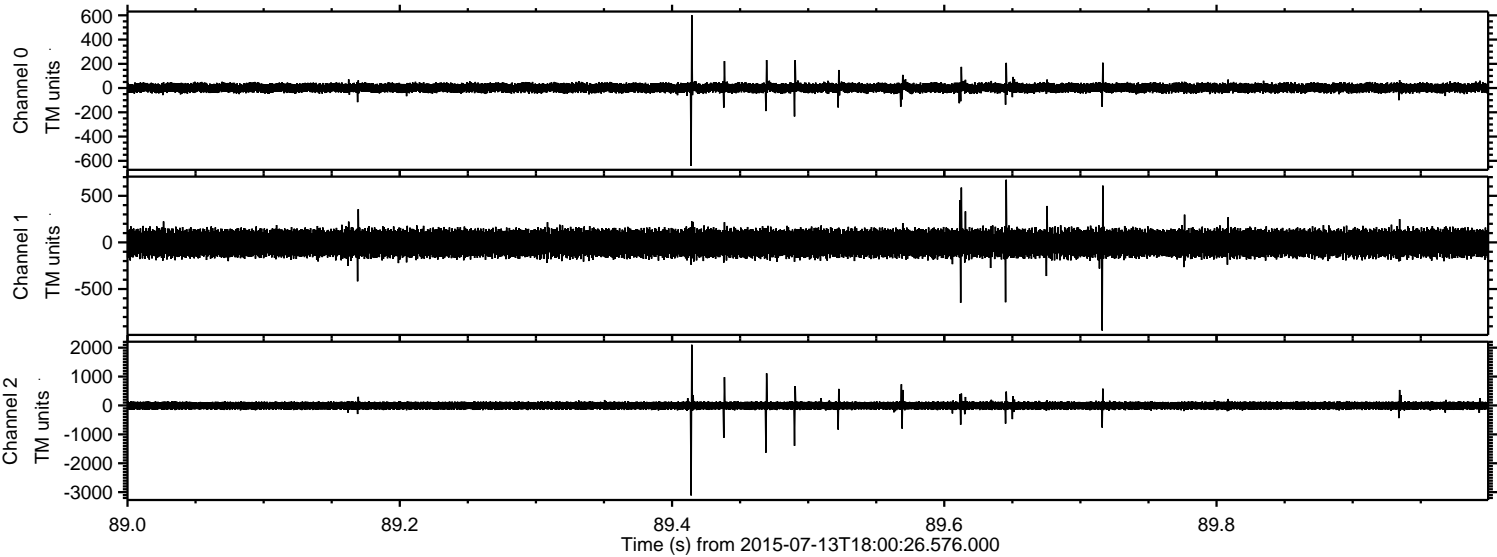


Channel 0  
mn: -603  
mx: 844  
 $\mu$ : 1.6  
 $\sigma$ : 20.1

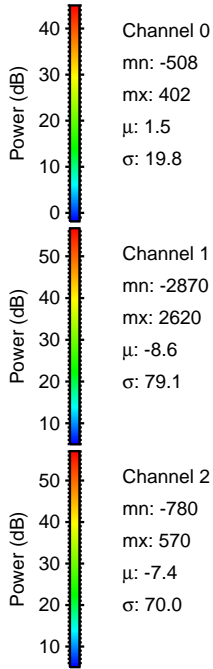
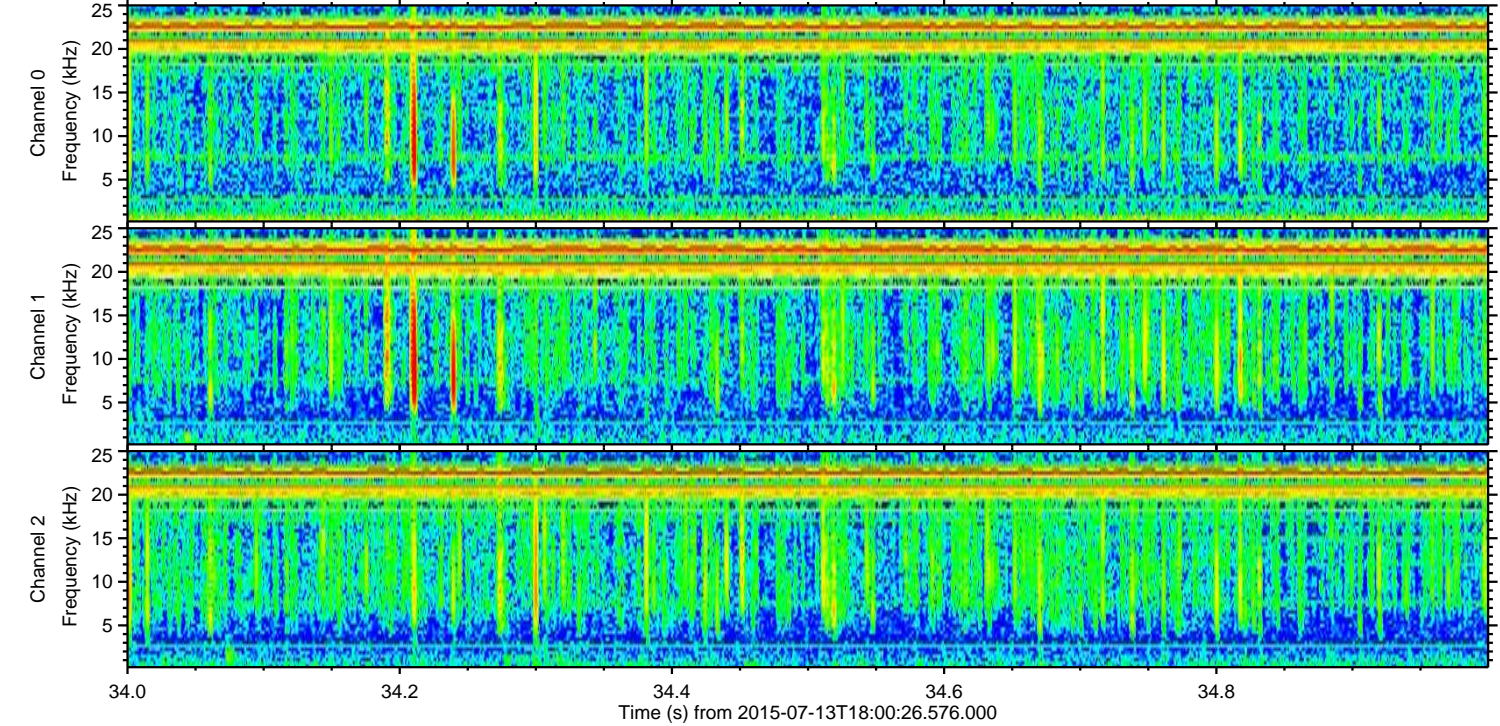
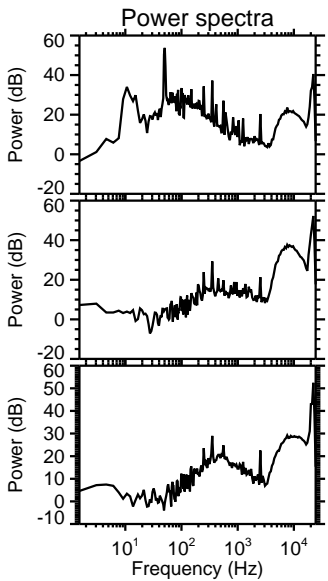
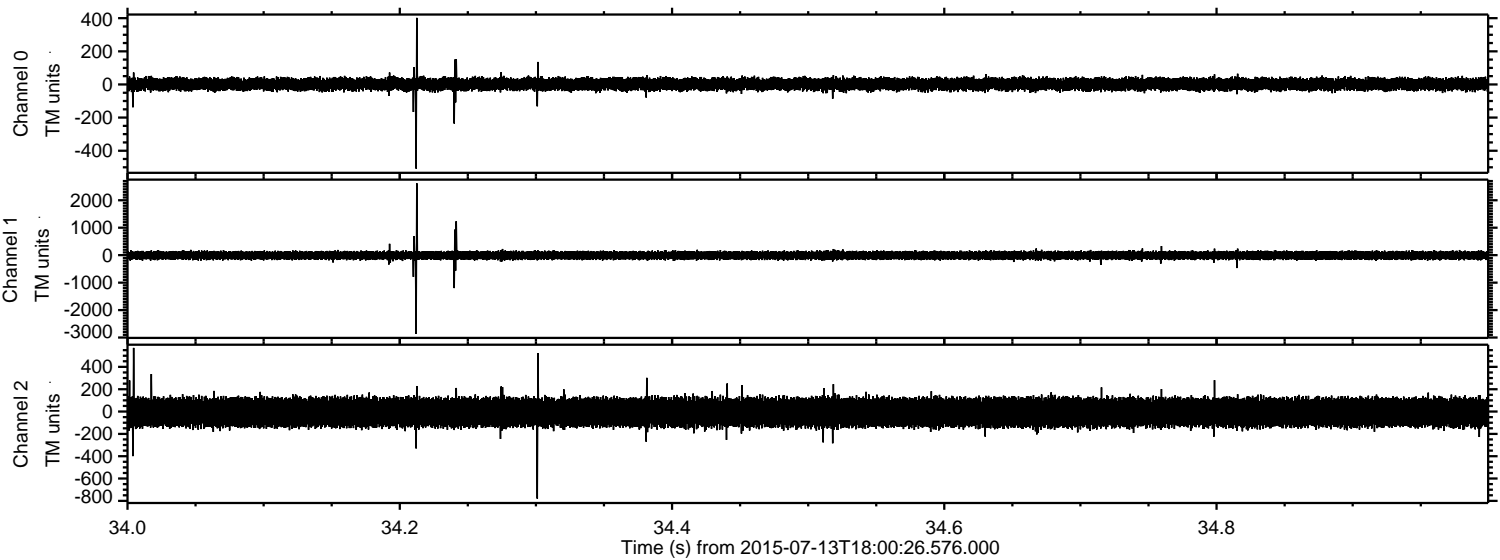
Channel 1  
mn: -530  
mx: 335  
 $\mu$ : -8.7  
 $\sigma$ : 74.1

Channel 2  
mn: -3246  
mx: 2116  
 $\mu$ : -7.4  
 $\sigma$ : 75.0

Processed Mon Jul 13 20:07:17 2015 by ELM ver.2012-10-06 from 001\_\_elm20150713\_180025\_\_dat00.bin



Processed Mon Jul 13 20:07:18 2015 by ELM ver.2012-10-06 from 001\_\_elm20150713\_180025\_\_dat00.bin

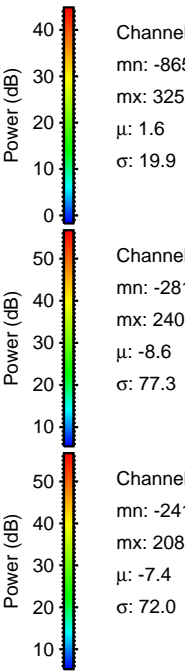
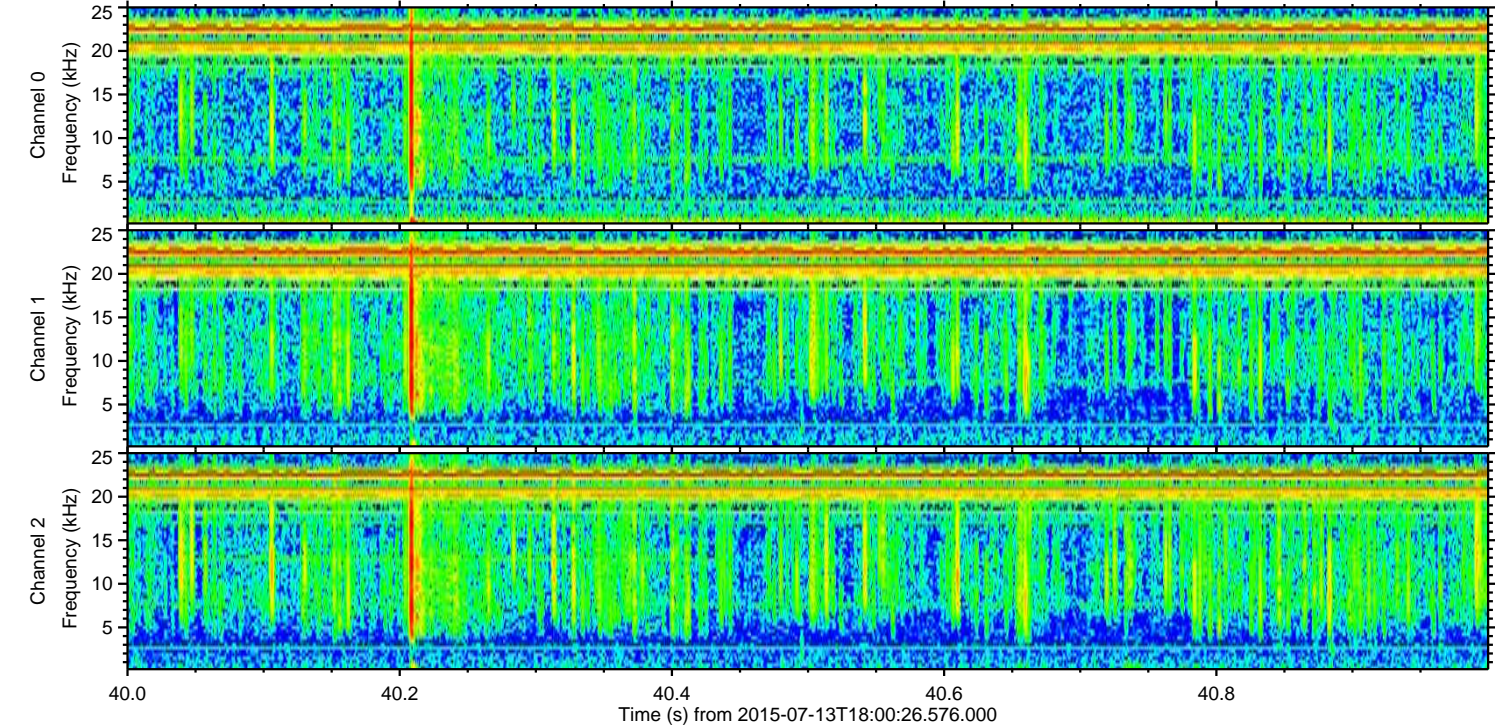
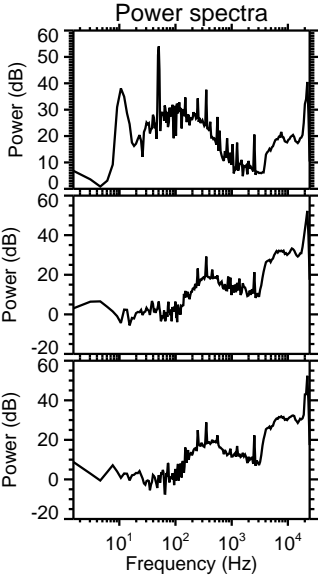
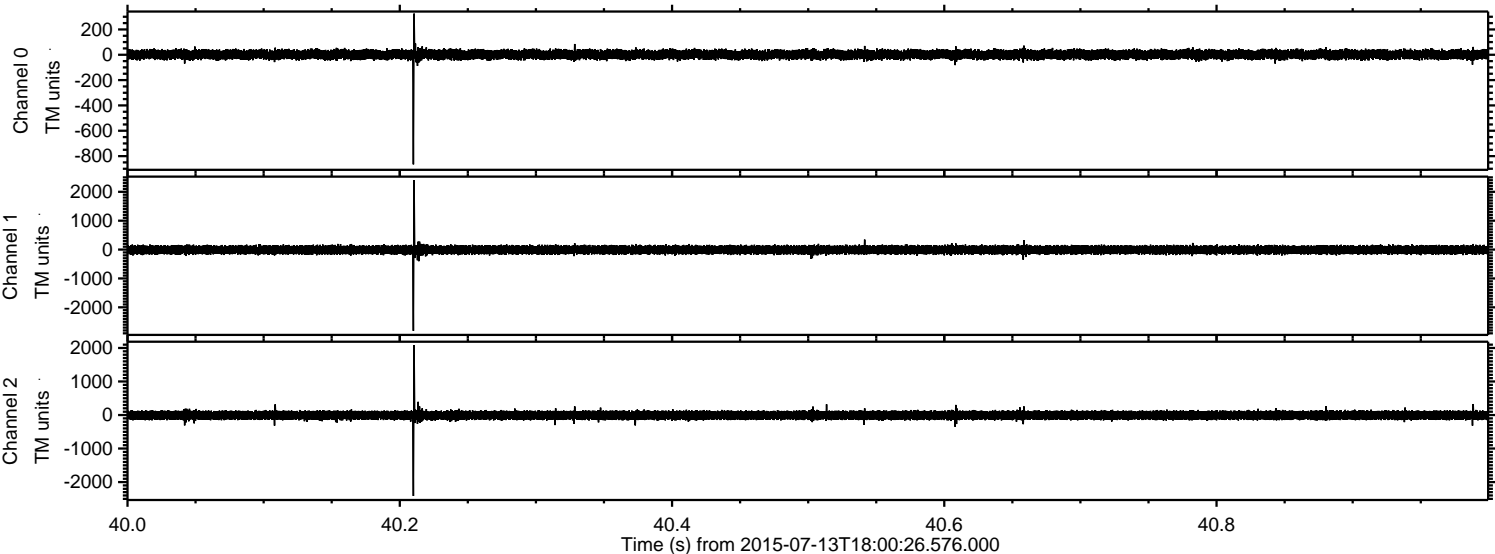


Channel 0  
mn: -508  
mx: 402  
 $\mu$ : 1.5  
 $\sigma$ : 19.8

Channel 1  
mn: -2870  
mx: 2620  
 $\mu$ : -8.6  
 $\sigma$ : 79.1

Channel 2  
mn: -780  
mx: 570  
 $\mu$ : -7.4  
 $\sigma$ : 70.0

Processed Mon Jul 13 20:07:19 2015 by ELM ver.2012-10-06 from 001\_\_elm20150713\_180025\_\_dat00.bin



Processed Mon Jul 13 20:07:20 2015 by ELM ver.2012-10-06 from 001\_\_elm20150713\_180025\_\_dat00.bin

