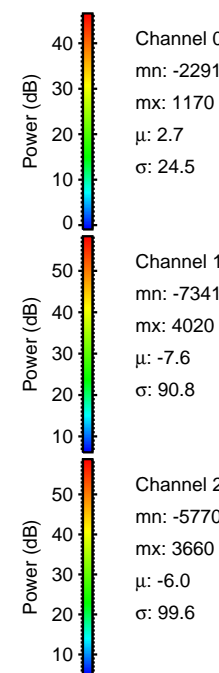
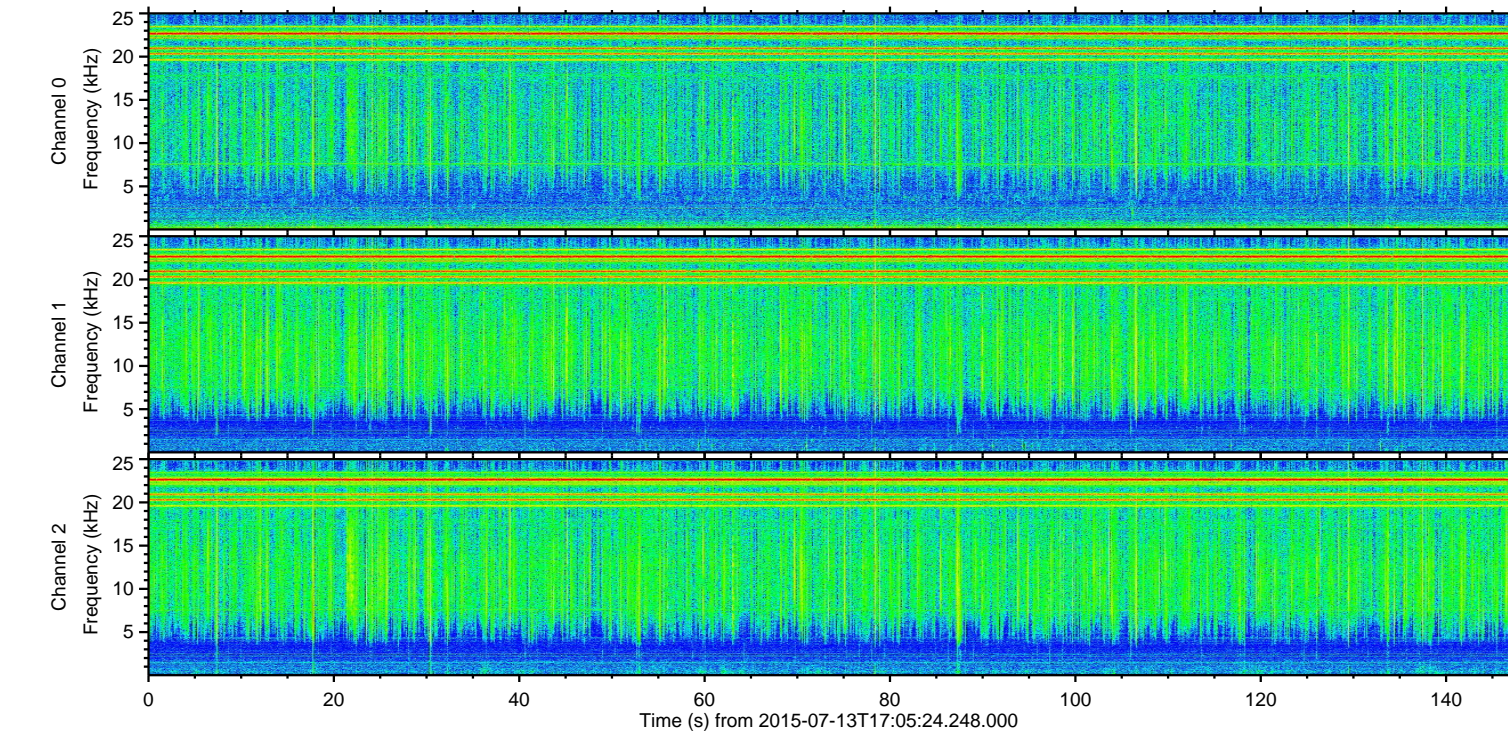
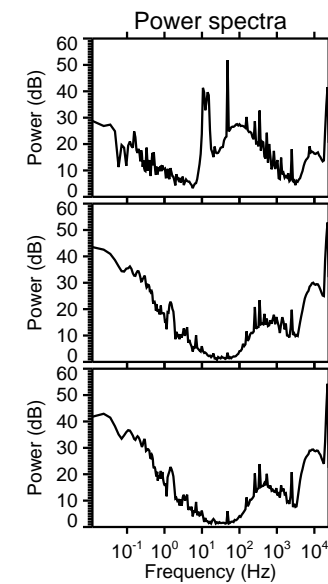
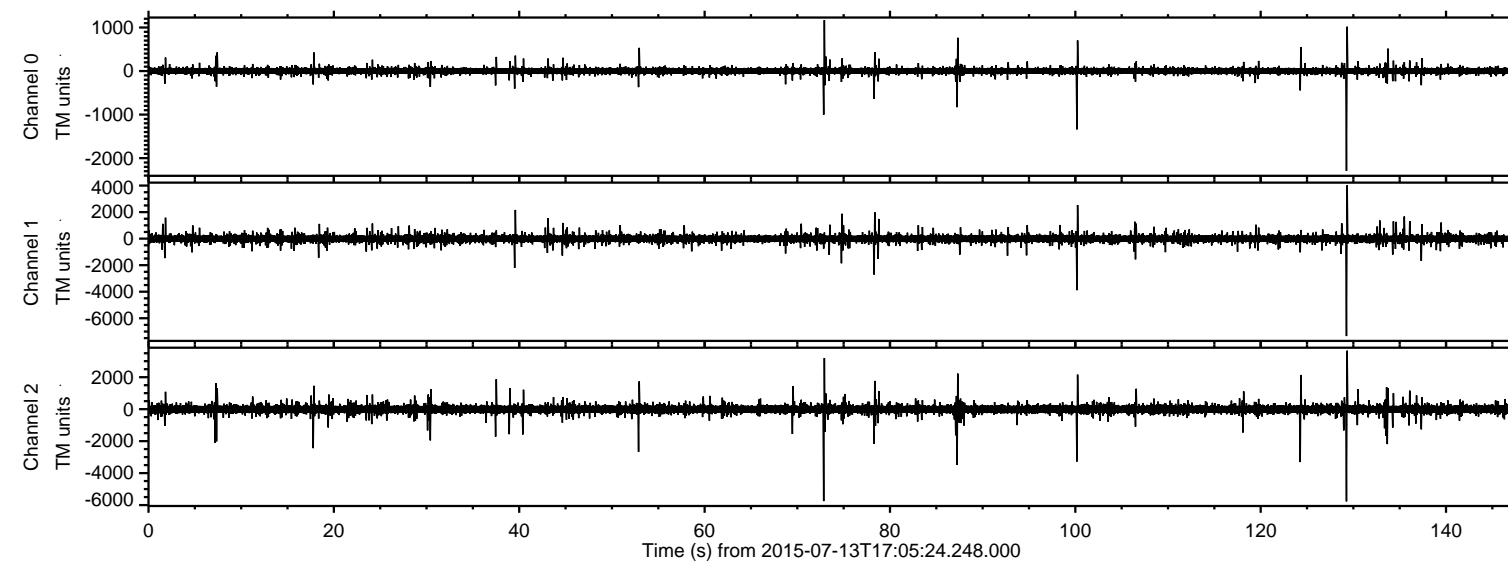


# ELMAVAN 3D WAVEFORMS (Measured data sampled at 50 kHz) 51000 packets of 144 samples from 2015-07-13T17:05:24.248.000.

Processed Mon Jul 13 19:11:22 2015 by ELM ver.2012-10-06 from 001\_\_elm20150713\_170523\_\_dat00.bin



Channel 0  
mn: -2291  
mx: 1170  
 $\mu$ : 2.7  
 $\sigma$ : 24.5

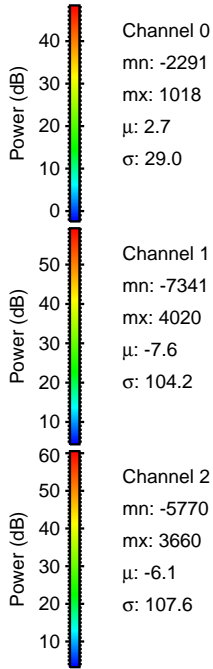
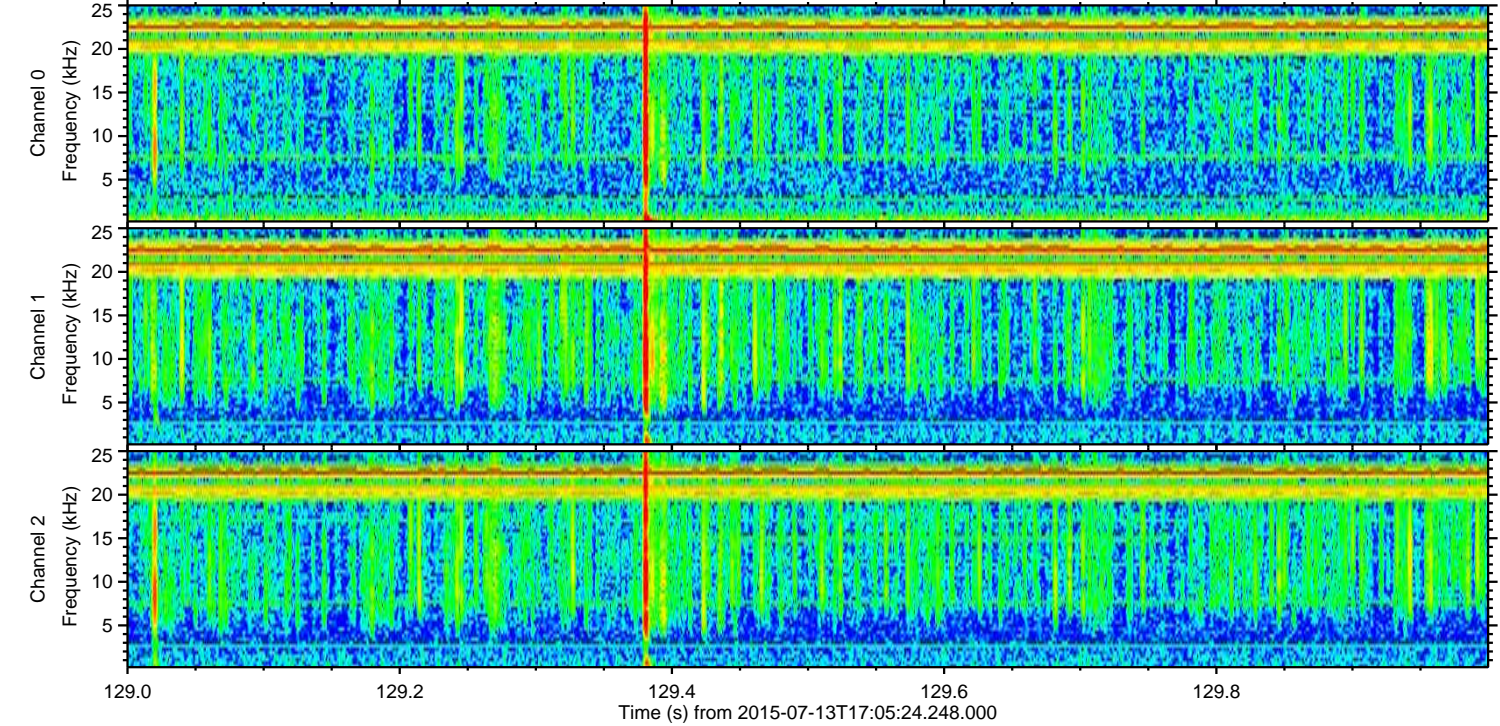
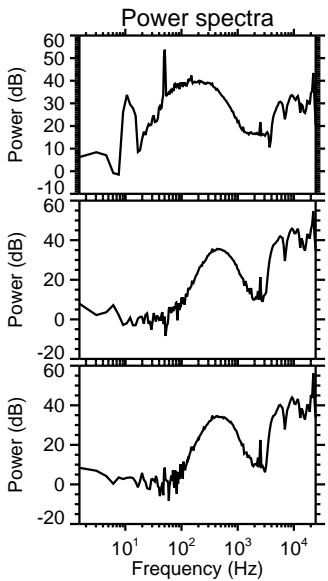
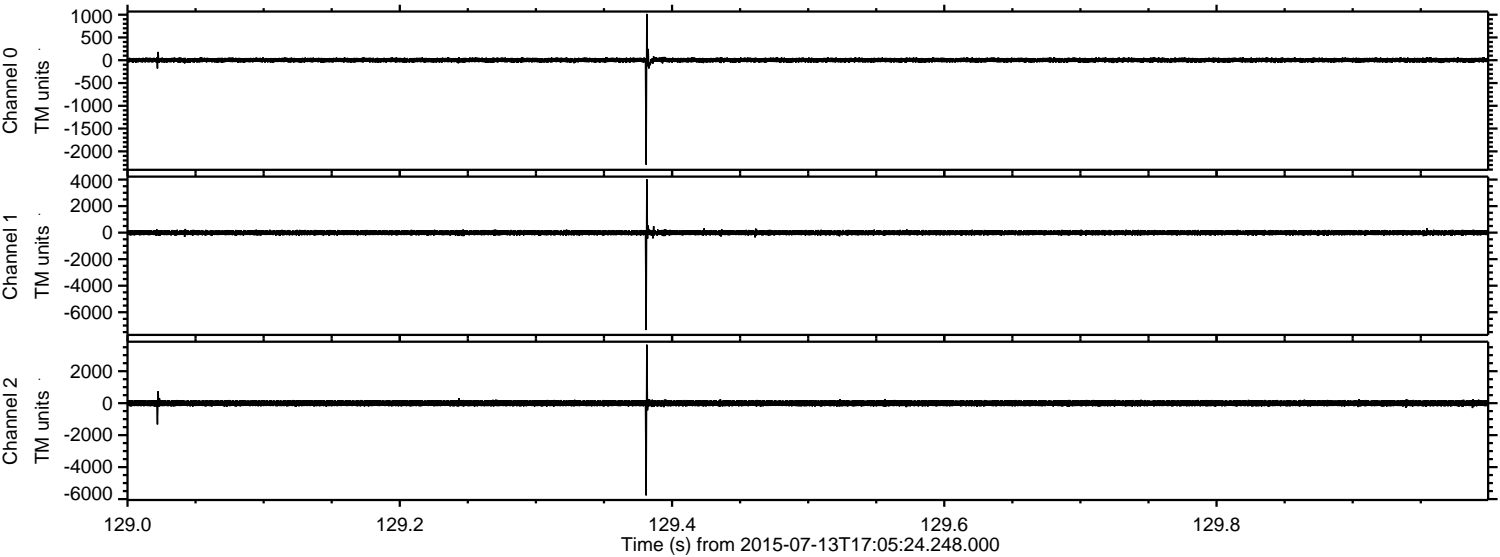
Channel 1  
mn: -7341  
mx: 4020  
 $\mu$ : -7.6  
 $\sigma$ : 90.8

Channel 2  
mn: -5770  
mx: 3660  
 $\mu$ : -6.0  
 $\sigma$ : 99.6



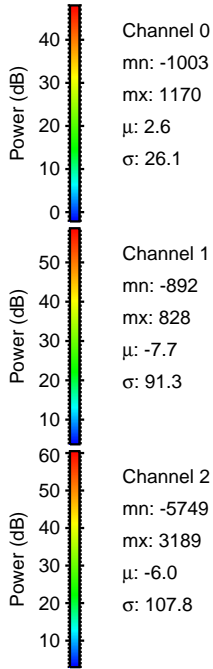
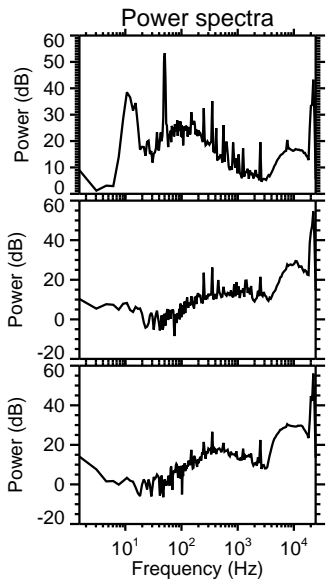
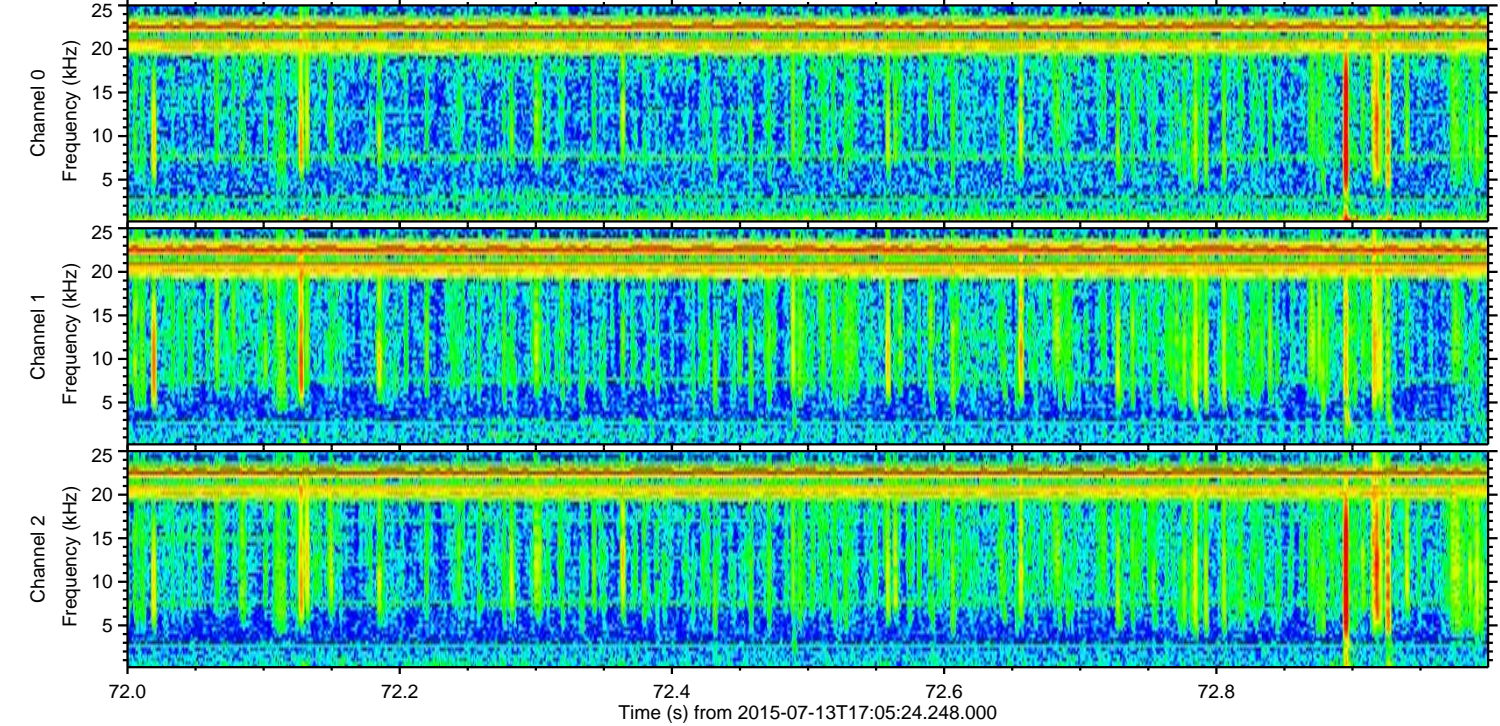
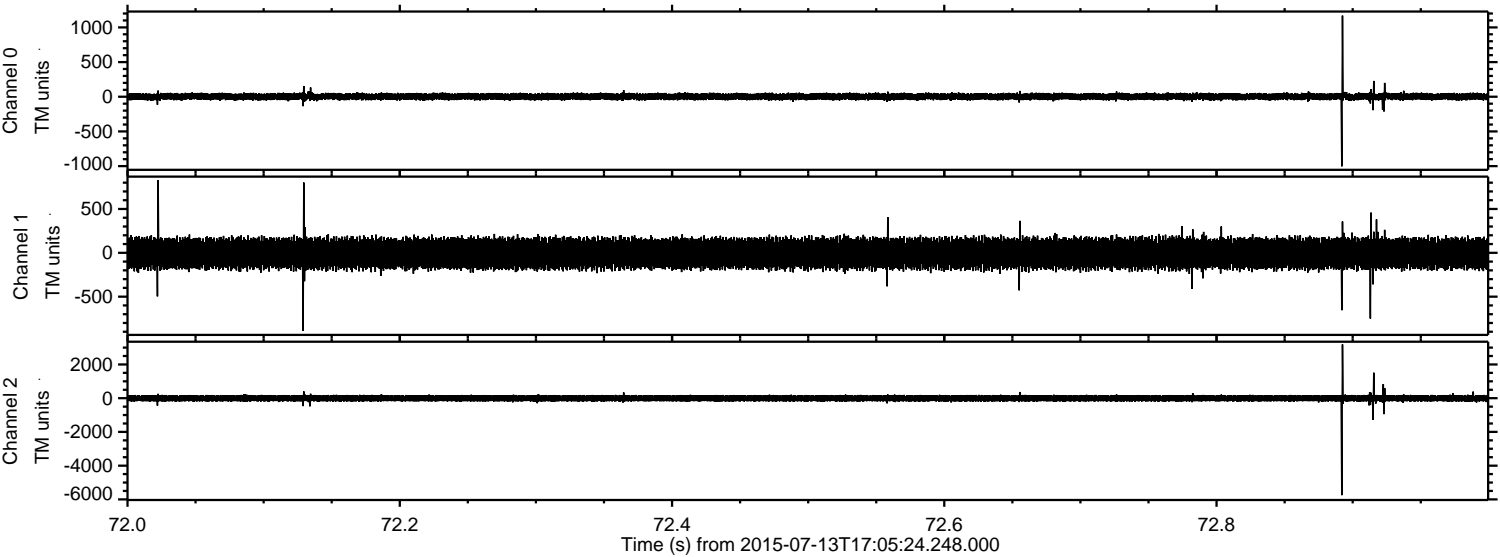
ELMAVAN 3D WAVEFORMS (Measured data sampled at 50 kHz) 51000 packets of 144 samples from 2015-07-13T17:05:24.248.000. Part 130/147

Processed Mon Jul 13 19:11:38 2015 by ELM ver.2012-10-06 from 001\_\_elm20150713\_170523\_\_dat00.bin



ELMAVAN 3D WAVEFORMS (Measured data sampled at 50 kHz) 51000 packets of 144 samples from 2015-07-13T17:05:24.248.000. Part 73/147

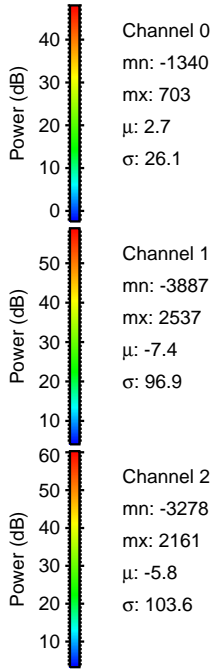
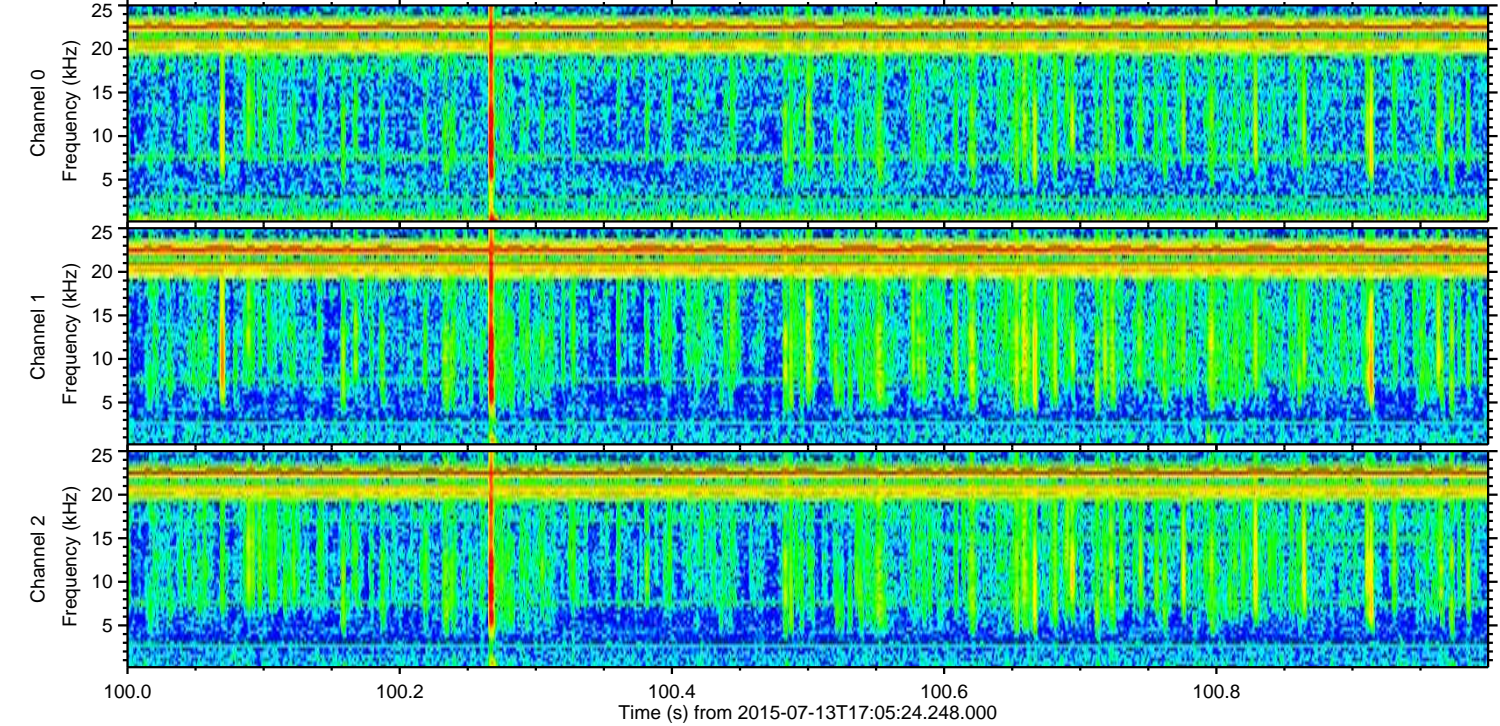
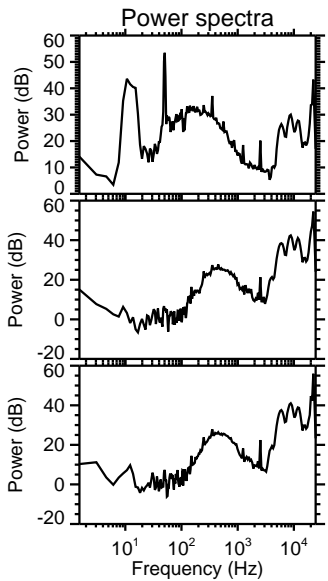
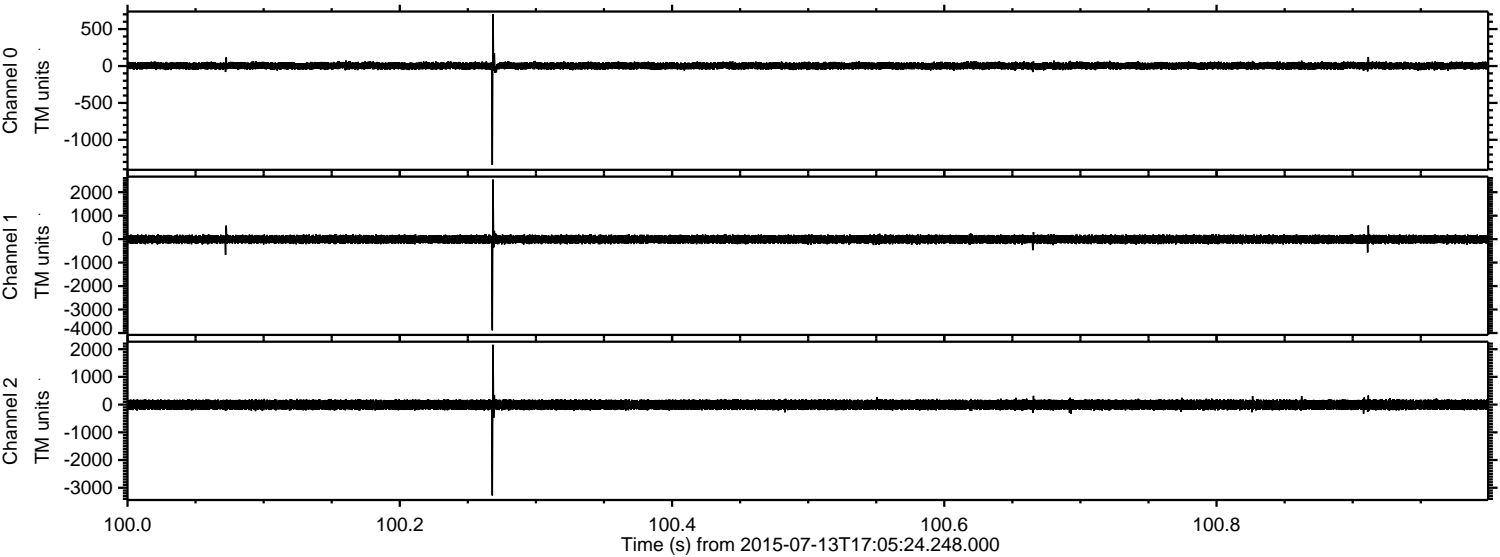
Processed Mon Jul 13 19:11:39 2015 by ELM ver.2012-10-06 from 001\_\_elm20150713\_170523\_\_dat00.bin





ELMAVAN 3D WAVEFORMS (Measured data sampled at 50 kHz) 51000 packets of 144 samples from 2015-07-13T17:05:24.248.000. Part 101/147

Processed Mon Jul 13 19:11:40 2015 by ELM ver.2012-10-06 from 001\_\_elm20150713\_170523\_\_dat00.bin



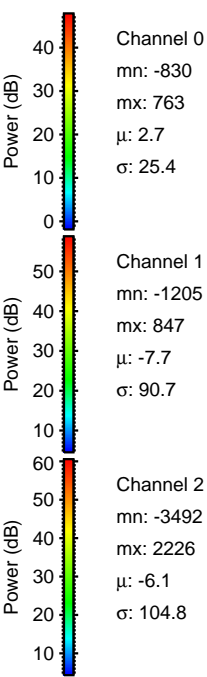
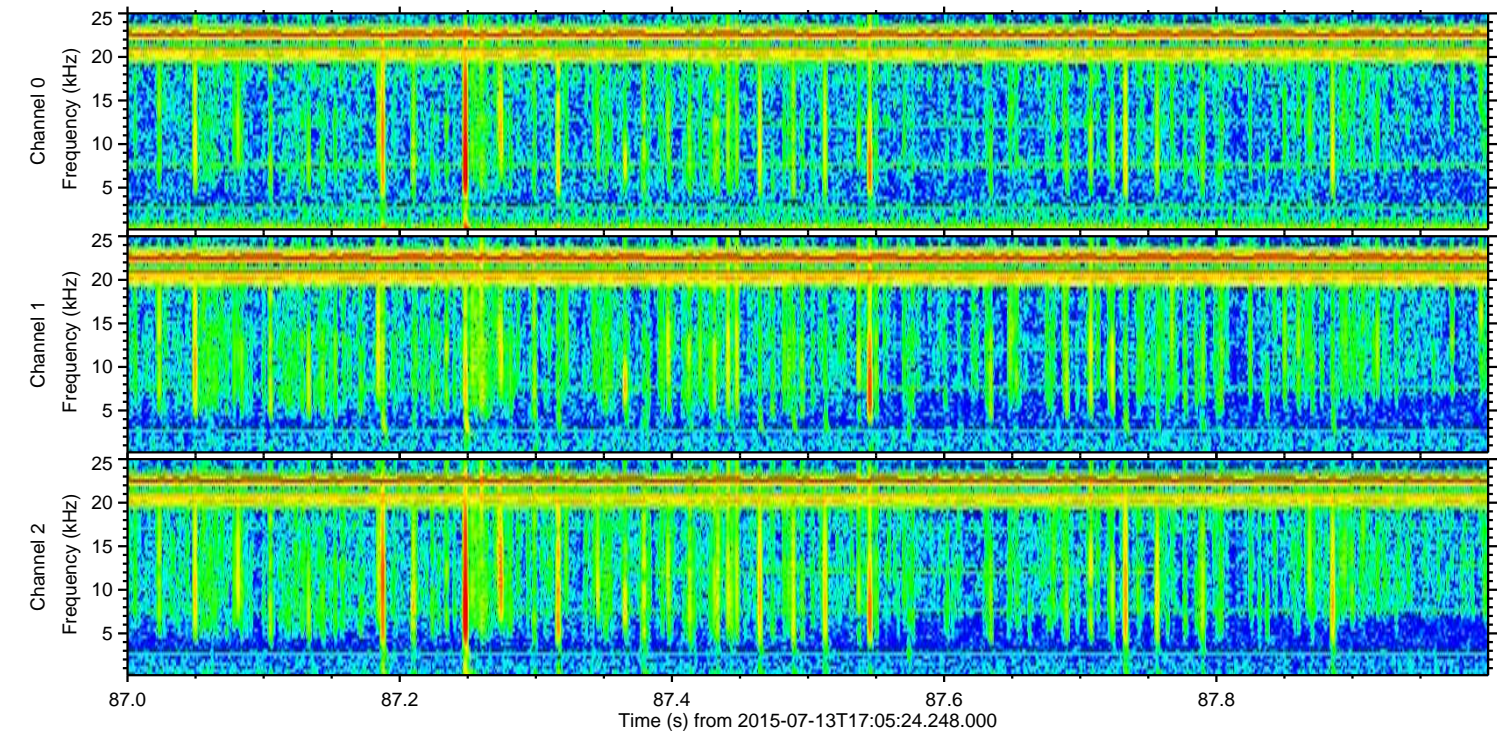
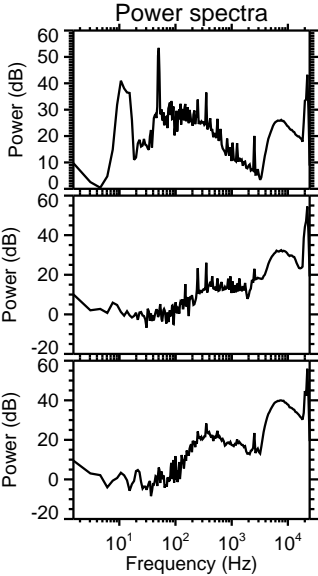
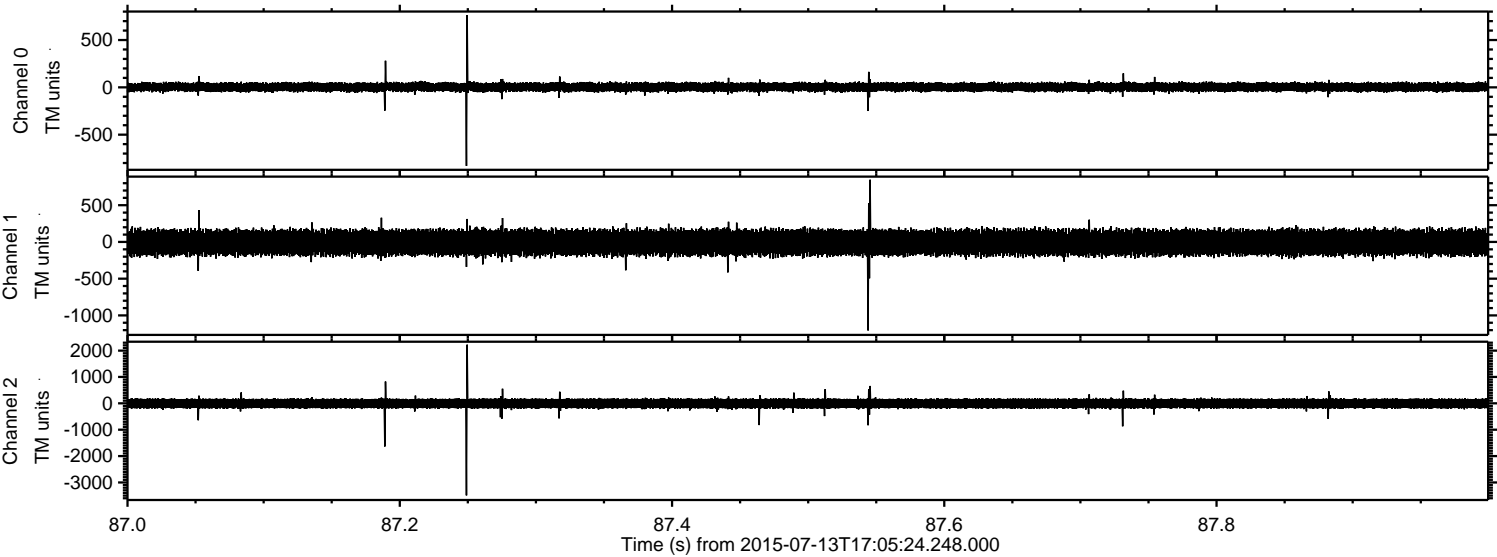
Channel 0  
mn: -1340  
mx: 703  
 $\mu$ : 2.7  
 $\sigma$ : 26.1

Channel 1  
mn: -3887  
mx: 2537  
 $\mu$ : -7.4  
 $\sigma$ : 96.9

Channel 2  
mn: -3278  
mx: 2161  
 $\mu$ : -5.8  
 $\sigma$ : 103.6



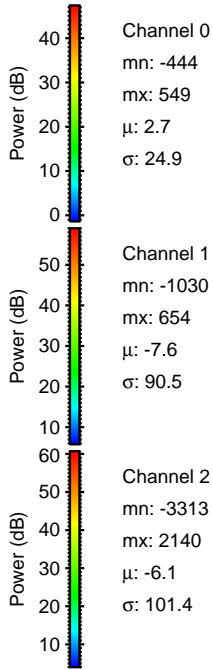
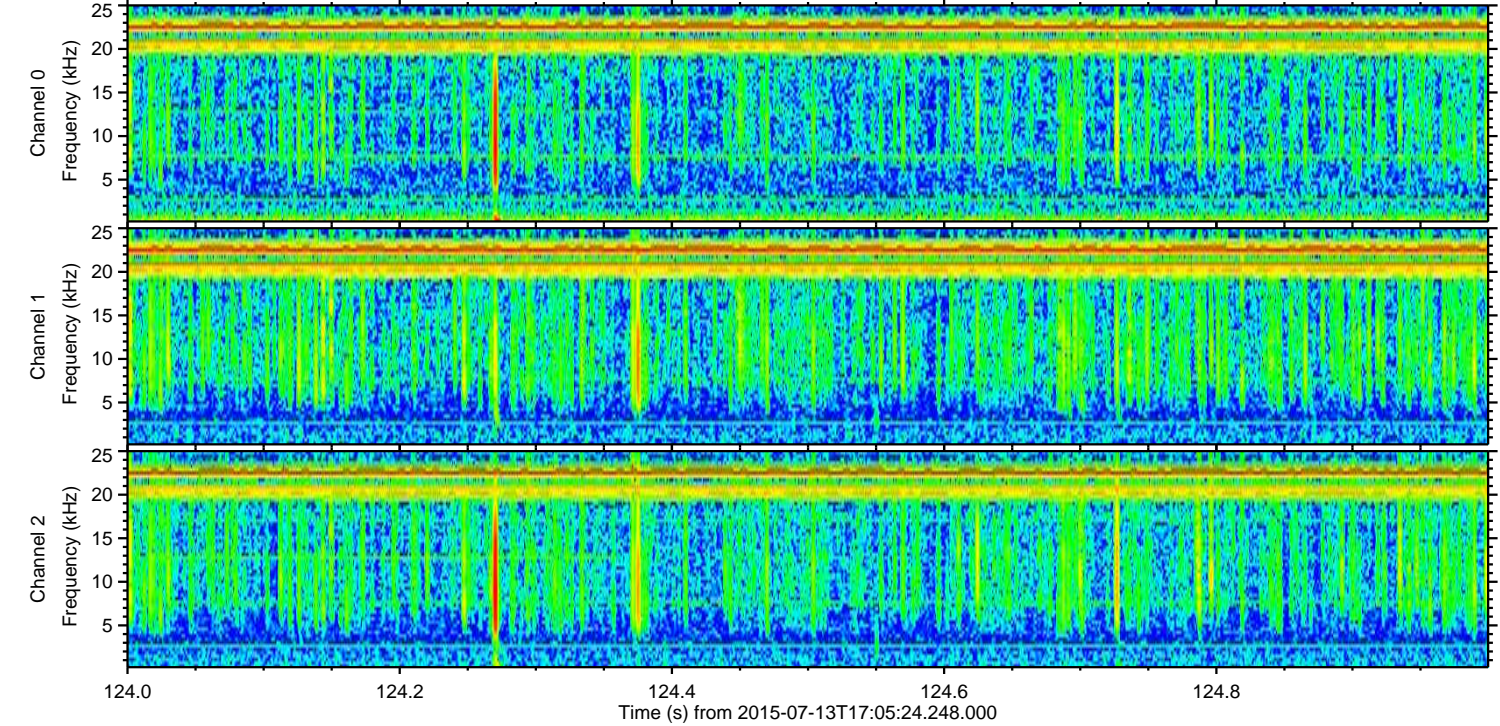
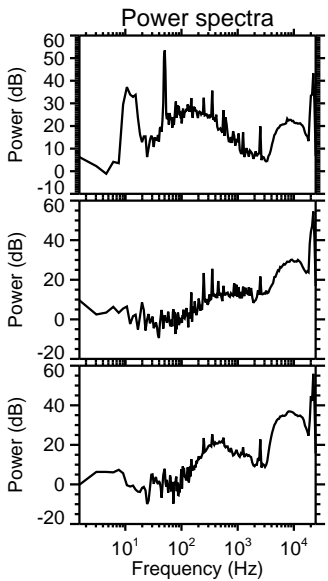
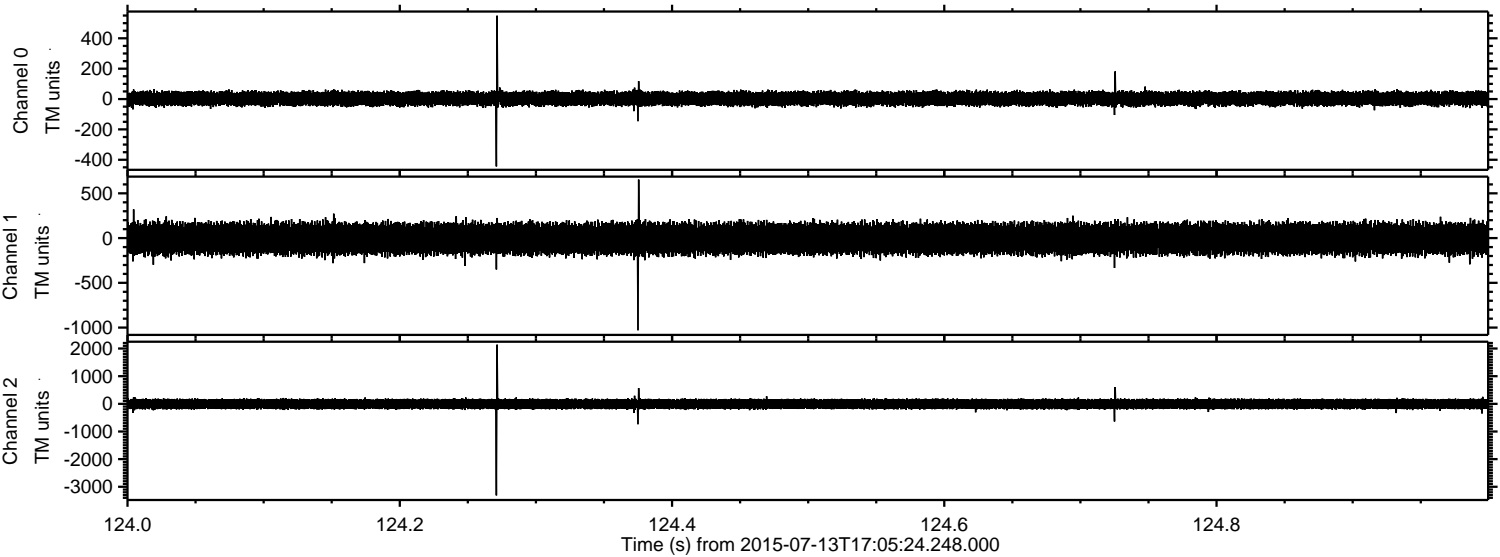
Processed Mon Jul 13 19:11:41 2015 by ELM ver.2012-10-06 from 001\_\_elm20150713\_170523\_\_dat00.bin





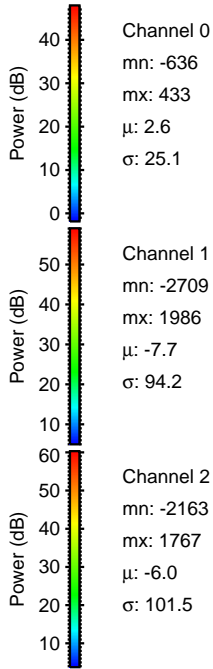
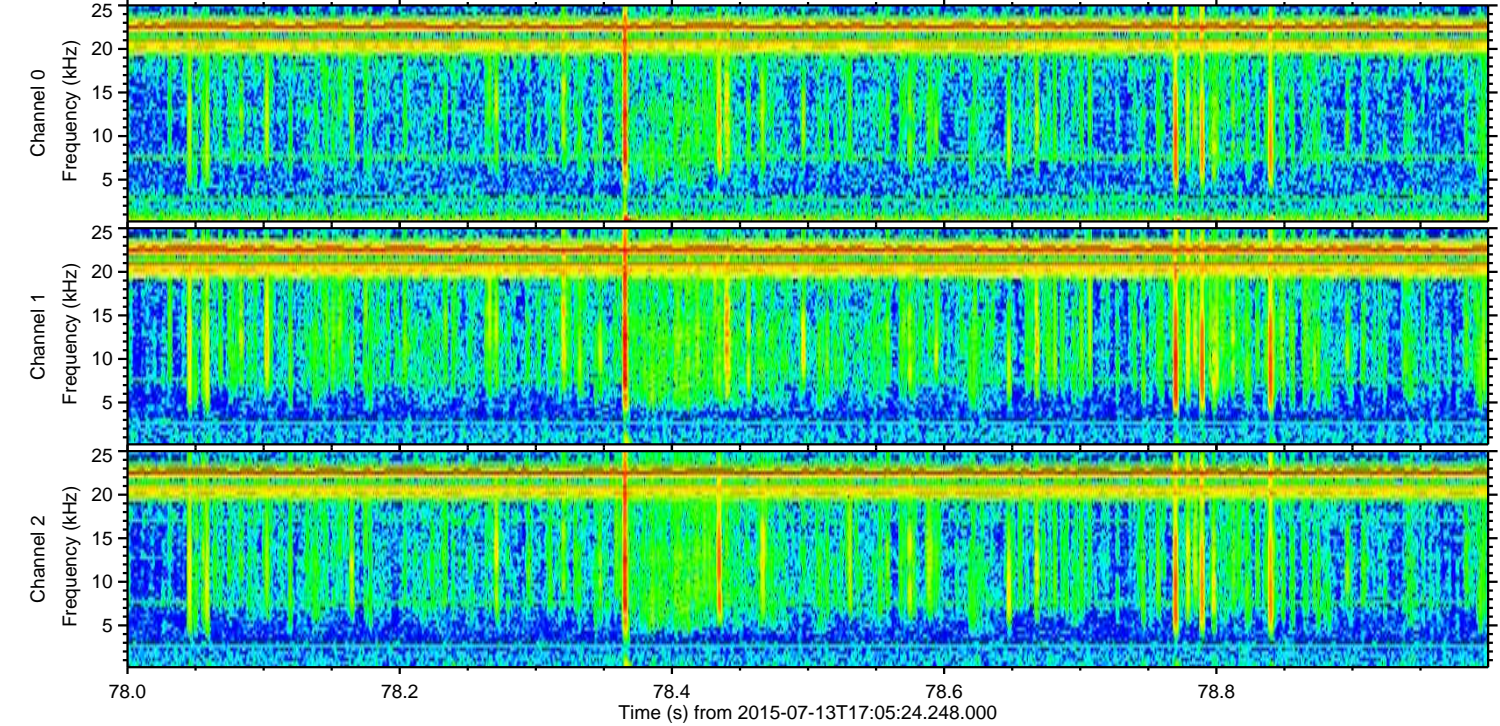
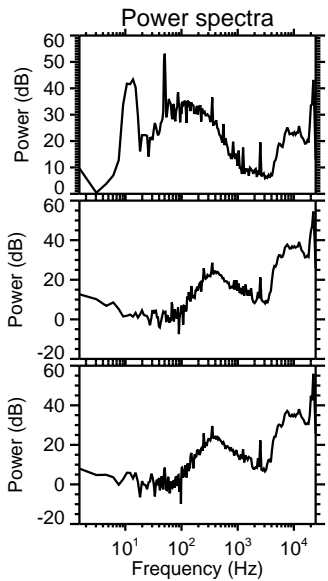
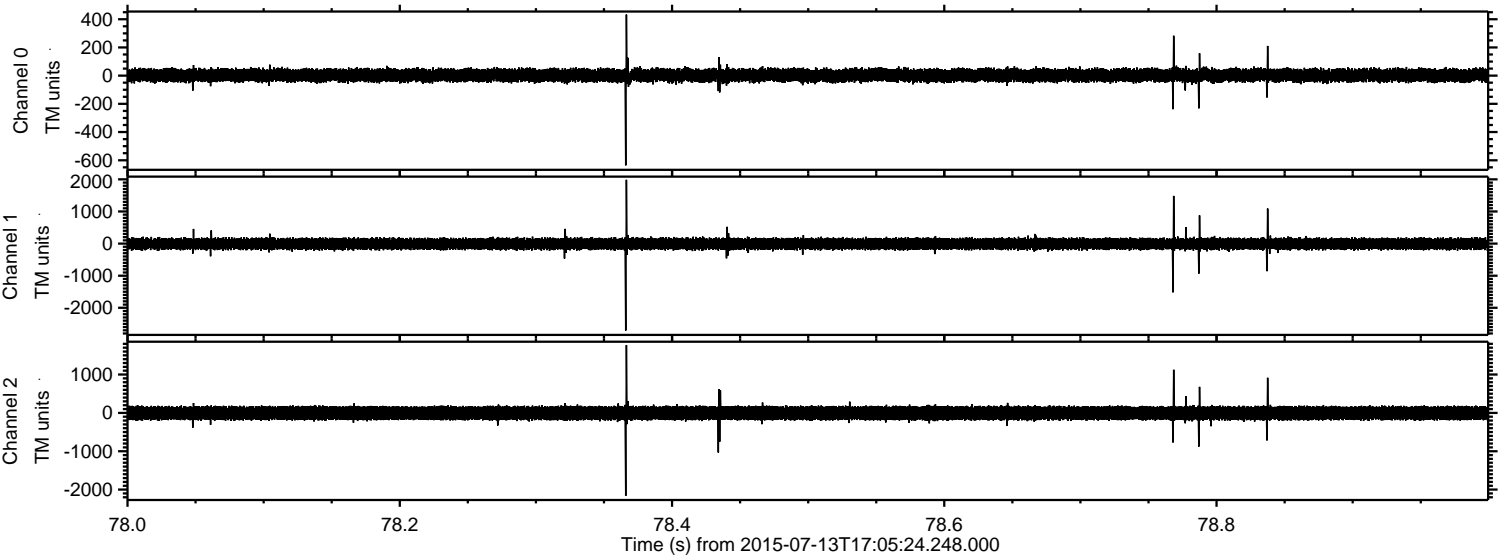
ELMAVAN 3D WAVEFORMS (Measured data sampled at 50 kHz) 51000 packets of 144 samples from 2015-07-13T17:05:24.248.000. Part 125/147

Processed Mon Jul 13 19:11:42 2015 by ELM ver.2012-10-06 from 001\_\_elm20150713\_170523\_\_dat00.bin



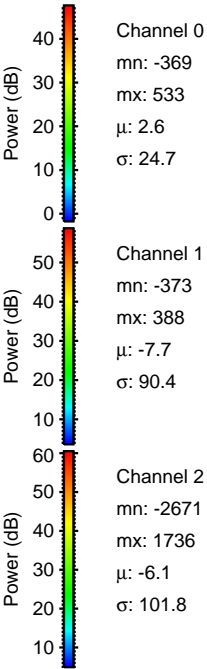
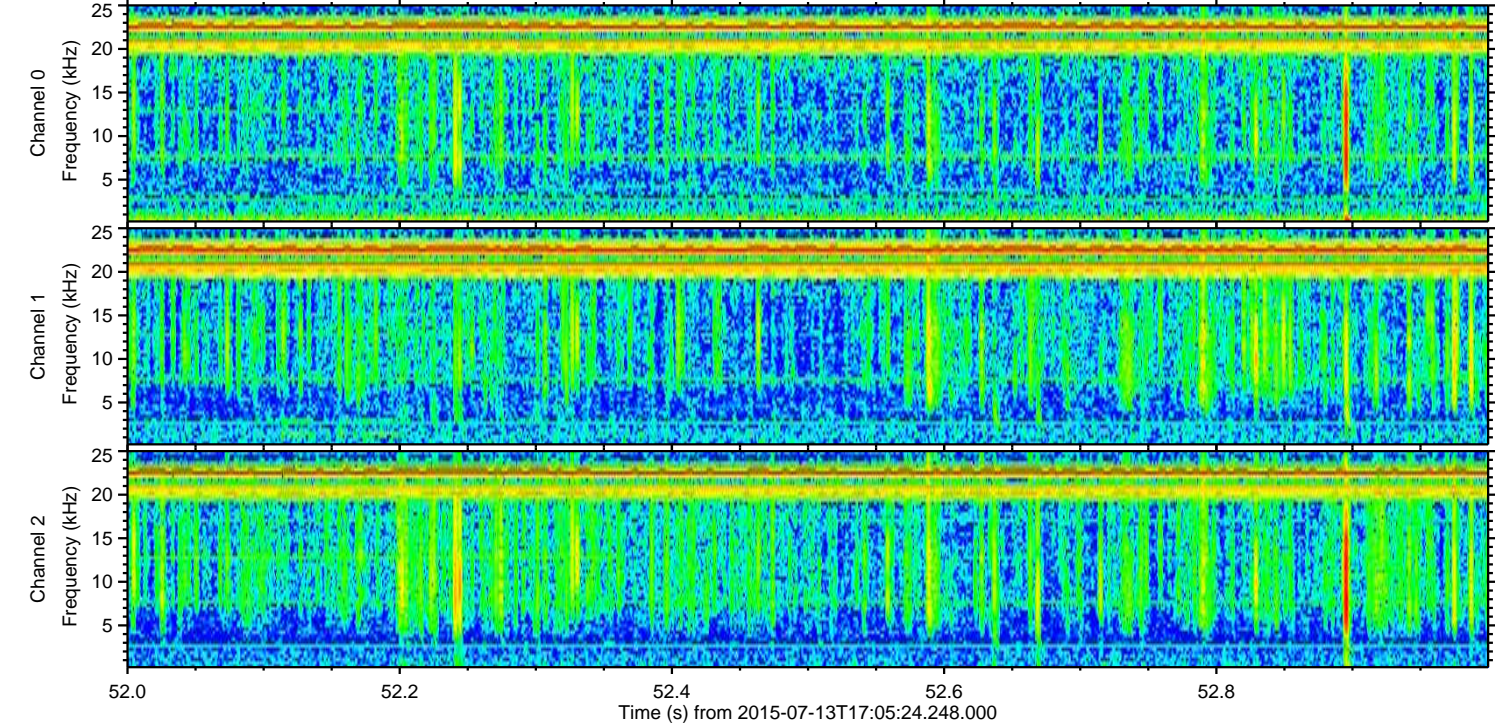
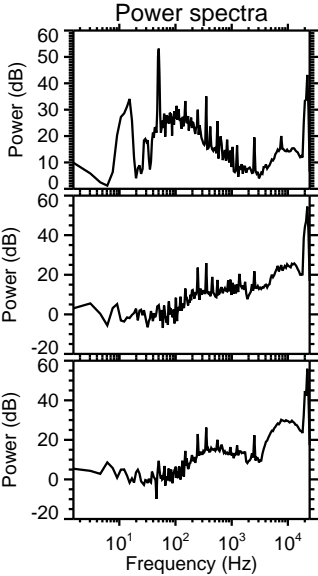
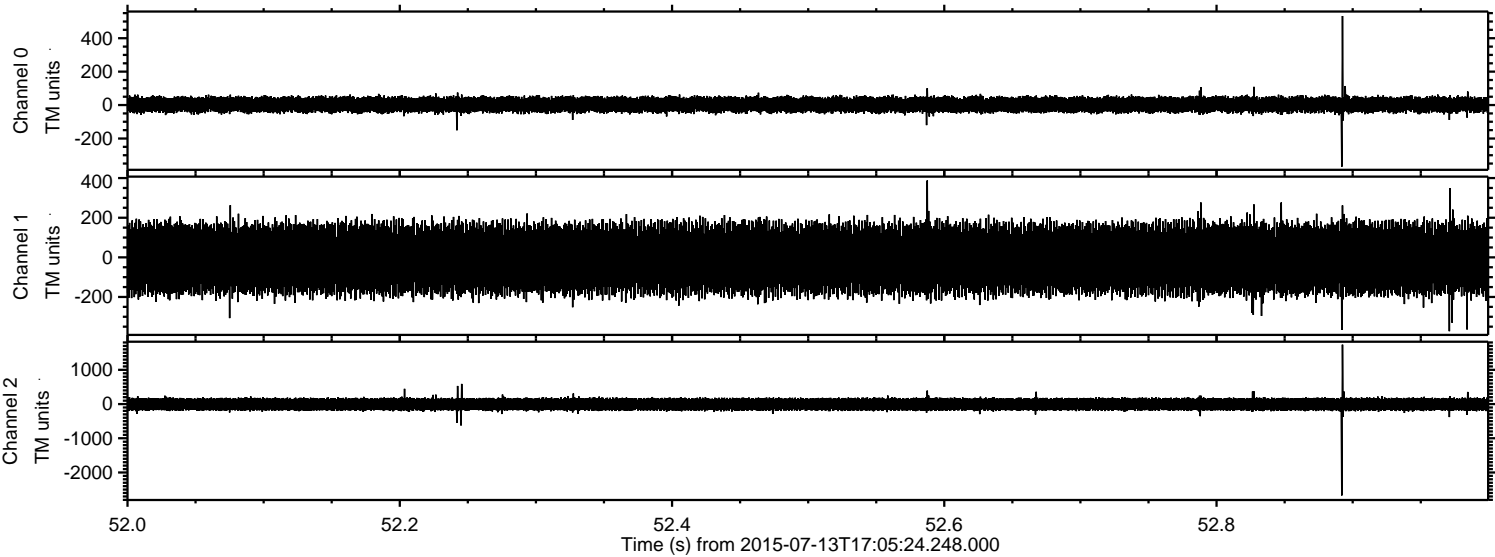


Processed Mon Jul 13 19:11:43 2015 by ELM ver.2012-10-06 from 001\_\_elm20150713\_170523\_\_dat00.bin



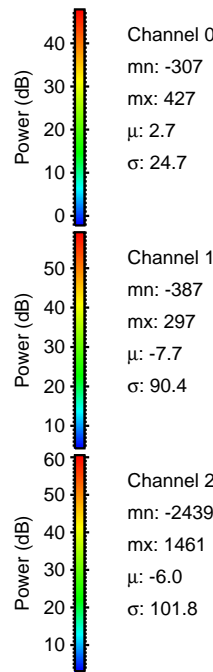
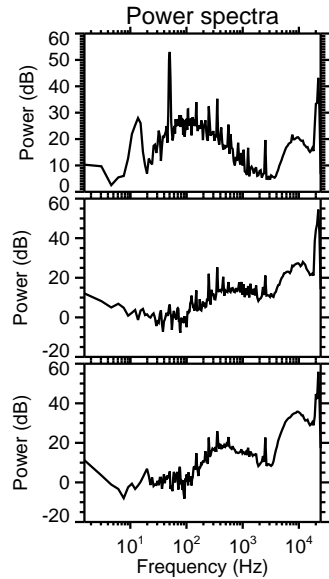
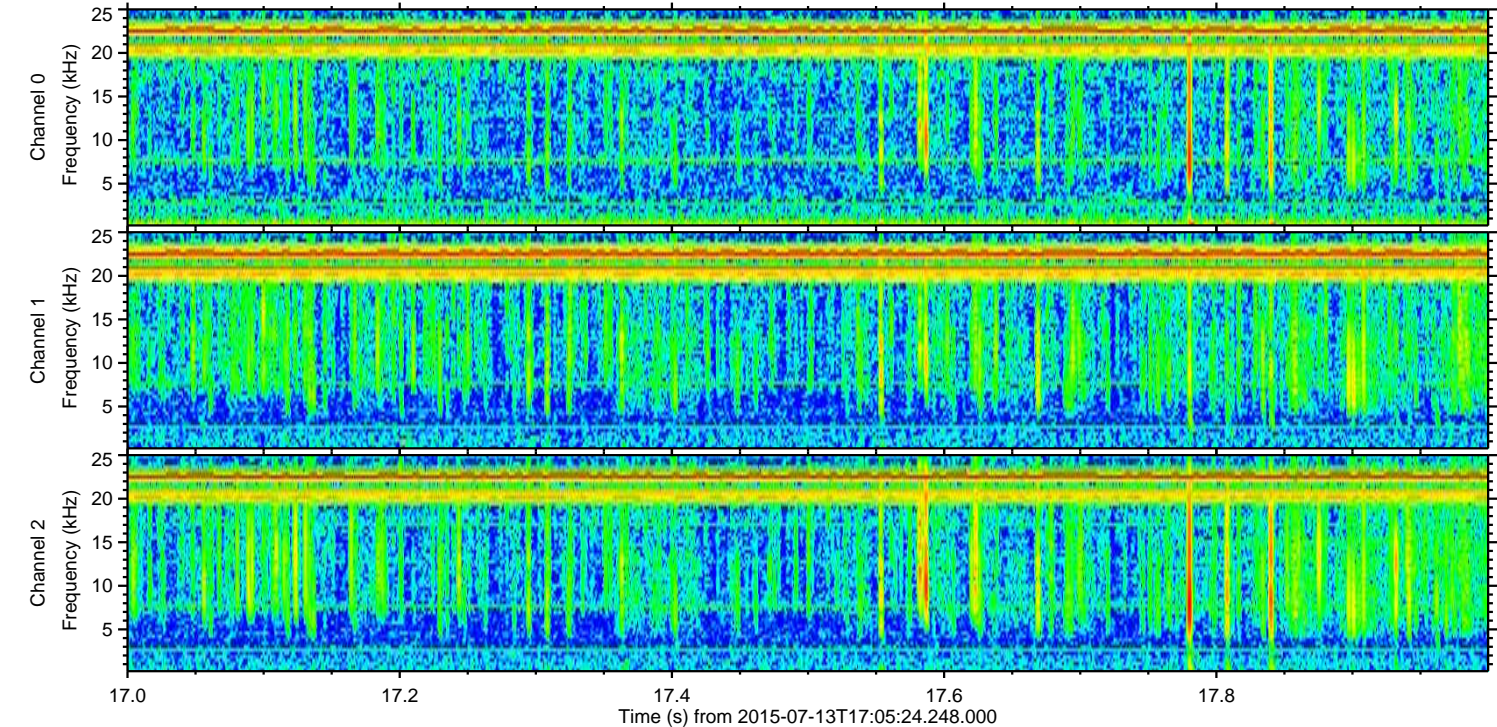
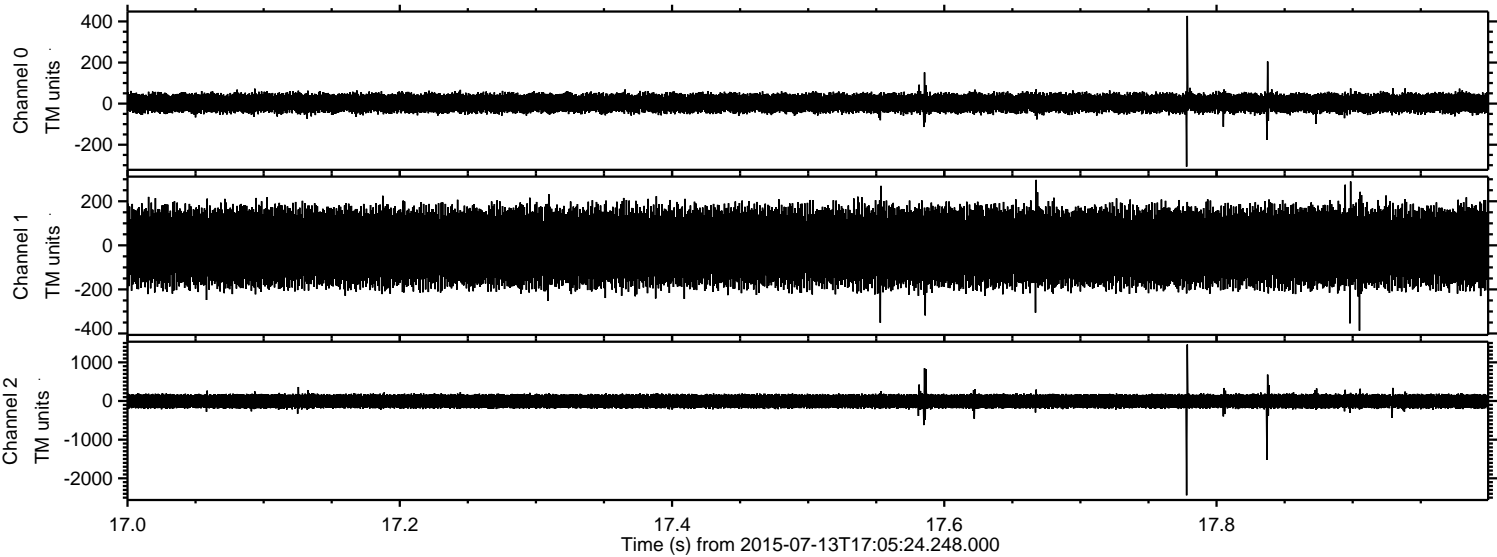


Processed Mon Jul 13 19:11:44 2015 by ELM ver.2012-10-06 from 001\_\_elm20150713\_170523\_\_dat00.bin





Processed Mon Jul 13 19:11:45 2015 by ELM ver.2012-10-06 from 001\_\_elm20150713\_170523\_\_dat00.bin



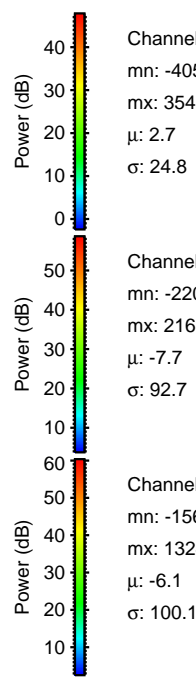
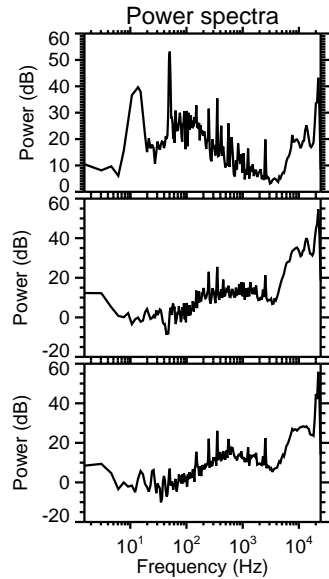
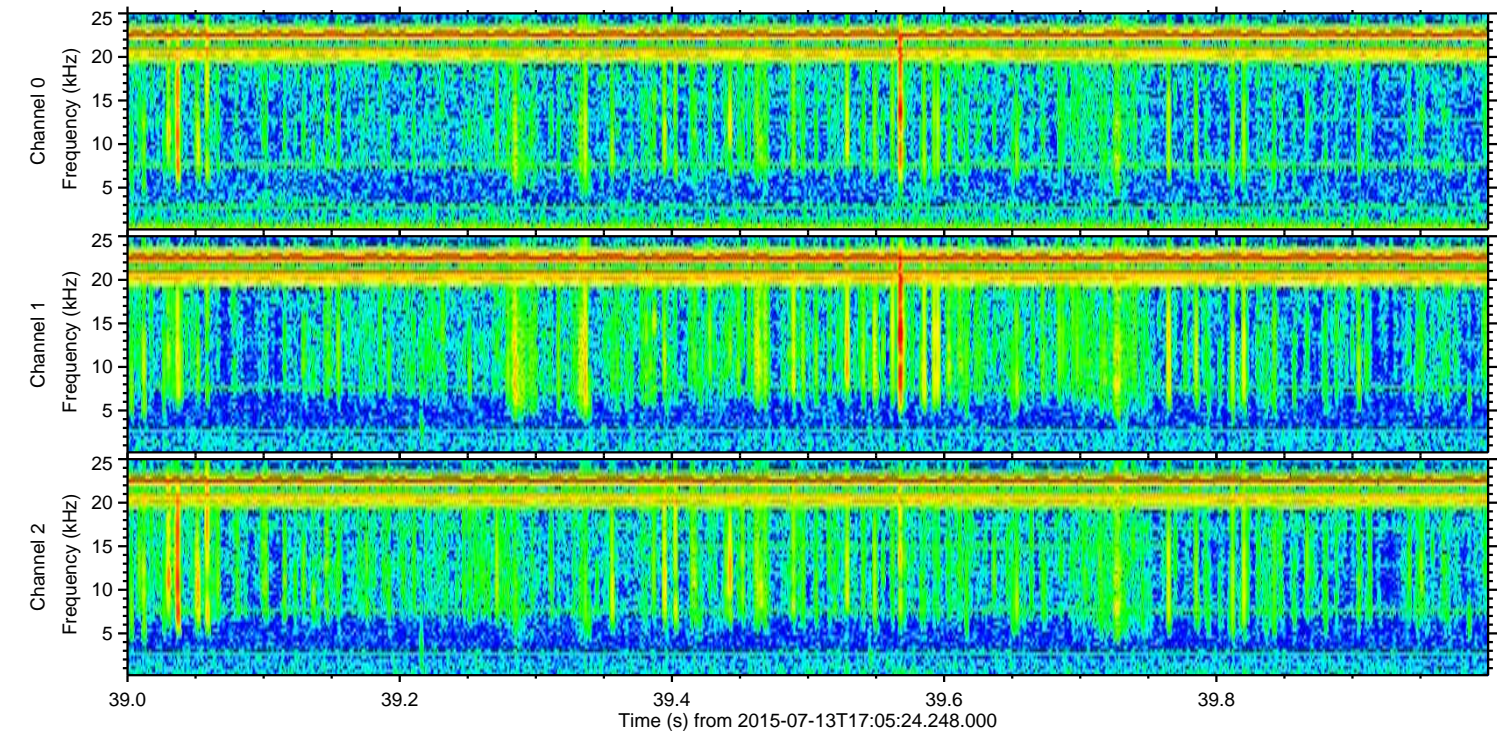
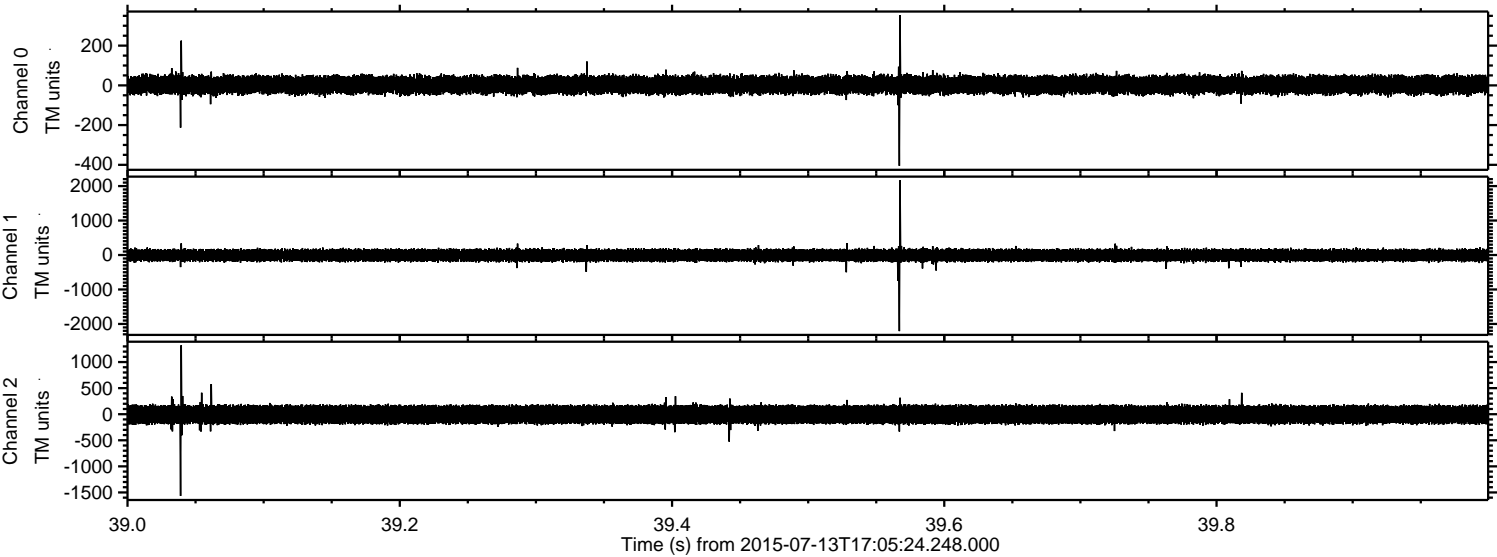
Channel 0  
mn: -307  
mx: 427  
 $\mu$ : 2.7  
 $\sigma$ : 24.7

Channel 1  
mn: -387  
mx: 297  
 $\mu$ : -7.7  
 $\sigma$ : 90.4

Channel 2  
mn: -2439  
mx: 1461  
 $\mu$ : -6.0  
 $\sigma$ : 101.8



Processed Mon Jul 13 19:11:46 2015 by ELM ver.2012-10-06 from 001\_\_elm20150713\_170523\_\_dat00.bin



Channel 0  
mn: -405  
mx: 354  
 $\mu$ : 2.7  
 $\sigma$ : 24.8

Channel 1  
mn: -2207  
mx: 2165  
 $\mu$ : -7.7  
 $\sigma$ : 92.7

Channel 2  
mn: -1566  
mx: 1324  
 $\mu$ : -6.1  
 $\sigma$ : 100.1



