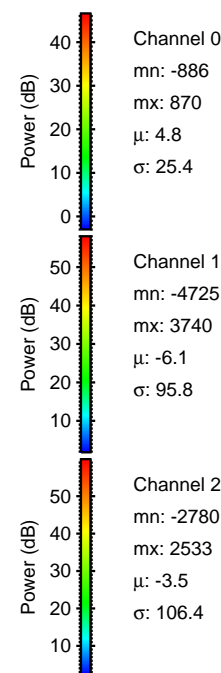
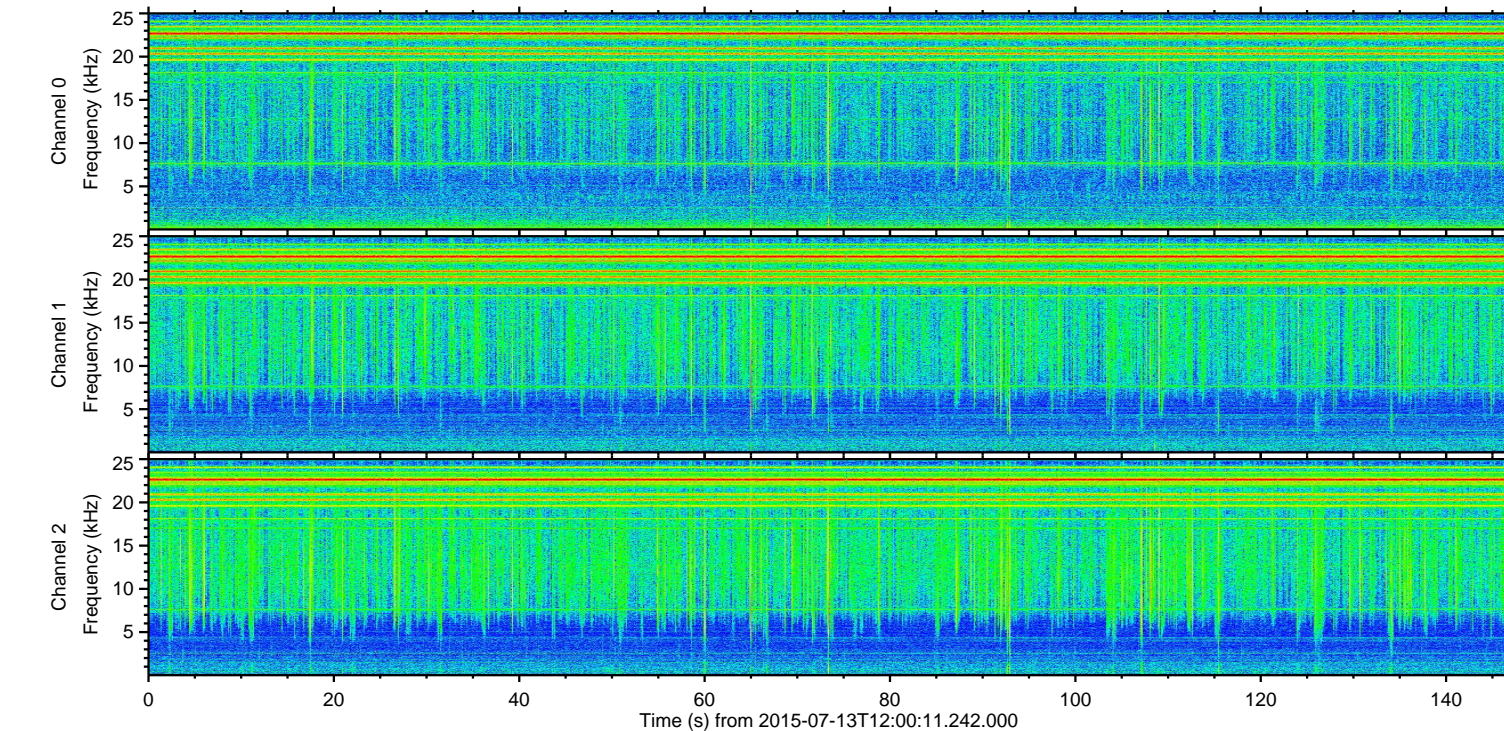
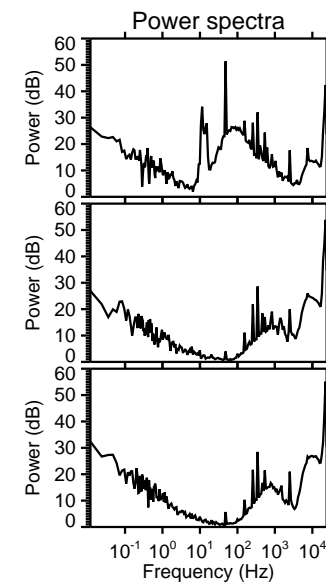
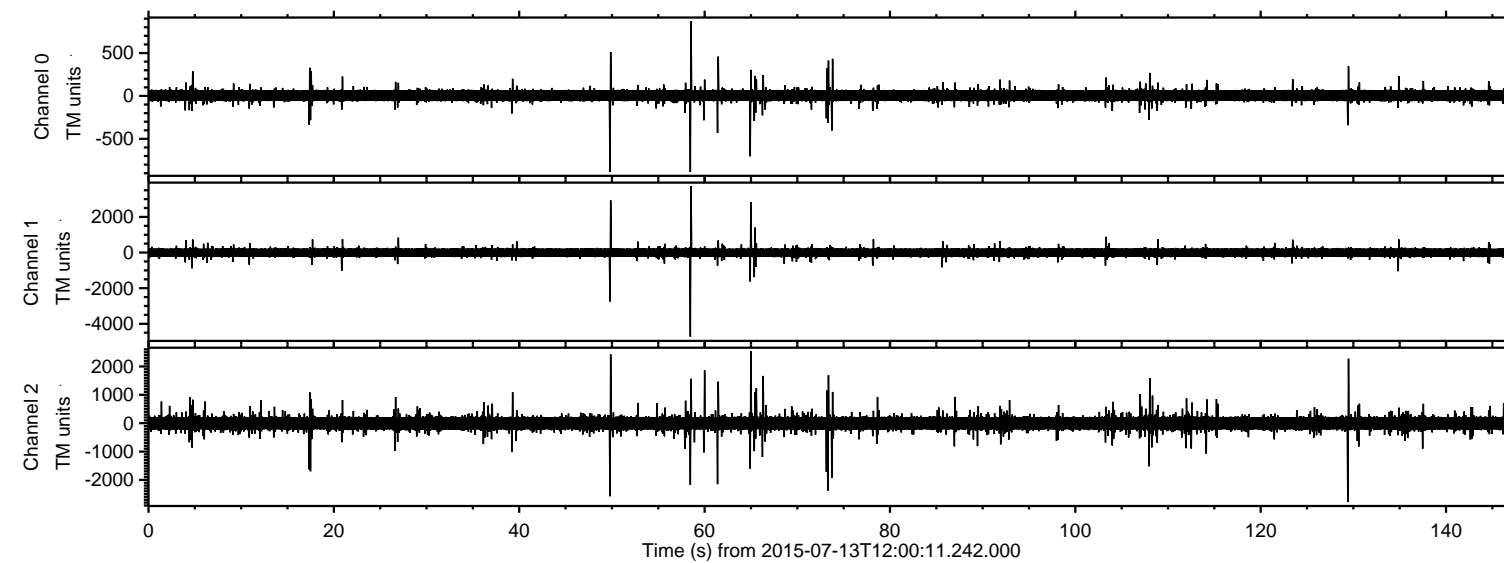
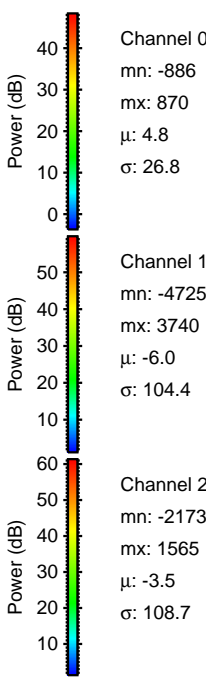
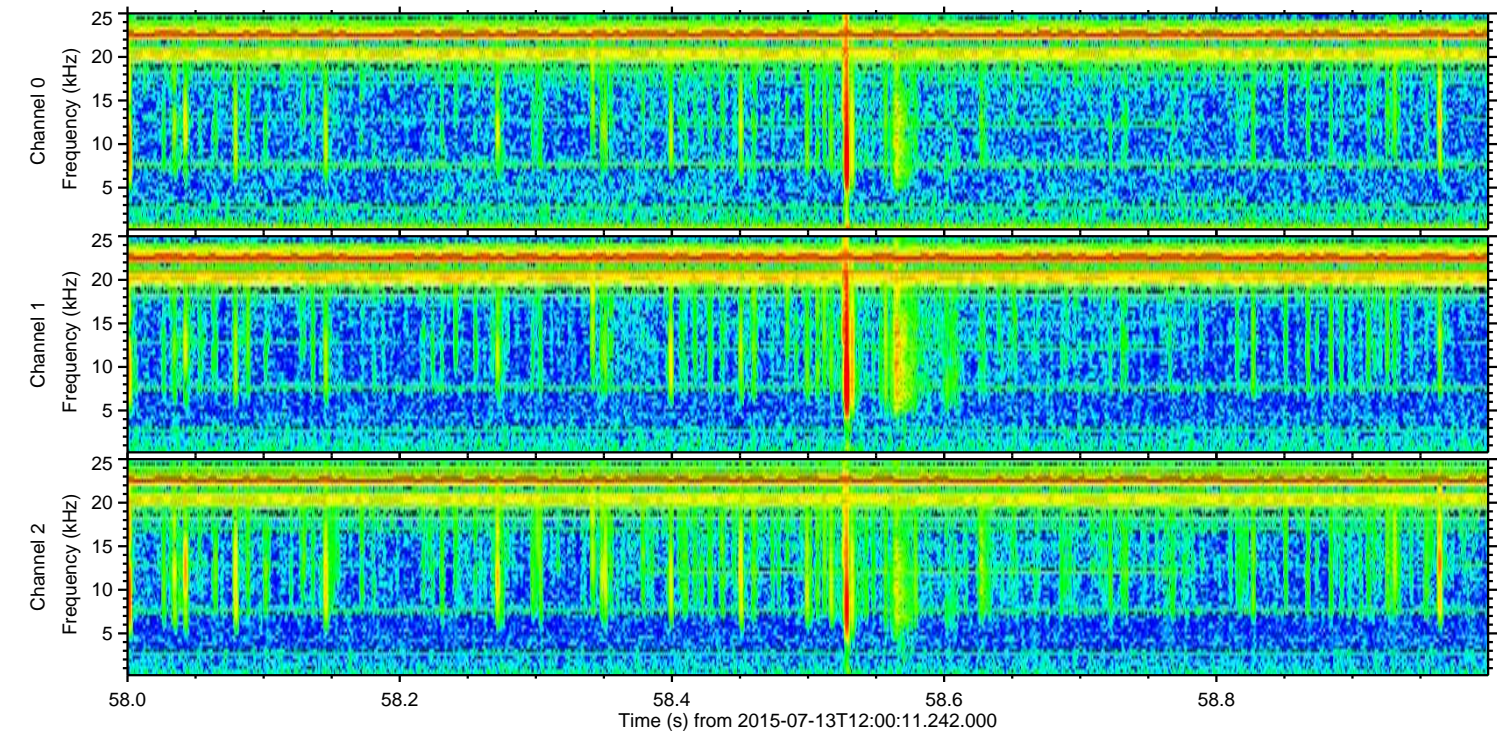
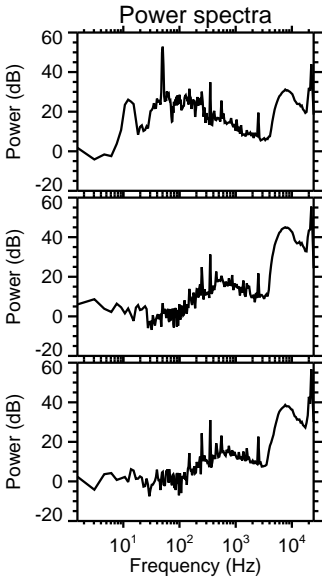
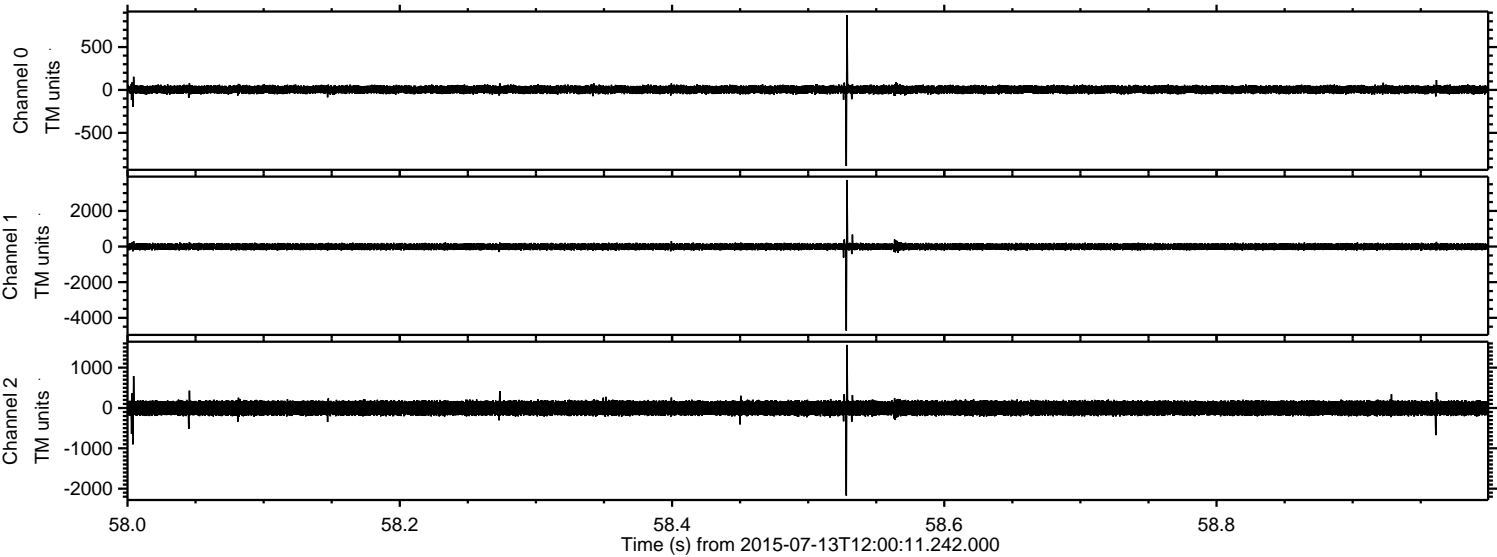


ELMAVAN 3D WAVEFORMS (Measured data sampled at 50 kHz) 51000 packets of 144 samples from 2015-07-13T12:00:11.242.000.

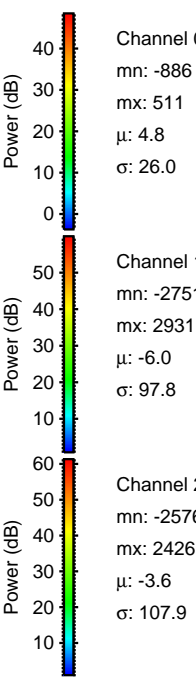
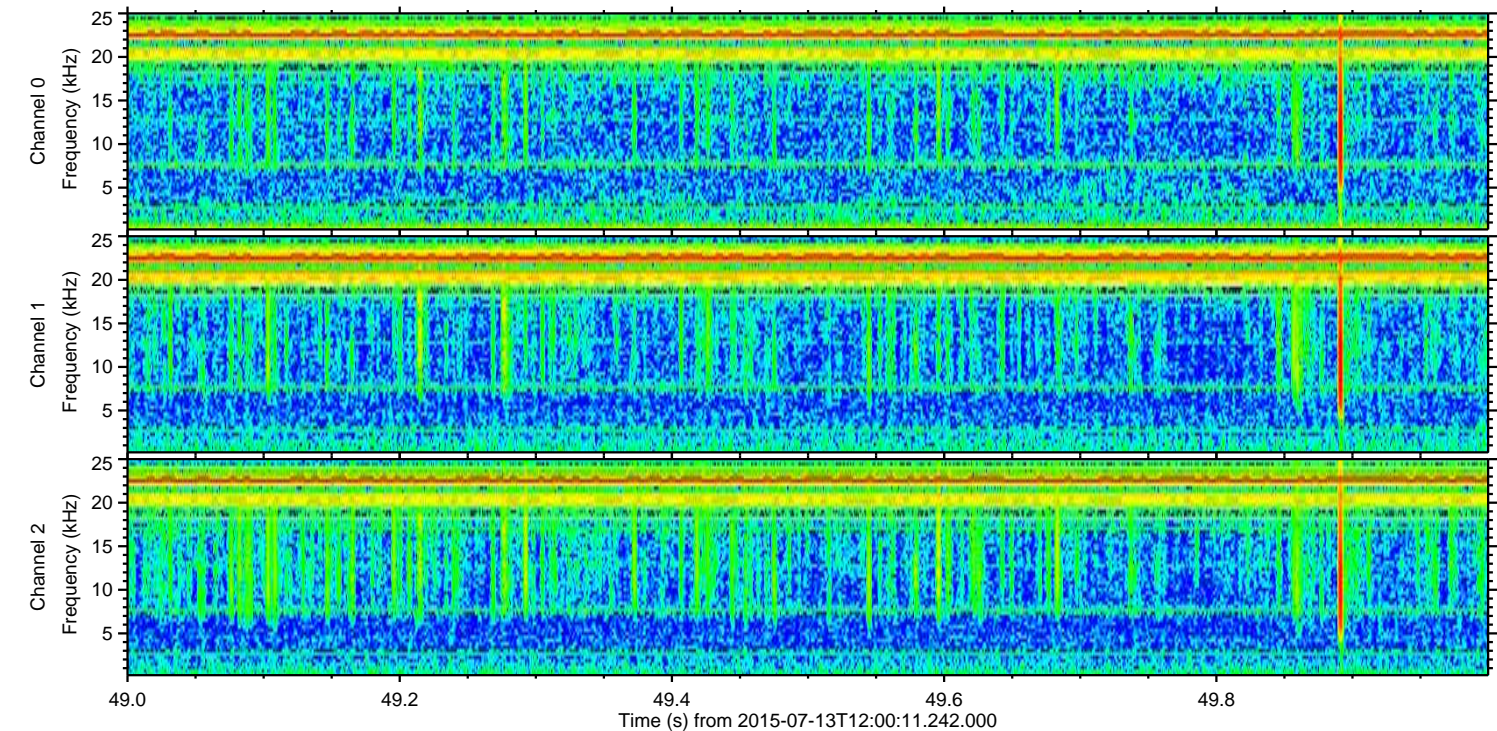
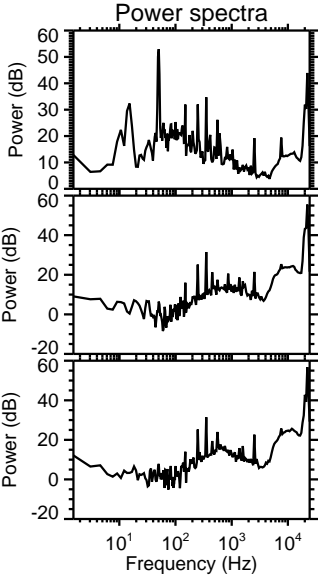
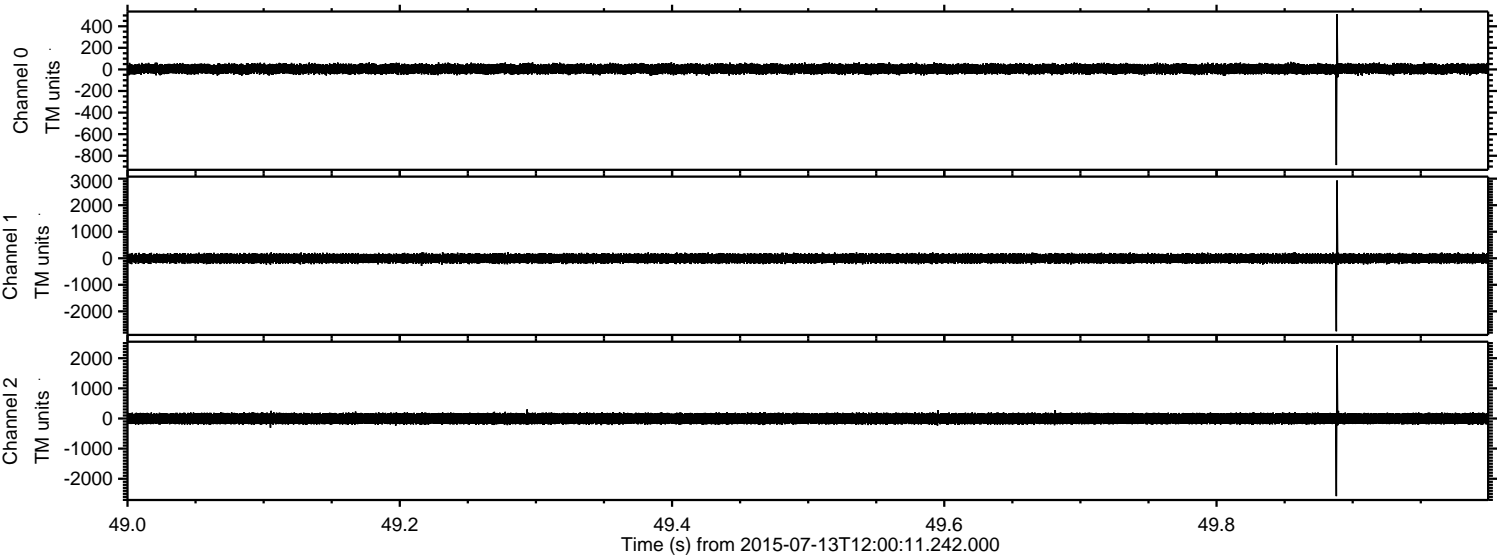
Processed Mon Jul 13 14:06:37 2015 by ELM ver.2012-10-06 from 001__elm20150713_120010__dat00.bin



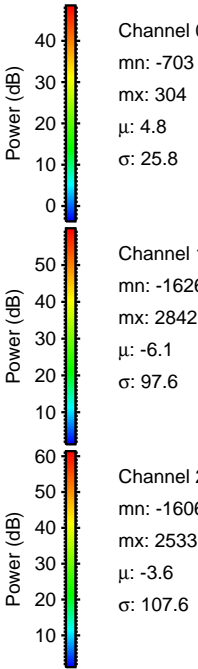
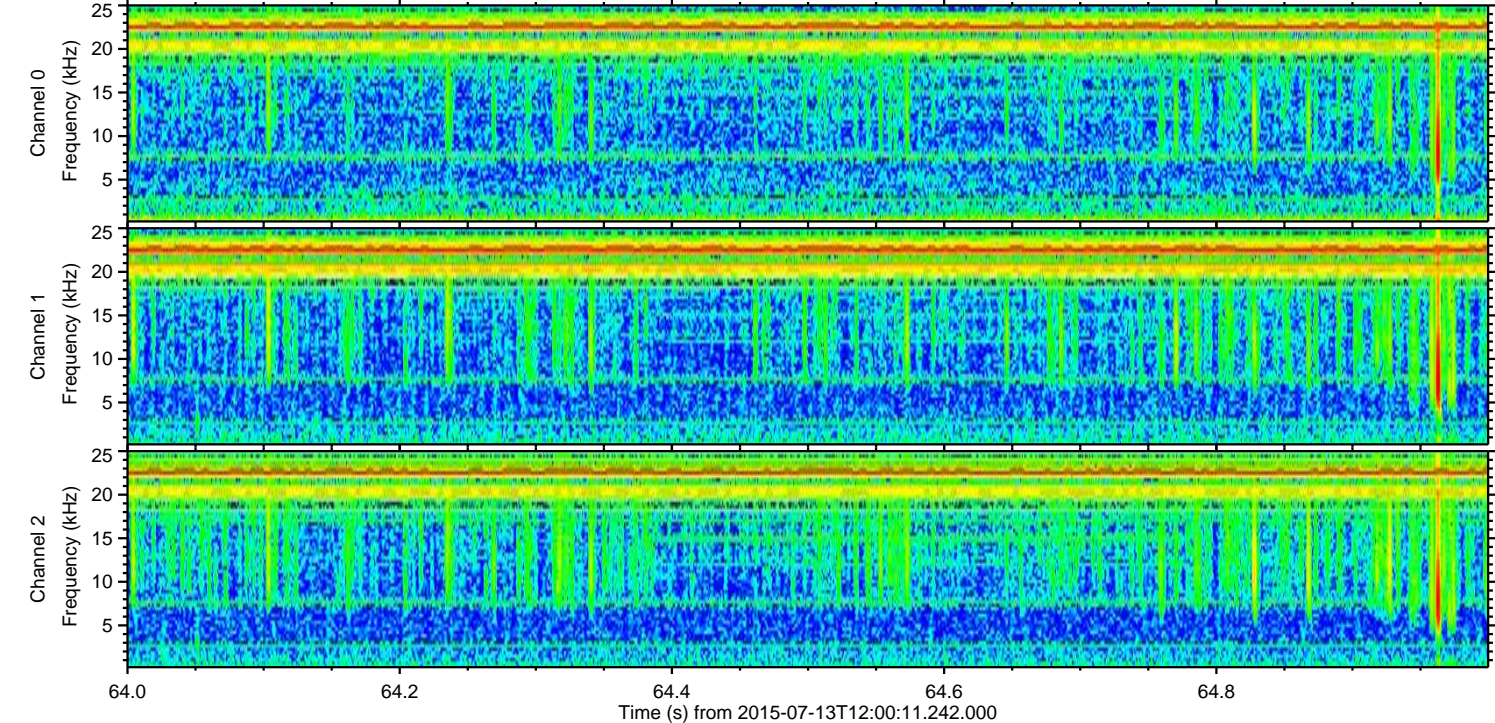
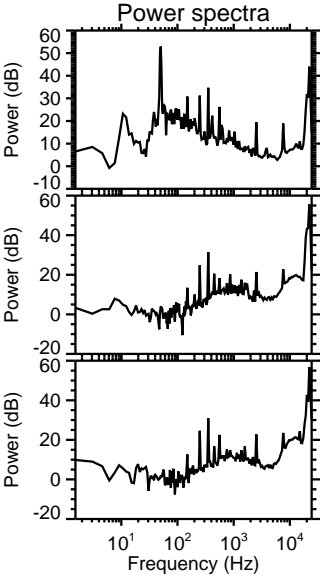
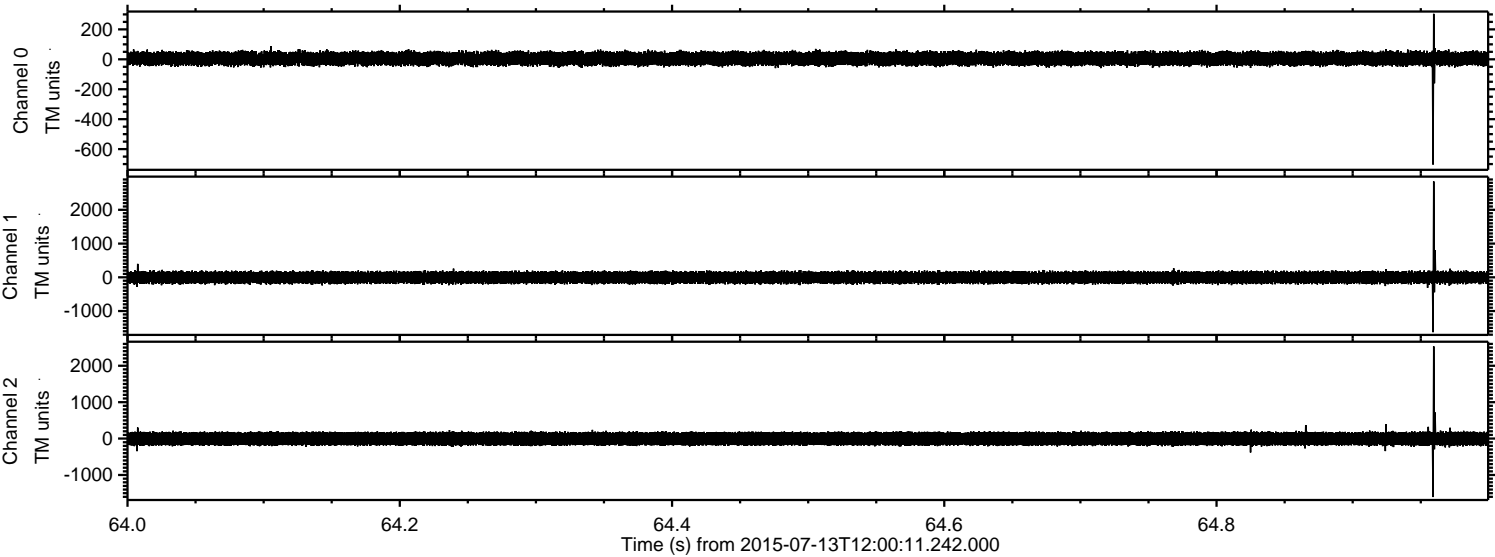
Processed Mon Jul 13 14:06:53 2015 by ELM ver.2012-10-06 from 001__elm20150713_120010__dat00.bin



Processed Mon Jul 13 14:06:54 2015 by ELM ver.2012-10-06 from 001__elm20150713_120010__dat00.bin



Processed Mon Jul 13 14:06:55 2015 by ELM ver.2012-10-06 from 001__elm20150713_120010__dat00.bin



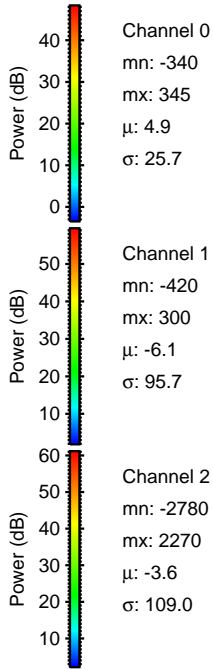
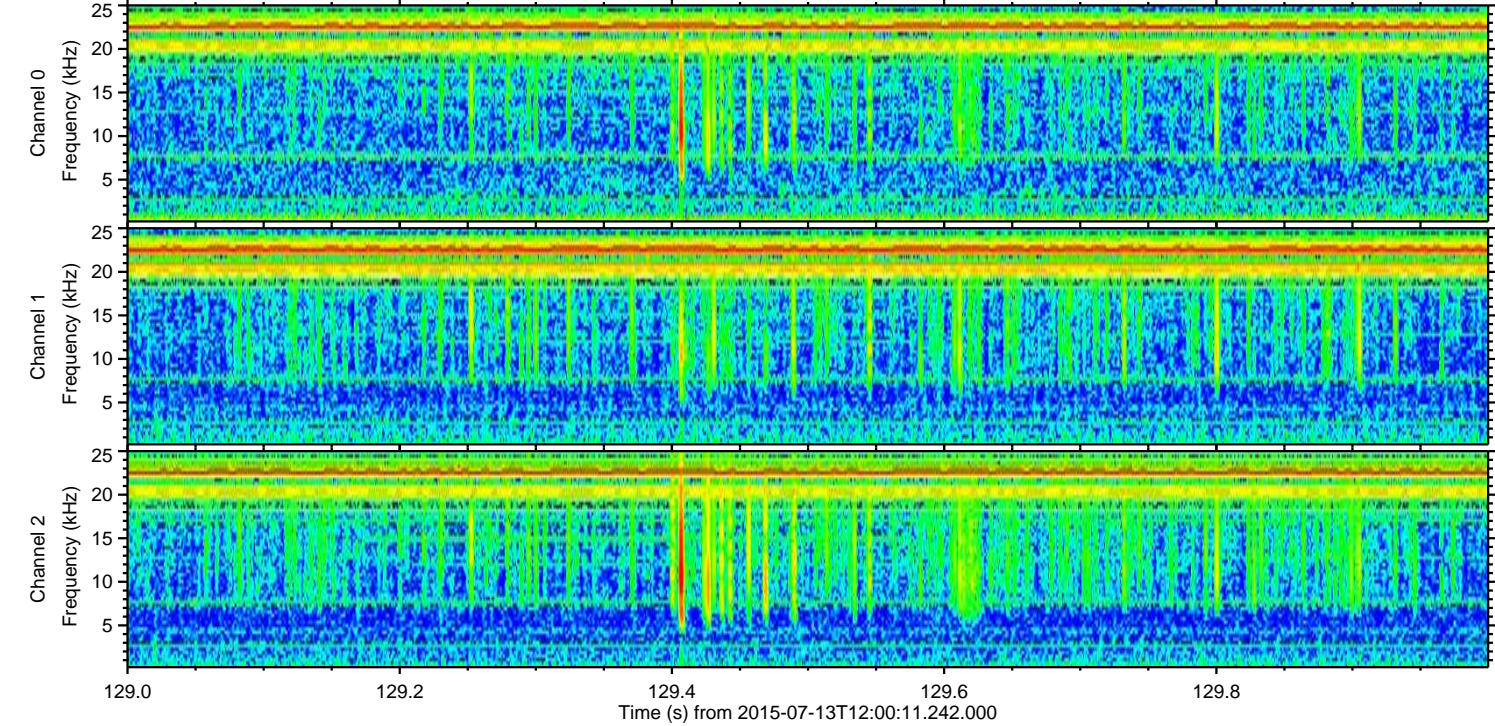
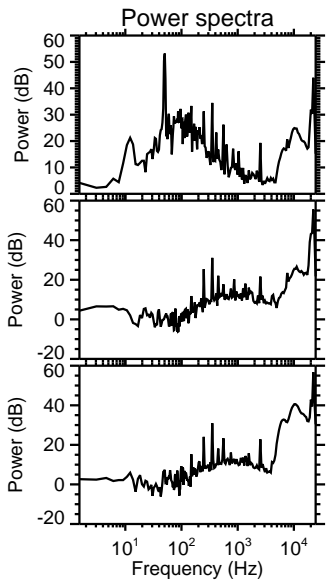
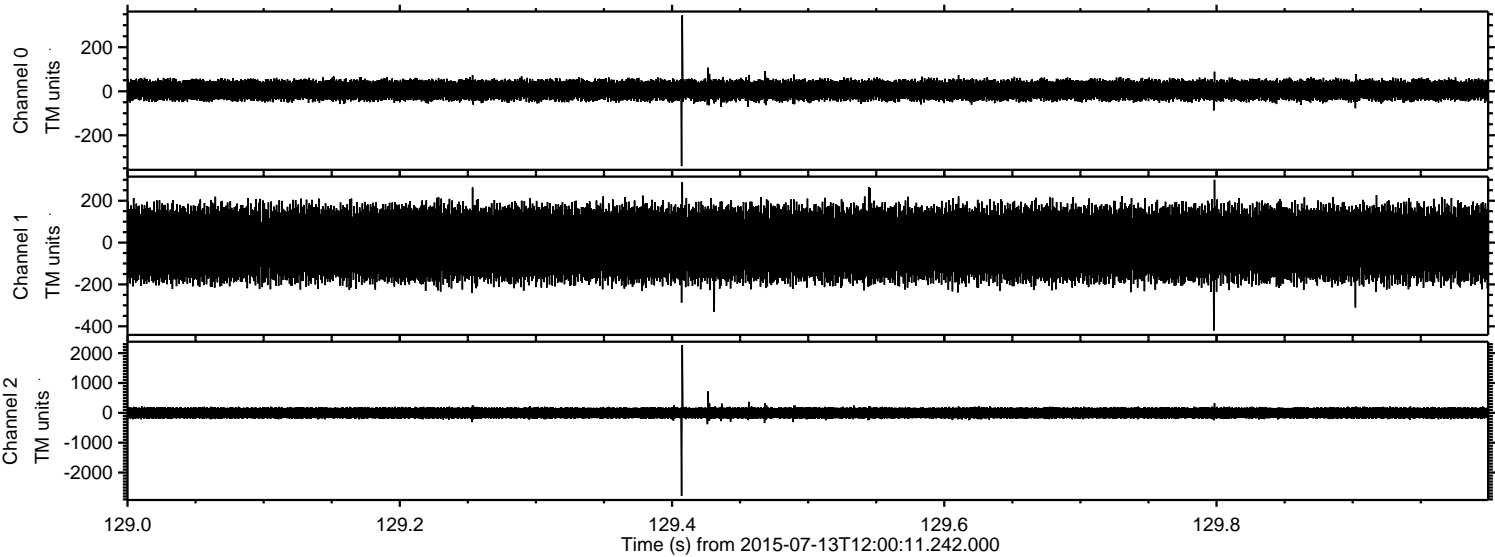
Channel 0
mn: -703
mx: 304
 μ : 4.8
 σ : 25.8

Channel 1
mn: -1626
mx: 2842
 μ : -6.1
 σ : 97.6

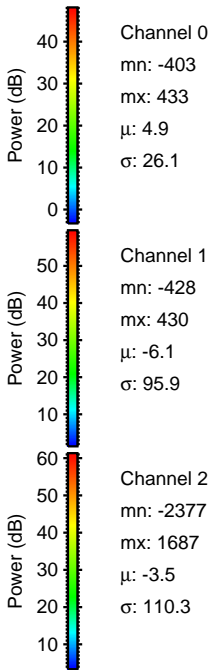
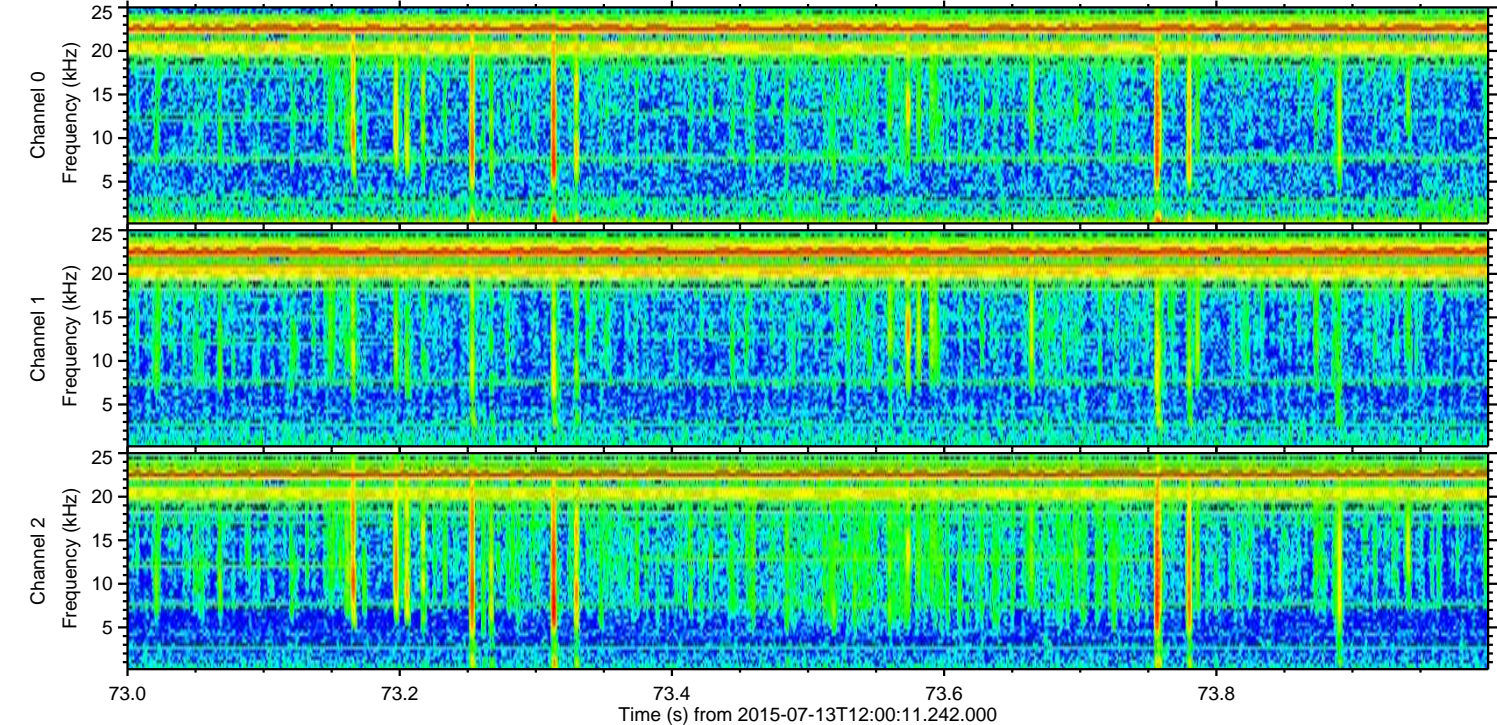
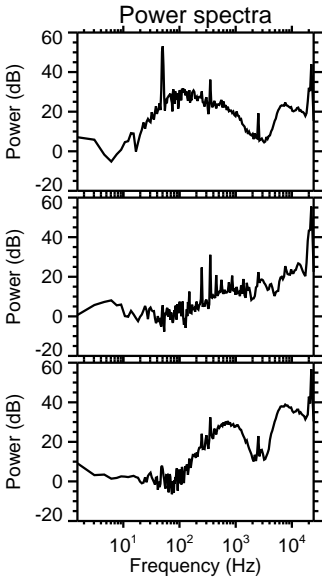
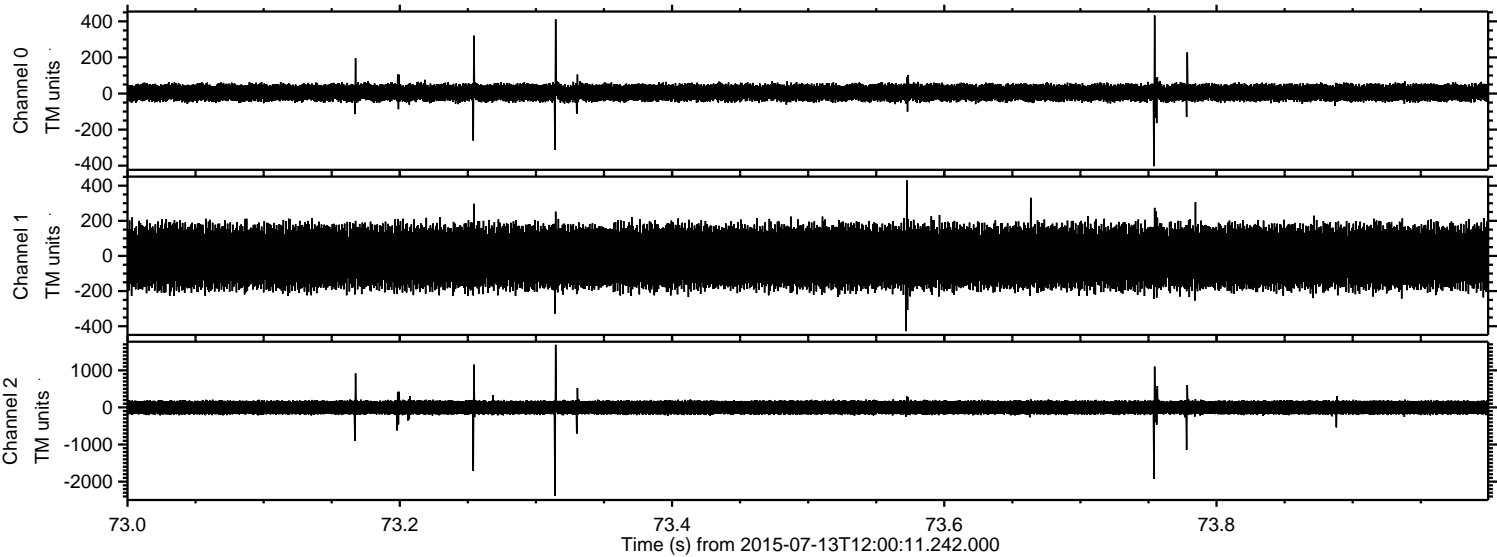
Channel 2
mn: -1606
mx: 2533
 μ : -3.6
 σ : 107.6

ELMAVAN 3D WAVEFORMS (Measured data sampled at 50 kHz) 51000 packets of 144 samples from 2015-07-13T12:00:11.242.000. Part 130/147

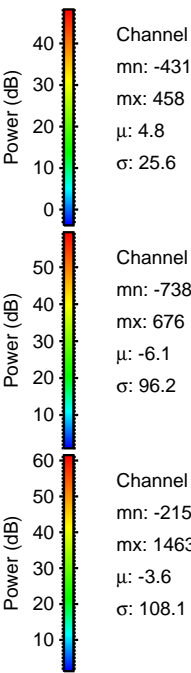
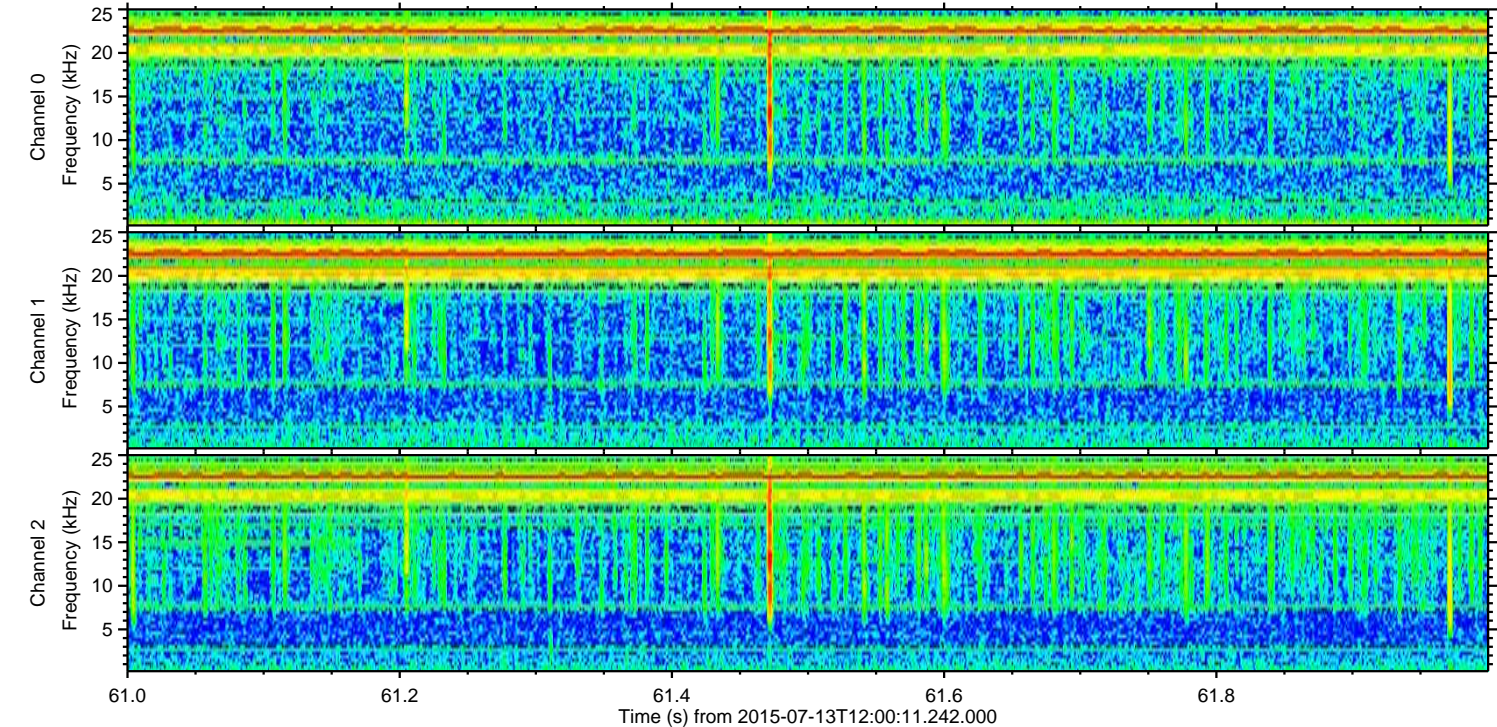
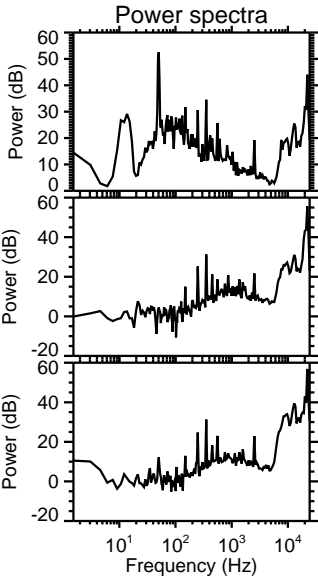
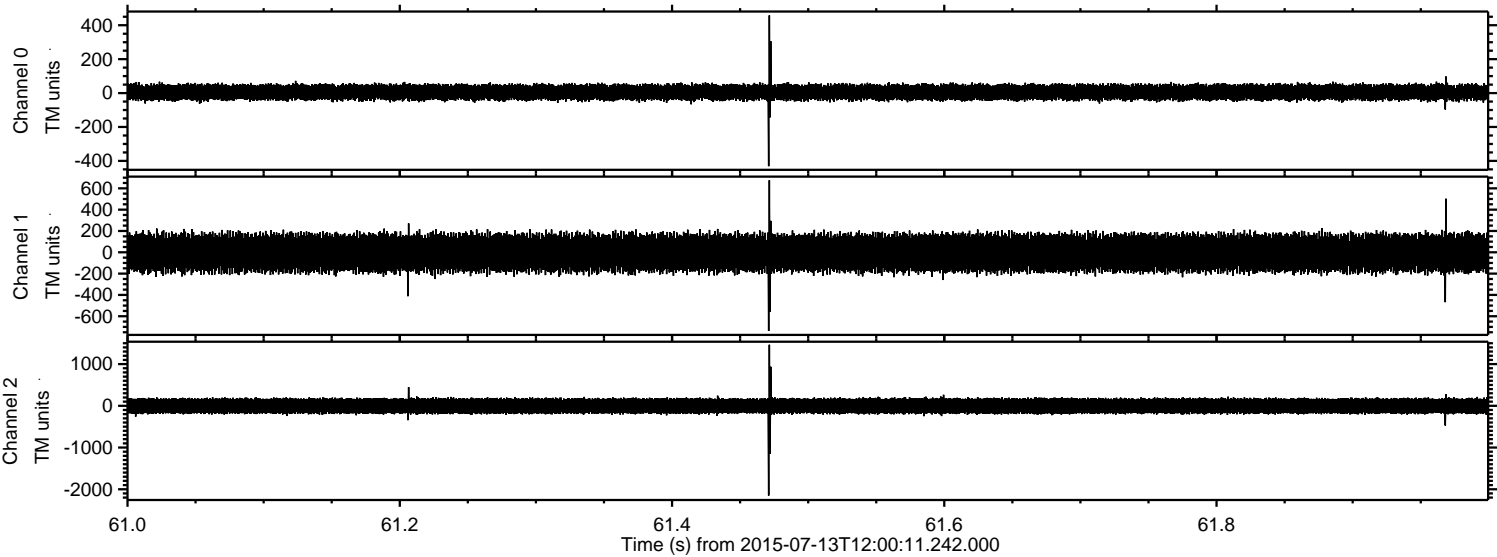
Processed Mon Jul 13 14:06:56 2015 by ELM ver.2012-10-06 from 001__elm20150713_120010__dat00.bin



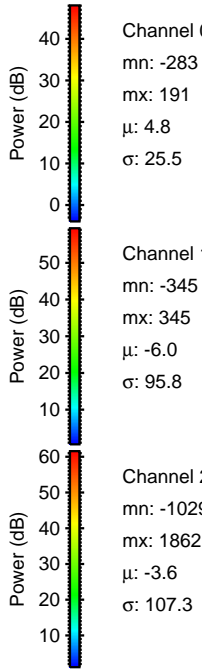
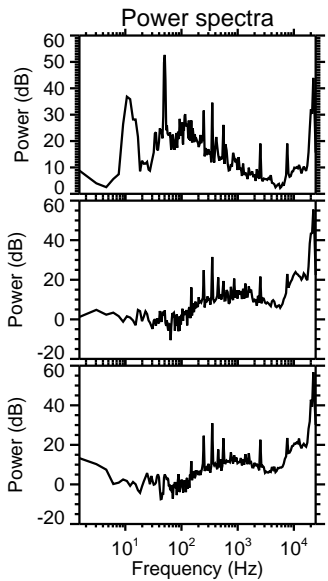
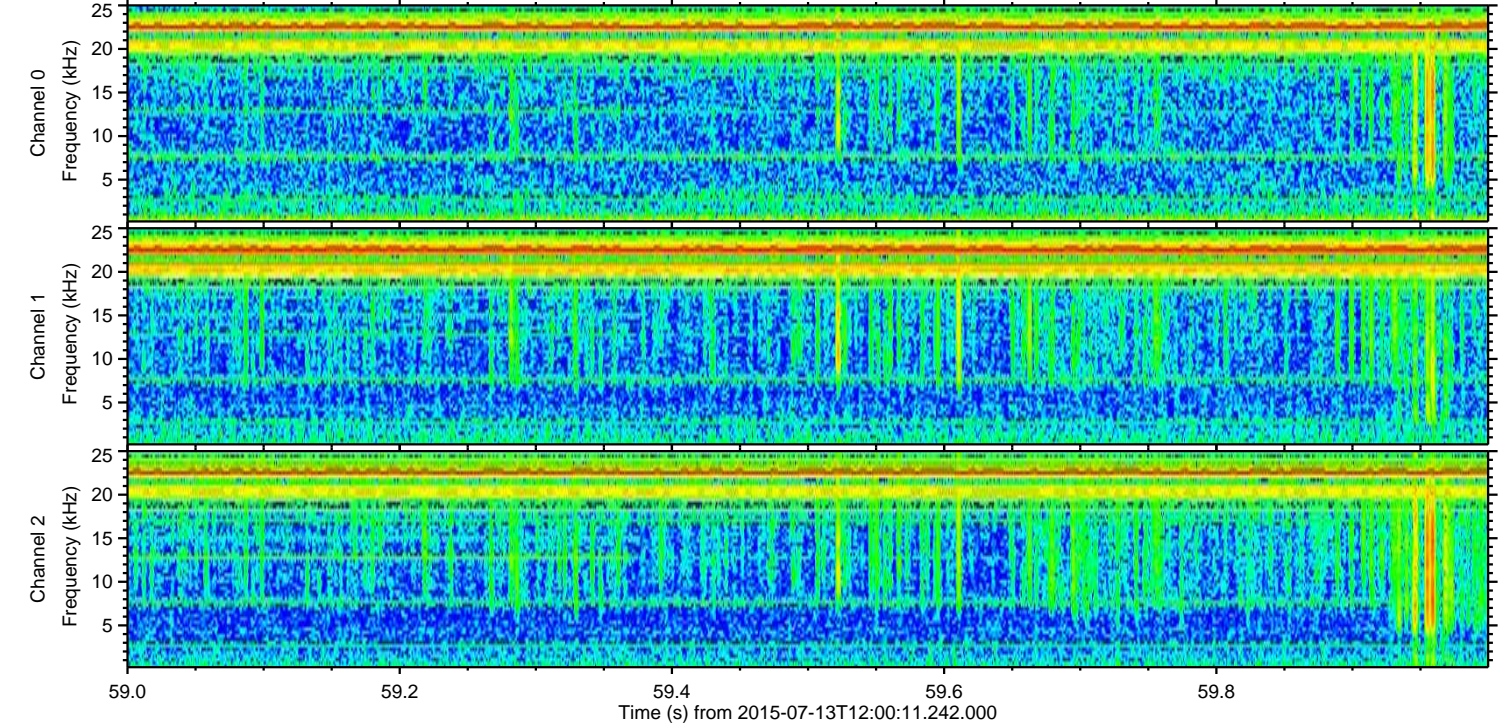
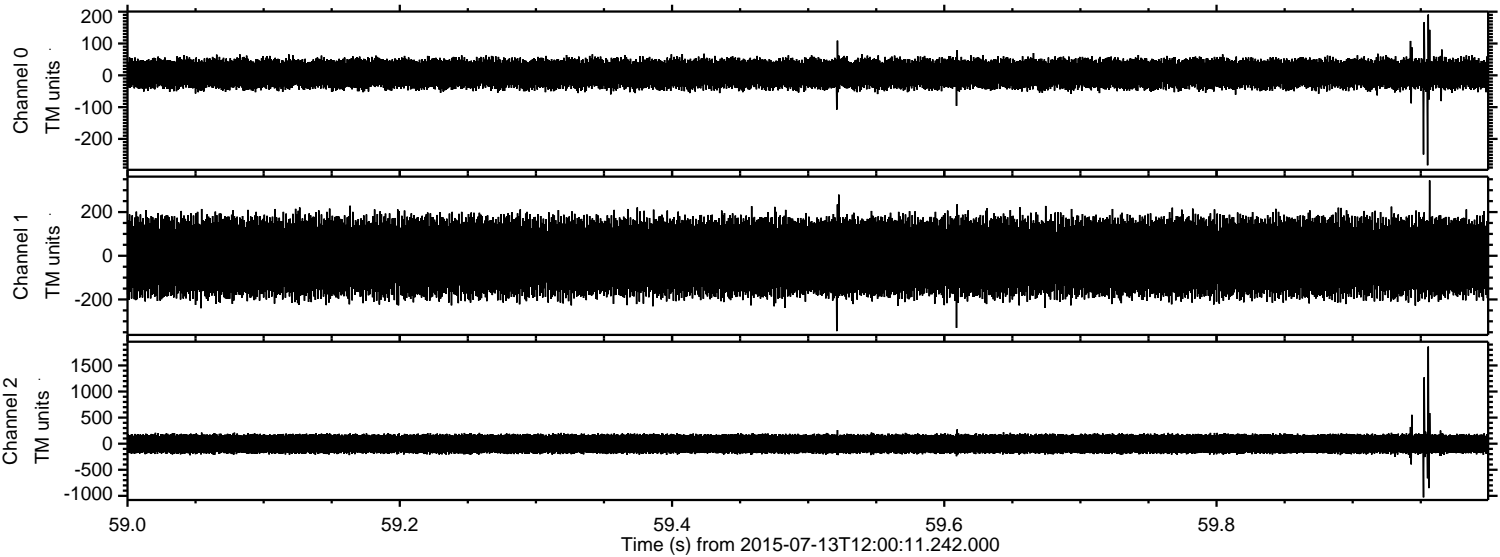
Processed Mon Jul 13 14:06:57 2015 by ELM ver.2012-10-06 from 001__elm20150713_120010__dat00.bin



Processed Mon Jul 13 14:06:58 2015 by ELM ver.2012-10-06 from 001__elm20150713_120010__dat00.bin

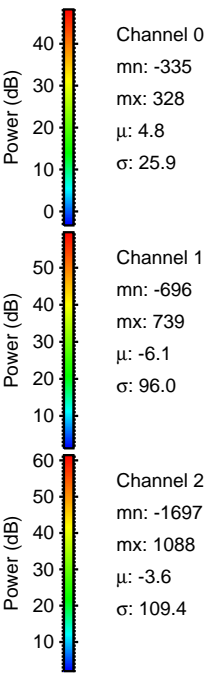
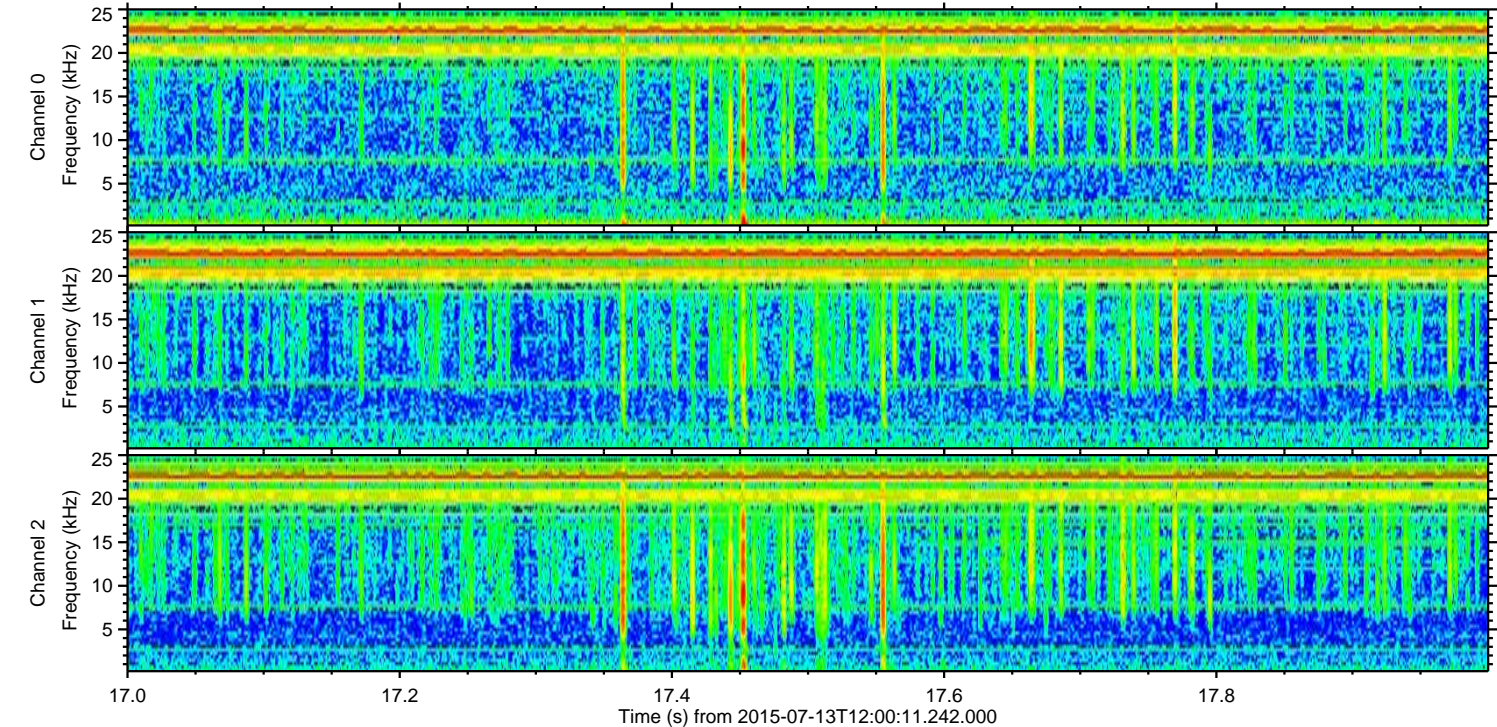
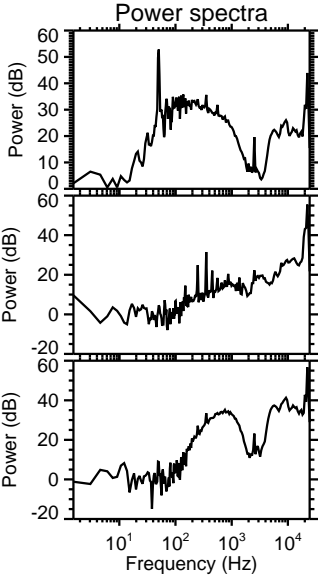
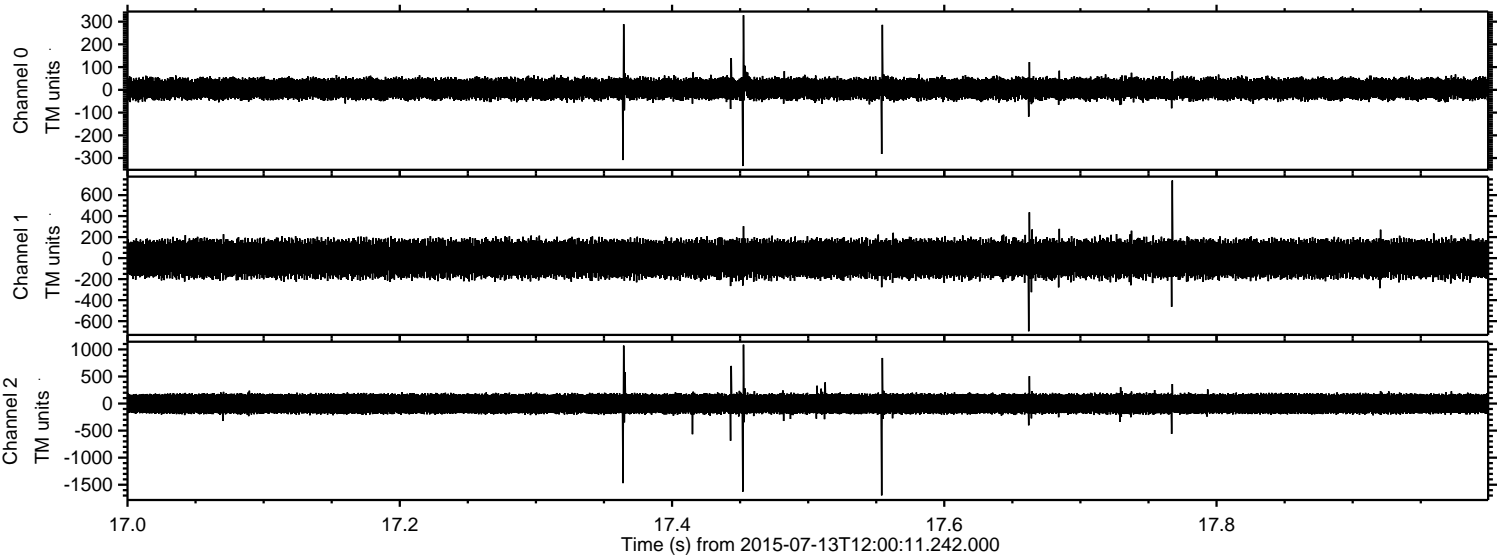


Processed Mon Jul 13 14:06:59 2015 by ELM ver.2012-10-06 from 001__elm20150713_120010__dat00.bin

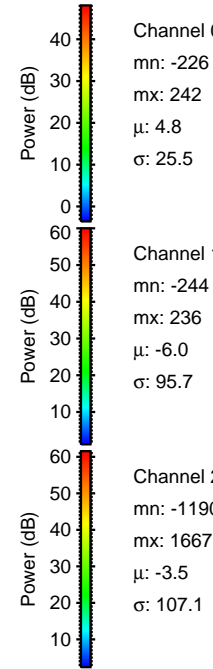
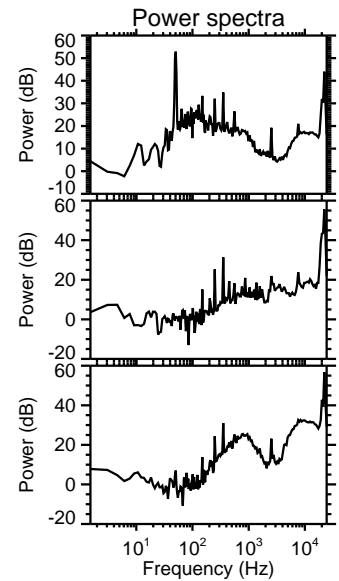
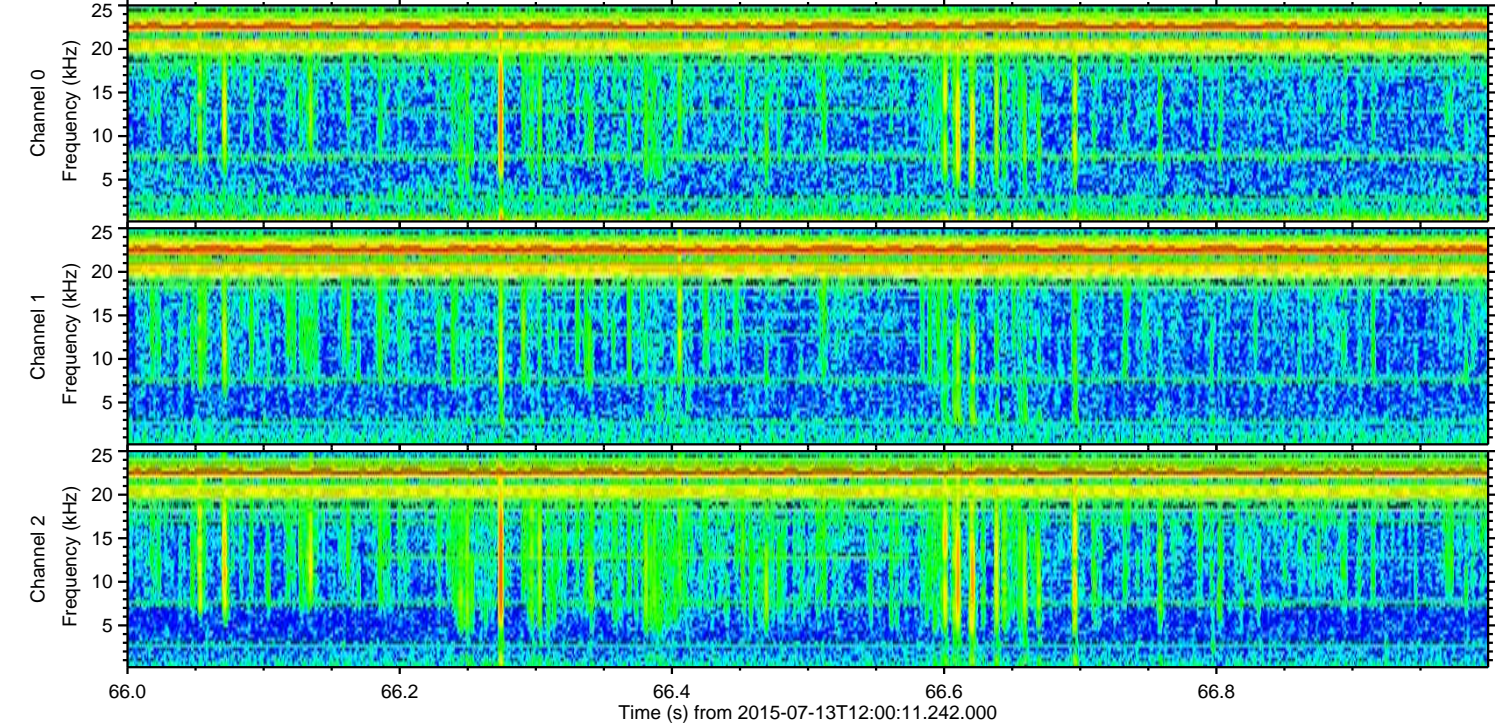
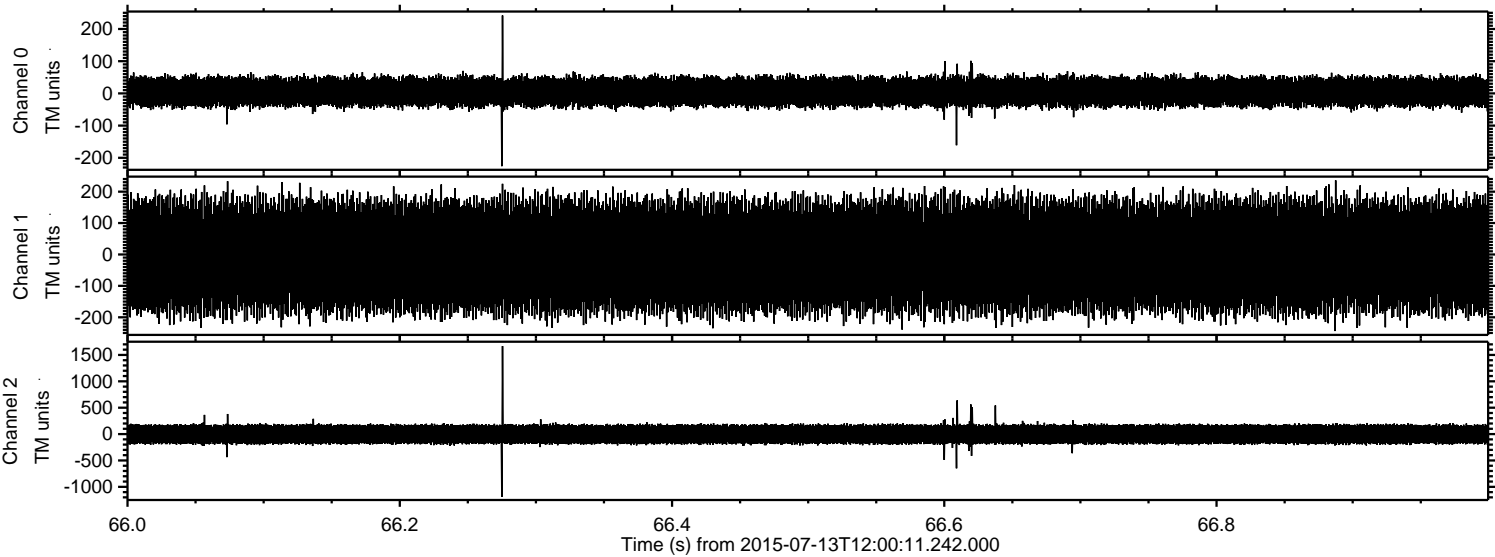


ELMAVAN 3D WAVEFORMS (Measured data sampled at 50 kHz) 51000 packets of 144 samples from 2015-07-13T12:00:11.242.000. Part 18/147

Processed Mon Jul 13 14:07:00 2015 by ELM ver.2012-10-06 from 001__elm20150713_120010__dat00.bin



Processed Mon Jul 13 14:07:01 2015 by ELM ver.2012-10-06 from 001__elm20150713_120010__dat00.bin



Channel 0
mn: -226
mx: 242
 μ : 4.8
 σ : 25.5

Channel 1
mn: -244
mx: 236
 μ : -6.0
 σ : 95.7

Channel 2
mn: -1190
mx: 1667
 μ : -3.5
 σ : 107.1

Processed Mon Jul 13 14:07:02 2015 by ELM ver.2012-10-06 from 001__elm20150713_120010__dat00.bin

