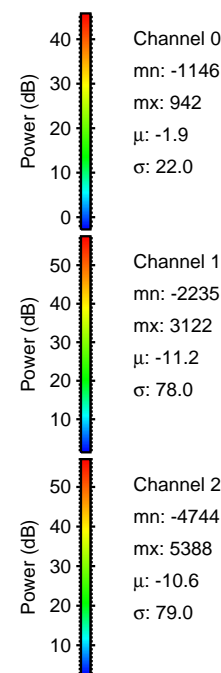
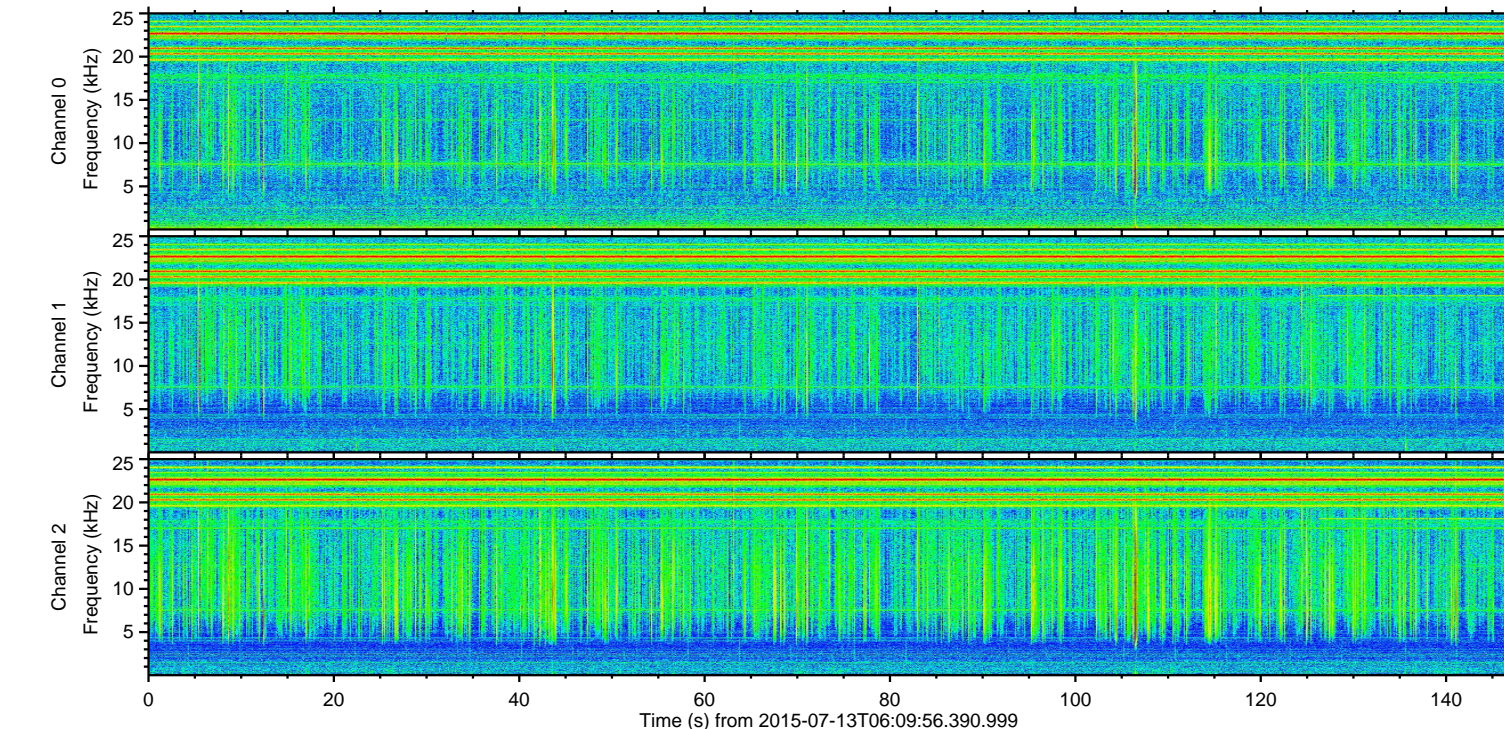
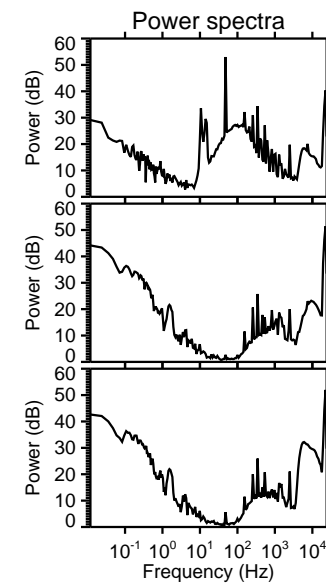
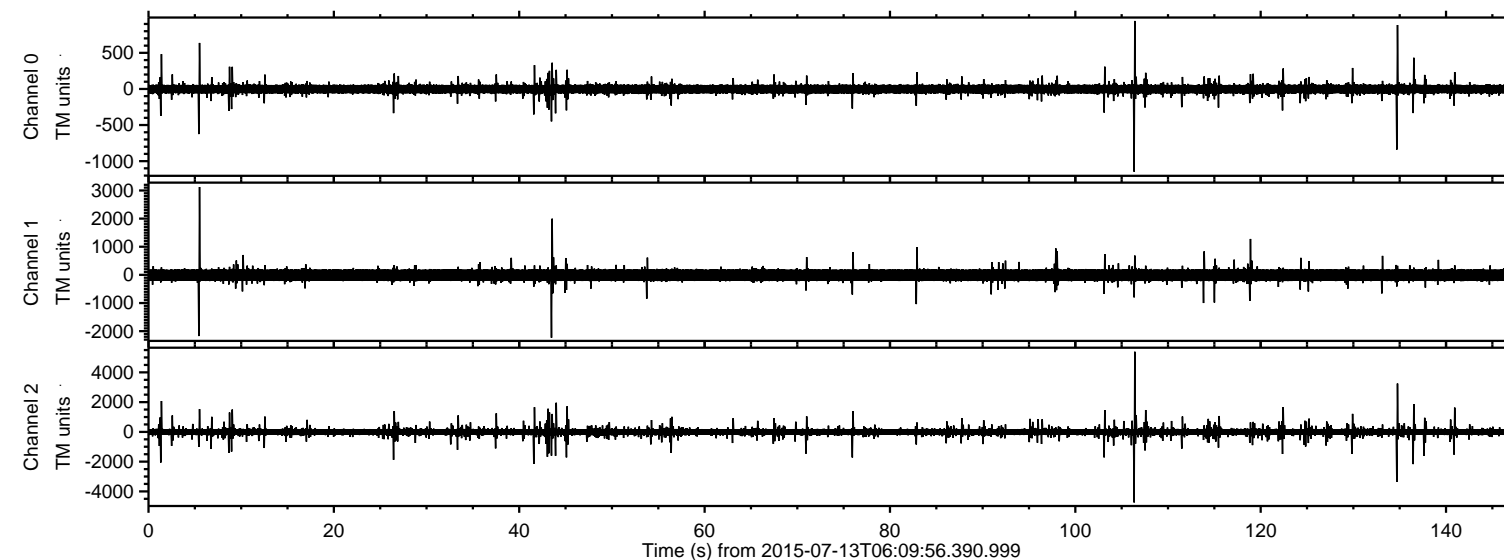


# ELMAVAN 3D WAVEFORMS (Measured data sampled at 50 kHz) 51000 packets of 144 samples from 2015-07-13T06:09:56.390.999.

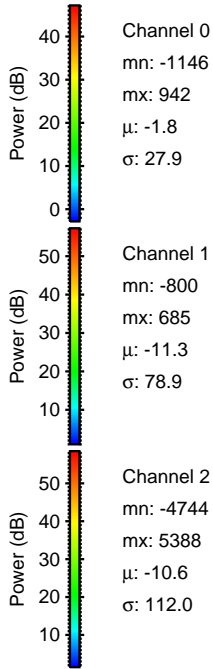
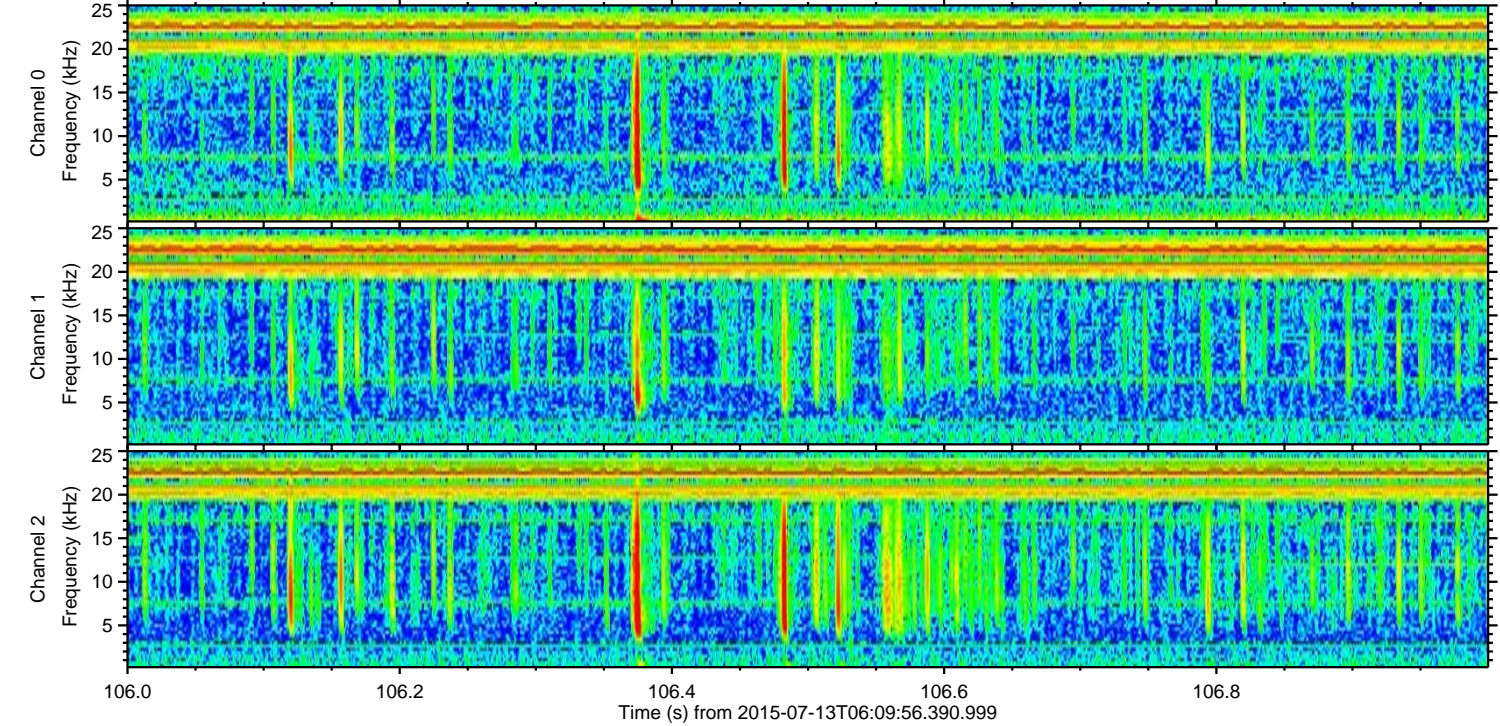
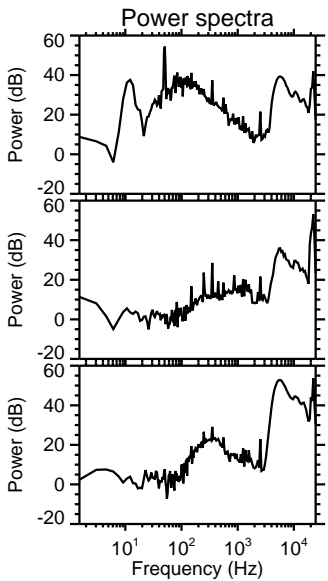
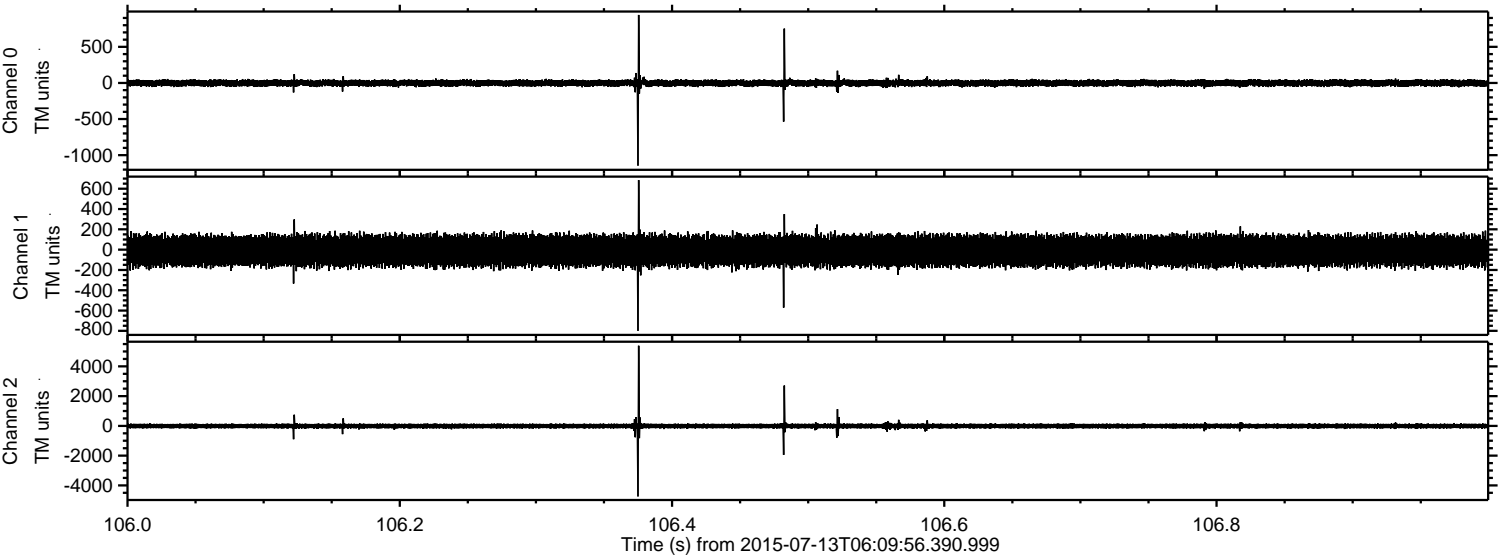
Processed Mon Jul 13 08:15:44 2015 by ELM ver.2012-10-06 from 001\_\_elm20150713\_060955\_\_dat00.bin





ELMAVAN 3D WAVEFORMS (Measured data sampled at 50 kHz) 51000 packets of 144 samples from 2015-07-13T06:09:56.390.999. Part 107/147

Processed Mon Jul 13 08:15:59 2015 by ELM ver.2012-10-06 from 001\_\_elm20150713\_060955\_\_dat00.bin



Channel 0  
mn: -1146  
mx: 942  
 $\mu$ : -1.8  
 $\sigma$ : 27.9

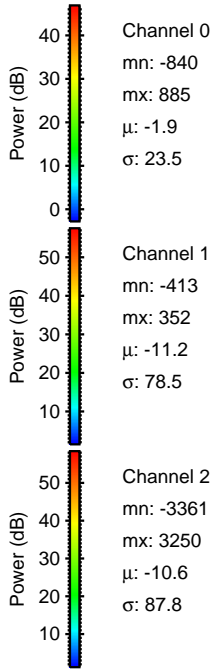
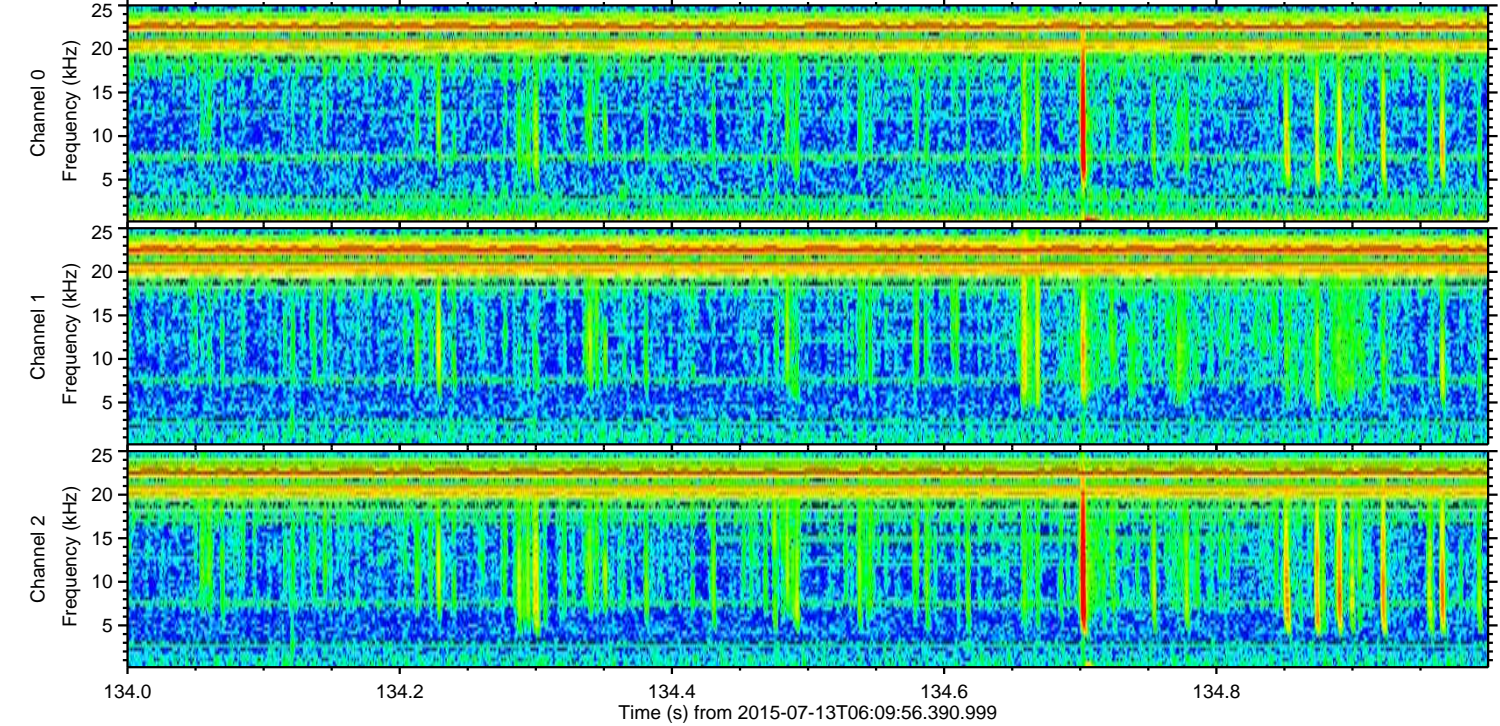
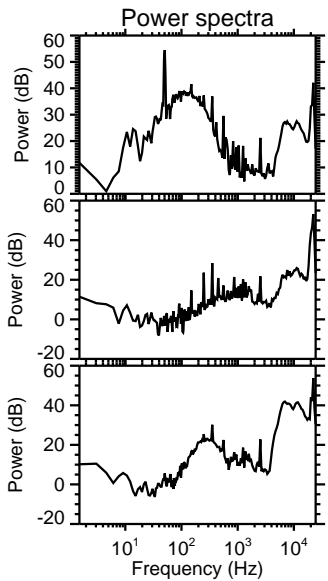
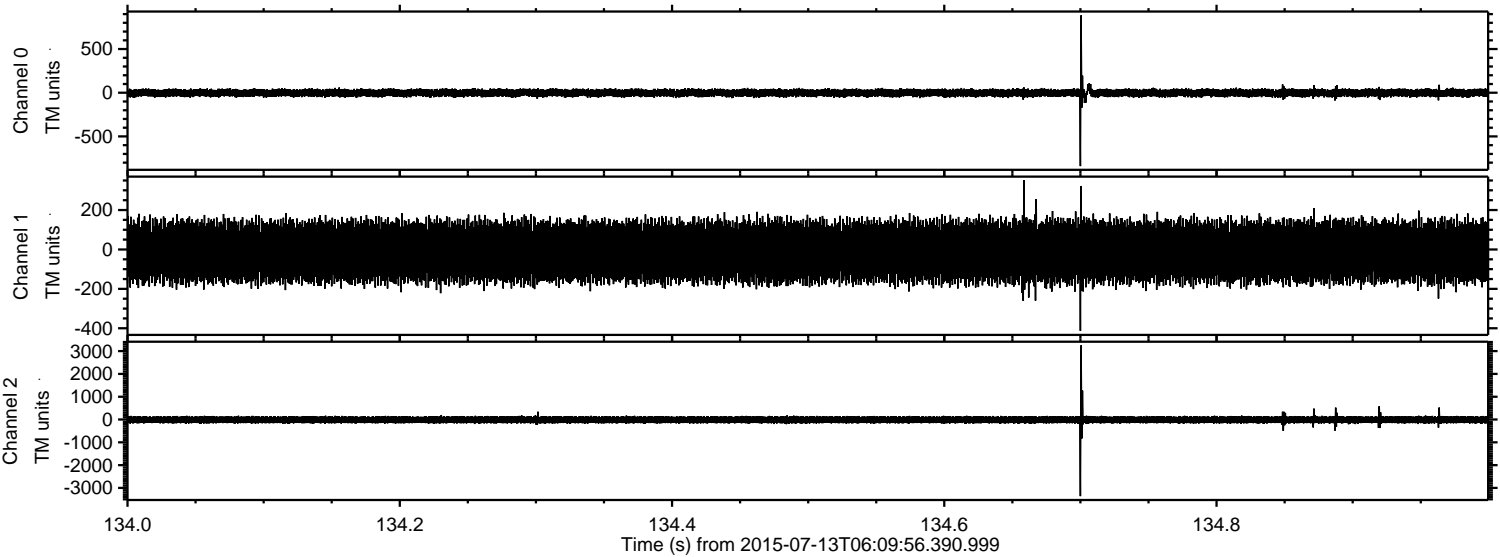
Channel 1  
mn: -800  
mx: 685  
 $\mu$ : -11.3  
 $\sigma$ : 78.9

Channel 2  
mn: -4744  
mx: 5388  
 $\mu$ : -10.6  
 $\sigma$ : 112.0



ELMAVAN 3D WAVEFORMS (Measured data sampled at 50 kHz) 51000 packets of 144 samples from 2015-07-13T06:09:56.390.999. Part 135/147

Processed Mon Jul 13 08:16:01 2015 by ELM ver.2012-10-06 from 001\_\_elm20150713\_060955\_\_dat00.bin



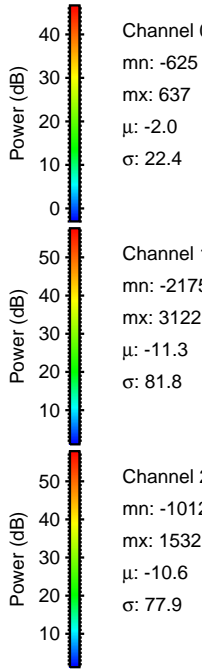
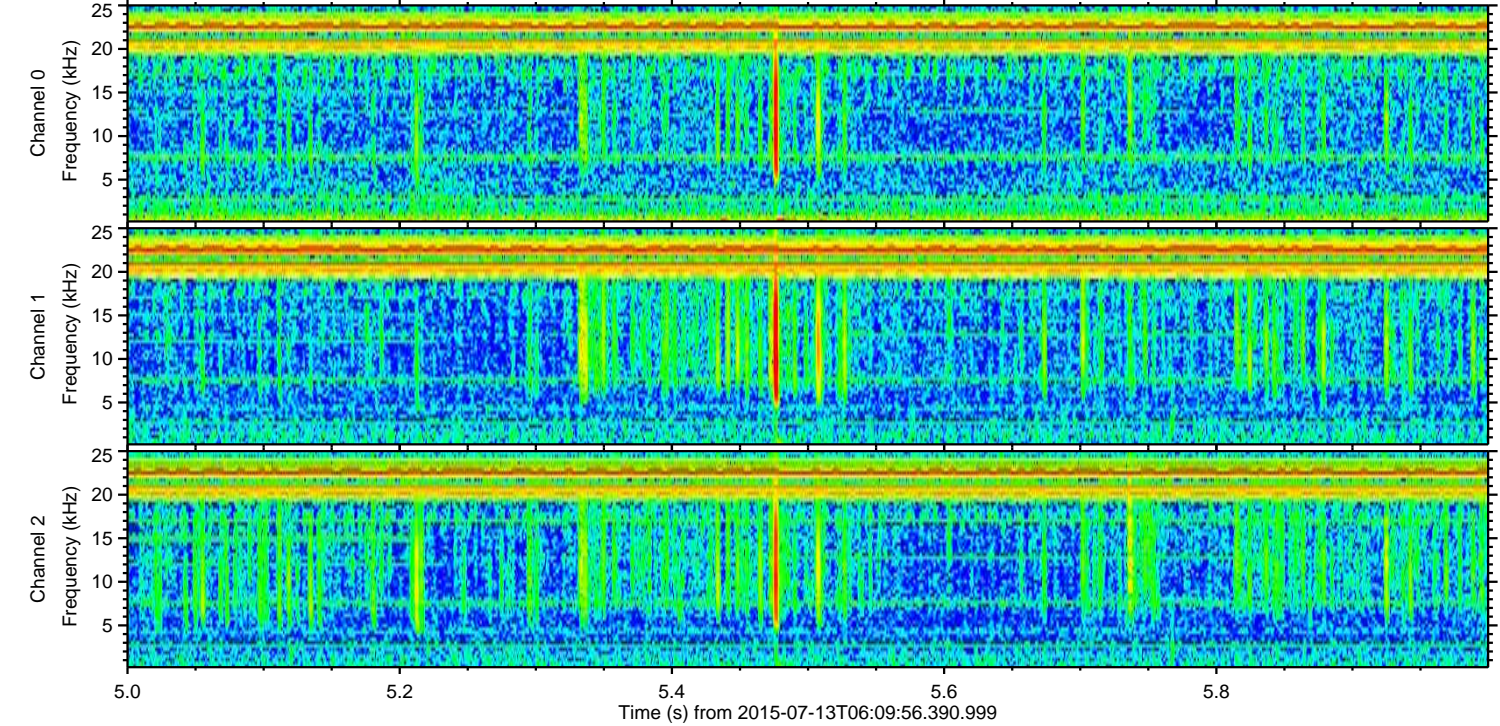
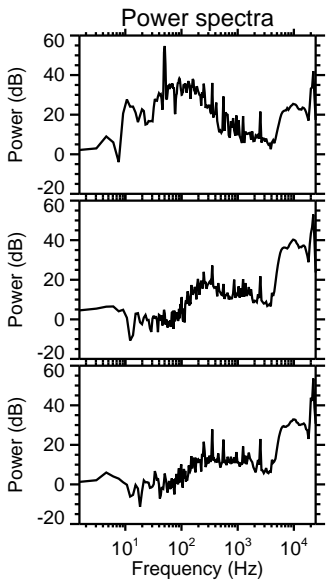
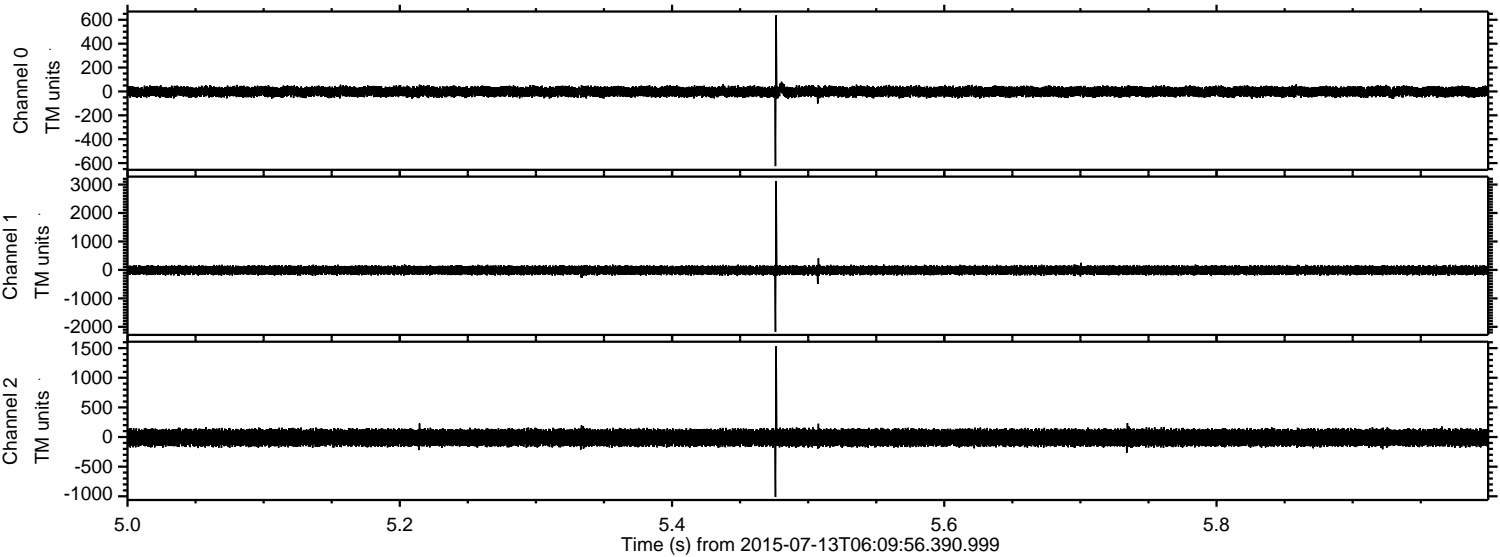
Channel 0  
mn: -840  
mx: 885  
 $\mu$ : -1.9  
 $\sigma$ : 23.5

Channel 1  
mn: -413  
mx: 352  
 $\mu$ : -11.2  
 $\sigma$ : 78.5

Channel 2  
mn: -3361  
mx: 3250  
 $\mu$ : -10.6  
 $\sigma$ : 87.8



Processed Mon Jul 13 08:16:02 2015 by ELM ver.2012-10-06 from 001\_\_elm20150713\_060955\_\_dat00.bin



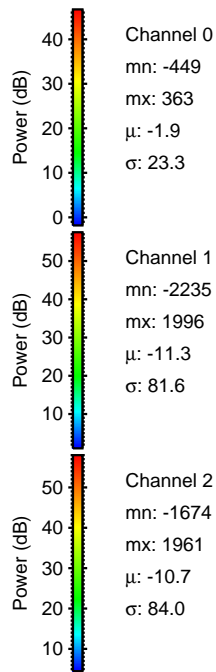
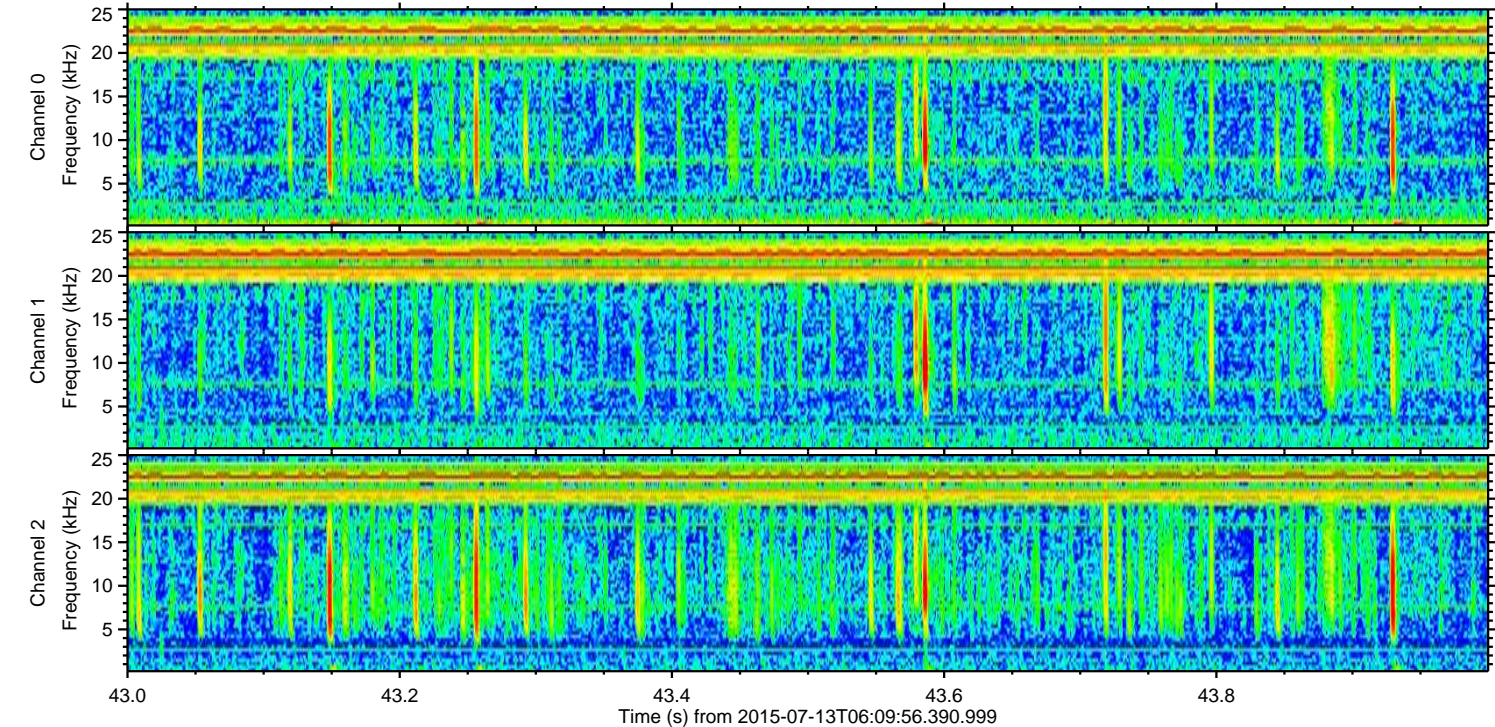
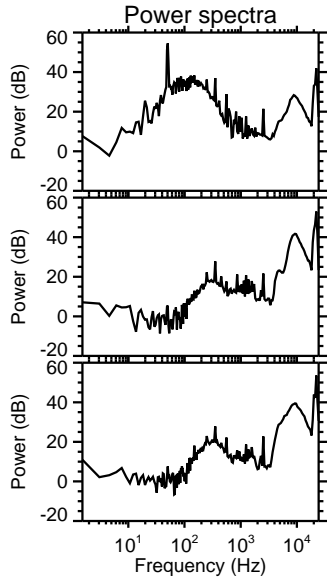
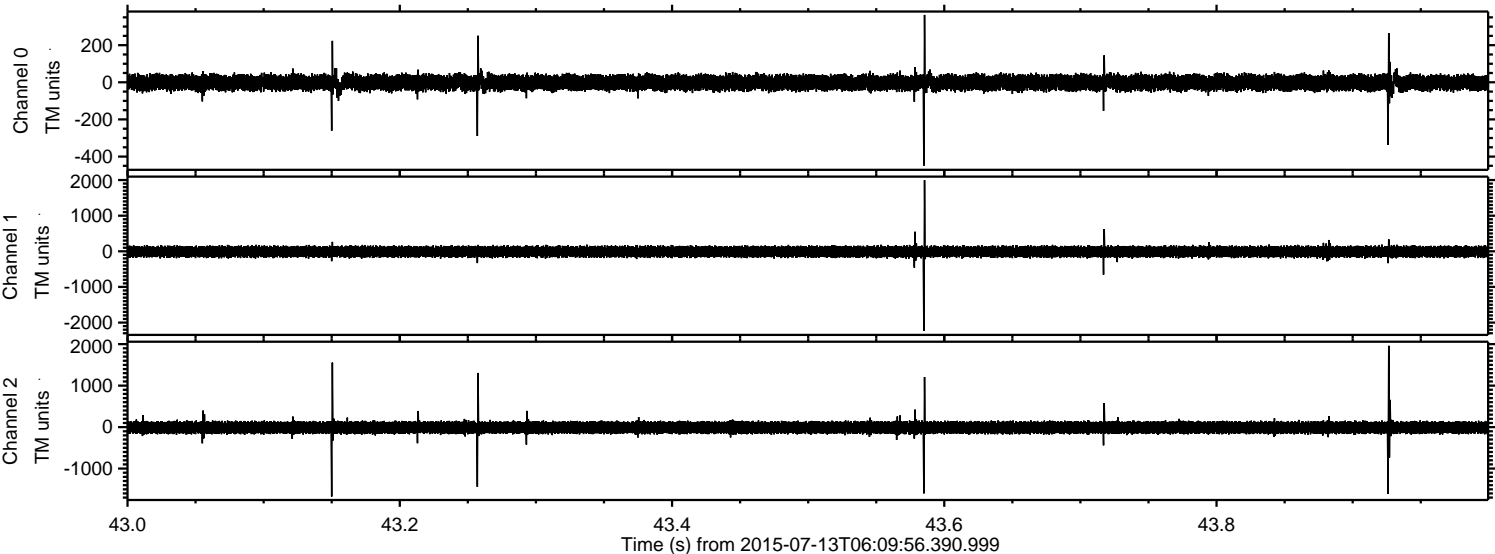
Channel 0  
mn: -625  
mx: 637  
 $\mu$ : -2.0  
 $\sigma$ : 22.4

Channel 1  
mn: -2175  
mx: 3122  
 $\mu$ : -11.3  
 $\sigma$ : 81.8

Channel 2  
mn: -1012  
mx: 1532  
 $\mu$ : -10.6  
 $\sigma$ : 77.9



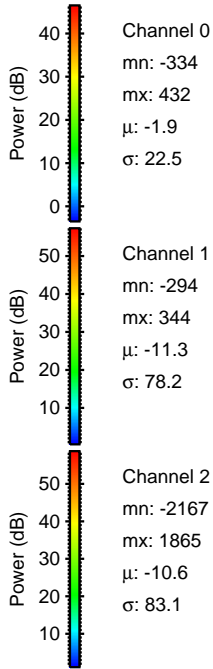
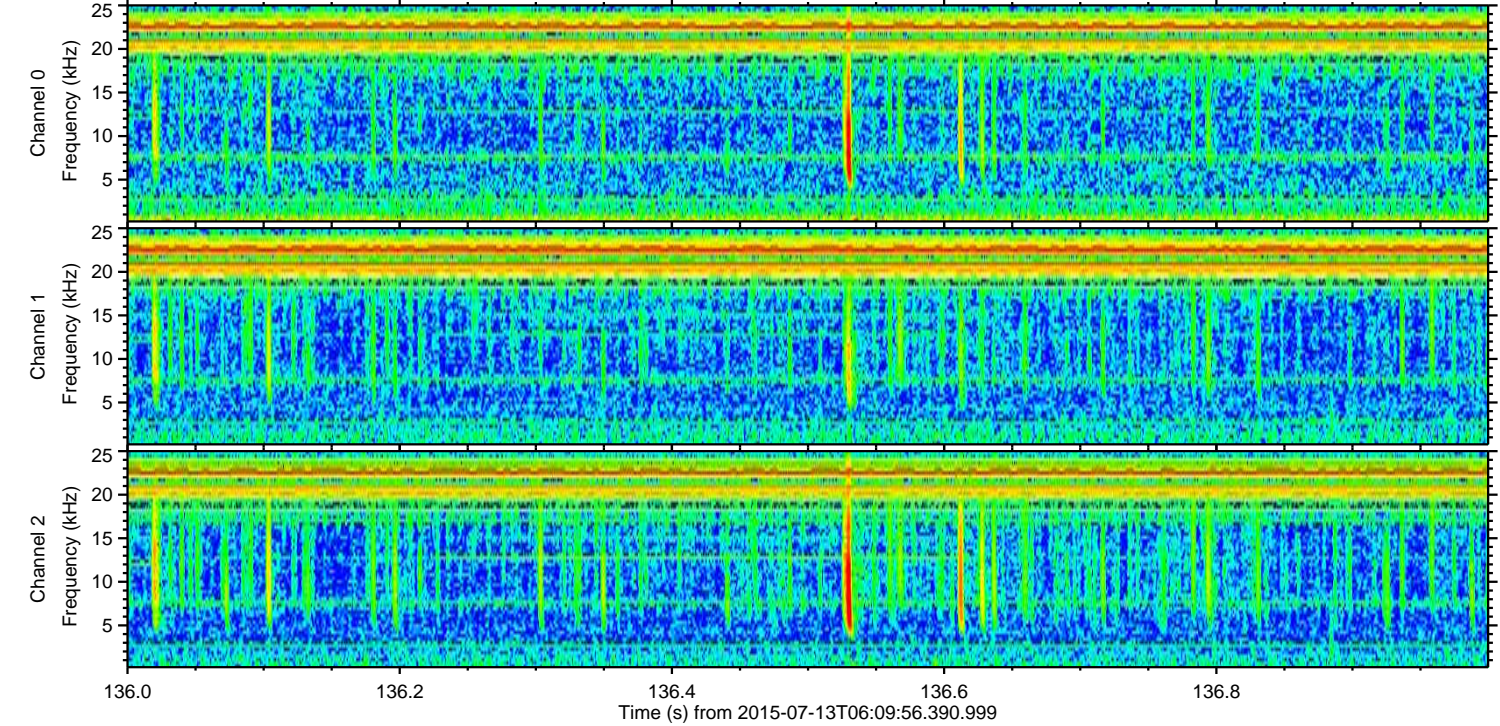
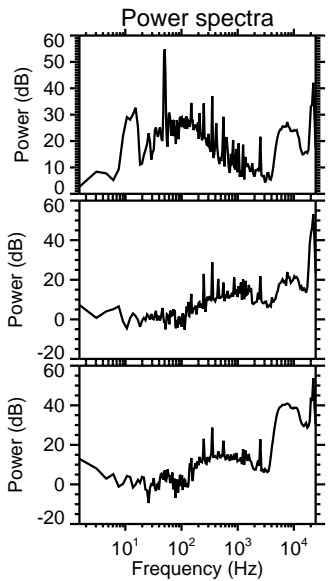
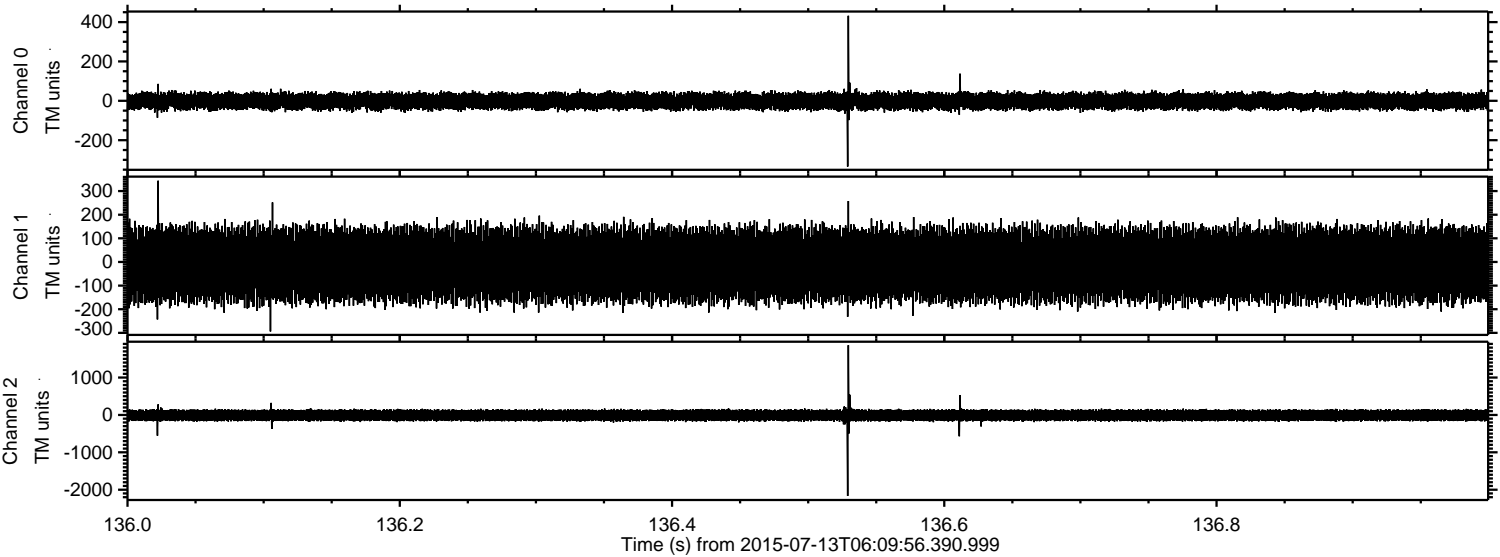
Processed Mon Jul 13 08:16:03 2015 by ELM ver.2012-10-06 from 001\_\_elm20150713\_060955\_\_dat00.bin





ELMAVAN 3D WAVEFORMS (Measured data sampled at 50 kHz) 51000 packets of 144 samples from 2015-07-13T06:09:56.390.999. Part 137/147

Processed Mon Jul 13 08:16:04 2015 by ELM ver.2012-10-06 from 001\_\_elm20150713\_060955\_\_dat00.bin



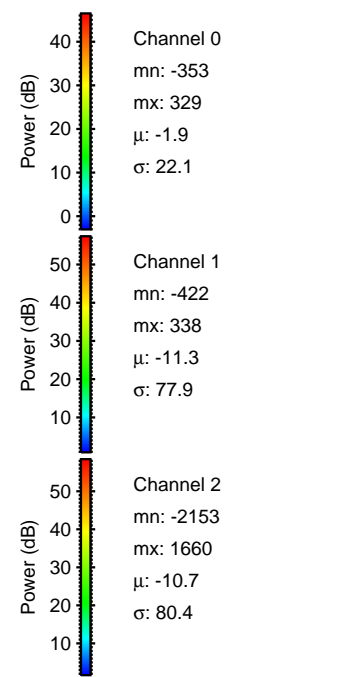
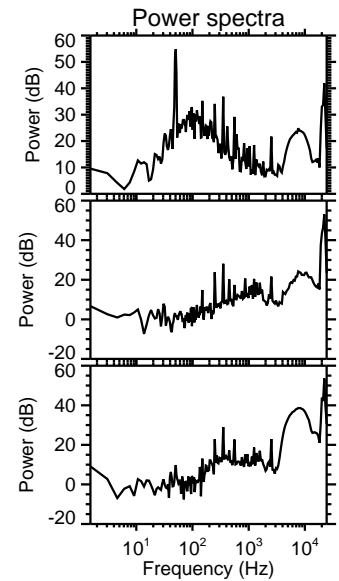
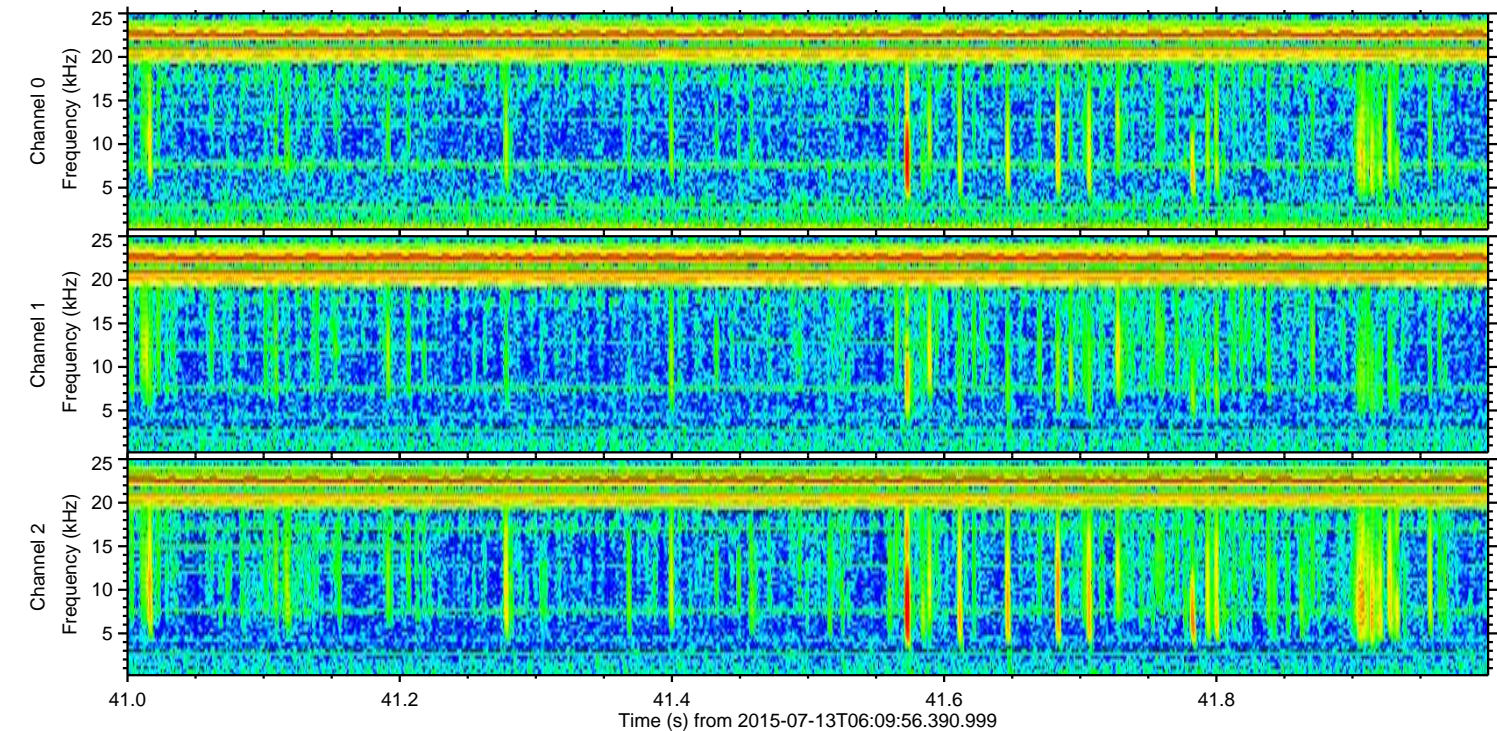
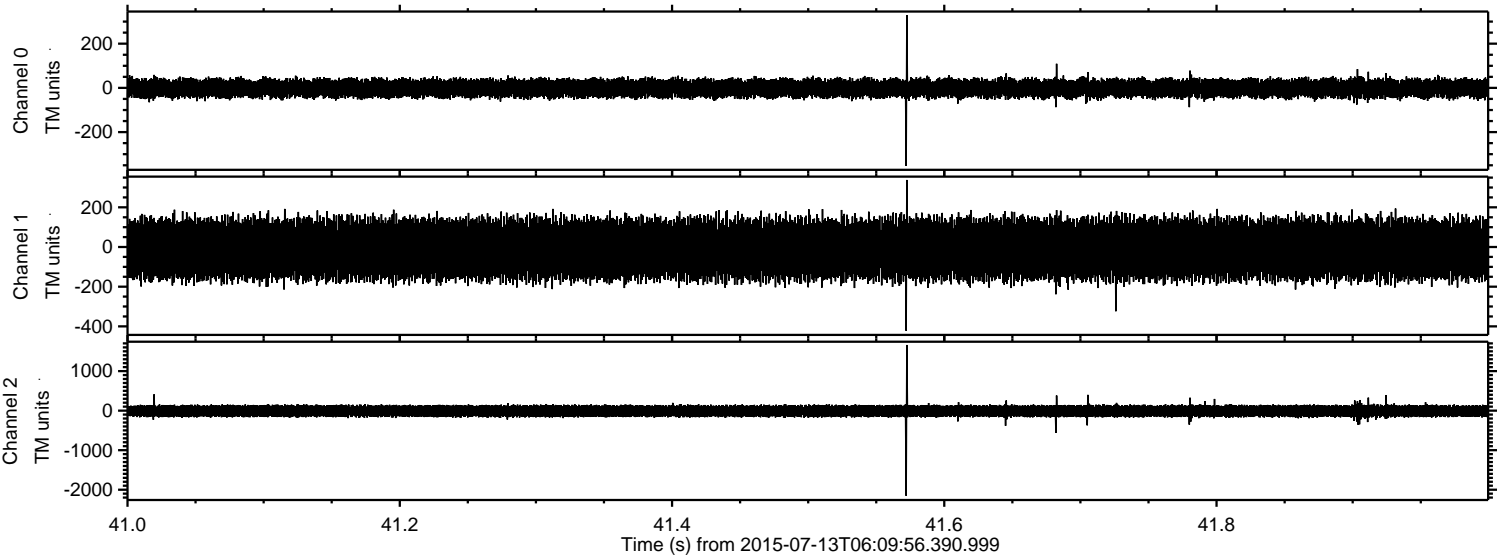
Channel 0  
mn: -334  
mx: 432  
 $\mu$ : -1.9  
 $\sigma$ : 22.5

Channel 1  
mn: -294  
mx: 344  
 $\mu$ : -11.3  
 $\sigma$ : 78.2

Channel 2  
mn: -2167  
mx: 1865  
 $\mu$ : -10.6  
 $\sigma$ : 83.1



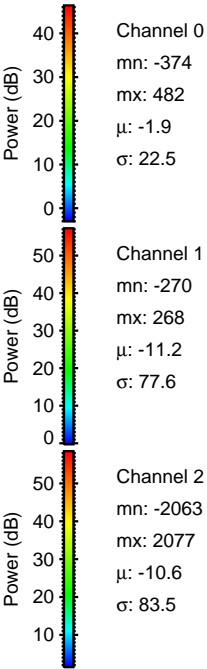
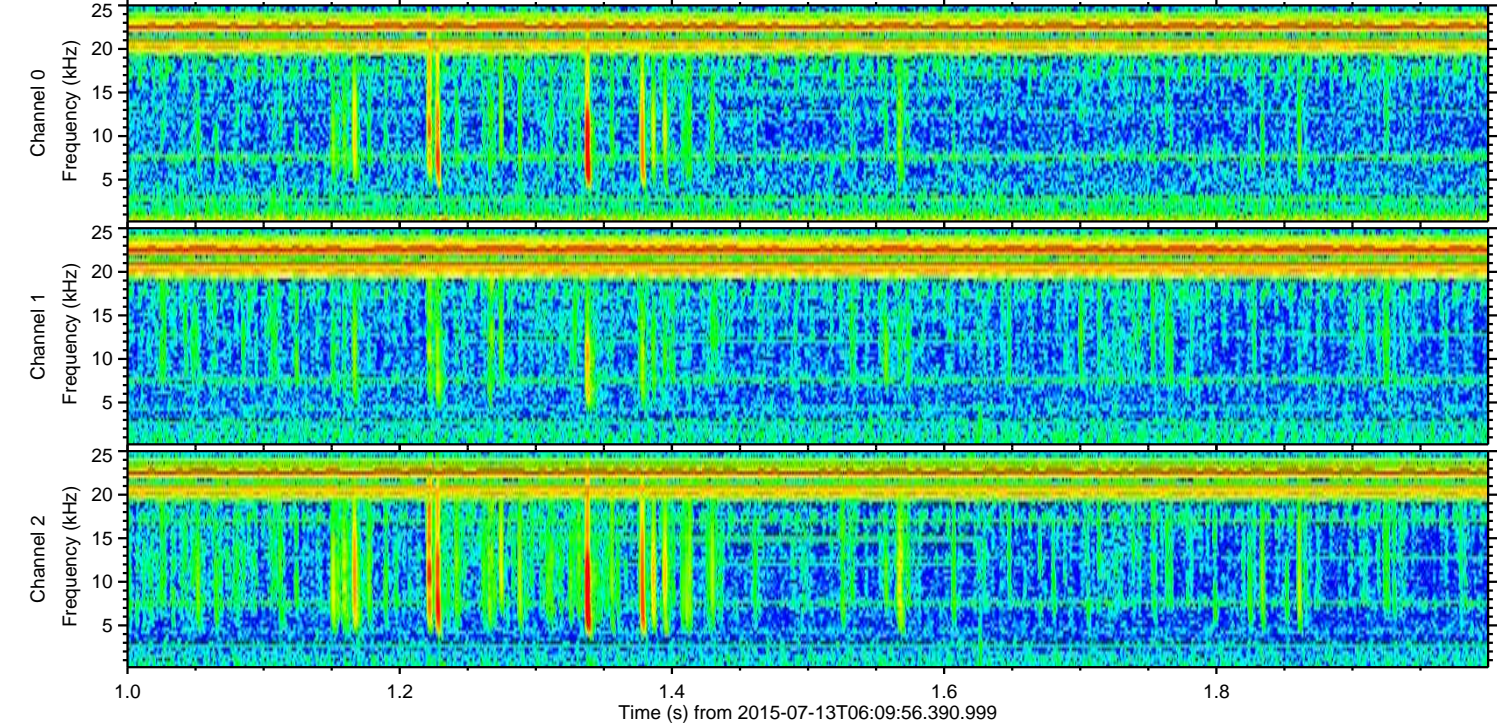
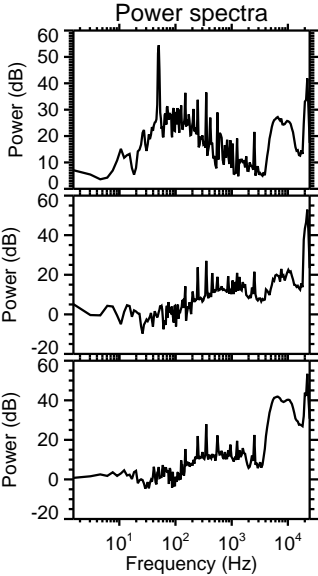
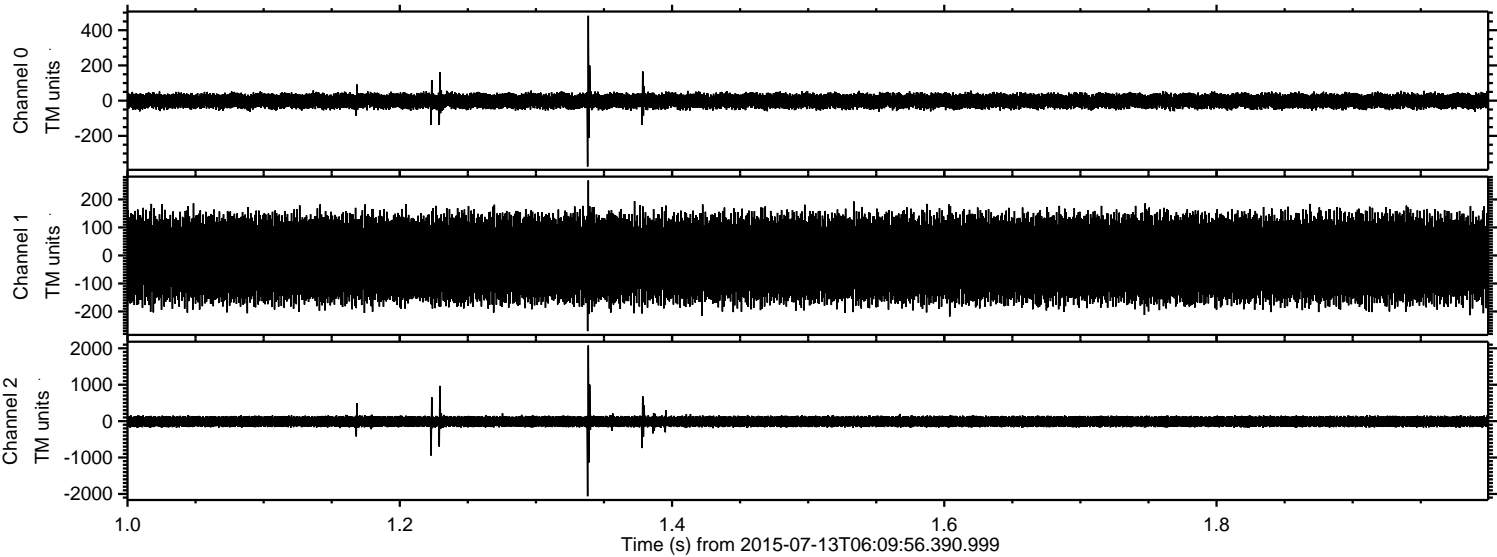
Processed Mon Jul 13 08:16:05 2015 by ELM ver.2012-10-06 from 001\_\_elm20150713\_060955\_\_dat00.bin





ELMAVAN 3D WAVEFORMS (Measured data sampled at 50 kHz) 51000 packets of 144 samples from 2015-07-13T06:09:56.390.999. Part 2/147

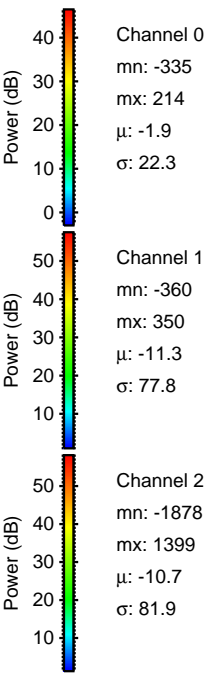
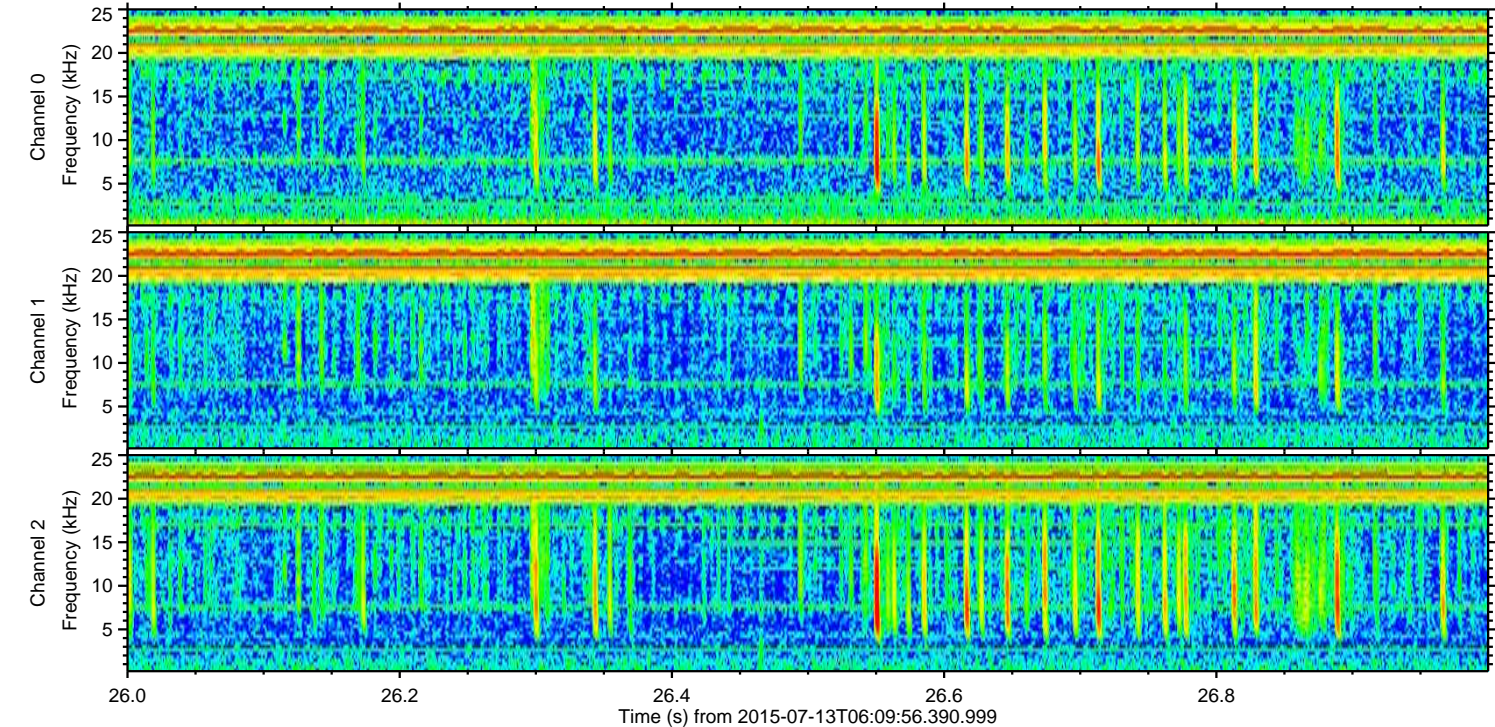
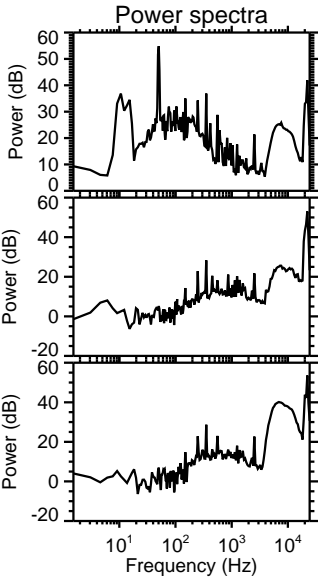
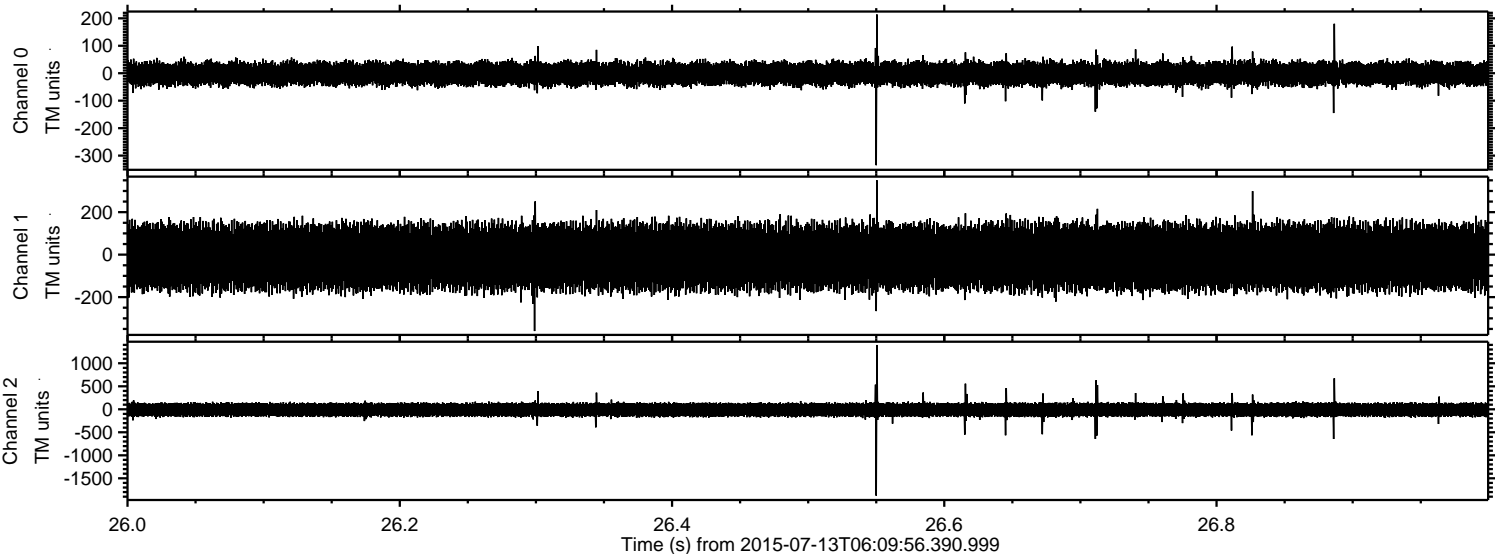
Processed Mon Jul 13 08:16:06 2015 by ELM ver.2012-10-06 from 001\_\_elm20150713\_060955\_\_dat00.bin





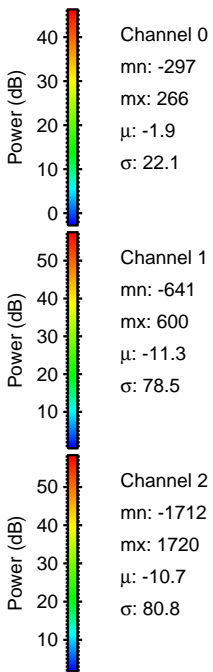
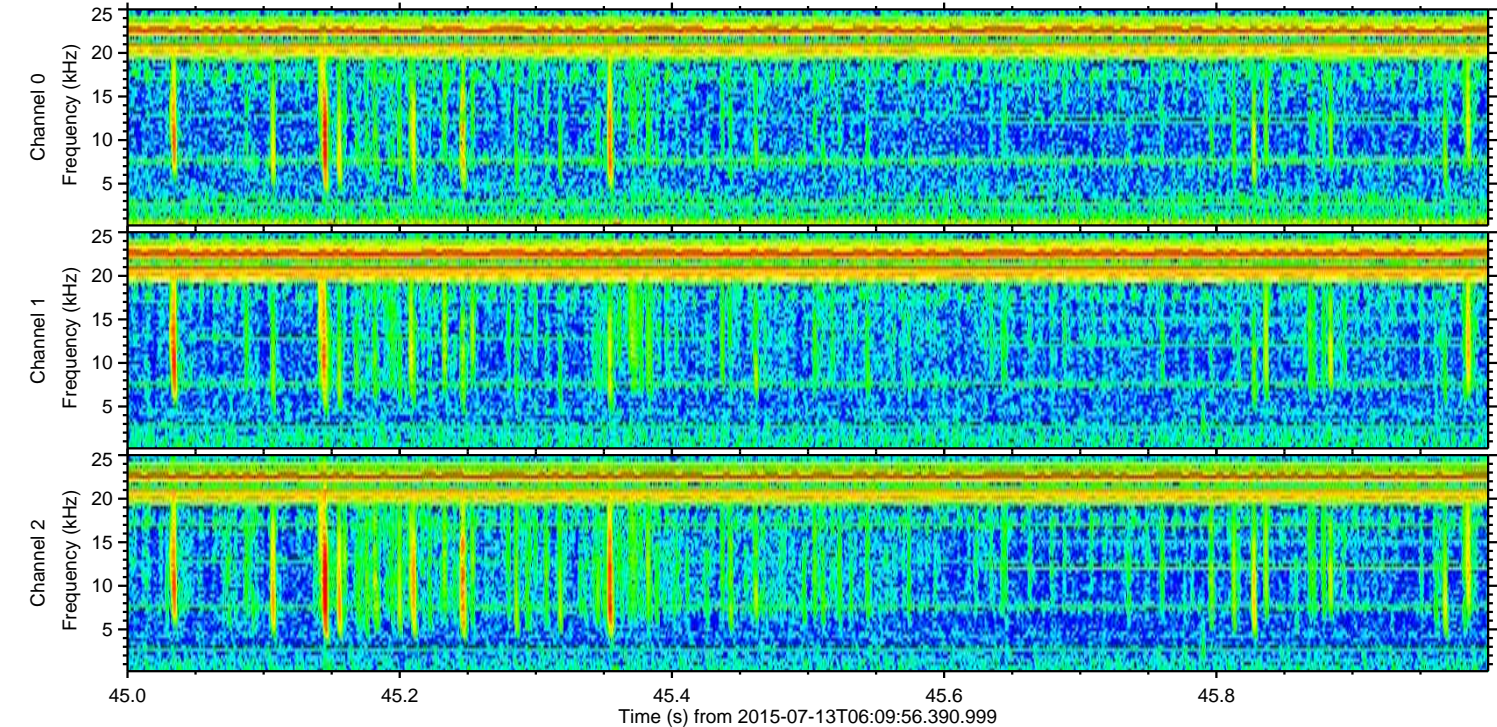
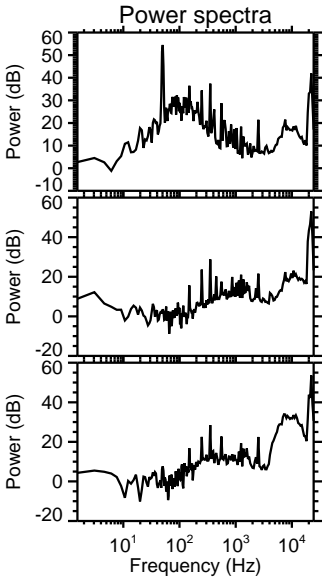
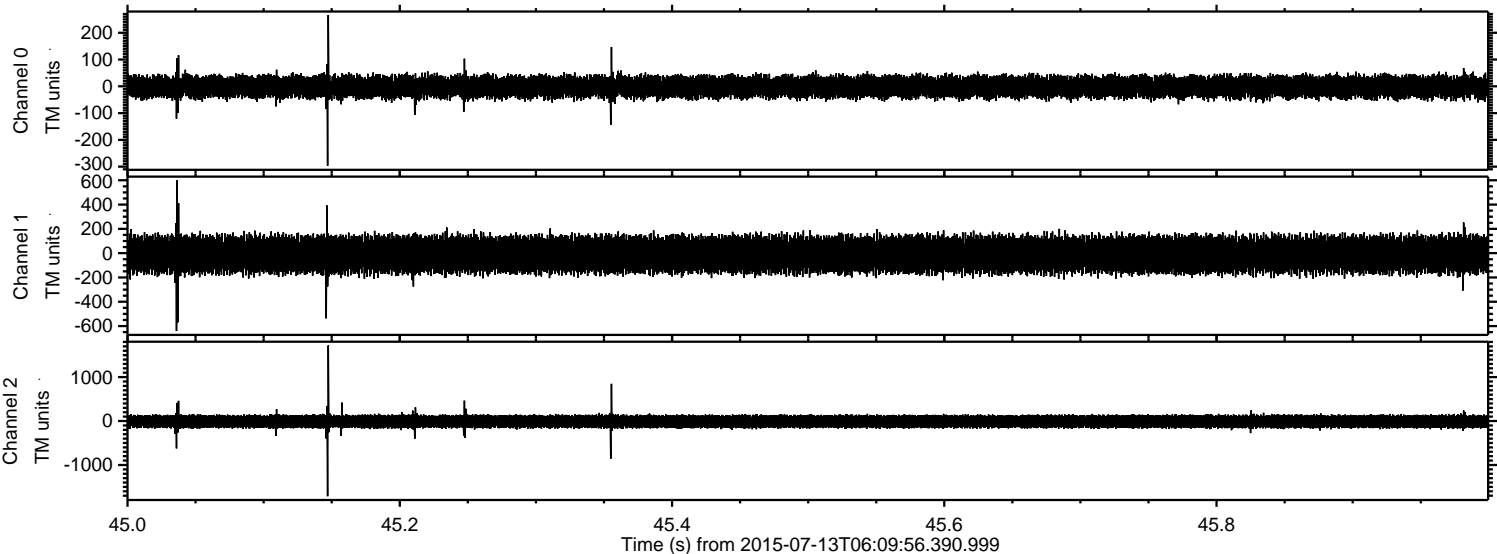
ELMAVAN 3D WAVEFORMS (Measured data sampled at 50 kHz) 51000 packets of 144 samples from 2015-07-13T06:09:56.390.999. Part 27/147

Processed Mon Jul 13 08:16:07 2015 by ELM ver.2012-10-06 from 001\_\_elm20150713\_060955\_\_dat00.bin





Processed Mon Jul 13 08:16:08 2015 by ELM ver.2012-10-06 from 001\_\_elm20150713\_060955\_\_dat00.bin





Processed Mon Jul 13 08:16:09 2015 by ELM ver.2012-10-06 from 001\_\_elm20150713\_060955\_\_dat00.bin

