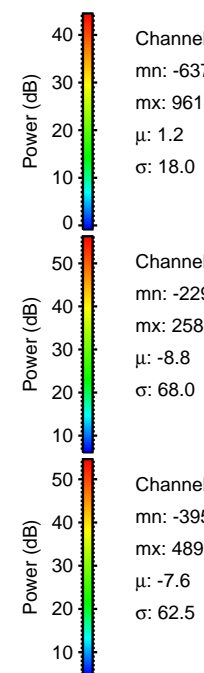
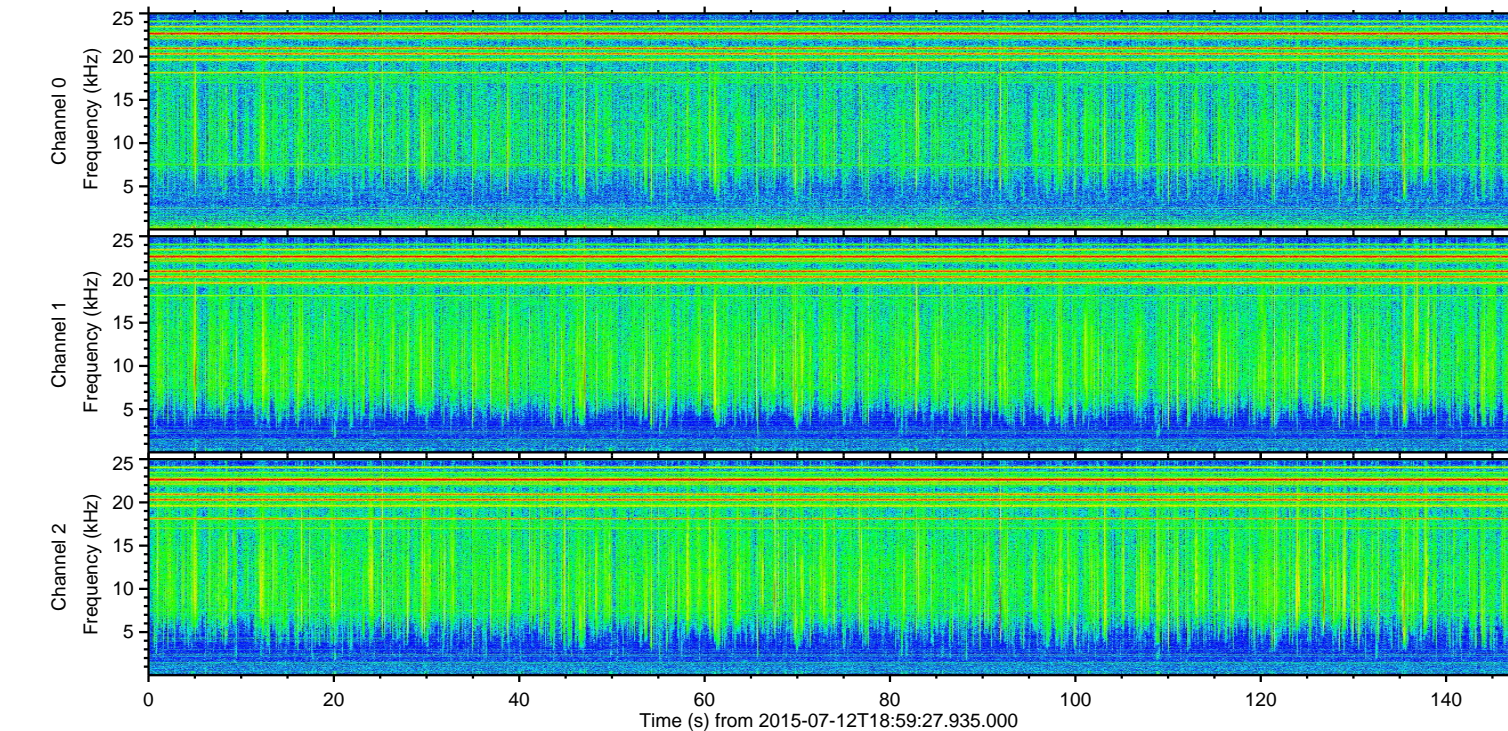
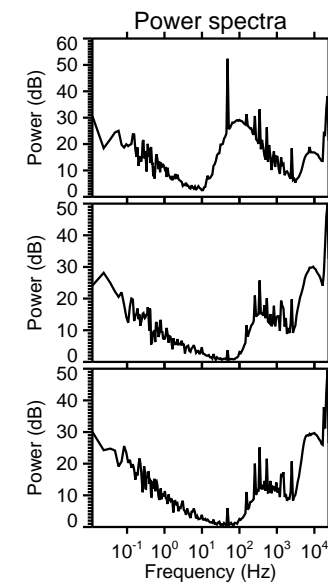
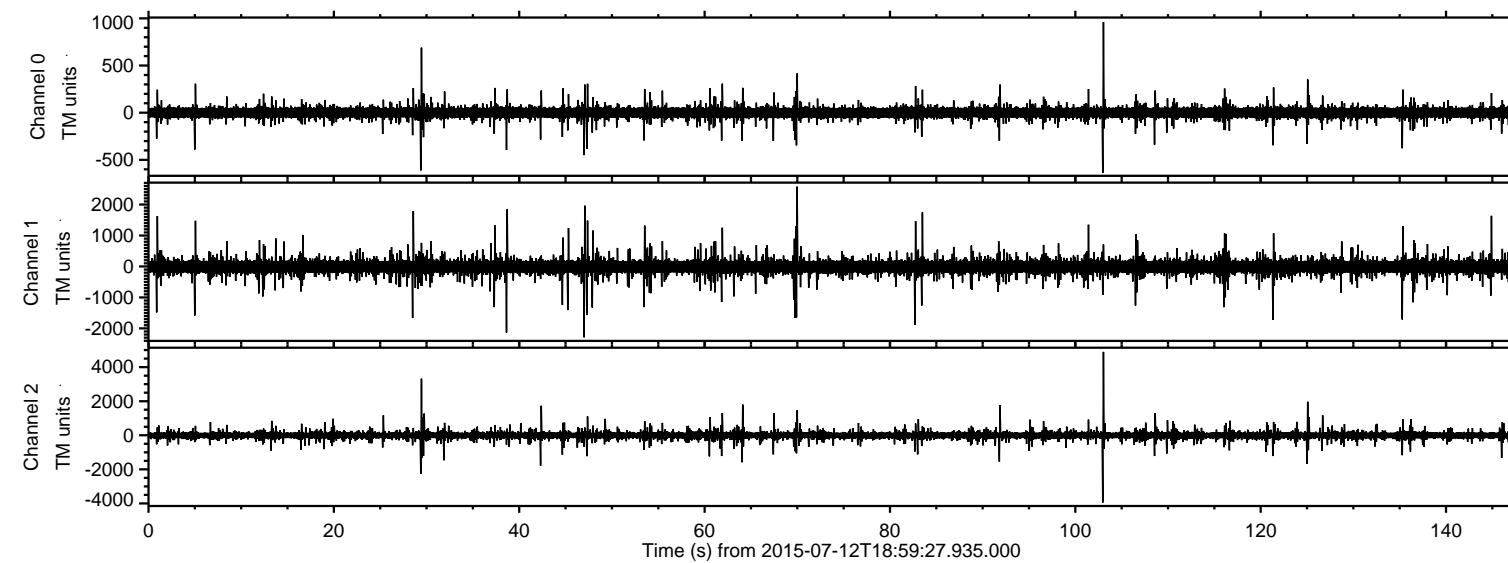


# ELMAVAN 3D WAVEFORMS (Measured data sampled at 50 kHz) 51000 packets of 144 samples from 2015-07-12T18:59:27.935.000.

Processed Sun Jul 12 21:05:33 2015 by ELM ver.2012-10-06 from 001\_\_elm20150712\_185926\_\_dat00.bin



Channel 0  
mn: -637  
mx: 961  
 $\mu$ : 1.2  
 $\sigma$ : 18.0

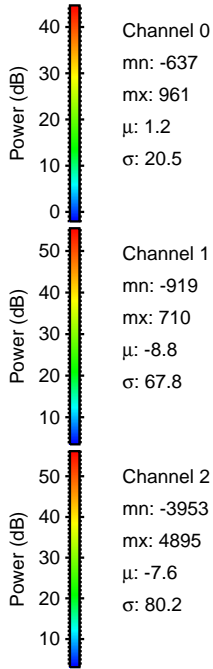
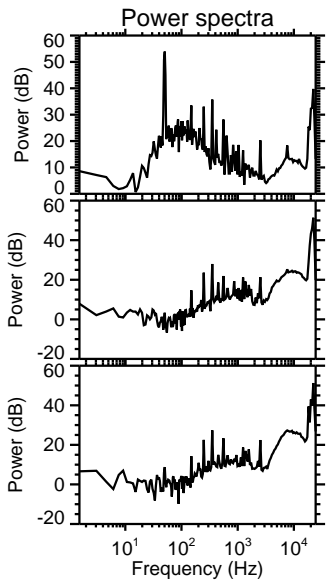
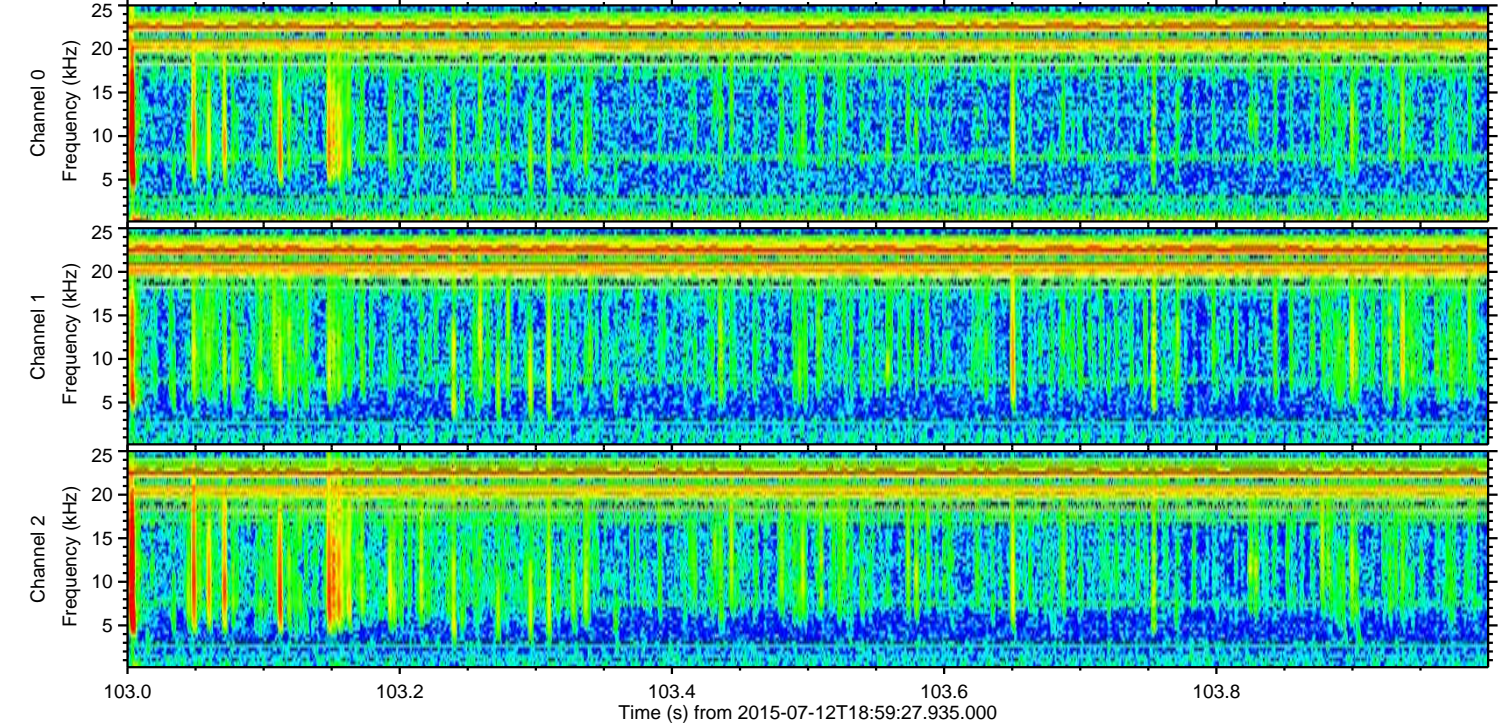
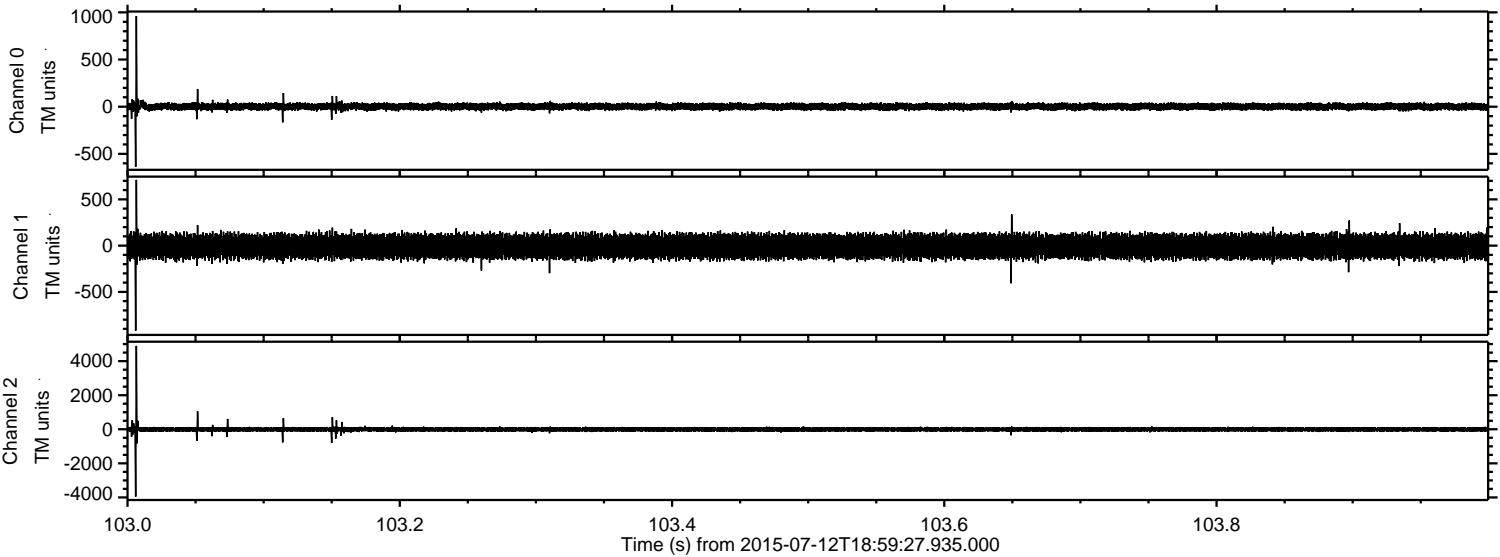
Channel 1  
mn: -2290  
mx: 2580  
 $\mu$ : -8.8  
 $\sigma$ : 68.0

Channel 2  
mn: -3953  
mx: 4895  
 $\mu$ : -7.6  
 $\sigma$ : 62.5



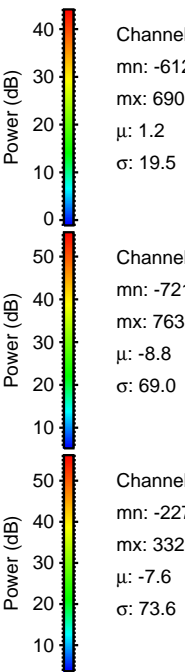
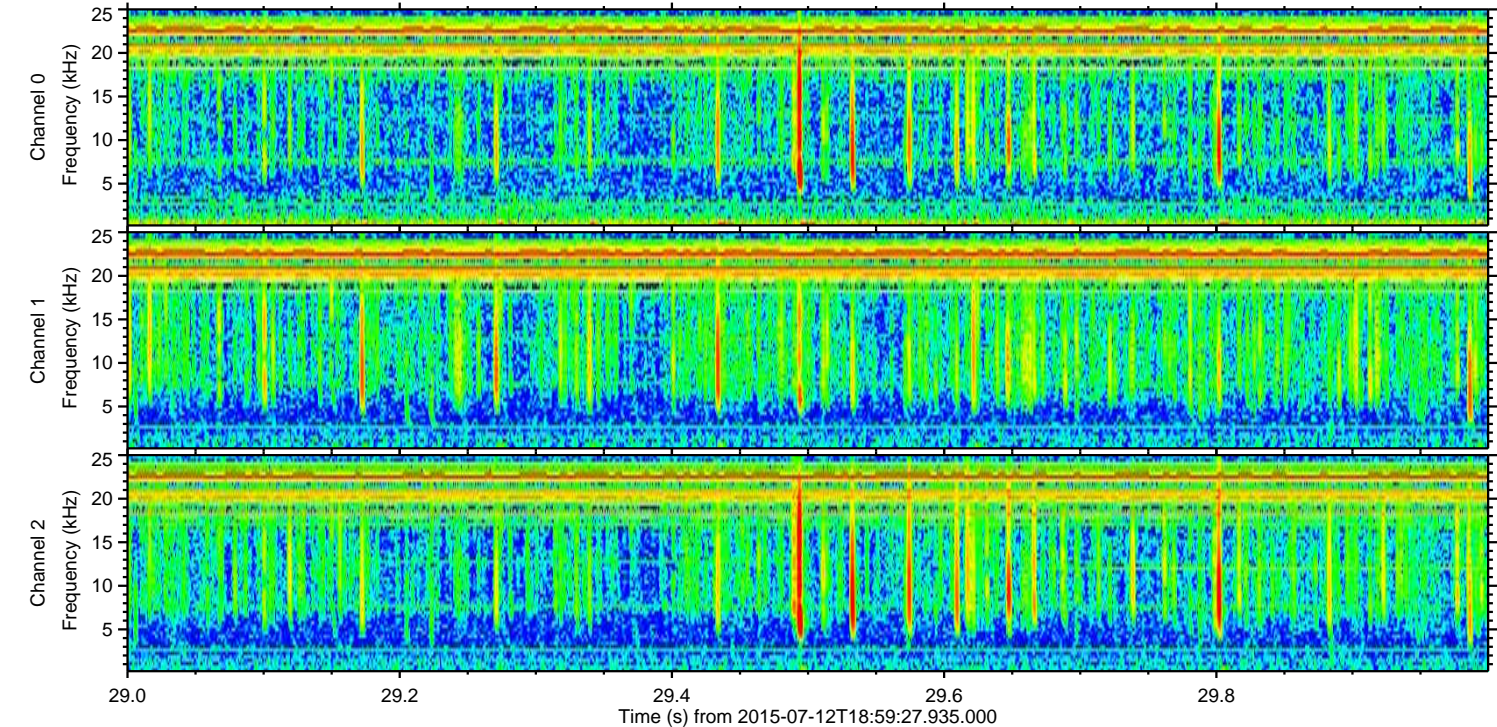
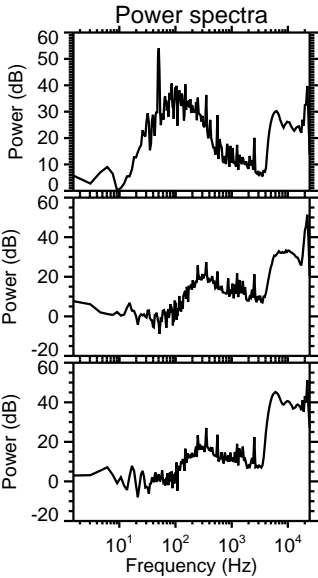
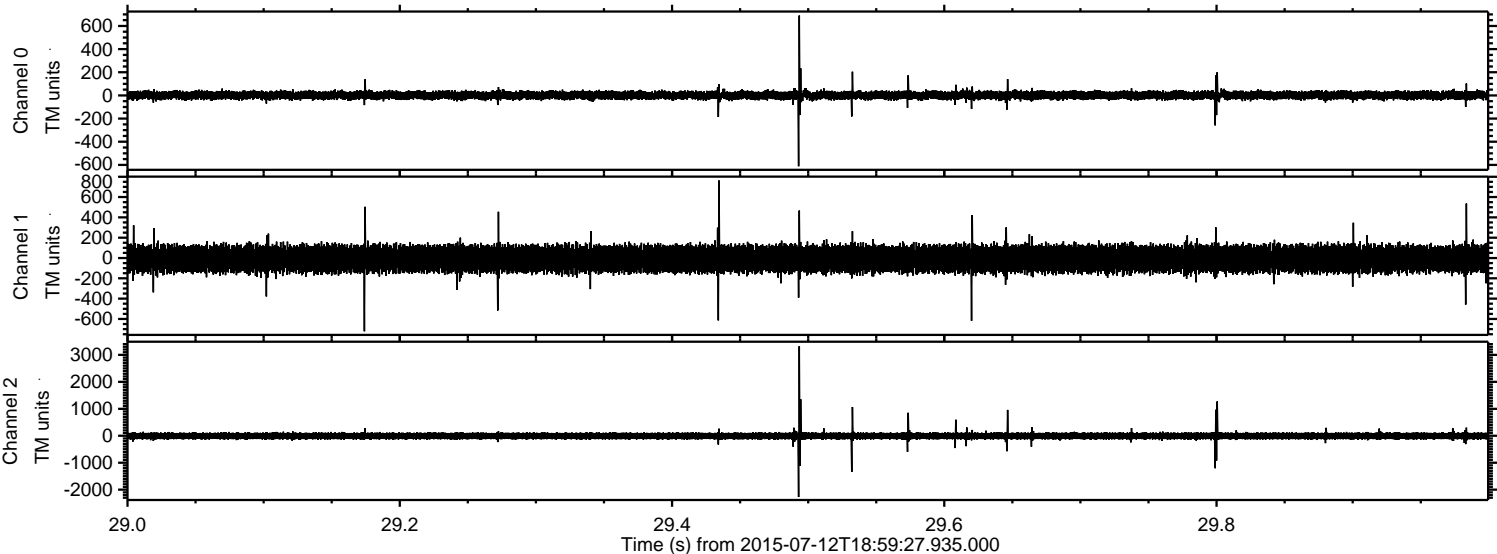
ELMAVAN 3D WAVEFORMS (Measured data sampled at 50 kHz) 51000 packets of 144 samples from 2015-07-12T18:59:27.935.000. Part 104/147

Processed Sun Jul 12 21:05:49 2015 by ELM ver.2012-10-06 from 001\_\_elm20150712\_185926\_\_dat00.bin





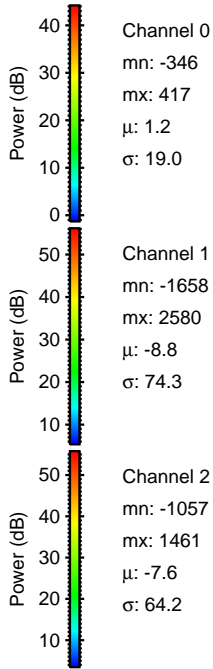
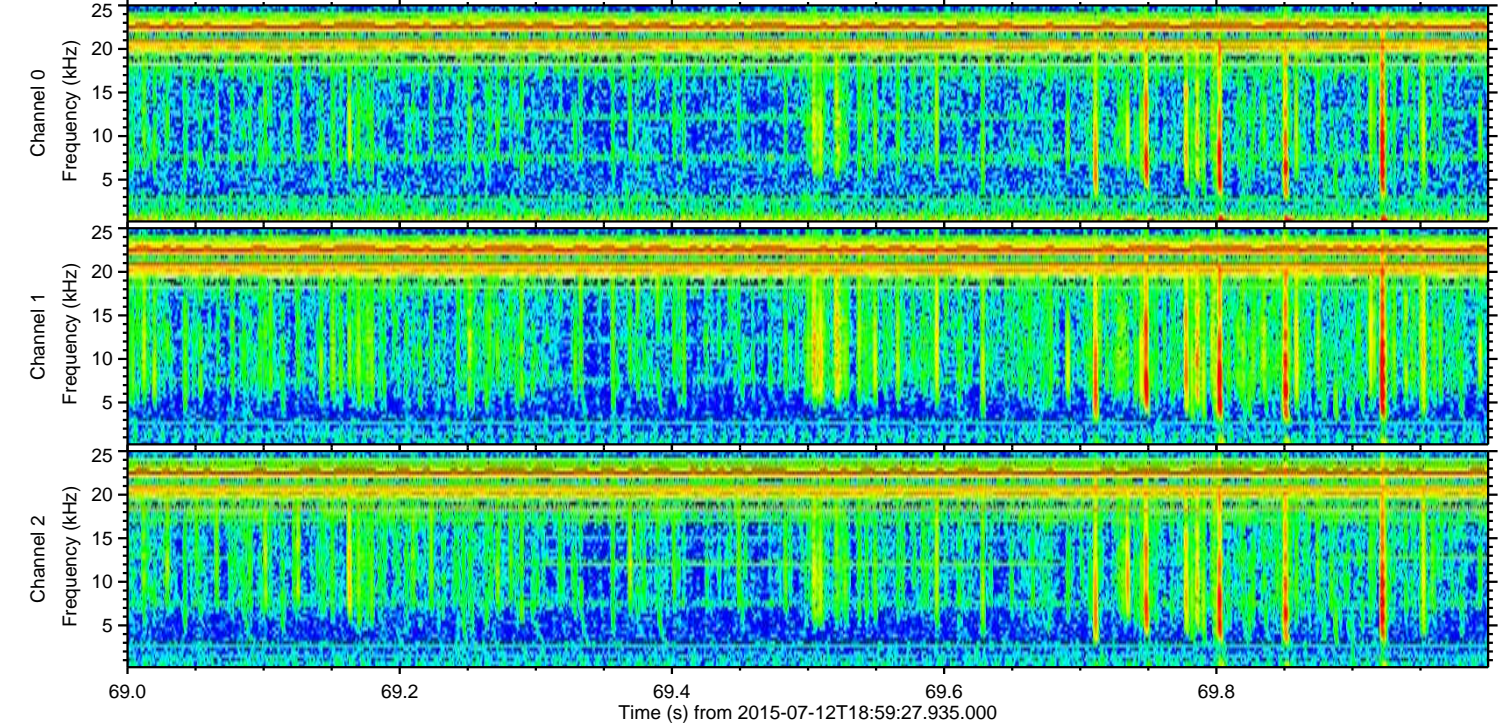
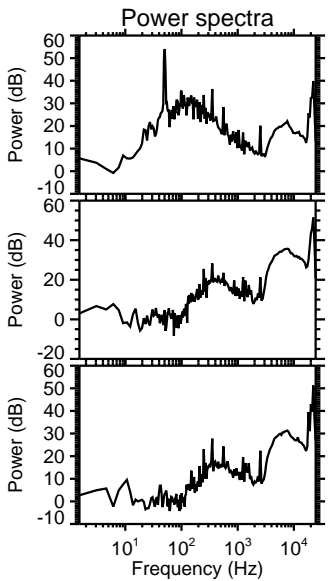
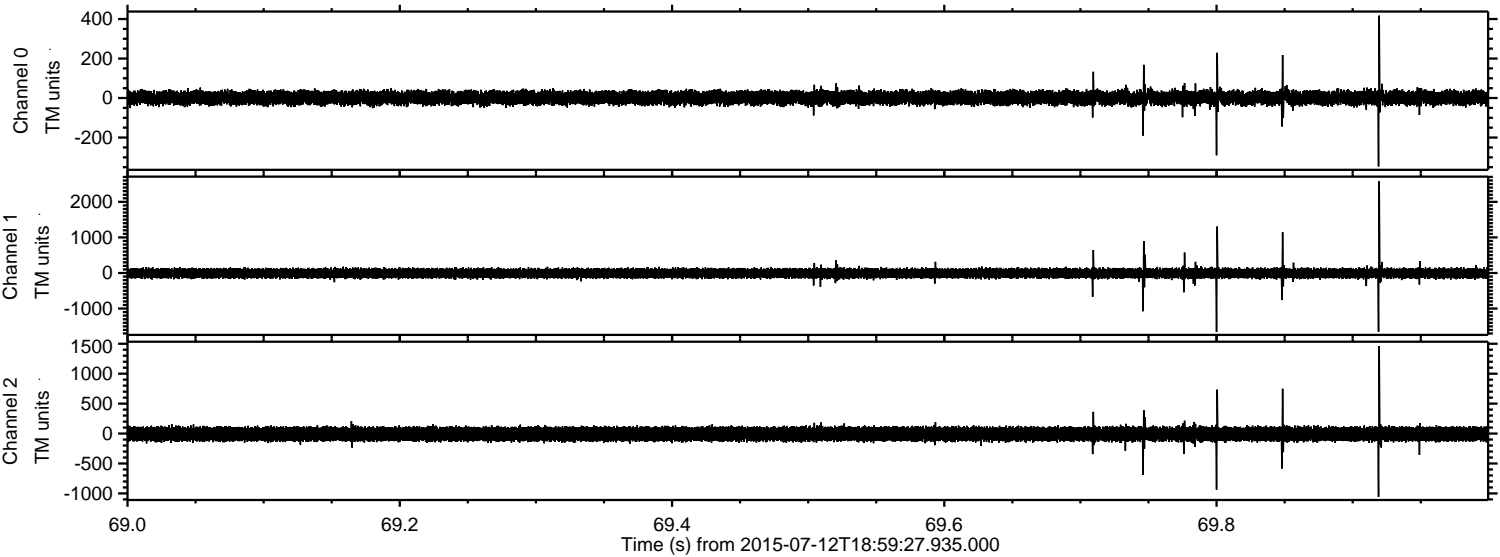
Processed Sun Jul 12 21:05:50 2015 by ELM ver.2012-10-06 from 001\_\_elm20150712\_185926\_\_dat00.bin





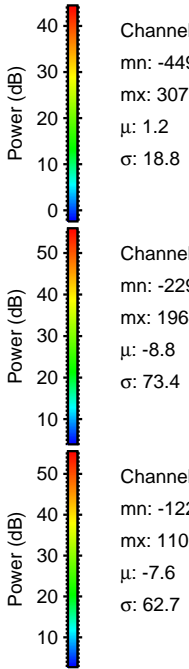
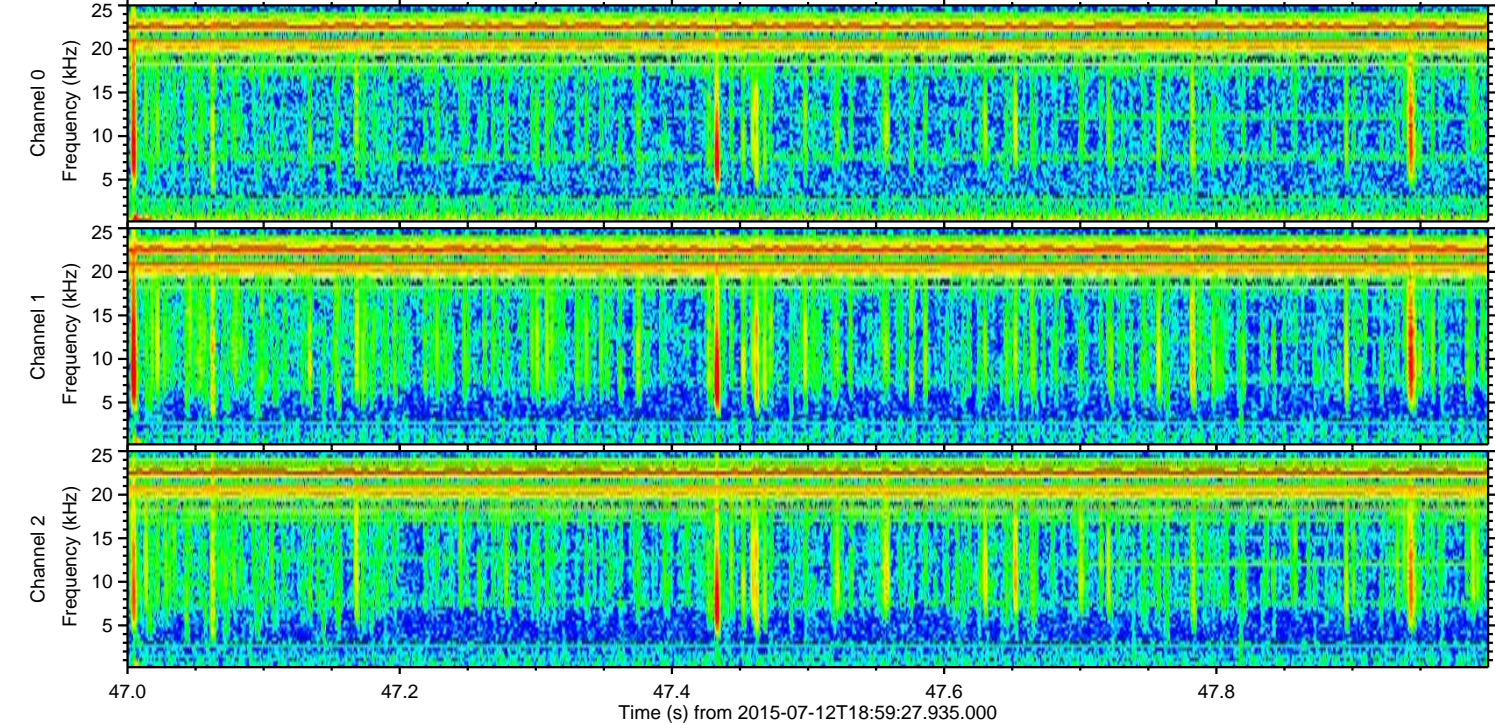
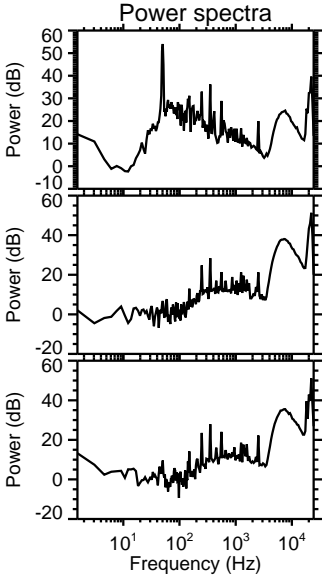
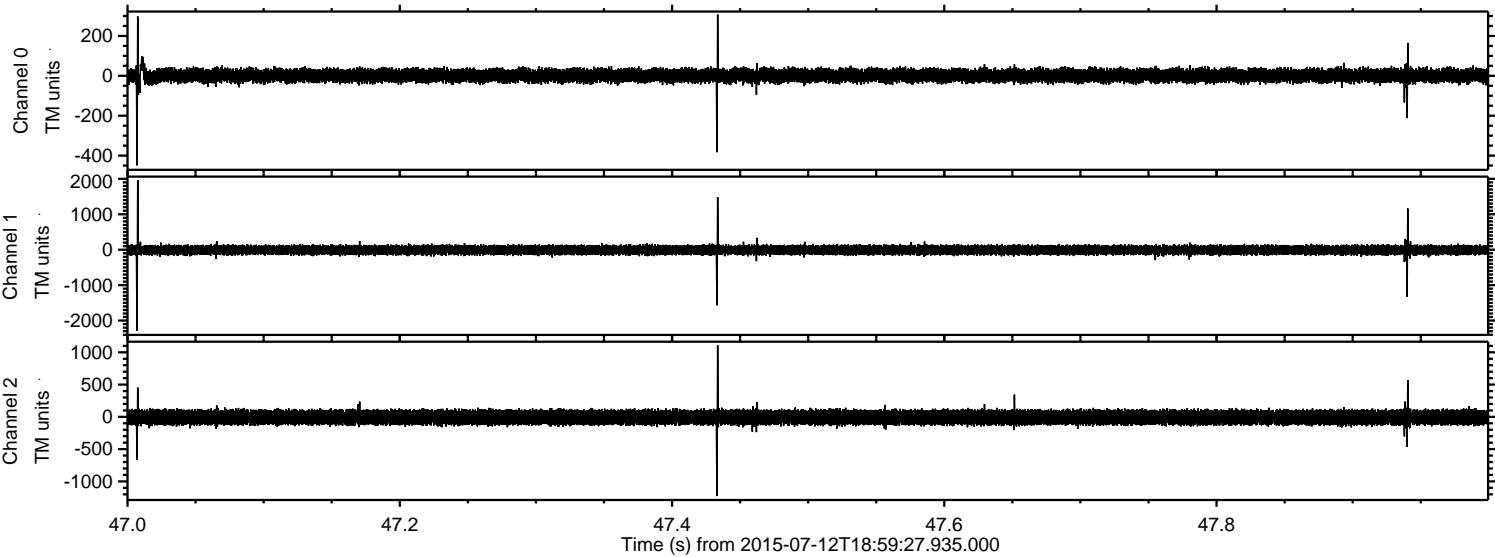
ELMAVAN 3D WAVEFORMS (Measured data sampled at 50 kHz) 51000 packets of 144 samples from 2015-07-12T18:59:27.935.000. Part 70/147

Processed Sun Jul 12 21:05:51 2015 by ELM ver.2012-10-06 from 001\_\_elm20150712\_185926\_\_dat00.bin



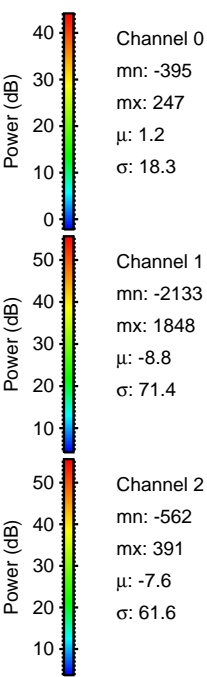
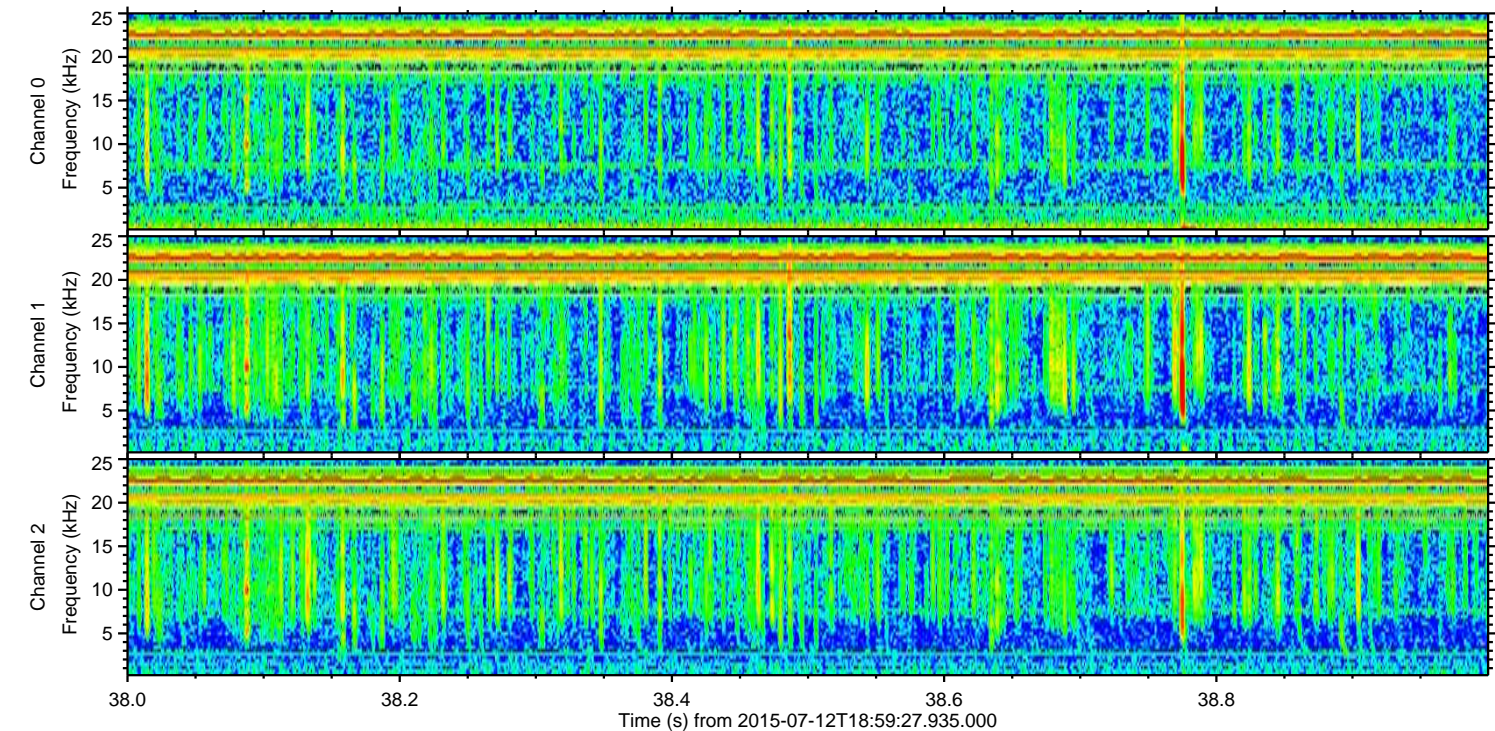
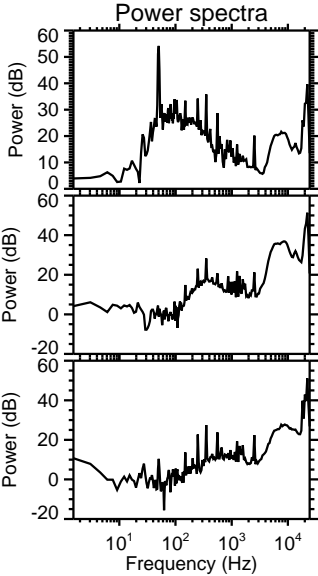
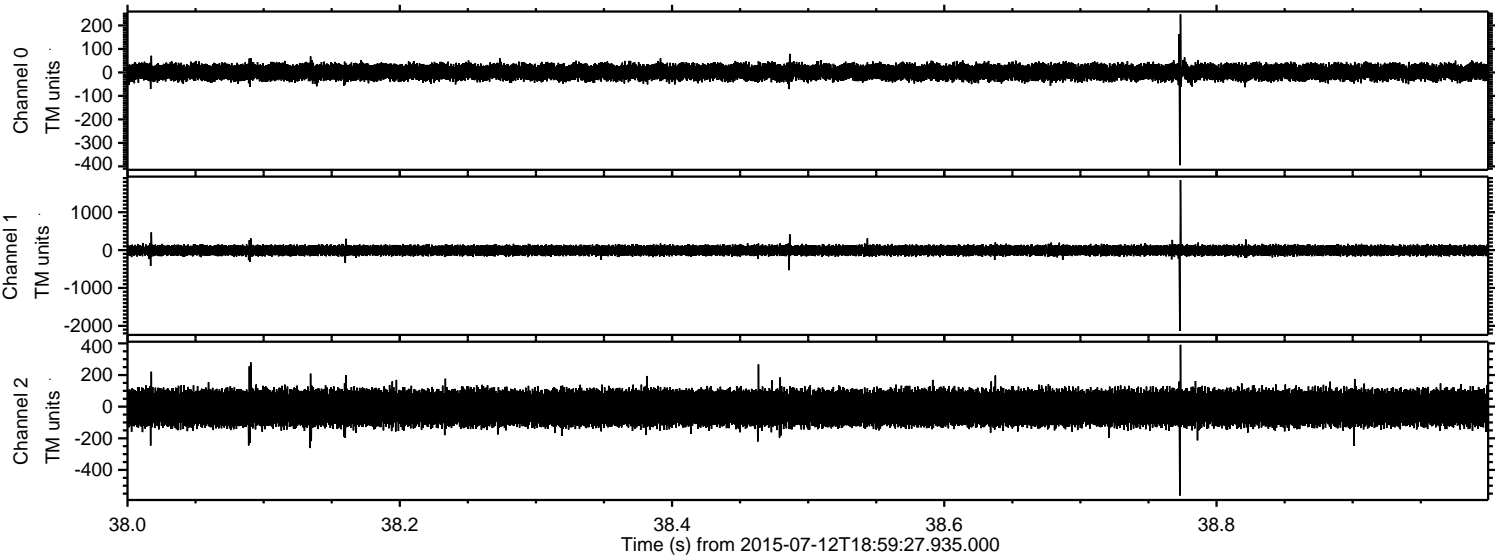


Processed Sun Jul 12 21:05:52 2015 by ELM ver.2012-10-06 from 001\_\_elm20150712\_185926\_\_dat00.bin





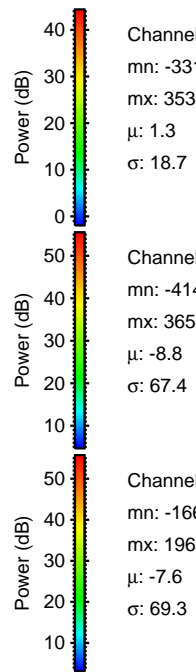
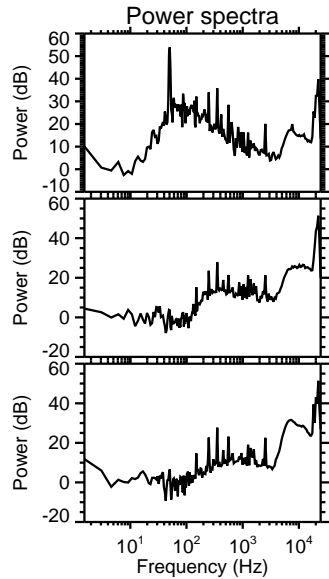
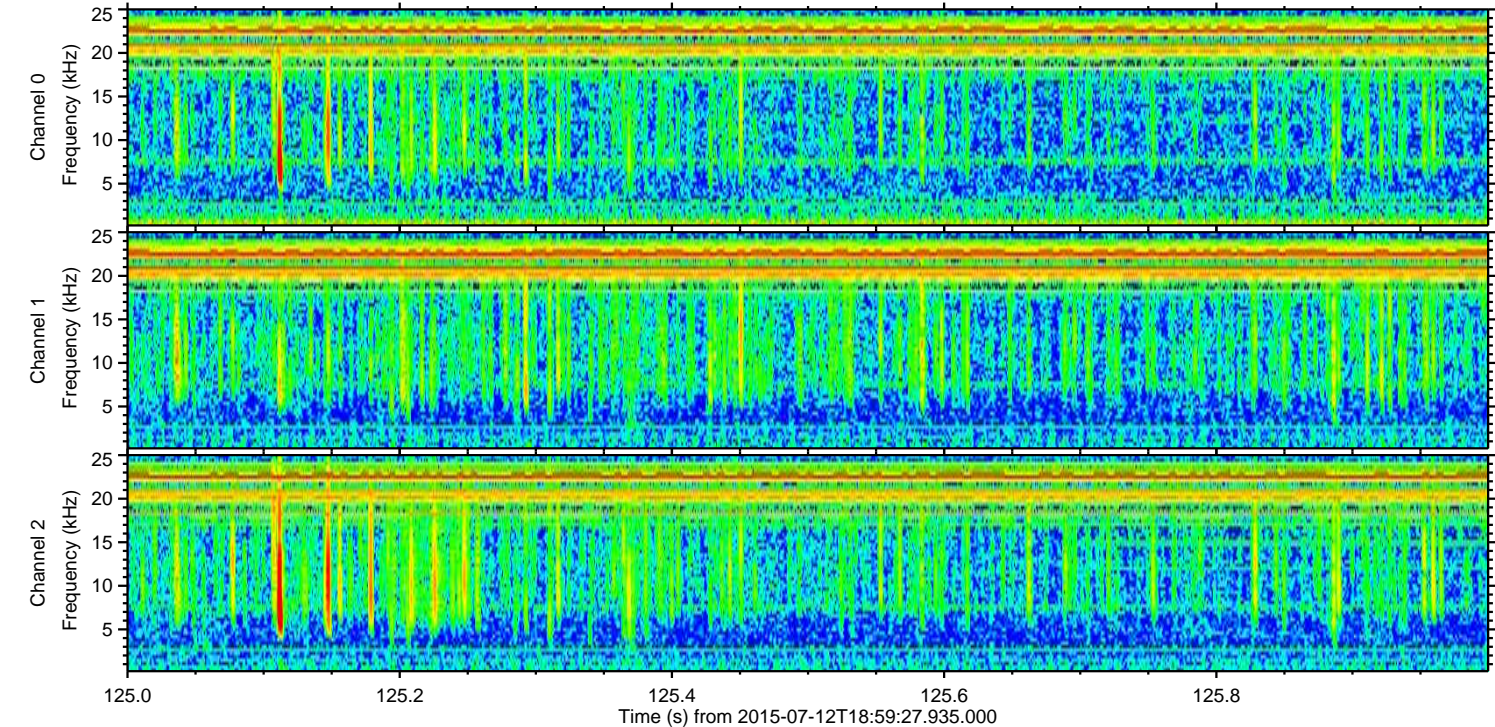
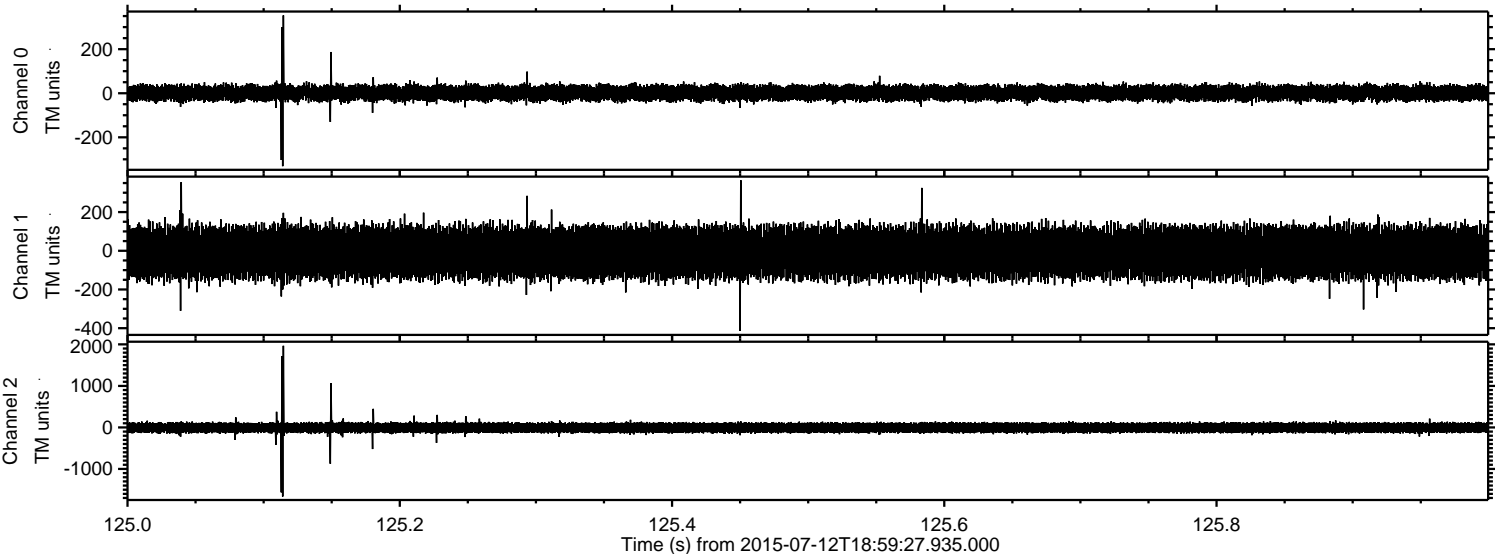
Processed Sun Jul 12 21:05:53 2015 by ELM ver.2012-10-06 from 001\_\_elm20150712\_185926\_\_dat00.bin





ELMAVAN 3D WAVEFORMS (Measured data sampled at 50 kHz) 51000 packets of 144 samples from 2015-07-12T18:59:27.935.000. Part 126/147

Processed Sun Jul 12 21:05:55 2015 by ELM ver.2012-10-06 from 001\_\_elm20150712\_185926\_\_dat00.bin



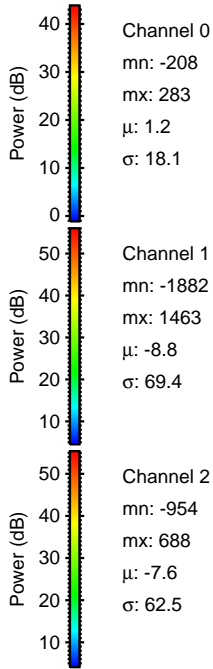
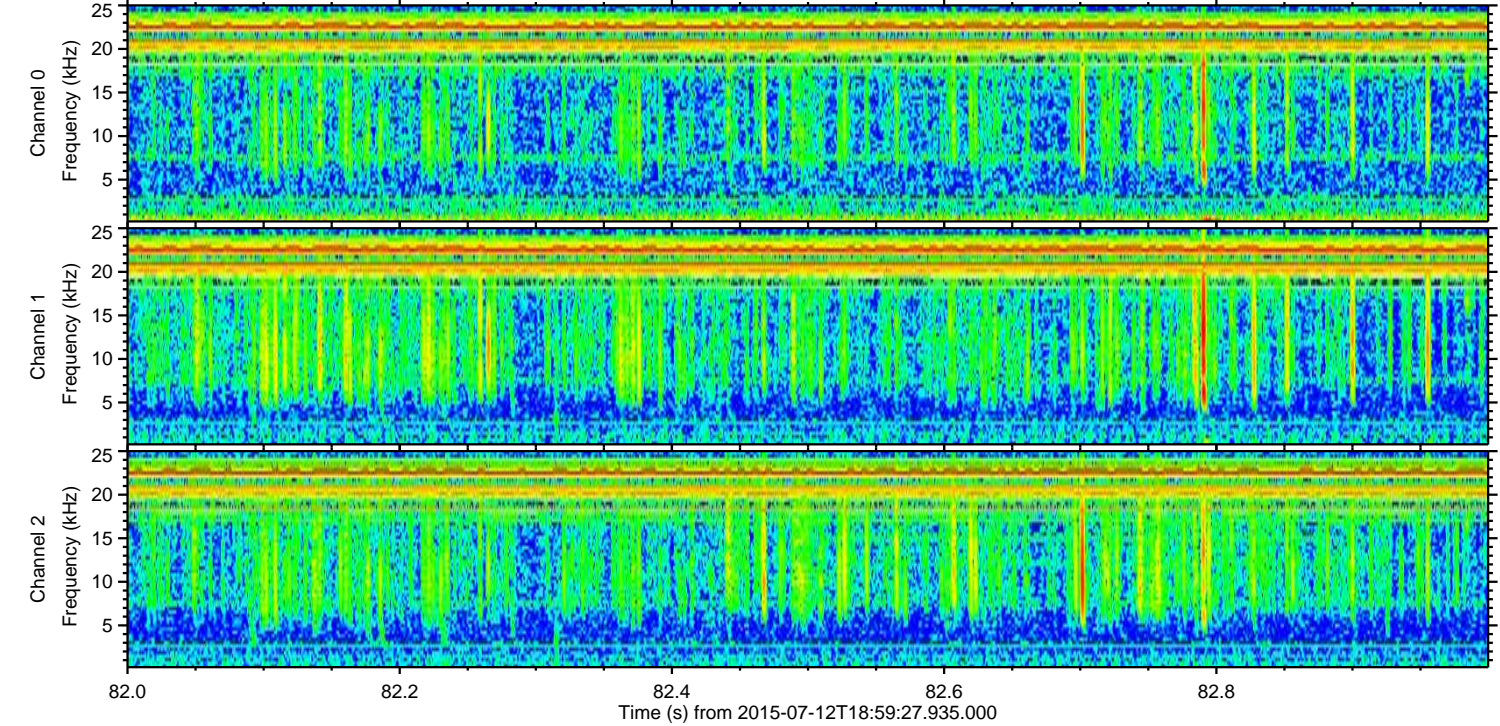
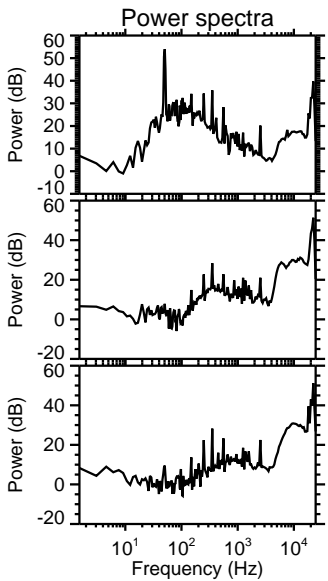
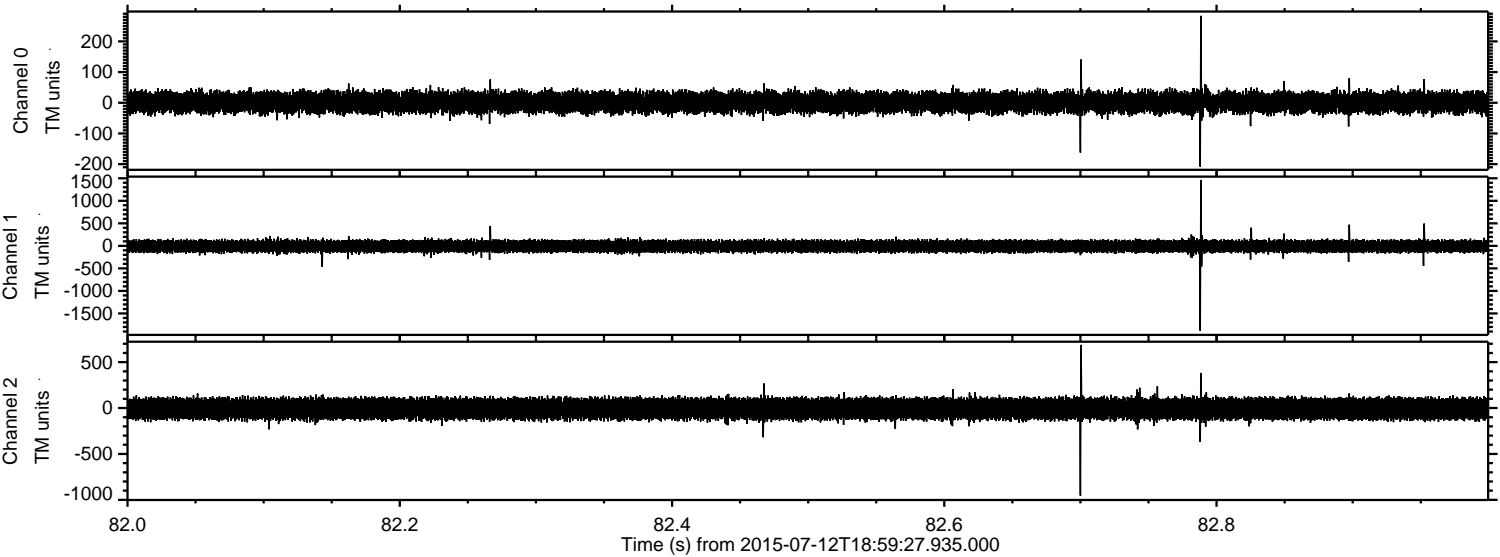
Channel 0  
mn: -331  
mx: 353  
 $\mu$ : 1.3  
 $\sigma$ : 18.7

Channel 1  
mn: -414  
mx: 365  
 $\mu$ : -8.8  
 $\sigma$ : 67.4

Channel 2  
mn: -1665  
mx: 1966  
 $\mu$ : -7.6  
 $\sigma$ : 69.3

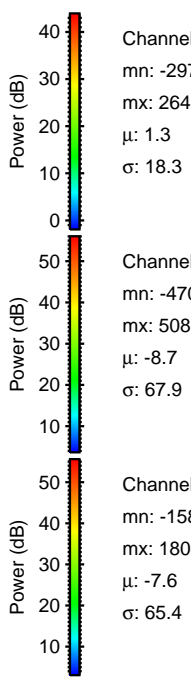
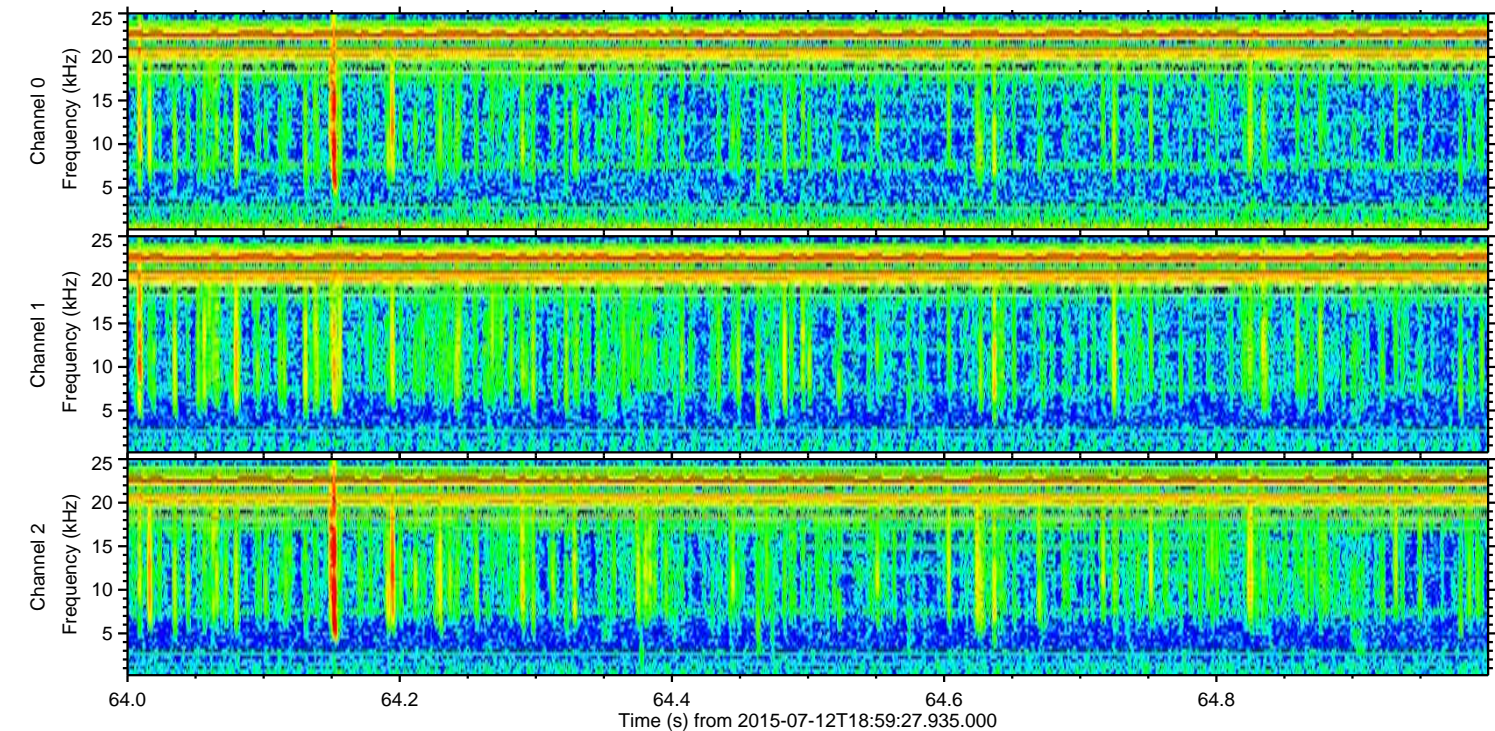
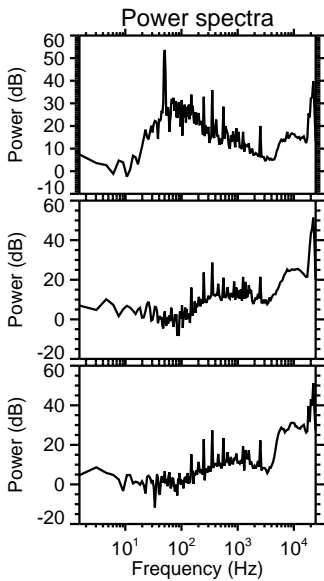
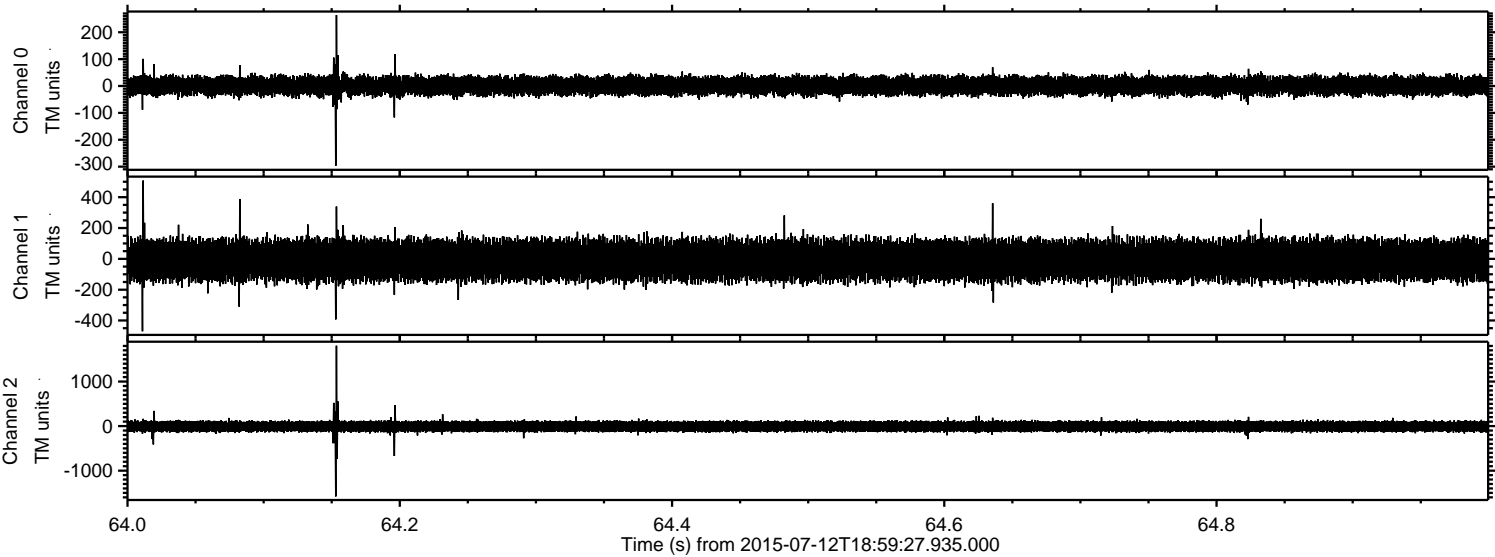


Processed Sun Jul 12 21:05:56 2015 by ELM ver.2012-10-06 from 001\_\_elm20150712\_185926\_\_dat00.bin



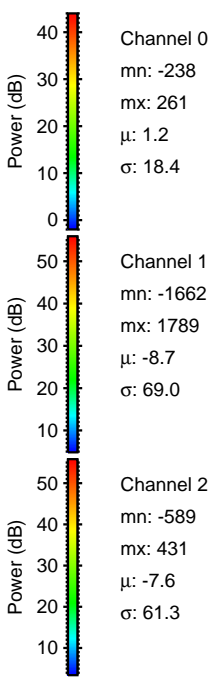
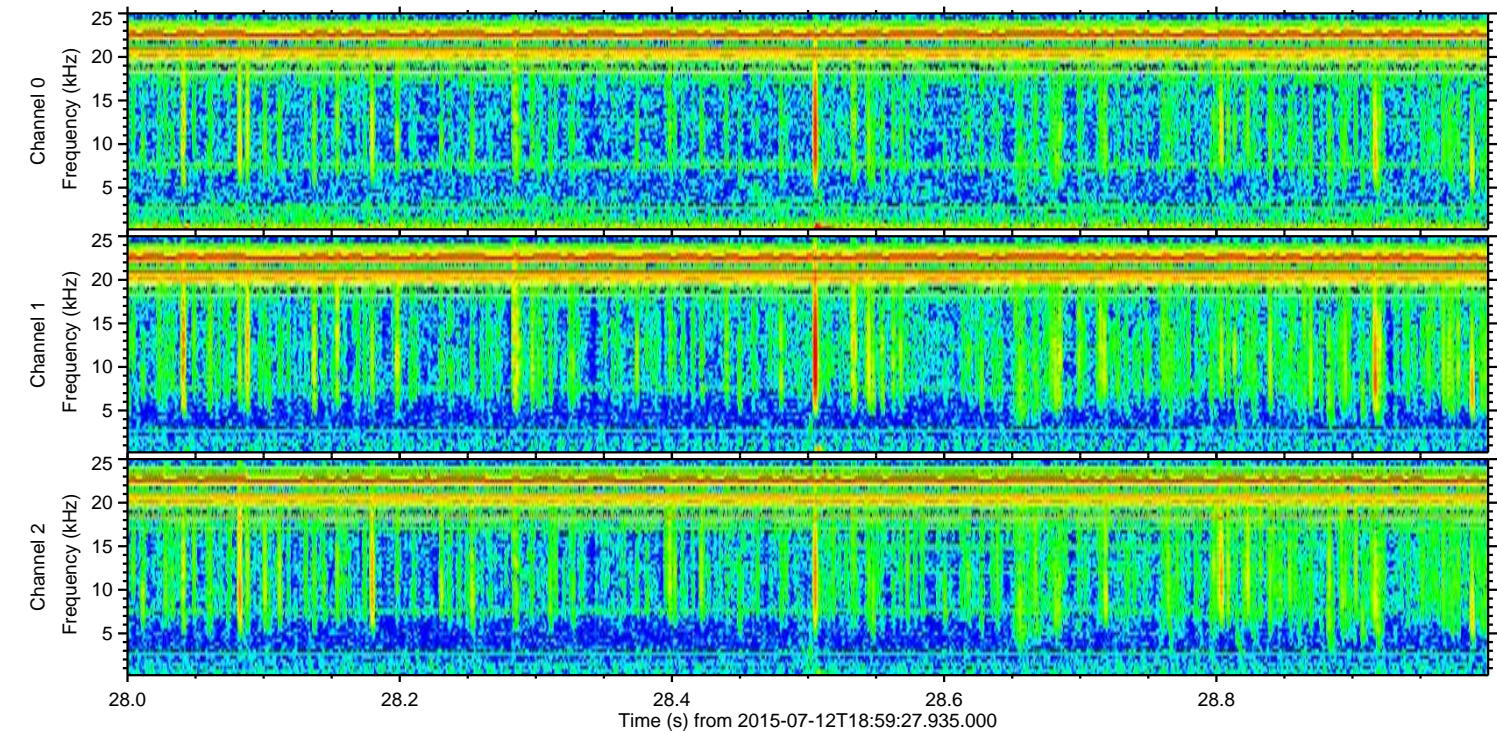
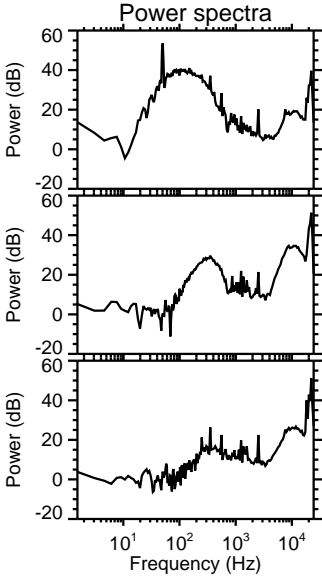
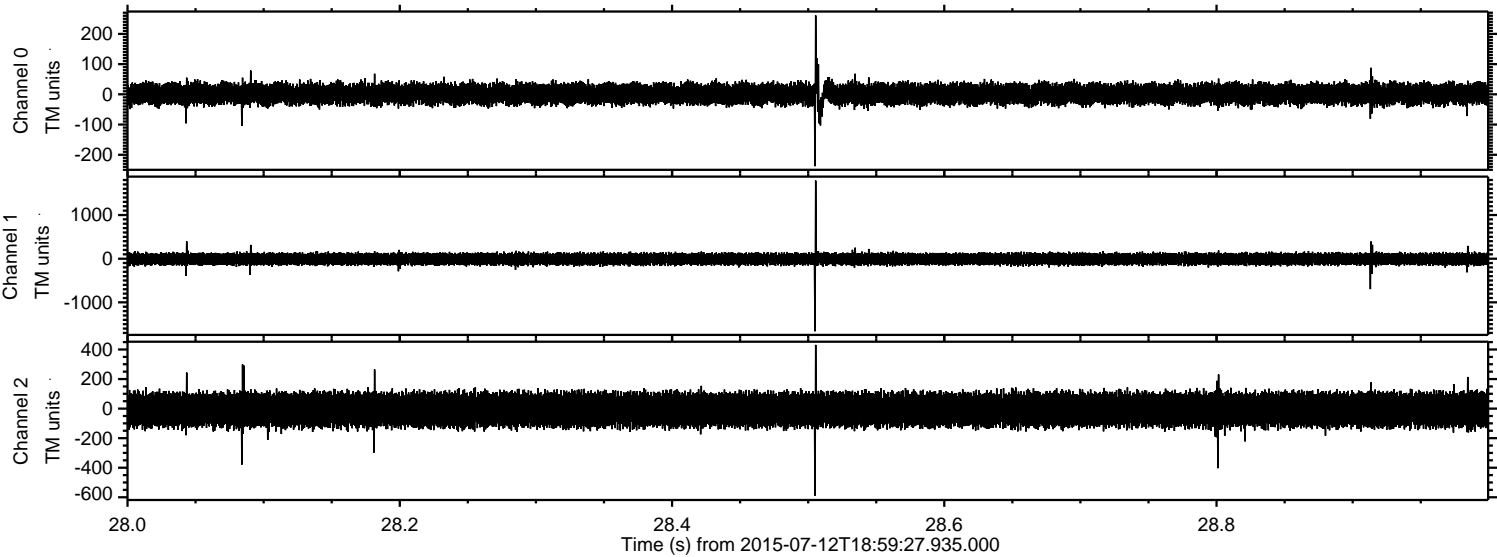


Processed Sun Jul 12 21:05:57 2015 by ELM ver.2012-10-06 from 001\_\_elm20150712\_185926\_\_dat00.bin





Processed Sun Jul 12 21:05:58 2015 by ELM ver.2012-10-06 from 001\_\_elm20150712\_185926\_\_dat00.bin





ELMAVAN 3D WAVEFORMS (Measured data sampled at 50 kHz) 51000 packets of 144 samples from 2015-07-12T18:59:27.935.000. Part 134/147

