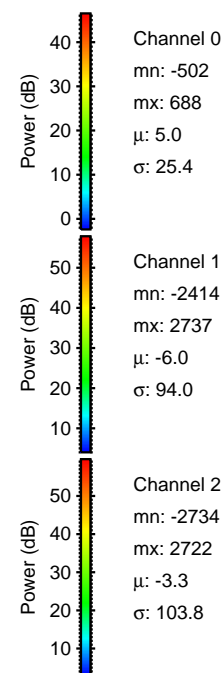
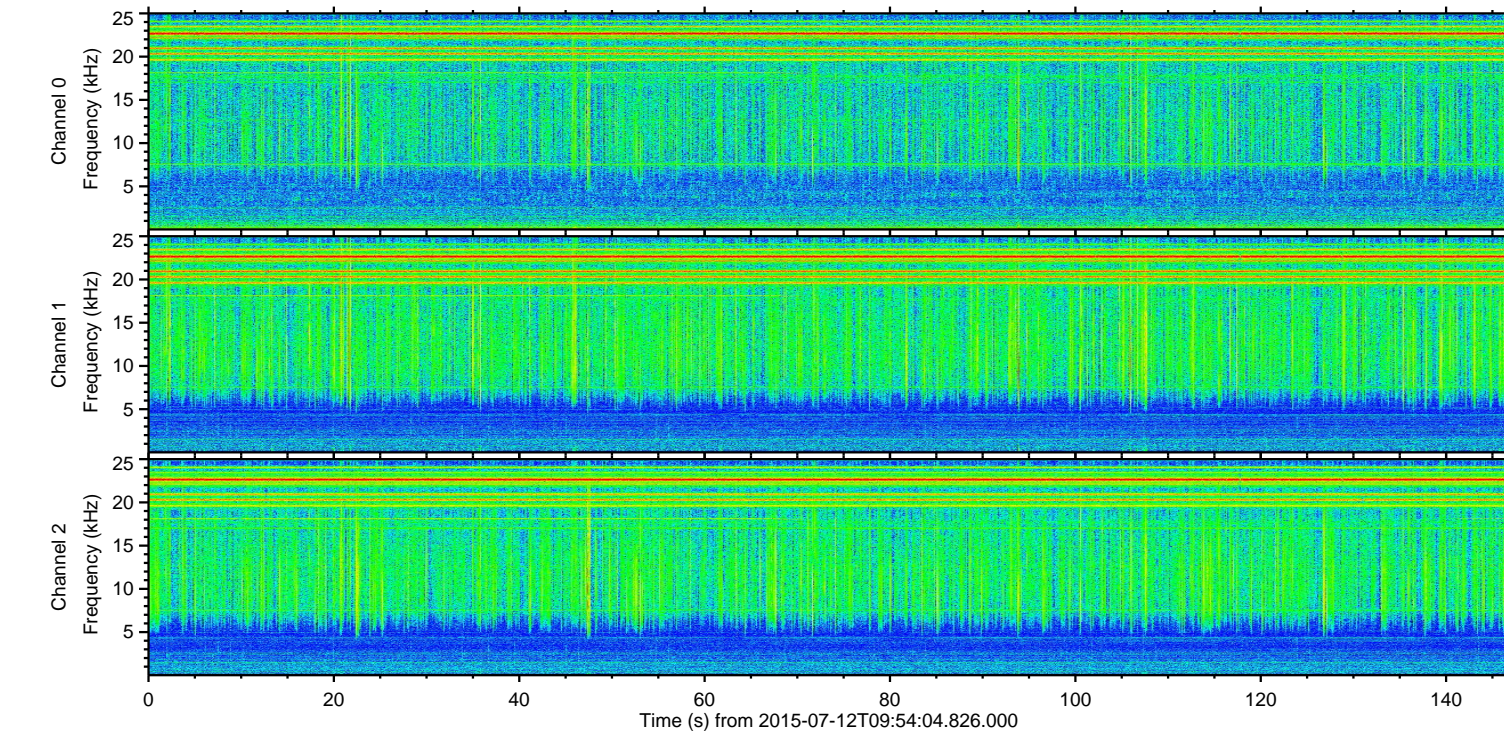
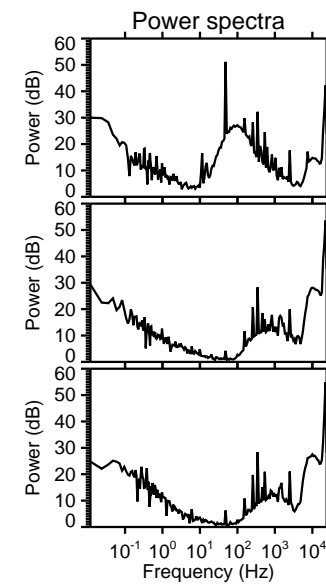
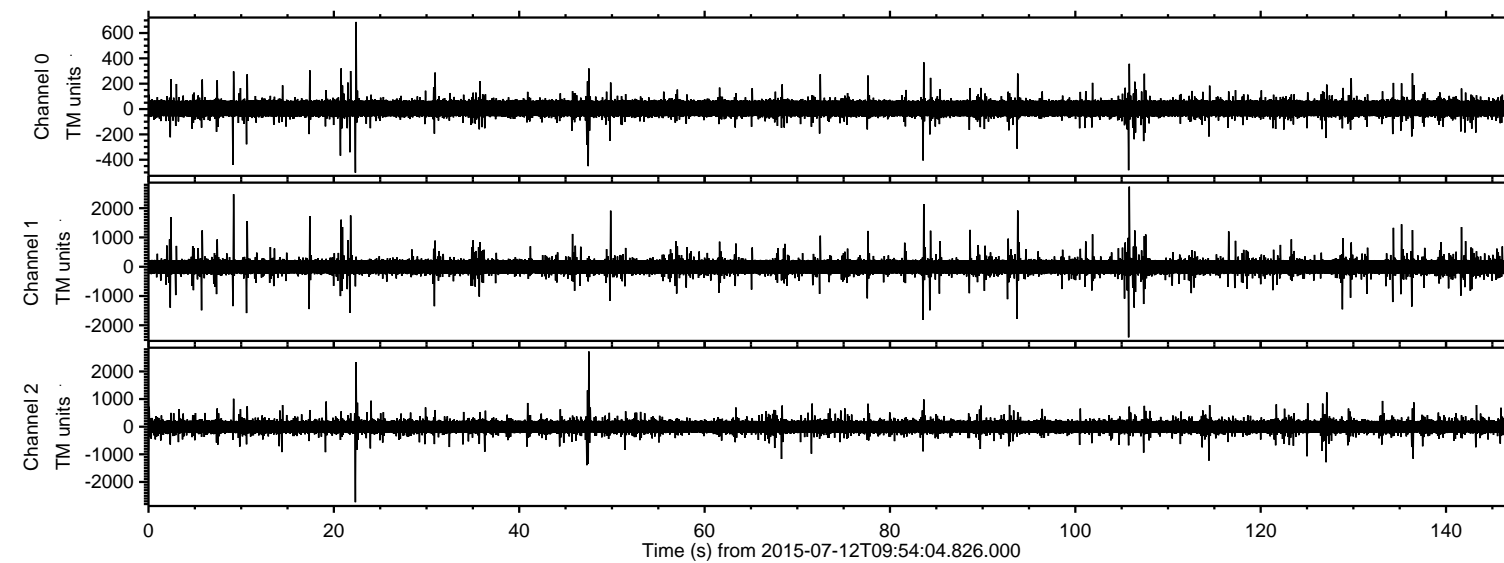


# ELMAVAN 3D WAVEFORMS (Measured data sampled at 50 kHz) 51000 packets of 144 samples from 2015-07-12T09:54:04.826.000.

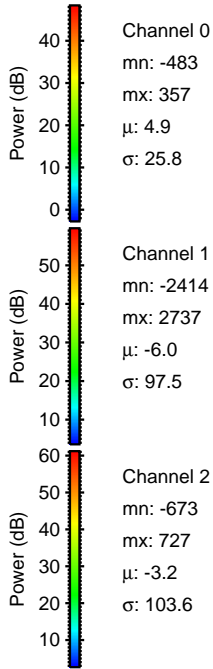
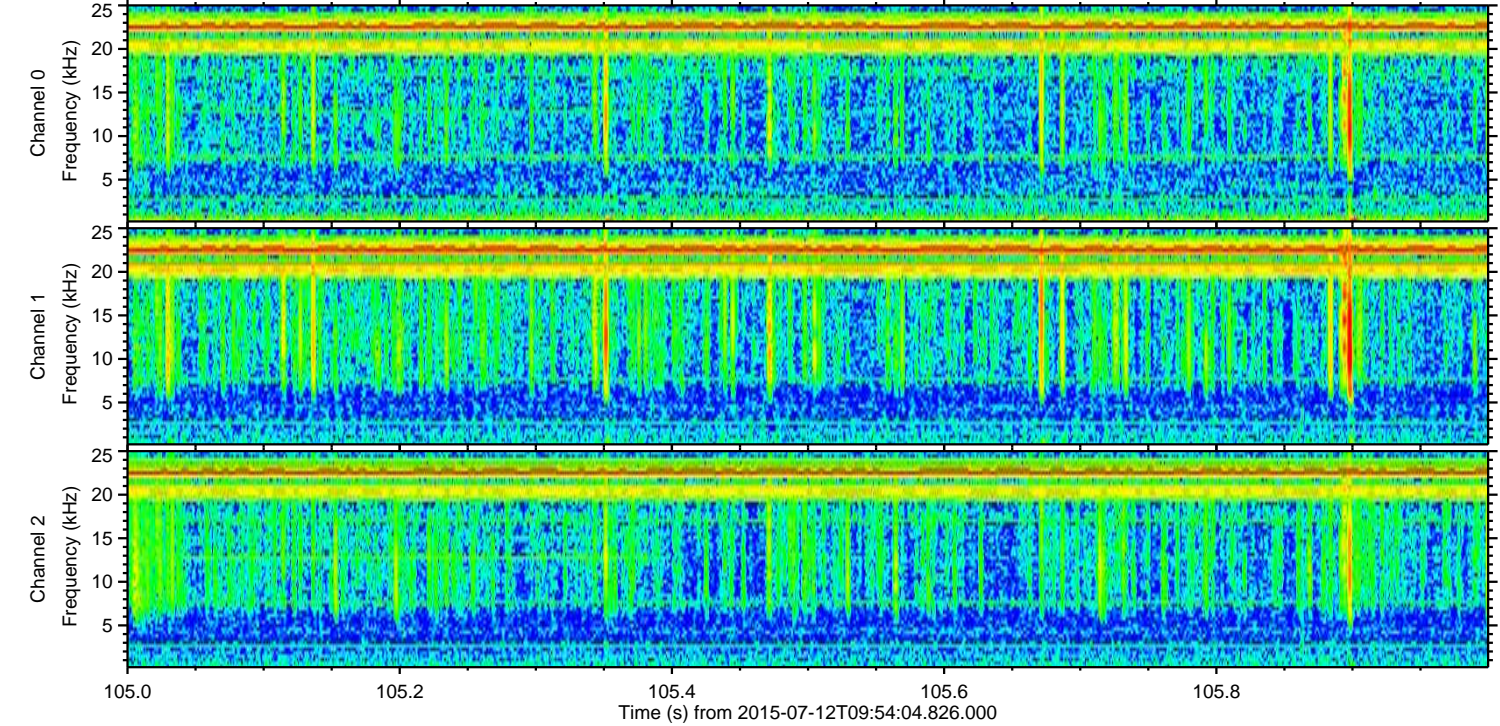
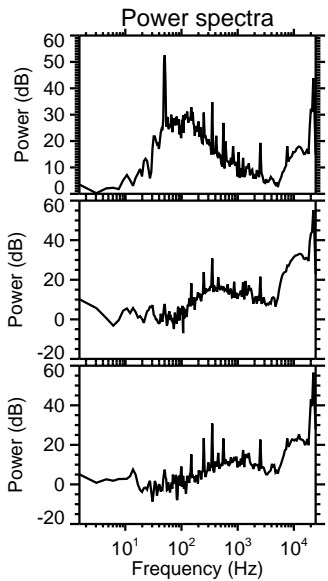
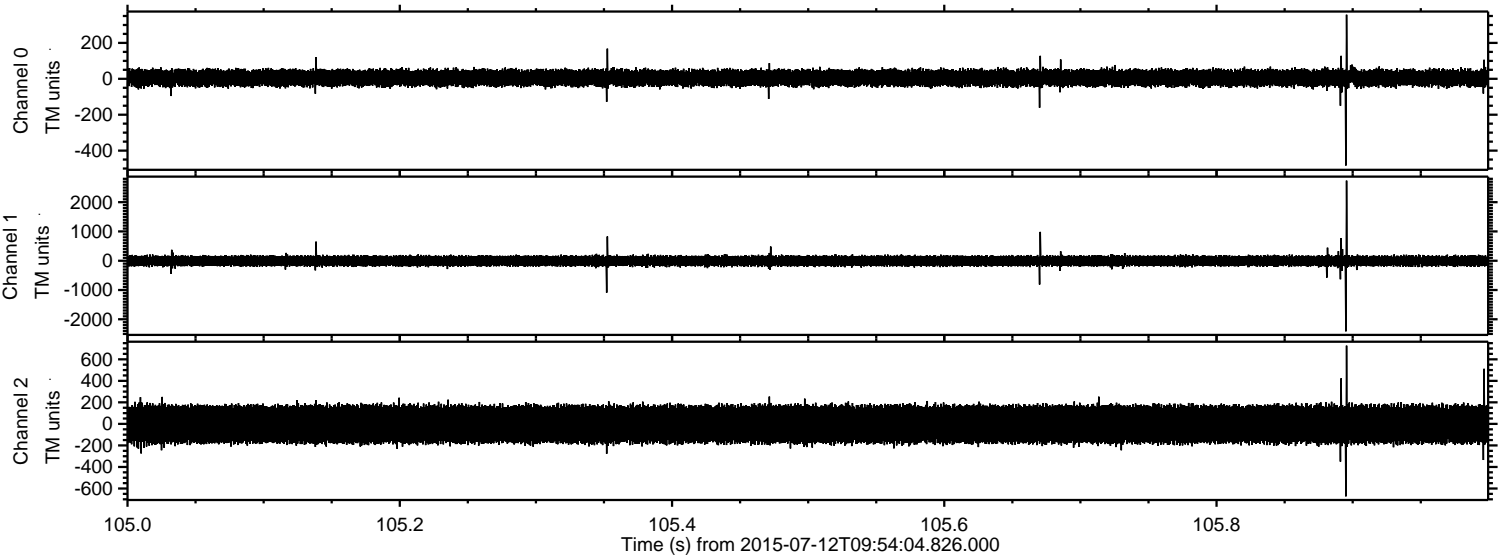
Processed Sun Jul 12 12:00:45 2015 by ELM ver.2012-10-06 from 001\_\_elm20150712\_095403\_\_dat00.bin





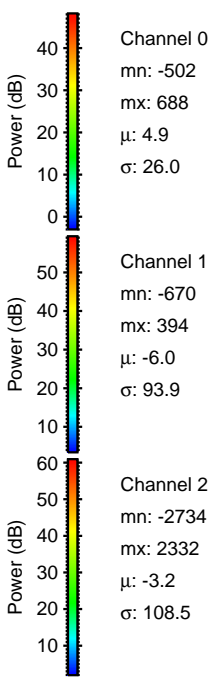
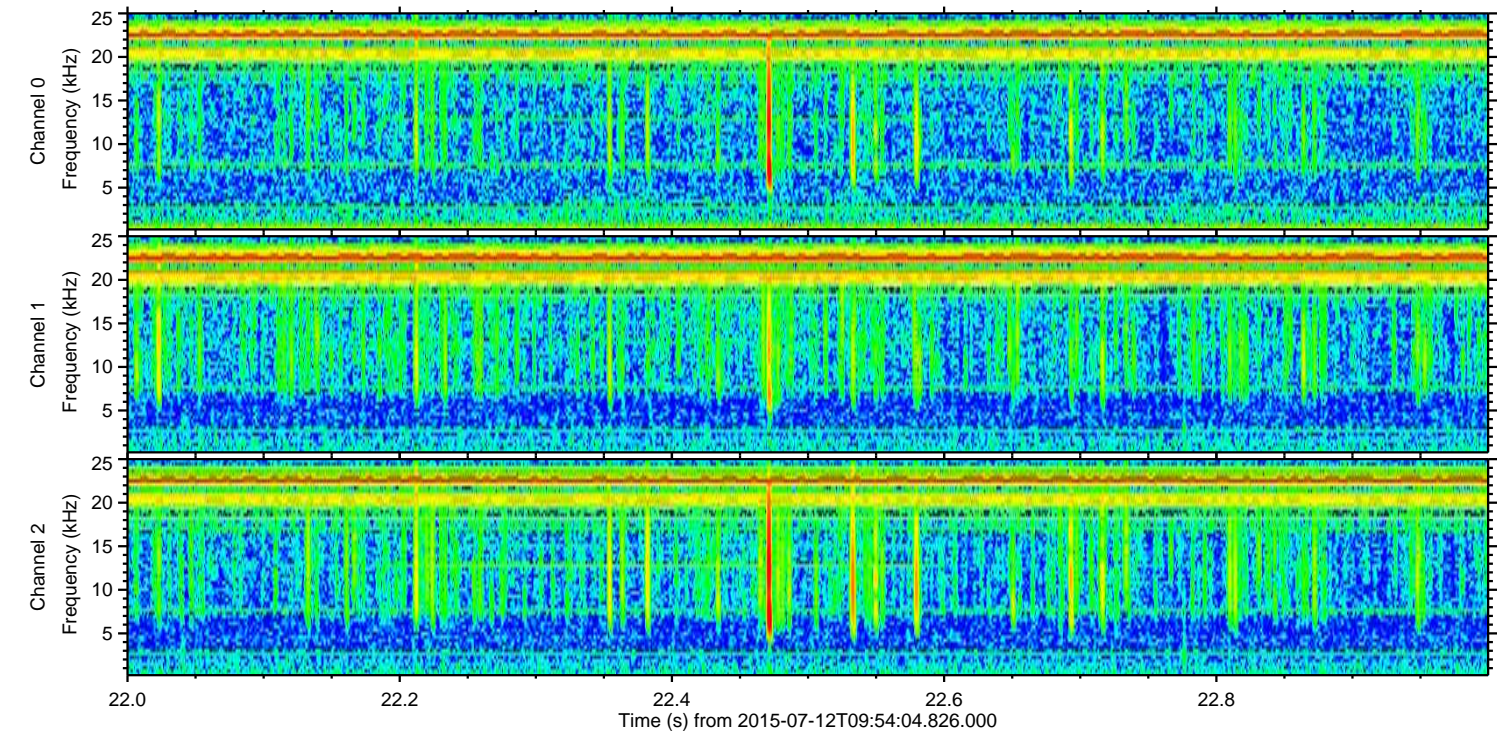
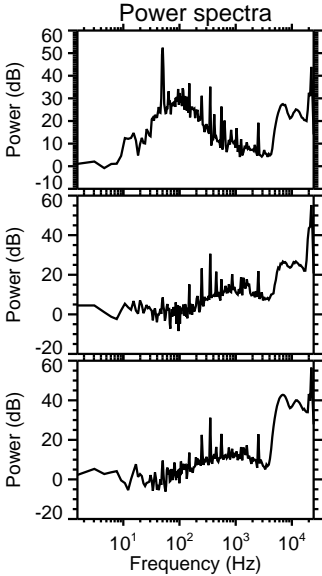
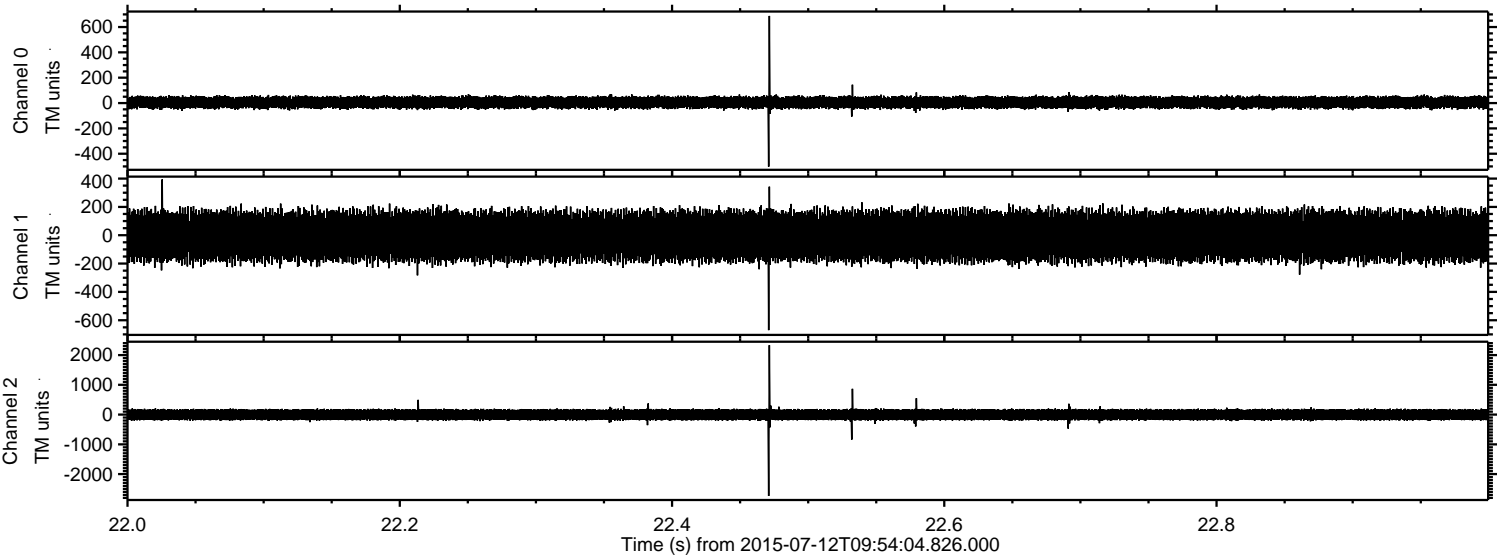
ELMAVAN 3D WAVEFORMS (Measured data sampled at 50 kHz) 51000 packets of 144 samples from 2015-07-12T09:54:04.826.000. Part 106/147

Processed Sun Jul 12 12:01:00 2015 by ELM ver.2012-10-06 from 001\_\_elm20150712\_095403\_\_dat00.bin



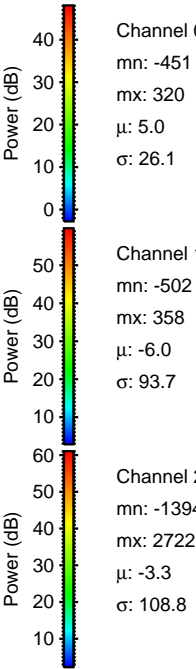
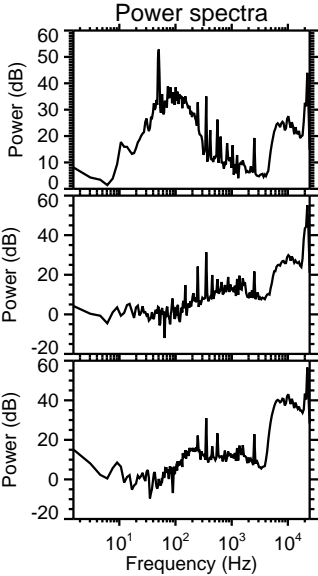
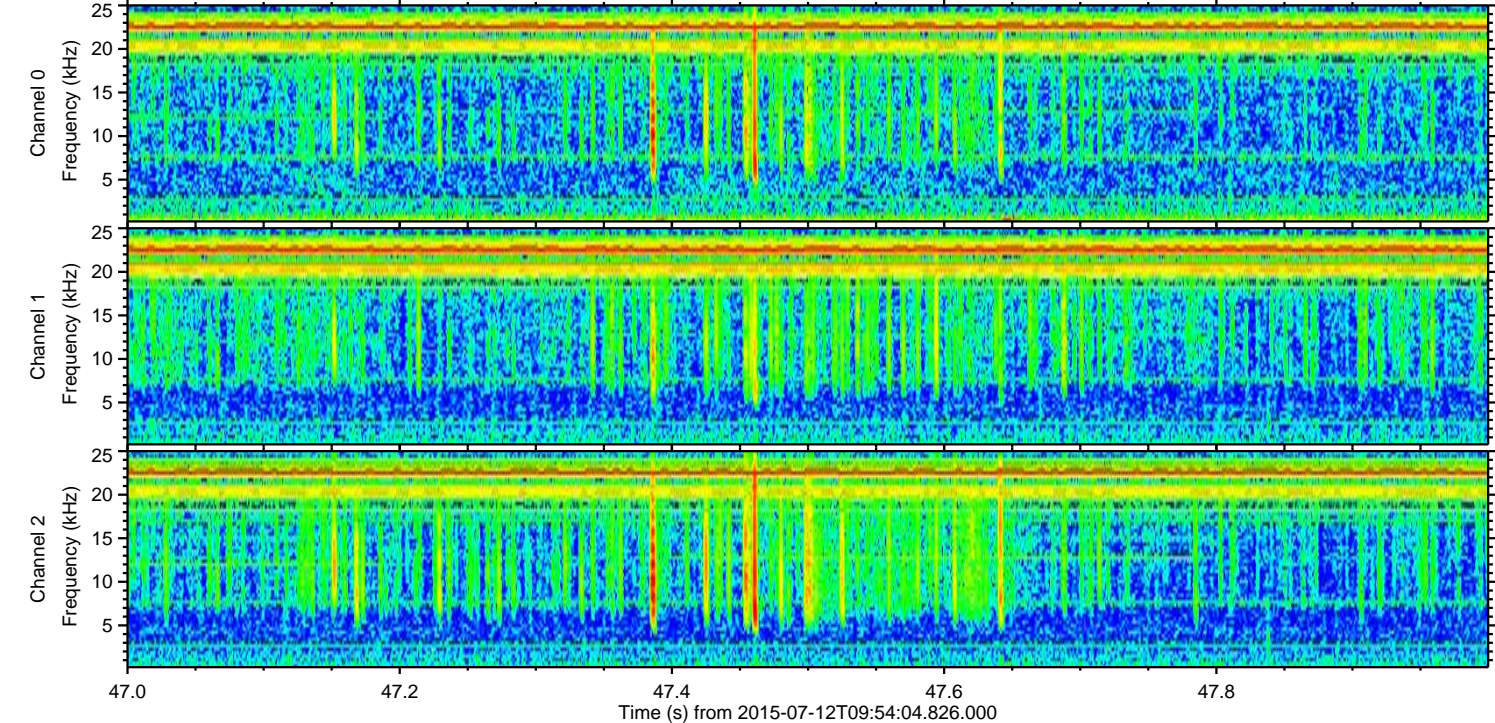
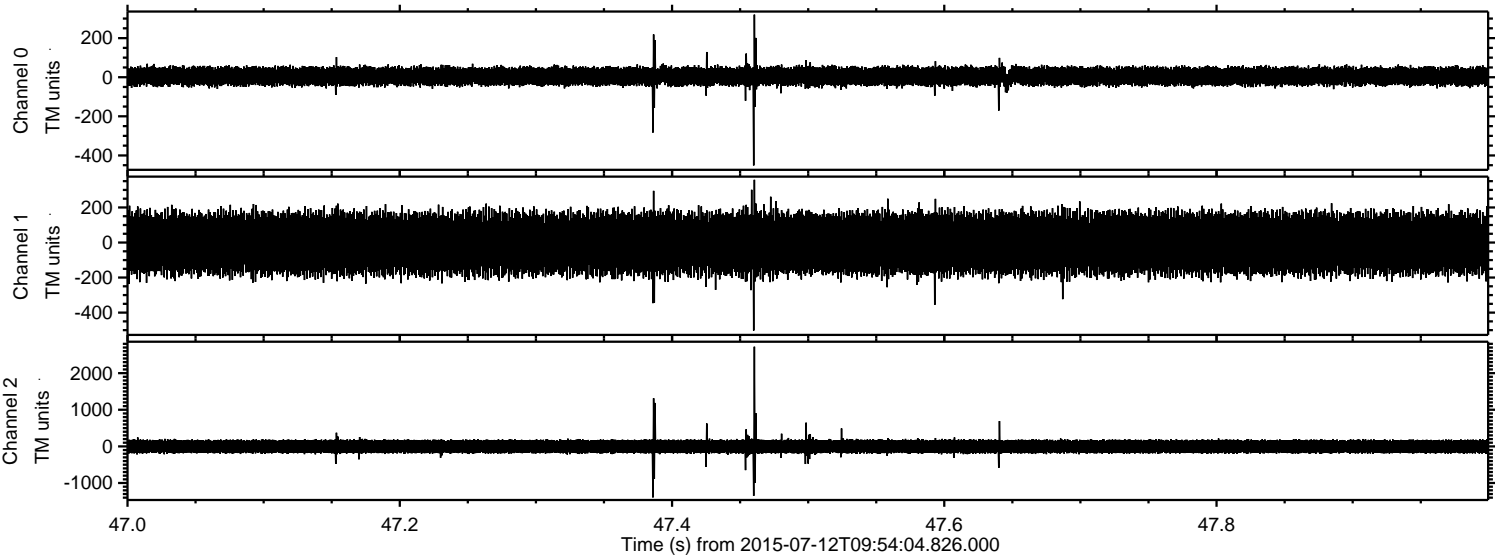


Processed Sun Jul 12 12:01:02 2015 by ELM ver.2012-10-06 from 001\_\_elm20150712\_095403\_\_dat00.bin



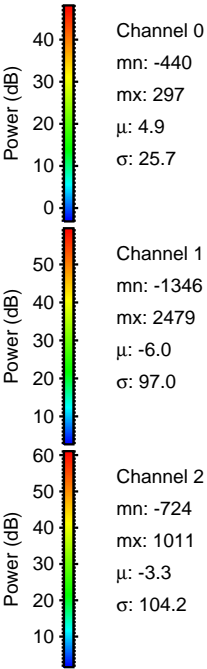
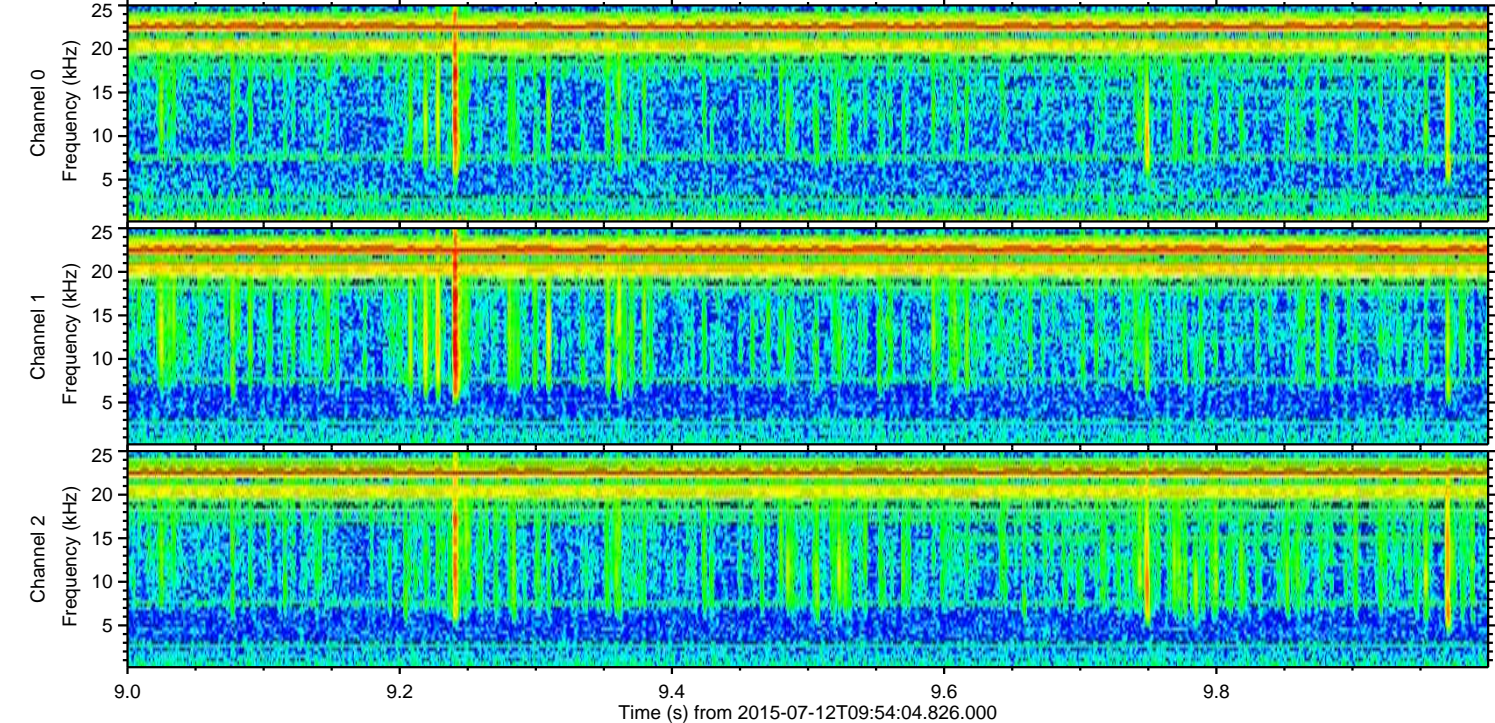
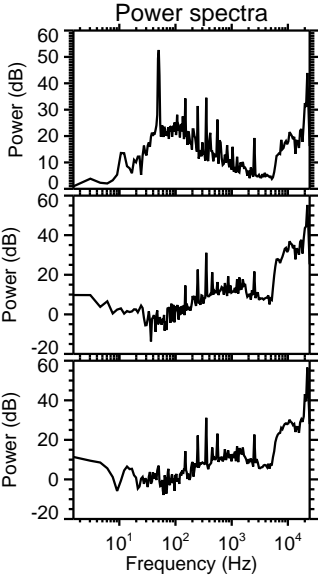
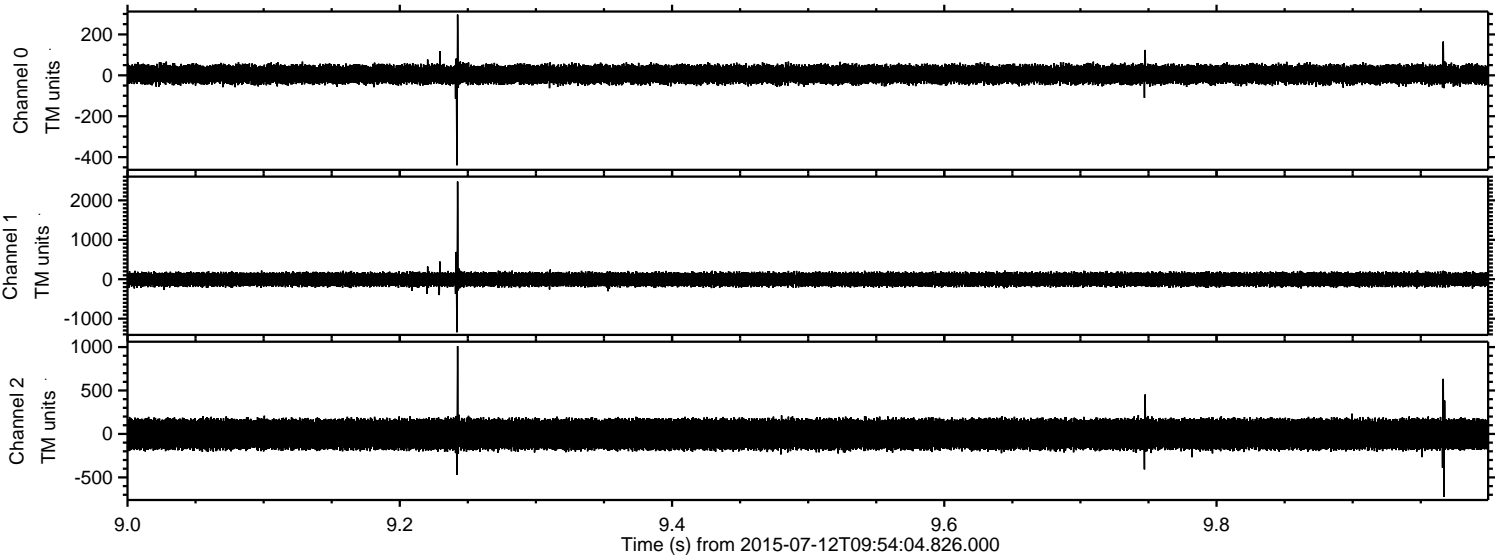


Processed Sun Jul 12 12:01:03 2015 by ELM ver.2012-10-06 from 001\_\_elm20150712\_095403\_\_dat00.bin



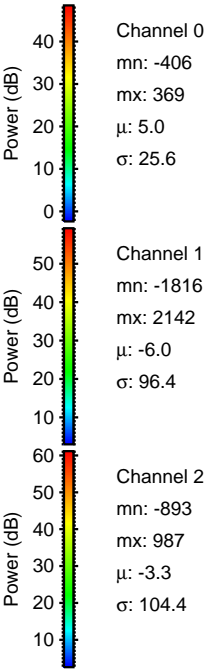
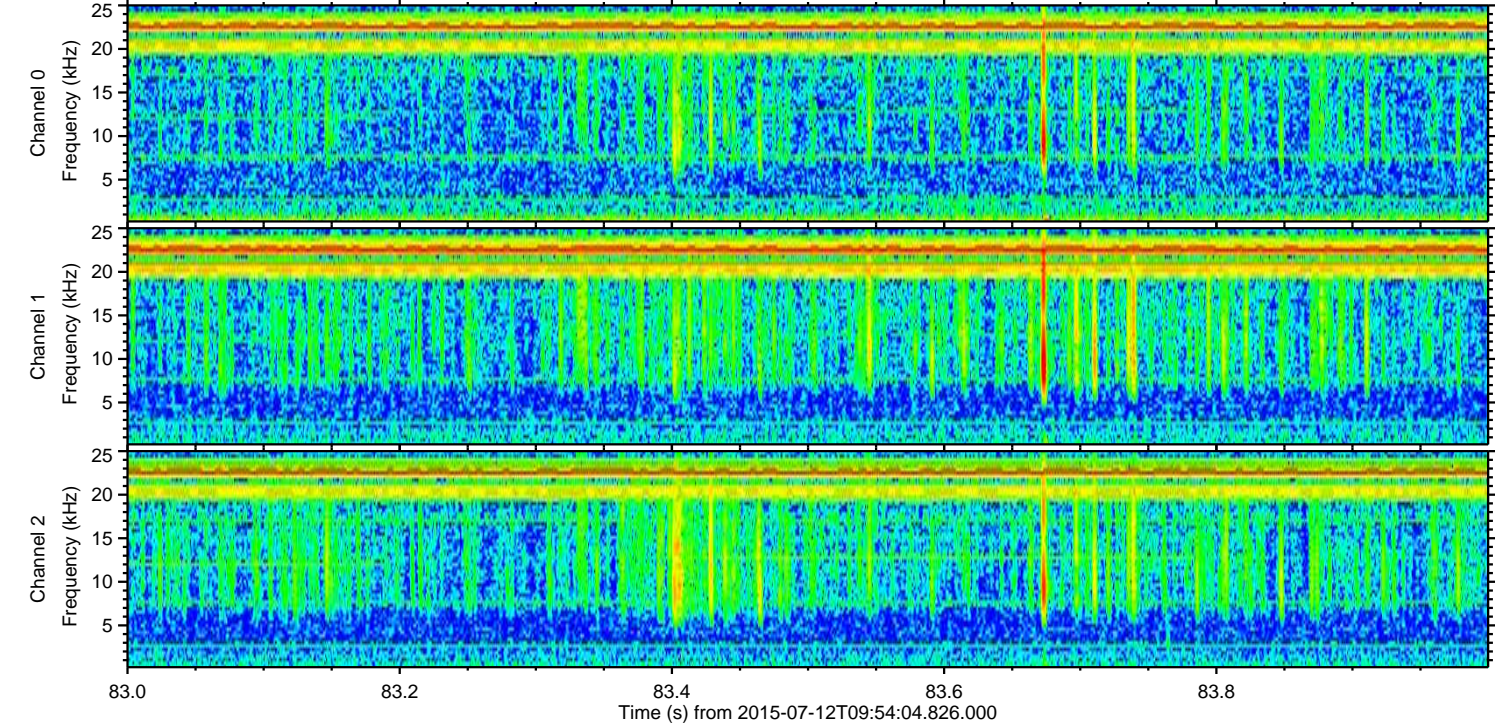
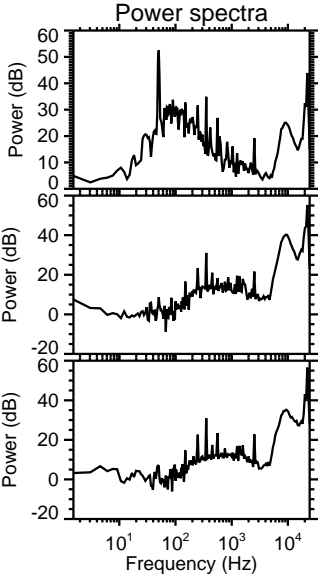
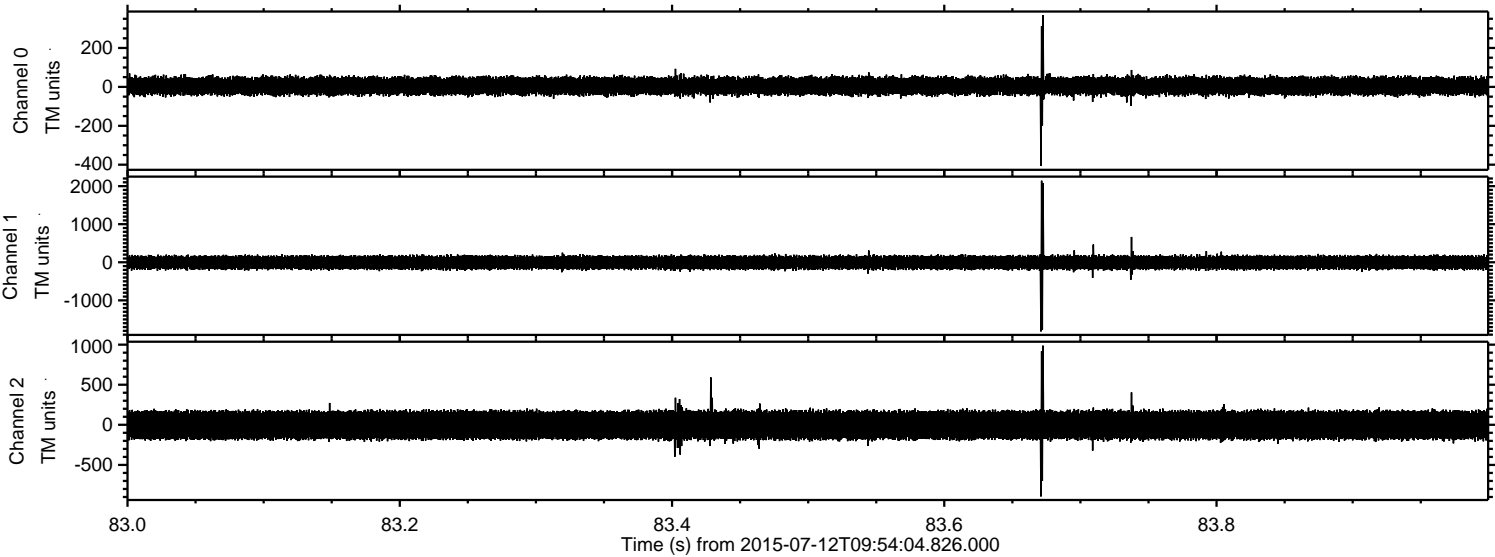


Processed Sun Jul 12 12:01:04 2015 by ELM ver.2012-10-06 from 001\_\_elm20150712\_095403\_\_dat00.bin



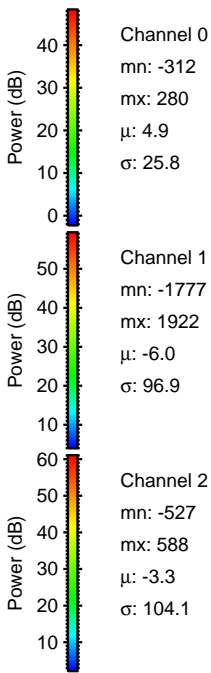
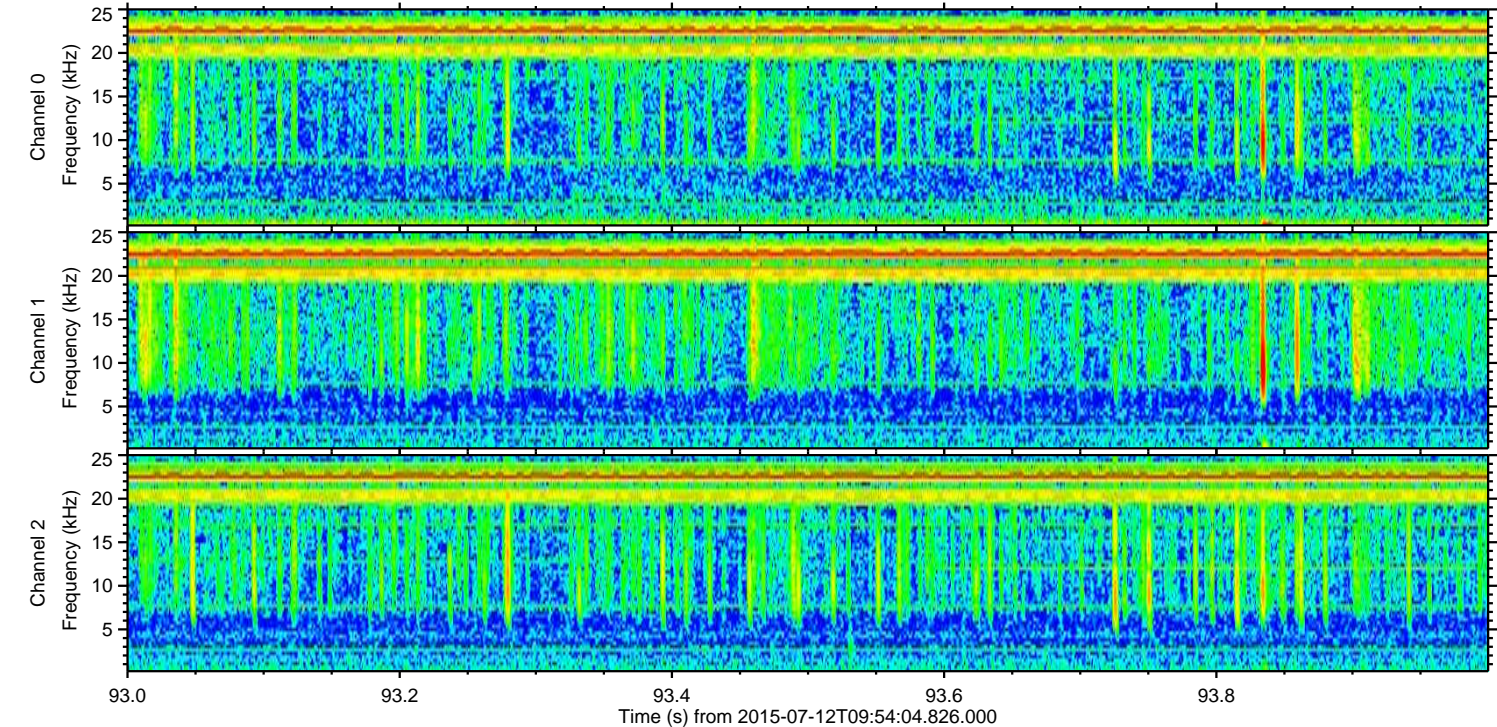
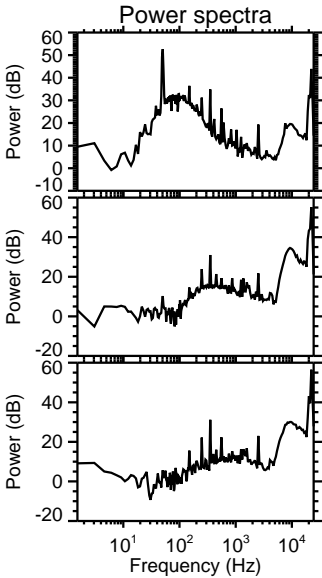
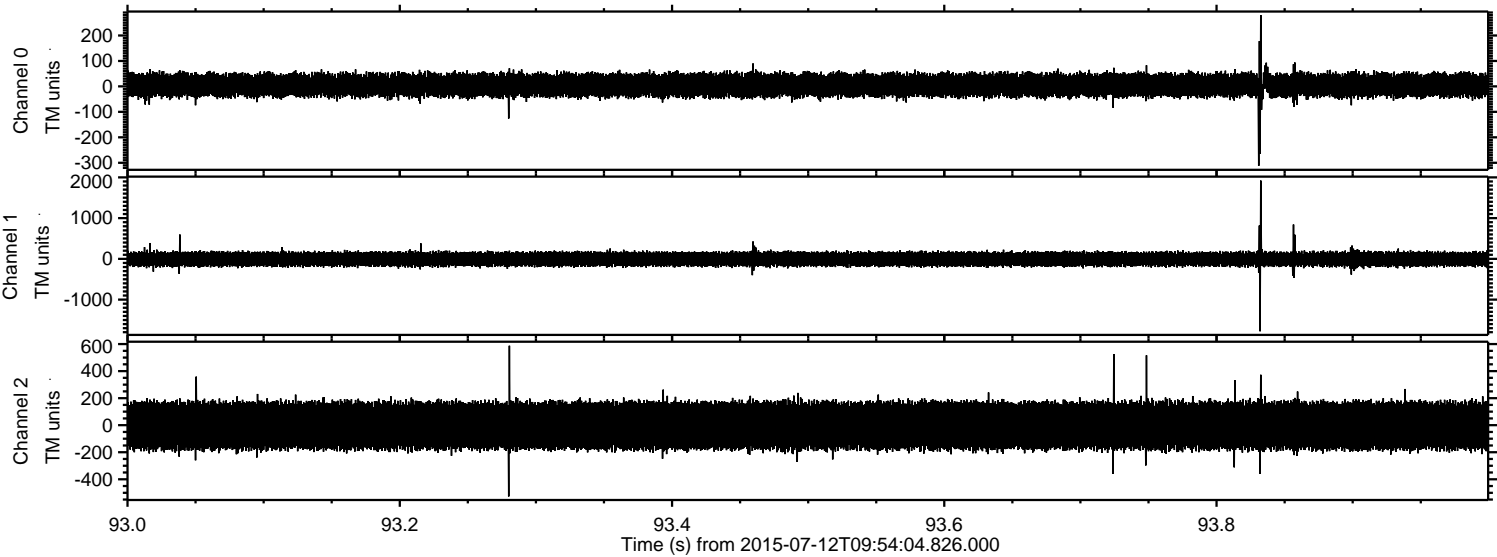


Processed Sun Jul 12 12:01:05 2015 by ELM ver.2012-10-06 from 001\_\_elm20150712\_095403\_\_dat00.bin



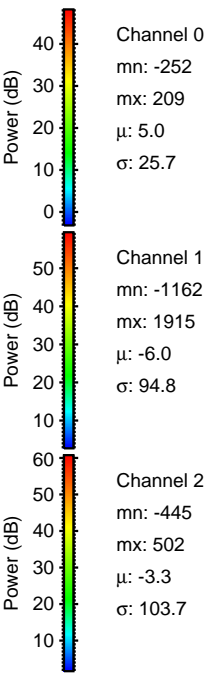
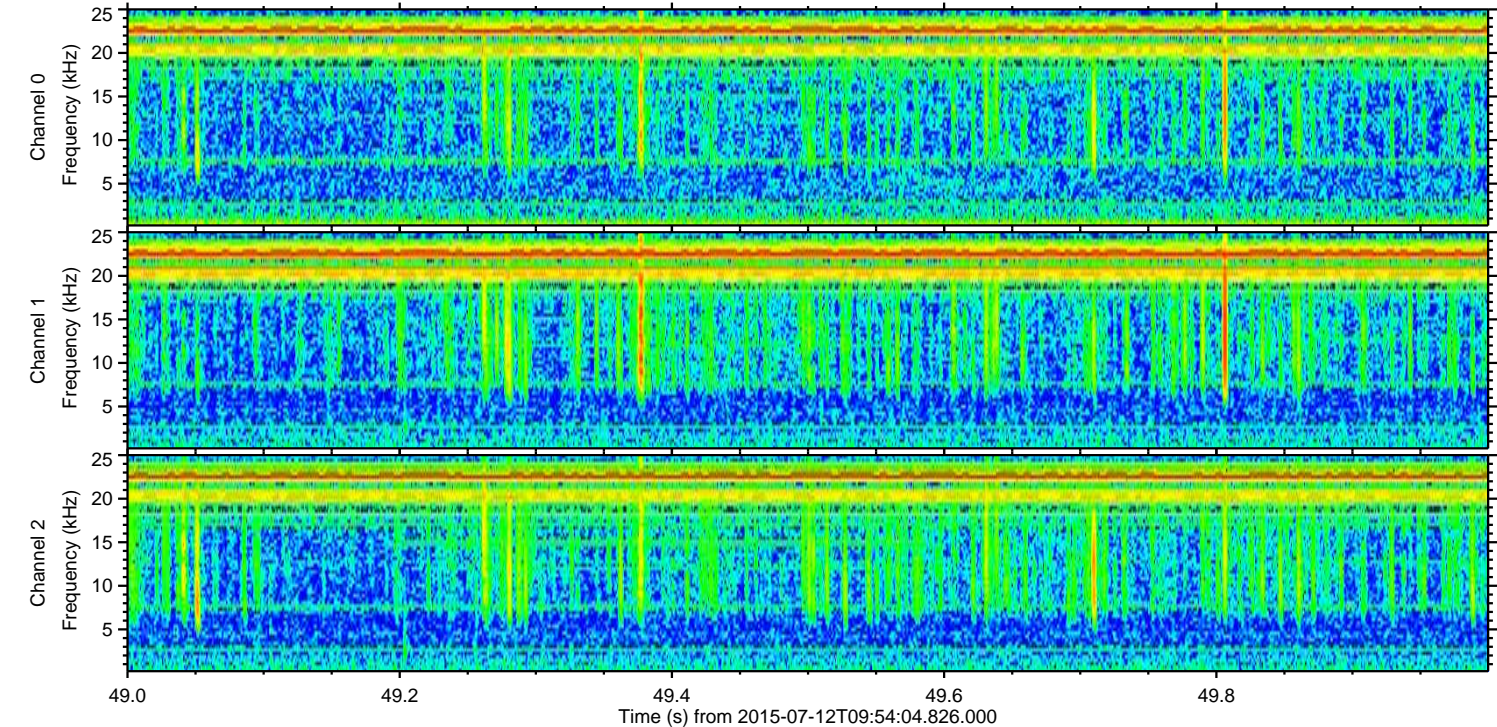
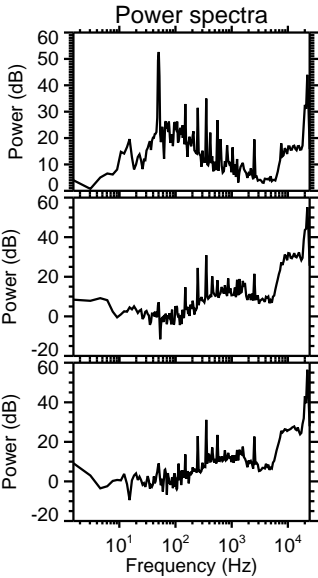
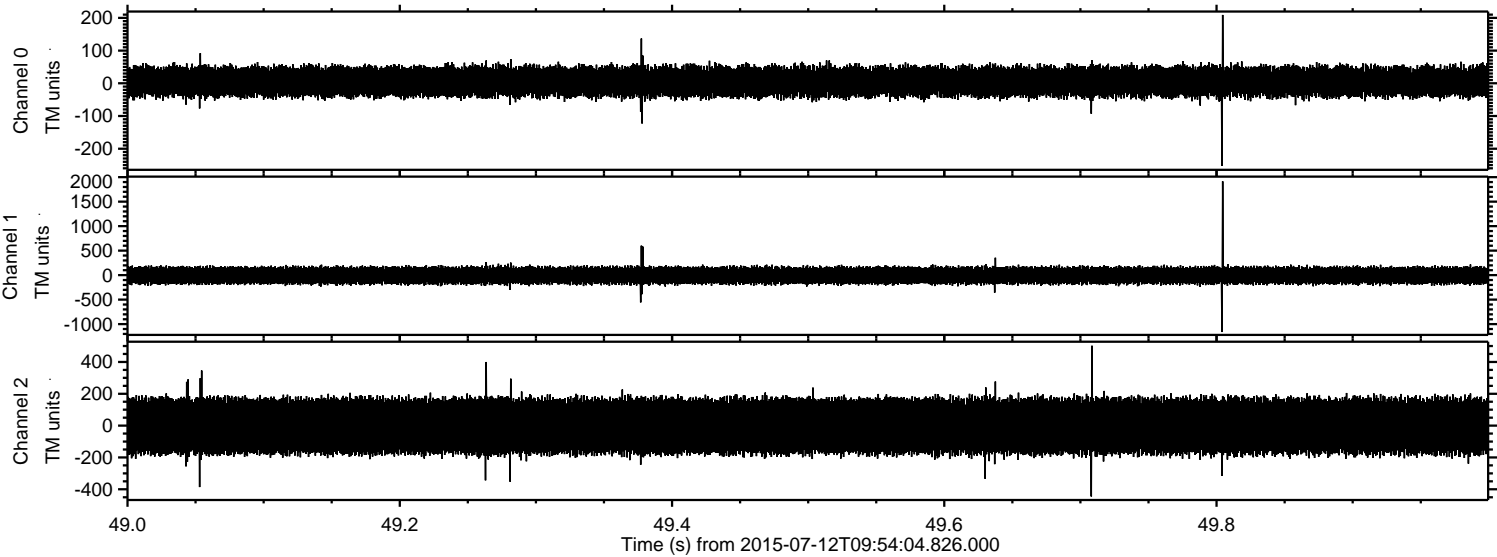


Processed Sun Jul 12 12:01:06 2015 by ELM ver.2012-10-06 from 001\_\_elm20150712\_095403\_\_dat00.bin



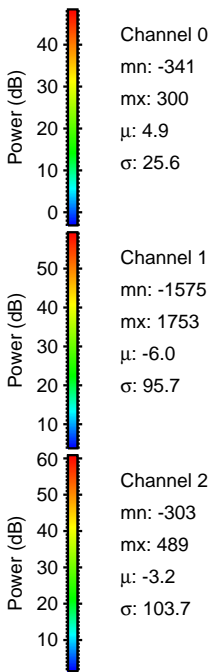
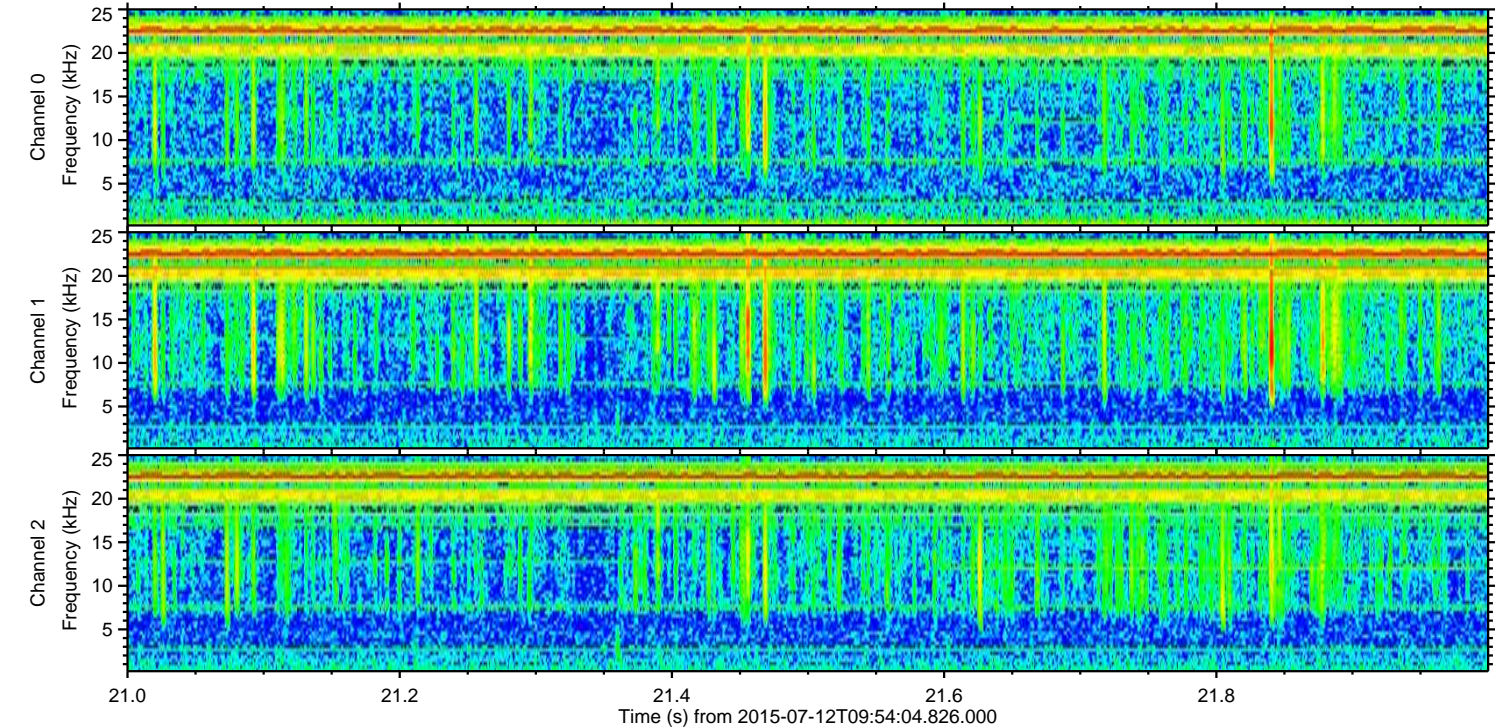
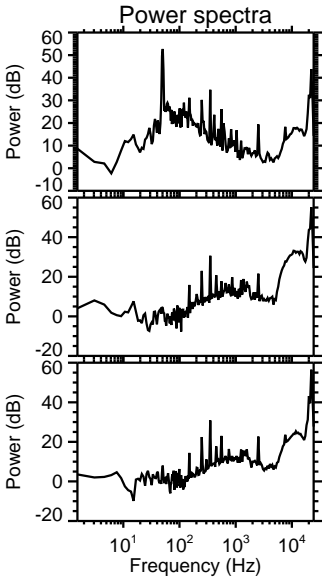
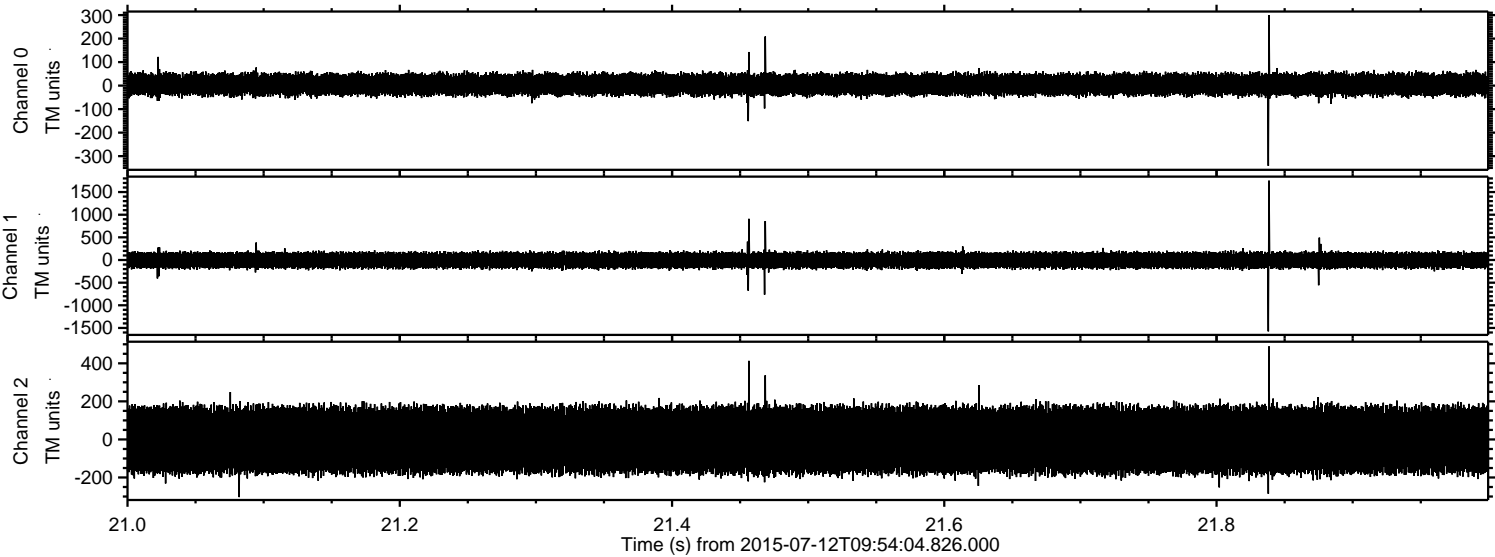


Processed Sun Jul 12 12:01:07 2015 by ELM ver.2012-10-06 from 001\_\_elm20150712\_095403\_\_dat00.bin



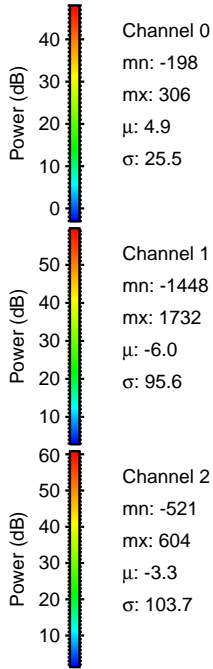
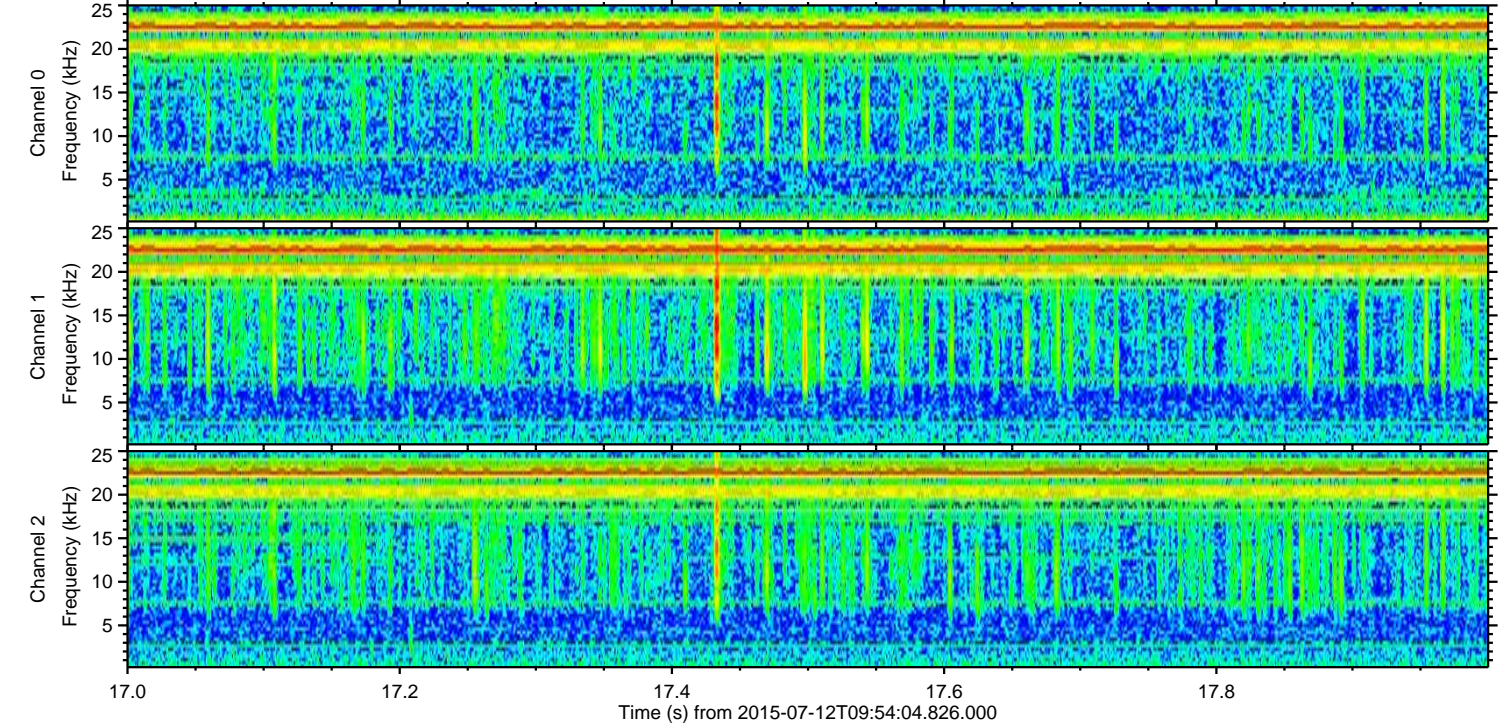
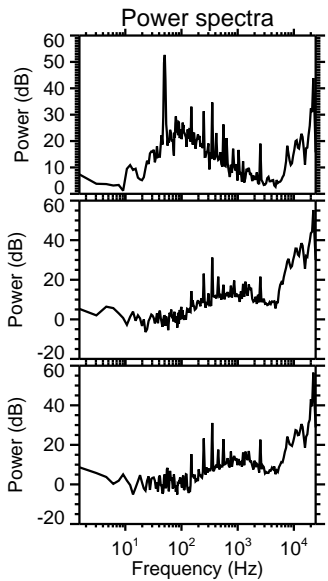
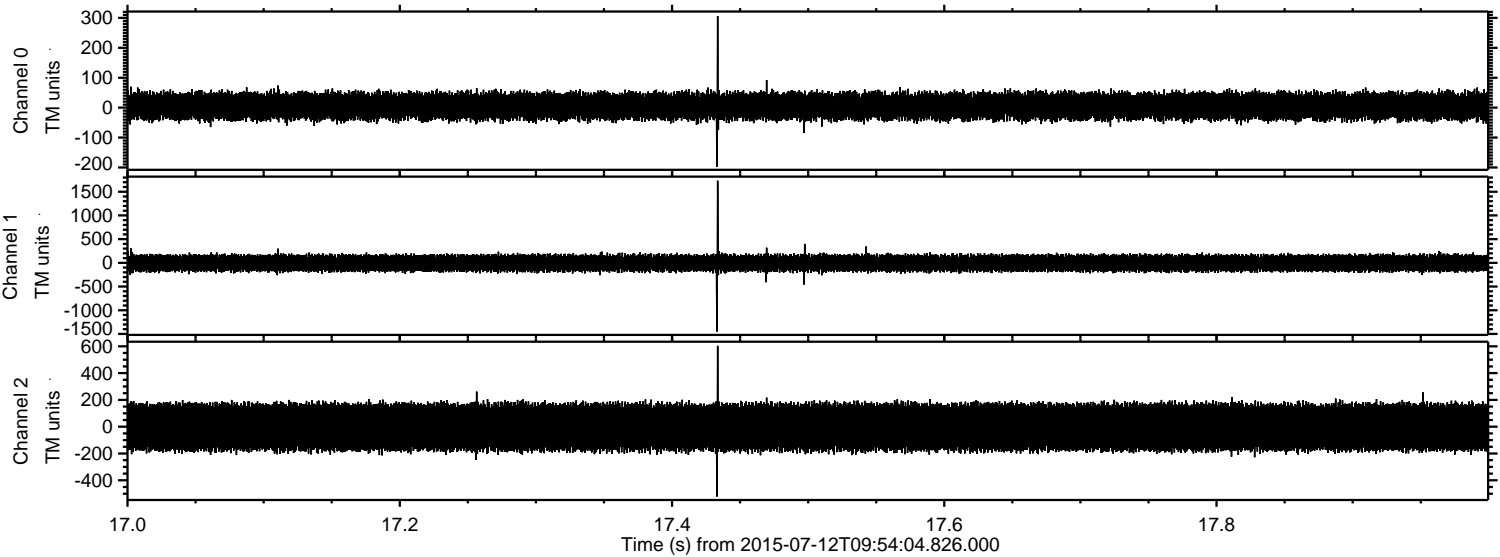


Processed Sun Jul 12 12:01:08 2015 by ELM ver.2012-10-06 from 001\_\_elm20150712\_095403\_\_dat00.bin





Processed Sun Jul 12 12:01:10 2015 by ELM ver.2012-10-06 from 001\_\_elm20150712\_095403\_\_dat00.bin



Channel 0  
mn: -198  
mx: 306  
 $\mu$ : 4.9  
 $\sigma$ : 25.5

Channel 1  
mn: -1448  
mx: 1732  
 $\mu$ : -6.0  
 $\sigma$ : 95.6

Channel 2  
mn: -521  
mx: 604  
 $\mu$ : -3.3  
 $\sigma$ : 103.7



Processed Sun Jul 12 12:01:11 2015 by ELM ver.2012-10-06 from 001\_\_elm20150712\_095403\_\_dat00.bin

