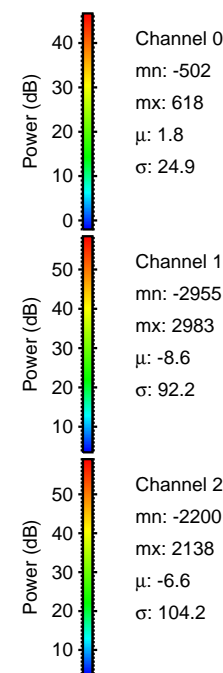
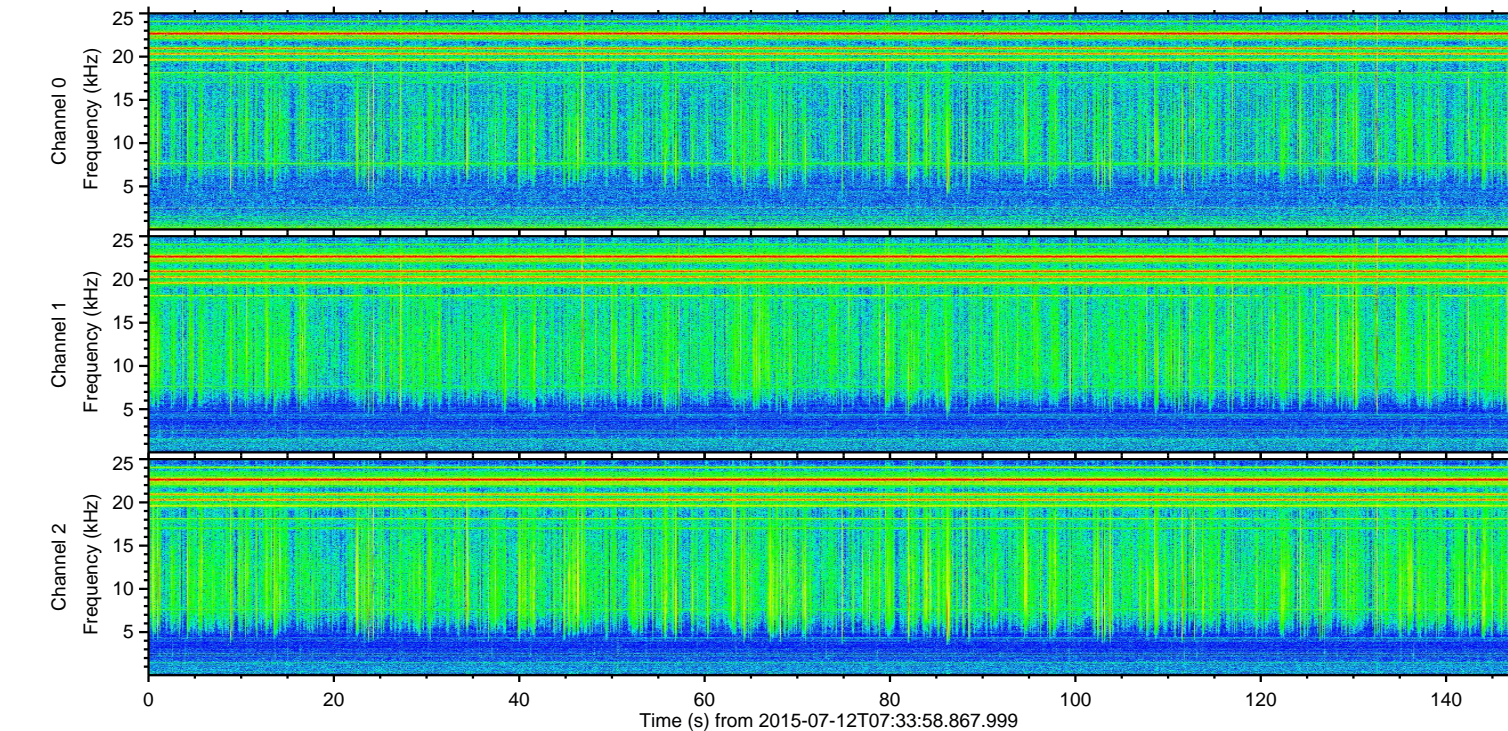
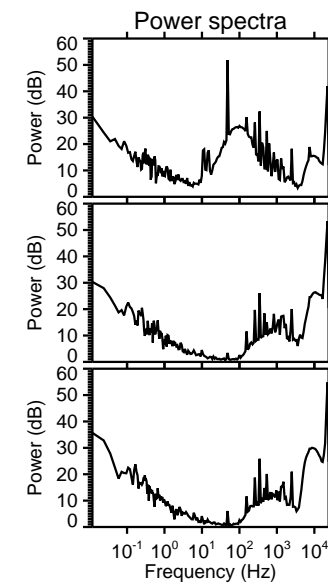
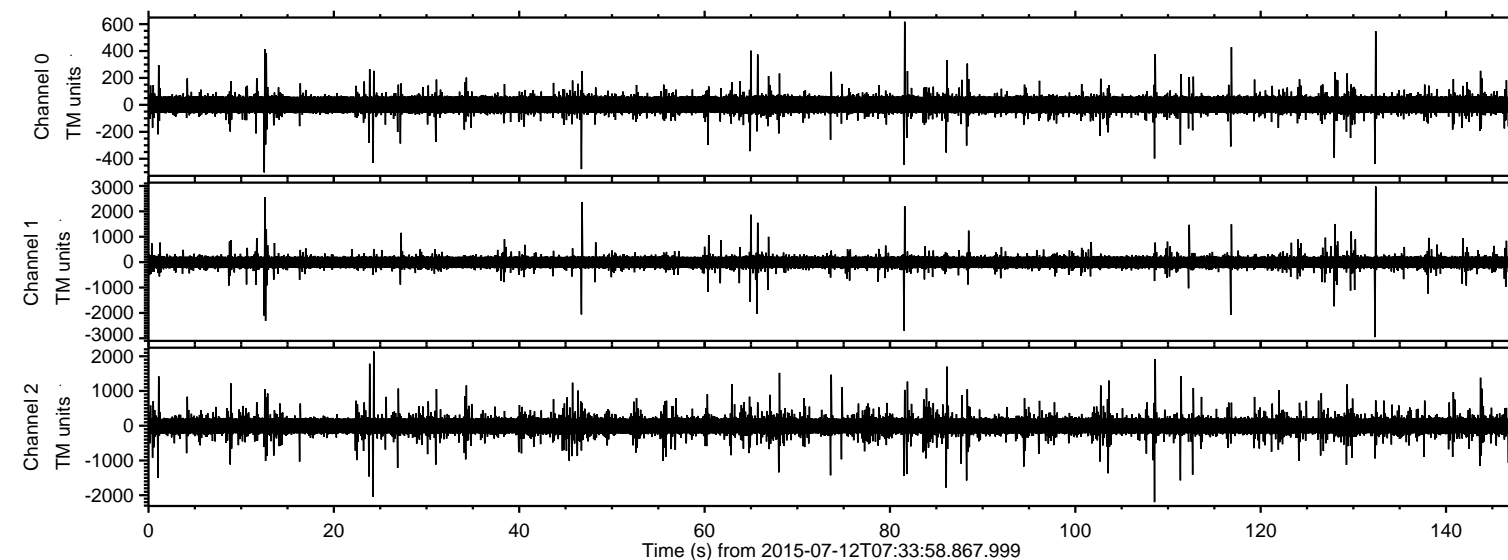


ELMAVAN 3D WAVEFORMS (Measured data sampled at 50 kHz) 51000 packets of 144 samples from 2015-07-12T07:33:58.867.999.

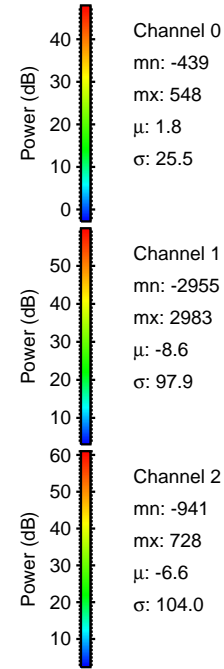
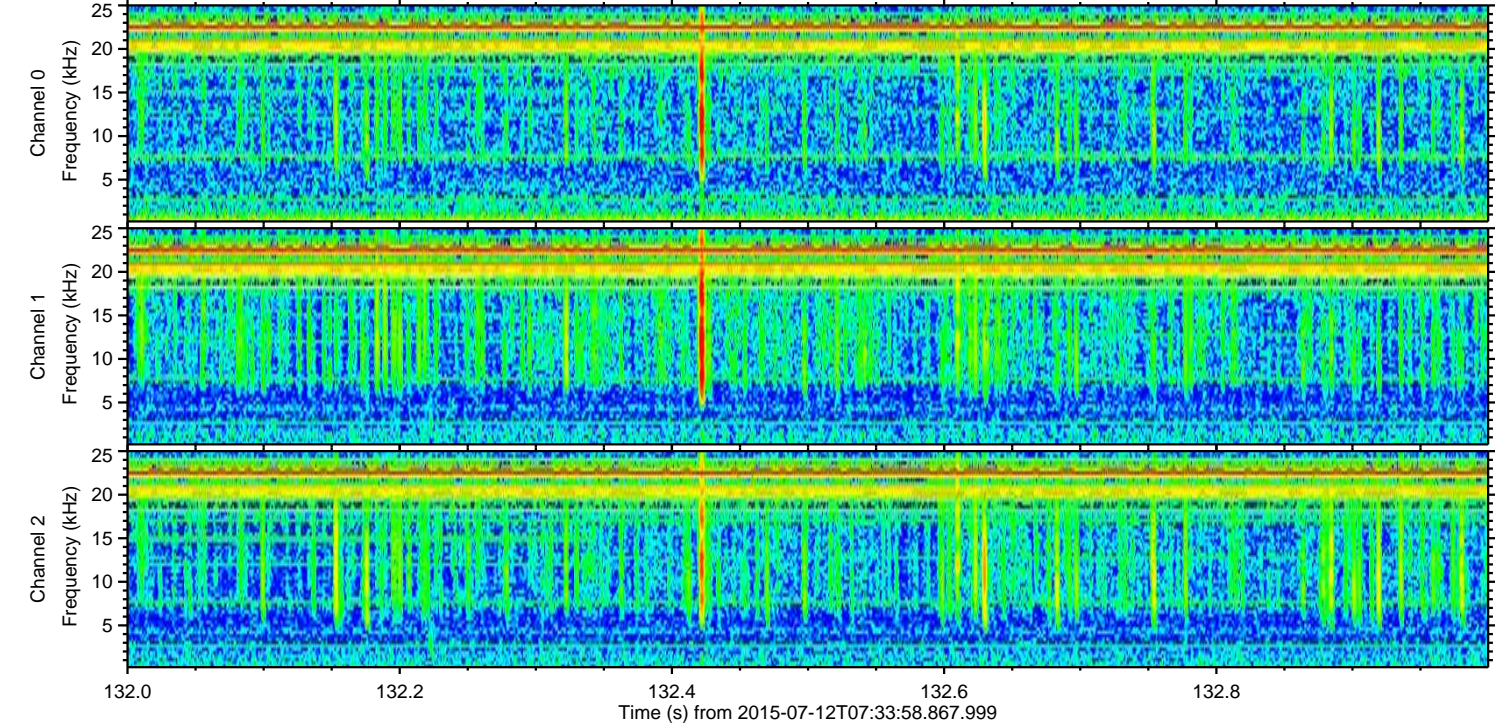
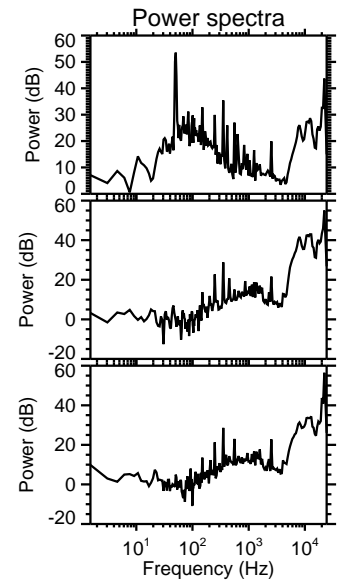
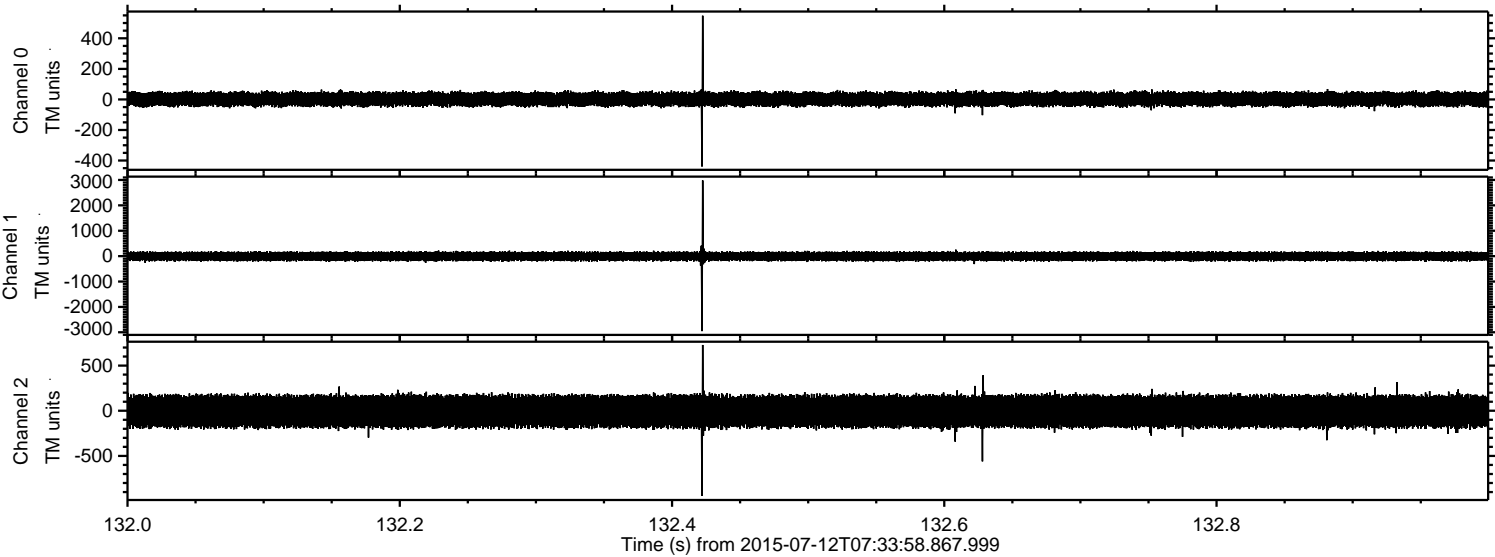
Processed Sun Jul 12 09:40:23 2015 by ELM ver.2012-10-06 from 001\_\_elm20150712\_073357\_\_dat00.bin





ELMAVAN 3D WAVEFORMS (Measured data sampled at 50 kHz) 51000 packets of 144 samples from 2015-07-12T07:33:58.867.999. Part 133/147

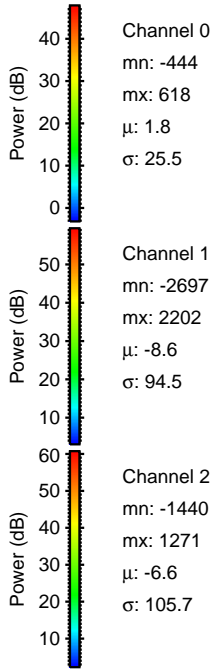
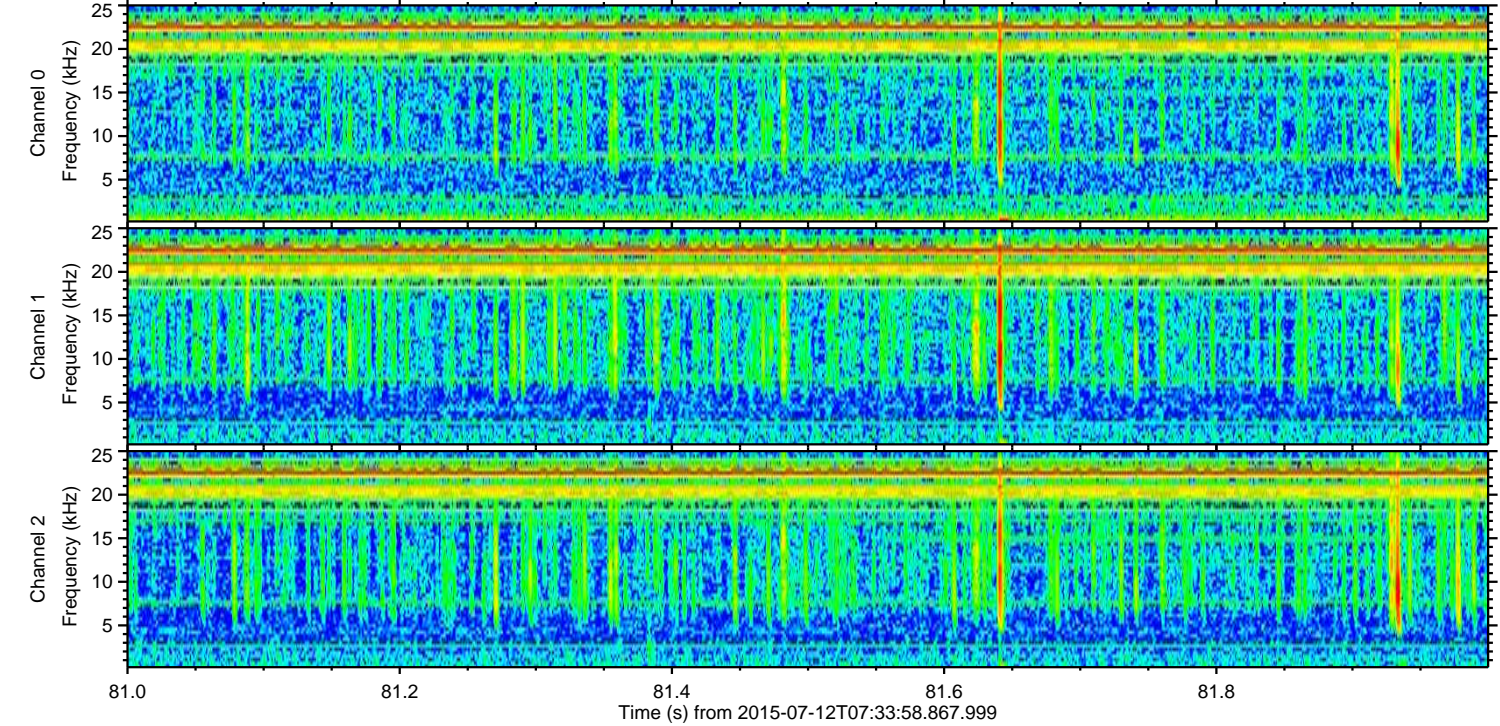
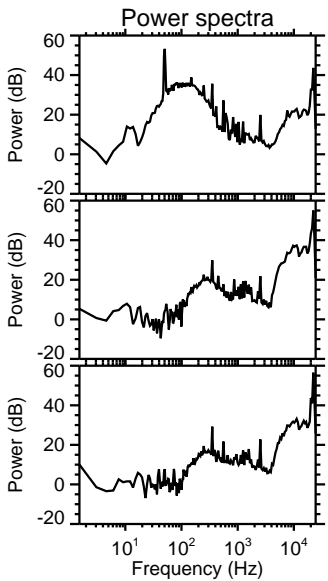
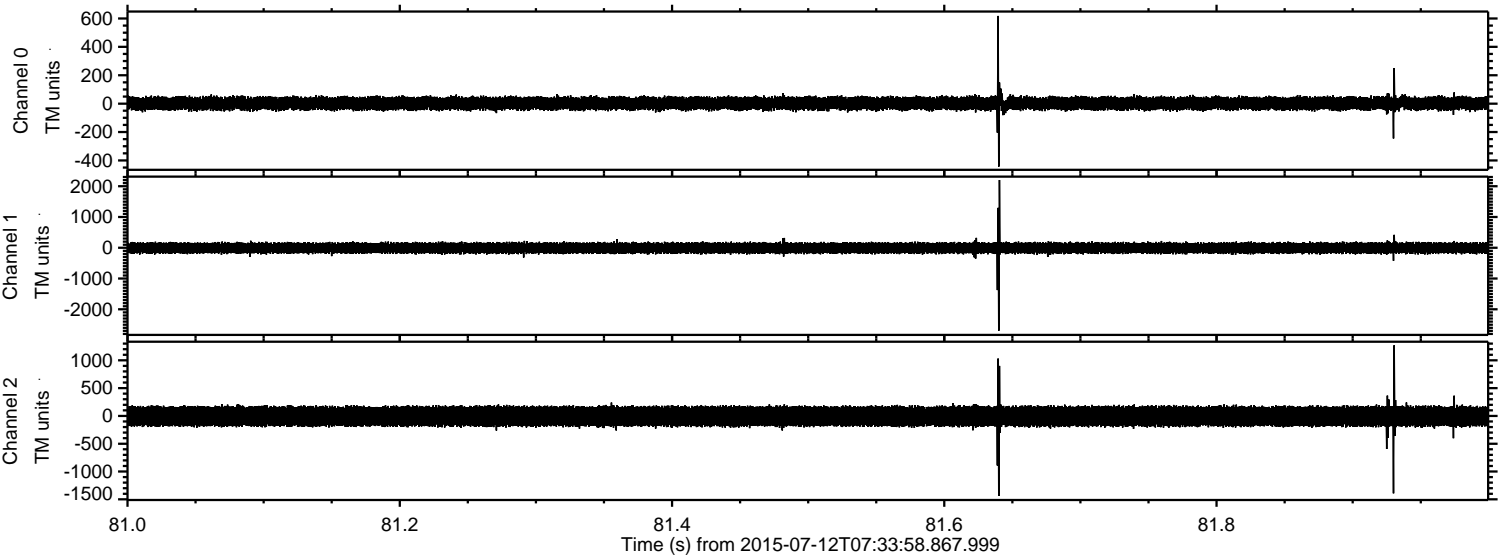
Processed Sun Jul 12 09:40:42 2015 by ELM ver.2012-10-06 from 001\_\_elm20150712\_073357\_\_dat00.bin





ELMAVAN 3D WAVEFORMS (Measured data sampled at 50 kHz) 51000 packets of 144 samples from 2015-07-12T07:33:58.867.999. Part 82/147

Processed Sun Jul 12 09:40:43 2015 by ELM ver.2012-10-06 from 001\_\_elm20150712\_073357\_\_dat00.bin



Channel 0  
mn: -444  
mx: 618  
 $\mu$ : 1.8  
 $\sigma$ : 25.5

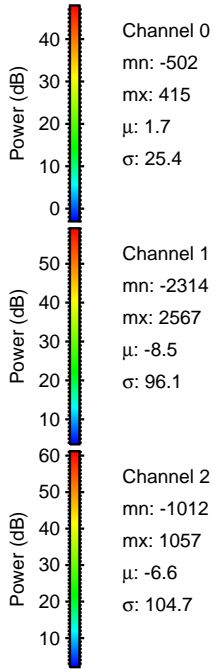
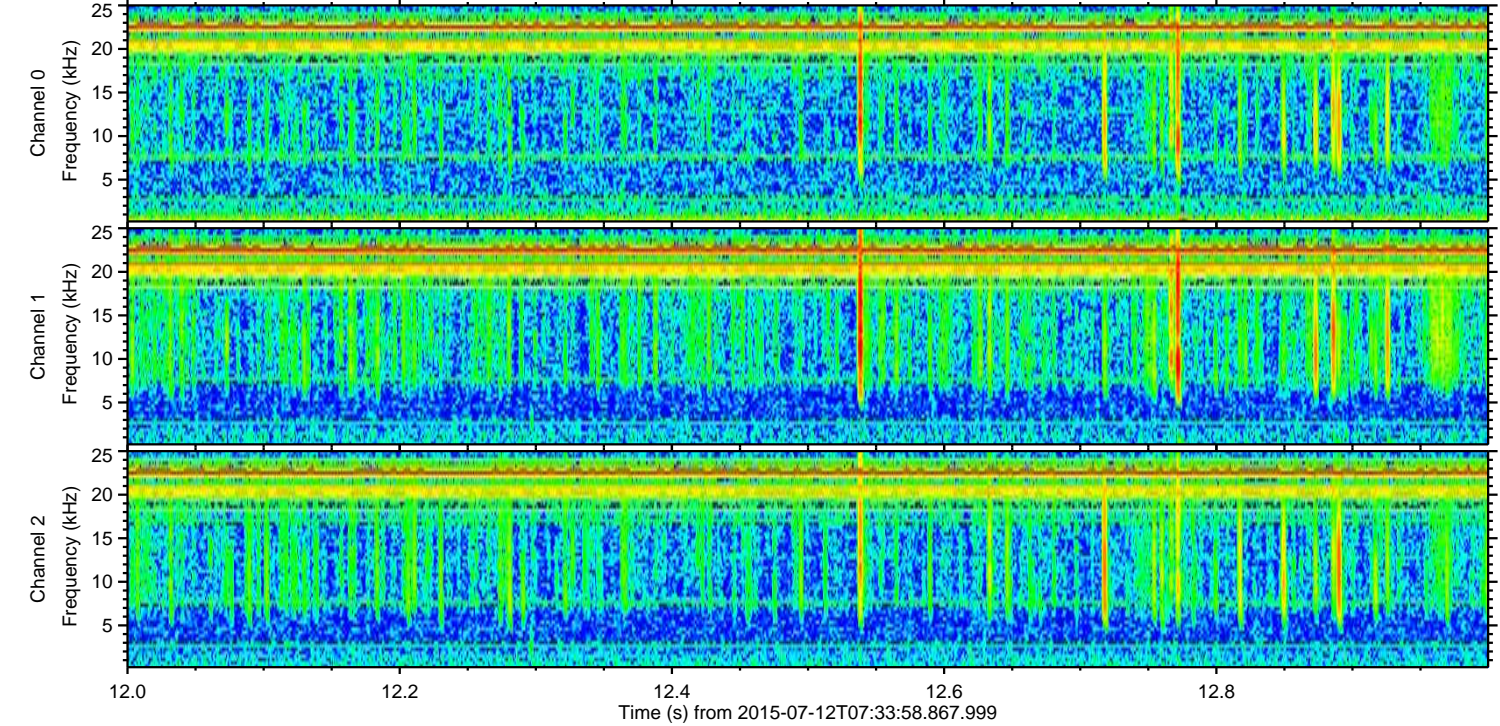
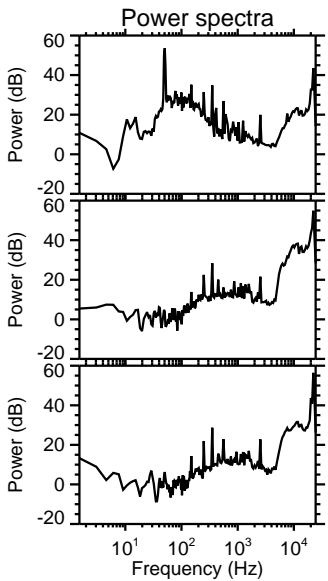
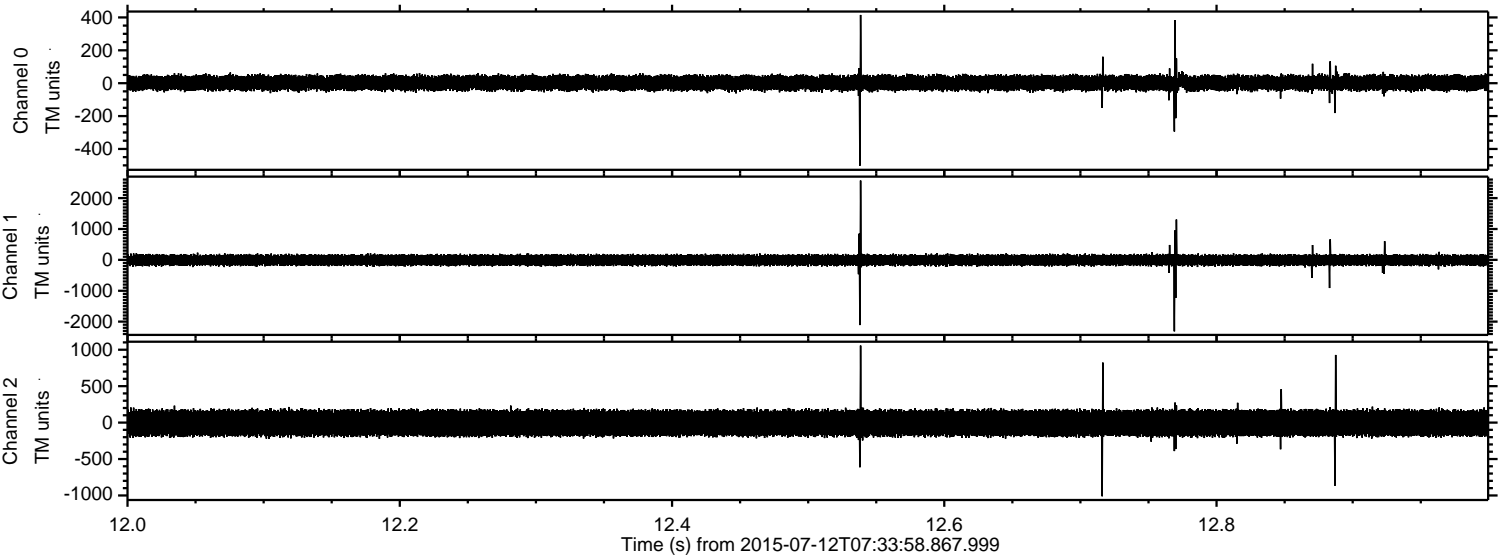
Channel 1  
mn: -2697  
mx: 2202  
 $\mu$ : -8.6  
 $\sigma$ : 94.5

Channel 2  
mn: -1440  
mx: 1271  
 $\mu$ : -6.6  
 $\sigma$ : 105.7



ELMAVAN 3D WAVEFORMS (Measured data sampled at 50 kHz) 51000 packets of 144 samples from 2015-07-12T07:33:58.867.999. Part 13/147

Processed Sun Jul 12 09:40:44 2015 by ELM ver.2012-10-06 from 001\_\_elm20150712\_073357\_\_dat00.bin



Channel 0  
mn: -502  
mx: 415  
 $\mu$ : 1.7  
 $\sigma$ : 25.4

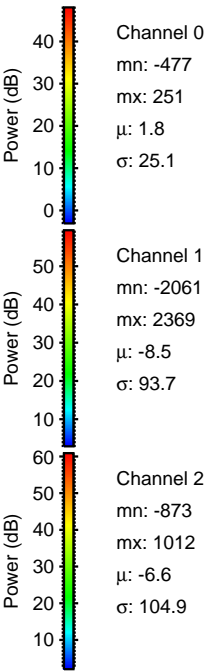
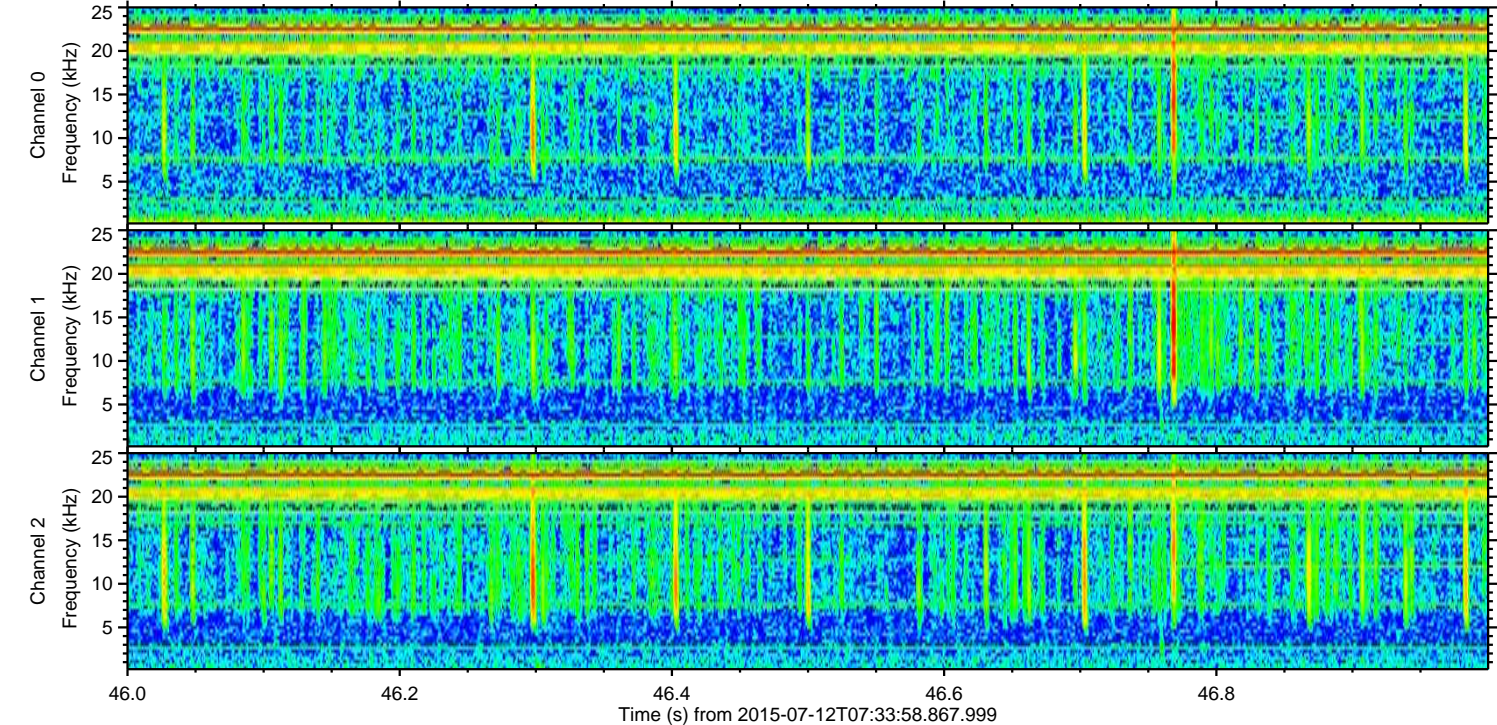
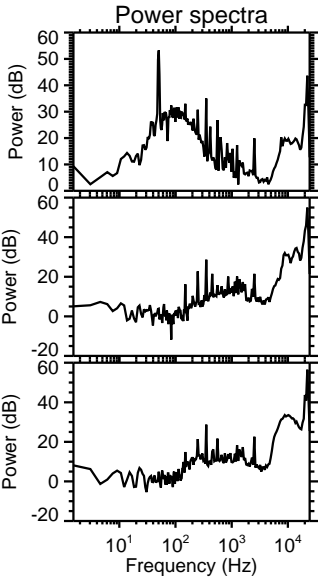
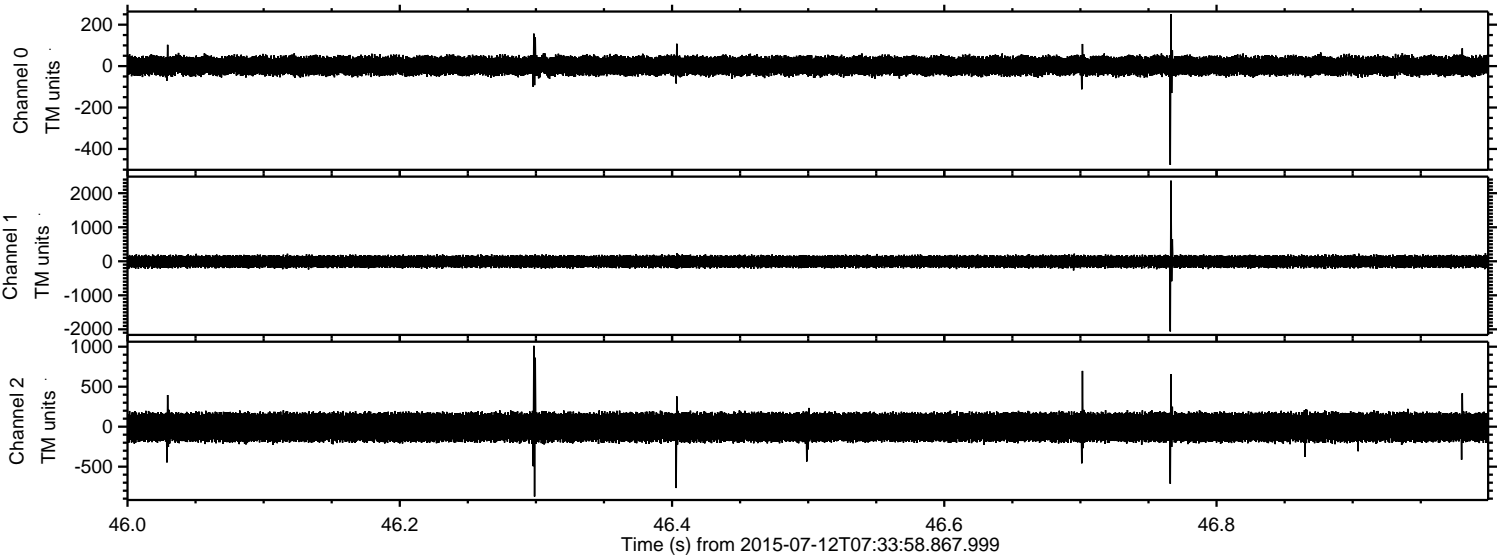
Channel 1  
mn: -2314  
mx: 2567  
 $\mu$ : -8.5  
 $\sigma$ : 96.1

Channel 2  
mn: -1012  
mx: 1057  
 $\mu$ : -6.6  
 $\sigma$ : 104.7



ELMAVAN 3D WAVEFORMS (Measured data sampled at 50 kHz) 51000 packets of 144 samples from 2015-07-12T07:33:58.867.999. Part 47/147

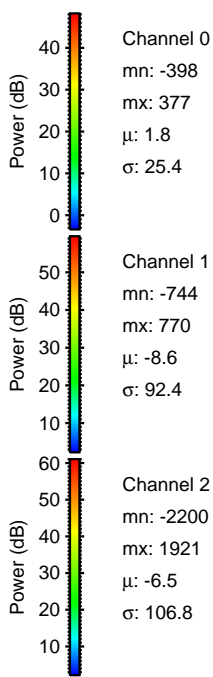
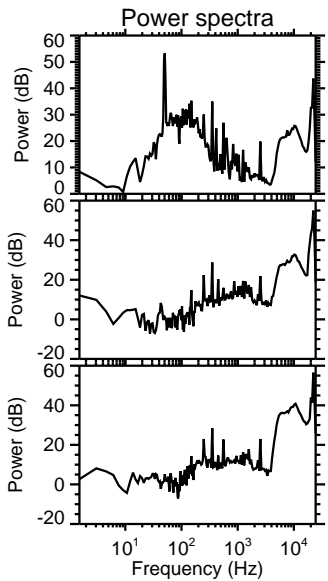
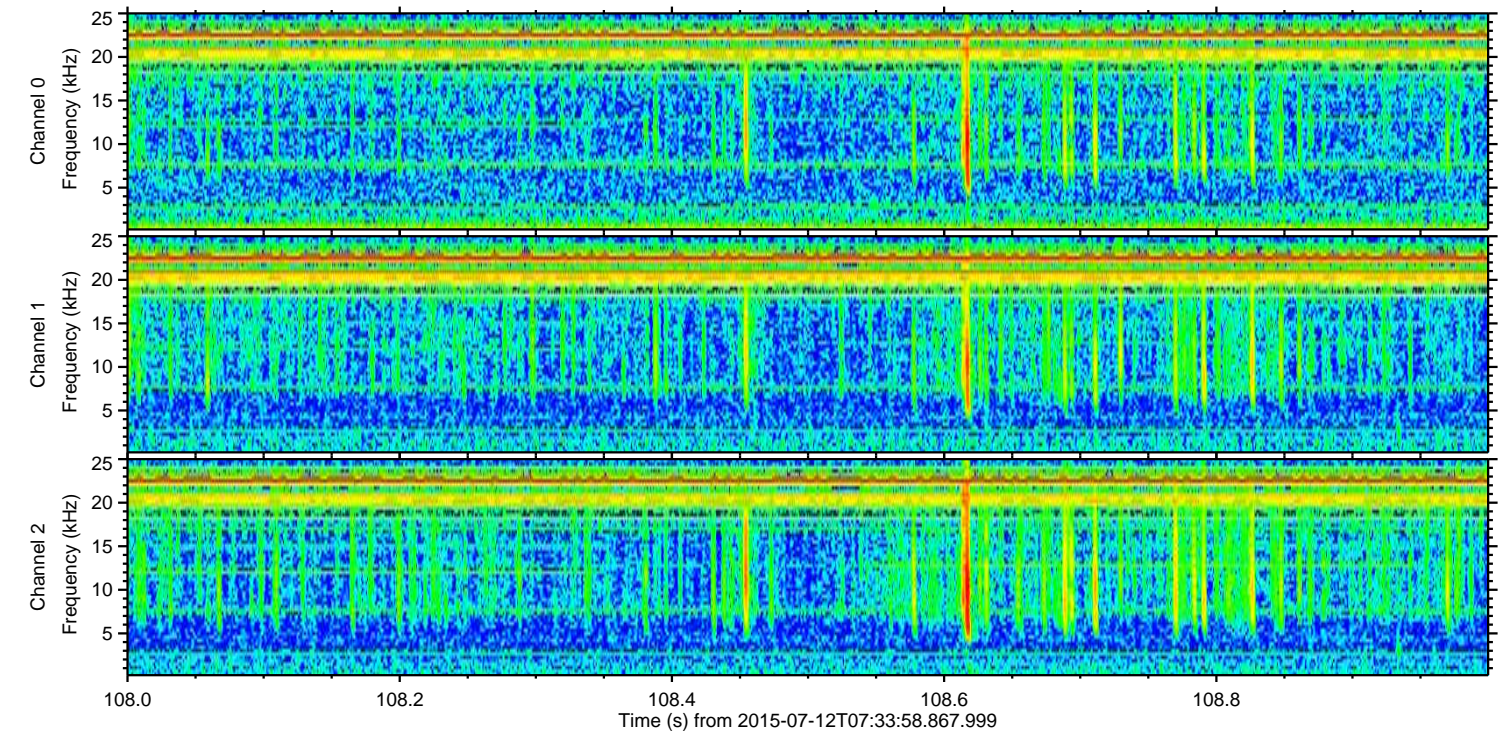
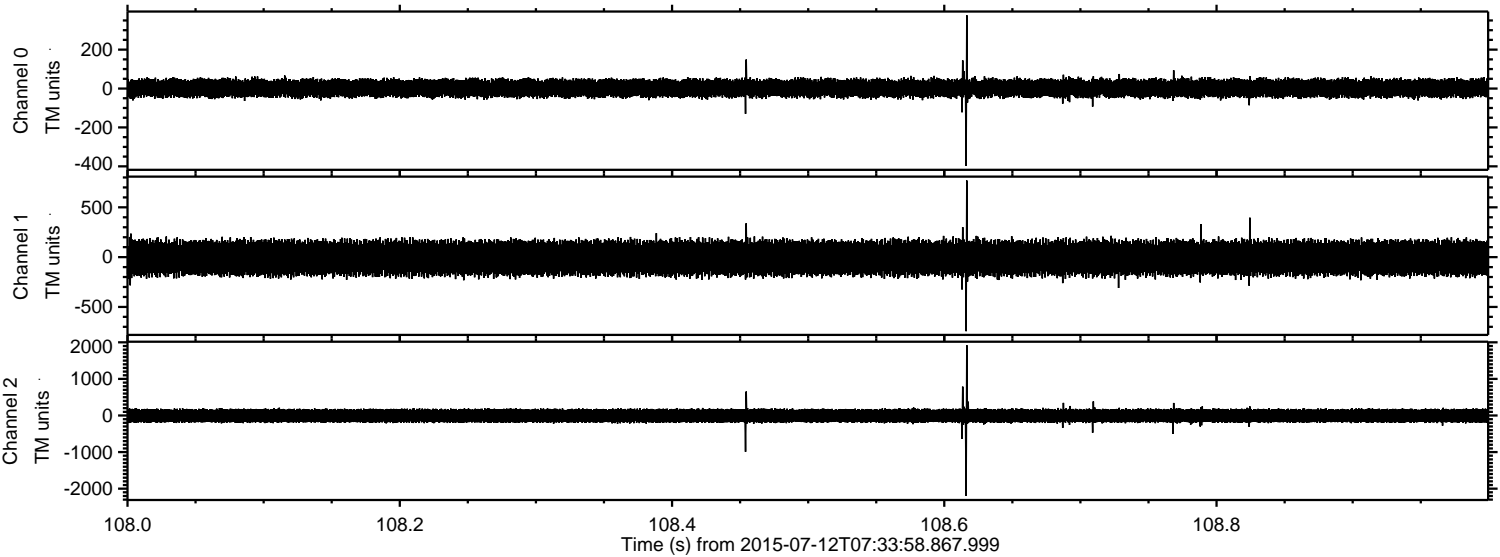
Processed Sun Jul 12 09:40:45 2015 by ELM ver.2012-10-06 from 001\_\_elm20150712\_073357\_\_dat00.bin





ELMAVAN 3D WAVEFORMS (Measured data sampled at 50 kHz) 51000 packets of 144 samples from 2015-07-12T07:33:58.867.999. Part 109/147

Processed Sun Jul 12 09:40:46 2015 by ELM ver.2012-10-06 from 001\_\_elm20150712\_073357\_\_dat00.bin



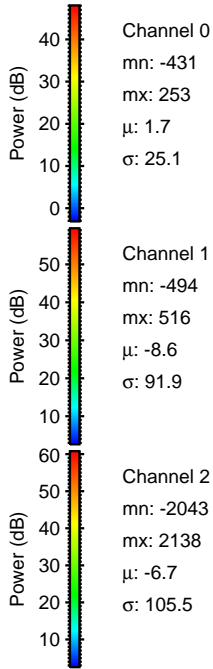
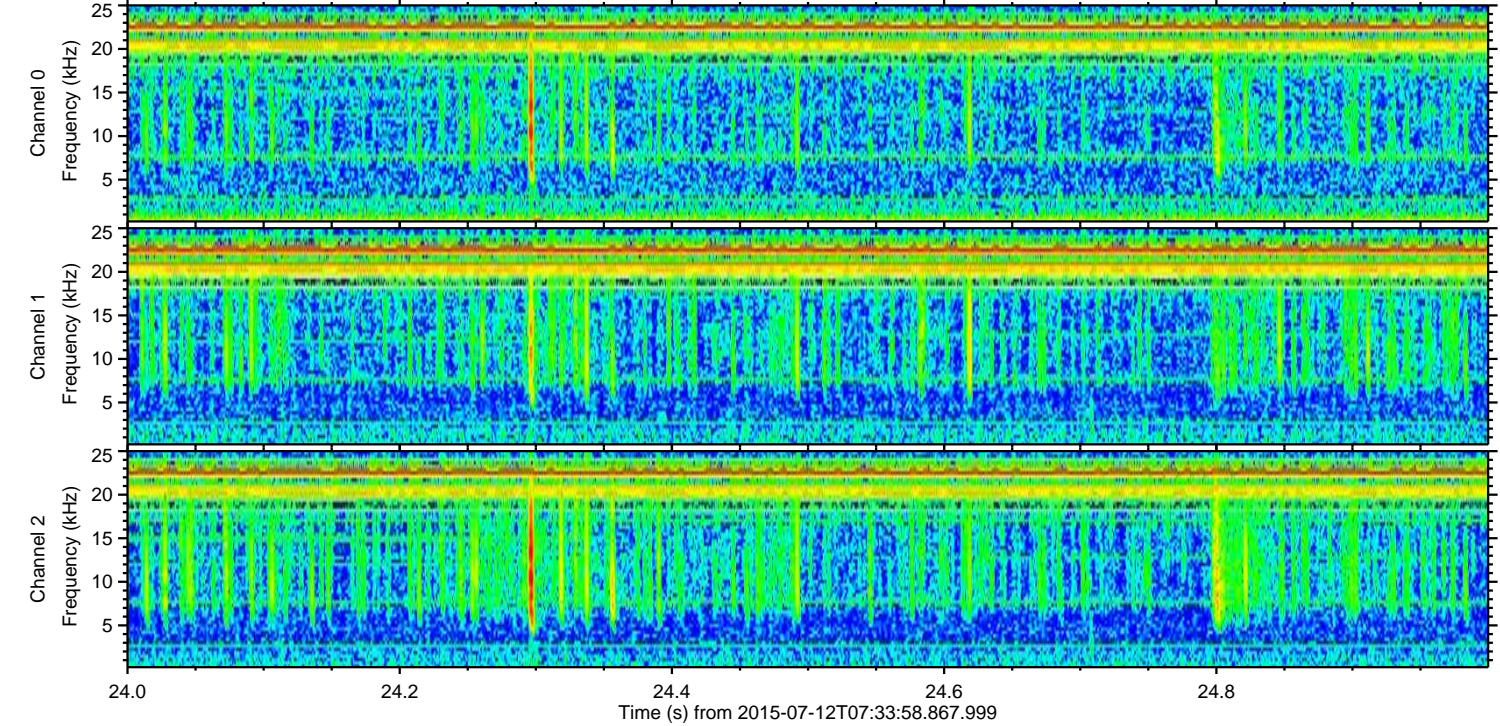
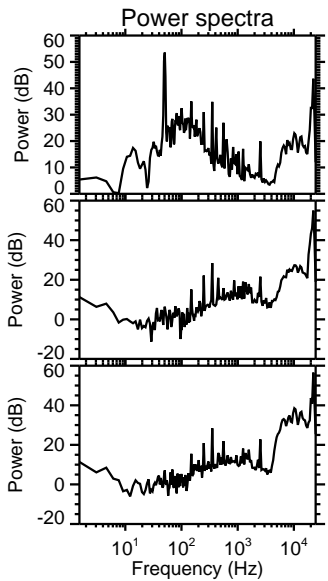
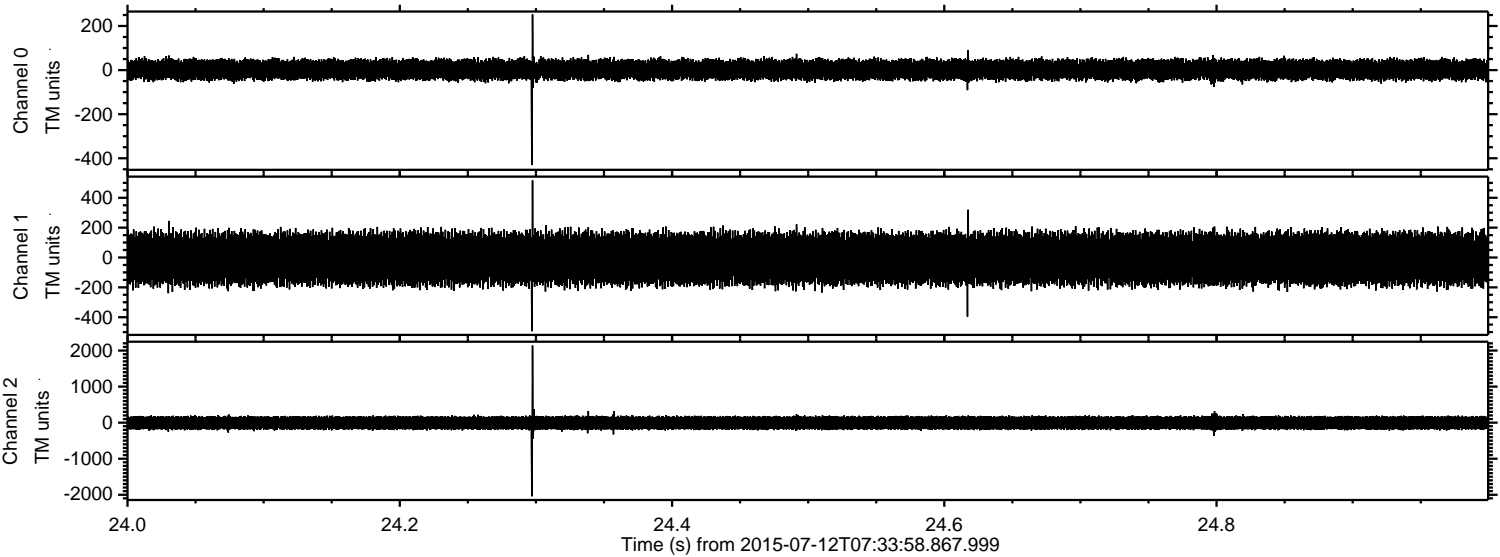
Channel 0  
mn: -398  
mx: 377  
 $\mu$ : 1.8  
 $\sigma$ : 25.4

Channel 1  
mn: -744  
mx: 770  
 $\mu$ : -8.6  
 $\sigma$ : 92.4

Channel 2  
mn: -2200  
mx: 1921  
 $\mu$ : -6.5  
 $\sigma$ : 106.8



Processed Sun Jul 12 09:40:47 2015 by ELM ver.2012-10-06 from 001\_\_elm20150712\_073357\_\_dat00.bin



Channel 0  
mn: -431  
mx: 253  
 $\mu$ : 1.7  
 $\sigma$ : 25.1

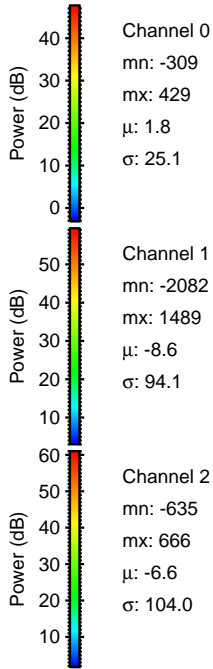
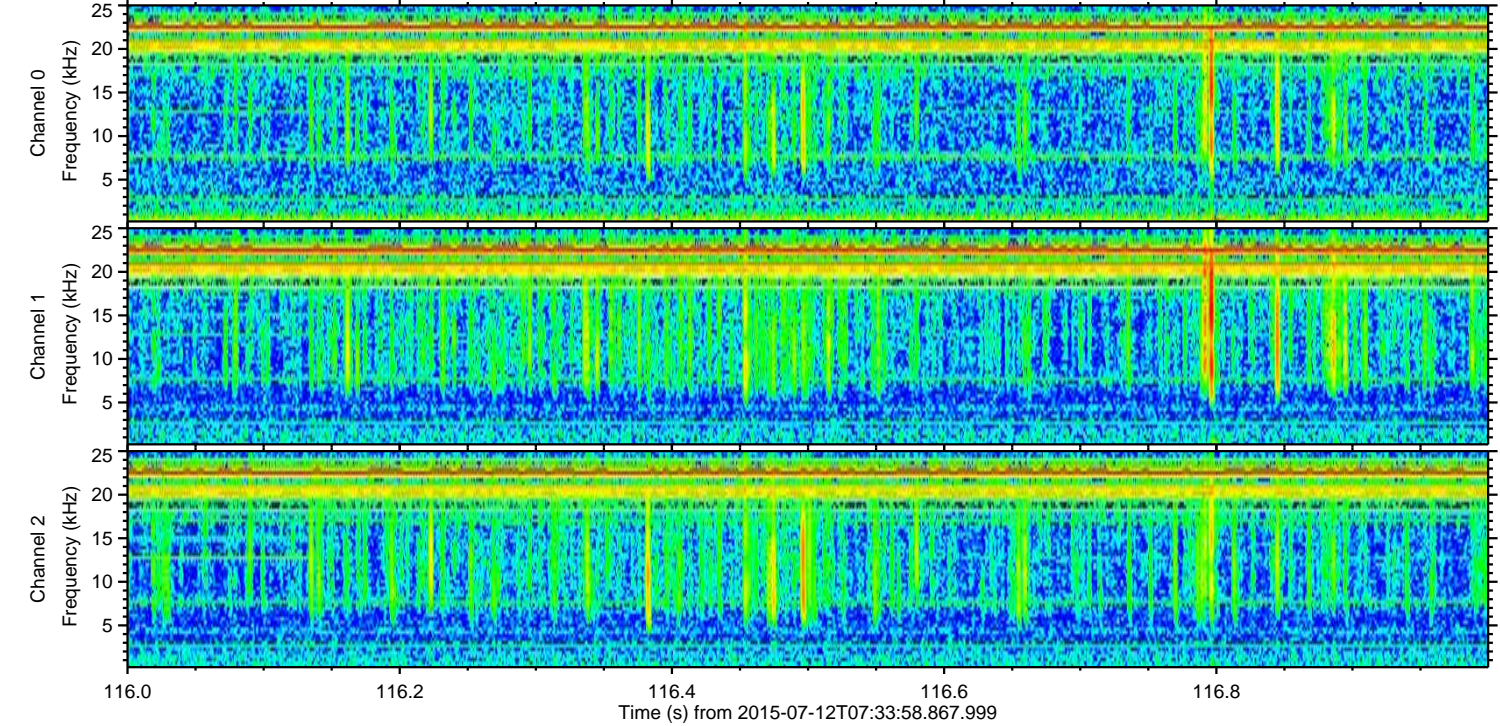
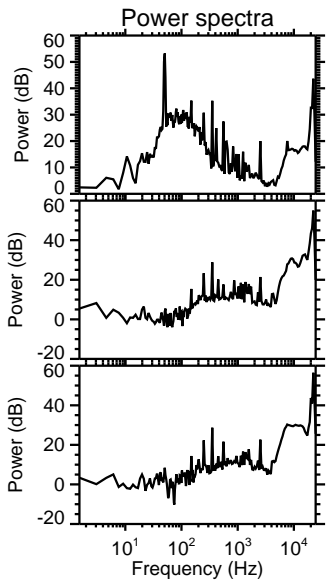
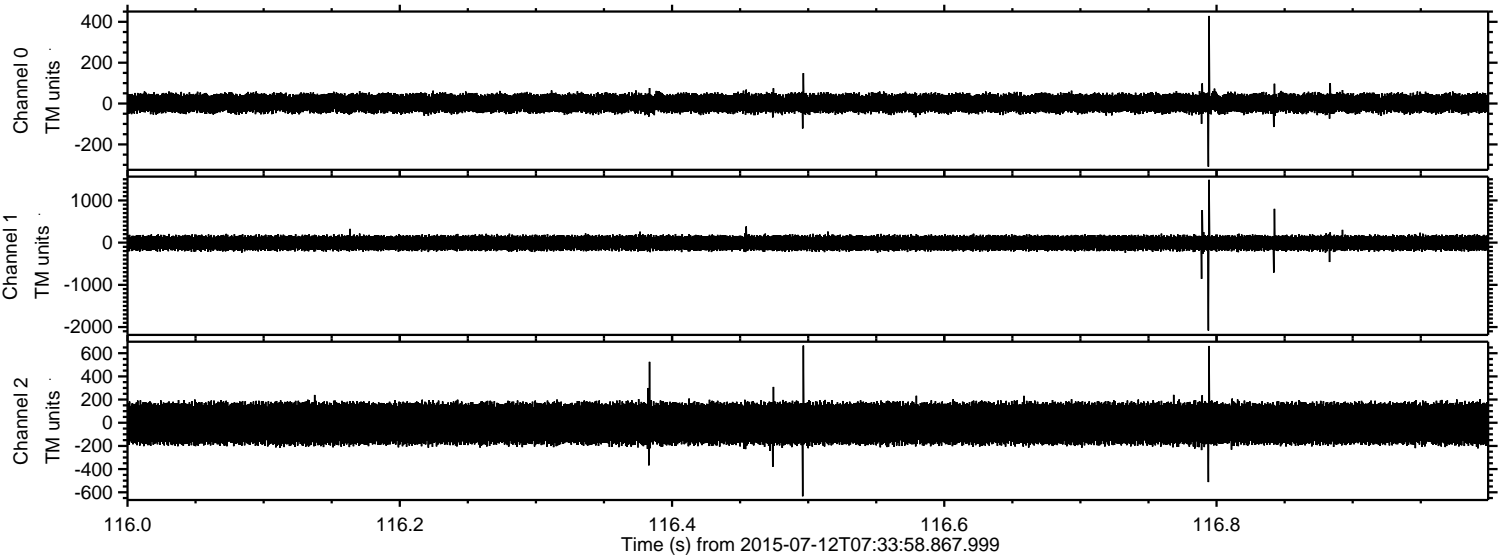
Channel 1  
mn: -494  
mx: 516  
 $\mu$ : -8.6  
 $\sigma$ : 91.9

Channel 2  
mn: -2043  
mx: 2138  
 $\mu$ : -6.7  
 $\sigma$ : 105.5



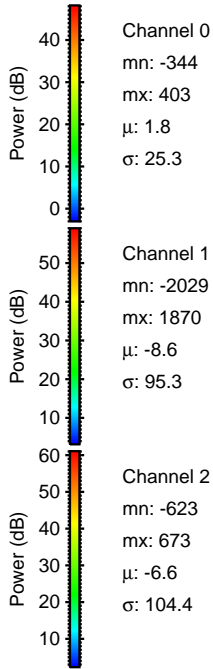
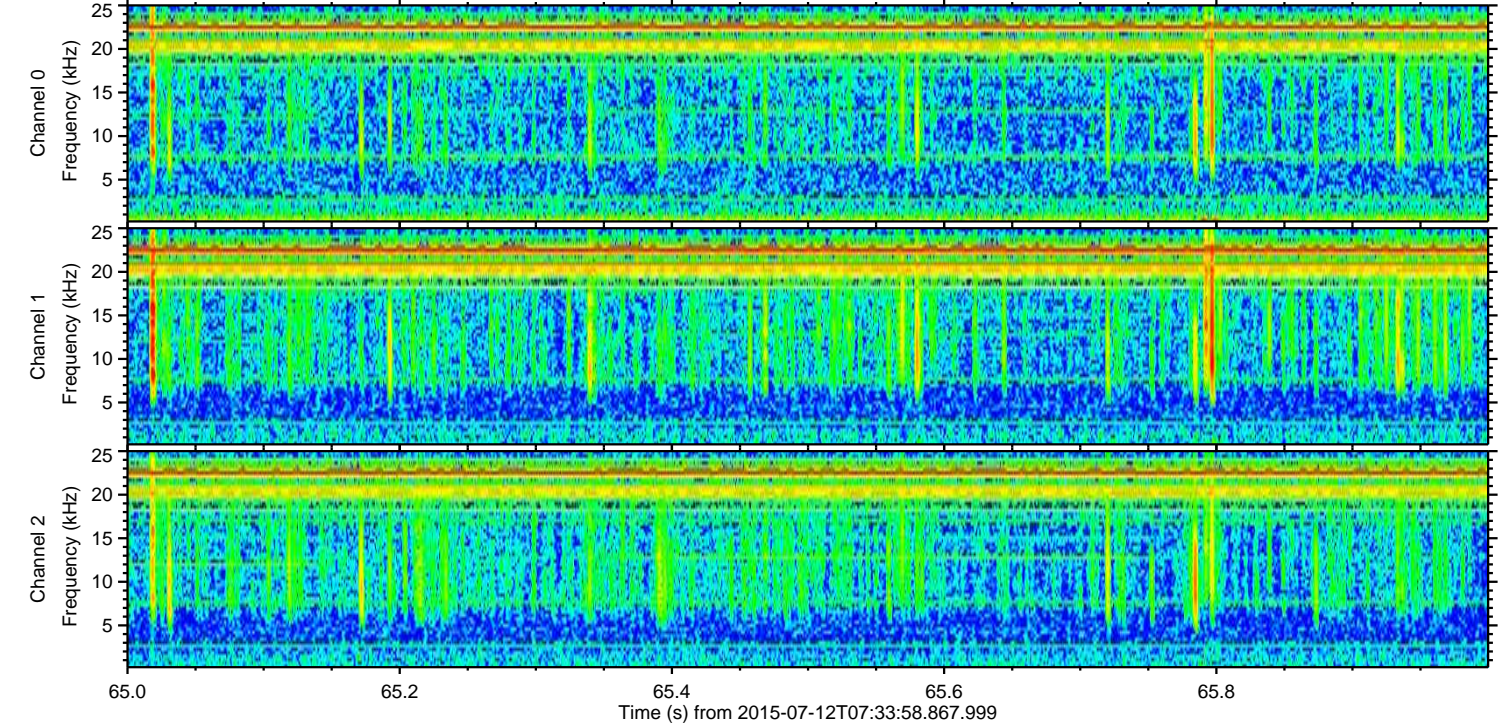
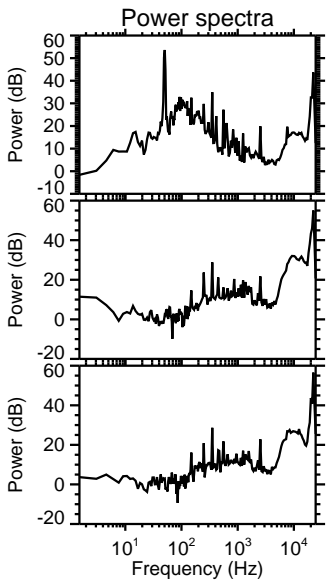
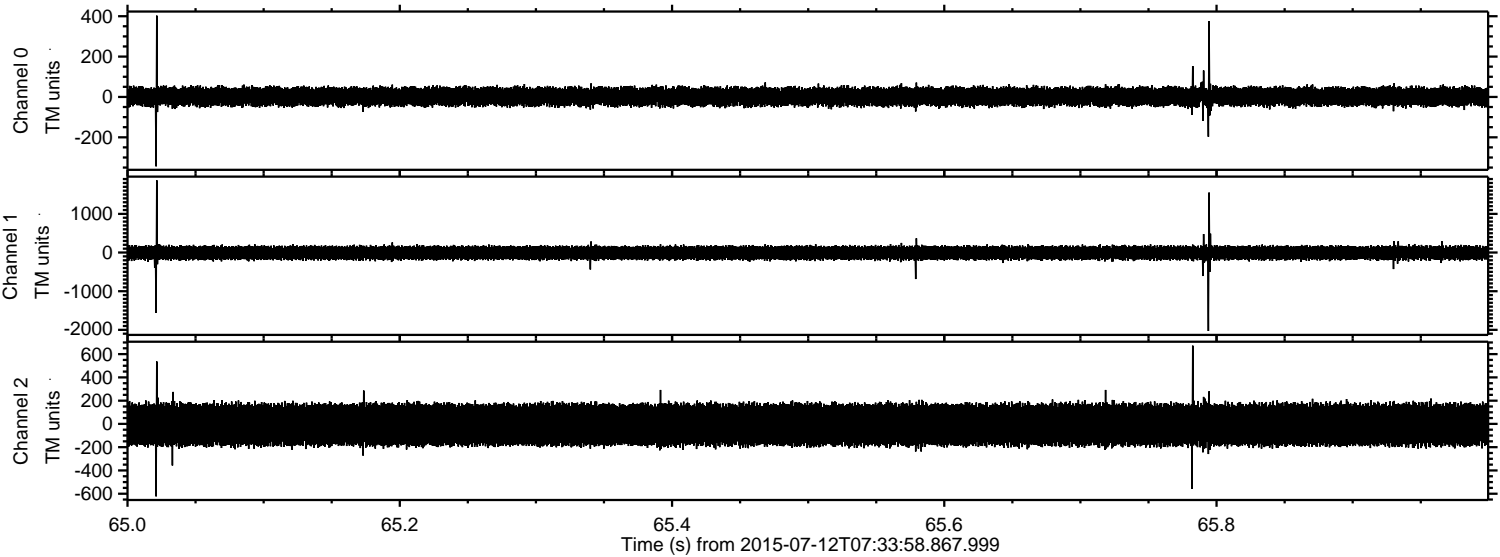
ELMAVAN 3D WAVEFORMS (Measured data sampled at 50 kHz) 51000 packets of 144 samples from 2015-07-12T07:33:58.867.999. Part 117/147

Processed Sun Jul 12 09:40:48 2015 by ELM ver.2012-10-06 from 001\_\_elm20150712\_073357\_\_dat00.bin



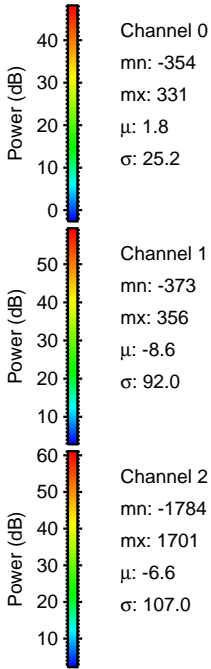
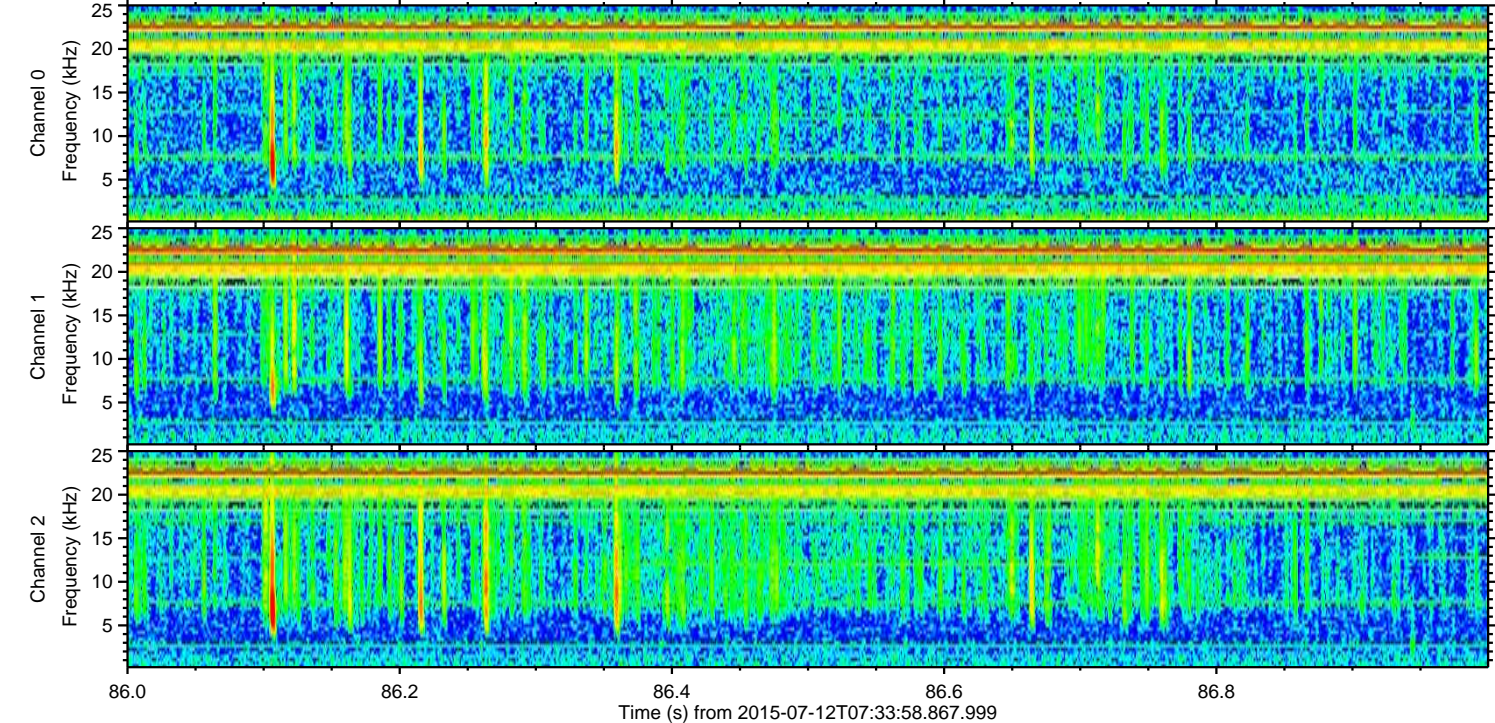
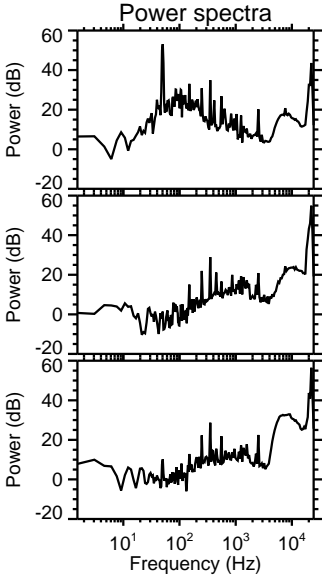
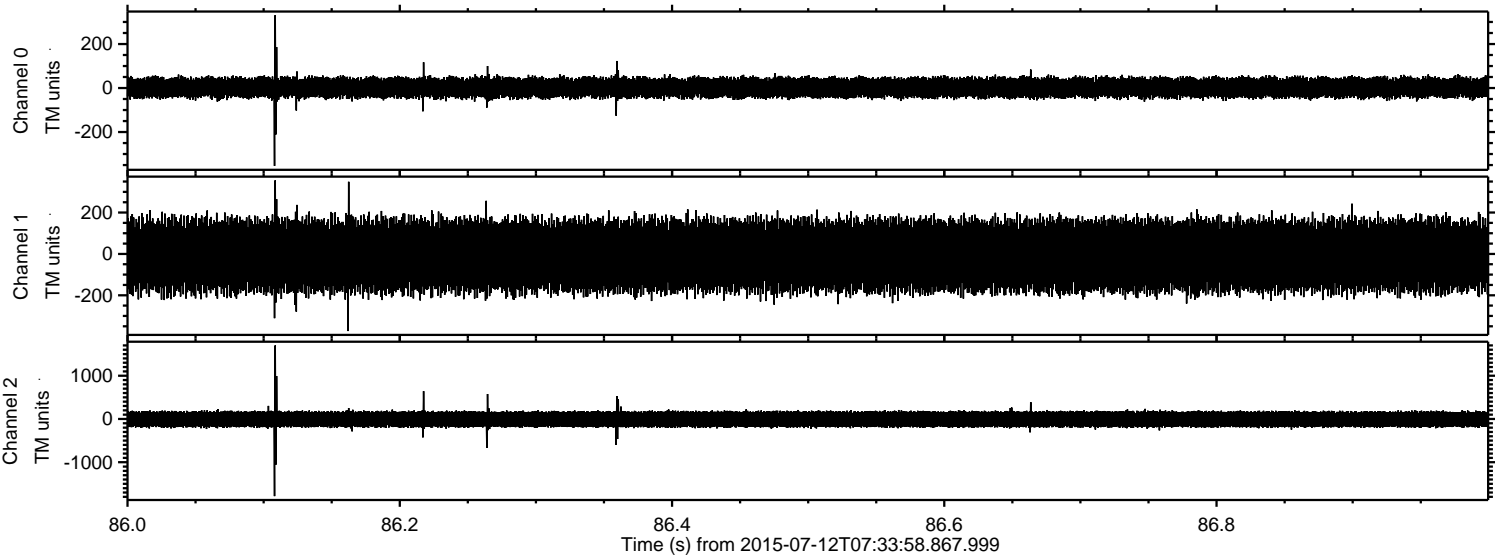


Processed Sun Jul 12 09:40:49 2015 by ELM ver.2012-10-06 from 001\_\_elm20150712\_073357\_\_dat00.bin





Processed Sun Jul 12 09:40:50 2015 by ELM ver.2012-10-06 from 001\_\_elm20150712\_073357\_\_dat00.bin





Processed Sun Jul 12 09:40:51 2015 by ELM ver.2012-10-06 from 001\_\_elm20150712\_073357\_\_dat00.bin

