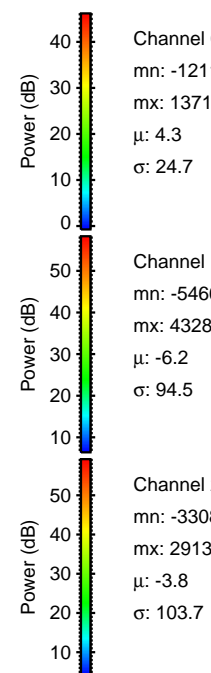
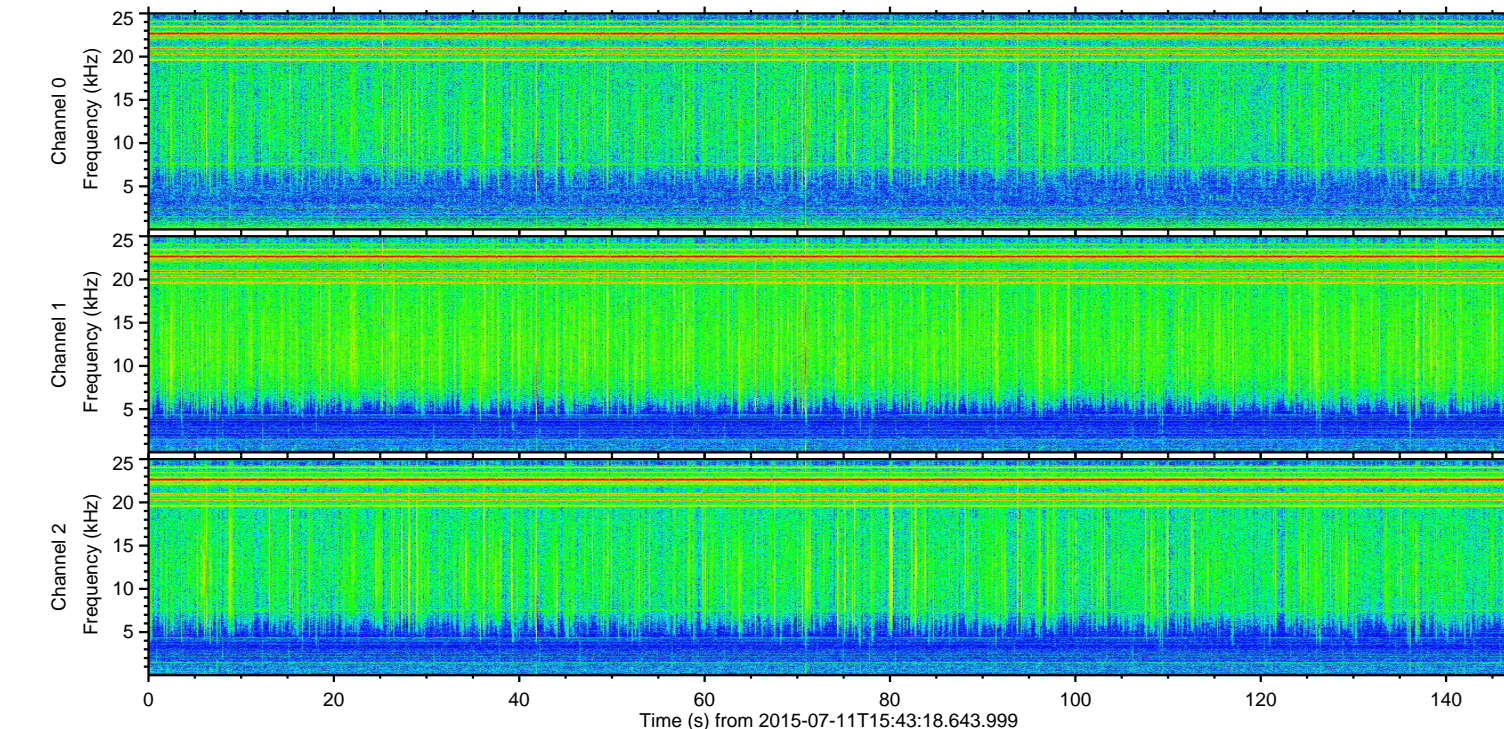
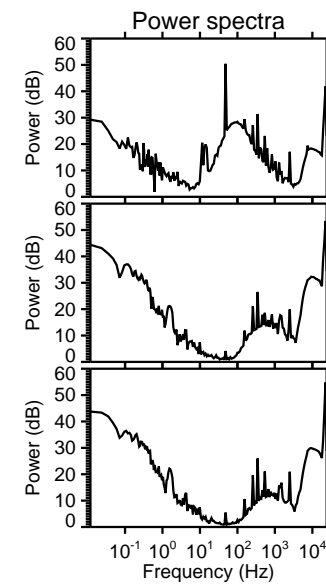
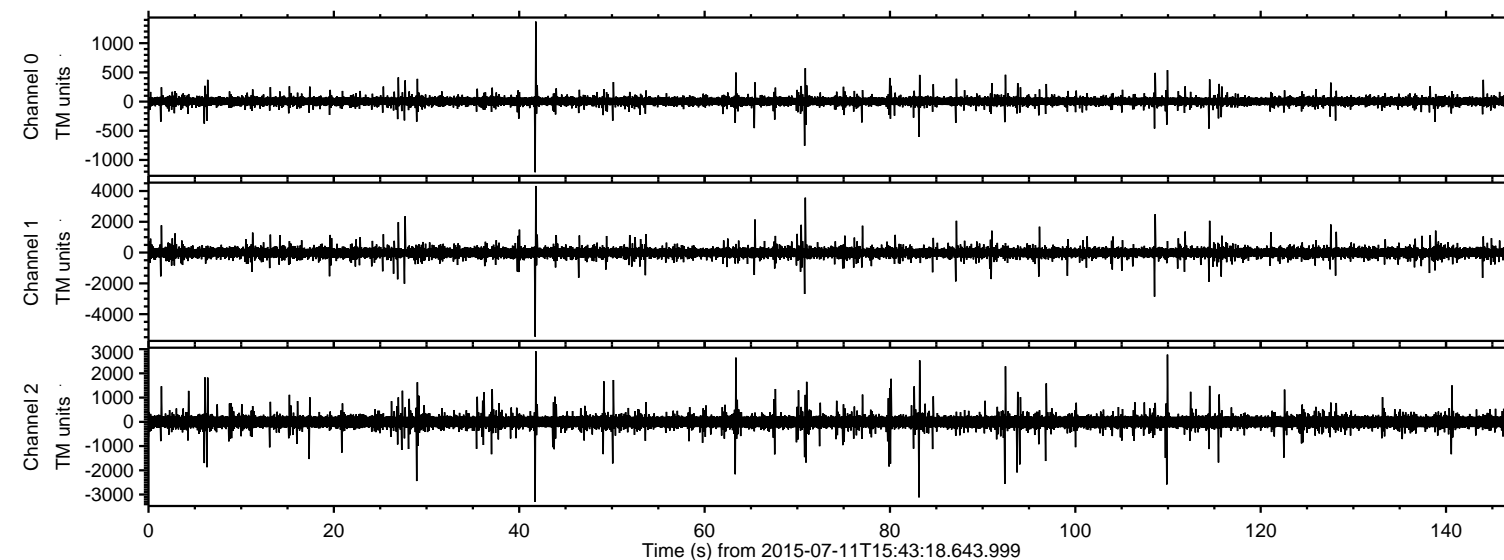


# ELMAVAN 3D WAVEFORMS (Measured data sampled at 50 kHz) 51000 packets of 144 samples from 2015-07-11T15:43:18.643.999.

Processed Sat Jul 11 17:49:18 2015 by ELM ver.2012-10-06 from 001\_\_elm20150711\_154317\_\_dat00.bin



Channel 0  
mn: -1211  
mx: 1371  
 $\mu$ : 4.3  
 $\sigma$ : 24.7

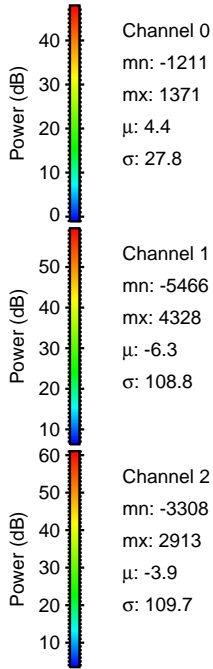
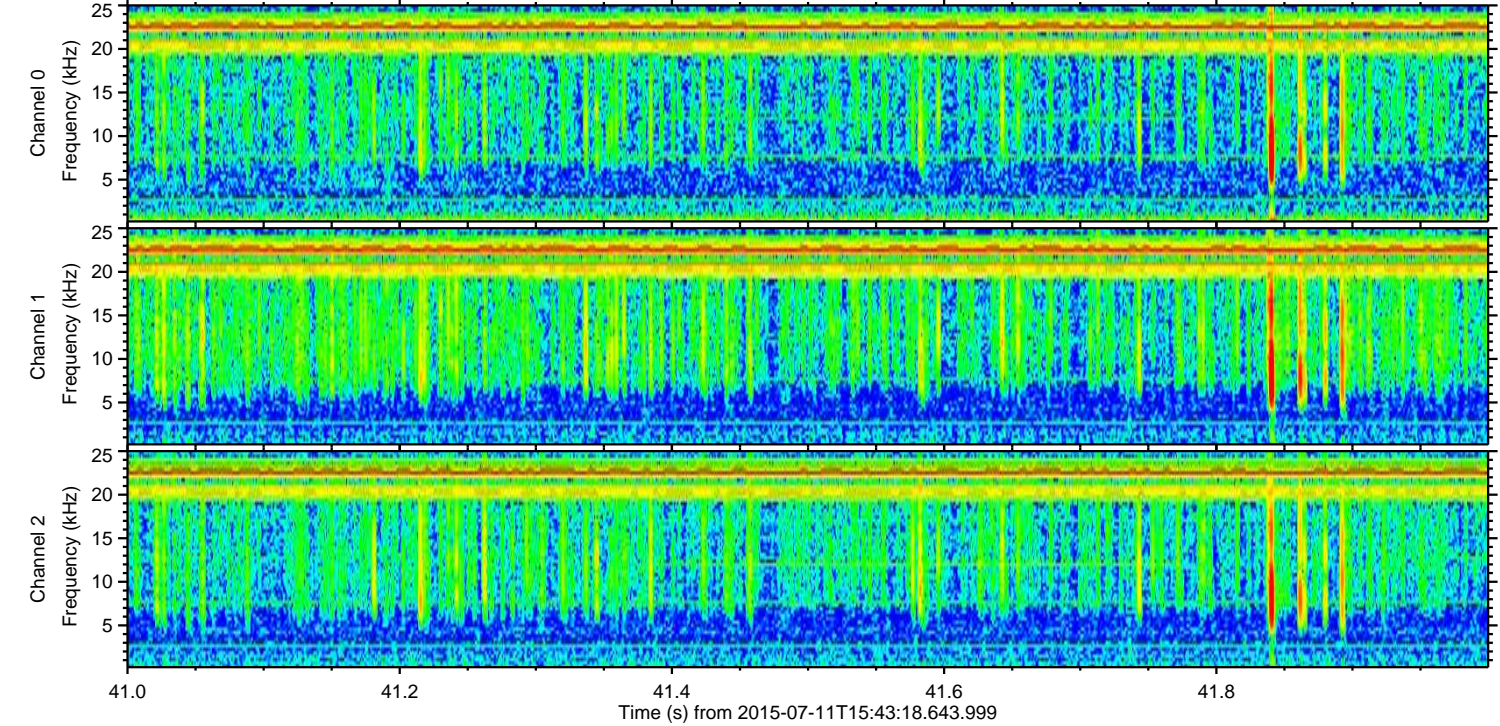
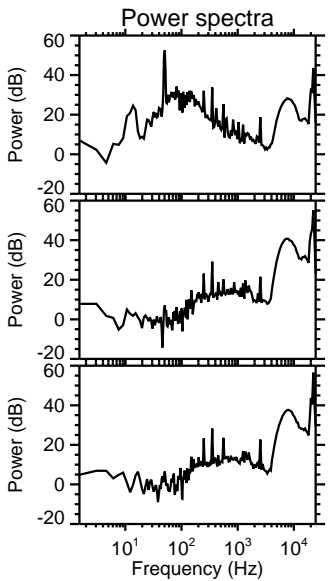
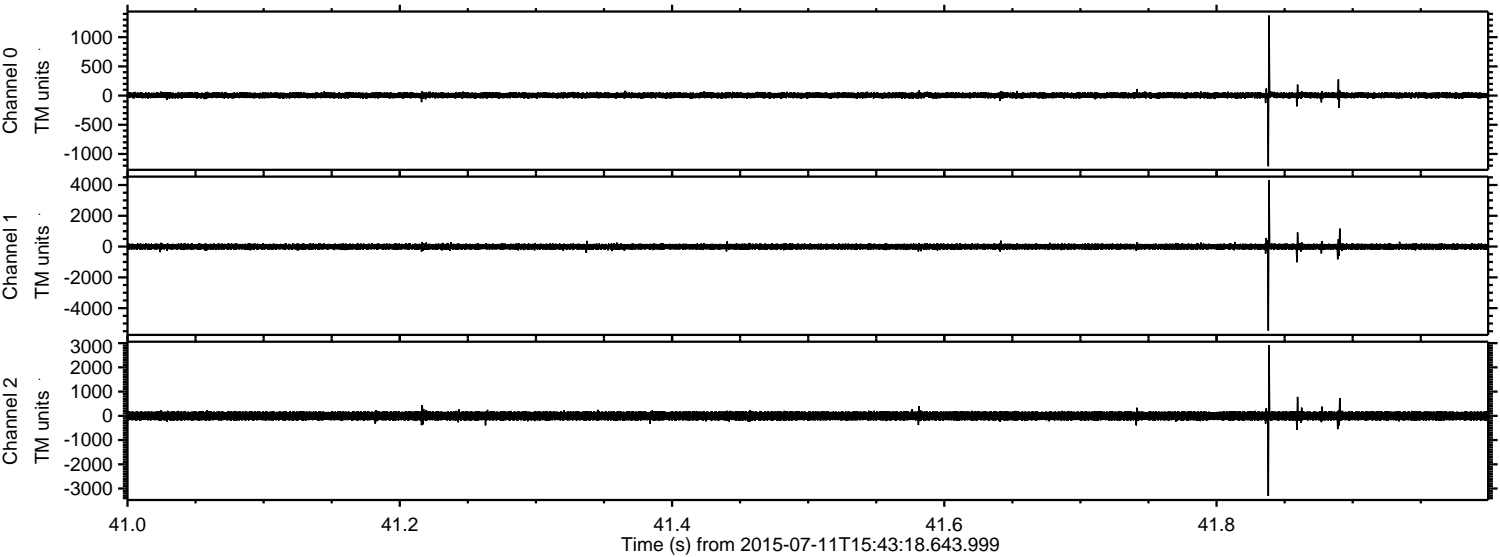
Channel 1  
mn: -5466  
mx: 4328  
 $\mu$ : -6.2  
 $\sigma$ : 94.5

Channel 2  
mn: -3308  
mx: 2913  
 $\mu$ : -3.8  
 $\sigma$ : 103.7



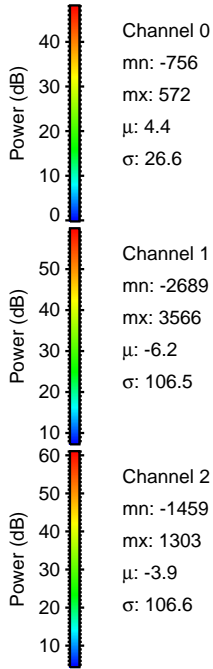
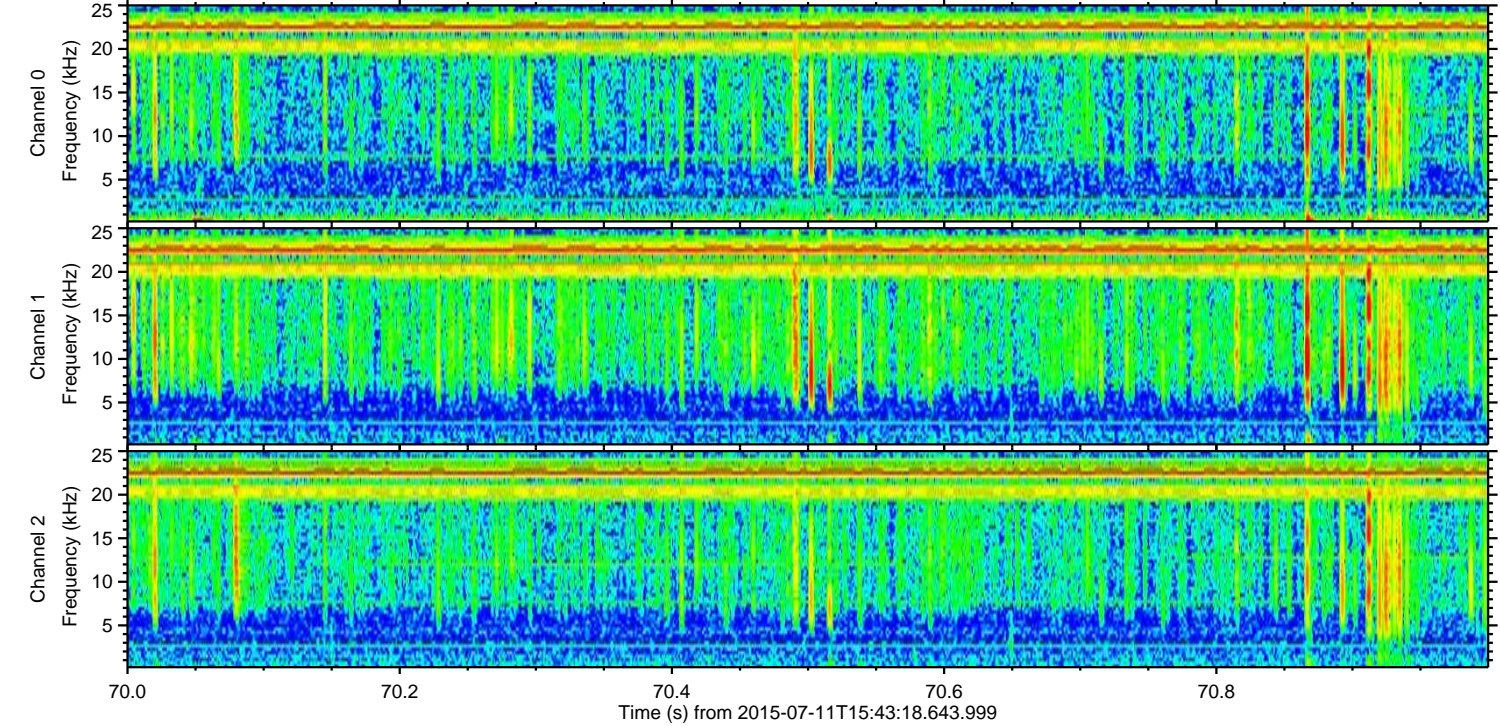
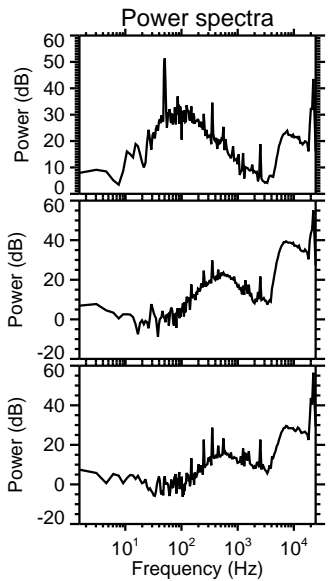
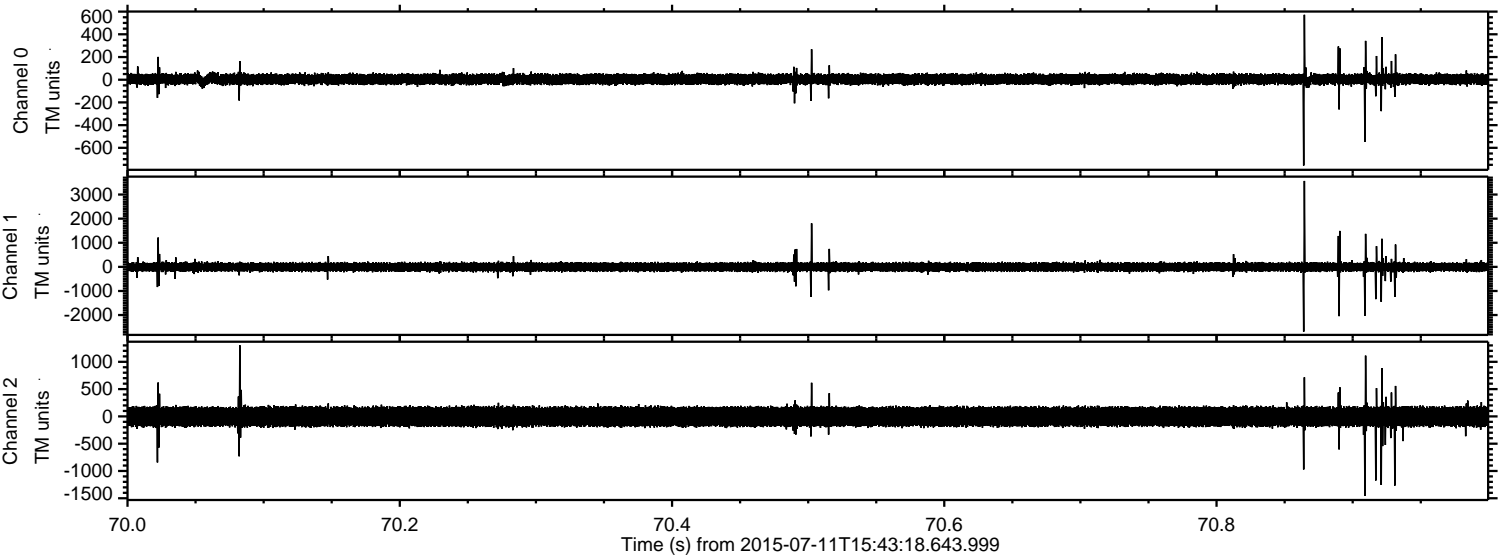
ELMAVAN 3D WAVEFORMS (Measured data sampled at 50 kHz) 51000 packets of 144 samples from 2015-07-11T15:43:18.643.999. Part 42/147

Processed Sat Jul 11 17:49:34 2015 by ELM ver.2012-10-06 from 001\_\_elm20150711\_154317\_\_dat00.bin



ELMAVAN 3D WAVEFORMS (Measured data sampled at 50 kHz) 51000 packets of 144 samples from 2015-07-11T15:43:18.643.999. Part 71/147

Processed Sat Jul 11 17:49:35 2015 by ELM ver.2012-10-06 from 001\_\_elm20150711\_154317\_\_dat00.bin



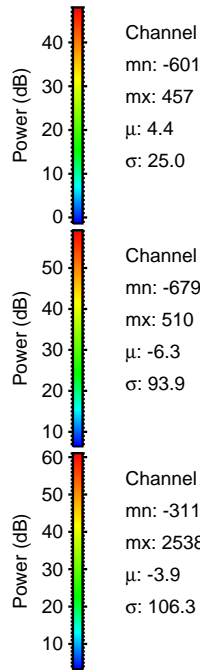
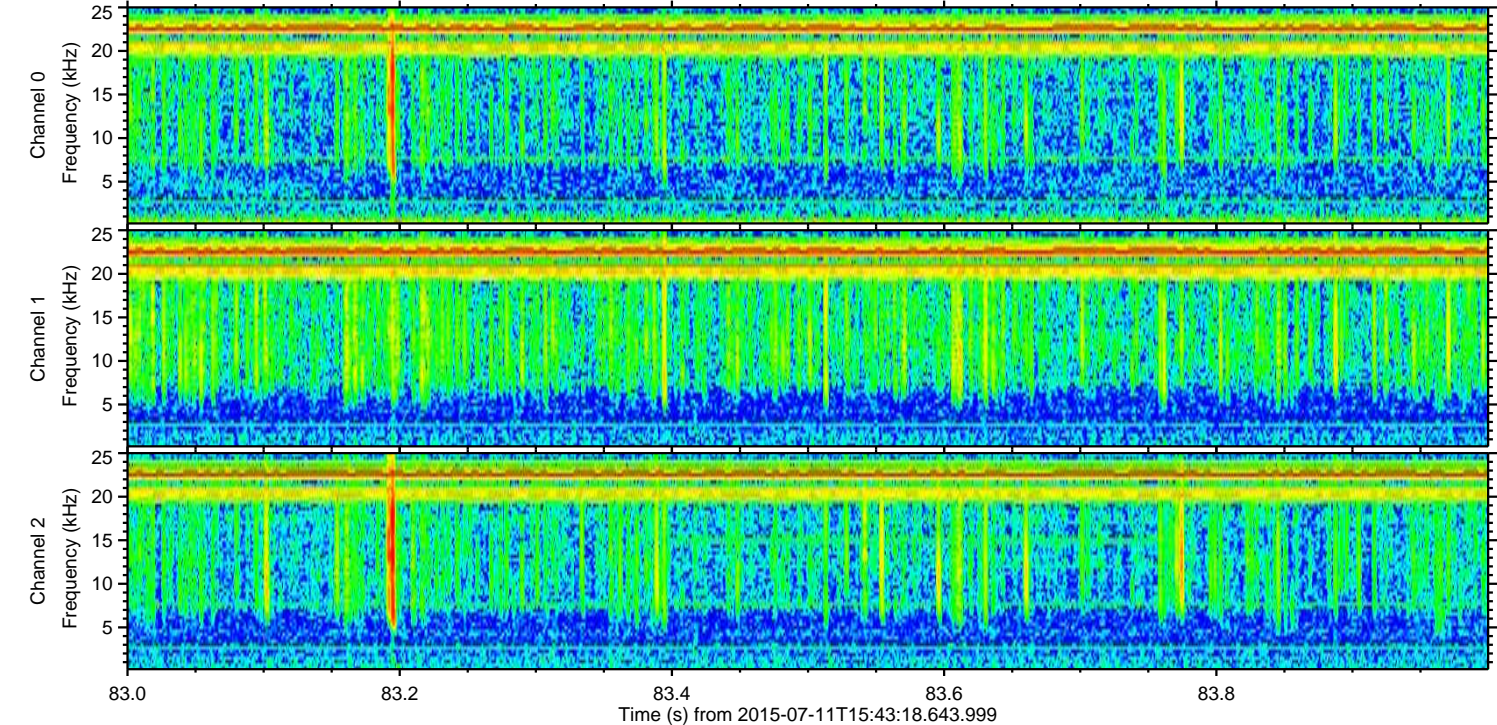
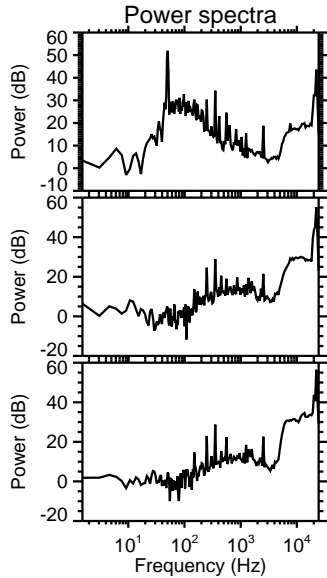
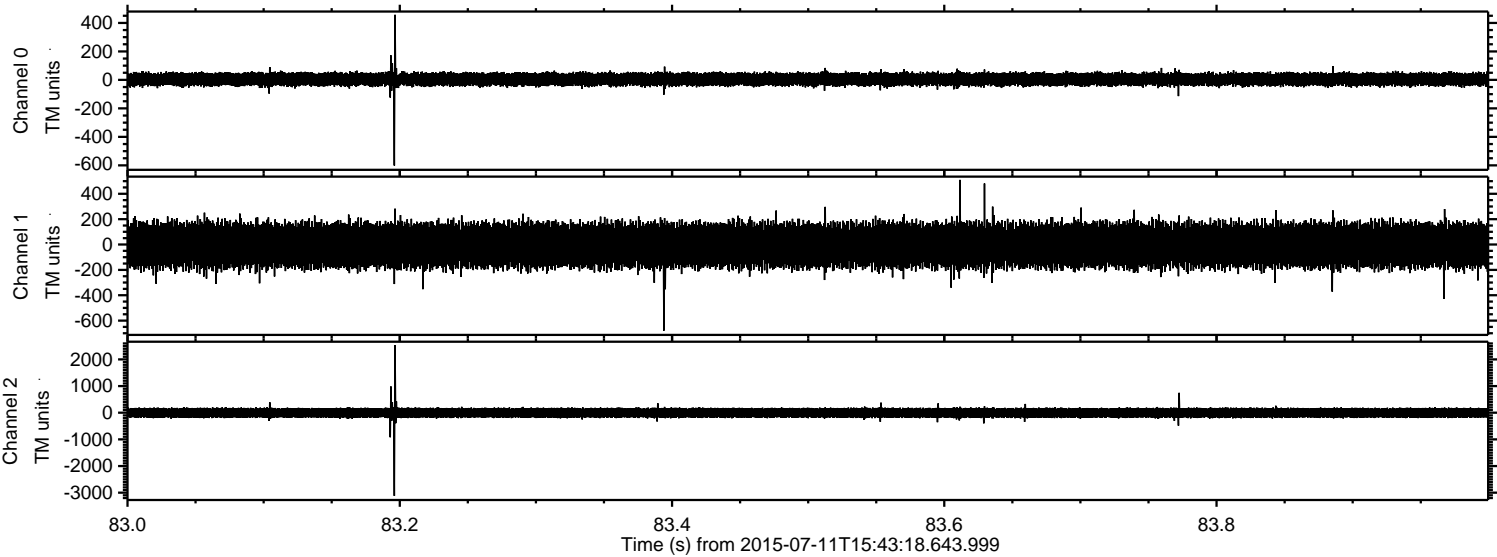
Channel 0  
mn: -756  
mx: 572  
 $\mu$ : 4.4  
 $\sigma$ : 26.6

Channel 1  
mn: -2689  
mx: 3566  
 $\mu$ : -6.2  
 $\sigma$ : 106.5

Channel 2  
mn: -1459  
mx: 1303  
 $\mu$ : -3.9  
 $\sigma$ : 106.6

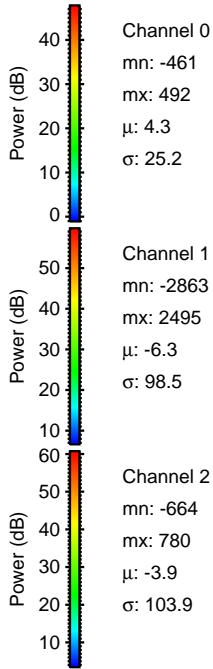
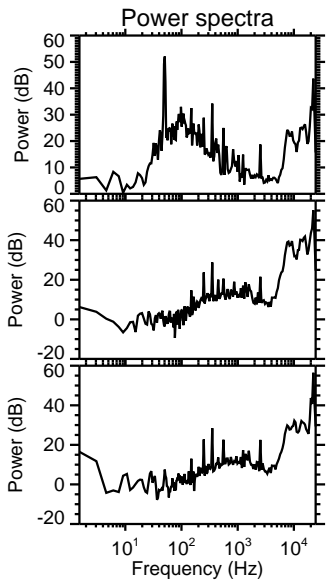
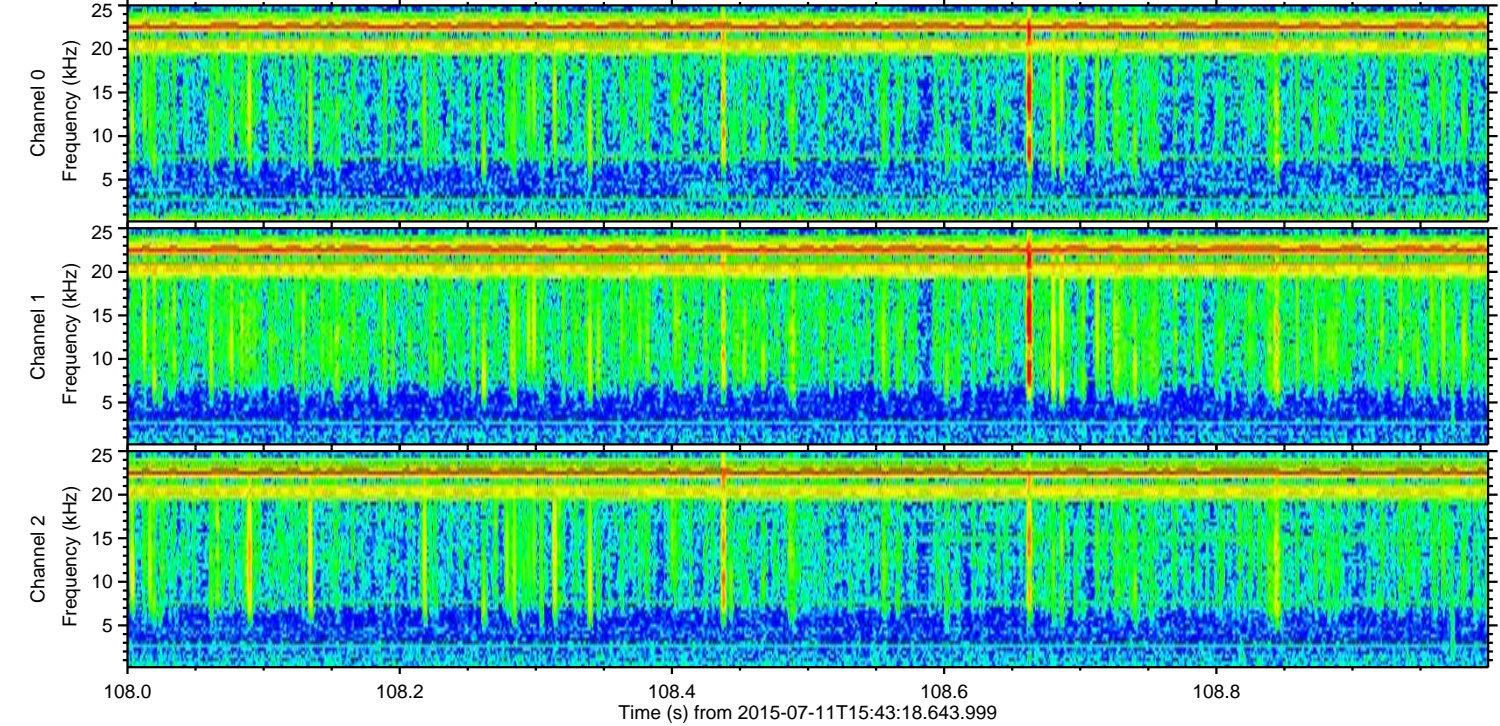
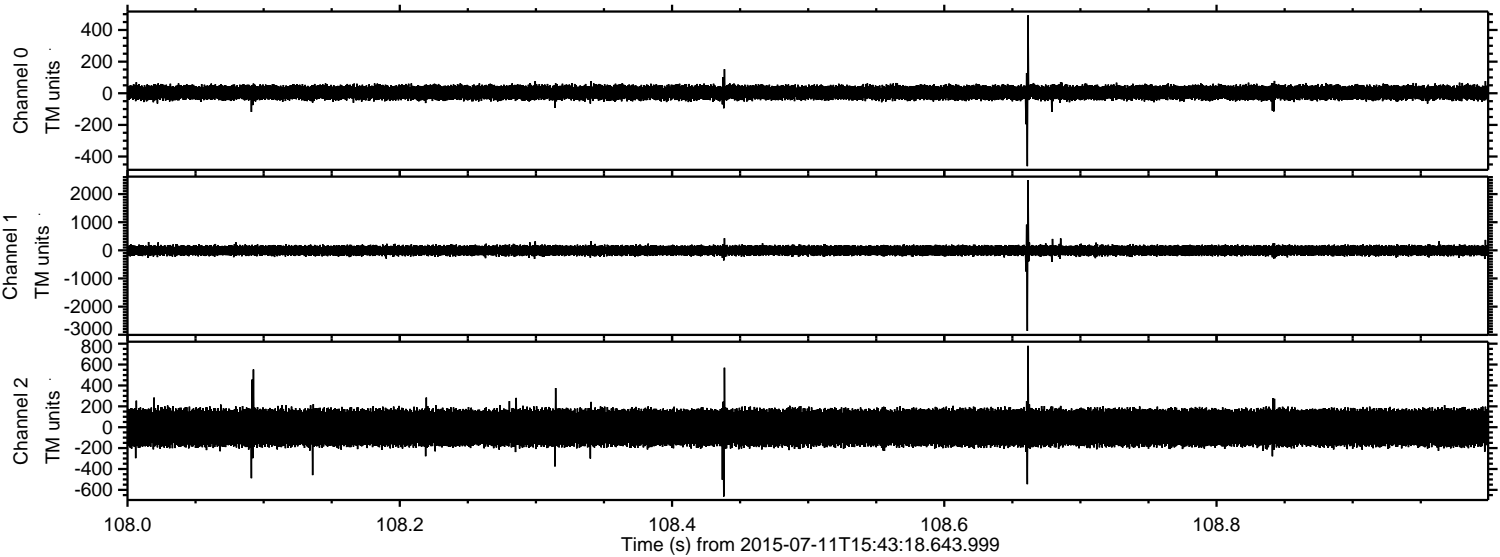


Processed Sat Jul 11 17:49:36 2015 by ELM ver.2012-10-06 from 001\_\_elm20150711\_154317\_\_dat00.bin



ELMAVAN 3D WAVEFORMS (Measured data sampled at 50 kHz) 51000 packets of 144 samples from 2015-07-11T15:43:18.643.999. Part 109/147

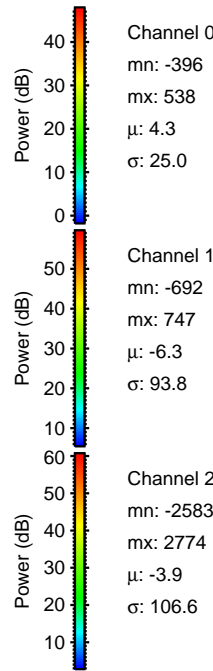
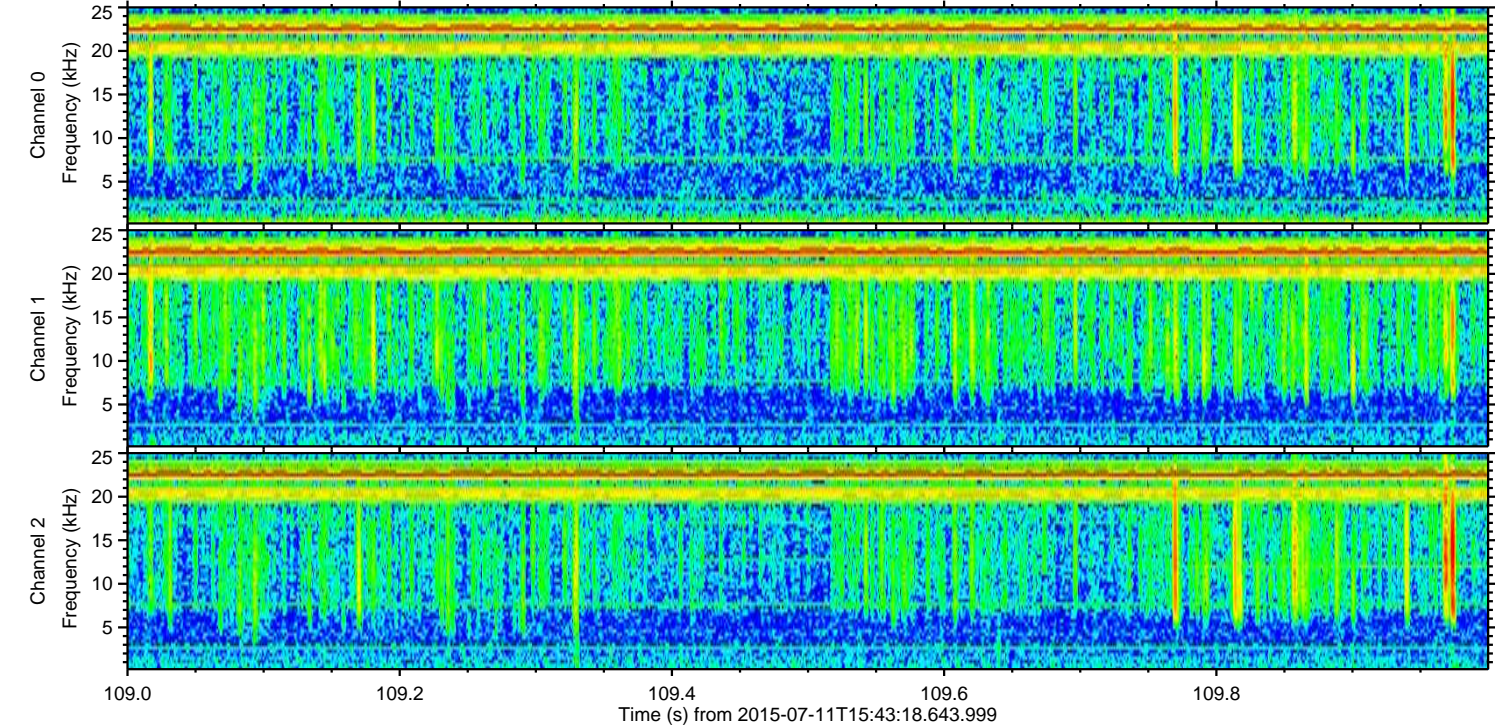
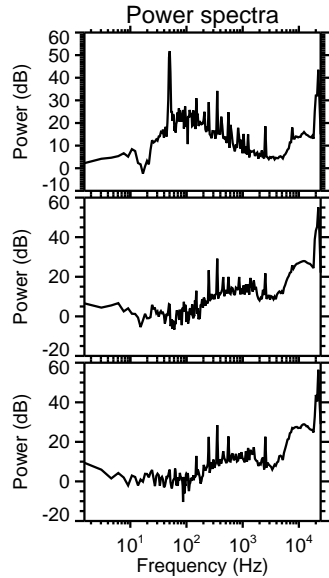
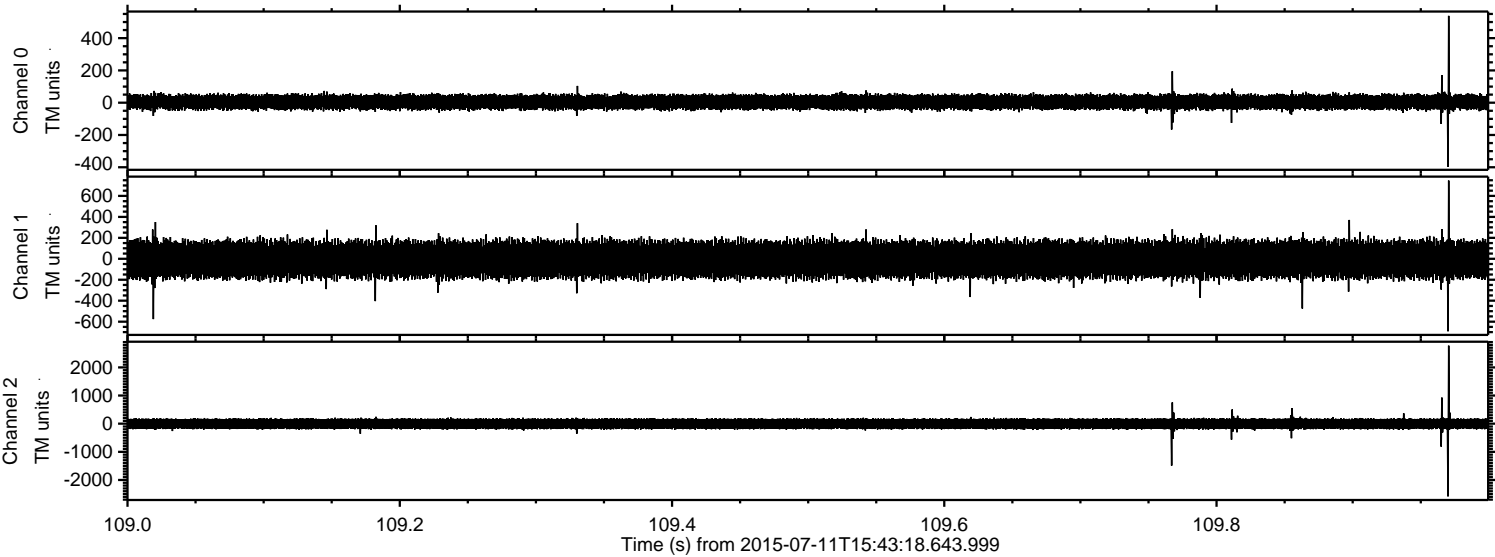
Processed Sat Jul 11 17:49:37 2015 by ELM ver.2012-10-06 from 001\_\_elm20150711\_154317\_\_dat00.bin





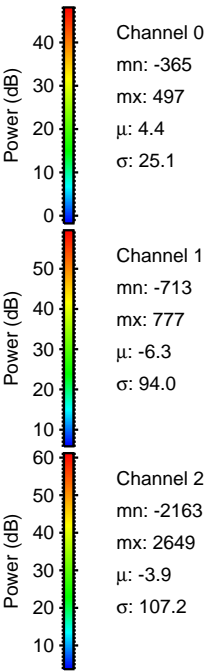
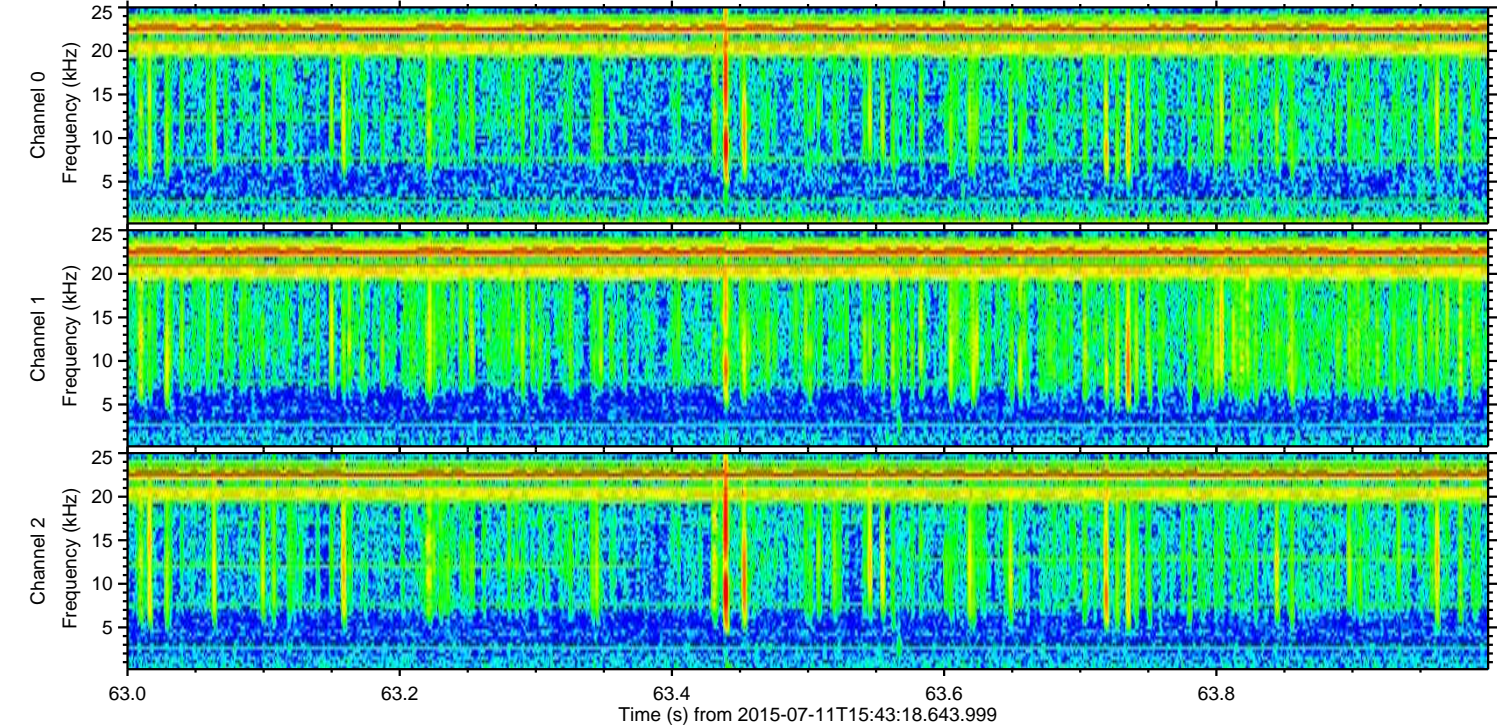
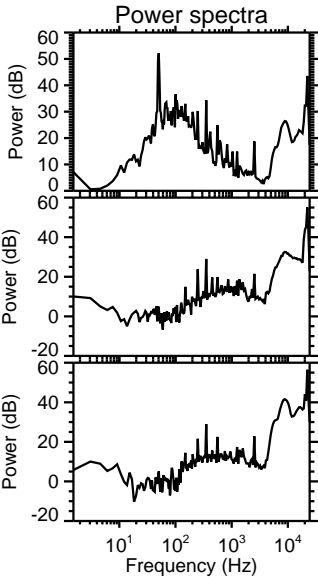
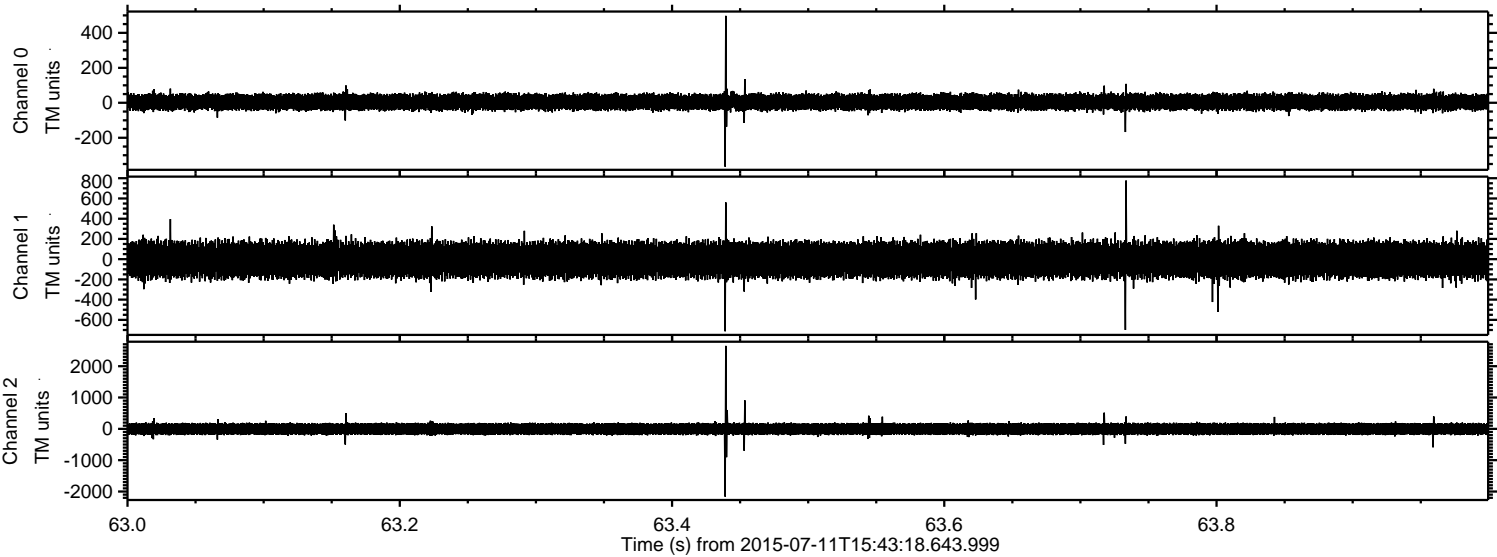
ELMAVAN 3D WAVEFORMS (Measured data sampled at 50 kHz) 51000 packets of 144 samples from 2015-07-11T15:43:18.643.999. Part 110/147

Processed Sat Jul 11 17:49:38 2015 by ELM ver.2012-10-06 from 001\_\_elm20150711\_154317\_\_dat00.bin

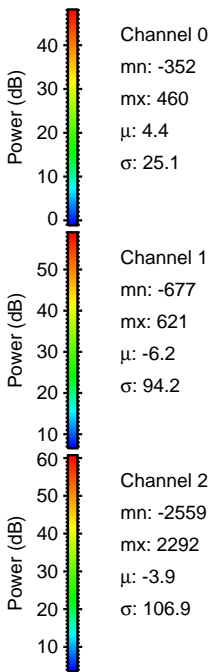
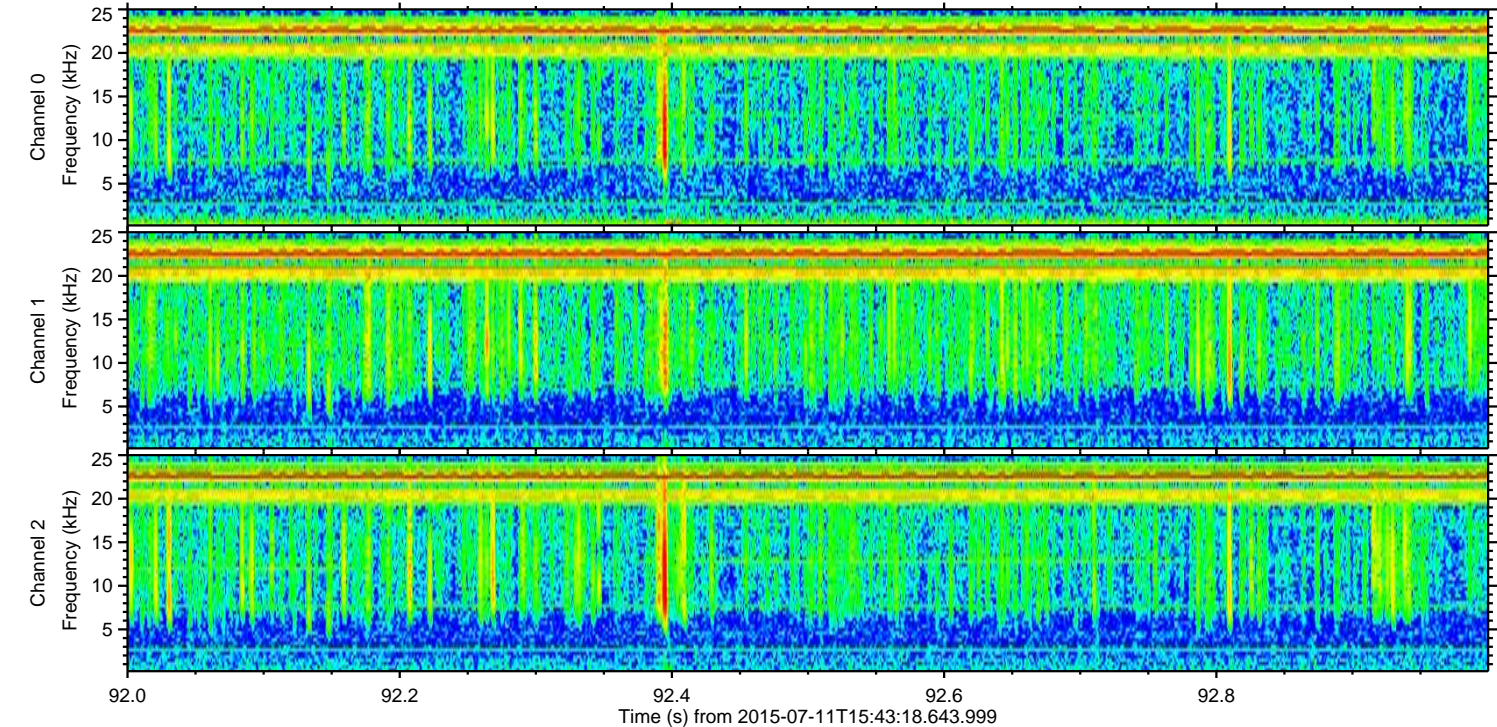
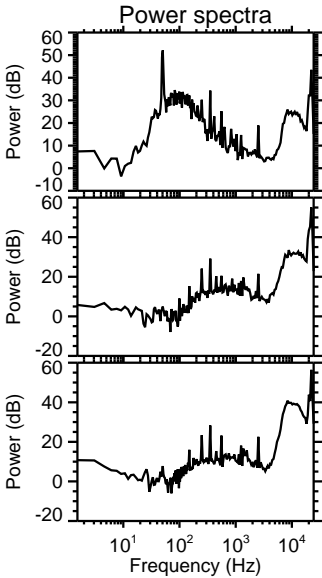
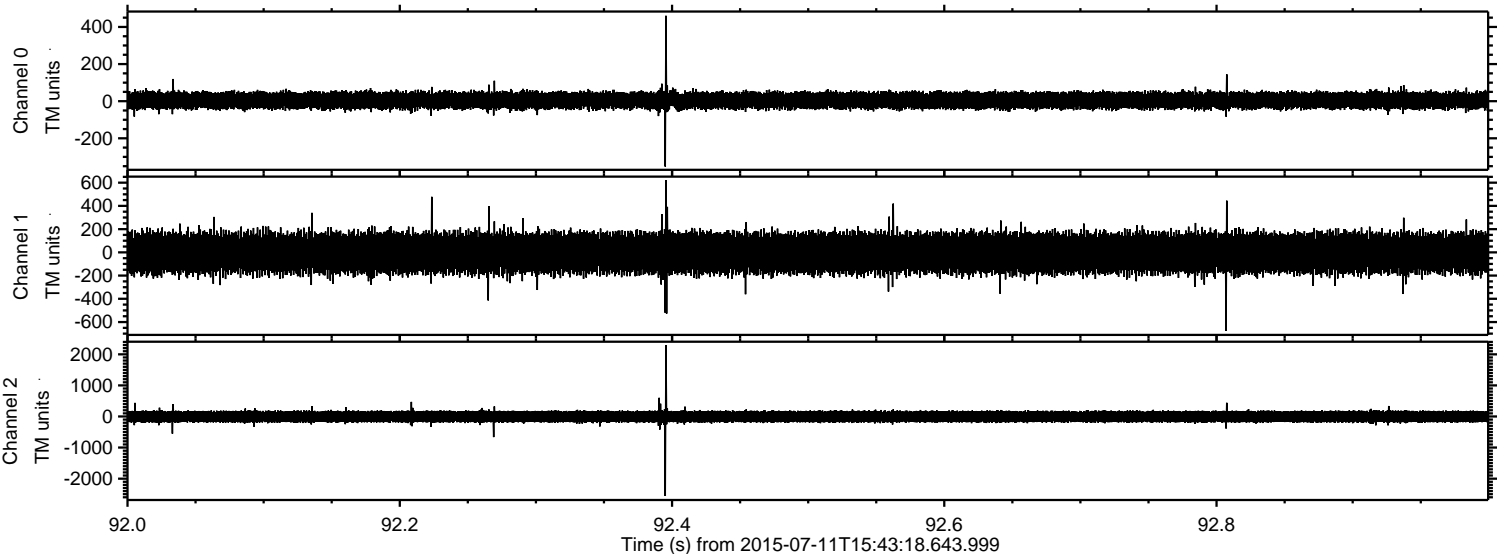




Processed Sat Jul 11 17:49:39 2015 by ELM ver.2012-10-06 from 001\_\_elm20150711\_154317\_\_dat00.bin



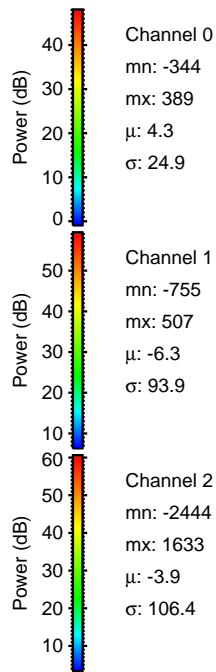
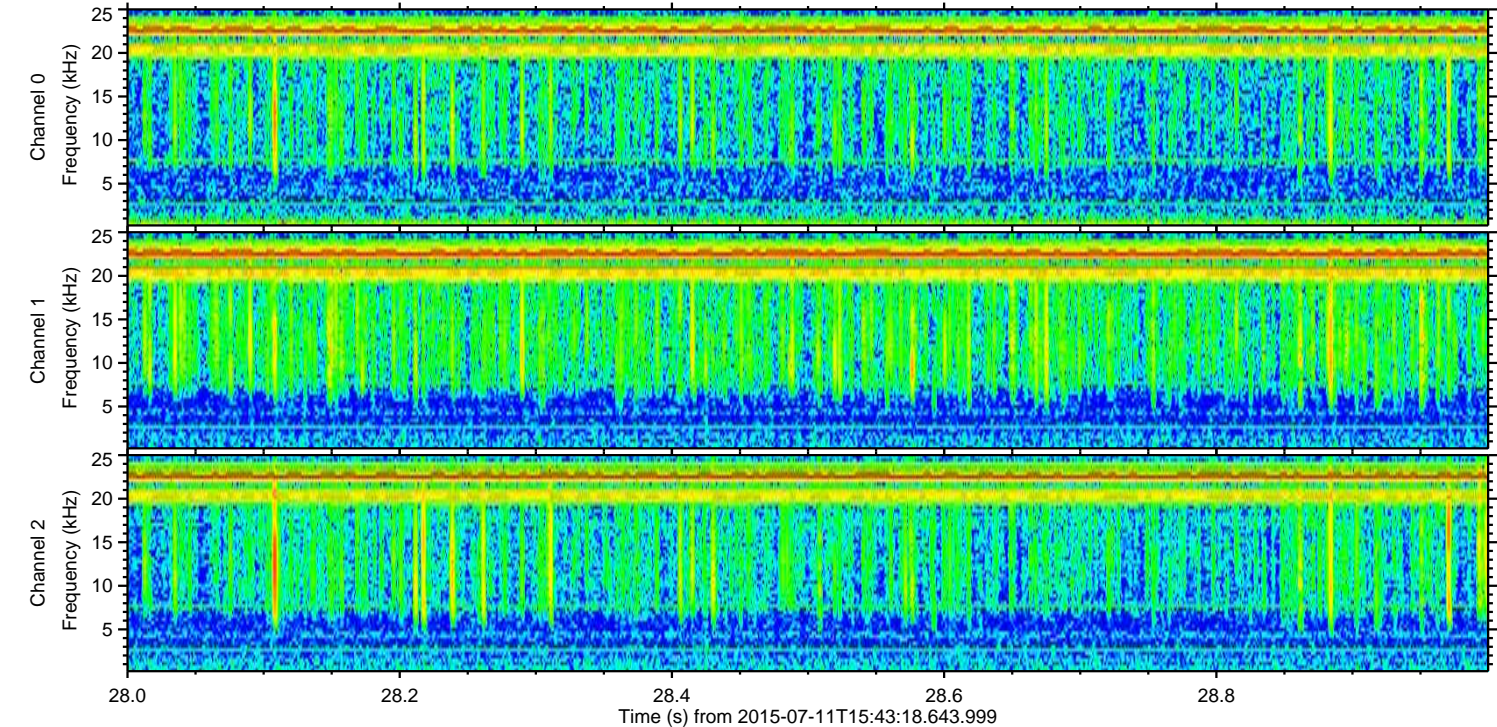
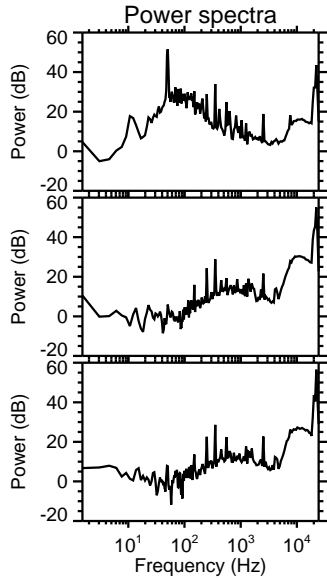
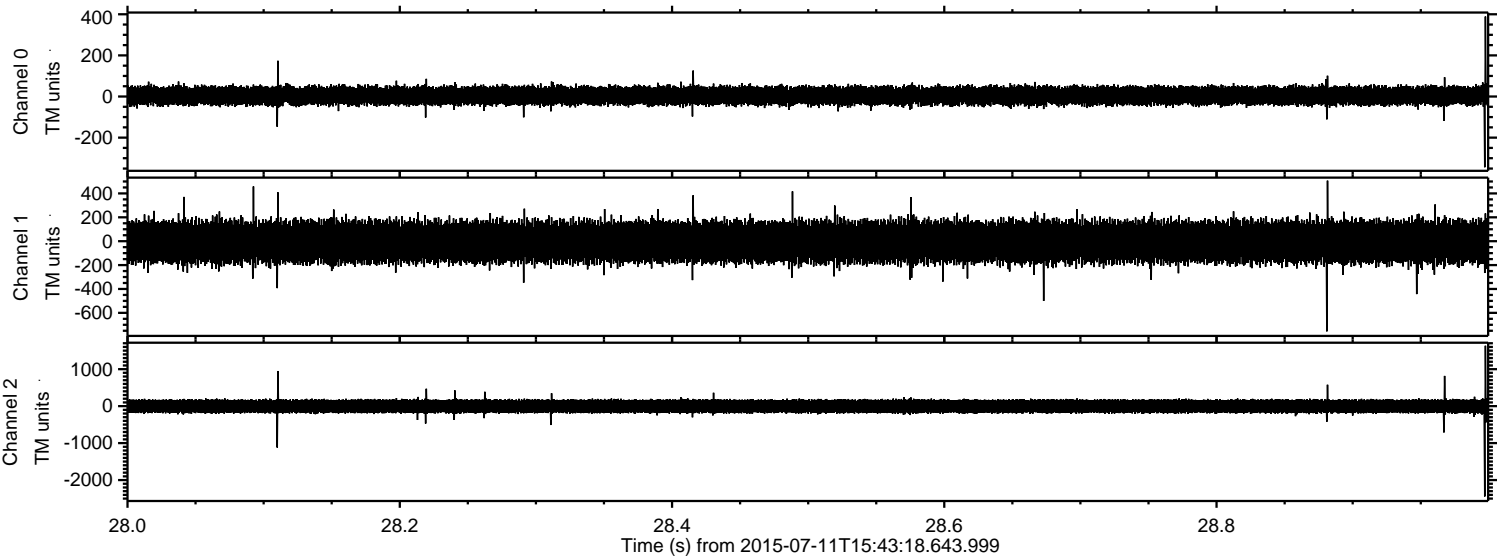
Processed Sat Jul 11 17:49:40 2015 by ELM ver.2012-10-06 from 001\_\_elm20150711\_154317\_\_dat00.bin





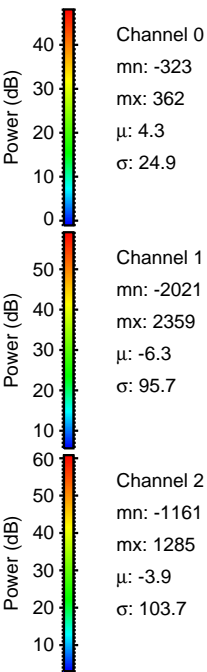
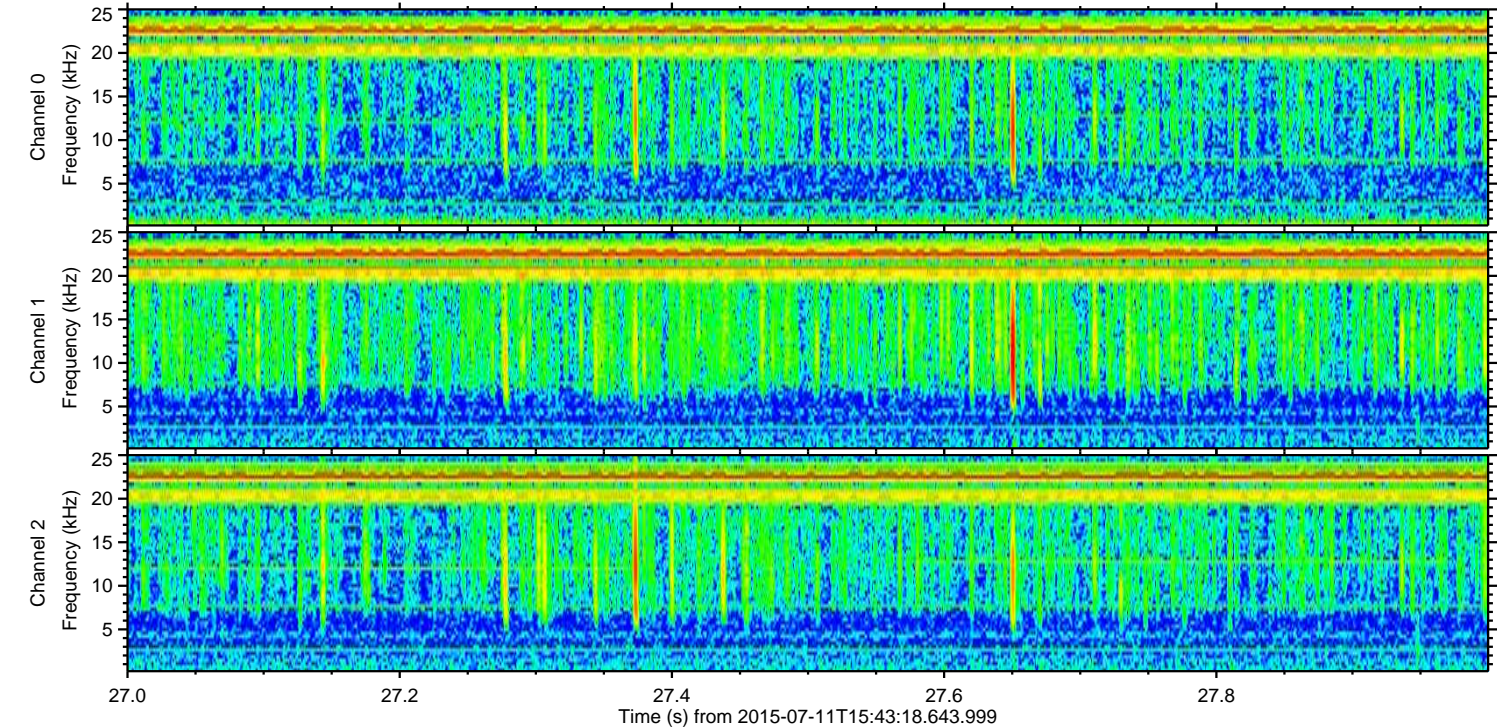
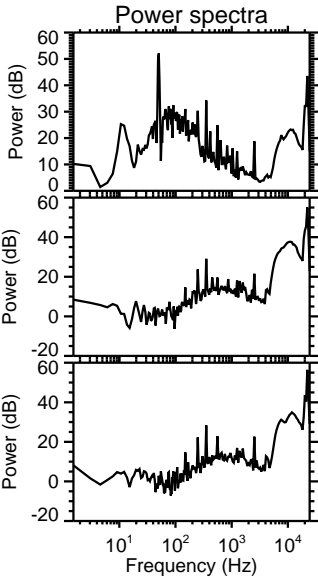
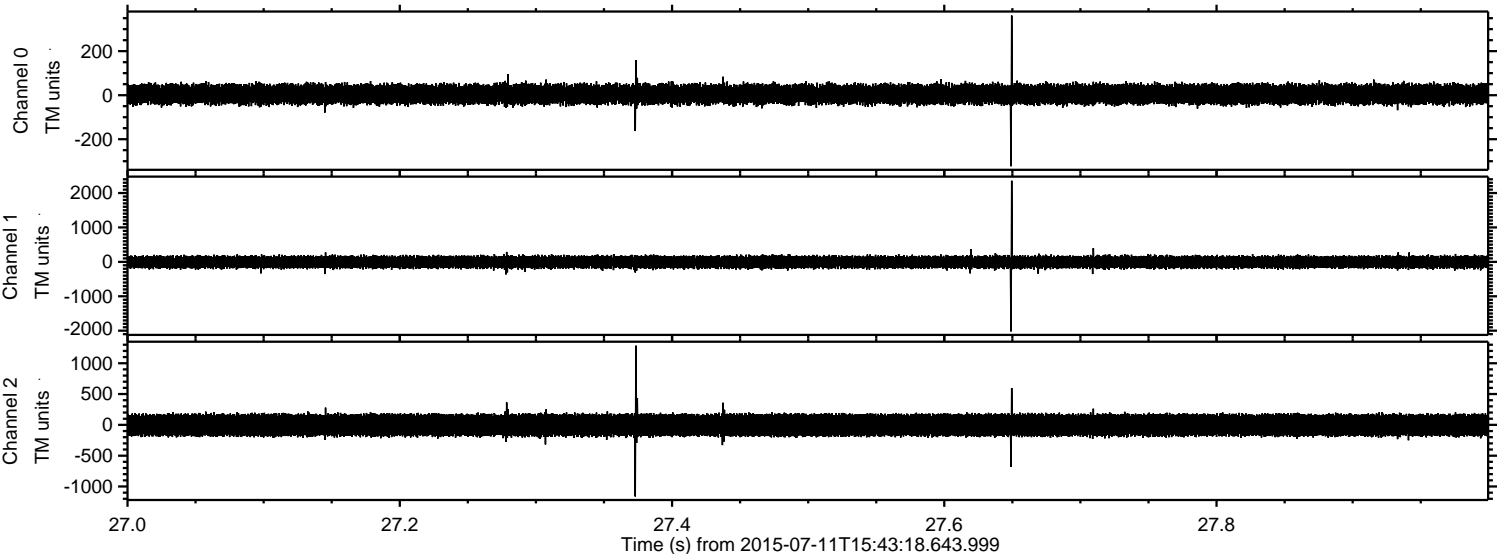
ELMAVAN 3D WAVEFORMS (Measured data sampled at 50 kHz) 51000 packets of 144 samples from 2015-07-11T15:43:18.643.999. Part 29/147

Processed Sat Jul 11 17:49:41 2015 by ELM ver.2012-10-06 from 001\_\_elm20150711\_154317\_\_dat00.bin





Processed Sat Jul 11 17:49:42 2015 by ELM ver.2012-10-06 from 001\_\_elm20150711\_154317\_\_dat00.bin





ELMAVAN 3D WAVEFORMS (Measured data sampled at 50 kHz) 51000 packets of 144 samples from 2015-07-11T15:43:18.643.999. Part 111/147

