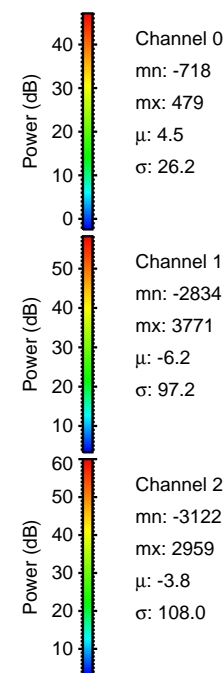
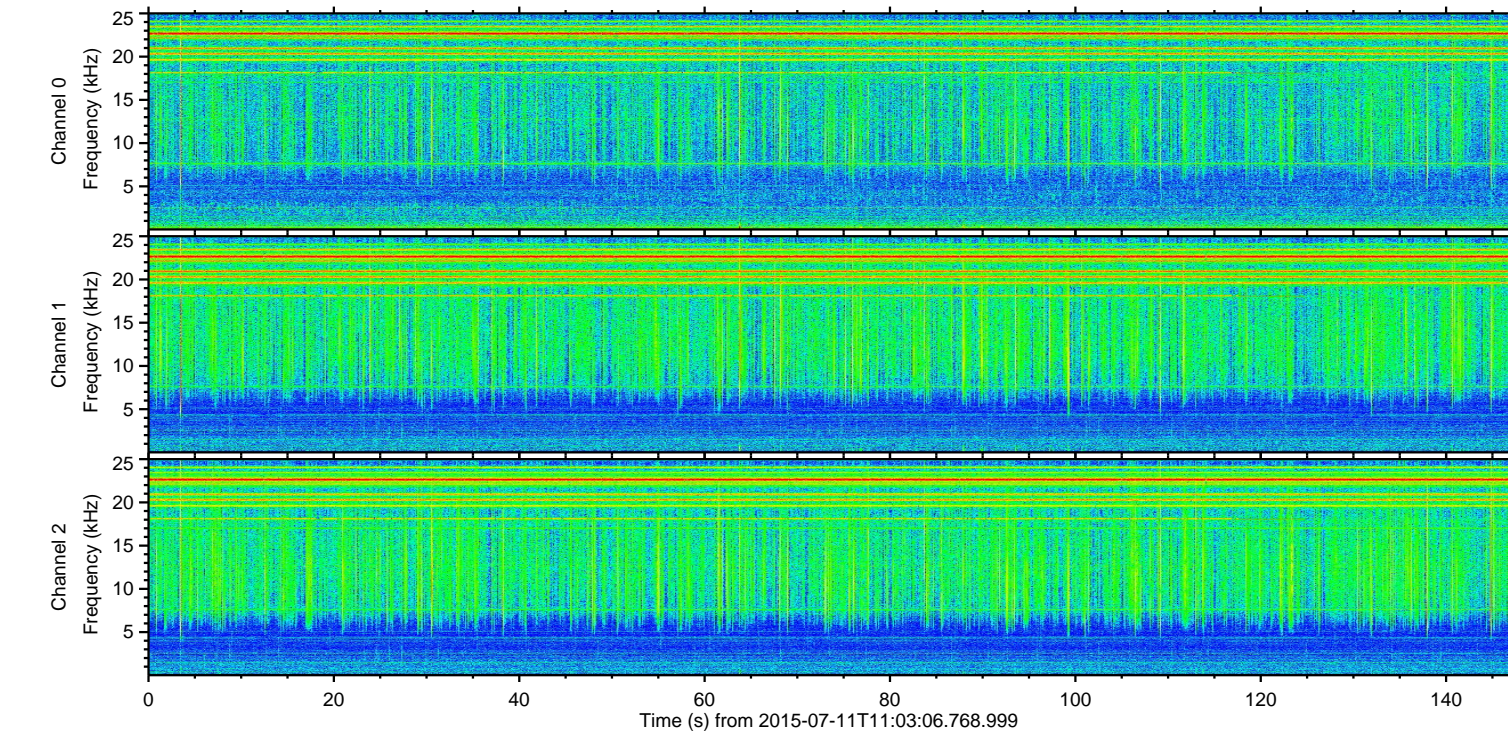
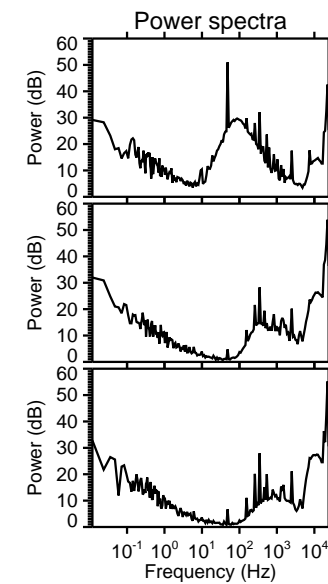
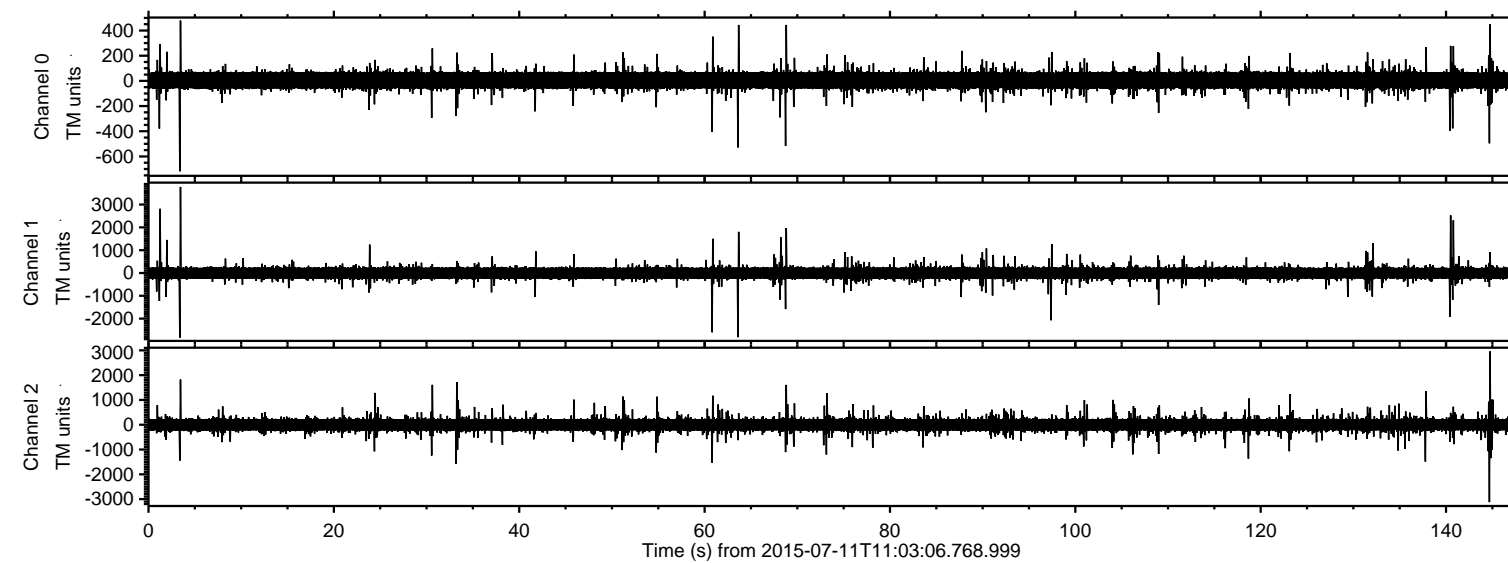


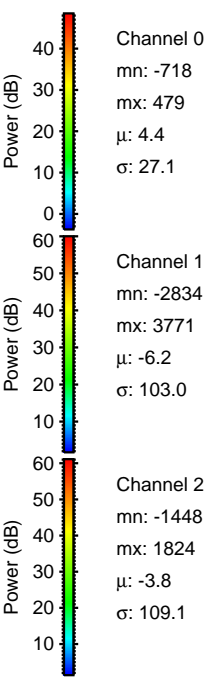
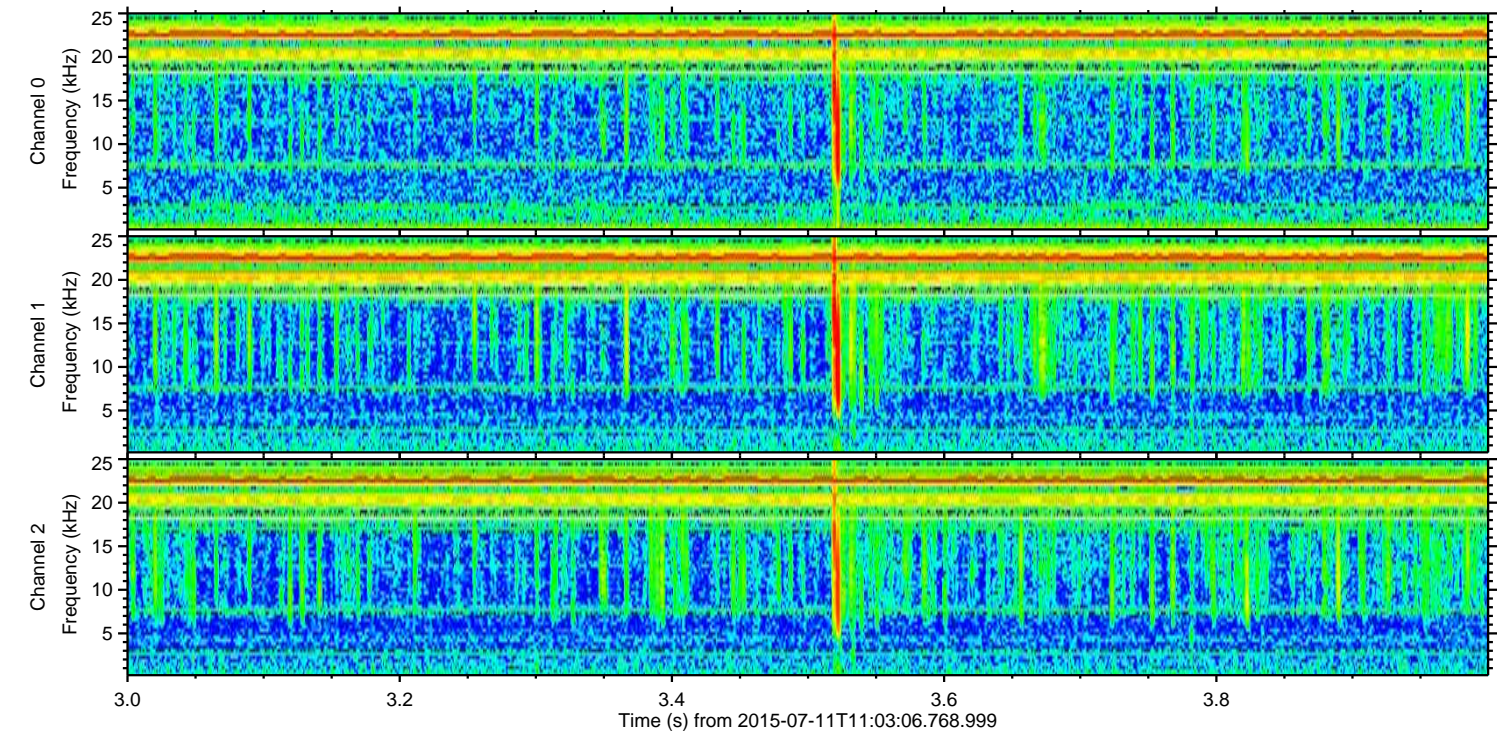
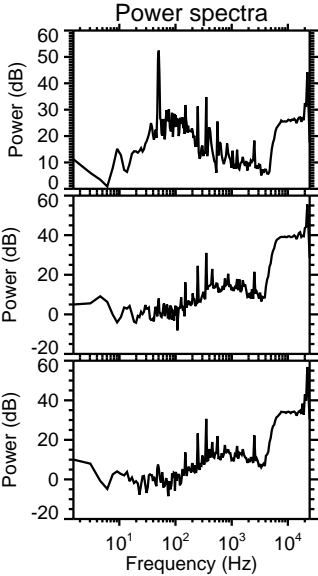
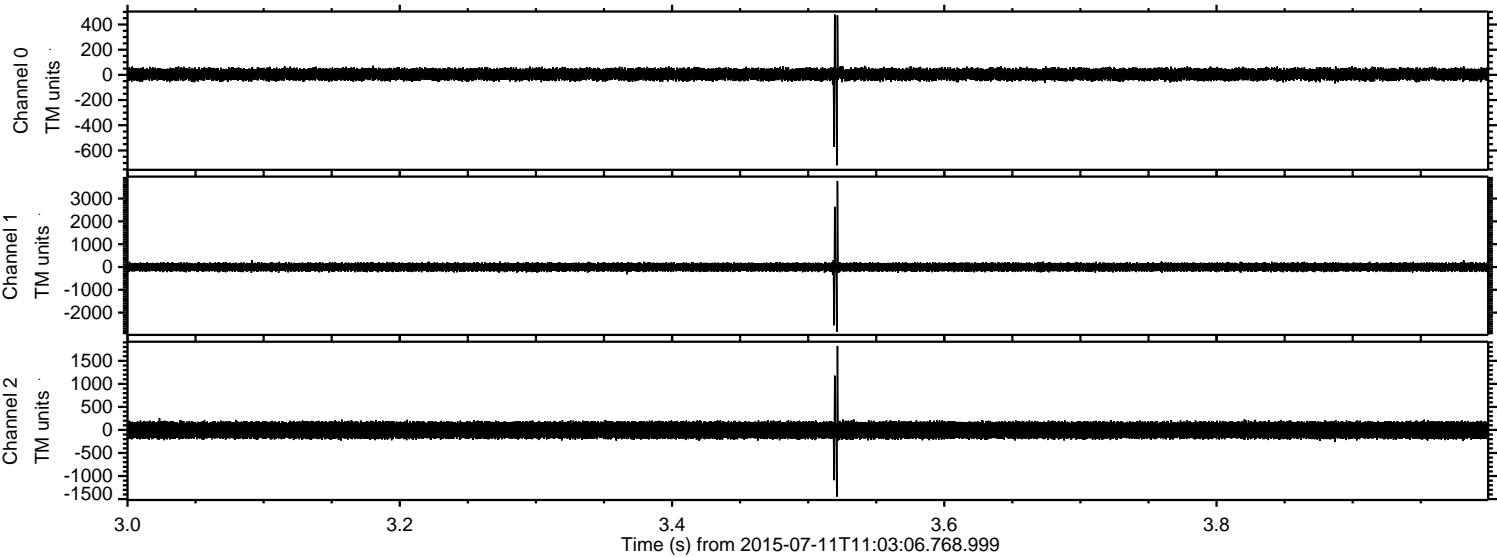
ELMAVAN 3D WAVEFORMS (Measured data sampled at 50 kHz) 51000 packets of 144 samples from 2015-07-11T11:03:06.768.999.

Processed Sat Jul 11 13:09:31 2015 by ELM ver.2012-10-06 from 001__elm20150711_110305__dat00.bin



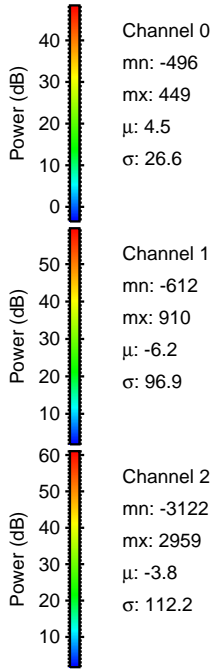
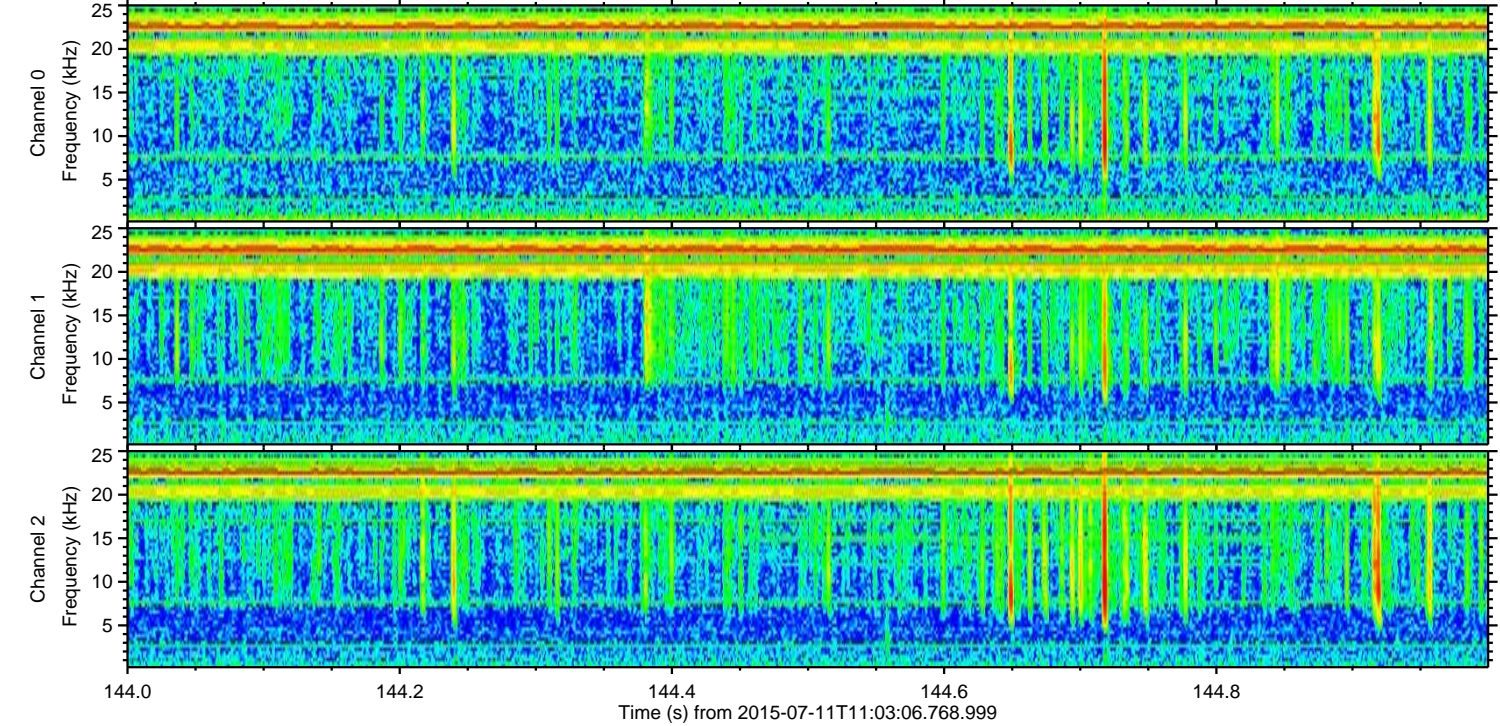
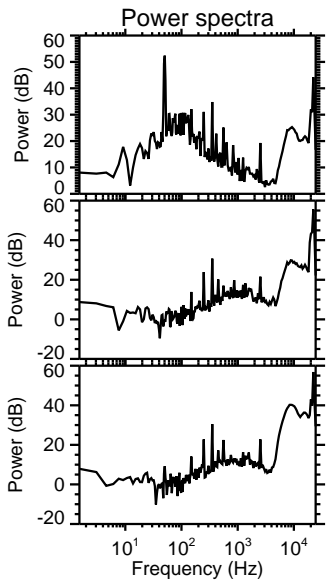
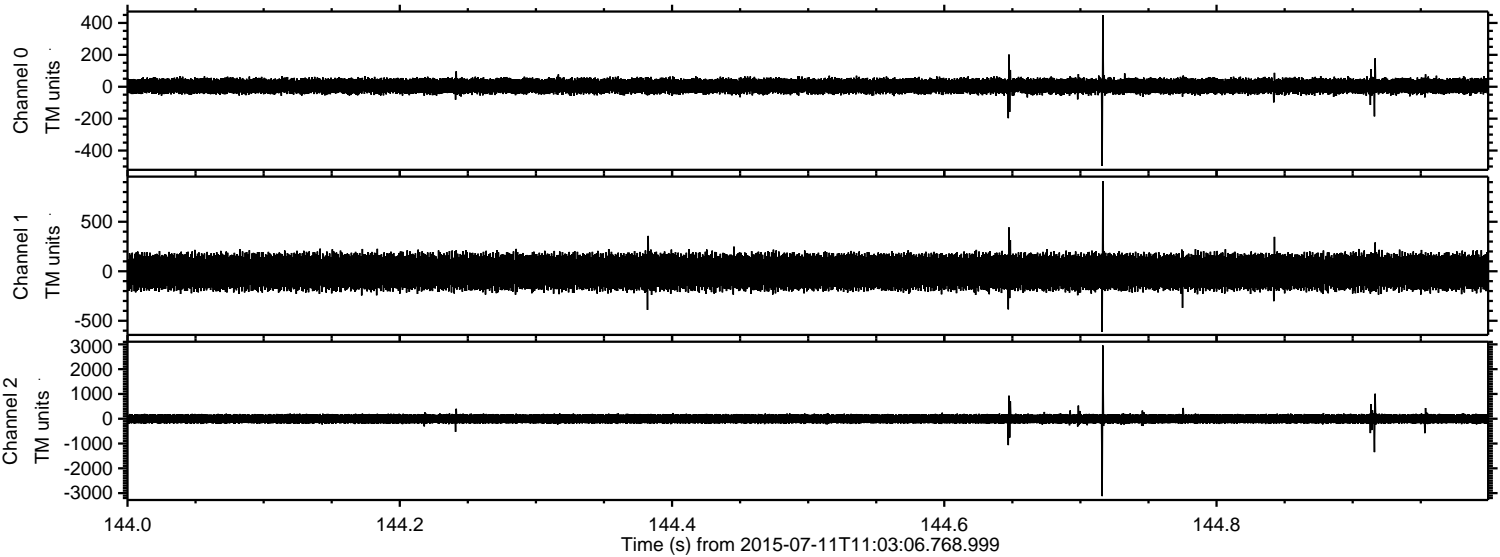
ELMAVAN 3D WAVEFORMS (Measured data sampled at 50 kHz) 51000 packets of 144 samples from 2015-07-11T11:03:06.768.999. Part 4/147

Processed Sat Jul 11 13:09:47 2015 by ELM ver.2012-10-06 from 001__elm20150711_110305__dat00.bin

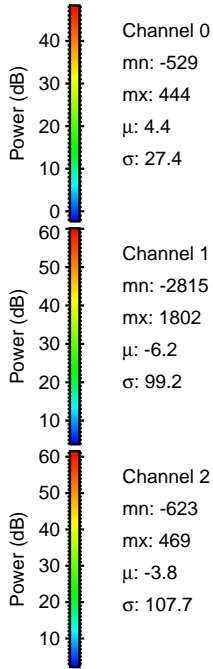
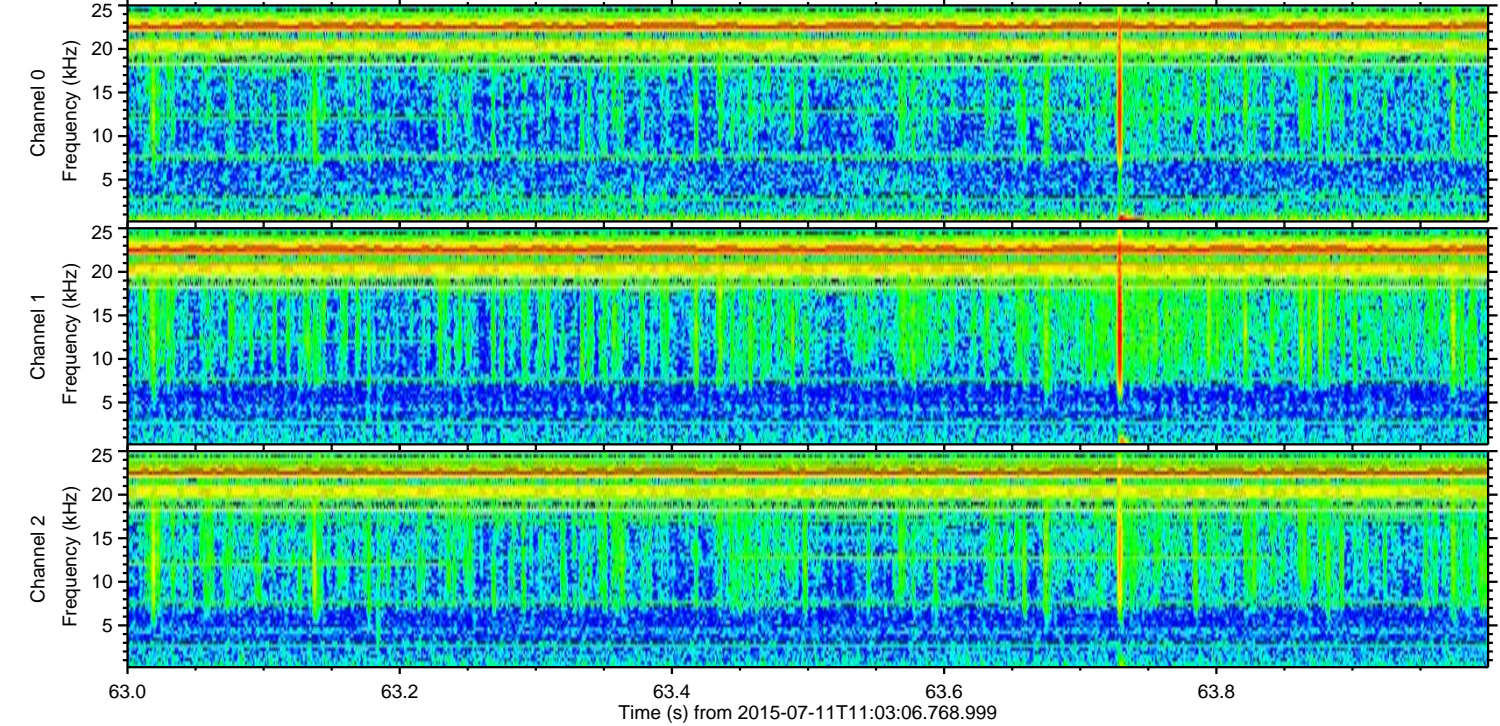
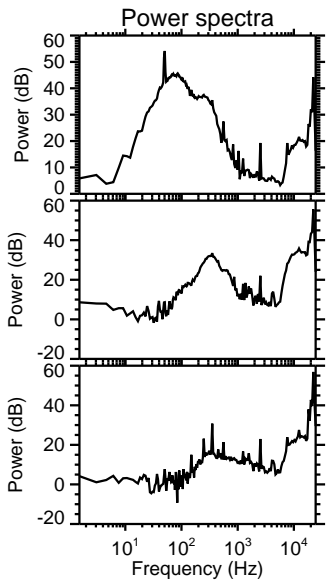
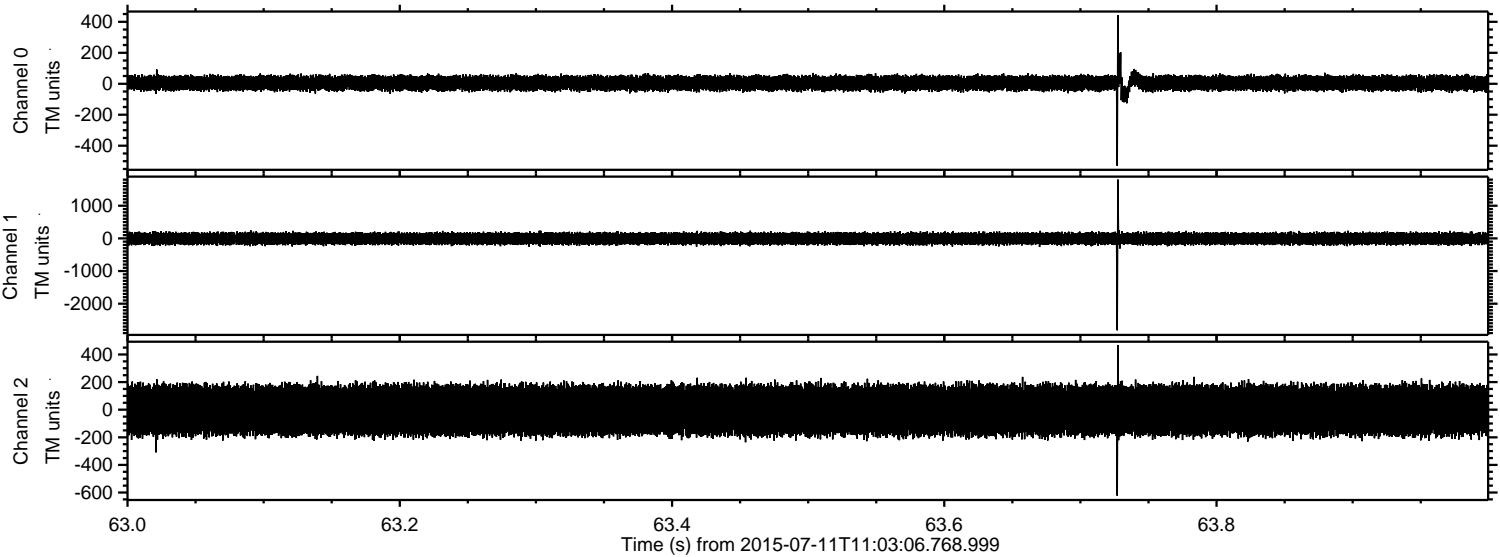


ELMAVAN 3D WAVEFORMS (Measured data sampled at 50 kHz) 51000 packets of 144 samples from 2015-07-11T11:03:06.768.999. Part 145/147

Processed Sat Jul 11 13:09:48 2015 by ELM ver.2012-10-06 from 001__elm20150711_110305__dat00.bin

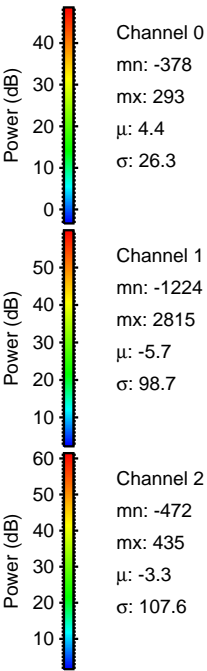
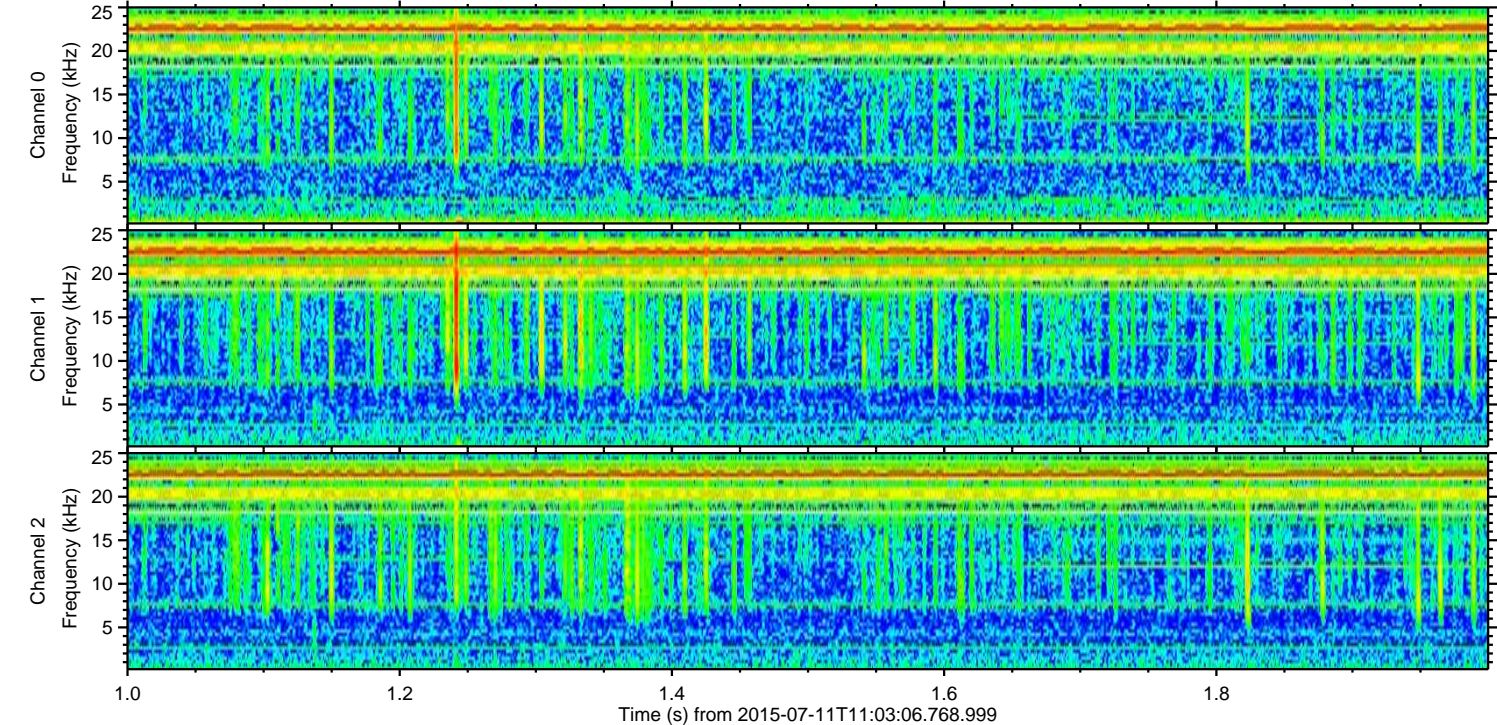
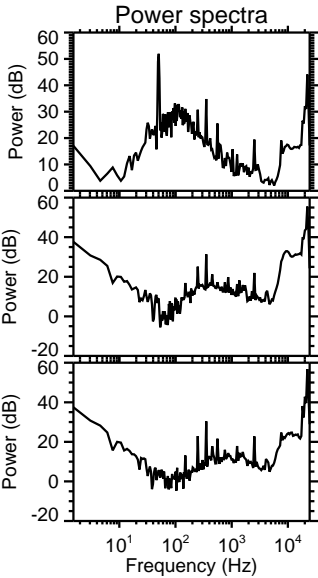
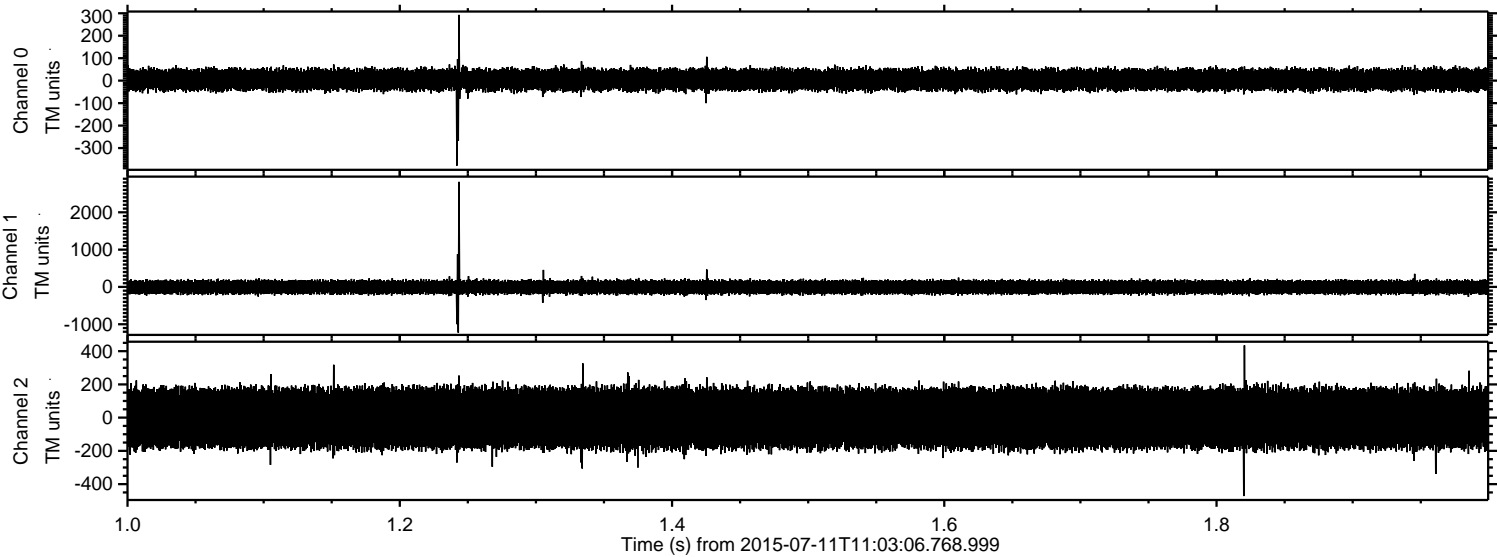


Processed Sat Jul 11 13:09:49 2015 by ELM ver.2012-10-06 from 001__elm20150711_110305__dat00.bin

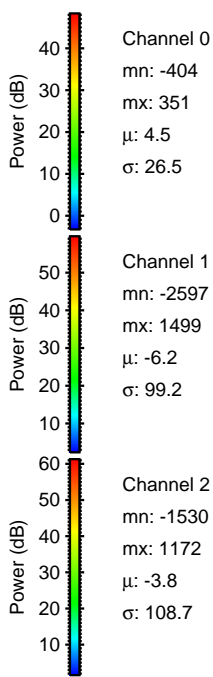
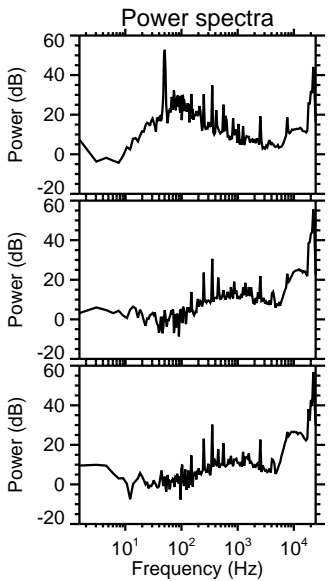
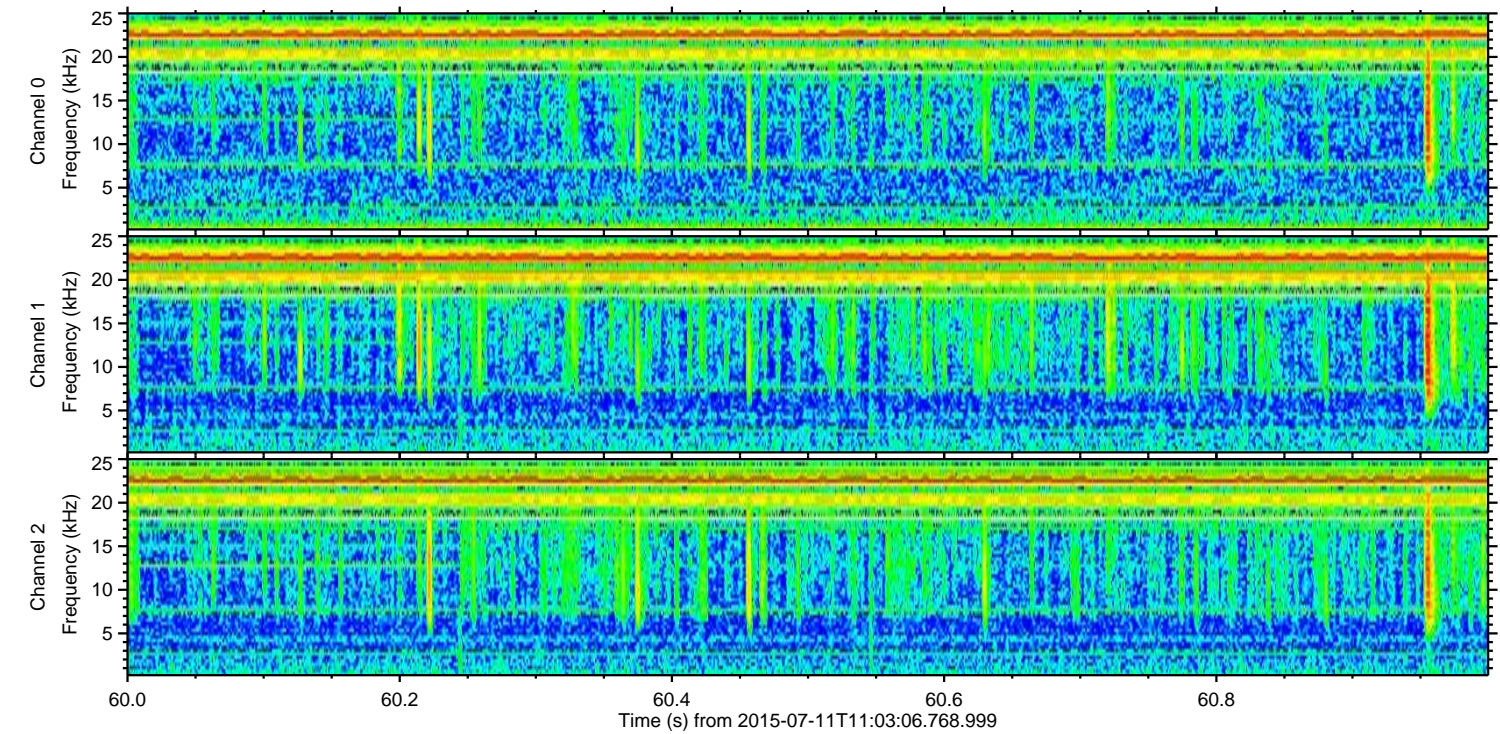
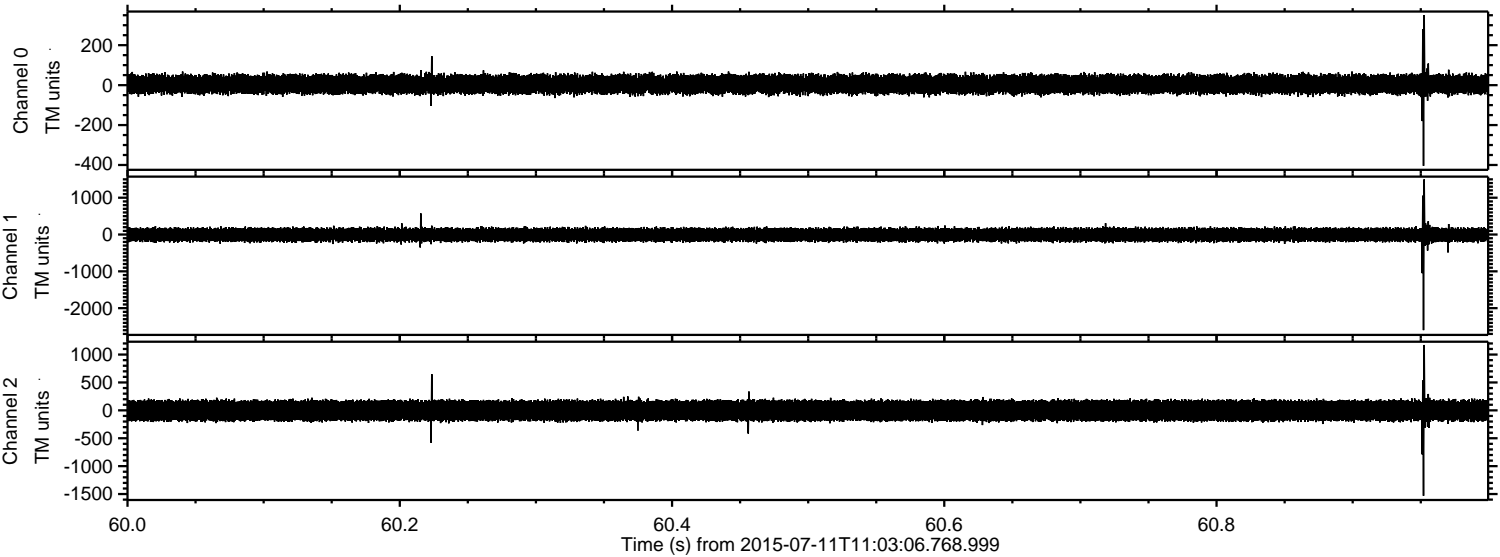


ELMAVAN 3D WAVEFORMS (Measured data sampled at 50 kHz) 51000 packets of 144 samples from 2015-07-11T11:03:06.768.999. Part 2/147

Processed Sat Jul 11 13:09:50 2015 by ELM ver.2012-10-06 from 001__elm20150711_110305__dat00.bin

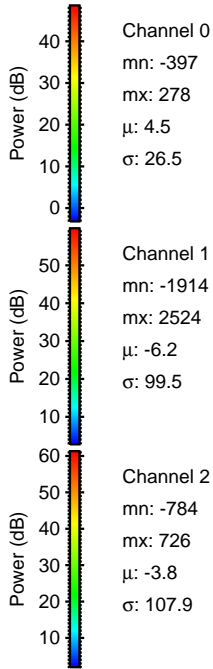
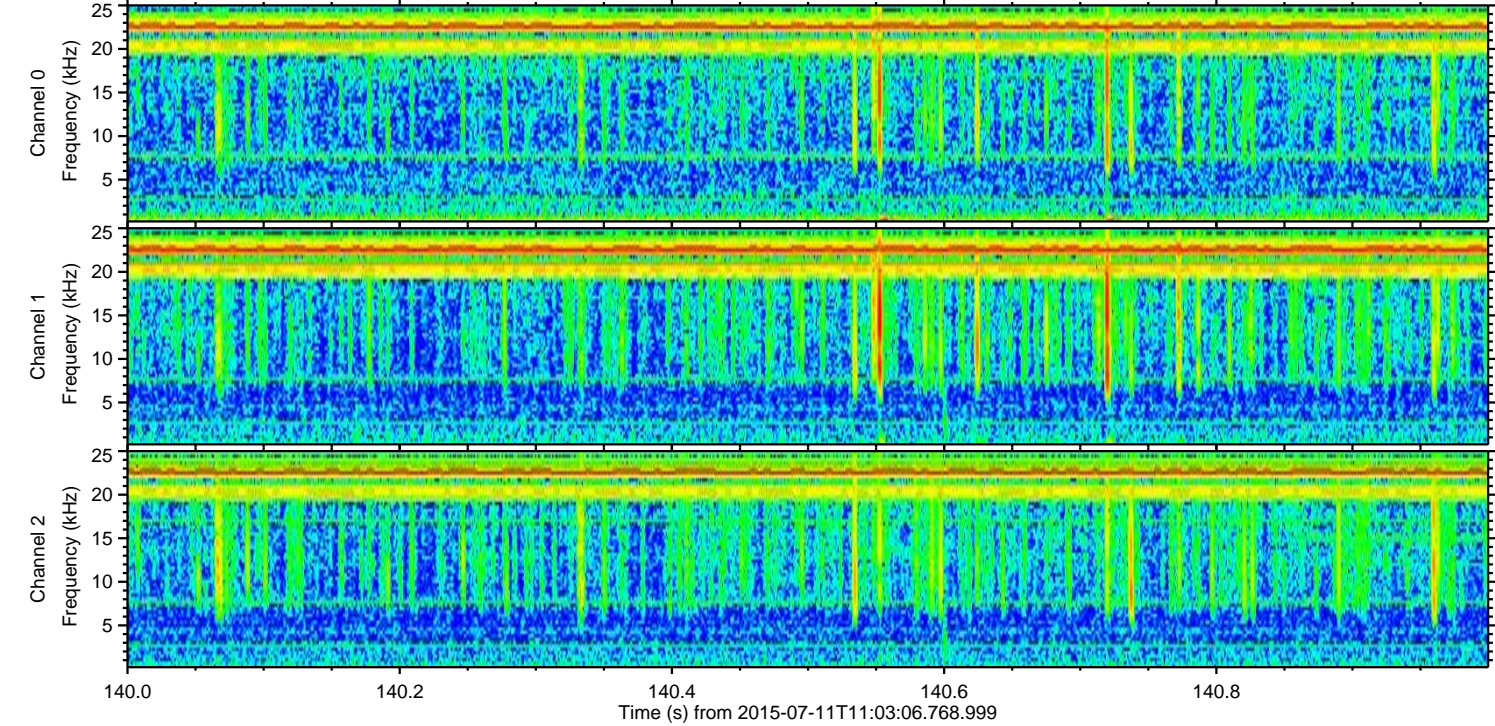
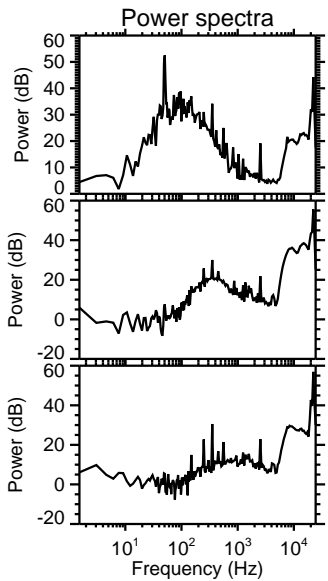
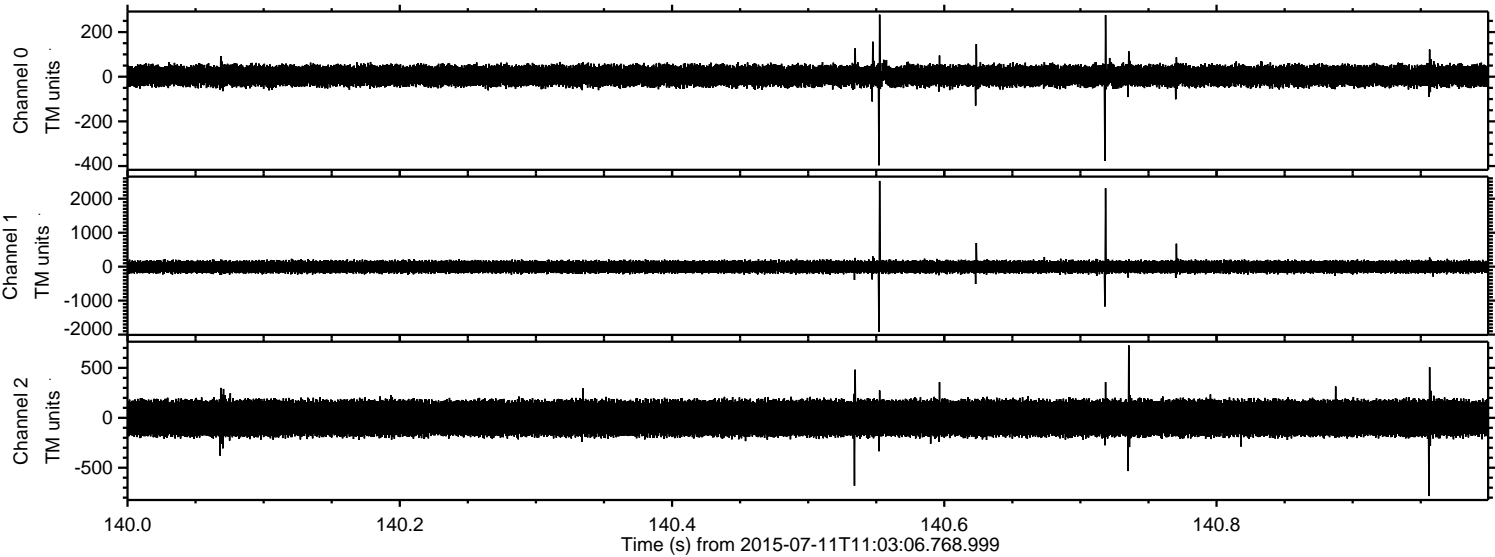


Processed Sat Jul 11 13:09:51 2015 by ELM ver.2012-10-06 from 001__elm20150711_110305__dat00.bin



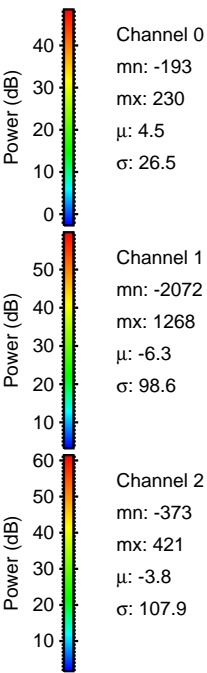
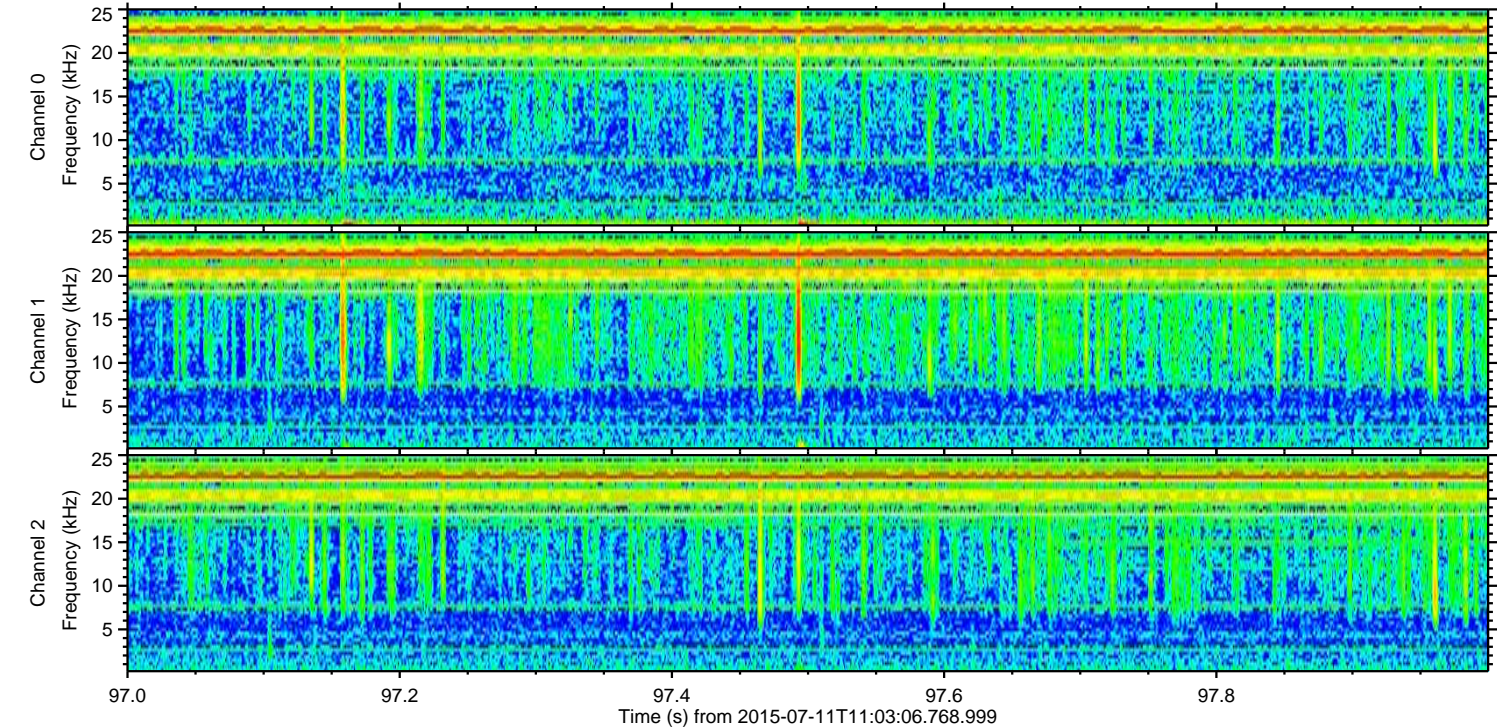
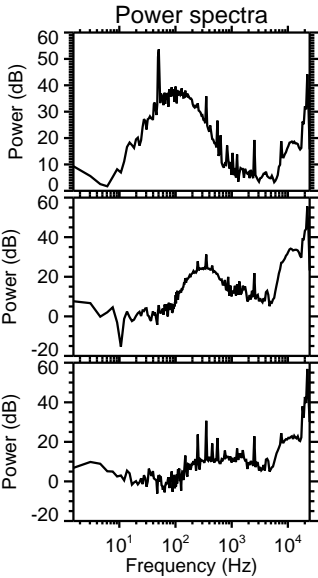
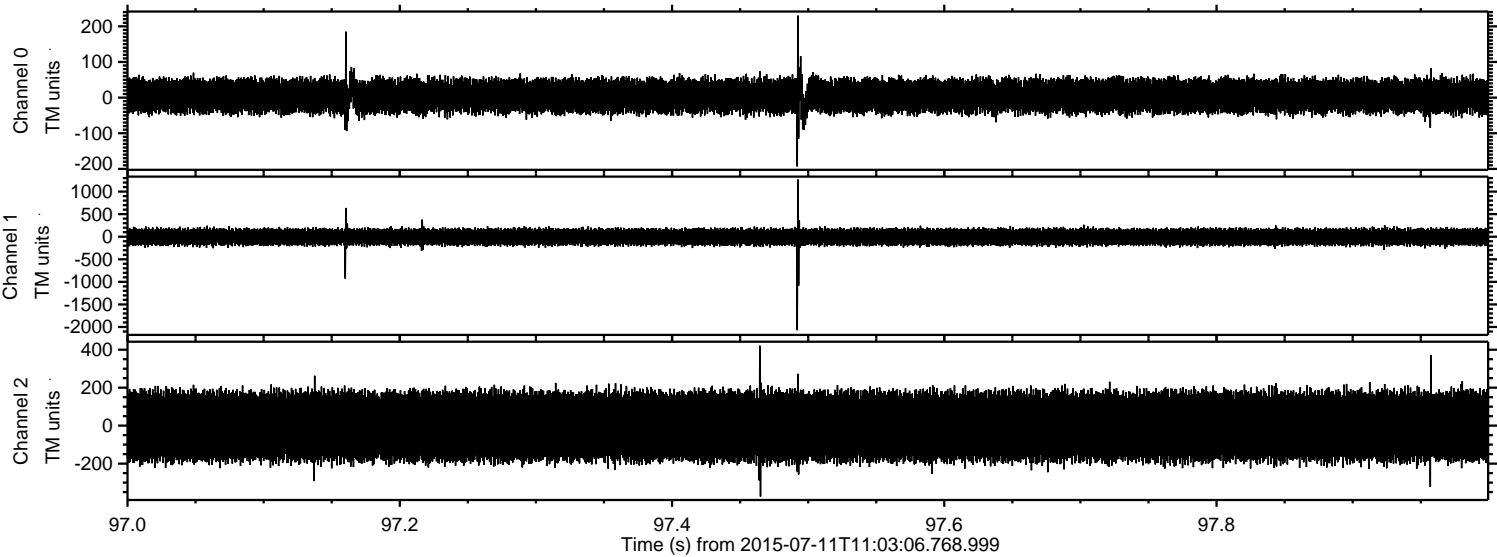
ELMAVAN 3D WAVEFORMS (Measured data sampled at 50 kHz) 51000 packets of 144 samples from 2015-07-11T11:03:06.768.999. Part 141/147

Processed Sat Jul 11 13:09:52 2015 by ELM ver.2012-10-06 from 001__elm20150711_110305__dat00.bin

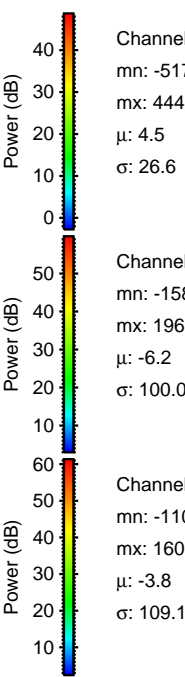
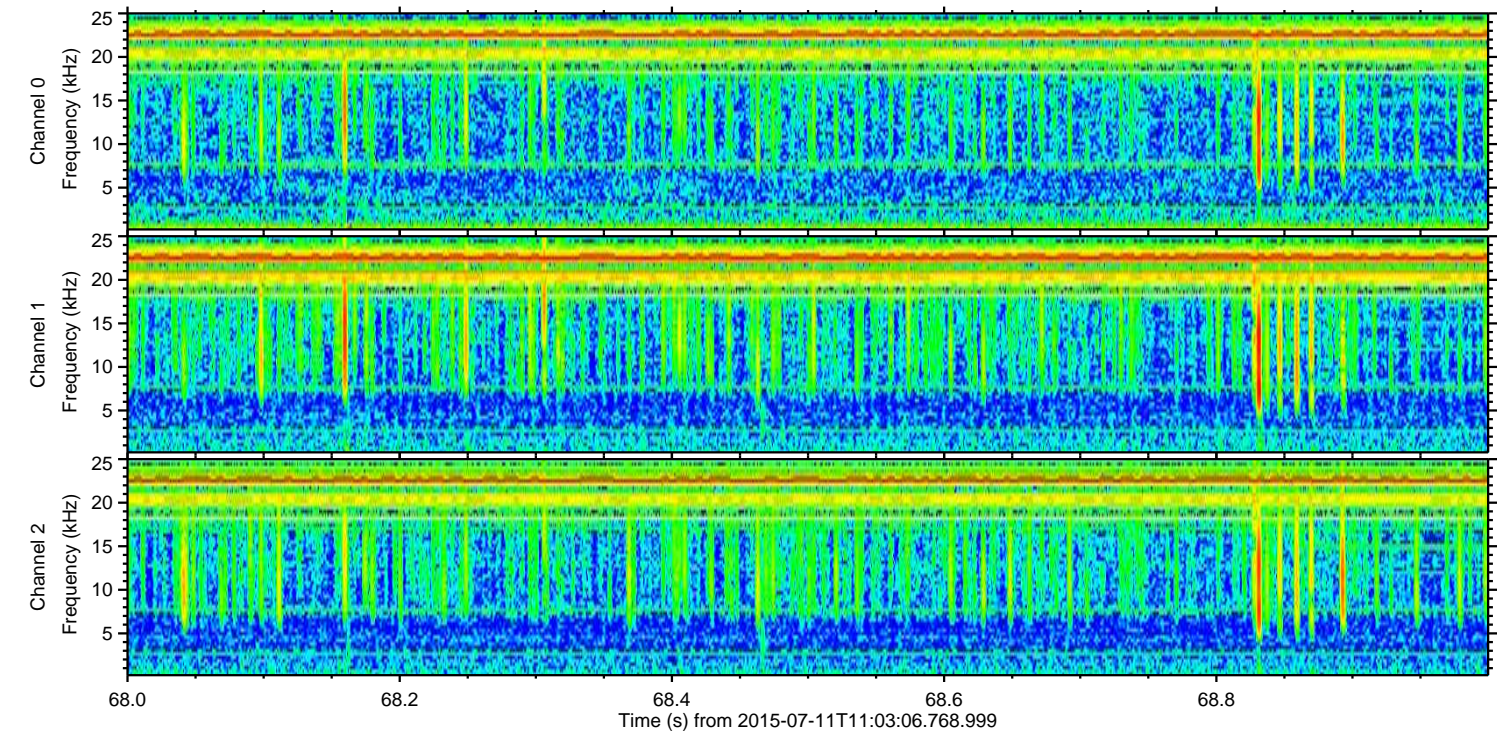
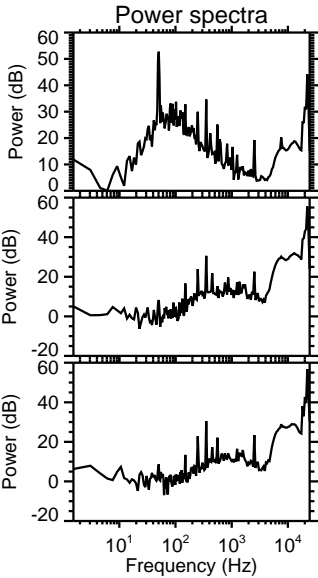
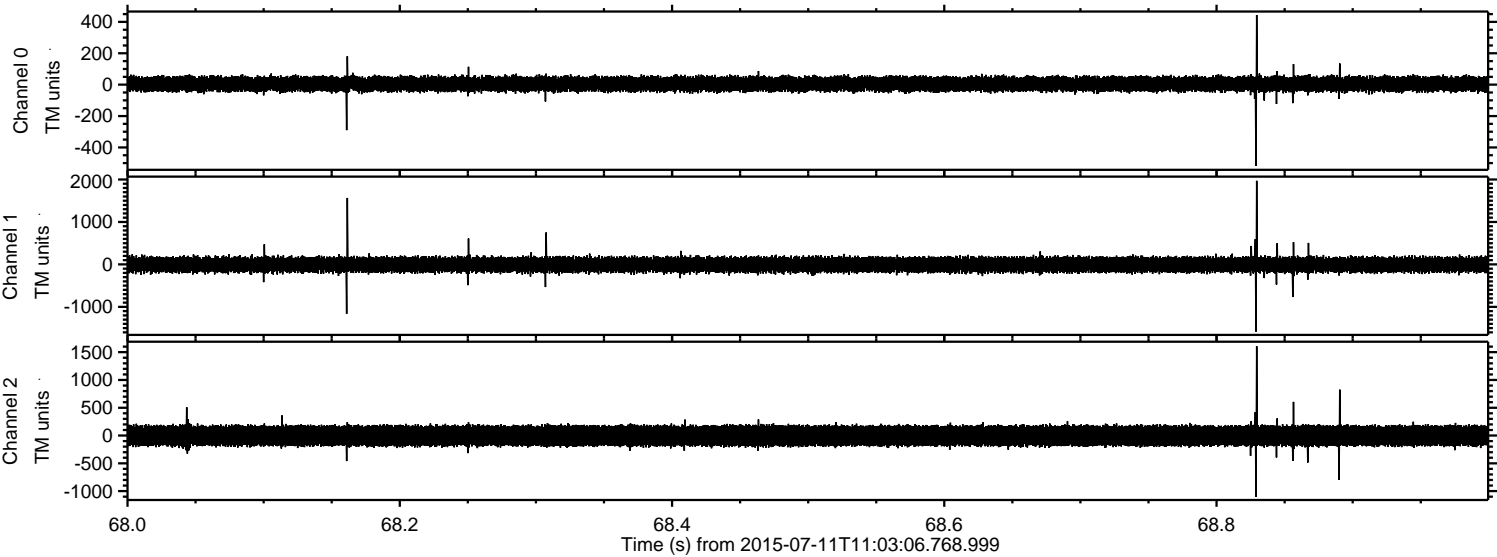


ELMAVAN 3D WAVEFORMS (Measured data sampled at 50 kHz) 51000 packets of 144 samples from 2015-07-11T11:03:06.768.999. Part 98/147

Processed Sat Jul 11 13:09:53 2015 by ELM ver.2012-10-06 from 001__elm20150711_110305__dat00.bin



Processed Sat Jul 11 13:09:54 2015 by ELM ver.2012-10-06 from 001__elm20150711_110305__dat00.bin

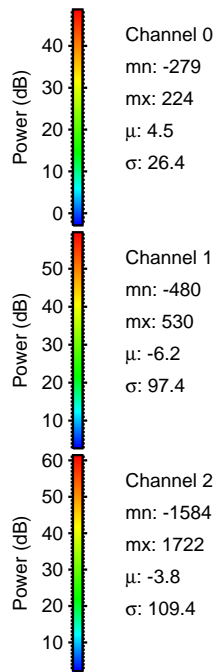
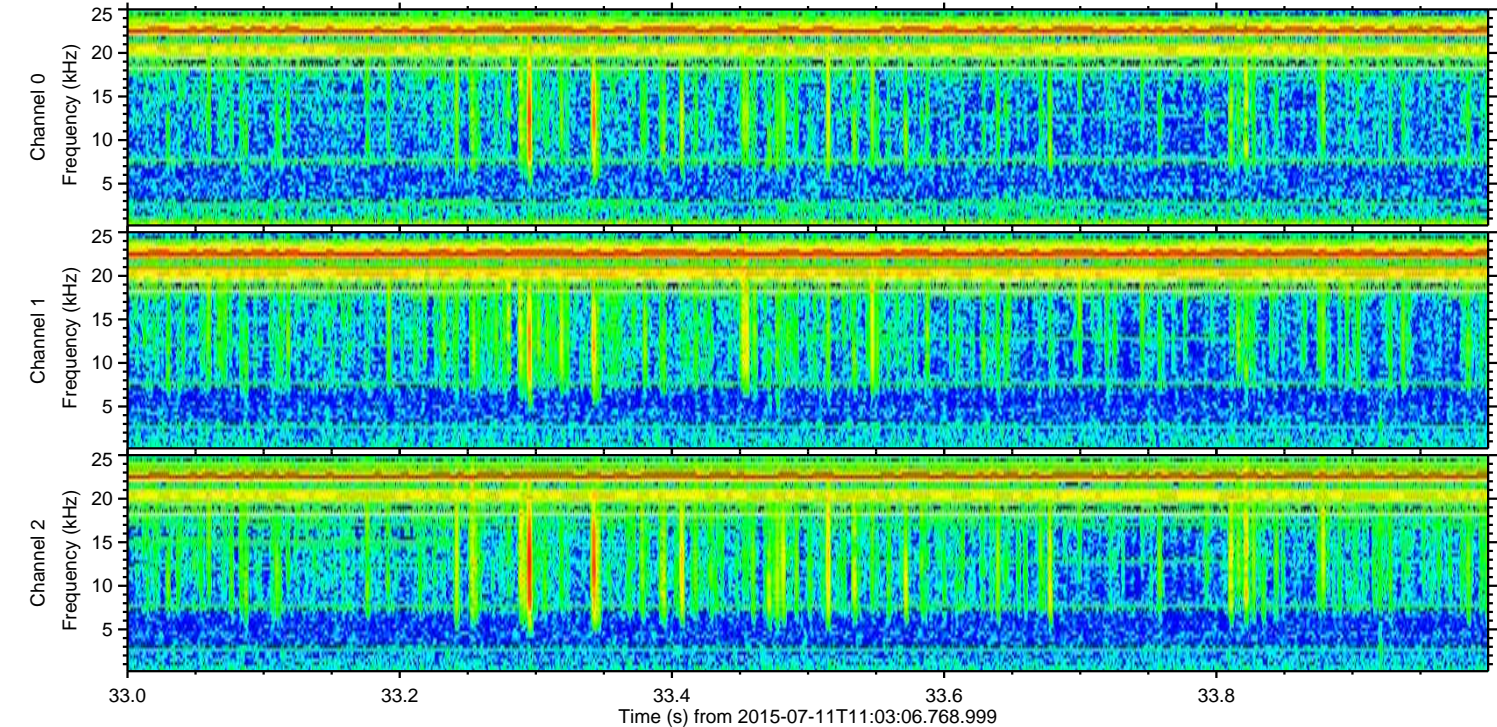
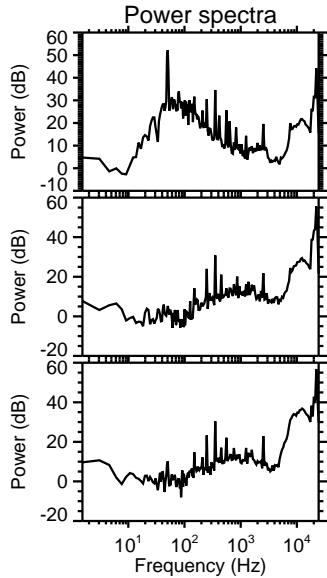
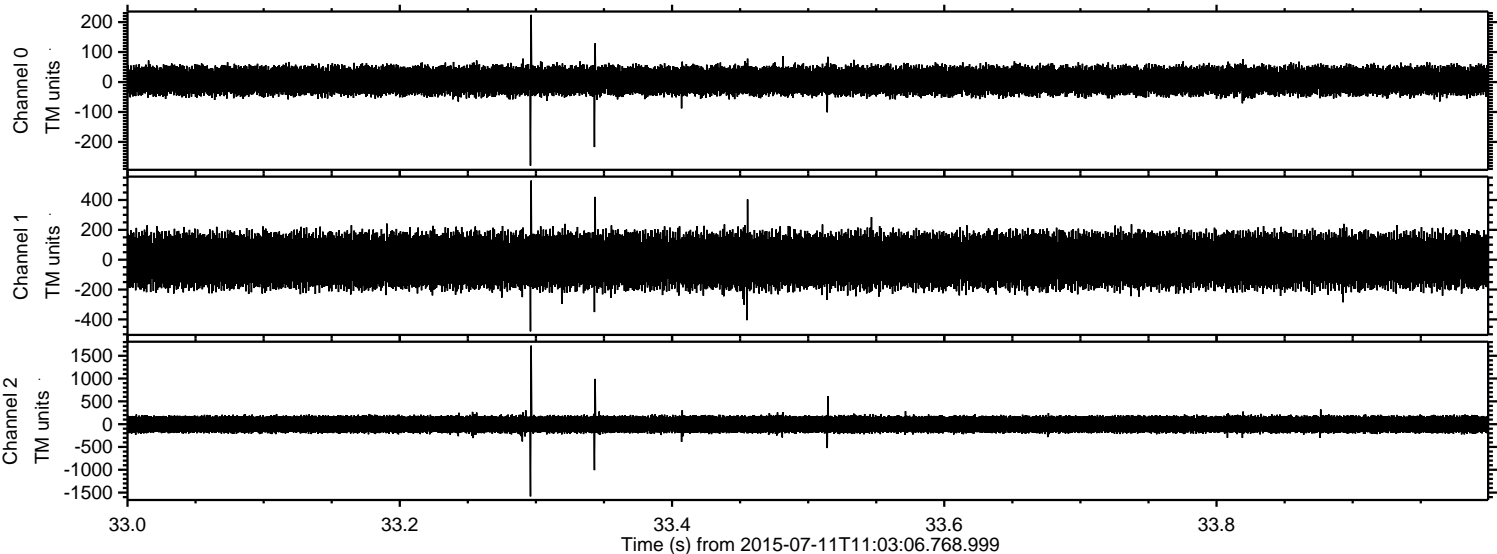


Channel 0
mn: -517
mx: 444
 μ : 4.5
 σ : 26.6

Channel 1
mn: -1581
mx: 1969
 μ : -6.2
 σ : 100.0

Channel 2
mn: -1105
mx: 1608
 μ : -3.8
 σ : 109.1

Processed Sat Jul 11 13:09:55 2015 by ELM ver.2012-10-06 from 001__elm20150711_110305__dat00.bin



Processed Sat Jul 11 13:09:57 2015 by ELM ver.2012-10-06 from 001__elm20150711_110305__dat00.bin

