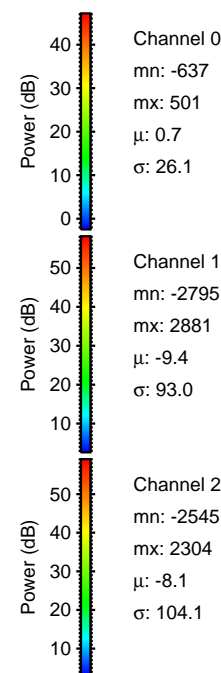
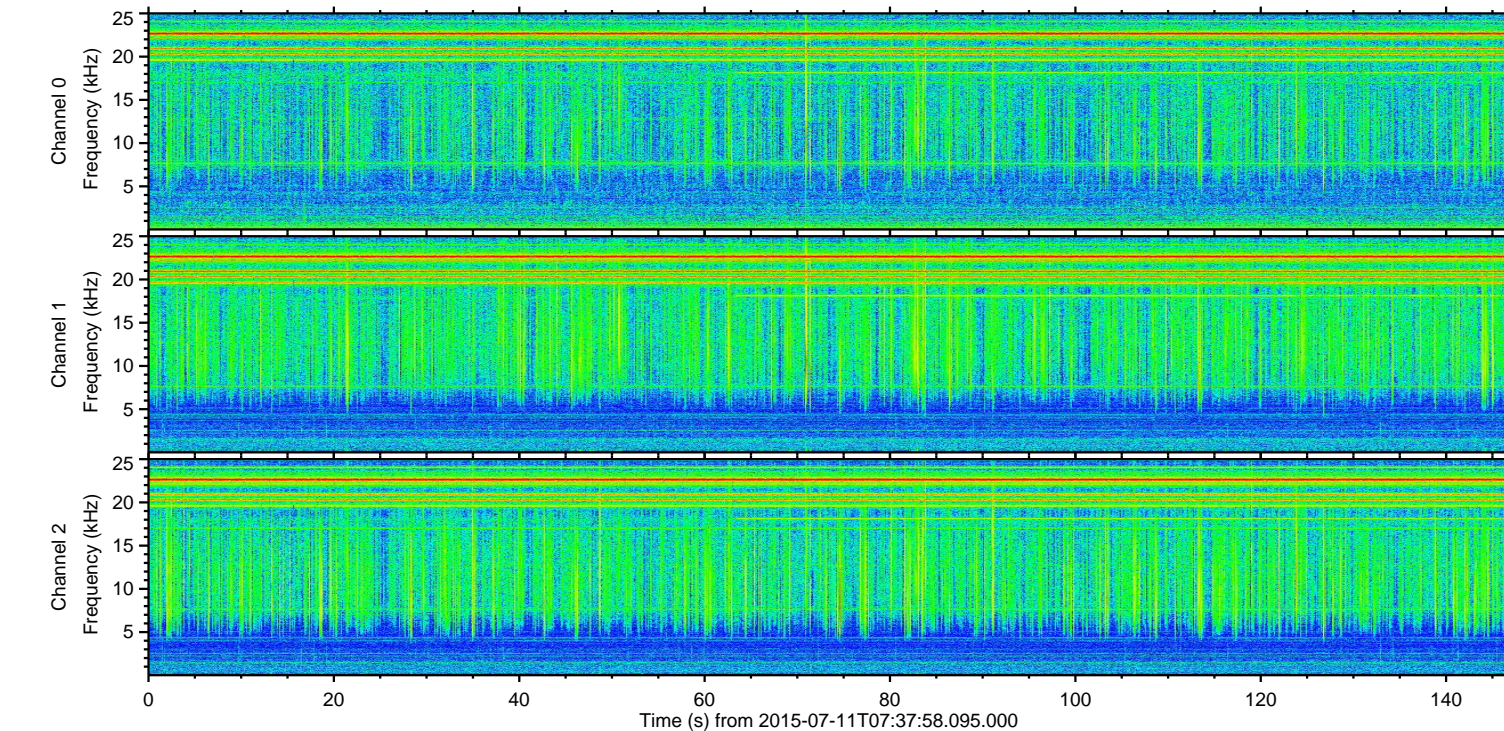
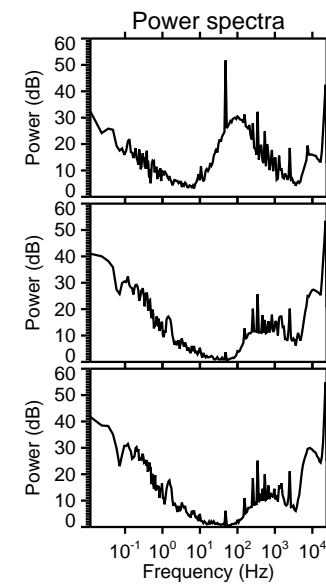
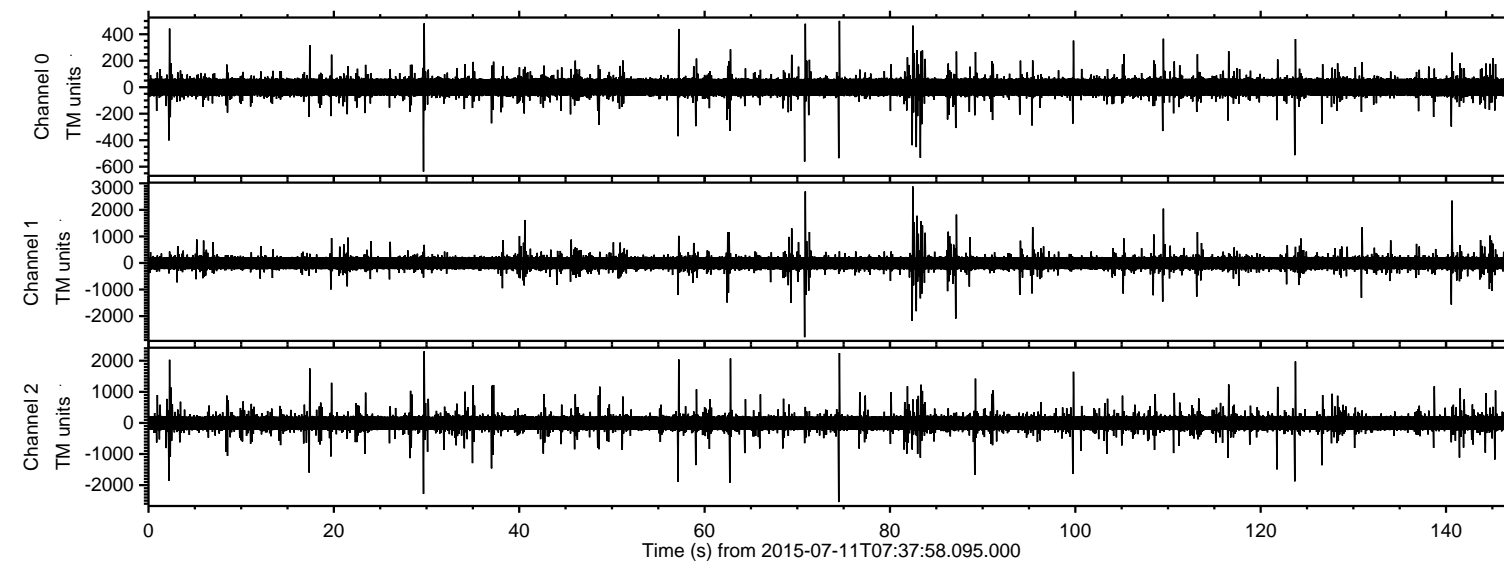
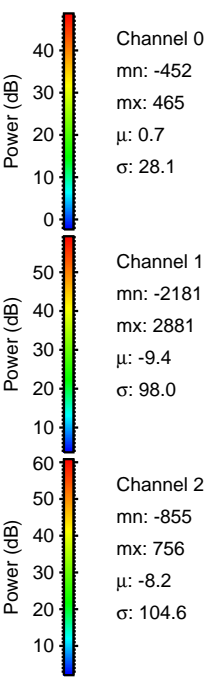
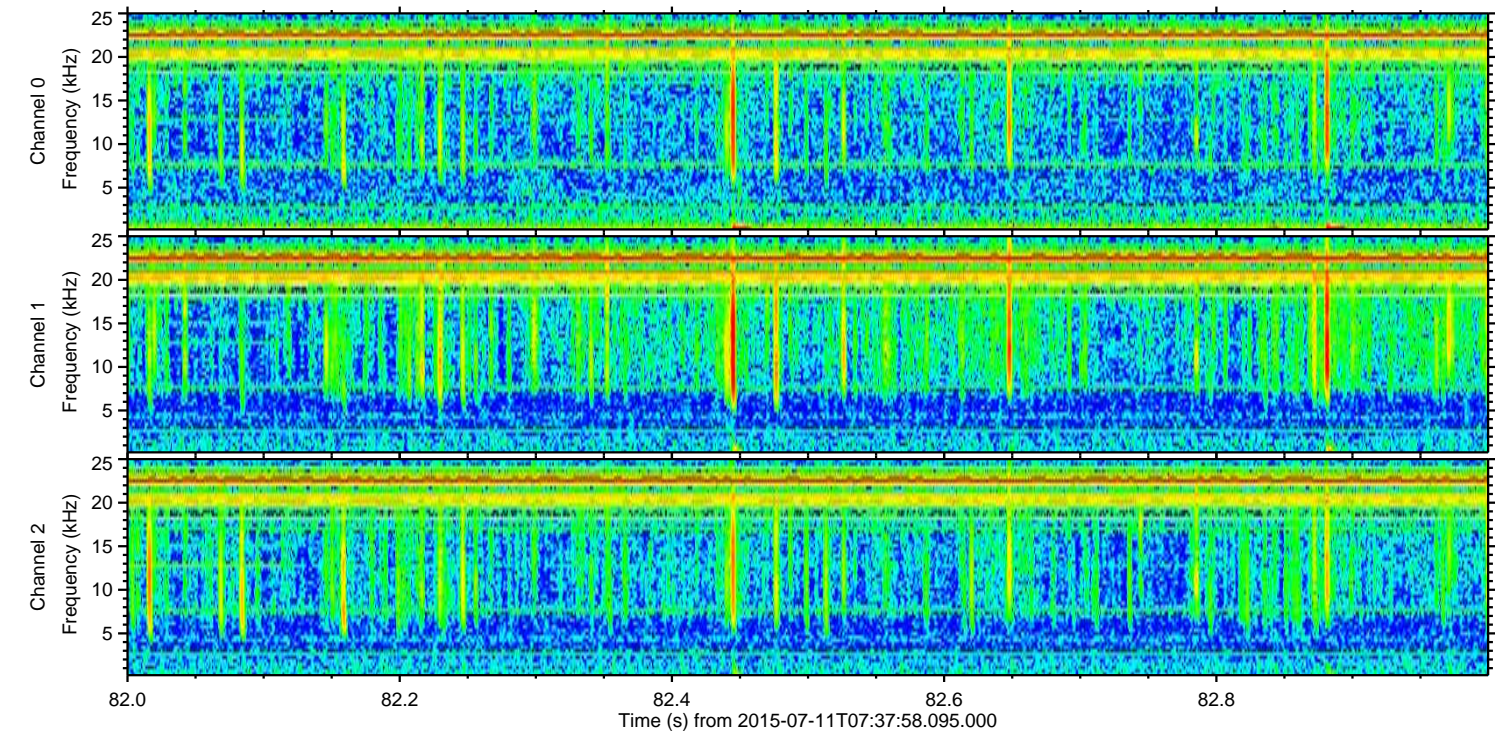
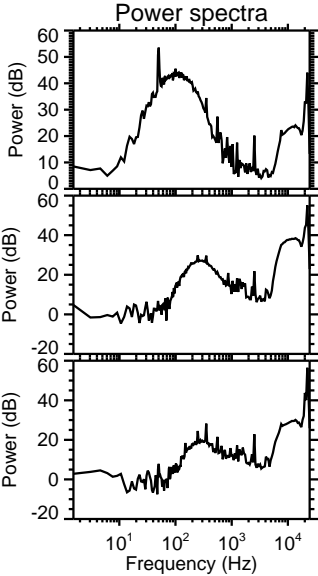
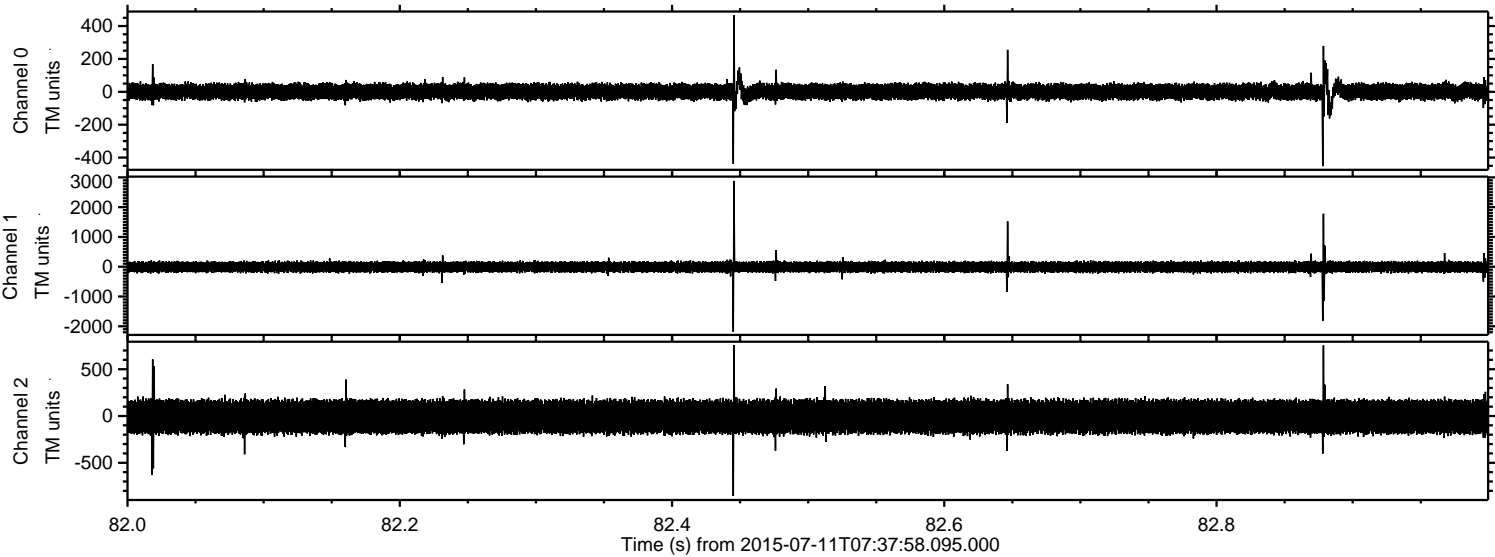


ELMAVAN 3D WAVEFORMS (Measured data sampled at 50 kHz) 51000 packets of 144 samples from 2015-07-11T07:37:58.095.000.

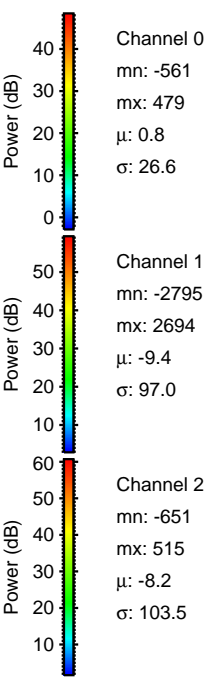
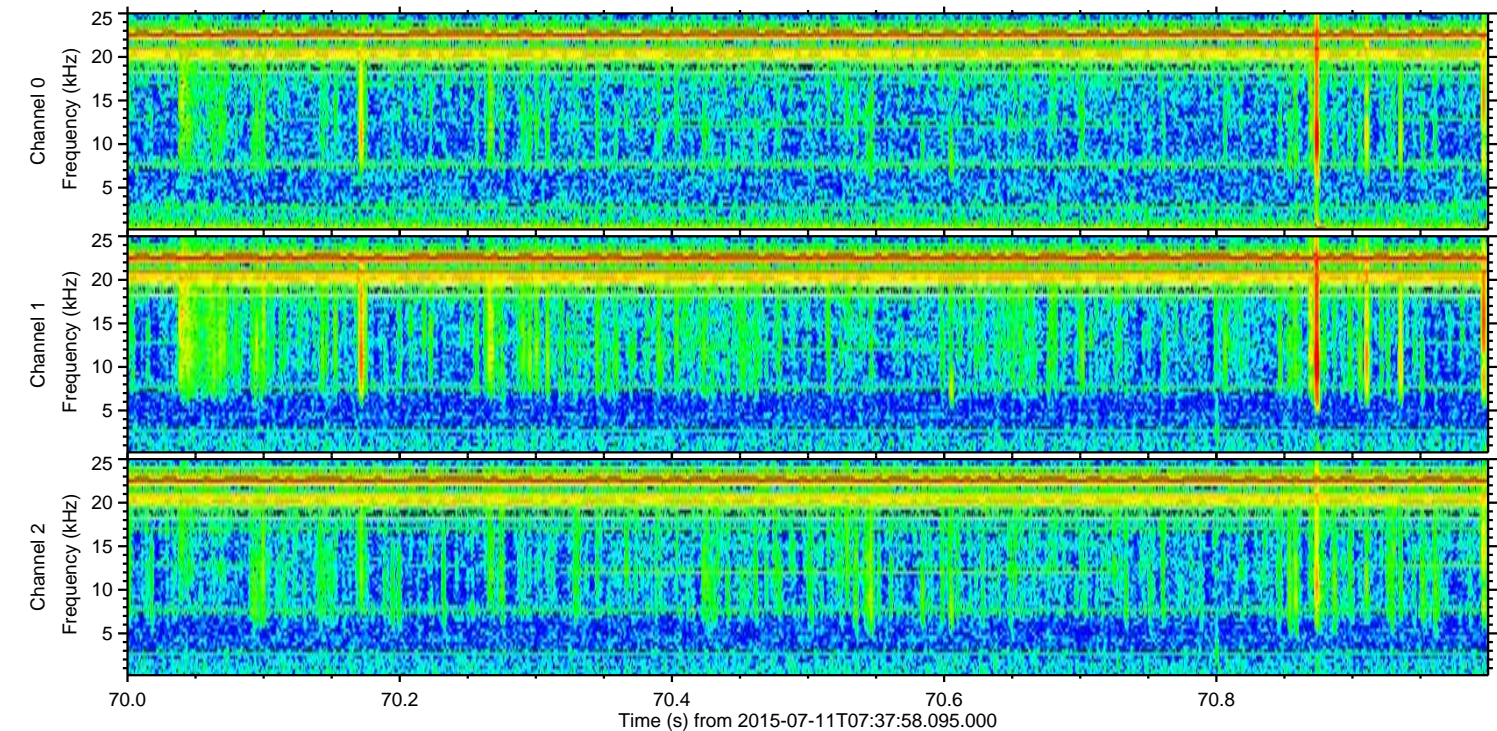
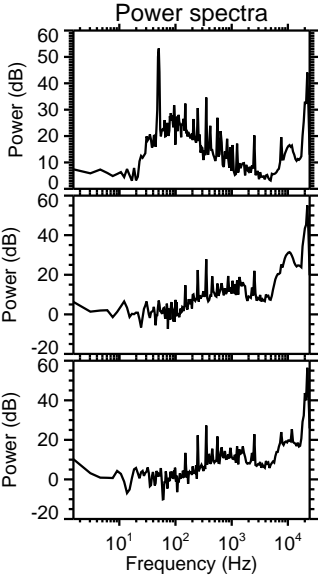
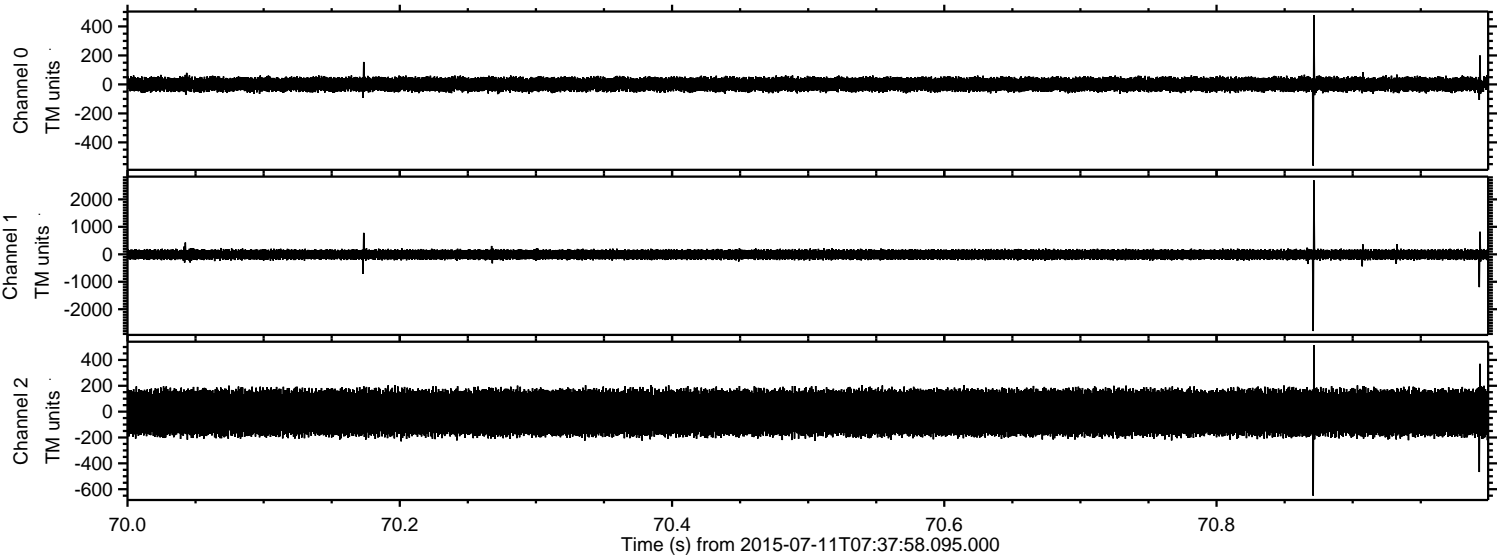
Processed Sat Jul 11 09:44:45 2015 by ELM ver.2012-10-06 from 001__elm20150711_073757__dat00.bin



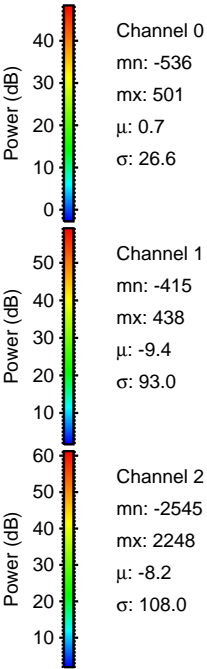
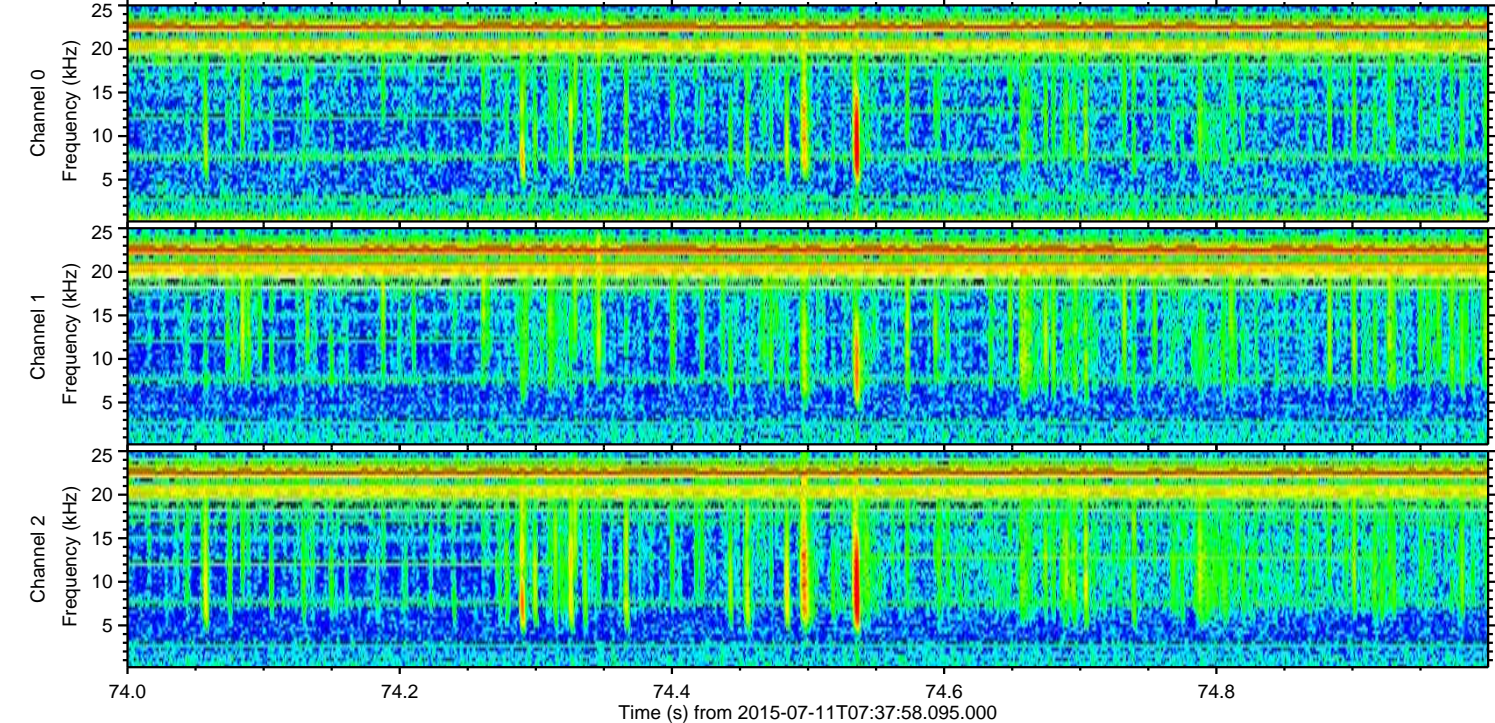
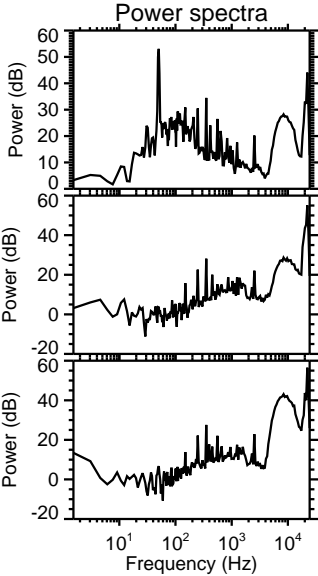
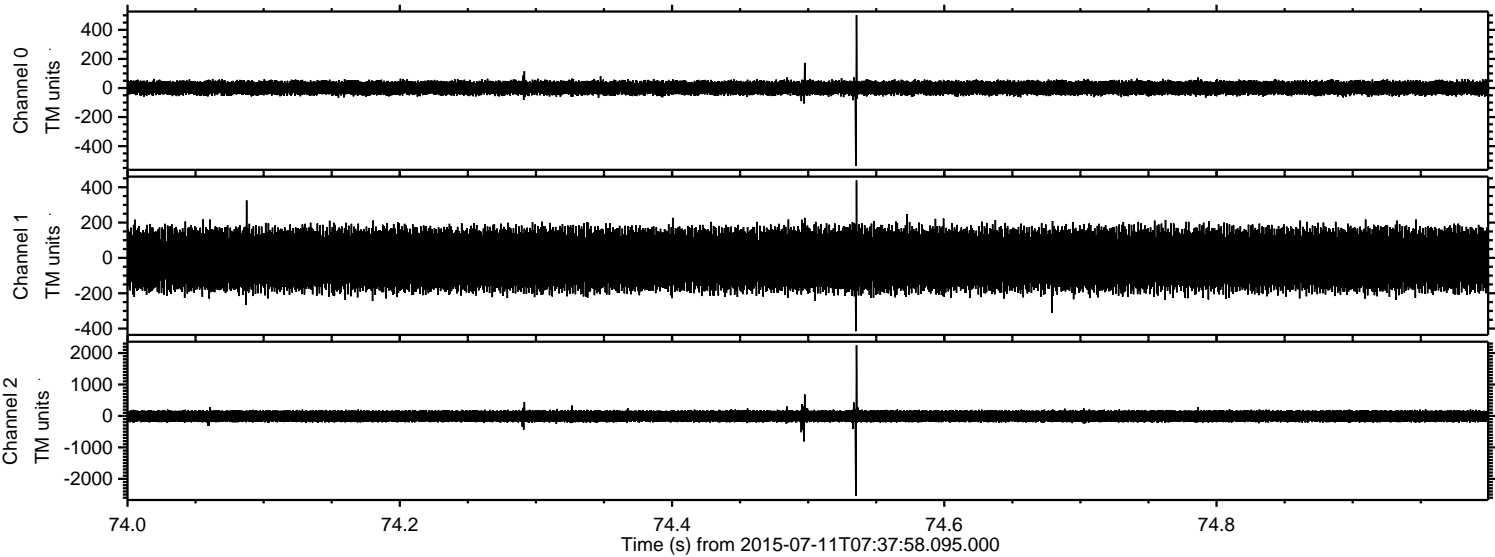
Processed Sat Jul 11 09:45:00 2015 by ELM ver.2012-10-06 from 001__elm20150711_073757__dat00.bin



Processed Sat Jul 11 09:45:02 2015 by ELM ver.2012-10-06 from 001__elm20150711_073757__dat00.bin

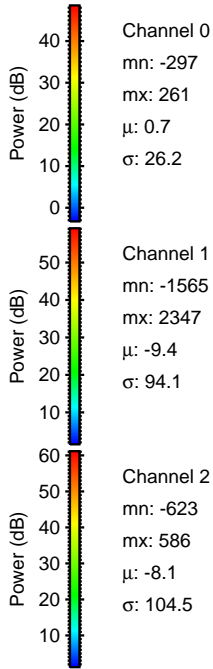
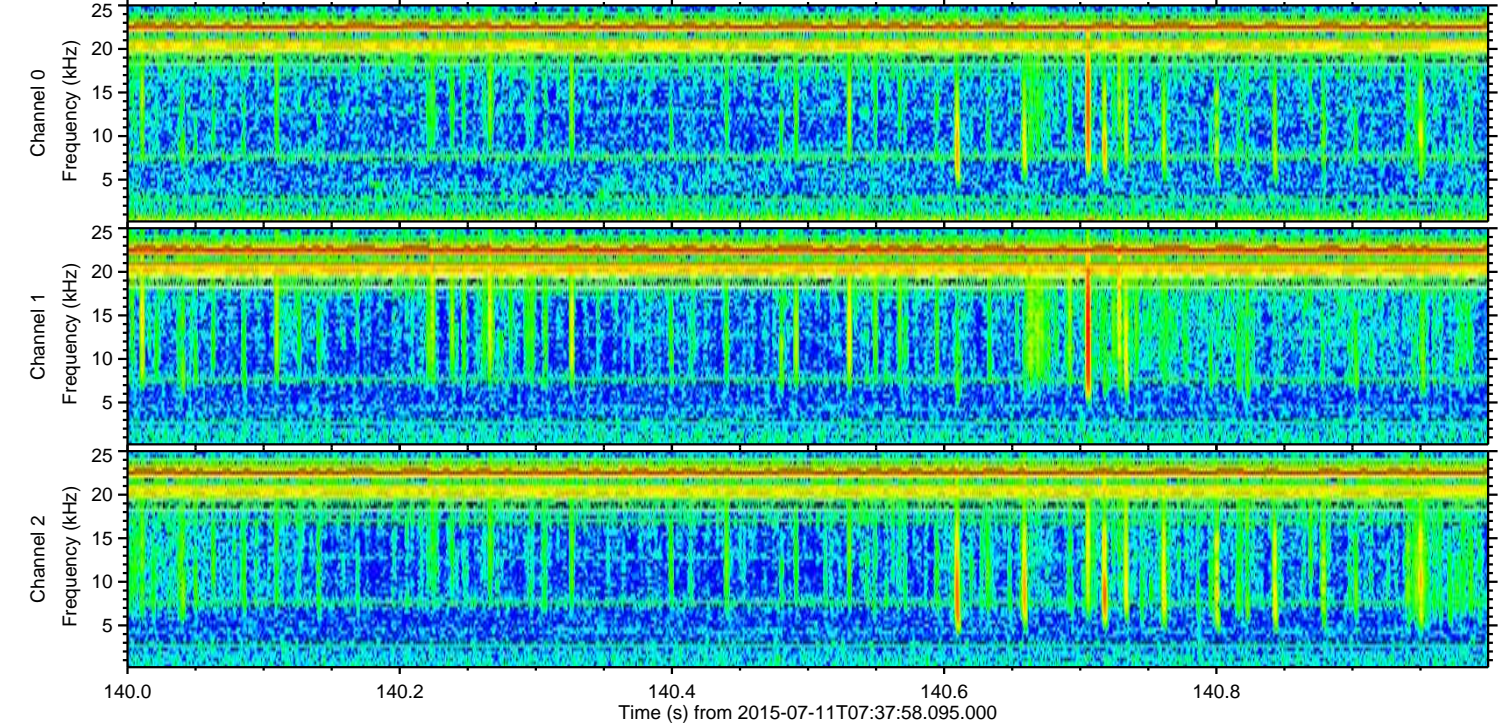
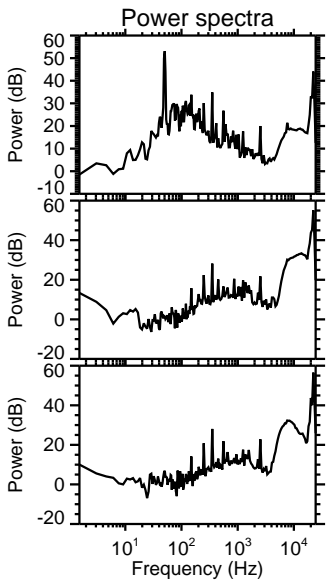
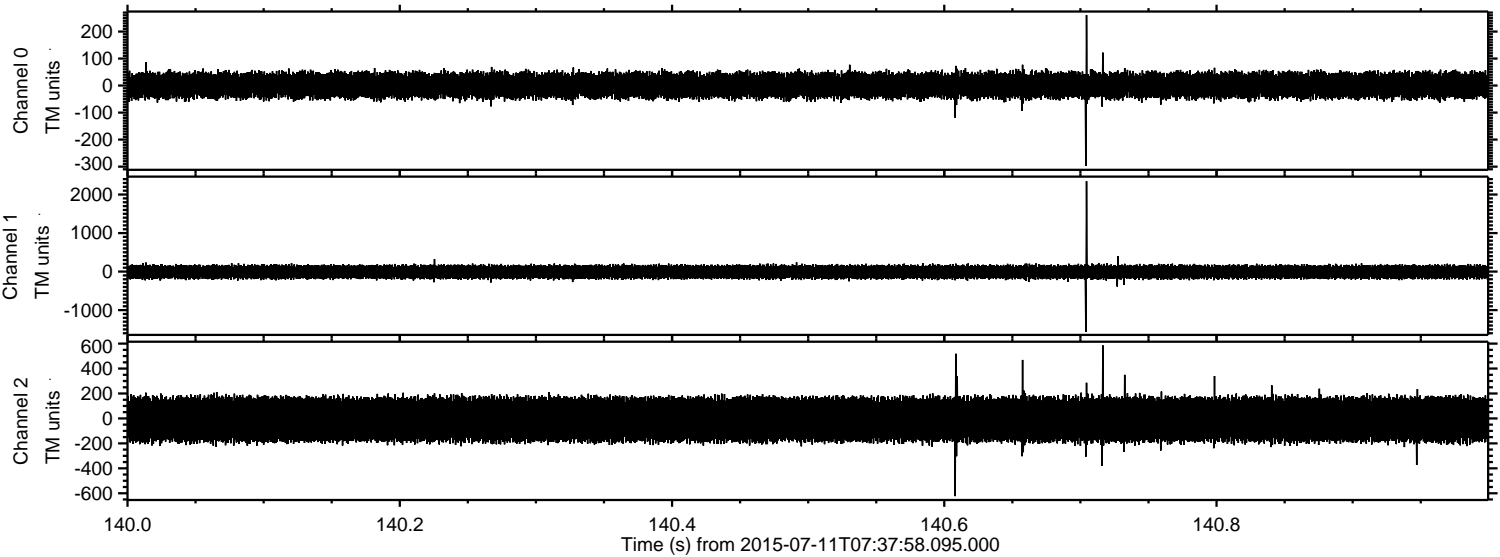


Processed Sat Jul 11 09:45:03 2015 by ELM ver.2012-10-06 from 001__elm20150711_073757__dat00.bin

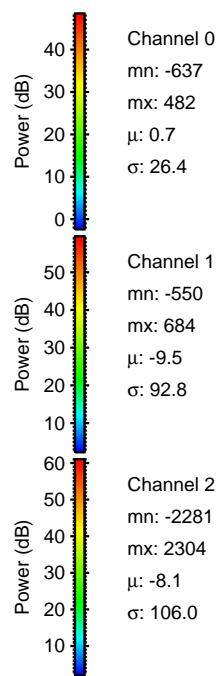
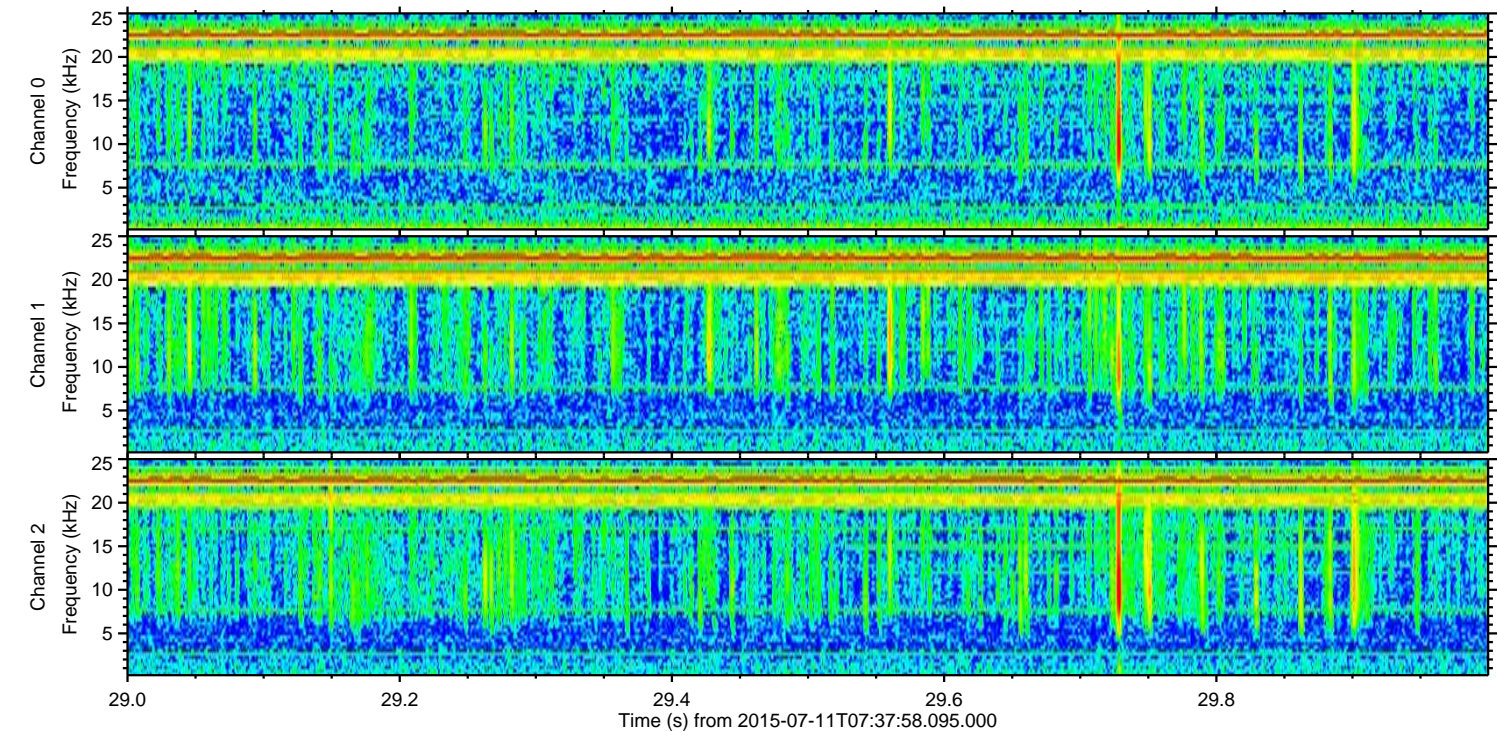
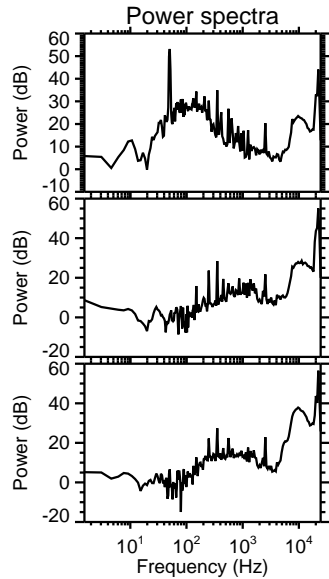
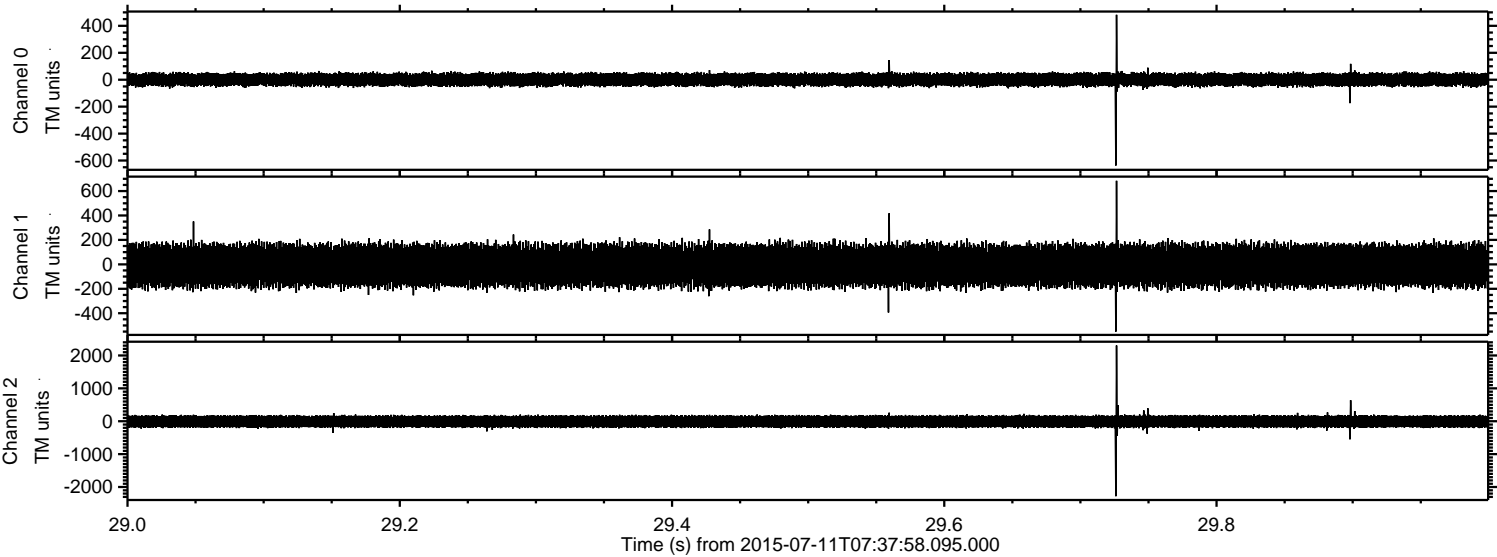


ELMAVAN 3D WAVEFORMS (Measured data sampled at 50 kHz) 51000 packets of 144 samples from 2015-07-11T07:37:58.095.000. Part 141/147

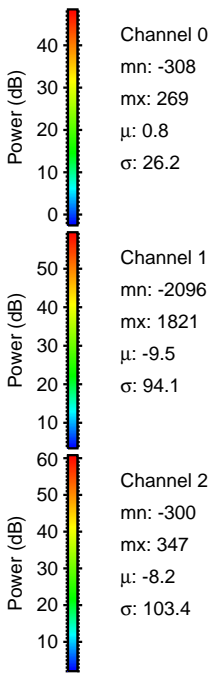
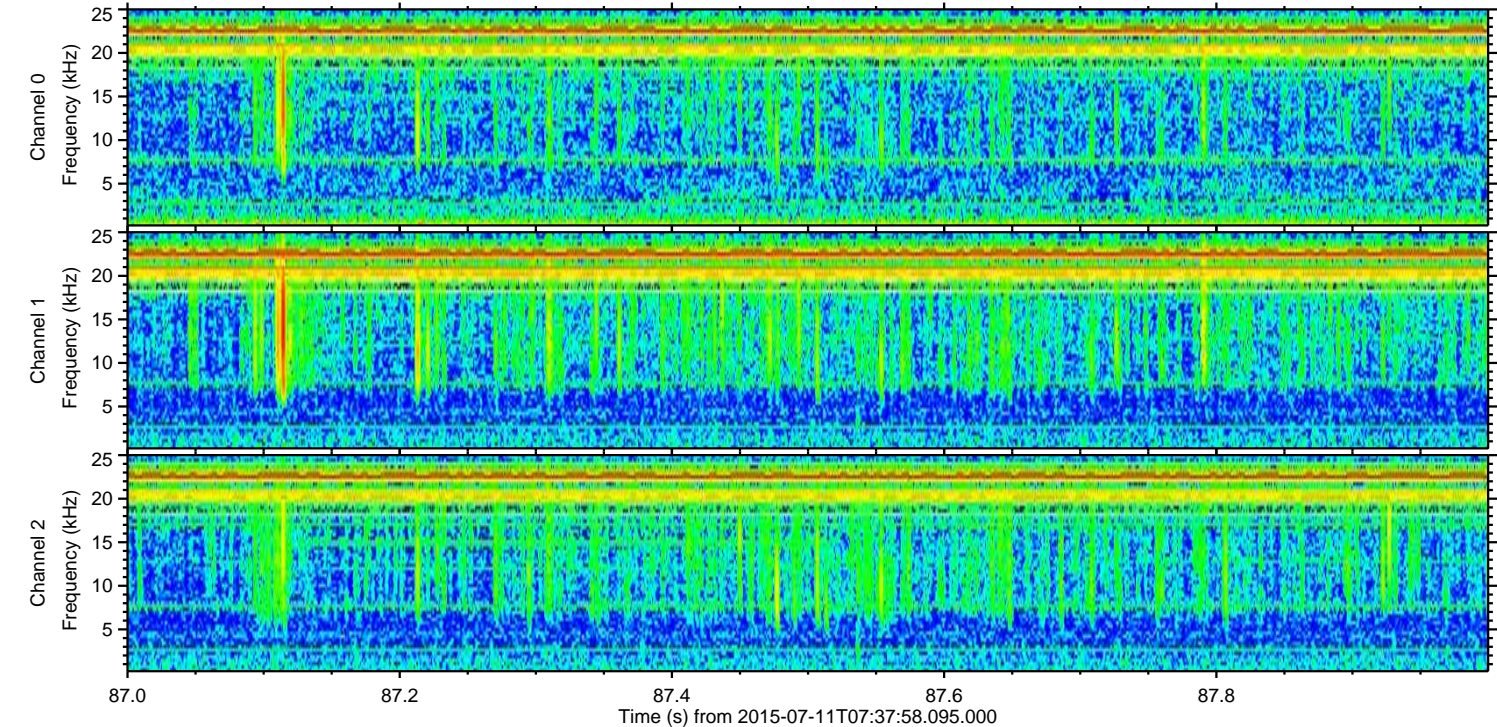
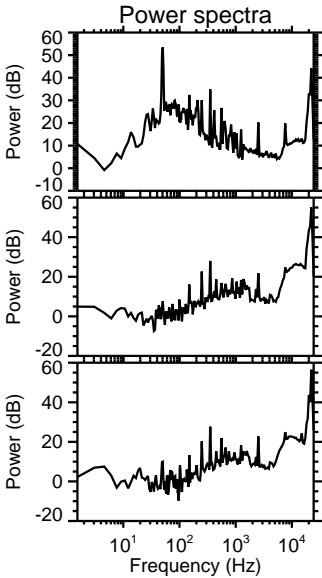
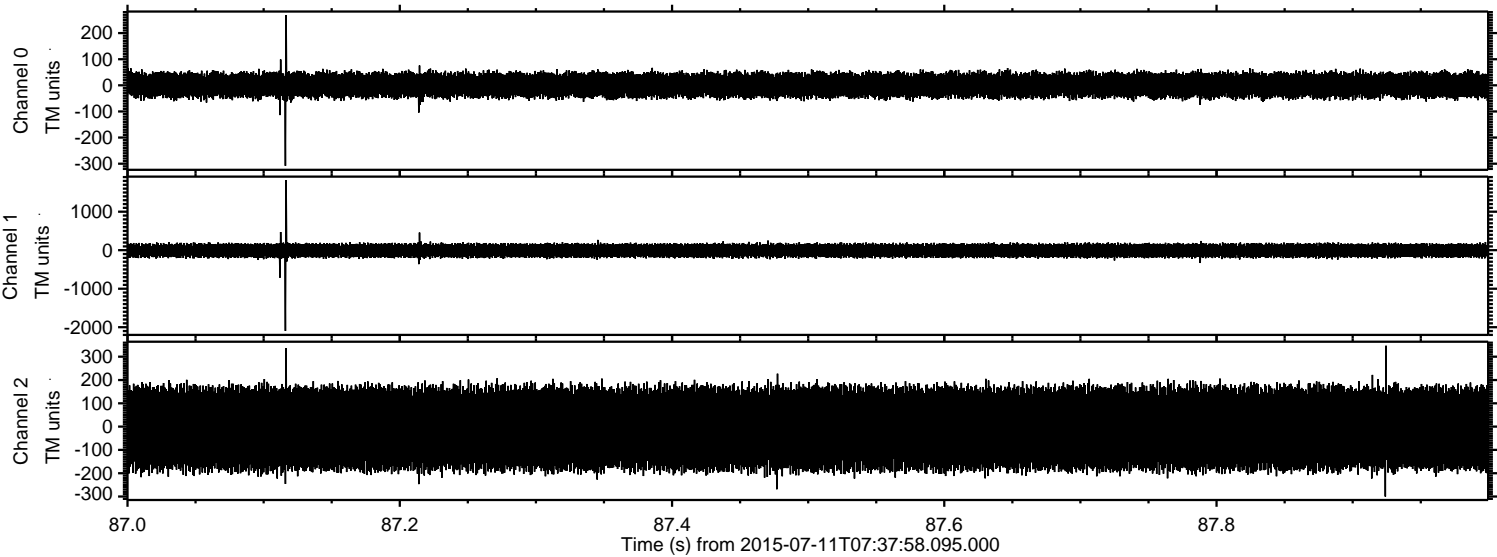
Processed Sat Jul 11 09:45:04 2015 by ELM ver.2012-10-06 from 001__elm20150711_073757__dat00.bin



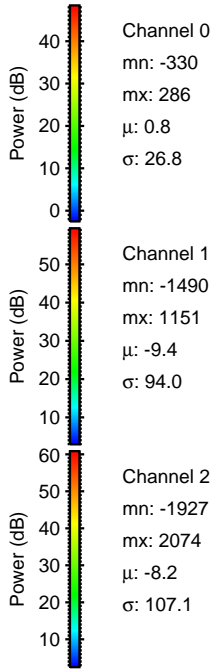
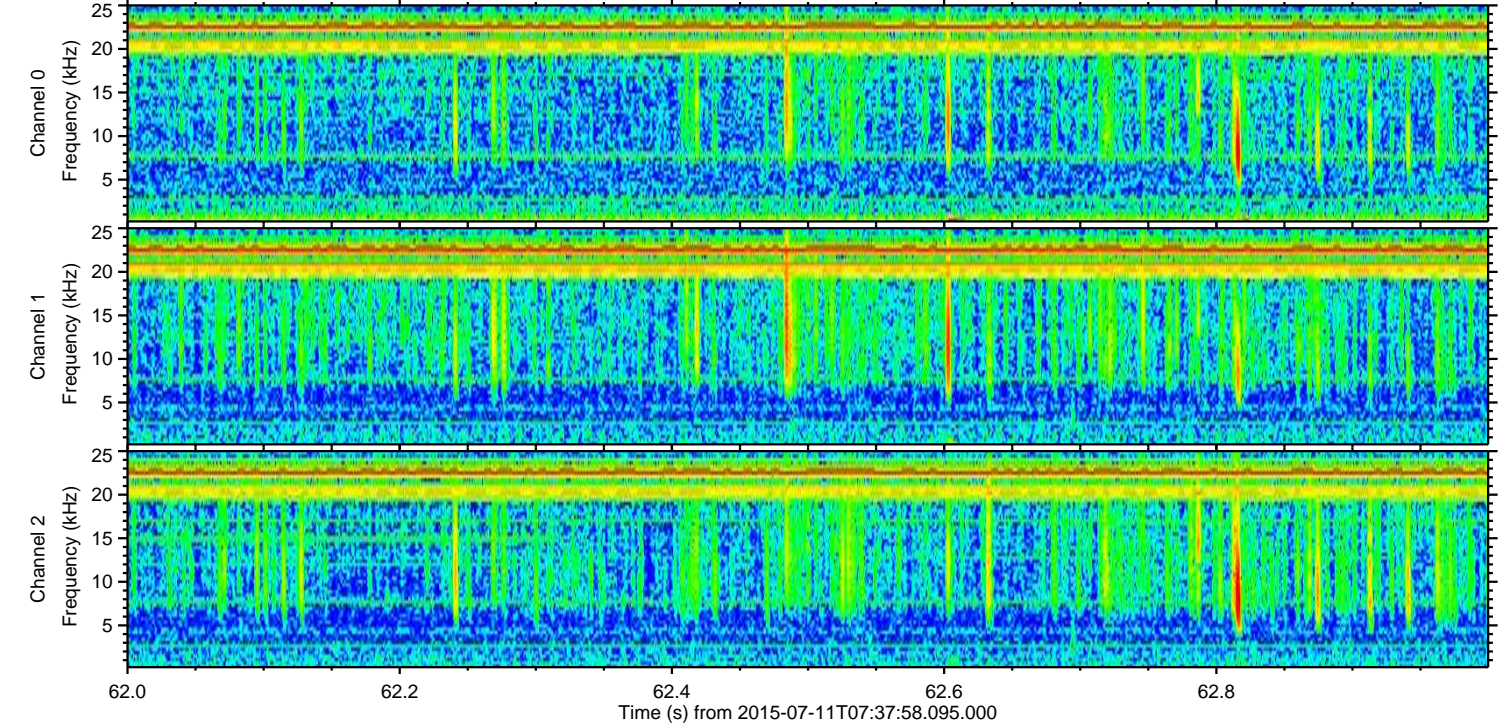
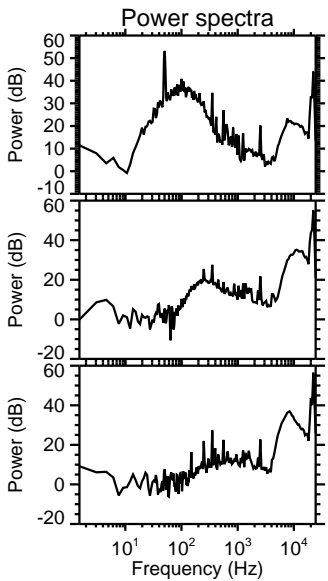
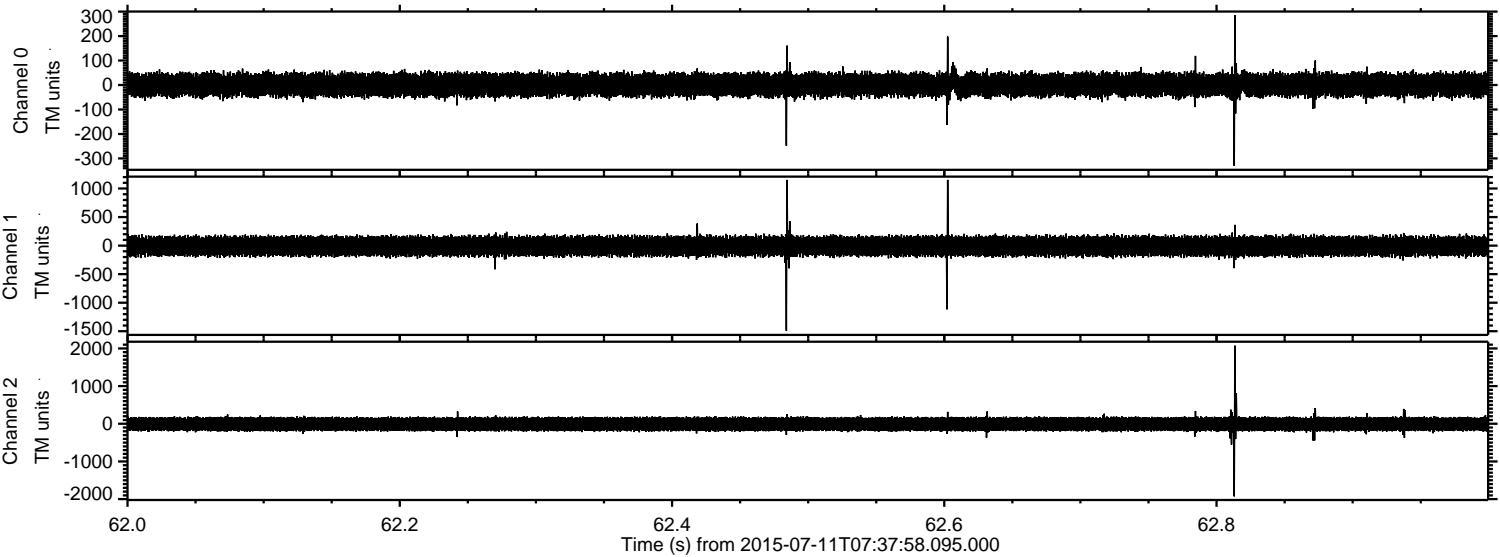
Processed Sat Jul 11 09:45:05 2015 by ELM ver.2012-10-06 from 001__elm20150711_073757__dat00.bin



Processed Sat Jul 11 09:45:06 2015 by ELM ver.2012-10-06 from 001__elm20150711_073757__dat00.bin



Processed Sat Jul 11 09:45:07 2015 by ELM ver.2012-10-06 from 001__elm20150711_073757__dat00.bin



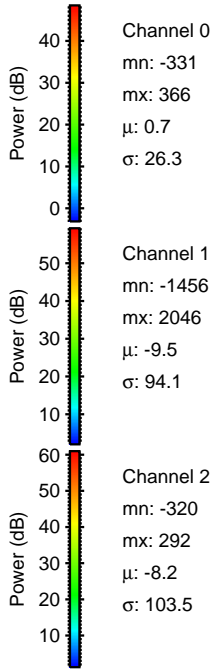
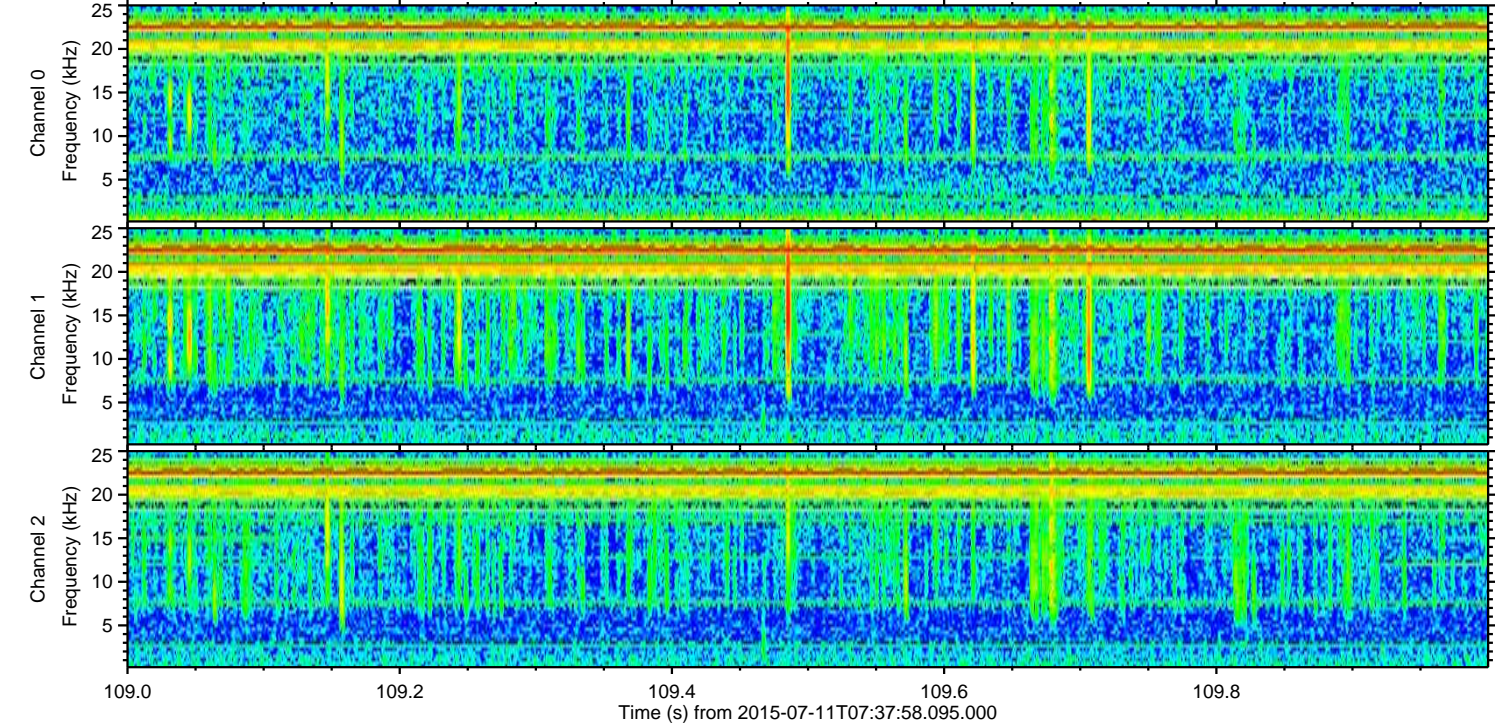
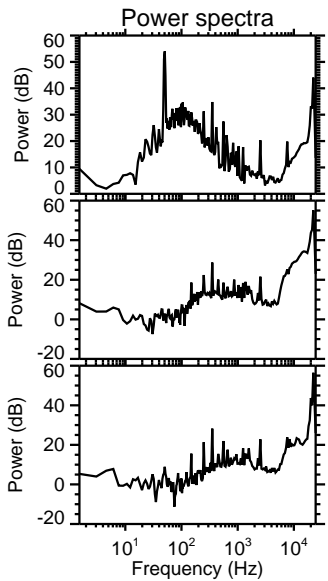
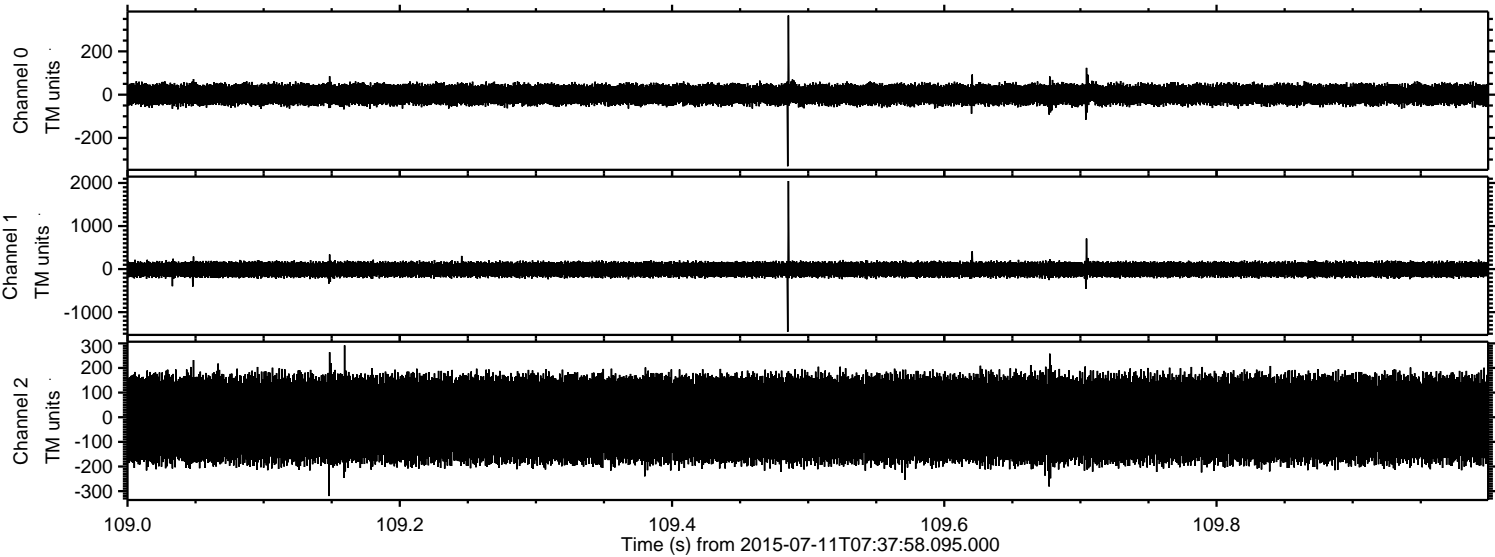
Channel 0
mn: -330
mx: 286
 μ : 0.8
 σ : 26.8

Channel 1
mn: -1490
mx: 1151
 μ : -9.4
 σ : 94.0

Channel 2
mn: -1927
mx: 2074
 μ : -8.2
 σ : 107.1

ELMAVAN 3D WAVEFORMS (Measured data sampled at 50 kHz) 51000 packets of 144 samples from 2015-07-11T07:37:58.095.000. Part 110/147

Processed Sat Jul 11 09:45:08 2015 by ELM ver.2012-10-06 from 001__elm20150711_073757__dat00.bin



Channel 0
mn: -331
mx: 366
 μ : 0.7
 σ : 26.3

Channel 1
mn: -1456
mx: 2046
 μ : -9.5
 σ : 94.1

Channel 2
mn: -320
mx: 292
 μ : -8.2
 σ : 103.5

Processed Sat Jul 11 09:45:09 2015 by ELM ver.2012-10-06 from 001__elm20150711_073757__dat00.bin

