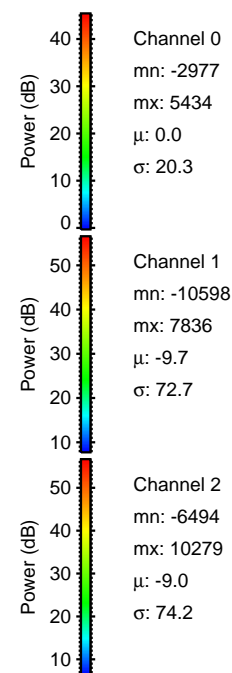
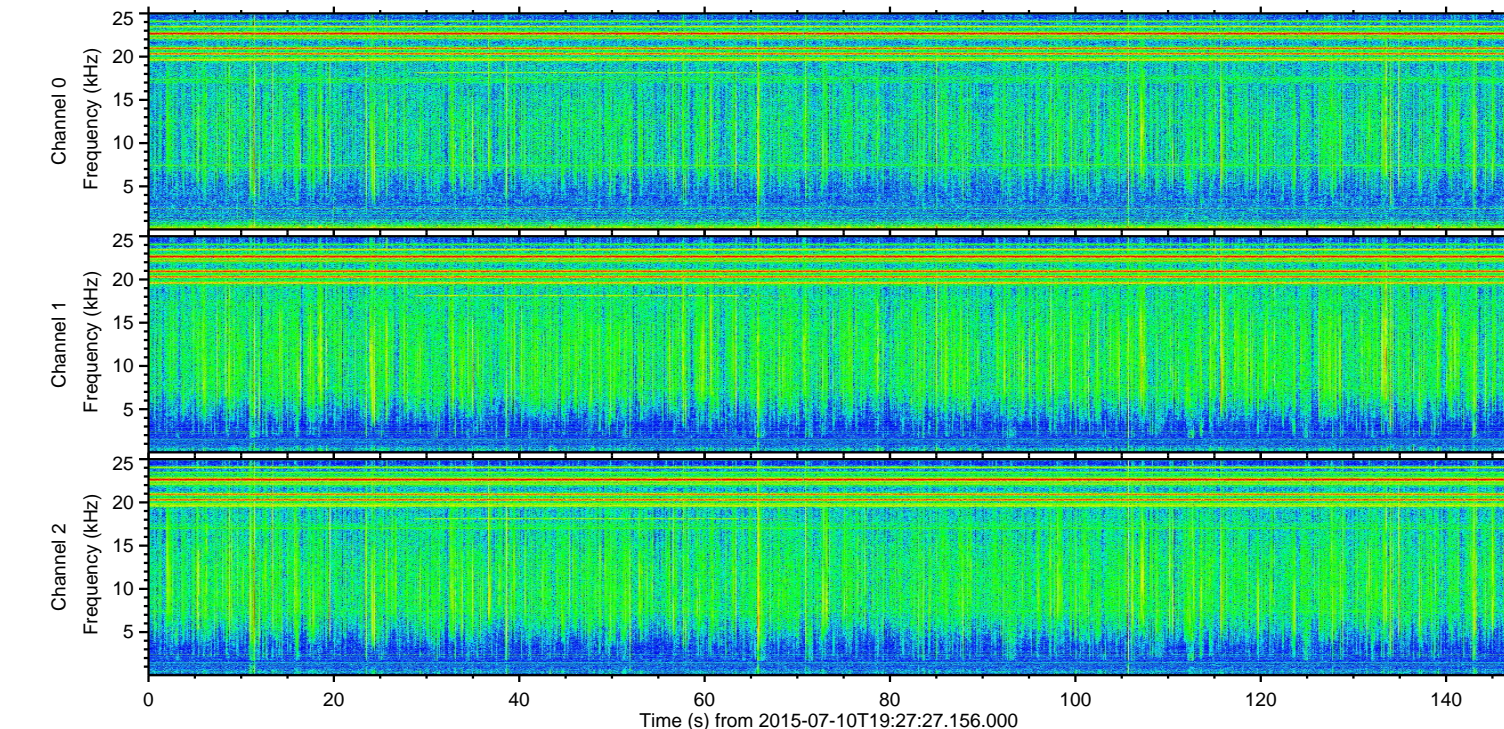
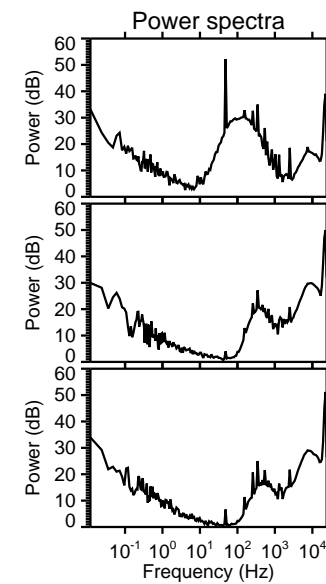
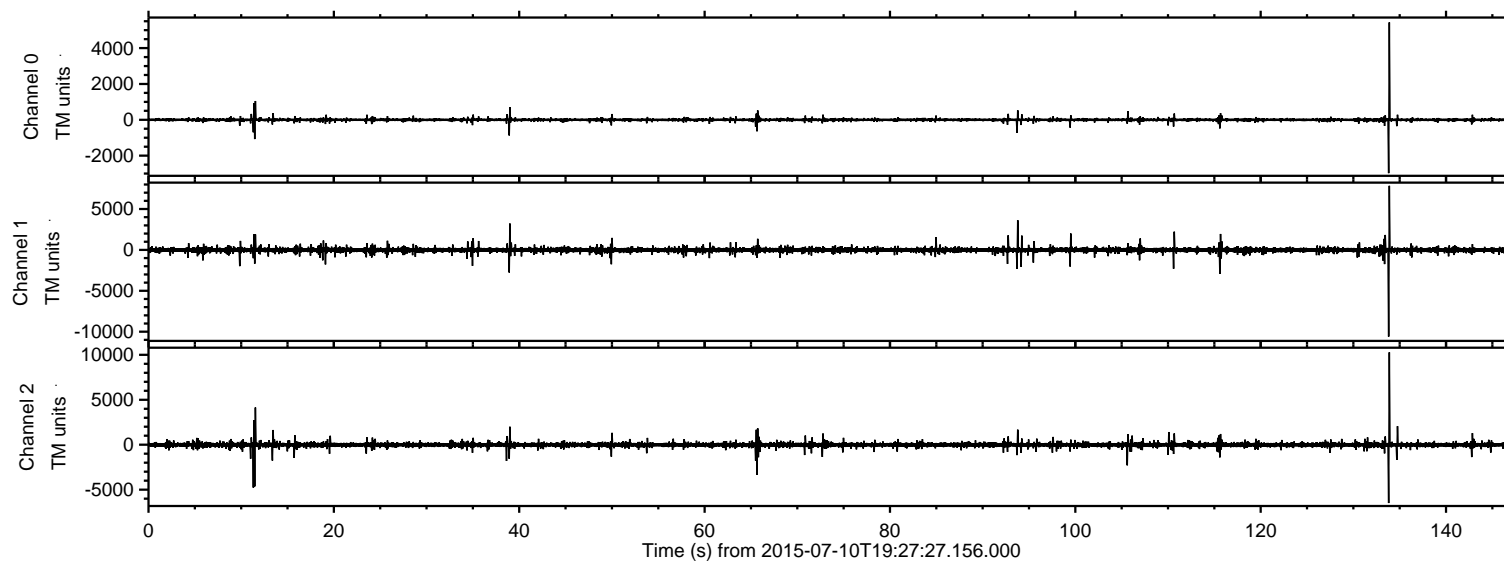


# ELMAVAN 3D WAVEFORMS (Measured data sampled at 50 kHz) 51000 packets of 144 samples from 2015-07-10T19:27:27.156.000.

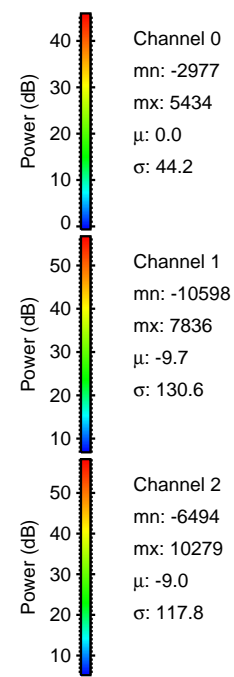
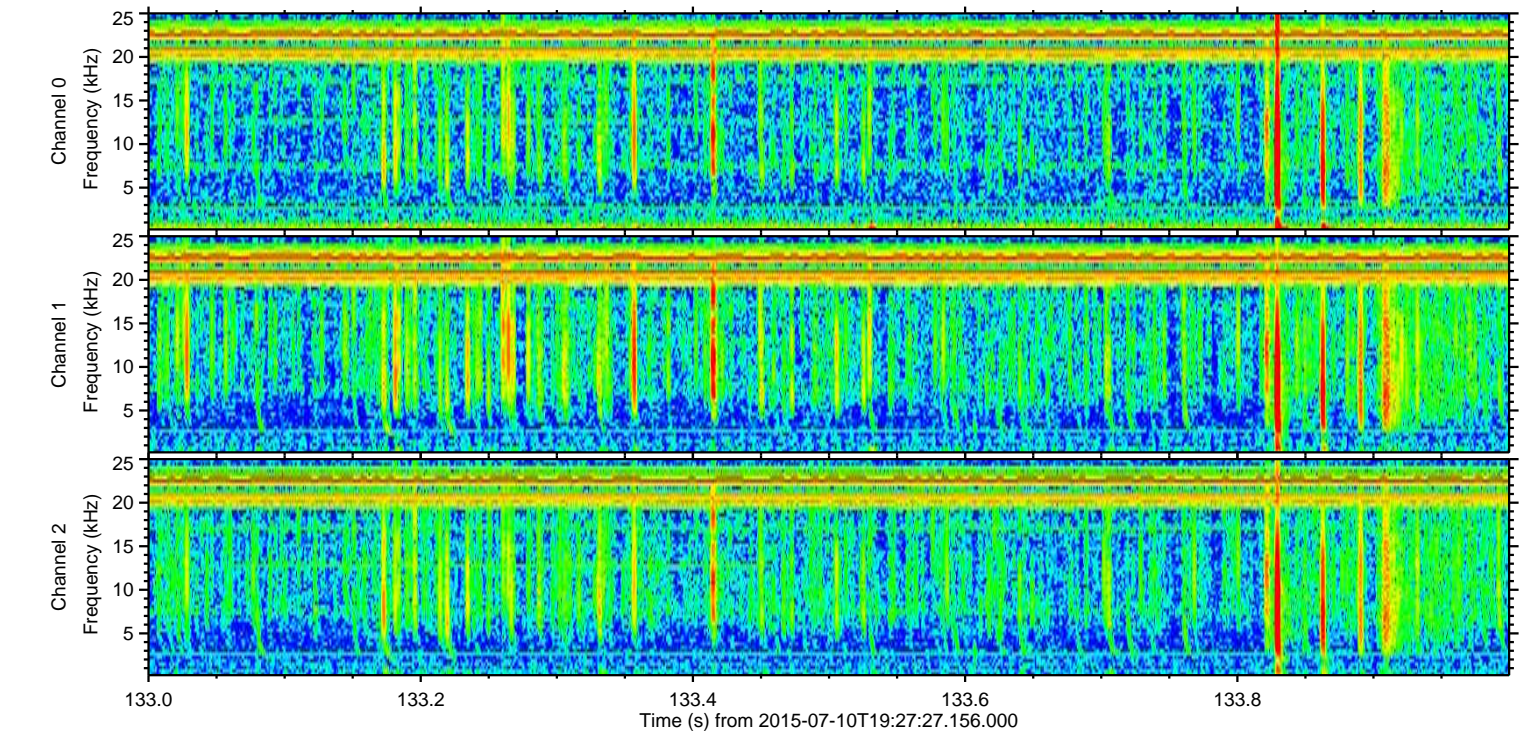
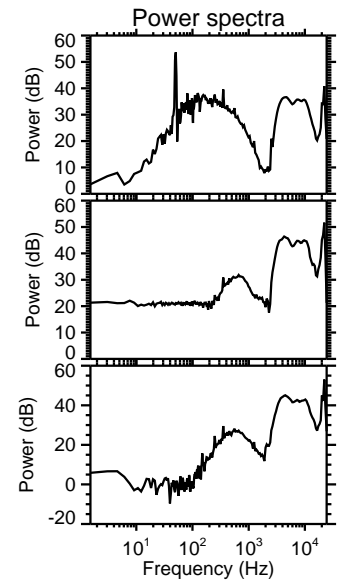
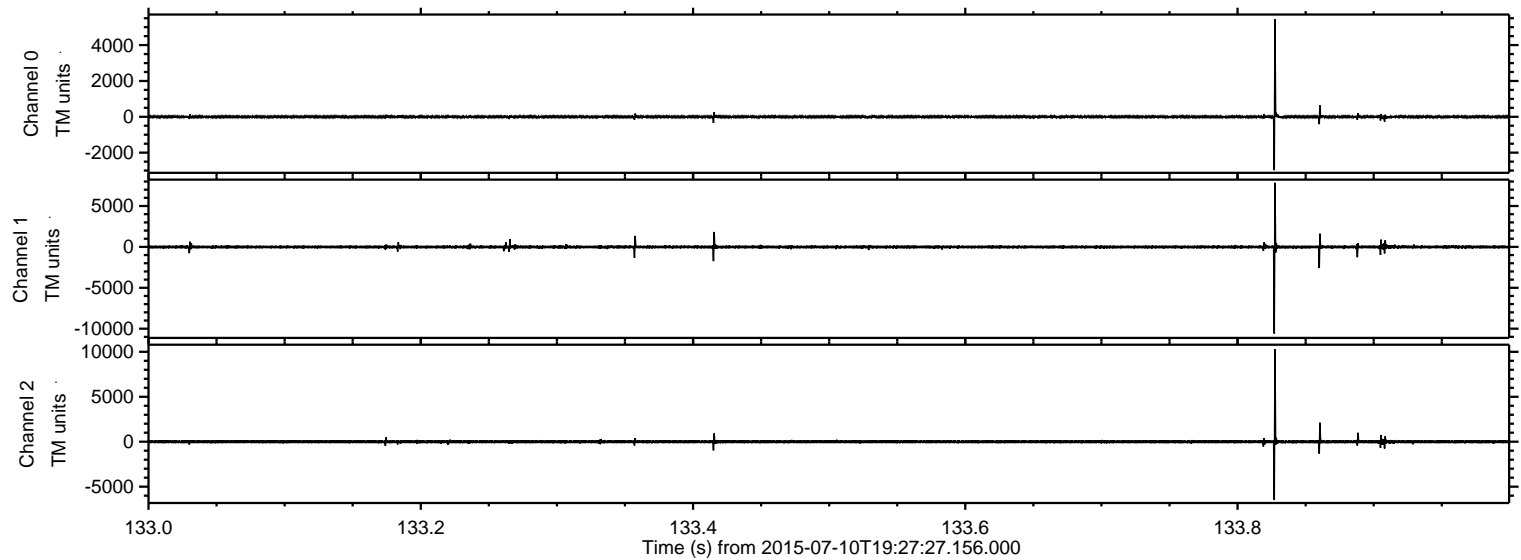
Processed Fri Jul 10 21:34:11 2015 by ELM ver.2012-10-06 from 001\_\_elm20150710\_192726\_\_dat00.bin





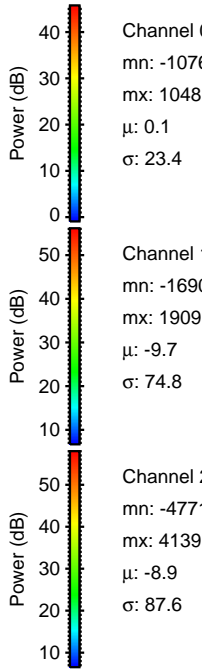
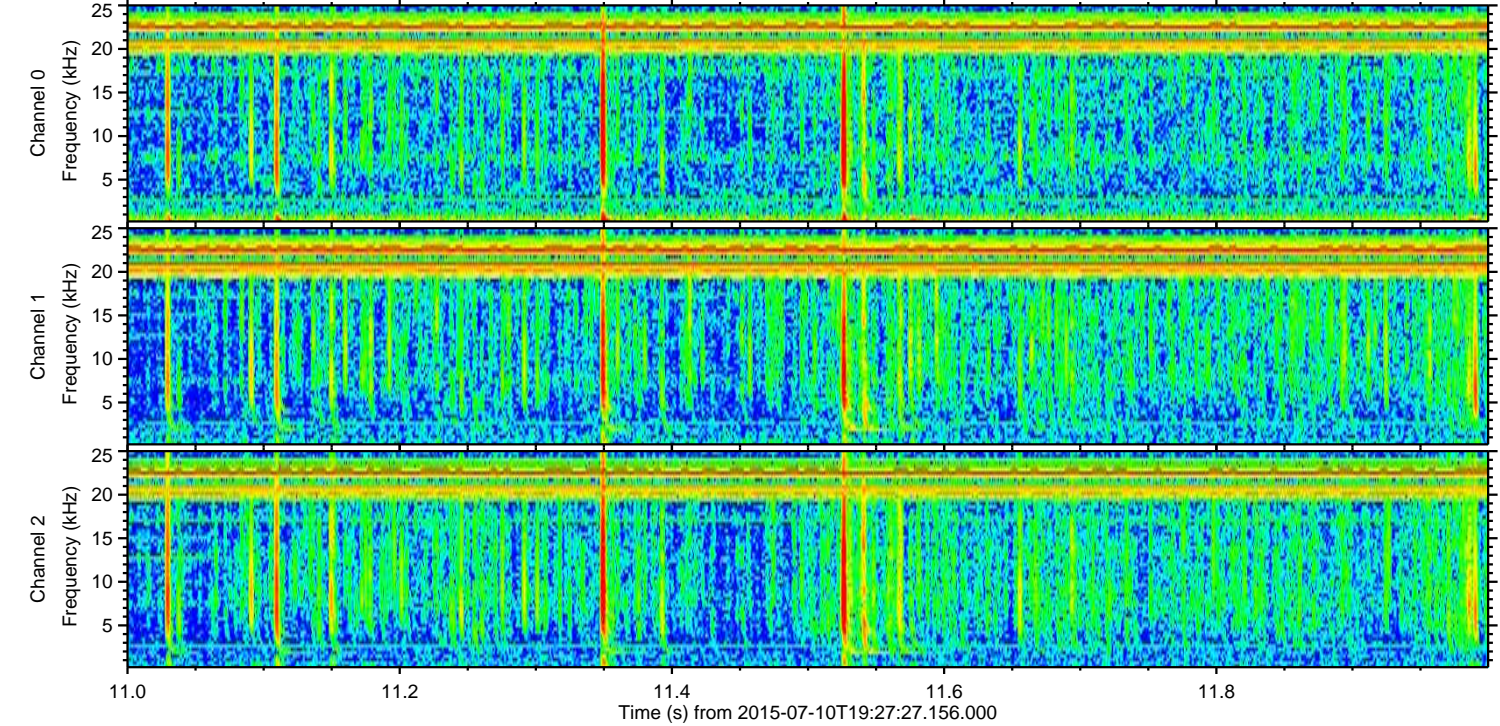
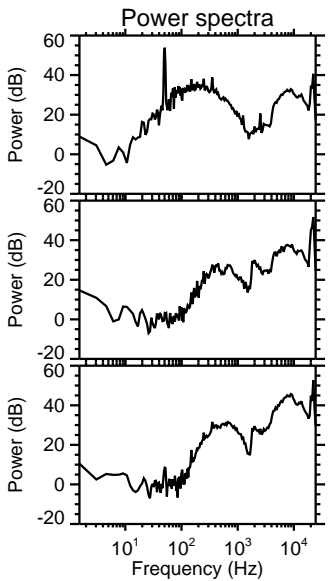
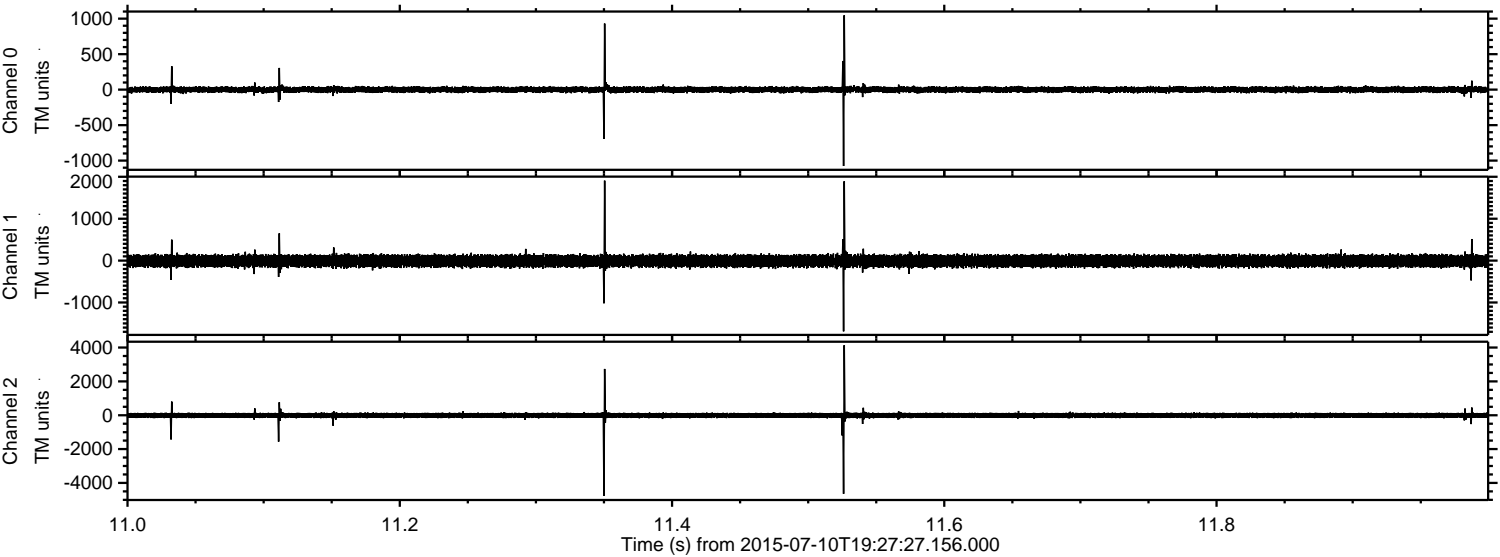
ELMAVAN 3D WAVEFORMS (Measured data sampled at 50 kHz) 51000 packets of 144 samples from 2015-07-10T19:27:27.156.000. Part 134/147

Processed Fri Jul 10 21:34:28 2015 by ELM ver.2012-10-06 from 001\_\_elm20150710\_192726\_\_dat00.bin



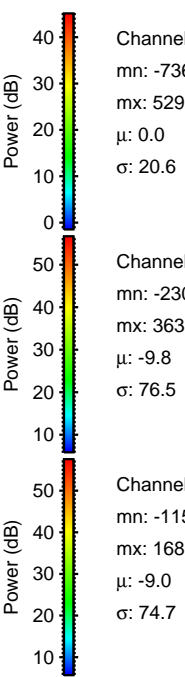
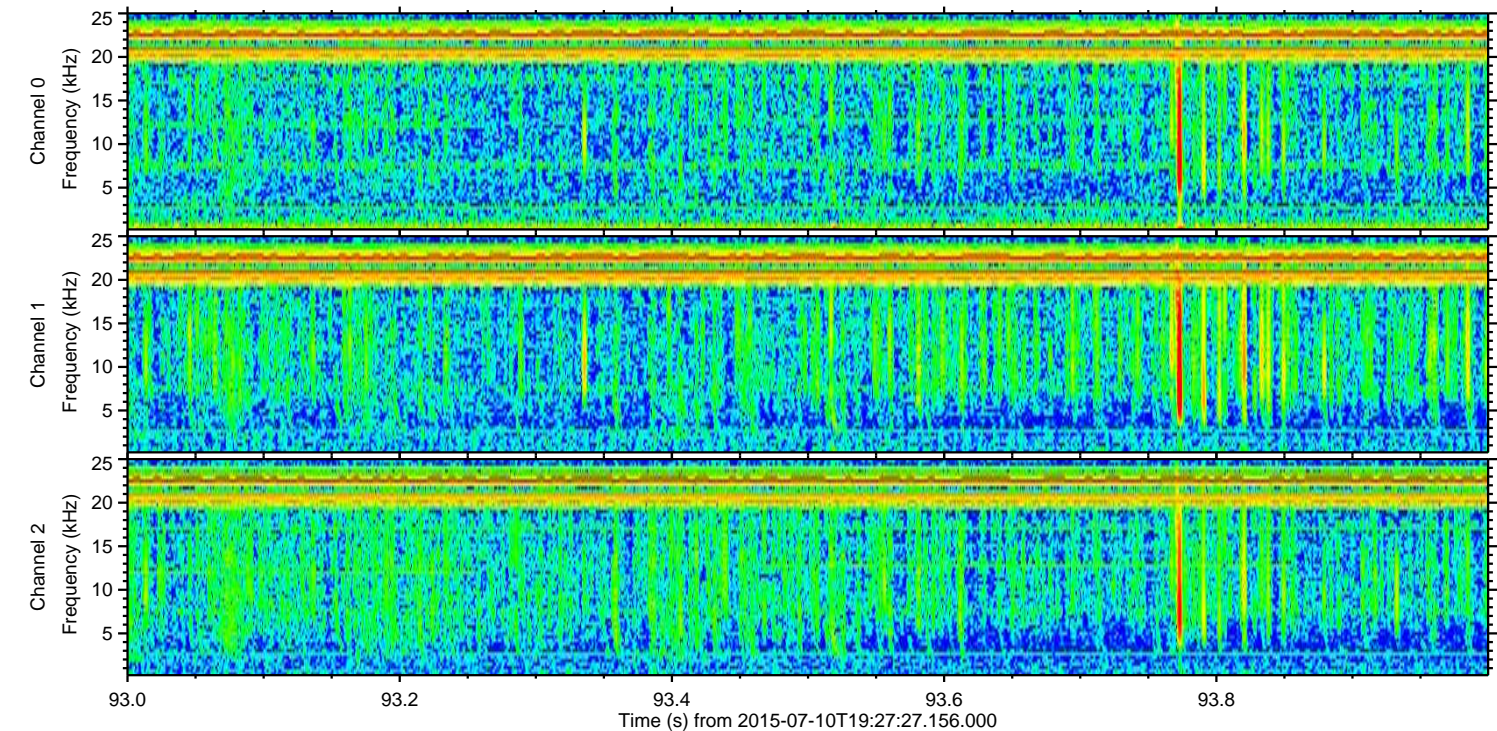
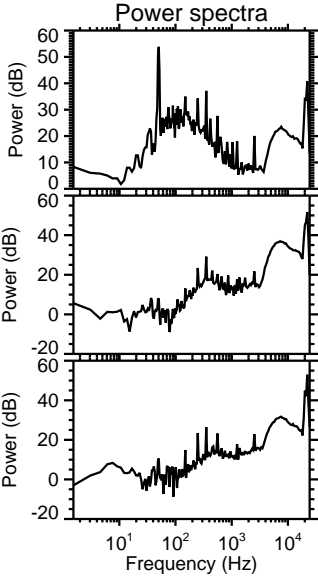
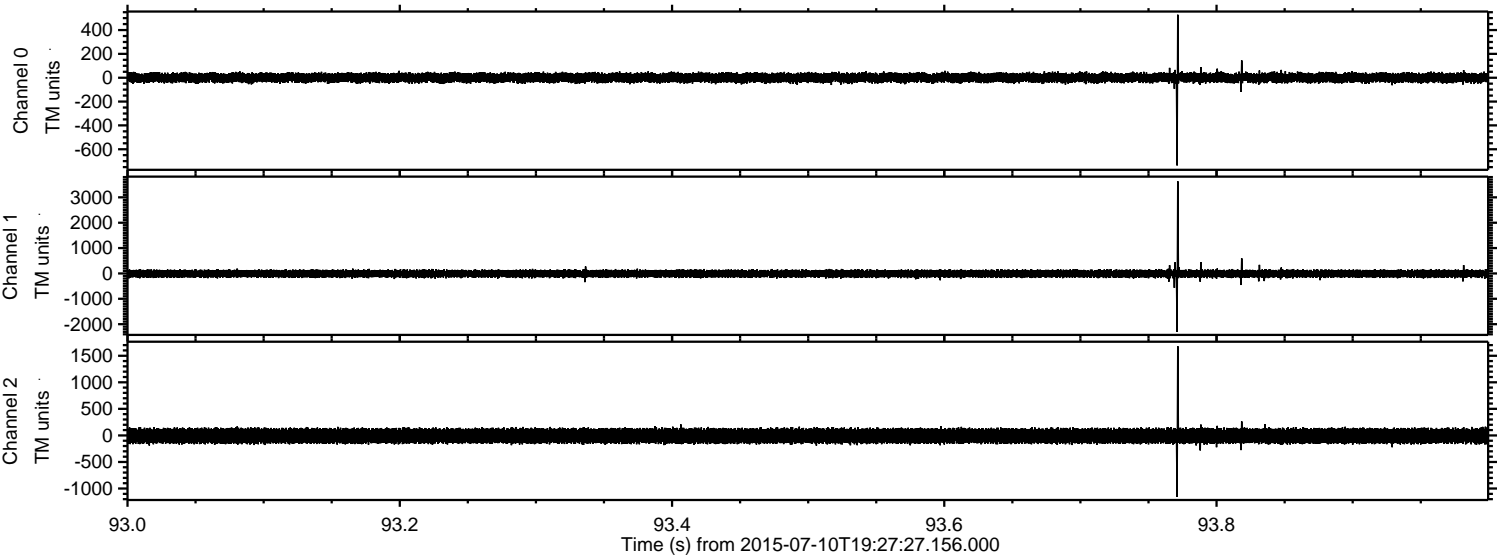


Processed Fri Jul 10 21:34:29 2015 by ELM ver.2012-10-06 from 001\_\_elm20150710\_192726\_\_dat00.bin





Processed Fri Jul 10 21:34:30 2015 by ELM ver.2012-10-06 from 001\_\_elm20150710\_192726\_\_dat00.bin



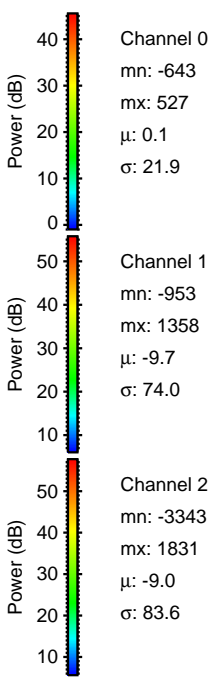
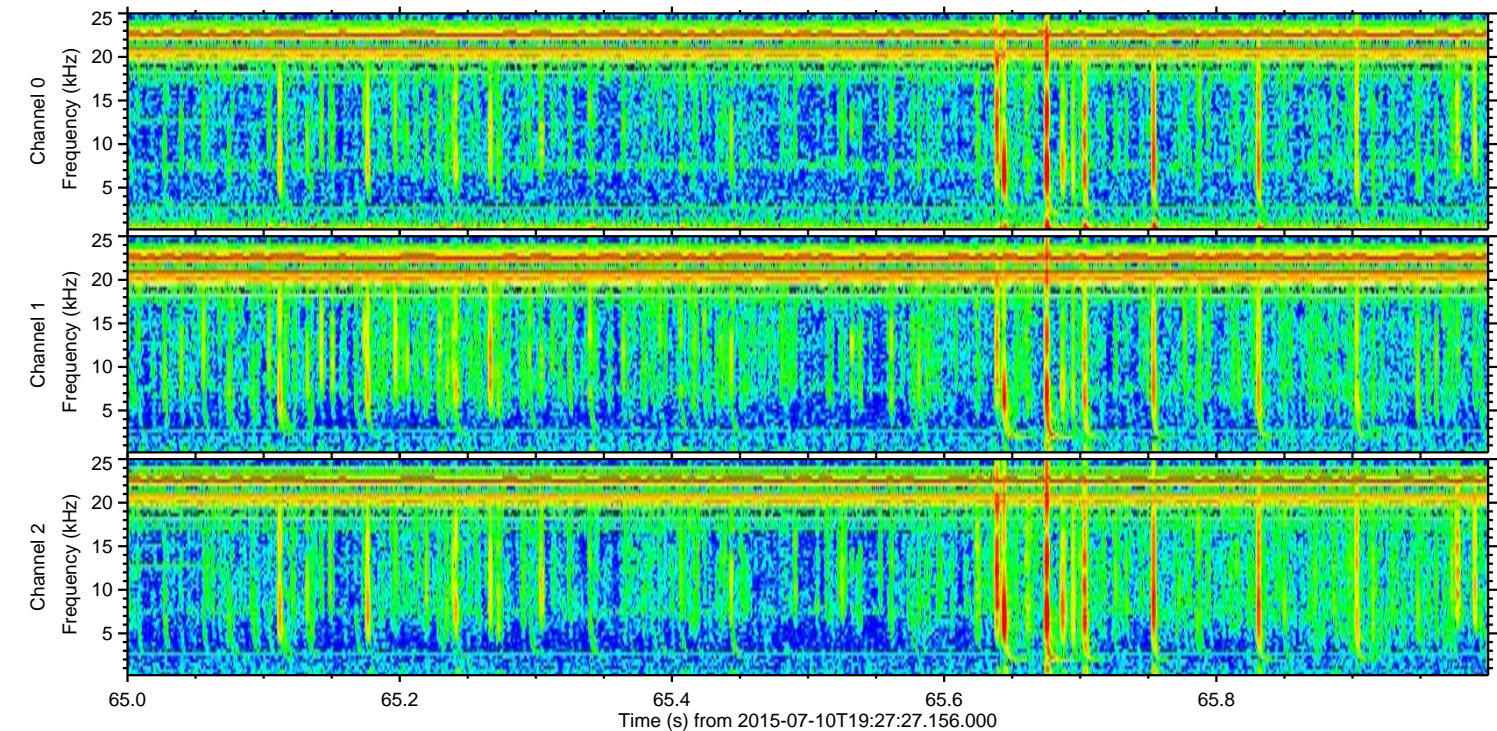
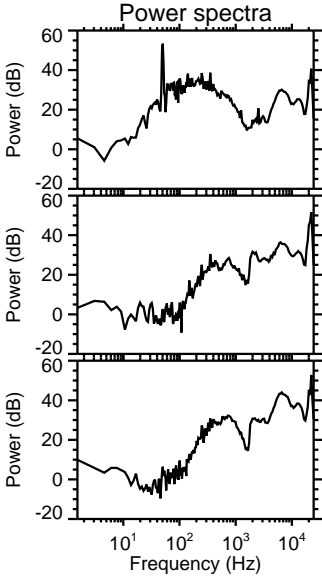
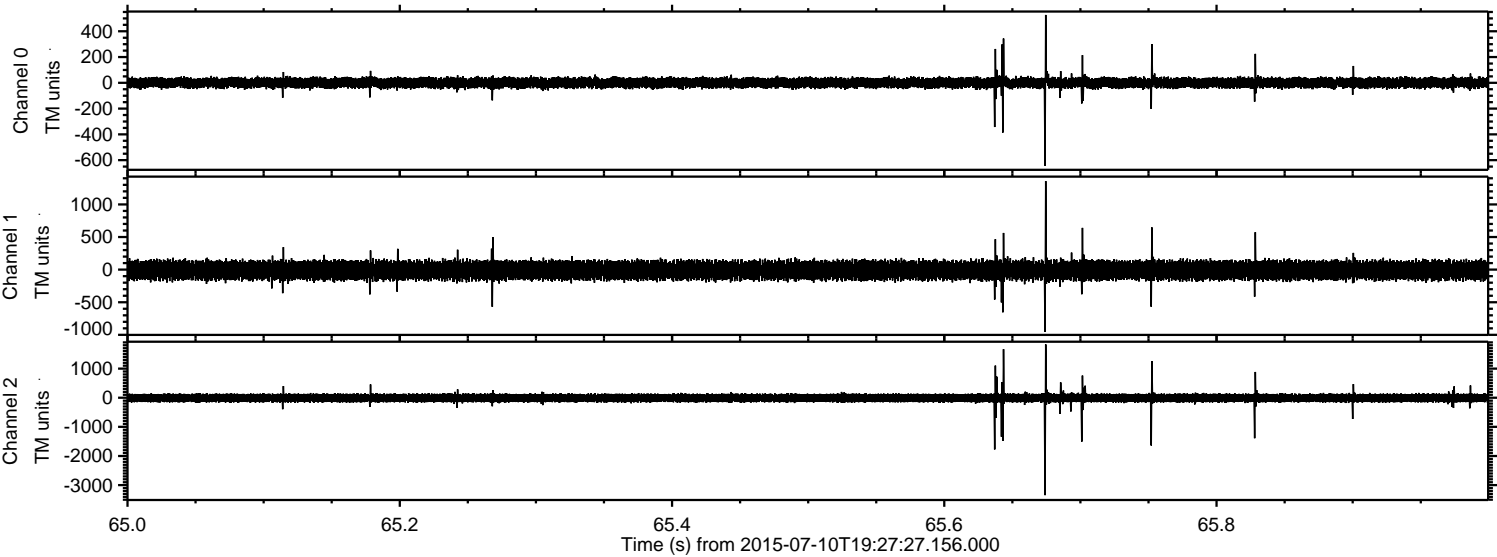
Channel 0  
mn: -736  
mx: 529  
 $\mu$ : 0.0  
 $\sigma$ : 20.6

Channel 1  
mn: -2308  
mx: 3635  
 $\mu$ : -9.8  
 $\sigma$ : 76.5

Channel 2  
mn: -1158  
mx: 1680  
 $\mu$ : -9.0  
 $\sigma$ : 74.7



Processed Fri Jul 10 21:34:31 2015 by ELM ver.2012-10-06 from 001\_\_elm20150710\_192726\_\_dat00.bin



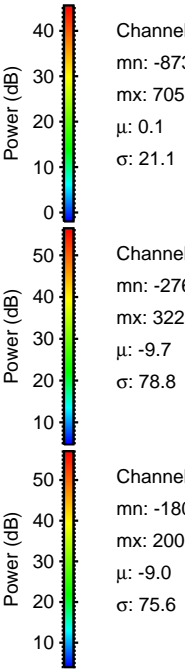
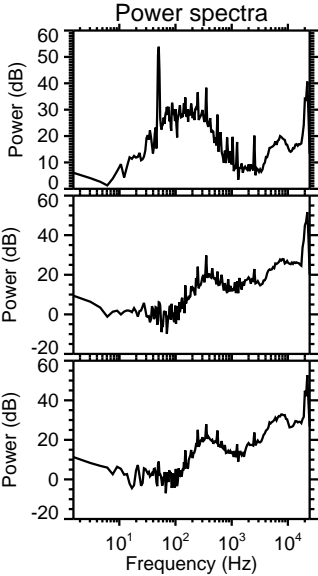
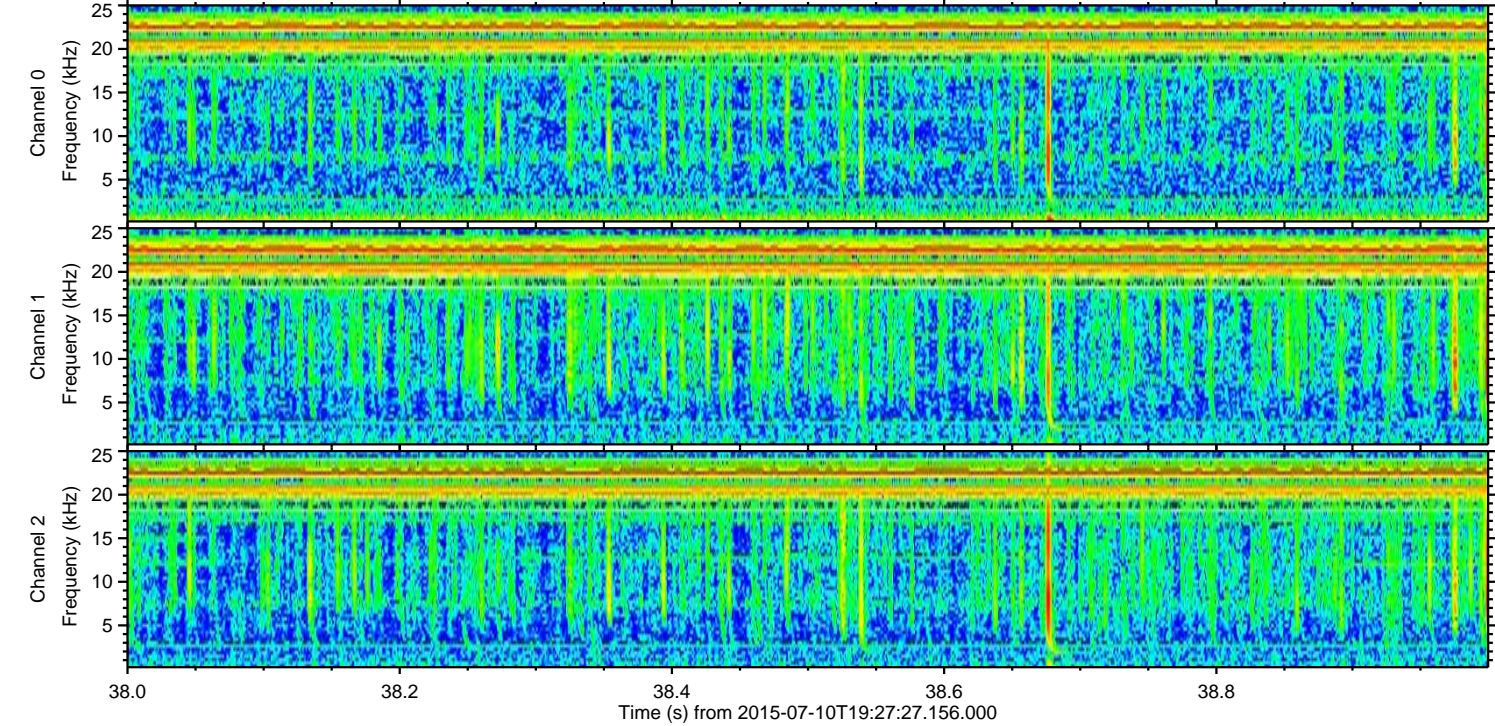
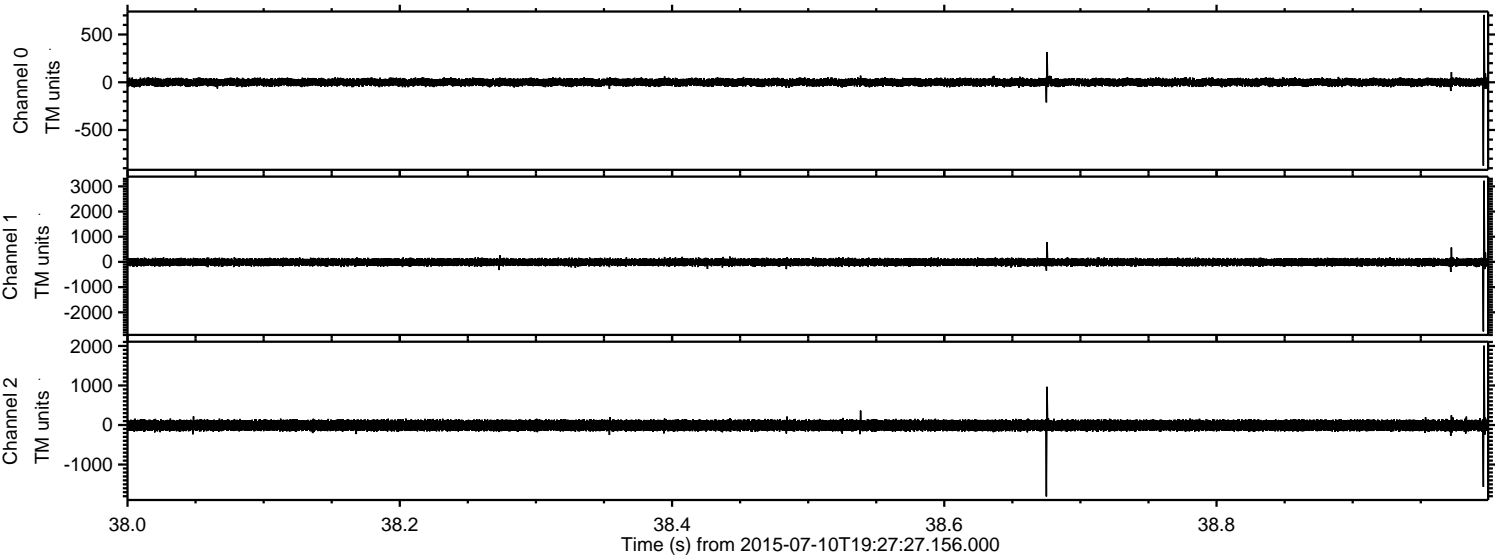
Channel 0  
mn: -643  
mx: 527  
 $\mu$ : 0.1  
 $\sigma$ : 21.9

Channel 1  
mn: -953  
mx: 1358  
 $\mu$ : -9.7  
 $\sigma$ : 74.0

Channel 2  
mn: -3343  
mx: 1831  
 $\mu$ : -9.0  
 $\sigma$ : 83.6



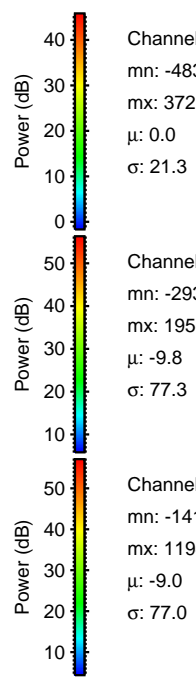
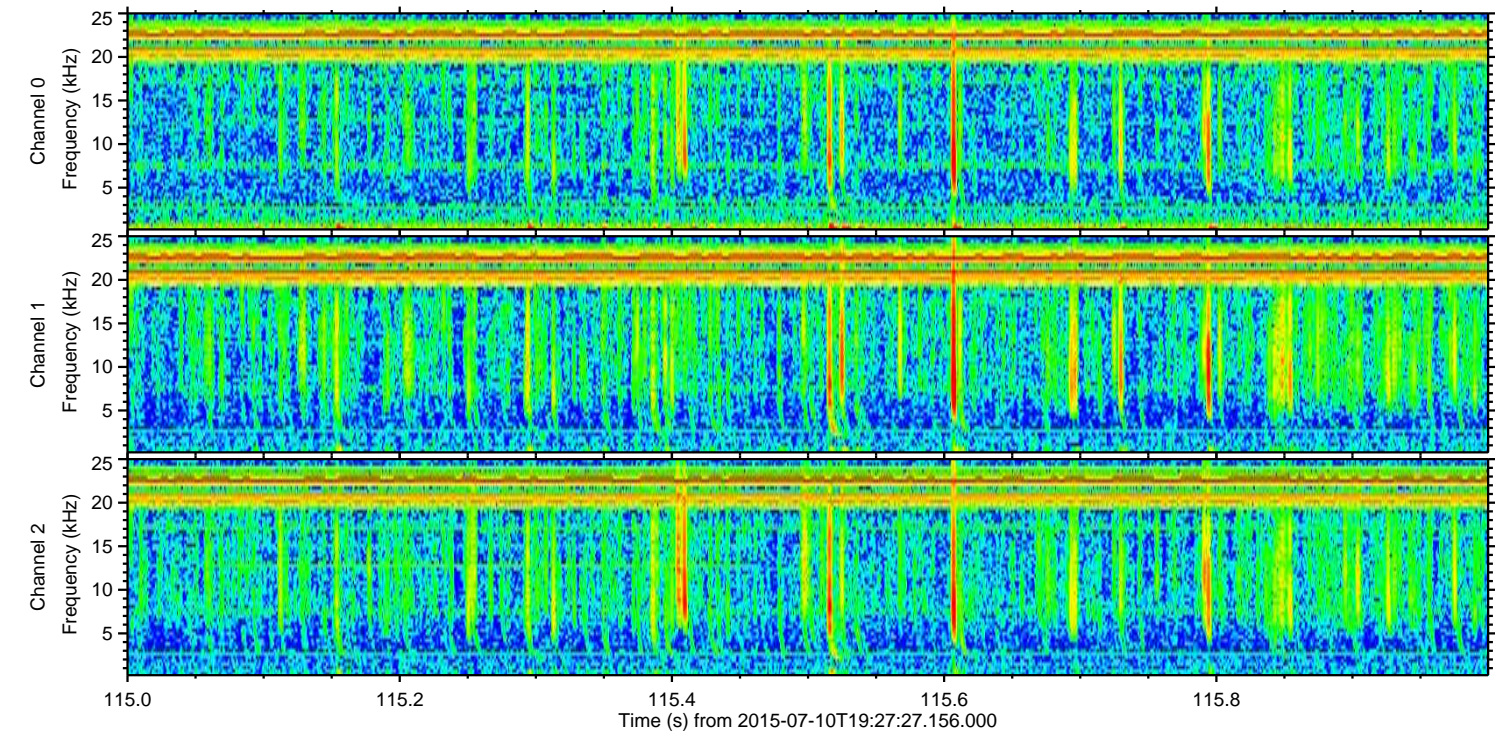
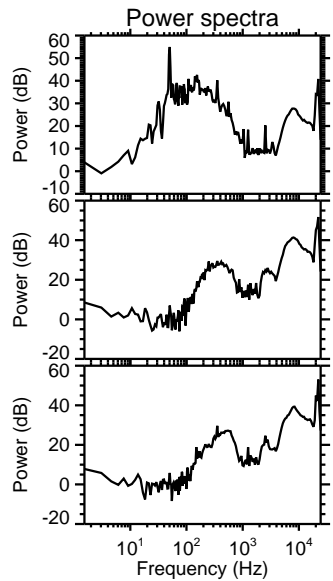
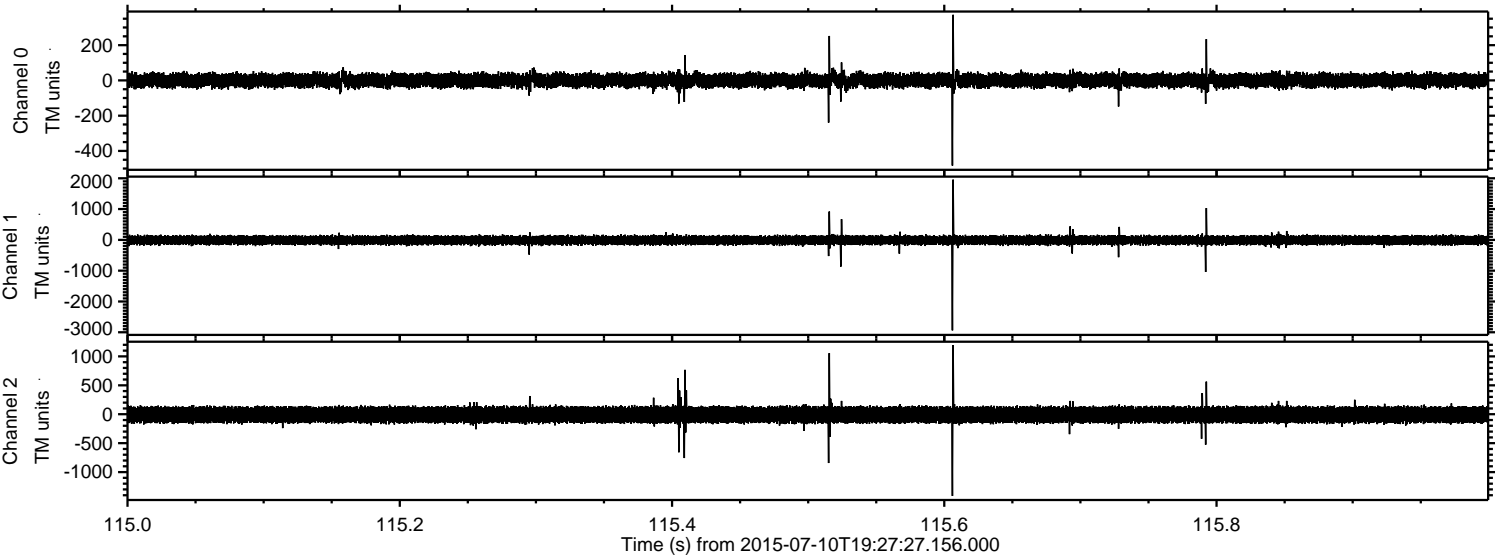
Processed Fri Jul 10 21:34:32 2015 by ELM ver.2012-10-06 from 001\_\_elm20150710\_192726\_\_dat00.bin





ELMAVAN 3D WAVEFORMS (Measured data sampled at 50 kHz) 51000 packets of 144 samples from 2015-07-10T19:27:27.156.000. Part 116/147

Processed Fri Jul 10 21:34:33 2015 by ELM ver.2012-10-06 from 001\_\_elm20150710\_192726\_\_dat00.bin



Channel 0  
mn: -483  
mx: 372  
 $\mu$ : 0.0  
 $\sigma$ : 21.3

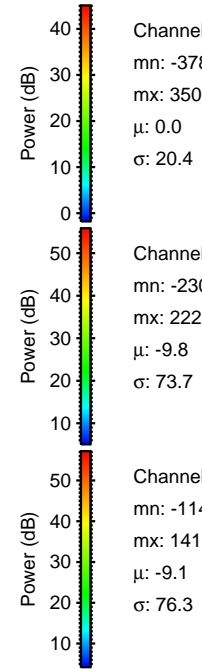
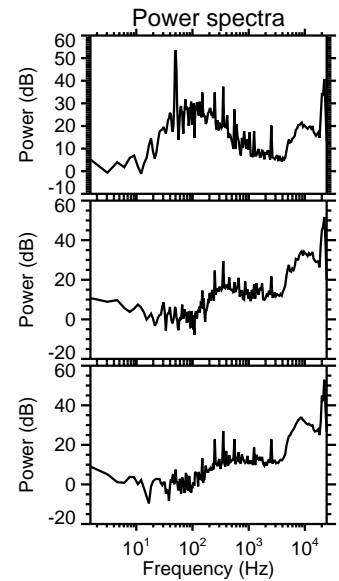
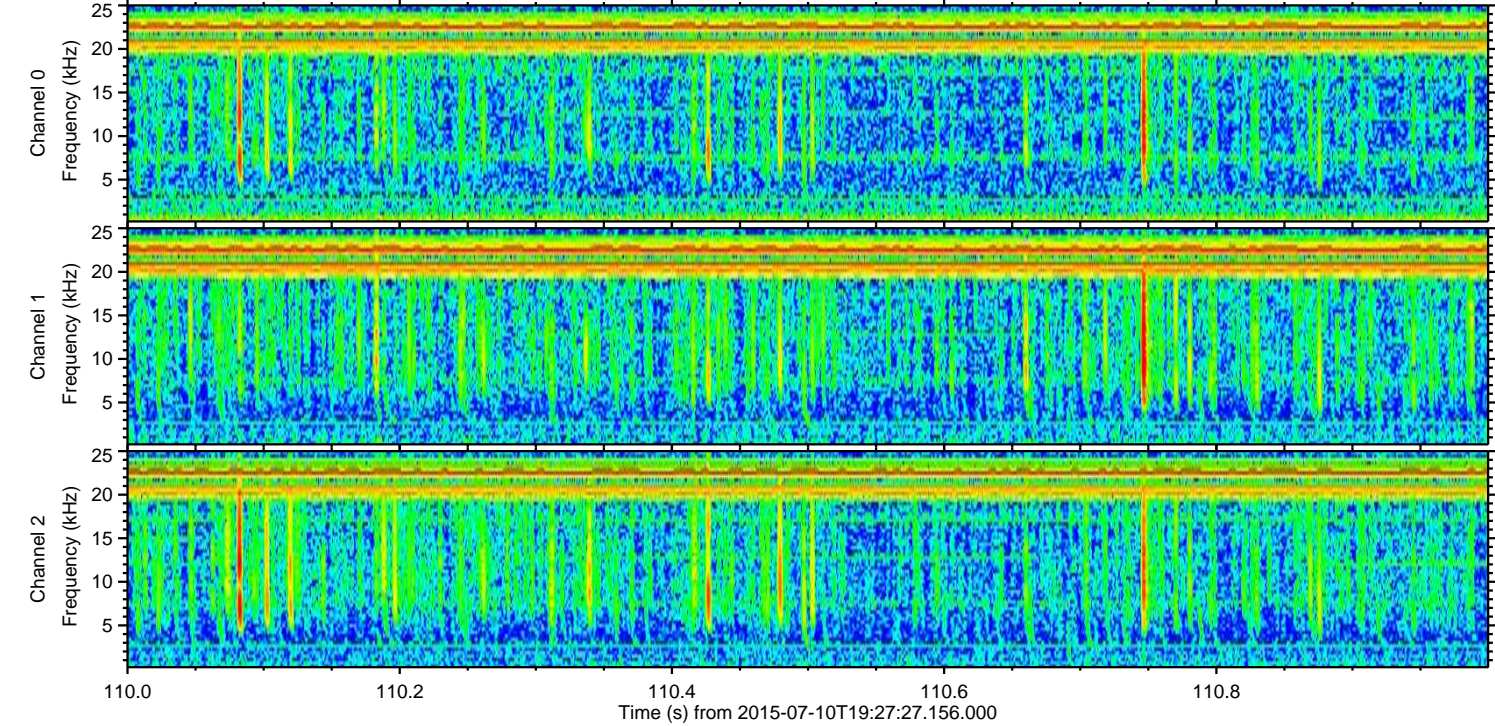
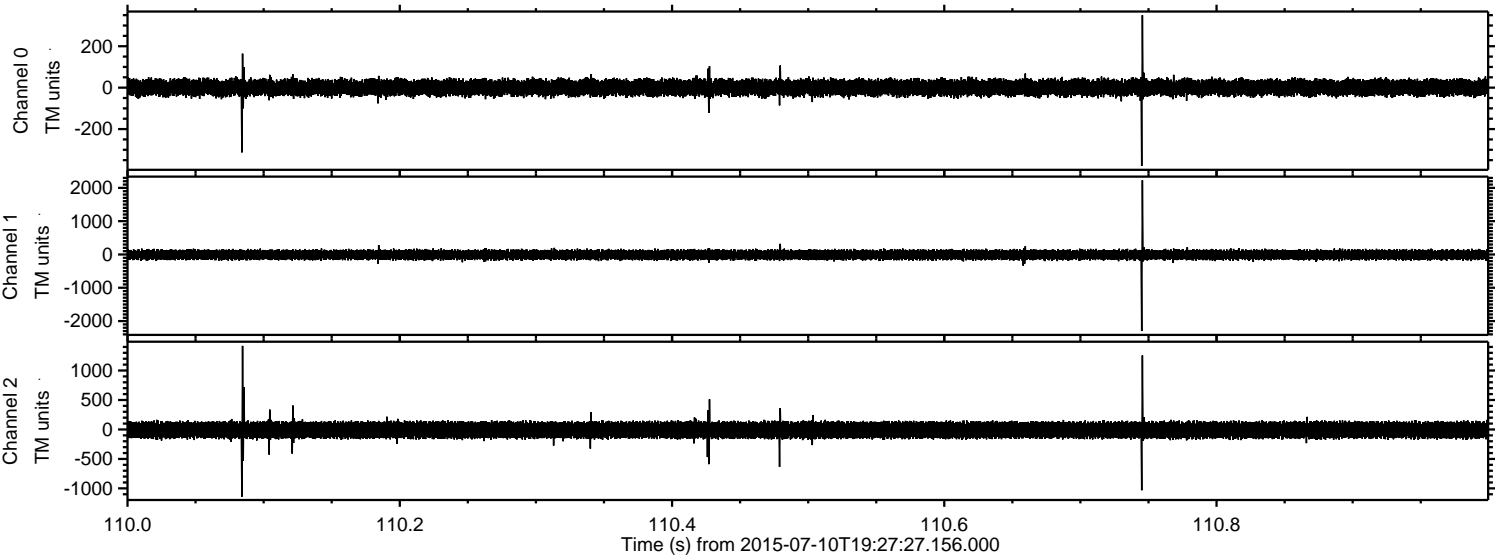
Channel 1  
mn: -2938  
mx: 1956  
 $\mu$ : -9.8  
 $\sigma$ : 77.3

Channel 2  
mn: -1412  
mx: 1194  
 $\mu$ : -9.0  
 $\sigma$ : 77.0



ELMAVAN 3D WAVEFORMS (Measured data sampled at 50 kHz) 51000 packets of 144 samples from 2015-07-10T19:27:27.156.000. Part 111/147

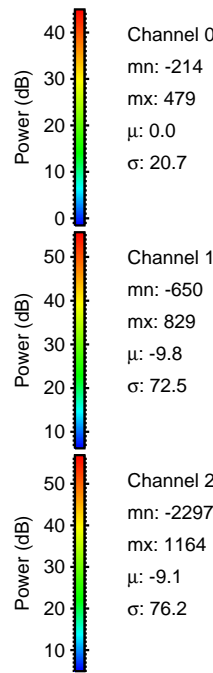
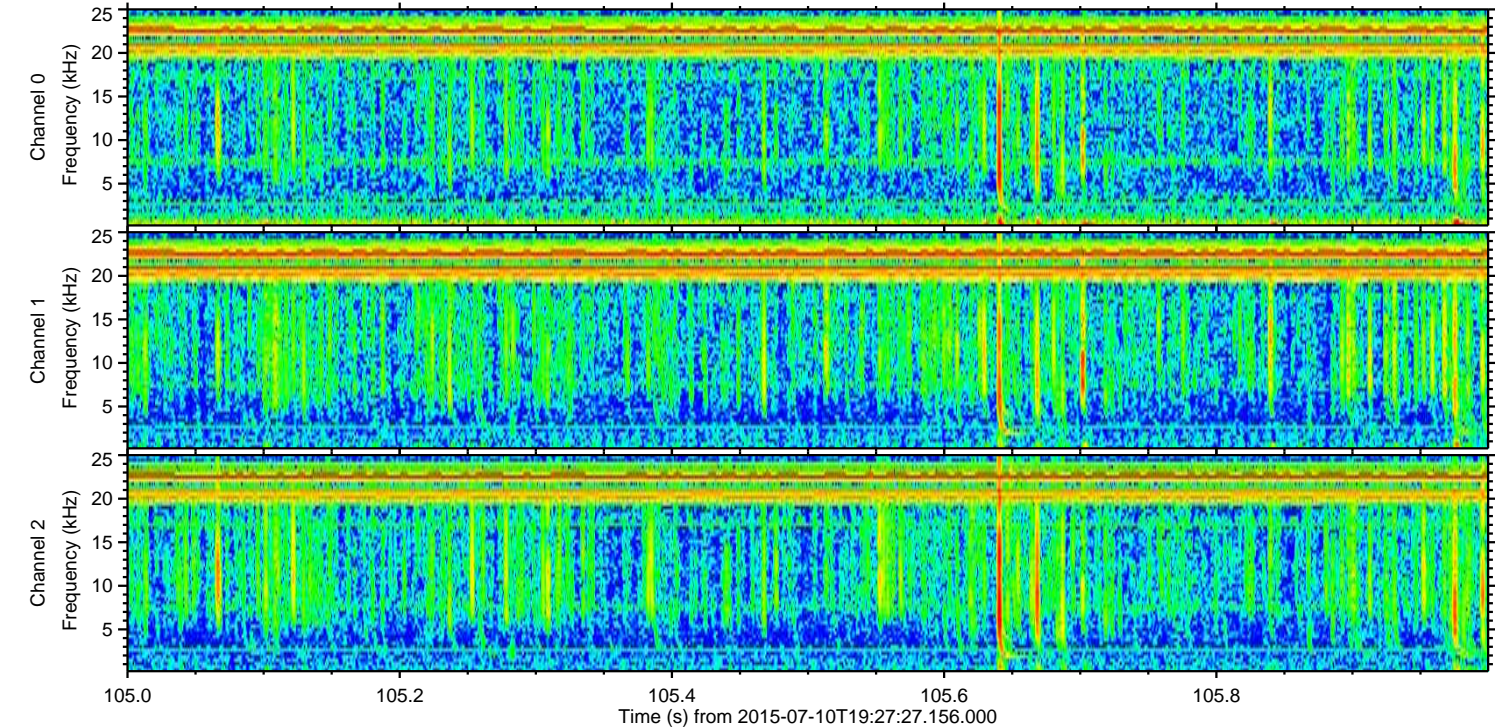
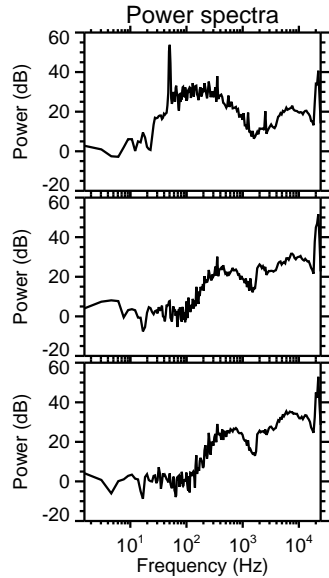
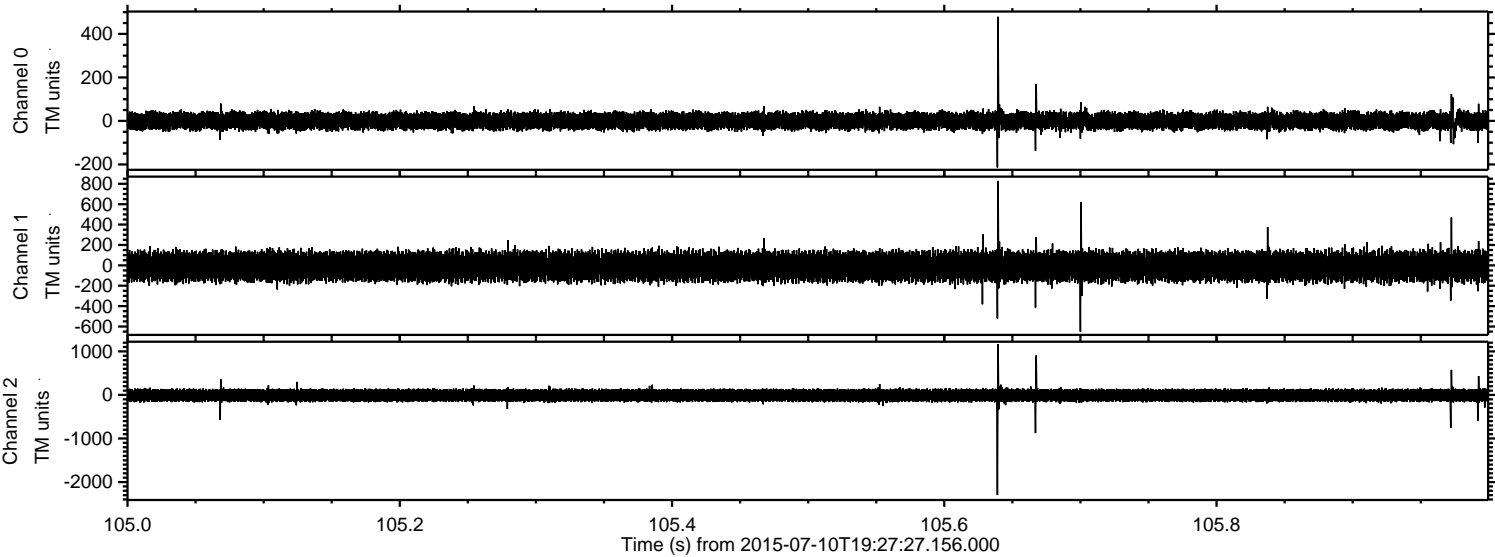
Processed Fri Jul 10 21:34:34 2015 by ELM ver.2012-10-06 from 001\_\_elm20150710\_192726\_\_dat00.bin





ELMAVAN 3D WAVEFORMS (Measured data sampled at 50 kHz) 51000 packets of 144 samples from 2015-07-10T19:27:27.156.000. Part 106/147

Processed Fri Jul 10 21:34:35 2015 by ELM ver.2012-10-06 from 001\_\_elm20150710\_192726\_\_dat00.bin



Channel 0  
mn: -214  
mx: 479  
 $\mu$ : 0.0  
 $\sigma$ : 20.7

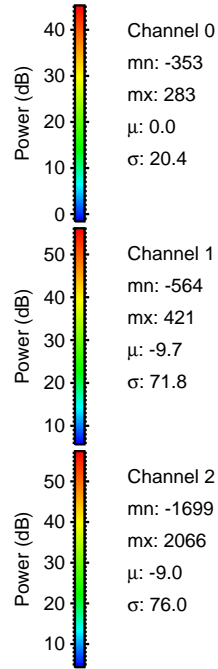
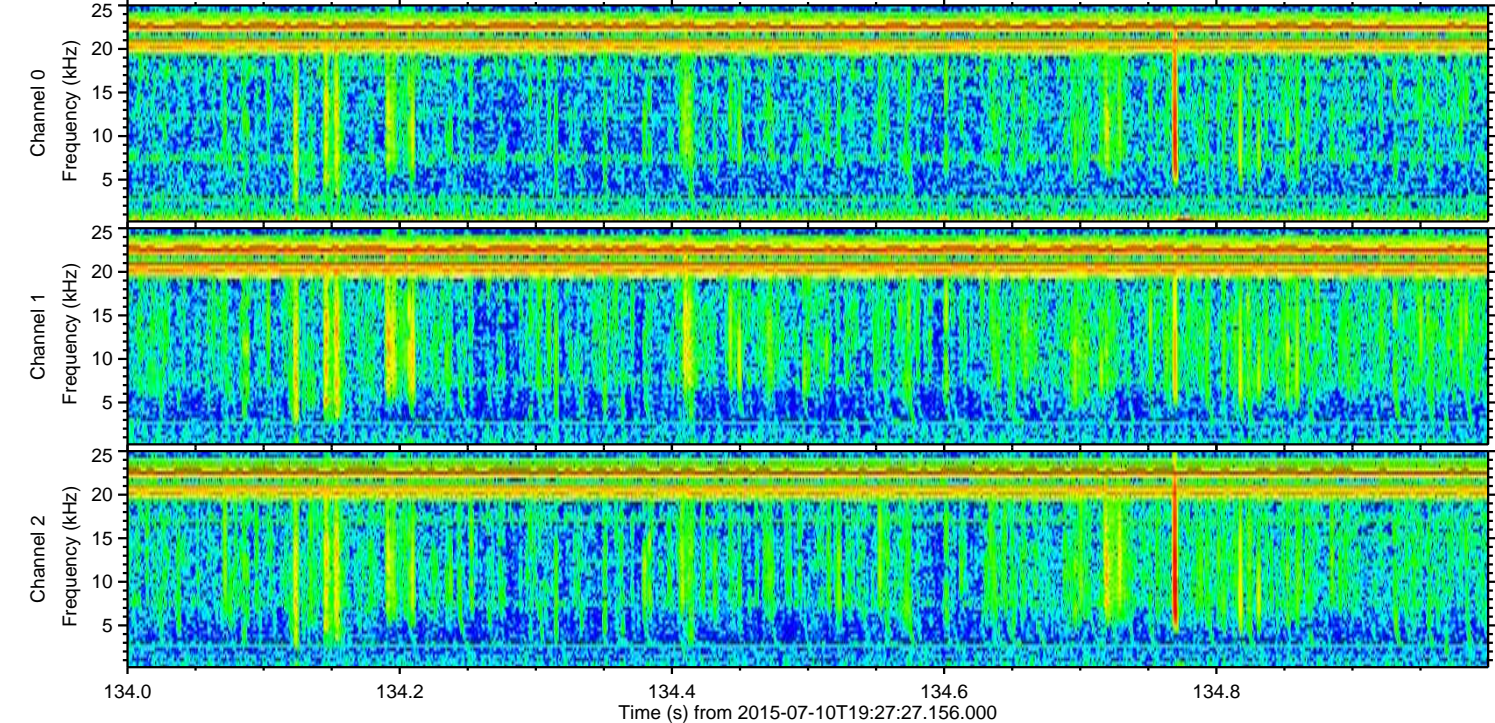
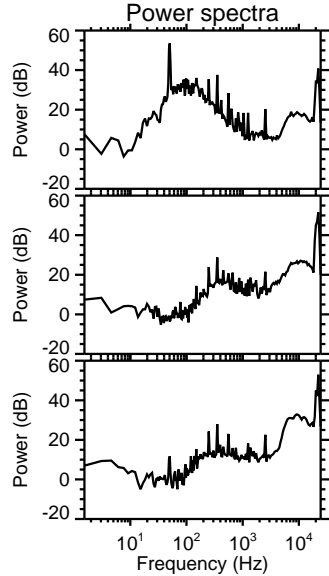
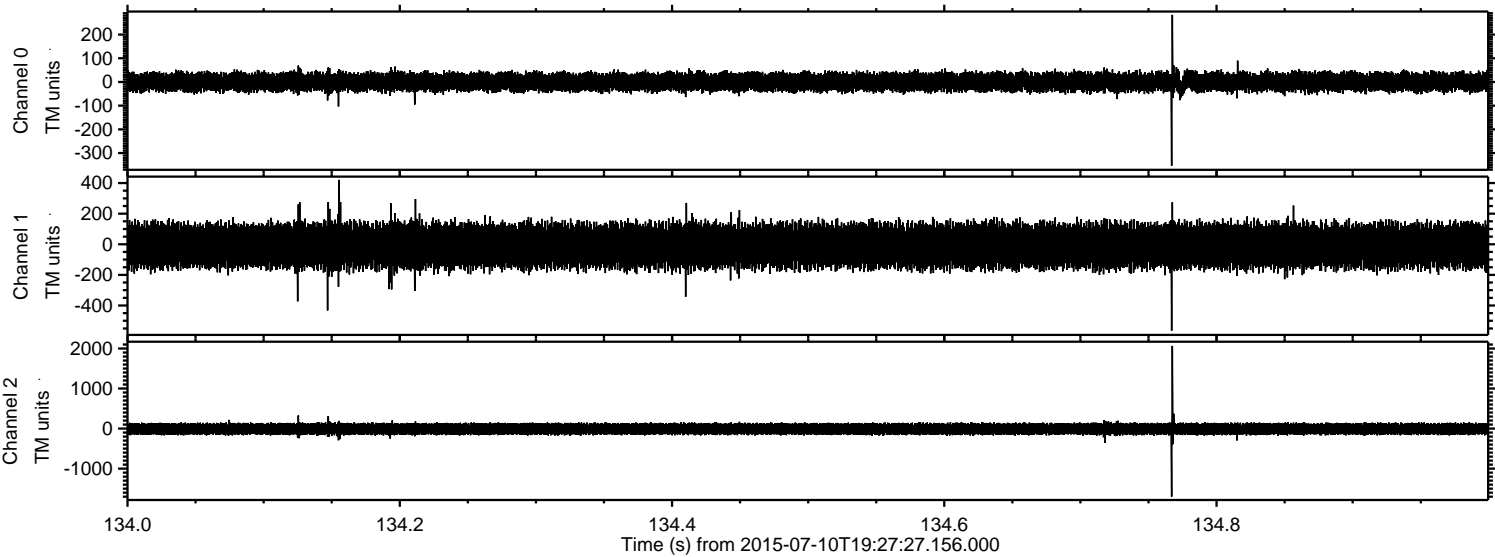
Channel 1  
mn: -650  
mx: 829  
 $\mu$ : -9.8  
 $\sigma$ : 72.5

Channel 2  
mn: -2297  
mx: 1164  
 $\mu$ : -9.1  
 $\sigma$ : 76.2



ELMAVAN 3D WAVEFORMS (Measured data sampled at 50 kHz) 51000 packets of 144 samples from 2015-07-10T19:27:27.156.000. Part 135/147

Processed Fri Jul 10 21:34:36 2015 by ELM ver.2012-10-06 from 001\_\_elm20150710\_192726\_\_dat00.bin





ELMAVAN 3D WAVEFORMS (Measured data sampled at 50 kHz) 51000 packets of 144 samples from 2015-07-10T19:27:27.156.000. Part 130/147

