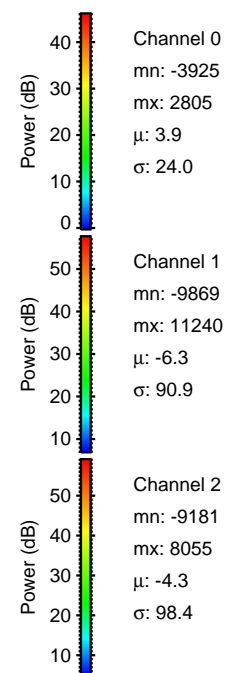
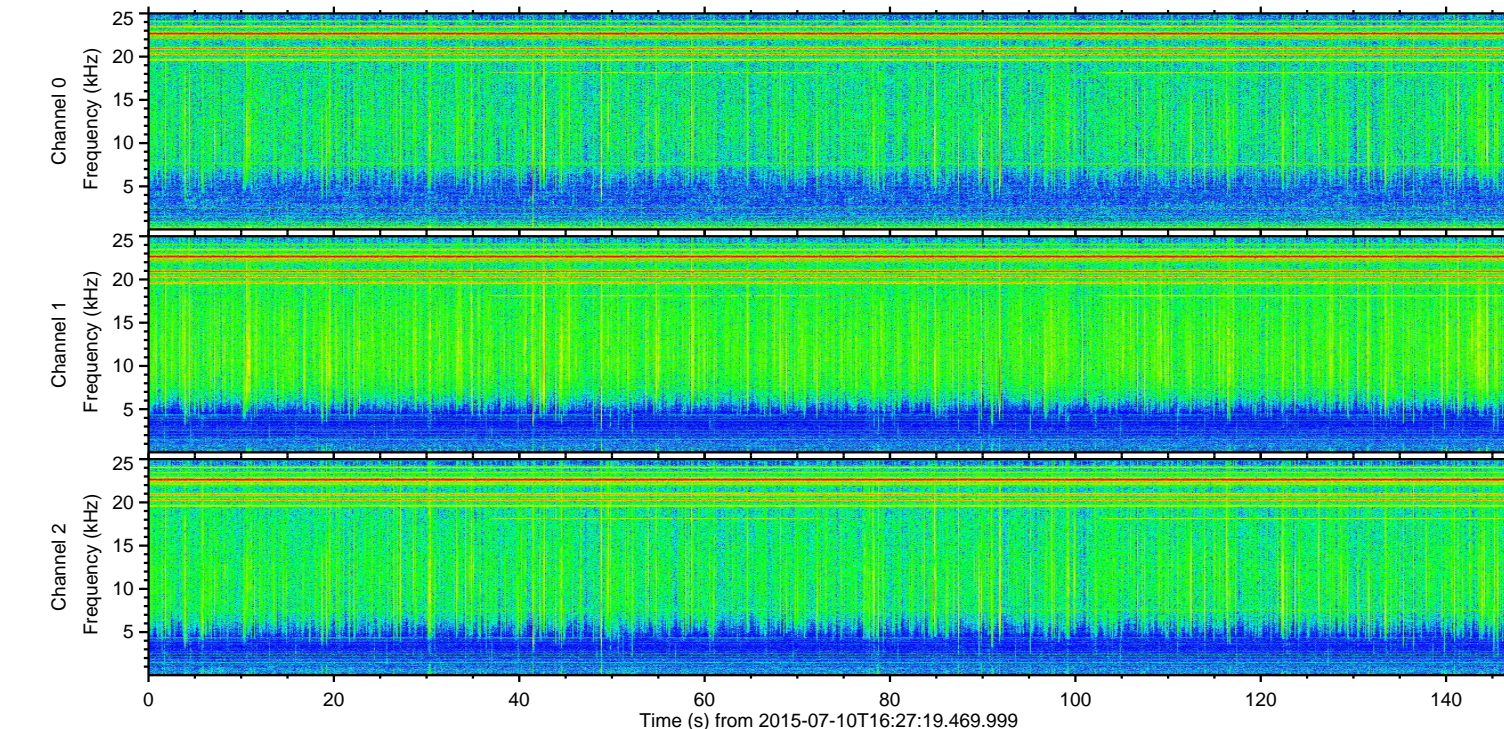
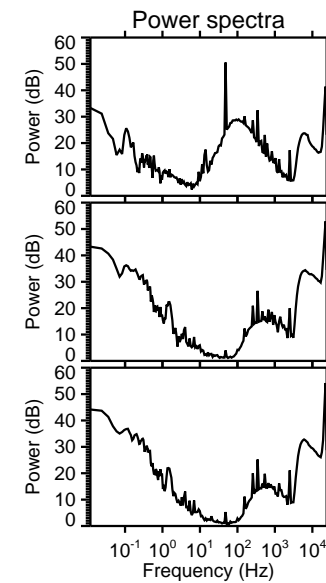
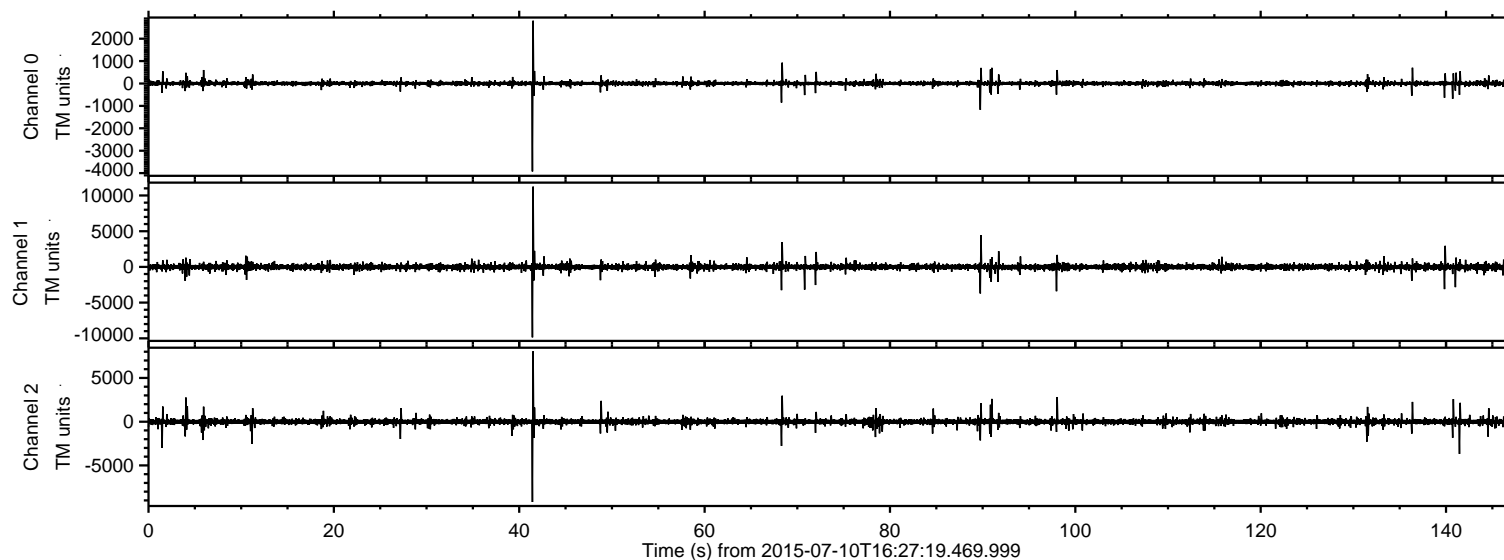


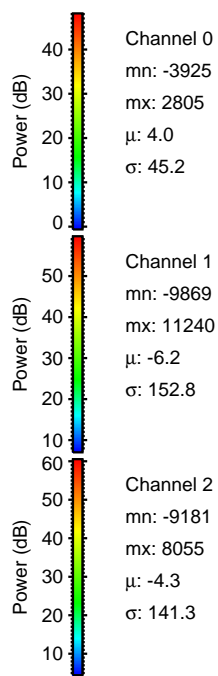
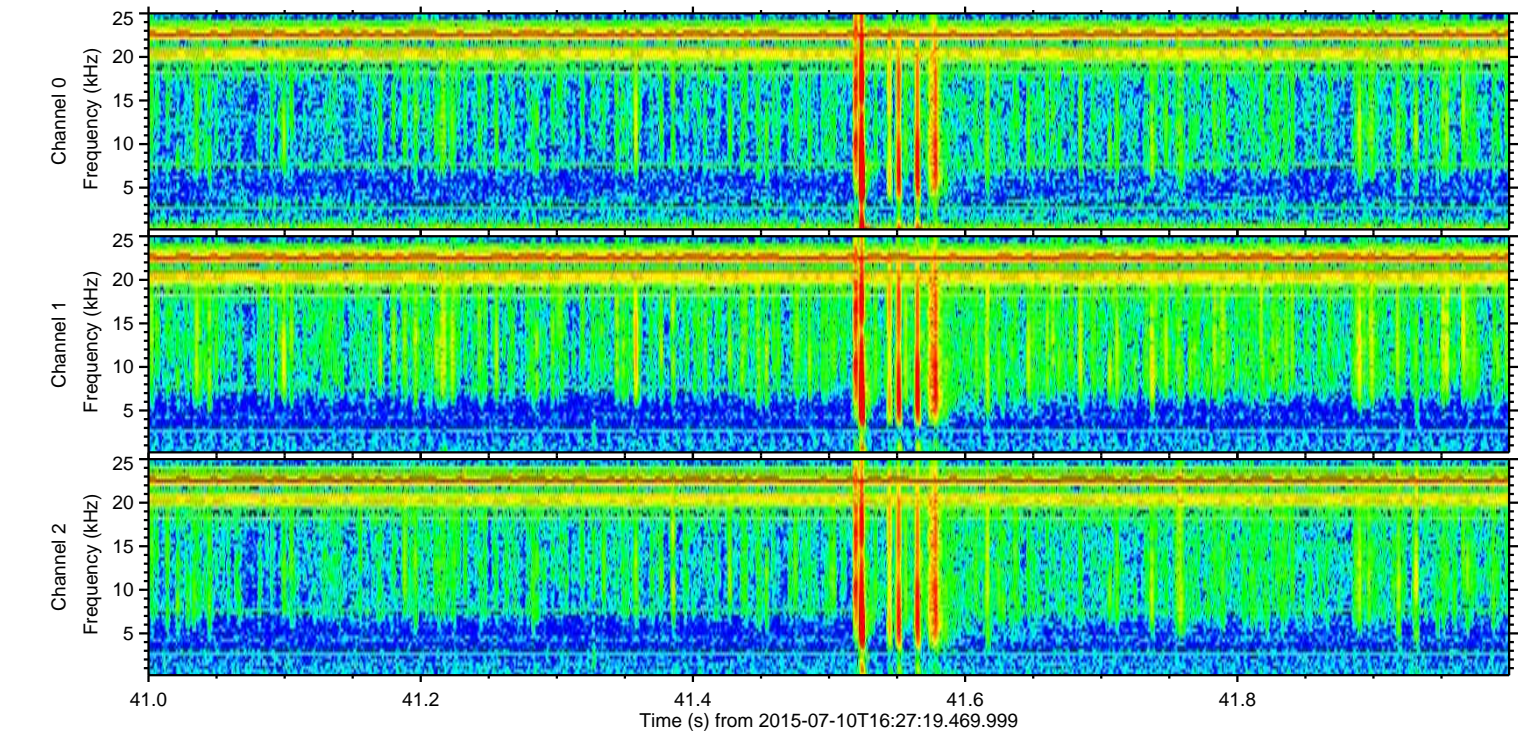
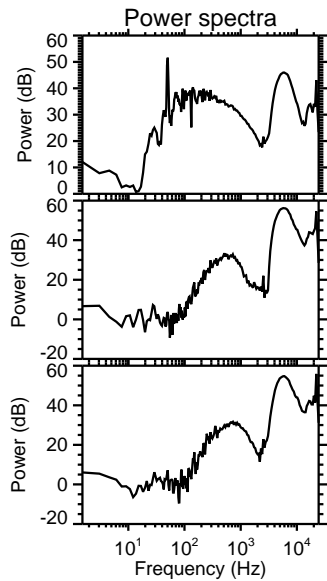
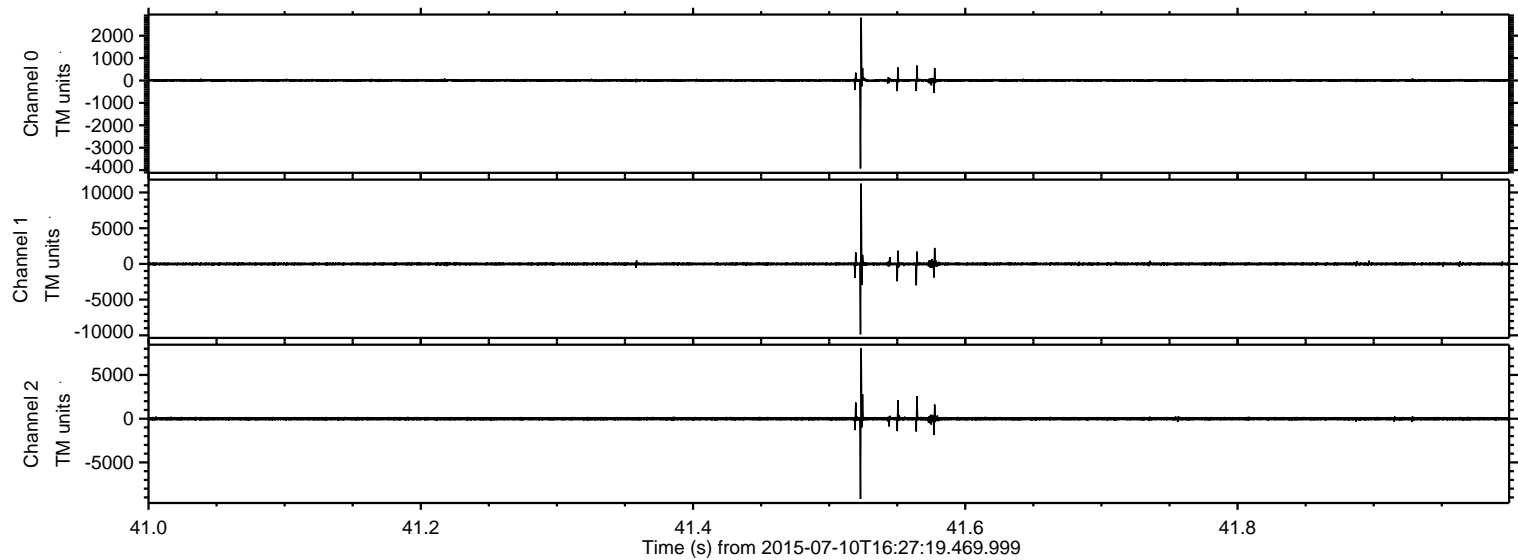
# ELMAVAN 3D WAVEFORMS (Measured data sampled at 50 kHz) 51000 packets of 144 samples from 2015-07-10T16:27:19.469.999.

Processed Fri Jul 10 18:33:16 2015 by ELM ver.2012-10-06 from 001\_\_elm20150710\_162718\_\_dat00.bin

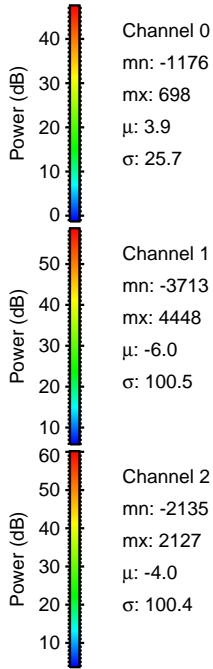
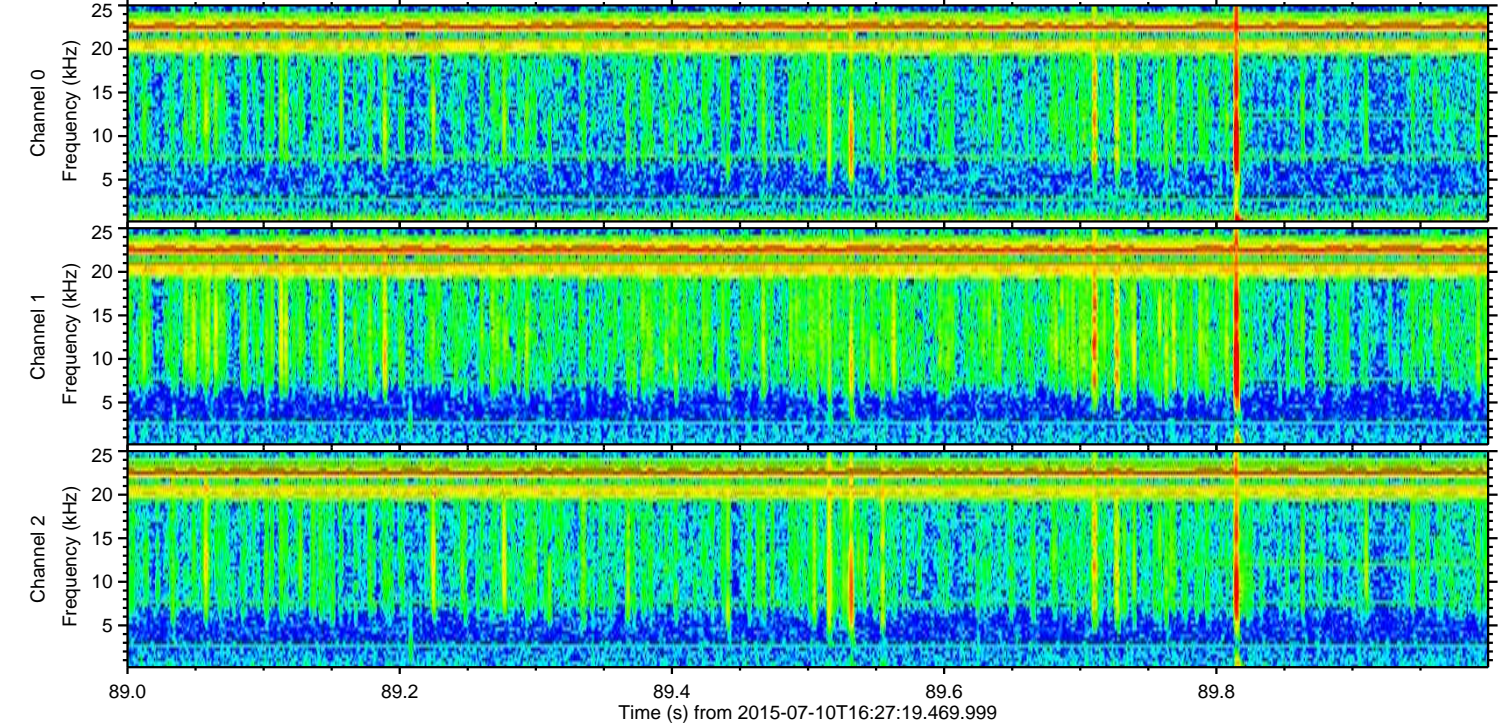
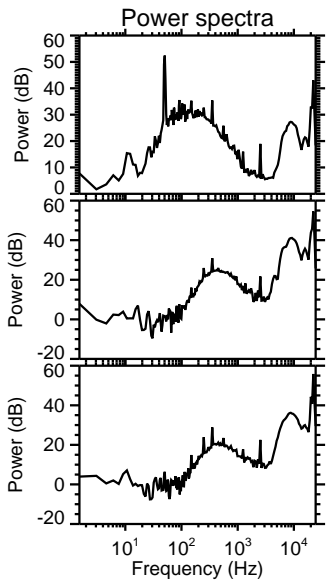
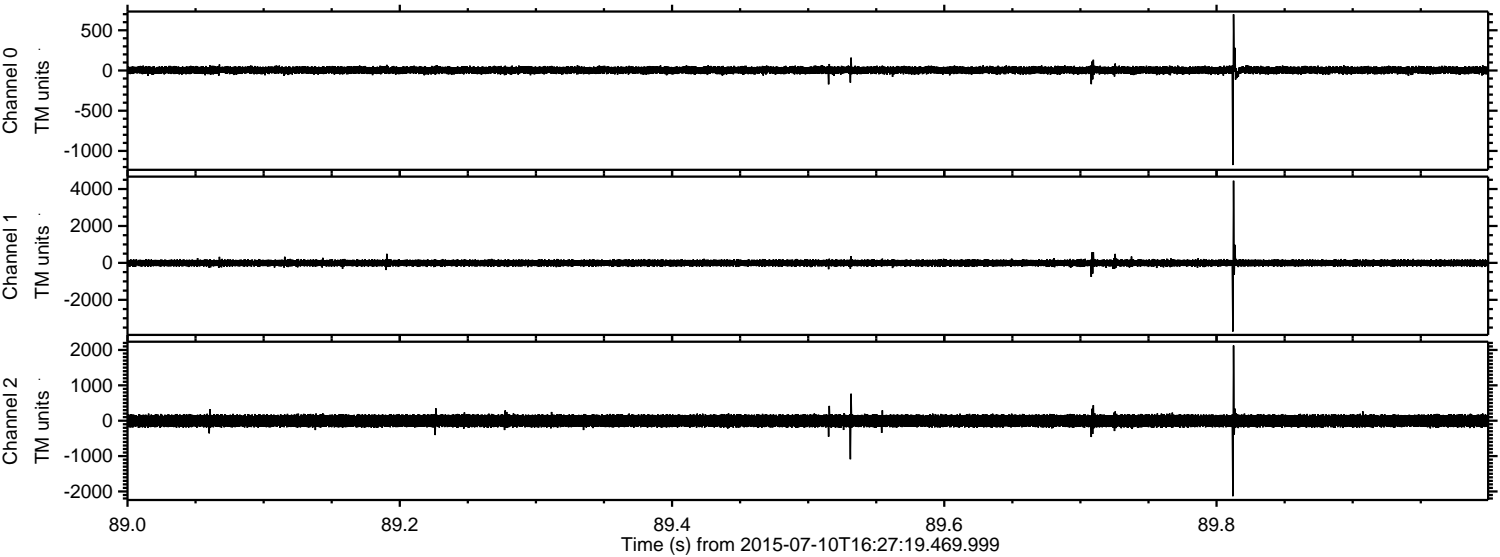




Processed Fri Jul 10 18:33:32 2015 by ELM ver.2012-10-06 from 001\_\_elm20150710\_162718\_\_dat00.bin



Processed Fri Jul 10 18:33:33 2015 by ELM ver.2012-10-06 from 001\_\_elm20150710\_162718\_\_dat00.bin



Channel 0  
mn: -1176  
mx: 698  
 $\mu$ : 3.9  
 $\sigma$ : 25.7

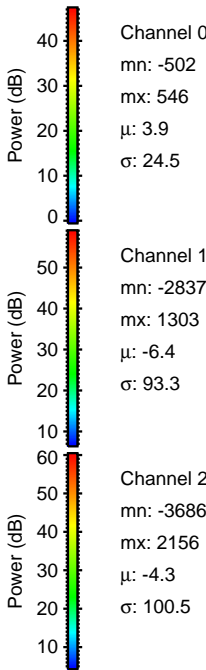
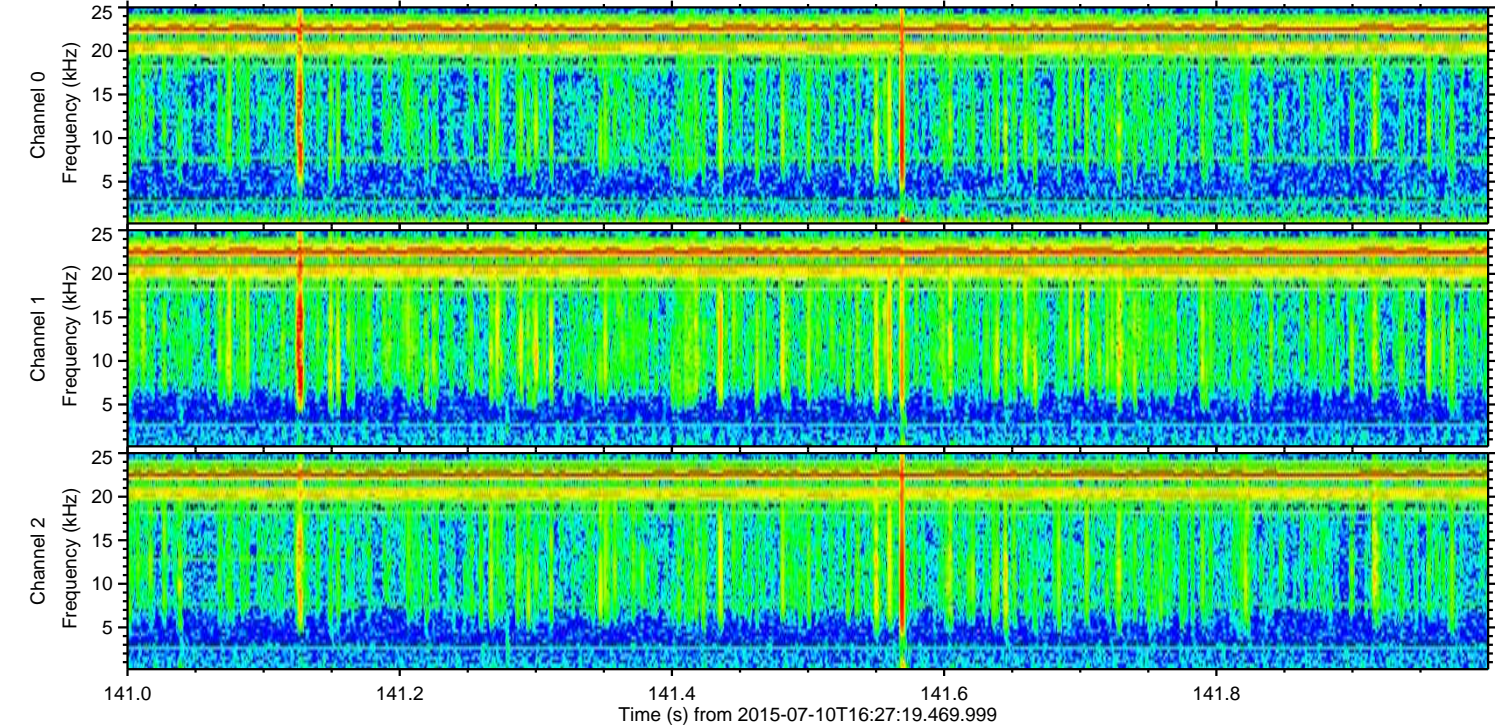
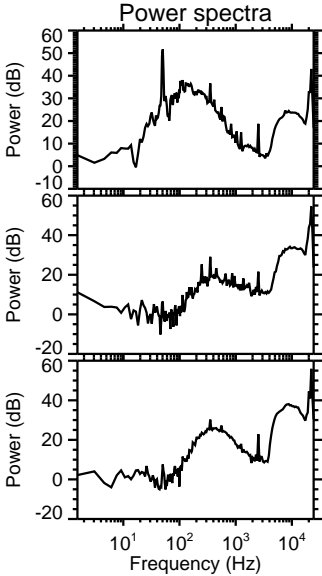
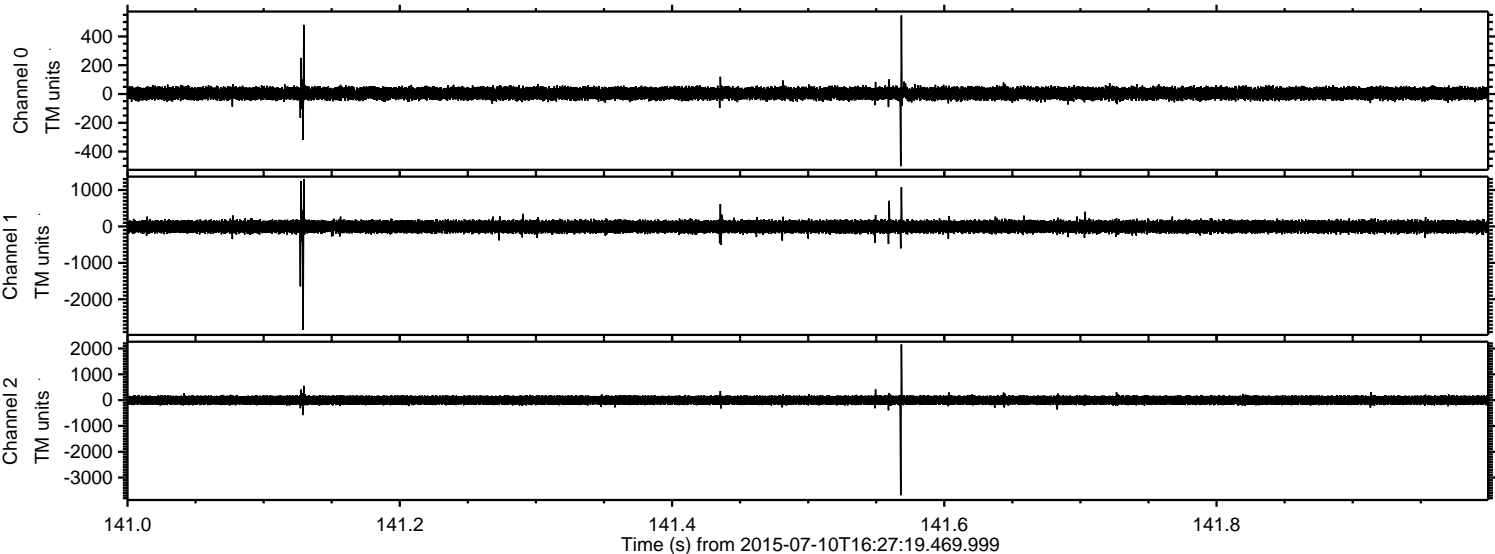
Channel 1  
mn: -3713  
mx: 4448  
 $\mu$ : -6.0  
 $\sigma$ : 100.5

Channel 2  
mn: -2135  
mx: 2127  
 $\mu$ : -4.0  
 $\sigma$ : 100.4

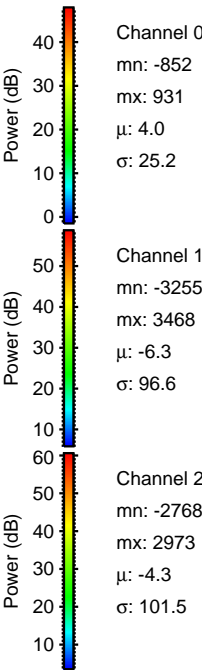
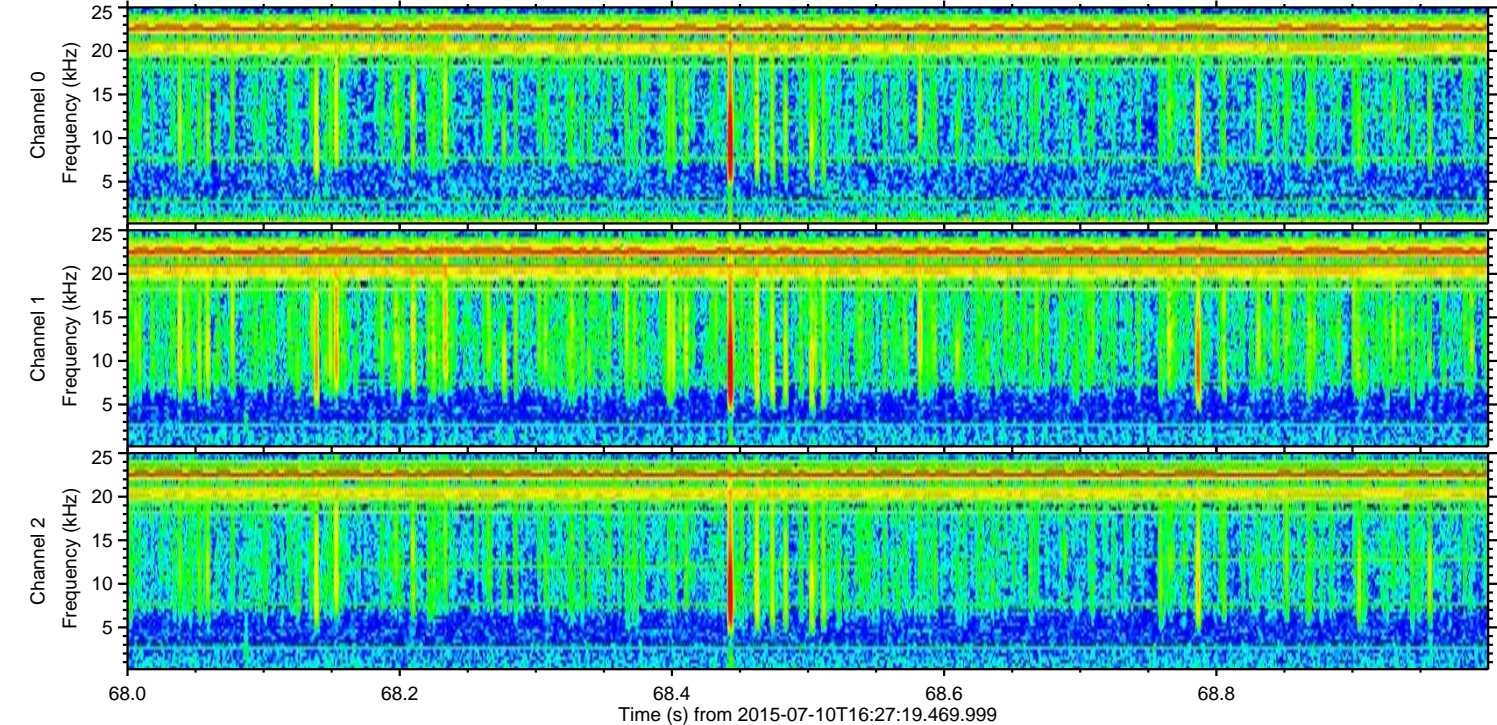
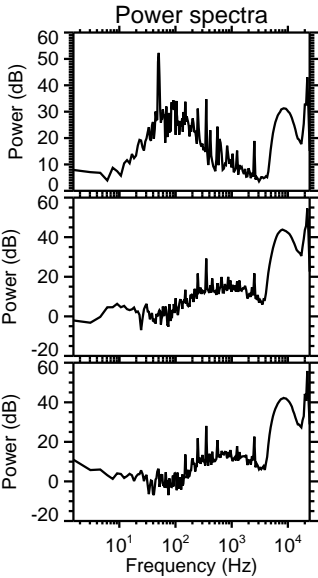
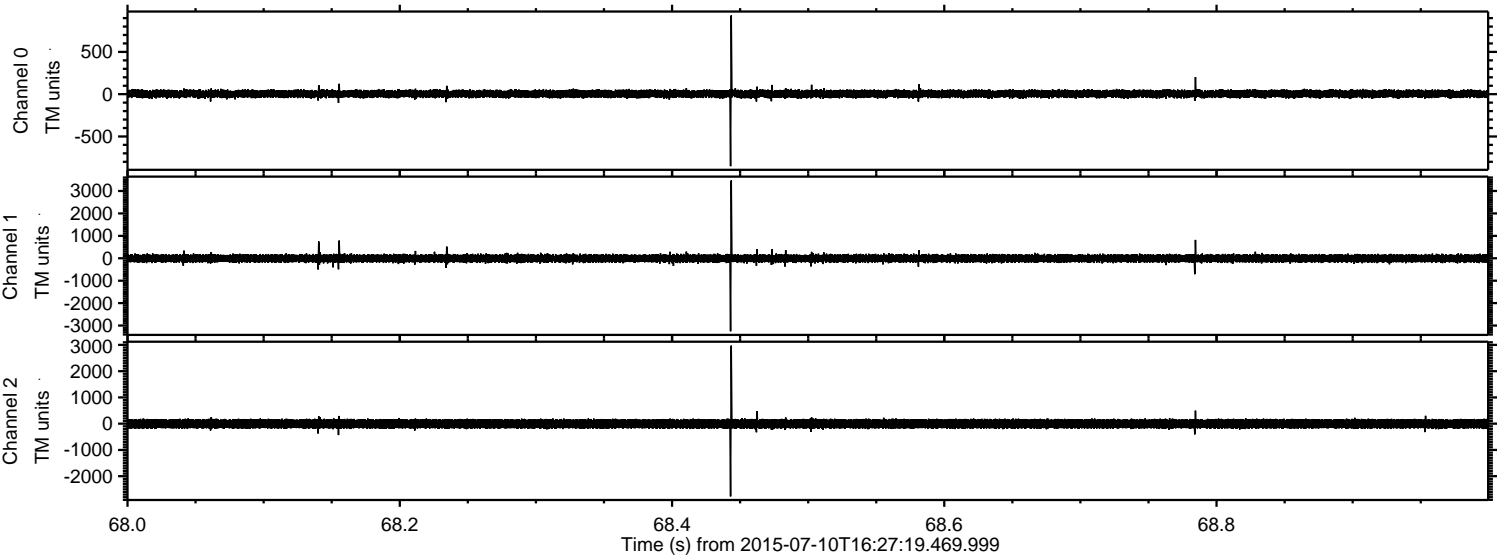


ELMAVAN 3D WAVEFORMS (Measured data sampled at 50 kHz) 51000 packets of 144 samples from 2015-07-10T16:27:19.469.999. Part 142/147

Processed Fri Jul 10 18:33:34 2015 by ELM ver.2012-10-06 from 001\_\_elm20150710\_162718\_\_dat00.bin

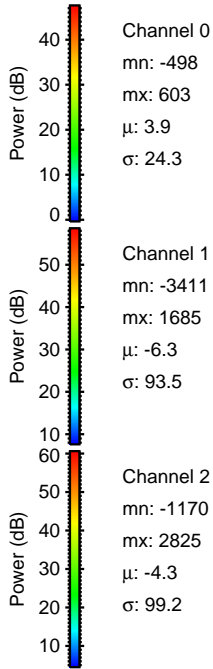
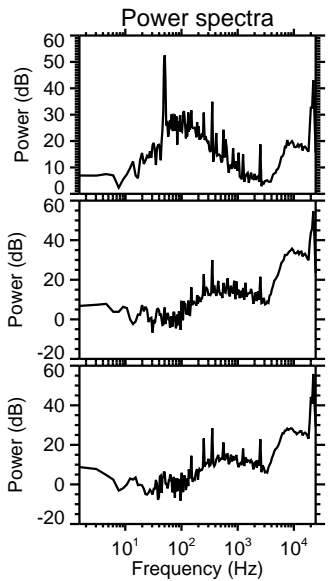
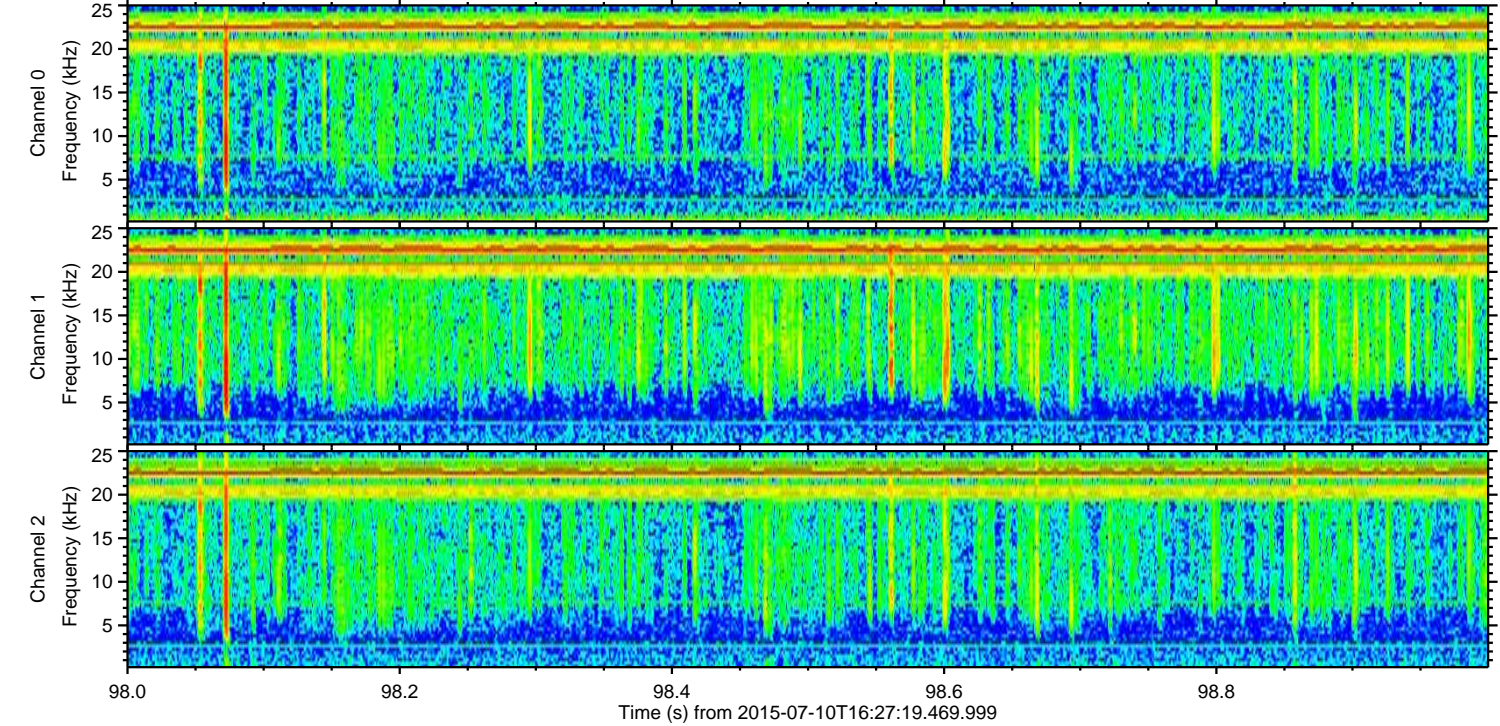
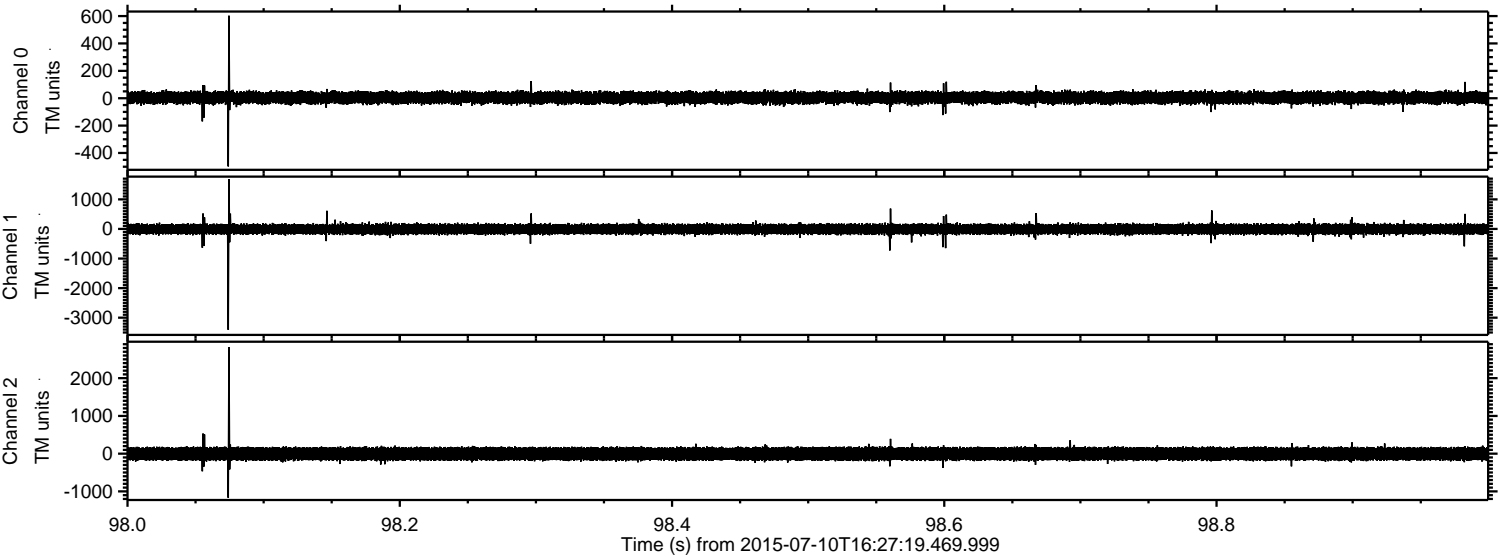


Processed Fri Jul 10 18:33:35 2015 by ELM ver.2012-10-06 from 001\_\_elm20150710\_162718\_\_dat00.bin

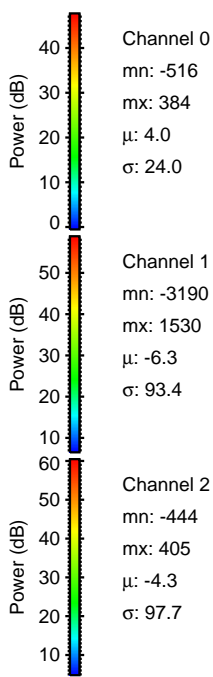
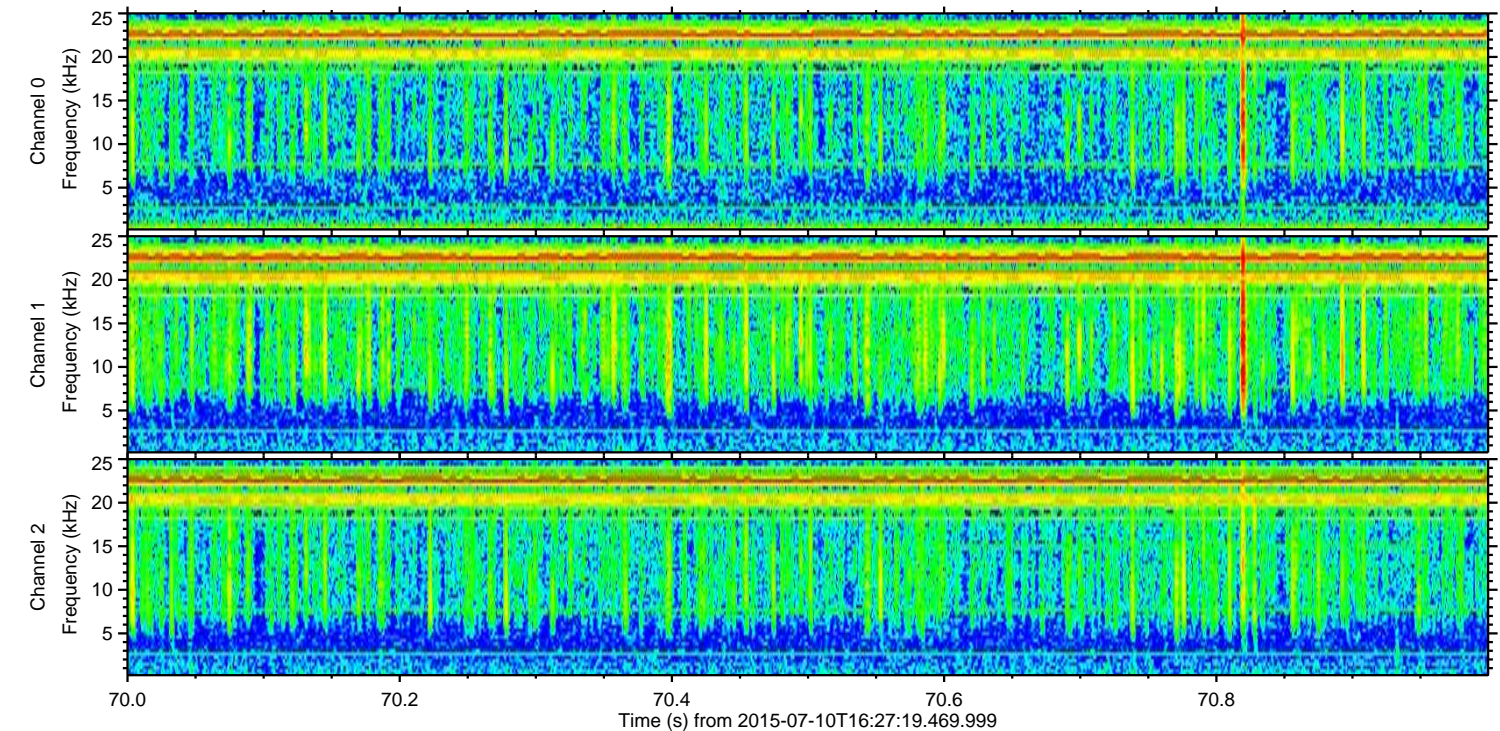
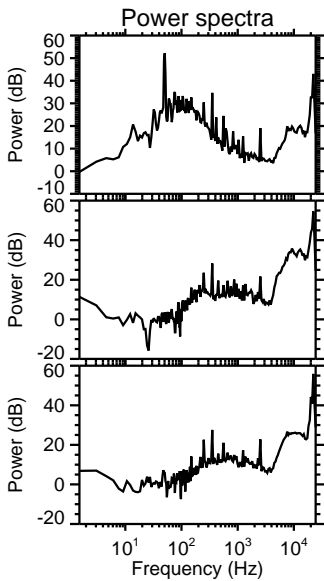
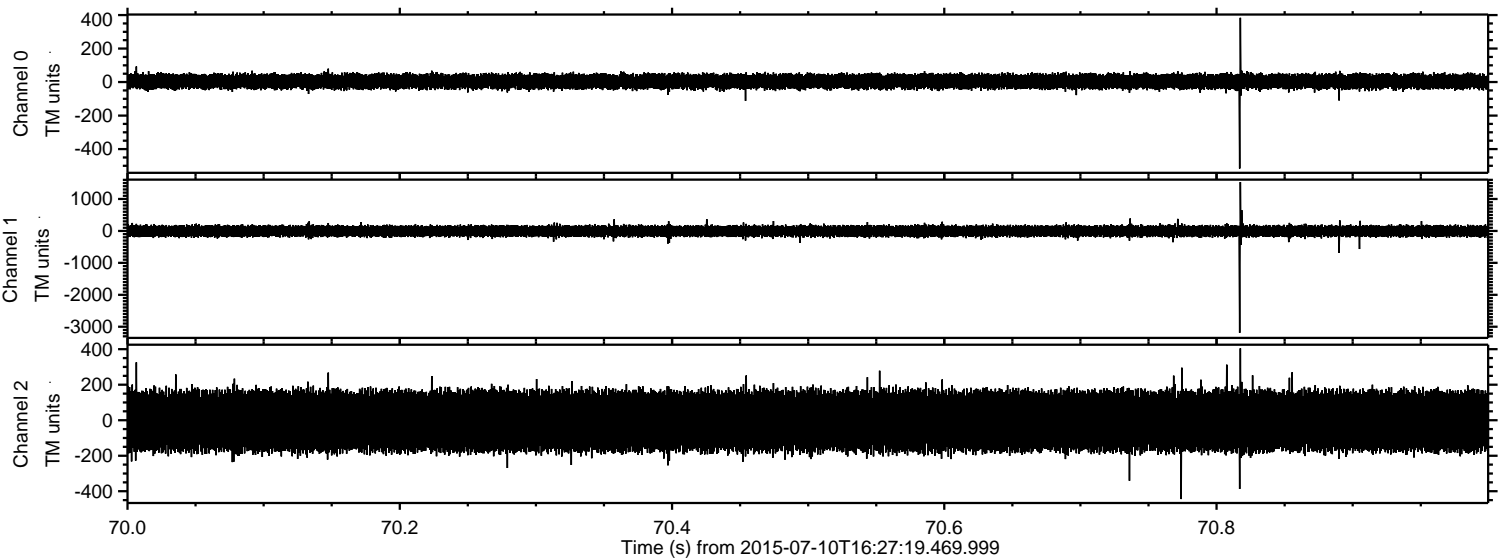




Processed Fri Jul 10 18:33:36 2015 by ELM ver.2012-10-06 from 001\_\_elm20150710\_162718\_\_dat00.bin



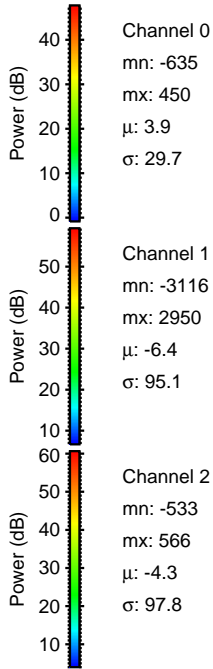
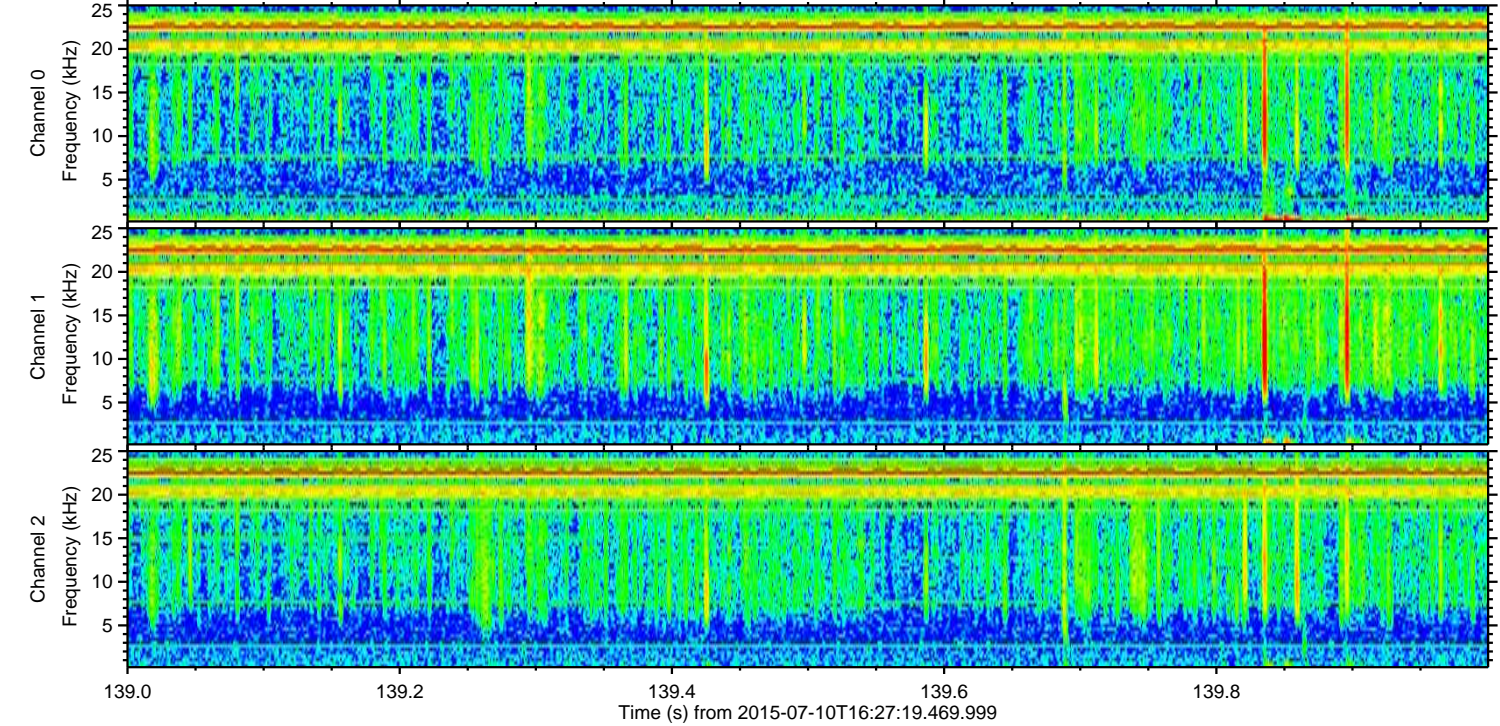
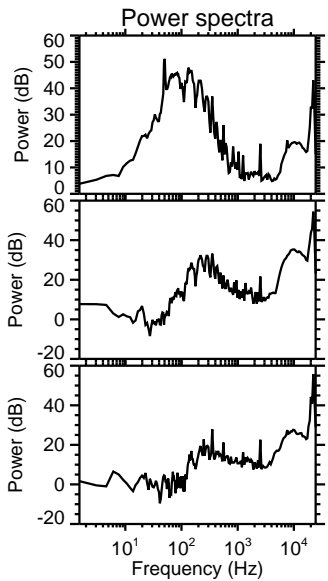
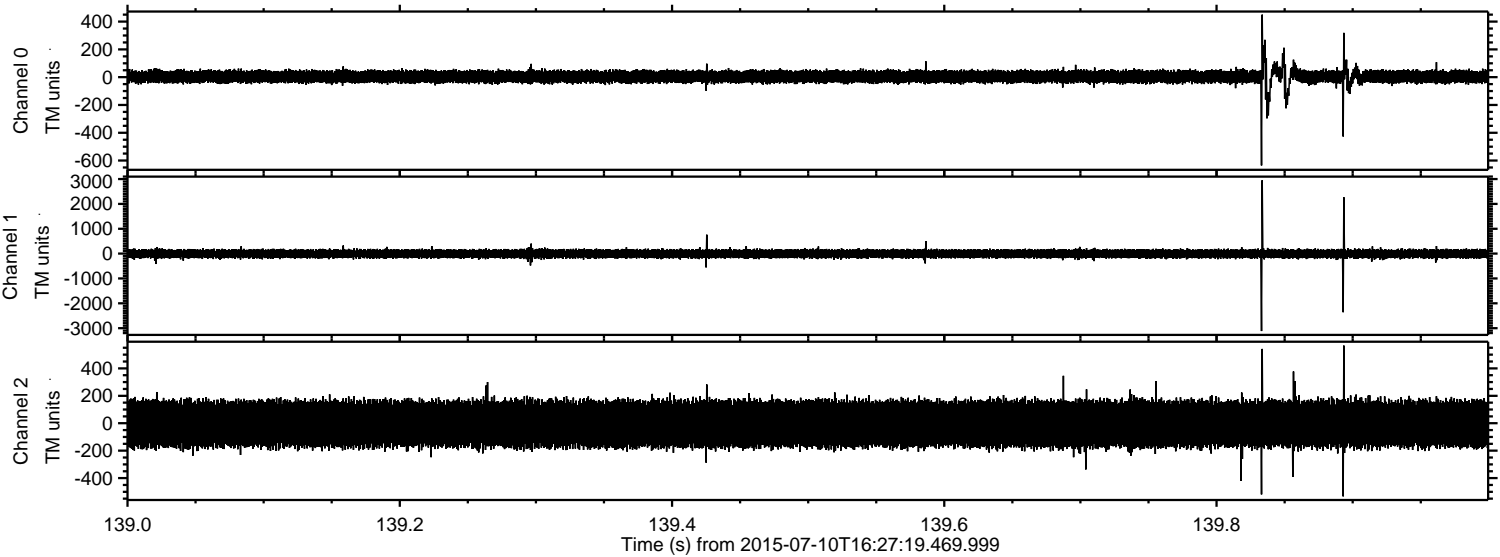
Processed Fri Jul 10 18:33:37 2015 by ELM ver.2012-10-06 from 001\_\_elm20150710\_162718\_\_dat00.bin





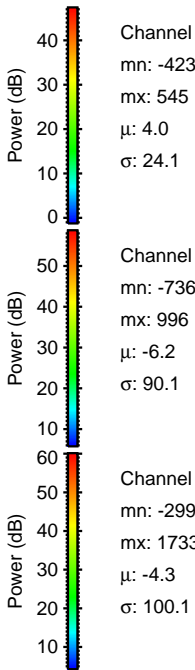
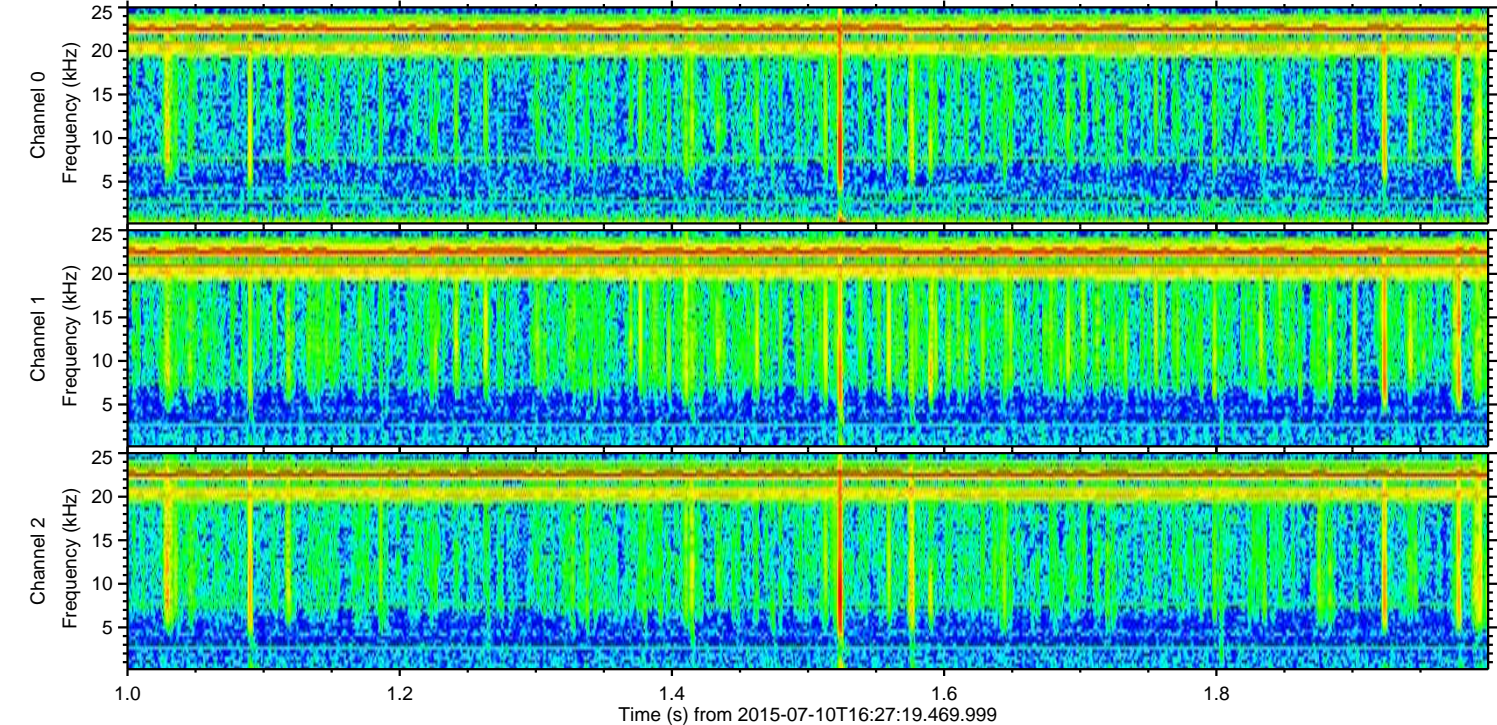
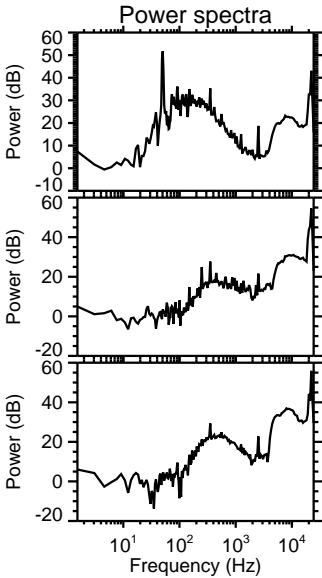
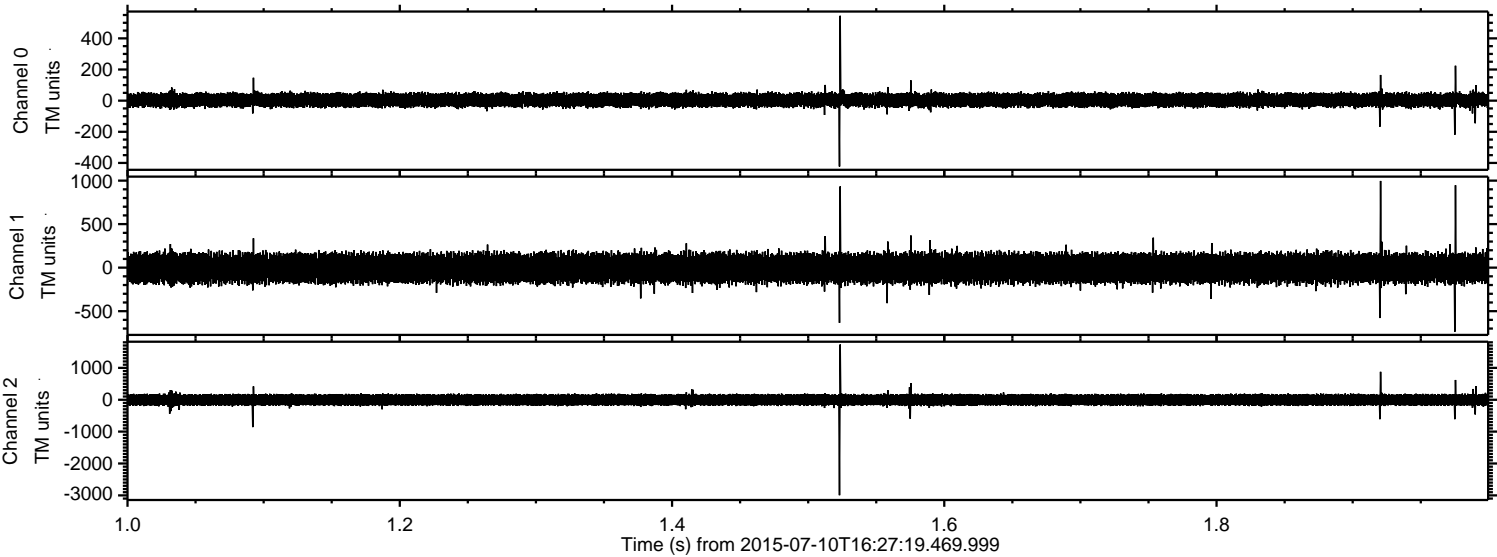
ELMAVAN 3D WAVEFORMS (Measured data sampled at 50 kHz) 51000 packets of 144 samples from 2015-07-10T16:27:19.469.999. Part 140/147

Processed Fri Jul 10 18:33:38 2015 by ELM ver.2012-10-06 from 001\_\_elm20150710\_162718\_\_dat00.bin



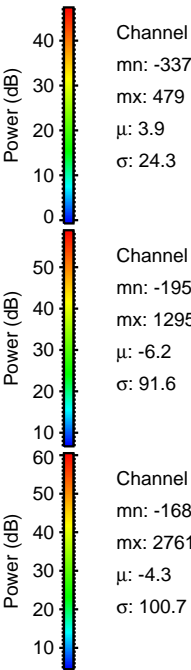
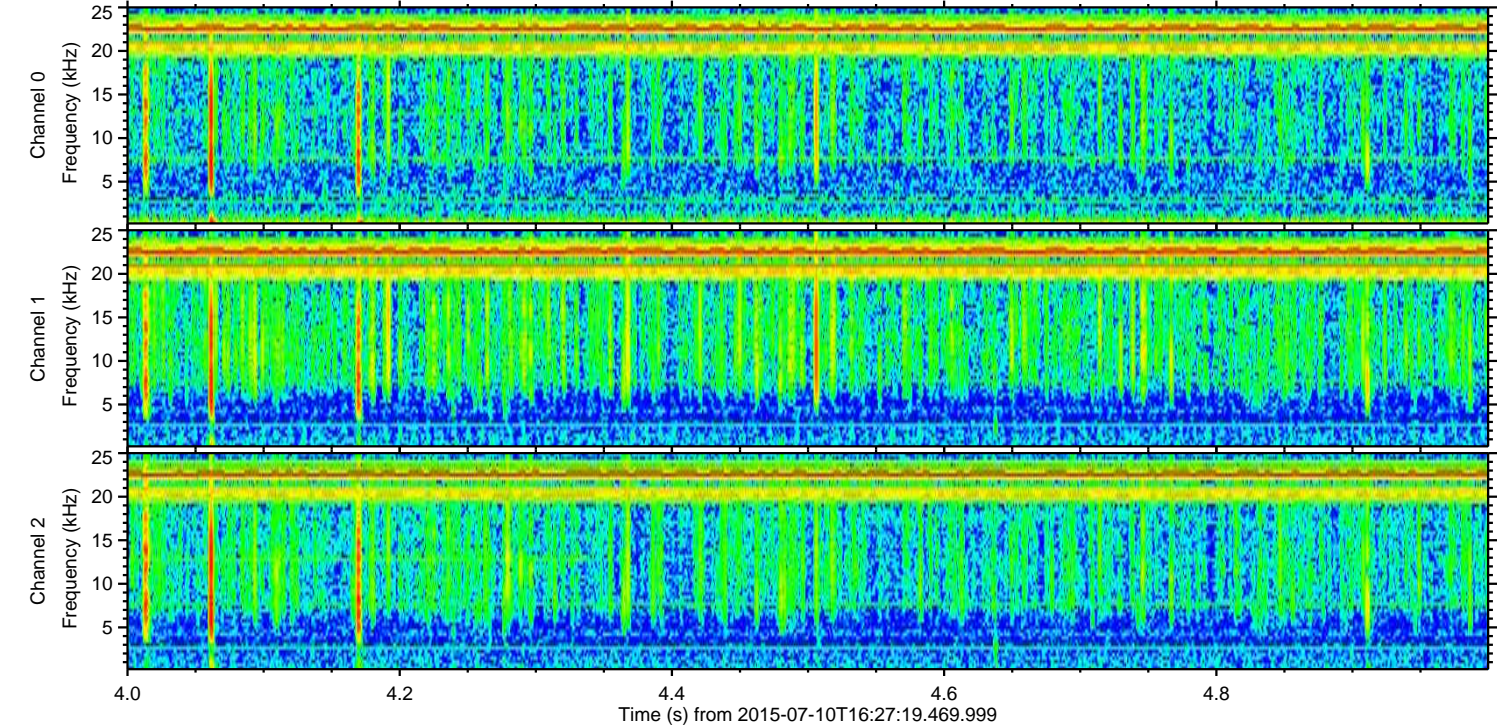
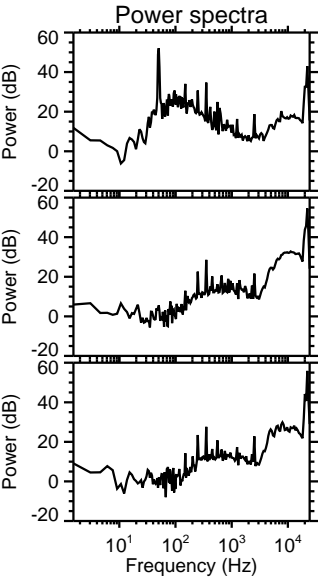
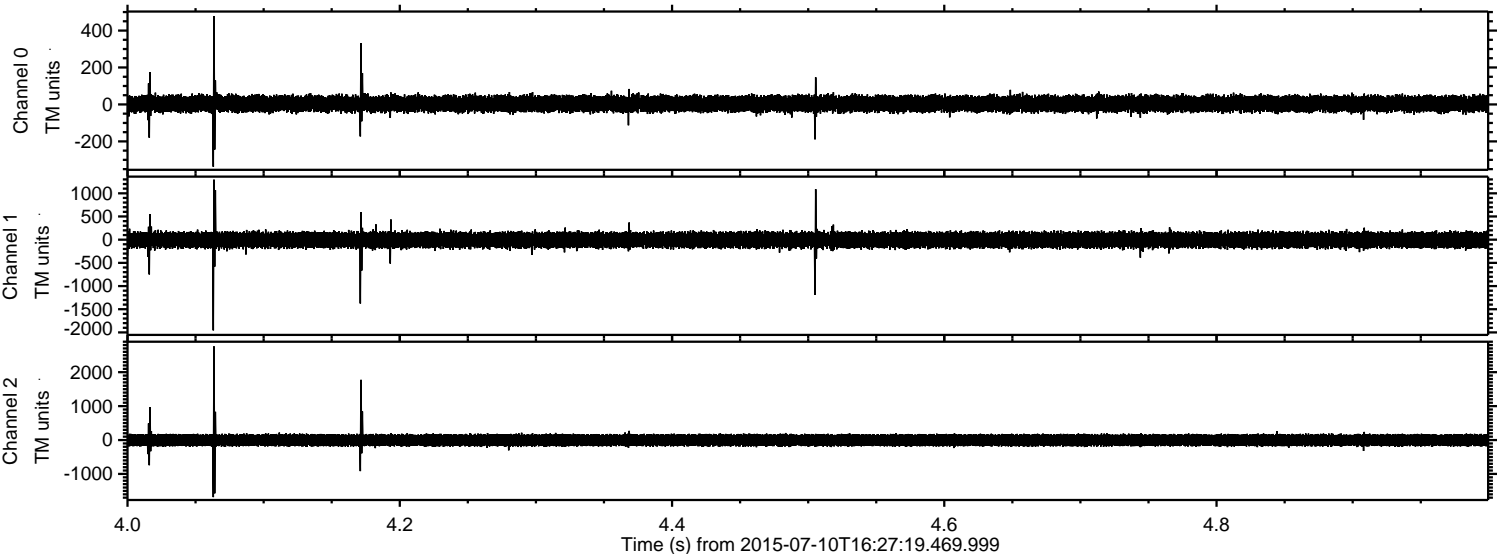


Processed Fri Jul 10 18:33:40 2015 by ELM ver.2012-10-06 from 001\_\_elm20150710\_162718\_\_dat00.bin





Processed Fri Jul 10 18:33:41 2015 by ELM ver.2012-10-06 from 001\_\_elm20150710\_162718\_\_dat00.bin





Processed Fri Jul 10 18:33:42 2015 by ELM ver.2012-10-06 from 001\_\_elm20150710\_162718\_\_dat00.bin

