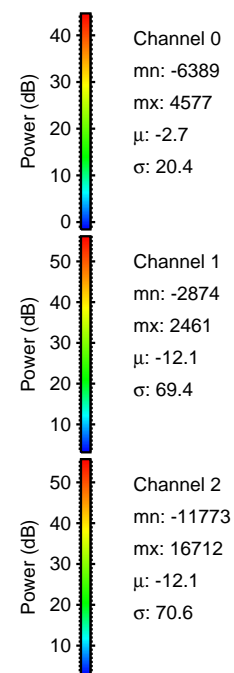
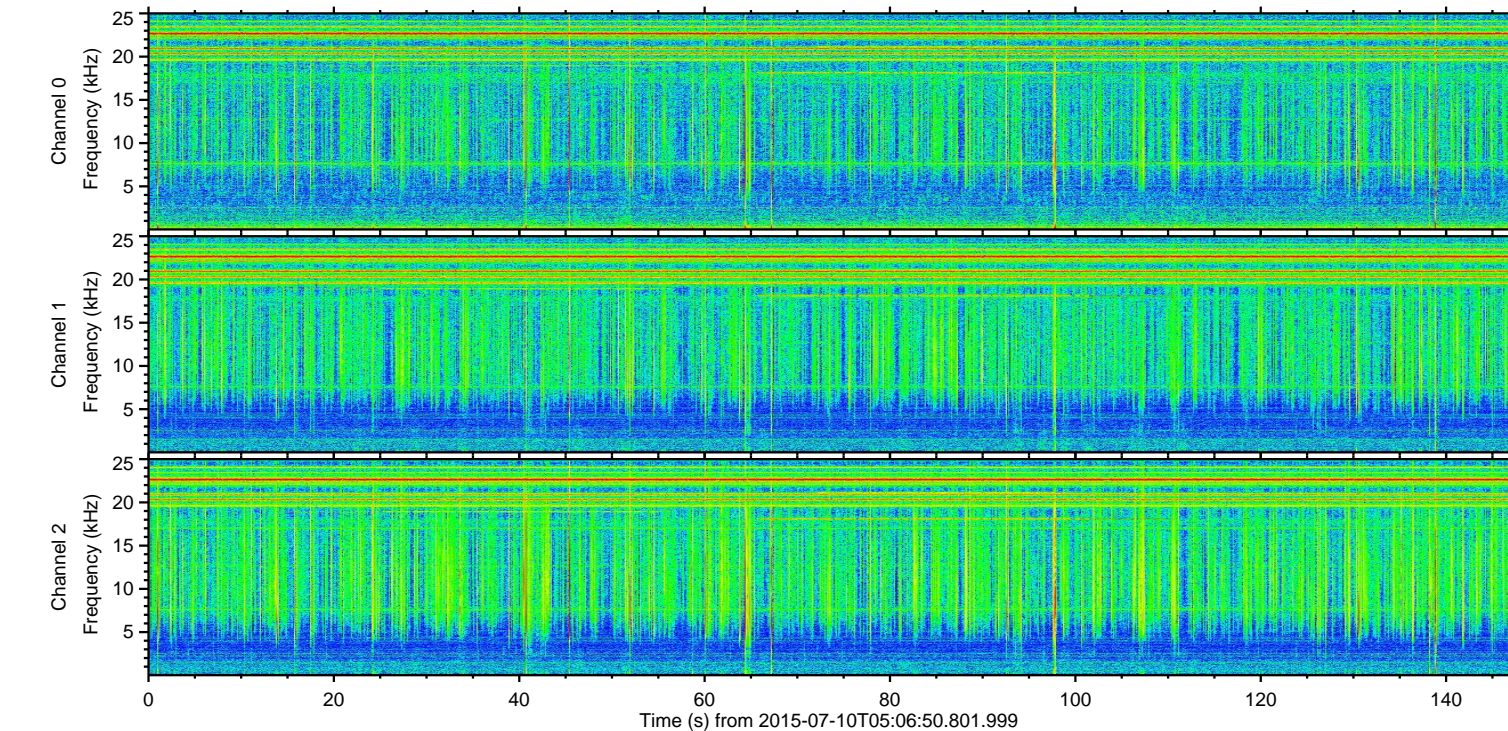
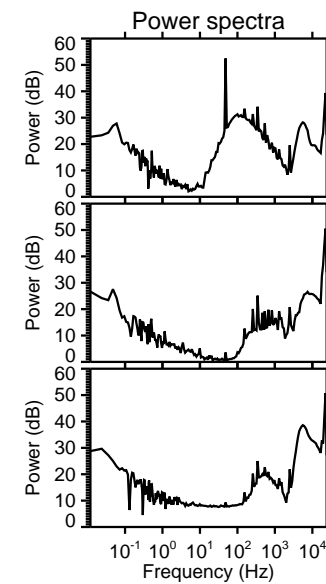
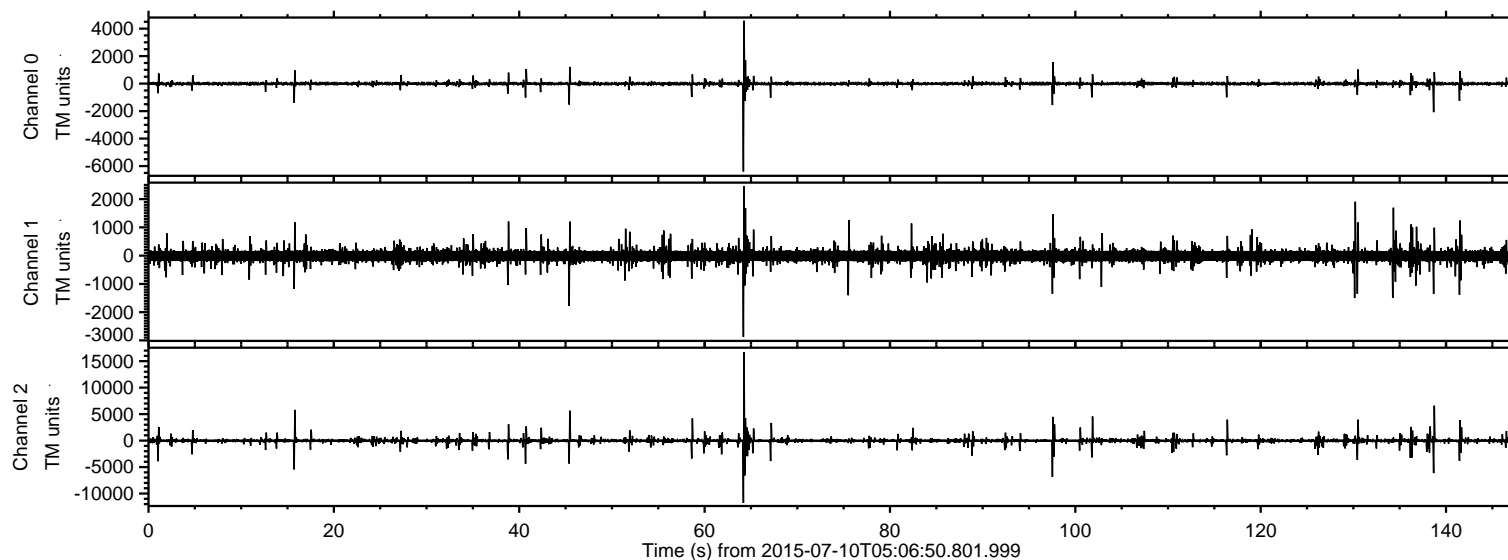
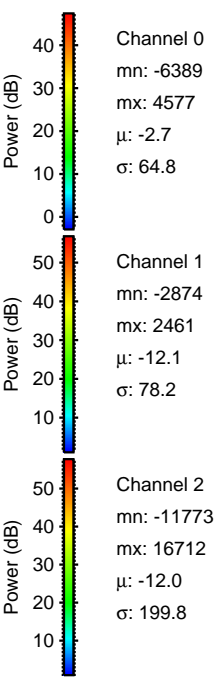
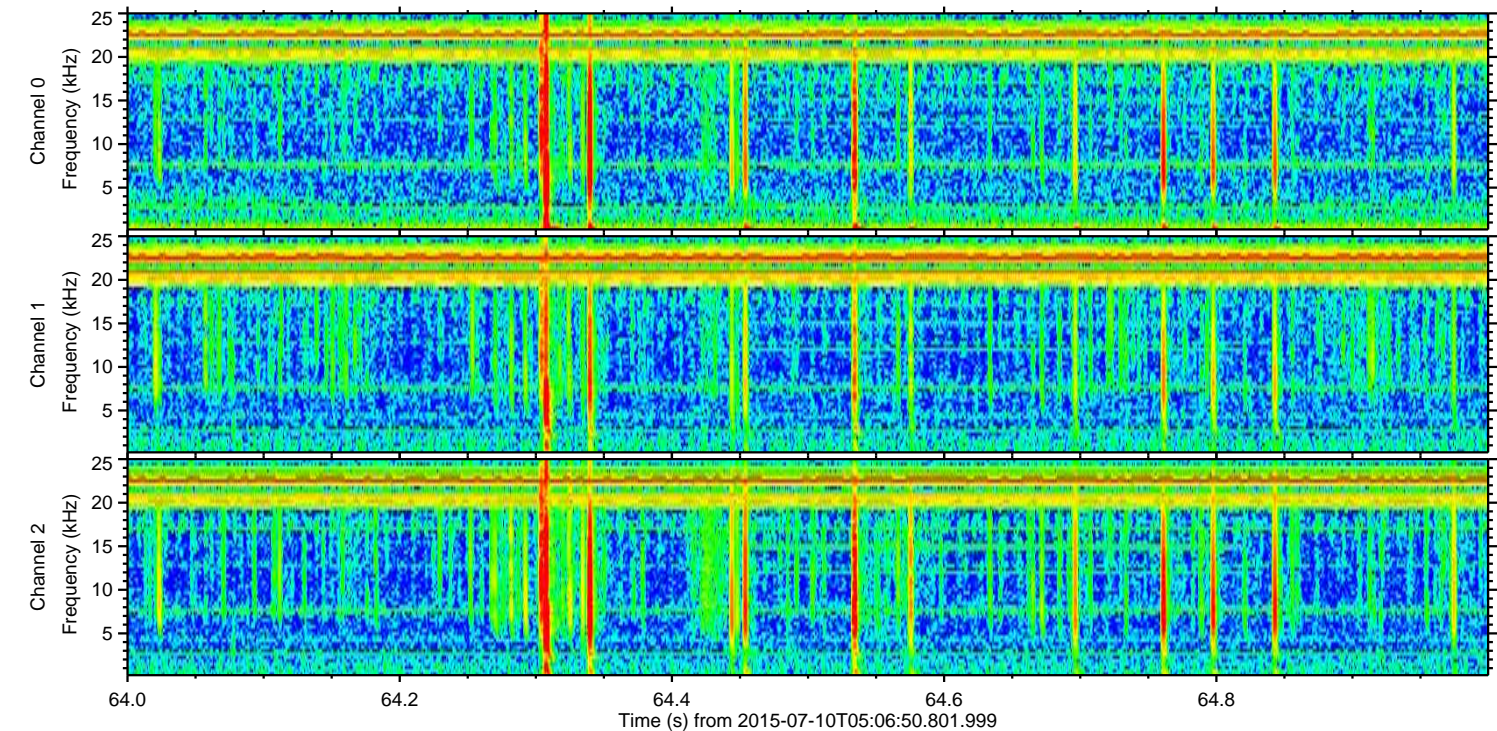
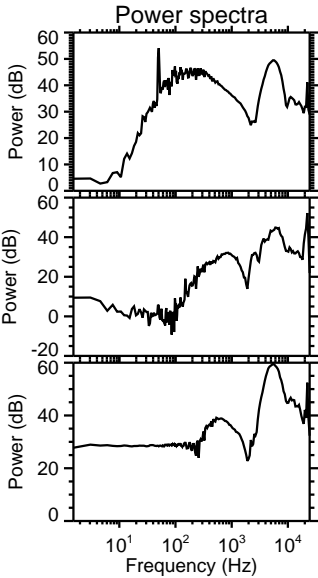
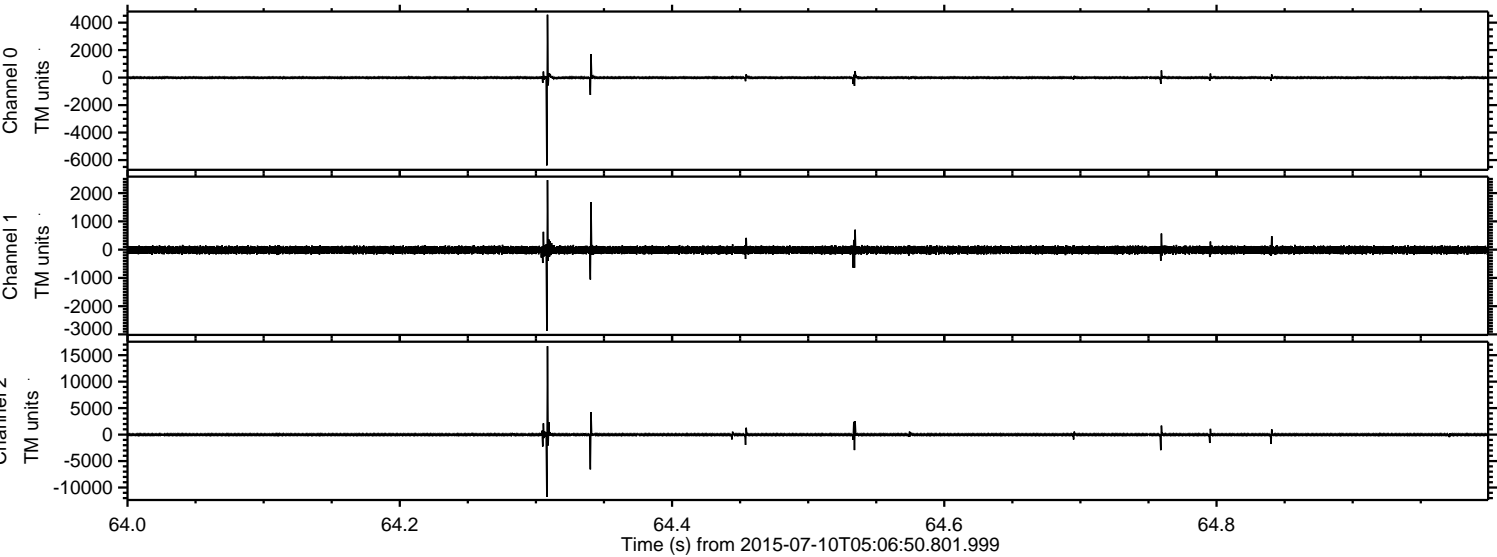


# ELMAVAN 3D WAVEFORMS (Measured data sampled at 50 kHz) 51000 packets of 144 samples from 2015-07-10T05:06:50.801.999.

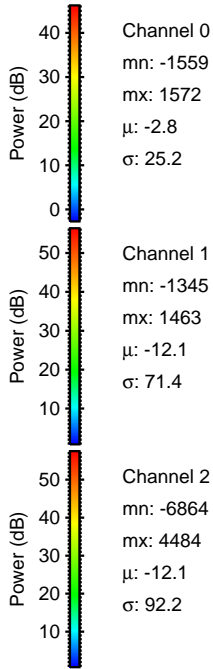
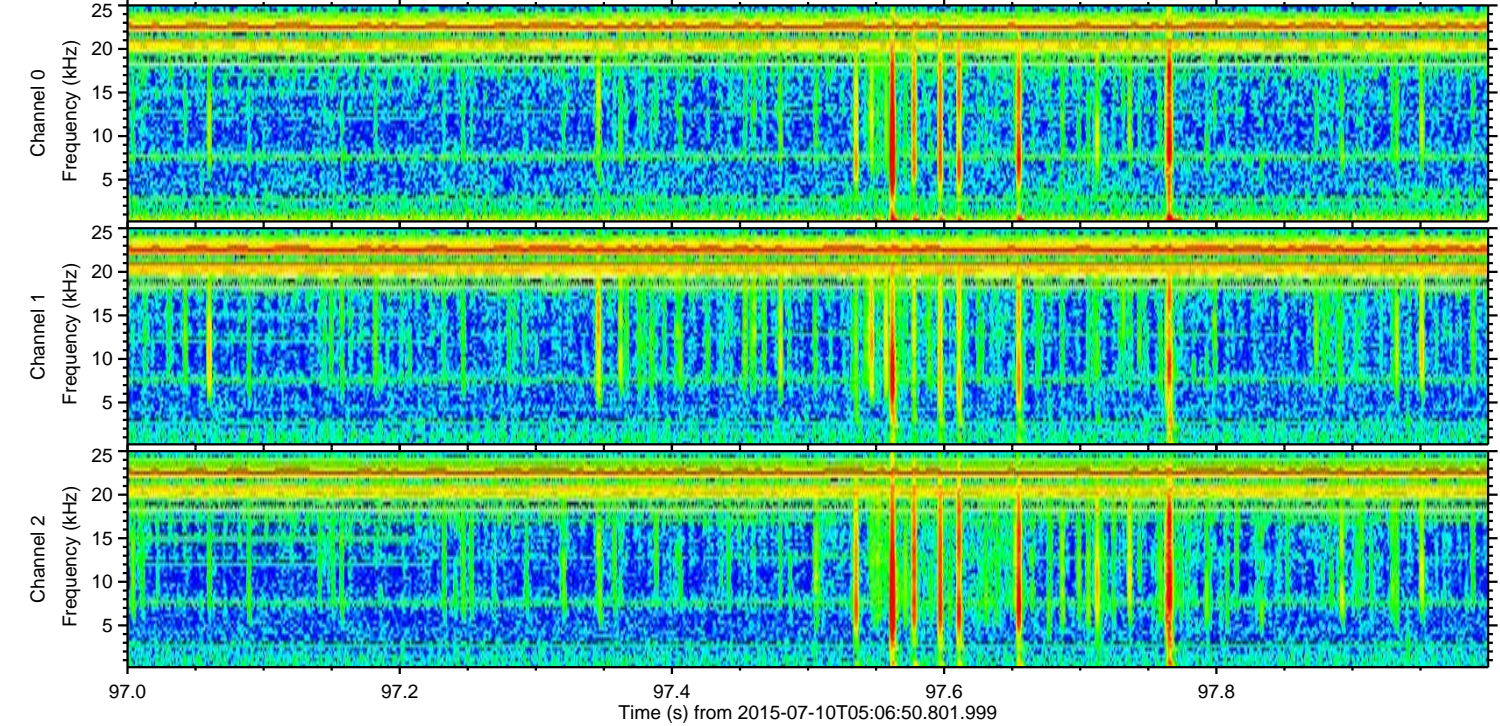
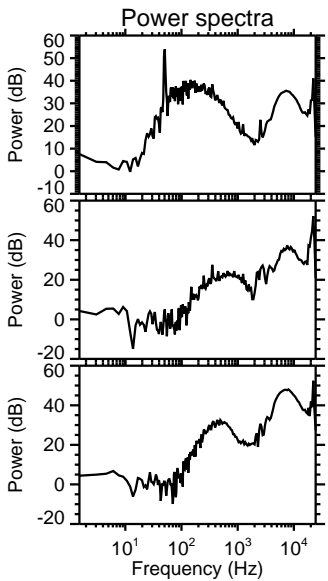
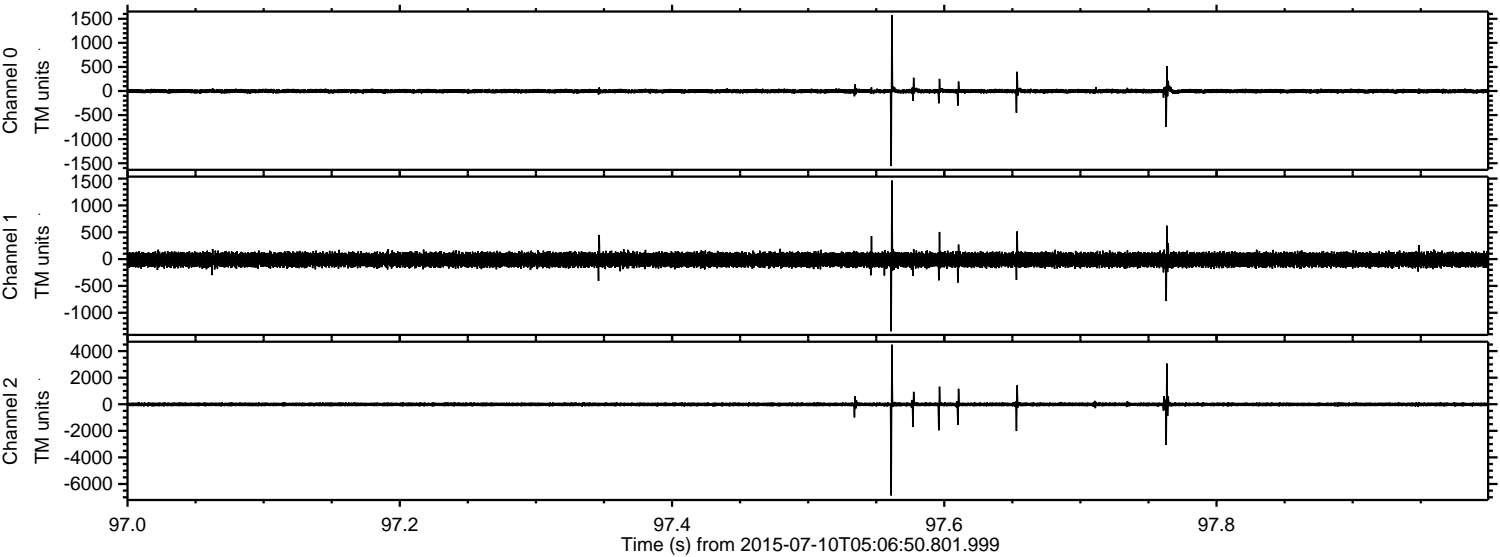
Processed Fri Jul 10 07:13:07 2015 by ELM ver.2012-10-06 from 001\_\_elm20150710\_050649\_\_dat00.bin



Processed Fri Jul 10 07:13:22 2015 by ELM ver.2012-10-06 from 001\_\_elm20150710\_050649\_\_dat00.bin

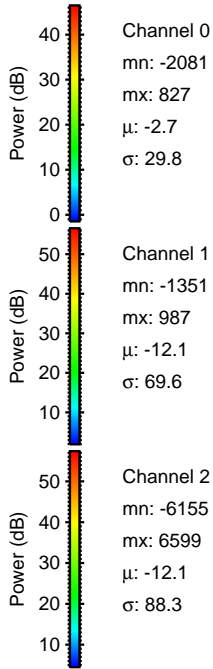
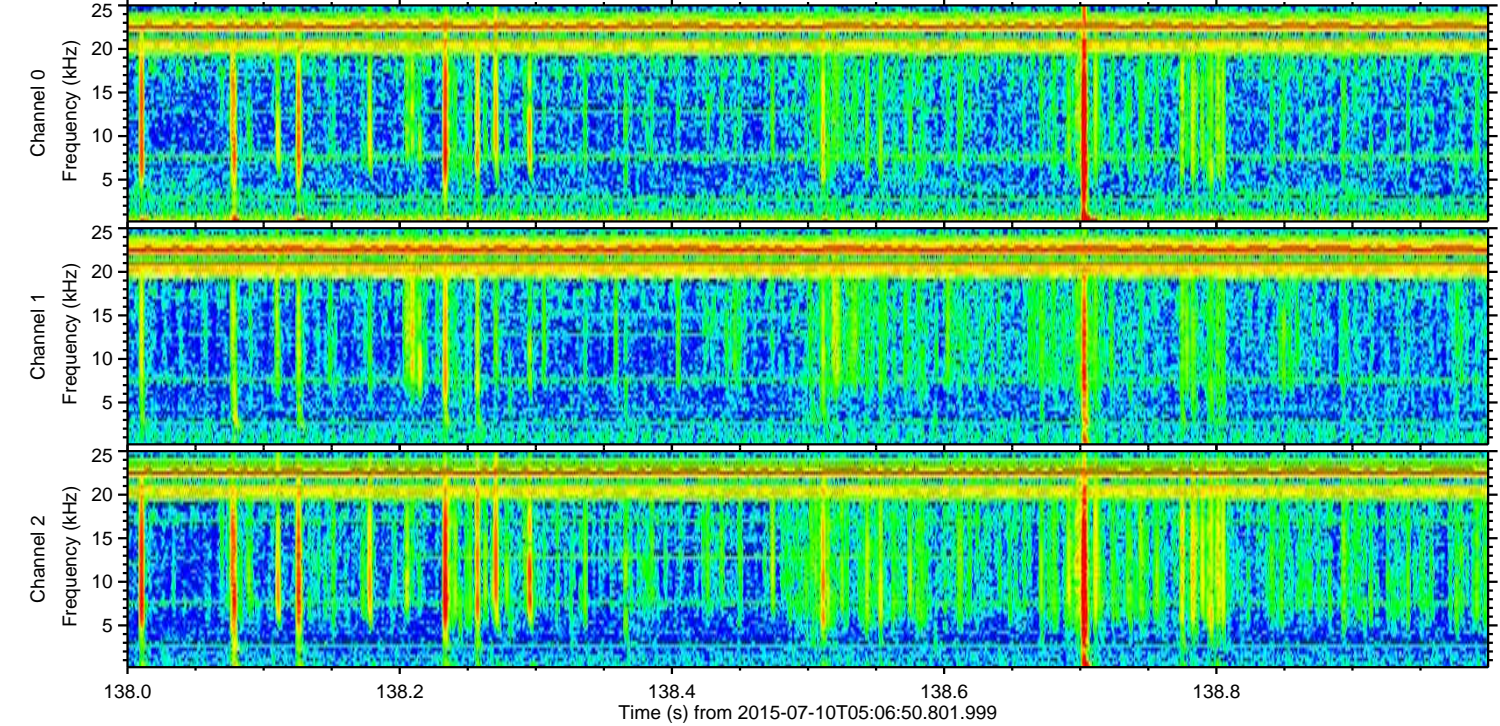
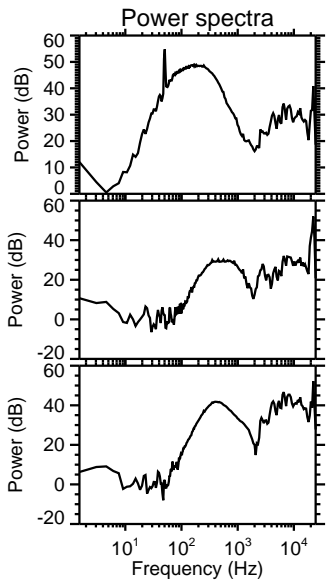
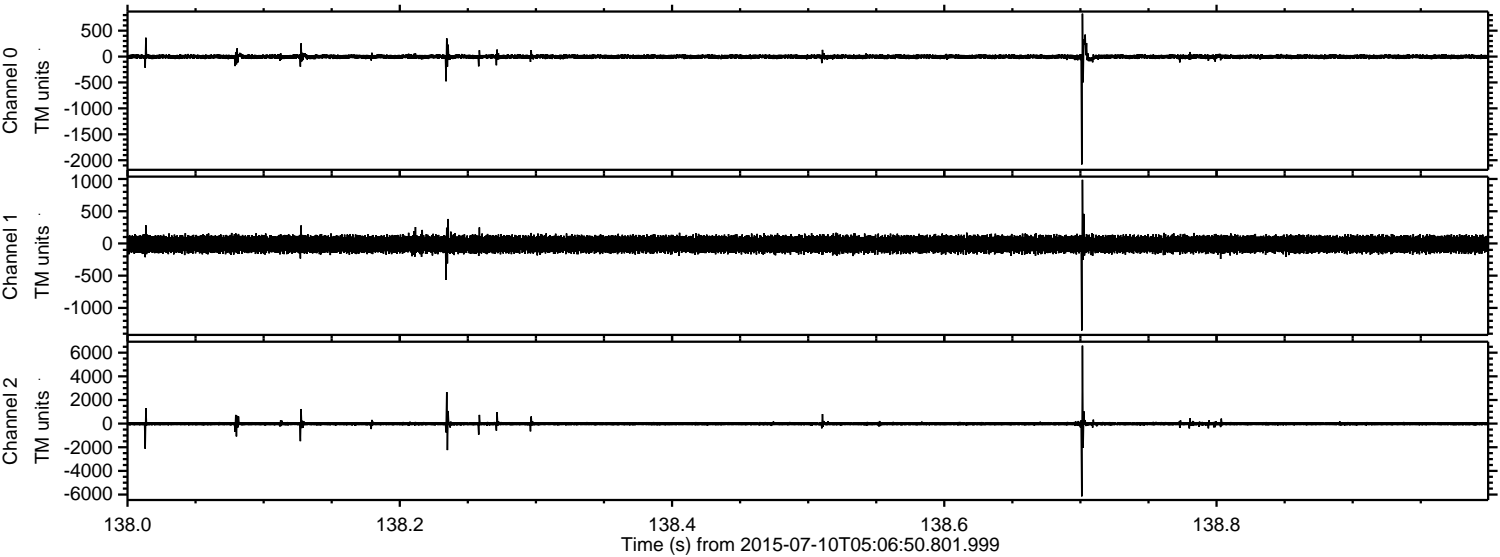


Processed Fri Jul 10 07:13:23 2015 by ELM ver.2012-10-06 from 001\_\_elm20150710\_050649\_\_dat00.bin



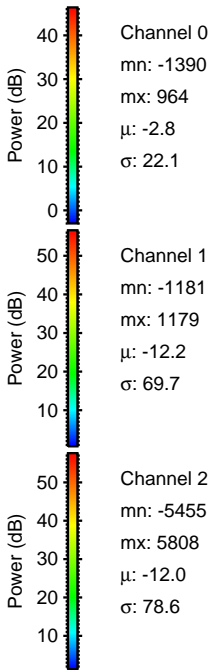
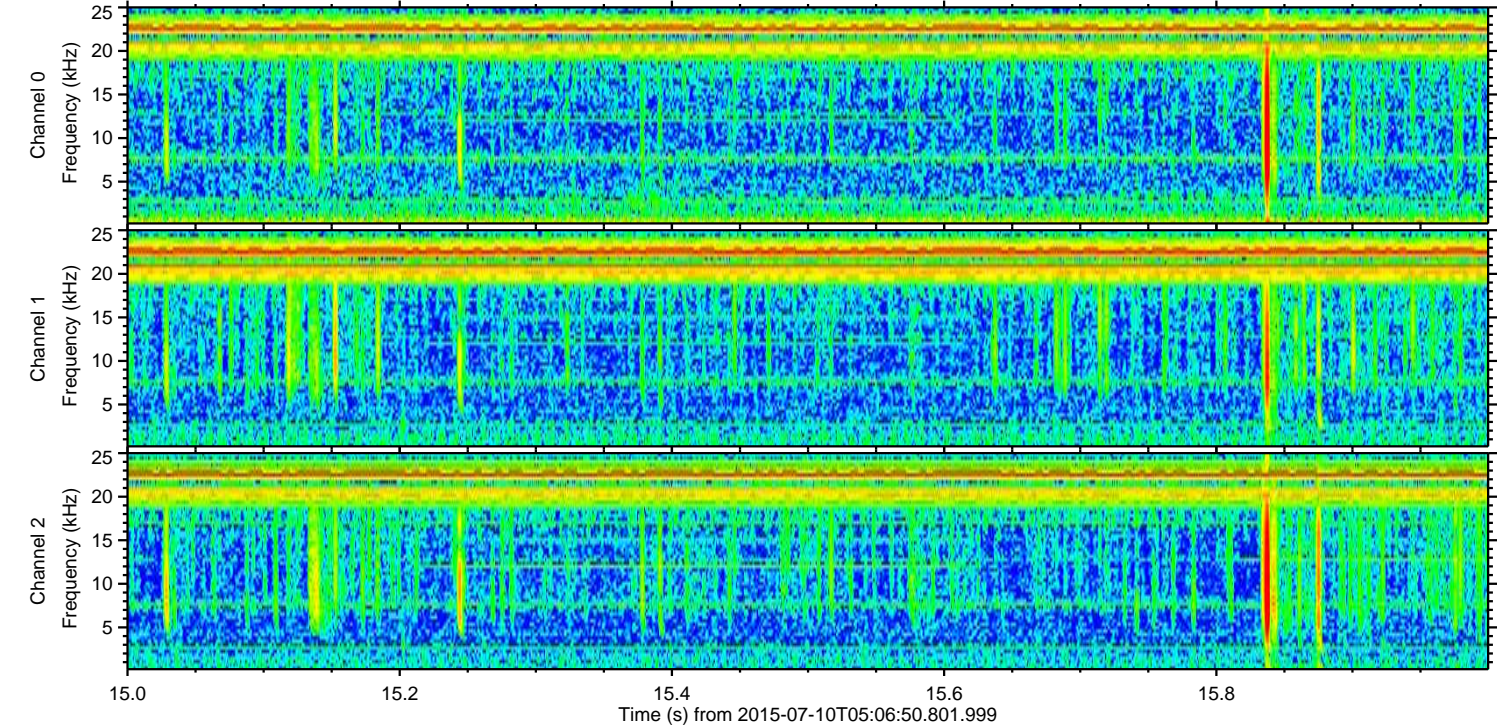
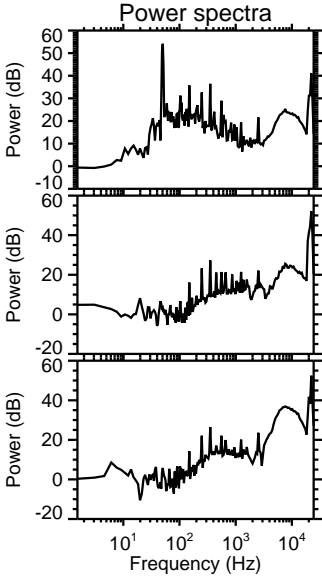
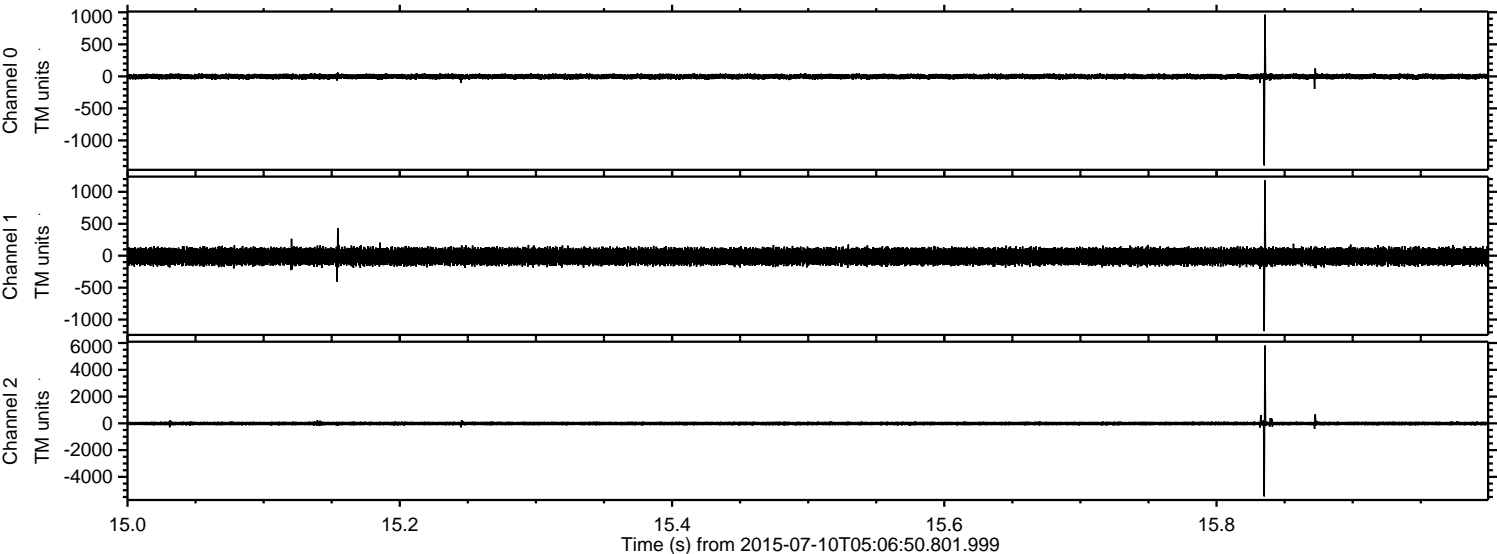
ELMAVAN 3D WAVEFORMS (Measured data sampled at 50 kHz) 51000 packets of 144 samples from 2015-07-10T05:06:50.801.999. Part 139/147

Processed Fri Jul 10 07:13:24 2015 by ELM ver.2012-10-06 from 001\_\_elm20150710\_050649\_\_dat00.bin



ELMAVAN 3D WAVEFORMS (Measured data sampled at 50 kHz) 51000 packets of 144 samples from 2015-07-10T05:06:50.801.999. Part 16/147

Processed Fri Jul 10 07:13:25 2015 by ELM ver.2012-10-06 from 001\_\_elm20150710\_050649\_\_dat00.bin

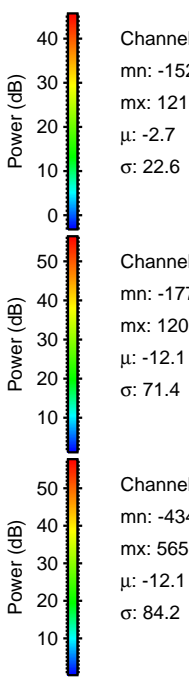
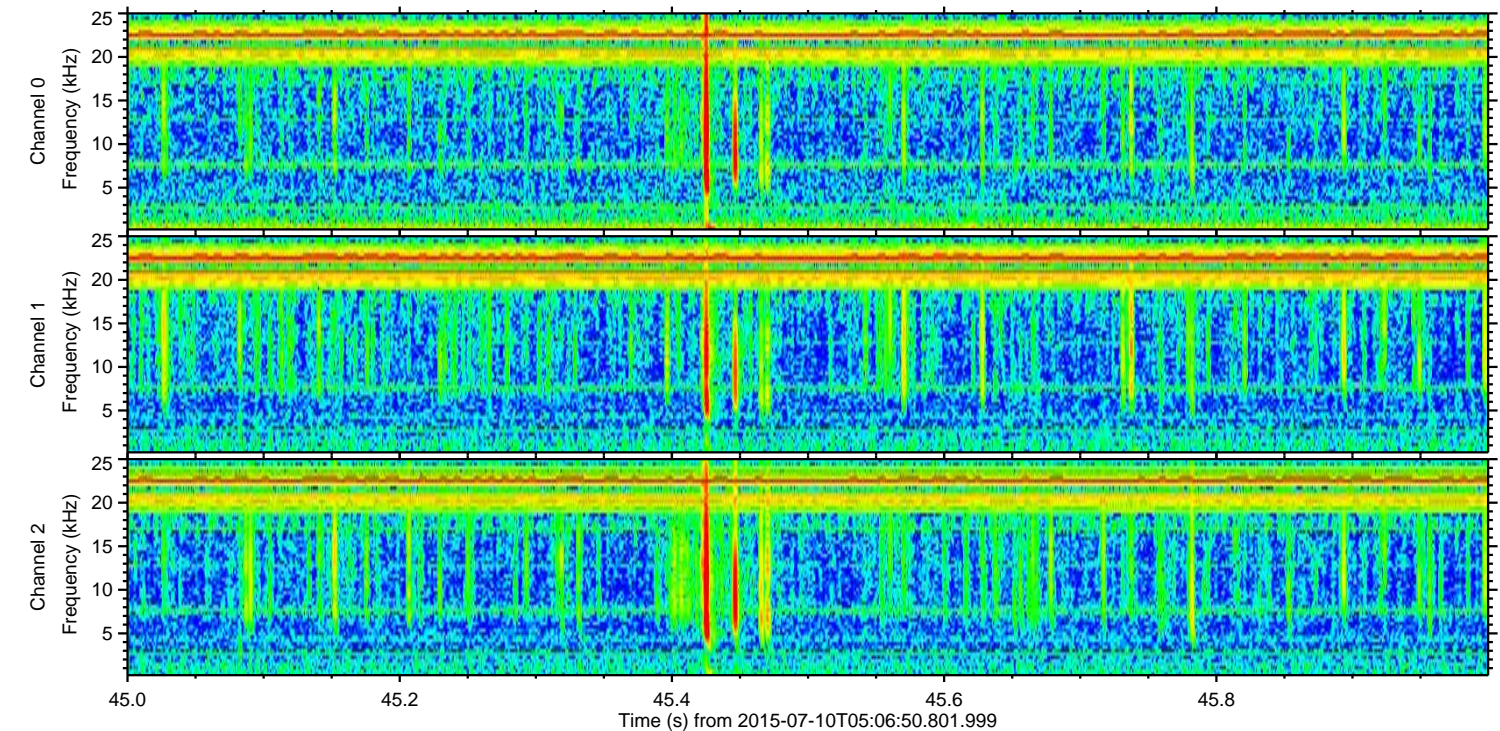
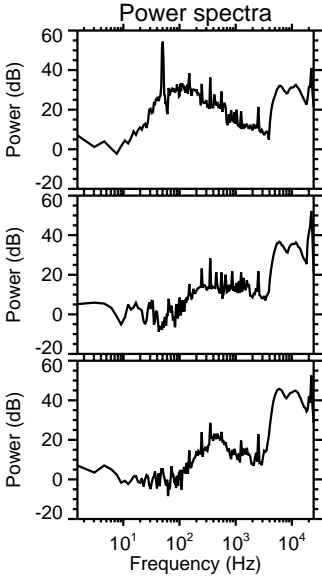
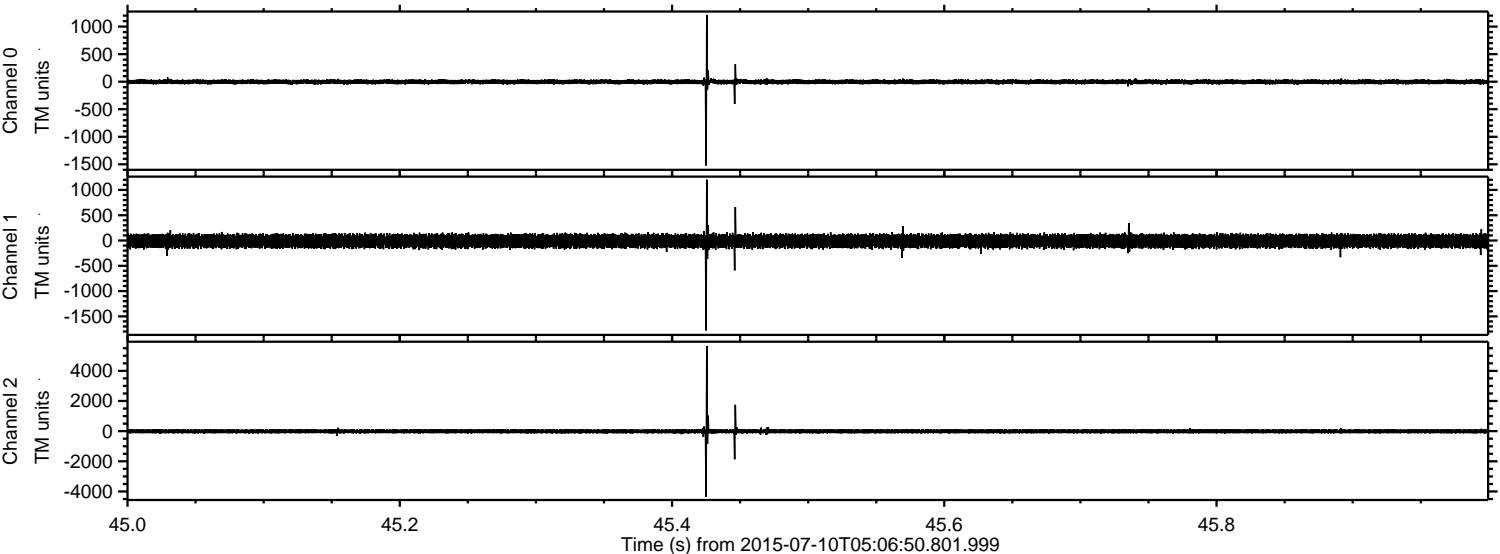


Channel 0  
mn: -1390  
mx: 964  
 $\mu$ : -2.8  
 $\sigma$ : 22.1

Channel 1  
mn: -1181  
mx: 1179  
 $\mu$ : -12.2  
 $\sigma$ : 69.7

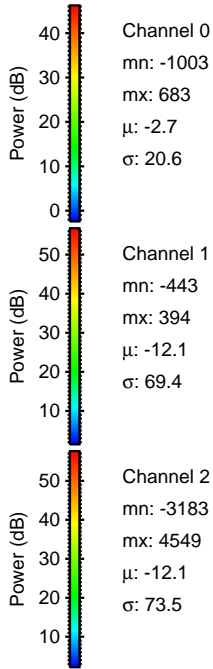
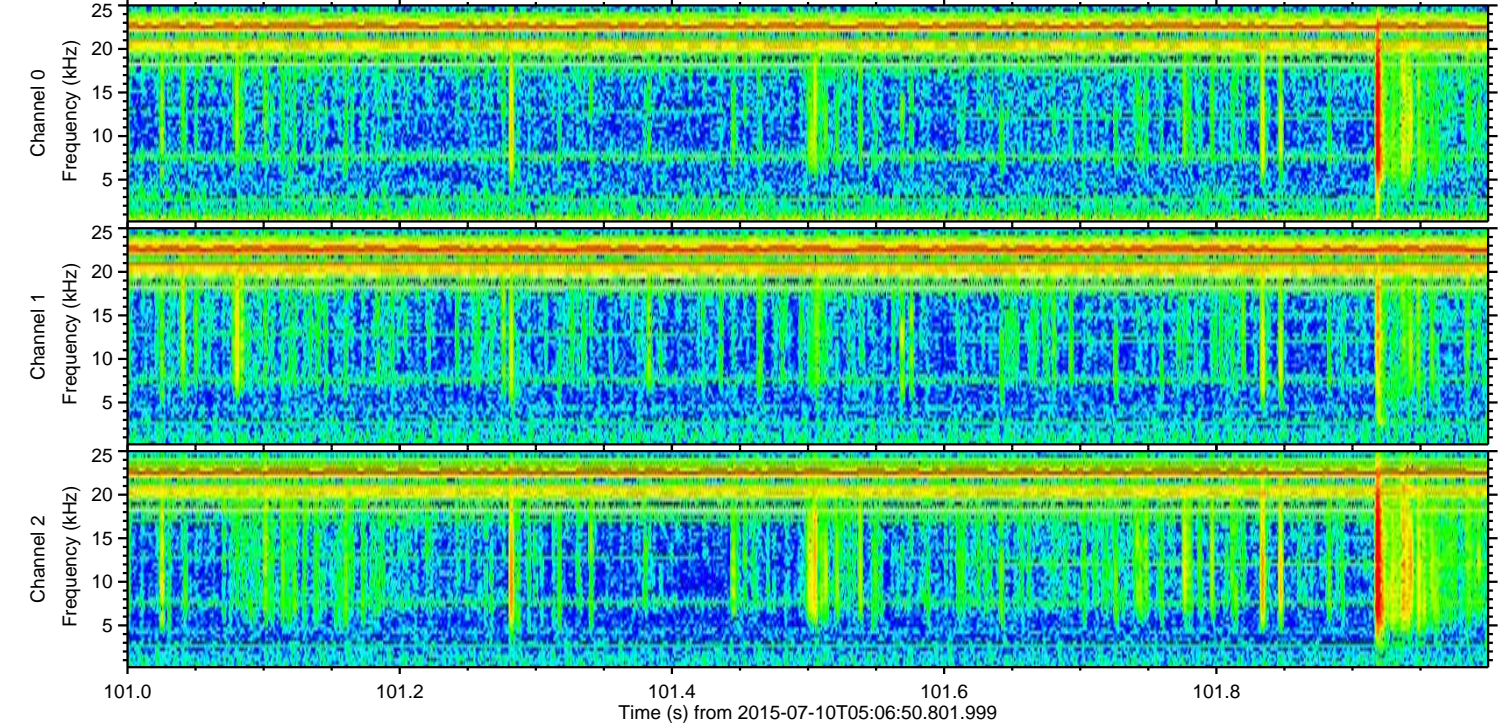
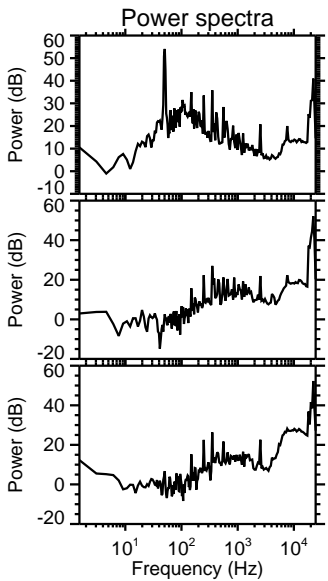
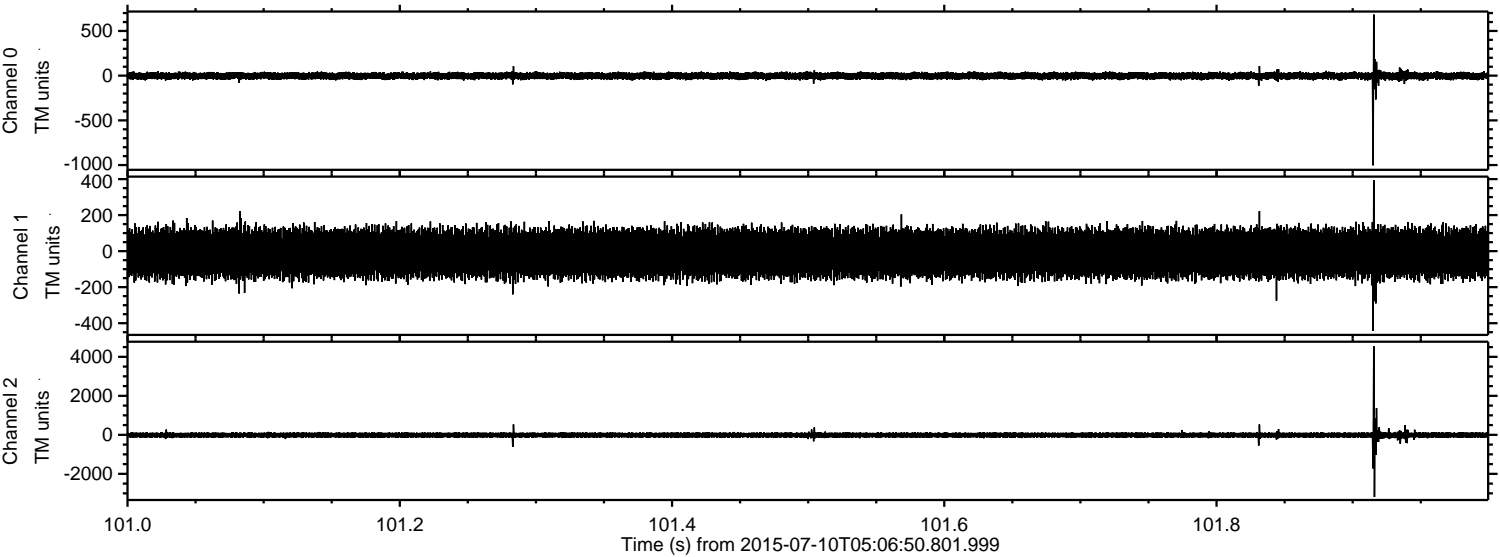
Channel 2  
mn: -5455  
mx: 5808  
 $\mu$ : -12.0  
 $\sigma$ : 78.6

Processed Fri Jul 10 07:13:26 2015 by ELM ver.2012-10-06 from 001\_\_elm20150710\_050649\_\_dat00.bin



ELMAVAN 3D WAVEFORMS (Measured data sampled at 50 kHz) 51000 packets of 144 samples from 2015-07-10T05:06:50.801.999. Part 102/147

Processed Fri Jul 10 07:13:27 2015 by ELM ver.2012-10-06 from 001\_\_elm20150710\_050649\_\_dat00.bin

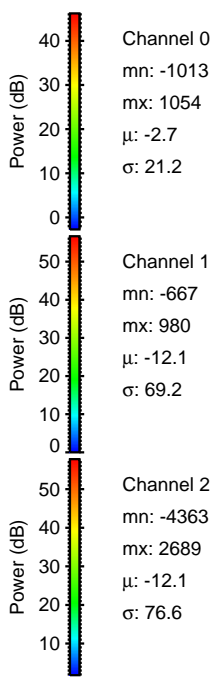
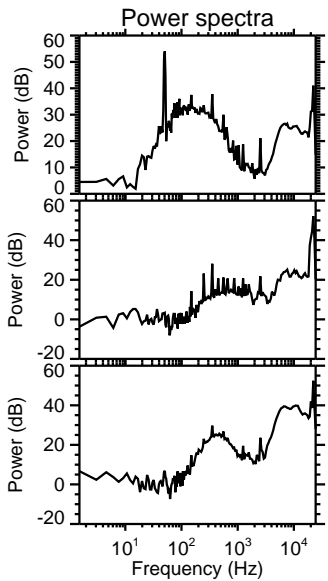
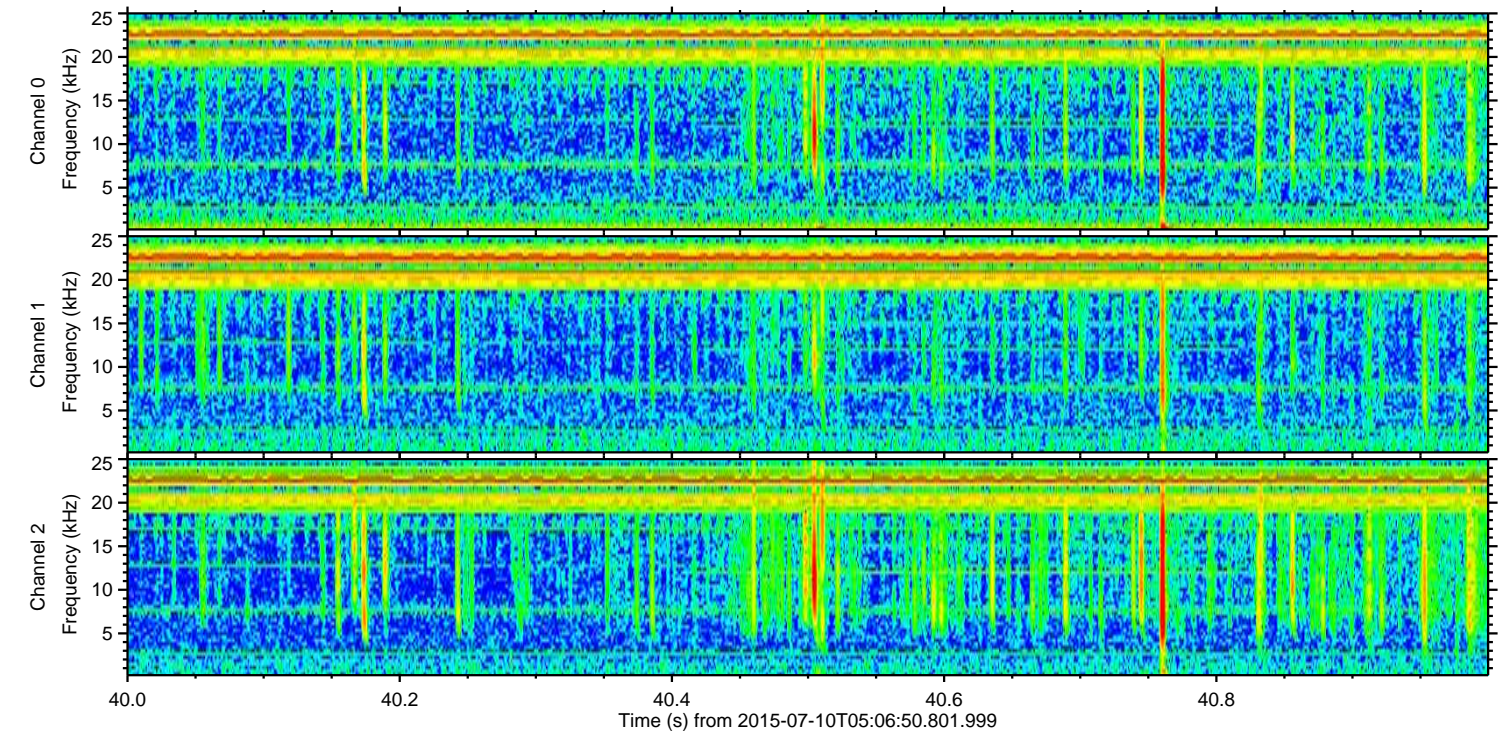
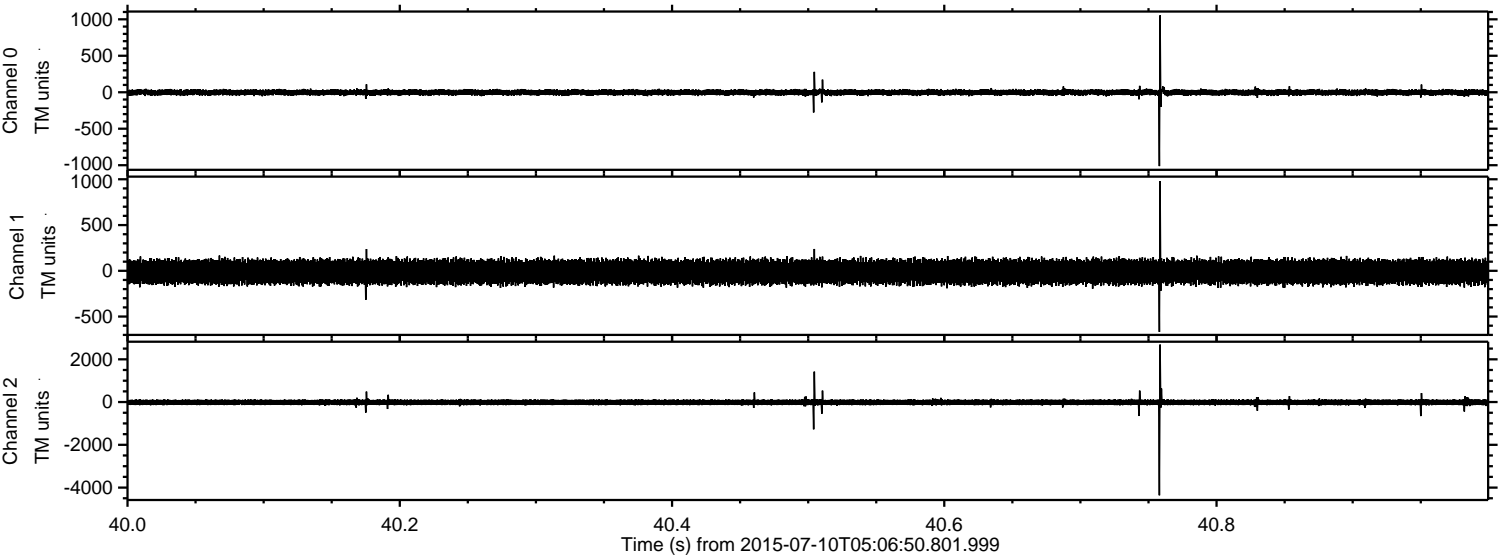


Channel 0  
mn: -1003  
mx: 683  
 $\mu$ : -2.7  
 $\sigma$ : 20.6

Channel 1  
mn: -443  
mx: 394  
 $\mu$ : -12.1  
 $\sigma$ : 69.4

Channel 2  
mn: -3183  
mx: 4549  
 $\mu$ : -12.1  
 $\sigma$ : 73.5

Processed Fri Jul 10 07:13:28 2015 by ELM ver.2012-10-06 from 001\_\_elm20150710\_050649\_\_dat00.bin

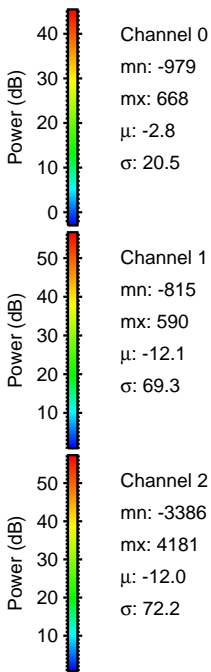
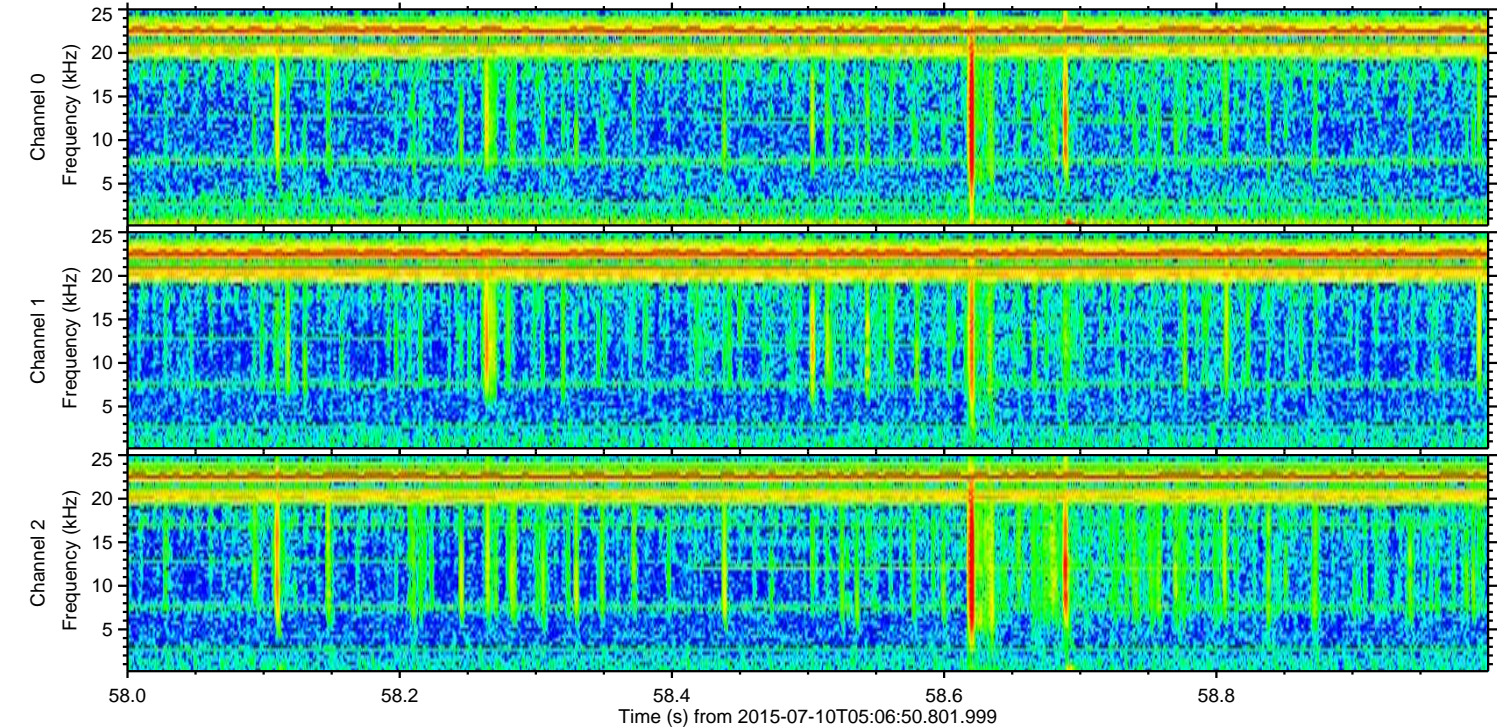
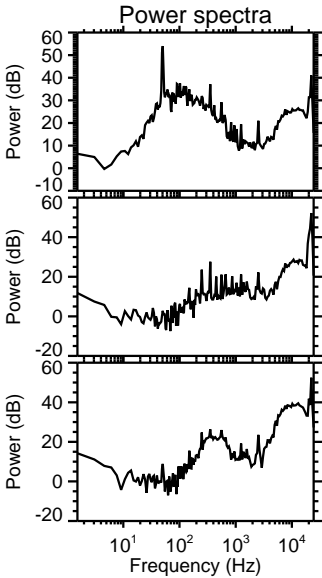
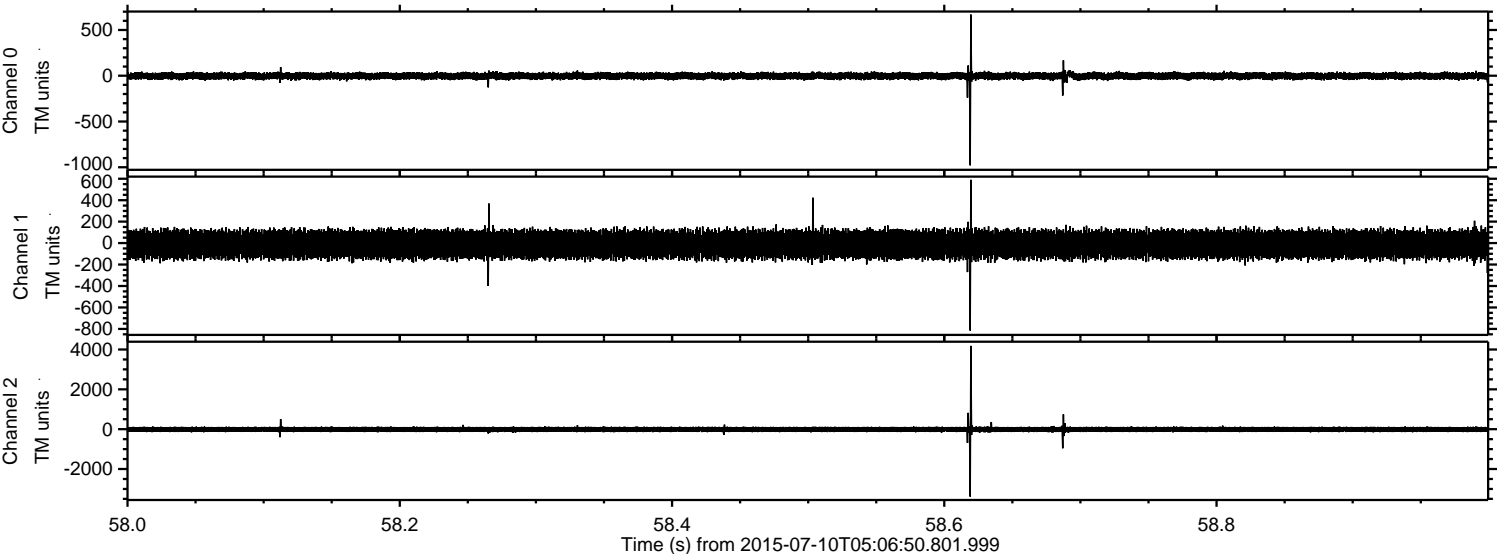


Channel 0  
mn: -1013  
mx: 1054  
 $\mu$ : -2.7  
 $\sigma$ : 21.2

Channel 1  
mn: -667  
mx: 980  
 $\mu$ : -12.1  
 $\sigma$ : 69.2

Channel 2  
mn: -4363  
mx: 2689  
 $\mu$ : -12.1  
 $\sigma$ : 76.6

Processed Fri Jul 10 07:13:29 2015 by ELM ver.2012-10-06 from 001\_\_elm20150710\_050649\_\_dat00.bin



ELMAVAN 3D WAVEFORMS (Measured data sampled at 50 kHz) 51000 packets of 144 samples from 2015-07-10T05:06:50.801.999. Part 131/147

Processed Fri Jul 10 07:13:30 2015 by ELM ver.2012-10-06 from 001\_\_elm20150710\_050649\_\_dat00.bin

